

Crime mapping at the NSW Bureau of Crime Statistics and Research

Nicole Mahoney

nicole_mahoney@agd.nsw.gov.au

Hotspot maps

Hotspot maps identify areas with a high concentration of a particular offence type.

The two hotspot images to the right show the difference between two different offence types across the same area, using the same criteria and within the same timeframe.

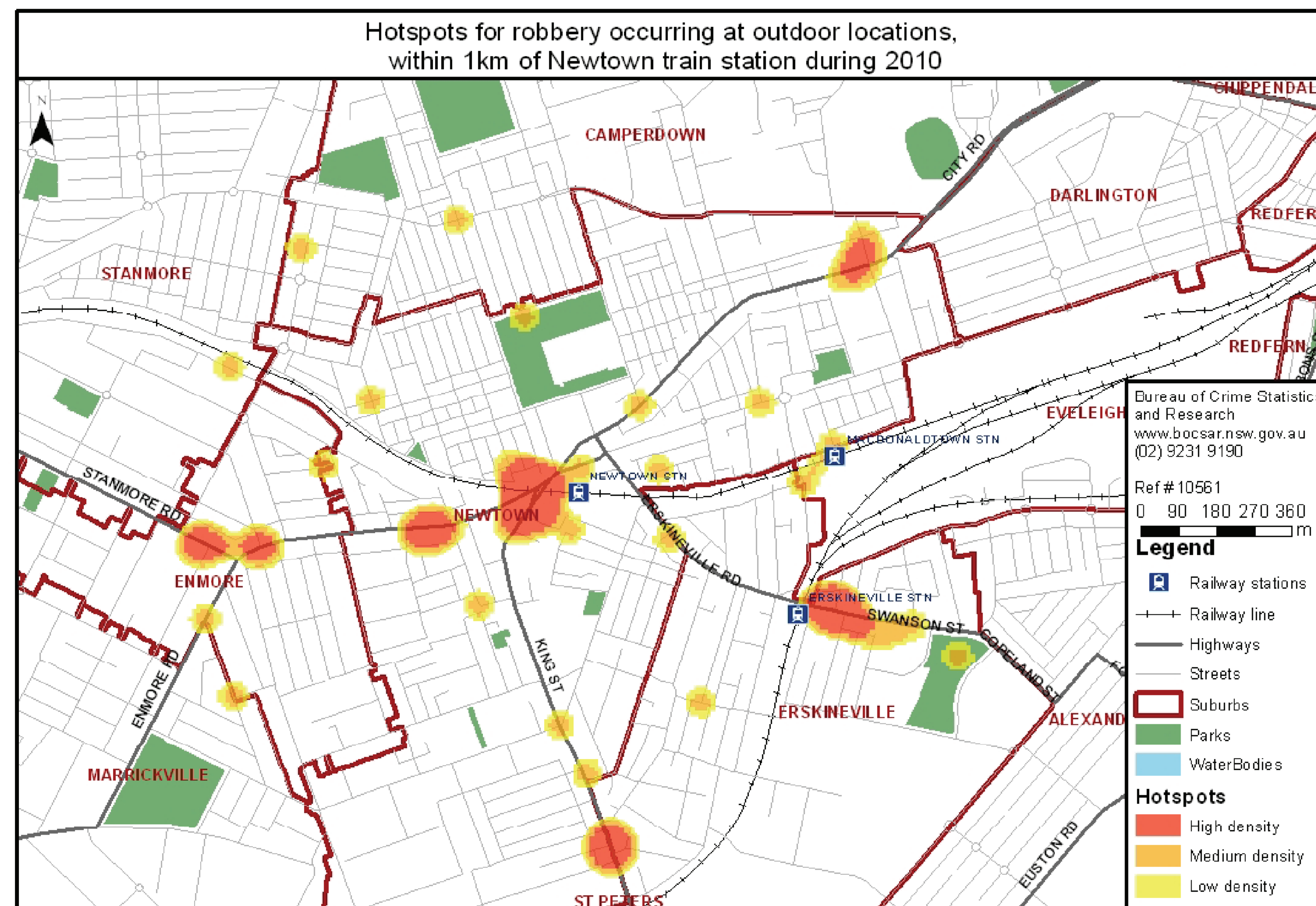
The maps highlight a number of areas where crime prevention could be targeted. These areas are mostly concentrated around the main roads and train stations.

The benefits of using a hotspot map include:

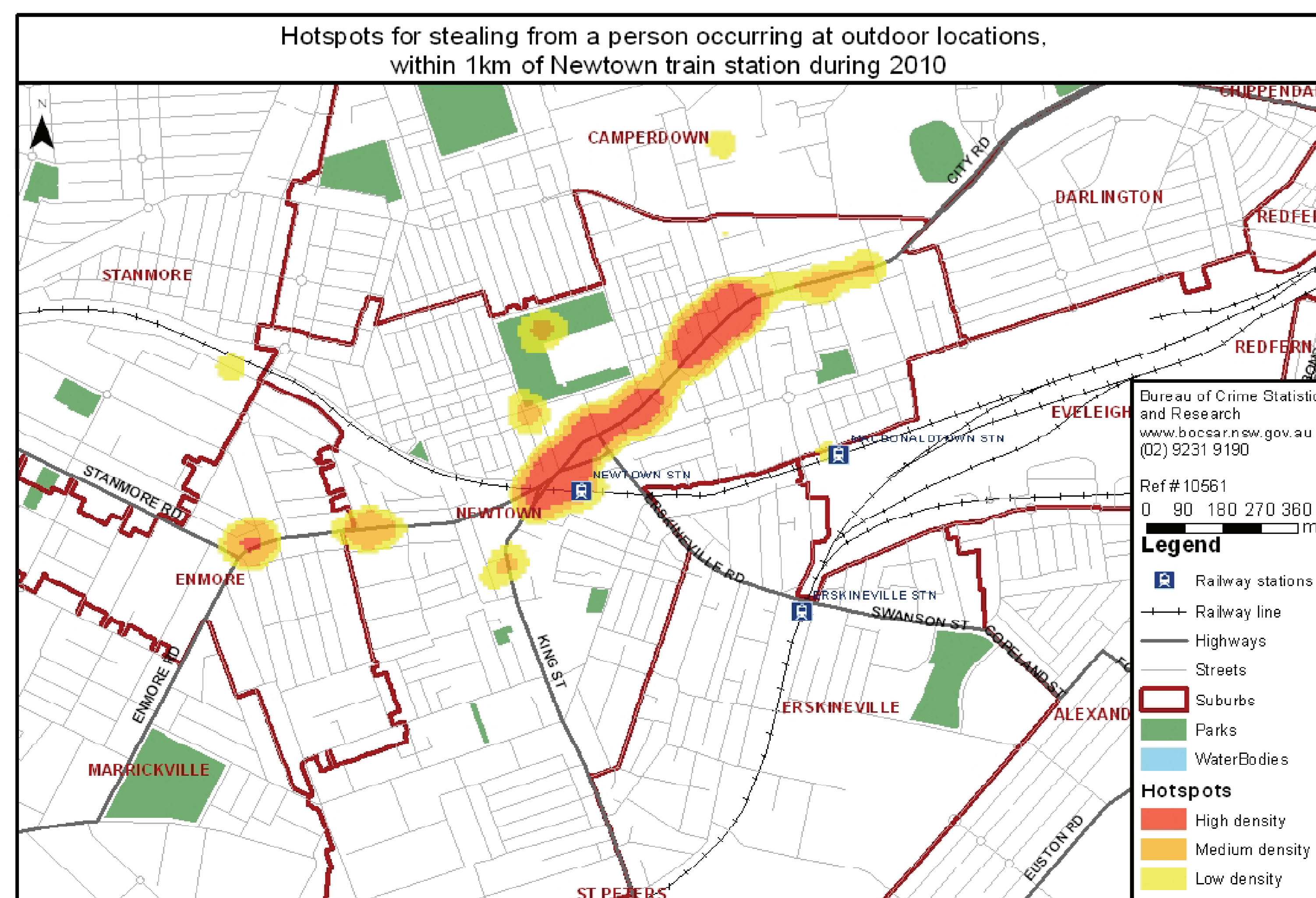
- Information is detailed enough to use to the maps to focus crime prevention resources
- Protection of privacy for victims
- Comparable across geographic areas within that year

The absence of a hotspot does not necessarily mean there have not been incidents of that offence type in that area. It just means they are not as concentrated.

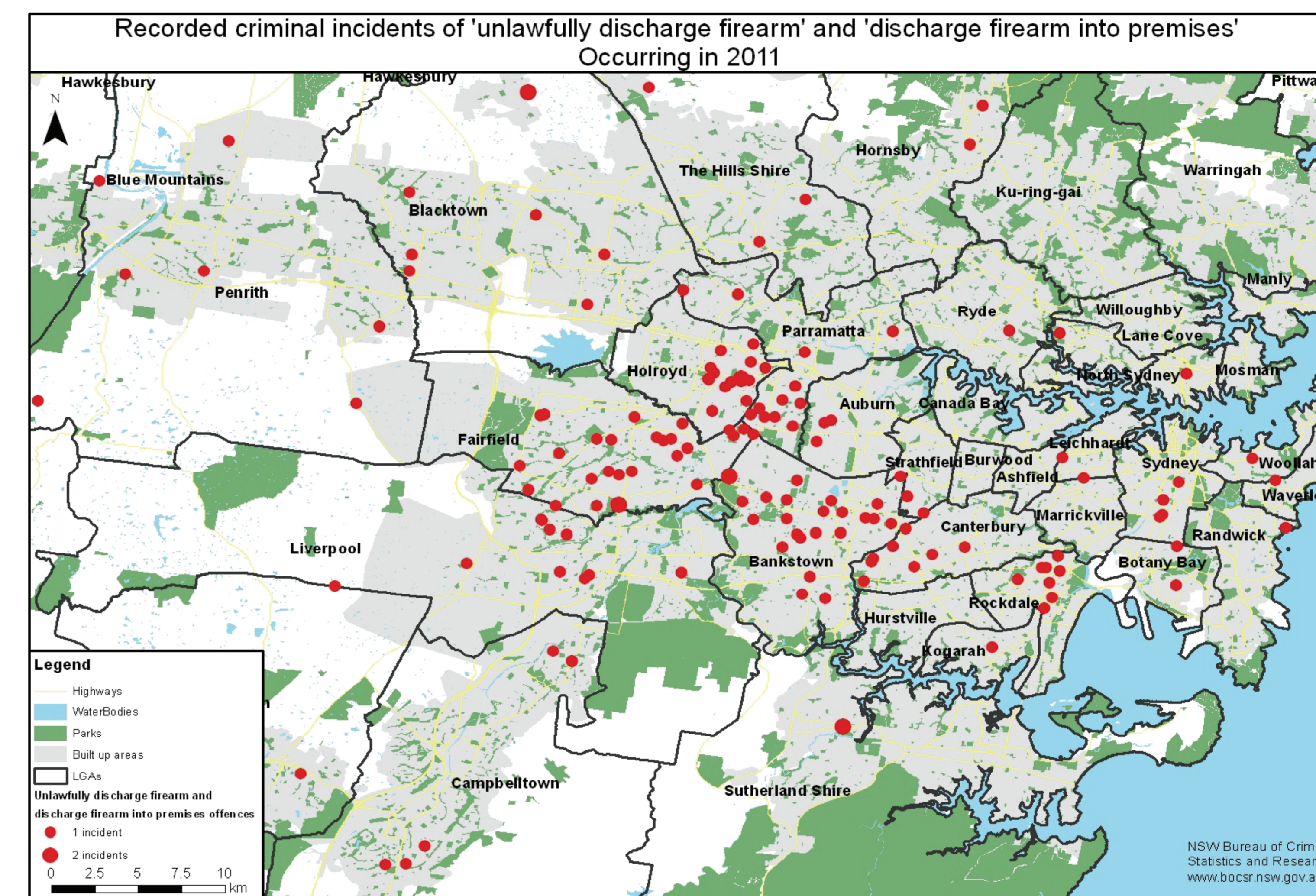
There will always be hotspots produced regardless of whether there is lots of crime or a small amount of crime.



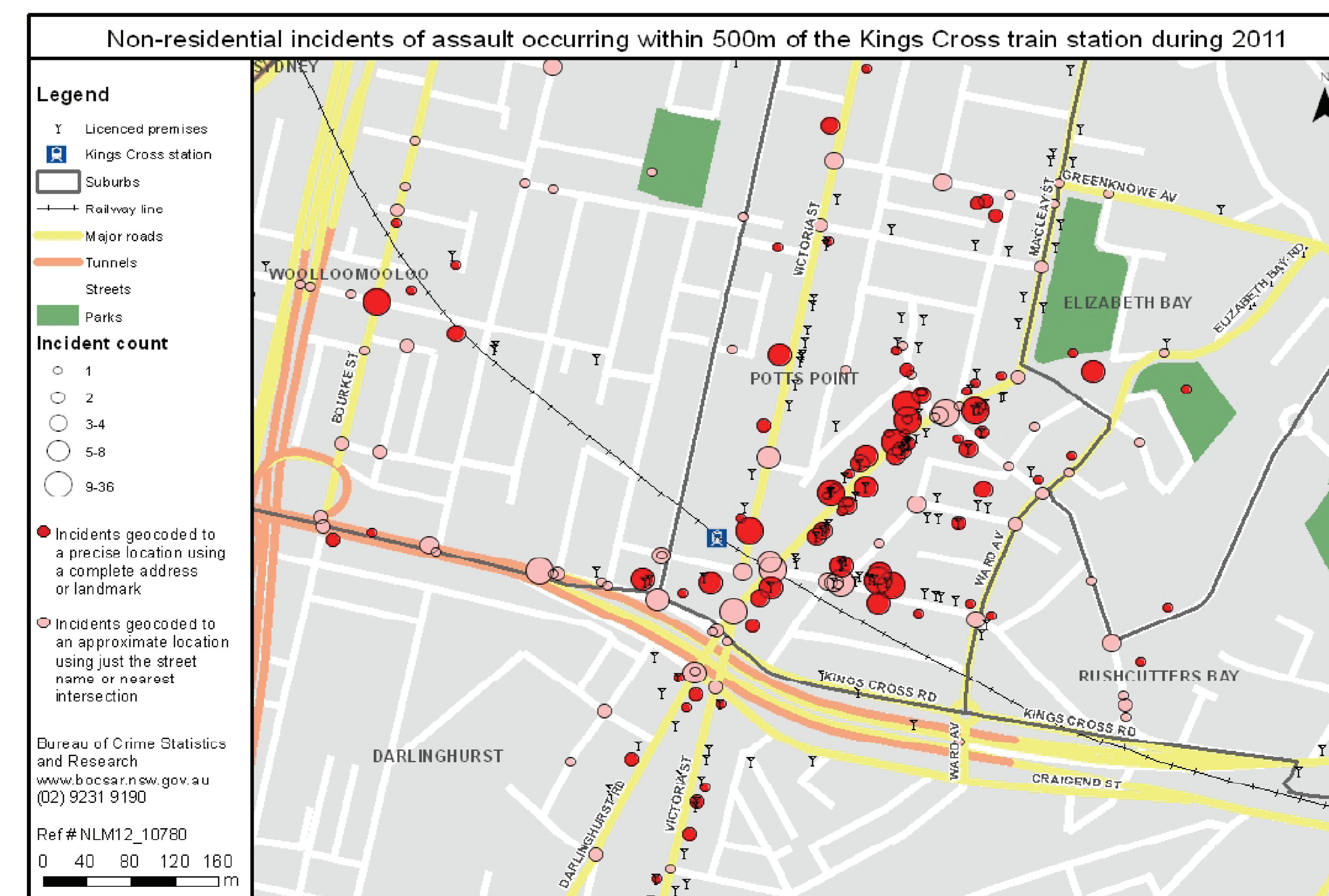
Hotspot map generated for a request to identify areas within 1km of the Newtown train station where robbery incidents occurred during 2011



The same request and conditions as above except for incidents of stealing from a person Hotspot map generated for a request to identify areas within 1km of the Newtown train station where robbery incidents occurred during 2011



Locations of drive by shooting incidents occurring in 2011



Locations of incidents of alcohol related assault occurring within 500m of the Kings Cross train station during 2011 by accuracy and in relation to licensed premises

Drive by shootings

Drive by shootings were highly publicised in the media during 2012.

In response to the media and public interest, maps were produced to identify which areas were most frequently being targeted. The map shows incidents occurring in 2011.

The map shows that the majority of the incidents are occurring in the Canterbury- Bankstown, Fairfield-Liverpool and Central Western Sydney areas.

The two worst months in the past decade for 'drive-by' shooting incidents (i.e. incidents involving 'discharge firearm into premises' or 'unlawfully discharge firearm') occurred in April and July 2012. Despite these spikes, however, the trend in drive-by shooting incidents over the last 24 months is neither significantly up or down.

Alcohol related assault

Alcohol related assault was a topic of interest in 2012.

The map shown to the left was used to provide insight into the number and location of alcohol related assaults and their spatial proximity to licensed premises in the Kings Cross area.

Kings Cross assault statistics:

- 213 assaults were reported to police in the year to March 2012
- 86% of assaults in Kings cross are alcohol related
- Approximately a third of assaults occur on licensed premises
- About 56% of the assaults occur on Darlinghurst Road and Bayswater Road
- Day time and weeknights are relatively free of violence. More than half of these assaults occur between 9pm and 9am on Fridays and Saturdays