

NSW CUSTODY STATISTICS

September 2024



YOUTH DETENTION POPULATION

197

in September 2023

209

in September 2024



CUSTODY STATUS

Between September 2023 and September 2024



↓
2.0%

Remand population decreased 2.0% or 3 young people to 145



↑
30.6%

Sentenced population increased 30.6% or 15 young people to 64

GENDER

Between September 2023 and September 2024



↑
128.6%

Young female detainees increased 128.6% or 9 young people to 16



↑
2.1%

Young male detainees increased 2.1% or 4 young people to 193

ABORIGINAL OVER-REPRESENTATION

In Sep 2023	In Sep 2024
56.9%	59.8%
of young people in custody were Aboriginal	of young people in custody were Aboriginal

Between September 2023 and September 2024



↑
800.0%

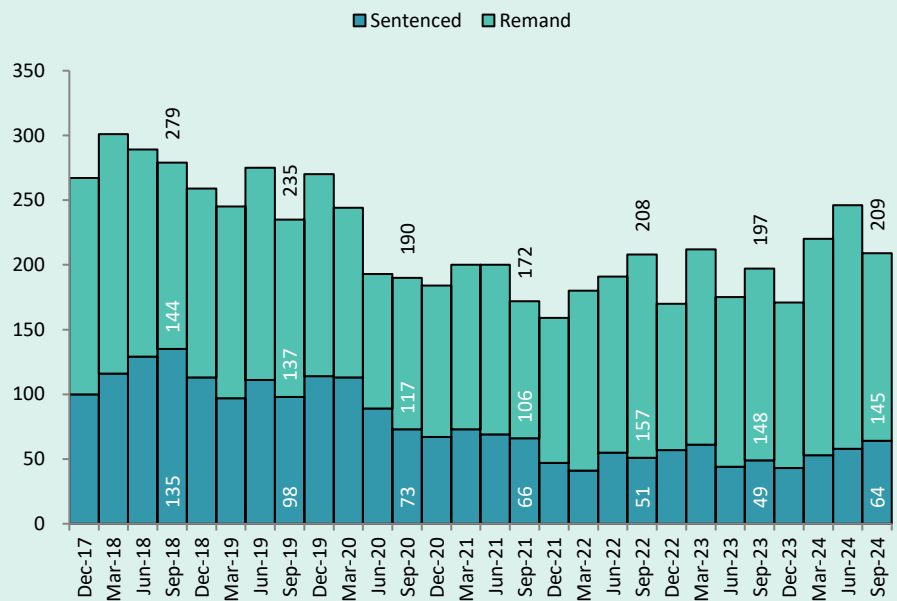
Young Aboriginal female detainees increased 800.0% or 8 young people to 9



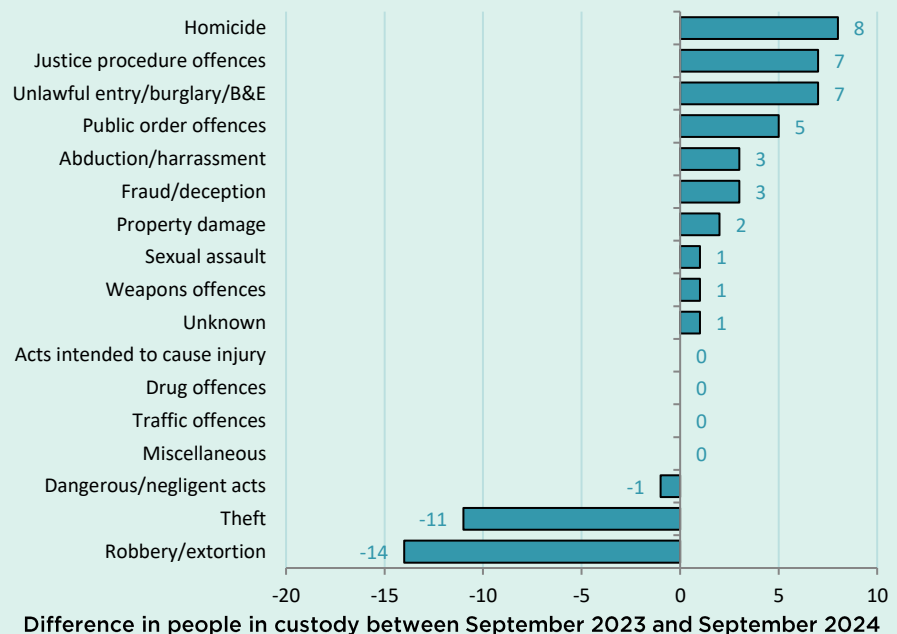
↑
4.5%

Young Aboriginal male detainees increased 4.5% or 5 young people to 116

QUARTERLY TRENDS



CHANGE IN YOUTH CUSTODY BY OFFENCE



NSW CUSTODY STATISTICS

September 2024

PRISON POPULATION

12,272 **12,897**

in September 2023

in September 2024



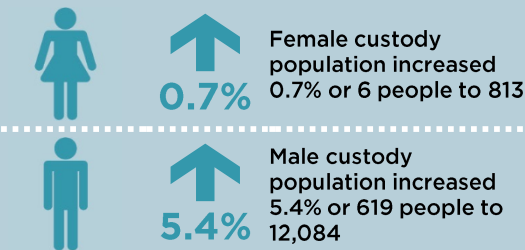
LEGAL STATUS

Between September 2023 and September 2024

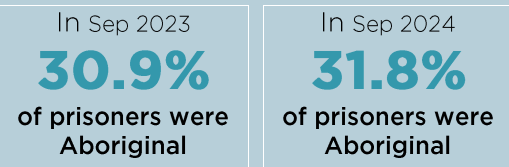


GENDER

Between September 2023 and September 2024



ABORIGINAL OVER-REPRESENTATION*

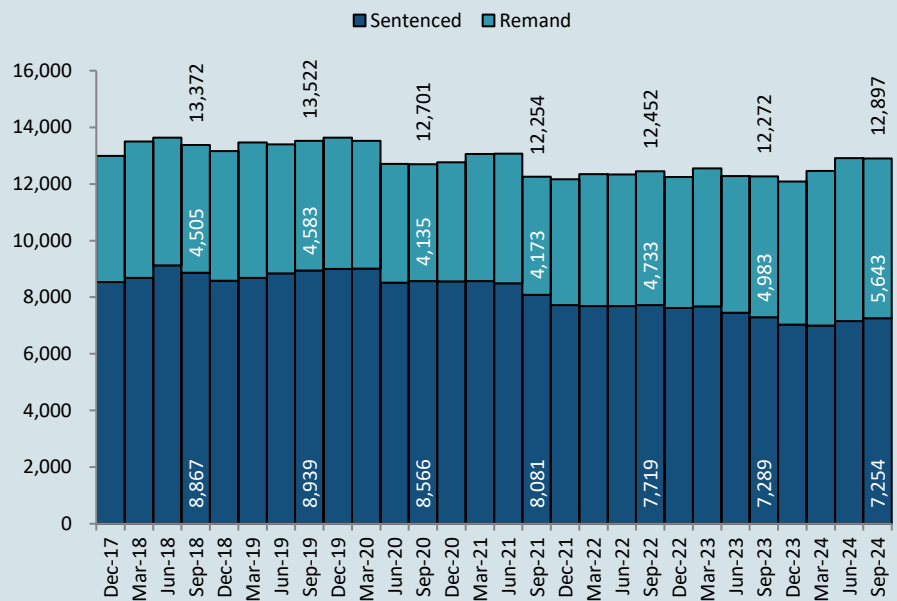


Between September 2023 and September 2024

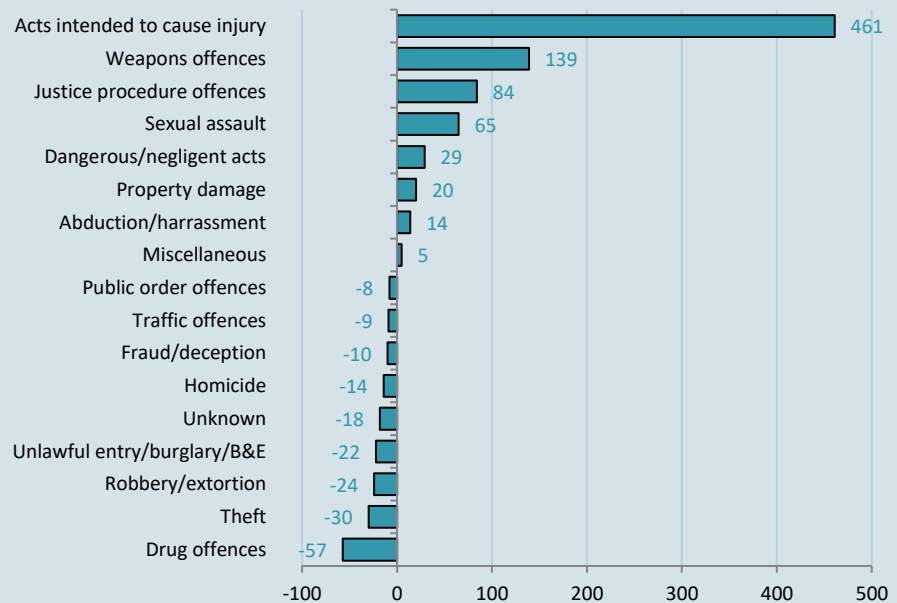


*Due to delays in identification of Aboriginal status the number of Aboriginal persons in adult custody is potentially undercounted by up to 2% in more recent months.

QUARTERLY TRENDS



CHANGE IN PRISON NUMBERS BY OFFENCE



Difference in people in custody between September 2023 and September 2024