

# NSW CUSTODY STATISTICS

## December 2023



### YOUTH DETENTION POPULATION

170

in December 2022

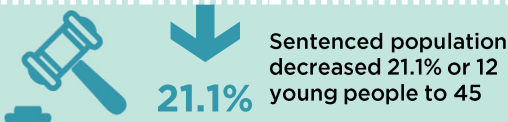
174

in December 2023



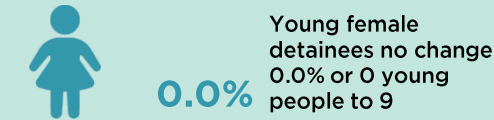
#### CUSTODY STATUS

Between December 2022 and December 2023



#### GENDER

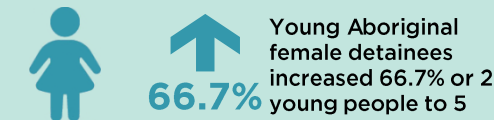
Between December 2022 and December 2023



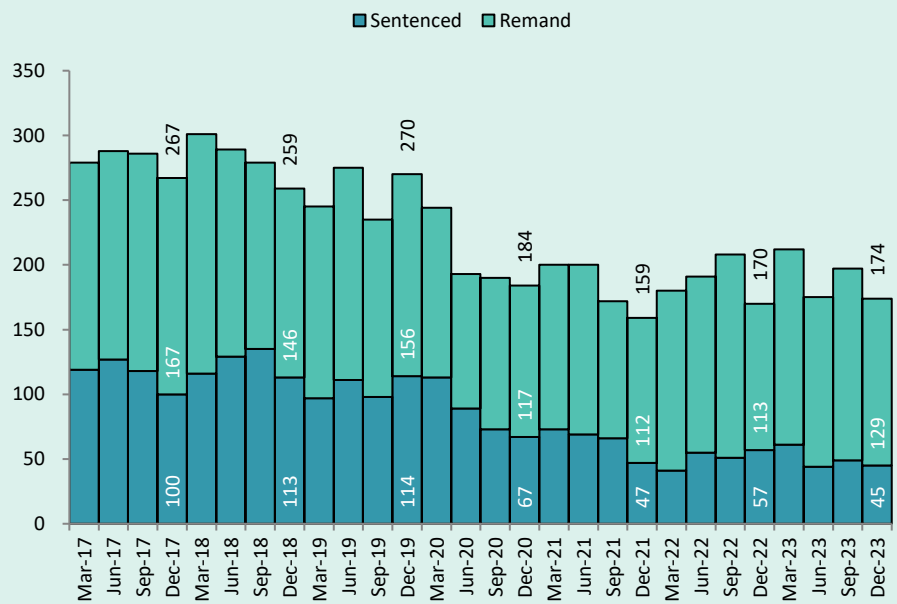
#### ABORIGINAL OVER-REPRESENTATION



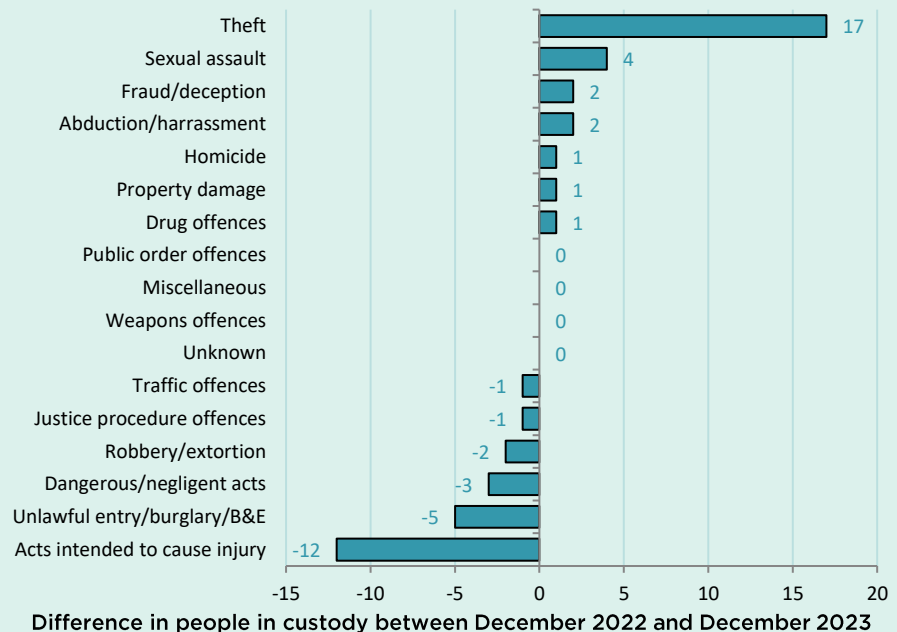
Between December 2022 and December 2023



#### QUARTERLY TRENDS



#### CHANGE IN YOUTH CUSTODY BY OFFENCE



# NSW CUSTODY STATISTICS

## December 2023

### PRISON POPULATION

**12,247** **12,091**

in December 2022

in December 2023



#### LEGAL STATUS

Between December 2022 and December 2023



**9.2%**

Remand population increased 9.2% or 426 people to 5,055



**7.6%**

Sentenced population decreased 7.6% or 582 people to 7,036

#### GENDER

Between December 2022 and December 2023



**7.1%**

Female custody population decreased 7.1% or 59 people to 768



**0.8%**

Male custody population decreased 0.8% or 97 people to 11,323

#### ABORIGINAL OVER-REPRESENTATION\*

In Dec 2022

**29.6%**

of prisoners were Aboriginal

In Dec 2023

**30.4%**

of prisoners were Aboriginal

Between December 2022 and December 2023



**1.3%**

Aboriginal female custody population decreased 1.3% or 4 people to 312

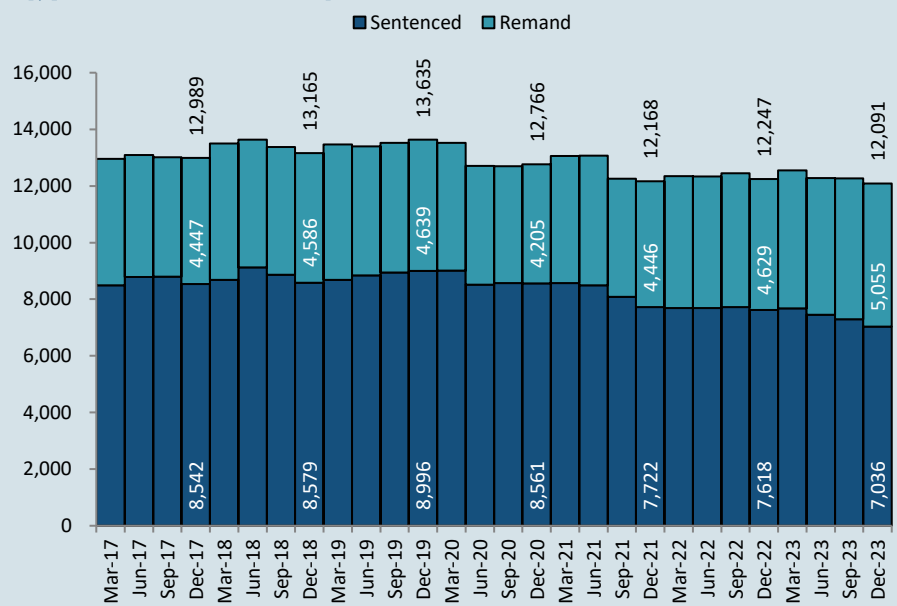


**1.8%**

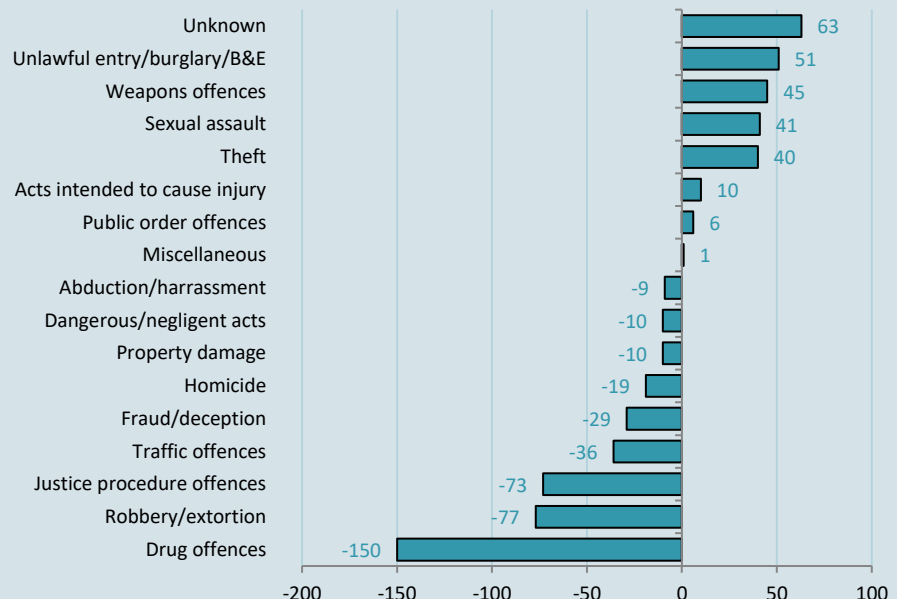
Aboriginal male custody population increased 1.8% or 59 people to 3,362

\*Due to delays in identification of Aboriginal status the number of Aboriginal persons in adult custody is potentially undercounted by up to 2% in more recent months.

#### QUARTERLY TRENDS



#### CHANGE IN PRISON NUMBERS BY OFFENCE



Difference in people in custody between December 2022 and December 2023

