

NSW CUSTODY STATISTICS

September 2022



YOUTH DETENTION POPULATION

173

in September 2021

212

in September 2022



CUSTODY STATUS

Between September 2021 and September 2022



47.7%

Remand population increased 47.7% or 51 young people to 158



18.2%

Sentenced population decreased 18.2% or 12 young people to 54

GENDER

Between September 2021 and September 2022



8.3%

Young female detainees increased 8.3% or 1 young person to 13



23.6%

Young male detainees increased 23.6% or 38 young people to 199

ABORIGINAL OVER-REPRESENTATION

In Sep 2021

41.6%

of young people in custody were Aboriginal

In Sep 2022

50.5%

of young people in custody were Aboriginal

Between September 2021 and September 2022



0.0%

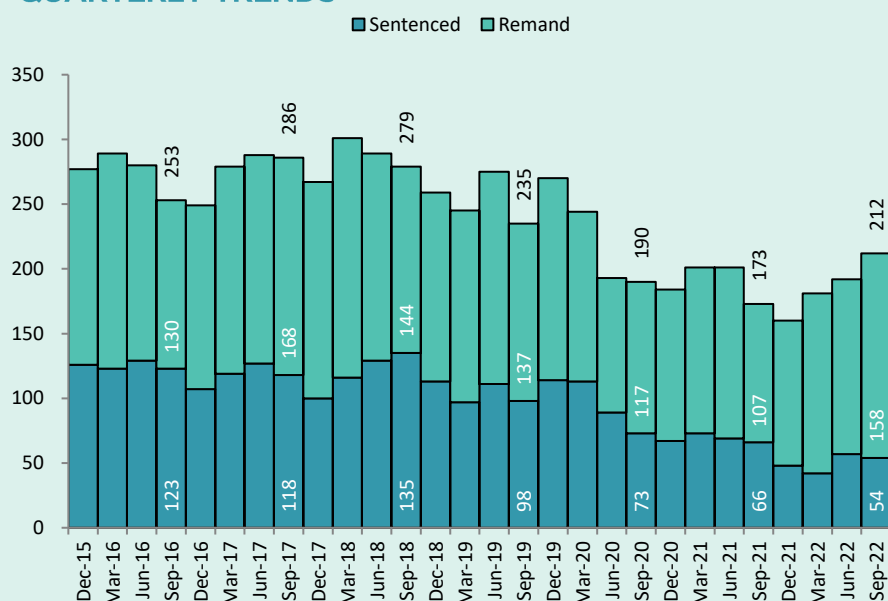
Young Aboriginal female detainees no change 0.0% or 0 young people to 4



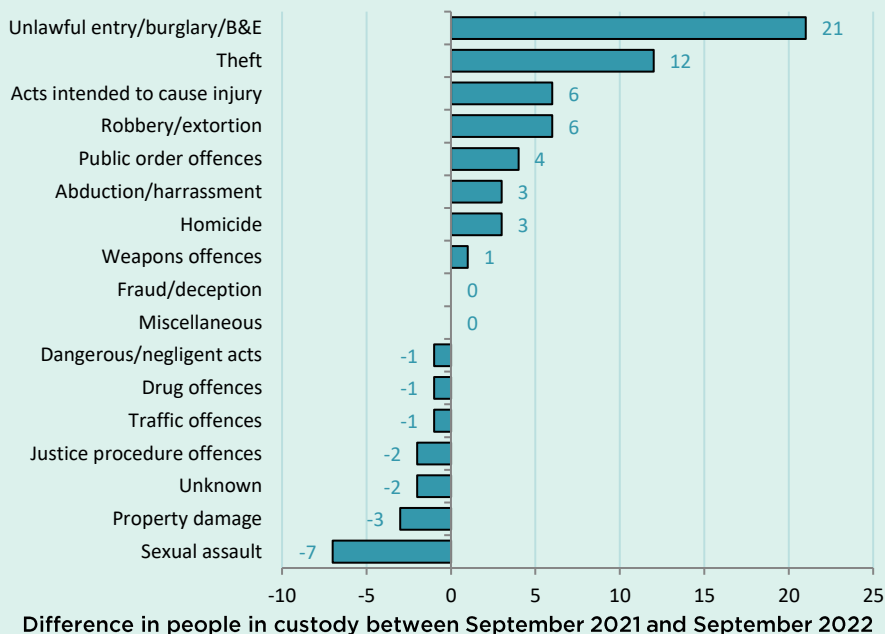
51.5%

Young Aboriginal male detainees increased 51.5% or 35 young people to 103

QUARTERLY TRENDS



CHANGE IN YOUTH CUSTODY BY OFFENCE



NSW CUSTODY STATISTICS

September 2022

PRISON POPULATION

12,254 **12,452**

in September 2021

in September 2022



LEGAL STATUS

Between September 2021 and September 2022



↑ 13.4%

Remand population increased 13.4% or 560 people to 4,733



↓ 4.5%

Sentenced population decreased 4.5% or 362 people to 7,719

GENDER

Between September 2021 and September 2022



↑ 0.3%

Female custody population increased 0.3% or 2 people to 785



↑ 1.7%

Male custody population increased 1.7% or 196 people to 11,667

ABORIGINAL OVER-REPRESENTATION*

In Sep 2021

28.2%

of prisoners were Aboriginal

In Sep 2022

29.2%

of prisoners were Aboriginal

Between September 2021 and September 2022



↑ 10.1%

Aboriginal female custody population increased 10.1% or 29 people to 317

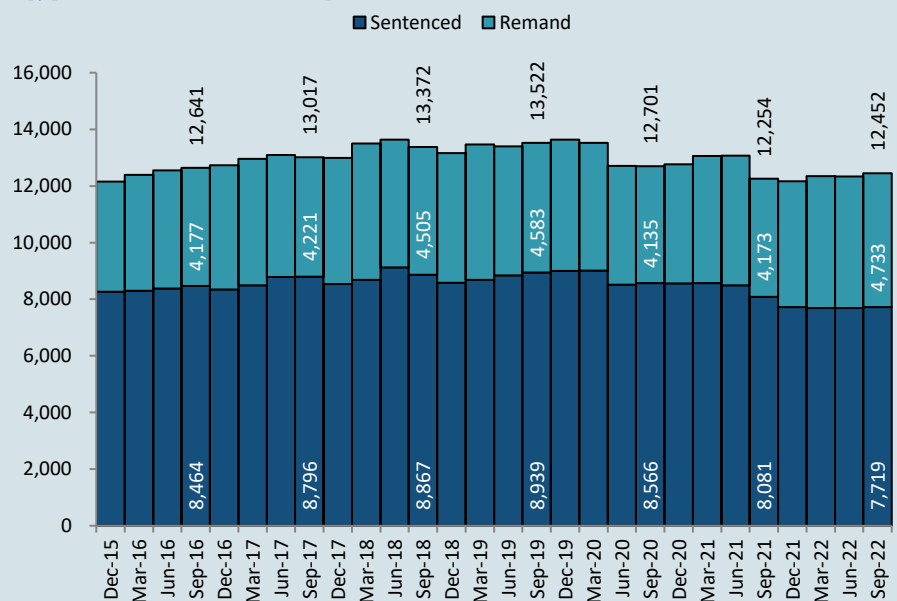


↑ 4.8%

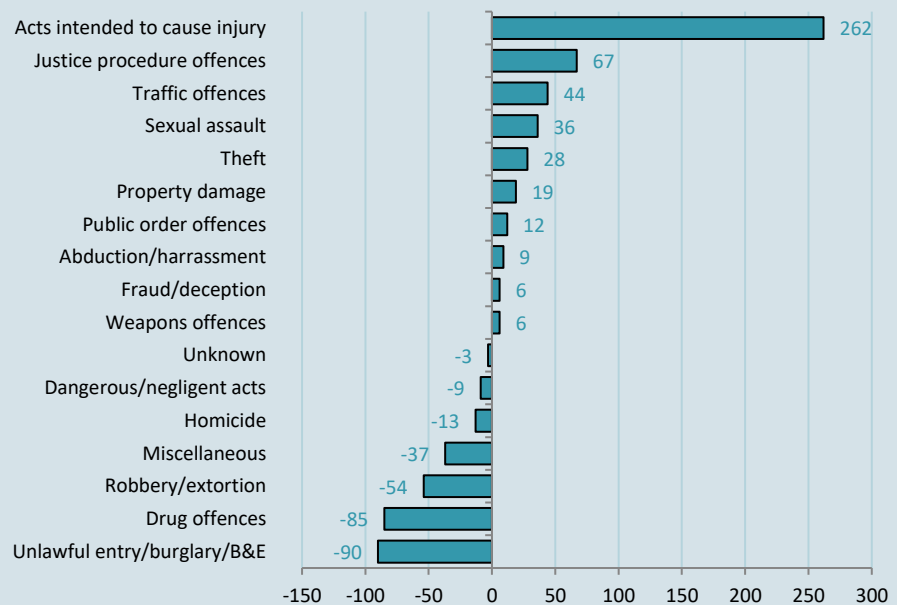
Aboriginal male custody population increased 4.8% or 152 people to 3,322

*Due to delays in identification of Aboriginal status the number of Aboriginal persons in adult custody is potentially undercounted by up to 2% in more recent months.

QUARTERLY TRENDS



CHANGE IN PRISON NUMBERS BY OFFENCE



Difference in people in custody between September 2021 and September 2022