
NEW SOUTH WALES CUSTODY STATISTICS

QUARTERLY UPDATE
MARCH 2016



NSW Bureau of Crime
Statistics and Research

CONTENTS

This report presents 24 months of reception, discharge and custody population data and comparisons between the current and previous quarter for age, gender, indigenous status, most serious offence and the average length of stay.

Separate figures are presented for juveniles and adults.

The counting unit is a custodial episode. An individual will be counted multiple times in a period if they have multiple custodial episodes in that period.

SCOPE

The data in this report are extracted from the Corrective Services NSW (CSNSW) Offender Integrated Management System (OIMS) and the Juvenile Justice NSW (JJNSW) Client Information Management System (CIMS).

The adult custody population figures include only those persons held in gazetted correctional centres managed by CSNSW. This includes: persons managed as forensic patients, persons held after expiry of their sentence awaiting deportation and persons awaiting extradition to another jurisdiction. Persons in the Special Purpose Centre at Long Bay Correctional Centre are not included.

In addition to gazetted correctional centres, CSNSW manages a number of police/court cell complexes. This report excludes persons received into and then discharged from a CSNSW-managed 24 hour police/court cell complex without entering a gazetted correctional centre. Adults refused police bail but not held in a gazetted correctional centre are not included.

Custody population figures are counted as at midnight on the last day of the month or quarter as appropriate. Reception and discharge figures are those during each month or quarter as appropriate.

Refer to the Glossary at the back of the report for detailed descriptions of the terms used in the report.

ACKNOWLEDGEMENTS

Juvenile custody data are provided by the Research and Information Section of JJNSW. Adult custody data are provided by the Corrections Research, Evaluation and Statistics (CRES) section of CSNSW. BOCSAR is grateful for the support provided by both areas in supplying the data for this report and advising on its interpretation.

NOTE

The adult custody data presented in this report will differ from data reported by CSNSW due to data extract timing differences.

Contents

PART 1 JUVENILES **3**

SECTION 1.1	JUVENILE CUSTODY POPULATION	4
1.1.1	By Month	4
1.1.2	By Legal Status	4
1.1.3	By Indigenous Status.....	5
1.1.4	By Legal Status (Indigenous Only).....	5
1.1.5	Profile	6
1.1.6	Legal Status Changed from Remand to Sentenced	6
1.1.7	Remand Population by Most Serious Offence	7
1.1.8	Sentenced Population by Most Serious Offence	8
SECTION 1.2	JUVENILE CUSTODY RECEPTIONS	9
1.2.1	By Month	9
1.2.2	By Legal Status	9
SECTION 1.3	JUVENILE CUSTODY DISCHARGES	10
1.3.1	By Month	10
1.3.2	Length of Stay	10
1.3.3	By Discharge Type	11
1.3.4	By Discharge Type (Excluding Bail).....	11
1.3.5	Ratio Of Receptions To Discharges.....	12

PART 2 ADULTS **13**

SECTION 2.1	ADULT CUSTODY POPULATION	14
2.1.1	By Month	14
2.1.2	By Indigenous Status.....	14
2.1.3	Remand Population	15
2.1.4	Sentenced Population.....	15
2.1.5	Indigenous Remand Population	16
2.1.6	Indigenous Sentenced Population	16
2.1.7	Profile	17
2.1.8	Legal Status Changed from Remand to Sentenced	17
2.1.9	Remand Population by Most Serious Offence	18
2.1.10	Sentenced Population by Most Serious Offence	19
SECTION 2.2	ADULT CUSTODY RECEPTIONS	20
2.2.1	By Month	20
2.2.2	Remand Receptions	21
2.2.3	Sentenced Receptions.....	21
SECTION 2.3	ADULT CUSTODY DISCHARGES	22
2.3.1	By Month	22
2.3.2	Length of Stay	22
2.3.3	By Discharge Type	23
2.3.4	Ratio Of Receptions To Discharges.....	23

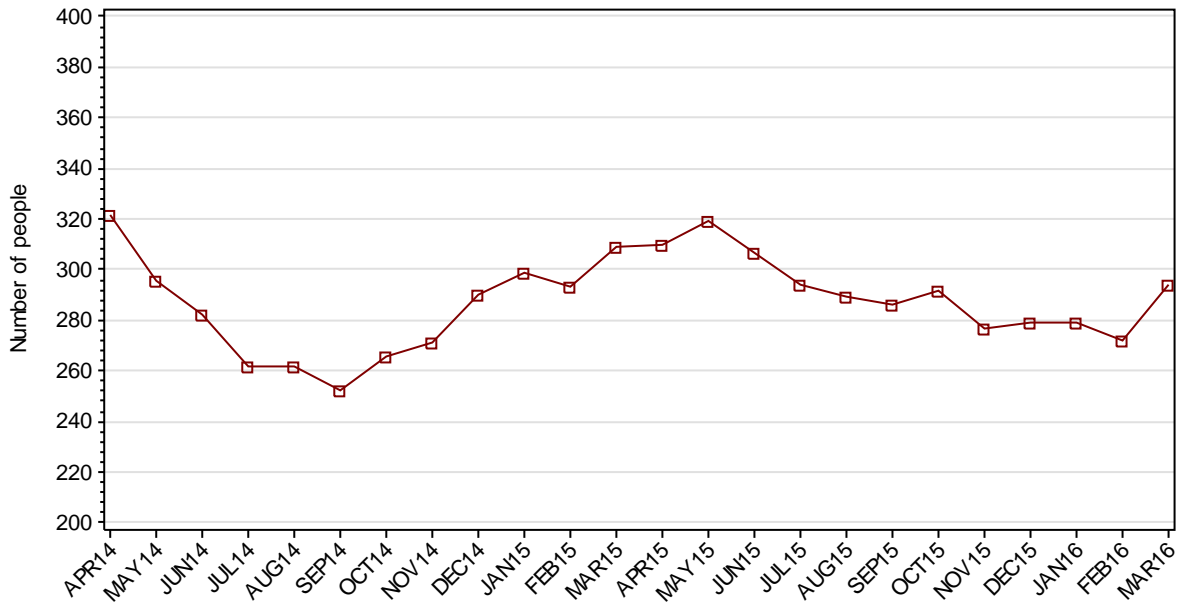
PART 3 DATA TABLES **24**

PART 4 GLOSSARY **29**

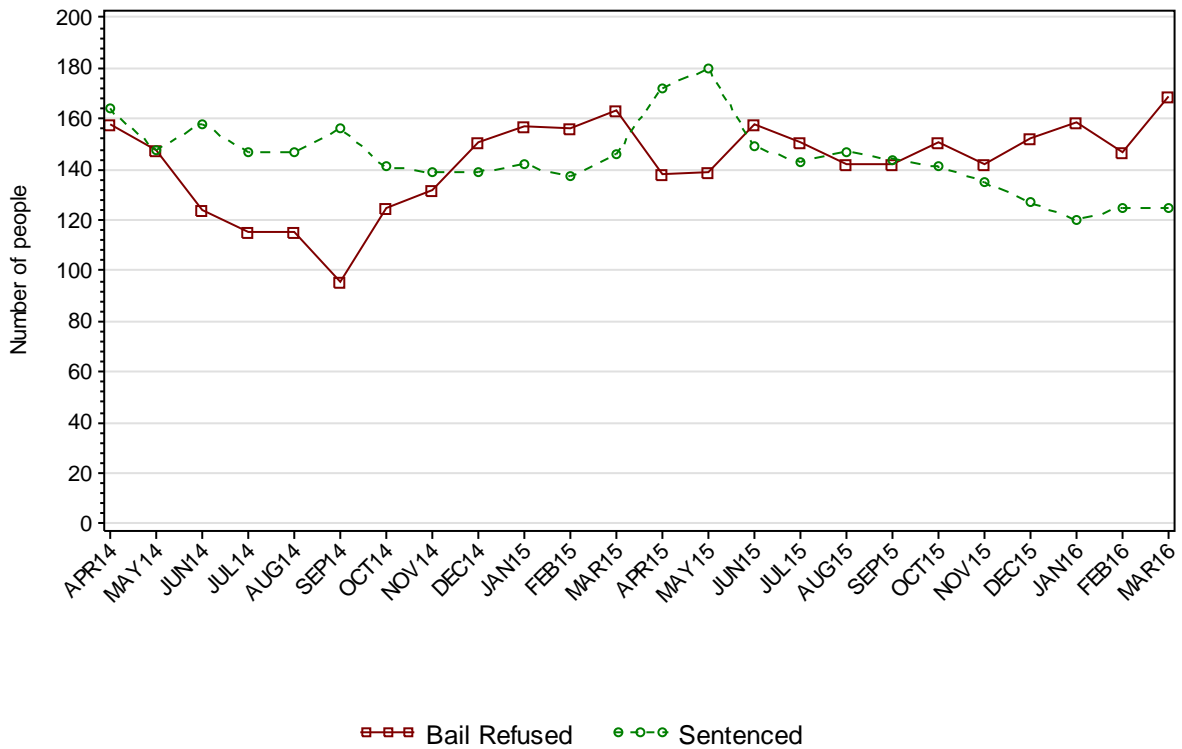
Part 1 JUVENILES

SECTION 1.1 JUVENILE CUSTODY POPULATION

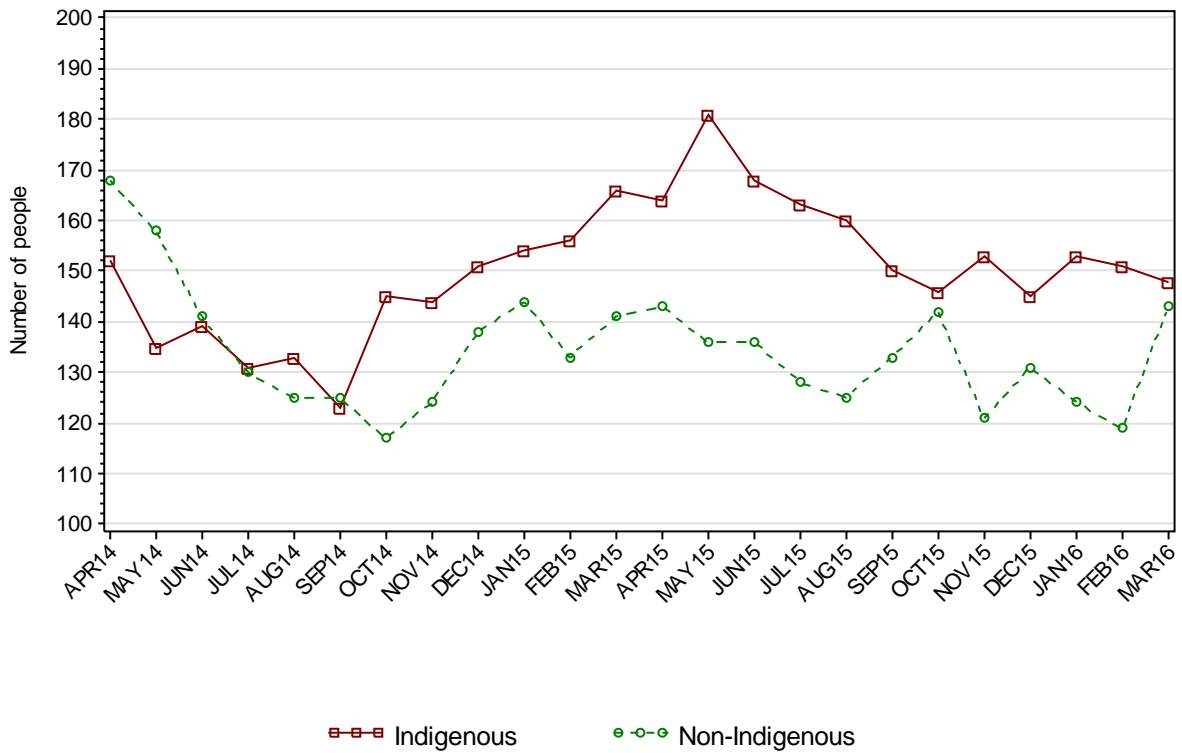
1.1.1 JUVENILE CUSTODY POPULATION AT END OF MONTH



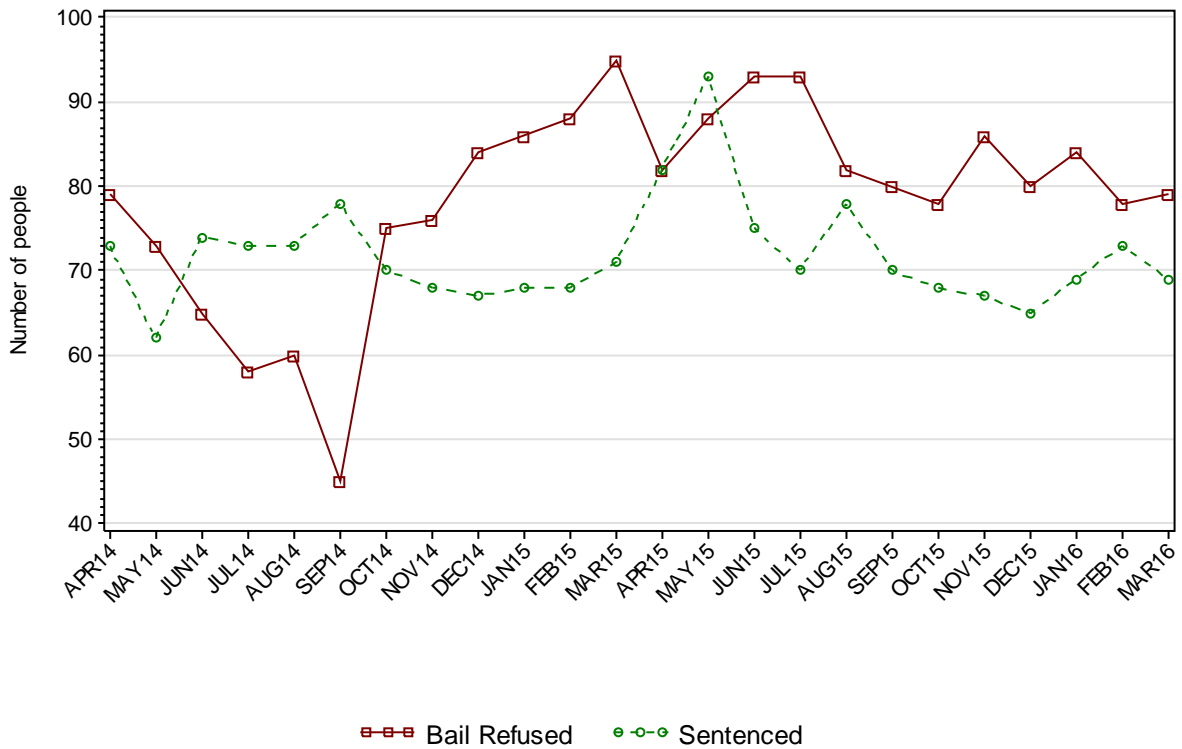
1.1.2 JUVENILE CUSTODY POPULATION BY LEGAL STATUS



1.1.3 JUVENILE CUSTODY POPULATION BY INDIGENOUS STATUS



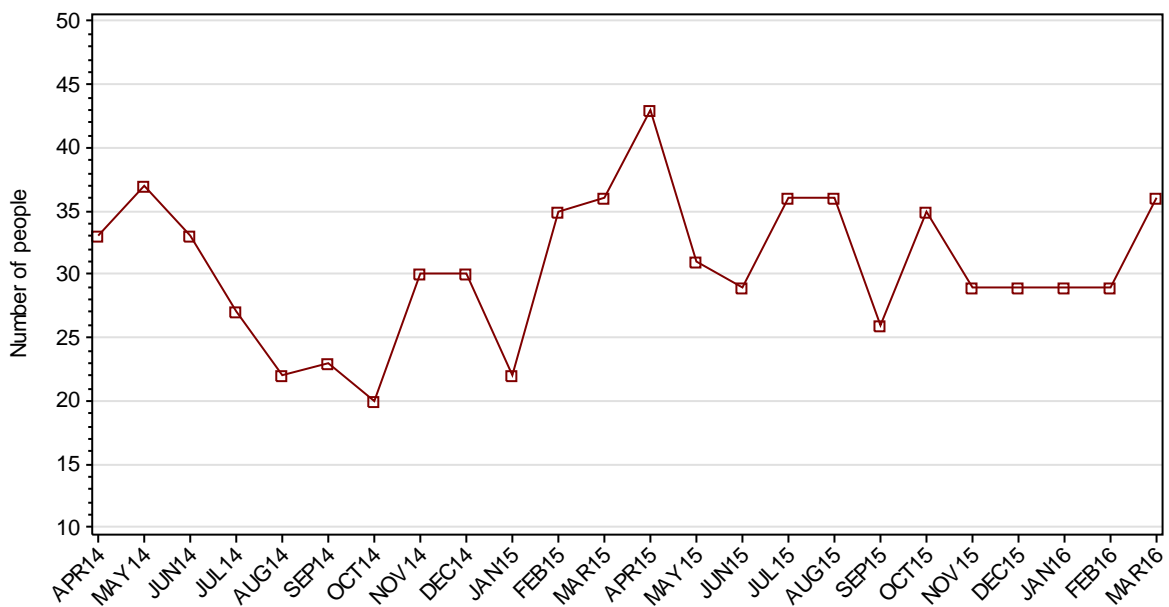
1.1.4 INDIGENOUS JUVENILE CUSTODY POPULATION BY LEGAL STATUS



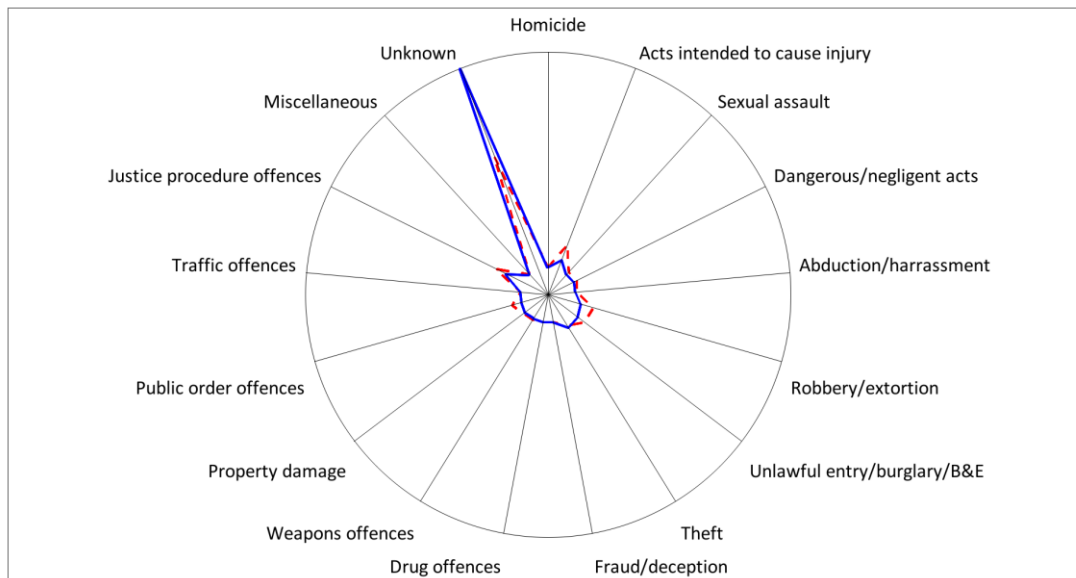
1.1.5 JUVENILE CUSTODY PROFILE AT END OF QUARTER

		Police Bail Refused		Court Bail Refused		Sentenced		Total	
		DEC15	MAR16	DEC15	MAR16	DEC15	MAR16	DEC15	MAR16
Total Male	Count	4	4	138	145	121	118	263	267
	Avg Age	15.0	15.0	16.2	16.1	16.9	16.7	16.5	16.4
Total Female	Count	0	3	10	17	6	7	16	27
	Avg Age	.	14.3	14.6	15.4	16.8	16.3	15.4	15.5
Indigenous Male	Count	2	2	73	70	64	66	139	138
	Avg Age	14.5	14.0	16.2	15.9	16.4	16.7	16.3	16.2
Indigenous Female	Count	0	1	5	6	1	3	6	10
	Avg Age	.	13.0	15.0	15.2	15.0	16.3	15.0	15.3
Total	Count	4	7	148	162	127	125	279	294
	Avg Age	15.0	14.7	16.1	16.1	16.9	16.7	16.4	16.3

1.1.6 JUVENILES IN CUSTODY: NUMBER WHOSE LEGAL STATUS CHANGED DURING MONTH FROM REMAND TO SENTENCED



1.1.7 JUVENILE REMAND POPULATION BY MOST SERIOUS OFFENCE

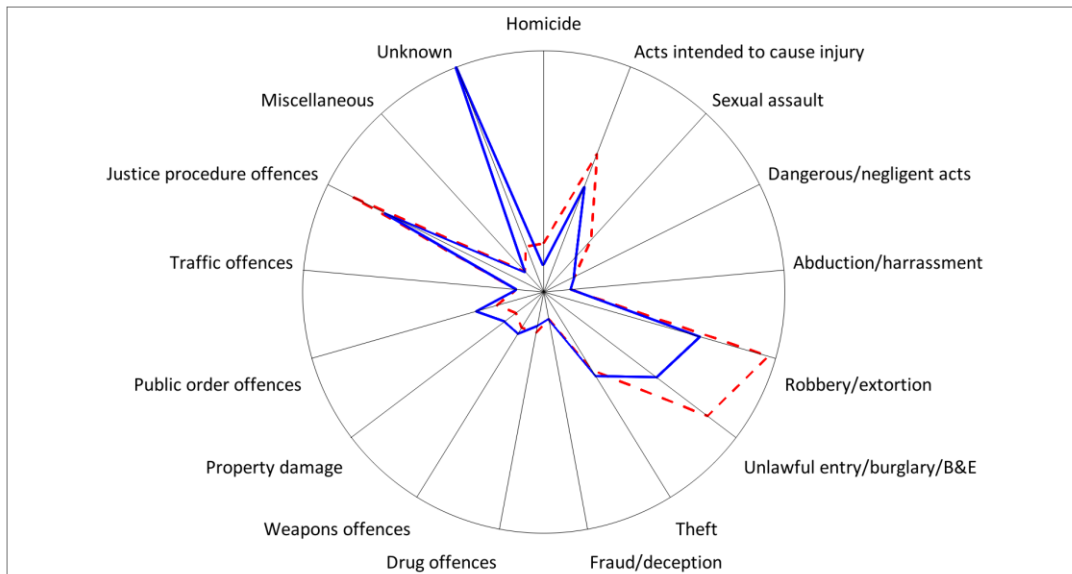


As At: - -31DEC15 — 31MAR16

	31DEC15		31MAR16	
	Number	% of Total	Number	% of Total
Homicide	0	0	0	0
Acts intended to cause injury	16	10.5	6	3.6
Sexual assault	2	1.3	0	0
Dangerous/negligent acts	3	2.0	1	0.6
Abduction/harassment	1	0.7	0	0
Robbery/extortion	12	7.9	4	2.4
Unlawful entry/burglary/B&E	11	7.2	6	3.6
Theft	5	3.3	7	4.1
Fraud/deception	0	0	0	0
Drug offences	0	0	0	0
Weapons offences	1	0.7	0	0
Property damage	2	1.3	1	0.6
Public order offences	6	3.9	0	0
Traffic offences	0	0	0	0
Justice procedure offences	19	12.5	12	7.1
Miscellaneous	0	0	0	0
Unknown	74	48.7	132	78.1
Total	152	100.0	169	100.0

Note: Due to a system issue at the time of producing this report, offence type was available for only a proportion of the juveniles in remand custody. Consequently the offence type data should be used with caution. This data will be corrected in future reports.

1.1.8 JUVENILE SENTENCED POPULATION BY MOST SERIOUS OFFENCE



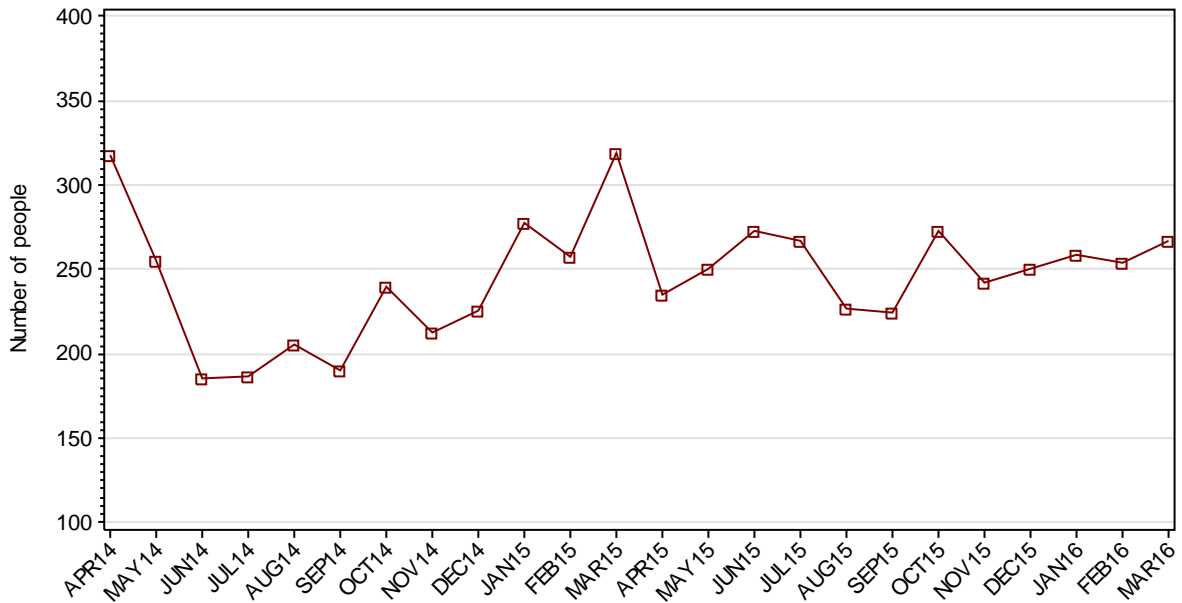
As At: - - 31DEC15 - 31MAR16

	31DEC15		31MAR16	
	Number	% of Total	Number	% of Total
Homicide	3	2.4	0	0
Acts intended to cause injury	17	13.4	12	9.6
Sexual assault	6	4.7	3	2.4
Dangerous/negligent acts	1	0.8	1	0.8
Abduction/harassment	0	0	0	0
Robbery/extortion	29	22.8	19	15.2
Unlawful entry/burglary/B&E	25	19.7	16	12.8
Theft	9	7.1	10	8.0
Fraud/deception	0	0	0	0
Drug offences	2	1.6	1	0.8
Weapons offences	2	1.6	3	2.4
Property damage	1	0.8	3	2.4
Public order offences	3	2.4	6	4.8
Traffic offences	0	0	0	0
Justice procedure offences	26	20.5	21	16.8
Miscellaneous	0	0	0	0
Unknown	3	2.4	30	24.0
Total	127	100.0	125	100.0

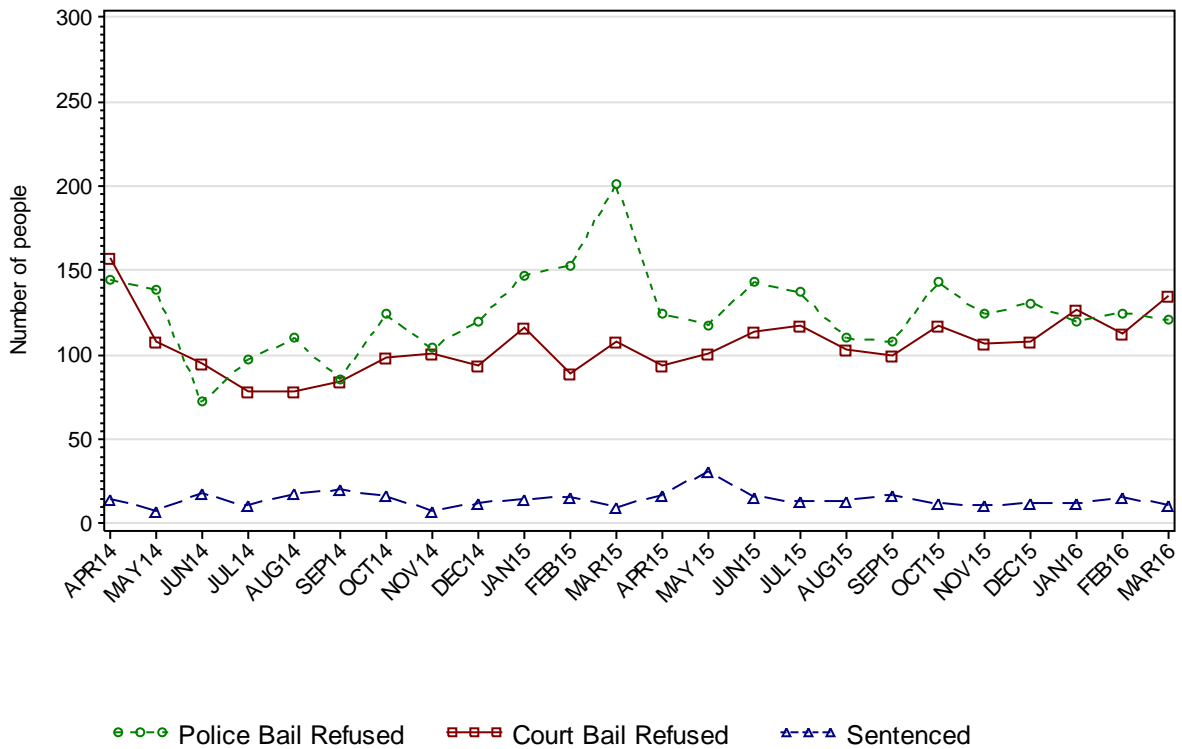
Note: Due to a system issue at the time of producing this report, offence type was available for only a proportion of the juveniles in sentenced custody as at 31 March 2016. Consequently the offence type data should be used with caution. This data will be corrected in future reports.

SECTION 1.2 JUVENILE CUSTODY RECEPTIONS

1.2.1 JUVENILES RECEIVED INTO CUSTODY DURING MONTH

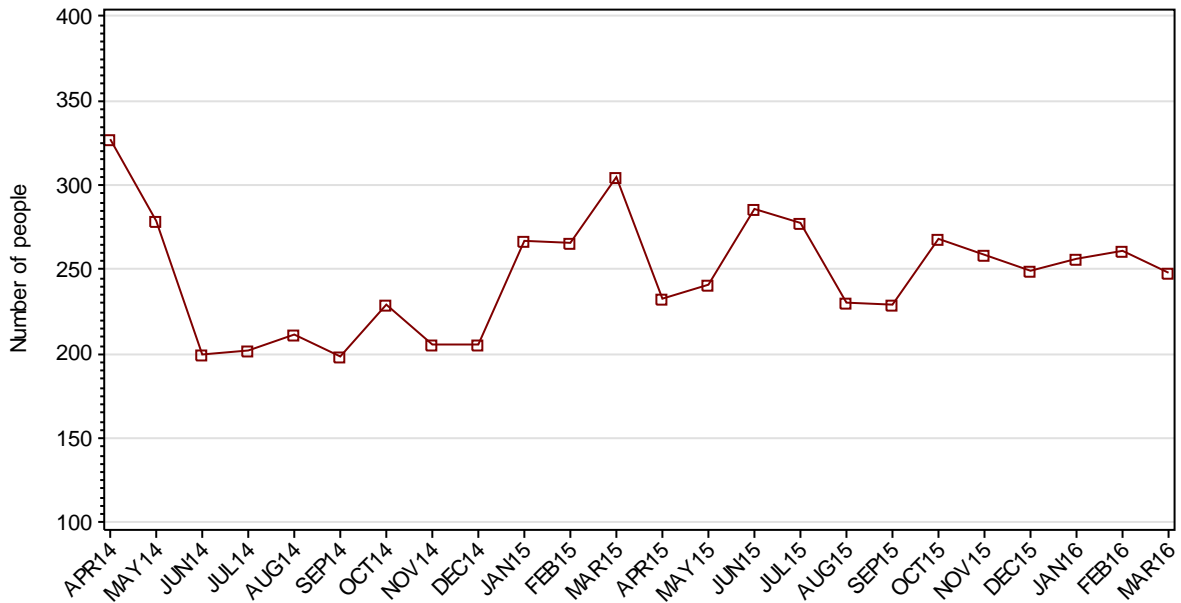


1.2.2 JUVENILES RECEIVED INTO CUSTODY BY LEGAL STATUS



SECTION 1.3 JUVENILE CUSTODY DISCHARGES

1.3.1 JUVENILES DISCHARGED FROM CUSTODY DURING MONTH

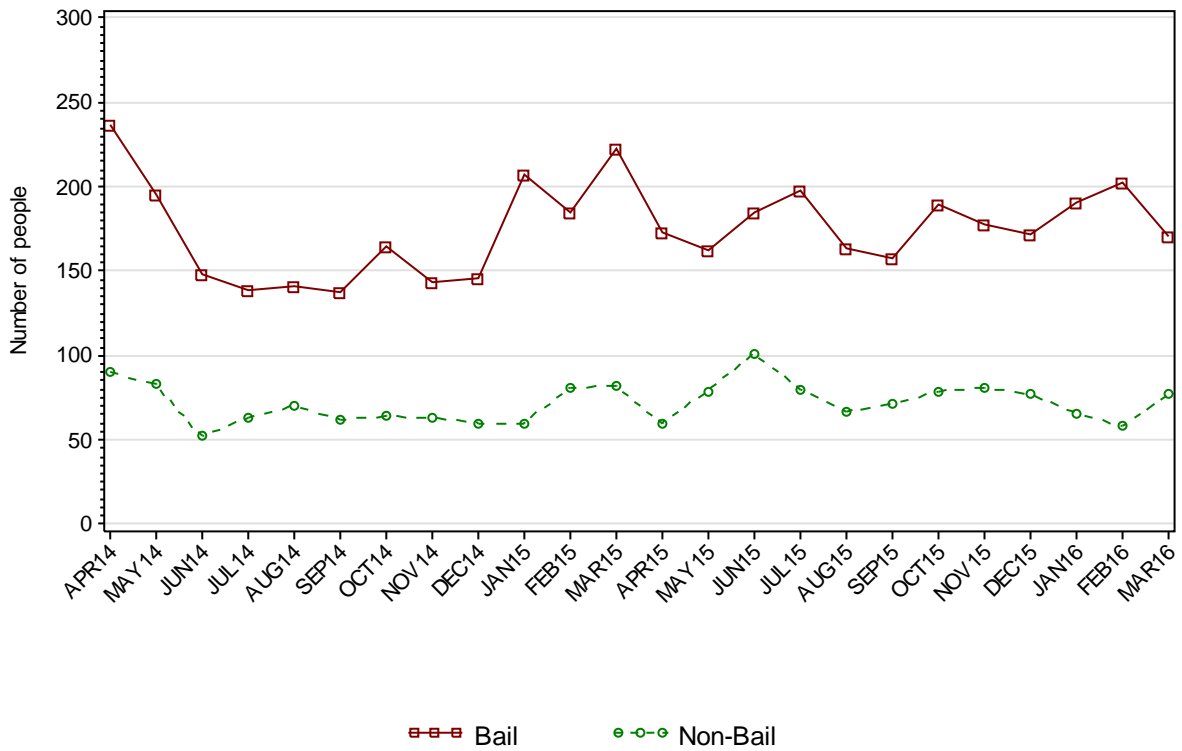


1.3.2 AVERAGE LENGTH OF STAY FOR JUVENILES DISCHARGED FROM CUSTODY EACH QUARTER

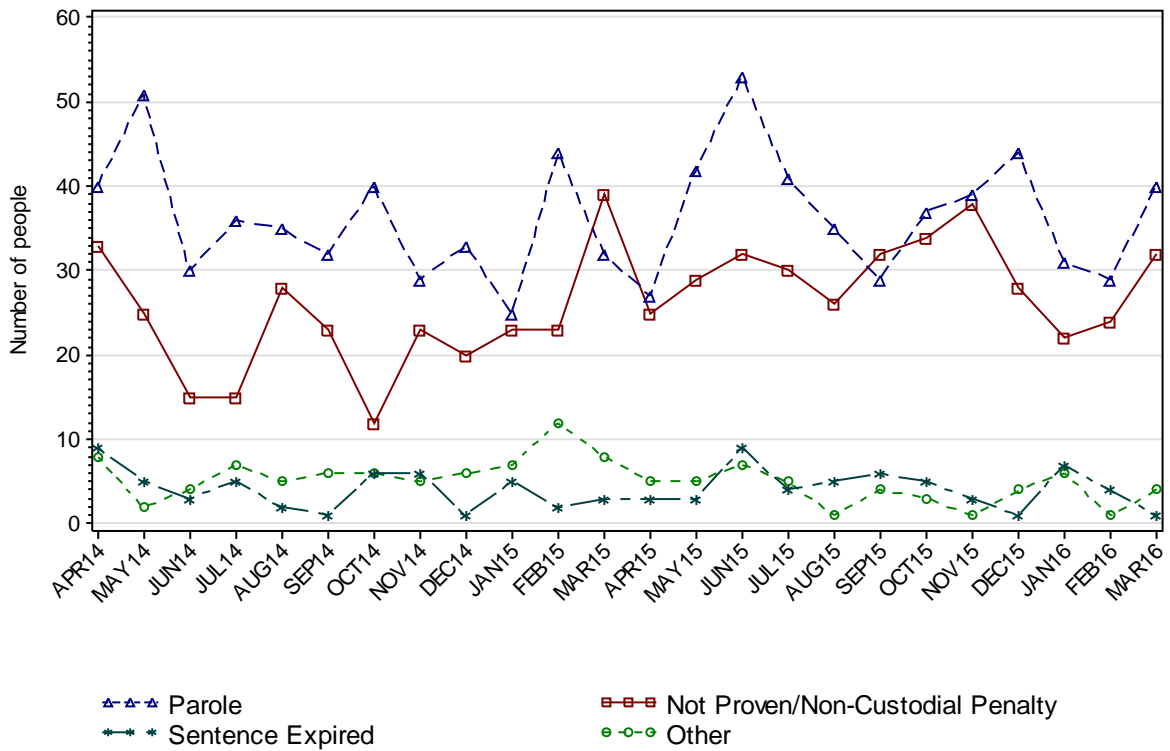
		Remand Custody Only		Sentenced Custody Only		Remand to Sentenced Custody	
		DEC15	MAR16	DEC15	MAR16	DEC15	MAR16
Total Male	Avg Days	8.7	11.7	136.2	86.8	188.3	207.9
	Number	488	491	47	35	93	93
Total Female	Avg Days	7.7	5.8	40.5	35.3	107.5	106.7
	Number	140	137	4	4	4	6
Indigenous Male	Avg Days	11.0	16.0	97.2	74.1	171.7	141.7
	Number	221	210	26	24	39	52
Indigenous Female	Avg Days	11.2	7.1	46.7	34.0	137.0	89.5
	Number	67	68	3	3	3	4
Total	Avg Days	8.4	10.4	128.7	81.5	184.9	201.8
	Number	628	628	51	39	97	99

Note: Length of Stay for Remand to Sentenced Custody is from the date of reception on remand to date of discharge after serving sentence.

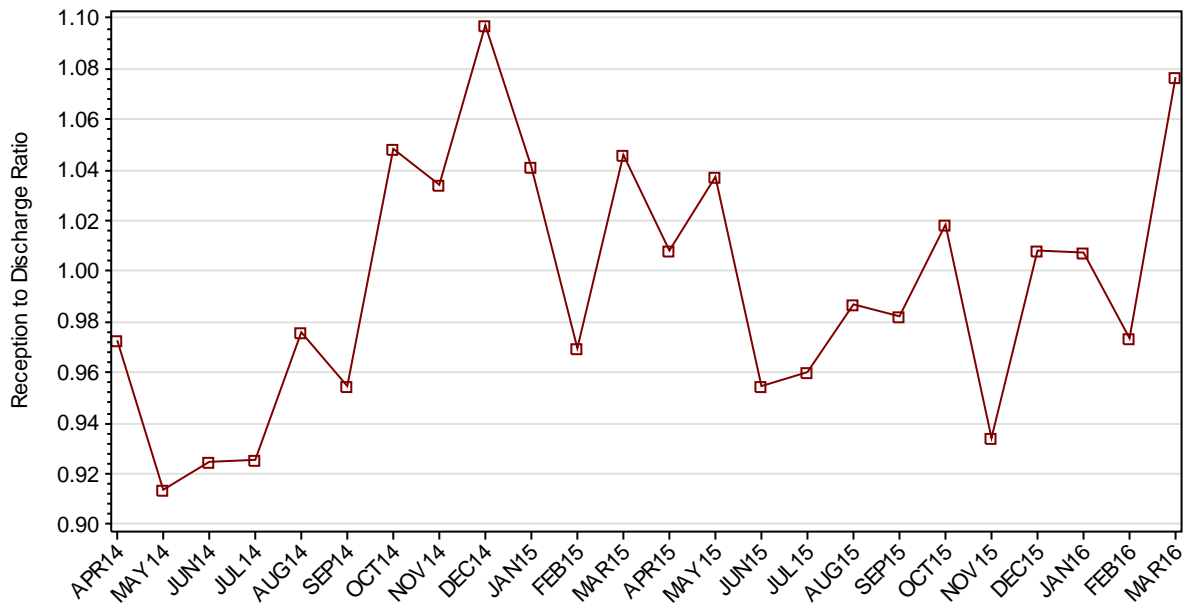
1.3.3 JUVENILES BY DISCHARGE TYPE



1.3.4 JUVENILES BY DISCHARGE TYPE (EXCLUDING BAIL)



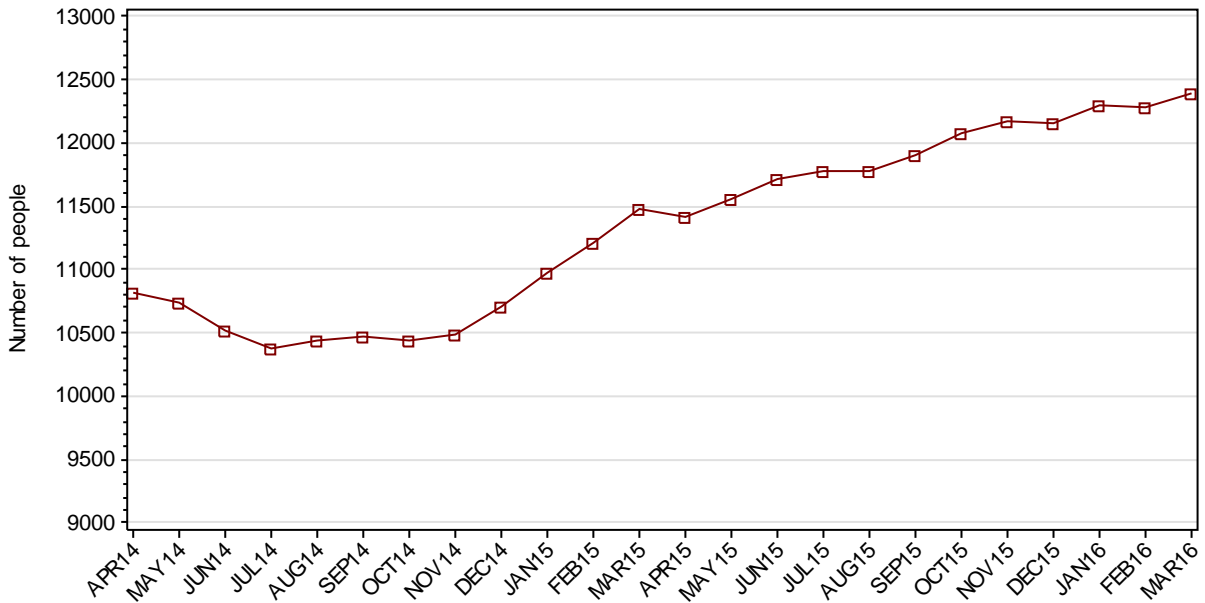
1.3.5 RATIO OF JUVENILE RECEPTIONS TO DISCHARGES



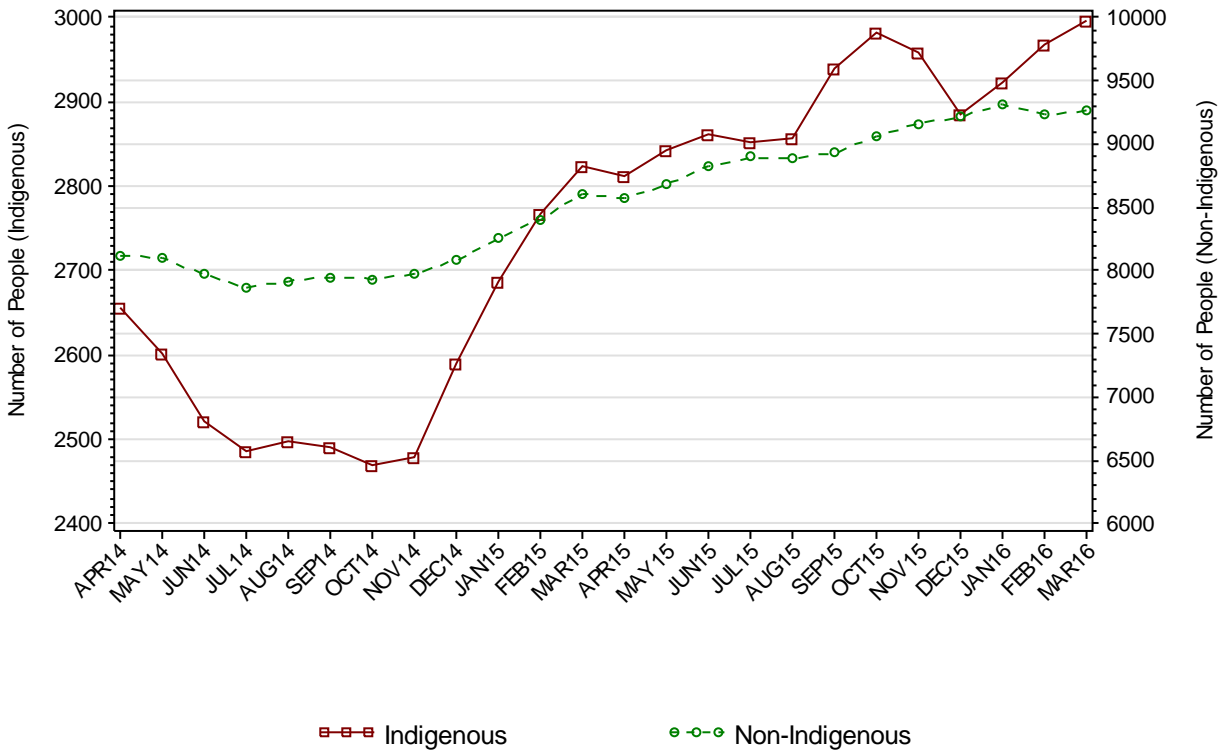
Part 2 ADULTS

SECTION 2.1 ADULT CUSTODY POPULATION

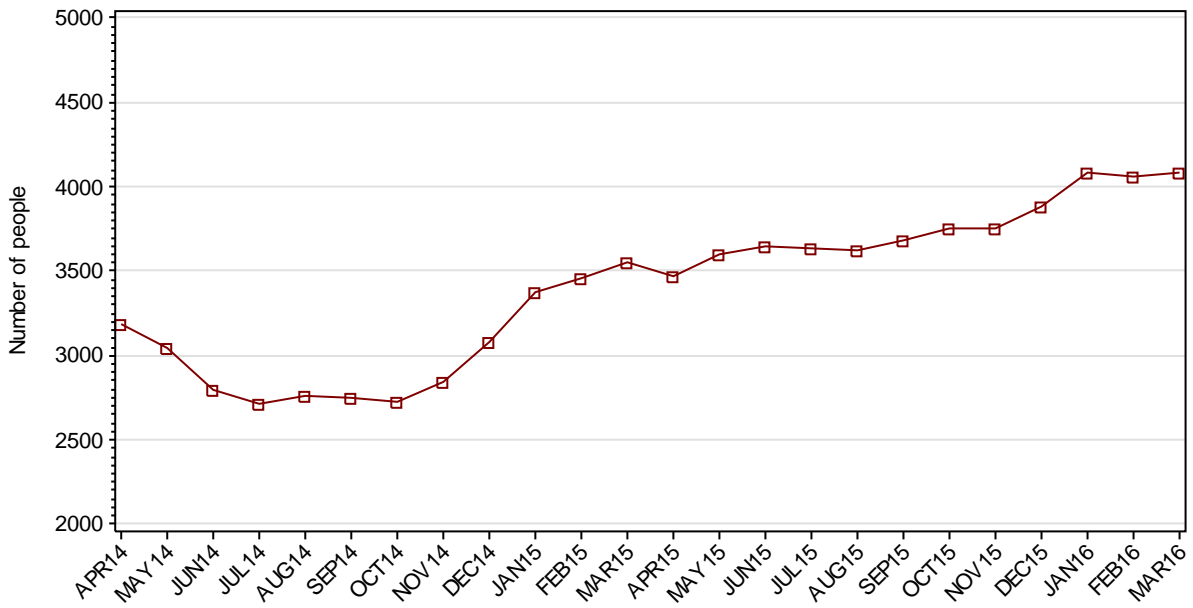
2.1.1 ADULT CUSTODY POPULATION AT END OF MONTH



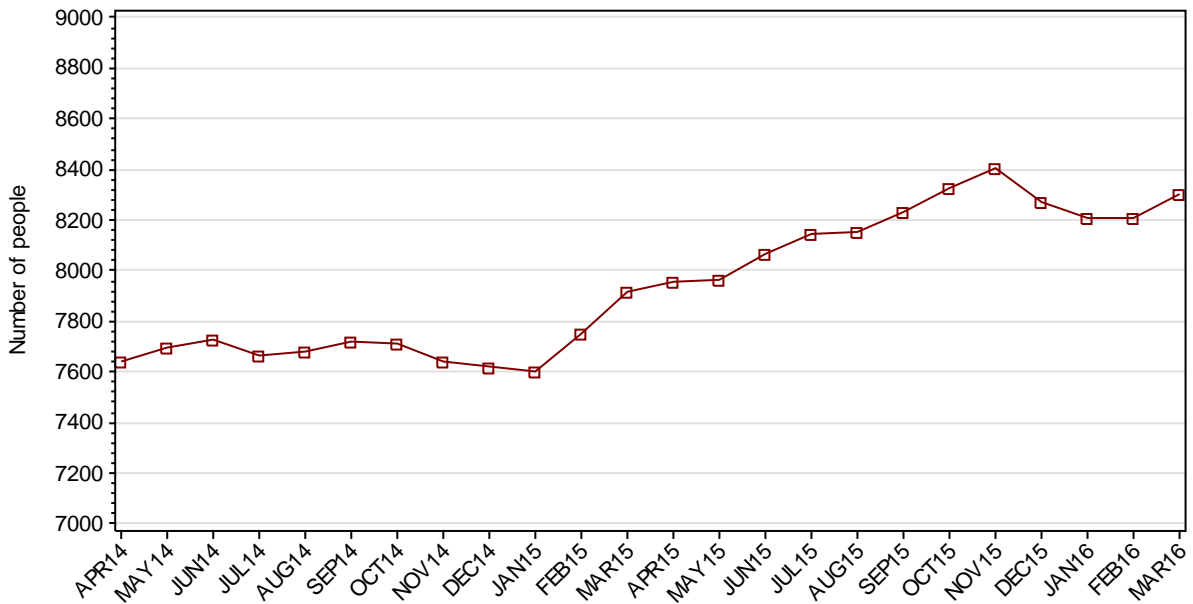
2.1.2 ADULT CUSTODY POPULATION BY INDIGENOUS STATUS



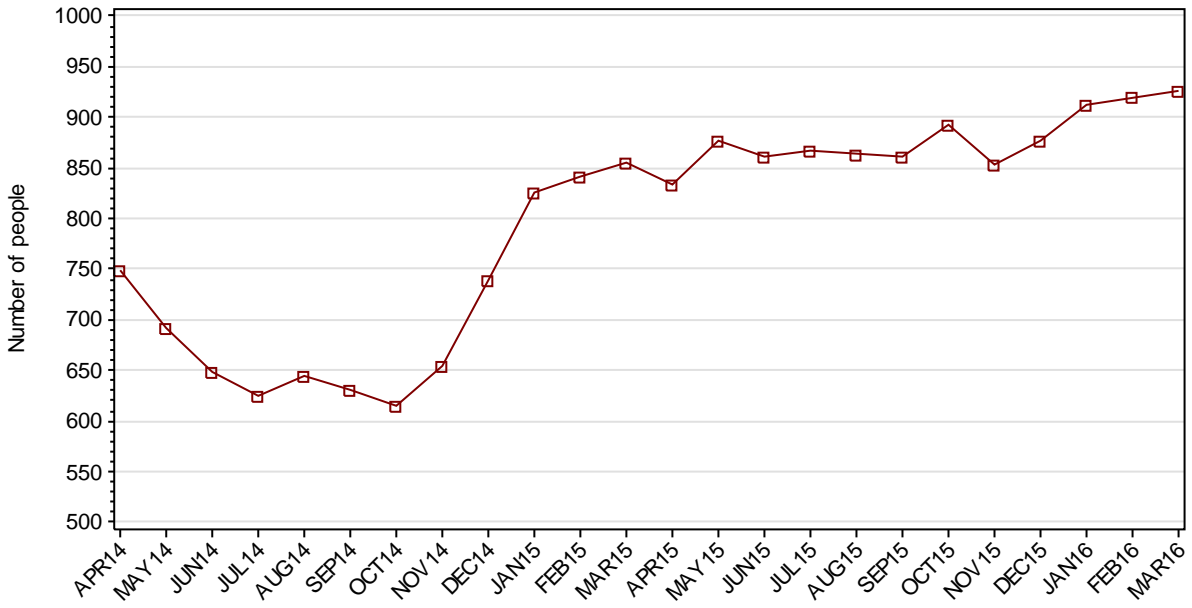
2.1.3 ADULT REMAND POPULATION



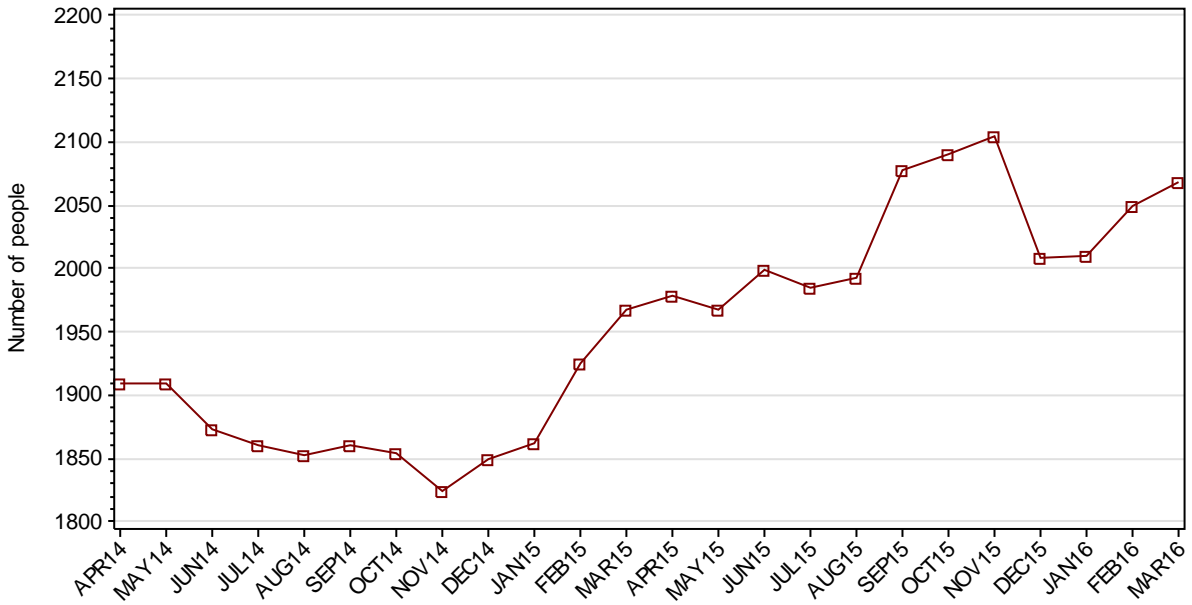
2.1.4 ADULT SENTENCED POPULATION



2.1.5 INDIGENOUS ADULT REMAND POPULATION



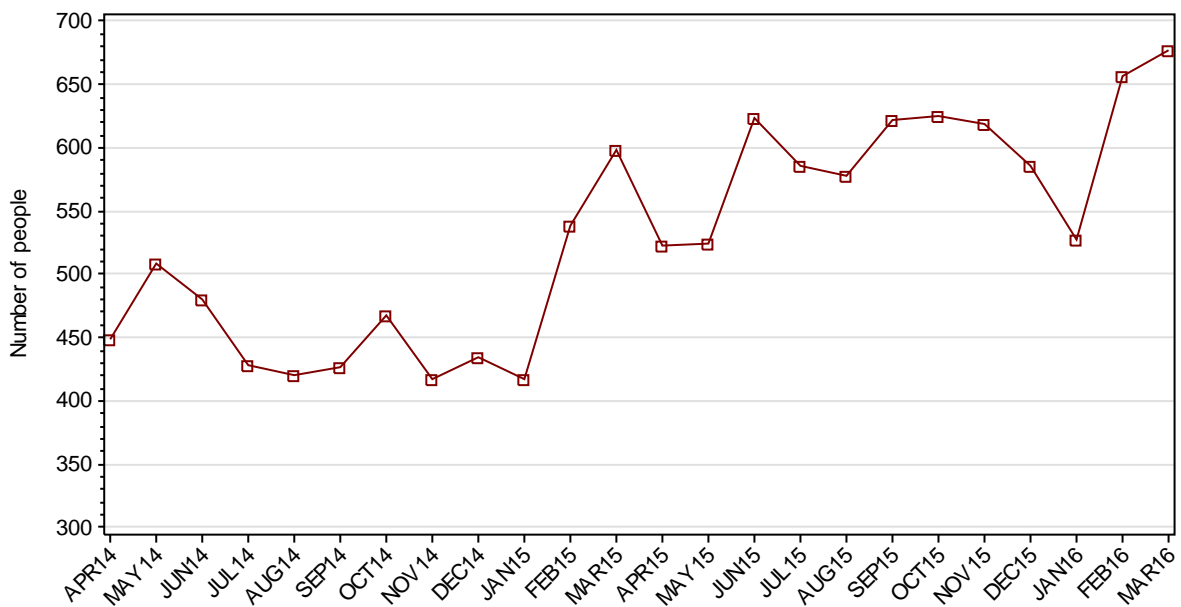
2.1.6 INDIGENOUS ADULT SENTENCED POPULATION



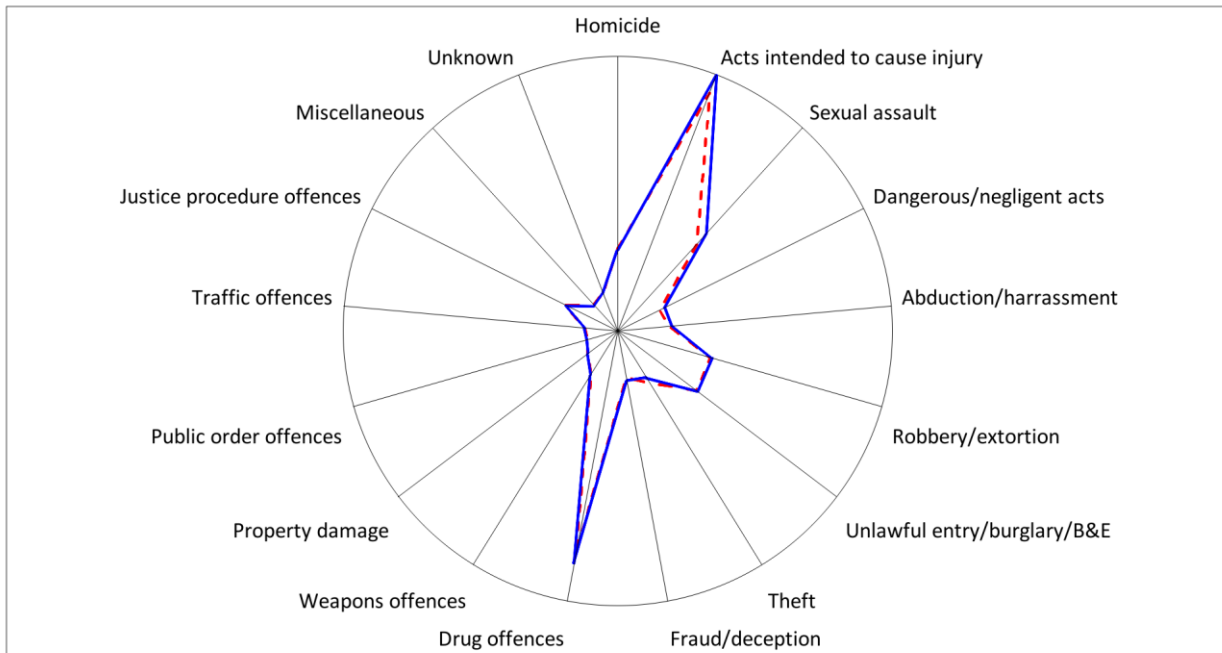
2.1.7 ADULT CUSTODY PROFILE AT END OF QUARTER

		Remand		Sentenced		Total	
		DEC15	MAR16	DEC15	MAR16	DEC15	MAR16
Total Male	Count	3571	3709	7707	7762	11278	11471
	Avg Age	34.3	34.4	36.8	36.8	36.1	36.0
Total Female	Count	310	381	562	538	872	919
	Avg Age	34.0	33.5	36.4	36.4	35.5	35.2
Indigenous Male	Count	776	804	1833	1896	2609	2700
	Avg Age	31.2	31.1	32.9	32.8	32.4	32.3
Indigenous Female	Count	101	123	176	173	277	296
	Avg Age	32.7	31.4	32.9	32.6	32.8	32.1
Total	Count	3881	4090	8269	8300	12150	12390
	Avg Age	34.3	34.3	36.8	36.8	36.0	35.9

2.1.8 ADULTS IN CUSTODY: NUMBER WHOSE LEGAL STATUS CHANGED DURING MONTH FROM REMAND TO SENTENCED



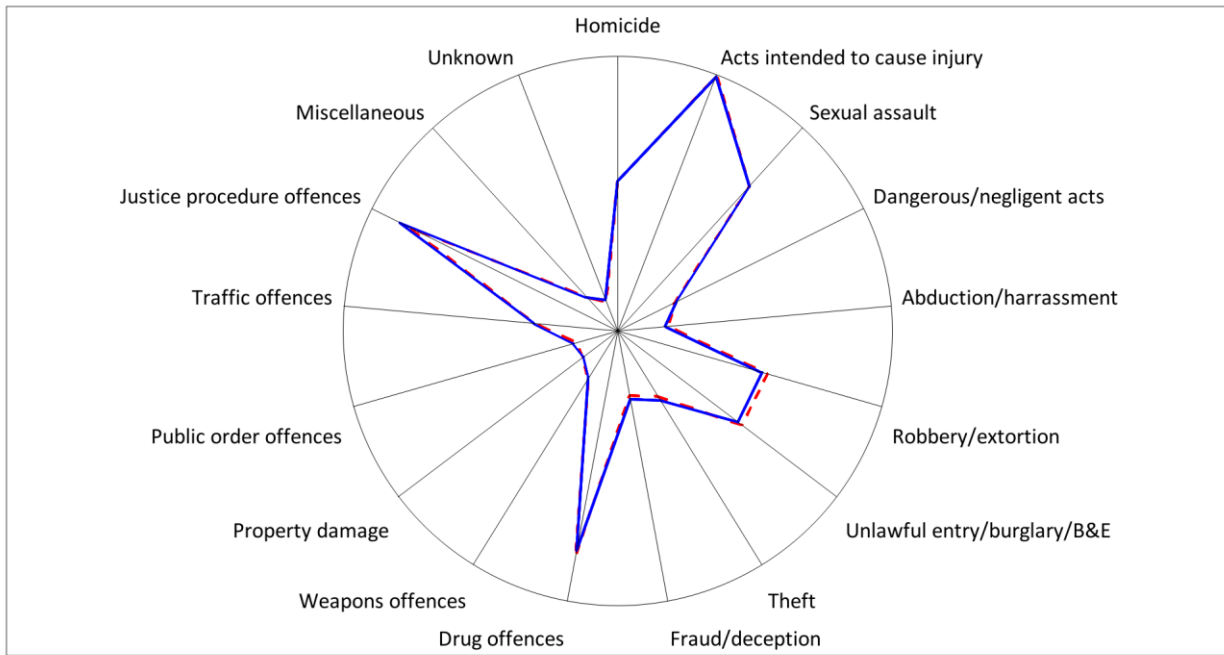
2.1.9 ADULT REMAND POPULATION BY MOST SERIOUS OFFENCE



As At: - -31DEC15 — 31MAR16

	31DEC15		31MAR16	
	Number	% of Total	Number	% of Total
Homicide	234	6.0	228	5.6
Acts intended to cause injury	984	25.4	1064	26.0
Sexual assault	388	10.0	451	11.0
Dangerous/negligent acts	84	2.2	108	2.6
Abduction/harrassment	104	2.7	116	2.8
Robbery/extortion	296	7.6	305	7.5
Unlawful entry/burglary/B&E	308	7.9	313	7.7
Theft	141	3.6	116	2.8
Fraud/deception	86	2.2	97	2.4
Drug offences	854	22.0	898	22.0
Weapons offences	97	2.5	100	2.4
Property damage	42	1.1	41	1.0
Public order offences	15	0.4	17	0.4
Traffic offences	22	0.6	21	0.5
Justice procedure offences	136	3.5	129	3.2
Miscellaneous	34	0.9	30	0.7
Unknown	56	1.4	56	1.4
Total	3881	100.0	4090	100.0

2.1.10 ADULT SENTENCED POPULATION BY MOST SERIOUS OFFENCE

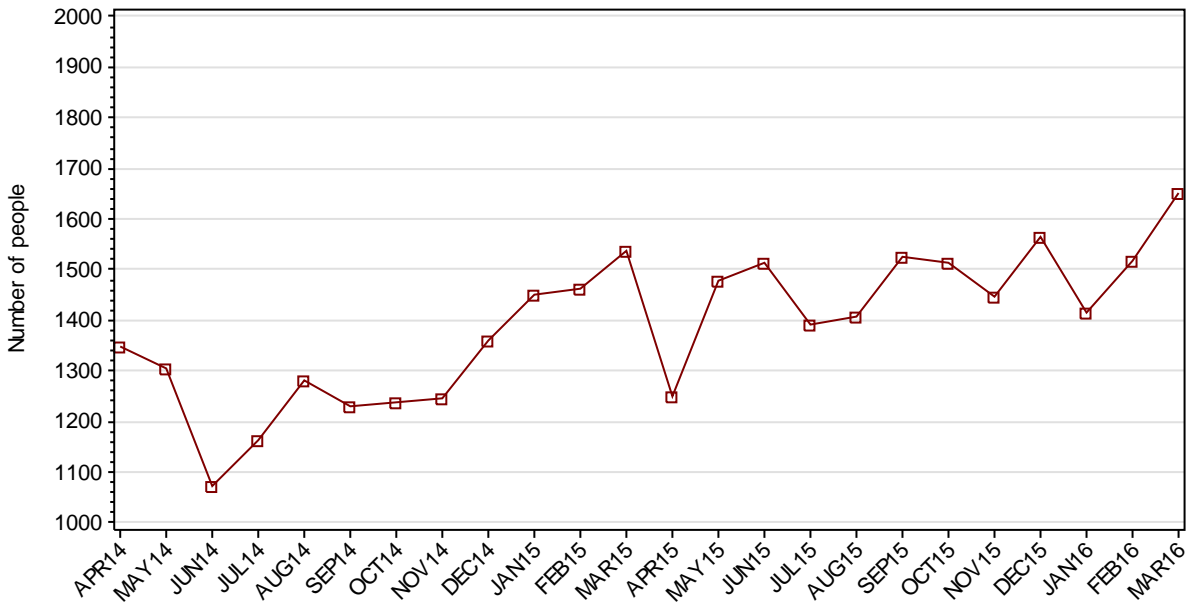


As At: - -31DEC15 31MAR16

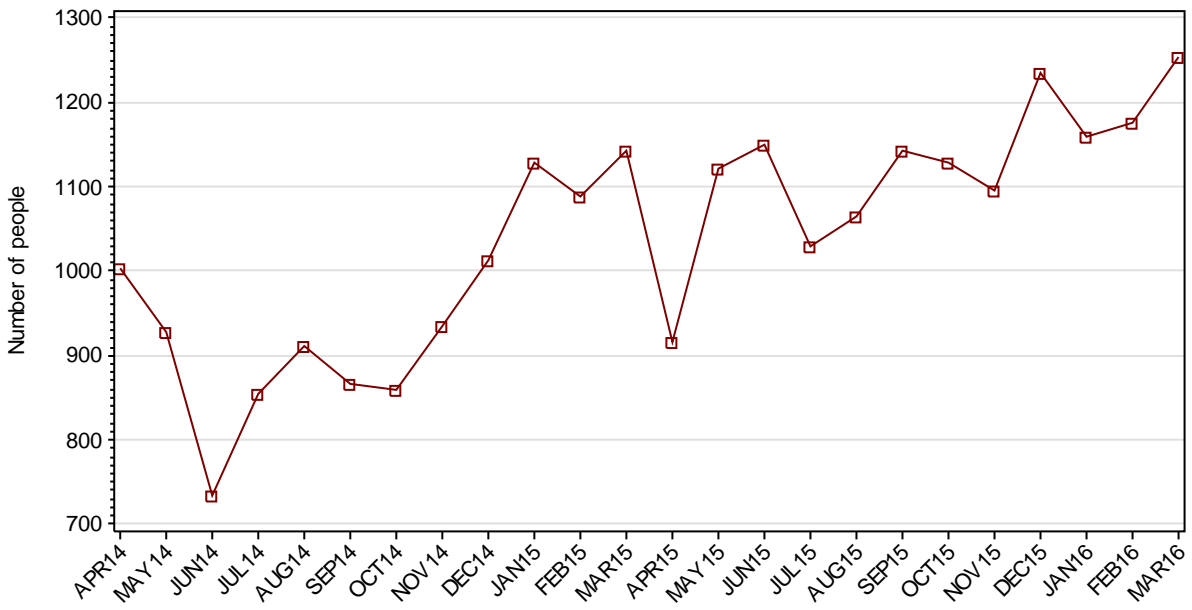
	31DEC15		31MAR16	
	Number	% of Total	Number	% of Total
Homicide	689	8.3	689	8.3
Acts intended to cause injury	1406	17.0	1396	16.8
Sexual assault	953	11.5	955	11.5
Dangerous/negligent acts	192	2.3	204	2.5
Abduction/harrassment	120	1.5	102	1.2
Robbery/extortion	723	8.7	692	8.3
Unlawful entry/burglary/B&E	722	8.7	695	8.4
Theft	266	3.2	292	3.5
Fraud/deception	200	2.4	221	2.7
Drug offences	1146	13.9	1110	13.4
Weapons offences	146	1.8	143	1.7
Property damage	75	0.9	71	0.9
Public order offences	65	0.8	88	1.1
Traffic offences	301	3.6	308	3.7
Justice procedure offences	1169	14.1	1225	14.8
Miscellaneous	92	1.1	89	1.1
Unknown	4	0.0	20	0.2
Total	8269	100.0	8300	100.0

SECTION 2.2 ADULT CUSTODY RECEPTIONS

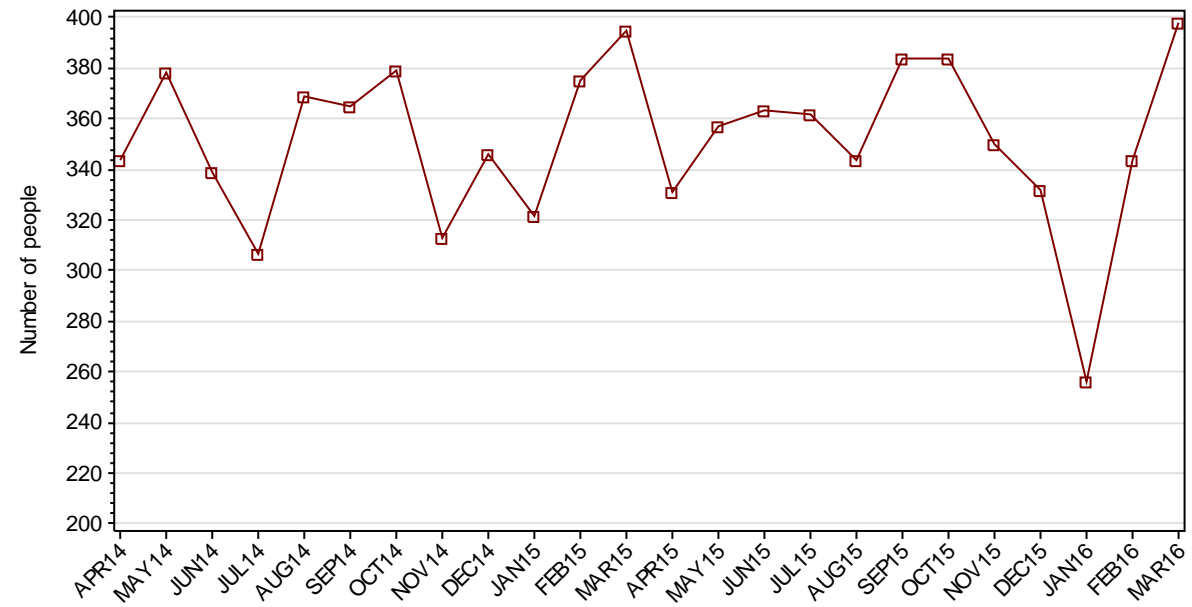
2.2.1 ADULTS RECEIVED INTO CUSTODY DURING MONTH



2.2.2 ADULT REMAND RECEPTIONS

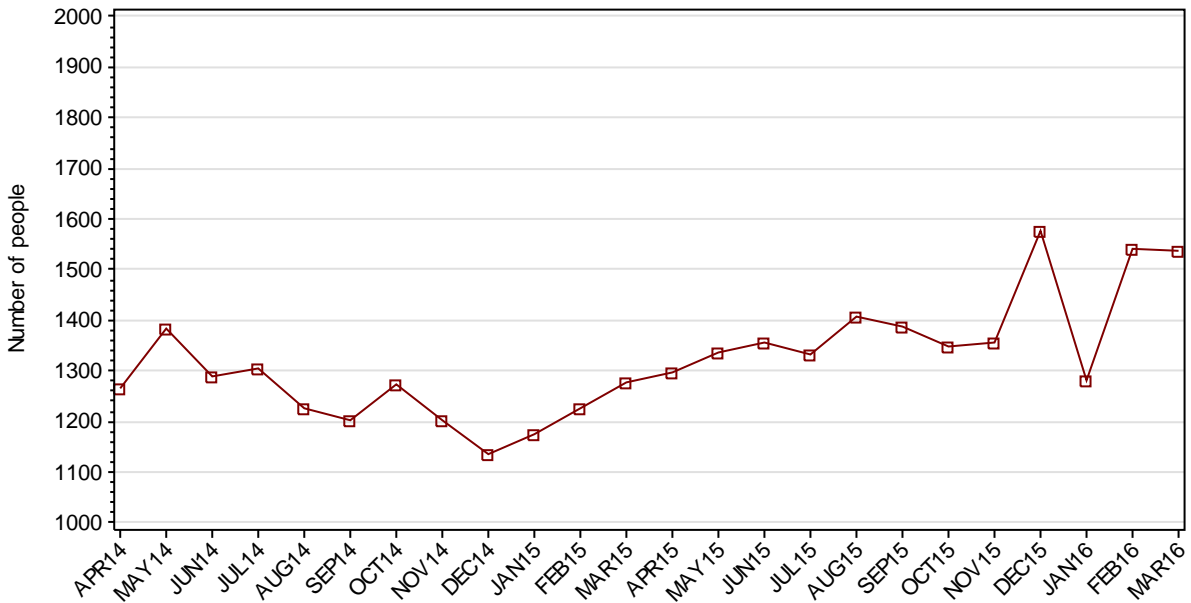


2.2.3 ADULT SENTENCED RECEPTIONS



SECTION 2.3 ADULT CUSTODY DISCHARGES

2.3.1 ADULTS DISCHARGED FROM CUSTODY DURING MONTH

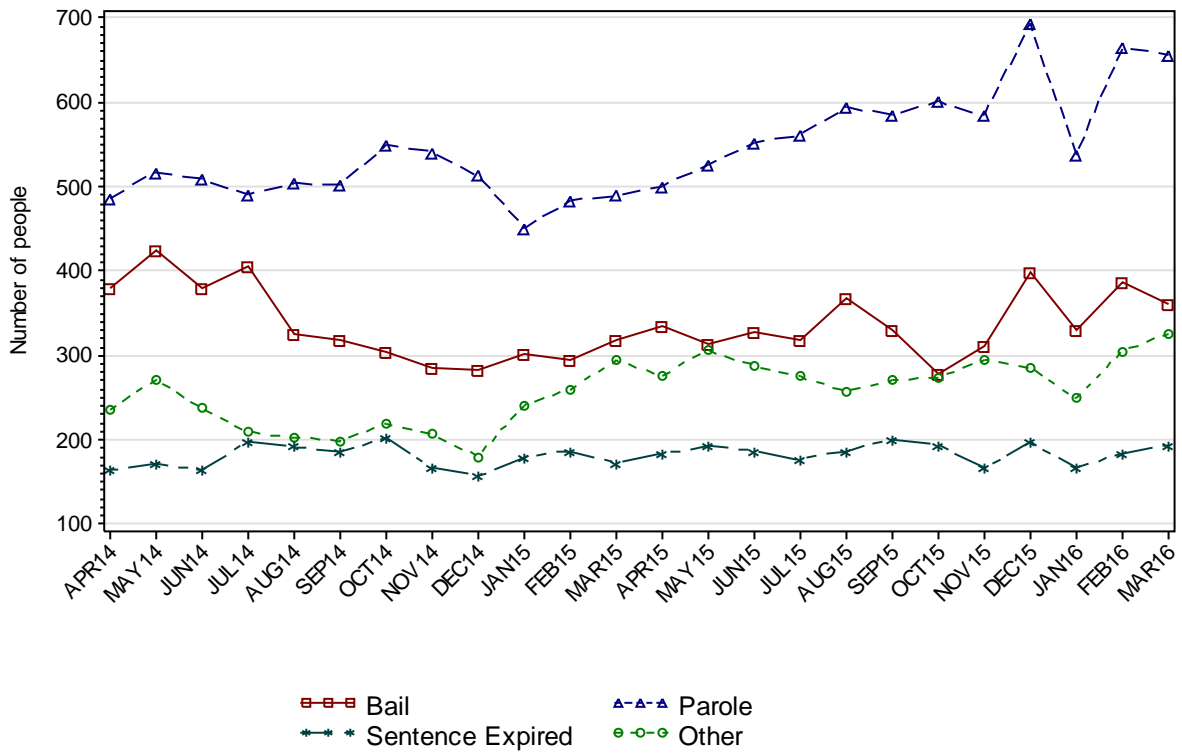


2.3.2 AVERAGE LENGTH OF STAY FOR ADULTS DISCHARGED FROM CUSTODY EACH QUARTER

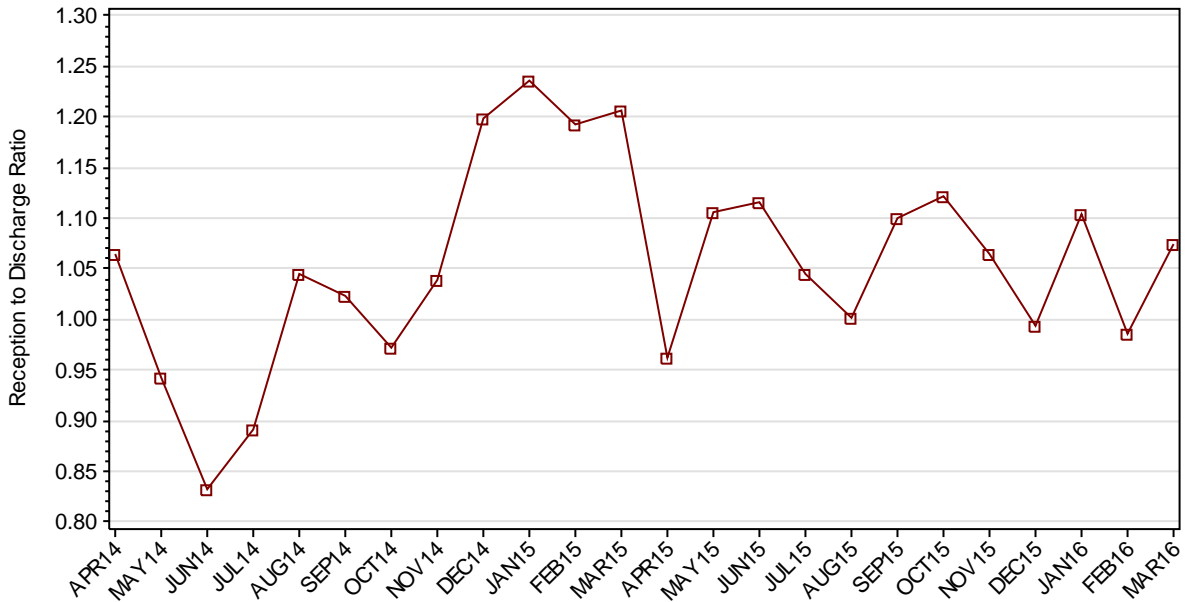
		Remand Custody Only		Sentenced Custody Only		Remand to Sentenced Custody	
		DEC15	MAR16	DEC15	MAR16	DEC15	MAR16
Total Male	Avg Days	57.9	49.5	221.8	199.6	454.3	422.8
	Number	1169	1314	1003	934	1546	1532
Total Female	Avg Days	30.4	33.9	142.0	154.4	244.0	296.1
	Number	233	255	137	141	192	185
Indigenous Male	Avg Days	51.1	43.4	193.7	186.8	351.1	370.8
	Number	299	312	272	261	488	454
Indigenous Female	Avg Days	27.3	39.7	115.0	124.6	193.1	251.7
	Number	88	77	55	46	86	84
Total	Avg Days	53.4	47.0	212.3	193.7	431.1	409.1
	Number	1402	1569	1140	1075	1738	1717

Note: length of Stay for Remand to Sentenced Custody is from the date of reception on remand to date of discharge after serving sentence.

2.3.3 ADULTS BY DISCHARGE TYPE



2.3.4 RATIO OF ADULT RECEPTIONS TO DISCHARGES



Part 3 DATA TABLES

Juvenile	1.In Custody										Remand to Sent
	Total	Legal Status			Indigenous			Indigenous Legal Status			
		Court Bail Ref.	Police Bail Ref.	Sent	Yes	No	Unk	Court Bail Ref.	Police Bail Ref.	Sent	
APR14	322	154	4	164	152	168	2	78	1	73	33
MAY14	296	145	3	148	135	158	3	72	1	62	37
JUN14	282	124	0	158	139	141	2	65	0	74	33
JUL14	262	115	0	147	131	130	1	58	0	73	27
AUG14	262	111	4	147	133	125	4	59	1	73	22
SEP14	252	94	2	156	123	125	4	44	1	78	23
OCT14	266	124	1	141	145	117	4	74	1	70	20
NOV14	271	131	1	139	144	124	3	76	0	68	30
DEC14	290	145	6	139	151	138	1	78	6	67	30
JAN15	299	155	2	142	154	144	1	85	1	68	22
FEB15	293	152	4	137	156	133	4	86	2	68	35
MAR15	309	159	4	146	166	141	2	92	3	71	36
APR15	310	137	1	172	164	143	3	81	1	82	43
MAY15	319	135	4	180	181	136	2	86	2	93	31
JUN15	307	155	3	149	168	136	3	91	2	75	29
JUL15	294	147	4	143	163	128	3	92	1	70	36
AUG15	289	137	5	147	160	125	4	78	4	78	36
SEP15	286	137	5	144	150	133	3	78	2	70	26
OCT15	292	149	2	141	146	142	4	77	1	68	35
NOV15	277	136	6	135	153	121	3	80	6	67	29
DEC15	279	148	4	127	145	131	3	78	2	65	29
JAN16	279	157	2	120	153	124	2	83	1	69	29
FEB16	272	145	2	125	151	119	2	78	0	73	29
MAR16	294	162	7	125	148	143	3	76	3	69	36

Juvenile	2.Receptions							3.Discharges									Ratio Rec/ Dis
	Tot	Legal Status			Indigenous			Tot	Legal Status					Indigenous			
		Court Bail Ref.	Police Bail Ref.	Sent	Yes	No	Unk		Bail	Not Proven Non-Cust.	Other	Parole	Sent Exp	Yes	No	Unk	
APR14	318	158	145	15	155	159	4	327	237	33	8	40	9	155	168	4	0.97
MAY14	255	108	139	8	120	129	6	279	196	25	2	51	5	136	138	5	0.91
JUN14	185	95	72	18	97	84	4	200	148	15	4	30	3	94	101	5	0.93
JUL14	187	79	97	11	101	82	4	202	139	15	7	36	5	108	90	4	0.93
AUG14	206	78	110	18	114	87	5	211	141	28	5	35	2	114	94	3	0.98
SEP14	190	84	86	20	98	88	4	199	137	23	6	32	1	108	87	4	0.95
OCT14	240	99	124	17	136	102	2	229	165	12	6	40	6	114	113	2	1.05
NOV14	213	101	104	8	111	99	3	206	143	23	5	29	6	112	90	4	1.03
DEC14	226	94	120	12	112	110	4	206	146	20	6	33	1	104	96	6	1.10
JAN15	278	116	147	15	131	143	4	267	207	23	7	25	5	126	137	4	1.04
FEB15	258	89	153	16	126	125	7	266	185	23	12	44	2	125	137	4	0.97
MAR15	319	108	201	10	145	164	10	305	223	39	8	32	3	137	156	12	1.05
APR15	235	94	124	17	107	125	3	233	173	25	5	27	3	108	123	2	1.01
MAY15	250	101	118	31	123	118	9	241	162	29	5	42	3	107	124	10	1.04
JUN15	273	114	143	16	116	147	10	286	185	32	7	53	9	129	148	9	0.95
JUL15	267	117	137	13	124	139	4	278	198	30	5	41	4	126	148	4	0.96
AUG15	227	103	110	14	108	110	9	230	163	26	1	35	5	109	113	8	0.99
SEP15	225	100	108	17	99	120	6	229	158	32	4	29	6	112	110	7	0.98
OCT15	273	118	143	12	121	147	5	268	189	34	3	37	5	125	139	4	1.02
NOV15	242	107	124	11	128	107	7	259	178	38	1	39	3	122	129	8	0.93
DEC15	251	108	131	12	104	140	7	249	172	28	4	44	1	112	130	7	1.01
JAN16	259	127	120	12	122	127	10	257	191	22	6	31	7	113	133	11	1.01
FEB16	254	113	125	16	125	113	16	261	203	24	1	29	4	128	117	16	0.97
MAR16	267	135	121	11	116	135	16	248	171	32	4	40	1	120	113	15	1.08

Adult	1.In Custody								Remand to Sent
	Total	Legal Status		Indigenous			Indigenous Legal Status		
		Remand	Sent	Yes	No	Unk	Remand	Sent	
APR14	10823	3181	7642	2657	8121	45	748	1909	448
MAY14	10744	3049	7695	2602	8101	41	692	1910	509
JUN14	10525	2795	7730	2522	7974	29	649	1873	480
JUL14	10384	2716	7668	2485	7867	32	624	1861	428
AUG14	10444	2760	7684	2497	7920	27	644	1853	420
SEP14	10471	2754	7717	2490	7945	36	630	1860	427
OCT14	10435	2720	7715	2469	7936	30	615	1854	468
NOV14	10481	2843	7638	2479	7971	31	654	1825	418
DEC14	10704	3083	7621	2589	8086	29	740	1849	435
JAN15	10976	3372	7604	2687	8258	31	825	1862	417
FEB15	11207	3456	7751	2767	8404	36	842	1925	538
MAR15	11472	3553	7919	2823	8609	40	855	1968	599
APR15	11422	3466	7956	2811	8572	39	833	1978	523
MAY15	11562	3601	7961	2844	8678	40	876	1968	525
JUN15	11721	3651	8070	2861	8829	31	862	1999	623
JUL15	11781	3633	8148	2852	8898	31	867	1985	585
AUG15	11777	3625	8152	2857	8886	34	864	1993	578
SEP15	11908	3677	8231	2939	8933	36	861	2078	622
OCT15	12081	3751	8330	2982	9060	39	892	2090	625
NOV15	12166	3757	8409	2959	9163	44	854	2105	619
DEC15	12150	3881	8269	2886	9216	48	877	2009	585
JAN16	12297	4085	8212	2923	9315	59	913	2010	527
FEB16	12276	4065	8211	2969	9231	76	920	2049	657
MAR16	12390	4090	8300	2996	9264	130	927	2069	677

Adult	2.Receptions						3.Discharges									Ratio Rec/ Dis
	Tot	Legal Status		Indigenous			Tot	Legal Status				Indigenous				
		Remand	Sent	Yes	No	Unk		Bail	Other	Parole	Sent Exp	Yes	No	Unk		
APR14	1347	1003	344	369	944	34	1266	380	235	487	164	364	873	29	1.06	
MAY14	1306	928	378	328	940	38	1385	424	272	517	172	385	958	42	0.94	
JUN14	1074	735	339	284	766	24	1291	380	237	510	164	363	892	36	0.83	
JUL14	1162	855	307	331	805	26	1303	405	209	491	198	367	913	23	0.89	
AUG14	1281	912	369	379	870	32	1225	326	203	504	192	368	820	37	1.05	
SEP14	1231	866	365	343	858	30	1204	318	199	502	185	348	836	20	1.02	
OCT14	1239	860	379	342	866	31	1275	305	219	549	202	361	875	39	0.97	
NOV14	1247	934	313	354	861	32	1201	286	207	541	167	345	827	29	1.04	
DEC14	1359	1013	346	398	938	23	1134	283	180	514	157	286	822	26	1.20	
JAN15	1451	1129	322	432	984	35	1174	302	241	451	180	332	809	33	1.24	
FEB15	1463	1088	375	418	1010	35	1226	295	260	484	187	335	862	29	1.19	
MAR15	1539	1144	395	421	1076	42	1276	319	294	490	173	365	872	39	1.21	
APR15	1248	917	331	376	838	34	1297	336	276	501	184	387	877	33	0.96	
MAY15	1478	1121	357	434	1011	33	1337	313	306	526	192	401	903	33	1.11	
JUN15	1512	1149	363	437	1043	32	1355	328	288	552	187	419	893	43	1.12	
JUL15	1391	1029	362	387	968	36	1331	318	275	561	177	398	898	35	1.05	
AUG15	1408	1064	344	400	983	25	1407	368	257	595	187	397	987	23	1.00	
SEP15	1527	1143	384	453	1047	27	1388	331	271	585	201	366	996	26	1.10	
OCT15	1512	1128	384	423	1061	28	1348	279	274	601	194	385	938	25	1.12	
NOV15	1445	1095	350	390	1029	26	1357	311	295	585	166	411	926	20	1.06	
DEC15	1566	1234	332	420	1106	40	1575	398	286	693	198	492	1047	36	0.99	
JAN16	1415	1159	256	430	951	34	1282	329	249	538	166	395	865	22	1.10	
FEB16	1519	1175	344	446	1017	56	1541	387	305	665	184	400	1101	40	0.99	
MAR16	1653	1255	398	470	1077	106	1538	362	326	657	193	439	1047	52	1.07	

Part 4 GLOSSARY

Adult

A person held in custody in a gazetted correctional centre managed by Corrective Services NSW (CSNSW). Persons may have been remanded in custody after being refused bail or sentenced to a custodial order for a proven offence.

The adult figures in this report include the small number of 16 and 17 year old males held in the Kariong Juvenile Correctional Centre.

ANZSOC

The Australian Bureau of Statistics Australian and New Zealand Standard Offence Classification (ANZSOC) groups criminal offences into 16 broad divisions:

1. Homicide and related offences
2. Acts intended to cause injury
3. Sexual assault and related offences
4. Dangerous or negligent acts endangering persons
5. Abduction, harassment and other offences against the person
6. Robbery, extortion and related offences
7. Unlawful entry with intent/burglary, break and enter
8. Theft and related offences
9. Fraud, deception and related offences
10. Illicit drug offences
11. Prohibited and regulated weapons and explosives offences
12. Property damage and environmental pollution
13. Public order offences
14. Traffic and vehicle regulatory offences
15. Offences against justice procedures, government security and government operations
16. Miscellaneous offences

For further information see:

<http://www.abs.gov.au/AUSSTATS/abs@.nsf/DetailsPage/1234.02011>

Note that shortened titles are used in this report.

Average length of stay

The length of stay is the duration of the custodial episode, from the date of reception to the date of discharge.

The average length of stay (in days) is presented for three types of custodial episodes:

Remand custody only - the person entered custody after being refused bail and was then discharged from custody without having been sentenced. Most commonly discharged after being granted bail, other reasons include criminal charges not proven, receiving a non-custodial penalty for a proven offence or being transferred interstate or from a juvenile to an adult prison or vice versa.

Sentenced custody only - persons who entered custody only after being sentenced to a custodial penalty by a court. These persons had either been granted bail, or bail had been dispensed with, pending finalisation of their charges.

Remand to sentenced custody - persons who had been remanded in custody prior to having a custodial sentence imposed by a court. The length of stay for these people is the entire time from reception on remand to discharge after serving the custodial sentence.

Note: Persons initially remanded in custody but then granted bail prior to having a custodial penalty imposed by a court are counted as two custodial episodes: one of remand custody only and one of sentenced custody only.

Bail

Under the provisions of the *Bail Act 1978*, police and courts may grant or refuse to grant bail to alleged offenders. The grant of bail takes into consideration the alleged offence and offender. Bail is granted at the offence level and so a person may be granted bail for one offence and refused bail for another offence.

Persons refused bail (and small numbers granted bail but unable to meet the bail conditions set by a court) are remanded into custody pending further court action.

Juvenile custody population data in this report disaggregates persons remanded into custody into those refused police bail and refused court bail. This is because all juveniles refused police bail are held in Juvenile Justice centres whereas not all adults refused police bail are held in gazetted correctional centres or 24 hour police cell complexes.

Control order

See Custodial sentence

Corrective Services NSW

Corrective Services NSW (CSNSW) is part of the NSW Department of Attorney General and Justice with responsibilities including the supervision of people remanded in custody pending the finalisation of criminal charges and offenders sentenced to a custodial order.

See <http://www.correctiveservices.nsw.gov.au/> for further information.

The Corrections Research, Evaluation and Statistics (CRES) section of CSNSW have provided the adult custody data for this report and advised on its interpretation.

Court bail refused

See Bail

Custodial episode

A custodial episode is the time between the reception into and discharge from custody. An individual may have multiple custodial episodes within the reporting period. A change in legal status between the reception and discharge date, for example changing from being bail refused to being sentenced to a custodial order, does not count as a new custodial episode.

Custodial sentence

Courts may impose a custodial sentence for a proven offence. For adults this is a term of imprisonment under the *Crimes (Sentencing Procedure) Act 1999*. For young people this is a control order of up to two years duration or a term of imprisonment to be served partly or wholly as a juvenile under the *Children (Criminal Proceedings) Act 1987*. A person may be given custodial sentences for multiple proven offences.

While the majority of persons held under sentence in a correctional centre are sentenced under the *Crimes (Sentencing Procedure) Act 1999*, offenders whose parole has been revoked by the State Parole Authority, persons sentenced under the *Commonwealth Crimes Act 1914*, those sentenced under the *Mental Health (Forensic Provision) Act 1990*, small numbers of persons held under immigration orders awaiting deportation following expiry of their sentence and persons sentenced under legislation in other states or territories are also managed by CSNSW.

Custody population

Persons held in custody in a JJNSW juvenile justice centre or a CSNSW gazetted correctional centre, whether remanded or sentenced. Custody population figures are counted as at midnight on the last day of the month or quarter as appropriate. Persons held in a CSNSW managed police/court cell complex at midnight on the last day of the month but later transferred to a gazetted correctional centre are included in custody population figures for that month.

Discharge type

The type of reason why persons were discharged from custody:

Bail - courts granted the person bail pending the finalisation of their criminal charge(s).

Parole - the person was released to parole after serving the non-parole period of custodial sentence(s).

Sentence expired - the person was released after serving the entire period of all custodial sentence(s) imposed. This includes some persons who served both the non-parole and parole components of their sentence(s) in custody.

Not proven / non-custodial penalty - juvenile data only - the person was released after criminal charges were not proven or after the court imposed a non-custodial penalty for a proven offence, e.g. good behaviour bond.

Other - includes persons transferred to the NSW Drug Court, interstate or from a juvenile to an adult prison or vice versa and deceased persons. Includes adults released after criminal charges were not proven, after the court imposed a non-custodial penalty for a proven offence and where the specific nature of the court's final non-custodial disposal is unknown.

Discharges

Persons legally discharged from JJNSW or CSNSW custody in accordance with a court order (including any State Parole Authority order). For example - to parole, on expiry of a sentence or having been granted bail. Note that persons whose legal status changed from remand to sentenced or the reverse are not counted as discharges as they have not been discharged from custody.

Imprisonment

See Custodial sentence.

Indigenous status

Indigenous status as self-reported on reception into custody. Persons may identify as being Aboriginal or Torres Strait Islander, neither Aboriginal nor Torres Strait Islander or may not provide this information. An inmate is recorded as indigenous if they have identified as such

in the current or any previous custodial episode. Indigenous status is unknown for a small proportion of people.

Juvenile

A person held in custody in a juvenile justice centre. These centres are managed by Juvenile Justice NSW (JJNSW). A young person in juvenile custody may have been refused bail by police, refused bail by the court or sentenced to a custodial sentence.

All young persons refused bail by police must be taken to a juvenile justice centre to be held in custody pending their court appearance. Young persons refused police bail cannot be held in a police or court cell.

Note: a small number of 16 and 17 year old males are held in Kariong Juvenile Correctional Centre which is managed by CSNSW. As Kariong is a gazetted correctional centre, these young persons are counted in the adult figures in this report.

Juvenile Justice NSW

Juvenile Justice NSW (JJNSW) is part of the NSW Department of Attorney General and Justice with responsibilities including the supervision of young people remanded in custody pending the finalisation of criminal charges and young offenders sentenced to a control order/imprisonment.

See <http://www.djj.nsw.gov.au/> for further information.

The Research and Information Section of JJNSW have provided the juvenile data for this report and advised on its interpretation.

Legal status

The legal status of persons received into or held in custody:

Remand (Juvenile) - Juveniles refused bail (and small numbers granted bail but unable to meet conditions) are remanded into custody pending future court action.

Juvenile remand figures are disaggregated into:

- Police bail refused - Police have refused to grant bail to a juvenile. All juveniles refused bail by police are held in custody in a juvenile justice centre pending future court action.
- Court bail refused - the courts have refused to grant bail to a juvenile pending future court action.

Remand (Adult) - adults refused bail (and small numbers granted bail but unable to meet conditions) are remanded in custody pending future court action. Includes a small number of persons refused police bail and remanded in custody in a gazetted correctional centre. Includes persons on remand who are being managed as correctional patients under the *Mental Health (Forensic Provisions) Act 1990*.

Sentenced - the courts have imposed custodial sentence(s) for proven offence(s). This category includes persons returned to custody after breaching parole. Includes forensic patients as per the *Mental Health (Forensic Provisions) Act 1990* (ie persons found unfit to be tried and persons found not guilty due to mental illness). Persons on remand for one or more offences and sentenced for one or more offences have a legal status of sentenced.

Unknown - adults whose legal status was not recorded at the time of admission.

Legal status changed from remand to sentenced

Persons whose legal status changed from remand to sentenced upon the imposition of a custodial sentence by a court. This report shows the numbers of persons during each month who changed from being on remand to being sentenced.

Most serious offence

The most serious offence type for which each person is in custody. The offence type categories in this report are the sixteen ANZSOC Divisions, with shortened titles (See ANZSOC).

Most serious offence data is presented in a radar chart and a data table. The radar chart consists of a circle with a series of 'spokes' running from the centre of the circle to the perimeter. Each spoke represents a different offence type. The radar chart is constructed by placing a point on each spoke marking the proportion of prisoners with that offence type as their most serious offence. The higher the proportion, the closer the point to the perimeter. The points are then connected and the resulting figure inside the circle gives a picture of the distribution of most serious offence type across prisoners. A different type/colour of line is used for each quarter, making changes from quarter to quarter apparent. Note that offence types with no observations are plotted a short distance from the zero radius so that the numbers for every offence type can be observed.

The data table displays the number and proportion of persons in custody for each of the most serious offence types. The data is presented separately for sentenced persons and persons on remand:

Most Serious Offence – Adults:

The most serious offence for adults is as provided by CSNSW.

A person's most serious offence may change over the course of their custodial episode depending on offences for which they are in custody at any one time. The Most Serious Offence data presented in this report are stock data and are sourced from data extracts run two to three weeks after the end of the quarter.

The data for the previous quarter is as at the previous quarter's custody report.

Extracting the data after the same time lag each quarter reduces variability due to extract timing and so is indicative of a change in the broad offence profile of persons in custody between the end of the current and previous quarters.

Due to the way that MSO is recorded and the data extracted, it is not available for receptions or discharge data.

Most Serious Offence – Juveniles:

Most serious offence for juveniles is compiled by matching custody order records from JJNSW with sentencing and bail refused orders sourced from the JusticeLink system used by the NSW criminal courts. Data is matched using JusticeLink Proceeding Number, a unique offence identifier which is available in the JJNSW data from January 2011.

- The most serious offence for juveniles remanded in custody is the offence with the highest Median Sentence Ranking (MSR). The MSR is a ranking of ANZSOC codes and was developed by BOCSAR using data on sentences imposed in the NSW criminal courts. The MSR can be used to select the most serious offence when sentencing data is not available and to select most serious offence when multiple

offences have the same custodial order duration. For further information see the BOCSAR's Crime and Justice Bulletin No.142 "Measuring Offence Seriousness": [www.bocsar.nsw.gov.au/lawlink/bocsar/ll_bocsar.nsf/vwFiles/CJB142.pdf/\\$file/CJB142.pdf](http://www.bocsar.nsw.gov.au/lawlink/bocsar/ll_bocsar.nsf/vwFiles/CJB142.pdf/$file/CJB142.pdf)

- The most serious offence for sentenced juveniles is the offence with the longest custodial order. For juveniles with more than one offence type with the same custodial order duration, the offence with the highest Median Sentence Ranking is selected as the most serious offence.
- Juveniles sentenced to a custodial order after breaching a non-custodial penalty (eg a suspended sentence, Community Service Order or good behaviour bond) have a most serious offence type of *Justice procedure offence* rather than the type of offence for which the non-custodial penalty was originally imposed (eg robbery/extortion, drug offences).

Note: this differs from the definition of most serious offence used in the Australian Bureau of Statistics Prisoners in Australia publication series (*ABS cat.no.4517.0*)

Police bail refused

See Bail.

Receptions

Persons received into Juvenile Justice custody or a gazetted correctional centre. Gazetted correctional centres are managed by CSNSW. Persons received into CSNSW custody and managed only in CSNSW 24-hour police/court cell complexes are excluded.

Ratio of receptions to discharges

The ratio of receptions to discharges. A ratio greater than 1 means there were more receptions than discharges during the month; a ratio less than 1 means there were more discharges than receptions during the month.

Remand

See Legal status.

Sentenced

See Legal status.

24 hour police/court cell complexes

In addition to gazetted correctional centres, CSNSW manage a number of police/court cell complexes. This report excludes persons received and then discharged from a CSNSW-managed 24 hour police/court cell complex without entering a gazetted correctional centre.