
NEW SOUTH WALES CUSTODY STATISTICS

QUARTERLY UPDATE
MARCH 2017



NSW Bureau of Crime
Statistics and Research

CONTENTS

This report presents 24 months of reception, discharge and custody population data and comparisons between the current and previous quarter for age, gender, indigenous status, most serious offence and the average length of stay.

Separate figures are presented for juveniles and adults.

The counting unit is a custodial episode. An individual will be counted multiple times in a period if they have multiple custodial episodes in that period.

SCOPE

The data in this report are extracted from the Corrective Services NSW (CSNSW) Offender Integrated Management System (OIMS) and the Juvenile Justice NSW (JJNSW) Client Information Management System (CIMS).

The adult custody population figures include only those persons held in gazetted correctional centres managed by CSNSW. This includes: persons managed as forensic patients, persons held after expiry of their sentence awaiting deportation and persons awaiting extradition to another jurisdiction. Persons in the Special Purpose Centre at Long Bay Correctional Centre are not included.

In addition to gazetted correctional centres, CSNSW manages a number of police/court cell complexes. This report excludes persons received into and then discharged from a CSNSW-managed 24 hour police/court cell complex without entering a gazetted correctional centre. Adults refused police bail but not held in a gazetted correctional centre are not included.

Custody population figures are counted as at midnight on the last day of the month or quarter as appropriate. Reception and discharge figures are those during each month or quarter as appropriate.

Refer to the Glossary at the back of the report for detailed descriptions of the terms used in the report.

ACKNOWLEDGEMENTS

Juvenile custody data are provided by the Research and Information Section of JJNSW. Adult custody data are provided by the Corrections Research, Evaluation and Statistics (CRES) section of CSNSW. BOCSAR is grateful for the support provided by both areas in supplying the data for this report and advising on its interpretation.

NOTE

The adult custody data presented in this report will differ from data reported by CSNSW due to data extract timing differences.

Contents

PART 1 JUVENILES **4**

SECTION 1.1	JUVENILE CUSTODY POPULATION	5
1.1.1	By Month	5
1.1.2	By Legal Status	5
1.1.3	By Indigenous Status.....	6
1.1.4	By Legal Status (Indigenous Only).....	6
1.1.5	Profile	7
1.1.6	Legal Status Changed from Remand to Sentenced	7
1.1.7	Remand Population by Most Serious Offence	8
1.1.8	Sentenced Population by Most Serious Offence	9
SECTION 1.2	JUVENILE CUSTODY RECEPTIONS	10
1.2.1	By Month	10
1.2.2	By Legal Status	10
SECTION 1.3	JUVENILE CUSTODY DISCHARGES	11
1.3.1	By Month	11
1.3.2	Length of Stay	11
1.3.3	By Discharge Type	12
1.3.4	By Discharge Type (Excluding Bail).....	12
1.3.5	Ratio Of Receptions To Discharges.....	13

PART 2 ADULTS **14**

SECTION 2.1	ADULT CUSTODY POPULATION	15
2.1.1	By Month	15
2.1.2	By Indigenous Status.....	15
2.1.3	Remand Population	16
2.1.4	Sentenced Population.....	16
2.1.5	Indigenous Remand Population	17
2.1.6	Indigenous Sentenced Population	17
2.1.7	Profile	18
2.1.8	Legal Status Changed from Remand to Sentenced	18
2.1.9	Remand Population by Most Serious Offence	19
2.1.10	Sentenced Population by Most Serious Offence	20
2.1.11	Prison Population Forecast.....	21
SECTION 2.2	ADULT CUSTODY RECEPTIONS	22
2.2.1	By Month	22
2.2.2	Remand Receptions	22
2.2.3	Sentenced Receptions.....	23
SECTION 2.3	ADULT CUSTODY DISCHARGES	24
2.3.1	By Month	24
2.3.2	Length of Stay	24
2.3.3	By Discharge Type	25
2.3.4	Ratio Of Receptions To Discharges.....	25

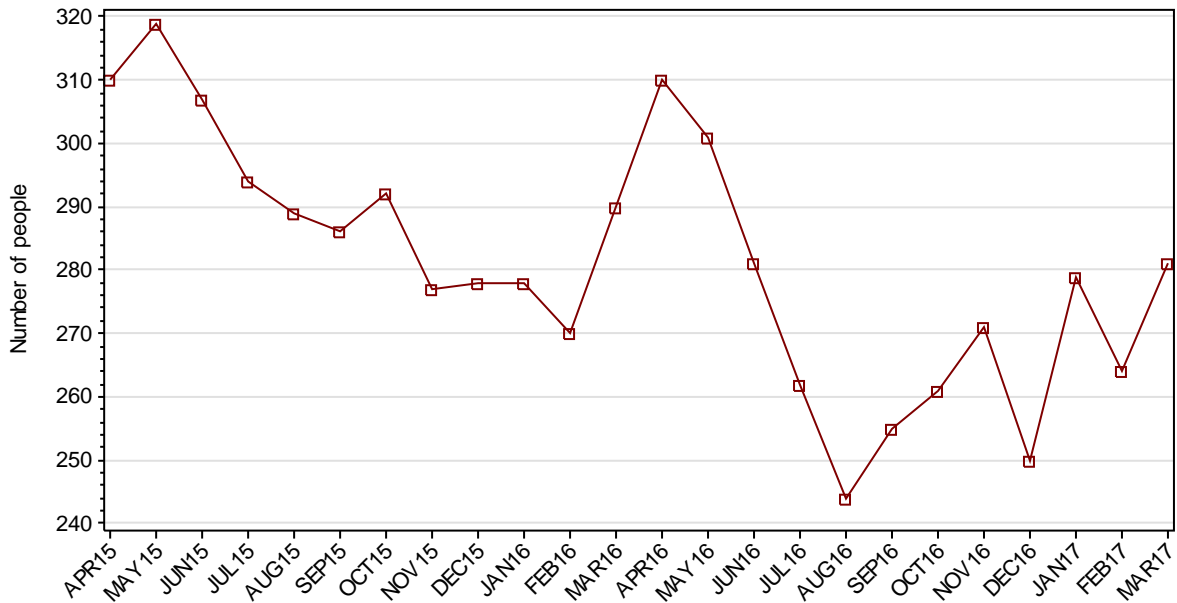
PART 3 DATA TABLES **26**

PART 4 GLOSSARY **31**

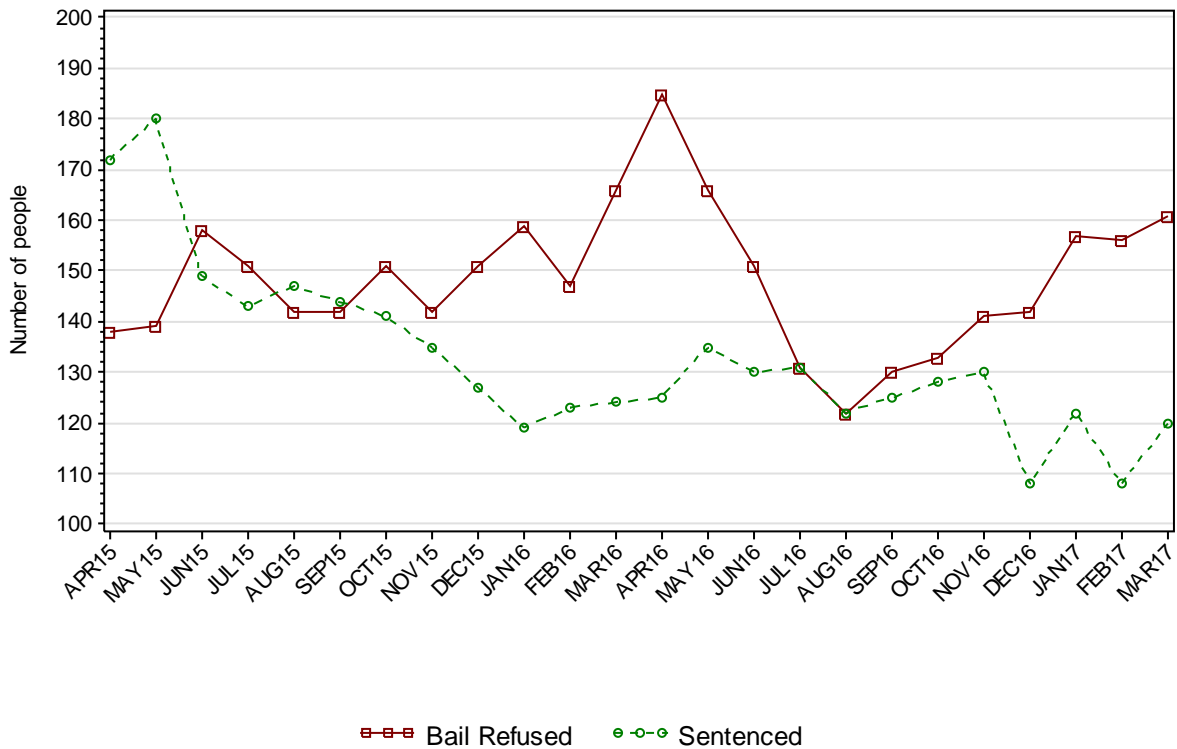
Part 1 JUVENILES

SECTION 1.1 JUVENILE CUSTODY POPULATION

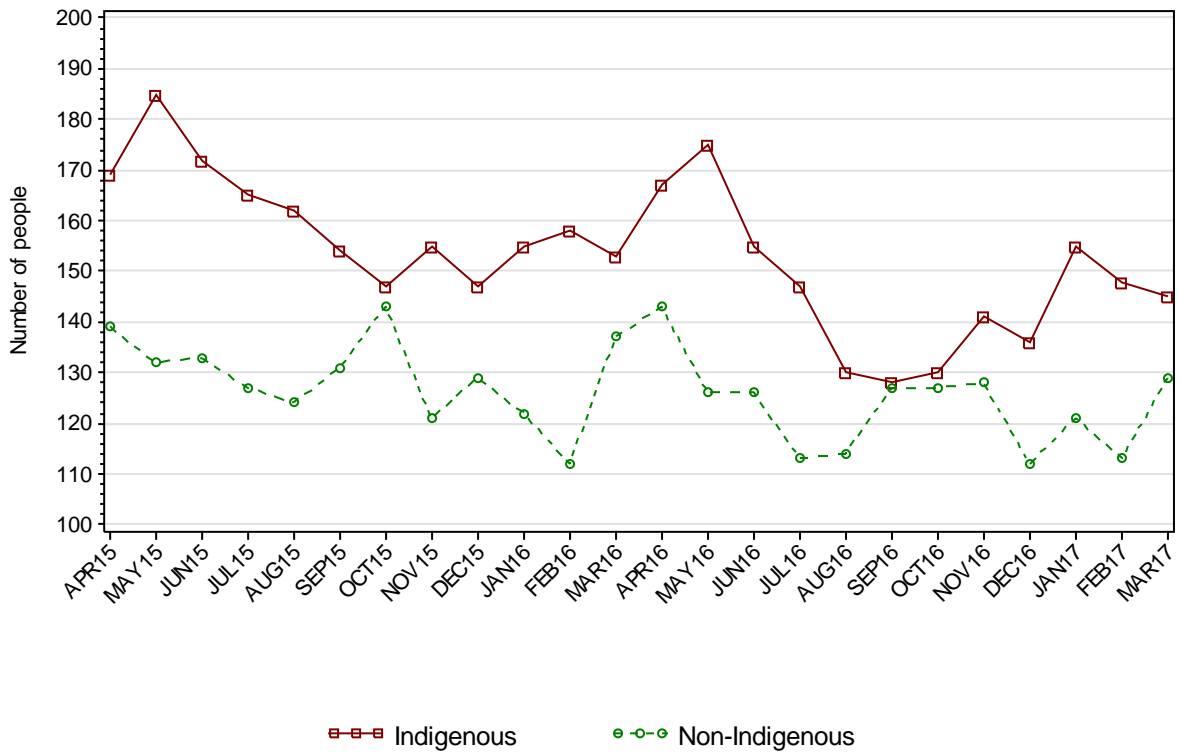
1.1.1 JUVENILE CUSTODY POPULATION AT END OF MONTH



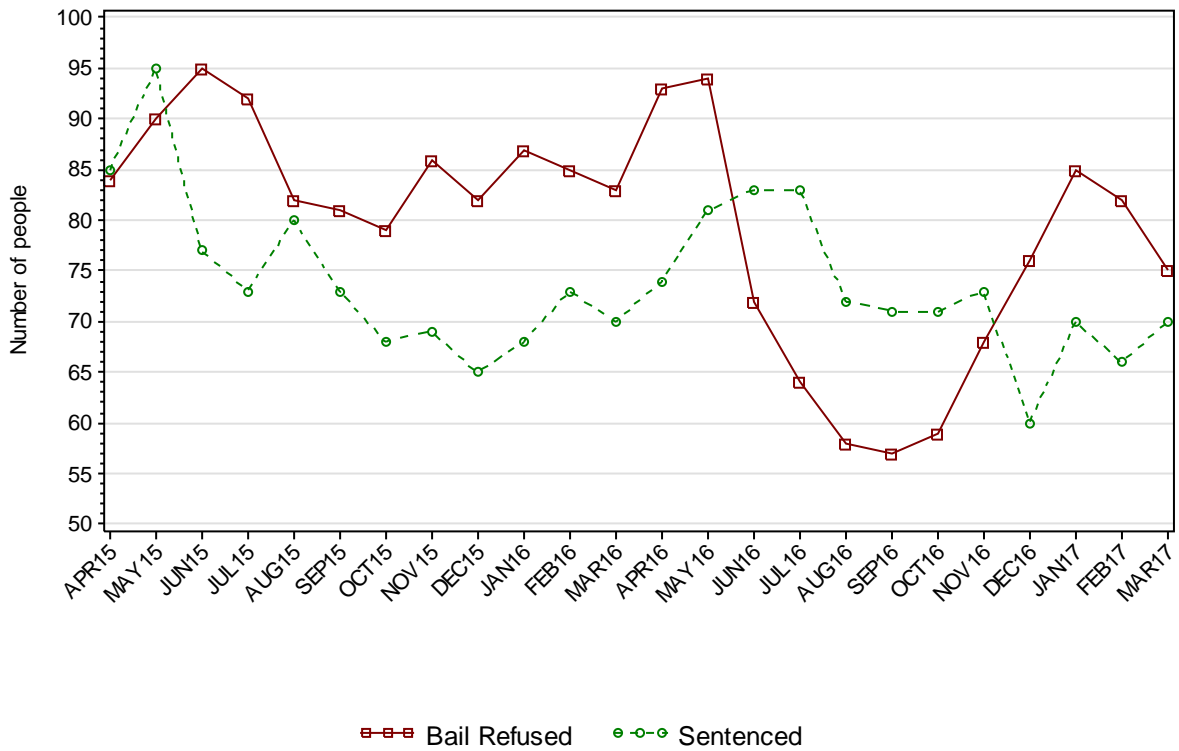
1.1.2 JUVENILE CUSTODY POPULATION BY LEGAL STATUS



1.1.3 JUVENILE CUSTODY POPULATION BY INDIGENOUS STATUS



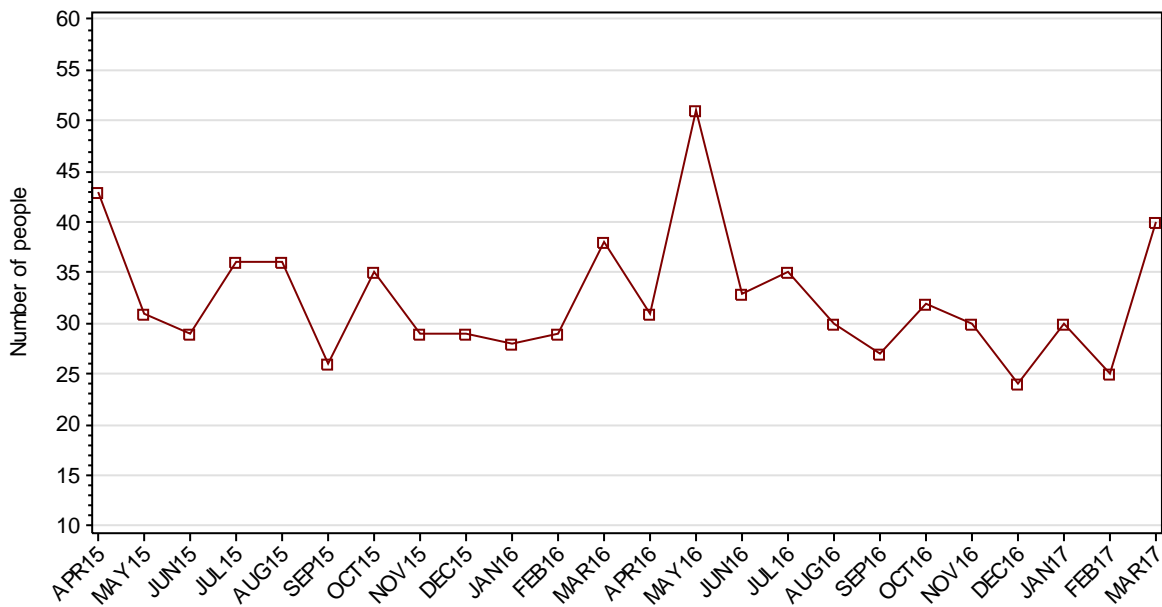
1.1.4 INDIGENOUS JUVENILE CUSTODY POPULATION BY LEGAL STATUS



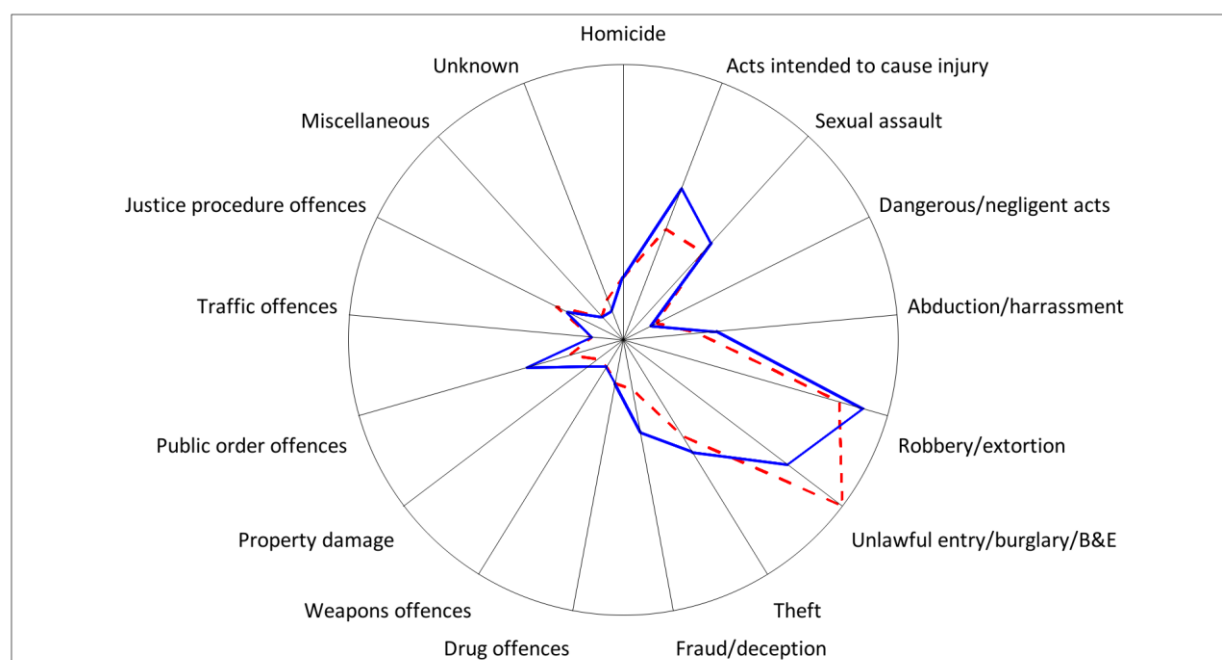
1.1.5 JUVENILE CUSTODY PROFILE AT END OF QUARTER

		Police Bail Refused		Court Bail Refused		Sentenced		Total	
		DEC16	MAR17	DEC16	MAR17	DEC16	MAR17	DEC16	MAR17
Total Male	Count	3	1	125	149	103	112	231	262
	Avg Age	13.7	16.0	16.2	16.1	17.0	16.7	16.5	16.4
Total Female	Count	1	2	13	9	5	8	19	19
	Avg Age	15.0	15.0	15.3	15.8	16.0	16.6	15.5	16.1
Indigenous Male	Count	2	1	64	69	57	65	123	135
	Avg Age	13.5	16.0	16.1	15.8	16.8	16.6	16.4	16.2
Indigenous Female	Count	1	0	9	5	3	5	13	10
	Avg Age	15.0	.	14.9	16.0	16.3	16.4	15.2	16.2
Total	Count	4	3	138	158	108	120	250	281
	Avg Age	14.0	15.3	16.1	16.1	17.0	16.7	16.5	16.4

1.1.6 JUVENILES IN CUSTODY: NUMBER WHOSE LEGAL STATUS CHANGED DURING MONTH FROM REMAND TO SENTENCED



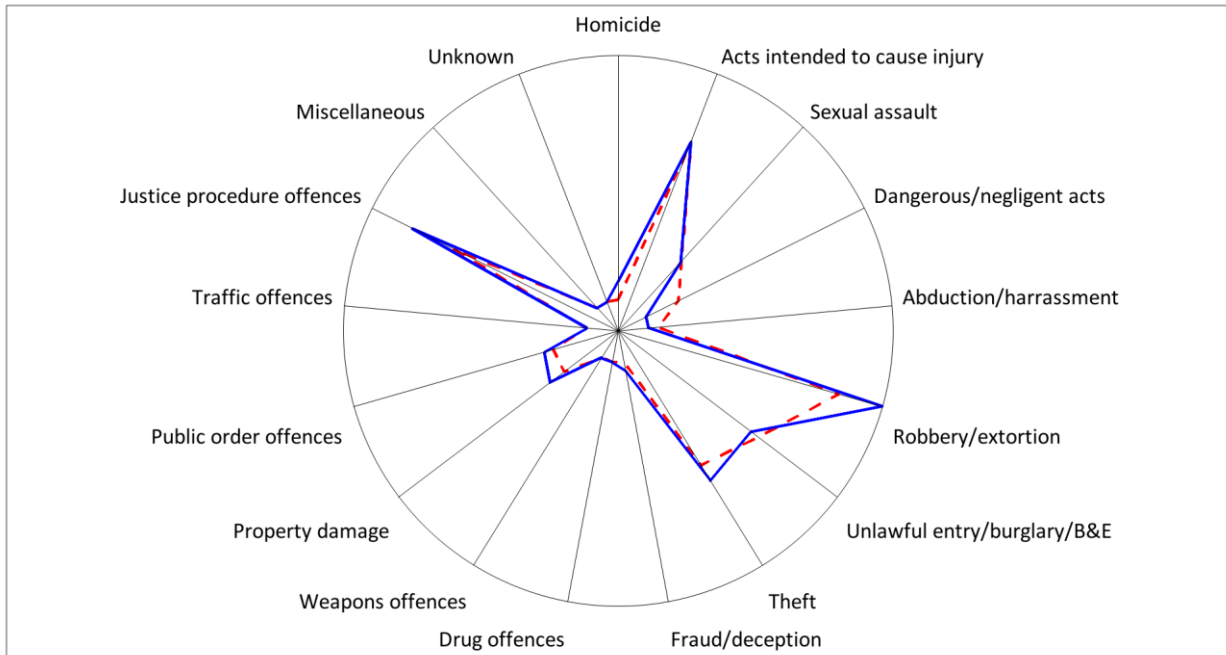
1.1.7 JUVENILE REMAND POPULATION BY MOST SERIOUS OFFENCE



As At: - - 31DEC16 — 31MAR17

	31DEC16		31MAR17	
	Number	% of Total	Number	% of Total
Homicide	5	3.5	5	3.1
Acts intended to cause injury	14	9.9	21	13.0
Sexual assault	14	9.9	16	9.9
Dangerous/negligent acts	1	0.7	0	0
Abduction/harrassment	7	4.9	10	6.2
Robbery/extortion	31	21.8	35	21.7
Unlawful entry/burglary/B&E	39	27.5	28	17.4
Theft	13	9.2	16	9.9
Fraud/deception	3	2.1	10	6.2
Drug offences	2	1.4	2	1.2
Weapons offences	0	0	0	0
Property damage	0	0	2	1.2
Public order offences	4	2.8	11	6.8
Traffic offences	0	0	0	0
Justice procedure offences	7	4.9	5	3.1
Miscellaneous	0	0	0	0
Unknown	2	1.4	0	0
Total	142	100.0	161	100.0

1.1.8 JUVENILE SENTENCED POPULATION BY MOST SERIOUS OFFENCE

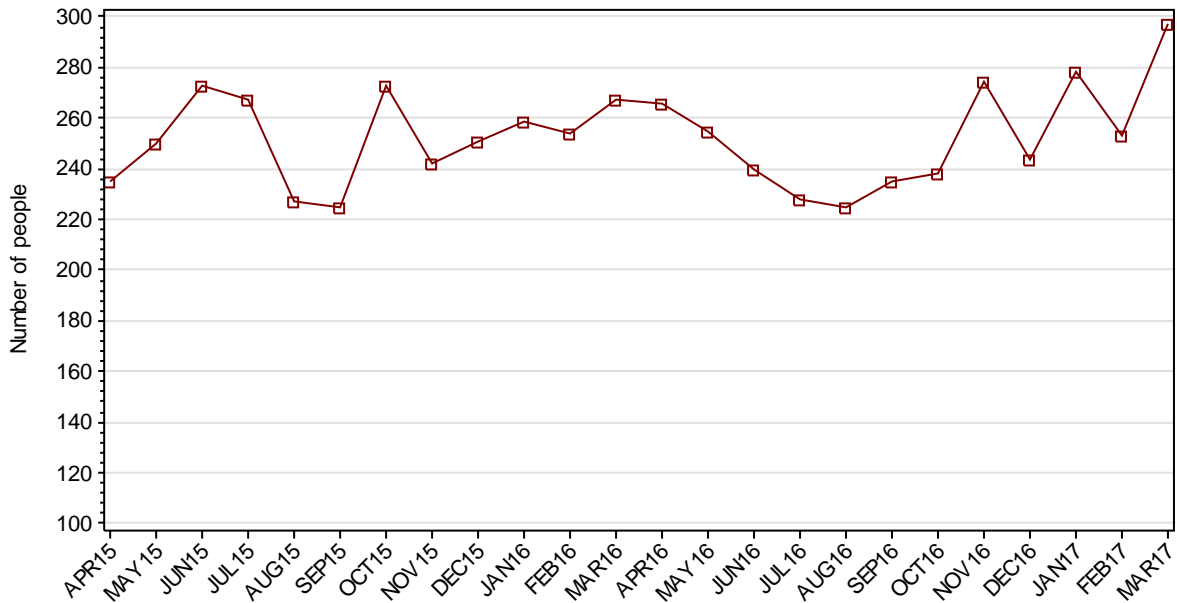


As At:

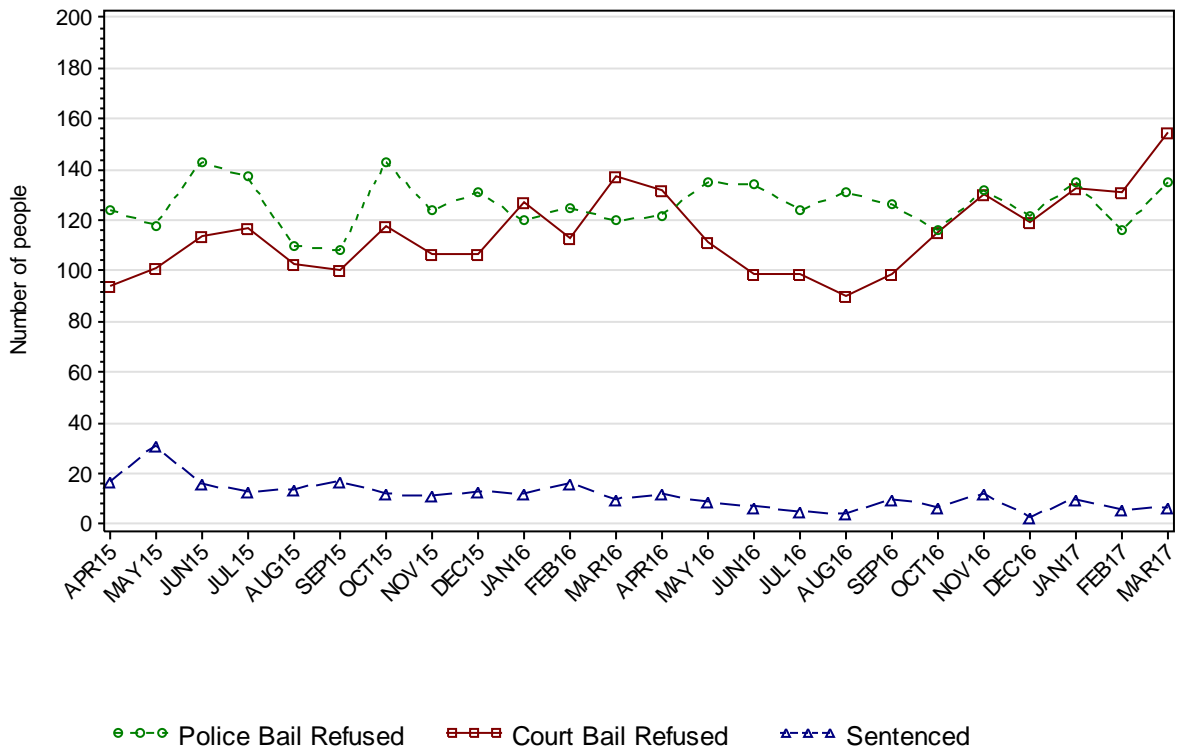
	31DEC16		31MAR17	
	Number	% of Total	Number	% of Total
Homicide	0	0	2	1.7
Acts intended to cause injury	19	17.6	19	15.8
Sexual assault	7	6.5	7	5.8
Dangerous/negligent acts	4	3.7	0	0
Abduction/harrassment	1	0.9	0	0
Robbery/extortion	22	20.4	27	22.5
Unlawful entry/burglary/B&E	16	14.8	15	12.5
Theft	14	13.0	16	13.3
Fraud/deception	0	0	1	0.8
Drug offences	0	0	0	0
Weapons offences	0	0	0	0
Property damage	4	3.7	6	5.0
Public order offences	4	3.7	5	4.2
Traffic offences	0	0	0	0
Justice procedure offences	17	15.7	22	18.3
Miscellaneous	0	0	0	0
Unknown	0	0	0	0
Total	108	100.0	120	100.0

SECTION 1.2 JUVENILE CUSTODY RECEPTIONS

1.2.1 JUVENILES RECEIVED INTO CUSTODY DURING MONTH

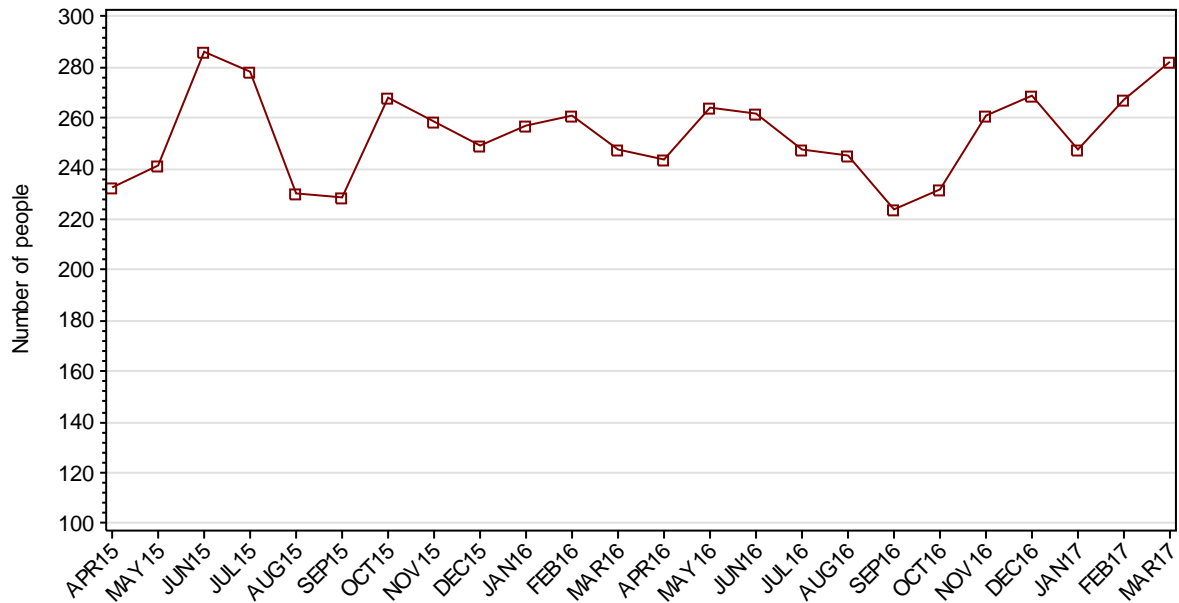


1.2.2 JUVENILES RECEIVED INTO CUSTODY BY LEGAL STATUS



SECTION 1.3 JUVENILE CUSTODY DISCHARGES

1.3.1 JUVENILES DISCHARGED FROM CUSTODY DURING MONTH

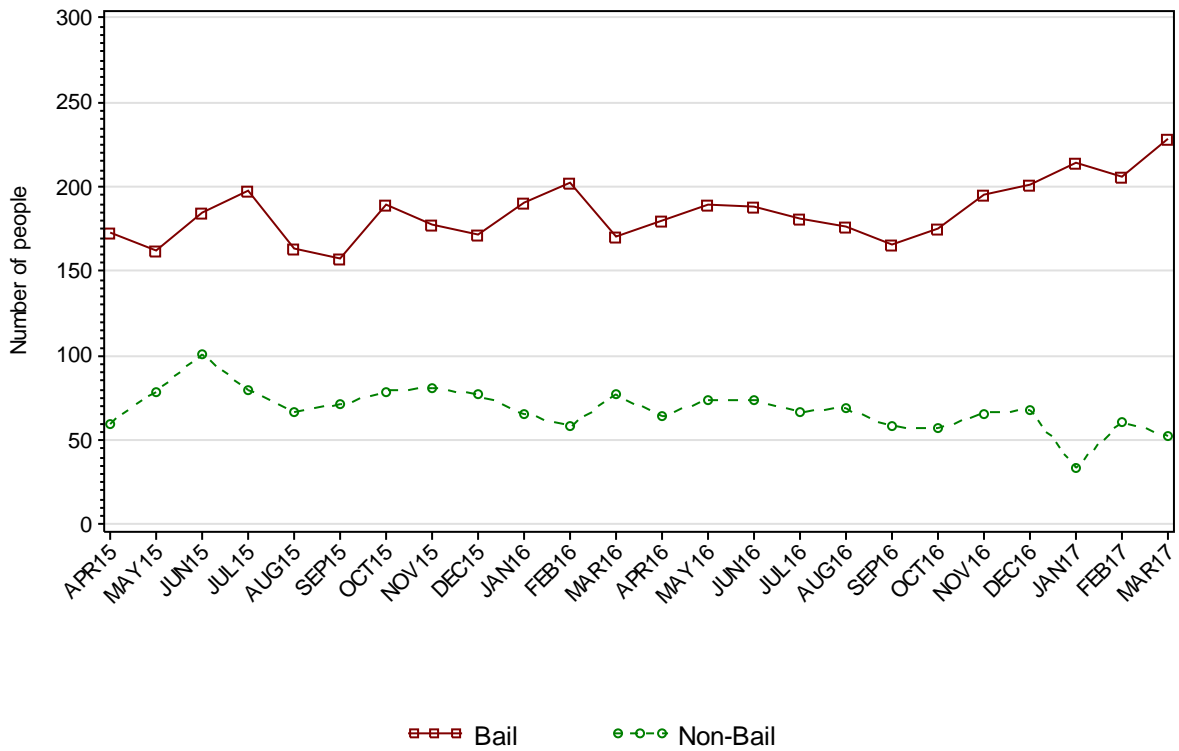


1.3.2 AVERAGE LENGTH OF STAY FOR JUVENILES DISCHARGED FROM CUSTODY EACH QUARTER

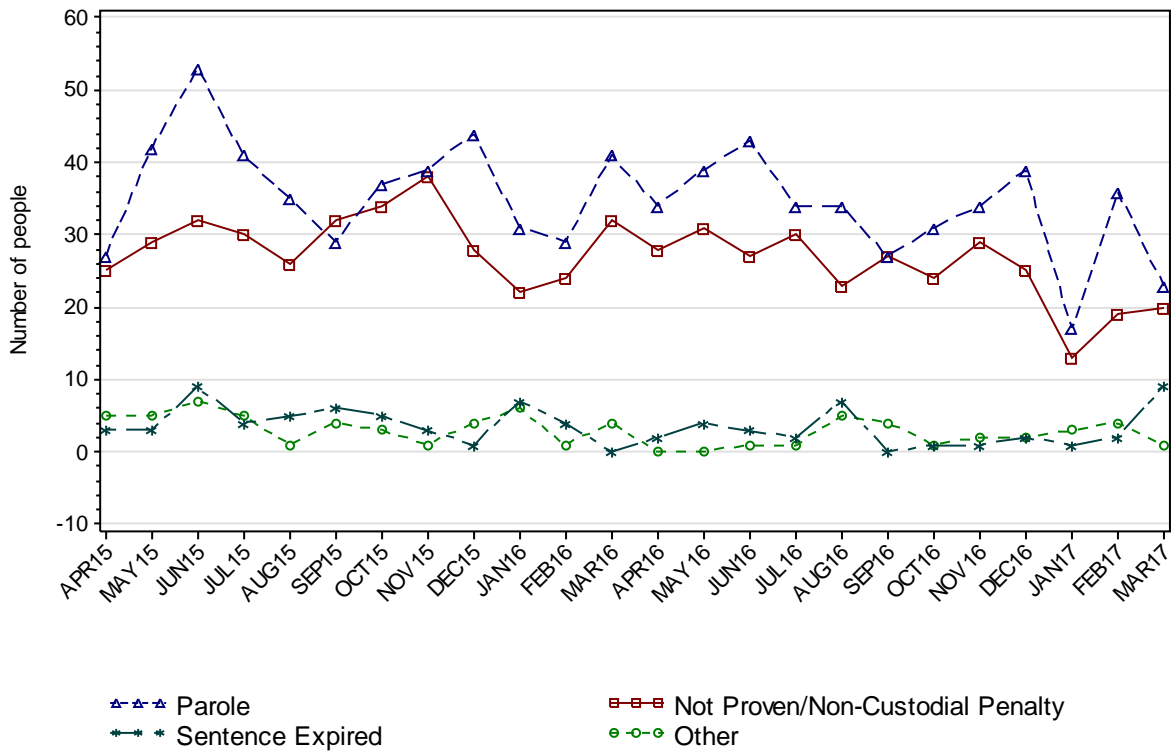
		Remand Custody Only		Sentenced Custody Only		Remand to Sentenced Custody	
		DEC16	MAR17	DEC16	MAR17	DEC16	MAR17
Total Male	Avg Days	9.6	9.9	121.9	95.7	196.9	174.9
	Number	504	562	22	17	94	84
Total Female	Avg Days	8.3	5.7	43.5	91.0	212.8	81.3
	Number	134	129	2	1	6	4
Indigenous Male	Avg Days	11.6	10.9	76.0	108.3	204.2	137.0
	Number	203	249	14	7	49	45
Indigenous Female	Avg Days	12.1	7.0	74.0	.	69.5	98.7
	Number	61	64	1	.	2	3
Total	Avg Days	9.4	9.1	115.4	95.4	197.8	170.6
	Number	638	691	24	18	100	88

Note: Length of Stay for Remand to Sentenced Custody is from the date of reception on remand to date of discharge after serving sentence.

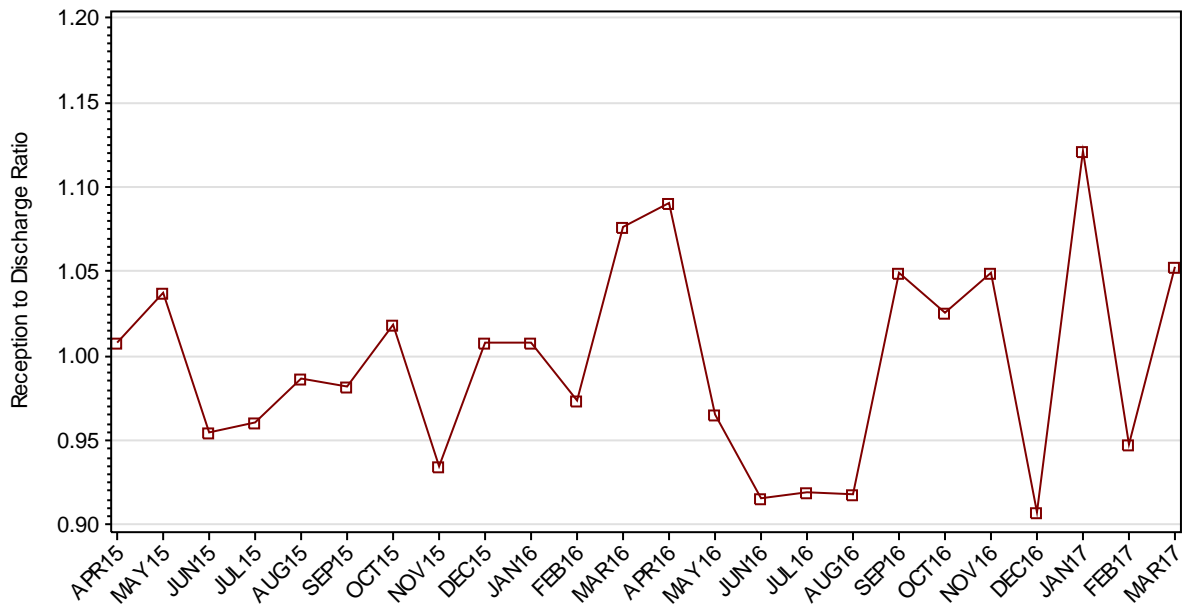
1.3.3 JUVENILES BY DISCHARGE TYPE



1.3.4 JUVENILES BY DISCHARGE TYPE (EXCLUDING BAIL)



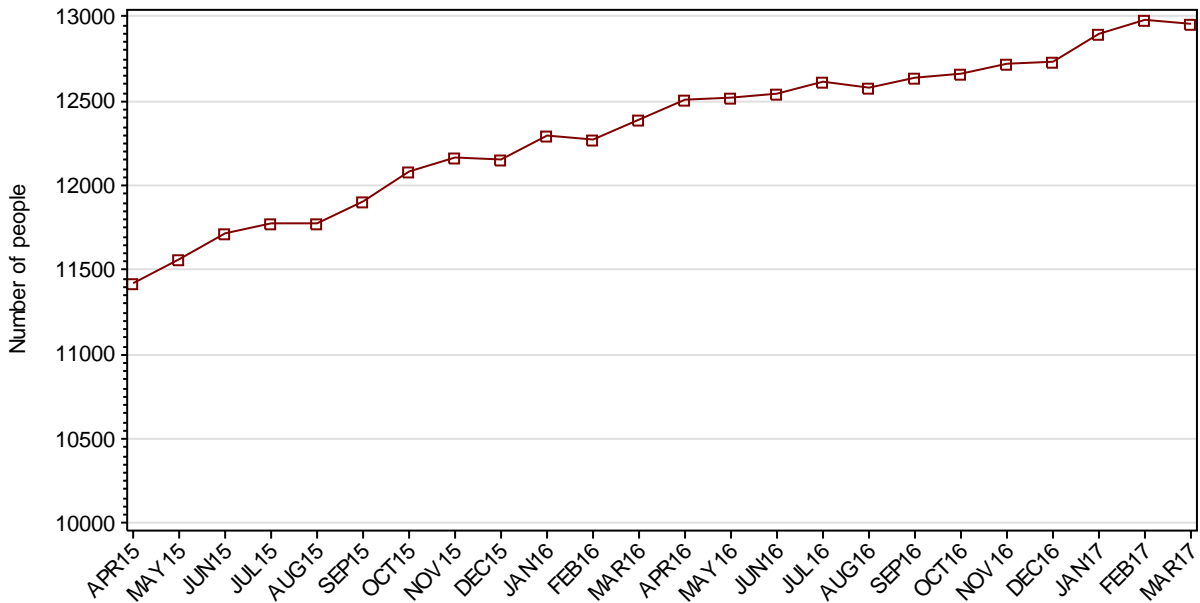
1.3.5 RATIO OF JUVENILE RECEPTIONS TO DISCHARGES



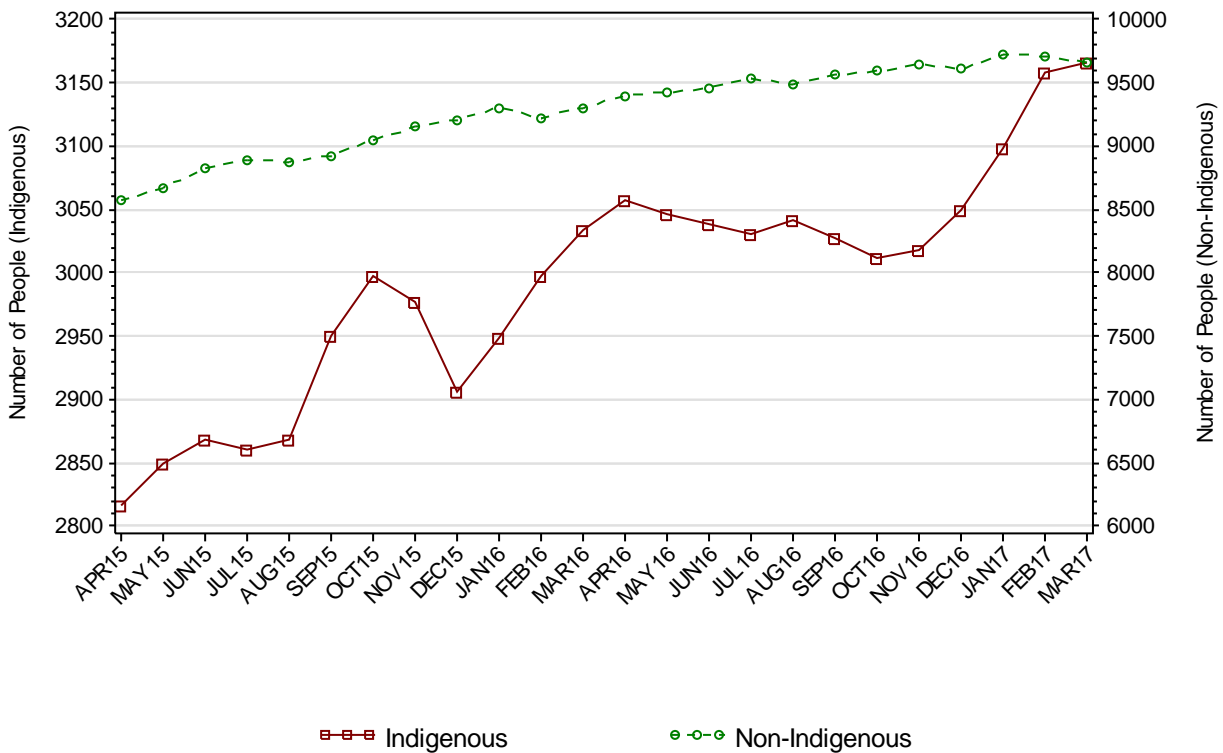
Part 2 ADULTS

SECTION 2.1 ADULT CUSTODY POPULATION

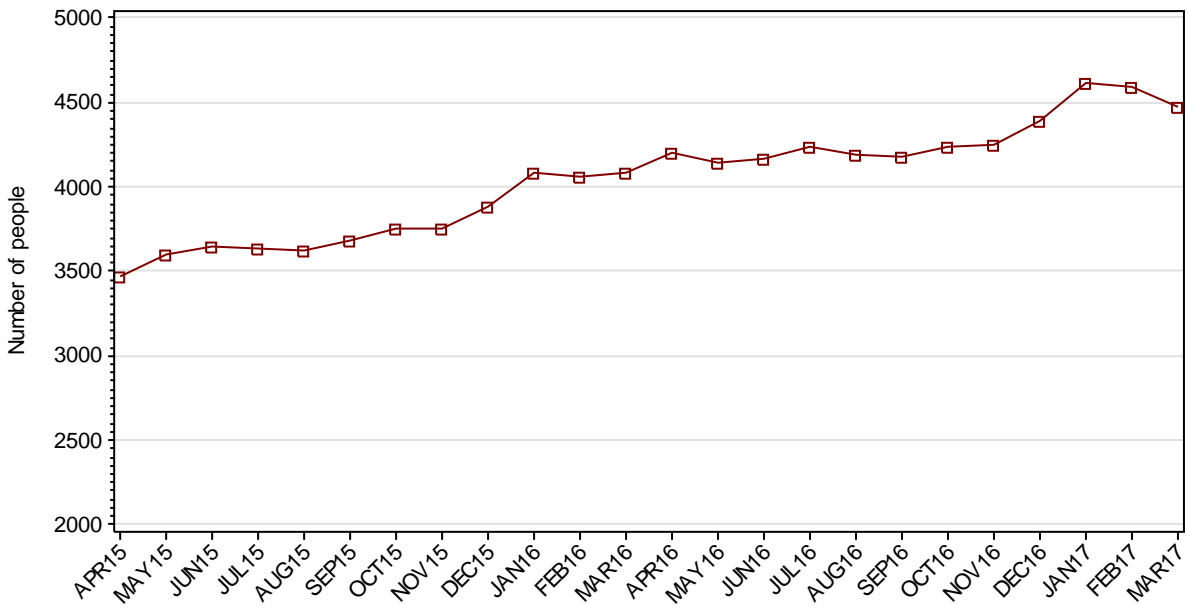
2.1.1 ADULT CUSTODY POPULATION AT END OF MONTH



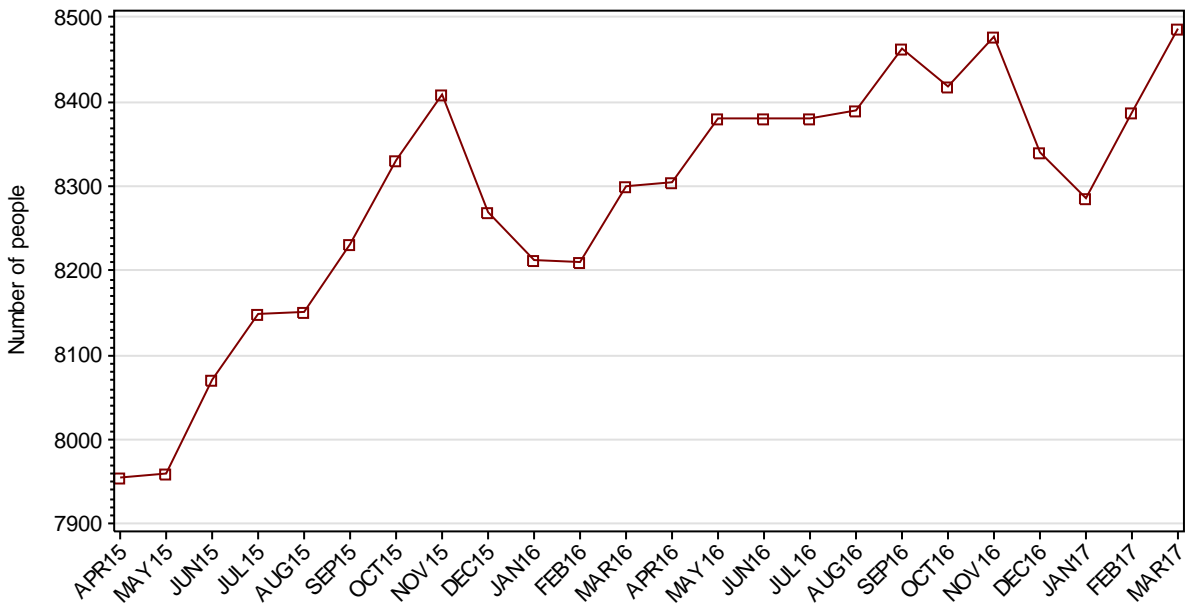
2.1.2 ADULT CUSTODY POPULATION BY INDIGENOUS STATUS



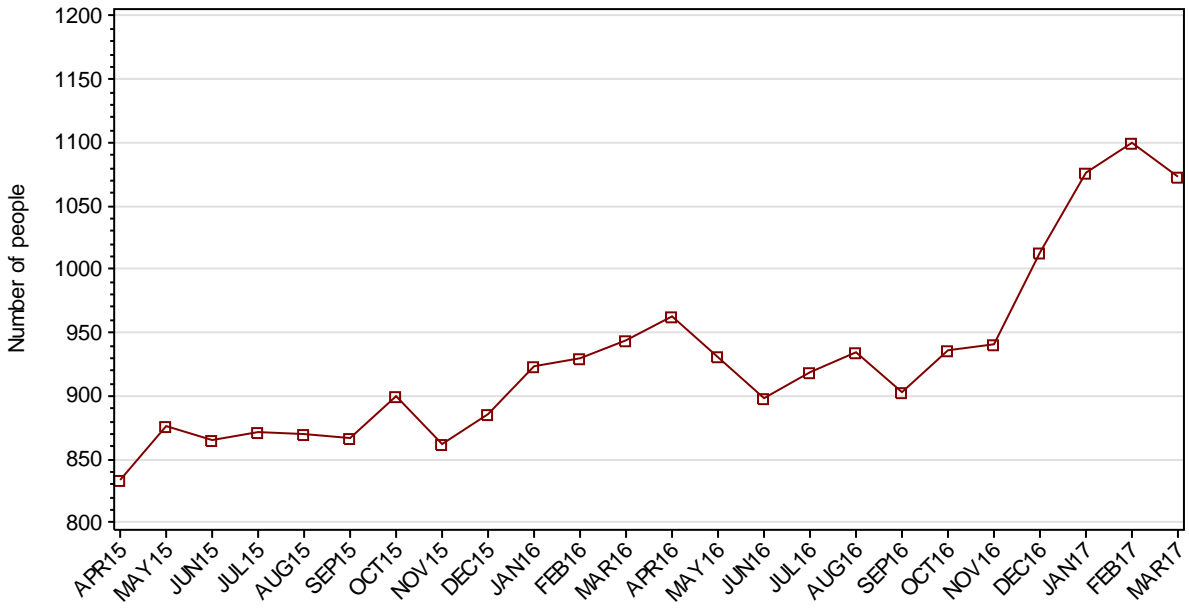
2.1.3 ADULT REMAND POPULATION



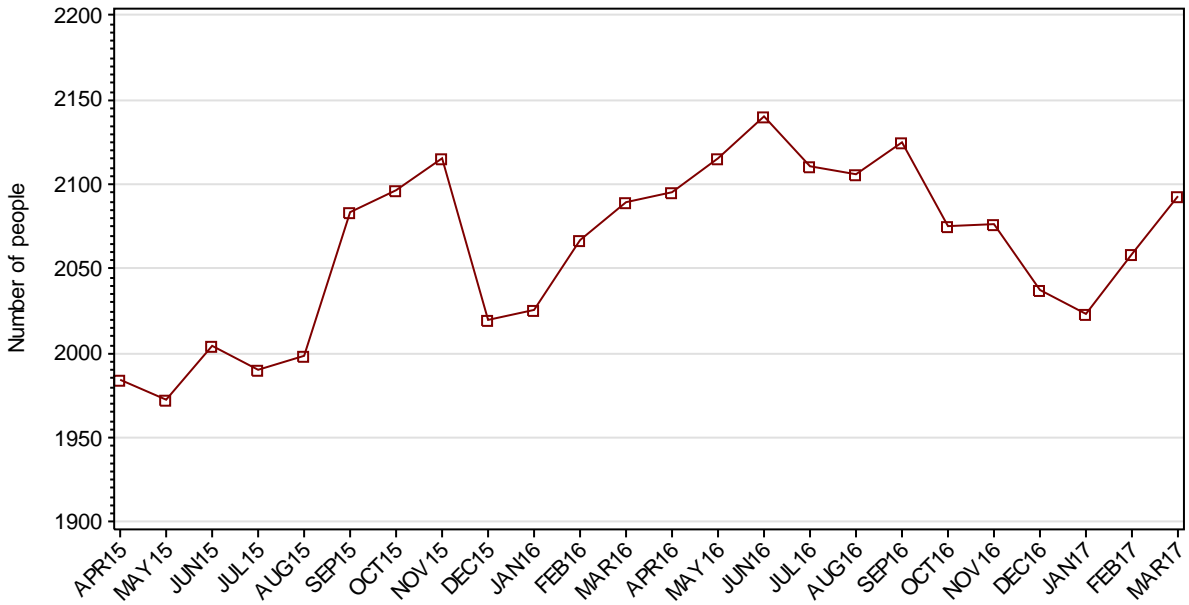
2.1.4 ADULT SENTENCED POPULATION



2.1.5 INDIGENOUS ADULT REMAND POPULATION



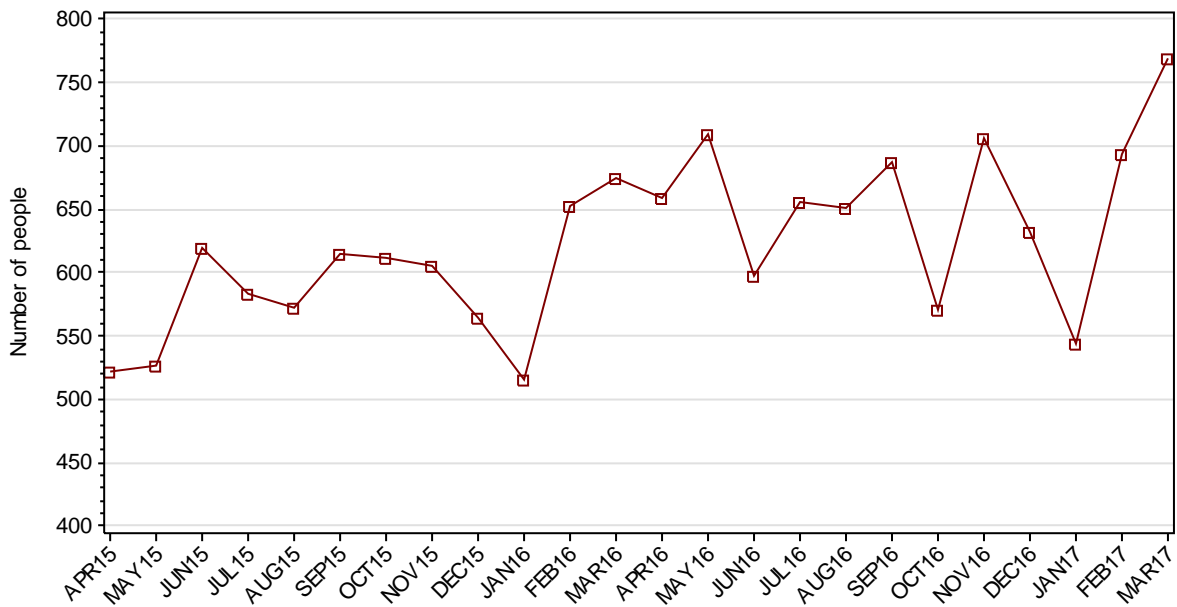
2.1.6 INDIGENOUS ADULT SENTENCED POPULATION



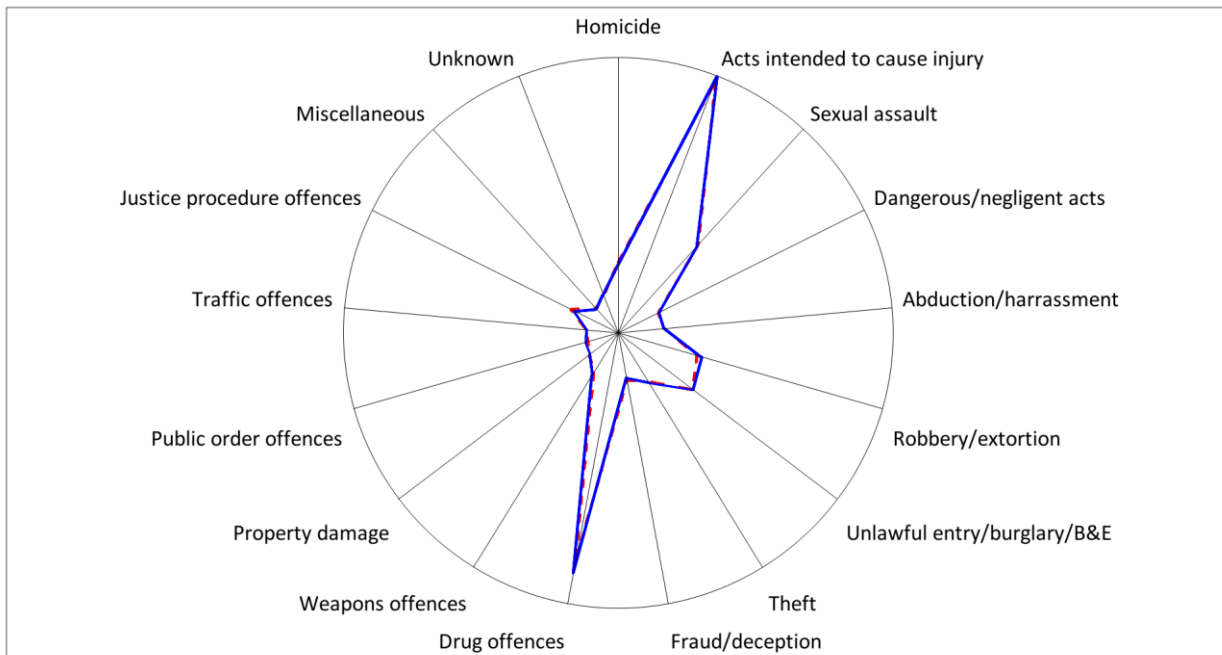
2.1.7 ADULT CUSTODY PROFILE AT END OF QUARTER

		Remand		Sentenced		Total	
		DEC16	MAR17	DEC16	MAR17	DEC16	MAR17
Total Male	Count	3951	4048	7764	7891	11715	11939
	Avg Age	34.5	34.7	37.4	37.3	36.4	36.4
Total Female	Count	437	421	577	595	1014	1016
	Avg Age	33.8	33.3	35.9	35.7	35.0	34.7
Indigenous Male	Count	875	927	1821	1894	2696	2821
	Avg Age	31.6	31.9	33.2	33.2	32.7	32.8
Indigenous Female	Count	138	146	216	199	354	345
	Avg Age	31.4	31.6	33.1	32.8	32.5	32.3
Total	Count	4388	4469	8341	8486	12729	12955
	Avg Age	34.4	34.6	37.3	37.2	36.3	36.3

2.1.8 ADULTS IN CUSTODY: NUMBER WHOSE LEGAL STATUS CHANGED DURING MONTH FROM REMAND TO SENTENCED



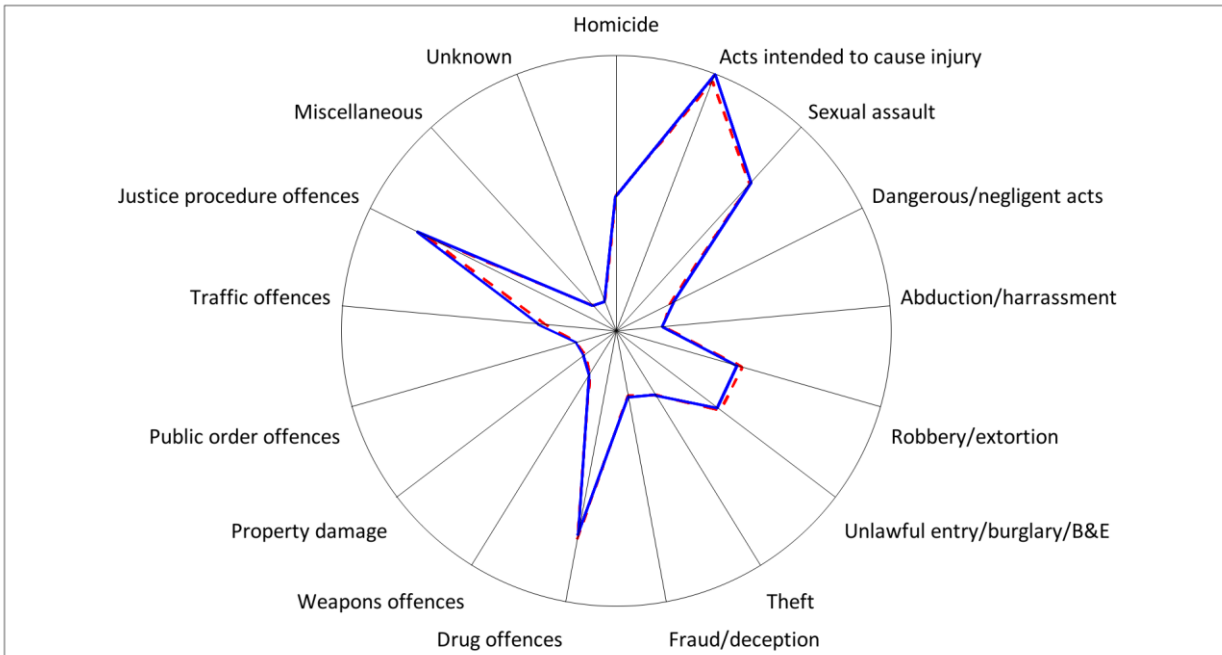
2.1.9 ADULT REMAND POPULATION BY MOST SERIOUS OFFENCE



As At: - - 31DEC16 — 31MAR17

	31DEC16		31MAR17	
	Number	% of Total	Number	% of Total
Homicide	215	4.9	205	4.6
Acts intended to cause injury	1228	28.0	1247	27.9
Sexual assault	463	10.6	455	10.2
Dangerous/negligent acts	88	2.0	93	2.1
Abduction/harrassment	97	2.2	98	2.2
Robbery/extortion	275	6.3	301	6.7
Unlawful entry/burglary/B&E	333	7.6	337	7.5
Theft	148	3.4	154	3.4
Fraud/deception	105	2.4	90	2.0
Drug offences	1037	23.6	1091	24.4
Weapons offences	93	2.1	108	2.4
Property damage	44	1.0	38	0.9
Public order offences	19	0.4	31	0.7
Traffic offences	21	0.5	19	0.4
Justice procedure offences	130	3.0	107	2.4
Miscellaneous	30	0.7	25	0.6
Unknown	62	1.4	70	1.6
Total	4388	100.0	4469	100.0

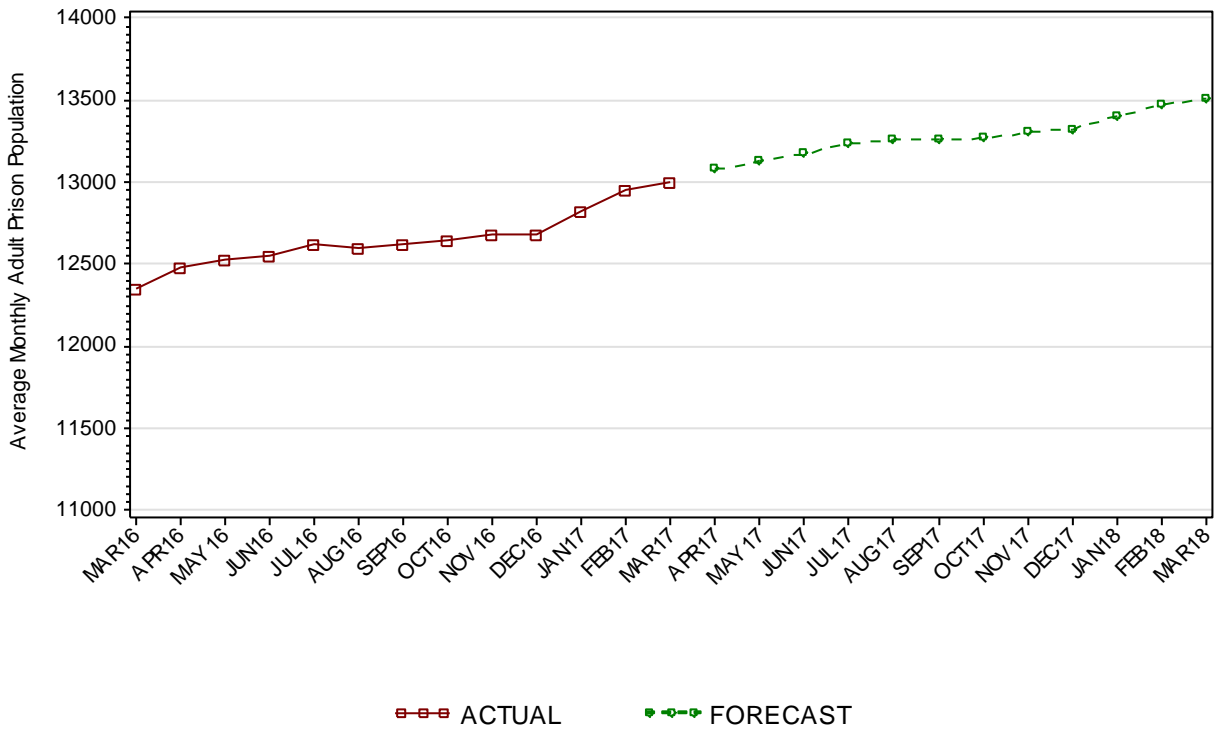
2.1.10 ADULT SENTENCED POPULATION BY MOST SERIOUS OFFENCE



As At: - -31DEC16 —31MAR17

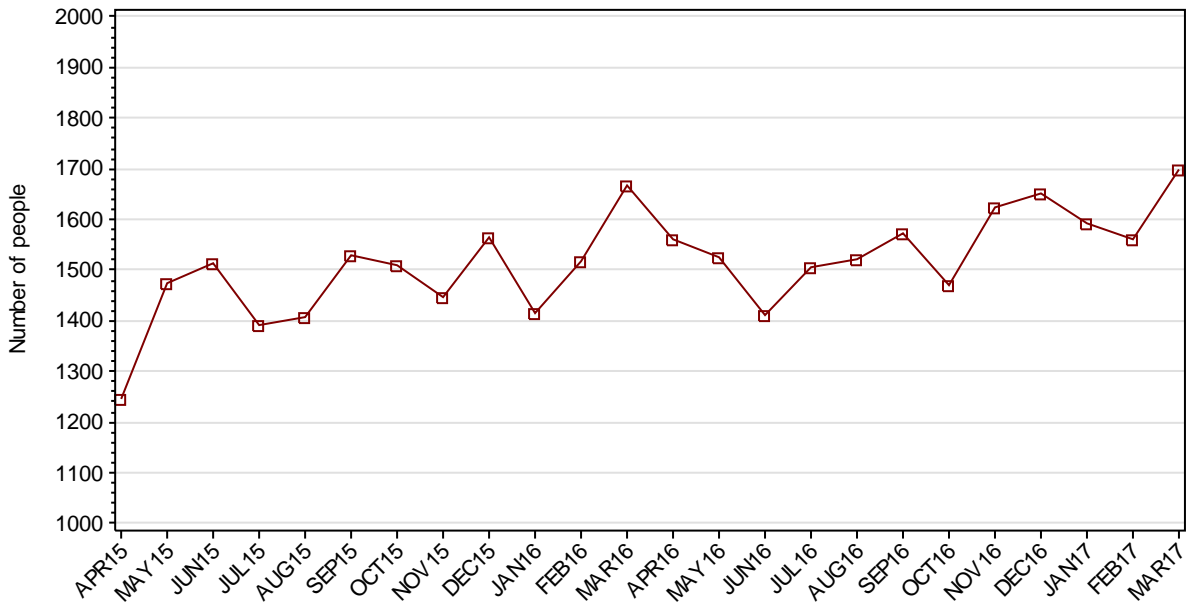
	31DEC16		31MAR17	
	Number	% of Total	Number	% of Total
Homicide	681	8.2	677	8.0
Acts intended to cause injury	1529	18.3	1577	18.6
Sexual assault	1086	13.0	1101	13.0
Dangerous/negligent acts	193	2.3	223	2.6
Abduction/harrassment	117	1.4	108	1.3
Robbery/extortion	655	7.9	620	7.3
Unlawful entry/burglary/B&E	654	7.8	629	7.4
Theft	293	3.5	289	3.4
Fraud/deception	230	2.8	238	2.8
Drug offences	1168	14.0	1140	13.4
Weapons offences	128	1.5	140	1.6
Property damage	61	0.7	70	0.8
Public order offences	74	0.9	77	0.9
Traffic offences	265	3.2	313	3.7
Justice procedure offences	1165	14.0	1237	14.6
Miscellaneous	31	0.4	33	0.4
Unknown	11	0.1	14	0.2
Total	8341	100.0	8486	100.0

2.1.11 PRISON POPULATION FORECAST

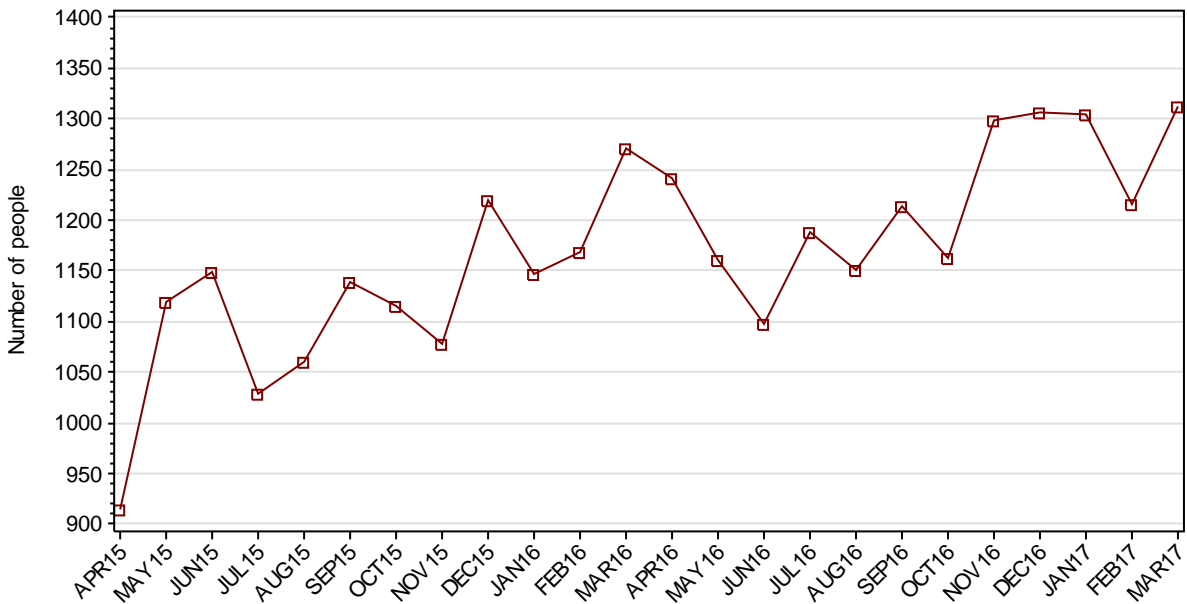


SECTION 2.2 ADULT CUSTODY RECEPTIONS

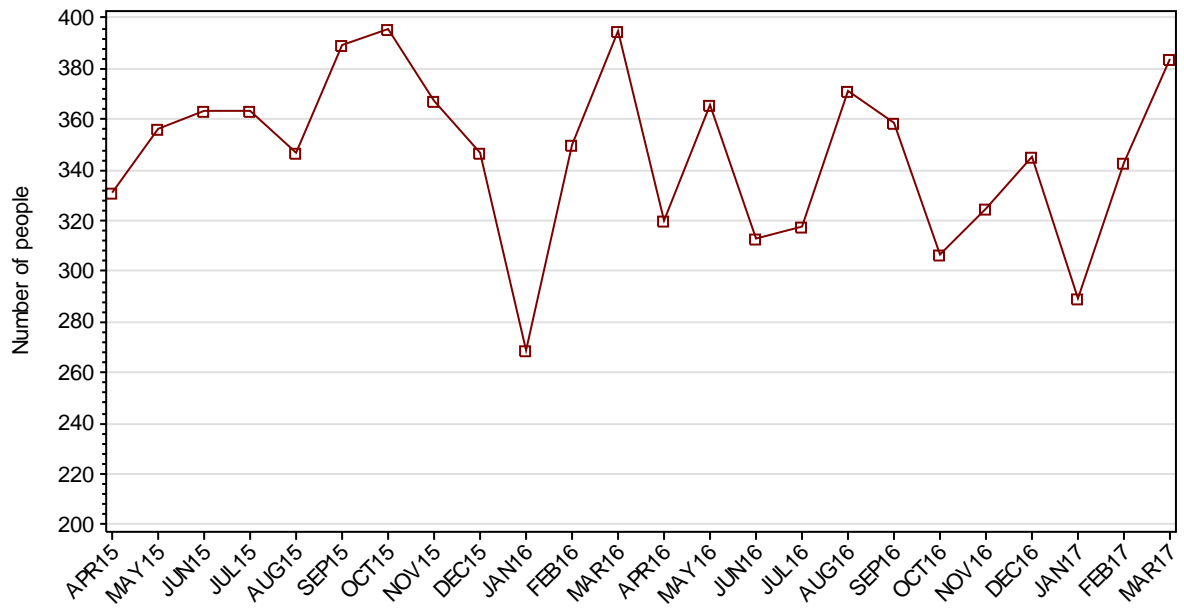
2.2.1 ADULTS RECEIVED INTO CUSTODY DURING MONTH



2.2.2 ADULT REMAND RECEPTIONS

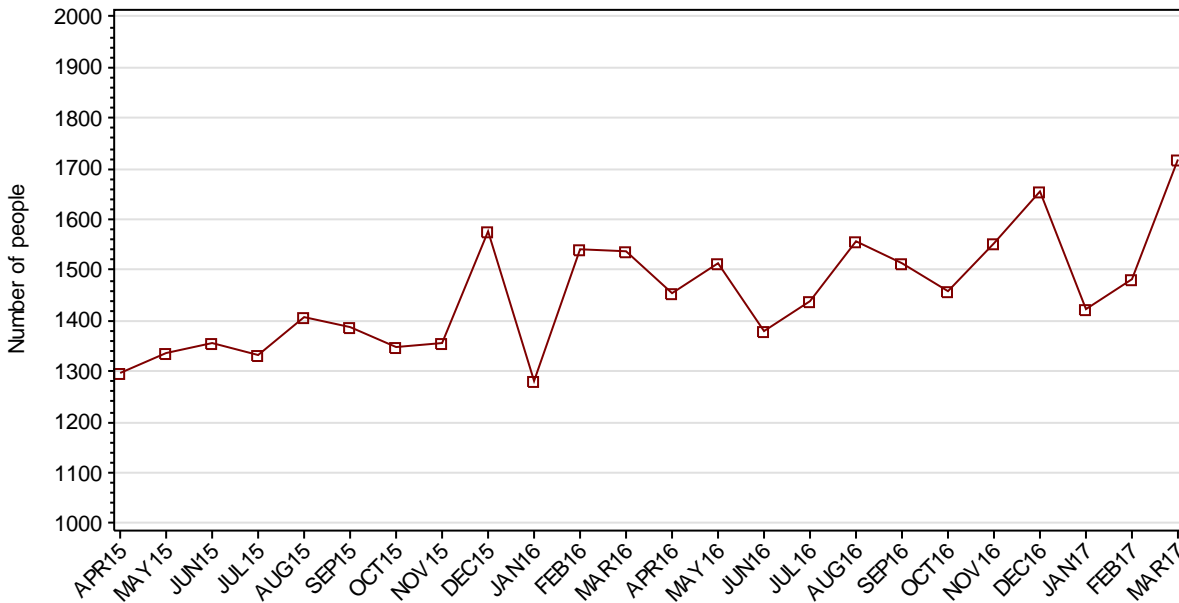


2.2.3 ADULT SENTENCED RECEPTIONS



SECTION 2.3 ADULT CUSTODY DISCHARGES

2.3.1 ADULTS DISCHARGED FROM CUSTODY DURING MONTH

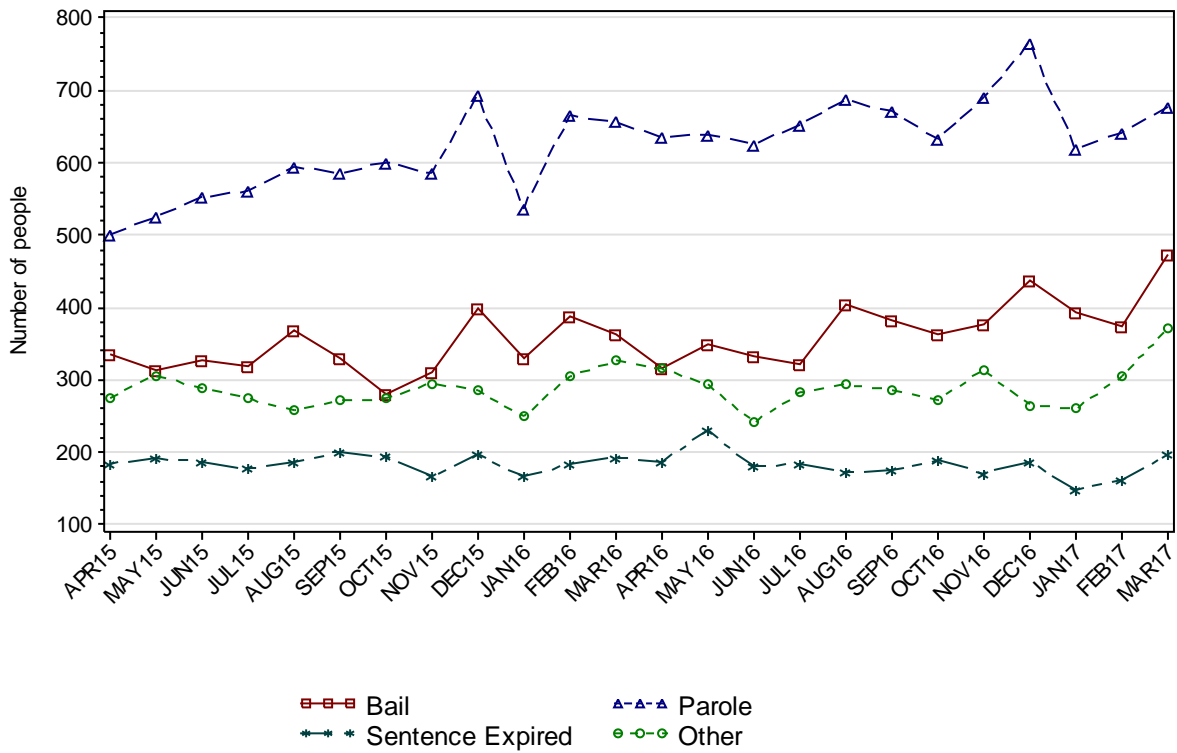


2.3.2 AVERAGE LENGTH OF STAY FOR ADULTS DISCHARGED FROM CUSTODY EACH QUARTER

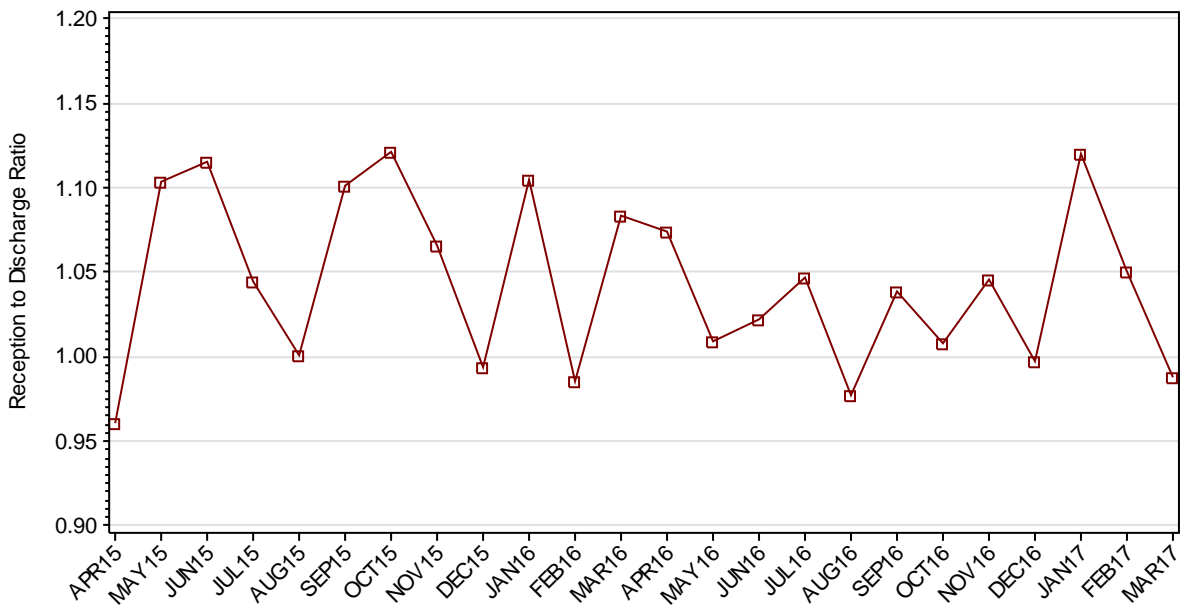
		Remand Custody Only		Sentenced Custody Only		Remand to Sentenced Custody	
		DEC16	MAR17	DEC16	MAR17	DEC16	MAR17
Total Male	Avg Days	50.7	49.5	225.5	218.4	444.9	439.3
	Number	1342	1469	950	846	1743	1631
Total Female	Avg Days	34.7	41.7	163.7	159.7	216.5	259.5
	Number	303	331	131	138	188	205
Indigenous Male	Avg Days	44.4	43.5	207.9	214.3	374.1	345.3
	Number	343	349	266	247	501	446
Indigenous Female	Avg Days	35.9	38.4	109.9	166.7	149.6	205.4
	Number	106	113	59	66	70	86
Total	Avg Days	47.8	48.1	218.0	210.1	422.7	419.2
	Number	1645	1800	1081	984	1931	1836

Note: length of Stay for Remand to Sentenced Custody is from the date of reception on remand to date of discharge after serving sentence.

2.3.3 ADULTS BY DISCHARGE TYPE



2.3.4 RATIO OF ADULT RECEPTIONS TO DISCHARGES



Part 3 DATA TABLES

Juvenile	1.In Custody										Remand to Sent
	Total	Legal Status			Indigenous			Indigenous Legal Status			
		Court Bail Ref.	Police Bail Ref.	Sent	Yes	No	Unk	Court Bail Ref.	Police Bail Ref.	Sent	
APR15	310	137	1	172	169	139	2	83	1	85	43
MAY15	319	135	4	180	185	132	2	88	2	95	31
JUN15	307	156	2	149	172	133	2	94	1	77	29
JUL15	294	147	4	143	165	127	2	91	1	73	36
AUG15	289	138	4	147	162	124	3	79	3	80	36
SEP15	286	137	5	144	154	131	1	79	2	73	26
OCT15	292	150	1	141	147	143	2	79	0	68	35
NOV15	277	136	6	135	155	121	1	80	6	69	29
DEC15	278	145	6	127	147	129	2	79	3	65	29
JAN16	278	157	2	119	155	122	1	86	1	68	28
FEB16	270	144	3	123	158	112	0	84	1	73	29
MAR16	290	160	6	124	153	137	0	82	1	70	38
APR16	310	180	5	125	167	143	0	92	1	74	31
MAY16	301	160	6	135	175	126	0	91	3	81	51
JUN16	281	144	7	130	155	126	0	72	0	83	33
JUL16	262	130	1	131	147	113	2	64	0	83	35
AUG16	244	112	10	122	130	114	0	54	4	72	30
SEP16	255	128	2	125	128	127	0	57	0	71	27
OCT16	261	132	1	128	130	127	4	58	1	71	32
NOV16	271	133	8	130	141	128	2	64	4	73	30
DEC16	250	138	4	108	136	112	2	73	3	60	24
JAN17	279	153	4	122	155	121	3	83	2	70	30
FEB17	264	150	6	108	148	113	3	78	4	66	25
MAR17	281	158	3	120	145	129	7	74	1	70	40

Juvenile	2.Receptions							3.Discharges									Ratio Rec/ Dis
	Tot	Legal Status			Indigenous			Tot	Legal Status					Indigenous			
		Court Bail Ref.	Police Bail Ref.	Sent	Yes	No	Unk		Bail	Not Proven Non-Cust.	Other	Parole	Sent Exp	Yes	No	Unk	
APR15	235	94	124	17	113	121	1	233	173	25	5	27	3	111	121	1	1.01
MAY15	250	101	118	31	125	116	9	241	162	29	5	42	3	110	122	9	1.04
JUN15	273	114	143	16	121	147	5	286	185	32	7	53	9	134	147	5	0.95
JUL15	267	117	137	13	126	140	1	278	198	30	5	41	4	130	147	1	0.96
AUG15	227	103	110	14	110	108	9	230	163	26	1	35	5	111	111	8	0.99
SEP15	225	100	108	17	108	114	3	229	158	32	4	29	6	119	105	5	0.98
OCT15	273	118	143	12	125	145	3	268	189	34	3	37	5	132	134	2	1.02
NOV15	242	107	124	11	134	105	3	259	178	38	1	39	3	127	128	4	0.93
DEC15	251	107	131	13	109	137	5	249	172	28	4	44	1	116	129	4	1.01
JAN16	259	127	120	12	129	124	6	257	191	22	6	31	7	120	130	7	1.01
FEB16	254	113	125	16	135	108	11	261	203	24	1	29	4	133	116	12	0.97
MAR16	267	137	120	10	122	139	6	248	171	32	4	41	0	126	116	6	1.08
APR16	266	132	122	12	106	153	7	244	180	28	0	34	2	91	146	7	1.09
MAY16	255	111	135	9	112	135	8	264	190	31	0	39	4	108	148	8	0.97
JUN16	240	99	134	7	102	132	6	262	188	27	1	43	3	121	135	6	0.92
JUL16	228	99	124	5	106	115	7	248	181	30	1	34	2	114	129	5	0.92
AUG16	225	90	131	4	89	131	5	245	176	23	5	34	7	106	132	7	0.92
SEP16	235	99	126	10	93	138	4	224	166	27	4	27	0	95	125	4	1.05
OCT16	238	115	116	7	92	133	13	232	175	24	1	31	1	90	133	9	1.03
NOV16	274	130	132	12	129	133	12	261	195	29	2	34	1	117	130	14	1.05
DEC16	244	119	122	3	116	116	12	269	201	25	2	39	2	123	134	12	0.91
JAN17	278	133	135	10	135	136	7	248	214	13	3	17	1	115	127	6	1.12
FEB17	253	131	116	6	113	123	17	267	206	19	4	36	2	120	130	17	0.95
MAR17	297	155	135	7	129	146	22	282	229	20	1	23	9	133	131	18	1.05

Adult	1.In Custody								Remand to Sent
	Total	Legal Status		Indigenous			Indigenous Legal Status		
		Remand	Sent	Yes	No	Unk	Remand	Sent	
APR15	11422	3466	7956	2817	8569	36	833	1984	522
MAY15	11562	3601	7961	2850	8674	38	877	1973	526
JUN15	11721	3651	8070	2869	8825	27	865	2004	620
JUL15	11781	3633	8148	2861	8893	27	871	1990	584
AUG15	11777	3625	8152	2868	8879	30	870	1998	573
SEP15	11908	3677	8231	2951	8925	32	867	2084	615
OCT15	12081	3751	8330	2997	9050	34	900	2097	612
NOV15	12166	3757	8409	2977	9150	39	862	2115	605
DEC15	12150	3881	8269	2906	9209	35	886	2020	565
JAN16	12297	4085	8212	2949	9303	45	923	2026	515
FEB16	12276	4065	8211	2997	9226	53	930	2067	652
MAR16	12390	4090	8300	3033	9306	51	944	2089	675
APR16	12509	4204	8305	3058	9398	53	963	2095	659
MAY16	12522	4141	8381	3046	9427	49	931	2115	710
JUN16	12550	4170	8380	3039	9460	51	899	2140	598
JUL16	12616	4236	8380	3030	9531	55	919	2111	656
AUG16	12584	4194	8390	3041	9491	52	935	2106	651
SEP16	12641	4177	8464	3028	9559	54	903	2125	688
OCT16	12659	4240	8419	3011	9593	55	936	2075	570
NOV16	12726	4248	8478	3018	9650	58	941	2077	706
DEC16	12729	4388	8341	3050	9613	66	1013	2037	632
JAN17	12901	4614	8287	3099	9726	76	1076	2023	544
FEB17	12978	4591	8387	3159	9713	106	1100	2059	693
MAR17	12955	4469	8486	3166	9658	131	1073	2093	769

Adult	2.Receptions						3.Discharges								Ratio Rec/ Dis
	Tot	Legal Status		Indigenous			Tot	Legal Status				Indigenous			
		Remand	Sent	Yes	No	Unk		Bail	Other	Parole	Sent Exp	Yes	No	Unk	
APR15	1246	915	331	378	836	32	1297	336	276	501	184	387	877	33	0.96
MAY15	1476	1120	356	434	1009	33	1337	313	306	526	192	401	903	33	1.10
JUN15	1512	1149	363	438	1042	32	1355	328	288	552	187	419	893	43	1.12
JUL15	1391	1028	363	388	967	36	1331	318	275	561	177	398	898	35	1.05
AUG15	1408	1061	347	402	981	25	1407	368	257	595	187	397	987	23	1.00
SEP15	1529	1140	389	454	1048	27	1388	331	271	585	201	366	996	26	1.10
OCT15	1511	1115	396	423	1061	27	1348	279	274	601	194	385	938	25	1.12
NOV15	1446	1079	367	393	1027	26	1357	311	295	585	166	411	926	20	1.07
DEC15	1566	1219	347	422	1112	32	1575	398	286	693	198	492	1047	36	0.99
JAN16	1416	1147	269	437	946	33	1282	329	249	538	166	395	865	22	1.10
FEB16	1519	1169	350	447	1023	49	1541	387	305	665	184	400	1101	40	0.99
MAR16	1666	1271	395	481	1133	52	1538	362	326	657	193	439	1047	52	1.08
APR16	1561	1241	320	428	1101	32	1454	317	315	635	187	407	1018	29	1.07
MAY16	1526	1160	366	417	1077	32	1512	349	294	639	230	426	1051	35	1.01
JUN16	1411	1098	313	369	1010	32	1380	333	241	626	180	374	974	32	1.02
JUL16	1507	1189	318	418	1054	35	1440	322	282	652	184	428	981	31	1.05
AUG16	1521	1150	371	459	1033	29	1557	403	294	687	173	451	1073	33	0.98
SEP16	1573	1214	359	435	1111	27	1514	382	286	671	175	450	1040	24	1.04
OCT16	1470	1163	307	423	1008	39	1458	364	272	632	190	439	982	37	1.01
NOV16	1624	1299	325	475	1116	33	1552	376	314	691	171	465	1058	29	1.05
DEC16	1651	1306	345	472	1118	61	1655	437	265	766	187	441	1153	61	1.00
JAN17	1593	1304	289	476	1067	50	1422	394	260	619	149	424	958	40	1.12
FEB17	1559	1216	343	476	1016	67	1484	374	305	642	163	416	1030	38	1.05
MAR17	1697	1313	384	477	1138	82	1718	473	370	678	197	467	1193	58	0.99

Part 4 GLOSSARY

Adult

A person held in custody in a gazetted correctional centre managed by Corrective Services NSW (CSNSW). Persons may have been remanded in custody after being refused bail or sentenced to a custodial order for a proven offence.

The adult figures in this report include the small number of 16 and 17 year old males held in the Kariong Juvenile Correctional Centre.

ANZSOC

The Australian Bureau of Statistics Australian and New Zealand Standard Offence Classification (ANZSOC) groups criminal offences into 16 broad divisions:

1. Homicide and related offences
2. Acts intended to cause injury
3. Sexual assault and related offences
4. Dangerous or negligent acts endangering persons
5. Abduction, harassment and other offences against the person
6. Robbery, extortion and related offences
7. Unlawful entry with intent/burglary, break and enter
8. Theft and related offences
9. Fraud, deception and related offences
10. Illicit drug offences
11. Prohibited and regulated weapons and explosives offences
12. Property damage and environmental pollution
13. Public order offences
14. Traffic and vehicle regulatory offences
15. Offences against justice procedures, government security and government operations
16. Miscellaneous offences

For further information see:

<http://www.abs.gov.au/AUSSTATS/abs@.nsf/DetailsPage/1234.02011>

Note that shortened titles are used in this report.

Average length of stay

The length of stay is the duration of the custodial episode, from the date of reception to the date of discharge.

The average length of stay (in days) is presented for three types of custodial episodes:

Remand custody only - the person entered custody after being refused bail and was then discharged from custody without having been sentenced. Most commonly discharged after being granted bail, other reasons include criminal charges not proven, receiving a non-custodial penalty for a proven offence or being transferred interstate or from a juvenile to an adult prison or vice versa.

Sentenced custody only - persons who entered custody only after being sentenced to a custodial penalty by a court. These persons had either been granted bail, or bail had been dispensed with, pending finalisation of their charges.

Remand to sentenced custody - persons who had been remanded in custody prior to having a custodial sentence imposed by a court. The length of stay for these people is the entire time from reception on remand to discharge after serving the custodial sentence.

Note: Persons initially remanded in custody but then granted bail prior to having a custodial penalty imposed by a court are counted as two custodial episodes: one of remand custody only and one of sentenced custody only.

Bail

Under the provisions of the *Bail Act 2013*, police and courts may grant or refuse to grant bail to alleged offenders. The grant of bail takes into consideration the alleged offence and offender. Bail is granted at the offence level and so a person may be granted bail for one offence and refused bail for another offence.

Persons refused bail (and small numbers granted bail but unable to meet the bail conditions set by a court) are remanded into custody pending further court action.

Juvenile custody population data in this report disaggregates persons remanded into custody into those refused police bail and refused court bail. This is because all juveniles refused police bail are held in Juvenile Justice centres whereas not all adults refused police bail are held in gazetted correctional centres or 24 hour police cell complexes.

Control order

See Custodial sentence

Corrective Services NSW

Corrective Services NSW (CSNSW) is part of the NSW Department of Attorney General and Justice with responsibilities including the supervision of people remanded in custody pending the finalisation of criminal charges and offenders sentenced to a custodial order.

See <http://www.correctiveservices.nsw.gov.au/> for further information.

The Corrections Research, Evaluation and Statistics (CRES) section of CSNSW have provided the adult custody data for this report and advised on its interpretation.

Court bail refused

See Bail

Custodial episode

A custodial episode is the time between the reception into and discharge from custody. An individual may have multiple custodial episodes within the reporting period. A change in legal status between the reception and discharge date, for example changing from being bail refused to being sentenced to a custodial order, does not count as a new custodial episode.

Custodial sentence

Courts may impose a custodial sentence for a proven offence. For adults this is a term of imprisonment under the *Crimes (Sentencing Procedure) Act 1999*. For young people this is a control order of up to two years duration or a term of imprisonment to be served partly or wholly as a juvenile under the *Children (Criminal Proceedings) Act 1987*. A person may be given custodial sentences for multiple proven offences.

While the majority of persons held under sentence in a correctional centre are sentenced under the *Crimes (Sentencing Procedure) Act 1999*, offenders whose parole has been revoked by the State Parole Authority, persons sentenced under the *Commonwealth Crimes Act 1914*, those sentenced under the *Mental Health (Forensic Provision) Act 1990*, small numbers of persons held under immigration orders awaiting deportation following expiry of their sentence and persons sentenced under legislation in other states or territories are also managed by CSNSW.

Custody population

Persons held in custody in a JJNSW juvenile justice centre or a CSNSW gazetted correctional centre, whether remanded or sentenced. Custody population figures are counted as at midnight on the last day of the month or quarter as appropriate. Persons held in a CSNSW managed police/court cell complex at midnight on the last day of the month but later transferred to a gazetted correctional centre are included in custody population figures for that month.

Discharge type

The type of reason why persons were discharged from custody:

Bail - courts granted the person bail pending the finalisation of their criminal charge(s).

Parole - the person was released to parole after serving the non-parole period of custodial sentence(s).

Sentence expired - the person was released after serving the entire period of all custodial sentence(s) imposed. This includes some persons who served both the non-parole and parole components of their sentence(s) in custody.

Not proven / non-custodial penalty - juvenile data only - the person was released after criminal charges were not proven or after the court imposed a non-custodial penalty for a proven offence, e.g. good behaviour bond.

Other - includes persons transferred to the NSW Drug Court, interstate or from a juvenile to an adult prison or vice versa and deceased persons. Includes adults released after criminal charges were not proven, after the court imposed a non-custodial penalty for a proven offence and where the specific nature of the court's final non-custodial disposal is unknown.

Discharges

Persons legally discharged from JJNSW or CSNSW custody in accordance with a court order (including any State Parole Authority order). For example - to parole, on expiry of a sentence or having been granted bail. Note that persons whose legal status changed from remand to sentenced or the reverse are not counted as discharges as they have not been discharged from custody.

Forecast

The prison population forecast is generated using an autoregressive integrated moving average (ARIMA) model. The model is estimated following the Box-Jenkins approach. The forecast is calculated from the average monthly prison population data from January 2011 to the current month.

Imprisonment

See Custodial sentence.

Indigenous status

Indigenous status as self-reported on reception into custody. Persons may identify as being Aboriginal or Torres Strait Islander, neither Aboriginal nor Torres Strait Islander or may not provide this information. An inmate is recorded as indigenous if they have identified as such in the current or any previous custodial episode. Indigenous status is unknown for a small proportion of people.

Juvenile

A person held in custody in a juvenile justice centre. These centres are managed by Juvenile Justice NSW (JJNSW). A young person in juvenile custody may have been refused bail by police, refused bail by the court or sentenced to a custodial sentence.

All young persons refused bail by police must be taken to a juvenile justice centre to be held in custody pending their court appearance. Young persons refused police bail cannot be held in a police or court cell.

Note: a small number of 16 and 17 year old males are held in Kariiong Juvenile Correctional Centre which is managed by CSNSW. As Kariiong is a gazetted correctional centre, these young persons are counted in the adult figures in this report.

Juvenile Justice NSW

Juvenile Justice NSW (JJNSW) is part of the NSW Department of Attorney General and Justice with responsibilities including the supervision of young people remanded in custody pending the finalisation of criminal charges and young offenders sentenced to a control order/imprisonment.

See <http://www.djj.nsw.gov.au/> for further information.

The Research and Information Section of JJNSW have provided the juvenile data for this report and advised on its interpretation.

Legal status

The legal status of persons received into or held in custody:

Remand (Juvenile) - Juveniles refused bail (and small numbers granted bail but unable to meet conditions) are remanded into custody pending future court action.

Juvenile remand figures are disaggregated into:

- Police bail refused - Police have refused to grant bail to a juvenile. All juveniles refused bail by police are held in custody in a juvenile justice centre pending future court action.
- Court bail refused - the courts have refused to grant bail to a juvenile pending future court action.

Remand (Adult) - adults refused bail (and small numbers granted bail but unable to meet conditions) are remanded in custody pending future court action. Includes a small number of persons refused police bail and remanded in custody in a gazetted correctional centre. Includes persons on remand who are being managed as correctional patients under the *Mental Health (Forensic Provisions) Act 1990*.

Sentenced - the courts have imposed custodial sentence(s) for proven offence(s). This category includes persons returned to custody after breaching parole. Includes forensic patients as per the *Mental Health (Forensic Provisions) Act 1990* (ie persons found unfit to be tried and persons found not guilty due to mental illness). Persons on remand for one or more offences and sentenced for one or more offences have a legal status of sentenced.

Unknown - adults whose legal status was not recorded at the time of admission.

Legal status changed from remand to sentenced

Persons whose legal status changed from remand to sentenced upon the imposition of a custodial sentence by a court. This report shows the numbers of persons during each month who changed from being on remand to being sentenced.

Most serious offence

The most serious offence type for which each person is in custody. The offence type categories in this report are the sixteen ANZSOC Divisions, with shortened titles (See ANZSOC).

Most serious offence data is presented in a radar chart and a data table. The radar chart consists of a circle with a series of 'spokes' running from the centre of the circle to the perimeter. Each spoke represents a different offence type. The radar chart is constructed by placing a point on each spoke marking the proportion of prisoners with that offence type as their most serious offence. The higher the proportion, the closer the point to the perimeter. The points are then connected and the resulting figure inside the circle gives a picture of the distribution of most serious offence type across prisoners. A different type/colour of line is used for each quarter, making changes from quarter to quarter apparent. Note that offence types with no observations are plotted a short distance from the zero radius so that the numbers for every offence type can be observed.

The data table displays the number and proportion of persons in custody for each of the most serious offence types. The data is presented separately for sentenced persons and persons on remand:

Most Serious Offence – Adults:

The most serious offence for adults is as provided by CSNSW.

A person's most serious offence may change over the course of their custodial episode depending on offences for which they are in custody at any one time. The Most Serious Offence data presented in this report are stock data and are sourced from data extracts run two to three weeks after the end of the quarter.

The data for the previous quarter is as at the previous quarter's custody report.

Extracting the data after the same time lag each quarter reduces variability due to extract timing and so is indicative of a change in the broad offence profile of persons in custody between the end of the current and previous quarters.

Due to the way that MSO is recorded and the data extracted, it is not available for receptions or discharge data.

Most Serious Offence – Juveniles:

Most serious offence for juveniles is compiled by matching custody order records from JJNSW with sentencing and bail refused orders sourced from the JusticeLink system used by the NSW criminal courts. Data is matched using JusticeLink Proceeding Number, a unique offence identifier which is available in the JJNSW data from January 2011.

- The most serious offence for juveniles remanded in custody is the offence with the highest Median Sentence Ranking (MSR). The MSR is a ranking of ANZSOC codes and was developed by BOCSAR using data on sentences imposed in the NSW criminal courts. The MSR can be used to select the most serious offence when sentencing data is not available and to select most serious offence when multiple offences have the same custodial order duration. For further information see the BOCSAR's Crime and Justice Bulletin No.142 "Measuring Offence Seriousness": [www.bocsar.nsw.gov.au/lawlink/bocsar/ll_bocsar.nsf/vwFiles/CJB142.pdf/\\$file/CJB142.pdf](http://www.bocsar.nsw.gov.au/lawlink/bocsar/ll_bocsar.nsf/vwFiles/CJB142.pdf/$file/CJB142.pdf)
- The most serious offence for sentenced juveniles is the offence with the longest custodial order. For juveniles with more than one offence type with the same custodial order duration, the offence with the highest Median Sentence Ranking is selected as the most serious offence.
- Juveniles sentenced to a custodial order after breaching a non-custodial penalty (eg a suspended sentence, Community Service Order or good behaviour bond) have a most serious offence type of *Justice procedure offence* rather than the type of offence for which the non-custodial penalty was originally imposed (eg robbery/extortion, drug offences).

Note: this differs from the definition of most serious offence used in the Australian Bureau of Statistics Prisoners in Australia publication series (*ABS cat.no.4517.0*)

Police bail refused

See Bail.

Receptions

Persons received into Juvenile Justice custody or a gazetted correctional centre. Gazetted correctional centres are managed by CSNSW. Persons received into CSNSW custody and managed only in CSNSW 24-hour police/court cell complexes are excluded.

Ratio of receptions to discharges

The ratio of receptions to discharges. A ratio greater than 1 means there were more receptions than discharges during the month; a ratio less than 1 means there were more discharges than receptions during the month.

Remand

See Legal status.

Sentenced

See Legal status.

24 hour police/court cell complexes

In addition to gazetted correctional centres, CSNSW manage a number of police/court cell complexes. This report excludes persons received and then discharged from a CSNSW-managed 24 hour police/court cell complex without entering a gazetted correctional centre.