
NEW SOUTH WALES CUSTODY STATISTICS

QUARTERLY UPDATE
MARCH 2018



NSW Bureau of Crime
Statistics and Research

CONTENTS

This report presents 24 months of reception, discharge and custody population data and comparisons between the current and previous quarter for age, gender, indigenous status, most serious offence and the average length of stay.

Separate figures are presented for juveniles and adults.

The counting unit is a custodial episode. An individual will be counted multiple times in a period if they have multiple custodial episodes in that period.

SCOPE

The data in this report are extracted from the Corrective Services NSW (CSNSW) Offender Integrated Management System (OIMS) and the Juvenile Justice NSW (JJNSW) Client Information Management System (CIMS).

The adult custody population figures include only those persons held in gazetted correctional centres managed by CSNSW. This includes: persons managed as forensic patients, persons held after expiry of their sentence awaiting deportation and persons awaiting extradition to another jurisdiction. Persons in the Special Purpose Centre at Long Bay Correctional Centre are not included.

In addition to gazetted correctional centres, CSNSW manages a number of police/court cell complexes. This report excludes persons received into and then discharged from a CSNSW-managed 24 hour police/court cell complex without entering a gazetted correctional centre. Adults refused police bail but not held in a gazetted correctional centre are not included. An exception to this is the adult prison population forecast which does include these non-gazetted correctional centres.

Custody population figures are counted as at midnight on the last day of the month or quarter as appropriate. Reception and discharge figures are those during each month or quarter as appropriate.

Refer to the Glossary at the back of the report for detailed descriptions of the terms used in the report.

ACKNOWLEDGEMENTS

Juvenile custody data are provided by the Research and Information Section of JJNSW. Adult custody data are provided by the Corrections Research, Evaluation and Statistics (CRES) section of CSNSW. BOCSAR is grateful for the support provided by both areas in supplying the data for this report and advising on its interpretation.

NOTE

The adult custody data presented in this report will differ from data reported by CSNSW due to data extract timing differences.

Contents

PART 1 JUVENILES **4**

SECTION 1.1	JUVENILE CUSTODY POPULATION	5
1.1.1	By Month	5
1.1.2	By Legal Status	5
1.1.3	By Indigenous Status.....	6
1.1.4	By Legal Status (Indigenous Only).....	6
1.1.5	Profile	7
1.1.6	Legal Status Changed from Remand to Sentenced	7
1.1.7	Remand Population by Most Serious Offence	8
1.1.8	Sentenced Population by Most Serious Offence	9
1.1.9	Juvenile Custody Forecast	10
SECTION 1.2	JUVENILE CUSTODY RECEPTIONS	11
1.2.1	By Month	11
1.2.2	By Legal Status	11
SECTION 1.3	JUVENILE CUSTODY DISCHARGES	12
1.3.1	By Month	12
1.3.2	Length of Stay	12
1.3.3	By Discharge Type	13
1.3.4	By Discharge Type (Excluding Bail).....	13
1.3.5	Ratio Of Receptions To Discharges.....	14

PART 2 ADULTS **15**

SECTION 2.1	ADULT CUSTODY POPULATION	16
2.1.1	By Month	16
2.1.2	By Indigenous Status.....	16
2.1.3	Remand Population	17
2.1.4	Sentenced Population.....	17
2.1.5	Indigenous Remand Population	18
2.1.6	Indigenous Sentenced Population	18
2.1.7	Profile	19
2.1.8	Legal Status Changed from Remand to Sentenced	19
2.1.9	Remand Population by Most Serious Offence	20
2.1.10	Sentenced Population by Most Serious Offence	21
2.1.11	Prison Population Forecast.....	22
SECTION 2.2	ADULT CUSTODY RECEPTIONS	23
2.2.1	By Month	23
2.2.2	Remand Receptions	23
2.2.3	Sentenced Receptions.....	24
SECTION 2.3	ADULT CUSTODY DISCHARGES	25
2.3.1	By Month	25
2.3.2	Length of Stay	25
2.3.3	By Discharge Type	26
2.3.4	Ratio Of Receptions To Discharges.....	26

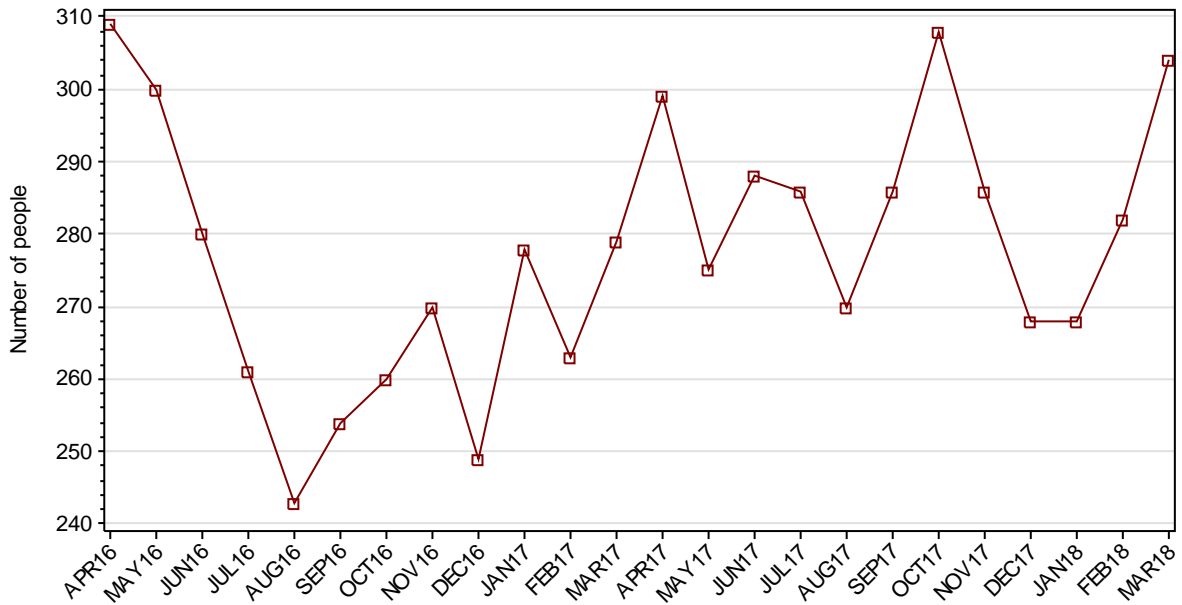
PART 3 DATA TABLES **27**

PART 4 GLOSSARY **32**

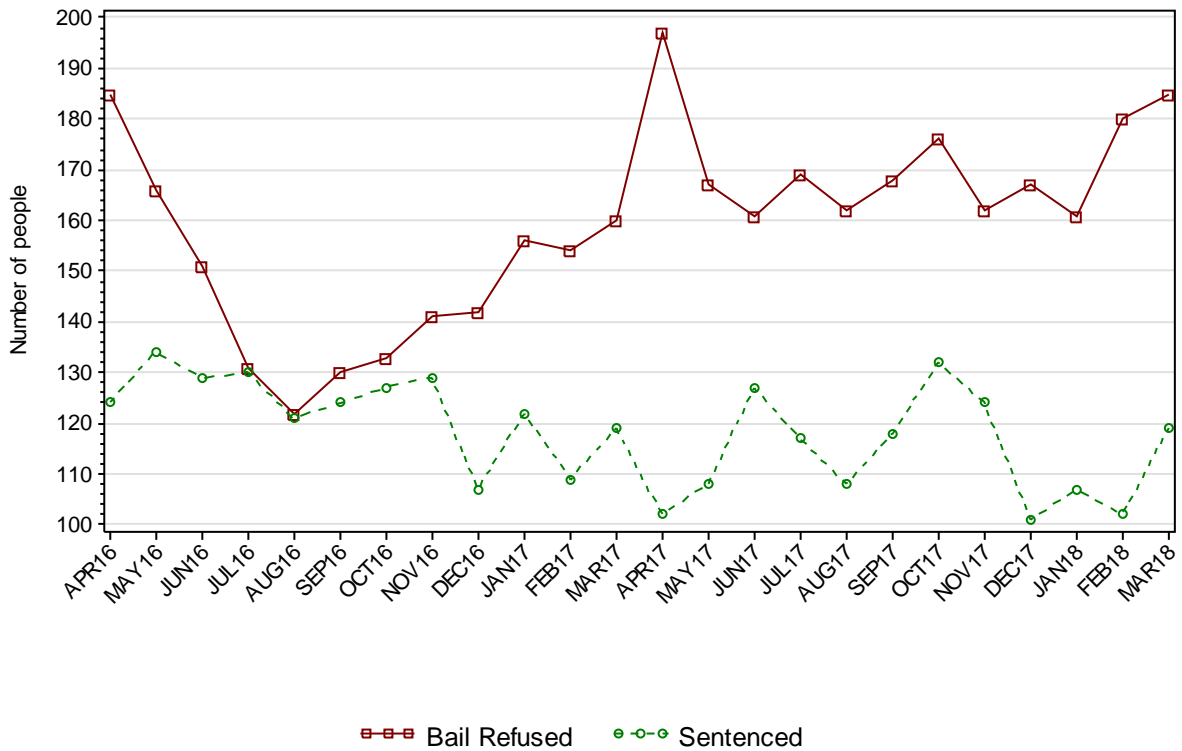
Part 1 JUVENILES

SECTION 1.1 JUVENILE CUSTODY POPULATION

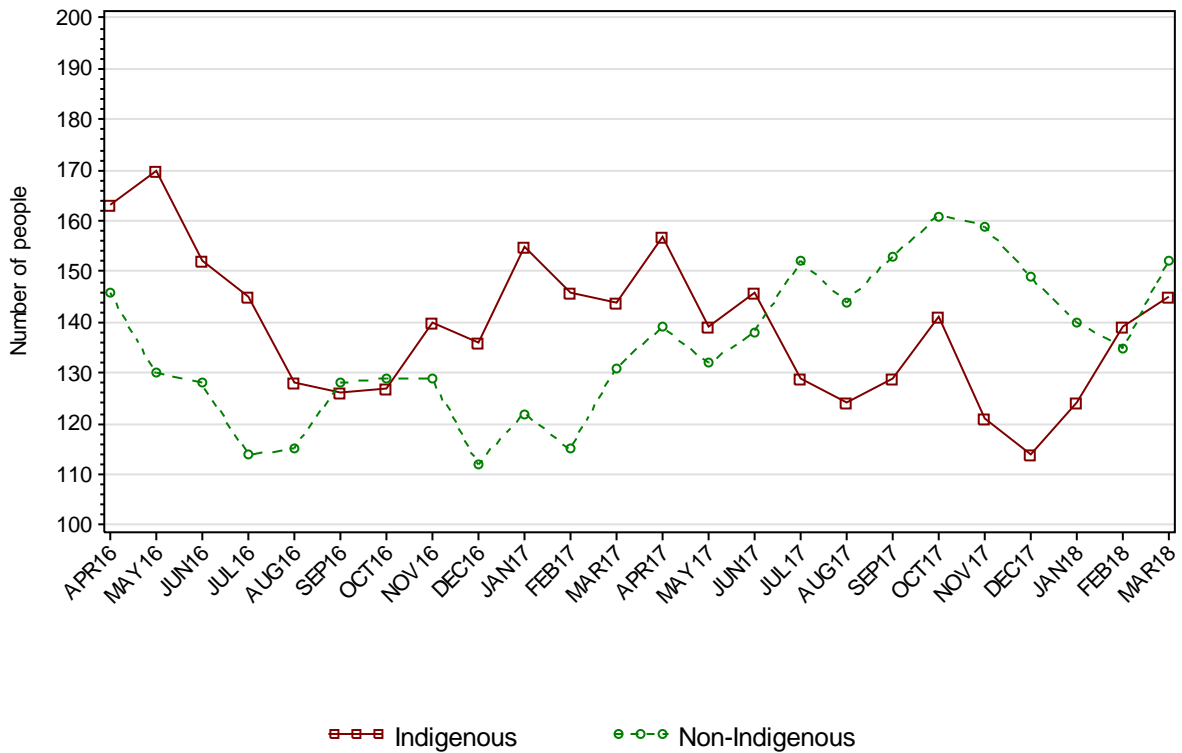
1.1.1 JUVENILE CUSTODY POPULATION AT END OF MONTH



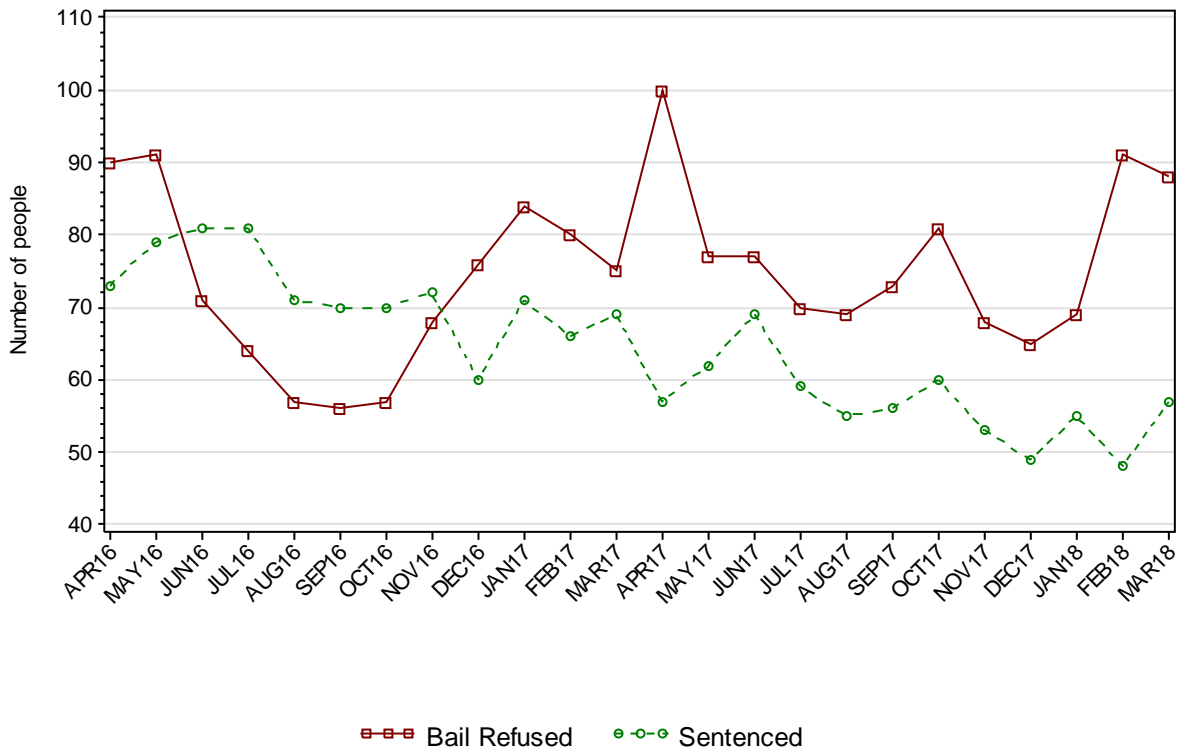
1.1.2 JUVENILE CUSTODY POPULATION BY LEGAL STATUS



1.1.3 JUVENILE CUSTODY POPULATION BY INDIGENOUS STATUS



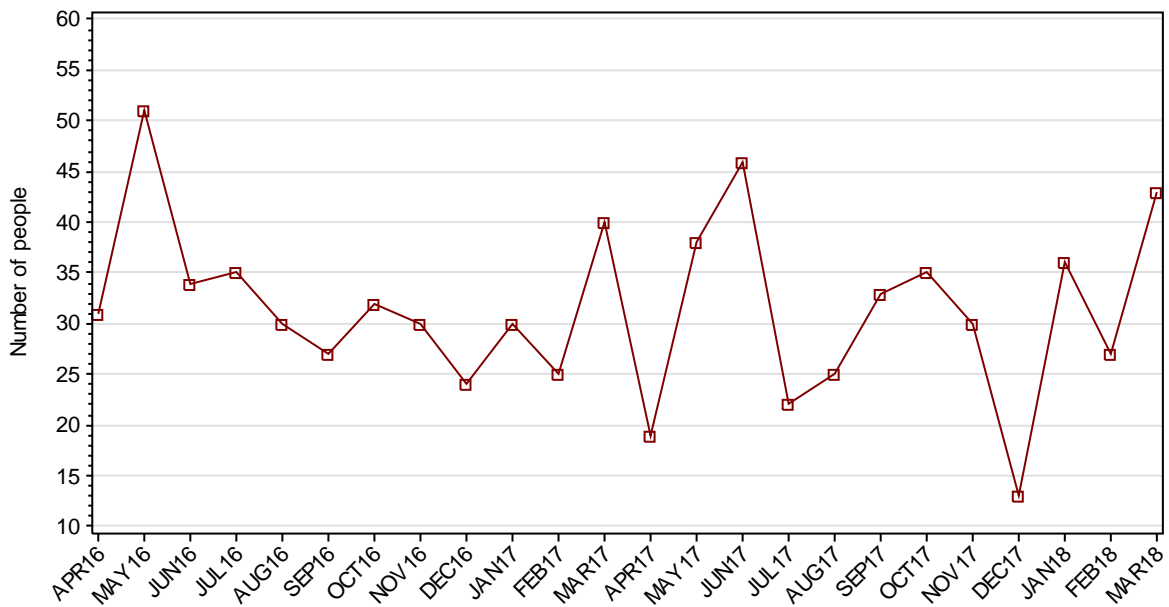
1.1.4 INDIGENOUS JUVENILE CUSTODY POPULATION BY LEGAL STATUS



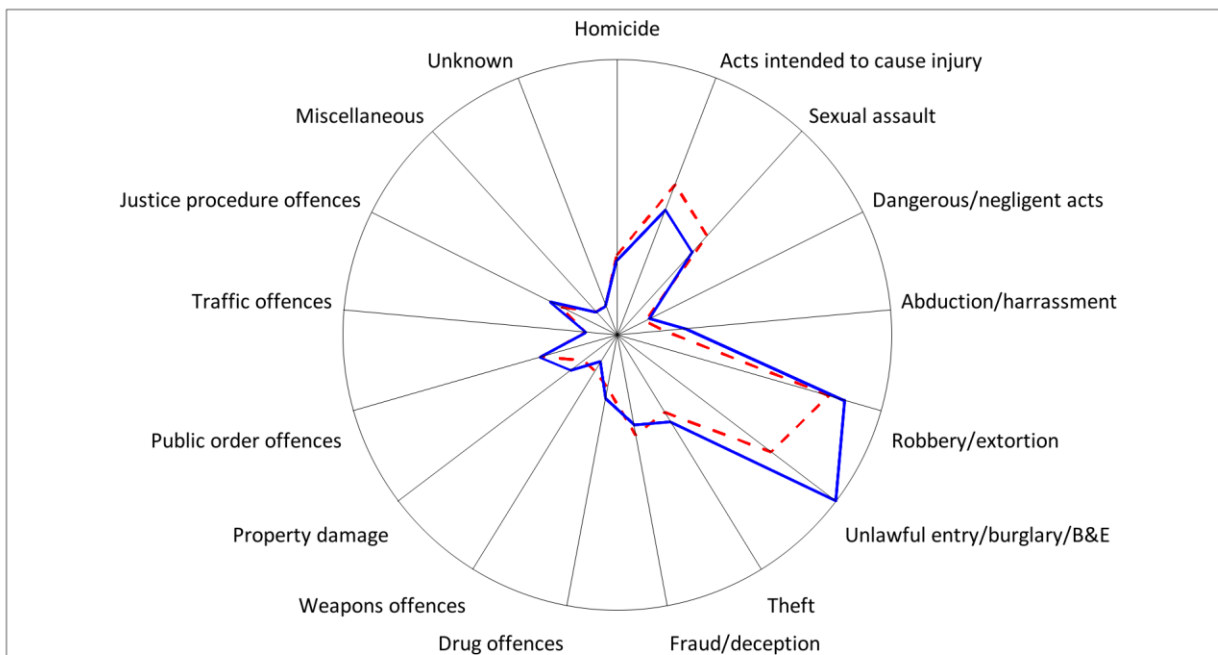
1.1.5 JUVENILE CUSTODY PROFILE AT END OF QUARTER

		Police Bail Refused		Court Bail Refused		Sentenced		Total	
		DEC17	MAR18	DEC17	MAR18	DEC17	MAR18	DEC17	MAR18
Total Male	Count	0	3	151	160	92	113	243	276
	Avg Age	.	16.7	16.3	16.3	17.1	17.0	16.6	16.6
Total Female	Count	2	2	14	20	9	6	25	28
	Avg Age	15.5	13.0	15.8	16.1	16.7	17.2	16.1	16.1
Indigenous Male	Count	0	3	57	75	45	55	102	133
	Avg Age	.	16.7	16.2	16.1	17.1	16.8	16.6	16.4
Indigenous Female	Count	2	1	6	9	4	2	12	12
	Avg Age	15.5	13.0	15.3	15.3	16.3	17.0	15.7	15.4
Total	Count	2	5	165	180	101	119	268	304
	Avg Age	15.5	15.2	16.3	16.2	17.1	17.1	16.6	16.5

1.1.6 JUVENILES IN CUSTODY: NUMBER WHOSE LEGAL STATUS CHANGED DURING MONTH FROM REMAND TO SENTENCED



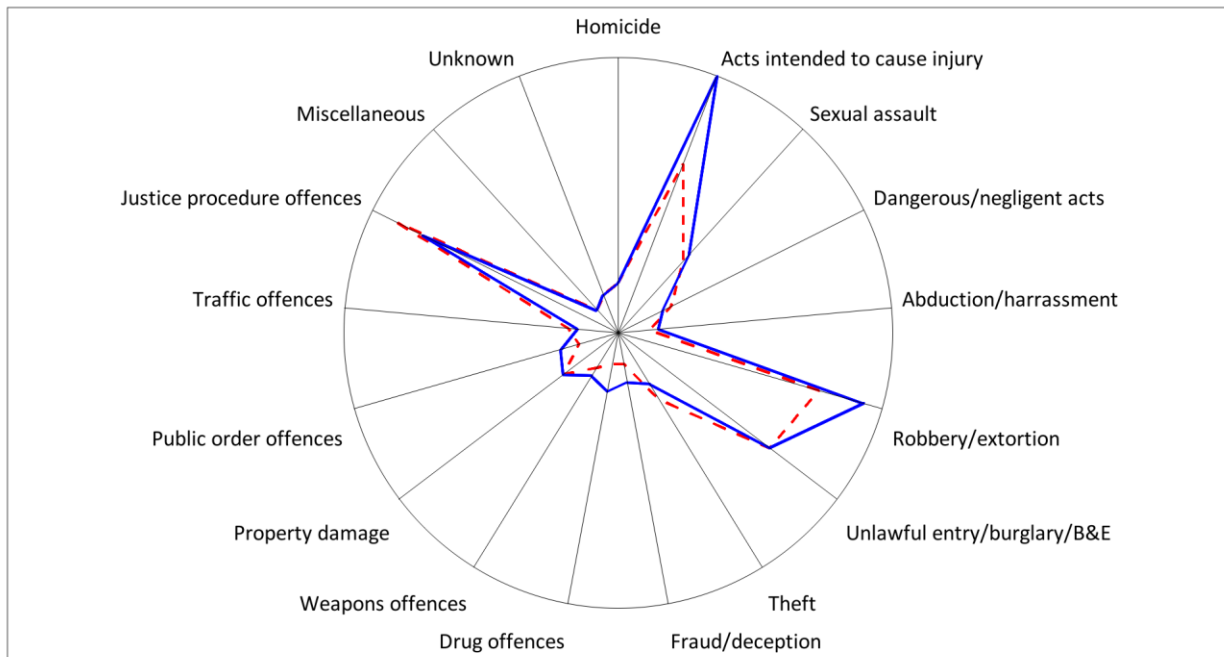
1.1.7 JUVENILE REMAND POPULATION BY MOST SERIOUS OFFENCE



As At: - -31DEC17 31MAR18

	31DEC17		31MAR18	
	Number	% of Total	Number	% of Total
Homicide	9	5.4	8	4.3
Acts intended to cause injury	24	14.4	19	10.3
Sexual assault	19	11.4	15	8.1
Dangerous/negligent acts	0	0	1	0.5
Abduction/harrassment	3	1.8	7	3.8
Robbery/extortion	35	21.0	38	20.5
Unlawful entry/burglary/B&E	30	18.0	45	24.3
Theft	11	6.6	13	7.0
Fraud/deception	13	7.8	11	5.9
Drug offences	4	2.4	6	3.2
Weapons offences	2	1.2	0	0
Property damage	2	1.2	5	2.7
Public order offences	9	5.4	9	4.9
Traffic offences	0	0	0	0
Justice procedure offences	6	3.6	8	4.3
Miscellaneous	0	0	0	0
Unknown	0	0	0	0
Total	167	100.0	185	100.0

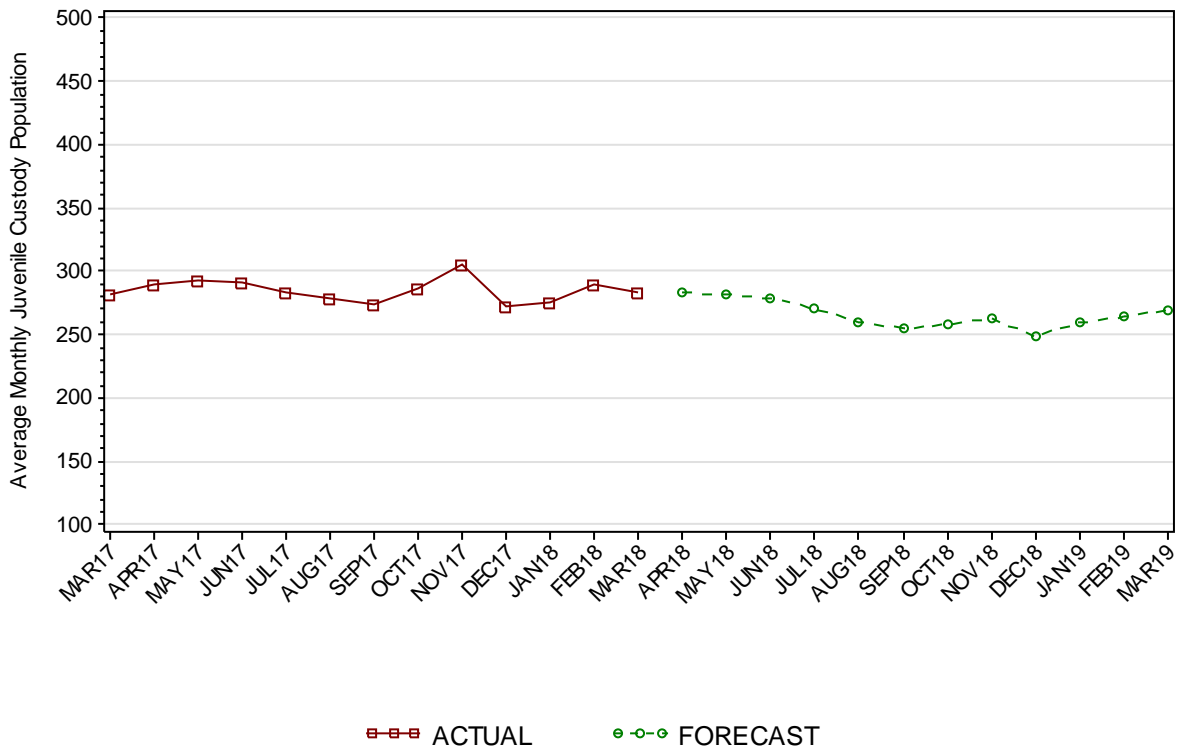
1.1.8 JUVENILE SENTENCED POPULATION BY MOST SERIOUS OFFENCE



As At:

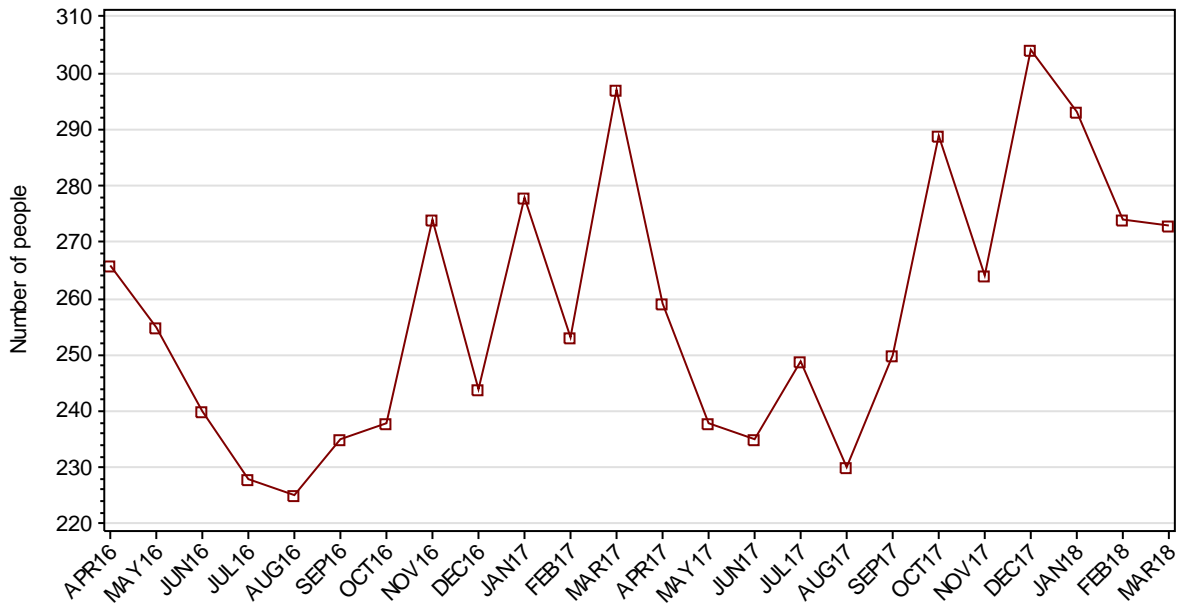
	31DEC17		31MAR18	
	Number	% of Total	Number	% of Total
Homicide	2	2.0	2	1.7
Acts intended to cause injury	16	15.8	26	21.8
Sexual assault	7	6.9	8	6.7
Dangerous/negligent acts	3	3.0	2	1.7
Abduction/harrassment	0	0	1	0.8
Robbery/extortion	19	18.8	24	20.2
Unlawful entry/burglary/B&E	17	16.8	17	14.3
Theft	5	5.0	3	2.5
Fraud/deception	0	0	2	1.7
Drug offences	0	0	3	2.5
Weapons offences	1	1.0	2	1.7
Property damage	4	4.0	4	3.4
Public order offences	1	1.0	3	2.5
Traffic offences	2	2.0	1	0.8
Justice procedure offences	23	22.8	20	16.8
Miscellaneous	0	0	0	0
Unknown	1	1.0	1	0.8
Total	101	100.0	119	100.0

1.1.9 JUVENILE CUSTODY FORECAST

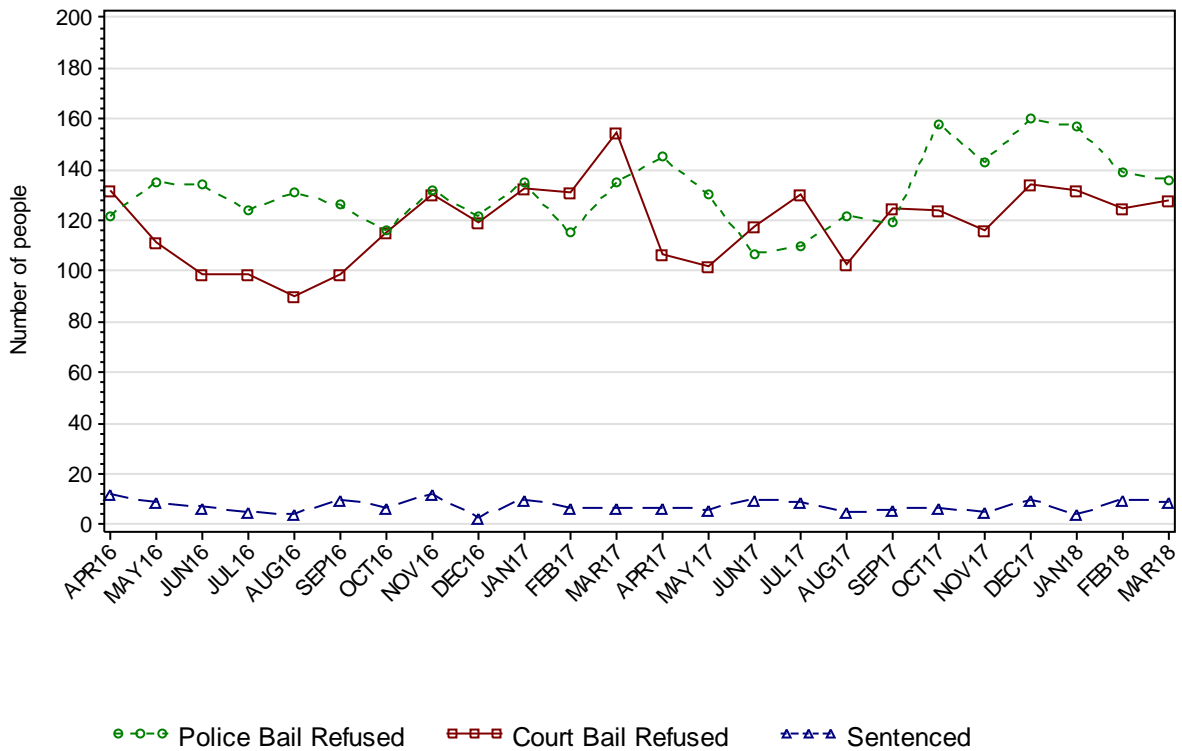


SECTION 1.2 JUVENILE CUSTODY RECEPTIONS

1.2.1 JUVENILES RECEIVED INTO CUSTODY DURING MONTH

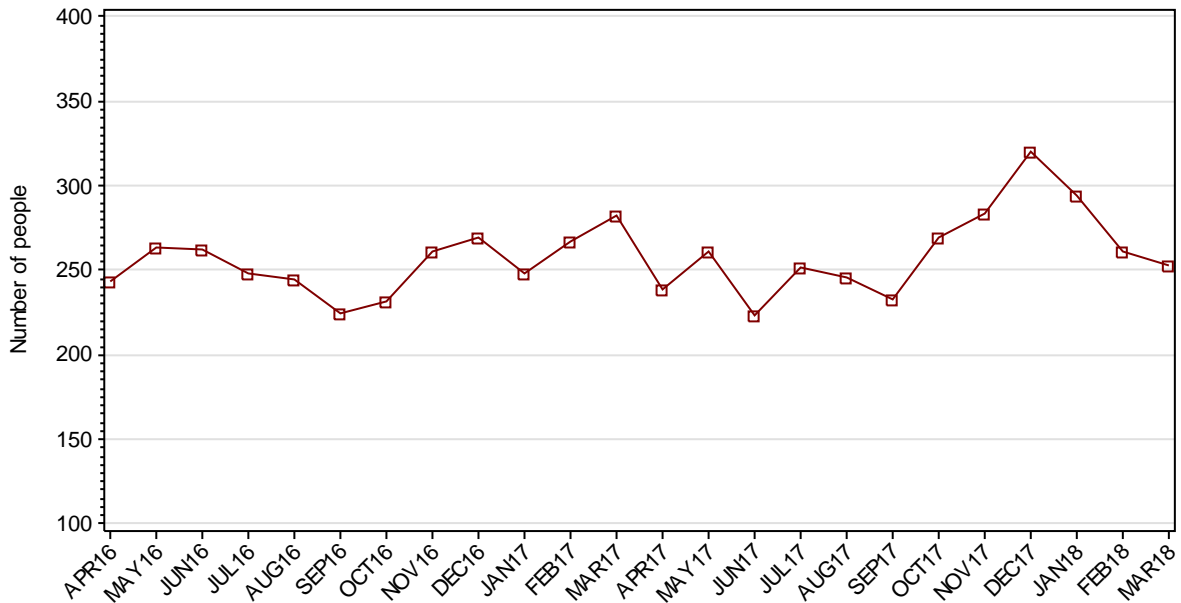


1.2.2 JUVENILES RECEIVED INTO CUSTODY BY LEGAL STATUS



SECTION 1.3 JUVENILE CUSTODY DISCHARGES

1.3.1 JUVENILES DISCHARGED FROM CUSTODY DURING MONTH

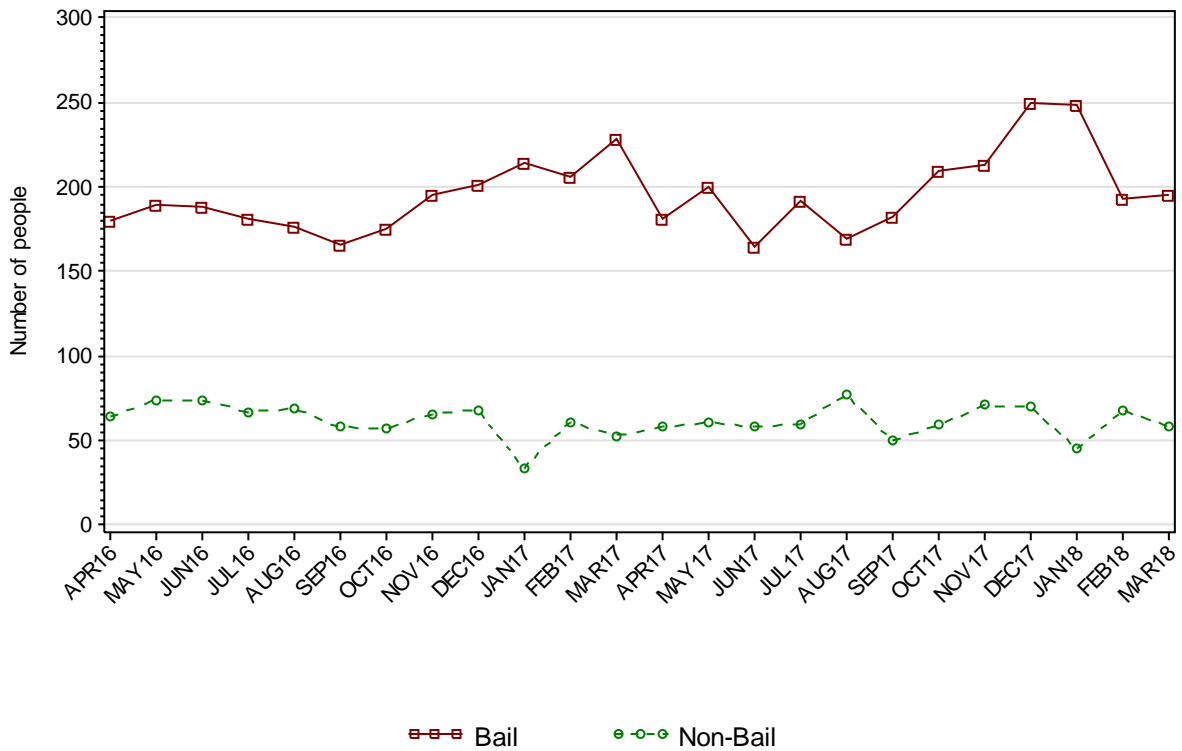


1.3.2 AVERAGE LENGTH OF STAY FOR JUVENILES DISCHARGED FROM CUSTODY EACH QUARTER

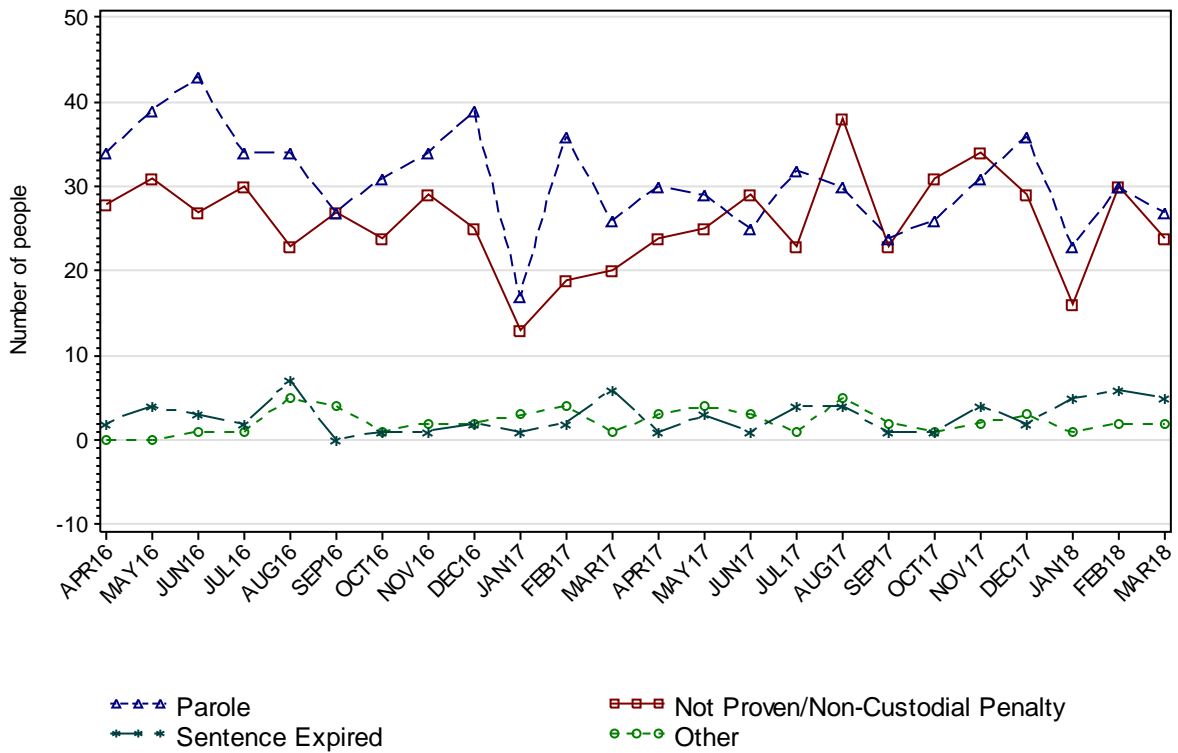
		Remand Custody Only		Sentenced Custody Only		Remand to Sentenced Custody	
		DEC17	MAR18	DEC17	MAR18	DEC17	MAR18
Total Male	Avg Days	11.8	12.9	142.9	94.5	186.5	172.8
	Number	575	522	15	21	93	76
Total Female	Avg Days	4.9	5.8	82.3	71.3	153.6	128.0
	Number	179	174	3	4	8	11
Indigenous Male	Avg Days	12.1	12.8	170.0	93.6	183.6	170.1
	Number	259	244	7	9	43	35
Indigenous Female	Avg Days	5.9	6.7	93.5	90.0	172.5	127.4
	Number	96	94	2	2	6	5
Total	Avg Days	10.2	11.1	132.8	90.8	183.9	167.1
	Number	754	696	18	25	101	87

Note: Length of Stay for Remand to Sentenced Custody is from the date of reception on remand to date of discharge after serving sentence.

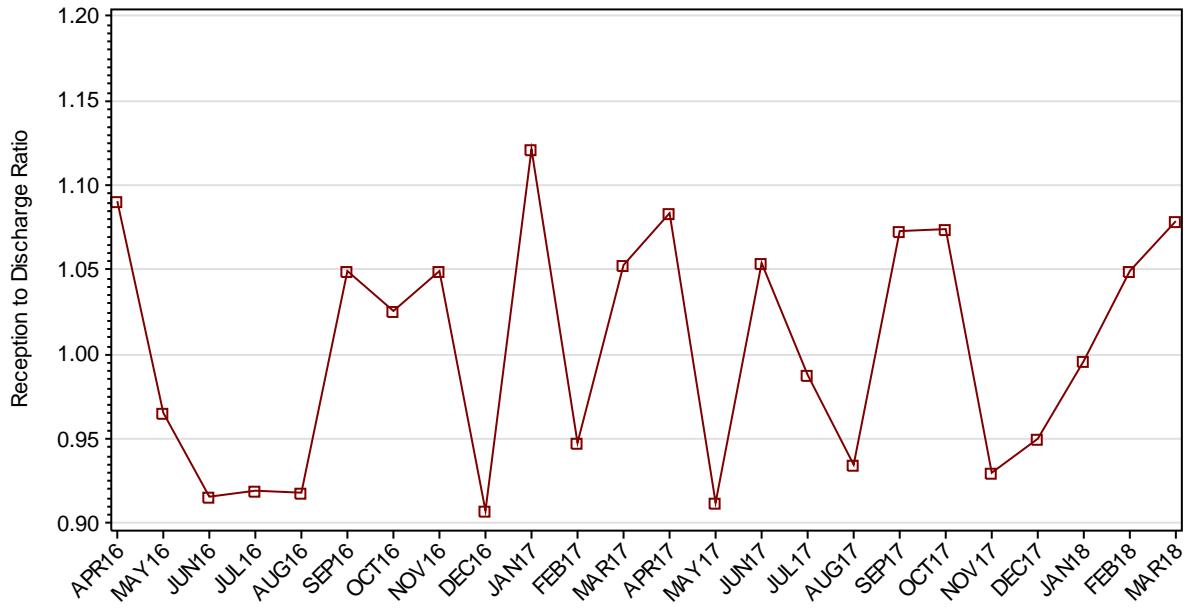
1.3.3 JUVENILES BY DISCHARGE TYPE



1.3.4 JUVENILES BY DISCHARGE TYPE (EXCLUDING BAIL)



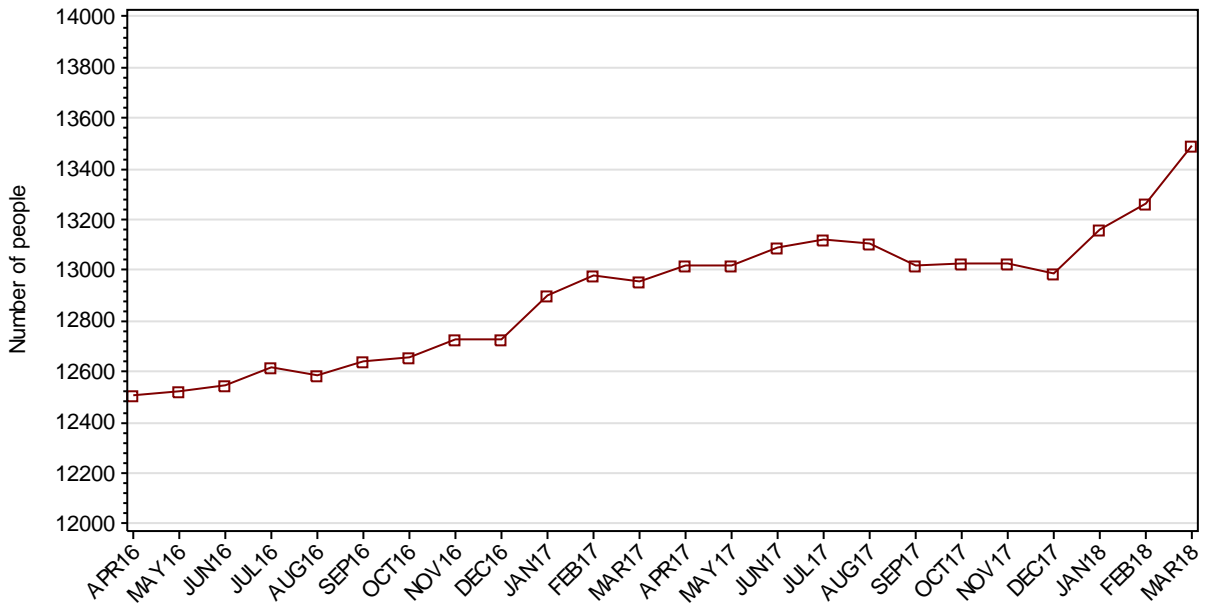
1.3.5 RATIO OF JUVENILE RECEPTIONS TO DISCHARGES



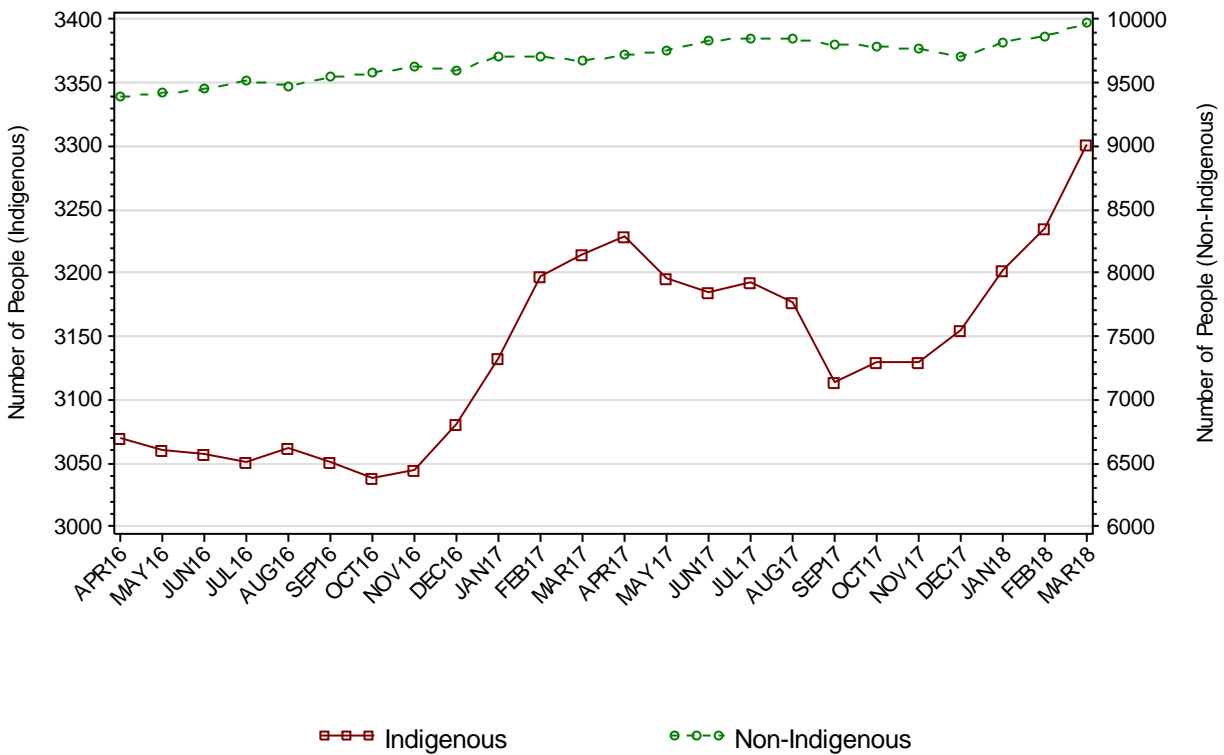
Part 2 ADULTS

SECTION 2.1 ADULT CUSTODY POPULATION

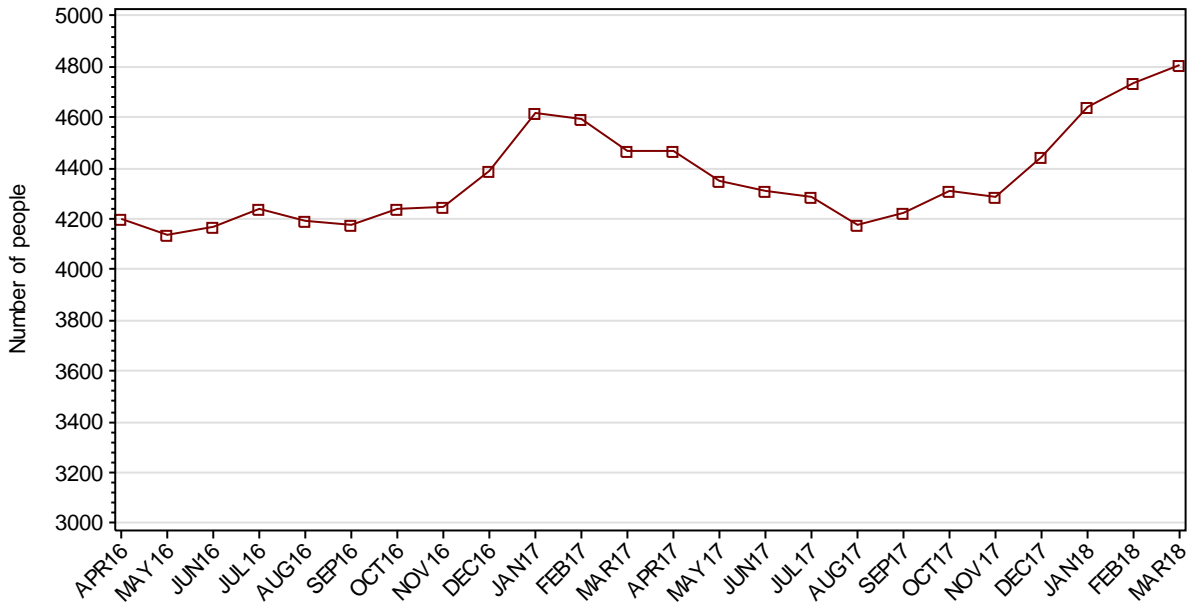
2.1.1 ADULT CUSTODY POPULATION AT END OF MONTH



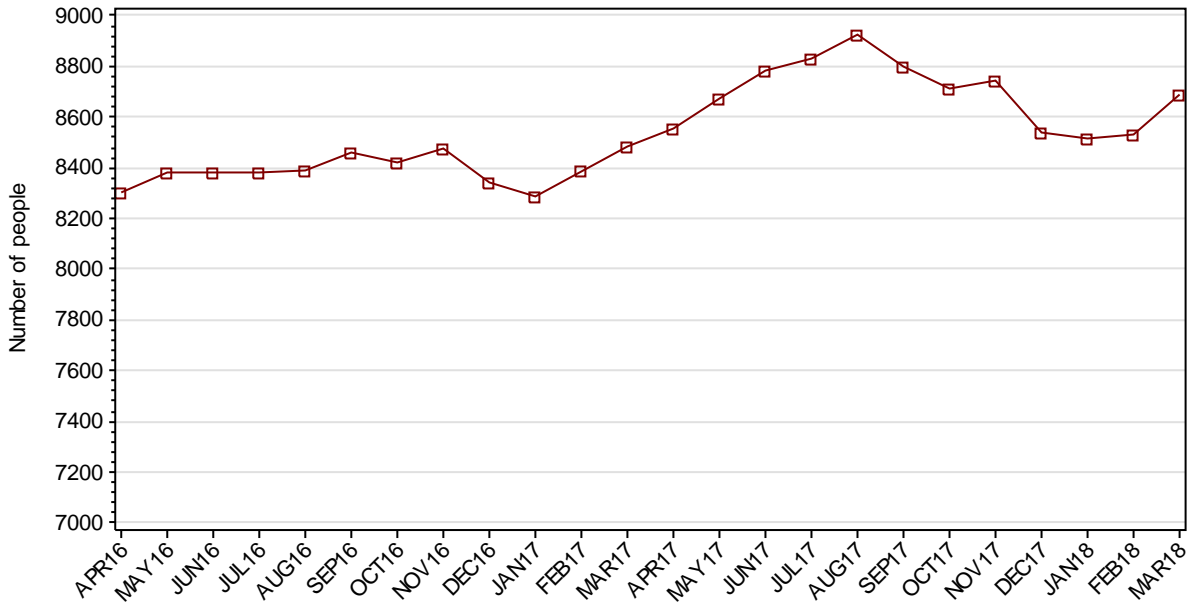
2.1.2 ADULT CUSTODY POPULATION BY INDIGENOUS STATUS



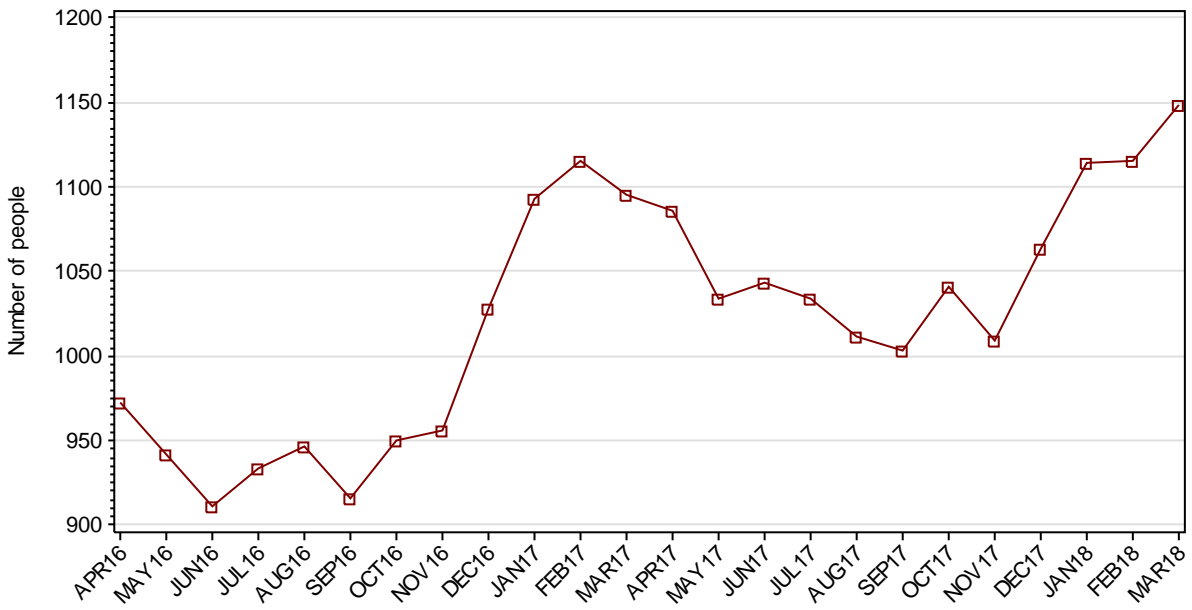
2.1.3 ADULT REMAND POPULATION



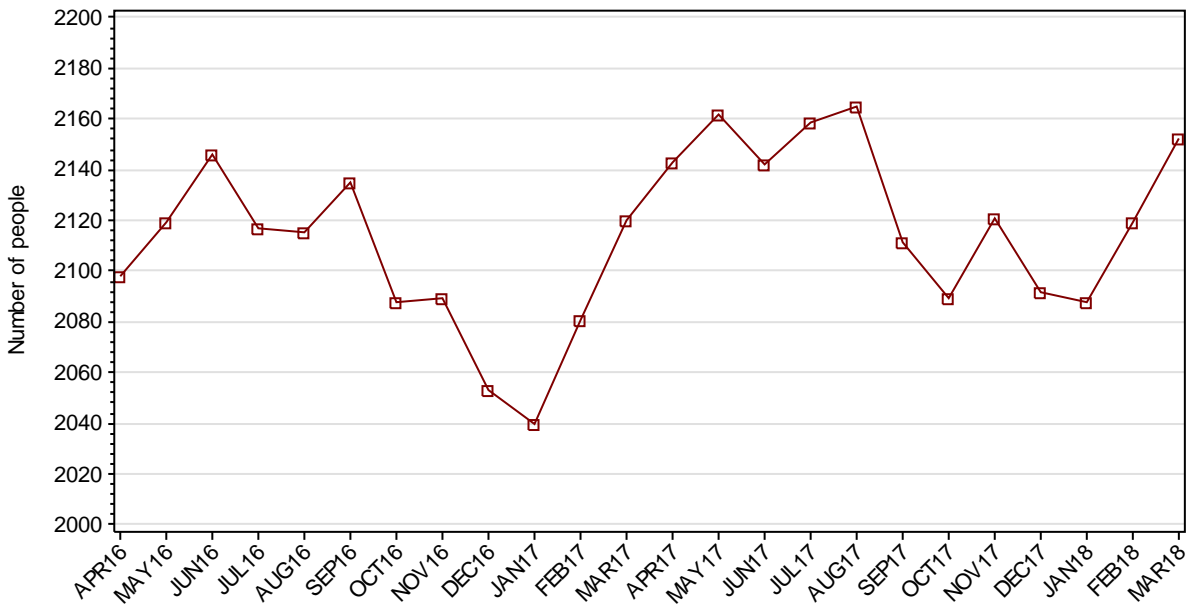
2.1.4 ADULT SENTENCED POPULATION



2.1.5 INDIGENOUS ADULT REMAND POPULATION



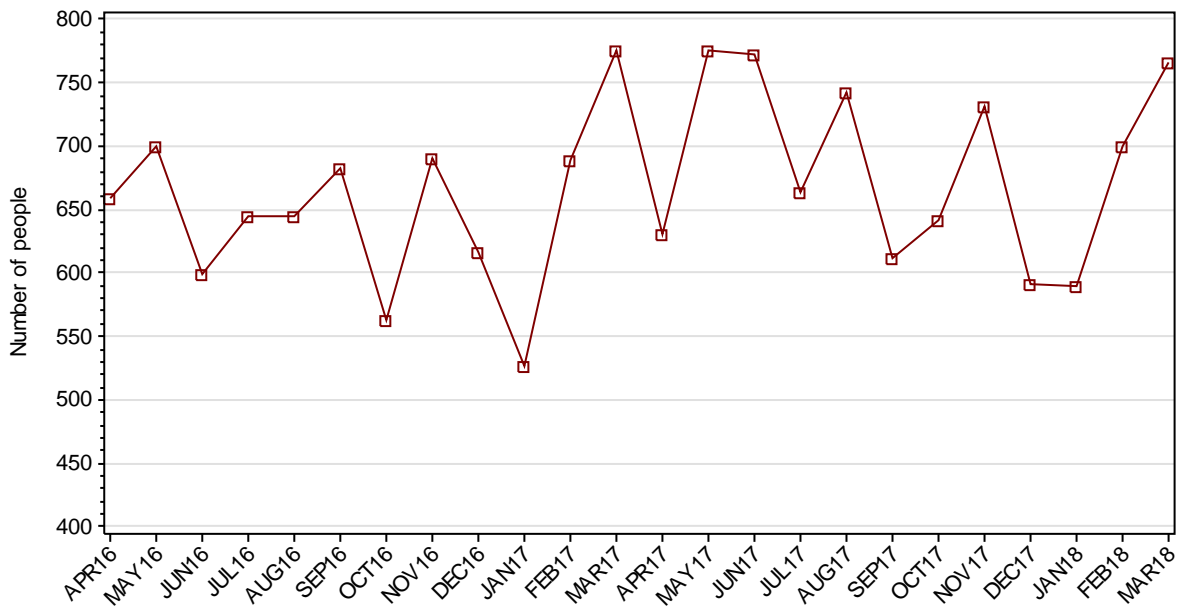
2.1.6 INDIGENOUS ADULT SENTENCED POPULATION



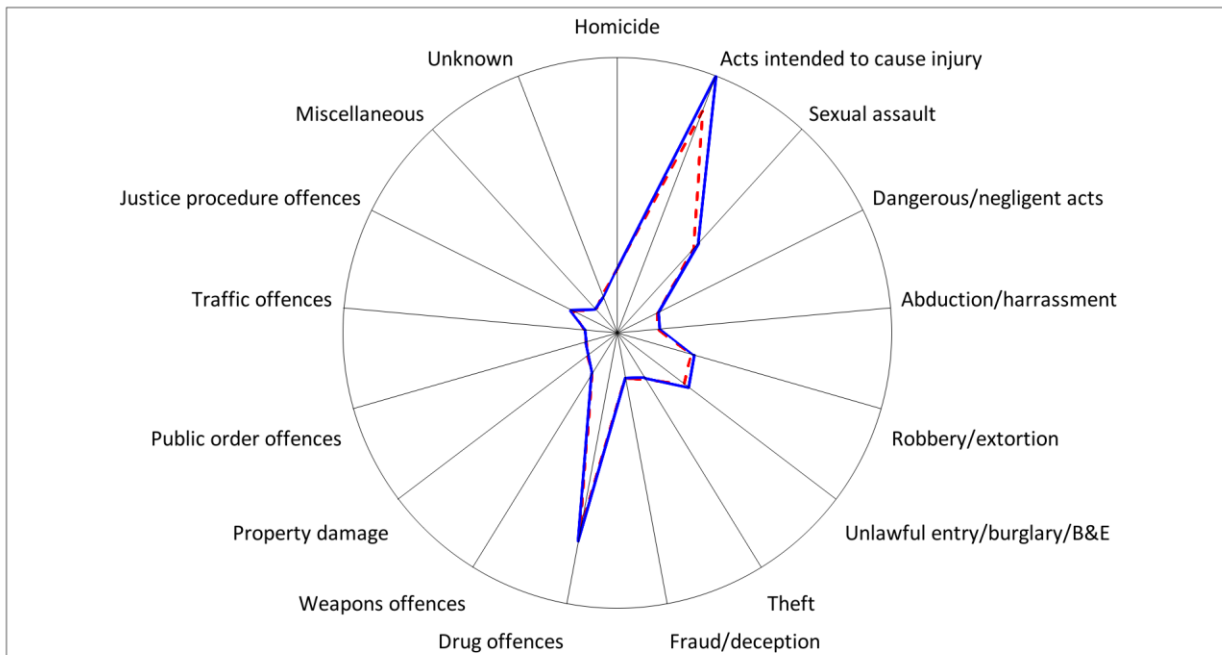
2.1.7 ADULT CUSTODY PROFILE AT END OF QUARTER

		Remand		Sentenced		Total	
		DEC17	MAR18	DEC17	MAR18	DEC17	MAR18
Total Male	Count	4015	4361	7973	8092	11988	12453
	Avg Age	35.3	35.1	37.5	37.5	36.8	36.7
Total Female	Count	432	446	569	595	1001	1041
	Avg Age	33.7	33.5	36.9	36.2	35.5	35.1
Indigenous Male	Count	932	1006	1899	1944	2831	2950
	Avg Age	32.2	32.5	33.1	33.2	32.8	33.0
Indigenous Female	Count	131	143	193	208	324	351
	Avg Age	32.1	32.9	34.3	33.4	33.4	33.2
Total	Count	4447	4807	8542	8687	12989	13494
	Avg Age	35.1	35.0	37.5	37.4	36.7	36.5

2.1.8 ADULTS IN CUSTODY: NUMBER WHOSE LEGAL STATUS CHANGED DURING MONTH FROM REMAND TO SENTENCED



2.1.9 ADULT REMAND POPULATION BY MOST SERIOUS OFFENCE

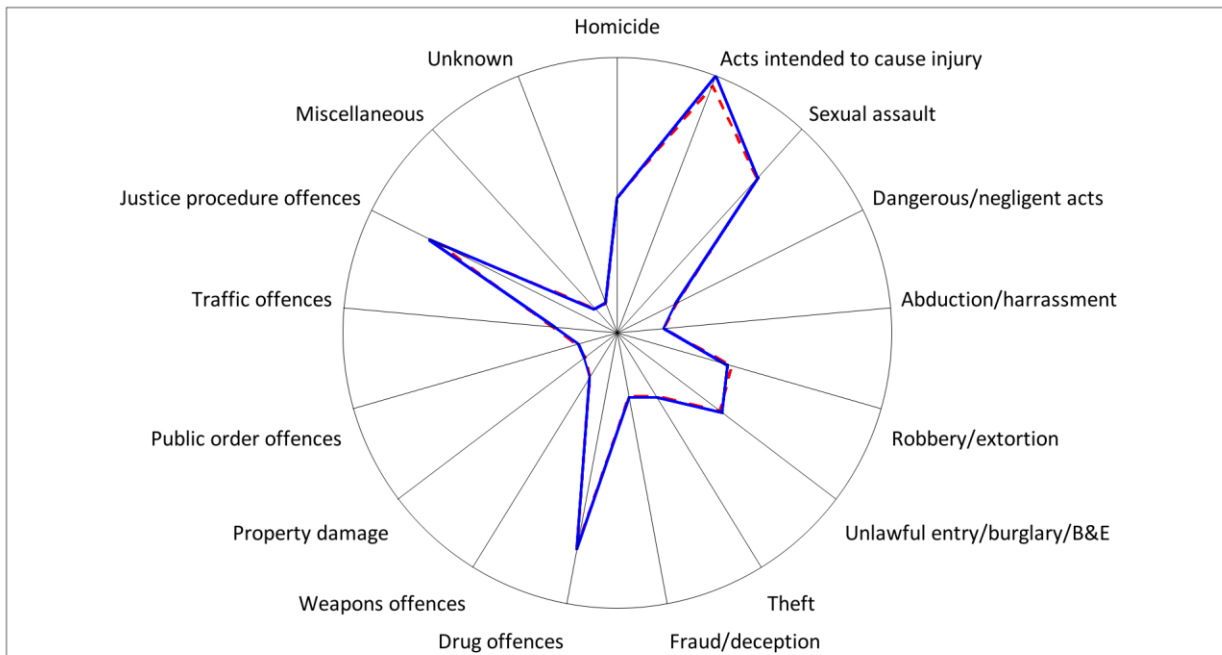


As At: - -31DEC17

—31MAR18

	31DEC17		31MAR18	
	Number	% of Total	Number	% of Total
Homicide	208	4.7	210	4.4
Acts intended to cause injury	1234	27.7	1450	30.2
Sexual assault	502	11.3	548	11.4
Dangerous/negligent acts	100	2.2	107	2.2
Abduction/harrassment	74	1.7	87	1.8
Robbery/extortion	287	6.5	306	6.4
Unlawful entry/burglary/B&E	330	7.4	364	7.6
Theft	154	3.5	139	2.9
Fraud/deception	101	2.3	101	2.1
Drug offences	1031	23.2	1077	22.4
Weapons offences	111	2.5	112	2.3
Property damage	51	1.1	44	0.9
Public order offences	21	0.5	22	0.5
Traffic offences	28	0.6	20	0.4
Justice procedure offences	124	2.8	138	2.9
Miscellaneous	17	0.4	23	0.5
Unknown	74	1.7	59	1.2
Total	4447	100.0	4807	100.0

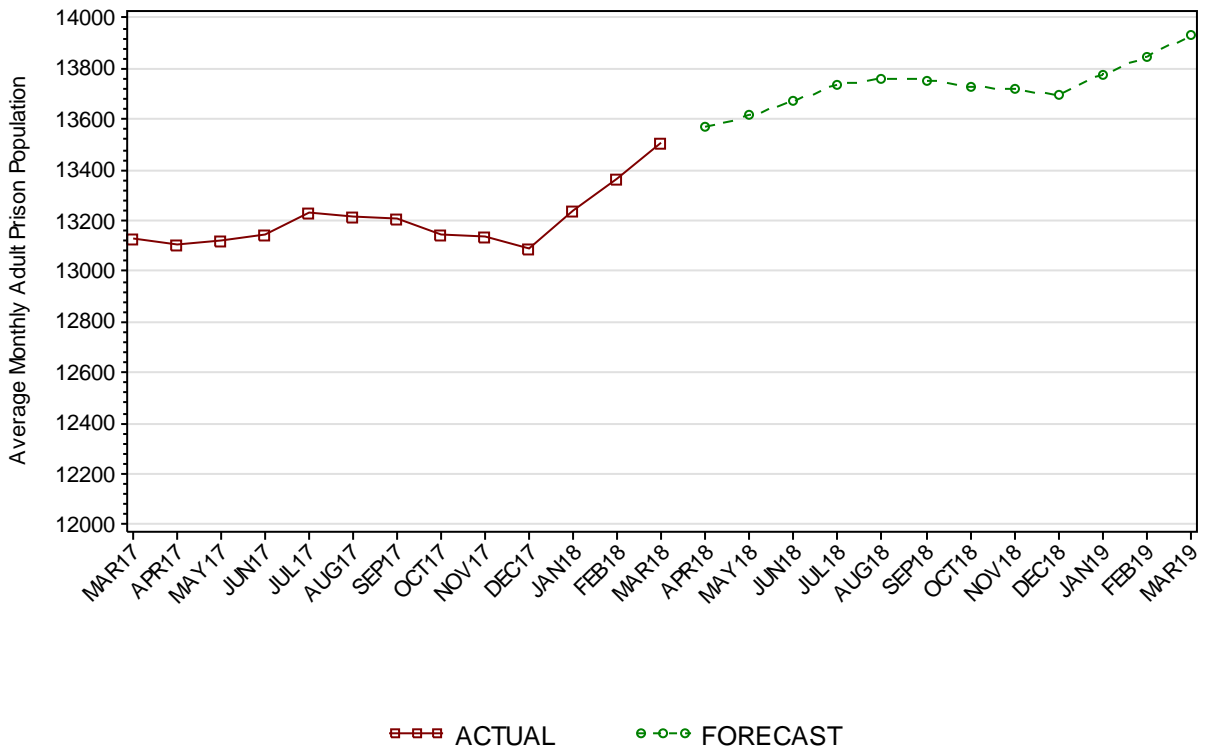
2.1.10 ADULT SENTENCED POPULATION BY MOST SERIOUS OFFENCE



As At: - -31DEC17 31MAR18

	31DEC17		31MAR18	
	Number	% of Total	Number	% of Total
Homicide	697	8.2	695	8.0
Acts intended to cause injury	1551	18.2	1617	18.6
Sexual assault	1180	13.8	1191	13.7
Dangerous/negligent acts	250	2.9	242	2.8
Abduction/harrassment	121	1.4	122	1.4
Robbery/extortion	597	7.0	569	6.6
Unlawful entry/burglary/B&E	660	7.7	681	7.8
Theft	294	3.4	308	3.5
Fraud/deception	235	2.8	239	2.8
Drug offences	1237	14.5	1253	14.4
Weapons offences	153	1.8	152	1.7
Property damage	74	0.9	82	0.9
Public order offences	86	1.0	75	0.9
Traffic offences	238	2.8	221	2.5
Justice procedure offences	1122	13.1	1190	13.7
Miscellaneous	30	0.4	27	0.3
Unknown	17	0.2	23	0.3
Total	8542	100.0	8687	100.0

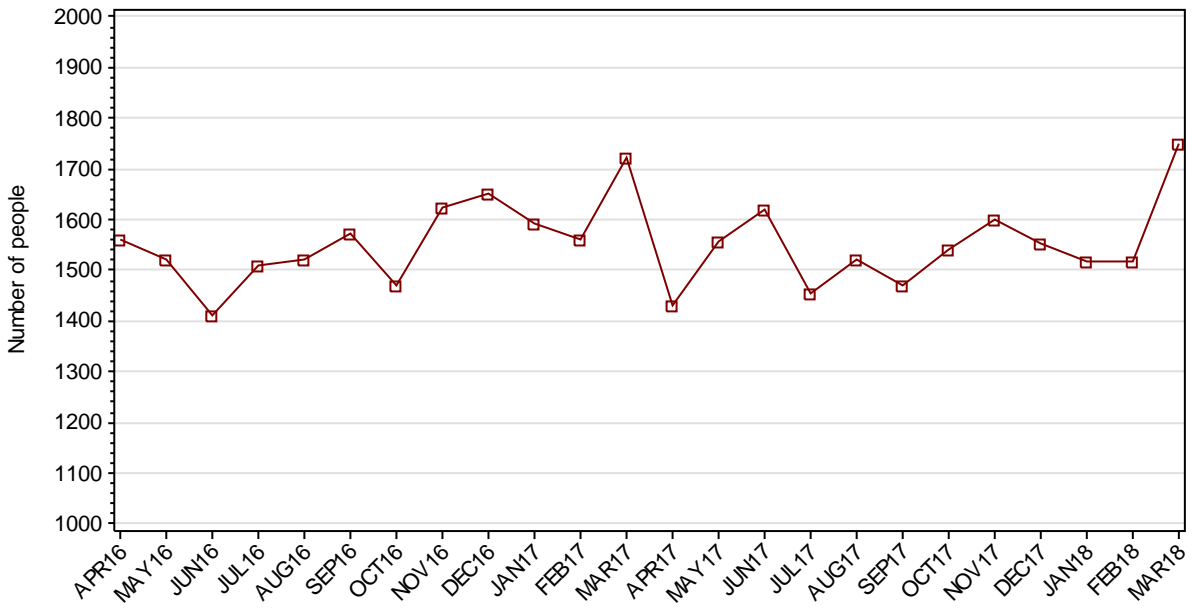
2.1.11 PRISON POPULATION* FORECAST



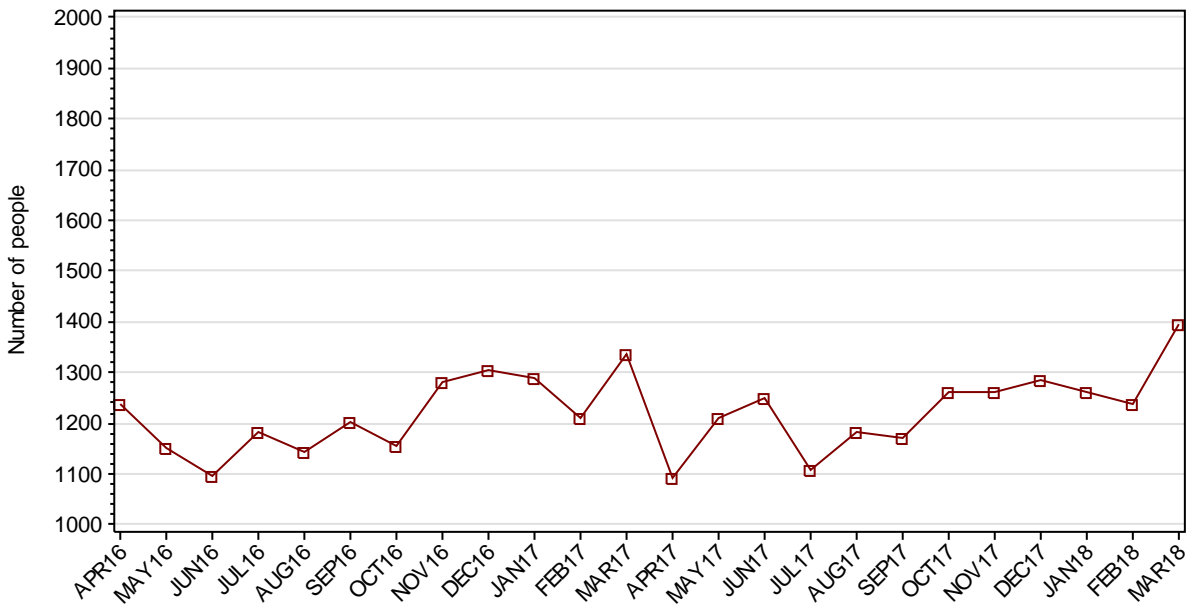
*Includes adults held in 24 hour police/court cell complexes managed by CSNSW

SECTION 2.2 ADULT CUSTODY RECEPTIONS

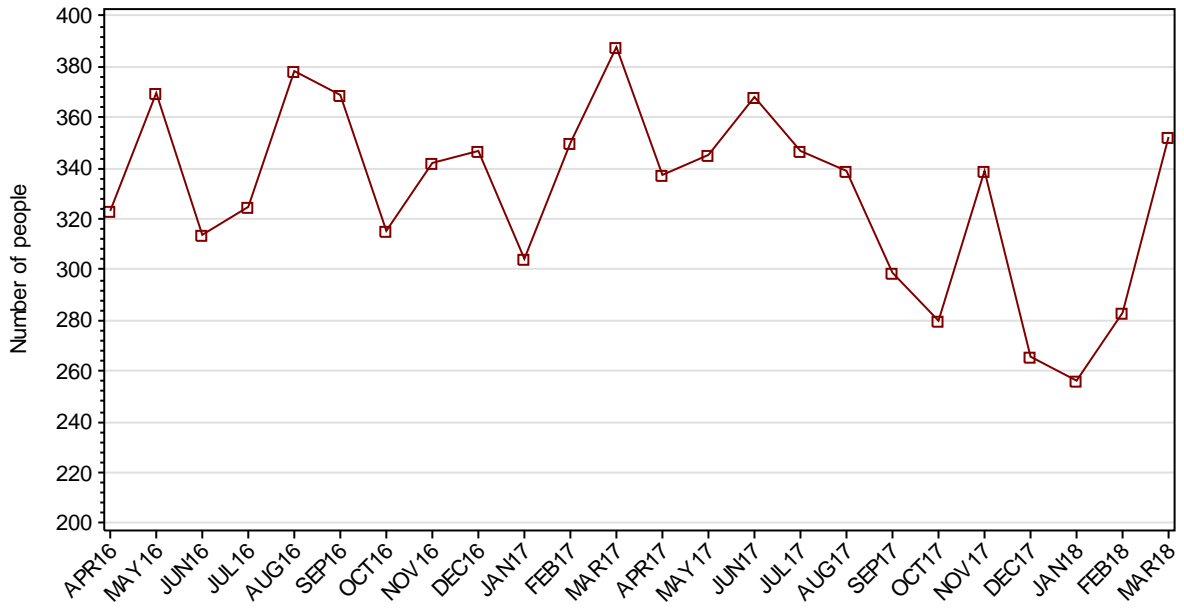
2.2.1 ADULTS RECEIVED INTO CUSTODY DURING MONTH



2.2.2 ADULT REMAND RECEPTIONS

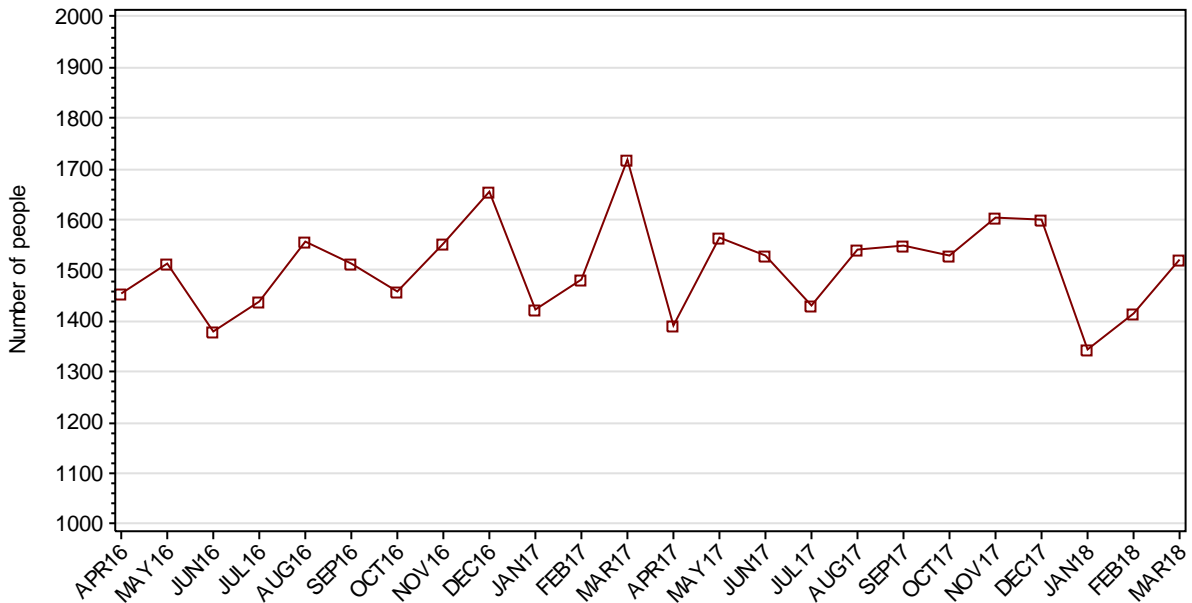


2.2.3 ADULT SENTENCED RECEPTIONS



SECTION 2.3 ADULT CUSTODY DISCHARGES

2.3.1 ADULTS DISCHARGED FROM CUSTODY DURING MONTH

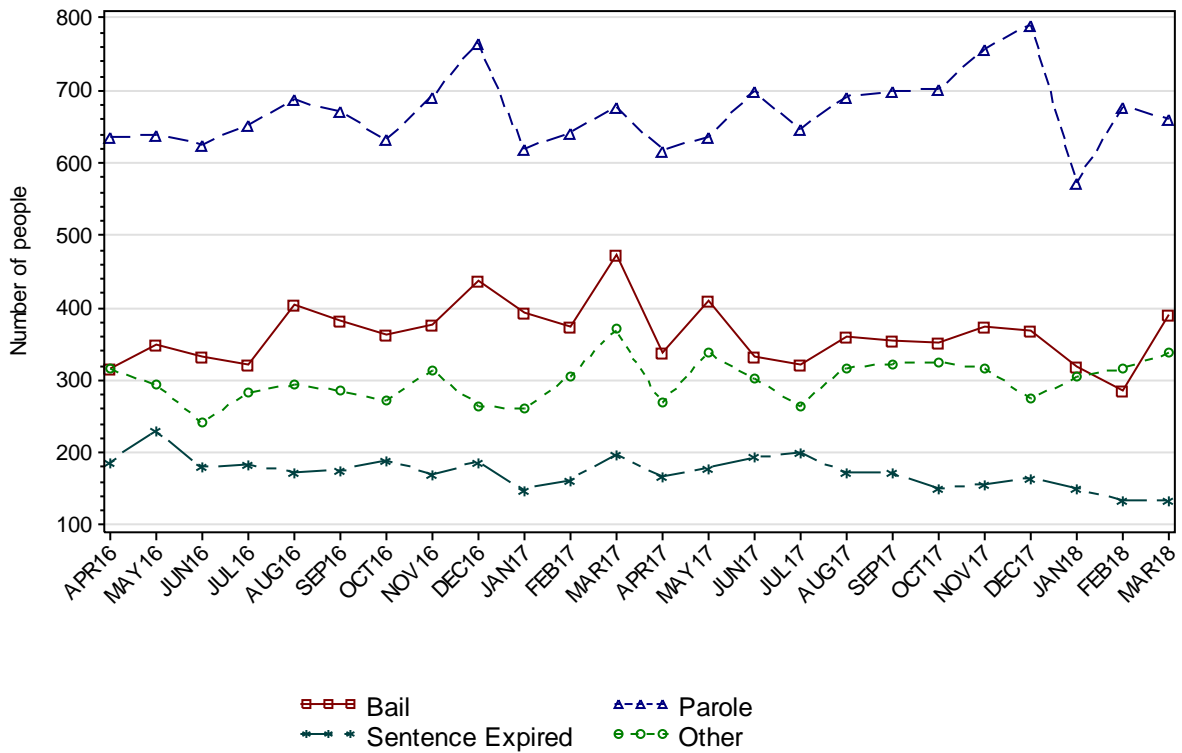


2.3.2 AVERAGE LENGTH OF STAY FOR ADULTS DISCHARGED FROM CUSTODY EACH QUARTER

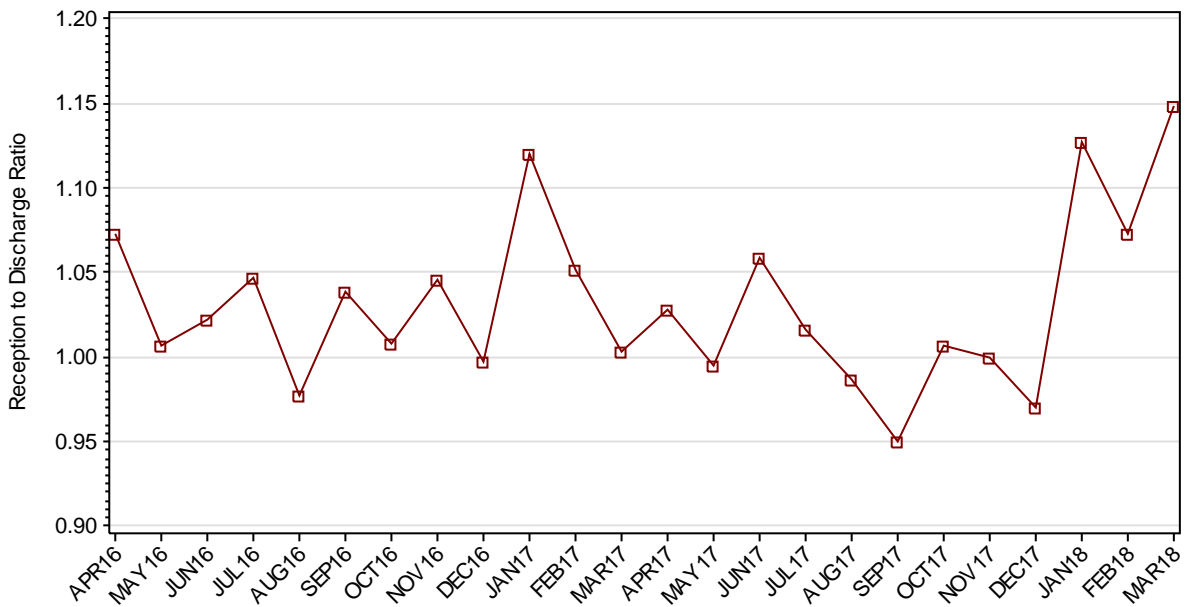
		Remand Custody Only		Sentenced Custody Only		Remand to Sentenced Custody	
		DEC17	MAR18	DEC17	MAR18	DEC17	MAR18
Total Male	Avg Days	55.0	49.3	238.6	236.2	436.5	402.4
	Number	1257	1219	944	829	1827	1616
Total Female	Avg Days	32.8	40.5	139.8	144.7	271.8	288.6
	Number	321	314	159	135	215	170
Indigenous Male	Avg Days	54.8	51.6	201.6	188.1	346.5	317.1
	Number	334	333	256	252	530	443
Indigenous Female	Avg Days	32.6	39.4	111.8	107.9	212.4	205.2
	Number	102	101	61	59	98	73
Total	Avg Days	50.5	47.5	224.4	223.4	419.1	391.6
	Number	1578	1533	1103	964	2042	1786

Note: Length of Stay for Remand to Sentenced Custody is from the date of reception on remand to date of discharge after serving sentence.

2.3.3 ADULTS BY DISCHARGE TYPE



2.3.4 RATIO OF ADULT RECEPTIONS TO DISCHARGES



Part 3 DATA TABLES

Juvenile	1.In Custody										Remand to Sent
	Total	Legal Status			Indigenous			Indigenous Legal Status			
		Court Bail Ref.	Police Bail Ref.	Sent	Yes	No	Unk	Court Bail Ref.	Police Bail Ref.	Sent	
APR16	309	177	8	124	163	146	0	88	2	73	31
MAY16	300	162	4	134	170	130	0	88	3	79	51
JUN16	280	144	7	129	152	128	0	71	0	81	34
JUL16	261	129	2	130	145	114	2	64	0	81	35
AUG16	243	112	10	121	128	115	0	53	4	71	30
SEP16	254	126	4	124	126	128	0	56	0	70	27
OCT16	260	130	3	127	127	129	4	55	2	70	32
NOV16	270	135	6	129	140	129	1	64	4	72	30
DEC16	249	137	5	107	136	112	1	72	4	60	24
JAN17	278	154	2	122	155	122	1	83	1	71	30
FEB17	263	151	3	109	146	115	2	78	2	66	25
MAR17	279	157	3	119	144	131	4	74	1	69	40
APR17	299	187	10	102	157	139	3	97	3	57	19
MAY17	275	160	7	108	139	132	4	76	1	62	38
JUN17	288	156	5	127	146	138	4	76	1	69	46
JUL17	286	165	4	117	129	152	5	69	1	59	22
AUG17	270	160	2	108	124	144	2	67	2	55	25
SEP17	286	162	6	118	129	153	4	72	1	56	33
OCT17	308	170	6	132	141	161	6	78	3	60	35
NOV17	286	156	6	124	121	159	6	64	4	53	30
DEC17	268	165	2	101	114	149	5	63	2	49	13
JAN18	268	153	8	107	124	140	4	64	5	55	36
FEB18	282	175	5	102	139	135	8	90	1	48	27
MAR18	304	180	5	119	145	152	7	84	4	57	43

Juvenile	2.Receptions							3.Discharges									Ratio Rec/ Dis
	Tot	Legal Status			Indigenous			Tot	Legal Status					Indigenous			
		Court Bail Ref.	Police Bail Ref.	Sent	Yes	No	Unk		Bail	Not Proven Non-Cust.	Other	Parole	Sent Exp	Yes	No	Unk	
APR16	266	132	122	12	107	153	6	244	180	28	0	34	2	92	146	6	1.09
MAY16	255	111	135	9	109	141	5	264	190	31	0	39	4	106	153	5	0.97
JUN16	240	99	134	7	103	132	5	262	188	27	1	43	3	120	137	5	0.92
JUL16	228	99	124	5	106	115	7	248	181	30	1	34	2	113	130	5	0.92
AUG16	225	90	131	4	86	134	5	245	176	23	5	34	7	103	135	7	0.92
SEP16	235	99	126	10	93	139	3	224	166	27	4	27	0	95	126	3	1.05
OCT16	238	115	116	7	90	135	13	232	175	24	1	31	1	89	134	9	1.03
NOV16	274	130	132	12	132	133	9	261	195	29	2	34	1	118	131	12	1.05
DEC16	244	119	122	3	118	116	10	269	201	25	2	39	2	124	135	10	0.91
JAN17	278	133	135	10	135	140	3	248	214	13	3	17	1	115	130	3	1.12
FEB17	253	131	115	7	120	122	11	267	206	19	4	36	2	129	128	10	0.95
MAR17	297	155	135	7	142	146	9	282	229	20	1	26	6	145	130	7	1.05
APR17	259	107	145	7	119	132	8	239	181	24	3	30	1	106	124	9	1.08
MAY17	238	102	130	6	102	127	9	261	200	25	4	29	3	120	133	8	0.91
JUN17	235	118	107	10	101	130	4	223	165	29	3	25	1	94	125	4	1.05
JUL17	249	130	110	9	99	136	14	252	192	23	1	32	4	116	123	13	0.99
AUG17	230	103	122	5	106	116	8	246	169	38	5	30	4	112	123	11	0.93
SEP17	250	125	119	6	108	134	8	233	183	23	2	24	1	102	125	6	1.07
OCT17	289	124	158	7	136	142	11	269	210	31	1	26	1	125	135	9	1.07
NOV17	264	116	143	5	123	133	8	284	213	34	2	31	4	142	134	8	0.93
DEC17	304	134	160	10	141	154	9	320	250	29	3	36	2	146	164	10	0.95
JAN18	293	132	157	4	154	130	9	294	249	16	1	23	5	144	140	10	1.00
FEB18	274	125	139	10	133	126	15	261	193	30	2	30	6	119	131	11	1.05
MAR18	273	128	136	9	130	132	11	253	195	24	2	27	5	126	115	12	1.08

Adult	1.In Custody								Remand to Sent
	Total	Legal Status		Indigenous			Indigenous Legal Status		
		Remand	Sent	Yes	No	Unk	Remand	Sent	
APR16	12509	4204	8305	3070	9391	48	972	2098	659
MAY16	12522	4141	8381	3061	9418	43	942	2119	700
JUN16	12550	4170	8380	3057	9450	43	911	2146	599
JUL16	12616	4236	8380	3051	9518	47	934	2117	645
AUG16	12584	4194	8390	3062	9479	43	947	2115	645
SEP16	12641	4177	8464	3051	9546	44	916	2135	682
OCT16	12659	4240	8419	3038	9576	45	950	2088	563
NOV16	12726	4248	8478	3045	9635	46	956	2089	690
DEC16	12729	4388	8341	3081	9596	52	1028	2053	617
JAN17	12901	4614	8287	3133	9709	59	1093	2040	527
FEB17	12978	4591	8387	3197	9710	71	1116	2081	689
MAR17	12955	4469	8486	3215	9673	67	1095	2120	775
APR17	13022	4470	8552	3229	9721	72	1086	2143	631
MAY17	13018	4348	8670	3196	9752	70	1034	2162	775
JUN17	13092	4309	8783	3185	9836	71	1043	2142	772
JUL17	13120	4288	8832	3193	9856	71	1034	2159	664
AUG17	13102	4180	8922	3177	9847	78	1012	2165	742
SEP17	13017	4221	8796	3114	9805	98	1003	2111	611
OCT17	13026	4311	8715	3130	9791	105	1041	2089	641
NOV17	13031	4286	8745	3130	9767	134	1009	2121	731
DEC17	12989	4447	8542	3155	9704	130	1063	2092	592
JAN18	13164	4645	8519	3202	9823	139	1114	2088	590
FEB18	13267	4737	8530	3235	9871	161	1116	2119	700
MAR18	13494	4807	8687	3301	9972	221	1149	2152	766

Adult	2.Receptions						3.Discharges								Ratio Rec/ Dis
	Tot	Legal Status		Indigenous			Tot	Legal Status				Indigenous			
		Remand	Sent	Yes	No	Unk		Bail	Other	Parole	Sent Exp	Yes	No	Unk	
APR16	1560	1237	323	428	1100	32	1454	317	315	635	187	407	1018	29	1.07
MAY16	1523	1153	370	419	1073	31	1512	349	294	639	230	426	1051	35	1.01
JUN16	1411	1097	314	372	1009	30	1380	333	241	626	180	374	974	32	1.02
JUL16	1508	1183	325	420	1053	35	1440	322	282	652	184	428	981	31	1.05
AUG16	1521	1143	378	459	1034	28	1557	403	294	687	173	451	1073	33	0.98
SEP16	1573	1204	369	436	1111	26	1514	382	286	671	175	450	1040	24	1.04
OCT16	1469	1154	315	425	1005	39	1458	364	272	632	190	439	982	37	1.01
NOV16	1624	1282	342	473	1119	32	1552	376	314	691	171	465	1058	29	1.05
DEC16	1651	1304	347	473	1119	59	1655	437	265	766	187	441	1153	61	1.00
JAN17	1593	1289	304	478	1068	47	1422	394	260	619	149	424	958	40	1.12
FEB17	1560	1210	350	479	1032	49	1484	374	305	642	163	416	1030	38	1.05
MAR17	1724	1336	388	487	1183	54	1718	473	370	678	197	467	1193	58	1.00
APR17	1431	1094	337	405	988	38	1392	339	268	618	167	395	965	32	1.03
MAY17	1556	1211	345	428	1095	33	1563	410	339	636	178	462	1065	36	1.00
JUN17	1618	1250	368	457	1125	36	1529	334	301	700	194	453	1041	35	1.06
JUL17	1455	1108	347	429	989	37	1432	322	265	646	199	418	978	36	1.02
AUG17	1521	1182	339	422	1051	48	1541	359	317	692	173	438	1063	40	0.99
SEP17	1471	1172	299	424	1002	45	1549	355	323	699	172	481	1042	26	0.95
OCT17	1541	1261	280	474	1006	61	1530	352	324	703	151	457	1015	58	1.01
NOV17	1602	1263	339	464	1058	80	1603	373	317	756	157	467	1085	51	1.00
DEC17	1551	1285	266	484	1016	51	1599	369	274	791	165	457	1082	60	0.97
JAN18	1517	1261	256	445	1028	44	1346	319	304	572	151	399	912	35	1.13
FEB18	1519	1236	283	445	1011	63	1415	286	316	678	135	413	962	40	1.07
MAR18	1748	1396	352	516	1120	112	1522	390	337	662	133	449	1020	53	1.15

Part 4 GLOSSARY

Adult

A person held in custody in a gazetted correctional centre managed by Corrective Services NSW (CSNSW). Persons may have been remanded in custody after being refused bail or sentenced to a custodial order for a proven offence.

The adult figures in this report include the small number of 16 and 17 year old males held in the Kariong Juvenile Correctional Centre.

ANZSOC

The Australian Bureau of Statistics Australian and New Zealand Standard Offence Classification (ANZSOC) groups criminal offences into 16 broad divisions:

1. Homicide and related offences
2. Acts intended to cause injury
3. Sexual assault and related offences
4. Dangerous or negligent acts endangering persons
5. Abduction, harassment and other offences against the person
6. Robbery, extortion and related offences
7. Unlawful entry with intent/burglary, break and enter
8. Theft and related offences
9. Fraud, deception and related offences
10. Illicit drug offences
11. Prohibited and regulated weapons and explosives offences
12. Property damage and environmental pollution
13. Public order offences
14. Traffic and vehicle regulatory offences
15. Offences against justice procedures, government security and government operations
16. Miscellaneous offences

For further information see:

<http://www.abs.gov.au/AUSSTATS/abs@.nsf/DetailsPage/1234.02011>

Note that shortened titles are used in this report.

Average length of stay

The length of stay is the duration of the custodial episode, from the date of reception to the date of discharge.

The average length of stay (in days) is presented for three types of custodial episodes:

Remand custody only - the person entered custody after being refused bail and was then discharged from custody without having been sentenced. Most commonly discharged after being granted bail, other reasons include criminal charges not proven, receiving a non-custodial penalty for a proven offence or being transferred interstate or from a juvenile to an adult prison or vice versa.

Sentenced custody only - persons who entered custody only after being sentenced to a custodial penalty by a court. These persons had either been granted bail, or bail had been dispensed with, pending finalisation of their charges.

Remand to sentenced custody - persons who had been remanded in custody prior to having a custodial sentence imposed by a court. The length of stay for these people is the entire time from reception on remand to discharge after serving the custodial sentence.

Note: Persons initially remanded in custody but then granted bail prior to having a custodial penalty imposed by a court are counted as two custodial episodes: one of remand custody only and one of sentenced custody only.

Bail

Under the provisions of the *Bail Act 2013*, police and courts may grant or refuse to grant bail to alleged offenders. The grant of bail takes into consideration the alleged offence and offender. Bail is granted at the offence level and so a person may be granted bail for one offence and refused bail for another offence.

Persons refused bail (and small numbers granted bail but unable to meet the bail conditions set by a court) are remanded into custody pending further court action.

Juvenile custody population data in this report disaggregates persons remanded into custody into those refused police bail and refused court bail. This is because all juveniles refused police bail are held in Juvenile Justice centres whereas not all adults refused police bail are held in gazetted correctional centres or 24 hour police cell complexes.

Control order

See Custodial sentence

Corrective Services NSW

Corrective Services NSW (CSNSW) is part of the Department of Justice with responsibilities including the supervision of people remanded in custody pending the finalisation of criminal charges and offenders sentenced to a custodial order.

See <http://www.correctiveservices.nsw.gov.au/> for further information.

The Corrections Research, Evaluation and Statistics (CRES) section of CSNSW have provided the adult custody data for this report and advised on its interpretation.

Court bail refused

See Bail

Custodial episode

A custodial episode is the time between the reception into and discharge from custody. An individual may have multiple custodial episodes within the reporting period. A change in legal status between the reception and discharge date, for example changing from being bail refused to being sentenced to a custodial order, does not count as a new custodial episode.

Custodial sentence

Courts may impose a custodial sentence for a proven offence. For adults this is a term of imprisonment under the *Crimes (Sentencing Procedure) Act 1999*. For young people this is a control order of up to two years duration or a term of imprisonment to be served partly or wholly as a juvenile under the *Children (Criminal Proceedings) Act 1987*. A person may be given custodial sentences for multiple proven offences.

While the majority of persons held under sentence in a correctional centre are sentenced under the *Crimes (Sentencing Procedure) Act 1999*, offenders whose parole has been revoked by the State Parole Authority, persons sentenced under the *Commonwealth Crimes Act 1914*, those sentenced under the *Mental Health (Forensic Provision) Act 1990*, small numbers of persons held under immigration orders awaiting deportation following expiry of their sentence and persons sentenced under legislation in other states or territories are also managed by CSNSW.

Custody population

Persons held in custody in a JJNSW juvenile justice centre or a CSNSW gazetted correctional centre, whether remanded or sentenced. Custody population figures are counted as at midnight on the last day of the month or quarter as appropriate. Persons held in a CSNSW managed police/court cell complex at midnight on the last day of the month but later transferred to a gazetted correctional centre are included in custody population figures for that month.

Discharge type

The type of reason why persons were discharged from custody:

Bail - courts granted the person bail pending the finalisation of their criminal charge(s).

Parole - the person was released to parole after serving the non-parole period of custodial sentence(s).

Sentence expired - the person was released after serving the entire period of all custodial sentence(s) imposed. This includes some persons who served both the non-parole and parole components of their sentence(s) in custody.

Not proven / non-custodial penalty - juvenile data only - the person was released after criminal charges were not proven or after the court imposed a non-custodial penalty for a proven offence, e.g. good behaviour bond.

Other - includes persons transferred to the NSW Drug Court, interstate or from a juvenile to an adult prison or vice versa and deceased persons. Includes adults released after criminal charges were not proven, after the court imposed a non-custodial penalty for a proven offence and where the specific nature of the court's final non-custodial disposal is unknown.

Discharges

Persons legally discharged from JJNSW or CSNSW custody in accordance with a court order (including any State Parole Authority order). For example - to parole, on expiry of a sentence or having been granted bail. Note that persons whose legal status changed from remand to sentenced or the reverse are not counted as discharges as they have not been discharged from custody.

Forecast

The adult prison population forecast is generated using an autoregressive integrated moving average (ARIMA) model. The model is estimated following the Box-Jenkins approach. The forecast is calculated from the average monthly prison population data from January 2011 to the current month. Please note that this forecast includes adults held in 24 hour police/court cell complexes.

The juvenile custody population forecast is generated using an exponential smoothing model. The model is estimated using a Holt-Winters additive method. The forecast is

calculated from the average monthly juvenile custody population from January 2011 to the current month.

Imprisonment

See Custodial sentence

Indigenous status

Indigenous status as self-reported on reception into custody. Persons may identify as being Aboriginal or Torres Strait Islander, neither Aboriginal nor Torres Strait Islander or may not provide this information. An inmate is recorded as indigenous if they have identified as such in the current or any previous custodial episode. Indigenous status is unknown for a small proportion of people.

Juvenile

A person held in custody in a juvenile justice centre. These centres are managed by Juvenile Justice NSW (JJNSW). A young person in juvenile custody may have been refused bail by police, refused bail by the court or sentenced to a custodial sentence.

All young persons refused bail by police must be taken to a juvenile justice centre to be held in custody pending their court appearance. Young persons refused police bail cannot be held in a police or court cell.

Note: a small number of 16 and 17 year old males are held in Kariiong Juvenile Correctional Centre which is managed by CSNSW. As Kariiong is a gazetted correctional centre, these young persons are counted in the adult figures in this report.

Juvenile Justice NSW

Juvenile Justice NSW (JJNSW) is part of the Department of Justice with responsibilities including the supervision of young people remanded in custody pending the finalisation of criminal charges and young offenders sentenced to a control order/imprisonment.

See <http://www.djj.nsw.gov.au/> for further information.

The Research and Information Section of JJNSW have provided the juvenile data for this report and advised on its interpretation.

Legal status

The legal status of persons received into or held in custody:

Remand (Juvenile) - Juveniles refused bail (and small numbers granted bail but unable to meet conditions) are remanded into custody pending future court action.

Juvenile remand figures are disaggregated into:

- Police bail refused - Police have refused to grant bail to a juvenile. All juveniles refused bail by police are held in custody in a juvenile justice centre pending future court action.
- Court bail refused - the courts have refused to grant bail to a juvenile pending future court action.

Remand (Adult) - adults refused bail (and small numbers granted bail but unable to meet conditions) are remanded in custody pending future court action. Includes a small number of persons refused police bail and remanded in custody in a gazetted correctional centre. Includes persons on remand who are being managed as correctional patients under the *Mental Health (Forensic Provisions) Act 1990*.

Sentenced - the courts have imposed custodial sentence(s) for proven offence(s). This category includes persons returned to custody after breaching parole. Includes forensic patients as per the *Mental Health (Forensic Provisions) Act 1990* (ie persons found unfit to be tried and persons found not guilty due to mental illness). Persons on remand for one or more offences and sentenced for one or more offences have a legal status of sentenced.

Unknown - adults whose legal status was not recorded at the time of admission.

Legal status changed from remand to sentenced

Persons whose legal status changed from remand to sentenced upon the imposition of a custodial sentence by a court. This report shows the numbers of persons during each month who changed from being on remand to being sentenced.

Most serious offence

The most serious offence type for which each person is in custody. The offence type categories in this report are the sixteen ANZSOC Divisions, with shortened titles (See ANZSOC).

Most serious offence data is presented in a radar chart and a data table. The radar chart consists of a circle with a series of 'spokes' running from the centre of the circle to the perimeter. Each spoke represents a different offence type. The radar chart is constructed by placing a point on each spoke marking the proportion of prisoners with that offence type as their most serious offence. The higher the proportion, the closer the point to the perimeter. The points are then connected and the resulting figure inside the circle gives a picture of the distribution of most serious offence type across prisoners. A different type/colour of line is used for each quarter, making changes from quarter to quarter apparent. Note that offence types with no observations are plotted a short distance from the zero radius so that the numbers for every offence type can be observed.

The data table displays the number and proportion of persons in custody for each of the most serious offence types. The data is presented separately for sentenced persons and persons on remand:

Most Serious Offence – Adults:

The most serious offence for adults is as provided by CSNSW.

A person's most serious offence may change over the course of their custodial episode depending on offences for which they are in custody at any one time. The Most Serious Offence data presented in this report are stock data and are sourced from data extracts run two to three weeks after the end of the quarter.

The data for the previous quarter is as at the previous quarter's custody report.

Extracting the data after the same time lag each quarter reduces variability due to extract timing and so is indicative of a change in the broad offence profile of persons in custody between the end of the current and previous quarters.

Due to the way that MSO is recorded and the data extracted, it is not available for receptions or discharge data.

Most Serious Offence – Juveniles:

Most serious offence for juveniles is compiled by matching custody order records from JJNSW with sentencing and bail refused orders sourced from the JusticeLink system used by the NSW criminal courts. Data is matched using JusticeLink Proceeding Number, a unique offence identifier which is available in the JJNSW data from January 2011.

- The most serious offence for juveniles remanded in custody is the offence with the highest Median Sentence Ranking (MSR). The MSR is a ranking of ANZSOC codes and was developed by BOCSAR using data on sentences imposed in the NSW criminal courts. The MSR can be used to select the most serious offence when sentencing data is not available and to select most serious offence when multiple offences have the same custodial order duration. For further information see the BOCSAR's Crime and Justice Bulletin No.142 "Measuring Offence Seriousness": [www.bocsar.nsw.gov.au/lawlink/bocsar/ll_bocsar.nsf/vwFiles/CJB142.pdf/\\$file/CJB142.pdf](http://www.bocsar.nsw.gov.au/lawlink/bocsar/ll_bocsar.nsf/vwFiles/CJB142.pdf/$file/CJB142.pdf)
- The most serious offence for sentenced juveniles is the offence with the longest custodial order. For juveniles with more than one offence type with the same custodial order duration, the offence with the highest Median Sentence Ranking is selected as the most serious offence.
- Juveniles sentenced to a custodial order after breaching a non-custodial penalty (eg a suspended sentence, Community Service Order or good behaviour bond) have a most serious offence type of *Justice procedure offence* rather than the type of offence for which the non-custodial penalty was originally imposed (eg robbery/extortion, drug offences).

Note: this differs from the definition of most serious offence used in the Australian Bureau of Statistics Prisoners in Australia publication series (*ABS cat.no.4517.0*)

Police bail refused

See Bail.

Receptions

Persons received into Juvenile Justice custody or a gazetted correctional centre. Gazetted correctional centres are managed by CSNSW. Persons received into CSNSW custody and managed only in CSNSW 24-hour police/court cell complexes are excluded.

Ratio of receptions to discharges

The ratio of receptions to discharges. A ratio greater than 1 means there were more receptions than discharges during the month; a ratio less than 1 means there were more discharges than receptions during the month.

Remand

See Legal status.

Sentenced

See Legal status.

24 hour police/court cell complexes

In addition to gazetted correctional centres, CSNSW manage a number of police/court cell complexes. This report (with the exception of the adult prison forecast) excludes persons received and then discharged from a CSNSW-managed 24 hour police/court cell complex without entering a gazetted correctional centre.