
NEW SOUTH WALES CUSTODY STATISTICS

QUARTERLY UPDATE
SEPTEMBER 2018



NSW Bureau of Crime
Statistics and Research

CONTENTS

This report presents 24 months of reception, discharge and custody population data and comparisons between the current and previous quarter for age, gender, indigenous status, most serious offence and the average length of stay.

Separate figures are presented for juveniles and adults.

The counting unit is a custodial episode. An individual will be counted multiple times in a period if they have multiple custodial episodes in that period.

SCOPE

The data in this report are extracted from the Corrective Services NSW (CSNSW) Offender Integrated Management System (OIMS) and the Juvenile Justice NSW (JJNSW) Client Information Management System (CIMS).

The adult custody population figures include only those persons held in gazetted correctional centres managed by CSNSW. This includes: persons managed as forensic patients, persons held after expiry of their sentence awaiting deportation and persons awaiting extradition to another jurisdiction. Persons in the Special Purpose Centre at Long Bay Correctional Centre are not included.

In addition to gazetted correctional centres, CSNSW manages a number of police/court cell complexes. This report excludes persons received into and then discharged from a CSNSW-managed 24 hour police/court cell complex without entering a gazetted correctional centre. Adults refused police bail but not held in a gazetted correctional centre are not included. An exception to this is the adult prison population forecast which does include these non-gazetted correctional centres.

Custody population figures are counted as at midnight on the last day of the month or quarter as appropriate. Reception and discharge figures are those during each month or quarter as appropriate.

Refer to the Glossary at the back of the report for detailed descriptions of the terms used in the report.

ACKNOWLEDGEMENTS

Juvenile custody data are provided by the Research and Information Section of JJNSW. Adult custody data are provided by the Corrections Research, Evaluation and Statistics (CRES) section of CSNSW. BOCSAR is grateful for the support provided by both areas in supplying the data for this report and advising on its interpretation.

NOTE

The adult custody data presented in this report will differ from data reported by CSNSW due to data extract timing differences.

Contents

PART 1 JUVENILES **4**

SECTION 1.1	JUVENILE CUSTODY POPULATION	5
1.1.1	By Month	5
1.1.2	By Legal Status	5
1.1.3	By Indigenous Status.....	6
1.1.4	By Legal Status (Indigenous Only).....	6
1.1.5	Profile	7
1.1.6	Legal Status Changed from Remand to Sentenced	7
1.1.7	Remand Population by Most Serious Offence	8
1.1.8	Sentenced Population by Most Serious Offence	9
1.1.9	Juvenile Custody Forecast	10
SECTION 1.2	JUVENILE CUSTODY RECEPTIONS	11
1.2.1	By Month	11
1.2.2	By Legal Status	11
SECTION 1.3	JUVENILE CUSTODY DISCHARGES	12
1.3.1	By Month	12
1.3.2	Length of Stay	12
1.3.3	By Discharge Type	13
1.3.4	By Discharge Type (Excluding Bail).....	13
1.3.5	Ratio Of Receptions To Discharges.....	14

PART 2 ADULTS **15**

SECTION 2.1	ADULT CUSTODY POPULATION	16
2.1.1	By Month	16
2.1.2	By Indigenous Status.....	16
2.1.3	Remand Population	17
2.1.4	Sentenced Population.....	17
2.1.5	Indigenous Remand Population	18
2.1.6	Indigenous Sentenced Population	18
2.1.7	Profile	19
2.1.8	Legal Status Changed from Remand to Sentenced	19
2.1.9	Remand Population by Most Serious Offence	20
2.1.10	Sentenced Population by Most Serious Offence	21
2.1.11	Prison Population Forecast.....	22
SECTION 2.2	ADULT CUSTODY RECEPTIONS	23
2.2.1	By Month	23
2.2.2	Remand Receptions	23
2.2.3	Sentenced Receptions.....	24
SECTION 2.3	ADULT CUSTODY DISCHARGES	25
2.3.1	By Month	25
2.3.2	Length of Stay	25
2.3.3	By Discharge Type	26
2.3.4	Ratio Of Receptions To Discharges.....	26

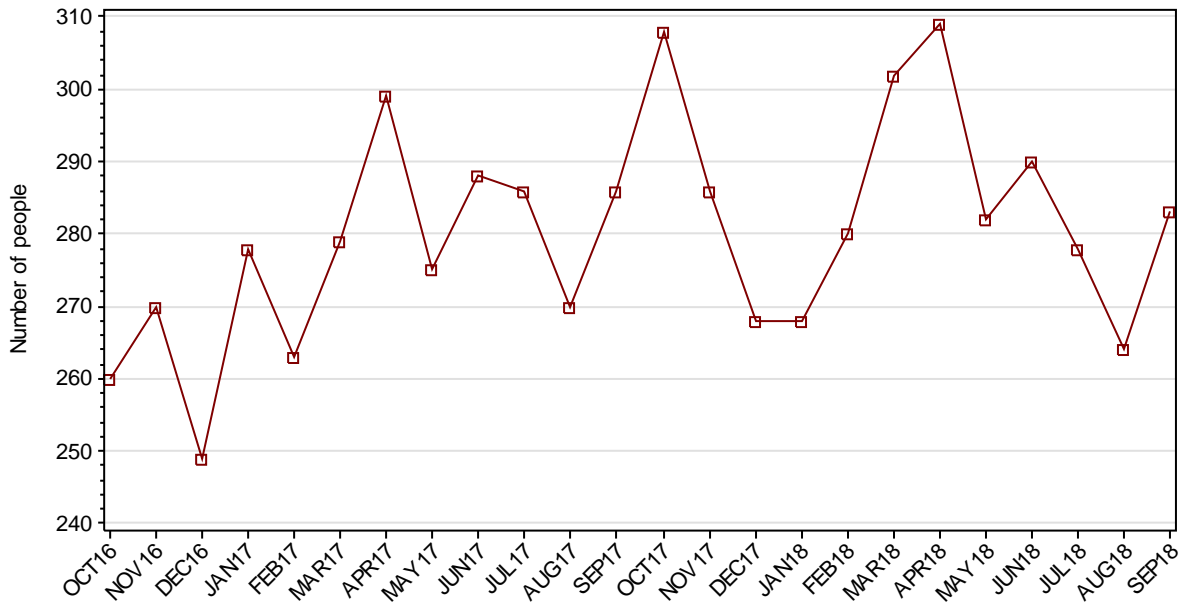
PART 3 DATA TABLES **27**

PART 4 GLOSSARY **32**

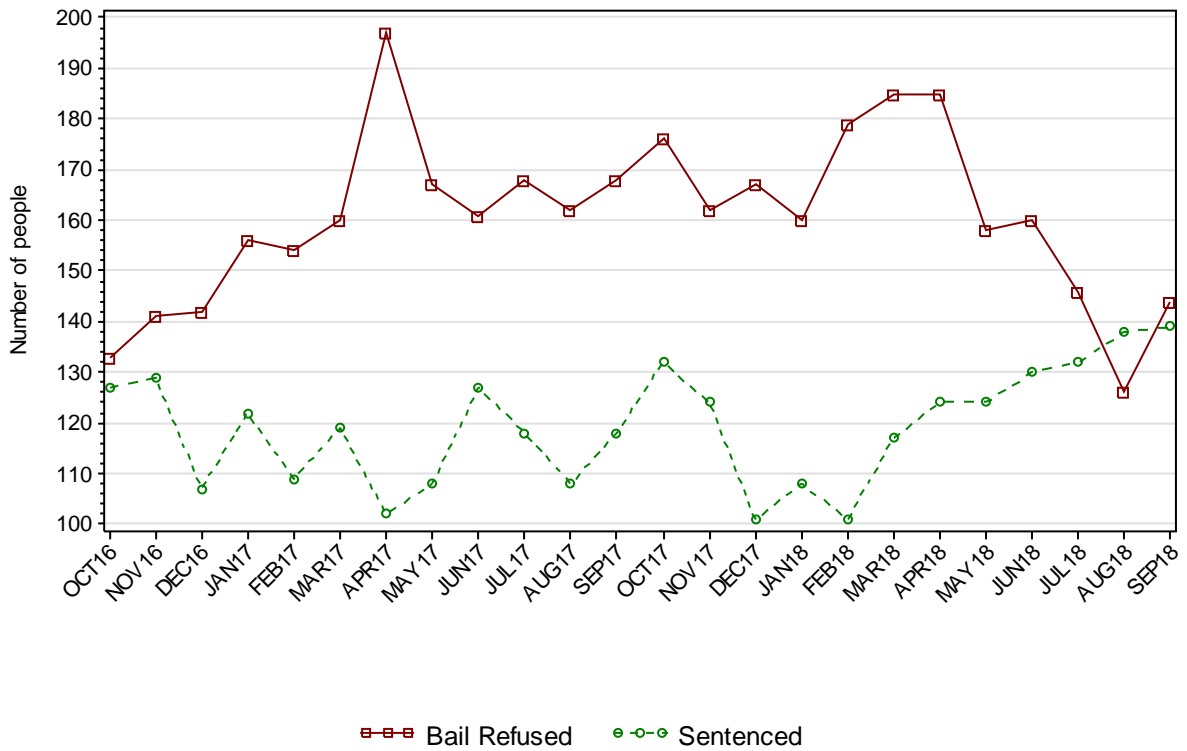
Part 1 JUVENILES

SECTION 1.1 JUVENILE CUSTODY POPULATION

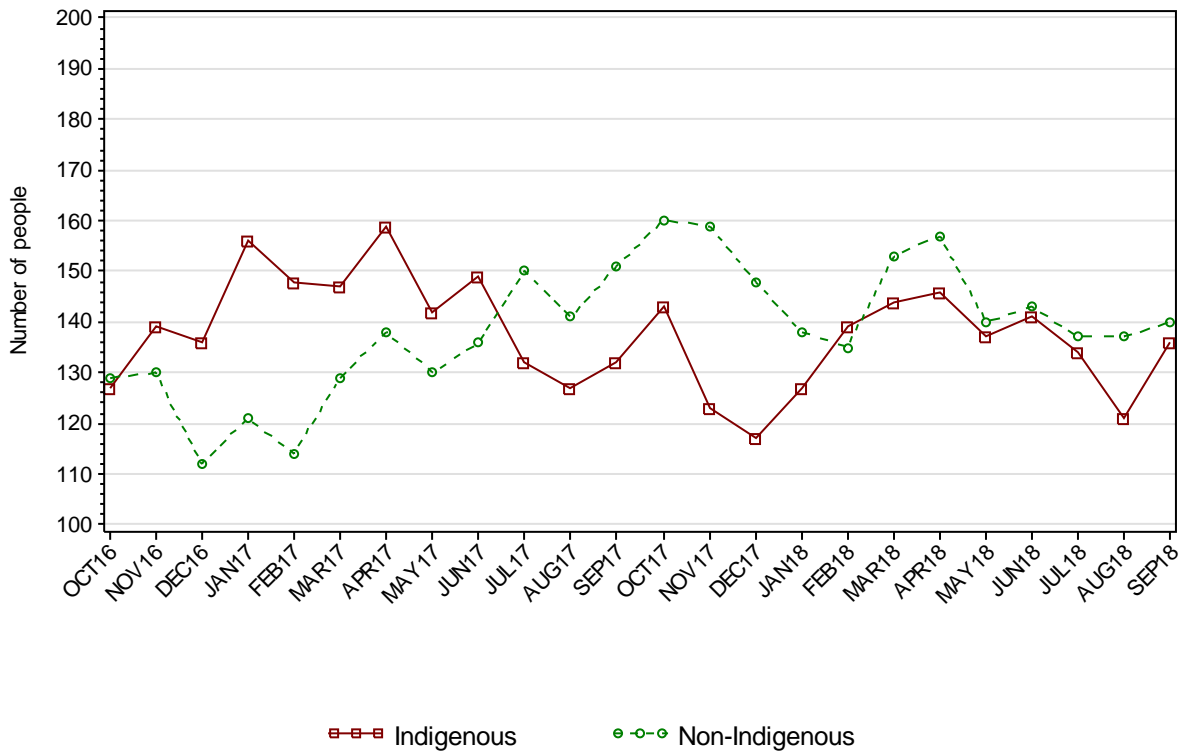
1.1.1 JUVENILE CUSTODY POPULATION AT END OF MONTH



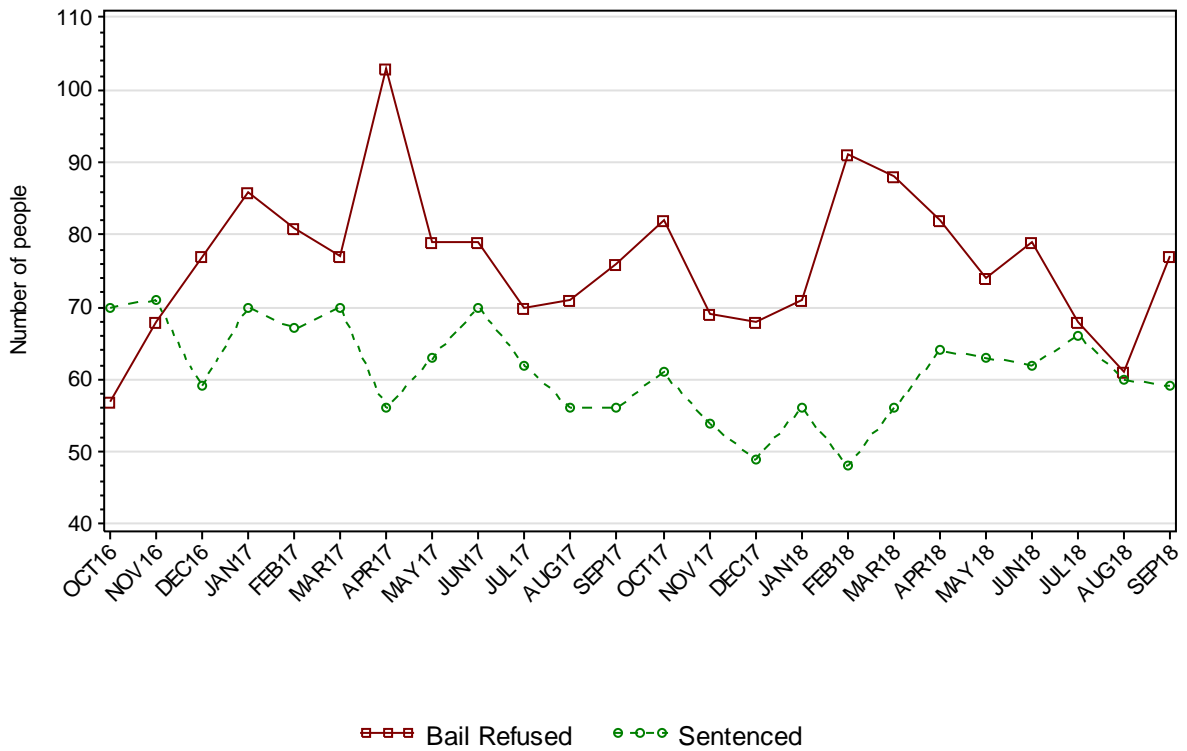
1.1.2 JUVENILE CUSTODY POPULATION BY LEGAL STATUS



1.1.3 JUVENILE CUSTODY POPULATION BY INDIGENOUS STATUS



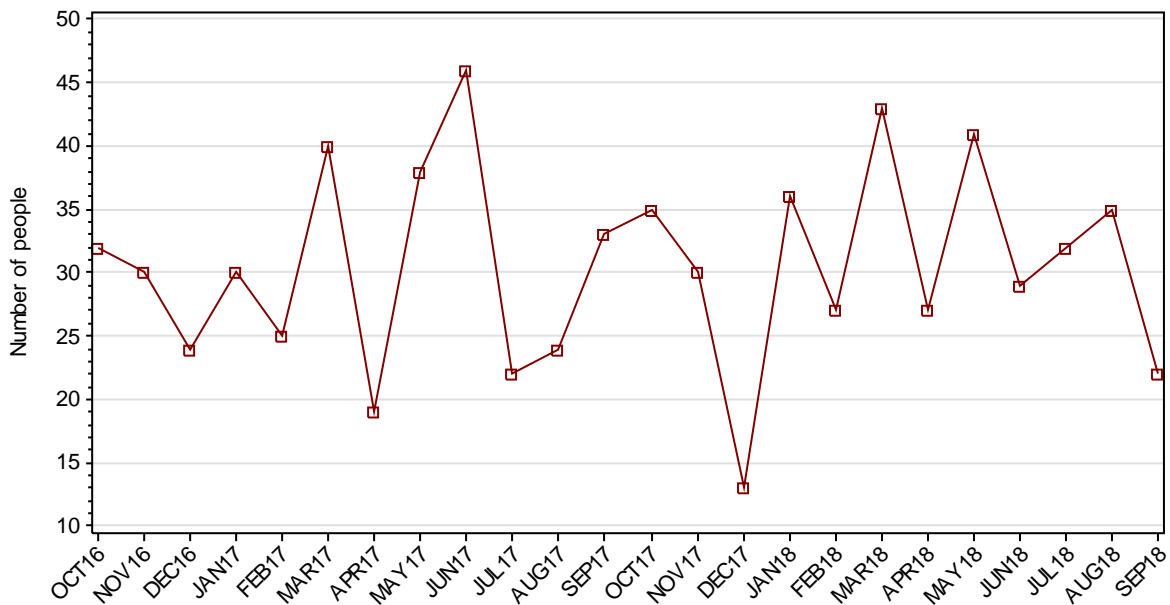
1.1.4 INDIGENOUS JUVENILE CUSTODY POPULATION BY LEGAL STATUS



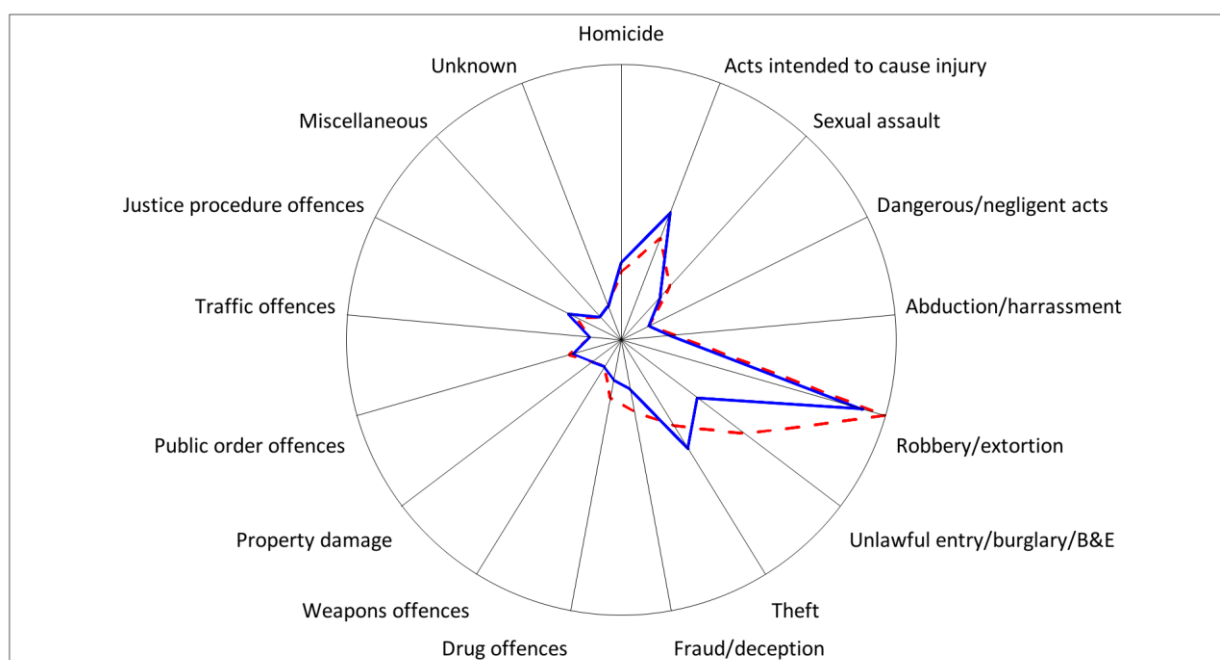
1.1.5 JUVENILE CUSTODY PROFILE AT END OF QUARTER

		Police Bail Refused		Court Bail Refused		Sentenced		Total	
		JUN18	SEP18	JUN18	SEP18	JUN18	SEP18	JUN18	SEP18
Total Male	Count	4	3	136	126	123	130	263	259
	Avg Age	16.3	16.0	16.2	16.4	16.9	17.0	16.5	16.7
Total Female	Count	4	1	16	14	7	9	27	24
	Avg Age	15.8	17.0	14.9	15.6	16.6	15.9	15.4	15.8
Indigenous Male	Count	1	2	64	67	59	55	124	124
	Avg Age	14.0	16.5	16.0	16.1	16.8	16.8	16.3	16.4
Indigenous Female	Count	3	0	11	8	3	4	17	12
	Avg Age	16.0	.	14.5	15.0	16.7	15.0	15.1	15.0
Total	Count	8	4	152	140	130	139	290	283
	Avg Age	16.0	16.3	16.0	16.3	16.8	16.9	16.4	16.6

1.1.6 JUVENILES IN CUSTODY: NUMBER WHOSE LEGAL STATUS CHANGED DURING MONTH FROM REMAND TO SENTENCED



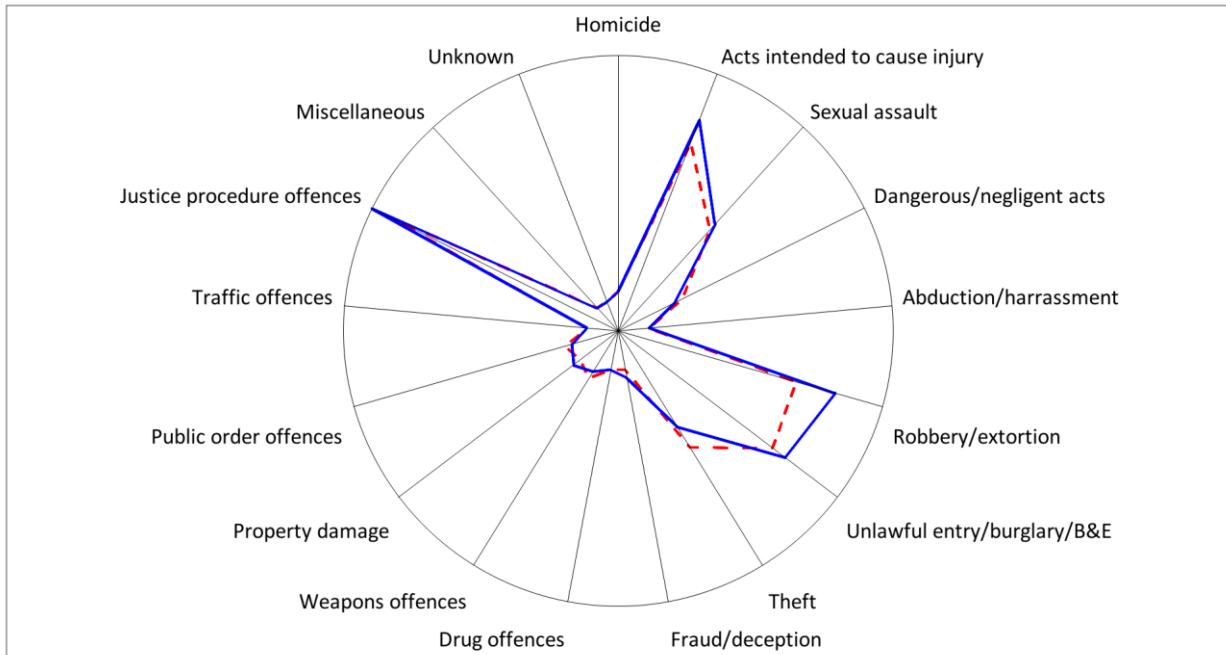
1.1.7 JUVENILE REMAND POPULATION BY MOST SERIOUS OFFENCE



As At: - - 30JUN18 — 30SEP18

	30JUN18		30SEP18	
	Number	% of Total	Number	% of Total
Homicide	8	5.0	10	6.9
Acts intended to cause injury	17	10.6	23	16.0
Sexual assault	9	5.6	6	4.2
Dangerous/negligent acts	0	0	0	0
Abduction/harrassment	5	3.1	4	2.8
Robbery/extortion	53	33.1	48	33.3
Unlawful entry/burglary/B&E	27	16.9	14	9.7
Theft	15	9.4	21	14.6
Fraud/deception	9	5.6	4	2.8
Drug offences	6	3.8	2	1.4
Weapons offences	0	0	0	0
Property damage	1	0.6	1	0.7
Public order offences	5	3.1	4	2.8
Traffic offences	0	0	0	0
Justice procedure offences	4	2.5	6	4.2
Miscellaneous	0	0	0	0
Unknown	1	0.6	1	0.7
Total	160	100.0	144	100.0

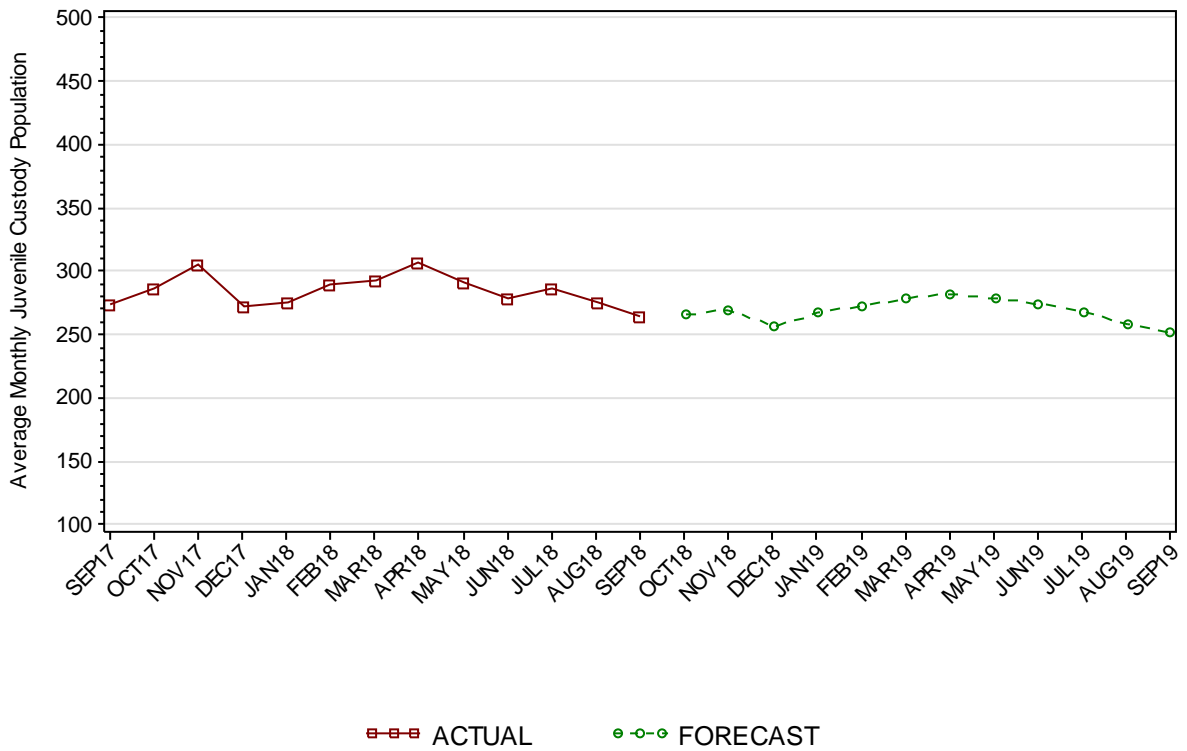
1.1.8 JUVENILE SENTENCED POPULATION BY MOST SERIOUS OFFENCE



As At:

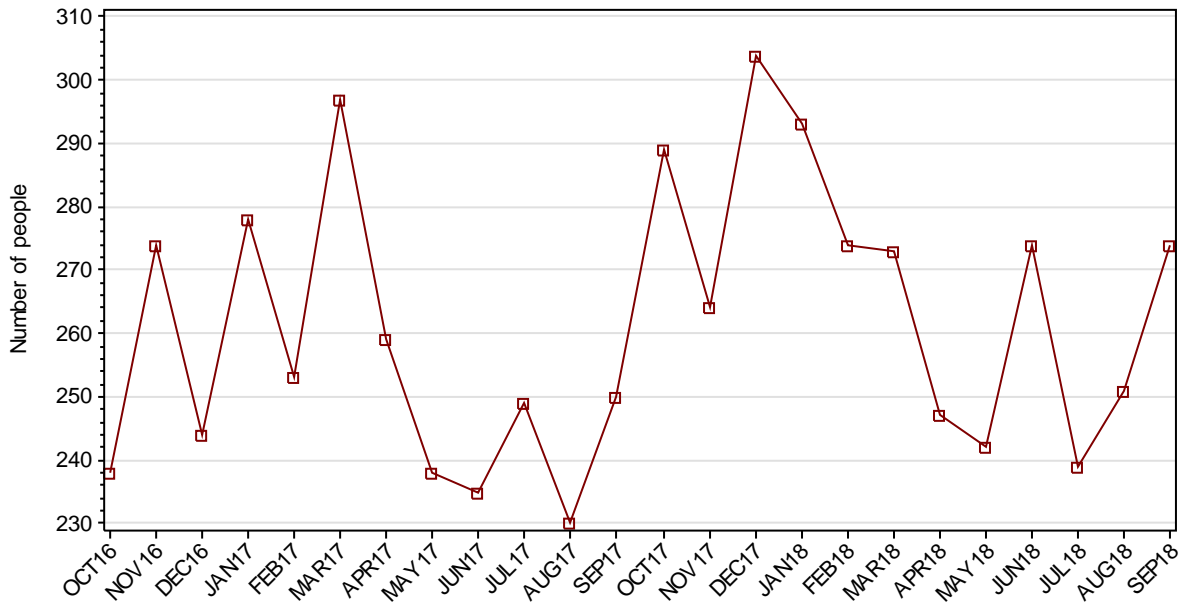
	30JUN18		30SEP18	
	Number	% of Total	Number	% of Total
Homicide	1	0.8	1	0.7
Acts intended to cause injury	21	16.2	24	17.3
Sexual assault	13	10.0	14	10.1
Dangerous/negligent acts	5	3.8	4	2.9
Abduction/harrassment	0	0	0	0
Robbery/extortion	19	14.6	24	17.3
Unlawful entry/burglary/B&E	20	15.4	22	15.8
Theft	13	10.0	10	7.2
Fraud/deception	1	0.8	2	1.4
Drug offences	1	0.8	1	0.7
Weapons offences	3	2.3	2	1.4
Property damage	2	1.5	3	2.2
Public order offences	3	2.3	2	1.4
Traffic offences	0	0	0	0
Justice procedure offences	28	21.5	30	21.6
Miscellaneous	0	0	0	0
Unknown	0	0	0	0
Total	130	100.0	139	100.0

1.1.9 JUVENILE CUSTODY FORECAST

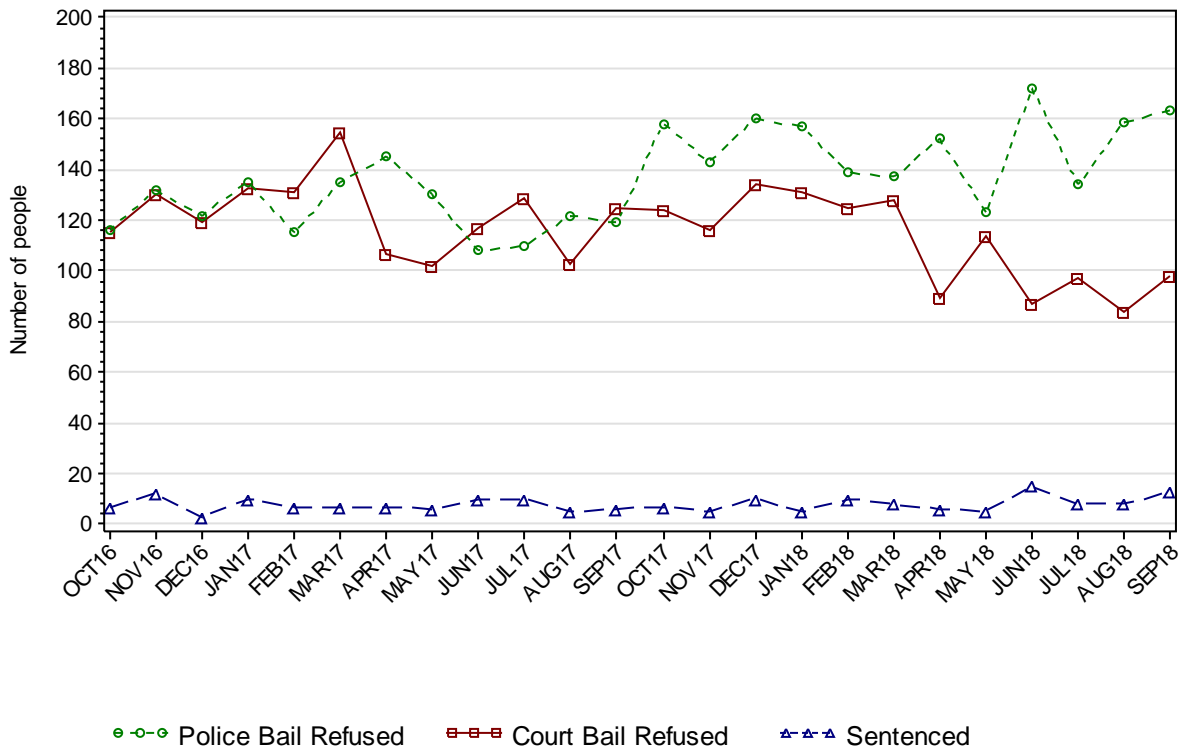


SECTION 1.2 JUVENILE CUSTODY RECEPTIONS

1.2.1 JUVENILES RECEIVED INTO CUSTODY DURING MONTH

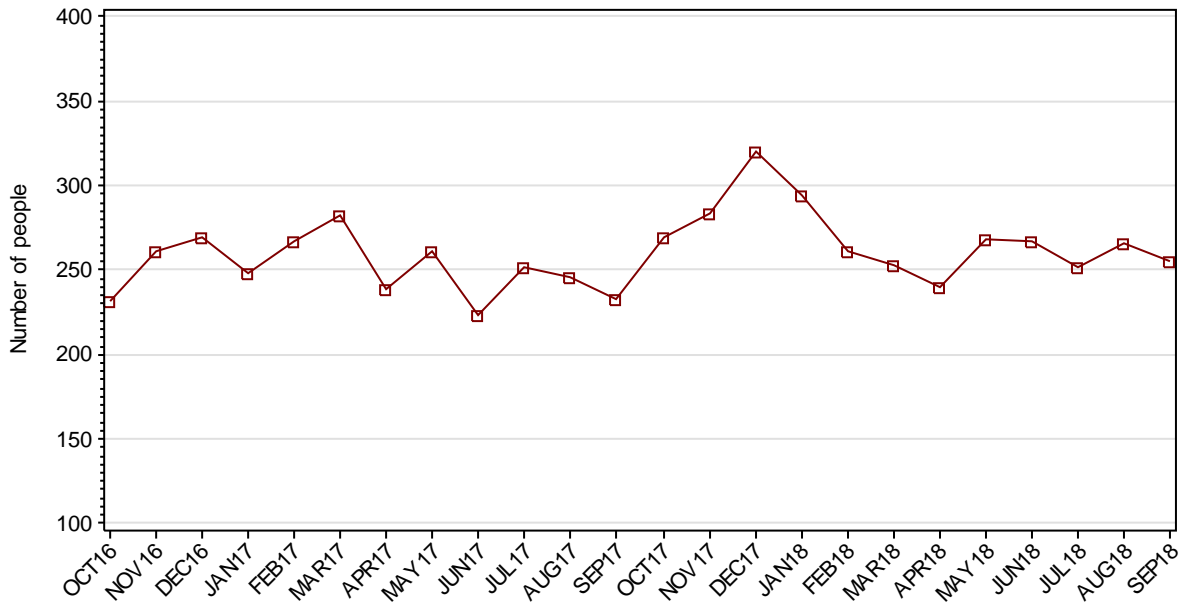


1.2.2 JUVENILES RECEIVED INTO CUSTODY BY LEGAL STATUS



SECTION 1.3 JUVENILE CUSTODY DISCHARGES

1.3.1 JUVENILES DISCHARGED FROM CUSTODY DURING MONTH

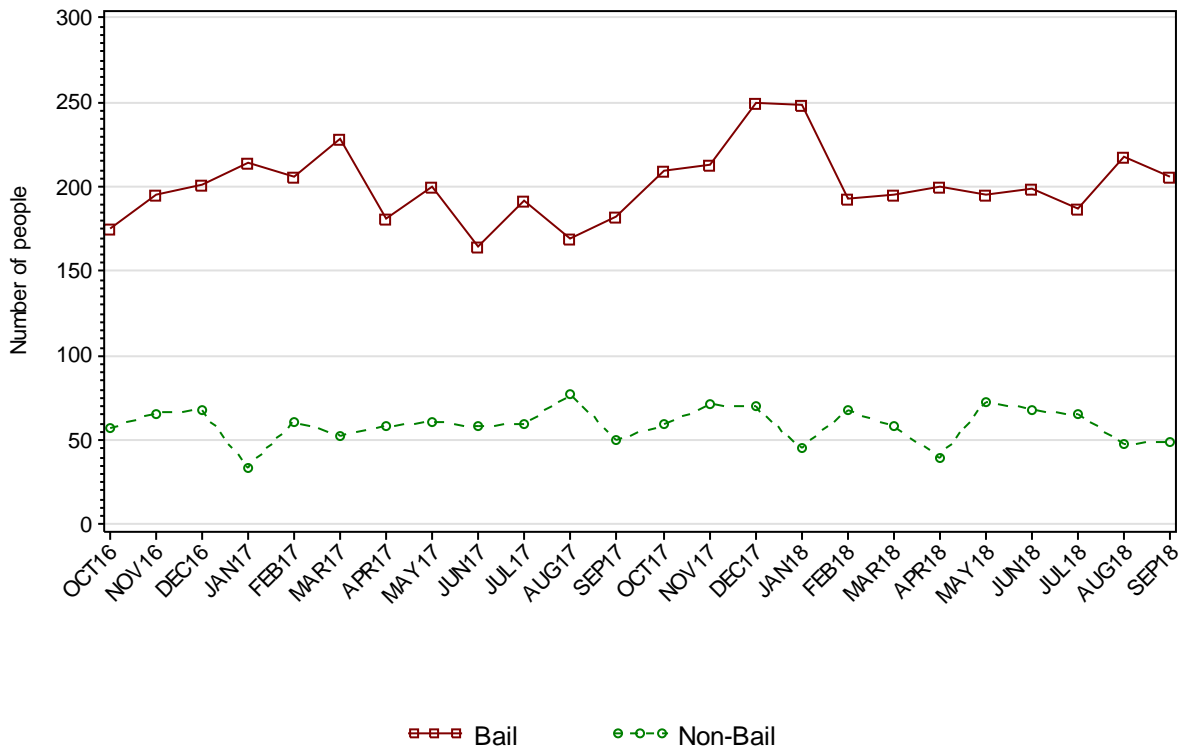


1.3.2 AVERAGE LENGTH OF STAY FOR JUVENILES DISCHARGED FROM CUSTODY EACH QUARTER

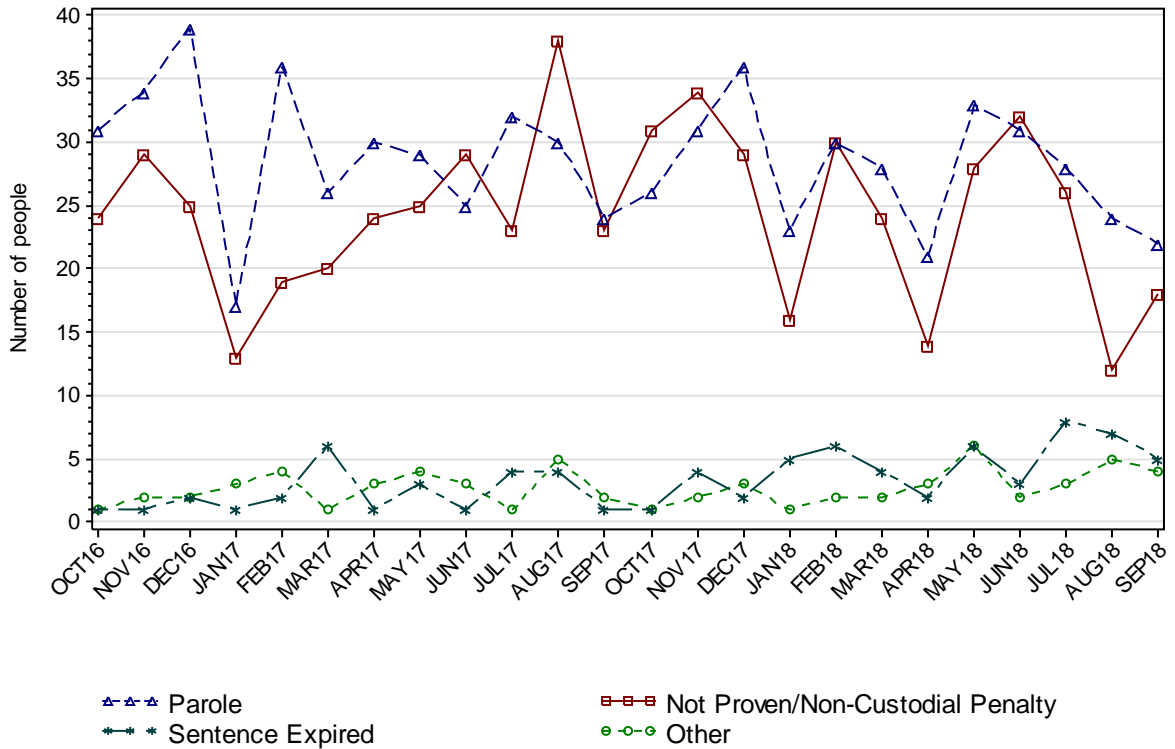
		Remand Custody Only		Sentenced Custody Only		Remand to Sentenced Custody	
		JUN18	SEP18	JUN18	SEP18	JUN18	SEP18
Total Male	Avg Days	10.5	13.1	156.3	111.2	174.9	148.1
	Number	484	497	20	22	82	70
Total Female	Avg Days	7.1	5.4	40.0	53.5	142.3	98.3
	Number	179	172	3	4	7	8
Indigenous Male	Avg Days	12.0	17.2	148.3	112.2	173.9	141.6
	Number	221	215	9	11	40	36
Indigenous Female	Avg Days	7.6	7.7	40.0	70.5	73.7	97.3
	Number	72	66	3	2	3	4
Total	Avg Days	9.6	11.1	141.1	102.3	172.3	143.0
	Number	663	669	23	26	89	78

Note: Length of Stay for Remand to Sentenced Custody is from the date of reception on remand to date of discharge after serving sentence.

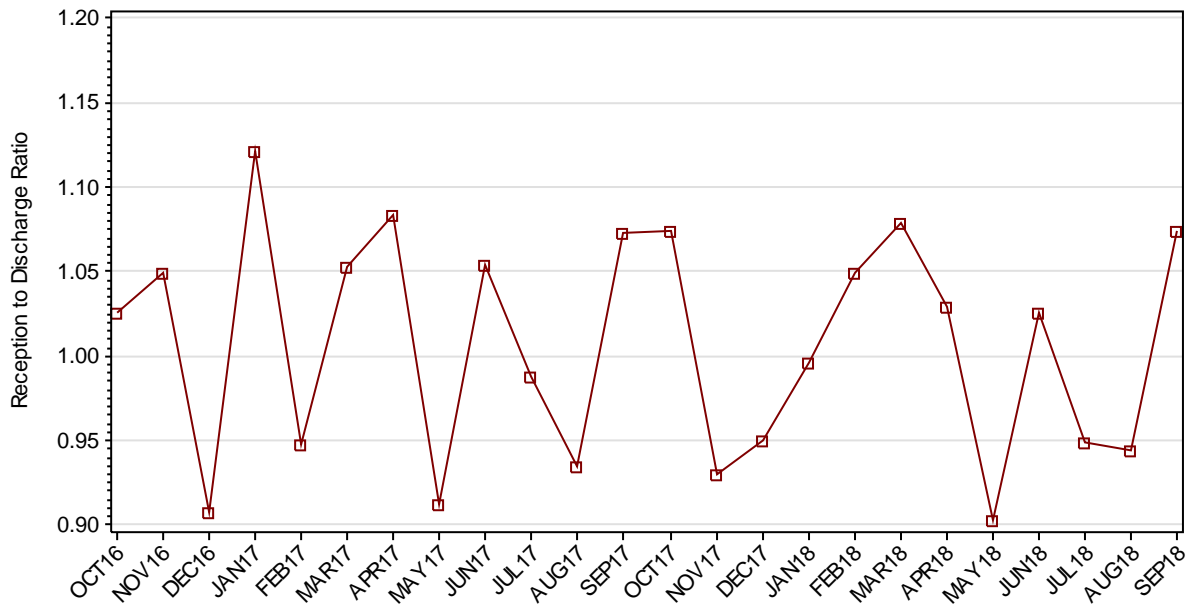
1.3.3 JUVENILES BY DISCHARGE TYPE



1.3.4 JUVENILES BY DISCHARGE TYPE (EXCLUDING BAIL)



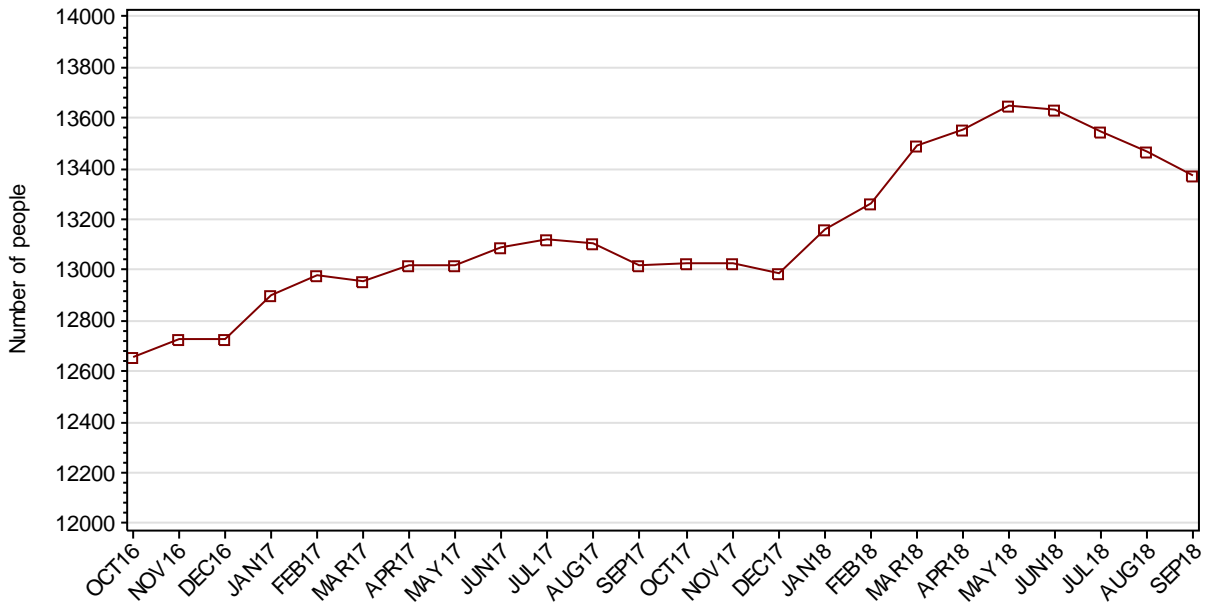
1.3.5 RATIO OF JUVENILE RECEPTIONS TO DISCHARGES



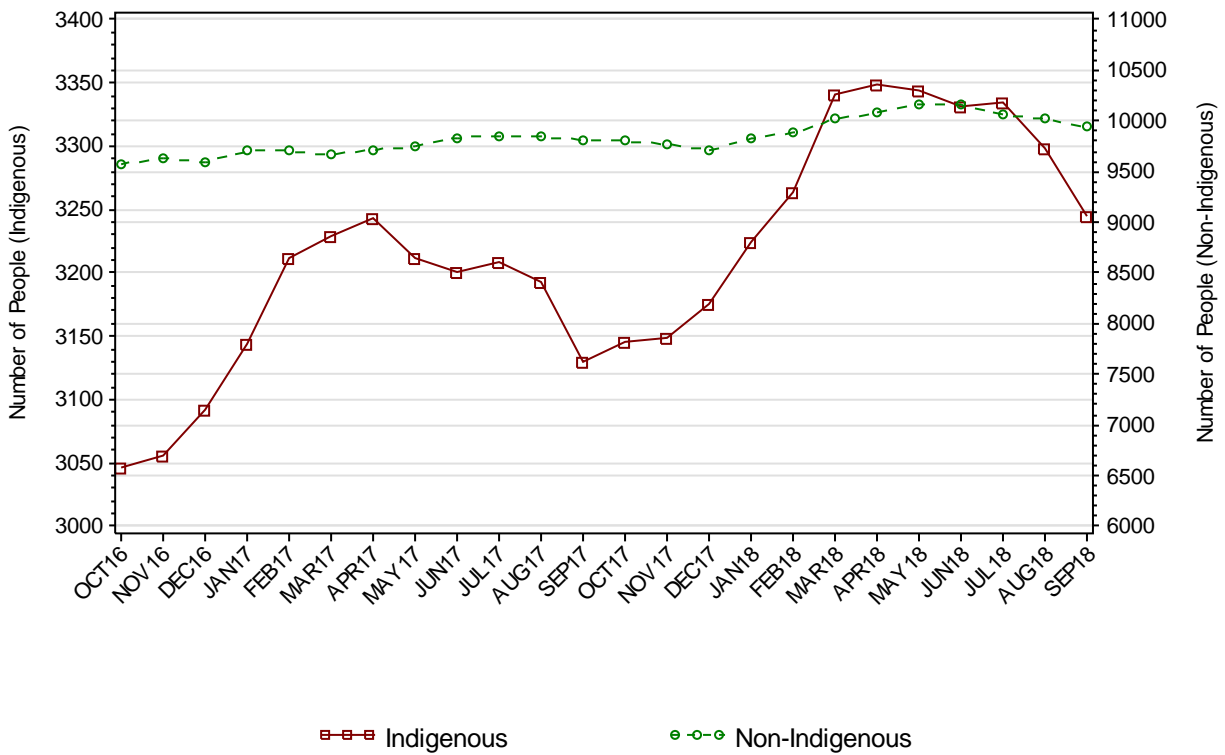
Part 2 ADULTS

SECTION 2.1 ADULT CUSTODY POPULATION

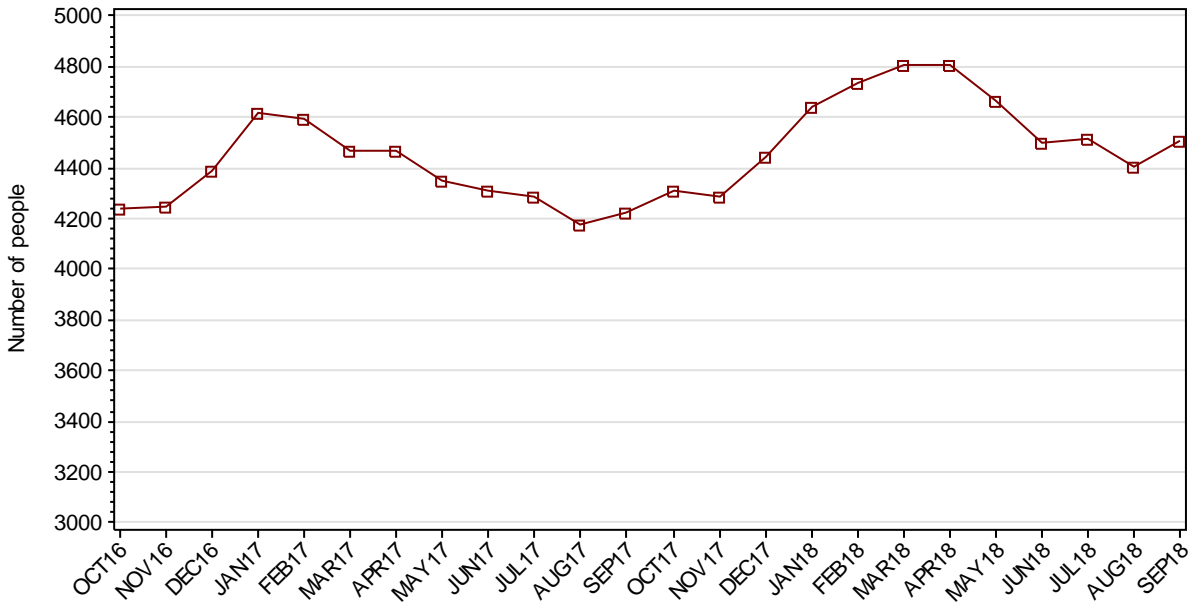
2.1.1 ADULT CUSTODY POPULATION AT END OF MONTH



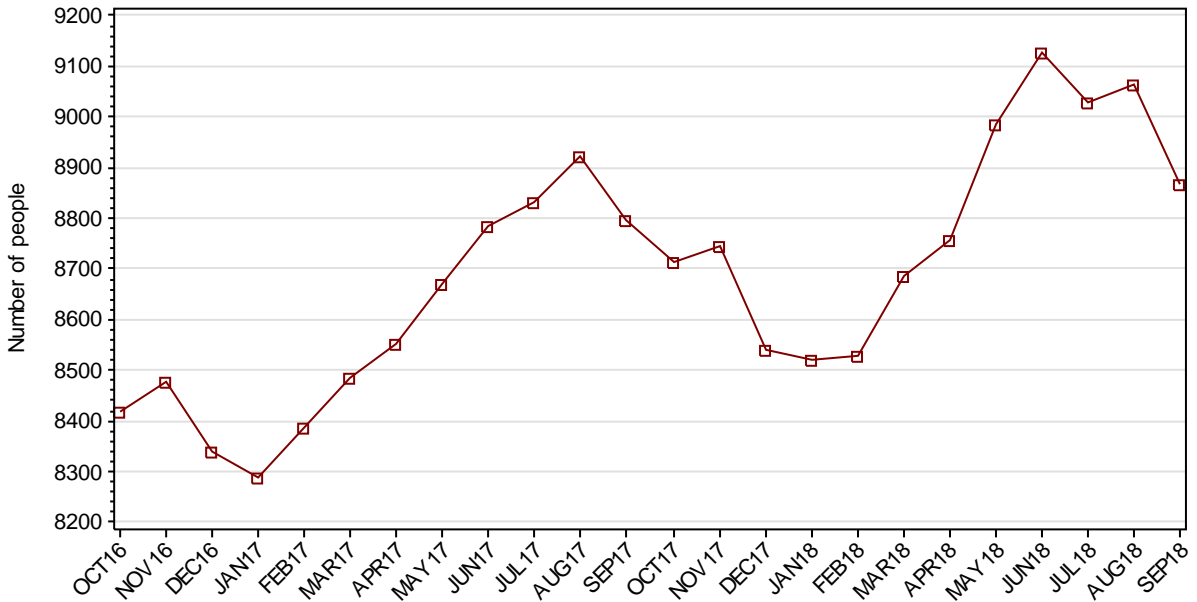
2.1.2 ADULT CUSTODY POPULATION BY INDIGENOUS STATUS



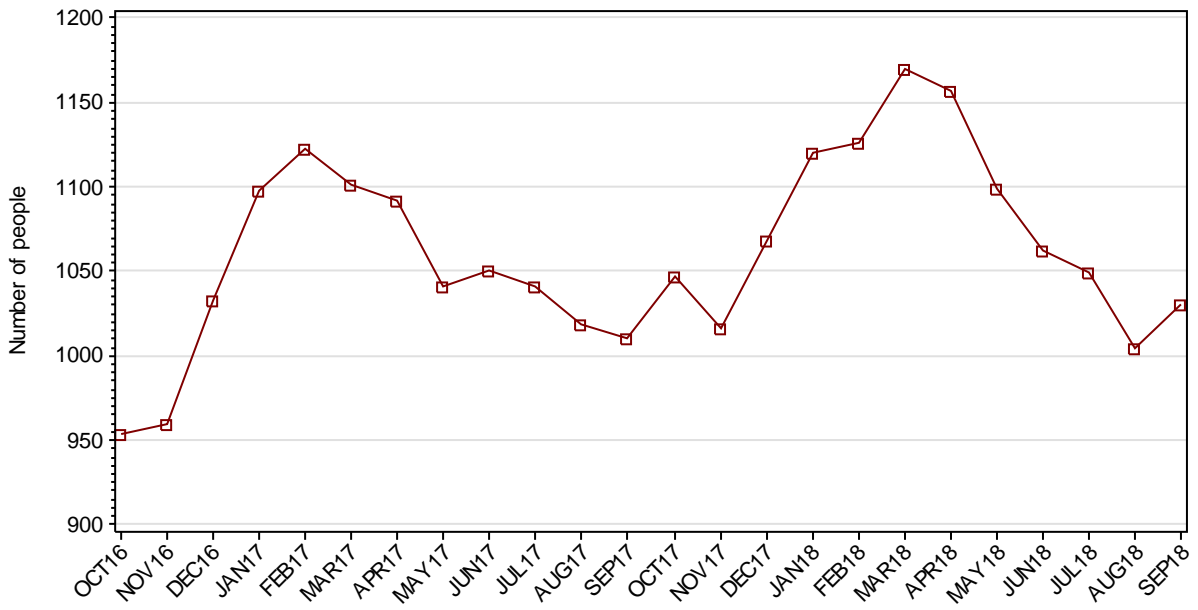
2.1.3 ADULT REMAND POPULATION



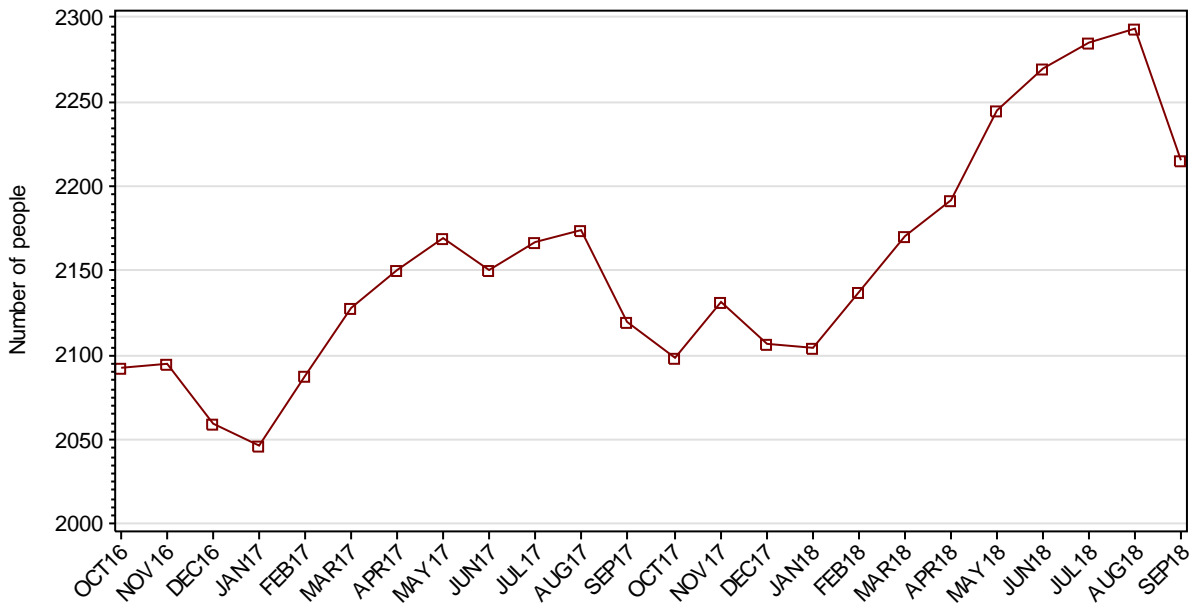
2.1.4 ADULT SENTENCED POPULATION



2.1.5 INDIGENOUS ADULT REMAND POPULATION



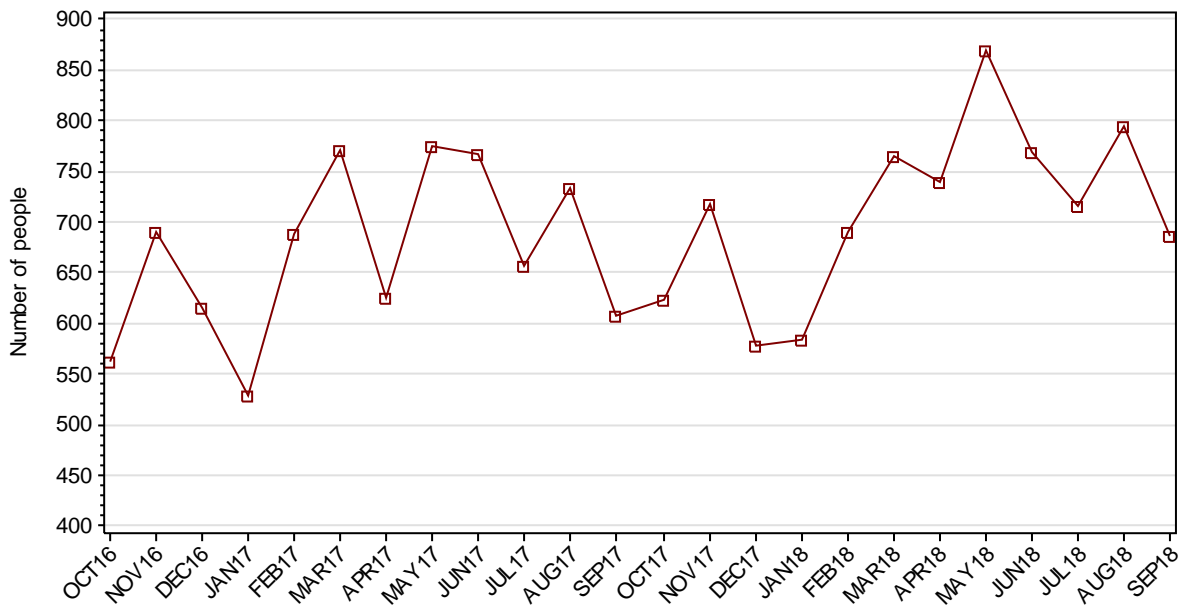
2.1.6 INDIGENOUS ADULT SENTENCED POPULATION



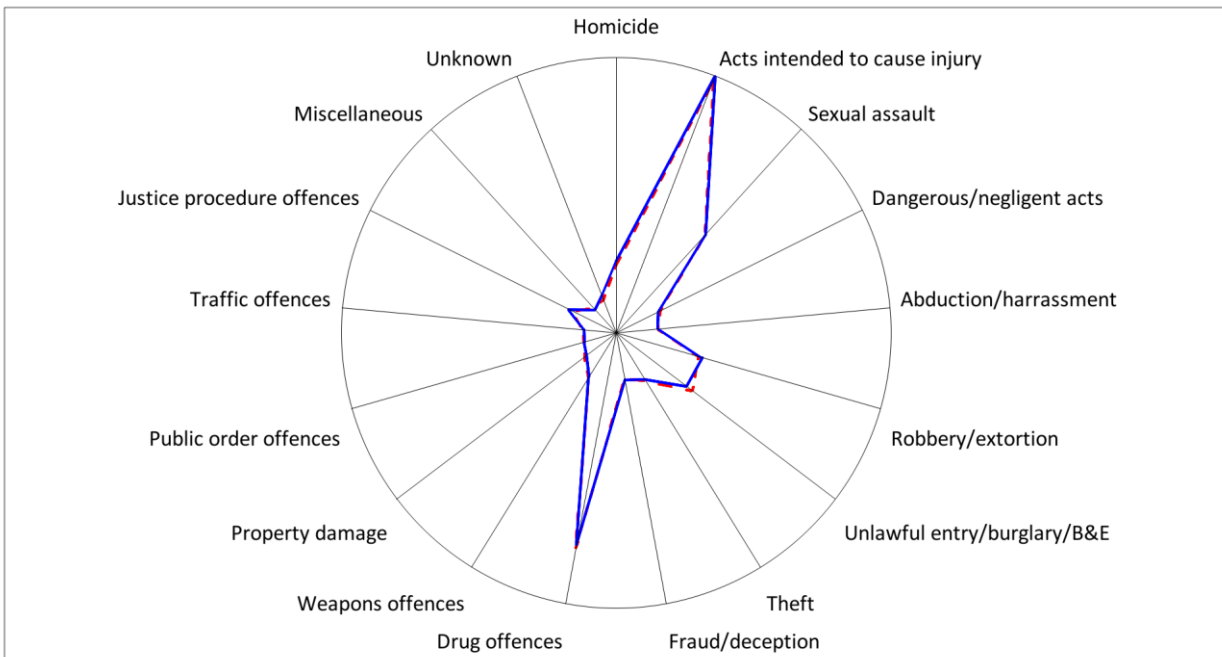
2.1.7 ADULT CUSTODY PROFILE AT END OF QUARTER

		Remand		Sentenced		Total	
		JUN18	SEP18	JUN18	SEP18	JUN18	SEP18
Total Male	Count	4098	4098	8465	8289	12563	12387
	Avg Age	35.5	35.5	37.5	37.7	36.8	37.0
Total Female	Count	404	407	663	578	1067	985
	Avg Age	33.6	33.7	36.0	36.7	35.1	35.4
Indigenous Male	Count	913	900	2050	2026	2963	2926
	Avg Age	32.3	32.2	33.4	33.4	33.0	33.0
Indigenous Female	Count	149	130	220	189	369	319
	Avg Age	32.3	31.0	33.4	32.9	32.9	32.1
Total	Count	4502	4505	9128	8867	13630	13372
	Avg Age	35.3	35.3	37.4	37.6	36.7	36.9

2.1.8 ADULTS IN CUSTODY: NUMBER WHOSE LEGAL STATUS CHANGED DURING MONTH FROM REMAND TO SENTENCED



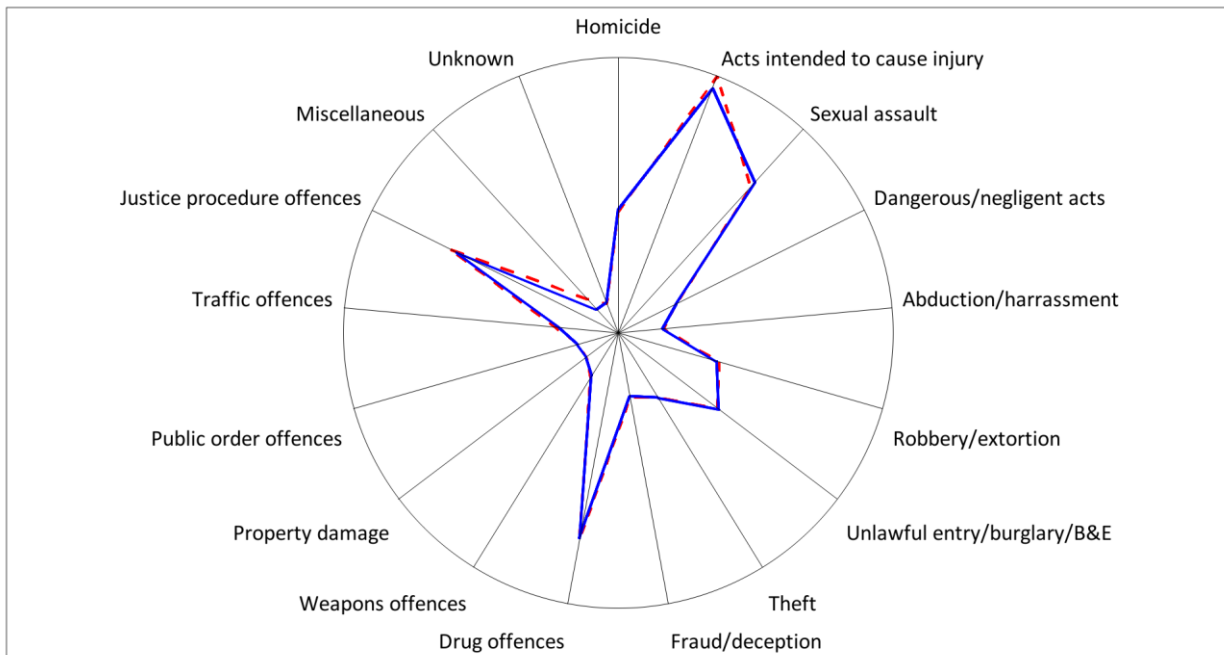
2.1.9 ADULT REMAND POPULATION BY MOST SERIOUS OFFENCE



As At: - - 30JUN18 — 30SEP18

	30JUN18		30SEP18	
	Number	% of Total	Number	% of Total
Homicide	206	4.6	226	5.0
Acts intended to cause injury	1285	28.5	1310	29.1
Sexual assault	548	12.2	557	12.4
Dangerous/negligent acts	107	2.4	97	2.2
Abduction/harrassment	67	1.5	70	1.6
Robbery/extortion	302	6.7	323	7.2
Unlawful entry/burglary/B&E	355	7.9	315	7.0
Theft	145	3.2	133	3.0
Fraud/deception	91	2.0	97	2.2
Drug offences	1011	22.5	991	22.0
Weapons offences	124	2.8	119	2.6
Property damage	55	1.2	40	0.9
Public order offences	21	0.5	18	0.4
Traffic offences	25	0.6	14	0.3
Justice procedure offences	104	2.3	127	2.8
Miscellaneous	24	0.5	11	0.2
Unknown	32	0.7	57	1.3
Total	4502	100.0	4505	100.0

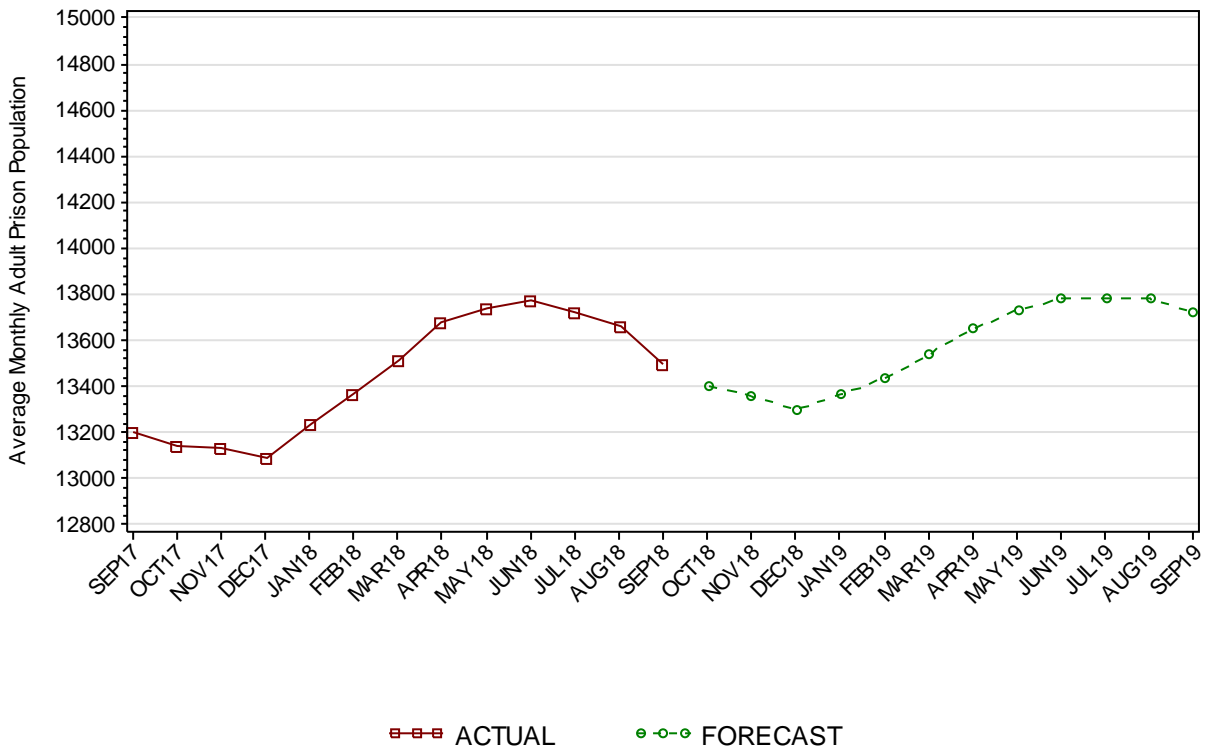
2.1.10 ADULT SENTENCED POPULATION BY MOST SERIOUS OFFENCE



As At: - -30JUN18 — 30SEP18

	30JUN18		30SEP18	
	Number	% of Total	Number	% of Total
Homicide	668	7.3	686	7.7
Acts intended to cause injury	1787	19.6	1694	19.1
Sexual assault	1222	13.4	1269	14.3
Dangerous/negligent acts	266	2.9	263	3.0
Abduction/harrassment	121	1.3	115	1.3
Robbery/extortion	557	6.1	537	6.1
Unlawful entry/burglary/B&E	695	7.6	710	8.0
Theft	341	3.7	339	3.8
Fraud/deception	267	2.9	254	2.9
Drug offences	1315	14.4	1304	14.7
Weapons offences	167	1.8	154	1.7
Property damage	79	0.9	80	0.9
Public order offences	91	1.0	95	1.1
Traffic offences	250	2.7	219	2.5
Justice procedure offences	1161	12.7	1099	12.4
Miscellaneous	124	1.4	21	0.2
Unknown	17	0.2	28	0.3
Total	9128	100.0	8867	100.0

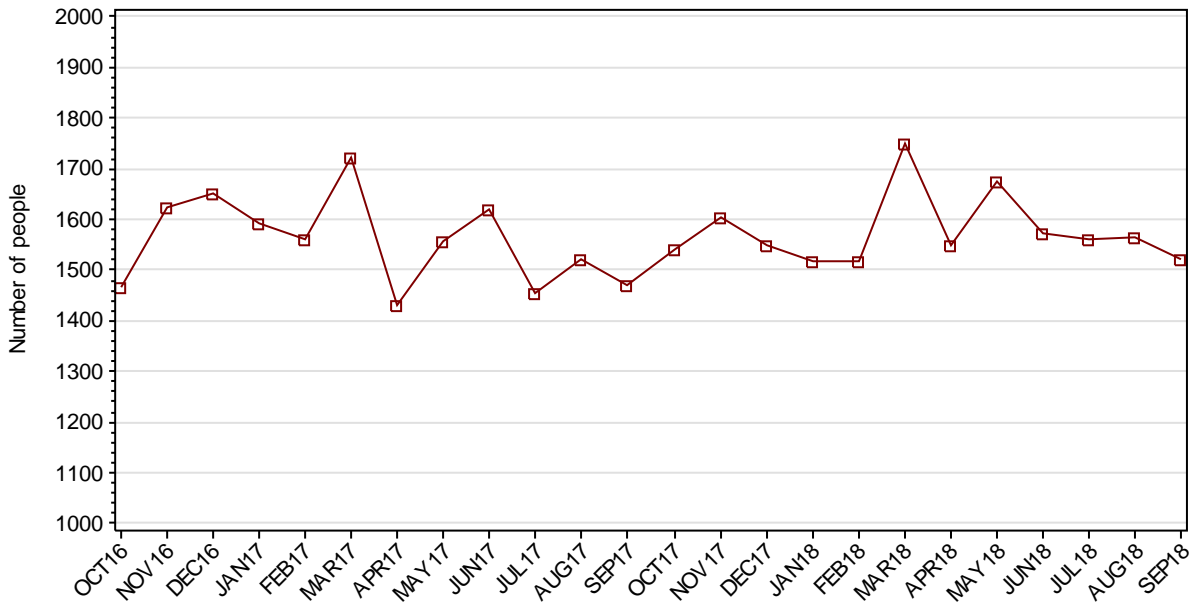
2.1.11 PRISON POPULATION* FORECAST



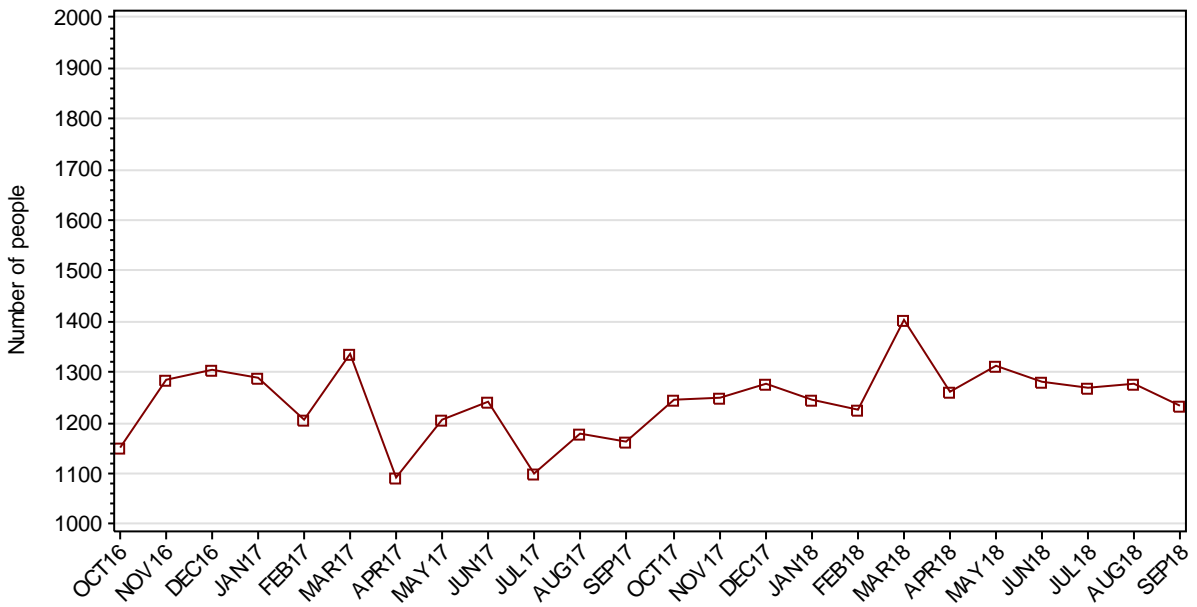
*Includes adults held in 24 hour police/court cell complexes managed by CSNSW

SECTION 2.2 ADULT CUSTODY RECEPTIONS

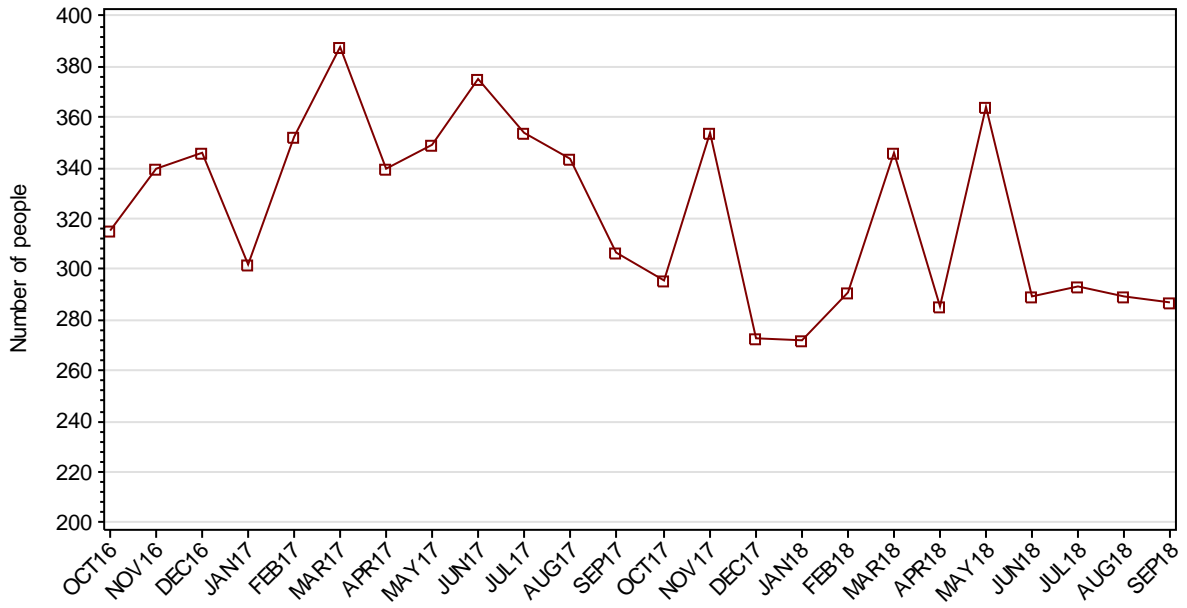
2.2.1 ADULTS RECEIVED INTO CUSTODY DURING MONTH



2.2.2 ADULT REMAND RECEPTIONS

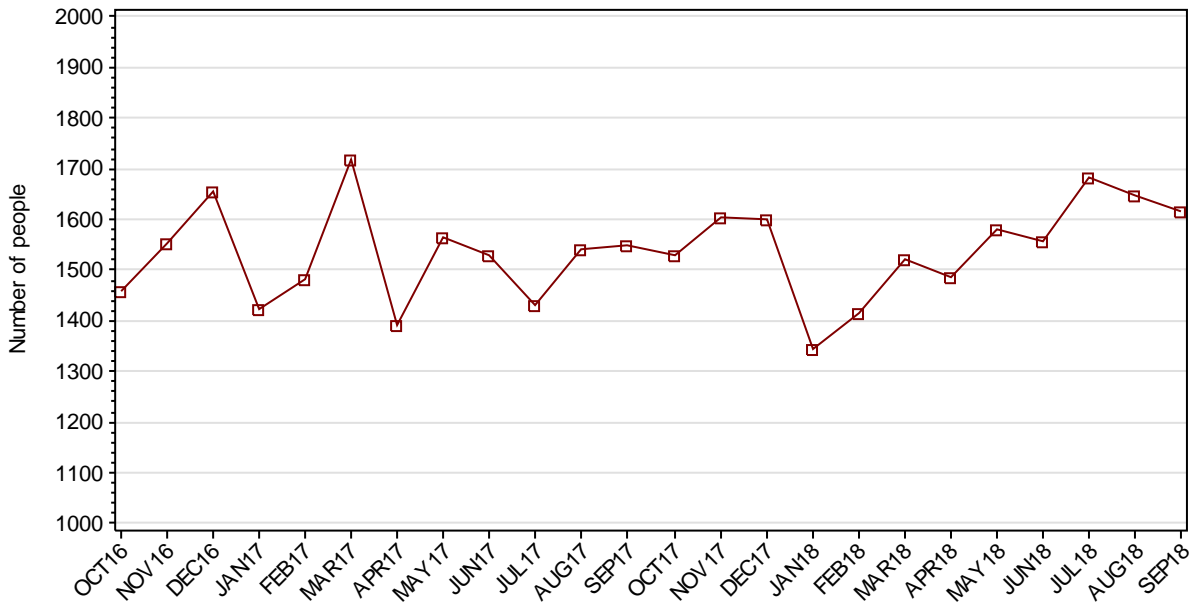


2.2.3 ADULT SENTENCED RECEPTIONS



SECTION 2.3 ADULT CUSTODY DISCHARGES

2.3.1 ADULTS DISCHARGED FROM CUSTODY DURING MONTH

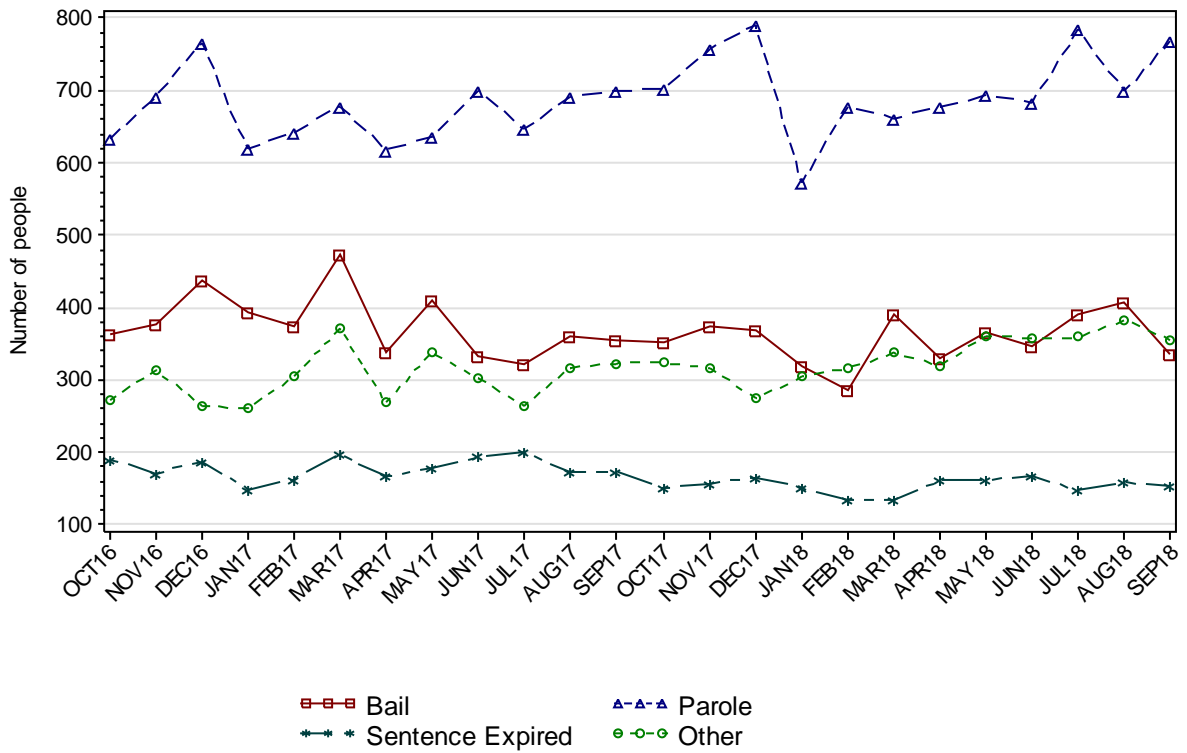


2.3.2 AVERAGE LENGTH OF STAY FOR ADULTS DISCHARGED FROM CUSTODY EACH QUARTER

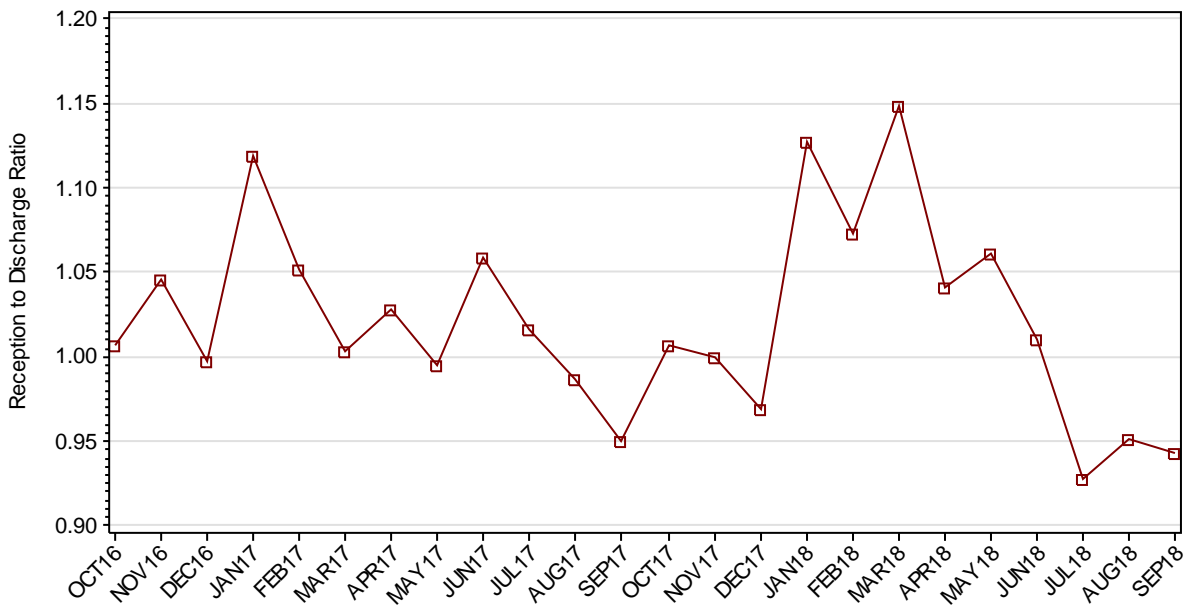
		Remand Custody Only		Sentenced Custody Only		Remand to Sentenced Custody	
		JUN18	SEP18	JUN18	SEP18	JUN18	SEP18
Total Male	Avg Days	56.7	57.3	213.3	235.4	423.6	427.5
	Number	1342	1417	851	905	1776	1902
Total Female	Avg Days	43.3	48.3	128.4	176.5	322.5	249.3
	Number	304	324	122	141	222	251
Indigenous Male	Avg Days	48.9	50.2	198.1	209.9	322.0	352.6
	Number	327	378	276	263	549	528
Indigenous Female	Avg Days	38.4	56.5	108.0	161.1	220.0	230.5
	Number	99	117	56	60	94	113
Total	Avg Days	54.3	55.6	202.7	227.4	412.4	406.7
	Number	1646	1741	973	1046	1998	2153

Note: Length of Stay for Remand to Sentenced Custody is from the date of reception on remand to date of discharge after serving sentence.

2.3.3 ADULTS BY DISCHARGE TYPE



2.3.4 RATIO OF ADULT RECEPTIONS TO DISCHARGES



Part 3 DATA TABLES

Juvenile	1.In Custody										Remand to Sent
	Total	Legal Status			Indigenous			Indigenous Legal Status			
		Court Bail Ref.	Police Bail Ref.	Sent	Yes	No	Unk	Court Bail Ref.	Police Bail Ref.	Sent	
OCT16	260	131	2	127	127	129	4	55	2	70	32
NOV16	270	133	8	129	139	130	1	64	4	71	30
DEC16	249	138	4	107	136	112	1	73	4	59	24
JAN17	278	154	2	122	156	121	1	85	1	70	30
FEB17	263	148	6	109	148	114	1	77	4	67	25
MAR17	279	158	2	119	147	129	3	76	1	70	40
APR17	299	189	8	102	159	138	2	99	4	56	19
MAY17	275	161	6	108	142	130	3	78	1	63	38
JUN17	288	159	2	127	149	136	3	79	0	70	46
JUL17	286	166	2	118	132	150	4	69	1	62	22
AUG17	270	160	2	108	127	141	2	69	2	56	24
SEP17	286	164	4	118	132	151	3	75	1	56	33
OCT17	308	172	4	132	143	160	5	81	1	61	35
NOV17	286	156	6	124	123	159	4	65	4	54	30
DEC17	268	164	3	101	117	148	3	66	2	49	13
JAN18	268	153	7	108	127	138	3	67	4	56	36
FEB18	280	174	5	101	139	135	6	90	1	48	27
MAR18	302	179	6	117	144	153	5	83	5	56	43
APR18	309	178	7	124	146	157	6	79	3	64	27
MAY18	282	154	4	124	137	140	5	71	3	63	41
JUN18	290	152	8	130	141	143	6	75	4	62	29
JUL18	278	138	8	132	134	137	7	64	4	66	32
AUG18	264	123	3	138	121	137	6	60	1	60	35
SEP18	283	140	4	139	136	140	7	75	2	59	22

Juvenile	2.Receptions							3.Discharges									Ratio Rec/ Dis
	Tot	Legal Status			Indigenous			Tot	Legal Status					Indigenous			
		Court Bail Ref.	Police Bail Ref.	Sent	Yes	No	Unk		Bail	Not Proven Non-Cust.	Other	Parole	Sent Exp	Yes	No	Unk	
OCT16	238	115	116	7	92	136	10	232	175	24	1	31	1	91	135	6	1.03
NOV16	274	130	132	12	135	133	6	261	195	29	2	34	1	122	130	9	1.05
DEC16	244	119	122	3	123	114	7	269	201	25	2	39	2	128	134	7	0.91
JAN17	278	133	135	10	138	138	2	248	214	13	3	17	1	117	129	2	1.12
FEB17	253	131	115	7	124	120	9	267	206	19	4	36	2	132	126	9	0.95
MAR17	297	155	135	7	146	144	7	282	229	20	1	26	6	148	129	5	1.05
APR17	259	107	145	7	120	132	7	239	181	24	3	30	1	108	123	8	1.08
MAY17	238	102	130	6	107	125	6	261	200	25	4	29	3	124	132	5	0.91
JUN17	235	117	108	10	104	127	4	223	165	29	3	25	1	97	122	4	1.05
JUL17	249	129	110	10	103	138	8	252	192	23	1	32	4	120	125	7	0.99
AUG17	230	103	122	5	108	115	7	246	169	38	5	30	4	114	123	9	0.93
SEP17	250	125	119	6	110	134	6	233	183	23	2	24	1	104	124	5	1.07
OCT17	289	124	158	7	138	144	7	269	210	31	1	26	1	128	136	5	1.07
NOV17	264	116	143	5	126	134	4	284	213	34	2	31	4	145	134	5	0.93
DEC17	304	134	160	10	148	150	6	320	250	29	3	36	2	152	161	7	0.95
JAN18	293	131	157	5	152	136	5	294	249	16	1	23	5	142	147	5	1.00
FEB18	274	125	139	10	135	129	10	261	193	30	2	30	6	123	131	7	1.05
MAR18	273	128	137	8	130	139	4	253	195	24	2	28	4	127	121	5	1.08
APR18	247	89	152	6	111	135	1	240	200	14	3	21	2	108	132	0	1.03
MAY18	242	114	123	5	121	113	8	268	195	28	6	33	6	129	130	9	0.90
JUN18	274	87	172	15	114	154	6	267	199	32	2	31	3	111	151	5	1.03
JUL18	239	97	134	8	104	129	6	252	187	26	3	28	8	113	134	5	0.95
AUG18	251	84	159	8	104	139	8	266	218	12	5	24	7	117	140	9	0.94
SEP18	274	98	163	13	119	146	9	255	206	18	4	22	5	104	143	8	1.07

Adult	1.In Custody								Remand to Sent
	Total	Legal Status		Indigenous			Indigenous Legal Status		
		Remand	Sent	Yes	No	Unk	Remand	Sent	
OCT16	12659	4240	8419	3047	9570	42	954	2093	563
NOV16	12726	4248	8478	3055	9628	43	960	2095	691
DEC16	12729	4388	8341	3092	9588	49	1033	2059	616
JAN17	12901	4614	8287	3144	9702	55	1098	2046	528
FEB17	12978	4591	8387	3211	9703	64	1123	2088	688
MAR17	12955	4469	8486	3229	9666	60	1101	2128	771
APR17	13022	4470	8552	3243	9714	65	1092	2151	626
MAY17	13018	4348	8670	3211	9746	61	1041	2170	775
JUN17	13092	4309	8783	3200	9833	59	1050	2150	768
JUL17	13120	4288	8832	3208	9855	57	1041	2167	657
AUG17	13102	4180	8922	3193	9848	61	1019	2174	733
SEP17	13017	4221	8796	3130	9808	79	1010	2120	607
OCT17	13026	4311	8715	3145	9799	82	1047	2098	624
NOV17	13031	4286	8745	3148	9774	109	1016	2132	717
DEC17	12989	4447	8542	3175	9711	103	1068	2107	578
JAN18	13164	4645	8519	3225	9831	108	1120	2105	583
FEB18	13267	4737	8530	3263	9881	123	1126	2137	691
MAR18	13494	4807	8687	3341	10019	134	1170	2171	766
APR18	13558	4803	8755	3349	10083	126	1157	2192	739
MAY18	13651	4664	8987	3344	10167	140	1099	2245	869
JUN18	13630	4502	9128	3332	10162	136	1062	2270	769
JUL18	13546	4516	9030	3334	10060	152	1049	2285	715
AUG18	13468	4402	9066	3298	10016	154	1005	2293	794
SEP18	13372	4505	8867	3245	9943	184	1030	2215	686

Adult	2.Receptions						3.Discharges								Ratio Rec/ Dis
	Tot	Legal Status		Indigenous			Tot	Legal Status				Indigenous			
		Remand	Sent	Yes	No	Unk		Bail	Other	Parole	Sent Exp	Yes	No	Unk	
OCT16	1468	1153	315	427	1005	36	1458	364	272	632	190	439	982	37	1.01
NOV16	1624	1284	340	473	1119	32	1552	376	314	691	171	465	1058	29	1.05
DEC16	1651	1305	346	474	1118	59	1655	437	265	766	187	441	1153	61	1.00
JAN17	1592	1290	302	477	1069	46	1422	394	260	619	149	424	958	40	1.12
FEB17	1560	1208	352	482	1032	46	1484	374	305	642	163	416	1030	38	1.05
MAR17	1723	1335	388	487	1182	54	1718	473	370	678	197	467	1193	58	1.00
APR17	1431	1091	340	405	988	38	1392	339	268	618	167	395	965	32	1.03
MAY17	1556	1207	349	430	1095	31	1563	410	339	636	178	462	1065	36	1.00
JUN17	1618	1243	375	457	1128	33	1529	334	301	700	194	453	1041	35	1.06
JUL17	1455	1101	354	428	991	36	1432	322	265	646	199	418	978	36	1.02
AUG17	1521	1177	344	422	1053	46	1541	359	317	692	173	438	1063	40	0.99
SEP17	1471	1164	307	423	1004	44	1549	355	323	699	172	481	1042	26	0.95
OCT17	1541	1245	296	473	1011	57	1530	352	324	703	151	457	1015	58	1.01
NOV17	1603	1249	354	466	1059	78	1603	373	317	756	157	467	1085	51	1.00
DEC17	1550	1277	273	484	1016	50	1599	369	274	791	165	457	1082	60	0.97
JAN18	1517	1245	272	448	1029	40	1346	319	304	572	151	399	912	35	1.13
FEB18	1519	1228	291	449	1014	56	1415	286	316	678	135	413	962	40	1.07
MAR18	1748	1402	346	527	1158	63	1522	390	337	662	133	449	1020	53	1.15
APR18	1548	1263	285	466	1022	60	1487	329	320	677	161	460	961	66	1.04
MAY18	1677	1313	364	480	1128	69	1581	366	360	693	162	480	1045	56	1.06
JUN18	1572	1283	289	460	1061	51	1555	346	358	684	167	461	1034	60	1.01
JUL18	1561	1268	293	470	1032	59	1682	391	359	784	148	479	1160	43	0.93
AUG18	1565	1276	289	449	1062	54	1646	406	383	698	159	484	1109	53	0.95
SEP18	1522	1235	287	447	998	77	1614	336	356	769	153	496	1070	48	0.94

Part 4 GLOSSARY

Adult

A person held in custody in a gazetted correctional centre managed by Corrective Services NSW (CSNSW). Persons may have been remanded in custody after being refused bail or sentenced to a custodial order for a proven offence.

The adult figures in this report include the small number of 16 and 17 year old males held in the Kariiong Juvenile Correctional Centre.

ANZSOC

The Australian Bureau of Statistics Australian and New Zealand Standard Offence Classification (ANZSOC) groups criminal offences into 16 broad divisions:

1. Homicide and related offences
2. Acts intended to cause injury
3. Sexual assault and related offences
4. Dangerous or negligent acts endangering persons
5. Abduction, harassment and other offences against the person
6. Robbery, extortion and related offences
7. Unlawful entry with intent/burglary, break and enter
8. Theft and related offences
9. Fraud, deception and related offences
10. Illicit drug offences
11. Prohibited and regulated weapons and explosives offences
12. Property damage and environmental pollution
13. Public order offences
14. Traffic and vehicle regulatory offences
15. Offences against justice procedures, government security and government operations
16. Miscellaneous offences

For further information see:

<http://www.abs.gov.au/AUSSTATS/abs@.nsf/DetailsPage/1234.02011>

Note that shortened titles are used in this report.

Average length of stay

The length of stay is the duration of the custodial episode, from the date of reception to the date of discharge.

The average length of stay (in days) is presented for three types of custodial episodes:

Remand custody only - the person entered custody after being refused bail and was then discharged from custody without having been sentenced. Most commonly discharged after being granted bail, other reasons include criminal charges not proven, receiving a non-custodial penalty for a proven offence or being transferred interstate or from a juvenile to an adult prison or vice versa.

Sentenced custody only - persons who entered custody only after being sentenced to a custodial penalty by a court. These persons had either been granted bail, or bail had been dispensed with, pending finalisation of their charges.

Remand to sentenced custody - persons who had been remanded in custody prior to having a custodial sentence imposed by a court. The length of stay for these people is the entire time from reception on remand to discharge after serving the custodial sentence.

Note: Persons initially remanded in custody but then granted bail prior to having a custodial penalty imposed by a court are counted as two custodial episodes: one of remand custody only and one of sentenced custody only.

Bail

Under the provisions of the *Bail Act 2013*, police and courts may grant or refuse to grant bail to alleged offenders. The grant of bail takes into consideration the alleged offence and offender. Bail is granted at the offence level and so a person may be granted bail for one offence and refused bail for another offence.

Persons refused bail (and small numbers granted bail but unable to meet the bail conditions set by a court) are remanded into custody pending further court action.

Juvenile custody population data in this report disaggregates persons remanded into custody into those refused police bail and refused court bail. This is because all juveniles refused police bail are held in Juvenile Justice centres whereas not all adults refused police bail are held in gazetted correctional centres or 24 hour police cell complexes.

Control order

See Custodial sentence

Corrective Services NSW

Corrective Services NSW (CSNSW) is part of the Department of Justice with responsibilities including the supervision of people remanded in custody pending the finalisation of criminal charges and offenders sentenced to a custodial order.

See <http://www.correctiveservices.nsw.gov.au/> for further information.

The Corrections Research, Evaluation and Statistics (CRES) section of CSNSW have provided the adult custody data for this report and advised on its interpretation.

Court bail refused

See Bail

Custodial episode

A custodial episode is the time between the reception into and discharge from custody. An individual may have multiple custodial episodes within the reporting period. A change in legal status between the reception and discharge date, for example changing from being bail refused to being sentenced to a custodial order, does not count as a new custodial episode.

Custodial sentence

Courts may impose a custodial sentence for a proven offence. For adults this is a term of imprisonment under the *Crimes (Sentencing Procedure) Act 1999*. For young people this is a control order of up to two years duration or a term of imprisonment to be served partly or wholly as a juvenile under the *Children (Criminal Proceedings) Act 1987*. A person may be given custodial sentences for multiple proven offences.

While the majority of persons held under sentence in a correctional centre are sentenced under the *Crimes (Sentencing Procedure) Act 1999*, offenders whose parole has been revoked by the State Parole Authority, persons sentenced under the *Commonwealth Crimes Act 1914*, those sentenced under the *Mental Health (Forensic Provision) Act 1990*, small numbers of persons held under immigration orders awaiting deportation following expiry of their sentence and persons sentenced under legislation in other states or territories are also managed by CSNSW.

Custody population

Persons held in custody in a JJNSW juvenile justice centre or a CSNSW gazetted correctional centre, whether remanded or sentenced. Custody population figures are counted as at midnight on the last day of the month or quarter as appropriate. Persons held in a CSNSW managed police/court cell complex at midnight on the last day of the month but later transferred to a gazetted correctional centre are included in custody population figures for that month.

Discharge type

The type of reason why persons were discharged from custody:

Bail - courts granted the person bail pending the finalisation of their criminal charge(s).

Parole - the person was released to parole after serving the non-parole period of custodial sentence(s).

Sentence expired - the person was released after serving the entire period of all custodial sentence(s) imposed. This includes some persons who served both the non-parole and parole components of their sentence(s) in custody.

Not proven / non-custodial penalty - juvenile data only - the person was released after criminal charges were not proven or after the court imposed a non-custodial penalty for a proven offence, e.g. good behaviour bond.

Other - includes persons transferred to the NSW Drug Court, interstate or from a juvenile to an adult prison or vice versa and deceased persons. Includes adults released after criminal charges were not proven, after the court imposed a non-custodial penalty for a proven offence and where the specific nature of the court's final non-custodial disposal is unknown.

Discharges

Persons legally discharged from JJNSW or CSNSW custody in accordance with a court order (including any State Parole Authority order). For example - to parole, on expiry of a sentence or having been granted bail. Note that persons whose legal status changed from remand to sentenced or the reverse are not counted as discharges as they have not been discharged from custody.

Forecast

The adult prison population forecast is generated using an autoregressive integrated moving average (ARIMA) model. The model is estimated following the Box-Jenkins approach. The forecast is calculated from the average monthly prison population data from January 2011 to the current month. Please note that this forecast includes adults held in 24 hour police/court cell complexes.

The juvenile custody population forecast is generated using an exponential smoothing model. The model is estimated using a Holt-Winters additive method. The forecast is

calculated from the average monthly juvenile custody population from January 2011 to the current month.

Imprisonment

See Custodial sentence

Indigenous status

Indigenous status as self-reported on reception into custody. Persons may identify as being Aboriginal or Torres Strait Islander, neither Aboriginal nor Torres Strait Islander or may not provide this information. An inmate is recorded as indigenous if they have identified as such in the current or any previous custodial episode. Indigenous status is unknown for a small proportion of people.

Juvenile

A person held in custody in a juvenile justice centre. These centres are managed by Juvenile Justice NSW (JJNSW). A young person in juvenile custody may have been refused bail by police, refused bail by the court or sentenced to a custodial sentence.

All young persons refused bail by police must be taken to a juvenile justice centre to be held in custody pending their court appearance. Young persons refused police bail cannot be held in a police or court cell.

Note: a small number of 16 and 17 year old males are held in Kariiong Juvenile Correctional Centre which is managed by CSNSW. As Kariiong is a gazetted correctional centre, these young persons are counted in the adult figures in this report.

Juvenile Justice NSW

Juvenile Justice NSW (JJNSW) is part of the Department of Justice with responsibilities including the supervision of young people remanded in custody pending the finalisation of criminal charges and young offenders sentenced to a control order/imprisonment.

See <http://www.djj.nsw.gov.au/> for further information.

The Research and Information Section of JJNSW have provided the juvenile data for this report and advised on its interpretation.

Legal status

The legal status of persons received into or held in custody:

Remand (Juvenile) - Juveniles refused bail (and small numbers granted bail but unable to meet conditions) are remanded into custody pending future court action.

Juvenile remand figures are disaggregated into:

- Police bail refused - Police have refused to grant bail to a juvenile. All juveniles refused bail by police are held in custody in a juvenile justice centre pending future court action.
- Court bail refused - the courts have refused to grant bail to a juvenile pending future court action.

Remand (Adult) - adults refused bail (and small numbers granted bail but unable to meet conditions) are remanded in custody pending future court action. Includes a small number of persons refused police bail and remanded in custody in a gazetted correctional centre. Includes persons on remand who are being managed as correctional patients under the *Mental Health (Forensic Provisions) Act 1990*.

Sentenced - the courts have imposed custodial sentence(s) for proven offence(s). This category includes persons returned to custody after breaching parole. Includes forensic patients as per the *Mental Health (Forensic Provisions) Act 1990* (ie persons found unfit to be tried and persons found not guilty due to mental illness). Persons on remand for one or more offences and sentenced for one or more offences have a legal status of sentenced.

Unknown - adults whose legal status was not recorded at the time of admission.

Legal status changed from remand to sentenced

Persons whose legal status changed from remand to sentenced upon the imposition of a custodial sentence by a court. This report shows the numbers of persons during each month who changed from being on remand to being sentenced.

Most serious offence

The most serious offence type for which each person is in custody. The offence type categories in this report are the sixteen ANZSOC Divisions, with shortened titles (See ANZSOC).

Most serious offence data is presented in a radar chart and a data table. The radar chart consists of a circle with a series of 'spokes' running from the centre of the circle to the perimeter. Each spoke represents a different offence type. The radar chart is constructed by placing a point on each spoke marking the proportion of prisoners with that offence type as their most serious offence. The higher the proportion, the closer the point to the perimeter. The points are then connected and the resulting figure inside the circle gives a picture of the distribution of most serious offence type across prisoners. A different type/colour of line is used for each quarter, making changes from quarter to quarter apparent. Note that offence types with no observations are plotted a short distance from the zero radius so that the numbers for every offence type can be observed.

The data table displays the number and proportion of persons in custody for each of the most serious offence types. The data is presented separately for sentenced persons and persons on remand:

Most Serious Offence – Adults:

The most serious offence for adults is as provided by CSNSW.

A person's most serious offence may change over the course of their custodial episode depending on offences for which they are in custody at any one time. The Most Serious Offence data presented in this report are stock data and are sourced from data extracts run two to three weeks after the end of the quarter.

The data for the previous quarter is as at the previous quarter's custody report.

Extracting the data after the same time lag each quarter reduces variability due to extract timing and so is indicative of a change in the broad offence profile of persons in custody between the end of the current and previous quarters.

Due to the way that MSO is recorded and the data extracted, it is not available for receptions or discharge data.

Most Serious Offence – Juveniles:

Most serious offence for juveniles is compiled by matching custody order records from JJNSW with sentencing and bail refused orders sourced from the JusticeLink system used by the NSW criminal courts. Data is matched using JusticeLink Proceeding Number, a unique offence identifier which is available in the JJNSW data from January 2011.

- The most serious offence for juveniles remanded in custody is the offence with the highest Median Sentence Ranking (MSR). The MSR is a ranking of ANZSOC codes and was developed by BOCSAR using data on sentences imposed in the NSW criminal courts. The MSR can be used to select the most serious offence when sentencing data is not available and to select most serious offence when multiple offences have the same custodial order duration. For further information see the BOCSAR's Crime and Justice Bulletin No.142 "Measuring Offence Seriousness": [www.bocsar.nsw.gov.au/lawlink/bocsar/ll_bocsar.nsf/vwFiles/CJB142.pdf/\\$file/CJB142.pdf](http://www.bocsar.nsw.gov.au/lawlink/bocsar/ll_bocsar.nsf/vwFiles/CJB142.pdf/$file/CJB142.pdf)
- The most serious offence for sentenced juveniles is the offence with the longest custodial order. For juveniles with more than one offence type with the same custodial order duration, the offence with the highest Median Sentence Ranking is selected as the most serious offence.
- Juveniles sentenced to a custodial order after breaching a non-custodial penalty (eg a suspended sentence, Community Service Order or good behaviour bond) have a most serious offence type of *Justice procedure offence* rather than the type of offence for which the non-custodial penalty was originally imposed (eg robbery/extortion, drug offences).

Note: this differs from the definition of most serious offence used in the Australian Bureau of Statistics Prisoners in Australia publication series (*ABS cat.no.4517.0*)

Police bail refused

See Bail.

Receptions

Persons received into Juvenile Justice custody or a gazetted correctional centre. Gazetted correctional centres are managed by CSNSW. Persons received into CSNSW custody and managed only in CSNSW 24-hour police/court cell complexes are excluded.

Ratio of receptions to discharges

The ratio of receptions to discharges. A ratio greater than 1 means there were more receptions than discharges during the month; a ratio less than 1 means there were more discharges than receptions during the month.

Remand

See Legal status.

Sentenced

See Legal status.

24 hour police/court cell complexes

In addition to gazetted correctional centres, CSNSW manage a number of police/court cell complexes. This report (with the exception of the adult prison forecast) excludes persons received and then discharged from a CSNSW-managed 24 hour police/court cell complex without entering a gazetted correctional centre.