
NEW SOUTH WALES CUSTODY STATISTICS

**QUARTERLY UPDATE
MARCH 2013**



NSW Bureau of Crime
Statistics and Research

CONTENTS

This report presents 24 months of reception, discharge and custody population data and comparisons between the current and previous quarter for age, gender, indigenous status, most serious offence and the average length of stay.

Separate figures are presented for juveniles and adults.

The counting unit is a custodial episode. An individual will be counted multiple times in a period if they have multiple custodial episodes in that period.

SCOPE

The data in this report are extracted from the Corrective Services NSW (CSNSW) Offender Information Management System (OIMS) and the Juvenile Justice NSW (JJNSW) Client Information Management System (CIMS).

The adult custody population figures include only those persons held in gazetted correctional centres managed by CSNSW. This includes: persons managed as forensic patients, persons held after expiry of their sentence awaiting deportation and persons awaiting extradition to another jurisdiction.

In addition to gazetted correctional centres, CSNSW manages a number of police/court cell complexes. This report excludes persons received into and then discharged from a CSNSW-managed 24 hour police/court cell complex without entering a gazetted correctional centre. Adults refused police bail but not held in a gazetted correctional centre are not included.

Custody population figures are counted as at midnight on the last day of the month or quarter as appropriate. Reception and discharge figures are those during each month or quarter as appropriate.

Refer to the Glossary at the back of the report for detailed descriptions of the terms used in the report.

ACKNOWLEDGEMENTS

Juvenile custody data are provided by the Research and Information Section of JJNSW. Adult custody data are provided by the Corporate Research, Evaluation and Statistics (CRES) section of CSNSW. The Bureau is grateful for the support provided by both areas in supplying the data for this report and advising on its interpretation.

NOTE

The adult custody data presented in this report will differ from data reported by CSNSW due to data extract timing differences.

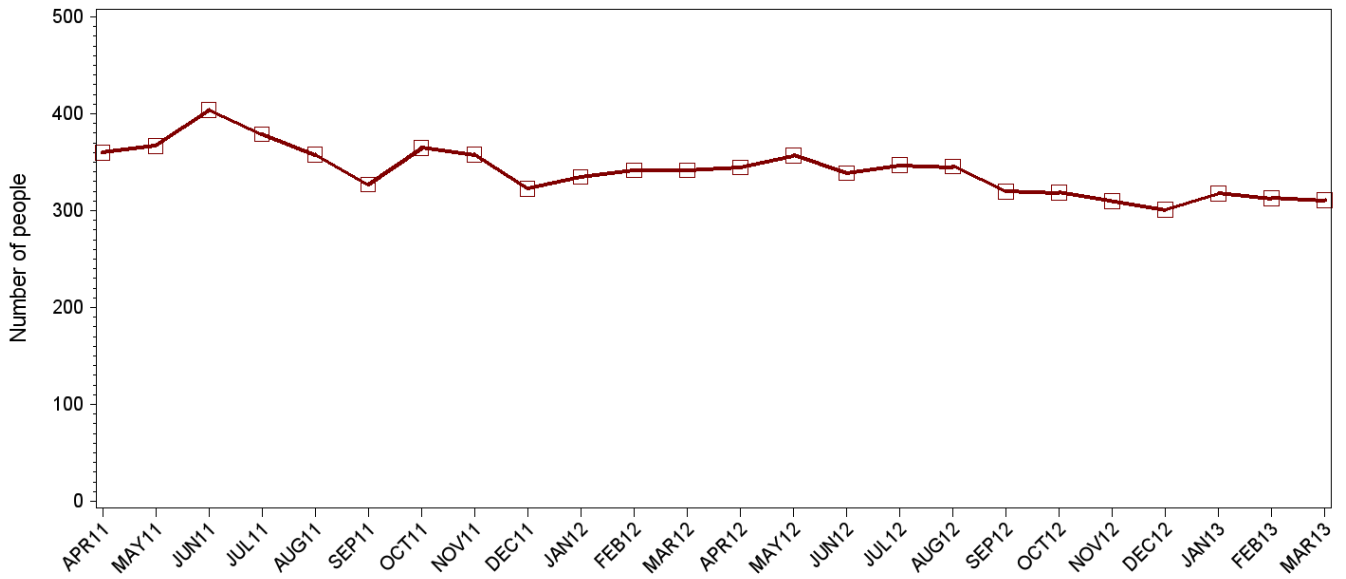
Contents

JUVENILES		4
SECTION 1.1	JUVENILE CUSTODY POPULATION	4
1.1.1	By Month	4
1.1.2	By Legal Status	4
1.1.3	By Indigenous Status	5
1.1.4	By Legal Status (Indigenous Only)	5
1.1.5	Profile	6
1.1.6	Legal Status Changed from Remand to Sentenced	6
1.1.7	Remand Population by Most Serious Offence	7
1.1.8	Sentenced Population by Most Serious Offence	8
SECTION 1.2	JUVENILE CUSTODY RECEPTIONS	9
1.2.1	By Month	9
1.2.2	By Legal Status	9
SECTION 1.3	JUVENILE CUSTODY DISCHARGES	10
1.3.1	By Month	10
1.3.2	Length of Stay	10
1.3.3	By Discharge Type	11
1.3.4	By Discharge Type (Excluding Bail)	11
ADULTS		13
SECTION 2.1	ADULT CUSTODY POPULATION	13
2.1.1	By Month	13
2.1.2	By Legal Status	13
2.1.3	By Indigenous Status	14
2.1.4	By Legal Status (Indigenous Only)	14
2.1.5	Profile	15
2.1.6	Legal Status Changed from Remand to Sentenced	15
2.1.7	Remand Population by Most Serious Offence	16
2.1.8	Sentenced Population by Most Serious Offence	17
SECTION 2.2	ADULT CUSTODY RECEPTIONS	18
2.2.1	By Month	18
2.2.2	By Legal Status	18
SECTION 2.3	ADULT CUSTODY DISCHARGES	19
2.3.1	By Month	19
2.3.2	Length of Stay	19
2.3.3	By Discharge Type	20
APPENDIX: DATA TABLES		22
GLOSSARY		27

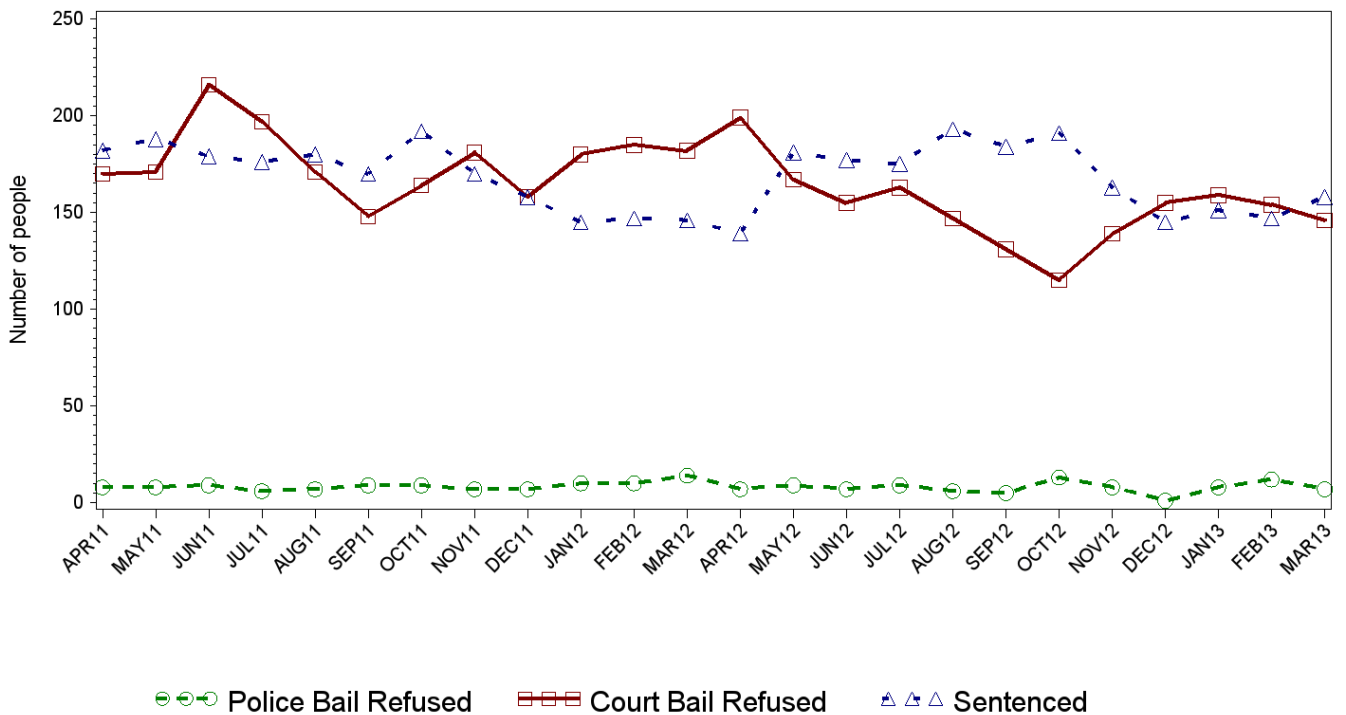
PART 1: JUVENILES

SECTION 1.1 JUVENILE CUSTODY POPULATION

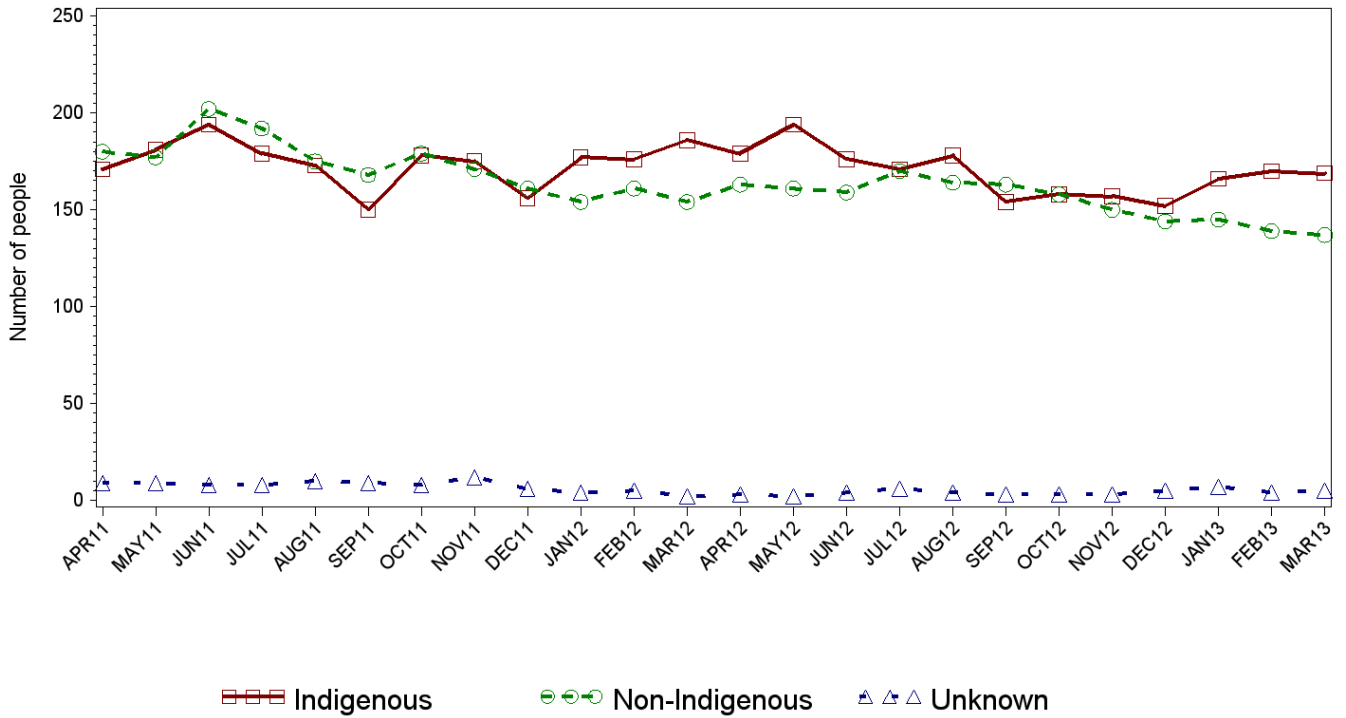
1.1.1 JUVENILE CUSTODY POPULATION AT END OF MONTH



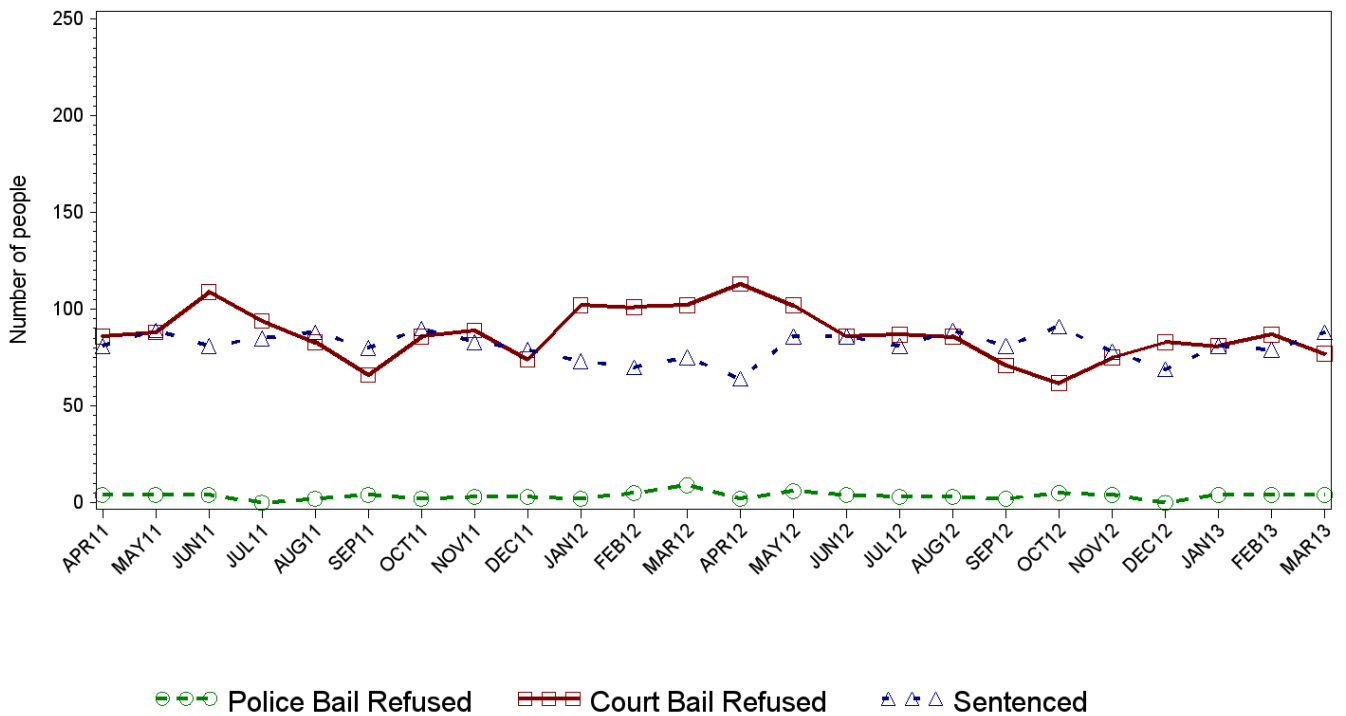
1.1.2 JUVENILE CUSTODY POPULATION BY LEGAL STATUS



1.1.3 JUVENILE CUSTODY POPULATION BY INDIGENOUS STATUS



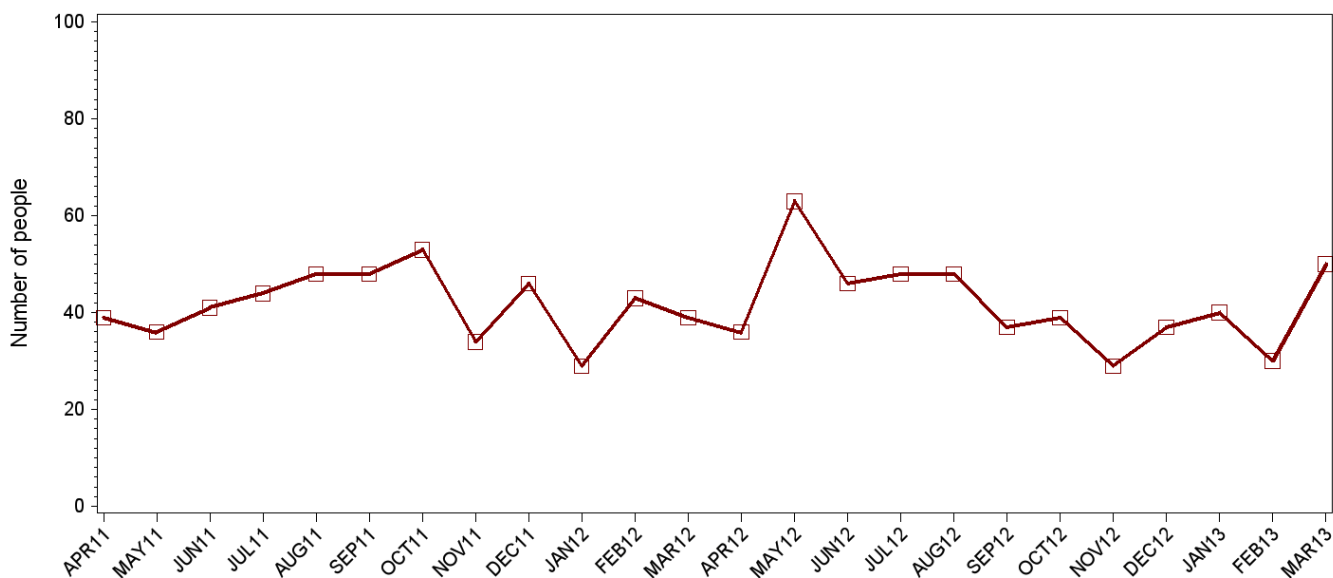
1.1.4 INDIGENOUS JUVENILE CUSTODY POPULATION BY LEGAL STATUS



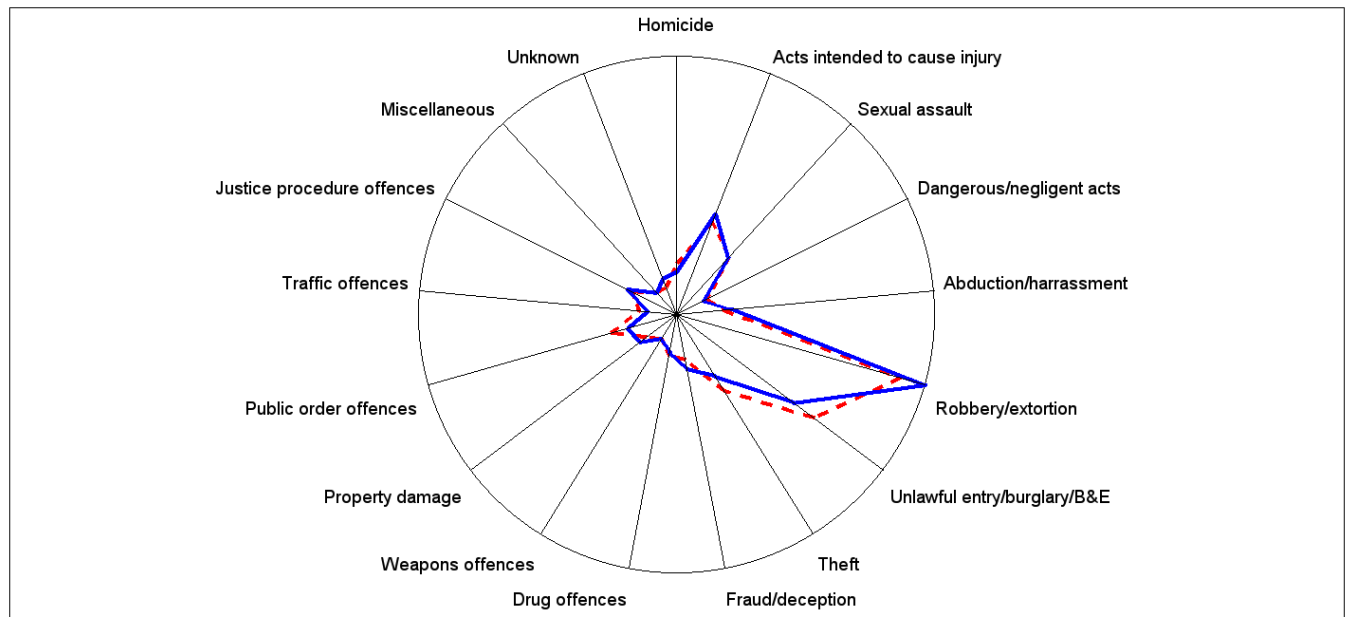
1.1.5 JUVENILE CUSTODY PROFILE AT END OF QUARTER

		Police Bail Refused		Court Bail Refused		Sentenced		All	
		Dec12	Mar13	Dec12	Mar13	Dec12	Mar13	Dec12	Mar13
Male	Count	0	6	144	137	132	144	276	287
	Avg Age	n/a	15.7	16.0	16.1	16.9	17.0	16.5	16.5
Female	Count	1	1	11	9	13	14	25	24
	Avg Age	16.0	16.0	15.4	15.6	17.4	16.7	16.4	16.3
Indigenous Male	Count	0	4	77	73	62	82	139	159
	Avg Age	n/a	15.3	15.9	15.8	16.5	16.5	16.2	16.2
Indigenous Female	Count	0	0	6	4	7	6	13	10
	Avg Age	n/a	n/a	15.5	16.3	17.0	16.0	16.3	16.1
All	Count	1	7	155	146	145	158	301	311
	Avg Age	16.0	15.7	16.0	16.1	17.0	16.9	16.5	16.5

1.1.6 JUVENILES IN CUSTODY: NUMBER WHOSE LEGAL STATUS CHANGED DURING MONTH FROM REMAND TO SENTENCED



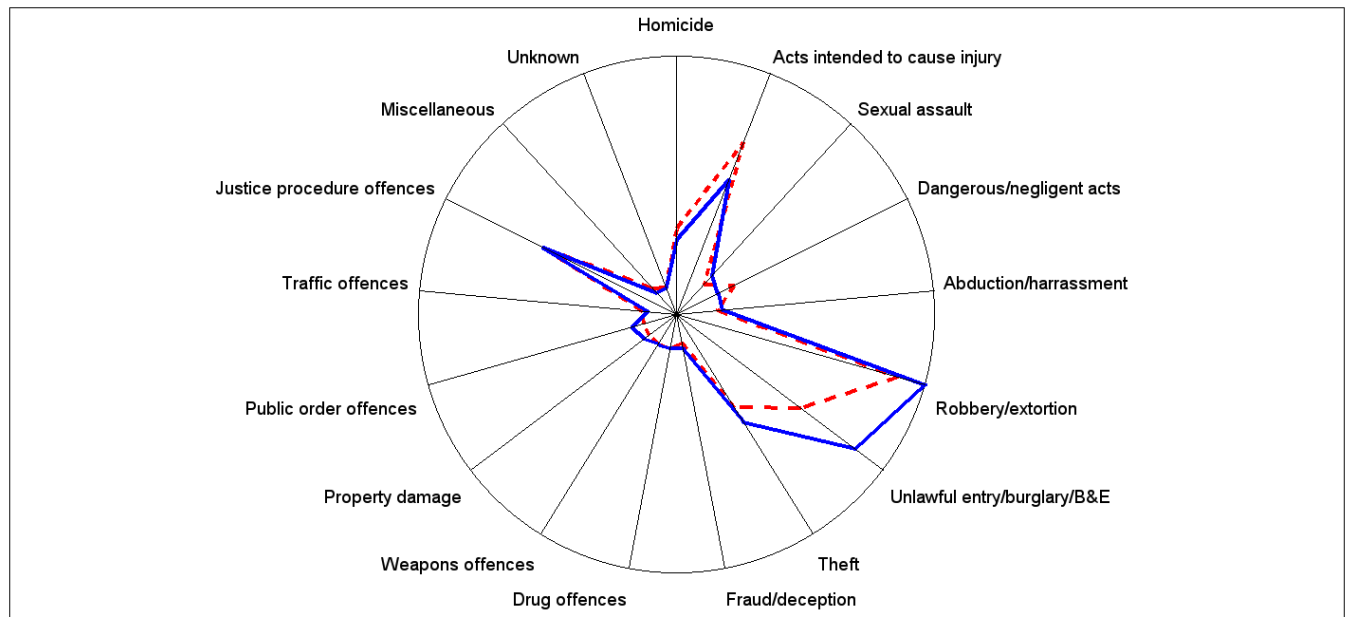
1.1.7 JUVENILE REMAND POPULATION BY MOST SERIOUS OFFENCE



As At: - - - 31DEC12 — 31MAR13

	31DEC12		31MAR13	
	Number	% of Total	Number	% of Total
Homicide	5	3.2%	3	2.0%
Acts intended to cause injury	16	10.3%	18	11.8%
Sexual assault	11	7.1%	11	7.2%
Dangerous/negligent acts	1	0.6%	0	0.0%
Abduction/harrassment	4	2.6%	6	3.9%
Robbery/extortion	47	30.1%	53	34.6%
Unlawful entry/burglary/B&E	33	21.2%	27	17.6%
Theft	14	9.0%	10	6.5%
Fraud/deception	4	2.6%	6	3.9%
Drug offences	3	1.9%	2	1.3%
Weapons offences	0	0.0%	0	0.0%
Property damage	2	1.3%	4	2.6%
Public order offences	9	5.8%	5	3.3%
Traffic offences	2	1.3%	0	0.0%
Justice procedure offences	5	3.2%	6	3.9%
Miscellaneous	0	0.0%	0	0.0%
Unknown	0	0.0%	2	1.3%

1.1.8 JUVENILE SENTENCED POPULATION BY MOST SERIOUS OFFENCE

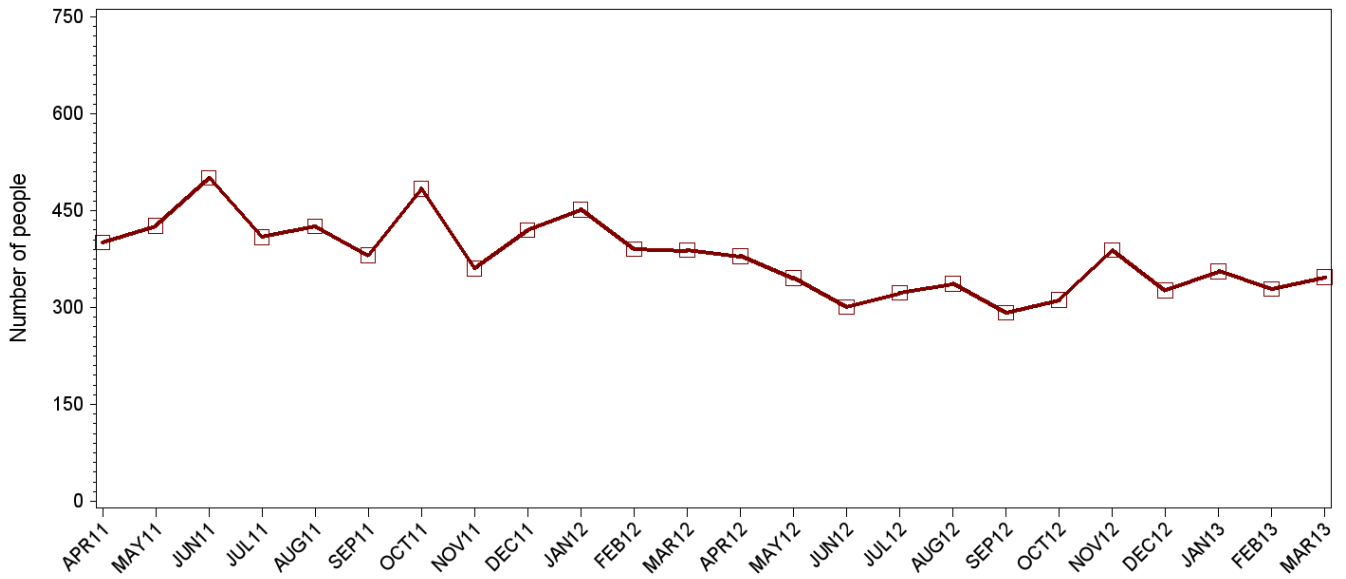


As At: - - - 31DEC12 — 31MAR13

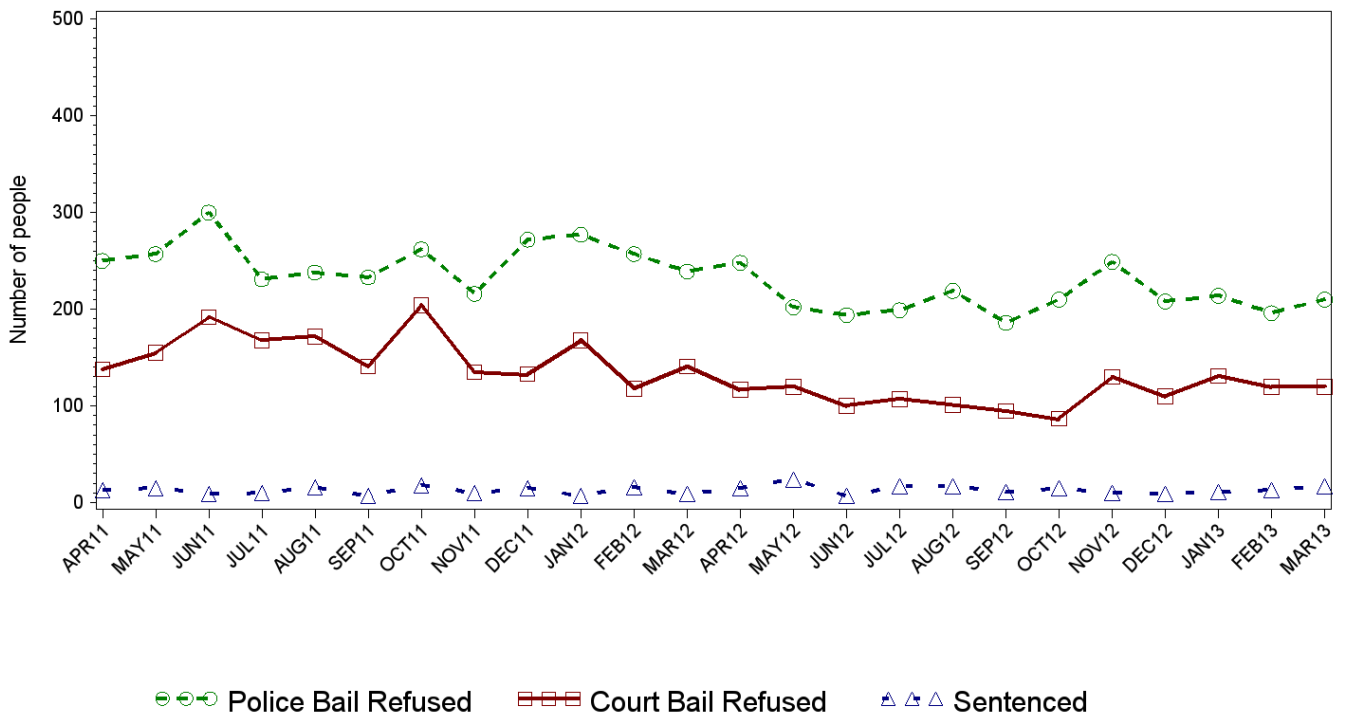
	31DEC12		31MAR13	
	Number	% of Total	Number	% of Total
Homicide	10	6.9%	8	5.1%
Acts intended to cause injury	27	18.6%	20	12.7%
Sexual assault	2	1.4%	4	2.5%
Dangerous/negligent acts	6	4.1%	3	1.9%
Abduction/harrassment	2	1.4%	3	1.9%
Robbery/extortion	35	24.1%	40	25.3%
Unlawful entry/burglary/B&E	22	15.2%	34	21.5%
Theft	14	9.7%	17	10.8%
Fraud/deception	0	0.0%	1	0.6%
Drug offences	1	0.7%	1	0.6%
Weapons offences	1	0.7%	1	0.6%
Property damage	1	0.7%	2	1.3%
Public order offences	1	0.7%	3	1.9%
Traffic offences	1	0.7%	0	0.0%
Justice procedure offences	21	14.5%	21	13.3%
Miscellaneous	1	0.7%	0	0.0%
Unknown	0	0.0%	0	0.0%

SECTION 1.2 JUVENILE CUSTODY RECEPTIONS

1.2.1 JUVENILES RECEIVED INTO CUSTODY DURING MONTH

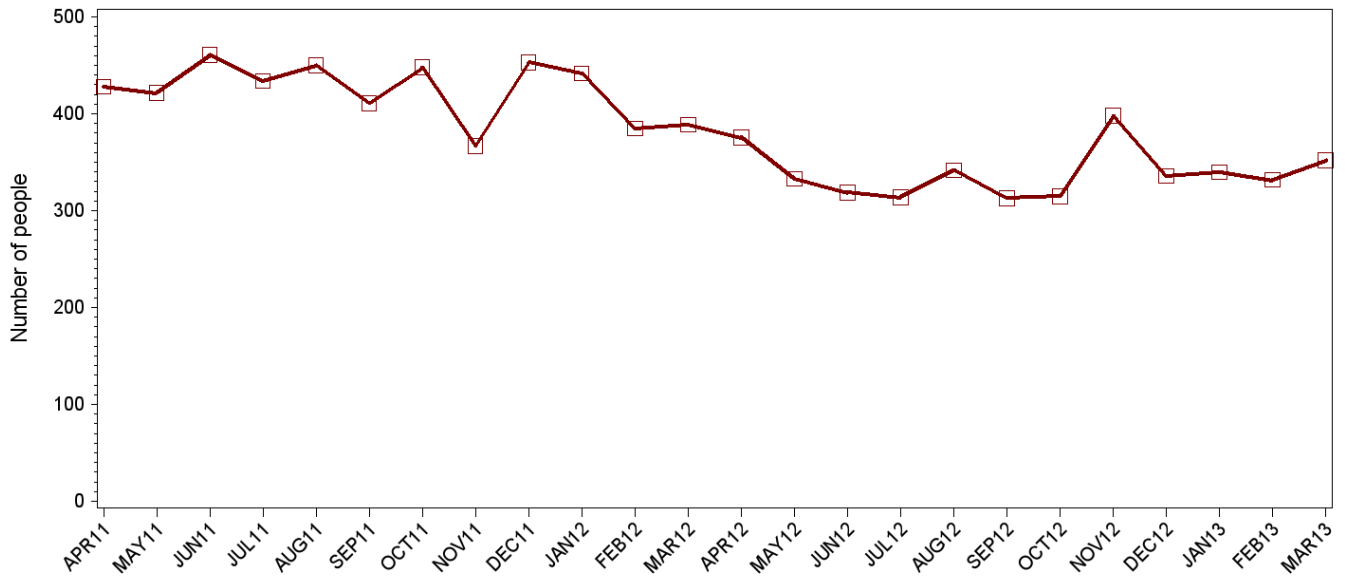


1.2.2 JUVENILES RECEIVED INTO CUSTODY BY LEGAL STATUS



SECTION 1.3 JUVENILE CUSTODY DISCHARGES

1.3.1 JUVENILES DISCHARGED FROM CUSTODY DURING MONTH

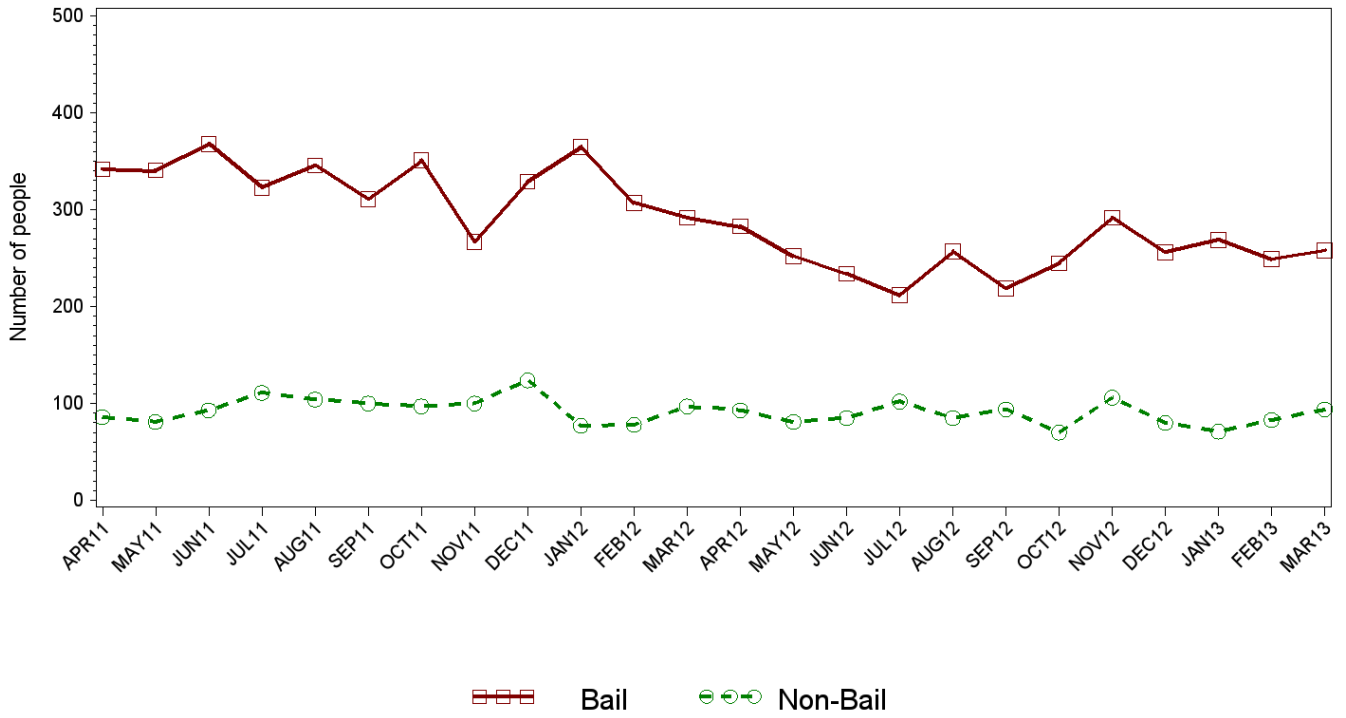


1.3.2 AVERAGE LENGTH OF STAY FOR JUVENILES DISCHARGED FROM CUSTODY EACH QUARTER

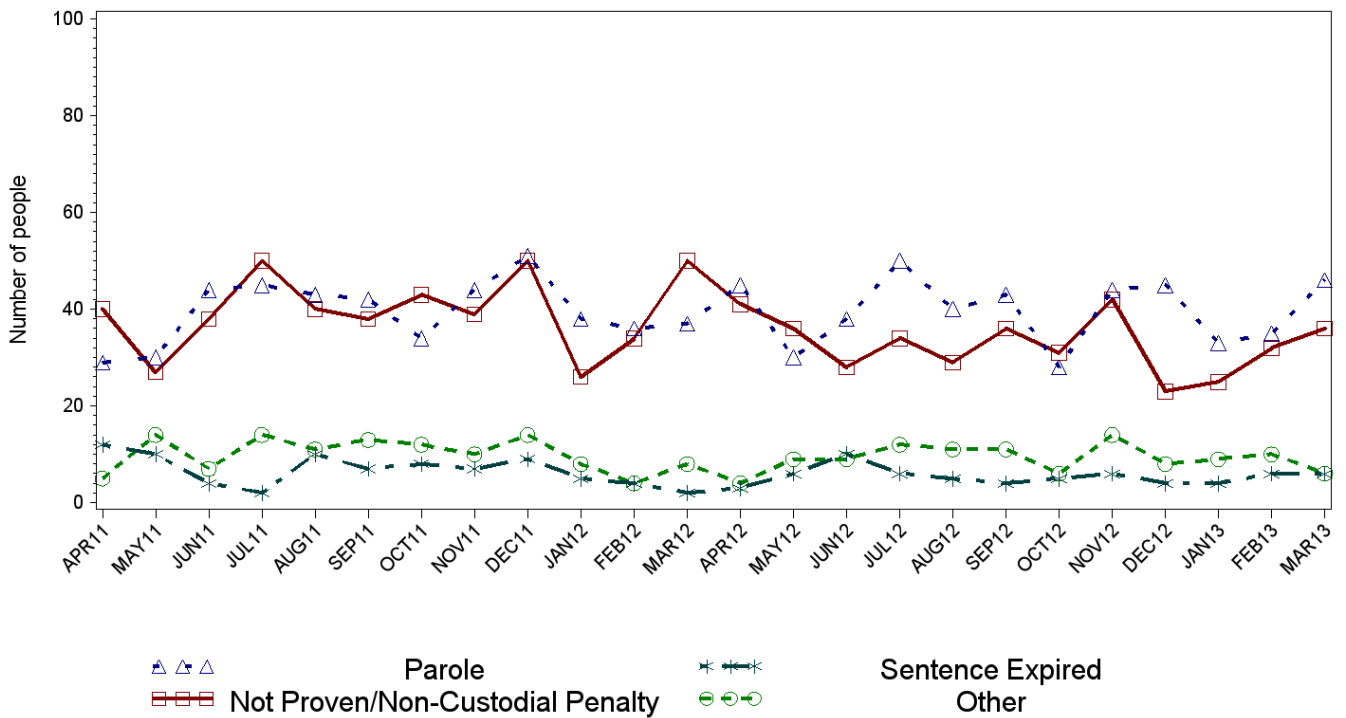
		Remand Custody Only		Sentenced Custody Only		Remand to Sentenced Custody	
		DEC12	MAR13	DEC12	MAR13	DEC12	MAR13
Total Male	Avg Days	8.2	8.4	111.7	105.3	161.0	201.1
	Number	707	702	41	38	115	104
Total Female	Avg Days	2.8	5.8	22.5	143.3	177.8	141.3
	Number	171	166	4	3	11	11
Indigenous Male	Avg Days	8.8	10.8	148.3	124.5	177.1	181.7
	Number	302	283	13	14	58	55
Indigenous Female	Avg Days	3.4	3.7	31.0	52.0	53.0	156.1
	Number	73	61	2	1	3	8
All	Avg Days	7.2	7.9	103.8	108.0	162.5	195.4
	Number	878	868	45	41	126	115

Note: Length of stay for Remand to Sentenced Custody is from the date of reception on remand to date of discharge after serving sentence

1.3.3 JUVENILES BY DISCHARGE TYPE



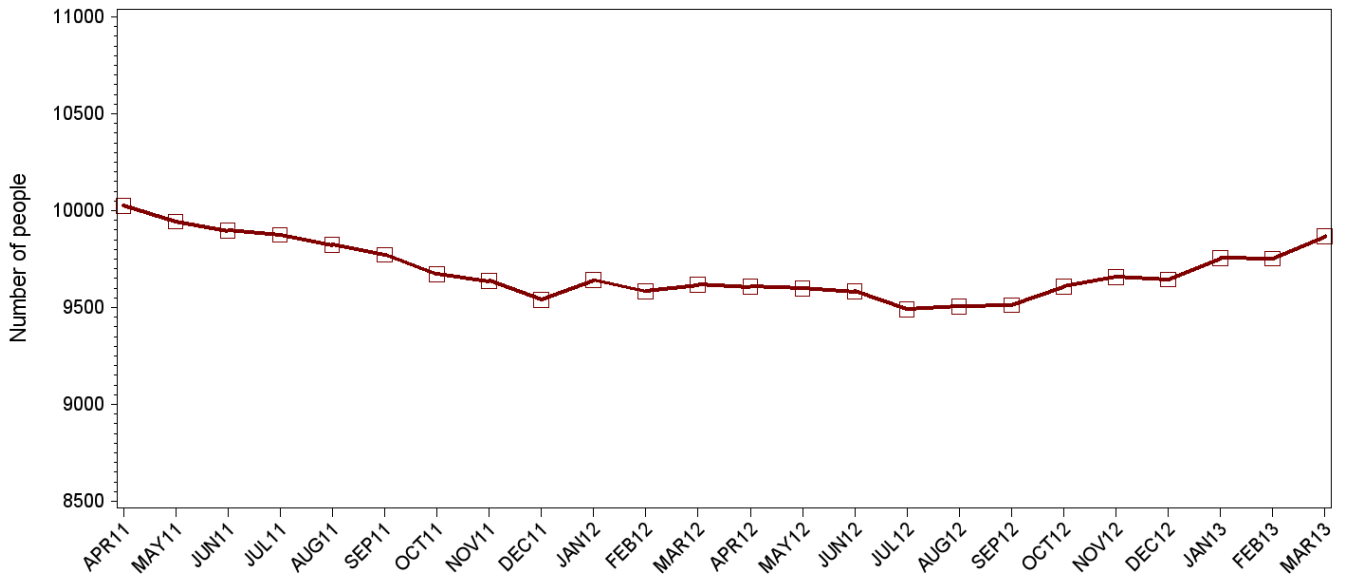
1.3.4 JUVENILES BY DISCHARGE TYPE (EXCLUDING BAIL)



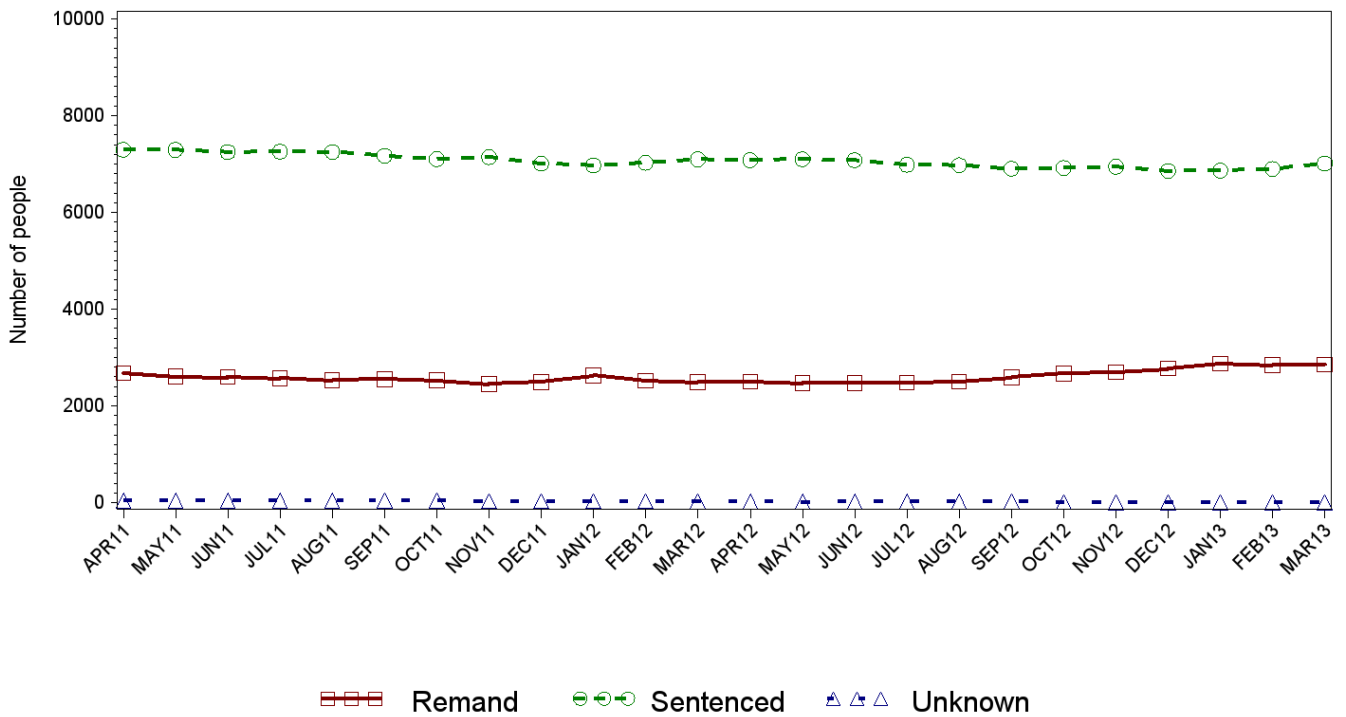
PART 2: ADULTS

SECTION 2.1 ADULT CUSTODY POPULATION

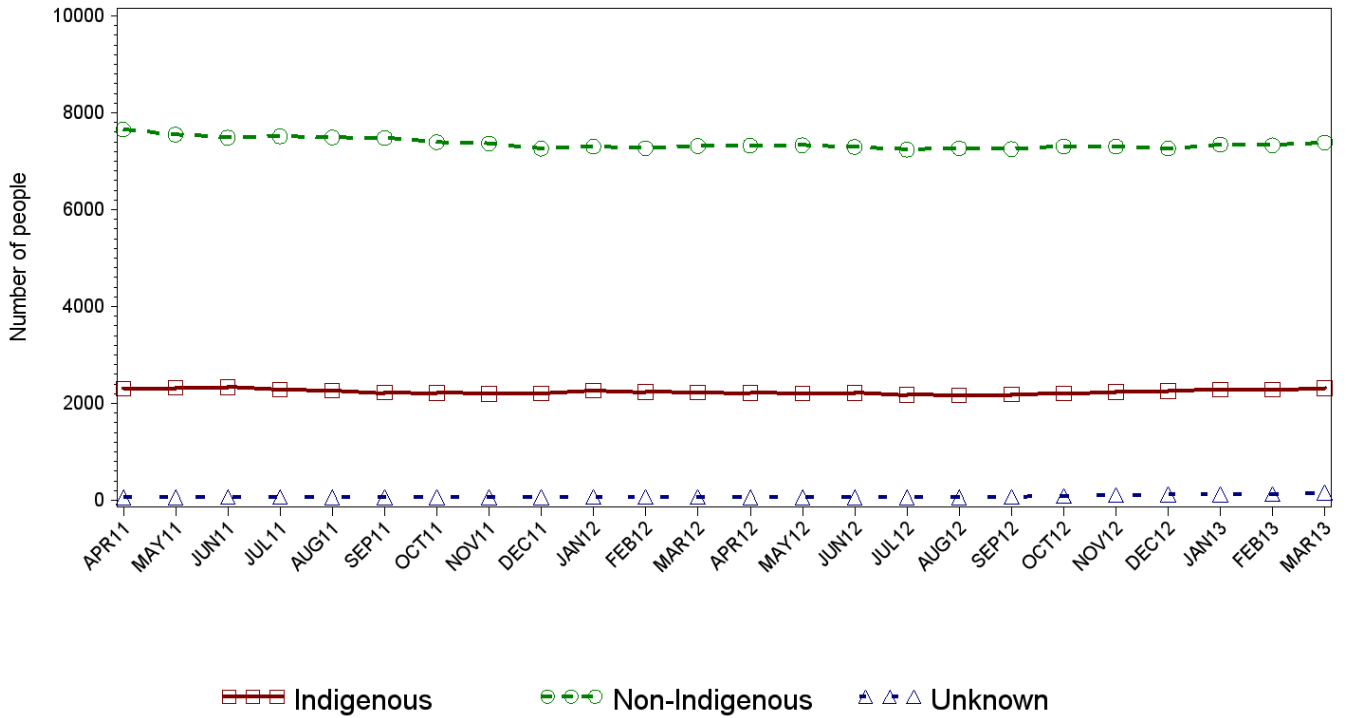
2.1.1 ADULT CUSTODY POPULATION AT END OF MONTH



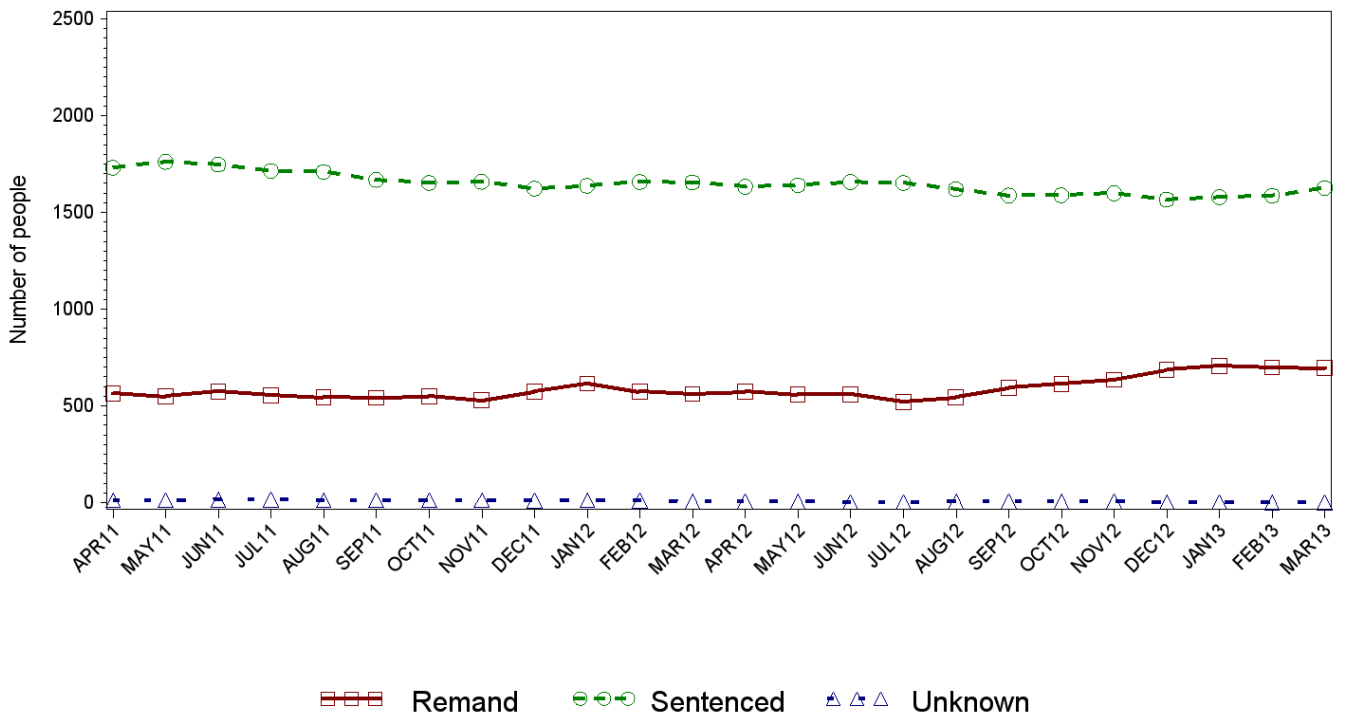
2.1.2 ADULT CUSTODY POPULATION BY LEGAL STATUS



2.1.3 ADULT CUSTODY POPULATION BY INDIGENOUS STATUS



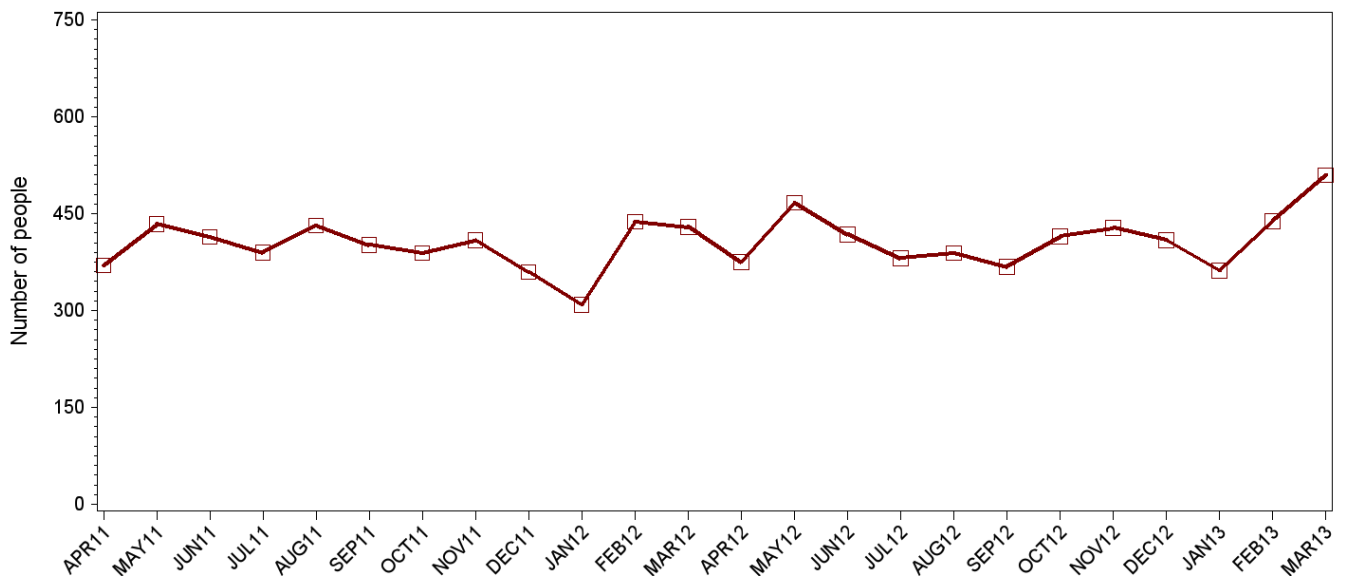
2.1.4 INDIGENOUS ADULT CUSTODY POPULATION BY LEGAL STATUS



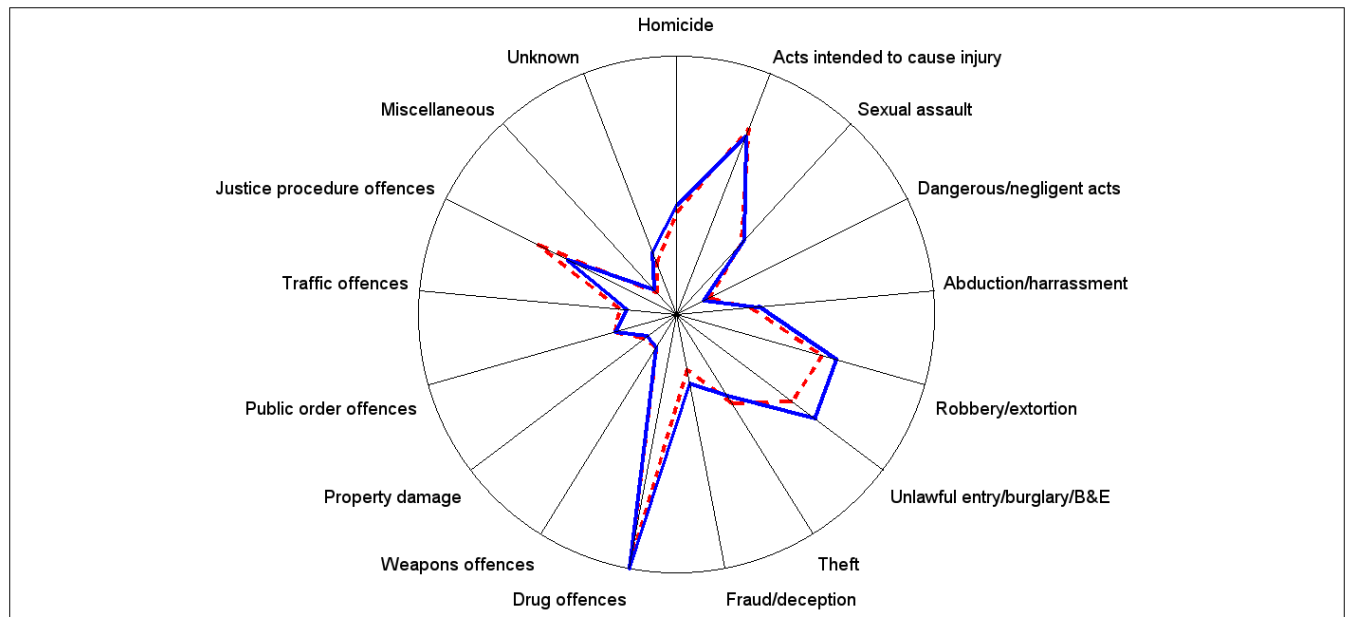
2.1.5 ADULT CUSTODY PROFILE AT END OF QUARTER

		Remand		Sentenced		Unknown		All	
		Dec12	Mar13	Dec12	Mar13	Dec12	Mar13	Dec12	Mar13
Male	Count	2543	2623	6423	6543	7	0	8973	9166
	Avg Age	33.0	33.1	36.3	36.2	36.1	n/a	35.3	35.3
Female	Count	234	231	437	471	1	0	672	702
	Avg Age	34.4	33.9	37.4	37.0	44.0	n/a	36.4	35.9
Indigenous Male	Count	585	612	1453	1505	3	0	2041	2117
	Avg Age	29.7	29.8	31.9	31.8	30.3	n/a	31.3	31.2
Indigenous Female	Count	102	84	114	122	1	0	217	206
	Avg Age	32.5	32.0	33.2	33.6	44.0	n/a	32.9	32.9
All	Count	2777	2854	6860	7014	8	0	9645	9868
	Avg Age	33.1	33.2	36.3	36.3	37.1	n/a	35.4	35.4

2.1.6 ADULTS IN CUSTODY: NUMBER WHOSE LEGAL STATUS CHANGED DURING MONTH FROM REMAND TO SENTENCED



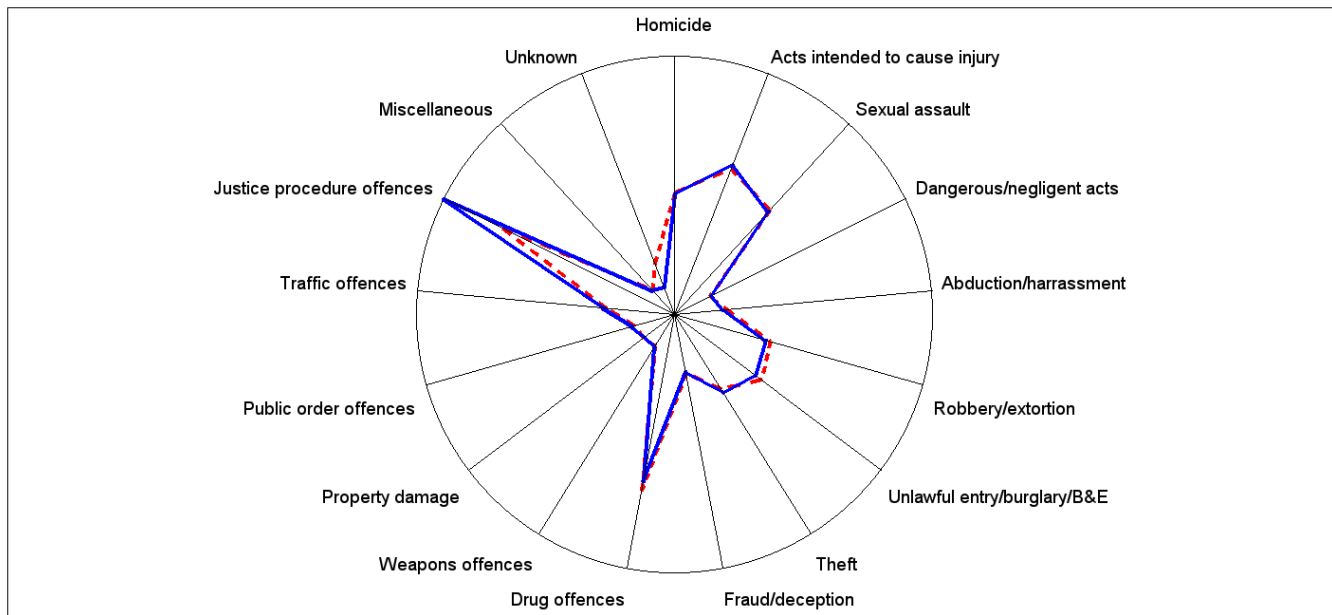
2.1.7 ADULT REMAND POPULATION BY MOST SERIOUS OFFENCE



As At: - - - 31DEC12 — 31MAR13

	31DEC12		31MAR13	
	Number	% of Total	Number	% of Total
Homicide	174	6.3%	190	6.7%
Acts intended to cause injury	394	14.2%	375	13.1%
Sexual assault	159	5.7%	170	6.0%
Dangerous/negligent acts	24	0.9%	12	0.4%
Abduction/harrassment	110	4.0%	129	4.5%
Robbery/extortion	285	10.3%	319	11.2%
Unlawful entry/burglary/B&E	270	9.7%	335	11.7%
Theft	180	6.5%	160	5.6%
Fraud/deception	70	2.5%	101	3.5%
Drug offences	511	18.4%	528	18.5%
Weapons offences	32	1.2%	31	1.1%
Property damage	34	1.2%	25	0.9%
Public order offences	89	3.2%	88	3.1%
Traffic offences	73	2.6%	57	2.0%
Justice procedure offences	295	10.6%	219	7.7%
Miscellaneous	9	0.3%	20	0.7%
Unknown	68	2.4%	95	3.3%

2.1.8 ADULT SENTENCED POPULATION BY MOST SERIOUS OFFENCE

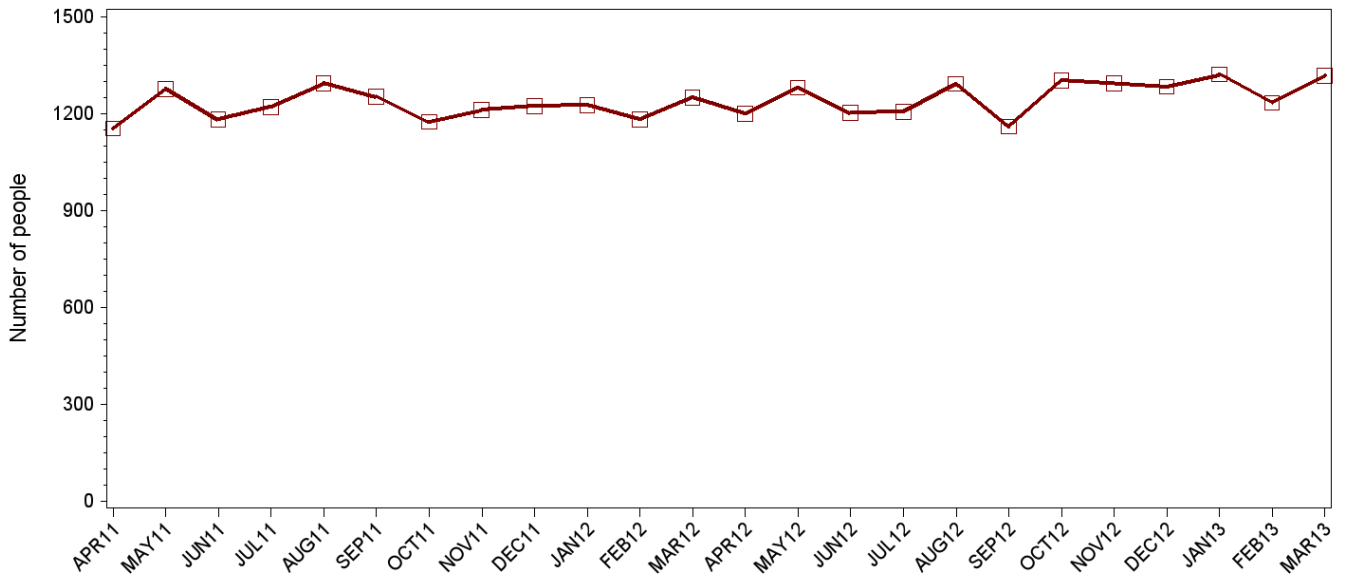


As At: - - - 31DEC12 — 31MAR13

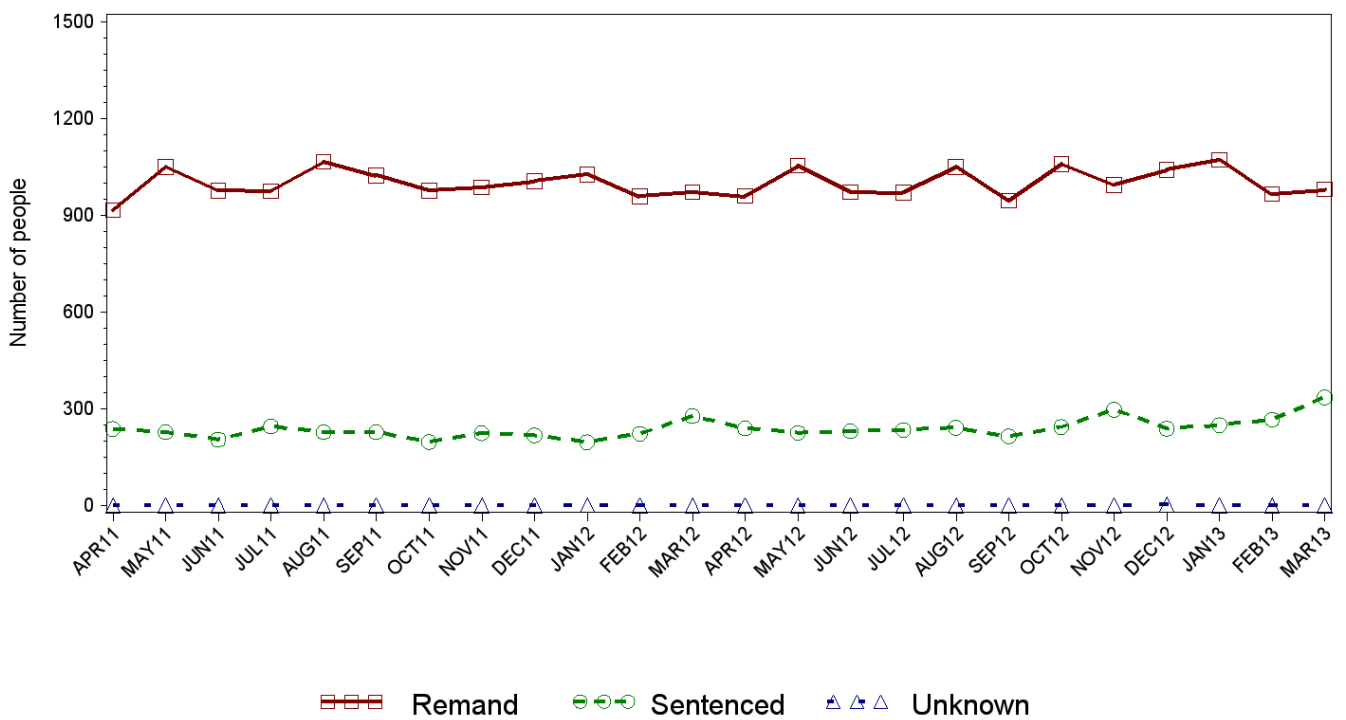
	31DEC12		31MAR13	
	Number	% of Total	Number	% of Total
Homicide	614	9.0%	602	8.6%
Acts intended to cause injury	830	12.1%	854	12.2%
Sexual assault	735	10.7%	722	10.3%
Dangerous/negligent acts	87	1.3%	95	1.4%
Abduction/harrasment	166	2.4%	145	2.1%
Robbery/extortion	470	6.9%	440	6.3%
Unlawful entry/burglary/B&E	529	7.7%	482	6.9%
Theft	396	5.8%	423	6.0%
Fraud/deception	219	3.2%	209	3.0%
Drug offences	977	14.2%	919	13.1%
Weapons offences	76	1.1%	82	1.2%
Property damage	86	1.3%	80	1.1%
Public order offences	105	1.5%	121	1.7%
Traffic offences	278	4.1%	294	4.2%
Justice procedure offences	1062	15.5%	1482	21.1%
Miscellaneous	45	0.7%	41	0.6%
Unknown	185	2.7%	23	0.3%

SECTION 2.2 ADULT CUSTODY RECEPTIONS

2.2.1 ADULTS RECEIVED INTO CUSTODY DURING MONTH

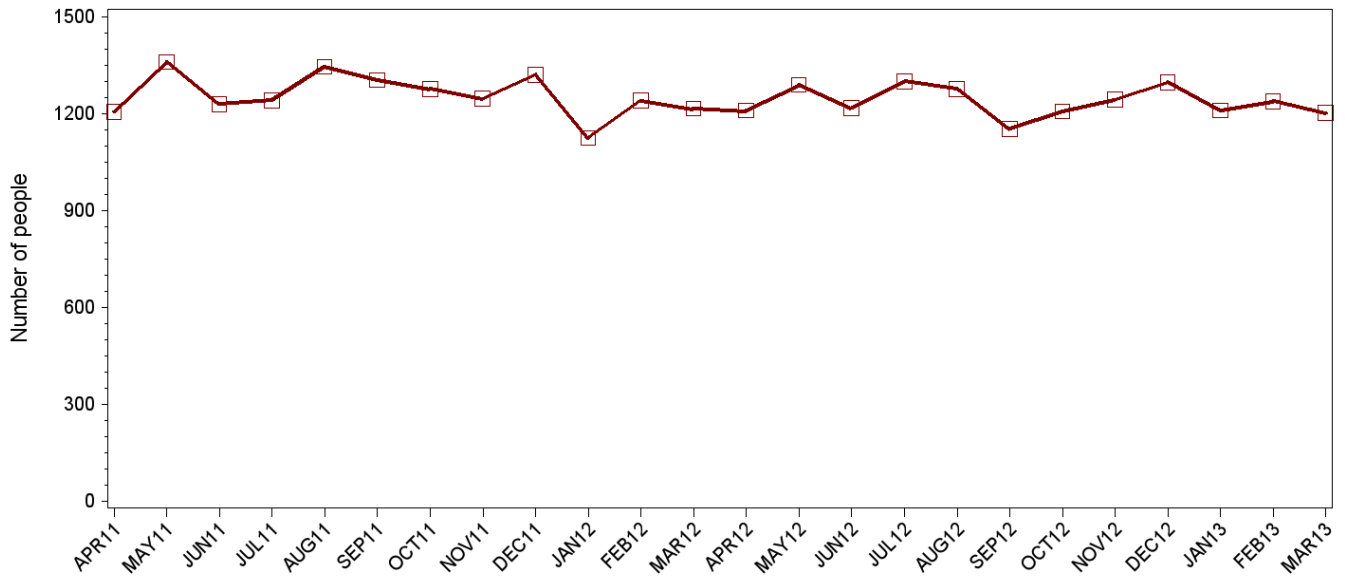


2.2.2 ADULTS RECEIVED INTO CUSTODY BY LEGAL STATUS



SECTION 2.3 ADULT CUSTODY DISCHARGES

2.3.1 ADULTS DISCHARGED FROM CUSTODY DURING MONTH

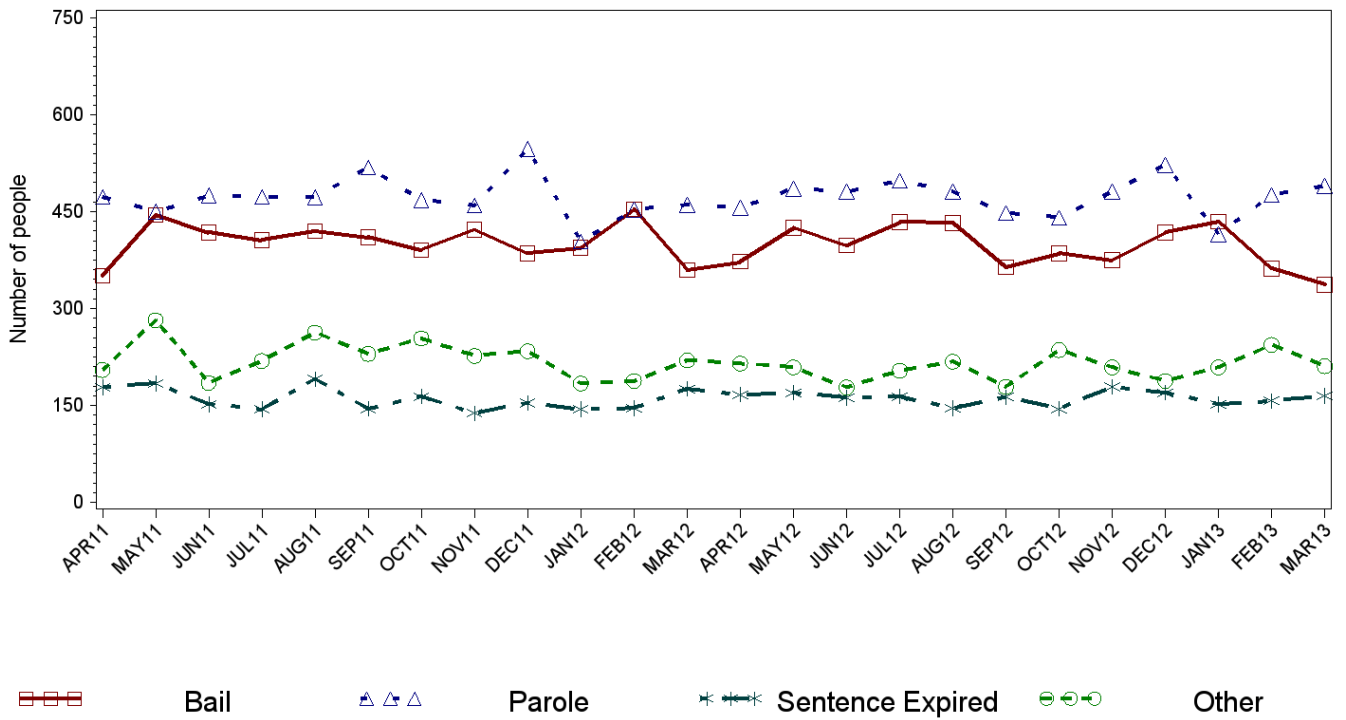


2.3.2 AVERAGE LENGTH OF STAY FOR ADULTS DISCHARGED FROM CUSTODY EACH QUARTER

		Remand Custody Only		Sentenced Custody Only		Remand to Sentenced Custody	
		DEC12	MAR13	DEC12	MAR13	DEC12	MAR13
Total Male	Avg Days	41.9	42.2	227.4	242.2	475.0	488.0
	Number	1327	1307	712	713	1260	1176
Total Female	Avg Days	30.5	31.3	135.4	195.5	301.5	299.6
	Number	228	257	87	74	136	126
Indigenous Male	Avg Days	42.0	36.4	225.0	206.0	386.5	408.7
	Number	349	359	195	194	375	327
Indigenous Female	Avg Days	30.5	35.5	130.8	183.8	219.3	183.1
	Number	79	112	38	27	55	54
All	Avg Days	40.2	40.5	217.4	237.8	458.1	469.8
	Number	1555	1564	799	787	1396	1302

Note: Length of stay for Remand to Sentenced Custody is from the date of reception on remand to date of discharge after serving sentence

2.3.3 ADULTS BY DISCHARGE TYPE



PART 3:
APPENDIX: DATA TABLES

Juvenile	1.In Custody										Remand to Sent
	Total	Legal Status			Indigenous			Indigenous Legal Status			
		Court Bail Refused	Police Bail Refused	Sent	No	Yes	Unk	Court Bail Refused	Police Bail Refused	Sent	
APR11	360	170	8	182	180	170	10	85	4	81	39
MAY11	367	171	8	188	177	180	10	87	4	89	36
JUN11	404	216	9	179	202	193	9	108	4	81	41
JUL11	379	197	6	176	192	178	9	94	0	84	44
AUG11	358	171	7	180	175	172	11	83	2	87	48
SEP11	327	148	9	170	168	149	10	66	4	79	48
OCT11	365	164	9	192	179	177	9	86	2	89	53
NOV11	358	181	7	170	171	174	13	89	3	82	34
DEC11	323	158	7	158	161	155	7	74	3	78	46
JAN12	335	180	10	145	154	175	6	101	2	72	29
FEB12	342	185	10	147	161	175	6	101	5	69	43
MAR12	342	182	14	146	154	185	3	102	9	74	39
APR12	345	199	7	139	163	178	4	113	2	63	36
MAY12	357	167	9	181	161	192	4	102	6	84	63
JUN12	339	155	7	177	159	174	6	86	4	84	46
JUL12	347	163	9	175	170	169	8	87	3	79	48
AUG12	346	147	6	193	164	177	5	86	3	88	48
SEP12	320	131	5	184	163	153	4	71	2	80	37
OCT12	319	115	13	191	158	157	4	62	5	90	39
NOV12	310	139	8	163	150	156	4	75	4	77	29
DEC12	301	155	1	145	144	151	6	83	0	68	37
JAN13	318	159	8	151	145	165	8	81	4	80	40
FEB13	313	154	12	147	139	168	6	87	3	78	30
MAR13	311	146	7	158	137	169	5	77	4	88	50

Juvenile	2.Receptions							3.Discharges								
	Total	Legal Status			Indigenous			Total	Bail	Legal Status				Indigenous		
		Court Bail Refused	Police Bail Refused	Sent	No	Yes	Unk			Not Proven Non-Custody	Other	Parole	Sent Exp	No	Yes	Unk
APR11	401	138	250	13	220	159	22	428	342	40	5	29	12	233	176	19
MAY11	427	155	257	15	256	160	11	422	341	27	14	30	10	260	151	11
JUN11	501	192	300	9	293	197	11	461	368	38	7	44	4	268	181	12
JUL11	409	168	231	10	239	159	11	434	323	50	14	45	2	249	175	10
AUG11	426	172	238	16	248	165	13	450	346	40	11	43	10	265	173	12
SEP11	381	141	233	7	232	140	9	411	311	38	13	42	7	237	164	10
OCT11	484	204	262	18	271	206	7	448	351	43	12	34	8	262	178	8
NOV11	361	135	216	10	206	140	15	367	267	39	10	44	7	214	142	11
DEC11	420	133	272	15	218	190	12	453	329	50	14	51	9	227	208	18
JAN12	452	168	277	7	227	217	8	442	365	26	8	38	5	234	199	9
FEB12	391	118	257	16	216	163	12	385	307	34	4	36	4	210	163	12
MAR12	389	141	239	9	212	165	12	389	292	50	8	37	2	219	155	15
APR12	380	117	248	15	196	177	7	376	283	41	4	45	3	187	183	6
MAY12	346	120	202	24	179	157	10	333	252	36	9	30	6	181	142	10
JUN12	301	100	194	7	159	132	10	319	234	28	9	38	10	161	150	8
JUL12	323	107	199	17	176	140	7	314	212	34	12	50	6	163	146	5
AUG12	337	101	219	17	156	173	8	342	257	29	11	40	5	164	167	11
SEP12	292	95	186	11	151	128	13	313	219	36	11	43	4	150	149	14
OCT12	312	87	210	15	168	135	9	315	245	31	6	28	5	174	132	9
NOV12	389	130	249	10	200	171	18	398	292	42	14	44	6	208	172	18
DEC12	327	110	208	9	178	141	8	336	256	23	8	45	4	185	145	6
JAN13	356	131	214	11	202	144	10	340	269	25	9	33	4	200	132	8
FEB13	329	120	196	13	172	149	8	332	249	32	10	35	6	177	145	10
MAR13	347	120	210	17	193	142	12	352	258	36	6	46	6	197	142	13

Adult	1.In Custody										Remand to Sent
	Total	Legal Status			Indigenous			Indigenous Legal Status			
		Remand	Sent	Unknown	No	Yes	Unk	Remand	Sent	Unknown	
APR11	10027	2678	7301	48	7658	2310	59	564	1732	14	370
MAY11	9944	2607	7295	42	7552	2325	67	549	1762	14	434
JUN11	9897	2606	7251	40	7491	2337	69	574	1748	15	414
JUL11	9877	2574	7260	43	7519	2286	72	556	1715	15	390
AUG11	9826	2532	7251	43	7493	2269	64	545	1710	14	432
SEP11	9774	2558	7173	43	7483	2226	65	543	1669	14	402
OCT11	9673	2528	7106	39	7394	2217	62	551	1653	13	389
NOV11	9638	2455	7146	37	7371	2201	66	529	1659	13	409
DEC11	9541	2500	7011	30	7265	2208	68	575	1623	10	360
JAN12	9642	2635	6975	32	7305	2268	69	617	1638	13	309
FEB12	9584	2524	7029	31	7272	2243	69	575	1658	10	438
MAR12	9618	2493	7099	26	7316	2226	76	563	1656	7	430
APR12	9608	2502	7083	23	7327	2216	65	575	1634	7	375
MAY12	9599	2476	7105	18	7334	2207	58	560	1641	6	467
JUN12	9584	2480	7084	20	7300	2222	62	560	1658	4	418
JUL12	9491	2481	6989	21	7245	2178	68	521	1653	4	381
AUG12	9506	2505	6979	22	7270	2172	64	545	1621	6	389
SEP12	9513	2589	6904	20	7255	2187	71	593	1588	6	368
OCT12	9608	2670	6922	16	7309	2209	90	614	1589	6	415
NOV12	9658	2700	6949	9	7307	2241	110	636	1600	5	428
DEC12	9645	2777	6860	8	7266	2258	121	687	1567	4	409
JAN13	9757	2878	6870	9	7347	2289	121	707	1579	3	362
FEB13	9753	2846	6902	5	7332	2289	132	700	1587	2	439
MAR13	9868	2854	7014	0	7390	2323	155	696	1627	0	510

Adult	2.Receptions							3.Discharges							
	Total	Legal Status			Indigenous			Total	Legal Status				Indigenous		
		Remand	Sent	Unknown	No	Yes	Unk		Bail	Other	Parole	Sent Exp	No	Yes	Unk
APR11	1155	917	238	0	847	289	19	1207	351	205	473	178	872	310	25
MAY11	1278	1050	228	0	908	343	27	1361	445	282	450	184	1014	328	19
JUN11	1183	978	205	0	829	335	19	1230	418	185	475	152	890	323	17
JUL11	1222	976	246	0	878	322	22	1242	406	219	473	144	850	373	19
AUG11	1295	1067	228	0	928	347	20	1346	420	263	472	191	954	364	28
SEP11	1253	1025	228	0	925	313	15	1305	411	230	519	145	935	356	14
OCT11	1176	978	198	0	822	328	26	1277	391	254	468	164	911	337	29
NOV11	1212	987	225	0	863	328	21	1247	422	227	460	138	886	344	17
DEC11	1224	1006	218	0	830	374	20	1321	386	234	547	154	936	367	18
JAN12	1227	1028	197	2	818	379	30	1126	394	184	404	144	778	319	29
FEB12	1183	960	223	0	802	348	33	1241	454	188	453	146	835	373	33
MAR12	1251	973	278	0	867	345	39	1217	360	220	461	176	823	362	32
APR12	1201	961	240	0	836	350	15	1211	373	215	456	167	825	360	26
MAY12	1281	1055	226	0	908	350	23	1290	425	209	486	170	901	359	30
JUN12	1204	973	231	0	836	331	37	1219	398	178	481	162	870	316	33
JUL12	1207	972	235	0	848	329	30	1300	434	204	498	164	903	373	24
AUG12	1293	1051	242	0	913	354	26	1278	433	218	481	146	888	360	30
SEP12	1161	946	215	0	793	338	30	1154	364	179	448	163	808	323	23
OCT12	1303	1059	244	0	858	393	52	1208	386	236	441	145	804	371	33
NOV12	1294	995	298	1	867	386	41	1244	375	209	481	179	869	354	21
DEC12	1285	1042	239	4	842	383	60	1298	418	188	522	170	883	366	49
JAN13	1323	1073	250	0	886	391	46	1211	435	209	415	152	805	360	46
FEB13	1235	967	267	1	830	363	42	1239	362	244	476	157	845	363	31
MAR13	1318	981	336	1	878	384	56	1203	337	211	490	165	820	350	33

PART 4:

GLOSSARY

Adult

A person held in custody in a gazetted correctional centre managed by Corrective Services NSW (CSNSW). Persons may have been remanded in custody after being refused bail or sentenced to a custodial order for a proven offence.

The adult figures in this report include the small number of 16 and 17 year old males held in the Kariong Juvenile Correctional Centre.

ANZSOC

The Australian Bureau of Statistics Australian and New Zealand Standard Offence Classification (ANZSOC) groups criminal offences into 16 broad divisions:

1. Homicide and related offences
2. Acts intended to cause injury
3. Sexual assault and related offences
4. Dangerous or negligent acts endangering persons
5. Abduction, harassment and other offences against the person
6. Robbery, extortion and related offences
7. Unlawful entry with intent/burglary, break and enter
8. Theft and related offences
9. Fraud, deception and related offences
10. Illicit drug offences
11. Prohibited and regulated weapons and explosives offences
12. Property damage and environmental pollution
13. Public order offences
14. Traffic and vehicle regulatory offences
15. Offences against justice procedures, government security and government operations
16. Miscellaneous offences

For further information see:

<http://www.abs.gov.au/AUSSTATS/abs@.nsf/DetailsPage/1234.02011?OpenDocument>

Note that shortened titles are used in this report.

Average length of stay

The length of stay is the duration of the custodial episode, from the date of reception to the date of discharge.

The average length of stay (in days) is presented for three types of custodial episodes:

Remand custody only - the person entered custody after being refused bail and was then discharged from custody without having been sentenced. Most commonly discharged after being granted bail, other reasons include criminal charges not proven, receiving a non-custodial penalty for a

proven offence or being transferred interstate or from a juvenile to an adult prison or vice versa.

Sentenced custody only - persons who entered custody only after being sentenced to a custodial penalty by a court. These persons had either been granted bail, or bail had been dispensed with, pending finalisation of their charges.

Remand to sentenced custody - persons who had been remanded in custody prior to having a custodial sentence imposed by a court. The length of stay for these people is the entire time from reception on remand to discharge after serving the custodial sentence.

Note: Persons initially remanded in custody but then granted bail prior to having a custodial penalty imposed by a court are counted as two custodial episodes: one of remand custody only and one of sentenced custody only.

Bail

Under the provisions of the *Bail Act 1978*, police and courts may grant or refuse to grant bail to alleged offenders. The grant of bail takes into consideration the alleged offence and offender. Bail is granted at the offence level and so a person may be granted bail for one offence and refused bail for another offence.

Persons refused bail (and small numbers granted bail but unable to meet the bail conditions set by a court) are remanded into custody pending further court action.

Juvenile custody population data in this report disaggregates persons remanded into custody into those refused police bail and refused court bail. This is because all juveniles refused police bail are held in Juvenile Justice centres whereas not all adults refused police bail are held in gazetted correctional centres or 24 hour police cell complexes.

Control order

See Custodial sentence

Corrective Services NSW

Corrective Services NSW (CSNSW) is part of the NSW Department of Attorney General and Justice with responsibilities including the supervision of people remanded in custody pending the finalisation of criminal charges and offenders sentenced to a custodial order.

See <http://www.correctiveservices.nsw.gov.au/> for further information.

The Corporate Research, Evaluation and Statistics (CRES) section of CSNSW have provided the adult custody data for this report and advised on its interpretation.

Court bail refused

See Bail

Custodial episode

A custodial episode is the time between the reception into and discharge from custody. An individual may have multiple custodial episodes within the reporting period. A change in legal status between the reception and discharge date, for example changing from being bail refused to being sentenced to a custodial order, does not count as a new custodial episode.

Custodial sentence

Courts may impose a custodial sentence for a proven offence. For adults this is a term of imprisonment under the *Crimes (Sentencing Procedure) Act 1999*. For young people this is a control order of up to two years duration or a term of imprisonment to be served partly or wholly as a juvenile under the *Children (Criminal Proceedings) Act 1987*. A person may be given custodial sentences for multiple proven offences.

While the majority of persons held under sentence in a correctional centre are sentenced under the *Crimes (Sentencing Procedure) Act 1999*, offenders whose parole has been revoked by the State Parole Authority, persons sentenced under the *Commonwealth Crimes Act 1914*, those sentenced under the *Mental Health (Forensic Provision) Act 1990*, small numbers of persons held under immigration orders awaiting deportation following expiry of their sentence and persons sentenced under legislation in other states or territories are also managed by CSNSW.

Custody population

Persons held in custody in a JJNSW juvenile justice centre or a CSNSW gazetted correctional centre, whether remanded or sentenced. Custody population figures are counted as at midnight on the last day of the month or quarter as appropriate.

Discharge type

The type of reason why persons were discharged from custody:

Bail - courts granted the person bail pending the finalisation of their criminal charge(s).

Parole - the person was released to parole after serving the non-parole period of custodial sentence(s).

Sentence expired - the person was released after serving the entire period of all custodial sentence(s) imposed. This includes some persons who served both the non-parole and parole components of their sentence(s) in custody.

Not proven / non-custodial penalty - juvenile data only - the person was released after criminal charges were not proven or after the court imposed a non-custodial penalty for a proven offence eg good behaviour bond.

Other - includes persons transferred to the NSW Drug Court, interstate or from a juvenile to an adult prison or vice versa and deceased persons. Includes adults released after criminal charges were not proven, after the court imposed a non-custodial penalty for a proven offence and where the specific nature of the court's final non-custodial disposal is unknown.

Discharges

Persons legally discharged from JJNSW or CSNSW custody in accordance with a court order (including any State Parole Authority order). For example, to parole, on expiry of a sentence or having been granted bail. Note that persons whose legal status changed from remand to sentenced or the reverse are not counted as discharges as they have not been discharged from custody.

Imprisonment

See Custodial sentence.

Indigenous status

Indigenous status as self-reported on reception into custody. Persons may identify as being Aboriginal or Torres Strait Islander, neither Aboriginal nor Torres Strait Islander or may not provide this information. An inmate is recorded as indigenous if they have identified as such in the current or any previous custodial episode. Indigenous status is unknown for a small proportion of people.

Juvenile

A person held in custody in a juvenile justice centre. These centres are managed by Juvenile Justice NSW (JJNSW). A young person in juvenile custody may have been refused bail by police, refused bail by the court or sentenced to a custodial sentence.

All young persons refused bail by police must be taken to a juvenile justice centre to be held in custody pending their court appearance. Young persons refused police bail cannot be held in a police or court cell.

Note: a small number of 16 and 17 year old males are held in Kariiong Juvenile Correctional Centre which is managed by CSNSW. As Kariiong is a gazetted correctional centre, these young persons are counted in the adult figures in this report.

Juvenile Justice NSW

Juvenile Justice NSW (JJNSW) is part of the NSW Department of Attorney General and Justice with responsibilities including the supervision of young people remanded in custody pending the finalisation of criminal charges and young offenders sentenced to a control order/imprisonment.

See <http://www.djj.nsw.gov.au/> for further information.

The Research and Information Section of JJNSW have provided the juvenile data for this report and advised on its interpretation.

Legal status

The legal status of persons received into or held in custody:

Remand (Juvenile) - Juveniles refused bail (and small numbers granted bail but unable to meet conditions) are remanded into custody pending future court action.

Juvenile remand figures are disaggregated into:

- Police bail refused - Police have refused to grant bail to a juvenile. All juveniles refused bail by police are held in custody in a juvenile justice centre pending future court action.
- Court bail refused - the courts have refused to grant bail to a juvenile pending future court action.

Remand (Adult) - adults refused bail (and small numbers granted bail but unable to meet conditions) are remanded in custody pending future court action. Includes a small number of persons refused police bail and remanded in custody in a gazetted correctional centre. Includes persons

on remand who are being managed as correctional patients under the *Mental Health (Forensic Provisions) Act 1990*.

Sentenced the courts have imposed custodial sentence(s) for proven offence(s). This category includes persons returned to custody after breaching parole. Includes forensic patients as per the *Mental Health (Forensic Provisions) Act 1990* (ie persons found unfit to be tried and persons found not guilty due to mental illness). Persons on remand for one or more offences and sentenced for one or more offences have a legal status of sentenced.

Unknown - adults whose legal status was not recorded at the time of admission.

Legal status changed from remand to sentenced

Persons whose legal status changed from remand to sentenced upon the imposition of a custodial sentence by a court. This report shows the numbers of persons during each month who changed from being on remand to being sentenced.

Most serious offence

The most serious offence type for which each person is in custody. The offence type categories in this report are the sixteen ANZSOC Divisions, with shortened titles (See ANZSOC).

Most serious offence data is presented in a radar chart and a data table. The radar chart comprises multiple spokes, each one representing an offence type category. The numbers of persons in custody at the end of the current and previous quarter are plotted on the spoke representing their most serious offence type. The data points for each quarter are connected. A different type/colour of line is used for each quarter, making changes from quarter to quarter apparent. Note that offence types with no observations are plotted a short distance from the zero radius so that the numbers for every offence type can be observed.

The data table displays the number and proportion of persons in custody for each of the most serious offence types.

Most serious offence data is compiled by matching custody order records from JJNSW and CSNSW with sentencing and bail refused orders sourced from the JusticeLink system used by the NSW Children's, Local, District and Supreme Courts. Data is matched using JusticeLink Proceeding Number, a unique offence identifier which is available in the JJNSW data from January 2011 and CSNSW data for orders created from January 2012. CSNSW records without a valid proceeding number are matched against the court orders using police charge number if available and, failing that, on name, court date and Central Names Index (CNI) - a unique person identifier assigned by NSW Police. For this reason, reliable data on most serious offence is not available prior to 31 December 2012.

The data is presented separately for sentenced persons and persons on remand:

- The most serious offence for persons remanded in custody is the offence with the highest Median Sentence Ranking (MSR). The MSR is a ranking of ANZSOC codes and was developed by the Bureau of Crime Statistics and Research using data on sentences imposed in the NSW criminal courts. The MSR can be used to select the most serious offence when sentencing data is not available and to select most serious offence when multiple offences have the same custodial order duration. For further information see the Bureau's Crime and

Justice Bulletin No.142 "Measuring Offence Seriousness":

[www.bocsar.nsw.gov.au/lawlink/bocsar/ll_bocsar.nsf/vwFiles/CJB142.pdf/\\$file/CJB142.pdf](http://www.bocsar.nsw.gov.au/lawlink/bocsar/ll_bocsar.nsf/vwFiles/CJB142.pdf/$file/CJB142.pdf)

- The most serious offence for sentenced persons is the offence with the longest custodial order. For persons with more than one offence type with the same custodial order duration, the offence with the highest Median Sentence Ranking is selected as the most serious offence.
- Persons sentenced to a custodial order after breaching a non-custodial penalty (eg a suspended sentence, Community Service Order or good behaviour bond) have a most serious offence type of *Justice procedure offence* rather than the type of offence for which the non-custodial penalty was originally imposed (eg robbery/extortion, drug offences).

Note: this differs from the definition of most serious offence used in CSNSW publications and the Australian Bureau of Statistics Prisoners in Australia publication series (*ABS cat.no.4517.0*)

Police bail refused

See Bail.

Receptions

Persons received into Juvenile Justice custody or a gazetted correctional centre. Gazetted correctional centres are managed by CSNSW. Persons received into CSNSW custody and managed only in CSNSW 24-hour police/court cell complexes are excluded.

Remand

See Legal status.

Sentenced

See Legal status.

24 hour police/court cell complexes

In addition to gazetted correctional centres, CSNSW manage a number of police/court cell complexes. This report excludes persons received and then discharged from a CSNSW-managed 24 hour police/court cell complex without entering a gazetted correctional centre.