

---

# **NEW SOUTH WALES RECORDED CRIME STATISTICS 2001**

---

Jacqui Allen, Marilyn Chilvers, Peter Doak,  
Derek Goh, Tracy Painting and Mark Ramsay

**NSW BUREAU OF CRIME STATISTICS AND RESEARCH**

## ACKNOWLEDGEMENTS

The production of this report was greatly assisted by officers within the NSW Police Service. Special thanks are due to officers in Information Technology and in Corporate Information, Organisational, Policy and Development. Thanks also to Jonathan Nichol at the NSW Bureau of Crime Statistics and Research who carried out the desktop publishing of the report.

2002

Published by the NSW Bureau of Crime Statistics and Research  
Attorney General's Department  
Level 8  
St James Centre  
111 Elizabeth Street  
Sydney

Phone: (02) 9231 9190

Fax: (02) 9231 9187

Email: [bcsr@agd.nsw.gov.au](mailto:bcsr@agd.nsw.gov.au)

Website: [www.lawlink.nsw.gov.au/bocsar](http://www.lawlink.nsw.gov.au/bocsar)

SSN 1035-9044

# INTRODUCTION

This report presents data on crimes reported to or detected by NSW police from January 1999 to December 2001. The data were extracted from the Computerised Operational Policing System (COPS) of the NSW Police Service in January 2002.

The report includes an overview of trends over the most recent two-year period for a selection of serious offence categories. The overview in this year's report indicates that four of the sixteen major offence categories are trending upwards. Between 2000 and 2001, increases were recorded in the numbers of recorded incidents of assault, robbery with a firearm, steal from person and fraud in NSW. There are significant downward trends in two of the selected offence categories. These are break and enter – dwelling and indecent assault, act of indecency, other sexual offences.

Dr Don Weatherburn  
**Director**

March 2002

# CONTENTS

<b>DEFINITIONS AND EXPLANATORY NOTES</b>	vi
<b>OVERVIEW OF MAJOR TRENDS, 2000 AND 2001, NEW SOUTH WALES</b>	1
Figure 1 Murder	5
Figure 2 Assault	6
Figure 3 Sexual assault and indecent assault, act of indecency, other sexual offences	7
Figure 4 Robbery with and without a weapon	8
Figure 5 Break and enter – dwelling and non-dwelling	9
Figure 6 Motor vehicle theft and steal from motor vehicle	10
Figure 7 Steal from retail store, from dwelling and from person	11
Figure 8 Fraud	12
Figure 9 Malicious damage to property	13
Figure 10 Charge	14
Figure 11 Court Attendance Notice	14
Figure 12 Summons	15
Figure 13 Field Court Attendance Notice	15
<b>MONTHLY TRENDS IN RECORDED CRIMINAL INCIDENTS, 1999, 2000 AND 2001, NEW SOUTH WALES</b>	17
Table 1.1 Monthly trends in recorded criminal incidents, 1999 New South Wales: Type of offence	18
Table 1.2 Monthly trends in recorded criminal incidents, 2000 New South Wales: Type of offence	22
Table 1.3 Monthly trends in recorded criminal incidents, 2001 New South Wales: Type of offence	26
<b>MONTHLY TRENDS IN METHODS OF PROCEEDING AGAINST ALLEGED OFFENDERS, 1999, 2000 AND 2001, NEW SOUTH WALES</b>	31
Table 2.1 Monthly trends in methods of proceeding against alleged offenders, 1999 New South Wales: Type of process	32
Table 2.2 Monthly trends in methods of proceeding against alleged offenders, 2000 New South Wales: Type of process	33
Table 2.3 Monthly trends in methods of proceeding against alleged offenders, 2001 New South Wales: Type of process	34
<b>CLEARED CRIMINAL INCIDENTS FOR SELECTED OFFENCES, JANUARY 1999 TO SEPTEMBER 2001, NEW SOUTH WALES</b>	35
Table 3.1 Cleared criminal incidents, selected offences, January 1999 to December 1999, New South Wales: Type of offence.	36
Table 3.2 Cleared criminal incidents, selected offences, January 2000 to December 2000, New South Wales: Type of offence	37
Table 3.3 Cleared criminal incidents, selected offences, January 2001 to September 2001, New South Wales: Type of offence.	38

## CONTENTS continued

<b>RECORDED CRIME STATISTICS IN NEW SOUTH WALES REGIONS FOR SELECTED OFFENCES, 1999, 2000 AND 2001</b>	39
Table 4.1 Murder	41
Table 4.2 Assault	42
Table 4.3 Sexual assault	43
Table 4.4 Indecent assault, act of indecency, other sexual offences	44
Table 4.5 Robbery without a weapon	45
Table 4.6 Robbery with a firearm	46
Table 4.7 Robbery with a weapon not a firearm	47
Table 4.8 Break and enter – dwelling	48
Table 4.9 Break and enter – non-dwelling	49
Table 4.10 Receiving, goods in custody	50
Table 4.11 Motor vehicle theft	51
Table 4.12 Steal from motor vehicle	52
Table 4.13 Steal from retail store	53
Table 4.14 Steal from dwelling	54
Table 4.15 Steal from person	55
Table 4.16 Fraud	56
Table 4.17 Malicious damage to property	57
Table 4.18 Possession and/or use of cocaine	58
Table 4.19 Possession and/or use of narcotics	59
Table 4.20 Possession and/or use of cannabis	60
Table 4.21 Dealing, trafficking in cocaine	61
Table 4.22 Dealing, trafficking in narcotics	62
Table 4.23 Dealing, trafficking in cannabis	63
Table 4.24 Cultivating cannabis	64
Table 4.25 Offensive conduct	65
Table 4.26 Offensive language	66
Table 4.27 Breach Apprehended Violence Order	67
Table 4.28 PCA driving offences	68
Table 4.29 Drive while disqualified	69
Table 4.30 Drive manner/speed dangerous	70
<b>APPENDICES</b>	71
Appendix 1 Offences included in classifications	72
Appendix 2 Maps	77
Appendix 3 Local Government Areas in Statistical Divisions	79

## DEFINITIONS AND EXPLANATORY NOTES

The data in this report are extracted from the NSW Police Service's Computerised Operational Policing System (COPS). This system is used for record-keeping for all police operations, not just for criminal matters.

In this report:

- the counting units are recorded *criminal incidents* (except for murder and manslaughter where the counting units are victims) rather than recorded *offences*; and
- the data are categorised by date of *reporting* to police (or date of detection by police) rather than by date of *occurrence* of the offence.

### RECORDED CRIMINAL INCIDENTS

A *criminal incident* is defined as an activity detected by or reported to police which:

- involved the same offender(s);
- involved the same victim(s);
- occurred at the one location;
- occurred during one uninterrupted period of time;
- falls into one offence category;
- falls into one incident type (for example, 'actual', 'attempted', 'conspiracy').

One incident may involve two offenders assaulting the same victim. This would be recorded as one assault incident. Alternatively, suppose a man reports to police that his neighbour demanded money from him, then assaulted him when he did not comply. For such an event, two criminal incidents are recorded because two distinct offence types are involved (demand money with menaces and assault) even though the same parties were involved at the same time and in the same place.

### RECORDED VICTIMS

For murder and manslaughter only, the counting units used are victims. Under the definition of a criminal incident (same parties, same time, same place, same offence and same incident type) one murder or manslaughter incident could involve two or more persons being killed. Because of the seriousness of these offences and their relatively small numbers, it was considered to be more appropriate to count the number of victims, rather than the number of criminal incidents. Hence, where *one* murder incident involves a person killing six people, *six* murder victims are counted.

### OFFENCE CATEGORIES

The classification of offences in this report is based on the Australian National Classification of Offences (ANCO) issued by the Australian Bureau of Statistics (ABS, 1985, Cat. No. 1234.0).

For all *type of offence* classifications used in the report, Appendix 1 lists the offence categories included in the classification. The offence categories are those used by the NSW Police Service and do not necessarily correspond exactly with offences defined in legislation.

### COUNTING PERIOD

Criminal incidents are included in the counting period in which they were reported to or detected by police.

In most cases criminal incidents are recorded on COPS on the day of reporting. Because the reporting date and recording date may differ, it is possible for some updating of data to occur. That is, data extracted for a specified period of time (incidents reported in 2000, for example), may differ according to the date of extraction of the data.

## PROCEEDINGS AGAINST ALLEGED OFFENDERS

Police may proceed against offenders and alleged offenders through a variety of legal or other processes. Most alleged offenders are referred to the NSW criminal courts. The more serious offences are dealt with by way of a charge. The alleged offender is arrested, taken to a police station, fingerprinted and the details of the person and charge are recorded. A Court Attendance Notice (CAN) may be issued at a police station or a Field Court Attendance Notice (FCAN) may be issued by police at other locations. Either type of Court Attendance Notice specifies the particulars of the alleged offence, the date and place of the court hearing and the consequences of failure to attend. A summons may be used for less serious offences. The court issues a summons at the request of an informant. The summons specifies the alleged offence and the date and place of the court hearing.

Some alleged offenders are proceeded against but diverted from the criminal court system. For many minor offences police can issue Infringement Notices. By paying the prescribed penalty the offender avoids having to go to court. Police also have the discretion to issue warnings to offenders. More recently, the *Young Offenders Act 1997* introduced the Youth Justice Conferencing scheme. A Youth Justice Conference (YJC) is a face to face meeting between offenders, victims and their support persons. A convenor acts as a facilitator for the meeting. The parties discuss the offending behaviour and the impact on the victim. They also negotiate some form of restitution to the victim. The *Young Offenders Act 1997* also provides for cautions to be issued to juvenile offenders.

Some offenders or alleged offenders are not proceeded against. The offender or alleged offender may be deceased, be under the age of ten years, have diplomatic immunity or be mentally incapable of forming criminal intent. The victim or the Director of Public Prosecutions may refuse to prosecute. A small number of offenders or alleged offenders are temporarily not proceeded against while police await further advice, for example whether a juvenile should be referred to a YJC.

## CLEARED CRIMINAL INCIDENTS

A cleared criminal incident is one which, in the view of police, has been satisfactorily cleared by charge or otherwise.

An incident is cleared by charge when police have laid a charge or an information against at least one person. The information may have been laid with a view to the issuing of a warrant, summons or other process for the purpose of bringing an offender before the court.

A criminal incident is cleared other than by charge when, under normal circumstances, a charge or information would have been laid against at least one person, but, for a variety of reasons, police have been unable to make an arrest, despite knowing the identity of the offender and having sufficient evidence to support a charge. Examples of situations in which an offence may be cleared other than by charge include the following:

- the offender is a juvenile and is cautioned;
- the offender has died before a charge is made or information laid;
- the offender has been committed to a psychiatric institution and is unlikely to be released;
- there is an obstacle to charging, such as diplomatic immunity;
- the complainant or essential witness is dead and proceedings would be aborted;
- the offender is serving a sentence and police consider that no useful purpose would be served by prosecution.

## REGIONAL STATISTICS

Statistics are provided on the number of criminal incidents (victims for murder) recorded for each of the Statistical Divisions of NSW as defined by the Australian Bureau of Statistics (ABS). Within the Sydney Statistical Division, statistics are provided for Statistical Subdivisions. Recorded criminal incidents which occurred in correctional, detention or remand centres, however, are not counted in the Statistical Division in which the incident occurred. Numbers of such incidents are noted at the foot of each table. Appendix 2

provides maps indicating the location of each Statistical Division and Sydney Statistical Subdivision. Appendix 3 lists the Local Government Areas within each of the Statistical Divisions and Statistical Subdivisions. A criminal incident is counted within a particular region when the location of the offence falls within that region.

For the rate calculations, population data were obtained from the Australian Bureau of Statistics publications: *Regional Population Growth, Australia, 20 Feb 2001*, Cat. No. 3218.0 (for 1999 population estimates), and *Regional Population Growth, Australia, 19 Feb 2002*, Cat. No. 3218.1 (for 2000 and 2001 population estimates).

## ORGANISATION OF THE REPORT

The report is organised into five main sections as follows. First, there is an overview of major trends in recorded criminal incidents (recorded victims for murder) over the two-year period from January 2000 to December 2001. Figures showing trends in selected offences are presented, as well as summary points indicating which trends are statistically significant and the highest and lowest offending rates in Statistical Divisions of rural NSW and Statistical Subdivisions of Sydney. This section also includes figures showing trends in methods of proceeding against offenders and alleged offenders which lead to attendance at court.

The second section presents, for all categories of offence, the monthly numbers of recorded criminal incidents (recorded victims for murder and manslaughter). There are three tables in this section, one each for 1999, 2000 and 2001. Each table provides a total for the year and the annual rate per 100,000 population. The data used for the trend analysis in the first section of the report are included in these tables. Note, however, that the trend analysis uses only the most recent two years of data.

The third section provides monthly numbers of offenders or alleged offenders proceeded against, by the type of process pursued, for those criminal incidents recorded by NSW police in the reference year. There are three tables in this section, one each for 1999, 2000 and 2001. Each offender or alleged offender appears only once in the table for each event (there can be more than one criminal incident associated with a single event). The processes are arranged in a hierarchy with the offender or alleged offender appearing in the most serious category where multiple incidents are involved. For example if an event involves two incidents and the alleged offender is charged for one incident but receives a warning for the second incident, the alleged offender appears only in the 'Charged' category. Note that in these tables the year refers to the year in which the criminal incident or incidents were reported to the police. For example, if an incident was reported to police in 2000 but the alleged offender was not apprehended and charged until 2001, the charge is recorded for 2000.

The fourth section provides the numbers and percentages of cleared criminal incidents, for selected types of offence, for 1999, 2000 and 2001. The offence types included in these tables are those where the crime is likely to have been reported to police, rather than discovered or detected by police. Offence types where the numbers of recorded criminal incidents are influenced by police law enforcement activity (drug offences, for example) are excluded. For such offence types the clear-up percentages are very high because clearing the offence generally occurs simultaneously with its detection (that is, an arrest is made when the crime is discovered).

The tables for 1999 and 2000 show the number of recorded criminal incidents and, of these, the number and percentage which had been cleared 30 days, 90 days and 180 days after the incident was reported to police. The table for 2001 is similar to those for 1999 and 2000 except that there are only two follow-up periods, 30 days and 90 days. Because the data for this report were extracted in January 2001, the clear-up status after 90 days could not be determined for any offences reported in the last three months of 2001. Hence, the clear-up data for 2001 are for the first nine months of the year only.

In the fifth section of the report there are 30 tables, one for each major offence category. Each table gives the numbers and rates (per 100,000 population) of recorded criminal incidents (for murder, recorded victims) for the periods January to December 1999, 2000 and 2001, for each of the NSW Statistical Divisions and for each Statistical Subdivision in Sydney. Recorded criminal incidents which occurred in custodial institutions are counted separately; they are not included in the data for the Statistical Division where the custodial institution is located. Note that both the numbers and rates of recorded criminal incidents in 1999 and 2000 have been updated since the previous edition. The Statistical Subdivisions in Sydney in this report differ from previous reports, in keeping with ABS changes to boundaries. Details are shown in Appendix 3.



---

**OVERVIEW OF MAJOR TRENDS,  
2000 AND 2001  
NEW SOUTH WALES**

---



# OVERVIEW OF MAJOR TRENDS

## TRENDS IN RECORDED CRIME

However trends in recorded crime are presented, their interpretation is a difficult task. The recorded criminal incident data presented in this report are based on information derived from the NSW Police Service Computerised Operational Policing System, so only those incidents which are reported to, or detected by, police are included. The trends in recorded crime shown in this report will, therefore, reflect movements in the underlying factors which influence the detection, reporting and recording of crime, as well as changes in the true level of crime in the community.

An alternative measure of the level of crime in NSW is available from crime victim surveys, for example the *Crime and Safety Survey* which is conducted annually by the Australian Bureau of Statistics (ABS).<sup>1</sup> As well as providing an estimate of the victimisation rate in the community for a selected set of offences, this survey measures the proportion of crimes which are not reported to police, and are therefore not recorded in the official statistics. In particular, personal crimes, such as assault and robbery, are less likely to be reported than crimes which involve households. For example, *Crime and Safety, New South Wales, 2001* shows that, in the twelve-month period to April 2001, while 95 per cent of motor vehicle thefts and 73 per cent of break and enter offences (crimes against 'households') were reported to police, only 30 per cent of all alleged assault offences were reported during that period. Given that some offences have low reporting rates, it is possible that changes in recorded crime rates over time for these offences largely reflect changes in reporting rates.

Public willingness to report crime, however, is just one of the extraneous factors which can affect trends in recorded crime. Shifts in policing policy can also have a marked effect on the number of recorded drug offences, drink driving offences, cases of offensive behaviour or of receiving stolen goods. For these offences, therefore, recorded rates probably do not accurately reflect actual rates. For this reason, the more detailed comparisons of crime rates and examination of trends in this document are restricted to categories of offence which are reported to, rather than detected by, police.

The interpretation of trends in official reports of crime can be considerably more difficult than the interpretation of trends in unemployment or inflation statistics. The ease with which recorded crime statistics can be misunderstood creates a temptation to offer an authoritative explanation for each major crime trend. Indeed, in many instances it is simply impossible to state with any assurance why a particular trend has appeared. This report, therefore, confines itself to identifying and describing trends in recorded crime, rather than explaining them.

The trends examined in this overview cover a twenty-four month period, from January 2000 to December 2001. For comparative purposes, statistics for 1999 have been included in the detailed tables in the sections which follow. For some offence categories, separate trends have been presented for various offence subcategories; in particular, sexual offences, robbery, break and enter, and stealing offences have been further disaggregated.

For each offence category or subcategory except murder, a statistical test for trend was applied to the monthly numbers of recorded criminal incidents over the twenty-four month period from January 2000 to December 2001.<sup>2</sup> In the case of murder, the statistical test for trend was applied to the monthly numbers of victims over the same period. For those offences where a statistically significant trend was found, the extent of the trend is indicated by the percentage change between the total recorded number of incidents for the twelve months of January to December 2000 and the total recorded number of incidents for the same period in 2001.

## SUMMARY OF TRENDS

In the following summary the bracketed figures denote the percentage change in the total number of recorded criminal incidents between the consecutive twelve-month periods January to December 2000 and January to December 2001.

### Significant downward trends

There was a statistically significant downward trend in the monthly numbers of recorded criminal incidents for the following offences:

- indecent assault, act of indecency, other sexual offences (down by 6.0%, see Figure 3)
- break and enter – dwelling (down by 3.2%, see Figure 5).

### Offences where there was no upward or downward trend

There was no statistically significant generally upward or downward trend in the monthly numbers of recorded criminal incidents<sup>3</sup> for any of the following offences:

- murder (see Figure 1)
- sexual assault (see Figure 3)
- robbery with a weapon not a firearm (see Figure 4)
- robbery without a weapon (see Figure 4)
- break and enter – non-dwelling (see Figure 5)
- motor vehicle theft (see Figure 6)
- steal from motor vehicle (see Figure 6)
- steal from retail store (see Figure 7)
- steal from dwelling (see Figure 7)
- malicious damage to property (see Figure 9).

### Significant upward trends

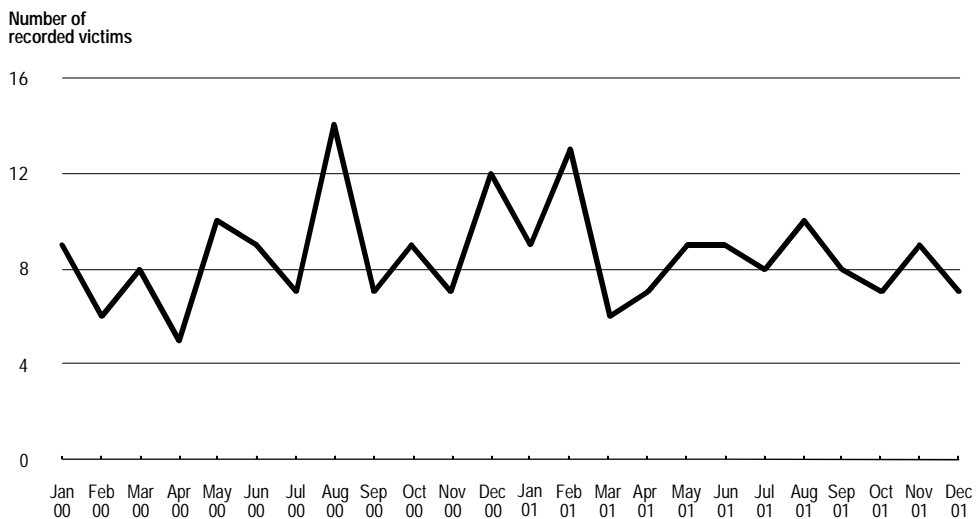
There was a statistically significant upward trend in the monthly numbers of recorded criminal incidents for the following offences:

- assault (up by 7.6%, see Figure 2)
- robbery with a firearm (up by 34.1%, see Figure 4)
- steal from person (up by 27.8%, see Figure 7)
- fraud (up by 16.3%, see Figure 8).

## DESCRIPTION OF TRENDS

Graphs in this section show monthly trends for a selected set of offences in NSW, between January 2000 and December 2001. For each offence category, information is given on the statistical significance of any trend shown in the graphs, and the annual rate of offences per 100,000 resident population. In addition, geographical areas with the three highest rates, and the three lowest rates of recorded criminal incidents in NSW are listed. Within the Sydney Statistical Division, recorded crime rates are detailed by Statistical Subdivision (SSD). Outside the Sydney Statistical Division, recorded crime rates are detailed by Statistical Division (SD). The rate calculations are based on resident population data and are calculated as recorded offences per 100,000 population in each Statistical Division or Subdivision.<sup>4</sup> It should be noted that the Inner Sydney Statistical Subdivision has high recorded crime rates because, compared with other regions, the resident population is small relative to the 'transient' or non-resident population which uses the area for business, entertainment, shopping, etc. That is, the high transient population is not reflected in the rate calculation.

**Figure 1: Murder**

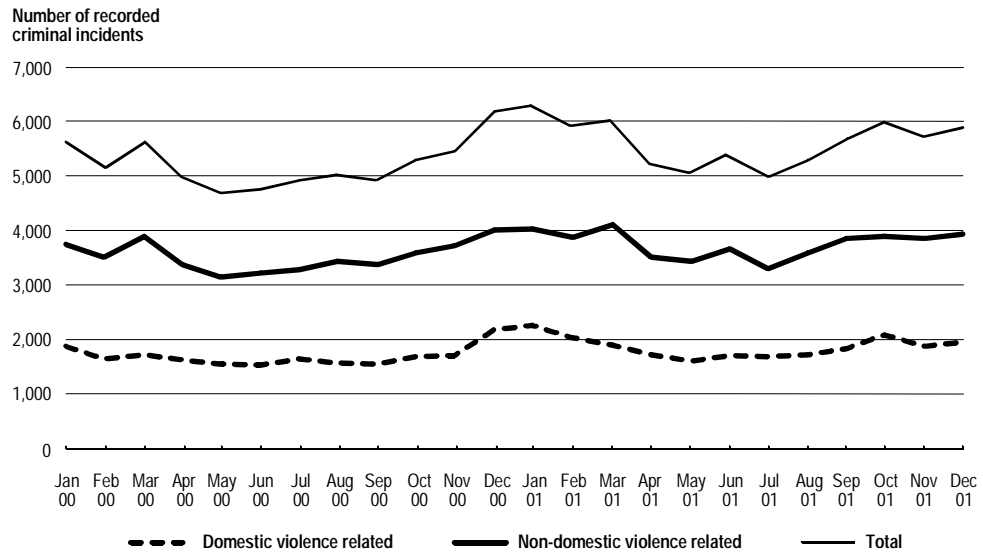


### Murder

With such small numbers of murder victims, the month to month variation is extremely marked. For this reason it is difficult to detect trends over such a short period. Because of the small numbers of murder victims, it is not sensible to make regional comparisons.

**Trend (Jan 2000 - Dec 2001):** No statistically significant upward or downward trend.

**NSW annual rate (2001):** 1.6 per 100,000 population

**Figure 2: Assault**

## Assault

### Total assaults

**Trend (Jan 2000 - Dec 2001):** A statistically significant upward trend (up by 7.6%).

**NSW annual rate (2001):** 1,034.8 per 100,000 population

**Highest rates:** Far West SD - 2,888.3 per 100,000 population  
 North Western SD - 2,269.8 per 100,000 population  
 Inner Sydney SSD - 2,267.0 per 100,000 population

**Lowest rates:** Central Northern Sydney SSD - 293.1 per 100,000 population  
 Lower Northern Sydney SSD - 432.2 per 100,000 population  
 Northern Beaches SSD - 487.3 per 100,000 population

### Non-domestic assault

**Trend (Jan 2000 - Dec 2001):** A statistically significant upward trend (up by 6.4%).

**NSW annual rate (2001):** 691.0 per 100,000 population

**Highest rates:** Inner Sydney SSD - 1,898.3 per 100,000 population  
 Far West SD - 1,599.3 per 100,000 population  
 North Western SD - 1,389.5 per 100,000 population

**Lowest rates:** Central Northern Sydney SSD - 192.4 per 100,000 population  
 Lower Northern Sydney SSD - 323.1 per 100,000 population  
 Northern Beaches SSD - 328.4 per 100,000 population

### Domestic assault

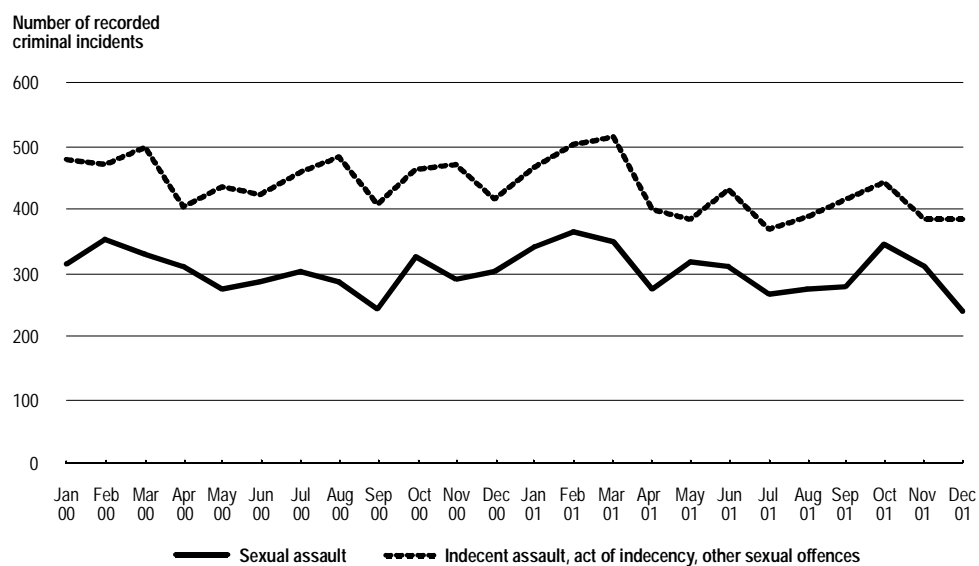
**Trend (Jan 2000 - Dec 2001):** A statistically significant upward trend (up by 10.2%).

**NSW annual rate (2001):** 343.9 per 100,000 population

**Highest rates:** Far West SD - 1,289.0 per 100,000 population  
 North Western SD - 880.3 per 100,000 population  
 Murrumbidgee SD - 616.2 per 100,000 population

**Lowest rates:** Central Northern Sydney SSD - 100.7 per 100,000 population  
 Lower Northern Sydney SSD - 109.1 per 100,000 population  
 Inner Western Sydney SSD - 158.2 per 100,000 population

**Figure 3: Sexual assault and indecent assault, act of indecency, other sexual offences**



## Sexual offences

### *Sexual assault*

**Trend (Jan 2000 - Dec 2001):** No statistically significant upward or downward trend.

**NSW annual rate (2001):** 56.2 per 100,000 population

**Highest rates:** Far West SD - 112.1 per 100,000 population  
 North Western SD - 109.9 per 100,000 population  
 Murray SD - 105.3 per 100,000 population

**Lowest rates:** Central Northern Sydney SSD - 20.0 per 100,000 population  
 Lower Northern Sydney SSD - 26.0 per 100,000 population  
 St George – Sutherland SSD - 27.5 per 100,000 population

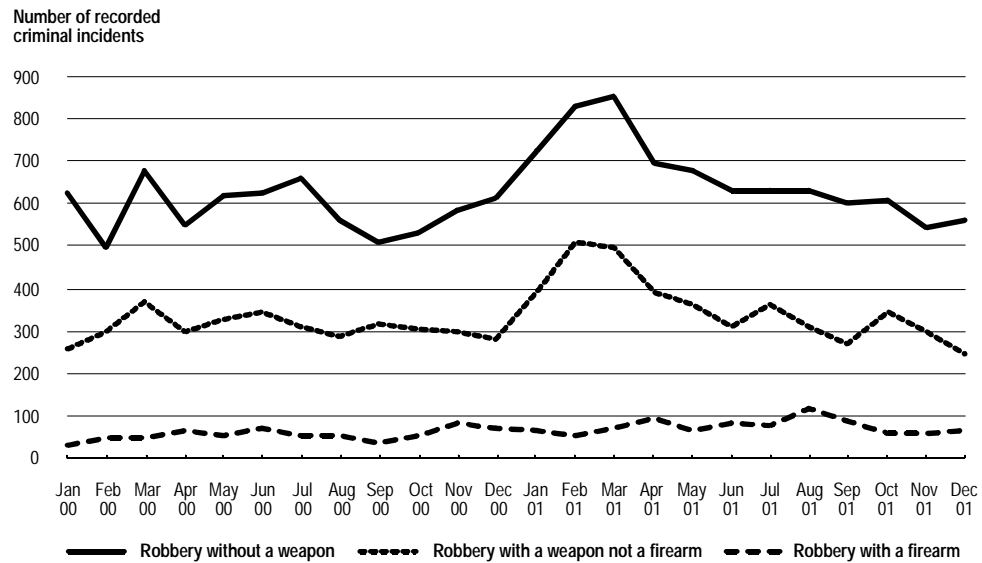
### *Indecent assault, act of indecency, other sexual offences*

**Trend (Jan 2000 - Dec 2001):** A statistically significant downward trend (down by 6.0%).

**NSW annual rate (2001):** 77.8 per 100,000 population

**Highest rates:** Far West SD - 137.9 per 100,000 population  
 Northern SD - 132.4 per 100,000 population  
 North Western SD - 125.4 per 100,000 population

**Lowest rates:** Central Northern Sydney SSD - 34.3 per 100,000 population  
 Eastern Suburbs SSD - 42.4 per 100,000 population  
 Canterbury – Bankstown SSD - 47.1 per 100,000 population

**Figure 4: Robbery with and without a weapon**

## Robbery

### *Robbery without a weapon*

**Trend (Jan 2000 - Dec 2001):** No statistically significant upward or downward trend.

**NSW annual rate (2001):** 122.3 per 100,000 population

**Highest rates:** Inner Sydney SSD - 778.4 per 100,000 population  
 Inner Western Sydney SSD - 248.2 per 100,000 population  
 Central Western Sydney SSD - 200.5 per 100,000 population

**Lowest rates:** South Eastern SD - 16.8 per 100,000 population  
 Murray SD - 17.3 per 100,000 population  
 Murrumbidgee SD - 25.5 per 100,000 population

### *Robbery with a firearm*

**Trend (Jan 2000 - Dec 2001):** A statistically significant upward trend (up by 34.1%).

**NSW annual rate (2001):** 13.5 per 100,000 population

**Highest rates:** Inner Sydney SSD - 43.4 per 100,000 population  
 Canterbury – Bankstown SSD - 40.1 per 100,000 population  
 Central Western Sydney SSD - 36.3 per 100,000 population

**Lowest rates:** North Western SD - 0.9 per 100,000 population  
 No robberies with firearms were recorded in the following SDs:  
 Central West, Far West, Murray, Murrumbidgee and Northern.

### *Robbery with a weapon not a firearm*

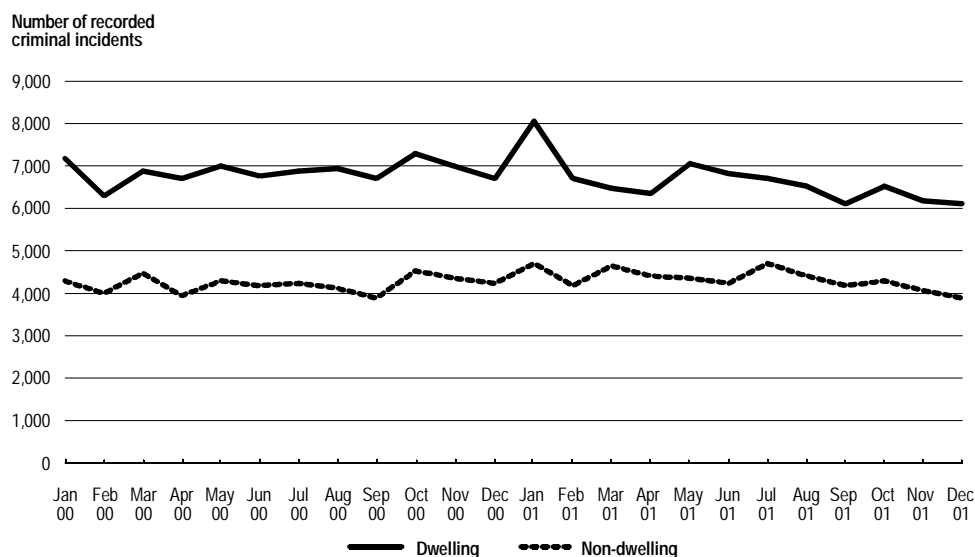
**Trend (Jan 2000 - Dec 2001):** No statistically significant upward or downward trend.

**NSW annual rate (2001):** 65.7 per 100,000 population

**Highest rates:** Inner Sydney SSD - 385.6 per 100,000 population  
 Inner Western Sydney SSD - 141.1 per 100,000 population  
 Fairfield – Liverpool SSD - 138.5 per 100,000 population

**Lowest rates:** Far West SD - 4.3 per 100,000 population  
 Richmond – Tweed SD - 7.5 per 100,000 population  
 Central West SD - 8.1 per 100,000 population



**Figure 5: Break and enter dwelling and non-dwelling**

## Break and enter

### *Break and enter - dwelling*

**Trend (Jan 2000 - Dec 2001):** A statistically significant downward trend (down by 3.2%).

**NSW annual rate (2001):** 1,221.6 per 100,000 population

**Highest rates:** Inner Sydney SSD - 2,166.6 per 100,000 population  
 North Western SD - 1,839.5 per 100,000 population  
 Eastern Suburbs SSD - 1,754.4 per 100,000 population

**Lowest rates:** Central Northern Sydney SSD - 758.3 per 100,000 population  
 Richmond – Tweed SD - 780.1 per 100,000 population  
 South Eastern SD - 789.4 per 100,000 population

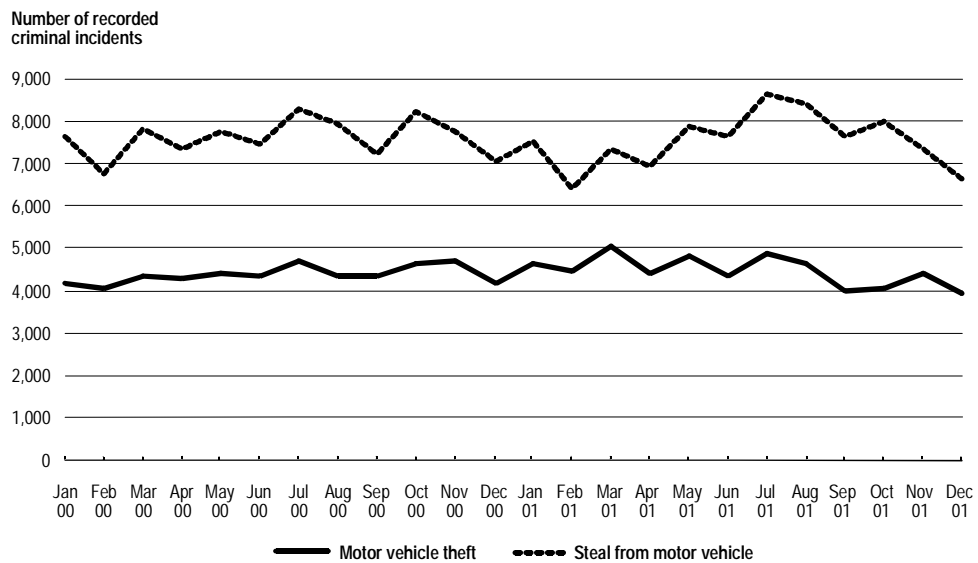
### *Break and enter - non-dwelling*

**Trend (Jan 2001 - Dec 2001):** No statistically significant upward or downward trend.

**NSW annual rate (2001):** 796.9 per 100,000 population

**Highest rates:** Inner Sydney SSD - 1,793.5 per 100,000 population  
 North Western SD - 1,247.0 per 100,000 population  
 Illawarra SD - 1,040.5 per 100,000 population

**Lowest rates:** Central Northern Sydney SSD - 426.9 per 100,000 population  
 Northern Beaches SSD - 437.7 per 100,000 population  
 St George – Sutherland SSD - 437.8 per 100,000 population

**Figure 6: Motor vehicle theft and steal from motor vehicle**

## Motor vehicle theft and steal from motor vehicle

### *Motor vehicle theft*

**Trend (Jan 2000 - Dec 2001):** No statistically significant upward or downward trend.

**NSW annual rate (2001):** 822.5 per 100,000 population

**Highest rates:** Inner Sydney SSD - 1,749.1 per 100,000 population  
 Central Western Sydney SSD - 1,339.4 per 100,000 population  
 Canterbury – Bankstown SSD - 1,272.0 per 100,000 population

**Lowest rates:** Northern SD - 235.1 per 100,000 population  
 Central West SD - 274.2 per 100,000 population  
 South Eastern SD - 281.4 per 100,000 population

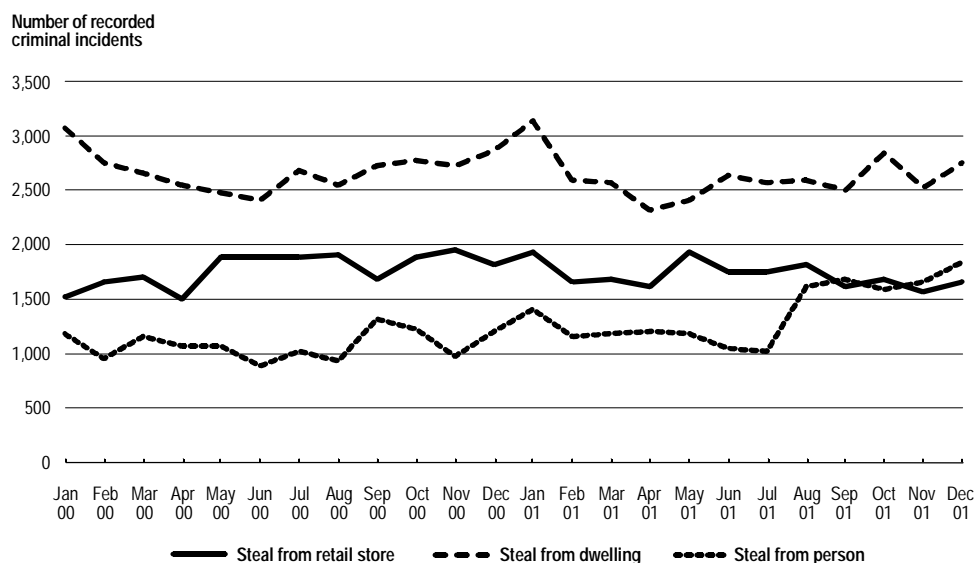
### *Steal from motor vehicle*

**Trend (Jan 2000 - Dec 2001):** No statistically significant upward or downward trend.

**NSW annual rate (2001):** 1,384.9 per 100,000 population

**Highest rates:** Inner Sydney SSD - 5,241.2 per 100,000 population  
 Eastern Suburbs SSD - 1,819.9 per 100,000 population  
 North Western SD - 1,800.0 per 100,000 population

**Lowest rates:** South Eastern SD - 739.5 per 100,000 population  
 Mid-North Coast SD - 781.9 per 100,000 population  
 Central Northern Sydney SSD - 790.2 per 100,000 population

**Figure 7: Steal from retail store, from dwelling and from person**

## Stealing

### *Steal from retail store*

**Trend (Jan 2000 - Dec 2001):** No statistically significant upward or downward trend.

**NSW annual rate (2001):** 316.1 per 100,000 population

**Highest rates:** Inner Sydney SSD - 799.1 per 100,000 population  
 Central Western Sydney SSD - 446.0 per 100,000 population  
 Blacktown SSD - 370.5 per 100,000 population

**Lowest rates:** Central Northern Sydney SSD - 129.4 per 100,000 population  
 Northern Beaches SSD - 177.1 per 100,000 population  
 South Eastern SD - 257.5 per 100,000 population

### *Steal from dwelling*

**Trend (Jan 2000 - Dec 2001):** No statistically significant upward or downward trend.

**NSW annual rate (2001):** 481.5 per 100,000 population

**Highest rates:** Far West SD - 1,082.0 per 100,000 population  
 Inner Sydney SSD - 794.7 per 100,000 population  
 North Western SD - 773.8 per 100,000 population

**Lowest rates:** Canterbury – Bankstown SSD - 248.2 per 100,000 population  
 Fairfield – Liverpool SSD - 281.1 per 100,000 population  
 St George – Sutherland SSD - 287.2 per 100,000 population

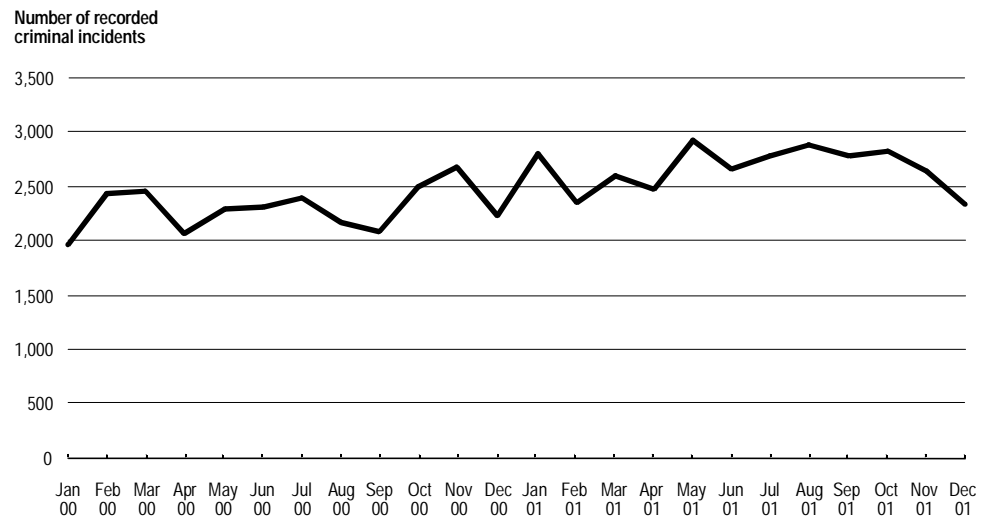
### *Steal from person*

**Trend (Jan 2000 - Dec 2001):** A statistically significant upward trend (up by 27.8%).

**NSW annual rate (2001):** 253.7 per 100,000 population

**Highest rates:** Inner Sydney SSD - 2,247.7 per 100,000 population  
 Inner Western Sydney SSD - 391.2 per 100,000 population  
 Eastern Suburbs SSD - 360.9 per 100,000 population

**Lowest rates:** Murray SD - 49.9 per 100,000 population  
 Central West SD - 51.9 per 100,000 population  
 Murrumbidgee SD - 57.1 per 100,000 population

**Figure 8: Fraud**

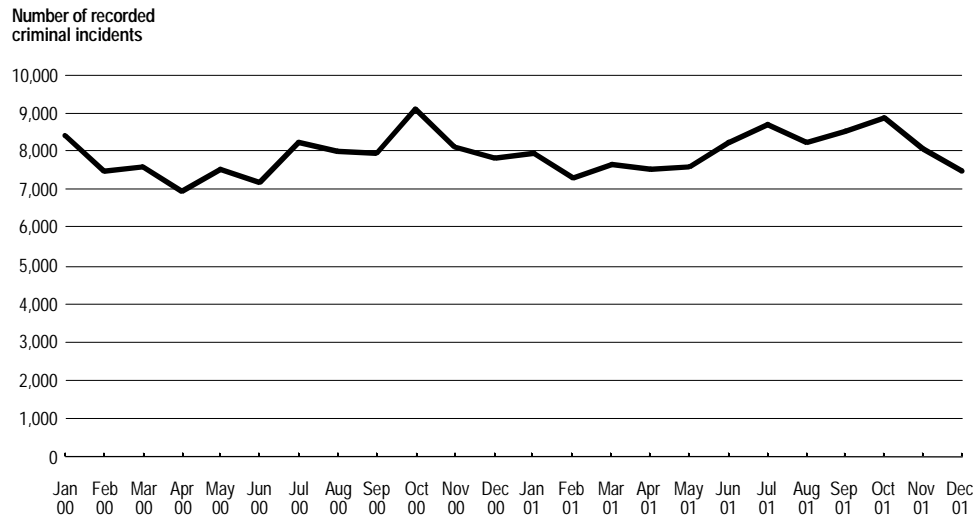
## Fraud

**Trend (Jan 2000 - Dec 2001):** A statistically significant upward trend (up by 16.3%).

**NSW annual rate (2001):** 491.4 per 100,000 population

**Highest rates:** Inner Sydney SSD - 1,529.0 per 100,000 population  
 Central Western Sydney SSD - 789.3 per 100,000 population  
 Canterbury – Bankstown SSD - 732.0 per 100,000 population

**Lowest rates:** Central Northern Sydney SSD - 209.4 per 100,000 population  
 Far West SD - 215.5 per 100,000 population  
 Northern SD - 232.8 per 100,000 population

**Figure 9: Malicious damage to property**

## Malicious damage to property

**Trend (Jan 2000 - Dec 2001):** No statistically significant upward or downward trend.

**NSW annual rate (2001):** 1,471.8 per 100,000 population

**Highest rates:** North Western SD - 2,681.2 per 100,000 population  
 Far West SD - 2,595.2 per 100,000 population  
 Inner Sydney SSD - 2,126.9 per 100,000 population

**Lowest rates:** Central Northern Sydney SSD - 827.4 per 100,000 population  
 Inner Western Sydney SSD - 853.0 per 100,000 population  
 Lower Northern Sydney SSD - 944.3 per 100,000 population

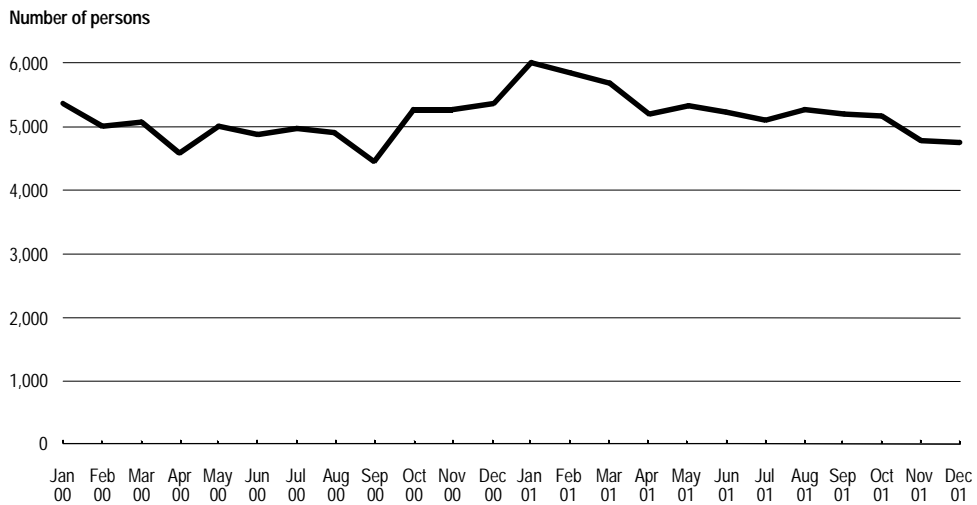
### TRENDS IN METHODS OF PROCEEDING AGAINST OFFENDERS OR ALLEGED OFFENDERS

The information which follows highlights trends in the numbers of persons proceeded against by charge, Court Attendance Notice, summons and Field Court Attendance Notice.

#### Charge

Trend (Jan 2000 - Dec 2001): No statistically significant upward or downward trend.

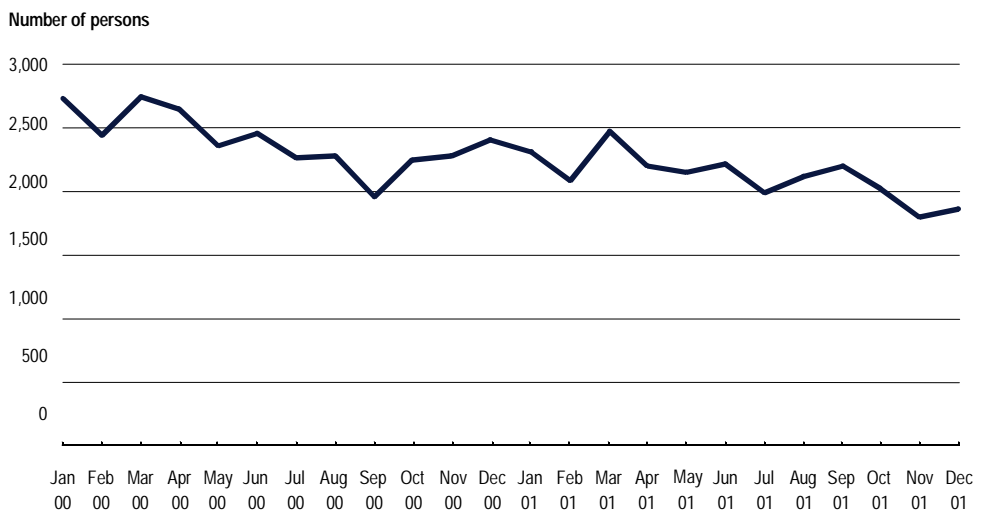
**Figure 10: Persons charged**



#### Court Attendance Notice

Trend (Jan 2000 - Dec 2001): A statistically significant downward trend (down by 11.8%).

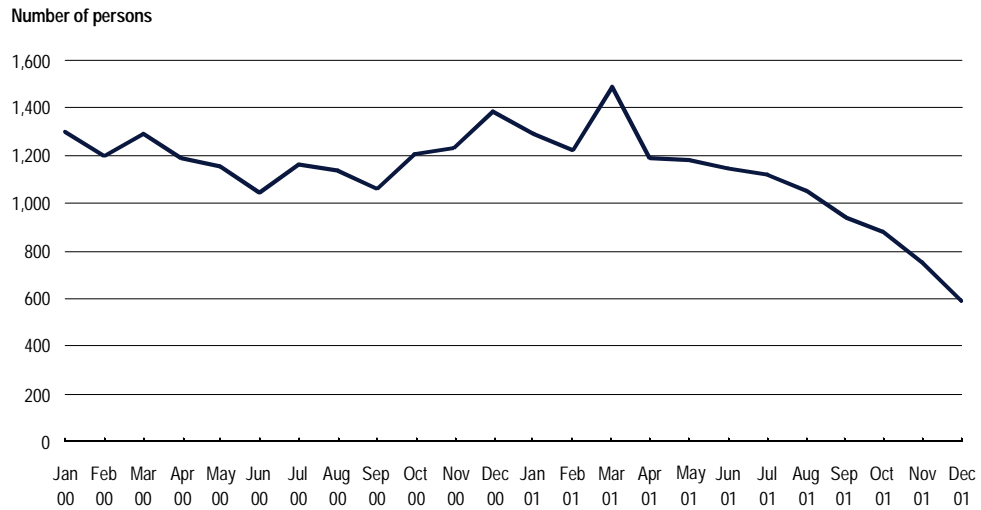
**Figure 11: Persons issued with Court Attendance Notice**



## Summons

Trend (Jan 2000 - Dec 2001): A statistically significant downward trend (down by 10.7%).

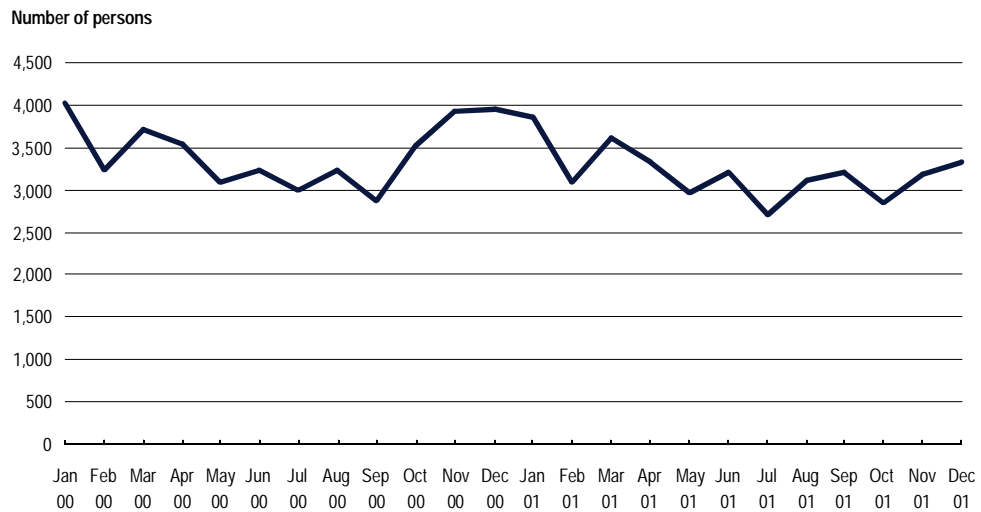
**Figure 12: Persons issued with summons**



## Field Court Attendance Notice

Trend (Jan 2000 - Dec 2001): No statistically significant upward or downward trend.

**Figure 13: Persons issued with Field Court Attendance Notice**



## NOTES

- 1 Australian Bureau of Statistics 2001, *Crime and Safety, New South Wales, April 2001*, Cat. No. 4509.1, ABS, Sydney.
- 2 The trend test used was Kendall's rank-order correlation test (see, for example, Conover, W.J. 1980, *Practical Non-Parametric Statistics*, 2nd edn, John Wiley and Sons, pp. 256-260). A two-tailed test was used to determine whether there had been an increasing or decreasing trend in the recorded numbers of criminal incidents over the most recent twenty-four month period covered in the report. Some month to month variations in the numbers of recorded incidents could be due in part to seasonal factors. The test for trend is not sensitive to seasonal variations; it is sensitive only to a generally increasing or generally decreasing trend over the time period examined.
- 3 In the case of murder, there was no statistically significant trend in the monthly numbers of recorded victims.
- 4 For the rate calculations, population data were obtained from the Australian Bureau of Statistics publications: *Regional Population Growth, Australia, 20 Feb 2000*, Cat. No. 3218.0 (for 1999 population estimates), and *Regional Population Growth, Australia, 19 Feb 2001*, Cat. No. 3218.1 (for 2000 and 2001 population estimates).



---

**MONTHLY TRENDS IN  
RECORDED CRIMINAL INCIDENTS,  
1999, 2000 AND 2001  
NEW SOUTH WALES**

---

**TABLE 1.1 MONTHLY TRENDS IN RECORDED CRIMINAL INCIDENTS, 1999, NEW SOUTH WALES:  
TYPE OF OFFENCE**

Type of offence	Recorded criminal incidents												Total 1999	
	Jan	Feb	Mar	Apr	May	Jun	Jul	Aug	Sep	Oct	Nov	Dec	No.	Rate per 100,000 population
	<b>Homicide:</b>													
Murder*	7	8	16	8	16	11	7	12	7	10	7	14	123	1.9
Attempted murder	8	9	14	8	9	11	11	5	11	7	11	9	113	1.8
Murder accessory, conspiracy	1	3	1	1	1	1	3	0	0	0	2	0	13	0.2
Manslaughter – not driving*	1	2	0	0	2	0	1	0	0	1	0	2	9	0.1
Manslaughter – driving*	10	5	6	5	9	5	10	10	9	9	5	9	92	1.4
<b>Assault</b>	5,734	5,049	5,238	4,456	4,652	4,184	4,398	4,675	4,779	5,000	4,984	5,497	58,646	916.8
<b>Sexual offences:</b>														
Sexual assault	302	311	311	230	240	304	244	231	239	226	290	273	3,201	50.0
Indecent assault, act of indecency	303	291	323	241	298	288	220	275	285	280	251	298	3,353	52.4
Other sexual offences	110	133	137	104	127	132	122	125	147	133	129	122	1,521	23.8
<b>Abduction and kidnapping</b>	34	36	39	27	29	32	29	31	26	46	33	39	401	6.3
<b>Robbery:</b>														
Robbery without a weapon	549	547	574	572	532	485	470	523	518	565	566	561	6,462	101.0
Robbery with a firearm	68	65	57	59	67	54	63	70	51	34	55	54	697	10.9
Robbery with a weapon not a firearm	289	261	294	296	377	273	292	295	254	298	316	283	3,528	55.2
<b>Other offences against the person</b>	306	272	358	275	358	265	253	281	297	321	279	318	3,583	56.0

\* For murder and manslaughter only, the data are counts of recorded victims, not criminal incidents. See Explanatory Notes.

<b>Theft:</b>														
Break and enter – dwelling	7,093	6,093	6,791	6,287	6,616	6,018	6,374	6,358	6,161	6,741	6,517	6,803	77,852	1,217.1
Break and enter – non-dwelling	3,489	3,447	3,807	3,452	3,968	3,978	3,866	4,014	3,941	4,028	4,075	3,930	45,995	719.0
Possess implements	143	147	140	111	139	120	107	147	112	141	136	121	1,564	24.5
Receiving	239	183	276	192	163	174	180	167	183	154	185	170	2,266	35.4
Goods in custody	789	844	917	761	799	818	795	777	760	741	860	707	9,568	149.6
Motor vehicle theft	3,948	3,829	3,946	3,792	3,981	3,678	4,046	3,956	4,260	4,439	4,267	4,259	48,401	756.7
Steal from motor vehicle	6,112	5,564	6,086	6,053	6,298	6,081	6,662	7,156	6,756	7,138	7,237	6,805	77,948	1,218.6
Steal from retail store	1,839	1,780	1,885	1,799	1,901	1,742	1,676	1,832	1,749	1,568	1,672	1,638	21,081	329.6
Steal from dwelling	2,674	2,294	2,608	2,409	2,498	2,270	2,437	2,563	2,622	2,601	2,723	2,722	30,421	475.6
Steal from person	1,007	995	1,114	967	990	837	871	949	933	943	921	1,065	11,592	181.2
Stock theft	58	69	77	77	82	53	70	70	60	60	69	45	790	12.4
Fraud	2,162	2,235	2,554	2,396	2,110	2,248	2,273	2,339	2,452	2,281	2,160	1,801	27,011	422.3
Other theft	5,145	4,769	5,426	4,743	5,256	5,277	5,497	5,638	5,773	5,730	5,909	5,900	65,063	1,017.1
<b>Demand money with menaces</b>	93	63	102	109	79	75	82	85	67	67	87	55	964	15.1
<b>Extortion, blackmail</b>	3	2	7	7	2	3	4	2	10	4	5	17	66	1.0
<b>Arson</b>	393	343	385	385	457	399	416	470	449	439	421	397	4,954	77.4
<b>Malicious damage to property</b>	7,737	6,926	7,721	7,273	7,738	7,183	7,432	8,184	7,936	8,496	8,158	7,480	92,264	1,442.4

Table continues on next page

**TABLE 1.1** MONTHLY TRENDS IN RECORDED CRIMINAL INCIDENTS, 1999, NEW SOUTH WALES:  
TYPE OF OFFENCE - continued

<i>Type of offence</i>	<i>Recorded criminal incidents</i>												<i>Total 1999</i>	
	<i>Jan</i>	<i>Feb</i>	<i>Mar</i>	<i>Apr</i>	<i>May</i>	<i>Jun</i>	<i>Jul</i>	<i>Aug</i>	<i>Sep</i>	<i>Oct</i>	<i>Nov</i>	<i>Dec</i>	<i>No.</i>	<i>Rate per 100,000 population</i>
	<b>Drug offences:</b>													
Possession and/or use of cocaine	21	15	20	33	14	8	17	15	20	14	11	12	200	3.1
Possession and/or use of narcotics	306	293	353	255	260	221	247	265	243	194	183	193	3,013	47.1
Possession and/or use of cannabis	967	977	1,110	1,110	1,194	1,029	899	849	920	813	832	794	11,494	179.7
Possession and/or use of other drugs	186	172	192	185	200	187	189	210	195	204	167	213	2,300	36.0
Dealing, trafficking in cocaine	12	46	12	8	16	18	6	15	30	9	6	27	205	3.2
Dealing, trafficking in narcotics	57	83	99	92	102	115	52	64	75	48	42	35	864	13.5
Dealing, trafficking in cannabis	76	56	128	104	91	101	92	80	77	63	64	57	989	15.5
Dealing, trafficking in other drugs	30	44	62	53	61	36	56	27	44	46	56	56	571	8.9
Cultivating cannabis	276	297	265	145	90	84	66	80	123	108	213	192	1,939	30.3
Importing drugs	0	3	1	4	5	6	3	0	1	0	1	8	32	0.5
Other drug offences	249	309	317	249	278	241	253	221	253	221	235	220	3,046	47.6
<b>Offensive behaviour:</b>														
Offensive conduct	392	298	370	291	331	283	312	309	303	332	308	338	3,867	60.5
Offensive language	731	637	731	637	613	492	545	552	499	499	459	497	6,892	107.7
<b>Prostitution offences</b>														
	38	13	51	33	44	51	27	33	33	41	21	14	399	6.2
<b>Betting and gaming offences</b>														
	1	1	2	1	0	3	1	1	1	1	1	0	13	0.2
<b>Weapons offences</b>														
	794	751	850	833	907	790	781	789	742	715	741	677	9,370	146.5

<b>Against justice procedures:</b>														
Escapee – Corrective Services custody	8	3	14	9	6	8	9	7	9	9	10	11	103	1.6
Escapee – Police custody	27	20	18	21	18	12	24	24	23	25	15	30	257	4.0
Escapee – juvenile detention	0	0	0	0	1	0	0	0	1	0	0	0	2	0.0
Escapee – other custody	6	11	6	3	10	2	2	1	5	5	6	8	65	1.0
Breach Apprehended Violence Order	948	826	880	718	774	758	738	739	761	784	825	888	9,639	150.7
Breach bail conditions	368	325	403	362	370	367	365	383	410	441	348	361	4,503	70.4
Breach of recognizance	37	48	56	52	39	39	49	70	58	50	49	50	597	9.3
Fail to appear	127	119	131	141	119	149	154	128	127	143	127	106	1,571	24.6
Other offences against justice procedures	673	568	605	553	533	530	597	604	522	541	539	535	6,800	106.3
<b>Driving offences:</b>														
Culpable driving	23	20	15	20	17	13	16	21	13	18	11	12	199	3.1
PCA	1,988	1,655	2,035	1,948	2,024	1,921	1,912	1,892	1,731	1,874	1,993	2,055	23,028	360.0
Drive while disqualified	1,350	1,127	1,245	1,271	1,288	1,265	1,290	1,443	1,377	1,490	1,531	1,568	16,245	254.0
Drive manner/speed dangerous	220	204	212	207	245	219	203	227	210	249	236	261	2,693	42.1
Other driving offences	2,905	2,599	2,809	2,956	3,085	2,890	2,861	3,068	3,028	4,545	5,003	3,516	39,265	613.8
<b>Other offences</b>	<b>3,029</b>	<b>2,791</b>	<b>2,952</b>	<b>2,820</b>	<b>3,166</b>	<b>3,026</b>	<b>3,188</b>	<b>3,276</b>	<b>3,424</b>	<b>3,383</b>	<b>3,244</b>	<b>3,444</b>	<b>37,743</b>	<b>590.0</b>

**TABLE 1.2 MONTHLY TRENDS IN RECORDED CRIMINAL INCIDENTS, 2000, NEW SOUTH WALES:  
TYPE OF OFFENCE**

Type of offence	Recorded criminal incidents												Total 2000	
	Jan	Feb	Mar	Apr	May	Jun	Jul	Aug	Sep	Oct	Nov	Dec	No.	Rate per 100,000 population
	<b>Homicide:</b>													
Murder*	9	6	8	5	10	9	7	14	7	9	7	12	103	1.6
Attempted murder	9	7	17	3	12	13	12	5	12	10	11	12	123	1.9
Murder accessory, conspiracy	0	0	2	0	2	0	0	2	0	0	0	1	7	0.1
Manslaughter – not driving*	2	1	0	3	0	1	2	1	0	0	2	1	13	0.2
Manslaughter – driving*	15	16	12	15	10	12	9	9	7	4	11	9	129	2.0
<b>Assault</b>	5,640	5,158	5,642	5,016	4,707	4,775	4,948	5,027	4,941	5,284	5,456	6,203	62,797	971.7
<b>Sexual offences:</b>														
Sexual assault	315	352	330	309	275	286	303	285	242	325	291	302	3,615	55.9
Indecent assault, act of indecency	339	311	355	282	305	310	339	333	286	332	342	299	3,833	59.3
Other sexual offences	139	160	142	120	132	115	120	150	121	132	127	117	1,575	24.4
<b>Abduction and kidnapping</b>	36	23	37	28	28	28	27	50	38	24	30	21	370	5.7
<b>Robbery:</b>														
Robbery without a weapon	623	497	678	550	618	627	662	563	511	531	586	614	7,060	109.2
Robbery with a firearm	31	48	45	63	55	73	51	54	33	53	80	70	656	10.2
Robbery with a weapon not a firearm	258	298	368	299	327	342	309	287	315	304	300	280	3,687	57.1
<b>Other offences against the person</b>	362	325	353	319	326	280	312	305	277	326	356	339	3,880	60.0

\* For murder and manslaughter only, the data are counts of recorded victims, not criminal incidents. See Explanatory Notes.

<b>Theft:</b>														
Break and enter – dwelling	7,172	6,323	6,899	6,682	6,998	6,765	6,882	6,948	6,702	7,312	7,017	6,727	82,427	1,275.5
Break and enter – non-dwelling	4,276	3,991	4,473	3,912	4,271	4,153	4,252	4,131	3,881	4,520	4,380	4,230	50,470	781.0
Possess implements	152	121	130	113	157	142	156	168	129	157	163	145	1,733	26.8
Receiving	145	189	199	176	217	201	180	177	111	200	179	152	2,126	32.9
Goods in custody	845	738	894	759	925	837	857	843	631	860	846	794	9,829	152.1
Motor vehicle theft	4,191	4,086	4,369	4,273	4,384	4,381	4,698	4,374	4,324	4,658	4,705	4,183	52,626	814.3
Steal from motor vehicle	7,668	6,762	7,800	7,346	7,738	7,464	8,315	7,954	7,243	8,214	7,739	7,070	91,313	1,413.0
Steal from retail store	1,516	1,649	1,699	1,505	1,887	1,889	1,897	1,903	1,686	1,880	1,952	1,820	21,283	329.3
Steal from dwelling	3,071	2,748	2,661	2,552	2,486	2,417	2,690	2,549	2,734	2,779	2,737	2,855	32,279	499.5
Steal from person	1,189	947	1,157	1,058	1,060	882	1,022	943	1,326	1,217	970	1,201	12,972	200.7
Stock theft	58	60	51	62	68	86	82	59	50	74	58	49	757	11.7
Fraud	1,971	2,439	2,457	2,064	2,289	2,318	2,398	2,165	2,094	2,494	2,681	2,237	27,607	427.2
Other theft	6,426	6,300	6,393	5,691	6,049	5,793	5,984	5,984	6,293	6,669	6,139	6,140	73,861	1,142.9
<b>Demand money with menaces</b>	103	79	85	99	84	95	87	87	80	80	101	82	1,062	16.4
<b>Extortion, blackmail</b>	7	4	2	4	5	7	6	4	5	5	6	1	56	0.9
<b>Arson</b>	510	421	384	440	461	485	580	591	649	614	516	506	6,157	95.3
<b>Malicious damage to property</b>	8,446	7,493	7,629	6,956	7,571	7,205	8,273	7,983	7,936	9,131	8,114	7,827	94,564	1,463.3

Table continues on next page

**TABLE 1.2 MONTHLY TRENDS IN RECORDED CRIMINAL INCIDENTS, 2000, NEW SOUTH WALES:  
TYPE OF OFFENCE - continued**

<i>Type of offence</i>	<i>Recorded criminal incidents</i>												<i>Total 2000</i>	
	<i>Jan</i>	<i>Feb</i>	<i>Mar</i>	<i>Apr</i>	<i>May</i>	<i>Jun</i>	<i>Jul</i>	<i>Aug</i>	<i>Sep</i>	<i>Oct</i>	<i>Nov</i>	<i>Dec</i>	<i>No.</i>	<i>Rate per 100,000 population</i>
<b>Drug offences:</b>														
Possession and/or use of cocaine	23	11	21	10	11	20	14	19	18	21	21	19	208	3.2
Possession and/or use of narcotics	259	220	207	193	268	177	197	194	151	200	197	220	2,483	38.4
Possession and/or use of cannabis	967	909	961	970	1,024	1,006	855	926	777	872	903	899	11,069	171.3
Possession and/or use of other drugs	258	199	233	196	216	215	225	210	157	199	227	252	2,587	40.0
Dealing, trafficking in cocaine	9	6	13	4	3	3	11	23	9	10	5	4	100	1.5
Dealing, trafficking in narcotics	84	45	53	38	124	76	77	102	58	42	79	82	860	13.3
Dealing, trafficking in cannabis	65	78	63	69	67	105	79	75	71	66	73	70	881	13.6
Dealing, trafficking in other drugs	60	67	47	61	71	74	72	75	41	38	114	46	766	11.9
Cultivating cannabis	252	242	192	133	103	68	58	85	65	138	132	194	1,662	25.7
Importing drugs	0	2	7	4	2	2	0	0	2	1	4	3	27	0.4
Other drug offences	247	251	254	243	201	267	235	229	199	245	226	191	2,788	43.1
<b>Offensive behaviour:</b>														
Offensive conduct	404	348	309	328	221	278	294	279	327	353	314	351	3,806	58.9
Offensive language	570	476	489	454	390	394	413	415	404	476	459	529	5,469	84.6
<b>Prostitution offences</b>														
	23	53	34	30	59	39	36	37	20	28	40	25	424	6.6
<b>Betting and gaming offences</b>														
	0	2	3	0	0	2	1	0	0	1	0	1	10	0.2
<b>Weapons offences</b>														
	791	779	810	654	795	766	761	883	711	785	809	764	9,308	144.0



<b>Against justice procedures:</b>														
Escapee – Corrective Services custody	5	7	7	11	11	7	11	6	10	6	4	10	95	1.5
Escapee – Police custody	24	19	22	18	21	20	15	16	14	15	14	23	221	3.4
Escapee – juvenile detention	0	0	0	0	0	0	0	1	0	0	0	0	1	0.0
Escapee – other custody	7	8	8	1	7	4	4	4	5	3	5	3	59	0.9
Breach Apprehended Violence Order	958	907	950	837	861	853	862	868	877	959	1,034	1,107	11,073	171.3
Breach bail conditions	511	416	430	350	366	395	385	365	385	396	503	445	4,947	76.5
Breach of recognizance	68	45	52	63	53	44	50	56	36	50	50	50	617	9.5
Fail to appear	135	138	149	132	146	147	156	153	122	118	169	142	1,707	26.4
Other offences against justice procedures	623	576	537	579	488	532	536	523	477	493	533	620	6,517	100.8
<b>Driving offences:</b>														
Culpable driving	14	13	15	22	23	13	24	13	17	22	18	26	220	3.4
PCA	2,038	1,578	2,135	2,082	1,747	1,939	1,781	1,911	1,627	1,943	2,338	2,438	23,557	364.5
Drive while disqualified	1,547	1,274	1,452	1,478	1,397	1,354	1,262	1,381	1,202	1,534	1,671	1,828	17,380	268.9
Drive manner/speed dangerous	271	226	259	282	244	229	239	256	205	258	255	268	2,992	46.3
Other driving offences*	4,008	3,340	3,904	3,808	3,268	3,330	3,369	3,579	3,086	3,883	5,521	46,180	87,276	1,350.5
<b>Other offences</b>	<b>3,811</b>	<b>3,678</b>	<b>3,666</b>	<b>3,592</b>	<b>3,577</b>	<b>3,887</b>	<b>3,872</b>	<b>3,763</b>	<b>3,435</b>	<b>3,984</b>	<b>4,139</b>	<b>4,265</b>	<b>45,669</b>	<b>706.6</b>

\* Since December 2000, police have included traffic infringement notices within this category.

**TABLE 1.3 MONTHLY TRENDS IN RECORDED CRIMINAL INCIDENTS, 2001, NEW SOUTH WALES:  
TYPE OF OFFENCE**

Type of offence	Recorded criminal incidents												Total 2001	
	Jan	Feb	Mar	Apr	May	Jun	Jul	Aug	Sep	Oct	Nov	Dec	No.	Rate per 100,000 population
	<b>Homicide:</b>													
Murder*	9	13	6	7	10	9	8	10	9	7	8	7	103	1.6
Attempted murder	15	19	10	19	15	10	10	13	11	11	9	20	162	2.5
Murder accessory, conspiracy	0	0	1	0	1	0	2	0	0	1	1	0	6	0.1
Manslaughter – not driving*	0	1	0	4	0	0	0	1	1	1	0	0	8	0.1
Manslaughter – driving*	10	9	4	7	11	9	12	15	3	5	5	4	94	1.4
<b>Assault</b>	6,311	5,917	6,026	5,245	5,064	5,401	4,993	5,315	5,698	5,997	5,745	5,887	67,599	1,034.8
<b>Sexual offences:</b>														
Sexual assault	341	365	350	276	318	310	266	275	277	345	311	240	3,674	56.2
Indecent assault, act of indecency	318	347	374	275	279	309	258	283	298	288	253	265	3,547	54.3
Other sexual offences	150	154	141	125	104	121	110	105	119	155	132	119	1,535	23.5
<b>Abduction and kidnapping</b>	42	40	37	30	39	34	39	42	35	58	33	29	458	7.0
<b>Robbery:</b>														
Robbery without a weapon	725	827	854	693	680	634	631	631	604	607	544	560	7,990	122.3
Robbery with a firearm	67	51	68	93	63	82	74	114	85	60	58	65	880	13.5
Robbery with a weapon not a firearm	393	508	496	389	365	307	364	309	271	342	298	248	4,290	65.7
<b>Other offences against the person</b>	355	418	425	365	416	371	386	447	447	456	473	394	4,953	75.8

\* For murder and manslaughter only, the data are counts of recorded victims, not criminal incidents. See Explanatory Notes.

<b>Theft:</b>															
Break and enter – dwelling	8,056	6,713	6,485	6,381	7,072	6,822	6,711	6,555	6,146	6,536	6,178	6,144	79,799	1,221.6	
Break and enter – non-dwelling	4,684	4,202	4,654	4,409	4,326	4,233	4,693	4,439	4,165	4,315	4,042	3,898	52,060	796.9	
Possess implements	174	185	157	160	175	199	195	195	137	154	140	154	2,025	31.0	
Receiving	292	224	192	187	144	165	132	127	129	102	112	49	1,855	28.4	
Goods in custody	1,027	919	837	764	811	779	789	787	710	700	697	617	9,437	144.5	
Motor vehicle theft	4,627	4,470	5,059	4,386	4,846	4,360	4,863	4,668	4,011	4,083	4,410	3,944	53,727	822.5	
Steal from motor vehicle	7,552	6,403	7,371	6,928	7,900	7,647	8,626	8,440	7,646	7,986	7,346	6,623	90,468	1,384.9	
Steal from retail store	1,923	1,664	1,672	1,603	1,931	1,760	1,760	1,808	1,617	1,682	1,563	1,665	20,648	316.1	
Steal from dwelling	3,131	2,588	2,575	2,316	2,410	2,630	2,564	2,593	2,511	2,844	2,531	2,758	31,451	481.5	
Steal from person	1,407	1,148	1,188	1,197	1,190	1,042	1,013	1,611	1,691	1,590	1,655	1,844	16,576	253.7	
Stock theft	72	71	73	77	109	70	62	105	85	75	62	64	925	14.2	
Fraud	2,814	2,364	2,600	2,472	2,934	2,663	2,787	2,892	2,784	2,815	2,640	2,333	32,098	491.4	
Other theft	6,967	6,080	6,428	6,147	6,263	5,907	5,862	5,523	4,981	5,423	5,221	4,879	69,681	1,066.7	
<b>Demand money with menaces</b>	82	75	120	71	97	93	81	75	84	64	66	56	964	14.8	
<b>Extortion, blackmail</b>	5	4	2	5	3	3	8	11	1	7	5	3	57	0.9	
<b>Arson</b>	598	450	534	528	590	664	736	673	618	766	594	559	7,310	111.9	
<b>Malicious damage to property</b>	7,936	7,285	7,650	7,523	7,581	8,239	8,685	8,241	8,523	8,897	8,073	7,512	96,145	1,471.8	

Table continues on next page

**TABLE 1.3** MONTHLY TRENDS IN RECORDED CRIMINAL INCIDENTS, 2001, NEW SOUTH WALES:  
TYPE OF OFFENCE - continued

<i>Type of offence</i>	<i>Recorded criminal incidents</i>												<i>Total 2001</i>	
	<i>Jan</i>	<i>Feb</i>	<i>Mar</i>	<i>Apr</i>	<i>May</i>	<i>Jun</i>	<i>Jul</i>	<i>Aug</i>	<i>Sep</i>	<i>Oct</i>	<i>Nov</i>	<i>Dec</i>	<i>No.</i>	<i>Rate per 100,000 population</i>
	<b>Drug offences:</b>													
Possession and/or use of cocaine	26	36	64	46	34	39	36	45	32	51	21	30	460	7.0
Possession and/or use of narcotics	191	131	89	95	113	91	80	75	38	70	64	57	1,094	16.7
Possession and/or use of cannabis	921	1,122	1,289	1,077	1,579	1,441	1,134	1,327	1,313	1,204	943	978	14,328	219.3
Possession and/or use of other drugs	268	248	298	225	300	305	241	277	265	199	212	216	3,054	46.8
Dealing, trafficking in cocaine	4	12	30	19	28	23	21	22	26	37	13	11	246	3.8
Dealing, trafficking in narcotics	38	60	42	32	64	30	24	42	37	37	30	29	465	7.1
Dealing, trafficking in cannabis	82	82	113	76	112	78	81	103	64	78	62	56	987	15.1
Dealing, trafficking in other drugs	57	73	70	74	82	160	119	115	93	58	64	81	1,046	16.0
Cultivating cannabis	229	231	188	103	103	56	59	86	83	94	136	189	1,557	23.8
Importing drugs	1	3	3	2	3	0	3	2	1	2	1	2	23	0.4
Other drug offences	220	259	286	209	264	259	242	304	273	325	267	210	3,118	47.7
<b>Offensive behaviour:</b>														
Offensive conduct	371	368	363	367	291	345	314	354	354	369	343	387	4,226	64.7
Offensive language	558	537	526	459	397	471	440	493	559	488	490	532	5,950	91.1
<b>Prostitution offences</b>														
	17	101	152	107	54	123	43	86	52	42	49	50	876	13.4
<b>Betting and gaming offences</b>														
	1	1	1	0	0	0	1	1	5	4	7	3	24	0.4
<b>Weapons offences</b>														
	848	900	893	838	855	930	826	929	968	931	836	713	10,467	160.2

<b>Against justice procedures:</b>														
Escapee – Corrective Services custody	8	10	10	5	6	4	10	8	6	12	8	11	98	1.5
Escapee – Police custody	20	27	21	23	20	10	13	18	18	25	26	26	247	3.8
Escapee – juvenile detention	1	0	0	0	0	0	0	0	0	1	0	0	2	0.0
Escapee – other custody	3	3	6	8	3	3	2	8	5	4	3	1	49	0.8
Breach Apprehended Violence Order	1,099	1,022	1,038	957	993	869	899	918	937	1,068	951	944	11,695	179.0
Breach bail conditions	591	513	534	561	553	580	636	643	597	617	581	611	7,017	107.4
Breach of recognizance	42	24	36	37	27	30	22	30	30	30	35	26	369	5.6
Fail to appear	170	147	183	170	177	229	207	214	185	188	137	147	2,154	33.0
Other offences against justice procedures	652	572	605	519	524	526	446	676	705	641	575	655	7,096	108.6
<b>Driving offences:</b>														
Culpable driving	20	14	13	18	17	21	22	19	6	0	7	2	159	2.4
PCA	2,088	1,740	2,408	2,010	1,734	1,995	1,682	1,875	2,118	1,755	2,086	2,081	23,572	360.8
Drive while disqualified	1,727	1,452	1,718	1,601	1,548	1,511	1,409	1,587	1,564	1,472	1,535	1,556	18,680	286.0
Drive manner/speed dangerous	268	250	296	219	235	247	195	271	267	245	236	260	2,989	45.8
Other driving offences*	51,210	32,057	38,843	46,475	37,846	40,123	36,442	43,414	48,428	42,573	38,901	50,626	506,938	7,760.3
<b>Other offences</b>	<b>4,551</b>	<b>4,048</b>	<b>4,435</b>	<b>4,189</b>	<b>4,103</b>	<b>4,329</b>	<b>4,256</b>	<b>4,570</b>	<b>4,543</b>	<b>4,775</b>	<b>4,758</b>	<b>4,765</b>	<b>53,322</b>	<b>816.3</b>

\* Since December 2000, police have included traffic infringement notices within this category.



---

**MONTHLY TRENDS IN  
METHODS OF PROCEEDING  
AGAINST ALLEGED OFFENDERS,  
1999, 2000 AND 2001  
NEW SOUTH WALES**

---

**TABLE 2.1 MONTHLY TRENDS IN METHODS OF PROCEEDING AGAINST ALLEGED OFFENDERS, 1999, NEW SOUTH WALES: TYPE OF PROCESS**

Type of process	Number of alleged offenders												1999 Total
	Jan	Feb	Mar	Apr	May	Jun	Jul	Aug	Sep	Oct	Nov	Dec	
<b>Proceeded against to court:</b>													
Charged	5,357	5,009	5,367	4,716	4,845	4,511	4,703	4,750	4,953	4,796	4,786	4,895	58,688
Court Attendance Notice	3,232	2,852	3,074	2,821	3,157	2,742	2,888	2,707	2,688	2,596	2,653	2,451	33,861
Summons	1,250	1,169	1,299	1,131	1,238	1,147	1,133	1,190	1,248	1,329	1,370	1,315	14,819
Field Court Attendance Notice	3,670	3,263	3,521	3,357	3,341	3,208	3,154	3,442	3,220	3,603	3,744	3,739	41,262
<b>All proceedings to court</b>	<b>13,509</b>	<b>12,293</b>	<b>13,261</b>	<b>12,025</b>	<b>12,581</b>	<b>11,608</b>	<b>11,878</b>	<b>12,089</b>	<b>12,109</b>	<b>12,324</b>	<b>12,553</b>	<b>12,400</b>	<b>148,630</b>
<b>Proceeded against other than to court:</b>													
Youth Conference	85	94	96	96	117	101	116	150	119	126	132	107	1,339
Caution Young Offenders Act	608	623	715	651	752	699	728	764	809	722	756	715	8,542
Cannabis/other drug caution*	-	-	-	-	-	-	-	-	-	-	-	-	0
Infringement Notice/ Public Safety Infringement Notice	544	487	606	544	685	696	652	746	774	1,435	1,248	788	9,205
Warning	377	409	541	624	693	705	773	706	839	871	914	820	8,272
<b>All proceedings other than to court</b>	<b>1,614</b>	<b>1,613</b>	<b>1,958</b>	<b>1,915</b>	<b>2,247</b>	<b>2,201</b>	<b>2,269</b>	<b>2,366</b>	<b>2,541</b>	<b>3,154</b>	<b>3,050</b>	<b>2,430</b>	<b>27,358</b>
<b>All proceedings</b>	<b>15,123</b>	<b>13,906</b>	<b>15,219</b>	<b>13,940</b>	<b>14,828</b>	<b>13,809</b>	<b>14,147</b>	<b>14,455</b>	<b>14,650</b>	<b>15,478</b>	<b>15,603</b>	<b>14,830</b>	<b>175,988</b>
<b>Not proceeded against†</b>	<b>2,985</b>	<b>2,671</b>	<b>3,037</b>	<b>2,605</b>	<b>2,864</b>	<b>2,758</b>	<b>2,902</b>	<b>3,008</b>	<b>3,015</b>	<b>3,355</b>	<b>3,413</b>	<b>3,301</b>	<b>35,914</b>

\* Police did not have the discretion to issue cautions for minor drug offences in 1999.

† Includes person deceased, under 10 years of age, diplomatic immunity, mentally incapable of forming criminal intent, DPP or victim refuses to prosecute and proceeding delayed pending further advice.



**TABLE 2.2 MONTHLY TRENDS IN METHODS OF PROCEEDING AGAINST ALLEGED OFFENDERS, 2000, NEW SOUTH WALES: TYPE OF PROCESS**

Type of process	Number of alleged offenders												2000 Total
	Jan	Feb	Mar	Apr	May	Jun	Jul	Aug	Sep	Oct	Nov	Dec	
<b>Proceeded against to court:</b>													
Charged	5,337	4,978	5,072	4,583	5,006	4,855	4,964	4,895	4,457	5,261	5,248	5,358	60,014
Court Attendance Notice	2,731	2,438	2,737	2,643	2,361	2,451	2,256	2,280	1,956	2,236	2,283	2,408	28,780
Summons	1,279	1,178	1,269	1,173	1,140	1,029	1,143	1,123	1,045	1,183	1,207	1,361	14,130
Field Court Attendance Notice	4,020	3,226	3,711	3,542	3,086	3,239	3,000	3,236	2,872	3,512	3,919	3,951	41,314
<b>All proceedings to court</b>	<b>13,367</b>	<b>11,820</b>	<b>12,789</b>	<b>11,941</b>	<b>11,593</b>	<b>11,574</b>	<b>11,363</b>	<b>11,534</b>	<b>10,330</b>	<b>12,192</b>	<b>12,657</b>	<b>13,078</b>	<b>144,238</b>
<b>Proceeded against other than to court:</b>													
Youth Conference	86	121	129	133	93	123	73	97	90	123	93	87	1,248
Caution Young Offenders Act	708	666	683	673	713	839	841	824	704	822	862	762	9,097
Cannabis/other drug caution		3		150	163	191	143	167	150	152	171	190	1,480
Infringement Notice/ Public Safety Infringement Notice*	1,058	969	1,055	1,080	850	1,094	1,095	1,081	733	1,006	2,515	37,083	49,619
Warning	944	956	1,059	1,068	862	1,008	1,128	1,128	1,140	1,217	1,414	1,469	13,393
<b>All proceedings other than to court</b>	<b>2,796</b>	<b>2,715</b>	<b>2,926</b>	<b>3,104</b>	<b>2,681</b>	<b>3,255</b>	<b>3,280</b>	<b>3,297</b>	<b>2,817</b>	<b>3,320</b>	<b>5,055</b>	<b>39,591</b>	<b>74,837</b>
<b>All proceedings</b>	<b>16,163</b>	<b>14,535</b>	<b>15,715</b>	<b>15,045</b>	<b>14,274</b>	<b>14,829</b>	<b>14,643</b>	<b>14,831</b>	<b>13,147</b>	<b>15,512</b>	<b>17,712</b>	<b>52,669</b>	<b>219,075</b>
<b>Not proceeded against†</b>	<b>3,828</b>	<b>3,542</b>	<b>3,572</b>	<b>3,321</b>	<b>3,314</b>	<b>3,301</b>	<b>3,519</b>	<b>3,426</b>	<b>3,414</b>	<b>3,720</b>	<b>4,061</b>	<b>4,114</b>	<b>43,132</b>

\* Prior to December 2000 traffic infringement notices were not included in this category.

† Includes person deceased, under 10 years of age, diplomatic immunity, mentally incapable of forming criminal intent, DPP or victim refuses to prosecute and proceeding delayed pending further advice.

**TABLE 2.3 MONTHLY TRENDS IN METHODS OF PROCEEDING AGAINST ALLEGED OFFENDERS, 2001, NEW SOUTH WALES: TYPE OF PROCESS**

<i>Type of process</i>	<i>Number of alleged offenders</i>												<i>2001 Total</i>
	<i>Jan</i>	<i>Feb</i>	<i>Mar</i>	<i>Apr</i>	<i>May</i>	<i>Jun</i>	<i>Jul</i>	<i>Aug</i>	<i>Sep</i>	<i>Oct</i>	<i>Nov</i>	<i>Dec</i>	
<b>Proceeded against to court:</b>													
Charged	5,979	5,824	5,678	5,189	5,325	5,214	5,101	5,261	5,198	5,171	4,779	4,729	63,448
Court Attendance Notice	2,317	2,077	2,462	2,193	2,143	2,217	1,991	2,113	2,193	2,023	1,797	1,860	25,386
Summons	1,265	1,208	1,456	1,166	1,152	1,131	1,087	1,035	923	864	747	586	12,620
Field Court Attendance Notice	3,851	3,085	3,607	3,319	2,969	3,212	2,707	3,097	3,212	2,854	3,182	3,320	38,415
<b>All proceedings to court</b>	<b>13,412</b>	<b>12,194</b>	<b>13,203</b>	<b>11,867</b>	<b>11,589</b>	<b>11,774</b>	<b>10,886</b>	<b>11,506</b>	<b>11,526</b>	<b>10,912</b>	<b>10,505</b>	<b>10,495</b>	<b>139,869</b>
<b>Proceeded against other than to court:</b>													
Youth Conference	80	90	121	117	123	88	125	116	82	57	86	63	1,148
Caution Young Offenders Act	771	669	854	873	796	830	854	889	808	823	670	628	9,465
Cannabis/other drug caution	221	299	269	244	466	512	333	434	464	345	248	293	4,128
Infringement Notice/ Public Safety Infringement Notice*	42,334	25,948	32,071	39,574	31,724	33,587	30,314	35,945	40,009	34,517	30,823	39,980	416,826
Warning	1,477	1,234	1,620	1,610	1,370	1,612	1,705	1,774	1,916	1,934	2,032	1,981	20,265
<b>All proceedings other than to court</b>	<b>44,883</b>	<b>28,240</b>	<b>34,935</b>	<b>42,418</b>	<b>34,479</b>	<b>36,629</b>	<b>33,331</b>	<b>39,158</b>	<b>43,279</b>	<b>37,676</b>	<b>33,859</b>	<b>42,945</b>	<b>451,832</b>
<b>All proceedings</b>	<b>58,295</b>	<b>40,434</b>	<b>48,138</b>	<b>54,285</b>	<b>46,068</b>	<b>48,403</b>	<b>44,217</b>	<b>50,664</b>	<b>54,805</b>	<b>48,588</b>	<b>44,364</b>	<b>53,440</b>	<b>591,701</b>
<b>Not proceeded against†</b>	<b>4,312</b>	<b>3,782</b>	<b>4,082</b>	<b>3,744</b>	<b>3,687</b>	<b>4,008</b>	<b>3,800</b>	<b>3,824</b>	<b>4,148</b>	<b>4,041</b>	<b>3,861</b>	<b>3,649</b>	<b>46,938</b>

\* Prior to December 2000 traffic infringement notices were not included in this category.

† Includes person deceased, under 10 years of age, diplomatic immunity, mentally incapable of forming criminal intent, DPP or victim refuses to prosecute and proceeding delayed pending further advice.

---

**CLEARED CRIMINAL INCIDENTS  
FOR SELECTED OFFENCES,  
JANUARY 1999 TO SEPTEMBER 2001,  
NEW SOUTH WALES**

---

**TABLE 3.1** CLEARED CRIMINAL INCIDENTS, SELECTED OFFENCES,  
JANUARY 1999 TO DECEMBER 1999, NEW SOUTH WALES: TYPE OF OFFENCE

<i>Type of offence</i>	<i>Recorded criminal incidents</i>						
	<i>Total number recorded</i>	<i>Cleared within 30 days of reporting</i>		<i>Cleared within 90 days of reporting</i>		<i>Cleared within 180 days of reporting</i>	
		<i>Total number cleared</i>	<i>% cleared</i>	<i>Total number cleared</i>	<i>% cleared</i>	<i>Total number cleared</i>	<i>% cleared</i>
Murder*	123	74	60.2	81	65.9	84	68.3
Assault	58,646	34,403	58.7	37,155	63.4	38,483	65.6
Sexual assault	3,201	803	25.1	1,120	35.0	1,338	41.8
Indecent assault, act of indecency	3,353	883	26.3	1,175	35.0	1,530	45.6
Other sexual offences	1,521	374	24.6	428	28.1	456	30.0
Abduction and kidnapping	401	110	27.4	119	29.7	133	33.2
Robbery without a weapon	6,462	862	13.3	998	15.4	1,069	16.5
Robbery with a firearm	697	89	12.8	151	21.7	171	24.5
Robbery with a weapon not a firearm	3,528	530	15.0	659	18.7	717	20.3
Break and enter – dwelling	77,852	3,458	4.4	4,555	5.9	5,149	6.6
Break and enter – non-dwelling	45,995	2,324	5.1	2,880	6.3	3,206	7.0
Motor vehicle theft	48,401	2,514	5.2	2,958	6.1	3,184	6.6
Steal from motor vehicle	77,948	2,227	2.9	2,488	3.2	2,631	3.4
Steal from retail store	21,081	12,589	59.7	12,885	61.1	13,019	61.8
Steal from dwelling	30,421	2,337	7.7	2,779	9.1	3,014	9.9
Steal from person	11,592	707	6.1	779	6.7	843	7.3
Stock theft	790	42	5.3	52	6.6	60	7.6
Fraud	27,011	7,549	27.9	9,859	36.5	11,273	41.7
Demand money with menaces	964	131	13.6	165	17.1	179	18.6
Arson	4,954	239	4.8	284	5.7	299	6.0
Malicious damage to property	92,264	11,939	12.9	12,951	14.0	13,488	14.6

\* *Victims for whom incident was cleared.*

**TABLE 3.2****CLEARED CRIMINAL INCIDENTS, SELECTED OFFENCES,  
JANUARY 2000 TO DECEMBER 2000, NEW SOUTH WALES: TYPE OF OFFENCE**

<i>Type of offence</i>	<i>Recorded criminal incidents</i>						
	<i>Total number recorded</i>	<i>Cleared within 30 days of reporting</i>		<i>Cleared within 90 days of reporting</i>		<i>Cleared within 180 days of reporting</i>	
		<i>Total number cleared</i>	<i>% cleared</i>	<i>Total number cleared</i>	<i>% cleared</i>	<i>Total number cleared</i>	<i>% cleared</i>
Murder*	103	69	67.0	75	72.8	77	74.8
Assault	62,797	36,348	57.9	39,313	62.6	40,772	64.9
Sexual assault	3,615	814	22.5	1,163	32.2	1,366	37.8
Indecent assault, act of indecency	3,833	1,038	27.1	1,431	37.3	1,649	43.0
Other sexual offences	1,575	386	24.5	453	28.8	512	32.5
Abduction and kidnapping	370	124	33.5	138	37.3	144	38.9
Robbery without a weapon	7,060	852	12.1	991	14.0	1,065	15.1
Robbery with a firearm	656	90	13.7	121	18.4	137	20.9
Robbery with a weapon not a firearm	3,687	546	14.8	676	18.3	729	19.8
Break and enter – dwelling	82,427	3,327	4.0	4,308	5.2	4,890	5.9
Break and enter – non-dwelling	50,470	2,200	4.4	2,779	5.5	3,104	6.2
Motor vehicle theft	52,626	2,786	5.3	3,234	6.1	3,537	6.7
Steal from motor vehicle	91,313	2,197	2.4	2,535	2.8	2,750	3.0
Steal from retail store	21,283	13,122	61.7	13,555	63.7	13,698	64.4
Steal from dwelling	32,279	2,304	7.1	2,761	8.6	2,988	9.3
Steal from person	12,972	703	5.4	798	6.2	858	6.6
Stock theft	757	39	5.2	49	6.5	50	6.6
Fraud	27,607	6,211	22.5	8,240	29.8	9,376	34.0
Demand money with menaces	1,062	190	17.9	223	21.0	242	22.8
Arson	6,157	309	5.0	340	5.5	368	6.0
Malicious damage to property	94,564	13,161	13.9	14,268	15.1	14,829	15.7

\* *Victims for whom incident was cleared.*

**TABLE 3.3****CLEARED CRIMINAL INCIDENTS, SELECTED OFFENCES,  
JANUARY 2001 TO SEPTEMBER 2001, NEW SOUTH WALES: TYPE OF OFFENCE**

<i>Type of offence</i>	<i>Recorded criminal incidents</i>				
	<i>Total number recorded</i>	<i>Cleared within 30 days of reporting</i>		<i>Cleared within 90 days of reporting</i>	
		<i>Total number cleared</i>	<i>% cleared</i>	<i>Total number cleared</i>	<i>% cleared</i>
Murder*	81	45	55.6	48	59.3
Assault	49,970	28,783	57.6	31,111	62.3
Sexual assault	2,778	553	19.9	804	28.9
Indecent assault, act of indecency	2,741	679	24.8	974	35.5
Other sexual offences	1,129	286	25.3	331	29.3
Abduction and kidnapping	338	103	30.5	128	37.9
Robbery without a weapon	6,279	716	11.4	850	13.5
Robbery with a firearm	697	66	9.5	86	12.3
Robbery with a weapon not a firearm	3,402	531	15.6	655	19.3
Break and enter – dwelling	60,941	2,379	3.9	3,149	5.2
Break and enter – non-dwelling	39,805	1,699	4.3	2,043	5.1
Motor vehicle theft	41,290	2,256	5.5	2,661	6.4
Steal from motor vehicle	68,513	1,796	2.6	1,988	2.9
Steal from retail store	15,738	9,390	59.7	9,634	61.2
Steal from dwelling	23,318	1,649	7.1	1,919	8.2
Steal from person	11,487	575	5.0	669	5.8
Stock theft	724	34	4.7	40	5.5
Fraud	24,310	4,389	18.1	5,666	23.3
Demand money with menaces	778	166	21.3	200	25.7
Arson	5,391	265	4.9	305	5.7
Malicious damage to property	71,663	10,293	14.4	11,224	15.7

\* *Victims for whom incident was cleared.*

---

**RECORDED CRIME STATISTICS  
IN NEW SOUTH WALES REGIONS  
FOR SELECTED OFFENCES,  
1999, 2000 AND 2001**

---





**TABLE 4.1** RECORDED CRIMINAL VICTIMS, 1999 TO 2001: STATISTICAL DIVISION**MURDER**

<i>Statistical Division where offence occurred</i>	<i>Recorded victims</i>					
	<i>1999</i>		<i>2000</i>		<i>2001</i>	
	<i>Number</i>	<i>Rate per 100,000 population</i>	<i>Number</i>	<i>Rate per 100,000 population</i>	<i>Number</i>	<i>Rate per 100,000 population</i>
Sydney	67	1.7	55	1.3	77	1.9
Inner Sydney	17	5.9	10	3.4	15	5.1
Eastern Suburbs	2	0.8	1	0.4	3	1.2
St George – Sutherland	4	0.9	3	0.7	7	1.6
Canterbury – Bankstown	11	3.6	6	1.9	8	2.5
Fairfield – Liverpool	9	2.7	5	1.5	14	4.0
Outer South Western Sydney	0	0.0	3	1.3	3	1.3
Inner Western Sydney	1	0.6	1	0.6	4	2.4
Central Western Sydney	4	1.4	7	2.4	4	1.3
Outer Western Sydney	6	1.9	4	1.3	4	1.3
Blacktown	1	0.4	4	1.5	0	0.0
Lower Northern Sydney	3	1.0	4	1.4	4	1.4
Central Northern Sydney	0	0.0	2	0.5	2	0.5
Northern Beaches	0	0.0	1	0.4	1	0.4
Gosford – Wyong	9	3.1	4	1.4	8	2.7
Hunter	11	1.9	8	1.4	7	1.2
Illawarra	11	2.9	4	1.0	2	0.5
Richmond – Tweed	8	3.8	3	1.4	1	0.5
Mid-North Coast	2	0.7	3	1.1	8	2.9
Northern	4	2.3	10	5.8	0	0.0
North Western	4	3.4	3	2.6	0	0.0
Central West	1	0.6	3	1.7	2	1.2
South Eastern	2	1.1	3	1.6	3	1.6
Murrumbidgee	3	2.0	3	2.0	0	0.0
Murray	6	5.4	4	3.6	2	1.8
Far West	1	4.1	1	4.2	1	4.3
New South Wales*	123	1.9	103	1.6	103	1.6

\* The total for New South Wales includes 3 recorded victims in 1999 and 3 recorded victims in 2000 where the offence occurred in a custodial institution.

**TABLE 4.2 RECORDED CRIMINAL INCIDENTS, 1999 TO 2001: STATISTICAL DIVISION****ASSAULT**

<i>Statistical Division where offence occurred</i>	<i>Recorded criminal incidents</i>					
	<i>1999</i>		<i>2000</i>		<i>2001</i>	
	<i>Number</i>	<i>Rate per 100,000 population</i>	<i>Number</i>	<i>Rate per 100,000 population</i>	<i>Number</i>	<i>Rate per 100,000 population</i>
Sydney	32,520	806.6	34,122	835.3	36,632	884.7
Inner Sydney	5,855	2,047.8	6,467	2,229.2	6,684	2,267.0
Eastern Suburbs	1,677	682.6	1,728	701.6	1,928	779.2
St George – Sutherland	2,254	531.0	2,188	509.0	2,443	560.8
Canterbury – Bankstown	1,951	634.2	1,990	639.5	2,214	704.6
Fairfield – Liverpool	2,765	829.8	2,833	832.1	3,092	890.5
Outer South Western Sydney	2,535	1,122.6	2,568	1,122.5	2,926	1,261.5
Inner Western Sydney	980	611.3	991	610.4	995	605.3
Central Western Sydney	2,726	940.2	2,742	935.3	2,772	931.0
Outer Western Sydney	2,756	886.0	2,712	864.5	3,062	969.1
Blacktown	3,333	1,311.1	3,602	1,383.8	3,833	1,467.1
Lower Northern Sydney	1,149	396.8	1,322	452.3	1,280	432.2
Central Northern Sydney	1,007	258.4	1,106	280.2	1,187	293.1
Northern Beaches	1,154	506.8	1,128	491.9	1,128	487.3
Gosford – Wyong	2,378	829.1	2,745	938.3	3,088	1,037.7
Hunter	4,505	788.3	5,362	929.6	5,857	1,006.4
Illawarra	3,494	908.5	3,938	1,011.8	4,370	1,111.2
Richmond – Tweed	2,039	976.6	2,374	1,124.4	2,407	1,131.1
Mid-North Coast	2,916	1,077.2	3,191	1,169.2	3,472	1,262.1
Northern	2,119	1,214.0	2,231	1,288.2	2,246	1,304.0
North Western	2,502	2,133.9	2,497	2,136.4	2,643	2,269.8
Central West	2,039	1,178.9	2,014	1,166.0	2,159	1,246.2
South Eastern	1,858	1,025.5	2,040	1,118.2	2,233	1,210.7
Murrumbidgee	1,735	1,167.4	2,005	1,348.2	2,478	1,665.2
Murray	1,093	989.4	1,229	1,117.8	1,308	1,187.7
Far West	642	2,654.2	658	2,790.0	670	2,888.3
New South Wales*	58,646	916.8	62,797	971.7	67,599	1,034.8

\* The total for New South Wales includes 1,184 recorded incidents in 1999, 1,136 recorded incidents in 2000 and 1,124 recorded incidents in 2001 where the offence occurred in a custodial institution.

**TABLE 4.3** RECORDED CRIMINAL INCIDENTS, 1999 TO 2001: STATISTICAL DIVISION**SEXUAL ASSAULT**

<i>Statistical Division where offence occurred</i>	<i>Recorded criminal incidents</i>					
	<i>1999</i>		<i>2000</i>		<i>2001</i>	
	<i>Number</i>	<i>Rate per 100,000 population</i>	<i>Number</i>	<i>Rate per 100,000 population</i>	<i>Number</i>	<i>Rate per 100,000 population</i>
Sydney	1,747	43.3	1,859	45.5	1,907	46.1
Inner Sydney	210	73.4	261	90.0	256	86.8
Eastern Suburbs	70	28.5	61	24.8	69	27.9
St George – Sutherland	104	24.5	127	29.5	120	27.5
Canterbury – Bankstown	176	57.2	121	38.9	118	37.6
Fairfield – Liverpool	129	38.7	171	50.2	168	48.4
Outer South Western Sydney	165	73.1	157	68.6	200	86.2
Inner Western Sydney	63	39.3	53	32.6	52	31.6
Central Western Sydney	127	43.8	147	50.1	135	45.3
Outer Western Sydney	172	55.3	198	63.1	229	72.5
Blacktown	158	62.2	197	75.7	182	69.7
Lower Northern Sydney	77	26.6	68	23.3	77	26.0
Central Northern Sydney	83	21.3	87	22.0	81	20.0
Northern Beaches	53	23.3	63	27.5	70	30.2
Gosford – Wyong	160	55.8	148	50.6	150	50.4
Hunter	297	52.0	320	55.5	336	57.7
Illawarra	190	49.4	272	69.9	235	59.8
Richmond – Tweed	81	38.8	120	56.8	127	59.7
Mid-North Coast	151	55.8	187	68.5	202	73.4
Northern	114	65.3	153	88.3	153	88.8
North Western	112	95.5	149	127.5	128	109.9
Central West	144	83.3	136	78.7	152	87.7
South Eastern	97	53.5	135	74.0	149	80.8
Murrumbidgee	122	82.1	131	88.1	126	84.7
Murray	79	71.5	108	98.2	116	105.3
Far West	34	140.6	25	106.0	26	112.1
New South Wales*	3,201	50.0	3,615	55.9	3,674	56.2

\* The total for New South Wales includes 33 recorded incidents in 1999, 20 recorded incidents in 2000 and 17 recorded incidents in 2001 where the offence occurred in a custodial institution.

**TABLE 4.4** RECORDED CRIMINAL INCIDENTS, 1999 TO 2001: STATISTICAL DIVISION**INDECENT ASSAULT, ACT OF INDECENCY, OTHER SEXUAL OFFENCES**

<i>Statistical Division where offence occurred</i>	<i>Recorded criminal incidents</i>					
	<i>1999</i>		<i>2000</i>		<i>2001</i>	
	<i>Number</i>	<i>Rate per 100,000 population</i>	<i>Number</i>	<i>Rate per 100,000 population</i>	<i>Number</i>	<i>Rate per 100,000 population</i>
Sydney	2,709	67.2	2,864	70.1	2,818	68.1
Inner Sydney	323	113.0	330	113.8	319	108.2
Eastern Suburbs	110	44.8	118	47.9	105	42.4
St George – Sutherland	198	46.6	199	46.3	226	51.9
Canterbury – Bankstown	181	58.8	166	53.3	148	47.1
Fairfield – Liverpool	209	62.7	217	63.7	178	51.3
Outer South Western Sydney	225	99.6	244	106.7	247	106.5
Inner Western Sydney	113	70.5	131	80.7	103	62.7
Central Western Sydney	208	71.7	201	68.6	217	72.9
Outer Western Sydney	236	75.9	274	87.3	295	93.4
Blacktown	184	72.4	239	91.8	286	109.5
Lower Northern Sydney	154	53.2	160	54.7	175	59.1
Central Northern Sydney	178	45.7	158	40.0	139	34.3
Northern Beaches	129	56.7	110	48.0	142	61.4
Gosford – Wyong	261	91.0	317	108.4	238	80.0
Hunter	399	69.8	451	78.2	450	77.3
Illawarra	356	92.6	299	76.8	279	70.9
Richmond – Tweed	169	80.9	214	101.4	172	80.8
Mid-North Coast	187	69.1	297	108.8	296	107.6
Northern	243	139.2	241	139.2	228	132.4
North Western	174	148.4	211	180.5	146	125.4
Central West	159	91.9	174	100.7	181	104.5
South Eastern	167	92.2	227	124.4	161	87.3
Murrumbidgee	153	102.9	217	145.9	182	122.3
Murray	91	82.4	148	134.6	125	113.5
Far West	29	119.9	41	173.8	32	137.9
New South Wales*	4,874	76.2	5,408	83.7	5,082	77.8

\* The total for New South Wales includes 38 recorded incidents in 1999, 24 recorded incidents in 2000 and 12 recorded incidents in 2001 where the offence occurred in a custodial institution.

**TABLE 4.5** RECORDED CRIMINAL INCIDENTS, 1999 TO 2001: STATISTICAL DIVISION**ROBBERY WITHOUT A WEAPON**

<i>Statistical Division where offence occurred</i>	<i>Recorded criminal incidents</i>					
	<i>1999</i>		<i>2000</i>		<i>2001</i>	
	<i>Number</i>	<i>Rate per 100,000 population</i>	<i>Number</i>	<i>Rate per 100,000 population</i>	<i>Number</i>	<i>Rate per 100,000 population</i>
Sydney	5,600	138.9	6,156	150.7	6,996	169.0
Inner Sydney	1,708	597.4	1,709	589.1	2,295	778.4
Eastern Suburbs	243	98.9	324	131.6	377	152.4
St George – Sutherland	389	91.6	342	79.6	431	98.9
Canterbury – Bankstown	686	223.0	610	196.0	539	171.5
Fairfield – Liverpool	545	163.6	654	192.1	677	195.0
Outer South Western Sydney	249	110.3	295	128.9	376	162.1
Inner Western Sydney	250	156.0	281	173.1	408	248.2
Central Western Sydney	519	179.0	597	203.6	597	200.5
Outer Western Sydney	221	71.1	297	94.7	259	82.0
Blacktown	291	114.5	410	157.5	353	135.1
Lower Northern Sydney	182	62.8	218	74.6	287	96.9
Central Northern Sydney	126	32.3	203	51.4	173	42.7
Northern Beaches	87	38.2	124	54.1	116	50.1
Gosford – Wyong	104	36.3	92	31.4	108	36.3
Hunter	236	41.3	260	45.1	291	50.0
Illawarra	166	43.2	188	48.3	255	64.8
Richmond – Tweed	64	30.7	64	30.3	70	32.9
Mid-North Coast	76	28.1	80	29.3	95	34.5
Northern	63	36.1	68	39.3	49	28.4
North Western	83	70.8	91	77.9	84	72.1
Central West	61	35.3	53	30.7	48	27.7
South Eastern	38	21.0	42	23.0	31	16.8
Murrumbidgee	41	27.6	36	24.2	38	25.5
Murray	24	21.7	15	13.6	19	17.3
Far West	8	33.1	4	17.0	12	51.7
New South Wales*	6,462	101.0	7,060	109.2	7,990	122.3

\* The total for New South Wales includes 2 recorded incidents in 1999, 3 recorded incidents in 2000 and 2 recorded incidents in 2001 where the offence occurred in a custodial institution.

**TABLE 4.6** RECORDED CRIMINAL INCIDENTS, 1999 TO 2001: STATISTICAL DIVISION**ROBBERY WITH A FIREARM**

<i>Statistical Division where offence occurred</i>	<i>Recorded criminal incidents</i>					
	<i>1999</i>		<i>2000</i>		<i>2001</i>	
	<i>Number</i>	<i>Rate per 100,000 population</i>	<i>Number</i>	<i>Rate per 100,000 population</i>	<i>Number</i>	<i>Rate per 100,000 population</i>
Sydney	623	15.5	588	14.4	803	19.4
Inner Sydney	111	38.8	106	36.5	128	43.4
Eastern Suburbs	47	19.1	22	8.9	37	15.0
St George – Sutherland	51	12.0	48	11.2	85	19.5
Canterbury – Bankstown	90	29.3	88	28.3	126	40.1
Fairfield – Liverpool	78	23.4	70	20.6	114	32.8
Outer South Western Sydney	24	10.6	17	7.4	26	11.2
Inner Western Sydney	37	23.1	45	27.7	55	33.5
Central Western Sydney	51	17.6	66	22.5	108	36.3
Outer Western Sydney	21	6.8	16	5.1	22	7.0
Blacktown	14	5.5	13	5.0	31	11.9
Lower Northern Sydney	29	10.0	38	13.0	31	10.5
Central Northern Sydney	34	8.7	25	6.3	25	6.2
Northern Beaches	8	3.5	10	4.4	5	2.2
Gosford – Wyong	28	9.8	24	8.2	10	3.4
Hunter	36	6.3	24	4.2	39	6.7
Illawarra	15	3.9	26	6.7	20	5.1
Richmond – Tweed	6	2.9	6	2.8	6	2.8
Mid-North Coast	6	2.2	2	0.7	5	1.8
Northern	4	2.3	2	1.2	0	0.0
North Western	0	0.0	5	4.3	1	0.9
Central West	2	1.2	1	0.6	0	0.0
South Eastern	1	0.6	1	0.5	6	3.3
Murrumbidgee	3	2.0	1	0.7	0	0.0
Murray	1	0.9	0	0.0	0	0.0
Far West	0	0.0	0	0.0	0	0.0
New South Wales	697	10.9	656	10.2	880	13.5

**TABLE 4.7** RECORDED CRIMINAL INCIDENTS, 1999 TO 2001: STATISTICAL DIVISION**ROBBERY WITH A WEAPON NOT A FIREARM**

<i>Statistical Division where offence occurred</i>	<i>Recorded criminal incidents</i>					
	<i>1999</i>		<i>2000</i>		<i>2001</i>	
	<i>Number</i>	<i>Rate per 100,000 population</i>	<i>Number</i>	<i>Rate per 100,000 population</i>	<i>Number</i>	<i>Rate per 100,000 population</i>
Sydney	3,080	76.4	3,265	79.9	3,887	93.9
Inner Sydney	776	271.4	825	284.4	1,137	385.6
Eastern Suburbs	118	48.0	160	65.0	203	82.0
St George – Sutherland	201	47.4	182	42.3	276	63.4
Canterbury – Bankstown	488	158.6	389	125.0	402	127.9
Fairfield – Liverpool	401	120.3	426	125.1	481	138.5
Outer South Western Sydney	99	43.8	88	38.5	142	61.2
Inner Western Sydney	178	111.0	178	109.6	232	141.1
Central Western Sydney	307	105.9	396	135.1	394	132.3
Outer Western Sydney	75	24.1	95	30.3	81	25.6
Blacktown	99	38.9	126	48.4	166	63.5
Lower Northern Sydney	126	43.5	175	59.9	141	47.6
Central Northern Sydney	102	26.2	89	22.6	102	25.2
Northern Beaches	46	20.2	52	22.7	58	25.1
Gosford – Wyong	64	22.3	84	28.7	72	24.2
Hunter	186	32.5	149	25.8	162	27.8
Illawarra	93	24.2	109	28.0	82	20.9
Richmond – Tweed	21	10.1	23	10.9	16	7.5
Mid-North Coast	30	11.1	27	9.9	28	10.2
Northern	19	10.9	23	13.3	19	11.0
North Western	35	29.9	23	19.7	25	21.5
Central West	19	11.0	41	23.7	14	8.1
South Eastern	23	12.7	11	6.0	32	17.4
Murrumbidgee	11	7.4	11	7.4	14	9.4
Murray	5	4.5	4	3.6	10	9.1
Far West	6	24.8	1	4.2	1	4.3
New South Wales	3,528	55.2	3,687	57.1	4,290	65.7

**TABLE 4.8** RECORDED CRIMINAL INCIDENTS, 1999 TO 2001: STATISTICAL DIVISION**BREAK AND ENTER – DWELLING**

<i>Statistical Division where offence occurred</i>	<i>Recorded criminal incidents</i>					
	<i>1999</i>		<i>2000</i>		<i>2001</i>	
	<i>Number</i>	<i>Rate per 100,000 population</i>	<i>Number</i>	<i>Rate per 100,000 population</i>	<i>Number</i>	<i>Rate per 100,000 population</i>
Sydney	51,653	1,281.1	55,813	1,366.3	53,633	1,295.2
Inner Sydney	5,174	1,809.6	6,158	2,122.7	6,388	2,166.6
Eastern Suburbs	2,845	1,158.1	3,907	1,586.4	4,341	1,754.4
St George – Sutherland	4,493	1,058.5	4,869	1,132.7	5,302	1,217.1
Canterbury – Bankstown	4,257	1,383.7	3,921	1,260.0	4,040	1,285.7
Fairfield – Liverpool	4,618	1,385.9	5,741	1,686.3	4,808	1,384.7
Outer South Western Sydney	3,744	1,658.0	3,077	1,344.9	2,768	1,193.4
Inner Western Sydney	2,342	1,461.0	2,393	1,473.9	2,620	1,594.0
Central Western Sydney	5,183	1,787.7	4,617	1,574.9	4,396	1,476.5
Outer Western Sydney	3,095	995.0	3,157	1,006.3	3,011	953.0
Blacktown	3,354	1,319.3	3,650	1,402.3	3,232	1,237.1
Lower Northern Sydney	3,931	1,357.5	4,415	1,510.6	3,699	1,248.9
Central Northern Sydney	3,028	777.1	3,507	888.6	3,071	758.3
Northern Beaches	1,926	845.9	1,997	870.9	1,923	830.8
Gosford – Wyong	3,663	1,277.2	4,404	1,505.4	4,034	1,355.5
Hunter	7,138	1,249.1	7,831	1,357.7	6,510	1,118.6
Illawarra	5,678	1,476.4	5,627	1,445.7	6,082	1,546.5
Richmond – Tweed	1,835	878.9	1,958	927.4	1,660	780.1
Mid-North Coast	2,556	944.2	2,158	790.7	2,376	863.7
Northern	1,794	1,027.8	1,573	908.2	1,686	978.9
North Western	1,841	1,570.1	1,807	1,546.1	2,142	1,839.5
Central West	1,950	1,127.4	1,872	1,083.8	1,630	940.8
South Eastern	1,480	816.9	1,415	775.6	1,456	789.4
Murrumbidgee	952	640.6	1,091	733.6	1,285	863.5
Murray	680	615.6	925	841.3	1,021	927.1
Far West	295	1,219.6	357	1,513.7	318	1,370.9
New South Wales	77,852	1,217.1	82,427	1,275.5	79,799	1,221.6



**TABLE 4.9** RECORDED CRIMINAL INCIDENTS, 1999 TO 2001: STATISTICAL DIVISION**BREAK AND ENTER – NON-DWELLING**

<i>Statistical Division where offence occurred</i>	<i>Recorded criminal incidents</i>					
	<i>1999</i>		<i>2000</i>		<i>2001</i>	
	<i>Number</i>	<i>Rate per 100,000 population</i>	<i>Number</i>	<i>Rate per 100,000 population</i>	<i>Number</i>	<i>Rate per 100,000 population</i>
Sydney	25,395	629.8	28,042	686.5	29,465	711.6
Inner Sydney	4,625	1,617.6	4,878	1,681.4	5,288	1,793.5
Eastern Suburbs	1,081	440.0	1,220	495.4	1,283	518.5
St George – Sutherland	1,863	438.9	2,125	494.4	1,907	437.8
Canterbury – Bankstown	1,682	546.7	1,756	564.3	1,716	546.1
Fairfield – Liverpool	1,968	590.6	2,671	784.6	2,723	784.2
Outer South Western Sydney	1,333	590.3	1,490	651.3	1,920	827.8
Inner Western Sydney	975	608.2	934	575.3	850	517.1
Central Western Sydney	2,217	764.7	2,493	850.4	2,576	865.2
Outer Western Sydney	1,654	531.8	1,918	611.4	2,131	674.5
Blacktown	1,382	543.6	1,540	591.6	1,551	593.7
Lower Northern Sydney	1,948	672.7	2,215	757.8	2,474	835.3
Central Northern Sydney	1,358	348.5	1,615	409.2	1,729	426.9
Northern Beaches	1,143	502.0	924	403.0	1,013	437.7
Gosford – Wyong	2,166	755.2	2,263	773.6	2,304	774.2
Hunter	6,332	1,108.0	6,627	1,149.0	5,941	1,020.8
Illawarra	3,107	807.9	3,600	924.9	4,092	1,040.5
Richmond – Tweed	1,324	634.1	1,670	791.0	1,634	767.8
Mid-North Coast	2,100	775.8	2,328	853.0	2,317	842.3
Northern	1,661	951.6	1,540	889.2	1,578	916.2
North Western	1,281	1,092.5	1,671	1,429.7	1,452	1,247.0
Central West	1,372	793.2	1,414	818.6	1,607	927.6
South Eastern	1,321	729.1	1,351	740.5	1,360	737.4
Murrumbidgee	1,028	691.7	994	668.4	1,384	930.0
Murray	823	745.0	971	883.2	982	891.7
Far West	229	946.8	245	1,038.8	240	1,034.6
New South Wales*	45,995	719.0	50,470	781.0	52,060	796.9

\* The total for New South Wales includes 1,910 recorded incidents in 1999, 2,156 recorded incidents in 2000 and 2,410 recorded incidents in 2001 where the offence occurred in a custodial institution.

**TABLE 4.10** RECORDED CRIMINAL INCIDENTS, 1999 TO 2001: STATISTICAL DIVISION**RECEIVING, GOODS IN CUSTODY**

<i>Statistical Division where offence occurred</i>	<i>Recorded criminal incidents</i>					
	<i>1999</i>		<i>2000</i>		<i>2001</i>	
	<i>Number</i>	<i>Rate per 100,000 population</i>	<i>Number</i>	<i>Rate per 100,000 population</i>	<i>Number</i>	<i>Rate per 100,000 population</i>
Sydney	7,882	195.5	8,039	196.8	7,790	188.1
Inner Sydney	1,936	677.1	2,137	736.6	2,140	725.8
Eastern Suburbs	272	110.7	324	131.6	357	144.3
St George – Sutherland	426	100.4	544	126.6	593	136.1
Canterbury – Bankstown	557	181.1	602	193.4	544	173.1
Fairfield – Liverpool	1,286	385.9	1,079	316.9	784	225.8
Outer South Western Sydney	444	196.6	333	145.6	344	148.3
Inner Western Sydney	273	170.3	218	134.3	260	158.2
Central Western Sydney	633	218.3	620	211.5	647	217.3
Outer Western Sydney	409	131.5	444	141.5	553	175.0
Blacktown	686	269.8	627	240.9	518	198.3
Lower Northern Sydney	255	88.1	309	105.7	279	94.2
Central Northern Sydney	181	46.5	232	58.8	190	46.9
Northern Beaches	150	65.9	172	75.0	174	75.2
Gosford – Wyong	374	130.4	398	136.0	407	136.8
Hunter	965	168.9	940	163.0	782	134.4
Illawarra	566	147.2	534	137.2	604	153.6
Richmond – Tweed	367	175.8	388	183.8	402	188.9
Mid-North Coast	378	139.6	379	138.9	306	111.2
Northern	257	147.2	245	141.5	161	93.5
North Western	482	411.1	392	335.4	240	206.1
Central West	290	167.7	313	181.2	281	162.2
South Eastern	250	138.0	270	148.0	284	154.0
Murrumbidgee	195	131.2	179	120.4	236	158.6
Murray	137	124.0	199	181.0	167	151.6
Far West	57	235.7	61	258.6	22	94.8
New South Wales*	11,834	185.0	11,955	185.0	11,292	172.9

\* The total for New South Wales includes 8 recorded incidents in 1999, 16 recorded incidents in 2000 and 17 recorded incidents in 2001 where the offence occurred in a custodial institution.

**TABLE 4.11 RECORDED CRIMINAL INCIDENTS, 1999 TO 2001: STATISTICAL DIVISION****MOTOR VEHICLE THEFT**

<i>Statistical Division where offence occurred</i>	<i>Recorded criminal incidents</i>					
	<i>1999</i>		<i>2000</i>		<i>2001</i>	
	<i>Number</i>	<i>Rate per 100,000 population</i>	<i>Number</i>	<i>Rate per 100,000 population</i>	<i>Number</i>	<i>Rate per 100,000 population</i>
Sydney	36,288	900.0	39,043	955.8	39,111	944.5
Inner Sydney	4,793	1,676.3	4,907	1,691.4	5,157	1,749.1
Eastern Suburbs	1,987	808.8	2,072	841.3	2,443	987.3
St George – Sutherland	3,204	754.9	3,334	775.6	3,372	774.0
Canterbury – Bankstown	3,726	1,211.1	3,894	1,251.3	3,997	1,272.0
Fairfield – Liverpool	4,081	1,224.8	4,765	1,399.6	3,932	1,132.4
Outer South Western Sydney	2,262	1,001.7	2,667	1,165.7	2,673	1,152.4
Inner Western Sydney	1,576	983.1	1,667	1,026.8	1,726	1,050.1
Central Western Sydney	3,587	1,237.2	3,777	1,288.4	3,988	1,339.4
Outer Western Sydney	2,440	784.4	2,618	834.5	2,592	820.4
Blacktown	2,832	1,114.0	3,051	1,172.1	2,743	1,049.9
Lower Northern Sydney	1,614	557.4	1,686	576.9	1,674	565.2
Central Northern Sydney	1,073	275.4	1,328	336.5	1,371	338.5
Northern Beaches	971	426.4	979	427.0	1,103	476.5
Gosford – Wyong	2,142	746.8	2,298	785.5	2,340	786.3
Hunter	3,760	658.0	4,821	835.8	4,617	793.3
Illawarra	3,731	970.1	3,853	989.9	4,911	1,248.7
Richmond – Tweed	871	417.2	836	396.0	812	381.6
Mid-North Coast	892	329.5	1,002	367.1	1,050	381.7
Northern	414	237.2	436	251.7	405	235.1
North Western	523	446.1	641	548.4	756	649.3
Central West	521	301.2	610	353.2	475	274.2
South Eastern	493	272.1	465	254.9	519	281.4
Murrumbidgee	529	355.9	468	314.7	529	355.5
Murray	302	273.4	356	323.8	414	375.9
Far West	73	301.8	87	368.9	124	534.6
New South Wales*	48,401	756.7	52,626	814.3	53,727	822.5

\* The total for New South Wales includes 4 recorded incidents in 1999, 8 recorded incidents in 2000 and 4 recorded incidents in 2001 where the offence occurred in a custodial institution.

**TABLE 4.12 RECORDED CRIMINAL INCIDENTS, 1999 TO 2001: STATISTICAL DIVISION****STEAL FROM MOTOR VEHICLE**

<i>Statistical Division where offence occurred</i>	<i>Recorded criminal incidents</i>					
	<i>1999</i>		<i>2000</i>		<i>2001</i>	
	<i>Number</i>	<i>Rate per 100,000 population</i>	<i>Number</i>	<i>Rate per 100,000 population</i>	<i>Number</i>	<i>Rate per 100,000 population</i>
Sydney	55,425	1,374.6	66,009	1,615.9	64,374	1,554.6
Inner Sydney	12,636	4,419.4	15,492	5,340.1	15,453	5,241.2
Eastern Suburbs	3,889	1,583.0	3,993	1,621.3	4,503	1,819.9
St George – Sutherland	4,517	1,064.2	5,569	1,295.6	4,886	1,121.6
Canterbury – Bankstown	3,788	1,231.3	4,646	1,493.0	3,656	1,163.5
Fairfield – Liverpool	4,197	1,259.6	4,849	1,424.3	4,180	1,203.8
Outer South Western Sydney	2,077	919.8	2,739	1,197.2	3,173	1,368.0
Inner Western Sydney	2,095	1,306.9	2,400	1,478.2	2,442	1,485.7
Central Western Sydney	4,106	1,416.2	4,931	1,682.0	4,435	1,489.6
Outer Western Sydney	3,335	1,072.2	3,478	1,108.6	4,137	1,309.4
Blacktown	2,925	1,150.6	3,694	1,419.2	3,139	1,201.5
Lower Northern Sydney	4,514	1,558.8	4,964	1,698.4	4,821	1,627.7
Central Northern Sydney	2,386	612.4	3,149	797.9	3,200	790.2
Northern Beaches	2,597	1,140.6	2,450	1,068.5	2,806	1,212.3
Gosford – Wyong	2,363	823.9	3,655	1,249.4	3,543	1,190.6
Hunter	6,148	1,075.8	7,625	1,322.0	6,830	1,173.6
Illawarra	4,974	1,293.3	5,426	1,394.1	5,911	1,503.0
Richmond – Tweed	1,733	830.0	1,973	934.5	1,964	922.9
Mid-North Coast	2,060	761.0	2,370	868.4	2,151	781.9
Northern	1,328	760.8	1,386	800.3	1,579	916.8
North Western	1,327	1,131.8	1,730	1,480.2	2,096	1,800.0
Central West	1,278	738.9	1,367	791.4	1,567	904.5
South Eastern	1,637	903.5	1,196	655.6	1,364	739.5
Murrumbidgee	1,072	721.3	1,027	690.6	1,309	879.6
Murray	691	625.5	913	830.4	1,039	943.5
Far West	274	1,132.8	286	1,212.7	280	1,207.1
New South Wales*	77,948	1,218.6	91,313	1,413.0	90,468	1,384.9

\* The total for New South Wales includes 1 recorded incident in 1999, 5 recorded incidents in 2000 and 4 recorded incidents in 2001 where the offence occurred in a custodial institution.

**TABLE 4.13 RECORDED CRIMINAL INCIDENTS, 1999 TO 2001: STATISTICAL DIVISION****STEAL FROM RETAIL STORE**

<i>Statistical Division where offence occurred</i>	<i>Recorded criminal incidents</i>					
	<i>1999</i>		<i>2000</i>		<i>2001</i>	
	<i>Number</i>	<i>Rate per 100,000 population</i>	<i>Number</i>	<i>Rate per 100,000 population</i>	<i>Number</i>	<i>Rate per 100,000 population</i>
Sydney	13,587	337.0	14,168	346.8	13,246	319.9
Inner Sydney	2,323	812.5	2,533	873.1	2,356	799.1
Eastern Suburbs	759	308.9	771	313.1	858	346.8
St George – Sutherland	1,126	265.3	1,127	262.2	1,136	260.8
Canterbury – Bankstown	923	300.0	886	284.7	840	267.3
Fairfield – Liverpool	1,189	356.8	1,286	377.7	941	271.0
Outer South Western Sydney	763	337.9	716	313.0	641	276.4
Inner Western Sydney	409	255.1	447	275.3	443	269.5
Central Western Sydney	1,445	498.4	1,605	547.5	1,328	446.0
Outer Western Sydney	1,120	360.1	931	296.8	954	301.9
Blacktown	1,056	415.4	1,226	471.0	968	370.5
Lower Northern Sydney	818	282.5	815	278.8	796	268.8
Central Northern Sydney	496	127.3	443	112.2	524	129.4
Northern Beaches	473	207.7	522	227.7	410	177.1
Gosford – Wyong	687	239.5	860	294.0	1,051	353.2
Hunter	1,456	254.8	1,685	292.1	1,828	314.1
Illawarra	1,333	346.6	1,205	309.6	1,216	309.2
Richmond – Tweed	778	372.6	675	319.7	751	352.9
Mid-North Coast	1,103	407.5	926	339.3	869	315.9
Northern	451	258.4	483	278.9	511	296.7
North Western	537	458.0	461	394.4	402	345.2
Central West	600	346.9	501	290.1	517	298.4
South Eastern	481	265.5	494	270.8	475	257.5
Murrumbidgee	410	275.9	367	246.8	447	300.4
Murray	267	241.7	269	244.7	309	280.6
Far West	78	322.5	49	207.8	77	331.9
New South Wales	21,081	329.6	21,283	329.3	20,648	316.1

**TABLE 4.14 RECORDED CRIMINAL INCIDENTS, 1999 TO 2001: STATISTICAL DIVISION****STEAL FROM DWELLING**

<i>Statistical Division where offence occurred</i>	<i>Recorded criminal incidents</i>					
	<i>1999</i>		<i>2000</i>		<i>2001</i>	
	<i>Number</i>	<i>Rate per 100,000 population</i>	<i>Number</i>	<i>Rate per 100,000 population</i>	<i>Number</i>	<i>Rate per 100,000 population</i>
Sydney	15,957	395.8	17,169	420.3	16,530	399.2
Inner Sydney	2,110	738.0	2,308	795.6	2,343	794.7
Eastern Suburbs	1,151	468.5	1,309	531.5	1,483	599.4
St George – Sutherland	1,325	312.2	1,407	327.3	1,251	287.2
Canterbury – Bankstown	749	243.5	789	253.5	780	248.2
Fairfield – Liverpool	1,106	331.9	1,096	321.9	976	281.1
Outer South Western Sydney	1,195	529.2	1,185	518.0	1,082	466.5
Inner Western Sydney	553	345.0	582	358.5	552	335.8
Central Western Sydney	938	323.5	984	335.7	950	319.1
Outer Western Sydney	1,233	396.4	1,266	403.5	1,254	396.9
Blacktown	1,192	468.9	1,302	500.2	1,190	455.5
Lower Northern Sydney	1,064	367.4	1,140	390.0	1,088	367.3
Central Northern Sydney	1,154	296.2	1,226	310.6	1,180	291.4
Northern Beaches	843	370.2	1,000	436.1	956	413.0
Gosford – Wyong	1,344	468.6	1,575	538.4	1,445	485.6
Hunter	3,446	603.0	3,632	629.7	3,533	607.1
Illawarra	1,946	506.0	2,202	565.8	2,178	553.8
Richmond – Tweed	1,394	667.7	1,493	707.1	1,442	677.6
Mid-North Coast	1,551	573.0	1,652	605.3	1,530	556.2
Northern	1,163	666.3	1,102	636.3	1,048	608.5
North Western	920	784.6	879	752.1	901	773.8
Central West	1,233	712.9	1,212	701.7	1,215	701.3
South Eastern	1,019	562.4	973	533.3	1,068	579.1
Murrumbidgee	878	590.8	939	631.4	1,023	687.5
Murray	665	602.0	717	652.1	732	664.7
Far West	249	1,029.4	309	1,310.2	251	1,082.0
New South Wales	30,421	475.6	32,279	499.5	31,451	481.5

**TABLE 4.15 RECORDED CRIMINAL INCIDENTS, 1999 TO 2001: STATISTICAL DIVISION****STEAL FROM PERSON**

<i>Statistical Division where offence occurred</i>	<i>Recorded criminal incidents</i>					
	<i>1999</i>		<i>2000</i>		<i>2001</i>	
	<i>Number</i>	<i>Rate per 100,000 population</i>	<i>Number</i>	<i>Rate per 100,000 population</i>	<i>Number</i>	<i>Rate per 100,000 population</i>
Sydney	10,036	248.9	11,196	274.1	14,367	347.0
Inner Sydney	4,355	1,523.1	4,831	1,665.2	6,627	2,247.7
Eastern Suburbs	598	243.4	652	264.7	893	360.9
St George – Sutherland	506	119.2	586	136.3	778	178.6
Canterbury – Bankstown	690	224.3	728	233.9	729	232.0
Fairfield – Liverpool	638	191.5	734	215.6	817	235.3
Outer South Western Sydney	226	100.1	279	121.9	341	147.0
Inner Western Sydney	567	353.7	561	345.5	643	391.2
Central Western Sydney	691	238.3	747	254.8	952	319.7
Outer Western Sydney	303	97.4	358	114.1	410	129.8
Blacktown	379	149.1	439	168.7	525	200.9
Lower Northern Sydney	448	154.7	529	181.0	691	233.3
Central Northern Sydney	204	52.4	218	55.2	294	72.6
Northern Beaches	252	110.7	302	131.7	412	178.0
Gosford – Wyong	179	62.4	232	79.3	255	85.7
Hunter	365	63.9	436	75.6	535	91.9
Illawarra	374	97.2	463	119.0	652	165.8
Richmond – Tweed	135	64.7	144	68.2	202	94.9
Mid-North Coast	151	55.8	164	60.1	187	68.0
Northern	103	59.0	115	66.4	119	69.1
North Western	120	102.3	170	145.5	140	120.2
Central West	106	61.3	87	50.4	90	51.9
South Eastern	79	43.6	87	47.7	114	61.8
Murrumbidgee	49	33.0	47	31.6	85	57.1
Murray	52	47.1	46	41.8	55	49.9
Far West	20	82.7	16	67.8	27	116.4
New South Wales*	11,592	181.2	12,972	200.7	16,576	253.7

\* The total for New South Wales includes 2 recorded incidents in 1999, 1 recorded incident in 2000 and 3 recorded incidents in 2001 where the offence occurred in a custodial institution.

**TABLE 4.16 RECORDED CRIMINAL INCIDENTS, 1999 TO 2001: STATISTICAL DIVISION****FRAUD**

<i>Statistical Division where offence occurred</i>	<i>Recorded criminal incidents</i>					
	<i>1999</i>		<i>2000</i>		<i>2001</i>	
	<i>Number</i>	<i>Rate per 100,000 population</i>	<i>Number</i>	<i>Rate per 100,000 population</i>	<i>Number</i>	<i>Rate per 100,000 population</i>
Sydney	18,211	451.7	18,842	461.3	24,211	584.7
Inner Sydney	4,056	1,418.6	3,668	1,264.4	4,508	1,529.0
Eastern Suburbs	1,133	461.2	1,039	421.9	1,247	504.0
St George – Sutherland	1,249	294.3	1,204	280.1	1,870	429.3
Canterbury – Bankstown	1,243	404.0	1,606	516.1	2,300	732.0
Fairfield – Liverpool	1,826	548.0	1,879	551.9	2,252	648.6
Outer South Western Sydney	779	345.0	893	390.3	986	425.1
Inner Western Sydney	707	441.0	830	511.2	1,101	669.8
Central Western Sydney	1,566	540.1	1,675	571.4	2,350	789.3
Outer Western Sydney	961	309.0	1,219	388.6	1,459	461.8
Blacktown	1,009	396.9	1,456	559.4	1,873	716.9
Lower Northern Sydney	1,334	460.7	1,139	389.7	1,579	533.1
Central Northern Sydney	643	165.0	688	174.3	848	209.4
Northern Beaches	620	272.3	649	283.0	869	375.4
Gosford – Wyong	1,085	378.3	897	306.6	969	325.6
Hunter	1,728	302.4	2,110	365.8	1,808	310.7
Illawarra	907	235.8	1,145	294.2	1,230	312.8
Richmond – Tweed	890	426.3	711	336.7	731	343.5
Mid-North Coast	1,205	445.1	1,244	455.8	903	328.3
Northern	725	415.4	580	334.9	401	232.8
North Western	775	661.0	369	315.7	382	328.1
Central West	614	355.0	668	386.7	582	335.9
South Eastern	592	326.7	700	383.7	709	384.4
Murrumbidgee	777	522.8	721	484.8	741	498.0
Murray	485	439.0	457	415.7	342	310.6
Far West	80	330.7	53	224.7	50	215.5
New South Wales*	27,011	422.3	27,607	427.2	32,098	491.4

\* The total for New South Wales includes 22 recorded incidents in 1999, 7 recorded incidents in 2000 and 8 recorded incidents in 2001 where the offence occurred in a custodial institution.



**TABLE 4.17** RECORDED CRIMINAL INCIDENTS, 1999 TO 2001: STATISTICAL DIVISION**MALICIOUS DAMAGE TO PROPERTY**

<i>Statistical Division where offence occurred</i>	<i>Recorded criminal incidents</i>					
	<i>1999</i>		<i>2000</i>		<i>2001</i>	
	<i>Number</i>	<i>Rate per 100,000 population</i>	<i>Number</i>	<i>Rate per 100,000 population</i>	<i>Number</i>	<i>Rate per 100,000 population</i>
Sydney	52,850	1,310.8	54,134	1,325.2	54,350	1,312.5
Inner Sydney	6,524	2,281.7	6,016	2,073.7	6,271	2,126.9
Eastern Suburbs	2,787	1,134.4	3,041	1,234.8	3,188	1,288.4
St George – Sutherland	5,413	1,275.3	4,965	1,155.1	4,888	1,122.0
Canterbury – Bankstown	3,656	1,188.4	3,479	1,118.0	3,286	1,045.8
Fairfield – Liverpool	3,958	1,187.8	4,303	1,263.9	4,137	1,191.5
Outer South Western Sydney	4,490	1,988.4	4,740	2,071.8	4,828	2,081.6
Inner Western Sydney	1,569	978.8	1,429	880.2	1,402	853.0
Central Western Sydney	3,206	1,105.8	3,487	1,189.5	3,466	1,164.1
Outer Western Sydney	5,033	1,618.1	5,023	1,601.1	4,937	1,562.6
Blacktown	4,048	1,592.3	4,248	1,632.0	4,260	1,630.6
Lower Northern Sydney	2,774	957.9	2,850	975.1	2,797	944.3
Central Northern Sydney	3,243	832.3	3,402	862.0	3,351	827.4
Northern Beaches	2,310	1,014.5	2,584	1,126.9	2,824	1,220.1
Gosford – Wyong	3,839	1,338.5	4,567	1,561.2	4,715	1,584.4
Hunter	8,629	1,510.0	9,658	1,674.5	9,788	1,681.9
Illawarra	7,227	1,879.2	6,958	1,787.7	6,929	1,761.9
Richmond – Tweed	2,574	1,232.8	2,761	1,307.7	2,698	1,267.8
Mid-North Coast	4,024	1,486.5	4,089	1,498.2	4,132	1,502.0
Northern	3,407	1,951.9	3,556	2,053.2	3,332	1,934.6
North Western	2,508	2,139.0	2,648	2,265.6	3,122	2,681.2
Central West	2,970	1,717.1	2,811	1,627.5	3,287	1,897.3
South Eastern	3,115	1,719.3	2,989	1,638.4	3,167	1,717.1
Murrumbidgee	2,606	1,753.5	2,532	1,702.6	2,828	1,900.4
Murray	1,653	1,496.4	1,664	1,513.5	1,820	1,652.6
Far West	594	2,455.8	623	2,641.6	602	2,595.2
New South Wales*	92,264	1,442.4	94,564	1,463.3	96,145	1,471.8

\* The total for New South Wales includes 107 recorded incidents in 1999, 141 recorded incidents in 2000 and 90 recorded incidents in 2001 where the offence occurred in a custodial institution.

**TABLE 4.18** RECORDED CRIMINAL INCIDENTS, 1999 TO 2001: STATISTICAL DIVISION**POSSESSION AND/OR USE OF COCAINE**

<i>Statistical Division where offence occurred</i>	<i>Recorded criminal incidents</i>					
	<i>1999</i>		<i>2000</i>		<i>2001</i>	
	<i>Number</i>	<i>Rate per 100,000 population</i>	<i>Number</i>	<i>Rate per 100,000 population</i>	<i>Number</i>	<i>Rate per 100,000 population</i>
Sydney	188	4.7	181	4.4	437	10.6
Inner Sydney	101	35.3	79	27.2	208	70.5
Eastern Suburbs	10	4.1	10	4.1	11	4.4
St George – Sutherland	9	2.1	13	3.0	9	2.1
Canterbury – Bankstown	5	1.6	21	6.7	25	8.0
Fairfield – Liverpool	30	9.0	25	7.3	112	32.3
Outer South Western Sydney	0	0.0	1	0.4	6	2.6
Inner Western Sydney	6	3.7	8	4.9	7	4.3
Central Western Sydney	7	2.4	2	0.7	22	7.4
Outer Western Sydney	2	0.6	1	0.3	3	0.9
Blacktown	2	0.8	1	0.4	5	1.9
Lower Northern Sydney	11	3.8	9	3.1	6	2.0
Central Northern Sydney	0	0.0	2	0.5	8	2.0
Northern Beaches	1	0.4	7	3.1	9	3.9
Gosford – Wyong	4	1.4	2	0.7	6	2.0
Hunter	2	0.3	1	0.2	3	0.5
Illawarra	2	0.5	3	0.8	3	0.8
Richmond – Tweed	1	0.5	2	0.9	7	3.3
Mid-North Coast	2	0.7	8	2.9	4	1.5
Northern	0	0.0	3	1.7	1	0.6
North Western	0	0.0	0	0.0	0	0.0
Central West	1	0.6	3	1.7	0	0.0
South Eastern	2	1.1	4	2.2	1	0.5
Murrumbidgee	1	0.7	2	1.3	0	0.0
Murray	1	0.9	0	0.0	0	0.0
Far West	0	0.0	0	0.0	0	0.0
New South Wales*	200	3.1	208	3.2	460	7.0

\* The total for New South Wales includes 1 recorded incident in 2000 and 4 recorded incidents in 2001 where the offence occurred in a custodial institution.

**TABLE 4.19** RECORDED CRIMINAL INCIDENTS, 1999 TO 2001: STATISTICAL DIVISION**POSSESSION AND/OR USE OF NARCOTICS**

<i>Statistical Division where offence occurred</i>	<i>Recorded criminal incidents</i>					
	<i>1999</i>		<i>2000</i>		<i>2001</i>	
	<i>Number</i>	<i>Rate per 100,000 population</i>	<i>Number</i>	<i>Rate per 100,000 population</i>	<i>Number</i>	<i>Rate per 100,000 population</i>
Sydney	2,408	59.7	1,857	45.5	805	19.4
Inner Sydney	573	200.4	463	159.6	240	81.4
Eastern Suburbs	24	9.8	30	12.2	9	3.6
St George – Sutherland	73	17.2	78	18.1	36	8.3
Canterbury – Bankstown	135	43.9	130	41.8	51	16.2
Fairfield – Liverpool	1,129	338.8	796	233.8	306	88.1
Outer South Western Sydney	41	18.2	26	11.4	6	2.6
Inner Western Sydney	58	36.2	53	32.6	17	10.3
Central Western Sydney	132	45.5	95	32.4	36	12.1
Outer Western Sydney	48	15.4	36	11.5	9	2.8
Blacktown	47	18.5	35	13.4	43	16.5
Lower Northern Sydney	26	9.0	28	9.6	4	1.4
Central Northern Sydney	32	8.2	14	3.5	8	2.0
Northern Beaches	33	14.5	14	6.1	10	4.3
Gosford – Wyong	57	19.9	59	20.2	30	10.1
Hunter	119	20.8	131	22.7	57	9.8
Illawarra	73	19.0	51	13.1	37	9.4
Richmond – Tweed	107	51.2	162	76.7	88	41.4
Mid-North Coast	78	28.8	74	27.1	32	11.6
Northern	48	27.5	18	10.4	3	1.7
North Western	26	22.2	7	6.0	6	5.2
Central West	37	21.4	48	27.8	14	8.1
South Eastern	23	12.7	37	20.3	19	10.3
Murrumbidgee	11	7.4	15	10.1	4	2.7
Murray	6	5.4	6	5.5	5	4.5
Far West	3	12.4	1	4.2	1	4.3
New South Wales*	3,013	47.1	2,483	38.4	1,094	16.7

\* The total for New South Wales includes 74 recorded incidents in 1999, 76 recorded incidents in 2000 and 23 recorded incidents in 2001 where the offence occurred in a custodial institution.

**TABLE 4.20** RECORDED CRIMINAL INCIDENTS, 1999 TO 2001: STATISTICAL DIVISION**POSSESSION AND/OR USE OF CANNABIS**

<i>Statistical Division where offence occurred</i>	<i>Recorded criminal incidents</i>					
	<i>1999</i>		<i>2000</i>		<i>2001</i>	
	<i>Number</i>	<i>Rate per 100,000 population</i>	<i>Number</i>	<i>Rate per 100,000 population</i>	<i>Number</i>	<i>Rate per 100,000 population</i>
Sydney	4,960	123.0	4,744	116.1	7,743	187.0
Inner Sydney	895	313.0	1,255	432.6	2,290	776.7
Eastern Suburbs	158	64.3	173	70.2	302	122.1
St George – Sutherland	388	91.4	331	77.0	514	118.0
Canterbury – Bankstown	258	83.9	264	84.8	301	95.8
Fairfield – Liverpool	490	147.1	301	88.4	437	125.9
Outer South Western Sydney	265	117.4	220	96.2	431	185.8
Inner Western Sydney	120	74.9	102	62.8	210	127.8
Central Western Sydney	434	149.7	322	109.8	576	193.5
Outer Western Sydney	526	169.1	436	139.0	563	178.2
Blacktown	496	195.1	367	141.0	676	258.7
Lower Northern Sydney	233	80.5	230	78.7	303	102.3
Central Northern Sydney	241	61.9	246	62.3	444	109.6
Northern Beaches	121	53.1	170	74.1	212	91.6
Gosford – Wyong	335	116.8	327	111.8	484	162.6
Hunter	974	170.4	969	168.0	1,066	183.2
Illawarra	545	141.7	484	124.4	643	163.5
Richmond – Tweed	887	424.8	1,137	538.5	1,116	524.4
Mid-North Coast	998	368.7	896	328.3	819	297.7
Northern	517	296.2	411	237.3	481	279.3
North Western	415	353.9	329	281.5	302	259.4
Central West	494	285.6	414	239.7	403	232.6
South Eastern	635	350.5	618	338.7	544	295.0
Murrumbidgee	369	248.3	368	247.5	493	331.3
Murray	232	210.0	292	265.6	306	277.9
Far West	78	322.5	69	292.6	61	263.0
New South Wales*	11,494	179.7	11,069	171.3	14,328	219.3

\* The total for New South Wales includes 390 recorded incidents in 1999, 338 recorded incidents in 2000 and 351 recorded incidents in 2001 where the offence occurred in a custodial institution.

**TABLE 4.21** RECORDED CRIMINAL INCIDENTS, 1999 TO 2001: STATISTICAL DIVISION**DEALING, TRAFFICKING IN COCAINE**

<i>Statistical Division where offence occurred</i>	<i>Recorded criminal incidents</i>					
	<i>1999</i>		<i>2000</i>		<i>2001</i>	
	<i>Number</i>	<i>Rate per 100,000 population</i>	<i>Number</i>	<i>Rate per 100,000 population</i>	<i>Number</i>	<i>Rate per 100,000 population</i>
Sydney	203	5.0	93	2.3	234	5.7
Inner Sydney	157	54.9	53	18.3	110	37.3
Eastern Suburbs	18	7.3	9	3.7	2	0.8
St George – Sutherland	12	2.8	2	0.5	5	1.1
Canterbury – Bankstown	5	1.6	6	1.9	16	5.1
Fairfield – Liverpool	6	1.8	3	0.9	71	20.4
Outer South Western Sydney	0	0.0	1	0.4	0	0.0
Inner Western Sydney	1	0.6	1	0.6	1	0.6
Central Western Sydney	2	0.7	3	1.0	16	5.4
Outer Western Sydney	0	0.0	0	0.0	0	0.0
Blacktown	0	0.0	0	0.0	0	0.0
Lower Northern Sydney	1	0.3	5	1.7	2	0.7
Central Northern Sydney	0	0.0	6	1.5	4	1.0
Northern Beaches	0	0.0	4	1.7	6	2.6
Gosford – Wyong	1	0.3	0	0.0	1	0.3
Hunter	1	0.2	2	0.3	0	0.0
Illawarra	0	0.0	0	0.0	8	2.0
Richmond – Tweed	0	0.0	2	0.9	4	1.9
Mid-North Coast	0	0.0	1	0.4	0	0.0
Northern	0	0.0	0	0.0	0	0.0
North Western	0	0.0	0	0.0	0	0.0
Central West	0	0.0	0	0.0	0	0.0
South Eastern	0	0.0	1	0.5	0	0.0
Murrumbidgee	1	0.7	1	0.7	0	0.0
Murray	0	0.0	0	0.0	0	0.0
Far West	0	0.0	0	0.0	0	0.0
New South Wales	205	3.2	100	1.5	246	3.8

**TABLE 4.22 RECORDED CRIMINAL INCIDENTS, 1999 TO 2001: STATISTICAL DIVISION****DEALING, TRAFFICKING IN NARCOTICS**

<i>Statistical Division where offence occurred</i>	<i>Recorded criminal incidents</i>					
	<i>1999</i>		<i>2000</i>		<i>2001</i>	
	<i>Number</i>	<i>Rate per 100,000 population</i>	<i>Number</i>	<i>Rate per 100,000 population</i>	<i>Number</i>	<i>Rate per 100,000 population</i>
Sydney	586	14.5	493	12.1	344	8.3
Inner Sydney	207	72.4	197	67.9	96	32.6
Eastern Suburbs	8	3.3	8	3.2	1	0.4
St George – Sutherland	15	3.5	17	4.0	7	1.6
Canterbury – Bankstown	28	9.1	53	17.0	21	6.7
Fairfield – Liverpool	248	74.4	175	51.4	181	52.1
Outer South Western Sydney	9	4.0	3	1.3	2	0.9
Inner Western Sydney	16	10.0	14	8.6	15	9.1
Central Western Sydney	13	4.5	10	3.4	5	1.7
Outer Western Sydney	5	1.6	6	1.9	2	0.6
Blacktown	6	2.4	0	0.0	1	0.4
Lower Northern Sydney	8	2.8	3	1.0	2	0.7
Central Northern Sydney	2	0.5	2	0.5	2	0.5
Northern Beaches	14	6.1	1	0.4	3	1.3
Gosford – Wyong	7	2.4	4	1.4	6	2.0
Hunter	32	5.6	80	13.9	15	2.6
Illawarra	39	10.1	44	11.3	21	5.3
Richmond – Tweed	80	38.3	118	55.9	64	30.1
Mid-North Coast	40	14.8	27	9.9	9	3.3
Northern	38	21.8	7	4.0	0	0.0
North Western	6	5.1	3	2.6	1	0.9
Central West	25	14.5	53	30.7	6	3.5
South Eastern	7	3.9	19	10.4	2	1.1
Murrumbidgee	6	4.0	9	6.1	2	1.3
Murray	2	1.8	1	0.9	1	0.9
Far West	0	0.0	0	0.0	0	0.0
New South Wales*	864	13.5	860	13.3	465	7.1

\* The total for New South Wales includes 3 recorded incidents in 1999 and 6 recorded incidents in 2000 where the offence occurred in a custodial institution.

**TABLE 4.23 RECORDED CRIMINAL INCIDENTS, 1999 TO 2001: STATISTICAL DIVISION****DEALING, TRAFFICKING IN CANNABIS**

<i>Statistical Division where offence occurred</i>	<i>Recorded criminal incidents</i>					
	<i>1999</i>		<i>2000</i>		<i>2001</i>	
	<i>Number</i>	<i>Rate per 100,000 population</i>	<i>Number</i>	<i>Rate per 100,000 population</i>	<i>Number</i>	<i>Rate per 100,000 population</i>
Sydney	389	9.6	387	9.5	506	12.2
Inner Sydney	128	44.8	166	57.2	167	56.6
Eastern Suburbs	12	4.9	9	3.7	14	5.7
St George – Sutherland	23	5.4	18	4.2	20	4.6
Canterbury – Bankstown	24	7.8	28	9.0	39	12.4
Fairfield – Liverpool	35	10.5	31	9.1	65	18.7
Outer South Western Sydney	20	8.9	8	3.5	24	10.3
Inner Western Sydney	9	5.6	7	4.3	11	6.7
Central Western Sydney	26	9.0	18	6.1	31	10.4
Outer Western Sydney	28	9.0	16	5.1	42	13.3
Blacktown	42	16.5	20	7.7	30	11.5
Lower Northern Sydney	11	3.8	13	4.4	19	6.4
Central Northern Sydney	10	2.6	18	4.6	21	5.2
Northern Beaches	4	1.8	9	3.9	9	3.9
Gosford – Wyong	17	5.9	26	8.9	14	4.7
Hunter	73	12.8	51	8.8	58	10.0
Illawarra	56	14.6	33	8.5	38	9.7
Richmond – Tweed	86	41.2	77	36.5	62	29.1
Mid-North Coast	98	36.2	53	19.4	46	16.7
Northern	39	22.3	34	19.6	44	25.5
North Western	37	31.6	23	19.7	27	23.2
Central West	36	20.8	38	22.0	30	17.3
South Eastern	68	37.5	79	43.3	52	28.2
Murrumbidgee	37	24.9	60	40.3	76	51.1
Murray	40	36.2	27	24.6	34	30.9
Far West	13	53.7	7	29.7	2	8.6
New South Wales*	989	15.5	881	13.6	987	15.1

\* The total for New South Wales includes 17 recorded incidents in 1999, 12 recorded incidents in 2000 and 12 recorded incidents in 2001 where the offence occurred in a custodial institution.

**TABLE 4.24** RECORDED CRIMINAL INCIDENTS, 1999 TO 2001: STATISTICAL DIVISION**CULTIVATING CANNABIS**

<i>Statistical Division where offence occurred</i>	<i>Recorded criminal incidents</i>					
	<i>1999</i>		<i>2000</i>		<i>2001</i>	
	<i>Number</i>	<i>Rate per 100,000 population</i>	<i>Number</i>	<i>Rate per 100,000 population</i>	<i>Number</i>	<i>Rate per 100,000 population</i>
Sydney	490	12.2	338	8.3	339	8.2
Inner Sydney	28	9.8	25	8.6	16	5.4
Eastern Suburbs	14	5.7	12	4.9	8	3.2
St George – Sutherland	38	9.0	32	7.4	35	8.0
Canterbury – Bankstown	32	10.4	17	5.5	20	6.4
Fairfield – Liverpool	28	8.4	22	6.5	19	5.5
Outer South Western Sydney	37	16.4	32	14.0	47	20.3
Inner Western Sydney	10	6.2	4	2.5	3	1.8
Central Western Sydney	30	10.3	14	4.8	30	10.1
Outer Western Sydney	86	27.6	57	18.2	40	12.7
Blacktown	53	20.8	33	12.7	37	14.2
Lower Northern Sydney	16	5.5	16	5.5	8	2.7
Central Northern Sydney	26	6.7	16	4.1	17	4.2
Northern Beaches	13	5.7	11	4.8	16	6.9
Gosford – Wyong	79	27.5	47	16.1	43	14.4
Hunter	189	33.1	166	28.8	192	33.0
Illawarra	102	26.5	121	31.1	91	23.1
Richmond – Tweed	276	132.2	292	138.3	285	133.9
Mid-North Coast	308	113.8	232	85.0	229	83.2
Northern	133	76.2	107	61.8	82	47.6
North Western	69	58.8	58	49.6	38	32.6
Central West	74	42.8	53	30.7	66	38.1
South Eastern	186	102.7	140	76.7	114	61.8
Murrumbidgee	64	43.1	78	52.5	72	48.4
Murray	42	38.0	60	54.6	33	30.0
Far West	6	24.8	16	67.8	11	47.4
New South Wales*	1,939	30.3	1,662	25.7	1,557	23.8

\* The total for New South Wales includes 1 recorded incident in 2000 and 5 recorded incidents in 2001 where the offence occurred in a custodial institution.



**TABLE 4.25 RECORDED CRIMINAL INCIDENTS, 1999 TO 2001: STATISTICAL DIVISION****OFFENSIVE CONDUCT**

<i>Statistical Division where offence occurred</i>	<i>Recorded criminal incidents</i>					
	<i>1999</i>		<i>2000</i>		<i>2001</i>	
	<i>Number</i>	<i>Rate per 100,000 population</i>	<i>Number</i>	<i>Rate per 100,000 population</i>	<i>Number</i>	<i>Rate per 100,000 population</i>
Sydney	1,193	29.6	1,146	28.1	1,335	32.2
Inner Sydney	269	94.1	237	81.7	313	106.2
Eastern Suburbs	46	18.7	57	23.1	56	22.6
St George – Sutherland	109	25.7	71	16.5	96	22.0
Canterbury – Bankstown	33	10.7	21	6.7	30	9.5
Fairfield – Liverpool	82	24.6	58	17.0	56	16.1
Outer South Western Sydney	73	32.3	63	27.5	65	28.0
Inner Western Sydney	39	24.3	35	21.6	23	14.0
Central Western Sydney	72	24.8	81	27.6	84	28.2
Outer Western Sydney	97	31.2	124	39.5	134	42.4
Blacktown	96	37.8	121	46.5	139	53.2
Lower Northern Sydney	79	27.3	50	17.1	66	22.3
Central Northern Sydney	46	11.8	58	14.7	68	16.8
Northern Beaches	57	25.0	65	28.3	83	35.9
Gosford – Wyong	95	33.1	105	35.9	122	41.0
Hunter	286	50.0	302	52.4	416	71.5
Illawarra	183	47.6	162	41.6	140	35.6
Richmond – Tweed	320	153.3	424	200.8	386	181.4
Mid-North Coast	320	118.2	311	114.0	358	130.1
Northern	292	167.3	271	156.5	289	167.8
North Western	323	275.5	315	269.5	277	237.9
Central West	228	131.8	207	119.8	254	146.6
South Eastern	269	148.5	224	122.8	226	122.5
Murrumbidgee	207	139.3	265	178.2	351	235.9
Murray	123	111.3	107	97.3	135	122.6
Far West	123	508.5	72	305.3	58	250.0
New South Wales	3,867	60.5	3,806	58.9	4,226	64.7

\* The total for New South Wales includes 1 recorded incident in 2001 where the offence occurred in a custodial institution.

**TABLE 4.26** RECORDED CRIMINAL INCIDENTS, 1999 TO 2001: STATISTICAL DIVISION**OFFENSIVE LANGUAGE**

<i>Statistical Division where offence occurred</i>	<i>Recorded criminal incidents</i>					
	<i>1999</i>		<i>2000</i>		<i>2001</i>	
	<i>Number</i>	<i>Rate per 100,000 population</i>	<i>Number</i>	<i>Rate per 100,000 population</i>	<i>Number</i>	<i>Rate per 100,000 population</i>
Sydney	2,475	61.4	1,875	45.9	2,254	54.4
Inner Sydney	382	133.6	283	97.6	356	120.7
Eastern Suburbs	87	35.4	66	26.8	62	25.1
St George – Sutherland	166	39.1	132	30.7	152	34.9
Canterbury – Bankstown	119	38.7	84	27.0	78	24.8
Fairfield – Liverpool	263	78.9	160	47.0	218	62.8
Outer South Western Sydney	215	95.2	110	48.1	149	64.2
Inner Western Sydney	37	23.1	47	28.9	45	27.4
Central Western Sydney	197	67.9	174	59.4	177	59.4
Outer Western Sydney	294	94.5	190	60.6	311	98.4
Blacktown	315	123.9	272	104.5	269	103.0
Lower Northern Sydney	59	20.4	47	16.1	48	16.2
Central Northern Sydney	94	24.1	85	21.5	110	27.2
Northern Beaches	64	28.1	35	15.3	71	30.7
Gosford – Wyong	183	63.8	190	64.9	208	69.9
Hunter	416	72.8	386	66.9	426	73.2
Illawarra	322	83.7	243	62.4	210	53.4
Richmond – Tweed	446	213.6	338	160.1	323	151.8
Mid-North Coast	490	181.0	426	156.1	454	165.0
Northern	553	316.8	478	276.0	407	236.3
North Western	552	470.8	346	296.0	357	306.6
Central West	504	291.4	321	185.8	379	218.8
South Eastern	447	246.7	385	211.0	360	195.2
Murrumbidgee	307	206.6	315	211.8	425	285.6
Murray	207	187.4	213	193.7	239	217.0
Far West	173	715.2	140	593.6	113	487.1
New South Wales	6,892	107.7	5,469	84.6	5,950	91.1

\* The total for New South Wales includes 3 recorded incidents in 2000 and 3 recorded incidents in 2001 where the offence occurred in a custodial institution.

**TABLE 4.27** RECORDED CRIMINAL INCIDENTS, 1999 TO 2001: STATISTICAL DIVISION**BREACH APPREHENDED VIOLENCE ORDER**

<i>Statistical Division where offence occurred</i>	<i>Recorded criminal incidents</i>					
	<i>1999</i>		<i>2000</i>		<i>2001</i>	
	<i>Number</i>	<i>Rate per 100,000 population</i>	<i>Number</i>	<i>Rate per 100,000 population</i>	<i>Number</i>	<i>Rate per 100,000 population</i>
Sydney	4,830	119.8	5,158	126.3	5,391	130.2
Inner Sydney	476	166.5	589	203.0	545	184.8
Eastern Suburbs	266	108.3	222	90.1	272	109.9
St George – Sutherland	380	89.5	459	106.8	557	127.9
Canterbury – Bankstown	200	65.0	235	75.5	353	112.3
Fairfield – Liverpool	415	124.5	391	114.8	427	123.0
Outer South Western Sydney	489	216.6	534	233.4	505	217.7
Inner Western Sydney	115	71.7	129	79.5	169	102.8
Central Western Sydney	356	122.8	419	142.9	413	138.7
Outer Western Sydney	609	195.8	557	177.5	510	161.4
Blacktown	556	218.7	601	230.9	504	192.9
Lower Northern Sydney	158	54.6	163	55.8	189	63.8
Central Northern Sydney	173	44.4	202	51.2	183	45.2
Northern Beaches	157	69.0	148	64.5	190	82.1
Gosford – Wyong	480	167.4	509	174.0	574	192.9
Hunter	970	169.7	1,323	229.4	1,377	236.6
Illawarra	808	210.1	1,089	279.8	1,111	282.5
Richmond – Tweed	382	183.0	499	236.3	466	219.0
Mid-North Coast	659	243.4	757	277.4	826	300.3
Northern	314	179.9	384	221.7	403	234.0
North Western	394	336.0	385	329.4	410	352.1
Central West	338	195.4	396	229.3	390	225.1
South Eastern	302	166.7	358	196.2	406	220.1
Murrumbidgee	331	222.7	382	256.9	445	299.0
Murray	195	176.5	201	182.8	297	269.7
Far West	114	471.3	131	555.5	164	707.0
New South Wales*	9,639	150.7	11,073	171.3	11,695	179.0

\* The total for New South Wales includes 2 recorded incidents in 1999, 10 recorded incidents in 2000 and 9 recorded incidents in 2001 where the offence occurred in a custodial institution.

**TABLE 4.28 RECORDED CRIMINAL INCIDENTS, 1999 TO 2001: STATISTICAL DIVISION****PCA DRIVING OFFENCES**

<i>Statistical Division where offence occurred</i>	<i>Recorded criminal incidents</i>					
	<i>1999</i>		<i>2000</i>		<i>2001</i>	
	<i>Number</i>	<i>Rate per 100,000 population</i>	<i>Number</i>	<i>Rate per 100,000 population</i>	<i>Number</i>	<i>Rate per 100,000 population</i>
Sydney	12,099	300.1	12,126	296.8	11,839	285.9
Inner Sydney	1,202	420.4	1,374	473.6	1,442	489.1
Eastern Suburbs	494	201.1	622	252.6	688	278.1
St George – Sutherland	909	214.2	1,058	246.1	1,130	259.4
Canterbury – Bankstown	499	162.2	452	145.2	492	156.6
Fairfield – Liverpool	1,062	318.7	969	284.6	938	270.1
Outer South Western Sydney	972	430.4	750	327.8	670	288.9
Inner Western Sydney	289	180.3	332	204.5	331	201.4
Central Western Sydney	574	198.0	626	213.5	584	196.1
Outer Western Sydney	1,216	390.9	1,416	451.4	1,023	323.8
Blacktown	1,081	425.2	826	317.3	802	307.0
Lower Northern Sydney	1,359	469.3	981	335.6	1,128	380.8
Central Northern Sydney	574	147.3	560	141.9	698	172.4
Northern Beaches	976	428.6	993	433.1	817	353.0
Gosford – Wyong	892	311.0	1,167	398.9	1,096	368.3
Hunter	1,929	337.6	2,303	399.3	2,715	466.5
Illawarra	1,143	297.2	1,150	295.5	1,114	283.3
Richmond – Tweed	1,148	549.8	1,270	601.5	1,371	644.3
Mid-North Coast	1,284	474.3	1,257	460.6	1,295	470.8
Northern	882	505.3	955	551.4	985	571.9
North Western	751	640.5	754	645.1	651	559.1
Central West	905	523.2	905	524.0	825	476.2
South Eastern	1,204	664.5	1,127	617.7	1,201	651.2
Murrumbidgee	787	529.5	941	632.8	839	563.8
Murray	662	599.3	602	547.5	605	549.4
Far West	234	967.4	167	708.1	131	564.7
New South Wales	23,028	360.0	23,557	364.5	23,572	360.8

\* The total for New South Wales includes 1 recorded incident in 2001 where the offence occurred in a custodial institution.

**TABLE 4.29 RECORDED CRIMINAL INCIDENTS, 1999 TO 2001: STATISTICAL DIVISION****DRIVE WHILE DISQUALIFIED**

<i>Statistical Division where offence occurred</i>	<i>Recorded criminal incidents</i>					
	<i>1999</i>		<i>2000</i>		<i>2001</i>	
	<i>Number</i>	<i>Rate per 100,000 population</i>	<i>Number</i>	<i>Rate per 100,000 population</i>	<i>Number</i>	<i>Rate per 100,000 population</i>
Sydney	9,880	245.0	10,300	252.1	10,750	259.6
Inner Sydney	818	286.1	1,002	345.4	985	334.1
Eastern Suburbs	295	120.1	329	133.6	345	139.4
St George – Sutherland	572	134.8	698	162.4	835	191.7
Canterbury – Bankstown	723	235.0	796	255.8	906	288.3
Fairfield – Liverpool	1,938	581.6	1,728	507.6	1,337	385.1
Outer South Western Sydney	928	411.0	803	351.0	821	354.0
Inner Western Sydney	235	146.6	313	192.8	354	215.4
Central Western Sydney	817	281.8	783	267.1	1,005	337.5
Outer Western Sydney	898	288.7	1,017	324.2	1,076	340.6
Blacktown	1,118	439.8	1,106	424.9	1,139	436.0
Lower Northern Sydney	368	127.1	368	125.9	380	128.3
Central Northern Sydney	308	79.0	277	70.2	379	93.6
Northern Beaches	259	113.7	259	113.0	252	108.9
Gosford – Wyong	603	210.2	821	280.6	936	314.5
Hunter	1,217	213.0	1,484	257.3	1,753	301.2
Illawarra	1,068	277.7	1,128	289.8	1,187	301.8
Richmond – Tweed	598	286.4	718	340.1	811	381.1
Mid-North Coast	709	261.9	737	270.0	872	317.0
Northern	498	285.3	516	297.9	700	406.4
North Western	523	446.1	513	438.9	494	424.2
Central West	571	330.1	587	339.8	562	324.4
South Eastern	538	296.9	583	319.6	675	366.0
Murrumbidgee	352	236.8	472	317.4	473	317.9
Murray	169	153.0	227	206.5	283	257.0
Far West	121	500.2	105	445.2	104	448.3
New South Wales*	16,245	254.0	17,380	268.9	18,680	286.0

\* The total for New South Wales includes 1 recorded incident in 1999, 10 recorded incidents in 2000 and 16 recorded incidents in 2001 where the offence occurred in a custodial institution.

**TABLE 4.30** RECORDED CRIMINAL INCIDENTS, 1999 TO 2001: STATISTICAL DIVISION**DRIVE MANNER/SPEED DANGEROUS**

<i>Statistical Division where offence occurred</i>	<i>Recorded criminal incidents</i>					
	<i>1999</i>		<i>2000</i>		<i>2001</i>	
	<i>Number</i>	<i>Rate per 100,000 population</i>	<i>Number</i>	<i>Rate per 100,000 population</i>	<i>Number</i>	<i>Rate per 100,000 population</i>
Sydney	1,356	33.6	1,697	41.5	1,551	37.5
Inner Sydney	120	42.0	171	58.9	124	42.1
Eastern Suburbs	47	19.1	54	21.9	52	21.0
St George – Sutherland	115	27.1	159	37.0	140	32.1
Canterbury – Bankstown	107	34.8	108	34.7	151	48.1
Fairfield – Liverpool	161	48.3	202	59.3	180	51.8
Outer South Western Sydney	144	63.8	167	73.0	125	53.9
Inner Western Sydney	33	20.6	40	24.6	36	21.9
Central Western Sydney	82	28.3	117	39.9	98	32.9
Outer Western Sydney	164	52.7	204	65.0	173	54.8
Blacktown	142	55.9	211	81.1	165	63.2
Lower Northern Sydney	49	16.9	51	17.4	51	17.2
Central Northern Sydney	46	11.8	57	14.4	69	17.0
Northern Beaches	30	13.2	31	13.5	27	11.7
Gosford – Wyong	116	40.4	125	42.7	160	53.8
Hunter	268	46.9	279	48.4	302	51.9
Illawarra	201	52.3	201	51.6	223	56.7
Richmond – Tweed	99	47.4	87	41.2	146	68.6
Mid-North Coast	151	55.8	131	48.0	160	58.2
Northern	96	55.0	80	46.2	69	40.1
North Western	122	104.1	88	75.3	107	91.9
Central West	101	58.4	83	48.1	81	46.8
South Eastern	130	71.8	110	60.3	113	61.3
Murrumbidgee	80	53.8	120	80.7	111	74.6
Murray	60	54.3	83	75.5	108	98.1
Far West	28	115.8	31	131.4	18	77.6
New South Wales*	2,693	42.1	2,992	46.3	2,989	45.8

\* The total for New South Wales includes 1 recorded incident in 1999 and 2 recorded incidents in 2000 where the offence occurred in a custodial institution.

---

# APPENDICES

---

## APPENDIX 1

<i>Classification</i>	<i>Offences included</i>
<b>Homicide:</b>	
Murder	Murder – actual
Attempted murder	Murder – attempted Shoot with intent to murder
Murder accessory, conspiracy	Murder accessory Murder conspiracy
Manslaughter – not driving	Manslaughter
Manslaughter – driving	Culpable driving cause death
<b>Assault</b>	Actual bodily harm Grievous bodily harm (including malicious wounding) Assault officer Common assault Shoot with intent other than to murder
<b>Sexual offences:</b>	
Sexual assault	Sexual assault Aggravated sexual assault Assault with intent to have sexual intercourse
Indecent assault, act of indecency	Indecent assault Aggravated indecent assault Act of indecency Aggravated act of indecency
Other sexual offences	Incest Carnal knowledge Wilful and obscene exposure Indecent communication Peep or pry Other sexual offence
<b>Abduction and kidnapping</b>	Abduction and kidnapping
<b>Robbery:</b>	
Robbery without a weapon	Robbery Robbery with striking Robbery with wounding Other robbery
Robbery with a firearm	Armed robbery where weapon is firearm
Robbery with a weapon not a firearm	Armed robbery where weapon is not firearm



## APPENDIX 1 continued

<i>Classification</i>	<i>Offences included</i>
<b>Other offences against the person</b>	Intimidation Malicious damage intent injure / endanger Negligent act cause grievous bodily harm Offence against transport service Other offence against the person
<b>Theft:</b>	
Break and enter – dwelling	Break, enter and steal Break, enter intent to steal Break, enter and intent to commit other felony <i>Note: property breaking includes all living premises, including nursing home, tent, balcony, garden, garage (attached or detached), shed etc.</i>
Break and enter – non-dwelling	Break, enter and steal Break, enter intent to steal Break, enter and commit other felony Break, enter and intent to commit other felony
Possess implements	Possess implements
Receiving	Receiving
Goods in custody	Goods in custody Possess property stolen outside NSW
Motor vehicle theft	Theft of motor cars, motor cycles, and other modes of transport (excluding marine vessels and aircraft)
Steal from motor vehicle	Steal from motor vehicle
Steal from retail store	Steal from retail store
Steal from dwelling	Steal from dwelling
Steal from person	Steal from person
Stock theft	Stock theft
Fraud	Larceny clerk / servant / bailee Make / use false instrument Embezzlement Fraudulent appropriation Company / corporate offence Deception offence Possess false instrument Publish false misleading statement Corrupt commission / practices Counterfeit currency offence under Commonwealth Crimes Act
Other theft	Other stealing

## APPENDIX 1 continued

<i>Classification</i>	<i>Offences included</i>
<b>Demand money with menace</b>	Demand money with menaces
<b>Extortion, blackmail</b>	Extortion, blackmail
<b>Arson</b>	Malicious damage by fire Destroy by fire – financial gain Destroy by fire – intent injure
<b>Malicious damage to property</b>	Malicious damage to property Graffiti Public place – damage fountain / wall Public place – damage shrine / monument
<b>Drug offences:</b>	
Possession and / or use of cocaine	Possess drug unlawfully, where drug type is cocaine Use or administer drug, where drug type is cocaine
Possession and / or use of narcotics	Possess drug unlawfully, where drug type is narcotics Use or administer drug, where drug type is narcotics
Possession and / or use of cannabis	Possess drug / plant unlawfully, where drug type is cannabis Use or administer drug, where drug type is cannabis
Possession and / or use of other drugs	Possess drug unlawfully, where drug type is not cocaine, narcotics or cannabis Use or administer drug, where drug type is not cocaine, narcotics or cannabis
Dealing, trafficking in cocaine	Supply drug where drug type is cocaine
Dealing, trafficking in narcotics	Supply drug where drug type is narcotics
Dealing, trafficking in cannabis	Supply drug where drug type is cannabis
Dealing, trafficking in other drugs	Supply drug where drug type is not cocaine, narcotics or cannabis
Cultivating cannabis	Cultivate cannabis plant
Importing drugs	Import drugs / plant
Other drug offences	Manufacture drug Forge and / or utter prescription Possess drug utensil Other drug offence
<b>Offensive behaviour:</b>	
Offensive conduct	Offensive conduct
Offensive language	Offensive language
<b>Prostitution offences</b>	Soliciting / prostitution in public Prostitution – premises Consorting Child prostitution Child pornography Other vice offence
<b>Betting and gaming offences</b>	Conduct / play illegal game Own / manage premises – gaming Other gaming offence

## APPENDIX 1 continued

<i>Classification</i>	<i>Offences included</i>
<b>Weapons offences</b>	Possess whilst unlicensed Possess shortened firearm Possess prohibited weapon / article Shorten firearm Firearms, dealer offence Unlawfully discharge firearm Trespass with firearm Use firearm under influence Discharge firearm into premises Firearms, not ensure safekeeping Use prohibited weapon / article Sell prohibited weapon / article Other prohibited weapon / article offence Bomb hoax or threat Possess explosive / dangerous article Carry cutting weapon Other firearm offence Other firearm licensing offence
<b>Against justice procedures:</b>	
Escapée – Corrective Services custody	Escapée – Corrective Services custody
Escapée – Police custody	Escapée – Police custody
Escapée – juvenile detention	Escapée – juvenile detention
Escapée – other custody	Escapée – other custody
Breach Apprehended Violence Order	Breach Apprehended Violence Order – domestic Breach Apprehended Violence Order – personal
Breach bail conditions	Breach bail conditions
Breach of recognizance	Breach of recognizance
Fail to appear	Fail to appear
Other offences against justice procedures	Resist / hinder officers Other judicial offence
<b>Driving offences:</b>	
Culpable driving	Culpable driving cause grievous bodily harm Culpable navigation cause grievous bodily harm
PCA	Prescribed concentration alcohol
Drive while disqualified	Drive while disqualified / licence cancelled etc.
Drive manner / speed dangerous	Drive manner / speed dangerous
Other driving offences	Negligent driving Drive under influence drug / alcohol Furious / wanton / menacing driving Registration / insurance offence Breath / drug test offence Speed class A (vehicle under 4.5 tonne) Speed class B & C (vehicle 4.5 tonne and over) Heavy vehicle (non-speeding) offence Motorcycle (non-speeding) offence

## APPENDIX 1 continued

<i>Classification</i>	<i>Offences included</i>
Other driving offences, <i>continued</i>	Public passenger vehicle offence Other driving offence Other traffic offence Other driving licence offence Miscellaneous offence Administrative offence Pedestrian offence Tow truck offence Bicycle offence Safety offence
<b>Other offences</b>	Accessory after the fact Consume alcohol in alcohol free zone Consume alcohol in public by minor Custody of offensive implement Family Law offence Immigration / customs offence Intention offences (e.g. armed with intent) Offences under the Telecommunications Act Offences under the Postal Services Act Offences under the Pawnbrokers Act Offences under the Dog Act Offences under the Prevention of Cruelty to Animals Act Offences under the Children (Care and Protection) Act Offences under the Local Government Act Offences under the Bush Fires Act Offences under the Liquor Act Offences under the Registered Clubs Act Offences under the Inclosed Lands Protection Act Offences under the Security (Protection) Industry Act Offences under the Marine / Waterways Act Possess / publish indecent material Public mischief Refuse direction to move on Street offences Transport offences Trespass Other offences

## APPENDIX 2

**Map 1: New South Wales Statistical Division boundaries**



# APPENDIX 2 continued

## Map 2: Sydney Statistical Subdivision boundaries



## APPENDIX 3

### LOCAL GOVERNMENT AREAS IN STATISTICAL DIVISIONS

#### *Sydney Statistical Subdivisions*

---

##### *Inner Sydney*

Botany Bay  
Leichhardt  
Marrickville  
South Sydney  
Sydney

##### *Outer South Western Sydney*

Camden  
Campbelltown  
Wollondilly

##### *Lower Northern Sydney*

Hunters Hill  
Lane Cove  
Mosman  
North Sydney  
Ryde  
Willoughby

##### *Eastern Suburbs*

Randwick  
Waverley  
Woollahra

##### *Inner Western Sydney*

Ashfield  
Burwood  
Concord  
Drummoyne  
Strathfield

##### *Central Northern Sydney\**

Baulkham Hills  
Hornsby  
Ku-ring-gai

##### *St George – Sutherland*

Hurstville  
Kogarah  
Rockdale  
Sutherland

##### *Central Western Sydney*

Auburn  
Holroyd  
Parramatta

##### *Northern Beaches*

Manly  
Pittwater  
Warringah

##### *Canterbury – Bankstown*

Bankstown  
Canterbury

##### *Outer Western Sydney*

Blue Mountains  
Hawkesbury  
Penrith

##### *Gosford – Wyong*

Gosford  
Wyong

##### *Fairfield – Liverpool*

Fairfield  
Liverpool

##### *Blacktown\**

Blacktown

\* In previous reports, the Statistical Subdivision and Local Government Area boundaries, as defined by the ABS, were as follows:

- Blacktown – Baulkham Hills SSD includes Blacktown LGA and Baulkham Hills LGA,
- Hornsby – Ku-ring-gai SSD includes Hornsby LGA and Ku-ring-gai LGA.

## APPENDIX 3 continued

### NSW Statistical Divisions

<i>Hunter</i>	<i>Illawarra</i>	<i>Richmond – Tweed</i>	<i>Mid-North Coast</i>
Cessnock	Kiama	Ballina	Bellingen
Dungog	Shellharbour	Byron	Coffs Harbour
Gloucester	Shoalhaven	Kyogle	Copmanhurst
Great Lakes	Wingecarribee	Lismore	Grafton
Lake Macquarie	Wollongong	Richmond Valley	Greater Taree
Maitland		Tweed	Hastings
Merriwa			Kempsey
Murrurundi			Lord Howe Island
Muswellbrook			Maclean
Newcastle			Nambucca
Port Stephens			Pristine Waters
Scone			
Singleton			
<i>Northern</i>	<i>North Western</i>	<i>Central West</i>	<i>South Eastern</i>
Armidale Dumaresq	Bogan	Bathurst	Bega Valley
Barraba	Bourke	Bland	Bombala
Bingara	Brewarrina	Blayney	Boorowa
Glen Innes	Cobar	Cabonne	Cooma-Monaro
Gunnedah	Coolah	Cowra	Crookwell
Guyra	Coonabarabran	Evans	Eurobodalla
Inverell	Coonamble	Forbes	Goulburn
Manilla	Dubbo	Greater Lithgow	Gunning
Moree Plains	Gilgandra	Lachlan	Harden
Narrabri	Mudgee	Oberon	Mulwaree
Nundle	Narromine	Orange	Queanbeyan
Parry	Walgett	Parkes	Snowy River
Quirindi	Warren	Rylstone	Tallaganda
Severn	Wellington	Weddin	Yarrowlumla
Tamworth			Yass
Tenterfield			Young
Uralla			
Walcha			
Yallaroi			
<i>Murrumbidgee</i>	<i>Murray</i>	<i>Far West</i>	
Carrathool	Albury	Broken Hill	
Coolamon	Balranald	Central Darling	
Cootamundra	Berrigan	Unincorporated Far West	
Griffith	Conargo		
Gundagai	Corowa		
Hay	Culcairn		
Junee	Deniliquin		
Leeton	Holbrook		
Lockhart	Hume		
Murrumbidgee	Jerilderie		
Narrandera	Murray		
Temora	Tumbarumba		
Tumut	Urana		
Wagga Wagga	Wakool		
	Wentworth		
	Windouran		