

---

**NEW SOUTH WALES  
RECORDED CRIME STATISTICS  
2002**

---

**Peter Doak, Jackie Fitzgerald and Mark Ramsay**

**NSW BUREAU OF CRIME STATISTICS AND RESEARCH**

## ACKNOWLEDGEMENTS

The production of this report was greatly assisted by officers within the NSW Police Service. Special thanks are due to officers in Information Technology and in Corporate Information, Organisational, Policy and Development. Thanks also to Jonathan Nichol at the NSW Bureau of Crime Statistics and Research who carried out the desktop publishing of the report.

2003

Published by the NSW Bureau of Crime Statistics and Research

Attorney General's Department

Level 8

St James Centre

111 Elizabeth Street

Sydney

Phone: (02) 9231 9190

Fax: (02) 9231 9187

Email: [bcsr@agd.nsw.gov.au](mailto:bcsr@agd.nsw.gov.au)

Website: [www.lawlink.nsw.gov.au/bocsar](http://www.lawlink.nsw.gov.au/bocsar)

SSN 1035-9044

# INTRODUCTION

This report presents data on crimes reported to or detected by NSW police from January 2000 to December 2002. The data were extracted from the Computerised Operational Policing System (COPS) of the NSW Police Service in January 2003.

The report includes an overview of trends over the most recent two-year period for a selection of serious offence categories. The overview in this year's report indicates that of the sixteen major offence categories, only steal from retail store is trending upwards. In the two years to December 2002 the incidence of six offence categories showed significant downward trends. These offence categories were robbery without a weapon, robbery with a weapon not a firearm, break and enter – dwelling, break and enter – non-dwelling, motor vehicle theft and steal from motor vehicle.

Due to a discontinuity in the recording of the offence category steal from person, trends for this offence category have been measured over a seventeen-month period from August 2001 to December 2002. The nature of the discontinuity is explained in the report. The incidence of steal from person showed no significant upward or downward trend over the seventeen months considered.

Dr Don Weatherburn

**Director**

March 2003

# CONTENTS

<b>DEFINITIONS AND EXPLANATORY NOTES</b>	vi
<b>OVERVIEW OF MAJOR TRENDS, 2001 AND 2002, NEW SOUTH WALES</b>	1
Figure 1 Murder	5
Figure 2 Assault	6
Figure 3 Sexual assault and indecent assault, act of indecency, other sexual offences	7
Figure 4 Robbery with and without a weapon	8
Figure 5 Break and enter – dwelling and non-dwelling	9
Figure 6 Motor vehicle theft and steal from motor vehicle.	10
Figure 7 Steal from retail store and from dwelling	11
Figure 7a Steal from person	12
Figure 8 Fraud	13
Figure 9 Malicious damage to property	14
Figure 10 Charge	15
Figure 11 Court Attendance Notice	15
Figure 12 Summons	16
Figure 13 Field Court Attendance Notice	16
<b>MONTHLY TRENDS IN RECORDED CRIMINAL INCIDENTS, 2000, 2001 AND 2002, NEW SOUTH WALES</b>	19
Table 1.1 Monthly trends in recorded criminal incidents, 2000 New South Wales: Type of offence	20
Table 1.2 Monthly trends in recorded criminal incidents, 2001 New South Wales: Type of offence	24
Table 1.3 Monthly trends in recorded criminal incidents, 2002 New South Wales: Type of offence	28
<b>MONTHLY TRENDS IN METHODS OF PROCEEDING AGAINST ALLEGED OFFENDERS, 2000, 2001 AND 2002, NEW SOUTH WALES</b>	33
Table 2.1 Monthly trends in methods of proceeding against alleged offenders, 2000 New South Wales: Type of process	34
Table 2.2 Monthly trends in methods of proceeding against alleged offenders, 2001 New South Wales: Type of process	35
Table 2.3 Monthly trends in methods of proceeding against alleged offenders, 2002 New South Wales: Type of process	36
<b>CLEARED CRIMINAL INCIDENTS FOR SELECTED OFFENCES, JANUARY 2000 TO SEPTEMBER 2002, NEW SOUTH WALES</b>	37
Table 3.1 Cleared criminal incidents, selected offences, January 2000 to December 2000, New South Wales: Type of offence	38
Table 3.2 Cleared criminal incidents, selected offences, January 2001 to December 2001, New South Wales: Type of offence	39
Table 3.3 Cleared criminal incidents, selected offences, January 2002 to September 2002, New South Wales: Type of offence	40

## CONTENTS continued

<b>RECORDED CRIME STATISTICS IN NEW SOUTH WALES REGIONS FOR SELECTED OFFENCES, 2000, 2001 AND 2002</b>	41
Table 4.1 Murder	43
Table 4.2 Assault	44
Table 4.2a Assault – domestic	45
Table 4.3 Sexual assault	46
Table 4.4 Indecent assault, act of indecency, other sexual offences	47
Table 4.5 Robbery without a weapon	48
Table 4.6 Robbery with a firearm	49
Table 4.7 Robbery with a weapon not a firearm	50
Table 4.8 Break and enter – dwelling	51
Table 4.9 Break and enter – non-dwelling	52
Table 4.10 Receiving, goods in custody	53
Table 4.11 Motor vehicle theft	54
Table 4.12 Steal from motor vehicle	55
Table 4.13 Steal from retail store	56
Table 4.14 Steal from dwelling	57
Table 4.15 Steal from person	58
Table 4.16 Fraud	59
Table 4.17 Malicious damage to property	60
Table 4.18 Possession and/or use of cocaine	61
Table 4.19 Possession and/or use of narcotics	62
Table 4.20 Possession and/or use of cannabis	63
Table 4.21 Dealing, trafficking in cocaine	64
Table 4.22 Dealing, trafficking in narcotics	65
Table 4.23 Dealing, trafficking in cannabis	66
Table 4.24 Cultivating cannabis	67
Table 4.25 Offensive conduct	68
Table 4.26 Offensive language	69
Table 4.27 Breach Apprehended Violence Order	70
Table 4.28 PCA driving offences	71
Table 4.29 Drive while disqualified	72
Table 4.30 Drive manner/speed dangerous	73
<b>APPENDICES</b>	75
Appendix 1 Offences included in classifications	76
Appendix 2 Maps	81
Appendix 3 Local Government Areas in Statistical Divisions	83

## DEFINITIONS AND EXPLANATORY NOTES

The data in this report are extracted from the NSW Police Service's Computerised Operational Policing System (COPS). This system is used for record-keeping for all police operations, not just for criminal matters.

In this report:

- the counting units are recorded criminal incidents (except for murder and manslaughter where the counting units are victims) rather than recorded offences; and
- the data are categorised by date of reporting to police (or date of detection by police) rather than by date of occurrence of the offence.

### RECORDED CRIMINAL INCIDENTS

A criminal incident is defined as an activity detected by or reported to police which:

- involved the same offender(s);
- involved the same victim(s);
- occurred at the one location;
- occurred during one uninterrupted period of time;
- falls into one offence category;
- falls into one incident type (for example, 'actual', 'attempted', 'conspiracy').

One incident may involve two offenders assaulting the same victim. This would be recorded as one assault incident. Alternatively, suppose a man reports to police that his neighbour demanded money from him, then assaulted him when he did not comply. For such an event, two criminal incidents are recorded because two distinct offence types are involved (demand money with menaces and assault) even though the same parties were involved at the same time and in the same place.

### RECORDED VICTIMS

For murder and manslaughter only, the counting units used are victims. Under the definition of a criminal incident (same parties, same time, same place, same offence and same incident type) one murder or manslaughter incident could involve two or more persons being killed. Because of the seriousness of these offences and their relatively small numbers, it was considered to be more appropriate to count the number of victims, rather than the number of criminal incidents. Hence, where one murder incident involves a person killing six people, six murder victims are counted.

### OFFENCE CATEGORIES

The classification of offences in this report is based on the Australian National Classification of Offences (ANCO) issued by the Australian Bureau of Statistics (ABS, 1985, Cat. No. 1234.0).

For all type of offence classifications used in the report, Appendix 1 lists the offence categories included in the classification. The offence categories are those used by the NSW Police Service and do not necessarily correspond exactly with offences defined in legislation.

### COUNTING PERIOD

Criminal incidents are included in the counting period in which they were reported to or detected by police.

In most cases criminal incidents are recorded on COPS on the day of reporting. Because the reporting date and recording date may differ, it is possible for some updating of data to occur. That is, data extracted for a specified period of time (incidents reported in 2001, for example), may differ according to the date of extraction of the data.

## PROCEEDINGS AGAINST ALLEGED OFFENDERS

Police may proceed against offenders and alleged offenders through a variety of legal or other processes. Most alleged offenders are referred to the NSW criminal courts. The more serious offences are dealt with by way of a charge. The alleged offender is arrested, taken to a police station, fingerprinted and the details of the person and charge are recorded. A Court Attendance Notice (CAN) may be issued at a police station or a Field Court Attendance Notice (FCAN) may be issued by police at other locations. Either type of Court Attendance Notice specifies the particulars of the alleged offence, the date and place of the court hearing and the consequences of failure to attend. A summons may be used for less serious offences. The court issues a summons at the request of an informant. The summons specifies the alleged offence and the date and place of the court hearing.

Some alleged offenders are proceeded against but diverted from the criminal court system. For many minor offences police can issue Infringement Notices. By paying the prescribed penalty the offender avoids having to go to court. Police also have the discretion to issue warnings to offenders. More recently, the Young Offenders Act 1997 (NSW) introduced the Youth Justice Conferencing scheme. A Youth Justice Conference (YJC) is a face to face meeting between offenders, victims and their support persons. A convenor acts as a facilitator for the meeting. The parties discuss the offending behaviour and the impact on the victim. They also negotiate some form of restitution to the victim. The Young Offenders Act 1997 (NSW) also provides for cautions to be issued to juvenile offenders.

Some alleged offenders are not proceeded against. The alleged offender may be deceased, be under the age of ten years, have diplomatic immunity or be mentally incapable of forming criminal intent. The victim or the Director of Public Prosecutions may refuse to prosecute. A small number of alleged offenders are temporarily not proceeded against while police await further advice, for example whether a juvenile should be referred to a YJC.

## CLEARED CRIMINAL INCIDENTS

A cleared criminal incident is one which, in the view of police, has been satisfactorily cleared by charge or otherwise.

An incident is cleared by charge when police have laid a charge or an information against at least one person. The information may have been laid with a view to the issuing of a warrant, summons or other process for the purpose of bringing an offender before the court.

A criminal incident is cleared other than by charge when, under normal circumstances, a charge or information would have been laid against at least one person, but, for a variety of reasons, police have been unable to make an arrest, despite knowing the identity of the offender and having sufficient evidence to support a charge. Examples of situations in which an offence may be cleared other than by charge include the following:

- the offender is a juvenile and is cautioned;
- the offender has died before a charge is made or information laid;
- the offender has been committed to a psychiatric institution and is unlikely to be released;
- there is an obstacle to charging, such as diplomatic immunity;
- the complainant or essential witness is dead and proceedings would be aborted;
- the offender is serving a sentence and police consider that no useful purpose would be served by prosecution.

## REGIONAL STATISTICS

Statistics are provided on the number of criminal incidents (victims for murder) recorded for each of the Statistical Divisions of NSW as defined by the Australian Bureau of Statistics (ABS). Within the Sydney Statistical Division, statistics are provided for Statistical Subdivisions. Recorded criminal incidents which occurred in correctional, detention or remand centres, however, are not counted in the Statistical Division in which the incident occurred. Numbers of such incidents are noted at the foot of each table. Appendix 2 provides maps indicating the location of each Statistical Division and Sydney Statistical Subdivision. Appendix 3 lists the Local Government Areas within each of the Statistical Divisions and Statistical Subdivisions. A criminal incident is counted within a particular region when the location of the offence falls within that region.

For the rate calculations, population data were obtained from the Australian Bureau of Statistics publication: *Regional Population Growth, Australia, 19 Feb 2002, Cat. No. 3218.1* (for 2000 and 2001 population estimates). As no population estimates were available for 2002 when this report was published rates for 2002 were calculated using 2001 population estimates.

## ORGANISATION OF THE REPORT

The report is organised into five main sections as follows. The first section is an overview of major trends in recorded criminal incidents (recorded victims for murder) over the two-year period from January 2001 to December 2002. Due to a discontinuity in the data, the trend for the offence category steal from person, is calculated for the seventeen-month period from August 2001 to December 2002. Figures showing trends in selected offences are presented, as well as summary points indicating which trends are statistically significant and the highest and lowest offending rates in Statistical Divisions of rural NSW and Statistical Subdivisions of Sydney. This section also includes figures showing trends in methods of proceeding against alleged offenders which lead to attendance at court.

The second section presents, for all categories of offence, the monthly numbers of recorded criminal incidents (recorded victims for murder and manslaughter). There are three tables in this section, one each for 2000, 2001 and 2002. Each table provides a total for the year and the annual rate per 100,000 population. The data used for the trend analysis in the first section of the report are included in these tables. Note, however, that the trend analysis uses only the most recent two years of data.

The third section provides monthly numbers of alleged offenders proceeded against, by the type of process pursued, for those criminal incidents recorded by NSW police in the reference year. There are three tables in this section, one each for 2000, 2001 and 2002. Each offender or alleged offender appears only once in the table for each event (there can be more than one criminal incident associated with a single event). The processes are arranged in a hierarchy with the offender or alleged offender appearing in the most serious category where multiple incidents are involved. For example if an event involves two incidents and the alleged offender is charged for one incident but receives a warning for the second incident, the alleged offender appears only in the 'Charged' category. Note that in these tables the year refers to the year in which the criminal incident or incidents were reported to the police. For example, if an incident was reported to police in 2001 but the alleged offender was not apprehended and charged until 2002, the charge is recorded for 2001.

The fourth section provides the numbers and percentages of cleared criminal incidents, for selected types of offence, for 2000, 2001 and 2002. The offence types included in these tables are those where the crime is likely to have been reported to police, rather than discovered or detected by police. Offence types where the numbers of recorded criminal incidents are influenced by police law enforcement activity (drug offences, for example) are excluded. For such offence types the clear-up percentages are very high because clearing the offence generally occurs simultaneously with its detection (that is, an arrest is made when the crime is discovered).

The tables for 2000 and 2001 show the number of recorded criminal incidents and, of these, the number and percentage which had been cleared 30 days, 90 days and 180 days after the incident was reported to police. The table for 2002 is similar to those for 2000 and 2001 except that there are only two follow-up periods, 30 days and 90 days. Because the data for this report were extracted in January 2002, the clear-up status after 90 days could not be determined for any offences reported in the last three months of 2002. Hence, the clear-up data for 2002 are for the first nine months of the year only.

In the fifth section of the report there are 30 tables, one for each major offence category. Each table gives the numbers and rates (per 100,000 population) of recorded criminal incidents (for murder, recorded victims) for the periods January to December 2000, 2001 and 2002, for each of the NSW Statistical Divisions and for each Statistical Subdivision in Sydney. Recorded criminal incidents which occurred in custodial institutions are counted separately; they are not included in the data for the Statistical Division where the custodial institution is located. Note that both the numbers and rates of recorded criminal incidents in 2001 have been updated since the previous edition.



---

**OVERVIEW OF MAJOR TRENDS,  
2001 AND 2002  
NEW SOUTH WALES**

---



# OVERVIEW OF MAJOR TRENDS

## TRENDS IN RECORDED CRIME

However trends in recorded crime are presented, their interpretation is a difficult task. The recorded criminal incident data presented in this report are based on information derived from the NSW Police Service Computerised Operational Policing System, so only those incidents which are reported to, or detected by, police are included. The trends in recorded crime shown in this report will, therefore, reflect movements in the underlying factors which influence the detection, reporting and recording of crime, as well as changes in the true level of crime in the community.

An alternative measure of the level of crime in NSW is available from crime victim surveys, for example the Crime and Safety Survey which is conducted annually by the Australian Bureau of Statistics (ABS).<sup>1</sup> As well as providing an estimate of the victimisation rate in the community for a selected set of offences, this survey measures the proportion of crimes which are not reported to police, and are therefore not recorded in the official statistics. In particular, personal crimes, such as assault and robbery, are less likely to be reported than crimes which involve households. For example, Crime and Safety, New South Wales, 2001 shows that, in the twelve-month period to April 2001, while 95 per cent of motor vehicle thefts and 73 per cent of break and enter offences (crimes against 'households') were reported to police, only 30 per cent of all alleged assault offences were reported during that period. Given that some offences have low reporting rates, it is possible that changes in recorded crime rates over time for these offences largely reflect changes in reporting rates.

Public willingness to report crime, however, is just one of the extraneous factors which can affect trends in recorded crime. Shifts in policing policy can also have a marked effect on the number of recorded drug offences, drink driving offences, cases of offensive behaviour or of receiving stolen goods. For these offences, therefore, recorded rates probably do not accurately reflect actual rates. For this reason, the more detailed comparisons of crime rates and examination of trends in this document are restricted to categories of offence which are reported to, rather than detected by, police.

The interpretation of trends in official reports of crime can be considerably more difficult than the interpretation of trends in unemployment or inflation statistics. The ease with which recorded crime statistics can be misunderstood creates a temptation to offer an authoritative explanation for each major crime trend. Indeed, in many instances it is simply impossible to state with any assurance why a particular trend has appeared. This report, therefore, confines itself to identifying and describing trends in recorded crime, rather than explaining them.

With the exception of one offence category, steal from person, the trends examined in this overview cover a twenty-four month period, from January 2001 to December 2002. For comparative purposes, statistics for 2000 have been included in the detailed tables in the sections which follow. For some offence categories, separate trends have been presented for various offence subcategories; in particular, sexual offences, robbery, break and enter, and stealing offences have been further disaggregated.

For each offence category or subcategory except murder and steal from person, a statistical test for trend was applied to the monthly numbers of recorded criminal incidents over the twenty-four month period from January 2001 to December 2002.<sup>2</sup> In the case of murder, the statistical test for trend was applied to the monthly numbers of victims over the same period. Due to a discontinuity in reporting, the trend in the incidence of steal from person covers the seventeen-month period from August 2001 to December 2002. For those offences where a statistically significant trend was found, the extent of the trend is indicated by the percentage change between the total recorded number of incidents for the twelve months of January to December 2001 and the total recorded number of incidents for the same period in 2002.

## SUMMARY OF TRENDS

In the following summary the bracketed figures denote the percentage change in the total number of recorded criminal incidents between the consecutive twelve-month periods January to December 2001 and January to December 2002. The percentage change is shown only for those offences where a statistically significant upward or downward trend was detected.

### Significant downward trends

There was a statistically significant downward trend in the monthly numbers of recorded criminal incidents for the following offences:

- robbery without a weapon (down by 17.9%, see Figure 4)
- robbery with a weapon not a firearm (down by 36.5%, see Figure 4)
- break and enter – dwelling (down by 12.9%, see Figure 5)
- break and enter – non-dwelling (down by 20.9%, see Figure 5)
- motor vehicle theft (down by 22.2%, see Figure 6)
- steal from motor vehicle (down by 15.7%, see Figure 6)

### Offences where there was no upward or downward trend

There was no statistically significant generally upward or downward trend in the monthly numbers of recorded criminal incidents<sup>3</sup> for any of the following offences:

- murder (see Figure 1)
- assault (see Figure 2)
- sexual assault (see Figure 3)
- indecent assault, act of indecency, other sexual offences (see Figure 3)
- robbery with a firearm (see Figure 4)
- steal from dwelling (see Figure 7)
- steal from person (see Figure 7a)<sup>#</sup>
- fraud (see Figure 8)
- malicious damage to property (see Figure 9)

### Significant upward trends

There was a statistically significant upward trend in the monthly numbers of recorded criminal incidents for the following offence:

- steal from retail store (up by 7.5%, see Figure 7)

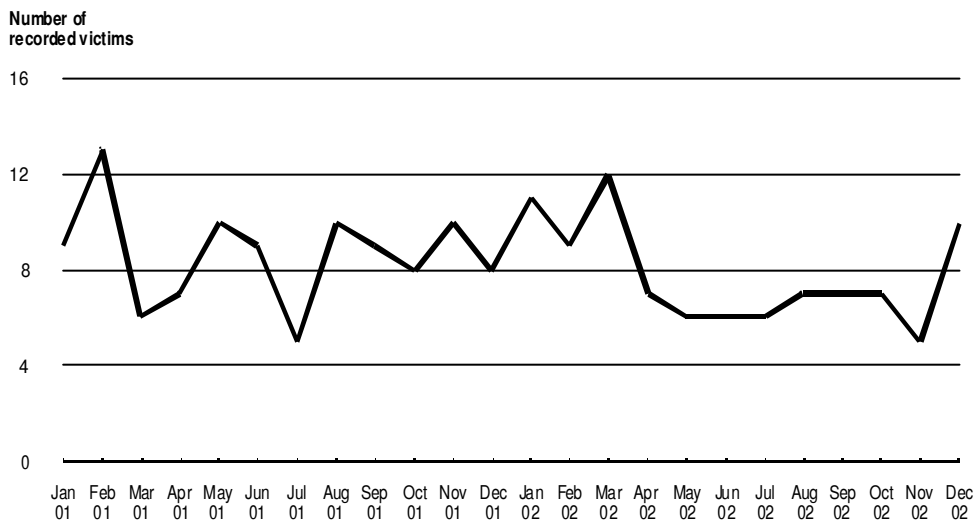
---

<sup>#</sup> Due to a discontinuity in recording, the statistical test for trend in the incidence of steal from person covers the seventeen months from August 2001 to December 2002.

## DESCRIPTION OF TRENDS

Graphs in this section show monthly trends for a selected set of offences in NSW, between January 2001 and December 2002. For each offence category, information is given on the statistical significance of any trend shown in the graphs, and the annual rate of offences per 100,000 resident population. In addition, geographical areas with the three highest rates, and the three lowest rates of recorded criminal incidents in NSW are listed. Within the Sydney Statistical Division, recorded crime rates are detailed by Statistical Subdivision (SSD). Outside the Sydney Statistical Division, recorded crime rates are detailed by Statistical Division (SD). The rate calculations are based on resident population data and are calculated as recorded offences per 100,000 population in each Statistical Division or Subdivision.<sup>4</sup> It should be noted that the Inner Sydney Statistical Subdivision has high recorded crime rates because, compared with other regions, the resident population is small relative to the 'transient' or non-resident population which uses the area for business, entertainment, shopping, etc. That is, the high transient population is not reflected in the rate calculation.

**Figure 1: Murder**

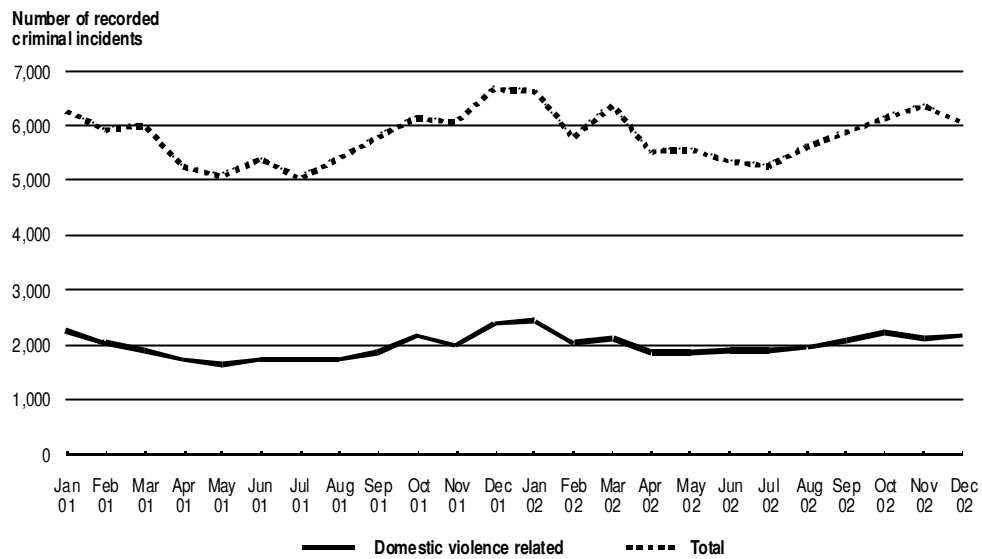


### Murder

With such small numbers of murder victims, the month to month variation is extremely marked. For this reason it is difficult to detect trends over such a short period. Because of the small numbers of murder victims, it is not sensible to make regional comparisons.

**Trend (Jan 2001 - Dec 2002):** No statistically significant upward or downward trend.

**NSW annual rate (2002):** 1.4 per 100,000 population

**Figure 2: Assault**

## Assault

### Total assaults

**Trend (Jan 2001 - Dec 2002):** No statistically significant upward or downward

**NSW annual rate (2002):** 1,081.7 per 100,000 population

**Highest rates:** Far West SD - 3,405.6 per 100,000 population  
 North Western SD - 2,497.4 per 100,000 population  
 Inner Sydney SSD - 2,354.5 per 100,000 population

**Lowest rates:** Central Northern Sydney SSD - 292.4 per 100,000 population  
 Lower Northern Sydney SSD - 483.8 per 100,000 population  
 Northern Beaches SSD - 562.5 per 100,000 population

### Domestic assault

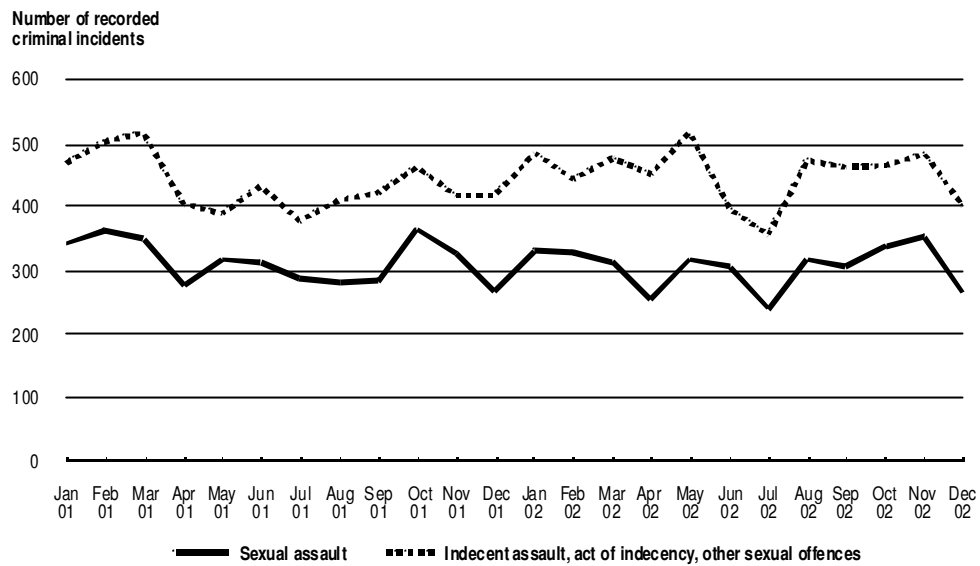
**Trend (Jan 2001 - Dec 2002):** No statistically significant upward or downward trend.

**NSW annual rate (2002):** 377.6 per 100,000 population

**Highest rates:** Far West SD - 1,745.9 per 100,000 population  
 North Western SD - 992.8 per 100,000 population  
 Blacktown SSD - 715.0 per 100,000 population

**Lowest rates:** Central Northern Sydney SSD - 101.5 per 100,000 population  
 Lower Northern Sydney SSD - 163.1 per 100,000 population  
 Inner Western Sydney SSD - 178.9 per 100,000 population

**Figure 3: Sexual assault and indecent assault, act of indecency, other sexual offences**



## Sexual offences

### *Sexual assault*

**Trend (Jan 2001 - Dec 2002):** No statistically significant upward or downward trend.

**NSW annual rate (2002):** 56.0 per 100,000 population

**Highest rates:** Far West SD - 116.4 per 100,000 population  
 North Western SD - 98.8 per 100,000 population  
 Inner Sydney SSD - 96.0 per 100,000 population

**Lowest rates:** Central Northern Sydney SSD - 12.8 per 100,000 population  
 Lower Northern Sydney SSD - 20.6 per 100,000 population  
 Northern Beaches SSD - 28.1 per 100,000 population

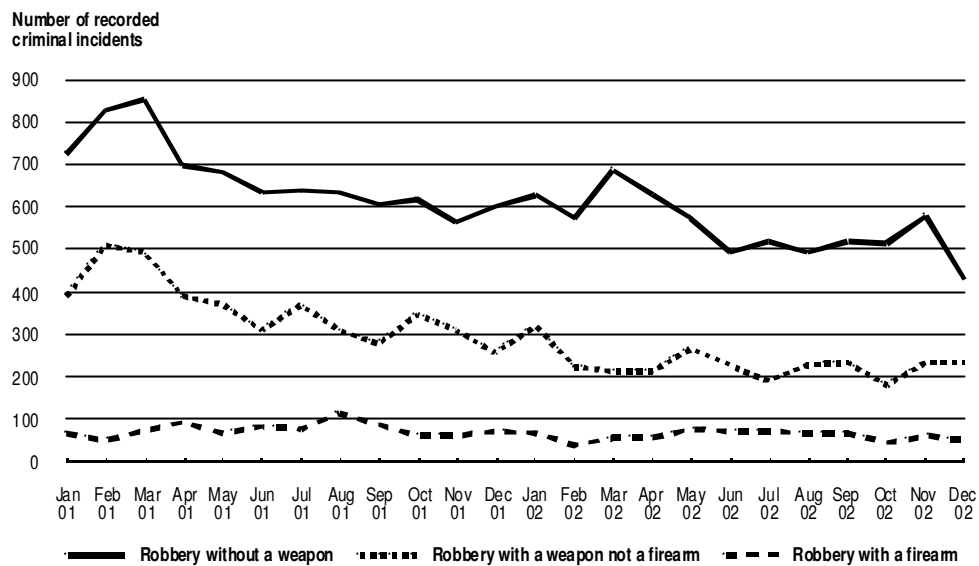
### *Indecent assault, act of indecency, other sexual offences*

**Trend (Jan 2001 - Dec 2002):** No statistically significant upward or downward trend.

**NSW annual rate (2002):** 82.8 per 100,000 population

**Highest rates:** Far West SD - 163.8 per 100,000 population  
 North Western SD - 146.9 per 100,000 population  
 Richmond - Tweed SD - 141.9 per 100,000 population

**Lowest rates:** Central Northern Sydney SSD - 32.6 per 100,000 population  
 Northern Beaches SSD - 41.5 per 100,000 population  
 Lower Northern Sydney SSD - 47.9 per 100,000 population

**Figure 4: Robbery with and without a weapon**

## Robbery

### *Robbery without a weapon*

**Trend (Jan 2001 - Dec 2002):** A statistically significant downward trend (down by 17.9%).

**NSW annual rate (2002):** 101.6 per 100,000 population

**Highest rates:** Inner Sydney SSD - 588.1 per 100,000 population  
 Inner Western Sydney SSD - 247.6 per 100,000 population  
 Central Western Sydney SSD - 196.1 per 100,000 population

**Lowest rates:** Murray SD - 10.9 per 100,000 population  
 South Eastern SD - 18.4 per 100,000 population  
 Central West SD - 20.2 per 100,000 population

### *Robbery with a firearm*

**Trend (Jan 2001 - Dec 2002):** No statistically significant upward or downward trend.

**NSW annual rate (2002):** 10.9 per 100,000 population

**Highest rates:** Inner Sydney SSD - 34.6 per 100,000 population  
 Central Western Sydney SSD - 33.9 per 100,000 population  
 Canterbury - Bankstown SSD - 26.1 per 100,000 population

**Lowest rates:** Mid North Coast SD - 0.4 per 100,000 population  
 No robberies with firearms were recorded in the following SDs:  
 North Western, Far West.

### *Robbery with a weapon not a firearm*

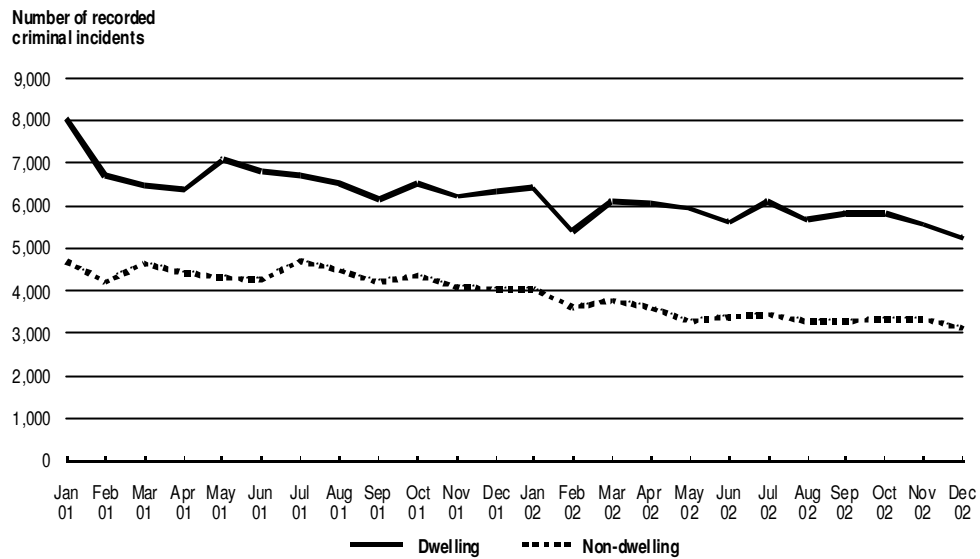
**Trend (Jan 2001 - Dec 2002):** A statistically significant downward trend (down by 36.5%).

**NSW annual rate (2002):** 42.1 per 100,000 population

**Highest rates:** Inner Sydney SSD - 202.8 per 100,000 population  
 Inner Western Sydney SSD - 118.6 per 100,000 population  
 Canterbury - Bankstown SSD - 88.2 per 100,000 population

**Lowest rates:** Richmond - Tweed SD - 4.2 per 100,000 population  
 Far West SD - 4.3 per 100,000 population  
 South Eastern SD - 4.3 per 100,000 population



**Figure 5: Break and enter – dwelling and non-dwelling**

## Break and enter

### *Break and enter – dwelling*

**Trend (Jan 2001 - Dec 2002):** A statistically significant downward trend (down by 12.9%).

**NSW annual rate (2002):** 1,068.4 per 100,000 population

**Highest rates:** Inner Sydney SSD - 1,809.8 per 100,000 population  
 Eastern Suburbs SSD - 1,619 per 100,000 population  
 North Western SD - 1,586.2 per 100,000 population

**Lowest rates:** South Eastern SD - 687.0 per 100,000 population  
 Central Northern Sydney SSD - 693.9 per 100,000 population  
 Northern Beaches SSD - 719.8 per 100,000 population

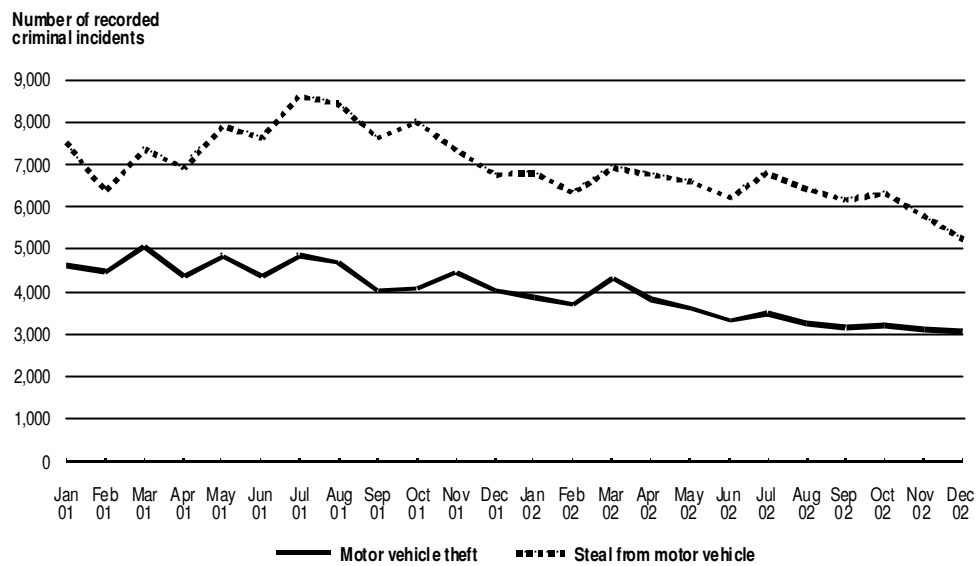
### *Break and enter – non-dwelling*

**Trend (Jan 2001 - Dec 2002):** A statistically significant downward trend (down by 20.9%).

**NSW annual rate (2002):** 633.3 per 100,000 population

**Highest rates:** Inner Sydney SSD - 1,394.0 per 100,000 population  
 North Western SD - 1,125.9 per 100,000 population  
 Far West SD - 1,056.2 per 100,000 population

**Lowest rates:** Central Northern Sydney SSD - 322.0 per 100,000 population  
 Northern Beaches SSD - 384.5 per 100,000 population  
 St George - Sutherland SSD - 388.6 per 100,000 population

**Figure 6: Motor vehicle theft and steal from motor vehicle**

## Motor vehicle theft and steal from motor vehicle

### Motor vehicle theft

**Trend (Jan 2001 - Dec 2002):** A statistically significant downward trend (down by 22.2%).

**NSW annual rate (2002):** 642.0 per 100,000 population

**Highest rates:** Inner Sydney SSD - 1,388.6 per 100,000 population  
 Central Western Sydney SSD - 1,079.8 per 100,000 population  
 Canterbury - Bankstown SSD - 1,023.2 per 100,000 population

**Lowest rates:** Northern SD - 233.4 per 100,000 population  
 Central Northern Sydney SSD - 258.5 per 100,000 population  
 South Eastern SD - 258.6 per 100,000 population

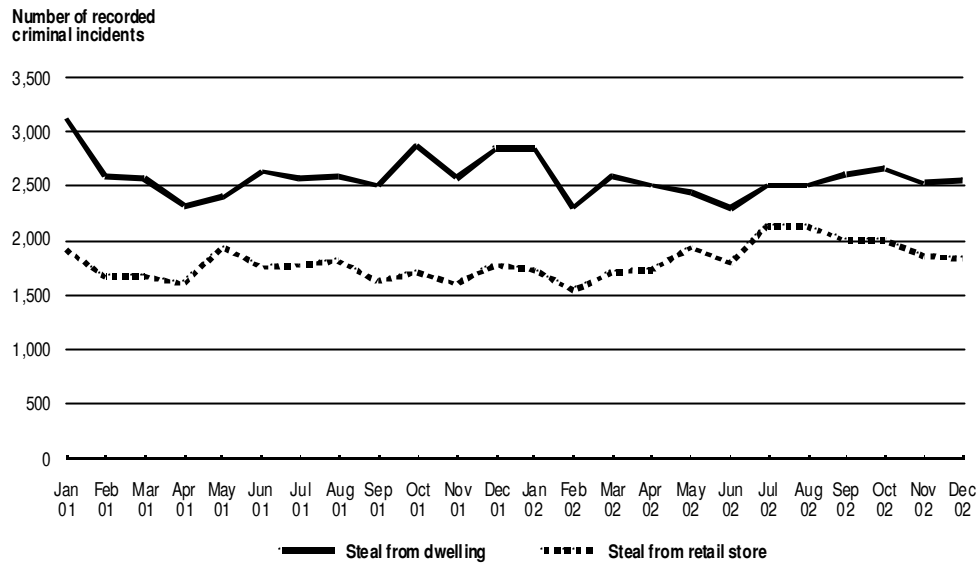
### Steal from motor vehicle

**Trend (Jan 2001 - Dec 2002):** A statistically significant downward trend (down by 15.7%).

**NSW annual rate (2002):** 1,169.7 per 100,000 population

**Highest rates:** Inner Sydney SSD - 4,243.0 per 100,000 population  
 North Western SD - 1,425.6 per 100,000 population  
 Eastern Suburbs SSD - 1,378.2 per 100,000 population

**Lowest rates:** South Eastern SD - 614.8 per 100,000 population  
 Central Northern Sydney SSD - 701.0 per 100,000 population  
 Murrumbidgee SD - 740.5 per 100,000 population

**Figure 7: Steal from retail store and from dwelling**

## Stealing

### *Steal from retail store*

**Trend (Jan 2001 - Dec 2002):** A statistically significant upward trend (up by 7.5%).

**NSW annual rate (2002):** 342.8 per 100,000 population

**Highest rates:** Inner Sydney SSD - 788.9 per 100,000 population  
 Blacktown SSD - 466.2 per 100,000 population  
 Central Western Sydney SSD - 449.1 per 100,000 population

**Lowest rates:** Central Northern Sydney SSD - 154.3 per 100,000 population  
 Northern Beaches SSD - 219.9 per 100,000 population  
 Murray SD - 233.4 per 100,000 population

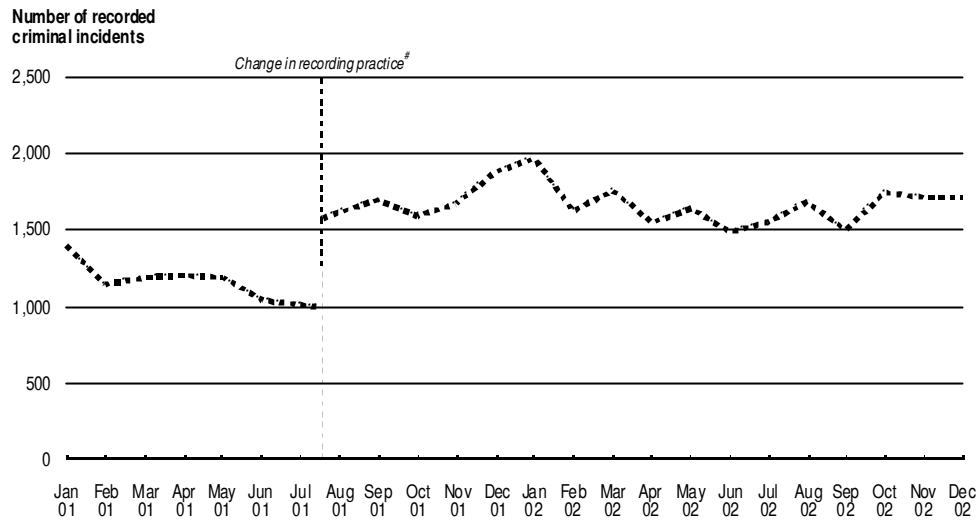
### *Steal from dwelling*

**Trend (Jan 2001 - Dec 2002):** No statistically significant upward or downward trend.

**NSW annual rate (2002):** 464.6 per 100,000 population

**Highest rates:** Far West SD - 1,224.3 per 100,000 population  
 Murrumbidgee SD - 714.3 per 100,000 population  
 Inner Sydney SSD - 681.7 per 100,000 population

**Lowest rates:** Canterbury - Bankstown SSD - 204.0 per 100,000 population  
 Central Northern Sydney SSD - 257.8 per 100,000 population  
 Central Western Sydney SSD - 275.4 per 100,000 population

**Figure 7a: Steal from person**

## Stealing continued

### *Steal from person*

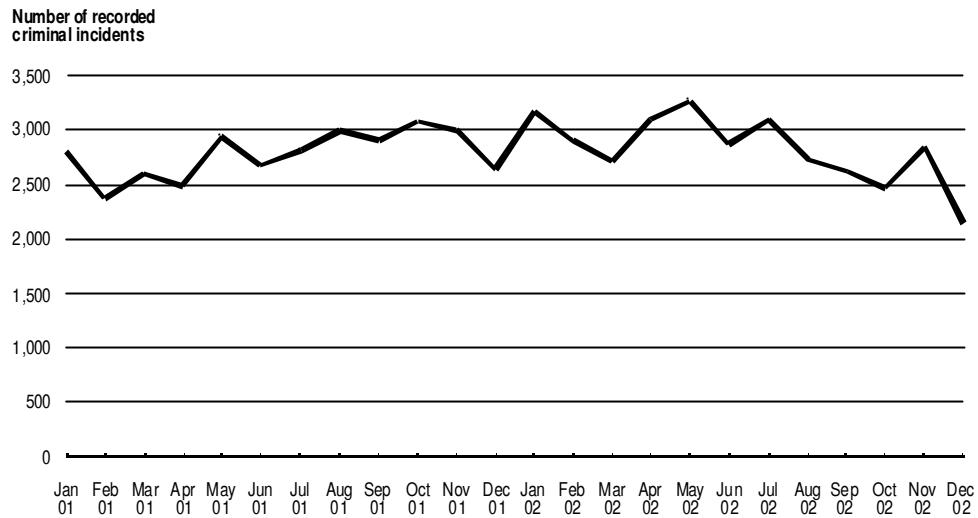
**Trend (Aug 2001 - Dec 2002):** No statistically significant upward or downward trend.

**NSW annual rate (2002):** 305.2 per 100,000 population

**Highest rates:** Inner Sydney SSD - 2,698.8 per 100,000 population  
 Inner Western Sydney SSD - 498.9 per 100,000 population  
 Eastern Suburbs SSD - 449.4 per 100,000 population

**Lowest rates:** Murrumbidgee SD - 60.5 per 100,000 population  
 Northern SD - 70.3 per 100,000 population  
 South Eastern SD - 71.6 per 100,000 population

# In August 2001, a guideline<sup>5</sup> was issued to NSW Police clarifying the definition of the steal from person offence category. This directive caused a sharp increase in the number of steal from person incidents recorded in August 2001.

**Figure 8: Fraud**

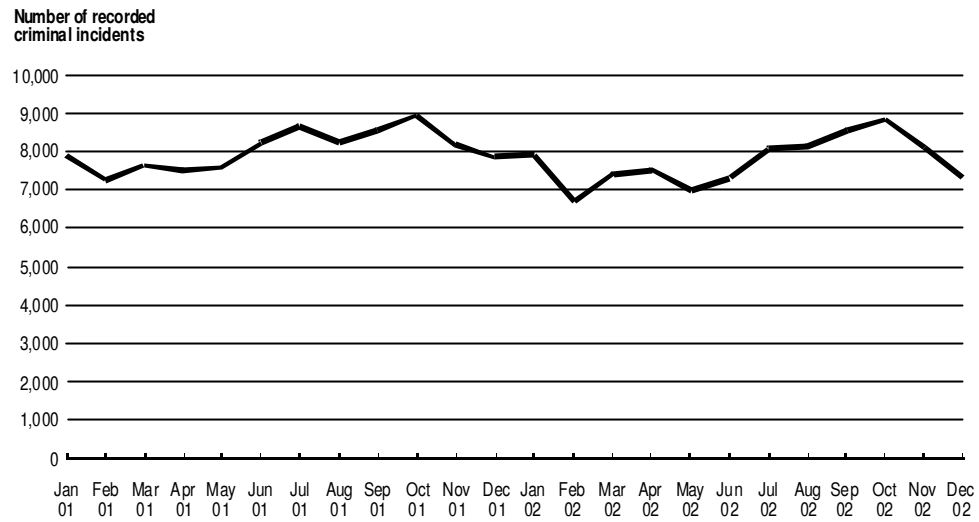
## Fraud

**Trend (Jan 2001 - Dec 2002):** No statistically significant upward or downward trend.

**NSW annual rate (2002):** 519.7 per 100,000 population

**Highest rates:** Inner Sydney SSD - 1,757.9 per 100,000 population  
 Central Western Sydney SSD - 836.3 per 100,000 population  
 Fairfield - Liverpool SSD - 694.9 per 100,000 population

**Lowest rates:** Central Northern Sydney SSD - 268.7 per 100,000 population  
 Far West SD - 275.9 per 100,000 population  
 Northern SD - 292.0 per 100,000 population

**Figure 9: Malicious damage to property**

## Malicious damage to property

**Trend (Jan 2001 - Dec 2002):** No statistically significant upward or downward trend.

**NSW annual rate (2002):** 1,424.3 per 100,000 population

**Highest rates:** North Western SD - 2,681.2 per 100,000 population  
 Far West SD - 2,621.0 per 100,000 population  
 Inner Sydney SSD - 2,091.7 per 100,000 population

**Lowest rates:** Central Northern Sydney SSD - 720.0 per 100,000 population  
 Lower Northern Sydney SSD - 877.2 per 100,000 population  
 Inner Western Sydney SSD - 907.1 per 100,000 population

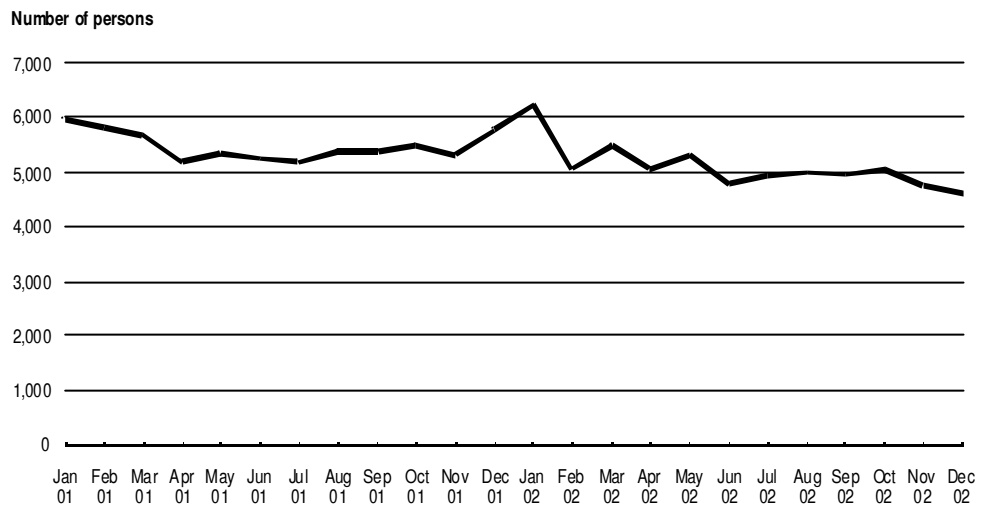
## TRENDS IN METHODS OF PROCEEDING AGAINST OFFENDERS OR ALLEGED OFFENDERS

The information which follows highlights trends in the numbers of persons proceeded against by charge, Court Attendance Notice, summons and Field Court Attendance Notice.

### Charge

**Trend (Jan 2001 - Dec 2002):** A statistically significant downward trend (down by 6.9%).

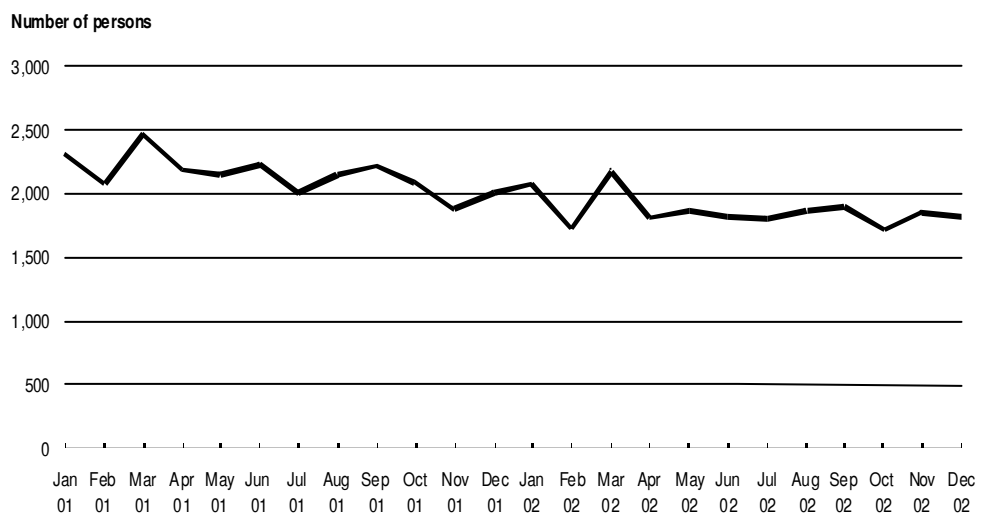
**Figure 10: Persons charged**



### Court Attendance Notice

**Trend (Jan 2001 - Dec 2002):** A statistically significant downward trend (down by 13.1%).

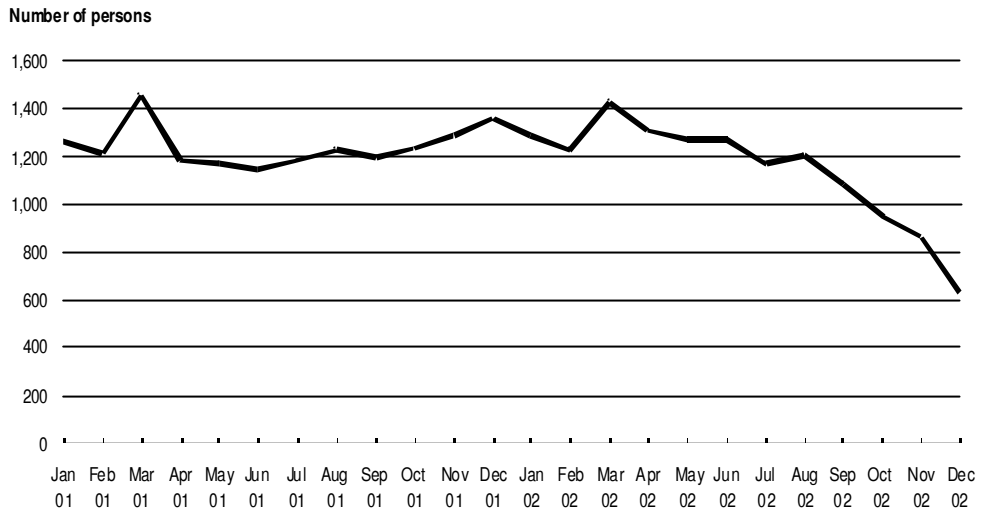
**Figure 11: Persons issued with Court Attendance Notice**



## Summons

Trend (Jan 2001 - Dec 2002): No statistically significant upward or downward trend.

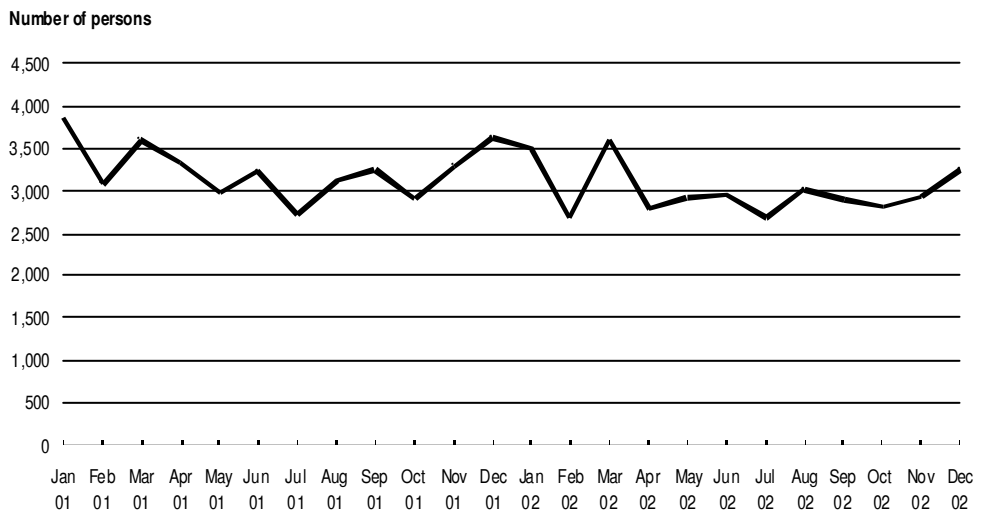
**Figure 12: Persons issued with summons**



## Field Court Attendance Notice

Trend (Jan 2001 - Dec 2002): No statistically significant upward or downward trend.

**Figure 13: Persons issued with Field Court Attendance Notice**





## NOTES

- 1 Australian Bureau of Statistics 2001, *Crime and Safety, New South Wales, April 2001*, Cat. No. 4509.1, ABS, Sydney.
- 2 The trend test used was Kendall's rank-order correlation test (see, for example, Conover, W.J. 1980, *Practical Non-Parametric Statistics*, 2nd edn, John Wiley and Sons, pp. 256-260). A two-tailed test was used to determine whether there had been an increasing or decreasing trend in the recorded numbers of criminal incidents over the most recent twenty-four month period covered in the report. Some month to month variations in the numbers of recorded incidents could be due in part to seasonal factors. The test for trend is not sensitive to seasonal variations; it is sensitive only to a generally increasing or generally decreasing trend over the time period examined.
- 3 In the case of murder, there was no statistically significant trend in the monthly numbers of recorded victims.
- 4 For the rate calculations, population data were obtained from the Australian Bureau of Statistics publications: *Regional Population Growth, Australia, 20 Feb 2001*, Cat. No. 3218.0 (for 2000 population estimates), and *Regional Population Growth, Australia, 19 Feb 2002*, Cat. No. 3218.1 (for 2001 and 2002 population estimates). As no population estimates were available for 2002 when this report was published rates for 2002 were calculated using 2001 population estimates.
- 5 NSW Police Service 2001, *Police Service Weekly*, Vol 13, no. 31, p. 10, NSW Police Service, Sydney. The guideline stipulated that stealing property from the presence of a person but not in the physical possession of the person should be recorded as a steal from person offence rather than general stealing.



---

**MONTHLY TRENDS IN  
RECORDED CRIMINAL INCIDENTS,  
2000, 2001 AND 2002  
NEW SOUTH WALES**

---

**TABLE 1.1 MONTHLY TRENDS IN RECORDED CRIMINAL INCIDENTS, 2000, NEW SOUTH WALES:  
TYPE OF OFFENCE**

Type of offence	Recorded criminal incidents												Total 2000	
	Jan	Feb	Mar	Apr	May	Jun	Jul	Aug	Sep	Oct	Nov	Dec	No.	Rate per 100,000 population
	<b>Homicide:</b>													
Murder*	9	6	8	5	10	9	7	14	7	9	7	12	103	1.6
Attempted murder	9	7	17	3	12	13	12	5	12	10	11	12	123	1.9
Murder accessory, conspiracy	0	0	2	0	2	0	0	2	0	0	0	1	7	0.1
Manslaughter – not driving*	2	1	0	3	0	1	2	1	0	0	2	1	13	0.2
Manslaughter – driving*	15	16	12	15	10	12	9	9	7	4	11	9	129	2.0
<b>Assault</b>	5,640	5,158	5,642	5,016	4,707	4,775	4,948	5,027	4,941	5,284	5,456	6,203	62,797	971.7
<b>Sexual offences:</b>														
Sexual assault	315	352	330	309	275	286	303	285	242	325	291	302	3,615	55.9
Indecent assault, act of indecency	339	311	355	282	305	310	339	333	286	332	342	299	3,833	59.3
Other sexual offences	139	160	142	120	132	115	120	150	121	132	127	117	1,575	24.4
<b>Abduction and kidnapping</b>	36	23	37	28	28	28	27	50	38	24	30	21	370	5.7
<b>Robbery:</b>														
Robbery without a weapon	623	497	678	550	618	627	662	563	511	531	586	614	7,060	109.2
Robbery with a firearm	31	48	45	63	55	73	51	54	33	53	80	70	656	10.2
Robbery with a weapon not a firearm	258	298	368	299	327	342	309	287	315	304	300	280	3,687	57.1
<b>Other offences against the person</b>	362	325	353	319	326	280	312	305	277	326	356	339	3,880	60.0

\* For murder and manslaughter only, the data are counts of recorded victims, not criminal incidents. See Explanatory Notes.

<b>Theft:</b>														
Break and enter – dwelling	7,172	6,323	6,899	6,682	6,998	6,765	6,882	6,948	6,702	7,312	7,017	6,727	82,427	1,275.5
Break and enter – non-dwelling	4,276	3,991	4,473	3,912	4,271	4,153	4,252	4,131	3,881	4,520	4,380	4,230	50,470	781.0
Possess implements	152	121	130	113	157	142	156	168	129	157	163	145	1,733	26.8
Receiving	145	189	199	176	217	201	180	177	111	200	179	152	2,126	32.9
Goods in custody	845	738	894	759	925	837	857	843	631	860	846	794	9,829	152.1
Motor vehicle theft	4,191	4,086	4,369	4,273	4,384	4,381	4,698	4,374	4,324	4,658	4,705	4,183	52,626	814.3
Steal from motor vehicle	7,668	6,762	7,800	7,346	7,738	7,464	8,315	7,954	7,243	8,214	7,739	7,070	91,313	1,413.0
Steal from retail store	1,516	1,649	1,699	1,505	1,887	1,889	1,897	1,903	1,686	1,880	1,952	1,820	21,283	329.3
Steal from dwelling	3,071	2,748	2,661	2,552	2,486	2,417	2,690	2,549	2,734	2,779	2,737	2,855	32,279	499.5
Steal from person	1,189	947	1,157	1,058	1,060	882	1,022	943	1,326	1,217	970	1,201	12,972	200.7
Stock theft	58	60	51	62	68	86	82	59	50	74	58	49	757	11.7
Fraud	1,971	2,439	2,457	2,064	2,289	2,318	2,398	2,165	2,094	2,494	2,681	2,237	27,607	427.2
Other theft	6,426	6,300	6,393	5,691	6,049	5,793	5,984	5,984	6,293	6,669	6,139	6,140	73,861	1,142.9
<b>Demand money with menaces</b>	103	79	85	99	84	95	87	87	80	80	101	82	1,062	16.4
<b>Extortion, blackmail</b>	7	4	2	4	5	7	6	4	5	5	6	1	56	0.9
<b>Arson</b>	510	421	384	440	461	485	580	591	649	614	516	506	6,157	95.3
<b>Malicious damage to property</b>	8,446	7,493	7,629	6,956	7,571	7,205	8,273	7,983	7,936	9,131	8,114	7,827	94,564	1,463.3

Table continues on next page

**TABLE 1.1** MONTHLY TRENDS IN RECORDED CRIMINAL INCIDENTS, 2000, NEW SOUTH WALES:  
TYPE OF OFFENCE - continued

Type of offence	Recorded criminal incidents												Total 2000	
	Jan	Feb	Mar	Apr	May	Jun	Jul	Aug	Sep	Oct	Nov	Dec	No.	Rate per 100,000 population
	<b>Drug offences:</b>													
Possession and/or use of cocaine	23	11	21	10	11	20	14	19	18	21	21	19	208	3.2
Possession and/or use of narcotics	259	220	207	193	268	177	197	194	151	200	197	220	2,483	38.4
Possession and/or use of cannabis	967	909	961	970	1,024	1,006	855	926	777	872	903	899	11,069	171.3
Possession and/or use of other drugs	258	199	233	196	216	215	225	210	157	199	227	252	2,587	40.0
Dealing, trafficking in cocaine	9	6	13	4	3	3	11	23	9	10	5	4	100	1.5
Dealing, trafficking in narcotics	84	45	53	38	124	76	77	102	58	42	79	82	860	13.3
Dealing, trafficking in cannabis	65	78	63	69	67	105	79	75	71	66	73	70	881	13.6
Dealing, trafficking in other drugs	60	67	47	61	71	74	72	75	41	38	114	46	766	11.9
Cultivating cannabis	252	242	192	133	103	68	58	85	65	138	132	194	1,662	25.7
Importing drugs	0	2	7	4	2	2	0	0	2	1	4	3	27	0.4
Other drug offences	247	251	254	243	201	267	235	229	199	245	226	191	2,788	43.1
<b>Offensive behaviour:</b>														
Offensive conduct	404	348	309	328	221	278	294	279	327	353	314	351	3,806	58.9
Offensive language	570	476	489	454	390	394	413	415	404	476	459	529	5,469	84.6
<b>Prostitution offences</b>	23	53	34	30	59	39	36	37	20	28	40	25	424	6.6
<b>Betting and gaming offences</b>	0	2	3	0	0	2	1	0	0	1	0	1	10	0.2
<b>Weapons offences</b>	791	779	810	654	795	766	761	883	711	785	809	764	9,308	144.0

<b>Against justice procedures:</b>														
Escapee – Corrective Services custody	5	7	7	11	11	7	11	6	10	6	4	10	95	1.5
Escapee – Police custody	24	19	22	18	21	20	15	16	14	15	14	23	221	3.4
Escapee – juvenile detention	0	0	0	0	0	0	0	1	0	0	0	0	1	0.0
Escapee – other custody	7	8	8	1	7	4	4	4	5	3	5	3	59	0.9
Breach Apprehended Violence Order	958	907	950	837	861	853	862	868	877	959	1,034	1,107	11,073	171.3
Breach bail conditions	511	416	430	350	366	395	385	365	385	396	503	445	4,947	76.5
Breach of recognizance	68	45	52	63	53	44	50	56	36	50	50	50	617	9.5
Fail to appear	135	138	149	132	146	147	156	153	122	118	169	142	1,707	26.4
Other offences against justice procedures	623	576	537	579	488	532	536	523	477	493	533	620	6,517	100.8
<b>Driving offences:</b>														
Culpable driving	14	13	15	22	23	13	24	13	17	22	18	26	220	3.4
PCA	2,038	1,578	2,135	2,082	1,747	1,939	1,781	1,911	1,627	1,943	2,338	2,438	23,557	364.5
Drive while disqualified	1,547	1,274	1,452	1,478	1,397	1,354	1,262	1,381	1,202	1,534	1,671	1,828	17,380	268.9
Drive manner/speed dangerous	271	226	259	282	244	229	239	256	205	258	255	268	2,992	46.3
Other driving offences*	4,008	3,340	3,904	3,808	3,268	3,330	3,369	3,579	3,086	3,883	5,521	46,180	87,276	1,350.5
<b>Other offences</b>	<b>3,811</b>	<b>3,678</b>	<b>3,666</b>	<b>3,592</b>	<b>3,577</b>	<b>3,887</b>	<b>3,872</b>	<b>3,763</b>	<b>3,435</b>	<b>3,984</b>	<b>4,139</b>	<b>4,265</b>	<b>45,669</b>	<b>706.7</b>

\* Since December 2000, police have included traffic infringement notices within this category.

**TABLE 1.2 MONTHLY TRENDS IN RECORDED CRIMINAL INCIDENTS, 2001, NEW SOUTH WALES:  
TYPE OF OFFENCE**

Type of offence	Recorded criminal incidents												Total 2001	
	Jan	Feb	Mar	Apr	May	Jun	Jul	Aug	Sep	Oct	Nov	Dec	No.	Rate per 100,000 population
	<b>Homicide:</b>													
Murder*	9	13	6	7	10	9	5	10	9	8	10	8	104	1.6
Attempted murder	15	19	10	19	15	10	10	13	11	11	7	21	161	2.5
Murder accessory, conspiracy	0	0	1	0	1	0	2	0	0	1	1	0	6	0.1
Manslaughter – not driving*	0	1	0	4	0	0	0	1	1	2	0	3	12	0.2
Manslaughter – driving*	10	9	4	7	11	9	13	17	4	11	9	9	113	1.7
<b>Assault</b>	6,311	5,917	6,026	5,258	5,080	5,415	5,059	5,386	5,800	6,178	6,050	6,685	69,165	1,058.8
<b>Sexual offences:</b>														
Sexual assault	341	365	350	278	318	311	289	279	285	364	326	265	3,771	57.7
Indecent assault, act of indecency	318	347	374	276	284	310	265	292	304	298	278	289	3,635	55.6
Other sexual offences	150	154	141	127	105	122	113	120	119	163	140	128	1,582	24.2
<b>Abduction and kidnapping</b>	42	40	37	30	39	34	39	42	35	62	33	34	467	7.1
<b>Robbery:</b>														
Robbery without a weapon	725	827	854	697	681	635	638	634	609	619	563	603	8,085	123.8
Robbery with a firearm	67	51	68	92	63	81	74	115	86	60	59	70	886	13.6
Robbery with a weapon not a firearm	393	508	496	389	366	308	371	310	275	346	308	256	4,326	66.2
<b>Other offences against the person</b>	355	418	425	366	416	373	385	452	453	474	498	445	5,060	77.5

\* For murder and manslaughter only, the data are counts of recorded victims, not criminal incidents. See Explanatory Notes.



<b>Theft:</b>														
Break and enter – dwelling	8,056	6,713	6,485	6,383	7,081	6,828	6,721	6,563	6,174	6,559	6,232	6,326	80,121	1,226.5
Break and enter – non-dwelling	4,684	4,202	4,654	4,413	4,327	4,236	4,700	4,451	4,181	4,346	4,094	4,040	52,328	801.0
Possess implements	174	185	157	160	175	200	195	195	139	160	145	164	2,049	31.4
Receiving	292	224	192	194	153	168	141	136	148	140	140	92	2,020	30.9
Goods in custody	1,027	919	837	767	815	786	801	808	733	779	771	753	9,796	150.0
Motor vehicle theft	4,627	4,470	5,059	4,389	4,843	4,360	4,867	4,671	4,026	4,117	4,450	4,046	53,925	825.5
Steal from motor vehicle	7,552	6,403	7,371	6,929	7,901	7,648	8,636	8,447	7,653	8,019	7,376	6,751	90,686	1,388.2
Steal from retail store	1,923	1,664	1,672	1,604	1,934	1,760	1,765	1,813	1,626	1,707	1,597	1,763	20,828	318.8
Steal from dwelling	3,131	2,588	2,575	2,322	2,411	2,632	2,571	2,595	2,517	2,869	2,564	2,848	31,623	484.1
Steal from person <sup>#</sup>	1,407	1,148	1,188	1,199	1,191	1,042	1,016	1,613	1,695	1,602	1,668	1,887	16,656	255.0
Stock theft	72	71	73	77	110	71	62	106	88	79	62	73	944	14.5
Fraud	2,814	2,364	2,600	2,490	2,951	2,670	2,815	3,005	2,899	3,074	2,998	2,648	33,328	510.2
Other theft	6,967	6,080	6,428	6,228	6,314	5,969	5,931	5,595	5,034	5,520	5,336	5,119	70,521	1,079.5
<b>Demand money with menaces</b>	82	75	120	71	97	93	83	78	87	66	68	59	979	15.0
<b>Extortion, blackmail</b>	5	4	2	5	3	3	8	11	1	7	5	3	57	0.9
<b>Arson</b>	598	450	534	528	591	666	738	682	623	778	617	594	7,399	113.3
<b>Malicious damage to property</b>	7,936	7,285	7,650	7,525	7,586	8,250	8,695	8,262	8,568	8,967	8,196	7,861	96,781	1,481.5

<sup>#</sup> In August 2001, police changed their recording practice for this offence category. (See Figure 7a on page 12)

Table continues on next page

**TABLE 1.2** MONTHLY TRENDS IN RECORDED CRIMINAL INCIDENTS, 2001, NEW SOUTH WALES:  
TYPE OF OFFENCE - continued

Type of offence	Recorded criminal incidents												Total 2001	
	Jan	Feb	Mar	Apr	May	Jun	Jul	Aug	Sep	Oct	Nov	Dec	No.	Rate per 100,000 population
	<b>Drug offences:</b>													
Possession and/or use of cocaine	26	36	64	46	34	39	36	45	34	52	24	33	469	7.2
Possession and/or use of narcotics	191	131	89	95	113	91	80	75	38	69	66	64	1,102	16.9
Possession and/or use of cannabis	921	1,122	1,289	1,078	1,583	1,449	1,142	1,340	1,326	1,228	974	1,034	14,486	221.8
Possession and/or use of other drugs	268	248	298	225	300	305	244	278	271	214	232	232	3,115	47.7
Dealing, trafficking in cocaine	4	12	30	19	28	25	21	22	28	42	13	11	255	3.9
Dealing, trafficking in narcotics	38	60	42	31	64	31	24	42	36	40	30	29	467	7.1
Dealing, trafficking in cannabis	82	82	113	76	114	79	81	104	66	84	77	73	1,031	15.8
Dealing, trafficking in other drugs	57	73	70	74	83	160	120	118	100	73	76	92	1,096	16.8
Cultivating cannabis	229	231	188	104	103	57	62	87	83	98	142	199	1,583	24.2
Importing drugs	1	3	3	2	3	0	3	3	1	2	1	2	24	0.4
Other drug offences	220	259	286	210	264	259	242	308	277	332	273	234	3,164	48.4
<b>Offensive behaviour:</b>														
Offensive conduct	371	368	363	368	291	344	315	356	357	374	350	417	4,274	65.4
Offensive language	558	537	526	461	397	473	440	494	561	496	500	563	6,006	91.9
<b>Prostitution offences</b>														
	17	101	152	107	54	123	43	86	52	45	50	49	879	13.5
<b>Betting and gaming offences</b>														
	1	1	1	0	0	0	1	1	5	4	7	3	24	0.4
<b>Weapons offences</b>														
	848	900	893	839	857	932	833	935	989	968	892	780	10,666	163.3

<b>Against justice procedures:</b>														
Escapee – Corrective Services custody	8	10	10	5	6	4	10	8	6	12	8	11	98	1.5
Escapee – Police custody	20	27	21	23	20	10	13	18	18	26	27	30	253	3.9
Escapee – juvenile detention	1	0	0	0	0	0	0	0	0	1	0	0	2	0.0
Escapee – other custody	3	3	6	8	3	3	3	8	5	4	3	1	50	0.8
Breach Apprehended Violence Order	1,099	1,022	1,038	957	994	873	910	928	953	1,114	1,019	1,123	12,030	184.2
Breach bail conditions	591	513	534	563	555	585	640	647	601	634	594	657	7,114	108.9
Breach of recognizance	42	24	36	37	27	30	22	30	30	30	36	30	374	5.7
Fail to appear	170	147	183	170	177	231	209	214	186	190	138	158	2,173	33.3
Other offences against justice procedures	652	572	605	521	525	528	448	680	711	653	597	712	7,204	110.3
<b>Driving offences:</b>														
Culpable driving	20	14	13	20	17	21	22	25	13	8	19	16	208	3.2
PCA	2,088	1,740	2,408	2,010	1,735	1,998	1,687	1,887	2,149	1,803	2,156	2,272	23,933	366.4
Drive while disqualified	1,727	1,452	1,718	1,602	1,549	1,514	1,416	1,613	1,589	1,512	1,625	1,759	19,076	292.0
Drive manner/speed dangerous	268	250	296	219	235	248	196	279	274	265	264	302	3,096	47.4
Other driving offences	51,210	32,057	38,843	46,495	37,868	40,157	36,547	43,643	48,777	43,077	39,818	53,120	511,612	7,831.8
<b>Other offences</b>	<b>4,551</b>	<b>4,048</b>	<b>4,435</b>	<b>4,203</b>	<b>4,117</b>	<b>4,341</b>	<b>4,284</b>	<b>4,607</b>	<b>4,603</b>	<b>4,872</b>	<b>4,915</b>	<b>5,151</b>	<b>54,127</b>	<b>828.6</b>

**TABLE 1.3 MONTHLY TRENDS IN RECORDED CRIMINAL INCIDENTS, 2002, NEW SOUTH WALES:  
TYPE OF OFFENCE**

Type of offence	Recorded criminal incidents												Total 2002	
	Jan	Feb	Mar	Apr	May	Jun	Jul	Aug	Sep	Oct	Nov	Dec	No.	Rate per 100,000 population
<b>Homicide:</b>														
Murder*	11	9	12	7	6	6	6	7	7	7	5	10	93	1.4
Attempted murder	8	10	9	9	6	14	7	6	4	8	8	9	98	1.5
Murder accessory, conspiracy	0	1	0	0	0	1	0	0	1	1	0	0	4	0.1
Manslaughter – not driving*	1	1	0	0	1	1	0	1	1	2	0	1	9	0.1
Manslaughter – driving*	13	8	10	9	13	9	6	11	5	2	3	2	91	1.4
<b>Assault</b>	6,649	5,797	6,400	5,549	5,586	5,350	5,251	5,624	5,876	6,150	6,374	6,057	70,663	1,081.7
<b>Sexual offences:</b>														
Sexual assault	330	328	311	254	315	304	239	318	307	337	352	265	3,660	56.0
Indecent assault, act of indecency	322	294	326	300	357	279	243	322	334	333	348	281	3,739	57.2
Other sexual offences	161	148	152	151	160	117	113	150	128	132	136	120	1,668	25.5
<b>Abduction and kidnapping</b>	33	36	31	32	34	25	29	27	33	23	33	36	372	5.7
<b>Robbery:</b>														
Robbery without a weapon	627	572	690	630	573	491	519	491	523	514	578	431	6,639	101.6
Robbery with a firearm	64	37	55	55	74	73	70	65	64	44	62	51	714	10.9
Robbery with a weapon not a firearm	319	225	212	213	263	226	190	227	231	181	231	231	2,749	42.1
<b>Other offences against the person</b>	435	409	495	423	433	463	463	530	523	572	574	491	5,811	89.0

\* For murder and manslaughter only, the data are counts of recorded victims, not criminal incidents. See Explanatory Notes.

<b>Theft:</b>															
Break and enter – dwelling	6,430	5,423	6,113	6,032	5,953	5,614	6,083	5,681	5,831	5,855	5,570	5,210	69,795	1,068.4	
Break and enter – non-dwelling	4,042	3,609	3,763	3,595	3,266	3,392	3,456	3,256	3,276	3,301	3,304	3,107	41,367	633.3	
Possess implements	136	140	148	142	137	116	144	139	119	126	85	103	1,535	23.5	
Receiving	143	142	135	151	167	101	121	134	120	117	91	64	1,486	22.7	
Goods in custody	905	698	715	805	800	716	794	714	601	826	571	560	8,705	133.3	
Motor vehicle theft	3,851	3,716	4,321	3,803	3,626	3,346	3,518	3,278	3,148	3,213	3,089	3,028	41,937	642.0	
Steal from motor vehicle	6,800	6,305	6,925	6,753	6,619	6,224	6,828	6,422	6,177	6,344	5,760	5,252	76,409	1,169.7	
Steal from retail store	1,732	1,542	1,710	1,725	1,933	1,786	2,138	2,123	1,998	2,012	1,852	1,840	22,391	342.8	
Steal from dwelling	2,836	2,300	2,597	2,505	2,439	2,304	2,512	2,513	2,604	2,658	2,524	2,555	30,347	464.6	
Steal from person	1,967	1,620	1,756	1,553	1,637	1,486	1,555	1,683	1,503	1,741	1,715	1,723	19,939	305.2	
Stock theft	85	67	85	67	59	68	56	70	77	78	68	57	837	12.8	
Fraud	3,173	2,906	2,723	3,089	3,262	2,862	3,107	2,744	2,619	2,461	2,857	2,144	33,947	519.7	
Other theft	5,934	5,073	5,548	5,266	5,073	4,684	4,788	4,796	4,714	4,842	4,830	4,302	59,850	916.2	
<b>Demand money with menaces</b>	65	45	69	77	56	60	60	54	68	51	51	57	713	10.9	
<b>Extortion, blackmail</b>	5	7	3	6	6	4	7	6	4	4	2	0	54	0.8	
<b>Arson</b>	666	431	519	514	503	487	644	610	634	687	579	475	6,749	103.3	
<b>Malicious damage to property</b>	7,950	6,746	7,439	7,531	6,999	7,321	8,069	8,129	8,553	8,857	8,123	7,324	93,041	1,424.3	

Table continues on next page

**TABLE 1.3** MONTHLY TRENDS IN RECORDED CRIMINAL INCIDENTS, 2002, NEW SOUTH WALES:  
TYPE OF OFFENCE - continued

Type of offence	Recorded criminal incidents												Total 2002	
	Jan	Feb	Mar	Apr	May	Jun	Jul	Aug	Sep	Oct	Nov	Dec	No.	Rate per 100,000 population
	<b>Drug offences:</b>													
Possession and/or use of cocaine	43	33	20	21	22	7	12	11	6	11	4	20	210	3.2
Possession and/or use of narcotics	70	73	65	71	76	68	84	87	84	104	64	85	931	14.3
Possession and/or use of cannabis	1,095	855	975	903	1,211	960	831	1,076	926	853	866	873	11,424	174.9
Possession and/or use of other drugs	254	187	203	169	245	212	202	242	176	214	196	203	2,503	38.3
Dealing, trafficking in cocaine	29	7	6	12	27	3	2	14	1	6	1	6	114	1.7
Dealing, trafficking in narcotics	31	37	44	36	51	45	72	44	19	67	21	38	505	7.7
Dealing, trafficking in cannabis	70	40	92	52	79	65	60	55	38	66	55	43	715	10.9
Dealing, trafficking in other drugs	60	94	93	82	94	98	87	105	61	71	52	81	978	15.0
Cultivating cannabis	186	195	227	145	76	53	57	78	98	110	129	148	1,502	23.0
Importing drugs	1	2	4	6	3	1	1	4	6	1	4	4	37	0.6
Other drug offences	285	251	228	246	351	238	233	270	284	255	223	236	3,100	47.5
<b>Offensive behaviour:</b>														
Offensive conduct	419	409	416	395	356	366	332	413	406	423	439	468	4,842	74.1
Offensive language	621	486	547	421	425	400	408	453	456	464	477	554	5,712	87.4
<b>Prostitution offences</b>														
	62	47	53	55	64	49	40	41	48	69	31	56	615	9.4
<b>Betting and gaming offences</b>														
	0	3	2	12	2	1	4	7	3	6	20	15	75	1.1
<b>Weapons offences</b>														
	836	736	784	846	851	813	751	908	923	914	827	802	9,991	152.9

<b>Against justice procedures:</b>														
Escapee – Corrective Services custody	7	6	5	7	9	1	2	5	8	6	6	4	66	1.0
Escapee – Police custody	26	18	10	13	15	10	12	14	7	20	24	19	188	2.9
Escapee – juvenile detention	0	0	0	0	0	0	0	0	0	0	0	0	0	0.0
Escapee – other custody	8	4	5	3	5	4	3	3	2	2	8	10	57	0.9
Breach Apprehended Violence Order	1,152	985	1,020	998	982	950	859	955	1,018	1,064	1,088	1,038	12,109	185.4
Breach bail conditions	789	637	661	613	649	572	599	608	665	700	665	706	7,864	120.4
Breach of recognizance	33	20	33	30	33	30	24	25	18	29	26	13	314	4.8
Fail to appear	197	177	173	190	195	155	167	174	171	155	144	175	2,073	31.7
Other offences against justice procedures	753	583	642	604	575	635	551	578	544	604	576	636	7,281	111.5
<b>Driving offences:</b>														
Culpable driving	15	6	18	16	21	14	11	10	11	11	4	0	137	2.1
PCA	2,084	1,590	2,679	1,856	1,969	2,080	1,876	2,176	2,228	1,966	2,319	2,264	25,087	384.0
Drive while disqualified	1,875	1,351	1,731	1,468	1,540	1,435	1,456	1,458	1,466	1,538	1,472	1,613	18,403	281.7
Drive manner/speed dangerous	310	186	286	184	245	252	227	230	190	228	241	247	2,826	43.3
Other driving offences	53,595	34,037	48,505	42,843	39,884	46,932	46,562	46,379	45,705	48,400	39,667	54,902	547,411	8,379.9
<b>Other offences</b>	<b>5,848</b>	<b>5,539</b>	<b>6,306</b>	<b>5,984</b>	<b>6,113</b>	<b>5,789</b>	<b>6,104</b>	<b>6,363</b>	<b>6,573</b>	<b>7,159</b>	<b>6,547</b>	<b>7,281</b>	<b>75,606</b>	<b>1,157.4</b>





---

**MONTHLY TRENDS IN  
METHODS OF PROCEEDING  
AGAINST ALLEGED OFFENDERS,  
2000, 2001 AND 2002  
NEW SOUTH WALES**

---

**TABLE 2.1** MONTHLY TRENDS IN METHODS OF PROCEEDING AGAINST ALLEGED OFFENDERS, 2000,  
NEW SOUTH WALES: TYPE OF PROCESS

Type of process	Number of alleged offenders												2000 Total
	Jan	Feb	Mar	Apr	May	Jun	Jul	Aug	Sep	Oct	Nov	Dec	
<b>Proceeded against to court:</b>													
Charged	5,337	4,978	5,072	4,583	5,006	4,855	4,964	4,895	4,457	5,261	5,248	5,358	60,014
Court Attendance Notice	2,731	2,438	2,737	2,643	2,361	2,451	2,256	2,280	1,956	2,236	2,283	2,408	28,780
Summons	1,279	1,178	1,269	1,173	1,140	1,029	1,143	1,123	1,045	1,183	1,207	1,361	14,130
Field Court Attendance Notice	4,020	3,226	3,711	3,542	3,086	3,239	3,000	3,236	2,872	3,512	3,919	3,951	41,314
<b>All proceedings to court</b>	<b>13,367</b>	<b>11,820</b>	<b>12,789</b>	<b>11,941</b>	<b>11,593</b>	<b>11,574</b>	<b>11,363</b>	<b>11,534</b>	<b>10,330</b>	<b>12,192</b>	<b>12,657</b>	<b>13,078</b>	<b>144,238</b>
<b>Proceeded against other than to court:</b>													
Youth Conference	86	121	129	133	93	123	73	97	90	123	93	87	1,248
Caution Young Offenders Act	708	666	683	673	713	839	841	824	704	822	862	762	9,097
Cannabis/other drug caution	-	3	-	150	163	191	143	167	150	152	171	190	1,480
Infringement Notice/ Public Safety Infringement Notice*	1,058	969	1,055	1,080	850	1,094	1,095	1,081	733	1,006	2,515	37,083	49,619
Warning	944	956	1,059	1,068	862	1,008	1,128	1,128	1,140	1,217	1,414	1,469	13,393
<b>All proceedings other than to court</b>	<b>2,796</b>	<b>2,715</b>	<b>2,926</b>	<b>3,104</b>	<b>2,681</b>	<b>3,255</b>	<b>3,280</b>	<b>3,297</b>	<b>2,817</b>	<b>3,320</b>	<b>5,055</b>	<b>39,591</b>	<b>74,837</b>
<b>All proceedings</b>	<b>16,163</b>	<b>14,535</b>	<b>15,715</b>	<b>15,045</b>	<b>14,274</b>	<b>14,829</b>	<b>14,643</b>	<b>14,831</b>	<b>13,147</b>	<b>15,512</b>	<b>17,712</b>	<b>52,669</b>	<b>219,075</b>
<b>Not proceeded against<sup>†</sup></b>	<b>3,828</b>	<b>3,542</b>	<b>3,572</b>	<b>3,321</b>	<b>3,314</b>	<b>3,301</b>	<b>3,519</b>	<b>3,426</b>	<b>3,414</b>	<b>3,720</b>	<b>4,061</b>	<b>4,114</b>	<b>43,132</b>

\* Prior to December 2000 traffic infringement notices were not included in this category.

† Includes person deceased, under 10 years of age, diplomatic immunity, mentally incapable of forming criminal intent, DPP or victim refuses to prosecute and proceeding delayed pending further advice.

**TABLE 2.2****MONTHLY TRENDS IN METHODS OF PROCEEDING AGAINST ALLEGED OFFENDERS, 2001,  
NEW SOUTH WALES: TYPE OF PROCESS**

<i>Type of process</i>	<i>Number of alleged offenders</i>												
	<i>Jan</i>	<i>Feb</i>	<i>Mar</i>	<i>Apr</i>	<i>May</i>	<i>Jun</i>	<i>Jul</i>	<i>Aug</i>	<i>Sep</i>	<i>Oct</i>	<i>Nov</i>	<i>Dec</i>	<i>2001 Total</i>
<b>Proceeded against to court:</b>													
Charged	5,979	5,824	5,678	5,197	5,345	5,245	5,194	5,383	5,396	5,491	5,308	5,782	65,822
Court Attendance Notice	2,317	2,077	2,462	2,190	2,146	2,227	2,002	2,140	2,217	2,093	1,873	2,011	25,755
Summons	1,265	1,208	1,456	1,183	1,165	1,145	1,182	1,227	1,193	1,230	1,284	1,364	14,902
Field Court Attendance Notice	3,851	3,085	3,607	3,321	2,972	3,218	2,718	3,117	3,243	2,907	3,281	3,630	38,950
<b>All proceedings to court</b>	<b>13,412</b>	<b>12,194</b>	<b>13,203</b>	<b>11,891</b>	<b>11,628</b>	<b>11,835</b>	<b>11,096</b>	<b>11,867</b>	<b>12,049</b>	<b>11,721</b>	<b>11,746</b>	<b>12,787</b>	<b>145,429</b>
<b>Proceeded against other than to court:</b>													
Youth Conference	80	90	121	118	125	88	119	108	81	63	87	91	1,171
Caution Young Offenders Act	771	669	854	881	804	849	878	925	861	899	770	843	10,004
Cannabis/other drug caution	221	299	269	244	469	512	336	437	472	348	253	305	4,165
Infringement Notice/ Public Safety Infringement Notice	42,334	25,948	32,071	39,586	31,738	33,594	30,332	35,975	40,059	34,650	31,116	41,448	418,851
Warning	1,477	1,234	1,620	1,616	1,378	1,626	1,718	1,795	1,955	1,981	2,114	2,150	20,664
<b>All proceedings other than to court</b>	<b>44,883</b>	<b>28,240</b>	<b>34,935</b>	<b>42,445</b>	<b>34,514</b>	<b>36,669</b>	<b>33,383</b>	<b>39,240</b>	<b>43,428</b>	<b>37,941</b>	<b>34,340</b>	<b>44,837</b>	<b>454,855</b>
<b>All proceedings</b>	<b>58,295</b>	<b>40,434</b>	<b>48,138</b>	<b>54,336</b>	<b>46,142</b>	<b>48,504</b>	<b>44,479</b>	<b>51,107</b>	<b>55,477</b>	<b>49,662</b>	<b>46,086</b>	<b>57,624</b>	<b>600,284</b>
<b>Not proceeded against<sup>†</sup></b>	<b>4,312</b>	<b>3,782</b>	<b>4,082</b>	<b>3,817</b>	<b>3,741</b>	<b>4,085</b>	<b>3,956</b>	<b>3,976</b>	<b>4,403</b>	<b>4,463</b>	<b>4,382</b>	<b>4,538</b>	<b>49,537</b>

<sup>†</sup> Includes person deceased, under 10 years of age, diplomatic immunity, mentally incapable of forming criminal intent, DPP or victim refuses to prosecute and proceeding delayed pending further advice.

**TABLE 2.3** MONTHLY TRENDS IN METHODS OF PROCEEDING AGAINST ALLEGED OFFENDERS, 2002,  
NEW SOUTH WALES: TYPE OF PROCESS

Type of process	Number of alleged offenders												2002 Total
	Jan	Feb	Mar	Apr	May	Jun	Jul	Aug	Sep	Oct	Nov	Dec	
<b>Proceeded against to court:</b>													
Charged	6,229	5,062	5,498	5,052	5,308	4,793	4,943	5,011	4,950	5,064	4,758	4,601	61,269
Court Attendance Notice	2,080	1,731	2,168	1,812	1,864	1,821	1,796	1,862	1,886	1,708	1,846	1,818	22,392
Summons	1,286	1,228	1,430	1,311	1,274	1,274	1,163	1,203	1,081	946	857	626	13,679
Field Court Attendance Notice	3,494	2,678	3,600	2,775	2,904	2,952	2,689	3,016	2,897	2,808	2,932	3,247	35,992
<b>All proceedings to court</b>	<b>13,089</b>	<b>10,699</b>	<b>12,696</b>	<b>10,950</b>	<b>11,350</b>	<b>10,840</b>	<b>10,591</b>	<b>11,092</b>	<b>10,814</b>	<b>10,526</b>	<b>10,393</b>	<b>10,292</b>	<b>133,332</b>
<b>Proceeded against other than to court:</b>													
Youth Conference	91	75	122	78	88	97	82	118	90	106	68	88	1,103
Caution Young Offenders Act	750	705	835	747	842	770	843	931	863	753	718	506	9,263
Cannabis/other drug caution	306	222	189	178	284	212	170	266	222	201	216	239	2,705
Infringement Notice/ Public Safety Infringement Notice	43,703	27,598	40,127	36,064	33,355	40,194	40,055	40,186	39,194	41,707	33,176	46,370	461,729
Warning	2,345	2,167	2,572	2,506	2,637	2,601	2,753	2,831	3,114	3,338	3,330	3,758	33,952
<b>All proceedings other than to court</b>	<b>47,195</b>	<b>30,767</b>	<b>43,845</b>	<b>39,573</b>	<b>37,206</b>	<b>43,874</b>	<b>43,903</b>	<b>44,332</b>	<b>43,483</b>	<b>46,105</b>	<b>37,508</b>	<b>50,961</b>	<b>508,752</b>
<b>All proceedings</b>	<b>60,284</b>	<b>41,466</b>	<b>56,541</b>	<b>50,523</b>	<b>48,556</b>	<b>54,714</b>	<b>54,494</b>	<b>55,424</b>	<b>54,297</b>	<b>56,631</b>	<b>47,901</b>	<b>61,253</b>	<b>642,084</b>
<b>Not proceeded against<sup>†</sup></b>	<b>4,829</b>	<b>4,177</b>	<b>4,666</b>	<b>4,479</b>	<b>4,556</b>	<b>4,239</b>	<b>4,431</b>	<b>4,610</b>	<b>4,858</b>	<b>4,998</b>	<b>4,993</b>	<b>4,439</b>	<b>55,275</b>

<sup>†</sup> Includes person deceased, under 10 years of age, diplomatic immunity, mentally incapable of forming criminal intent, DPP or victim refuses to prosecute and proceeding delayed pending further advice.

---

**CLEARED CRIMINAL INCIDENTS  
FOR SELECTED OFFENCES,  
JANUARY 2000 TO SEPTEMBER 2002,  
NEW SOUTH WALES**

---

**TABLE 3.1** CLEARED CRIMINAL INCIDENTS, SELECTED OFFENCES,  
JANUARY 2000 TO DECEMBER 2000, NEW SOUTH WALES: TYPE OF OFFENCE

Type of offence	Recorded criminal incidents						
	Cleared within 30 days of reporting			Cleared within 90 days of reporting		Cleared within 180 days of reporting	
	Total number recorded	Total number cleared	% cleared	Total number cleared	% cleared	Total number cleared	% cleared
Murder*	103	69	67.0	75	72.8	77	74.8
Assault	62,797	36,348	57.9	39,313	62.6	40,772	64.9
Sexual assault	3,615	814	22.5	1,163	32.2	1,366	37.8
Indecent assault, act of indecency	3,833	1,038	27.1	1,431	37.3	1,649	43.0
Other sexual offences	1,575	386	24.5	453	28.8	512	32.5
Abduction and kidnapping	370	124	33.5	138	37.3	144	38.9
Robbery without a weapon	7,060	852	12.1	991	14.0	1,065	15.1
Robbery with a firearm	656	90	13.7	121	18.4	137	20.9
Robbery with a weapon not a firearm	3,687	546	14.8	676	18.3	729	19.8
Break and enter – dwelling	82,427	3,327	4.0	4,308	5.2	4,890	5.9
Break and enter – non-dwelling	50,470	2,200	4.4	2,779	5.5	3,104	6.2
Motor vehicle theft	52,626	2,786	5.3	3,234	6.1	3,537	6.7
Steal from motor vehicle	91,313	2,197	2.4	2,535	2.8	2,750	3.0
Steal from retail store	21,283	13,122	61.7	13,555	63.7	13,698	64.4
Steal from dwelling	32,279	2,304	7.1	2,761	8.6	2,988	9.3
Steal from person	12,972	703	5.4	798	6.2	858	6.6
Stock theft	757	39	5.2	49	6.5	50	6.6
Fraud	27,607	6,211	22.5	8,240	29.8	9,376	34.0
Demand money with menaces	1,062	190	17.9	223	21.0	242	22.8
Arson	6,157	309	5.0	340	5.5	368	6.0
Malicious damage to property	94,564	13,161	13.9	14,268	15.1	14,829	15.7

\* Victims for whom incident was cleared.

**TABLE 3.2****CLEARED CRIMINAL INCIDENTS, SELECTED OFFENCES,  
JANUARY 2001 TO DECEMBER 2001, NEW SOUTH WALES: TYPE OF OFFENCE**

<i>Type of offence</i>	<i>Recorded criminal incidents</i>						
	<i>Total number recorded</i>	<i>Cleared within 30 days of reporting</i>		<i>Cleared within 90 days of reporting</i>		<i>Cleared within 180 days of reporting</i>	
		<i>Total number cleared</i>	<i>% cleared</i>	<i>Total number cleared</i>	<i>% cleared</i>	<i>Total number cleared</i>	<i>% cleared</i>
Murder*	104	62	59.6	67	64.4	73	70.2
Assault	69,165	39,764	57.5	43,014	62.2	44,614	64.5
Sexual assault	3,771	729	19.3	1,085	28.8	1,254	33.3
Indecent assault, act of indecency	3,635	900	24.8	1,269	34.9	1,409	38.8
Other sexual offences	1,582	405	25.6	461	29.1	501	31.7
Abduction and kidnapping	467	140	30.0	169	36.2	183	39.2
Robbery without a weapon	8,085	900	11.1	1,079	13.3	1,165	14.4
Robbery with a firearm	886	98	11.1	123	13.9	136	15.3
Robbery with a weapon not a firearm	4,326	663	15.3	814	18.8	909	21.0
Break and enter – dwelling	80,121	3,162	3.9	4,209	5.3	4,677	5.8
Break and enter – non-dwelling	52,328	2,209	4.2	2,668	5.1	3,026	5.8
Motor vehicle theft	53,925	2,936	5.4	3,459	6.4	3,723	6.9
Steal from motor vehicle	90,686	2,299	2.5	2,554	2.8	2,704	3.0
Steal from retail store	20,828	12,389	59.5	12,762	61.3	12,906	62.0
Steal from dwelling	31,623	2,190	6.9	2,568	8.1	2,776	8.8
Steal from person <sup>#</sup>	16,656	755	4.5	880	5.3	942	5.7
Stock theft	944	38	4.0	47	5.0	48	5.1
Fraud	33,328	5,713	17.1	7,492	22.5	8,610	25.8
Demand money with menaces	979	207	21.1	244	24.9	269	27.5
Arson	7,399	365	4.9	424	5.7	462	6.2
Malicious damage to property	96,781	14,160	14.6	15,421	15.9	16,048	16.6

\* *Victims for whom incident was cleared.*

<sup>#</sup> *In August 2001, police changed their recording practice for this offence category. (See Figure 7a on page 12)*

**TABLE 3.3** CLEARED CRIMINAL INCIDENTS, SELECTED OFFENCES,  
JANUARY 2002 TO SEPTEMBER 2002, NEW SOUTH WALES: TYPE OF OFFENCE

<i>Type of offence</i>	<i>Recorded criminal incidents</i>				
	<i>Cleared within 30 days of reporting</i>			<i>Cleared within 90 days of reporting</i>	
	<i>Total number recorded</i>	<i>Total number cleared</i>	<i>% cleared</i>	<i>Total number cleared</i>	<i>% cleared</i>
Murder*	71	39	54.9	46	64.8
Assault	52,082	30,376	58.3	32,852	63.1
Sexual assault	2,706	576	21.3	748	27.6
Indecent assault, act of indecency	2,777	787	28.3	1,045	37.6
Other sexual offences	1,280	316	24.7	369	28.8
Abduction and kidnapping	280	77	27.5	95	33.9
Robbery without a weapon	5,116	560	10.9	672	13.1
Robbery with a firearm	557	63	11.3	78	14.0
Robbery with a weapon not a firearm	2,106	327	15.5	396	18.8
Break and enter – dwelling	53,160	2,148	4.0	2,814	5.3
Break and enter – non-dwelling	31,655	1,429	4.5	1,796	5.7
Motor vehicle theft	32,607	1,737	5.3	2,059	6.3
Steal from motor vehicle	59,053	1,394	2.4	1,647	2.8
Steal from retail store	16,687	9,788	58.7	10,128	60.7
Steal from dwelling	22,610	1,584	7.0	1,842	8.1
Steal from person	14,760	506	3.4	570	3.9
Stock theft	634	33	5.2	40	6.3
Fraud	26,485	4,225	16.0	5,588	21.1
Demand money with menaces	554	107	19.3	123	22.2
Arson	5,008	296	5.9	347	6.9
Malicious damage to property	68,737	11,126	16.2	11,995	17.5

\* *Victims for whom incident was cleared.*



---

**RECORDED CRIME STATISTICS  
IN NEW SOUTH WALES REGIONS  
FOR SELECTED OFFENCES,  
2000, 2001 AND 2002**

---



**TABLE 4.1** RECORDED CRIMINAL VICTIMS, 2000 TO 2002: STATISTICAL DIVISION**MURDER**

<i>Statistical Division where offence occurred</i>	<i>Recorded victims</i>					
	<i>2000</i>		<i>2001</i>		<i>2002</i>	
	<i>Number</i>	<i>Rate per 100,000 population</i>	<i>Number</i>	<i>Rate per 100,000 population</i>	<i>Number</i>	<i>Rate per 100,000 population</i>
Sydney	55	1.3	77	1.9	57	1.4
Inner Sydney	10	3.4	16	5.4	4	1.4
Eastern Suburbs	1	0.4	4	1.6	5	2.0
St George – Sutherland	3	0.7	7	1.6	7	1.6
Canterbury – Bankstown	6	1.9	8	2.5	2	0.6
Fairfield – Liverpool	5	1.5	15	4.3	10	2.9
Outer South Western Sydney	3	1.3	3	1.3	3	1.3
Inner Western Sydney	1	0.6	4	2.4	4	2.4
Central Western Sydney	7	2.4	4	1.3	2	0.7
Outer Western Sydney	4	1.3	4	1.3	3	0.9
Blacktown	4	1.5	0	0.0	5	1.9
Lower Northern Sydney	4	1.4	1	0.3	6	2.0
Central Northern Sydney	2	0.5	2	0.5	0	0.0
Northern Beaches	1	0.4	1	0.4	2	0.9
Gosford – Wyong	4	1.4	8	2.7	4	1.3
Hunter	8	1.4	9	1.5	3	0.5
Illawarra	4	1.0	2	0.5	5	1.3
Richmond – Tweed	3	1.4	1	0.5	3	1.4
Mid-North Coast	3	1.1	8	2.9	3	1.1
Northern	10	5.8	0	0.0	1	0.6
North Western	3	2.6	0	0.0	2	1.7
Central West	3	1.7	2	1.2	4	2.3
South Eastern	3	1.6	2	1.1	4	2.2
Murrumbidgee	3	2.0	0	0.0	2	1.3
Murray	4	3.6	2	1.8	6	5.4
Far West	1	4.2	1	4.3	0	0.0
New South Wales*	103	1.6	104	1.6	93	1.4

\* The total for New South Wales includes 3 recorded victims in 2000 and 3 recorded victims in 2002 where the offence occurred in a custodial institution.

**TABLE 4.2** RECORDED CRIMINAL INCIDENTS, 2000 TO 2002: STATISTICAL DIVISION**ASSAULT**

<i>Statistical Division where offence occurred</i>	<i>Recorded criminal incidents</i>					
	<i>2000</i>		<i>2001</i>		<i>2002</i>	
	<i>Number</i>	<i>Rate per 100,000 population</i>	<i>Number</i>	<i>Rate per 100,000 population</i>	<i>Number</i>	<i>Rate per 100,000 population</i>
Sydney	34,122	835.3	37,395	903.1	38,099	920.1
Inner Sydney	6,467	2,229.2	6,798	2,305.7	6,942	2,354.5
Eastern Suburbs	1,728	701.6	1,957	790.9	2,113	854.0
St George – Sutherland	2,188	509.0	2,487	570.9	2,601	597.1
Canterbury – Bankstown	1,990	639.5	2,250	716.1	2,131	678.2
Fairfield – Liverpool	2,833	832.1	3,181	916.1	3,427	987.0
Outer South Western Sydney	2,568	1,122.5	2,971	1,280.9	2,919	1,258.5
Inner Western Sydney	991	610.4	1,018	619.3	1,013	616.3
Central Western Sydney	2,742	935.3	2,847	956.2	2,796	939.1
Outer Western Sydney	2,712	864.5	3,132	991.3	2,952	934.3
Blacktown	3,602	1,383.8	3,923	1,501.6	4,061	1,554.4
Lower Northern Sydney	1,322	452.3	1,312	443.0	1,433	483.8
Central Northern Sydney	1,106	280.2	1,234	304.7	1,184	292.4
Northern Beaches	1,128	491.9	1,151	497.3	1,302	562.5
Gosford – Wyong	2,745	938.3	3,134	1,053.1	3,225	1,083.7
Hunter	5,362	929.6	6,050	1,039.6	6,577	1,130.1
Illawarra	3,938	1,011.8	4,504	1,145.3	4,318	1,098.0
Richmond – Tweed	2,374	1,124.4	2,487	1,168.7	2,495	1,172.4
Mid-North Coast	3,191	1,169.2	3,554	1,291.9	3,737	1,358.5
Northern	2,231	1,288.2	2,266	1,315.7	2,507	1,455.6
North Western	2,497	2,136.4	2,698	2,317.0	2,908	2,497.4
Central West	2,014	1,166.0	2,194	1,266.4	2,239	1,292.4
South Eastern	2,040	1,118.2	2,303	1,248.7	2,048	1,110.4
Murrumbidgee	2,005	1,348.2	2,550	1,713.6	2,342	1,573.8
Murray	1,229	1,117.8	1,353	1,228.6	1,303	1,183.2
Far West	658	2,790.0	682	2,940.0	790	3,405.6
New South Wales*	62,797	971.7	69,165	1,058.8	70,663	1,081.7

\* The total for New South Wales includes 1,136 recorded incidents in 2000, 1,129 recorded incidents in 2001 and 1,300 recorded incidents in 2002 where the offence occurred in a custodial institution.

**TABLE 4.2a** RECORDED CRIMINAL INCIDENTS, 2000 TO 2002: STATISTICAL DIVISION**ASSAULT - DOMESTIC**

<i>Statistical Division where offence occurred</i>	<i>Recorded criminal incidents</i>					
	<i>2000</i>		<i>2001</i>		<i>2002</i>	
	<i>Number</i>	<i>Rate per 100,000 population</i>	<i>Number</i>	<i>Rate per 100,000 population</i>	<i>Number</i>	<i>Rate per 100,000 population</i>
Sydney	10,626	260.1	11,995	289.7	13,137	317.3
Inner Sydney	1,070	368.8	1,108	375.8	1,209	410.1
Eastern Suburbs	405	164.4	494	199.7	585	236.4
St George – Sutherland	686	159.6	897	205.9	926	212.6
Canterbury – Bankstown	663	213.1	871	277.2	813	258.7
Fairfield – Liverpool	1,001	294.0	1,171	337.2	1,581	455.3
Outer South Western Sydney	986	431.0	1,097	473.0	1,175	506.6
Inner Western Sydney	266	163.8	273	166.1	294	178.9
Central Western Sydney	971	331.2	1,016	341.2	1,049	352.3
Outer Western Sydney	984	313.7	1,131	358.0	1,053	333.3
Blacktown	1,468	564.0	1,629	623.5	1,868	715.0
Lower Northern Sydney	373	127.6	332	112.1	483	163.1
Central Northern Sydney	359	91.0	431	106.4	411	101.5
Northern Beaches	399	174.0	372	160.7	470	203.1
Gosford – Wyong	995	340.1	1,173	394.2	1,220	410.0
Hunter	1,981	343.5	2,302	395.6	2,313	397.4
Illawarra	1,429	367.2	1,681	427.4	1,641	417.3
Richmond – Tweed	785	371.8	805	378.3	891	418.7
Mid-North Coast	1,167	427.6	1,259	457.7	1,363	495.5
Northern	774	446.9	782	454.0	842	488.9
North Western	907	776.0	1,048	900.0	1,156	992.8
Central West	660	382.1	747	431.2	806	465.2
South Eastern	625	342.6	787	426.7	700	379.5
Murrumbidgee	687	462.0	945	635.0	913	613.5
Murray	455	413.8	494	448.6	491	445.8
Far West	279	1,183.0	306	1,319.1	405	1,745.9
New South Wales*	20,385	315.4	23,168	354.7	24,667	377.6

\* The total for New South Wales includes 10 recorded incidents in 2000, 17 recorded incidents in 2001 and 9 recorded incidents in 2002 where the offence occurred in a custodial institution.

**TABLE 4.3** RECORDED CRIMINAL INCIDENTS, 2000 TO 2002: STATISTICAL DIVISION**SEXUAL ASSAULT**

<i>Statistical Division where offence occurred</i>	<i>Recorded criminal incidents</i>					
	<i>2000</i>		<i>2001</i>		<i>2002</i>	
	<i>Number</i>	<i>Rate per 100,000 population</i>	<i>Number</i>	<i>Rate per 100,000 population</i>	<i>Number</i>	<i>Rate per 100,000 population</i>
Sydney	1,859	45.5	1,967	47.5	1,844	44.5
Inner Sydney	261	90.0	259	87.8	283	96.0
Eastern Suburbs	61	24.8	69	27.9	79	31.9
St George – Sutherland	127	29.5	121	27.8	138	31.7
Canterbury – Bankstown	121	38.9	118	37.6	106	33.7
Fairfield – Liverpool	171	50.2	173	49.8	159	45.8
Outer South Western Sydney	157	68.6	217	93.6	181	78.0
Inner Western Sydney	53	32.6	53	32.2	58	35.3
Central Western Sydney	147	50.1	150	50.4	148	49.7
Outer Western Sydney	198	63.1	239	75.6	176	55.7
Blacktown	197	75.7	187	71.6	191	73.1
Lower Northern Sydney	68	23.3	77	26.0	61	20.6
Central Northern Sydney	87	22.0	83	20.5	52	12.8
Northern Beaches	63	27.5	71	30.7	65	28.1
Gosford – Wyong	148	50.6	150	50.4	147	49.4
Hunter	320	55.5	339	58.3	445	76.5
Illawarra	272	69.9	244	62.0	241	61.3
Richmond – Tweed	120	56.8	127	59.7	134	63.0
Mid-North Coast	187	68.5	210	76.3	202	73.4
Northern	153	88.3	158	91.7	152	88.3
North Western	149	127.5	130	111.6	115	98.8
Central West	136	78.7	151	87.2	143	82.5
South Eastern	135	74.0	152	82.4	127	68.9
Murrumbidgee	131	88.1	128	86.0	141	94.8
Murray	108	98.2	122	110.8	68	61.7
Far West	25	106.0	26	112.1	27	116.4
New South Wales*	3,615	55.9	3,771	57.7	3,660	56.0

\* The total for New South Wales includes 20 recorded incidents in 2000, 17 recorded incidents in 2001 and 21 recorded incidents in 2002 where the offence occurred in a custodial institution.

**TABLE 4.4** RECORDED CRIMINAL INCIDENTS, 2000 TO 2002: STATISTICAL DIVISION**INDECENT ASSAULT, ACT OF INDECENCY, OTHER SEXUAL OFFENCES**

<i>Statistical Division where offence occurred</i>	<i>Recorded criminal incidents</i>					
	<i>2000</i>		<i>2001</i>		<i>2002</i>	
	<i>Number</i>	<i>Rate per 100,000 population</i>	<i>Number</i>	<i>Rate per 100,000 population</i>	<i>Number</i>	<i>Rate per 100,000 population</i>
Sydney	2,864	70.1	2,869	69.3	2,698	65.2
Inner Sydney	330	113.8	325	110.2	329	111.6
Eastern Suburbs	118	47.9	106	42.8	128	51.7
St George – Sutherland	199	46.3	228	52.3	298	68.4
Canterbury – Bankstown	166	53.3	148	47.1	156	49.6
Fairfield – Liverpool	217	63.7	186	53.6	201	57.9
Outer South Western Sydney	244	106.7	260	112.1	210	90.5
Inner Western Sydney	131	80.7	105	63.9	91	55.4
Central Western Sydney	201	68.6	223	74.9	193	64.8
Outer Western Sydney	274	87.3	299	94.6	266	84.2
Blacktown	239	91.8	285	109.1	226	86.5
Lower Northern Sydney	160	54.7	176	59.4	142	47.9
Central Northern Sydney	158	40.0	141	34.8	132	32.6
Northern Beaches	110	48.0	149	64.4	96	41.5
Gosford – Wyong	317	108.4	238	80.0	230	77.3
Hunter	451	78.2	485	83.3	672	115.5
Illawarra	299	76.8	293	74.5	270	68.7
Richmond – Tweed	214	101.4	174	81.8	302	141.9
Mid-North Coast	297	108.8	307	111.6	372	135.2
Northern	241	139.2	233	135.3	191	110.9
North Western	211	180.5	149	128.0	171	146.9
Central West	174	100.7	183	105.6	189	109.1
South Eastern	227	124.4	165	89.5	180	97.6
Murrumbidgee	217	145.9	186	125.0	175	117.6
Murray	148	134.6	128	116.2	127	115.3
Far West	41	173.8	33	142.3	38	163.8
New South Wales*	5,408	83.7	5,217	79.9	5,407	82.8

\* The total for New South Wales includes 24 recorded incidents in 2000, 12 recorded incidents in 2001 and 22 recorded incidents in 2002 where the offence occurred in a custodial institution.

**TABLE 4.5** RECORDED CRIMINAL INCIDENTS, 2000 TO 2002: STATISTICAL DIVISION**ROBBERY WITHOUT A WEAPON**

<i>Statistical Division where offence occurred</i>	<i>Recorded criminal incidents</i>					
	<i>2000</i>		<i>2001</i>		<i>2002</i>	
	<i>Number</i>	<i>Rate per 100,000 population</i>	<i>Number</i>	<i>Rate per 100,000 population</i>	<i>Number</i>	<i>Rate per 100,000 population</i>
Sydney	6,156	150.7	7,072	170.8	5,752	138.9
Inner Sydney	1,709	589.1	2,325	788.6	1,734	588.1
Eastern Suburbs	324	131.6	380	153.6	338	136.6
St George – Sutherland	342	79.6	436	100.1	391	89.8
Canterbury – Bankstown	610	196.0	542	172.5	417	132.7
Fairfield – Liverpool	654	192.1	678	195.3	448	129.0
Outer South Western Sydney	295	128.9	381	164.3	273	117.7
Inner Western Sydney	281	173.1	407	247.6	407	247.6
Central Western Sydney	597	203.6	606	203.5	584	196.1
Outer Western Sydney	297	94.7	262	82.9	257	81.3
Blacktown	410	157.5	363	138.9	322	123.2
Lower Northern Sydney	218	74.6	290	97.9	242	81.7
Central Northern Sydney	203	51.4	177	43.7	150	37.0
Northern Beaches	124	54.1	117	50.5	89	38.5
Gosford – Wyong	92	31.4	108	36.3	100	33.6
Hunter	260	45.1	295	50.7	281	48.3
Illawarra	188	48.3	261	66.4	221	56.2
Richmond – Tweed	64	30.3	71	33.4	60	28.2
Mid-North Coast	80	29.3	97	35.3	91	33.1
Northern	68	39.3	49	28.4	55	31.9
North Western	91	77.9	88	75.6	55	47.2
Central West	53	30.7	49	28.3	35	20.2
South Eastern	42	23.0	31	16.8	34	18.4
Murrumbidgee	36	24.2	39	26.2	32	21.5
Murray	15	13.6	19	17.3	12	10.9
Far West	4	17.0	12	51.7	9	38.8
New South Wales*	7,060	109.2	8,085	123.8	6,639	101.6

\* The total for New South Wales includes 3 recorded incidents in 2000, 2 recorded incidents in 2001 and 2 recorded incidents in 2002 where the offence occurred in a custodial institution.



**TABLE 4.6** RECORDED CRIMINAL INCIDENTS, 2000 TO 2002: STATISTICAL DIVISION**ROBBERY WITH A FIREARM**

<i>Statistical Division where offence occurred</i>	<i>Recorded criminal incidents</i>					
	<i>2000</i>		<i>2001</i>		<i>2002</i>	
	<i>Number</i>	<i>Rate per 100,000 population</i>	<i>Number</i>	<i>Rate per 100,000 population</i>	<i>Number</i>	<i>Rate per 100,000 population</i>
Sydney	588	14.4	807	19.5	661	16.0
Inner Sydney	106	36.5	129	43.8	102	34.6
Eastern Suburbs	22	8.9	37	15.0	35	14.1
St George – Sutherland	48	11.2	85	19.5	48	11.0
Canterbury – Bankstown	88	28.3	127	40.4	82	26.1
Fairfield – Liverpool	70	20.6	114	32.8	76	21.9
Outer South Western Sydney	17	7.4	27	11.6	25	10.8
Inner Western Sydney	45	27.7	56	34.1	40	24.3
Central Western Sydney	66	22.5	108	36.3	101	33.9
Outer Western Sydney	16	5.1	22	7.0	24	7.6
Blacktown	13	5.0	31	11.9	44	16.8
Lower Northern Sydney	38	13.0	31	10.5	34	11.5
Central Northern Sydney	25	6.3	25	6.2	17	4.2
Northern Beaches	10	4.4	5	2.2	20	8.6
Gosford – Wyong	24	8.2	10	3.4	13	4.4
Hunter	24	4.2	40	6.9	28	4.8
Illawarra	26	6.7	21	5.3	12	3.1
Richmond – Tweed	6	2.8	6	2.8	1	0.5
Mid-North Coast	2	0.7	5	1.8	1	0.4
Northern	2	1.2	0	0.0	1	0.6
North Western	5	4.3	1	0.9	0	0.0
Central West	1	0.6	0	0.0	3	1.7
South Eastern	1	0.5	6	3.3	2	1.1
Murrumbidgee	1	0.7	0	0.0	4	2.7
Murray	0	0.0	0	0.0	1	0.9
Far West	0	0.0	0	0.0	0	0.0
New South Wales	656	10.2	886	13.6	714	10.9

**TABLE 4.7** RECORDED CRIMINAL INCIDENTS, 2000 TO 2002: STATISTICAL DIVISION**ROBBERY WITH A WEAPON NOT A FIREARM**

<i>Statistical Division where offence occurred</i>	<i>Recorded criminal incidents</i>					
	<i>2000</i>		<i>2001</i>		<i>2002</i>	
	<i>Number</i>	<i>Rate per 100,000 population</i>	<i>Number</i>	<i>Rate per 100,000 population</i>	<i>Number</i>	<i>Rate per 100,000 population</i>
Sydney	3,265	79.9	3,917	94.6	2,444	59.0
Inner Sydney	825	284.4	1,149	389.7	598	202.8
Eastern Suburbs	160	65.0	203	82.0	140	56.6
St George – Sutherland	182	42.3	279	64.0	213	48.9
Canterbury – Bankstown	389	125.0	405	128.9	277	88.2
Fairfield – Liverpool	426	125.1	488	140.5	232	66.8
Outer South Western Sydney	88	38.5	144	62.1	110	47.4
Inner Western Sydney	178	109.6	234	142.4	195	118.6
Central Western Sydney	396	135.1	395	132.7	257	86.3
Outer Western Sydney	95	30.3	81	25.6	70	22.2
Blacktown	126	48.4	166	63.5	129	49.4
Lower Northern Sydney	175	59.9	141	47.6	93	31.4
Central Northern Sydney	89	22.6	102	25.2	65	16.0
Northern Beaches	52	22.7	58	25.1	24	10.4
Gosford – Wyong	84	28.7	72	24.2	41	13.8
Hunter	149	25.8	166	28.5	140	24.1
Illawarra	109	28.0	84	21.4	66	16.8
Richmond – Tweed	23	10.9	16	7.5	9	4.2
Mid-North Coast	27	9.9	28	10.2	23	8.4
Northern	23	13.3	19	11.0	13	7.5
North Western	23	19.7	25	21.5	6	5.2
Central West	41	23.7	14	8.1	15	8.7
South Eastern	11	6.0	32	17.4	8	4.3
Murrumbidgee	11	7.4	14	9.4	15	10.1
Murray	4	3.6	10	9.1	9	8.2
Far West	1	4.2	1	4.3	1	4.3
New South Wales	3,687	57.1	4,326	66.2	2,749	42.1

**TABLE 4.8** RECORDED CRIMINAL INCIDENTS, 2000 TO 2002: STATISTICAL DIVISION**BREAK AND ENTER – DWELLING**

<i>Statistical Division where offence occurred</i>	<i>Recorded criminal incidents</i>					
	<i>2000</i>		<i>2001</i>		<i>2002</i>	
	<i>Number</i>	<i>Rate per 100,000 population</i>	<i>Number</i>	<i>Rate per 100,000 population</i>	<i>Number</i>	<i>Rate per 100,000 population</i>
Sydney	55,813	1,366.3	53,794	1,299.1	44,252	1,068.7
Inner Sydney	6,158	2,122.7	6,414	2,175.4	5,336	1,809.8
Eastern Suburbs	3,907	1,586.4	4,349	1,757.6	4,007	1,619.4
St George – Sutherland	4,869	1,132.7	5,309	1,218.7	3,540	812.6
Canterbury – Bankstown	3,921	1,260.0	4,052	1,289.5	2,942	936.3
Fairfield – Liverpool	5,741	1,686.3	4,821	1,388.4	3,937	1,133.9
Outer South Western Sydney	3,077	1,344.9	2,778	1,197.7	2,302	992.5
Inner Western Sydney	2,393	1,473.9	2,629	1,599.5	2,158	1,312.9
Central Western Sydney	4,617	1,574.9	4,414	1,482.5	3,503	1,176.5
Outer Western Sydney	3,157	1,006.3	3,020	955.9	2,458	778.0
Blacktown	3,650	1,402.3	3,247	1,242.8	2,838	1,086.3
Lower Northern Sydney	4,415	1,510.6	3,709	1,252.3	3,641	1,229.3
Central Northern Sydney	3,507	888.6	3,079	760.3	2,810	693.9
Northern Beaches	1,997	870.9	1,929	833.4	1,666	719.8
Gosford – Wyong	4,404	1,505.4	4,044	1,358.9	3,114	1,046.4
Hunter	7,831	1,357.7	6,538	1,123.4	7,843	1,347.7
Illawarra	5,627	1,445.7	6,129	1,558.5	4,975	1,265.0
Richmond – Tweed	1,958	927.4	1,668	783.8	1,804	847.7
Mid-North Coast	2,158	790.7	2,408	875.3	2,187	795.0
Northern	1,573	908.2	1,691	981.8	1,845	1,071.2
North Western	1,807	1,546.1	2,156	1,851.6	1,847	1,586.2
Central West	1,872	1,083.8	1,636	944.3	1,458	841.6
South Eastern	1,415	775.6	1,461	792.1	1,267	687.0
Murrumbidgee	1,091	733.6	1,293	868.9	1,081	726.4
Murray	925	841.3	1,026	931.7	901	818.1
Far West	357	1,513.7	321	1,383.8	335	1,444.2
New South Wales	82,427	1,275.5	80,121	1,226.5	69,795	1,068.4

**TABLE 4.9** RECORDED CRIMINAL INCIDENTS, 2000 TO 2002: STATISTICAL DIVISION**BREAK AND ENTER – NON-DWELLING**

<i>Statistical Division where offence occurred</i>	<i>Recorded criminal incidents</i>					
	<i>2000</i>		<i>2001</i>		<i>2002</i>	
	<i>Number</i>	<i>Rate per 100,000 population</i>	<i>Number</i>	<i>Rate per 100,000 population</i>	<i>Number</i>	<i>Rate per 100,000 population</i>
Sydney	28,042	686.5	29,592	714.6	22,576	545.2
Inner Sydney	4,878	1,681.4	5,310	1,801.0	4,110	1,394.0
Eastern Suburbs	1,220	495.4	1,291	521.8	1,178	476.1
St George – Sutherland	2,125	494.4	1,911	438.7	1,693	388.6
Canterbury – Bankstown	1,756	564.3	1,723	548.3	1,438	457.6
Fairfield – Liverpool	2,671	784.6	2,734	787.4	1,671	481.2
Outer South Western Sydney	1,490	651.3	1,928	831.2	1,060	457.0
Inner Western Sydney	934	575.3	854	519.6	764	464.8
Central Western Sydney	2,493	850.4	2,587	868.9	2,004	673.1
Outer Western Sydney	1,918	611.4	2,144	678.6	1,671	528.9
Blacktown	1,540	591.6	1,564	598.6	1,382	529.0
Lower Northern Sydney	2,215	757.8	2,488	840.0	1,725	582.4
Central Northern Sydney	1,615	409.2	1,736	428.7	1,304	322.0
Northern Beaches	924	403.0	1,015	438.5	890	384.5
Gosford – Wyong	2,263	773.6	2,307	775.2	1,686	566.5
Hunter	6,627	1,149.0	5,975	1,026.7	4,675	803.3
Illawarra	3,600	924.9	4,119	1,047.4	3,079	782.9
Richmond – Tweed	1,670	791.0	1,639	770.2	1,714	805.4
Mid-North Coast	2,328	853.0	2,334	848.4	2,032	738.7
Northern	1,540	889.2	1,587	921.4	1,620	940.6
North Western	1,671	1,429.7	1,464	1,257.3	1,311	1,125.9
Central West	1,414	818.6	1,611	929.9	1,043	602.0
South Eastern	1,351	740.5	1,380	748.2	1,068	579.1
Murrumbidgee	994	668.4	1,394	936.8	1,036	696.2
Murray	971	883.2	984	893.5	961	872.6
Far West	245	1,038.8	241	1,038.9	245	1,056.2
New South Wales*	50,470	781.0	52,328	801.0	41,367	633.3

\* The total for New South Wales includes 17 recorded incidents in 2000, 8 recorded incidents in 2001 and 7 recorded incidents in 2002 where the offence occurred in a custodial institution.

**TABLE 4.10** RECORDED CRIMINAL INCIDENTS, 2000 TO 2002: STATISTICAL DIVISION**RECEIVING, GOODS IN CUSTODY**

<i>Statistical Division where offence occurred</i>	<i>Recorded criminal incidents</i>					
	<i>2000</i>		<i>2001</i>		<i>2002</i>	
	<i>Number</i>	<i>Rate per 100,000 population</i>	<i>Number</i>	<i>Rate per 100,000 population</i>	<i>Number</i>	<i>Rate per 100,000 population</i>
Sydney	8,039	196.8	8,138	196.5	6,862	165.7
Inner Sydney	2,137	736.6	2,230	756.4	1,813	614.9
Eastern Suburbs	324	131.6	374	151.2	287	116.0
St George – Sutherland	544	126.6	619	142.1	467	107.2
Canterbury – Bankstown	602	193.4	581	184.9	434	138.1
Fairfield – Liverpool	1,079	316.9	827	238.2	666	191.8
Outer South Western Sydney	333	145.6	356	153.5	335	144.4
Inner Western Sydney	218	134.3	270	164.3	217	132.0
Central Western Sydney	620	211.5	676	227.0	605	203.2
Outer Western Sydney	444	141.5	573	181.4	489	154.8
Blacktown	627	240.9	552	211.3	583	223.1
Lower Northern Sydney	309	105.7	284	95.9	259	87.4
Central Northern Sydney	232	58.8	192	47.4	202	49.9
Northern Beaches	172	75.0	181	78.2	173	74.7
Gosford – Wyong	398	136.0	423	142.1	332	111.6
Hunter	940	163.0	824	141.6	793	136.3
Illawarra	534	137.2	646	164.3	585	148.8
Richmond – Tweed	388	183.8	414	194.5	352	165.4
Mid-North Coast	379	138.9	321	116.7	324	117.8
Northern	245	141.5	169	98.1	204	118.4
North Western	392	335.4	255	219.0	246	211.3
Central West	313	181.2	290	167.4	242	139.7
South Eastern	270	148.0	294	159.4	199	107.9
Murrumbidgee	179	120.4	250	168.0	155	104.2
Murray	199	181.0	174	158.0	162	147.1
Far West	61	258.6	23	99.2	51	219.9
New South Wales*	11,955	185.0	11,816	180.9	10,191	156.0

\* The total for New South Wales includes 16 recorded incidents in 2000, 18 recorded incidents in 2001 and 16 recorded incidents in 2002 where the offence occurred in a custodial institution.

**TABLE 4.11 RECORDED CRIMINAL INCIDENTS, 2000 TO 2002: STATISTICAL DIVISION****MOTOR VEHICLE THEFT**

<i>Statistical Division where offence occurred</i>	<i>Recorded criminal incidents</i>					
	<i>2000</i>		<i>2001</i>		<i>2002</i>	
	<i>Number</i>	<i>Rate per 100,000 population</i>	<i>Number</i>	<i>Rate per 100,000 population</i>	<i>Number</i>	<i>Rate per 100,000 population</i>
Sydney	39,043	955.8	39,206	946.8	31,075	750.5
Inner Sydney	4,907	1,691.4	5,171	1,753.9	4,094	1,388.6
Eastern Suburbs	2,072	841.3	2,449	989.8	2,140	864.9
St George – Sutherland	3,334	775.6	3,380	775.9	2,622	601.9
Canterbury – Bankstown	3,894	1,251.3	4,003	1,273.9	3,215	1,023.2
Fairfield – Liverpool	4,765	1,399.6	3,938	1,134.1	2,930	843.8
Outer South Western Sydney	2,667	1,165.7	2,678	1,154.6	2,153	928.2
Inner Western Sydney	1,667	1,026.8	1,726	1,050.1	1,340	815.2
Central Western Sydney	3,777	1,288.4	4,001	1,343.8	3,215	1,079.8
Outer Western Sydney	2,618	834.5	2,605	824.5	2,251	712.5
Blacktown	3,051	1,172.1	2,750	1,052.6	2,336	894.1
Lower Northern Sydney	1,686	576.9	1,678	566.5	1,405	474.4
Central Northern Sydney	1,328	336.5	1,371	338.5	1,047	258.5
Northern Beaches	979	427.0	1,107	478.3	801	346.1
Gosford – Wyong	2,298	785.5	2,349	789.3	1,526	512.8
Hunter	4,821	835.8	4,645	798.1	3,520	604.8
Illawarra	3,853	989.9	4,937	1,255.4	2,837	721.4
Richmond – Tweed	836	396.0	821	385.8	765	359.5
Mid-North Coast	1,002	367.1	1,055	383.5	814	295.9
Northern	436	251.7	410	238.0	402	233.4
North Western	641	548.4	763	655.3	689	591.7
Central West	610	353.2	481	277.6	516	297.8
South Eastern	465	254.9	526	285.2	477	258.6
Murrumbidgee	468	314.7	534	358.8	386	259.4
Murray	356	323.8	417	378.7	365	331.4
Far West	87	368.9	126	543.2	86	370.7
New South Wales*	52,626	814.3	53,925	825.5	41,937	642.0

\* The total for New South Wales includes 8 recorded incidents in 2000, 4 recorded incidents in 2001 and 5 recorded incidents in 2002 where the offence occurred in a custodial institution.

**TABLE 4.12** RECORDED CRIMINAL INCIDENTS, 2000 TO 2002: STATISTICAL DIVISION**STEAL FROM MOTOR VEHICLE**

<i>Statistical Division where offence occurred</i>	<i>Recorded criminal incidents</i>					
	<i>2000</i>		<i>2001</i>		<i>2002</i>	
	<i>Number</i>	<i>Rate per 100,000 population</i>	<i>Number</i>	<i>Rate per 100,000 population</i>	<i>Number</i>	<i>Rate per 100,000 population</i>
Sydney	66,009	1,615.9	64,502	1,557.7	52,685	1,272.3
Inner Sydney	15,492	5,340.1	15,476	5,249.0	12,510	4,243.0
Eastern Suburbs	3,993	1,621.3	4,509	1,822.3	3,410	1,378.2
St George – Sutherland	5,569	1,295.6	4,903	1,125.5	4,179	959.3
Canterbury – Bankstown	4,646	1,493.0	3,661	1,165.1	3,104	987.8
Fairfield – Liverpool	4,849	1,424.3	4,192	1,207.3	3,477	1,001.4
Outer South Western Sydney	2,739	1,197.2	3,178	1,370.2	2,392	1,031.3
Inner Western Sydney	2,400	1,478.2	2,446	1,488.1	1,881	1,144.4
Central Western Sydney	4,931	1,682.0	4,448	1,493.9	4,000	1,343.5
Outer Western Sydney	3,478	1,108.6	4,139	1,310.0	3,663	1,159.4
Blacktown	3,694	1,419.2	3,147	1,204.5	2,689	1,029.2
Lower Northern Sydney	4,964	1,698.4	4,833	1,631.7	3,454	1,166.2
Central Northern Sydney	3,149	797.9	3,207	791.9	2,839	701.0
Northern Beaches	2,450	1,068.5	2,812	1,214.9	2,402	1,037.8
Gosford – Wyong	3,655	1,249.4	3,551	1,193.2	2,685	902.2
Hunter	7,625	1,322.0	6,844	1,176.0	6,865	1,179.6
Illawarra	5,426	1,394.1	5,929	1,507.6	4,117	1,046.9
Richmond – Tweed	1,973	934.5	1,973	927.1	2,345	1,101.9
Mid-North Coast	2,370	868.4	2,155	783.4	2,158	784.5
Northern	1,386	800.3	1,588	922.0	1,592	924.3
North Western	1,730	1,480.2	2,104	1,806.9	1,660	1,425.6
Central West	1,367	791.4	1,571	906.8	1,472	849.6
South Eastern	1,196	655.6	1,370	742.8	1,134	614.8
Murrumbidgee	1,027	690.6	1,320	887.0	1,102	740.5
Murray	913	830.4	1,044	948.0	1,016	922.6
Far West	286	1,212.7	282	1,215.7	258	1,112.2
New South Wales*	91,313	1,413.0	90,686	1,388.2	76,409	1,169.7

\* The total for New South Wales includes 5 recorded incidents in 2000, 4 recorded incidents in 2001 and 5 recorded incidents in 2002 where the offence occurred in a custodial institution.

**TABLE 4.13** RECORDED CRIMINAL INCIDENTS, 2000 TO 2002: STATISTICAL DIVISION**STEAL FROM RETAIL STORE**

<i>Statistical Division where offence occurred</i>	<i>Recorded criminal incidents</i>					
	<i>2000</i>		<i>2001</i>		<i>2002</i>	
	<i>Number</i>	<i>Rate per 100,000 population</i>	<i>Number</i>	<i>Rate per 100,000 population</i>	<i>Number</i>	<i>Rate per 100,000 population</i>
Sydney	14,168	346.8	13,332	322.0	14,101	340.5
Inner Sydney	2,533	873.1	2,375	805.5	2,326	788.9
Eastern Suburbs	771	313.1	866	350.0	815	329.4
St George – Sutherland	1,127	262.2	1,141	261.9	1,076	247.0
Canterbury – Bankstown	886	284.7	846	269.2	904	287.7
Fairfield – Liverpool	1,286	377.7	945	272.2	1,087	313.1
Outer South Western Sydney	716	313.0	648	279.4	824	355.3
Inner Western Sydney	447	275.3	447	271.9	471	286.6
Central Western Sydney	1,605	547.5	1,339	449.7	1,337	449.1
Outer Western Sydney	931	296.8	957	302.9	1,005	318.1
Blacktown	1,226	471.0	976	373.6	1,218	466.2
Lower Northern Sydney	815	278.8	796	268.8	752	253.9
Central Northern Sydney	443	112.2	529	130.6	625	154.3
Northern Beaches	522	227.7	413	178.4	509	219.9
Gosford – Wyong	860	294.0	1,054	354.2	1,152	387.1
Hunter	1,685	292.1	1,849	317.7	1,968	338.2
Illawarra	1,205	309.6	1,254	318.9	1,514	385.0
Richmond – Tweed	675	319.7	759	356.7	819	384.9
Mid-North Coast	926	339.3	876	318.4	998	362.8
Northern	483	278.9	512	297.3	658	382.0
North Western	461	394.4	406	348.7	473	406.2
Central West	501	290.1	521	300.7	568	327.9
South Eastern	494	270.8	479	259.7	530	287.4
Murrumbidgee	367	246.8	449	301.7	402	270.1
Murray	269	244.7	310	281.5	257	233.4
Far West	49	207.8	81	349.2	103	444.0
New South Wales	21,283	329.3	20,828	318.8	22,391	342.8



**TABLE 4.14** RECORDED CRIMINAL INCIDENTS, 2000 TO 2002: STATISTICAL DIVISION**STEAL FROM DWELLING**

<i>Statistical Division where offence occurred</i>	<i>Recorded criminal incidents</i>					
	<i>2000</i>		<i>2001</i>		<i>2002</i>	
	<i>Number</i>	<i>Rate per 100,000 population</i>	<i>Number</i>	<i>Rate per 100,000 population</i>	<i>Number</i>	<i>Rate per 100,000 population</i>
Sydney	17,169	420.3	16,623	401.4	15,212	367.4
Inner Sydney	2,308	795.6	2,358	799.8	2,010	681.7
Eastern Suburbs	1,309	531.5	1,495	604.2	1,357	548.4
St George – Sutherland	1,407	327.3	1,257	288.5	1,212	278.2
Canterbury – Bankstown	789	253.5	784	249.5	641	204.0
Fairfield – Liverpool	1,096	321.9	982	282.8	959	276.2
Outer South Western Sydney	1,185	518.0	1,084	467.4	1,001	431.6
Inner Western Sydney	582	358.5	554	337.0	474	288.4
Central Western Sydney	984	335.7	956	321.1	820	275.4
Outer Western Sydney	1,266	403.5	1,263	399.8	1,174	371.6
Blacktown	1,302	500.2	1,205	461.2	1,157	442.9
Lower Northern Sydney	1,140	390.0	1,092	368.7	1,128	380.8
Central Northern Sydney	1,226	310.6	1,181	291.6	1,044	257.8
Northern Beaches	1,000	436.1	960	414.8	785	339.2
Gosford – Wyong	1,575	538.4	1,452	487.9	1,450	487.2
Hunter	3,632	629.7	3,548	609.7	3,620	622.0
Illawarra	2,202	565.8	2,200	559.4	2,365	601.4
Richmond – Tweed	1,493	707.1	1,448	680.4	1,410	662.6
Mid-North Coast	1,652	605.3	1,539	559.4	1,627	591.4
Northern	1,102	636.3	1,049	609.1	1,139	661.3
North Western	879	752.1	904	776.4	764	656.1
Central West	1,212	701.7	1,219	703.6	1,163	671.3
South Eastern	973	533.3	1,075	582.9	1,038	562.8
Murrumbidgee	939	631.4	1,032	693.5	1,063	714.3
Murray	717	652.1	735	667.4	662	601.1
Far West	309	1,310.2	251	1,082.0	284	1,224.3
New South Wales	32,279	499.5	31,623	484.1	30,347	464.6

**TABLE 4.15** RECORDED CRIMINAL INCIDENTS, 2000 TO 2002: STATISTICAL DIVISION**STEAL FROM PERSON<sup>#</sup>**

<i>Statistical Division where offence occurred</i>	<i>Recorded criminal incidents</i>					
	<i>2000</i>		<i>2001</i>		<i>2002</i>	
	<i>Number</i>	<i>Rate per 100,000 population</i>	<i>Number</i>	<i>Rate per 100,000 population</i>	<i>Number</i>	<i>Rate per 100,000 population</i>
Sydney	11,196	274.1	14,431	348.5	17,242	416.4
Inner Sydney	4,831	1,665.2	6,650	2,255.5	7,957	2,698.8
Eastern Suburbs	652	264.7	898	362.9	1,112	449.4
St George – Sutherland	586	136.3	781	179.3	860	197.4
Canterbury – Bankstown	728	233.9	733	233.3	793	252.4
Fairfield – Liverpool	734	215.6	825	237.6	975	280.8
Outer South Western Sydney	279	121.9	342	147.5	354	152.6
Inner Western Sydney	561	345.5	644	391.8	820	498.9
Central Western Sydney	747	254.8	957	321.4	1,143	383.9
Outer Western Sydney	358	114.1	412	130.4	493	156.0
Blacktown	439	168.7	532	203.6	623	238.5
Lower Northern Sydney	529	181.0	692	233.6	813	274.5
Central Northern Sydney	218	55.2	294	72.6	381	94.1
Northern Beaches	302	131.7	415	179.3	500	216.0
Gosford – Wyong	232	79.3	256	86.0	418	140.5
Hunter	436	75.6	536	92.1	779	133.9
Illawarra	463	119.0	663	168.6	670	170.4
Richmond – Tweed	144	68.2	202	94.9	305	143.3
Mid-North Coast	164	60.1	191	69.4	215	78.2
Northern	115	66.4	119	69.1	121	70.3
North Western	170	145.5	139	119.4	146	125.4
Central West	87	50.4	90	51.9	132	76.2
South Eastern	87	47.7	115	62.4	132	71.6
Murrumbidgee	47	31.6	85	57.1	90	60.5
Murray	46	41.8	55	49.9	80	72.6
Far West	16	67.8	27	116.4	24	103.5
New South Wales*	12,972	200.7	16,656	255.0	19,939	305.2

\* The total for New South Wales includes 1 recorded incident in 2000, 3 recorded incidents in 2001 and 3 recorded incidents in 2002 where the offence occurred in a custodial institution.

# In August 2001, police changed their recording practice for this offence category. (See Figure 7a on page 12)

**TABLE 4.16** RECORDED CRIMINAL INCIDENTS, 2000 TO 2002: STATISTICAL DIVISION**FRAUD**

<i>Statistical Division where offence occurred</i>	<i>Recorded criminal incidents</i>					
	<i>2000</i>		<i>2001</i>		<i>2002</i>	
	<i>Number</i>	<i>Rate per 100,000 population</i>	<i>Number</i>	<i>Rate per 100,000 population</i>	<i>Number</i>	<i>Rate per 100,000 population</i>
Sydney	18,842	461.3	24,920	601.8	25,575	617.6
Inner Sydney	3,668	1,264.4	4,658	1,579.9	5,183	1,757.9
Eastern Suburbs	1,039	421.9	1,272	514.1	1,485	600.2
St George – Sutherland	1,204	280.1	1,931	443.3	1,968	451.8
Canterbury – Bankstown	1,606	516.1	2,358	750.4	2,028	645.4
Fairfield – Liverpool	1,879	551.9	2,289	659.2	2,413	694.9
Outer South Western Sydney	893	390.3	1,022	440.6	781	336.7
Inner Western Sydney	830	511.2	1,128	686.3	1,028	625.4
Central Western Sydney	1,675	571.4	2,426	814.8	2,490	836.3
Outer Western Sydney	1,219	388.6	1,478	467.8	1,434	453.9
Blacktown	1,456	559.4	1,913	732.2	1,683	644.2
Lower Northern Sydney	1,139	389.7	1,670	563.8	1,880	634.7
Central Northern Sydney	688	174.3	878	216.8	1,088	268.7
Northern Beaches	649	283.0	898	388.0	798	344.8
Gosford – Wyong	897	306.6	999	335.7	1,316	442.2
Hunter	2,110	365.8	1,926	330.9	2,226	382.5
Illawarra	1,145	294.2	1,303	331.3	1,261	320.6
Richmond – Tweed	711	336.7	749	352.0	842	395.7
Mid-North Coast	1,244	455.8	925	336.3	979	355.9
Northern	580	334.9	427	247.9	503	292.0
North Western	369	315.7	395	339.2	402	345.2
Central West	668	386.7	614	354.4	530	305.9
South Eastern	700	383.7	720	390.4	613	332.4
Murrumbidgee	721	484.8	940	631.7	578	388.4
Murray	457	415.7	351	318.7	368	334.2
Far West	53	224.7	50	215.5	64	275.9
New South Wales*	27,607	427.2	33,328	510.2	33,947	519.7

\* The total for New South Wales includes 7 recorded incidents in 2000, 8 recorded incidents in 2001 and 6 recorded incidents in 2002 where the offence occurred in a custodial institution.

**TABLE 4.17** RECORDED CRIMINAL INCIDENTS, 2000 TO 2002: STATISTICAL DIVISION**MALICIOUS DAMAGE TO PROPERTY**

<i>Statistical Division where offence occurred</i>	<i>Recorded criminal incidents</i>					
	<i>2000</i>		<i>2001</i>		<i>2002</i>	
	<i>Number</i>	<i>Rate per 100,000 population</i>	<i>Number</i>	<i>Rate per 100,000 population</i>	<i>Number</i>	<i>Rate per 100,000 population</i>
Sydney	54,134	1,325.2	54,631	1,319.3	51,406	1,241.4
Inner Sydney	6,016	2,073.7	6,306	2,138.8	6,167	2,091.7
Eastern Suburbs	3,041	1,234.8	3,203	1,294.5	3,215	1,299.3
St George – Sutherland	4,965	1,155.1	4,911	1,127.3	4,785	1,098.4
Canterbury – Bankstown	3,479	1,118.0	3,299	1,049.9	3,069	976.7
Fairfield – Liverpool	4,303	1,263.9	4,163	1,198.9	3,645	1,049.8
Outer South Western Sydney	4,740	2,071.8	4,845	2,088.9	4,021	1,733.6
Inner Western Sydney	1,429	880.2	1,405	854.8	1,491	907.1
Central Western Sydney	3,487	1,189.5	3,489	1,171.8	3,452	1,159.4
Outer Western Sydney	5,023	1,601.1	4,963	1,570.8	4,402	1,393.3
Blacktown	4,248	1,632.0	4,297	1,644.7	4,253	1,627.9
Lower Northern Sydney	2,850	975.1	2,813	949.7	2,598	877.2
Central Northern Sydney	3,402	862.0	3,363	830.4	2,916	720.0
Northern Beaches	2,584	1,126.9	2,837	1,225.7	2,196	948.8
Gosford – Wyong	4,567	1,561.2	4,737	1,591.8	5,196	1,746.0
Hunter	9,658	1,674.5	9,865	1,695.1	9,467	1,626.7
Illawarra	6,958	1,787.7	6,998	1,779.4	6,383	1,623.0
Richmond – Tweed	2,761	1,307.7	2,729	1,282.4	2,864	1,345.8
Mid-North Coast	4,089	1,498.2	4,168	1,515.1	4,492	1,632.9
Northern	3,556	2,053.2	3,352	1,946.2	3,511	2,038.5
North Western	2,648	2,265.6	3,155	2,709.5	3,122	2,681.2
Central West	2,811	1,627.5	3,306	1,908.2	3,175	1,832.6
South Eastern	2,989	1,638.4	3,193	1,731.2	2,935	1,591.3
Murrumbidgee	2,532	1,702.6	2,851	1,915.9	2,870	1,928.6
Murray	1,664	1,513.5	1,835	1,666.3	2,090	1,897.8
Far West	623	2,641.6	605	2,608.1	608	2,621.0
New South Wales*	94,564	1,463.3	96,781	1,481.5	93,041	1,424.3

\* The total for New South Wales includes 141 recorded incidents in 2000, 93 recorded incidents in 2001 and 118 recorded incidents in 2002 where the offence occurred in a custodial institution.

**TABLE 4.18** RECORDED CRIMINAL INCIDENTS, 2000 TO 2002: STATISTICAL DIVISION**POSSESSION AND/OR USE OF COCAINE**

<i>Statistical Division where offence occurred</i>	<i>Recorded criminal incidents</i>					
	<i>2000</i>		<i>2001</i>		<i>2002</i>	
	<i>Number</i>	<i>Rate per 100,000 population</i>	<i>Number</i>	<i>Rate per 100,000 population</i>	<i>Number</i>	<i>Rate per 100,000 population</i>
Sydney	181	4.4	440	10.6	190	4.6
Inner Sydney	79	27.2	209	70.9	96	32.6
Eastern Suburbs	10	4.1	11	4.4	11	4.4
St George – Sutherland	13	3.0	9	2.1	7	1.6
Canterbury – Bankstown	21	6.7	26	8.3	7	2.2
Fairfield – Liverpool	25	7.3	113	32.5	45	13.0
Outer South Western Sydney	1	0.4	6	2.6	0	0.0
Inner Western Sydney	8	4.9	7	4.3	3	1.8
Central Western Sydney	2	0.7	22	7.4	6	2.0
Outer Western Sydney	1	0.3	3	0.9	5	1.6
Blacktown	1	0.4	5	1.9	3	1.1
Lower Northern Sydney	9	3.1	6	2.0	2	0.7
Central Northern Sydney	2	0.5	8	2.0	0	0.0
Northern Beaches	7	3.1	9	3.9	2	0.9
Gosford – Wyong	2	0.7	6	2.0	3	1.0
Hunter	1	0.2	3	0.5	5	0.9
Illawarra	3	0.8	5	1.3	1	0.3
Richmond – Tweed	2	0.9	8	3.8	5	2.3
Mid-North Coast	8	2.9	4	1.5	2	0.7
Northern	3	1.7	2	1.2	0	0.0
North Western	0	0.0	0	0.0	2	1.7
Central West	3	1.7	0	0.0	0	0.0
South Eastern	4	2.2	2	1.1	1	0.5
Murrumbidgee	2	1.3	1	0.7	0	0.0
Murray	0	0.0	0	0.0	2	1.8
Far West	0	0.0	0	0.0	0	0.0
New South Wales*	208	3.2	469	7.2	210	3.2

\* The total for New South Wales includes 1 recorded incident in 2000, 4 recorded incidents in 2001 and 2 recorded incidents in 2002 where the offence occurred in a custodial institution.

**TABLE 4.19** RECORDED CRIMINAL INCIDENTS, 2000 TO 2002: STATISTICAL DIVISION**POSSESSION AND/OR USE OF NARCOTICS**

<i>Statistical Division where offence occurred</i>	<i>Recorded criminal incidents</i>					
	<i>2000</i>		<i>2001</i>		<i>2002</i>	
	<i>Number</i>	<i>Rate per 100,000 population</i>	<i>Number</i>	<i>Rate per 100,000 population</i>	<i>Number</i>	<i>Rate per 100,000 population</i>
Sydney	1,857	45.5	813	19.6	761	18.4
Inner Sydney	463	159.6	243	82.4	183	62.1
Eastern Suburbs	30	12.2	10	4.0	7	2.8
St George – Sutherland	78	18.1	37	8.5	19	4.4
Canterbury – Bankstown	130	41.8	51	16.2	50	15.9
Fairfield – Liverpool	796	233.8	306	88.1	335	96.5
Outer South Western Sydney	26	11.4	6	2.6	8	3.4
Inner Western Sydney	53	32.6	17	10.3	20	12.2
Central Western Sydney	95	32.4	36	12.1	40	13.4
Outer Western Sydney	36	11.5	9	2.8	18	5.7
Blacktown	35	13.4	45	17.2	35	13.4
Lower Northern Sydney	28	9.6	4	1.4	9	3.0
Central Northern Sydney	14	3.5	8	2.0	3	0.7
Northern Beaches	14	6.1	11	4.8	10	4.3
Gosford – Wyong	59	20.2	30	10.1	24	8.1
Hunter	131	22.7	57	9.8	76	13.1
Illawarra	51	13.1	37	9.4	18	4.6
Richmond – Tweed	162	76.7	88	41.4	16	7.5
Mid-North Coast	74	27.1	32	11.6	16	5.8
Northern	18	10.4	3	1.7	1	0.6
North Western	7	6.0	6	5.2	4	3.4
Central West	48	27.8	14	8.1	4	2.3
South Eastern	37	20.3	19	10.3	4	2.2
Murrumbidgee	15	10.1	3	2.0	2	1.3
Murray	6	5.5	5	4.5	4	3.6
Far West	1	4.2	1	4.3	0	0.0
New South Wales*	2,483	38.4	1,102	16.9	931	14.3

\* The total for New South Wales includes 76 recorded incidents in 2000, 24 recorded incidents in 2001 and 25 recorded incidents in 2002 where the offence occurred in a custodial institution.

**TABLE 4.20** RECORDED CRIMINAL INCIDENTS, 2000 TO 2002: STATISTICAL DIVISION**POSSESSION AND/OR USE OF CANNABIS**

<i>Statistical Division where offence occurred</i>	<i>Recorded criminal incidents</i>					
	<i>2000</i>		<i>2001</i>		<i>2002</i>	
	<i>Number</i>	<i>Rate per 100,000 population</i>	<i>Number</i>	<i>Rate per 100,000 population</i>	<i>Number</i>	<i>Rate per 100,000 population</i>
Sydney	4,744	116.1	7,799	188.3	5,673	137.0
Inner Sydney	1,255	432.6	2,314	784.8	1,399	474.5
Eastern Suburbs	173	70.2	304	122.9	239	96.6
St George – Sutherland	331	77.0	518	118.9	378	86.8
Canterbury – Bankstown	264	84.8	301	95.8	268	85.3
Fairfield – Liverpool	301	88.4	438	126.1	319	91.9
Outer South Western Sydney	220	96.2	432	186.3	346	149.2
Inner Western Sydney	102	62.8	213	129.6	229	139.3
Central Western Sydney	322	109.8	582	195.5	446	149.8
Outer Western Sydney	436	139.0	566	179.1	394	124.7
Blacktown	367	141.0	681	260.7	519	198.7
Lower Northern Sydney	230	78.7	302	102.0	197	66.5
Central Northern Sydney	246	62.3	448	110.6	389	96.1
Northern Beaches	170	74.1	214	92.5	166	71.7
Gosford – Wyong	327	111.8	486	163.3	384	129.0
Hunter	969	168.0	1,084	186.3	1,043	179.2
Illawarra	484	124.4	653	166.0	503	127.9
Richmond – Tweed	1,137	538.5	1,136	533.8	870	408.8
Mid-North Coast	896	328.3	824	299.5	837	304.3
Northern	411	237.3	487	282.8	416	241.5
North Western	329	281.5	303	260.2	211	181.2
Central West	414	239.7	406	234.3	328	189.3
South Eastern	618	338.7	561	304.2	396	214.7
Murrumbidgee	368	247.5	507	340.7	341	229.2
Murray	292	265.6	309	280.6	265	240.6
Far West	69	292.6	63	271.6	57	245.7
New South Wales*	11,069	171.3	14,486	221.8	11,424	174.9

\* The total for New South Wales includes 338 recorded incidents in 2000, 354 recorded incidents in 2001 and 484 recorded incidents in 2002 where the offence occurred in a custodial institution.

**TABLE 4.21** RECORDED CRIMINAL INCIDENTS, 2000 TO 2002: STATISTICAL DIVISION**DEALING, TRAFFICKING IN COCAINE**

<i>Statistical Division where offence occurred</i>	<i>Recorded criminal incidents</i>					
	<i>2000</i>		<i>2001</i>		<i>2002</i>	
	<i>Number</i>	<i>Rate per 100,000 population</i>	<i>Number</i>	<i>Rate per 100,000 population</i>	<i>Number</i>	<i>Rate per 100,000 population</i>
Sydney	93	2.3	241	5.8	110	2.7
Inner Sydney	53	18.3	115	39.0	61	20.7
Eastern Suburbs	9	3.7	2	0.8	8	3.2
St George – Sutherland	2	0.5	5	1.1	1	0.2
Canterbury – Bankstown	6	1.9	16	5.1	21	6.7
Fairfield – Liverpool	3	0.9	73	21.0	12	3.5
Outer South Western Sydney	1	0.4	0	0.0	0	0.0
Inner Western Sydney	1	0.6	1	0.6	0	0.0
Central Western Sydney	3	1.0	16	5.4	2	0.7
Outer Western Sydney	0	0.0	0	0.0	0	0.0
Blacktown	0	0.0	0	0.0	0	0.0
Lower Northern Sydney	5	1.7	2	0.7	0	0.0
Central Northern Sydney	6	1.5	4	1.0	0	0.0
Northern Beaches	4	1.7	6	2.6	5	2.2
Gosford – Wyong	0	0.0	1	0.3	0	0.0
Hunter	2	0.3	1	0.2	2	0.3
Illawarra	0	0.0	8	2.0	1	0.3
Richmond – Tweed	2	0.9	4	1.9	0	0.0
Mid-North Coast	1	0.4	0	0.0	0	0.0
Northern	0	0.0	0	0.0	0	0.0
North Western	0	0.0	0	0.0	1	0.9
Central West	0	0.0	0	0.0	0	0.0
South Eastern	1	0.5	0	0.0	0	0.0
Murrumbidgee	1	0.7	0	0.0	0	0.0
Murray	0	0.0	1	0.9	0	0.0
Far West	0	0.0	0	0.0	0	0.0
New South Wales	100	1.5	255	3.9	114	1.7



**TABLE 4.22** RECORDED CRIMINAL INCIDENTS, 2000 TO 2002: STATISTICAL DIVISION**DEALING, TRAFFICKING IN NARCOTICS**

<i>Statistical Division where offence occurred</i>	<i>Recorded criminal incidents</i>					
	<i>2000</i>		<i>2001</i>		<i>2002</i>	
	<i>Number</i>	<i>Rate per 100,000 population</i>	<i>Number</i>	<i>Rate per 100,000 population</i>	<i>Number</i>	<i>Rate per 100,000 population</i>
Sydney	493	12.1	347	8.4	414	10.0
Inner Sydney	197	67.9	97	32.9	88	29.8
Eastern Suburbs	8	3.2	1	0.4	3	1.2
St George – Sutherland	17	4.0	7	1.6	21	4.8
Canterbury – Bankstown	53	17.0	22	7.0	26	8.3
Fairfield – Liverpool	175	51.4	183	52.7	220	63.4
Outer South Western Sydney	3	1.3	2	0.9	1	0.4
Inner Western Sydney	14	8.6	15	9.1	7	4.3
Central Western Sydney	10	3.4	5	1.7	6	2.0
Outer Western Sydney	6	1.9	2	0.6	5	1.6
Blacktown	0	0.0	1	0.4	24	9.2
Lower Northern Sydney	3	1.0	2	0.7	0	0.0
Central Northern Sydney	2	0.5	2	0.5	0	0.0
Northern Beaches	1	0.4	2	0.9	5	2.2
Gosford – Wyong	4	1.4	6	2.0	8	2.7
Hunter	80	13.9	15	2.6	25	4.3
Illawarra	44	11.3	21	5.3	35	8.9
Richmond – Tweed	118	55.9	64	30.1	2	0.9
Mid-North Coast	27	9.9	9	3.3	2	0.7
Northern	7	4.0	0	0.0	1	0.6
North Western	3	2.6	1	0.9	0	0.0
Central West	53	30.7	6	3.5	14	8.1
South Eastern	19	10.4	2	1.1	2	1.1
Murrumbidgee	9	6.1	2	1.3	0	0.0
Murray	1	0.9	0	0.0	10	9.1
Far West	0	0.0	0	0.0	0	0.0
New South Wales*	860	13.3	467	7.1	505	7.7

\* The total for New South Wales includes 6 recorded incidents in 2000 where the offence occurred in a custodial institution.

**TABLE 4.23** RECORDED CRIMINAL INCIDENTS, 2000 TO 2002: STATISTICAL DIVISION**DEALING, TRAFFICKING IN CANNABIS**

<i>Statistical Division where offence occurred</i>	<i>Recorded criminal incidents</i>					
	<i>2000</i>		<i>2001</i>		<i>2002</i>	
	<i>Number</i>	<i>Rate per 100,000 population</i>	<i>Number</i>	<i>Rate per 100,000 population</i>	<i>Number</i>	<i>Rate per 100,000 population</i>
Sydney	387	9.5	512	12.4	346	8.4
Inner Sydney	166	57.2	170	57.7	113	38.3
Eastern Suburbs	9	3.7	14	5.7	10	4.0
St George – Sutherland	18	4.2	20	4.6	22	5.1
Canterbury – Bankstown	28	9.0	40	12.7	26	8.3
Fairfield – Liverpool	31	9.1	65	18.7	21	6.0
Outer South Western Sydney	8	3.5	24	10.3	26	11.2
Inner Western Sydney	7	4.3	14	8.5	12	7.3
Central Western Sydney	18	6.1	30	10.1	26	8.7
Outer Western Sydney	16	5.1	42	13.3	16	5.1
Blacktown	20	7.7	30	11.5	25	9.6
Lower Northern Sydney	13	4.4	19	6.4	16	5.4
Central Northern Sydney	18	4.6	21	5.2	7	1.7
Northern Beaches	9	3.9	9	3.9	11	4.8
Gosford – Wyong	26	8.9	14	4.7	15	5.0
Hunter	51	8.8	65	11.2	52	8.9
Illawarra	33	8.5	39	9.9	28	7.1
Richmond – Tweed	77	36.5	62	29.1	37	17.4
Mid-North Coast	53	19.4	46	16.7	61	22.2
Northern	34	19.6	45	26.1	26	15.1
North Western	23	19.7	29	24.9	13	11.2
Central West	38	22.0	32	18.5	37	21.4
South Eastern	79	43.3	60	32.5	24	13.0
Murrumbidgee	60	40.3	78	52.4	55	37.0
Murray	27	24.6	46	41.8	19	17.3
Far West	7	29.7	5	21.6	9	38.8
New South Wales*	881	13.6	1,031	15.8	715	10.9

\* The total for New South Wales includes 12 recorded incidents in 2000, 12 recorded incidents in 2001 and 8 recorded incidents in 2002 where the offence occurred in a custodial institution.

**TABLE 4.24** RECORDED CRIMINAL INCIDENTS, 2000 TO 2002: STATISTICAL DIVISION**CULTIVATING CANNABIS**

<i>Statistical Division where offence occurred</i>	<i>Recorded criminal incidents</i>					
	<i>2000</i>		<i>2001</i>		<i>2002</i>	
	<i>Number</i>	<i>Rate per 100,000 population</i>	<i>Number</i>	<i>Rate per 100,000 population</i>	<i>Number</i>	<i>Rate per 100,000 population</i>
Sydney	338	8.3	340	8.2	358	8.6
Inner Sydney	25	8.6	16	5.4	17	5.8
Eastern Suburbs	12	4.9	8	3.2	14	5.7
St George – Sutherland	32	7.4	35	8.0	20	4.6
Canterbury – Bankstown	17	5.5	20	6.4	25	8.0
Fairfield – Liverpool	22	6.5	19	5.5	22	6.3
Outer South Western Sydney	32	14.0	47	20.3	40	17.2
Inner Western Sydney	4	2.5	3	1.8	4	2.4
Central Western Sydney	14	4.8	31	10.4	18	6.0
Outer Western Sydney	57	18.2	40	12.7	52	16.5
Blacktown	33	12.7	37	14.2	38	14.5
Lower Northern Sydney	16	5.5	8	2.7	6	2.0
Central Northern Sydney	16	4.1	17	4.2	26	6.4
Northern Beaches	11	4.8	16	6.9	7	3.0
Gosford – Wyong	47	16.1	43	14.4	69	23.2
Hunter	166	28.8	198	34.0	148	25.4
Illawarra	121	31.1	92	23.4	87	22.1
Richmond – Tweed	292	138.3	289	135.8	216	101.5
Mid-North Coast	232	85.0	231	84.0	252	91.6
Northern	107	61.8	83	48.2	122	70.8
North Western	58	49.6	38	32.6	36	30.9
Central West	53	30.7	68	39.3	58	33.5
South Eastern	140	76.7	121	65.6	85	46.1
Murrumbidgee	78	52.5	74	49.7	59	39.6
Murray	60	54.6	33	30.0	65	59.0
Far West	16	67.8	11	47.4	15	64.7
New South Wales*	1,662	25.7	1,583	24.2	1,502	23.0

\* The total for New South Wales includes 1 recorded incident in 2000, 5 recorded incidents in 2001 and 1 recorded incident in 2002 where the offence occurred in a custodial institution.

**TABLE 4.25 RECORDED CRIMINAL INCIDENTS, 2000 TO 2002: STATISTICAL DIVISION****OFFENSIVE CONDUCT**

<i>Statistical Division where offence occurred</i>	<i>Recorded criminal incidents</i>					
	<i>2000</i>		<i>2001</i>		<i>2002</i>	
	<i>Number</i>	<i>Rate per 100,000 population</i>	<i>Number</i>	<i>Rate per 100,000 population</i>	<i>Number</i>	<i>Rate per 100,000 population</i>
Sydney	1,146	28.1	1,346	32.5	1,599	38.6
Inner Sydney	237	81.7	316	107.2	384	130.2
Eastern Suburbs	57	23.1	57	23.0	91	36.8
St George – Sutherland	71	16.5	97	22.3	131	30.1
Canterbury – Bankstown	21	6.7	30	9.5	29	9.2
Fairfield – Liverpool	58	17.0	56	16.1	88	25.3
Outer South Western Sydney	63	27.5	65	28.0	70	30.2
Inner Western Sydney	35	21.6	23	14.0	45	27.4
Central Western Sydney	81	27.6	84	28.2	85	28.5
Outer Western Sydney	124	39.5	135	42.7	172	54.4
Blacktown	121	46.5	140	53.6	202	77.3
Lower Northern Sydney	50	17.1	67	22.6	60	20.3
Central Northern Sydney	58	14.7	69	17.0	40	9.9
Northern Beaches	65	28.3	83	35.9	91	39.3
Gosford – Wyong	105	35.9	124	41.7	111	37.3
Hunter	302	52.4	420	72.2	466	80.1
Illawarra	162	41.6	143	36.4	194	49.3
Richmond – Tweed	424	200.8	390	183.3	459	215.7
Mid-North Coast	311	114.0	363	132.0	429	155.9
Northern	271	156.5	289	167.8	254	147.5
North Western	315	269.5	283	243.0	324	278.3
Central West	207	119.8	257	148.3	269	155.3
South Eastern	224	122.8	226	122.5	269	145.8
Murrumbidgee	265	178.2	361	242.6	338	227.1
Murray	107	97.3	136	123.5	183	166.2
Far West	72	305.3	59	254.3	58	250.0
New South Wales*	3,806	58.9	4,274	65.4	4,842	74.1

\* The total for New South Wales includes 1 recorded incident in 2001 where the offence occurred in a custodial institution.

**TABLE 4.26** RECORDED CRIMINAL INCIDENTS, 2000 TO 2002: STATISTICAL DIVISION**OFFENSIVE LANGUAGE**

<i>Statistical Division where offence occurred</i>	<i>Recorded criminal incidents</i>					
	<i>2000</i>		<i>2001</i>		<i>2002</i>	
	<i>Number</i>	<i>Rate per 100,000 population</i>	<i>Number</i>	<i>Rate per 100,000 population</i>	<i>Number</i>	<i>Rate per 100,000 population</i>
Sydney	1,875	45.9	2,272	54.9	2,188	52.8
Inner Sydney	283	97.6	358	121.4	395	134.0
Eastern Suburbs	66	26.8	63	25.5	73	29.5
St George – Sutherland	132	30.7	154	35.4	157	36.0
Canterbury – Bankstown	84	27.0	80	25.5	73	23.2
Fairfield – Liverpool	160	47.0	218	62.8	187	53.9
Outer South Western Sydney	110	48.1	151	65.1	179	77.2
Inner Western Sydney	47	28.9	45	27.4	65	39.5
Central Western Sydney	174	59.4	177	59.4	138	46.3
Outer Western Sydney	190	60.6	312	98.8	243	76.9
Blacktown	272	104.5	272	104.1	233	89.2
Lower Northern Sydney	47	16.1	48	16.2	39	13.2
Central Northern Sydney	85	21.5	110	27.2	84	20.7
Northern Beaches	35	15.3	72	31.1	81	35.0
Gosford – Wyong	190	64.9	212	71.2	241	81.0
Hunter	386	66.9	436	74.9	427	73.4
Illawarra	243	62.4	213	54.2	240	61.0
Richmond – Tweed	338	160.1	326	153.2	322	151.3
Mid-North Coast	426	156.1	456	165.8	493	179.2
Northern	478	276.0	409	237.5	313	181.7
North Western	346	296.0	362	310.9	337	289.4
Central West	321	185.8	383	221.1	362	208.9
South Eastern	385	211.0	365	197.9	314	170.2
Murrumbidgee	315	211.8	427	286.9	330	221.8
Murray	213	193.7	241	218.8	269	244.3
Far West	140	593.6	113	487.1	114	491.4
New South Wales*	5,469	84.6	6,006	91.9	5,712	87.4

\* The total for New South Wales includes 3 recorded incidents in 2000, 3 recorded incidents in 2001 and 3 recorded incidents in 2002 where the offence occurred in a custodial institution.

**TABLE 4.27** RECORDED CRIMINAL INCIDENTS, 2000 TO 2002: STATISTICAL DIVISION**BREACH APPREHENDED VIOLENCE ORDER**

<i>Statistical Division where offence occurred</i>	<i>Recorded criminal incidents</i>					
	<i>2000</i>		<i>2001</i>		<i>2002</i>	
	<i>Number</i>	<i>Rate per 100,000 population</i>	<i>Number</i>	<i>Rate per 100,000 population</i>	<i>Number</i>	<i>Rate per 100,000 population</i>
Sydney	5,158	126.3	5,546	133.9	5,563	134.3
Inner Sydney	589	203.0	552	187.2	594	201.5
Eastern Suburbs	222	90.1	276	111.5	242	97.8
St George – Sutherland	459	106.8	574	131.8	571	131.1
Canterbury – Bankstown	235	75.5	361	114.9	366	116.5
Fairfield – Liverpool	391	114.8	444	127.9	482	138.8
Outer South Western Sydney	534	233.4	526	226.8	535	230.7
Inner Western Sydney	129	79.5	173	105.3	167	101.6
Central Western Sydney	419	142.9	432	145.1	376	126.3
Outer Western Sydney	557	177.5	523	165.5	487	154.1
Blacktown	601	230.9	510	195.2	563	215.5
Lower Northern Sydney	163	55.8	201	67.9	161	54.4
Central Northern Sydney	202	51.2	186	45.9	182	44.9
Northern Beaches	148	64.5	196	84.7	219	94.6
Gosford – Wyong	509	174.0	592	198.9	618	207.7
Hunter	1,323	229.4	1,419	243.8	1,518	260.8
Illawarra	1,089	279.8	1,134	288.3	965	245.4
Richmond – Tweed	499	236.3	496	233.1	489	229.8
Mid-North Coast	757	277.4	850	309.0	771	280.3
Northern	384	221.7	414	240.4	487	282.8
North Western	385	329.4	413	354.7	468	401.9
Central West	396	229.3	401	231.5	474	273.6
South Eastern	358	196.2	416	225.6	399	216.3
Murrumbidgee	382	256.9	454	305.1	506	340.0
Murray	201	182.8	312	283.3	293	266.1
Far West	131	555.5	166	715.6	175	754.4
New South Wales*	11,073	171.3	12,030	184.2	12,109	185.4

\* The total for New South Wales includes 10 recorded incidents in 2000, 9 recorded incidents in 2001 and 1 recorded incident in 2002 where the offence occurred in a custodial institution.

**TABLE 4.28** RECORDED CRIMINAL INCIDENTS, 2000 TO 2002: STATISTICAL DIVISION**PCA DRIVING OFFENCES**

<i>Statistical Division where offence occurred</i>	<i>Recorded criminal incidents</i>					
	<i>2000</i>		<i>2001</i>		<i>2002</i>	
	<i>Number</i>	<i>Rate per 100,000 population</i>	<i>Number</i>	<i>Rate per 100,000 population</i>	<i>Number</i>	<i>Rate per 100,000 population</i>
Sydney	12,126	296.8	12,009	290.0	12,795	309.0
Inner Sydney	1,374	473.6	1,459	494.8	1,745	591.9
Eastern Suburbs	622	252.6	695	280.9	702	283.7
St George – Sutherland	1,058	246.1	1,140	261.7	1,313	301.4
Canterbury – Bankstown	452	145.2	501	159.4	514	163.6
Fairfield – Liverpool	969	284.6	949	273.3	1,249	359.7
Outer South Western Sydney	750	327.8	677	291.9	693	298.8
Inner Western Sydney	332	204.5	336	204.4	384	233.6
Central Western Sydney	626	213.5	596	200.2	536	180.0
Outer Western Sydney	1,416	451.4	1,054	333.6	885	280.1
Blacktown	826	317.3	808	309.3	894	342.2
Lower Northern Sydney	981	335.6	1,139	384.6	909	306.9
Central Northern Sydney	560	141.9	710	175.3	670	165.4
Northern Beaches	993	433.1	824	356.0	1,089	470.5
Gosford – Wyong	1,167	398.9	1,121	376.7	1,212	407.3
Hunter	2,303	399.3	2,742	471.2	3,000	515.5
Illawarra	1,150	295.5	1,166	296.5	1,402	356.5
Richmond – Tweed	1,270	601.5	1,383	649.9	1,415	664.9
Mid-North Coast	1,257	460.6	1,309	475.8	1,163	422.8
Northern	955	551.4	997	578.9	977	567.3
North Western	754	645.1	658	565.1	708	608.0
Central West	905	524.0	832	480.2	823	475.0
South Eastern	1,127	617.7	1,225	664.2	1,201	651.2
Murrumbidgee	941	632.8	860	577.9	861	578.6
Murray	602	547.5	618	561.2	612	555.7
Far West	167	708.1	133	573.4	130	560.4
New South Wales*	23,557	364.5	23,933	366.4	25,087	384.0

\* The total for New South Wales includes 1 recorded incident in 2001 where the offence occurred in a custodial institution.

**TABLE 4.29 RECORDED CRIMINAL INCIDENTS, 2000 TO 2002: STATISTICAL DIVISION****DRIVE WHILE DISQUALIFIED**

<i>Statistical Division where offence occurred</i>	<i>Recorded criminal incidents</i>					
	<i>2000</i>		<i>2001</i>		<i>2002</i>	
	<i>Number</i>	<i>Rate per 100,000 population</i>	<i>Number</i>	<i>Rate per 100,000 population</i>	<i>Number</i>	<i>Rate per 100,000 population</i>
Sydney	10,300	252.1	10,978	265.1	10,872	262.6
Inner Sydney	1,002	345.4	1,011	342.9	1,030	349.3
Eastern Suburbs	329	133.6	352	142.3	340	137.4
St George – Sutherland	698	162.4	843	193.5	992	227.7
Canterbury – Bankstown	796	255.8	926	294.7	925	294.4
Fairfield – Liverpool	1,728	507.6	1,358	391.1	1,482	426.8
Outer South Western Sydney	803	351.0	827	356.6	737	317.8
Inner Western Sydney	313	192.8	360	219.0	370	225.1
Central Western Sydney	783	267.1	1,025	344.3	1,033	346.9
Outer Western Sydney	1,017	324.2	1,113	352.3	898	284.2
Blacktown	1,106	424.9	1,153	441.3	1,200	459.3
Lower Northern Sydney	368	125.9	397	134.0	367	123.9
Central Northern Sydney	277	70.2	389	96.1	397	98.0
Northern Beaches	259	113.0	265	114.5	273	117.9
Gosford – Wyong	821	280.6	959	322.3	828	278.2
Hunter	1,484	257.3	1,784	306.5	1,863	320.1
Illawarra	1,128	289.8	1,236	314.3	906	230.4
Richmond – Tweed	718	340.1	831	390.5	787	369.8
Mid-North Coast	737	270.0	883	321.0	786	285.7
Northern	516	297.9	707	410.5	614	356.5
North Western	513	438.9	496	426.0	516	443.1
Central West	587	339.8	573	330.7	563	325.0
South Eastern	583	319.6	686	371.9	563	305.3
Murrumbidgee	472	317.4	488	327.9	501	336.7
Murray	227	206.5	292	265.1	311	282.4
Far West	105	445.2	106	457.0	99	426.8
New South Wales*	17,380	268.9	19,076	292.0	18,403	281.7

\* The total for New South Wales includes 10 recorded incidents in 2000, 16 recorded incidents in 2001 and 22 recorded incidents in 2002 where the offence occurred in a custodial institution.



**TABLE 4.30** RECORDED CRIMINAL INCIDENTS, 2000 TO 2002: STATISTICAL DIVISION**DRIVE MANNER/SPEED DANGEROUS**

<i>Statistical Division where offence occurred</i>	<i>Recorded criminal incidents</i>					
	<i>2000</i>		<i>2001</i>		<i>2002</i>	
	<i>Number</i>	<i>Rate per 100,000 population</i>	<i>Number</i>	<i>Rate per 100,000 population</i>	<i>Number</i>	<i>Rate per 100,000 population</i>
Sydney	1,697	41.5	1,609	38.9	1,435	34.7
Inner Sydney	171	58.9	126	42.7	126	42.7
Eastern Suburbs	54	21.9	52	21.0	45	18.2
St George – Sutherland	159	37.0	151	34.7	122	28.0
Canterbury – Bankstown	108	34.7	157	50.0	129	41.1
Fairfield – Liverpool	202	59.3	184	53.0	190	54.7
Outer South Western Sydney	167	73.0	127	54.8	116	50.0
Inner Western Sydney	40	24.6	40	24.3	43	26.2
Central Western Sydney	117	39.9	104	34.9	101	33.9
Outer Western Sydney	204	65.0	182	57.6	160	50.6
Blacktown	211	81.1	172	65.8	152	58.2
Lower Northern Sydney	51	17.4	52	17.6	51	17.2
Central Northern Sydney	57	14.4	73	18.0	51	12.6
Northern Beaches	31	13.5	29	12.5	26	11.2
Gosford – Wyong	125	42.7	160	53.8	123	41.3
Hunter	279	48.4	314	54.0	332	57.0
Illawarra	201	51.6	239	60.8	153	38.9
Richmond – Tweed	87	41.2	150	70.5	115	54.0
Mid-North Coast	131	48.0	162	58.9	148	53.8
Northern	80	46.2	70	40.6	89	51.7
North Western	88	75.3	109	93.6	126	108.2
Central West	83	48.1	81	46.8	101	58.3
South Eastern	110	60.3	118	64.0	146	79.2
Murrumbidgee	120	80.7	118	79.3	99	66.5
Murray	83	75.5	108	98.1	67	60.8
Far West	31	131.4	18	77.6	15	64.7
New South Wales*	2,992	46.3	3,096	47.4	2,826	43.3

\* The total for New South Wales includes 2 recorded incidents in 2000 where the offence occurred in a custodial institution.



---

# APPENDICES

---

## APPENDIX 1

<i>Classification</i>	<i>Offences included</i>
<b>Homicide:</b>	
Murder	Murder – actual
Attempted murder	Murder – attempted Shoot with intent to murder
Murder accessory, conspiracy	Murder accessory Murder conspiracy
Manslaughter – not driving	Manslaughter
Manslaughter – driving	Culpable driving cause death
<b>Assault</b>	Actual bodily harm Grievous bodily harm (including malicious wounding) Assault officer Common assault Shoot with intent other than to murder
<b>Sexual offences:</b>	
Sexual assault	Sexual assault Aggravated sexual assault Assault with intent to have sexual intercourse
Indecent assault, act of indecency	Indecent assault Aggravated indecent assault Act of indecency Aggravated act of indecency
Other sexual offences	Incest Carnal knowledge Wilful and obscene exposure Indecent communication Peep or pry Other sexual offence
<b>Abduction and kidnapping</b>	Abduction and kidnapping
<b>Robbery:</b>	
Robbery without a weapon	Robbery Robbery with striking Robbery with wounding Other robbery
Robbery with a firearm	Armed robbery where weapon is firearm
Robbery with a weapon not a firearm	Armed robbery where weapon is not firearm

## APPENDIX 1 continued

<i>Classification</i>	<i>Offences included</i>
<b>Other offences against the person</b>	Intimidation Malicious damage intent injure / endanger Negligent act cause grievous bodily harm Offence against transport service Other offence against the person
<b>Theft:</b>	
Break and enter – dwelling	Break, enter and steal Break, enter intent to steal Break, enter and commit other felony Break, enter and intent to commit other felony <i>Note: property breaking includes all living premises, including nursing home, tent, balcony, garden, garage (attached or detached), shed etc.</i>
Break and enter – non-dwelling	Break, enter and steal Break, enter intent to steal Break, enter and commit other felony Break, enter and intent to commit other felony
Possess implements	Possess implements
Receiving	Receiving
Goods in custody	Goods in custody Possess property stolen outside NSW
Motor vehicle theft	Theft of motor cars, motor cycles, and other modes of transport (excluding marine vessels and aircraft)
Steal from motor vehicle	Steal from motor vehicle
Steal from retail store	Steal from retail store
Steal from dwelling	Steal from dwelling
Steal from person	Steal from person
Stock theft	Stock theft
Fraud	Larceny clerk / servant / bailee Make / use false instrument Embezzlement Fraudulent appropriation Company / corporate offence Deception offence Possess false instrument Publish false misleading statement Corrupt commission / practices Counterfeit currency offence under Crimes Act 1914 (Cth)
Other theft	Other stealing

## APPENDIX 1 continued

<i>Classification</i>	<i>Offences included</i>
<b>Demand money with menace</b>	Demand money with menaces
<b>Extortion, blackmail</b>	Extortion, blackmail
<b>Arson</b>	Malicious damage by fire Destroy by fire – financial gain Destroy by fire – intent injure
<b>Malicious damage to property</b>	Malicious damage to property Graffiti Public place – damage fountain / wall Public place – damage shrine / monument
<b>Drug offences:</b>	
Possession and / or use of cocaine	Possess drug unlawfully, where drug type is cocaine Use or administer drug, where drug type is cocaine
Possession and / or use of narcotics	Possess drug unlawfully, where drug type is narcotics Use or administer drug, where drug type is narcotics
Possession and / or use of cannabis	Possess drug / plant unlawfully, where drug type is cannabis Use or administer drug, where drug type is cannabis
Possession and / or use of other drugs	Possess drug unlawfully, where drug type is not cocaine, narcotics or cannabis Use or administer drug, where drug type is not cocaine, narcotics or cannabis
Dealing, trafficking in cocaine	Supply drug where drug type is cocaine
Dealing, trafficking in narcotics	Supply drug where drug type is narcotics
Dealing, trafficking in cannabis	Supply drug where drug type is cannabis
Dealing, trafficking in other drugs	Supply drug where drug type is not cocaine, narcotics or cannabis
Cultivating cannabis	Cultivate cannabis plant
Importing drugs	Import drugs / plant
Other drug offences	Manufacture drug Forge and / or utter prescription Possess drug utensil Other drug offence
<b>Offensive behaviour:</b>	
Offensive conduct	Offensive conduct
Offensive language	Offensive language
<b>Prostitution offences</b>	Soliciting / prostitution in public Prostitution – premises Consorting Child prostitution Child pornography Other vice offence
<b>Betting and gaming offences</b>	Conduct / play illegal game Own / manage premises – gaming Other gaming offence

## APPENDIX 1 continued

<i>Classification</i>	<i>Offences included</i>
<b>Weapons offences</b>	Possess whilst unlicensed Possess shortened firearm Possess prohibited weapon / article Shorten firearm Firearms, dealer offence Unlawfully discharge firearm Trespass with firearm Use firearm under influence Discharge firearm into premises Firearms, not ensure safekeeping Use prohibited weapon / article Sell prohibited weapon / article Other prohibited weapon / article offence Bomb hoax or threat Possess explosive / dangerous article Carry cutting weapon Other firearm offence Other firearm licensing offence
<b>Against justice procedures:</b>	
Escapee – Corrective Services custody	Escapee – Corrective Services custody
Escapee – Police custody	Escapee – Police custody
Escapee – juvenile detention	Escapee – juvenile detention
Escapee – other custody	Escapee – other custody
Breach Apprehended Violence Order	Breach Apprehended Violence Order – domestic Breach Apprehended Violence Order – personal
Breach bail conditions	Breach bail conditions
Breach of recognizance	Breach of recognizance
Fail to appear	Fail to appear
Other offences against justice procedures	Resist / hinder officers Other judicial offence
<b>Driving offences:</b>	
Culpable driving	Culpable driving cause grievous bodily harm Culpable navigation cause grievous bodily harm
PCA	Prescribed concentration alcohol
Drive while disqualified	Drive while disqualified / licence cancelled etc.
Drive manner / speed dangerous	Drive manner / speed dangerous
Other driving offences	Negligent driving Drive under influence drug / alcohol Furious / wanton / menacing driving Registration / insurance offence Breath / drug test offence Speed class A (vehicle under 4.5 tonne) Speed class B & C (vehicle 4.5 tonne and over) Heavy vehicle (non-speeding) offence Motorcycle (non-speeding) offence

## APPENDIX 1 continued

<b>Classification</b>	<b>Offences included</b>
Other driving offences, <i>continued</i>	Public passenger vehicle offence Other driving offence Other traffic offence Other driving licence offence Miscellaneous offence Administrative offence Pedestrian offence Tow truck offence Bicycle offence Safety offence
<b>Other offences</b>	Accessory after the fact Consume alcohol in alcohol free zone Consume alcohol in public by minor Custody of offensive implement Immigration / customs offence Intention offences (e.g. armed with intent) Offences under the: Australian Postal Corporation Act 1989 (Cth) Children and Young Persons (Care and Protection) Act 1998 (NSW) Children (Care and Protection) Act 1987 (NSW) Companion Animals Act 1998 (NSW) Family Law Act 1975 (Cth) Inclosed Lands Protection Act 1901 (NSW) Liquor Act 1982 (NSW) Local Government Act 1993 (NSW) Pawnbrokers and Second-hand Dealers Act 1997 (NSW) Prevention of Cruelty to Animals Act 1979 (NSW) Registered Clubs Act 1976 (NSW) Rural Fires Act 1997 (NSW) Security Industry Act 1997 (NSW) Telecommunications Act 1997 (Cth) various acts administered by the Waterways Authority of NSW  Possess / publish indecent material Public mischief Refuse direction to move on Street offences Transport offences Trespass Other offences



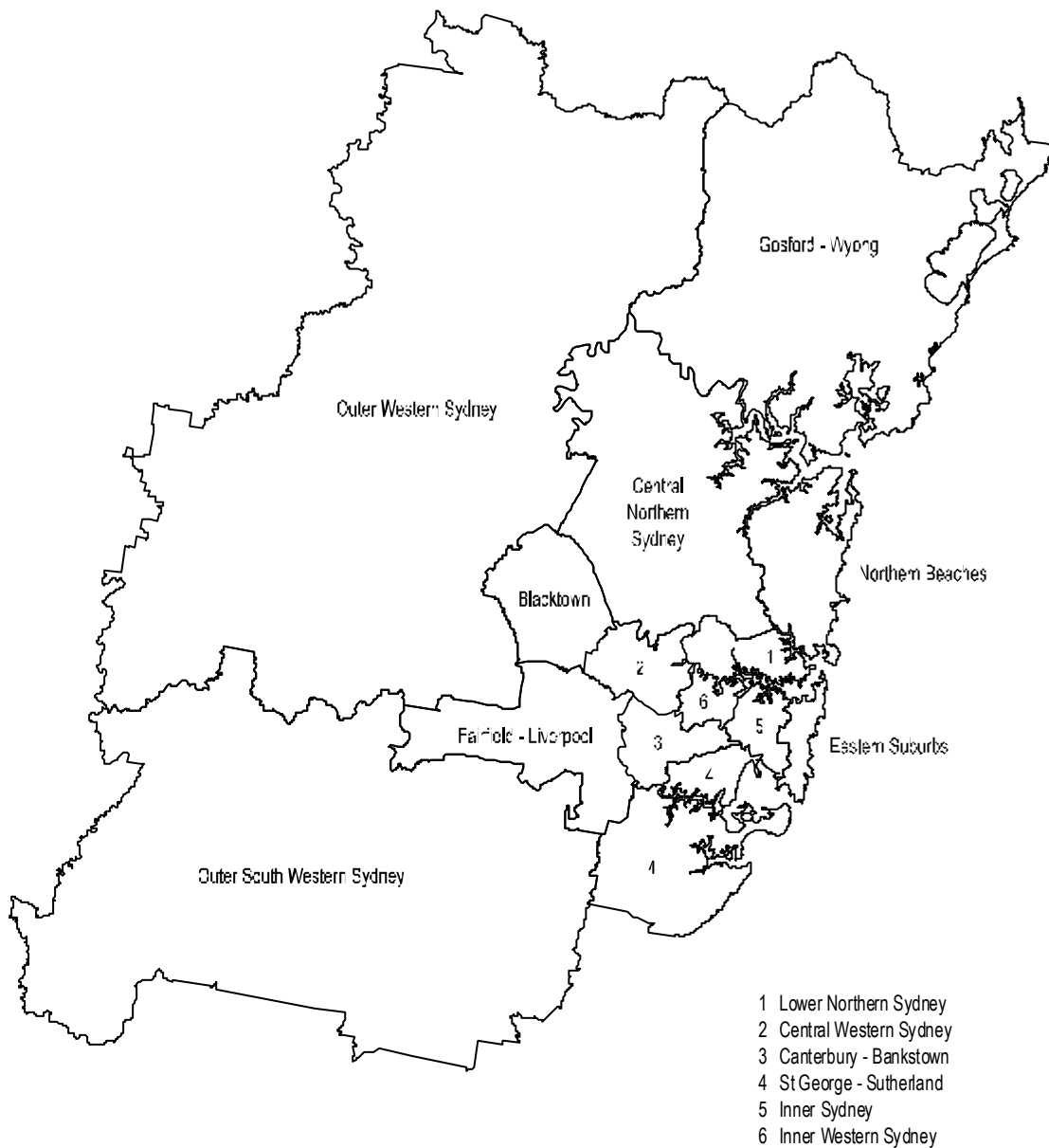
## APPENDIX 2

**Map 1: New South Wales Statistical Division boundaries**



## APPENDIX 2 continued

**Map 2: Sydney Statistical Subdivision boundaries**



## APPENDIX 3

### LOCAL GOVERNMENT AREAS IN STATISTICAL DIVISIONS

#### *Sydney Statistical Subdivisions*

---

<i>Inner Sydney</i>	<i>Outer South Western Sydney</i>	<i>Lower Northern Sydney</i>
Botany Bay	Camden	Hunters Hill
Leichhardt	Campbelltown	Lane Cove
Marrickville	Wollondilly	Mosman
South Sydney		North Sydney
Sydney		Ryde
		Willoughby
<i>Eastern Suburbs</i>	<i>Inner Western Sydney</i>	<i>Central Northern Sydney*</i>
Randwick	Ashfield	Baulkham Hills
Waverley	Burwood	Hornsby
Woollahra	Concord	Ku-ring-gai
	Drummoyne	
	Strathfield	
<i>St George – Sutherland</i>	<i>Central Western Sydney</i>	<i>Northern Beaches</i>
Hurstville	Auburn	Manly
Kogarah	Holroyd	Pittwater
Rockdale	Parramatta	Warringah
Sutherland		
<i>Canterbury – Bankstown</i>	<i>Outer Western Sydney</i>	<i>Gosford – Wyong</i>
Bankstown	Blue Mountains	Gosford
Canterbury	Hawkesbury	Wyong
	Penrith	
<i>Fairfield – Liverpool</i>	<i>Blacktown*</i>	
Fairfield	Blacktown	
Liverpool		

---

\* In reports prior to 2001, the Statistical Subdivision and Local Government Area boundaries, as defined by the ABS, were as follows:

- Blacktown – Baulkham Hills SSD included Blacktown LGA and Baulkham Hills LGA,
- Hornsby – Ku-ring-gai SSD included Hornsby LGA and Ku-ring-gai LGA.

## APPENDIX 3 continued

### NSW Statistical Divisions

<i>Hunter</i>	<i>Illawarra</i>	<i>Richmond – Tweed</i>	<i>Mid-North Coast</i>
Cessnock	Kiama	Ballina	Bellingen
Dungog	Shellharbour	Byron	Coffs Harbour
Gloucester	Shoalhaven	Kyogle	Copmanhurst
Great Lakes	Wingecarribee	Lismore	Grafton
Lake Macquarie	Wollongong	Richmond Valley	Greater Taree
Maitland		Tweed	Hastings
Merriwa			Kempsey
Murrurundi			Lord Howe Island
Muswellbrook			Maclean
Newcastle			Nambucca
Port Stephens			Pristine Waters
Scone			
Singleton			
<i>Northern</i>	<i>North Western</i>	<i>Central West</i>	<i>South Eastern</i>
Armidale Dumaresq	Bogan	Bathurst	Bega Valley
Barraba	Bourke	Bland	Bombala
Bingara	Brewarrina	Blayney	Boorowa
Glen Innes	Cobar	Cabonne	Cooma-Monaro
Gunnedah	Coolah	Cowra	Crookwell
Guyra	Coonabarabran	Evans	Eurobodalla
Inverell	Coonamble	Forbes	Goulburn
Manilla	Dubbo	Greater Lithgow	Gunning
Moree Plains	Gilgandra	Lachlan	Harden
Narrabri	Mudgee	Oberon	Mulwaree
Nundle	Narromine	Orange	Queanbeyan
Parry	Walgett	Parkes	Snowy River
Quirindi	Warren	Rylstone	Tallaganda
Severn	Wellington	Weddin	Yarrowlumla
Tamworth			Yass
Tenterfield			Young
Uralla			
Walcha			
Yallaro			
<i>Murrumbidgee</i>	<i>Murray</i>	<i>Far West</i>	
Carrathool	Albury	Broken Hill	
Coolamon	Balranald	Central Darling	
Cootamundra	Berrigan	Unincorporated Far West	
Griffith	Conargo		
Gundagai	Corowa		
Hay	Culcairn		
Junee	Deniliquin		
Leeton	Holbrook		
Lockhart	Hume		
Murrumbidgee	Jerilderie		
Narrandera	Murray		
Temora	Tumbarumba		
Tumut	Urana		
Wagga Wagga	Wakool		
	Wentworth		
	Windouran		