

---

# NEW SOUTH WALES RECORDED CRIME STATISTICS 2006

---

Derek Goh, Steve Moffatt and Craig Jones



NSW Bureau of Crime  
Statistics and Research

## ACKNOWLEDGEMENTS

The production of this report was greatly assisted by officers within the NSW Police Force. Special thanks are due to officers in Business and Technology Services and in Corporate Information, Executive Support Group. The following officers of the Bureau of Crime Statistics and Research contributed significantly to the production of this report. Thanks to Florence Sin who carried out the desktop publishing of the report. Thanks also to Mark Ramsay and Tracy Painting of the Data Quality Unit for collecting, validating and advising on the data contained in the report. Thanks also to Arvind Varshney for the mapping work used to produce the new front cover.

2007

Published by the NSW Bureau of Crime Statistics and Research  
Attorney General's Department  
Level 8  
St James Centre  
111 Elizabeth Street  
Sydney 2000  
Australia

Phone: + 61 (2) 9231 9190  
Fax: + 61 (2) 9231 9187  
Email: [bcsr@agd.nsw.gov.au](mailto:bcsr@agd.nsw.gov.au)  
Website: [www.bocsar.nsw.gov.au](http://www.bocsar.nsw.gov.au)  
ISSN 1035-9044

This report is available in pdf format on our website and may be provided in alternative formats. Please contact the Statistical Services Unit on 9231 9190 or email us at [bcsr@agd.nsw.gov.au](mailto:bcsr@agd.nsw.gov.au).

### Front Cover

Alcohol-related criminal incidents for NSW in 2006 comprised assaults (30.3%), liquor offences (13.9%), malicious damage to property (10.8%), disorderly conduct (9.7%), offences against justice procedures (8.9%), theft (8.5%) and all other offences (17.9%). The 2006 NSW rate of recorded offending per 100,000 population for alcohol related crime was 1487. The data used for the front cover excludes driving offences. See Appendix 1 (page 78) for more detail on these offence categories. Note that offence rates for LGAs such as Sydney and North Sydney will be influenced by the relatively low residential populations used in the rate calculation when compared to the higher transient populations using these areas daily for work and entertainment. Normally, BOCSAR does not publish rates for LGAs with resident populations below 3,000, but to maintain continuity on the map all LGAs have been included in the four bands.

# INTRODUCTION

This report presents data on crime reported to or detected by the NSW Police Force from January 2004 to December 2006. The data were extracted from the Computerised Operational Policing System (COPS) of the NSW Police Force in January 2007.

This report includes an overview of trends in the most recent two-year period for a selection of serious offence categories. The overview indicates that in the two years to December 2006, one of the 17 major offence categories, *malicious damage to property*, has been trending upwards whilst *break and enter – dwelling*, *break and enter – non-dwelling*, *motor vehicle theft* and *steal from person* were trending downwards. Property crime has, in general, continued the downward trends that have been observed since 2002, but with reduced increments.

Since the 2005 report, *assault* has been partitioned into two separate categories: *domestic violence related* and *non-domestic violence related*.

The front cover of this report is a colour-coded map showing NSW Local Government Areas (2005 boundaries) and their alcohol-related crime rates. See the explanation on the previous page for a summary of alcohol-related offences.

Dr Don Weatherburn  
**Director**

March 2007

# CONTENTS

<b>DEFINITIONS AND EXPLANATORY NOTES.</b>	vi
<b>OVERVIEW OF MAJOR TRENDS, 2005 AND 2006, NEW SOUTH WALES</b>	1
Figure 1 Murder	5
Figure 2 Assault - domestic violence related and non-domestic violence related	6
Figure 3 Sexual assault and indecent assault, act of indecency, other sexual offences	7
Figure 4 Robbery with and without a weapon	8
Figure 5 Break and enter – dwelling and non-dwelling	9
Figure 6 Motor vehicle theft and steal from motor vehicle	10
Figure 7 Steal from retail store, from dwelling and from person	11
Figure 8 Fraud	12
Figure 9 Malicious damage to property.	13
Figure 10 Bail Court Attendance Notice	14
Figure 11 No-Bail Court Attendance Notice	15
Figure 12 Future Court Attendance Notice	15
Figure 13 Field Court Attendance Notice	16
<b>MONTHLY TRENDS IN RECORDED CRIMINAL INCIDENTS, 2004, 2005 AND 2006, NEW SOUTH WALES</b>	17
Table 1.1 Monthly trends in recorded criminal incidents, 2004 New South Wales: Type of offence	18
Table 1.2 Monthly trends in recorded criminal incidents, 2005 New South Wales: Type of offence	22
Table 1.3 Monthly trends in recorded criminal incidents, 2006 New South Wales: Type of offence	26
<b>MONTHLY TRENDS IN METHODS OF PROCEEDING AGAINST ALLEGED OFFENDERS, 2004, 2005 AND 2006, NEW SOUTH WALES</b>	31
Table 2.1 Monthly trends in methods of proceeding against alleged offenders, 2004 New South Wales: Type of process	32
Table 2.2 Monthly trends in methods of proceeding against alleged offenders, 2005 New South Wales: Type of process	33
Table 2.3 Monthly trends in methods of proceeding against alleged offenders, 2006 New South Wales: Type of process	34
<b>CLEARED CRIMINAL INCIDENTS FOR SELECTED OFFENCES, JANUARY 2004 TO SEPTEMBER 2006, NEW SOUTH WALES</b>	35
Table 3.1 Cleared criminal incidents, selected offences, January 2004 to December 2004, New South Wales: Type of offence	36
Table 3.2 Cleared criminal incidents, selected offences, January 2005 to December 2005, New South Wales: Type of offence	37
Table 3.3 Cleared criminal incidents, selected offences, January 2006 to September 2006, New South Wales: Type of offence	38

## RECORDED CRIME STATISTICS IN NEW SOUTH WALES REGIONS FOR SELECTED OFFENCES, 2004, 2005 AND 2006

	39
Table 4.1 Murder	41
Table 4.2 Assault – domestic violence related	42
Table 4.3 Assault – non-domestic violence related	43
Table 4.4 Sexual assault	44
Table 4.5 Indecent assault, act of indecency, other sexual offences.	45
Table 4.6 Robbery without a weapon	46
Table 4.7 Robbery with a firearm	47
Table 4.8 Robbery with a weapon not a firearm	48
Table 4.9 Break and enter – dwelling	49
Table 4.10 Break and enter – non-dwelling	50
Table 4.11 Receiving or handling stolen goods	51
Table 4.12 Motor vehicle theft	52
Table 4.13 Steal from motor vehicle	53
Table 4.14 Steal from retail store	54
Table 4.15 Steal from dwelling	55
Table 4.16 Steal from person	56
Table 4.17 Fraud	57
Table 4.18 Malicious damage to property	58
Table 4.19 Possession and/or use of cocaine	59
Table 4.20 Possession and/or use of narcotics	60
Table 4.21 Possession and/or use of cannabis	61
Table 4.22 Possession and/or use of amphetamines	62
Table 4.23 Possession and/or use of ecstasy	63
Table 4.24 Dealing, trafficking in cocaine	64
Table 4.25 Dealing, trafficking in narcotics	65
Table 4.26 Dealing, trafficking in cannabis	66
Table 4.27 Dealing, trafficking in amphetamines	67
Table 4.28 Dealing, trafficking in ecstasy	68
Table 4.29 Cultivating cannabis	69
Table 4.30 Trespass	70
Table 4.31 Offensive conduct	71
Table 4.32 Offensive language	72
Table 4.33 Breach Apprehended Violence Order	73
Table 4.34 Dangerous or negligent driving	74
Table 4.35 Exceeding the prescribed content of alcohol limit	75
Table 4.36 Exceeding legal speed limit	76
<b>APPENDICES</b>	<b>77</b>
Appendix 1 Offences included in classifications	78
Appendix 2 Maps	84
Appendix 3 Local Government Areas in Sydney Statistical Subdivisions and regional Statistical Divisions	86

## DEFINITIONS AND EXPLANATORY NOTES

The data in this report are extracted from the NSW Police Force's Computerised Operational Policing System (COPS). This system is used for record-keeping for all police operations, not just for criminal matters.

In this report:

- the counting units are recorded *criminal incidents* rather than recorded *offences* (except for murder and manslaughter, where the counting units are victims, and driving offences, where the counting units are legal actions commenced); and
- the data are categorised by date of *reporting* to police (or date of detection by police) rather than by date of *occurrence* of the offence.

### RECORDED CRIMINAL INCIDENTS

A criminal incident is defined as an activity detected by or reported to police which:

- involved the same alleged offender(s);
- involved the same victim(s);
- occurred at the one location;
- occurred during one uninterrupted period of time;
- falls into one offence category;
- falls into one incident type (for example, 'actual', 'attempted', 'conspiracy').

One incident may involve two alleged offenders assaulting the same victim. This would be recorded as one assault incident. Alternatively, suppose a man reports to police that he found his neighbour in the process of damaging his car and, when confronted, the neighbour assaulted him. For such an event, two criminal incidents are recorded because two distinct offence types are involved (malicious damage to property and assault) even though the same parties were involved at the same time and in the same place.

### RECORDED VICTIMS

For murder and manslaughter only, the counting units used are victims. Under the definition of a criminal incident (same parties, same time, same place, same offence and same incident type) one murder or manslaughter incident could involve two or more persons being killed. Because of the seriousness of these offences and their relatively small numbers, it is considered to be more appropriate to count the number of victims, rather than the number of criminal incidents. Hence, where one murder incident involves a person killing six people, six murder victims are counted.

### LEGAL ACTIONS COMMENCED

For driving offences, including driving causing death, the counting unit is the number of legal actions commenced by police rather than the number of incidents recorded. Legal actions include infringement notices, court referrals as well as formal cautions and youth justice conference referrals under the *Young Offenders Act 1997*. Incidents that do not result in a formal legal process are not counted. Legal actions have replaced recorded incidents for driving offences from 2003 onwards. This is because in July 2003, the NSW Police Force changed the way they classify traffic incidents on COPS and, as a result, the incidence of specific driving offences can no longer be determined directly from police incident categories. Driving offence data from 2003 onwards are not comparable with those published in earlier reports.

## OFFENCE CATEGORIES

The classification of offences in this report is broadly based on the Australian Standard Offence Classification (ASOC) devised by the Australian Bureau of Statistics (ABS 1997 Cat. No. 1234.0).

For all *type of offence* classifications used in the report, Appendix 1 lists the offence categories included in the classification. The original offence categories are those used by the NSW Police Force and do not necessarily correspond exactly with offences defined in legislation.

IMPORTANT NOTE. In 2004 the Bureau of Crime Statistics and Research reviewed the offence classifications used in this report. The review aimed to reduce the size of 'other' offence categories and improve the composition of offence categories. Arising from the 2004 review were several significant changes:

1. The composition of all three types of *robbery (without a weapon, with a firearm and with a weapon not a firearm)* changed significantly. *Demand money with menaces*, previously counted as a separate offence, was included in *robbery*. The method used to identify involvement of a weapon was improved, and consequently the number of identified armed robberies increased. *Robbery* statistics in this report should not be compared with robbery statistics reported in publications prior to 2004. Please contact the Bureau for comparable robbery data for earlier years. For comparability, the new counting rules have been retrospectively applied to data from earlier years.
2. Drug offences that involve amphetamines and ecstasy were separately identified. Prior to 2004 they were contained within *other drug offences*.
3. Since the 2004 report, the following offences have been separately enumerated: *harassment, intimidation and private nuisance, receiving or handling stolen goods, trespass, criminal intent, manufacture drug, liquor offences, pornography offences, escape custody, resist or hinder officer and transport regulatory offences*.
4. The following offences are still included in the report but their composition was changed significantly in 2004: *other offences against the person, other offences against justice procedures, prostitution offences, other drug offences, regulated and prohibited weapons offences and other offences*.

There have also been significant changes in the way driving offences are reported. As mentioned above, from 2003 onwards the counting units for driving offences have been the number of legal actions commenced rather than the number of recorded incidents. This change meant that very detailed information became available about the specific offence committed, through the Act and Section of the charge (or Lawpart Code). As a result we have been able to align the offence categories reported for driving offences with those in the Australian Standard Offence Classification (ASOC). Driving offence data from 2003 onwards are not comparable with earlier statistics.

Since the 2005 report, *assault* has been partitioned into two separate categories: *domestic violence related* and *non-domestic violence related*. The NSW Police Force classify an assault as *domestic violence related* where they believe the alleged offender knows the victim intimately through a long-term, close or developing relationship, otherwise the assault is classified as *non-domestic violence related*.

## COUNTING PERIOD

Criminal incidents are included in the counting period in which they were reported to or detected by police.

In most cases criminal incidents are recorded on COPS on the day of reporting. It is possible for some updating of data to occur. That is, data extracted for a specified period of time (incidents reported in 2006, for example), may differ according to the date of extraction of the data.

## PROCEEDINGS AGAINST ALLEGED OFFENDERS

Police may proceed against alleged offenders through a variety of legal or other processes. Most alleged offenders are referred to the NSW criminal courts. The more serious offences are dealt with by way of a Bail Court Attendance Notice (known as a Charge prior to July 2003) or a No-Bail Court Attendance Notice (known as a Court Attendance Notice (CAN) prior to July 2003). In these instances, the alleged offender is arrested, taken to a police station, fingerprinted and the details of the person and charge recorded. Alternatively a Field Court Attendance Notice may be issued by police at other locations. A Future Court Attendance Notice (previously called a Summons) is used for less serious offences.

Some alleged offenders are proceeded against but diverted from the criminal court system. For many minor offences police can issue Infringement Notices. By paying the prescribed penalty the alleged offender avoids having to go to court. A specific type of infringement notice, identified separately for the first time in this report (Tables 2.1, 2.2 and 2.3) is the Criminal Infringement Notice (CIN). CINs were introduced in 12 Local Area Commands in September 2002 to speed up the process for police dealing with minor criminal offences such as *common assault*, *shoplifting*, *offensive conduct*, *offensive language* and *goods in custody*. Instead of commencing court proceedings by issuing a CAN, and then attending court as a prosecution witness, a police officer can issue a CIN. The alleged offender can then pay the prescribed penalty or elect to challenge the CIN at court.

Police also have the discretion to issue warnings to some offenders. Under the *Young Offenders Act 1997*, a juvenile offender can be issued with a warning, cautioned or referred to a youth justice conference. A youth justice conference is a face-to-face meeting between offenders, victims and their support persons. The offending behaviour is discussed and an outcome plan for the offender negotiated. Note that both the police and the courts can refer a young person to a youth justice conference. However, the number of alleged offenders proceeded against by way of a youth conference, as shown in Tables 2.1, 2.2 and 2.3, includes only police referrals to a youth justice conference.

Some alleged offenders are not proceeded against. The alleged offender may be deceased, be under the age of ten years, have diplomatic immunity or be mentally incapable of forming criminal intent. The victim or the Director of Public Prosecutions may decide not to prosecute. A small number of alleged offenders are temporarily not proceeded against while police await further advice, for example whether a juvenile should be referred to a youth justice conference.

## CLEARED CRIMINAL INCIDENTS

A cleared criminal incident is one which, in the view of police, has been satisfactorily cleared either by the commencement of legal proceedings or otherwise.

An incident is cleared when police have commenced criminal proceedings by Court Attendance Notice (CAN) against at least one person.

A criminal incident is cleared other than by commencement of legal proceedings when, under normal circumstances, legal proceedings would have been commenced against at least one person, but, for a variety of reasons, police have been unable to do so, despite knowing the identity of the alleged offender and having sufficient evidence to support criminal proceedings. Examples of situations in which an offence may be cleared other than by commencement of legal proceedings include the following:

- the offender is a juvenile and is cautioned;
- the offender has died before the CAN could be commenced;
- the offender has been committed to a psychiatric institution and is unlikely to be released;
- there is an obstacle to charging, such as diplomatic immunity;
- the complainant or essential witness is dead and proceedings would be aborted;
- the offender is serving a sentence and police consider that no useful purpose would be served by prosecution.



## REGIONAL STATISTICS

Statistics are provided on the number of criminal incidents (victims for murder and legal actions for driving offences) recorded for each of the Statistical Divisions of NSW as defined by the Australian Bureau of Statistics (ABS). Within the Sydney Statistical Division, statistics are provided for Statistical Subdivisions. Recorded criminal incidents which occurred in correctional, detention or remand centres, however, are not counted in the Statistical Division in which the incident occurred. Numbers of such incidents are noted at the foot of each table. Appendix 2 provides maps indicating the location of each Statistical Division and Sydney Statistical Subdivision. Appendix 3 lists the Local Government Areas (LGAs using 2005 boundaries) within each of the Sydney Statistical Subdivisions and regional Statistical Divisions. Note that LGA boundaries change from time to time and that the current list differs from that stated in the 2005 NSW recorded crime report. A criminal incident is counted within a particular region when the location of the offence falls within that region.

For the rate calculations, population data were obtained from the Australian Bureau of Statistics publication: *Regional Population Growth, Australia and New Zealand, 2004-05*, Cat. No. 3218.0 (for 2004 and 2005 population estimates). As no population estimates were available for 2006 when this report was published, rates for 2006 were calculated using 2005 population estimates.

## ORGANISATION OF THE REPORT

The report is organised into five main sections as follows. The first section is an overview of major trends in recorded criminal incidents (recorded victims for murder) over the two-year period from January 2005 to December 2006. Figures showing trends in selected offences are presented, as well as summary points indicating which trends are statistically significant and the highest and lowest offending rates in Statistical Divisions of rural NSW and Statistical Subdivisions of Sydney. This section also includes figures showing trends in methods of proceeding against offenders and alleged offenders which lead to attendance at court.

The second section presents, for all categories of offence, the monthly numbers of recorded criminal incidents (recorded victims for murder and manslaughter and legal actions for driving offences). There are three tables in this section, one each for 2004, 2005 and 2006. Each table provides a total for the year and the annual rate per 100,000 population. The data used for the trend analysis in the first section of the report are included in these tables. Note, however, that the trend analysis uses only the most recent two years of data.

The third section provides monthly numbers of alleged offenders proceeded against, by the type of process pursued, for those criminal incidents recorded by the NSW Police Force in the reference year. There are three tables in this section, one each for 2004, 2005 and 2006. Each offender or alleged offender appears only once in the table for each event (there can be more than one criminal incident associated with a single event). The processes are arranged in a hierarchy with the offender or alleged offender appearing in the most serious category where multiple incidents are involved. For example if an event involves two incidents and the alleged offender is issued with a Bail CAN for one incident but receives a warning for the second incident, the alleged offender appears only in the 'Bail CAN' category. Note that in these tables, the year refers to the year in which the criminal incident or incidents were reported to police. For example, if an incident was reported to police in 2005 but the alleged offender was not apprehended and charged until 2006, the charge is recorded for 2005.

The fourth section provides the number and proportion of cleared criminal incidents, for selected types of offence, for 2004, 2005 and 2006. The offence types included in these tables are those where the crime is likely to have been reported to police, rather than discovered or detected by police. Offence types where the numbers of recorded criminal incidents are influenced by police law enforcement activity (drug offences, for example) are excluded. For such offence types, the clear-up percentages are very high because clearing the offence generally occurs simultaneously with its detection (that is, an arrest is made when the crime is discovered). This report contains criminal incidents cleared within 30 and 90 days of the incident being reported to the NSW Police Force. For each reporting period the table shows (1) the total number of recorded criminal incidents, (2) the total number of incidents cleared (i.e. both criminal incidents where proceedings were commenced and criminal incidents where proceedings were NOT commenced), (3) the number of criminal incidents where police commenced legal proceedings against at least one person and (4) the percentage of recorded criminal incidents where police

commenced proceedings against at least one person. To compare with tables and reports prior to 2005, clear up calculations can be performed using the two columns of 'total number cleared' compared to the 'total number recorded'. Because the data for this report were extracted in January 2007, the clear-up status after 90 days could not be determined for any offences reported in the last three months of 2006. Hence, the clear-up data for 2006 are for the first nine months of the year only.

In the fifth section of the report there are 36 tables, one for each major offence category. Each table gives the numbers and rates (per 100,000 population) of recorded criminal incidents (for murder, recorded victims and for driving offences, legal actions) for the periods January to December 2004, 2005 and 2006, for each of the NSW Statistical Divisions and for each Statistical Subdivision in Sydney. Recorded criminal incidents which occurred in custodial institutions are counted separately; they are not included in the data for the Statistical Division where the custodial institution is located. Note that both the numbers and rates of recorded criminal incidents in 2005 have been updated since the previous edition.

---

**OVERVIEW OF MAJOR TRENDS  
2005 AND 2006  
NEW SOUTH WALES**

---



# OVERVIEW OF MAJOR TRENDS

## TRENDS IN RECORDED CRIME

Irrespective of how trends in recorded crime are presented, their interpretation is a difficult task. The recorded criminal incident data presented in this report are based on information derived from the NSW Police Computerised Operational Policing System (COPS), so only those incidents which are reported to, or detected by, police are included. The trends in recorded crime shown in this report will, therefore, reflect movements in the underlying factors which influence the detection, reporting and recording of crime, as well as changes in the true level of crime in the community.

An alternative measure of the level of crime in NSW is available from crime victim surveys, for example the *Crime and Safety Survey* which is conducted annually by the Australian Bureau of Statistics (ABS).<sup>1</sup> As well as providing an estimate of the victimisation rate in the community for a selected set of offences, this survey measures the proportion of crimes which are not reported to police, and are therefore not recorded in the official statistics. In particular, personal crimes, such as assault and robbery, are less likely to be reported than crimes which involve households. For example, *Crime and Safety, New South Wales, 2006* shows that in the twelve-month period to April 2006, while 71.5 per cent of break and enter offences in NSW (crimes against 'households') were reported to police, only 32.8 per cent of all alleged assault offences were reported.<sup>1</sup> Given that some offences have low reporting rates, it is possible that changes in recorded crime rates over time for these offences may be reflecting changes in reporting rates.

Public willingness to report crime, however, is just one of the extraneous factors which can affect trends in recorded crime. Shifts in policing policy can also have a marked effect on the number of recorded drug offences, drink driving offences, cases of offensive behaviour or of receiving stolen goods. For these offences, therefore, recorded rates probably do not accurately reflect actual rates. For this reason, the more detailed comparisons of crime rates and examination of trends in this document are restricted to offence categories which are reported to, rather than detected by, police.

The interpretation of trends in official reports of crime can be considerably more difficult than the interpretation of trends in unemployment or inflation statistics. The ease with which recorded crime statistics can be misunderstood creates a temptation to offer an authoritative explanation for each major crime trend. Indeed, in many instances it is simply impossible to state with any assurance why a particular trend has appeared. This report, therefore, confines itself to identifying and describing trends in recorded crime, rather than explaining them.

The trends examined in this overview cover the twenty-four month period from January 2005 to December 2006. For comparative purposes, statistics for 2004 have been included in the detailed tables in the sections which follow. For some offence categories, separate trends have been presented for various offence subcategories; in particular, *assault, sexual offences, robbery, break and enter, and stealing offences* have been further disaggregated.

For each offence category or sub-category (except murder), a statistical test for trend<sup>2</sup>, at the 5% level of significance, was applied to the monthly numbers of recorded criminal incidents over the twenty-four month period from January 2005 to December 2006. In the case of murder, the statistical test for trend was applied to the monthly numbers of victims over the same period. For those offences where a statistically significant trend was found, the extent of the trend is indicated by the percentage change between the total recorded number of incidents for the twelve month period to December 2005 and the total recorded number of incidents for the same period in 2006.

## SUMMARY OF TRENDS

A statistical test for trend was applied to the monthly numbers of recorded incidents (except for murder) over the 24 month period to December 2006. In the case of murder, the test was applied to the number of victims. In the following summary, for those offences where a statistically significant trend (see Note 2 page 16) was found, the extent of the trend is indicated by percentage change in the total number of recorded criminal incidents between the consecutive twelve-month periods January to December 2005 and January to December 2006.

### Significant downward trends

There was a statistically significant downward trend in the monthly numbers of recorded criminal incidents for the following offences:

- break and enter – dwelling (down by 4.1%, see Figure 5)
- break and enter – non-dwelling (down by 2.4%, see Figure 5)
- motor vehicle theft (down by 3.0%, see Figure 6)
- steal from person (down by 6.8%, see Figure 7)

### Offences where there was no upward or downward trend

There was no statistically significant upward or downward trend in the monthly numbers of recorded criminal incidents<sup>3</sup> for any of the following offences:

- murder (number of victims; see Figure 1)
- assault – domestic violence related (see Figure 2)
- assault – non-domestic violence related (see Figure 2)
- sexual assault (see Figure 3)
- indecent assault, act of indecency, other sexual offences (see Figure 3)
- robbery without a weapon (see Figure 4)
- robbery with a firearm (see Figure 4)
- robbery with a weapon not a firearm (see Figure 4)
- steal from motor vehicle (see Figure 6)
- steal from retail store (see Figure 7)
- steal from dwelling (see Figure 7)
- fraud (see Figure 8)

### Significant upward trends

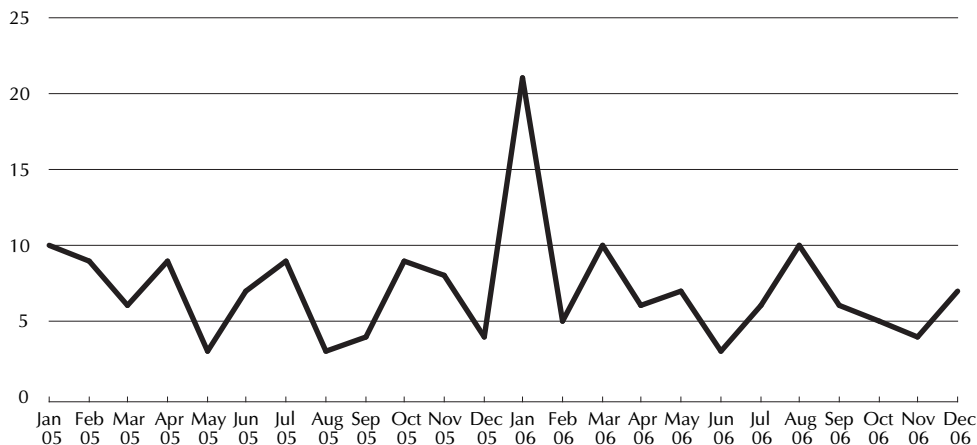
- malicious damage to property (up by 4.3%, see Figure 9)

## DESCRIPTION OF TRENDS

Graphs in this section show monthly trends for a selected set of offences in NSW between January 2005 and December 2006. For each category, information is given on the statistical significance of any trend shown in the graphs and the annual rate of offences per 100,000 resident population. In addition, geographical areas with the three highest rates, and the three lowest rates of recorded criminal incidents in NSW are listed. Within the Sydney Statistical Division, recorded crime rates are detailed by Statistical Subdivision (SSD). Outside the Sydney Statistical Division, recorded crime rates are detailed by Statistical Division (SD). The rate calculations are based on resident population data and are calculated as recorded offences per 100,000 population in each Statistical Division or Subdivision.<sup>4</sup> It should be noted that the Inner Sydney Statistical Subdivision has high recorded crime rates because, compared with other regions, the resident population is small relative to the transient or non-resident population which uses the area for business, entertainment, shopping, etc. That is, the high transient population is not reflected in the rate calculation.

**Figure 1: Murder**

Number of recorded victims



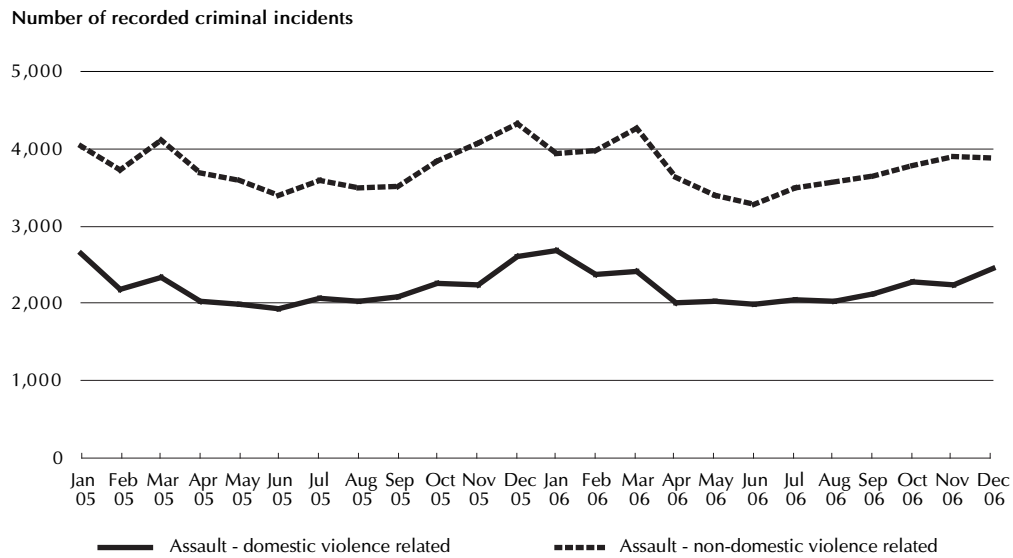
### Murder

The month-to-month variation in the number of murder victims makes it difficult to detect trends over a two-year period. Because of the small numbers of murder victims, it is not sensible to make regional comparisons.

**Trend (Jan 2005 - Dec 2006):** No statistically significant upward or downward trend.

**NSW annual rate (2006):** 1.3 per 100,000 population

**Figure 2: Assault - domestic violence related and non-domestic violence related**



## Assault

### *Assault - domestic violence related*

**Trend (Jan 2005 - Dec 2006):** No statistically significant upward or downward trend.

**NSW annual rate (2006):** 392.9 per 100,000 population

**Highest rates:**  
 Far West SD - 1,259.2 per 100,000 population  
 North Western SD - 996.8 per 100,000 population  
 Blacktown SSD - 645.2 per 100,000 population

**Lowest rates:**  
 Lower Northern Sydney SSD - 125.4 per 100,000 population  
 Central Northern Sydney SSD - 143.1 per 100,000 population  
 Northern Beaches SSD - 163.2 per 100,000 population

### *Assault - non-domestic violence related*

**Trend (Jan 2005 - Dec 2006):** No statistically significant upward or downward trend.

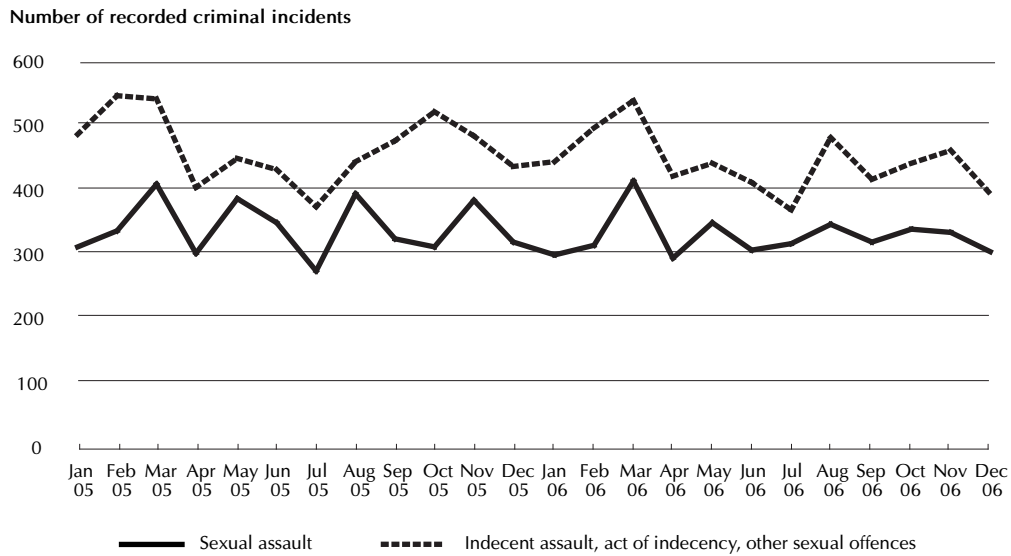
**NSW annual rate (2006):** 660.7 per 100,000 population

**Highest rates:**  
 Inner Sydney SSD - 1,736.6 per 100,000 population  
 Far West SD - 1,365.9 per 100,000 population  
 North Western SD - 1,300.4 per 100,000 population

**Lowest rates:**  
 Central Northern Sydney SSD - 226.2 per 100,000 population  
 Lower Northern Sydney SSD - 282.5 per 100,000 population  
 Northern Beaches SSD - 307.4 per 100,000 population



**Figure 3: Sexual assault and indecent assault, act of indecency, other sexual offences**



**Sexual offences**

*Sexual assault*

**Trend (Jan 2005 - Dec 2006):** No statistically significant upward or downward trend.

**NSW annual rate (2006):** 58.2 per 100,000 population

**Highest rates:**  
 Far West SD - 170.7 per 100,000 population  
 North Western SD - 129.5 per 100,000 population  
 Northern SD - 105.5 per 100,000 population

**Lowest rates:**  
 Central Northern Sydney SSD - 18.7 per 100,000 population  
 Lower Northern Sydney SSD - 21.4 per 100,000 population  
 Inner Western Sydney SSD - 21.8 per 100,000 population

*Indecent assault, act of indecency, other sexual offences*

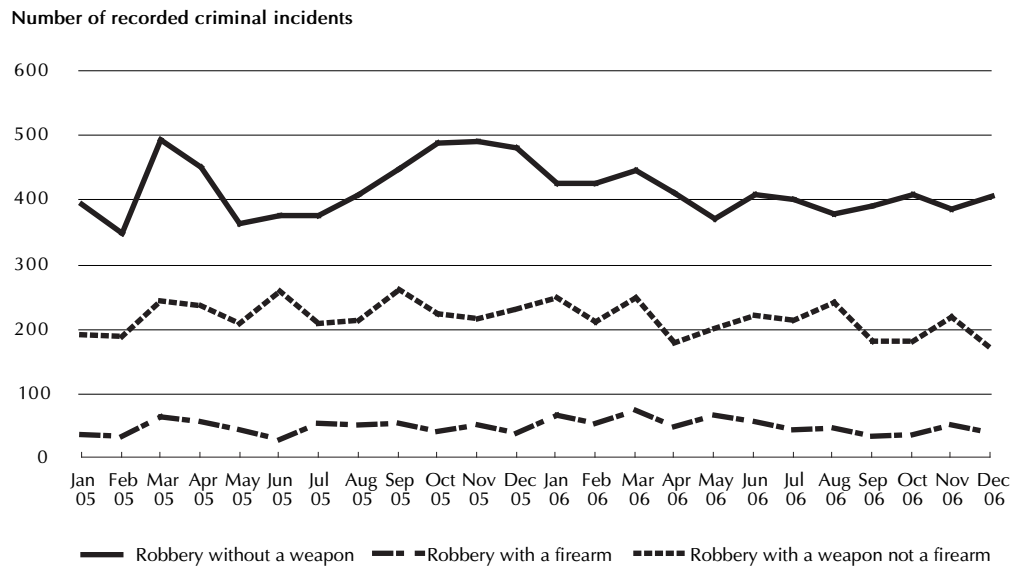
**Trend (Jan 2005 - Dec 2006):** No statistically significant upward or downward trend.

**NSW annual rate (2006):** 78.4 per 100,000 population

**Highest rates:**  
 North Western SD - 190.9 per 100,000 population  
 Northern SD - 130.7 per 100,000 population  
 Central West SD - 122.7 per 100,000 population

**Lowest rates:**  
 Central Northern Sydney SSD - 30.7 per 100,000 population  
 Canterbury-Bankstown SSD - 45.6 per 100,000 population  
 Lower Northern Sydney SSD - 47.5 per 100,000 population

Figure 4: Robbery with and without a weapon



## Robbery

### *Robbery without a weapon*

**Trend (Jan 2005 - Dec 2006):** No statistically significant upward or downward trend.

**NSW annual rate (2006):** 72.2 per 100,000 population

**Highest rates:**  
 Inner Sydney SSD - 404.2 per 100,000 population  
 Central Western Sydney SSD - 144.2 per 100,000 population  
 Canterbury-Bankstown SSD - 124.7 per 100,000 population

**Lowest rates:**  
 Far West SD - 12.8 per 100,000 population  
 Murray SD - 14.7 per 100,000 population  
 Central West SD - 17.8 per 100,000 population

### *Robbery with a firearm*

**Trend (Jan 2005 - Dec 2006):** No statistically significant upward or downward trend.

**NSW annual rate (2006):** 8.2 per 100,000 population

**Highest rates:**  
 Inner Sydney SSD - 34.6 per 100,000 population  
 Canterbury-Bankstown SSD - 23.1 per 100,000 population  
 Fairfield-Liverpool SSD - 19.8 per 100,000 population

**Lowest rates:**  
 No *robbery with a firearm* incidents were recorded in Northern SD, Murray SD and Far West SD

### *Robbery with a weapon not a firearm*

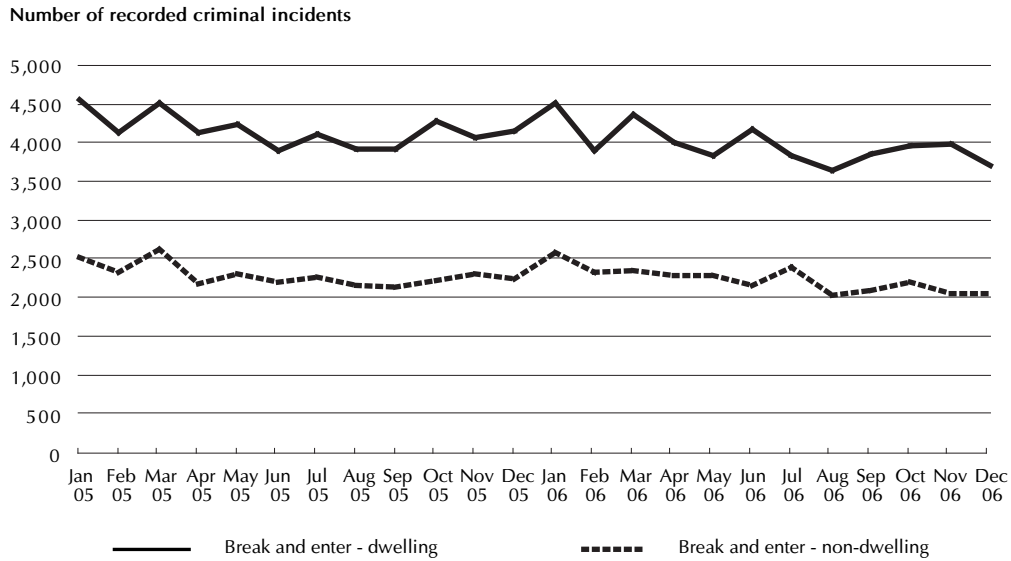
**Trend (Jan 2005 - Dec 2006):** No statistically significant upward or downward trend.

**NSW annual rate (2006):** 36.8 per 100,000 population

**Highest rates:**  
 Inner Sydney SSD - 188.3 per 100,000 population  
 Central Western Sydney SSD - 85.7 per 100,000 population  
 Canterbury-Bankstown SSD - 79.1 per 100,000 population

**Lowest rates:**  
 Northern SD - 5.0 per 100,000 population  
 Murray SD - 5.2 per 100,000 population  
 South Eastern SD - 6.9 per 100,000 population

**Figure 5: Break and enter - dwelling and non-dwelling**



**Break and enter**

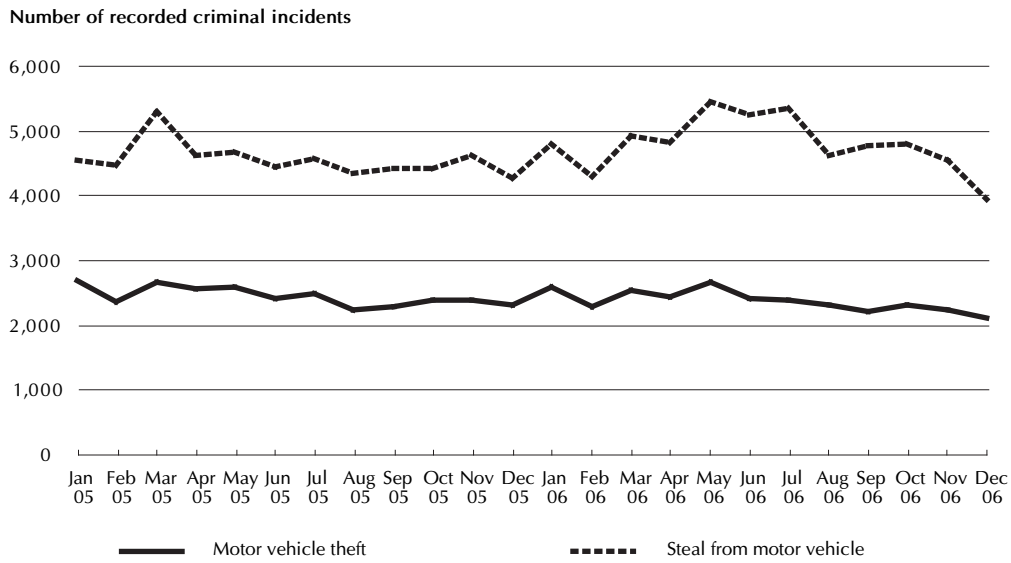
*Break and enter – dwelling*

- Trend (Jan 2005 - Dec 2006):** A statistically significant downward trend (down by 4.1%)
- NSW annual rate (2006):** 706.5 per 100,000 population
- Highest rates:**
  - Far West SD - 1,071.4 per 100,000 population
  - Inner Sydney SSD - 1,003.5 per 100,000 population
  - North Western SD - 987.5 per 100,000 population
- Lowest rates:**
  - Central Northern Sydney SSD - 433.5 per 100,000 population
  - St George-Sutherland SSD - 500.6 per 100,000 population
  - South Eastern SD - 505.5 per 100,000 population

*Break and enter – non-dwelling*

- Trend (Jan 2005 - Dec 2006):** A statistically significant downward trend (down by 2.4%)
- NSW annual rate (2006):** 398.3 per 100,000 population
- Highest rates:**
  - Inner Sydney SSD - 756.5 per 100,000 population
  - North Western SD - 726.8 per 100,000 population
  - Hunter SD - 609.1 per 100,000 population
- Lowest rates:**
  - St George-Sutherland SSD - 192.2 per 100,000 population
  - Inner Western Sydney SSD - 211.7 per 100,000 population
  - Central Northern Sydney SSD - 224.1 per 100,000 population

**Figure 6: Motor vehicle theft and steal from from motor vehicle**



**Motor vehicle theft and steal from motor vehicle**

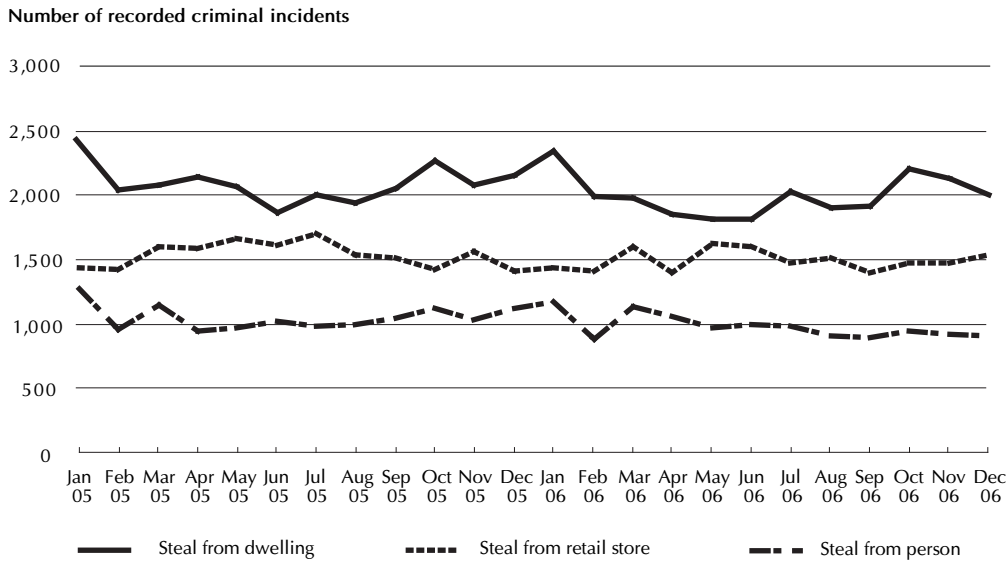
*Motor vehicle theft*

- Trend (Jan 2005 - Dec 2006):** A statistically significant downward trend (down by 3.0%).
- NSW annual rate (2006):** 417.8 per 100,000 population
- Highest rates:**
  - Inner Sydney SSD - 805.3 per 100,000 population
  - Canterbury-Bankstown SSD - 738.6 per 100,000 population
  - Central Western Sydney SSD - 705.5 per 100,000 population
- Lowest rates:**
  - Central Northern Sydney SSD - 163.0 per 100,000 population
  - Northern Beaches SSD - 184.4 per 100,000 population
  - South Eastern SD - 204.2 per 100,000 population

*Steal from motor vehicle*

- Trend (Jan 2005 - Dec 2006):** No statistically significant upward or downward trend.
- NSW annual rate (2006):** 848.5 per 100,000 population
- Highest rates:**
  - Inner Sydney SSD - 2,986.2 per 100,000 population
  - Central Western Sydney SSD - 1,035.4 per 100,000 population
  - North Western SD - 942.1 per 100,000 population
- Lowest rates:**
  - Central Northern Sydney SSD - 519.9 per 100,000 population
  - Northern Beaches SSD - 524.9 per 100,000 population
  - South Eastern SD - 526.2 per 100,000 population

Figure 7: Steal from from retail store, from dwelling and from person



## Stealing

### Steal from retail store

- Trend (Jan 2005 - Dec 2006):** No statistically significant upward or downward trend.
- NSW annual rate (2006):** 264.9 per 100,000 population
- Highest rates:**
  - Inner Sydney SSD - 631.1 per 100,000 population
  - Eastern Suburbs SSD - 414.7 per 100,000 population
  - Central Western Sydney SSD - 376.0 per 100,000 population
- Lowest rates:**
  - Central Northern Sydney SSD - 126.2 per 100,000 population
  - Murray SD - 155.8 per 100,000 population
  - Far West SD - 166.5 per 100,000 population

### Steal from dwelling

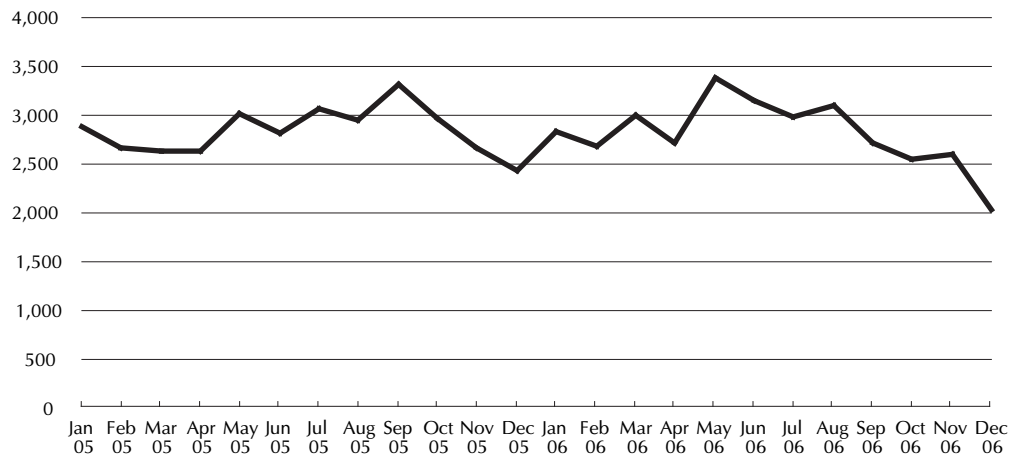
- Trend (Jan 2005 - Dec 2006):** No statistically significant upward or downward trend.
- NSW annual rate (2006):** 353.6 per 100,000 population
- Highest rates:**
  - Far West SD - 751.2 per 100,000 population
  - North Western SD - 621.6 per 100,000 population
  - Richmond-Tweed SD - 554.7 per 100,000 population
- Lowest rates:**
  - St George-Sutherland SSD - 159.0 per 100,000 population
  - Central Northern Sydney SSD - 166.3 per 100,000 population
  - Canterbury-Bankstown SSD - 170.0 per 100,000 population

### Steal from person

- Trend (Jan 2005 - Dec 2006):** A statistically significant downward trend (down by 6.8%)
- NSW annual rate (2006):** 173.7 per 100,000 population
- Highest rates:**
  - Inner Sydney SSD - 1,558.6 per 100,000 population
  - Eastern Suburbs SSD - 319.1 per 100,000 population
  - Central Western Sydney SSD - 227.3 per 100,000 population
- Lowest rates:**
  - South Eastern SD - 38.5 per 100,000 population
  - Northern SD - 50.3 per 100,000 population
  - Central Northern Sydney SSD - 55.3 per 100,000 population

**Figure 8: Fraud<sup>#</sup>**

Number of recorded criminal incidents



<sup>#</sup> Due to the time lag between a fraud offence being reported to police and the incident being verified on COPS, some upward revision of data is expected for the number of incidents in the last quarter of 2006.

**Fraud**

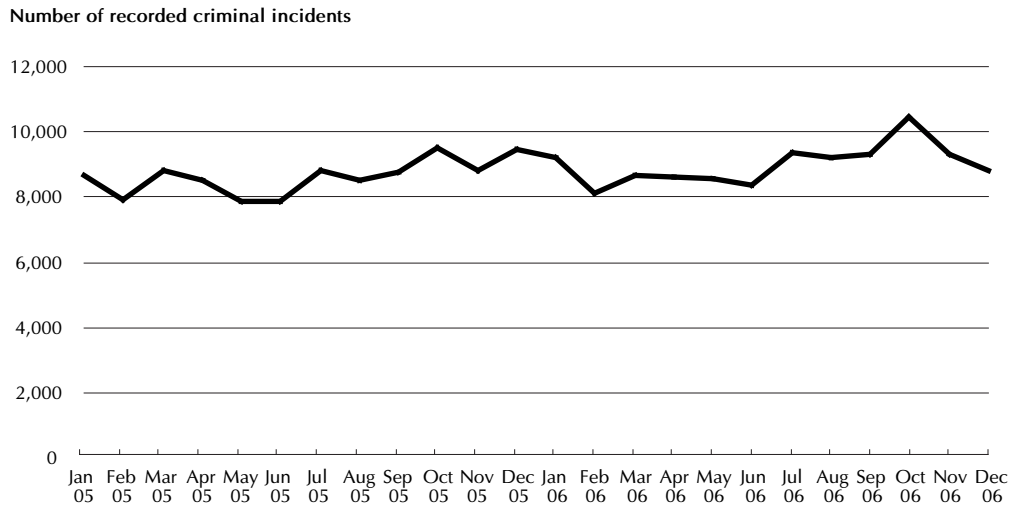
**Trend (Jan 2005 - Dec 2006):** No statistically significant upward or downward trend.

**NSW annual rate (2006):** 498.4 per 100,000 population

**Highest rates:**  
 Inner Sydney SSD - 1,612.5 per 100,000 population  
 Blacktown SSD - 895.4 per 100,000 population  
 Central Western Sydney SSD - 783.4 per 100,000 population

**Lowest rates:**  
 Far West SD - 243.3 per 100,000 population  
 Central West SD - 245.5 per 100,000 population  
 Murrumbidgee SD - 255.4 per 100,000 population

**Figure 9: Malicious damage to property**



**Malicious damage to property**

**Trend (Jan 2005 - Dec 2006):** A statistically significant upward trend (up by 4.3%)

**NSW annual rate (2006):** 1,594.2 per 100,000 population

**Highest rates:**  
 North Western SD - 2,975.1 per 100,000 population  
 Far West SD - 2,680.6 per 100,000 population  
 Northern SD - 2,249.0 per 100,000 population

**Lowest rates:**  
 Central Northern Sydney SSD - 811.5 per 100,000 population  
 Inner Western Sydney SSD - 979.1 per 100,000 population  
 Lower Northern Sydney SSD - 979.7 per 100,000 population

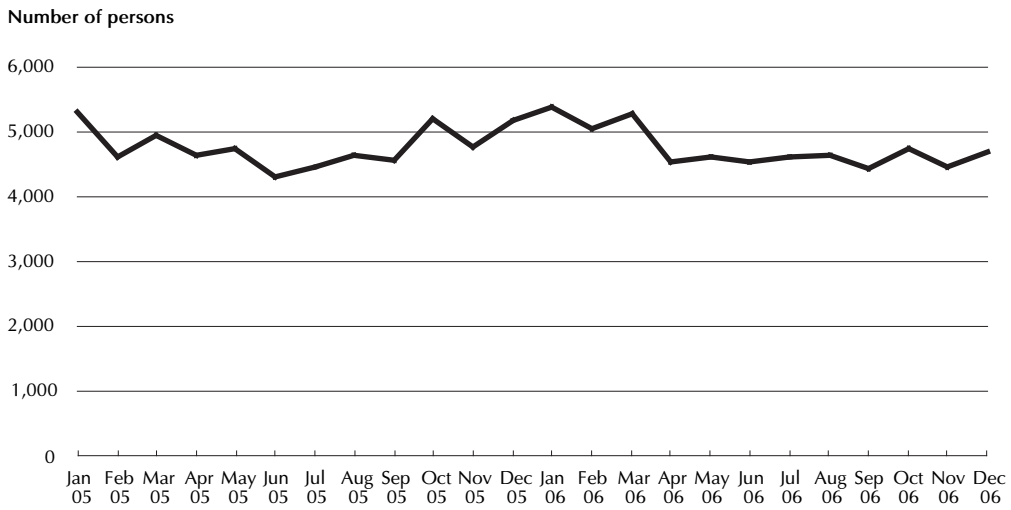
### TRENDS IN METHODS OF PROCEEDING AGAINST OFFENDERS OR ALLEGED OFFENDERS

The information that follows highlights trends in the number of persons proceeded against to court by NSW Police. These proceedings relate to criminal incidents recorded between January 2005 and December 2006.

#### Bail Court Attendance Notice

Trend (Jan 2005 - Dec 2006): No statistically significant upward or downward trend.

Figure 10: Persons issued with a Bail Court Attendance Notice

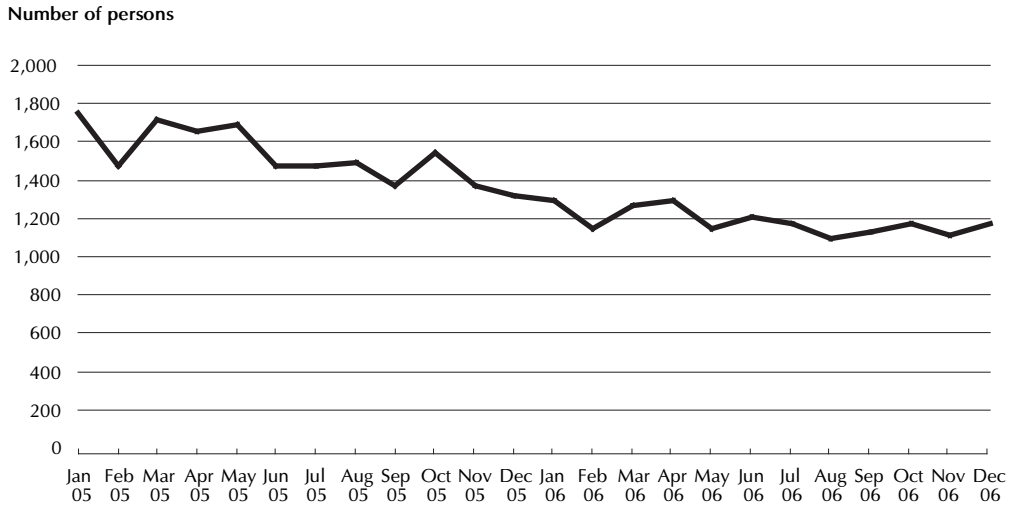




### No-Bail Court Attendance Notice

Trend (Jan 2005 - Dec 2006): A statistically significant downward trend (down by 22.4%)

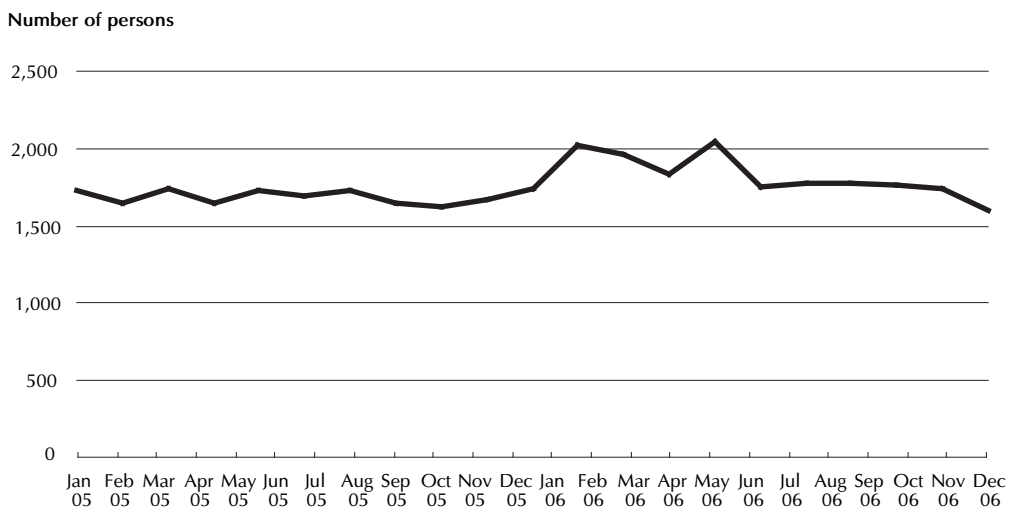
Figure 11: Persons issued with a No-Bail Court Attendance Notice



### Future Court Attendance Notice<sup>#</sup>

Trend (Jan 2005 - Dec 2006): No statistically significant upward or downward trend.

Figure 12: Persons issued with a Future Court Attendance Notice

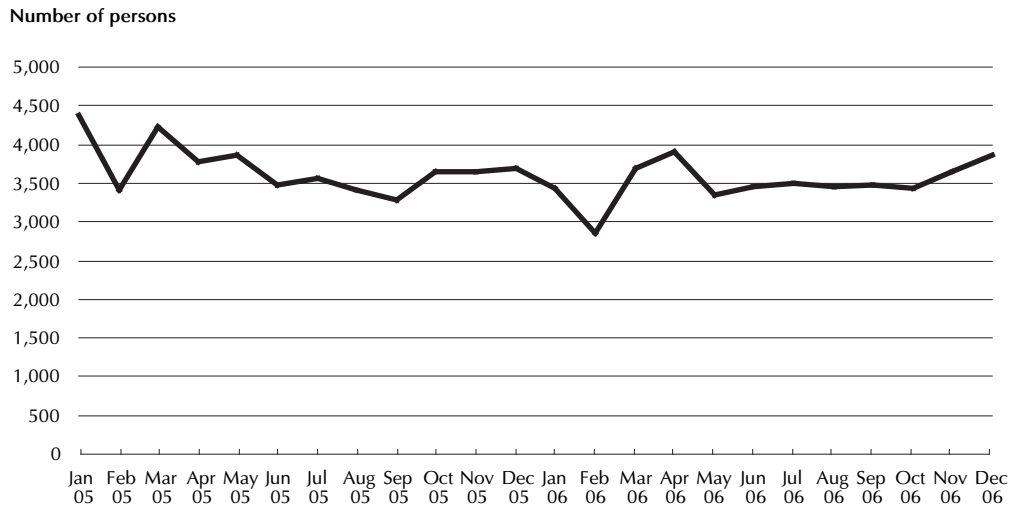


<sup>#</sup> Due to the time lag between the incident being recorded and the Future CAN being issued, some upward revision of data for the number of Future CANs is expected for the last quarter of 2006.

## Field Court Attendance Notice

Trend (Jan 2005 - Dec 2006): No statistically significant upward or downward trend.

**Figure 13: Persons issued with a Field Court Attendance Notice**



## NOTES

1. Australian Bureau of Statistics 2006, *Crime and Safety, New South Wales, April 2006*, Cat. No. 4509.1, ABS, Sydney.
2. The trend test used was Kendall's rank-order correlation test (see, for example, Conover, W.J. 1980, *Practical Non-Parametric Statistics*, 2nd ed, John Wiley and Sons, pp 256-260). A two-tailed test at the 5% level of significance was used to determine whether there had been an increasing or decreasing trend in the recorded numbers of criminal incidents over the most recent twenty-four month period covered in the report. Some month to month variations in the numbers of recorded incidents could be due in part to seasonal factors. The test for trend is not sensitive to seasonal variations; it is sensitive only to a generally increasing or generally decreasing trend over the time period examined.
3. In the case of murder, there was no statistically significant trend in the monthly number of recorded victims.
4. For the rate calculations, population data were obtained from the Australian Bureau of Statistics publication: *Regional Population Growth Australia and New Zealand 2004-05*, Cat. No. 3218 (for 2004 and 2005 population estimates). As no population estimates were available for 2006 when this report was published, rates for 2006 were calculated using 2005 population estimates.

---

**MONTHLY TRENDS IN  
RECORDED CRIMINAL INCIDENTS  
2004, 2005 AND 2006  
NEW SOUTH WALES**

---

**TABLE 1.1** MONTHLY TRENDS IN RECORDED CRIMINAL INCIDENTS, 2004, NEW SOUTH WALES:  
TYPE OF OFFENCE

Type of offence	Recorded criminal incidents												Rate per 100,000 No. population	
	Jan	Feb	Mar	Apr	May	Jun	Jul	Aug	Sep	Oct	Nov	Dec		Total 2004
<b>Homicide</b>														
Murder*	7	4	4	8	5	5	12	7	4	1	2	10	69	1.0
Attempted murder	4	4	6	5	10	4	9	6	4	4	4	6	66	1.0
Murder accessory, conspiracy	0	0	0	0	0	0	0	2	1	0	1	0	4	0.1
Manslaughter*	1	0	0	0	0	0	0	0	2	2	0	2	7	0.1
Driving causing death	27	15	35	12	14	27	15	26	9	18	16	24	238	3.5
<b>Assault</b>														
Domestic violence related	2,538	2,244	2,272	1,990	1,944	1,988	2,035	2,083	2,021	2,270	2,329	2,536	26,250	390.6
Non-domestic violence related	3,808	3,899	3,905	3,368	3,404	3,286	3,405	3,528	3,485	3,811	3,846	4,127	43,872	652.8
<b>Sexual offences</b>														
Sexual assault	375	374	396	318	324	346	344	373	303	356	409	373	4,291	63.8
Indecent assault, act of indecency	295	325	341	263	280	236	301	304	313	290	339	328	3,615	53.8
Other sexual offences	151	156	166	144	123	138	128	163	157	184	157	144	1,811	26.9
<b>Abduction and kidnapping</b>	38	39	34	31	36	39	37	30	38	33	35	24	414	6.2
<b>Robbery</b>														
Robbery without a weapon	481	419	511	452	451	363	365	393	373	392	384	389	4,973	74.0
Robbery with a firearm	59	80	69	45	98	81	72	25	39	31	38	29	666	9.9
Robbery with a weapon not a firearm	189	179	242	282	268	220	229	207	186	203	193	211	2,609	38.8
<b>Blackmail and extortion</b>	1	4	6	10	3	2	4	8	6	4	7	10	65	1.0
<b>Harassment, threatening behaviour and private nuisance</b>	1,749	1,491	1,568	1,361	1,499	1,658	1,620	1,576	1,629	1,613	1,796	1,728	19,288	287.0
<b>Other offences against the person</b>	116	105	117	106	106	110	121	119	105	152	140	117	1,414	21.0

<b>Theft</b>															
Break and enter - dwelling	5,209	4,752	5,428	4,892	4,880	4,339	4,241	4,451	4,029	4,380	4,616	4,636	55,853	831.0	
Break and enter - non-dwelling	2,689	2,581	2,862	2,447	2,580	2,279	2,442	2,572	2,120	2,423	2,598	2,240	29,833	443.9	
Receiving or handling stolen goods	793	640	673	634	688	630	618	654	595	637	638	689	7,889	117.4	
Motor vehicle theft	2,896	2,933	3,238	2,847	2,747	2,471	2,548	2,728	2,650	2,694	2,778	2,704	33,234	494.5	
Steal from motor vehicle	5,389	4,928	5,464	5,103	4,662	4,511	4,777	4,977	4,779	5,005	5,447	4,785	59,827	890.2	
Steal from retail store	1,433	1,557	1,630	1,574	1,680	1,542	1,576	1,599	1,459	1,535	1,548	1,683	18,816	280.0	
Steal from dwelling	2,669	2,296	2,263	2,272	2,099	1,914	2,002	2,163	2,058	2,193	2,261	2,231	26,421	393.1	
Steal from person	1,574	1,310	1,393	1,276	1,170	1,002	1,123	1,036	995	1,110	1,124	1,225	14,338	213.3	
Stock theft	78	58	91	105	78	54	67	64	61	64	73	58	851	12.7	
Fraud	2,478	2,343	2,661	2,484	2,718	2,721	2,539	3,167	2,758	2,764	3,008	2,742	32,383	481.8	
Other theft	4,635	4,212	4,562	3,903	3,938	3,593	3,701	3,915	3,655	3,769	4,015	3,856	47,754	710.5	
<b>Arson</b>	500	484	528	458	564	521	575	569	564	489	485	489	6,226	92.6	
<b>Malicious damage to property</b>	8,140	7,380	7,860	7,269	7,399	7,404	7,885	8,621	8,341	8,542	8,300	7,982	95,123	1,415.4	
<b>Drug offences</b>															
Possession and/or use of cocaine	16	8	13	15	20	16	8	21	11	22	17	27	194	2.9	
Possession and/or use of narcotics	74	89	77	101	99	77	71	64	85	72	71	49	929	13.8	
Possession and/or use of cannabis	1,186	850	1,139	996	1,053	1,160	912	918	1,000	934	934	1,032	12,114	180.2	
Possession and/or use of amphetamines	177	168	171	151	167	150	157	155	157	156	188	185	1,982	29.5	
Possession and/or use of ecstasy	75	54	53	43	49	43	35	47	26	57	44	51	577	8.6	
Possession and/or use of other drugs	68	62	88	65	76	61	81	71	78	94	82	105	931	13.9	

... continued over page

\* For murder and manslaughter, the data are counts of recorded victims, not criminal incidents. (See Explanatory Notes, page vi).

**TABLE 1.1** MONTHLY TRENDS IN RECORDED CRIMINAL INCIDENTS, 2004, NEW SOUTH WALES:  
TYPE OF OFFENCE - continued

Type of offence	Recorded criminal incidents												Rate per 100,000 population	
	Jan	Feb	Mar	Apr	May	Jun	Jul	Aug	Sep	Oct	Nov	Dec		Total 2004
<b>Drug offences - continued</b>														
Dealing, trafficking in cocaine	5	2	2	1	7	15	8	5	9	16	11	7	88	1.3
Dealing, trafficking in narcotics	42	34	27	37	40	52	94	47	47	31	41	13	505	7.5
Dealing, trafficking in cannabis	43	59	76	63	74	75	47	49	42	47	42	71	688	10.2
Dealing, trafficking in amphetamines	35	42	47	21	62	55	36	45	47	33	46	67	536	8.0
Dealing, trafficking in ecstasy	39	49	30	19	15	20	13	15	12	24	22	16	274	4.1
Dealing, trafficking in other drugs	6	6	11	9	4	5	6	7	7	9	7	4	81	1.2
Cultivating cannabis	212	252	221	114	77	65	52	61	54	105	122	132	1,467	21.8
Manufacture drug	4	3	3	5	7	2	11	2	7	3	3	8	58	0.9
Importing drugs	5	1	3	11	4	6	1	5	3	3	1	7	50	0.7
Other drug offences	280	217	269	256	281	248	219	231	228	219	206	239	2,893	43.0
<b>Prohibited and regulated weapons offences</b>	1,046	1,063	1,023	856	887	887	542	638	619	653	681	737	9,632	143.3
<b>Disorderly conduct</b>														
Trespass	696	621	677	662	646	593	585	648	654	654	696	705	7,837	116.6
Offensive conduct	491	427	424	408	370	376	375	433	396	451	451	599	5,201	77.4
Offensive language	512	419	460	390	356	364	396	425	392	444	469	572	5,199	77.4
Criminal intent	151	132	163	144	135	124	111	154	135	115	130	142	1,636	24.3
<b>Betting and gaming offences</b>	8	4	5	7	13	33	28	50	11	13	16	32	220	3.3
<b>Liquor offences</b>	1,207	800	932	1,038	826	972	885	958	919	1,194	1,146	1,744	12,621	187.8
<b>Pornography offences</b>	16	8	7	5	9	6	11	6	48	47	16	12	191	2.8
<b>Prostitution offences</b>	8	30	17	30	16	12	24	24	30	14	30	35	270	4.0



**TABLE 1.2** MONTHLY TRENDS IN RECORDED CRIMINAL INCIDENTS, 2005, NEW SOUTH WALES:  
TYPE OF OFFENCE

Type of offence	Recorded criminal incidents												Rate per 100,000 population	
	Jan	Feb	Mar	Apr	May	Jun	Jul	Aug	Sep	Oct	Nov	Dec		Total 2005
<b>Homicide</b>														
Murder*	10	9	6	9	3	7	9	3	4	9	8	4	81	1.2
Attempted murder	2	1	6	5	5	5	2	5	1	8	7	4	51	0.8
Murder accessory, conspiracy	2	0	0	0	1	2	0	1	1	5	1	0	13	0.2
Manslaughter*	2	0	0	0	0	0	0	0	1	0	0	0	3	0.0
Driving causing death	12	10	12	18	23	16	17	18	23	14	16	20	199	2.9
<b>Assault</b>														
Domestic violence related	2,640	2,182	2,328	2,024	1,982	1,925	2,056	2,018	2,076	2,265	2,231	2,613	26,340	388.8
Non-domestic violence related	4,027	3,723	4,112	3,687	3,584	3,401	3,591	3,502	3,523	3,836	4,074	4,318	45,378	669.9
<b>Sexual offences</b>														
Sexual assault	313	336	408	302	386	349	276	395	326	313	385	320	4,109	60.7
Indecent assault, act of indecency	286	327	334	242	282	287	258	305	311	336	335	271	3,574	52.8
Other sexual offences	200	219	207	162	167	145	116	138	165	185	148	165	2,017	29.8
<b>Abduction and kidnapping</b>	31	26	29	30	32	25	26	43	31	41	49	37	400	5.9
<b>Robbery</b>														
Robbery without a weapon	397	350	497	455	364	378	377	410	452	493	495	484	5,152	76.1
Robbery with a firearm	31	28	59	51	38	24	48	46	49	37	45	34	490	7.2
Robbery with a weapon not a firearm	189	186	243	236	208	259	207	212	261	223	214	230	2,668	39.4
<b>Blackmail and extortion</b>	4	9	6	5	3	2	1	6	14	2	5	3	60	0.9
<b>Harassment, threatening behaviour and private nuisance</b>	1,944	1,742	1,967	1,820	1,707	1,604	1,663	1,864	1,893	1,891	1,882	2,019	21,996	324.7
<b>Other offences against the person</b>	143	135	141	125	120	125	114	134	103	136	111	128	1,515	22.4



<b>Theft</b>																
Break and enter - dwelling	4,559	4,126	4,507	4,129	4,242	3,896	4,104	3,921	3,930	4,274	4,081	4,166	49,935	737.1		
Break and enter - non-dwelling	2,540	2,351	2,634	2,195	2,313	2,211	2,268	2,180	2,144	2,241	2,318	2,254	27,649	408.1		
Receiving or handling stolen goods	661	567	618	544	557	504	537	541	527	613	461	513	6,643	98.1		
Motor vehicle theft	2,665	2,356	2,646	2,534	2,579	2,396	2,468	2,226	2,267	2,358	2,382	2,294	29,171	430.6		
Steal from motor vehicle	4,528	4,451	5,306	4,609	4,657	4,432	4,565	4,345	4,422	4,412	4,624	4,265	54,616	806.2		
Steal from retail store	1,440	1,421	1,598	1,592	1,664	1,613	1,698	1,542	1,508	1,421	1,557	1,411	18,465	272.6		
Steal from dwelling	2,436	2,044	2,074	2,141	2,071	1,871	1,999	1,942	2,058	2,274	2,078	2,161	25,149	371.2		
Steal from person	1,275	952	1,144	951	976	1,019	983	995	1,041	1,128	1,032	1,126	12,622	186.3		
Stock theft	62	58	51	51	46	59	46	67	57	53	61	43	654	9.7		
Fraud	2,889	2,669	2,628	2,628	3,014	2,819	3,065	2,944	3,317	2,973	2,668	2,434	34,048	502.6		
Other theft	4,112	3,608	3,948	3,805	3,764	3,630	3,475	3,399	3,476	3,557	3,536	3,799	44,109	651.1		
<b>Arson</b>	572	456	525	503	525	480	554	561	516	618	589	625	6,524	96.3		
<b>Malicious damage to property</b>	8,667	7,909	8,817	8,524	7,876	7,874	8,823	8,499	8,764	9,486	8,826	9,448	103,513	1,528.0		
<b>Drug offences</b>																
Possession and/or use of cocaine	26	25	25	14	28	19	22	17	9	13	18	17	233	3.4		
Possession and/or use of narcotics	89	85	84	75	77	64	87	65	75	61	59	38	859	12.7		
Possession and/or use of cannabis	1,135	844	892	951	1,163	987	1,033	1,013	971	979	847	839	11,654	172.0		
Possession and/or use of amphetamines	206	141	153	147	187	176	173	185	160	175	174	181	2,058	30.4		
Possession and/or use of ecstasy	121	55	46	55	44	61	73	84	77	51	40	68	775	11.4		
Possession and/or use of other drugs	90	70	81	90	98	89	82	86	77	70	75	92	1,000	14.8		

... continued over page

\* For murder and manslaughter, the data are counts of recorded victims, not criminal incidents. (See Explanatory Notes, page vi).

**TABLE 1.2** MONTHLY TRENDS IN RECORDED CRIMINAL INCIDENTS, 2005, NEW SOUTH WALES:  
TYPE OF OFFENCE - continued

Type of offence	Recorded criminal incidents												Rate per 100,000 population	
	Jan	Feb	Mar	Apr	May	Jun	Jul	Aug	Sep	Oct	Nov	Dec		Total 2005 No.
<b>Drug offences - continued</b>														
Dealing, trafficking in cocaine	11	15	15	5	18	3	8	7	9	1	6	1	99	1.5
Dealing, trafficking in narcotics	32	58	46	27	24	26	32	32	28	27	26	18	376	5.6
Dealing, trafficking in cannabis	31	38	45	65	66	63	79	65	26	47	49	47	621	9.2
Dealing, trafficking in amphetamines	39	21	32	49	47	105	59	44	128	59	67	104	754	11.1
Dealing, trafficking in ecstasy	52	14	24	24	26	64	59	68	30	17	40	38	456	6.7
Dealing, trafficking in other drugs	10	5	6	4	4	13	7	6	13	4	8	5	85	1.3
Cultivating cannabis	147	179	202	95	77	75	35	54	66	81	109	126	1,246	18.4
Manufacture drug	5	4	13	5	12	1	6	2	6	3	5	4	66	1.0
Importing drugs	1	9	4	1	6	1	5	2	3	2	1	5	40	0.6
Other drug offences	257	206	217	247	228	206	238	252	192	234	242	194	2,713	40.0
<b>Prohibited and regulated weapons offences</b>	730	676	606	614	599	629	602	692	631	721	649	754	7,903	116.7
<b>Disorderly conduct</b>														
Trespass	829	636	791	732	663	622	660	658	745	750	691	784	8,561	126.4
Offensive conduct	622	500	451	482	438	423	520	441	490	541	480	560	5,948	87.8
Offensive language	595	513	552	486	542	473	456	408	444	513	439	501	5,922	87.4
Criminal intent	159	132	154	129	148	118	126	110	126	152	130	146	1,630	24.1
<b>Betting and gaming offences</b>	8	11	6	18	9	9	19	12	7	9	2	22	132	1.9
<b>Liquor offences</b>	1,296	987	1,132	1,249	925	1,044	1,091	930	924	1,365	1,108	1,449	13,500	199.3
<b>Pornography offences</b>	10	9	19	6	9	6	6	11	14	10	10	4	114	1.7
<b>Prostitution offences</b>	29	22	28	31	32	30	18	11	23	11	11	7	253	3.7

<b>Against justice procedures</b>														
Escape custody	19	16	31	31	22	12	24	20	12	23	21	18	249	3.7
Breach Apprehended Violence Order	1,079	1,030	1,054	964	957	904	969	962	914	989	977	1,063	11,862	175.1
Breach bail conditions	1,143	952	1,011	937	984	884	886	881	850	1,133	947	1,058	11,666	172.2
Fail to appear	56	79	61	42	53	51	45	50	64	37	55	34	627	9.3
Resist or hinder officer	656	552	523	532	508	507	519	454	471	610	522	571	6,425	94.8
Other offences against justice procedures	56	81	73	65	73	40	50	45	33	62	49	33	660	9.7
<b>Driving offences</b>														
Drive under influence of alcohol or drugs	124	94	92	114	100	79	86	95	91	98	113	93	1,179	17.4
Dangerous or negligent driving	2,406	2,277	2,547	2,345	2,444	2,699	2,322	2,211	2,382	2,317	2,448	2,347	28,745	424.3
Driving licence cancelled or suspended	1,516	1,189	1,435	1,265	1,312	1,272	1,306	1,380	1,190	1,328	1,299	1,302	15,794	233.1
Driving without a licence	2,985	2,198	2,839	2,536	2,540	2,561	2,392	2,434	2,338	2,651	2,508	2,715	30,697	453.1
Other driving licence offences	5,773	3,882	5,607	4,646	4,512	4,652	4,438	4,618	4,338	4,521	4,166	4,350	55,503	819.3
Registration offences	6,593	3,947	4,972	4,569	4,815	4,866	4,471	4,928	4,459	5,323	5,462	7,243	61,648	910.0
Roadworthiness offences	99	77	114	103	99	153	120	107	62	77	62	60	1,133	16.7
Exceeding the prescribed content of alcohol limit	2,442	1,879	2,746	2,339	2,519	2,139	2,127	2,005	1,982	2,359	2,291	2,174	27,002	398.6
Exceeding legal speed limit	20,870	15,328	19,249	17,779	17,133	17,986	18,021	19,209	17,680	17,817	13,885	17,878	212,835	3,141.8
Parking offences	150	118	84	79	136	128	178	154	138	102	96	126	1,489	22.0
Other regulatory driving offences	15,681	14,401	15,478	16,096	15,488	16,604	14,696	16,837	15,383	14,480	14,256	16,106	185,506	2,738.4
<b>Transport regulatory offences</b>	3,049	2,524	2,503	2,881	3,955	3,550	3,118	3,214	3,202	3,159	2,942	2,803	36,900	544.7
<b>Other offences</b>	1,780	1,421	1,482	1,437	1,383	1,316	1,506	1,400	1,381	1,591	1,322	1,551	17,570	259.4

**TABLE 1.3** MONTHLY TRENDS IN RECORDED CRIMINAL INCIDENTS, 2006, NEW SOUTH WALES:  
TYPE OF OFFENCE

Type of offence	Recorded criminal incidents												Rate per 100,000 population	
	Jan	Feb	Mar	Apr	May	Jun	Jul	Aug	Sep	Oct	Nov	Dec		Total 2006
<b>Homicide</b>														
Murder*	21	5	10	6	7	3	6	10	6	5	4	7	90	1.3
Attempted murder	4	6	4	3	7	4	8	5	8	4	3	6	62	0.9
Murder accessory, conspiracy	1	0	1	1	0	1	0	0	1	0	0	2	7	0.1
Manslaughter*	1	0	0	1	0	0	0	2	0	0	0	1	5	0.1
Driving causing death	24	6	17	15	17	17	8	4	4	9	12	3	136	2.0
<b>Assault</b>														
Domestic violence related	2,678	2,366	2,410	2,002	2,029	1,991	2,046	2,029	2,114	2,274	2,230	2,444	26,613	392.9
Non-domestic violence related	3,946	3,973	4,264	3,628	3,401	3,274	3,492	3,566	3,656	3,777	3,907	3,876	44,760	660.7
<b>Sexual offences</b>														
Sexual assault	301	315	413	296	349	307	318	348	319	339	335	304	3,944	58.2
Indecent assault, act of indecency	288	310	341	266	315	274	252	318	267	263	306	241	3,441	50.8
Other sexual offences	155	186	198	156	126	137	117	162	149	178	156	152	1,872	27.6
<b>Abduction and kidnapping</b>	36	33	41	27	32	33	26	35	33	30	39	30	395	5.8
<b>Robbery</b>														
Robbery without a weapon	429	430	449	413	373	412	404	380	393	411	388	408	4,890	72.2
Robbery with a firearm	62	49	70	43	61	50	39	40	29	31	46	34	554	8.2
Robbery with a weapon not a firearm	248	210	247	177	199	220	211	239	178	180	217	165	2,491	36.8
<b>Blackmail and extortion</b>	1	13	4	4	5	5	4	10	5	8	8	3	70	1.0
<b>Harassment, threatening behaviour and private nuisance</b>	1,980	1,870	2,119	1,619	1,708	1,787	1,894	1,953	1,919	1,912	1,928	1,754	22,443	331.3
<b>Other offences against the person</b>	139	122	183	121	134	116	124	159	127	129	171	144	1,669	24.6

<b>Theft</b>														
Break and enter - dwelling	4,519	3,912	4,369	4,000	3,850	4,181	3,846	3,651	3,854	3,966	3,997	3,718	47,863	706.5
Break and enter - non-dwelling	2,600	2,338	2,359	2,296	2,302	2,170	2,402	2,051	2,115	2,211	2,078	2,059	26,981	398.3
Receiving or handling stolen goods	532	501	597	498	567	492	469	475	447	457	396	378	5,809	85.8
Motor vehicle theft	2,562	2,281	2,533	2,428	2,640	2,398	2,370	2,283	2,203	2,286	2,226	2,094	28,304	417.8
Steal from motor vehicle	4,801	4,291	4,911	4,807	5,434	5,241	5,348	4,619	4,759	4,784	4,539	3,943	57,477	848.5
Steal from retail store	1,437	1,417	1,595	1,397	1,628	1,601	1,472	1,515	1,403	1,472	1,473	1,534	17,944	264.9
Steal from dwelling	2,348	1,991	1,977	1,855	1,813	1,812	2,024	1,898	1,912	2,200	2,127	1,999	23,956	353.6
Steal from person	1,167	880	1,136	1,057	974	997	986	906	896	943	922	905	11,769	173.7
Stock theft	43	57	58	48	46	57	38	51	57	49	40	45	589	8.7
Fraud	2,832	2,686	3,001	2,723	3,382	3,154	2,988	3,097	2,718	2,542	2,601	2,040	33,764	498.4
Other theft	3,892	3,677	3,667	3,450	3,589	3,305	3,497	3,431	3,294	3,621	3,554	2,969	41,946	619.2
<b>Arson</b>	558	518	550	618	665	561	694	736	675	815	677	604	7,671	113.2
<b>Malicious damage to property</b>	9,198	8,125	8,662	8,598	8,567	8,356	9,368	9,217	9,317	10,464	9,331	8,792	107,995	1,594.2
<b>Drug offences</b>														
Possession and/or use of cocaine	19	19	16	21	23	20	37	33	29	27	37	31	312	4.6
Possession and/or use of narcotics	41	48	60	38	73	51	39	47	40	50	48	56	591	8.7
Possession and/or use of cannabis	995	862	949	998	1,244	1,073	1,137	1,142	1,005	827	833	923	11,988	177.0
Possession and/or use of amphetamines	155	145	207	210	188	188	220	230	209	213	195	182	2,342	34.6
Possession and/or use of ecstasy	94	79	33	68	42	71	79	66	119	78	73	94	896	13.2
Possession and/or use of other drugs	77	79	96	87	98	88	104	89	114	90	82	116	1,120	16.5

... continued over page

\* For murder and manslaughter, the data are counts of recorded victims, not criminal incidents. (See Explanatory Notes, page vi).

**TABLE 1.3** MONTHLY TRENDS IN RECORDED CRIMINAL INCIDENTS, 2006, NEW SOUTH WALES:  
TYPE OF OFFENCE - continued

Type of offence	Recorded criminal incidents												Rate per 100,000 population	
	Jan	Feb	Mar	Apr	May	Jun	Jul	Aug	Sep	Oct	Nov	Dec		Total 2006
<b>Drug offences - continued</b>														
Dealing, trafficking in cocaine	12	3	6	20	6	19	21	14	21	11	8	4	145	2.1
Dealing, trafficking in narcotics	20	17	21	19	12	32	17	16	26	29	57	17	283	4.2
Dealing, trafficking in cannabis	24	52	40	39	53	54	40	61	26	29	35	43	496	7.3
Dealing, trafficking in amphetamines	28	48	53	71	46	90	84	73	62	64	37	55	711	10.5
Dealing, trafficking in ecstasy	32	57	19	32	11	40	23	48	33	21	26	40	382	5.6
Dealing, trafficking in other drugs	2	5	13	6	6	4	7	8	4	6	9	9	79	1.2
Cultivating cannabis	120	146	155	94	60	35	38	52	52	84	84	102	1,022	15.1
Manufacture drug	7	3	7	5	4	2	2	3	3	4	2	6	48	0.7
Importing drugs	5	1	3	1	3	1	2	2	1	5	1	1	26	0.4
Other drug offences	210	212	248	221	248	204	250	257	228	244	214	212	2,748	40.6
<b>Prohibited and regulated weapons offences</b>	613	599	724	673	621	666	632	735	636	730	628	649	7,906	116.7
<b>Disorderly conduct</b>														
Trespass	793	663	769	724	605	642	695	692	702	812	691	743	8,531	125.9
Offensive conduct	531	465	473	512	412	389	443	475	504	528	523	608	5,863	86.5
Offensive language	509	452	522	476	390	383	392	457	436	462	440	488	5,407	79.8
Criminal intent	137	124	161	134	129	129	138	112	116	97	122	120	1,519	22.4
<b>Betting and gaming offences</b>	14	9	27	42	42	48	9	43	20	13	88	23	378	5.6
<b>Liquor offences</b>	1,198	1,112	1,258	1,303	1,047	927	1,006	1,323	1,257	1,280	1,609	1,784	15,104	223.0
<b>Pornography offences</b>	2	3	8	6	6	13	9	16	8	10	12	6	99	1.5
<b>Prostitution offences</b>	8	12	26	12	27	21	10	6	14	13	18	17	184	2.7

<b>Against justice procedures</b>														
Escape custody	31	21	20	28	14	12	25	18	31	15	24	21	260	3.8
Breach Apprehended Violence Order	1,057	1,099	1,019	854	959	877	860	875	906	1,018	964	884	11,372	167.9
Breach bail conditions	1,158	1,184	1,300	1,141	1,192	1,101	1,201	1,136	1,253	1,298	1,262	1,618	14,844	219.1
Fail to appear	35	45	56	46	44	62	51	42	71	47	52	44	595	8.8
Resist or hinder officer	613	581	609	592	499	484	500	502	473	579	528	677	6,637	98.0
Other offences against justice procedures	43	49	55	42	45	55	46	59	60	75	63	59	651	9.6
<b>Driving offences</b>														
Drive under influence of alcohol or drugs	85	91	113	99	100	89	101	83	69	51	52	49	982	14.5
Dangerous or negligent driving	2,358	2,109	2,468	2,173	2,319	2,409	2,438	2,318	2,235	2,052	2,156	1,774	26,809	395.7
Driving licence cancelled or suspended	1,223	1,043	1,215	1,214	1,220	1,365	1,283	1,336	1,273	1,203	1,213	1,326	14,914	220.2
Driving without a licence	2,321	1,973	2,297	2,482	2,224	2,353	2,135	2,266	2,242	2,267	2,235	2,601	27,396	404.4
Other driving licence offences	4,107	3,273	4,200	4,855	3,806	4,134	3,899	4,342	4,417	4,496	4,436	5,926	51,891	766.0
Registration offences	5,997	4,324	4,985	5,769	5,466	5,535	4,848	5,210	5,165	5,204	5,320	7,195	65,018	959.8
Roadworthiness offences	72	62	73	112	90	100	71	72	75	62	67	97	953	14.1
Exceeding the prescribed content of alcohol limit	2,033	1,609	2,232	2,480	1,831	2,073	2,152	2,012	2,215	2,127	2,310	2,292	25,366	374.4
Exceeding legal speed limit	15,543	16,592	17,412	21,188	18,072	19,322	18,391	21,656	20,314	21,614	16,469	18,869	225,442	3,327.9
Parking offences	108	141	124	116	100	89	100	122	79	96	97	124	1,296	19.1
Other regulatory driving offences	13,708	13,926	16,180	14,441	16,710	15,061	14,230	16,606	15,701	15,636	14,940	16,913	184,052	2,716.9
<b>Transport regulatory offences</b>	2,811	2,616	3,471	2,805	2,788	2,829	3,256	3,331	3,029	2,480	2,511	2,608	34,535	509.8
<b>Other offences</b>	1,473	1,263	1,361	1,360	1,253	1,170	1,291	1,279	1,238	1,159	1,218	1,318	15,383	227.1





---

**MONTHLY TRENDS IN  
METHODS OF PROCEEDING  
AGAINST ALLEGED OFFENDERS  
2004, 2005 AND 2006  
NEW SOUTH WALES**

---

**TABLE 2.1** MONTHLY TRENDS IN METHODS OF PROCEEDING AGAINST ALLEGED OFFENDERS, 2004  
NEW SOUTH WALES: TYPE OF PROCESS

Type of process	Number of alleged offenders <sup>#</sup>												
	Jan	Feb	Mar	Apr	May	Jun	Jul	Aug	Sep	Oct	Nov	Dec	2004 Total
<b>Proceeded against to court:</b>													
Bail Court Attendance Notice	5,223	4,610	4,841	4,590	4,463	4,294	4,325	4,533	4,472	4,792	4,810	5,173	56,126
No-Bail Court Attendance Notice	1,915	1,554	1,709	1,761	1,641	1,615	1,532	1,600	1,498	1,719	1,660	1,780	19,984
Future Court Attendance Notice	1,566	1,504	1,543	1,437	1,423	1,450	1,593	1,667	1,587	1,613	1,670	1,779	18,832
Field Court Attendance Notice	4,007	3,100	3,678	3,689	3,412	3,256	3,462	3,515	3,779	3,835	3,872	4,403	44,008
<b>All proceedings to court</b>	<b>12,711</b>	<b>10,768</b>	<b>11,771</b>	<b>11,477</b>	<b>10,939</b>	<b>10,615</b>	<b>10,912</b>	<b>11,315</b>	<b>11,336</b>	<b>11,959</b>	<b>12,012</b>	<b>13,135</b>	<b>138,950</b>
<b>Proceeded against other than to court:</b>													
Youth Conference	79	73	95	87	72	67	57	75	85	56	73	66	885
Cautious Young Offenders Act	746	621	779	667	777	725	778	886	794	758	799	784	9,114
Cannabis/other drug caution	365	233	289	259	262	333	247	218	271	267	233	242	3,219
Criminal Infringement Notice <sup>^</sup>	125	118	123	137	136	123	155	163	138	138	133	196	1,685
Infringement Notice/ Public Safety Infringement Notice	48,680	34,214	38,609	48,158	40,189	40,041	40,765	42,269	41,249	40,336	37,445	47,642	499,597
Warning*	4,060	3,704	3,906	4,082	4,134	4,319	3,953	3,967	3,777	3,827	3,903	4,766	48,398
<b>All proceedings other than to court</b>	<b>54,055</b>	<b>38,963</b>	<b>43,801</b>	<b>53,390</b>	<b>45,570</b>	<b>45,608</b>	<b>45,955</b>	<b>47,578</b>	<b>46,314</b>	<b>45,382</b>	<b>42,586</b>	<b>53,696</b>	<b>562,898</b>
<b>All proceedings</b>	<b>66,766</b>	<b>49,731</b>	<b>55,572</b>	<b>64,867</b>	<b>56,509</b>	<b>56,223</b>	<b>56,867</b>	<b>58,893</b>	<b>57,650</b>	<b>57,341</b>	<b>54,598</b>	<b>66,831</b>	<b>701,848</b>
<b>Not proceeded against**</b>	<b>5,884</b>	<b>5,563</b>	<b>5,757</b>	<b>5,389</b>	<b>5,544</b>	<b>5,548</b>	<b>5,536</b>	<b>5,674</b>	<b>5,410</b>	<b>5,795</b>	<b>6,192</b>	<b>6,548</b>	<b>68,840</b>

# Each alleged offender is counted only once in each event.

<sup>^</sup> In previous reports Criminal Infringement Notices were counted in the category Infringement Notices.

\* This includes warnings issued to both juveniles and adults.

\*\* Includes offences where: person deceased, under 10 years of age, diplomatic immunity, mentally incapable of forming criminal intent, DPP or victim refuses to prosecute and proceeding delayed pending further advice.

**TABLE 2.2** MONTHLY TRENDS IN METHODS OF PROCEEDING AGAINST ALLEGED OFFENDERS, 2005  
NEW SOUTH WALES: TYPE OF PROCESS

Type of process	Number of alleged offenders <sup>#</sup>												
	Jan	Feb	Mar	Apr	May	Jun	Jul	Aug	Sep	Oct	Nov	Dec	2005 Total
<b>Proceeded against to court:</b>													
Bail Court Attendance Notice	5,310	4,610	4,950	4,647	4,753	4,303	4,456	4,638	4,576	5,197	4,778	5,184	57,402
No-Bail Court Attendance Notice	1,752	1,470	1,713	1,654	1,688	1,477	1,470	1,488	1,374	1,546	1,371	1,315	18,318
Future Court Attendance Notice	1,734	1,644	1,736	1,648	1,732	1,691	1,729	1,651	1,627	1,676	1,746	2,017	20,631
Field Court Attendance Notice	4,367	3,419	4,237	3,772	3,854	3,474	3,566	3,416	3,292	3,655	3,654	3,690	44,396
<b>All proceedings to court</b>	13,163	11,143	12,636	11,721	12,027	10,945	11,221	11,193	10,869	12,074	11,549	12,206	140,747
<b>Proceeded against other than to court:</b>													
Youth Conference	84	110	59	53	142	73	65	59	64	70	80	48	907
Caution Young Offenders Act	678	675	801	785	798	710	796	754	876	840	820	706	9,239
Cannabis/other drug caution	305	153	178	240	319	287	275	235	243	245	196	213	2,889
Criminal Infringement Notice <sup>^</sup>	173	149	153	143	143	125	153	113	112	136	122	154	1,676
Infringement Notice/ Public Safety Infringement Notice	45,470	36,087	43,042	41,236	41,184	43,193	40,031	43,773	41,017	40,116	35,614	42,327	493,090
Warning*	4,378	3,287	3,522	3,861	3,852	3,584	3,749	3,580	3,708	4,298	3,808	4,127	45,754
<b>All proceedings other than to court</b>	51,088	40,461	47,755	46,318	46,438	47,972	45,069	48,514	46,020	45,705	40,640	47,575	553,555
<b>All proceedings</b>	64,251	51,604	60,391	58,039	58,465	58,917	56,290	59,707	56,889	57,779	52,189	59,781	694,302
<b>Not proceeded against**</b>	6,703	5,925	6,424	5,810	5,954	5,393	5,821	5,742	5,853	6,167	5,920	6,531	72,243

# Each alleged offender is counted only once in each event.

<sup>^</sup> In previous reports Criminal Infringement Notices were counted in the category Infringement Notices.

\* This includes warnings issued to both juveniles and adults.

\*\* Includes offences where: person deceased, under 10 years of age, diplomatic immunity, mentally incapable of forming criminal intent, DPP or victim refuses to prosecute and proceeding delayed pending further advice.

**TABLE 2.3** MONTHLY TRENDS IN METHODS OF PROCEEDING AGAINST ALLEGED OFFENDERS, 2006  
NEW SOUTH WALES: TYPE OF PROCESS

Type of process	Number of alleged offenders <sup>#</sup>												
	Jan	Feb	Mar	Apr	May	Jun	Jul	Aug	Sep	Oct	Nov	Dec	2006 Total
<b>Proceeded against to court:</b>													
Bail Court Attendance Notice	5,374	5,060	5,291	4,548	4,624	4,539	4,622	4,631	4,443	4,736	4,473	4,704	57,045
No-Bail Court Attendance Notice	1,291	1,147	1,268	1,291	1,150	1,211	1,176	1,091	1,127	1,175	1,115	1,175	14,217
Future Court Attendance Notice <sup>##</sup>	1,966	1,831	2,040	1,747	1,771	1,773	1,762	1,743	1,596	1,566	1,422	1,273	20,490
Field Court Attendance Notice	3,428	2,858	3,694	3,908	3,350	3,449	3,501	3,457	3,480	3,439	3,651	3,858	42,073
<b>All proceedings to court</b>	<b>12,059</b>	<b>10,896</b>	<b>12,293</b>	<b>11,494</b>	<b>10,895</b>	<b>10,972</b>	<b>11,061</b>	<b>10,922</b>	<b>10,646</b>	<b>10,916</b>	<b>10,661</b>	<b>11,010</b>	<b>133,825</b>
<b>Proceeded against other than to court:</b>													
Youth Conference	98	70	101	66	72	85	82	99	72	72	57	59	933
Caution Young Offenders Act	744	680	822	750	782	832	850	787	771	798	657	599	9,072
Cannabis/other drug caution	255	164	191	237	320	239	267	231	233	201	189	217	2,744
Criminal Infringement Notice <sup>^</sup>	139	135	169	206	122	148	134	153	164	168	167	142	1,847
Infringement Notice/ Public Safety Infringement Notice	37,473	36,924	41,621	44,213	41,888	41,837	39,960	46,129	44,094	44,777	39,412	45,863	504,191
Warning <sup>*</sup>	4,022	3,472	4,025	4,227	3,393	3,551	3,693	3,959	4,075	3,826	4,115	4,617	46,975
<b>All proceedings other than to court</b>	<b>42,731</b>	<b>41,445</b>	<b>46,929</b>	<b>49,699</b>	<b>46,577</b>	<b>46,692</b>	<b>44,986</b>	<b>51,358</b>	<b>49,409</b>	<b>49,842</b>	<b>44,597</b>	<b>51,497</b>	<b>565,762</b>
<b>All proceedings</b>	<b>54,790</b>	<b>52,341</b>	<b>59,222</b>	<b>61,193</b>	<b>57,472</b>	<b>57,664</b>	<b>56,047</b>	<b>62,280</b>	<b>60,055</b>	<b>60,758</b>	<b>55,258</b>	<b>62,507</b>	<b>699,587</b>
<b>Not proceeded against<sup>**</sup></b>	<b>6,406</b>	<b>6,011</b>	<b>6,515</b>	<b>5,835</b>	<b>5,761</b>	<b>5,657</b>	<b>5,580</b>	<b>5,866</b>	<b>5,831</b>	<b>5,855</b>	<b>5,918</b>	<b>5,767</b>	<b>71,002</b>

<sup>#</sup> Each alleged offender is counted only once in each event.

<sup>##</sup> These data show the number of Future CANs issued for criminal incidents recorded in 2006. Due to the time lag between the incident being recorded and the Future CAN being issued, data for the last half of 2006 can expect an upward revision.

<sup>^</sup> In previous reports Criminal Infringement Notices were counted in the category Infringement Notices.

<sup>\*</sup> This includes warnings issued to both juveniles and adults.

<sup>\*\*</sup> Includes offences where: person deceased, under 10 years of age, diplomatic immunity, mentally incapable of forming criminal intent, DPP or victim refuses to prosecute and proceeding delayed pending further advice.

---

**CLEARED CRIMINAL INCIDENTS  
FOR SELECTED OFFENCES  
JANUARY 2004 TO SEPTEMBER 2006  
NEW SOUTH WALES**

---

**TABLE 3.1** CLEARED CRIMINAL INCIDENTS AND PROCEEDINGS COMMENCED, SELECTED OFFENCES  
JANUARY 2004 TO DECEMBER 2004, NEW SOUTH WALES: TYPE OF OFFENCE

Type of offence	Recorded criminal incidents					
	Total number recorded	Within 30 days of reporting		Within 90 days of reporting		% proceedings commenced within 90 days
		Total number cleared#	Proceedings commenced within 30 days##	% proceedings commenced within 30 days	Total number cleared#	Proceedings commenced within 90 days##
Murder*	69	45	37	53.6	47	39
Assault - domestic violence related	26,250	20,783	12,105	46.1	21,936	12,814
Assault - non-domestic violence related	43,872	21,147	11,131	25.4	23,261	12,651
Sexual assault	4,291	737	364	8.5	955	502
Indecent assault, act of indecency	3,615	850	443	12.3	1,097	587
Other sexual offences	1,811	490	274	15.1	536	305
Abduction and kidnapping	414	119	89	21.5	141	104
Robbery without a weapon	4,973	554	424	8.5	646	491
Robbery with a firearm	666	48	39	5.9	64	56
Robbery with a weapon not a firearm	2,609	350	315	12.1	440	387
Harassment, threatening behaviour and private nuisance	19,288	9,087	2,391	12.4	9,673	2,662
Break and enter - dwelling	55,853	2,366	1,673	3.0	2,959	2,100
Break and enter - non-dwelling	29,833	1,263	1,021	3.4	1,603	1,273
Motor vehicle theft	33,234	1,539	1,261	3.8	1,846	1,477
Steal from motor vehicle	59,827	1,325	1,029	1.7	1,548	1,193
Steal from retail store	18,816	11,020	9,284	49.3	11,340	9,609
Steal from dwelling	26,421	2,094	816	3.1	2,402	968
Steal from person	14,338	555	302	2.1	659	353
Stock theft	851	29	4	0.5	66	26
Fraud	32,383	4,252	2,892	8.9	5,738	4,101
Aison	6,226	315	190	3.1	347	214
Malicious damage to property	95,123	15,920	9,034	9.5	17,278	9,936

\* Total number cleared includes both incidents where proceedings were commenced and those where no proceedings were commenced.

## This includes incidents where a person was proceeded against to court and proceeded against other than to court.

\* Victims for whom incident was cleared.

**TABLE 3.2** CLEARED CRIMINAL INCIDENTS AND PROCEEDINGS COMMENCED, SELECTED OFFENCES  
JANUARY 2005 TO DECEMBER 2005, NEW SOUTH WALES: TYPE OF OFFENCE

Type of offence	Recorded criminal incidents					
	Total number recorded	Within 30 days of reporting		Within 90 days of reporting		% proceedings commenced within 90 days
		Total number cleared#	Proceedings commenced within 30 days##	% proceedings commenced within 30 days	Total number cleared#	Proceedings commenced within 90 days##
Murder*	81	55	47	58.0	62	54
Assault - domestic violence related	26,340	21,072	12,854	48.8	22,186	13,615
Assault - non-domestic violence related	45,378	21,430	11,209	24.7	23,584	12,826
Sexual assault	4,109	675	323	7.9	893	482
Indecent assault, act of indecency	3,574	751	404	11.3	1,022	596
Other sexual offences	2,017	515	282	14.0	571	320
Abduction and kidnapping	400	103	76	19.0	123	86
Robbery without a weapon	5,152	639	500	9.7	729	586
Robbery with a firearm	490	47	42	8.6	55	48
Robbery with a weapon not a firearm	2,668	372	328	12.3	465	405
Harassment, threatening behaviour and private nuisance	21,996	10,847	3,105	14.1	11,508	3,434
Break and enter - dwelling	49,935	2,331	1,682	3.4	2,925	2,102
Break and enter - non-dwelling	27,649	1,225	1,005	3.6	1,510	1,228
Motor vehicle theft	29,171	1,216	1,017	3.5	1,500	1,215
Steal from motor vehicle	54,616	1,268	979	1.8	1,488	1,121
Steal from retail store	18,465	9,714	8,071	43.7	10,191	8,514
Steal from dwelling	25,149	1,912	675	2.7	2,181	805
Steal from person	12,622	572	321	2.5	649	375
Stock theft	654	33	7	1.1	43	14
Fraud	34,048	4,222	2,744	8.1	5,443	3,776
Airson	6,524	322	188	2.9	363	214
Malicious damage to property	103,513	17,170	9,862	9.5	18,693	10,988

# Total number cleared includes both incidents where proceedings were commenced and those where no proceedings were commenced.

## This includes incidents where a person was proceeded against to court and proceeded against other than to court.

\* Victims for whom incident was cleared.

**TABLE 3.3** CLEARED CRIMINAL INCIDENTS AND PROCEEDINGS COMMENCED, SELECTED OFFENCES  
JANUARY 2006 TO SEPTEMBER 2006<sup>^</sup>, NEW SOUTH WALES: TYPE OF OFFENCE

Type of offence	Recorded criminal incidents					
	Total number recorded	Within 30 days of reporting		Within 90 days of reporting		% proceedings commenced within 90 days
		Total number cleared <sup>#</sup>	Proceedings commenced within 30 days <sup>##</sup>	% proceedings commenced within 30 days	Total number cleared <sup>#</sup>	Proceedings commenced within 90 days <sup>##</sup>
Murder*	74	41	36	48.6	49	43
Assault - domestic violence related	19,665	15,738	9,942	50.6	16,487	10,480
Assault - non-domestic violence related	33,200	15,742	8,263	24.9	17,340	9,466
Sexual assault	2,966	485	247	8.3	619	323
Indecent assault, act of indecency	2,631	638	337	12.8	816	453
Other sexual offences	1,386	351	209	15.1	387	225
Abduction and kidnapping	296	96	77	26.0	103	82
Robbery without a weapon	3,683	470	387	10.5	540	459
Robbery with a firearm	443	55	52	11.7	70	68
Robbery with a weapon not a firearm	1,929	267	239	12.4	349	321
Harassment, threatening behaviour and private nuisance	16,849	8,587	2,521	15.0	9,123	2,823
Break and enter - dwelling	36,182	1,747	1,300	3.6	2,197	1,641
Break and enter - non-dwelling	20,633	1,015	834	4.0	1,262	1,021
Motor vehicle theft	21,698	938	767	3.5	1,116	909
Steal from motor vehicle	44,211	801	607	1.4	975	736
Steal from retail store	13,465	7,049	5,954	44.2	7,316	6,228
Steal from dwelling	17,630	1,329	495	2.8	1,512	606
Steal from person	8,999	364	227	2.5	418	266
Stock theft	455	25	5	1.1	31	10
Fraud	26,581	3,130	1,937	7.3	4,055	2,655
Arson	5,575	226	124	2.2	258	140
Malicious damage to property	79,408	13,182	7,678	9.7	14,226	8,458

<sup>^</sup> The data for this report were extracted in January 2007 and the clear-up status after 90 days could not be determined for any offences reported in the last three months of 2006. Hence, the clear-up data for 2006 are for the first nine months of the year only.

<sup>#</sup> Total number cleared includes both incidents where proceedings were commenced and those where no proceedings were commenced.

<sup>##</sup> This includes incidents where a person was proceeded against to court and proceeded against other than to court.

\* Victims for whom incident was cleared.



---

**RECORDED CRIME STATISTICS  
IN NEW SOUTH WALES REGIONS  
FOR SELECTED OFFENCES  
2004, 2005 AND 2006**

---



**TABLE 4.1** RECORDED VICTIMS, 2004 TO 2006: STATISTICAL DIVISION**MURDER**

<i>Statistical Division where offence occurred</i>	<i>Recorded victims</i>					
	<i>2004</i>		<i>2005</i>		<i>2006</i>	
	<i>Number</i>	<i>Rate per 100,000 population</i>	<i>Number</i>	<i>Rate per 100,000 population</i>	<i>Number</i>	<i>Rate per 100,000 population</i>
Sydney	46	1.1	51	1.2	57	1.3
Inner Sydney	8	2.6	6	1.9	4	1.3
Eastern Suburbs	4	1.7	4	1.7	7	2.9
St George-Sutherland	4	0.9	6	1.4	5	1.1
Canterbury-Bankstown	5	1.6	1	0.3	6	1.9
Fairfield-Liverpool	8	2.3	7	2.0	9	2.5
Outer South Western Sydney	4	1.7	3	1.2	5	2.1
Inner Western Sydney	1	0.6	0	0.0	1	0.6
Central Western Sydney	2	0.7	6	1.9	8	2.6
Outer Western Sydney	1	0.3	6	1.9	2	0.6
Blacktown	6	2.2	3	1.1	2	0.7
Lower Northern Sydney	0	0.0	1	0.3	0	0.0
Central Northern Sydney	1	0.2	0	0.0	3	0.7
Northern Beaches	2	0.9	1	0.4	1	0.4
Gosford-Wyong	0	0.0	7	2.3	4	1.3
Hunter	4	0.7	13	2.1	7	1.1
Illawarra	1	0.2	2	0.5	8	1.9
Richmond-Tweed	2	0.9	2	0.9	3	1.3
Mid-North Coast	2	0.7	4	1.4	5	1.7
Northern	2	1.1	4	2.2	3	1.7
North Western	5	4.2	2	1.7	0	0.0
Central West	1	0.6	2	1.1	2	1.1
South Eastern	1	0.5	1	0.5	1	0.5
Murrumbidgee	0	0.0	0	0.0	3	1.9
Murray	4	3.5	0	0.0	1	0.9
Far West	0	0.0	0	0.0	0	0.0
New South Wales*	69	1.0	81	1.2	90	1.3

\* The total for New South Wales includes 1 recorded victim in 2004 where the offence occurred in a custodial institution.

**TABLE 4.2** RECORDED CRIMINAL INCIDENTS, 2004 TO 2006: STATISTICAL DIVISION**ASSAULT - DOMESTIC VIOLENCE RELATED**

<i>Statistical Division where offence occurred</i>	<i>Recorded criminal incidents</i>					
	<i>2004</i>		<i>2005</i>		<i>2006</i>	
	<i>Number</i>	<i>Rate per 100,000 population</i>	<i>Number</i>	<i>Rate per 100,000 population</i>	<i>Number</i>	<i>Rate per 100,000 population</i>
Sydney	14,066	332.9	13,856	325.6	14,312	336.4
Inner Sydney	1,391	448.4	1,325	425.1	1,493	479.0
Eastern Suburbs	530	219.7	526	218.8	544	226.3
St George-Sutherland	1,013	230.3	999	225.9	1,063	240.4
Canterbury-Bankstown	793	255.9	877	281.9	926	297.6
Fairfield-Liverpool	1,513	426.0	1,472	411.2	1,356	378.8
Outer South Western Sydney	1,375	571.7	1,309	538.6	1,483	610.2
Inner Western Sydney	397	235.9	306	179.9	345	202.9
Central Western Sydney	1,126	369.8	1,184	384.4	1,295	420.4
Outer Western Sydney	1,269	399.6	1,339	420.7	1,298	407.8
Blacktown	1,847	664.2	1,770	624.4	1,829	645.2
Lower Northern Sydney	492	164.8	396	132.4	375	125.4
Central Northern Sydney	524	123.9	584	136.8	611	143.1
Northern Beaches	437	186.6	421	178.5	385	163.2
Gosford-Wyong	1,359	446.8	1,348	439.5	1,309	426.8
Hunter	2,541	421.2	2,983	488.6	2,777	454.9
Illawarra	1,745	425.9	1,771	427.6	1,652	398.9
Richmond-Tweed	920	411.5	887	392.7	1,105	489.2
Mid-North Coast	1,355	465.1	1,411	478.1	1,327	449.6
Northern	943	527.3	1,035	577.9	1,114	622.0
North Western	1,348	1,135.6	1,300	1,093.5	1,185	996.8
Central West	897	501.2	799	443.7	825	458.2
South Eastern	837	418.0	775	382.2	707	348.7
Murrumbidgee	815	533.0	731	475.1	701	455.6
Murray	456	398.4	494	427.6	560	484.8
Far West	291	1,230.5	261	1,114.1	295	1,259.2
New South Wales*	26,250	390.6	26,340	388.8	26,613	392.9

\* The total for New South Wales includes 36 recorded incidents in 2004, 37 recorded incidents in 2005 and 53 recorded incidents in 2006 where the offence occurred in a custodial institution.

**TABLE 4.3** RECORDED CRIMINAL INCIDENTS, 2004 TO 2006: STATISTICAL DIVISIONASSAULT - NON-DOMESTIC VIOLENCE RELATED<sup>^</sup>

<i>Statistical Division where offence occurred</i>	<i>Recorded criminal incidents</i>					
	<i>2004</i>		<i>2005</i>		<i>2006</i>	
	<i>Number</i>	<i>Rate per 100,000 population</i>	<i>Number</i>	<i>Rate per 100,000 population</i>	<i>Number</i>	<i>Rate per 100,000 population</i>
Sydney	24,340	576.1	25,368	596.2	24,764	582.0
Inner Sydney	5,644	1,819.4	5,740	1,841.5	5,413	1,736.6
Eastern Suburbs	1,433	594.1	1,558	648.1	1,490	619.8
St George-Sutherland	1,516	344.7	1,594	360.4	1,567	354.3
Canterbury-Bankstown	1,225	395.2	1,239	398.2	1,255	403.4
Fairfield-Liverpool	1,799	506.6	1,924	537.5	1,783	498.1
Outer South Western Sydney	1,700	706.9	1,903	783.0	1,812	745.5
Inner Western Sydney	647	384.4	617	362.8	605	355.8
Central Western Sydney	1,889	620.3	1,990	646.1	2,089	678.2
Outer Western Sydney	1,893	596.1	1,948	612.0	2,044	642.2
Blacktown	2,028	729.2	2,162	762.7	2,113	745.4
Lower Northern Sydney	939	314.5	868	290.2	845	282.5
Central Northern Sydney	848	200.5	934	218.8	966	226.2
Northern Beaches	816	348.4	787	333.7	725	307.4
Gosford-Wyong	1,963	645.4	2,104	686.0	2,057	670.7
Hunter	4,211	698.1	4,337	710.4	4,147	679.3
Illawarra	2,514	613.6	2,649	639.6	2,751	664.2
Richmond-Tweed	1,607	718.7	1,695	750.4	1,821	806.2
Mid-North Coast	2,011	690.2	2,102	712.2	2,053	695.6
Northern	1,586	886.8	1,627	908.4	1,684	940.2
North Western	1,752	1,475.9	1,640	1,379.5	1,546	1,300.4
Central West	1,404	784.4	1,478	820.8	1,445	802.5
South Eastern	1,395	696.7	1,429	704.8	1,445	712.7
Murrumbidgee	1,092	714.1	1,229	798.7	1,177	764.9
Murray	781	682.3	822	711.5	890	770.4
Far West	331	1,399.6	277	1,182.3	320	1,365.9
New South Wales*	43,872	652.8	45,378	669.9	44,760	660.7

<sup>^</sup> Assault – 'non-domestic violence related' is published as a separate table for the first time in this annual report. Previous reports included an 'assault' table which contained the sum of all 'domestic' and 'non-domestic' assault incidents recorded and a separate 'domestic violence related' table.

\* The total for New South Wales includes 848 recorded incidents in 2004, 725 recorded incidents in 2005 and 717 recorded incidents in 2006 where the offence occurred in a custodial institution.

**TABLE 4.4** RECORDED CRIMINAL INCIDENTS, 2004 TO 2006: STATISTICAL DIVISION**SEXUAL ASSAULT**

<i>Statistical Division where offence occurred</i>	<i>Recorded criminal incidents</i>					
	<i>2004</i>		<i>2005</i>		<i>2006</i>	
	<i>Number</i>	<i>Rate per 100,000 population</i>	<i>Number</i>	<i>Rate per 100,000 population</i>	<i>Number</i>	<i>Rate per 100,000 population</i>
Sydney	2,166	51.3	1,941	45.6	1,907	44.8
Inner Sydney	292	94.1	237	76.0	237	76.0
Eastern Suburbs	98	40.6	80	33.3	75	31.2
St George-Sutherland	155	35.2	157	35.5	128	28.9
Canterbury-Bankstown	172	55.5	101	32.5	117	37.6
Fairfield-Liverpool	180	50.7	172	48.0	179	50.0
Outer South Western Sydney	193	80.3	195	80.2	184	75.7
Inner Western Sydney	59	35.1	42	24.7	37	21.8
Central Western Sydney	132	43.3	147	47.7	143	46.4
Outer Western Sydney	229	72.1	206	64.7	198	62.2
Blacktown	189	68.0	181	63.9	182	64.2
Lower Northern Sydney	62	20.8	57	19.1	64	21.4
Central Northern Sydney	88	20.8	83	19.4	80	18.7
Northern Beaches	88	37.6	61	25.9	68	28.8
Gosford-Wyong	229	75.3	222	72.4	215	70.1
Hunter	436	72.3	456	74.7	401	65.7
Illawarra	289	70.5	258	62.3	280	67.6
Richmond-Tweed	195	87.2	228	100.9	183	81.0
Mid-North Coast	242	83.1	245	83.0	236	80.0
Northern	179	100.1	198	110.6	189	105.5
North Western	171	144.1	180	151.4	154	129.5
Central West	139	77.7	179	99.4	140	77.8
South Eastern	170	84.9	153	75.5	168	82.9
Murrumbidgee	154	100.7	115	74.7	129	83.8
Murray	84	73.4	107	92.6	94	81.4
Far West	33	139.5	34	145.1	40	170.7
New South Wales*	4,291	63.8	4,109	60.7	3,944	58.2

\* The total for New South Wales includes 33 recorded incidents in 2004, 15 recorded incidents in 2005 and 23 recorded incidents in 2006 where the offence occurred in a custodial institution.

**TABLE 4.5** RECORDED CRIMINAL INCIDENTS, 2004 TO 2006: STATISTICAL DIVISION

## INDECENT ASSAULT, ACT OF INDECENCY, OTHER SEXUAL OFFENCES

<i>Statistical Division where offence occurred</i>	<i>Recorded criminal incidents</i>					
	<i>2004</i>		<i>2005</i>		<i>2006</i>	
	<i>Number</i>	<i>Rate per 100,000 population</i>	<i>Number</i>	<i>Rate per 100,000 population</i>	<i>Number</i>	<i>Rate per 100,000 population</i>
Sydney	2,936	69.5	2,865	67.3	2,708	63.6
Inner Sydney	421	135.7	375	120.3	372	119.3
Eastern Suburbs	176	73.0	161	67.0	175	72.8
St George-Sutherland	224	50.9	225	50.9	221	50.0
Canterbury-Bankstown	172	55.5	157	50.5	142	45.6
Fairfield-Liverpool	232	65.3	215	60.1	193	53.9
Outer South Western Sydney	225	93.6	232	95.5	200	82.3
Inner Western Sydney	106	63.0	84	49.4	88	51.7
Central Western Sydney	169	55.5	208	67.5	191	62.0
Outer Western Sydney	244	76.8	279	87.7	226	71.0
Blacktown	198	71.2	219	77.3	219	77.3
Lower Northern Sydney	139	46.6	125	41.8	142	47.5
Central Northern Sydney	186	44.0	159	37.2	131	30.7
Northern Beaches	132	56.4	142	60.2	123	52.1
Gosford-Wyong	312	102.6	284	92.6	285	92.9
Hunter	565	93.7	565	92.5	508	83.2
Illawarra	267	65.2	295	71.2	295	71.2
Richmond-Tweed	226	101.1	286	126.6	218	96.5
Mid-North Coast	318	109.1	306	103.7	325	110.1
Northern	219	122.5	227	126.7	234	130.7
North Western	200	168.5	245	206.1	227	190.9
Central West	183	102.2	213	118.3	221	122.7
South Eastern	197	98.4	217	107.0	226	111.5
Murrumbidgee	162	105.9	189	122.8	180	117.0
Murray	105	91.7	133	115.1	122	105.6
Far West	29	122.6	34	145.1	27	115.2
New South Wales*	5,426	80.7	5,591	82.5	5,313	78.4

\* The total for New South Wales includes 19 recorded incidents in 2004, 16 recorded incidents in 2005 and 22 recorded incidents in 2006 where the offence occurred in a custodial institution.

**TABLE 4.6** RECORDED CRIMINAL INCIDENTS, 2004 TO 2006: STATISTICAL DIVISION**ROBBERY WITHOUT A WEAPON**

<i>Statistical Division where offence occurred</i>	<i>Recorded criminal incidents</i>					
	<i>2004</i>		<i>2005</i>		<i>2006</i>	
	<i>Number</i>	<i>Rate per 100,000 population</i>	<i>Number</i>	<i>Rate per 100,000 population</i>	<i>Number</i>	<i>Rate per 100,000 population</i>
Sydney	4,184	99.0	4,331	101.8	4,121	96.9
Inner Sydney	1,339	431.6	1,626	521.7	1,260	404.2
Eastern Suburbs	284	117.7	222	92.3	242	100.7
St George-Sutherland	247	56.2	255	57.7	243	54.9
Canterbury-Bankstown	323	104.2	402	129.2	388	124.7
Fairfield-Liverpool	346	97.4	300	83.8	323	90.2
Outer South Western Sydney	161	66.9	206	84.8	156	64.2
Inner Western Sydney	227	134.9	182	107.0	183	107.6
Central Western Sydney	411	135.0	355	115.3	444	144.2
Outer Western Sydney	213	67.1	156	49.0	195	61.3
Blacktown	243	87.4	246	86.8	300	105.8
Lower Northern Sydney	136	45.6	104	34.8	133	44.5
Central Northern Sydney	93	22.0	109	25.5	105	24.6
Northern Beaches	71	30.3	69	29.3	71	30.1
Gosford-Wyong	90	29.6	99	32.3	78	25.4
Hunter	222	36.8	260	42.6	215	35.2
Illawarra	159	38.8	173	41.8	170	41.0
Richmond-Tweed	66	29.5	71	31.4	67	29.7
Mid-North Coast	68	23.3	72	24.4	92	31.2
Northern	64	35.8	48	26.8	57	31.8
North Western	51	43.0	48	40.4	39	32.8
Central West	52	29.1	52	28.9	32	17.8
South Eastern	33	16.5	32	15.8	39	19.2
Murrumbidgee	43	28.1	38	24.7	38	24.7
Murray	17	14.9	15	13.0	17	14.7
Far West	14	59.2	10	42.7	3	12.8
New South Wales*	4,973	74.0	5,152	76.1	4,890	72.2

\* The total for New South Wales includes 2 recorded incidents in 2005 where the offence occurred in a custodial institution.



**TABLE 4.7** RECORDED CRIMINAL INCIDENTS, 2004 TO 2006: STATISTICAL DIVISION**ROBBERY WITH A FIREARM**

<i>Statistical Division where offence occurred</i>	<i>Recorded criminal incidents</i>					
	<i>2004</i>		<i>2005</i>		<i>2006</i>	
	<i>Number</i>	<i>Rate per 100,000 population</i>	<i>Number</i>	<i>Rate per 100,000 population</i>	<i>Number</i>	<i>Rate per 100,000 population</i>
Sydney	608	14.4	445	10.5	499	11.7
Inner Sydney	129	41.6	76	24.4	108	34.6
Eastern Suburbs	32	13.3	20	8.3	25	10.4
St George-Sutherland	58	13.2	26	5.9	44	9.9
Canterbury-Bankstown	69	22.3	56	18.0	72	23.1
Fairfield-Liverpool	74	20.8	65	18.2	71	19.8
Outer South Western Sydney	17	7.1	12	4.9	25	10.3
Inner Western Sydney	47	27.9	33	19.4	33	19.4
Central Western Sydney	72	23.6	61	19.8	55	17.9
Outer Western Sydney	19	6.0	19	6.0	12	3.8
Blacktown	24	8.6	19	6.7	15	5.3
Lower Northern Sydney	33	11.1	21	7.0	20	6.7
Central Northern Sydney	13	3.1	13	3.0	6	1.4
Northern Beaches	3	1.3	4	1.7	5	2.1
Gosford-Wyong	18	5.9	20	6.5	8	2.6
Hunter	11	1.8	24	3.9	19	3.1
Illawarra	15	3.7	5	1.2	10	2.4
Richmond-Tweed	4	1.8	0	0.0	13	5.8
Mid-North Coast	7	2.4	6	2.0	6	2.0
Northern	2	1.1	3	1.7	0	0.0
North Western	7	5.9	1	0.8	2	1.7
Central West	0	0.0	1	0.6	2	1.1
South Eastern	5	2.5	2	1.0	2	1.0
Murrumbidgee	5	3.3	1	0.6	1	0.6
Murray	2	1.7	1	0.9	0	0.0
Far West	0	0.0	1	4.3	0	0.0
New South Wales	666	9.9	490	7.2	554	8.2

**TABLE 4.8** RECORDED CRIMINAL INCIDENTS, 2004 TO 2006: STATISTICAL DIVISION**ROBBERY WITH A WEAPON NOT A FIREARM**

<i>Statistical Division where offence occurred</i>	<i>Recorded criminal incidents</i>					
	<i>2004</i>		<i>2005</i>		<i>2006</i>	
	<i>Number</i>	<i>Rate per 100,000 population</i>	<i>Number</i>	<i>Rate per 100,000 population</i>	<i>Number</i>	<i>Rate per 100,000 population</i>
Sydney	2,176	51.5	2,289	53.8	2,123	49.9
Inner Sydney	632	203.7	615	197.3	587	188.3
Eastern Suburbs	123	51.0	125	52.0	127	52.8
St George-Sutherland	139	31.6	160	36.2	115	26.0
Canterbury-Bankstown	190	61.3	283	91.0	246	79.1
Fairfield-Liverpool	234	65.9	190	53.1	192	53.6
Outer South Western Sydney	78	32.4	108	44.4	94	38.7
Inner Western Sydney	174	103.4	175	102.9	121	71.2
Central Western Sydney	212	69.6	214	69.5	264	85.7
Outer Western Sydney	96	30.2	83	26.1	79	24.8
Blacktown	99	35.6	77	27.2	99	34.9
Lower Northern Sydney	86	28.8	105	35.1	79	26.4
Central Northern Sydney	54	12.8	79	18.5	58	13.6
Northern Beaches	14	6.0	25	10.6	24	10.2
Gosford-Wyong	45	14.8	50	16.3	38	12.4
Hunter	175	29.0	114	18.7	126	20.6
Illawarra	101	24.7	112	27.0	95	22.9
Richmond-Tweed	24	10.7	22	9.7	23	10.2
Mid-North Coast	40	13.7	42	14.2	37	12.5
Northern	12	6.7	17	9.5	9	5.0
North Western	29	24.4	28	23.6	13	10.9
Central West	17	9.5	12	6.7	28	15.6
South Eastern	14	7.0	10	4.9	14	6.9
Murrumbidgee	13	8.5	15	9.7	14	9.1
Murray	6	5.2	3	2.6	6	5.2
Far West	1	4.2	4	17.1	3	12.8
New South Wales*	2,609	38.8	2,668	39.4	2,491	36.8

\* The total for New South Wales includes 1 recorded incident in 2004 where the offence occurred in a custodial institution.

**TABLE 4.9** RECORDED CRIMINAL INCIDENTS, 2004 TO 2006: STATISTICAL DIVISION**BREAKING AND ENTERING - DWELLING**

<i>Statistical Division where offence occurred</i>	<i>Recorded criminal incidents</i>					
	<i>2004</i>		<i>2005</i>		<i>2006</i>	
	<i>Number</i>	<i>Rate per 100,000 population</i>	<i>Number</i>	<i>Rate per 100,000 population</i>	<i>Number</i>	<i>Rate per 100,000 population</i>
Sydney	34,272	811.2	29,869	702.0	29,804	700.5
Inner Sydney	4,010	1,292.6	4,086	1,310.9	3,128	1,003.5
Eastern Suburbs	2,672	1,107.8	2,156	896.9	1,901	790.8
St George-Sutherland	2,910	661.7	2,164	489.3	2,214	500.6
Canterbury-Bankstown	1,997	644.3	1,769	568.6	2,063	663.1
Fairfield-Liverpool	2,826	795.8	2,678	748.1	2,692	752.0
Outer South Western Sydney	2,488	1,034.5	2,022	831.9	1,860	765.3
Inner Western Sydney	1,712	1,017.1	1,405	826.2	1,460	858.5
Central Western Sydney	3,160	1,037.7	2,908	944.1	2,796	907.8
Outer Western Sydney	2,057	647.7	1,820	571.8	2,144	673.6
Blacktown	2,475	890.0	2,439	860.4	2,647	933.8
Lower Northern Sydney	2,590	867.5	1,568	524.3	1,741	582.1
Central Northern Sydney	2,053	485.5	1,830	428.6	1,851	433.5
Northern Beaches	1,284	548.2	961	407.4	1,274	540.1
Gosford-Wyong	2,038	670.1	2,063	672.7	2,033	662.9
Hunter	5,876	974.1	5,596	916.6	4,543	744.1
Illawarra	3,645	889.6	3,433	828.9	2,973	717.8
Richmond-Tweed	1,668	746.0	1,374	608.3	1,404	621.6
Mid-North Coast	2,185	749.9	1,850	626.8	1,869	633.3
Northern	1,696	948.3	1,525	851.5	1,413	788.9
North Western	1,929	1,625.0	1,519	1,277.7	1,174	987.5
Central West	1,408	786.7	1,421	789.2	1,368	759.7
South Eastern	1,136	567.3	1,058	521.8	1,025	505.5
Murrumbidgee	1,035	676.8	1,125	731.1	1,227	797.4
Murray	717	626.4	876	758.3	812	702.9
Far West	286	1,209.4	289	1,233.6	251	1,071.4
New South Wales	55,853	831.0	49,935	737.1	47,863	706.5

**TABLE 4.10** RECORDED CRIMINAL INCIDENTS, 2004 TO 2006: STATISTICAL DIVISION**BREAKING AND ENTERING - NON-DWELLING**

<i>Statistical Division where offence occurred</i>	<i>Recorded criminal incidents</i>					
	<i>2004</i>		<i>2005</i>		<i>2006</i>	
	<i>Number</i>	<i>Rate per 100,000 population</i>	<i>Number</i>	<i>Rate per 100,000 population</i>	<i>Number</i>	<i>Rate per 100,000 population</i>
Sydney	15,499	366.8	14,487	340.5	13,234	311.0
Inner Sydney	3,004	968.3	2,821	905.0	2,358	756.5
Eastern Suburbs	688	285.2	577	240.0	589	245.0
St George-Sutherland	980	222.8	1,040	235.2	850	192.2
Canterbury-Bankstown	1,032	333.0	903	290.2	767	246.5
Fairfield-Liverpool	1,258	354.2	1,026	286.6	932	260.3
Outer South Western Sydney	898	373.4	1,010	415.6	732	301.2
Inner Western Sydney	415	246.6	512	301.1	360	211.7
Central Western Sydney	1,421	466.6	1,293	419.8	1,097	356.2
Outer Western Sydney	1,083	341.0	864	271.5	1,047	328.9
Blacktown	941	338.4	810	285.8	713	251.5
Lower Northern Sydney	1,023	342.7	1,027	343.4	937	313.3
Central Northern Sydney	877	207.4	875	204.9	957	224.1
Northern Beaches	600	256.2	553	234.5	537	227.7
Gosford-Wyong	1,279	420.5	1,176	383.4	1,358	442.8
Hunter	3,708	614.7	3,282	537.6	3,719	609.1
Illawarra	2,015	491.8	1,720	415.3	1,836	443.3
Richmond-Tweed	1,190	532.2	1,156	511.8	1,224	541.9
Mid-North Coast	1,856	637.0	1,817	615.6	1,776	601.7
Northern	1,002	560.3	991	553.3	999	557.8
North Western	1,221	1,028.6	1,065	895.8	864	726.8
Central West	906	506.2	873	484.8	921	511.5
South Eastern	863	431.0	817	402.9	821	404.9
Murrumbidgee	802	524.5	692	449.7	802	521.2
Murray	588	513.7	604	522.8	660	571.3
Far West	179	756.9	140	597.6	123	525.0
New South Wales*	29,833	443.9	27,649	408.1	26,981	398.3

\* The total for New South Wales includes 4 recorded incidents in 2004, 5 recorded incidents in 2005 and 2 recorded incidents in 2006 where the offence occurred in a custodial institution.

**TABLE 4.11** RECORDED CRIMINAL INCIDENTS, 2004 TO 2006: STATISTICAL DIVISION

## RECEIVING OR HANDLING STOLEN GOODS

<i>Statistical Division where offence occurred</i>	<i>Recorded criminal incidents</i>					
	<i>2004</i>		<i>2005</i>		<i>2006</i>	
	<i>Number</i>	<i>Rate per 100,000 population</i>	<i>Number</i>	<i>Rate per 100,000 population</i>	<i>Number</i>	<i>Rate per 100,000 population</i>
Sydney	5,154	122.0	4,385	103.1	3,843	90.3
Inner Sydney	1,468	473.2	1,219	391.1	1,018	326.6
Eastern Suburbs	311	128.9	221	91.9	183	76.1
St George-Sutherland	274	62.3	265	59.9	260	58.8
Canterbury-Bankstown	278	89.7	201	64.6	184	59.1
Fairfield-Liverpool	519	146.1	461	128.8	360	100.6
Outer South Western Sydney	242	100.6	220	90.5	192	79.0
Inner Western Sydney	135	80.2	101	59.4	113	66.4
Central Western Sydney	477	156.6	427	138.6	428	139.0
Outer Western Sydney	306	96.4	257	80.7	237	74.5
Blacktown	415	149.2	381	134.4	303	106.9
Lower Northern Sydney	177	59.3	140	46.8	97	32.4
Central Northern Sydney	151	35.7	123	28.8	116	27.2
Northern Beaches	104	44.4	118	50.0	106	44.9
Gosford-Wyong	297	97.7	251	81.8	246	80.2
Hunter	634	105.1	484	79.3	460	75.3
Illawarra	549	134.0	396	95.6	345	83.3
Richmond-Tweed	243	108.7	199	88.1	190	84.1
Mid-North Coast	295	101.2	229	77.6	194	65.7
Northern	123	68.8	127	70.9	111	62.0
North Western	195	164.3	164	137.9	138	116.1
Central West	158	88.3	145	80.5	142	78.9
South Eastern	217	108.4	194	95.7	138	68.1
Murrumbidgee	167	109.2	127	82.5	131	85.1
Murray	111	97.0	151	130.7	85	73.6
Far West	27	114.2	28	119.5	19	81.1
New South Wales*	7,889	117.4	6,643	98.1	5,809	85.8

\* The total for New South Wales includes 16 recorded incidents in 2004, 14 recorded incidents in 2005 and 13 recorded incidents in 2006 where the offence occurred in a custodial institution.

**TABLE 4.12** RECORDED CRIMINAL INCIDENTS, 2004 TO 2006: STATISTICAL DIVISION**MOTOR VEHICLE THEFT**

<i>Statistical Division where offence occurred</i>	<i>Recorded criminal incidents</i>					
	<i>2004</i>		<i>2005</i>		<i>2006</i>	
	<i>Number</i>	<i>Rate per 100,000 population</i>	<i>Number</i>	<i>Rate per 100,000 population</i>	<i>Number</i>	<i>Rate per 100,000 population</i>
Sydney	23,361	552.9	20,211	475.0	19,682	462.6
Inner Sydney	3,269	1,053.8	2,465	790.8	2,510	805.3
Eastern Suburbs	1,680	696.5	1,133	471.3	1,219	507.1
St George-Sutherland	1,963	446.3	1,551	350.7	1,413	319.5
Canterbury-Bankstown	2,611	842.4	2,275	731.2	2,298	738.6
Fairfield-Liverpool	2,293	645.7	2,002	559.2	1,923	537.2
Outer South Western Sydney	1,776	738.5	1,471	605.2	1,300	534.9
Inner Western Sydney	993	589.9	850	499.8	852	501.0
Central Western Sydney	2,248	738.2	2,275	738.6	2,173	705.5
Outer Western Sydney	1,545	486.5	1,352	424.8	1,298	407.8
Blacktown	1,697	610.2	1,611	568.3	1,708	602.6
Lower Northern Sydney	858	287.4	731	244.4	709	237.1
Central Northern Sydney	656	155.1	728	170.5	696	163.0
Northern Beaches	467	199.4	490	207.7	435	184.4
Gosford-Wyong	1,305	429.1	1,277	416.4	1,148	374.3
Hunter	2,989	495.5	2,929	479.8	2,910	476.6
Illawarra	2,590	632.1	2,022	488.2	1,668	402.7
Richmond-Tweed	722	322.9	710	314.3	668	295.7
Mid-North Coast	879	301.7	687	232.8	825	279.5
Northern	326	182.3	342	191.0	380	212.2
North Western	702	591.4	689	579.6	579	487.0
Central West	402	224.6	383	212.7	416	231.0
South Eastern	501	250.2	447	220.5	414	204.2
Murrumbidgee	390	255.0	292	189.8	364	236.6
Murray	319	278.7	386	334.1	328	283.9
Far West	50	211.4	73	311.6	69	294.5
New South Wales*	33,234	494.5	29,171	430.6	28,304	417.8

\* The total for New South Wales includes 3 recorded incidents in 2004 and 1 recorded incident in 2006 where the offence occurred in a custodial institution.

**TABLE 4.13** RECORDED CRIMINAL INCIDENTS, 2004 TO 2006: STATISTICAL DIVISION**STEAL FROM MOTOR VEHICLE**

<i>Statistical Division where offence occurred</i>	<i>Recorded criminal incidents</i>					
	<i>2004</i>		<i>2005</i>		<i>2006</i>	
	<i>Number</i>	<i>Rate per 100,000 population</i>	<i>Number</i>	<i>Rate per 100,000 population</i>	<i>Number</i>	<i>Rate per 100,000 population</i>
Sydney	40,321	954.3	35,822	841.9	38,637	908.1
Inner Sydney	9,248	2,981.1	7,328	2,351.0	9,308	2,986.2
Eastern Suburbs	3,094	1,282.8	2,038	847.8	2,081	865.7
St George-Sutherland	2,741	623.2	2,611	590.4	2,391	540.7
Canterbury-Bankstown	2,583	833.4	2,505	805.1	2,552	820.2
Fairfield-Liverpool	3,112	876.3	2,972	830.2	2,897	809.3
Outer South Western Sydney	1,996	830.0	2,019	830.7	1,900	781.7
Inner Western Sydney	1,631	969.0	1,379	810.9	1,469	863.8
Central Western Sydney	3,061	1,005.2	3,182	1,033.1	3,189	1,035.4
Outer Western Sydney	2,729	859.3	2,003	629.3	2,414	758.4
Blacktown	2,124	763.8	2,126	750.0	2,619	923.9
Lower Northern Sydney	2,477	829.7	1,804	603.2	2,004	670.1
Central Northern Sydney	1,858	439.4	1,988	465.6	2,220	519.9
Northern Beaches	1,554	663.5	1,687	715.2	1,238	524.9
Gosford-Wyong	2,113	694.8	2,180	710.8	2,355	767.9
Hunter	5,358	888.2	5,468	895.6	5,744	940.8
Illawarra	3,404	830.8	3,169	765.1	2,906	701.6
Richmond-Tweed	1,445	646.3	1,544	683.5	1,561	691.1
Mid-North Coast	2,183	749.2	1,823	617.7	1,844	624.8
Northern	1,095	612.3	1,163	649.3	1,107	618.1
North Western	1,536	1,294.0	1,369	1,151.5	1,120	942.1
Central West	1,158	647.0	1,231	683.6	1,118	620.9
South Eastern	1,159	578.8	944	465.6	1,067	526.2
Murrumbidgee	1,139	744.8	1,104	717.5	1,184	769.5
Murray	890	777.5	798	690.8	1,008	872.6
Far West	133	562.4	179	764.0	173	738.4
New South Wales*	59,827	890.2	54,616	806.2	57,477	848.5

\* The total for New South Wales includes 6 recorded incidents in 2004, 2 recorded incidents in 2005 and 8 recorded incidents in 2006 where the offence occurred in a custodial institution.

**TABLE 4.14** RECORDED CRIMINAL INCIDENTS, 2004 TO 2006: STATISTICAL DIVISION**STEAL FROM RETAIL STORE**

<i>Statistical Division where offence occurred</i>	<i>Recorded criminal incidents</i>					
	<i>2004</i>		<i>2005</i>		<i>2006</i>	
	<i>Number</i>	<i>Rate per 100,000 population</i>	<i>Number</i>	<i>Rate per 100,000 population</i>	<i>Number</i>	<i>Rate per 100,000 population</i>
Sydney	12,021	284.5	12,295	289.0	12,297	289.0
Inner Sydney	1,991	641.8	2,104	675.0	1,967	631.1
Eastern Suburbs	755	313.0	996	414.3	997	414.7
St George-Sutherland	950	216.0	764	172.8	882	199.4
Canterbury-Bankstown	719	232.0	589	189.3	706	226.9
Fairfield-Liverpool	1,020	287.2	1,059	295.8	1,117	312.0
Outer South Western Sydney	724	301.0	775	318.9	694	285.5
Inner Western Sydney	501	297.6	518	304.6	482	283.4
Central Western Sydney	1,130	371.1	1,074	348.7	1,158	376.0
Outer Western Sydney	754	237.4	838	263.3	793	249.1
Blacktown	963	346.3	1,001	353.1	1,003	353.8
Lower Northern Sydney	852	285.4	855	285.9	758	253.5
Central Northern Sydney	584	138.1	564	132.1	539	126.2
Northern Beaches	333	142.2	400	169.6	400	169.6
Gosford-Wyong	745	245.0	758	247.1	801	261.2
Hunter	1,570	260.3	1,444	236.5	1,326	217.2
Illawarra	1,209	295.1	1,042	251.6	986	238.1
Richmond-Tweed	811	362.7	705	312.1	630	278.9
Mid-North Coast	773	265.3	774	262.2	723	245.0
Northern	514	287.4	444	247.9	427	238.4
North Western	411	346.2	422	355.0	300	252.3
Central West	469	262.0	395	219.4	336	186.6
South Eastern	362	180.8	388	191.4	362	178.5
Murrumbidgee	375	245.2	278	180.7	338	219.7
Murray	249	217.5	239	206.9	180	155.8
Far West	51	215.7	39	166.5	39	166.5
New South Wales*	18,816	280.0	18,465	272.6	17,944	264.9

\* The total for New South Wales includes 1 recorded incident in 2004 where the offence occurred in a custodial institution.



**TABLE 4.15** RECORDED CRIMINAL INCIDENTS, 2004 TO 2006: STATISTICAL DIVISION**STEAL FROM DWELLING**

<i>Statistical Division where offence occurred</i>	<i>Recorded criminal incidents</i>					
	<i>2004</i>		<i>2005</i>		<i>2006</i>	
	<i>Number</i>	<i>Rate per 100,000 population</i>	<i>Number</i>	<i>Rate per 100,000 population</i>	<i>Number</i>	<i>Rate per 100,000 population</i>
Sydney	12,446	294.6	11,682	274.6	11,400	267.9
Inner Sydney	1,832	590.6	1,868	599.3	1,669	535.5
Eastern Suburbs	949	393.5	813	338.2	830	345.3
St George-Sutherland	963	219.0	752	170.0	703	159.0
Canterbury-Bankstown	593	191.3	561	180.3	529	170.0
Fairfield-Liverpool	722	203.3	672	187.7	618	172.6
Outer South Western Sydney	845	351.4	844	347.3	831	341.9
Inner Western Sydney	487	289.3	489	287.5	409	240.5
Central Western Sydney	780	256.1	704	228.6	710	230.5
Outer Western Sydney	980	308.6	915	287.5	1,034	324.9
Blacktown	993	357.1	917	323.5	926	326.7
Lower Northern Sydney	700	234.5	615	205.6	590	197.3
Central Northern Sydney	786	185.9	764	178.9	710	166.3
Northern Beaches	636	271.5	600	254.4	543	230.2
Gosford-Wyong	1,180	388.0	1,168	380.8	1,298	423.2
Hunter	3,191	529.0	3,301	540.7	3,112	509.7
Illawarra	2,150	524.7	1,817	438.7	1,499	361.9
Richmond-Tweed	1,304	583.2	1,206	533.9	1,253	554.7
Mid-North Coast	1,534	526.5	1,542	522.5	1,616	547.5
Northern	1,069	597.7	1,006	561.7	882	492.5
North Western	887	747.2	830	698.2	739	621.6
Central West	1,072	598.9	1,000	555.4	924	513.2
South Eastern	938	468.5	934	460.6	897	442.4
Murrumbidgee	876	572.9	948	616.1	827	537.5
Murray	721	629.8	666	576.5	631	546.2
Far West	233	985.2	217	926.2	176	751.2
New South Wales	26,421	393.1	25,149	371.2	23,956	353.6

**TABLE 4.16** RECORDED CRIMINAL INCIDENTS, 2004 TO 2006: STATISTICAL DIVISION**STEAL FROM PERSON**

<i>Statistical Division where offence occurred</i>	<i>Recorded criminal incidents</i>					
	<i>2004</i>		<i>2005</i>		<i>2006</i>	
	<i>Number</i>	<i>Rate per 100,000 population</i>	<i>Number</i>	<i>Rate per 100,000 population</i>	<i>Number</i>	<i>Rate per 100,000 population</i>
Sydney	12,079	285.9	10,476	246.2	9,803	230.4
Inner Sydney	5,436	1,752.3	4,961	1,591.6	4,858	1,558.6
Eastern Suburbs	852	353.2	768	319.5	767	319.1
St George-Sutherland	550	125.1	413	93.4	395	89.3
Canterbury-Bankstown	510	164.5	321	103.2	285	91.6
Fairfield-Liverpool	648	182.5	467	130.5	420	117.3
Outer South Western Sydney	262	108.9	245	100.8	218	89.7
Inner Western Sydney	593	352.3	480	282.3	321	188.8
Central Western Sydney	793	260.4	748	242.8	700	227.3
Outer Western Sydney	354	111.5	331	104.0	280	88.0
Blacktown	437	157.1	392	138.3	396	139.7
Lower Northern Sydney	663	222.1	496	165.8	425	142.1
Central Northern Sydney	268	63.4	248	58.1	236	55.3
Northern Beaches	355	151.6	274	116.2	239	101.3
Gosford-Wyong	358	117.7	332	108.3	263	85.8
Hunter	644	106.8	623	102.0	570	93.4
Illawarra	487	118.9	460	111.1	406	98.0
Richmond-Tweed	261	116.7	276	122.2	251	111.1
Mid-North Coast	206	70.7	189	64.0	182	61.7
Northern	128	71.6	99	55.3	90	50.3
North Western	146	123.0	111	93.4	90	75.7
Central West	117	65.4	130	72.2	122	67.8
South Eastern	97	48.4	79	39.0	78	38.5
Murrumbidgee	89	58.2	94	61.1	97	63.0
Murray	65	56.8	64	55.4	67	58.0
Far West	19	80.3	19	81.1	13	55.5
New South Wales*	14,338	213.3	12,622	186.3	11,769	173.7

\* The total for New South Wales includes 2 recorded incidents in 2005 where the offence occurred in a custodial institution.

**TABLE 4.17** RECORDED CRIMINAL INCIDENTS, 2004 TO 2006: STATISTICAL DIVISION**FRAUD<sup>^</sup>**

<i>Statistical Division where offence occurred</i>	<i>Recorded criminal incidents</i>					
	<i>2004</i>		<i>2005</i>		<i>2006</i>	
	<i>Number</i>	<i>Rate per 100,000 population</i>	<i>Number</i>	<i>Rate per 100,000 population</i>	<i>Number</i>	<i>Rate per 100,000 population</i>
Sydney	24,478	579.3	26,239	616.7	25,831	607.1
Inner Sydney	5,390	1,737.5	5,863	1,881.0	5,026	1,612.5
Eastern Suburbs	1,557	645.5	1,714	713.0	1,505	626.1
St George-Sutherland	2,015	458.2	1,928	436.0	1,759	397.8
Canterbury-Bankstown	1,790	577.5	2,079	668.2	2,092	672.4
Fairfield-Liverpool	2,054	578.4	2,146	599.5	2,252	629.1
Outer South Western Sydney	845	351.4	890	366.2	980	403.2
Inner Western Sydney	929	551.9	992	583.3	1,018	598.6
Central Western Sydney	2,172	713.2	2,420	785.7	2,413	783.4
Outer Western Sydney	1,600	503.8	1,353	425.1	1,563	491.1
Blacktown	1,558	560.2	1,769	624.1	2,538	895.4
Lower Northern Sydney	1,794	600.9	1,881	628.9	1,611	538.7
Central Northern Sydney	1,152	272.4	1,173	274.7	1,292	302.6
Northern Beaches	703	300.1	1,113	471.9	773	327.7
Gosford-Wyong	919	302.2	918	299.3	1,009	329.0
Hunter	2,130	353.1	2,139	350.4	2,196	359.7
Illawarra	1,208	294.8	1,286	310.5	1,415	341.6
Richmond-Tweed	754	337.2	781	345.7	694	307.2
Mid-North Coast	862	295.9	838	283.9	773	261.9
Northern	563	314.8	428	239.0	462	258.0
North Western	434	365.6	435	365.9	459	386.1
Central West	481	268.7	433	240.5	442	245.5
South Eastern	659	329.1	574	283.1	572	282.1
Murrumbidgee	477	311.9	462	300.3	393	255.4
Murray	243	212.3	348	301.2	466	403.4
Far West	84	355.2	78	332.9	57	243.3
New South Wales*	32,383	481.8	34,048	502.6	33,764	498.4

<sup>^</sup> Due to the time lag between a fraud offence being reported to police and the incident being verified on COPS, some upward revision of data is expected for the number of incidents in 2006.

\* The total for New South Wales includes 10 recorded incidents in 2004, 7 recorded incidents in 2005 and 4 recorded incidents in 2006 where the offence occurred in a custodial institution.

**TABLE 4.18** RECORDED CRIMINAL INCIDENTS, 2004 TO 2006: STATISTICAL DIVISION**MALICIOUS DAMAGE TO PROPERTY**

<i>Statistical Division where offence occurred</i>	<i>Recorded criminal incidents</i>					
	<i>2004</i>		<i>2005</i>		<i>2006</i>	
	<i>Number</i>	<i>Rate per 100,000 population</i>	<i>Number</i>	<i>Rate per 100,000 population</i>	<i>Number</i>	<i>Rate per 100,000 population</i>
Sydney	52,873	1,251.4	57,330	1,347.4	59,133	1,389.8
Inner Sydney	6,194	1,996.7	6,406	2,055.2	6,943	2,227.5
Eastern Suburbs	2,888	1,197.4	3,220	1,339.5	3,545	1,474.7
St George-Sutherland	4,504	1,024.1	5,073	1,147.1	5,369	1,214.1
Canterbury-Bankstown	3,372	1,087.9	3,523	1,132.3	3,245	1,043.0
Fairfield-Liverpool	3,978	1,120.1	4,003	1,118.2	4,394	1,227.4
Outer South Western Sydney	4,513	1,876.6	4,993	2,054.3	5,011	2,061.7
Inner Western Sydney	1,677	996.3	1,869	1,099.0	1,665	979.1
Central Western Sydney	3,589	1,178.5	3,844	1,248.0	3,793	1,231.5
Outer Western Sydney	4,587	1,444.4	5,450	1,712.3	5,620	1,765.7
Blacktown	4,333	1,558.1	4,864	1,716.0	5,053	1,782.6
Lower Northern Sydney	2,785	932.8	2,704	904.1	2,930	979.7
Central Northern Sydney	2,844	672.5	3,586	839.9	3,465	811.5
Northern Beaches	2,032	867.6	2,160	915.8	2,729	1,157.0
Gosford-Wyong	5,577	1,833.8	5,635	1,837.3	5,371	1,751.2
Hunter	9,266	1,536.1	10,711	1,754.4	11,424	1,871.2
Illawarra	6,517	1,590.5	7,111	1,716.9	7,474	1,804.6
Richmond-Tweed	2,860	1,279.1	3,190	1,412.2	3,526	1,561.0
Mid-North Coast	4,595	1,577.1	4,881	1,653.8	5,320	1,802.5
Northern	3,628	2,028.6	3,939	2,199.3	4,028	2,249.0
North Western	3,293	2,774.1	3,493	2,938.1	3,537	2,975.1
Central West	3,450	1,927.6	3,491	1,938.8	3,967	2,203.1
South Eastern	3,196	1,596.2	3,479	1,715.8	3,582	1,766.6
Murrumbidgee	2,873	1,878.8	3,059	1,988.0	3,179	2,066.0
Murray	1,877	1,639.7	2,062	1,784.9	2,082	1,802.2
Far West	581	2,456.8	661	2,821.4	628	2,680.6
New South Wales*	95,123	1,415.4	103,513	1,528.0	107,995	1,594.2

\* The total for New South Wales includes 114 recorded incidents in 2004, 106 recorded incidents in 2005 and 115 recorded incidents in 2006 where the offence occurred in a custodial institution.

**TABLE 4.19** RECORDED CRIMINAL INCIDENTS, 2004 TO 2006: STATISTICAL DIVISION**POSSESSION AND/OR USE OF COCAINE**

<i>Statistical Division where offence occurred</i>	<i>Recorded criminal incidents</i>					
	<i>2004</i>		<i>2005</i>		<i>2006</i>	
	<i>Number</i>	<i>Rate per 100,000 population</i>	<i>Number</i>	<i>Rate per 100,000 population</i>	<i>Number</i>	<i>Rate per 100,000 population</i>
Sydney	172	4.1	219	5.1	262	6.2
Inner Sydney	85	27.4	119	38.2	109	35.0
Eastern Suburbs	15	6.2	25	10.4	39	16.2
St George-Sutherland	3	0.7	11	2.5	11	2.5
Canterbury-Bankstown	11	3.5	9	2.9	11	3.5
Fairfield-Liverpool	22	6.2	13	3.6	19	5.3
Outer South Western Sydney	2	0.8	3	1.2	1	0.4
Inner Western Sydney	4	2.4	1	0.6	12	7.1
Central Western Sydney	10	3.3	9	2.9	25	8.1
Outer Western Sydney	3	0.9	2	0.6	3	0.9
Blacktown	1	0.4	4	1.4	2	0.7
Lower Northern Sydney	5	1.7	7	2.3	8	2.7
Central Northern Sydney	3	0.7	5	1.2	11	2.6
Northern Beaches	7	3.0	6	2.5	4	1.7
Gosford-Wyong	1	0.3	5	1.6	7	2.3
Hunter	3	0.5	3	0.5	8	1.3
Illawarra	2	0.5	2	0.5	11	2.7
Richmond-Tweed	6	2.7	2	0.9	12	5.3
Mid-North Coast	2	0.7	2	0.7	3	1.0
Northern	3	1.7	0	0.0	1	0.6
North Western	0	0.0	0	0.0	1	0.8
Central West	1	0.6	1	0.6	1	0.6
South Eastern	1	0.5	2	1.0	7	3.5
Murrumbidgee	1	0.7	0	0.0	0	0.0
Murray	0	0.0	1	0.9	1	0.9
Far West	0	0.0	0	0.0	0	0.0
New South Wales*	194	2.9	233	3.4	312	4.6

\* The total for New South Wales includes 3 recorded incidents in 2004, 1 recorded incident in 2005 and 5 recorded incidents in 2006 where the offence occurred in a custodial institution.

**TABLE 4.20** RECORDED CRIMINAL INCIDENTS, 2004 TO 2006: STATISTICAL DIVISION**POSSESSION AND/OR USE OF NARCOTICS**

<i>Statistical Division where offence occurred</i>	<i>Recorded criminal incidents</i>					
	<i>2004</i>		<i>2005</i>		<i>2006</i>	
	<i>Number</i>	<i>Rate per 100,000 population</i>	<i>Number</i>	<i>Rate per 100,000 population</i>	<i>Number</i>	<i>Rate per 100,000 population</i>
Sydney	795	18.8	729	17.1	521	12.2
Inner Sydney	238	76.7	243	78.0	160	51.3
Eastern Suburbs	13	5.4	34	14.1	19	7.9
St George-Sutherland	28	6.4	30	6.8	19	4.3
Canterbury-Bankstown	82	26.5	63	20.2	32	10.3
Fairfield-Liverpool	259	72.9	203	56.7	144	40.2
Outer South Western Sydney	12	5.0	9	3.7	10	4.1
Inner Western Sydney	18	10.7	13	7.6	16	9.4
Central Western Sydney	55	18.1	40	13.0	40	13.0
Outer Western Sydney	19	6.0	13	4.1	10	3.1
Blacktown	18	6.5	22	7.8	24	8.5
Lower Northern Sydney	4	1.3	8	2.7	9	3.0
Central Northern Sydney	9	2.1	9	2.1	2	0.5
Northern Beaches	8	3.4	5	2.1	7	3.0
Gosford-Wyong	32	10.5	37	12.1	29	9.5
Hunter	24	4.0	31	5.1	9	1.5
Illawarra	18	4.4	28	6.8	19	4.6
Richmond-Tweed	12	5.4	20	8.9	6	2.7
Mid-North Coast	17	5.8	11	3.7	7	2.4
Northern	1	0.6	0	0.0	1	0.6
North Western	2	1.7	1	0.8	2	1.7
Central West	6	3.4	6	3.3	5	2.8
South Eastern	14	7.0	11	5.4	1	0.5
Murrumbidgee	6	3.9	4	2.6	1	0.6
Murray	4	3.5	2	1.7	3	2.6
Far West	1	4.2	0	0.0	0	0.0
New South Wales*	929	13.8	859	12.7	591	8.7

\* The total for New South Wales includes 29 recorded incidents in 2004, 16 recorded incidents in 2005 and 16 recorded incidents in 2006 where the offence occurred in a custodial institution.

**TABLE 4.21** RECORDED CRIMINAL INCIDENTS, 2004 TO 2006: STATISTICAL DIVISION**POSSESSION AND/OR USE OF CANNABIS**

<i>Statistical Division where offence occurred</i>	<i>Recorded criminal incidents</i>					
	<i>2004</i>		<i>2005</i>		<i>2006</i>	
	<i>Number</i>	<i>Rate per 100,000 population</i>	<i>Number</i>	<i>Rate per 100,000 population</i>	<i>Number</i>	<i>Rate per 100,000 population</i>
Sydney	6,913	163.6	6,684	157.1	6,473	152.1
Inner Sydney	1,848	595.7	1,636	524.9	1,535	492.5
Eastern Suburbs	263	109.0	285	118.6	244	101.5
St George-Sutherland	606	137.8	597	135.0	498	112.6
Canterbury-Bankstown	319	102.9	281	90.3	394	126.6
Fairfield-Liverpool	437	123.1	412	115.1	443	123.7
Outer South Western Sydney	287	119.3	352	144.8	342	140.7
Inner Western Sydney	405	240.6	208	122.3	241	141.7
Central Western Sydney	592	194.4	661	214.6	629	204.2
Outer Western Sydney	368	115.9	392	123.2	386	121.3
Blacktown	517	185.9	528	186.3	555	195.8
Lower Northern Sydney	205	68.7	150	50.2	194	64.9
Central Northern Sydney	366	86.5	501	117.3	536	125.5
Northern Beaches	258	110.2	215	91.2	143	60.6
Gosford-Wyong	442	145.3	466	151.9	333	108.6
Hunter	878	145.6	779	127.6	773	126.6
Illawarra	414	101.0	461	111.3	589	142.2
Richmond-Tweed	841	376.1	771	341.3	1,073	475.0
Mid-North Coast	644	221.0	586	198.5	704	238.5
Northern	341	190.7	320	178.7	356	198.8
North Western	258	217.3	254	213.7	337	283.5
Central West	255	142.5	329	182.7	328	182.2
South Eastern	405	202.3	450	221.9	472	232.8
Murrumbidgee	395	258.3	355	230.7	339	220.3
Murray	275	240.2	239	206.9	207	179.2
Far West	94	397.5	89	379.9	67	286.0
New South Wales*	12,114	180.2	11,654	172.0	11,988	177.0

\* The total for New South Wales includes 401 recorded incidents in 2004, 337 recorded incidents in 2005 and 270 recorded incidents in 2006 where the offence occurred in a custodial institution.

**TABLE 4.22** RECORDED CRIMINAL INCIDENTS, 2004 TO 2006: STATISTICAL DIVISION**POSSESSION AND/OR USE OF AMPHETAMINES**

<i>Statistical Division where offence occurred</i>	<i>Recorded criminal incidents</i>					
	<i>2004</i>		<i>2005</i>		<i>2006</i>	
	<i>Number</i>	<i>Rate per 100,000 population</i>	<i>Number</i>	<i>Rate per 100,000 population</i>	<i>Number</i>	<i>Rate per 100,000 population</i>
Sydney	1,169	27.7	1,246	29.3	1,394	32.8
Inner Sydney	315	101.5	351	112.6	368	118.1
Eastern Suburbs	32	13.3	64	26.6	53	22.0
St George-Sutherland	95	21.6	87	19.7	114	25.8
Canterbury-Bankstown	46	14.8	34	10.9	66	21.2
Fairfield-Liverpool	75	21.1	61	17.0	104	29.1
Outer South Western Sydney	61	25.4	72	29.6	57	23.5
Inner Western Sydney	42	25.0	36	21.2	41	24.1
Central Western Sydney	117	38.4	110	35.7	135	43.8
Outer Western Sydney	89	28.0	89	28.0	81	25.4
Blacktown	128	46.0	107	37.7	147	51.9
Lower Northern Sydney	23	7.7	29	9.7	22	7.4
Central Northern Sydney	36	8.5	90	21.1	95	22.2
Northern Beaches	39	16.7	32	13.6	30	12.7
Gosford-Wyong	71	23.3	84	27.4	81	26.4
Hunter	186	30.8	151	24.7	208	34.1
Illawarra	100	24.4	143	34.5	194	46.8
Richmond-Tweed	82	36.7	70	31.0	72	31.9
Mid-North Coast	58	19.9	88	29.8	92	31.2
Northern	38	21.2	45	25.1	34	19.0
North Western	51	43.0	39	32.8	78	65.6
Central West	50	27.9	62	34.4	73	40.5
South Eastern	63	31.5	78	38.5	74	36.5
Murrumbidgee	64	41.9	53	34.4	39	25.3
Murray	65	56.8	34	29.4	50	43.3
Far West	6	25.4	5	21.3	9	38.4
New South Wales*	1,982	29.5	2,058	30.4	2,342	34.6

\* The total for New South Wales includes 50 recorded incidents in 2004, 44 recorded incidents in 2005 and 25 recorded incidents in 2006 where the offence occurred in a custodial institution.



**TABLE 4.23** RECORDED CRIMINAL INCIDENTS, 2004 TO 2006: STATISTICAL DIVISION**POSSESSION AND/OR USE OF ECSTACY**

<i>Statistical Division where offence occurred</i>	<i>Recorded criminal incidents</i>					
	<i>2004</i>		<i>2005</i>		<i>2006</i>	
	<i>Number</i>	<i>Rate per 100,000 population</i>	<i>Number</i>	<i>Rate per 100,000 population</i>	<i>Number</i>	<i>Rate per 100,000 population</i>
Sydney	441	10.4	616	14.5	694	16.3
Inner Sydney	160	51.6	253	81.2	223	71.5
Eastern Suburbs	27	11.2	38	15.8	35	14.6
St George-Sutherland	21	4.8	32	7.2	37	8.4
Canterbury-Bankstown	13	4.2	22	7.1	15	4.8
Fairfield-Liverpool	17	4.8	22	6.1	19	5.3
Outer South Western Sydney	5	2.1	9	3.7	11	4.5
Inner Western Sydney	33	19.6	39	22.9	22	12.9
Central Western Sydney	49	16.1	65	21.1	120	39.0
Outer Western Sydney	17	5.4	13	4.1	18	5.7
Blacktown	9	3.2	12	4.2	15	5.3
Lower Northern Sydney	19	6.4	34	11.4	45	15.0
Central Northern Sydney	18	4.3	28	6.6	61	14.3
Northern Beaches	36	15.4	23	9.8	17	7.2
Gosford-Wyong	17	5.6	26	8.5	56	18.3
Hunter	30	5.0	62	10.2	43	7.0
Illawarra	21	5.1	19	4.6	30	7.2
Richmond-Tweed	33	14.8	26	11.5	33	14.6
Mid-North Coast	9	3.1	12	4.1	20	6.8
Northern	2	1.1	1	0.6	2	1.1
North Western	2	1.7	2	1.7	4	3.4
Central West	3	1.7	5	2.8	7	3.9
South Eastern	14	7.0	14	6.9	20	9.9
Murrumbidgee	3	2.0	3	1.9	22	14.3
Murray	10	8.7	7	6.1	13	11.3
Far West	1	4.2	1	4.3	2	8.5
New South Wales*	577	8.6	775	11.4	896	13.2

\* The total for New South Wales includes 8 recorded incidents in 2004, 7 recorded incidents in 2005 and 6 recorded incidents in 2006 where the offence occurred in a custodial institution.

**TABLE 4.24** RECORDED CRIMINAL INCIDENTS, 2004 TO 2006: STATISTICAL DIVISION**DEALING, TRAFFICKING IN COCAINE**

<i>Statistical Division where offence occurred</i>	<i>Recorded criminal incidents</i>					
	<i>2004</i>		<i>2005</i>		<i>2006</i>	
	<i>Number</i>	<i>Rate per 100,000 population</i>	<i>Number</i>	<i>Rate per 100,000 population</i>	<i>Number</i>	<i>Rate per 100,000 population</i>
Sydney	81	1.9	95	2.2	125	2.9
Inner Sydney	51	16.4	53	17.0	68	21.8
Eastern Suburbs	16	6.6	13	5.4	12	5.0
St George-Sutherland	1	0.2	3	0.7	4	0.9
Canterbury-Bankstown	0	0.0	6	1.9	11	3.5
Fairfield-Liverpool	6	1.7	6	1.7	6	1.7
Outer South Western Sydney	0	0.0	0	0.0	2	0.8
Inner Western Sydney	2	1.2	4	2.4	7	4.1
Central Western Sydney	4	1.3	2	0.6	7	2.3
Outer Western Sydney	0	0.0	0	0.0	0	0.0
Blacktown	0	0.0	0	0.0	0	0.0
Lower Northern Sydney	0	0.0	0	0.0	1	0.3
Central Northern Sydney	0	0.0	0	0.0	0	0.0
Northern Beaches	1	0.4	3	1.3	6	2.5
Gosford-Wyong	0	0.0	5	1.6	1	0.3
Hunter	1	0.2	0	0.0	12	2.0
Illawarra	1	0.2	0	0.0	0	0.0
Richmond-Tweed	2	0.9	1	0.4	6	2.7
Mid-North Coast	0	0.0	0	0.0	0	0.0
Northern	1	0.6	1	0.6	0	0.0
North Western	0	0.0	1	0.8	1	0.8
Central West	0	0.0	0	0.0	0	0.0
South Eastern	1	0.5	0	0.0	0	0.0
Murrumbidgee	0	0.0	0	0.0	0	0.0
Murray	1	0.9	0	0.0	0	0.0
Far West	0	0.0	0	0.0	0	0.0
New South Wales*	88	1.3	99	1.5	145	2.1

\* The total for New South Wales includes 1 recorded incident in 2005 and 1 recorded incident in 2006 where the offence occurred in a custodial institution.

**TABLE 4.25** RECORDED CRIMINAL INCIDENTS, 2004 TO 2006: STATISTICAL DIVISION  
DEALING, TRAFFICKING IN NARCOTICS

<i>Statistical Division where offence occurred</i>	<i>Recorded criminal incidents</i>					
	<i>2004</i>		<i>2005</i>		<i>2006</i>	
	<i>Number</i>	<i>Rate per 100,000 population</i>	<i>Number</i>	<i>Rate per 100,000 population</i>	<i>Number</i>	<i>Rate per 100,000 population</i>
Sydney	436	10.3	324	7.6	265	6.2
Inner Sydney	171	55.1	125	40.1	26	8.3
Eastern Suburbs	1	0.4	9	3.7	3	1.2
St George-Sutherland	10	2.3	3	0.7	20	4.5
Canterbury-Bankstown	52	16.8	20	6.4	24	7.7
Fairfield-Liverpool	156	43.9	116	32.4	85	23.7
Outer South Western Sydney	17	7.1	3	1.2	8	3.3
Inner Western Sydney	1	0.6	1	0.6	12	7.1
Central Western Sydney	7	2.3	7	2.3	20	6.5
Outer Western Sydney	6	1.9	1	0.3	2	0.6
Blacktown	0	0.0	14	4.9	4	1.4
Lower Northern Sydney	1	0.3	1	0.3	0	0.0
Central Northern Sydney	2	0.5	3	0.7	0	0.0
Northern Beaches	1	0.4	0	0.0	2	0.8
Gosford-Wyong	11	3.6	21	6.8	59	19.2
Hunter	14	2.3	14	2.3	9	1.5
Illawarra	7	1.7	20	4.8	4	1.0
Richmond-Tweed	12	5.4	6	2.7	0	0.0
Mid-North Coast	21	7.2	8	2.7	4	1.4
Northern	1	0.6	1	0.6	0	0.0
North Western	0	0.0	0	0.0	0	0.0
Central West	0	0.0	0	0.0	0	0.0
South Eastern	13	6.5	1	0.5	1	0.5
Murrumbidgee	0	0.0	0	0.0	0	0.0
Murray	0	0.0	0	0.0	0	0.0
Far West	0	0.0	0	0.0	0	0.0
New South Wales*	505	7.5	376	5.6	283	4.2

\* The total for New South Wales includes 1 recorded incident in 2004 and 2 recorded incidents in 2005 where the offence occurred in a custodial institution.

**TABLE 4.26** RECORDED CRIMINAL INCIDENTS, 2004 TO 2006: STATISTICAL DIVISION  
DEALING, TRAFFICKING IN CANNABIS

<i>Statistical Division where offence occurred</i>	<i>Recorded criminal incidents</i>					
	<i>2004</i>		<i>2005</i>		<i>2006</i>	
	<i>Number</i>	<i>Rate per 100,000 population</i>	<i>Number</i>	<i>Rate per 100,000 population</i>	<i>Number</i>	<i>Rate per 100,000 population</i>
Sydney	356	8.4	353	8.3	256	6.0
Inner Sydney	93	30.0	79	25.3	54	17.3
Eastern Suburbs	15	6.2	20	8.3	3	1.2
St George-Sutherland	29	6.6	20	4.5	17	3.8
Canterbury-Bankstown	36	11.6	39	12.5	34	10.9
Fairfield-Liverpool	32	9.0	41	11.5	18	5.0
Outer South Western Sydney	20	8.3	36	14.8	35	14.4
Inner Western Sydney	15	8.9	6	3.5	2	1.2
Central Western Sydney	29	9.5	27	8.8	25	8.1
Outer Western Sydney	16	5.0	25	7.9	10	3.1
Blacktown	19	6.8	14	4.9	16	5.6
Lower Northern Sydney	7	2.3	10	3.3	7	2.3
Central Northern Sydney	8	1.9	11	2.6	21	4.9
Northern Beaches	6	2.6	6	2.5	7	3.0
Gosford-Wyong	31	10.2	19	6.2	7	2.3
Hunter	35	5.8	35	5.7	26	4.3
Illawarra	31	7.6	17	4.1	31	7.5
Richmond-Tweed	52	23.3	50	22.1	49	21.7
Mid-North Coast	59	20.2	17	5.8	38	12.9
Northern	25	14.0	13	7.3	18	10.1
North Western	18	15.2	20	16.8	15	12.6
Central West	14	7.8	18	10.0	14	7.8
South Eastern	24	12.0	31	15.3	16	7.9
Murrumbidgee	35	22.9	14	9.1	31	20.1
Murray	11	9.6	10	8.7	0	0.0
Far West	10	42.3	32	136.6	2	8.5
New South Wales*	688	10.2	621	9.2	496	7.3

\* The total for New South Wales includes 18 recorded incidents in 2004 and 11 recorded incidents in 2005 where the offence occurred in a custodial institution.

**TABLE 4.27** RECORDED CRIMINAL INCIDENTS, 2004 TO 2006: STATISTICAL DIVISION  
DEALING, TRAFFICKING IN AMPHETAMINES

<i>Statistical Division where offence occurred</i>	<i>Recorded criminal incidents</i>					
	<i>2004</i>		<i>2005</i>		<i>2006</i>	
	<i>Number</i>	<i>Rate per 100,000 population</i>	<i>Number</i>	<i>Rate per 100,000 population</i>	<i>Number</i>	<i>Rate per 100,000 population</i>
Sydney	276	6.5	404	9.5	400	9.4
Inner Sydney	75	24.2	63	20.2	128	41.1
Eastern Suburbs	13	5.4	15	6.2	21	8.7
St George-Sutherland	25	5.7	18	4.1	18	4.1
Canterbury-Bankstown	20	6.5	24	7.7	11	3.5
Fairfield-Liverpool	24	6.8	54	15.1	39	10.9
Outer South Western Sydney	15	6.2	15	6.2	41	16.9
Inner Western Sydney	5	3.0	5	2.9	4	2.4
Central Western Sydney	11	3.6	28	9.1	29	9.4
Outer Western Sydney	17	5.4	34	10.7	12	3.8
Blacktown	45	16.2	40	14.1	25	8.8
Lower Northern Sydney	1	0.3	7	2.3	3	1.0
Central Northern Sydney	2	0.5	11	2.6	11	2.6
Northern Beaches	4	1.7	7	3.0	4	1.7
Gosford-Wyong	19	6.2	83	27.1	54	17.6
Hunter	42	7.0	65	10.6	68	11.1
Illawarra	56	13.7	66	15.9	40	9.7
Richmond-Tweed	18	8.1	16	7.1	9	4.0
Mid-North Coast	5	1.7	14	4.7	32	10.8
Northern	8	4.5	8	4.5	21	11.7
North Western	18	15.2	16	13.5	26	21.9
Central West	9	5.0	20	11.1	4	2.2
South Eastern	20	10.0	38	18.7	20	9.9
Murrumbidgee	66	43.2	97	63.0	58	37.7
Murray	12	10.5	7	6.1	29	25.1
Far West	4	16.9	2	8.5	2	8.5
New South Wales*	536	8.0	754	11.1	711	10.5

\* The total for New South Wales includes 2 recorded incidents in 2004, 1 recorded incident in 2005 and 2 recorded incidents in 2006 where the offence occurred in a custodial institution.

**TABLE 4.28** RECORDED CRIMINAL INCIDENTS, 2004 TO 2006: STATISTICAL DIVISION**DEALING, TRAFFICKING IN ECSTASY**

<i>Statistical Division where offence occurred</i>	<i>Recorded criminal incidents</i>					
	<i>2004</i>		<i>2005</i>		<i>2006</i>	
	<i>Number</i>	<i>Rate per 100,000 population</i>	<i>Number</i>	<i>Rate per 100,000 population</i>	<i>Number</i>	<i>Rate per 100,000 population</i>
Sydney	209	4.9	325	7.6	287	6.7
Inner Sydney	77	24.8	98	31.4	87	27.9
Eastern Suburbs	20	8.3	22	9.2	17	7.1
St George-Sutherland	19	4.3	9	2.0	13	2.9
Canterbury-Bankstown	8	2.6	11	3.5	7	2.2
Fairfield-Liverpool	8	2.3	24	6.7	10	2.8
Outer South Western Sydney	0	0.0	5	2.1	11	4.5
Inner Western Sydney	17	10.1	15	8.8	13	7.6
Central Western Sydney	23	7.6	21	6.8	25	8.1
Outer Western Sydney	6	1.9	3	0.9	13	4.1
Blacktown	6	2.2	4	1.4	2	0.7
Lower Northern Sydney	3	1.0	23	7.7	8	2.7
Central Northern Sydney	3	0.7	4	0.9	12	2.8
Northern Beaches	13	5.6	20	8.5	9	3.8
Gosford-Wyong	6	2.0	66	21.5	60	19.6
Hunter	8	1.3	59	9.7	19	3.1
Illawarra	6	1.5	12	2.9	19	4.6
Richmond-Tweed	18	8.1	18	8.0	9	4.0
Mid-North Coast	2	0.7	2	0.7	7	2.4
Northern	1	0.6	2	1.1	2	1.1
North Western	0	0.0	0	0.0	2	1.7
Central West	4	2.2	1	0.6	9	5.0
South Eastern	3	1.5	28	13.8	2	1.0
Murrumbidgee	12	7.8	6	3.9	25	16.2
Murray	10	8.7	3	2.6	0	0.0
Far West	0	0.0	0	0.0	1	4.3
New South Wales*	274	4.1	456	6.7	382	5.6

\* The total for New South Wales includes 1 recorded incident in 2004 where the offence occurred in a custodial institution.

**TABLE 4.29** RECORDED CRIMINAL INCIDENTS, 2004 TO 2006: STATISTICAL DIVISION**CULTIVATING CANNABIS**

<i>Statistical Division where offence occurred</i>	<i>Recorded criminal incidents</i>					
	<i>2004</i>		<i>2005</i>		<i>2006</i>	
	<i>Number</i>	<i>Rate per 100,000 population</i>	<i>Number</i>	<i>Rate per 100,000 population</i>	<i>Number</i>	<i>Rate per 100,000 population</i>
Sydney	447	10.6	442	10.4	286	6.7
Inner Sydney	28	9.0	24	7.7	13	4.2
Eastern Suburbs	8	3.3	11	4.6	9	3.7
St George-Sutherland	42	9.5	29	6.6	21	4.7
Canterbury-Bankstown	57	18.4	54	17.4	23	7.4
Fairfield-Liverpool	53	14.9	83	23.2	46	12.8
Outer South Western Sydney	40	16.6	35	14.4	19	7.8
Inner Western Sydney	9	5.3	3	1.8	6	3.5
Central Western Sydney	32	10.5	21	6.8	14	4.5
Outer Western Sydney	34	10.7	42	13.2	23	7.2
Blacktown	38	13.7	34	12.0	37	13.1
Lower Northern Sydney	12	4.0	10	3.3	8	2.7
Central Northern Sydney	22	5.2	19	4.4	22	5.2
Northern Beaches	12	5.1	23	9.8	4	1.7
Gosford-Wyong	60	19.7	54	17.6	41	13.4
Hunter	153	25.4	124	20.3	90	14.7
Illawarra	106	25.9	78	18.8	86	20.8
Richmond-Tweed	186	83.2	135	59.8	121	53.6
Mid-North Coast	191	65.6	158	53.5	138	46.8
Northern	95	53.1	84	46.9	68	38.0
North Western	49	41.3	36	30.3	32	26.9
Central West	46	25.7	45	25.0	36	20.0
South Eastern	105	52.4	76	37.5	91	44.9
Murrumbidgee	39	25.5	28	18.2	39	25.3
Murray	34	29.7	31	26.8	29	25.1
Far West	14	59.2	9	38.4	6	25.6
New South Wales*	1,467	21.8	1,246	18.4	1,022	15.1

\* The total for New South Wales includes 2 recorded incidents in 2004 where the offence occurred in a custodial institution.

**TABLE 4.30** RECORDED CRIMINAL INCIDENTS, 2004 TO 2006: STATISTICAL DIVISION**TRESPASS**

<i>Statistical Division where offence occurred</i>	<i>Recorded criminal incidents</i>					
	<i>2004</i>		<i>2005</i>		<i>2006</i>	
	<i>Number</i>	<i>Rate per 100,000 population</i>	<i>Number</i>	<i>Rate per 100,000 population</i>	<i>Number</i>	<i>Rate per 100,000 population</i>
Sydney	3,420	80.9	3,579	84.1	3,536	83.1
Inner Sydney	525	169.2	674	216.2	581	186.4
Eastern Suburbs	191	79.2	199	82.8	236	98.2
St George-Sutherland	236	53.7	238	53.8	220	49.7
Canterbury-Bankstown	215	69.4	191	61.4	157	50.5
Fairfield-Liverpool	330	92.9	238	66.5	245	68.4
Outer South Western Sydney	231	96.1	247	101.6	273	112.3
Inner Western Sydney	82	48.7	103	60.6	118	69.4
Central Western Sydney	188	61.7	183	59.4	223	72.4
Outer Western Sydney	318	100.1	345	108.4	377	118.4
Blacktown	308	110.8	332	117.1	286	100.9
Lower Northern Sydney	145	48.6	129	43.1	113	37.8
Central Northern Sydney	111	26.2	148	34.7	149	34.9
Northern Beaches	212	90.5	178	75.5	205	86.9
Gosford-Wyong	328	107.8	374	121.9	353	115.1
Hunter	596	98.8	729	119.4	638	104.5
Illawarra	406	99.1	409	98.8	468	113.0
Richmond-Tweed	456	203.9	490	216.9	458	202.8
Mid-North Coast	526	180.5	604	204.6	542	183.6
Northern	498	278.5	517	288.7	537	299.8
North Western	616	518.9	703	591.3	621	522.4
Central West	271	151.4	285	158.3	462	256.6
South Eastern	392	195.8	456	224.9	499	246.1
Murrumbidgee	416	272.0	431	280.1	370	240.5
Murray	178	155.5	276	238.9	323	279.6
Far West	55	232.6	78	332.9	69	294.5
New South Wales*	7,837	116.6	8,561	126.4	8,531	125.9

\* The total for New South Wales includes 7 recorded incidents in 2004, 4 recorded incidents in 2005 and 8 recorded incidents in 2006 where the offence occurred in a custodial institution.



**TABLE 4.31** RECORDED CRIMINAL INCIDENTS, 2004 TO 2006: STATISTICAL DIVISION**OFFENSIVE CONDUCT**

<i>Statistical Division where offence occurred</i>	<i>Recorded criminal incidents</i>					
	<i>2004</i>		<i>2005</i>		<i>2006</i>	
	<i>Number</i>	<i>Rate per 100,000 population</i>	<i>Number</i>	<i>Rate per 100,000 population</i>	<i>Number</i>	<i>Rate per 100,000 population</i>
Sydney	1,741	41.2	2,188	51.4	2,189	51.4
Inner Sydney	444	143.1	632	202.8	575	184.5
Eastern Suburbs	94	39.0	145	60.3	136	56.6
St George-Sutherland	173	39.3	196	44.3	234	52.9
Canterbury-Bankstown	32	10.3	34	10.9	54	17.4
Fairfield-Liverpool	75	21.1	98	27.4	89	24.9
Outer South Western Sydney	64	26.6	98	40.3	79	32.5
Inner Western Sydney	33	19.6	19	11.2	33	19.4
Central Western Sydney	100	32.8	99	32.1	126	40.9
Outer Western Sydney	140	44.1	199	62.5	183	57.5
Blacktown	128	46.0	101	35.6	95	33.5
Lower Northern Sydney	62	20.8	58	19.4	70	23.4
Central Northern Sydney	36	8.5	76	17.8	68	15.9
Northern Beaches	170	72.6	255	108.1	239	101.3
Gosford-Wyong	190	62.5	178	58.0	208	67.8
Hunter	445	73.8	471	77.1	468	76.7
Illawarra	187	45.6	199	48.0	244	58.9
Richmond-Tweed	453	202.6	484	214.3	463	205.0
Mid-North Coast	428	146.9	445	150.8	399	135.2
Northern	429	239.9	476	265.8	410	228.9
North Western	328	276.3	286	240.6	270	227.1
Central West	216	120.7	263	146.1	284	157.7
South Eastern	311	155.3	368	181.5	425	209.6
Murrumbidgee	274	179.2	323	209.9	300	195.0
Murray	329	287.4	369	319.4	336	290.9
Far West	58	245.3	75	320.1	75	320.1
New South Wales*	5,201	77.4	5,948	87.8	5,863	86.5

\* The total for New South Wales includes 2 recorded incidents in 2004 and 1 recorded incident in 2005 where the offence occurred in a custodial institution.

**TABLE 4.32** RECORDED CRIMINAL INCIDENTS, 2004 TO 2006: STATISTICAL DIVISION**OFFENSIVE LANGUAGE**

<i>Statistical Division where offence occurred</i>	<i>Recorded criminal incidents</i>					
	<i>2004</i>		<i>2005</i>		<i>2006</i>	
	<i>Number</i>	<i>Rate per 100,000 population</i>	<i>Number</i>	<i>Rate per 100,000 population</i>	<i>Number</i>	<i>Rate per 100,000 population</i>
Sydney	2,268	53.7	2,838	66.7	2,407	56.6
Inner Sydney	413	133.1	574	184.2	422	135.4
Eastern Suburbs	112	46.4	153	63.6	126	52.4
St George-Sutherland	190	43.2	243	54.9	236	53.4
Canterbury-Bankstown	78	25.2	66	21.2	81	26.0
Fairfield-Liverpool	182	51.2	219	61.2	257	71.8
Outer South Western Sydney	134	55.7	227	93.4	167	68.7
Inner Western Sydney	52	30.9	40	23.5	40	23.5
Central Western Sydney	174	57.1	161	52.3	156	50.6
Outer Western Sydney	197	62.0	318	99.9	297	93.3
Blacktown	286	102.8	220	77.6	166	58.6
Lower Northern Sydney	70	23.4	67	22.4	46	15.4
Central Northern Sydney	55	13.0	114	26.7	74	17.3
Northern Beaches	111	47.4	150	63.6	113	47.9
Gosford-Wyong	214	70.4	286	93.3	226	73.7
Hunter	301	49.9	367	60.1	330	54.1
Illawarra	216	52.7	229	55.3	314	75.8
Richmond-Tweed	291	130.1	267	118.2	228	100.9
Mid-North Coast	428	146.9	444	150.4	468	158.6
Northern	287	160.5	311	173.6	295	164.7
North Western	285	240.1	291	244.8	287	241.4
Central West	261	145.8	289	160.5	334	185.5
South Eastern	328	163.8	340	167.7	290	143.0
Murrumbidgee	226	147.8	230	149.5	194	126.1
Murray	247	215.8	272	235.5	211	182.6
Far West	59	249.5	44	187.8	49	209.2
New South Wales*	5,199	77.4	5,922	87.4	5,407	79.8

\* The total for New South Wales includes 2 recorded incidents in 2004 where the offence occurred in a custodial institution.

**TABLE 4.33** RECORDED CRIMINAL INCIDENTS, 2004 TO 2006: STATISTICAL DIVISION**BREACH APPREHENDED VIOLENCE ORDER<sup>^</sup>**

<i>Statistical Division where offence occurred</i>	<i>Recorded criminal incidents</i>					
	<i>2004</i>		<i>2005</i>		<i>2006</i>	
	<i>Number</i>	<i>Rate per 100,000 population</i>	<i>Number</i>	<i>Rate per 100,000 population</i>	<i>Number</i>	<i>Rate per 100,000 population</i>
Sydney	5,736	135.8	5,149	121.0	5,136	120.7
Inner Sydney	693	223.4	538	172.6	533	171.0
Eastern Suburbs	242	100.3	243	101.1	204	84.9
St George-Sutherland	499	113.5	385	87.1	478	108.1
Canterbury-Bankstown	275	88.7	229	73.6	265	85.2
Fairfield-Liverpool	491	138.3	462	129.1	458	127.9
Outer South Western Sydney	708	294.4	639	262.9	698	287.2
Inner Western Sydney	143	85.0	101	59.4	98	57.6
Central Western Sydney	483	158.6	388	126.0	331	107.5
Outer Western Sydney	477	150.2	507	159.3	511	160.5
Blacktown	502	180.5	511	180.3	547	193.0
Lower Northern Sydney	180	60.3	136	45.5	150	50.2
Central Northern Sydney	199	47.1	188	44.0	189	44.3
Northern Beaches	190	81.1	170	72.1	150	63.6
Gosford-Wyong	654	215.0	652	212.6	524	170.9
Hunter	1,481	245.5	1,587	259.9	1,580	258.8
Illawarra	1,082	264.1	1,109	267.8	903	218.0
Richmond-Tweed	499	223.2	559	247.5	572	253.2
Mid-North Coast	727	249.5	647	219.2	655	221.9
Northern	471	263.4	565	315.5	543	303.2
North Western	484	407.7	508	427.3	405	340.7
Central West	551	307.9	481	267.1	421	233.8
South Eastern	470	234.7	459	226.4	380	187.4
Murrumbidgee	406	265.5	459	298.3	370	240.5
Murray	243	212.3	246	212.9	286	247.6
Far West	115	486.3	86	367.1	103	439.6
New South Wales*	12,276	182.7	11,862	175.1	11,372	167.9

<sup>^</sup> Offence includes both 'domestic' and 'personal' apprehended violence orders.

\* The total for New South Wales includes 11 recorded incidents in 2004, 7 recorded incidents in 2005 and 18 recorded incidents in 2006 where the offence occurred in a custodial institution.

**TABLE 4.34** LEGAL ACTIONS COMMENCED, 2004 TO 2006: STATISTICAL DIVISION**DANGEROUS OR NEGLIGENT DRIVING**

<i>Statistical Division where offence occurred</i>	<i>Legal actions commenced</i>					
	<i>2004</i>		<i>2005</i>		<i>2006</i>	
	<i>Number</i>	<i>Rate per 100,000 population</i>	<i>Number</i>	<i>Rate per 100,000 population</i>	<i>Number</i>	<i>Rate per 100,000 population</i>
Sydney	18,385	435.1	17,438	409.8	16,314	383.4
Inner Sydney	1,708	550.6	1,590	510.1	1,496	480.0
Eastern Suburbs	561	232.6	463	192.6	450	187.2
St George-Sutherland	1,483	337.2	1,561	353.0	1,474	333.3
Canterbury-Bankstown	1,174	378.8	1,062	341.3	1,085	348.7
Fairfield-Liverpool	1,761	495.9	1,613	450.6	1,477	412.6
Outer South Western Sydney	1,024	425.8	1,012	416.4	970	399.1
Inner Western Sydney	688	408.7	633	372.2	615	361.6
Central Western Sydney	1,491	489.6	1,296	420.8	1,284	416.9
Outer Western Sydney	1,744	549.2	1,600	502.7	1,479	464.7
Blacktown	1,482	532.9	1,311	462.5	1,240	437.5
Lower Northern Sydney	1,265	423.7	1,256	420.0	1,178	393.9
Central Northern Sydney	1,690	399.6	1,723	403.5	1,487	348.3
Northern Beaches	832	355.2	854	362.1	839	355.7
Gosford-Wyong	1,482	487.3	1,464	477.3	1,240	404.3
Hunter	2,736	453.6	2,687	440.1	2,510	411.1
Illawarra	1,538	375.4	1,523	367.7	1,479	357.1
Richmond-Tweed	1,267	566.6	1,223	541.4	1,208	534.8
Mid-North Coast	1,357	465.7	1,205	408.3	1,205	408.3
Northern	814	455.1	855	477.4	757	422.7
North Western	567	477.7	551	463.5	477	401.2
Central West	872	487.2	853	473.7	804	446.5
South Eastern	1,016	507.4	1,042	513.9	894	440.9
Murrumbidgee	701	458.4	650	422.4	581	377.6
Murray	571	498.8	598	517.6	487	421.6
Far West	96	405.9	120	512.2	93	397.0
New South Wales	29,920	445.2	28,745	424.3	26,809	395.7

**TABLE 4.35** LEGAL ACTIONS COMMENCED, 2004 TO 2006: STATISTICAL DIVISION**EXCEEDING THE PRESCRIBED CONTENT OF ALCOHOL LIMIT**

<i>Statistical Division where offence occurred</i>	<i>Legal actions commenced</i>					
	<i>2004</i>		<i>2005</i>		<i>2006</i>	
	<i>Number</i>	<i>Rate per 100,000 population</i>	<i>Number</i>	<i>Rate per 100,000 population</i>	<i>Number</i>	<i>Rate per 100,000 population</i>
Sydney	14,231	336.8	14,479	340.3	12,770	300.1
Inner Sydney	1,780	573.8	1,841	590.6	1,670	535.8
Eastern Suburbs	841	348.7	909	378.1	607	252.5
St George-Sutherland	1,667	379.0	1,476	333.8	1,134	256.4
Canterbury-Bankstown	669	215.8	655	210.5	580	186.4
Fairfield-Liverpool	1,414	398.2	1,425	398.1	1,212	338.6
Outer South Western Sydney	695	289.0	774	318.5	782	321.7
Inner Western Sydney	422	250.7	445	261.7	451	265.2
Central Western Sydney	824	270.6	736	239.0	739	239.9
Outer Western Sydney	1,054	331.9	1,199	376.7	1,092	343.1
Blacktown	1,048	376.8	894	315.4	700	247.0
Lower Northern Sydney	864	289.4	880	294.2	836	279.5
Central Northern Sydney	753	178.1	997	233.5	820	192.1
Northern Beaches	1,009	430.8	861	365.0	908	385.0
Gosford-Wyong	1,191	391.6	1,387	452.2	1,239	404.0
Hunter	2,592	429.7	2,905	475.8	2,842	465.5
Illawarra	1,552	378.8	1,452	350.6	1,384	334.2
Richmond-Tweed	1,701	760.7	1,573	696.4	1,505	666.3
Mid-North Coast	1,205	413.6	1,265	428.6	1,378	466.9
Northern	808	451.8	874	488.0	834	465.7
North Western	675	568.6	689	579.6	714	600.6
Central West	676	377.7	746	414.3	826	458.7
South Eastern	1,203	600.8	1,380	680.6	1,432	706.3
Murrumbidgee	733	479.3	735	477.7	883	573.9
Murray	671	586.2	769	665.7	660	571.3
Far West	128	541.2	135	576.2	138	589.0
New South Wales	26,175	389.5	27,002	398.6	25,366	374.4

**TABLE 4.36** LEGAL ACTIONS COMMENCED, 2004 TO 2006: STATISTICAL DIVISION**EXCEEDING LEGAL SPEED LIMIT**

<i>Statistical Division where offence occurred</i>	<i>Legal actions commenced</i>					
	<i>2004</i>		<i>2005</i>		<i>2006</i>	
	<i>Number</i>	<i>Rate per 100,000 population</i>	<i>Number</i>	<i>Rate per 100,000 population</i>	<i>Number</i>	<i>Rate per 100,000 population</i>
Sydney	95,299	2,255.6	87,828	2,064.2	97,132	2,282.8
Inner Sydney	5,379	1,733.9	6,486	2,080.9	6,510	2,088.6
Eastern Suburbs	2,738	1,135.2	3,029	1,260.0	2,445	1,017.1
St George-Sutherland	8,885	2,020.2	11,406	2,579.2	10,559	2,387.7
Canterbury-Bankstown	5,030	1,622.9	4,396	1,412.9	4,746	1,525.4
Fairfield-Liverpool	7,393	2,081.8	6,999	1,955.1	8,239	2,301.5
Outer South Western Sydney	6,544	2,721.1	6,150	2,530.4	7,445	3,063.2
Inner Western Sydney	3,588	2,131.7	3,309	1,945.8	3,885	2,284.5
Central Western Sydney	9,863	3,238.8	6,490	2,107.1	6,752	2,192.1
Outer Western Sydney	9,316	2,933.5	7,907	2,484.2	8,998	2,827.0
Blacktown	7,020	2,524.3	6,124	2,160.5	9,732	3,433.3
Lower Northern Sydney	5,986	2,005.0	5,283	1,766.5	5,038	1,684.6
Central Northern Sydney	9,926	2,347.2	8,637	2,022.9	10,783	2,525.5
Northern Beaches	3,229	1,378.6	3,075	1,303.7	3,504	1,485.6
Gosford-Wyong	10,402	3,420.2	8,537	2,783.5	8,496	2,770.2
Hunter	25,164	4,171.7	26,052	4,267.1	28,963	4,743.9
Illawarra	15,184	3,705.8	12,567	3,034.3	11,588	2,797.9
Richmond-Tweed	9,435	4,219.7	7,221	3,196.7	7,136	3,159.1
Mid-North Coast	17,945	6,159.0	15,529	5,261.5	14,724	4,988.8
Northern	11,382	6,364.2	9,904	5,529.8	9,641	5,382.9
North Western	4,548	3,831.3	4,820	4,054.3	5,434	4,570.8
Central West	7,651	4,274.7	8,387	4,657.8	10,599	5,886.2
South Eastern	24,428	12,200.0	22,091	10,895.3	22,322	11,009.2
Murrumbidgee	10,407	6,805.6	9,335	6,066.8	10,692	6,948.7
Murray	11,958	10,446.2	8,786	7,605.4	6,754	5,846.5
Far West	517	2,186.1	315	1,344.5	457	1,950.7
New South Wales	233,918	3,480.5	212,835	3,141.8	225,442	3,327.9

---

# APPENDICES

---

## APPENDIX 1

<i>Classification</i>	<i>Offences included</i>
<b>Homicide:</b>	
Murder	Murder – actual
Attempted murder	Murder – attempted Shoot with intent to murder
Murder accessory, conspiracy	Murder accessory Murder conspiracy
Manslaughter – not driving	Manslaughter
Driving causing death	Culpable driving causing death Culpable navigation causing death Manslaughter
<b>Assault:</b>	<i>Includes any of the following offences where police have flagged the incident as domestic violence related or non-domestic violence related :</i>
Domestic violence related	Actual bodily harm Grievous bodily harm (including malicious wounding) Assault officer Common assault Shoot with intent other than to murder
Non-domestic violence related	Actual bodily harm Grievous bodily harm (including malicious wounding) Assault officer Common assault Shoot with intent other than to murder
<b>Sexual offences:</b>	
Sexual assault	Sexual assault Aggravated sexual assault Assault with intent to have sexual intercourse
Indecent assault, act of indecency	Indecent assault Aggravated indecent assault Act of indecency Aggravated act of indecency
Other sexual offences	Incest Carnal knowledge Wilful and obscene exposure Indecent communication Peep or pry Bestiality Other sexual offence
<b>Abduction and kidnapping</b>	Abduction / kidnapping



## APPENDIX 1 continued

<i>Classification</i>	<i>Offences included</i>
<b>Robbery:</b>	
Robbery without a weapon	<i>Includes any of the following offences in which no weapon was recorded:</i> Robbery Robbery with aggravation Demand money with menaces Robbery with wounding Other robbery
Robbery with a firearm	<i>Includes any of the following offences in which a firearm was recorded as a weapon:</i> Robbery Armed robbery Robbery with aggravation Demand money with menaces Robbery with wounding Other robbery
Robbery with a weapon not a firearm	<i>Armed robbery where a firearm was not recorded as a weapon or any of the following offences in which a weapon other than a firearm was recorded:</i> Robbery Robbery with aggravation Robbery with wounding Demand money with menaces Other robbery
<b>Blackmail and extortion</b>	Extortion / blackmail
<b>Harassment, threatening behaviour and private nuisance</b>	Intimidation ( <i>includes threatening behaviour stalking</i> ) Telecommunications offence ( <i>includes nuisance phone calls</i> )
<b>Other offences against the person</b>	Malicious damage intent injure / endanger Negligent act cause grievous bodily harm Other offence against the person
<b>Theft:</b>	
Break and enter – dwelling	<i>Dwelling includes premises where people reside such as house, home unit, caravan, tent as well as any attachment such as garage, shed, yard and garden.</i> Break, enter and steal Break, enter intent to steal Break, enter and commit other felony Break, enter, intent to commit other felony
Break and enter – non-dwelling	<i>Non-dwelling includes commercial and government premises.</i> Break, enter and steal Break, enter intent to steal Break, enter and commit other felony Break, enter and intent to commit other felony

## APPENDIX 1 continued

<i>Classification</i>	<i>Offences included</i>
Receiving or handling stolen goods	Receiving Goods in custody Possess property stolen outside NSW
Motor vehicle theft	Theft of motor cars, motor cycles, and other vehicles
Steal from motor vehicle	Steal from motor vehicle
Steal from retail store	Steal from retail store
Steal from dwelling	Steal from dwelling Other stealing <i>occurring in a residential dwelling</i>
Steal from person	Steal from person
Stock theft	Steal stock (animal)
Fraud	Larceny clerk / servant / bailee Make / use false instrument Embezzlement Fraudulent misappropriation Company / corporate offence Deception offence Possess false instrument Publish false misleading statement Corrupt commission / practices Counterfeit currency Other fraud
Other theft	Steal from marine vessel Steal vessel Other stealing <i>occurring somewhere other than a residential dwelling</i>
<b>Arson</b>	Malicious damage by fire Destroy by fire – financial gain Destroy by fire – intent injure
<b>Malicious damage to property</b>	Malicious damage to property Graffiti Public place – damage fountain / wall etc. Public place – damage shrine / monument
<b>Drug offences:</b>	
Possession and / or use of cocaine	Possess drug <i>where drug type is cocaine</i> Use or administer drug <i>where drug type is cocaine</i>
Possession and / or use of narcotics	Possess drug <i>where drug type is narcotics</i> Use or administer drug <i>where drug type is narcotics</i>
Possession and / or use of cannabis	Possess drug / plant <i>where drug type is cannabis</i> Use or administer drug <i>where drug type is cannabis</i>

## APPENDIX 1 continued

<i>Classification</i>	<i>Offences included</i>
Possession and / or use of amphetamines	Possess drug <i>where drug type is amphetamines</i> Use or administer drug <i>where drug type is amphetamines</i>
Possession and / or use of ecstasy	Possess drug <i>where drug type is ecstasy</i> Use or administer drug <i>where drug type is ecstasy</i>
Possession and / or use of other drugs	Possess drug <i>where drug type is not cocaine, narcotics, cannabis, amphetamines or ecstasy</i> Use or administer drug <i>where drug type is not cocaine, narcotics, cannabis, amphetamines or ecstasy</i>
Dealing, trafficking in cocaine	Supply drug <i>where drug type is cocaine</i>
Dealing, trafficking in narcotics	Supply drug <i>where drug type is narcotics</i>
Dealing, trafficking in cannabis	Supply drug / plant <i>where drug type is cannabis</i>
Dealing, trafficking in amphetamines	Supply drug <i>where drug type is amphetamines</i>
Dealing, trafficking in ecstasy	Supply drug <i>where drug type is ecstasy</i>
Dealing, trafficking in other drugs	Supply drug <i>where drug type is not cocaine, narcotics, cannabis, amphetamines or ecstasy</i>
Cultivating cannabis	Cultivate cannabis plant Hydroponics / cultivate Plantation
Manufacture drug	Manufacture drug
Importing drugs	Import drug / plant
Other drug offences	Forge and / or utter prescription Possess drug utensil Other drug detection / seizure offence
<b>Prohibited and regulated weapons offences</b>	Possess whilst unlicensed Possess shortened firearm Possess prohibited weapon / article Shorten firearm Firearms, dealer offence Unlawfully discharge firearm Trespass with firearm Use firearm under influence Discharge firearm into premises Other firearm offence Other firearm licensing offence Firearms, not ensure safekeeping Use prohibited weapon / article Sell prohibited weapon / article Other prohibited weapon / article offence Bomb hoax or threat Possess explosive / dangerous article Search knife / implement found Item / object / weapon found

## APPENDIX 1 continued

<i>Classification</i>	<i>Offences included</i>
<b>Disorderly conduct:</b>	
Trespass	Trespass Remain in closed lands
Offensive conduct	Offensive conduct
Offensive language	Offensive language
Criminal intent	Enter land with intent Armed with intent Disguised with intent Intent to repeat indictable offence Possess implements
<b>Betting and gaming offences</b>	Own / manage premises – gaming Own / manage premises – betting Conduct / play illegal game Other gaming offence
<b>Liquor offences</b>	Consume alcohol in public by minor Consume alcohol in alcohol-free zone Liquor Act offence – Supply liquor to juvenile Liquor Act offence by minor, customer, employee or licensee Registered Clubs Act offence by minor, customer, employee, secretary or club
<b>Pornography offences</b>	Possess / publish indecent material Child pornography
<b>Prostitution offences</b>	Soliciting / prostitution in public Prostitution – premises Prostitution – live off earnings Consorting Child prostitution Other vice offence
<b>Against justice procedures:</b>	
Escape Custody	Escapee – Corrective Services custody Escapee – Police custody Escapee – Other custody
Breach Apprehended Violence Order	Breach Apprehended Violence Order – domestic Breach Apprehended Violence Order – personal
Breach bail conditions	Breach bail conditions
Fail to appear	Fail to appear
Resist or hinder officer	Resist officer Hinder officer Refuse to be searched Refuse to produce object Refuse direction drug related Refuse direction not drug related

## APPENDIX 1 continued

<i>Classification</i>	<i>Offences included</i>
Other offences against justice procedures	Accessory after the fact Other judicial offence Breach of recognizance
<b>Driving offences:</b> Drive under influence of alcohol or drug Dangerous or negligent driving Driving licence cancelled or suspended Driving without a licence Other driving licence offences Registration offences Road worthiness offences Exceeding the prescribed content of alcohol limit Exceeding legal speed limit Parking offences Other regulatory driving offences	<i>Detailed information on driving incidents is not recorded on COPS. The driving statistics in this report represent legal actions commenced by police including referrals to court and infringement notices rather than recorded incidents. Offences are determined by matching lawpart codes to the driving classifications used in the Australian Standard Offence Classification (ABS Cat. No. 1234.0).</i>
<b>Transport regulatory offences</b>	Transport offence ( <i>includes offences on the rail network such as travelling without a valid ticket, smoking, drinking or using offensive language on a train or railway land</i> )
<b>Other offences</b>	Immigration / customs offence Animals – dog offences Family law offence Unlawful assembly Obstruction Violent disorder Riot and affray Custody of offensive implement Carry cutting weapon Public mischief Offence against transport service Other street offences Other miscellaneous offences  Offences under various acts: Acts administered by the Waterways Authority of NSW <i>Australian Postal Corporation Act 1989</i> (Cwlth) <i>Children and Young Persons (Care and Protection) Act 1998</i> (NSW) <i>Children (Care and Protection) Act 1987</i> (NSW) <i>Companion Animals Act 1998</i> (NSW) <i>Family Law Act 1975</i> (Cwlth) <i>Local Government Act 1993</i> (NSW) <i>Pawnbrokers and Second-hand Dealers Act 1997</i> (NSW) <i>Prevention of Cruelty to Animals Act 1979</i> (NSW) <i>Rural Fires Act 1997</i> (NSW) <i>Security Industry Act 1997</i> (NSW)

# APPENDIX 2

Map 1: New South Wales Statistical Division boundaries



## APPENDIX 2 continued

Map 2: Sydney Statistical Subdivision boundaries



## APPENDIX 3

### LOCAL GOVERNMENT AREAS IN SYDNEY STATISTICAL SUBDIVISIONS AND REGIONAL STATISTICAL DIVISIONS

#### *Sydney Statistical Subdivisions*

---

##### ***Inner Sydney***

Botany Bay  
Leichhardt  
Marrickville  
Sydney

##### ***Outer South Western Sydney***

Camden  
Campbelltown  
Wollondilly

##### ***Lower Northern Sydney***

Hunters Hill  
Lane Cove  
Mosman  
North Sydney  
Ryde  
Willoughby

##### ***Eastern Suburbs***

Randwick  
Waverley  
Woollahra

##### ***Inner Western Sydney***

Ashfield  
Burwood  
Canada Bay  
Strathfield

##### ***Central Northern Sydney***

Baulkham Hills  
Hornsby  
Ku-ring-gai

##### ***St George – Sutherland***

Hurstville  
Kogarah  
Rockdale  
Sutherland Shire

##### ***Central Western Sydney***

Auburn  
Holroyd  
Parramatta

##### ***Northern Beaches***

Manly  
Pittwater  
Warringah

##### ***Canterbury – Bankstown***

Bankstown  
Canterbury

##### ***Outer Western Sydney***

Blue Mountains  
Hawkesbury  
Penrith

##### ***Gosford – Wyong***

Gosford  
Wyong

##### ***Fairfield – Liverpool***

Fairfield  
Liverpool

##### ***Blacktown***

Blacktown



## APPENDIX 3 continued

### *NSW regional Statistical Divisions*

<b><i>Hunter</i></b>	<b><i>Illawarra</i></b>	<b><i>Richmond – Tweed</i></b>	<b><i>Mid-North Coast</i></b>
Cessnock	Kiama	Ballina	Bellingen
Dungog	Shellharbour	Byron	Clarence Valley
Gloucester	Shoalhaven	Kyogle	Coffs Harbour
Great Lakes	Wingecarribee	Lismore	Greater Taree
Lake Macquarie	Wollongong	Richmond Valley	Hastings
Maitland		Tweed	Kempsey
Muswellbrook			Lord Howe Island
Newcastle			Nambucca
Port Stephens			
Singleton			
Upper Hunter Shire			
<b><i>Northern</i></b>	<b><i>North Western</i></b>	<b><i>Central West</i></b>	<b><i>South Eastern</i></b>
Armidale Dumaresq	Bogan	Bathurst Regional	Bega Valley
Glen Innes Severn	Bourke	Bland	Bombala
Gunnedah	Brewarrina	Blayney	Boorowa
Guyra	Cobar	Cabonne	Cooma-Monaro
Gwydir	Coonamble	Cowra	Eurobodalla
Inverell	Dubbo	Forbes	Goulburn Mulwaree
Liverpool Plains	Gilgandra	Lachlan	Harden
Moree Plains	Mid-Western Regional	Lithgow	Palerang
Narrabri	Narromine	Oberon	Queanbeyan
Tamworth Regional	Walgett	Orange	Snowy River
Tenterfield	Warren	Parkes	Upper Lachlan
Uralla	Warrumbungle Shire	Weddin	Yass Valley
Walcha	Wellington		Young
<b><i>Murrumbidgee</i></b>	<b><i>Murray</i></b>	<b><i>Far West</i></b>	
Carrathool	Albury	Broken Hill	
Coolamon	Balranald	Central Darling	
Cootamundra	Berrigan	Unincorporated Far West	
Griffith	Conargo		
Gundagai	Corowa Shire		
Hay	Deniliquin		
Junee	Greater Hume Shire		
Leeton	Jerilderie		
Lockhart	Murray		
Murrumbidgee	Tumbarumba		
Narrandera	Urana		
Temora	Wakool		
Tumut	Wentworth		
Wagga Wagga			

