

---

**NEW SOUTH WALES  
RECORDED CRIME STATISTICS  
1998**

---

**Marilyn Chilvers**

**NSW BUREAU OF CRIME STATISTICS AND RESEARCH**

## ACKNOWLEDGEMENTS

The production of this report was greatly assisted by officers within the NSW Police Service. Special thanks are due to officers in the Information Technology Branch and in the Planning and Evaluation Section of the Audit and Evaluation Branch.

Several officers within the Bureau also made important contributions. In particular, Peter Doak was responsible for the programming and table production and Jonathan Nichol carried out the desktop publishing.

1999

Published by the NSW Bureau of Crime Statistics and Research  
Attorney General's Department  
Level 8  
St James Centre  
111 Elizabeth Street  
Sydney  
[www.lawlink.nsw.gov.au/bocsar/](http://www.lawlink.nsw.gov.au/bocsar/)

ISSN 1035-9044

## INTRODUCTION

This report presents data on crimes reported to or detected by NSW police from January 1996 to December 1998. The data were extracted from the Computerised Operational Policing System (COPS) of the NSW Police Service in January 1999.

The report includes an overview of trends over the most recent two-year period for a selection of serious offence categories. The overview in this year's report indicates that, although there are a number of offences whose recorded rate is still rising in NSW, the position as at the end of 1998 is a significant improvement on that revealed in the 1997 Recorded Crime Statistics Report.

In the 1997 report, increases were recorded in eight major categories of offence. The increases recorded in most of these categories were also substantial, particularly among the most serious forms of offending, such as assault and robbery. This year, increases have been recorded in seven categories of offence and the size of the increase amongst those categories of offence which are still rising has, in most cases, diminished significantly. The 1997 report, for example, revealed a 33 per cent increase in robbery with a firearm. This year's report shows this category of offence is now stable. Similarly, motor vehicle theft, which had increased by 13 per cent over the two-year period to the end of 1997, is now no longer rising. Smaller increases have also been recorded in the categories of assault and steal from a motor vehicle. For the first time in recent years, there has been a significant downward trend in each of the sexual offence categories.

While the general pattern in this year's report is one of improvement there are some exceptions to this rule. In general they involve non-violent property offences. Malicious damage to property, which was stable in last year's report, shows an increase of nearly 12 per cent in this year's report. Steal from a dwelling, which was stable in last year's report, shows an increase of nearly eight per cent in this year's report. Break and enter (non-dwelling) which had risen by three per cent in last year's report, has risen by seven per cent in this year's report.

Dr Don Weatherburn

**Director**

February 1999

# CONTENTS

Definitions and explanatory notes . . . . .	vi
<b>OVERVIEW OF MAJOR TRENDS . . . . .</b>	<b>1</b>
Figure 1    Murder . . . . .	5
Figure 2    Assault . . . . .	6
Figure 3    Sexual assault and indecent assault, act of indecency, other sexual offences . . . . .	7
Figure 4    Robbery with and without a weapon . . . . .	8
Figure 5    Break and enter – dwelling and non-dwelling . . . . .	9
Figure 6    Motor vehicle theft and steal from motor vehicle . . . . .	10
Figure 7    Steal from retail store, from dwelling and from person . . . . .	11
Figure 8    Fraud . . . . .	12
Figure 9    Malicious damage to property . . . . .	13
<b>MONTHLY TRENDS IN RECORDED CRIMINAL INCIDENTS, 1996, 1997 AND 1998, NEW SOUTH WALES . . . . .</b>	<b>15</b>
Table 1.1    Monthly trends in recorded criminal incidents, 1996 New South Wales: Type of offence . . . . .	16
Table 1.2    Monthly trends in recorded criminal incidents, 1997 New South Wales: Type of offence . . . . .	20
Table 1.3    Monthly trends in recorded criminal incidents, 1998 New South Wales: Type of offence . . . . .	24
<b>CLEARED CRIMINAL INCIDENTS FOR SELECTED OFFENCES, JANUARY 1996 TO SEPTEMBER 1998, NEW SOUTH WALES . . . . .</b>	<b>29</b>
Table 2.1    Cleared criminal incidents, selected offences, January 1996 to December 1996, New South Wales: Type of offence . . . . .	30
Table 2.2    Cleared criminal incidents, selected offences, January 1997 to December 1997, New South Wales: Type of offence . . . . .	31
Table 2.3    Cleared criminal incidents, selected offences, January 1998 to September 1998, New South Wales: Type of offence . . . . .	32
<b>RECORDED CRIME STATISTICS IN NEW SOUTH WALES REGIONS FOR SELECTED OFFENCES, 1996, 1997 AND 1998 . . . . .</b>	<b>33</b>
Table 3.1    Murder . . . . .	35
Table 3.2    Assault . . . . .	36
Table 3.3    Sexual assault . . . . .	37

## CONTENTS continued

Table 3.4	Indecent assault, act of indecency, other sexual offences . . . . .	38
Table 3.5	Robbery without a weapon . . . . .	39
Table 3.6	Robbery with a firearm . . . . .	40
Table 3.7	Robbery with a weapon not a firearm . . . . .	41
Table 3.8	Break and enter – dwelling . . . . .	42
Table 3.9	Break and enter – non-dwelling . . . . .	43
Table 3.10	Receiving, goods in custody . . . . .	44
Table 3.11	Motor vehicle theft . . . . .	45
Table 3.12	Steal from motor vehicle . . . . .	46
Table 3.13	Steal from retail store . . . . .	47
Table 3.14	Steal from dwelling . . . . .	48
Table 3.15	Steal from person . . . . .	49
Table 3.16	Fraud . . . . .	50
Table 3.17	Malicious damage to property . . . . .	51
Table 3.18	Possession and/or use of cocaine . . . . .	52
Table 3.19	Possession and/or use of narcotics . . . . .	53
Table 3.20	Possession and/or use of cannabis . . . . .	54
Table 3.21	Dealing, trafficking in cocaine . . . . .	55
Table 3.22	Dealing, trafficking in narcotics . . . . .	56
Table 3.23	Dealing, trafficking in cannabis . . . . .	57
Table 3.24	Cultivating cannabis . . . . .	58
Table 3.25	Offensive conduct . . . . .	59
Table 3.26	Offensive language . . . . .	60
Table 3.27	Breach Apprehended Violence Order . . . . .	61
Table 3.28	PCA driving offences . . . . .	62
Table 3.29	Drive while disqualified . . . . .	63
Table 3.30	Drive manner/speed dangerous . . . . .	64
<b>APPENDICES</b>	. . . . .	<b>65</b>
Appendix 1	Offences included in classifications . . . . .	67
Appendix 2	Maps . . . . .	72
Appendix 3	Local Government Areas in Statistical Divisions . . . . .	74

## DEFINITIONS AND EXPLANATORY NOTES

The data in this report are extracted from the NSW Police Service's Computerised Operational Policing System (COPS). This system is used for record-keeping for all police operations, not just for criminal matters.

Prior to April 1994, the NSW Police Service used a different system for recording criminal offences. Recorded crime statistics for NSW for periods prior to April 1994 are not comparable with those for more recent periods. In this report:

- the counting units are recorded *criminal incidents* (except for murder and manslaughter where the counting units are victims) rather than recorded *offences*; and
- the data are categorised by date of *reporting* to police (or date of detection by police) rather than date of *occurrence* of the offence.

### RECORDED CRIMINAL INCIDENTS

A *criminal incident* is defined as an activity detected by or reported to police which:

- involved the same offender(s);
- involved the same victim(s);
- occurred at the one location;
- occurred during one uninterrupted period of time;
- falls into one offence category;
- falls into one incident type (for example, 'actual', 'attempted', 'conspiracy').

One incident may involve two offenders assaulting the same victim. This would be recorded as one assault incident. Alternatively, suppose a man reports to police that his neighbour demanded money from him, then assaulted him when he did not comply. For such an event, two criminal incidents are recorded because two distinct offence types are involved (demand money with menaces and assault) even though the same parties were involved at the same time and in the same place.

### RECORDED VICTIMS

For murder and manslaughter only, the counting units used are victims. Under the definition of a criminal incident (same parties, same time, same place, same offence and same incident type) one murder or manslaughter incident could involve two or more persons being killed. Because of the seriousness of these offences and their relatively small numbers, it was considered to be more appropriate to count the number of victims, rather than the number of criminal incidents. Hence, where *one* murder incident involves a person killing six people, *six* murder victims are counted.

### OFFENCE CATEGORIES

The classification of offences in this report is based on the Australian National Classification of Offences (ANCO) issued by the Australian Bureau of Statistics (ABS, 1985, Cat. No. 1234.0).

For all *type of offence* classifications used in the report, Appendix 1 lists the offence categories included in the classification. The offence categories are those used by the NSW Police Service and do not necessarily correspond exactly with offences defined in legislation.

## COUNTING PERIOD

Criminal incidents are included in the counting period in which they were reported to or detected by police.

In most cases criminal incidents are recorded on COPS on the day of reporting. Because the reporting date and recording date may differ, it is possible for some updating of data to occur. That is, data extracted for a specified period of time (incidents reported in 1997, for example), may differ according to the date of extraction of the data.

## CLEARED CRIMINAL INCIDENTS

A cleared criminal incident is one which, in the view of police, has been satisfactorily cleared by charge or otherwise.

An incident is cleared by charge when police have laid a charge or an information against at least one person. The information may have been laid with a view to the issuing of a warrant, summons or other process for the purpose of bringing an offender before the court.

A criminal incident is cleared other than by charge when, under normal circumstances, a charge or information would have been laid against at least one person, but, for a variety of reasons, police have been unable to make an arrest, despite knowing the identity of the offender and having sufficient evidence to support a charge. Examples of situations in which an offence may be cleared other than by charge include the following:

- the offender is a juvenile and is cautioned;
- the offender has died before a charge is made or information laid;
- the offender has been committed to a psychiatric institution and is unlikely to be released;
- there is an obstacle to charging, such as diplomatic immunity;
- the complainant or essential witness is dead and proceedings would be aborted;
- the offender is serving a sentence and police consider that no useful purpose would be served by prosecution.

## REGIONAL STATISTICS

Statistics are provided on the number of criminal incidents (victims for murder) recorded for each of the Statistical Divisions of NSW as defined by the Australian Bureau of Statistics. Within the Sydney Statistical Division, statistics are provided for Statistical Subdivisions. Recorded criminal incidents which occurred in correctional, detention or remand centres, however, are not counted in the Statistical Division in which the incident occurred. Numbers of such incidents are noted at the foot of each table. Appendix 2 provides maps indicating the location of each Statistical Division and Sydney Statistical Subdivision. Appendix 3 lists the Local Government Areas within each of the Statistical Divisions and Statistical Subdivisions. A criminal incident is counted within a particular region when the location of the offence falls within that region.

For the rate calculations, population data were obtained from the Australian Bureau of Statistics publications: *Population, New South Wales, 30 June 1997*, Cat. No. 3234.1 (for 1996 population estimates), and *Population, New South Wales, 30 June 1998*, Cat. No. 3234.1 (for 1997 and 1998 population estimates).

## ORGANISATION OF THE REPORT

The report is organised into four main sections as follows. First, there is an overview of major trends in recorded criminal incidents (recorded victims for murder) over the two-year period from January 1997 to December 1998. Figures showing trends in selected offences are presented, as well as an analysis indicating which trends are statistically significant.

The second section presents, for all categories of offence, the monthly numbers of recorded criminal incidents (recorded victims for murder and manslaughter). There are three tables in this section, one each for 1996, 1997 and 1998. Each table provides a total for the year and the annual rate per 100,000 population. The data used for the trend analysis in the first section of the report are included in these tables. Note, however, that the trend analysis uses only the most recent two years of data.

The third section provides the numbers and percentages of cleared criminal incidents, for selected types of offence, for 1996, 1997 and 1998. The offence types included in these tables are those where the crime is likely to have been reported to police, rather than discovered or detected by police. Offence types where the numbers of recorded criminal incidents are influenced by police law enforcement activity (drug offences, for example) are excluded. For such offence types the clear-up percentages are very high because clearing the offence generally occurs simultaneously with its detection (that is, an arrest is made when the crime is discovered).

The tables for 1996 and 1997 show the number of recorded criminal incidents and, of these, the number which had been cleared 30 days, 90 days and 180 days after the incident was reported to police. The tables also include clear-up percentages, which show the proportions of recorded incidents which had been cleared within 30, 90 and 180 days of reporting. The table for 1998 is similar to those for 1996 and 1997 except that there are only two follow-up periods, 30 days and 90 days. Because the data for this report were extracted in January 1999, the clear-up status after 90 days could not be determined for any offences reported in the last three months of 1998. Hence, the clear-up data for 1998 are for the first nine months of the year only.

In the fourth section of the report there are 30 tables, one for each major offence category. Each table gives the numbers and rates (per 100,000 population) of recorded criminal incidents (for murder, recorded victims) for the periods January to December 1996, January to December 1997 and January to December 1998, for each of the NSW Statistical Divisions and for each Statistical Subdivision in Sydney. Recorded criminal incidents which occurred in custodial institutions are counted separately; they are not included in the data for the Statistical Division where the custodial institution is located. Note that both the numbers and rates of recorded criminal incidents in 1997 have been updated since the previous edition.



---

# OVERVIEW OF MAJOR TRENDS

---



# OVERVIEW OF MAJOR TRENDS

## TRENDS IN RECORDED CRIME

However trends in recorded crime are presented, their interpretation is a difficult task. The recorded criminal incident data presented in this report are based on information derived from the NSW Police Service Computerised Operational Policing System, so only those incidents which are reported to, or detected by, police are included. The trends in recorded crime shown in this report will, therefore, reflect movements in the underlying factors which influence the detection, reporting and recording of crime, as well as changes in the true level of crime in the community.

An alternative measure of the level of crime in NSW is available from crime victim surveys, for example the *Crime and Safety Survey* which is conducted annually by the Australian Bureau of Statistics (ABS).<sup>1</sup> As well as providing an estimate of the victimisation rate in the community for a selected set of offences, this survey measures the proportion of crimes which are not reported to police, and are therefore not recorded in the official statistics. In particular, personal crimes, such as assault and robbery, are less likely to be reported than crimes which involve households. For example, *Crime and Safety, New South Wales, 1997* shows that, in the twelve-month period to April 1997, while almost 97 per cent of motor vehicle thefts and 71 per cent of break and enter offences (crimes against 'households') were reported to police, only 43 per cent of all alleged assault offences and 19 per cent of sexual assault offences were reported during that period.<sup>2</sup> Given that some offences have low reporting rates, it is possible that changes in recorded crime rates over time for these offences largely reflect changes in reporting rates.

Public willingness to report crime, however, is just one of the extraneous factors which can affect trends in recorded crime. Shifts in policing policy can also have a marked effect on the number of recorded drug offences, drink driving offences, cases of offensive behaviour or of receiving stolen goods. For these offences, therefore, recorded rates probably do not accurately reflect actual rates. For this reason, the more detailed comparisons of crime rates and examination of trends in this document are restricted to categories of offence which are reported to, rather than detected by, police.

The interpretation of trends in official reports of crime can be considerably more difficult than the interpretation of trends in unemployment or inflation statistics. The ease with which recorded crime statistics can be misunderstood creates a temptation to offer an authoritative explanation for each major crime trend. Indeed, in many instances it is simply impossible to state with any assurance why a particular trend has appeared. This report, therefore, confines itself to identifying and describing trends in recorded crime, rather than explaining them.

The trends examined in this overview cover a twenty-four month period, from January 1997 to December 1998. For comparative purposes, statistics for 1996 have been included in the detailed tables in the sections which follow. For some offence categories, separate trends have been presented for various offence subcategories; in particular, sexual offences, robbery, break and enter, and stealing offences have been further disaggregated.

For each offence category or subcategory except murder, a statistical test for trend was applied to the monthly numbers of recorded criminal incidents over the twenty-four month period from January 1997 to December 1998.<sup>3</sup> In the case of murder, the statistical test for trend was applied to the monthly numbers of victims over the same period. For those offences where a statistically significant trend was found, the extent of the trend is indicated by the percentage change between the total recorded number of incidents for the twelve months of January to December 1997 and the total recorded number of incidents for the same period in 1998.

## SUMMARY OF TRENDS

In the following summary the bracketed figures denote the percentage change in the total number of recorded criminal incidents between the consecutive twelve-month periods January to December 1997 and January to December 1998.

### Significant downward trends

There was a statistically significant downward trend in the monthly numbers of recorded criminal incidents for the following offences:

- sexual assault (down by 14.1%; see Figure 3)
- indecent assault, act of indecency and other sexual offences (down by 18.7%; see Figure 3).

### Offences where there was no upward or downward trend

There was no statistically significant generally upward or downward trend in the monthly numbers of recorded criminal incidents<sup>4</sup> for any of the following offences:

- murder (see Figure 1)
- robbery without a weapon (see Figure 4)
- robbery with a firearm (see Figure 4)
- motor vehicle theft (see Figure 6)
- steal from retail store (see Figure 7)
- steal from person (see Figure 7)
- fraud (see Figure 8).

### Significant upward trends

There were statistically significant upward trends in the monthly numbers of recorded criminal incidents for the following offences:

- assault (up by 6.2%; see Figure 2)
- robbery with a weapon not a firearm (up by 29.7%; see Figure 4)
- break and enter – dwelling (up by 7.0%; see Figure 5)
- break and enter – non-dwelling (up by 6.8%; see Figure 5)
- steal from motor vehicle (up by 5.9%; see Figure 6)
- steal from dwelling (up by 7.7%; see Figure 7)
- malicious damage to property (up by 11.9%; see Figure 9).

## DESCRIPTION OF TRENDS

The discussion which follows includes comparisons of recorded crime rates, for a selected set of offences, between Statistical Divisions of NSW. In addition, within the Sydney Statistical Division, recorded crime rates are detailed by Statistical Subdivision. The rate calculations are based on resident population data and are calculated as recorded offences per 100,000 population in each Statistical Division or Subdivision.<sup>5</sup> It should be noted that the Inner Sydney Statistical Subdivision has high recorded crime rates because, compared with other regions, the resident population is small relative to the 'transient' or non-resident population which uses the area for business, entertainment, shopping, etc. That is, the high transient population is not reflected in the rate calculation.

### Murder

Figure 1 shows the recorded number of murder victims for each month from January 1997 to December 1998. There was no statistically significant upward or downward trend in the number of murder victims over this period. It is clear that, with such small numbers of victims, the month to month variation is extremely marked. For this reason it is difficult to detect trends over such a short period.

**Figure 1: Murder**

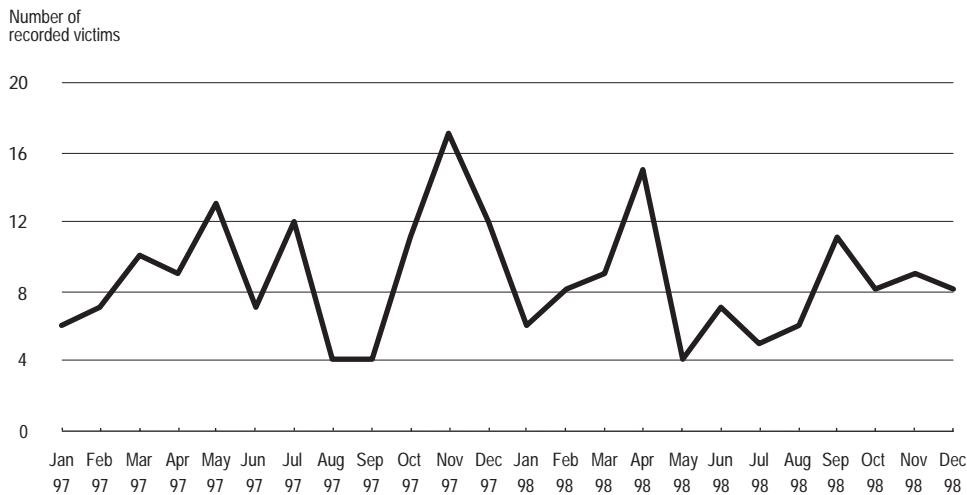


Table 3.1 shows the regional distribution for murder from January 1997 to December 1998. Because of the small numbers of murder victims, it is not sensible to make regional comparisons.

## Assault

Figure 2 shows the recorded number of assault incidents between January 1997 and December 1998. There was a statistically significant upward trend for assault over this period (up by 6.2% from 1997 to 1998).

**Figure 2: Assault**

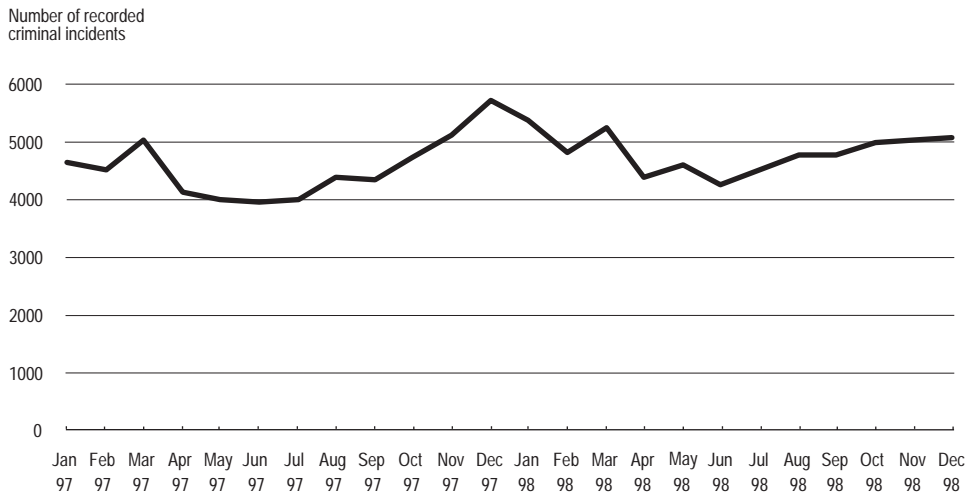


Table 3.2 shows that from January to December 1998, the highest rate of assault in NSW was recorded in the Far West Statistical Division (2,402.1 incidents per 100,000 population). There were also high rates of assault recorded in the North Western Statistical Division (2,216.1 per 100,000) and in the Inner Sydney Statistical Subdivision (2,097.2 per 100,000). The rate in each of the above three regions was more than double the rate for NSW (909.0 per 100,000).

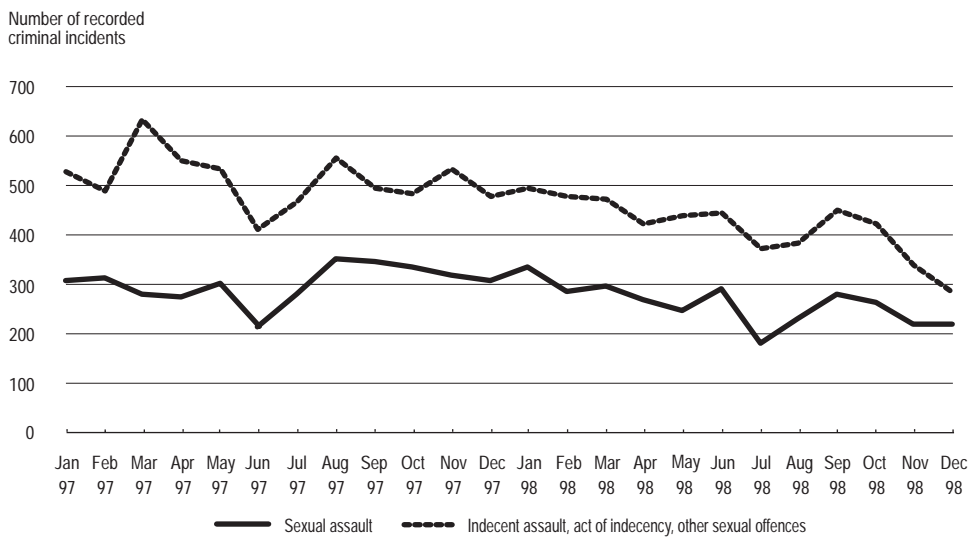
Of the three regions which recorded the highest rates of assault in 1998, however, only one region recorded an increase in the assault rate between 1997 and 1998. While the rate for the Far West Statistical Division and the Inner Sydney Statistical Subdivision remained relatively stable over this two-year period, the rate of assault in the North Western Statistical Division increased substantially between 1997 and 1998 (an increase of 10.0%). The highest percentage increases in the assault rate in NSW over this two-year period were recorded in the Murrumbidgee, Mid-North Coast and Richmond-Tweed Statistical Divisions of NSW, with increases of 24.7 per cent, 17.9 per cent and 17.8 per cent, respectively.

Of the regions detailed in Table 3.2, the lowest rates of assault were in geographical regions within the Sydney Statistical Division. In 1998, the Hornsby-Kuring-gai Statistical Subdivision recorded the lowest rate of assault (259.1 per 100,000), followed by the Lower Northern Sydney Statistical Subdivision (376.9 per 100,000). Each of these rates was less than half of the average NSW rate. Furthermore, the assault rate remained relatively stable within the Sydney Statistical Division between 1997 and 1998.

## Sexual offences

For the period from January 1997 to December 1998, Figure 3 presents the number of recorded incidents of sexual offences separately for sexual assault and for indecent assault, act of indecency and other sexual offences. There were statistically significant downward trends in each series over this period, with a 14.1 per cent decrease in the recorded rate of sexual assault between 1997 and 1998, and an 18.7 per cent decrease in the recorded rate of indecent assault, act of indecency and other sexual offences.

**Figure 3: Sexual assault and indecent assault, act of indecency, other sexual offences**



Inspection of Table 3.3 shows that the highest rate of sexual assault from January to December 1998 was recorded in the Far West Statistical Division (142.3 incidents per 100,000 population), followed by the North Western Statistical Division of NSW (80.2 per 100,000). The highest rate in the Sydney Division was recorded in the Inner Sydney Statistical Subdivision (75.2 per 100,000).

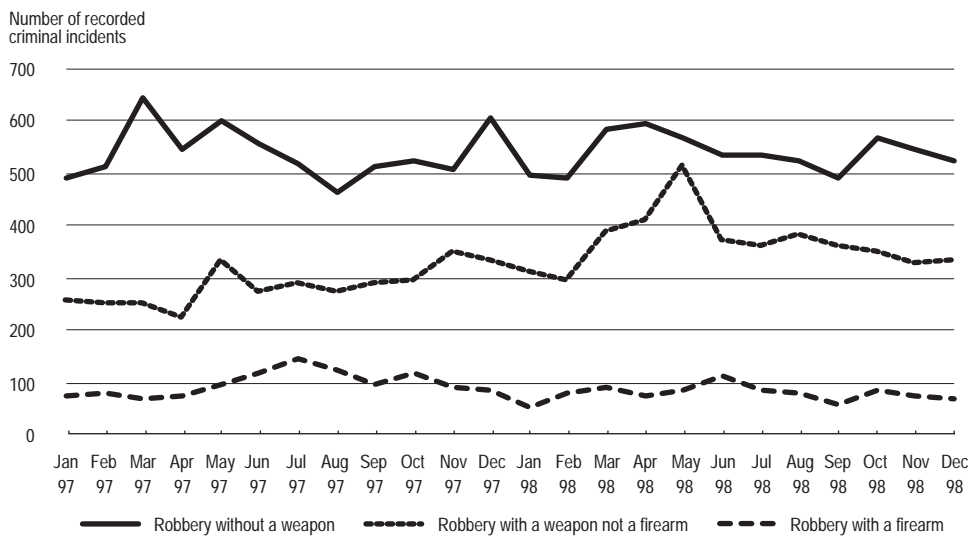
The lowest rates of sexual assault during 1998 were recorded in the areas within the Sydney Statistical Division which had also recorded lower than average rates of non-sexual assault during 1998. In 1998, Hornsby-Ku-ring-gai recorded the lowest rate of sexual assault (15.7 per 100,000), followed by the Lower Northern Sydney Statistical Subdivision (18.5 per 100,000). Each of these rates is less than half of the average NSW rate of 48.8 recorded incidents per 100,000 resident population. Note that between 1997 and 1998, the statewide decrease in the rate of sexual assault was widespread across NSW with most geographical regions recording a marked decrease in the rate of this offence over this time period.

Table 3.4 shows that for 1998 the highest rate of indecent assault, act of indecency and other sexual offences was recorded in the Inner Sydney Statistical Subdivision (130.3 per 100,000), followed by the Murrumbidgee and the Far West Statistical Divisions of NSW (118.1 and 109.7 per 100,000 population, respectively). The overall rate for NSW in 1998 was 79.0 per 100,000 population. The lowest rates of indecent assault, act of indecency and other sexual offences were recorded in areas within the Sydney Statistical Division. Between 1997 and 1998, most geographical regions of NSW recorded a decrease in the rate of this offence.

## Robbery

Figure 4 presents recorded numbers of robbery incidents separately for robbery without a weapon, robbery with a firearm and robbery with a weapon other than a firearm over the period January 1997 to December 1998. There was no statistically significant upward or downward trend for either of the offences robbery without a weapon or robbery with a firearm during this period. There was a statistically significant upward trend, however, in the number of recorded incidents of robbery with a weapon other than a firearm (up by 29.7% from 1997 to 1998).

**Figure 4: Robbery with and without a weapon**



Tables 3.5, 3.6 and 3.7 present the regional distribution of the recorded rates of each subcategory of robbery incident. These figures indicate that robbery offences in NSW are more likely to occur in the Sydney Statistical Division than elsewhere in NSW. For example, on a per capita basis, the recorded rate of robbery with a weapon other than a firearm in the Sydney Statistical Division during 1998 was more than four times the rate in country NSW (i.e. all Statistical Divisions excluding Sydney). For each robbery subcategory, the highest rate of recorded incidents in 1998 occurred in the Inner Sydney Statistical Subdivision.

Inner Sydney's rate for robbery without a weapon shown in Table 3.5 (626.8 recorded incidents per 100,000 population) was more than six times as high as the corresponding rate for the State (101.9 per 100,000). High rates of this offence were also recorded in the Canterbury–Bankstown and Fairfield–Liverpool Statistical Subdivisions of Sydney (192.0 and 187.2 incidents per 100,000 population, respectively).

The lowest rates within NSW of robbery without a weapon were mostly recorded in country regions; in particular, the lowest rates for this offence in 1998 were recorded in the Murray and the South Eastern Statistical Divisions of NSW (19.7 and 20.5 incidents per 100,000 population, respectively).

Following a sustained increase in the number of recorded incidents of robbery without a weapon between 1995 and 1997, many regions within the Sydney Statistical Division showed a sizeable decrease in the rate of this offence between 1997 and 1998. In particular, large percentage decreases in the rate of robbery without a weapon between 1997 and 1998 were recorded in the Blacktown–Baulkham Hills (down by 30.4%), Inner Western Sydney (down by 23.1%) and Central Western Sydney Statistical Subdivisions (down by 16.8%). Large percentage increases in the rate of this offence between 1997 and 1998, however, occurred in the Canterbury–Bankstown (up by 19.6%) and Fairfield–Liverpool Statistical Subdivisions (up by 15.4%), resulting in a 1998 rate in each of these two regions almost double the NSW rate.



Robbery with a firearm, the least prevalent of the robbery offences in NSW overall, is again concentrated in the Sydney region (see Table 3.6). Inner Sydney’s rate for robbery with a firearm (55.4 per 100,000) was almost four times as high as the State rate (14.4 per 100,000). The next highest rate of robbery with a firearm recorded in NSW during 1998 was in the Canterbury–Bankstown Statistical Subdivision (31.8 per 100,000), followed by the Fairfield–Liverpool (29.0 per 100,000), Central Western Sydney (28.1 per 100,000) and Inner Western Sydney Statistical Subdivisions (24.0 per 100,000). Overall, areas in country NSW exhibited low rates of robbery with a firearm in 1998.

Most regions in NSW experienced a decrease in the recorded rate of this robbery subcategory between 1997 and 1998. In particular, several regions within the Sydney Statistical Division recorded a large percentage decrease in the rate of robbery with a firearm during this period. The largest percentage decrease in Sydney was recorded in the Inner Western Sydney Statistical Subdivision (down by 52.4%), followed by the St. George–Sutherland (down by 34.7%), Lower Northern Sydney (down by 32.1%) and Blacktown–Baulkham Hills Statistical Subdivisions (down by 31.3%).

Inner Sydney’s rate for robbery with a weapon other than a firearm shown in Table 3.7 (396.4 per 100,000) was almost six times as high as the State rate (69.2 per 100,000). Rates in 1998 for this offence were highest in the Sydney region, with higher than average rates recorded in several Statistical Subdivisions including Inner Western Sydney (144.6 per 100,000), Canterbury–Bankstown (139.8 per 100,000), Fairfield–Liverpool (133.8 per 100,000), and Central Western Sydney (111.9 per 100,000). The lowest rates of robbery with a weapon other than a firearm were recorded in country NSW regions. Between 1997 and 1998, sizeable percentage increases were recorded in the rate of robbery with a weapon other than a firearm in most geographical areas of NSW, particularly within the Sydney Statistical Division.

### Break and enter

Break and enter is one of the most frequently occurring serious offences. Figure 5 presents the recorded number of incidents of break and enter over the period January 1997 to December 1998 separately for dwellings and non-dwellings. There was a statistically significant upward trend for both subcategories of break and enter over this period (up 7.0% for break and enter – dwelling, and 6.8% for break and enter – non-dwelling, from 1997 to 1998).

**Figure 5: Break and enter – dwelling and non-dwelling**

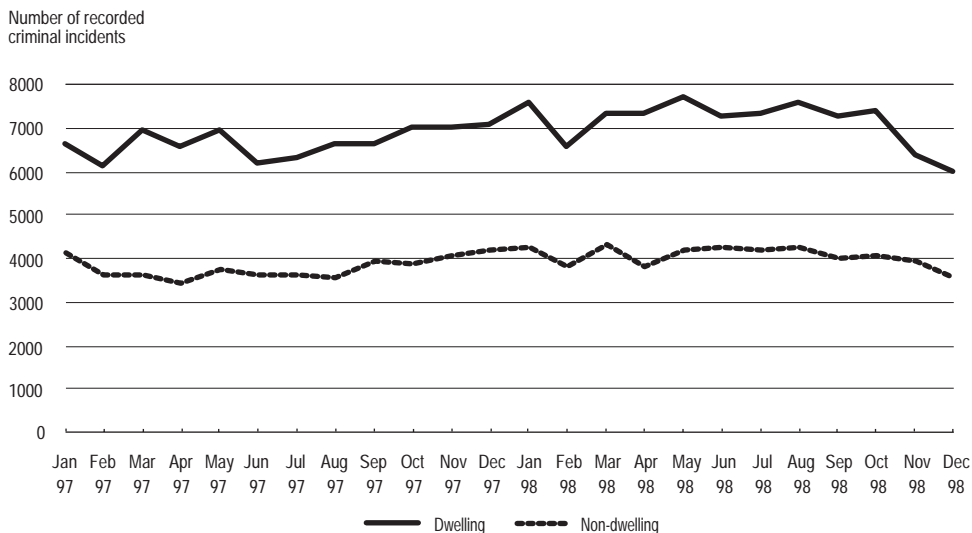


Table 3.8 shows the regional distribution for recorded incidents of break and enter – dwelling. In 1998, the four highest rates recorded in NSW were from subdivisions within the Sydney Statistical Division. The highest recorded rate was in the Inner Sydney Statistical Subdivision (2,448.2 incidents per 100,000 population). This rate was almost two times that of the State (1,346.6 per 100,000). Outside Sydney, the highest recorded rate of break and enter – dwelling was in the North Western Statistical Division (1,714.1 per 100,000). While the recorded rate of break and enter – dwelling remained relatively stable in the Sydney Statistical Division between 1997 and 1998, most country regions of NSW showed an increase in the rate of this offence over this time period.

Table 3.9 presents the regional distribution for recorded incidents of break and enter – non-dwelling. In 1998, the recorded rate for the Sydney Statistical Division (651.1 incidents per 100,000 population) was slightly lower than the rate for the entire State (765.4 per 100,000). Nonetheless, the highest recorded rate occurred in the Inner Sydney Statistical Subdivision (1,652.8 per 100,000) with a rate more than two times as high as the State average. Outside Sydney, the highest recorded rates of break and enter – non-dwelling occurred in the North Western (1,365.0 per 100,000) and the Far West Statistical Divisions (1,243.8 per 100,000). Overall, in 1998, the recorded rates of break and enter – non-dwelling offences were generally highest in the country areas of NSW.

### Motor vehicle theft and steal from motor vehicle

Figure 6 presents the number of recorded incidents of motor vehicle theft and of steal from motor vehicle for the period January 1997 to December 1998. Both of these offences occur frequently in NSW, particularly in areas within the Sydney Statistical Division. There was no statistically significant upward or downward trend in the number of monthly recorded incidents of motor vehicle theft in NSW during this period, but there was a statistically significant upward trend for the steal from motor vehicle offence category (up by 5.9% from 1997 to 1998).

**Figure 6: Motor vehicle theft and steal from motor vehicle**

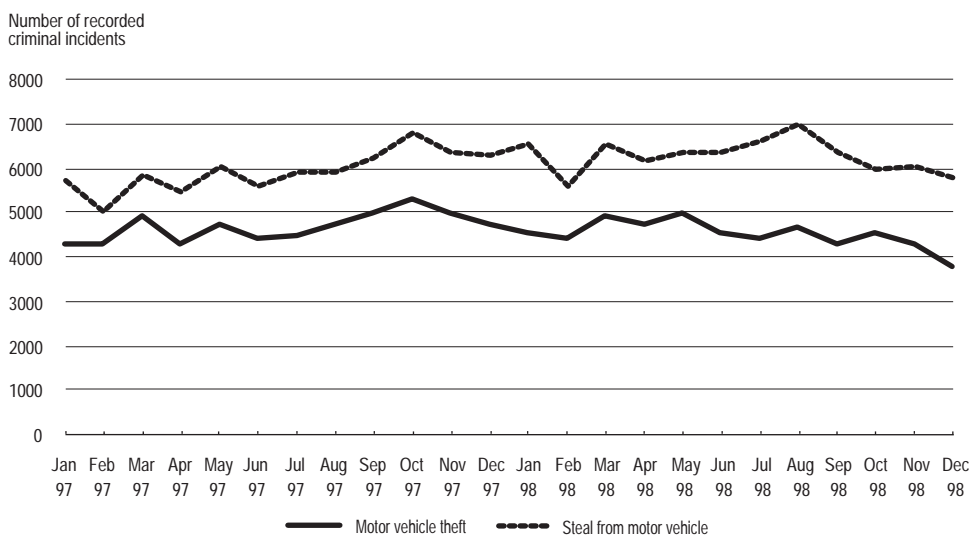


Table 3.11 shows that between January and December 1998, the highest recorded rate of motor vehicle theft incidents was in the Inner Sydney Statistical Subdivision (2,261.2 per 100,000 population), which was more than two and a half times as high as the State rate (847.1 per 100,000). Other Sydney Statistical Subdivisions with high rates were the Canterbury–Bankstown (1,442.2 per 100,000), Fairfield–Liverpool (1,322.6 per 100,000) and Central Western Sydney Statistical Subdivisions (1,231.2 per 100,000). The

lowest rates of motor vehicle theft during 1998 were mostly recorded in the country regions of NSW. Note that between 1997 and 1998, the recorded rate of motor vehicle theft decreased in most Subdivisions within the Sydney Statistical Division.

Table 3.12 shows that in 1998, the Inner Sydney Statistical Subdivision also had the highest recorded crime rate for stealing from motor vehicles. The rate for Inner Sydney (4,552.5 recorded incidents per 100,000 population) was almost four times as high as that for NSW as a whole (1,186.7 per 100,000). The next highest rates were in the Eastern Suburbs (1,499.2 per 100,000) and in the Inner Western Sydney Statistical Subdivisions (1,406.7 per 100,000). The lowest rates of steal from motor vehicle in 1998 were generally recorded in the country regions of NSW.

### Stealing

Stealing (not including break and enter or motor vehicle theft or steal from motor vehicle) is an offence frequently recorded in NSW. Figure 7 shows separately the trends in the recorded number of incidents of steal from retail store, steal from dwelling and steal from person. Over the period from January 1997 to December 1998, there was no statistically significant upward or downward trend for the monthly numbers of steal from retail store or of steal from person incidents. However, there was a statistically significant upward trend in the number of recorded incidents for steal from dwelling over this time period (up by 7.7% from 1997 to 1998).

**Figure 7: Steal from retail store, from dwelling and from person**

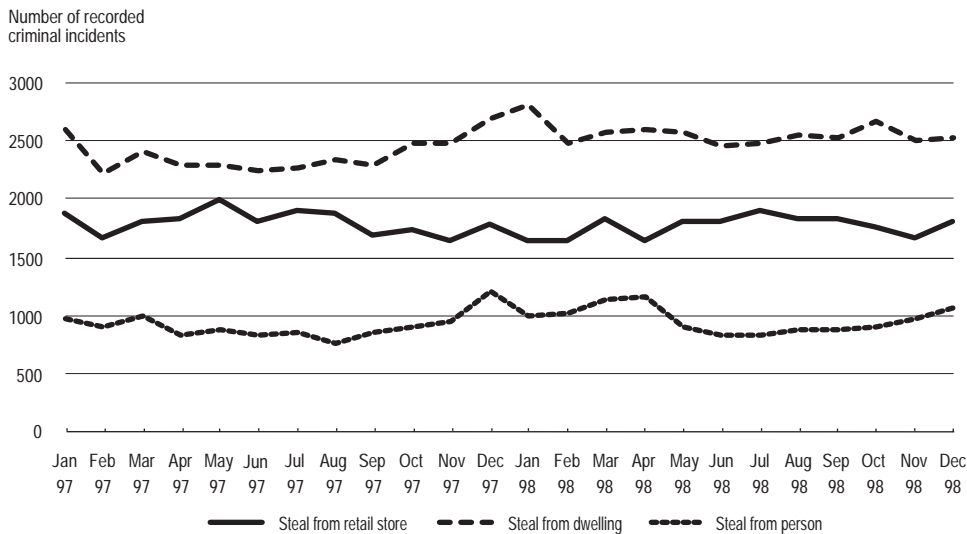


Table 3.13 shows that from January to December 1998, the highest rate of steal from retail store was recorded for Inner Sydney (849.3 incidents per 100,000 population), followed by the Central Western Sydney Statistical Subdivision (513.5 per 100,000). The lowest rate of steal from retail store incidents was recorded in the Hornsby-Ku-ring-gai Statistical Subdivision (131.7 per 100,000). Most areas within the Sydney Statistical Division showed a decrease in the rate of this offence between 1997 and 1998.

Table 3.14 shows that in 1998, the Far West Statistical Division of NSW had the highest recorded rate for steal from dwelling (1,113.7 incidents per 100,000 population), followed by the Inner Sydney Statistical Subdivision (819.5 per 100,000) and the North Western Statistical Division of NSW (781.1 per 100,000). The lowest rates for this offence category during 1998 were recorded in areas within the Sydney Statistical Division.

Between 1997 and 1998, most geographical regions of NSW recorded an increase in the rate of steal from dwelling offences. In particular, large percentage increases were recorded in the Inner Sydney Statistical Subdivision (up by 23.8% from 1997 to 1998), and the Central West (up by 20.5%) and South Eastern Statistical Divisions of NSW (up by 20.1%).

Table 3.15 shows that in 1998, Inner Sydney had the highest recorded rates for steal from person (1,561.6 incidents per 100,000 population), which was at least five times as high as the rate for any other region. The next highest rates were all in areas within the Sydney Statistical Division. The lowest rates of this offence in 1998 were mostly recorded in country areas of NSW.

### Fraud

Figure 8 presents the number of recorded incidents of fraud (excluding credit card fraud) over the period January 1997 to December 1998. There was no statistically significant upward or downward trend in the number of incidents of fraud recorded over this period. Fraud is an offence for which the recorded rate is strongly influenced by variations in both police ability to detect incidents and public willingness to report incidents. Thus, it is difficult to detect true changes in the rate of fraud incidents.

**Figure 8: Fraud**

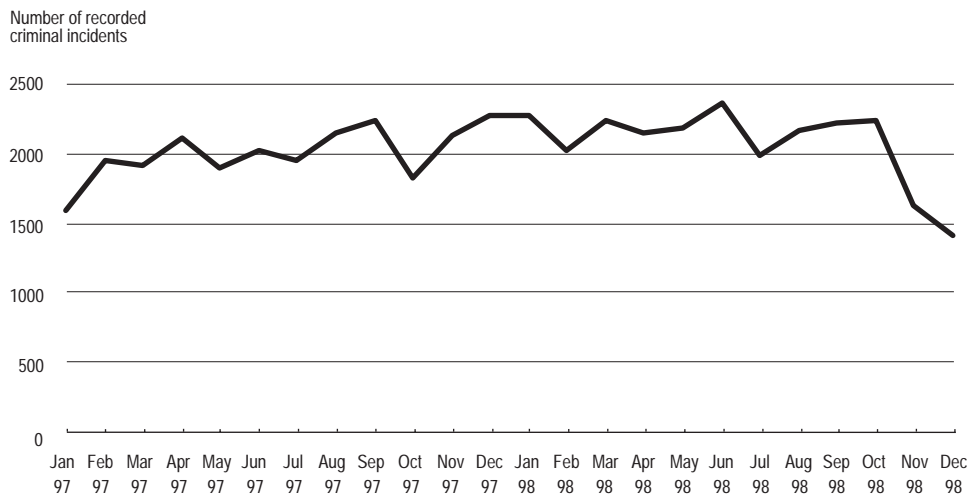
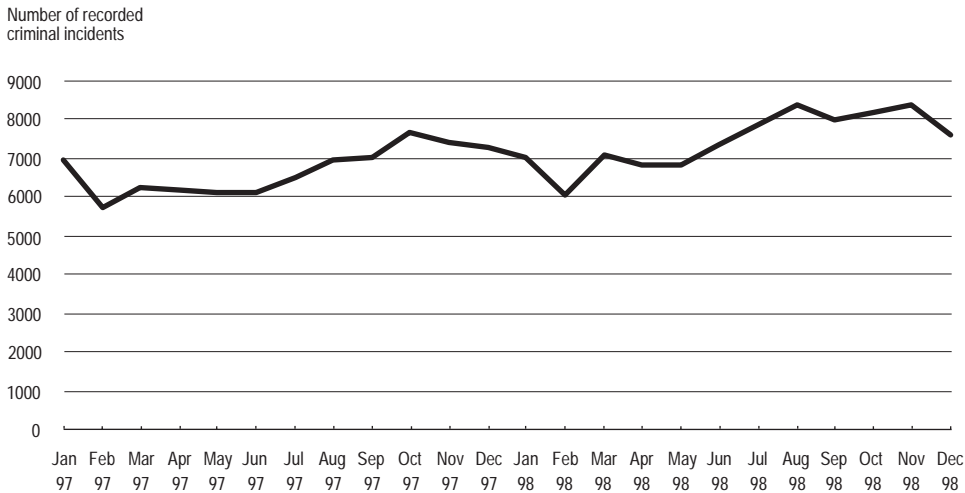


Table 3.16 shows that in 1998, the Inner Sydney Statistical Subdivision had the highest recorded rate of fraud incidents (1,143.9 per 100,000 population), almost three times as high as that for NSW (390.6 per 100,000). The Lower Northern Sydney Statistical Subdivision had the second highest recorded rate of fraud (531.8 per 100,000), followed by the Murrumbidgee Statistical Division (515.3 per 100,000). The lowest rate of fraud during 1998 was recorded in the Hornsby-Ku-ring-gai Statistical Subdivision (165.1 per 100,000).

### Malicious damage to property

Figure 9 shows the number of recorded incidents of malicious damage to property (other than arson) from January 1997 to December 1998. There was a statistically significant upward trend in the number of incidents of malicious damage to property recorded over this period, with an 11.9 per cent increase recorded between 1997 and 1998.

**Figure 9: Malicious damage to property**



Inspection of Table 3.17 reveals that the highest rate in recorded incidents of malicious damage to property in 1998 occurred in the Inner Sydney Statistical Subdivision (2,341.7 incidents per 100,000 population). The overall rate for NSW in 1998 was 1,406.8 incidents per 100,000 population. Outside Sydney, the highest recorded rates occurred in the Far West and North Western Statistical Divisions (2,300.5 and 2,131.6 per 100,000, respectively). During 1998, the lowest rates of malicious damage to property were recorded in areas within the Sydney Statistical Division.

Between 1997 and 1998, most geographical regions in NSW recorded an increase in the rate of malicious damage to property offences. The percentage increases recorded for this offence in the country regions of NSW were generally higher than for areas within the Sydney Statistical Division.

## NOTES

- 1 Australian Bureau of Statistics 1997, *Crime and Safety, New South Wales, April 1997*, Cat. No. 4509.1, ABS, Sydney.
- 2 *ibid.*  
Care should be taken in the interpretation of sexual assault data from the survey because of the small sample size and resultant high level of sampling variability.
- 3 The trend test used was Kendall's rank-order correlation test (see, for example, Conover, W.J. 1980, *Practical Non-Parametric Statistics*, 2nd edn, John Wiley & Sons, pp. 256-260). A two-tailed test was used to determine whether there had been an increasing or decreasing trend in the recorded numbers of criminal incidents over the most recent twenty-four month period covered in the report. Some month to month variations in the numbers of recorded incidents could be due in part to seasonal factors. The test for trend is not sensitive to seasonal variations; it is sensitive only to a generally increasing or generally decreasing trend over the time period examined.
- 4 In the case of murder, there was no statistically significant trend in the monthly numbers of recorded victims.
- 5 For the rate calculations, population data were obtained from the Australian Bureau of Statistics publications: *Population, New South Wales, 30 June 1997*, Cat. No. 3234.1 (for 1996 population estimates), and *Population, New South Wales, 30 June 1998*, Cat. No. 3234.1 (for 1997 and 1998 population estimates).

---

**MONTHLY TRENDS IN RECORDED  
CRIMINAL INCIDENTS,  
1996, 1997 AND 1998  
NEW SOUTH WALES**

---

**TABLE 1.1** MONTHLY TRENDS IN RECORDED CRIMINAL INCIDENTS, 1996, NEW SOUTH WALES:  
TYPE OF OFFENCE

Type of offence	Recorded criminal incidents												Total 1996	
	Jan	Feb	Mar	Apr	May	Jun	Jul	Aug	Sep	Oct	Nov	Dec	No.	Rate per 100,000 population
	<b>Homicide:</b>													
Murder*	9	7	17	6	6	4	8	7	8	15	10	9	106	1.7
Attempted murder	3	6	9	10	8	5	6	6	6	10	5	13	87	1.4
Murder accessory, conspiracy	0	0	0	0	1	0	0	0	0	0	2	3	6	0.1
Manslaughter – not driving*	0	0	1	2	2	3	1	2	0	2	1	2	16	0.3
Manslaughter – driving*	1	4	2	5	0	6	4	1	0	5	0	3	31	0.5
<b>Assault</b>	3,962	3,668	4,193	3,540	3,759	4,004	3,619	3,984	4,214	4,327	4,473	5,126	48,869	787.6
<b>Sexual offences:</b>														
Sexual assault	323	181	248	252	258	246	224	274	240	257	260	210	2,973	47.9
Indecent assault, act of indecency	284	240	324	335	321	264	283	340	268	286	332	293	3,570	57.5
Other sexual offences	150	142	162	144	150	141	131	117	143	136	123	102	1,641	26.5
<b>Abduction and kidnapping</b>	19	15	13	22	25	30	24	22	37	31	21	19	278	4.5
<b>Robbery:</b>														
Robbery without a weapon	424	353	421	411	476	419	376	339	369	441	471	452	4,952	79.8
Robbery with a firearm	80	68	69	62	87	84	51	65	63	66	69	60	824	13.3
Robbery with a weapon not a firearm	125	134	155	162	158	164	155	159	139	175	175	193	1,894	30.5
<b>Other offences against the person</b>	138	147	141	120	161	126	115	149	129	148	108	126	1,608	25.9

\* For murder and manslaughter only, the data are counts of recorded victims, not criminal incidents. See Explanatory Notes.



<b>Theft:</b>														
Break and enter – dwelling	6,154	5,503	6,029	5,657	6,341	6,126	6,374	6,749	6,320	6,678	6,422	6,193	74,546	1,201.4
Break and enter – non-dwelling	3,548	3,299	3,371	3,283	3,433	3,635	3,808	3,826	3,983	3,793	3,629	3,943	43,551	701.9
Possess implements	85	73	76	73	83	93	101	96	95	104	61	97	1,037	16.7
Receiving	187	165	170	178	210	199	209	209	158	251	214	174	2,324	37.5
Goods in custody	446	376	444	369	425	398	379	402	398	599	433	435	5,104	82.3
Motor vehicle theft	4,062	3,953	4,275	3,525	3,976	3,756	3,795	4,369	4,249	4,666	4,428	4,152	49,206	793.0
Steal from motor vehicle	5,423	4,873	5,136	4,683	5,196	5,223	5,555	5,403	5,353	6,150	5,410	5,366	63,771	1,027.8
Steal from retail store	1,840	1,791	1,859	1,697	2,087	2,026	1,918	1,964	1,687	1,982	1,890	1,878	22,619	364.5
Steal from dwelling	2,520	2,280	2,252	2,181	2,331	2,290	2,346	2,253	2,422	2,651	2,364	2,530	28,420	458.0
Steal from person	816	782	913	911	837	798	718	660	757	866	929	952	9,939	160.2
Stock theft	65	64	84	59	75	61	61	73	64	66	66	70	808	13.0
Fraud	1,927	1,630	1,740	1,521	1,992	1,881	1,789	1,921	1,842	2,056	1,735	1,668	21,702	349.8
Other theft	4,389	4,210	4,474	4,281	4,326	4,067	4,386	4,247	4,290	4,524	4,526	4,492	52,212	841.5
<b>Demand money with menaces</b>	48	33	59	39	62	74	62	64	55	44	59	49	648	10.4
<b>Extortion, blackmail</b>	2	1	0	1	1	5	6	2	1	7	4	1	31	0.5
<b>Arson</b>	316	345	321	319	331	382	377	465	402	439	406	353	4,456	71.8
<b>Malicious damage to property</b>	6,509	5,805	6,448	5,956	6,022	6,377	6,867	7,007	6,708	7,353	6,835	6,966	78,853	1,270.9

*Table continues on next page*

**TABLE 1.1****MONTHLY TRENDS IN RECORDED CRIMINAL INCIDENTS, 1996, NEW SOUTH WALES:  
TYPE OF OFFENCE - continued**

<i>Type of offence</i>	<i>Recorded criminal incidents</i>												<i>Total 1996</i>	
	<i>Jan</i>	<i>Feb</i>	<i>Mar</i>	<i>Apr</i>	<i>May</i>	<i>Jun</i>	<i>Jul</i>	<i>Aug</i>	<i>Sep</i>	<i>Oct</i>	<i>Nov</i>	<i>Dec</i>	<i>No.</i>	<i>Rate per 100,000 population</i>
	<b>Drug offences:</b>													
Possession and/or use of cocaine	12	5	7	10	15	10	7	8	9	13	10	11	117	1.9
Possession and/or use of narcotics	112	121	132	121	130	123	166	152	146	119	101	118	1,541	24.8
Possession and/or use of cannabis	814	946	1,062	944	1,002	829	727	724	640	682	643	729	9,742	157.0
Possession and/or use of other drugs	98	81	110	86	77	90	75	89	77	102	78	89	1,052	17.0
Dealing, trafficking in cocaine	7	2	6	11	11	3	6	5	36	7	5	4	103	1.7
Dealing, trafficking in narcotics	58	46	63	56	86	53	59	42	39	52	39	44	637	10.3
Dealing, trafficking in cannabis	198	107	131	109	132	99	116	75	67	67	52	70	1,223	19.7
Dealing, trafficking in other drugs	37	23	42	29	32	28	25	29	28	36	14	36	359	5.8
Cultivating cannabis	429	427	410	231	171	117	134	120	135	194	202	227	2,797	45.1
Importing drugs	1	2	1	0	0	0	1	2	1	0	0	1	9	0.2
Other drug offences	216	237	235	238	235	238	225	215	213	190	197	188	2,627	42.3
<b>Offensive behaviour:</b>														
Offensive conduct	284	238	291	220	251	181	212	254	245	206	231	321	2,934	47.3
Offensive language	518	427	451	426	403	340	302	353	351	399	357	454	4,781	77.1
<b>Prostitution offences</b>														
	32	36	24	28	76	21	8	43	18	29	36	38	389	6.3
<b>Betting and gaming offences</b>														
	5	5	7	11	7	10	9	12	10	9	12	17	114	1.8
<b>Weapons offences</b>														
	361	388	425	363	462	331	404	373	335	387	380	350	4,559	73.5

<b>Against justice procedures:</b>														
Escapee – Corrective Services custody	15	9	10	18	19	11	14	11	8	10	10	12	147	2.4
Escapee – Police custody	14	13	13	8	15	15	13	11	12	14	22	16	166	2.7
Escapee – juvenile detention	0	0	0	0	0	0	1	0	1	0	1	0	3	0.1
Escapee – other custody	3	5	2	5	10	8	10	4	7	5	12	8	79	1.3
Breach Apprehended Violence Order	445	399	421	403	490	455	498	495	506	601	536	628	5,877	94.7
Breach bail conditions	183	170	169	171	185	175	173	154	151	181	189	219	2,120	34.2
Breach of recognizance	71	82	62	73	72	69	67	86	74	82	90	85	913	14.7
Fail to appear	217	186	176	234	207	173	188	195	206	194	246	217	2,439	39.3
Other offences against justice procedures	767	705	731	789	704	696	703	798	773	731	726	845	8,968	144.5
<b>Driving offences:</b>														
Culpable driving	4	3	5	2	10	4	10	8	4	7	6	4	67	1.1
PCA	1,424	1,136	1,546	1,418	1,422	1,322	1,263	1,346	1,441	1,343	1,384	1,579	16,624	267.9
Drive while disqualified	548	537	535	533	514	533	524	539	537	570	549	652	6,571	105.9
Drive manner/speed dangerous	160	166	199	133	155	177	155	182	149	187	180	211	2,054	33.1
Other driving offences	1,849	1,597	1,849	1,733	1,635	1,498	1,656	1,769	1,739	1,868	1,862	2,085	21,140	340.7
<b>Other offences</b>	<b>1,877</b>	<b>1,638</b>	<b>1,808</b>	<b>1,797</b>	<b>1,884</b>	<b>1,807</b>	<b>1,993</b>	<b>1,837</b>	<b>1,843</b>	<b>1,951</b>	<b>1,991</b>	<b>2,054</b>	<b>22,480</b>	<b>362.3</b>

**TABLE 1.2** MONTHLY TRENDS IN RECORDED CRIMINAL INCIDENTS, 1997, NEW SOUTH WALES:  
TYPE OF OFFENCE

Type of offence	Recorded criminal incidents												Total 1997	
	Jan	Feb	Mar	Apr	May	Jun	Jul	Aug	Sep	Oct	Nov	Dec	No.	Rate per 100,000 population
	<b>Homicide:</b>													
Murder*	6	7	10	9	13	7	12	4	4	11	17	12	112	1.8
Attempted murder	9	7	8	4	6	7	3	3	8	13	10	14	92	1.5
Murder accessory, conspiracy	0	1	0	0	0	0	0	0	0	3	0	0	4	0.1
Manslaughter – not driving*	4	1	2	1	1	0	0	2	0	1	1	1	14	0.2
Manslaughter – driving*	11	5	6	7	11	4	6	5	4	6	13	12	90	1.4
<b>Assault</b>	4,610	4,490	5,009	4,108	3,977	3,948	3,950	4,361	4,327	4,722	5,110	5,691	54,303	865.7
<b>Sexual offences:</b>														
Sexual assault	304	312	277	272	301	212	280	350	342	331	314	306	3,601	57.4
Indecent assault, act of indecency	364	340	376	389	356	279	360	441	361	342	379	327	4,314	68.8
Other sexual offences	163	147	255	162	180	134	104	116	134	139	155	153	1,842	29.4
<b>Abduction and kidnapping</b>	29	16	46	25	28	22	16	23	28	33	35	26	327	5.2
<b>Robbery:</b>														
Robbery without a weapon	492	515	647	548	602	555	518	461	515	524	505	605	6,487	103.4
Robbery with a firearm	69	76	67	72	92	116	146	121	91	115	89	85	1,139	18.2
Robbery with a weapon not a firearm	256	248	248	219	329	269	287	269	284	291	349	332	3,381	53.9
<b>Other offences against the person</b>	128	134	139	154	144	127	152	142	131	134	142	153	1,680	26.8

\* For murder and manslaughter only, the data are counts of recorded victims, not criminal incidents. See Explanatory Notes.

<b>Theft:</b>														
Break and enter – dwelling	6,634	6,112	6,952	6,545	6,919	6,136	6,299	6,614	6,586	7,014	7,000	7,027	79,838	1,272.8
Break and enter – non-dwelling	4,146	3,608	3,637	3,454	3,734	3,625	3,630	3,543	3,930	3,899	4,054	4,207	45,467	724.8
Possess implements	106	79	104	105	116	111	118	111	111	124	134	127	1,346	21.5
Receiving	229	161	201	184	221	223	203	194	229	229	238	241	2,553	40.7
Goods in custody	565	434	497	471	584	567	574	551	574	681	547	576	6,621	105.6
Motor vehicle theft	4,245	4,242	4,859	4,250	4,686	4,351	4,428	4,704	4,949	5,242	4,932	4,668	55,556	885.7
Steal from motor vehicle	5,703	5,039	5,834	5,434	6,022	5,560	5,915	5,915	6,235	6,791	6,375	6,256	71,079	1,133.1
Steal from retail store	1,869	1,654	1,807	1,821	1,991	1,797	1,878	1,867	1,672	1,720	1,635	1,781	21,492	342.6
Steal from dwelling	2,609	2,215	2,406	2,295	2,289	2,243	2,267	2,332	2,283	2,472	2,487	2,688	28,586	455.7
Steal from person	969	905	992	821	864	822	856	751	847	907	936	1,194	10,864	173.2
Stock theft	68	57	71	75	61	54	72	67	55	75	55	53	763	12.2
Fraud	1,582	1,943	1,898	2,096	1,887	2,022	1,944	2,134	2,226	1,820	2,115	2,266	23,933	381.5
Other theft	4,724	4,394	4,842	4,427	4,328	3,947	4,119	4,340	4,451	4,770	4,875	4,844	54,061	861.8
<b>Demand money with menaces</b>	75	54	87	82	80	52	84	69	79	70	88	58	878	14.0
<b>Extortion, blackmail</b>	9	6	6	4	6	3	5	12	1	4	4	3	63	1.0
<b>Arson</b>	392	381	420	353	346	358	387	382	376	478	443	434	4,750	75.7
<b>Malicious damage to property</b>	6,902	5,677	6,193	6,151	6,084	6,112	6,474	6,904	7,018	7,641	7,352	7,223	79,731	1,271.1

*Table continues on next page*

**TABLE 1.2** MONTHLY TRENDS IN RECORDED CRIMINAL INCIDENTS, 1997, NEW SOUTH WALES:  
TYPE OF OFFENCE - continued

<i>Type of offence</i>	<i>Recorded criminal incidents</i>												<i>Total 1997</i>	
	<i>Jan</i>	<i>Feb</i>	<i>Mar</i>	<i>Apr</i>	<i>May</i>	<i>Jun</i>	<i>Jul</i>	<i>Aug</i>	<i>Sep</i>	<i>Oct</i>	<i>Nov</i>	<i>Dec</i>	<i>No.</i>	<i>Rate per 100,000 population</i>
	<b>Drug offences:</b>													
Possession and/or use of cocaine	24	10	10	9	19	10	9	20	10	10	10	15	156	2.5
Possession and/or use of narcotics	140	127	129	120	129	135	179	176	210	168	200	182	1,895	30.2
Possession and/or use of cannabis	900	809	1,002	894	1,040	860	798	828	810	813	800	905	10,459	166.7
Possession and/or use of other drugs	102	97	115	97	131	108	113	109	104	107	112	132	1,327	21.2
Dealing, trafficking in cocaine	11	28	12	5	3	16	16	3	1	1	3	9	108	1.7
Dealing, trafficking in narcotics	36	65	54	53	56	75	66	65	64	41	73	58	706	11.3
Dealing, trafficking in cannabis	69	64	97	82	92	98	82	117	100	72	62	94	1,029	16.4
Dealing, trafficking in other drugs	22	38	25	31	35	47	29	34	33	19	23	65	401	6.4
Cultivating cannabis	373	391	319	240	157	128	118	123	164	182	207	264	2,666	42.5
Importing drugs	1	1	2	1	3	3	7	2	11	4	5	2	42	0.7
Other drug offences	243	207	312	226	279	237	249	218	230	258	245	235	2,939	46.9
<b>Offensive behaviour:</b>														
Offensive conduct	307	245	281	216	212	205	167	222	234	245	316	301	2,951	47.0
Offensive language	536	458	464	402	337	312	305	350	378	423	457	518	4,940	78.8
<b>Prostitution offences</b>	19	24	16	21	24	17	13	32	31	26	55	22	300	4.8
<b>Betting and gaming offences</b>	17	3	6	7	3	6	4	5	4	4	3	2	64	1.0
<b>Weapons offences</b>	394	358	478	393	443	388	434	381	379	388	422	428	4,886	77.9

<b>Against justice procedures:</b>														
Escapee – Corrective Services custody	9	4	13	8	15	13	10	13	12	10	5	13	125	2.0
Escapee – Police custody	23	17	17	16	13	8	10	10	12	13	18	21	178	2.8
Escapee – juvenile detention	0	1	1	1	1	0	2	0	1	0	1	0	8	0.1
Escapee – other custody	6	9	8	9	7	13	6	12	16	10	6	8	110	1.8
Breach Apprehended Violence Order	637	640	643	640	650	617	606	697	698	692	744	841	8,105	129.2
Breach bail conditions	250	218	225	200	195	190	164	188	188	223	226	244	2,511	40.0
Breach of recognizance	95	76	77	83	69	54	73	65	56	66	38	67	819	13.1
Fail to appear	247	178	222	209	195	174	178	149	149	133	156	168	2,158	34.4
Other offences against justice procedures	918	740	818	622	586	564	537	551	600	438	530	596	7,500	119.6
<b>Driving offences:</b>														
Culpable driving	12	10	1	11	18	12	8	14	12	6	22	13	139	2.2
PCA	1,564	1,183	1,732	1,140	1,236	1,177	1,092	1,322	1,289	1,331	1,734	1,707	16,507	263.2
Drive while disqualified	662	469	637	596	588	637	654	687	668	700	743	929	7,970	127.1
Drive manner/speed dangerous	184	154	179	149	151	140	167	168	136	189	190	228	2,035	32.4
Other driving offences	2,047	1,548	2,094	1,744	1,884	1,810	1,949	2,042	1,983	2,291	2,225	2,710	24,327	387.8
<b>Other offences</b>	<b>2,188</b>	<b>1,962</b>	<b>2,347</b>	<b>1,993</b>	<b>2,127</b>	<b>1,948</b>	<b>2,011</b>	<b>2,143</b>	<b>2,201</b>	<b>2,121</b>	<b>2,241</b>	<b>2,331</b>	<b>25,613</b>	<b>408.3</b>

**TABLE 1.3** MONTHLY TRENDS IN RECORDED CRIMINAL INCIDENTS, 1998, NEW SOUTH WALES:  
TYPE OF OFFENCE

Type of offence	Recorded criminal incidents												Total 1998	
	Jan	Feb	Mar	Apr	May	Jun	Jul	Aug	Sep	Oct	Nov	Dec	No.	Rate per 100,000 population
	<b>Homicide:</b>													
Murder*	6	8	9	15	4	7	5	6	11	8	9	8	96	1.5
Attempted murder	11	14	19	7	4	12	7	8	1	4	13	9	109	1.7
Murder accessory, conspiracy	0	1	0	1	0	0	0	0	0	0	0	1	3	0.0
Manslaughter – not driving*	2	3	4	1	0	8	0	0	3	3	1	0	25	0.4
Manslaughter – driving*	14	5	10	7	13	9	5	9	1	5	2	3	83	1.3
<b>Assault</b>	5,372	4,802	5,235	4,377	4,594	4,246	4,507	4,757	4,762	4,974	4,991	5,029	57,646	909.0
<b>Sexual offences:</b>														
Sexual assault	331	285	293	264	247	290	180	230	279	260	215	218	3,092	48.8
Indecent assault, act of indecency	358	286	298	301	321	296	293	285	323	315	223	188	3,487	55.0
Other sexual offences	138	191	177	120	119	151	80	96	128	107	117	96	1,520	24.0
<b>Abduction and kidnapping</b>	37	36	32	26	24	28	27	33	54	55	51	40	443	7.0
<b>Robbery:</b>														
Robbery without a weapon	496	488	587	598	569	534	537	523	493	570	546	523	6,464	101.9
Robbery with a firearm	52	78	89	72	81	108	82	78	55	80	70	68	913	14.4
Robbery with a weapon not a firearm	307	293	387	408	514	372	359	381	360	349	324	332	4,386	69.2
<b>Other offences against the person</b>	128	196	195	175	179	201	195	195	250	256	298	239	2,507	39.5

\* For murder and manslaughter only, the data are counts of recorded victims, not criminal incidents. See Explanatory Notes.



<b>Theft:</b>														
Break and enter – dwelling	7,547	6,530	7,300	7,313	7,689	7,263	7,277	7,569	7,243	7,356	6,334	5,975	85,396	1,346.6
Break and enter – non-dwelling	4,237	3,818	4,315	3,801	4,164	4,245	4,203	4,237	4,016	4,047	3,909	3,547	48,539	765.4
Possess implements	149	144	138	118	150	127	116	137	118	143	132	120	1,592	25.1
Receiving	265	201	246	194	253	273	260	219	213	169	168	133	2,594	40.9
Goods in custody	678	663	686	575	769	764	725	704	705	705	545	547	8,066	127.2
Motor vehicle theft	4,531	4,397	4,913	4,667	4,958	4,480	4,381	4,649	4,283	4,481	4,225	3,757	53,722	847.1
Steal from motor vehicle	6,515	5,579	6,541	6,173	6,334	6,379	6,617	6,979	6,379	5,971	6,034	5,757	75,258	1,186.7
Steal from retail store	1,625	1,629	1,809	1,629	1,785	1,798	1,879	1,814	1,808	1,755	1,645	1,790	20,966	330.6
Steal from dwelling	2,814	2,477	2,586	2,610	2,581	2,456	2,484	2,542	2,537	2,675	2,497	2,521	30,780	485.4
Steal from person	990	1,026	1,131	1,165	904	832	824	875	885	894	968	1,073	11,567	182.4
Stock theft	52	54	65	53	61	82	78	63	69	83	66	47	773	12.2
Fraud	2,259	2,017	2,231	2,145	2,169	2,352	1,982	2,161	2,204	2,227	1,615	1,406	24,768	390.6
Other theft	5,231	4,909	5,441	4,787	4,994	4,554	4,569	4,589	4,642	4,963	4,743	4,686	58,108	916.3
<b>Demand money with menaces</b>	69	60	72	81	108	71	92	92	87	96	90	83	1,001	15.8
<b>Extortion, blackmail</b>	4	7	7	8	1	6	5	16	7	2	4	3	70	1.1
<b>Arson</b>	369	383	415	327	388	389	438	421	338	460	351	325	4,604	72.6
<b>Malicious damage to property</b>	7,011	5,998	7,071	6,790	6,779	7,287	7,841	8,355	7,959	8,173	8,349	7,601	89,214	1,406.8

*Table continues on next page*

**TABLE 1.3** MONTHLY TRENDS IN RECORDED CRIMINAL INCIDENTS, 1998, NEW SOUTH WALES:  
TYPE OF OFFENCE - continued

<i>Type of offence</i>	<i>Recorded criminal incidents</i>												<i>Total 1998</i>	
	<i>Jan</i>	<i>Feb</i>	<i>Mar</i>	<i>Apr</i>	<i>May</i>	<i>Jun</i>	<i>Jul</i>	<i>Aug</i>	<i>Sep</i>	<i>Oct</i>	<i>Nov</i>	<i>Dec</i>	<i>No.</i>	<i>Rate per 100,000 population</i>
	<b>Drug offences:</b>													
Possession and/or use of cocaine	21	15	21	12	16	27	23	21	25	36	31	25	273	4.3
Possession and/or use of narcotics	237	213	229	217	240	247	245	261	246	252	289	301	2,977	46.9
Possession and/or use of cannabis	1,003	857	990	874	1,047	1,101	999	884	863	844	896	801	11,159	176.0
Possession and/or use of other drugs	177	129	133	114	163	155	188	142	125	154	153	154	1,787	28.2
Dealing, trafficking in cocaine	8	5	4	5	10	6	14	10	28	16	5	9	120	1.9
Dealing, trafficking in narcotics	47	33	71	41	30	66	49	78	80	75	94	83	747	11.8
Dealing, trafficking in cannabis	91	71	72	99	90	143	98	92	98	64	89	61	1,068	16.8
Dealing, trafficking in other drugs	54	29	26	42	45	45	27	22	38	45	50	31	454	7.2
Cultivating cannabis	332	303	294	177	136	133	100	106	124	143	173	235	2,256	35.6
Importing drugs	1	4	2	5	1	2	0	1	0	5	2	2	25	0.4
Other drug offences	260	270	276	236	270	280	270	245	230	235	264	248	3,084	48.6
<b>Offensive behaviour:</b>														
Offensive conduct	304	239	235	229	249	211	249	270	336	342	298	372	3,334	52.6
Offensive language	561	400	527	430	438	426	492	485	527	570	595	665	6,116	96.4
<b>Prostitution offences</b>	58	24	46	40	23	34	21	43	37	22	13	21	382	6.0
<b>Betting and gaming offences</b>	1	6	0	3	5	1	1	1	4	2	1	1	26	0.4
<b>Weapons offences</b>	372	401	400	367	424	441	450	429	450	437	434	446	5,051	79.6

<b>Against justice procedures:</b>														
Escapee – Corrective Services custody	10	12	10	9	17	13	10	10	9	13	12	13	138	2.2
Escapee – Police custody	17	21	21	23	16	12	20	24	12	15	17	15	213	3.4
Escapee – juvenile detention	1	2	0	0	0	0	0	0	0	0	0	1	4	0.1
Escapee – other custody	12	11	6	7	9	10	5	2	5	1	2	2	72	1.1
Breach Apprehended Violence Order	934	826	836	762	760	754	726	781	875	856	795	742	9,647	152.1
Breach bail conditions	318	281	293	231	266	244	218	240	302	285	289	303	3,270	51.6
Breach of recognizance	69	31	55	41	51	40	48	40	53	58	35	42	563	8.9
Fail to appear	172	130	144	133	166	120	135	135	155	118	117	120	1,645	25.9
Other offences against justice procedures	659	485	578	521	576	432	498	514	531	612	579	658	6,643	104.8
<b>Driving offences:</b>														
Culpable driving	18	12	20	19	14	7	16	20	10	7	8	3	154	2.4
PCA	1,536	1,125	1,723	1,453	1,472	1,481	1,283	1,588	1,500	1,649	1,761	1,741	18,312	288.8
Drive while disqualified	922	674	850	830	827	827	814	932	1,026	1,121	1,059	1,268	11,150	175.8
Drive manner/speed dangerous	226	167	199	173	183	170	156	210	215	209	209	144	2,261	35.7
Other driving offences	2,517	2,003	2,520	2,198	2,228	2,213	2,172	2,252	2,328	2,636	2,554	2,405	28,026	441.9
<b>Other offences</b>	<b>2,619</b>	<b>2,091</b>	<b>2,610</b>	<b>2,338</b>	<b>2,344</b>	<b>2,288</b>	<b>2,333</b>	<b>2,539</b>	<b>2,697</b>	<b>2,677</b>	<b>2,577</b>	<b>2,468</b>	<b>29,581</b>	<b>466.5</b>



---

**CLEARED CRIMINAL INCIDENTS  
FOR SELECTED OFFENCES,  
JANUARY 1996 TO SEPTEMBER 1998,  
NEW SOUTH WALES**

---

**TABLE 2.1** **CLEARED CRIMINAL INCIDENTS, SELECTED OFFENCES,  
JANUARY 1996 TO DECEMBER 1996, NEW SOUTH WALES: TYPE OF OFFENCE**

<i>Type of offence</i>	<i>Recorded criminal incidents</i>						
	<i>Total number recorded</i>	<i>Cleared within 30 days of reporting</i>		<i>Cleared within 90 days of reporting</i>		<i>Cleared within 180 days of reporting</i>	
		<i>Total number cleared</i>	<i>% cleared</i>	<i>Total number cleared</i>	<i>% cleared</i>	<i>Total number cleared</i>	<i>% cleared</i>
Murder*	106	74	69.8	75	70.8	77	72.6
Assault	48,869	28,314	57.9	30,254	61.9	31,180	63.8
Sexual assault	2,973	1,210	40.7	1,489	50.1	1,744	58.7
Indecent assault, act of indecency	3570	1,381	38.7	1,707	47.8	1,998	56.0
Other sexual offences	1,641	453	27.6	512	31.2	572	34.9
Abduction and kidnapping	278	89	32.0	96	34.5	101	36.3
Robbery without a weapon	4,952	535	10.8	613	12.4	663	13.4
Robbery with a firearm	824	96	11.7	129	15.7	148	18.0
Robbery with a weapon not a firearm	1,894	281	14.8	343	18.1	365	19.3
Break and enter – dwelling	74,546	2,891	3.9	3,669	4.9	4,079	5.5
Break and enter – non-dwelling	43,551	2,151	4.9	2,562	5.9	2,808	6.4
Motor vehicle theft	49,206	1,892	3.8	2,166	4.4	2,343	4.8
Steal from motor vehicle	63,771	1,888	3.0	2,105	3.3	2,188	3.4
Steal from retail store	22,619	11,093	49.0	11,368	50.3	11,481	50.8
Steal from dwelling	28,420	1,810	6.4	2,098	7.4	2,233	7.9
Steal from person	9,939	572	5.8	626	6.3	666	6.7
Stock theft	808	34	4.2	43	5.3	44	5.4
Fraud	21,702	6,796	31.3	8,595	39.6	9,895	45.6
Demand money with menaces	648	111	17.1	143	22.1	148	22.8
Arson	4,456	222	5.0	255	5.7	280	6.3
Malicious damage to property	78,853	10,339	13.1	11,057	14.0	11,330	14.4

\* *Victims for whom incident was cleared.*

**TABLE 2.2****CLEARED CRIMINAL INCIDENTS, SELECTED OFFENCES,  
JANUARY 1997 TO DECEMBER 1997, NEW SOUTH WALES: TYPE OF OFFENCE**

<i>Type of offence</i>	<i>Recorded criminal incidents</i>						
	<i>Total number recorded</i>	<i>Cleared within 30 days of reporting</i>		<i>Cleared within 90 days of reporting</i>		<i>Cleared within 180 days of reporting</i>	
		<i>Total number cleared</i>	<i>% cleared</i>	<i>Total number cleared</i>	<i>% cleared</i>	<i>Total number cleared</i>	<i>% cleared</i>
Murder*	112	62	55.4	68	60.7	72	64.3
Assault	54,303	31,232	57.5	33,631	61.9	34,711	63.9
Sexual assault	3,601	1,036	28.8	1,523	42.3	1,804	50.1
Indecent assault, act of indecency	4,314	1,523	35.3	2,071	48.0	2,418	56.1
Other sexual offences	1,842	515	28.0	633	34.4	703	38.2
Abduction and kidnapping	327	89	27.2	104	31.8	109	33.3
Robbery without a weapon	6,487	566	8.7	683	10.5	752	11.6
Robbery with a firearm	1,139	105	9.2	152	13.3	198	17.4
Robbery with a weapon not a firearm	3,381	486	14.4	598	17.7	662	19.6
Break and enter – dwelling	79,838	2,998	3.8	3,830	4.8	4,298	5.4
Break and enter – non-dwelling	45,467	2,183	4.8	2,581	5.7	2,791	6.1
Motor vehicle theft	55,556	2,179	3.9	2,523	4.5	2,718	4.9
Steal from motor vehicle	71,079	2,166	3.0	2,450	3.4	2,545	3.6
Steal from retail store	21,492	10,681	49.7	10,987	51.1	11,092	51.6
Steal from dwelling	28,586	1,833	6.4	2,147	7.5	2,301	8.0
Steal from person	10,864	591	5.4	648	6.0	692	6.4
Stock theft	763	38	5.0	45	5.9	47	6.2
Fraud	23,933	5,985	25.0	8,575	35.8	10,027	41.9
Demand money with menaces	878	116	13.2	146	16.6	152	17.3
Arson	4,750	244	5.1	287	6.0	309	6.5
Malicious damage to property	79,731	10,443	13.1	11,220	14.1	11,518	14.4

\* *Victims for whom incident was cleared.*

**TABLE 2.3****CLEARED CRIMINAL INCIDENTS, SELECTED OFFENCES,  
JANUARY 1998 TO SEPTEMBER 1998, NEW SOUTH WALES: TYPE OF OFFENCE**

<i>Type of offence</i>	<i>Recorded criminal incidents</i>				
	<i>Total number recorded</i>	<i>Cleared within 30 days of reporting</i>		<i>Cleared within 90 days of reporting</i>	
		<i>Total number cleared</i>	<i>% cleared</i>	<i>Total number cleared</i>	<i>% cleared</i>
Murder*	71	32	45.1	34	47.9
Assault	42,652	24,223	56.8	26,091	61.2
Sexual assault	2,399	595	24.8	867	36.1
Indecent assault, act of indecency	2,761	903	32.7	1,334	48.3
Other sexual offences	1,200	312	26.0	392	32.7
Abduction and kidnapping	297	94	31.6	103	34.7
Robbery without a weapon	4,825	507	10.5	588	12.2
Robbery with a firearm	695	91	13.1	111	16.0
Robbery with a weapon not a firearm	3,381	481	14.2	653	19.3
Break and enter – dwelling	65,731	2,406	3.7	3,147	4.8
Break and enter – non-dwelling	37,036	1,644	4.4	1,921	5.2
Motor vehicle theft	41,259	1,736	4.2	1,984	4.8
Steal from motor vehicle	57,496	1,666	2.9	1,851	3.2
Steal from retail store	15,776	8,086	51.3	8,341	52.9
Steal from dwelling	23,087	1,577	6.8	1,862	8.1
Steal from person	8,632	461	5.3	514	6.0
Stock theft	577	24	4.2	33	5.7
Fraud	19,520	4,948	25.3	7,382	37.8
Demand money with menaces	732	111	15.2	126	17.2
Arson	3,468	151	4.4	176	5.1
Malicious damage to property	65,091	8,268	12.7	8,909	13.7

\* *Victims for whom incident was cleared.*



---

**RECORDED CRIME STATISTICS  
IN NEW SOUTH WALES REGIONS  
FOR SELECTED OFFENCES,  
1996, 1997 AND 1998**

---



**TABLE 3.1** RECORDED VICTIMS, 1996 TO 1998: STATISTICAL DIVISION**MURDER**

<i>Statistical Division where offence occurred</i>	<i>Recorded victims</i>					
	<i>1996</i>		<i>1997</i>		<i>1998</i>	
	<i>Number</i>	<i>Rate per 100,000 population</i>	<i>Number</i>	<i>Rate per 100,000 population</i>	<i>Number</i>	<i>Rate per 100,000 population</i>
Sydney	72	1.9	74	1.9	56	1.4
Inner Sydney	11	4.1	19	6.9	13	4.6
Eastern Suburbs	3	1.2	3	1.2	3	1.2
St George – Sutherland	5	1.2	4	1.0	1	0.2
Canterbury – Bankstown	11	3.6	12	3.9	9	2.9
Fairfield – Liverpool	10	3.2	8	2.5	7	2.1
Outer South Western Sydney	4	1.9	3	1.4	1	0.4
Inner Western Sydney	4	2.6	5	3.2	5	3.2
Central Western Sydney	5	1.8	4	1.4	2	0.7
Outer Western Sydney	3	1.0	4	1.3	0	0.0
Blacktown – Baulkham Hills	7	1.9	4	1.1	4	1.1
Lower Northern Sydney	1	0.4	3	1.1	0	0.0
Hornsby – Ku-ring-gai	1	0.4	1	0.4	1	0.4
Northern Beaches	3	1.3	2	0.9	3	1.3
Gosford – Wyong	4	1.5	2	0.7	7	2.5
Hunter	2	0.4	7	1.2	4	0.7
Illawarra	6	1.6	10	2.7	6	1.6
Richmond – Tweed	2	1.0	3	1.5	4	1.9
Mid-North Coast	5	1.9	4	1.5	7	2.6
Northern	5	2.8	2	1.1	1	0.6
North Western	3	2.6	2	1.7	1	0.9
Central West	3	1.7	1	0.6	1	0.6
South Eastern	1	0.6	2	1.1	2	1.1
Murrumbidgee	2	1.3	0	0.0	5	3.4
Murray	2	1.8	3	2.7	2	1.8
Far West	1	3.9	2	8.0	0	0.0
New South Wales*	106	1.7	112	1.8	96	1.5

\* The total for New South Wales includes 2 recorded victims in 1996, 2 recorded victims in 1997 and 7 recorded victims in 1998 where the offence occurred in a custodial institution.

**TABLE 3.2 RECORDED CRIMINAL INCIDENTS, 1996 TO 1998: STATISTICAL DIVISION****ASSAULT**

<i>Statistical Division where offence occurred</i>	<i>Recorded criminal incidents</i>					
	<i>1996</i>		<i>1997</i>		<i>1998</i>	
	<i>Number</i>	<i>Rate per 100,000 population</i>	<i>Number</i>	<i>Rate per 100,000 population</i>	<i>Number</i>	<i>Rate per 100,000 population</i>
Sydney	28,571	736.2	31,535	801.7	32,391	812.5
Inner Sydney	5,563	2,061.4	5,764	2,092.1	5,909	2,097.2
Eastern Suburbs	1,407	581.3	1,610	660.9	1,581	648.8
St George – Sutherland	2,259	549.4	2,557	613.5	2,680	636.6
Canterbury – Bankstown	2,099	692.5	2,160	706.1	2,216	718.8
Fairfield – Liverpool	2,420	772.2	2,592	808.5	2,642	805.5
Outer South Western Sydney	2,126	984.8	2,471	1,128.5	2,566	1,152.0
Inner Western Sydney	903	582.2	965	616.4	932	588.7
Central Western Sydney	2,397	856.2	2,599	918.5	2,581	896.6
Outer Western Sydney	2,244	743.5	2,730	894.8	2,942	954.7
Blacktown – Baulkham Hills	2,753	753.4	3,342	899.9	3,461	913.6
Lower Northern Sydney	949	338.2	1,040	367.4	1,078	376.9
Hornsby – Ku-ring-gai	562	225.8	596	236.4	659	259.1
Northern Beaches	977	437.2	1,005	446.5	1,039	458.6
Gosford – Wyong	1,912	707.1	2,104	762.0	2,105	748.4
Hunter	3,854	694.2	4,325	770.0	4,283	755.0
Illawarra	2,700	724.1	3,013	799.2	3,372	885.8
Richmond – Tweed	1,583	789.4	1,738	853.4	2,078	1,005.1
Mid-North Coast	2,226	848.2	2,413	910.1	2,882	1,072.6
Northern	1,705	954.8	1,893	1,068.6	2,051	1,166.1
North Western	1,932	1,647.6	2,364	2,014.0	2,596	2,216.1
Central West	1,361	789.3	1,512	876.5	1,700	983.9
South Eastern	1,379	770.7	1,544	858.7	1,742	964.6
Murrumbidgee	1,238	830.0	1,290	865.5	1,609	1,079.6
Murray	1,029	928.0	1,070	965.8	1,070	960.5
Far West	502	1,980.7	602	2,418.8	591	2,402.1
New South Wales*	48,869	787.6	54,303	865.7	57,646	909.0

\* The total for New South Wales includes 789 recorded incidents in 1996, 1,004 recorded incidents in 1997 and 1,281 recorded incidents in 1998 where the offence occurred in a custodial institution.

**TABLE 3.3** RECORDED CRIMINAL INCIDENTS, 1996 TO 1998: STATISTICAL DIVISION**SEXUAL ASSAULT**

<i>Statistical Division where offence occurred</i>	<i>Recorded criminal incidents</i>					
	<i>1996</i>		<i>1997</i>		<i>1998</i>	
	<i>Number</i>	<i>Rate per 100,000 population</i>	<i>Number</i>	<i>Rate per 100,000 population</i>	<i>Number</i>	<i>Rate per 100,000 population</i>
Sydney	1,653	42.6	1,982	50.4	1,642	41.2
Inner Sydney	219	81.2	245	88.9	212	75.2
Eastern Suburbs	81	33.5	91	37.4	64	26.3
St George – Sutherland	96	23.3	117	28.1	122	29.0
Canterbury – Bankstown	123	40.6	122	39.9	97	31.5
Fairfield – Liverpool	151	48.2	172	53.7	138	42.1
Outer South Western Sydney	122	56.5	158	72.2	165	74.1
Inner Western Sydney	33	21.3	66	42.2	40	25.3
Central Western Sydney	132	47.1	170	60.1	115	40.0
Outer Western Sydney	180	59.6	219	71.8	160	51.9
Blacktown – Baulkham Hills	186	50.9	242	65.2	237	62.6
Lower Northern Sydney	69	24.6	67	23.7	53	18.5
Hornsby – Ku-ring-gai	41	16.5	46	18.2	40	15.7
Northern Beaches	96	43.0	122	54.2	63	27.8
Gosford – Wyong	124	45.9	145	52.5	136	48.4
Hunter	234	42.2	409	72.8	370	65.2
Illawarra	185	49.6	191	50.7	197	51.8
Richmond – Tweed	129	64.3	131	64.3	137	66.3
Mid-North Coast	181	69.0	167	63.0	123	45.8
Northern	63	35.3	80	45.2	93	52.9
North Western	126	107.5	130	110.8	94	80.2
Central West	116	67.3	137	79.4	112	64.8
South Eastern	75	41.9	108	60.1	93	51.5
Murrumbidgee	91	61.0	133	89.2	91	61.1
Murray	77	69.4	76	68.6	72	64.6
Far West	20	78.9	33	132.6	35	142.3
New South Wales*	2,973	47.9	3,601	57.4	3,092	48.8

\* The total for New South Wales includes 23 recorded incidents in 1996, 24 recorded incidents in 1997 and 33 recorded incidents in 1998 where the offence occurred in a custodial institution.

**TABLE 3.4** RECORDED CRIMINAL INCIDENTS, 1996 TO 1998: STATISTICAL DIVISION**INDECENT ASSAULT, ACT OF INDECENCY, OTHER SEXUAL OFFENCES**

<i>Statistical Division where offence occurred</i>	<i>Recorded criminal incidents</i>					
	<i>1996</i>		<i>1997</i>		<i>1998</i>	
	<i>Number</i>	<i>Rate per 100,000 population</i>	<i>Number</i>	<i>Rate per 100,000 population</i>	<i>Number</i>	<i>Rate per 100,000 population</i>
Sydney	3,185	82.1	3,385	86.1	2,844	71.3
Inner Sydney	360	133.4	417	151.4	367	130.3
Eastern Suburbs	170	70.2	129	53.0	133	54.6
St George – Sutherland	249	60.6	289	69.3	281	66.8
Canterbury – Bankstown	213	70.3	209	68.3	183	59.4
Fairfield – Liverpool	216	68.9	223	69.6	215	65.6
Outer South Western Sydney	210	97.3	201	91.8	227	101.9
Inner Western Sydney	117	75.4	138	88.1	102	64.4
Central Western Sydney	223	79.7	275	97.2	223	77.5
Outer Western Sydney	314	104.0	309	101.3	254	82.4
Blacktown – Baulkham Hills	335	91.7	330	88.9	281	74.2
Lower Northern Sydney	204	72.7	253	89.4	159	55.6
Hornsby – Ku-ring-gai	137	55.0	146	57.9	119	46.8
Northern Beaches	237	106.1	222	98.6	123	54.3
Gosford – Wyong	200	74.0	244	88.4	177	62.9
Hunter	432	77.8	648	115.4	456	80.4
Illawarra	216	57.9	352	93.4	292	76.7
Richmond – Tweed	223	111.2	168	82.5	215	104.0
Mid-North Coast	313	119.3	407	153.5	278	103.5
Northern	132	73.9	148	83.5	170	96.7
North Western	156	133.0	251	213.8	119	101.6
Central West	143	82.9	174	100.9	148	85.7
South Eastern	123	68.7	263	146.3	189	104.7
Murrumbidgee	144	96.5	193	129.5	176	118.1
Murray	96	86.6	93	83.9	76	68.2
Far West	31	122.3	63	253.1	27	109.7
New South Wales*	5,211	84.0	6,156	98.1	5,007	79.0

\* The total for New South Wales includes 17 recorded incidents in 1996, 11 recorded incidents in 1997 and 17 recorded incidents in 1998 where the offence occurred in a custodial institution.

**TABLE 3.5** RECORDED CRIMINAL INCIDENTS, 1996 TO 1998: STATISTICAL DIVISION**ROBBERY WITHOUT A WEAPON**

<i>Statistical Division where offence occurred</i>	<i>Recorded criminal incidents</i>					
	<i>1996</i>		<i>1997</i>		<i>1998</i>	
	<i>Number</i>	<i>Rate per 100,000 population</i>	<i>Number</i>	<i>Rate per 100,000 population</i>	<i>Number</i>	<i>Rate per 100,000 population</i>
Sydney	4,327	111.5	5,692	144.7	5,511	138.2
Inner Sydney	1,409	522.1	1,859	674.7	1,766	626.8
Eastern Suburbs	223	92.1	264	108.4	229	94.0
St George – Sutherland	228	55.5	315	75.6	330	78.4
Canterbury – Bankstown	387	127.7	491	160.5	592	192.0
Fairfield – Liverpool	420	134.0	520	162.2	614	187.2
Outer South Western Sydney	186	86.2	264	120.6	241	108.2
Inner Western Sydney	203	130.9	293	187.2	228	144.0
Central Western Sydney	433	154.7	546	193.0	462	160.5
Outer Western Sydney	178	59.0	255	83.6	220	71.4
Blacktown – Baulkham Hills	355	97.1	452	121.7	321	84.7
Lower Northern Sydney	134	47.8	190	67.1	225	78.7
Hornsby – Ku-ring-gai	48	19.3	65	25.8	86	33.8
Northern Beaches	68	30.4	84	37.3	99	43.7
Gosford – Wyong	55	20.3	94	34.0	98	34.8
Hunter	162	29.2	252	44.9	276	48.7
Illawarra	124	33.3	147	39.0	188	49.4
Richmond – Tweed	51	25.4	39	19.1	69	33.4
Mid-North Coast	52	19.8	80	30.2	103	38.3
Northern	39	21.8	54	30.5	84	47.8
North Western	79	67.4	62	52.8	68	58.0
Central West	43	24.9	48	27.8	62	35.9
South Eastern	24	13.4	25	13.9	37	20.5
Murrumbidgee	30	20.1	60	40.3	36	24.2
Murray	15	13.5	17	15.3	22	19.7
Far West	4	15.8	8	32.1	7	28.5
New South Wales*	4,952	79.8	6,487	103.4	6,464	101.9

\* The total for New South Wales includes 2 recorded incidents in 1996, 3 recorded incidents in 1997 and 1 recorded incident in 1998 where the offence occurred in a custodial institution.

**TABLE 3.6** RECORDED CRIMINAL INCIDENTS, 1996 TO 1998: STATISTICAL DIVISION**ROBBERY WITH A FIREARM**

<i>Statistical Division where offence occurred</i>	<i>Recorded criminal incidents</i>					
	<i>1996</i>		<i>1997</i>		<i>1998</i>	
	<i>Number</i>	<i>Rate per 100,000 population</i>	<i>Number</i>	<i>Rate per 100,000 population</i>	<i>Number</i>	<i>Rate per 100,000 population</i>
Sydney	732	18.9	1,001	25.4	821	20.6
Inner Sydney	117	43.4	177	64.2	156	55.4
Eastern Suburbs	45	18.6	31	12.7	42	17.2
St George – Sutherland	52	12.6	97	23.3	64	15.2
Canterbury – Bankstown	83	27.4	121	39.6	98	31.8
Fairfield – Liverpool	116	37.0	116	36.2	95	29.0
Outer South Western Sydney	35	16.2	22	10.0	45	20.2
Inner Western Sydney	38	24.5	79	50.5	38	24.0
Central Western Sydney	79	28.2	103	36.4	81	28.1
Outer Western Sydney	28	9.3	47	15.4	47	15.3
Blacktown – Baulkham Hills	55	15.1	77	20.7	54	14.3
Lower Northern Sydney	28	10.0	51	18.0	35	12.2
Hornsby – Ku-ring-gai	17	6.8	31	12.3	17	6.7
Northern Beaches	16	7.2	16	7.1	16	7.1
Gosford – Wyong	23	8.5	33	12.0	33	11.7
Hunter	36	6.5	56	10.0	33	5.8
Illawarra	15	4.0	19	5.0	33	8.7
Richmond – Tweed	9	4.5	24	11.8	2	1.0
Mid-North Coast	7	2.7	3	1.1	6	2.2
Northern	8	4.5	2	1.1	6	3.4
North Western	1	0.9	12	10.2	3	2.6
Central West	4	2.3	7	4.1	4	2.3
South Eastern	3	1.7	4	2.2	2	1.1
Murrumbidgee	3	2.0	4	2.7	3	2.0
Murray	5	4.5	5	4.5	0	0.0
Far West	1	3.9	2	8.0	0	0.0
New South Wales	824	13.3	1,139	18.2	913	14.4



**TABLE 3.7** RECORDED CRIMINAL INCIDENTS, 1996 TO 1998: STATISTICAL DIVISION**ROBBERY WITH A WEAPON NOT A FIREARM**

<i>Statistical Division where offence occurred</i>	<i>Recorded criminal incidents</i>					
	<i>1996</i>		<i>1997</i>		<i>1998</i>	
	<i>Number</i>	<i>Rate per 100,000 population</i>	<i>Number</i>	<i>Rate per 100,000 population</i>	<i>Number</i>	<i>Rate per 100,000 population</i>
Sydney	1,656	42.7	2,978	75.7	3,861	96.8
Inner Sydney	461	170.8	965	350.2	1,117	396.4
Eastern Suburbs	83	34.3	121	49.7	216	88.6
St George – Sutherland	94	22.9	205	49.2	264	62.7
Canterbury – Bankstown	151	49.8	274	89.6	431	139.8
Fairfield – Liverpool	189	60.3	305	95.1	439	133.8
Outer South Western Sydney	59	27.3	99	45.2	130	58.4
Inner Western Sydney	73	47.1	203	129.7	229	144.6
Central Western Sydney	170	60.7	270	95.4	322	111.9
Outer Western Sydney	78	25.8	102	33.4	143	46.4
Blacktown – Baulkham Hills	114	31.2	175	47.1	174	45.9
Lower Northern Sydney	89	31.7	129	45.6	178	62.2
Hornsby – Ku-ring-gai	45	18.1	51	20.2	61	24.0
Northern Beaches	23	10.3	38	16.9	57	25.2
Gosford – Wyong	27	10.0	41	14.8	100	35.6
Hunter	78	14.1	134	23.9	221	39.0
Illawarra	57	15.3	91	24.1	136	35.7
Richmond – Tweed	14	7.0	28	13.7	18	8.7
Mid-North Coast	26	9.9	32	12.1	27	10.0
Northern	10	5.6	24	13.5	27	15.4
North Western	12	10.2	29	24.7	38	32.4
Central West	13	7.5	33	19.1	23	13.3
South Eastern	15	8.4	15	8.3	8	4.4
Murrumbidgee	2	1.3	8	5.4	14	9.4
Murray	6	5.4	7	6.3	11	9.9
Far West	4	15.8	1	4.0	2	8.1
New South Wales*	1,894	30.5	3,381	53.9	4,386	69.2

\* The total for New South Wales includes 1 recorded incident in 1996 and 1 recorded incident in 1997 where the offence occurred in a custodial institution.

**TABLE 3.8** RECORDED CRIMINAL INCIDENTS, 1996 TO 1998: STATISTICAL DIVISION**BREAK AND ENTER – DWELLING**

<i>Statistical Division where offence occurred</i>	<i>Recorded criminal incidents</i>					
	<i>1996</i>		<i>1997</i>		<i>1998</i>	
	<i>Number</i>	<i>Rate per 100,000 population</i>	<i>Number</i>	<i>Rate per 100,000 population</i>	<i>Number</i>	<i>Rate per 100,000 population</i>
Sydney	53,192	1,370.5	56,755	1,442.8	57,298	1,437.2
Inner Sydney	5,880	2,178.8	5,747	2,085.9	6,898	2,448.2
Eastern Suburbs	3,107	1,283.6	2,758	1,132.1	3,565	1,463.1
St George – Sutherland	4,167	1,013.4	4,622	1,109.0	5,231	1,242.6
Canterbury – Bankstown	4,880	1,610.0	5,383	1,759.8	5,415	1,756.6
Fairfield – Liverpool	4,597	1,466.8	5,686	1,773.7	5,034	1,534.8
Outer South Western Sydney	3,509	1,625.5	3,727	1,702.1	3,697	1,659.7
Inner Western Sydney	2,792	1,800.1	2,910	1,858.8	2,739	1,730.1
Central Western Sydney	5,731	2,047.0	5,452	1,926.8	5,023	1,745.0
Outer Western Sydney	3,429	1,136.1	3,439	1,127.1	3,499	1,135.5
Blacktown – Baulkham Hills	4,717	1,290.9	4,972	1,338.9	4,874	1,286.6
Lower Northern Sydney	3,641	1,297.5	3,698	1,306.2	3,710	1,297.1
Hornsby – Ku-ring-gai	2,005	805.6	2,292	909.3	2,375	933.7
Northern Beaches	1,771	792.5	2,327	1,033.8	1,887	832.9
Gosford – Wyong	2,966	1,096.9	3,742	1,355.1	3,351	1,191.5
Hunter	4,839	871.7	5,070	902.6	6,813	1,200.9
Illawarra	5,026	1,348.0	5,111	1,355.6	6,388	1,678.1
Richmond – Tweed	1,674	834.7	1,770	869.1	2,128	1,029.2
Mid-North Coast	2,088	795.6	2,104	793.5	2,927	1,089.3
Northern	1,587	888.7	1,627	918.4	2,119	1,204.8
North Western	1,542	1,315.0	1,901	1,619.6	2,008	1,714.1
Central West	1,298	752.7	1,727	1,001.2	1,916	1,108.9
South Eastern	1,141	637.6	1,362	757.5	1,519	841.1
Murrumbidgee	1,107	742.2	1,252	840.0	1,139	764.2
Murray	720	649.3	812	732.9	767	688.5
Far West	332	1,310.0	347	1,394.2	374	1,520.1
New South Wales	74,546	1,201.4	79,838	1,272.8	85,396	1,346.6

**TABLE 3.9** RECORDED CRIMINAL INCIDENTS, 1996 TO 1998: STATISTICAL DIVISION**BREAK AND ENTER – NON-DWELLING**

<i>Statistical Division where offence occurred</i>	<i>Recorded criminal incidents</i>					
	<i>1996</i>		<i>1997</i>		<i>1998</i>	
	<i>Number</i>	<i>Rate per 100,000 population</i>	<i>Number</i>	<i>Rate per 100,000 population</i>	<i>Number</i>	<i>Rate per 100,000 population</i>
Sydney	25,181	648.8	25,124	638.7	25,957	651.1
Inner Sydney	4,728	1,752.0	3,987	1,447.1	4,657	1,652.8
Eastern Suburbs	1,020	421.4	971	398.6	1,218	499.9
St George – Sutherland	1,559	379.2	1,686	404.5	1,620	384.8
Canterbury – Bankstown	1,673	552.0	1,898	620.5	1,941	629.6
Fairfield – Liverpool	2,682	855.8	2,145	669.1	2,107	642.4
Outer South Western Sydney	1,402	649.4	1,562	713.4	1,406	631.2
Inner Western Sydney	918	591.9	998	637.5	900	568.5
Central Western Sydney	2,432	868.7	2,302	813.5	2,216	769.8
Outer Western Sydney	1,901	629.8	2,026	664.0	2,043	663.0
Blacktown – Baulkham Hills	1,643	449.6	1,829	492.5	1,773	468.0
Lower Northern Sydney	1,939	691.0	1,895	669.4	1,939	677.9
Hornsby – Ku-ring-gai	723	290.5	810	321.3	758	298.0
Northern Beaches	995	445.3	1,161	515.8	1,303	575.1
Gosford – Wyong	1,566	579.1	1,854	671.4	2,076	738.1
Hunter	3,959	713.1	5,243	933.4	6,152	1,084.4
Illawarra	2,884	773.5	3,240	859.4	4,254	1,117.5
Richmond – Tweed	1,504	750.0	1,546	759.1	1,436	694.5
Mid-North Coast	2,175	828.8	2,119	799.2	2,293	853.4
Northern	1,448	810.8	1,563	882.3	1,763	1,002.4
North Western	1,334	1,137.6	1,265	1,077.7	1,599	1,365.0
Central West	1,318	764.3	1,518	880.0	1,548	895.9
South Eastern	1,423	795.2	1,746	971.1	1,345	744.8
Murrumbidgee	1,050	704.0	941	631.3	963	646.1
Murray	940	847.7	879	793.4	911	817.7
Far West	311	1,227.1	262	1,052.7	306	1,243.8
New South Wales*	43,551	701.9	45,467	724.8	48,539	765.4

\* The total for New South Wales includes 24 recorded incidents in 1996, 21 recorded incidents in 1997 and 12 recorded incidents in 1998 where the offence occurred in a custodial institution.

**TABLE 3.10 RECORDED CRIMINAL INCIDENTS, 1996 TO 1998: STATISTICAL DIVISION****RECEIVING, GOODS IN CUSTODY**

<i>Statistical Division where offence occurred</i>	<i>Recorded criminal incidents</i>					
	<i>1996</i>		<i>1997</i>		<i>1998</i>	
	<i>Number</i>	<i>Rate per 100,000 population</i>	<i>Number</i>	<i>Rate per 100,000 population</i>	<i>Number</i>	<i>Rate per 100,000 population</i>
Sydney	4,958	127.7	6,255	159.0	7,235	181.5
Inner Sydney	1,243	460.6	1,620	588.0	1,860	660.1
Eastern Suburbs	231	95.4	214	87.8	303	124.4
St George – Sutherland	321	78.1	286	68.6	367	87.2
Canterbury – Bankstown	238	78.5	367	120.0	367	119.0
Fairfield – Liverpool	664	211.9	1,086	338.8	1,351	411.9
Outer South Western Sydney	263	121.8	369	168.5	460	206.5
Inner Western Sydney	95	61.3	198	126.5	212	133.9
Central Western Sydney	410	146.4	466	164.7	537	186.6
Outer Western Sydney	344	114.0	366	120.0	379	123.0
Blacktown – Baulkham Hills	507	138.7	559	150.5	525	138.6
Lower Northern Sydney	166	59.2	194	68.5	237	82.9
Hornsby – Ku-ring-gai	71	28.5	123	48.8	127	49.9
Northern Beaches	130	58.2	130	57.8	171	75.5
Gosford – Wyong	275	101.7	277	100.3	339	120.5
Hunter	534	96.2	498	88.7	639	112.6
Illawarra	473	126.9	477	126.5	583	153.2
Richmond – Tweed	209	104.2	231	113.4	259	125.3
Mid-North Coast	209	79.6	313	118.0	397	147.8
Northern	117	65.5	147	83.0	193	109.7
North Western	224	191.0	258	219.8	367	313.3
Central West	156	90.5	259	150.1	315	182.3
South Eastern	277	154.8	241	134.0	255	141.2
Murrumbidgee	111	74.4	167	112.0	164	110.0
Murray	124	111.8	273	246.4	167	149.9
Far West	29	114.4	49	196.9	78	317.0
New South Wales*	7,428	119.7	9,174	146.3	10,660	168.1

\* The total for New South Wales includes 7 recorded incidents in 1996, 6 recorded incidents in 1997 and 8 recorded incidents in 1998 where the offence occurred in a custodial institution.

**TABLE 3.11 RECORDED CRIMINAL INCIDENTS, 1996 TO 1998: STATISTICAL DIVISION****MOTOR VEHICLE THEFT**

<i>Statistical Division where offence occurred</i>	<i>Recorded criminal incidents</i>					
	<i>1996</i>		<i>1997</i>		<i>1998</i>	
	<i>Number</i>	<i>Rate per 100,000 population</i>	<i>Number</i>	<i>Rate per 100,000 population</i>	<i>Number</i>	<i>Rate per 100,000 population</i>
Sydney	40,224	1,036.4	44,652	1,135.1	41,569	1,042.7
Inner Sydney	6,630	2,456.7	6,470	2,348.3	6,371	2,261.2
Eastern Suburbs	2,287	944.9	2,747	1,127.6	2,763	1,133.9
St George – Sutherland	3,060	744.2	3,589	861.1	3,689	876.3
Canterbury – Bankstown	3,917	1,292.3	5,071	1,657.8	4,446	1,442.2
Fairfield – Liverpool	4,446	1,418.6	4,566	1,424.3	4,338	1,322.6
Outer South Western Sydney	2,277	1,054.8	2,648	1,209.4	2,395	1,075.2
Inner Western Sydney	1,915	1,234.7	2,134	1,363.1	1,876	1,185.0
Central Western Sydney	4,161	1,486.2	4,179	1,476.9	3,544	1,231.2
Outer Western Sydney	3,225	1,068.5	3,239	1,061.6	2,688	872.3
Blacktown – Baulkham Hills	3,821	1,045.7	4,428	1,192.4	3,685	972.7
Lower Northern Sydney	1,741	620.4	2,007	708.9	2,020	706.3
Hornsby – Ku-ring-gai	590	237.1	796	315.8	651	255.9
Northern Beaches	679	303.9	870	386.5	981	433.0
Gosford – Wyong	1,475	545.5	1,908	691.0	2,122	754.5
Hunter	2,409	433.9	3,051	543.2	3,862	680.8
Illawarra	2,463	660.6	3,416	906.0	3,578	939.9
Richmond – Tweed	664	331.1	763	374.6	818	395.6
Mid-North Coast	770	293.4	872	328.9	955	355.4
Northern	390	218.4	330	186.3	403	229.1
North Western	445	379.5	548	466.9	551	470.4
Central West	601	348.5	670	388.4	591	342.0
South Eastern	426	238.1	463	257.5	618	342.2
Murrumbidgee	398	266.8	391	262.3	357	239.5
Murray	320	288.6	301	271.7	327	293.5
Far West	91	359.1	93	373.7	87	353.6
New South Wales*	49,206	793.0	55,556	885.7	53,722	847.1

\* The total for New South Wales includes 5 recorded incidents in 1996, 6 recorded incidents in 1997 and 6 recorded incidents in 1998 where the offence occurred in a custodial institution.

**TABLE 3.12 RECORDED CRIMINAL INCIDENTS, 1996 TO 1998: STATISTICAL DIVISION****STEAL FROM MOTOR VEHICLE**

<i>Statistical Division where offence occurred</i>	<i>Recorded criminal incidents</i>					
	<i>1996</i>		<i>1997</i>		<i>1998</i>	
	<i>Number</i>	<i>Rate per 100,000 population</i>	<i>Number</i>	<i>Rate per 100,000 population</i>	<i>Number</i>	<i>Rate per 100,000 population</i>
Sydney	47,020	1,211.5	51,887	1,319.0	53,113	1,332.2
Inner Sydney	11,267	4,175.0	12,445	4,516.9	12,827	4,552.5
Eastern Suburbs	4,192	1,731.9	3,607	1,480.6	3,653	1,499.2
St George – Sutherland	4,109	999.3	4,686	1,124.3	4,724	1,122.2
Canterbury – Bankstown	3,361	1,108.9	4,111	1,343.9	4,188	1,358.5
Fairfield – Liverpool	3,211	1,024.6	3,479	1,085.2	3,420	1,042.7
Outer South Western Sydney	1,623	751.8	2,080	949.9	2,030	911.4
Inner Western Sydney	2,253	1,452.6	2,335	1,491.5	2,227	1,406.7
Central Western Sydney	3,382	1,208.0	4,245	1,500.2	3,779	1,312.8
Outer Western Sydney	2,366	783.9	3,188	1,044.9	2,800	908.6
Blacktown – Baulkham Hills	2,561	700.8	2,782	749.1	3,198	844.2
Lower Northern Sydney	4,013	1,430.1	3,847	1,358.9	3,823	1,336.6
Hornsby – Ku-ring-gai	1,344	540.0	1,194	473.7	1,459	573.6
Northern Beaches	1,471	658.3	1,760	781.9	2,720	1,200.6
Gosford – Wyong	1,867	690.4	2,128	770.6	2,265	805.3
Hunter	3,680	662.9	4,802	854.9	5,542	976.9
Illawarra	3,197	857.4	3,809	1,010.3	4,976	1,307.2
Richmond – Tweed	1,570	782.9	1,972	968.3	1,995	964.9
Mid-North Coast	1,620	617.3	1,668	629.1	2,419	900.3
Northern	1,300	728.0	1,400	790.3	1,435	815.9
North Western	876	747.0	1,107	943.1	1,222	1,043.2
Central West	1,331	771.9	1,217	705.5	1,280	740.8
South Eastern	1,233	689.1	1,259	700.2	1,626	900.4
Murrumbidgee	965	647.0	926	621.3	794	532.7
Murray	750	676.4	801	723.0	611	548.4
Far West	224	883.8	226	908.1	238	967.4
New South Wales*	63,771	1,027.8	71,079	1,133.1	75,258	1,186.7

\* The total for New South Wales includes 5 recorded incidents in 1996, 5 recorded incidents in 1997 and 7 recorded incidents in 1998 where the offence occurred in a custodial institution.

**TABLE 3.13 RECORDED CRIMINAL INCIDENTS, 1996 TO 1998: STATISTICAL DIVISION****STEAL FROM RETAIL STORE**

<i>Statistical Division where offence occurred</i>	<i>Recorded criminal incidents</i>					
	<i>1996</i>		<i>1997</i>		<i>1998</i>	
	<i>Number</i>	<i>Rate per 100,000 population</i>	<i>Number</i>	<i>Rate per 100,000 population</i>	<i>Number</i>	<i>Rate per 100,000 population</i>
Sydney	15,433	397.6	14,408	366.3	13,674	343.0
Inner Sydney	2,424	898.2	2,272	824.6	2,393	849.3
Eastern Suburbs	1,005	415.2	767	314.8	761	312.3
St George – Sutherland	1,212	294.8	1,204	288.9	1,126	267.5
Canterbury – Bankstown	1,029	339.5	931	304.4	898	291.3
Fairfield – Liverpool	1,648	525.8	1,456	454.2	1,250	381.1
Outer South Western Sydney	821	380.3	797	364.0	694	311.6
Inner Western Sydney	567	365.6	543	346.8	603	380.9
Central Western Sydney	1,527	545.4	1,569	554.5	1,478	513.5
Outer Western Sydney	1,175	389.3	944	309.4	921	298.9
Blacktown – Baulkham Hills	1,145	313.3	1,121	301.9	1,120	295.6
Lower Northern Sydney	919	327.5	889	314.0	863	301.7
Hornsby – Ku-ring-gai	407	163.5	445	176.5	335	131.7
Northern Beaches	555	248.4	499	221.7	499	220.3
Gosford – Wyong	999	369.4	971	351.6	733	260.6
Hunter	1,672	301.2	1,798	320.1	1,472	259.5
Illawarra	1,149	308.2	1,145	303.7	1,351	354.9
Richmond – Tweed	752	375.0	690	338.8	730	353.1
Mid-North Coast	928	353.6	962	362.8	1,106	411.6
Northern	500	280.0	516	291.3	495	281.4
North Western	384	327.5	374	318.6	486	414.9
Central West	474	274.9	439	254.5	516	298.6
South Eastern	489	273.3	394	219.1	419	232.0
Murrumbidgee	415	278.2	370	248.2	352	236.2
Murray	380	342.7	339	306.0	303	272.0
Far West	43	169.7	57	229.0	62	252.0
New South Wales	22,619	364.5	21,492	342.6	20,966	330.6

**TABLE 3.14 RECORDED CRIMINAL INCIDENTS, 1996 TO 1998: STATISTICAL DIVISION****STEAL FROM DWELLING**

<i>Statistical Division where offence occurred</i>	<i>Recorded criminal incidents</i>					
	<i>1996</i>		<i>1997</i>		<i>1998</i>	
	<i>Number</i>	<i>Rate per 100,000 population</i>	<i>Number</i>	<i>Rate per 100,000 population</i>	<i>Number</i>	<i>Rate per 100,000 population</i>
Sydney	15,191	391.4	15,079	383.3	16,015	401.7
Inner Sydney	1,683	623.6	1,824	662.0	2,309	819.5
Eastern Suburbs	1,102	455.3	1,000	410.5	1,066	437.5
St George – Sutherland	1,163	282.8	1,215	291.5	1,360	323.1
Canterbury – Bankstown	807	266.3	788	257.6	851	276.1
Fairfield – Liverpool	990	315.9	904	282.0	1,006	306.7
Outer South Western Sydney	1,219	564.7	1,056	482.3	1,124	504.6
Inner Western Sydney	539	347.5	494	315.5	533	336.7
Central Western Sydney	900	321.5	892	315.2	854	296.7
Outer Western Sydney	1,312	434.7	1,296	424.8	1,266	410.8
Blacktown – Baulkham Hills	1,470	402.3	1,484	399.6	1,325	349.8
Lower Northern Sydney	878	312.9	918	324.3	1,012	353.8
Hornsby – Ku-ring-gai	719	288.9	709	281.3	819	322.0
Northern Beaches	916	409.9	852	378.5	957	422.4
Gosford – Wyong	1,493	552.1	1,647	596.5	1,533	545.1
Hunter	3,211	578.4	3,273	582.7	3,348	590.2
Illawarra	2,013	539.9	1,991	528.1	2,109	554.0
Richmond – Tweed	1,374	685.1	1,253	615.2	1,423	688.3
Mid-North Coast	1,442	549.5	1,449	546.5	1,660	617.8
Northern	917	513.5	976	550.9	1,097	623.7
North Western	679	579.0	791	673.9	915	781.1
Central West	1,054	611.2	1,010	585.5	1,219	705.5
South Eastern	809	452.1	874	486.1	1,054	583.6
Murrumbidgee	871	584.0	850	570.3	870	583.7
Murray	655	590.7	781	705.0	796	714.5
Far West	204	804.9	259	1,040.7	274	1,113.7
New South Wales	28,420	458.0	28,586	455.7	30,780	485.4



**TABLE 3.15 RECORDED CRIMINAL INCIDENTS, 1996 TO 1998: STATISTICAL DIVISION****STEAL FROM PERSON**

<i>Statistical Division where offence occurred</i>	<i>Recorded criminal incidents</i>					
	<i>1996</i>		<i>1997</i>		<i>1998</i>	
	<i>Number</i>	<i>Rate per 100,000 population</i>	<i>Number</i>	<i>Rate per 100,000 population</i>	<i>Number</i>	<i>Rate per 100,000 population</i>
Sydney	8,356	215.3	9,326	237.1	9,828	246.5
Inner Sydney	3,261	1,208.4	3,735	1,355.6	4,400	1,561.6
Eastern Suburbs	551	227.6	564	231.5	564	231.5
St George – Sutherland	555	135.0	593	142.3	489	116.2
Canterbury – Bankstown	694	229.0	659	215.4	728	236.2
Fairfield – Liverpool	733	233.9	782	243.9	678	206.7
Outer South Western Sydney	219	101.4	257	117.4	246	110.4
Inner Western Sydney	395	254.7	482	307.9	483	305.1
Central Western Sydney	464	165.7	571	201.8	527	183.1
Outer Western Sydney	317	105.0	382	125.2	318	103.2
Blacktown – Baulkham Hills	372	101.8	456	122.8	392	103.5
Lower Northern Sydney	309	110.1	357	126.1	443	154.9
Hornsby – Ku-ring-gai	138	55.4	129	51.2	140	55.0
Northern Beaches	162	72.5	178	79.1	226	99.8
Gosford – Wyong	186	68.8	181	65.5	194	69.0
Hunter	346	62.3	384	68.4	413	72.8
Illawarra	340	91.2	334	88.6	400	105.1
Richmond – Tweed	200	99.7	158	77.6	188	90.9
Mid-North Coast	150	57.2	162	61.1	164	61.0
Northern	96	53.8	117	66.0	122	69.4
North Western	128	109.2	110	93.7	136	116.1
Central West	106	61.5	87	50.4	112	64.8
South Eastern	95	53.1	81	45.0	81	44.9
Murrumbidgee	45	30.2	43	28.9	52	34.9
Murray	60	54.1	33	29.8	41	36.8
Far West	17	67.1	26	104.5	29	117.9
New South Wales*	9,939	160.2	10,864	173.2	11,567	182.4

\* The total for New South Wales includes 3 recorded incidents in 1997 and 1 recorded incident in 1998 where the offence occurred in a custodial institution.

**TABLE 3.16 RECORDED CRIMINAL INCIDENTS, 1996 TO 1998: STATISTICAL DIVISION****FRAUD**

<i>Statistical Division where offence occurred</i>	<i>Recorded criminal incidents</i>					
	<i>1996</i>		<i>1997</i>		<i>1998</i>	
	<i>Number</i>	<i>Rate per 100,000 population</i>	<i>Number</i>	<i>Rate per 100,000 population</i>	<i>Number</i>	<i>Rate per 100,000 population</i>
Sydney	15,083	388.6	16,324	415.0	16,609	416.6
Inner Sydney	2,951	1,093.5	3,462	1,256.5	3,223	1,143.9
Eastern Suburbs	935	386.3	719	295.1	932	382.5
St George – Sutherland	838	203.8	1,110	266.3	1,024	243.3
Canterbury – Bankstown	960	316.7	1,201	392.6	1,065	345.5
Fairfield – Liverpool	1,328	423.7	1,416	441.7	1,510	460.4
Outer South Western Sydney	537	248.8	548	250.3	719	322.8
Inner Western Sydney	526	339.1	725	463.1	582	367.6
Central Western Sydney	1,405	501.8	1,421	502.2	1,330	462.0
Outer Western Sydney	1,077	356.8	1,025	335.9	860	279.1
Blacktown – Baulkham Hills	1,421	388.9	1,484	399.6	1,535	405.2
Lower Northern Sydney	1,366	486.8	1,492	527.0	1,521	531.8
Hornsby – Ku-ring-gai	352	141.4	337	133.7	420	165.1
Northern Beaches	631	282.4	714	317.2	796	351.3
Gosford – Wyong	756	279.6	670	242.6	1,092	388.3
Hunter	1,496	269.5	1,755	312.5	1,937	341.4
Illawarra	656	175.9	973	258.1	803	210.9
Richmond – Tweed	482	240.3	633	310.8	745	360.3
Mid-North Coast	701	267.1	712	268.5	1,010	375.9
Northern	568	318.1	700	395.1	764	434.4
North Western	397	338.6	426	362.9	448	382.4
Central West	496	287.6	424	245.8	515	298.0
South Eastern	560	313.0	611	339.8	624	345.5
Murrumbidgee	671	449.9	723	485.1	768	515.3
Murray	530	478.0	558	503.7	490	439.8
Far West	56	221.0	86	345.5	48	195.1
New South Wales*	21,702	349.8	23,933	381.5	24,768	390.6

\* The total for New South Wales includes 6 recorded incidents in 1996, 8 recorded incidents in 1997 and 7 recorded incidents in 1998 where the offence occurred in a custodial institution.

**TABLE 3.17 RECORDED CRIMINAL INCIDENTS, 1996 TO 1998: STATISTICAL DIVISION****MALICIOUS DAMAGE TO PROPERTY**

<i>Statistical Division where offence occurred</i>	<i>Recorded criminal incidents</i>					
	<i>1996</i>		<i>1997</i>		<i>1998</i>	
	<i>Number</i>	<i>Rate per 100,000 population</i>	<i>Number</i>	<i>Rate per 100,000 population</i>	<i>Number</i>	<i>Rate per 100,000 population</i>
Sydney	47,679	1,228.5	47,612	1,210.4	52,423	1,314.9
Inner Sydney	6,408	2,374.5	6,192	2,247.4	6,598	2,341.7
Eastern Suburbs	2,661	1,099.4	2,314	949.8	2,530	1,038.3
St George – Sutherland	4,328	1,052.6	4,737	1,136.5	5,165	1,227.0
Canterbury – Bankstown	3,160	1,042.6	3,221	1,053.0	3,595	1,166.2
Fairfield – Liverpool	3,964	1,264.8	3,191	995.4	3,410	1,039.7
Outer South Western Sydney	3,675	1,702.4	4,149	1,894.9	4,325	1,941.7
Inner Western Sydney	1,413	911.0	1,470	939.0	1,599	1,010.0
Central Western Sydney	3,387	1,209.8	3,264	1,153.5	3,360	1,167.3
Outer Western Sydney	4,378	1,450.5	4,409	1,445.1	5,458	1,771.2
Blacktown – Baulkham Hills	4,319	1,181.9	4,686	1,261.9	5,242	1,383.7
Lower Northern Sydney	2,374	846.0	2,419	854.5	2,675	935.3
Hornsby – Ku-ring-gai	1,923	772.7	1,850	733.9	2,397	942.4
Northern Beaches	2,313	1,035.1	2,315	1,028.5	2,275	1,004.2
Gosford – Wyong	3,376	1,248.5	3,395	1,229.5	3,794	1,349.0
Hunter	6,830	1,230.3	7,064	1,257.6	7,894	1,391.5
Illawarra	5,196	1,393.6	5,680	1,506.5	6,820	1,791.6
Richmond – Tweed	1,989	991.8	2,121	1,041.5	2,511	1,214.5
Mid-North Coast	3,165	1,206.0	3,190	1,203.1	3,788	1,409.8
Northern	2,409	1,349.0	2,662	1,502.7	3,164	1,798.9
North Western	2,143	1,827.5	2,150	1,831.7	2,497	2,131.6
Central West	2,803	1,625.5	2,374	1,376.2	2,665	1,542.3
South Eastern	2,415	1,349.6	2,379	1,323.1	2,823	1,563.2
Murrumbidgee	2,072	1,389.2	2,022	1,356.6	2,356	1,580.8
Murray	1,536	1,385.3	1,804	1,628.4	1,523	1,367.1
Far West	533	2,103.1	531	2,133.6	566	2,300.5
New South Wales*	78,853	1,270.9	79,731	1,271.1	89,214	1,406.8

\* The total for New South Wales includes 83 recorded incidents in 1996, 142 recorded incidents in 1997 and 184 recorded incidents in 1998 where the offence occurred in a custodial institution.

**TABLE 3.18** RECORDED CRIMINAL INCIDENTS, 1996 TO 1998: STATISTICAL DIVISION**POSSESSION AND/OR USE OF COCAINE**

<i>Statistical Division where offence occurred</i>	<i>Recorded criminal incidents</i>					
	<i>1996</i>		<i>1997</i>		<i>1998</i>	
	<i>Number</i>	<i>Rate per 100,000 population</i>	<i>Number</i>	<i>Rate per 100,000 population</i>	<i>Number</i>	<i>Rate per 100,000 population</i>
Sydney	107	2.8	140	3.6	253	6.3
Inner Sydney	81	30.0	95	34.5	162	57.5
Eastern Suburbs	5	2.1	12	4.9	23	9.4
St George – Sutherland	2	0.5	7	1.7	9	2.1
Canterbury – Bankstown	3	1.0	4	1.3	11	3.6
Fairfield – Liverpool	3	1.0	2	0.6	13	4.0
Outer South Western Sydney	0	0.0	1	0.5	0	0.0
Inner Western Sydney	2	1.3	3	1.9	10	6.3
Central Western Sydney	4	1.4	3	1.1	5	1.7
Outer Western Sydney	1	0.3	1	0.3	3	1.0
Blacktown – Baulkham Hills	1	0.3	5	1.3	1	0.3
Lower Northern Sydney	1	0.4	3	1.1	7	2.4
Hornsby – Ku-ring-gai	0	0.0	2	0.8	2	0.8
Northern Beaches	4	1.8	2	0.9	5	2.2
Gosford – Wyong	0	0.0	0	0.0	2	0.7
Hunter	0	0.0	1	0.2	0	0.0
Illawarra	0	0.0	3	0.8	1	0.3
Richmond – Tweed	2	1.0	5	2.5	7	3.4
Mid-North Coast	3	1.1	0	0.0	1	0.4
Northern	0	0.0	1	0.6	1	0.6
North Western	0	0.0	0	0.0	0	0.0
Central West	0	0.0	1	0.6	0	0.0
South Eastern	2	1.1	1	0.6	2	1.1
Murrumbidgee	0	0.0	0	0.0	2	1.3
Murray	0	0.0	1	0.9	0	0.0
Far West	0	0.0	0	0.0	0	0.0
New South Wales*	117	1.9	156	2.5	273	4.3

\* The total for New South Wales includes 3 recorded incidents in 1996, 3 recorded incidents in 1997 and 6 recorded incidents in 1998 where the offence occurred in a custodial institution.

**TABLE 3.19** RECORDED CRIMINAL INCIDENTS, 1996 TO 1998: STATISTICAL DIVISION**POSSESSION AND/OR USE OF NARCOTICS**

<i>Statistical Division where offence occurred</i>	<i>Recorded criminal incidents</i>					
	<i>1996</i>		<i>1997</i>		<i>1998</i>	
	<i>Number</i>	<i>Rate per 100,000 population</i>	<i>Number</i>	<i>Rate per 100,000 population</i>	<i>Number</i>	<i>Rate per 100,000 population</i>
Sydney	1,176	30.3	1,519	38.6	2,390	59.9
Inner Sydney	230	85.2	220	79.8	476	168.9
Eastern Suburbs	19	7.8	20	8.2	30	12.3
St George – Sutherland	26	6.3	34	8.2	61	14.5
Canterbury – Bankstown	38	12.5	63	20.6	102	33.1
Fairfield – Liverpool	679	216.7	927	289.2	1,313	400.3
Outer South Western Sydney	16	7.4	50	22.8	50	22.4
Inner Western Sydney	18	11.6	27	17.2	35	22.1
Central Western Sydney	41	14.6	49	17.3	121	42.0
Outer Western Sydney	29	9.6	21	6.9	33	10.7
Blacktown – Baulkham Hills	22	6.0	34	9.2	56	14.8
Lower Northern Sydney	8	2.9	13	4.6	24	8.4
Hornsby – Ku-ring-gai	6	2.4	19	7.5	23	9.0
Northern Beaches	17	7.6	11	4.9	26	11.5
Gosford – Wyong	27	10.0	31	11.2	40	14.2
Hunter	73	13.1	89	15.8	114	20.1
Illawarra	99	26.6	66	17.5	104	27.3
Richmond – Tweed	49	24.4	76	37.3	113	54.7
Mid-North Coast	26	9.9	41	15.5	57	21.2
Northern	19	10.6	15	8.5	28	15.9
North Western	3	2.6	8	6.8	19	16.2
Central West	9	5.2	16	9.3	37	21.4
South Eastern	21	11.7	9	5.0	30	16.6
Murrumbidgee	8	5.4	4	2.7	8	5.4
Murray	1	0.9	2	1.8	5	4.5
Far West	1	3.9	0	0.0	1	4.1
New South Wales*	1,541	24.8	1,895	30.2	2,977	46.9

\* The total for New South Wales includes 56 recorded incidents in 1996, 50 recorded incidents in 1997 and 71 recorded incidents in 1998 where the offence occurred in a custodial institution.

**TABLE 3.20 RECORDED CRIMINAL INCIDENTS, 1996 TO 1998: STATISTICAL DIVISION****POSSESSION AND/OR USE OF CANNABIS**

<i>Statistical Division where offence occurred</i>	<i>Recorded criminal incidents</i>					
	<i>1996</i>		<i>1997</i>		<i>1998</i>	
	<i>Number</i>	<i>Rate per 100,000 population</i>	<i>Number</i>	<i>Rate per 100,000 population</i>	<i>Number</i>	<i>Rate per 100,000 population</i>
Sydney	3,543	91.3	4,267	108.5	4,845	121.5
Inner Sydney	577	213.8	607	220.3	768	272.6
Eastern Suburbs	215	88.8	230	94.4	217	89.1
St George – Sutherland	244	59.3	296	71.0	385	91.5
Canterbury – Bankstown	178	58.7	178	58.2	204	66.2
Fairfield – Liverpool	237	75.6	375	117.0	475	144.8
Outer South Western Sydney	197	91.3	240	109.6	271	121.7
Inner Western Sydney	82	52.9	105	67.1	98	61.9
Central Western Sydney	180	64.3	256	90.5	365	126.8
Outer Western Sydney	345	114.3	473	155.0	581	188.5
Blacktown – Baulkham Hills	315	86.2	476	128.2	521	137.5
Lower Northern Sydney	233	83.0	249	88.0	236	82.5
Hornsby – Ku-ring-gai	152	61.1	230	91.2	222	87.3
Northern Beaches	216	96.7	150	66.6	148	65.3
Gosford – Wyong	372	137.6	402	145.6	354	125.9
Hunter	1,061	191.1	894	159.2	849	149.7
Illawarra	487	130.6	494	131.0	527	138.4
Richmond – Tweed	854	425.8	805	395.3	834	403.4
Mid-North Coast	965	367.7	927	349.6	913	339.8
Northern	368	206.1	436	246.1	438	249.0
North Western	309	263.5	398	339.1	339	289.4
Central West	396	229.6	384	222.6	578	334.5
South Eastern	610	340.9	695	386.5	765	423.6
Murrumbidgee	379	254.1	364	244.2	396	265.7
Murray	290	261.5	324	292.5	288	258.5
Far West	70	276.2	71	285.3	76	308.9
New South Wales*	9,742	157.0	10,459	166.7	11,159	176.0

\* The total for New South Wales includes 410 recorded incidents in 1996, 400 recorded incidents in 1997 and 311 recorded incidents in 1998 where the offence occurred in a custodial institution.

**TABLE 3.21 RECORDED CRIMINAL INCIDENTS, 1996 TO 1998: STATISTICAL DIVISION****DEALING, TRAFFICKING IN COCAINE**

<i>Statistical Division where offence occurred</i>	<i>Recorded criminal incidents</i>					
	<i>1996</i>		<i>1997</i>		<i>1998</i>	
	<i>Number</i>	<i>Rate per 100,000 population</i>	<i>Number</i>	<i>Rate per 100,000 population</i>	<i>Number</i>	<i>Rate per 100,000 population</i>
Sydney	100	2.6	91	2.3	111	2.8
Inner Sydney	85	31.5	67	24.3	86	30.5
Eastern Suburbs	4	1.7	10	4.1	6	2.5
St George – Sutherland	2	0.5	9	2.2	5	1.2
Canterbury – Bankstown	0	0.0	2	0.7	3	1.0
Fairfield – Liverpool	0	0.0	0	0.0	4	1.2
Outer South Western Sydney	0	0.0	0	0.0	0	0.0
Inner Western Sydney	4	2.6	1	0.6	0	0.0
Central Western Sydney	0	0.0	0	0.0	1	0.3
Outer Western Sydney	1	0.3	1	0.3	0	0.0
Blacktown – Baulkham Hills	1	0.3	0	0.0	0	0.0
Lower Northern Sydney	3	1.1	1	0.4	4	1.4
Hornsby – Ku-ring-gai	0	0.0	0	0.0	1	0.4
Northern Beaches	0	0.0	0	0.0	1	0.4
Gosford – Wyong	0	0.0	0	0.0	0	0.0
Hunter	1	0.2	0	0.0	0	0.0
Illawarra	1	0.3	2	0.5	0	0.0
Richmond – Tweed	1	0.5	13	6.4	7	3.4
Mid-North Coast	0	0.0	0	0.0	1	0.4
Northern	0	0.0	1	0.6	0	0.0
North Western	0	0.0	0	0.0	0	0.0
Central West	0	0.0	0	0.0	0	0.0
South Eastern	0	0.0	1	0.6	0	0.0
Murrumbidgee	0	0.0	0	0.0	1	0.7
Murray	0	0.0	0	0.0	0	0.0
Far West	0	0.0	0	0.0	0	0.0
New South Wales	103	1.7	108	1.7	120	1.9

**TABLE 3.22 RECORDED CRIMINAL INCIDENTS, 1996 TO 1998: STATISTICAL DIVISION****DEALING, TRAFFICKING IN NARCOTICS**

<i>Statistical Division where offence occurred</i>	<i>Recorded criminal incidents</i>					
	<i>1996</i>		<i>1997</i>		<i>1998</i>	
	<i>Number</i>	<i>Rate per 100,000 population</i>	<i>Number</i>	<i>Rate per 100,000 population</i>	<i>Number</i>	<i>Rate per 100,000 population</i>
Sydney	502	12.9	570	14.5	511	12.8
Inner Sydney	74	27.4	51	18.5	92	32.7
Eastern Suburbs	6	2.5	5	2.1	9	3.7
St George – Sutherland	8	1.9	2	0.5	12	2.9
Canterbury – Bankstown	17	5.6	18	5.9	16	5.2
Fairfield – Liverpool	368	117.4	403	125.7	280	85.4
Outer South Western Sydney	4	1.9	44	20.1	19	8.5
Inner Western Sydney	2	1.3	10	6.4	9	5.7
Central Western Sydney	5	1.8	4	1.4	13	4.5
Outer Western Sydney	8	2.7	5	1.6	7	2.3
Blacktown – Baulkham Hills	1	0.3	4	1.1	1	0.3
Lower Northern Sydney	1	0.4	2	0.7	43	15.0
Hornsby – Ku-ring-gai	0	0.0	8	3.2	1	0.4
Northern Beaches	1	0.4	3	1.3	3	1.3
Gosford – Wyong	7	2.6	11	4.0	6	2.1
Hunter	30	5.4	21	3.7	44	7.8
Illawarra	32	8.6	33	8.8	50	13.1
Richmond – Tweed	43	21.4	36	17.7	67	32.4
Mid-North Coast	7	2.7	14	5.3	16	6.0
Northern	3	1.7	5	2.8	5	2.8
North Western	3	2.6	2	1.7	4	3.4
Central West	1	0.6	4	2.3	26	15.0
South Eastern	6	3.4	9	5.0	15	8.3
Murrumbidgee	4	2.7	5	3.4	3	2.0
Murray	2	1.8	3	2.7	1	0.9
Far West	0	0.0	0	0.0	0	0.0
New South Wales*	637	10.3	706	11.3	747	11.8

\* The total for New South Wales includes 4 recorded incidents in 1996, 4 recorded incidents in 1997 and 5 recorded incidents in 1998 where the offence occurred in a custodial institution.



**TABLE 3.23 RECORDED CRIMINAL INCIDENTS, 1996 TO 1998: STATISTICAL DIVISION****DEALING, TRAFFICKING IN CANNABIS**

<i>Statistical Division where offence occurred</i>	<i>Recorded criminal incidents</i>					
	<i>1996</i>		<i>1997</i>		<i>1998</i>	
	<i>Number</i>	<i>Rate per 100,000 population</i>	<i>Number</i>	<i>Rate per 100,000 population</i>	<i>Number</i>	<i>Rate per 100,000 population</i>
Sydney	386	9.9	417	10.6	411	10.3
Inner Sydney	84	31.1	68	24.7	104	36.9
Eastern Suburbs	18	7.4	32	13.1	24	9.8
St George – Sutherland	34	8.3	24	5.8	25	5.9
Canterbury – Bankstown	15	4.9	11	3.6	18	5.8
Fairfield – Liverpool	27	8.6	28	8.7	38	11.6
Outer South Western Sydney	23	10.7	47	21.5	25	11.2
Inner Western Sydney	6	3.9	6	3.8	7	4.4
Central Western Sydney	18	6.4	15	5.3	16	5.6
Outer Western Sydney	24	8.0	68	22.3	41	13.3
Blacktown – Baulkham Hills	49	13.4	32	8.6	39	10.3
Lower Northern Sydney	16	5.7	12	4.2	11	3.8
Hornsby – Ku-ring-gai	14	5.6	24	9.5	12	4.7
Northern Beaches	23	10.3	16	7.1	18	7.9
Gosford – Wyong	35	12.9	34	12.3	33	11.7
Hunter	75	13.5	83	14.8	36	6.3
Illawarra	77	20.7	83	22.0	86	22.6
Richmond – Tweed	114	56.8	63	30.9	82	39.7
Mid-North Coast	76	29.0	85	32.1	66	24.6
Northern	39	21.8	56	31.6	46	26.2
North Western	67	57.1	24	20.4	44	37.6
Central West	30	17.4	20	11.6	47	27.2
South Eastern	43	24.0	83	46.2	79	43.7
Murrumbidgee	200	134.1	50	33.5	79	53.0
Murray	86	77.6	45	40.6	67	60.1
Far West	22	86.8	7	28.1	10	40.6
New South Wales*	1,223	19.7	1,029	16.4	1,068	16.8

\* The total for New South Wales includes 8 recorded incidents in 1996, 13 recorded incidents in 1997 and 15 recorded incidents in 1998 where the offence occurred in a custodial institution.

**TABLE 3.24 RECORDED CRIMINAL INCIDENTS, 1996 TO 1998: STATISTICAL DIVISION****CULTIVATING CANNABIS**

<i>Statistical Division where offence occurred</i>	<i>Recorded criminal incidents</i>					
	<i>1996</i>		<i>1997</i>		<i>1998</i>	
	<i>Number</i>	<i>Rate per 100,000 population</i>	<i>Number</i>	<i>Rate per 100,000 population</i>	<i>Number</i>	<i>Rate per 100,000 population</i>
Sydney	870	22.4	814	20.7	639	16.0
Inner Sydney	70	25.9	51	18.5	44	15.6
Eastern Suburbs	29	12.0	16	6.6	15	6.2
St George – Sutherland	62	15.1	56	13.4	48	11.4
Canterbury – Bankstown	49	16.2	37	12.1	33	10.7
Fairfield – Liverpool	61	19.5	47	14.7	55	16.8
Outer South Western Sydney	94	43.5	80	36.5	56	25.1
Inner Western Sydney	4	2.6	12	7.7	12	7.6
Central Western Sydney	48	17.1	41	14.5	43	14.9
Outer Western Sydney	112	37.1	131	42.9	105	34.1
Blacktown – Baulkham Hills	115	31.5	103	27.7	82	21.6
Lower Northern Sydney	22	7.8	39	13.8	13	4.5
Hornsby – Ku-ring-gai	27	10.8	33	13.1	18	7.1
Northern Beaches	47	21.0	31	13.8	20	8.8
Gosford – Wyong	130	48.1	137	49.6	95	33.8
Hunter	309	55.7	295	52.5	238	42.0
Illawarra	177	47.5	167	44.3	118	31.0
Richmond – Tweed	365	182.0	292	143.4	285	137.8
Mid-North Coast	372	141.7	368	138.8	324	120.6
Northern	138	77.3	135	76.2	121	68.8
North Western	92	78.5	86	73.3	77	65.7
Central West	105	60.9	81	47.0	109	63.1
South Eastern	175	97.8	223	124.0	163	90.3
Murrumbidgee	99	66.4	106	71.1	91	61.1
Murray	75	67.6	77	69.5	78	70.0
Far West	19	75.0	21	84.4	11	44.7
New South Wales*	2,797	45.1	2,666	42.5	2,256	35.6

\* The total for New South Wales includes 1 recorded incident in 1996, 1 recorded incident in 1997 and 2 recorded incidents in 1998 where the offence occurred in a custodial institution.

**TABLE 3.25 RECORDED CRIMINAL INCIDENTS, 1996 TO 1998: STATISTICAL DIVISION****OFFENSIVE CONDUCT**

<i>Statistical Division where offence occurred</i>	<i>Recorded criminal incidents</i>					
	<i>1996</i>		<i>1997</i>		<i>1998</i>	
	<i>Number</i>	<i>Rate per 100,000 population</i>	<i>Number</i>	<i>Rate per 100,000 population</i>	<i>Number</i>	<i>Rate per 100,000 population</i>
Sydney	1,125	29.0	1,036	26.3	1,116	28.0
Inner Sydney	252	93.4	219	79.5	225	79.9
Eastern Suburbs	58	24.0	46	18.9	54	22.2
St George – Sutherland	78	19.0	95	22.8	100	23.8
Canterbury – Bankstown	54	17.8	38	12.4	28	9.1
Fairfield – Liverpool	64	20.4	71	22.1	58	17.7
Outer South Western Sydney	72	33.4	61	27.9	89	40.0
Inner Western Sydney	31	20.0	33	21.1	20	12.6
Central Western Sydney	48	17.1	49	17.3	59	20.5
Outer Western Sydney	72	23.9	74	24.3	135	43.8
Blacktown – Baulkham Hills	72	19.7	66	17.8	111	29.3
Lower Northern Sydney	50	17.8	62	21.9	48	16.8
Hornsby – Ku-ring-gai	39	15.7	31	12.3	41	16.1
Northern Beaches	74	33.1	76	33.8	53	23.4
Gosford – Wyong	161	59.5	115	41.6	95	33.8
Hunter	297	53.5	202	36.0	223	39.3
Illawarra	147	39.4	140	37.1	140	36.8
Richmond – Tweed	133	66.3	188	92.3	263	127.2
Mid-North Coast	209	79.6	202	76.2	246	91.6
Northern	177	99.1	228	128.7	255	145.0
North Western	202	172.3	250	213.0	265	226.2
Central West	119	69.0	147	85.2	202	116.9
South Eastern	246	137.5	211	117.4	217	120.2
Murrumbidgee	136	91.2	135	90.6	171	114.7
Murray	106	95.6	147	132.7	131	117.6
Far West	35	138.1	65	261.2	105	426.8
New South Wales*	2,934	47.3	2,951	47.0	3,334	52.6

\* The total for New South Wales includes 2 recorded incidents in 1996 where the offence occurred in a custodial institution.

**TABLE 3.26 RECORDED CRIMINAL INCIDENTS, 1996 TO 1998: STATISTICAL DIVISION****OFFENSIVE LANGUAGE**

<i>Statistical Division where offence occurred</i>	<i>Recorded criminal incidents</i>					
	<i>1996</i>		<i>1997</i>		<i>1998</i>	
	<i>Number</i>	<i>Rate per 100,000 population</i>	<i>Number</i>	<i>Rate per 100,000 population</i>	<i>Number</i>	<i>Rate per 100,000 population</i>
Sydney	1,635	42.1	1,768	44.9	2,282	57.2
Inner Sydney	307	113.8	287	104.2	309	109.7
Eastern Suburbs	63	26.0	51	20.9	72	29.5
St George – Sutherland	102	24.8	147	35.3	179	42.5
Canterbury – Bankstown	94	31.0	90	29.4	155	50.3
Fairfield – Liverpool	130	41.5	171	53.3	216	65.9
Outer South Western Sydney	136	63.0	158	72.2	227	101.9
Inner Western Sydney	26	16.8	26	16.6	32	20.2
Central Western Sydney	69	24.6	134	47.4	146	50.7
Outer Western Sydney	115	38.1	127	41.6	273	88.6
Blacktown – Baulkham Hills	79	21.6	137	36.9	262	69.2
Lower Northern Sydney	54	19.2	60	21.2	63	22.0
Hornsby – Ku-ring-gai	68	27.3	62	24.6	86	33.8
Northern Beaches	88	39.4	63	28.0	67	29.6
Gosford – Wyong	304	112.4	255	92.3	195	69.3
Hunter	411	74.0	386	68.7	377	66.5
Illawarra	271	72.7	201	53.3	295	77.5
Richmond – Tweed	227	113.2	275	135.0	347	167.8
Mid-North Coast	461	175.7	383	144.4	550	204.7
Northern	297	166.3	348	196.4	426	242.2
North Western	525	447.7	494	420.9	466	397.8
Central West	225	130.5	245	142.0	384	222.2
South Eastern	320	178.8	320	178.0	375	207.6
Murrumbidgee	179	120.0	222	148.9	302	202.6
Murray	162	146.1	206	185.9	213	191.2
Far West	68	268.3	92	369.7	99	402.4
New South Wales	4,781	77.1	4,940	78.8	6,116	96.4

**TABLE 3.27 RECORDED CRIMINAL INCIDENTS, 1996 TO 1998: STATISTICAL DIVISION****BREACH APPREHENDED VIOLENCE ORDER**

<i>Statistical Division where offence occurred</i>	<i>Recorded criminal incidents</i>					
	<i>1996</i>		<i>1997</i>		<i>1998</i>	
	<i>Number</i>	<i>Rate per 100,000 population</i>	<i>Number</i>	<i>Rate per 100,000 population</i>	<i>Number</i>	<i>Rate per 100,000 population</i>
Sydney	3,054	78.7	4,324	109.9	4,995	125.3
Inner Sydney	393	145.6	480	174.2	486	172.5
Eastern Suburbs	151	62.4	218	89.5	291	119.4
St George – Sutherland	275	66.9	458	109.9	467	110.9
Canterbury – Bankstown	206	68.0	249	81.4	330	107.0
Fairfield – Liverpool	266	84.9	379	118.2	490	149.4
Outer South Western Sydney	275	127.4	399	182.2	524	235.2
Inner Western Sydney	94	60.6	108	69.0	96	60.6
Central Western Sydney	279	99.7	306	108.1	386	134.1
Outer Western Sydney	248	82.2	409	134.1	488	158.4
Blacktown – Baulkham Hills	345	94.4	557	150.0	585	154.4
Lower Northern Sydney	107	38.1	129	45.6	178	62.2
Hornsby – Ku-ring-gai	58	23.3	82	32.5	74	29.1
Northern Beaches	73	32.7	88	39.1	141	62.2
Gosford – Wyong	284	105.0	462	167.3	459	163.2
Hunter	572	103.0	827	147.2	998	175.9
Illawarra	401	107.5	656	174.0	766	201.2
Richmond – Tweed	230	114.7	290	142.4	389	188.1
Mid-North Coast	366	139.5	500	188.6	626	233.0
Northern	221	123.8	218	123.1	306	174.0
North Western	224	191.0	314	267.5	386	329.5
Central West	205	118.9	251	145.5	258	149.3
South Eastern	153	85.5	191	106.2	310	171.7
Murrumbidgee	217	145.5	268	179.8	315	211.4
Murray	120	108.2	133	120.1	172	154.4
Far West	112	441.9	129	518.3	110	447.1
New South Wales*	5,877	94.7	8,105	129.2	9,647	152.1

\* The total for New South Wales includes 2 recorded incidents in 1996, 4 recorded incidents in 1997 and 16 recorded incidents in 1998 where the offence occurred in a custodial institution.

**TABLE 3.28 RECORDED CRIMINAL INCIDENTS, 1996 TO 1998: STATISTICAL DIVISION****PCA DRIVING OFFENCES**

<i>Statistical Division where offence occurred</i>	<i>Recorded criminal incidents</i>					
	<i>1996</i>		<i>1997</i>		<i>1998</i>	
	<i>Number</i>	<i>Rate per 100,000 population</i>	<i>Number</i>	<i>Rate per 100,000 population</i>	<i>Number</i>	<i>Rate per 100,000 population</i>
Sydney	8,119	209.2	7,559	192.2	9,124	228.9
Inner Sydney	767	284.2	805	292.2	950	337.2
Eastern Suburbs	471	194.6	391	160.5	422	173.2
St George – Sutherland	747	181.7	682	163.6	757	179.8
Canterbury – Bankstown	329	108.5	315	103.0	332	107.7
Fairfield – Liverpool	522	166.6	492	153.5	653	199.1
Outer South Western Sydney	534	247.4	515	235.2	882	396.0
Inner Western Sydney	196	126.4	164	104.8	170	107.4
Central Western Sydney	365	130.4	412	145.6	450	156.3
Outer Western Sydney	512	169.6	746	244.5	981	318.3
Blacktown – Baulkham Hills	549	150.2	562	151.3	878	231.8
Lower Northern Sydney	972	346.4	680	240.2	767	268.2
Hornsby – Ku-ring-gai	359	144.2	273	108.3	291	114.4
Northern Beaches	960	429.6	745	331.0	835	368.6
Gosford – Wyong	836	309.2	777	281.4	756	268.8
Hunter	1,695	305.3	1,797	319.9	1,623	286.1
Illawarra	870	233.3	891	236.3	1,034	271.6
Richmond – Tweed	869	433.3	967	474.8	1,015	490.9
Mid-North Coast	1,010	384.8	1,078	406.6	1,156	430.2
Northern	596	333.7	794	448.2	824	468.5
North Western	540	460.5	596	507.8	561	478.9
Central West	711	412.3	657	380.9	718	415.5
South Eastern	866	484.0	875	486.6	936	518.3
Murrumbidgee	688	461.3	640	429.4	700	469.7
Murray	584	526.7	563	508.2	511	458.7
Far West	76	299.9	90	361.6	110	447.1
New South Wales	16,624	267.9	16,507	263.2	18,312	288.8

**TABLE 3.29 RECORDED CRIMINAL INCIDENTS, 1996 TO 1998: STATISTICAL DIVISION****DRIVE WHILE DISQUALIFIED**

<i>Statistical Division where offence occurred</i>	<i>Recorded criminal incidents</i>					
	<i>1996</i>		<i>1997</i>		<i>1998</i>	
	<i>Number</i>	<i>Rate per 100,000 population</i>	<i>Number</i>	<i>Rate per 100,000 population</i>	<i>Number</i>	<i>Rate per 100,000 population</i>
Sydney	3,796	97.8	4,695	119.4	6,563	164.6
Inner Sydney	349	129.3	489	177.5	604	214.4
Eastern Suburbs	144	59.5	162	66.5	249	102.2
St George – Sutherland	333	81.0	378	90.7	427	101.4
Canterbury – Bankstown	243	80.2	299	97.7	465	150.8
Fairfield – Liverpool	476	151.9	560	174.7	1,035	315.6
Outer South Western Sydney	342	158.4	345	157.6	569	255.4
Inner Western Sydney	87	56.1	108	69.0	135	85.3
Central Western Sydney	239	85.4	394	139.2	491	170.6
Outer Western Sydney	330	109.3	509	166.8	632	205.1
Blacktown – Baulkham Hills	327	89.5	569	153.2	884	233.4
Lower Northern Sydney	267	95.1	211	74.5	252	88.1
Hornsby – Ku-ring-gai	125	50.2	110	43.6	115	45.2
Northern Beaches	129	57.7	150	66.6	185	81.7
Gosford – Wyong	405	149.8	411	148.8	520	184.9
Hunter	582	104.8	672	119.6	940	165.7
Illawarra	451	121.0	470	124.7	691	181.5
Richmond – Tweed	210	104.7	231	113.4	397	192.0
Mid-North Coast	313	119.3	396	149.4	543	202.1
Northern	214	119.8	230	129.8	338	192.2
North Western	188	160.3	300	255.6	366	312.4
Central West	221	128.2	286	165.8	417	241.3
South Eastern	234	130.8	267	148.5	413	228.7
Murrumbidgee	186	124.7	259	173.8	283	189.9
Murray	138	124.5	122	110.1	124	111.3
Far West	37	146.0	41	164.7	74	300.8
New South Wales*	6,571	105.9	7,970	127.1	11,150	175.8

\* The total for New South Wales includes 1 recorded incident in 1996, 1 recorded incident in 1997 and 1 recorded incident in 1998 where the offence occurred in a custodial institution.

**TABLE 3.30 RECORDED CRIMINAL INCIDENTS, 1996 TO 1998: STATISTICAL DIVISION****DRIVE MANNER/SPEED DANGEROUS**

<i>Statistical Division where offence occurred</i>	<i>Recorded criminal incidents</i>					
	<i>1996</i>		<i>1997</i>		<i>1998</i>	
	<i>Number</i>	<i>Rate per 100,000 population</i>	<i>Number</i>	<i>Rate per 100,000 population</i>	<i>Number</i>	<i>Rate per 100,000 population</i>
Sydney	1,117	28.8	1,060	26.9	1,197	30.0
Inner Sydney	108	40.0	105	38.1	111	39.4
Eastern Suburbs	55	22.7	39	16.0	43	17.6
St George – Sutherland	86	20.9	73	17.5	80	19.0
Canterbury – Bankstown	83	27.4	89	29.1	81	26.3
Fairfield – Liverpool	144	45.9	122	38.1	159	48.5
Outer South Western Sydney	119	55.1	76	34.7	105	47.1
Inner Western Sydney	28	18.1	32	20.4	22	13.9
Central Western Sydney	69	24.6	75	26.5	83	28.8
Outer Western Sydney	140	46.4	118	38.7	151	49.0
Blacktown – Baulkham Hills	89	24.4	147	39.6	165	43.6
Lower Northern Sydney	42	15.0	40	14.1	41	14.3
Hornsby – Ku-ring-gai	33	13.3	24	9.5	29	11.4
Northern Beaches	30	13.4	31	13.8	28	12.4
Gosford – Wyong	91	33.7	89	32.2	99	35.2
Hunter	176	31.7	165	29.4	219	38.6
Illawarra	132	35.4	137	36.3	158	41.5
Richmond – Tweed	83	41.4	78	38.3	89	43.0
Mid-North Coast	109	41.5	120	45.3	119	44.3
Northern	52	29.1	57	32.2	61	34.7
North Western	68	58.0	73	62.2	93	79.4
Central West	96	55.7	93	53.9	93	53.8
South Eastern	83	46.4	85	47.3	93	51.5
Murrumbidgee	72	48.3	83	55.7	66	44.3
Murray	56	50.5	60	54.2	56	50.3
Far West	10	39.5	24	96.4	17	69.1
New South Wales	2,054	33.1	2,035	32.4	2,261	35.7



---

# APPENDICES

---



# APPENDIX 1

## OFFENCES INCLUDED IN CLASSIFICATIONS

<i>Classification</i>	<i>Offences included</i>
<b>Homicide:</b>	
Murder	Murder – actual
Attempted murder	Murder – attempted Shoot with intent to murder
Murder accessory, conspiracy	Murder accessory Murder conspiracy
Manslaughter – not driving	Manslaughter
Manslaughter – driving	Culpable driving cause death Culpable navigation cause death
<b>Assault</b>	
	Actual bodily harm Grievous bodily harm (including malicious wounding) Assault officer Common assault Shoot with intent other than to murder
<b>Sexual offences:</b>	
Sexual assault	Sexual assault Aggravated sexual assault Assault with intent to have sexual intercourse
Indecent assault, act of indecency	Indecent assault Aggravated indecent assault Act of indecency Aggravated act of indecency
Other sexual offences	Incest Carnal knowledge Wilful and obscene exposure Bestiality Indecent communication Peep or pry Other sexual offence
<b>Abduction and kidnapping</b>	Abduction and kidnapping
<b>Robbery:</b>	
Robbery without a weapon	Robbery Robbery with striking Robbery with wounding Other robbery
Robbery with a firearm	Armed robbery where weapon is firearm
Robbery with a weapon not a firearm	Armed robbery where weapon is not firearm

## APPENDIX 1 continued

<i>Classification</i>	<i>Offences included</i>
<b>Other offences against the person</b>	Intimidation Malicious damage intent injure / endanger Negligent act cause grievous bodily harm Offence against transport service Other offence against the person
<b>Theft:</b>	
Break and enter – dwelling	Property breaking – all living premises (including, for example, nursing home and tent)  Property breaking – Balcony Clothes line Cubby house Garage (attached) Garage (detached) Garden Gazebo Greenhouse Outhouse Sauna/spa (external) Shed Swimming pool (residential) Tennis court (residential) Verandah Yard
Break and enter – non-dwelling	All property breakings other than to dwellings as defined above
Possess implements	Possess implements
Receiving	Receiving
Goods in custody	Goods in custody Possess property stolen outside NSW
Motor vehicle theft	Theft of motor cars, motor cycles, and other modes of transport (excluding marine vessels and aircraft)
Steal from motor vehicle	Steal from motor vehicle
Steal from retail store	Steal from retail store
Steal from dwelling	Steal from dwelling
Steal from person	Steal from person
Stock theft	Stock theft
Fraud	Larceny clerk / servant / bailee Make / use false instrument Embezzlement

## APPENDIX 1 continued

<b>Classification</b>	<b>Offences included</b>
Fraud <i>continued</i>	Fraudulent appropriation Company / corporate offence Deception offence Possess false misleading statement Other fraud Corrupt commission / practices Counterfeit currency offence under Commonwealth Crimes Act
Other theft	Other stealing Other stealing
<b>Demand money with menace</b>	Demand money with menaces
<b>Extortion, blackmail</b>	Extortion, blackmail
<b>Arson</b>	Malicious damage by fire Destroy by fire – financial gain Destroy by fire – intent injure
<b>Malicious damage to property</b>	Malicious damage to property Graffiti Public place – damage fountain / wall Public place – damage shrine / monument
<b>Drug offences:</b>	
Possession and / or use of cocaine	Possess drug unlawfully, where drug type is cocaine Use or administer drug, where drug type is cocaine
Possession and / or use of narcotics	Possess drug unlawfully, where drug type is narcotics Use or administer drug, where drug type is narcotics
Possession and / or use of cannabis	Possess drug unlawfully, where drug type is cannabis Use or administer drug, where drug type is cannabis
Possession and / or use of other drugs	Possess drug unlawfully, where drug type is not cocaine, narcotics or cannabis
Dealing, trafficking in cocaine	Supply drug where drug type is cocaine
Dealing, trafficking in narcotics	Supply drug where drug type is narcotics
Dealing, trafficking in other drugs	Supply drug where drug type is not cocaine, narcotics or cannabis
Cultivating cannabis	Cultivate cannabis
Importing drugs	Import drugs
Other drug offences	Manufacture drug Forge and / or utter prescription Possess drug utensil Other drug offence

## APPENDIX 1 continued

<b>Classification</b>	<b>Offences included</b>
<b>Offensive behaviour:</b>	
Offensive conduct	Offensive conduct
Offensive language	Offensive language
<b>Prostitution offences</b>	Soliciting / prostitution in public Prostitution – premises Prostitution – live off earnings Consorting Child prostitution Child pornography Other vice offence
<b>Betting and gaming offences</b>	Conduct / play illegal game Conduct / play illegal betting Own / manage premises – gaming Own / manage premises – betting Other gaming offence
<b>Weapons offences</b>	Possess whilst unlicensed Possess shortened firearm Possess prohibited weapon / article Shorten firearm Dealer offence Unlawfully discharge firearm Trespass with firearm Use firearm under influence Discharge firearm into premises Other firearm offence Other firearm licensing offence Not ensure safekeeping Use prohibited weapon / article Sell prohibited weapon / article Other prohibited weapon / article offence Bomb hoax or threat Possess explosive / dangerous article Carry cutting weapon
<b>Against justice procedures:</b>	
Escapee – Corrective Services custody	Escapee – Corrective Services custody
Escapee – Police custody	Escapee – Police custody
Escapee – juvenile detention	Escapee – juvenile detention
Escapee – other custody	Escapee – other custody
Breach Apprehended Violence Order	Breach Apprehended Violence Order

## APPENDIX 1 continued

<b>Classification</b>	<b>Offences included</b>
<b>Against justice procedures: <i>continued</i></b>	
Breach bail conditions	Breach bail conditions
Breach of recognizance	Breach of recognizance
Fail to appear	Fail to appear
Other offences against justice procedures	Resist / hinder officers Other judicial offence
<b>Driving offences:</b>	
Culpable driving	Culpable driving cause grievous bodily harm Culpable navigation cause grievous bodily harm
PCA	Prescribed concentration alcohol
Drive while disqualified	Drive while disqualified
Drive manner / speed dangerous	Drive manner / speed dangerous
Other driving offences	Negligent driving Drive under influence drug Furious / wanton / menacing driving Registration / insurance offence Breath / drug test offence Other driving offence Other traffic offence Other driving licence offence
<b>Other offences</b>	
	Accessory after the fact Family Law offence Immigration / customs offence Offences under the Telecommunications Act Offences under the Postal Services Act Offences under the Pawnbrokers Act Offences under the Dog Act Offences under the Prevention of Cruelty to Animals Act Offences under the Children (Care and Protection) Act Offences under the Local Government Act Offences under the Bush Fires Act Offences under the Liquor Act Offences under the Registered Clubs Act Offences under the Inclosed Lands Protection Act Offences under the Security (Protection) Industry Act Possess / publish indecent material Public mischief Intention offences (e.g. armed with intent) Street offences Transport offences Trespass Other offences

# APPENDIX 2

**Map 1: New South Wales Statistical Division boundaries**





## APPENDIX 2 continued

**Map 2: Sydney Statistical Subdivision boundaries**



## APPENDIX 3

### LOCAL GOVERNMENT AREAS IN STATISTICAL DIVISIONS

#### *Sydney Statistical Subdivisions*

---

##### *Inner Sydney*

Botany Bay  
Leichhardt  
Marrickville  
South Sydney  
Sydney

##### *Outer South Western Sydney*

Camden  
Campbelltown  
Wollondilly

##### *Lower Northern Sydney*

Hunters Hill  
Lane Cove  
Mosman  
North Sydney  
Ryde  
Willoughby

##### *Eastern Suburbs*

Randwick  
Waverley  
Woollahra

##### *Inner Western Sydney*

Ashfield  
Burwood  
Concord  
Drummoyne  
Strathfield

##### *Hornsby – Ku-ring-gai*

Hornsby  
Ku-ring-gai

##### *St George – Sutherland*

Hurstville  
Kogarah  
Rockdale  
Sutherland

##### *Central Western Sydney*

Auburn  
Holroyd  
Parramatta

##### *Northern Beaches*

Manly  
Pittwater  
Warringah

##### *Canterbury – Bankstown*

Bankstown  
Canterbury

##### *Outer Western Sydney*

Blue Mountains  
Hawkesbury  
Penrith

##### *Gosford – Wyong*

Gosford  
Wyong

##### *Fairfield – Liverpool*

Fairfield  
Liverpool

##### *Blacktown – Baulkham Hills*

Baulkham Hills  
Blacktown

## APPENDIX 3 continued

### NSW Statistical Divisions

<i>Hunter</i>	<i>Illawarra</i>	<i>Richmond – Tweed</i>	<i>Mid-North Coast</i>
Cessnock	Kiama	Ballina	Bellingen
Dungog	Shellharbour	Byron	Coffs Harbour
Gloucester	Shoalhaven	Casino	Copmanhurst
Great Lakes	Wingecarribee	Kyogle	Grafton
Lake Macquarie	Wollongong	Lismore	Greater Taree
Maitland		Richmond River	Hastings
Merriwa		Tweed	Kempsey
Murrurundi			Lord Howe Island
Muswellbrook			Maclean
Newcastle			Nambucca
Port Stephens			Nymboida
Scone			Ulmarra
Singleton			
<i>Northern</i>	<i>North Western</i>	<i>Central West</i>	<i>South Eastern</i>
Armidale	Bogan	Bathurst	Bega Valley
Barraba	Bourke	Bland	Bombala
Bingara	Brewarrina	Blayney	Boorowa
Dumaresq	Cobar	Cabonne	Cooma-Monaro
Glen Innes	Coolah	Cowra	Crookwell
Gunnedah	Coonabarabran	Evans	Eurobodalla
Guyra	Coonamble	Forbes	Goulburn
Inverell	Dubbo	Greater Lithgow	Gunning
Manilla	Gilgandra	Lachlan	Harden
Moree Plains	Mudgee	Oberon	Mulwaree
Narrabri	Narromine	Orange	Queanbeyan
Nundle	Walgett	Parkes	Snowy River
Parry	Warren	Rylstone	Tallaganda
Quirindi	Wellington	Weddin	Yarrowlumla
Severn			Yass
Tamworth			Young
Tenterfield			
Uralla			
Walcha			
Yallaroi			
<i>Murrumbidgee</i>	<i>Murray</i>	<i>Far West</i>	
Carrathool	Albury	Broken Hill	
Coolamon	Balranald	Central Darling	
Cootamundra	Berrigan	Unincorporated Far West	
Griffith	Conargo		
Gundagai	Corowa		
Hay	Culcairn		
Junee	Deniliquin		
Leeton	Holbrook		
Lockhart	Hume		
Murrumbidgee	Jerilderie		
Narrandera	Murray		
Temora	Tumbarumba		
Tumut	Urana		
Wagga Wagga	Wakool		
	Wentworth		
	Windouran		