



NSW Bureau of Crime  
Statistics and Research

# NEW SOUTH WALES RECORDED CRIME STATISTICS

Quarterly Update  
December Quarter 2022

This report presents data on crime reported to, or detected by, police and recorded on the NSW Police Force's Computerised Operational Policing System (COPS). Information is provided on 13 major offence categories, which include the most serious personal violence and property offences, plus a more detailed list of 62 specific offence types.

Published by the NSW Bureau of Crime Statistics and Research  
March 2023

**Phone:** + 61 (2) 8688 9800

**Email:** [bcsr@justice.nsw.gov.au](mailto:bcsr@justice.nsw.gov.au)

**Website:** [www.bocsar.nsw.gov.au](http://www.bocsar.nsw.gov.au)

ISSN: 1035-9044

This report is available in pdf format on our website and may be provided in alternative formats. Please contact us at [bcsr@justice.nsw.gov.au](mailto:bcsr@justice.nsw.gov.au).

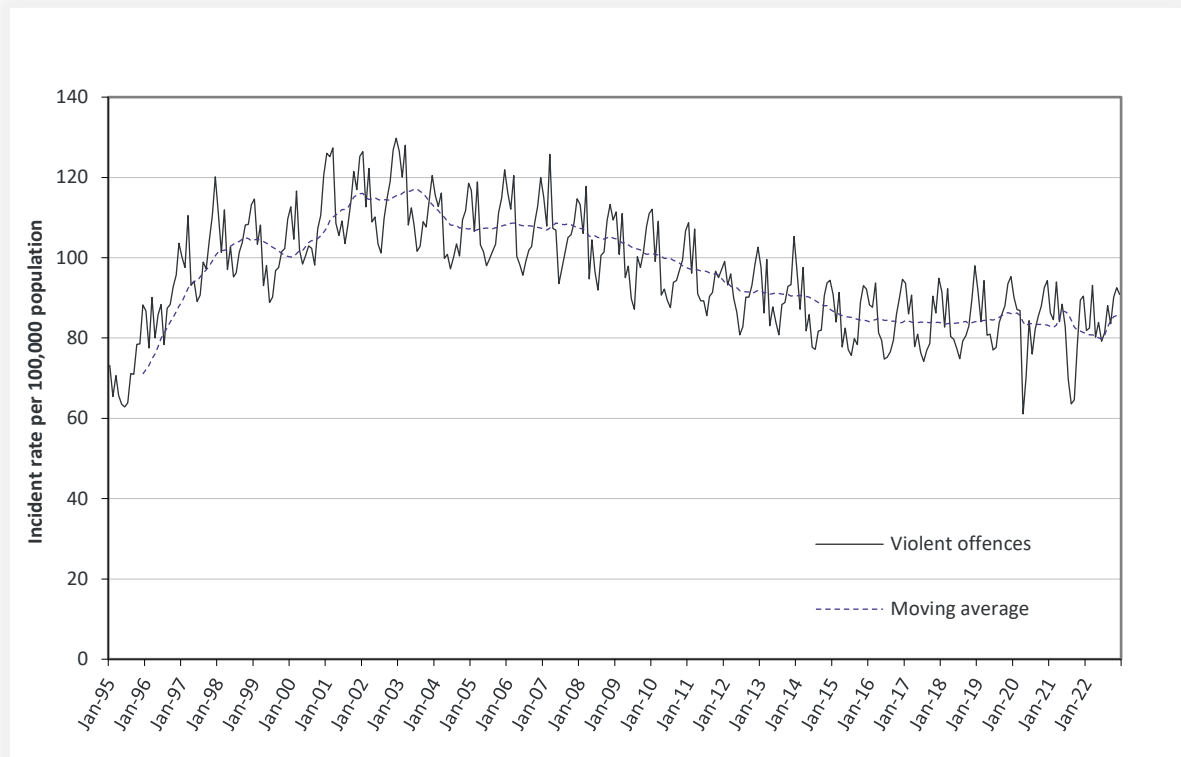
# CONTENTS

<b>SECTION 1:</b>	<b>OVERVIEW OF TRENDS IN RECORDED CRIME</b>	<b>5</b>
Figure 1.1	NSW long-term trend in violent offences	6
Figure 1.2	NSW long-term trend in property offences	6
Table 1.3	Violent and property offences by Statistical Area (SA4) over the five years to December 2022	7
Table 1.4	Recorded criminal incidents for major offences over the five years to December 2022	8
Table 1.5	Recorded criminal incidents for 62 offences over the two years to December 2022	9
Table 1.6	Recorded criminal incidents for 62 offences over the five years to December 2022	10
<b>SECTION 2:</b>	<b>REGIONAL COMPARISONS Statistical Areas</b>	<b>11</b>
Table 2.1	Two year trends and percent change in recorded criminal incidents for major offences by Statistical Area (SA4) over the two years to December 2022	12
Table 2.2	Ratio to NSW rate of recorded criminal incidents per 100,000 population for major offences by Statistical Area (SA4) over the 12 months to December 2022	13
Table 2.3	Number of major offences by Statistical Area (SA4) over the 12 months to December 2022	14
Table 2.4	Number of major offences by Statistical Area (SA4) over the 12 months to December 2021	15
<b>SECTION 3:</b>	<b>LEGAL PROCEEDINGS</b>	<b>16</b>
Table 3.1	Adults proceeded against by the NSW Police Force by method of legal proceeding over the five years to December 2022	17
Table 3.2	Young people proceeded against by the NSW Police Force by method of legal proceeding over the five years to December 2022	17
Table 3.3	Adults proceeded against to court by the NSW Police Force for all 62 criminal offences types over the two years to December 2022	18
Table 3.4	Young people proceeded against to court by the NSW Police Force for all 62 criminal offences over the two years to December 2022	19
Figure 3.5	Offences with the largest change in the number of adults proceeded against to court by the NSW Police Force between the 12 months to December 2021 and the 12 months to December 2022	20
Figure 3.6	Offences with the largest change in the number of young people proceeded against to court by the NSW Police Force between the 12 months to December 2021 and the 12 months to December 2022	20
Table 3.7	Incidents of all 62 criminal offence types by whether legal proceedings commenced within 90 days of reporting over the two years to September 2022	21
Figure 3.8	Percentage of recorded criminal incidents for major offences by whether legal proceedings commenced within 90 days of reporting over the two years to September 2022	22

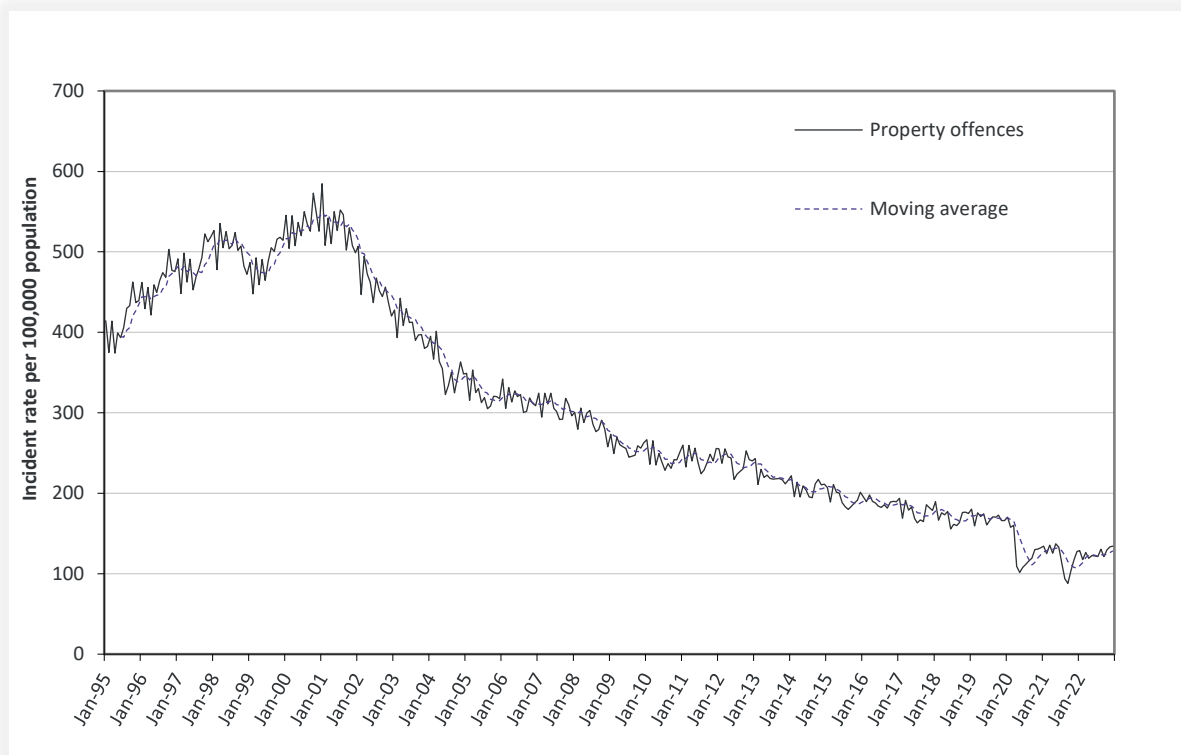
<b>SECTION 4:</b>	<b>POLICING ACTIVITY</b>	<b>23</b>
Table 4.1	Selected policing activities over the five years to December 2022	24
Table 4.2	Non-criminal domestic violence episodes by Statistical Area (SA4) over the five years to December 2022	25
Table 4.3	Ratio to NSW rate of non-criminal domestic violence episodes per 100,000 population by Statistical Area (SA4) over the five years to December 2022	26
<b>APPENDIX 1:</b>	<b>REGIONAL COMPARISONS Local Government Areas</b>	<b>27</b>
Appendix Table 1.1	Trends in recorded criminal incidents for major offences, NSW LGAs Over the two years to December 2022	28
Appendix Table 1.2	Ratio to NSW rate of recorded criminal incidents per 100,000 population for major offences, NSW LGAs 12 months to December 2022	31
Appendix Table 1.3	Number of recorded criminal incidents for major offences, NSW LGAs 12 months to December 2022	34
Appendix Table 1.4	Number of recorded criminal incidents for major offences, NSW LGAs 12 months to December 2021	37
<b>APPENDIX 2:</b>	<b>EXPLANATORY NOTES</b>	<b>40</b>
Appendix 2.1	Explanatory Notes	41
<b>APPENDIX 3:</b>	<b>LGAs IN STATISTICAL AREAS</b>	<b>44</b>
Appendix Table 3.1	Local Government Areas in Greater Sydney Statistical Areas	45
Appendix Table 3.2	Local Government Areas in Regional Statistical Areas	46
Appendix Table 3.3	Greater Sydney Statistical Area Map	47
Appendix Table 3.4	Regional NSW Statistical Areas Map	48
<b>APPENDIX 4:</b>	<b>OFFENCE CATEGORIES</b>	<b>49</b>
Appendix 4.1	BOCSAR offences mapped to NSW Police Force incident categories	50

# SECTION 1: OVERVIEW OF TRENDS IN RECORDED CRIME

**Figure 1.1: NSW long-term trend in violent offences**



**Figure 1.2: NSW long-term trend in property offences**



Violent offences include: murder, attempted murder, manslaughter, assault - domestic violence related, assault - non-domestic violence related, assault police, robbery without a weapon, robbery with a firearm, robbery with a weapon not a firearm, sexual assault and sexual touching, sexual act and other sexual offences.

Property offences include: break and enter dwelling, break and enter non-dwelling, motor vehicle theft, steal from motor vehicle, steal from retail store, steal from dwelling, steal from person, stock theft and other theft.

**Table 1.3: Violent and property offences by Statistical Area (SA4)**

Over the five years to December 2022

Statistical Area	Trend and average annual percentage change			
	Violent Offences		Property Offences	
	2 Year Trend	5 Year Trend	2 Year Trend	5 Year Trend
<b>Greater Sydney</b>	Stable	Stable	Stable	-7.8%
Baulkham Hills and Hawkesbury	Stable	4.7%	Stable	-8.0%
Blacktown	Stable	Stable	Stable	-8.9%
Central Coast	Stable	Stable	Stable	-8.3%
City and Inner South	18.0%	-2.4%	27.0%	-8.2%
Eastern Suburbs	Stable	Stable	14.9%	-6.9%
Inner South West	Stable	Stable	Stable	-6.1%
Inner West	Stable	Stable	Stable	-4.7%
North Sydney and Hornsby	Stable	Stable	Stable	-9.6%
Northern Beaches	Stable	-6.2%	-19.4%	-12.5%
Outer South West	Stable	Stable	Stable	-8.4%
Outer West and Blue Mountains	Stable	Stable	Stable	-9.1%
Parramatta	Stable	Stable	14.3%	-5.1%
Ryde	Stable	-3.7%	Stable	-8.1%
South West	Stable	2.1%	Stable	-6.3%
Sutherland	Stable	Stable	-19.1%	-13.5%
<b>Regional NSW</b>	Stable	2.3%	Stable	-5.8%
Capital Region	Stable	Stable	Stable	-7.7%
Central West	Stable	3.6%	Stable	-2.3%
Coffs Harbour - Grafton	Stable	2.3%	18.9%	-4.0%
Far West and Orana	Stable	Stable	13.2%	-4.0%
Hunter Valley excluding Newcastle	Stable	4.2%	Stable	-6.2%
Illawarra	Stable	Stable	Stable	-6.7%
Mid North Coast	Stable	2.5%	Stable	-6.8%
Murray	Stable	4.9%	Stable	-3.4%
New England and North West	Stable	3.5%	Stable	-5.1%
Newcastle and Lake Macquarie	Stable	Stable	Stable	-6.7%
Richmond - Tweed	Stable	Stable	Stable	-5.9%
Riverina	Stable	Stable	16.2%	-6.5%
Southern Highlands and Shoalhaven	-4.4%	Stable	Stable	-11.1%
<b>NSW</b>	<b>Stable</b>	<b>Stable</b>	<b>Stable</b>	<b>-6.9%</b>

**Table 1.4: Recorded criminal incidents for major offences**  
Over the five years to December 2022

Offence category	12 months to December 2018	12 months to December 2019	12 months to December 2020	12 months to December 2021	12 months to December 2022	Trend and average annual percentage change	
						2 Year Trend	5 Year Trend
Murder	73	73	69	52	58	Stable	Down 5.6%
Domestic violence related assault	29,718	31,337	32,261	32,125	33,410	Stable	Up 3.0%
Non-domestic violence related assault	31,889	32,398	29,538	28,299	30,667	Stable	Stable
Sexual assault	5,915	6,417	7,089	7,395	7,764	Stable	Up 7.0%
Sexual touching, sexual act and other sexual offences	7,927	8,247	7,902	7,488	7,418	Stable	Stable
Robbery	2,493	2,555	2,118	1,765	1,828	Stable	Down 7.5%
Break and enter dwelling	26,551	25,512	19,701	17,874	18,709	Stable	Down 8.4%
Break and enter non-dwelling	10,228	9,924	7,385	7,155	7,390	Stable	Down 7.8%
Motor vehicle theft	13,096	13,428	11,735	10,491	12,274	Up 17.0%	Down 1.6%
Steal from motor vehicle	38,120	38,187	28,336	27,735	27,139	Stable	Down 8.1%
Steal from retail store	24,855	27,061	19,981	17,980	22,240	Up 23.7%	Down 2.7%
Other stealing offences	50,775	50,353	39,149	35,861	35,282	Stable	Down 8.7%
Malicious damage to property	58,587	57,170	53,318	49,291	48,393	Stable	Down 4.7%



## NSW Recorded Crime Statistics, December Quarter 2022

**Table 1.5: Recorded criminal incidents for 62 offences**

Over the two years to December 2022

Offence category		Number of recorded criminal incidents		2 Year Trend	
		12 months to December 2021	12 months to December 2022	Trend test result	Annual average percentage change
Homicide	Murder	52	58	Stable	
	Attempted murder	19	13	n.c.	
	Murder accessory, conspiracy	1	1	n.c.	
	Manslaughter	3	9	n.c.	
Assault	Domestic violence related assault	32,125	33,410	Stable	
	Non-domestic violence related assault	28,299	30,667	Stable	
	Assault Police	2,594	2,741	Stable	
Sexual offences	Sexual assault	7,395	7,764	Stable	
	Sexual touching, sexual act and other sexual offences	7,488	7,418	Stable	
Abduction and kidnapping		207	197	Stable	
Robbery	Robbery without a weapon	957	971	Stable	
	Robbery with a firearm	86	105	Stable	
	Robbery with a weapon not a firearm	722	752	Stable	
Blackmail and extortion		127	824	Up	548.8%
Intimidation, stalking and harassment		41,158	42,685	Stable	
Other offences against the person		1,902	1,308	Stable	
Theft	Break and enter dwelling	17,874	18,709	Stable	
	Break and enter non-dwelling	7,155	7,390	Stable	
	Receiving or handling stolen goods	7,588	7,727	Stable	
	Motor vehicle theft	10,491	12,274	Up	17.0%
	Steal from motor vehicle	27,735	27,139	Stable	
	Steal from retail store	17,980	22,240	Up	23.7%
	Steal from dwelling	16,435	15,110	Down	-8.1%
	Steal from person	1,779	1,956	Stable	
	Stock theft	321	254	Down	-20.9%
	Fraud	45,854	46,289	Stable	
Other theft	17,326	17,962	Stable		
Arson		3,779	3,337	Down	-11.7%
Malicious damage to property		49,291	48,393	Stable	
Drug offences	Possession and/or use of cocaine	2,342	2,631	Stable	
	Possession and/or use of narcotics	1,216	1,189	Stable	
	Possession and/or use of cannabis	16,210	15,530	Stable	
	Possession and/or use of amphetamines	7,405	6,287	Down	-15.1%
	Possession and/or use of ecstasy	529	872	Up	64.8%
	Possession and/or use of other drugs	6,582	6,102	Stable	
	Dealing, trafficking in cocaine	1,422	1,276	Stable	
	Dealing, trafficking in narcotics	408	368	Stable	
	Dealing, trafficking in cannabis	810	569	Stable	
	Dealing, trafficking in amphetamines	2,928	1,918	Stable	
	Dealing, trafficking in ecstasy	181	186	Stable	
	Dealing, trafficking in other drugs	549	385	Down	-29.9%
	Cultivating cannabis	1,078	811	Down	-24.8%
	Manufacture drug	53	56	Stable	
	Importing drugs	199	153	Stable	
Other drug offences	5,886	5,479	Stable		
Prohibited and regulated weapons offences		14,804	13,107	Down	-11.5%
Disorderly conduct	Trespass	9,376	10,308	Up	9.9%
	Offensive conduct	3,746	3,582	Stable	
	Offensive language	1,920	1,597	Down	-16.8%
	Criminal intent	2,421	2,605	Stable	
Betting and gaming offences		n.a.	n.a.		
Liquor offences		8,407	10,925	Stable	
Pornography offences		862	1,017	Stable	
Prostitution offences		18	23	n.c.	
Against justice procedures	Escape custody	166	149	Stable	
	Breach Apprehended Violence Order	21,218	22,485	Up	6.0%
	Breach bail conditions	51,142	52,949	Stable	
	Fail to appear	810	954	Stable	
	Resist or hinder officer	5,620	5,645	Stable	
	Other offences against justice procedures	2,059	2,368	Stable	
Transport regulatory offences		73,727	65,799	Down	-10.8%
Other offences		93,318	20,557	Down	-78.0%

**Note:** The increase in blackmail and extortion offence numbers in the most recent reporting period is due to a change in how NSW Police record 'sextortion' incidents. From mid-2022, sextortion offences are recorded as extortion. Previously they were recorded as fraud. As such, the series prior to mid-2022 is not comparable to the series after this time for this offence.

## NSW Recorded Crime Statistics, December Quarter 2022

**Table 1.6: Recorded criminal incidents for 62 offences**

Over the five years to December 2022

Offence category		Number of recorded criminal incidents		5 Year Trend	
		12 months to December 2018	12 months to December 2022	Trend test result	Annual average percentage change
Homicide	Murder	73	58	Down	-5.6%
	Attempted murder	19	13	n.c.	
	Murder accessory, conspiracy	2	1	n.c.	
	Manslaughter	11	9	n.c.	
Assault	Domestic violence related assault	29,718	33,410	Up	3.0%
	Non-domestic violence related assault	31,889	30,667	Stable	
	Assault Police	2,476	2,741	Up	2.6%
Sexual offences	Sexual assault	5,915	7,764	Up	7.0%
	Sexual touching, sexual act and other sexual offences	7,927	7,418	Stable	
Abduction and kidnapping		207	197	Stable	
Robbery	Robbery without a weapon	1,495	971	Down	-10.2%
	Robbery with a firearm	156	105	Down	-9.4%
	Robbery with a weapon not a firearm	842	752	Down	-2.8%
Blackmail and extortion		116	824	Up	63.3%
Intimidation, stalking and harassment		32,388	42,685	Up	7.1%
Other offences against the person		860	1,308	Up	11.1%
Theft	Break and enter dwelling	26,551	18,709	Down	-8.4%
	Break and enter non-dwelling	10,228	7,390	Down	-7.8%
	Receiving or handling stolen goods	8,030	7,727	Stable	
	Motor vehicle theft	13,096	12,274	Down	-1.6%
	Steal from motor vehicle	38,120	27,139	Down	-8.1%
	Steal from retail store	24,855	22,240	Down	-2.7%
	Steal from dwelling	19,234	15,110	Down	-5.9%
	Steal from person	4,112	1,956	Down	-17.0%
	Stock theft	426	254	Down	-12.1%
	Fraud	52,110	46,289	Down	-2.9%
Other theft	27,003	17,962	Down	-9.7%	
Arson		5,367	3,337	Down	-11.2%
Malicious damage to property		58,587	48,393	Down	-4.7%
Drug offences	Possession and/or use of cocaine	2,364	2,631	Stable	
	Possession and/or use of narcotics	1,046	1,189	Stable	
	Possession and/or use of cannabis	17,253	15,530	Down	-2.6%
	Possession and/or use of amphetamines	7,199	6,287	Down	-3.3%
	Possession and/or use of ecstasy	2,860	872	Down	-25.7%
	Possession and/or use of other drugs	5,058	6,102	Up	4.8%
	Dealing, trafficking in cocaine	780	1,276	Up	13.1%
	Dealing, trafficking in narcotics	341	368	Stable	
	Dealing, trafficking in cannabis	987	569	Down	-12.9%
	Dealing, trafficking in amphetamines	1,894	1,918	Stable	
	Dealing, trafficking in ecstasy	614	186	Down	-25.8%
	Dealing, trafficking in other drugs	463	385	Stable	
	Cultivating cannabis	1,153	811	Down	-8.4%
	Manufacture drug	71	56	Stable	
	Importing drugs	72	153	Up	20.7%
Other drug offences	5,748	5,479	Stable		
Prohibited and regulated weapons offences		14,297	13,107	Down	-2.1%
Disorderly conduct	Trespass	10,018	10,308	Stable	
	Offensive conduct	4,709	3,582	Down	-6.6%
	Offensive language	2,735	1,597	Down	-12.6%
	Criminal intent	2,317	2,605	Up	3.0%
Betting and gaming offences		n.a.	n.a.		
Liquor offences		11,541	10,925	Stable	
Pornography offences		695	1,017	Up	10.0%
Prostitution offences		27	23	n.c.	
Against justice procedures	Escape custody	168	149	Stable	
	Breach Apprehended Violence Order	16,037	22,485	Up	8.8%
	Breach bail conditions	42,585	52,949	Up	5.6%
	Fail to appear	536	954	Up	15.5%
	Resist or hinder officer	6,171	5,645	Down	-2.2%
	Other offences against justice procedures	600	2,368	Up	40.9%
Transport regulatory offences		114,403	65,799	Down	-12.9%
Other offences		14,805	20,557	Up	8.6%

**Note:** The increase in blackmail and extortion offence numbers in the most recent reporting period is due to a change in how NSW Police record 'sextortion' incidents. From mid-2022, sextortion offences are recorded as extortion. Previously they were recorded as fraud. As such, the series prior to mid-2022 is not comparable to the series after this time for this offence.

# SECTION 2: REGIONAL COMPARISONS

## Statistical Areas

## NSW Recorded Crime Statistics, December Quarter 2022

**Table 2.1: Two year trends and percent change in recorded criminal incidents for major offences by Statistical Area (SA4)**  
Over the two years to December 2022

Statistical Area	Murder	Domestic violence related assault	Non-domestic violence related assault	Sexual assault	Sexual touching, sexual act and other sexual offences	Robbery	Break and enter dwelling	Break and enter non-dwelling	Motor vehicle theft	Steal from motor vehicle	Steal from retail store	Other stealing offences	Malicious damage to property
<b>Greater Sydney</b>	ns	ns	ns	ns	ns	ns	ns	ns	ns	ns	27.8	ns	ns
Baulkham Hills and Hawkesbury		ns	ns	ns	ns	ns	ns	ns	ns	ns	ns	ns	21.9
Blacktown		ns	ns	ns	ns	ns	ns	ns	ns	ns	ns	ns	ns
Central Coast		14.8	ns	ns	ns	24.6	ns	ns	ns	ns	ns	ns	-9.4
City and Inner South		ns	24.5	11.4	ns	ns	21.7	ns	ns	ns	41.2	20.7	11.6
Eastern Suburbs		ns	ns	ns	30.0	ns	ns	ns	ns	ns	53.5	ns	-6.5
Inner South West		ns	ns	ns	ns	ns	ns	29.6	ns	ns	ns	ns	ns
Inner West		ns	ns	ns	ns	ns	ns	ns	ns	ns	ns	14.0	ns
North Sydney and Hornsby		ns	15.7	ns	ns	ns	ns	ns	ns	ns	ns	ns	-13.0
Northern Beaches		ns	ns	ns	ns	ns	ns	-50.4	ns	-37.8	ns	-21.8	ns
Outer South West		ns	ns	ns	ns	ns	ns	-38.4	ns	-14.0	40.5	ns	-12.4
Outer West and Blue Mountains		ns	ns	ns	ns	ns	ns	ns	ns	ns	ns	ns	ns
Parramatta		ns	15.5	ns	ns	ns	ns	44.5	25.7	ns	43.2	ns	-5.2
Ryde		-18.3	ns	ns	ns	ns	45.7	ns	65.3	ns	ns	ns	ns
South West		ns	19.4	ns	ns	ns	ns	ns	ns	ns	45.9	ns	ns
Sutherland		ns	ns	ns	ns	ns	-27.7	ns	ns	-34.2	ns	-26.0	ns
<b>Regional NSW</b>	ns	ns	ns	ns	ns	ns	ns	ns	20.1	ns	16.6	-8.1	ns
Capital Region		ns	ns	ns	ns	ns	ns	ns	ns	ns	ns	ns	ns
Central West		ns	ns	ns	-23.4	ns	ns	ns	25.6	ns	ns	ns	ns
Coffs Harbour - Grafton		ns	ns	ns	ns	ns	20.0	ns	46.0	32.5	49.5	ns	ns
Far West and Orana		ns	ns	ns	ns	ns	ns	ns	39.2	ns	34.5	ns	ns
Hunter Valley excluding Newcastle		ns	ns	ns	ns	ns	ns	ns	ns	ns	ns	-8.9	ns
Illawarra		ns	ns	ns	ns	ns	ns	-36.3	ns	ns	ns	ns	ns
Mid North Coast		ns	ns	ns	ns	ns	ns	ns	ns	ns	24.8	-14.7	ns
Murray		ns	ns	ns	ns	ns	ns	34.4	ns	ns	ns	ns	ns
New England and North West		ns	ns	ns	ns	ns	ns	ns	ns	-15.1	ns	ns	ns
Newcastle and Lake Macquarie		ns	ns	ns	ns	ns	ns	ns	ns	ns	ns	ns	-8.0
Richmond - Tweed		ns	ns	ns	ns	ns	21.0	ns	ns	ns	ns	ns	-14.1
Riverina		ns	ns	ns	ns	ns	ns	ns	39.6	33.4	35.2	ns	ns
Southern Highlands and Shoalhaven		ns	-8.3	ns	ns	ns	ns	ns	ns	ns	ns	-23.6	ns
<b>NSW</b>	ns	ns	ns	ns	ns	ns	ns	ns	17.0	ns	23.7	ns	ns

## NSW Recorded Crime Statistics, December Quarter 2022

**Table 2.2: Ratio to NSW rate of recorded criminal incidents per 100,000 population for major offences by Statistical Area (SA4)**  
Over the 12 months to December 2022

Statistical Area	Murder	Domestic violence related assault	Non-domestic violence related assault	Sexual assault	Sexual touching, sexual act and other sexual offences	Robbery	Break and enter dwelling	Break and enter non-dwelling	Motor vehicle theft	Steal from motor vehicle	Steal from retail store	Other stealing offences	Malicious damage to property
<b>Greater Sydney</b>	0.9	0.8	0.8	0.7	0.8	1.0	0.7	0.6	0.7	0.8	1.0	0.9	0.8
Baulkham Hills and Hawkesbury	1.1	0.5	<b>0.3</b>	0.5	0.6	<b>0.3</b>	<b>0.4</b>	0.5	<b>0.4</b>	<b>0.4</b>	0.5	0.5	0.5
Blacktown	1.1	1.3	1.1	0.9	1.1	1.8	1.0	0.7	1.1	1.2	1.3	1.1	1.2
Central Coast	<b>2.4</b>	1.2	1.2	1.2	1.2	1.0	0.7	0.8	0.8	1.0	1.0	0.8	1.1
City and Inner South	<b>2.3</b>	1.0	<b>2.1</b>	1.2	1.5	2.0	0.8	1.1	0.7	0.9	<b>2.9</b>	<b>2.7</b>	1.3
Eastern Suburbs	0.5	0.5	0.9	0.7	0.8	0.5	0.6	<b>0.3</b>	0.7	0.6	1.2	0.9	0.6
Inner South West	1.1	0.8	0.6	0.5	0.6	0.8	0.6	0.5	0.7	0.7	0.5	0.6	0.6
Inner West	0.9	0.5	0.6	0.6	0.6	0.7	0.8	0.6	0.6	0.7	0.8	0.9	0.6
North Sydney and Hornsby		<b>0.3</b>	<b>0.3</b>	<b>0.4</b>	0.5	<b>0.4</b>	0.5	<b>0.4</b>	<b>0.3</b>	<b>0.4</b>	0.8	0.5	<b>0.4</b>
Northern Beaches		<b>0.2</b>	0.5	0.5	0.6	0.5	<b>0.4</b>	<b>0.2</b>	<b>0.4</b>	<b>0.4</b>	0.7	0.5	0.5
Outer South West	1.0	1.1	0.8	0.9	1.0	1.1	0.6	<b>0.4</b>	0.8	0.8	1.1	0.7	0.9
Outer West and Blue Mountains	<b>0.4</b>	1.1	1.1	1.3	1.1	1.2	1.0	0.8	1.0	1.1	1.1	0.9	1.2
Parramatta	1.7	0.9	0.8	0.8	0.8	1.2	1.1	0.8	1.1	1.1	0.9	1.0	0.7
Ryde		<b>0.4</b>	<b>0.4</b>	<b>0.4</b>	<b>0.4</b>	<b>0.4</b>	0.7	<b>0.4</b>	<b>0.4</b>	0.5	0.5	0.6	<b>0.4</b>
South West	0.6	1.0	0.8	0.6	0.8	1.1	0.7	0.5	0.9	0.9	0.8	0.8	0.8
Sutherland		0.7	0.5	0.6	0.6	0.5	<b>0.3</b>	<b>0.2</b>	<b>0.3</b>	<b>0.4</b>	0.5	<b>0.4</b>	0.6
<b>Regional NSW</b>	1.1	1.4	1.2	1.3	1.3	1.1	1.6	1.8	1.6	1.4	1.0	1.3	1.5
Capital Region		1.0	0.9	0.9	1.1	0.5	0.7	1.4	0.9	0.8	0.8	1.0	1.0
Central West	0.7	1.7	1.4	1.4	1.5	1.3	1.8	2.0	1.6	1.4	1.0	1.3	1.7
Coffs Harbour - Grafton		1.6	1.5	1.4	1.3	1.3	1.5	1.9	1.9	1.6	1.1	1.5	1.5
Far West and Orana		<b>3.5</b>	<b>2.3</b>	2.0	<b>2.2</b>	1.6	<b>4.1</b>	<b>5.9</b>	<b>3.0</b>	<b>2.7</b>	1.5	<b>2.1</b>	<b>2.9</b>
Hunter Valley excluding Newcastle	0.5	1.4	1.2	1.6	1.3	0.9	1.1	1.7	1.7	1.4	1.0	1.4	1.5
Illawarra	1.3	0.7	0.9	1.0	1.0	0.8	0.8	0.8	1.0	1.2	1.3	0.9	1.0
Mid North Coast	0.6	1.5	1.2	1.2	1.5	0.9	1.9	2.0	1.5	1.1	0.9	1.6	1.5
Murray	<b>2.3</b>	1.5	1.4	1.3	1.3	0.7	1.5	<b>2.5</b>	1.7	<b>2.1</b>	0.8	1.4	1.7
New England and North West	0.8	<b>2.1</b>	1.7	1.7	1.4	1.6	<b>3.4</b>	<b>2.1</b>	<b>2.3</b>	1.8	1.2	1.5	<b>2.2</b>
Newcastle and Lake Macquarie	1.5	1.1	1.2	1.3	1.1	1.4	1.5	1.5	1.8	1.8	1.2	1.2	1.3
Richmond - Tweed	<b>2.8</b>	1.0	1.2	1.1	1.0	1.1	1.3	1.6	1.6	1.1	0.5	1.1	1.2
Riverina	0.9	1.6	1.3	1.6	1.3	0.9	2.0	2.0	1.7	1.6	1.2	1.3	1.6
Southern Highlands and Shoalhaven	<b>2.7</b>	0.9	0.8	1.3	1.3	0.7	0.7	1.1	0.7	0.5	0.6	0.7	1.1
<b>NSW</b>	<b>1.0</b>	<b>1.0</b>	<b>1.0</b>	<b>1.0</b>	<b>1.0</b>	<b>1.0</b>	<b>1.0</b>	<b>1.0</b>	<b>1.0</b>	<b>1.0</b>	<b>1.0</b>	<b>1.0</b>	<b>1.0</b>

## NSW Recorded Crime Statistics, December Quarter 2022

**Table 2.3: Number of major offences by Statistical Area (SA4)**

Over the 12 months to December 2022

Statistical Area	Murder	Domestic violence related assault	Non-domestic violence related assault	Sexual assault	Sexual touching, sexual act and other sexual offences	Robbery	Break and enter dwelling	Break and enter non-dwelling	Motor vehicle theft	Steal from motor vehicle	Steal from retail store	Other stealing offences	Malicious damage to property
<b>Greater Sydney</b>	36	17,755	16,509	3,755	4,051	1,159	8,658	2,797	5,735	13,895	14,487	20,109	24,019
Baulkham Hills and Hawkesbury	2	481	324	115	145	20	250	113	170	325	322	524	739
Blacktown	3	2,079	1,569	340	392	155	887	256	649	1,591	1,386	1,760	2,663
Central Coast	6	1,671	1,551	403	373	76	566	247	434	1,122	964	1,140	2,255
City and Inner South	6	1,556	3,005	419	513	169	679	383	407	1,126	2,991	4,353	2,787
Eastern Suburbs	1	653	954	197	221	36	388	78	301	569	995	1,164	1,037
Inner South West	5	2,131	1,417	298	332	116	822	267	696	1,455	914	1,567	2,183
Inner West	2	666	703	173	189	52	588	191	276	782	707	1,276	1,123
North Sydney and Hornsby	0	540	559	174	207	42	530	153	188	637	955	988	1,007
Northern Beaches	0	267	464	130	141	28	225	57	161	391	506	576	814
Outer South West	2	1,356	893	257	273	70	403	114	338	804	867	843	1,510
Outer West and Blue Mountains	1	1,510	1,378	401	339	88	754	230	482	1,163	976	1,251	2,348
Parramatta	6	1,937	1,610	362	363	140	1,259	367	811	1,838	1,272	2,214	2,070
Ryde	0	312	281	74	80	20	335	81	119	351	287	514	506
South West	2	1,922	1,367	270	354	119	792	209	592	1,449	1,001	1,520	2,120
Sutherland	0	674	434	142	129	28	180	51	111	292	344	419	857
<b>Regional NSW</b>	22	15,651	13,097	3,495	3,215	665	10,051	4,593	6,539	13,242	7,753	15,166	24,290
Capital Region	0	930	795	200	230	24	363	287	299	581	511	957	1,445
Central West	1	1,491	1,112	284	294	64	899	390	510	973	568	1,242	2,147
Coffs Harbour - Grafton	0	909	798	188	172	43	481	245	397	738	417	944	1,282
Far West and Orana	0	1,668	999	218	233	42	1,087	621	526	1,050	483	1,036	1,992
Hunter Valley excluding Newcastle	1	1,633	1,333	440	333	60	711	435	724	1,344	758	1,743	2,459
Illawarra	3	954	1,017	310	279	59	614	218	464	1,319	1,124	1,180	1,852
Mid North Coast	1	1,387	1,006	254	308	46	963	402	491	834	554	1,534	2,044
Murray	2	753	650	147	141	19	410	281	303	866	278	720	1,235
New England and North West	1	1,591	1,213	304	245	65	1,467	361	636	1,101	617	1,190	2,454
Newcastle and Lake Macquarie	4	1,645	1,723	458	370	123	1,306	535	1,009	2,344	1,290	2,027	3,044
Richmond - Tweed	5	1,083	1,131	256	238	62	733	378	612	971	341	1,233	1,744
Riverina	1	1,030	815	247	187	33	758	288	402	839	542	897	1,546
Southern Highlands and Shoalhaven	3	577	505	189	185	25	259	152	166	282	270	463	1,046
<b>NSW</b>	<b>58</b>	<b>33,410</b>	<b>30,667</b>	<b>7,764</b>	<b>7,418</b>	<b>1,828</b>	<b>18,709</b>	<b>7,390</b>	<b>12,274</b>	<b>27,139</b>	<b>22,240</b>	<b>35,282</b>	<b>48,393</b>

## NSW Recorded Crime Statistics, December Quarter 2022

**Table 2.4: Number of major offences by Statistical Area (SA4)**

Over the 12 months to December 2021

Statistical Area	Murder	Domestic violence related assault	Non-domestic violence related assault	Sexual assault	Sexual touching, sexual act and other sexual offences	Robbery	Break and enter dwelling	Break and enter non-dwelling	Motor vehicle theft	Steal from motor vehicle	Steal from retail store	Other stealing offences	Malicious damage to property
<b>Greater Sydney</b>	24	17,352	14,753	3,543	3,892	1,116	7,996	2,580	5,047	14,753	11,332	19,361	24,358
Baulkham Hills and Hawkesbury	0	473	339	143	115	21	265	69	135	314	247	480	606
Blacktown	4	2,152	1,610	348	369	188	777	223	573	1,601	1,057	1,721	2,752
Central Coast	2	1,456	1,371	406	385	61	602	227	408	1,121	828	1,164	2,489
City and Inner South	4	1,414	2,413	376	390	152	558	316	317	909	2,119	3,605	2,497
Eastern Suburbs	0	694	841	193	170	36	339	73	243	648	648	1,090	1,109
Inner South West	3	2,095	1,283	273	337	107	792	206	569	1,547	695	1,512	2,102
Inner West	1	630	616	152	165	47	461	151	235	830	725	1,119	1,104
North Sydney and Hornsby	0	547	483	197	197	34	517	136	214	763	870	1,058	1,158
Northern Beaches	1	296	500	155	148	32	229	115	179	629	487	737	925
Outer South West	2	1,290	780	241	294	65	417	185	344	935	617	931	1,724
Outer West and Blue Mountains	0	1,486	1,254	321	382	79	711	266	444	1,357	916	1,316	2,314
Parramatta	4	1,832	1,394	308	352	138	1,138	254	645	1,827	888	2,038	2,184
Ryde	1	382	276	80	116	21	230	83	72	327	278	513	512
South West	2	1,931	1,145	253	363	116	711	206	542	1,501	686	1,511	2,021
Sutherland	0	674	448	97	109	19	249	70	127	444	271	566	861
<b>Regional NSW</b>	27	14,767	12,730	3,748	3,547	647	9,878	4,574	5,444	12,979	6,648	16,496	24,866
Capital Region	2	863	734	233	215	33	432	237	287	678	346	977	1,517
Central West	3	1,397	1,194	349	384	48	902	352	406	1,030	434	1,328	2,213
Coffs Harbour - Grafton	0	769	779	227	209	42	401	307	272	557	279	893	1,257
Far West and Orana	4	1,632	961	213	215	45	1,031	461	378	878	359	1,135	1,979
Hunter Valley excluding Newcastle	2	1,409	1,130	421	393	41	755	433	539	1,155	604	1,914	2,306
Illawarra	1	927	924	253	260	63	710	342	461	1,435	933	1,284	1,832
Mid North Coast	2	1,370	1,028	339	318	41	1,062	522	506	873	444	1,799	2,102
Murray	2	697	587	132	135	24	391	209	252	722	319	786	1,238
New England and North West	1	1,518	1,193	319	294	43	1,424	401	477	1,297	568	1,262	2,434
Newcastle and Lake Macquarie	7	1,522	1,799	496	402	140	1,190	560	890	2,262	1,255	2,212	3,307
Richmond - Tweed	0	1,091	1,112	310	273	55	606	341	518	1,083	374	1,341	2,030
Riverina	1	1,000	738	249	262	38	658	272	288	629	401	959	1,653
Southern Highlands and Shoalhaven	2	572	551	207	187	34	316	137	170	380	332	606	998
<b>NSW</b>	<b>52</b>	<b>32,125</b>	<b>28,299</b>	<b>7,395</b>	<b>7,488</b>	<b>1,765</b>	<b>17,874</b>	<b>7,155</b>	<b>10,491</b>	<b>27,735</b>	<b>17,980</b>	<b>35,861</b>	<b>49,291</b>

# SECTION 3: LEGAL PROCEEDINGS



**Table 3.1: Adults proceeded against by the NSW Police Force by method of legal proceeding**

Over the five years to December 2022

Method of legal proceeding	Adults proceeded against					2 Year Trend		5 Year Trend	
	12 months to December 2018	12 months to December 2019	12 months to December 2020	12 months to December 2021	12 months to December 2022	Number change	Percentage change	Number change	Average annual percentage change
Proceeded against to court (offence)	147,701	148,680	144,551	145,163	154,838	9,675	6.7%	7,137	Stable
Proceeded against to court (breach of bail)	5,834	6,996	7,929	7,472	7,875	403	Stable	2,041	7.8%
Court diversion	13,534	13,288	10,274	8,638	9,344	706	Stable	-4,190	-8.8%
Criminal Infringement Notice	8,771	8,680	6,508	5,666	6,480	814	Stable	-2,291	-7.3%
Cannabis or other drug caution	4,763	4,608	3,766	2,972	2,864	-108	Stable	-1,899	-11.9%

**Table 3.2: Young people proceeded against by the NSW Police Force by method of legal proceeding**

Over the five years to December 2022

Method of legal proceeding	Young people proceeded against					2 Year Trend		5 Year Trend	
	12 months to December 2018	12 months to December 2019	12 months to December 2020	12 months to December 2021	12 months to December 2022	Number change	Percentage change	Number change	Average annual percentage change
Proceeded against to court (offence)	10,176	9,873	9,673	9,318	10,327	1,009	Stable	151	Stable
Proceeded against to court (breach of bail)	1,595	1,674	1,476	1,418	1,501	83	Stable	-94	-1.5%
Court diversion	10,211	10,672	10,009	12,030	10,766	-1,264	Stable	555	1.3%
Youth Justice Conference	744	818	774	786	695	-91	Stable	-49	Stable
Caution Young Offenders Act	6,969	7,119	6,686	6,742	6,905	163	Stable	-64	Stable
Warning Young Offenders Act	2,498	2,735	2,549	4,502	3,166	-1,336	-29.7%	668	6.1%

**Table 3.3: Adults proceeded against to court by the NSW Police Force for all 62 criminal offences types**

Over the two years to December 2022

Offence category		12 months to December 2021		12 months to December 2022		2 Year Trend	
		No. proceeded to court	% proceeded to court	No. proceeded to court	% proceeded to court	Trend test result	Percentage change
Homicide	Murder	71	100.0%	91	100.0%	Stable	
	Attempted murder	15	100.0%	12	100.0%	n.c.	
	Murder accessory, conspiracy	0		1	100.0%	n.c.	
	Manslaughter	6	100.0%	10	100.0%	n.c.	
Assault	Domestic violence related assault	13,266	99.9%	14,218	99.8%	Up	7.2%
	Non-domestic violence related assault	6,376	97.1%	7,124	96.6%	Up	11.7%
	Assault Police	1,334	99.9%	1,513	99.9%	Up	13.4%
Sexual offences	Sexual assault	804	100.0%	805	100.0%	Stable	
	Sexual touching, sexual act and other sexual offences	1,298	98.4%	1,375	97.3%	Stable	
Abduction and kidnapping		208	100.0%	184	100.0%	Stable	
Robbery	Robbery without a weapon	341	100.0%	354	100.0%	Stable	
	Robbery with a firearm	72	100.0%	86	100.0%	Stable	
	Robbery with a weapon not a firearm	367	100.0%	324	100.0%	Stable	
Blackmail and extortion		20	100.0%	23	100.0%	Stable	
Intimidation, stalking and harassment		13,253	99.0%	14,400	99.2%	Up	8.7%
Other offences against the person		339	98.3%	227	96.2%	Down	-33.0%
Theft	Break and enter dwelling	2,310	99.7%	2,372	99.7%	Stable	
	Break and enter non-dwelling	1,074	99.3%	1,277	99.2%	Stable	
	Receiving or handling stolen goods	3,789	97.0%	4,003	97.7%	Stable	
	Motor vehicle theft	1,237	99.6%	1,422	99.9%	Stable	
	Steal from motor vehicle	918	99.1%	875	98.6%	Stable	
	Steal from retail store	4,346	66.6%	5,830	68.5%	Up	34.1%
	Steal from dwelling	748	94.9%	770	95.1%	Stable	
	Steal from person	181	96.3%	221	97.8%	Stable	
	Stock theft	13	100.0%	5	100.0%	n.c.	
	Fraud	3,889	98.4%	3,946	98.6%	Stable	
Other theft	1,428	88.6%	1,525	89.3%	Stable		
Arson		151	89.9%	160	91.4%	Stable	
Malicious damage to property		4,384	99.5%	4,382	99.1%	Stable	
Drug offences	Possession and/or use of cocaine	1,366	99.7%	1,576	96.7%	Stable	
	Possession and/or use of narcotics	505	99.6%	543	99.6%	Stable	
	Possession and/or use of cannabis	5,082	63.2%	4,878	63.2%	Stable	
	Possession and/or use of amphetamines	3,131	99.9%	2,705	99.1%	Down	-13.6%
	Possession and/or use of ecstasy	174	87.9%	373	62.1%	Up	114.4%
	Possession and/or use of other drugs	1,651	99.6%	1,517	95.3%	Stable	
	Dealing, trafficking in cocaine	762	100.0%	817	100.0%	Stable	
	Dealing, trafficking in narcotics	140	100.0%	138	100.0%	Stable	
	Dealing, trafficking in cannabis	429	99.8%	359	100.0%	Stable	
	Dealing, trafficking in amphetamines	826	100.0%	717	100.0%	Stable	
	Dealing, trafficking in ecstasy	75	100.0%	97	100.0%	Stable	
	Dealing, trafficking in other drugs	249	100.0%	201	100.0%	Stable	
	Cultivating cannabis	664	99.7%	532	100.0%	Down	-19.9%
	Manufacture drug	43	100.0%	50	100.0%	Stable	
Importing drugs	109	98.2%	96	100.0%	Stable		
Other drug offences	676	98.7%	637	96.8%	Stable		
Prohibited and regulated weapons offences		2,979	84.6%	2,838	87.4%	Stable	
Disorderly conduct	Trespass	980	64.3%	1,204	66.5%	Up	22.9%
	Offensive conduct	296	15.3%	300	14.8%	Stable	
	Offensive language	123	12.4%	112	14.1%	Stable	
	Criminal intent	1,442	99.4%	1,528	99.7%	Stable	
Betting and gaming offences		n.a.	n.a.				
Liquor offences		83	4.4%	154	5.8%	Up	85.5%
Pornography offences		211	100.0%	238	100.0%	Stable	
Prostitution offences		1	100.0%	1	100.0%	n.c.	
Against justice procedures	Escape custody	75	100.0%	71	100.0%	Stable	
	Breach Apprehended Violence Order	11,272	100.0%	12,182	100.0%	Up	8.1%
	Breach bail conditions	7,472	100.0%	7,875	100.0%	Stable	
	Fail to appear	9	100.0%	14	100.0%	n.c.	
	Resist or hinder officer	1,645	85.1%	1,424	81.3%	Down	-13.4%
	Other offences against justice procedures	1,027	100.0%	1,068	100.0%	Stable	
Transport regulatory offences		523	1.2%	336	0.9%	Stable	
Other offences		4,361	7.8%	2,077	25.3%	Stable	

## NSW Recorded Crime Statistics, December Quarter 2022

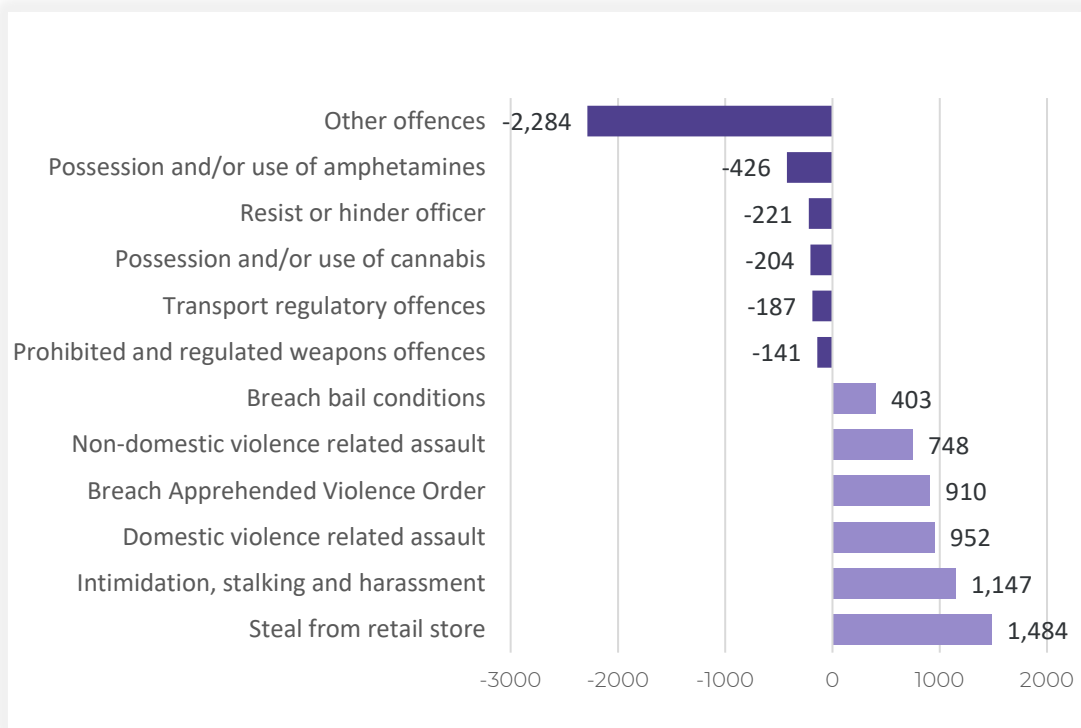
**Table 3.4: Young people proceeded against to court by the NSW Police Force for all 62 criminal offences**

Over the two years to December 2022

Offence category		12 months to December 2021		12 months to December 2022		2 Year Trend	
		No. proceeded to court	% proceeded to court	No. proceeded to court	% proceeded to court	Trend test result	Percentage change
Homicide	Murder	5	100.0%	11	100.0%	n.c.	
	Attempted murder	1	100.0%	0		n.c.	
	Murder accessory, conspiracy	0		0		n.c.	
	Manslaughter	0		0		n.c.	
Assault	Domestic violence related assault	476	45.4%	435	37.9%	Stable	
	Non-domestic violence related assault	897	39.8%	811	34.5%	Stable	
	Assault Police	120	77.4%	119	73.0%	Stable	
Sexual offences	Sexual assault	162	98.8%	116	100.0%	Stable	
	Sexual touching, sexual act and other sexual offences	82	78.1%	87	77.0%	Stable	
Abduction and kidnapping		6	85.7%	6	100.0%	n.c.	
Robbery	Robbery without a weapon	302	95.6%	306	91.9%	Stable	
	Robbery with a firearm	12	100.0%	20	90.9%	n.c.	
	Robbery with a weapon not a firearm	186	93.9%	154	95.1%	Stable	
Blackmail and extortion		1	100.0%	1	100.0%	n.c.	
Intimidation, stalking and harassment		1,140	71.9%	1,244	71.9%	Stable	
Other offences against the person		24	80.0%	19	52.8%	n.c.	
Theft	Break and enter dwelling	530	69.6%	951	86.3%	Up	79.4%
	Break and enter non-dwelling	301	46.1%	336	50.5%	Stable	
	Receiving or handling stolen goods	186	56.9%	207	57.8%	Stable	
	Motor vehicle theft	549	69.8%	878	78.3%	Up	59.9%
	Steal from motor vehicle	348	67.3%	311	74.4%	Stable	
	Steal from retail store	384	31.4%	448	29.1%	Stable	
	Steal from dwelling	71	41.8%	60	39.0%	Stable	
	Steal from person	49	53.3%	32	45.7%	Down	-34.7%
	Stock theft	3	100.0%	0		n.c.	
	Fraud	218	60.4%	304	69.7%	Stable	
Other theft	132	34.8%	100	30.2%	Stable		
Arson		20	24.4%	34	35.8%	Stable	
Malicious damage to property		491	33.8%	519	34.6%	Stable	
Drug offences	Possession and/or use of cocaine	5	25.0%	6	50.0%	n.c.	
	Possession and/or use of narcotics	0		1	100.0%	n.c.	
	Possession and/or use of cannabis	178	14.9%	176	17.1%	Stable	
	Possession and/or use of amphetamines	10	62.5%	14	60.9%	n.c.	
	Possession and/or use of ecstasy	5	20.8%	3	37.5%	n.c.	
	Possession and/or use of other drugs	18	27.7%	13	28.9%	n.c.	
	Dealing, trafficking in cocaine	19	100.0%	16	100.0%	n.c.	
	Dealing, trafficking in narcotics	0		0		n.c.	
	Dealing, trafficking in cannabis	18	81.8%	38	79.2%	n.c.	
	Dealing, trafficking in amphetamines	3	100.0%	1	100.0%	n.c.	
	Dealing, trafficking in ecstasy	7	100.0%	1	100.0%	n.c.	
	Dealing, trafficking in other drugs	6	66.7%	1	25.0%	n.c.	
	Cultivating cannabis	5	62.5%	3	75.0%	n.c.	
	Manufacture drug	0		0		n.c.	
Importing drugs	0		0		n.c.		
Other drug offences	4	5.6%	5	6.7%	n.c.		
Prohibited and regulated weapons offences		135	31.2%	160	29.1%	Stable	
Disorderly conduct	Trespass	156	13.4%	212	15.6%	Stable	
	Offensive conduct	21	8.4%	25	11.4%	Stable	
	Offensive language	6	10.7%	5	7.0%	n.c.	
	Criminal intent	211	87.6%	243	85.9%	Stable	
Betting and gaming offences		n.a.		n.a.			
Liquor offences		1	0.4%	1	0.5%	n.c.	
Pornography offences		11	12.6%	11	16.7%	n.c.	
Prostitution offences		0		0		n.c.	
Against justice procedures	Escape custody	17	94.4%	12	92.3%	n.c.	
	Breach Apprehended Violence Order	502	99.6%	489	99.8%	Stable	
	Breach bail conditions	1,418	99.0%	1,501	98.9%	Stable	
	Fail to appear	0		0		n.c.	
	Resist or hinder officer	63	47.4%	85	43.1%	Stable	
	Other offences against justice procedures	9	100.0%	8	80.0%	n.c.	
Transport regulatory offences		26	0.1%	27	0.2%	Stable	
Other offences		208	3.5%	156	10.1%	Stable	

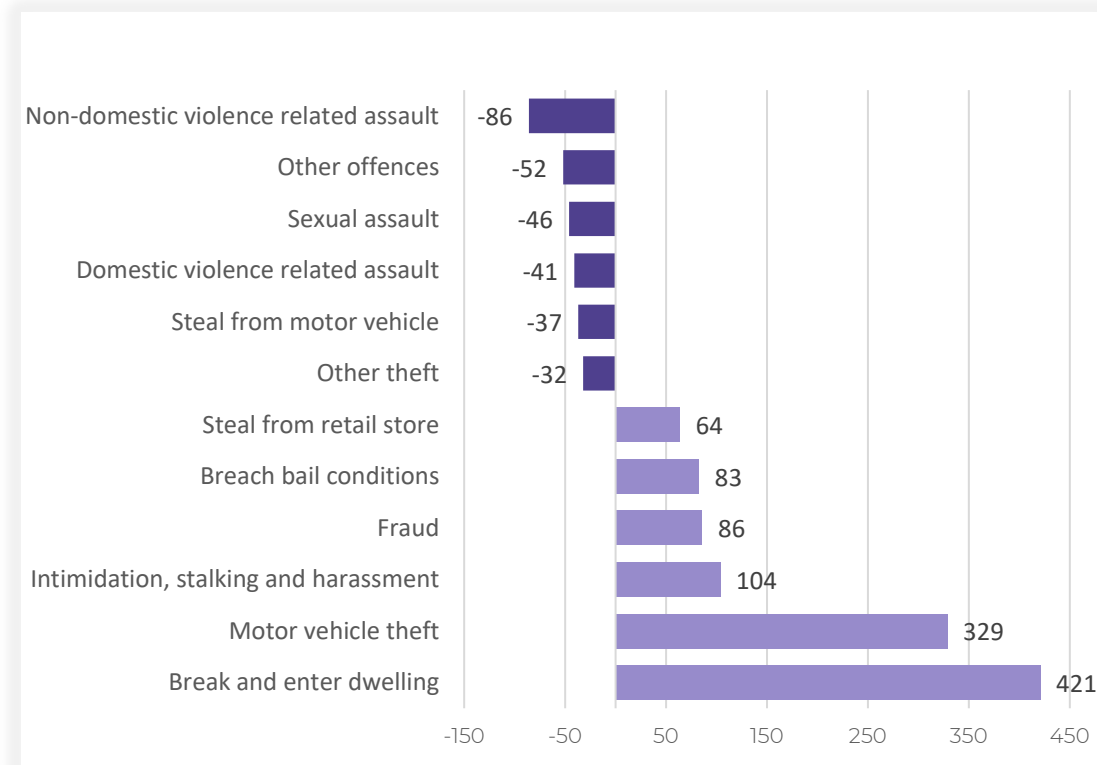
**Figure 3.5: Offences with the largest change in the number of adults proceeded against to court by the NSW Police Force**

Between the 12 months to December 2021 and the 12 months to December 2022



**Figure 3.6: Offences with the largest change in the number of young people proceeded against to court by the NSW Police Force**

Between the 12 months to December 2021 and the 12 months to December 2022



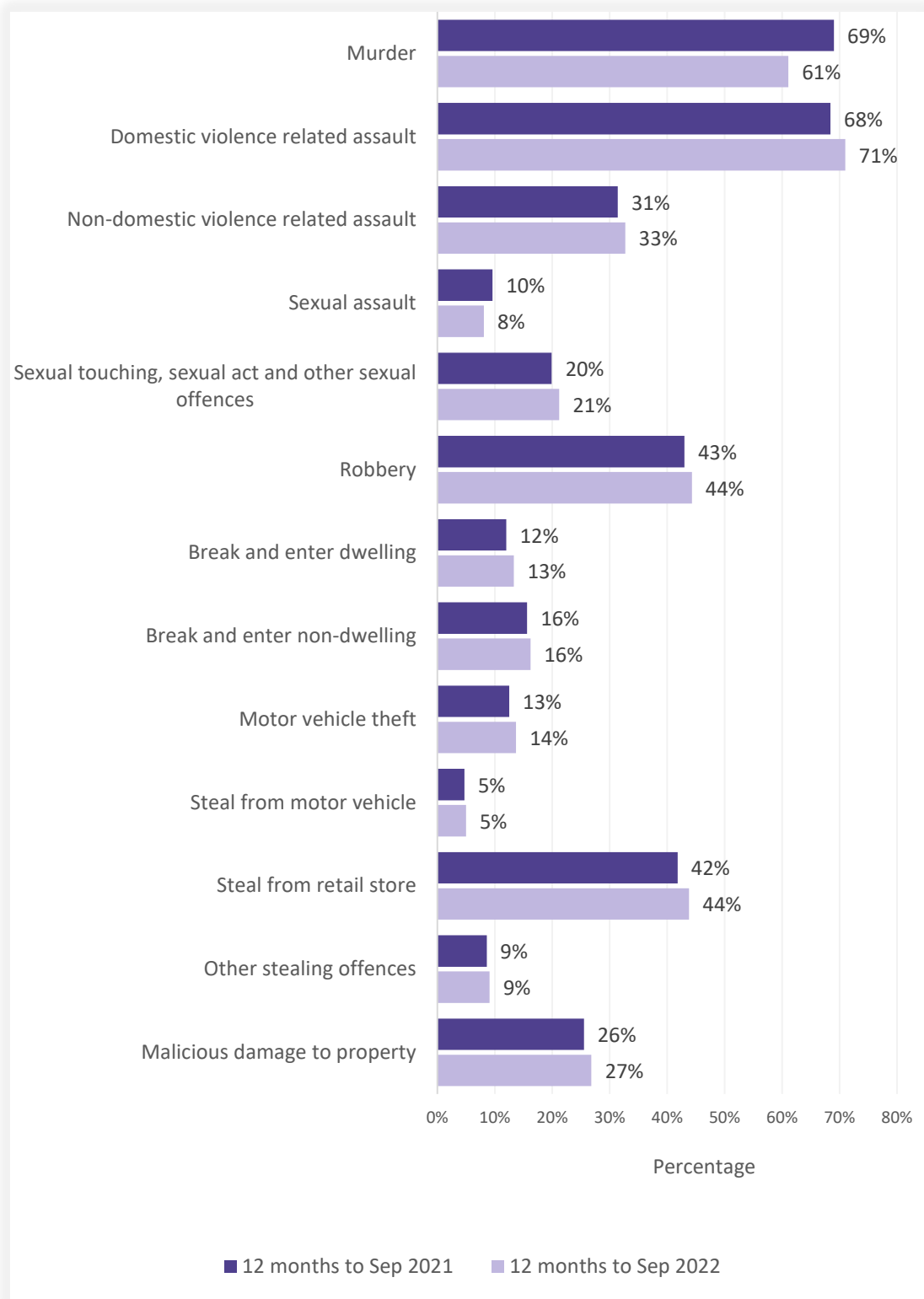
## NSW Recorded Crime Statistics, December Quarter 2022

**Table 3.7: Incidents of all 62 criminal offence types by whether legal proceedings commenced within 90 days of reporting**  
Over the two years to September 2022

Offence category		Recorded criminal incidents over the 12 months to September 2021			Recorded criminal incidents over the 12 months to September 2022		
		Proceedings commenced within 90 days	Total number recorded	% proceedings commenced within 90 days	Proceedings commenced within 90 days	Total number recorded	% proceedings commenced within 90 days
Homicide	Murder	40	58	69.0%	33	54	61.1%
	Attempted murder	12	23	52.2%	10	13	76.9%
	Murder accessory, conspiracy	0	0	0.0%	1	2	50.0%
	Manslaughter	1	2	50.0%	4	7	57.1%
Assault	Domestic violence related assault	22,162	32,418	68.4%	23,556	33,160	71.0%
	Non-domestic violence related assault	9,076	28,927	31.4%	9,799	29,955	32.7%
	Assault Police	2,232	2,510	88.9%	2,420	2,699	89.7%
Sexual offences	Sexual assault	729	7,581	9.6%	619	7,607	8.1%
	Sexual touching, sexual act and other sexual offences	1,521	7,651	19.9%	1,582	7,468	21.2%
Abduction and kidnapping		127	223	57.0%	125	206	60.7%
Robbery	Robbery without a weapon	403	1,031	39.1%	380	900	42.2%
	Robbery with a firearm	44	97	45.4%	47	92	51.1%
	Robbery with a weapon not a firearm	381	797	47.8%	319	692	46.1%
Blackmail and extortion		16	130	12.3%	13	463	2.8%
Intimidation, stalking and harassment		17,960	40,877	43.9%	19,771	42,460	46.6%
Other offences against the person		540	1,882	28.7%	415	1,286	32.3%
Theft	Break and enter dwelling	2,246	18,695	12.0%	2,422	18,263	13.3%
	Break and enter non-dwelling	1,120	7,185	15.6%	1,175	7,254	16.2%
	Receiving or handling stolen goods	5,819	7,545	77.1%	5,881	7,580	77.6%
	Motor vehicle theft	1,369	10,911	12.5%	1,592	11,644	13.7%
	Steal from motor vehicle	1,302	27,981	4.7%	1,368	27,351	5.0%
	Steal from retail store	8,004	19,147	41.8%	8,682	19,810	43.8%
	Steal from dwelling	968	16,506	5.9%	1,014	15,365	6.6%
	Steal from person	344	1,893	18.2%	326	1,833	17.8%
	Stock theft	13	338	3.8%	4	244	1.6%
	Fraud	3,895	46,143	8.4%	3,300	45,480	7.3%
Other theft	1,845	18,029	10.2%	1,834	17,321	10.6%	
Arson		212	3,926	5.4%	178	3,291	5.4%
Malicious damage to property		12,906	50,629	25.5%	13,099	48,831	26.8%
Drug offences	Possession and/or use of cocaine	1,650	2,236	73.8%	1,966	2,653	74.1%
	Possession and/or use of narcotics	728	1,190	61.2%	777	1,227	63.3%
	Possession and/or use of cannabis	12,390	16,231	76.3%	11,651	15,577	74.8%
	Possession and/or use of amphetamines	5,323	7,192	74.0%	4,767	6,529	73.0%
	Possession and/or use of ecstasy	307	473	64.9%	540	682	79.2%
	Possession and/or use of other drugs	3,169	6,546	48.4%	2,851	6,113	46.6%
	Dealing, trafficking in cocaine	1,047	1,477	70.9%	978	1,217	80.4%
	Dealing, trafficking in narcotics	217	264	82.2%	399	459	86.9%
	Dealing, trafficking in cannabis	706	891	79.2%	536	669	80.1%
	Dealing, trafficking in amphetamines	2,198	2,776	79.2%	1,812	2,196	82.5%
	Dealing, trafficking in ecstasy	139	196	70.9%	131	164	79.9%
	Dealing, trafficking in other drugs	391	572	68.4%	255	414	61.6%
	Cultivating cannabis	726	1,111	65.3%	608	893	68.1%
	Manufacture drug	27	53	50.9%	35	54	64.8%
Importing drugs	74	202	36.6%	65	178	36.5%	
Other drug offences	1,145	5,840	19.6%	1,059	5,513	19.2%	
Prohibited and regulated weapons offences		6,040	15,064	40.1%	5,866	13,204	44.4%
Disorderly conduct	Trespass	3,578	9,464	37.8%	3,938	9,690	40.6%
	Offensive conduct	2,555	3,782	67.6%	2,483	3,706	67.0%
	Offensive language	1,585	1,971	80.4%	1,275	1,656	77.0%
	Criminal intent	1,881	2,388	78.8%	2,012	2,523	79.7%
Betting and gaming offences		n.a.	n.a.	n.a.	n.a.		
Liquor offences		2,690	8,172	32.9%	3,723	10,813	34.4%
Pornography offences		238	875	27.2%	237	971	24.4%
Prostitution offences		0	18	0.0%	2	20	10.0%
Against justice procedures	Escape custody	159	178	89.3%	131	158	82.9%
	Breach Apprehended Violence Order	16,920	20,759	81.5%	18,279	22,286	82.0%
	Breach bail conditions	16,701	50,831	32.9%	18,307	52,951	34.6%
	Fail to appear	7	788	0.9%	14	937	1.5%
	Resist or hinder officer	4,643	5,550	83.7%	4,796	5,696	84.2%
	Other offences against justice procedures	1,194	1,971	60.6%	1,314	2,315	56.8%
Transport regulatory offences		61,563	71,739	85.8%	57,275	68,429	83.7%
Other offences		22,302	85,567	26.1%	9,508	29,808	31.9%

**Figure 3.8: Percentage of recorded criminal incidents for major offences by whether legal proceedings commenced within 90 days of reporting**

Over the two years to September 2022



# SECTION 4: POLICING ACTIVITY

**Table 4.1: Selected policing activities**

Over the five years to December 2022

	Number of selected policing activities					2 Year Trend		5 Year Trend	
	12 months to December 2018	12 months to December 2019	12 months to December 2020	12 months to December 2021	12 months to December 2022	Number change	Annual percentage change	Number change	Annual average percentage change
<b>Bail compliance checks</b>	106,616	93,939	117,629	127,486	139,836	12,350	Stable	33,220	7.0%
<b>ADVO compliance checks</b>	32,903	51,697	80,749	105,596	145,323	39,727	37.6%	112,420	45.0%
<b>Move-on directions</b>	104,021	112,066	103,884	101,768	86,402	-15,366	-15.1%	-17,619	-4.5%
<b>Searches</b>	279,937	292,002	268,915	245,825	215,585	-30,240	-12.3%	-64,352	-6.3%
Vehicle searches	45,693	44,280	47,331	44,456	36,216	-8,240	-18.5%	-9,477	-5.6%
Person searches	228,698	243,255	218,270	199,034	177,186	-21,848	-11.0%	-51,512	-6.2%
Strip searches	5,546	4,467	3,314	2,335	2,183	-152	Stable	-3,363	-20.8%
<b>Convey/detain person to mental health facility</b>	14,850	16,468	17,728	19,008	20,738	1,730	9.1%	5,888	8.7%



## NSW Recorded Crime Statistics, December Quarter 2022

**Table 4.2: Non-criminal domestic violence episodes by Statistical Area (SA4)**

Over the five years to December 2022

Statistical Area	Number of activities					Trend and average annual percentage change	
	12 months to December 2018	12 months to December 2019	12 months to December 2020	12 months to December 2021	12 months to December 2022	2 Year Trend	5 Year Trend
						Percentage change	Annual average percentage change
<b>Greater Sydney</b>	44,996	47,102	49,693	45,499	42,494	Stable	Stable
Baulkham Hills and Hawkesbury	1,008	1,125	1,210	1,158	1,063	Stable	Stable
Blacktown	5,302	5,257	5,433	5,363	5,008	Stable	Stable
Central Coast	4,303	4,623	5,112	4,567	4,445	Stable	Stable
City and Inner South	3,298	3,425	3,657	3,440	3,282	Stable	Stable
Eastern Suburbs	1,720	1,873	2,032	2,028	1,806	-10.9%	Stable
Inner South West	5,290	5,212	5,376	4,844	4,427	-8.6%	-4.4%
Inner West	2,002	2,049	2,195	1,870	1,886	Stable	-1.5%
North Sydney and Hornsby	1,531	1,616	1,889	1,827	1,684	Stable	2.4%
Northern Beaches	1,559	1,629	1,639	1,420	1,305	-8.1%	-4.3%
Outer South West	3,450	3,560	3,688	3,424	3,107	Stable	Stable
Outer West and Blue Mountains	4,510	4,732	5,074	4,371	4,120	Stable	-2.2%
Parramatta	4,096	4,244	4,636	4,078	4,045	Stable	Stable
Ryde	953	1,112	1,213	1,098	1,042	Stable	Stable
South West	4,396	4,787	4,684	4,311	3,896	Stable	-3.0%
Sutherland	1,578	1,858	1,855	1,700	1,378	-18.9%	Stable
<b>Regional NSW</b>	35,448	38,121	40,134	39,310	37,217	Stable	Stable
Capital Region	2,191	2,525	2,863	2,895	2,608	Stable	4.5%
Central West	2,952	3,122	3,366	3,194	3,149	Stable	Stable
Coffs Harbour - Grafton	2,000	1,881	2,023	1,916	2,092	9.2%	Stable
Far West and Orana	3,607	3,551	3,818	3,877	3,533	Stable	Stable
Hunter Valley excluding Newcastle	2,771	2,815	3,131	3,137	3,174	Stable	3.5%
Illawarra	3,380	3,737	3,717	3,680	3,543	Stable	Stable
Mid North Coast	2,990	3,311	3,440	3,238	2,760	-14.8%	Stable
Murray	1,686	1,958	2,038	1,996	1,869	Stable	Stable
New England and North West	3,669	3,886	3,816	3,844	3,581	Stable	Stable
Newcastle and Lake Macquarie	3,448	3,788	4,351	4,293	3,989	Stable	3.7%
Richmond - Tweed	2,576	2,823	2,856	2,829	2,792	Stable	Stable
Riverina	2,583	2,831	2,892	2,576	2,346	-8.9%	-2.4%
Southern Highlands and Shoalhaven	1,595	1,893	1,823	1,835	1,781	Stable	Stable
<b>NSW</b>	<b>80,463</b>	<b>85,234</b>	<b>89,838</b>	<b>84,821</b>	<b>79,727</b>	<b>Stable</b>	<b>Stable</b>

**Table 4.3: Ratio to NSW rate of non-criminal domestic violence episodes per 100,000 population by Statistical Area (SA4)**

Over the five years to December 2022

Statistical Area	12 months to December 2018	12 months to December 2019	12 months to December 2020	12 months to December 2021	12 months to December 2022
<b>Greater Sydney</b>	0.9	0.8	0.8	0.8	0.8
Baulkham Hills and Hawkesbury	0.4	0.4	0.4	0.4	0.4
Blacktown	1.4	1.3	1.3	1.3	1.3
Central Coast	1.2	1.3	1.3	1.3	1.3
City and Inner South	0.9	0.9	0.9	0.9	0.9
Eastern Suburbs	0.6	0.6	0.6	0.7	0.6
Inner South West	0.8	0.8	0.8	0.7	0.7
Inner West	0.6	0.6	0.6	0.6	0.6
North Sydney and Hornsby	0.3	0.3	0.4	0.4	0.4
Northern Beaches	0.6	0.6	0.5	0.5	0.5
Outer South West	1.2	1.2	1.1	1.1	1.1
Outer West and Blue Mountains	1.4	1.4	1.4	1.3	1.3
Parramatta	0.8	0.8	0.8	0.8	0.8
Ryde	0.5	0.5	0.5	0.5	0.5
South West	1.0	1.0	0.9	0.9	0.9
Sutherland	0.7	0.8	0.7	0.7	0.6
<b>Regional NSW</b>	1.3	1.3	1.3	1.4	1.4
Capital Region	1.0	1.0	1.1	1.2	1.1
Central West	1.4	1.4	1.4	1.4	1.5
Coffs Harbour - Grafton	1.4	1.3	1.3	1.3	1.5
Far West and Orana	3.1	2.9	3.0	3.2	3.1
Hunter Valley excluding Newcastle	1.0	1.0	1.0	1.1	1.1
Illawarra	1.1	1.1	1.1	1.1	1.1
Mid North Coast	1.3	1.4	1.4	1.4	1.3
Murray	1.4	1.5	1.5	1.6	1.6
New England and North West	1.9	2.0	1.9	2.0	2.0
Newcastle and Lake Macquarie	0.9	0.9	1.0	1.1	1.1
Richmond - Tweed	1.0	1.1	1.0	1.1	1.1
Riverina	1.6	1.7	1.6	1.5	1.5
Southern Highlands and Shoalhaven	1.0	1.1	1.0	1.1	1.1
<b>NSW</b>	<b>1.0</b>	<b>1.0</b>	<b>1.0</b>	<b>1.0</b>	<b>1.0</b>

# APPENDIX 1

## REGIONAL COMPARISONS

### Local Government Areas

## NSW Recorded Crime Statistics, December Quarter 2022

Appendix  
Table 1.1: Trends in recorded criminal incidents for major offences, NSW LGAs

Over the two years to December 2022

NSW LGA	Murder	Domestic violence related assault	Non-domestic violence related assault	Sexual assault	Sexual touching, sexual act and other sexual offences	Robbery	Break and enter dwelling	Break and enter non-dwelling	Motor vehicle theft	Steal from motor vehicle	Steal from retail store	Other stealing offences	Malicious damage to property
Albury	ns	ns	ns	ns	ns	ns	ns	110.0	ns	ns	ns	ns	ns
Armidale Regional	ns	ns	ns	ns	ns	ns	ns	ns	ns	ns	ns	-22.4	ns
Ballina	ns	ns	26.8	ns	ns	ns	ns	ns	ns	ns	ns	ns	ns
Balranald	ns	ns	ns	ns	ns	ns	ns	ns	ns	ns	ns	ns	ns
Bathurst Regional	ns	ns	-18.9	ns	ns	ns	ns	ns	59.6	ns	ns	-7.3	-19.5
Bayside	ns	ns	ns	ns	ns	ns	ns	ns	ns	ns	102.7	ns	ns
Bega Valley	ns	ns	ns	ns	ns	ns	ns	-57.9	ns	-5.8	ns	ns	ns
Bellingen	ns	ns	ns	ns	ns	ns	ns	ns	ns	79.2	ns	ns	ns
Berrigan	ns	104.3	ns	ns	ns	ns	ns	ns	ns	ns	ns	ns	ns
Blacktown	ns	ns	ns	ns	ns	ns	ns	ns	ns	ns	31.9	ns	ns
Bland	ns	ns	ns	ns	ns	ns	ns	ns	ns	ns	ns	ns	ns
Blayney	ns	ns	ns	ns	ns	ns	ns	ns	ns	ns	ns	ns	ns
Blue Mountains	ns	ns	ns	ns	ns	ns	43.2	ns	54.5	ns	ns	ns	11.1
Bogan	ns	ns	ns	ns	ns	ns	ns	ns	ns	ns	ns	ns	ns
Bourke	ns	ns	ns	ns	ns	ns	ns	ns	ns	ns	ns	ns	ns
Brewarrina	ns	ns	ns	ns	ns	ns	ns	ns	ns	ns	ns	ns	ns
Broken Hill	ns	ns	ns	ns	ns	ns	ns	ns	ns	ns	34.1	ns	ns
Burwood	ns	ns	ns	ns	ns	ns	ns	ns	ns	ns	ns	33.5	ns
Byron	ns	ns	ns	ns	ns	ns	ns	ns	ns	ns	ns	ns	-17.8
Cabonne	ns	ns	ns	ns	ns	ns	ns	ns	ns	ns	ns	ns	ns
Camden	ns	ns	ns	ns	ns	ns	ns	ns	ns	ns	ns	ns	ns
Campbelltown	ns	ns	ns	ns	ns	ns	ns	-39.3	ns	-14.5	ns	ns	-16.2
Canada Bay	ns	ns	ns	ns	ns	ns	ns	ns	ns	ns	ns	ns	ns
Canterbury-Bankstown	ns	ns	23.2	ns	ns	ns	ns	66.4	ns	ns	ns	ns	ns
Carrathool	ns	ns	ns	ns	ns	ns	ns	ns	ns	ns	ns	ns	ns
Central Coast	ns	14.8	ns	ns	ns	24.6	ns	ns	ns	ns	ns	ns	-9.4
Central Darling	ns	-33.3	ns	ns	ns	ns	ns	ns	ns	ns	ns	ns	-50.0
Cessnock	ns	ns	ns	ns	-36.5	ns	ns	ns	ns	ns	ns	ns	ns
Clarence Valley	ns	35.1	ns	ns	ns	ns	ns	ns	69.9	24.9	65.3	ns	ns
Cobar	ns	ns	ns	ns	ns	ns	ns	ns	ns	ns	ns	ns	ns
Coffs Harbour	ns	ns	ns	-26.0	ns	ns	ns	-44.9	40.5	ns	ns	ns	ns
Coolamon	ns	ns	ns	ns	ns	ns	ns	ns	ns	ns	ns	ns	ns
Coonamble	ns	-38.5	ns	ns	ns	ns	ns	ns	ns	ns	ns	ns	ns
Cootamundra-Gundagai	ns	ns	ns	ns	ns	ns	ns	ns	ns	ns	ns	ns	ns
Cowra	ns	ns	ns	ns	ns	ns	ns	ns	ns	-49.2	ns	ns	ns
Cumberland	ns	ns	ns	ns	ns	ns	ns	87.5	ns	ns	ns	ns	ns
Dubbo Regional	ns	ns	ns	ns	ns	ns	ns	42.5	29.1	ns	48.1	ns	ns
Dungog	ns	ns	ns	ns	ns	ns	ns	ns	ns	ns	ns	ns	ns
Edward River	ns	ns	ns	ns	ns	ns	ns	ns	ns	ns	ns	ns	-20.3
Eurobodalla	ns	ns	ns	ns	ns	ns	ns	ns	ns	ns	ns	ns	ns
Fairfield	ns	ns	ns	ns	ns	ns	ns	ns	ns	ns	ns	ns	ns
Federation	ns	ns	ns	ns	ns	ns	ns	ns	ns	ns	ns	ns	ns

NSW Recorded Crime Statistics, December Quarter 2022

NSW LGA	Murder	Domestic violence related assault	Non-domestic violence related assault	Sexual assault	Sexual touching, sexual act and other sexual offences	Robbery	Break and enter dwelling	Break and enter non-dwelling	Motor vehicle theft	Steal from motor vehicle	Steal from retail store	Other stealing offences	Malicious damage to property
Forbes		ns	-46.4				ns	ns	ns	ns	ns	ns	ns
Georges River		ns	ns	ns	ns		-1.6	ns	ns	ns	ns	ns	ns
Gilgandra		ns	ns				ns					ns	ns
Glen Innes Severn		ns	ns				ns	ns		ns	ns	ns	31.5
Goulburn Mulwaree		ns	ns	ns	47.1		ns	104.8	ns	ns	ns	ns	ns
Greater Hume Shire		ns								ns		ns	ns
Griffith		ns	ns	ns	ns		ns	ns	ns	ns	45.6	ns	ns
Gunnedah		ns	ns				ns	ns	ns	-35.8	ns	ns	-16.9
Gwydir												ns	
Hawkesbury		15.8	ns	59.1	ns		ns	ns	ns	ns	ns	ns	ns
Hay			ns										ns
Hilltops		ns	ns		ns		ns		ns	122.7		ns	ns
Hornsby		ns	ns	ns	ns		ns	ns	ns	ns	ns	ns	ns
Hunters Hill							ns			ns		ns	ns
Inner West		ns	ns	ns	ns	ns	ns	ns	ns	ns	ns	12.6	ns
Inverell		ns	46.7	ns	ns		ns	ns	ns	ns	-49.0	ns	ns
Junee												ns	-37.5
Kempsey		ns	ns	ns	ns		ns	86.0	ns	ns	85.5	ns	ns
Kiama		ns	ns							ns		ns	-31.0
Ku-ring-gai		ns	ns	ns	ns		ns	ns	ns	ns	ns	ns	ns
Kyogle		ns	ns									ns	ns
Lachlan		ns	ns				ns	ns	ns	ns		ns	ns
Lake Macquarie		ns	-7.5	ns	ns	ns	ns	-34.3	ns	ns	ns	ns	ns
Lane Cove		91.4	ns				ns		ns	ns	ns	ns	ns
Leeton		ns	ns	ns	ns		ns					ns	48.4
Lismore		ns	-22.6	ns	ns		ns	ns	ns	ns	-38.8	ns	-34.2
Lithgow		ns	ns	ns	ns		ns		ns	ns	ns	ns	ns
Liverpool		ns	24.0	ns	ns	ns	ns	ns	ns	ns	ns	ns	ns
Liverpool Plains		ns	ns									ns	ns
Lockhart													
Lord Howe Island													
Maitland		35.6	ns	ns	ns	ns	ns	ns	ns	ns	ns	-12.0	ns
Mid-Coast		ns	ns	ns	ns		ns	-34.4	ns	ns	ns	-12.5	ns
Mid-Western Regional		ns	ns	ns	-46.4		ns			ns	ns	ns	ns
Moree Plains		ns	ns	ns	ns		ns	ns	ns	ns	ns	ns	ns
Mosman		ns	ns				ns			ns	ns	ns	ns
Murray River		ns	-35.3					ns	ns	ns		ns	ns
Murrumbidgee													ns
Muswellbrook		ns	ns	ns	ns		ns	ns	ns	-30.8	ns	ns	ns
Nambucca Valley		ns	ns	ns	ns		ns	ns	ns	ns	70.0	-22.3	ns
Narrabri		ns	ns				ns		ns	ns		ns	ns
Narrandera		ns	ns				ns					ns	ns
Narromine		ns	-42.6				ns	ns		ns		ns	ns
Newcastle		ns	ns	ns	ns	ns	ns	ns	ns	ns	ns	ns	ns
North Sydney		ns	ns	ns	ns		ns	ns	ns	ns	ns	-21.0	ns

NSW Recorded Crime Statistics, December Quarter 2022

NSW LGA	Murder	Domestic violence related assault	Non-domestic violence related assault	Sexual assault	Sexual touching, sexual act and other sexual offences	Robbery	Break and enter dwelling	Break and enter non-dwelling	Motor vehicle theft	Steal from motor vehicle	Steal from retail store	Other stealing offences	Malicious damage to property
Northern Beaches		ns	ns	ns	ns	ns	ns	-50.4	ns	-37.8	ns	-21.8	ns
Oberon												ns	ns
Orange		ns	ns	ns	-35.2	ns	ns	ns	ns	ns	85.5	ns	ns
Parkes		ns	ns	-11.5	ns		ns	ns	ns	ns	ns	16.8	ns
Parramatta		ns	16.9	ns	ns	ns	ns	ns	42.2	ns	44.2	ns	ns
Penrith		ns	ns	ns	ns	ns	ns	ns	ns	ns	ns	ns	ns
Port Macquarie-Hastings		ns	ns	-31.6	ns		ns	-42.0	ns	ns	ns	-26.1	ns
Port Stephens		ns	ns	ns	ns		ns	ns	ns	ns	61.2	ns	26.9
Queanbeyan-Palerang Regional		ns	ns	ns	ns		ns	ns	ns	ns	ns	-21.2	15.1
Randwick		ns	ns	ns	36.6	ns	ns	ns	ns	ns	ns	15.3	ns
Richmond Valley		ns	ns	ns	ns		ns	ns	ns	ns	ns	ns	ns
Ryde		-26.1	ns	ns	ns		68.7	ns	85.1	ns	ns	ns	ns
Shellharbour		ns	ns	ns	ns		ns	ns	ns	ns	ns	ns	ns
Shoalhaven		ns	-11.8	ns	ns	ns	ns	ns	ns	ns	ns	-24.9	ns
Singleton		ns	ns	ns	ns		ns	ns	ns	ns	ns	-11.1	ns
Snowy Monaro Regional		ns	ns	ns						ns		ns	-40.5
Snowy Valleys		68.0	ns	ns			ns	ns		ns		ns	ns
Strathfield		ns	ns		ns		ns		ns	ns	ns	40.6	ns
Sutherland Shire		ns	ns	ns	ns		-28.9	ns	ns	-34.7	ns	-26.1	ns
Sydney		17.8	28.1	7.2	49.0	ns	ns	ns	ns	ns	36.8	22.0	ns
Tamworth Regional		ns	ns	ns	ns		ns	32.4	ns	-32.3	ns	ns	ns
Temora							ns					ns	-16.7
Tenterfield		ns	ns				ns					ns	ns
The Hills Shire		ns	ns	ns	ns		ns	ns	ns	ns	ns	ns	ns
Tweed		ns	ns	ns	ns		ns	ns	ns	ns	ns	ns	ns
Unincorporated Far West													
Upper Hunter Shire		ns	ns				ns			ns		-39.3	-24.5
Upper Lachlan Shire												ns	ns
Uralla		ns											ns
Wagga Wagga		ns	10.2	ns	-44.7		ns	ns	68.0	49.7	ns	ns	ns
Walcha													ns
Walgett		ns	ns				ns			ns		ns	ns
Warren		ns										ns	ns
Warrumbungle Shire		61.5	ns				ns			ns		ns	ns
Waverley		ns	ns	ns	ns		ns		ns	ns	80.3	ns	ns
Weddin													
Wentworth		ns	ns					ns		ns		ns	ns
Willoughby		ns	ns	ns	ns		ns	ns	ns	ns	ns	ns	ns
Wingecarribee		ns	ns	ns	ns		ns		ns	ns	ns	ns	ns
Wollondilly		ns	ns	ns	ns		ns		ns	ns		ns	ns
Wollongong		ns	ns	ns	ns	ns	ns	ns	ns	ns	23.7	ns	ns
Woollahra		ns	ns	ns	ns		ns		ns	-33.1	ns	ns	ns
Yass Valley		ns	ns							ns		ns	75.0
<b>NSW</b>	<b>ns</b>	<b>ns</b>	<b>ns</b>	<b>ns</b>	<b>ns</b>	<b>ns</b>	<b>ns</b>	<b>ns</b>	<b>17.0</b>	<b>ns</b>	<b>23.7</b>	<b>ns</b>	<b>ns</b>

## NSW Recorded Crime Statistics, December Quarter 2022

### Appendix Table 1.2:

#### Ratio to NSW rate of recorded criminal incidents per 100,000 population for major offences, NSW LGAs

12 months to December 2022

NSW LGA	Murder	Domestic violence related assault	Non-domestic violence related assault	Sexual assault	Sexual touching, sexual act and other sexual offences	Robbery	Break and enter dwelling	Break and enter non-dwelling	Motor vehicle theft	Steal from motor vehicle	Steal from retail store	Other stealing offences	Malicious damage to property
Albury	2.6	1.8	2.0	1.5	1.5	1.3	2.0	3.0	2.2	3.9	1.5	1.7	2.2
Armidale Regional		1.7	1.8	1.6	1.6	2.0	2.9	2.4	1.2	1.8	1.5	1.5	2.1
Ballina	3.1	0.8	0.9	0.8	0.6	1.2	0.8	1.0	1.0	1.0	0.5	1.0	0.9
Balranald													
Bathurst Regional	3.2	1.7	1.4	1.2	1.6	1.6	1.5	1.5	1.3	1.2	1.2	1.2	1.6
Bayside		0.9	0.6	0.5	0.5	0.6	0.5	0.4	0.6	0.6	1.1	0.9	0.7
Bega Valley		0.7	0.7	0.8	1.2	0.3	0.4	0.8	0.4	0.4	0.5	0.7	0.9
Bellingen		0.8	1.0	1.6	1.5		0.9	2.3	1.0	1.0	0.3	1.1	1.2
Berrigan		1.3	0.9	1.7	1.3	1.0	0.9	3.3	0.9	0.8	0.2	1.1	1.7
Blacktown	1.1	1.3	1.1	0.9	1.1	1.8	1.0	0.7	1.1	1.2	1.3	1.0	1.2
Bland		1.0	1.1	0.7	1.3		0.7	3.9	1.7	0.9	0.1	1.0	1.0
Blayney		1.0	0.4	0.7	0.9	0.6	0.9	2.7	0.9	0.6	0.3	1.0	1.1
Blue Mountains	1.8	0.7	0.7	1.1	0.8	0.3	0.6	0.6	0.4	0.5	0.4	0.6	1.1
Bogan													
Bourke													
Brewarrina													
Broken Hill		3.6	2.4	1.0	2.1	0.5	3.4	2.4	1.8	1.3	1.2	1.8	3.0
Burwood		0.6	0.9	0.6	0.7	1.9	1.0	1.0	0.5	0.7	2.6	1.4	0.7
Byron		0.8	1.6	1.4	1.3	0.1	0.6	1.6	1.4	1.0	0.5	1.3	1.2
Cabonne		0.8	0.3	0.8	0.9		0.8	1.5	1.1	0.4	0.3	0.7	0.7
Camden		0.7	0.5	0.5	0.7	0.4	0.3	0.4	0.5	0.6	0.5	0.5	0.5
Campbelltown	1.6	1.4	1.1	1.2	1.3	1.4	0.8	0.5	1.0	1.1	1.5	0.9	1.1
Canada Bay	1.5	0.3	0.4	0.4	0.5	0.4	0.7	0.5	0.6	0.6	0.4	0.7	0.4
Canterbury-Bankstown	2.2	0.9	0.7	0.6	0.6	1.0	0.6	0.6	0.9	0.8	0.5	0.6	0.6
Carrathool													
Central Coast	2.4	1.2	1.2	1.2	1.2	1.0	0.7	0.8	0.8	1.0	1.0	0.8	1.1
Central Darling													
Cessnock	2.3	1.3	1.3	1.8	1.2	1.2	1.4	1.7	3.1	1.8	1.1	1.8	1.6
Clarence Valley		1.3	1.2	1.1	1.2	1.3	1.5	2.1	1.8	1.4	0.9	1.7	1.3
Cobar		1.6	1.3	1.4	2.0		1.3	4.5	2.9	1.2	0.6	1.9	2.4
Coffs Harbour		1.9	1.8	1.5	1.4	1.6	1.6	1.7	2.0	1.8	1.3	1.5	1.7
Coolamon		0.6	0.2	1.2	1.0		0.9	1.0	0.8	0.1		0.6	0.9
Coonamble		3.7	2.8	1.9	3.4	1.1	11.0	10.5	3.1	2.9	0.7	3.0	4.4
Cootamundra-Gundagai		1.2	1.1	1.4	1.4	0.4	0.8	1.6	1.1	0.5	0.3	1.1	0.8
Cowra		1.9	1.6	0.7	1.8	1.4	3.6	2.6	2.0	0.7	1.1	1.4	1.6
Cumberland	1.7	0.9	0.8	0.7	0.6	1.1	1.0	0.8	1.0	1.1	0.6	0.8	0.7
Dubbo Regional		3.0	2.1	1.7	2.0	1.9	4.5	5.4	3.6	3.3	2.2	1.9	2.6
Dungog		1.0	0.4	1.1	1.0		0.3	0.3	1.2	0.7	0.1	1.2	1.0
Edward River		2.1	1.5	0.6	1.7	0.5	1.5	1.1	0.6	0.8	0.3	1.2	1.8
Eurobodalla		1.4	1.2	0.9	1.3	0.9	1.0	2.3	0.9	0.8	1.8	1.0	1.4
Fairfield	0.7	1.1	0.7	0.6	0.7	1.2	0.6	0.4	0.8	0.8	0.7	0.6	0.7
Federation	11.2	0.8	0.8	0.5	0.7		0.6	1.1	0.8	0.6	0.5	1.1	0.8

## NSW Recorded Crime Statistics, December Quarter 2022

NSW LGA	Murder	Domestic violence related assault	Non-domestic violence related assault	Sexual assault	Sexual touching, sexual act and other sexual offences	Robbery	Break and enter dwelling	Break and enter non-dwelling	Motor vehicle theft	Steal from motor vehicle	Steal from retail store	Other stealing offences	Malicious damage to property
Forbes		1.4	1.4	0.8	1.4	0.9	3.2	2.9	1.8	3.1	0.8	1.4	2.0
Georges River		0.7	0.5	0.4	0.5	0.7	0.5	0.4	0.5	0.5	0.7	0.5	0.5
Gilgandra		2.0	1.6	3.5	1.6	2.1	2.1	4.4	1.3	1.1	0.3	1.4	2.2
Glen Innes Severn		1.7	1.6	2.3	1.7	1.0	2.7	3.1	1.6	1.3	1.4	2.0	2.8
Goulburn Mulwaree		1.3	1.2	1.1	1.7	0.4	1.0	1.5	0.8	0.7	1.5	1.7	1.2
Greater Hume Shire		0.9	0.6	1.6	0.8		0.4	1.3	0.9	0.6	0.2	0.8	0.6
Griffith		1.6	1.2	1.5	1.8	1.6	1.9	2.5	1.7	1.6	1.6	1.2	1.6
Gunnedah		2.1	1.4	1.5	1.6	0.4	4.7	2.2	4.0	1.6	0.8	1.5	2.0
Gwydir		0.6	0.6	0.8	1.5		0.8	2.1	0.8	0.6	0.1	1.1	0.5
Hawkesbury		1.0	0.8	1.1	1.1	0.5	0.6	0.3	0.8	0.5	0.6	0.6	0.8
Hay													
Hilltops		1.6	1.4	1.1	1.2	1.0	0.9	1.2	1.2	0.8	0.6	0.9	1.4
Hornsby	0.9	0.4	0.3	0.4	0.4	0.5	0.3	0.3	0.2	0.3	0.7	0.4	0.4
Hunters Hill		0.3	0.3	0.5	0.7		1.3	0.4	0.5	0.6	0.0	0.7	0.4
Inner West	2.8	0.6	0.7	0.8	0.8	0.9	0.6	0.7	0.7	0.7	0.8	1.0	0.8
Inverell		2.7	2.3	2.0	1.8	1.8	2.7	1.9	2.4	1.9	1.0	1.5	2.4
Junee		0.5	0.8	1.1	0.8	1.3	0.7	0.5	0.7	0.2	0.1	0.9	0.6
Kempsey	4.7	2.4	1.6	1.3	1.7	1.8	4.1	3.0	2.9	1.6	1.6	2.5	2.1
Kiama		0.3	0.3	0.6	0.6	0.9	0.3	0.7	0.6	0.9	0.1	0.4	0.4
Ku-ring-gai		0.2	0.1	0.4	0.3	0.2	0.5	0.2	0.2	0.3	0.1	0.3	0.3
Kyogle	16.0	0.9	0.7	1.0	0.6		1.4	2.5	1.6	0.7	0.5	0.8	0.8
Lachlan		2.2	1.9	1.6	2.4	2.9	5.9	11.8	4.9	2.0	0.4	2.2	3.0
Lake Macquarie		1.0	0.8	1.1	1.0	0.7	0.9	1.0	1.3	1.1	0.9	0.8	1.0
Lane Cove		0.4	0.3	0.3	0.4	0.2	0.9	0.5	0.4	0.5	0.4	0.7	0.4
Leeton		1.9	1.9	2.8	2.2	0.4	1.7	2.0	1.3	0.5	0.4	1.5	2.1
Lismore		1.2	1.6	1.5	1.6	1.7	1.6	2.9	2.1	1.5	0.4	1.2	1.3
Lithgow		1.7	1.6	1.4	1.6	1.7	1.4	1.3	1.1	1.2	0.7	2.1	1.6
Liverpool	0.6	1.1	0.9	0.7	1.0	1.3	1.0	0.6	1.0	1.2	1.0	0.9	0.9
Liverpool Plains		1.8	1.2	1.9	0.8	3.4	1.8	3.4	1.3	0.8	0.1	1.0	1.5
Lockhart		0.4	0.5	0.6	1.4	1.4	1.2		2.0	0.5		0.8	0.8
Lord Howe Island													
Maitland		1.7	1.3	1.8	1.5	1.3	1.1	1.2	1.5	1.6	1.4	1.4	1.4
Mid-Coast		1.4	1.2	1.3	1.6	0.8	2.0	2.6	1.4	1.2	0.9	1.8	1.5
Mid-Western Regional		1.6	1.2	1.8	1.3	0.5	0.7	0.7	0.9	0.3	0.6	0.9	1.4
Moree Plains	10.8	5.6	3.9	2.6	1.9	3.1	7.3	3.6	5.3	3.8	3.1	3.2	5.3
Mosman		0.2	0.3	0.3	0.6		0.5	0.2	0.4	0.5	0.3	0.6	0.4
Murray River		0.6	0.5	1.0	1.1		0.9	2.3	1.8	0.6	0.1	1.2	0.9
Murrumbidgee		1.4	0.8	0.5	1.1	2.3	1.3	1.7	1.7	0.2	0.1	1.0	1.1
Muswellbrook		2.0	1.9	2.3	1.5	0.5	2.2	2.6	2.0	1.7	0.9	2.8	2.0
Nambucca Valley		2.3	1.6	1.1	1.9	1.8	2.0	2.5	1.6	1.6	0.9	1.3	2.0
Narrabri		2.2	1.4	1.5	1.0	0.3	3.2	1.7	2.6	2.1	0.7	1.6	1.5
Narrandera		2.0	1.3	2.7	2.3	0.8	2.6	4.7	0.7	1.2	1.4	1.1	2.5
Narromine		2.3	1.6	2.1	3.6	1.4	2.2	6.0	2.4	2.2	0.1	1.6	1.7
Newcastle	3.4	1.1	1.7	1.4	1.1	2.4	2.2	2.3	2.3	2.8	1.7	1.8	1.7
North Sydney		0.3	0.5	0.4	0.6	0.4	0.5	0.5	0.3	0.5	0.6	0.7	0.4



NSW Recorded Crime Statistics, December Quarter 2022

NSW LGA	Murder	Domestic violence related assault	Non-domestic violence related assault	Sexual assault	Sexual touching, sexual act and other sexual offences	Robbery	Break and enter dwelling	Break and enter non-dwelling	Motor vehicle theft	Steal from motor vehicle	Steal from retail store	Other stealing offences	Malicious damage to property
Northern Beaches		0.2	0.5	0.5	0.6	0.5	0.4	0.2	0.4	0.4	0.7	0.5	0.5
Oberon		0.8	0.5	0.6	1.8		0.6	1.4	0.7	0.6	0.2	0.9	0.9
Orange		2.3	2.0	2.0	1.5	2.4	2.8	2.0	2.4	2.7	1.9	1.4	2.4
Parkes		2.0	1.7	1.6	2.0	0.9	1.5	2.0	1.5	1.3	1.1	2.0	2.0
Parramatta	1.1	0.8	0.8	0.7	0.9	1.2	1.2	0.7	0.9	1.1	1.2	1.2	0.6
Penrith	0.7	1.2	1.3	1.3	1.2	1.6	1.2	0.9	1.2	1.3	1.3	1.0	1.3
Port Macquarie-Hastings		1.1	1.0	1.0	1.3	0.5	0.9	0.7	0.9	0.7	0.6	1.0	1.2
Port Stephens		1.3	1.2	1.4	1.2	0.8	0.7	1.8	0.9	1.0	0.8	1.0	1.5
Queanbeyan-Palerang Regional		0.7	0.8	0.7	0.8	0.4	0.7	1.4	1.2	1.2	0.7	0.8	1.0
Randwick		0.5	0.8	0.6	0.7	0.6	0.6	0.2	0.6	0.7	0.5	0.9	0.6
Richmond Valley	12.0	1.7	1.5	1.7	1.7	1.3	3.5	2.4	2.9	1.5	0.6	1.5	2.2
Ryde		0.4	0.4	0.5	0.4	0.6	0.7	0.5	0.4	0.5	0.7	0.7	0.5
Shellharbour	3.8	0.8	0.7	1.0	1.3	0.4	0.7	0.4	0.9	1.0	1.2	0.8	1.0
Shoalhaven	3.9	1.1	1.0	1.2	1.2	0.9	0.9	1.5	0.9	0.6	0.8	0.8	1.3
Singleton		1.1	1.0	1.6	1.5	0.4	1.3	3.1	1.8	1.3	0.6	1.3	1.7
Snowy Monaro Regional		0.8	0.9	1.4	0.8		0.4	1.1	0.2	0.4	0.1	0.9	0.8
Snowy Valleys		1.4	1.2	1.6	0.8	0.9	0.7	1.8	0.7	0.5	0.3	1.1	1.2
Strathfield		0.7	0.6	0.6	0.5	0.7	1.3	0.7	0.7	1.1	1.1	1.1	0.5
Sutherland Shire		0.7	0.5	0.6	0.6	0.5	0.3	0.2	0.3	0.4	0.5	0.4	0.6
Sydney	1.7	1.2	2.8	1.3	1.9	2.5	0.9	1.4	0.7	0.9	3.4	3.4	1.4
Tamworth Regional		1.7	1.6	1.6	1.3	1.8	4.0	1.7	2.4	1.9	1.4	1.2	2.2
Temora		0.5	0.8	2.0	0.5	0.7	1.5	2.3	1.4	0.6	0.8	1.0	0.9
Tenterfield		1.7	1.2	2.1	1.7		1.7	1.7	1.2	0.7	0.6	1.2	1.7
The Hills Shire		0.4	0.3	0.5	0.6	0.5	0.5	0.5	0.4	0.5	0.6	0.6	0.5
Tweed	1.4	1.0	0.9	0.7	0.7	1.1	1.0	1.1	1.4	1.1	0.5	1.0	0.9
Unincorporated Far West													
Upper Hunter Shire		1.1	1.0	1.3	1.0	0.3	1.3	1.4	0.8	0.8	0.3	0.9	0.9
Upper Lachlan Shire		0.4	0.4	0.9	0.8	0.5	0.5	0.4	0.7	0.3		0.7	0.6
Uralla		0.8	0.6	0.4	1.1	0.8	0.7	0.9	0.7	0.4	0.1	0.8	0.8
Wagga Wagga	2.1	1.9	1.7	1.5	1.1	0.7	3.0	1.6	2.2	2.7	2.0	1.5	1.9
Walcha		1.4	1.8	3.0	1.4		1.0	2.1		0.4	0.5	0.6	1.2
Walgett		6.9	3.2	2.7	3.6	1.5	3.1	6.1	3.2	2.2	1.2	2.1	3.7
Warren													
Warrumbungle Shire		2.2	1.4	2.2	1.7		2.2	2.6	1.2	1.5	1.0	2.0	1.3
Waverley	1.9	0.6	1.0	0.8	1.1	0.7	0.5	0.4	0.9	0.4	3.5	1.1	0.7
Weddin		0.5	0.4	0.3	0.3		0.4		0.6	0.6	0.2	0.8	0.8
Wentworth		2.7	1.5	0.7	1.2		0.9	4.8	1.7	1.0	0.2	1.3	2.8
Willoughby		0.3	0.4	0.5	0.9	0.6	0.7	0.6	0.3	0.5	2.0	0.7	0.4
Wingecarribee		0.5	0.5	1.3	1.5	0.3	0.3	0.2	0.4	0.3	0.2	0.4	0.7
Wollondilly		0.7	0.4	0.5	0.7	0.4	0.4	0.1	0.4	0.3	0.1	0.4	0.6
Wollongong	0.6	0.7	0.9	1.1	0.9	1.0	1.0	0.9	1.0	1.4	1.4	0.9	1.0
Woollahra		0.5	0.6	0.7	0.7	0.2	0.7	0.3	0.8	0.4	0.4	0.7	0.4
Yass Valley		0.7	0.4	0.7	0.7		0.2	0.9	1.1	0.4	0.1	0.5	0.8
<b>NSW</b>	<b>1.0</b>	<b>1.0</b>	<b>1.0</b>	<b>1.0</b>	<b>1.0</b>	<b>1.0</b>	<b>1.0</b>	<b>1.0</b>	<b>1.0</b>	<b>1.0</b>	<b>1.0</b>	<b>1.0</b>	<b>1.0</b>

## NSW Recorded Crime Statistics, December Quarter 2022

Appendix  
Table 1.3: Number of recorded criminal incidents for major offences, NSW LGAs

12 months to December 2022

NSW LGA	Murder	Domestic violence related assault	Non-domestic violence related assault	Sexual assault	Sexual touching, sexual act and other sexual offences	Robbery	Break and enter dwelling	Break and enter non-dwelling	Motor vehicle theft	Steal from motor vehicle	Steal from retail store	Other stealing offences	Malicious damage to property
Albury	1	403	415	78	76	16	258	147	186	707	232	396	717
Armidale Regional	0	201	198	45	43	13	196	65	55	178	124	187	367
Ballina	1	143	161	35	25	12	79	42	71	144	62	197	254
Balranald	0	9	7	2	2	0	9	2	8	8	0	9	17
Bathurst Regional	1	312	227	52	64	16	151	58	83	175	141	230	412
Bayside	0	676	417	85	85	25	202	59	168	359	521	733	703
Bega Valley	0	101	88	26	37	2	31	24	20	49	49	102	181
Bellingen	0	41	50	20	18	0	26	27	20	43	9	60	90
Berrigan	0	47	31	14	10	2	19	26	12	22	4	42	88
Blacktown	3	2,061	1,558	339	387	154	868	249	642	1,570	1,361	1,729	2,648
Bland	0	24	24	4	7	0	9	21	15	17	1	25	34
Blayney	0	29	12	5	6	1	16	18	10	15	7	31	46
Blue Mountains	1	242	200	85	56	6	106	45	51	144	86	207	529
Bogan	0	32	8	4	2	2	13	34	14	30	5	31	48
Bourke	0	122	72	22	8	4	64	78	33	93	30	72	175
Brewarrina	0	54	38	7	1	2	25	18	8	13	2	14	60
Broken Hill	0	254	155	16	33	2	133	37	46	74	55	131	305
Burwood	0	93	136	24	25	17	96	38	32	99	293	251	164
Byron	0	120	218	49	43	1	49	51	74	120	47	199	254
Cabonne	0	42	15	11	11	0	26	18	22	17	11	40	59
Camden	0	316	208	54	68	10	85	42	73	227	158	220	332
Campbelltown	2	1,016	694	195	201	56	323	85	264	619	701	645	1,129
Canada Bay	1	131	133	35	45	8	149	45	83	189	118	276	252
Canterbury-Bankstown	6	1,348	972	224	219	85	536	208	510	1,050	492	943	1,433
Carrathool	0	18	10	6	0	0	8	25	10	3	2	10	35
Central Coast	6	1,671	1,551	403	373	76	566	247	434	1,122	964	1,140	2,254
Central Darling	0	76	22	5	4	2	14	18	3	5	0	17	32
Cessnock	1	323	294	103	66	16	191	93	283	371	186	465	582
Clarence Valley	0	273	231	54	57	15	177	100	141	241	124	385	396
Cobar	0	29	22	6	8	0	13	18	19	17	7	37	64
Coffs Harbour	0	595	517	114	97	28	278	118	236	454	284	499	796
Coolamon	0	11	4	5	4	0	9	4	5	2	0	11	23
Coonamble	0	59	41	7	12	1	98	37	18	37	7	50	101
Cootamundra-Gundagai	0	57	45	15	14	1	20	16	19	20	9	55	53
Cowra	0	97	76	9	21	4	104	30	39	31	37	77	122
Cumberland	3	941	730	152	141	58	562	165	377	863	401	809	963
Dubbo Regional	0	669	436	86	99	23	555	265	293	590	320	448	839
Dungog	0	39	15	10	9	0	7	3	18	22	3	51	58
Edward River	0	77	50	5	14	1	31	9	8	23	7	48	98
Eurobodalla	0	225	172	35	47	8	89	80	55	106	186	171	325
Fairfield	1	909	527	116	143	58	274	71	243	555	417	577	899
Federation	1	43	37	6	8	0	16	13	15	27	18	59	58

## NSW Recorded Crime Statistics, December Quarter 2022

NSW LGA	Murder	Domestic violence related assault	Non-domestic violence related assault	Sexual assault	Sexual touching, sexual act and other sexual offences	Robbery	Break and enter dwelling	Break and enter non-dwelling	Motor vehicle theft	Steal from motor vehicle	Steal from retail store	Other stealing offences	Malicious damage to property
Forbes	0	58	52	8	13	2	72	26	27	103	22	62	120
Georges River	0	443	290	60	77	25	190	52	118	284	307	343	482
Gilgandra	0	35	25	14	6	2	20	17	8	15	4	26	55
Glen Innes Severn	0	62	52	19	14	2	54	25	22	38	33	76	146
Goulburn Mulwaree	0	164	143	32	50	3	69	43	36	75	126	238	225
Greater Hume Shire	0	41	23	17	8	0	9	13	15	23	7	39	36
Griffith	0	177	120	40	44	10	121	61	71	140	115	143	263
Gunnedah	0	110	66	18	19	1	138	25	77	68	27	81	148
Gwydir	0	13	12	4	7	0	10	10	6	11	1	25	17
Hawkesbury	0	286	193	70	70	8	89	21	86	112	119	174	307
Hay	0	19	21	8	4	0	22	11	5	6	3	19	31
Hilltops	0	125	95	20	20	4	37	21	33	49	30	71	154
Hornsby	1	222	190	62	62	17	104	46	52	173	300	238	357
Hunters Hill	0	17	18	7	10	0	44	6	12	32	2	44	37
Inner West	4	472	561	148	150	41	295	133	200	494	447	866	913
Inverell	0	200	154	33	29	7	109	31	63	110	49	118	257
Junee	0	13	19	7	5	2	10	3	7	4	1	26	25
Kempsey	1	295	175	37	45	12	281	80	131	163	128	327	372
Kiama	0	29	28	13	13	5	16	14	20	71	6	43	60
Ku-ring-gai	0	126	68	51	29	6	133	28	40	129	35	154	195
Kyogle	1	32	23	8	5	0	29	20	21	19	11	30	41
Lachlan	0	54	43	9	13	4	82	65	45	40	6	59	108
Lake Macquarie	0	812	649	226	196	31	417	188	410	750	504	725	1,265
Lane Cove	0	67	41	11	16	2	83	19	27	64	43	126	85
Leeton	0	88	81	30	23	1	45	21	23	19	13	74	141
Lismore	0	210	257	64	65	17	159	116	140	211	52	223	335
Lithgow	0	152	127	29	31	8	68	25	35	84	40	195	207
Liverpool	1	1,034	806	160	202	66	515	130	362	901	604	887	1,215
Liverpool Plains	0	59	35	14	6	6	32	24	15	22	2	34	69
Lockhart	0	5	6	2	4	1	9	0	10	5	0	11	15
Lord Howe Island	0	1	1	0	1	0	1	0	0	0	0	4	5
Maitland	0	610	416	148	116	26	222	96	200	471	322	529	709
Mid-Coast	0	540	427	120	134	16	434	221	203	364	232	751	850
Mid-Western Regional	0	162	110	44	30	3	41	15	35	29	38	95	209
Moree Plains	1	301	192	32	23	9	218	43	104	164	110	180	409
Mosman	0	26	40	10	18	0	38	5	17	52	28	75	77
Murray River	0	29	22	12	12	0	26	26	33	24	3	66	67
Murrumbidgee	0	22	12	2	4	2	12	6	10	3	1	17	26
Muswellbrook	0	132	119	35	23	2	84	39	49	92	38	200	194
Nambucca Valley	0	189	119	21	34	8	90	45	49	103	51	108	236
Narrabri	0	117	70	18	12	1	96	20	51	91	24	92	119
Narrandera	0	47	28	15	12	1	35	25	6	24	22	29	86
Narromine	0	62	39	13	21	2	33	35	23	47	1	45	66
Newcastle	4	778	1,052	219	167	91	850	341	578	1,584	786	1,272	1,709
North Sydney	0	81	136	27	40	6	86	33	37	132	115	214	190

## NSW Recorded Crime Statistics, December Quarter 2022

NSW LGA	Murder	Domestic violence related assault	Non-domestic violence related assault	Sexual assault	Sexual touching, sexual act and other sexual offences	Robbery	Break and enter dwelling	Break and enter non-dwelling	Motor vehicle theft	Steal from motor vehicle	Steal from retail store	Other stealing offences	Malicious damage to property
Northern Beaches	0	267	464	130	141	28	225	57	161	391	506	576	814
Oberon	0	18	11	3	9	0	8	7	6	10	3	21	28
Orange	0	402	313	82	59	23	268	78	152	377	217	259	605
Parkes	0	123	94	23	27	3	49	27	34	63	43	125	176
Parramatta	2	800	817	170	212	72	686	171	367	910	838	1,372	983
Penrith	1	1,077	1,038	264	240	76	588	172	393	940	789	927	1,606
Port Macquarie-Hastings	0	382	311	80	98	10	168	58	117	212	143	374	612
Port Stephens	0	394	341	99	78	14	122	123	106	254	158	314	647
Queanbeyan-Palerang Regional	0	184	190	40	44	6	103	81	110	242	111	227	359
Randwick	0	336	499	94	97	21	207	25	130	361	219	602	548
Richmond Valley	2	161	134	38	36	7	186	50	104	117	40	150	310
Ryde	0	210	225	57	48	17	221	63	87	219	266	375	375
Shellharbour	2	257	207	73	87	7	118	26	103	258	251	243	439
Shoalhaven	3	466	403	124	114	22	228	141	137	230	242	370	818
Singleton	0	104	89	36	31	2	72	66	62	98	40	128	235
Snowy Monaro Regional	0	65	68	28	15	0	17	21	7	29	6	84	94
Snowy Valleys	0	84	65	22	10	3	22	24	16	25	12	68	100
Strathfield	0	133	101	28	22	7	139	29	51	178	140	232	150
Sutherland Shire	0	677	434	142	129	28	180	51	111	292	344	420	859
Sydney	3	1,197	2,598	314	435	137	521	316	250	782	2,312	3,649	2,116
Tamworth Regional	0	446	371	97	72	25	573	98	225	394	231	336	806
Temora	0	13	19	12	3	1	21	13	13	12	14	28	35
Tenterfield	0	45	29	13	10	0	25	10	12	14	10	34	67
The Hills Shire	0	325	238	79	99	19	208	91	117	275	317	448	562
Tweed	1	417	338	62	64	25	231	99	202	360	129	434	550
Unincorporated Far West	0	3	5	5	5	0	4	3	0	5	1	6	7
Upper Hunter Shire	0	65	54	18	13	1	41	18	18	37	11	54	74
Upper Lachlan Shire	0	15	12	7	6	1	10	3	9	9	0	24	31
Uralla	0	20	13	2	6	1	9	5	6	8	2	21	27
Wagga Wagga	1	502	411	91	63	11	451	93	215	584	354	429	750
Walcha	0	18	21	9	4	0	7	6	0	4	4	8	22
Walgett	0	164	71	15	19	2	41	32	28	42	19	53	129
Warren	0	36	17	3	3	0	29	9	21	40	6	39	44
Warrumbungle Shire	0	84	50	19	14	0	47	22	16	47	26	78	71
Waverley	1	169	285	57	77	12	78	29	100	111	712	340	296
Weddin	0	7	6	1	1	0	3	0	3	7	2	12	18
Wentworth	0	78	39	5	8	0	15	31	18	24	3	39	116
Willoughby	0	106	127	38	63	11	121	43	40	133	449	232	214
Wingecarribee	0	111	105	65	71	3	31	11	28	53	28	96	228
Wollondilly	0	165	81	25	35	5	44	6	34	52	19	104	176
Wollongong	1	667	776	222	178	47	480	178	341	988	867	890	1,350
Woollahra	0	116	137	41	37	2	96	17	67	83	64	185	157
Yass Valley	0	51	26	12	11	0	7	14	29	21	3	36	77
In Custody	0	4	1,061	514	152	4	0	0	0	2	0	7	84
<b>NSW</b>	<b>58</b>	<b>33,410</b>	<b>30,667</b>	<b>7,764</b>	<b>7,418</b>	<b>1,828</b>	<b>18,709</b>	<b>7,390</b>	<b>12,274</b>	<b>27,139</b>	<b>22,240</b>	<b>35,282</b>	<b>48,393</b>

## NSW Recorded Crime Statistics, December Quarter 2022

Appendix  
Table 1.4: Number of recorded criminal incidents for major offences, NSW LGAs

12 months to December 2021

NSW LGA	Murder	Domestic violence related assault	Non-domestic violence related assault	Sexual assault	Sexual touching, sexual act and other sexual offences	Robbery	Break and enter dwelling	Break and enter non-dwelling	Motor vehicle theft	Steal from motor vehicle	Steal from retail store	Other stealing offences	Malicious damage to property
Albury	1	405	339	66	75	24	235	70	133	562	255	399	713
Armidale Regional	0	237	200	70	52	7	189	80	47	218	127	241	379
Ballina	0	149	127	58	41	12	84	33	59	199	92	270	250
Balranald	0	7	6	0	1	0	11	2	1	5	0	16	13
Bathurst Regional	0	335	280	66	83	15	144	46	52	284	114	248	512
Bayside	0	625	387	80	85	24	217	58	146	387	257	655	751
Bega Valley	0	125	109	27	33	2	36	57	28	52	31	115	178
Bellingen	0	50	54	22	26	2	22	21	21	24	8	56	151
Berrigan	0	23	36	5	9	0	19	28	11	17	9	27	64
Blacktown	4	2,140	1,592	348	365	181	768	220	564	1,575	1,032	1,695	2,735
Bland	0	41	26	7	6	0	11	9	12	17	4	24	34
Blayney	0	29	27	12	9	1	26	11	10	8	10	28	50
Blue Mountains	0	210	172	83	86	4	74	39	33	165	88	201	476
Bogan	0	17	11	4	6	1	14	15	10	15	5	35	38
Bourke	1	121	52	15	11	2	66	59	14	44	27	76	178
Brewarrina	0	66	25	5	4	0	19	11	3	13	0	22	50
Broken Hill	0	231	154	13	26	8	164	43	30	99	41	146	300
Burwood	0	94	107	14	29	8	54	34	27	85	280	188	147
Byron	0	128	199	43	39	7	54	47	84	128	54	223	309
Cabonne	0	32	30	10	11	0	22	25	15	24	4	45	50
Camden	1	332	147	53	81	7	69	33	94	241	120	231	344
Campbelltown	2	943	608	177	203	56	347	140	252	724	516	716	1,348
Canada Bay	0	131	126	48	38	7	107	38	73	216	121	294	263
Canterbury-Bankstown	2	1,364	789	184	221	85	498	125	407	1,146	444	919	1,392
Carrathool	1	21	14	6	3	0	5	8	6	7	1	21	21
Central Coast	2	1,455	1,371	406	385	61	602	227	407	1,121	828	1,164	2,489
Central Darling	0	114	19	6	6	0	19	25	10	10	0	23	64
Cessnock	0	302	274	79	104	10	160	97	212	262	97	475	526
Clarence Valley	0	202	225	51	54	5	155	72	83	193	75	393	414
Cobar	0	21	23	3	4	0	12	15	7	16	13	40	66
Coffs Harbour	0	517	500	154	129	35	224	214	168	340	196	444	692
Coolamon	0	10	4	7	3	0	2	7	2	1	0	16	12
Coonamble	0	96	53	10	8	2	52	17	13	29	8	63	130
Cootamundra-Gundagai	0	47	38	9	26	0	17	14	14	15	9	59	73
Cowra	0	80	64	20	29	4	135	29	50	61	31	92	137
Cumberland	4	878	656	125	139	72	499	88	327	795	289	775	975
Dubbo Regional	2	609	404	99	86	24	534	186	227	526	216	505	772
Dungog	0	28	27	8	7	1	13	6	6	15	3	41	45
Edward River	1	63	46	11	5	0	26	8	9	18	12	63	123
Eurobodalla	0	222	174	42	41	15	113	70	54	132	99	179	396
Fairfield	1	798	490	82	148	49	258	80	201	600	294	584	813
Federation	0	29	44	9	6	0	25	21	22	34	24	82	61
Forbes	1	74	97	18	10	1	83	22	44	71	24	98	160

## NSW Recorded Crime Statistics, December Quarter 2022

NSW LGA	Murder	Domestic violence related assault	Non-domestic violence related assault	Sexual assault	Sexual touching, sexual act and other sexual offences	Robbery	Break and enter dwelling	Break and enter non-dwelling	Motor vehicle theft	Steal from motor vehicle	Steal from retail store	Other stealing offences	Malicious damage to property
Georges River	1	432	308	56	87	17	193	57	116	287	194	343	443
Gilgandra	0	48	20	4	11	2	27	7	6	13	7	32	45
Glen Innes Severn	0	65	55	16	22	0	61	32	12	26	36	89	111
Goulburn Mulwaree	0	115	117	46	34	6	67	21	41	83	75	183	236
Greater Hume Shire	0	33	16	8	16	0	27	10	20	24	3	40	53
Griffith	0	191	120	30	38	6	114	73	72	124	79	179	265
Gunnedah	0	90	89	19	23	2	108	28	41	106	26	100	178
Gwydir	0	11	18	10	7	1	8	5	8	10	0	22	18
Hawkesbury	0	247	207	44	60	7	84	40	69	98	123	165	310
Hay	0	25	22	4	5	0	12	4	4	4	0	24	29
Hilltops	0	109	73	19	20	1	30	16	23	22	14	62	161
Hornsby	0	243	163	76	74	13	101	29	42	155	299	221	380
Hunters Hill	0	17	18	10	11	0	24	7	11	27	5	36	47
Inner West	1	456	515	128	139	43	247	88	157	534	488	769	918
Inverell	1	194	105	34	32	2	88	50	39	86	96	115	202
Junee	0	36	25	13	13	1	10	4	6	3	8	24	40
Kempsey	1	259	178	64	50	14	329	43	139	194	69	352	419
Kiama	0	38	35	17	14	0	35	30	16	71	10	54	87
Ku-ring-gai	0	147	71	48	55	10	181	39	56	159	62	164	231
Kyogle	0	32	35	10	7	0	17	15	17	15	2	29	50
Lachlan	0	37	39	9	9	0	35	55	33	30	9	61	88
Lake Macquarie	2	816	702	257	207	47	394	286	388	753	546	859	1,357
Lane Cove	0	35	35	18	8	0	59	8	34	90	31	109	84
Leeton	0	100	51	21	23	3	50	9	17	24	7	52	95
Lismore	0	278	332	73	66	21	145	64	108	227	85	244	509
Lithgow	0	149	113	38	36	2	46	10	21	83	54	182	188
Liverpool	0	1,107	650	160	207	72	455	121	328	867	380	862	1,180
Liverpool Plains	0	48	42	14	9	0	8	8	7	11	10	40	65
Lockhart	0	9	9	5	2	0	2	7	4	3	0	14	21
Lord Howe Island	0	18	1	0	0	0	0	1	1	1	0	1	10
Maitland	1	450	334	135	100	24	236	100	143	367	308	601	761
Mid-Coast	1	548	420	134	155	18	470	337	181	331	195	858	879
Mid-Western Regional	0	161	120	50	56	1	53	23	18	31	32	107	189
Moree Plains	0	248	192	25	26	11	233	81	80	179	104	165	438
Mosman	0	25	28	19	17	1	47	8	20	102	20	89	79
Murray River	0	38	34	21	8	0	15	35	31	36	11	87	81
Murrumbidgee	0	9	10	8	7	0	15	3	5	5	4	16	34
Muswellbrook	0	129	121	29	31	3	82	52	39	133	42	190	221
Nambucca Valley	0	183	110	33	38	1	101	46	47	113	30	139	257
Narrabri	0	116	60	16	9	2	92	18	36	62	11	79	125
Narrandera	0	51	35	10	8	2	36	17	6	15	15	37	69
Narromine	0	83	68	12	11	3	41	26	12	37	16	64	65
Newcastle	5	673	1,065	228	185	89	779	265	489	1,479	708	1,325	1,857
North Sydney	0	85	110	35	27	5	89	31	31	152	95	271	263
Northern Beaches	1	296	500	155	148	32	229	115	179	629	487	737	925
Oberon	2	13	14	9	8	0	4	3	2	0	0	27	25

## NSW Recorded Crime Statistics, December Quarter 2022

NSW LGA	Murder	Domestic violence related assault	Non-domestic violence related assault	Sexual assault	Sexual touching, sexual act and other sexual offences	Robbery	Break and enter dwelling	Break and enter non-dwelling	Motor vehicle theft	Steal from motor vehicle	Steal from retail store	Other stealing offences	Malicious damage to property
Orange	0	318	282	78	91	22	285	93	113	282	117	287	557
Parkes	0	116	95	26	36	2	49	25	35	135	31	107	201
Parramatta	1	825	699	170	199	65	640	168	258	957	581	1,226	1,078
Penrith	0	1,118	943	218	250	70	579	198	376	1,114	726	1,004	1,627
Port Macquarie-Hastings	0	387	342	117	87	9	171	100	147	242	153	506	578
Port Stephens	1	352	273	106	100	4	159	79	91	219	98	345	510
Queanbeyan-Palerang Regional	0	184	166	60	57	7	137	42	105	333	114	288	312
Randwick	0	389	479	88	71	25	178	46	105	361	174	522	585
Richmond Valley	0	143	124	43	31	2	125	85	92	171	27	155	297
Ryde	0	284	197	50	75	14	131	60	47	235	246	401	359
Shellharbour	1	237	179	65	62	11	108	39	88	246	221	236	441
Shoalhaven	2	449	457	147	137	32	283	117	150	328	291	493	788
Singleton	0	90	80	32	22	1	75	90	43	147	50	144	197
Snowy Monaro Regional	1	60	58	24	20	1	29	18	14	28	7	81	158
Snowy Valleys	0	50	49	27	20	2	26	33	22	30	19	90	134
Strathfield	0	122	100	12	21	9	115	16	44	140	105	165	117
Sutherland Shire	0	674	449	97	109	19	253	70	131	447	271	568	865
Sydney	4	1,016	2,028	293	292	118	410	271	195	596	1,690	2,991	1,811
Tamworth Regional	0	406	383	93	95	18	594	74	185	582	151	351	782
Temora	0	16	11	15	5	0	20	7	6	13	13	31	42
Tenterfield	0	67	29	11	13	0	30	7	14	5	4	36	62
The Hills Shire	0	332	253	102	76	19	211	48	96	257	227	401	443
Tweed	0	361	295	83	89	13	181	97	158	343	114	420	615
Unincorporated Far West	0	1	3	11	18	0	4	0	4	7	5	11	4
Upper Hunter Shire	0	67	30	34	27	1	37	13	10	34	4	89	98
Upper Lachlan Shire	0	13	8	6	4	0	10	8	5	4	0	28	34
Uralla	0	21	15	6	3	0	7	7	7	5	2	11	34
Wagga Wagga	0	459	373	99	114	24	362	90	128	390	249	422	849
Walcha	0	15	5	5	3	0	7	11	1	7	1	13	40
Walgett	0	132	65	14	14	1	37	17	18	33	10	42	136
Warren	0	38	22	2	3	1	11	18	14	14	3	27	42
Warrumbungle Shire	1	52	46	13	8	1	34	18	10	23	10	63	90
Waverley	0	190	252	57	61	10	73	16	75	136	395	338	295
Weddin	0	15	3	8	0	0	6	5	1	3	2	9	21
Wentworth	0	75	43	7	10	0	20	31	21	21	2	44	97
Willoughby	0	93	126	28	49	10	88	32	45	158	392	260	223
Wingecarribee	0	123	95	60	50	3	35	20	23	53	41	115	211
Wollondilly	0	146	82	35	43	1	34	25	43	75	8	103	165
Wollongong	0	652	706	170	184	52	567	272	353	1,116	701	994	1,302
Woollahra	0	102	98	45	32	1	81	6	60	124	65	192	198
Yass Valley	1	35	29	9	6	1	9	5	15	23	6	42	44
In Custody	1	6	816	104	49	2	0	1	0	3	0	4	67
<b>NSW</b>	<b>52</b>	<b>32,125</b>	<b>28,299</b>	<b>7,395</b>	<b>7,488</b>	<b>1,765</b>	<b>17,874</b>	<b>7,155</b>	<b>10,491</b>	<b>27,735</b>	<b>17,980</b>	<b>35,861</b>	<b>49,291</b>

# APPENDIX 2

# EXPLANATORY NOTES



## Appendix 2.1: Explanatory Notes

### What are crime statistics?

BOCSAR's crime statistics consist of criminal incidents reported to, or detected by, police and recorded on the NSW Police Force's Computerised Operational Policing System (COPS). While this system is used for record-keeping for all police operations, not just for criminal matters, BOCSAR only reports on criminal incidents and selected policing activities. BOCSAR's crime statistics therefore do not capture crimes that are not recorded on COPS. The Australian Bureau of Statistics conducts regular crime and victim surveys which attempt to capture a snapshot of both reported and unreported crimes.

### How to interpret crime statistics

Recorded crime statistics for some offence categories do not accurately reflect the actual level of crime in the community. This is because the number of incidents recorded may be affected by extraneous factors which are not easily measured. In particular:

- > Public willingness to report crime - Many crimes which occur are not reported to police and will therefore not be recorded - for example, a large number of assaults, sexual assaults and robberies are not reported to police.
- > Shifts in policing policy - Recording of those offences which are detected by, rather than reported to police, are strongly affected by policing practices - examples of these are drug offences, drink driving offences, offensive behaviour and receiving stolen goods. Recorded rates for such offences do not accurately reflect actual rates.
- > High visitor populations compared to residential populations - Sydney Local Government Area has relatively high recorded crime rates because, compared with other regions, the resident population is small relative to the number of people in the area. In other words, the area has a high user population which is not reflected in the denominator of the rate calculation.
- > Areas with small residential populations - Recorded crime rates in Local Government Areas with small population sizes are not always a good indicator of offending. Crime rates in areas with populations under 3,000 may be unreliable and should be interpreted with

### What offences are included?

BOCSAR's standard quarterly publications report on 13 major offence categories, which include serious personal violence and property offences. In addition to these offences, we also release data for 62 specific offence categories.

From the September Quarter 2021 report, the offence category previously labelled 'indecent sexual assault, act of indecency and other sexual offences' is labelled 'sexual touching, sexual act and other sexual offences'.

Commencing March 2020, the NSW Government issued public health orders under the NSW Public Health Act 2010 (NSW) to limit the spread of COVID-19. Police can issue a fine or court attendance notice for failure to comply with the orders. Breaches of these orders are counted as "other offences" in this report.

### **What is being counted?**

> Incidents - When a crime is reported to, or detected by, the NSW Police they record it as a criminal event on COPS. The event date is the date that the crime was reported. Unless otherwise stated, the date BOCSAR attaches to a crime is the event date. One criminal event can contain multiple criminal incidents. BOCSAR's default counting unit for crime data is criminal incidents with the exception of murder and manslaughter. Criminal incidents are activities detected by or reported to police which involve the same offender(s) and victim(s); occur at the one location during one uninterrupted period of time; fall into one offence category and one incident type. For murder and manslaughter only, the counting units used are victims.

> Alleged offenders - BOCSAR also reports on alleged offenders or 'Persons of Interest' (POIs) who have had a legal proceeding commenced against them by the NSW Police Force. Within the police recorded crime data POIs may not have been convicted in court, however they have been proceeded against in some way or another by the police. There could be quite some time between an event being recorded by police, an investigation being completed and an alleged offender (i.e. a POI) being charged. Consequently, POIs are counted in the time period they were proceeded against, rather than the time period the event /incident was reported to or recorded by police.

> Legal proceedings against alleged offenders presented in Tables 3.1 and 3.2 include persons proceeded against to court and persons diverted from court (by way of criminal infringement notice, cannabis or other drug caution and diversions under the Young Offenders Act 1997, including Youth Justice Conference, Caution and Warning). Young people proceeded against by way of a Warning for Transport and regulatory offences have been excluded from table 3.2 as Warnings are not a diversion for these offences.

> Young people proceeded against by way of a Warning under the Young Offenders Act 1997 for Transport and regulatory offences have been excluded from table 3.2 as Warnings are not a diversion for these offences.

> Proceeded against to court (breach of bail) in Tables 3.1 and 3.2 includes persons with breach of bail as the only matter on the criminal event recorded by the NSW Police Force. Breaching bail is not a criminal offence by it can lead to being brought to court by police for the court to reconsider bail.

> Infringement Notices (fines) are not included in this report but have been included in past reports as they are not a form of court diversion.

### **What are crime trends and how are they calculated?**

In general, BOCSAR relies upon the Kendall Rank Order Correlation statistical test (or Kendall's tau-b) to determine whether a series is trending upwards, downwards or is stable ( $p < .05$ ). In some tables a stable trend is represented by 'ns' (not significant). The statistical test is applied to the monthly data over the specified period. Where a significant trend is found, the average annual percentage change over the time period is reported. If any of the 12-monthly totals in the series have a value of less than 20, a trend test is not conducted. When this occurs, the relevant cell will be left blank or contain 'n.c.' (not calculated). For murder and manslaughter incidents, the trend test is applied to the monthly number of recorded victims rather than criminal incidents.

### **How is the ratio to NSW calculated?**

The ratio to NSW rate statistics are a comparison of a NSW regional rate per 100,000 population to the NSW rate per 100,000 population. A ratio of one indicates parity with the NSW rate. Ratios indicating double the NSW rate (or more) before rounding are highlighted in red, whilst ratios indicating half the NSW rate (or less) before rounding are highlighted in green. Ratios are not calculated for regions with a population of less than 3,000.

### **How are 'young people' and 'adults' defined?**

The term 'young people' refers to persons aged 10-17 years at the time of the offence; 'adults' refers to persons aged 18 years and older at the time of the offence.

### **Regional Statistics**

Statistics are provided on the number of criminal incidents (victims for murder) recorded for each of the Statistical Areas Level 4 (SA4s) of NSW as defined by the Australian Bureau of Statistics (ABS). Recorded criminal incidents which occurred in correctional, detention or remand centres, however, are not counted in the SA in which the incident occurred. Note that LGA boundaries change from time to time. A criminal incident is counted within a particular region when the location of the offence falls within that region.

### **What is included in 'selected policing activities'?**

- > Bail compliance checks - checks conducted by police to assess if bail conditions are being complied with.
- > ADVO compliance checks - checks conducted by police to assess if ADVO conditions are being complied. These checks can also include checking on the person in need of protection and taking the necessary action if a breach is detected.
- > Move on directions - a 'move on direction' is a direction given to a person by a police officer, under section 198 of the Law Enforcement (Powers and Responsibilities) Act 2002 (NSW), to leave a public place and not return for a specified period.
- > Searches - If the police have reasonable grounds they may, without a warrant, stop and search a person and anything in their possession or under their control, including a vehicle.
- > Detain/convey person to mental health facility - The police detain a person at risk of harm to themselves or others and transport them to a mental health facility for assessment under section 22 of the Mental Health Act 2007 (NSW).

### **What are non-criminal domestic violence episodes?**

Incidents attended by police where a domestic dispute is recorded as having taken place but no criminal incident has been recorded. The vast majority of these episodes are verbal altercations.

### **Where can I find more detail and explanatory notes?**

Detailed definitions and explanatory notes are available at

[https://www.bocsar.nsw.gov.au/Pages/bocsar\\_crime\\_stats/bocsar\\_glossary.aspx](https://www.bocsar.nsw.gov.au/Pages/bocsar_crime_stats/bocsar_glossary.aspx)

# APPENDIX 3

## LGAs IN STATISTICAL AREAS

**Appendix**  
**Table 3.1: Local Government Areas in Greater Sydney Statistical Areas**

<b>Baulkham Hills and Hawkesbury</b>	<b>Blacktown</b>	<b>Central Coast</b>
The Hills Shire*	Blacktown	Central Coast
	Cumberland	
<b>City and Inner South</b>	<b>Eastern Suburbs</b>	<b>Inner South West</b>
Sydney*	Randwick*	Bayside*
	Waverley	Canterbury-Bankstown*
	Woollahra	Georges River
<b>Inner West</b>	<b>North Sydney and Hornsby</b>	<b>Northern Beaches</b>
Burwood	Hornsby*	Northern Beaches
Canada Bay	Ku-ring-gai	
Strathfield*	Lane Cove	
Inner West*	Mosman	
	North Sydney	
	Willoughby	
<b>Outer South West</b>	<b>Outer West and Blue Mountains</b>	<b>Parramatta</b>
Camden*	Blue Mountains*	Cumberland*
Campbelltown	Penrith*	Parramatta*
Wollondilly*	Hawkesbury*	
<b>Ryde</b>	<b>South West</b>	<b>Sutherland</b>
Hunters Hill	Fairfield*	Sutherland Shire*
Ryde*	Liverpool*	

\* These LGAs span across two or more Statistical Areas.

These LGAs are listed under the Greater Sydney Statistical Areas which contain the largest area of each LGA.

Appendix  
Table 3.2: Local Government Areas in Regional Statistical Areas

Capital Region	Central West	Coffs Harbour - Grafton	Far West and Orana
Bega Valley	Bathurst Regional	Bellingen*	Bogan
Eurobodalla	Bland*	Clarence Valley	Bourke
Goulburn Mulwaree	Blayney	Coffs Harbour	Brewarrina
Hilltops	Cabonne*		Broken Hill
Queanbeyan-Palerang Regional	Cowra		Central Darling
Snowy Monaro Regional*	Forbes		Cobar
Upper Lachlan Shire	Lachlan*		Coonamble
Yass Valley	Lithgow		Dubbo Regional*
	Mid-Western Regional		Gilgandra
	Oberon*		Narromine
	Orange		Unincorporated Far West
	Parkes		Walgett
	Weddin		Warren
			Warrumbungle Shire*
Hunter Valley excluding Newcastle	Illawarra	Mid North Coast	Murray
Cessnock	Kiama*	Kempsey	Albury
Dungog	Shellharbour	Lord Howe Island	Balranald
Maitland*	Wollongong	Mid-Coast*	Berrigan
Muswellbrook		Nambucca	Edward River
Port Stephens*		Port Macquarie-Hastings	Federation*
Singleton*			Greater Hume Shire*
Upper Hunter Shire*			Hay
			Murray River
			Wentworth
New England and North West	Newcastle and Lake Macquarie	Richmond - Tweed	Riverina
Armidale Regional*	Lake Macquarie*	Ballina	Carrathool*
Glen Innes Severn	Newcastle	Byron	Coolamon
Gunnedah		Kyogle	Cootamundra-Gundagai
Gwydir		Lismore	Griffith
Inverell		Richmond Valley*	Junee
Liverpool Plains		Tweed	Leeton
Moree Plains			Lockhart*
Narrabri			Murrumbidgee*
Tamworth Regional			Narrandera
Tenterfield			Snowy Valleys*
Uralla			Temora
Walcha			Wagga Wagga
Southern Highlands and Shoalhaven			
Shoalhaven*			
Wingecarribee*			

\* These LGAs span across two or more Statistical Areas.

These LGAs are listed under the NSW Regional Statistical Areas which contain the largest area of each LGA.

Appendix Table 3.3: Greater Sydney Statistical Area Map



Appendix Table 3.4: Regional NSW Statistical Areas Map





# APPENDIX 4

# OFFENCE

# CATEGORIES

**Appendix BOCSAR offences mapped to NSW Police Force incident categories**

**4.1:**

<b>BOCSAR offence</b>	<b>NSW Police Force incident categories</b>
<b>Homicide</b>	
Murder	Murder
Attempted murder	Murder – attempted Shoot with intent to murder
Murder accessory, conspiracy	Murder – conspiracy Murder – solicit
Manslaughter – not driving	Manslaughter
<b>Assault</b>	
	<i>Includes any of the following offences disaggregated by whether or not police have flagged the incident as domestic violence related:</i>
Domestic violence related	Actual bodily harm Assault common Grievous bodily harm (including malicious wounding) Shoot with intent other than to murder Spike drink/food
Non-domestic violence related	Actual bodily harm Assault common Grievous bodily harm (including malicious wounding) Shoot with intent other than to murder Spike drink/food
Assault Police	Assault Police officer
<b>Sexual offences</b>	
Sexual assault	Sexual assault – adult victim (16 years old and over) Sexual assault – child victim, reported when child Sexual assault – child victim, reported when adult
Sexual touching, sexual act and other sexual offences	Sexual act – adult victim (16 years old and over) Sexual act – child victim, reported when child Sexual act – child victim, reported when adult Sexual touching – adult victim (16 years old and over) Sexual touching – child victim, reported when child Sexual touching – child victim, reported when adult Act of indecency Aggravated act of indecency Bestiality Carnal knowledge Grooming/procuring Incest Indecent communication Peep or pry

<b>BOCSAR offence</b>	<b>NSW Police Force incident categories</b>
Sexual touching, sexual act and other sexual offences ( <i>continued</i> )	Wilful and obscene exposure Other sexual offence Voyeurism/Film person
<b>Abduction and kidnapping</b>	Kidnapping/Abduction People trafficking
<b>Robbery</b>	
Robbery without a weapon	<i>Includes any of the following offences in which no weapon was recorded:</i> Demand money with menaces Robbery Robbery with aggravation Robbery with wounding Other robbery
Robbery with a firearm	<i>Includes any of the following offences in which a firearm was recorded as a weapon:</i> Armed robbery Demand money with menaces Robbery Robbery with aggravation Robbery with wounding Other robbery
Robbery with a weapon not a firearm	<i>Includes any of the following offences in which a non firearm weapon was recorded:</i> Armed robbery Demand money with menaces Robbery Robbery with aggravation Robbery with wounding Other robbery
<b>Blackmail and extortion</b>	Extortion/Blackmail
<b>Intimidation, stalking and harassment</b>	Bullying/harassment or intimidation Stalking (since 2017) Child approach (since 2017) Riot and affray Telecommunications offence (includes nuisance phone calls) Indecent Communication Threats against Police Violent disorder Unlawful assembly

<b>BOCSAR offence</b>	<b>NSW Police Force incident categories</b>
<b>Other offences against the person</b>	Labour exploitation (includes sexual servitude) Malicious damage with intent to injure/endorse Negligent act cause grievous bodily harm Other offence against the person
<b>Theft</b>	
Break and enter – dwelling	<i>Dwelling includes premises where people reside such as house, home unit, caravan, tent as well as any attachment such as garage, shed, yard and garden.</i> Break/Enter and steal Break/Enter and commit other felony Break/Enter intent to steal Break/Enter intent to commit other felony
Break and enter – non-dwelling	<i>Non-dwelling includes commercial and government premises.</i> Break/Enter and steal Break/Enter and commit other felony Break/Enter intent to steal Break/Enter intent to commit other felony
Receiving or handling stolen goods	Receiving Goods in custody Possess property stolen outside NSW Deal with proceeds of crime Money Laundering
Motor vehicle theft	Theft of motor cars, motor cycles, and other vehicles / vessels Rebirthing vehicles / vessels Vehicle/Vessel Unique Identifier
Steal from motor vehicle	Steal from motor vehicle
Steal from retail store	Steal from retail store
Steal from dwelling	Steal from dwelling Other stealing <i>occurring in a residential dwelling</i>
Steal from person	Steal from person
Stock theft	Steal stock (Non-domestic animal)
Fraud	Company/corporate offence Computer crime Copyright/Intellectual property/Trademark Corrupt commission/practices Corrupt payment (receive or pay) Counterfeit currency Deception offence Embezzlement Fail to pay

<b>BOCSAR offence</b>	<b>NSW Police Force incident categories</b>
Fraud ( <i>continued</i> )	Forgery (since 2017) Fraudulent misappropriation Larceny clerk/servant/bailee Make/use false instrument Misappropriate cheques/funds Possess false instrument Publish false misleading statement Receiving (fraud related) Scams - obtain funds (since 2017) Scams - selling (since 2017) Unauthorised access of funds (since 2017) Deal/supply false identity documents (since 2017) Deal/supply false information (since 2017) Equipment to make false identity documents (since 2017)  Make false identity documents (since 2017) Possess false identity documents (since 2017) Possess identity information (since 2017) Use false identity documents (since 2017) Other fraud
Other theft	Steal from dwelling <i>occurring somewhere other than a residential or non-residential dwelling</i> (e.g. from hostels, motels, boarding houses etc) Steal domestic animal or bird Steal from marine vessel Steal vessel Other stealing <i>occurring somewhere other than a dwelling</i> (e.g. in outdoor/public places)
<b>Arson</b>	<i>Fire incident where classified as deliberate:</i> Bushfire Structure Vehicle (e.g. aircraft/motor vehicle/train/vessel) Other commodity
<b>Malicious damage to property</b>	Graffiti Malicious damage to property Public place – damage fountain/wall etc. Public place – damage shrine/monument
<b>Drug offences</b>	
Possession and/or use of cocaine	Possess drug where drug type is cocaine Use or administer drug where drug type is cocaine Item/object found where drug type is cocaine
Possession and/or use of narcotics	Possess drug <i>where drug type is narcotics</i> Use or administer drug <i>where drug type is narcotics</i> Item/object found <i>where drug type is narcotics</i>

<b>BOCSAR offence</b>	<b>NSW Police Force incident categories</b>
Possession and/or use of cannabis	Possess drug / plant <i>where drug type is cannabis</i> Use or administer drug <i>where drug type is cannabis</i> Item/object found <i>where drug type is cannabis</i>
Possession and/or use of amphetamines	Possess drug <i>where drug type is amphetamines</i> Use or administer drug <i>where drug type is amphetamines</i>  Item/object found <i>where drug type is amphetamines</i>
Possession and/or use of ecstasy	Possess drug <i>where drug type is ecstasy</i> Use or administer drug <i>where drug type is ecstasy</i> Item/object found <i>where drug type is ecstasy</i>
Possession and/or use of other drugs	Possess drug <i>where drug type is not cocaine, narcotics, cannabis, amphetamines or ecstasy</i> Use or administer drug <i>where drug type is not cocaine, narcotics, cannabis, amphetamines or ecstasy</i> Item/object found <i>where drug type is not cocaine, narcotics, cannabis, amphetamines or ecstasy</i>
Dealing, trafficking in cocaine	Supply drug <i>where drug type is cocaine</i>
Dealing, trafficking in narcotics	Supply drug <i>where drug type is narcotics</i>
Dealing, trafficking in cannabis	Supply drug/plant <i>where drug/plant type is cannabis</i>
Dealing, trafficking in amphetamines	Supply drug <i>where drug type is amphetamines</i>
Dealing, trafficking in ecstasy	Supply drug <i>where drug type is ecstasy</i>
Dealing, trafficking in other drugs	Supply drug/plant <i>where drug/plant type is not cocaine, narcotics, cannabis, amphetamines or ecstasy</i>
Cultivating cannabis	Cultivation
Manufacture drug	Manufacture drug
Importing drugs	Import drug/plant
Other drug offences	Forge and/or utter prescription Possess drug utensil Other drug detection/seizure offence
<b>Prohibited and regulated weapons offences</b>	Bomb hoax or threat Discharge firearm into premises Licence offence Firearms dealer offence Firearms not ensure safekeeping Improper storage of explosives Person search - Item/object found <i>where item/object is a weapon</i> Possess explosive/dangerous article Possess prohibited weapon/article Possess shortened firearm Possess whilst unlicensed Sell prohibited weapon/article Shorten firearm

<b>BOCSAR offence</b>	<b>NSW Police Force incident categories</b>
<b>Prohibited and regulated weapons offences (continued)</b>	Trespass with firearm Unlawful handling/access/supply of explosives Unlawfully discharge firearm Use firearm under influence Use prohibited weapon/article Other explosives offence Other firearm licencing offence Other firearm offence Other prohibited weapon/article offence
<b>Disorderly conduct</b>	
Trespass	Trespass Remain inclosed lands
Offensive conduct	Offensive behaviour
Offensive language	Offensive language
Criminal intent	Armed with intent Charge with intent Disguised with intent Enter land with intent Intent to repeat indictable offence Instruments of crime Possess implements
<b>Betting and gaming offences</b>	Conduct/play illegal betting Conduct/play illegal game Own/manage premises – betting Own/manage premises – gaming Other gaming offence
<b>Liquor offences</b>	Consume alcohol in alcohol-free zone Consume/possess alcohol in public by minor Licensing legislation offence: – Offence by licensee/employee/secretary – Offence by minor – Offence by customer (not minor) – Supply liquor to juvenile – Offence against registered clubs legislation
<b>Pornography offences</b>	Possess/disseminate child pornography Possess/publish indecent material
<b>Prostitution offences</b>	Soliciting/prostitution in public Procure Prostitute (Including child prostitute) Prostitution – premises Prostitution – live off earnings Child prostitution

<b>BOCSAR offence</b>	<b>NSW Police Force incident categories</b>
Prostitution offences ( <i>continued</i> )	Other vice offence
<b>Against justice procedures</b>	
Escape Custody	Escapee – Corrective Services custody Escapee – Department of Community Services custody Escapee – Police custody Escapee – Other custody
Breach Apprehended Violence Order	Breach Apprehended Violence Order – domestic Breach Apprehended Violence Order – personal
Breach bail conditions	Breach bail conditions Breach control order
Fail to appear	Fail to appear
Resist or hinder officer	Refuse direction Refuse direction continue intoxication and disorder Refuse direction intoxicated person Refuse to be searched Refuse to produce object Resist/hinder officer
Other offences against justice procedures	Other judicial offence Fail to comply Contravene Child Protection Prohibition Order (CPPO)
<b>Transport regulatory offences</b>	<i>Transport offence (includes offences on the rail network such as travelling without a valid ticket, smoking, drinking or using offensive language on a train or railway land)</i> Buffer riding
<b>Other offences</b>	Animals - Dog offences Cyber Breach/Attack False 000 call Family law offence Immigration/customs offence Obstruction Offence against transport service  Breach COVID 19 direction Other street offences (carry cutting weapon, offensive implement) Public mischief Terrorism offences (e.g. associating with terrorist organisations, financing terrorism etc.) Other miscellaneous offences  Offences under various acts:



**BOCSAR offence**

**NSW Police Force incident categories**

---

**Other offences (*continued*)**

*Animals - Prevention Of Cruelty Acts*

*Bush Fire Act*

*Child Protection Act*

*Local Government Act*

*Marine/Waterway Act*

*Pawnbrokers Act*

*Postal Services Act*

*Public Health Act*

*Security Industry Act*

*Sydney Harbour Bridge Act*

*Tattoo Parlours Act*

---