

NEW SOUTH WALES RECORDED CRIME STATISTICS

Quarterly Update
June 2019

**NSW
Statistical Areas
and
Local Government Areas**

NSW Bureau of Crime Statistics and Research

ACKNOWLEDGEMENTS

The production of this report was greatly assisted by officers within the NSW Police Force. Special thanks are due to officers in Business and Technology Services and in Corporate Information, Executive Support Group. The following officers of the NSW Bureau of Crime Statistics and Research contributed significantly to the production of this report. Thanks to Darren Kwok for processing the data contained in the report, Derek Goh for preparing the report and Jessie Holmes for reviews and presentation improvements.

2019

Published by the NSW Bureau of Crime Statistics and Research
NSW Department of Communities and Justice
Level 1
Henry Deane Building
20 Lee St
Sydney NSW 2000
Australia

Phone: + 61 (2) 8346 1100
Fax: + 61 (2) 8364 1298
Email: bcsr@justice.nsw.gov.au
Website: www.bocsar.nsw.gov.au
ISSN: 1035-9044

This report is available in pdf format on our website and may be provided in alternative formats. Please contact the Bureau on 8346 1100 or email us at bcsr@justice.nsw.gov.au.

INTRODUCTION

This report presents data on crime reported to, or detected by, the NSW Police Force from January 1995 to June 2019, with a focus on the statistical trends for the 24 months ending June 2019. The data were extracted from the Computerised Operational Policing System (COPS) of the NSW Police Force in August 2019.

The report includes an overview of trends in the most recent two-year period for major offence categories, firstly for NSW and then across NSW regions broken down to the Local Government Area (LGA) level. At the State level, for the latest 24-month period, one major offence category have been trending upwards: steal from retail store (up 6.5%) and one of the 17 major offence categories were trending downwards: steal from person (down 12.3%).

The NSW graphs for rates of violent and property offences are on page 9 of the report. For violent offences using the 12-month moving average (light grey line) we can see a downward path from 2004, which has stabilised over the last 5 years. The trend tests shown in Table 1.1 indicate that for the latest 24-month period, one NSW Statistical Area have a significant upward trend in violent crime: Central West (up 7.8%) and no NSW Statistical Area have a significant downward trend in violent crime.

The property offences graph using the 6-month moving average (light grey line) indicates a strong downward path from 2000 to 2010, after which there are further declines but at a slower rate. Table 1.1 showing trend tests on the levels of property offences in NSW indicates a significant decrease over the last 5 years for NSW. For the latest 24-month period, one NSW Statistical Area have a significant upward trend in property crime: Murray (up 15.9%) and no NSW Statistical Area have a significant downward trend in property crime.

Jackie Fitzgerald
Executive Director

September 2019

© State of New South Wales through the NSW Department of Communities and Justice 2019. You may copy, distribute, display, download and otherwise freely deal with this work for any purpose, provided that you attribute the Department of Justice NSW as the owner. However, you must obtain permission if you wish to (a) charge others for access to the work (other than at cost), (b) include the work in advertising or a product for sale, or (c) modify the work.

CONTENTS

	ACKNOWLEDGEMENTS	2
	INTRODUCTION	3
SECTION 1:	OVERVIEW OF TRENDS IN VIOLENT AND PROPERTY CRIME	. . . 7
Figure 1.1	NSW long-term trend in violent crime	. . . 9
Figure 1.2	NSW long-term trend in property crime	. . . 9
Table 1.1	Trends in violent and property offences, over the 60 months to June 2019, NSW Statistical Areas (SAs) and NSW	. . . 10
Table 1.2	Trends in violent and property offences, over the 60 months to June 2019, NSW Statistical Areas (SAs) and NSW	. . . 11
Table 1.3	Trends in violent and property offences, over the 60 months to June 2019, NSW Local Government Areas (LGAs)	. . . 12
SECTION 2:	OVERVIEW OF TRENDS IN RECORDED CRIME, BY OFFENCE TYPE	. . . 15
Table 2.1	Trends in recorded criminal incidents for major offences, over the 60 months to June 2019, NSW	. . . 16
Table 2.2	Periodic trends in recorded criminal incidents for major offences over the 60 months to June 2019, NSW	. . . 17
Table 2.3	Number and trends in recorded criminal incidents for 62 offences, over the 24 months to June 2019, NSW	. . . 18
Table 2.4	Number and outcome of 24-month trend for major offences, NSW Local Government Areas (LGAs), all reports 2009 to June 2019	19
Figure 2.1A	Number of NSW LGAs with significant upward trends for major offences in the 24-month periods to June 2018 and June 2019	. . . 20
Figure 2.1B	Number of NSW LGAs with significant downward trends for major offences in the 24-month periods to June 2018 and June 2019	. . . 20
SECTION 3:	TRENDS, RATE COMPARISONS AND RECORDED CRIMINAL INCIDENTS FOR MAJOR OFFENCES, NSW REGIONS AND LGAs	. . . 21
Table 3.1A	Trends in recorded criminal incidents for major offences, over the 24 months to June 2019, NSW SAs	. . . 22
Table 3.1B	Ratio to NSW rate of recorded criminal incidents per 100,000 population for major offences, over the 12 months to June 2019, NSW SAs	. . . 22
Table 3.1C	Number of recorded criminal incidents for major offences, over the 12 months to June 2019, NSW SAs	. . . 23
Table 3.1D	Number of recorded criminal incidents for major offences, over the 12 months to June 2018, NSW SAs	. . . 23
Table 3.2A	Trends in recorded criminal incidents for major offences, over the 24 months to June 2019, Greater Sydney SAs	. . . 24
Table 3.2B	Ratio to NSW rate of recorded criminal incidents per 100,000 population for major offences, over the 12 months to June 2019, Greater Sydney SAs	. . . 24
Table 3.2C	Number of recorded criminal incidents for major offences, over the 12 months to June 2019, Greater Sydney SAs	. . . 25
Table 3.2D	Number of recorded criminal incidents for major offences, over the 12 months to June 2018, Greater Sydney SAs	. . . 25

SECTION 3:	TRENDS, RATE COMPARISONS AND RECORDED CRIMINAL INCIDENTS FOR MAJOR OFFENCES, NSW REGIONS AND LGAS <i>continued</i>	
Table 3.3A	Trends in recorded criminal incidents for major offences, over the 24 months to June 2019, NSW LGAs	. . . 26
Table 3.3B	Ratio to NSW rate of recorded criminal incidents per 100,000 population for major offences, over the 12 months to June 2019, NSW LGAs	. . . 28
Table 3.3C	Number of recorded criminal incidents for major offences, over the 12 months to June 2019, NSW LGAs	. . . 30
Table 3.3D	Number of recorded criminal incidents for major offences, over the 12 months to June 2018, NSW LGAs	. . . 32
SECTION 4:	METHODS OF PROCEEDINGS AGAINST ALLEGED OFFENDERS	. . . 35
Figure 4.1	Trends in referral methods for alleged offenders proceeded against to court over the 24 months to June 2019, NSW	36
Table 4.1	Number, percentage and trend in alleged offenders proceeded against by NSW Police by method of legal proceedings over the 24 months to June 2019, NSW	. . . 37
Table 4.2	Number, percentage and trend in alleged offenders proceeded against to court by NSW Police for major offences over the 24 months to June 2019, NSW	38
SECTION 5:	CLEARED CRIMINAL INCIDENTS AND WHETHER LEGAL PROCEEDINGS COMMENCED FOR SELECTED OFFENCES	. . . 39
Table 5.1	Number of recorded criminal incidents for selected offences by whether legal proceedings commenced in 30 days of reporting over the 24 months to May 2019, NSW	. . . 40
Table 5.2	Number of recorded criminal incidents for selected offences by whether legal proceedings commenced in 90 days of reporting over the 24 months to March 2019, NSW	41
Figure 5.1	Percentage of recorded criminal incidents for selected offences where legal proceedings commenced within 30 and 90 days, over the 12 months to March 2019, NSW	. . . 42
APPENDICES		43
	APPENDIX 1: TRENDS IN RECORDED CRIMINAL INCIDENTS IN NSW	. . . 44
	APPENDIX 2: DEFINITIONS AND EXPLANATORY NOTES	. . . 45
	APPENDIX 3: BOCSAR OFFENCES MAPPED TO POLICE INCIDENT CATEGORY	. . . 48
	APPENDIX 4: NSW & GREATER SYDNEY STATISTICAL AREA MAPS	. . . 55
	APPENDIX 5: LGAS IN GREATER SYDNEY STATISTICAL AREAS	. . . 57
	APPENDIX 5: LGAS IN NSW REGIONAL STATISTICAL AREAS	. . . 58

SECTION 1:

**OVERVIEW OF TRENDS
IN VIOLENT AND PROPERTY CRIME**

FIGURE 1.1: NSW LONG-TERM TREND IN VIOLENT OFFENCES*

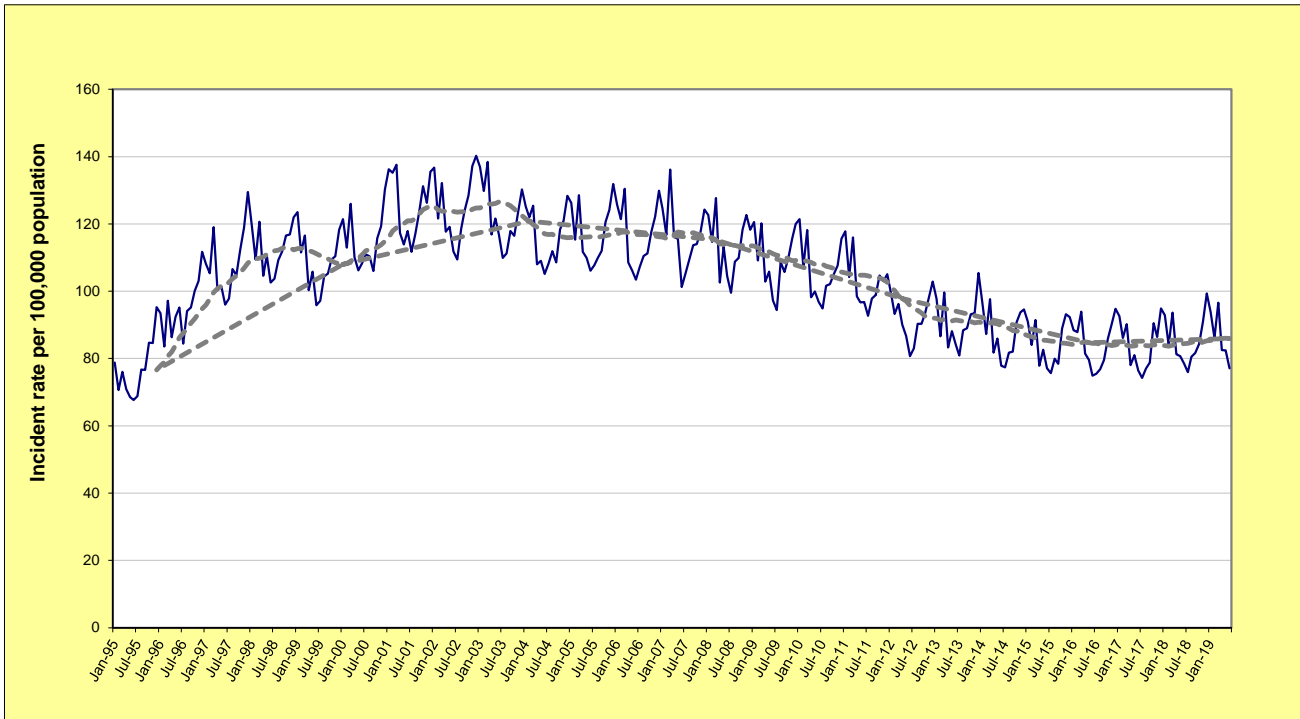
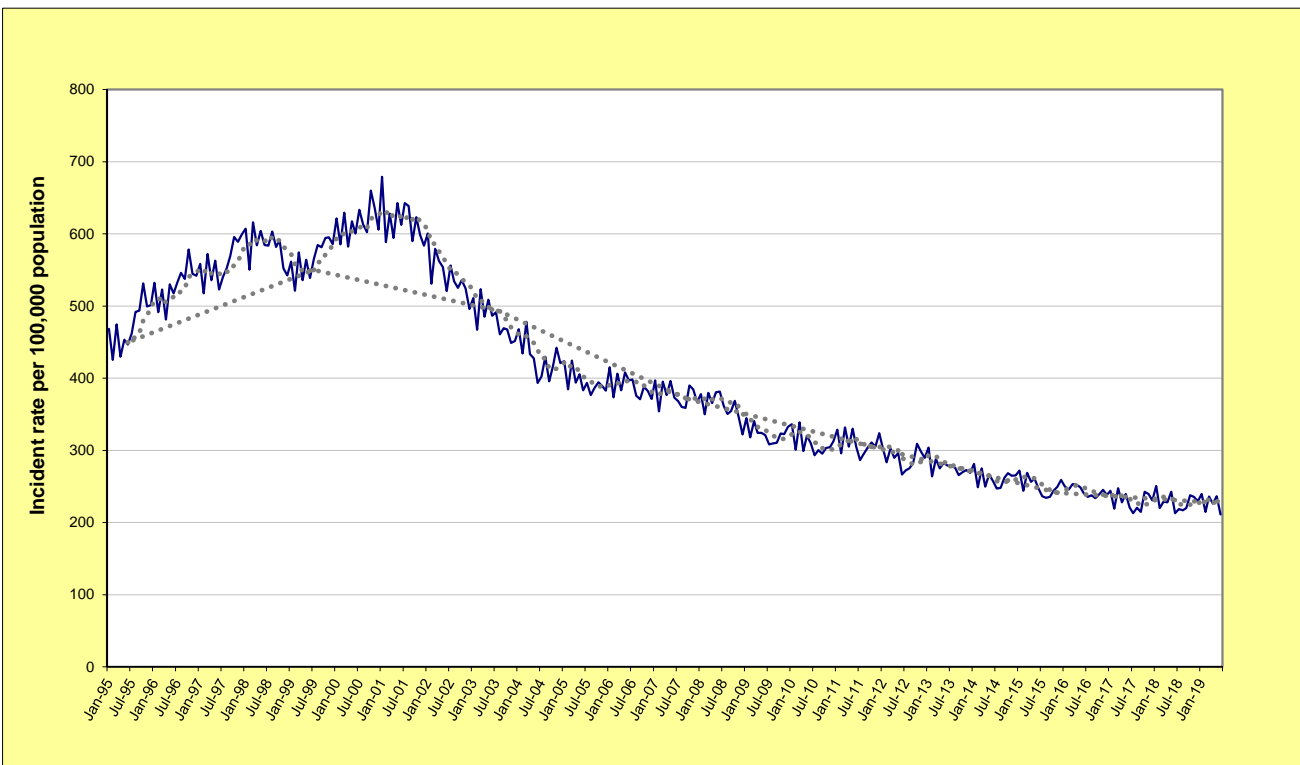


FIGURE 1.2: NSW LONG-TERM TREND IN PROPERTY OFFENCES**



* **Violent offences** include: murder, attempted murder, manslaughter, assault - domestic violence related, assault - non-domestic violence related, assault police, robbery without a weapon, robbery with a firearm, robbery with a weapon not a firearm, sexual assault and indecent assault / act of indecency / other sexual offences.

** **Property offences** include: break and enter dwelling, break and enter non-dwelling, motor vehicle theft, steal from motor vehicle, steal from retail store, steal from dwelling, steal from person, stock theft, other theft and fraud.

For further explanation of **violent offences** and **property offences**, see page 44, Note [7].

**TABLE 1.1: TRENDS[^] IN RECORDED CRIMINAL INCIDENTS, VIOLENT AND PROPERTY OFFENCES
OVER THE 60 MONTHS TO JUNE 2019, NSW STATISTICAL AREAS (SAs) AND NSW**

NSW Statistical Area	Violent Offences*			Property Offences**		
	Annual percentage change over the last 24 months	Average annual percentage change over the last 60 months	Ratio [#] to NSW rate	Annual percentage change over the last 24 months	Average annual percentage change over the last 60 months	Ratio [#] to NSW rate
Greater Sydney	Stable	Stable	0.9	Stable	-3.5%	0.9
Capital Region	Stable	Stable	0.8	Stable	Stable	0.8
Central West	7.8%	Stable	1.4	Stable	-5.3%	1.1
Coffs Harbour - Grafton	Stable	Stable	1.2	Stable	Stable	1.2
Far West and Orana	Stable	Stable	2.7	Stable	-1.9%	2.0
Hunter Valley excluding Newcastle	Stable	Stable	1.2	Stable	Stable	1.2
Illawarra	Stable	-2.5%	0.8	Stable	-3.9%	0.9
Mid North Coast	Stable	Stable	1.2	Stable	Stable	1.2
Murray	Stable	Stable	1.2	15.9%	4.0%	1.3
New England and North West	Stable	Stable	1.6	Stable	Stable	1.4
Newcastle and Lake Macquarie	Stable	Stable	1.1	Stable	2.3%	1.4
Richmond - Tweed	Stable	Stable	1.1	Stable	Stable	1.0
Riverina	Stable	Stable	1.4	Stable	Stable	1.3
Southern Highlands and Shoalhaven	Stable	Stable	0.9	Stable	-4.6%	0.8
NSW	Stable	Stable	1.0	Stable	-2.3%	1.0

[^] For further explanation of trend results, see page 44, Notes [5] and [6].

* **Violent offences** include: murder, assault - domestic violence related, assault - non-domestic violence related, assault police, robbery without a weapon, robbery with a firearm, robbery with a weapon not a firearm, sexual assault and indecent assault / act of indecency / other sexual offences.

** **Property offences** include: break and enter dwelling, break and enter non-dwelling, motor vehicle theft, steal from motor vehicle, steal from retail store, steal from dwelling, steal from person, stock theft, other theft and fraud.

For further explanation of violent offences and property offences, see page 44, Note [7].

For further explanation of rate calculation populations and the ratio to NSW rate, see page 44, Footnote 2 and Note [8].

**TABLE 1.2: TRENDS[^] IN RECORDED CRIMINAL INCIDENTS, VIOLENT AND PROPERTY OFFENCES
OVER THE 60 MONTHS TO JUNE 2019, GREATER SYDNEY STATISTICAL AREAS (SAs)**

Greater Sydney Statistical Area	Violent Offences*			Property Offences**		
	Annual percentage change over the last 24 months	Average annual percentage change over the last 60 months	Ratio [#] to NSW rate	Annual percentage change over the last 24 months	Average annual percentage change over the last 60 months	Ratio [#] to NSW rate
Baulkham Hills and Hawkesbury	Stable	Stable	0.4	Stable	Stable	0.5
Blacktown	Stable	2.3%	1.3	Stable	1.4%	1.3
Central Coast	Stable	Stable	1.1	Stable	Stable	1.0
City and Inner South	Stable	2.1%	1.9	Stable	-6.5%	2.0
Eastern Suburbs	Stable	Stable	0.7	Stable	-5.0%	0.8
Inner South West	Stable	Stable	0.7	Stable	-6.2%	0.7
Inner West	Stable	Stable	0.5	Stable	-6.4%	0.8
North Sydney and Hornsby	Stable	3.7%	0.4	Stable	Stable	0.6
Northern Beaches	16.5%	Stable	0.5	Stable	Stable	0.6
Outer South West	Stable	Stable	1.0	4.2%	-2.3%	0.8
Outer West and Blue Mountains	Stable	Stable	1.2	Stable	Stable	1.1
Parramatta	Stable	Stable	0.9	Stable	-3.5%	1.0
Ryde	Stable	8.4%	0.5	Stable	Stable	0.7
South West	Stable	Stable	0.9	Stable	-3.5%	0.9
Sutherland	Stable	4.4%	0.6	Stable	-4.9%	0.5

[^] For further explanation of trend results, see page 44, Notes [5] and [6].

* **Violent offences** include: murder, assault - domestic violence related, assault - non-domestic violence related, assault police, robbery without a weapon, robbery with a firearm, robbery with a weapon not a firearm, sexual assault and indecent assault / act of indecency / other sexual offences.

** **Property offences** include: break and enter dwelling, break and enter non-dwelling, motor vehicle theft, steal from motor vehicle, steal from retail store, steal from dwelling, steal from person, stock theft, other theft and fraud.

For further explanation of violent offences and property offences, see page 44, Note [7].

[#] For further explanation of rate calculation populations and the ratio to NSW rate, see page 44, Footnote 2 and Note [8].

TABLE 1.3: TRENDS^a IN RECORDED CRIMINAL INCIDENTS, VIOLENT AND PROPERTY OFFENCES, OVER THE 60 MONTHS TO JUNE 2019, NSW LOCAL GOVERNMENT AREAS (LGAs)

NSW LGAs	Violent Offences*			Property Offences*		
	Annual percentage change over the last 24 months	Average annual percentage change over the last 60 months	Ratio [#] to NSW rate	Annual percentage change over the last 24 months	Average annual percentage change over the last 60 months	Ratio [#] to NSW rate
Albury	ns	ns	1.5	15.3	5.8	1.7
Armidale Regional	ns	ns	1.7	ns	ns	1.6
Ballina	ns	ns	0.7	ns	4.3	0.9
Balranald	.	.	.	ns	ns	.
Bathurst Regional	ns	ns	1.4	ns	-8.9	1.0
Bayside	7.7	6.9	0.8	ns	-4.2	0.8
Bega Valley	ns	ns	0.8	ns	ns	0.6
Bellingen	ns	5.5	0.8	ns	ns	0.7
Berrigan	ns	ns	0.7	ns	12.6	0.8
Blacktown	ns	2.3	1.3	ns	1.3	1.3
Bland	ns	ns	1.0	ns	ns	0.6
Blayney	ns	ns	0.9	ns	ns	0.9
Blue Mountains	ns	ns	0.7	ns	ns	0.6
Bogan	ns	ns	.	ns	-10.4	.
Bourke	ns	ns	.	ns	-8.2	.
Brewarrina	ns	-10.4	.	ns	ns	.
Broken Hill	ns	2.9	2.4	ns	8.5	1.9
Burwood	ns	ns	0.5	ns	-7.8	1.2
Byron	ns	ns	1.2	ns	-5.7	1.2
Cabonne	ns	ns	0.8	38.7	9.1	0.7
Camden	ns	9.5	0.8	12.5	3.8	0.6
Campbelltown	ns	ns	1.3	4.9	-2.4	1.1
Canada Bay	ns	ns	0.4	ns	-5.5	0.6
Canterbury-Bankstown	ns	-2.2	0.7	ns	-6.7	0.7
Carrathool	ns	ns	.	ns	13.6	.
Central Coast	ns	ns	1.1	ns	ns	1.0
Central Darling	ns	ns	.	ns	ns	.
Cessnock	ns	ns	1.2	ns	ns	1.6
Clarence Valley	ns	ns	1.1	ns	-2.7	1.1
Cobar	ns	ns	2.1	ns	-13.1	1.3
Coffs Harbour	ns	ns	1.4	ns	6.4	1.4
Coolamon	ns	ns	0.6	ns	ns	0.5
Coonamble	41.3	14.1	4.1	ns	ns	3.5
Cootamundra-Gundagai	ns	ns	1.4	ns	6.6	1.0
Cowra	ns	-6.6	1.3	ns	-4.8	1.2
Cumberland	ns	ns	0.9	ns	-4.2	0.9
Dubbo Regional	21.1	6.6	2.5	ns	ns	2.2
Dungog	ns	ns	0.8	ns	ns	0.5
Edward River	ns	ns	1.2	ns	ns	1.2
Eurobodalla	ns	ns	1.0	ns	ns	1.0
Fairfield	ns	ns	0.8	ns	-3.1	0.8
Federation	ns	ns	0.7	19.5	ns	0.9
Forbes	ns	ns	1.9	ns	ns	1.4
Georges River	ns	ns	0.7	ns	-5.1	0.6
Gilgandra	ns	ns	1.9	ns	-18.2	1.1
Glen Innes Severn	ns	-8.5	1.7	ns	ns	0.9
Goulburn Mulwaree	ns	ns	1.0	ns	3.2	0.9
Greater Hume Shire	ns	ns	0.6	ns	ns	0.6
Griffith	ns	-2.0	1.5	ns	-6.7	1.4
Gunnedah	ns	ns	1.2	21.7	ns	1.5
Gwydir	ns	ns	1.0	ns	15.8	0.8
Hawkesbury	ns	ns	0.9	8.0	-4.4	0.8
Hay	28.9	ns	.	ns	ns	.
Hilltops	ns	ns	1.2	ns	ns	0.7
Hornsby	31.4	5.3	0.4	ns	ns	0.6
Hunters Hill	ns	12.3	0.5	45.5	9.1	0.8
Inner West	ns	ns	0.7	ns	-5.4	0.9
Inverell	ns	ns	1.8	ns	7.8	1.3
Junee	72.1	ns	1.1	ns	ns	0.6
Kempsey	ns	ns	1.7	ns	ns	2.0
Kiama	ns	-7.9	0.3	-28.4	-8.9	0.5
Ku-ring-gai	ns	7.2	0.3	ns	ns	0.4
Kyogle	ns	11.1	1.6	35.4	ns	0.7
Lachlan	ns	ns	1.9	31.2	-10.3	1.3
Lake Macquarie	ns	ns	0.9	ns	ns	1.1

TABLE 1.3: TRENDS[^] IN RECORDED CRIMINAL INCIDENTS, VIOLENT AND PROPERTY OFFENCES, OVER THE 60 MONTHS TO JUNE 2019, NSW LOCAL GOVERNMENT AREAS (LGAs)

NSW LGAs	Violent Offences*			Property Offences*		
	Annual percentage change over the last 24 months	Average annual percentage change over the last 60 months	Ratio [#] to NSW rate	Annual percentage change over the last 24 months	Average annual percentage change over the last 24 months	Ratio [#] to NSW rate
Lane Cove	ns	ns	0.3	ns	3.4	0.6
Leeton	ns	ns	1.5	ns	ns	1.0
Lismore	ns	ns	1.5	ns	ns	1.1
Lithgow	ns	6.8	1.4	ns	-8.5	1.0
Liverpool	ns	ns	0.9	ns	-5.2	1.0
Liverpool Plains	ns	ns	1.2	ns	ns	0.8
Lockhart	ns	.	0.7	ns	ns	0.8
Lord Howe Island
Maitland	ns	3.7	1.3	ns	4.6	1.3
Mid-Coast	ns	ns	1.2	ns	ns	1.0
Mid-Western Regional	ns	ns	1.3	ns	-6.8	0.7
Moree Plains	-24.1	-8.7	2.7	-28.7	ns	2.9
Mosman	ns	ns	0.3	ns	ns	0.6
Murray River	ns	ns	0.6	ns	ns	0.9
Murrumbidgee	ns	ns	1.1	ns	ns	0.7
Muswellbrook	ns	ns	1.5	ns	-3.3	1.3
Nambucca	ns	11.1	1.9	ns	5.4	1.5
Narrabri	ns	ns	1.4	ns	-4.9	1.2
Narrandera	37.2	12.0	1.7	ns	ns	1.3
Narramine	ns	ns	2.1	28.3	ns	2.5
Newcastle	ns	ns	1.3	ns	4.4	1.9
North Sydney	-14.3	ns	0.5	ns	-6.9	0.7
Northern Beaches	16.5	ns	0.5	ns	ns	0.6
Oberon	ns	ns	0.9	ns	ns	0.8
Orange	15.0	ns	1.8	32.9	ns	1.9
Parkes	ns	ns	1.5	-24.6	-10.9	0.9
Parramatta	ns	ns	0.8	ns	ns	1.1
Penrith	ns	1.9	1.4	ns	ns	1.2
Port Macquarie-Hastings	ns	ns	0.9	ns	ns	0.9
Port Stephens	ns	ns	1.2	ns	ns	0.9
Queanbeyan-Palerang Regional	ns	ns	0.7	ns	ns	0.9
Randwick	ns	5.3	0.8	ns	-4.1	0.8
Richmond Valley	ns	ns	1.5	ns	-5.6	1.0
Ryde	ns	7.2	0.5	-11.4	ns	0.7
Shellharbour	ns	-3.5	0.8	ns	ns	0.8
Shoalhaven	ns	ns	1.0	ns	-4.6	0.9
Singleton	ns	9.1	1.0	30.1	ns	1.4
Snowy Monaro Regional	ns	ns	0.8	ns	ns	0.5
Snowy Valleys	ns	ns	1.1	-18.9	11.3	1.1
Strathfield	ns	ns	0.8	ns	-7.2	1.0
Sutherland Shire	ns	4.4	0.6	ns	-4.9	0.5
Sydney	ns	1.8	2.4	ns	-7.1	2.4
Tamworth Regional	ns	ns	1.6	ns	1.8	1.4
Temora	ns	ns	0.9	ns	ns	0.8
Tenterfield	ns	ns	1.4	46.4	ns	1.2
The Hills Shire	10.9	ns	0.4	ns	ns	0.6
Tweed	ns	ns	0.8	ns	ns	0.9
Unincorporated Far West
Upper Hunter Shire	ns	12.0	0.9	ns	ns	0.8
Upper Lachlan Shire	ns	-11.0	0.4	ns	ns	0.4
Uralla	ns	ns	0.6	ns	ns	0.5
Wagga Wagga	ns	6.9	1.6	ns	ns	1.7
Walcha	ns	17.7	1.4	ns	ns	0.5
Walgett	ns	ns	3.9	-18.5	-8.7	1.7
Warren	ns	ns	.	ns	ns	.
Warrumbungle Shire	ns	ns	1.3	ns	ns	0.9
Waverley	ns	ns	0.8	ns	-4.3	1.1
Weddin	.	.	0.4	ns	ns	0.5
Wentworth	ns	ns	2.1	ns	ns	1.1
Willoughby	ns	2.7	0.4	ns	ns	1.0
Wingecarribee	ns	ns	0.6	ns	-4.9	0.5
Wollondilly	ns	ns	0.6	ns	ns	0.4
Wollongong	ns	ns	0.9	ns	-4.4	1.0
Woolahra	ns	ns	0.5	ns	-8.4	0.6
Yass Valley	ns	ns	0.5	ns	ns	0.4
NSW	ns	ns	1.0	ns	-2.3	1.0

[^] For further explanation of trend results, see page 44, Notes [5] and [6].

* For further explanation of violent offences and property offences, see page 44, Note [7].

For further explanation of rate calculation populations and the ratio to NSW rate, see page 44, Footnote 2 and Note [8].

Sydney LGA can be considered a special case since the population used to calculate the rate is much lower than the population using the area for work and entertainment. This will be reflected in higher incident rates.

SECTION 2:
OVERVIEW OF TRENDS
IN RECORDED CRIME
BY OFFENCE TYPE
NSW

**TABLE 2.1: TRENDS[^] IN RECORDED CRIMINAL INCIDENTS FOR MAJOR OFFENCES
OVER THE 60 MONTHS TO JUNE 2019, NSW**

Offence category	Trend result and annual percentage change over the last 24 months	Trend result and average annual percentage change over the last 60 months
Murder *	Stable	Stable
Domestic violence related assault	Stable	Stable
Non-domestic violence related assault	Stable	Stable
Sexual assault	Stable	Up by 4.5%
Indecent assault, act of indecency and other sexual offences	Stable	Up by 5.5%
Robbery without a weapon	Stable	Down by 5.1%
Robbery with a firearm	Stable	Down by 12.6%
Robbery with a weapon not a firearm	Stable	Down by 4.2%
Break and enter dwelling	Stable	Down by 6.1%
Break and enter non-dwelling	Stable	Down by 6.2%
Motor vehicle theft	Stable	Down by 3.2%
Steal from motor vehicle	Stable	Down by 2.6%
Steal from retail store	Up by 6.5%	Up by 5.0%
Steal from dwelling	Stable	Down by 4.3%
Steal from person	Down by 12.3%	Down by 10.0%
Fraud	Stable	Stable
Malicious damage to property	Stable	Down by 3.2%

[^] For further explanation of trend results, see page 44, Notes [5] and [6].

* For murder, the trend test is applied to the monthly number of recorded victims rather than criminal incidents.

TABLE 2.2: PERIODIC TRENDS[^] IN RECORDED CRIMINAL INCIDENTS FOR MAJOR OFFENCES, OVER THE 60 MONTHS TO JUNE 2019, NSW

Offence category	Trend result and annual percentage change				
	Jul 2013 - Jun 2015	Jul 2014 - Jun 2016	Jul 2015 - Jun 2017	Jul 2016 - Jun 2018	Jul 2017 - Jun 2019
Murder *	Stable	-35.1%	Stable	Stable	Stable
Domestic violence related assault	Stable	Stable	Stable	Stable	Stable
Non-domestic violence related assault	Stable	Stable	Stable	Stable	Stable
Sexual assault	Stable	Stable	Stable	6.2%	Stable
Indecent assault, act of indecency and other sexual offences	Stable	7.6%	Stable	8.4%	Stable
Robbery without a weapon	-13.8%	-25.4%	Stable	Stable	Stable
Robbery with a firearm	-13.1%	-40.2%	Stable	Stable	Stable
Robbery with a weapon not a firearm	-19.0%	-22.1%	Stable	Stable	Stable
Break and enter dwelling	-5.6%	-7.1%	-4.8%	-6.3%	Stable
Break and enter non-dwelling	Stable	Stable	Stable	-6.0%	Stable
Motor vehicle theft	Stable	-12.5%	Stable	Stable	Stable
Steal from motor vehicle	Stable	Stable	Stable	Stable	Stable
Steal from retail store	Stable	6.7%	5.8%	Stable	6.5%
Steal from dwelling	Stable	-6.4%	Stable	Stable	Stable
Steal from person	-9.6%	-9.8%	-12.1%	Stable	-12.3%
Fraud	Stable	3.0%	Stable	Stable	Stable
Malicious damage to property	-8.5%	-3.0%	Stable	-4.4%	Stable

[^] For further explanation of trend results, see page 44, Notes [5] and [6].

* For murder, the trend test is applied to the monthly number of recorded victims rather than criminal incidents.

TABLE 2.3: NUMBER AND TRENDS[^] IN RECORDED CRIMINAL INCIDENTS FOR 62 OFFENCES OVER THE 24 MONTHS TO JUNE 2019, NSW

Offence Category		Number of recorded criminal incidents		Trend [^] over the last 24 months	
		months to June 2018	months to June 2019	Trend test result	Percentage change
Homicide	Murder*	55	75	Stable	
	Attempted murder	16	23	.	
	Murder accessory, conspiracy	2	2	.	
	Manslaughter*	10	9	.	
Assault	Domestic violence related assault	28,712	30,434	Stable	
	Non-domestic violence related assault	32,171	31,614	Stable	
	Assault Police	2,346	2,481	Stable	
Sexual offences	Sexual assault	5,989	5,778	Stable	
	Indecent assault, act of indecency and other sexual offences	7,834	8,106	Stable	
Abduction and kidnapping		200	207	Stable	
Robbery	Robbery without a weapon	1,459	1,491	Stable	
	Robbery with a firearm	149	155	Stable	
	Robbery with a weapon not a firearm	878	910	Stable	
Blackmail and extortion		107	92	Stable	
Intimidation, stalking and harassment		31,315	33,394	Up	6.6%
Other offences against the person**		n.a.	1,169	n.c.	
Theft	Break and enter dwelling	27,185	25,508	Stable	
	Break and enter non-dwelling	10,392	9,991	Stable	
	Receiving or handling stolen goods	7,846	8,101	Up	3.3%
	Motor vehicle theft	12,947	13,244	Stable	
	Steal from motor vehicle	38,344	38,063	Stable	
	Steal from retail store	24,438	26,033	Up	6.5%
	Steal from dwelling	19,393	18,788	Stable	
	Steal from person	4,436	3,892	Down	-12.3%
	Stock theft	427	443	Stable	
	Fraud	51,057	51,058	Stable	
	Other theft	27,212	27,074	Stable	
Arson		5,825	5,067	Down	-13.0%
Malicious damage to property		59,627	57,564	Stable	
Drug offences	Possession and/or use of cocaine	2,229	2,353	Stable	
	Possession and/or use of narcotics	1,006	1,030	Stable	
	Possession and/or use of cannabis	17,797	17,224	Stable	
	Possession and/or use of amphetamines	6,890	7,480	Up	8.6%
	Possession and/or use of ecstasy	2,866	2,898	Stable	
	Possession and/or use of other drugs	4,591	5,439	Up	18.5%
	Dealing, trafficking in cocaine	818	803	Stable	
	Dealing, trafficking in narcotics	179	1,019	Up	469.3%
	Dealing, trafficking in cannabis	786	1,151	Up	46.4%
	Dealing, trafficking in amphetamines	1,965	1,788	Stable	
	Dealing, trafficking in ecstasy	745	545	Down	-26.8%
	Dealing, trafficking in other drugs	409	515	Stable	
	Cultivating cannabis	1,172	1,259	Stable	
	Manufacture drug	78	59	Stable	
Importing drugs	80	78	Stable		
Other drug offences	5,411	6,163	Up	13.9%	
Prohibited and regulated weapons offences		13,490	14,976	Up	11.0%
Disorderly conduct	Trespass	9,852	10,429	Up	5.9%
	Offensive conduct	4,993	4,511	Down	-9.7%
	Offensive language	3,058	2,470	Down	-19.2%
	Criminal intent	2,250	2,333	Up	3.7%
Betting and gaming offences		89	166	Up	86.5%
Liquor offences		11,306	11,873	Stable	
Pornography offences		640	639	Stable	
Prostitution offences		41	20	Stable	
Against justice procedures	Escape custody	168	177	Stable	
	Breach Apprehended Violence Order	15,243	16,737	Up	9.8%
	Breach bail conditions	42,238	44,605	Up	5.6%
	Fail to appear	531	496	Stable	
	Resist or hinder officer	6,270	6,049	Stable	
Other offences against justice procedures**		n.a.	1,059	n.c.	
Transport regulatory offences		123,994	109,305	Down	-11.8%
Other offences		15,494	14,626	Stable	

[^] For further explanation of trend results, see page 44, Notes [5] and [6].

* For murder and manslaughter incidents, the trend test is applied to the monthly number of recorded victims rather than criminal incidents.

** Due to classification changes, comparable figures are not available in this time period for this offence. n.a. - Not available, n.c. - Not calculated.

TABLE 2.4: NUMBER AND OUTCOME[^] OF 24-MONTH TREND TESTS FOR MAJOR OFFENCES, NSW LOCAL GOVERNMENT AREAS (LGAs), ALL REPORTS 2011 TO JUNE 2019

Year	Final month for 24-month trend test	Number of LGAs	Number of trend tests	Stable trends (%)	Downward trends (%)	Upward trends (%)
2011	March	130	1,250	86.0	8.2	5.8
	June	130	1,244	86.4	8.8	4.7
	September	130	1,251	84.9	11.5	3.6
	December	130	1,241	86.0	9.1	4.9
2012	March	130	1,250	86.2	5.7	8.2
	June	130	1,236	86.8	7.3	5.9
	September	130	1,240	85.9	9.5	4.6
	December	130	1,246	85.6	7.9	6.6
2013	March	130	1,238	85.2	6.9	7.8
	June	130	1,232	84.9	8.6	6.5
	September	130	1,240	83.5	11.0	5.6
	December	130	1,236	84.4	11.1	4.5
2014	March	130	1,228	84.0	9.9	6.1
	June	130	1,228	82.5	13.7	3.8
	September	130	1,227	80.0	17.2	2.9
	December	130	1,227	85.8	9.9	4.2
2015	March	130	1,224	86.2	9.0	4.8
	June	130	1,229	86.7	9.6	3.7
	September	130	1,220	86.2	10.8	3.0
	December	130	1,224	87.7	8.2	4.2
2016	March	130	1,225	85.7	6.3	8.0
	June	130	1,220	83.9	9.3	6.8
	September	130	1,220	83.2	11.6	5.2
	December	130	1,219	87.0	7.2	5.7
2017	March	130	1,226	88.0	5.6	6.4
	June	130	1,216	88.7	5.8	5.4
	September	130	1,224	84.5	11.3	4.2
	December	130	1,223	86.8	8.9	4.3
2018	March	130	1,224	87.3	6.9	5.8
	June	130	1,218	86.6	8.2	5.2
	September	130	1,220	85.8	10.7	3.4
	December	130	1,218	88.1	6.2	5.7
2019	March	130	1,214	86.4	4.9	8.6
	June	130	1,225	88.5	5.0	6.5

[^] This table summarises the aggregate outcomes of statistical tests for significant upward or downward trends in the number of recorded criminal incidents in major offence categories over a 24-month period across all NSW LGAs with a population of 3,000 or more. The trend test used is Kendall's rank-order correlation test. A trend test was not performed if there were fewer than 20 incidents in either of the two years for the period in question, hence no trend tests for **murder** were calculated for this table. These tests were carried out on 17 major offence categories.

FIGURE 2.1A: NUMBER OF NSW LGAs WITH SIGNIFICANT UPWARD TRENDS[^], MAJOR OFFENCES, JUL 16 TO JUN 18 and JUL 17 TO JUN 19

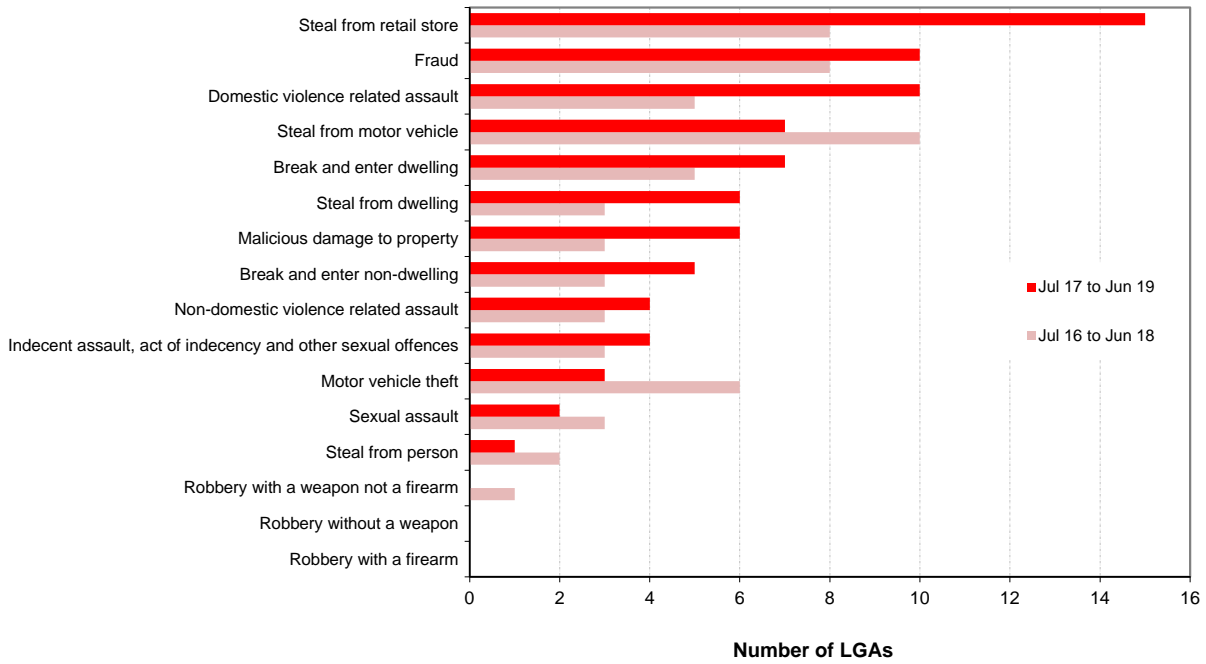
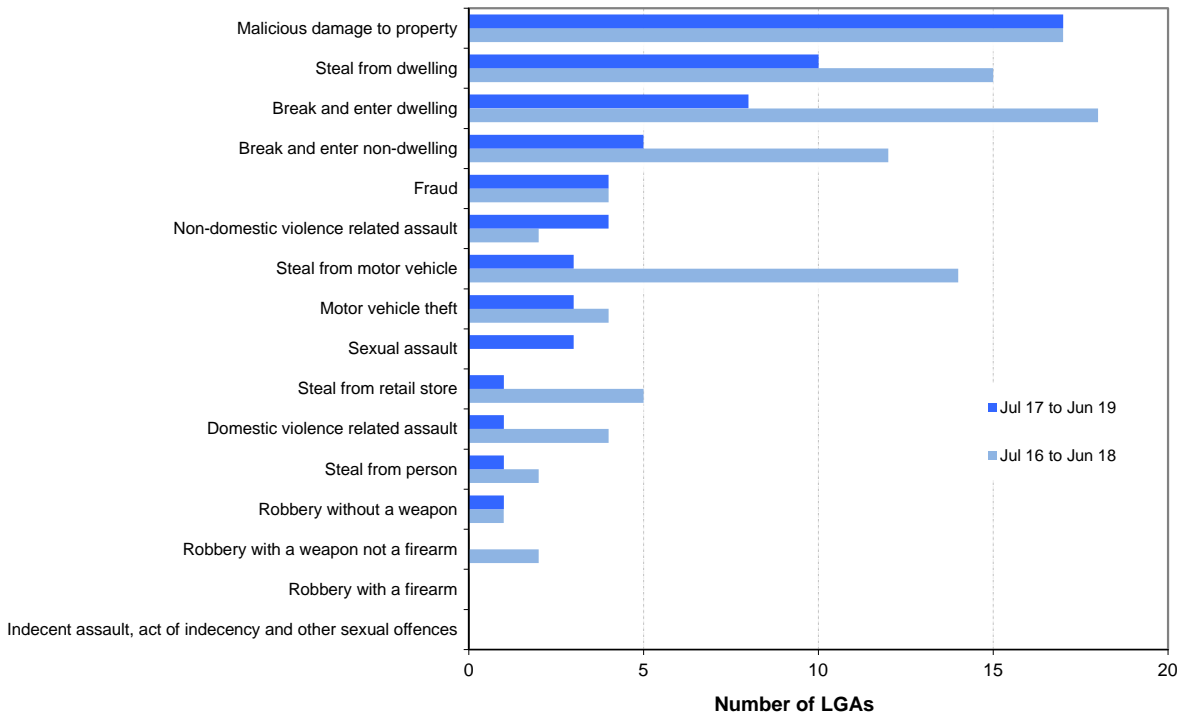


FIGURE 2.1B: NUMBER OF NSW LGAs WITH SIGNIFICANT DOWNWARD TRENDS[^], MAJOR OFFENCES, JUL 16 TO JUN 18 and JUL 17 TO JUN 19



[^] For further explanation of trend results, see page 44, Notes [5] and 6.

SECTION 3:

**TRENDS, RATE COMPARISONS AND
RECORDED CRIMINAL INCIDENTS
FOR MAJOR OFFENCES
NSW REGIONS AND LGAS**

TABLE 3.1A: TRENDS[^] IN RECORDED CRIMINAL INCIDENTS FOR MAJOR OFFENCES OVER THE 24 MONTHS TO JUNE 2019, NSW SAs

<i>NSW Statistical Area</i>	Murder *	Domestic violence related assault	Non-domestic violence related assault	Sexual assault	Indecent assault, act of indecency and other sexual offences	Robbery without a weapon	Robbery with a firearm	Robbery with a weapon not a firearm	Break and enter dwelling	Break and enter non-dwelling	Motor vehicle theft	Steal from motor vehicle	Steal from retail store	Steal from dwelling	Steal from person	Fraud	Malicious damage to property
Greater Sydney	ns	ns	ns	ns	ns	ns	ns	ns	-8.9	ns	ns	ns	5.2	ns	-12.4	ns	ns
Capital Region	.	ns	ns	ns	ns	.	.	.	ns	ns	ns	ns	ns	ns	.	ns	-10.6
Central West	.	ns	ns	ns	ns	.	.	.	ns	ns	ns	ns	19.1	ns	ns	ns	ns
Coffs Harbour - Grafton	.	ns	ns	ns	ns	ns	ns	ns	ns	-25.4	ns	ns	63.6	ns	ns	ns	ns
Far West and Orana	.	28.7	ns	ns	ns	.	.	.	ns	ns	ns	ns	17.9	9.2	ns	ns	ns
Hunter Valley excluding Newcastle	.	ns	ns	ns	ns	ns	ns	ns	ns	ns	15.1	ns	26.6	ns	ns	ns	-9.3
Illawarra	.	ns	-11.1	ns	ns	ns	.	ns	ns	ns	ns	ns	ns	ns	ns	18.3	-6.2
Mid North Coast	.	ns	ns	ns	ns	ns	.	ns	ns	ns	ns	ns	ns	-7.1	ns	ns	ns
Murray	.	ns	ns	ns	ns	.	.	.	ns	33.8	ns	ns	ns	15.9	ns	21.7	-8.2
New England and North West	.	ns	ns	20.5	ns	ns	.	ns	ns	ns	ns	ns	ns	-13.0	ns	ns	-14.9
Newcastle and Lake Macquarie	.	ns	ns	ns	ns	ns	.	ns	ns	ns	ns	ns	5.5	ns	ns	ns	-10.3
Richmond - Tweed	.	ns	ns	ns	ns	ns	.	ns	ns	-23.5	ns	ns	ns	ns	ns	7.9	-9.7
Riverina	.	ns	ns	-19.3	ns	.	.	.	ns	ns	ns	ns	ns	ns	ns	24.1	-7.7
Southern Highlands and Shoalhaven	.	ns	ns	-34.9	ns	.	.	.	ns	ns	ns	ns	ns	ns	ns	ns	-11.0
NSW	ns	ns	ns	ns	ns	ns	ns	ns	ns	ns	ns	ns	6.5	ns	-12.3	ns	ns

[^] For further explanation of **trend results**, see page 44, Notes [5] and [6].

* The trend test for Greater Sydney and NSW on the offence of murder is for the number of victims, not incidents.

TABLE 3.1B: RATIO TO NSW RATE[^] OF RECORDED CRIMINAL INCIDENTS PER 100,000 POPULATION FOR MAJOR OFFENCES OVER THE 12 MONTHS TO JUNE 2019, NSW SAs

<i>NSW Statistical Area</i>	Murder *	Domestic violence related assault	Non-domestic violence related assault	Sexual assault	Indecent assault, act of indecency and other sexual offences	Robbery without a weapon	Robbery with a firearm	Robbery with a weapon not a firearm	Break and enter dwelling	Break and enter non-dwelling	Motor vehicle theft	Steal from motor vehicle	Steal from retail store	Steal from dwelling	Steal from person	Fraud	Malicious damage to property
Greater Sydney	0.8	0.9	0.9	0.8	0.8	1.2	1.1	1.0	0.8	0.7	0.8	0.9	1.0	0.8	1.2	1.1	0.8
Capital Region	0.9	0.8	0.8	1.0	1.0	0.3	0.7	0.5	0.9	1.0	0.8	0.8	0.8	1.0	0.2	0.5	1.0
Central West	1.5	1.4	1.4	1.7	1.5	0.9	0.2	0.7	1.7	1.7	1.3	1.1	0.9	1.5	0.6	0.8	1.5
Coffs Harbour - Grafton	3.0	1.2	1.2	1.5	1.4	1.2	0.7	1.5	1.3	1.6	1.4	1.2	1.2	1.4	0.9	0.9	1.3
Far West and Orana	0.0	3.6	2.1	2.2	2.1	0.8	1.3	2.1	3.4	3.8	2.3	2.4	1.5	2.5	1.5	1.1	3.0
Hunter Valley excluding Newcastle	0.8	1.3	1.0	1.5	1.4	0.5	0.4	0.7	1.3	1.8	1.7	1.1	1.2	1.7	0.6	0.8	1.2
Illawarra	1.7	0.8	0.8	0.9	0.8	0.9	1.0	1.0	0.9	0.8	1.1	1.0	1.2	0.9	0.4	0.8	1.0
Mid North Coast	1.0	1.2	1.1	1.5	1.3	0.7	0.5	1.1	1.5	2.1	1.2	0.9	0.9	1.7	0.7	0.8	1.3
Murray	1.8	1.1	1.2	1.3	1.4	1.2	0.9	0.7	1.5	2.4	1.3	1.5	1.1	1.7	0.5	0.7	1.3
New England and North West	0.0	1.8	1.4	2.1	1.6	0.7	0.3	1.1	2.5	2.1	1.3	1.5	1.2	1.8	0.6	0.8	1.8
Newcastle and Lake Macquarie	2.3	1.0	1.2	1.4	1.2	0.7	1.8	1.3	1.4	1.4	1.8	1.8	1.4	1.5	1.1	1.2	1.3
Richmond - Tweed	1.3	1.0	1.1	1.2	1.2	0.4	0.2	0.8	1.0	1.1	1.1	1.1	0.6	1.2	0.7	0.8	1.0
Riverina	2.0	1.6	1.3	1.2	1.6	0.4	1.6	0.9	2.1	2.4	1.6	1.3	1.1	1.6	0.4	0.8	1.6
Southern Highlands and Shoalhaven	0.7	0.9	0.8	0.9	1.4	0.4	1.0	0.5	0.8	1.1	0.8	0.8	0.9	0.8	0.3	0.7	0.9
NSW	1.0	1.0	1.0	1.0	1.0	1.0	1.0	1.0	1.0	1.0	1.0	1.0	1.0	1.0	1.0	1.0	1.0

[^] For further explanation of **rate calculation populations** and the **ratio to NSW rate**, see page 44, Footnote 2 and Note [8].

* The rate calculations on the offence of murder is for the number of victims, not incidents.

TABLE 3.1C: NUMBER OF RECORDED CRIMINAL INCIDENTS FOR MAJOR OFFENCES, OVER THE 12 MONTHS TO JUNE 2019, NSW SAs

<i>NSW Statistical Area</i>	Murder *	Domestic violence related assault	Non-domestic violence related assault	Sexual assault	Indecent assault, act of indecency and other sexual offences	Robbery without a weapon	Robbery with a firearm	Robbery with a weapon not a firearm	Break and enter dwelling	Break and enter non-dwelling	Motor vehicle theft	Steal from motor vehicle	Steal from retail store	Steal from dwelling	Steal from person	Fraud	Malicious damage to property
Greater Sydney	37	17,238	17,797	2,942	4,350	1,138	111	598	12,559	4,358	7,048	21,577	16,330	9,540	3,010	36,199	31,020
Capital Region	2	679	767	174	236	11	3	14	678	282	289	892	577	535	17	764	1,623
Central West	3	1,143	1,164	266	324	37	1	16	1,154	448	455	1,108	629	732	62	1,086	2,308
Coffs Harbour - Grafton	4	662	671	153	201	31	2	25	580	288	320	839	558	481	64	863	1,308
Far West and Orana	0	1,643	963	189	247	17	3	28	1,284	562	447	1,328	572	691	85	798	2,539
Hunter Valley excluding Newcastle	2	1,359	1,089	298	387	26	2	23	1,159	621	801	1,439	1,060	1,106	82	1,493	2,431
Illawarra	5	950	932	194	262	53	6	37	904	304	573	1,555	1,211	646	60	1,496	2,202
Mid North Coast	2	1,033	964	248	303	30	2	29	1,051	571	438	1,000	633	876	77	1,189	2,007
Murray	2	504	569	111	176	26	2	10	596	356	263	875	442	474	32	571	1,158
New England and North West	0	1,262	1,084	282	312	26	1	23	1,489	493	399	1,379	765	787	55	937	2,494
Newcastle and Lake Macquarie	8	1,431	1,810	375	473	52	13	58	1,734	677	1,129	3,201	1,694	1,322	201	2,923	3,607
Richmond - Tweed	3	983	1,101	228	307	21	1	23	843	338	454	1,277	530	698	90	1,216	1,872
Riverina	3	1,011	837	146	257	11	5	16	1,068	482	433	1,024	564	604	33	830	1,870
Southern Highlands and Shoalhaven	1	531	480	97	218	12	3	9	409	209	194	569	468	296	23	673	1,049
NSW	75	30,434	31,614	5,778	8,106	1,491	155	910	25,508	9,991	13,244	38,063	26,033	18,788	3,892	51,058	57,564

* For murder the count given is for the number of victims, not incidents.

TABLE 3.1D: NUMBER OF RECORDED CRIMINAL INCIDENTS FOR MAJOR OFFENCES, OVER THE 12 MONTHS TO JUNE 2018, NSW SAs

<i>NSW Statistical Area</i>	Murder *	Domestic violence related assault	Non-domestic violence related assault	Sexual assault	Indecent assault, act of indecency and other sexual offences	Robbery without a weapon	Robbery with a firearm	Robbery with a weapon not a firearm	Break and enter dwelling	Break and enter non-dwelling	Motor vehicle theft	Steal from motor vehicle	Steal from retail store	Steal from dwelling	Steal from person	Fraud	Malicious damage to property
Greater Sydney	33	16,160	18,069	3,036	4,269	1,105	109	564	13,791	4,421	7,114	21,589	15,527	10,177	3,435	36,707	31,025
Capital Region	2	734	832	203	250	13	1	12	697	311	333	966	566	567	25	779	1,815
Central West	2	1,074	1,063	260	312	17	1	13	1,043	452	377	1,066	528	697	68	1,095	2,385
Coffs Harbour - Grafton	0	780	825	177	211	25	2	20	705	386	313	704	341	540	68	943	1,304
Far West and Orana	1	1,277	1,018	187	278	15	1	14	1,346	521	366	1,200	485	633	59	629	2,349
Hunter Valley excluding Newcastle	0	1,438	1,085	303	346	26	5	29	1,298	648	696	1,391	837	985	76	1,566	2,681
Illawarra	2	902	1,048	243	246	49	10	47	978	390	580	1,870	1,129	743	89	1,265	2,347
Mid North Coast	2	963	995	227	294	48	3	26	1,104	682	415	1,034	661	943	83	1,047	2,141
Murray	3	521	540	107	139	13	2	7	543	266	219	824	356	409	29	469	1,261
New England and North West	2	1,188	1,243	234	271	41	1	29	1,605	552	459	1,595	835	905	72	958	2,931
Newcastle and Lake Macquarie	2	1,452	1,785	389	499	53	8	67	1,598	725	1,061	3,207	1,605	1,235	234	3,188	4,023
Richmond - Tweed	2	865	1,157	235	301	23	4	20	804	442	483	1,236	538	685	125	1,127	2,074
Riverina	2	922	796	181	203	17	0	25	1,239	414	350	1,160	552	598	50	669	2,025
Southern Highlands and Shoalhaven	1	431	515	149	175	12	2	5	434	180	181	501	478	276	23	600	1,179
NSW	55	28,712	32,171	5,989	7,834	1,459	149	878	27,185	10,392	12,947	38,344	24,438	19,393	4,436	51,057	59,627

* For murder the count given is for the number of victims, not incidents.

TABLE 3.2A: TRENDS[^] IN RECORDED CRIMINAL INCIDENTS FOR MAJOR OFFENCES OVER THE 24 MONTHS TO JUNE 2019, GREATER SYDNEY SAs

Greater Sydney Statistical Area	Murder *	Domestic violence related assault	Non-domestic violence related assault	Sexual assault	Indecent assault, act of indecency and other sexual offences	Robbery without a weapon	Robbery with a firearm	Robbery with a weapon not a firearm	Break and enter dwelling	Break and enter non-dwelling	Motor vehicle theft	Steal from motor vehicle	Steal from retail store	Steal from dwelling	Steal from person	Fraud	Malicious damage to property
Baulkham Hills and Hawkesbury	.	10.7	ns	ns	14.7	.	.	.	ns	ns	ns	ns	16.2	ns	ns	ns	ns
Blacktown	.	ns	ns	ns	ns	ns	.	ns	ns	ns	ns	ns	ns	ns	ns	ns	ns
Central Coast	.	ns	ns	ns	ns	ns	.	ns	ns	ns	ns	ns	18.7	ns	ns	ns	-3.9
City and Inner South	.	ns	ns	ns	ns	ns	.	ns	ns	ns	ns	13.2	ns	ns	ns	ns	-9.4
Eastern Suburbs	.	ns	ns	ns	ns	ns	.	.	ns	ns	ns	ns	ns	ns	ns	ns	ns
Inner South West	.	ns	ns	ns	ns	ns	.	ns	ns	ns	ns	ns	ns	ns	ns	ns	ns
Inner West	.	-16.5	ns	ns	ns	ns	.	ns	-21.5	ns	ns	ns	ns	ns	-43.2	ns	-11.3
North Sydney and Hornsby	.	ns	ns	ns	ns	ns	.	.	ns	ns	ns	ns	23.0	-18.4	-27.6	ns	ns
Northern Beaches	.	24.5	ns	ns	ns	ns	.	.	ns	ns	ns	ns	30.9	-18.7	ns	ns	24.6
Outer South West	.	ns	ns	ns	21.3	ns	.	ns	ns	ns	ns	19.3	ns	ns	ns	10.7	ns
Outer West and Blue Mountains	.	ns	ns	ns	ns	ns	.	ns	ns	ns	ns	ns	ns	ns	29.2	ns	ns
Parramatta	.	ns	ns	-21.2	ns	ns	ns	ns	ns	ns	ns	ns	ns	ns	ns	ns	ns
Ryde	.	33.3	ns	-34.6	ns	.	.	.	-24.0	ns	ns	ns	-16.9	ns	ns	ns	-12.4
South West	.	ns	ns	ns	ns	ns	.	ns	-15.7	ns	ns	ns	ns	ns	-35.4	ns	ns
Sutherland	.	ns	ns	ns	35.1	.	.	.	ns	ns	ns	ns	ns	ns	ns	ns	ns

[^] For further explanation of **trend results**, see page 44, Notes [5] and [6].

TABLE 3.2B: RATIO TO NSW RATE[^] OF RECORDED CRIMINAL INCIDENTS PER 100,000 POPULATION FOR MAJOR OFFENCES OVER THE 12 MONTHS TO JUNE 2019, GREATER SYDNEY SAs

Greater Sydney Statistical Area	Murder *	Domestic violence related assault	Non-domestic violence related assault	Sexual assault	Indecent assault, act of indecency and other sexual offences	Robbery without a weapon	Robbery with a firearm	Robbery with a weapon not a firearm	Break and enter dwelling	Break and enter non-dwelling	Motor vehicle theft	Steal from motor vehicle	Steal from retail store	Steal from dwelling	Steal from person	Fraud	Malicious damage to property
Baulkham Hills and Hawkesbury	0.0	0.4	0.4	0.5	0.5	0.3	0.2	0.3	0.6	0.5	0.5	0.5	0.5	0.5	0.3	0.7	0.4
Blacktown	0.6	1.6	1.1	1.1	1.1	2.3	1.8	2.0	1.2	0.9	1.2	1.5	1.2	1.1	1.5	1.6	1.3
Central Coast	0.3	1.2	1.1	1.0	1.1	0.7	0.7	0.8	0.9	0.9	1.3	1.1	0.9	0.9	0.8	1.0	1.2
City and Inner South	0.9	1.1	2.7	1.3	1.6	3.9	1.7	2.0	0.9	1.3	1.0	1.1	2.9	1.6	6.6	2.3	1.4
Eastern Suburbs	1.1	0.6	0.9	0.7	0.7	0.6	0.7	0.4	0.6	0.3	0.7	0.7	0.9	0.9	1.2	1.0	0.7
Inner South West	0.3	0.8	0.6	0.6	0.5	1.1	0.8	1.0	0.6	0.5	0.8	0.7	0.5	0.5	0.6	0.9	0.7
Inner West	1.3	0.4	0.6	0.5	0.6	1.0	0.5	0.8	0.6	0.6	0.6	0.7	0.8	0.8	0.7	1.1	0.6
North Sydney and Hornsby	0.2	0.3	0.4	0.6	0.6	0.7	0.4	0.5	0.6	0.6	0.3	0.4	1.0	0.5	0.6	0.8	0.5
Northern Beaches	0.4	0.5	0.6	0.6	0.6	0.5	0.4	0.5	0.5	0.6	0.5	0.6	0.8	0.6	0.5	0.7	0.7
Outer South West	1.5	1.2	0.7	1.2	1.2	0.7	2.2	1.0	0.7	0.6	0.9	1.0	1.1	0.8	0.5	0.8	0.9
Outer West and Blue Mountains	0.7	1.3	1.0	1.3	1.1	1.1	1.0	1.0	1.0	1.0	1.1	1.2	1.1	1.0	1.3	1.2	1.2
Parramatta	1.1	0.9	0.9	0.6	0.7	1.3	2.1	1.6	1.0	0.7	1.1	1.1	0.8	0.8	1.2	1.2	0.7
Ryde	1.6	0.5	0.4	0.4	0.6	0.5	0.3	0.5	0.7	0.7	0.4	0.6	0.7	0.5	0.5	0.9	0.5
South West	1.5	1.0	0.8	0.8	0.8	1.2	2.1	1.3	0.7	0.5	1.1	1.0	0.8	0.7	0.6	1.0	0.8
Sutherland	0.0	0.6	0.6	0.4	0.7	0.5	0.2	0.2	0.4	0.3	0.5	0.5	0.7	0.5	0.5	0.6	0.7

[^] For further explanation of **rate calculation populations** and the **ratio to NSW rate**, see page 44, Footnote 2 and Note [8].

* The rate calculations on the offence of murder is for the number of victims, not incidents.

TABLE 3.2C: NUMBER OF RECORDED CRIMINAL INCIDENTS FOR MAJOR OFFENCES, OVER THE 12 MONTHS TO JUNE 2019, GREATER SYDNEY SAs

Greater Sydney Statistical Area	Murder *	Domestic violence related assault	Non-domestic violence related assault	Sexual assault	Indecent assault, act of indecency and other sexual offences	Robbery without a weapon	Robbery with a firearm	Robbery with a weapon not a firearm	Break and enter dwelling	Break and enter non-dwelling	Motor vehicle theft	Steal from motor vehicle	Steal from retail store	Steal from dwelling	Steal from person	Fraud	Malicious damage to property
Baulkham Hills and Hawkesbury	0	374	342	95	133	15	1	7	437	144	184	552	359	283	34	1,088	719
Blacktown	2	2,264	1,625	295	418	157	13	84	1,425	390	700	2,672	1,431	914	275	3,661	3,559
Central Coast	1	1,574	1,440	252	386	47	5	33	1,014	380	733	1,727	1,010	697	141	2,223	2,862
City and Inner South	3	1,496	3,721	334	592	257	12	81	974	564	587	1,898	3,311	1,333	1,143	5,248	3,558
Eastern Suburbs	3	668	1,014	155	211	32	4	14	577	120	330	1,001	873	630	176	1,858	1,408
Inner South West	2	1,997	1,550	253	335	124	10	72	1,198	383	845	2,089	911	782	175	3,702	2,964
Inner West	4	486	699	121	195	60	3	28	652	257	303	1,105	794	588	104	2,280	1,281
North Sydney and Hornsby	1	505	635	184	245	58	3	24	894	307	213	922	1,443	553	118	2,229	1,632
Northern Beaches	1	478	643	123	165	24	2	14	393	190	218	834	691	374	64	1,234	1,372
Outer South West	4	1,321	819	238	342	36	12	32	646	217	415	1,324	993	513	64	1,449	1,836
Outer West and Blue Mountains	2	1,646	1,340	296	366	69	6	38	1,032	408	565	1,779	1,123	768	208	2,405	2,903
Parramatta	5	1,760	1,744	215	324	122	20	87	1,564	439	858	2,473	1,307	889	279	3,834	2,570
Ryde	3	388	347	51	123	17	1	12	431	172	139	562	437	229	49	1,191	681
South West	6	1,719	1,316	256	361	97	18	66	1,042	300	776	2,089	1,146	713	126	2,862	2,446
Sutherland	0	562	562	74	154	23	1	6	280	87	182	550	501	274	54	935	1,229

* For murder the count given is for the number of victims, not incidents.

TABLE 3.2D: NUMBER OF RECORDED CRIMINAL INCIDENTS FOR MAJOR OFFENCES, OVER THE 12 MONTHS TO JUNE 2018, GREATER SYDNEY SAs

Greater Sydney Statistical Area	Murder *	Domestic violence related assault	Non-domestic violence related assault	Sexual assault	Indecent assault, act of indecency and other sexual offences	Robbery without a weapon	Robbery with a firearm	Robbery with a weapon not a firearm	Break and enter dwelling	Break and enter non-dwelling	Motor vehicle theft	Steal from motor vehicle	Steal from retail store	Steal from dwelling	Steal from person	Fraud	Malicious damage to property
Baulkham Hills and Hawkesbury	1	338	323	100	116	12	1	4	439	113	160	601	309	301	33	1,060	636
Blacktown	6	2,053	1,719	295	381	134	10	69	1,632	393	838	2,943	1,288	979	274	3,584	3,336
Central Coast	2	1,695	1,487	293	428	50	6	37	1,022	398	682	1,561	851	765	157	2,272	2,978
City and Inner South	3	1,347	3,789	316	661	203	15	82	992	642	555	1,676	3,317	1,340	1,267	5,790	3,545
Eastern Suburbs	2	581	1,050	144	184	42	5	13	562	116	350	855	938	657	188	2,001	1,469
Inner South West	8	1,753	1,638	268	305	121	14	56	1,165	384	852	2,241	990	815	178	3,534	3,004
Inner West	1	582	720	121	191	58	4	39	831	233	343	1,114	676	571	183	2,420	1,444
North Sydney and Hornsby	1	477	639	143	263	35	2	18	938	336	228	1,045	1,173	678	163	2,259	1,640
Northern Beaches	1	384	588	109	122	25	2	8	420	178	228	886	528	460	83	1,215	1,101
Outer South West	1	1,261	875	233	282	49	7	42	752	223	366	1,110	958	508	79	1,309	1,984
Outer West and Blue Mountains	1	1,596	1,314	336	395	71	4	34	1,185	374	643	1,663	1,084	821	161	2,408	2,860
Parramatta	3	1,704	1,672	273	349	162	20	67	1,674	429	807	2,743	1,264	998	352	3,925	2,582
Ryde	1	291	316	78	126	10	4	7	567	143	114	521	526	279	73	1,192	777
South West	1	1,619	1,342	240	352	122	15	84	1,236	342	746	1,892	1,054	691	195	2,831	2,486
Sutherland	1	479	597	87	114	11	0	4	376	117	202	738	571	314	49	907	1,183

* For murder the count given is for the number of victims, not incidents.

**TABLE 3.3A: TRENDS* IN RECORDED CRIMINAL INCIDENTS FOR MAJOR OFFENCES
OVER THE 24 MONTHS TO JUNE 2019, NSW LGAs**

NSW LGA	Murder*	Domestic violence related assault	Non-domestic violence related assault	Sexual assault	Indecent assault, act of indecency and other sexual offences	Robbery without a weapon	Robbery with a firearm	Robbery with a weapon not a firearm	Break and enter dwelling	Break and enter non-dwelling	Motor vehicle theft	Steal from motor vehicle	Steal from retail store	Steal from dwelling	Steal from person	Fraud	Malicious damage to property
Lane Cove	.	ns	ns	ns	ns	ns	ns	ns	ns	.	ns	ns
Leeton	.	ns	ns	.	ns	.	.	.	ns	ns	ns	ns	ns	ns	.	ns	ns
Lismore	.	ns	ns	ns	ns	.	.	.	ns	ns	ns	ns	ns	ns	.	35.8	-26.2
Lithgow	.	ns	ns	.	ns	.	.	.	ns	ns	ns	ns	ns	ns	.	ns	ns
Liverpool	.	ns	ns	ns	ns	-29.3	.	ns	ns	ns	ns	ns	ns	ns	-44.0	ns	ns
Liverpool Plains	.	ns	ns	50.0	ns	.	ns	ns
Lockhart
Lord Howe Island
Maitland	.	ns	ns	ns	ns	.	.	.	ns	ns	ns	ns	40.5	ns	ns	-17.5	ns
Mid-Coast	.	ns	ns	ns	ns	.	.	.	ns	ns	ns	ns	ns	ns	ns	-22.8	-18.7
Mid-Western Regional	.	20.5	ns	ns	ns	.	.	.	ns	ns	ns	ns	ns	ns	.	ns	ns
Moree Plains	.	ns	-37.4	ns	ns	.	.	.	ns	-47.5	-46.2	ns	ns	ns	.	12.9	ns
Mosman	.	ns	ns	ns	ns	.	ns	ns	ns	.	ns	ns
Murray River	.	.	ns	ns	ns	.	ns	.	81.0	.	ns	ns
Murrumbidgee	.	ns	ns
Muswellbrook	.	ns	ns	ns	ns	.	.	.	-44.3	ns	ns	ns	ns	ns	.	89.5	ns
Nambucca	.	ns	60.6	ns	ns	.	.	.	ns	ns	ns	ns	ns	ns	.	ns	ns
Narrabri	.	ns	-23.1	ns	40.7	ns	ns	ns	ns	.	ns	-25.0
Narrandera	.	ns	57.1	ns	.	.	ns	ns
Narromine	.	ns	ns	ns	ns	.	ns	.	ns	.	112.0	ns
Newcastle	.	ns	ns	ns	ns	ns	.	ns	ns	ns	ns	ns	ns	ns	ns	ns	ns
North Sydney	.	ns	ns	36.7	ns	.	.	.	ns	ns	ns	ns	ns	-34.8	ns	ns	ns
Northern Beaches	.	24.5	ns	ns	ns	ns	.	.	ns	ns	ns	ns	30.9	-18.7	ns	ns	24.6
Oberon	.	ns	ns	ns
Orange	.	ns	ns	ns	ns	.	.	.	39.0	ns	.	48.5	23.5	41.3	.	.	ns
Parkes	.	ns	ns	ns	ns	.	.	.	ns	-50.0	ns	ns	ns	-54.3	.	ns	-24.7
Parramatta	.	ns	ns	ns	ns	ns	.	ns	ns	ns	ns	ns	ns	-19.2	ns	ns	ns
Penrith	.	ns	ns	ns	ns	ns	.	ns	ns	ns	ns	ns	ns	ns	38.1	ns	ns
Port Macquarie-Hastings	.	ns	ns	ns	ns	.	.	.	ns	ns	ns	ns	ns	-21.9	.	50.6	ns
Port Stephens	.	ns	ns	ns	ns	.	.	.	ns	ns	28.8	ns	ns	ns	.	.	ns
Queanbeyan-Palerang Regional	.	ns	ns	ns	ns	.	.	.	ns	ns	ns	ns	ns	ns	.	ns	ns
Randwick	.	ns	ns	ns	ns	.	.	.	ns	ns	ns	ns	ns	ns	ns	ns	ns
Richmond Valley	.	ns	ns	ns	ns	.	.	.	ns	ns	ns	53.3	ns	ns	.	ns	ns
Ryde	.	25.0	ns	-45.3	ns	.	.	.	-26.5	ns	ns	ns	-19.3	ns	ns	-13.8	ns
Shellharbour	.	ns	ns	ns	ns	.	.	.	35.9	ns	ns	ns	ns	ns	.	28.5	ns
Shoalhaven	.	ns	ns	-36.9	ns	.	.	.	-10.4	ns	ns	ns	ns	ns	ns	ns	ns
Singleton	.	-15.9	ns	.	ns	.	.	.	ns	ns	ns	ns	ns	68.3	.	ns	ns
Snowy Monaro Regional	.	ns	ns	.	ns	.	.	.	ns	.	.	ns	.	ns	.	ns	ns
Snowy Valleys	.	ns	ns	.	ns	.	.	.	-44.1	ns	ns	ns	ns	ns	.	ns	ns
Strathfield	.	ns	ns	.	ns	.	.	.	-27.6	ns	ns	ns	70.4	ns	ns	ns	ns
Sutherland Shire	.	ns	ns	ns	35.1	.	.	.	ns	ns	ns	ns	ns	ns	ns	ns	ns
Sydney	.	ns	ns	ns	ns	ns	.	ns	ns	ns	ns	16.2	ns	ns	ns	-11.7	ns
Tamworth Regional	.	ns	ns	ns	ns	.	.	.	ns	ns	ns	-32.9	ns	ns	.	ns	ns
Temora	.	.	ns	ns
Tenterfield	.	55.6	ns	113.6	ns
The Hills Shire	.	17.2	ns	ns	9.3	.	.	.	ns	ns	ns	ns	16.5	ns	ns	ns	ns
Tweed	.	ns	ns	ns	ns	.	.	.	ns	ns	ns	ns	ns	ns	ns	ns	ns
Unincorporated Far West
Upper Hunter Shire	.	ns	ns	ns	ns	.	ns	.	ns	.	ns	ns
Upper Lachlan Shire	ns
Uralla	ns
Wagga Wagga	.	14.8	ns	-29.9	ns	.	.	.	ns	ns	ns	ns	ns	ns	ns	30.2	ns
Walcha
Walgett	.	ns	ns	ns	ns	.	ns	ns	-56.5	.	ns	-22.6
Warren	.	ns	ns	ns
Warrumbungle Shire	.	ns	ns	ns	.	.	ns	.	ns	.	ns	ns
Waverley	.	ns	ns	ns	ns	.	.	.	ns	76.2	ns	ns	ns	ns	ns	ns	ns
Weddin
Wentworth	.	ns	ns	ns	ns	ns	ns	.	ns	.	.	-41.2
Willoughby	.	ns	ns	ns	ns	.	.	.	ns	ns	ns	ns	ns	ns	ns	ns	ns
Wingecarribee	.	ns	ns	ns	ns	.	.	.	ns	ns	ns	ns	ns	ns	.	ns	-23.2
Wollondilly	.	ns	ns	ns	139.1	.	.	.	ns	ns	ns	ns	ns	ns	.	ns	ns
Wollongong	.	ns	-17.4	ns	ns	ns	.	ns	ns	ns	ns	ns	ns	ns	ns	ns	-7.7
Woollahra	.	ns	ns	ns	ns	.	.	.	ns	.	ns	ns	ns	ns	ns	ns	ns
Yass Valley	.	ns	ns	ns	.	.	ns	ns
NSW	ns	ns	ns	ns	ns	ns	ns	ns	ns	ns	ns	ns	6.5	ns	-12.3	ns	ns

^ For further explanation of trend results, see page 44, Notes [5] and [6].

* There were no LGAs with 20 murder victims, hence no trend tests were reported. The trend test for NSW on the offence of murder is for the number of victims, not incidents.

TABLE 3.3B: RATIO NSW RATE^a OF RECORDED CRIMINAL INCIDENTS PER 100,000 POPULATION FOR MAJOR OFFENCES OVER THE 12 MONTHS TO JUNE 2019, NSW LGAs

NSW LGA	Murder*	Domestic violence related assault	Non-domestic violence related assault	Sexual assault	Indecent assault, act of indecency and other sexual offences	Robbery without a weapon	Robbery with a firearm	Robbery with a weapon not a firearm	Break and enter dwelling	Break and enter non-dwelling	Motor vehicle theft	Steal from motor vehicle	Steal from retail store	Steal from dwelling	Steal from person	Fraud	Malicious damage to property
Albury	.	1.3	1.6	1.5	1.5	2.1	1.0	1.3	2.1	2.2	1.7	2.5	2.0	1.8	0.9	1.0	1.8
Armidale Regional	.	1.7	1.6	2.2	1.9	1.0	.	2.0	2.5	2.7	1.3	1.9	1.6	1.9	0.8	0.8	1.9
Ballina	.	0.7	0.7	1.1	0.8	0.1	.	0.6	1.2	1.0	0.7	0.9	0.8	1.6	0.2	0.6	0.9
Balranald
Bathurst Regional	.	1.3	1.5	1.4	1.4	1.1	.	0.2	1.5	0.8	0.7	0.9	1.1	1.1	0.8	0.8	1.4
Bayside	.	0.9	0.8	0.5	0.5	1.1	1.5	0.7	0.5	0.6	0.8	0.8	0.7	0.8	1.1	1.0	0.7
Bega Valley	3.1	0.8	0.7	1.1	1.1	0.2	.	0.3	0.5	1.4	0.6	0.6	0.4	0.9	0.1	0.5	0.7
Bellingen	.	0.8	0.6	1.6	1.0	.	.	0.7	0.6	2.2	1.1	0.7	0.4	1.0	.	0.6	0.8
Berrigan	.	0.5	0.5	0.9	1.6	.	.	.	0.5	3.7	1.0	0.9	0.5	1.6	.	0.2	0.8
Blacktown	0.6	1.6	1.1	1.1	1.1	2.3	1.7	2.0	1.2	0.8	1.2	1.5	1.2	1.0	1.6	1.6	1.3
Bland	.	1.0	0.9	1.1	0.8	.	.	.	0.8	0.8	0.7	0.0	0.2	0.7	.	0.8	1.0
Blayney	.	0.7	1.0	0.9	0.9	0.7	.	1.2	1.7	3.0	1.0	0.4	0.4	0.8	.	0.7	0.7
Blue Mountains	.	0.7	0.6	0.9	1.0	0.6	.	0.2	0.7	0.5	0.5	0.9	0.5	0.7	0.5	0.6	1.2
Bogan
Bourke
Brewarrina
Broken Hill	.	3.2	1.9	1.7	1.9	0.3	.	1.9	3.9	3.3	1.5	2.0	1.0	3.1	0.3	1.0	2.8
Burwood	2.7	0.4	0.6	0.3	0.4	2.0	.	1.8	0.8	0.8	0.5	0.6	2.6	0.8	1.1	1.6	0.5
Byron	.	0.9	1.6	1.3	1.4	.	.	.	0.7	1.4	0.9	1.2	0.7	1.2	1.9	1.0	1.2
Cabonne	.	0.7	0.6	1.1	1.3	.	.	.	1.1	2.5	1.2	0.7	0.2	0.9	0.1	0.4	0.8
Camden	.	1.1	0.5	0.6	0.7	0.2	.	0.2	0.4	0.5	0.6	0.6	0.7	0.6	0.1	0.7	0.7
Campbelltown	2.5	1.4	1.0	1.5	1.4	1.1	3.1	1.4	0.9	0.6	1.1	1.3	1.5	1.0	0.7	1.0	1.1
Canada Bay	1.1	0.3	0.4	0.4	0.5	0.5	0.5	0.6	0.5	0.5	0.5	0.6	0.5	0.5	0.3	0.9	0.4
Canterbury-Bankstown	0.6	0.8	0.7	0.6	0.6	1.0	1.0	1.3	0.7	0.6	1.0	0.8	0.4	0.5	0.5	1.0	0.7
Carrathool
Central Coast	0.3	1.2	1.1	1.0	1.1	0.7	0.7	0.8	0.9	0.9	1.3	1.1	0.9	0.9	0.8	1.0	1.2
Central Darling
Cessnock	.	1.3	1.0	1.6	1.4	0.5	1.8	1.4	1.9	2.0	3.2	1.7	0.9	2.1	0.6	1.0	1.2
Clarence Valley	8.1	1.0	1.2	1.3	1.0	0.4	.	0.8	1.0	1.3	0.9	0.8	1.1	1.6	1.0	0.9	1.4
Cobar	.	2.6	1.6	2.0	2.5	.	.	.	1.4	4.0	2.4	1.4	0.3	1.0	1.1	2.5	.
Coffs Harbour	.	1.4	1.3	1.6	1.7	1.9	1.3	2.2	1.6	1.7	1.7	1.6	1.4	1.4	1.0	1.1	1.3
Coolamon	.	0.5	0.7	0.6	1.5	.	.	.	0.7	1.6	0.5	0.4	.	0.4	.	0.2	0.7
Coonamble	.	6.1	2.8	2.0	3.8	.	.	4.3	10.8	7.4	3.1	2.5	1.5	5.1	2.5	1.3	4.5
Cootamundra-Gundagai	.	1.7	1.3	1.3	1.7	.	.	0.8	1.0	2.2	0.7	0.5	0.7	1.3	.	1.1	1.0
Cowra	.	1.2	1.5	0.9	1.8	0.4	.	.	2.0	2.0	1.2	1.0	0.9	1.6	0.5	0.8	1.6
Cumberland	0.5	1.0	0.9	0.5	0.5	1.3	2.8	1.7	0.9	0.5	1.1	1.0	0.5	0.7	0.6	1.2	0.7
Dubbo Regional	.	3.3	1.9	1.8	1.9	1.2	1.9	3.0	3.2	3.1	2.7	3.0	2.1	2.2	2.1	1.2	3.1
Dungog	.	0.7	0.8	1.5	0.8	.	.	.	0.6	0.5	0.7	0.3	0.1	0.8	0.2	0.5	0.5
Edward River	.	1.6	0.9	1.1	1.0	1.2	5.7	.	1.6	2.7	0.7	1.1	0.8	2.0	.	0.7	1.3
Eurobodalla	2.8	1.1	1.0	1.4	0.7	0.4	2.7	0.7	1.7	1.1	0.9	0.9	1.5	1.1	0.1	0.6	1.2
Fairfield	2.0	1.0	0.7	0.7	0.7	1.6	3.6	1.6	0.5	0.5	1.0	1.0	0.6	0.5	0.6	1.0	0.7
Federation	.	0.5	0.9	0.5	1.1	.	.	.	0.9	2.7	0.9	0.5	0.6	1.9	0.3	0.4	0.9
Forbes	.	2.2	1.8	2.5	1.8	0.5	.	.	2.5	4.0	1.5	0.9	0.8	2.4	0.6	0.7	1.7
Georges River	0.7	0.8	0.6	0.6	0.6	1.1	0.3	0.9	0.6	0.5	0.6	0.6	0.6	0.5	0.7	0.9	0.6
Gilgandra	.	3.0	1.2	1.3	2.1	.	.	.	1.3	1.5	1.0	1.2	0.6	1.6	1.0	0.8	2.1
Glen Innes Severn	.	1.6	1.5	2.1	2.3	1.2	.	.	1.1	1.9	0.9	0.6	1.1	1.7	0.7	0.4	1.6
Goulburn Mulwaree	.	0.9	1.0	1.1	1.7	0.5	.	0.3	0.8	0.7	0.7	0.6	1.4	1.2	0.2	0.8	1.1
Greater Hume Shire	.	0.7	0.4	1.4	1.2	.	.	.	0.8	1.6	0.7	0.4	.	0.8	0.4	0.3	0.6
Griffith	.	2.0	1.2	1.2	1.1	1.0	1.9	1.0	1.6	4.4	1.9	1.2	1.4	1.3	0.3	0.9	1.5
Gunnedah	.	1.2	1.3	1.4	1.2	0.4	.	.	2.8	1.9	1.7	1.9	1.0	2.0	0.3	0.6	2.0
Gwydir	.	1.5	0.4	1.3	1.6	.	9.5	.	0.9	1.2	1.1	1.3	0.1	1.3	.	0.1	0.7
Hawkesbury	1.6	0.9	0.8	1.1	1.0	0.4	0.8	0.3	0.7	1.4	0.8	0.7	0.9	0.7	0.4	0.8	1.0
Hay
Hilltops	.	1.3	1.2	2.0	1.3	.	.	0.5	0.8	1.1	0.8	0.6	0.7	1.3	.	0.6	1.6
Hornsby	1.4	0.4	0.4	0.6	0.6	0.5	.	0.3	0.4	0.5	0.3	0.5	0.9	0.4	0.4	0.8	0.5
Hunters Hill	7.1	0.4	0.7	0.2	0.4	.	.	.	0.9	1.7	0.6	0.8	0.3	0.6	0.5	1.1	0.8
Inner West	0.5	0.5	0.8	0.7	0.8	1.0	0.5	0.8	0.7	0.7	0.8	0.9	0.7	1.1	0.9	1.2	0.9
Inverell	.	2.3	1.5	2.2	1.7	0.3	.	0.5	2.4	1.3	0.6	1.5	1.0	1.7	0.8	0.7	1.8
June	16.1	1.3	1.1	0.6	0.6	.	.	1.3	0.9	1.0	0.6	0.2	0.1	0.7	.	0.4	1.2
Kempsey	.	2.0	1.5	1.9	1.3	1.4	.	2.9	3.8	3.7	2.5	1.2	1.9	3.1	2.1	0.9	2.0
Kiama	.	0.4	0.3	0.2	0.2	.	.	1.2	0.4	0.8	0.7	0.5	0.2	0.4	0.2	0.5	0.5
Ku-ring-gai	.	0.2	0.2	0.5	0.4	0.5	.	0.8	0.8	0.5	0.1	0.3	0.2	0.4	0.2	0.6	0.4
Kyogle	.	1.8	1.4	2.3	1.6	0.6	.	1.0	1.0	1.0	1.5	1.0	0.1	1.0	0.2	0.4	1.0
Lachlan	.	2.3	1.3	2.2	1.6	2.5	.	.	1.7	4.4	1.1	1.6	0.4	2.2	0.6	0.3	2.3
Lake Macquarie	2.6	1.0	0.8	1.4	1.2	0.4	0.5	1.0	1.0	1.1	1.5	1.2	1.1	0.9	0.6	1.0	1.1

TABLE 3.3B: RATIO NSW RATE* OF RECORDED CRIMINAL INCIDENTS PER 100,000 POPULATION FOR MAJOR OFFENCES OVER THE 12 MONTHS TO JUNE 2019, NSW LGAs

NSW LGA	Murder*	Domestic violence related assault	Non-domestic violence related assault	Sexual assault	Indecent assault, act of indecency and other sexual offences	Robbery without a weapon	Robbery with a firearm	Robbery with a weapon not a firearm	Break and enter dwelling	Break and enter non-dwelling	Motor vehicle theft	Steal from motor vehicle	Steal from retail store	Steal from dwelling	Steal from person	Fraud	Malicious damage to property
Lane Cove	.	0.3	0.3	0.5	0.7	0.5	1.3	.	0.7	0.8	0.5	0.7	0.4	0.7	0.3	0.8	0.4
Leeton	.	1.9	1.3	0.6	2.0	.	.	0.8	2.2	1.7	1.3	0.5	0.6	1.8	0.5	0.6	1.5
Lismore	.	1.2	1.6	1.7	2.1	1.0	.	1.6	1.3	1.0	1.4	1.1	0.9	1.5	0.9	0.8	1.1
Lithgow	.	1.4	1.5	1.1	1.5	0.2	.	.	1.1	1.4	1.1	0.5	0.6	1.6	0.6	0.9	1.6
Liverpool	1.4	1.0	0.8	0.9	0.9	1.0	0.7	1.1	0.9	0.6	1.1	1.1	1.0	0.9	0.6	1.0	0.9
Liverpool Plains	.	1.2	1.4	0.9	0.7	.	.	1.1	1.3	0.6	1.2	0.8	0.5	1.3	0.3	0.5	1.4
Lockhart	.	0.5	0.6	1.7	1.2	.	.	.	0.9	2.2	1.3	1.0	0.1	0.4	.	0.3	0.8
Lord Howe Island
Maitland	.	1.4	1.1	1.6	1.4	0.3	.	1.2	1.3	1.7	1.6	1.3	2.0	1.5	0.7	0.9	1.2
Mid-Coast	2.3	1.2	1.1	1.5	1.2	0.7	.	1.0	1.3	1.6	1.0	1.0	0.6	1.8	0.5	0.6	1.2
Mid-Western Regional	.	1.5	1.3	2.1	0.8	0.6	.	.	0.8	0.6	0.9	0.6	0.5	1.2	0.2	0.6	1.5
Moree Plains	.	3.5	2.3	3.1	1.6	1.6	.	.	4.4	5.5	2.8	3.1	3.4	2.9	2.0	1.5	5.0
Mosman	.	0.3	0.3	0.4	0.5	2.1	.	0.3	0.6	0.6	0.3	0.5	0.3	0.7	0.3	0.6	0.5
Murray River	.	0.6	0.5	1.0	1.1	0.4	.	0.7	1.1	2.2	1.1	0.7	0.4	1.3	0.2	0.5	0.8
Murrumbidgee	.	1.4	0.7	1.0	2.5	.	.	.	0.7	2.0	1.2	0.4	0.3	0.7	.	0.5	0.8
Muswellbrook	.	1.7	1.2	2.2	1.5	0.3	.	.	1.9	3.2	1.3	0.9	1.1	2.3	1.1	1.0	1.8
Nambucca	.	1.6	2.0	2.9	2.0	0.5	.	1.3	1.8	4.1	1.5	1.3	1.4	1.7	0.7	1.2	1.8
Narrabri	.	1.6	1.3	2.2	1.2	.	.	0.7	2.5	2.3	1.1	1.2	0.7	1.7	0.3	0.6	1.2
Narrandera	.	1.3	1.8	1.8	2.6	0.9	8.6	.	1.5	1.5	1.4	2.3	1.0	1.4	.	0.4	1.6
Narromine	.	3.1	1.4	2.7	1.2	0.8	7.7	1.3	3.9	7.3	3.1	2.8	0.5	3.4	1.8	1.2	2.1
Newcastle	1.9	1.0	1.7	1.3	1.3	1.2	3.4	1.8	1.9	1.9	2.2	2.5	1.7	2.2	1.8	1.5	1.6
North Sydney	.	0.4	0.5	0.8	0.6	0.4	1.4	0.4	0.6	0.7	0.4	0.5	0.7	0.8	0.9	1.0	0.7
Northern Beaches	0.4	0.5	0.6	0.6	0.6	0.5	0.4	0.5	0.5	0.6	0.5	0.6	0.8	0.6	0.5	0.7	0.7
Oberon	.	1.3	0.6	1.3	0.9	.	.	.	1.4	1.9	1.2	0.5	0.2	1.2	.	0.6	1.4
Orange	2.5	1.7	1.6	2.5	2.2	2.0	1.2	2.7	3.2	2.3	2.6	2.5	1.8	2.0	1.3	1.1	1.8
Parkes	14.1	1.4	1.5	2.6	1.5	0.7	.	0.6	1.0	1.3	0.8	0.7	0.7	1.0	.	0.9	1.6
Parramatta	1.3	0.8	0.8	0.7	0.7	1.3	1.5	1.3	1.1	0.9	0.9	1.1	1.1	0.8	1.7	1.3	0.7
Penrith	0.5	1.6	1.2	1.4	1.2	1.4	1.5	1.4	1.1	1.0	1.3	1.3	1.2	1.2	1.7	1.4	1.3
Port Macquarie-Hastings	.	0.9	0.7	1.2	1.3	0.5	1.2	0.5	0.8	1.4	0.9	0.7	0.6	1.0	0.5	0.9	0.9
Port Stephens	1.5	1.2	1.0	1.4	1.6	0.8	.	0.4	0.9	1.1	1.3	0.7	0.8	1.3	0.5	0.8	1.2
Queanbeyan-Palerang Regional	.	0.5	0.8	0.6	0.8	0.4	0.9	1.2	1.1	1.0	0.9	1.3	0.7	1.1	0.3	0.5	0.9
Randwick	0.7	0.7	0.9	0.7	0.8	0.6	1.0	0.6	0.7	0.3	0.7	0.8	0.5	0.9	1.2	0.9	0.7
Richmond Valley	.	1.5	1.3	2.2	1.8	.	.	0.7	1.7	1.8	1.1	1.0	0.7	1.0	0.5	0.8	1.3
Ryde	.	0.6	0.5	0.3	0.6	0.6	.	0.7	0.6	0.6	0.4	0.6	0.9	0.5	0.5	0.9	0.5
Shellharbour	1.5	0.8	0.7	0.9	0.8	0.7	0.7	0.6	1.0	0.6	1.0	0.8	1.3	0.8	0.3	0.7	1.0
Shoalhaven	.	1.1	0.9	0.9	1.3	0.4	1.5	0.6	1.0	1.3	0.9	1.0	1.1	1.0	0.4	0.7	1.0
Singleton	.	1.0	1.0	1.1	1.2	0.7	.	.	1.4	2.7	1.6	0.8	1.1	2.5	0.6	0.7	1.5
Snowy Monaro Regional	.	0.8	0.9	1.0	1.0	.	.	.	0.4	1.0	0.3	0.4	0.4	0.6	0.1	0.3	1.0
Snowy Valleys	.	1.1	0.9	1.5	1.7	0.7	.	.	1.4	2.6	1.3	1.5	0.6	1.4	0.3	0.4	1.5
Strathfield	.	0.8	0.7	0.4	0.8	1.6	.	0.6	0.8	0.7	0.9	0.8	0.8	0.7	1.0	1.5	0.6
Sutherland Shire	.	0.6	0.6	0.4	0.7	0.5	0.2	0.2	0.4	0.3	0.5	0.5	0.7	0.5	0.5	0.6	0.7
Sydney	1.4	1.2	3.5	1.6	2.0	5.2	2.2	2.6	1.0	1.5	1.0	1.2	3.7	1.8	9.2	2.8	1.6
Tamworth Regional	.	1.6	1.5	2.2	1.7	1.0	.	1.7	2.7	1.8	1.3	1.5	1.2	1.6	0.4	1.0	1.7
Temora	.	0.7	1.4	1.3	0.2	.	.	1.4	0.8	1.8	0.5	0.7	0.5	1.3	.	0.6	1.2
Tenterfield	.	2.2	0.9	0.8	1.3	.	.	.	2.2	1.2	1.3	0.9	1.1	2.6	0.3	0.4	1.1
The Hills Shire	.	0.4	0.4	0.5	0.5	0.4	0.3	0.3	0.6	0.4	0.4	0.5	0.6	0.5	0.4	0.8	0.4
Tweed	3.3	0.9	0.8	0.7	0.7	0.6	0.5	0.8	0.8	0.8	1.1	1.1	0.5	0.9	0.6	0.7	0.9
Unincorporated Far West
Upper Hunter Shire	7.3	1.0	0.6	1.2	1.4	.	.	.	0.7	2.3	0.8	0.4	0.5	1.6	0.4	0.5	1.0
Upper Lachlan Shire	.	0.3	0.4	0.9	0.9	.	.	.	0.7	0.3	0.7	0.2	0.0	0.7	0.3	0.2	0.5
Uralla	.	0.6	0.6	1.1	0.8	.	.	1.4	1.0	1.2	0.7	0.4	0.1	1.0	.	0.4	0.5
Wagga Wagga	3.3	1.8	1.5	1.3	1.6	0.2	2.4	1.1	3.0	2.1	2.2	1.8	1.6	2.1	0.8	1.0	2.0
Walcha	.	1.1	1.0	3.9	3.4	.	.	.	0.1	1.3	0.2	0.5	.	0.7	1.3	0.5	0.4
Walgett	.	5.6	3.3	1.3	2.8	.	.	.	3.7	5.0	2.0	1.3	1.3	1.4	.	0.9	3.2
Warren
Warrumbungle Shire	.	1.4	1.1	2.0	1.1	.	.	0.9	1.2	1.7	0.5	0.5	0.6	1.6	0.4	0.6	1.5
Waverley	2.9	0.6	1.0	0.9	0.9	0.8	.	0.1	0.5	0.4	0.7	0.6	2.3	1.0	1.3	1.2	0.8
Weddin	.	0.5	0.5	.	0.5	.	.	.	0.6	0.2	0.5	0.2	0.5	1.0	.	0.4	0.6
Wentworth	30.1	2.4	1.9	1.6	2.8	1.5	.	1.2	1.8	2.6	2.0	0.8	0.2	1.2	0.6	0.6	1.4
Willoughby	1.3	0.3	0.4	0.4	0.6	1.0	.	0.5	0.7	0.6	0.4	0.5	2.7	0.5	0.9	1.1	0.6
Wingecarribee	2.1	0.5	0.4	0.8	1.5	0.4	.	0.3	0.5	0.6	0.4	0.4	0.6	0.4	0.1	0.6	0.8
Wollondilly	.	0.9	0.3	0.7	1.0	.	2.0	0.7	0.5	0.7	0.7	0.4	0.1	0.4	.	0.4	0.5
Wollongong	2.0	0.9	0.8	0.9	0.9	1.1	1.2	1.2	0.9	0.8	1.2	1.2	1.3	0.9	0.5	0.8	1.0
Woollahra	.	0.4	0.5	0.8	0.3	0.2	0.9	0.3	0.5	0.2	0.6	0.6	0.4	0.8	0.8	0.8	0.5
Yass Valley	.	0.3	0.5	0.6	1.0	.	.	.	0.4	0.7	0.8	0.5	0.2	0.4	.	0.3	0.5
NSW	1.0	1.0	1.0	1.0	1.0	1.0	1.0	1.0	1.0	1.0	1.0	1.0	1.0	1.0	1.0	1.0	1.0

* For further explanation of rate calculation populations and the ratio to NSW rate, see page 44, Footnote 2 and Note [8]. A result of . indicates either that there were no relevant offences recorded in the LGA, or that the population is less than 3,000 people and no rate was calculated.

Sydney LGA can be considered a special case since the population used to calculate the rate is much lower than the population using the area for work and entertainment and this will be reflected in higher incident rates.

* The ratios given on the offence of murder are calculated for the number of victims, not incidents, and must be treated with caution since for LGAs with relatively small populations a single murder victim will result in relatively high ratio to state.

TABLE 3.3C: NUMBER OF RECORDED CRIMINAL INCIDENTS FOR MAJOR OFFENCES, OVER THE 12 MONTHS TO JUNE 2019, NSW LGAs

NSW LGA	Murder *	Domestic violence related assault	Non-domestic violence related assault	Sexual assault	Indecent assault, act of indecency and other sexual offences	Robbery without a weapon	Robbery with a firearm	Robbery with a weapon not a firearm	Break and enter dwelling	Break and enter non-dwelling	Motor vehicle theft	Steal from motor vehicle	Steal from retail store	Steal from dwelling	Steal from person	Fraud	Malicious damage to property
Albury	0	257	338	59	81	21	1	8	355	145	152	652	357	234	24	354	685
Armidale Regional	0	204	196	50	60	6	0	7	248	105	65	287	167	140	12	155	417
Ballina	0	117	128	36	38	1	0	3	175	54	51	184	114	161	4	177	288
Balranald	0	10	12	2	2	0	0	0	10	8	1	9	0	9	0	20	25
Bathurst Regional	0	213	262	44	63	9	0	1	202	41	51	191	156	116	18	233	453
Bayside	0	605	536	62	94	37	5	13	294	120	223	627	371	311	93	1,158	915
Bega Valley	1	100	93	28	39	1	0	1	58	62	37	97	45	71	2	105	177
Bellingen	0	38	32	15	13	0	0	1	27	36	24	43	18	32	0	47	75
Berrigan	0	18	18	6	14	0	0	0	15	41	15	36	13	34	0	12	51
Blacktown	2	2,254	1,607	295	416	155	12	83	1,400	381	694	2,636	1,410	897	275	3,641	3,511
Bland	0	23	22	5	5	0	0	0	15	6	7	1	4	10	0	33	45
Blayney	0	21	29	5	7	1	0	1	40	28	12	15	10	14	0	32	38
Blue Mountains	0	229	188	55	82	9	0	2	181	48	73	339	132	125	21	326	676
Bogan	0	16	9	6	2	0	0	0	10	11	9	17	3	18	0	16	30
Bourke	0	113	55	19	15	0	0	1	59	22	18	53	34	34	7	23	160
Brewarrina	0	44	34	11	10	1	0	1	33	19	12	23	5	16	0	13	56
Broken Hill	0	219	135	22	35	1	0	4	226	75	44	173	60	134	3	119	368
Burwood	1	60	95	9	18	15	0	8	97	40	33	108	332	76	21	403	141
Byron	0	116	213	33	50	0	0	0	78	62	51	191	74	95	32	221	301
Cabonne	0	37	34	11	18	0	0	0	47	44	27	44	9	28	1	31	77
Camden	0	383	168	40	64	4	0	2	116	59	93	271	190	124	4	388	439
Campbelltown	4	922	634	183	241	33	10	27	507	132	313	1,059	828	394	61	1,057	1,346
Canada Bay	1	101	138	28	51	9	1	6	150	62	83	284	144	112	15	564	290
Canterbury-Bankstown	2	1,187	971	171	216	71	7	54	819	260	604	1,408	515	447	89	2,276	1,796
Carrathool	0	14	18	3	9	0	0	1	19	4	1	11	1	11	0	10	13
Central Coast	1	1,574	1,440	252	386	47	5	33	1,014	380	733	1,727	1,010	697	141	2,223	2,862
Central Darling	0	93	48	5	5	0	0	0	26	17	6	21	1	9	1	7	67
Cessnock	0	296	225	66	81	6	2	9	354	148	313	484	177	287	17	369	497
Clarence Valley	4	202	248	50	55	4	0	5	172	88	77	207	183	196	25	298	528
Cobar	0	48	31	7	12	0	0	0	22	24	19	32	4	11	0	35	85
Coffs Harbour	0	422	391	88	133	27	2	19	381	164	219	589	357	253	39	518	705
Coolamon	0	8	12	2	7	0	0	0	10	9	4	9	0	4	0	7	21
Coonamble	0	95	45	6	16	0	0	2	141	38	21	49	20	49	5	35	134
Cootamundra-Gundagai	0	72	58	11	20	0	0	1	35	31	13	29	27	36	0	83	82
Cowra	0	61	75	8	23	1	0	0	82	32	26	63	37	48	3	63	153
Cumberland	1	905	828	87	131	56	13	45	696	156	414	1,082	414	398	65	1,782	1,187
Dubbo Regional	0	663	399	67	103	12	2	18	535	207	235	766	369	277	54	392	1,183
Dungog	0	26	29	10	8	0	0	0	17	6	11	13	4	17	1	27	37
Edward River	0	55	31	7	9	2	1	0	47	31	10	46	23	42	0	40	85
Eurobodalla	1	169	160	39	26	3	2	3	204	51	57	171	184	102	2	137	334
Fairfield	4	779	580	111	155	62	15	38	350	139	364	965	391	247	65	1,404	1,007
Federation	0	25	46	5	14	0	0	0	38	43	18	32	23	57	2	34	81
Forbes	0	84	72	18	18	1	0	0	79	50	25	45	26	57	3	45	125
Georges River	1	469	353	65	97	33	1	16	280	90	165	448	293	173	58	927	734
Gilgandra	0	50	20	4	9	0	0	0	18	8	7	25	9	16	2	22	66
Glen Innes Severn	0	56	55	14	21	2	0	0	31	22	13	25	33	37	3	24	104
Goulburn Mulwaree	0	104	126	24	52	3	0	1	81	28	36	95	139	90	3	150	254
Greater Hume Shire	0	27	17	11	13	0	0	0	28	22	13	22	0	21	2	22	43
Griffith	0	208	126	24	30	5	1	3	141	148	85	159	121	82	4	164	291
Gunnedah	0	60	64	13	16	1	0	0	116	30	35	116	42	61	2	53	185
Gwydir	0	30	9	5	9	0	1	0	15	8	10	34	2	16	0	4	26
Hawkesbury	1	233	227	52	70	5	1	2	152	116	92	238	194	107	14	342	474
Hay	0	20	27	4	7	0	0	0	19	6	5	12	4	16	1	19	50
Hilltops	0	92	88	28	25	0	0	1	50	27	26	53	41	59	0	73	213
Hornsby	2	207	240	69	97	14	0	6	196	91	78	327	439	140	32	738	517
Hunters Hill	1	24	44	2	6	0	0	0	44	32	16	60	14	20	4	104	84
Inner West	1	398	609	107	156	38	2	19	430	182	250	852	436	534	83	1,457	1,230
Inverell	0	148	99	27	29	1	0	1	133	27	16	119	56	68	7	75	227
Junee	1	33	30	3	4	0	0	1	20	8	7	7	2	11	0	15	58
Kempsey	0	234	175	41	40	8	0	10	360	139	126	178	184	217	30	181	443
Kiama	0	32	28	4	5	0	0	3	30	24	25	51	17	23	2	70	84
Ku-ring-gai	0	89	109	48	53	11	0	12	306	72	28	166	74	126	13	453	333
Kyogle	0	61	52	15	15	1	0	1	30	11	23	43	2	22	1	26	65
Lachlan	0	55	33	10	10	3	0	0	35	35	12	49	8	33	2	14	104
Lake Macquarie	5	754	691	206	251	16	2	24	682	290	516	1,188	772	461	59	1,350	1,577

TABLE 3.3C: NUMBER OF RECORDED CRIMINAL INCIDENTS FOR MAJOR OFFENCES, OVER THE 12 MONTHS TO JUNE 2019, NSW LGAs

NSW LGA	Murder *	Domestic violence related assault	Non-domestic violence related assault	Sexual assault	Indecent assault, act of indecency and other sexual offences	Robbery without a weapon	Robbery with a firearm	Robbery with a weapon not a firearm	Break and enter dwelling	Break and enter non-dwelling	Motor vehicle theft	Steal from motor vehicle	Steal from retail store	Steal from dwelling	Steal from person	Fraud	Malicious damage to property
Lane Cove	0	44	41	14	26	4	1	0	89	39	32	131	47	63	6	207	117
Leeton	0	83	58	5	24	0	0	1	82	25	25	27	22	48	3	48	123
Lismore	0	212	274	55	96	8	0	8	183	57	106	237	126	160	19	235	363
Lithgow	0	118	132	17	34	1	0	0	80	37	41	55	46	84	6	128	246
Liverpool	3	867	737	144	199	41	3	28	670	166	419	1,131	732	442	65	1,445	1,378
Liverpool Plains	0	38	43	5	6	0	0	1	33	6	16	30	14	25	1	23	82
Lockhart	0	6	8	4	4	0	0	0	9	9	7	16	1	3	0	7	19
Lord Howe Island	0	0	1	1	2	0	0	0	1	0	1	0	0	1	0	0	3
Maitland	0	449	356	95	114	5	0	11	334	170	216	509	527	299	28	468	719
Mid-Coast	2	431	398	101	114	12	0	11	395	192	149	437	191	408	22	372	803
Mid-Western Regional	0	147	127	38	21	3	0	0	65	19	37	71	43	72	3	97	277
Moree Plains	0	184	124	31	22	4	0	0	193	94	63	203	151	94	13	131	492
Mosman	0	35	36	9	16	12	0	1	63	25	15	76	33	51	5	127	109
Murray River	0	28	22	9	13	1	0	1	41	33	22	38	14	38	1	37	68
Murrumbidgee	0	22	11	3	10	0	0	0	9	10	8	7	4	7	0	13	22
Muswellbrook	0	105	77	26	26	1	0	0	102	67	37	70	58	92	9	108	217
Nambucca	0	121	159	42	41	2	0	3	116	102	50	120	89	82	7	155	253
Narrabri	0	82	70	21	16	0	0	1	106	38	25	75	31	53	2	48	120
Narrandera	0	30	44	8	16	1	1	0	29	11	14	66	19	20	0	14	69
Narromine	0	80	36	13	8	1	1	1	83	61	34	88	10	54	6	53	99
Newcastle	3	637	1,091	157	211	36	11	34	1,018	385	593	1,993	922	837	141	1,560	1,960
North Sydney	0	106	139	41	46	6	2	3	138	61	47	169	180	131	33	494	373
Northern Beaches	1	478	643	123	165	24	2	14	393	190	218	834	691	374	64	1,234	1,372
Oberon	0	27	13	5	5	0	0	0	24	13	11	14	4	16	0	22	54
Orange	1	269	262	77	96	16	1	13	424	121	181	502	247	202	26	291	535
Parkes	2	78	87	29	23	2	0	1	50	25	21	48	33	37	0	83	171
Parramatta	3	774	828	119	185	60	7	36	886	269	357	1,277	879	476	210	1,998	1,294
Penrith	1	1,253	996	208	244	55	6	34	745	267	433	1,265	807	566	174	1,844	1,908
Port Macquarie-Hastings	0	273	244	70	110	8	2	5	214	148	121	280	172	193	19	497	551
Port Stephens	1	345	285	74	117	11	0	3	211	100	152	247	184	216	17	362	614
Queanbeyan-Palerang Regional	0	118	183	27	48	4	1	8	217	71	90	384	131	155	8	209	404
Randwick	1	406	546	73	123	18	3	10	358	65	177	568	231	325	94	936	743
Richmond Valley	0	136	123	37	44	0	0	2	126	52	45	115	56	56	6	122	222
Ryde	0	285	239	29	79	13	0	10	258	97	92	362	368	161	33	763	473
Shellharbour	1	209	196	48	62	9	1	5	231	57	120	280	294	142	9	334	506
Shoalhaven	0	436	393	70	141	8	3	7	336	170	158	480	376	246	20	479	772
Singleton	0	95	97	19	28	3	0	0	108	80	63	93	84	138	7	113	265
Snowy Monaro Regional	0	62	72	15	21	0	0	0	30	26	11	44	27	29	1	40	147
Snowy Valleys	0	61	54	16	26	2	0	0	66	49	32	104	29	50	2	37	163
Strathfield	0	133	132	12	37	13	0	3	110	40	66	176	121	77	22	415	179
Sutherland Shire	0	562	563	74	154	23	1	6	280	87	183	553	501	274	54	937	1,230
Sydney	3	1,101	3,258	266	469	228	10	69	720	442	374	1,354	2,829	1,020	1,060	4,167	2,662
Tamworth Regional	0	379	375	98	108	12	0	12	548	139	133	439	243	232	12	383	753
Temora	0	17	35	6	1	0	0	1	16	14	5	20	10	20	0	23	53
Tenterfield	0	56	23	4	9	0	0	0	47	10	15	30	24	41	1	16	56
The Hills Shire	0	245	246	59	82	14	1	6	339	92	125	435	346	211	30	831	493
Tweed	3	341	311	52	64	11	1	9	251	102	178	507	158	204	28	435	633
Unincorporated Far West	0	0	4	5	0	0	0	0	1	1	4	5	2	0	1	3	4
Upper Hunter Shire	1	56	34	13	20	0	0	0	31	42	20	28	23	56	3	43	106
Upper Lachlan Shire	0	8	12	5	7	0	0	0	17	3	9	8	1	14	1	12	29
Uralla	0	13	14	5	5	0	0	1	19	9	7	13	2	15	0	14	22
Wagga Wagga	2	457	387	61	109	3	3	8	634	168	235	569	331	315	24	414	955
Walcha	0	13	13	9	11	0	0	0	1	5	1	8	0	5	2	11	10
Walgett	0	134	82	6	18	0	0	0	74	39	21	38	27	20	0	35	147
Warren	0	40	32	3	3	2	0	0	22	16	10	21	8	22	4	11	52
Warrumbungle Shire	0	51	42	14	11	0	0	1	38	20	8	23	20	37	2	39	101
Waverley	2	165	301	47	67	11	0	1	115	37	87	226	562	173	47	579	426
Weddin	0	7	7	0	2	0	0	0	7	1	3	4	6	9	0	9	17
Wentworth	2	64	54	8	20	2	0	1	41	23	24	28	5	20	2	28	70
Willoughby	1	107	143	26	49	15	0	5	192	60	51	177	720	103	37	544	323
Wingecarribee	1	99	87	28	77	4	0	2	73	39	36	90	92	50	3	193	278
Wollondilly	0	176	64	27	55	0	2	4	75	46	60	88	20	51	0	130	201
Wollongong	4	708	707	142	195	44	5	29	643	223	425	1,222	900	481	49	1,090	1,609
Woollahra	0	83	119	35	20	2	1	2	96	15	59	159	76	114	22	308	199
Yass Valley	0	22	33	7	18	0	0	0	21	14	23	40	9	15	0	38	66
In Custody	3	5	1,386	75	53	0	0	1	0	2	1	0	0	0	1	20	76
NSW	75	30,434	31,614	5,778	8,106	1,491	155	910	25,508	9,991	13,244	38,063	26,033	18,788	3,892	51,058	57,564

* For murder the count given is for the number of victims, not incidents.

TABLE 3.3D: NUMBER OF RECORDED CRIMINAL INCIDENTS FOR MAJOR OFFENCES, OVER THE 12 MONTHS TO JUNE 2018, NSW LGAs

NSW LGA	Murder *	Domestic violence related assault	Non-domestic violence related assault	Sexual assault	Indecent assault, act of indecency and other sexual offences	Robbery without a weapon	Robbery with a firearm	Robbery with a weapon not a firearm	Break and enter dwelling	Break and enter non-dwelling	Motor vehicle theft	Steal from motor vehicle	Steal from retail store	Steal from dwelling	Steal from person	Fraud	Malicious damage to property
Albury	1	295	331	49	75	9	1	5	330	109	126	566	296	235	22	290	655
Armidale Regional	0	199	188	35	41	8	0	9	314	74	84	317	174	160	17	194	458
Ballina	1	106	180	26	36	4	0	4	115	97	71	282	87	127	14	221	316
Balranald	0	4	8	1	1	0	0	0	11	7	4	6	0	5	0	6	28
Bathurst Regional	0	241	228	52	65	4	0	5	242	48	72	294	122	126	30	275	493
Bayside	2	554	499	73	87	30	3	16	342	111	209	641	443	269	86	1,031	943
Bega Valley	2	103	109	30	43	1	0	1	66	51	29	95	49	75	8	97	247
Bellingen	0	39	34	10	9	0	0	1	31	28	22	35	2	25	5	44	78
Berrigan	0	15	12	9	8	0	0	0	14	16	7	25	8	19	0	19	37
Blacktown	6	2,045	1,702	293	380	131	10	69	1,597	383	832	2,896	1,279	957	273	3,548	3,298
Bland	0	23	10	5	3	0	0	0	14	10	14	22	5	8	0	21	30
Blayney	0	40	24	5	14	0	0	0	24	13	11	33	3	9	2	15	45
Blue Mountains	0	224	223	88	69	6	1	4	173	59	55	222	92	136	17	313	695
Bogan	0	28	25	1	3	0	0	0	9	10	10	21	9	9	1	15	34
Bourke	0	94	50	16	14	0	0	0	76	14	13	57	55	40	1	25	118
Brewarrina	0	40	25	7	4	0	0	0	31	17	2	20	6	10	1	4	42
Broken Hill	0	201	157	15	33	4	0	3	186	49	29	139	39	106	5	60	329
Burwood	1	70	116	16	30	22	1	9	100	35	41	133	268	78	44	420	176
Byron	1	100	264	39	62	4	0	1	102	62	59	200	101	108	48	176	331
Cabonne	0	30	16	17	10	0	0	0	29	26	20	27	4	22	0	28	44
Camden	0	343	184	42	72	2	1	7	147	47	95	245	135	106	7	359	444
Campbelltown	1	841	653	166	202	46	5	37	578	163	260	857	820	398	71	911	1,460
Canada Bay	0	111	115	25	44	9	1	8	259	69	108	299	96	146	25	600	332
Canterbury-Bankstown	5	1,115	1,072	193	202	86	13	43	758	249	627	1,501	590	508	93	2,274	1,847
Carrathool	0	7	10	2	7	0	0	0	7	6	5	11	2	10	0	9	32
Central Coast	2	1,695	1,487	293	428	50	6	37	1,022	398	682	1,561	851	765	157	2,272	2,978
Central Darling	0	82	28	4	7	0	0	0	28	20	6	20	1	9	1	4	51
Cessnock	0	347	225	95	83	5	1	8	346	174	296	399	148	257	18	329	659
Clarence Valley	0	236	254	40	59	2	0	1	188	142	105	228	112	239	19	362	470
Cobar	0	28	48	6	18	0	0	1	23	12	17	42	1	7	1	16	99
Coffs Harbour	0	505	537	127	143	23	2	18	486	216	186	441	227	276	44	537	756
Coolamon	1	10	10	4	2	0	0	0	8	16	10	6	2	6	0	6	13
Coonamble	0	55	44	9	6	2	0	0	67	54	12	54	23	27	3	30	119
Cootamundra-Gundagai	0	58	38	8	13	0	0	1	48	11	20	31	22	42	2	93	125
Cowra	0	62	73	9	18	3	0	1	106	45	18	38	35	50	4	68	146
Cumberland	2	866	804	116	145	87	8	28	764	203	414	1,313	377	414	112	1,968	1,148
Dubbo Regional	0	413	421	81	126	5	0	6	646	200	214	669	286	260	36	368	1,061
Dungog	0	30	18	8	11	0	0	0	22	12	8	9	1	20	0	23	50
Edward River	0	44	32	16	12	0	0	1	29	17	6	36	21	21	1	27	99
Eurobodalla	0	166	213	36	41	3	0	3	186	84	64	192	88	114	3	137	391
Fairfield	0	715	627	108	139	70	5	46	461	146	338	806	359	254	85	1,306	1,100
Federation	1	27	39	6	12	0	0	1	34	31	13	41	7	50	2	43	99
Forbes	1	54	75	7	9	0	0	0	58	61	16	63	29	55	2	45	129
Georges River	1	377	361	50	78	27	2	9	238	93	155	415	320	188	62	910	719
Gilgandra	0	30	23	7	10	1	0	1	44	28	10	29	7	28	1	17	39
Glen Innes Severn	0	68	71	15	10	2	0	1	42	29	17	15	22	45	1	34	116
Goulburn Mulwaree	0	128	129	48	53	1	0	2	69	34	33	121	160	91	3	176	250
Greater Hume Shire	0	21	12	10	11	1	0	0	36	16	18	32	4	21	2	29	47
Griffith	0	203	142	23	18	6	0	5	144	80	55	309	106	97	5	95	366
Gunnedah	0	64	84	17	16	1	0	0	58	18	48	62	43	71	1	69	181
Gwydir	0	19	14	6	6	0	0	0	8	4	11	13	2	18	1	12	29
Hawkesbury	0	270	193	71	83	6	0	4	173	62	112	223	168	108	19	295	394
Hay	0	14	19	3	9	0	0	0	10	9	6	17	2	8	0	12	94
Hilltops	0	109	106	19	34	3	0	1	48	33	39	76	35	73	1	59	221
Hornsby	0	142	194	58	91	10	1	1	217	76	87	378	301	135	48	649	577
Hunters Hill	0	20	32	9	14	0	1	0	40	15	16	43	10	29	2	53	75
Inner West	1	390	662	107	163	38	6	22	478	162	242	769	359	432	106	1,498	1,259
Inverell	0	108	101	22	34	3	0	1	165	57	37	126	80	108	3	52	278
Junee	0	13	18	5	5	0	0	0	25	13	7	30	4	15	0	11	54
Kempsey	0	224	193	40	40	14	2	6	321	87	92	163	140	196	24	127	332
Kiama	0	32	26	8	12	1	0	2	50	37	29	105	8	35	3	58	96
Ku-ring-gai	0	71	96	31	49	6	0	1	316	51	32	238	45	153	19	486	306
Kyogle	0	51	39	9	18	1	0	0	31	20	12	8	9	16	1	14	85
Lachlan	0	47	42	7	17	0	1	0	22	37	16	23	6	28	0	13	113
Lake Macquarie	0	745	701	208	258	22	3	20	611	327	534	1,111	716	470	75	1,492	1,894

TABLE 3.3D: NUMBER OF RECORDED CRIMINAL INCIDENTS FOR MAJOR OFFENCES, OVER THE 12 MONTHS TO JUNE 2018, NSW LGAs

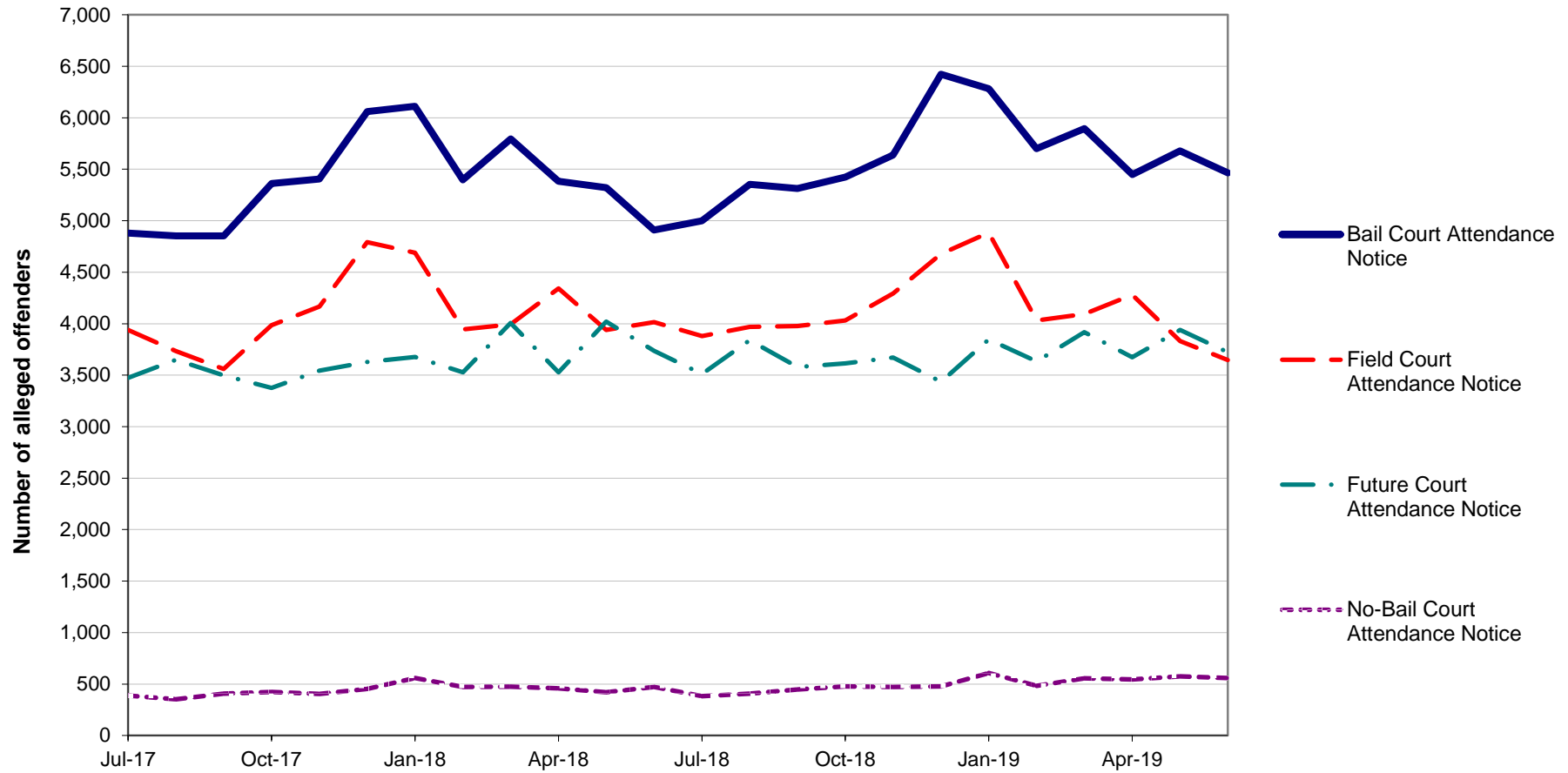
NSW LGA	Murder *	Domestic violence related assault	Non-domestic violence related assault	Sexual assault	Indecent assault, act of indecency and other sexual offences	Robbery without a weapon	Robbery with a firearm	Robbery with a weapon not a firearm	Break and enter dwelling	Break and enter non-dwelling	Motor vehicle theft	Steal from motor vehicle	Steal from retail store	Steal from dwelling	Steal from person	Fraud	Malicious damage to property
Lane Cove	0	36	46	15	18	1	0	1	112	51	24	106	30	63	4	172	130
Leeton	1	78	59	21	21	0	0	3	87	41	24	95	27	42	2	46	100
Lismore	0	189	276	62	67	9	0	8	204	82	119	233	124	155	19	173	492
Lithgow	0	85	123	21	25	1	0	1	78	34	31	68	34	72	8	153	203
Liverpool	1	884	726	140	207	58	8	35	764	199	414	1,111	705	410	116	1,542	1,328
Liverpool Plains	0	38	40	4	12	0	0	0	22	18	8	10	7	33	0	20	112
Lockhart	0	10	9	3	2	0	0	0	8	4	3	8	1	5	0	5	19
Lord Howe Island	0	0	2	1	0	0	0	0	0	0	0	0	0	1	0	1	1
Maitland	0	487	370	78	111	9	2	15	398	161	191	539	375	341	33	567	836
Mid-Coast	0	420	433	99	144	19	1	10	491	302	182	459	245	447	31	482	988
Mid-Western Regional	1	122	99	35	27	2	0	0	83	20	26	79	43	78	4	74	290
Moree Plains	0	197	198	29	30	17	0	9	288	179	117	289	201	122	19	116	601
Mosman	0	51	39	10	17	1	0	1	60	21	23	63	30	58	6	115	140
Murray River	0	14	27	4	3	0	1	0	27	33	17	54	13	21	0	30	71
Murrumbidgee	0	26	13	4	11	0	0	0	16	8	4	8	2	7	0	9	37
Muswellbrook	0	90	99	27	24	5	0	4	183	80	33	77	45	65	7	57	203
Nambucca	1	108	99	30	40	1	0	1	145	127	37	146	85	77	5	122	230
Narrabri	0	81	91	15	8	1	0	0	65	27	32	78	24	47	2	62	160
Narrandera	0	35	28	4	8	0	0	2	52	32	16	28	20	14	0	17	83
Narromine	0	69	49	5	19	3	1	1	86	58	18	67	8	52	5	25	103
Newcastle	2	654	1,059	176	228	31	5	46	935	384	502	2,058	888	731	159	1,683	2,059
North Sydney	0	129	174	30	59	9	1	8	169	79	39	174	189	201	42	528	337
Northern Beaches	1	384	588	109	122	25	2	8	420	178	228	886	528	460	83	1,215	1,101
Oberon	0	25	19	6	3	0	0	0	22	17	1	4	4	12	0	21	44
Orange	0	256	226	72	77	7	0	5	305	86	123	338	200	143	15	271	588
Parkes	0	80	114	23	40	0	0	1	50	50	24	68	38	81	1	85	227
Parramatta	1	705	790	134	201	64	9	30	944	214	324	1,358	874	589	237	1,893	1,379
Penrith	1	1,175	949	206	269	61	6	28	898	274	520	1,279	842	616	126	1,889	1,853
Port Macquarie-Hastings	1	240	291	63	75	14	0	9	180	178	112	279	196	247	23	330	623
Port Stephens	0	359	248	57	85	4	2	3	217	113	118	258	198	186	16	421	699
Queanbeyan-Palerang Regional	0	135	154	34	36	3	1	5	239	61	137	376	204	146	9	195	447
Randwick	1	328	568	66	100	28	3	13	318	70	177	499	285	304	94	1,012	680
Richmond Valley	0	122	149	35	40	0	1	3	109	66	48	75	47	72	10	96	247
Ryde	1	228	227	53	84	8	3	6	351	99	65	327	456	188	60	885	513
Shellharbour	0	224	165	66	58	7	2	9	170	58	139	354	289	136	14	260	508
Shoalhaven	1	350	411	111	139	11	2	5	375	135	146	418	400	221	21	427	818
Singleton	0	113	95	22	26	3	0	0	101	57	49	91	59	82	2	127	182
Snowy Monaro Regional	0	53	77	22	22	0	0	0	40	19	16	66	17	28	1	54	166
Snowy Valleys	0	67	62	20	23	1	0	0	118	48	36	125	32	53	3	48	182
Strathfield	0	157	157	17	31	7	2	7	152	21	53	212	71	65	55	437	234
Sutherland Shire	1	480	597	87	114	11	0	4	376	117	203	739	571	315	49	907	1,190
Sydney	3	1,004	3,281	240	538	173	7	68	741	551	369	1,165	2,861	1,091	1,169	4,720	2,644
Tamworth Regional	1	342	399	74	81	9	1	8	606	130	91	654	267	248	26	350	874
Temora	0	19	24	1	4	1	0	0	16	4	6	19	5	16	0	16	46
Tenterfield	0	36	33	1	8	0	0	1	22	7	8	19	12	36	1	25	73
The Hills Shire	1	209	227	56	75	10	0	3	345	74	112	503	297	238	32	880	442
Tweed	0	297	249	64	78	5	3	4	243	115	174	438	170	207	33	447	603
Unincorporated Far West	0	1	3	0	1	0	0	2	1	0	1	1	5	0	0	1	2
Upper Hunter Shire	0	36	32	15	14	0	0	0	50	53	18	42	7	42	0	40	88
Upper Lachlan Shire	0	8	9	6	7	0	0	0	13	8	2	15	1	17	0	18	29
Uralla	0	29	8	6	15	0	0	0	10	8	4	6	0	15	0	16	32
Wagga Wagga	0	398	388	87	90	9	0	14	714	154	165	494	329	292	38	318	977
Walcha	1	7	16	10	10	0	0	0	5	1	2	7	3	3	1	8	18
Walgett	1	156	92	14	17	0	0	0	96	34	17	50	25	46	1	30	190
Warren	0	31	20	6	5	0	0	0	19	10	7	13	7	10	2	7	77
Warrumbungle Shire	0	52	38	17	19	0	0	0	39	16	13	20	16	35	2	41	94
Waverley	0	150	323	44	53	12	2	2	115	21	111	197	553	184	51	587	465
Weddin	0	7	9	1	1	0	0	0	5	4	2	7	2	7	1	12	24
Wentworth	1	85	55	8	7	3	0	0	48	25	21	43	5	28	2	9	119
Willoughby	1	107	158	22	53	9	1	6	165	80	53	207	611	117	49	550	334
Wingecarribee	0	81	105	39	36	1	0	0	59	46	34	86	78	53	2	174	362
Wollondilly	0	189	80	31	23	1	1	3	84	32	46	97	26	53	2	128	241
Wollongong	2	645	856	169	177	41	8	36	758	295	412	1,409	832	574	71	942	1,743
Woollahra	0	95	120	35	28	1	0	0	114	18	49	128	85	149	35	360	264
Yass Valley	0	32	34	8	13	2	0	0	36	20	13	22	12	23	0	41	65
In Custody	1	5	1,200	58	40	2	0	0	0	2	0	1	0	0	0	15	87
NSW	55	28,712	32,171	5,989	7,834	1,459	149	878	27,185	10,392	12,947	38,344	24,438	19,393	4,436	51,057	59,627

* For murder the count given is for the number of victims, not incidents.

SECTION 4:

**METHODS OF PROCEEDINGS
AGAINST ALLEGED OFFENDERS**

Figure 4.1: TRENDS IN REFERRAL METHODS FOR ALLEGED OFFENDERS PROCEEDED AGAINST TO COURT, OVER THE 24 MONTHS TO JUNE 2019*, NSW



Trends:

Bail Court Attendance Notice shows a statistically significant upward trend for the 24 month period (up by 5.1%).

Field Court Attendance Notice shows no statistically significant trend for the 24 month period.

Future Court Attendance Notice shows a statistically significant upward trend for the 24 month period (up by 1.7%).

No-Bail Court Attendance Notice shows a statistically significant upward trend for the 24 month period (up by 13.4%).

* The date alleged offenders were proceeded against, rather than the date the incident was recorded.

TABLE 4.1: NUMBER, PERCENTAGE AND TREND[^] IN ALLEGED OFFENDERS PROCEEDED AGAINST BY NSW POLICE BY METHOD OF LEGAL PROCEEDINGS OVER THE 24 MONTHS TO JUNE 2019*, NSW

Type of process	Number of alleged offenders with proceedings commenced		Trend [^] over the 24 months to June 2019	
	over the 12 months to June 2018	over the 12 months to June 2019	Change	Annual percentage change
Proceeded against to court:				
Bail Court Attendance Notice	64,330	67,622	3,292	5.1%
No-Bail Court Attendance Notice	5,279	5,986	707	13.4%
Future Court Attendance Notice	43,665	44,387	722	1.7%
Field Court Attendance Notice	49,097	49,599	502	Stable
All proceedings to court	162,371	167,594	5,223	3.2%
Proceeded against other than to court:				
Youth Justice Conference	746	765	19	Stable
Caution Young Offenders Act	7,422	6,931	-491	Stable
Cannabis Caution	5,283	4,696	-587	-11.1%
Criminal Infringement Notice	9,259	8,782	-477	Stable
Infringement Notice	711,207	655,078	-56,129	-7.9%
Liquor Offence Compliance Notice	362	348	-14	Stable
Warning Young Offenders Act	10,411	9,324	-1,087	Stable
All proceedings other than to court	744,690	685,924	-58,766	-7.9%
All proceedings	907,061	853,518	-53,543	Stable

[^] For further explanation of **trend results**, see page 44, Notes [5] and [6].

* The date alleged offenders were proceeded against, rather than the date the incident was recorded.

TABLE 4.2: NUMBER, PERCENTAGE AND TREND[^] IN ALLEGED OFFENDERS PROCEEDED AGAINST TO COURT BY NSW POLICE FOR MAJOR OFFENCES OVER THE 24 MONTHS TO JUNE 2019, NSW**

<i>Offence category</i>	<i>Over the 12 months to June 2018</i>			<i>Over the 12 months to June 2019</i>			<i>Trend[^] over the last 24 months</i>	
	<i>Number proceeded against to court</i>	<i>Total number proceeded against</i>	<i>% proceeded against to court</i>	<i>Number proceeded against to court</i>	<i>Total number proceeded against</i>	<i>% proceeded against to court</i>	<i>Change in number proceeded against to court</i>	<i>Annual percentage change</i>
Murder	73	73	100.0%	128	128	100.0%	55	Stable
Domestic violence related assault	12,317	12,704	97.0%	12,936	13,370	96.8%	619	Stable
Non-domestic violence related assault	7,597	8,845	85.9%	7,504	8,844	84.8%	-93	Stable
Sexual assault	799	799	100.0%	801	802	99.9%	2	Stable
Indecent assault, act of indecency and other sexual offences	1,470	1,533	95.9%	1,461	1,518	96.2%	-9	Stable
Robbery without a weapon	782	791	98.9%	875	879	99.5%	93	Stable
Robbery with a firearm	130	130	100.0%	133	133	100.0%	3	Stable
Robbery with a weapon not a firearm	590	591	99.8%	526	528	99.6%	-64	-10.8%
Break and enter dwelling	2,996	3,185	94.1%	2,909	3,105	93.7%	-87	Stable
Break and enter non-dwelling	1,865	2,267	82.3%	1,711	1,989	86.0%	-154	Stable
Motor vehicle theft	1,510	1,677	90.0%	1,630	1,764	92.4%	120	Stable
Steal from motor vehicle	1,316	1,575	83.6%	1,081	1,229	88.0%	-235	-17.9%
Steal from retail store	5,509	11,120	49.5%	6,258	11,753	53.2%	749	13.6%
Steal from dwelling	591	786	75.2%	589	727	81.0%	-2	Stable
Steal from person	408	453	90.1%	378	431	87.7%	-30	Stable
Fraud	4,666	4,930	94.7%	5,005	5,270	95.0%	339	7.3%
Malicious damage to property	5,298	6,303	84.1%	5,279	6,244	84.5%	-19	Stable

[^] For further explanation of **trend results**, see page 44, Notes [5] and [6].

** The date alleged offenders were proceeded against, rather than the date the incident was recorded.

SECTION 5:

**CLEARED CRIMINAL INCIDENTS
AND WHETHER LEGAL PROCEEDINGS
COMMENCED FOR SELECTED OFFENCES**

TABLE 5.1: NUMBER OF RECORDED CRIMINAL INCIDENTS FOR SELECTED OFFENCES BY WHETHER LEGAL PROCEEDINGS COMMENCED IN 30 DAYS OF REPORTING, OVER THE 24 MONTHS TO MAY 2019, NSW

Type of offence	Recorded criminal incidents over the 12 months to May 2018				Recorded criminal incidents over the 12 months to May 2019			
	Total number recorded	Cleared within 30 days of reporting			Total number recorded	Cleared within 30 days of reporting		
		Total number cleared [#]	Proceedings commenced within 30 days ^{###}	% proceedings commenced within 30 days		Total number cleared [#]	Proceedings commenced within 30 days ^{###}	% proceedings commenced within 30 days
Murder*	58	36	36	62.1	77	52	51	66.2
Domestic violence related assault	28,544	22,716	17,822	62.4	30,372	24,288	19,370	63.8
Non-domestic violence related assault	32,222	13,512	7,830	24.3	31,662	13,220	7,760	24.5
Sexual assault	5,967	1,265	468	7.8	5,839	976	407	7.0
Indecent assault, act of indecency and other sexual offences	7,791	2,234	1,275	16.4	8,165	2,206	1,236	15.1
Abduction and kidnapping	206	111	102	49.5	207	100	92	44.4
Robbery without a weapon	1,442	455	401	27.8	1,526	517	463	30.3
Robbery with a firearm	147	52	49	33.3	162	63	61	37.7
Robbery with a weapon not a firearm	893	318	303	33.9	901	317	300	33.3
Intimidation, stalking and harassment	31,328	18,628	11,797	37.7	33,273	19,724	12,852	38.6
Break and enter dwelling	27,253	2,102	1,745	6.4	25,586	2,117	1,801	7.0
Break and enter non-dwelling	10,464	1,026	923	8.8	10,029	944	851	8.5
Motor vehicle theft	12,980	1,061	885	6.8	13,177	1,084	935	7.1
Steal from motor vehicle	38,624	1,425	1,161	3.0	37,788	1,132	926	2.5
Steal from retail store	24,534	11,392	9,752	39.7	25,808	11,510	9,964	38.6
Steal from dwelling	19,500	1,490	704	3.6	18,801	1,424	657	3.5
Steal from person	4,474	484	335	7.5	3,915	496	356	9.1
Stock theft	430	16	4	0.9	440	25	14	3.2
Fraud	50,821	4,311	3,453	6.8	51,639	4,099	3,300	6.4
Arson	5,885	474	214	3.6	5,059	335	149	2.9
Malicious damage to property	59,845	14,799	11,414	19.1	57,711	15,252	11,766	20.4

[#] Total number cleared includes both incidents where proceedings were commenced and those where no proceedings were commenced.

^{###} This includes incidents where a person was either proceeded against to court or proceeded against other than to court.

* Victims for whom incident was cleared.

TABLE 5.2: NUMBER OF RECORDED CRIMINAL INCIDENTS FOR SELECTED OFFENCES BY WHETHER LEGAL PROCEEDINGS COMMENCED IN 90 DAYS OF REPORTING, OVER THE 24 MONTHS TO MARCH 2019, NSW

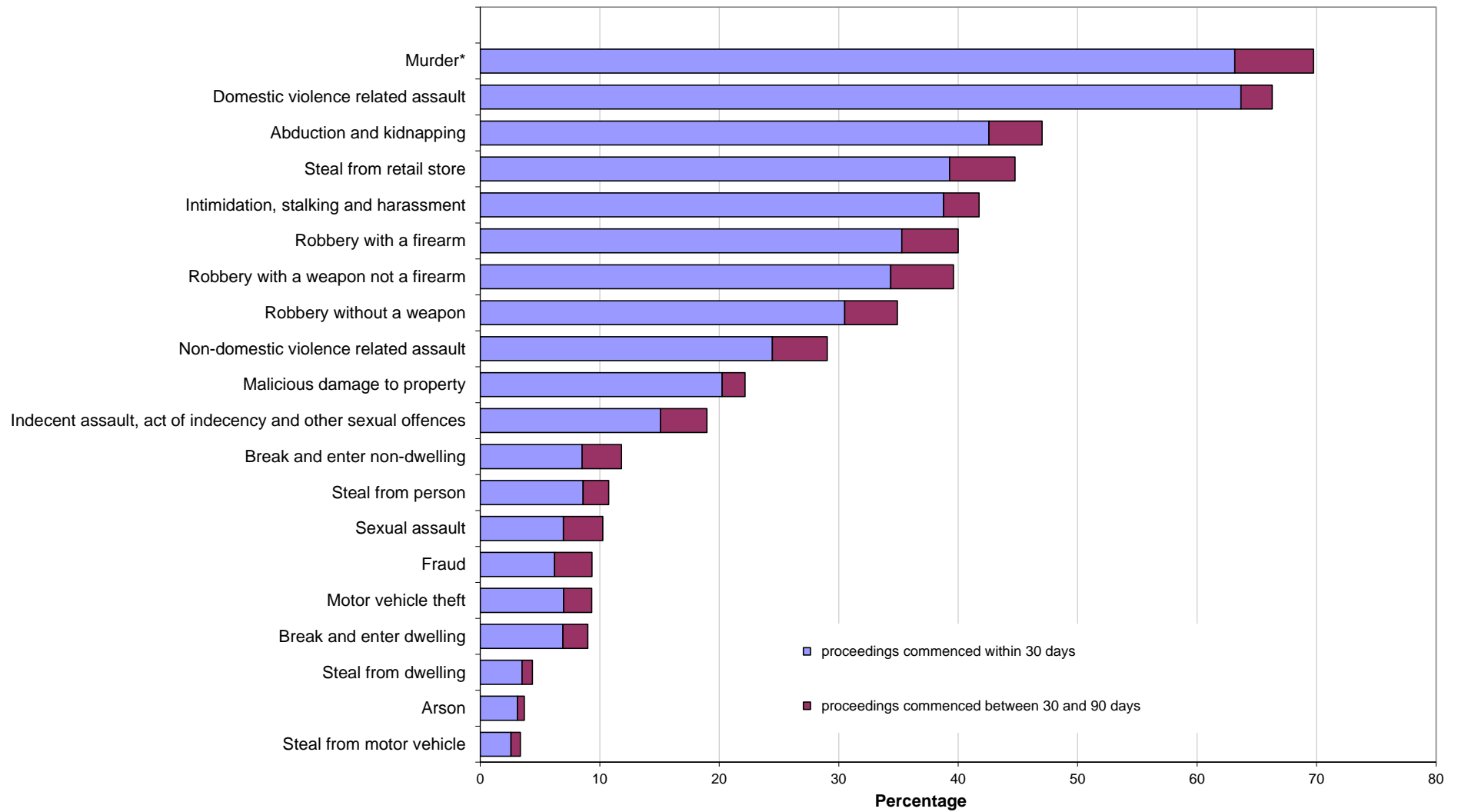
Type of offence	Recorded criminal incidents over the 12 months to March 2018				Recorded criminal incidents over the 12 months to March 2019			
	Total number recorded	Cleared within 90 days of reporting			Total number recorded	Cleared within 90 days of reporting		
		Total number cleared [#]	Proceedings commenced within 90 days ^{###}	% proceedings commenced within 90 days		Total number cleared [#]	Proceedings commenced within 90 days ^{###}	% proceedings commenced within 90 days
Murder*	53	38	38	71.7	76	56	53	69.7
Domestic violence related assault	28,360	23,827	18,615	65.6	30,184	25,462	20,009	66.3
Non-domestic violence related assault	32,367	15,636	9,266	28.6	31,560	15,262	9,167	29.0
Sexual assault	5,886	1,710	642	10.9	5,904	1,498	605	10.2
Indecent assault, act of indecency and other sexual offences	7,679	2,965	1,657	21.6	8,199	2,867	1,555	19.0
Abduction and kidnapping	211	123	110	52.1	202	104	95	47.0
Robbery without a weapon	1,469	527	461	31.4	1,515	591	529	34.9
Robbery with a firearm	130	58	55	42.3	170	73	68	40.0
Robbery with a weapon not a firearm	900	365	348	38.7	856	355	339	39.6
Intimidation, stalking and harassment	31,275	20,217	12,632	40.4	32,514	21,066	13,577	41.8
Break and enter dwelling	27,379	2,834	2,332	8.5	26,068	2,772	2,344	9.0
Break and enter non-dwelling	10,352	1,450	1,312	12.7	10,089	1,311	1,192	11.8
Motor vehicle theft	13,004	1,461	1,188	9.1	13,241	1,487	1,235	9.3
Steal from motor vehicle	39,093	1,856	1,510	3.9	37,660	1,530	1,262	3.4
Steal from retail store	24,629	12,881	11,051	44.9	25,382	13,116	11,361	44.8
Steal from dwelling	19,362	1,796	872	4.5	18,940	1,710	823	4.3
Steal from person	4,557	633	443	9.7	3,984	585	428	10.7
Stock theft	446	24	5	1.1	453	30	16	3.5
Fraud	50,097	6,709	5,364	10.7	52,120	6,026	4,865	9.3
Arson	5,920	519	239	4.0	5,117	403	188	3.7
Malicious damage to property	60,475	16,291	12,465	20.6	58,120	16,699	12,873	22.1

[#] Total number cleared includes both incidents where proceedings were commenced and those where no proceedings were commenced.

^{###} This includes incidents where a person was either proceeded against to court or proceeded against other than to court.

* Victims for whom incident was cleared.

Figure 5.1: PERCENTAGE OF RECORDED CRIMINAL INCIDENTS FOR SELECTED OFFENCES WHERE LEGAL PROCEEDINGS COMMENCED WITHIN 30 AND 90 DAYS, OVER THE 12 MONTHS TO MARCH 2019, NSW



* For murder the data are counts of recorded victims, not criminal incidents.

APPENDICES

APPENDIX 1: TRENDS IN RECORDED CRIMINAL INCIDENTS FOR NSW

[1] Irrespective of how trends in recorded crime are presented, their interpretation is a difficult task. The recorded criminal incident data presented in this report are based on information derived from the NSW Police Force Computerised Operational Policing System (COPS), so only those incidents which are reported to, or detected by, police are included. The trends in recorded crime shown in this report will, therefore, reflect movements in the underlying factors which influence the detection, reporting and recording of crime, as well as changes in the true level of crime in the community.

[2] An alternative measure of the level of crime in Australia is available from crime victim surveys, for example the national Crime Victimization Survey by the Australian Bureau of Statistics (ABS)¹. As well as providing an estimate of the victimisation rate at the State level for a selected set of offences, this survey estimates the proportion of crimes which are not reported to police, and are therefore not recorded in the official statistics. In particular, personal crimes, such as assault and robbery, are less likely to be reported than crimes which involve households. These surveys generally find that about half of physical assault victims aged 15 and over report the incident to police whereas break-ins are reported to police approximately three quarters of the time. Given that some offences have low reporting rates, it is possible that changes in recorded crime rates over time for these offences may be reflecting changes in reporting rates.

[3] Public willingness to report crime, however, is just one of the extraneous factors which can affect trends in recorded crime. Shifts in policing policy can also have a marked effect on the number of recorded drug offences, cases of offensive behaviour or of receiving stolen goods. For these offences, therefore, recorded rates probably do not accurately reflect actual rates. For this reason, the more detailed comparisons of crime rates and examination of trends in this document are restricted to offence categories which are more likely to be reported to, rather than detected by police.

[4] The interpretation of trends in official reports of crime can be considerably more difficult than the interpretation of trends in unemployment or inflation statistics. The ease with which recorded crime statistics can be misunderstood creates a temptation to offer an authoritative explanation for each major crime trend. Indeed, in many instances it is simply impossible to state with any assurance why a particular trend has appeared. This report, therefore, confines itself to identifying and describing trends in recorded crime, rather than explaining them.

[5] For each offence category or subcategory (except murder), a statistical test for trend was applied to the monthly numbers of recorded criminal incidents over the relevant period. In the case of murder, the statistical test for trend was applied to the monthly numbers of victims over the period. The trend test used was Kendall's rank-order correlation test (see, for example, Conover, W.J. 1980, *Practical Non-Parametric Statistics*, 2nd ed, John Wiley and Sons, pp 256-260). A two-tailed test was used to determine whether there had been an increasing or decreasing trend in the recorded numbers of criminal incidents over the relevant period covered in the report. Some month to month variations in the numbers of recorded incidents could be due in part to seasonal factors. The test for trend is not sensitive to seasonal variations; it is sensitive only to a generally increasing or generally decreasing trend over the time period examined.

[6] For the trend tests throughout this publication, where a statistically significant trend was found ($p < .05$), the extent of the trend is indicated by the percentage change in the total number of recorded criminal incidents between the latest two consecutive 12-month periods for 24 month tests; and the average annual percentage change between the first 12-month period and the latest 12-month period for longer tests. A trend test was not performed if there were fewer than 20 incidents in any of the years for the period in question. The result ' . ' indicates that a trend test was not performed. A non-significant test result ($p > .05$) is denoted by 'Stable' or by 'ns' in some larger LGA tables.

[7] In order to present an overview of crime trends in NSW the information in Section 1 relates to aggregate violent and property crime. The State graphs for violent and property offences are plotted as monthly rates² per 100,000 population. The State graph for violent offences shows distinct seasonality and the 12-month moving average (light grey line) indicates a downward path since 2004, which has stabilized over the past five years, whilst the property offences graph and the 6-month moving average (light grey line) both indicate a strong downward path since about 2000. Violent offences include: murder, attempted murder, manslaughter, assault - domestic violence related, assault - non-domestic violence related, assault police, robbery without a weapon, robbery with a firearm, robbery with a weapon not a firearm, sexual assault and indecent assault / act of indecency / other sexual offences. Property offences include: break and enter dwelling, break and enter non-dwelling, motor vehicle theft, steal from motor vehicle, steal from retail store, steal from dwelling, steal from person, stock theft, other theft and fraud.

[8] The ratio to NSW rate statistics are a comparison of a NSW regional rate per 100,000 population to the NSW rate per 100,000 population². A ratio of one indicates parity with the NSW rate. Ratios indicating double the NSW rate (or more) before rounding are highlighted in red, whilst ratios indicating half the NSW rate (or less) before rounding are highlighted in yellow.

1. Australian Bureau of Statistics *Crime Victimization, Australia, Cat. No. 4530.0, ABS, Sydney. See the Australian Bureau of Statistics website for the latest version available at www.abs.gov.au*

2. For the rate calculations, specialised population data were prepared and provided to BOCSAR by the Australian Bureau of Statistics.

APPENDIX 2: DEFINITIONS AND EXPLANATORY NOTES

The data in this report are extracted from the NSW Police Force's Computerised Operational Policing System (COPS). This system is used for record-keeping for all police operations, not just for criminal matters.

In this report:

- the counting units are recorded *criminal incidents* rather than recorded *offences* (except for murder and manslaughter, where the counting units are victims); and
- the data are categorised by date of *reporting* to police (or date of detection by police) rather than by date of *occurrence* of the offence (except for alleged offender data, where the data is categorised by date the alleged offender was proceeded against).

RECORDED CRIMINAL INCIDENTS

A criminal incident is defined as an activity detected by or reported to police which:

- involved the same offender(s);
- involved the same victim(s);
- occurred at the one location;
- occurred during one uninterrupted period of time;
- falls into one offence category;
- falls into one incident type (for example, 'actual', 'attempted', 'conspiracy').

One incident may involve two offenders assaulting the same victim. This would be recorded as one assault incident. Alternatively, suppose a man reports to police that he found his neighbour in the process of damaging his car and, when confronted, the neighbour assaulted him. For such an event, two criminal incidents are recorded because two distinct offence types are involved (malicious damage to property and assault) even though the same parties were involved at the same time and in the same place.

RECORDED VICTIMS

For murder and manslaughter only, the counting units used are victims. Under the definition of a criminal incident (same parties, same time, same place, same offence and same incident type) one murder or manslaughter incident could involve two or more persons being killed. Because of the seriousness of these offences and their relatively small numbers, it is considered to be more appropriate to count the number of victims, rather than the number of criminal incidents. Hence, where one murder incident involves a person killing six people, six murder victims are counted.

OFFENCE CATEGORIES

The classification of offences in this report is broadly based on the Australian and New Zealand Standard Offence Classification (ANZSOC) devised by the Australian Bureau of Statistics (*ABS 2011, third edition, Cat. No. 1234.0*).

For all types of offence classifications used in the report, Appendix 3 lists the offence categories included in the classification. The original offence incident categories are those used by the NSW Police Force and do not necessarily correspond exactly with offences as defined in legislation.

MAJOR OFFENCE CATEGORIES

Major offence categories include the most serious personal violence and property offences. The most serious of these offences is *murder* for which the incident count is the number of victims. Assault offences include the two major offence categories of *domestic violence related assault* and *non-domestic violence related assault*. All sexual offences are categorised by the two major offence types, either as *sexual assault* or *indecent assault, act of indecency and other sexual offences*.

Robbery offences are sorted into three categories by use of weapon: *robbery with a firearm*, *robbery with a weapon not a firearm* or *robbery without a weapon*. The serious theft offences in this group start with the burglary categories of *break and enter - dwelling* and *break and enter - non-dwelling* followed by *motor vehicle theft* and *steal from motor vehicle*. Other theft offences included in the 17 major offences are *steal from retail store*, *steal from dwelling*, *steal from person* and *fraud*. The final property offence listed as a major offence is *malicious damage to property*.

APPENDIX 2: DEFINITIONS AND EXPLANATORY NOTES *continued*

COUNTING PERIOD

Criminal incidents are included in the counting period in which they were reported to or detected by police.

In most cases criminal incidents are recorded on COPS on the day of reporting. However there may be some time delay before the incident gains the status of accepted and verified (which are necessary conditions for inclusion in this report). It is therefore possible for some updating of data to occur. That is, data extracted for a specified period of time may differ according to the date of extraction of the data.

In recent years some historic murders have been re-entered on the COPS system after being referred to the unsolved homicide squad. Murders that were first reported to NSW Police prior to the introduction of COPS in 1995 but recorded on COPS in recent years are excluded from the statistics. Murders which took place prior to 1995 but were first reported to Police in or after 1995 are included in the statistics.

PROCEEDINGS AGAINST ALLEGED OFFENDERS

Police may proceed against alleged offenders through a variety of legal or other processes. Alleged offenders who are not legally proceeded against are not included in this report. Most alleged offenders are referred to the NSW Criminal Courts. The more serious offences are dealt with by way of a Bail Court Attendance Notice (CAN) or a No-Bail CAN. In these instances, the alleged offender is arrested, taken to a police station, fingerprinted and the details of the person and all charges are recorded. A Bail CAN is used when a bail determination is required and a No-Bail CAN is used when a bail determination is not required.

Following changes to the Bail Act in May 2014, No-Bail CANs are used almost solely for incidents of 'Breach of bail conditions' and no bail determination is required because the original determination stands until a new determination is made by the court. Alternatively a Field CAN may be issued by police at other locations. A Future CAN is used for less serious offences.

Some alleged offenders are proceeded against but diverted from the criminal court system. For many minor offences police can issue Infringement Notices. By paying the prescribed penalty the offender avoids having to go to court. Under the *Young Offenders Act 1997*, a juvenile offender can be issued with either a warning, a caution or referred to a youth justice conference.

Youth Justice Conference and cautions data in previous reports have included juvenile offenders initially proceeded against to court by Police and then referred to a conference or given a caution under the *Young Offenders Act* by the court. From the 2015 report, they are now counted as being proceeded against to court by Court Attendance Notice as that was the method of proceeding used by the Police. Consequently data in this report is not comparable with data in previously published reports. Comparable data for previous years is available on request.

Data on warnings under the *Young offenders Act*, is available from January 2010 onwards. Due to changes in how warnings are recorded, this data series can not be compared with warning data previously published. A youth justice conference is a face-to-face meeting between offenders, victims and their support persons. The offending behaviour is discussed and an outcome plan for the offender negotiated. Note that both the police and the courts can refer a young person to a youth justice conference. However, the number of alleged offenders proceeded against by way of a youth justice conference, as shown in Table 4.1, includes only police referrals to a youth justice conference.

Since mid-2008, Police have issued compliance notices for breaches of liquor licensing regulations/legislation. Commonly these are for relatively minor breaches eg fail to display regulated signs. Liquor Offence Compliance Notices have been added to the recorded crime collection from the 2015 report. Consequently data in this report is not comparable with data in previously published reports. Comparable data for all years is available on request.

Each offender or alleged offender appears only once in the table for each event. Note that multiple criminal incidents may be associated with a single event. The processes are arranged in a hierarchy with the offender or alleged offender appearing in the most serious category where multiple incidents are involved. For example if an event involves two incidents and the alleged offender is charged for one incident but receives a caution for the second incident, the alleged offender appears only in the relevant 'proceeded against to court' category.

APPENDIX 2: DEFINITIONS AND EXPLANATORY NOTES *continued*

PROCEEDINGS AGAINST ALLEGED OFFENDERS *continued*

It should be noted that in previous annual recorded crime reports, data on alleged offenders were categorised by date of reporting to police (or date the incident was detected by police). Given there can be a delay between an event being recorded by police and police commencing legal proceedings this resulted in fewer alleged offenders being counted, particularly during the last three months of the reporting period. For this reason, since the 2017 annual report, alleged offender data is categorised by the date the alleged offender was proceeded against. Therefore in Section 4 the year refers to the year in which alleged offenders were proceeded against. It does not refer to the year in which a criminal incident or incidents were reported to police. For example, if an incident was reported to police in 2016 but the alleged offender was not apprehended and charged until 2017, the alleged offender is counted in 2017. As such, Section 4 of this report is not comparable with alleged offender data published prior to the 2017 annual report. Comparable data for all years is available on request.

CLEARED CRIMINAL INCIDENTS

A cleared criminal incident is one, which, in the view of police, has been satisfactorily cleared by the commencement of legal proceedings or otherwise.

An incident is cleared by the commencement of legal proceedings when police have laid a charge or an information against at least one person. The information may have been laid with a view to the issuing of a warrant, Future CAN or other process for the purpose of bringing an offender before the court.

A criminal incident is cleared other than by commencement of legal proceedings when, under normal circumstances, a charge or information would have been laid against at least one person, but, for a variety of reasons, police have been unable to make an arrest, despite knowing the identity of the offender and having sufficient evidence to support a charge. Examples of situations in which an offence may be cleared other than by charge include the following:

- the offender is a juvenile and is cautioned;
- the offender has died before a charge is made or information laid;
- the offender has been committed to a psychiatric institution and is unlikely to be released;
- there is an obstacle to charging, such as diplomatic immunity;
- the complainant or essential witness is dead and proceedings would be aborted;
- the offender is serving a sentence and police consider that no useful purpose would be served by prosecution.

The offence types included in these tables are those where the crime is likely to have been reported to police, rather than discovered or detected by police. Offence types where the numbers of recorded criminal incidents are influenced by police law enforcement activity (drug offences, for example) are excluded. For such offence types, the clear-up percentages are very high because clearing the offence generally occurs simultaneously with its detection (that is, an arrest is made when the crime is discovered). This report contains criminal incidents cleared within 30 and 90 days after the incident was reported to the NSW Police Force.

The clear-up status after 30 days could not be determined for any offences reported in the latest month. Hence, Table 5.1 is for the 24-month period ending one month before the quarterly reporting period. Similarly, the clear-up status after 90 days could not be determined for any offences reported in the latest three months. Hence, Table 5.2 and Figure 5.1 is for the 24-month period ending three months before the quarterly reporting period.

REGIONAL STATISTICS

Statistics are provided on the number of criminal incidents (victims for murder) recorded for each of the Statistical Areas (SAs) of NSW as defined by the Australian Bureau of Statistics (ABS).

Recorded criminal incidents which occurred in correctional, detention or remand centres, however, are not counted in the SA in which the incident occurred. Appendix 4 provides maps indicating the location of each SA. Appendix 5 lists the Local Government Areas (LGAs using 2017 boundaries) within each of the SAs. Note that LGA boundaries change from time to time. A criminal incident is counted within a particular region when the location of the offence falls within that region.

For the rate calculations, specialised population data were prepared and provided to BOCSAR by the Australian Bureau of Statistics.

APPENDIX 3: BOCSAR OFFENCES MAPPED TO POLICE INCIDENT CATEGORIES

BOCSAR offence	NSW Police Force incident categories
Homicide	
Murder	Murder
Attempted murder	Murder – attempted Shoot with intent to murder
Murder accessory, conspiracy	Murder – conspiracy Murder – solicit
Manslaughter – not driving	Manslaughter
Assault	
	<i>Includes any of the following offences disaggregated by whether or not police have flagged the incident as domestic violence related:</i>
Domestic violence related	Actual bodily harm Assault common Grievous bodily harm (including malicious wounding) Shoot with intent other than to murder Spike drink/food
Non-domestic violence related	Actual bodily harm Assault common Grievous bodily harm (including malicious wounding) Shoot with intent other than to murder Spike drink/food
Assault Police	Assault Police officer
Sexual offences	
Sexual assault	Sexual assault – adult victim (16+ years old) Sexual assault – child victim, reported when adult Sexual assault – child victim, reported when child
Indecent assault, act of indecency and other sexual offences	Act of indecency Aggravated act of indecency Indecent assault – adult victim (16+ years old) Indecent assault – child victim, reported when child Indecent assault – child victim, reported when adult Bestiality Carnal knowledge Grooming/procuring Incest Indecent communication Peep or pry Wilful and obscene exposure Other sexual offence
Abduction and kidnapping	
	Kidnapping/Abduction <input type="checkbox"/> People trafficking

APPENDIX 3: BOCSAR OFFENCES MAPPED TO POLICE INCIDENT CATEGORIES

BOCSAR offence	NSW Police Force incident categories
Robbery	
Robbery without a weapon	<i>Includes any of the following offences in which no weapon was recorded:</i> Demand money with menaces Robbery Robbery with aggravation Robbery with wounding Other robbery
Robbery with a firearm	<i>Includes any of the following offences in which a firearm was recorded as a weapon:</i> Armed robbery Demand money with menaces Robbery Robbery with aggravation Robbery with wounding Other robbery
Robbery with a weapon not a firearm	<i>Includes any of the following offences in which a non firearm weapon was recorded:</i> Armed robbery Demand money with menaces Robbery Robbery with aggravation Robbery with wounding Other robbery
Blackmail and extortion	Extortion/Blackmail
Intimidation, stalking and harassment	Bullying/harassment or intimidation Stalking (since 2017) Child approach (since 2017) Riot and affray Telecommunications offence (<i>includes nuisance phone calls</i>) Threats against Police Violent disorder Unlawful assembly
Other offences against the person	Labour exploitation (<i>includes sexual servitude</i>) Malicious damage with intent to injure/endanger Negligent act cause grievous bodily harm Other offence against the person
Theft	
Break and enter – dwelling	<i>Dwelling includes premises where people reside such as house, home unit, caravan, tent as well as any attachment such as garage, shed, yard and garden.</i> Break/Enter and steal Break/Enter and commit other felony Break/Enter intent to steal Break/Enter intent to commit other felony

APPENDIX 3: BOCSAR OFFENCES MAPPED TO POLICE INCIDENT CATEGORIES

BOCSAR offence	NSW Police Force incident categories
Theft continued:	
Break and enter – non-dwelling	<i>Non-dwelling includes commercial and government premises.</i> Break/Enter and steal Break/Enter and commit other felony Break/Enter intent to steal Break/Enter intent to commit other felony
Receiving or handling stolen goods	Receiving Goods in custody Possess property stolen outside NSW
Motor vehicle theft	Theft of motor cars, motor cycles, and other vehicles / vessels Rebirthing vehicles / vessels
Steal from motor vehicle	Steal from motor vehicle
Steal from retail store	Steal from retail store
Steal from dwelling	Steal from dwelling Other stealing <i>occurring in a residential dwelling</i>
Steal from person	Steal from person
Stock theft	Steal stock (Non-domestic animal)
Fraud	Company/corporate offence Computer crime Copyright/Intellectual property/Trademark Corrupt commission/practices Corrupt payment (receive or pay) Counterfeit currency Deception offence Embezzlement Fail to pay Forgery (since 2017) Fraudulent misappropriation Larceny clerk/servant/bailee Make/use false instrument Misappropriate cheques/funds Possess false instrument Publish false misleading statement Receiving (fraud related) Scams - obtain funds (since 2017) Scams - selling (since 2017) Unauthorised access of funds (since 2017) Deal/supply false identity documents (since 2017) Deal/supply false information (since 2017) Equipment to make false identity documents (since 2017) Make false identity documents (since 2017) Possess false identity documents (since 2017) Possess identity information (since 2017) Use false identity documents (since 2017) Other fraud

APPENDIX 3: BOCSAR OFFENCES MAPPED TO POLICE INCIDENT CATEGORIES

BOCSAR offence	NSW Police Force incident categories
Theft continued: Other theft	Steal from dwelling <i>occurring somewhere other than a residential or non-residential dwelling</i> (e.g. from hostels, motels, boarding houses etc) Steal domestic animal or bird Steal from marine vessel Steal vessel Other stealing <i>occurring somewhere other than a dwelling</i> (e.g. in outdoor/public places)
Arson	<i>Fire incident where classified as deliberate:</i> Bushfire Structure Vehicle (e.g. aircraft/motor vehicle/train/vessel) Other commodity
Malicious damage to property	Graffiti Malicious damage to property Public place – damage fountain/wall etc. Public place – damage shrine/monument
Drug offences	
Possession and/or use of cocaine	Possess drug <i>where drug type is cocaine</i> Use or administer drug <i>where drug type is cocaine</i> Item/object found <i>where drug type is cocaine</i>
Possession and/or use of narcotics	Possess drug <i>where drug type is narcotics</i> Use or administer drug <i>where drug type is narcotics</i> Item/object found <i>where drug type is narcotics</i>
Possession and/or use of cannabis	Possess drug / plant <i>where drug type is cannabis</i> Use or administer drug <i>where drug type is cannabis</i> Item/object found <i>where drug type is cannabis</i>
Possession and/or use of amphetamines	Possess drug <i>where drug type is amphetamines</i> Use or administer drug <i>where drug type is amphetamines</i> Item/object found <i>where drug type is amphetamines</i>
Possession and/or use of ecstasy	Possess drug <i>where drug type is ecstasy</i> Use or administer drug <i>where drug type is ecstasy</i> Item/object found <i>where drug type is ecstasy</i>
Possession and/or use of other drugs	Possess drug <i>where drug type is not cocaine, narcotics, cannabis, amphetamines or ecstasy</i> Use or administer drug <i>where drug type is not cocaine, narcotics, cannabis, amphetamines or ecstasy</i> Item/object found <i>where drug type is not cocaine, narcotics, cannabis, amphetamines or ecstasy</i>
Dealing, trafficking in cocaine	Supply drug <i>where drug type is cocaine</i>
Dealing, trafficking in narcotics	Supply drug <i>where drug type is narcotics</i>

APPENDIX 3: BOCSAR OFFENCES MAPPED TO POLICE INCIDENT CATEGORIES

BOCSAR offence	NSW Police Force incident categories
Drug offences continued:	
Dealing, trafficking in cannabis	Supply drug/plant <i>where drug/plant type is cannabis</i>
Dealing, trafficking in amphetamines	Supply drug <i>where drug type is amphetamines</i>
Dealing, trafficking in ecstasy	Supply drug <i>where drug type is ecstasy</i>
Dealing, trafficking in other drugs	Supply drug/plant <i>where drug/plant type is not cocaine, narcotics, cannabis, amphetamines or ecstasy</i>
Cultivating cannabis	Cultivation
Manufacture drug	Manufacture drug
Importing drugs	Import drug/plant
Other drug offences	Forge and/or utter prescription Possess drug utensil Other drug detection/seizure offence
Prohibited and regulated weapons offences	Bomb hoax or threat Discharge firearm into premises Licence offence Firearms dealer offence Firearms not ensure safekeeping Improper storage of explosives Person search - Item/object found <i>where item/object is a weapon</i> Possess explosive/dangerous article Possess prohibited weapon/article Possess shortened firearm Possess whilst unlicensed Sell prohibited weapon/article Shorten firearm Trespass with firearm Unlawful handling/access/supply of explosives Unlawfully discharge firearm Use firearm under influence Use prohibited weapon/article Other explosives offence Other firearm licencing offence Other firearm offence Other prohibited weapon/article offence
Disorderly conduct	
Trespass	Trespass Remain inclosed lands
Offensive conduct	Offensive behaviour
Offensive language	Offensive language
Criminal intent	Armed with intent Disguised with intent Enter land with intent Intent to repeat indictable offence Possess implements

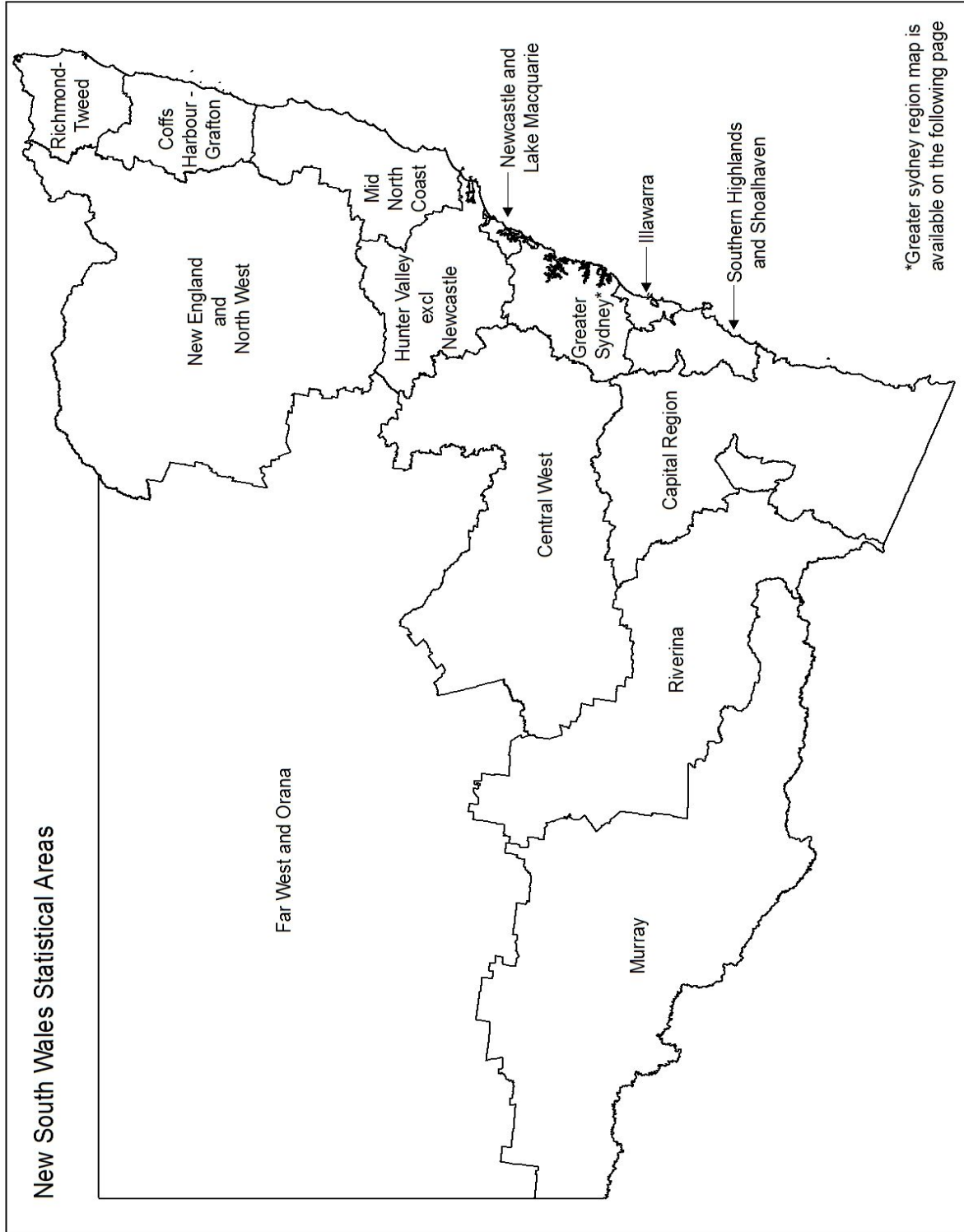
APPENDIX 3: BOCSAR OFFENCES MAPPED TO POLICE INCIDENT CATEGORIES

BOCSAR offence	NSW Police Force incident categories
Betting and gaming offences	Conduct/play illegal betting Conduct/play illegal game Own/manage premises – betting Own/manage premises – gaming Other gaming offence
Liquor offences	Consume alcohol in alcohol-free zone Consume/possess alcohol in public by minor Licensing legislation offence: – Offence by licensee/employee/secretary – Offence by minor – Offence by customer (not minor) – Supply liquor to juvenile – Offence against registered clubs legislation
Pornography offences	Possess/disseminate child pornography Possess/publish indecent material
Prostitution offences	Soliciting/prostitution in public Prostitution – premises Prostitution – live off earnings Child prostitution Other vice offence
Against justice procedures	
Escape Custody	Escapee – Corrective Services custody Escapee – Department of Community Services custody Escapee – Police custody Escapee – Other custody
Breach Apprehended Violence Order	Breach Apprehended Violence Order – domestic Breach Apprehended Violence Order – personal
Breach bail conditions	Breach bail conditions Breach control order
Fail to appear	Fail to appear
Resist or hinder officer	Refuse direction Refuse direction continue intoxication and disorder Refuse direction intoxicated person Refuse to be searched Refuse to produce object Resist/hinder officer
Other offences against justice procedures	Breach of recognizance Contravene Child Protection Prohibition Order (CPPO) Other judicial offence
Transport regulatory offences	Transport offence (<i>includes offences on the rail network such as travelling without a valid ticket, smoking, drinking or using offensive language on a train or railway land</i>) Buffer riding

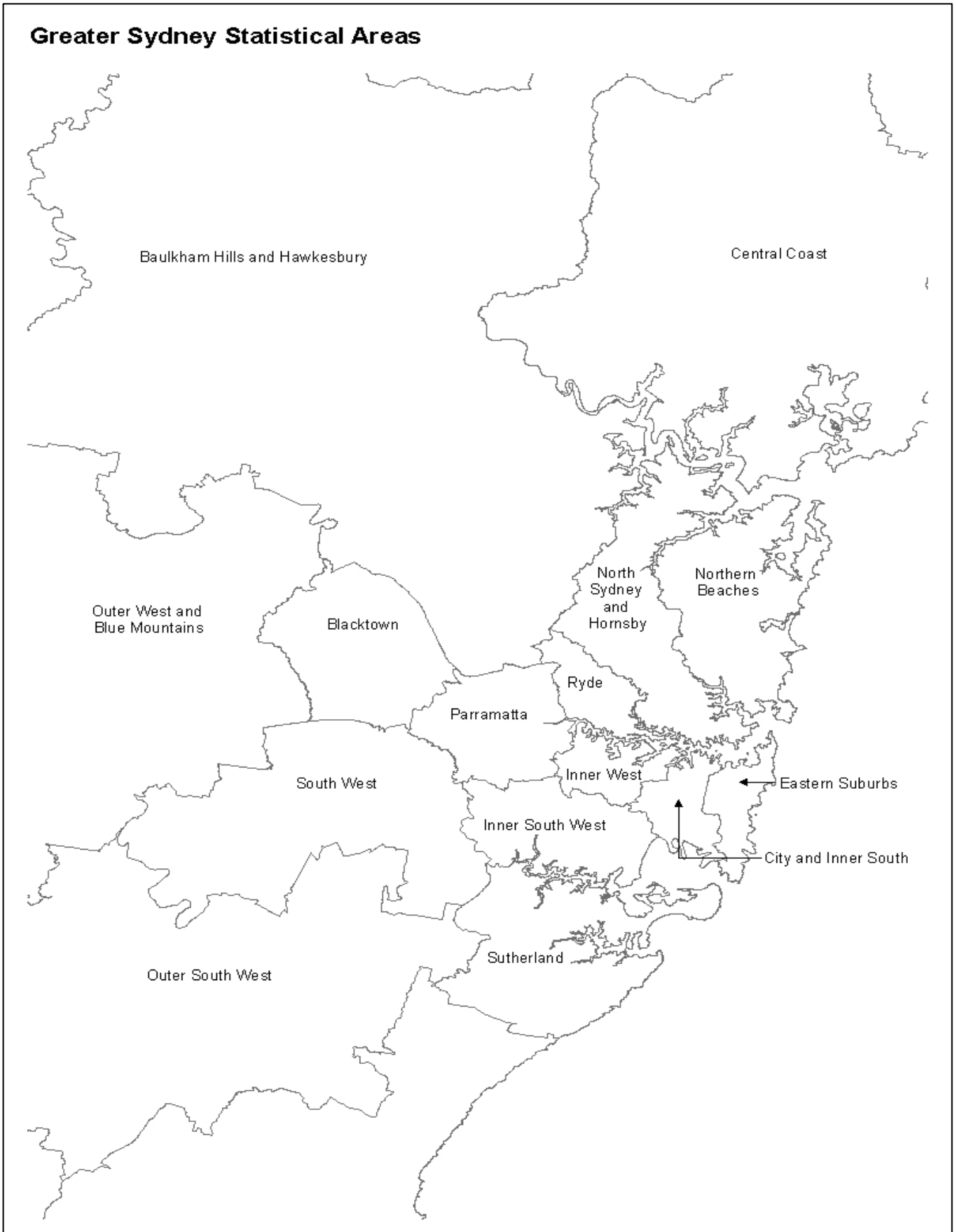
APPENDIX 3: BOCSAR OFFENCES MAPPED TO POLICE INCIDENT CATEGORIES

<i>BOCSAR offence</i>	<i>NSW Police Force incident categories</i>
Other offences	Animals - Dog offences Cyber Breach/Attack Family law offence Immigration/customs offence Obstruction Offence against transport service Other street offences (carry cutting weapon, offensive implement) Public mischief Terrorism offences (e.g. associating with terrorist organisations, financing terrorism etc.) Other miscellaneous offences Offences under various acts: <i>Animals - Prevention Of Cruelty Acts</i> <i>Bush Fire Act</i> <i>Child Protection Act</i> <i>Local Government Act</i> <i>Marine/Waterway Act</i> <i>Pawnbrokers Act</i> <i>Postal Services Act</i> <i>Security Industry Act</i> <i>Sydney Harbour Bridge Act</i> <i>Tattoo Parlours Act</i>

APPENDIX 4: NSW & GREATER SYDNEY STATISTICAL AREA MAPS



APPENDIX 4: NSW & GREATER SYDNEY STATISTICAL AREA MAPS



APPENDIX 5: LGAs IN GREATER SYDNEY STATISTICAL AREAS***Greater Sydney Statistical Areas***

<i>Baulkham Hills and Hawkesbury</i> Hawkesbury* The Hills Shire*	<i>Blacktown</i> Blacktown	<i>Central Coast</i> Central Coast
<i>City and Inner South</i> Sydney*	<i>Eastern Suburbs</i> Randwick* Waverley Woollahra	<i>Inner South West</i> Bayside* Canterbury-Bankstown* Georges River
<i>Inner West</i> Burwood Canada Bay Inner West* Strathfield*	<i>North Sydney and Hornsby</i> Hornsby* Ku-ring-gai Lane Cove Mosman North Sydney Willoughby	<i>Northern Beaches</i> Northern Beaches
<i>Outer South West</i> Camden* Campbelltown* Wollondilly*	<i>Outer West and Blue Mountains</i> Blue Mountains* Penrith*	<i>Parramatta</i> Cumberland* Parramatta*
<i>Ryde</i> Hunters Hill Ryde*	<i>South West</i> Fairfield* Liverpool*	<i>Sutherland</i> Sutherland Shire*

* These LGAs span across two or more Statistical Areas.

These LGAs are listed under the Greater Sydney Statistical Areas which contain the largest area of each LGA.

APPENDIX 5: LGAs IN NSW REGIONAL STATISTICAL AREAS***NSW Regional Statistical Areas******Capital Region***

Bega Valley
Eurobodalla
Goulburn Mulwaree
Hilltops
Queanbeyan-Palerang Regional
Snowy Monaro Regional*
Upper Lachlan Shire
Yass Valley*

Central West

Bathurst Regional
Bland*
Blayney
Cabonne*
Cowra
Forbes
Lachlan*
Lithgow
Mid-Western Regional*
Oberon*
Orange
Parkes
Weddin

Coffs Harbour - Grafton

Bellingen*
Clarence Valley*
Coffs Harbour

Far West and Orana

Bogan
Bourke
Brewarrina
Broken Hill
Central Darling
Cobar
Coonamble
Dubbo Regional*
Gilgandra
Narromine
Unincorporated Far West
Walgett
Warren
Warrumbungle Shire*

Hunter Valley excluding Newcastle

Cessnock
Dungog
Maitland*
Muswellbrook
Port Stephens*
Singleton*
Upper Hunter Shire*

Illawarra

Kiama*
Shellharbour
Wollongong

Mid North Coast

Kempsey
Lord Howe Island
Mid-Coast*
Nambucca*
Port Macquarie-Hastings

Murray

Albury
Balranald
Berrigan
Edward River
Federation*
Greater Hume Shire*
Hay
Murray River
Wentworth

New England and North West

Armidale Regional*
Glen Innes Severn
Gunnedah
Gwydir
Inverell
Liverpool Plains*
Moree Plains
Narrabri
Tamworth Regional
Tenterfield
Uralla
Walcha

Newcastle and Lake Macquarie

Lake Macquarie*
Newcastle

Richmond - Tweed

Ballina
Byron
Kyogle
Lismore
Richmond Valley*
Tweed

Riverina

Carrathool*
Coolamon
Cootamundra-Gundagai
Griffith
Junee
Leeton
Lockhart*
Murrumbidgee*
Narrandera
Snowy Valleys*
Temora
Wagga Wagga

Southern Highlands and Shoalhaven

Shoalhaven*
Wingecarribee*

* These LGAs span across two or more Statistical Areas.

These LGAs are listed under the NSW Regional Statistical Areas which contain the largest area of each LGA.