



NSW Bureau of Crime
Statistics and Research

NEW SOUTH WALES RECORDED CRIME STATISTICS

Quarterly Update
June Quarter 2022

This report presents data on crime reported to, or detected by, police and recorded on the NSW Police Force's Computerised Operational Policing System (COPS). Information is provided on 13 major offence categories, which include the most serious personal violence and property offences, plus a more detailed list of 62 specific offence types.

Published by the NSW Bureau of Crime Statistics and Research
September 2022

Phone: + 61 (2) 8688 9800

Email: bcsr@justice.nsw.gov.au

Website: www.bocsar.nsw.gov.au

ISSN: 1035-9044

This report is available in pdf format on our website and may be provided in alternative formats. Please contact us at bcsr@justice.nsw.gov.au.

© State of New South Wales through the NSW Department of Communities and Justice 2022. You may copy, distribute, display, download and otherwise freely deal with this work for any purpose, provided that you attribute the Department of Justice NSW as the owner. However, you must obtain permission if you wish to (a) charge others for access to the work (other than at cost), (b) include the work in advertising or a product for sale, or (c) modify the work.

CONTENTS

SECTION 1:	OVERVIEW OF TRENDS IN RECORDED CRIME	5
Figure 1.1	NSW long-term trend in violent offences	6
Figure 1.2	NSW long-term trend in property offences	6
Table 1.3	Violent and property offences by Statistical Area (SA4) over the five years to June 2022	7
Table 1.4	Recorded criminal incidents for major offences over the five years to June 2022	8
Table 1.5	Recorded criminal incidents for 62 offences over the two years to June 2022	9
Table 1.6	Recorded criminal incidents for 62 offences over the five years to June 2022	10
SECTION 2:	REGIONAL COMPARISONS Statistical Areas	11
Table 2.1	Two year trends and percent change in recorded criminal incidents for major offences by Statistical Area (SA4) over the two years to June 2022	12
Table 2.2	Ratio to NSW rate of recorded criminal incidents per 100,000 population for major offences by Statistical Area (SA4) over the 12 months to June 2022	13
Table 2.3	Number of major offences by Statistical Area (SA4) over the 12 months to June 2022	14
Table 2.4	Number of major offences by Statistical Area (SA4) over the 12 months to June 2021	15
SECTION 3:	LEGAL PROCEEDINGS	16
Table 3.1	Adults proceeded against by the NSW Police Force by method of legal proceeding over the five years to June 2022	17
Table 3.2	Young people proceeded against by the NSW Police Force by method of legal proceeding over the five years to June 2022	17
Table 3.3	Adults proceeded against to court by the NSW Police Force for all 62 criminal offences types over the two years to June 2022	18
Table 3.4	Young people proceeded against to court by the NSW Police Force for all 62 criminal offences over the two years to June 2022	19
Figure 3.5	Offences with the largest change in the number of adults proceeded against to court by the NSW Police Force between the 12 months to June 2021 and the 12 months to June 2022	20
Figure 3.6	Offences with the largest change in the number of young people proceeded against to court by the NSW Police Force between the 12 months to June 2021 and the 12 months to June 2022	20
Table 3.7	Incidents of all 62 criminal offence types by whether legal proceedings commenced within 90 days of reporting over the two years to March 2022	21
Figure 3.8	Percentage of recorded criminal incidents for major offences by whether legal proceedings commenced within 90 days of reporting over the two years to March 2022	22

SECTION 4:	POLICING ACTIVITY	23
Table 4.1	Selected policing activities over the five years to June 2022	24
Table 4.2	Non-criminal domestic violence episodes by Statistical Area (SA4) over the five years to June 2022	25
Table 4.3	Ratio to NSW rate of non-criminal domestic violence episodes per 100,000 population by Statistical Area (SA4) over the five years to June 2022	26
APPENDIX 1:	REGIONAL COMPARISONS Local Government Areas	27
Appendix Table 1.1	Trends in recorded criminal incidents for major offences, NSW LGAs Over the two years to June 2022	28
Appendix Table 1.2	Ratio to NSW rate of recorded criminal incidents per 100,000 population for major offences, NSW LGAs 12 months to June 2022	31
Appendix Table 1.3	Number of recorded criminal incidents for major offences, NSW LGAs 12 months to June 2022	34
Appendix Table 1.4	Number of recorded criminal incidents for major offences, NSW LGAs 12 months to June 2021	37
APPENDIX 2:	EXPLANATORY NOTES	40
Appendix Table 2.1	Explanatory Notes	41
APPENDIX 3:	LGAs IN STATISTICAL AREAS	44
Appendix Table 3.1	Local Government Areas in Greater Sydney Statistical Areas	45
Appendix Table 3.2	Local Government Areas in Regional Statistical Areas	46
Appendix Table 3.3	Greater Sydney Statistical Area Map	47
Appendix Table 3.4	Regional NSW Statistical Areas Map	48

SECTION 1: OVERVIEW OF TRENDS IN RECORDED CRIME

Figure 1.1: NSW long-term trend in violent offences

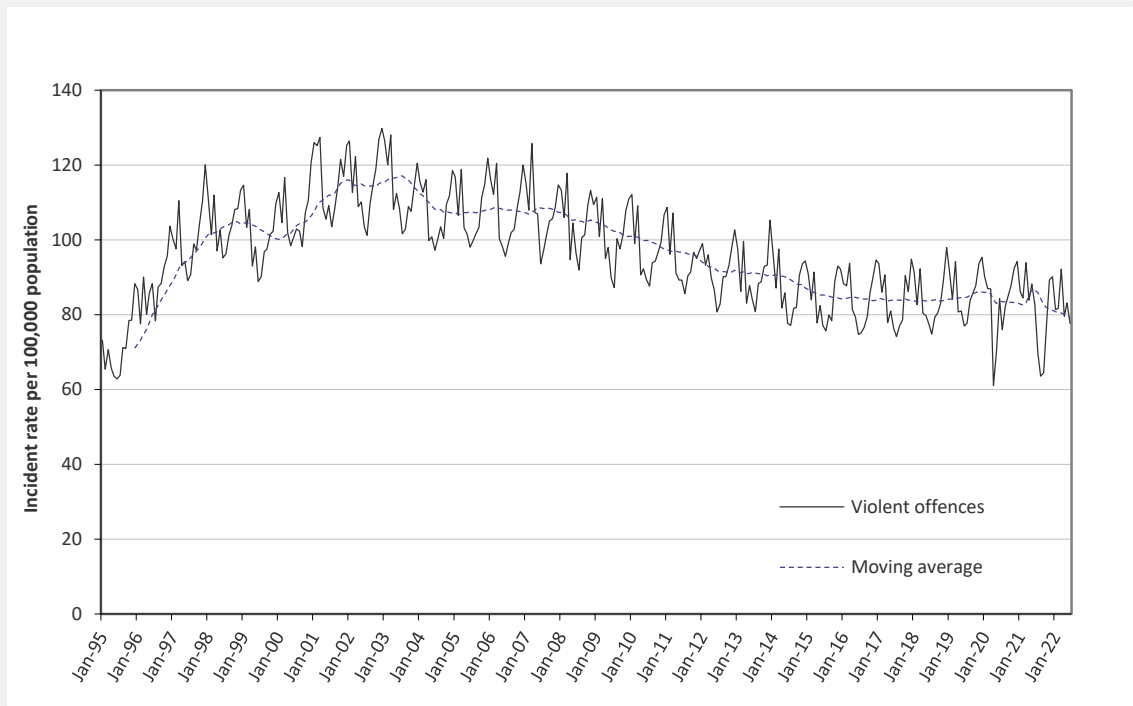
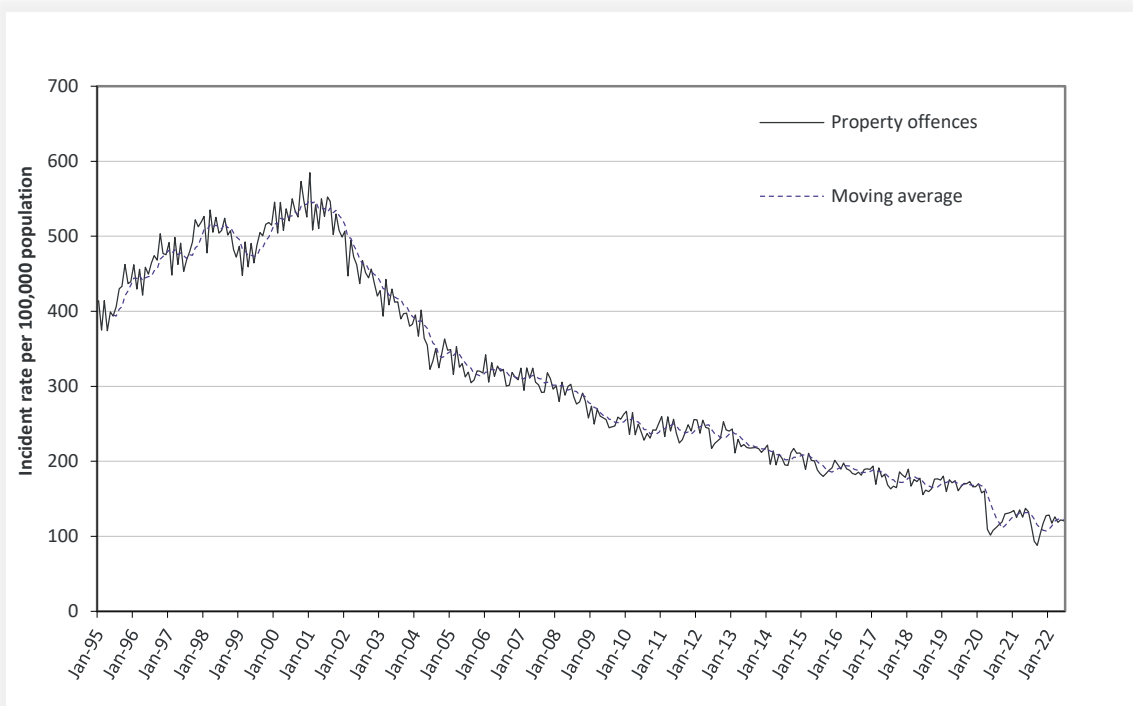


Figure 1.2: NSW long-term trend in property offences



Violent offences include: murder, attempted murder, manslaughter, assault - domestic violence related, assault - non-domestic violence related, assault police, robbery without a weapon, robbery with a firearm, robbery with a weapon not a firearm, sexual assault and sexual touching, sexual act and other sexual offences.

Property offences include: break and enter dwelling, break and enter non-dwelling, motor vehicle theft, steal from motor vehicle, steal from retail store, steal from dwelling, steal from person, stock theft and other theft.

Table 1.3: Violent and property offences by Statistical Area (SA4)

Over the five years to June 2022

Statistical Area	Trend and average annual percentage change			
	Violent Offences		Property Offences	
	2 Year Trend	5 Year Trend	2 Year Trend	5 Year Trend
Greater Sydney	Stable	Stable	Stable	-11.3%
Baulkham Hills and Hawkesbury	Stable	2.8%	-34.1%	-13.5%
Blacktown	-21.0%	Stable	Stable	-11.8%
Central Coast	Stable	Stable	-19.1%	-10.3%
City and Inner South	Stable	-6.1%	Stable	-12.9%
Eastern Suburbs	Stable	Stable	Stable	-11.6%
Inner South West	Stable	Stable	-20.3%	-11.1%
Inner West	Stable	Stable	Stable	-8.7%
North Sydney and Hornsby	Stable	Stable	Stable	-14.2%
Northern Beaches	Stable	-4.7%	-24.3%	-13.5%
Outer South West	Stable	Stable	Stable	-9.9%
Outer West and Blue Mountains	-12.0%	Stable	Stable	-10.3%
Parramatta	Stable	Stable	Stable	-8.7%
Ryde	Stable	Stable	Stable	-13.4%
South West	Stable	Stable	Stable	-10.1%
Sutherland	Stable	Stable	-25.0%	-15.2%
Regional NSW	Stable	1.4%	Stable	-6.5%
Capital Region	Stable	Stable	Stable	-8.7%
Central West	Stable	3.4%	Stable	-2.8%
Coffs Harbour - Grafton	Stable	Stable	21.5%	-5.5%
Far West and Orana	Stable	Stable	8.0%	-4.6%
Hunter Valley excluding Newcastle	Stable	1.5%	Stable	-6.5%
Illawarra	Stable	Stable	Stable	-8.6%
Mid North Coast	Stable	3.6%	Stable	-4.8%
Murray	Stable	5.0%	Stable	-4.5%
New England and North West	Stable	2.4%	Stable	-6.6%
Newcastle and Lake Macquarie	Stable	Stable	Stable	-7.2%
Richmond - Tweed	Stable	Stable	Stable	-5.8%
Riverina	Stable	Stable	Stable	-10.0%
Southern Highlands and Shoalhaven	Stable	3.5%	-20.8%	-10.4%
NSW	Stable	Stable	Stable	-9.1%

Table 1.4: Recorded criminal incidents for major offences
Over the five years to June 2022

Offence category	12 months to June 2018	12 months to June 2019	12 months to June 2020	12 months to June 2021	12 months to June 2022	Trend and average annual percentage change	
						2 Year Trend	5 Year Trend
Murder	54	77	72	58	64	Stable	Stable
Domestic violence related assault	28,720	30,568	31,872	32,925	31,775	Stable	Up 2.6%
Non-domestic violence related assault	32,163	31,804	30,210	30,985	27,666	Stable	Down 3.7%
Sexual assault	6,095	5,873	6,527	7,937	6,967	Stable	Up 3.4%
Sexual touching, sexual act and other sexual offences	7,742	8,060	7,967	8,225	6,962	Stable	Stable
Robbery	2,486	2,553	2,322	2,124	1,530	Down 28.0%	Down 11.4%
Break and enter dwelling	27,188	25,553	23,060	19,258	17,296	Stable	Down 10.7%
Break and enter non-dwelling	10,392	10,028	9,015	7,099	6,995	Stable	Down 9.4%
Motor vehicle theft	12,963	13,281	12,615	11,546	10,688	Stable	Down 4.7%
Steal from motor vehicle	38,341	38,115	33,518	28,734	26,332	Stable	Down 9.0%
Steal from retail store	24,441	26,131	23,706	20,531	17,184	Stable	Down 8.4%
Other stealing offences	51,412	50,319	45,841	37,784	33,888	Down 10.3%	Down 9.9%
Malicious damage to property	59,618	57,676	54,645	53,433	47,456	Down 11.2%	Down 5.5%

NSW Recorded Crime Statistics June 2022

Table 1.5: Recorded criminal incidents for 62 offences

Over the two years to June 2022

Offence category		Number of recorded criminal incidents		2 Year Trend	
		12 months to June 2021	12 months to June 2022	Trend test result	Annual average percentage change
Homicide	Murder	58	64	Stable	
	Attempted murder	28	14	n.c.	
	Murder accessory, conspiracy	0	1	n.c.	
	Manslaughter	2	2	n.c.	
Assault	Domestic violence related assault	32,925	31,775	Stable	
	Non-domestic violence related assault	30,985	27,666	Stable	
	Assault Police	2,440	2,667	Stable	
Sexual offences	Sexual assault	7,937	6,967	Stable	
	Sexual touching, sexual act and other sexual offences	8,225	6,962	Stable	
Abduction and kidnapping		232	177	Stable	
Robbery	Robbery without a weapon	1,149	793	Down	-31.0%
	Robbery with a firearm	110	79	Stable	
	Robbery with a weapon not a firearm	865	658	Down	-23.9%
Blackmail and extortion		120	162	Up	35.0%
Intimidation, stalking and harassment		41,541	40,834	Stable	
Other offences against the person		1,425	1,753	Stable	
Theft	Break and enter dwelling	19,258	17,296	Stable	
	Break and enter non-dwelling	7,099	6,995	Stable	
	Receiving or handling stolen goods	7,496	7,267	Stable	
	Motor vehicle theft	11,546	10,688	Stable	
	Steal from motor vehicle	28,734	26,332	Stable	
	Steal from retail store	20,531	17,184	Stable	
	Steal from dwelling	16,453	15,516	Stable	
	Steal from person	2,095	1,652	Stable	
	Stock theft	347	275	Down	-20.7%
	Fraud	45,986	43,925	Stable	
	Other theft	18,889	16,445	Stable	
Arson		3,974	3,441	Down	-13.4%
Malicious damage to property		53,433	47,456	Down	-11.2%
Drug offences	Possession and/or use of cocaine	2,430	2,278	Stable	
	Possession and/or use of narcotics	1,138	1,257	Stable	
	Possession and/or use of cannabis	16,438	15,616	Stable	
	Possession and/or use of amphetamines	7,057	6,639	Stable	
	Possession and/or use of ecstasy	597	614	Stable	
	Possession and/or use of other drugs	6,550	6,081	Down	-7.2%
	Dealing, trafficking in cocaine	1,551	1,069	Stable	
	Dealing, trafficking in narcotics	272	451	Stable	
	Dealing, trafficking in cannabis	882	736	Down	-16.6%
	Dealing, trafficking in amphetamines	2,799	2,757	Stable	
	Dealing, trafficking in ecstasy	279	150	Down	-46.2%
	Dealing, trafficking in other drugs	576	466	Down	-19.1%
	Cultivating cannabis	1,138	959	Stable	
Manufacture drug	67	54	Stable		
Importing drugs	238	163	Down	-31.5%	
Other drug offences	6,026	5,362	Down	-11.0%	
Prohibited and regulated weapons offences		15,000	13,446	Down	-10.4%
Disorderly conduct	Trespass	9,588	9,282	Stable	
	Offensive conduct	3,942	3,567	Stable	
	Offensive language	1,965	1,761	Down	-10.4%
	Criminal intent	2,358	2,401	Stable	
Betting and gaming offences		84	72	Stable	
Liquor offences		9,258	8,992	Stable	
Pornography offences		946	897	Stable	
Prostitution offences		15	16	n.c.	
Against justice procedures	Escape custody	179	159	Stable	
	Breach Apprehended Violence Order	20,573	21,769	Up	5.8%
	Breach bail conditions	50,946	51,801	Stable	
	Fail to appear	790	905	Up	14.6%
	Resist or hinder officer	5,499	5,685	Stable	
Other offences against justice procedures	1,893	2,036	Stable		
Transport regulatory offences		74,575	64,939	Stable	
Other offences		29,275	89,602	Stable	

NSW Recorded Crime Statistics June 2022

Table 1.6: Recorded criminal incidents for 62 offences

Over the five years to June 2022

Offence category		Number of recorded criminal incidents		5 Year Trend	
		12 months to June 2018	12 months to June 2022	Trend test result	Annual average percentage change
Homicide	Murder	54	64	Stable	
	Attempted murder	16	14	n.c.	
	Murder accessory, conspiracy	3	1	n.c.	
	Manslaughter	11	2	n.c.	
Assault	Domestic violence related assault	28,720	31,775	Up	2.6%
	Non-domestic violence related assault	32,163	27,666	Down	-3.7%
	Assault Police	2,349	2,667	Stable	
Sexual offences	Sexual assault	6,095	6,967	Up	3.4%
	Sexual touching, sexual act and other sexual offences	7,742	6,962	Stable	
Abduction and kidnapping		202	177	Stable	
Robbery	Robbery without a weapon	1,458	793	Down	-14.1%
	Robbery with a firearm	149	79	Down	-14.7%
	Robbery with a weapon not a firearm	879	658	Down	-7.0%
Blackmail and extortion		108	162	Stable	
Intimidation, stalking and harassment		31,460	40,834	Up	6.7%
Other offences against the person		437	1,753	Up	41.5%
Theft	Break and enter dwelling	27,188	17,296	Down	-10.7%
	Break and enter non-dwelling	10,392	6,995	Down	-9.4%
	Receiving or handling stolen goods	7,872	7,267	Stable	
	Motor vehicle theft	12,963	10,688	Down	-4.7%
	Steal from motor vehicle	38,341	26,332	Down	-9.0%
	Steal from retail store	24,441	17,184	Down	-8.4%
	Steal from dwelling	19,392	15,516	Down	-5.4%
	Steal from person	4,431	1,652	Down	-21.9%
	Stock theft	427	275	Down	-10.4%
	Fraud	51,156	43,925	Down	-3.7%
	Other theft	27,162	16,445	Down	-11.8%
Arson		5,822	3,441	Down	-12.3%
Malicious damage to property		59,618	47,456	Down	-5.5%
Drug offences	Possession and/or use of cocaine	2,231	2,278	Stable	
	Possession and/or use of narcotics	1,006	1,257	Up	5.7%
	Possession and/or use of cannabis	17,788	15,616	Down	-3.2%
	Possession and/or use of amphetamines	6,890	6,639	Stable	
	Possession and/or use of ecstasy	2,866	614	Down	-32.0%
	Possession and/or use of other drugs	4,594	6,081	Up	7.3%
	Dealing, trafficking in cocaine	827	1,069	Up	6.6%
	Dealing, trafficking in narcotics	179	451	Stable	
	Dealing, trafficking in cannabis	787	736	Stable	
	Dealing, trafficking in amphetamines	1,976	2,757	Stable	
	Dealing, trafficking in ecstasy	747	150	Down	-33.1%
	Dealing, trafficking in other drugs	410	466	Stable	
	Cultivating cannabis	1,171	959	Stable	
	Manufacture drug	79	54	Stable	
	Importing drugs	80	163	Up	19.5%
	Other drug offences	5,414	5,362	Stable	
Prohibited and regulated weapons offences		13,520	13,446	Stable	
Disorderly conduct	Trespass	9,857	9,282	Down	-1.5%
	Offensive conduct	4,987	3,567	Down	-8.0%
	Offensive language	3,056	1,761	Down	-12.9%
	Criminal intent	2,250	2,401	Up	1.6%
Betting and gaming offences		89	72	Stable	
Liquor offences		11,314	8,992	Down	-5.6%
Pornography offences		644	897	Up	8.6%
Prostitution offences		41	16	n.c.	
Against justice procedures	Escape custody	168	159	Stable	
	Breach Apprehended Violence Order	15,241	21,769	Up	9.3%
	Breach bail conditions	42,244	51,801	Up	5.2%
	Fail to appear	531	905	Up	14.3%
	Resist or hinder officer	6,270	5,685	Down	-2.4%
	Other offences against justice procedures	565	2,036	Up	37.8%
Transport regulatory offences		123,924	64,939	Down	-14.9%
Other offences		15,366	89,602	Up	55.4%

SECTION 2: REGIONAL COMPARISONS

Statistical Areas

Table 2.1: Two year trends and percent change in recorded criminal incidents for major offences by Statistical Area (SA4)
Over the two years to June 2022

Statistical Area	Murder	Domestic violence related assault	Non-domestic violence related assault	Sexual assault	Sexual touching, sexual act and other sexual offences	Robbery	Break and enter dwelling	Break and enter non-dwelling	Motor vehicle theft	Steal from motor vehicle	Steal from retail store	Other stealing offences	Malicious damage to property
Greater Sydney	ns	ns	ns	ns	ns	-34.3	ns	ns	-22.0	ns	ns	ns	-16.5
Baulkham Hills and Hawkesbury		ns	-20.9	ns	ns		ns	ns	-45.7	-41.2	ns	ns	ns
Blacktown		-15.4	-25.3	-28.4	-19.8	ns	ns	ns	ns	ns	5.0	ns	-16.8
Central Coast		ns	ns	ns	ns	ns	-29.5	ns	-22.8	ns	ns	-26.2	-18.3
City and Inner South		ns	ns	ns	ns	-43.1	-20.5	ns	ns	ns	ns	ns	ns
Eastern Suburbs		ns	ns	ns	ns	ns	ns	ns	ns	ns	ns	ns	-13.4
Inner South West		ns	ns	ns	ns	ns	ns	ns	-29.4	-24.3	ns	ns	-18.4
Inner West		15.8	ns	ns	ns	ns	ns	ns	ns	ns	-43.0	ns	ns
North Sydney and Hornsby		ns	-20.3	ns	ns	ns	ns	ns	ns	ns	ns	-21.6	-29.8
Northern Beaches		ns	-21.7	ns	ns	ns	ns	-56.0	ns	-36.3	10.7	-24.1	-33.4
Outer South West		ns	ns	ns	ns	ns	-26.6	-26.2	ns	ns	ns	ns	-16.7
Outer West and Blue Mountains		ns	-16.2	ns	ns	ns	ns	-24.2	ns	ns	ns	ns	-19.8
Parramatta		ns	ns	ns	ns	ns	ns	ns	ns	ns	ns	ns	ns
Ryde		-24.5	ns	ns	-46.4		ns	ns	ns	ns	-48.3	ns	ns
South West		ns	ns	ns	ns	-47.2	ns	ns	-31.6	-21.4	ns	ns	ns
Sutherland		ns	-18.6	ns	ns	ns	ns	ns	ns	ns	ns	ns	-15.2
Regional NSW	ns	ns	ns	ns	ns	ns	ns	ns	9.3	5.6	ns	ns	ns
Capital Region		ns	ns	ns	ns	ns	ns	ns	ns	ns	ns	-11.7	ns
Central West		ns	ns	-20.3	ns	ns	ns	ns	21.7	ns	19.9	ns	ns
Coffs Harbour - Grafton		ns	ns	ns	ns	ns	ns	ns	69.0	38.9	ns	ns	ns
Far West and Orana		ns	ns	ns	ns	ns	ns	27.7	37.6	ns	33.4	ns	ns
Hunter Valley excluding Newcastle		ns	ns	ns	ns	ns	ns	ns	ns	22.2	ns	ns	ns
Illawarra		ns	ns	ns	ns	ns	ns	ns	ns	ns	ns	ns	-17.0
Mid North Coast		ns	ns	ns	ns	ns	ns	ns	ns	ns	ns	ns	ns
Murray		ns	ns	ns	ns	ns	ns	15.6	ns	ns	ns	ns	ns
New England and North West		ns	ns	ns	ns	ns	ns	42.8	30.3	ns	17.5	ns	ns
Newcastle and Lake Macquarie		ns	-16.0	ns	-29.9	-31.8	ns	ns	ns	ns	ns	ns	-10.1
Richmond - Tweed		ns	ns	-24.3	-21.8	ns	29.9	ns	15.0	25.4	ns	ns	ns
Riverina		ns	ns	ns	ns	ns	-20.1	ns	ns	ns	ns	ns	-12.0
Southern Highlands and Shoalhaven		ns	ns	ns	ns	ns	ns	ns	ns	ns	ns	-23.8	ns
NSW	ns	ns	ns	ns	ns	-28.0	ns	ns	ns	ns	ns	-10.3	-11.2

Table 2.2: Ratio to NSW rate of recorded criminal incidents per 100,000 population for major offences by Statistical Area (SA4)
Over the 12 months to June 2022

Statistical Area	Murder	Domestic violence related assault	Non-domestic violence related assault	Sexual assault	Sexual touching, sexual act and other sexual offences	Robbery	Break and enter dwelling	Break and enter non-dwelling	Motor vehicle theft	Steal from motor vehicle	Steal from retail store	Other stealing offences	Malicious damage to property
Greater Sydney	0.9	0.8	0.8	0.7	0.8	0.9	0.7	0.6	0.7	0.8	0.9	0.8	0.7
Baulkham Hills and Hawkesbury	0.5	0.4	0.4	0.6	0.6	0.2	0.4	0.3	0.3	0.3	0.4	0.4	0.4
Blacktown	2.0	1.3	1.1	0.9	1.1	2.0	1.0	0.7	1.1	1.2	1.3	1.0	1.1
Central Coast	1.8	1.2	1.2	1.3	1.2	1.0	0.7	0.8	0.9	1.0	1.0	0.7	1.1
City and Inner South	1.7	1.0	2.0	1.1	1.3	1.8	0.7	1.1	0.7	0.8	2.7	2.4	1.1
Eastern Suburbs		0.6	0.8	0.7	0.7	0.6	0.6	0.3	0.6	0.6	1.0	0.9	0.6
Inner South West	0.8	0.8	0.6	0.5	0.5	0.9	0.5	0.4	0.7	0.7	0.5	0.6	0.5
Inner West	1.2	0.5	0.6	0.5	0.6	0.8	0.7	0.6	0.6	0.7	0.8	0.9	0.5
North Sydney and Hornsby		0.3	0.3	0.4	0.5	0.3	0.5	0.4	0.3	0.4	0.7	0.5	0.4
Northern Beaches	0.5	0.3	0.5	0.5	0.6	0.4	0.3	0.3	0.4	0.5	0.8	0.5	0.5
Outer South West	1.3	1.1	0.8	1.0	1.1	1.0	0.6	0.6	0.8	0.9	0.9	0.7	0.9
Outer West and Blue Mountains		1.2	1.1	1.2	1.2	1.1	1.0	0.9	1.0	1.0	1.2	0.9	1.2
Parramatta	2.3	0.9	0.8	0.7	0.8	1.3	1.1	0.6	1.0	1.1	0.8	1.0	0.7
Ryde		0.4	0.4	0.3	0.4	0.4	0.6	0.6	0.3	0.5	0.5	0.6	0.4
South West	0.3	1.0	0.7	0.6	0.8	1.0	0.7	0.5	0.8	0.9	0.7	0.7	0.8
Sutherland		0.8	0.5	0.6	0.5	0.6	0.4	0.3	0.3	0.4	0.5	0.5	0.6
Regional NSW	1.1	1.4	1.3	1.4	1.4	1.1	1.6	1.9	1.6	1.5	1.1	1.3	1.5
Capital Region	0.5	1.0	0.9	1.0	1.0	0.7	0.8	1.3	1.0	0.9	0.8	1.0	1.1
Central West	1.8	1.7	1.5	1.7	1.7	1.3	2.0	2.1	1.6	1.3	1.1	1.4	1.8
Coffs Harbour - Grafton		1.4	1.6	1.6	1.6	1.1	1.5	2.4	2.0	1.5	1.0	1.5	1.5
Far West and Orana	1.1	3.5	2.4	2.2	2.3	2.0	4.2	5.0	3.0	2.5	1.8	2.1	2.9
Hunter Valley excluding Newcastle	0.4	1.3	1.2	1.7	1.5	0.7	1.1	1.5	1.7	1.5	1.0	1.6	1.4
Illawarra	0.4	0.7	0.8	0.9	0.9	0.8	0.9	0.8	1.1	1.3	1.3	0.8	0.9
Mid North Coast	1.7	1.5	1.3	1.4	1.7	0.9	2.1	2.5	1.5	1.2	1.0	1.8	1.6
Murray	2.1	1.5	1.4	1.3	1.4	0.9	1.5	2.1	1.7	1.9	1.0	1.4	1.7
New England and North West		2.1	1.8	1.9	1.7	1.5	3.6	2.5	2.3	2.0	1.4	1.5	2.3
Newcastle and Lake Macquarie	2.0	1.1	1.3	1.3	1.0	1.5	1.5	1.7	1.8	1.9	1.5	1.3	1.4
Richmond - Tweed	2.0	1.1	1.3	1.2	1.1	1.1	1.2	1.6	1.6	1.3	0.6	1.2	1.3
Riverina		1.5	1.4	1.7	1.5	1.1	1.8	1.9	1.7	1.4	1.3	1.3	1.6
Southern Highlands and Shoalhaven	2.4	0.9	1.0	1.5	1.4	0.8	0.8	0.9	0.7	0.7	0.7	0.8	1.1
NSW	1.0	1.0	1.0	1.0	1.0	1.0	1.0	1.0	1.0	1.0	1.0	1.0	1.0

NSW Recorded Crime Statistics June 2022

Table 2.3: Number of major offences by Statistical Area (SA4)

Over the 12 months to June 2022

Statistical Area	Murder	Domestic violence related assault	Non-domestic violence related assault	Sexual assault	Sexual touching, sexual act and other sexual offences	Robbery	Break and enter dwelling	Break and enter non-dwelling	Motor vehicle theft	Steal from motor vehicle	Steal from retail store	Other stealing offences	Malicious damage to property
Greater Sydney	38	17,053	14,377	3,314	3,659	955	7,689	2,551	4,804	13,158	10,537	18,521	22,946
Baulkham Hills and Hawkesbury	1	435	307	123	125	10	215	68	108	254	223	420	642
Blacktown	6	1,948	1,399	305	364	148	816	219	578	1,473	1,076	1,638	2,562
Central Coast	5	1,616	1,390	378	351	62	526	237	392	1,169	757	1,022	2,264
City and Inner South	5	1,433	2,506	345	425	123	564	353	328	925	2,120	3,687	2,485
Eastern Suburbs	0	678	845	166	187	32	348	72	235	547	631	1,051	1,066
Inner South West	4	1,984	1,253	252	290	104	702	235	556	1,339	606	1,504	2,006
Inner West	3	675	613	152	169	48	510	156	239	788	520	1,154	1,020
North Sydney and Hornsby	0	528	468	161	170	29	443	133	168	584	660	945	995
Northern Beaches	1	292	448	123	138	23	193	59	155	466	466	604	747
Outer South West	3	1,303	774	243	271	57	367	141	297	851	588	834	1,552
Outer West and Blue Mountains	0	1,503	1,222	327	349	71	667	247	415	1,067	853	1,174	2,237
Parramatta	9	1,775	1,371	321	326	122	1,160	276	676	1,785	850	2,109	2,049
Ryde	0	315	256	61	74	17	272	99	88	302	210	496	480
South West	1	1,882	1,114	232	313	85	708	190	472	1,275	726	1,400	2,024
Sutherland	0	686	411	125	107	24	198	66	97	333	251	483	817
Regional NSW	25	14,717	12,402	3,414	3,239	572	9,607	4,444	5,884	13,173	6,647	15,359	24,425
Capital Region	1	874	714	202	191	31	388	253	294	648	388	963	1,497
Central West	3	1,375	1,101	310	308	54	888	387	460	928	507	1,268	2,216
Coffs Harbour - Grafton	0	776	768	194	190	29	442	295	365	686	294	911	1,235
Far West and Orana	1	1,600	943	215	225	44	1,028	498	461	926	435	1,015	1,932
Hunter Valley excluding Newcastle	1	1,471	1,160	425	360	40	661	378	623	1,341	621	1,839	2,353
Illawarra	1	877	888	236	250	49	622	228	461	1,375	898	1,109	1,735
Mid North Coast	3	1,311	975	271	335	40	1,005	483	449	845	472	1,658	2,106
Murray	2	712	590	135	149	20	395	222	265	729	249	724	1,217
New England and North West	0	1,531	1,144	309	264	51	1,406	404	550	1,173	538	1,184	2,451
Newcastle and Lake Macquarie	6	1,628	1,679	432	340	105	1,213	558	914	2,390	1,231	2,030	3,182
Richmond - Tweed	4	1,065	1,129	259	237	51	660	342	536	1,081	328	1,292	1,945
Riverina	0	955	779	228	204	33	633	269	362	715	454	871	1,550
Southern Highlands and Shoalhaven	3	542	532	198	186	25	266	127	144	336	232	495	1,006
NSW	64	31,775	27,666	6,967	6,962	1,530	17,296	6,995	10,688	26,332	17,184	33,888	47,456

NSW Recorded Crime Statistics June 2022

Table 2.4: Number of major offences by Statistical Area (SA4)

Over the 12 months to June 2021

Statistical Area	Murder	Domestic violence related assault	Non-domestic violence related assault	Sexual assault	Sexual touching, sexual act and other sexual offences	Robbery	Break and enter dwelling	Break and enter non-dwelling	Motor vehicle theft	Steal from motor vehicle	Steal from retail store	Other stealing offences	Malicious damage to property
Greater Sydney	34	18,068	16,744	3,891	4,401	1,454	9,300	2,824	6,161	16,255	13,622	20,786	27,494
Baulkham Hills and Hawkesbury	0	495	388	137	136	39	339	94	199	432	346	543	703
Blacktown	2	2,302	1,873	426	454	216	866	257	627	1,819	1,025	1,815	3,079
Central Coast	1	1,434	1,504	425	436	64	746	256	508	1,303	874	1,384	2,772
City and Inner South	6	1,504	2,691	412	416	216	709	303	396	1,092	2,534	3,697	2,756
Eastern Suburbs	1	660	907	201	205	47	405	62	284	642	908	1,192	1,231
Inner South West	5	2,194	1,477	308	403	141	894	229	787	1,768	871	1,651	2,457
Inner West	1	583	695	156	186	58	531	147	276	811	912	1,182	1,152
North Sydney and Hornsby	0	580	587	175	224	47	574	149	236	820	1,270	1,205	1,417
Northern Beaches	0	328	572	174	171	35	288	134	196	732	421	796	1,121
Outer South West	1	1,334	878	290	337	86	500	191	429	981	697	980	1,863
Outer West and Blue Mountains	3	1,636	1,459	385	386	100	847	326	505	1,496	984	1,441	2,791
Parramatta	6	2,010	1,591	319	370	191	1,227	298	765	1,863	1,126	2,116	2,361
Ryde	1	417	283	82	138	25	270	63	89	366	406	487	580
South West	6	1,917	1,334	299	410	161	879	247	690	1,622	866	1,751	2,248
Sutherland	1	674	505	102	129	28	225	68	174	508	382	546	963
Regional NSW	24	14,850	13,316	3,910	3,762	666	9,958	4,274	5,385	12,477	6,909	16,995	25,883
Capital Region	1	866	788	215	242	29	473	260	281	665	409	1,091	1,531
Central West	1	1,356	1,290	389	387	47	898	387	378	948	423	1,445	2,312
Coffs Harbour - Grafton	0	871	761	215	214	45	350	263	216	494	267	874	1,242
Far West and Orana	3	1,616	1,053	250	216	37	957	390	335	889	326	1,142	2,096
Hunter Valley excluding Newcastle	2	1,443	1,192	400	404	43	835	511	683	1,097	612	1,967	2,402
Illawarra	0	992	971	304	290	65	703	329	475	1,334	1,165	1,368	2,090
Mid North Coast	0	1,356	1,071	345	352	54	981	442	480	890	389	1,815	2,134
Murray	1	614	621	152	142	23	405	192	230	713	342	766	1,289
New England and North West	3	1,502	1,160	302	282	43	1,392	283	422	1,245	458	1,287	2,460
Newcastle and Lake Macquarie	5	1,512	1,998	533	485	154	1,364	488	968	2,307	1,341	2,303	3,540
Richmond - Tweed	3	1,122	1,112	342	303	49	508	295	466	862	360	1,283	1,932
Riverina	2	1,022	761	266	257	49	792	286	271	640	468	1,004	1,761
Southern Highlands and Shoalhaven	3	578	538	197	188	28	300	148	180	393	349	650	1,094
NSW	58	32,925	30,985	7,937	8,225	2,124	19,258	7,099	11,546	28,734	20,531	37,784	53,433

SECTION 3: LEGAL PROCEEDINGS

Table 3.1: Adults proceeded against by the NSW Police Force by method of legal proceeding

Over the five years to June 2022

Method of legal proceeding	Adults proceeded against					2 Year Trend		5 Year Trend	
	12 months to June 2018	12 months to June 2019	12 months to June 2020	12 months to June 2021	12 months to June 2022	Number change	Percentage change	Number change	Average annual percentage change
Proceeded against to court	150,243	156,206	156,639	149,320	155,340	6,020	4.0%	5,097	Stable
Court diversion	14,512	13,446	12,059	9,412	8,302	-1,110	Stable	-6,210	-13.0%
Criminal Infringement Notice	9,262	8,780	7,738	6,186	5,488	-698	Stable	-3,774	-12.3%
Cannabis or other drug caution	5,250	4,666	4,321	3,226	2,814	-412	-12.8%	-2,436	-14.4%

Table 3.2: Young people proceeded against by the NSW Police Force by method of legal proceeding

Over the five years to June 2022

Method of legal proceeding	Young people proceeded against					2 Year Trend		5 Year Trend	
	12 months to June 2018	12 months to June 2019	12 months to June 2020	12 months to June 2021	12 months to June 2022	Number change	Percentage change	Number change	Average annual percentage change
Proceeded against to court	12,089	11,552	11,672	10,932	10,783	-149	Stable	-1,306	-2.8%
Court diversion	18,458	16,851	17,669	19,357	17,649	-1,708	Stable	-809	Stable
Youth Justice Conference	718	701	885	818	715	-103	Stable	-3	Stable
Caution Young Offenders Act	7,370	6,877	7,033	6,861	6,364	-497	Stable	-1,006	-3.6%
Warning Young Offenders Act	10,370	9,273	9,751	11,678	10,570	-1,108	Stable	200	Stable

Table 3.3: Adults proceeded against to court by the NSW Police Force for all 62 criminal offences types
Over the two years to June 2022

Offence category		12 months to June 2021		12 months to June 2022		2 Year Trend	
		No. proceeded to court	% proceeded to court	No. proceeded to court	% proceeded to court	Trend test result	Percentage change
Homicide	Murder	78	100.0%	86	100.0%	Stable	
	Attempted murder	22	100.0%	16	100.0%	n.c.	
	Murder accessory, conspiracy	0		0		n.c.	
	Manslaughter	6	100.0%	4	100.0%	n.c.	
Assault	Domestic violence related assault	13,298	99.9%	13,623	99.8%	Stable	
	Non-domestic violence related assault	6,600	97.3%	6,550	96.6%	Stable	
	Assault Police	1,250	99.8%	1,481	100.0%	Up	18.5%
Sexual offences	Sexual assault	865	100.0%	776	100.0%	Stable	
	Sexual touching, sexual act and other sexual offences	1,297	98.3%	1,318	98.4%	Stable	
Abduction and kidnapping		216	100.0%	178	100.0%	Stable	
Robbery	Robbery without a weapon	374	99.7%	320	100.0%	Stable	
	Robbery with a firearm	78	100.0%	73	100.0%	Stable	
	Robbery with a weapon not a firearm	433	100.0%	315	100.0%	Stable	
Blackmail and extortion		16	100.0%	16	100.0%	n.c.	
Intimidation, stalking and harassment		13,016	99.0%	13,562	98.9%	Stable	
Other offences against the person		257	97.7%	302	97.7%	Stable	
Theft	Break and enter dwelling	2,237	99.5%	2,199	99.7%	Stable	
	Break and enter non-dwelling	1,127	98.9%	1,096	99.1%	Stable	
	Receiving or handling stolen goods	3,766	97.0%	3,769	97.4%	Stable	
	Motor vehicle theft	1,225	99.6%	1,326	99.6%	Stable	
	Steal from motor vehicle	731	98.9%	873	98.8%	Up	19.4%
	Steal from retail store	4,638	63.3%	4,234	68.3%	Stable	
	Steal from dwelling	608	94.6%	775	95.1%	Up	27.5%
	Steal from person	192	96.0%	180	98.4%	Stable	
	Stock theft	14	93.3%	8	100.0%	n.c.	
	Fraud	3,953	97.9%	3,820	98.7%	Stable	
Other theft	1,467	87.9%	1,357	88.5%	Stable		
Arson		149	89.2%	170	92.9%	Stable	
Malicious damage to property		4,643	99.2%	4,344	99.1%	Down	-6.4%
Drug offences	Possession and/or use of cocaine	1,399	99.6%	1,296	97.7%	Stable	
	Possession and/or use of narcotics	537	99.4%	513	99.8%	Stable	
	Possession and/or use of cannabis	5,386	62.7%	4,922	63.7%	Stable	
	Possession and/or use of amphetamines	3,127	99.8%	2,787	99.5%	Stable	
	Possession and/or use of ecstasy	197	93.8%	265	75.5%	Stable	
	Possession and/or use of other drugs	1,774	99.6%	1,519	98.4%	Down	-14.4%
	Dealing, trafficking in cocaine	885	100.0%	683	100.0%	Stable	
	Dealing, trafficking in narcotics	111	100.0%	157	100.0%	Stable	
	Dealing, trafficking in cannabis	420	99.8%	398	100.0%	Stable	
	Dealing, trafficking in amphetamines	859	100.0%	779	100.0%	Stable	
	Dealing, trafficking in ecstasy	99	100.0%	78	100.0%	Stable	
	Dealing, trafficking in other drugs	275	100.0%	207	100.0%	Down	-24.7%
	Cultivating cannabis	743	99.9%	585	99.8%	Stable	
	Manufacture drug	61	100.0%	48	100.0%	Stable	
	Importing drugs	98	99.0%	92	98.9%	Stable	
Other drug offences	663	97.8%	629	98.3%	Stable		
Prohibited and regulated weapons offences		2,936	84.7%	2,891	85.6%	Stable	
Disorderly conduct	Trespass	1,037	62.1%	1,001	63.0%	Stable	
	Offensive conduct	337	16.6%	290	14.9%	Stable	
	Offensive language	134	14.0%	111	12.4%	Stable	
	Criminal intent	1,385	99.4%	1,440	99.7%	Stable	
Betting and gaming offences		10	62.5%	11	73.3%	n.c.	
Liquor offences		98	4.5%	99	4.7%	Stable	
Pornography offences		197	99.0%	216	100.0%	Stable	
Prostitution offences		0		1	100.0%	n.c.	
Against justice procedures	Escape custody	89	100.0%	77	100.0%	Stable	
	Breach Apprehended Violence Order	11,024	100.0%	11,767	100.0%	Up	6.7%
	Breach bail conditions	7,195	99.9%	7,890	100.0%	Up	9.7%
	Fail to appear	7	100.0%	16	100.0%	n.c.	
	Resist or hinder officer	1,539	82.3%	1,694	84.6%	Stable	
Other offences against justice procedures		997	100.0%	983	100.0%	Stable	
Transport regulatory offences		266	0.6%	577	1.4%	Up	116.9%
Other offences		2,100	30.1%	4,417	7.6%	Stable	

NSW Recorded Crime Statistics June 2022

Table 3.4: Young people proceeded against to court by the NSW Police Force for all 62 criminal offences
Over the two years to June 2022

Offence category		12 months to June 2021		12 months to June 2022		2 Year Trend	
		No. proceeded to court	% proceeded to court	No. proceeded to court	% proceeded to court	Trend test result	Percentage change
Homicide	Murder	2	100.0%	9	100.0%	n.c.	
	Attempted murder	0		1	100.0%	n.c.	
	Murder accessory, conspiracy	0		0		n.c.	
	Manslaughter	0		0		n.c.	
Assault	Domestic violence related assault	477	47.5%	442	40.8%	Stable	
	Non-domestic violence related assault	954	40.0%	803	37.5%	Stable	
	Assault Police	121	77.1%	112	75.2%	Stable	
Sexual offences	Sexual assault	150	98.0%	150	99.3%	Stable	
	Sexual touching, sexual act and other sexual offences	82	76.6%	92	77.3%	Stable	
Abduction and kidnapping		11	91.7%	3	100.0%	n.c.	
Robbery	Robbery without a weapon	378	95.0%	252	95.1%	Stable	
	Robbery with a firearm	15	100.0%	9	100.0%	n.c.	
	Robbery with a weapon not a firearm	242	98.8%	161	92.0%	Down	-33.5%
Blackmail and extortion		1	100.0%	1	100.0%	n.c.	
Intimidation, stalking and harassment		1,171	72.2%	1,107	70.4%	Stable	
Other offences against the person		19	55.9%	20	66.7%	n.c.	
Theft	Break and enter dwelling	482	67.7%	673	83.0%	Up	39.6%
	Break and enter non-dwelling	292	49.4%	323	51.6%	Stable	
	Receiving or handling stolen goods	183	58.5%	204	58.1%	Stable	
	Motor vehicle theft	492	67.1%	738	77.4%	Up	50.0%
	Steal from motor vehicle	267	60.8%	368	73.7%	Stable	
	Steal from retail store	515	35.2%	312	28.2%	Down	-39.4%
	Steal from dwelling	47	30.9%	77	45.0%	Up	63.8%
	Steal from person	60	56.6%	32	50.0%	Stable	
	Stock theft	1	100.0%	2	100.0%	n.c.	
	Fraud	226	60.1%	233	62.6%	Stable	
Other theft		139	33.8%	118	36.0%	Stable	
		26	23.9%	29	39.7%	Stable	
Malicious damage to property		525	34.1%	489	33.5%	Stable	
Drug offences	Possession and/or use of cocaine	9	36.0%	6	30.0%	n.c.	
	Possession and/or use of narcotics	0		0		n.c.	
	Possession and/or use of cannabis	187	15.6%	181	16.5%	Stable	
	Possession and/or use of amphetamines	6	46.2%	14	70.0%	n.c.	
	Possession and/or use of ecstasy	7	20.6%	3	23.1%	n.c.	
	Possession and/or use of other drugs	18	28.1%	15	29.4%	n.c.	
	Dealing, trafficking in cocaine	27	100.0%	15	100.0%	n.c.	
	Dealing, trafficking in narcotics	0		0		n.c.	
	Dealing, trafficking in cannabis	25	86.2%	28	75.7%	Stable	
	Dealing, trafficking in amphetamines	6	100.0%	1	100.0%	n.c.	
	Dealing, trafficking in ecstasy	15	100.0%	2	100.0%	n.c.	
	Dealing, trafficking in other drugs	6	66.7%	2	50.0%	n.c.	
	Cultivating cannabis	4	66.7%	1	33.3%	n.c.	
	Manufacture drug	0		0		n.c.	
Importing drugs	0		0		n.c.		
Other drug offences	2	3.3%	5	7.2%	n.c.		
Prohibited and regulated weapons offences		140	28.2%	141	32.3%	Stable	
Disorderly conduct	Trespass	194	16.2%	131	11.6%	Stable	
	Offensive conduct	22	7.7%	25	12.6%	Stable	
	Offensive language	6	6.6%	4	7.8%	n.c.	
	Criminal intent	192	86.5%	234	88.0%	Up	21.9%
Betting and gaming offences		0		0		n.c.	
Liquor offences		1	0.4%	1	0.4%	n.c.	
Pornography offences		9	9.8%	14	17.5%	n.c.	
Prostitution offences		0		0		n.c.	
Against justice procedures	Escape custody	18	90.0%	8	80.0%	n.c.	
	Breach Apprehended Violence Order	519	99.2%	463	99.6%	Stable	
	Breach bail conditions	1,448	98.4%	1,354	99.0%	Stable	
	Fail to appear	0		0		n.c.	
	Resist or hinder officer	82	43.4%	78	51.3%	Stable	
Other offences against justice procedures	13	100.0%	7	77.8%	n.c.		
Transport regulatory offences		23	0.1%	21	0.1%	Stable	
Other offences		130	10.7%	220	3.5%	Stable	

Figure 3.5: Offences with the largest change in the number of adults proceeded against to court by the NSW Police Force

Between the 12 months to June 2021 and the 12 months to June 2022

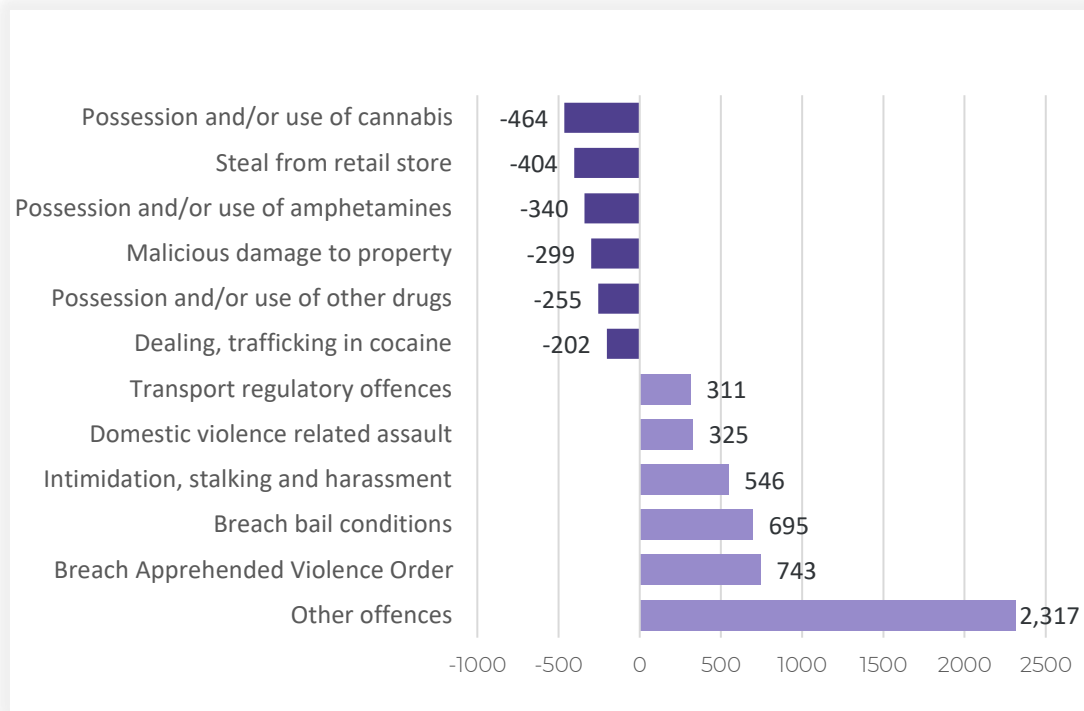
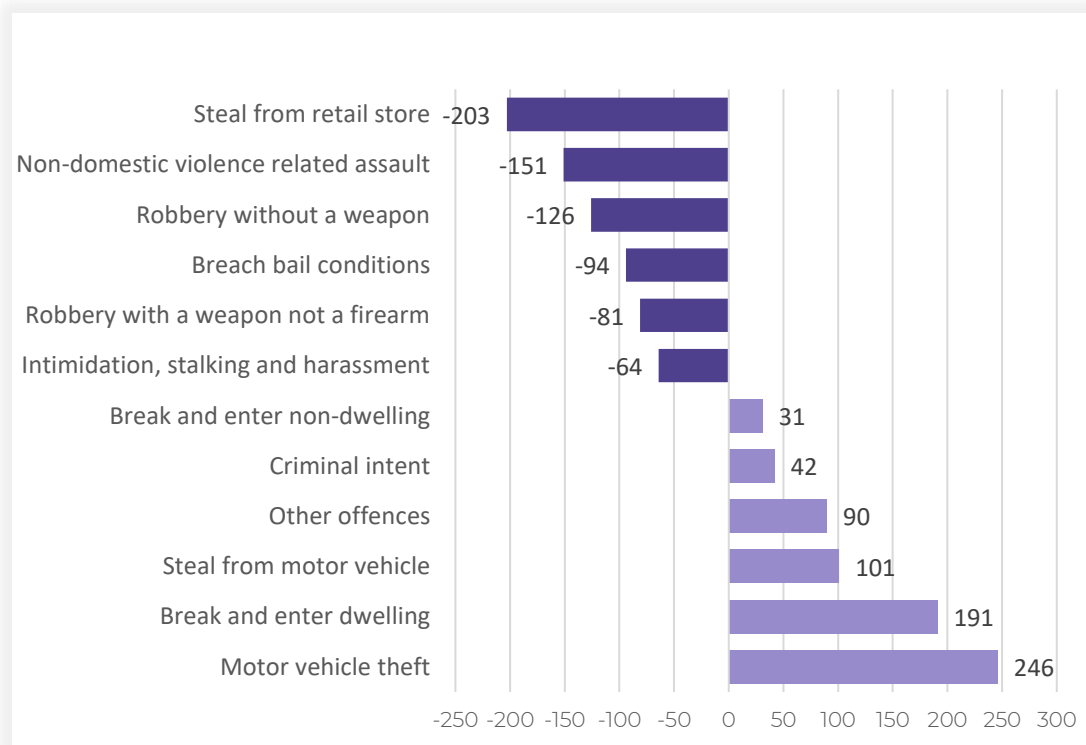


Figure 3.6: Offences with the largest change in the number of young people proceeded against to court by the NSW Police Force

Between the 12 months to June 2021 and the 12 months to June 2022



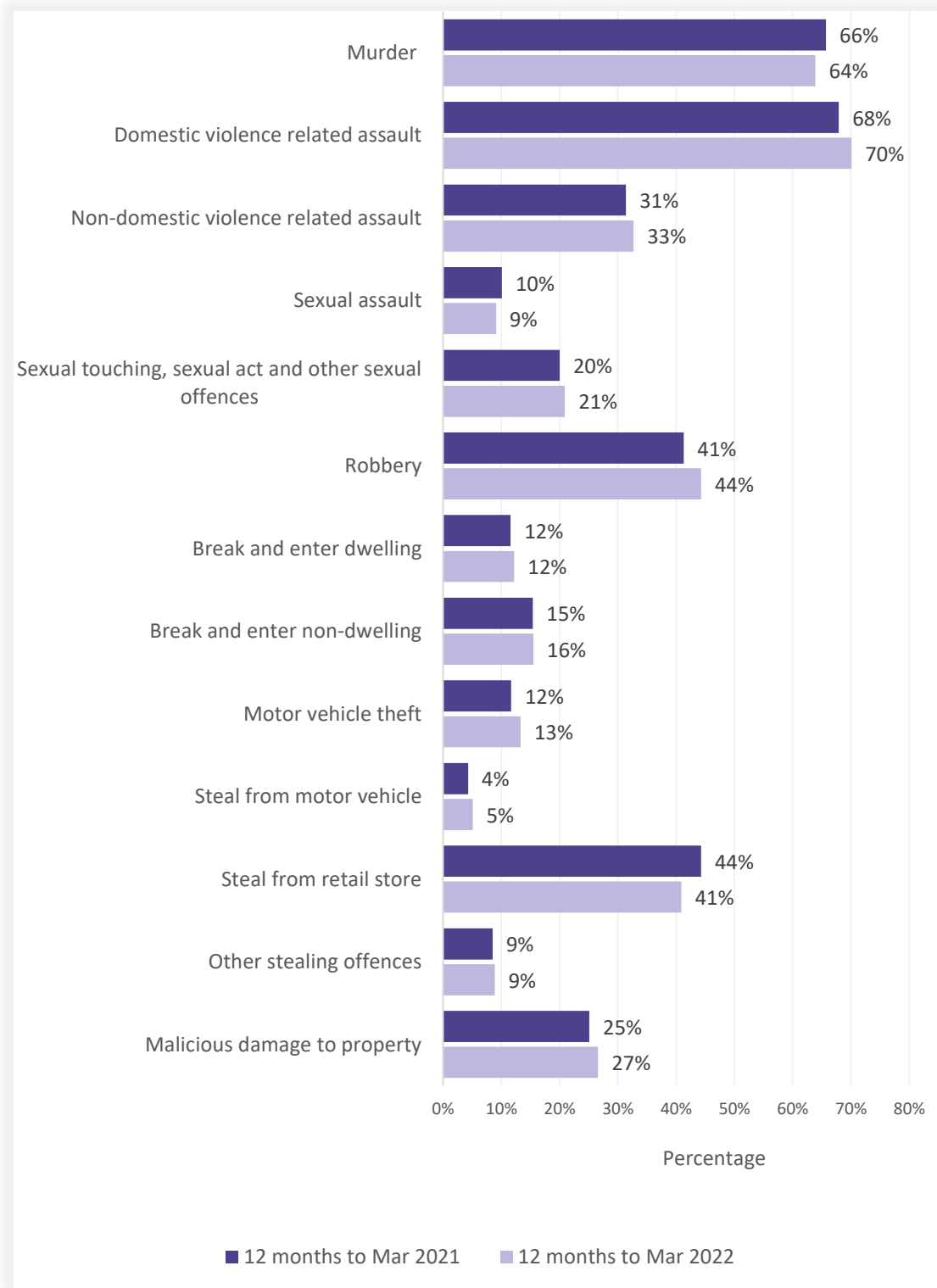
NSW Recorded Crime Statistics June 2022

Table 3.7: Incidents of all 62 criminal offence types by whether legal proceedings commenced within 90 days of reporting
Over the two years to March 2022

Offence category		Recorded criminal incidents over the 12 months to March 2021			Recorded criminal incidents over the 12 months to March 2022		
		Proceedings commenced within 90 days	Total number recorded	% proceedings commenced within 90 days	Proceedings commenced within 90 days	Total number recorded	% proceedings commenced within 90 days
Homicide	Murder	44	67	65.7%	39	61	63.9%
	Attempted murder	18	28	64.3%	12	17	70.6%
	Murder accessory, conspiracy	0	0	0.0%	0	1	0.0%
	Manslaughter	1	2	50.0%	1	2	50.0%
Assault	Domestic violence related assault	21,842	32,160	67.9%	22,605	32,256	70.1%
	Non-domestic violence related assault	9,207	29,335	31.4%	9,159	27,971	32.7%
	Assault Police	2,210	2,480	89.1%	2,348	2,645	88.8%
Sexual offences	Sexual assault	747	7,417	10.1%	642	7,082	9.1%
	Sexual touching, sexual act and other sexual offences	1,611	8,067	20.0%	1,481	7,098	20.9%
Abduction and kidnapping		117	221	52.9%	121	198	61.1%
Robbery	Robbery without a weapon	421	1,082	38.9%	358	889	40.3%
	Robbery with a firearm	38	94	40.4%	47	91	51.6%
	Robbery with a weapon not a firearm	355	796	44.6%	351	728	48.2%
Blackmail and extortion		10	107	9.3%	14	124	11.3%
Intimidation, stalking and harassment		17,413	40,153	43.4%	18,787	41,197	45.6%
Other offences against the person		424	1,460	29.0%	556	1,806	30.8%
Theft	Break and enter dwelling	2,148	18,466	11.6%	2,121	17,425	12.2%
	Break and enter non-dwelling	1,038	6,740	15.4%	1,124	7,245	15.5%
	Receiving or handling stolen goods	5,984	7,819	76.5%	5,769	7,428	77.7%
	Motor vehicle theft	1,310	11,220	11.7%	1,406	10,587	13.3%
	Steal from motor vehicle	1,160	26,733	4.3%	1,390	27,464	5.1%
	Steal from retail store	8,396	18,973	44.3%	7,181	17,570	40.9%
	Steal from dwelling	914	16,264	5.6%	1,021	16,039	6.4%
	Steal from person	354	1,929	18.4%	299	1,691	17.7%
	Stock theft	7	399	1.8%	11	299	3.7%
	Fraud	3,898	44,108	8.8%	3,335	44,645	7.5%
	Other theft	1,834	17,930	10.2%	1,762	16,885	10.4%
Arson		202	3,950	5.1%	184	3,622	5.1%
Malicious damage to property		13,205	52,710	25.1%	12,883	48,354	26.6%
Drug offences	Possession and/or use of cocaine	1,619	2,245	72.1%	1,706	2,289	74.5%
	Possession and/or use of narcotics	835	1,265	66.0%	757	1,239	61.1%
	Possession and/or use of cannabis	13,916	17,930	77.6%	12,166	16,091	75.6%
	Possession and/or use of amphetamines	5,901	7,905	74.6%	5,152	7,007	73.5%
	Possession and/or use of ecstasy	464	694	66.9%	445	616	72.2%
	Possession and/or use of other drugs	3,475	6,869	50.6%	2,986	6,290	47.5%
	Dealing, trafficking in cocaine	1,025	1,491	68.7%	828	1,038	79.8%
	Dealing, trafficking in narcotics	197	335	58.8%	421	491	85.7%
	Dealing, trafficking in cannabis	816	1,110	73.5%	622	776	80.2%
	Dealing, trafficking in amphetamines	2,461	3,074	80.1%	2,482	3,009	82.5%
	Dealing, trafficking in ecstasy	251	337	74.5%	120	159	75.5%
	Dealing, trafficking in other drugs	442	657	67.3%	326	487	66.9%
	Cultivating cannabis	795	1,177	67.5%	683	1,031	66.2%
	Manufacture drug	39	73	53.4%	29	49	59.2%
Importing drugs	67	227	29.5%	76	189	40.2%	
Other drug offences	1,187	6,121	19.4%	1,138	5,649	20.1%	
Prohibited and regulated weapons offences		6,197	15,159	40.9%	6,004	14,114	42.5%
Disorderly conduct	Trespass	3,917	9,854	39.8%	3,601	9,251	38.9%
	Offensive conduct	2,538	3,818	66.5%	2,408	3,617	66.6%
	Offensive language	1,606	2,053	78.2%	1,415	1,793	78.9%
	Criminal intent	1,802	2,305	78.2%	1,931	2,432	79.4%
Betting and gaming offences		17	76	22.4%	15	70	21.4%
Liquor offences		2,706	8,042	33.6%	2,862	9,063	31.6%
Pornography offences		293	956	30.6%	242	887	27.3%
Prostitution offences		0	16	0.0%	0	19	0.0%
Against justice procedures	Escape custody	157	181	86.7%	136	158	86.1%
	Breach Apprehended Violence Order	16,455	20,214	81.4%	17,777	21,679	82.0%
	Breach bail conditions	17,384	51,868	33.5%	17,775	51,419	34.6%
	Fail to appear	3	745	0.4%	12	892	1.3%
	Resist or hinder officer	4,648	5,518	84.2%	4,782	5,694	84.0%
Other offences against justice procedures	1,238	1,871	66.2%	1,209	2,006	60.3%	
Transport regulatory offences		60,460	70,125	86.2%	60,318	70,080	86.1%
Other offences		8,598	34,121	25.2%	23,859	91,021	26.2%

Figure 3.8: Percentage of recorded criminal incidents for major offences by whether legal proceedings commenced within 90 days of reporting

Over the two years to March 2022



SECTION 4: POLICING ACTIVITY

Table 4.1: Selected policing activities
Over the five years to June 2022

	Number of selected policing activities					2 Year Trend		5 Year Trend	
	12 months to June 2018	12 months to June 2019	12 months to June 2020	12 months to June 2021	12 months to June 2022	Number change	Annual percentage change	Number change	Annual average percentage change
Bail compliance checks	110,053	100,984	106,334	117,951	138,628	20,677	17.5%	28,575	5.9%
ADVO compliance checks	12,799	45,798	67,478	80,416	138,988	58,572	72.8%	126,189	81.5%
Move-on directions	105,604	105,910	114,564	99,137	92,511	-6,626	Stable	-13,093	-3.3%
Searches	287,593	284,848	294,313	249,063	226,366	-22,697	-9.1%	-61,227	-5.8%
Vehicle searches	47,701	44,982	47,690	44,256	41,103	-3,153	-7.1%	-6,598	-3.7%
Person searches	234,401	234,453	242,872	202,325	183,193	-19,132	Stable	-51,208	-6.0%
Strip searches	5,491	5,413	3,751	2,482	2,070	-412	-16.6%	-3,421	-21.6%
Convey/detain person to mental health facility	13,951	15,681	17,158	18,745	19,736	991	5.3%	5,785	9.1%

NSW Recorded Crime Statistics June 2022

Table 4.2: Non-criminal domestic violence episodes by Statistical Area (SA4)
Over the five years to June 2022

Statistical Area	Number of activities					Trend and average annual percentage change	
	12 months to June 2018	12 months to June 2019	12 months to June 2020	12 months to June 2021	12 months to June 2022	2 Year Trend	5 Year Trend
						Percentage change	Annual average percentage change
Greater Sydney	44,423	46,213	49,231	46,984	44,250	Stable	Stable
Baulkham Hills and Hawkesbury	944	1,104	1,195	1,174	1,128	Stable	4.6%
Blacktown	5,458	5,207	5,466	5,305	5,221	Stable	Stable
Central Coast	4,316	4,477	4,905	4,849	4,510	Stable	Stable
City and Inner South	3,152	3,471	3,488	3,565	3,386	Stable	Stable
Eastern Suburbs	1,655	1,802	2,043	1,953	2,001	Stable	4.9%
Inner South West	5,214	5,212	5,422	4,978	4,693	Stable	-2.6%
Inner West	1,991	2,001	2,172	1,966	1,888	Stable	Stable
North Sydney and Hornsby	1,560	1,565	1,805	1,800	1,771	Stable	3.2%
Northern Beaches	1,507	1,579	1,706	1,481	1,348	-9.0%	Stable
Outer South West	3,391	3,530	3,709	3,537	3,229	-8.7%	Stable
Outer West and Blue Mountains	4,371	4,701	4,870	4,807	4,114	-14.4%	Stable
Parramatta	3,978	4,169	4,583	4,189	4,204	Stable	Stable
Ryde	937	1,056	1,209	1,113	1,088	Stable	3.8%
South West	4,365	4,597	4,789	4,495	4,137	Stable	Stable
Sutherland	1,584	1,742	1,869	1,772	1,532	-13.5%	Stable
Regional NSW	35,252	36,635	39,472	39,931	38,056	Stable	1.9%
Capital Region	2,089	2,372	2,666	2,934	2,690	-8.3%	6.5%
Central West	2,848	3,044	3,314	3,290	3,155	Stable	2.6%
Coffs Harbour - Grafton	1,971	1,928	1,969	1,985	1,940	Stable	Stable
Far West and Orana	3,469	3,648	3,597	3,903	3,764	Stable	Stable
Hunter Valley excluding Newcastle	2,908	2,758	2,933	3,190	3,106	Stable	1.7%
Illawarra	3,426	3,582	3,800	3,642	3,607	Stable	Stable
Mid North Coast	2,978	3,130	3,362	3,349	3,009	-10.2%	Stable
Murray	1,616	1,772	2,030	2,058	1,874	Stable	3.8%
New England and North West	3,749	3,753	3,900	3,756	3,843	Stable	Stable
Newcastle and Lake Macquarie	3,584	3,471	4,192	4,341	4,146	Stable	3.7%
Richmond - Tweed	2,597	2,730	2,853	2,909	2,749	Stable	Stable
Riverina	2,429	2,714	2,960	2,801	2,379	-15.1%	Stable
Southern Highlands and Shoalhaven	1,588	1,733	1,896	1,773	1,794	Stable	Stable
NSW	79,690	82,866	88,713	86,922	82,322	Stable	Stable

Table 4.3: Ratio to NSW rate of non-criminal domestic violence episodes per 100,000 population by Statistical Area (SA4)

Over the five years to June 2022

Statistical Area	12 months to June 2018	12 months to June 2019	12 months to June 2020	12 months to June 2021	12 months to June 2022
Greater Sydney	0.9	0.8	0.8	0.8	0.8
Baulkham Hills and Hawkesbury	0.4	0.4	0.4	0.4	0.4
Blacktown	1.5	1.3	1.3	1.3	1.3
Central Coast	1.3	1.3	1.3	1.3	1.3
City and Inner South	0.9	0.9	0.9	0.9	0.9
Eastern Suburbs	0.6	0.6	0.6	0.6	0.7
Inner South West	0.8	0.8	0.8	0.7	0.7
Inner West	0.6	0.6	0.6	0.6	0.6
North Sydney and Hornsby	0.4	0.3	0.4	0.4	0.4
Northern Beaches	0.6	0.6	0.6	0.5	0.5
Outer South West	1.2	1.2	1.2	1.1	1.1
Outer West and Blue Mountains	1.4	1.4	1.4	1.4	1.2
Parramatta	0.8	0.8	0.8	0.8	0.8
Ryde	0.5	0.5	0.5	0.5	0.5
South West	1.0	1.0	1.0	0.9	0.9
Sutherland	0.7	0.7	0.7	0.7	0.7
Regional NSW	1.3	1.3	1.3	1.3	1.3
Capital Region	0.9	1.0	1.1	1.2	1.1
Central West	1.3	1.4	1.4	1.4	1.5
Coffs Harbour - Grafton	1.4	1.3	1.3	1.3	1.4
Far West and Orana	3.0	3.0	2.8	3.1	3.2
Hunter Valley excluding Newcastle	1.1	1.0	0.9	1.1	1.1
Illawarra	1.1	1.1	1.1	1.1	1.1
Mid North Coast	1.4	1.4	1.4	1.4	1.3
Murray	1.3	1.4	1.5	1.6	1.5
New England and North West	2.0	2.0	1.9	1.9	2.0
Newcastle and Lake Macquarie	1.0	0.9	1.0	1.1	1.1
Richmond - Tweed	1.0	1.1	1.0	1.1	1.1
Riverina	1.5	1.6	1.7	1.6	1.5
Southern Highlands and Shoalhaven	1.0	1.1	1.1	1.0	1.1
NSW	1.0	1.0	1.0	1.0	1.0

APPENDIX 1

REGIONAL

COMPARISONS

Local Government Areas

NSW Recorded Crime Statistics June 2022

Appendix
Table 1.1: Trends in recorded criminal incidents for major offences, NSW LGAs

Over the two years to June 2022

NSW LGA	Murder	Domestic violence related assault	Non-domestic violence related assault	Sexual assault	Sexual touching, sexual act and other sexual offences	Robbery	Break and enter dwelling	Break and enter non-dwelling	Motor vehicle theft	Steal from motor vehicle	Steal from retail store	Other stealing offences	Malicious damage to property
Albury	ns	ns	ns	ns	ns	ns	ns	ns	ns	ns	ns	ns	ns
Armidale Regional	ns	ns	ns	ns	ns	ns	-32.8	ns	-36.1	4.3	ns	ns	ns
Ballina	ns	ns	ns	ns	ns	ns	ns	ns	48.9	ns	ns	ns	ns
Balranald	ns	ns	ns	ns	ns	ns	ns	ns	ns	ns	ns	ns	ns
Bathurst Regional	ns	ns	ns	-21.3	ns	ns	ns	ns	ns	ns	23.6	ns	ns
Bayside	ns	ns	ns	ns	ns	ns	ns	ns	ns	ns	ns	ns	ns
Bega Valley	ns	ns	ns	ns	ns	ns	ns	-68.7	-54.5	ns	145.0	ns	ns
Bellingen	ns	-57.6	ns	ns	ns	ns	ns	ns	ns	ns	ns	ns	ns
Berrigan	ns	57.1	ns	ns	ns	ns	ns	ns	ns	ns	ns	ns	ns
Blacktown	ns	-15.2	-25.4	-28.2	-20.6	ns	ns	ns	ns	ns	6.3	ns	-17.0
Bland	ns	ns	ns	ns	ns	ns	ns	ns	ns	ns	ns	ns	ns
Blayney	ns	ns	ns	ns	ns	ns	ns	ns	ns	ns	ns	ns	ns
Blue Mountains	ns	ns	ns	ns	ns	ns	ns	ns	ns	ns	ns	ns	-31.9
Bogan	ns	ns	ns	ns	ns	ns	ns	ns	ns	ns	ns	ns	ns
Bourke	ns	ns	ns	ns	ns	ns	ns	13.6	ns	166.7	ns	ns	ns
Brewarrina	ns	ns	ns	ns	ns	ns	ns	ns	ns	ns	ns	ns	ns
Broken Hill	ns	ns	ns	ns	ns	ns	ns	ns	ns	ns	ns	ns	ns
Burwood	ns	ns	ns	ns	ns	ns	ns	ns	41.7	ns	-56.6	ns	ns
Byron	ns	ns	ns	ns	ns	ns	ns	ns	ns	ns	ns	-35.1	ns
Cabonne	ns	ns	ns	ns	ns	ns	ns	ns	ns	ns	ns	ns	ns
Camden	ns	ns	ns	ns	ns	ns	ns	ns	ns	ns	ns	ns	-22.9
Campbelltown	ns	ns	ns	ns	ns	ns	ns	ns	ns	ns	ns	ns	ns
Canada Bay	ns	ns	ns	ns	ns	ns	ns	ns	15.9	ns	ns	ns	ns
Canterbury-Bankstown	ns	ns	ns	ns	ns	ns	ns	ns	-28.6	-26.8	ns	ns	-16.4
Carrathool	ns	ns	ns	ns	ns	ns	ns	ns	ns	ns	ns	ns	ns
Central Coast	ns	ns	ns	ns	ns	ns	-29.5	ns	-22.7	ns	ns	-26.2	-18.4
Central Darling	ns	ns	ns	ns	ns	ns	ns	ns	ns	ns	ns	ns	-29.9
Cessnock	ns	ns	ns	ns	-25.9	ns	-26.3	ns	ns	ns	ns	ns	ns
Clarence Valley	ns	ns	ns	ns	ns	ns	ns	73.2	141.5	89.9	ns	ns	ns
Cobar	ns	ns	ns	ns	ns	ns	ns	ns	ns	ns	ns	ns	ns
Coffs Harbour	ns	ns	ns	ns	ns	ns	ns	ns	50.3	20.4	ns	ns	ns
Coolamon	ns	ns	ns	ns	ns	ns	ns	ns	ns	ns	ns	ns	ns
Coonamble	ns	ns	ns	ns	ns	ns	ns	ns	ns	ns	ns	ns	ns
Cootamundra-Gundagai	ns	ns	ns	ns	ns	ns	ns	ns	ns	ns	ns	ns	ns
Cowra	ns	ns	ns	ns	ns	ns	ns	ns	ns	ns	ns	ns	ns
Cumberland	ns	ns	ns	ns	ns	ns	ns	ns	ns	ns	ns	ns	ns
Dubbo Regional	ns	ns	ns	ns	ns	ns	37.0	ns	59.4	ns	42.5	ns	ns
Dungog	ns	ns	ns	ns	ns	ns	ns	ns	ns	ns	ns	ns	ns
Edward River	ns	ns	ns	ns	ns	ns	ns	ns	ns	ns	ns	ns	ns
Eurobodalla	ns	ns	ns	ns	ns	ns	-28.9	ns	ns	ns	ns	ns	ns
Fairfield	ns	ns	-25.2	ns	ns	ns	ns	ns	ns	-31.1	ns	ns	ns
Federation	ns	ns	ns	ns	ns	ns	ns	ns	ns	ns	ns	ns	-34.1
Forbes	ns	ns	ns	ns	ns	ns	ns	ns	ns	-52.7	ns	ns	ns
Georges River	ns	ns	ns	ns	ns	ns	ns	ns	-40.8	ns	ns	ns	-21.5
Gilgandra	ns	ns	ns	ns	ns	ns	ns	ns	ns	ns	ns	ns	ns
Glen Innes Severn	ns	ns	ns	ns	ns	ns	ns	ns	ns	90.0	ns	ns	26.8
Goulburn Mulwaree	ns	ns	ns	ns	ns	ns	ns	ns	ns	ns	ns	ns	ns

NSW Recorded Crime Statistics June 2022

NSW LGA	Murder	Domestic violence related assault	Non-domestic violence related assault	Sexual assault	Sexual touching, sexual act and other sexual offences	Robbery	Break and enter dwelling	Break and enter non-dwelling	Motor vehicle theft	Steal from motor vehicle	Steal from retail store	Other stealing offences	Malicious damage to property
Greater Hume Shire		ns								ns		ns	ns
Griffith		ns	ns	ns	ns		ns	ns	ns	ns	ns	ns	ns
Gunnedah		ns	ns	ns			ns	ns	129.6	ns	ns	ns	ns
Gwydir													
Hawkesbury		ns	ns	ns	ns		-37.3	-46.0	ns	ns	ns	ns	-24.6
Hay		ns											ns
Hilltops		24.3	ns				ns		ns	95.2		ns	ns
Hornsby		ns	-28.8	ns	ns		-60.9	ns	ns	-41.3	ns	-27.6	-29.2
Hunters Hill			ns				ns			ns		ns	-37.9
Inner West		ns	ns	ns	ns	ns	ns	ns	ns	-28.3	ns	ns	ns
Inverell		ns	65.5	ns	ns		39.4	176.2	80.0	ns	ns	ns	ns
Junee		ns	ns									ns	-46.6
Kempsey		ns	-22.2	ns	ns		ns	-34.7	ns	ns	ns	ns	ns
Kiama		ns	ns				ns			ns		ns	-32.1
Ku-ring-gai		ns	-38.0	ns	-52.3		ns	ns	ns	ns	-75.0	-39.0	-32.4
Kyogle		ns	ns									ns	ns
Lachlan		ns	ns				ns	ns	ns	ns		ns	ns
Lake Macquarie		ns	-19.3	ns	ns	-57.1	ns	ns	ns	ns	ns	-17.1	-12.0
Lane Cove		ns	ns				ns		-48.7	ns	ns	ns	ns
Leeton		ns	ns	ns			-36.9		ns	-25.0		ns	ns
Lismore		ns	ns	ns	ns		ns	67.2	98.6	136.1	-37.9	27.6	ns
Lithgow		ns	ns	ns	ns		ns		ns	ns	ns	ns	ns
Liverpool		ns	ns	ns	ns	-45.5	ns	ns	-30.8	ns	ns	ns	ns
Liverpool Plains		ns	ns									ns	ns
Lockhart													
Lord Howe Island													
Maitland		26.1	ns	ns	ns		ns	-23.4	ns	47.7	ns	ns	ns
Mid-Coast		ns	ns	ns	ns		ns	ns	ns	ns	ns	ns	ns
Mid-Western Regional		ns	ns	ns	ns		-45.3	ns		-37.0	ns	ns	ns
Moree Plains		ns	ns	ns	ns		ns	ns	ns	ns	43.8	ns	ns
Mosman		ns	ns				ns			-49.1		ns	ns
Murray River		ns	ns					ns		ns		ns	ns
Murrumbidgee													ns
Muswellbrook		ns	ns	ns	ns		ns	ns	ns	ns	ns	ns	ns
Nambucca Valley		ns	ns	-25.0	ns		ns	ns	ns	ns	ns	ns	ns
Narrabri		ns	ns						ns	ns		ns	ns
Narrandera		ns	ns				ns			ns		ns	ns
Narromine		ns	ns				ns	ns		ns		ns	ns
Newcastle		13.3	ns	ns	-27.1	ns	ns	33.2	ns	ns	ns	ns	ns
North Sydney		ns	ns	ns	ns		ns	ns	ns	ns	ns	-25.7	-33.3
Northern Beaches		ns	-21.7	ns	ns	ns	ns	-56.0	ns	-36.3	10.7	-24.1	-33.4
Oberon													ns
Orange		11.8	ns	ns	ns		ns	ns	ns	44.1	27.3	ns	ns
Parkes		ns	ns	ns	ns		-45.1		ns	-22.8	ns	ns	ns
Parramatta		ns	ns	ns	21.1	ns	ns	ns	ns	ns	ns	ns	ns
Penrith		ns	-15.5	ns	ns	ns	ns	ns	ns	ns	ns	ns	ns
Port Macquarie-Hastings		ns	ns	ns	ns		ns	ns	ns	ns	ns	ns	ns
Port Stephens		ns	ns	ns	ns		ns	ns	ns	ns	ns	-22.9	ns
Queanbeyan-Palerang Regional		ns	ns	ns	ns		ns	ns	ns	15.4	ns	ns	ns

NSW Recorded Crime Statistics June 2022

NSW LGA	Murder	Domestic violence related assault	Non-domestic violence related assault	Sexual assault	Sexual touching, sexual act and other sexual offences	Robbery	Break and enter dwelling	Break and enter non-dwelling	Motor vehicle theft	Steal from motor vehicle	Steal from retail store	Other stealing offences	Malicious damage to property
Randwick	ns	ns	ns	ns	ns	ns	ns	ns	ns	ns	ns	ns	ns
Richmond Valley	ns	ns	ns	ns	ns	106.3	113.5	11.8	ns	ns	ns	ns	32.6
Ryde	-31.6	ns	ns	-53.3	ns	ns	ns	ns	ns	-47.0	ns	ns	ns
Shellharbour	ns	ns	-37.2	ns	ns	ns	ns	ns	ns	ns	ns	ns	ns
Shoalhaven	ns	ns	ns	ns	ns	ns	ns	ns	ns	ns	ns	-25.7	ns
Singleton	ns	ns	ns	ns	ns	ns	ns	ns	ns	ns	ns	-26.9	38.1
Snowy Monaro Regional	ns	ns	ns	ns	ns	ns	ns	ns	ns	ns	ns	ns	-22.3
Snowy Valleys	ns	ns	ns	ns	ns	-46.2	ns	ns	-37.5	ns	ns	ns	ns
Strathfield	ns	ns	ns	ns	ns	ns	ns	ns	ns	ns	ns	ns	ns
Sutherland Shire	ns	-18.8	ns	ns	ns	ns	ns	ns	ns	ns	ns	ns	-15.2
Sydney	ns	ns	ns	ns	ns	-26.3	ns	ns	ns	ns	ns	ns	ns
Tamworth Regional	ns	ns	ns	ns	ns	ns	ns	ns	ns	ns	ns	ns	ns
Temora	ns	ns	ns	ns	ns	ns	ns	ns	ns	ns	ns	ns	ns
Tenterfield	ns	ns	ns	ns	ns	ns	ns	ns	ns	ns	ns	ns	ns
The Hills Shire	ns	ns	ns	ns	ns	ns	ns	-53.5	-37.1	ns	ns	ns	ns
Tweed	ns	ns	ns	ns	ns	ns	ns	ns	ns	ns	ns	ns	ns
Unincorporated Far West	ns	ns	ns	ns	ns	ns	ns	ns	ns	ns	ns	ns	ns
Upper Hunter Shire	ns	ns	ns	ns	ns	-2.6	ns	ns	ns	ns	ns	ns	ns
Upper Lachlan Shire	ns	ns	ns	ns	ns	ns	ns	ns	ns	ns	ns	ns	ns
Uralla	ns	ns	ns	ns	ns	ns	ns	ns	ns	ns	ns	ns	ns
Wagga Wagga	ns	ns	ns	ns	ns	ns	ns	ns	22.4	ns	ns	ns	-19.1
Walcha	ns	ns	ns	ns	ns	ns	ns	ns	ns	ns	ns	ns	ns
Walgett	ns	ns	ns	ns	ns	ns	ns	ns	ns	ns	ns	ns	ns
Warren	ns	ns	ns	ns	ns	ns	ns	ns	ns	ns	ns	ns	ns
Warrumbungle Shire	ns	ns	ns	ns	ns	ns	ns	ns	ns	ns	ns	21.1	ns
Waverley	ns	ns	ns	ns	ns	ns	ns	ns	ns	ns	ns	ns	ns
Weddin	ns	ns	ns	ns	ns	ns	ns	ns	ns	ns	ns	ns	ns
Wentworth	ns	ns	ns	ns	ns	ns	ns	ns	ns	ns	ns	ns	ns
Willoughby	ns	ns	ns	ns	ns	32.1	ns	ns	ns	-52.1	ns	ns	ns
Wingecarribee	ns	ns	ns	ns	ns	ns	ns	ns	ns	ns	ns	ns	ns
Wollondilly	ns	33.3	ns	ns	ns	ns	ns	ns	-42.9	ns	ns	ns	ns
Wollongong	ns	ns	ns	ns	ns	ns	ns	ns	ns	ns	ns	ns	-14.0
Woollahra	ns	ns	ns	ns	ns	ns	ns	ns	ns	ns	ns	ns	ns
Yass Valley	ns	ns	ns	ns	ns	ns	ns	ns	ns	ns	ns	ns	ns
NSW	ns	ns	ns	ns	ns	-28.0	ns	ns	ns	ns	ns	-10.3	-11.2

NSW Recorded Crime Statistics June 2022

Appendix
Table 1.2: Ratio to NSW rate of recorded criminal incidents per 100,000 population for major offences, NSW LGAs

12 months to June 2022

NSW LGA	Murder	Domestic violence related assault	Non-domestic violence related assault	Sexual assault	Sexual touching, sexual act and other sexual offences	Robbery	Break and enter dwelling	Break and enter non-dwelling	Motor vehicle theft	Steal from motor vehicle	Steal from retail store	Other stealing offences	Malicious damage to property
Albury		1.9	1.9	1.2	1.9	1.7	2.1	1.8	2.2	3.4	1.7	1.6	2.2
Armidale Regional		1.8	1.8	2.1	1.9	2.5	2.7	2.8	1.0	2.3	2.0	1.6	2.1
Ballina	2.8	0.8	0.9	0.9	1.0	1.1	0.9	1.0	1.1	1.4	0.8	1.5	1.0
Balranald													
Bathurst Regional	2.9	1.7	1.6	1.6	1.9	1.9	1.6	1.4	1.2	1.6	1.4	1.3	1.8
Bayside		0.9	0.6	0.5	0.5	0.8	0.6	0.4	0.6	0.6	0.8	0.9	0.7
Bega Valley		0.9	0.8	0.8	0.9	0.2	0.5	0.9	0.4	0.5	0.7	0.8	0.9
Bellingen		0.5	1.2	2.1	2.4		0.7	1.8	1.3	0.8	0.4	1.1	1.7
Berrigan		1.0	0.9	1.5	1.2	0.6	1.1	4.5	0.8	0.5	0.4	1.3	1.8
Blacktown	2.0	1.3	1.1	0.9	1.1	2.0	1.0	0.6	1.1	1.2	1.3	1.0	1.1
Bland		1.2	1.4	0.6	1.8		0.7	1.6	1.5	1.0	0.2	1.1	0.9
Blayney		0.8	0.7	1.3	0.6	1.4	1.3	3.3	0.7	0.5	0.5	0.9	0.8
Blue Mountains	1.6	0.7	0.6	1.1	0.9	0.3	0.4	0.5	0.3	0.4	0.4	0.6	1.0
Bogan													
Bourke													
Brewarrina													
Broken Hill		3.2	2.5	0.7	2.0	1.2	4.0	3.4	2.1	1.6	1.2	1.7	2.8
Burwood		0.6	0.8	0.5	0.7	1.6	1.1	1.0	0.6	0.8	2.1	1.2	0.6
Byron		0.8	1.8	1.2	1.1	0.6	0.6	1.3	1.4	0.9	0.7	1.2	1.4
Cabonne		0.9	0.5	1.1	0.9		1.1	0.9	1.2	0.5	0.2	0.7	0.7
Camden		0.8	0.4	0.5	0.7	0.3	0.3	0.4	0.5	0.6	0.6	0.4	0.5
Campbelltown	2.2	1.4	1.0	1.2	1.3	1.5	0.8	0.7	1.0	1.2	1.3	0.9	1.2
Canada Bay	1.3	0.4	0.4	0.4	0.5	0.6	0.5	0.5	0.6	0.6	0.5	0.7	0.4
Canterbury-Bankstown	1.7	0.9	0.6	0.5	0.6	1.0	0.5	0.5	0.8	0.8	0.5	0.6	0.6
Carrathool													
Central Coast	1.8	1.2	1.2	1.3	1.2	1.0	0.7	0.8	0.9	1.0	1.0	0.7	1.1
Central Darling													
Cessnock		1.2	1.4	1.7	1.5	0.8	1.1	1.5	2.9	1.7	1.0	1.9	1.6
Clarence Valley		1.1	1.3	1.1	1.3	0.7	1.7	2.2	1.9	1.4	0.8	1.9	1.3
Cobar		1.4	1.5	1.3	1.1		1.0	5.3	2.1	1.1	1.1	2.1	2.6
Coffs Harbour		1.8	1.8	1.8	1.6	1.5	1.4	2.7	2.1	1.7	1.2	1.4	1.6
Coolamon		0.6	0.3	1.6	0.8		0.7	1.4	1.1	0.1		1.0	0.6
Coonamble		4.5	3.8	3.0	2.1	4.1	8.2	5.4	2.2	2.1	1.2	3.4	5.8
Cootamundra-Gundagai		1.1	1.1	0.9	2.3		0.5	1.1	1.0	0.4	0.5	1.1	0.9
Cowra		2.0	1.6	0.9	2.8	2.1	4.8	3.5	2.9	1.3	1.6	1.7	1.9
Cumberland	3.2	0.9	0.8	0.6	0.6	1.3	0.9	0.5	1.1	1.0	0.5	0.8	0.6
Dubbo Regional	2.4	3.2	2.2	2.0	2.0	2.5	4.8	4.0	3.7	3.1	2.5	2.0	2.4
Dungog		0.9	0.6	1.3	1.3		0.5	0.5	0.9	0.5	0.1	1.3	0.9
Edward River	14.1	2.0	1.8	0.8	0.9	0.6	1.4	1.0	0.8	0.3	0.5	1.3	1.9
Eurobodalla		1.4	1.2	1.0	1.2	2.1	1.0	2.3	0.9	0.8	1.6	1.1	1.7
Fairfield	0.6	1.0	0.6	0.4	0.7	1.0	0.6	0.4	0.7	0.7	0.6	0.6	0.7
Federation	10.1	0.4	0.9	0.7	0.7		0.6	1.7	0.8	0.6	0.7	1.3	0.7
Forbes		1.6	1.8	1.7	1.1	1.1	3.3	2.5	2.7	1.4	1.1	1.9	2.6
Georges River		0.7	0.5	0.3	0.5	0.7	0.5	0.4	0.4	0.5	0.5	0.5	0.5
Gilgandra		1.9	1.8	3.0	3.1	1.3	2.2	3.0	1.4	0.8	0.8	1.3	2.3
Glen Innes Severn		1.7	1.3	3.0	2.1		3.8	4.2	1.3	1.3	1.5	2.3	2.4
Goulburn Mulwaree		1.0	1.2	1.4	1.4	0.8	1.2	1.0	0.8	0.6	1.4	1.6	1.2

NSW Recorded Crime Statistics June 2022

NSW LGA	Murder	Domestic violence related assault	Non-domestic violence related assault	Sexual assault	Sexual touching, sexual act and other sexual offences	Robbery	Break and enter dwelling	Break and enter non-dwelling	Motor vehicle theft	Steal from motor vehicle	Steal from retail store	Other stealing offences	Malicious damage to property
Greater Hume Shire		0.8	0.6	2.3	1.5		0.8	1.3	1.5	0.6	0.2	0.9	0.7
Griffith		1.7	1.3	1.6	1.8	1.6	1.9	3.7	2.5	1.5	1.7	1.4	1.7
Gunnedah		2.1	1.6	1.8	1.8	0.4	4.3	2.2	3.7	2.0	1.2	1.7	2.3
Gwydir		0.4	0.7	0.9	1.5		0.6	0.9	0.9	0.6		0.9	0.6
Hawkesbury		1.0	0.8	0.9	1.2	0.5	0.6	0.5	0.9	0.4	0.8	0.6	0.8
Hay													
Hilltops		1.8	1.3	0.8	0.8	0.6	0.7	1.2	1.4	0.7	0.7	0.9	1.6
Hornsby		0.4	0.3	0.5	0.4	0.4	0.2	0.3	0.2	0.3	0.7	0.3	0.4
Hunters Hill		0.2	0.4	0.6	0.7		0.9	0.4	0.6	0.5	0.0	0.7	0.4
Inner West	3.2	0.6	0.7	0.7	0.8	0.9	0.7	0.6	0.6	0.7	0.9	1.0	0.7
Inverell		2.9	2.3	2.8	1.9	1.5	2.6	3.8	1.9	1.6	2.1	1.7	2.2
Junee		0.8	0.9	1.9	1.2		0.4	0.2	0.6	0.0	0.4	0.8	0.8
Kempsey	8.5	2.1	1.7	1.9	2.1	1.2	4.4	1.8	3.2	1.9	1.4	2.9	2.4
Kiama		0.3	0.3	0.6	0.5	0.5	0.6	0.9	0.6	1.1	0.1	0.5	0.6
Ku-ring-gai		0.2	0.1	0.3	0.3	0.3	0.5	0.3	0.3	0.3	0.1	0.3	0.3
Kyogle	14.5	1.0	1.0	1.2	0.4		1.0	2.4	1.3	0.5	0.3	1.0	0.9
Lachlan		2.1	2.6	1.0	1.2	3.5	4.7	14.0	5.5	1.3	0.5	2.1	2.9
Lake Macquarie	0.6	1.0	0.9	1.3	1.0	0.6	0.9	1.4	1.3	1.2	1.2	0.9	1.1
Lane Cove		0.3	0.3	0.4	0.3	0.1	0.6	0.3	0.4	0.5	0.4	0.6	0.3
Leeton		2.1	2.0	2.3	1.4	0.9	1.7	1.4	1.3	0.6	0.5	1.2	1.9
Lismore		1.4	2.0	2.0	1.7	1.8	1.8	2.7	2.5	2.0	0.6	1.4	1.8
Lithgow		1.7	1.5	1.9	1.3	0.7	0.8	0.8	0.7	0.9	1.2	1.8	1.5
Liverpool		1.1	0.9	0.8	0.9	1.1	0.9	0.6	0.9	1.1	0.9	0.9	0.8
Liverpool Plains		1.9	1.5	2.4	1.3	2.0	1.6	3.1	1.0	0.6	0.2	1.0	1.4
Lockhart		0.8	0.5	1.1	1.1	1.6	0.9	1.8	1.4	0.4		0.9	1.0
Lord Howe Island													
Maitland		1.6	1.2	1.7	1.3	1.1	1.2	1.3	1.4	1.8	1.6	1.6	1.4
Mid-Coast	1.4	1.5	1.2	1.3	1.9	0.9	2.5	3.8	1.4	1.1	1.1	2.0	1.6
Mid-Western Regional		1.6	1.4	2.2	1.8	0.4	0.7	0.9	0.5	0.4	0.7	1.0	1.4
Moree Plains		5.5	4.1	2.5	2.0	2.9	8.6	5.6	5.0	4.0	3.8	3.4	6.0
Mosman		0.2	0.4	0.6	0.5		0.5	0.3	0.3	0.6	0.3	0.7	0.5
Murray River		0.7	0.6	1.8	1.0		0.7	2.3	1.7	0.7	0.2	1.3	1.1
Murrumbidgee		0.9	0.7	0.9	0.6	1.4	1.9	1.5	1.2	0.3	0.2	0.9	1.6
Muswellbrook		1.9	2.1	2.2	1.8	1.0	2.3	2.0	2.0	2.6	1.3	2.9	2.0
Nambucca Valley		2.3	1.5	1.4	2.0	2.2	1.9	2.4	1.1	1.3	0.9	1.3	2.2
Narrabri		2.3	1.4	1.3	0.9		2.9	1.7	2.6	1.5	0.5	1.6	1.7
Narrandera		1.8	1.2	1.8	2.2	2.7	2.6	3.6	1.2	1.2	1.6	1.1	1.9
Narromine		2.7	2.1	2.2	2.2	4.1	2.2	4.7	2.0	1.2	0.8	2.1	1.6
Newcastle	3.8	1.2	1.8	1.4	1.1	2.5	2.3	2.1	2.4	2.9	2.0	1.8	1.8
North Sydney		0.3	0.4	0.4	0.5	0.1	0.5	0.4	0.2	0.4	0.5	0.7	0.4
Northern Beaches		0.5	0.3	0.5	0.5	0.6	0.4	0.3	0.3	0.4	0.5	0.8	0.5
Oberon	47.1	0.7	0.6	2.2	2.2		0.7	1.9	0.7	0.5		1.3	0.9
Orange		2.0	2.0	2.2	1.8	2.4	3.2	2.7	2.6	2.4	1.8	1.7	2.4
Parkes		2.0	1.7	1.7	2.2	0.4	1.3	1.4	1.6	2.1	1.1	1.7	2.4
Parramatta	1.0	0.8	0.8	0.8	0.9	1.2	1.2	0.8	0.8	1.1	1.0	1.2	0.7
Penrith		1.3	1.3	1.2	1.3	1.5	1.2	1.0	1.2	1.3	1.5	1.0	1.3
Port Macquarie-Hastings		1.1	1.1	1.3	1.4	0.6	0.9	1.2	1.2	0.9	0.7	1.2	1.2
Port Stephens	1.7	1.2	1.1	1.5	1.5	0.7	0.7	1.4	1.0	0.8	0.6	1.0	1.2
Queanbeyan-Palerang Regional		0.7	0.8	0.9	0.8	0.5	0.9	1.2	1.4	1.6	0.6	1.0	0.9

NSW Recorded Crime Statistics June 2022

NSW LGA	Murder	Domestic violence related assault	Non-domestic violence related assault	Sexual assault	Sexual touching, sexual act and other sexual offences	Robbery	Break and enter dwelling	Break and enter non-dwelling	Motor vehicle theft	Steal from motor vehicle	Steal from retail store	Other stealing offences	Malicious damage to property	
Randwick		0.6	0.9	0.6	0.6	0.6	0.5	0.3	0.5	0.7	0.5	0.8	0.6	
Richmond Valley	10.9	1.7	1.6	1.9	1.6	0.9	3.3	3.9	2.8	1.9	0.6	1.5	2.3	
Ryde		0.4	0.4	0.4	0.4	0.6	0.6	0.7	0.4	0.4	0.7	0.7	0.4	
Shellharbour	1.7	0.8	0.7	0.8	1.0	0.7	0.6	0.4	1.0	1.0	1.2	0.7	0.9	
Shoalhaven	3.6	1.0	1.2	1.5	1.4	1.2	1.1	1.3	0.9	0.8	0.9	0.9	1.2	
Singleton		1.1	1.0	1.8	1.5	0.5	1.5	3.4	2.3	1.9	1.0	1.5	1.8	
Snowy Monaro Regional		0.7	0.7	1.7	0.9		0.5	1.0	0.5	0.4	0.1	0.9	1.0	
Snowy Valleys		1.1	1.3	2.1	1.3	1.1	0.7	2.1	0.8	0.4	0.6	1.3	1.5	
Strathfield		0.7	0.6	0.6	0.3	0.8	1.2	0.6	0.6	1.1	0.7	0.9	0.4	
Sutherland Shire		0.8	0.5	0.6	0.5	0.6	0.4	0.3	0.3	0.4	0.5	0.5	0.6	
Sydney	1.0	1.1	2.5	1.2	1.6	2.2	0.7	1.4	0.6	0.8	3.2	3.0	1.3	
Tamworth Regional		1.6	1.8	1.6	1.6	1.8	4.2	1.6	2.7	2.4	1.1	1.2	2.2	
Temora		0.4	0.8	1.5	0.9		1.1	2.8	1.6	0.6	0.5	1.2	0.9	
Tenterfield		1.7	1.4	2.5	2.5		2.0	2.0	1.7	0.2	0.3	1.2	1.4	
The Hills Shire		0.4	0.4	0.6	0.5	0.3	0.4	0.3	0.3	0.4	0.6	0.5	0.4	
Tweed		1.0	1.0	0.8	0.8	1.0	0.9	0.8	1.2	1.0	0.5	1.0	1.0	
Unincorporated Far West														
Upper Hunter Shire		1.1	0.9	3.3	1.7	0.4	1.3	1.5	0.9	0.7	0.2	1.2	1.1	
Upper Lachlan Shire		0.4	0.3	0.7	0.7	0.6	0.7	1.4	0.6	0.1	0.1	0.6	0.7	
Uralla		1.1	0.6	0.8	1.0		0.6	1.6	1.0	0.3	0.2	0.6	1.1	
Wagga Wagga		1.8	1.8	1.6	1.4	1.2	2.6	1.1	1.9	2.3	2.0	1.5	2.0	
Walcha		1.7	0.9	1.9			0.8	2.3		0.3	0.3	0.5	1.7	
Walgett		5.2	3.4	2.8	3.6	1.8	3.2	5.6	3.4	2.4	1.1	1.6	4.1	
Warren														
Warrumbungle Shire		1.6	1.2	2.8	2.0	0.6	1.9	2.7	1.2	1.0	1.0	1.8	1.4	
Waverley		0.6	1.0	0.8	1.1	0.9	0.5	0.3	0.8	0.4	2.6	1.0	0.7	
Weddin		0.9	0.3	0.3			0.8	1.0	0.4	0.4	0.3	0.9	1.2	
Wentworth		2.7	1.8	1.5	1.5		1.2	4.8	1.9	0.9	0.3	1.7	2.4	
Willoughby		0.4	0.4	0.4	0.7	0.7	0.6	0.5	0.4	0.5	1.7	0.7	0.4	
Wingecarribee		0.6	0.5	1.3	1.2	0.2	0.3	0.2	0.3	0.3	0.2	0.5	0.8	
Wollondilly		0.8	0.4	0.7	1.0	0.2	0.3	0.3	0.6	0.3	0.1	0.5	0.5	
Wollongong		0.7	0.9	0.9	0.9	0.9	1.1	1.0	1.2	1.5	1.5	0.9	1.0	
Woollahra		0.5	0.6	0.7	0.7	0.1	0.6	0.2	0.7	0.4	0.5	0.8	0.5	
Yass Valley		7.4	0.5	0.4	0.7	0.5	0.3	0.1	0.6	0.8	0.4	0.1	0.5	0.7
NSW	1.0	1.0	1.0	1.0	1.0	1.0	1.0	1.0	1.0	1.0	1.0	1.0	1.0	

NSW Recorded Crime Statistics June 2022

Appendix
Table 1.3: Number of recorded criminal incidents for major offences, NSW LGAs

12 months to June 2022

NSW LGA	Murder	Domestic violence related assault	Non-domestic violence related assault	Sexual assault	Sexual touching, sexual act and other sexual offences	Robbery	Break and enter dwelling	Break and enter non-dwelling	Motor vehicle theft	Steal from motor vehicle	Steal from retail store	Other stealing offences	Malicious damage to property
Albury	0	408	350	57	87	18	249	85	156	598	196	373	695
Armidale Regional	0	209	183	54	49	14	168	71	39	216	128	203	365
Ballina	1	145	139	35	39	9	88	38	67	206	77	274	272
Balranald	0	7	7	0	1	0	13	4	8	9	0	12	17
Bathurst Regional	1	286	235	59	71	16	151	53	71	223	131	233	457
Bayside	0	619	373	83	83	27	219	57	138	347	310	698	696
Bega Valley	0	121	96	24	28	1	40	26	20	56	49	110	176
Bellingen	0	28	52	23	27	0	20	20	22	35	11	58	131
Berrigan	0	33	27	11	9	1	20	34	9	13	8	46	94
Blacktown	6	1,935	1,386	305	358	144	803	213	569	1,445	1,054	1,611	2,545
Bland	0	27	28	3	9	0	9	8	12	19	3	27	32
Blayney	0	23	18	8	4	2	20	21	7	13	8	27	33
Blue Mountains	1	208	159	74	64	5	65	35	35	113	70	196	455
Bogan	0	22	11	1	3	0	11	26	11	5	5	32	57
Bourke	0	109	54	23	9	1	67	67	27	96	22	65	167
Brewarrina	0	64	32	5	2	1	14	9	3	4	2	19	52
Broken Hill	0	213	145	10	30	4	146	50	47	88	45	125	283
Burwood	0	101	111	19	26	12	92	35	34	102	183	199	135
Byron	0	114	216	38	34	4	42	40	66	102	50	176	285
Cabonne	0	46	23	13	10	0	33	11	22	20	5	39	59
Camden	0	323	160	43	64	7	64	37	69	220	126	190	313
Campbelltown	3	951	602	185	189	48	301	107	223	675	470	636	1,195
Canada Bay	1	146	117	33	41	10	110	40	80	192	94	274	230
Canterbury-Bankstown	5	1,283	803	177	193	71	433	159	419	971	402	873	1,328
Carrathool	0	19	11	6	2	0	7	23	13	5	0	14	27
Central Coast	5	1,616	1,390	378	351	62	526	237	392	1,169	757	1,022	2,263
Central Darling	0	102	21	6	8	0	9	25	6	5	0	21	47
Cessnock	0	288	289	88	80	9	146	77	232	327	128	475	562
Clarence Valley	0	216	231	49	58	7	185	97	128	226	90	404	404
Cobar	0	24	23	5	4	0	9	20	12	16	10	39	66
Coffs Harbour	0	532	485	122	105	22	237	178	215	425	193	449	700
Coolamon	0	10	4	6	3	0	6	5	6	1	0	18	16
Coonamble	0	69	50	10	7	3	68	18	11	26	10	55	131
Cootamundra-Gundagai	0	50	40	9	22	0	13	11	14	15	12	50	56
Cowra	0	101	67	10	30	5	130	38	49	53	43	90	141
Cumberland	6	845	649	123	119	58	479	101	343	816	262	764	915
Dubbo Regional	1	681	401	90	94	25	552	184	263	533	285	449	754
Dungog	0	34	20	11	11	0	11	4	11	16	2	53	51
Edward River	1	70	54	6	7	1	27	8	10	9	9	50	100
Eurobodalla	0	219	152	33	40	15	86	78	48	101	132	173	375
Fairfield	1	837	440	80	119	40	262	65	197	474	271	536	893
Federation	1	22	37	7	8	0	17	18	14	25	19	68	54
Forbes	0	62	62	14	9	2	69	21	35	44	22	77	151
Georges River	0	411	281	44	66	22	162	53	90	271	158	335	426
Gilgandra	0	32	26	11	11	1	20	11	8	11	7	22	56
Glen Innes Severn	0	59	38	23	16	0	72	32	15	38	28	85	123

NSW Recorded Crime Statistics June 2022

NSW LGA	Murder	Domestic violence related assault	Non-domestic violence related assault	Sexual assault	Sexual touching, sexual act and other sexual offences	Robbery	Break and enter dwelling	Break and enter non-dwelling	Motor vehicle theft	Steal from motor vehicle	Steal from retail store	Other stealing offences	Malicious damage to property
Goulburn Mulwaree	0	123	130	39	39	5	77	27	35	66	93	210	214
Greater Hume Shire	0	33	23	21	14	0	19	12	21	22	5	40	45
Griffith	0	175	117	36	41	8	110	85	89	129	96	153	268
Gunnedah	0	105	67	20	19	1	115	24	62	81	31	89	171
Gwydir	0	9	12	4	7	0	7	4	6	10	0	19	17
Hawkesbury	0	273	187	50	71	6	79	27	79	98	121	155	297
Hay	0	28	21	5	4	0	14	5	2	5	1	19	32
Hilltops	0	133	80	12	12	2	28	19	33	41	28	73	174
Hornsby	0	226	156	65	54	12	66	36	38	128	219	213	346
Hunters Hill	0	12	21	8	9	0	29	5	12	23	1	42	36
Inner West	5	441	503	121	142	33	279	105	162	473	367	810	844
Inverell	0	201	139	42	29	5	99	58	45	92	77	125	225
Junee	0	22	20	11	7	0	5	1	5	1	5	22	31
Kempsey	2	245	168	49	53	7	278	47	125	187	85	366	409
Kiama	0	28	25	12	11	2	31	18	18	82	4	54	76
Ku-ring-gai	0	116	57	34	31	6	136	35	47	142	30	139	202
Kyogle	1	33	30	9	3	0	18	18	15	13	6	36	44
Lachlan	0	50	54	5	6	4	60	73	44	26	6	54	104
Lake Macquarie	1	821	646	223	171	24	380	246	367	810	525	744	1,318
Lane Cove	0	54	35	14	10	1	52	11	20	63	30	109	79
Leeton	0	92	78	22	14	2	41	14	20	21	12	58	127
Lismore	0	234	302	73	63	15	171	102	145	288	54	259	461
Lithgow	0	146	110	35	24	3	37	15	21	59	53	164	183
Liverpool	0	1,027	666	149	183	48	451	117	286	787	447	833	1,135
Liverpool Plains	0	57	39	16	9	3	26	21	10	14	3	33	63
Lockhart	0	10	6	3	3	1	6	5	6	4	0	12	18
Lord Howe Island	0	0	1	0	0	0	0	0	0	0	0	3	4
Maitland	0	541	341	127	97	18	223	95	161	508	293	569	722
Mid-Coast	1	549	396	105	154	16	495	310	168	336	215	790	872
Mid-Western Regional	0	161	118	47	39	2	35	20	17	29	36	101	200
Moree Plains	0	282	180	28	22	7	238	63	86	167	105	187	455
Mosman	0	21	38	16	14	0	34	7	14	55	18	87	82
Murray River	0	33	24	19	10	0	17	24	27	27	6	64	76
Murrumbidgee	0	14	9	3	2	1	16	5	6	4	2	15	37
Muswellbrook	0	124	116	30	25	3	81	28	42	136	45	195	191
Nambucca Valley	0	181	102	24	34	8	82	41	29	85	39	111	259
Narrabri	0	119	61	14	10	0	79	19	45	62	14	84	128
Narrandera	0	42	24	9	11	3	32	18	9	22	20	26	64
Narromine	0	68	45	12	12	5	30	26	17	25	11	56	61
Newcastle	5	765	1,010	202	161	78	801	305	531	1,553	706	1,258	1,777
North Sydney	0	82	114	27	34	1	78	23	24	95	85	220	192
Northern Beaches	1	292	448	123	138	23	193	59	155	466	466	604	747
Oberon	2	14	11	10	10	0	8	9	5	9	0	30	29
Orange	0	332	285	81	66	19	288	97	142	330	163	291	593
Parkes	0	114	83	21	28	1	39	18	31	98	34	105	202
Parramatta	2	801	686	177	207	58	689	173	273	931	564	1,316	1,007
Penrith	0	1,106	930	222	238	61	553	194	337	877	682	870	1,578
Port Macquarie-Hastings	0	358	332	98	103	9	159	86	135	241	134	438	599
Port Stephens	1	342	269	95	96	10	110	92	98	201	99	313	536

NSW Recorded Crime Statistics June 2022

NSW LGA	Murder	Domestic violence related assault	Non-domestic violence related assault	Sexual assault	Sexual touching, sexual act and other sexual offences	Robbery	Break and enter dwelling	Break and enter non-dwelling	Motor vehicle theft	Steal from motor vehicle	Steal from retail store	Other stealing offences	Malicious damage to property
Queanbeyan-Palerang Regional	0	169	171	48	44	6	116	66	117	330	74	265	333
Randwick	0	361	455	76	80	18	182	35	101	353	159	525	557
Richmond Valley	2	154	124	38	33	4	163	79	85	143	28	150	317
Ryde	0	214	182	41	43	14	166	75	62	180	194	367	337
Shellharbour	1	229	180	54	61	10	95	27	96	245	189	212	402
Shoalhaven	3	430	439	140	132	24	239	116	127	290	208	397	765
Singleton	0	101	79	36	30	2	75	69	70	144	48	141	250
Snowy Monaro Regional	0	61	52	31	16	0	24	18	13	27	6	75	122
Snowy Valleys	0	64	62	26	16	3	21	26	15	20	19	75	128
Strathfield	0	126	92	25	14	7	122	23	37	162	70	186	123
Sutherland Shire	0	686	411	125	107	24	202	66	98	336	251	484	820
Sydney	2	1,061	2,145	263	337	101	395	295	197	607	1,687	3,052	1,840
Tamworth Regional	0	400	373	85	84	21	561	88	220	481	143	308	783
Temora	0	10	16	8	5	0	14	15	13	13	7	30	34
Tenterfield	0	43	30	14	14	0	28	11	14	5	4	31	54
The Hills Shire	0	298	225	87	85	10	172	47	66	217	216	351	474
Tweed	0	385	318	66	65	19	178	65	158	329	113	397	566
Unincorporated Far West	0	1	6	8	10	0	7	0	2	9	2	9	5
Upper Hunter Shire	0	61	45	40	20	1	38	18	17	31	5	71	92
Upper Lachlan Shire	0	13	8	5	5	1	12	10	7	2	1	22	36
Uralla	0	26	13	4	5	0	8	8	8	5	3	14	37
Wagga Wagga	0	450	395	89	78	15	363	64	166	480	282	401	748
Walcha	0	21	9	5	0	0	5	6	0	3	2	6	30
Walgett	0	119	67	14	18	2	40	28	26	45	13	39	140
Warren	0	37	29	1	3	1	21	13	15	32	5	32	44
Warrumbungle Shire	0	59	36	22	16	1	37	21	15	31	19	69	76
Waverley	0	176	254	51	67	12	79	20	77	101	400	302	302
Weddin	0	13	4	1	0	0	6	3	2	5	2	14	26
Wentworth	0	75	44	9	9	0	18	29	18	21	4	49	99
Willoughby	0	111	112	29	45	10	107	36	38	137	297	227	210
Wingecarribee	0	112	95	58	54	2	28	11	19	47	24	100	241
Wollondilly	0	170	80	33	44	2	30	13	40	52	9	107	165
Wollongong	0	620	679	168	177	37	496	182	344	1,045	705	841	1,256
Woollahra	0	124	112	36	34	1	79	11	55	83	67	188	178
Yass Valley	1	35	24	10	7	1	4	9	19	24	5	34	68
In Custody	1	5	887	239	64	3	0	0	0	1	0	8	85
NSW	64	31,775	27,666	6,967	6,962	1,530	17,296	6,995	10,688	26,332	17,184	33,888	47,456

NSW Recorded Crime Statistics June 2022

Appendix
Table 1.4: Number of recorded criminal incidents for major offences, NSW LGAs

12 months to June 2021

NSW LGA	Murder	Domestic violence related assault	Non-domestic violence related assault	Sexual assault	Sexual touching, sexual act and other sexual offences	Robbery	Break and enter dwelling	Break and enter non-dwelling	Motor vehicle theft	Steal from motor vehicle	Steal from retail store	Other stealing offences	Malicious damage to property
Albury	1	337	388	76	72	20	274	91	144	561	285	399	778
Armidale Regional	0	223	191	61	53	7	250	76	61	207	100	219	386
Ballina	0	153	144	64	39	9	55	31	45	144	86	182	276
Balranald	0	8	6	0	1	0	10	6	1	5	0	13	18
Bathurst Regional	0	324	292	75	77	13	155	52	51	190	106	283	520
Bayside	0	653	446	82	89	32	219	69	178	393	359	643	805
Bega Valley	0	124	98	27	50	1	45	83	44	78	20	129	213
Bellingen	0	66	57	15	15	2	23	12	20	22	4	40	103
Berrigan	0	21	38	11	8	0	15	13	10	23	9	31	64
Blacktown	2	2,281	1,857	425	451	209	855	253	622	1,796	992	1,791	3,065
Bland	0	30	18	12	5	0	20	12	9	22	2	25	41
Blayney	0	38	30	11	11	0	24	8	9	10	6	30	59
Blue Mountains	1	210	193	87	78	8	101	62	43	177	88	184	668
Bogan	0	22	9	6	6	1	9	10	7	17	5	29	46
Bourke	1	135	81	12	8	8	61	59	34	36	27	89	189
Brewarrina	0	69	28	7	5	0	23	13	3	16	2	20	70
Broken Hill	0	233	165	24	22	7	161	26	29	98	45	168	341
Burwood	0	87	114	15	26	13	61	25	24	78	422	199	173
Byron	0	124	212	46	43	5	60	55	89	144	51	271	305
Cabonne	0	28	28	14	13	0	15	26	10	15	7	46	63
Camden	1	323	173	76	97	15	92	51	116	240	140	257	406
Campbelltown	1	987	712	214	237	73	414	143	319	777	562	757	1,446
Canada Bay	0	127	130	48	45	7	138	35	69	185	145	291	269
Canterbury-Bankstown	4	1,429	967	198	269	110	580	138	587	1,327	519	1,031	1,588
Carrathool	1	26	14	5	2	0	8	8	2	8	2	22	29
Central Coast	1	1,433	1,504	425	436	64	746	256	507	1,303	874	1,384	2,772
Central Darling	0	100	27	8	6	0	37	21	14	11	0	18	67
Cessnock	1	321	246	84	108	10	198	114	301	302	102	461	561
Clarence Valley	0	231	212	55	56	8	104	56	53	119	72	375	383
Cobar	0	22	25	2	4	0	18	8	9	15	6	36	58
Coffs Harbour	0	574	493	145	143	35	223	195	143	353	191	459	756
Coolamon	0	13	5	3	2	0	2	7	0	2	0	12	13
Coonamble	0	86	61	10	16	1	74	17	19	34	6	58	113
Cootamundra-Gundagai	0	53	30	11	18	0	22	17	20	16	8	55	75
Cowra	0	81	70	16	19	4	108	36	43	58	20	96	135
Cumberland	3	1,027	728	145	174	90	569	104	381	813	397	830	1,084
Dubbo Regional	1	602	440	113	84	18	403	157	165	472	200	496	856
Dungog	0	29	28	6	10	1	7	7	5	14	6	39	59
Edward River	0	66	50	9	8	1	21	8	3	21	10	68	120
Eurobodalla	0	215	187	35	46	12	121	47	49	123	123	222	347
Fairfield	2	785	588	114	182	78	306	98	263	688	399	713	908
Federation	0	38	42	14	10	0	26	16	17	26	19	63	82
Forbes	1	73	96	15	10	2	75	35	35	93	24	107	150
Georges River	1	447	341	72	108	25	225	63	152	328	256	357	543
Gilgandra	0	61	18	8	6	1	19	5	8	18	3	31	38
Glen Innes Severn	0	77	59	13	22	0	34	11	8	20	18	71	97
Goulburn Mulwaree	0	135	141	47	38	4	65	26	37	97	79	189	268

NSW Recorded Crime Statistics June 2022

NSW LGA	Murder	Domestic violence related assault	Non-domestic violence related assault	Sexual assault	Sexual touching, sexual act and other sexual offences	Robbery	Break and enter dwelling	Break and enter non-dwelling	Motor vehicle theft	Steal from motor vehicle	Steal from retail store	Other stealing offences	Malicious damage to property
Greater Hume Shire	0	32	12	11	14	0	19	21	14	27	3	44	49
Griffith	1	190	118	35	31	12	111	48	59	120	88	166	266
Gunnedah	1	86	88	22	19	2	90	25	27	83	22	98	182
Gwydir	0	19	19	9	4	1	11	5	6	8	1	28	20
Hawkesbury	0	241	229	61	78	12	126	50	90	138	104	174	394
Hay	0	23	18	4	10	0	11	3	4	2	2	21	31
Hilltops	0	107	72	32	31	1	43	19	27	21	12	73	178
Hornsby	0	268	219	54	94	17	169	41	70	218	360	294	489
Hunters Hill	0	19	26	8	15	1	30	7	9	38	8	34	58
Inner West	1	433	604	157	140	64	301	93	196	660	563	869	1,012
Inverell	1	162	84	25	26	0	71	21	25	99	67	118	197
Junee	0	33	30	9	12	2	21	11	6	3	4	36	58
Kempsey	0	288	216	58	47	24	338	72	144	220	55	399	460
Kiama	0	48	34	16	19	0	22	27	21	57	16	56	112
Ku-ring-gai	0	161	92	50	65	16	199	42	44	147	120	228	299
Kyogle	1	33	31	16	15	1	20	7	16	19	1	30	47
Lachlan	0	43	31	11	11	0	30	41	22	45	9	76	105
Lake Macquarie	1	795	800	274	256	56	489	256	438	844	569	898	1,498
Lane Cove	0	42	39	14	12	0	70	7	39	93	46	123	100
Leeton	0	92	58	30	32	2	65	15	23	28	6	50	98
Lismore	1	277	288	77	71	19	111	61	73	122	87	203	455
Lithgow	0	146	135	35	43	4	60	25	26	104	50	186	225
Liverpool	2	1,091	760	166	214	88	561	136	413	908	472	970	1,293
Liverpool Plains	0	38	43	11	6	1	13	6	12	13	8	51	55
Lockhart	0	8	11	4	1	0	3	7	4	3	0	13	13
Lord Howe Island	0	18	0	0	0	0	0	1	1	1	0	1	8
Maitland	1	429	368	132	122	23	252	124	167	344	302	584	783
Mid-Coast	0	529	416	149	169	22	403	234	181	365	178	907	869
Mid-Western Regional	0	141	117	56	57	2	64	25	16	46	39	135	205
Moree Plains	0	249	189	20	33	13	204	50	60	177	73	158	452
Mosman	0	28	25	13	12	1	50	6	24	108	24	83	97
Murray River	0	24	29	18	12	0	8	23	14	25	9	71	60
Murrumbidgee	0	14	11	7	7	0	15	10	4	4	3	24	35
Muswellbrook	0	131	116	25	22	1	91	62	41	86	39	178	217
Nambucca Valley	0	167	132	32	23	4	96	32	42	98	26	138	239
Narrabri	0	107	71	22	11	4	68	12	27	64	9	81	125
Narrandera	0	56	36	10	8	0	30	13	7	28	11	44	67
Narromine	0	71	60	13	17	0	53	27	11	50	7	59	60
Newcastle	4	675	1,170	248	221	96	858	229	519	1,439	771	1,377	1,960
North Sydney	0	94	126	33	36	5	83	33	42	179	136	296	288
Northern Beaches	0	328	572	174	171	35	288	134	196	732	421	796	1,121
Oberon	0	22	17	8	10	0	7	5	4	4	0	35	35
Orange	0	297	340	94	92	20	263	88	99	229	128	292	524
Parke	0	114	105	35	39	2	71	35	50	127	29	117	224
Parramatta	4	876	769	169	171	94	646	183	294	910	720	1,215	1,130
Penrith	2	1,259	1,100	264	254	84	661	229	413	1,218	810	1,127	1,826
Port Macquarie-Hastings	0	377	329	118	119	5	158	106	116	220	132	422	584
Port Stephens	0	369	310	109	98	3	168	84	109	228	99	406	561
Queanbeyan-Palerang Regional	0	179	181	47	44	9	144	57	94	286	158	313	301
Randwick	1	390	519	84	92	32	218	29	126	318	220	581	644

NSW Recorded Crime Statistics June 2022

NSW LGA	Murder	Domestic violence related assault	Non-domestic violence related assault	Sexual assault	Sexual touching, sexual act and other sexual offences	Robbery	Break and enter dwelling	Break and enter non-dwelling	Motor vehicle theft	Steal from motor vehicle	Steal from retail store	Other stealing offences	Malicious damage to property
Richmond Valley	0	169	124	49	45	1	79	37	76	111	28	164	239
Ryde	0	313	204	53	92	16	158	44	60	264	366	371	396
Shellharbour	0	240	191	86	67	14	134	50	110	244	289	276	515
Shoalhaven	3	471	444	137	137	24	266	112	144	321	303	534	857
Singleton	0	109	98	27	20	5	82	103	54	106	54	193	181
Snowy Monaro Regional	1	60	64	18	24	1	28	15	17	35	10	85	157
Snowy Valleys	0	58	41	29	23	2	39	29	22	32	12	99	140
Strathfield	0	117	137	11	29	9	114	22	62	129	121	183	135
Sutherland Shire	2	675	506	102	129	28	225	69	177	511	382	548	967
Sydney	6	1,100	2,202	306	325	165	536	249	259	701	1,963	3,057	2,013
Tamworth Regional	1	440	353	101	91	14	613	61	182	552	154	391	806
Temora	0	25	20	12	5	0	23	5	2	6	15	22	46
Tenterfield	0	76	38	7	7	0	22	3	10	7	3	38	75
The Hills Shire	0	339	287	97	86	33	255	67	142	345	324	455	524
Tweed	1	366	313	90	90	14	183	104	167	322	107	433	610
Unincorporated Far West	0	2	4	15	16	0	1	1	4	5	4	13	5
Upper Hunter Shire	0	75	30	16	26	1	39	17	14	27	9	82	96
Upper Lachlan Shire	0	14	10	3	3	0	8	1	2	8	0	31	31
Uralla	0	12	16	7	3	1	13	4	2	9	2	20	32
Wagga Wagga	0	454	390	113	117	31	454	115	123	392	322	466	925
Walcha	0	13	10	4	7	0	4	9	2	6	1	14	33
Walgett	0	144	64	12	13	1	50	15	16	78	8	48	125
Warren	0	35	15	4	2	0	13	11	11	15	3	26	41
Warrumbungle Shire	1	37	57	13	10	0	35	15	6	25	12	57	93
Waverley	0	176	276	56	66	11	86	18	88	152	613	389	340
Weddin	0	16	10	10	2	0	6	4	3	4	1	11	20
Wentworth	0	65	35	7	6	2	20	12	22	21	2	49	80
Willoughby	0	86	147	33	45	14	81	37	44	151	620	263	270
Wingecarribee	0	107	93	59	51	4	38	37	37	73	46	118	239
Wollondilly	0	167	60	30	40	2	45	22	47	91	15	109	170
Wollongong	0	702	744	203	204	51	547	252	341	1,028	858	1,034	1,461
Woollahra	0	77	95	55	42	3	91	9	66	143	63	185	202
Yass Valley	0	32	35	6	6	1	16	11	11	17	7	50	38
In Custody	0	7	925	136	62	4	0	1	0	2	0	3	56
NSW	58	32,925	30,985	7,937	8,225	2,124	19,258	7,099	11,546	28,734	20,531	37,784	53,433

APPENDIX 2

EXPLANATORY NOTES

Appendix 2.1: Explanatory Notes

What are crime statistics?

BOCSAR's crime statistics consist of criminal incidents reported to, or detected by, police and recorded on the NSW Police Force's Computerised Operational Policing System (COPS). While this system is used for record-keeping for all police operations, not just for criminal matters, BOCSAR only reports on criminal incidents and selected policing activities. BOCSAR's crime statistics therefore do not capture crimes that are not recorded on COPS. The Australian Bureau of Statistics conducts regular crime and victim surveys which attempt to capture a snapshot of both reported and unreported crimes.

How to interpret crime statistics

Recorded crime statistics for some offence categories do not accurately reflect the actual level of crime in the community. This is because the number of incidents recorded may be affected by extraneous factors which are not easily measured. In particular:

- > Public willingness to report crime - Many crimes which occur are not reported to police and will therefore not be recorded - for example, a large number of assaults, sexual assaults and robberies are not reported to police.
- > Shifts in policing policy - Recording of those offences which are detected by, rather than reported to police, are strongly affected by policing practices - examples of these are drug offences, drink driving offences, offensive behaviour and receiving stolen goods. Recorded rates for such offences do not accurately reflect actual rates.
- > High visitor populations compared to residential populations - Sydney Local Government Area has relatively high recorded crime rates because, compared with other regions, the resident population is small relative to the number of people in the area. In other words, the area has a high user population which is not reflected in the denominator of the rate calculation.
- > Areas with small residential populations - Recorded crime rates in Local Government Areas with small population sizes are not always a good indicator of offending. Crime rates in areas with populations under 3,000 may be unreliable and should be interpreted with ..

What offences are included?

BOCSAR's standard quarterly publications report on 13 major offence categories, which include serious personal violence and property offences. In addition to these offences, we also release data for 62 specific offence categories.

From the September Quarter 2021 report, the offence category previously labelled 'indecent sexual assault, act of indecency and other sexual offences' is labelled 'sexual touching, sexual act and other sexual offences'.

Commencing March 2020, the NSW Government issued public health orders under the NSW Public Health Act 2010 (NSW) to limit the spread of COVID-19. Police can issue a fine or court attendance notice for failure to comply with the orders. Breaches of these orders are counted as "other offences" in this report.

What is being counted?

> Incidents - When a crime is reported to, or detected by, the NSW Police they record it as a criminal event on COPS. The event date is the date that the crime was reported. Unless otherwise stated, the date BOCSAR attaches to a crime is the event date. One criminal event can contain multiple criminal incidents. BOCSAR's default counting unit for crime data is criminal incidents with the exception of murder and manslaughter. Criminal incidents are activities detected by or reported to police which involve the same offender(s) and victim(s); occur at the one location during one uninterrupted period of time; fall into one offence category and one incident type.

For murder and manslaughter only, the counting units used are victims.

> Alleged offenders - BOCSAR also reports on alleged offenders or 'Persons of Interest' (POIs) who have had a legal proceeding commenced against them by the NSW Police Force. Within the police recorded crime data POIs may not have been convicted in court, however they have been proceeded against in some way or another by the police. There could be quite some time between an event being recorded by police, an investigation being completed and an alleged offender (i.e. a POI) being charged. Consequently, POIs are counted in the time period they were proceeded against, rather than the time period the event /incident was reported to or recorded by police.

> Legal proceedings against alleged offenders presented in Tables 3.1 and 3.2 include persons proceeded against to court and persons diverted from court (by way of criminal infringement notice, cannabis or other drug caution and diversions under the Young Offenders Act 1997, including Youth Justice Conference, Caution and Warning).

> Infringement Notices (fines) are not included in this report but have been included in past reports as they are not a form of court diversion.

What are crime trends and how are they calculated?

In general, BOCSAR relies upon the Kendall Rank Order Correlation statistical test (or Kendall's tau-b) to determine whether a series is trending upwards, downwards or is stable ($p < .05$). In some tables a stable trend is represented by 'ns' (not significant). The statistical test is applied to the monthly data over the specified period. Where a significant trend is found, the average annual percentage change over the time period is reported. If any of the 12-monthly totals in the series have a value of less than 20, a trend test is not conducted. When this occurs, the relevant cell will be left blank or contain 'n.c.' (not calculated). For murder and manslaughter incidents, the trend test is applied to the monthly number of recorded victims rather than criminal incidents.

How is the ratio to NSW calculated?

The ratio to NSW rate statistics are a comparison of a NSW regional rate per 100,000 population to the NSW rate per 100,000 population. A ratio of one indicates parity with the NSW rate. Ratios indicating double the NSW rate (or more) before rounding are highlighted in red, whilst ratios indicating half the NSW rate (or less) before rounding are highlighted in green. Ratios are not calculated for regions with a population of less than 3,000.

How are 'young people' and 'adults' defined?

The term 'young people' refers to persons aged 10-17 years at the time of the offence; 'adults' refers to persons aged 18 years and older at the time of the offence.

Regional Statistics

Statistics are provided on the number of criminal incidents (victims for murder) recorded for each of the Statistical Areas Level 4 (SA4s) of NSW as defined by the Australian Bureau of Statistics (ABS). Recorded criminal incidents which occurred in correctional, detention or remand centres, however, are not counted in the SA in which the incident occurred. Note that LGA boundaries change from time to time. A criminal incident is counted within a particular region when the location of the offence falls within that region.

What is included in 'selected policing activities'?

- > Bail compliance checks - checks conducted by police to assess if bail conditions are being complied with.
- > ADVO compliance checks - checks conducted by police to assess if ADVO conditions are being complied. These checks can also include checking on the person in need of protection and taking the necessary action if a breach is detected.
- > Move on directions - a 'move on direction' is a direction given to a person by a police officer, under section 198 of the Law Enforcement (Powers and Responsibilities) Act 2002 (NSW), to leave a public place and not return for a specified period.
- > Searches - If the police have reasonable grounds they may, without a warrant, stop and search a person and anything in their possession or under their control, including a vehicle.
- > Detain/convey person to mental health facility - The police detain a person at risk of harm to themselves or others and transport them to a mental health facility for assessment under section 22 of the Mental Health Act 2007 (NSW).

What are non-criminal domestic violence episodes?

Incidents attended by police where a domestic dispute is recorded as having taken place but no criminal incident has been recorded. The vast majority of these episodes are verbal altercations.

Where can I find more detail and explanatory notes?

Detailed definitions and explanatory notes are available at

https://www.bocsar.nsw.gov.au/Pages/bocsar_crime_stats/bocsar_glossary.aspx

APPENDIX 3

LGAs IN STATISTICAL AREAS

Appendix
Table 3.1: Local Government Areas in Greater Sydney Statistical Areas

<p>Baulkham Hills and Hawkesbury The Hills Shire*</p>	<p>Blacktown Blacktown Cumberland</p>	<p>Central Coast Central Coast</p>
<p>City and Inner South Sydney*</p>	<p>Eastern Suburbs Randwick* Waverley Woollahra</p>	<p>Inner South West Bayside* Canterbury-Bankstown* Georges River</p>
<p>Inner West Burwood Canada Bay Strathfield* Inner West*</p>	<p>North Sydney and Hornsby Hornsby* Ku-ring-gai Lane Cove Mosman North Sydney Willoughby</p>	<p>Northern Beaches Northern Beaches</p>
<p>Outer South West Camden* Campbelltown Wollondilly*</p>	<p>Outer West and Blue Mountains Blue Mountains* Penrith* Hawkesbury*</p>	<p>Parramatta Cumberland* Parramatta*</p>
<p>Ryde Hunters Hill Ryde*</p>	<p>South West Fairfield* Liverpool*</p>	<p>Sutherland Sutherland Shire*</p>

* These LGAs span across two or more Statistical Areas.

These LGAs are listed under the Greater Sydney Statistical Areas which contain the largest area of each LGA.

Appendix
Table 3.2: Local Government Areas in Regional Statistical Areas

Capital Region	Central West	Coffs Harbour - Grafton	Far West and Orana
Bega Valley	Bathurst Regional	Bellingen*	Bogan
Eurobodalla	Bland*	Clarence Valley	Bourke
Goulburn Mulwaree	Blayney	Coffs Harbour	Brewarrina
Hilltops	Cabonne*		Broken Hill
Queanbeyan-Palerang Regional	Cowra		Central Darling
Snowy Monaro Regional*	Forbes		Cobar
Upper Lachlan Shire	Lachlan*		Coonamble
Yass Valley	Lithgow		Dubbo Regional*
	Mid-Western Regional		Gilgandra
	Oberon*		Narromine
	Orange		Unincorporated Far West
	Parkes		Walgett
	Weddin		Warren
			Warrumbungle Shire*
Hunter Valley excluding Newcastle	Illawarra	Mid North Coast	Murray
Cessnock	Kiama*	Kempsey	Albury
Dungog	Shellharbour	Lord Howe Island	Balranald
Maitland*	Wollongong	Mid-Coast*	Berrigan
Muswellbrook		Nambucca	Edward River
Port Stephens*		Port Macquarie-Hastings	Federation*
Singleton*			Greater Hume Shire*
Upper Hunter Shire*			Hay
			Murray River
			Wentworth
New England and North West	Newcastle and Lake Macquarie	Richmond - Tweed	Riverina
Armidale Regional*	Lake Macquarie*	Ballina	Carrathool*
Glen Innes Severn	Newcastle	Byron	Coolamon
Gunnedah		Kyogle	Cootamundra-Gundagai
Gwydir		Lismore	Griffith
Inverell		Richmond Valley*	Junee
Liverpool Plains		Tweed	Leeton
Moree Plains			Lockhart*
Narrabri			Murrumbidgee*
Tamworth Regional			Narrandera
Tenterfield			Snowy Valleys*
Uralla			Temora
Walcha			Wagga Wagga
Southern Highlands and Shoalhaven			
Shoalhaven*			
Wingecarribee*			

* These LGAs span across two or more Statistical Areas.

These LGAs are listed under the NSW Regional Statistical Areas which contain the largest area of each LGA.

Appendix Table 3.3: Greater Sydney Statistical Area Map



Appendix Table 3.4: Regional NSW Statistical Areas Map

