



NSW Bureau of Crime  
Statistics and Research

# NEW SOUTH WALES RECORDED CRIME STATISTICS

Quarterly Update  
June Quarter 2023

This report presents data on crime reported to, or detected by, police and recorded on the NSW Police Force's Computerised Operational Policing System (COPS). Information is provided on 13 major offence categories, which include the most serious personal violence and property offences, plus a more detailed list of 62 specific offence types.

Published by the NSW Bureau of Crime Statistics and Research  
September 2023

Phone: + 61 (2) 8688 9800

Email: [bcsr@justice.nsw.gov.au](mailto:bcsr@justice.nsw.gov.au)

Website: [www.bocsar.nsw.gov.au](http://www.bocsar.nsw.gov.au)

ISSN: 1035-9044

This report is available in pdf format on our website and may be provided in alternative formats. Please contact us at [bcsr@justice.nsw.gov.au](mailto:bcsr@justice.nsw.gov.au).

© State of New South Wales through the NSW Department of Communities and Justice 2023. You may copy, distribute, display, download and otherwise freely deal with this work for any purpose, provided that you attribute the Department of Justice NSW as the owner. However, you must obtain permission if you wish to (a) charge others for access to the work (other than at cost), (b) include the work in advertising or a product for sale, or (c) modify the work.

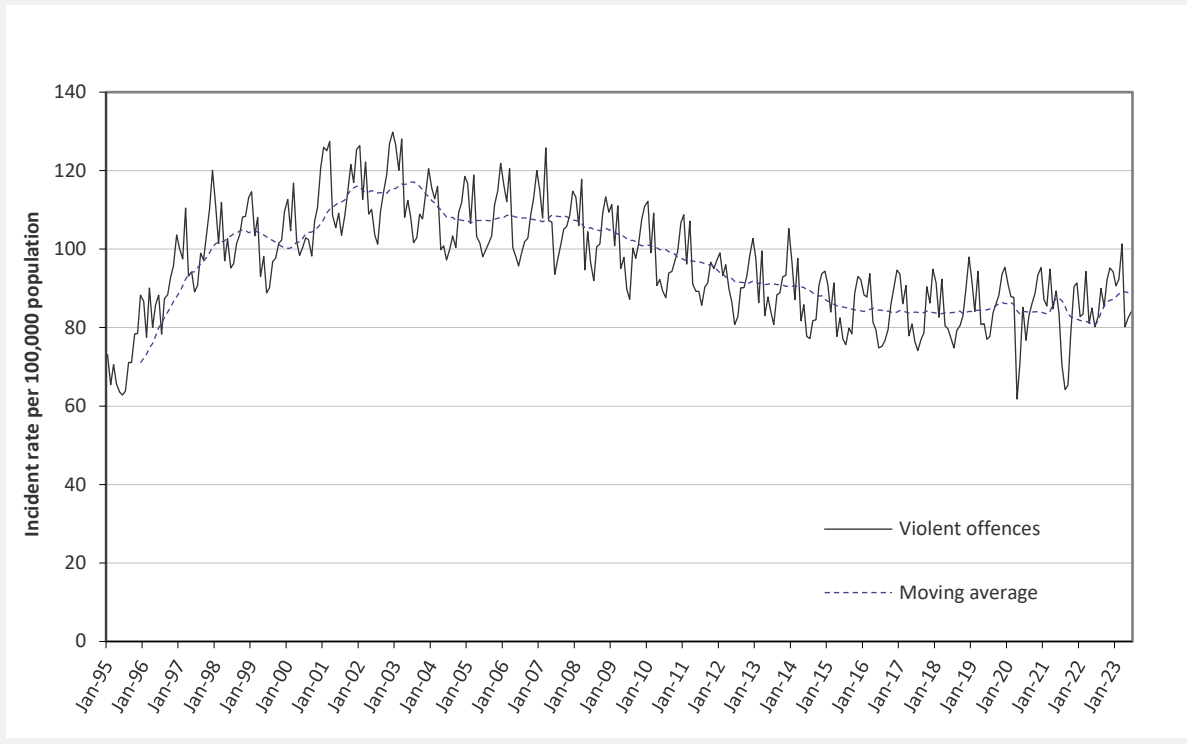
# CONTENTS

<b>SECTION 1:</b>	<b>OVERVIEW OF TRENDS IN RECORDED CRIME</b>	<b>5</b>
Figure 1.1	NSW long-term trend in violent offences	6
Figure 1.2	NSW long-term trend in property offences	6
Table 1.3	Violent and property offences by Statistical Area (SA4) over the five years to June 2023	7
Table 1.4	Recorded criminal incidents for major offences over the five years to June 2023	8
Table 1.5	Recorded criminal incidents for 62 offences over the two years to June 2023	9
Table 1.6	Recorded criminal incidents for 62 offences over the five years to June 2023	10
<b>SECTION 2:</b>	<b>REGIONAL COMPARISONS Statistical Areas</b>	<b>11</b>
Table 2.1	Two year trends and percent change in recorded criminal incidents for major offences by Statistical Area (SA4) over the two years to June 2023	12
Table 2.2	Ratio to NSW rate of recorded criminal incidents per 100,000 population for major offences by Statistical Area (SA4) over the 12 months to June 2023	13
Table 2.3	Number of major offences by Statistical Area (SA4) over the 12 months to June 2023	14
Table 2.4	Number of major offences by Statistical Area (SA4) over the 12 months to June 2022	15
<b>SECTION 3:</b>	<b>LEGAL PROCEEDINGS</b>	<b>16</b>
Table 3.1	Adults proceeded against by the NSW Police Force by method of legal proceeding over the five years to June 2023	17
Table 3.2	Young people proceeded against by the NSW Police Force by method of legal proceeding over the five years to June 2023	17
Table 3.3	Adults proceeded against to court by the NSW Police Force for all 62 criminal offences types over the two years to June 2023	18
Table 3.4	Young people proceeded against to court by the NSW Police Force for all 62 criminal offences over the two years to June 2023	19
Figure 3.5	Offences with the largest change in the number of adults proceeded against to court by the NSW Police Force between the 12 months to June 2022 and the 12 months to June 2023	20
Figure 3.6	Offences with the largest change in the number of young people proceeded against to court by the NSW Police Force between the 12 months to June 2022 and the 12 months to June 2023	20
Table 3.7	Incidents of all 62 criminal offence types by whether legal proceedings commenced within 90 days of reporting over the two years to March 2023	21
Figure 3.8	Percentage of recorded criminal incidents for major offences by whether legal proceedings commenced within 90 days of reporting over the two years to March 2023	22

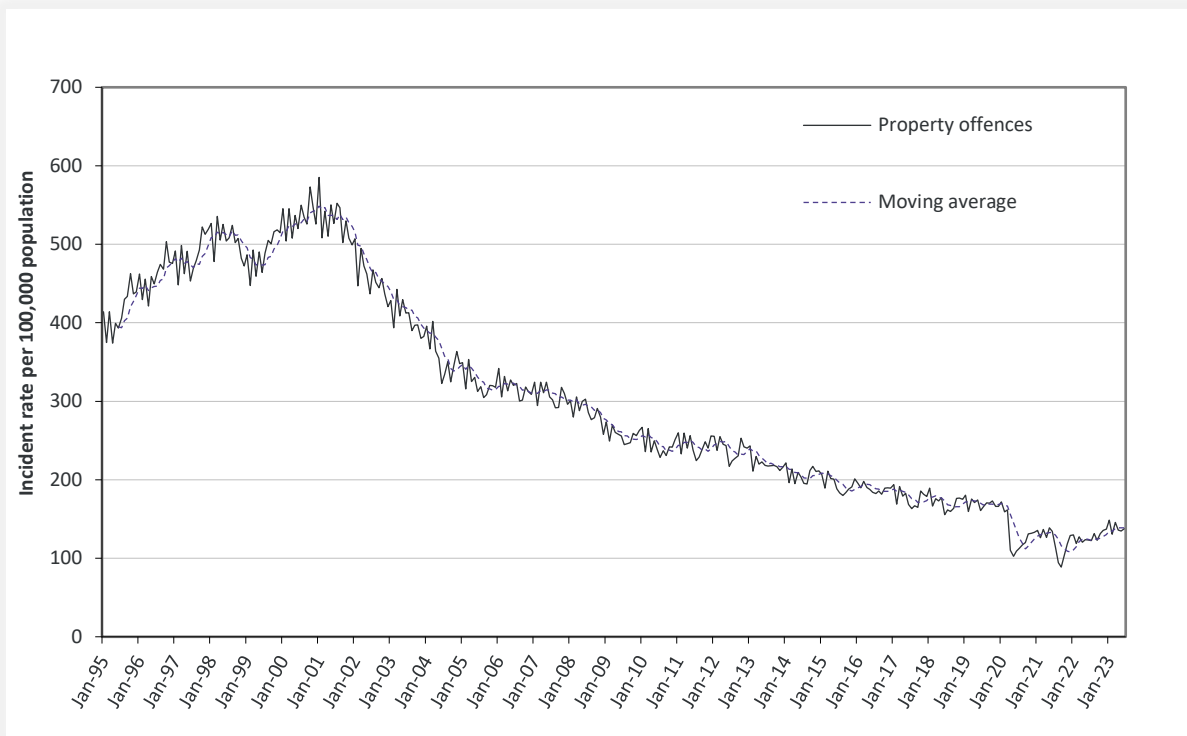
<b>SECTION 4:</b>	<b>POLICING ACTIVITY</b>	<b>23</b>
Table 4.1	Selected policing activities over the five years to June 2023	24
Table 4.2	Non-criminal domestic episodes by Statistical Area (SA4) over the five years to June 2023	25
Table 4.3	Ratio to NSW rate of non-criminal domestic episodes per 100,000 population by Statistical Area (SA4) over the five years to June 2023	26
<b>APPENDIX 1:</b>	<b>REGIONAL COMPARISONS Local Government Areas</b>	<b>27</b>
Appendix Table 1.1	Trends in recorded criminal incidents for major offences, NSW LGAs Over the two years to June 2023	28
Appendix Table 1.2	Ratio to NSW rate of recorded criminal incidents per 100,000 population for major offences, NSW LGAs	31
Appendix Table 1.3	Number of recorded criminal incidents for major offences, NSW LGAs 12 months to June 2023	34
Appendix Table 1.4	Number of recorded criminal incidents for major offences, NSW LGAs	37
<b>APPENDIX 2:</b>	<b>EXPLANATORY NOTES</b>	<b>40</b>
Appendix 2.1	Explanatory Notes	41
<b>APPENDIX 3:</b>	<b>LGAs IN STATISTICAL AREAS</b>	<b>44</b>
Appendix Table 3.1	Local Government Areas in Greater Sydney Statistical Areas	45
Appendix Table 3.2	Local Government Areas in Regional Statistical Areas	46
Appendix Table 3.3	Greater Sydney Statistical Area Map	47
Appendix Table 3.4	Regional NSW Statistical Areas Map	48
<b>APPENDIX 4:</b>	<b>OFFENCE CATEGORIES</b>	<b>49</b>
Appendix 4.1	BOCSAR offences mapped to NSW Police Force incident categories	50

# SECTION 1: OVERVIEW OF TRENDS IN RECORDED CRIME

**Figure 1.1: NSW long-term trend in violent offences**



**Figure 1.2: NSW long-term trend in property offences**



Violent offences include: murder, attempted murder, manslaughter, assault - domestic violence related, assault - non-domestic violence related, assault police, robbery without a weapon, robbery with a firearm, robbery with a weapon not a firearm, sexual assault and sexual touching, sexual act and other sexual offences.

Property offences include: break and enter dwelling, break and enter non-dwelling, motor vehicle theft, steal from motor vehicle, steal from retail store, steal from dwelling, steal from person, stock theft and other theft.

**Table 1.3: Violent and property offences by Statistical Area (SA4)**

Over the five years to June 2023

Trend and average annual percentage change

Statistical Area	Violent Offences		Property Offences	
	2 Year Trend	5 Year Trend	2 Year Trend	5 Year Trend
<b>Greater Sydney</b>	11.6%	Stable	22.3%	-6.3%
Baulkham Hills and Hawkesbury	Stable	3.4%	40.9%	-5.9%
Blacktown	Stable	-1.6%	16.6%	-6.9%
Central Coast	Stable	Stable	15.3%	-8.1%
City and Inner South	19.2%	-2.2%	32.8%	-6.5%
Eastern Suburbs	Stable	Stable	34.9%	-4.8%
Inner South West	12.0%	Stable	21.7%	-5.6%
Inner West	16.8%	5.2%	18.7%	-3.6%
North Sydney and Hornsby	12.6%	Stable	20.0%	-9.6%
Northern Beaches	Stable	-7.9%	14.6%	-10.2%
Outer South West	Stable	Stable	15.7%	-7.6%
Outer West and Blue Mountains	Stable	Stable	20.8%	-5.9%
Parramatta	12.8%	Stable	22.2%	-2.7%
Ryde	Stable	-5.0%	20.9%	-7.5%
South West	20.0%	3.6%	24.0%	-5.8%
Sutherland	Stable	Stable	Stable	-10.0%
<b>Regional NSW</b>	Stable	3.3%	9.1%	-4.5%
Capital Region	18.6%	6.1%	Stable	-7.2%
Central West	Stable	2.1%	Stable	-3.3%
Coffs Harbour - Grafton	20.4%	7.8%	Stable	-4.3%
Far West and Orana	9.2%	Stable	19.3%	Stable
Hunter Valley excluding Newcastle	11.8%	4.9%	7.6%	-6.2%
Illawarra	Stable	Stable	16.1%	-3.0%
Mid North Coast	Stable	5.4%	Stable	-3.6%
Murray	Stable	5.1%	Stable	-4.8%
New England and North West	Stable	3.5%	Stable	Stable
Newcastle and Lake Macquarie	Stable	Stable	10.0%	-5.6%
Richmond - Tweed	Stable	Stable	Stable	-3.5%
Riverina	Stable	Stable	Stable	-7.7%
Southern Highlands and Shoalhaven	Stable	2.6%	18.3%	-7.6%
<b>NSW</b>	10.6%	Stable	15.9%	-5.5%

## NSW Recorded Crime Statistics, June Quarter 2023

**Table 1.4: Recorded criminal incidents for major offences**  
Over the five years to June 2023

Offence category	12 months to June 2019	12 months to June 2020	12 months to June 2021	12 months to June 2022	12 months to June 2023	Trend and average annual percentage change	
						2 Year Trend	5 Year Trend
Murder	79	72	58	64	52	Stable	Down 9.9%
Domestic violence related assault	30,570	31,887	32,934	31,935	34,700	Up 8.7%	Up 3.2%
Non-domestic violence related assault	31,804	30,227	31,013	27,870	32,391	Up 16.2%	Stable
Sexual assault	5,883	6,569	8,011	7,127	7,637	Stable	Up 6.7%
Sexual touching, sexual act and other sexual offences	8,065	7,978	8,267	7,096	7,190	Stable	Down 2.8%
Robbery	2,553	2,323	2,123	1,535	1,944	Up 26.6%	Down 6.6%
Break and enter dwelling	25,552	23,058	19,257	17,346	19,076	Up 10.0%	Down 7.0%
Break and enter non-dwelling	10,028	9,015	7,098	7,020	8,026	Up 14.3%	Down 5.4%
Motor vehicle theft	13,284	12,616	11,547	10,718	13,183	Up 23.0%	Stable
Steal from motor vehicle	38,118	33,518	28,737	26,363	28,140	Up 6.7%	Down 7.3%
Steal from retail store	26,131	23,707	20,535	17,273	25,478	Up 47.5%	Stable
Other stealing offences	50,332	45,854	37,802	34,001	36,705	Up 8.0%	Down 7.6%
Malicious damage to property	57,677	54,647	53,444	47,610	48,585	Stable	Down 4.2%



## NSW Recorded Crime Statistics, June Quarter 2023

**Table 1.5: Recorded criminal incidents for 62 offences**  
Over the two years to June 2023

Offence category		Number of recorded criminal incidents		2 Year Trend	
		12 months to June 2022	12 months to June 2023	Trend test result	Annual average percentage change
Homicide	Murder	64	52	Stable	
	Attempted murder	14	8	n.c.	
	Murder accessory, conspiracy	1	1	n.c.	
	Manslaughter	5	10	n.c.	
Assault	Domestic violence related assault	31,935	34,700	Up	8.7%
	Non-domestic violence related assault	27,870	32,391	Up	16.2%
	Assault Police	2,676	2,719	Stable	
Sexual offences	Sexual assault	7,127	7,637	Stable	
	Sexual touching, sexual act and other sexual offences	7,096	7,190	Stable	
Abduction and kidnapping		183	228	Up	24.6%
Robbery	Robbery without a weapon	796	1,075	Up	35.1%
	Robbery with a firearm	80	109	Up	36.3%
	Robbery with a weapon not a firearm	659	760	Up	15.3%
Blackmail and extortion		165	1,701	Up	930.9%
Intimidation, stalking and harassment		41,062	44,786	Up	9.1%
Other offences against the person		1,768	1,546	Stable	
Theft	Break and enter dwelling	17,346	19,076	Up	10.0%
	Break and enter non-dwelling	7,020	8,026	Up	14.3%
	Receiving or handling stolen goods	7,448	7,891	Stable	
	Motor vehicle theft	10,718	13,183	Up	23.0%
	Steal from motor vehicle	26,363	28,140	Up	6.7%
	Steal from retail store	17,273	25,478	Up	47.5%
	Steal from dwelling	15,559	15,305	Stable	
	Steal from person	1,659	2,068	Up	24.7%
	Stock theft	277	269	Stable	
	Other theft	16,506	19,063	Up	15.5%
Arson		3,459	3,774	Stable	
Malicious damage to property		47,610	48,585	Stable	
Drug offences	Possession and/or use of cocaine	2,302	2,534	Stable	
	Possession and/or use of narcotics	1,263	1,168	Stable	
	Possession and/or use of cannabis	15,708	15,330	Stable	
	Possession and/or use of amphetamines	6,677	6,351	Stable	
	Possession and/or use of ecstasy	616	1,135	Up	84.3%
	Possession and/or use of other drugs	6,151	6,228	Stable	
	Dealing, trafficking in cocaine	1,090	1,259	Stable	
	Dealing, trafficking in narcotics	454	287	Stable	
	Dealing, trafficking in cannabis	762	519	Down	-31.9%
	Dealing, trafficking in amphetamines	2,844	1,770	Down	-37.8%
	Dealing, trafficking in ecstasy	154	205	Stable	
	Dealing, trafficking in other drugs	486	430	Stable	
	Cultivating cannabis	968	683	Down	-29.4%
	Manufacture drug	57	54	Stable	
Importing drugs	177	156	Stable		
Other drug offences	5,396	5,675	Stable		
Prohibited and regulated weapons offences		13,618	13,299	Stable	
Disorderly conduct	Trespass	9,337	11,606	Up	24.3%
	Offensive conduct	3,597	3,447	Stable	
	Offensive language	1,766	1,411	Down	-20.1%
	Criminal intent	2,424	2,734	Up	12.8%
Betting and gaming offences		80	114	Stable	
Liquor offences		9,110	9,020	Stable	
Pornography offences		934	1,047	Stable	
Prostitution offences		16	22	n.c.	
Against justice procedures	Escape custody	159	136	Stable	
	Breach Apprehended Violence Order	21,842	23,241	Up	6.4%
	Breach bail conditions	52,089	53,204	Stable	
	Fail to appear	909	865	Stable	
	Resist or hinder officer	5,709	5,511	Stable	
	Other offences against justice procedures	2,056	2,586	Stable	
Transport regulatory offences		64,944	71,868	Up	10.7%
Other offences		89,746	14,407	Down	-83.9%

**Note:** The increase in blackmail and extortion offence numbers in the most recent reporting period is due to a change in how NSW Police record 'sextortion' incidents. From mid-2022, sextortion offences are recorded as extortion. Previously they were recorded as fraud. As such, the series prior to mid-2022 is not comparable to the series after this time for this offence.

## NSW Recorded Crime Statistics, June Quarter 2023

**Table 1.6: Recorded criminal incidents for 62 offences**  
Over the five years to June 2023

Offence category		Number of recorded criminal incidents		5 Year Trend	
		12 months to June 2019	12 months to June 2023	Trend test result	Annual average percentage change
Homicide	Murder	79	52	Down	-9.9%
	Attempted murder	23	8	n.c.	
	Murder accessory, conspiracy	2	1	n.c.	
	Manslaughter	12	10	n.c.	
Assault	Domestic violence related assault	30,570	34,700	Up	3.2%
	Non-domestic violence related assault	31,804	32,391	Stable	
	Assault Police	2,488	2,719	Stable	
Sexual offences	Sexual assault	5,883	7,637	Up	6.7%
	Sexual touching, sexual act and other sexual offences	8,065	7,190	Down	-2.8%
Abduction and kidnapping		213	228	Stable	
Robbery	Robbery without a weapon	1,488	1,075	Down	-7.8%
	Robbery with a firearm	157	109	Down	-8.7%
	Robbery with a weapon not a firearm	908	760	Down	-4.4%
Blackmail and extortion		92	1,701	Up	107.4%
Intimidation, stalking and harassment		33,796	44,786	Up	7.3%
Other offences against the person		1,180	1,546	Up	7.0%
Theft	Break and enter dwelling	25,552	19,076	Down	-7.0%
	Break and enter non-dwelling	10,028	8,026	Down	-5.4%
	Receiving or handling stolen goods	8,265	7,891	Down	-1.2%
	Motor vehicle theft	13,284	13,183	Stable	
	Steal from motor vehicle	38,118	28,140	Down	-7.3%
	Steal from retail store	26,131	25,478	Stable	
	Steal from dwelling	18,829	15,305	Down	-5.0%
	Steal from person	3,904	2,068	Down	-14.7%
	Stock theft	446	269	Down	-11.9%
	Fraud	51,364	47,447	Down	-2.0%
	Other theft	27,153	19,063	Down	-8.5%
Arson		5,088	3,774	Down	-7.2%
Malicious damage to property		57,677	48,585	Down	-4.2%
Drug offences	Possession and/or use of cocaine	2,362	2,534	Stable	
	Possession and/or use of narcotics	1,035	1,168	Stable	
	Possession and/or use of cannabis	17,345	15,330	Down	-3.0%
	Possession and/or use of amphetamines	7,547	6,351	Down	-4.2%
	Possession and/or use of ecstasy	2,907	1,135	Down	-21.0%
	Possession and/or use of other drugs	5,489	6,228	Stable	
	Dealing, trafficking in cocaine	840	1,259	Stable	
	Dealing, trafficking in narcotics	1,036	287	Stable	
	Dealing, trafficking in cannabis	1,158	519	Down	-18.2%
	Dealing, trafficking in amphetamines	1,894	1,770	Stable	
	Dealing, trafficking in ecstasy	576	205	Down	-22.8%
	Dealing, trafficking in other drugs	526	430	Stable	
	Cultivating cannabis	1,269	683	Down	-14.3%
	Manufacture drug	64	54	Stable	
	Importing drugs	90	156	Stable	
Other drug offences	6,174	5,675	Down	-2.1%	
Prohibited and regulated weapons offences		15,174	13,299	Down	-3.2%
Disorderly conduct	Trespass	10,496	11,606	Stable	
	Offensive conduct	4,625	3,447	Down	-7.1%
	Offensive language	2,480	1,411	Down	-13.2%
	Criminal intent	2,351	2,734	Up	3.8%
Betting and gaming offences		179	114	Stable	
Liquor offences		11,958	9,020	Down	-6.8%
Pornography offences		681	1,047	Up	11.4%
Prostitution offences		20	22	n.c.	
Against justice procedures	Escape custody	177	136	Down	-6.4%
	Breach Apprehended Violence Order	16,784	23,241	Up	8.5%
	Breach bail conditions	44,813	53,204	Up	4.4%
	Fail to appear	496	865	Up	14.9%
	Resist or hinder officer	6,073	5,511	Down	-2.4%
	Other offences against justice procedures	1,099	2,586	Up	23.9%
Transport regulatory offences		109,235	71,868	Down	-9.9%
Other offences		14,662	14,407	Stable	

**Note:** The increase in blackmail and extortion offence numbers in the most recent reporting period is due to a change in how NSW Police record 'sextortion' incidents. From mid-2022, sextortion offences are recorded as extortion. Previously they were recorded as fraud. As such, the series prior to mid-2022 is not comparable to the series after this time for this offence.

# SECTION 2:

# REGIONAL

# COMPARISONS

## Statistical Areas

## NSW Recorded Crime Statistics, June Quarter 2023

**Table 2.1: Two year trends and percent change in recorded criminal incidents for major offences by Statistical Area (SA4)**  
Over the two years to June 2023

Statistical Area	Murder	Domestic violence related assault	Non-domestic violence related assault	Sexual assault	Sexual touching, sexual act and other sexual offences	Robbery	Break and enter dwelling	Break and enter non-dwelling	Motor vehicle theft	Steal from motor vehicle	Steal from retail store	Other stealing offences	Malicious damage to property
<b>Greater Sydney</b>	ns	ns	19.9	ns	ns	26.1	10.8	20.2	29.3	10.9	55.7	14.7	ns
Baulkham Hills and Hawkesbury		13.7	ns	ns	ns		ns	92.8	53.1	29.1	59.3	39.4	ns
Blacktown		ns	ns	ns	ns	ns	ns	ns	18.9	ns	43.1	ns	ns
Central Coast		ns	ns	ns	ns	ns	9.1	ns	24.0	ns	34.4	24.0	ns
City and Inner South		ns	24.5	31.6	ns	62.3	19.8	20.5	38.9	16.1	55.6	26.4	ns
Eastern Suburbs		ns	ns	ns	ns	ns	ns	40.8	31.5	ns	85.0	22.0	ns
Inner South West		ns	16.1	ns	ns	ns	ns	ns	28.0	ns	104.4	ns	13.9
Inner West		11.2	27.7	23.2	ns	ns	ns	38.0	38.6	ns	ns	13.3	ns
North Sydney and Hornsby		ns	25.7	ns	ns	44.8	ns	40.0	ns	ns	46.7	ns	ns
Northern Beaches		ns	ns	ns	ns	ns	ns	ns	ns	ns	30.9	ns	ns
Outer South West		ns	26.5	12.6	ns	ns	ns	ns	23.3	ns	72.9	ns	ns
Outer West and Blue Mountains		ns	18.7	ns	ns	ns	ns	ns	20.6	23.9	36.2	12.8	ns
Parramatta		ns	23.5	ns	ns	33.1	ns	ns	25.7	14.0	81.4	11.0	ns
Ryde		ns	ns	ns	ns		ns	ns	64.0	ns	56.1	ns	ns
South West		ns	34.0	ns	ns	ns	ns	24.1	47.3	22.1	46.3	15.6	ns
Sutherland		ns	ns	ns	ns	ns	ns	ns	ns	ns	46.8	ns	ns
<b>Regional NSW</b>	ns	10.5	ns	ns	ns	27.0	ns	10.9	17.8	ns	34.5	ns	ns
Capital Region		14.6	28.6	ns	ns	ns	ns	ns	ns	ns	18.0	ns	ns
Central West		ns	ns	ns	ns	ns	ns	ns	ns	ns	19.2	ns	ns
Coffs Harbour - Grafton		36.5	ns	ns	ns	ns	ns	ns	ns	ns	60.4	ns	ns
Far West and Orana		9.0	16.6	ns	ns	ns	ns	39.7	30.6	ns	30.3	16.4	ns
Hunter Valley excluding Newcastle		18.2	19.9	ns	ns	ns	17.7	43.9	20.2	ns	34.6	ns	ns
Illawarra		ns	20.0	28.7	ns	ns	ns	ns	ns	ns	45.2	ns	ns
Mid North Coast		ns	ns	ns	-18.9	ns	ns	-19.6	33.4	ns	42.8	-12.3	ns
Murray		ns	ns	ns	ns	ns	ns	ns	ns	ns	28.1	ns	ns
New England and North West		ns	ns	ns	ns	51.0	ns	ns	31.0	ns	37.0	ns	ns
Newcastle and Lake Macquarie		ns	ns	ns	ns	ns	17.1	ns	22.5	ns	21.8	ns	ns
Richmond - Tweed		ns	ns	ns	ns	ns	ns	ns	21.7	ns	70.5	ns	-12.7
Riverina		ns	ns	ns	ns	ns	ns	ns	-10.7	ns	ns	ns	ns
Southern Highlands and Shoalhaven		ns	ns	ns	-24.1		ns	41.7	34.7	ns	66.5	ns	19.1
<b>NSW</b>	ns	8.7	16.2	ns	ns	26.6	10.0	14.3	23.0	6.7	47.5	8.0	ns

## NSW Recorded Crime Statistics, June Quarter 2023

**Table 2.2: Ratio to NSW rate of recorded criminal incidents per 100,000 population for major offences by Statistical Area (SA4)**  
Over the 12 months to June 2023

Statistical Area	Murder	Domestic violence related assault	Non-domestic violence related assault	Sexual assault	Sexual touching, sexual act and other sexual offences	Robbery	Break and enter dwelling	Break and enter non-dwelling	Motor vehicle theft	Steal from motor vehicle	Steal from retail store	Other stealing offences	Malicious damage to property
<b>Greater Sydney</b>	0.8	0.8	0.8	0.7	0.8	1.0	0.7	0.6	0.7	0.8	1.0	0.9	0.8
Baulkham Hills and Hawkesbury	0.6	0.4	0.3	0.4	0.5	0.4	0.4	0.5	0.4	0.4	0.4	0.5	0.4
Blacktown	0.4	1.2	1.0	0.8	1.0	1.8	1.0	0.6	1.1	1.2	1.2	1.0	1.0
Central Coast	1.8	1.2	1.1	1.2	1.2	0.8	0.7	0.7	0.9	0.9	0.9	0.8	1.1
City and Inner South	0.9	1.1	2.3	1.5	1.7	2.5	0.9	1.3	0.8	0.9	3.1	3.1	1.4
Eastern Suburbs	1.2	0.6	1.0	0.8	1.0	0.5	0.7	0.4	0.7	0.7	1.4	1.1	0.7
Inner South West	1.5	0.9	0.6	0.5	0.6	0.7	0.6	0.4	0.7	0.7	0.7	0.6	0.6
Inner West		0.6	0.6	0.6	0.7	0.7	0.8	0.7	0.7	0.8	0.8	0.9	0.6
North Sydney and Hornsby	0.4	0.3	0.3	0.4	0.6	0.4	0.5	0.4	0.3	0.5	0.7	0.5	0.4
Northern Beaches		0.2	0.5	0.5	0.5	0.5	0.4	0.4	0.4	0.4	0.7	0.6	0.5
Outer South West	1.0	1.0	0.8	1.0	0.9	0.8	0.6	0.5	0.7	0.7	1.1	0.6	0.9
Outer West and Blue Mountains	1.4	1.1	1.1	1.0	1.1	1.0	1.0	0.8	0.9	1.1	1.1	0.9	1.1
Parramatta	1.3	0.9	0.9	0.7	0.8	1.3	1.0	0.8	1.1	1.2	1.0	1.0	0.7
Ryde		0.3	0.4	0.4	0.5	0.5	0.6	0.4	0.4	0.5	0.5	0.6	0.4
South West	0.7	1.0	0.8	0.6	0.8	1.1	0.7	0.5	0.9	0.9	0.7	0.8	0.7
Sutherland		0.6	0.5	0.6	0.6	0.5	0.4	0.2	0.3	0.4	0.5	0.4	0.6
<b>Regional NSW</b>	1.3	1.3	1.2	1.3	1.2	1.1	1.6	1.8	1.5	1.4	1.0	1.2	1.4
Capital Region		1.0	1.0	1.0	1.1	0.4	0.7	1.1	0.8	0.6	0.6	0.9	1.0
Central West	2.2	1.6	1.4	1.4	1.5	1.2	2.0	1.6	1.5	1.4	0.9	1.2	1.7
Coffs Harbour - Grafton	1.1	1.7	1.4	1.5	1.5	1.7	1.4	1.7	1.6	1.3	1.0	1.3	1.5
Far West and Orana	1.3	3.5	2.3	1.8	2.1	1.6	4.1	6.0	3.2	2.5	1.5	2.2	3.0
Hunter Valley excluding Newcastle	1.1	1.4	1.2	1.4	1.2	0.9	1.1	1.9	1.6	1.2	0.9	1.3	1.5
Illawarra	2.0	0.7	0.9	1.0	0.9	0.9	0.9	0.9	0.9	1.4	1.3	0.9	1.0
Mid North Coast	2.0	1.6	1.2	1.2	1.3	1.0	1.8	1.7	1.6	1.0	0.9	1.4	1.5
Murray	2.5	1.4	1.3	1.4	1.2	0.7	1.4	2.6	1.5	1.9	0.8	1.4	1.6
New England and North West	1.7	2.0	1.7	1.8	1.5	1.7	3.5	2.2	2.4	1.8	1.3	1.5	2.2
Newcastle and Lake Macquarie	0.8	1.0	1.1	1.3	1.1	1.5	1.5	1.4	1.8	1.9	1.2	1.2	1.3
Richmond - Tweed	1.2	0.9	1.1	1.2	1.1	1.1	1.2	1.7	1.6	1.1	0.7	1.1	1.1
Riverina	0.9	1.6	1.3	1.7	1.4	0.7	1.9	1.9	1.2	1.4	1.0	1.2	1.6
Southern Highlands and Shoalhaven	1.0	0.9	0.9	1.2	1.0	0.5	0.7	1.1	0.7	0.6	0.8	0.7	1.2
<b>NSW</b>	<b>1.0</b>	<b>1.0</b>	<b>1.0</b>	<b>1.0</b>	<b>1.0</b>	<b>1.0</b>	<b>1.0</b>	<b>1.0</b>	<b>1.0</b>	<b>1.0</b>	<b>1.0</b>	<b>1.0</b>	<b>1.0</b>

## NSW Recorded Crime Statistics, June Quarter 2023

**Table 2.3: Number of major offences by Statistical Area (SA4)**

Over the 12 months to June 2023

Statistical Area	Murder	Domestic violence related assault	Non-domestic violence related assault	Sexual assault	Sexual touching, sexual act and other sexual offences	Robbery	Break and enter dwelling	Break and enter non-dwelling	Motor vehicle theft	Steal from motor vehicle	Steal from retail store	Other stealing offences	Malicious damage to property
<b>Greater Sydney</b>	28	18,352	17,338	3,648	3,938	1,204	8,541	3,081	6,234	14,609	16,499	21,304	23,895
Baulkham Hills and Hawkesbury	1	497	344	105	121	25	250	133	173	333	360	591	714
Blacktown	1	2,134	1,605	304	357	171	908	221	692	1,629	1,543	1,784	2,536
Central Coast	4	1,735	1,500	391	358	70	577	250	485	1,137	1,023	1,266	2,314
City and Inner South	2	1,606	3,146	462	513	198	678	429	457	1,075	3,321	4,676	2,762
Eastern Suburbs	2	724	1,029	201	225	33	414	100	309	621	1,171	1,282	1,098
Inner South West	6	2,265	1,466	293	336	100	813	253	713	1,482	1,247	1,532	2,291
Inner West	0	755	789	186	186	50	555	218	327	858	748	1,312	1,153
North Sydney and Hornsby	1	561	591	161	212	42	487	189	207	702	971	973	995
Northern Beaches	0	254	484	128	120	32	238	96	172	401	610	715	786
Outer South West	2	1,297	982	269	246	60	401	146	365	754	991	827	1,526
Outer West and Blue Mountains	3	1,541	1,453	316	330	81	758	277	504	1,322	1,167	1,326	2,300
Parramatta	4	1,921	1,706	341	366	161	1,212	399	856	2,039	1,556	2,347	2,074
Ryde	0	298	291	80	85	23	297	76	146	387	331	543	461
South West	2	2,140	1,505	290	352	131	752	242	698	1,563	1,090	1,663	2,054
Sutherland	0	624	447	121	131	27	201	52	130	306	370	467	831
<b>Regional NSW</b>	24	16,345	13,908	3,571	3,102	733	10,535	4,944	6,948	13,529	8,979	15,394	24,637
Capital Region	0	1,014	921	217	227	25	412	262	305	539	459	980	1,489
Central West	3	1,472	1,160	275	278	59	1,020	344	531	1,058	603	1,209	2,125
Coffs Harbour - Grafton	1	1,062	845	208	194	59	494	253	387	661	470	890	1,301
Far West and Orana	1	1,757	1,102	197	218	45	1,126	700	602	1,037	568	1,186	2,126
Hunter Valley excluding Newcastle	2	1,750	1,401	400	305	65	783	541	757	1,264	841	1,710	2,561
Illawarra	4	940	1,076	305	253	69	649	271	456	1,508	1,308	1,263	1,861
Mid North Coast	3	1,546	1,120	262	274	55	985	389	599	820	677	1,458	2,033
Murray	2	755	654	160	129	21	410	316	300	824	319	771	1,177
New England and North West	2	1,567	1,306	318	249	77	1,524	415	723	1,149	740	1,241	2,494
Newcastle and Lake Macquarie	2	1,690	1,753	494	367	141	1,423	528	1,120	2,545	1,507	2,058	2,956
Richmond - Tweed	2	1,032	1,152	285	255	70	697	434	650	1,009	561	1,250	1,700
Riverina	1	1,157	846	270	205	28	728	311	324	780	538	863	1,611
Southern Highlands and Shoalhaven	1	603	572	180	148	19	284	180	194	335	388	515	1,203
<b>NSW</b>	<b>52</b>	<b>34,700</b>	<b>32,391</b>	<b>7,637</b>	<b>7,190</b>	<b>1,944</b>	<b>19,076</b>	<b>8,026</b>	<b>13,183</b>	<b>28,140</b>	<b>25,478</b>	<b>36,705</b>	<b>48,585</b>

## NSW Recorded Crime Statistics, June Quarter 2023

**Table 2.4: Number of major offences by Statistical Area (SA4)**

Over the 12 months to June 2022

Statistical Area	Murder	Domestic violence related assault	Non-domestic violence related assault	Sexual assault	Sexual touching, sexual act and other sexual offences	Robbery	Break and enter dwelling	Break and enter non-dwelling	Motor vehicle theft	Steal from motor vehicle	Steal from retail store	Other stealing offences	Malicious damage to property
<b>Greater Sydney</b>	38	17,142	14,458	3,415	3,732	955	7,707	2,563	4,822	13,171	10,599	18,576	23,022
Baulkham Hills and Hawkesbury	1	437	306	127	128	10	216	69	113	258	226	424	634
Blacktown	6	1,948	1,406	314	375	148	817	219	582	1,472	1,078	1,644	2,574
Central Coast	5	1,622	1,398	381	358	62	529	238	391	1,169	761	1,021	2,270
City and Inner South	5	1,452	2,527	351	443	122	566	356	329	926	2,135	3,698	2,500
Eastern Suburbs	0	685	852	168	191	32	348	71	235	550	633	1,051	1,073
Inner South West	4	2,023	1,263	266	293	105	705	239	557	1,339	610	1,512	2,012
Inner West	3	679	618	151	169	48	512	158	236	790	531	1,158	1,020
North Sydney and Hornsby	0	530	470	185	177	29	446	135	168	583	662	948	1,001
Northern Beaches	1	269	443	131	138	23	192	59	155	466	466	610	750
Outer South West	3	1,295	776	239	274	57	362	135	296	845	573	800	1,545
Outer West and Blue Mountains	0	1,525	1,224	338	351	72	667	247	418	1,067	857	1,176	2,240
Parramatta	9	1,786	1,381	336	333	121	1,163	278	681	1,788	858	2,114	2,057
Ryde	0	316	260	60	78	17	272	99	89	302	212	498	481
South West	1	1,890	1,123	242	315	85	714	195	474	1,280	745	1,438	2,049
Sutherland	0	685	411	126	109	24	198	65	98	336	252	484	816
<b>Regional NSW</b>	25	14,788	12,521	3,458	3,297	577	9,639	4,457	5,896	13,191	6,674	15,417	24,503
Capital Region	1	885	716	209	196	31	389	255	294	647	389	967	1,500
Central West	3	1,376	1,106	312	310	54	893	388	462	928	506	1,275	2,222
Coffs Harbour - Grafton	0	778	775	194	191	29	444	298	367	697	293	913	1,250
Far West and Orana	1	1,612	945	222	234	44	1,030	501	461	927	436	1,019	1,937
Hunter Valley excluding Newcastle	1	1,480	1,168	432	375	41	665	376	630	1,343	625	1,842	2,355
Illawarra	1	886	897	237	251	51	623	228	460	1,374	901	1,113	1,743
Mid North Coast	3	1,310	986	277	338	40	1,010	484	449	847	474	1,662	2,113
Murray	2	713	599	138	149	20	396	221	266	729	249	728	1,219
New England and North West	0	1,536	1,155	312	265	51	1,410	408	552	1,174	540	1,191	2,462
Newcastle and Lake Macquarie	6	1,633	1,696	434	347	105	1,215	557	914	2,389	1,237	2,037	3,192
Richmond - Tweed	4	1,070	1,149	261	236	51	662	345	534	1,084	329	1,300	1,947
Riverina	0	962	791	229	210	33	636	269	363	716	462	873	1,553
Southern Highlands and Shoalhaven	3	547	538	201	195	27	266	127	144	336	233	497	1,010
<b>NSW</b>	<b>64</b>	<b>31,935</b>	<b>27,870</b>	<b>7,127</b>	<b>7,096</b>	<b>1,535</b>	<b>17,346</b>	<b>7,020</b>	<b>10,718</b>	<b>26,363</b>	<b>17,273</b>	<b>34,001</b>	<b>47,610</b>

# SECTION 3: LEGAL PROCEEDINGS



**Table 3.1: Adults proceeded against by the NSW Police Force by method of legal proceeding**

Over the five years to June 2023

Method of legal proceeding	Adults proceeded against					2 Year Trend		5 Year Trend	
	12 months to June 2019	12 months to June 2020	12 months to June 2021	12 months to June 2022	12 months to June 2023	Number change	Percentage change	Number change	Average annual percentage change
Proceeded against to court (offence)	149,608	148,593	141,938	147,183	158,591	11,408	7.8%	8,983	1.5%
Proceeded against to court (breach of bail)	6,426	7,860	7,188	7,876	7,772	-104	Stable	1,346	4.9%
<b>Court diversion</b>	<b>13,433</b>	<b>12,053</b>	<b>9,407</b>	<b>8,293</b>	<b>9,644</b>	<b>1,351</b>	<b>16.3%</b>	<b>-3,789</b>	<b>-8.0%</b>
Criminal Infringement Notice	8,766	7,733	6,185	5,480	6,781	1,301	23.7%	-1,985	-6.2%
Cannabis or other drug caution	4,667	4,320	3,222	2,813	2,863	50	Stable	-1,804	-11.5%

**Table 3.2: Young people proceeded against by the NSW Police Force by method of legal proceeding**

Over the five years to June 2023

Method of legal proceeding	Young people proceeded against					2 Year Trend		5 Year Trend	
	12 months to June 2019	12 months to June 2020	12 months to June 2021	12 months to June 2022	12 months to June 2023	Number change	Percentage change	Number change	Average annual percentage change
Proceeded against to court (offence)	9,877	10,099	9,476	9,459	10,566	1,107	11.7%	689	Stable
Proceeded against to court (breach of bail)	1,691	1,605	1,447	1,349	1,604	255	18.9%	-87	Stable
<b>Court diversion</b>	<b>10,132</b>	<b>10,519</b>	<b>10,796</b>	<b>11,420</b>	<b>11,243</b>	<b>-177</b>	<b>Stable</b>	<b>1,111</b>	<b>2.6%</b>
Youth Justice Conference	695	865	810	670	901	231	34.5%	206	Stable
Caution Young Offenders Act	6,878	7,042	6,858	6,363	7,284	921	14.5%	406	Stable
Warning Young Offenders Act	2,559	2,612	3,128	4,387	3,058	-1,329	-30.3%	499	4.6%

## NSW Recorded Crime Statistics, June Quarter 2023

**Table 3.3: Adults proceeded against to court by the NSW Police Force for all 62 criminal offences types**

Over the two years to June 2023

Offence category		12 months to June 2022		12 months to June 2023		2 Year Trend	
		No. proceeded to court	% proceeded to court	No. proceeded to court	% proceeded to court	Trend test result	Percentage change
Homicide	Murder	89	100.0%	97	100.0%	Stable	
	Attempted murder	16	100.0%	7	100.0%	n.c.	
	Murder accessory, conspiracy	0		1	100.0%	n.c.	
	Manslaughter	5	100.0%	9	100.0%	n.c.	
Assault	Domestic violence related assault	13,606	99.8%	14,642	99.9%	Stable	
	Non-domestic violence related assault	6,548	96.9%	7,273	96.5%	Up	11.1%
	Assault Police	1,479	100.0%	1,471	99.8%	Stable	
Sexual offences	Sexual assault	790	100.0%	825	100.0%	Stable	
	Sexual touching, sexual act and other sexual offences	1,315	98.4%	1,417	97.7%	Up	7.8%
Abduction and kidnapping		178	100.0%	195	100.0%	Stable	
Robbery	Robbery without a weapon	318	100.0%	367	100.0%	Stable	
	Robbery with a firearm	72	100.0%	81	100.0%	Stable	
	Robbery with a weapon not a firearm	312	100.0%	300	100.0%	Stable	
Blackmail and extortion		17	100.0%	21	100.0%	n.c.	
Intimidation, stalking and harassment		13,562	98.9%	14,990	99.1%	Up	10.5%
Other offences against the person		302	97.7%	296	96.1%	Stable	
Theft	Break and enter dwelling	2,211	99.8%	2,502	99.8%	Stable	
	Break and enter non-dwelling	1,102	99.2%	1,415	99.5%	Up	28.4%
	Receiving or handling stolen goods	3,769	97.4%	4,230	97.8%	Up	12.2%
	Motor vehicle theft	1,331	99.8%	1,480	99.9%	Up	11.2%
	Steal from motor vehicle	886	98.8%	1,035	99.0%	Stable	
	Steal from retail store	4,229	68.3%	7,044	70.5%	Up	66.6%
	Steal from dwelling	780	95.4%	807	94.6%	Stable	
	Steal from person	179	98.4%	236	97.5%	Up	31.8%
	Stock theft	8	100.0%	6	100.0%	n.c.	
	Fraud	3,777	98.7%	4,103	98.6%	Stable	
Other theft	1,353	88.5%	1,642	90.2%	Up	21.4%	
Arson		169	92.9%	149	87.1%	Stable	
Malicious damage to property		4,339	99.3%	4,424	99.4%	Stable	
Drug offences	Possession and/or use of cocaine	1,294	97.8%	1,489	94.7%	Stable	
	Possession and/or use of narcotics	513	99.8%	554	99.5%	Stable	
	Possession and/or use of cannabis	4,907	63.7%	4,611	61.8%	Stable	
	Possession and/or use of amphetamines	2,778	99.5%	2,713	99.1%	Stable	
	Possession and/or use of ecstasy	265	75.5%	413	53.0%	Up	55.8%
	Possession and/or use of other drugs	1,519	98.3%	1,557	93.3%	Stable	
	Dealing, trafficking in cocaine	687	100.0%	848	100.0%	Stable	
	Dealing, trafficking in narcotics	158	100.0%	138	100.0%	Stable	
	Dealing, trafficking in cannabis	397	100.0%	364	99.7%	Stable	
	Dealing, trafficking in amphetamines	787	100.0%	653	100.0%	Down	-17.0%
	Dealing, trafficking in ecstasy	76	100.0%	93	100.0%	Stable	
	Dealing, trafficking in other drugs	210	100.0%	223	100.0%	Stable	
	Cultivating cannabis	591	99.8%	441	100.0%	Stable	
	Manufacture drug	50	100.0%	38	100.0%	Stable	
	Importing drugs	90	98.9%	96	100.0%	Stable	
Other drug offences	624	98.1%	629	96.6%	Stable		
Prohibited and regulated weapons offences		2,887	85.6%	2,851	87.5%	Stable	
Disorderly conduct	Trespass	1,001	63.5%	1,474	69.9%	Up	47.3%
	Offensive conduct	293	15.1%	283	15.0%	Stable	
	Offensive language	114	12.7%	93	13.6%	Down	-18.4%
	Criminal intent	1,430	99.7%	1,637	99.7%	Up	14.5%
Betting and gaming offences		11	73.3%	16	76.2%	n.c.	
Liquor offences		98	5.0%	160	6.4%	Up	63.3%
Pornography offences		214	100.0%	252	100.0%	Stable	
Prostitution offences		0		1	100.0%	n.c.	
Against justice procedures	Escape custody	76	100.0%	65	100.0%	Stable	
	Breach Apprehended Violence Order	11,753	100.0%	12,504	100.0%	Up	6.4%
	Breach bail conditions	7,876	100.0%	7,772	100.0%	Stable	
	Fail to appear	15	100.0%	11	100.0%	n.c.	
	Resist or hinder officer	1,692	84.6%	1,499	83.8%	Down	-11.4%
	Other offences against justice procedures	986	100.0%	1,185	100.0%	Up	20.2%
Transport regulatory offences		577	1.4%	320	0.9%	Down	-44.5%
Other offences		4,410	7.7%	2,010	34.0%	Down	-54.4%

## NSW Recorded Crime Statistics, June Quarter 2023

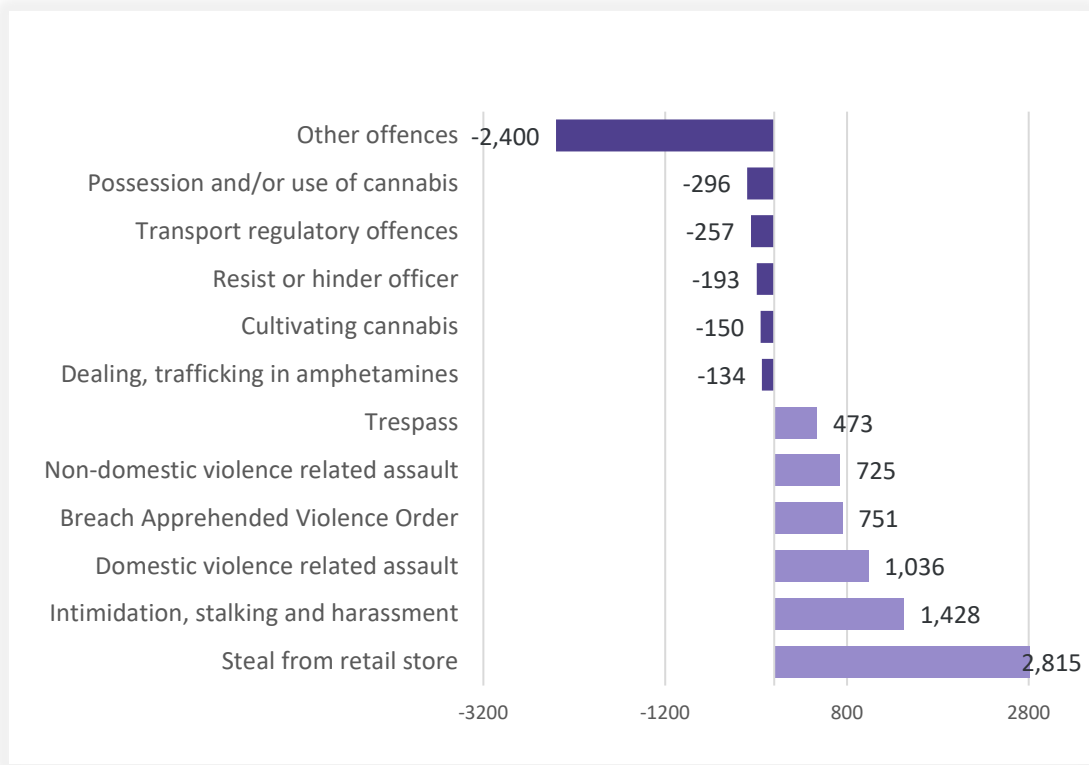
Table 3.4: Young people proceeded against to court by the NSW Police Force for all 62 criminal offences

Over the two years to June 2023

Offence category		12 months to June 2022		12 months to June 2023		2 Year Trend	
		No. proceeded to court	% proceeded to court	No. proceeded to court	% proceeded to court	Trend test result	Percentage change
Homicide	Murder	10	100.0%	11	100.0%	n.c.	
	Attempted murder	1	100.0%	0		n.c.	
	Murder accessory, conspiracy	0		0		n.c.	
	Manslaughter	0		0		n.c.	
Assault	Domestic violence related assault	445	41.1%	455	39.2%	Stable	
	Non-domestic violence related assault	812	37.9%	803	30.3%	Stable	
	Assault Police	112	75.7%	138	75.4%	Stable	
Sexual offences	Sexual assault	152	99.3%	95	97.9%	Down	-37.5%
	Sexual touching, sexual act and other sexual offences	93	77.5%	78	76.5%	Stable	
Abduction and kidnapping		3	100.0%	5	100.0%	n.c.	
Robbery	Robbery without a weapon	255	95.1%	295	92.2%	Stable	
	Robbery with a firearm	9	100.0%	26	92.9%	n.c.	
	Robbery with a weapon not a firearm	161	92.0%	181	97.3%	Stable	
Blackmail and extortion		1	100.0%	1	100.0%	n.c.	
Intimidation, stalking and harassment		1,102	70.4%	1,374	73.2%	Up	24.7%
Other offences against the person		20	66.7%	30	56.6%	Stable	
Theft	Break and enter dwelling	685	83.4%	933	83.8%	Up	36.2%
	Break and enter non-dwelling	323	51.8%	413	50.1%	Up	27.9%
	Receiving or handling stolen goods	203	58.2%	203	52.2%	Stable	
	Motor vehicle theft	746	77.5%	833	74.3%	Up	11.7%
	Steal from motor vehicle	369	73.7%	272	74.5%	Stable	
	Steal from retail store	313	28.4%	544	30.4%	Up	73.8%
	Steal from dwelling	79	46.5%	59	39.6%	Stable	
	Steal from person	32	51.6%	46	57.5%	Up	43.8%
	Stock theft	2	100.0%	0		n.c.	
	Fraud	233	62.8%	296	67.3%	Stable	
Other theft	120	36.3%	110	31.0%	Stable		
Arson		29	39.7%	30	35.7%	Stable	
Malicious damage to property		486	33.3%	531	33.9%	Up	9.3%
Drug offences	Possession and/or use of cocaine	5	26.3%	8	72.7%	n.c.	
	Possession and/or use of narcotics	0		2	100.0%	n.c.	
	Possession and/or use of cannabis	179	16.4%	155	15.7%	Stable	
	Possession and/or use of amphetamines	14	70.0%	7	46.7%	n.c.	
	Possession and/or use of ecstasy	3	23.1%	2	28.6%	n.c.	
	Possession and/or use of other drugs	15	29.4%	11	23.4%	n.c.	
	Dealing, trafficking in cocaine	15	100.0%	17	100.0%	n.c.	
	Dealing, trafficking in narcotics	0		1	100.0%	n.c.	
	Dealing, trafficking in cannabis	28	75.7%	35	85.4%	Stable	
	Dealing, trafficking in amphetamines	2	100.0%	4	100.0%	n.c.	
	Dealing, trafficking in ecstasy	2	100.0%	3	100.0%	n.c.	
	Dealing, trafficking in other drugs	2	50.0%	0		n.c.	
	Cultivating cannabis	1	33.3%	4	66.7%	n.c.	
	Manufacture drug	0		0		n.c.	
Importing drugs	0		0		n.c.		
Other drug offences	5	7.2%	5	6.8%	n.c.		
Prohibited and regulated weapons offences		139	32.0%	135	24.6%	Stable	
Disorderly conduct	Trespass	133	11.8%	296	19.4%	Up	122.6%
	Offensive conduct	25	12.6%	20	7.8%	Stable	
	Offensive language	4	7.8%	7	9.6%	n.c.	
	Criminal intent	233	87.9%	245	85.1%	Stable	
Betting and gaming offences		0		0		n.c.	
Liquor offences		1	0.4%	1	0.8%	n.c.	
Pornography offences		14	17.5%	9	13.6%	n.c.	
Prostitution offences		0		0		n.c.	
Against justice procedures	Escape custody	8	80.0%	10	100.0%	n.c.	
	Breach Apprehended Violence Order	465	99.6%	505	100.0%	Stable	
	Breach bail conditions	1,349	99.1%	1,604	98.5%	Up	18.9%
	Fail to appear	0		1	100.0%	n.c.	
	Resist or hinder officer	77	51.0%	98	44.3%	Stable	
	Other offences against justice procedures	7	77.8%	13	100.0%	n.c.	
Transport regulatory offences		21	0.1%	40	0.3%	Stable	
Other offences		218	3.5%	134	17.2%	Down	-38.5%

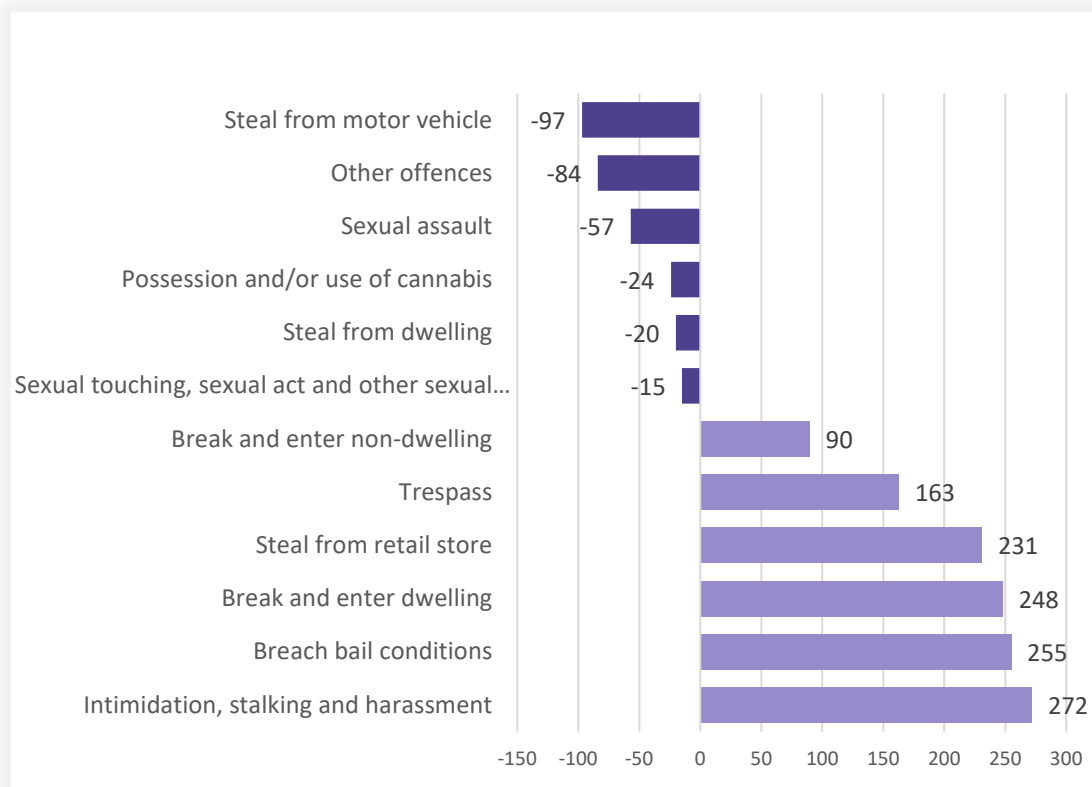
**Figure 3.5: Offences with the largest change in the number of adults proceeded against to court by the NSW Police Force**

Between the 12 months to June 2022 and the 12 months to June 2023



**Figure 3.6: Offences with the largest change in the number of young people proceeded against to court by the NSW Police Force**

Between the 12 months to June 2022 and the 12 months to June 2023



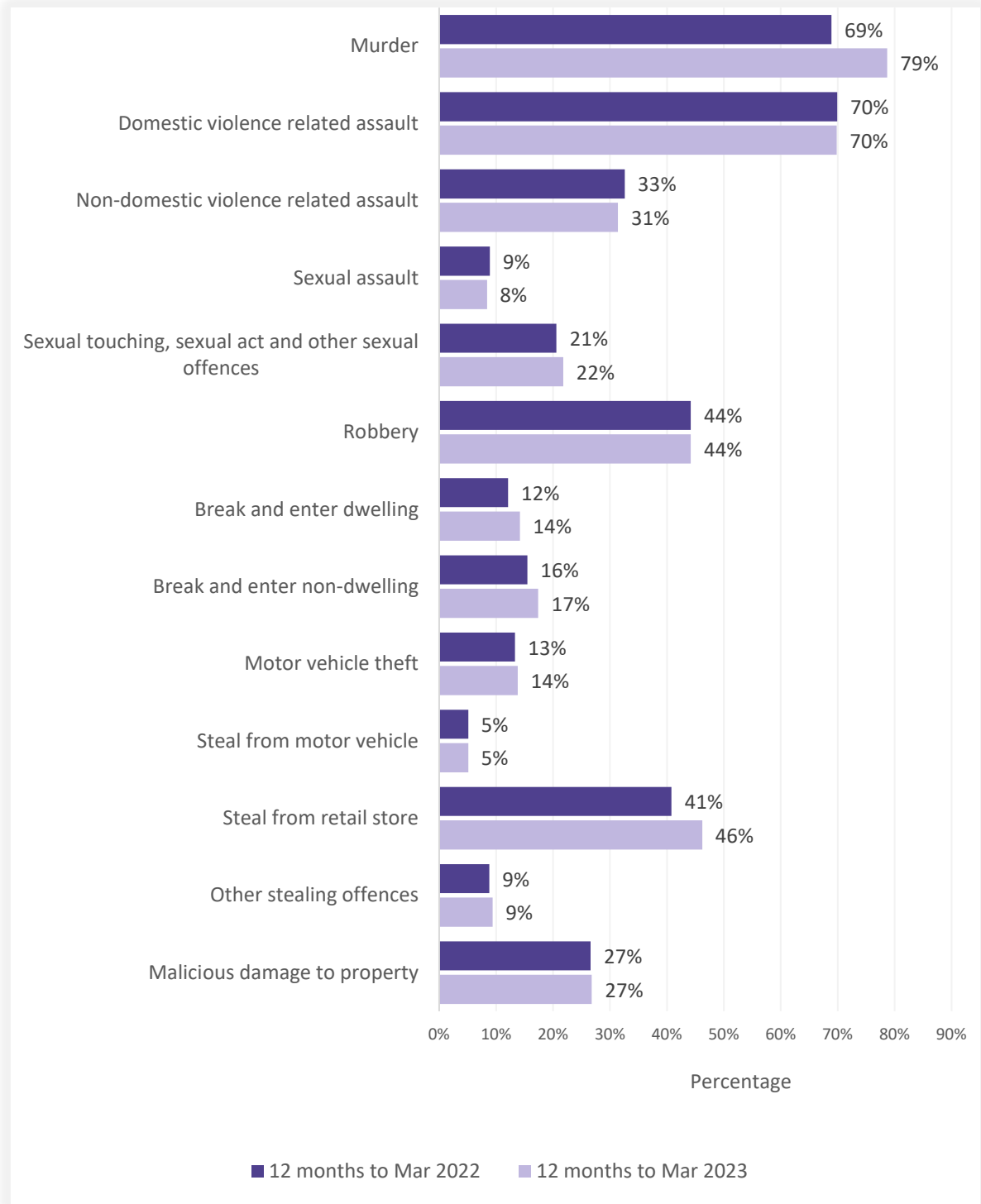
## NSW Recorded Crime Statistics, June Quarter 2023

**Table 3.7: Incidents of all 62 criminal offence types by whether legal proceedings commenced within 90 days of reporting**  
Over the two years to March 2023

Offence category		Recorded criminal incidents over the 12 months to March 2022			Recorded criminal incidents over the 12 months to March 2023		
		Proceedings commenced within 90 days	Total number recorded	% proceedings commenced within 90 days	Proceedings commenced within 90 days	Total number recorded	% proceedings commenced within 90 days
Homicide	Murder	42	61	68.9%	37	47	78.7%
	Attempted murder	12	17	70.6%	4	7	57.1%
	Murder accessory, conspiracy	0	1	0.0%	1	1	100.0%
	Manslaughter	1	3	33.3%	6	11	54.5%
Assault	Domestic violence related assault	22,592	32,334	69.9%	23,988	34,387	69.8%
	Non-domestic violence related assault	9,148	28,064	32.6%	10,061	32,048	31.4%
	Assault Police	2,346	2,649	88.6%	2,450	2,733	89.6%
Sexual offences	Sexual assault	644	7,208	8.9%	669	7,934	8.4%
	Sexual touching, sexual act and other sexual offences	1,481	7,195	20.6%	1,652	7,572	21.8%
Abduction and kidnapping		121	200	60.5%	119	202	58.9%
Robbery	Robbery without a weapon	359	891	40.3%	448	1,031	43.5%
	Robbery with a firearm	47	91	51.6%	52	108	48.1%
	Robbery with a weapon not a firearm	351	730	48.1%	335	751	44.6%
Blackmail and extortion		14	124	11.3%	16	1,302	1.2%
Intimidation, stalking and harassment		18,793	41,277	45.5%	20,653	44,235	46.7%
Other offences against the person		556	1,814	30.7%	453	1,466	30.9%
Theft	Break and enter dwelling	2,119	17,446	12.1%	2,692	18,991	14.2%
	Break and enter non-dwelling	1,122	7,253	15.5%	1,310	7,544	17.4%
	Receiving or handling stolen goods	5,769	7,501	76.9%	6,318	8,016	78.8%
	Motor vehicle theft	1,404	10,589	13.3%	1,766	12,840	13.8%
	Steal from motor vehicle	1,392	27,466	5.1%	1,388	27,415	5.1%
	Steal from retail store	7,173	17,587	40.8%	11,225	24,319	46.2%
	Steal from dwelling	1,020	16,051	6.4%	1,058	15,260	6.9%
	Steal from person	298	1,693	17.6%	378	2,040	18.5%
	Stock theft	11	300	3.7%	2	266	0.8%
	Fraud	3,335	44,882	7.4%	3,388	47,947	7.1%
Other theft	1,760	16,906	10.4%	1,987	18,690	10.6%	
Arson		184	3,628	5.1%	205	3,623	5.7%
Malicious damage to property		12,878	48,397	26.6%	13,134	49,012	26.8%
Drug offences	Possession and/or use of cocaine	1,708	2,295	74.4%	1,967	2,645	74.4%
	Possession and/or use of narcotics	757	1,241	61.0%	752	1,172	64.2%
	Possession and/or use of cannabis	12,162	16,126	75.4%	11,453	15,576	73.5%
	Possession and/or use of amphetamines	5,153	7,020	73.4%	4,681	6,420	72.9%
	Possession and/or use of ecstasy	445	617	72.1%	868	1,089	79.7%
	Possession and/or use of other drugs	2,986	6,309	47.3%	2,893	6,263	46.2%
	Dealing, trafficking in cocaine	828	1,050	78.9%	1,104	1,325	83.3%
	Dealing, trafficking in narcotics	421	492	85.6%	245	290	84.5%
	Dealing, trafficking in cannabis	622	788	78.9%	440	546	80.6%
	Dealing, trafficking in amphetamines	2,483	3,036	81.8%	1,446	1,816	79.6%
	Dealing, trafficking in ecstasy	121	160	75.6%	145	191	75.9%
	Dealing, trafficking in other drugs	326	490	66.5%	255	404	63.1%
	Cultivating cannabis	683	1,036	65.9%	507	734	69.1%
	Manufacture drug	29	50	58.0%	29	60	48.3%
Importing drugs	76	191	39.8%	63	151	41.7%	
Other drug offences	1,138	5,666	20.1%	1,093	5,638	19.4%	
Prohibited and regulated weapons offences		6,006	14,187	42.3%	5,845	13,536	43.2%
Disorderly conduct	Trespass	3,598	9,268	38.8%	4,586	11,085	41.4%
	Offensive conduct	2,409	3,626	66.4%	2,367	3,560	66.5%
	Offensive language	1,416	1,795	78.9%	1,193	1,529	78.0%
	Criminal intent	1,931	2,437	79.2%	2,154	2,696	79.9%
Betting and gaming offences		15	71	21.1%	25	118	21.2%
Liquor offences		2,866	9,086	31.5%	3,740	9,807	38.1%
Pornography offences		242	905	26.7%	248	1,013	24.5%
Prostitution offences		0	19	0.0%	5	21	23.8%
Against justice procedures	Escape custody	135	158	85.4%	131	156	84.0%
	Breach Apprehended Violence Order	17,777	21,695	81.9%	18,774	23,052	81.4%
	Breach bail conditions	17,773	51,458	34.5%	18,578	53,335	34.8%
	Fail to appear	12	891	1.3%	12	867	1.4%
	Resist or hinder officer	4,784	5,703	83.9%	4,649	5,552	83.7%
	Other offences against justice procedures	1,208	2,014	60.0%	1,454	2,538	57.3%
Transport regulatory offences		60,294	70,063	86.1%	51,568	68,254	75.6%
Other offences		23,874	91,079	26.2%	7,783	16,101	48.3%

**Figure 3.8: Percentage of recorded criminal incidents for major offences by whether legal proceedings commenced within 90 days of reporting**

Over the two years to March 2023



# SECTION 4: POLICING ACTIVITY

**Table 4.1: Selected policing activities**  
Over the five years to June 2023

	Number of selected policing activities					2 Year Trend		5 Year Trend	
	12 months to June 2019	12 months to June 2020	12 months to June 2021	12 months to June 2022	12 months to June 2023	Number change	Annual percentage change	Number change	Annual average percentage change
<b>Bail compliance checks</b>	100,984	106,336	117,947	138,687	131,827	-6,860	Stable	30,843	6.9%
<b>ADVO compliance checks events</b>	40,206	52,713	63,368	113,527	109,924	-3,603	Stable	69,718	28.6%
<b>Move-on directions</b>	105,944	114,568	99,146	92,591	82,705	-9,886	-10.7%	-23,239	-6.0%
<b>Searches</b>	284,872	294,310	249,069	226,868	199,144	-27,724	-12.2%	-85,728	-8.6%
Vehicle searches	44,980	47,688	44,260	41,221	30,964	-10,257	-24.9%	-14,016	-8.9%
Person searches	234,479	242,871	202,327	183,551	165,752	-17,799	-9.7%	-68,727	-8.3%
Strip searches	5,413	3,751	2,482	2,096	2,428	332	Stable	-2,985	-18.2%
<b>Convey/detain person to mental health facility</b>	15,677	17,158	18,743	19,748	20,705	957	4.8%	5,028	7.2%



## NSW Recorded Crime Statistics, June Quarter 2023

**Table 4.2: Non-criminal domestic episodes by Statistical Area (SA4)**

Over the five years to June 2023

Statistical Area	Number of activities					Trend and average annual percentage change	
	12 months to June 2019	12 months to June 2020	12 months to June 2021	12 months to June 2022	12 months to June 2023	2 Year Trend	5 Year Trend
						Percentage change	Annual average percentage change
<b>Greater Sydney</b>	46,212	49,233	46,989	44,285	42,388	Stable	-2.1%
Baulkham Hills and Hawkesbury	1,102	1,195	1,174	1,128	1,084	Stable	Stable
Blacktown	5,212	5,467	5,305	5,222	4,997	Stable	Stable
Central Coast	4,478	4,905	4,849	4,513	4,318	Stable	Stable
City and Inner South	3,471	3,488	3,564	3,390	3,263	Stable	Stable
Eastern Suburbs	1,802	2,042	1,955	2,004	1,723	Stable	Stable
Inner South West	5,211	5,422	4,979	4,699	4,439	Stable	-3.9%
Inner West	2,002	2,173	1,966	1,888	1,884	Stable	-1.5%
North Sydney and Hornsby	1,565	1,805	1,800	1,771	1,682	Stable	Stable
Northern Beaches	1,578	1,708	1,481	1,348	1,310	Stable	-4.5%
Outer South West	3,529	3,708	3,536	3,217	3,119	Stable	-3.0%
Outer West and Blue Mountains	4,701	4,870	4,809	4,118	4,300	Stable	-2.2%
Parramatta	4,166	4,582	4,189	4,206	3,948	Stable	Stable
Ryde	1,056	1,209	1,113	1,091	1,034	Stable	Stable
South West	4,597	4,790	4,496	4,156	3,874	Stable	-4.2%
Sutherland	1,742	1,869	1,773	1,534	1,413	Stable	-5.1%
<b>Regional NSW</b>	36,634	39,473	39,934	38,099	38,567	Stable	Stable
Capital Region	2,371	2,666	2,934	2,695	2,661	Stable	Stable
Central West	3,044	3,314	3,290	3,157	3,205	Stable	Stable
Coffs Harbour - Grafton	1,928	1,969	1,985	1,942	2,195	13.0%	3.3%
Far West and Orana	3,648	3,597	3,902	3,766	3,749	Stable	Stable
Hunter Valley excluding Newcastle	2,758	2,933	3,191	3,112	3,351	Stable	5.0%
Illawarra	3,582	3,800	3,642	3,607	3,632	Stable	Stable
Mid North Coast	3,130	3,362	3,350	3,013	2,881	Stable	-2.1%
Murray	1,772	2,030	2,058	1,878	1,978	Stable	Stable
New England and North West	3,753	3,900	3,756	3,846	3,537	Stable	Stable
Newcastle and Lake Macquarie	3,471	4,192	4,342	4,150	4,148	Stable	4.6%
Richmond - Tweed	2,730	2,854	2,910	2,750	2,898	5.4%	Stable
Riverina	2,714	2,960	2,801	2,386	2,408	Stable	-2.9%
Southern Highlands and Shoalhaven	1,733	1,896	1,773	1,797	1,924	Stable	Stable
<b>NSW</b>	<b>82,864</b>	<b>88,716</b>	<b>86,930</b>	<b>82,400</b>	<b>80,975</b>	<b>Stable</b>	<b>Stable</b>

**Table 4.3: Ratio to NSW rate of non-criminal domestic episodes per 100,000 population by Statistical Area (SA4)**  
Over the five years to June 2023

Statistical Area	12 months to June 2019	12 months to June 2020	12 months to June 2021	12 months to June 2022	12 months to June 2023
<b>Greater Sydney</b>	0.8	0.8	0.8	0.8	0.8
Baulkham Hills and Hawkesbury	0.4	0.4	0.4	0.4	0.4
Blacktown	1.3	1.3	1.2	1.3	1.2
Central Coast	1.3	1.3	1.3	1.3	1.2
City and Inner South	0.9	0.9	1.0	1.0	1.0
Eastern Suburbs	0.6	0.7	0.7	0.7	0.7
Inner South West	0.8	0.8	0.8	0.8	0.7
Inner West	0.6	0.6	0.6	0.6	0.6
North Sydney and Hornsby	0.3	0.4	0.4	0.4	0.4
Northern Beaches	0.6	0.6	0.5	0.5	0.5
Outer South West	1.2	1.1	1.1	1.1	1.0
Outer West and Blue Mountains	1.4	1.3	1.3	1.2	1.3
Parramatta	0.8	0.8	0.8	0.8	0.8
Ryde	0.5	0.5	0.5	0.5	0.5
South West	1.0	0.9	0.9	0.9	0.8
Sutherland	0.7	0.7	0.7	0.7	0.6
<b>Regional NSW</b>	1.3	1.3	1.3	1.3	1.4
Capital Region	1.0	1.0	1.1	1.1	1.1
Central West	1.4	1.4	1.4	1.5	1.5
Coffs Harbour - Grafton	1.3	1.2	1.3	1.3	1.5
Far West and Orana	3.0	2.8	3.1	3.2	3.2
Hunter Valley excluding Newcastle	1.0	0.9	1.0	1.0	1.1
Illawarra	1.1	1.1	1.1	1.1	1.2
Mid North Coast	1.4	1.4	1.4	1.3	1.3
Murray	1.4	1.5	1.6	1.5	1.6
New England and North West	2.0	1.9	1.9	2.0	1.9
Newcastle and Lake Macquarie	0.9	1.0	1.0	1.0	1.1
Richmond - Tweed	1.1	1.0	1.1	1.1	1.1
Riverina	1.6	1.7	1.6	1.4	1.5
Southern Highlands and Shoalhaven	1.1	1.1	1.0	1.1	1.2
<b>NSW</b>	<b>1.0</b>	<b>1.0</b>	<b>1.0</b>	<b>1.0</b>	<b>1.0</b>

# APPENDIX 1

# REGIONAL

# COMPARISONS

Local Government Areas

## NSW Recorded Crime Statistics, June Quarter 2023

Appendix Table 1.1: Trends in recorded criminal incidents for major offences, NSW LGAs

Over the two years to June 2023

NSW LGA	Murder	Domestic violence related assault	Non-domestic violence related assault	Sexual assault	Sexual touching, sexual act and other sexual offences	Robbery	Break and enter dwelling	Break and enter non-dwelling	Motor vehicle theft	Steal from motor vehicle	Steal from retail store	Other stealing offences	Malicious damage to property
Albury	ns	ns	82.8	ns	ns	ns	71.8	ns	ns	37.8	ns	ns	
Armidale Regional	ns	26.6	ns	ns	ns	61.3	ns	152.5	ns	ns	18.6	ns	
Ballina	ns	ns	ns	ns	ns	ns	ns	ns	ns	ns	-30.4	ns	
Balranald													
Bathurst Regional	ns	ns	ns	ns	ns	ns	ns	ns	ns	ns	ns	ns	
Bayside	ns	ns	ns	ns	ns	ns	ns	ns	ns	66.3	ns	12.6	
Bega Valley	ns	ns	ns	ns	ns	-46.2	ns	ns	ns	ns	ns	ns	
Bellingen	ns	ns	ns	ns	ns	ns	ns	ns	ns	ns	ns	ns	
Berrigan	63.6	ns	ns	ns	ns	ns	ns	ns	ns	ns	ns	ns	
Blacktown	ns	ns	ns	ns	ns	ns	ns	18.7	ns	44.0	8.9	ns	
Bland	ns	ns	ns	ns	ns	ns	ns	ns	ns	ns	ns	ns	
Blayney	ns	ns	ns	ns	ns	ns	ns	ns	ns	ns	ns	ns	
Blue Mountains	ns	41.5	ns	ns	ns	ns	57.1	ns	ns	90.1	ns	ns	
Bogan	ns	ns	ns	ns	ns	ns	88.5	ns	ns	ns	ns	ns	
Bourke	34.9	ns	ns	ns	ns	ns	ns	ns	ns	86.4	ns	ns	
Brewarrina	ns	ns	ns	ns	ns	ns	ns	ns	ns	ns	ns	ns	
Broken Hill	51.4	ns	ns	ns	ns	ns	ns	ns	ns	111.4	ns	ns	
Burwood	ns	30.3	ns	ns	ns	ns	ns	ns	ns	61.1	ns	25.5	
Byron	ns	ns	ns	ns	ns	ns	ns	ns	ns	ns	ns	-17.7	
Cabonne	ns	ns	ns	ns	ns	ns	ns	ns	ns	ns	ns	ns	
Camden	ns	41.2	ns	ns	ns	ns	ns	ns	ns	ns	ns	14.6	
Campbelltown	ns	25.4	ns	ns	ns	ns	ns	22.9	ns	77.5	ns	ns	
Canada Bay	ns	33.1	ns	ns	ns	ns	ns	ns	ns	ns	ns	ns	
Canterbury-Bankstown	ns	24.6	ns	ns	ns	29.0	ns	26.9	ns	49.0	13.6	10.4	
Carrathool													
Central Coast	ns	ns	ns	ns	ns	9.1	ns	24.0	ns	34.4	24.0	ns	
Central Darling	ns	ns	ns	ns	ns	ns	ns	ns	ns	ns	ns	ns	
Cessnock	34.3	ns	ns	ns	ns	53.4	112.0	19.1	ns	ns	ns	ns	
Clarence Valley	43.8	ns	ns	ns	ns	ns	ns	18.8	ns	ns	ns	ns	
Cobar	ns	ns	ns	ns	ns	ns	ns	ns	ns	ns	ns	ns	
Coffs Harbour	28.5	ns	ns	ns	ns	ns	-35.4	ns	ns	77.6	ns	ns	
Coolamon													
Coonamble	ns	ns	ns	ns	ns	ns	ns	ns	42.3	ns	ns	-22.1	
Cootamundra-Gundagai	ns	ns	ns	ns	ns	ns	ns	ns	ns	ns	ns	ns	
Cowra	ns	ns	ns	ns	ns	ns	ns	ns	ns	ns	ns	ns	
Cumberland	ns	ns	ns	ns	ns	15.2	88.5	ns	13.1	64.3	17.7	5.2	
Dubbo Regional	ns	27.1	ns	ns	ns	ns	70.3	ns	ns	20.6	13.1	28.5	
Dungog	ns	ns	ns	ns	ns	ns	ns	ns	ns	ns	ns	ns	
Edward River	ns	ns	ns	ns	ns	ns	ns	ns	ns	ns	ns	ns	
Eurobodalla	ns	ns	ns	ns	ns	ns	ns	ns	ns	ns	ns	ns	
Fairfield	ns	ns	57.3	ns	ns	ns	ns	42.3	24.2	99.6	ns	ns	
Federation	ns	ns	ns	ns	ns	ns	ns	ns	ns	ns	ns	ns	
Forbes	ns	ns	ns	ns	ns	ns	ns	ns	284.1	ns	ns	ns	

NSW Recorded Crime Statistics, June Quarter 2023

NSW LGA	Murder	Domestic violence related assault	Non-domestic violence related assault	Sexual assault	Sexual touching, sexual act and other sexual offences	Robbery	Break and enter dwelling	Break and enter non-dwelling	Motor vehicle theft	Steal from motor vehicle	Steal from retail store	Other stealing offences	Malicious damage to property
Georges River	ns	ns	ns	ns	ns	ns	ns	ns	ns	-14.7	214.0	ns	19.1
Gilgandra	ns	ns	ns	ns	ns	ns	ns	ns	ns	ns	ns	ns	ns
Glen Innes Severn	ns	67.5	ns	ns	ns	ns	-38.9	ns	ns	ns	ns	ns	ns
Goulburn Mulwaree	45.5	ns	ns	ns	ns	ns	ns	ns	ns	ns	ns	ns	ns
Greater Hume Shire	ns	ns	ns	ns	ns	ns	ns	ns	ns	27.3	ns	ns	ns
Griffith	ns	ns	ns	ns	ns	ns	ns	ns	ns	ns	ns	ns	ns
Gunnedah	ns	ns	ns	ns	ns	ns	ns	ns	ns	ns	ns	ns	ns
Gwydir	ns	ns	ns	ns	ns	ns	ns	ns	ns	ns	ns	ns	ns
Hawkesbury	ns	ns	ns	ns	ns	ns	ns	ns	ns	48.0	ns	ns	ns
Hay	ns	ns	ns	ns	ns	ns	ns	ns	ns	ns	ns	ns	ns
Hilltops	ns	ns	ns	ns	ns	ns	ns	ns	ns	ns	ns	ns	ns
Hornsby	ns	ns	ns	ns	ns	ns	54.5	60.0	61.5	71.1	ns	ns	ns
Hunters Hill	ns	ns	ns	ns	ns	ns	ns	ns	ns	ns	ns	ns	ns
Inner West	ns	17.5	30.8	ns	ns	ns	42.5	34.8	ns	35.2	ns	ns	ns
Inverell	ns	ns	ns	ns	ns	ns	ns	-36.2	79.5	ns	ns	ns	ns
Junee	ns	ns	ns	ns	ns	ns	ns	ns	ns	ns	ns	ns	ns
Kempsey	42.2	ns	-42.3	-34.0	ns	ns	87.2	54.4	ns	82.6	ns	ns	ns
Kiama	ns	ns	ns	ns	ns	ns	ns	ns	ns	ns	ns	ns	ns
Ku-ring-gai	ns	ns	ns	ns	ns	ns	ns	ns	ns	ns	ns	ns	ns
Kyogle	ns	ns	ns	ns	ns	ns	ns	ns	ns	ns	ns	ns	ns
Lachlan	ns	ns	ns	ns	ns	ns	ns	-40.3	ns	ns	ns	ns	ns
Lake Macquarie	ns	ns	ns	ns	ns	ns	16.5	-27.6	28.1	ns	28.5	ns	ns
Lane Cove	ns	ns	ns	ns	ns	ns	ns	ns	ns	ns	ns	ns	ns
Leeton	ns	ns	ns	ns	ns	ns	68.3	ns	ns	ns	ns	ns	ns
Lismore	ns	ns	ns	ns	ns	ns	ns	ns	ns	-33.3	167.3	ns	-26.2
Lithgow	ns	ns	ns	ns	ns	ns	121.1	ns	ns	69.5	ns	ns	ns
Liverpool	ns	35.1	ns	ns	ns	ns	11.3	ns	43.8	ns	25.9	20.2	ns
Liverpool Plains	ns	ns	ns	ns	ns	ns	ns	ns	ns	ns	ns	ns	ns
Lockhart	ns	ns	ns	ns	ns	ns	ns	ns	ns	ns	ns	ns	ns
Lord Howe Island	ns	ns	ns	ns	ns	ns	ns	ns	ns	ns	ns	ns	ns
Maitland	16.9	ns	ns	ns	ns	ns	ns	ns	35.0	ns	ns	-11.8	ns
Mid-Coast	ns	ns	ns	ns	ns	ns	ns	-43.6	53.3	ns	34.3	-18.4	ns
Mid-Western Regional	ns	ns	-31.9	ns	ns	ns	ns	ns	ns	ns	ns	ns	ns
Moree Plains	ns	ns	ns	ns	ns	ns	ns	ns	73.9	ns	73.3	ns	-19.3
Mosman	33.3	ns	ns	ns	ns	ns	ns	ns	ns	ns	ns	ns	ns
Murray River	ns	ns	ns	ns	ns	ns	ns	ns	ns	ns	ns	ns	-28.9
Murrumbidgee	ns	ns	ns	ns	ns	ns	ns	ns	ns	ns	ns	ns	ns
Muswellbrook	32.8	ns	ns	ns	ns	ns	ns	ns	ns	ns	ns	ns	ns
Nambucca Valley	ns	ns	ns	ns	ns	ns	ns	ns	123.3	ns	ns	ns	ns
Narrabri	ns	ns	ns	ns	ns	ns	58.0	ns	ns	ns	ns	ns	ns
Narrandera	ns	ns	ns	ns	ns	ns	ns	ns	ns	ns	ns	ns	ns
Narromine	ns	ns	ns	ns	ns	ns	ns	ns	ns	ns	ns	ns	ns
Newcastle	ns	ns	29.7	ns	ns	ns	19.3	ns	18.6	12.3	ns	ns	ns
North Sydney	ns	ns	ns	ns	ns	ns	ns	ns	ns	ns	51.2	ns	ns
Northern Beaches	ns	ns	ns	ns	ns	ns	ns	ns	ns	ns	30.9	ns	ns

NSW Recorded Crime Statistics, June Quarter 2023

NSW LGA	Murder	Domestic violence related assault	Non-domestic violence related assault	Sexual assault	Sexual touching, sexual act and other sexual offences	Robbery	Break and enter dwelling	Break and enter non-dwelling	Motor vehicle theft	Steal from motor vehicle	Steal from retail store	Other stealing offences	Malicious damage to property
Oberon												ns	
Orange		ns	ns	ns	ns		ns	ns	ns	ns	25.2	ns	ns
Parkes		ns	41.0		ns		59.0		ns	ns	ns	ns	ns
Parramatta		ns	27.7	ns	ns	35.1	ns	ns	57.3	ns	88.8	8.3	ns
Penrith		ns	16.4	ns	ns	ns	ns	ns	25.2	24.7	33.0	15.6	ns
Port Macquarie-Hastings		ns	ns	ns	ns		ns	ns	-23.0	ns	ns	ns	ns
Port Stephens		ns	33.7	ns	-33.7		25.0	33.7	27.0	ns	90.9	ns	33.2
Queanbeyan-Palerang Regional		ns	ns	ns	ns		ns	ns	ns	-45.8	ns	ns	ns
Randwick		ns	19.3	ns	ns		31.9	ns	45.2	ns	71.1	29.3	ns
Richmond Valley		ns	ns	ns	ns		ns	ns	ns	ns	92.9	ns	-18.6
Ryde		ns	32.1	52.5	ns		31.3	ns	63.5	51.4	52.6	ns	ns
Shellharbour		ns	ns	ns	ns		ns	ns	ns	ns	50.5	ns	ns
Shoalhaven		ns	ns	ns	ns		ns	ns	ns	ns	66.5	ns	26.9
Singleton		ns	ns	ns			ns	ns	ns	ns	ns	ns	-25.9
Snowy Monaro Regional		ns	ns	-35.5			ns			ns		ns	ns
Snowy Valleys		ns	ns	ns			ns	ns		ns		ns	ns
Strathfield		ns	25.3	ns			ns	ns	94.3	ns	ns	34.2	ns
Sutherland Shire		ns	ns	ns	ns	ns	ns	ns	ns	ns	46.8	ns	ns
Sydney		ns	26.7	37.1	ns	63.0	31.8	17.9	49.7	23.2	56.2	29.9	ns
Tamworth Regional		ns	ns	ns	ns	ns	ns	36.4	ns	ns	89.5	22.0	ns
Temora												ns	ns
Tenterfield		ns	ns				ns					ns	ns
The Hills Shire		ns	ns	ns	ns		ns	124.5	91.4	ns	55.9	41.0	ns
Tweed		ns	ns	ns	ns		ns	ns	47.8	ns	104.4	ns	ns
Unincorporated Far West													
Upper Hunter Shire		ns	ns				ns			ns		ns	-34.8
Upper Lachlan Shire												ns	ns
Uralla		ns											ns
Wagga Wagga		ns	ns	ns	ns		ns	75.0	ns	ns	ns	ns	ns
Walcha		ns											
Walgett		66.4	ns				ns	ns	ns	ns		ns	ns
Warren		ns					ns			ns		ns	ns
Warrumbungle Shire		ns	75.0				ns	ns		ns		21.4	ns
Waverley		ns	ns	ns	ns		ns	ns	ns	ns	101.7	ns	ns
Weddin													
Wentworth		ns	ns					ns		ns		ns	ns
Willoughby		ns	ns	ns	ns		ns	ns	ns	ns	54.7	ns	ns
Wingecarribee		ns	ns	ns	ns		ns			ns	ns	ns	ns
Wollondilly		ns	ns	ns	ns		ns		ns	ns		ns	ns
Wollongong		ns	19.6	ns	ns	ns	ns	ns	ns	ns	43.0	16.1	ns
Woollahra		ns	ns	ns	ns		ns		ns	ns	ns	ns	ns
Yass Valley		ns	ns							ns		ns	ns
<b>NSW</b>	<b>ns</b>	<b>8.7</b>	<b>16.2</b>	<b>ns</b>	<b>ns</b>	<b>26.6</b>	<b>10.0</b>	<b>14.3</b>	<b>23.0</b>	<b>6.7</b>	<b>47.5</b>	<b>8.0</b>	<b>ns</b>

## NSW Recorded Crime Statistics, June Quarter 2023

Appendix Table 1.2: Ratio to NSW rate of recorded criminal incidents per 100,000 population for major offences, NSW LGAs

12 months to June 2023

NSW LGA	Murder	Domestic violence related assault	Non-domestic violence related assault	Sexual assault	Sexual touching, sexual act and other sexual	Robbery	Break and enter dwelling	Break and enter non-dwelling	Motor vehicle theft	Steal from motor vehicle	Steal from retail store	Other stealing offences	Malicious damage to property
Albury	5.6	1.7	1.8	2.0	1.3	1.3	1.8	2.6	1.8	3.3	1.5	1.7	2.1
Armidale Regional		1.6	2.0	2.2	2.2	1.4	3.9	2.1	2.1	2.5	1.4	1.8	2.3
Ballina	3.4	0.6	0.8	0.8	0.7	1.4	0.9	1.2	1.2	1.1	0.5	0.9	0.9
Balranald													
Bathurst Regional		1.8	1.4	1.4	1.7	1.2	1.7	1.2	1.2	1.1	1.0	1.1	1.5
Bayside	0.9	0.9	0.6	0.4	0.6	0.5	0.5	0.3	0.6	0.7	1.0	0.9	0.7
Bega Valley		0.6	0.6	0.6	1.1	0.5	0.2	0.8	0.4	0.3	0.4	0.8	0.9
Bellingen		1.1	1.0	1.6	0.9	0.3	1.2	2.1	0.8	0.9	0.2	1.2	1.4
Berrigan		1.5	0.8	1.0	0.9	0.5	0.9	1.8	1.1	0.6	0.1	0.5	1.2
Blacktown	0.4	1.2	1.0	0.8	1.0	1.8	0.9	0.6	1.0	1.2	1.2	1.0	1.0
Bland		1.6	1.3	0.8	0.8	0.8	1.1	3.5	1.2	0.8	0.1	1.0	1.5
Blayney		0.9	0.5	0.7	0.9		0.8	2.0	1.1	0.7	0.3	0.9	1.3
Blue Mountains		0.7	0.7	1.1	1.0	0.2	0.6	0.7	0.4	0.5	0.5	0.6	1.1
Bogan													
Bourke													
Brewarrina													
Broken Hill		4.3	2.3	1.6	2.2	0.5	3.4	3.1	2.1	1.5	1.7	1.8	3.0
Burwood		0.6	0.9	0.6	0.8	1.3	0.8	0.9	0.5	0.8	2.4	1.4	0.7
Byron		0.8	1.6	1.5	1.6	0.2	0.7	1.6	1.5	1.1	0.4	1.4	1.1
Cabonne	11.3	0.5	0.4	0.9	0.6		0.7	2.1	0.8	0.4	0.2	0.6	0.5
Camden		0.6	0.5	0.5	0.7	0.3	0.3	0.4	0.4	0.6	0.4	0.5	0.5
Campbelltown	1.8	1.3	1.1	1.2	1.1	1.1	0.8	0.6	0.9	0.9	1.5	0.8	1.0
Canada Bay		0.5	0.4	0.4	0.4	0.2	0.7	0.6	0.6	0.6	0.4	0.7	0.5
Canterbury-Bankstown	2.5	0.9	0.7	0.6	0.7	0.9	0.6	0.6	0.9	0.8	0.5	0.6	0.7
Carrathool													
Central Coast	1.8	1.2	1.1	1.2	1.2	0.8	0.7	0.7	0.9	0.9	0.9	0.8	1.1
Central Darling													
Cessnock	4.9	1.4	1.3	1.8	1.1	1.2	1.5	2.5	2.7	1.5	0.8	1.7	1.7
Clarence Valley	2.9	1.3	1.2	1.2	1.0	1.5	1.2	2.0	1.7	1.2	0.7	1.5	1.4
Cobar		1.7	1.6	1.8	1.9		2.2	4.4	3.7	1.7	0.4	2.3	2.7
Coffs Harbour		2.0	1.7	1.7	1.9	2.1	1.6	1.5	1.7	1.4	1.4	1.3	1.6
Coolamon		0.4	0.3	1.2	1.0		0.5	0.9	0.1	0.1	0.1	0.2	0.7
Coonamble		4.0	2.6	1.9	3.8		8.9	11.3	5.1	2.8	0.5	2.8	4.4
Cootamundra-Gundagai		1.5	1.1	1.2	1.5	0.4	0.8	1.1	0.8	0.5	0.1	0.9	1.0
Cowra		1.6	1.6	1.7	1.3	0.3	3.9	0.9	1.4	1.0	1.1	1.1	1.8
Cumberland	2.0	0.9	0.8	0.7	0.7	1.4	1.0	0.8	1.0	1.1	0.6	0.8	0.7
Dubbo Regional		2.5	2.3	1.4	1.8	2.4	4.4	5.7	3.5	3.1	2.0	2.0	2.9
Dungog		0.9	0.6	1.0	0.9		0.4	0.5	0.8	0.4	0.2	1.0	0.7
Edward River		2.0	1.7	1.3	2.0		1.6	1.7	0.7	1.1	0.5	1.6	2.1
Eurobodalla		1.4	1.3	1.2	1.2	0.3	1.3	1.6	1.2	1.0	1.3	1.0	1.4
Fairfield		1.0	0.6	0.7	0.8	1.2	0.5	0.4	0.8	0.8	0.8	0.6	0.6
Federation		0.8	0.8	0.7	1.0	0.3	0.5	1.3	0.7	0.8	0.2	1.2	0.8
Forbes		1.8	1.6	0.8	1.6	0.4	3.1	2.7	1.7	5.2	0.8	1.8	2.2
Georges River	1.0	0.7	0.5	0.5	0.5	0.5	0.5	0.3	0.5	0.4	1.0	0.5	0.6

NSW Recorded Crime Statistics, June Quarter 2023

NSW LGA	Murder	Domestic violence related assault	Non-domestic violence related assault	Sexual assault	Sexual touching, sexual act and other sexual	Robbery	Break and enter dwelling	Break and enter non-dwelling	Motor vehicle theft	Steal from motor vehicle	Steal from retail store	Other stealing offences	Malicious damage to property
Gilgandra		2.3	1.2	1.7	3.4	1.9	2.2	4.2	0.7	1.0	0.4	1.9	1.5
Glen Innes Severn		2	1.9	2.1	1.6	1.4	2.1	3.6	1.7	0.6	1.2	1.8	3.1
Goulburn Mulwaree		1.3	1.3	1.2	1.4	1.0	0.9	1.5	0.8	0.8	1.1	1.5	1.4
Greater Hume Shire		0.8	0.4	1.0	0.8		0.3	1.4	1.1	0.7	0.1	0.7	0.5
Griffith		2.0	1.1	1.6	1.8	1.5	1.8	2.1	1.3	1.5	1.5	1.1	1.9
Gunnedah		2.0	1.6	1.9	1.6	0.3	3.8	1.5	3.6	1.8	0.7	1.3	2.0
Gwydir		0.6	0.7	0.4	0.9		1.7	2.7	1.8	0.9	0.1	1.2	0.6
Hawkesbury		1.1	0.8	1.1	1.0	0.2	0.5	0.4	0.6	0.6	0.7	0.6	0.8
Hay													
Hilltops		1.5	1.3	1.4	1.6	0.4	0.9	0.7	0.6	0.6	0.3	0.8	1.2
Hornsby	2.0	0.3	0.3	0.4	0.5	0.4	0.3	0.4	0.3	0.4	0.6	0.3	0.4
Hunters Hill		0.3	0.2	0.5	0.6	0.6	1.0	0.9	0.6	0.8	0.1	0.6	0.4
Inner West		0.7	0.8	0.9	1.0	1.0	0.7	0.8	0.7	0.8	0.9	1.0	0.9
Inverell		2.8	2.1	1.6	1.4	1.6	2.7	2.1	2.7	1.4	0.8	1.1	2.4
Junee		0.5	0.9	1.8	1.9	1.3	0.9	0.2	0.6	0.2	0.0	0.8	0.5
Kempsey	5.1	2.6	1.7	1.0	1.3	2.7	4.7	2.9	3.8	1.9	1.6	2.1	2.2
Kiama		0.3	0.3	0.6	1.0	0.7	0.3	0.6	0.6	0.9	0.1	0.4	0.4
Ku-ring-gai		0.2	0.2	0.4	0.3	0.2	0.4	0.4	0.2	0.3	0.1	0.3	0.3
Kyogle		0.8	0.7	1.1	1.2		1.5	2.4	1.6	1.0	0.3	0.5	0.8
Lachlan		2.0	1.3	1.6	2.6	1.4	5.3	7.1	4.6	2.3	0.3	2.3	2.1
Lake Macquarie		0.9	0.8	1.1	0.9	0.8	0.9	0.8	1.3	1.0	1.0	0.8	1.0
Lane Cove		0.4	0.3	0.3	0.4	0.3	0.9	0.5	0.4	0.5	0.3	0.6	0.3
Leeton		1.9	1.5	3.1	2.2	0.7	2.5	2.0	1.7	1.0	0.5	1.4	2.1
Lismore		1.2	1.4	1.9	1.3	1.8	1.3	2.7	1.6	1.2	1.1	1.1	1.3
Lithgow		1.8	1.7	1.4	1.7	1.6	1.7	1.3	1.3	1.4	0.8	2.3	1.7
Liverpool	1.3	1.2	1.0	0.7	0.9	1.4	0.9	0.6	1.1	1.2	0.8	0.9	0.9
Liverpool Plains		2.0	1.0	2.1	1.2	1.6	1.1	2.0	1.2	0.9	0.1	0.8	1.5
Lockhart		0.5	0.5	0.3	0.7		1.4	2.1	1.5	0.6		0.7	1.4
Lord Howe Island													
Maitland		1.6	1.1	1.6	1.3	1.3	1.2	1.5	1.5	1.5	1.2	1.2	1.3
Mid-Coast	3.2	1.4	1.2	1.5	1.7	0.8	1.8	1.8	1.6	1.0	1.0	1.5	1.4
Mid-Western Regional		1.4	0.9	1.3	1.3	0.5	0.7	0.7	1.1	0.5	0.7	0.9	1.5
Moree Plains	12.0	4.6	3.8	2.4	1.5	6.4	8.2	6.1	7.2	3.5	4.5	3.1	4.7
Mosman		0.2	0.3	0.3	0.8	0.4	0.4	0.1	0.4	0.5	0.4	0.6	0.4
Murray River		0.7	0.5	0.7	0.9	0.3	1.3	3.8	1.8	0.8	0.1	1.6	0.7
Murrumbidgee		1.4	1.1	1.8	0.9	1.2	1.4	0.8	2.2	0.4	0.2	1.3	0.9
Muswellbrook		2.4	2.0	2.1	2.1	1.0	2.1	2.3	1.8	1.5	1.4	2.6	2.2
Nambucca Valley		2.1	1.6	1.1	1.7	0.4	1.6	2.3	2.0	1.4	1.0	1.2	1.8
Narrabri		1.8	1.4	1.4	1.1	1.0	4.2	1.5	2.3	2.1	0.8	1.5	1.6
Narrandera		2.6	1.4	2.8	1.6		2.3	4.8	0.7	0.9	1.1	1.5	2.6
Narromine		2.5	1.8	1.2	2.6		2.3	5.3	3.2	2.1	0.5	1.9	2.1
Newcastle	1.8	1.1	1.6	1.6	1.2	2.4	2.4	2.0	2.3	3.0	1.6	1.7	1.6
North Sydney		0.3	0.5	0.5	0.7	0.5	0.6	0.5	0.4	0.6	0.6	0.7	0.5
Northern Beaches		0.2	0.5	0.5	0.5	0.5	0.4	0.4	0.4	0.4	0.7	0.6	0.5
Oberon	28.0	0.6	0.4	1.0	2.0		0.8	0.2	0.8	0.2	0.5	0.9	0.5
Orange		1.9	1.7	1.8	1.4	2.3	3.2	1.5	2.3	2.3	1.5	1.0	2.2



NSW Recorded Crime Statistics, June Quarter 2023

NSW LGA	Murder	Domestic violence related assault	Non-domestic violence related assault	Sexual assault	Sexual touching, sexual act and other sexual	Robbery	Break and enter dwelling	Break and enter non-dwelling	Motor vehicle theft	Steal from motor vehicle	Steal from retail store	Other stealing offences	Malicious damage to property
Parkes	10.8	2.1	2.0	1.3	1.8	1.7	1.8	2.0	1.5	1.6	1.1	2.0	2.1
Parramatta		0.7	0.8	0.6	0.9	1.2	1.0	0.7	1.0	1.1	1.3	1.2	0.6
Penrith	2.1	1.2	1.2	1.0	1.1	1.4	1.1	1.0	1.2	1.4	1.3	1.0	1.2
Port Macquarie-Hastings		1.2	1.0	0.9	0.9	0.7	0.8	1.0	0.7	0.6	0.6	1.1	1.2
Port Stephens		1.2	1.2	1.2	1.0	0.8	0.8	1.6	1.0	0.9	0.8	0.9	1.6
Queanbeyan-Palerang Regional		0.9	0.8	0.8	0.9	0.5	0.8	1.0	0.9	0.8	0.5	0.8	0.9
Randwick		0.7	1.0	0.8	0.8	0.7	0.8	0.4	0.7	0.8	0.6	1.1	0.7
Richmond Valley		1.6	1.5	2.3	1.7	1.4	2.6	2.8	2.5	1.5	0.7	1.4	1.8
Ryde		0.4	0.5	0.5	0.5	0.5	0.7	0.4	0.5	0.6	0.7	0.7	0.4
Shellharbour	4.1	0.8	0.7	1.0	1.3	0.5	0.6	0.5	0.7	0.9	1.2	0.7	1.0
Shoalhaven	1.4	1.0	1.1	1.2	1.0	0.7	1.0	1.4	0.9	0.8	1.0	0.8	1.5
Singleton		1.0	1.0	1.2	0.8		0.9	2.6	1.2	1.0	0.5	1.0	1.3
Snowy Monaro Regional		0.7	1.0	1.0	0.7	0.2	0.4	1.3	0.2	0.3	0.1	0.9	1.0
Snowy Valleys		1.2	1.3	2.6	0.9	0.3	0.7	2.3	0.5	0.5	0.3	1.0	1.1
Strathfield		0.8	0.6	0.6	0.8	0.7	1.1	0.7	0.9	1.2	1.0	1.2	0.5
Sutherland Shire		0.6	0.5	0.6	0.6	0.5	0.4	0.2	0.3	0.4	0.5	0.4	0.6
Sydney	0.7	1.3	3.2	1.8	2.2	3.2	1.0	1.6	0.8	1.0	3.9	4.1	1.6
Tamworth Regional	2.4	1.6	1.5	1.6	1.3	1.8	3.5	1.9	1.9	1.8	1.4	1.3	2.1
Temora		1.2	0.9	1.6	0.6	1.4	1.3	2.7	0.5	0.7	0.7	1.2	1.1
Tenterfield		1.6	1.3	1.9	1.5	0.6	1.3	1.3	0.6	0.7	0.6	1.2	1.9
The Hills Shire		0.4	0.3	0.4	0.5	0.5	0.5	0.6	0.4	0.4	0.6	0.6	0.5
Tweed	1.6	0.9	0.9	0.7	0.9	1.1	1.0	1.2	1.5	1.0	0.8	1.0	1.0
Unincorporated Far West													
Upper Hunter Shire		1.0	0.8	1.0	1.3	0.3	0.7	1.4	0.7	0.6	0.3	0.9	0.7
Upper Lachlan Shire		0.6	0.5	0.7	0.4		0.4	0.5	0.6	0.3		0.8	0.6
Uralla		0.9	0.8	0.9	0.4	0.7	0.7	1.3	0.9	0.4	0.1	0.7	0.8
Wagga Wagga	2.3	1.8	1.5	1.5	1.3	0.6	2.5	1.7	1.5	2.1	1.6	1.3	1.9
Walcha		1.6	2.0	4.6	3.4		0.8	1.7	0.2	0.4	0.1	0.7	1.0
Walgett		8.3	3.4	3.2	2.6	0.7	2.2	4.7	3.0	2.6	1.1	2.1	3.8
Warren													
Warrumbungle Shire		2.3	1.7	0.9	1.1		2.2	3.5	0.9	1.2	0.9	2.0	1.6
Waverley	4.5	0.6	1.1	0.8	1.1	0.4	0.5	0.4	0.9	0.4	3.8	1.2	0.7
Weddin		0.2	0.5	0.6	0.9		0.2	0.8	0.2	0.4	0.4	0.5	0.5
Wentworth		2.4	1.3	0.3	1.4		1.5	6.5	2.1	1.0	0.4	1.1	2.7
Willoughby		0.3	0.5	0.4	0.9	0.4	0.5	0.6	0.3	0.5	1.9	0.7	0.4
Wingecarribee		0.6	0.5	1.1	1.1	0.2	0.3	0.6	0.5	0.3	0.2	0.5	0.7
Wollondilly		0.6	0.4	0.6	0.7	0.5	0.4	0.2	0.6	0.4	0.2	0.4	0.6
Wollongong	1.5	0.7	1.0	1.1	0.8	1.1	1.0	1.0	1.0	1.6	1.5	1.0	1.0
Woollahra		0.6	0.7	0.6	0.8	0.2	0.6	0.3	0.6	0.5	0.4	0.8	0.5
Yass Valley		0.7	0.5	0.9	0.7		0.3	0.9	1.1	0.4	0.1	0.4	0.5
<b>NSW</b>	<b>1.0</b>	<b>1.0</b>	<b>1.0</b>	<b>1.0</b>	<b>1.0</b>	<b>1.0</b>	<b>1.0</b>	<b>1.0</b>	<b>1.0</b>	<b>1.0</b>	<b>1.0</b>	<b>1.0</b>	<b>1.0</b>

## NSW Recorded Crime Statistics, June Quarter 2023

Appendix Table 1.3: Number of recorded criminal incidents for major offences, NSW LGAs

12 months to June 2023

NSW LGA	Murder	Domestic violence related assault	Non-domestic violence related assault	Sexual assault	Sexual touching, sexual act and other sexual offences	Robbery	Break and enter dwelling	Break and enter non-dwelling	Motor vehicle theft	Steal from motor vehicle	Steal from retail store	Other stealing offences	Malicious damage to property
Albury	2	397	408	106	63	17	240	146	160	635	270	432	700
Armidale Regional	0	200	238	60	57	10	271	60	101	254	128	242	411
Ballina	1	119	153	34	27	16	99	53	93	183	77	192	238
Balranald	0	10	8	3	2	1	4	1	9	4	0	4	8
Bathurst Regional	0	332	245	59	66	13	174	50	84	161	136	214	393
Bayside	1	702	443	71	95	23	190	59	178	406	532	721	786
Bega Valley	0	92	93	20	34	4	21	28	23	37	45	136	189
Bellingen	0	65	55	20	11	1	36	27	18	40	7	70	113
Berrigan	0	54	29	8	7	1	18	15	16	19	2	20	63
Blacktown	1	2,118	1,595	303	356	169	888	218	680	1,609	1,521	1,761	2,518
Bland	0	39	28	4	4	1	15	19	11	15	1	25	50
Blayney	0	28	16	5	6	0	15	15	14	17	6	29	60
Blue Mountains	0	236	225	80	72	4	103	55	50	127	135	206	522
Bogan	1	35	14	5	0	2	24	49	28	44	4	52	35
Bourke	0	147	68	13	10	3	77	60	31	40	41	79	135
Brewarrina	0	47	27	8	3	1	24	15	10	18	0	16	50
Broken Hill	0	324	165	26	34	2	141	54	59	93	93	146	319
Burwood	0	110	142	24	28	13	75	36	34	116	311	252	172
Byron	0	123	227	52	51	2	63	57	87	132	43	226	233
Cabonne	1	29	23	12	7	0	24	29	19	19	10	37	42
Camden	0	306	233	51	72	9	86	44	84	252	168	245	368
Campbelltown	2	998	755	204	173	45	320	112	274	533	829	639	1,107
Canada Bay	0	174	157	38	34	5	150	51	81	177	126	301	282
Canterbury-Bankstown	6	1,457	1,012	224	220	79	561	204	533	1,100	599	994	1,467
Carrathool	0	15	10	6	2	0	8	15	6	9	3	14	35
Central Coast	4	1,735	1,500	391	358	70	577	250	485	1,137	1,023	1,266	2,314
Central Darling	0	94	26	9	3	2	25	23	3	11	1	24	59
Cessnock	2	388	328	109	64	19	227	159	281	339	167	484	641
Clarence Valley	1	312	267	61	50	19	157	109	152	230	122	362	443
Cobar	0	29	26	7	7	0	21	18	25	24	5	42	67
Coffs Harbour	0	685	523	127	133	39	301	117	217	391	341	458	745
Coolamon	0	7	5	5	4	0	5	4	1	1	1	3	19
Coonamble	0	66	40	7	13	0	80	43	32	37	6	48	102
Cootamundra-Gundagai	0	75	51	13	15	1	22	12	15	21	5	44	65
Cowra	0	87	80	21	15	1	116	12	30	44	46	64	138
Cumberland	3	942	758	149	139	80	552	196	387	925	432	906	968
Dubbo Regional	0	590	511	75	87	32	575	315	313	593	345	508	970
Dungog	0	35	21	9	8	0	10	5	13	13	5	45	41
Edward River	0	71	59	10	15	0	32	14	10	33	14	61	108
Eurobodalla	0	248	212	46	43	3	123	64	79	139	162	182	332
Fairfield	0	916	538	129	149	61	240	90	279	591	545	566	793
Federation	0	44	41	8	11	1	15	17	14	35	9	67	61
Forbes	0	72	61	7	13	1	68	25	26	169	25	75	124
Georges River	1	460	293	71	71	18	171	49	121	232	493	327	511

## NSW Recorded Crime Statistics, June Quarter 2023

NSW LGA	Murder	Domestic violence related assault	Non-domestic violence related assault	Sexual assault	Sexual touching, sexual act and other sexual offences	Robbery	Break and enter dwelling	Break and enter non-dwelling	Motor vehicle theft	Steal from motor vehicle	Steal from retail store	Other stealing offences	Malicious damage to property
Gilgandra	0	42	20	7	13	2	22	18	5	15	5	37	39
Glen Innes Severn	0	75	67	18	13	3	44	32	25	19	35	72	165
Goulburn Mulwaree	0	179	172	36	41	8	66	48	43	84	116	214	266
Greater Hume Shire	0	38	19	10	8	0	9	15	19	28	5	37	33
Griffith	0	230	124	40	43	10	116	57	57	146	129	138	305
Gunnedah	0	112	83	23	19	1	118	19	77	81	27	77	157
Gwydir	0	12	14	2	4	0	20	13	14	15	2	26	18
Hawkesbury	0	312	212	68	62	4	86	27	64	145	140	180	337
Hay	0	21	20	4	5	0	19	12	6	5	3	16	22
Hilltops	0	122	102	25	28	2	41	13	19	40	20	71	135
Hornsby	2	225	193	54	61	13	102	56	63	219	295	237	349
Hunters Hill	0	16	10	7	7	2	32	12	13	36	4	34	35
Inner West	0	519	598	157	159	44	301	151	217	511	499	801	940
Inverell	0	212	149	27	23	7	113	37	79	87	44	91	263
Junee	0	14	24	11	11	2	13	1	6	5	1	24	21
Kempsey	1	347	213	30	35	20	342	88	193	200	157	290	400
Kiama	0	30	30	13	20	4	18	14	24	70	10	39	49
Ku-ring-gai	0	129	79	46	36	7	106	48	40	144	32	145	188
Kyogle	0	32	26	10	10	0	32	22	24	32	9	21	45
Lachlan	0	54	33	9	14	2	77	43	46	50	6	63	78
Lake Macquarie	0	811	681	218	180	42	444	178	469	780	680	762	1,242
Lane Cove	0	60	41	10	15	3	82	20	29	68	34	112	81
Leeton	0	94	67	34	22	2	69	23	31	38	19	74	144
Lismore	0	221	242	78	52	19	134	119	117	192	147	227	340
Lithgow	0	157	146	27	31	8	84	26	44	100	51	221	217
Liverpool	2	1,228	904	163	197	77	501	140	414	952	564	1,001	1,204
Liverpool Plains	0	65	31	15	8	3	20	15	15	23	3	26	67
Lockhart	0	7	7	1	2	0	11	7	8	7	0	10	28
Lord Howe Island	0	3	1	2	1	0	1	0	0	0	0	1	5
Maitland	0	637	416	137	107	29	260	136	220	467	353	501	728
Mid-Coast	2	583	461	136	144	19	417	176	256	341	290	647	812
Mid-Western Regional	0	155	96	32	29	3	44	19	44	41	57	103	234
Moree Plains	1	258	197	29	17	20	252	79	153	156	182	180	369
Mosman	0	28	33	7	19	3	30	3	17	52	35	79	62
Murray River	0	37	24	9	10	1	39	48	37	36	6	94	54
Murrumbidgee	0	21	15	6	3	1	12	3	13	5	2	21	20
Muswellbrook	0	166	131	32	30	4	82	37	49	88	72	195	221
Nambucca Valley	0	181	131	22	31	2	77	46	67	99	63	115	224
Narrabri	0	101	71	17	12	3	128	19	47	95	34	85	124
Narrandera	0	63	33	15	8	0	31	27	7	17	19	39	88
Narromine	0	68	46	7	15	0	35	34	34	47	10	56	83
Newcastle	2	824	1,055	262	179	97	957	344	631	1,749	827	1,273	1,652
North Sydney	0	81	136	30	41	9	101	35	44	137	130	212	216
Northern Beaches	0	254	484	128	120	32	238	96	172	401	610	715	786
Oberon	1	14	10	5	10	0	11	1	7	3	8	22	17

## NSW Recorded Crime Statistics, June Quarter 2023

NSW LGA	Murder	Domestic violence related assault	Non-domestic violence related assault	Sexual assault	Sexual touching, sexual act and other sexual offences	Robbery	Break and enter dwelling	Break and enter non-dwelling	Motor vehicle theft	Steal from motor vehicle	Steal from retail store	Other stealing offences	Malicious damage to property
Orange	0	361	297	73	56	24	328	66	167	349	204	203	577
Parkes	1	131	117	18	23	6	62	29	36	79	48	134	179
Parramatta	0	779	876	154	217	77	639	173	431	1,029	1,078	1,423	991
Penrith	3	1,094	1,085	198	215	74	590	207	422	1,094	910	1,006	1,554
Port Macquarie-Hastings	0	449	333	73	68	14	161	82	104	192	167	425	623
Port Stephens	0	397	361	83	65	14	140	123	127	247	189	315	714
Queanbeyan-Palerang Regional	0	236	206	50	53	7	119	62	96	179	105	222	360
Randwick	0	386	549	104	101	23	240	51	151	398	272	679	593
Richmond Valley	0	157	140	51	36	8	146	65	97	125	54	153	258
Ryde	0	208	243	61	52	15	218	50	103	271	299	411	343
Shellharbour	2	270	222	73	85	10	108	39	91	252	286	241	459
Shoalhaven	1	468	465	124	100	17	246	147	152	283	348	406	973
Singleton	0	105	98	28	18	0	50	63	50	82	42	112	186
Snowy Monaro Regional	0	63	85	20	13	1	22	28	7	26	7	86	124
Snowy Valleys	0	74	75	37	12	1	26	34	11	27	14	65	99
Strathfield	0	149	119	24	34	8	117	33	68	199	146	251	143
Sutherland Shire	0	627	447	121	131	27	201	52	130	307	370	468	832
Sydney	1	1,191	2,734	366	417	163	522	349	295	748	2,645	3,969	2,043
Tamworth Regional	1	441	378	98	76	28	521	120	195	390	271	377	796
Temora	0	31	22	9	3	2	19	16	5	14	13	33	39
Tenterfield	0	47	36	12	9	1	21	9	7	17	12	38	79
The Hills Shire	0	338	260	69	83	24	217	110	134	281	343	499	532
Tweed	1	380	364	60	79	25	223	118	232	345	231	431	586
Unincorporated Far West	0	3	3	5	5	0	0	4	0	4	7	13	4
Upper Hunter Shire	0	59	43	14	16	1	23	20	16	31	13	58	60
Upper Lachlan Shire	0	21	16	6	3	0	9	4	8	10	0	31	30
Uralla	0	24	19	5	2	1	10	8	9	9	1	20	27
Wagga Wagga	1	531	419	93	79	9	403	112	168	492	333	403	755
Walcha	0	21	24	13	9	0	6	5	1	4	1	10	19
Walgett	0	198	77	17	13	1	29	26	27	51	19	53	126
Warren	0	32	17	4	7	0	26	16	24	26	6	38	55
Warrumbungle Shire	0	92	63	8	9	0	47	32	13	40	26	85	88
Waverley	2	187	294	55	70	6	87	28	102	105	823	380	292
Weddin	0	3	7	2	3	0	2	3	1	5	5	8	10
Wentworth	0	78	40	2	9	0	27	48	25	27	9	36	121
Willoughby	0	111	148	30	63	8	93	48	41	134	461	242	201
Wingecarribee	0	135	109	56	49	2	38	33	41	53	40	112	231
Wollondilly	0	149	95	31	32	6	45	12	50	80	29	94	199
Wollongong	2	639	819	218	147	55	523	218	339	1,181	1,011	980	1,350
Woollahra	0	128	150	31	40	3	80	16	51	98	67	185	169
Yass Valley	0	53	35	14	11	0	11	15	30	23	4	34	52
In Custody	0	3	1,145	418	150	7	0	1	1	2	0	7	53
<b>NSW</b>	<b>52</b>	<b>34,700</b>	<b>32,391</b>	<b>7,637</b>	<b>7,190</b>	<b>1,944</b>	<b>19,076</b>	<b>8,026</b>	<b>13,183</b>	<b>28,140</b>	<b>25,478</b>	<b>36,705</b>	<b>48,585</b>

## NSW Recorded Crime Statistics, June Quarter 2023

Appendix Table 1.4: Number of recorded criminal incidents for major offences, NSW LGAs

12 months to June 2022

NSW LGA	Murder	Domestic violence related assault	Non-domestic violence related assault	Sexual assault	Sexual touching, sexual act and other sexual offences	Robbery	Break and enter dwelling	Break and enter non-dwelling	Motor vehicle theft	Steal from motor vehicle	Steal from retail store	Other stealing offences	Malicious damage to property
Albury	0	409	358	58	87	18	250	85	157	598	196	375	696
Armidale Regional	0	211	188	56	50	14	168	71	40	216	128	204	366
Ballina	1	145	145	34	37	9	89	38	67	206	77	276	273
Balranald	0	7	7	0	1	0	13	3	8	9	0	13	16
Bathurst Regional	1	286	236	60	71	16	151	54	74	222	131	235	458
Bayside	0	634	375	87	84	27	218	59	137	346	320	709	698
Bega Valley	0	121	96	24	28	1	39	27	20	56	49	110	176
Bellingen	0	28	52	23	27	0	21	20	22	36	11	59	131
Berrigan	0	33	27	12	9	1	20	34	9	13	8	46	94
Blacktown	6	1,935	1,393	314	369	144	804	213	573	1,444	1,056	1,617	2,557
Bland	0	27	28	3	9	0	10	8	12	19	3	28	32
Blayney	0	23	18	8	4	2	21	21	7	13	8	28	33
Blue Mountains	1	222	159	76	64	5	65	35	35	113	71	196	455
Bogan	0	23	11	1	3	0	11	26	11	5	5	33	58
Bourke	0	109	54	23	9	1	67	67	27	96	22	66	168
Brewarrina	0	64	32	5	2	1	14	9	2	4	2	19	52
Broken Hill	0	214	145	10	30	4	146	50	47	88	44	125	284
Burwood	0	101	109	19	26	12	92	35	34	101	193	197	137
Byron	0	114	221	38	34	4	42	40	66	102	50	181	283
Cabonne	0	46	23	14	10	0	33	11	22	20	5	39	59
Camden	0	328	165	43	64	7	65	36	70	221	130	212	321
Campbelltown	3	943	602	184	192	48	301	106	223	673	467	617	1,192
Canada Bay	1	147	118	33	41	10	111	41	80	191	94	276	229
Canterbury-Bankstown	5	1,292	812	185	194	71	435	161	420	970	402	875	1,329
Carrathool	0	19	11	6	2	0	7	23	13	5	0	14	27
Central Coast	5	1,622	1,398	381	358	62	529	238	391	1,169	761	1,021	2,269
Central Darling	0	102	21	5	8	0	9	25	6	5	0	21	47
Cessnock	0	289	290	88	82	9	148	75	236	327	127	477	562
Clarence Valley	0	217	234	50	59	7	185	97	128	227	90	405	404
Cobar	0	24	23	5	4	0	9	21	12	16	11	38	66
Coffs Harbour	0	533	489	121	105	22	238	181	217	434	192	449	715
Coolamon	0	10	4	6	4	0	6	5	6	1	0	18	16
Coonamble	0	69	50	10	7	3	68	19	11	26	10	57	131
Cootamundra-Gundagai	0	51	40	9	22	0	13	11	14	15	12	50	57
Cowra	0	101	67	11	29	5	131	38	48	53	43	91	141
Cumberland	6	853	660	131	126	58	479	104	347	818	263	770	920
Dubbo Regional	1	689	402	96	102	25	553	185	263	534	286	449	755
Dungog	0	34	20	11	14	0	11	4	11	16	2	53	51
Edward River	1	70	54	6	7	1	27	8	10	9	9	50	101
Eurobodalla	0	220	152	34	43	15	87	78	50	101	134	173	375
Fairfield	1	839	443	82	119	40	263	65	196	476	273	539	895
Federation	1	22	38	7	8	0	17	18	14	25	19	68	55
Forbes	0	62	62	14	9	2	69	21	35	44	22	76	151
Georges River	0	432	283	49	67	23	164	54	91	272	157	336	429
Gilgandra	0	32	26	11	11	1	20	11	8	11	7	22	56
Glen Innes Severn	0	59	40	23	16	0	72	32	14	38	28	86	126

## NSW Recorded Crime Statistics, June Quarter 2023

NSW LGA	Murder	Domestic violence related assault	Non-domestic violence related assault	Sexual assault	Sexual touching, sexual act and other sexual offences	Robbery	Break and enter dwelling	Break and enter non-dwelling	Motor vehicle theft	Steal from motor vehicle	Steal from retail store	Other stealing offences	Malicious damage to property
Goulburn Mulwaree	0	123	132	39	39	5	78	28	35	65	93	210	216
Greater Hume Shire	0	33	23	21	14	0	19	12	21	22	5	40	45
Griffith	0	177	120	36	41	8	111	84	89	130	97	154	268
Gunnedah	0	105	67	20	19	1	115	25	62	81	31	89	171
Gwydir	0	9	12	4	7	0	7	4	6	10	0	19	17
Hawkesbury	0	276	187	52	71	6	79	27	81	98	122	156	299
Hay	0	28	21	6	4	0	14	5	2	5	1	19	32
Hilltops	0	135	84	14	14	2	28	19	33	41	28	73	174
Hornsby	0	227	154	75	55	12	66	35	39	128	218	214	346
Hunters Hill	0	12	22	8	9	0	29	5	12	23	1	42	36
Inner West	5	450	509	120	146	33	281	106	161	475	369	814	849
Inverell	0	201	139	43	30	5	100	58	44	92	77	125	225
Junee	0	22	20	11	8	0	5	1	5	1	5	22	31
Kempsey	2	244	169	52	53	7	278	47	125	187	86	367	409
Kiama	0	28	25	12	11	2	31	18	18	82	4	54	76
Ku-ring-gai	0	116	58	46	34	6	138	35	47	142	30	140	202
Kyogle	1	33	30	9	3	0	18	20	15	13	6	36	44
Lachlan	0	50	54	5	6	4	60	72	44	26	6	54	105
Lake Macquarie	1	824	653	225	177	24	381	246	366	805	529	745	1,322
Lane Cove	0	55	35	15	10	1	54	13	21	63	30	109	80
Leeton	0	93	76	23	16	2	41	14	20	21	12	56	126
Lismore	0	234	304	73	63	15	171	102	144	288	55	258	461
Lithgow	0	146	112	35	26	3	38	15	20	59	52	167	185
Liverpool	0	1,029	669	154	185	48	450	118	288	786	448	833	1,144
Liverpool Plains	0	59	39	16	9	3	26	21	10	14	3	33	63
Lockhart	0	10	6	3	3	1	6	5	6	4	0	12	18
Lord Howe Island	0	0	1	0	0	0	0	0	0	0	0	3	4
Maitland	0	545	342	129	102	19	224	95	163	508	296	568	723
Mid-Coast	1	549	403	104	155	16	500	312	167	338	216	793	877
Mid-Western Regional	0	161	119	47	39	2	35	20	17	29	36	100	200
Moree Plains	0	282	182	29	22	7	238	64	88	168	105	187	457
Mosman	0	21	39	16	14	0	34	7	14	55	18	87	82
Murray River	0	33	24	19	10	0	17	24	27	27	6	64	76
Murrumbidgee	0	14	9	3	4	1	16	5	6	4	2	15	37
Muswellbrook	0	125	116	30	25	3	81	28	42	136	45	196	191
Nambucca Valley	0	181	102	24	36	8	82	40	30	85	39	111	259
Narrabri	0	120	60	13	10	0	81	19	45	62	15	85	130
Narrandera	0	42	25	9	11	3	32	19	9	22	21	29	66
Narromine	0	69	45	13	13	5	31	26	17	25	11	56	61
Newcastle	5	767	1,020	202	162	78	802	304	532	1,557	708	1,264	1,783
North Sydney	0	82	113	27	34	1	78	23	24	96	86	221	196
Northern Beaches	1	269	443	131	138	23	192	59	155	466	466	610	750
Oberon	2	15	11	10	10	0	8	9	5	9	0	31	30
Orange	0	332	286	80	66	19	289	97	143	331	163	291	594
Parkes	0	114	83	21	29	1	39	19	31	98	34	105	202
Parramatta	2	803	686	184	207	57	692	172	274	932	571	1,314	1,009
Penrith	0	1,113	932	229	240	62	553	194	337	877	684	870	1,580

NSW Recorded Crime Statistics, June Quarter 2023

NSW LGA	Murder	Domestic violence related assault	Non-domestic violence related assault	Sexual assault	Sexual touching, sexual act and other sexual offences	Robbery	Break and enter dwelling	Break and enter non-dwelling	Motor vehicle theft	Steal from motor vehicle	Steal from retail store	Other stealing offences	Malicious damage to property
Port Macquarie-Hastings	0	358	336	102	103	9	159	86	135	241	134	438	601
Port Stephens	1	343	270	96	98	10	112	92	100	203	99	314	536
Queanbeyan-Palerang Regional	0	176	168	51	44	6	117	66	118	330	74	265	334
Randwick	0	363	460	78	81	18	182	34	104	353	159	525	564
Richmond Valley	2	154	125	39	33	4	164	79	85	143	28	151	317
Ryde	0	215	184	40	47	14	166	75	63	179	196	369	339
Shellharbour	1	230	182	54	61	10	95	27	96	244	190	213	405
Shoalhaven	3	432	443	143	141	25	238	116	125	290	209	398	767
Singleton	0	102	80	40	33	2	75	69	69	144	49	141	251
Snowy Monaro Regional	0	62	49	31	16	0	25	18	13	27	6	77	122
Snowy Valleys	0	65	63	26	16	3	21	26	15	20	19	75	128
Strathfield	0	126	95	25	14	7	122	24	35	166	73	187	125
Sutherland Shire	0	685	411	126	109	24	202	65	99	339	252	485	819
Sydney	2	1,068	2,158	267	351	100	396	296	197	607	1,693	3,056	1,846
Tamworth Regional	0	400	377	85	83	21	561	88	218	481	143	309	785
Temora	0	10	17	8	5	0	14	15	13	13	8	30	35
Tenterfield	0	43	30	14	14	0	28	11	16	5	4	34	55
The Hills Shire	0	298	226	89	88	10	173	49	70	220	220	354	467
Tweed	0	390	324	68	66	19	178	66	157	332	113	398	569
Unincorporated Far West	0	1	6	8	10	0	7	0	2	9	2	9	5
Upper Hunter Shire	0	62	48	40	20	1	37	18	17	31	6	71	92
Upper Lachlan Shire	0	13	8	5	5	1	11	10	7	2	0	22	36
Uralla	0	26	13	4	5	0	8	8	9	5	3	14	37
Wagga Wagga	0	452	403	89	78	15	365	64	167	480	287	401	748
Walcha	0	21	8	5	0	0	6	8	0	3	3	6	30
Walgett	0	119	67	14	18	2	40	28	26	45	13	39	140
Warren	0	37	30	2	3	1	21	13	16	32	5	32	45
Warrumbungle Shire	0	60	36	22	16	1	37	21	15	31	19	70	76
Waverley	0	179	256	51	70	12	79	20	74	101	408	303	303
Weddin	0	13	4	1	0	0	6	3	2	5	2	14	26
Wentworth	0	75	44	9	9	0	18	29	18	21	4	50	99
Willoughby	0	111	113	31	48	10	106	36	37	136	298	228	210
Wingecarribee	0	115	97	58	54	3	28	11	19	47	24	101	243
Wollondilly	0	170	81	33	44	2	30	13	40	52	9	107	166
Wollongong	0	628	685	169	178	39	497	182	343	1,045	707	844	1,261
Woollahra	0	126	114	36	34	1	79	11	56	86	61	187	178
Yass Valley	1	35	26	11	7	1	4	9	18	24	5	36	68
In Custody	1	5	891	254	67	3	0	0	0	1	0	8	85
<b>NSW</b>	<b>64</b>	<b>31,935</b>	<b>27,870</b>	<b>7,127</b>	<b>7,096</b>	<b>1,535</b>	<b>17,346</b>	<b>7,020</b>	<b>10,718</b>	<b>26,363</b>	<b>17,273</b>	<b>34,001</b>	<b>47,610</b>

# APPENDIX 2

# EXPLANATORY NOTES



## Appendix 2.1: Explanatory Notes

### What are crime statistics?

BOCSAR's crime statistics consist of criminal incidents reported to, or detected by, police and recorded on the NSW Police Force's Computerised Operational Policing System (COPS). While this system is used for record-keeping for all police operations, not just for criminal matters, BOCSAR only reports on criminal incidents and selected policing activities. BOCSAR's crime statistics therefore do not capture crimes that are not recorded on COPS. The Australian Bureau of Statistics conducts regular crime and victim surveys which attempt to capture a snapshot of both reported and unreported crimes.

### How to interpret crime statistics

Recorded crime statistics for some offence categories do not accurately reflect the actual level of crime in the community. This is because the number of incidents recorded may be affected by extraneous factors which are not easily measured. In particular:

- > Public willingness to report crime - Many crimes which occur are not reported to police and will therefore not be recorded - for example, a large number of assaults, sexual assaults and robberies are not reported to police.
- > Shifts in policing policy - Recording of those offences which are detected by, rather than reported to police, are strongly affected by policing practices - examples of these are drug offences, drink driving offences, offensive behaviour and receiving stolen goods. Recorded rates for such offences do not accurately reflect actual rates.
- > High visitor populations compared to residential populations - Sydney Local Government Area has relatively high recorded crime rates because, compared with other regions, the resident population is small relative to the number of people in the area. In other words, the area has a high user population which is not reflected in the denominator of the rate calculation.
- > Areas with small residential populations - Recorded crime rates in Local Government Areas with small population sizes are not always a good indicator of offending. Crime rates in areas with populations under 3,000 may be unreliable and should be interpreted with caution.

### What offences are included?

BOCSAR's standard quarterly publications report on 13 major offence categories, which include serious personal violence and property offences. In addition to these offences, we also release data for 62 specific offence categories.

From the September Quarter 2021 report, the offence category previously labelled 'indecent sexual assault, act of indecency and other sexual offences' is labelled 'sexual touching, sexual act and other sexual offences'.

Commencing March 2020, the NSW Government issued public health orders under the NSW Public Health Act 2010 (NSW) to limit the spread of COVID-19. Police can issue a fine or court attendance notice for failure to comply with the orders. Breaches of these orders are counted as "other offences" in this report.

### What is being counted?

- > Incidents - When a crime is reported to, or detected by, the NSW Police they record it as a criminal event on COPS. The event date is the date that the crime was reported. Unless otherwise stated, the date BOCSAR attaches to a crime is the event date. One criminal event can contain multiple criminal incidents. BOCSAR's default counting unit for crime data is criminal incidents with the exception of murder and manslaughter. Criminal incidents are activities detected by or reported to police which involve the same offender(s) and victim(s); occur at the one location during one uninterrupted period of time; fall into one offence category and one incident type.  
For murder and manslaughter only, the counting units used are victims.

- > Alleged offenders - BOCSAR also reports on alleged offenders or 'Persons of Interest' (POIs) who have had a legal proceeding commenced against them by the NSW Police Force. Within the police recorded crime data POIs may not have been convicted in court, however they have been proceeded against in some way or another by the police. There could be quite some time between an event being recorded by police, an investigation being completed and an alleged offender (i.e. a POI) being charged. Consequently, POIs are counted in the time period they were proceeded against, rather than the time period the event /incident was reported to or recorded by police.
- > Legal proceedings against alleged offenders presented in Tables 3.1 and 3.2 include persons proceeded against to court and persons diverted from court (by way of criminal infringement notice, cannabis or other drug caution and diversions under the Young Offenders Act 1997, including Youth Justice Conference, Caution and Warning). Young people proceeded against by way of a Warning for Transport and regulatory offences have been excluded from table 3.2 as Warnings are not a diversion for these offences.
- > Young people proceeded against by way of a Warning under the Young Offenders Act 1997 for Transport and regulatory offences have been excluded from table 3.2 as Warnings are not a diversion for these offences.
- > Proceeded against to court (breach of bail) in Tables 3.1 and 3.2 includes persons with breach of bail as the only matter on the criminal event recorded by the NSW Police Force. Breaching bail is not a criminal offence by it can lead to being brought to court by police for the court to reconsider bail.
- > Infringement Notices (fines) are not included in this report but have been included in past reports as they are not a form of court diversion.

#### **What are crime trends and how are they calculated?**

In general, BOCSAR relies upon the Kendall Rank Order Correlation statistical test (or Kendall's tau-b) to determine whether a series is trending upwards, downwards or is stable ( $p < .05$ ). In some tables a stable trend is represented by 'ns' (not significant). The statistical test is applied to the monthly data over the specified period. Where a significant trend is found, the average annual percentage change over the time period is reported. If any of the 12-monthly totals in the series have a value of less than 20, a trend test is not conducted. When this occurs, the relevant cell will be left blank or contain 'n.c.' (not calculated). For murder and manslaughter incidents, the trend test is applied to the monthly number of recorded victims rather than criminal incidents.

#### **How is the ratio to NSW calculated?**

The ratio to NSW rate statistics are a comparison of a NSW regional rate per 100,000 population to the NSW rate per 100,000 population. A ratio of one indicates parity with the NSW rate. Ratios indicating double the NSW rate (or more) before rounding are highlighted in red, whilst ratios indicating half the NSW rate (or less) before rounding are highlighted in green. Ratios are not calculated for regions with a population of less than 3,000.

#### **How are 'young people' and 'adults' defined?**

The term 'young people' refers to persons aged 10-17 years at the time of the offence; 'adults' refers to persons aged 18 years and older at the time of the offence.

#### **Regional Statistics**

Statistics are provided on the number of criminal incidents (victims for murder) recorded for each of the Statistical Areas Level 4 (SA4s) of NSW as defined by the Australian Bureau of Statistics (ABS). Recorded criminal incidents which occurred in correctional, detention or remand centres, however, are not counted in the SA in which the incident occurred. Note that LGA boundaries change from time to time. A criminal incident is counted within a particular region when the location of the offence falls within that region.

**What is included in 'selected policing activities'?**

- > Bail compliance checks - checks conducted by police to assess if bail conditions are being complied with.
- > ADVO compliance checks - checks conducted by police to assess if ADVO conditions are being complied. These checks can also include checking on the person in need of protection and taking the necessary action if a breach is detected.
- > Move on directions - a 'move on direction' is a direction given to a person by a police officer, under section 198 of the Law Enforcement (Powers and Responsibilities) Act 2002 (NSW), to leave a public place and not return for a specified period.
- > Searches - If the police have reasonable grounds they may, without a warrant, stop and search a person and anything in their possession or under their control, including a vehicle.
- > Detain/convey person to mental health facility - The police detain a person at risk of harm to themselves or others and transport them to a mental health facility for assessment under section 22 of the Mental Health Act 2007 (NSW).

**What are non-criminal domestic episodes?**

Incidents attended by police where a domestic dispute is recorded as having taken place but no criminal incident has been recorded. The vast majority of these episodes are verbal altercations.

**Where can I find more detail and explanatory notes?**

Detailed definitions and explanatory notes are available at

[https://www.bocsar.nsw.gov.au/Pages/bocsar\\_crime\\_stats/bocsar\\_glossary.aspx](https://www.bocsar.nsw.gov.au/Pages/bocsar_crime_stats/bocsar_glossary.aspx)

# APPENDIX 3

# LGAs IN STATISTICAL AREAS

Appendix Table 3.1: Local Government Areas in Greater Sydney Statistical Areas

<b>Baulkham Hills and Hawkesbury</b>	<b>Blacktown</b>	<b>Central Coast</b>
Hawkesbury*	Blacktown	Central Coast
The Hills Shire*		
<b>City and Inner South</b>	<b>Eastern Suburbs</b>	<b>Inner South West</b>
Sydney*	Randwick*	Bayside*
	Waverley	Canterbury-Bankstown*
	Woollahra	Georges River
<b>Inner West</b>	<b>North Sydney and Hornsby</b>	<b>Northern Beaches</b>
Burwood	Hornsby*	Northern Beaches
Canada Bay	Ku-ring-gai	
Strathfield*	Lane Cove	
Inner West*	Mosman	
	North Sydney	
	Willoughby	
<b>Outer South West</b>	<b>Outer West and Blue Mountains</b>	<b>Parramatta</b>
Camden*	Blue Mountains*	Cumberland*
Campbelltown*	Penrith*	Parramatta*
Wollondilly*		
<b>Ryde</b>	<b>South West</b>	<b>Sutherland</b>
Hunters Hill	Fairfield*	Sutherland Shire*
Ryde*	Liverpool*	

\* These LGAs span across two or more Statistical Areas.

These LGAs are listed under the Greater Sydney Statistical Areas which contain the largest area of each LGA.

Appendix Table 3.2: Local Government Areas in Regional Statistical Areas

<b>Capital Region</b>	<b>Central West</b>	<b>Coffs Harbour - Grafton</b>	<b>Far West and Orana</b>
Bega Valley	Bathurst Regional	Bellingen*	Bogan
Eurobodalla	Bland*	Clarence Valley*	Bourke
Goulburn Mulwaree	Blayney	Coffs Harbour	Brewarrina
Hilltops	Cabonne*		Broken Hill
Queanbeyan-Palerang Regional	Cowra		Central Darling
Snowy Monaro Regional*	Forbes		Cobar
Upper Lachlan Shire	Lachlan*		Coonamble
Yass Valley*	Lithgow		Dubbo Regional*
	Mid-Western Regional*		Gilgandra
	Oberon*		Narromine
	Orange		Unincorporated Far West
	Parkes		Walgett
	Weddin		Warren
			Warrumbungle Shire*
<b>Hunter Valley excluding Newcastle</b>	<b>Illawarra</b>	<b>Mid North Coast</b>	<b>Murray</b>
Cessnock	Kiama*	Kempsey	Albury
Dungog	Shellharbour	Lord Howe Island	Balranald
Maitland*	Wollongong	Mid-Coast*	Berrigan
Muswellbrook		Nambucca*	Edward River
Port Stephens*		Port Macquarie-Hastings	Federation*
Singleton*			Greater Hume Shire*
Upper Hunter Shire*			Hay
			Murray River
			Wentworth
<b>New England and North West</b>	<b>Newcastle and Lake Macquarie</b>	<b>Richmond - Tweed</b>	<b>Riverina</b>
Armidale Regional*	Lake Macquarie*	Ballina	Carrathool*
Glen Innes Severn	Newcastle	Byron	Coolamon
Gunnedah		Kyogle	Cootamundra-Gundagai
Gwydir		Lismore	Griffith
Inverell		Richmond Valley*	Junee
Liverpool Plains*		Tweed	Leeton
Moree Plains			Lockhart*
Narrabri			Murrumbidgee*
Tamworth Regional			Narrandera
Tenterfield			Snowy Valleys*
Uralla			Temora
Walcha			Wagga Wagga
<b>Southern Highlands and Shoalhaven</b>			
Shoalhaven*			
Wingecarribee*			

\* These LGAs span across two or more Statistical Areas.

These LGAs are listed under the NSW Regional Statistical Areas which contain the largest area of each LGA.

Appendix Table 3.3: Greater Sydney Statistical Area Map



Appendix Table 3.4: Regional NSW Statistical Areas Map





# APPENDIX 4

# OFFENCE

# CATEGORIES

**Appendix 4.1: BOCSAR offences mapped to NSW Police Force incident categories**

BOCSAR offence	NSW Police Force incident categories
<b>Homicide</b>	
Murder	Murder
Attempted murder	Murder – attempted Shoot with intent to murder
Murder accessory, conspiracy	Murder – conspiracy Murder – solicit
Manslaughter – not driving	Assault causing death (s25A) Manslaughter
<b>Assault</b>	
	<i>Includes any of the following offences disaggregated by whether or not police have flagged the incident as domestic violence related:</i>
Domestic violence related	Actual bodily harm Assault common Grievous bodily harm (including malicious wounding) Shoot with intent other than to murder Spike drink/food
Non-domestic violence related	Actual bodily harm Assault common Grievous bodily harm (including malicious wounding) Shoot with intent other than to murder Spike drink/food
Assault Police	Assault Police officer
<b>Sexual offences</b>	
Sexual assault	Sexual assault – adult victim (16 years old and over) Sexual assault – child victim, reported when child Sexual assault – child victim, reported when adult
Sexual touching, sexual act and other sexual offences	Sexual act – adult victim (16 years old and over) Sexual act – child victim, reported when child Sexual act – child victim, reported when adult Sexual touching – adult victim (16 years old and over) Sexual touching – child victim, reported when child Sexual touching – child victim, reported when adult Act of indecency Aggravated act of indecency Bestiality Carnal knowledge Grooming/procuring Incest Indecent communication Peep or pry Wilful and obscene exposure Other sexual offence Voyeurism/Film person
<b>Abduction and kidnapping</b>	
	Kidnapping/Abduction People trafficking
<b>Robbery</b>	
Robbery without a weapon	Includes any of the following offences in which no weapon was recorded: Demand money with menaces Robbery Robbery with aggravation Robbery with wounding Other robbery

BOCSAR offence	NSW Police Force incident categories
Robbery with a firearm	<p><i>Includes any of the following offences in which a firearm was recorded as a weapon:</i></p> <ul style="list-style-type: none"> <li>Armed robbery</li> <li>Demand money with menaces</li> <li>Robbery</li> <li>Robbery with aggravation</li> <li>Robbery with wounding</li> <li>Other robbery</li> </ul>
Robbery with a weapon not a firearm	<p><i>Includes any of the following offences in which a non firearm weapon was recorded:</i></p> <ul style="list-style-type: none"> <li>Armed robbery</li> <li>Demand money with menaces</li> <li>Robbery</li> <li>Robbery with aggravation</li> <li>Robbery with wounding</li> <li>Other robbery</li> </ul>
<b>Blackmail and extortion</b>	Extortion/Blackmail
<b>Intimidation, stalking and harassment</b>	<ul style="list-style-type: none"> <li>Bullying/harassment or intimidation</li> <li>Stalking (since 2017)</li> <li>Child approach (since 2017)</li> <li>Riot and affray</li> <li>Telecommunications offence (includes nuisance phone calls)</li> <li>Indecent Communication</li> <li>Threats against Police</li> <li>Violent disorder</li> <li>Unlawful assembly</li> </ul>
<b>Other offences against the person</b>	<ul style="list-style-type: none"> <li>Labour exploitation (includes sexual servitude)</li> <li>Malicious damage with intent to injure/endorse</li> <li>Negligent act cause grievous bodily harm</li> <li>Other offence against the person</li> </ul>
<b>Theft</b>	<p><i>Dwelling includes premises where people reside such as house, home unit, caravan, tent as well as any attachment such as garage, shed, yard and garden.</i></p> <ul style="list-style-type: none"> <li>Break/Enter and steal</li> <li>Break/Enter and commit other felony</li> <li>Break/Enter intent to steal</li> <li>Break/Enter intent to commit other felony</li> </ul> <p><i>Non-dwelling includes commercial and government premises.</i></p> <ul style="list-style-type: none"> <li>Break/Enter and steal</li> <li>Break/Enter and commit other felony</li> <li>Break/Enter intent to steal</li> <li>Break/Enter intent to commit other felony</li> </ul> <ul style="list-style-type: none"> <li>Receiving</li> <li>Goods in custody</li> <li>Possess property stolen outside NSW</li> <li>Deal with proceeds of crime</li> <li>Money Laundering</li> </ul> <ul style="list-style-type: none"> <li>Theft of motor cars, motor cycles, and other vehicles / vessels</li> <li>Rebirthing vehicles / vessels</li> <li>Vehicle/Vessel Unique Identifier</li> </ul> <ul style="list-style-type: none"> <li>Steal from motor vehicle</li> <li>Steal from retail store</li> <li>Steal from dwelling</li> <li>Other stealing occurring in a residential dwelling</li> </ul> <ul style="list-style-type: none"> <li>Steal from person</li> </ul>
Break and enter – dwelling	
Break and enter – non-dwelling	
Receiving or handling stolen goods	
Motor vehicle theft	
Steal from motor vehicle	
Steal from retail store	
Steal from dwelling	
Steal from person	

BOCSAR offence	NSW Police Force incident categories
Stock theft	Steal stock (Non-domestic animal)
Fraud	Company/corporate offence Computer crime Copyright/Intellectual property/Trademark Corrupt commission/practices Corrupt payment (receive or pay) Counterfeit currency Deception offence Embezzlement Fail to pay Forgery (since 2017) Fraudulent misappropriation Larceny clerk/servant/bailee Make/use false instrument Misappropriate cheques/funds Possess false instrument Publish false misleading statement Receiving (fraud related) Scams - obtain funds (since 2017) Scams - selling (since 2017) Unauthorised access of funds (since 2017) Deal/supply false identity documents (since 2017) Deal/supply false information (since 2017) Equipment to make false identity documents (since 2017) Make false identity documents (since 2017) Possess false identity documents (since 2017) Possess identity information (since 2017) Use false identity documents (since 2017) Other fraud
Other theft	Steal from dwelling occurring somewhere other than a residential or non-residential dwelling (e.g. from hostels, motels, boarding houses etc) Steal from marine vessel Steal vessel Other stealing <i>occurring somewhere other than a dwelling (e.g. in outdoor/public places)</i>
<b>Arson</b>	<i>Fire incident where classified as deliberate (to March 2023) or as suspicious - arson or suspicious - reckless (from March 2023):</i> Bushfire related Structure (not bushfire related) Vehicle/Transport/Aircraft Other commodity
<b>Malicious damage to property</b>	Graffiti Malicious damage to property Public place – damage fountain/wall etc. Public place – damage shrine/monument
<b>Drug offences</b>	
Possession and/or use of cocaine	Possess drug where drug type is cocaine Use or administer drug where drug type is cocaine Item/object found where drug type is cocaine
Possession and/or use of narcotics	Possess drug <i>where drug type is narcotics</i> Use or administer drug <i>where drug type is narcotics</i> Item/object found where drug type is narcotics
Possession and/or use of cannabis	Possess drug / plant where drug type is cannabis Use or administer drug where drug type is cannabis Item/object found where drug type is cannabis
Possession and/or use of amphetamines	Possess drug where drug type is amphetamines Use or administer drug where drug type is amphetamines Item/object found where drug type is amphetamines
Possession and/or use of ecstasy	Possess drug where drug type is ecstasy

BOCSAR offence	NSW Police Force incident categories
Possession and/or use of ecstasy (continued)	Use or administer drug where drug type is ecstasy Item/object found where drug type is ecstasy
Possession and/or use of other drugs	Possess drug where drug type is not cocaine, narcotics, cannabis, amphetamines or ecstasy Use or administer drug where drug type is not cocaine, narcotics, cannabis, amphetamines or ecstasy Item/object found where drug type is not cocaine, narcotics, cannabis, amphetamines or ecstasy
Dealing, trafficking in cocaine	Supply drug where drug type is cocaine
Dealing, trafficking in narcotics	Supply drug where drug type is narcotics
Dealing, trafficking in cannabis	Supply drug/plant where drug/plant type is cannabis
Dealing, trafficking in amphetamines	Supply drug where drug type is amphetamines
Dealing, trafficking in ecstasy	Supply drug where drug type is ecstasy
Dealing, trafficking in other drugs	Supply drug/plant where drug/plant type is not cocaine, narcotics, cannabis, amphetamines or ecstasy
Cultivating cannabis	Cultivation
Manufacture drug	Manufacture drug
Importing drugs	Import drug/plant
Other drug offences	Forge and/or utter prescription Possess drug utensil Other drug detection/seizure offence
<b>Prohibited and regulated weapons offences</b>	
	Bomb hoax or threat Discharge firearm into premises Licence offence Firearms dealer offence Firearms not ensure safekeeping Improper storage of explosives Person search - Item/object found where item/object is a weapon Possess explosive/dangerous article Possess prohibited weapon/article Possess shortened firearm Possess whilst unlicensed Sell prohibited weapon/article Shorten firearm Trespass with firearm Unlawful handling/access/supply of explosives Unlawfully discharge firearm Use firearm under influence Use prohibited weapon/article Other explosives offence Other firearm licencing offence Other firearm offence Other prohibited weapon/article offence
<b>Disorderly conduct</b>	
Trespass	Trespass
Offensive conduct	Remain inclosed lands Offensive behaviour
Offensive language	Offensive language
Criminal intent	Armed with intent Charge with intent Disguised with intent Enter land with intent Intent to repeat indictable offence Instruments of crime Possess implements

BOCSAR offence	NSW Police Force incident categories
<b>Betting and gaming offences</b>	Conduct/play illegal betting Conduct/play illegal game Own/manage premises – betting Own/manage premises – gaming Other gaming offence
<b>Liquor offences</b>	Consume alcohol in alcohol-free zone Consume/possess alcohol in public by minor Licensing legislation offence: <ul style="list-style-type: none"> <li>– Offence by licensee/employee/secretary</li> <li>– Offence by minor</li> <li>– Offence by customer (not minor)</li> <li>– Supply liquor to juvenile</li> <li>– Offence against registered clubs legislation</li> </ul>
<b>Pornography offences</b>	Possess/disseminate child pornography Possess/publish indecent material
<b>Prostitution offences</b>	Soliciting/prostitution in public Procure Prostitute (Including child prostitute) Prostitution – premises Prostitution – live off earnings Child prostitution Other vice offence
<b>Against justice procedures</b>	Escape Custody <ul style="list-style-type: none"> <li>Escapee – Corrective Services custody</li> <li>Escapee – Department of Community Services custody</li> <li>Escapee – Police custody</li> <li>Escapee – Other custody</li> </ul> Breach Apprehended Violence Order <ul style="list-style-type: none"> <li>Breach Apprehended Violence Order – domestic</li> <li>Breach Apprehended Violence Order – personal</li> </ul> Breach bail conditions <ul style="list-style-type: none"> <li>Breach bail conditions</li> <li>Breach control order</li> </ul> Fail to appear <ul style="list-style-type: none"> <li>Fail to appear</li> </ul> Resist or hinder officer <ul style="list-style-type: none"> <li>Refuse direction</li> <li>Refuse direction continue intoxication and disorder</li> <li>Refuse direction intoxicated person</li> <li>Refuse to be searched</li> <li>Refuse to produce object</li> <li>Resist/hinder officer</li> </ul> Other offences against justice procedures <ul style="list-style-type: none"> <li>Other judicial offence</li> <li>Fail to comply</li> <li>Contravene Child Protection Prohibition Order (CPPO)</li> </ul> Transport regulatory offences <ul style="list-style-type: none"> <li>Transport offence (includes offences on the rail network such as travelling without a valid ticket, smoking, drinking or using offensive language on a train)</li> <li>Buffer riding</li> </ul>
<b>Other offences</b>	Animals - Dog offences Cyber Breach/Attack False 000 call Family law offence Immigration/customs offence Obstruction Offence against transport service

BOCSAR offence	NSW Police Force incident categories
<b>Other offences (continued)</b>	Breach COVID 19 direction Other street offences (carry cutting weapon, offensive implement) Public mischief Terrorism offences (e.g. associating with terrorist organisations, financing terrorism etc.) Other miscellaneous offences Offences under various acts: Animals - Prevention Of Cruelty Acts Bush Fire Act Child Protection Act Local Government Act Marine/Waterway Act Pawnbrokers Act Postal Services Act Public Health Act Security Industry Act Sydney Harbour Bridge Act Tattoo Parlours Act