



NSW Bureau of Crime
Statistics and Research

NEW SOUTH WALES
**RECORDED CRIME
STATISTICS**

Quarterly Update
March Quarter 2022

This report presents data on crime reported to, or detected by, police and recorded on the NSW Police Force's Computerised Operational Policing System (COPS). Information is provided on 13 major offence categories, which include the most serious personal violence and property offences, plus a more detailed list of 62 specific offence types.

Published by the NSW Bureau of Crime Statistics and Research
June 2022

Phone: + 61 (2) 8346 1100

Email: bcsr@justice.nsw.gov.au

Website: www.bocsar.nsw.gov.au

ISSN: 1035-9044

This report is available in pdf format on our website and may be provided in alternative formats. Please contact us at bcsr@justice.nsw.gov.au.

CONTENTS

SECTION 1:	OVERVIEW OF TRENDS IN RECORDED CRIME	5
Figure 1.1	NSW long-term trend in violent offences	6
Figure 1.2	NSW long-term trend in property offences	6
Table 1.3	Violent and property offences by Statistical Area (SA4) over the five years to March 2022	7
Table 1.4	Recorded criminal incidents for major offences over the five years to March 2022	8
Table 1.5	Recorded criminal incidents for 62 offences over the two years to March 2022	9
Table 1.6	Recorded criminal incidents for 62 offences over the five years to March 2022	10
SECTION 2:	REGIONAL COMPARISONS Statistical Areas	11
Table 2.1	Two year trends and percent change in recorded criminal incidents for major offences by Statistical Area (SA4) over the two years to March 2022	12
Table 2.2	Ratio to NSW rate of recorded criminal incidents per 100,000 population for major offences by Statistical Area (SA4) over the 12 months to March 2022	13
Table 2.3	Number of major offences by Statistical Area (SA4) over the 12 months to March 2022	14
Table 2.4	Number of major offences by Statistical Area (SA4) over the 12 months to March 2021	15
SECTION 3:	LEGAL PROCEEDINGS	16
Table 3.1	Adults proceeded against by NSW Police by method of legal proceeding over the five years to March 2022	17
Table 3.2	Young people proceeded against by NSW Police by method of legal proceeding over the five years to March 2022	17
Table 3.3	Adults proceeded against to court by NSW Police for all 62 criminal offences types over the two years to March 2022	18
Table 3.4	Young people proceeded against to court by NSW Police for all 62 criminal offences over the two years to March 2022	19
Figure 3.5	Offences with the largest change in the number of adults proceeded against to court by NSW Police between the 12 months to March 2021 and the 12 months to March 2022	20
Figure 3.6	Offences with the largest change in the number of young people proceeded against to court by NSW Police between the 12 months to March 2021 and the 12 months to March 2022	20
Table 3.7	Incidents of all 62 criminal offence types by whether legal proceedings commenced within 90 days of reporting over the two years to December 2021	21
Figure 3.8	Percentage of recorded criminal incidents for major offences by whether legal proceedings commenced within 90 days of reporting over the two years to December 2021	22

SECTION 4:	POLICING ACTIVITY	23
Table 4.1	Selected policing activities over the five years to March 2022	24
Table 4.2	Non-criminal domestic violence episodes by Statistical Area (SA4) over the five years to March 2022	25
Table 4.3	Ratio to NSW rate of non-criminal domestic violence episodes per 100,000 population by Statistical Area (SA4) over the five years to March 2022	26
APPENDIX 1:	REGIONAL COMPARISONS Local Government Areas	27
Appendix Table 1.1	Trends in recorded criminal incidents for major offences, NSW LGAs Over the two years to March 2022	28
Appendix Table 1.2	Ratio to NSW rate of recorded criminal incidents per 100,000 population for major offences, NSW LGAs 12 months to March 2022	31
Appendix Table 1.3	Number of recorded criminal incidents for major offences, NSW LGAs 12 months to March 2022	34
Appendix Table 1.4	Number of recorded criminal incidents for major offences, NSW LGAs 12 months to March 2021	37
APPENDIX 2:	EXPLANATORY NOTES	40

SECTION 1: OVERVIEW OF TRENDS IN RECORDED CRIME

Figure 1.1: NSW long-term trend in violent offences

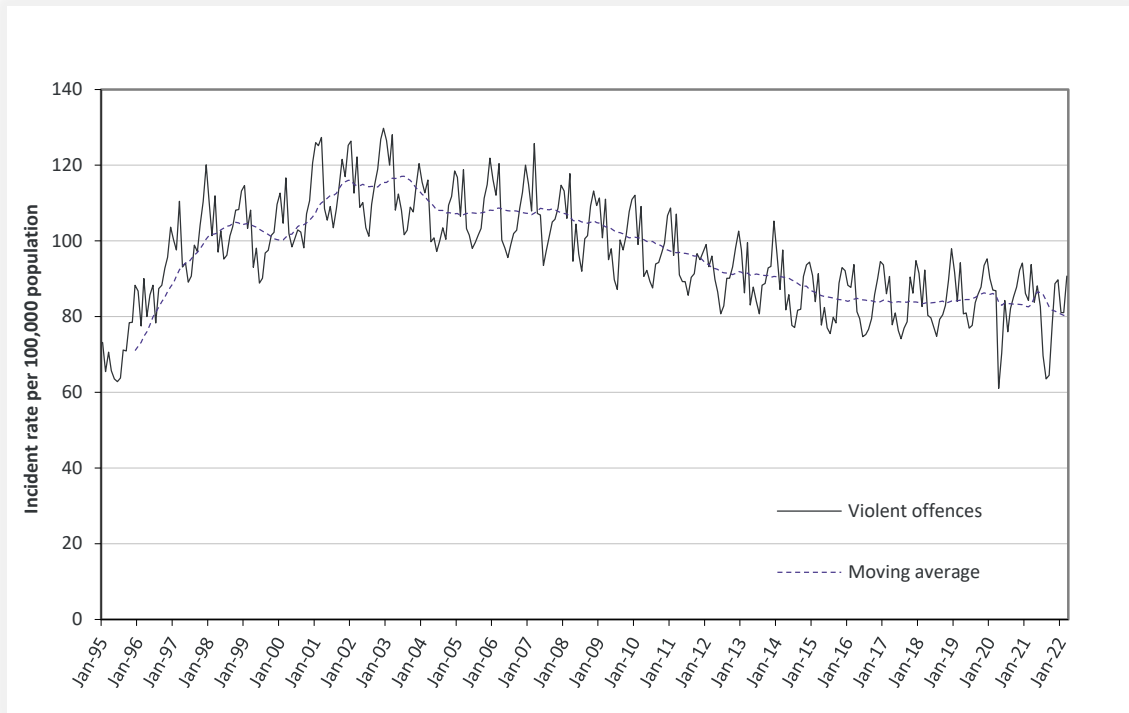
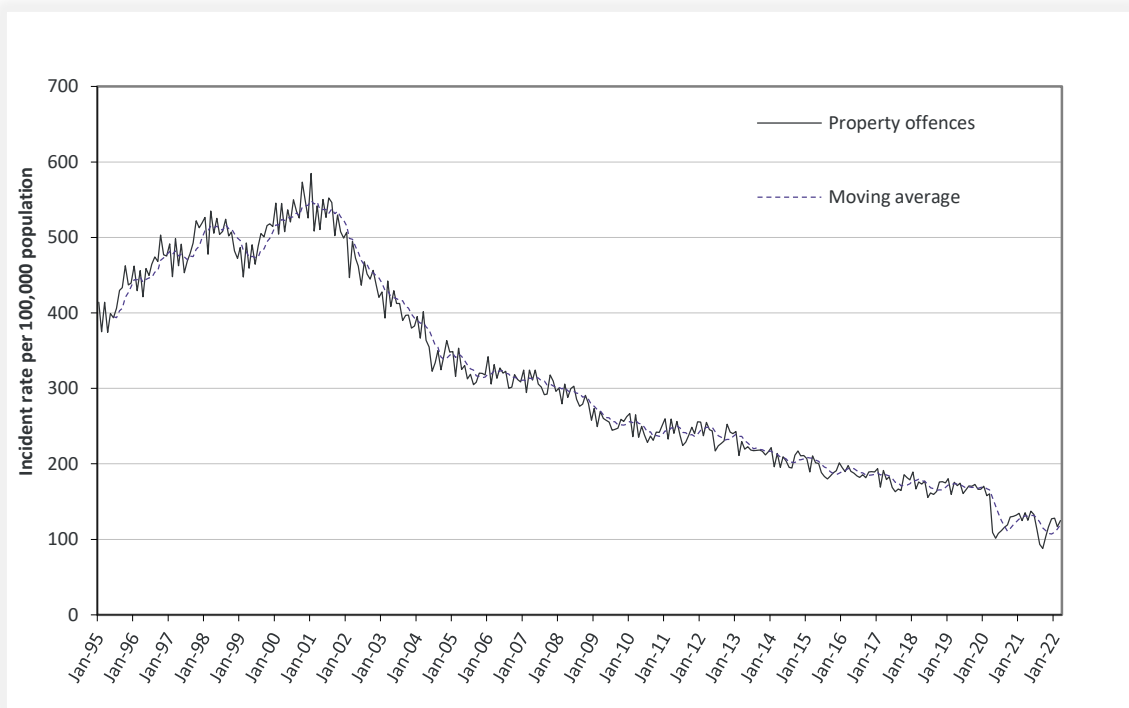


Figure 1.2: NSW long-term trend in property offences



Violent offences include: murder, attempted murder, manslaughter, assault - domestic violence related, assault - non-domestic violence related, assault police, robbery without a weapon, robbery with a firearm, robbery with a weapon not a firearm, sexual assault and sexual touching, sexual act and other sexual offences.

Property offences include: break and enter dwelling, break and enter non-dwelling, motor vehicle theft, steal from motor vehicle, steal from retail store, steal from dwelling, steal from person, stock theft and other theft.

Table 1.3: Violent and property offences by Statistical Area (SA4)

Over the five years to March 2022

Statistical Area	Trend and average annual percentage change			
	Violent Offences		Property Offences	
	2 Year Trend	5 Year Trend	2 Year Trend	5 Year Trend
Greater Sydney	Stable	Stable	Stable	-10.8%
Baulkham Hills and Hawkesbury	Stable	3.4%	-29.1%	-12.5%
Blacktown	Stable	Stable	Stable	-11.2%
Central Coast	Stable	Stable	Stable	-9.9%
City and Inner South	Stable	-6.6%	Stable	-13.2%
Eastern Suburbs	Stable	Stable	Stable	-11.8%
Inner South West	Stable	Stable	Stable	-10.5%
Inner West	Stable	Stable	Stable	-8.8%
North Sydney and Hornsby	Stable	Stable	Stable	-12.9%
Northern Beaches	Stable	Stable	Stable	-11.4%
Outer South West	Stable	Stable	Stable	-8.2%
Outer West and Blue Mountains	Stable	Stable	Stable	-9.7%
Parramatta	Stable	Stable	Stable	-8.6%
Ryde	-16.3%	Stable	Stable	-14.4%
South West	Stable	Stable	Stable	-10.0%
Sutherland	Stable	Stable	Stable	-12.4%
Regional NSW	Stable	1.9%	4.6%	-6.3%
Capital Region	Stable	Stable	Stable	-7.7%
Central West	Stable	3.6%	6.3%	Stable
Coffs Harbour - Grafton	Stable	Stable	17.2%	-5.6%
Far West and Orana	Stable	2.9%	12.7%	-4.2%
Hunter Valley excluding Newcastle	-1.4%	1.3%	Stable	-7.6%
Illawarra	Stable	Stable	Stable	-6.5%
Mid North Coast	Stable	4.6%	9.0%	-3.1%
Murray	6.2%	6.0%	Stable	-4.5%
New England and North West	8.6%	2.6%	20.0%	-5.8%
Newcastle and Lake Macquarie	Stable	Stable	Stable	-8.2%
Richmond - Tweed	Stable	2.3%	27.5%	-4.7%
Riverina	Stable	Stable	-12.8%	-12.6%
Southern Highlands and Shoalhaven	Stable	3.6%	Stable	-8.9%
NSW	Stable	Stable	Stable	-8.8%

Table 1.4: Recorded criminal incidents for major offences
Over the five years to March 2022

Offence category	12 months to March 2018	12 months to March 2019	12 months to March 2020	12 months to March 2021	12 months to March 2022	Trend and average annual percentage change	
						2 Year Trend	5 Year Trend
Murder *	52	77	69	67	60	Stable	Stable
Domestic violence related assault	28,368	30,243	31,612	32,152	32,188	Stable	Up 3.2%
Non-domestic violence related assault	32,366	31,613	32,014	29,329	27,854	Stable	Stable
Sexual assault	5,960	5,994	6,492	7,394	7,019	Stable	Up 4.2%
Sexual touching, sexual act and other sexual offences	7,557	8,139	8,023	8,051	7,046	Stable	Stable
Robbery	2,500	2,540	2,469	1,972	1,704	Stable	Down 9.1%
Break and enter dwelling	27,384	26,081	25,296	18,462	17,378	Stable	Down 10.7%
Break and enter non-dwelling	10,354	10,102	9,953	6,739	7,226	Up 7.2%	Down 8.6%
Motor vehicle theft	13,013	13,271	13,381	11,216	10,551	Stable	Down 5.1%
Steal from motor vehicle	39,089	37,680	37,684	26,732	27,446	Stable	Down 8.5%
Steal from retail store	24,628	25,401	26,580	18,972	17,524	Stable	Down 8.2%
Other stealing offences	51,634	50,326	49,774	36,519	34,870	Stable	Down 9.3%
Malicious damage to property	60,470	58,152	56,177	52,708	48,253	Stable	Down 5.5%

Table 1.5: Recorded criminal incidents for 62 offences

Over the two years to March 2022

Offence category		Number of recorded criminal incidents		2 Year Trend	
		12 months to March 2021	12 months to March 2022	Trend test result	Annual average percentage change
Homicide	Murder	67	60	Stable	
	Attempted murder	28	17	n.c.	
	Murder accessory, conspiracy	0	1	n.c.	
	Manslaughter	2	1	n.c.	
Assault	Domestic violence related assault	32,152	32,188	Stable	
	Non-domestic violence related assault	29,329	27,854	Stable	
	Assault Police	2,480	2,644	Stable	
Sexual offences	Sexual assault	7,394	7,019	Stable	
	Sexual touching, sexual act and other sexual offences	8,051	7,046	Stable	
Abduction and kidnapping		220	196	Stable	
Robbery	Robbery without a weapon	1,082	888	Stable	
	Robbery with a firearm	94	91	Stable	
	Robbery with a weapon not a firearm	796	725	Stable	
Blackmail and extortion		107	125	Stable	
Intimidation, stalking and harassment		40,143	40,988	Stable	
Other offences against the person		1,460	1,803	Stable	
Theft	Break and enter dwelling	18,462	17,378	Stable	
	Break and enter non-dwelling	6,739	7,226	Up	7.2%
	Receiving or handling stolen goods	7,815	7,333	Stable	
	Motor vehicle theft	11,216	10,551	Stable	
	Steal from motor vehicle	26,732	27,446	Stable	
	Steal from retail store	18,972	17,524	Stable	
	Steal from dwelling	16,259	16,074	Stable	
	Steal from person	1,929	1,700	Stable	
	Stock theft	400	298	Down	-25.5%
	Fraud	44,056	44,378	Stable	
Other theft		17,931	16,798	Stable	
		3,951	3,606	Down	-8.7%
Arson		52,708	48,253	Stable	
Malicious damage to property		2,245	2,272	Stable	
Drug offences	Possession and/or use of cocaine	1,265	1,231	Stable	
	Possession and/or use of narcotics	17,925	15,998	Down	-10.8%
	Possession and/or use of cannabis	7,905	6,970	Stable	
	Possession and/or use of amphetamines	694	610	Stable	
	Possession and/or use of ecstasy	6,868	6,239	Down	-9.2%
	Possession and/or use of other drugs	1,491	994	Stable	
	Dealing, trafficking in cocaine	335	488	Stable	
	Dealing, trafficking in narcotics	1,109	771	Down	-30.5%
	Dealing, trafficking in cannabis	3,073	2,989	Stable	
	Dealing, trafficking in amphetamines	337	156	Down	-53.7%
	Dealing, trafficking in other drugs	657	481	Down	-26.8%
	Cultivating cannabis	1,176	1,023	Stable	
	Manufacture drug	73	48	Stable	
	Importing drugs	227	187	Stable	
	Other drug offences	6,113	5,614	Down	-8.2%
Prohibited and regulated weapons offences		15,154	13,982	Down	-7.7%
Disorderly conduct	Trespass	9,852	9,205	Down	-6.6%
	Offensive conduct	3,818	3,592	Stable	
	Offensive language	2,053	1,783	Stable	
	Criminal intent	2,305	2,415	Up	4.8%
Betting and gaming offences		76	70	Stable	
Liquor offences		8,042	8,980	Up	11.7%
Pornography offences		954	873	Stable	
Prostitution offences		16	19	n.c.	
Against justice procedures	Escape custody	181	158	Stable	
	Breach Apprehended Violence Order	20,215	21,602	Up	6.9%
	Breach bail conditions	51,866	51,090	Stable	
	Fail to appear	744	892	Up	19.9%
	Resist or hinder officer	5,518	5,662	Stable	
Other offences against justice procedures		1,869	1,989	Stable	
Transport regulatory offences		70,125	70,059	Stable	
Other offences		34,117	90,877	Stable	

NSW Recorded Crime Statistics March 2022

Table 1.6: Recorded criminal incidents for 62 offences

Over the five years to March 2022

Offence category		Number of recorded criminal incidents		5 Year Trend	
		12 months to March 2018	12 months to March 2022	Trend test result	Annual average percentage change
Homicide	Murder	52	60	Stable	
	Attempted murder	17	17	n.c.	
	Murder accessory, conspiracy	3	1	n.c.	
	Manslaughter	11	1	n.c.	
Assault	Domestic violence related assault	28,368	32,188	Up	3.2%
	Non-domestic violence related assault	32,366	27,854	Stable	
	Assault Police	2,359	2,644	Up	2.9%
Sexual offences	Sexual assault	5,960	7,019	Up	4.2%
	Sexual touching, sexual act and other sexual offences	7,557	7,046	Stable	
Abduction and kidnapping		212	196	Stable	
Robbery	Robbery without a weapon	1,469	888	Down	-11.8%
	Robbery with a firearm	130	91	Down	-8.5%
	Robbery with a weapon not a firearm	901	725	Stable	
Blackmail and extortion		94	125	Stable	
Intimidation, stalking and harassment		31,412	40,988	Up	6.9%
Other offences against the person		299	1,803	Up	56.7%
Theft	Break and enter dwelling	27,384	17,378	Down	-10.7%
	Break and enter non-dwelling	10,354	7,226	Down	-8.6%
	Receiving or handling stolen goods	7,596	7,333	Stable	
	Motor vehicle theft	13,013	10,551	Down	-5.1%
	Steal from motor vehicle	39,089	27,446	Down	-8.5%
	Steal from retail store	24,628	17,524	Down	-8.2%
	Steal from dwelling	19,362	16,074	Down	-4.5%
	Steal from person	4,551	1,700	Down	-21.8%
	Stock theft	445	298	Down	-9.5%
	Fraud	50,171	44,378	Down	-3.0%
Other theft	27,276	16,798	Down	-11.4%	
Arson		5,917	3,606	Down	-11.6%
Malicious damage to property		60,470	48,253	Down	-5.5%
Drug offences	Possession and/or use of cocaine	2,126	2,272	Stable	
	Possession and/or use of narcotics	975	1,231	Up	6.0%
	Possession and/or use of cannabis	18,115	15,998	Down	-3.1%
	Possession and/or use of amphetamines	6,683	6,970	Stable	
	Possession and/or use of ecstasy	2,798	610	Down	-31.7%
	Possession and/or use of other drugs	4,444	6,239	Up	8.9%
	Dealing, trafficking in cocaine	784	994	Up	6.1%
	Dealing, trafficking in narcotics	222	488	Stable	
	Dealing, trafficking in cannabis	831	771	Stable	
	Dealing, trafficking in amphetamines	1,930	2,989	Up	11.6%
	Dealing, trafficking in ecstasy	804	156	Down	-33.6%
	Dealing, trafficking in other drugs	364	481	Stable	
	Cultivating cannabis	1,159	1,023	Stable	
Manufacture drug	74	48	Stable		
Importing drugs	82	187	Up	22.9%	
Other drug offences		5,250	5,614	Stable	
Prohibited and regulated weapons offences		13,141	13,982	Stable	
Disorderly conduct	Trespass	10,016	9,205	Stable	
	Offensive conduct	5,066	3,592	Down	-8.2%
	Offensive language	3,151	1,783	Down	-13.3%
	Criminal intent	2,239	2,415	Up	1.9%
Betting and gaming offences		67	70	Stable	
Liquor offences		11,167	8,980	Down	-5.3%
Pornography offences		634	873	Up	8.3%
Prostitution offences		51	19	n.c.	
Against justice procedures	Escape custody	161	158	Stable	
	Breach Apprehended Violence Order	14,970	21,602	Up	9.6%
	Breach bail conditions	42,480	51,090	Up	4.7%
	Fail to appear	546	892	Up	13.1%
	Resist or hinder officer	6,229	5,662	Stable	
	Other offences against justice procedures	584	1,989	Up	35.8%
Transport regulatory offences		125,887	70,059	Down	-13.6%
Other offences		15,440	90,877	Up	55.8%

SECTION 2: REGIONAL COMPARISONS

Statistical Areas

Table 2.1: Two year trends and percent change in recorded criminal incidents for major offences by Statistical Area (SA4)
Over the two years to March 2022

Statistical Area	Murder	Domestic violence related assault	Non-domestic violence related assault	Sexual assault	Sexual touching, sexual act and other sexual offences	Robbery	Break and enter dwelling	Break and enter non-dwelling	Motor vehicle theft	Steal from motor vehicle	Steal from retail store	Other stealing offences	Malicious damage to property
Greater Sydney	ns	ns	ns	ns	ns	ns	ns	ns	ns	ns	ns	ns	-14.6
Baulkham Hills and Hawkesbury		ns	ns	ns	ns	ns	ns	-30.8	ns	-33.7	ns	-19.0	ns
Blacktown		ns	ns	-22.9	ns	ns	ns	ns	ns	ns	18.9	ns	ns
Central Coast		5.2	ns	ns	ns	ns	-25.6	ns	ns	ns	ns	ns	-15.7
City and Inner South		ns	ns	ns	ns	ns	-21.3	ns	ns	ns	ns	8.9	ns
Eastern Suburbs		ns	ns	ns	ns	ns	ns	ns	ns	ns	ns	ns	ns
Inner South West		ns	ns	ns	ns	-25.0	ns	ns	-33.5	ns	ns	ns	-17.2
Inner West		ns	ns	ns	ns	ns	ns	29.5	ns	ns	ns	ns	ns
North Sydney and Hornsby		ns	ns	ns	ns	ns	ns	ns	ns	ns	ns	-19.6	-25.2
Northern Beaches		ns	ns	ns	ns	ns	ns	-31.0	ns	ns	ns	-16.1	-28.8
Outer South West		ns	ns	ns	ns	ns	ns	ns	ns	ns	ns	ns	ns
Outer West and Blue Mountains		-14.5	ns	ns	ns	ns	ns	ns	ns	ns	ns	ns	-25.7
Parramatta		ns	ns	ns	ns	ns	ns	ns	ns	ns	ns	ns	ns
Ryde		-20.3	ns	ns	ns	ns	ns	ns	ns	ns	ns	ns	-13.1
South West		7.0	ns	ns	ns	-33.3	ns	ns	-22.3	ns	ns	ns	ns
Sutherland		5.7	ns	ns	ns	ns	ns	ns	ns	ns	-32.4	ns	ns
Regional NSW	ns	4.0	ns	ns	ns	ns	ns	17.9	8.4	12.6	ns	ns	ns
Capital Region		ns	ns	ns	ns	ns	ns	ns	ns	ns	ns	ns	ns
Central West		17.4	ns	ns	ns	ns	ns	ns	13.5	27.7	22.9	ns	ns
Coffs Harbour - Grafton		ns	ns	ns	ns	ns	ns	37.6	ns	34.8	ns	ns	ns
Far West and Orana		ns	ns	ns	ns	ns	ns	42.4	16.5	ns	36.6	ns	ns
Hunter Valley excluding Newcastle		ns	ns	ns	ns	ns	ns	ns	ns	14.4	ns	ns	ns
Illawarra		ns	ns	ns	ns	ns	ns	ns	ns	28.5	ns	ns	ns
Mid North Coast		ns	ns	ns	ns	ns	ns	29.5	ns	ns	ns	ns	ns
Murray		14.0	ns	ns	ns	ns	ns	20.9	23.8	ns	ns	ns	ns
New England and North West		7.1	10.5	ns	ns	ns	15.6	57.0	44.2	25.4	42.1	ns	ns
Newcastle and Lake Macquarie		9.3	ns	ns	-27.8	ns	ns	33.8	ns	ns	ns	ns	ns
Richmond - Tweed		ns	ns	ns	ns	ns	49.5	ns	41.5	50.7	ns	ns	ns
Riverina		ns	6.5	ns	ns	ns	-23.3	ns	ns	ns	ns	-10.0	ns
Southern Highlands and Shoalhaven		ns	ns	ns	ns	ns	ns	ns	ns	ns	ns	ns	ns
NSW	ns	ns	ns	ns	ns	ns	ns	7.2	ns	ns	ns	ns	ns

Table 2.2: Ratio to NSW rate of recorded criminal incidents per 100,000 population for major offences by Statistical Area (SA4)
Over the 12 months to March 2022

Statistical Area	Murder	Domestic violence related assault	Non-domestic violence related assault	Sexual assault	Sexual touching, sexual act and other sexual offences	Robbery	Break and enter dwelling	Break and enter non-dwelling	Motor vehicle theft	Steal from motor vehicle	Steal from retail store	Other stealing offences	Malicious damage to property
Greater Sydney	0.9	0.8	0.8	0.7	0.8	1.0	0.7	0.5	0.7	0.8	0.9	0.8	0.7
Baulkham Hills and Hawkesbury	0.5	0.5	0.4	0.6	0.5	0.3	0.4	0.3	0.3	0.3	0.4	0.4	0.4
Blacktown	1.8	1.3	1.1	1.0	1.1	2.1	1.0	0.6	1.2	1.2	1.3	1.0	1.2
Central Coast	1.6	1.1	1.2	1.3	1.1	0.9	0.8	0.8	0.9	1.0	1.1	0.7	1.1
City and Inner South	3.3	1.0	1.9	1.1	1.2	1.9	0.7	1.0	0.7	0.8	2.7	2.3	1.1
Eastern Suburbs		0.6	0.9	0.7	0.7	0.5	0.5	0.2	0.6	0.6	1.0	0.9	0.6
Inner South West	0.4	0.8	0.6	0.5	0.6	0.8	0.5	0.4	0.7	0.7	0.5	0.6	0.5
Inner West	0.8	0.5	0.5	0.5	0.6	0.7	0.7	0.6	0.5	0.7	0.9	0.8	0.6
North Sydney and Hornsby		0.3	0.3	0.4	0.5	0.3	0.5	0.4	0.3	0.5	0.8	0.5	0.4
Northern Beaches	0.5	0.3	0.5	0.6	0.6	0.5	0.4	0.4	0.5	0.6	0.8	0.6	0.5
Outer South West	1.4	1.1	0.8	1.0	1.2	1.1	0.6	0.6	0.9	0.9	0.9	0.7	0.9
Outer West and Blue Mountains		1.1	1.1	1.2	1.3	1.1	1.0	0.9	0.9	1.1	1.2	0.8	1.1
Parramatta	1.6	0.9	0.8	0.7	0.7	1.3	1.1	0.6	1.0	1.1	0.8	1.0	0.7
Ryde		0.4	0.4	0.4	0.5	0.3	0.5	0.5	0.3	0.4	0.6	0.6	0.4
South West	0.3	1.1	0.7	0.6	0.8	1.1	0.7	0.5	0.9	0.9	0.6	0.7	0.7
Sutherland		0.8	0.5	0.5	0.5	0.5	0.5	0.3	0.4	0.6	0.5	0.5	0.6
Regional NSW	1.2	1.3	1.3	1.5	1.4	1.1	1.6	1.9	1.6	1.4	1.1	1.3	1.5
Capital Region	0.6	1.0	0.9	1.1	1.1	0.8	0.9	1.2	1.0	0.8	0.7	1.0	1.1
Central West	1.9	1.7	1.6	1.8	1.8	1.1	2.0	2.1	1.6	1.4	1.1	1.4	1.8
Coffs Harbour - Grafton		1.4	1.6	1.7	1.5	1.3	1.5	2.5	1.8	1.3	0.9	1.5	1.5
Far West and Orana	2.3	3.5	2.4	2.1	2.2	1.8	4.1	4.9	2.7	2.3	1.6	2.2	2.9
Hunter Valley excluding Newcastle	0.5	1.3	1.1	1.7	1.5	0.7	1.1	1.7	1.6	1.3	1.0	1.5	1.4
Illawarra	0.4	0.7	0.8	0.8	0.9	0.9	1.0	1.1	1.1	1.4	1.4	0.9	1.0
Mid North Coast	1.2	1.5	1.3	1.6	1.6	0.8	2.1	2.5	1.6	1.1	1.0	1.8	1.6
Murray	2.2	1.5	1.4	1.4	1.3	1.0	1.4	2.0	1.8	1.9	1.1	1.4	1.7
New England and North West	0.7	2.1	1.8	2.0	1.7	1.2	3.6	2.5	2.2	2.1	1.4	1.5	2.2
Newcastle and Lake Macquarie	2.5	1.1	1.4	1.4	1.1	1.7	1.4	1.8	1.8	1.7	1.6	1.3	1.4
Richmond - Tweed	0.5	1.1	1.3	1.2	1.1	1.1	1.2	1.5	1.7	1.3	0.6	1.2	1.3
Riverina		1.5	1.4	1.7	1.6	0.9	1.8	1.9	1.5	1.2	1.0	1.3	1.7
Southern Highlands and Shoalhaven	3.4	0.9	1.0	1.5	1.4	1.1	0.8	0.8	0.7	0.7	0.8	0.8	1.0
NSW	1.0	1.0	1.0	1.0	1.0	1.0	1.0	1.0	1.0	1.0	1.0	1.0	1.0

Table 2.3: Number of major offences by Statistical Area (SA4)

Over the 12 months to March 2022

Statistical Area	Murder	Domestic violence related assault	Non-domestic violence related assault	Sexual assault	Sexual touching, sexual act and other sexual offences	Robbery	Break and enter dwelling	Break and enter non-dwelling	Motor vehicle theft	Steal from motor vehicle	Steal from retail store	Other stealing offences	Malicious damage to property
Greater Sydney	34	17,306	14,471	3,369	3,675	1,065	7,691	2,583	4,912	14,263	10,858	18,968	23,443
Baulkham Hills and Hawkesbury	1	467	322	126	107	14	236	72	113	287	227	438	592
Blacktown	5	2,025	1,491	316	354	172	788	212	579	1,537	1,080	1,687	2,677
Central Coast	4	1,516	1,362	386	342	63	572	242	391	1,144	785	1,075	2,343
City and Inner South	9	1,431	2,415	347	393	146	554	341	325	955	2,168	3,691	2,473
Eastern Suburbs	0	673	868	170	169	31	336	65	244	596	605	1,075	1,070
Inner South West	2	2,097	1,232	276	305	105	734	229	541	1,502	680	1,524	2,036
Inner West	2	634	605	152	167	49	455	171	229	821	612	1,149	1,088
North Sydney and Hornsby	0	562	480	167	193	31	455	139	197	680	803	967	1,083
Northern Beaches	1	317	471	135	150	28	218	89	164	552	455	670	805
Outer South West	3	1,313	790	243	302	65	392	155	325	929	598	924	1,622
Outer West and Blue Mountains	0	1,477	1,251	331	368	79	689	252	405	1,183	837	1,189	2,173
Parramatta	6	1,775	1,395	314	314	141	1,138	269	680	1,920	857	2,080	2,104
Ryde	0	353	264	73	88	15	228	100	78	308	250	507	497
South West	1	1,980	1,099	233	323	104	673	186	520	1,396	634	1,461	2,028
Sutherland	0	686	426	100	100	22	223	61	121	453	267	531	852
Regional NSW	25	14,876	12,560	3,569	3,322	638	9,687	4,642	5,639	13,181	6,666	15,896	24,733
Capital Region	1	885	719	223	212	38	422	246	291	633	357	977	1,506
Central West	3	1,413	1,149	331	340	51	918	394	437	1,041	483	1,276	2,239
Coffs Harbour - Grafton	0	798	760	206	186	38	445	311	331	627	282	883	1,252
Far West and Orana	2	1,610	949	215	224	44	1,025	507	409	890	396	1,101	1,984
Hunter Valley excluding Newcastle	1	1,434	1,117	419	371	40	693	433	571	1,222	604	1,851	2,340
Illawarra	1	883	916	232	239	62	671	296	448	1,496	929	1,222	1,800
Mid North Coast	2	1,355	1,003	312	319	37	1,019	496	457	850	475	1,760	2,143
Murray	2	700	577	148	141	25	372	214	276	769	299	751	1,236
New England and North West	1	1,560	1,156	320	281	46	1,421	413	535	1,310	564	1,210	2,467
Newcastle and Lake Macquarie	7	1,608	1,775	457	350	133	1,141	594	878	2,210	1,300	2,104	3,199
Richmond - Tweed	1	1,080	1,128	271	249	57	664	345	549	1,135	352	1,320	1,993
Riverina	0	982	767	235	218	32	613	275	312	651	355	902	1,600
Southern Highlands and Shoalhaven	4	568	544	200	192	35	283	118	145	347	270	539	974
NSW	60	32,188	27,854	7,019	7,046	1,704	17,378	7,226	10,551	27,446	17,524	34,870	48,253

Table 2.4: Number of major offences by Statistical Area (SA4)

Over the 12 months to March 2021

Statistical Area	Murder	Domestic violence related assault	Non-domestic violence related assault	Sexual assault	Sexual touching, sexual act and other sexual offences	Robbery	Break and enter dwelling	Break and enter non-dwelling	Motor vehicle theft	Steal from motor vehicle	Steal from retail store	Other stealing offences	Malicious damage to property
Greater Sydney	40	17,844	15,972	3,556	4,212	1,377	8,980	2,797	6,013	15,021	12,582	19,978	27,464
Baulkham Hills and Hawkesbury	1	473	359	131	135	37	327	104	195	433	336	541	709
Blacktown	6	2,254	1,820	410	455	196	844	251	578	1,685	908	1,720	3,017
Central Coast	1	1,441	1,436	388	426	62	769	258	512	1,298	793	1,369	2,778
City and Inner South	2	1,499	2,531	391	384	186	704	302	381	977	2,321	3,389	2,729
Eastern Suburbs	1	641	865	177	202	48	379	68	239	568	878	1,138	1,219
Inner South West	6	2,109	1,432	251	371	140	890	214	813	1,664	787	1,583	2,460
Inner West	1	588	631	133	174	57	535	132	282	747	849	1,154	1,071
North Sydney and Hornsby	0	549	563	151	205	43	518	156	194	757	1,116	1,203	1,448
Northern Beaches	0	333	583	151	155	36	255	129	189	674	351	799	1,131
Outer South West	1	1,279	802	252	329	77	486	184	389	855	629	894	1,857
Outer West and Blue Mountains	4	1,728	1,409	359	355	90	794	323	509	1,359	967	1,377	2,925
Parramatta	9	2,008	1,477	299	351	187	1,169	307	816	1,721	1,031	2,092	2,329
Ryde	1	443	271	69	135	27	266	62	95	356	373	524	572
South West	6	1,850	1,301	288	388	156	832	239	669	1,519	848	1,674	2,228
Sutherland	1	649	492	106	147	35	212	68	152	408	395	521	991
Regional NSW	26	14,301	12,391	3,721	3,793	590	9,482	3,938	5,202	11,710	6,390	16,539	25,194
Capital Region	1	857	785	209	227	21	478	271	268	660	404	1,096	1,552
Central West	2	1,204	1,171	370	374	50	886	351	385	815	393	1,449	2,230
Coffs Harbour - Grafton	0	816	720	197	202	35	354	226	244	465	279	888	1,226
Far West and Orana	3	1,546	988	243	221	36	932	356	351	851	290	1,060	1,946
Hunter Valley excluding Newcastle	4	1,438	1,122	405	412	37	797	452	663	1,068	524	1,942	2,428
Illawarra	0	975	873	300	283	58	664	300	491	1,164	1,089	1,311	2,041
Mid North Coast	1	1,246	983	306	391	51	900	383	426	859	358	1,713	2,053
Murray	1	614	585	149	136	17	417	177	223	687	294	764	1,218
New England and North West	2	1,456	1,046	287	272	41	1,229	263	371	1,045	397	1,240	2,399
Newcastle and Lake Macquarie	5	1,471	1,874	503	485	130	1,301	444	930	2,285	1,186	2,223	3,451
Richmond - Tweed	3	1,062	1,031	324	321	46	444	276	388	753	345	1,218	1,841
Riverina	2	1,042	720	244	284	47	799	291	292	686	493	1,002	1,691
Southern Highlands and Shoalhaven	2	574	493	184	185	21	281	148	170	372	338	633	1,118
NSW	67	32,152	29,329	7,394	8,051	1,972	18,462	6,739	11,216	26,732	18,972	36,519	52,708

SECTION 3: LEGAL PROCEEDINGS

Table 3.1: Adults proceeded against by NSW Police by method of legal proceeding

Over the five years to March 2022

Method of legal proceeding	Adults proceeded against					2 Year Trend		5 Year Trend	
	12 months to March 2018	12 months to March 2019	12 months to March 2020	12 months to March 2021	12 months to March 2022	Number change	Percentage change	Number change	Average annual percentage change
Proceeded against to court	149,885	155,157	154,697	152,164	152,592	428	Stable	2,707	Stable
Court diversion	14,993	13,430	13,038	9,451	8,453	-998	Stable	-6,540	-13.3%
Criminal Infringement Notice	9,493	8,762	8,600	5,917	5,565	-352	Stable	-3,928	-12.5%
Cannabis or other drug caution	5,500	4,668	4,438	3,534	2,888	-646	-18.3%	-2,612	-14.9%

Table 3.2: Young people proceeded against by NSW Police by method of legal proceeding

Over the five years to March 2022

Method of legal proceeding	Young people proceeded against					2 Year Trend		5 Year Trend	
	12 months to March 2018	12 months to March 2019	12 months to March 2020	12 months to March 2021	12 months to March 2022	Number change	Percentage change	Number change	Average annual percentage change
Proceeded against to court	12,237	11,614	11,547	11,025	10,694	-331	Stable	-1,543	-3.3%
Court diversion	18,454	16,802	18,403	17,740	18,334	594	Stable	-120	Stable
Youth Justice Conference	682	709	851	811	756	-55	Stable	74	Stable
Caution Young Offenders Act	7,444	6,724	7,293	6,730	6,405	-325	Stable	-1,039	-3.7%
Warning Young Offenders Act	10,328	9,369	10,259	10,199	11,173	974	Stable	845	Stable

Table 3.3: Adults proceeded against to court by NSW Police for all 62 criminal offences types
Over the two years to March 2022

Offence category		12 months to March 2021		12 months to March 2022		2 Year Trend	
		No. proceeded to court	% proceeded to court	No. proceeded to court	% proceeded to court	Trend test result	Percentage change
Homicide	Murder	92	100.0%	75	100.0%	Stable	
	Attempted murder	35	100.0%	17	100.0%	n.c.	
	Murder accessory, conspiracy	0		0		n.c.	
	Manslaughter	5	100.0%	4	100.0%	n.c.	
Assault	Domestic violence related assault	13,095	99.9%	13,536	99.9%	Up	3.4%
	Non-domestic violence related assault	6,406	97.4%	6,439	96.9%	Stable	
	Assault Police	1,238	99.8%	1,424	99.9%	Up	15.0%
Sexual offences	Sexual assault	829	100.0%	786	100.0%	Stable	
	Sexual touching, sexual act and other sexual offences	1,310	98.4%	1,304	98.5%	Stable	
Abduction and kidnapping		202	100.0%	204	100.0%	Stable	
Robbery	Robbery without a weapon	367	99.7%	325	100.0%	Stable	
	Robbery with a firearm	66	100.0%	78	100.0%	Stable	
	Robbery with a weapon not a firearm	405	100.0%	356	100.0%	Stable	
Blackmail and extortion		12	100.0%	20	100.0%	n.c.	
Intimidation, stalking and harassment		12,453	99.1%	13,381	98.9%	Up	7.5%
Other offences against the person		243	97.2%	329	98.5%	Stable	
Theft	Break and enter dwelling	2,290	99.7%	2,179	99.5%	Stable	
	Break and enter non-dwelling	1,149	99.2%	1,075	99.1%	Stable	
	Receiving or handling stolen goods	3,932	97.0%	3,828	97.1%	Stable	
	Motor vehicle theft	1,301	99.8%	1,219	99.5%	Stable	
	Steal from motor vehicle	731	98.3%	866	98.9%	Stable	
	Steal from retail store	4,620	64.3%	4,181	66.7%	Stable	
	Steal from dwelling	627	94.0%	746	95.3%	Up	19.0%
	Steal from person	209	97.2%	160	96.4%	Down	-23.4%
	Stock theft	13	92.9%	13	100.0%	n.c.	
	Fraud	4,247	98.1%	3,716	98.4%	Down	-12.5%
Other theft	1,445	87.2%	1,415	88.3%	Stable		
Arson		155	88.1%	163	92.1%	Stable	
Malicious damage to property		4,756	99.2%	4,360	99.1%	Stable	
Drug offences	Possession and/or use of cocaine	1,237	99.6%	1,295	98.4%	Stable	
	Possession and/or use of narcotics	601	99.5%	507	100.0%	Down	-15.6%
	Possession and/or use of cannabis	6,053	63.3%	5,001	63.5%	Down	-17.4%
	Possession and/or use of amphetamines	3,577	99.9%	2,946	99.6%	Down	-17.6%
	Possession and/or use of ecstasy	224	96.6%	231	77.0%	Stable	
	Possession and/or use of other drugs	1,950	99.6%	1,534	98.9%	Down	-21.3%
	Dealing, trafficking in cocaine	806	100.0%	680	100.0%	Stable	
	Dealing, trafficking in narcotics	150	100.0%	143	100.0%	Stable	
	Dealing, trafficking in cannabis	483	100.0%	404	99.8%	Down	-16.4%
	Dealing, trafficking in amphetamines	945	100.0%	803	100.0%	Down	-15.0%
	Dealing, trafficking in ecstasy	124	100.0%	77	100.0%	Down	-37.9%
	Dealing, trafficking in other drugs	309	100.0%	207	100.0%	Down	-33.0%
	Cultivating cannabis	815	100.0%	613	99.7%	Stable	
	Manufacture drug	57	100.0%	42	100.0%	Stable	
Importing drugs	91	100.0%	108	98.2%	Stable		
Other drug offences	705	98.1%	648	98.5%	Down	-8.1%	
Prohibited and regulated weapons offences		3,098	85.3%	2,940	85.3%	Stable	
Disorderly conduct	Trespass	1,136	61.4%	970	61.7%	Down	-14.6%
	Offensive conduct	334	17.6%	292	15.2%	Stable	
	Offensive language	143	14.3%	117	12.8%	Down	-18.2%
	Criminal intent	1,372	99.4%	1,445	99.7%	Up	5.3%
Betting and gaming offences		14	73.7%	6	54.5%	n.c.	
Liquor offences		82	4.6%	93	4.5%	Stable	
Pornography offences		199	98.5%	217	100.0%	Stable	
Prostitution offences		0		1	100.0%	n.c.	
Against justice procedures	Escape custody	97	100.0%	71	100.0%	Stable	
	Breach Apprehended Violence Order	10,964	100.0%	11,518	100.0%	Up	5.1%
	Breach bail conditions	7,845	100.0%	7,618	100.0%	Stable	
	Fail to appear	5	100.0%	13	100.0%	n.c.	
	Resist or hinder officer	1,551	83.2%	1,682	85.3%	Up	8.4%
Other offences against justice procedures	1,029	100.0%	982	100.0%	Down	-4.6%	
Transport regulatory offences		266	0.6%	565	1.3%	Up	112.4%
Other offences		2,281	28.0%	4,397	7.6%	Stable	

NSW Recorded Crime Statistics March 2022

Table 3.4: Young people proceeded against to court by NSW Police for all 62 criminal offences
Over the two years to March 2022

Offence category		12 months to March 2021		12 months to March 2022		2 Year Trend	
		No. proceeded to court	% proceeded to court	No. proceeded to court	% proceeded to court	Trend test result	Percentage change
Homicide	Murder	5	100.0%	7	100.0%	n.c.	
	Attempted murder	0		1	100.0%	n.c.	
	Murder accessory, conspiracy	0		0		n.c.	
	Manslaughter	0		0		n.c.	
Assault	Domestic violence related assault	495	49.4%	447	42.9%	Stable	
	Non-domestic violence related assault	892	40.7%	841	38.8%	Stable	
	Assault Police	129	76.3%	110	76.9%	Stable	
Sexual offences	Sexual assault	147	98.7%	147	98.7%	Stable	
	Sexual touching, sexual act and other sexual offences	84	79.2%	89	80.9%	Stable	
Abduction and kidnapping		9	90.0%	5	100.0%	n.c.	
Robbery	Robbery without a weapon	379	95.5%	271	93.8%	Down	-28.5%
	Robbery with a firearm	14	100.0%	6	100.0%	n.c.	
	Robbery with a weapon not a firearm	234	97.9%	194	92.4%	Down	-17.1%
Blackmail and extortion		0		1	100.0%	n.c.	
Intimidation, stalking and harassment		1,145	73.3%	1,106	70.4%	Stable	
Other offences against the person		22	59.5%	19	76.0%	n.c.	
Theft	Break and enter dwelling	467	72.1%	580	76.3%	Up	24.2%
	Break and enter non-dwelling	276	46.9%	357	50.6%	Stable	
	Receiving or handling stolen goods	191	55.4%	187	58.4%	Stable	
	Motor vehicle theft	491	67.7%	630	73.9%	Up	28.3%
	Steal from motor vehicle	283	60.1%	365	71.4%	Stable	
	Steal from retail store	574	38.8%	337	30.2%	Down	-41.3%
	Steal from dwelling	50	30.5%	64	40.3%	Stable	
	Steal from person	55	56.1%	44	55.0%	Stable	
	Stock theft	1	100.0%	2	100.0%	n.c.	
	Fraud	240	59.4%	231	62.8%	Stable	
Other theft	160	36.9%	124	34.3%	Down	-22.5%	
Arson		24	27.3%	25	33.8%	Stable	
Malicious damage to property		500	32.8%	516	35.6%	Stable	
Drug offences	Possession and/or use of cocaine	7	26.9%	6	26.1%	n.c.	
	Possession and/or use of narcotics	0		0		n.c.	
	Possession and/or use of cannabis	222	17.5%	178	15.5%	Stable	
	Possession and/or use of amphetamines	8	38.1%	9	69.2%	n.c.	
	Possession and/or use of ecstasy	15	27.8%	4	28.6%	n.c.	
	Possession and/or use of other drugs	22	27.5%	14	23.3%	n.c.	
	Dealing, trafficking in cocaine	25	100.0%	16	100.0%	n.c.	
	Dealing, trafficking in narcotics	0		0		n.c.	
	Dealing, trafficking in cannabis	28	77.8%	24	77.4%	Stable	
	Dealing, trafficking in amphetamines	5	100.0%	2	100.0%	n.c.	
	Dealing, trafficking in ecstasy	19	100.0%	4	100.0%	n.c.	
	Dealing, trafficking in other drugs	6	75.0%	4	66.7%	n.c.	
	Cultivating cannabis	3	75.0%	3	50.0%	n.c.	
	Manufacture drug	0		0		n.c.	
Importing drugs	1	100.0%	0		n.c.		
Other drug offences	3	5.4%	5	6.5%	n.c.		
Prohibited and regulated weapons offences		125	26.8%	134	32.7%	Stable	
Disorderly conduct	Trespass	210	17.8%	138	12.4%	Stable	
	Offensive conduct	22	8.8%	19	8.8%	n.c.	
	Offensive language	8	8.7%	4	7.8%	n.c.	
	Criminal intent	176	84.2%	214	89.5%	Stable	
Betting and gaming offences		0		0		n.c.	
Liquor offences		1	0.4%	1	0.4%	n.c.	
Pornography offences		8	9.1%	12	14.3%	n.c.	
Prostitution offences		0		0		n.c.	
Against justice procedures	Escape custody	18	90.0%	11	84.6%	n.c.	
	Breach Apprehended Violence Order	524	99.2%	478	99.4%	Stable	
	Breach bail conditions	1,480	98.7%	1,389	99.1%	Stable	
	Fail to appear	0		0		n.c.	
	Resist or hinder officer	94	44.8%	74	51.4%	Stable	
Other offences against justice procedures	18	94.7%	9	90.0%	n.c.		
Transport regulatory offences		28	0.2%	24	0.1%	Stable	
Other offences		140	11.7%	196	3.2%	Stable	

Figure 3.5: Offences with the largest change in the number of adults proceeded against to court by NSW Police

Between the 12 months to March 2021 and the 12 months to March 2022

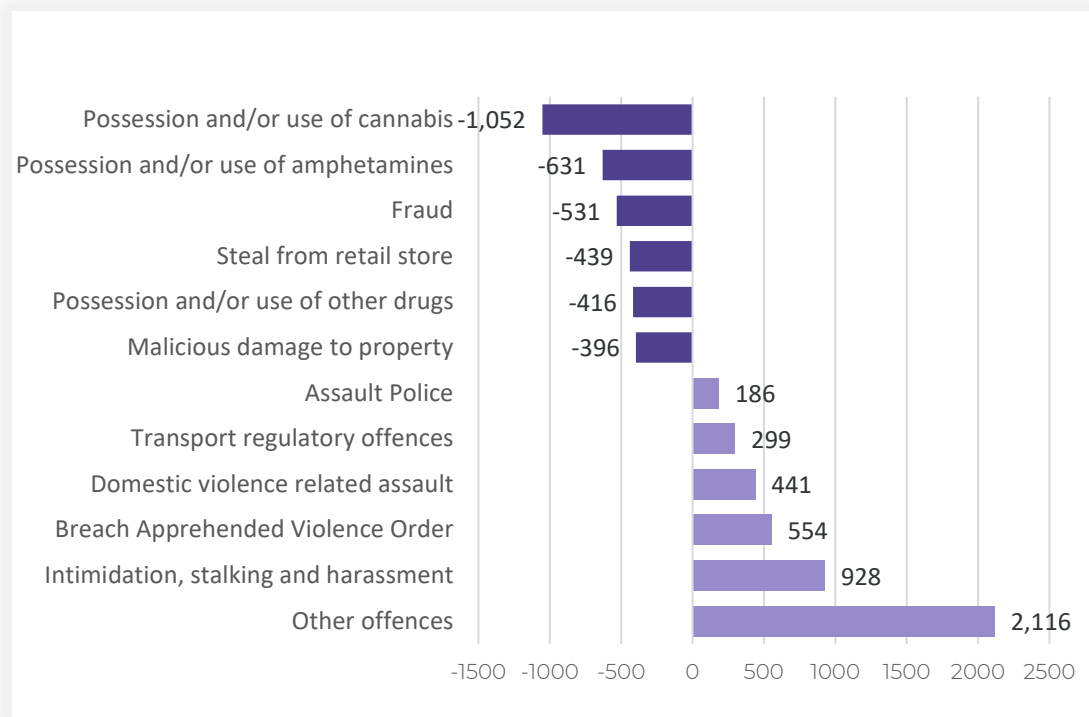
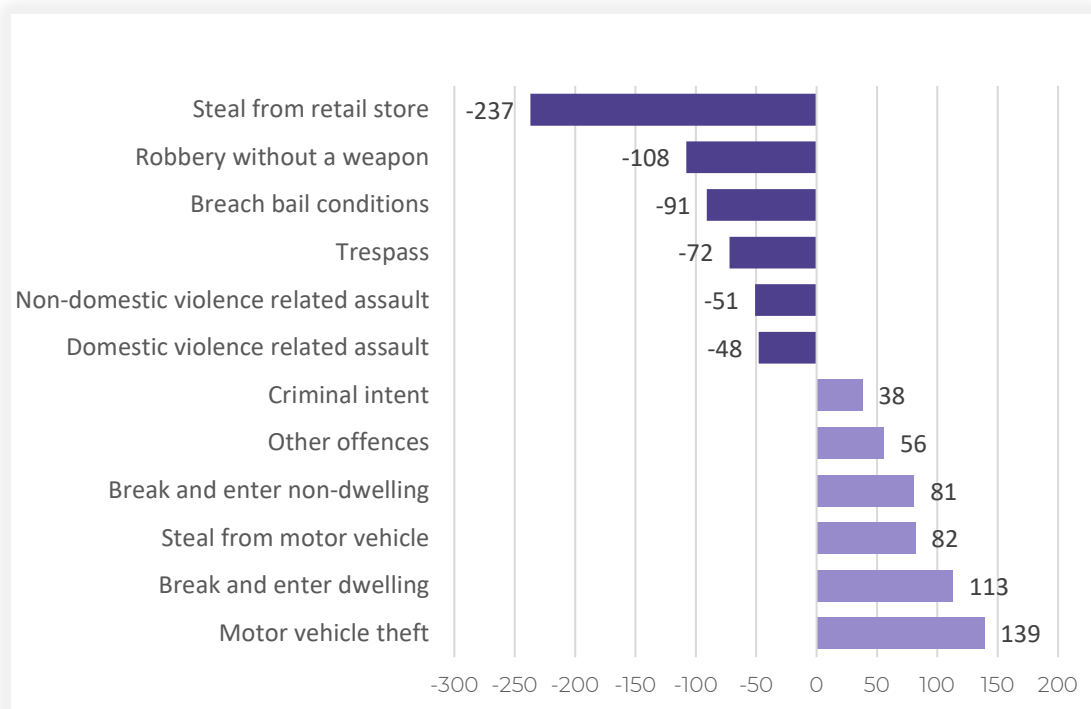


Figure 3.6: Offences with the largest change in the number of young people proceeded against to court by NSW Police

Between the 12 months to March 2021 and the 12 months to March 2022



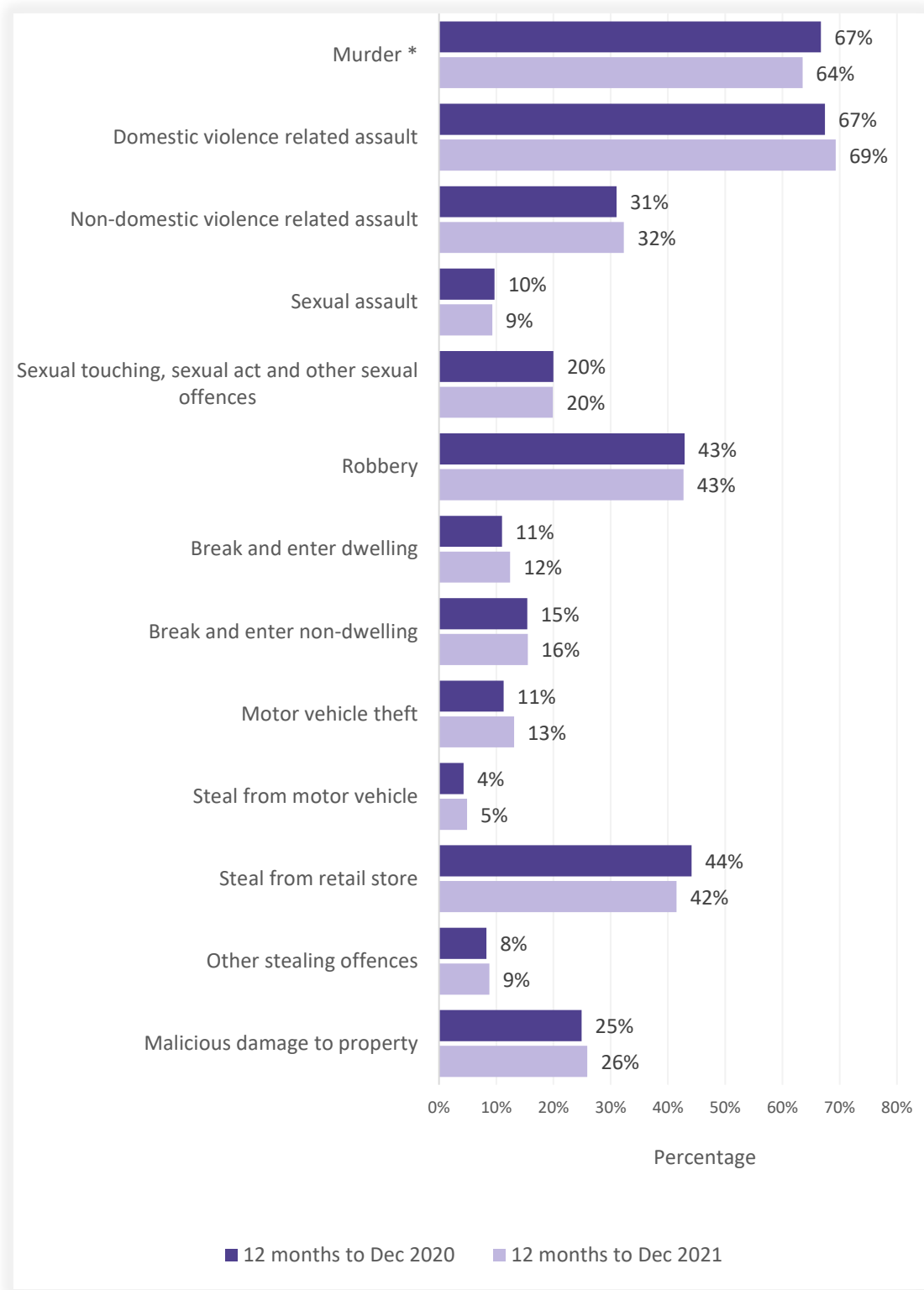
NSW Recorded Crime Statistics March 2022

Table 3.7: Incidents of all 62 criminal offence types by whether legal proceedings commenced within 90 days of reporting
Over the two years to December 2021

Offence category		Recorded criminal incidents over the 12 months to December 2020			Recorded criminal incidents over the 12 months to December 2021		
		Proceedings commenced within 90 days	Total number recorded	% proceedings commenced within 90 days	Proceedings commenced within 90 days	Total number recorded	% proceedings commenced within 90 days
Homicide	Murder	46	69	66.7%	33	52	63.5%
	Attempted murder	20	27	74.1%	9	19	47.4%
	Murder accessory, conspiracy	1	1	100.0%	0	1	0.0%
	Manslaughter	1	4	25.0%	1	1	100.0%
Assault	Domestic violence related assault	21,742	32,256	67.4%	22,226	32,078	69.3%
	Non-domestic violence related assault	9,141	29,532	31.0%	9,129	28,235	32.3%
	Assault Police	2,258	2,520	89.6%	2,284	2,592	88.1%
Sexual offences	Sexual assault	683	7,050	9.7%	675	7,283	9.3%
	Sexual touching, sexual act and other sexual offences	1,574	7,883	20.0%	1,481	7,435	19.9%
Abduction and kidnapping		108	202	53.5%	120	203	59.1%
Robbery	Robbery without a weapon	476	1,146	41.5%	370	956	38.7%
	Robbery with a firearm	42	103	40.8%	44	86	51.2%
	Robbery with a weapon not a firearm	391	869	45.0%	338	719	47.0%
Blackmail and extortion		8	93	8.6%	14	127	11.0%
Intimidation, stalking and harassment		16,880	39,179	43.1%	18,382	41,058	44.8%
Other offences against the person		407	1,367	29.8%	574	1,893	30.3%
Theft	Break and enter dwelling	2,177	19,702	11.0%	2,212	17,845	12.4%
	Break and enter non-dwelling	1,137	7,387	15.4%	1,109	7,147	15.5%
	Receiving or handling stolen goods	6,263	8,138	77.0%	5,838	7,530	77.5%
	Motor vehicle theft	1,325	11,728	11.3%	1,372	10,481	13.1%
	Steal from motor vehicle	1,206	28,337	4.3%	1,348	27,735	4.9%
	Steal from retail store	8,821	19,980	44.1%	7,456	17,966	41.5%
	Steal from dwelling	934	16,798	5.6%	1,004	16,466	6.1%
	Steal from person	364	2,151	16.9%	328	1,789	18.3%
	Stock theft	7	396	1.8%	11	321	3.4%
	Fraud	4,057	44,817	9.1%	3,682	45,640	8.1%
Other theft	1,944	19,805	9.8%	1,807	17,271	10.5%	
Arson		203	3,940	5.2%	195	3,769	5.2%
Malicious damage to property		13,264	53,317	24.9%	12,750	49,255	25.9%
Drug offences	Possession and/or use of cocaine	1,556	2,143	72.6%	1,740	2,336	74.5%
	Possession and/or use of narcotics	877	1,316	66.6%	752	1,215	61.9%
	Possession and/or use of cannabis	14,153	18,177	77.9%	12,307	16,183	76.0%
	Possession and/or use of amphetamines	5,997	8,051	74.5%	5,450	7,388	73.8%
	Possession and/or use of ecstasy	1,089	1,462	74.5%	356	528	67.4%
	Possession and/or use of other drugs	3,418	6,726	50.8%	3,138	6,570	47.8%
	Dealing, trafficking in cocaine	992	1,265	78.4%	971	1,387	70.0%
	Dealing, trafficking in narcotics	214	358	59.8%	343	406	84.5%
	Dealing, trafficking in cannabis	829	1,125	73.7%	632	798	79.2%
	Dealing, trafficking in amphetamines	2,434	2,980	81.7%	2,302	2,902	79.3%
	Dealing, trafficking in ecstasy	385	490	78.6%	133	178	74.7%
	Dealing, trafficking in other drugs	430	664	64.8%	370	548	67.5%
	Cultivating cannabis	808	1,209	66.8%	709	1,076	65.9%
	Manufacture drug	35	74	47.3%	31	51	60.8%
Importing drugs	75	244	30.7%	77	197	39.1%	
Other drug offences	1,209	6,091	19.8%	1,168	5,869	19.9%	
Prohibited and regulated weapons offences		6,338	15,503	40.9%	6,111	14,752	41.4%
Disorderly conduct	Trespass	4,243	10,226	41.5%	3,563	9,362	38.1%
	Offensive conduct	2,631	3,906	67.4%	2,484	3,739	66.4%
	Offensive language	1,682	2,124	79.2%	1,547	1,916	80.7%
	Criminal intent	1,811	2,323	78.0%	1,920	2,412	79.6%
Betting and gaming offences		16	74	21.6%	13	57	22.8%
Liquor offences		2,848	8,108	35.1%	2,790	8,393	33.2%
Pornography offences		271	894	30.3%	221	852	25.9%
Prostitution offences		2	20	10.0%	0	18	0.0%
Against justice procedures	Escape custody	153	176	86.9%	145	166	87.3%
	Breach Apprehended Violence Order	16,175	19,965	81.0%	17,416	21,205	82.1%
	Breach bail conditions	17,235	51,743	33.3%	17,336	51,029	34.0%
	Fail to appear	6	768	0.8%	8	810	1.0%
	Resist or hinder officer	4,745	5,642	84.1%	4,731	5,613	84.3%
	Other offences against justice procedures	1,210	1,753	69.0%	1,241	2,051	60.5%
Transport regulatory offences		63,678	73,598	86.5%	63,459	73,719	86.1%
Other offences		7,753	27,405	28.3%	23,933	93,239	25.7%

Figure 3.8: Percentage of recorded criminal incidents for major offences by whether legal proceedings commenced within 90 days of reporting

Over the two years to December 2021



SECTION 4: POLICING ACTIVITY

Table 4.1: Selected policing activities
Over the five years to March 2022

	Number of selected policing activities					2 Year Trend		5 Year Trend	
	12 months to March 2018	12 months to March 2019	12 months to March 2020	12 months to March 2021	12 months to March 2022	Number change	Annual percentage change	Number change	Annual average percentage change
Bail compliance checks	113,119	103,680	94,580	123,531	133,479	9,948	Stable	20,360	4.2%
ADVO compliance checks	5,619	39,901	55,610	83,989	122,754	38,765	46.2%	117,135	116.2%
Move-on directions	105,036	104,778	113,231	101,756	97,570	-4,186	Stable	-7,466	Stable
Searches	291,032	279,966	288,382	264,538	235,631	-28,907	-10.9%	-55,401	-5.1%
Vehicle searches	48,958	45,041	43,619	48,156	42,955	-5,201	-10.8%	-6,003	-3.2%
Person searches	236,888	229,235	240,843	213,579	190,534	-23,045	-10.8%	-46,354	-5.3%
Strip searches	5,186	5,690	3,920	2,803	2,142	-661	-23.6%	-3,044	-19.8%
Convey/detain person to mental health facility	13,957	15,118	16,996	18,092	19,183	1,091	6.0%	5,226	8.3%

NSW Recorded Crime Statistics March 2022

Table 4.2: Non-criminal domestic violence episodes by Statistical Area (SA4)

Over the five years to March 2022

Statistical Area	Number of activities					Trend and average annual percentage change	
	12 months to March 2018	12 months to March 2019	12 months to March 2020	12 months to March 2021	12 months to March 2022	2 Year Trend	5 Year Trend
						Percentage change	Annual average percentage change
Greater Sydney	44,624	45,437	47,806	48,371	45,055	Stable	Stable
Baulkham Hills and Hawkesbury	957	1,029	1,167	1,172	1,160	Stable	4.9%
Blacktown	5,505	5,240	5,336	5,337	5,324	Stable	Stable
Central Coast	4,354	4,354	4,713	4,988	4,589	Stable	1.3%
City and Inner South	3,233	3,375	3,457	3,574	3,434	Stable	1.5%
Eastern Suburbs	1,708	1,730	1,951	1,999	2,052	Stable	4.7%
Inner South West	5,205	5,175	5,328	5,100	4,865	Stable	Stable
Inner West	2,003	1,987	2,079	2,133	1,872	-12.2%	Stable
North Sydney and Hornsby	1,583	1,548	1,706	1,844	1,783	Stable	3.0%
Northern Beaches	1,479	1,549	1,668	1,566	1,359	-13.2%	Stable
Outer South West	3,395	3,495	3,585	3,652	3,278	Stable	Stable
Outer West and Blue Mountains	4,374	4,584	4,802	4,981	4,174	-16.2%	Stable
Parramatta	3,949	4,129	4,351	4,413	4,188	Stable	1.5%
Ryde	937	1,021	1,141	1,155	1,100	Stable	4.1%
South West	4,390	4,518	4,695	4,620	4,286	Stable	Stable
Sutherland	1,552	1,703	1,827	1,837	1,591	-13.4%	Stable
Regional NSW	35,108	35,973	38,633	40,054	38,551	Stable	2.4%
Capital Region	2,108	2,263	2,574	2,888	2,810	Stable	7.5%
Central West	2,899	3,004	3,199	3,335	3,155	Stable	2.1%
Coffs Harbour - Grafton	1,933	1,939	1,907	2,036	1,921	Stable	Stable
Far West and Orana	3,424	3,624	3,621	3,843	3,758	Stable	2.4%
Hunter Valley excluding Newcastle	2,928	2,748	2,860	3,199	3,073	Stable	1.2%
Illawarra	3,463	3,502	3,755	3,668	3,608	Stable	Stable
Mid North Coast	2,943	3,064	3,284	3,404	3,154	Stable	1.7%
Murray	1,571	1,737	1,967	2,046	1,951	Stable	5.6%
New England and North West	3,697	3,665	3,897	3,746	3,865	Stable	Stable
Newcastle and Lake Macquarie	3,617	3,495	3,939	4,410	4,182	Stable	3.7%
Richmond - Tweed	2,581	2,680	2,788	2,866	2,758	Stable	1.7%
Riverina	2,396	2,601	2,963	2,822	2,504	-11.3%	Stable
Southern Highlands and Shoalhaven	1,548	1,651	1,879	1,791	1,812	Stable	4.0%
NSW	79,743	81,430	86,450	88,434	83,618	Stable	1.2%

Table 4.3: Ratio to NSW rate of non-criminal domestic violence episodes per 100,000 population by Statistical Area (SA4)

Over the five years to March 2022

Statistical Area	12 months to March 2018	12 months to March 2019	12 months to March 2020	12 months to March 2021	12 months to March 2022
Greater Sydney	0.9	0.8	0.8	0.8	0.8
Baulkham Hills and Hawkesbury	0.4	0.4	0.4	0.4	0.4
Blacktown	1.5	1.4	1.3	1.3	1.3
Central Coast	1.3	1.3	1.3	1.3	1.3
City and Inner South	0.9	0.9	0.9	0.9	0.9
Eastern Suburbs	0.6	0.6	0.6	0.6	0.7
Inner South West	0.8	0.8	0.8	0.7	0.8
Inner West	0.6	0.6	0.6	0.6	0.6
North Sydney and Hornsby	0.4	0.3	0.4	0.4	0.4
Northern Beaches	0.5	0.6	0.6	0.5	0.5
Outer South West	1.2	1.2	1.1	1.1	1.1
Outer West and Blue Mountains	1.4	1.4	1.4	1.4	1.2
Parramatta	0.8	0.8	0.8	0.8	0.8
Ryde	0.5	0.5	0.5	0.5	0.5
South West	1.0	1.0	1.0	0.9	0.9
Sutherland	0.7	0.7	0.7	0.7	0.7
Regional NSW	1.3	1.3	1.3	1.3	1.3
Capital Region	0.9	1.0	1.0	1.1	1.2
Central West	1.4	1.4	1.4	1.4	1.4
Coffs Harbour - Grafton	1.4	1.4	1.3	1.3	1.3
Far West and Orana	2.9	3.1	2.9	3.0	3.2
Hunter Valley excluding Newcastle	1.1	1.0	0.9	1.0	1.1
Illawarra	1.1	1.1	1.1	1.1	1.1
Mid North Coast	1.3	1.4	1.4	1.4	1.4
Murray	1.3	1.4	1.5	1.5	1.6
New England and North West	2.0	1.9	2.0	1.9	2.0
Newcastle and Lake Macquarie	1.0	0.9	1.0	1.1	1.1
Richmond - Tweed	1.0	1.1	1.0	1.0	1.1
Riverina	1.5	1.6	1.7	1.6	1.5
Southern Highlands and Shoalhaven	1.0	1.0	1.1	1.0	1.1
NSW	1.0	1.0	1.0	1.0	1.0

APPENDIX 1

REGIONAL

COMPARISONS

Local Government Areas

Appendix Table 1.1: Trends in recorded criminal incidents for major offences, NSW LGAs

Over the two years to March 2022

NSW LGA	Murder	Domestic violence related assault	Non-domestic violence related assault	Sexual assault	Sexual touching, sexual act and other sexual offences	Robbery	Break and enter dwelling	Break and enter non-dwelling	Motor vehicle theft	Steal from motor vehicle	Steal from retail store	Other stealing offences	Malicious damage to property
Albury		23.1	ns	ns	ns		ns	ns	ns	ns	ns	ns	ns
Armidale Regional		ns	22.2	ns	ns		-39.1	ns	ns	ns	ns	ns	ns
Ballina		ns	ns	ns	ns		94.0	ns	94.1	ns	ns	74.4	ns
Balranald													
Bathurst Regional		ns	ns	ns	ns		ns	ns	ns	ns	ns	ns	ns
Bayside		ns	ns	ns	ns	ns	ns	ns	ns	ns	ns	ns	-8.3
Bega Valley		ns	ns	ns	ns		ns	-50.6	-60.8	ns	ns	ns	ns
Bellingen		-30.0	ns				ns		ns	ns		73.0	ns
Berrigan			ns									ns	ns
Blacktown		ns	ns	-22.7	ns	ns	ns	ns	ns	ns	21.1	ns	ns
Bland		ns										ns	ns
Blayney		ns	ns									ns	ns
Blue Mountains		ns	ns	ns	ns		ns	ns	ns	ns	ns	ns	-42.1
Bogan		ns										ns	ns
Bourke		ns	ns				ns	64.3		85.7	ns	ns	ns
Brewarrina		ns	ns										ns
Broken Hill		ns	ns		ns		ns	ns	ns	ns	ns	ns	ns
Burwood		ns	ns		ns		ns		ns	ns	ns	ns	ns
Byron		ns	ns	ns	ns		ns	ns	ns	ns	ns	ns	ns
Cabonne		ns	ns									ns	ns
Camden		9.8	ns	ns	ns		ns	ns	ns	ns	ns	ns	-24.8
Campbelltown		ns	ns	ns	ns	ns	ns	ns	ns	ns	ns	ns	ns
Canada Bay		ns	ns	ns	ns		ns	ns	ns	ns	ns	ns	ns
Canterbury-Bankstown		ns	ns	ns	ns	ns	ns	ns	-36.0	ns	ns	ns	-15.2
Carrathool		ns											ns
Central Coast		5.1	ns	ns	ns	ns	-25.6	ns	ns	ns	ns	ns	-15.7
Central Darling		ns	ns					ns					ns
Cessnock		ns	21.4	ns	ns		-29.4	ns	ns	ns	ns	ns	ns
Clarence Valley		ns	ns	ns	ns		ns	122.5	82.8	107.7	ns	ns	ns
Cobar			ns									ns	ns
Coffs Harbour		ns	ns	ns	ns	ns	ns	ns	ns	ns	ns	ns	ns
Coolamon													
Coonamble		ns	ns				ns					ns	ns
Cootamundra-Gundagai		-37.5	68.0		ns							ns	ns
Cowra		ns	ns				ns	ns	ns	ns	ns	ns	-28.0
Cumberland		ns	ns	ns	ns	ns	ns	ns	ns	ns	ns	ns	ns
Dubbo Regional		ns	ns	ns	ns	ns	52.4	25.9	50.9	30.4	ns	ns	ns
Dungog		ns										ns	ns
Edward River		ns	ns				ns					ns	ns
Eurobodalla		ns	ns	ns	ns		ns	88.1	ns	ns	ns	ns	ns
Fairfield		ns	-22.8	ns	ns	ns	ns	ns	-33.3	-24.1	-35.7	ns	ns
Federation		ns	ns							ns		ns	ns
Forbes		ns	ns				ns	ns	ns	ns		ns	ns
Georges River		ns	ns	ns	ns		ns	ns	ns	ns	ns	ns	-20.0

NSW Recorded Crime Statistics March 2022

NSW LGA	Murder	Domestic violence related assault	Non-domestic violence related assault	Sexual assault	Sexual touching, sexual act and other sexual offences	Robbery	Break and enter dwelling	Break and enter non-dwelling	Motor vehicle theft	Steal from motor vehicle	Steal from retail store	Other stealing offences	Malicious damage to property
Gilgandra		ns	ns									ns	57.6
Glen Innes Severn		ns	ns				120.6					ns	ns
Goulburn Mulwaree		ns	ns	ns	ns		ns	ns	ns	ns	ns	ns	ns
Greater Hume Shire		ns								ns		ns	ns
Griffith		ns	ns	ns	ns		ns	ns	ns	ns	ns	ns	ns
Gunnedah		ns	ns	ns			135.1	ns	ns	ns	ns	ns	ns
Gwydir												ns	
Hawkesbury		ns	ns	ns	ns		ns	-22.4	ns	ns	ns	ns	-31.9
Hay		ns										ns	ns
Hilltops		ns	ns				ns		ns	ns		ns	ns
Hornsby		ns	-29.4	ns	ns		-59.6	ns	ns	-40.4	ns	-30.8	-29.5
Hunters Hill							ns			ns		ns	ns
Inner West		ns	ns	ns	ns	ns	ns	ns	ns	ns	ns	ns	ns
Inverell		36.5	78.6	ns	ns		ns			ns	142.5	ns	ns
Junee		ns	ns									ns	-34.6
Kempsey		ns	ns	ns	ns		ns	-46.6	ns	ns	ns	-20.1	ns
Kiama		ns	ns				ns	ns		ns		ns	-38.1
Ku-ring-gai		ns	ns	ns	ns		ns	ns	ns	ns	-61.6	-37.7	-29.7
Kyogle		ns	ns									ns	ns
Lachlan		ns	45.2				ns	124.2		ns		ns	ns
Lake Macquarie		7.6	-12.9	ns	ns	ns	ns	38.2	-14.9	ns	ns	ns	ns
Lane Cove		ns	ns				ns		ns	ns	ns	ns	-32.4
Leeton		ns	ns	ns			ns			-41.2		ns	ns
Lismore		ns	27.4	ns	ns		ns	ns	109.4	145.5	ns	27.1	19.6
Lithgow		ns	ns	ns	ns		ns		ns	ns	ns	ns	ns
Liverpool		ns	ns	ns	ns	-34.1	ns	ns	ns	ns	ns	ns	ns
Liverpool Plains		ns	ns									ns	ns
Lockhart													
Lord Howe Island													
Maitland		ns	4.6	ns	ns		ns	ns	ns	ns	ns	ns	ns
Mid-Coast		ns	ns	ns	ns		35.9	83.7	20.8	ns	ns	ns	ns
Mid-Western Regional		ns	ns	ns	ns		-40.0	ns		-40.4	ns	-39.2	ns
Moree Plains		5.3	ns	ns	ns		26.8	ns	104.8	ns	84.7	ns	ns
Mosman		ns	ns				ns			ns		ns	ns
Murray River		ns	ns									ns	ns
Murrumbidgee													ns
Muswellbrook		ns	ns	ns	ns		ns	ns	ns	133.9	117.4	ns	ns
Nambucca Valley		31.7	ns	ns	ns		ns	ns	ns	ns	ns	ns	ns
Narrabri		29.3	ns				75.5		ns	ns		ns	ns
Narrandera		ns	ns				ns					ns	-9.2
Narromine		ns	ns				ns	ns		ns		ns	ns
Newcastle		ns	ns	ns	ns	ns	ns	ns	ns	ns	ns	ns	ns
North Sydney		ns	ns	ns	ns		ns	ns	ns	ns	ns	-18.9	-20.4
Northern Beaches		ns	ns	ns	ns	ns	ns	-31.0	ns	ns	ns	-16.1	-28.8
Oberon												-34.9	ns
Orange		27.6	ns	ns	-31.0		ns	61.5	40.8	64.9	38.1	ns	26.3

NSW Recorded Crime Statistics March 2022

NSW LGA	Murder	Domestic violence related assault	Non-domestic violence related assault	Sexual assault	Sexual touching, sexual act and other sexual offences	Robbery	Break and enter dwelling	Break and enter non-dwelling	Motor vehicle theft	Steal from motor vehicle	Steal from retail store	Other stealing offences	Malicious damage to property
Parke	ns	ns	ns	ns	ns		-49.3	ns	ns	ns	ns	ns	ns
Parramatta	ns	ns	ns	ns	ns	ns	ns	ns	ns	ns	ns	ns	ns
Penrith		-16.6	ns	ns	ns	ns	ns	ns	ns	ns	ns	ns	-16.7
Port Macquarie-Hastings	ns	ns	ns	ns	ns		ns	ns	ns	ns	63.4	27.2	ns
Port Stephens	ns	ns	ns	ns	ns		ns	ns	ns	ns	ns	ns	ns
Queanbeyan-Palerang Regional	ns	ns	ns	ns	ns		ns	ns	ns	ns	ns	ns	ns
Randwick	ns	ns	ns	ns	ns	ns	ns	ns	ns	ns	-36.4	ns	ns
Richmond Valley	ns	ns	ns	ns	ns		110.3	328.6	113.3	157.1	ns	ns	40.8
Ryde		-24.8	ns	ns	ns		ns	94.9	ns	ns	ns	ns	ns
Shellharbour	ns	ns	ns	-41.9	-17.6		ns	ns	ns	51.1	ns	ns	ns
Shoalhaven	ns	ns	ns	ns	ns		ns	ns	ns	ns	ns	ns	ns
Singleton	ns	ns	ns	ns	ns		ns	ns	ns	ns	ns	ns	51.6
Snowy Monaro Regional	ns	ns	ns	ns	ns		ns	ns	ns	ns	ns	ns	ns
Snowy Valleys	ns	ns	ns	ns	ns		ns	ns	ns	ns	ns	ns	ns
Strathfield	ns	ns	ns	ns	ns		ns	ns	ns	ns	ns	ns	ns
Sutherland Shire		5.5	ns	ns	ns	ns	ns	ns	ns	ns	-32.4	ns	ns
Sydney	ns	ns	ns	ns	ns	ns	-26.1	ns	ns	ns	ns	10.0	ns
Tamworth Regional	ns	ns	ns	ns	ns		15.6	36.8	50.7	36.9	ns	ns	ns
Temora	ns	ns	ns	ns	ns		ns	ns	ns	ns	ns	ns	ns
Tenterfield	ns	ns	ns	ns	ns		ns	ns	ns	ns	ns	ns	ns
The Hills Shire	ns	ns	ns	ns	ns		ns	-35.1	ns	-32.4	ns	-18.4	ns
Tweed	ns	ns	ns	ns	ns		35.0	ns	ns	ns	ns	ns	ns
Unincorporated Far West	ns	ns	ns	ns	ns		ns	ns	ns	ns	ns	ns	ns
Upper Hunter Shire	ns	ns	ns	ns	ns		ns	ns	ns	ns	ns	ns	ns
Upper Lachlan Shire	ns	ns	ns	ns	ns		ns	ns	ns	ns	ns	ns	ns
Uralla	ns	ns	ns	ns	ns		ns	ns	ns	ns	ns	ns	ns
Wagga Wagga	ns	ns	ns	ns	ns	ns	-28.0	ns	ns	ns	ns	-18.6	ns
Walcha	ns	ns	ns	ns	ns		ns	ns	ns	ns	ns	ns	ns
Walgett	ns	ns	ns	ns	ns		ns	ns	ns	ns	ns	ns	ns
Warren	ns	ns	ns	ns	ns		ns	ns	ns	ns	ns	61.9	ns
Warrumbungle Shire	ns	ns	ns	ns	ns		ns	ns	ns	ns	ns	ns	ns
Waverley	ns	ns	ns	ns	ns		ns	ns	ns	ns	ns	ns	ns
Weddin	ns	ns	ns	ns	ns		ns	ns	ns	ns	ns	ns	ns
Wentworth	ns	ns	ns	ns	ns		ns	ns	ns	ns	ns	ns	ns
Willoughby	ns	ns	ns	ns	ns		ns	ns	ns	ns	ns	ns	ns
Wingecarribee	ns	ns	ns	ns	ns		ns	ns	ns	ns	ns	ns	ns
Wollondilly	ns	ns	ns	ns	ns		ns	ns	ns	ns	ns	ns	ns
Wollongong	ns	ns	ns	ns	ns	ns	ns	ns	ns	26.4	ns	ns	ns
Woollahra	ns	ns	ns	ns	ns		ns	ns	ns	ns	ns	ns	ns
Yass Valley	ns	ns	ns	ns	ns		ns	ns	ns	ns	ns	ns	ns
NSW	ns	ns	ns	ns	ns	ns	ns	7.2	ns	ns	ns	ns	ns

NSW Recorded Crime Statistics March 2022

Appendix Table 1.2: Ratio to NSW rate of recorded criminal incidents per 100,000 population for major offences, NSW LGAs
12 months to March 2022

NSW LGA	Murder	Domestic violence related assault	Non-domestic violence related assault	Sexual assault	Sexual touching, sexual act and other sexual offences	Robbery	Break and enter dwelling	Break and enter non-dwelling	Motor vehicle theft	Steal from motor vehicle	Steal from retail store	Other stealing offences	Malicious damage to property
Albury		1.9	1.8	1.4	1.7	2.2	1.9	1.6	2.4	3.4	2.0	1.6	2.2
Armidale Regional		1.9	2.0	2.3	2.0	1.6	2.5	2.7	1.0	2.3	2.0	1.7	2.1
Ballina	3.0	0.8	0.8	1.0	1.0	1.2	1.0	0.8	1.1	1.3	0.8	1.4	0.9
Balranald													
Bathurst Regional	3.1	1.8	1.7	1.7	1.8	1.9	1.6	1.1	1.0	1.8	1.2	1.3	1.9
Bayside		0.9	0.6	0.5	0.5	0.7	0.5	0.3	0.6	0.6	0.7	0.9	0.7
Bega Valley		0.9	0.8	0.9	1.1	0.3	0.5	1.4	0.4	0.5	0.5	0.8	0.9
Bellingen		0.8	1.1	2.5	1.9	0.4	0.8	1.4	1.4	0.7	0.5	1.1	1.8
Berrigan		0.8	0.8	1.1	1.3		1.2	3.1	0.7	0.4	0.4	0.9	1.3
Blacktown	1.8	1.3	1.1	1.0	1.1	2.1	1.0	0.6	1.2	1.2	1.3	1.0	1.2
Bland		1.2	1.2	0.6	1.4		0.7	1.5	1.2	0.8	0.4	0.9	1.0
Blayney		0.9	0.9	1.6	1.1	1.3	1.6	2.9	0.9	0.4	0.5	0.9	0.8
Blue Mountains	1.7	0.7	0.6	1.2	1.0	0.5	0.4	0.5	0.3	0.6	0.4	0.6	0.9
Bogan													
Bourke													
Brewarrina													
Broken Hill		3.1	2.4	0.9	1.8	2.2	4.3	3.2	1.6	1.4	1.1	1.8	2.9
Burwood		0.6	0.7	0.5	0.7	0.8	0.6	1.0	0.6	0.6	2.6	1.1	0.6
Byron		0.9	1.7	1.3	1.1	0.8	0.6	1.4	1.6	0.9	0.7	1.2	1.5
Cabonne		0.7	0.6	1.1	1.0		0.9	1.8	1.2	0.5	0.1	0.7	0.7
Camden	1.3	0.8	0.4	0.5	0.8	0.3	0.3	0.3	0.6	0.7	0.5	0.5	0.5
Campbelltown	2.3	1.4	1.0	1.2	1.4	1.6	0.9	0.8	1.1	1.2	1.3	1.0	1.2
Canada Bay		0.4	0.4	0.5	0.5	0.3	0.6	0.5	0.6	0.7	0.5	0.7	0.4
Canterbury-Bankstown	0.7	0.9	0.6	0.6	0.6	1.0	0.5	0.5	0.8	0.9	0.5	0.6	0.6
Carrathool													
Central Coast	1.6	1.1	1.2	1.3	1.1	0.9	0.8	0.8	0.9	1.0	1.1	0.7	1.1
Central Darling													
Cessnock		1.3	1.4	1.7	1.8	0.5	1.1	1.4	2.7	1.3	0.9	1.8	1.6
Clarence Valley		1.0	1.4	1.0	1.2	0.6	1.6	1.9	1.6	1.2	0.8	1.8	1.4
Cobar		1.4	1.5	1.3	0.5		1.0	4.1	1.4	1.1	1.3	2.1	2.5
Coffs Harbour		1.8	1.8	2.0	1.6	1.9	1.5	3.0	2.0	1.5	1.1	1.3	1.5
Coolamon		0.5	0.3	1.9	1.1		0.5	2.1	0.5	0.1		0.9	0.6
Coonamble		5.6	3.7	2.4	1.5	2.5	5.9	4.9	2.0	1.4	1.1	3.8	5.8
Cootamundra-Gundagai		0.9	1.1	0.9	2.2		0.7	0.8	1.0	0.4	0.4	1.3	0.9
Cowra		2.0	1.4	1.4	3.1	1.1	5.2	2.8	3.1	1.5	1.2	1.5	1.6
Cumberland	2.8	0.9	0.8	0.6	0.5	1.3	0.9	0.4	1.1	1.0	0.5	0.7	0.6
Dubbo Regional	2.5	3.1	2.3	2.1	2.0	2.0	4.9	3.9	3.6	3.0	2.1	2.1	2.5
Dungog		0.8	0.5	1.2	1.2	0.5	0.6	0.6	0.8	0.4	0.2	1.2	1.0
Edward River	15.0	1.7	1.5	1.3	0.6		1.3	0.4	0.3	0.2	0.5	1.7	2.2
Eurobodalla		1.6	1.1	1.3	1.1	2.2	1.3	2.3	1.0	0.8	1.3	1.0	1.7
Fairfield		1.0	0.6	0.4	0.7	1.1	0.6	0.4	0.7	0.7	0.6	0.6	0.7
Federation	10.8	0.5	0.9	0.8	0.8		0.6	2.0	0.9	0.7	0.9	1.3	0.8
Forbes		1.8	2.4	1.8	1.2	1.0	3.5	2.2	2.5	1.8	1.3	2.0	2.9
Georges River		0.7	0.5	0.4	0.5	0.5	0.5	0.4	0.5	0.5	0.6	0.5	0.5

NSW Recorded Crime Statistics March 2022

NSW LGA	Murder	Domestic violence related assault	Non-domestic violence related assault	Sexual assault	Sexual touching, sexual act and other sexual offences	Robbery	Break and enter dwelling	Break and enter non-dwelling	Motor vehicle theft	Steal from motor vehicle	Steal from retail store	Other stealing offences	Malicious damage to property
Gilgandra		2.0	1.4	2.8	3.3	1.1	2.7	2.9	0.5	0.8	0.4	1.6	2.1
Glen Innes Severn		1.8	1.3	2.6	2.5		4.0	4.1	1.2	1.0	1.6	2.1	2.1
Goulburn Mulwaree		0.9	1.2	1.7	1.4	0.9	1.1	1.0	1.0	0.7	1.3	1.5	1.2
Greater Hume Shire		0.7	0.5	2.0	1.5		1.0	1.3	1.6	0.7	0.3	0.9	0.8
Griffith		1.7	1.3	1.3	1.4	1.1	1.8	3.2	2.1	1.3	1.4	1.4	1.7
Gunnedah		2.2	1.9	1.8	1.4	1.1	5.0	2.2	3.4	2.4	1.0	1.9	2.4
Gwydir		0.3	0.7	1.3	1.3		0.5	1.5	1.2	0.5		0.9	0.5
Hawkesbury		1.0	0.8	0.8	1.1	0.5	0.5	0.6	0.7	0.4	0.9	0.5	0.7
Hay													
Hilltops		1.6	1.3	1.1	1.0	0.5	0.8	0.9	1.2	0.5	0.3	0.9	1.6
Hornsby		0.4	0.3	0.5	0.4	0.4	0.2	0.2	0.2	0.3	0.9	0.3	0.4
Hunters Hill		0.2	0.3	0.9	0.7		0.8	0.6	0.7	0.5	0.2	0.5	0.5
Inner West	3.4	0.5	0.7	0.7	0.8	1.0	0.6	0.6	0.6	0.8	1.0	0.9	0.8
Inverell	7.7	2.9	2.1	2.4	2.2	1.1	2.2	3.8	1.8	1.4	2.5	1.4	2.1
Junee		1.0	1.1	1.7	2.1		0.6	0.5	0.6	0.0	0.4	0.7	0.9
Kempsey	4.5	2.1	1.7	2.1	1.8	1.4	4.1	1.5	3.1	1.8	1.1	2.7	2.5
Kiama		0.3	0.4	0.7	0.5		0.6	1.2	0.6	0.9	0.1	0.5	0.5
Ku-ring-gai		0.3	0.2	0.3	0.4	0.2	0.5	0.3	0.3	0.4	0.2	0.3	0.3
Kyogle		1.0	1.1	1.5	0.9		1.2	2.4	1.4	0.5	0.2	1.0	0.9
Lachlan		1.8	2.2	1.1	1.5	2.4	3.9	13.7	5.5	1.7	0.5	2.2	2.9
Lake Macquarie	0.7	1.0	0.9	1.3	1.1	0.8	0.8	1.6	1.4	1.1	1.2	0.9	1.1
Lane Cove		0.3	0.2	0.4	0.3	0.1	0.6	0.3	0.6	0.6	0.4	0.6	0.3
Leeton		2.2	1.7	2.5	1.6	0.8	1.8	0.7	1.2	0.5	0.3	1.1	1.7
Lismore		1.4	2.2	2.0	1.6	2.2	1.7	2.1	2.4	1.8	0.8	1.4	2.0
Lithgow		1.8	1.6	2.1	1.8	0.4	1.0	0.6	0.8	1.0	1.3	1.9	1.4
Liverpool		1.2	0.8	0.7	0.9	1.2	0.9	0.5	1.1	1.1	0.7	0.8	0.9
Liverpool Plains		1.9	1.6	1.8	1.5	1.2	1.1	2.7	0.7	0.4	0.4	1.0	1.5
Lockhart		0.8	0.8	1.4	1.1		0.7	2.1	1.4	0.3		1.0	1.1
Lord Howe Island													
Maitland		1.3	1.1	1.8	1.3	1.4	1.2	1.3	1.2	1.5	1.5	1.6	1.4
Mid-Coast	1.4	1.5	1.3	1.5	1.8	0.8	2.4	3.9	1.5	1.1	1.0	2.1	1.6
Mid-Western Regional		1.7	1.4	2.2	2.2	0.4	0.7	0.9	0.6	0.4	0.6	0.9	1.2
Moree Plains		5.0	3.9	2.5	2.7	3.7	8.7	6.6	5.1	4.3	3.9	3.1	6.0
Mosman		0.2	0.4	0.8	0.7	0.2	0.7	0.3	0.6	0.7	0.3	0.7	0.5
Murray River		0.6	0.7	2.2	0.6		0.6	3.3	1.9	0.7	0.4	1.5	1.0
Murrumbidgee		0.8	0.7	1.5	1.2		1.6	0.9	1.4	0.3	0.1	0.9	1.5
Muswellbrook		2.1	2.1	1.9	1.7	0.9	2.2	3.7	2.4	2.6	1.4	2.7	2.2
Nambucca Valley		2.4	1.6	1.7	1.8	0.7	2.2	2.4	1.3	1.3	0.7	1.5	2.2
Narrabri		2.3	1.4	1.6	0.7		3.1	1.6	2.6	1.5	0.5	1.6	1.7
Narrandera		2.0	1.6	1.8	1.4	1.6	2.5	3.1	0.8	0.9	1.3	1.2	1.7
Narromine		3.0	2.7	1.8	3.1	3.0	2.1	4.7	1.6	1.4	1.2	2.5	1.6
Newcastle	4.9	1.1	1.9	1.4	1.1	2.6	2.1	2.0	2.3	2.5	2.1	1.8	1.8
North Sydney		0.3	0.5	0.5	0.5	0.2	0.5	0.4	0.4	0.5	0.6	0.8	0.5
Northern Beaches		0.5	0.3	0.5	0.6	0.6	0.5	0.4	0.4	0.5	0.6	0.6	0.5
Oberon	50.2	0.7	0.7	2.1	2.6		0.5	1.9	0.6	0.2		1.2	0.9
Orange		1.9	2.0	2.2	1.9	2.1	3.4	2.8	2.6	2.4	1.7	1.6	2.4

NSW Recorded Crime Statistics March 2022

NSW LGA	Murder	Domestic violence related assault	Non-domestic violence related assault	Sexual assault	Sexual touching, sexual act and other sexual offences	Robbery	Break and enter dwelling	Break and enter non-dwelling	Motor vehicle theft	Steal from motor vehicle	Steal from retail store	Other stealing offences	Malicious damage to property
Parke		2.0	1.7	1.9	2.3	0.3	1.2	2.1	1.3	2.3	0.9	1.6	2.4
Parramatta	0.5	0.8	0.8	0.8	0.9	1.2	1.2	0.8	0.8	1.2	1.0	1.2	0.7
Penrith		1.3	1.3	1.2	1.4	1.4	1.2	1.0	1.2	1.3	1.4	1.0	1.2
Port Macquarie-Hastings		1.1	1.1	1.5	1.4	0.6	1.0	1.2	1.2	0.8	0.9	1.3	1.2
Port Stephens	1.8	1.2	1.0	1.5	1.6	0.4	0.9	1.5	0.9	0.8	0.6	1.0	1.1
Queanbeyan-Palerang Regional		0.7	0.8	1.0	1.0	0.6	0.9	0.9	1.4	1.5	0.8	1.0	0.8
Randwick		0.6	0.9	0.5	0.5	0.7	0.5	0.3	0.5	0.7	0.5	0.8	0.6
Richmond Valley		1.6	1.5	1.8	1.6	0.4	2.9	4.3	3.2	2.3	0.6	1.7	2.2
Ryde		0.5	0.4	0.4	0.5	0.4	0.5	0.6	0.3	0.4	0.8	0.7	0.4
Shellharbour	1.8	0.8	0.7	0.8	0.9	0.6	0.6	0.5	1.0	1.1	1.2	0.7	0.9
Shoalhaven	5.1	1.0	1.2	1.5	1.4	1.5	1.1	1.1	0.9	0.8	1.1	1.0	1.2
Singleton		1.2	0.9	1.4	0.9	0.2	1.5	3.8	2.3	2.0	1.0	1.4	1.8
Snowy Monaro Regional		0.8	0.8	1.2	1.0	0.2	0.7	0.9	0.5	0.4	0.1	0.8	1.2
Snowy Valleys		1.0	1.2	2.0	1.4	0.7	0.8	2.4	1.1	0.5	0.5	1.4	1.6
Strathfield		0.6	0.6	0.4	0.3	1.0	1.1	0.4	0.6	1.0	0.8	0.8	0.4
Sutherland Shire		0.7	0.5	0.5	0.5	0.5	0.5	0.3	0.4	0.6	0.5	0.5	0.6
Sydney	3.3	1.1	2.4	1.2	1.4	2.3	0.7	1.3	0.6	0.7	3.3	2.9	1.2
Tamworth Regional		1.7	1.7	1.8	1.6	1.3	4.3	1.4	2.6	2.7	1.0	1.3	2.2
Temora		0.5	0.7	2.2	0.7		0.9	2.3	1.1	0.7	0.4	1.2	1.0
Tenterfield		1.9	1.5	2.7	2.7		2.5	1.9	2.2	0.2	0.4	1.2	1.4
The Hills Shire		0.4	0.4	0.6	0.4	0.3	0.5	0.3	0.3	0.4	0.5	0.5	0.4
Tweed		1.0	0.9	0.8	0.9	0.9	0.9	0.9	1.3	1.1	0.5	1.0	1.0
Unincorporated Far West													
Upper Hunter Shire		1.0	0.7	3.2	2.0	0.3	1.5	1.8	0.6	0.5	0.1	1.3	1.1
Upper Lachlan Shire		0.3	0.3	0.8	0.6		0.7	1.2	0.5	0.1	0.1	0.8	0.7
Uralla		1.0	0.7	1.4	1.0		0.5	1.3	1.2	0.2	0.2	0.5	1.0
Wagga Wagga		1.8	1.7	1.6	1.7	1.5	2.4	1.4	1.6	1.9	1.5	1.4	2.0
Walcha		1.6	0.8	1.5	0.4		0.9	3.3		0.2	0.3	0.5	1.5
Walgett		5.4	3.2	2.6	3.6	0.8	3.4	5.8	3.1	1.5	1.0	1.6	4.2
Warren													
Warrumbungle Shire	14.8	1.4	1.3	2.3	1.5	0.5	1.9	2.5	1.0	0.9	1.0	1.6	1.4
Waverley		0.6	1.0	0.8	0.9	0.5	0.5	0.2	0.8	0.4	2.3	1.0	0.6
Weddin		1.1	0.2	1.6			0.8	1.3		0.4	0.3	0.8	1.1
Wentworth		2.8	1.9	1.6	1.6		1.2	4.8	2.4	0.9	0.2	1.6	2.2
Willoughby		0.3	0.4	0.4	0.7	0.6	0.6	0.6	0.4	0.6	2.1	0.7	0.5
Wingecarribee		0.6	0.6	1.4	1.3	0.3	0.3	0.3	0.3	0.3	0.2	0.5	0.6
Wollondilly		0.7	0.4	0.7	0.9	0.2	0.3	0.3	0.5	0.4	0.1	0.4	0.5
Wollongong		0.7	0.9	0.9	0.9	1.1	1.2	1.2	1.2	1.5	1.5	1.0	1.0
Woollahra		0.5	0.6	0.8	0.7	0.1	0.6	0.1	0.8	0.5	0.6	0.8	0.5
Yass Valley	7.9	0.5	0.4	0.4	0.5	0.3	0.2	0.5	0.6	0.4	0.2	0.5	0.5
NSW	1.0	1.0	1.0	1.0	1.0	1.0	1.0	1.0	1.0	1.0	1.0	1.0	1.0

Appendix Table 1.3 Number of recorded criminal incidents for major offences, NSW LGAs

12 months to March 2022

NSW LGA	Murder	Domestic violence related assault	Non-domestic violence related assault	Sexual assault	Sexual touching, sexual act and other sexual offences	Robbery	Break and enter dwelling	Break and enter non-dwelling	Motor vehicle theft	Steal from motor vehicle	Steal from retail store	Other stealing offences	Malicious damage to property
Albury	0	415	340	64	81	25	227	79	168	633	238	375	722
Armidale Regional	0	227	198	58	52	10	159	70	38	233	129	214	360
Ballina	1	139	124	40	39	11	97	33	66	201	78	272	244
Balranald	0	7	6	0	1	0	11	4	3	8	0	14	15
Bathurst Regional	1	319	256	63	70	17	147	43	55	269	117	241	496
Bayside	0	626	381	84	86	25	212	52	139	368	271	690	729
Bega Valley	0	118	99	28	34	2	38	42	20	60	34	115	177
Bellingen	0	42	49	28	22	1	21	16	23	29	13	64	138
Berrigan	0	27	25	8	10	0	22	24	8	12	7	33	70
Blacktown	5	2,007	1,476	316	347	167	780	207	569	1,510	1,058	1,662	2,663
Bland	0	27	25	3	7	0	9	8	9	15	5	24	34
Blayney	0	25	22	10	7	2	25	19	9	11	8	29	35
Blue Mountains	1	211	171	85	70	9	66	38	32	154	70	186	413
Bogan	0	20	11	3	3	0	14	20	9	10	4	37	49
Bourke	0	116	43	20	8	3	65	69	18	65	26	72	166
Brewarrina	0	61	26	3	3	0	11	13	3	8	0	24	55
Broken Hill	0	213	144	13	27	8	157	49	35	84	42	134	295
Burwood	0	90	104	19	26	7	54	36	31	87	226	200	142
Byron	0	133	213	39	35	6	47	43	75	107	57	183	312
Cabonne	0	40	27	13	12	0	27	22	22	25	4	39	58
Camden	1	347	157	48	73	6	64	30	84	266	112	209	318
Campbelltown	3	953	616	183	215	57	319	123	240	708	489	715	1,270
Canada Bay	0	134	122	40	42	6	115	44	74	213	105	304	249
Canterbury-Bankstown	2	1,361	764	182	199	81	443	154	400	1,128	427	908	1,348
Carrathool	0	24	17	7	2	0	10	19	9	8	0	19	27
Central Coast	4	1,515	1,362	386	342	63	572	242	391	1,144	785	1,075	2,343
Central Darling	0	114	21	3	8	0	8	30	5	6	0	19	55
Cessnock	0	309	289	92	93	7	144	74	213	275	124	469	564
Clarence Valley	0	213	240	45	55	7	181	89	106	216	87	389	425
Cobar	0	24	23	5	2	0	9	16	8	16	12	39	64
Coffs Harbour	0	543	471	133	109	30	243	206	202	382	182	430	689
Coolamon	0	9	5	7	4	0	5	8	3	2	0	17	15
Coonamble	0	86	49	8	5	2	49	17	10	19	9	64	134
Cootamundra-Gundagai	0	40	42	9	21	0	16	8	15	14	10	60	59
Cowra	0	100	62	15	34	3	142	32	51	64	34	79	118
Cumberland	5	877	657	121	108	68	477	93	350	832	274	777	912
Dubbo Regional	1	653	418	99	91	23	561	185	252	549	244	480	785
Dungog	0	32	16	10	10	1	12	5	10	13	4	49	55
Edward River	1	61	46	10	5	0	25	3	4	5	10	66	117
Eurobodalla	0	245	151	42	37	18	105	79	50	101	107	169	402
Fairfield	0	830	446	76	129	50	252	72	190	516	256	575	848
Federation	1	24	38	9	9	0	17	22	14	29	23	70	59
Forbes	0	71	80	15	10	2	73	19	32	60	28	86	168
Georges River	0	431	288	57	70	16	182	57	96	270	200	326	433

NSW Recorded Crime Statistics March 2022

NSW LGA	Murder	Domestic violence related assault	Non-domestic violence related assault	Sexual assault	Sexual touching, sexual act and other sexual offences	Robbery	Break and enter dwelling	Break and enter non-dwelling	Motor vehicle theft	Steal from motor vehicle	Steal from retail store	Other stealing offences	Malicious damage to property
Gilgandra	0	34	20	10	12	1	24	11	3	11	4	29	52
Glen Innes Severn	0	63	40	20	19	0	75	32	14	29	31	79	109
Goulburn Mulwaree	0	114	134	46	39	6	77	27	42	78	85	205	216
Greater Hume Shire	0	28	20	19	14	0	23	12	22	27	7	41	52
Griffith	0	181	119	31	33	6	106	78	74	120	83	161	272
Gunnedah	0	109	82	20	15	3	134	25	56	103	27	102	178
Gwydir	0	7	13	6	6	0	6	7	8	9	0	20	16
Hawkesbury	0	265	195	45	63	7	78	38	64	100	131	149	295
Hay	0	25	25	5	5	0	11	5	4	4	0	22	30
Hilltops	0	120	80	17	16	2	30	15	29	32	12	73	177
Hornsby	0	234	154	61	59	13	69	29	34	137	279	213	358
Hunters Hill	0	13	17	11	9	0	25	8	13	27	5	35	41
Inner West	5	428	502	130	145	43	268	109	162	533	425	799	898
Inverell	1	202	125	36	33	4	82	60	42	81	97	109	219
Junee	0	27	24	10	12	0	8	3	5	1	6	20	34
Kempsey	1	245	176	55	46	9	264	39	119	177	71	345	434
Kiama	0	31	30	15	10	0	31	26	18	70	6	51	73
Ku-ring-gai	0	143	69	37	41	6	140	35	46	159	43	142	227
Kyogle	0	33	33	11	7	0	22	19	16	15	3	36	47
Lachlan	0	44	45	6	8	3	51	74	43	34	7	57	103
Lake Macquarie	1	833	669	239	190	36	368	286	366	752	546	804	1,342
Lane Cove	0	51	30	15	10	1	54	11	30	80	31	101	73
Leeton	0	99	66	24	16	2	43	7	18	20	7	53	114
Lismore	0	248	330	74	61	20	162	82	134	270	73	258	506
Lithgow	0	152	115	39	33	2	44	12	22	69	58	173	181
Liverpool	0	1,117	650	148	186	58	430	109	326	835	372	837	1,168
Liverpool Plains	0	58	42	12	10	2	19	19	7	11	7	34	69
Lockhart	0	10	9	4	3	0	5	6	6	3	0	14	21
Lord Howe Island	0	18	1	0	0	0	0	1	0	1	0	4	10
Maitland	0	463	338	133	96	26	216	103	137	433	276	579	724
Mid-Coast	1	551	419	124	150	15	492	327	186	348	212	852	884
Mid-Western Regional	0	166	120	48	49	2	39	20	19	31	35	93	187
Moree Plains	0	257	174	28	31	10	241	76	86	191	109	172	463
Mosman	0	28	40	21	19	1	44	8	22	71	19	86	82
Murray River	0	31	28	23	6	0	17	36	31	30	11	81	76
Murrumbidgee	0	13	9	5	4	0	13	3	7	4	1	15	34
Muswellbrook	0	133	116	27	24	3	78	54	51	145	50	187	216
Nambucca Valley	0	187	111	29	31	3	91	42	33	86	28	130	261
Narrabri	0	119	61	18	8	0	86	19	43	67	15	90	132
Narrandera	0	47	32	9	7	2	31	16	6	17	16	30	59
Narromine	0	77	60	10	17	4	29	27	13	31	17	69	60
Newcastle	6	741	1,069	207	152	92	749	300	497	1,432	753	1,272	1,766
North Sydney	0	82	120	33	32	3	83	29	34	121	94	241	223
Northern Beaches	1	317	471	135	150	28	218	89	164	552	455	670	805
Oberon	2	15	13	10	12	0	6	9	4	3	0	28	30

NSW Recorded Crime Statistics March 2022

NSW LGA	Murder	Domestic violence related assault	Non-domestic violence related assault	Sexual assault	Sexual touching, sexual act and other sexual offences	Robbery	Break and enter dwelling	Break and enter non-dwelling	Motor vehicle theft	Steal from motor vehicle	Steal from retail store	Other stealing offences	Malicious damage to property
Orange	0	324	294	80	69	19	309	105	145	338	156	299	595
Parkes	0	115	86	24	29	1	37	28	25	115	27	102	205
Parramatta	1	786	697	179	204	65	665	175	278	1,034	563	1,282	1,062
Penrith	0	1,094	943	221	258	65	569	189	341	956	659	900	1,557
Port Macquarie-Hastings	0	376	322	112	104	10	179	91	129	244	165	482	593
Port Stephens	1	343	260	93	100	6	139	101	86	197	96	329	498
Queanbeyan-Palerang Regional	0	177	161	56	56	8	120	50	115	308	106	277	307
Randwick	0	364	480	74	72	22	174	38	107	366	152	517	569
Richmond Valley	0	148	122	37	32	2	143	90	96	180	32	169	300
Ryde	0	252	192	44	55	12	128	76	49	200	221	387	349
Shellharbour	1	244	172	54	56	10	95	34	94	284	195	231	412
Shoalhaven	4	442	446	139	133	33	252	103	128	294	243	436	781
Singleton	0	111	74	28	19	1	75	78	68	155	50	137	244
Snowy Monaro Regional	0	66	59	22	19	1	30	16	14	28	6	74	143
Snowy Valleys	0	58	60	25	17	2	23	30	20	26	15	85	140
Strathfield	0	120	91	17	13	10	111	19	38	154	84	170	116
Sutherland Shire	0	686	427	100	100	22	227	61	123	456	267	532	856
Sydney	6	1,062	2,051	260	301	120	391	289	193	617	1,759	3,050	1,811
Tamworth Regional	0	425	366	96	86	17	572	78	214	575	140	337	805
Temora	0	13	14	12	4	0	12	13	9	15	6	31	36
Tenterfield	0	49	32	15	15	0	35	11	18	5	5	33	54
The Hills Shire	0	322	241	87	68	12	191	48	77	238	209	367	434
Tweed	0	379	306	70	75	18	193	78	162	362	109	402	584
Unincorporated Far West	0	0	4	8	16	0	5	0	3	8	2	11	5
Upper Hunter Shire	0	56	35	39	25	1	46	22	11	24	4	76	91
Upper Lachlan Shire	0	10	9	6	4	0	13	9	5	2	1	27	33
Uralla	0	24	15	7	5	0	6	7	9	4	2	13	34
Wagga Wagga	0	464	372	92	95	20	342	83	140	421	211	398	789
Walcha	0	20	8	4	1	0	6	9	0	2	2	7	28
Walgett	0	123	64	13	18	1	42	30	23	30	12	41	144
Warren	0	38	27	2	3	1	16	19	16	27	6	34	48
Warrumbungle Shire	1	51	41	18	12	1	38	20	12	28	20	62	78
Waverley	0	187	255	53	55	8	75	15	77	112	372	325	283
Weddin	0	15	2	5	0	0	6	4	0	5	2	13	23
Wentworth	0	79	47	10	10	0	18	30	22	21	3	47	93
Willoughby	0	109	114	27	51	10	102	40	45	154	362	236	221
Wingecarribee	0	126	100	61	59	3	32	15	20	54	27	105	193
Wollondilly	0	157	78	34	41	2	35	14	38	66	11	102	160
Wollongong	0	608	711	161	172	52	545	235	332	1,140	728	940	1,315
Woollahra	0	106	112	42	36	1	78	7	58	101	72	198	187
Yass Valley	1	35	25	6	7	1	8	8	14	23	6	37	53
In Custody	1	6	823	81	49	1	0	1	0	2	0	6	77
NSW	60	32,188	27,854	7,019	7,046	1,704	17,378	7,226	10,551	27,446	17,524	34,870	48,253

NSW Recorded Crime Statistics March 2022

Appendix Table 1.4: Number of recorded criminal incidents for major offences, NSW LGAs
12 months to March 2021

NSW LGA	Murder	Domestic violence related assault	Non-domestic violence related assault	Sexual assault	Sexual touching, sexual act and other sexual offences	Robbery	Break and enter dwelling	Break and enter non-dwelling	Motor vehicle theft	Steal from motor vehicle	Steal from retail store	Other stealing offences	Malicious damage to property
Albury	1	337	372	72	62	14	295	85	150	555	247	399	734
Armidale Regional	0	197	162	61	43	7	261	76	69	213	93	202	405
Ballina	0	151	148	57	43	7	50	32	34	122	82	156	296
Balranald	0	11	5	1	2	0	7	6	1	6	0	13	18
Bathurst Regional	0	253	249	78	70	13	157	57	61	131	103	283	475
Bayside	1	645	447	76	86	33	252	59	174	375	348	617	795
Bega Valley	0	126	100	27	41	1	46	85	51	84	26	136	222
Bellingen	0	60	54	11	16	1	27	12	21	28	5	37	101
Berrigan	0	18	29	15	7	0	11	12	10	23	8	32	56
Blacktown	6	2,232	1,806	409	453	189	830	249	568	1,661	874	1,692	2,994
Bland	0	30	19	11	4	0	17	8	10	23	1	27	39
Blayney	0	35	26	9	9	0	18	9	7	9	5	30	66
Blue Mountains	1	219	181	73	73	7	97	68	42	143	95	180	713
Bogan	0	24	9	4	6	1	4	8	8	19	6	22	42
Bourke	1	120	84	13	7	6	58	42	34	35	23	82	174
Brewarrina	0	68	24	7	7	0	27	10	4	16	2	18	64
Broken Hill	0	231	157	27	21	3	166	35	37	109	40	163	324
Burwood	0	81	99	12	27	15	68	16	28	70	400	191	153
Byron	0	107	197	38	42	7	59	57	80	146	45	259	263
Cabonne	0	25	22	15	12	0	16	12	9	11	6	43	68
Camden	0	316	151	69	92	14	91	55	107	201	146	249	423
Campbelltown	1	944	661	185	231	64	395	126	279	699	497	671	1,416
Canada Bay	0	130	127	41	31	12	147	31	70	164	128	264	268
Canterbury-Bankstown	4	1,368	949	165	236	102	563	139	625	1,214	464	990	1,589
Carrathool	1	22	9	4	4	0	6	10	3	6	2	20	30
Central Coast	1	1,441	1,436	388	426	62	769	258	511	1,298	793	1,369	2,778
Central Darling	0	87	26	14	5	0	40	20	14	16	0	20	64
Cessnock	1	314	238	104	112	10	204	107	280	276	75	450	568
Clarence Valley	0	211	206	50	43	7	115	40	58	104	72	395	379
Cobar	0	18	29	1	6	0	18	8	13	14	3	31	48
Coffs Harbour	0	545	461	136	143	27	212	174	165	333	202	456	746
Coolamon	0	11	5	2	2	0	2	4	2	1	0	10	16
Coonamble	0	81	61	8	19	2	78	23	18	33	3	61	118
Cootamundra-Gundagai	0	64	25	12	26	0	20	21	17	28	10	49	73
Cowra	0	86	73	13	14	5	87	40	38	49	20	101	164
Cumberland	5	1,023	690	137	181	87	511	111	420	769	348	847	1,042
Dubbo Regional	2	573	402	101	85	20	368	147	167	421	185	461	777
Dungog	0	34	26	10	11	0	8	5	5	12	5	41	66
Edward River	0	60	51	5	7	1	22	11	4	25	13	63	104
Eurobodalla	0	196	192	34	48	8	115	42	55	123	119	207	326
Fairfield	2	771	578	113	172	73	285	99	285	680	398	647	904
Federation	0	40	36	12	8	0	29	15	16	20	10	74	73
Forbes	1	77	84	11	14	2	73	37	35	80	17	105	153
Georges River	1	427	311	55	106	29	224	53	146	324	210	350	541
Gilgandra	0	59	20	8	5	2	11	6	9	16	6	24	33

NSW Recorded Crime Statistics March 2022

NSW LGA	Murder	Domestic violence related assault	Non-domestic violence related assault	Sexual assault	Sexual touching, sexual act and other sexual offences	Robbery	Break and enter dwelling	Break and enter non-dwelling	Motor vehicle theft	Steal from motor vehicle	Steal from retail store	Other stealing offences	Malicious damage to property
Glen Innes Severn	0	79	55	13	22	0	34	14	13	11	8	78	103
Goulburn Mulwaree	0	137	139	44	39	4	53	31	25	89	76	209	265
Greater Hume Shire	0	35	13	13	14	0	14	19	12	20	1	45	46
Griffith	1	195	111	30	39	13	98	62	54	138	105	160	278
Gunnedah	1	90	79	24	21	1	57	22	36	57	24	80	174
Gwydir	0	29	19	7	12	1	14	6	4	7	1	22	28
Hawkesbury	0	270	214	62	79	11	122	49	96	140	97	187	433
Hay	0	27	16	3	14	0	9	2	3	1	2	21	31
Hilltops	0	105	78	32	29	0	53	18	25	24	18	75	190
Hornsby	1	258	218	53	89	15	171	50	66	230	300	308	508
Hunters Hill	0	17	36	8	14	1	30	9	7	42	4	39	58
Inner West	1	431	562	135	134	57	276	97	193	619	540	850	958
Inverell	0	148	70	26	26	1	81	17	17	90	40	136	190
Junee	0	33	30	7	8	2	28	9	8	5	3	39	52
Kempsey	1	270	214	45	49	24	320	73	137	240	57	432	445
Kiama	0	44	27	13	18	1	23	31	20	67	15	60	118
Ku-ring-gai	0	148	86	47	58	17	182	45	36	128	112	228	323
Kyogle	1	32	24	14	14	1	14	5	16	12	0	29	46
Lachlan	0	50	31	10	9	1	36	33	18	36	7	75	103
Lake Macquarie	1	774	768	265	257	51	470	207	430	895	522	880	1,488
Lane Cove	0	50	35	14	12	0	65	10	35	81	39	136	108
Leeton	0	94	59	27	34	2	63	19	25	34	12	57	92
Lismore	1	249	259	75	78	18	110	66	64	110	81	203	423
Lithgow	0	127	128	31	42	4	59	31	22	90	49	183	213
Liverpool	3	1,056	741	157	201	88	534	130	384	816	446	961	1,283
Liverpool Plains	0	39	40	11	6	1	15	3	11	12	7	50	50
Lockhart	0	6	7	5	13	0	3	7	3	6	0	13	11
Lord Howe Island	0	0	0	0	1	0	0	0	1	1	0	1	1
Maitland	2	416	323	116	120	15	277	132	176	407	271	605	779
Mid-Coast	0	518	367	139	179	21	362	178	154	344	158	831	839
Mid-Western Regional	0	132	98	56	58	2	65	27	22	52	38	153	201
Moree Plains	0	244	176	25	23	10	190	33	42	164	59	168	452
Mosman	0	24	27	7	8	0	35	7	14	106	23	87	99
Murray River	0	24	24	17	11	0	5	14	8	17	6	56	59
Murrumbidgee	0	13	7	6	6	0	13	12	2	7	6	29	32
Muswellbrook	0	128	117	25	33	1	88	27	35	62	23	170	208
Nambucca Valley	0	142	129	31	31	4	85	29	34	86	44	120	234
Narrabri	0	92	61	18	15	4	49	16	24	49	8	74	121
Narrandera	0	55	29	8	7	1	34	11	11	32	14	46	65
Narromine	0	72	42	12	15	1	49	23	14	46	1	51	60
Newcastle	4	658	1,089	232	221	77	815	235	492	1,370	664	1,315	1,892
North Sydney	0	96	108	26	39	5	71	29	29	157	127	297	280
Northern Beaches	0	333	583	151	155	36	255	129	189	674	351	799	1,131
Oberon	0	19	17	8	6	0	10	6	5	4	1	43	50
Orange	0	254	311	90	100	21	270	65	103	205	113	266	471
Parke	1	96	101	35	34	2	73	26	51	119	28	119	214
Parramatta	5	873	690	151	151	95	642	183	305	827	677	1,189	1,155

NSW Recorded Crime Statistics March 2022

NSW LGA	Murder	Domestic violence related assault	Non-domestic violence related assault	Sexual assault	Sexual touching, sexual act and other sexual offences	Robbery	Break and enter dwelling	Break and enter non-dwelling	Motor vehicle theft	Steal from motor vehicle	Steal from retail store	Other stealing offences	Malicious damage to property
Penrith	3	1,311	1,068	252	228	75	613	221	409	1,111	787	1,048	1,869
Port Macquarie-Hastings	0	341	295	99	135	3	146	106	104	201	101	379	561
Port Stephens	0	372	284	106	91	6	135	77	112	202	84	382	586
Queanbeyan-Palerang Regional	0	193	168	40	35	7	159	58	83	280	146	310	327
Randwick	1	382	487	79	86	30	207	33	115	288	239	549	653
Richmond Valley	0	160	109	51	55	1	68	21	45	70	20	135	213
Ryde	0	335	190	42	93	17	158	39	67	244	341	392	391
Shellharbour	0	244	185	93	68	13	139	47	117	188	261	268	504
Shoalhaven	2	464	407	141	148	17	245	114	136	308	295	508	861
Singleton	0	102	94	25	22	5	68	88	47	86	54	191	161
Snowy Monaro Regional	1	62	62	19	24	0	29	21	16	35	12	91	147
Snowy Valleys	0	68	43	32	31	3	36	34	22	31	15	79	119
Strathfield	0	133	125	13	34	6	114	22	66	120	102	190	128
Sutherland Shire	2	650	492	106	147	35	212	69	154	411	395	526	995
Sydney	2	1,081	2,053	291	297	139	529	246	245	618	1,790	2,773	1,985
Tamworth Regional	1	433	323	85	85	15	495	57	142	420	152	359	742
Temora	0	25	18	5	8	0	22	4	2	5	12	18	41
Tenterfield	0	79	38	4	9	0	16	7	9	4	2	32	71
The Hills Shire	0	320	263	92	82	32	249	74	139	352	326	450	515
Tweed	1	363	294	89	89	12	143	95	149	293	117	436	600
Unincorporated Far West	0	2	6	17	15	0	1	2	3	4	4	11	5
Upper Hunter Shire	1	86	33	17	26	1	19	15	13	30	10	81	104
Upper Lachlan Shire	0	13	10	4	3	0	5	0	3	10	0	25	30
Uralla	0	14	15	5	3	1	15	4	2	9	1	26	33
Wagga Wagga	0	454	380	109	108	26	475	100	144	395	319	489	886
Walcha	0	12	9	8	7	0	3	8	2	9	2	13	30
Walgett	0	140	57	12	15	1	59	12	14	82	8	46	115
Warren	0	35	19	3	3	0	14	6	8	13	2	21	33
Warrumbungle Shire	0	41	53	13	11	0	39	10	9	29	9	59	95
Waverley	0	163	269	48	72	13	82	20	69	129	570	376	343
Weddin	0	15	11	7	3	0	5	4	3	4	3	13	19
Wentworth	0	64	36	8	9	2	24	11	18	18	2	53	91
Willoughby	0	78	147	26	39	11	74	36	37	133	548	243	269
Wingecarribee	0	110	86	42	37	4	40	35	34	65	43	126	259
Wollondilly	0	161	51	27	40	3	46	25	53	77	15	111	167
Wollongong	0	685	659	195	197	44	502	222	352	902	811	980	1,417
Woollahra	0	79	93	45	40	4	80	10	51	126	54	172	186
Yass Valley	0	25	36	9	8	1	15	15	10	15	7	44	46
In Custody	1	7	966	117	46	5	0	4	1	1	0	2	50
NSW	67	32,152	29,329	7,394	8,051	1,972	18,462	6,739	11,216	26,732	18,972	36,519	52,708

APPENDIX 2

EXPLANATORY NOTES

What are crime statistics?

BOCSAR's crime statistics consist of criminal incidents reported to, or detected by, police and recorded on the NSW Police Force's Computerised Operational Policing System (COPS). While this system is used for record-keeping for all police operations, not just for criminal matters, BOCSAR only reports on criminal incidents and selected policing activities. BOCSAR's crime statistics therefore do not capture crimes that are not recorded on COPS. The Australian Bureau of Statistics conducts regular crime and victim surveys which attempt to capture a snapshot of both reported and unreported crimes.

How to interpret crime statistics

Recorded crime statistics for some offence categories do not accurately reflect the actual level of crime in the community. This is because the number of incidents recorded may be affected by extraneous factors which are not easily measured. In particular:

- > Public willingness to report crime - Many crimes which occur are not reported to police and will therefore not be recorded - for example, a large number of assaults, sexual assaults and robberies are not reported to police.
- > Shifts in policing policy - Recording of those offences which are detected by, rather than reported to police, are strongly affected by policing practices - examples of these are drug offences, drink driving offences, offensive behaviour and receiving stolen goods. Recorded rates for such offences do not accurately reflect actual rates.
- > High visitor populations compared to residential populations - Sydney Local Government Area has relatively high recorded crime rates because, compared with other regions, the resident population is small relative to the number of people in the area. In other words, the area has a high user population which is not reflected in the denominator of the rate calculation.
- > Areas with small residential populations - Recorded crime rates in Local Government Areas with small population sizes are not always a good indicator of offending. Crime rates in areas with populations under 3,000 may be unreliable and should be interpreted with caution.

What offences are included?

BOCSAR's standard quarterly publications report on 13 major offence categories, which include serious personal violence and property offences. In addition to these offences, we also release data for 62 specific offence categories.

From the September Quarter 2021 report, the offence category previously labelled 'indecent sexual assault, act of indecency and other sexual offences' is labelled 'sexual touching, sexual act and other sexual offences'.

Commencing March 2020, the NSW Government issued public health orders under the *NSW Public Health Act 2010* (NSW) to limit the spread of COVID-19. Police can issue a fine or court attendance notice for failure to comply with the orders. Breaches of these orders are counted as "Other offences" in this report.

What is being counted?

> Incidents: When a crime is reported to, or detected by, the NSW Police they record it as a criminal event on COPS. The event date is the date that the crime was reported. Unless otherwise stated, the date BOCSAR attaches to a crime is the event date. One criminal event can contain multiple criminal incidents. BOCSAR's default counting unit for crime data is criminal incidents with the exception of murder and manslaughter. Criminal incidents are activities detected by or reported to police which involve the same offender(s) and victim(s); occur at the one location during one uninterrupted period of time; fall into one offence category and one incident type. For murder and manslaughter only, the counting units used are victims.

> Alleged offenders: BOCSAR also reports on alleged offenders or 'Persons of Interest' (POIs) who have had a legal proceeding commenced against them by the NSW Police Force. Within the police recorded crime data POIs may not have been convicted in court, however they have been proceeded against in some way or another by the police. There could be quite some time between an event being recorded by police, an investigation being completed and an alleged offender (i.e. a POI) being charged. Consequently, POIs are counted in the time period they were proceeded against, rather than the time period the event /incident was reported to or recorded by police.

Legal proceedings against alleged offenders presented in Tables 3.1 and 3.2 include persons proceeded against to court and persons diverted from court (by way of criminal infringement notice, cannabis or other drug caution and diversions under the Young Offenders Act 1997, including Youth Justice Conference, Caution and Warning).

Infringement Notices (fines) are not included in this report but have been included in past reports as they are not a form of court diversion.

What are crime trends and how are they calculated?

In general, BOCSAR relies upon the Kendall Rank Order Correlation statistical test (or Kendall's tau-b) to determine whether a series is trending upwards, downwards or is stable ($p < .05$). In some tables a stable trend is represented by 'ns' (not significant). The statistical test is applied to the monthly data over the specified period. Where a significant trend is found, the average annual percentage change over the time period is reported. If any of the 12-monthly totals in the series have a value of less than 20, a trend test is not conducted. When this occurs, the relevant cell will be left blank or contain 'n.c.' (not calculated). For murder and manslaughter incidents, the trend test is applied to the monthly number of recorded victims rather than criminal incidents.

How is the ratio to NSW calculated?

The ratio to NSW rate statistics are a comparison of a NSW regional rate per 100,000 population to the NSW rate per 100,000 population. A ratio of one indicates parity with the NSW rate. Ratios indicating double the NSW rate (or more) before rounding are highlighted in red, whilst ratios indicating half the NSW rate (or less) before rounding are highlighted in green. Ratios are not calculated for regions with a population of less than 3,000.

How are 'young people' and 'adults' defined?

The term 'young people' refers to persons aged 10-17 years at the time of the offence; 'adults' refers to persons aged 18 years and older at the time of the offence.

Regional Statistics

Statistics are provided on the number of criminal incidents (victims for murder) recorded for each of the Statistical Areas Level 4 (SA4s) of NSW as defined by the Australian Bureau of Statistics (ABS). Recorded criminal incidents which occurred in correctional, detention or remand centres, however, are not counted in the SA in which the incident occurred. Note that LGA boundaries change from time to time. A criminal incident is counted within a particular region when the location of the offence falls within that region.

What is included in 'selected policing activities'?

- > Bail compliance checks: checks conducted by police to assess if bail conditions are being complied with.
- > ADVO compliance checks: checks conducted by police to assess if ADVO conditions are being complied. These checks can also include checking on the person in need of protection and taking the necessary action if a breach is detected.
- > Move on directions: a 'move on direction' is a direction given to a person by a police officer, under section 198 of the *Law Enforcement (Powers and Responsibilities) Act 2002 (NSW)*, to leave a public place and not return for a specified period.
- > Searches: If the police have reasonable grounds they may, without a warrant, stop and search a person and anything in their possession or under their control, including a vehicle.
- > Detain/convey person to mental health facility: The police detain a person at risk of harm to themselves or others and transport them to a mental health facility for assessment under section 22 of the *Mental Health Act 2007 (NSW)*.

What are non-criminal domestic violence episodes?

Incidents attended by police where a domestic dispute is recorded as having taken place but no criminal incident has been recorded. The vast majority of these episodes are verbal altercations.

Where can I find more detail and explanatory notes?

Detailed definitions and explanatory notes are available at

https://www.bocsar.nsw.gov.au/Pages/bocsar_crime_stats/bocsar_glossary.aspx