



NSW Bureau of Crime
Statistics and Research

NEW SOUTH WALES RECORDED CRIME STATISTICS

Quarterly Update
September Quarter 2021

This report presents data on crime reported to, or detected by, police and recorded on the NSW Police Force's Computerised Operational Policing System (COPS). Information is provided on 13 major offence categories, which include the most serious personal violence and property offences, plus a more detailed list of 62 specific offence types.

Published by the NSW Bureau of Crime Statistics and Research
December 2021

Phone: + 61 (2) 8346 1100

Email: bcsr@justice.nsw.gov.au

Website: www.bocsar.nsw.gov.au

ISSN: 1035-9044

This report is available in pdf format on our website and may be provided in alternative formats. Please contact us at bcsr@justice.nsw.gov.au.

CONTENTS

SECTION 1:	OVERVIEW OF TRENDS IN RECORDED CRIME	1
Figure 1.1	NSW long-term trend in violent offences	2
Figure 1.2	NSW long-term trend in property offences	2
Table 1.3	Violent and property offences by Statistical Area (SA4) over the five years to September 2021	3
Table 1.4	Recorded criminal incidents for major offences over the five years to September 2021	4
Table 1.5	Recorded criminal incidents for 62 offences over the two years to September 2021	5
Table 1.6	Recorded criminal incidents for 62 offences over the five years to September 2021	6
SECTION 2:	REGIONAL COMPARISONS Statistical Areas	7
Table 2.1	Two year trends and percent change in recorded criminal incidents for major offences by Statistical Area (SA4) over the two years to September 2021	8
Table 2.2	Ratio to NSW rate of recorded criminal incidents per 100,000 population for major offences by Statistical Area (SA4) over the 12 months to September 2021	9
Table 2.3	Number of major offences by Statistical Area (SA4) over the 12 months to September 2021	10
Table 2.4	Number of major offences by Statistical Area (SA4) over the 12 months to September 2020	11
SECTION 3:	LEGAL PROCEEDINGS	12
Table 3.1	Adults proceeded against by NSW Police by method of legal proceeding over the five years to September 2021	13
Table 3.2	Young people proceeded against by NSW Police by method of legal proceeding over the five years to September 2021	13
Table 3.3	Adults proceeded against to court by NSW Police for all 62 criminal offences types over the two years to September 2021	14
Table 3.4	Young people proceeded against to court by NSW Police for all 62 criminal offences over the two years to September 2021	15
Figure 3.5	Offences with the largest change in the number of adults proceeded against to court by NSW Police between the 12 months to September 2020 and the 12 months to September 2021	16
Figure 3.6	Offences with the largest change in the number of young people proceeded against to court by NSW Police between the 12 months to September 2020 and the 12 months to September 2021	16
Table 3.7	Incidents of all 62 criminal offence types by whether legal proceedings commenced within 90 days of reporting over the two years to June 2021	17
Figure 3.8	Percentage of recorded criminal incidents for major offences by whether legal proceedings commenced within 90 days of reporting over the two years to June 2021	18

SECTION 4:	POLICING ACTIVITY	19
<hr/>		
Table 4.1	Selected policing activities over the five years to September 2021	20
<hr/>		
Table 4.2	Non-criminal domestic violence episodes by Statistical Area (SA4) over the five years to September 2021	21
<hr/>		
Table 4.3	Ratio to NSW rate of non-criminal domestic violence episodes per 100,000 population by Statistical Area (SA4) over the five years to September 2021	22
<hr/>		
APPENDIX 1	REGIONAL COMPARISONS Local Government Areas	23
<hr/>		
Appendix Table 1.1	Trends in recorded criminal incidents for major offences, NSW LGAs Over the two years to September 2021	24
<hr/>		
Appendix Table 1.2	Ratio to NSW rate of recorded criminal incidents per 100,000 population for major offences, NSW LGAs 12 months to September 2021	27
<hr/>		
Appendix Table 1.3	Number of recorded criminal incidents for major offences, NSW LGAs 12 months to September 2021	30
<hr/>		
Appendix Table 1.4	Number of recorded criminal incidents for major offences, NSW LGAs 12 months to September 2020	33
<hr/>		
APPENDIX 2	EXPLANATORY NOTES	36
<hr/>		

SECTION 1: OVERVIEW OF TRENDS IN RECORDED CRIME

Figure 1.1: NSW long-term trend in violent offences

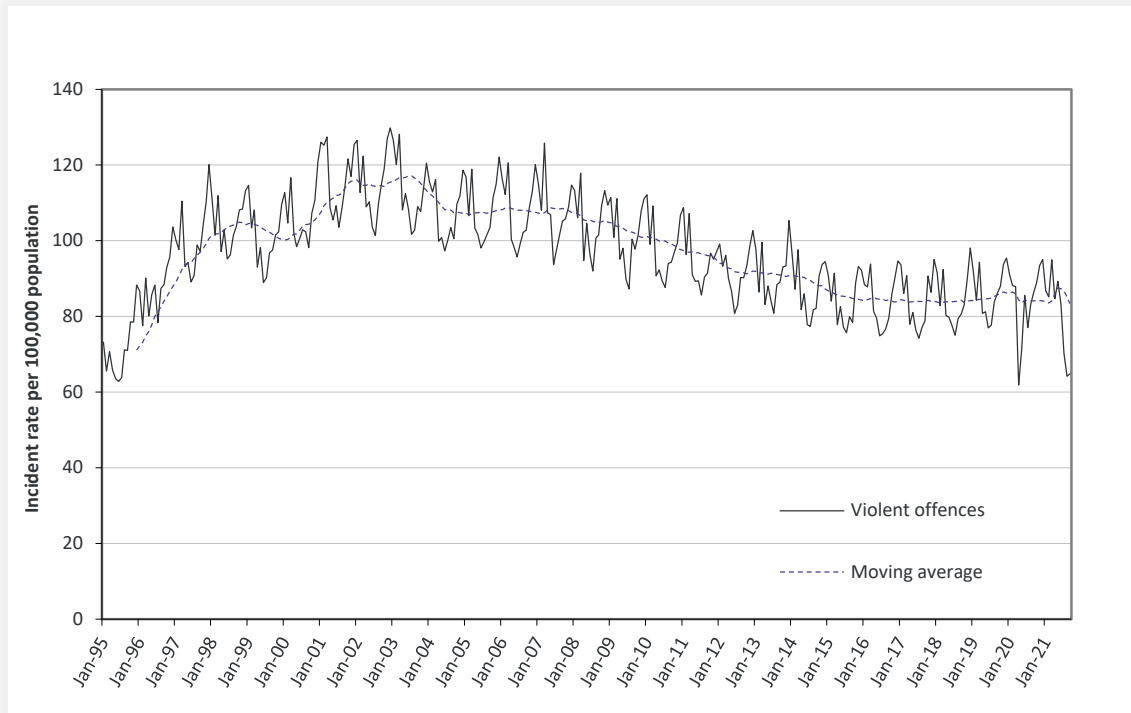
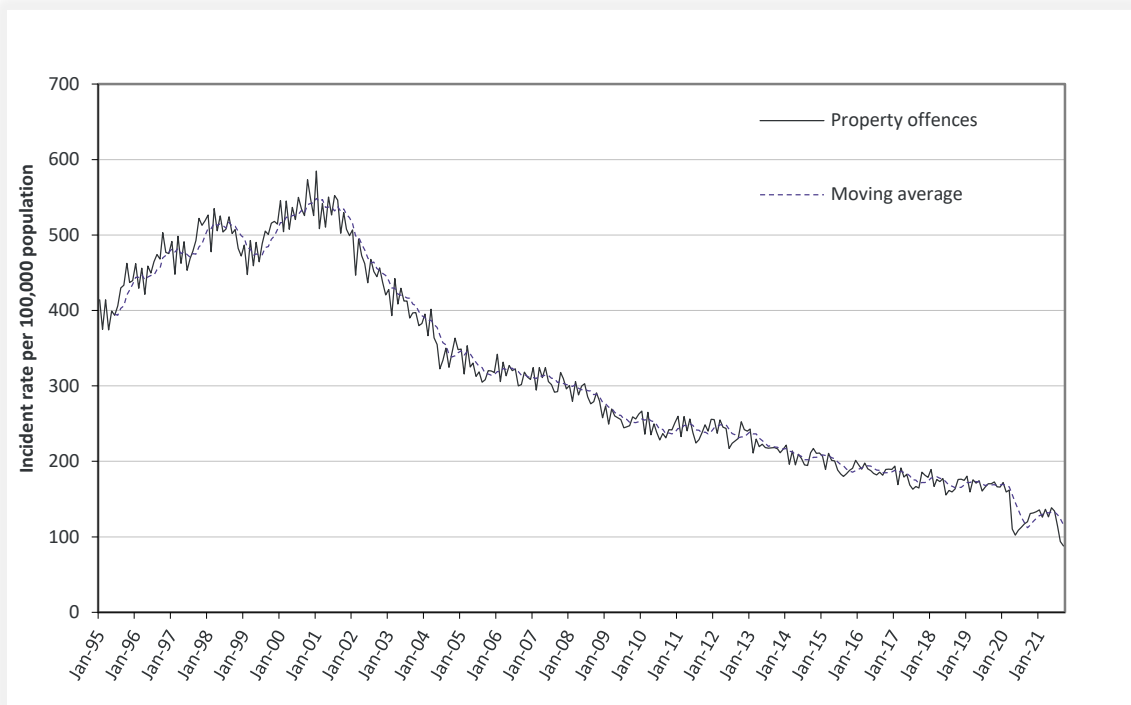


Figure 1.2: NSW long-term trend in property offences



Violent offences include: murder, attempted murder, manslaughter, assault - domestic violence related, assault - non-domestic violence related, assault police, robbery without a weapon, robbery with a firearm, robbery with a weapon not a firearm, sexual assault and sexual touching, sexual act and other sexual offences.

Property offences include: break and enter dwelling, break and enter non-dwelling, motor vehicle theft, steal from motor vehicle, steal from retail store, steal from dwelling, steal from person, stock theft and other theft.

Table 1.3: Violent and property offences by Statistical Area (SA4)

Over the five years to September 2021

Trend and average annual percentage change

Statistical Area	Violent Offences		Property Offences	
	2 Year Trend	5 Year Trend	2 Year Trend	5 Year Trend
Greater Sydney	-5.3%	Stable	-14.1%	-9.3%
Baulkham Hills and Hawkesbury	Stable	6.1%	-27.8%	-8.0%
Blacktown	Stable	Stable	-8.7%	-8.9%
Central Coast	Stable	-1.1%	-17.5%	-9.8%
City and Inner South	-11.6%	-5.2%	-21.7%	-13.1%
Eastern Suburbs	-5.0%	Stable	-11.7%	-12.1%
Inner South West	-5.7%	Stable	-11.0%	-8.2%
Inner West	Stable	-2.5%	-10.2%	-9.5%
North Sydney and Hornsby	Stable	Stable	Stable	-9.3%
Northern Beaches	-9.0%	Stable	Stable	-6.9%
Outer South West	-5.0%	Stable	Stable	-6.9%
Outer West and Blue Mountains	-12.9%	Stable	-9.9%	-6.7%
Parramatta	Stable	Stable	-18.4%	-8.1%
Ryde	Stable	Stable	-18.9%	-12.3%
South West	Stable	Stable	-13.2%	-8.1%
Sutherland	-8.1%	Stable	-12.4%	-9.8%
Regional NSW	Stable	Stable	Stable	-6.4%
Capital Region	Stable	Stable	-11.7%	-4.7%
Central West	Stable	4.5%	Stable	-5.0%
Coffs Harbour - Grafton	Stable	Stable	-12.8%	-5.9%
Far West and Orana	Stable	4.1%	Stable	-8.6%
Hunter Valley excluding Newcastle	Stable	Stable	Stable	-7.1%
Illawarra	Stable	Stable	Stable	-5.8%
Mid North Coast	Stable	5.0%	Stable	-1.8%
Murray	Stable	3.7%	-18.4%	-5.1%
New England and North West	Stable	Stable	Stable	-6.1%
Newcastle and Lake Macquarie	Stable	Stable	-9.5%	-7.5%
Richmond - Tweed	Stable	Stable	Stable	-5.4%
Riverina	Stable	Stable	-25.2%	-11.3%
Southern Highlands and Shoalhaven	Stable	3.7%	-10.3%	-7.2%
NSW	Stable	Stable	-10.8%	-8.0%

Table 1.4: Recorded criminal incidents for major offences
Over the five years to September 2021

Offence category	12 months to September 2017	12 months to September 2018	12 months to September 2019	12 months to September 2020	12 months to September 2021	Trend and average annual percentage change	
						2 Year Trend	5 Year Trend
Murder	65	61	72	76	57	Down 25.0%	Stable
Domestic violence related assault	28,435	29,221	31,095	32,000	32,436	Stable	Up 3.3%
Non-domestic violence related assault	32,113	32,267	32,107	29,842	28,760	Down 3.6%	Down 2.7%
Sexual assault	5,889	5,992	6,122	6,798	7,446	Stable	Up 6.0%
Sexual touching, sexual act and other sexual offences	7,571	7,900	8,452	8,160	7,816	Stable	Stable
Robbery	2,432	2,518	2,517	2,218	1,917	Down 13.6%	Down 5.8%
Break and enter dwelling	27,976	27,224	25,593	20,989	18,678	Down 11.0%	Down 9.6%
Break and enter non-dwelling	10,757	10,345	10,129	8,067	7,169	Stable	Down 9.6%
Motor vehicle theft	13,321	12,925	13,543	12,086	10,893	Down 9.9%	Down 4.9%
Steal from motor vehicle	39,079	38,009	38,971	30,431	27,963	Stable	Down 8.0%
Steal from retail store	24,358	24,620	26,883	21,408	19,081	Down 10.9%	Down 5.9%
Other stealing offences	52,718	51,371	50,599	42,084	36,709	Down 12.8%	Down 8.7%
Malicious damage to property	61,518	59,429	57,316	54,106	50,527	Down 6.6%	Down 4.8%

Table 1.5: Recorded criminal incidents for 62 offences

Over the two years to September 2021

Offence category		Number of recorded criminal incidents		2 Year Trend	
		12 months to September 2020	12 months to September 2021	Trend test result	Annual average percentage change
Homicide	Murder	76	57	Down	-25.0%
	Attempted murder	29	23	Stable	
	Murder accessory, conspiracy	1	0	n.c.	
	Manslaughter	6	1	n.c.	
Assault	Domestic violence related assault	32,000	32,436	Stable	
	Non-domestic violence related assault	29,842	28,760	Down	-3.6%
	Assault Police	2,555	2,507	Stable	
Sexual offences	Sexual assault	6,798	7,446	Stable	
	Sexual touching, sexual act and other sexual offences	8,160	7,816	Stable	
Abduction and kidnapping		199	216	Stable	
Robbery	Robbery without a weapon	1,220	1,027	Down	-15.8%
	Robbery with a firearm	111	96	Stable	
	Robbery with a weapon not a firearm	887	794	Stable	
Blackmail and extortion		84	129	Stable	
Intimidation, stalking and harassment		37,799	40,338	Stable	
Other offences against the person		1,324	1,862	Up	40.6%
Theft	Break and enter dwelling	20,989	18,678	Down	-11.0%
	Break and enter non-dwelling	8,067	7,169	Stable	
	Receiving or handling stolen goods	8,711	7,388	Down	-15.2%
	Motor vehicle theft	12,086	10,893	Down	-9.9%
	Steal from motor vehicle	30,431	27,963	Stable	
	Steal from retail store	21,408	19,081	Down	-10.9%
	Steal from dwelling	17,239	16,497	Down	-4.3%
	Steal from person	2,496	1,899	Down	-23.9%
	Stock theft	417	337	Stable	
	Fraud	46,737	44,965	Stable	
	Other theft	21,932	17,976	Down	-18.0%
Arson		4,347	3,902	Stable	
Malicious damage to property		54,106	50,527	Down	-6.6%
Drug offences	Possession and/or use of cocaine	2,193	2,225	Stable	
	Possession and/or use of narcotics	1,366	1,185	Stable	
	Possession and/or use of cannabis	18,651	16,140	Stable	
	Possession and/or use of amphetamines	8,611	7,146	Down	-17.0%
	Possession and/or use of ecstasy	1,942	471	Down	-75.7%
	Possession and/or use of other drugs	6,659	6,501	Stable	
	Dealing, trafficking in cocaine	1,250	1,419	Stable	
	Dealing, trafficking in narcotics	380	257	Stable	
	Dealing, trafficking in cannabis	1,030	856	Stable	
	Dealing, trafficking in amphetamines	2,886	2,594	Stable	
	Dealing, trafficking in ecstasy	636	189	Down	-70.3%
	Dealing, trafficking in other drugs	705	556	Down	-21.1%
	Cultivating cannabis	1,233	1,104	Down	-10.5%
	Manufacture drug	68	52	Stable	
Importing drugs	252	200	Stable		
	Other drug offences	6,425	5,800	Down	-9.7%
Prohibited and regulated weapons offences		15,812	14,955	Down	-5.4%
Disorderly conduct	Trespass	10,646	9,412	Down	-11.6%
	Offensive conduct	4,013	3,769	Down	-6.1%
	Offensive language	2,230	1,967	Down	-11.8%
	Criminal intent	2,404	2,366	Down	-1.6%
Betting and gaming offences		60	73	Stable	
Liquor offences		8,650	8,128	Stable	
Pornography offences		819	852	Stable	
Prostitution offences		20	17	n.c.	
Against justice procedures	Escape custody	191	178	Stable	
	Breach Apprehended Violence Order	19,804	20,679	Stable	
	Breach bail conditions	51,249	50,515	Stable	
	Fail to appear	746	783	Stable	
	Resist or hinder officer	5,848	5,524	Down	-5.5%
	Other offences against justice procedures	1,752	1,939	Stable	
Transport regulatory offences		86,591	71,721	Down	-17.2%
Other offences		25,974	85,256	Up	228.2%

Table 1.6: Recorded criminal incidents for 62 offences

Over the five years to September 2021

Offence category		Number of recorded criminal incidents		5 Year Trend	
		12 months to September 2017	12 months to September 2021	Trend test result	Annual average percentage change
Homicide	Murder	65	57	Stable	
	Attempted murder	17	23	n.c.	
	Murder accessory, conspiracy	4	0	n.c.	
	Manslaughter	9	1	n.c.	
Assault	Domestic violence related assault	28,435	32,436	Up	3.3%
	Non-domestic violence related assault	32,113	28,760	Down	-2.7%
	Assault Police	2,306	2,507	Stable	
Sexual offences	Sexual assault	5,889	7,446	Up	6.0%
	Sexual touching, sexual act and other sexual offences	7,571	7,816	Stable	
Abduction and kidnapping		221	216	Stable	
Robbery	Robbery without a weapon	1,444	1,027	Down	-8.2%
	Robbery with a firearm	146	96	Down	-10.0%
	Robbery with a weapon not a firearm	842	794	Stable	
Blackmail and extortion		91	129	Stable	
Intimidation, stalking and harassment		30,325	40,338	Up	7.4%
Other offences against the person		829	1,862	Up	22.4%
Theft	Break and enter dwelling	27,976	18,678	Down	-9.6%
	Break and enter non-dwelling	10,757	7,169	Down	-9.6%
	Receiving or handling stolen goods	7,553	7,388	Stable	
	Motor vehicle theft	13,321	10,893	Down	-4.9%
	Steal from motor vehicle	39,079	27,963	Down	-8.0%
	Steal from retail store	24,358	19,081	Down	-5.9%
	Steal from dwelling	20,073	16,497	Down	-4.8%
	Steal from person	4,643	1,899	Down	-20.0%
	Stock theft	481	337	Down	-8.5%
	Fraud	48,657	44,965	Down	-2.0%
Other theft	27,521	17,976	Down	-10.1%	
Arson		5,981	3,902	Down	-10.1%
Malicious damage to property		61,518	50,527	Down	-4.8%
Drug offences	Possession and/or use of cocaine	1,746	2,225	Stable	
	Possession and/or use of narcotics	951	1,185	Up	5.7%
	Possession and/or use of cannabis	18,167	16,140	Down	-2.9%
	Possession and/or use of amphetamines	6,657	7,146	Up	1.8%
	Possession and/or use of ecstasy	2,783	471	Down	-35.9%
	Possession and/or use of other drugs	4,208	6,501	Up	11.5%
	Dealing, trafficking in cocaine	662	1,419	Up	21.0%
	Dealing, trafficking in narcotics	394	257	Stable	
	Dealing, trafficking in cannabis	911	856	Stable	
	Dealing, trafficking in amphetamines	2,004	2,594	Stable	
	Dealing, trafficking in ecstasy	759	189	Down	-29.4%
	Dealing, trafficking in other drugs	324	556	Up	14.5%
	Cultivating cannabis	1,078	1,104	Stable	
	Manufacture drug	62	52	Stable	
Importing drugs	85	200	Up	23.9%	
Other drug offences	5,174	5,800	Up	2.9%	
Prohibited and regulated weapons offences		12,452	14,955	Up	4.7%
Disorderly conduct	Trespass	9,916	9,412	Stable	
	Offensive conduct	5,251	3,769	Down	-8.0%
	Offensive language	3,405	1,967	Down	-12.8%
	Criminal intent	2,247	2,366	Stable	
Betting and gaming offences		72	73	Stable	
Liquor offences		10,948	8,128	Down	-7.2%
Pornography offences		595	852	Up	9.4%
Prostitution offences		79	17	n.c.	
Against justice procedures	Escape custody	165	178	Stable	
	Breach Apprehended Violence Order	14,822	20,679	Up	8.7%
	Breach bail conditions	42,384	50,515	Up	4.5%
	Fail to appear	646	783	Up	4.9%
	Resist or hinder officer	6,213	5,524	Down	-2.9%
	Other offences against justice procedures	580	1,939	Up	35.2%
Transport regulatory offences		129,800	71,721	Down	-13.8%
Other offences		15,027	85,256	Up	54.3%

SECTION 2:

REGIONAL

COMPARISONS

Statistical Areas

Table 2.1: Two year trends and percent change in recorded criminal incidents for major offences by Statistical Area (SA4)
Over the two years to September 2021

Statistical Area	Murder	Domestic violence related assault	Non-domestic violence related assault	Sexual assault	Sexual touching, sexual act and other sexual offences	Robbery	Break and enter dwelling	Break and enter non-dwelling	Motor vehicle theft	Steal from motor vehicle	Steal from retail store	Other stealing offences	Malicious damage to property
Greater Sydney	-37.8	ns	-9.7	ns	ns	-20.3	-16.5	-21.1	-14.0	-10.7	ns	-16.1	-10.6
Baulkham Hills and Hawkesbury		ns	ns	ns	ns	ns	-34.4	-46.2	-15.2	-37.3	ns	-24.2	-6.2
Blacktown		ns	ns	ns	ns	ns	-20.9	ns	ns	-6.1	ns	-11.1	-7.1
Central Coast		-6.6	ns	ns	ns	-34.9	-24.5	-26.1	-23.3	-18.9	ns	-17.1	ns
City and Inner South		ns	-17.3	ns	-16.1	ns	-30.1	-25.8	ns	-21.2	-20.9	-21.1	-13.2
Eastern Suburbs		ns	-5.8	ns	ns	ns	-15.5	ns	ns	ns	ns	-19.9	-12.5
Inner South West		ns	-13.2	ns	ns	-33.9	-11.2	ns	-20.1	ns	ns	-11.4	-13.4
Inner West		ns	ns	ns	ns	ns	-18.2	-31.3	-21.3	ns	ns	-15.2	ns
North Sydney and Hornsby		ns	-17.6	ns	ns	ns	-23.3	-37.5	ns	ns	ns	-16.1	-15.7
Northern Beaches		-14.5	-10.4	ns	ns	ns	ns	ns	ns	ns	ns	-14.1	ns
Outer South West		ns	ns	ns	ns	ns	-11.6	ns	ns	ns	ns	-10.8	-7.5
Outer West and Blue Mountains		-16.7	-15.8	ns	ns	ns	ns	-22.0	-12.6	ns	-20.2	-11.2	-18.8
Parramatta		ns	-9.2	ns	ns	-27.0	-11.1	-15.9	-26.1	-19.6	-15.5	-20.1	-7.9
Ryde		ns	-18.1	75.6	ns	ns	-24.5	ns	-26.5	-25.5	ns	ns	-19.2
South West		ns	-3.5	ns	ns	-29.7	-14.5	-16.4	-22.3	-9.8	ns	-13.2	-4.2
Sutherland		ns	-11.4	ns	-30.5	-55.3	ns	ns	ns	-12.3	-36.6	ns	-20.1
Regional NSW	ns	ns	ns	ns	ns	ns	ns	ns	ns	ns	ns	-8.5	-2.2
Capital Region		ns	ns	ns	ns	ns	-23.2	ns	ns	-11.0	-19.3	ns	ns
Central West		ns	ns	ns	ns	ns	-13.8	-8.2	-13.4	ns	ns	-12.1	-5.1
Coffs Harbour - Grafton		ns	ns	ns	ns	ns	-16.5	ns	ns	ns	-28.7	-13.6	ns
Far West and Orana		ns	ns	ns	ns	ns	-15.6	ns	ns	-11.6	ns	-9.9	ns
Hunter Valley excluding Newcastle		ns	ns	ns	ns	ns	-11.5	ns	ns	ns	ns	-4.3	-7.8
Illawarra		ns	ns	ns	ns	ns	ns	ns	ns	ns	ns	-10.9	-11.2
Mid North Coast		ns	ns	ns	ns	ns	ns	58.6	ns	ns	ns	ns	ns
Murray		ns	ns	ns	ns	ns	-25.6	ns	-28.5	ns	ns	-17.2	ns
New England and North West		ns	ns	ns	ns	ns	ns	ns	ns	48.4	ns	ns	ns
Newcastle and Lake Macquarie		ns	ns	ns	ns	ns	-5.3	ns	ns	-12.9	ns	-9.6	-2.3
Richmond - Tweed		ns	ns	ns	ns	ns	ns	ns	ns	29.5	ns	ns	ns
Riverina		ns	ns	ns	ns	ns	-21.2	-26.1	ns	-39.3	-21.0	-18.6	-5.3
Southern Highlands and Shoalhaven		ns	ns	ns	ns	ns	-16.0	-29.4	ns	-19.6	-9.5	-1.9	ns
NSW	-25.0	ns	-3.6	ns	ns	-13.6	-11.0	ns	-9.9	ns	-10.9	-12.8	-6.6

Table 2.2: Ratio to NSW rate of recorded criminal incidents per 100,000 population for major offences by Statistical Area (SA4)
Over the 12 months to September 2021

Statistical Area	Murder	Domestic violence related assault	Non-domestic violence related assault	Sexual assault	Sexual touching, sexual act and other sexual offences	Robbery	Break and enter dwelling	Break and enter non-dwelling	Motor vehicle theft	Steal from motor vehicle	Steal from retail store	Other stealing offences	Malicious damage to property
Greater Sydney	0.7	0.8	0.8	0.7	0.8	1.0	0.7	0.6	0.8	0.8	1.0	0.8	0.8
Baulkham Hills and Hawkesbury		0.5	0.4	0.6	0.5	0.5	0.5	0.4	0.5	0.4	0.5	0.4	0.4
Blacktown	1.5	1.5	1.3	1.1	1.2	2.3	0.9	0.7	1.2	1.3	1.2	1.0	1.2
Central Coast	0.8	1.0	1.1	1.2	1.2	0.7	0.8	0.8	1.0	1.1	1.0	0.8	1.2
City and Inner South	1.5	1.0	1.8	1.1	1.1	2.1	0.7	0.9	0.7	0.8	2.6	2.1	1.1
Eastern Suburbs	0.5	0.6	0.8	0.7	0.6	0.6	0.5	0.2	0.7	0.6	1.1	0.9	0.6
Inner South West	0.7	0.8	0.6	0.5	0.6	0.8	0.6	0.4	0.8	0.7	0.5	0.6	0.6
Inner West	0.4	0.4	0.6	0.5	0.6	0.7	0.7	0.5	0.6	0.8	1.1	0.8	0.5
North Sydney and Hornsby		0.4	0.3	0.5	0.5	0.3	0.5	0.3	0.4	0.5	1.0	0.6	0.5
Northern Beaches		0.3	0.5	0.6	0.6	0.5	0.4	0.5	0.5	0.7	0.7	0.6	0.6
Outer South West	0.5	1.1	0.8	0.9	1.1	1.1	0.7	0.8	1.0	1.0	0.9	0.7	1.0
Outer West and Blue Mountains	0.4	1.1	1.0	1.1	1.2	1.2	1.0	1.0	1.0	1.2	1.2	0.9	1.2
Parramatta	1.4	1.0	0.8	0.7	0.7	1.3	1.0	0.6	1.0	1.1	0.8	0.9	0.7
Ryde	0.7	0.5	0.4	0.4	0.6	0.5	0.5	0.3	0.3	0.5	0.7	0.5	0.4
South West	1.2	1.0	0.8	0.6	0.9	1.2	0.7	0.6	1.0	1.0	0.7	0.8	0.7
Sutherland	0.6	0.8	0.6	0.5	0.5	0.4	0.5	0.3	0.5	0.6	0.5	0.5	0.6
Regional NSW	1.5	1.3	1.3	1.5	1.4	1.0	1.6	1.8	1.4	1.3	1.0	1.3	1.4
Capital Region	1.2	1.0	1.0	1.1	1.0	0.5	0.9	1.2	0.9	0.8	0.7	1.0	1.1
Central West	2.0	1.6	1.6	1.8	1.9	1.0	1.9	2.0	1.3	1.3	0.9	1.4	1.7
Coffs Harbour - Grafton		1.4	1.5	1.6	1.5	1.5	1.1	2.3	1.3	1.0	0.8	1.3	1.4
Far West and Orana	4.9	3.5	2.4	2.3	1.9	1.4	3.6	4.2	2.2	2.1	1.2	2.1	2.8
Hunter Valley excluding Newcastle	1.0	1.3	1.1	1.5	1.5	0.7	1.2	2.0	1.7	1.2	1.0	1.6	1.3
Illawarra	0.5	0.7	0.8	1.0	0.9	0.8	1.0	1.2	1.1	1.3	1.4	0.9	1.0
Mid North Coast	1.3	1.5	1.3	1.6	1.4	0.9	2.1	2.7	1.7	1.1	0.8	1.8	1.5
Murray	1.2	1.3	1.4	1.3	1.2	0.9	1.5	1.9	1.4	1.6	1.1	1.4	1.6
New England and North West	0.8	2.0	1.7	1.8	1.6	1.0	3.4	1.9	1.8	2.1	1.1	1.5	2.1
Newcastle and Lake Macquarie	3.0	1.0	1.4	1.4	1.2	1.6	1.5	1.6	1.7	1.7	1.5	1.3	1.4
Richmond - Tweed	0.6	1.1	1.2	1.4	1.2	0.9	1.0	1.5	1.5	1.2	0.6	1.2	1.3
Riverina	0.9	1.6	1.3	1.7	1.7	1.1	2.0	1.9	1.2	1.0	1.2	1.3	1.7
Southern Highlands and Shoalhaven	2.7	0.9	1.0	1.4	1.3	0.8	0.8	0.9	0.9	0.6	0.9	0.9	1.1
NSW	1.0	1.0	1.0	1.0	1.0	1.0	1.0	1.0	1.0	1.0	1.0	1.0	1.0

Table 2.3: Number of major offences by Statistical Area (SA4)

Over the 12 months to September 2021

Statistical Area	Murder	Domestic violence related assault	Non-domestic violence related assault	Sexual assault	Sexual touching, sexual act and other sexual offences	Robbery	Break and enter dwelling	Break and enter non-dwelling	Motor vehicle theft	Steal from motor vehicle	Steal from retail store	Other stealing offences	Malicious damage to property
Greater Sydney	28	17,636	15,138	3,537	4,124	1,252	8,509	2,649	5,529	15,400	12,202	19,913	25,366
Baulkham Hills and Hawkesbury	0	494	341	128	128	27	301	85	168	351	307	501	661
Blacktown	4	2,235	1,709	378	420	208	818	245	606	1,742	1,051	1,754	2,886
Central Coast	2	1,420	1,398	391	403	54	658	232	461	1,253	851	1,254	2,572
City and Inner South	4	1,451	2,402	367	402	183	593	302	344	964	2,229	3,590	2,521
Eastern Suburbs	1	674	844	192	184	43	360	60	263	604	781	1,157	1,125
Inner South West	3	2,108	1,318	271	386	121	830	221	679	1,611	798	1,607	2,247
Inner West	1	573	640	137	173	53	496	132	247	847	806	1,141	1,090
North Sydney and Hornsby	0	633	529	184	220	36	511	130	214	768	1,051	1,118	1,288
Northern Beaches	0	331	517	163	150	31	260	126	181	685	442	768	1,024
Outer South West	1	1,293	807	245	307	74	463	199	381	974	628	935	1,775
Outer West and Blue Mountains	1	1,492	1,222	329	378	94	770	284	449	1,386	903	1,361	2,426
Parramatta	5	1,946	1,448	318	349	157	1,170	286	674	1,834	953	2,018	2,226
Ryde	1	409	267	79	126	22	247	56	83	347	354	507	529
South West	4	1,873	1,223	258	382	128	782	225	622	1,584	753	1,647	2,120
Sutherland	1	704	473	97	116	21	250	66	157	450	295	555	876
Regional NSW	29	14,793	12,776	3,779	3,635	661	10,169	4,519	5,364	12,561	6,879	16,791	25,105
Capital Region	2	884	782	232	228	29	464	248	279	638	376	1,072	1,511
Central West	3	1,379	1,216	358	390	51	918	382	380	975	459	1,397	2,234
Coffs Harbour - Grafton	0	822	781	214	205	49	375	291	241	502	271	857	1,243
Far West and Orana	4	1,625	996	249	212	40	960	437	342	844	337	1,104	2,030
Hunter Valley excluding Newcastle	2	1,437	1,094	397	398	45	807	507	635	1,133	636	1,985	2,291
Illawarra	1	911	922	279	281	60	720	339	451	1,420	1,060	1,338	1,886
Mid North Coast	2	1,383	995	324	307	45	1,078	525	515	879	408	1,810	2,117
Murray	1	627	600	145	141	25	412	206	226	681	321	764	1,234
New England and North West	1	1,516	1,155	307	296	45	1,482	319	453	1,349	488	1,292	2,440
Newcastle and Lake Macquarie	8	1,526	1,865	502	433	145	1,315	534	889	2,180	1,331	2,196	3,415
Richmond - Tweed	1	1,106	1,096	319	288	54	599	329	519	1,032	386	1,365	1,976
Riverina	1	1,011	726	253	259	43	745	275	253	583	471	978	1,692
Southern Highlands and Shoalhaven	3	566	548	200	197	30	294	127	181	345	335	633	1,036
NSW	57	32,436	28,760	7,446	7,816	1,917	18,678	7,169	10,893	27,963	19,081	36,709	50,527

Table 2.4: Number of major offences by Statistical Area (SA4)

Over the 12 months to September 2020

Statistical Area	Murder	Domestic violence related assault	Non-domestic violence related assault	Sexual assault	Sexual touching, sexual act and other sexual offences	Robbery	Break and enter dwelling	Break and enter non-dwelling	Motor vehicle theft	Steal from motor vehicle	Steal from retail store	Other stealing offences	Malicious damage to property
Greater Sydney	45	18,047	16,757	3,373	4,293	1,571	10,189	3,357	6,431	17,253	13,786	23,721	28,375
Baulkham Hills and Hawkesbury	1	499	346	94	115	36	459	158	198	560	336	661	705
Blacktown	5	2,220	1,835	410	430	218	1,034	281	600	1,856	1,061	1,973	3,106
Central Coast	3	1,520	1,410	353	376	83	871	314	601	1,545	866	1,513	2,699
City and Inner South	4	1,492	2,903	387	479	200	848	407	400	1,223	2,817	4,548	2,904
Eastern Suburbs	1	687	896	164	231	52	426	84	213	594	892	1,444	1,285
Inner South West	4	2,132	1,518	271	370	183	935	251	850	1,748	861	1,813	2,595
Inner West	3	600	645	107	183	63	606	192	314	867	759	1,346	1,166
North Sydney and Hornsby	2	559	642	152	219	45	666	208	181	757	1,158	1,332	1,527
Northern Beaches	0	387	577	129	168	38	227	130	175	729	350	894	1,102
Outer South West	1	1,346	810	253	364	85	524	182	405	1,007	758	1,048	1,919
Outer West and Blue Mountains	3	1,791	1,452	338	360	102	829	364	514	1,351	1,131	1,533	2,987
Parramatta	9	1,943	1,595	269	331	215	1,316	340	912	2,280	1,128	2,526	2,416
Ryde	0	421	326	45	125	22	327	94	113	466	375	590	655
South West	8	1,794	1,268	276	375	182	915	269	801	1,757	829	1,897	2,213
Sutherland	1	656	534	125	167	47	206	83	154	513	465	603	1,096
Regional NSW	30	13,945	11,903	3,380	3,841	642	10,800	4,704	5,654	13,178	7,622	18,356	25,667
Capital Region	3	779	770	198	223	28	604	272	284	717	466	1,142	1,532
Central West	1	1,227	1,060	306	346	62	1,065	416	439	878	462	1,589	2,353
Coffs Harbour - Grafton	0	773	721	171	181	32	449	261	291	538	380	992	1,279
Far West and Orana	3	1,675	926	209	245	39	1,137	448	385	955	419	1,225	2,100
Hunter Valley excluding Newcastle	4	1,404	1,063	381	418	36	912	604	678	1,257	704	2,075	2,485
Illawarra	1	980	872	271	305	68	742	313	511	1,426	1,119	1,501	2,123
Mid North Coast	1	1,096	952	275	408	52	825	331	417	961	482	1,870	2,030
Murray	0	619	537	144	154	22	554	223	316	846	338	923	1,311
New England and North West	5	1,385	937	310	282	53	1,282	366	361	909	494	1,300	2,322
Newcastle and Lake Macquarie	4	1,437	1,773	449	481	132	1,388	627	1,064	2,504	1,320	2,430	3,495
Richmond - Tweed	6	858	1,049	273	328	52	547	291	403	797	472	1,463	1,805
Riverina	1	1,131	763	216	267	40	945	372	345	961	596	1,201	1,787
Southern Highlands and Shoalhaven	1	581	480	177	203	26	350	180	160	429	370	645	1,045
NSW	76	32,000	29,842	6,798	8,160	2,218	20,989	8,067	12,086	30,431	21,408	42,084	54,106

SECTION 3: LEGAL PROCEEDINGS

Table 3.1: Adults proceeded against by NSW Police by method of legal proceeding

Over the five years to September 2021

Method of legal proceeding	Adults proceeded against					2 Year Trend		5 Year Trend	
	12 months to September 2017	12 months to September 2018	12 months to September 2019	12 months to September 2020	12 months to September 2021	Number change	Percentage change	Number change	Average annual percentage change
Proceeded against to court	149,386	152,428	156,130	155,240	150,815	-4,425	Stable	1,429	Stable
Court diversion	14,860	14,015	13,520	11,082	8,903	-2,179	-19.7%	-5,957	-12.0%
Criminal Infringement Notice	9,535	8,957	8,772	7,100	5,828	-1,272	-17.9%	-3,707	-11.6%
Cannabis or other drug caution	5,325	5,058	4,748	3,982	3,075	-907	-22.8%	-2,250	-12.8%

Table 3.2: Young people proceeded against by NSW Police by method of legal proceeding

Over the five years to September 2021

Method of legal proceeding	Young people proceeded against					2 Year Trend		5 Year Trend	
	12 months to September 2017	12 months to September 2018	12 months to September 2019	12 months to September 2020	12 months to September 2021	Number change	Percentage change	Number change	Average annual percentage change
Proceeded against to court	11,810	11,980	11,504	11,348	11,011	-337	Stable	-799	-1.7%
Court diversion	17,874	17,991	17,289	16,992	19,572	2,580	Stable	1,698	Stable
Youth Justice Conference	557	767	758	848	851	3	Stable	294	11.2%
Caution Young Offenders Act	7,033	7,220	7,007	6,665	7,060	395	Stable	27	Stable
Warning Young Offenders Act	10,284	10,004	9,524	9,479	11,661	2,182	Stable	1,377	Stable

Table 3.3: Adults proceeded against to court by NSW Police for all 62 criminal offences types
Over the two years to September 2021

Offence category		12 months to September 2020		12 months to September 2021		2 Year Trend	
		No. proceeded to court	% proceeded to court	No. proceeded to court	% proceeded to court	Trend test result	Percentage change
Homicide	Murder	102	100.0%	69	100.0%	Down	-32.4%
	Attempted murder	35	100.0%	15	100.0%	n.c.	
	Murder accessory, conspiracy	2	100.0%	0		n.c.	
	Manslaughter	9	100.0%	5	100.0%	n.c.	
Assault	Domestic violence related assault	13,000	99.9%	13,242	99.9%	Stable	
	Non-domestic violence related assault	6,484	97.3%	6,451	97.4%	Stable	
	Assault Police	1,327	99.9%	1,282	99.8%	Stable	
Sexual offences	Sexual assault	805	100.0%	855	100.0%	Stable	
	Sexual touching, sexual act and other sexual offences	1,368	99.3%	1,337	98.2%	Stable	
Abduction and kidnapping		168	100.0%	210	100.0%	Stable	
Robbery	Robbery without a weapon	455	99.8%	357	100.0%	Down	-21.5%
	Robbery with a firearm	79	100.0%	78	100.0%	Stable	
	Robbery with a weapon not a firearm	411	100.0%	391	100.0%	Stable	
Blackmail and extortion		11	100.0%	17	100.0%	n.c.	
Intimidation, stalking and harassment		11,372	99.0%	12,968	99.0%	Up	14.0%
Other offences against the person		250	96.5%	316	98.8%	Stable	
Theft	Break and enter dwelling	2,475	99.7%	2,311	99.6%	Stable	
	Break and enter non-dwelling	1,319	99.5%	1,141	99.0%	Stable	
	Receiving or handling stolen goods	4,570	96.8%	3,765	96.8%	Down	-17.6%
	Motor vehicle theft	1,426	99.6%	1,254	99.5%	Down	-12.1%
	Steal from motor vehicle	795	97.5%	817	99.3%	Stable	
	Steal from retail store	5,253	64.3%	4,585	66.0%	Down	-12.7%
	Steal from dwelling	607	94.0%	680	94.3%	Stable	
	Steal from person	244	96.1%	201	96.6%	Down	-17.6%
	Stock theft	10	90.9%	14	93.3%	n.c.	
	Fraud	4,886	98.1%	4,019	98.1%	Down	-17.7%
	Other theft	1,695	87.8%	1,439	87.9%	Down	-15.1%
Arson		181	75.4%	146	90.1%	Stable	
Malicious damage to property		4,750	99.3%	4,507	99.2%	Down	-5.1%
Drug offences	Possession and/or use of cocaine	1,231	97.2%	1,275	99.5%	Stable	
	Possession and/or use of narcotics	678	99.9%	500	99.6%	Down	-26.3%
	Possession and/or use of cannabis	6,017	60.3%	5,159	62.8%	Stable	
	Possession and/or use of amphetamines	3,920	99.5%	3,088	99.9%	Down	-21.2%
	Possession and/or use of ecstasy	732	65.8%	148	92.5%	Down	-79.8%
	Possession and/or use of other drugs	1,885	98.1%	1,707	99.7%	Stable	
	Dealing, trafficking in cocaine	763	100.0%	794	100.0%	Stable	
	Dealing, trafficking in narcotics	168	100.0%	116	100.0%	Stable	
	Dealing, trafficking in cannabis	497	100.0%	436	99.8%	Stable	
	Dealing, trafficking in amphetamines	931	100.0%	821	100.0%	Stable	
	Dealing, trafficking in ecstasy	301	100.0%	71	100.0%	Down	-76.4%
	Dealing, trafficking in other drugs	294	100.0%	254	100.0%	Stable	
	Cultivating cannabis	794	100.0%	708	99.7%	Stable	
Manufacture drug	53	100.0%	40	100.0%	Stable		
Importing drugs	97	100.0%	98	99.0%	Stable		
Other drug offences	753	98.4%	678	98.1%	Stable		
Prohibited and regulated weapons offences		3,156	85.4%	2,990	84.9%	Stable	
Disorderly conduct	Trespass	1,386	63.4%	938	61.8%	Down	-32.3%
	Offensive conduct	334	15.7%	319	16.3%	Down	-4.5%
	Offensive language	173	15.8%	122	12.3%	Down	-29.5%
	Criminal intent	1,364	99.6%	1,431	99.4%	Stable	
Betting and gaming offences		11	78.6%	7	58.3%	n.c.	
Liquor offences		125	5.9%	73	3.8%	Down	-41.6%
Pornography offences		195	99.0%	198	99.5%	Stable	
Prostitution offences		0		0		n.c.	
Against justice procedures	Escape custody	102	100.0%	93	100.0%	Stable	
	Breach Apprehended Violence Order	10,457	100.0%	11,078	100.0%	Stable	
	Breach bail conditions	8,071	100.0%	7,220	99.9%	Stable	
	Fail to appear	12	100.0%	9	100.0%	n.c.	
	Resist or hinder officer	1,708	83.4%	1,630	85.2%	Stable	
	Other offences against justice procedures	1,068	100.0%	968	100.0%	Stable	
Transport regulatory offences		276	0.5%	399	0.9%	Stable	
Other offences		2,315	32.8%	4,180	8.2%	Stable	

Table 3.4: Young people proceeded against to court by NSW Police for all 62 criminal offences
Over the two years to September 2021

Offence category		12 months to September 2020		12 months to September 2021		2 Year Trend	
		No. proceeded to court	% proceeded to court	No. proceeded to court	% proceeded to court	Trend test result	Percentage change
Homicide	Murder	11	100.0%	8	100.0%	n.c.	
	Attempted murder	3	100.0%	1	100.0%	n.c.	
	Murder accessory, conspiracy	0		0		n.c.	
	Manslaughter	0		0		n.c.	
Assault	Domestic violence related assault	483	50.6%	465	45.4%	Down	-3.7%
	Non-domestic violence related assault	861	43.1%	964	40.4%	Stable	
	Assault Police	128	75.3%	132	78.1%	Stable	
Sexual offences	Sexual assault	147	98.0%	149	99.3%	Stable	
	Sexual touching, sexual act and other sexual offences	93	75.0%	84	69.4%	Stable	
Abduction and kidnapping		17	100.0%	8	88.9%	n.c.	
Robbery	Robbery without a weapon	407	95.8%	341	94.7%	Down	-16.2%
	Robbery with a firearm	9	100.0%	13	100.0%	n.c.	
	Robbery with a weapon not a firearm	225	97.8%	213	94.7%	Stable	
Blackmail and extortion		0		1	100.0%	n.c.	
Intimidation, stalking and harassment		1,098	75.2%	1,148	70.7%	Stable	
Other offences against the person		34	75.6%	20	57.1%	Stable	
Theft	Break and enter dwelling	446	75.2%	498	67.8%	Stable	
	Break and enter non-dwelling	292	46.6%	290	45.5%	Stable	
	Receiving or handling stolen goods	222	54.0%	199	60.1%	Down	-10.4%
	Motor vehicle theft	479	69.2%	528	66.7%	Stable	
	Steal from motor vehicle	293	64.4%	346	64.4%	Stable	
	Steal from retail store	635	35.9%	480	34.4%	Down	-24.4%
	Steal from dwelling	51	30.7%	58	34.1%	Stable	
	Steal from person	74	59.7%	50	52.1%	Stable	
	Stock theft	0		3	100.0%	n.c.	
	Fraud	243	59.3%	241	62.1%	Stable	
	Other theft	210	44.8%	144	33.4%	Down	-31.4%
Arson		35	28.0%	17	19.5%	n.c.	
Malicious damage to property		611	38.7%	507	33.2%	Stable	
Drug offences	Possession and/or use of cocaine	5	15.6%	6	33.3%	n.c.	
	Possession and/or use of narcotics	0		0		n.c.	
	Possession and/or use of cannabis	262	18.5%	187	15.6%	Stable	
	Possession and/or use of amphetamines	18	48.6%	7	50.0%	n.c.	
	Possession and/or use of ecstasy	31	32.0%	5	17.9%	n.c.	
	Possession and/or use of other drugs	18	20.7%	20	31.3%	n.c.	
	Dealing, trafficking in cocaine	13	100.0%	24	100.0%	n.c.	
	Dealing, trafficking in narcotics	0		0		n.c.	
	Dealing, trafficking in cannabis	32	82.1%	19	76.0%	n.c.	
	Dealing, trafficking in amphetamines	4	100.0%	4	100.0%	n.c.	
	Dealing, trafficking in ecstasy	30	96.8%	8	100.0%	n.c.	
	Dealing, trafficking in other drugs	2	50.0%	7	63.6%	n.c.	
	Cultivating cannabis	2	40.0%	5	55.6%	n.c.	
	Manufacture drug	0		0		n.c.	
Importing drugs	1	100.0%	0		n.c.		
	Other drug offences	9	11.8%	2	3.4%	n.c.	
Prohibited and regulated weapons offences		118	25.7%	149	31.4%	Stable	
Disorderly conduct	Trespass	226	18.4%	184	15.8%	Stable	
	Offensive conduct	19	10.3%	17	6.0%	n.c.	
	Offensive language	9	10.7%	7	10.0%	n.c.	
	Criminal intent	182	85.0%	198	88.4%	Stable	
Betting and gaming offences		0		0		n.c.	
Liquor offences		2	0.7%	1	0.5%	n.c.	
Pornography offences		3	4.8%	13	15.1%	n.c.	
Prostitution offences		0		0		n.c.	
Against justice procedures	Escape custody	11	84.6%	17	100.0%	n.c.	
	Breach Apprehended Violence Order	508	99.4%	517	99.4%	Stable	
	Breach bail conditions	1,571	98.1%	1,416	98.5%	Stable	
	Fail to appear	0		0		n.c.	
	Resist or hinder officer	112	53.3%	80	47.6%	Down	-28.6%
	Other offences against justice procedures	25	96.2%	6	100.0%	n.c.	
Transport regulatory offences		31	0.2%	26	0.1%	Stable	
Other offences		134	18.4%	207	4.2%	Stable	

Figure 3.5: Offences with the largest change in the number of adults proceeded against to court by NSW Police

Between the 12 months to September 2020 and the 12 months to September 2021

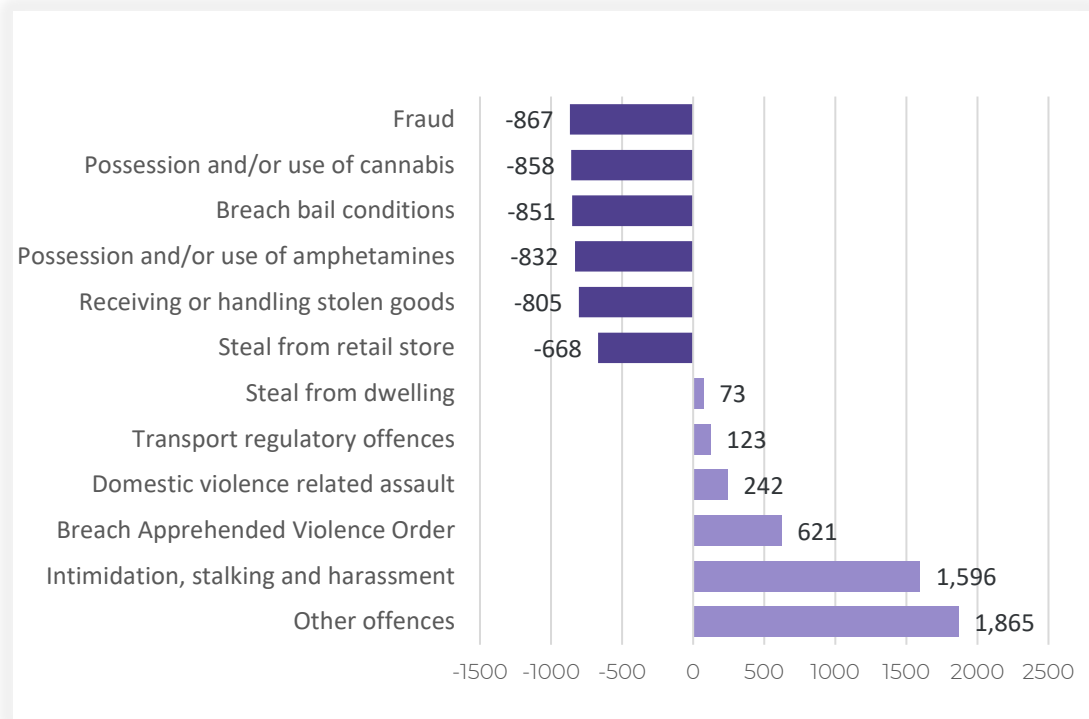


Figure 3.6: Offences with the largest change in the number of young people proceeded against to court by NSW Police

Between the 12 months to September 2020 and the 12 months to September 2021

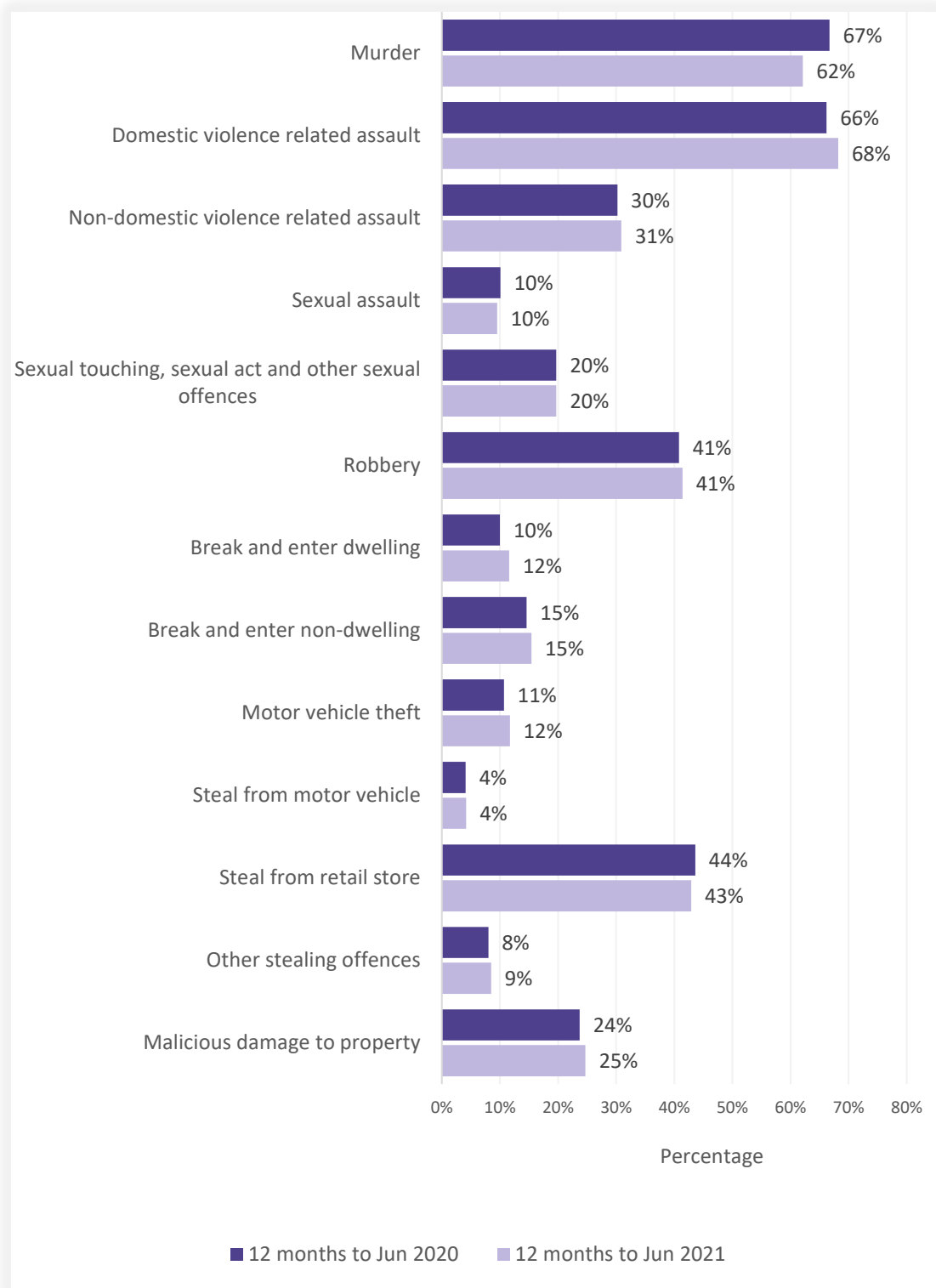


Table 3.7: Incidents of all 62 criminal offence types by whether legal proceedings commenced within 90 days of reporting
Over the two years to June 2021

Offence category		Recorded criminal incidents over the 12 months to June 2020			Recorded criminal incidents over the 12 months to June 2021		
		Proceedings commenced within 90 days	Total number recorded	% proceedings commenced within 90 days	Proceedings commenced within 90 days	Total number recorded	% proceedings commenced within 90 days
Homicide	Murder	48	72	66.7%	36	58	62.1%
	Attempted murder	18	28	64.3%	15	28	53.6%
	Murder accessory, conspiracy	1	1	100.0%	0	0	0.0%
	Manslaughter	5	9	55.6%	1	1	100.0%
Assault	Domestic violence related assault	21,106	31,873	66.2%	22,447	32,923	68.2%
	Non-domestic violence related assault	9,129	30,206	30.2%	9,561	30,921	30.9%
	Assault Police	2,270	2,548	89.1%	2,171	2,439	89.0%
Sexual offences	Sexual assault	657	6,517	10.1%	745	7,860	9.5%
	Sexual touching, sexual act and other sexual offences	1,620	8,203	19.7%	1,662	8,439	19.7%
Abduction and kidnapping		101	193	52.3%	127	229	55.5%
Robbery	Robbery without a weapon	522	1,304	40.0%	438	1,145	38.3%
	Robbery with a firearm	62	129	48.1%	46	110	41.8%
	Robbery with a weapon not a firearm	364	889	40.9%	393	863	45.5%
Blackmail and extortion		8	83	9.6%	15	120	12.5%
Intimidation, stalking and harassment		15,791	36,821	42.9%	18,022	41,141	43.8%
Other offences against the person		416	1,290	32.2%	417	1,421	29.3%
Theft	Break and enter dwelling	2,310	23,054	10.0%	2,225	19,249	11.6%
	Break and enter non-dwelling	1,317	9,016	14.6%	1,095	7,091	15.4%
	Receiving or handling stolen goods	7,151	9,217	77.6%	5,781	7,452	77.6%
	Motor vehicle theft	1,351	12,611	10.7%	1,352	11,539	11.7%
	Steal from motor vehicle	1,369	33,515	4.1%	1,200	28,726	4.2%
	Steal from retail store	10,334	23,707	43.6%	8,793	20,507	42.9%
	Steal from dwelling	961	18,204	5.3%	896	16,438	5.5%
	Steal from person	419	2,914	14.4%	368	2,095	17.6%
	Stock theft	4	421	1.0%	9	348	2.6%
	Fraud	4,725	50,509	9.4%	3,842	45,075	8.5%
Other theft	2,269	24,303	9.3%	1,938	18,887	10.3%	
Arson		297	4,764	6.2%	213	3,964	5.4%
Malicious damage to property		12,966	54,647	23.7%	13,190	53,392	24.7%
Drug offences	Possession and/or use of cocaine	1,750	2,363	74.1%	1,789	2,426	73.7%
	Possession and/or use of narcotics	985	1,463	67.3%	728	1,137	64.0%
	Possession and/or use of cannabis	14,661	18,859	77.7%	12,612	16,413	76.8%
	Possession and/or use of amphetamines	6,862	9,048	75.8%	5,244	7,047	74.4%
	Possession and/or use of ecstasy	1,627	2,129	76.4%	401	595	67.4%
	Possession and/or use of other drugs	3,261	6,482	50.3%	3,220	6,538	49.3%
	Dealing, trafficking in cocaine	931	1,218	76.4%	1,108	1,533	72.3%
	Dealing, trafficking in narcotics	319	428	74.5%	183	272	67.3%
	Dealing, trafficking in cannabis	907	1,195	75.9%	696	874	79.6%
	Dealing, trafficking in amphetamines	1,984	2,476	80.1%	2,355	2,781	84.7%
	Dealing, trafficking in ecstasy	492	646	76.2%	194	272	71.3%
	Dealing, trafficking in other drugs	396	645	61.4%	390	574	67.9%
	Cultivating cannabis	748	1,147	65.2%	746	1,135	65.7%
Manufacture drug	23	57	40.4%	40	67	59.7%	
Importing drugs	89	239	37.2%	78	237	32.9%	
Other drug offences	1,282	6,720	19.1%	1,145	6,001	19.1%	
Prohibited and regulated weapons offences		6,585	16,808	39.2%	6,083	14,966	40.6%
Disorderly conduct	Trespass	4,691	10,922	43.0%	3,650	9,567	38.2%
	Offensive conduct	2,892	4,165	69.4%	2,642	3,941	67.0%
	Offensive language	1,860	2,261	82.3%	1,552	1,964	79.0%
	Criminal intent	2,020	2,553	79.1%	1,829	2,352	77.8%
Betting and gaming offences		18	63	28.6%	21	84	25.0%
Liquor offences		3,643	9,385	38.8%	3,111	9,244	33.7%
Pornography offences		208	758	27.4%	277	934	29.7%
Prostitution offences		2	23	8.7%	0	14	0.0%
Against justice procedures	Escape custody	166	191	86.9%	161	179	89.9%
	Breach Apprehended Violence Order	15,637	19,380	80.7%	16,690	20,558	81.2%
	Breach bail conditions	16,682	50,794	32.8%	16,370	50,845	32.2%
	Fail to appear	15	703	2.1%	5	786	0.6%
	Resist or hinder officer	4,925	5,855	84.1%	4,575	5,489	83.3%
	Other offences against justice procedures	1,304	1,839	70.9%	1,196	1,888	63.3%
Transport regulatory offences		86,717	99,574	87.1%	63,678	74,573	85.4%
Other offences		7,692	22,138	34.7%	7,920	29,223	27.1%

Figure 3.8: Percentage of recorded criminal incidents for major offences by whether legal proceedings commenced within 90 days of reporting

Over the two years to June 2021



SECTION 4: POLICING ACTIVITY

Table 4.1: Selected policing activities
Over the five years to September 2021

	Number of selected policing activities					2 Year Trend		5 Year Trend	
	12 months to September 2017	12 months to September 2018	12 months to September 2019	12 months to September 2020	12 months to September 2021	Number change	Annual percentage change	Number change	Annual average percentage change
Bail compliance checks	111,975	108,977	96,009	113,316	119,201	5,885	5.2%	7,226	Stable
ADVO compliance checks	n.a.	22,590	49,079	71,452	88,960	17,508	24.5%	88,960	n.c.
Move-on directions	107,014	105,510	107,894	109,658	100,329	-9,329	-8.5%	-6,685	Stable
Searches	291,129	285,119	287,481	281,187	245,634	-35,553	-12.6%	-45,495	-4.2%
Vehicle searches	49,602	46,806	44,560	47,256	44,155	-3,101	Stable	-5,447	-2.9%
Person searches	236,902	232,528	238,225	230,262	199,180	-31,082	-13.5%	-37,722	-4.2%
Strip searches	4,625	5,785	4,696	3,669	2,299	-1,370	-37.3%	-2,326	-16.0%
Convey/detain person to mental health facility	13,531	14,327	16,124	17,391	18,889	1,498	Stable	5,358	8.7%

Table 4.2: Non-criminal domestic violence episodes by Statistical Area (SA4)

Over the five years to September 2021

Statistical Area	Number of activities					Trend and average annual percentage change	
	12 months to September 2017	12 months to September 2018	12 months to September 2019	12 months to September 2020	12 months to September 2021	2 Year Trend	5 Year Trend
						Percentage change	Annual average percentage change
Greater Sydney	44,337	44,986	46,612	49,852	46,109	-7.5%	Stable
Baulkham Hills and Hawkesbury	1,056	979	1,134	1,203	1,163	Stable	2.4%
Blacktown	5,415	5,466	5,192	5,480	5,360	Stable	Stable
Central Coast	4,266	4,352	4,505	5,094	4,633	-9.0%	Stable
City and Inner South	3,276	3,176	3,484	3,600	3,470	-3.6%	Stable
Eastern Suburbs	1,763	1,675	1,856	2,037	1,968	Stable	2.8%
Inner South West	5,216	5,369	5,128	5,470	4,944	-9.6%	-1.3%
Inner West	2,080	2,018	2,020	2,205	1,922	-12.8%	Stable
North Sydney and Hornsby	1,595	1,556	1,590	1,880	1,816	Stable	3.3%
Northern Beaches	1,438	1,510	1,625	1,709	1,448	-15.3%	Stable
Outer South West	3,254	3,473	3,537	3,734	3,451	-7.6%	Stable
Outer West and Blue Mountains	4,196	4,460	4,744	4,984	4,581	-8.1%	Stable
Parramatta	3,837	4,149	4,127	4,661	4,052	-13.1%	Stable
Ryde	996	909	1,098	1,194	1,160	Stable	3.9%
South West	4,395	4,338	4,776	4,716	4,397	-6.8%	Stable
Sutherland	1,554	1,556	1,796	1,885	1,744	-7.5%	2.9%
Regional NSW	34,984	35,535	37,264	39,771	39,716	-0.1%	3.2%
Capital Region	2,135	2,138	2,460	2,785	2,892	Stable	7.9%
Central West	2,935	2,998	3,023	3,340	3,253	-2.6%	Stable
Coffs Harbour - Grafton	1,941	2,024	1,919	1,979	1,932	Stable	Stable
Far West and Orana	3,198	3,518	3,620	3,725	3,827	Stable	4.6%
Hunter Valley excluding Newcastle	2,860	2,833	2,790	2,983	3,215	Stable	Stable
Illawarra	3,635	3,410	3,615	3,768	3,676	-2.4%	Stable
Mid North Coast	2,913	3,009	3,222	3,420	3,292	-3.7%	Stable
Murray	1,604	1,626	1,863	2,020	2,053	Stable	6.4%
New England and North West	3,704	3,691	3,780	3,856	3,765	-2.4%	Stable
Newcastle and Lake Macquarie	3,621	3,605	3,612	4,296	4,358	Stable	4.7%
Richmond - Tweed	2,510	2,593	2,728	2,846	2,892	Stable	3.6%
Riverina	2,423	2,512	2,805	2,887	2,734	-5.3%	3.1%
Southern Highlands and Shoalhaven	1,505	1,578	1,827	1,866	1,827	Stable	5.0%
NSW	79,328	80,541	83,888	89,635	85,833	-4.2%	Stable

Table 4.3: Ratio to NSW rate of non-criminal domestic violence episodes per 100,000 population by Statistical Area (SA4)

Over the five years to September 2021

Statistical Area	12 months to September 2017	12 months to September 2018	12 months to September 2019	12 months to September 2020	12 months to September 2021
Greater Sydney	0.9	0.9	0.8	0.8	0.8
Baulkham Hills and Hawkesbury	0.4	0.4	0.4	0.4	0.4
Blacktown	1.5	1.5	1.3	1.3	1.3
Central Coast	1.2	1.3	1.3	1.3	1.3
City and Inner South	0.9	0.9	0.9	0.9	0.9
Eastern Suburbs	0.6	0.6	0.6	0.6	0.6
Inner South West	0.8	0.9	0.8	0.8	0.7
Inner West	0.7	0.6	0.6	0.6	0.6
North Sydney and Hornsby	0.4	0.4	0.3	0.4	0.4
Northern Beaches	0.5	0.6	0.6	0.6	0.5
Outer South West	1.2	1.2	1.2	1.2	1.1
Outer West and Blue Mountains	1.3	1.4	1.4	1.4	1.3
Parramatta	0.8	0.8	0.8	0.8	0.8
Ryde	0.5	0.5	0.5	0.5	0.5
South West	1.0	1.0	1.0	0.9	0.9
Sutherland	0.7	0.7	0.8	0.7	0.7
Regional NSW	1.3	1.3	1.3	1.3	1.3
Capital Region	0.9	0.9	1.0	1.1	1.2
Central West	1.4	1.4	1.4	1.4	1.4
Coffs Harbour - Grafton	1.4	1.4	1.3	1.3	1.3
Far West and Orana	2.7	3.0	3.0	2.9	3.1
Hunter Valley excluding Newcastle	1.0	1.0	1.0	1.0	1.1
Illawarra	1.2	1.1	1.1	1.1	1.1
Mid North Coast	1.3	1.4	1.4	1.4	1.4
Murray	1.3	1.3	1.5	1.5	1.6
New England and North West	2.0	2.0	1.9	1.9	1.9
Newcastle and Lake Macquarie	1.0	1.0	0.9	1.0	1.1
Richmond - Tweed	1.0	1.0	1.0	1.0	1.1
Riverina	1.5	1.5	1.7	1.6	1.6
Southern Highlands and Shoalhaven	1.0	1.0	1.1	1.1	1.1
NSW	1.0	1.0	1.0	1.0	1.0

APPENDIX 1

REGIONAL COMPARISONS

Local Government Areas

Appendix Table 1.1: Trends in recorded criminal incidents for major offences, NSW LGAs

Over the two years to September 2021

NSW LGA	Murder	Domestic violence related assault	Non-domestic violence related assault	Sexual assault	Sexual touching, sexual act and other sexual offences	Robbery	Break and enter dwelling	Break and enter non-dwelling	Motor vehicle theft	Steal from motor vehicle	Steal from retail store	Other stealing offences	Malicious damage to property
Albury	ns	ns	ns	ns	ns		-28.1	ns	-40.3	ns	ns	ns	-7.8
Armidale Regional	ns	ns	ns	ns	ns		-27.2	ns	-35.6	-13.5	ns	ns	-14.2
Ballina	94.0	ns	ns	ns	ns		ns	ns	ns	112.0	ns	ns	ns
Balranald													
Bathurst Regional	ns	ns	ns	ns	50.9		-42.6	ns	-39.7	ns	ns	-6.5	ns
Bayside	-12.8	-15.4	ns	ns	ns		-24.3	ns	-17.5	-24.5	ns	ns	-12.5
Bega Valley	ns	ns	ns	ns	60.0		ns	ns	ns	-31.0	ns	-20.6	ns
Bellingen	ns	ns	ns	ns	ns		ns	ns	ns	ns	ns	ns	ns
Berrigan	ns	ns	ns	ns	ns		ns	ns	ns	ns	ns	ns	ns
Blacktown	ns	ns	ns	ns	ns		-20.3	ns	ns	-6.1	ns	-11.0	-6.9
Bland	ns	ns	ns	ns	ns		ns	ns	ns	ns	ns	ns	ns
Blayney	ns	ns	ns	ns	ns		ns	ns	ns	ns	ns	ns	ns
Blue Mountains	ns	ns	ns	ns	ns		ns	-34.7	-25.5	ns	-36.5	ns	-29.9
Bogan	ns	ns	ns	ns	ns		ns	ns	ns	ns	ns	ns	ns
Bourke	ns	ns	ns	ns	ns		ns	93.5	ns	ns	ns	ns	ns
Brewarrina	ns	ns	ns	ns	ns		ns	ns	ns	ns	ns	ns	ns
Broken Hill	ns	ns	ns	ns	ns		-24.2	ns	ns	ns	ns	-21.8	ns
Burwood	ns	ns	ns	ns	ns		-37.2	ns	ns	ns	ns	ns	ns
Byron	ns	-15.0	ns	ns	ns		ns	ns	ns	-17.2	ns	-27.2	ns
Cabonne	ns	ns	ns	ns	ns		ns	ns	ns	ns	ns	ns	ns
Camden	ns	ns	ns	ns	ns		ns	ns	ns	ns	ns	ns	-21.3
Campbelltown	ns	ns	ns	ns	ns		ns	ns	ns	ns	-18.8	ns	ns
Canada Bay	ns	ns	ns	ns	ns		-34.0	ns	ns	ns	ns	ns	-11.2
Canterbury-Bankstown	ns	-16.3	ns	ns	ns	-32.1	-13.7	ns	-24.9	ns	ns	-13.0	-10.6
Carrathool	ns	ns	ns	ns	ns		ns	ns	ns	ns	ns	ns	ns
Central Coast	-6.6	ns	ns	ns	ns	-34.9	-24.5	-26.1	-23.5	-18.9	ns	-17.1	ns
Central Darling	ns	ns	ns	ns	ns		ns	ns	ns	ns	ns	ns	ns
Cessnock	ns	ns	ns	ns	ns		-32.2	-26.2	ns	ns	ns	ns	ns
Clarence Valley	ns	ns	ns	ns	ns		ns	ns	ns	ns	-29.7	ns	ns
Cobar	ns	ns	ns	ns	ns		ns	ns	ns	ns	ns	ns	ns
Coffs Harbour	ns	ns	ns	ns	ns		-23.8	ns	ns	-2.4	-28.4	-14.6	ns
Coolamon	ns	ns	ns	ns	ns		ns	ns	ns	ns	ns	ns	ns
Coonamble	ns	ns	ns	ns	ns		-26.4	ns	ns	ns	ns	ns	ns
Cootamundra-Gundagai	ns	ns	ns	ns	ns		ns	ns	ns	ns	ns	ns	ns
Cowra	ns	ns	ns	ns	ns		ns	ns	ns	ns	ns	-17.1	-29.5
Cumberland	ns	ns	ns	ns	ns		ns	-32.7	-27.2	-20.0	ns	-21.6	ns
Dubbo Regional	ns	ns	ns	ns	ns		ns	ns	ns	ns	ns	ns	-16.5
Dungog	ns	ns	ns	ns	ns		ns	ns	ns	ns	ns	ns	ns
Edward River	ns	ns	ns	ns	ns		ns	ns	ns	-42.9	ns	ns	ns
Eurobodalla	26.2	ns	ns	ns	ns		-35.7	ns	-36.6	ns	ns	ns	ns
Fairfield	ns	ns	ns	ns	ns		ns	ns	-39.5	-20.8	ns	ns	ns
Federation	ns	ns	ns	ns	ns		ns	ns	ns	ns	ns	ns	ns
Forbes	ns	ns	ns	ns	ns		ns	ns	ns	ns	ns	-40.1	ns
Georges River	ns	ns	ns	ns	ns	-37.1	ns	ns	-15.0	ns	ns	-12.4	-18.5

NSW LGA	Murder	Domestic violence related assault	Non-domestic violence related assault	Sexual assault	Sexual touching, sexual act and other sexual offences	Robbery	Break and enter dwelling	Break and enter non-dwelling	Motor vehicle theft	Steal from motor vehicle	Steal from retail store	Other stealing offences	Malicious damage to property	
Gilgandra		ns										ns	ns	
Glen Innes Severn		ns	ns				ns					ns	ns	
Goulburn Mulwaree		ns	ns	ns	ns		ns	ns	ns	ns	ns	-17.3	ns	
Greater Hume Shire		ns										-44.6	ns	
Griffith		ns	-26.6	ns	ns		ns	-44.0	ns	-57.3	-46.0	ns	ns	
Gunnedah		ns	ns	ns			92.7		66.7	141.3	ns	ns	ns	
Gwydir													ns	
Hawkesbury		ns	ns	ns	ns		ns	-34.8	ns	-25.3	ns	-26.2	ns	
Hay													ns	-29.7
Hilltops		ns	ns	ns	ns		ns		ns	ns		-30.9	ns	
Hornsby		ns	ns	ns	ns		-33.2	-54.1	ns	-40.1	ns	-33.0	-12.4	
Hunters Hill			-53.5				ns			ns		-34.6	ns	
Inner West		ns	ns	ns	ns	ns	ns	-31.8	ns	ns	ns	-18.3	-12.8	
Inverell		ns	ns	ns	ns		-33.6	ns		ns	ns	ns	ns	
Junee		ns	ns									-41.3	ns	
Kempsey		ns	ns	ns	ns		103.2	ns	68.5	ns	-43.7	ns	ns	
Kiama		ns	ns				ns	ns		-54.3		ns	ns	
Ku-ring-gai		ns	-36.4	ns	ns		-40.2	ns	ns	ns	ns	ns	-23.5	
Kyogle		ns	ns										ns	ns
Lachlan		-45.3	ns				ns	ns	ns	ns		ns	ns	
Lake Macquarie		ns	ns	ns	ns	ns	-3.9	ns	ns	-20.0	ns	ns	ns	
Lane Cove		ns	ns				ns		ns	ns	ns	-21.0	-25.6	
Leeton		ns	ns				ns			ns		-31.2	ns	
Lismore		ns	ns	ns	ns		ns	ns	ns	ns	ns	ns	14.7	
Lithgow		ns	ns	ns	ns		-37.2	-54.5	ns	ns	ns	ns	ns	
Liverpool		ns	-2.5	ns	ns	ns	-18.8	ns	-17.5	ns	-14.4	-19.9	ns	
Liverpool Plains		ns	ns										ns	ns
Lockhart														
Lord Howe Island														
Maitland		ns	ns	ns	ns		ns	ns	ns	-42.9	ns	-10.6	ns	
Mid-Coast		ns	ns	ns	ns		ns	134.8	ns	-23.3	ns	ns	ns	
Mid-Western Regional		ns	ns	ns	ns		ns	ns	ns	ns	ns	ns	ns	
Moree Plains		ns	68.6	ns	ns		ns	ns	ns	ns	ns	ns	ns	
Mosman		ns	ns				ns			ns	ns	ns	ns	
Murray River		ns	ns					ns		ns		ns	ns	
Murrumbidgee													ns	ns
Muswellbrook		ns	ns	ns	ns		ns	ns	ns	239.5	ns	ns	ns	
Nambucca		ns	ns	ns	ns		ns	ns	ns	ns	-65.3	ns	ns	
Narrabri		ns	ns				ns		ns	ns		ns	ns	
Narrandera		ns	ns				-70.4			-49.1		ns	ns	
Narromine		ns	209.5				ns	ns		ns		ns	ns	
Newcastle		ns	ns	ns	ns	ns	-6.9	ns	ns	-9.6	ns	-13.3	-2.8	
North Sydney		ns	ns	ns	-42.0		ns	ns	ns	ns	ns	-17.4	-13.0	
Northern Beaches		-14.5	-10.4	ns	ns	ns	ns	ns	ns	ns	ns	-14.1	ns	
Oberon													ns	ns
Orange		ns	ns	ns	ns	ns	ns	ns	ns	ns	ns	-16.8	ns	

NSW LGA	Murder	Domestic violence related assault	Non-domestic violence related assault	Sexual assault	Sexual touching, sexual act and other sexual offences	Robbery	Break and enter dwelling	Break and enter non-dwelling	Motor vehicle theft	Steal from motor vehicle	Steal from retail store	Other stealing offences	Malicious damage to property
Parkes	ns	ns	ns	ns	ns	ns	ns	ns	ns	ns	ns	ns	ns
Parramatta	ns	-10.7	ns	ns	-22.8	-17.3	ns	-23.8	-18.8	-17.2	-18.8	-15.8	
Penrith	-17.7	-16.4	ns	ns	ns	ns	-16.3	ns	ns	-18.5	-9.7	-13.2	
Port Macquarie-Hastings	ns	ns	52.5	ns	ns	ns	ns	ns	ns	ns	ns	ns	
Port Stephens	ns	ns	ns	ns	ns	ns	-26.2	ns	ns	-9.3	-16.4		
Queanbeyan-Palerang Regional	ns	ns	34.1	ns	ns	ns	ns	ns	ns	ns	ns	-14.0	
Randwick	-4.0	ns	ns	ns	ns	-21.2	ns	ns	-19.2	ns	-18.0	-10.9	
Richmond Valley	ns	ns	ns	-46.5	77.0	150.0	124.6	ns	ns	46.0			
Ryde	ns	-15.6	108.3	ns	-20.3	ns	-26.6	-20.5	ns	ns	-24.2		
Shellharbour	ns	ns	-21.4	-21.2	-23.5	ns	ns	ns	ns	-1.1	-20.6		
Shoalhaven	ns	ns	ns	ns	ns	ns	-33.1	ns	-20.0	-12.7	ns	ns	
Singleton	ns	ns	ns	ns	ns	ns	ns	ns	76.6	ns	ns	ns	
Snowy Monaro Regional	ns	ns	ns	ns	ns	ns	ns	ns	ns	ns	ns	ns	
Snowy Valleys	-27.7	ns	ns	ns	ns	ns	ns	-18.6	ns	ns	ns		
Strathfield	-26.1	ns	ns	ns	-7.5	-34.6	ns	ns	-35.8	-17.4			
Sutherland Shire	ns	-11.9	ns	-31.0	-55.3	ns	ns	ns	-12.2	-36.6	ns	-20.2	
Sydney	ns	-19.2	ns	-20.3	ns	-29.3	-25.1	ns	ns	-25.7	-22.8	-11.8	
Tamworth Regional	ns	ns	ns	ns	ns	ns	-24.4	ns	112.5	ns	ns	ns	
Temora	ns	ns	ns	ns	ns	ns	ns	ns	ns	ns	ns	ns	
Tenterfield	ns	ns	ns	ns	ns	ns	ns	ns	ns	ns	ns	ns	
The Hills Shire	ns	ns	ns	ns	ns	-36.5	-44.5	-26.8	-36.0	ns	-24.4	-6.3	
Tweed	ns	ns	ns	ns	ns	ns	ns	ns	ns	ns	ns	ns	
Unincorporated Far West	ns	ns	ns	ns	ns	ns	ns	ns	ns	ns	ns	ns	
Upper Hunter Shire	ns	ns	ns	ns	ns	ns	ns	ns	ns	ns	ns	ns	
Upper Lachlan Shire	ns	ns	ns	ns	ns	ns	ns	ns	ns	ns	ns	ns	
Uralla	ns	ns	ns	ns	ns	ns	ns	ns	ns	ns	ns	ns	
Wagga Wagga	ns	ns	ns	ns	ns	ns	ns	-35.8	-32.8	ns	-27.5	-8.0	
Walcha	ns	ns	ns	ns	ns	ns	ns	ns	ns	ns	ns	ns	
Walgett	ns	ns	ns	ns	ns	-30.2	ns	ns	ns	-38.3	ns		
Warren	ns	ns	ns	ns	ns	ns	ns	ns	ns	ns	ns	ns	
Warrumbungle Shire	ns	ns	ns	ns	ns	-31.4	ns	ns	ns	-21.1	ns		
Waverley	ns	ns	ns	ns	ns	ns	ns	ns	ns	-22.1	-17.8		
Weddin	ns	ns	ns	ns	ns	ns	ns	ns	ns	ns	ns	ns	
Wentworth	ns	ns	ns	ns	ns	ns	ns	ns	ns	ns	ns	ns	
Willoughby	ns	ns	ns	ns	ns	-31.8	ns	ns	ns	ns	ns	ns	
Wingecarribee	ns	ns	ns	ns	ns	-43.9	ns	ns	ns	ns	ns	-19.9	
Wollondilly	-20.3	ns	ns	ns	ns	-32.1	-33.3	ns	ns	ns	ns	ns	
Wollongong	ns	ns	ns	ns	ns	ns	ns	ns	ns	ns	-12.7	ns	
Woollahra	ns	-23.0	ns	ns	ns	ns	ns	ns	ns	ns	-17.9	ns	
Yass Valley	ns	ns	ns	ns	ns	ns	ns	ns	ns	ns	ns	ns	
NSW	-25.0	ns	-3.6	ns	ns	-13.6	-11.0	ns	-9.9	ns	-10.9	-12.8	-6.6

Appendix Table 1.2: Ratio to NSW rate of recorded criminal incidents per 100,000 population for major offences, NSW LGAs
12 months to September 2021

NSW LGA	Murder	Domestic violence related assault	Non-domestic violence related assault	Sexual assault	Sexual touching, sexual act and other sexual offences	Robbery	Break and enter dwelling	Break and enter non-dwelling	Motor vehicle theft	Steal from motor vehicle	Steal from retail store	Other stealing offences	Malicious damage to property
Albury	2.6	1.6	1.9	1.4	1.4	1.8	2.2	1.8	1.7	2.8	2.0	1.6	2.2
Armidale Regional		1.8	1.8	2.3	1.6	0.8	3.2	2.6	1.4	1.9	1.3	1.7	1.9
Ballina		0.9	0.8	1.4	0.9	0.9	0.7	0.7	1.0	1.3	0.9	1.3	1.0
Balranald													
Bathurst Regional		1.9	1.8	1.6	2.0	1.4	1.5	1.3	0.8	1.6	1.1	1.4	1.9
Bayside		0.9	0.6	0.5	0.6	0.5	0.5	0.4	0.7	0.6	0.7	0.8	0.7
Bega Valley		0.9	0.9	0.9	1.4	0.2	0.6	2.2	0.7	0.6	0.3	0.8	0.9
Bellingen		1.0	1.1	1.2	1.6	0.6	0.7	1.3	1.1	0.5	0.2	0.8	1.7
Berrigan		0.5	1.2	1.7	0.9		0.8	2.1	0.8	0.7	0.3	0.7	1.1
Blacktown	1.5	1.5	1.3	1.1	1.1	2.3	0.9	0.7	1.2	1.3	1.2	1.0	1.2
Bland		1.5	1.4	1.1	0.9		0.8	2.1	1.1	0.7	0.3	1.0	0.8
Blayney		1.2	1.1	0.9	1.1		1.5	1.7	1.2	0.5	0.5	0.9	1.3
Blue Mountains	1.8	0.6	0.6	1.1	1.1	0.5	0.5	0.7	0.3	0.6	0.4	0.5	1.1
Bogan													
Bourke													
Brewarrina													
Broken Hill		3.4	2.6	1.5	1.4	1.7	4.2	2.1	1.2	1.7	1.0	2.0	2.9
Burwood		0.5	0.7	0.3	0.6	1.1	0.6	0.7	0.4	0.6	3.6	1.0	0.6
Byron		0.9	1.6	1.4	1.3	0.7	0.8	2.0	1.9	1.1	0.7	1.5	1.4
Cabonne		0.5	0.6	1.2	1.1		0.8	2.1	0.6	0.4	0.2	0.7	0.6
Camden	1.4	0.8	0.4	0.6	0.9	0.4	0.4	0.4	0.8	0.7	0.5	0.5	0.6
Campbelltown	0.8	1.4	1.0	1.1	1.3	1.6	1.0	1.0	1.2	1.3	1.3	0.9	1.3
Canada Bay		0.3	0.4	0.4	0.4	0.4	0.6	0.4	0.5	0.6	0.6	0.7	0.4
Canterbury-Bankstown	0.8	0.9	0.6	0.5	0.7	1.0	0.6	0.4	1.0	0.9	0.6	0.6	0.6
Carrathool													
Central Coast	0.8	1.0	1.1	1.2	1.2	0.7	0.8	0.8	1.0	1.1	1.0	0.8	1.2
Central Darling													
Cessnock		1.3	1.1	1.4	1.7	0.6	1.3	2.0	3.5	1.4	0.8	1.7	1.4
Clarence Valley		1.1	1.2	1.0	1.1	0.8	1.0	1.4	0.8	0.7	0.6	1.6	1.2
Cobar		1.4	1.5	0.7	0.9		1.4	3.4	1.1	0.7	0.6	1.4	2.2
Coffs Harbour		1.7	1.9	2.1	1.7	2.0	1.3	3.1	1.6	1.4	1.0	1.3	1.5
Coolamon		0.7	0.3	1.5	0.5		0.2	2.1	0.2	0.1		0.7	0.5
Coonamble		5.7	4.3	3.0	2.4	2.1	7.0	6.0	3.4	2.3	0.6	3.3	4.9
Cootamundra-Gundagai		1.0	0.7	1.1	2.9		0.7	1.6	1.1	0.4	0.5	1.2	1.1
Cowra		1.6	1.4	1.5	1.9	1.3	4.5	2.3	2.9	1.2	1.1	1.5	1.6
Cumberland	1.8	1.0	0.8	0.6	0.7	1.3	1.0	0.5	1.0	1.0	0.6	0.7	0.7
Dubbo Regional	5.3	2.8	2.2	2.3	1.7	1.8	3.4	3.7	2.6	2.6	1.6	2.0	2.3
Dungog		0.8	0.5	0.7	1.2	0.4	0.5	0.8	0.4	0.5	0.2	1.0	0.8
Edward River		1.8	1.6	1.1	1.1	0.5	0.9	0.9	0.4	0.6	0.5	1.6	2.0
Eurobodalla		1.4	1.3	1.0	1.3	1.5	1.3	1.7	0.9	0.8	1.2	1.2	1.5
Fairfield	1.3	0.9	0.7	0.5	0.8	1.2	0.6	0.5	0.8	0.9	0.7	0.7	0.7
Federation		0.7	0.9	1.0	1.0		0.8	1.9	1.2	0.7	0.7	1.3	0.9
Forbes	14.3	2.0	2.7	1.9	1.1	0.9	3.2	3.8	2.3	2.3	1.0	2.0	2.4

NSW LGA	Murder	Domestic violence related assault	Non-domestic violence related assault	Sexual assault	Sexual touching, sexual act and other sexual offences	Robbery	Break and enter dwelling	Break and enter non-dwelling	Motor vehicle theft	Steal from motor vehicle	Steal from retail store	Other stealing offences	Malicious damage to property
Georges River	0.9	0.7	0.5	0.4	0.7	0.6	0.5	0.3	0.6	0.6	0.6	0.5	0.5
Gilgandra		3.2	1.3	1.3	2.2	1.0	2.6	2.1	1.6	1.4	0.3	1.7	1.4
Glen Innes Severn		2.1	1.8	1.3	2.8		2.6	2.7	0.6	0.8	1.0	1.8	1.8
Goulburn Mulwaree		1.1	1.2	1.7	1.2	0.5	0.9	0.8	1.0	0.9	1.0	1.3	1.2
Greater Hume Shire		0.8	0.3	1.0	1.2		0.8	1.9	0.8	0.5	0.2	0.6	0.7
Griffith		1.8	1.1	1.3	1.1	1.7	1.8	2.1	1.5	1.1	1.4	1.4	1.6
Gunnedah		1.8	2.1	1.7	2.0	0.7	3.6	2.4	2.3	2.5	0.8	1.7	2.4
Gwydir		0.7	0.8	1.6	1.2	0.8	0.6	0.8	1.0	0.4	0.1	1.1	0.6
Hawkesbury		0.9	0.8	0.8	1.2	0.6	0.7	0.7	0.9	0.5	0.8	0.5	0.8
Hay													
Hilltops		1.4	1.0	1.6	1.3	0.2	0.8	0.9	1.1	0.3	0.4	0.8	1.5
Hornsby		0.5	0.4	0.4	0.6	0.4	0.4	0.3	0.3	0.4	0.9	0.4	0.5
Hunters Hill		0.3	0.4	0.7	0.9		0.8	0.4	0.4	0.8	0.2	0.5	0.6
Inner West	0.7	0.5	0.7	0.7	0.7	1.1	0.6	0.5	0.6	0.9	1.1	0.9	0.7
Inverell	8.4	2.5	1.3	2.1	2.0	0.5	1.8	2.3	1.2	1.5	1.9	1.5	1.7
Junee		1.3	1.0	1.6	1.4	1.3	0.9	1.7	0.7	0.1	0.4	0.9	1.1
Kempsey	4.8	2.4	1.9	2.0	1.7	2.6	5.5	2.2	3.9	2.1	0.8	2.7	2.4
Kiama		0.4	0.4	0.7	0.8		0.6	1.5	0.4	0.7	0.3	0.5	0.7
Ku-ring-gai		0.3	0.2	0.4	0.5	0.4	0.5	0.3	0.2	0.3	0.3	0.4	0.3
Kyogle		0.9	0.9	1.0	1.3		0.9	1.5	1.4	0.7	0.1	0.8	0.9
Lachlan		1.2	1.5	1.8	1.9		2.6	8.9	3.3	2.0	0.6	2.6	2.7
Lake Macquarie	1.4	1.0	1.0	1.3	1.1	1.1	1.0	1.6	1.4	1.1	1.2	0.9	1.1
Lane Cove		0.2	0.3	0.5	0.3		0.7	0.2	0.6	0.7	0.4	0.6	0.4
Leeton		2.2	1.4	1.8	3.0	1.1	2.4	1.1	1.0	0.7	0.3	1.0	1.4
Lismore		1.5	2.0	1.8	1.5	2.3	1.4	1.7	1.6	1.3	0.8	1.1	1.8
Lithgow		1.7	1.5	1.7	1.6	0.4	1.0	1.0	0.9	1.3	1.0	1.9	1.5
Liverpool	0.6	1.2	0.9	0.7	1.0	1.3	0.9	0.6	1.2	1.2	0.8	0.9	0.9
Liverpool Plains		1.5	1.4	1.9	0.9	0.5	0.6	0.9	0.8	0.5	0.4	1.3	1.3
Lockhart		0.8	0.9	1.7	0.6		0.3	2.7	1.1	0.3		0.8	0.6
Lord Howe Island													
Maitland	1.7	1.3	1.1	1.7	1.4	1.2	1.2	1.5	1.3	1.1	1.5	1.6	1.5
Mid-Coast	1.5	1.4	1.1	1.4	1.6	0.9	2.0	3.7	1.4	1.0	0.8	2.1	1.4
Mid-Western Regional		1.5	1.3	2.2	2.5	0.5	1.0	1.2	0.6	0.4	0.7	1.2	1.2
Moree Plains		4.8	4.2	1.8	2.1	4.8	7.5	5.4	4.5	4.1	2.9	2.7	5.2
Mosman		0.2	0.3	0.5	0.4	0.1	0.7	0.3	0.5	1.0	0.3	0.6	0.4
Murray River		0.6	0.7	1.9	0.8		0.4	2.6	1.7	0.8	0.3	1.4	0.9
Murrumbidgee		0.7	0.8	2.2	1.8		1.4	2.0	0.6	0.3	0.4	1.1	1.1
Muswellbrook		1.9	1.8	1.5	1.8	0.5	2.3	4.3	1.9	2.3	1.0	2.5	2.0
Nambucca		2.2	1.6	1.9	1.6	0.6	2.4	2.6	1.9	1.5	0.6	1.7	2.0
Narrabri		2.1	1.4	1.7	0.9	1.0	2.8	1.3	1.9	1.4	0.4	1.2	1.6
Narrandera		2.2	1.8	1.8	2.3		2.5	3.1	1.0	1.4	1.1	1.6	1.8
Narromine		2.8	2.8	2.3	1.9	1.3	3.5	4.8	1.0	2.0	0.9	1.8	1.5
Newcastle	5.1	1.0	1.9	1.6	1.2	2.3	2.2	1.6	2.2	2.4	1.9	1.7	1.8
North Sydney		0.3	0.4	0.5	0.4	0.3	0.5	0.4	0.4	0.6	0.6	0.8	0.6
Northern Beaches		0.3	0.5	0.6	0.6	0.5	0.4	0.5	0.5	0.7	0.7	0.6	0.6

NSW LGA	Murder	Domestic violence related assault	Non-domestic violence related assault	Sexual assault	Sexual touching, sexual act and other sexual offences	Robbery	Break and enter dwelling	Break and enter non-dwelling	Motor vehicle theft	Steal from motor vehicle	Steal from retail store	Other stealing offences	Malicious damage to property
Oberon	52.5	1.0	0.8	2.4	1.3		0.5	0.6	0.4	0.1		1.4	1.0
Orange		1.8	2.0	2.1	2.3	2.5	3.0	2.5	1.8	1.6	1.3	1.5	2.0
Parkes		1.9	1.8	2.4	2.8	0.3	1.7	2.2	2.1	2.6	0.7	1.7	2.4
Parramatta	1.7	0.8	0.8	0.7	0.7	1.3	1.0	0.8	0.8	1.0	1.0	1.0	0.7
Penrith		1.3	1.2	1.2	1.2	1.5	1.2	1.1	1.3	1.5	1.5	1.1	1.3
Port Macquarie-Hastings		1.1	1.0	1.6	1.1	0.3	0.9	1.5	1.2	0.8	0.7	1.2	1.1
Port Stephens	1.9	1.3	1.1	1.5	1.4	0.2	1.0	1.2	1.0	0.9	0.6	1.1	1.1
Queanbeyan-Palerang Regional		0.7	0.8	1.0	0.8	0.4	1.1	1.1	1.2	1.4	0.9	1.1	0.8
Randwick	0.9	0.6	0.9	0.6	0.5	0.8	0.5	0.2	0.6	0.5	0.5	0.8	0.6
Richmond Valley		1.6	1.5	2.3	1.7	0.4	2.0	2.6	2.7	1.7	0.5	1.6	1.9
Ryde		0.6	0.4	0.4	0.7	0.5	0.5	0.3	0.3	0.5	1.0	0.7	0.4
Shellharbour	1.9	0.8	0.7	1.1	0.9	0.7	0.7	0.7	1.1	1.0	1.5	0.8	0.9
Shoalhaven	4.0	1.1	1.2	1.5	1.4	1.1	1.1	1.1	1.0	0.8	1.2	1.1	1.2
Singleton		1.1	1.1	1.4	1.1	0.9	1.6	5.4	1.7	1.7	1.1	1.7	1.2
Snowy Monaro Regional	6.8	0.7	0.9	1.1	0.9	0.2	0.6	0.8	0.7	0.4	0.2	0.9	1.2
Snowy Valleys		1.0	0.8	1.9	1.5	0.6	1.1	3.0	1.1	0.7	0.3	1.5	1.4
Strathfield		0.6	0.8	0.2	0.6	0.7	1.0	0.4	0.8	0.9	1.1	0.8	0.4
Sutherland Shire	0.6	0.8	0.6	0.5	0.5	0.4	0.5	0.3	0.5	0.6	0.5	0.5	0.6
Sydney	2.3	1.1	2.3	1.2	1.3	2.5	0.8	1.2	0.7	0.7	3.0	2.6	1.2
Tamworth Regional		1.7	1.6	1.7	1.6	1.0	4.5	1.1	2.0	2.9	1.0	1.4	2.1
Temora		0.8	0.6	2.2	0.8		1.4	0.9	0.6	0.5	1.1	0.9	1.3
Tenterfield		2.5	1.4	1.3	1.9		1.8	0.7	1.6	0.4	0.2	1.3	1.8
The Hills Shire		0.5	0.4	0.5	0.5	0.6	0.6	0.4	0.5	0.5	0.7	0.5	0.4
Tweed	1.5	0.9	0.9	1.0	1.0	0.5	0.9	1.2	1.3	1.0	0.5	1.0	1.0
Unincorporated Far West													
Upper Hunter Shire		1.2	0.5	1.9	1.8	0.3	1.3	1.8	0.6	0.7	0.2	1.4	1.0
Upper Lachlan Shire		0.5	0.3	0.5	0.5		0.4	0.8	0.4	0.2		0.8	0.7
Uralla		0.7	0.8	1.1	0.5		0.9	0.4	0.5	0.4	0.1	0.6	0.9
Wagga Wagga		1.7	1.6	1.9	1.7	1.6	2.8	1.6	1.3	1.5	2.0	1.5	2.2
Walcha		1.4	0.6	0.7	1.3		0.7	3.2	0.5	0.6	0.1	1.0	1.9
Walgett		6.2	3.1	2.9	2.4		3.2	2.8	2.0	2.2	0.5	1.4	3.6
Warren													
Warrumbungle Shire	15.3	1.0	1.5	1.6	0.7	0.5	1.6	2.3	0.6	0.8	0.5	1.4	1.7
Waverley		0.6	0.9	0.8	0.9	0.6	0.4	0.3	0.8	0.6	2.9	1.1	0.6
Weddin		1.2	0.5	3.0			0.7	1.9	0.6	0.4	0.2	0.5	0.8
Wentworth		2.4	1.5	1.1	1.2	0.6	1.2	3.4	2.5	0.9	0.2	1.3	2.2
Willoughby		0.3	0.5	0.4	0.7	0.5	0.4	0.4	0.4	0.5	2.6	0.7	0.5
Wingecarribee		0.6	0.6	1.1	1.0	0.2	0.3	0.6	0.5	0.4	0.4	0.5	0.7
Wollondilly		0.7	0.4	0.6	0.8	0.1	0.3	0.5	0.6	0.4	0.1	0.5	0.5
Wollongong		0.7	0.9	0.9	0.9	0.9	1.1	1.4	1.1	1.5	1.5	1.0	1.0
Woollahra		0.4	0.4	0.9	0.6	0.2	0.6	0.1	0.8	0.7	0.4	0.7	0.5
Yass Valley	8.3	0.6	0.6	0.5	0.3	0.2	0.3	0.4	0.6	0.3	0.2	0.6	0.4
NSW	1.0	1.0	1.0	1.0	1.0	1.0	1.0	1.0	1.0	1.0	1.0	1.0	1.0

Appendix Table 1.3 Number of recorded criminal incidents for major offences, NSW LGAs

12 months to September 2021

NSW LGA	Murder	Domestic violence related assault	Non-domestic violence related assault	Sexual assault	Sexual touching, sexual act and other sexual offences	Robbery	Break and enter dwelling	Break and enter non-dwelling	Motor vehicle theft	Steal from motor vehicle	Steal from retail store	Other stealing offences	Malicious damage to property
Albury	1	354	360	69	73	23	279	89	126	531	261	406	732
Armidale Regional	0	222	199	66	48	6	225	71	56	198	97	237	363
Ballina	0	163	129	56	40	10	75	29	58	195	95	264	265
Balranald	0	8	6	0	1	0	9	3	0	5	0	17	12
Bathurst Regional	0	324	282	65	83	14	148	50	47	241	117	273	517
Bayside	0	614	402	83	99	23	218	60	170	346	308	660	757
Bega Valley	0	126	105	29	48	2	47	67	31	69	23	131	193
Bellingen	0	52	49	14	20	2	21	15	20	22	6	47	142
Berrigan	0	19	38	14	8	0	17	16	9	20	7	26	59
Blacktown	4	2,218	1,692	377	416	203	809	242	601	1,719	1,021	1,731	2,872
Bland	0	37	30	6	5	0	11	11	9	14	4	26	28
Blayney	0	35	29	6	8	0	26	11	12	13	9	31	62
Blue Mountains	1	185	165	81	85	9	87	49	35	164	73	191	526
Bogan	0	16	8	5	7	1	9	11	10	14	3	32	42
Bourke	1	132	77	14	11	3	67	60	26	34	31	79	192
Brewarrina	0	62	24	6	4	0	18	11	2	14	0	23	62
Broken Hill	0	240	159	24	24	7	169	33	28	102	43	161	319
Burwood	0	88	103	12	24	11	54	26	24	89	343	188	160
Byron	0	124	204	45	43	6	62	61	92	130	56	243	302
Cabonne	0	27	28	15	15	0	24	25	11	17	7	42	53
Camden	1	325	158	60	86	10	84	38	107	247	124	243	369
Campbelltown	1	944	636	179	216	63	391	148	283	773	517	711	1,360
Canada Bay	0	109	121	39	40	10	124	33	70	185	130	298	253
Canterbury-Bankstown	2	1,385	834	166	248	93	534	146	486	1,212	491	983	1,472
Carrathool	1	22	17	4	2	0	5	10	3	7	1	21	20
Central Coast	2	1,419	1,398	391	403	54	658	232	460	1,253	851	1,254	2,572
Central Darling	0	111	17	6	4	0	28	23	12	10	0	20	69
Cessnock	0	310	239	78	100	9	179	107	282	292	111	475	528
Clarence Valley	0	238	218	49	55	10	123	62	56	117	78	364	398
Cobar	0	27	25	3	4	0	15	14	7	12	7	29	65
Coffs Harbour	0	532	514	151	130	37	231	214	165	363	187	446	703
Coolamon	0	13	5	6	2	0	2	8	1	1	0	14	14
Coonamble	0	91	61	11	9	2	64	21	18	31	6	59	120
Cootamundra-Gundagai	0	46	29	11	32	0	19	16	16	17	13	60	77
Cowra	0	82	64	18	23	4	132	26	49	55	32	87	129
Cumberland	3	965	662	138	168	77	533	101	332	805	322	774	1,003
Dubbo Regional	2	603	411	112	87	23	424	175	186	474	208	488	788
Dungog	0	29	18	6	11	1	10	7	5	16	5	43	48
Edward River	0	64	51	9	10	1	19	7	5	20	11	64	115
Eurobodalla	0	217	183	37	48	14	117	59	45	106	112	213	369
Fairfield	2	797	529	94	159	60	277	93	227	637	334	662	877
Federation	0	34	41	11	12	0	24	21	20	29	20	72	73
Forbes	1	81	95	17	11	2	74	33	31	80	24	91	146
Georges River	1	441	310	65	101	22	202	49	130	305	221	359	481

NSW LGA	Murder	Domestic violence related assault	Non-domestic violence related assault	Sexual assault	Sexual touching, sexual act and other sexual offences	Robbery	Break and enter dwelling	Break and enter non-dwelling	Motor vehicle theft	Steal from motor vehicle	Steal from retail store	Other stealing offences	Malicious damage to property
Gilgandra	0	55	20	5	9	1	25	8	9	21	3	32	37
Glen Innes Severn	0	75	56	11	24	0	53	21	7	24	21	74	102
Goulburn Mulwaree	0	138	134	50	35	4	66	23	40	92	72	187	232
Greater Hume Shire	0	33	13	10	12	0	20	18	11	20	4	31	49
Griffith	0	198	105	32	29	11	113	51	56	102	87	174	264
Gunnedah	0	93	95	20	24	2	106	27	40	111	25	100	194
Gwydir	0	15	15	8	6	1	8	4	7	8	1	26	19
Hawkesbury	0	248	202	52	77	9	107	43	80	115	120	166	337
Hay	0	19	21	2	7	0	12	3	4	2	1	21	26
Hilltops	0	106	68	27	24	1	35	15	28	22	16	67	178
Hornsby	0	292	201	60	88	14	141	34	58	187	324	244	440
Hunters Hill	0	17	20	9	13	0	26	5	8	40	8	34	55
Inner West	1	437	527	130	139	51	272	88	171	616	539	814	920
Inverell	1	169	76	32	32	2	71	35	27	87	76	114	183
Junee	0	36	24	10	9	2	14	10	6	2	7	27	47
Kempsey	1	291	205	56	48	18	378	59	155	213	58	368	454
Kiama	0	33	36	16	19	0	33	31	14	53	14	55	99
Ku-ring-gai	0	176	70	50	58	11	158	36	35	132	83	202	270
Kyogle	0	32	28	8	11	0	18	12	16	20	2	33	48
Lachlan	0	29	33	10	11	0	36	48	27	42	9	71	103
Lake Macquarie	2	801	735	254	224	54	469	291	397	798	571	859	1,423
Lane Cove	0	39	38	18	13	0	61	8	35	92	35	109	93
Leeton	0	99	55	19	33	3	63	11	16	26	7	53	99
Lismore	0	271	306	74	64	24	141	66	96	201	81	220	483
Lithgow	0	146	115	34	34	2	49	20	26	98	50	185	202
Liverpool	1	1,054	699	152	209	72	497	131	372	912	411	915	1,224
Liverpool Plains	0	48	40	14	7	1	11	6	9	13	8	48	64
Lockhart	0	10	11	5	2	0	2	8	5	3	0	12	13
Lord Howe Island	0	18	0	0	0	0	0	1	1	1	0	1	9
Maitland	1	442	341	137	113	25	245	116	150	316	308	600	780
Mid-Coast	1	538	379	120	148	19	425	310	183	336	177	901	838
Mid-Western Regional	0	148	116	51	61	3	58	27	19	39	42	137	183
Moree Plains	0	256	199	22	27	15	231	63	81	190	92	163	428
Mosman	0	30	30	13	13	1	51	8	20	112	22	81	81
Murray River	0	30	30	21	9	0	12	28	27	32	10	78	69
Murrumbidgee	0	11	11	8	7	0	13	7	3	4	4	20	28
Muswellbrook	0	124	107	23	28	2	86	62	42	129	38	187	207
Nambucca	0	177	115	34	30	3	112	45	50	104	26	150	248
Narrabri	0	111	67	21	11	3	84	15	34	65	11	74	129
Narrandera	0	51	37	10	13	0	34	16	8	29	16	44	68
Narromine	0	72	65	14	12	2	52	28	9	45	14	52	63
Newcastle	6	691	1,101	237	198	89	827	239	482	1,353	759	1,310	1,909
North Sydney	0	97	109	35	29	6	89	28	44	159	115	289	274
Northern Beaches	0	331	517	163	150	31	260	126	181	685	442	768	1,024
Oberon	2	21	15	12	7	0	6	3	3	2	0	34	35

NSW LGA	Murder	Domestic violence related assault	Non-domestic violence related assault	Sexual assault	Sexual touching, sexual act and other sexual offences	Robbery	Break and enter dwelling	Break and enter non-dwelling	Motor vehicle theft	Steal from motor vehicle	Steal from retail store	Other stealing offences	Malicious damage to property
Orange	0	312	303	84	93	25	290	95	102	235	135	292	523
Parkes	0	115	95	33	40	1	57	29	41	132	25	115	225
Parramatta	3	869	719	175	167	78	620	172	272	931	611	1,194	1,074
Penrith	0	1,152	922	228	240	78	610	206	379	1,137	731	1,055	1,663
Port Macquarie-Hastings	0	386	315	122	89	6	175	114	132	236	149	449	602
Port Stephens	1	373	280	101	98	3	168	80	96	227	106	382	510
Queanbeyan-Palerang Regional	0	181	182	55	46	6	150	58	99	295	136	307	308
Randwick	1	381	493	84	82	30	193	31	118	294	201	550	599
Richmond Valley	0	154	124	49	38	2	108	55	85	137	28	167	273
Ryde	0	302	190	50	85	15	149	40	58	240	318	396	361
Shellharbour	1	228	175	77	67	13	124	44	104	252	262	271	429
Shoalhaven	3	450	443	147	146	28	264	99	148	284	289	518	821
Singleton	0	101	92	30	26	5	84	113	53	136	60	177	180
Snowy Monaro Regional	1	62	65	22	18	1	29	14	19	31	10	89	156
Snowy Valleys	0	60	41	25	21	2	37	38	21	35	10	97	124
Strathfield	0	113	130	10	29	8	111	16	51	148	118	167	123
Sutherland Shire	1	704	474	97	116	21	251	67	160	452	295	557	880
Sydney	4	1,055	1,992	278	302	145	446	253	221	629	1,723	2,956	1,849
Tamworth Regional	0	426	351	97	98	15	648	62	172	631	152	388	814
Temora	0	21	14	13	5	0	21	5	5	11	16	27	50
Tenterfield	0	66	32	8	12	0	28	4	14	8	3	38	73
The Hills Shire	0	336	250	87	81	24	230	61	112	283	286	415	487
Tweed	1	362	305	87	92	12	195	106	172	349	124	438	605
Unincorporated Far West	0	2	3	12	18	0	1	1	2	5	4	13	6
Upper Hunter Shire	0	66	27	25	25	1	41	22	12	35	7	89	87
Upper Lachlan Shire	0	16	8	4	4	0	8	6	4	6	0	30	37
Uralla	0	18	18	6	3	0	13	2	4	8	1	16	33
Wagga Wagga	0	443	379	112	105	25	423	95	113	347	313	433	890
Walcha	0	17	7	2	4	0	5	9	2	6	1	14	38
Walgett	0	149	66	16	14	0	44	15	16	46	7	37	133
Warren	0	33	15	4	3	0	10	16	10	13	3	25	45
Warrumbungle Shire	1	37	49	14	6	1	35	19	7	25	11	60	99
Waverley	0	181	249	57	63	10	74	18	82	146	506	380	301
Weddin	0	17	7	10	0	0	6	6	3	5	2	8	18
Wentworth	0	67	38	7	8	1	19	21	24	21	4	43	95
Willoughby	0	88	139	27	52	9	73	31	45	148	506	262	243
Wingecarribee	0	116	105	53	51	2	32	28	34	63	46	116	218
Wollondilly	0	149	73	30	39	1	36	24	45	77	15	113	181
Wollongong	0	649	708	185	195	47	563	264	327	1,109	782	1,011	1,355
Woollahra	0	95	87	48	33	3	82	6	61	135	60	192	186
Yass Valley	1	38	37	8	5	1	11	6	13	16	7	49	39
In Custody	0	7	846	130	57	4	0	1	0	2	0	5	56
NSW	57	32,436	28,760	7,446	7,816	1,917	18,678	7,169	10,893	27,963	19,081	36,709	50,527

Appendix Table 1.4: Number of recorded criminal incidents for major offences, NSW LGAs

12 months to September 2020

NSW LGA	Murder	Domestic violence related assault	Non-domestic violence related assault	Sexual assault	Sexual touching, sexual act and other sexual offences	Robbery	Break and enter dwelling	Break and enter non-dwelling	Motor vehicle theft	Steal from motor vehicle	Steal from retail store	Other stealing offences	Malicious damage to property
Albury	0	322	332	71	76	19	388	82	211	690	297	463	794
Armidale Regional	0	202	147	45	46	19	309	87	87	229	79	226	423
Ballina	2	84	146	38	36	9	65	45	34	92	93	188	294
Balranald	0	13	5	4	3	0	8	5	4	5	0	16	26
Bathurst Regional	0	235	230	74	55	18	258	50	78	156	114	292	424
Bayside	1	704	475	91	105	35	288	79	206	458	325	719	865
Bega Valley	0	108	94	23	30	2	59	81	41	100	38	165	199
Bellingen	0	60	58	12	11	1	31	13	15	41	8	52	113
Berrigan	0	14	20	11	7	0	13	14	9	18	4	42	47
Blacktown	5	2,195	1,821	410	428	213	1,015	273	590	1,830	1,036	1,944	3,084
Bland	0	16	8	6	4	0	18	9	5	18	2	27	40
Blayney	0	24	16	7	10	0	24	22	7	11	4	38	58
Blue Mountains	0	206	192	64	64	7	98	75	47	167	115	199	750
Bogan	0	23	6	1	3	0	4	6	5	22	9	31	31
Bourke	0	111	58	14	12	7	47	31	20	41	24	68	159
Brewarrina	0	71	22	2	9	0	21	5	2	9	2	21	68
Broken Hill	0	225	149	18	14	7	223	47	54	118	49	206	298
Burwood	0	64	94	10	26	13	86	23	40	81	329	197	139
Byron	0	108	240	34	51	10	80	72	97	157	61	334	266
Cabonne	0	34	22	8	10	3	18	19	13	17	5	54	66
Camden	0	363	157	61	104	11	89	62	88	236	128	275	469
Campbelltown	1	961	662	181	240	78	425	116	302	800	637	805	1,444
Canada Bay	0	132	145	33	38	14	188	46	81	234	130	300	285
Canterbury-Bankstown	3	1,300	997	190	233	137	619	162	647	1,275	483	1,130	1,646
Carrathool	0	17	12	3	4	0	12	11	8	4	1	26	30
Central Coast	3	1,520	1,410	353	376	83	871	314	601	1,545	866	1,513	2,699
Central Darling	0	99	33	12	6	0	27	43	7	16	0	20	70
Cessnock	1	265	250	101	101	8	264	145	253	321	97	485	555
Clarence Valley	0	198	244	54	50	7	115	75	85	125	111	418	417
Cobar	0	23	24	4	7	0	20	15	17	14	3	37	60
Coffs Harbour	0	515	420	105	120	24	303	173	191	372	261	522	749
Coolamon	0	9	7	6	4	0	12	9	4	2	0	10	22
Coonamble	0	119	64	10	24	2	87	35	17	34	5	62	124
Cootamundra-Gundagai	0	60	23	12	23	0	22	20	15	27	18	54	83
Cowra	0	73	75	9	17	3	96	45	29	45	24	105	183
Cumberland	7	1,017	704	123	164	100	560	150	456	1,006	384	987	1,029
Dubbo Regional	2	671	395	82	98	16	506	201	185	539	287	517	944
Dungog	0	32	25	12	9	0	14	11	11	14	14	45	73
Edward River	0	65	51	3	5	0	33	18	4	35	10	84	109
Eurobodalla	1	172	176	46	31	10	182	43	71	143	93	223	334
Fairfield	2	726	557	107	164	87	293	105	375	804	344	677	864
Federation	0	41	41	11	8	0	36	23	20	17	10	92	60
Forbes	0	88	70	7	21	2	81	29	42	85	20	152	164
Georges River	0	464	322	45	83	35	205	59	153	322	268	410	590
Gilgandra	0	49	14	7	7	2	19	4	16	12	4	29	41

NSW LGA	Murder	Domestic violence related assault	Non-domestic violence related assault	Sexual assault	Sexual touching, sexual act and other sexual offences	Robbery	Break and enter dwelling	Break and enter non-dwelling	Motor vehicle theft	Steal from motor vehicle	Steal from retail store	Other stealing offences	Malicious damage to property
Glen Innes Severn	0	75	48	15	15	5	39	18	12	13	10	77	109
Goulburn Mulwaree	0	114	146	31	45	5	63	35	24	80	100	226	276
Greater Hume Shire	0	36	15	11	12	0	19	22	13	19	1	56	53
Griffith	1	231	143	29	38	11	109	91	56	239	161	177	284
Gunnedah	1	93	68	28	16	1	55	6	24	46	33	84	187
Gwydir	1	31	11	7	12	0	16	8	2	2	2	29	33
Hawkesbury	0	255	199	56	64	8	101	66	84	154	144	225	409
Hay	0	27	17	2	20	2	17	5	8	9	2	20	37
Hilltops	0	85	82	21	26	1	58	25	21	34	28	97	168
Hornsby	1	277	217	45	85	10	211	74	63	312	326	364	502
Hunters Hill	0	21	43	7	8	2	30	21	7	38	9	52	49
Inner West	4	425	564	125	158	53	298	129	184	694	518	996	1,055
Inverell	0	146	83	22	26	0	107	25	12	56	43	129	174
Junee	0	30	23	5	10	0	25	5	8	6	4	46	54
Kempsey	1	209	184	45	53	24	186	68	92	205	103	433	445
Kiama	0	36	22	10	9	1	23	24	27	116	11	67	103
Ku-ring-gai	1	133	110	55	62	17	264	53	31	140	104	225	353
Kyogle	1	29	22	18	16	1	15	4	12	13	1	37	51
Lachlan	0	53	22	8	6	4	61	41	20	43	7	77	124
Lake Macquarie	1	746	689	267	245	51	488	256	479	997	559	892	1,478
Lane Cove	0	60	48	9	8	1	82	18	31	76	36	138	125
Leeton	0	88	50	30	19	1	53	24	27	34	38	77	81
Lismore	1	197	258	87	83	12	153	85	63	122	103	267	421
Lithgow	0	129	111	37	36	5	78	44	39	99	51	185	234
Liverpool	5	1,014	717	145	200	103	612	145	451	949	480	1,143	1,286
Liverpool Plains	0	63	37	12	11	0	25	10	10	16	17	42	53
Lockhart	0	10	3	2	16	0	6	10	3	7	1	16	12
Lord Howe Island	0	0	2	0	1	0	0	0	1	1	0	3	0
Maitland	1	459	308	90	127	18	300	179	196	553	347	671	755
Mid-Coast	0	466	377	130	183	17	391	132	160	438	187	893	818
Mid-Western Regional	0	158	92	45	48	1	65	31	32	62	34	133	219
Moree Plains	0	195	118	27	33	8	190	56	49	187	100	177	429
Mosman	0	20	37	9	10	0	43	11	14	89	31	95	110
Murray River	0	26	21	17	12	0	8	22	12	23	9	80	57
Murrumbidgee	0	25	12	4	7	0	17	15	3	13	5	40	31
Muswellbrook	0	141	91	25	32	1	83	34	37	38	37	165	221
Nambucca	0	127	132	30	42	3	95	45	52	115	75	157	239
Narrabri	0	84	62	17	14	1	69	36	29	45	20	75	116
Narrandera	0	52	31	4	4	1	115	20	23	57	26	49	77
Narromine	0	53	21	11	12	1	51	21	24	46	11	68	67
Newcastle	3	651	1,060	177	230	79	888	370	571	1,496	761	1,511	1,964
North Sydney	0	92	136	27	50	9	78	41	24	161	118	350	315
Northern Beaches	0	387	577	129	168	38	227	130	175	729	350	894	1,102
Oberon	0	19	19	2	4	1	13	13	8	8	4	45	51
Orange	0	292	291	80	106	24	294	79	125	238	159	351	584
Parke	1	90	93	21	25	1	56	27	33	87	31	106	194
Parramatta	2	823	805	133	157	101	750	182	357	1,146	738	1,471	1,275

NSW LGA	Murder	Domestic violence related assault	Non-domestic violence related assault	Sexual assault	Sexual touching, sexual act and other sexual offences	Robbery	Break and enter dwelling	Break and enter non-dwelling	Motor vehicle theft	Steal from motor vehicle	Steal from retail store	Other stealing offences	Malicious damage to property
Penrith	3	1,399	1,103	238	244	90	670	246	408	1,058	897	1,168	1,917
Port Macquarie-Hastings	0	318	279	80	134	8	176	89	119	218	119	435	562
Port Stephens	1	367	277	97	97	8	153	93	130	221	139	421	610
Queanbeyan-Palerang Regional	1	188	157	41	44	9	173	46	95	296	183	276	358
Randwick	1	397	492	78	106	28	245	40	117	364	237	671	672
Richmond Valley	0	129	96	34	71	6	61	17	34	61	42	140	187
Ryde	0	324	225	24	89	13	187	60	79	302	328	428	476
Shellharbour	0	261	186	98	85	12	162	48	103	238	229	274	540
Shoalhaven	1	469	402	128	157	21	296	148	136	355	331	517	772
Singleton	0	82	73	19	28	3	70	105	43	77	58	179	190
Snowy Monaro Regional	0	77	75	19	32	1	38	21	11	36	15	95	123
Snowy Valleys	0	83	43	25	30	3	42	38	18	43	17	90	122
Strathfield	0	153	101	10	27	8	120	29	78	127	91	260	149
Sutherland Shire	2	657	538	125	168	47	207	83	154	515	465	607	1,103
Sydney	3	1,065	2,466	278	379	163	631	338	243	764	2,318	3,828	2,096
Tamworth Regional	3	418	314	98	86	18	435	82	123	297	185	378	689
Temora	0	21	14	6	8	0	17	5	5	14	3	25	28
Tenterfield	0	57	31	7	12	0	25	18	7	8	2	50	60
The Hills Shire	0	346	267	66	71	31	362	110	153	442	318	549	520
Tweed	2	311	287	62	71	14	173	68	163	352	172	497	586
Unincorporated Far West	0	5	7	13	12	0	1	4	2	2	3	14	8
Upper Hunter Shire	1	74	39	32	25	0	17	35	15	28	10	85	100
Upper Lachlan Shire	0	7	13	7	6	0	8	3	6	8	0	19	28
Uralla	0	13	9	11	6	1	12	15	6	5	2	25	35
Wagga Wagga	0	508	403	91	105	24	516	127	176	516	325	597	967
Walcha	0	8	10	21	5	0	0	5	0	5	1	8	14
Walgett	1	147	64	14	20	2	63	16	19	59	14	60	124
Warren	0	48	28	5	2	1	18	10	7	14	0	31	31
Warrumbungle Shire	0	34	45	17	20	1	51	12	12	31	11	76	81
Waverley	0	192	263	45	75	20	87	21	60	111	584	488	366
Weddin	0	13	7	2	3	0	2	5	6	8	4	11	18
Wentworth	0	72	34	13	10	1	31	29	34	29	2	64	123
Willoughby	1	88	152	23	38	12	107	42	41	128	579	271	261
Wingecarribee	0	112	80	48	46	5	57	33	25	74	39	129	272
Wollondilly	0	187	49	39	57	2	53	36	59	95	12	107	154
Wollongong	1	680	661	164	210	55	557	241	380	1,067	879	1,158	1,480
Woollahra	0	83	113	38	45	2	87	18	33	105	58	234	205
Yass Valley	1	28	27	10	9	0	20	17	14	20	9	41	47
In Custody	1	8	1,182	45	26	5	0	6	1	0	0	7	64
NSW	76	32,000	29,842	6,798	8,160	2,218	20,989	8,067	12,086	30,431	21,408	42,084	54,106

APPENDIX 2

EXPLANATORY NOTES

What are crime statistics?

BOCSAR's crime statistics consist of criminal incidents reported to, or detected by, police and recorded on the NSW Police Force's Computerised Operational Policing System (COPS). While this system is used for record-keeping for all police operations, not just for criminal matters, BOCSAR only reports on criminal incidents and selected policing activities. BOCSAR's crime statistics therefore do not capture crimes that are not recorded on COPS. The Australian Bureau of Statistics conducts regular crime and victim surveys which attempt to capture a snapshot of both reported and unreported crimes.

How to interpret crime statistics

Recorded crime statistics for some offence categories do not accurately reflect the actual level of crime in the community. This is because the number of incidents recorded may be affected by extraneous factors which are not easily measured. In particular:

- > Public willingness to report crime - Many crimes which occur are not reported to police and will therefore not be recorded - for example, a large number of assaults, sexual assaults and robberies are not reported to police.
- > Shifts in policing policy - Recording of those offences which are detected by, rather than reported to police, are strongly affected by policing practices - examples of these are drug offences, drink driving offences, offensive behaviour and receiving stolen goods. Recorded rates for such offences do not accurately reflect actual rates.
- > High visitor populations compared to residential populations - Sydney Local Government Area has relatively high recorded crime rates because, compared with other regions, the resident population is small relative to the number of people in the area. In other words, the area has a high user population which is not reflected in the denominator of the rate calculation.
- > Areas with small residential populations - Recorded crime rates in Local Government Areas with small population sizes are not always a good indicator of offending. Crime rates in areas with populations under 3,000 may be unreliable and should be interpreted with caution.

What offences are included?

BOCSAR's standard quarterly publications report on 13 major offence categories, which include serious personal violence and property offences. In addition to these offences, we also release data for 62 specific offence categories.

From the September Quarter 2021 report, the offence category previously labelled 'indecent sexual assault, act of indecency and other sexual offences' is labelled 'sexual touching, sexual act and other sexual offences'.

Commencing March 2020, the NSW Government issued public health orders under the *NSW Public Health Act 2010* (NSW) to limit the spread of COVID-19. Police can issue a fine or court attendance notice for failure to comply with the orders. Breaches of these orders are counted as "Other offences" in this report.

What is being counted?

> Incidents: When a crime is reported to, or detected by, the NSW Police they record it as a criminal event on COPS. The event date is the date that the crime was reported. Unless otherwise stated, the date BOCSAR attaches to a crime is the event date. One criminal event can contain multiple criminal incidents. BOCSAR's default counting unit for crime data is criminal incidents with the exception of murder and manslaughter. Criminal incidents are activities detected by or reported to police which involve the same offender(s) and victim(s); occur at the one location during one uninterrupted period of time; fall into one offence category and one incident type. For murder and manslaughter only, the counting units used are victims.

> Alleged offenders: BOCSAR also reports on alleged offenders or 'Persons of Interest' (POIs) who have had a legal proceeding commenced against them by the NSW Police Force. Within the police recorded crime data POIs may not have been convicted in court, however they have been proceeded against in some way or another by the police. There could be quite some time between an event being recorded by police, an investigation being completed and an alleged offender (i.e. a POI) being charged. Consequently, POIs are counted in the time period they were proceeded against, rather than the time period the event /incident was reported to or recorded by police.

Legal proceedings against alleged offenders presented in Tables 3.1 and 3.2 include persons proceeded against to court and persons diverted from court (by way of criminal infringement notice, cannabis or other drug caution and diversions under the Young Offenders Act 1997, including Youth Justice Conference, Caution and Warning).

Infringement Notices (fines) are not included in this report but have been included in past reports as they are not a form of court diversion.

What are crime trends and how are they calculated?

In general, BOCSAR relies upon the Kendall Rank Order Correlation statistical test (or Kendall's tau-b) to determine whether a series is trending upwards, downwards or is stable ($p < .05$). In some tables a stable trend is represented by 'ns' (not significant). The statistical test is applied to the monthly data over the specified period. Where a significant trend is found, the average annual percentage change over the time period is reported. If any of the 12-monthly totals in the series have a value of less than 20, a trend test is not conducted. When this occurs, the relevant cell will be left blank or contain 'n.c.' (not calculated). For murder and manslaughter incidents, the trend test is applied to the monthly number of recorded victims rather than criminal incidents.

How is the ratio to NSW calculated?

The ratio to NSW rate statistics are a comparison of a NSW regional rate per 100,000 population to the NSW rate per 100,000 population. A ratio of one indicates parity with the NSW rate. Ratios indicating double the NSW rate (or more) before rounding are highlighted in red, whilst ratios indicating half the NSW rate (or less) before rounding are highlighted in green. Ratios are not calculated for regions with a population of less than 3,000.

How are 'young people' and 'adults' defined?

The term 'young people' refers to persons aged 10-17 years at the time of the offence; 'adults' refers to persons aged 18 years and older at the time of the offence.

Regional Statistics

Statistics are provided on the number of criminal incidents (victims for murder) recorded for each of the Statistical Areas Level 4 (SA4s) of NSW as defined by the Australian Bureau of Statistics (ABS). Recorded criminal incidents which occurred in correctional, detention or remand centres, however, are not counted in the SA in which the incident occurred. Note that LGA boundaries change from time to time. A criminal incident is counted within a particular region when the location of the offence falls within that region.

What is included in 'selected policing activities'?

- > Bail compliance checks: checks conducted by police to assess if bail conditions are being complied with.
- > ADVO compliance checks: checks conducted by police to assess if ADVO conditions are being complied. These checks can also include checking on the person in need of protection and taking the necessary action if a breach is detected.
- > Move on directions: a 'move on direction' is a direction given to a person by a police officer, under section 198 of the *Law Enforcement (Powers and Responsibilities) Act 2002 (NSW)*, to leave a public place and not return for a specified period.
- > Searches: If the police have reasonable grounds they may, without a warrant, stop and search a person and anything in their possession or under their control, including a vehicle.
- > Detain/convey person to mental health facility: The police detain a person at risk of harm to themselves or others and transport them to a mental health facility for assessment under section 22 of the *Mental Health Act 2007 (NSW)*.

What are non-criminal domestic violence episodes?

Incidents attended by police where a domestic dispute is recorded as having taken place but no criminal incident has been recorded. The vast majority of these episodes are verbal altercations.

Where can I find more detail and explanatory notes?

Detailed definitions and explanatory notes are available at

https://www.bocsar.nsw.gov.au/Pages/bocsar_crime_stats/bocsar_glossary.aspx