



NSW Bureau of Crime  
Statistics and Research

# NEW SOUTH WALES RECORDED CRIME STATISTICS

Quarterly Update  
September Quarter 2022

This report presents data on crime reported to, or detected by, police and recorded on the NSW Police Force's Computerised Operational Policing System (COPS). Information is provided on 13 major offence categories, which include the most serious personal violence and property offences, plus a more detailed list of 62 specific offence types.

Published by the NSW Bureau of Crime Statistics and Research  
December 2022

**Phone:** + 61 (2) 8688 9800

**Email:** [bcsr@justice.nsw.gov.au](mailto:bcsr@justice.nsw.gov.au)

**Website:** [www.bocsar.nsw.gov.au](http://www.bocsar.nsw.gov.au)

ISSN: 1035-9044

This report is available in pdf format on our website and may be provided in alternative formats. Please contact us at [bcsr@justice.nsw.gov.au](mailto:bcsr@justice.nsw.gov.au).

© State of New South Wales through the NSW Department of Communities and Justice 2022. You may copy, distribute, display, download and otherwise freely deal with this work for any purpose, provided that you attribute the Department of Justice NSW as the owner. However, you must obtain permission if you wish to (a) charge others for access to the work (other than at cost), (b) include the work in advertising or a product for sale, or (c) modify the work.

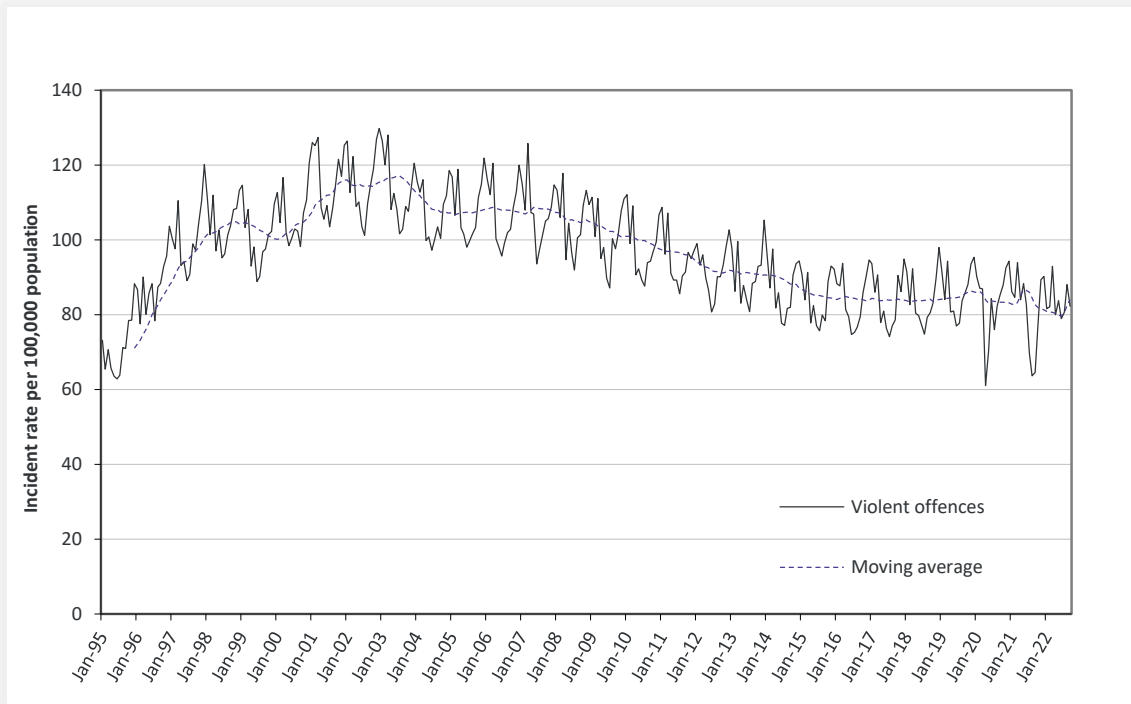
# CONTENTS

<b>SECTION 1:</b>	<b>OVERVIEW OF TRENDS IN RECORDED CRIME</b>	<b>5</b>
Figure 1.1	NSW long-term trend in violent offences	6
Figure 1.2	NSW long-term trend in property offences	6
Table 1.3	Violent and property offences by Statistical Area (SA4) over the five years to September 2022	7
Table 1.4	Recorded criminal incidents for major offences over the five years to September 2022	8
Table 1.5	Recorded criminal incidents for 62 offences over the two years to September 2022	9
Table 1.6	Recorded criminal incidents for 62 offences over the five years to September 2022	10
<b>SECTION 2:</b>	<b>REGIONAL COMPARISONS Statistical Areas</b>	<b>11</b>
Table 2.1	Two year trends and percent change in recorded criminal incidents for major offences by Statistical Area (SA4) over the two years to September 2022	12
Table 2.2	Ratio to NSW rate of recorded criminal incidents per 100,000 population for major offences by Statistical Area (SA4) over the 12 months to September 2022	13
Table 2.3	Number of major offences by Statistical Area (SA4) over the 12 months to September 2022	14
Table 2.4	Number of major offences by Statistical Area (SA4) over the 12 months to September 2021	15
<b>SECTION 3:</b>	<b>LEGAL PROCEEDINGS</b>	<b>16</b>
Table 3.1	Adults proceeded against by the NSW Police Force by method of legal proceeding over the five years to September 2022	17
Table 3.2	Young people proceeded against by the NSW Police Force by method of legal proceeding over the five years to September 2022	17
Table 3.3	Adults proceeded against to court by the NSW Police Force for all 62 criminal offences types over the two years to September 2022	18
Table 3.4	Young people proceeded against to court by the NSW Police Force for all 62 criminal offences over the two years to September 2022	19
Figure 3.5	Offences with the largest change in the number of adults proceeded against to court by the NSW Police Force between the 12 months to September 2021 and the 12 months to September 2022	20
Figure 3.6	Offences with the largest change in the number of young people proceeded against to court by the NSW Police Force between the 12 months to September 2021 and the 12 months to September 2022	20
Table 3.7	Incidents of all 62 criminal offence types by whether legal proceedings commenced within 90 days of reporting over the two years to June 2022	21
Figure 3.8	Percentage of recorded criminal incidents for major offences by whether legal proceedings commenced within 90 days of reporting over the two years to June 2022	22

<b>SECTION 4:</b>	<b>POLICING ACTIVITY</b>	<b>23</b>
Table 4.1	Selected policing activities over the five years to September 2022	24
Table 4.2	Non-criminal domestic violence episodes by Statistical Area (SA4) over the five years to September 2022	25
Table 4.3	Ratio to NSW rate of non-criminal domestic violence episodes per 100,000 population by Statistical Area (SA4) over the five years to September 2022	26
<b>APPENDIX 1:</b>	<b>REGIONAL COMPARISONS Local Government Areas</b>	<b>27</b>
Appendix Table 1.1	Trends in recorded criminal incidents for major offences, NSW LGAs Over the two years to September 2022	28
Appendix Table 1.2	Ratio to NSW rate of recorded criminal incidents per 100,000 population for major offences, NSW LGAs 12 months to September 2022	31
Appendix Table 1.3	Number of recorded criminal incidents for major offences, NSW LGAs 12 months to September 2022	34
Appendix Table 1.4	Number of recorded criminal incidents for major offences, NSW LGAs 12 months to September 2021	37
<b>APPENDIX 2:</b>	<b>EXPLANATORY NOTES</b>	<b>40</b>
Appendix 2.1	Explanatory Notes	41
<b>APPENDIX 3:</b>	<b>LGAs IN STATISTICAL AREAS</b>	<b>44</b>
Appendix Table 3.1	Local Government Areas in Greater Sydney Statistical Areas	45
Appendix Table 3.2	Local Government Areas in Regional Statistical Areas	46
Appendix Table 3.3	Greater Sydney Statistical Area Map	47
Appendix Table 3.4	Regional NSW Statistical Areas Map	48
<b>APPENDIX 4:</b>	<b>OFFENCE CATEGORIES</b>	<b>49</b>
Appendix 4.1	BOCSAR offences mapped to NSW Police Force incident categories	50

# SECTION 1: OVERVIEW OF TRENDS IN RECORDED CRIME

**Figure 1.1: NSW long-term trend in violent offences**



**Figure 1.2: NSW long-term trend in property offences**



Violent offences include: murder, attempted murder, manslaughter, assault - domestic violence related, assault - non-domestic violence related, assault police, robbery without a weapon, robbery with a firearm, robbery with a weapon not a firearm, sexual assault and sexual touching, sexual act and other sexual offences.

Property offences include: break and enter dwelling, break and enter non-dwelling, motor vehicle theft, steal from motor vehicle, steal from retail store, steal from dwelling, steal from person, stock theft and other theft.

**Table 1.3: Violent and property offences by Statistical Area (SA4)**

Over the five years to September 2022

Statistical Area	Trend and average annual percentage change			
	Violent Offences		Property Offences	
	2 Year Trend	5 Year Trend	2 Year Trend	5 Year Trend
<b>Greater Sydney</b>	Stable	Stable	Stable	-9.0%
Baulkham Hills and Hawkesbury	Stable	5.3%	Stable	-9.4%
Blacktown	-10.2%	Stable	Stable	-10.4%
Central Coast	Stable	Stable	-9.5%	-9.0%
City and Inner South	Stable	-3.6%	14.6%	-9.9%
Eastern Suburbs	Stable	Stable	Stable	-8.4%
Inner South West	Stable	Stable	Stable	-7.4%
Inner West	Stable	Stable	Stable	-5.7%
North Sydney and Hornsby	Stable	Stable	Stable	-11.3%
Northern Beaches	-9.5%	-3.9%	-20.1%	-13.5%
Outer South West	Stable	Stable	Stable	-8.9%
Outer West and Blue Mountains	Stable	Stable	-6.6%	-9.1%
Parramatta	Stable	Stable	Stable	-6.3%
Ryde	Stable	Stable	Stable	-10.3%
South West	Stable	Stable	Stable	-8.0%
Sutherland	Stable	Stable	-19.4%	-13.3%
<b>Regional NSW</b>	Stable	Stable	Stable	-6.3%
Capital Region	Stable	Stable	Stable	-8.3%
Central West	-4.9%	3.5%	Stable	-2.8%
Coffs Harbour - Grafton	Stable	Stable	23.3%	-5.0%
Far West and Orana	Stable	Stable	Stable	-4.0%
Hunter Valley excluding Newcastle	Stable	Stable	Stable	-6.6%
Illawarra	Stable	Stable	-9.2%	-7.1%
Mid North Coast	Stable	3.0%	-10.1%	-6.7%
Murray	Stable	5.6%	Stable	-3.6%
New England and North West	Stable	Stable	Stable	-6.3%
Newcastle and Lake Macquarie	-4.0%	Stable	Stable	-7.2%
Richmond - Tweed	-2.8%	Stable	Stable	-7.1%
Riverina	Stable	Stable	Stable	-7.6%
Southern Highlands and Shoalhaven	Stable	Stable	-15.7%	-10.6%
<b>NSW</b>	<b>Stable</b>	<b>Stable</b>	<b>Stable</b>	<b>-7.8%</b>

**Table 1.4: Recorded criminal incidents for major offences**  
Over the five years to September 2022

Offence category	12 months to September 2018	12 months to September 2019	12 months to September 2020	12 months to September 2021	12 months to September 2022	Trend and average annual percentage change	
						2 Year Trend	5 Year Trend
Murder	61	73	76	58	54	Stable	Stable
Domestic violence related assault	29,221	31,098	31,990	32,418	33,061	Stable	Up 3.1%
Non-domestic violence related assault	32,268	32,109	29,847	28,920	29,855	Stable	Down 1.9%
Sexual assault	5,995	6,145	6,832	7,550	7,550	Stable	Up 5.9%
Sexual touching, sexual act and other sexual offences	7,770	8,278	7,913	7,643	7,414	Stable	Stable
Robbery	2,518	2,516	2,219	1,925	1,675	Stable	Down 9.7%
Break and enter dwelling	27,224	25,591	20,994	18,693	18,235	Down 2.5%	Down 9.5%
Break and enter non-dwelling	10,346	10,128	8,067	7,185	7,235	Stable	Down 8.6%
Motor vehicle theft	12,929	13,543	12,092	10,910	11,636	Stable	Down 2.6%
Steal from motor vehicle	38,009	38,973	30,434	27,979	27,326	Stable	Down 7.9%
Steal from retail store	24,620	26,883	21,416	19,145	19,745	Stable	Down 5.4%
Other stealing offences	51,372	50,598	42,085	36,765	34,685	Down 5.7%	Down 9.4%
Malicious damage to property	59,429	57,315	54,108	50,624	48,740	Down 3.7%	Down 4.8%



## NSW Recorded Crime Statistics, September Quarter 2022

**Table 1.5: Recorded criminal incidents for 62 offences**

Over the two years to September 2022

Offence category		Number of recorded criminal incidents		2 Year Trend	
		12 months to September 2021	12 months to September 2022	Trend test result	Annual average percentage change
Homicide	Murder	58	54	Stable	
	Attempted murder	23	13	n.c.	
	Murder accessory, conspiracy	0	2	n.c.	
	Manslaughter	2	5	n.c.	
Assault	Domestic violence related assault	32,418	33,061	Stable	
	Non-domestic violence related assault	28,920	29,855	Stable	
	Assault Police	2,510	2,694	Stable	
Sexual offences	Sexual assault	7,550	7,550	Stable	
	Sexual touching, sexual act and other sexual offences	7,643	7,414	Stable	
Abduction and kidnapping		222	203	Stable	
Robbery	Robbery without a weapon	1,031	899	Stable	
	Robbery with a firearm	97	91	Stable	
	Robbery with a weapon not a firearm	797	685	Stable	
Blackmail and extortion		130	463	Up	256.2%
Intimidation, stalking and harassment		40,867	42,288	Stable	
Other offences against the person		1,880	1,276	Down	-32.1%
Theft	Break and enter dwelling	18,693	18,235	Down	-2.5%
	Break and enter non-dwelling	7,185	7,235	Stable	
	Receiving or handling stolen goods	7,531	7,481	Stable	
	Motor vehicle theft	10,910	11,636	Stable	
	Steal from motor vehicle	27,979	27,326	Stable	
	Steal from retail store	19,145	19,745	Stable	
	Steal from dwelling	16,506	15,338	Down	-7.1%
	Steal from person	1,893	1,840	Stable	
	Stock theft	338	244	Down	-27.8%
	Fraud	46,124	45,259	Stable	
	Other theft	18,028	17,263	Down	-4.2%
Arson		3,926	3,283	Down	-16.4%
Malicious damage to property		50,624	48,740	Down	-3.7%
Drug offences	Possession and/or use of cocaine	2,236	2,642	Stable	
	Possession and/or use of narcotics	1,190	1,228	Stable	
	Possession and/or use of cannabis	16,229	15,497	Stable	
	Possession and/or use of amphetamines	7,192	6,499	Down	-9.6%
	Possession and/or use of ecstasy	473	679	Stable	
	Possession and/or use of other drugs	6,546	6,065	Stable	
	Dealing, trafficking in cocaine	1,461	1,171	Stable	
	Dealing, trafficking in narcotics	264	456	Up	72.7%
	Dealing, trafficking in cannabis	891	660	Stable	
	Dealing, trafficking in amphetamines	2,775	2,096	Stable	
	Dealing, trafficking in ecstasy	196	156	Stable	
	Dealing, trafficking in other drugs	572	380	Down	-33.6%
	Cultivating cannabis	1,111	888	Down	-20.1%
Manufacture drug	53	51	Stable		
Importing drugs	202	172	Down	-14.9%	
Other drug offences	5,840	5,487	Stable		
Prohibited and regulated weapons offences		15,062	13,112	Down	-12.9%
Disorderly conduct	Trespass	9,464	9,654	Stable	
	Offensive conduct	3,782	3,685	Down	-2.6%
	Offensive language	1,971	1,646	Down	-16.5%
	Criminal intent	2,384	2,499	Stable	
Betting and gaming offences		76	223	Stable	
Liquor offences		8,170	10,705	Stable	
Pornography offences		874	948	Stable	
Prostitution offences		18	20	n.c.	
Against justice procedures	Escape custody	178	158	Stable	
	Breach Apprehended Violence Order	20,759	22,244	Stable	
	Breach bail conditions	50,856	52,763	Stable	
	Fail to appear	788	934	Stable	
	Resist or hinder officer	5,550	5,673	Stable	
	Other offences against justice procedures	1,971	2,281	Stable	
Transport regulatory offences		71,739	68,406	Stable	
Other offences		85,554	29,718	Down	-65.3%

Note: The increase in the Betting and gaming offence numbers in the most recent reporting period is due to non-criminal administrative orders being recorded as criminal incidents. This affects data from June 2022 and will be corrected in future reports.

## NSW Recorded Crime Statistics, September Quarter 2022

**Table 1.6: Recorded criminal incidents for 62 offences**  
Over the five years to September 2022

Offence category		Number of recorded criminal incidents		5 Year Trend	
		12 months to September 2018	12 months to September 2022	Trend test result	Annual average percentage change
Homicide	Murder	61	54	Stable	
	Attempted murder	21	13	n.c.	
	Murder accessory, conspiracy	2	2	n.c.	
	Manslaughter	12	5	n.c.	
Assault	Domestic violence related assault	29,221	33,061	Up	3.1%
	Non-domestic violence related assault	32,268	29,855	Down	-1.9%
	Assault Police	2,421	2,694	Stable	
Sexual offences	Sexual assault	5,995	7,550	Up	5.9%
	Sexual touching, sexual act and other sexual offences	7,770	7,414	Stable	
Abduction and kidnapping		195	203	Stable	
Robbery	Robbery without a weapon	1,475	899	Down	-11.6%
	Robbery with a firearm	163	91	Down	-13.6%
	Robbery with a weapon not a firearm	880	685	Down	-6.1%
Blackmail and extortion		118	463	Up	40.7%
Intimidation, stalking and harassment		31,867	42,288	Up	7.3%
Other offences against the person		632	1,276	Up	19.2%
Theft	Break and enter dwelling	27,224	18,235	Down	-9.5%
	Break and enter non-dwelling	10,346	7,235	Down	-8.6%
	Receiving or handling stolen goods	7,983	7,481	Down	-1.6%
	Motor vehicle theft	12,929	11,636	Down	-2.6%
	Steal from motor vehicle	38,009	27,326	Down	-7.9%
	Steal from retail store	24,620	19,745	Down	-5.4%
	Steal from dwelling	19,400	15,338	Down	-5.7%
	Steal from person	4,217	1,840	Down	-18.7%
	Stock theft	444	244	Down	-13.9%
	Fraud	52,058	45,259	Down	-3.4%
	Other theft	27,311	17,263	Down	-10.8%
Arson		5,698	3,283	Down	-12.9%
Malicious damage to property		59,429	48,740	Down	-4.8%
Drug offences	Possession and/or use of cocaine	2,358	2,642	Stable	
	Possession and/or use of narcotics	1,026	1,228	Up	4.6%
	Possession and/or use of cannabis	17,582	15,497	Down	-3.1%
	Possession and/or use of amphetamines	7,064	6,499	Stable	
	Possession and/or use of ecstasy	2,844	679	Down	-30.1%
	Possession and/or use of other drugs	4,840	6,065	Up	5.8%
	Dealing, trafficking in cocaine	857	1,171	Up	8.1%
	Dealing, trafficking in narcotics	349	456	Stable	
	Dealing, trafficking in cannabis	858	660	Stable	
	Dealing, trafficking in amphetamines	1,949	2,096	Stable	
	Dealing, trafficking in ecstasy	696	156	Down	-31.2%
	Dealing, trafficking in other drugs	440	380	Stable	
	Cultivating cannabis	1,186	888	Down	-7.0%
	Manufacture drug	77	51	Stable	
Importing drugs	73	172	Up	23.9%	
Other drug offences		5,583	5,487	Stable	
Prohibited and regulated weapons offences		14,110	13,112	Stable	
Disorderly conduct	Trespass	10,017	9,654	Stable	
	Offensive conduct	4,844	3,685	Down	-6.6%
	Offensive language	2,859	1,646	Down	-12.9%
	Criminal intent	2,275	2,499	Stable	
Betting and gaming offences		107	223	Stable	
Liquor offences		11,708	10,705	Down	-2.2%
Pornography offences		654	948	Up	9.7%
Prostitution offences		29	20	n.c.	
Against justice procedures	Escape custody	173	158	Stable	
	Breach Apprehended Violence Order	15,644	22,244	Up	9.2%
	Breach bail conditions	42,091	52,763	Up	5.8%
	Fail to appear	524	934	Up	15.5%
	Resist or hinder officer	6,293	5,673	Down	-2.6%
Other offences against justice procedures		593	2,281	Up	40.0%
Transport regulatory offences		120,174	68,406	Down	-13.1%
Other offences		15,304	29,718	Up	18.0%

Note: The increase in the Betting and gaming offence numbers in the most recent reporting period is due to non-criminal administrative orders being recorded as criminal incidents. This affects data from June 2022 and will be corrected in future reports.

# SECTION 2: REGIONAL COMPARISONS

## Statistical Areas

## NSW Recorded Crime Statistics, September Quarter 2022

**Table 2.1: Two year trends and percent change in recorded criminal incidents for major offences by Statistical Area (SA4)**  
Over the two years to September 2022

Statistical Area	Murder	Domestic violence related assault	Non-domestic violence related assault	Sexual assault	Sexual touching, sexual act and other sexual offences	Robbery	Break and enter dwelling	Break and enter non-dwelling	Motor vehicle theft	Steal from motor vehicle	Steal from retail store	Other stealing offences	Malicious damage to property
<b>Greater Sydney</b>	ns	ns	ns	ns	ns	ns	ns	ns	ns	-9.7	ns	-2.7	-5.4
Baulkham Hills and Hawkesbury		ns	-4.9	ns	ns		ns	ns	ns	-20.3	ns	ns	ns
Blacktown		-9.0	-9.5	ns	ns	-28.5	ns	ns	ns	ns	17.6	ns	-7.8
Central Coast		ns	ns	ns	ns	ns	-17.7	ns	ns	ns	ns	-15.7	-12.6
City and Inner South		ns	ns	ns	27.0	ns	ns	ns	ns	ns	ns	12.1	ns
Eastern Suburbs		ns	ns	ns	ns	ns	ns	ns	ns	ns	ns	-8.8	-3.5
Inner South West		ns	ns	ns	ns	ns	ns	ns	ns	ns	ns	ns	ns
Inner West		ns	ns	ns	ns	ns	ns	ns	ns	ns	ns	ns	ns
North Sydney and Hornsby		ns	ns	ns	ns	ns	ns	ns	ns	ns	ns	-11.4	-19.8
Northern Beaches		-20.8	-7.8	ns	ns	ns	ns	-52.0	ns	-33.6	ns	-27.3	-23.4
Outer South West		ns	ns	ns	ns	ns	-12.0	-42.4	ns	ns	ns	ns	-12.5
Outer West and Blue Mountains		ns	ns	ns	ns	ns	ns	-16.4	ns	ns	ns	-9.4	ns
Parramatta		ns	ns	ns	ns	ns	ns	ns	ns	ns	ns	ns	-4.4
Ryde		-18.1	ns	ns	ns		ns	91.2	ns	ns	ns	ns	ns
South West		ns	ns	ns	ns	-30.3	ns	ns	ns	-18.2	ns	ns	ns
Sutherland		ns	ns	ns	ns	ns	-24.0	ns	-33.5	ns	ns	-20.0	ns
<b>Regional NSW</b>		ns	1.4	ns	ns	ns	ns	ns	15.8	ns	ns	-9.2	-2.2
Capital Region		ns	ns	ns	ns	ns	-17.2	ns	ns	ns	ns	-10.7	ns
Central West		ns	-7.4	-17.0	ns	ns	ns	ns	29.7	ns	ns	-10.3	ns
Coffs Harbour - Grafton		ns	ns	ns	-12.6	ns	ns	ns	57.8	52.4	18.3	ns	ns
Far West and Orana		ns	ns	ns	ns	ns	ns	ns	48.0	ns	38.3	ns	ns
Hunter Valley excluding Newcastle		ns	ns	ns	ns	ns	ns	-23.6	ns	20.1	ns	-10.5	ns
Illawarra		ns	ns	ns	ns	ns	-13.9	-31.3	ns	ns	ns	-15.1	-4.6
Mid North Coast		ns	ns	ns	ns	ns	-13.0	ns	ns	ns	19.0	-12.0	-2.5
Murray		ns	ns	ns	ns	ns	ns	ns	26.7	ns	ns	ns	ns
New England and North West		ns	ns	ns	ns	ns	ns	ns	ns	-19.9	22.0	-7.0	ns
Newcastle and Lake Macquarie		ns	-7.8	ns	ns	ns	ns	ns	ns	ns	ns	-6.0	-8.2
Richmond - Tweed		ns	ns	-19.0	ns	ns	11.9	ns	ns	ns	ns	ns	-7.1
Riverina		ns	ns	ns	-27.3	ns	ns	ns	63.8	45.3	ns	-9.2	-8.1
Southern Highlands and Shoalhaven		ns	ns	ns	ns	ns	ns	ns	ns	ns	ns	-25.0	ns
<b>NSW</b>	ns	ns	ns	ns	ns	ns	-2.5	ns	ns	ns	ns	-5.7	-3.7

## NSW Recorded Crime Statistics, September Quarter 2022

**Table 2.2: Ratio to NSW rate of recorded criminal incidents per 100,000 population for major offences by Statistical Area (SA4)**  
Over the 12 months to September 2022

Statistical Area	Murder	Domestic violence related assault	Non-domestic violence related assault	Sexual assault	Sexual touching, sexual act and other sexual offences	Robbery	Break and enter dwelling	Break and enter non-dwelling	Motor vehicle theft	Steal from motor vehicle	Steal from retail store	Other stealing offences	Malicious damage to property
<b>Greater Sydney</b>	1.0	0.8	0.8	0.7	0.8	1.0	0.7	0.6	0.7	0.8	1.0	0.9	0.8
Baulkham Hills and Hawkesbury	1.2	0.5	0.3	0.6	0.6	0.4	0.4	0.4	0.4	0.3	0.4	0.5	0.5
Blacktown	1.6	1.3	1.1	0.9	1.1	1.9	1.0	0.7	1.1	1.2	1.3	1.1	1.2
Central Coast	2.6	1.2	1.2	1.3	1.1	1.1	0.7	0.8	0.9	1.0	1.0	0.7	1.1
City and Inner South	2.0	1.0	2.1	1.1	1.5	2.1	0.8	1.2	0.7	0.9	3.0	2.5	1.2
Eastern Suburbs		0.6	0.9	0.7	0.8	0.5	0.6	0.3	0.6	0.6	1.2	0.8	0.6
Inner South West	1.4	0.8	0.6	0.5	0.6	0.8	0.6	0.5	0.7	0.7	0.5	0.6	0.6
Inner West	0.9	0.5	0.6	0.6	0.6	0.8	0.8	0.6	0.6	0.7	0.8	0.9	0.6
North Sydney and Hornsby		0.3	0.3	0.4	0.5	0.4	0.5	0.4	0.3	0.4	0.8	0.5	0.4
Northern Beaches		0.2	0.5	0.5	0.6	0.5	0.4	0.3	0.4	0.5	0.8	0.5	0.5
Outer South West	1.0	1.2	0.8	1.0	1.0	1.0	0.6	0.4	0.8	0.8	1.0	0.7	0.9
Outer West and Blue Mountains		1.2	1.1	1.2	1.2	1.3	1.0	0.8	1.0	1.1	1.2	0.9	1.2
Parramatta	2.4	0.9	0.8	0.7	0.8	1.2	1.1	0.8	1.1	1.1	0.9	1.0	0.7
Ryde		0.4	0.4	0.4	0.4	0.4	0.6	0.6	0.3	0.5	0.5	0.6	0.4
South West	0.3	1.1	0.7	0.6	0.8	1.0	0.7	0.5	0.8	0.8	0.8	0.7	0.8
Sutherland		0.7	0.5	0.6	0.6	0.5	0.4	0.3	0.3	0.4	0.5	0.5	0.6
<b>Regional NSW</b>	0.9	1.3	1.3	1.3	1.3	1.1	1.6	1.8	1.6	1.4	1.0	1.3	1.5
Capital Region		1.0	0.9	0.9	1.0	0.6	0.7	1.3	0.9	0.9	0.8	1.0	1.1
Central West	0.7	1.6	1.4	1.6	1.6	1.3	1.8	2.0	1.6	1.3	1.0	1.4	1.8
Coffs Harbour - Grafton		1.5	1.5	1.4	1.5	1.1	1.5	2.1	1.9	1.6	0.9	1.5	1.5
Far West and Orana		3.5	2.3	2.0	2.3	2.0	4.1	5.4	3.1	2.6	1.7	2.1	2.8
Hunter Valley excluding Newcastle		1.3	1.2	1.7	1.5	0.8	1.1	1.5	1.6	1.4	0.9	1.5	1.4
Illawarra	0.5	0.7	0.9	0.9	0.9	0.9	0.9	0.8	1.1	1.3	1.3	0.8	0.9
Mid North Coast	0.7	1.5	1.3	1.3	1.6	0.9	1.9	2.1	1.4	1.1	0.9	1.7	1.5
Murray	2.5	1.5	1.4	1.2	1.4	0.7	1.4	2.3	1.6	2.1	0.9	1.4	1.8
New England and North West	0.8	2.1	1.8	1.7	1.5	1.5	3.4	2.5	2.2	1.7	1.3	1.5	2.2
Newcastle and Lake Macquarie	1.2	1.1	1.2	1.3	1.1	1.5	1.5	1.6	1.8	1.9	1.3	1.3	1.4
Richmond - Tweed	3.0	1.1	1.2	1.1	1.0	1.0	1.2	1.6	1.5	1.1	0.5	1.1	1.2
Riverina	0.9	1.5	1.4	1.6	1.3	1.0	2.0	1.8	1.8	1.6	1.2	1.3	1.6
Southern Highlands and Shoalhaven	1.9	0.9	0.9	1.3	1.3	0.7	0.8	0.9	0.7	0.6	0.6	0.7	1.1
<b>NSW</b>	<b>1.0</b>	<b>1.0</b>	<b>1.0</b>	<b>1.0</b>	<b>1.0</b>	<b>1.0</b>	<b>1.0</b>	<b>1.0</b>	<b>1.0</b>	<b>1.0</b>	<b>1.0</b>	<b>1.0</b>	<b>1.0</b>

## NSW Recorded Crime Statistics, September Quarter 2022

**Table 2.3: Number of major offences by Statistical Area (SA4)**

Over the 12 months to September 2022

Statistical Area	Murder	Domestic violence related assault	Non-domestic violence related assault	Sexual assault	Sexual touching, sexual act and other sexual offences	Robbery	Break and enter dwelling	Break and enter non-dwelling	Motor vehicle theft	Steal from motor vehicle	Steal from retail store	Other stealing offences	Malicious damage to property
<b>Greater Sydney</b>	36	17,824	15,872	3,624	3,979	1,060	8,450	2,757	5,410	13,910	12,715	19,406	24,047
Baulkham Hills and Hawkesbury	2	474	328	132	141	19	255	97	146	278	268	511	714
Blacktown	4	2,017	1,538	330	370	148	893	239	598	1,577	1,238	1,724	2,671
Central Coast	6	1,651	1,500	411	359	75	544	241	424	1,178	827	1,061	2,252
City and Inner South	5	1,536	2,879	381	504	157	639	397	383	1,096	2,664	4,032	2,679
Eastern Suburbs	0	666	921	178	214	32	399	81	267	611	847	1,054	1,089
Inner South West	6	2,134	1,373	277	334	106	811	257	669	1,487	757	1,566	2,138
Inner West	2	677	665	172	185	51	552	182	275	785	640	1,220	1,114
North Sydney and Hornsby	0	549	499	177	184	37	506	150	187	637	816	996	1,035
Northern Beaches	0	252	476	131	145	29	224	61	165	455	505	559	784
Outer South West	2	1,393	848	259	276	61	405	114	317	831	736	859	1,552
Outer West and Blue Mountains	0	1,580	1,350	370	365	88	737	239	466	1,195	946	1,233	2,414
Parramatta	8	1,903	1,521	340	362	125	1,247	342	794	1,809	1,066	2,179	2,130
Ryde	0	326	275	76	81	15	298	109	97	331	233	508	517
South West	1	1,999	1,261	266	342	92	750	190	517	1,298	881	1,459	2,107
Sutherland	0	667	438	124	117	25	190	58	105	342	291	445	851
<b>Regional NSW</b>	17	15,234	12,989	3,483	3,308	611	9,785	4,478	6,226	13,415	7,030	15,273	24,610
Capital Region	0	906	754	202	214	28	385	278	311	665	440	954	1,486
Central West	1	1,406	1,130	307	304	55	876	387	493	947	525	1,253	2,239
Coffs Harbour - Grafton	0	844	757	190	188	32	471	267	385	768	323	927	1,280
Far West and Orana	0	1,644	984	213	244	48	1,069	557	506	1,000	466	1,051	1,950
Hunter Valley excluding Newcastle	0	1,547	1,283	446	377	48	679	388	649	1,362	652	1,777	2,459
Illawarra	1	910	1,002	268	268	60	620	233	484	1,354	1,012	1,140	1,802
Mid North Coast	1	1,344	1,045	268	318	41	940	418	445	814	488	1,602	2,068
Murray	2	763	631	132	151	17	387	252	285	862	265	721	1,280
New England and North West	1	1,570	1,200	299	258	57	1,404	409	581	1,081	598	1,201	2,478
Newcastle and Lake Macquarie	3	1,656	1,730	457	371	118	1,286	543	960	2,398	1,227	2,069	3,144
Richmond - Tweed	5	1,106	1,112	260	238	51	669	359	561	976	308	1,207	1,843
Riverina	1	979	834	246	186	34	723	261	416	847	477	892	1,554
Southern Highlands and Shoalhaven	2	559	527	195	191	22	276	126	150	341	249	479	1,027
<b>NSW</b>	<b>54</b>	<b>33,061</b>	<b>29,855</b>	<b>7,550</b>	<b>7,414</b>	<b>1,675</b>	<b>18,235</b>	<b>7,235</b>	<b>11,636</b>	<b>27,326</b>	<b>19,745</b>	<b>34,685</b>	<b>48,740</b>

## NSW Recorded Crime Statistics, September Quarter 2022

**Table 2.4: Number of major offences by Statistical Area (SA4)**

Over the 12 months to September 2021

Statistical Area	Murder	Domestic violence related assault	Non-domestic violence related assault	Sexual assault	Sexual touching, sexual act and other sexual offences	Robbery	Break and enter dwelling	Break and enter non-dwelling	Motor vehicle theft	Steal from motor vehicle	Steal from retail store	Other stealing offences	Malicious damage to property
<b>Greater Sydney</b>	29	17,570	15,233	3,583	4,017	1,258	8,517	2,659	5,533	15,411	12,240	19,940	25,415
Baulkham Hills and Hawkesbury	0	481	345	128	124	27	300	84	167	349	307	501	664
Blacktown	4	2,216	1,699	381	405	207	817	244	610	1,743	1,053	1,754	2,896
Central Coast	2	1,428	1,407	396	406	55	661	233	460	1,254	858	1,258	2,576
City and Inner South	4	1,456	2,411	370	397	185	593	304	346	966	2,235	3,597	2,532
Eastern Suburbs	1	683	847	194	178	43	360	60	263	604	784	1,156	1,128
Inner South West	3	2,108	1,330	287	367	121	834	224	678	1,611	797	1,609	2,252
Inner West	1	577	640	142	168	53	495	132	247	845	814	1,140	1,091
North Sydney and Hornsby	0	559	523	168	208	36	511	130	214	773	1,056	1,124	1,290
Northern Beaches	1	318	516	162	142	31	260	127	180	685	444	769	1,024
Outer South West	1	1,291	807	262	306	74	460	198	379	976	632	937	1,774
Outer West and Blue Mountains	1	1,530	1,281	331	364	93	772	286	452	1,386	901	1,361	2,428
Parramatta	5	1,947	1,453	324	347	158	1,174	288	674	1,836	957	2,021	2,229
Ryde	1	398	267	80	121	22	248	57	84	347	355	508	530
South West	4	1,872	1,233	258	370	132	782	226	621	1,586	752	1,649	2,123
Sutherland	1	706	474	100	114	21	250	66	158	450	295	556	878
<b>Regional NSW</b>	29	14,841	12,814	3,834	3,569	663	10,176	4,525	5,377	12,566	6,905	16,820	25,152
Capital Region	2	888	772	231	220	29	465	249	280	636	376	1,068	1,513
Central West	3	1,387	1,220	370	385	52	920	382	380	978	462	1,397	2,237
Coffs Harbour - Grafton	0	823	786	218	215	50	376	292	244	504	273	859	1,248
Far West and Orana	4	1,621	999	251	197	40	960	436	342	844	337	1,103	2,031
Hunter Valley excluding Newcastle	2	1,440	1,100	404	387	45	807	508	636	1,134	638	1,985	2,295
Illawarra	1	922	924	274	268	60	720	339	453	1,421	1,060	1,342	1,889
Mid North Coast	2	1,392	997	343	308	45	1,080	525	520	880	410	1,820	2,121
Murray	1	626	602	143	139	25	412	206	225	681	323	764	1,237
New England and North West	1	1,524	1,163	311	286	45	1,483	319	454	1,349	490	1,292	2,450
Newcastle and Lake Macquarie	8	1,527	1,876	504	437	145	1,314	535	889	2,178	1,336	2,200	3,426
Richmond - Tweed	1	1,107	1,103	321	279	54	598	329	520	1,033	390	1,369	1,983
Riverina	1	1,017	719	265	256	43	747	278	254	583	472	982	1,691
Southern Highlands and Shoalhaven	3	567	553	199	192	30	294	127	180	345	338	639	1,031
<b>NSW</b>	<b>58</b>	<b>32,418</b>	<b>28,920</b>	<b>7,550</b>	<b>7,643</b>	<b>1,925</b>	<b>18,693</b>	<b>7,185</b>	<b>10,910</b>	<b>27,979</b>	<b>19,145</b>	<b>36,765</b>	<b>50,624</b>

# SECTION 3: LEGAL PROCEEDINGS



**Table 3.1: Adults proceeded against by the NSW Police Force by method of legal proceeding**

Over the five years to September 2022

Method of legal proceeding	Adults proceeded against					2 Year Trend		5 Year Trend	
	12 months to September 2018	12 months to September 2019	12 months to September 2020	12 months to September 2021	12 months to September 2022	Number change	Percentage change	Number change	Average annual percentage change
Proceeded against to court (offence)	146,640	149,230	146,987	143,512	151,785	8,273	5.8%	5,145	Stable
Proceeded against to court (breach of bail)	5,625	6,681	8,065	7,195	7,895	700	9.7%	2,270	8.8%
<b>Court diversion</b>	<b>13,998</b>	<b>13,498</b>	<b>11,069</b>	<b>8,893</b>	<b>8,884</b>	<b>-9</b>	<b>Stable</b>	<b>-5,114</b>	<b>-10.7%</b>
Criminal Infringement Notice	8,941	8,757	7,091	5,823	6,028	205	Stable	-2,913	-9.4%
Cannabis or other drug caution	5,057	4,741	3,978	3,070	2,856	-214	Stable	-2,201	-13.3%

**Table 3.2: Young people proceeded against by the NSW Police Force by method of legal proceeding**

Over the five years to September 2022

Method of legal proceeding	Young people proceeded against					2 Year Trend		5 Year Trend	
	12 months to September 2018	12 months to September 2019	12 months to September 2020	12 months to September 2021	12 months to September 2022	Number change	Percentage change	Number change	Average annual percentage change
Proceeded against to court (offence)	10,424	9,826	9,789	9,580	9,903	323	Stable	-521	Stable
Proceeded against to court (breach of bail)	1,572	1,703	1,571	1,409	1,430	21	Stable	-142	-2.3%
<b>Court diversion</b>	<b>10,615</b>	<b>10,409</b>	<b>10,054</b>	<b>12,010</b>	<b>10,635</b>	<b>-1,375</b>	<b>Stable</b>	<b>20</b>	<b>Stable</b>
Youth Justice Conference	765	755	831	804	673	-131	Stable	-92	Stable
Caution Young Offenders Act	7,220	7,002	6,662	7,041	6,540	-501	Stable	-680	-2.4%
Warning Young Offenders Act	2,630	2,652	2,561	4,165	3,422	-743	Stable	792	6.8%

**Table 3.3: Adults proceeded against to court by the NSW Police Force for all 62 criminal offences types**  
Over the two years to September 2022

Offence category		12 months to September 2021		12 months to September 2022		2 Year Trend	
		No. proceeded to court	% proceeded to court	No. proceeded to court	% proceeded to court	Trend test result	Percentage change
Homicide	Murder	71	100.0%	95	100.0%	Stable	
	Attempted murder	15	100.0%	15	100.0%	n.c.	
	Murder accessory, conspiracy	0		1	100.0%	n.c.	
	Manslaughter	7	100.0%	6	100.0%	n.c.	
Assault	Domestic violence related assault	13,224	99.9%	14,120	99.8%	Stable	
	Non-domestic violence related assault	6,436	97.6%	6,935	96.7%	Stable	
	Assault Police	1,280	99.8%	1,486	99.9%	Up	16.1%
Sexual offences	Sexual assault	853	100.0%	766	100.0%	Stable	
	Sexual touching, sexual act and other sexual offences	1,284	98.1%	1,370	97.9%	Stable	
Abduction and kidnapping		212	100.0%	196	100.0%	Stable	
Robbery	Robbery without a weapon	359	100.0%	331	100.0%	Stable	
	Robbery with a firearm	78	100.0%	78	100.0%	Stable	
	Robbery with a weapon not a firearm	394	100.0%	301	100.0%	Stable	
Blackmail and extortion		17	100.0%	17	100.0%	n.c.	
Intimidation, stalking and harassment		13,002	99.0%	14,176	99.0%	Stable	
Other offences against the person		316	98.8%	239	96.8%	Stable	
Theft	Break and enter dwelling	2,328	99.7%	2,313	99.7%	Stable	
	Break and enter non-dwelling	1,139	99.2%	1,187	99.3%	Stable	
	Receiving or handling stolen goods	3,772	96.7%	3,880	97.5%	Stable	
	Motor vehicle theft	1,263	99.6%	1,353	100.0%	Stable	
	Steal from motor vehicle	828	99.3%	892	98.7%	Stable	
	Steal from retail store	4,580	66.0%	4,939	67.9%	Stable	
	Steal from dwelling	680	94.6%	768	95.2%	Stable	
	Steal from person	198	96.6%	196	98.5%	Stable	
	Stock theft	14	93.3%	6	100.0%	n.c.	
	Fraud	4,007	98.2%	3,797	98.6%	Stable	
Other theft	1,437	88.0%	1,445	88.5%	Stable		
Arson		151	90.4%	169	93.9%	Stable	
Malicious damage to property		4,486	99.5%	4,381	99.2%	Stable	
Drug offences	Possession and/or use of cocaine	1,274	99.5%	1,551	98.0%	Stable	
	Possession and/or use of narcotics	497	99.6%	548	99.6%	Stable	
	Possession and/or use of cannabis	5,146	62.8%	4,937	63.5%	Stable	
	Possession and/or use of amphetamines	3,085	99.9%	2,818	99.4%	Stable	
	Possession and/or use of ecstasy	149	92.0%	303	74.6%	Stable	
	Possession and/or use of other drugs	1,705	99.7%	1,514	97.6%	Down	-11.2%
	Dealing, trafficking in cocaine	799	100.0%	714	100.0%	Down	-10.6%
	Dealing, trafficking in narcotics	115	100.0%	153	100.0%	Stable	
	Dealing, trafficking in cannabis	438	100.0%	368	100.0%	Stable	
	Dealing, trafficking in amphetamines	819	100.0%	755	100.0%	Stable	
	Dealing, trafficking in ecstasy	71	100.0%	81	100.0%	Stable	
	Dealing, trafficking in other drugs	255	100.0%	197	100.0%	Stable	
	Cultivating cannabis	708	99.7%	562	100.0%	Down	-20.6%
	Manufacture drug	43	100.0%	39	100.0%	Stable	
Importing drugs	97	99.0%	101	99.0%	Stable		
Other drug offences	679	98.1%	621	97.3%	Stable		
Prohibited and regulated weapons offences		2,984	85.0%	2,853	86.5%	Stable	
Disorderly conduct	Trespass	941	62.0%	1,097	64.5%	Up	16.6%
	Offensive conduct	319	16.4%	291	14.0%	Down	-8.8%
	Offensive language	125	12.6%	106	13.0%	Down	-15.2%
	Criminal intent	1,431	99.4%	1,472	99.7%	Stable	
Betting and gaming offences		7	53.8%	17	73.9%	n.c.	
Liquor offences		71	3.9%	139	5.6%	Stable	
Pornography offences		198	100.0%	219	100.0%	Stable	
Prostitution offences		0		2	100.0%	n.c.	
Against justice procedures	Escape custody	92	100.0%	69	100.0%	Stable	
	Breach Apprehended Violence Order	11,066	100.0%	12,060	100.0%	Up	9.0%
	Breach bail conditions	7,195	99.9%	7,895	100.0%	Up	9.7%
	Fail to appear	9	100.0%	15	100.0%	n.c.	
	Resist or hinder officer	1,631	85.2%	1,580	82.2%	Stable	
Other offences against justice procedures		979	100.0%	1,043	100.0%	Stable	
Transport regulatory offences		399	0.9%	427	1.1%	Stable	
Other offences		4,165	8.2%	2,339	17.1%	Stable	

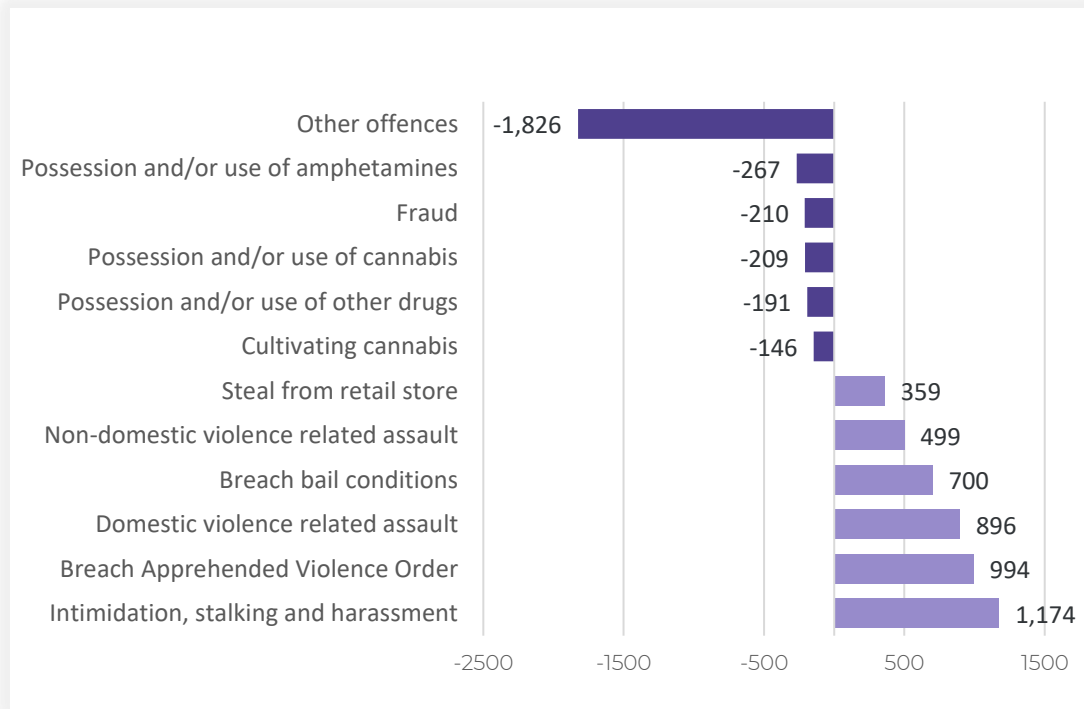
## NSW Recorded Crime Statistics, September Quarter 2022

**Table 3.4: Young people proceeded against to court by the NSW Police Force for all 62 criminal offences**  
Over the two years to September 2022

Offence category		12 months to September 2021		12 months to September 2022		2 Year Trend	
		No. proceeded to court	% proceeded to court	No. proceeded to court	% proceeded to court	Trend test result	Percentage change
Homicide	Murder	5	100.0%	11	100.0%	n.c.	
	Attempted murder	1	100.0%	0		n.c.	
	Murder accessory, conspiracy	0		0		n.c.	
	Manslaughter	0		0		n.c.	
Assault	Domestic violence related assault	470	45.7%	452	39.4%	Stable	
	Non-domestic violence related assault	957	40.4%	783	35.7%	Down	-18.2%
	Assault Police	128	77.6%	124	77.0%	Stable	
Sexual offences	Sexual assault	153	99.4%	132	99.2%	Stable	
	Sexual touching, sexual act and other sexual offences	83	76.9%	93	77.5%	Stable	
Abduction and kidnapping		8	88.9%	6	100.0%	n.c.	
Robbery	Robbery without a weapon	341	94.7%	274	93.2%	Stable	
	Robbery with a firearm	13	100.0%	12	100.0%	n.c.	
	Robbery with a weapon not a firearm	212	94.6%	153	96.8%	Stable	
Blackmail and extortion		1	100.0%	1	100.0%	n.c.	
Intimidation, stalking and harassment		1,156	70.3%	1,205	73.0%	Stable	
Other offences against the person		21	60.0%	20	62.5%	Stable	
Theft	Break and enter dwelling	495	67.4%	834	86.5%	Up	68.5%
	Break and enter non-dwelling	293	45.9%	326	51.9%	Stable	
	Receiving or handling stolen goods	199	60.3%	211	55.4%	Stable	
	Motor vehicle theft	524	66.8%	813	77.8%	Up	55.2%
	Steal from motor vehicle	342	64.4%	330	75.9%	Stable	
	Steal from retail store	481	34.7%	378	29.0%	Stable	
	Steal from dwelling	57	33.9%	68	43.3%	Stable	
	Steal from person	50	52.6%	38	51.4%	Stable	
	Stock theft	3	100.0%	0		n.c.	
	Fraud	238	62.0%	259	65.4%	Stable	
Other theft		146	34.0%	104	33.3%	Stable	
		17	19.5%	33	42.9%	n.c.	
Malicious damage to property		503	33.1%	503	34.5%	Stable	
Drug offences	Possession and/or use of cocaine	6	33.3%	8	42.1%	n.c.	
	Possession and/or use of narcotics	0		1	100.0%	n.c.	
	Possession and/or use of cannabis	188	15.7%	171	16.3%	Stable	
	Possession and/or use of amphetamines	7	50.0%	15	62.5%	n.c.	
	Possession and/or use of ecstasy	5	18.5%	3	30.0%	n.c.	
	Possession and/or use of other drugs	20	31.7%	16	34.0%	n.c.	
	Dealing, trafficking in cocaine	24	100.0%	18	100.0%	n.c.	
	Dealing, trafficking in narcotics	0		0		n.c.	
	Dealing, trafficking in cannabis	19	76.0%	32	84.2%	n.c.	
	Dealing, trafficking in amphetamines	4	100.0%	1	100.0%	n.c.	
	Dealing, trafficking in ecstasy	8	100.0%	1	100.0%	n.c.	
	Dealing, trafficking in other drugs	7	63.6%	1	33.3%	n.c.	
	Cultivating cannabis	5	55.6%	2	100.0%	n.c.	
	Manufacture drug	0		0		n.c.	
Importing drugs	0		0		n.c.		
Other drug offences		2	3.4%	5	6.3%	n.c.	
Prohibited and regulated weapons offences		149	31.5%	151	29.3%	Stable	
Disorderly conduct	Trespass	183	15.8%	155	12.1%	Stable	
	Offensive conduct	17	6.0%	26	13.1%	n.c.	
	Offensive language	7	10.0%	5	7.8%	n.c.	
	Criminal intent	196	88.7%	239	86.0%	Up	21.9%
Betting and gaming offences		0		0		n.c.	
Liquor offences		1	0.5%	1	0.4%	n.c.	
Pornography offences		13	15.1%	12	15.2%	n.c.	
Prostitution offences		0		0		n.c.	
Against justice procedures	Escape custody	17	100.0%	11	84.6%	n.c.	
	Breach Apprehended Violence Order	516	99.4%	481	99.6%	Stable	
	Breach bail conditions	1,409	98.6%	1,430	98.8%	Stable	
	Fail to appear	0		0		n.c.	
	Resist or hinder officer	80	48.2%	80	44.4%	Stable	
Other offences against justice procedures		6	100.0%	7	77.8%	n.c.	
Transport regulatory offences		26	0.1%	22	0.1%	Stable	
Other offences		208	4.3%	155	6.0%	Stable	

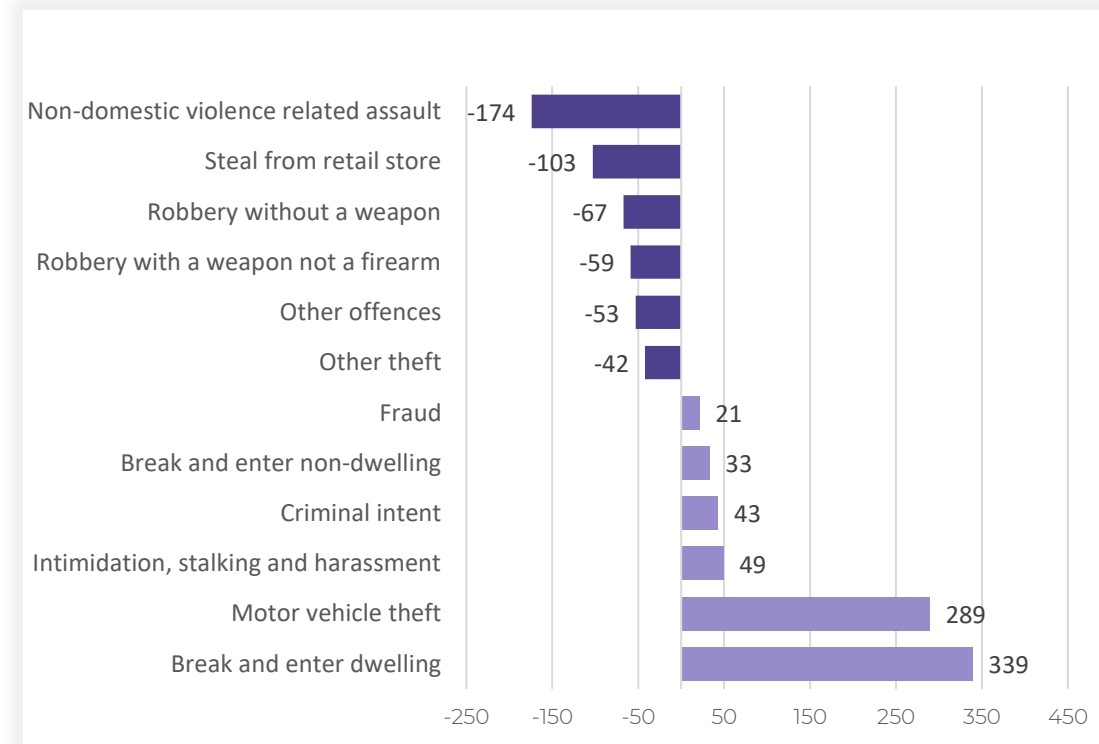
**Figure 3.5: Offences with the largest change in the number of adults proceeded against to court by the NSW Police Force**

Between the 12 months to September 2021 and the 12 months to September 2022



**Figure 3.6: Offences with the largest change in the number of young people proceeded against to court by the NSW Police Force**

Between the 12 months to September 2021 and the 12 months to September 2022



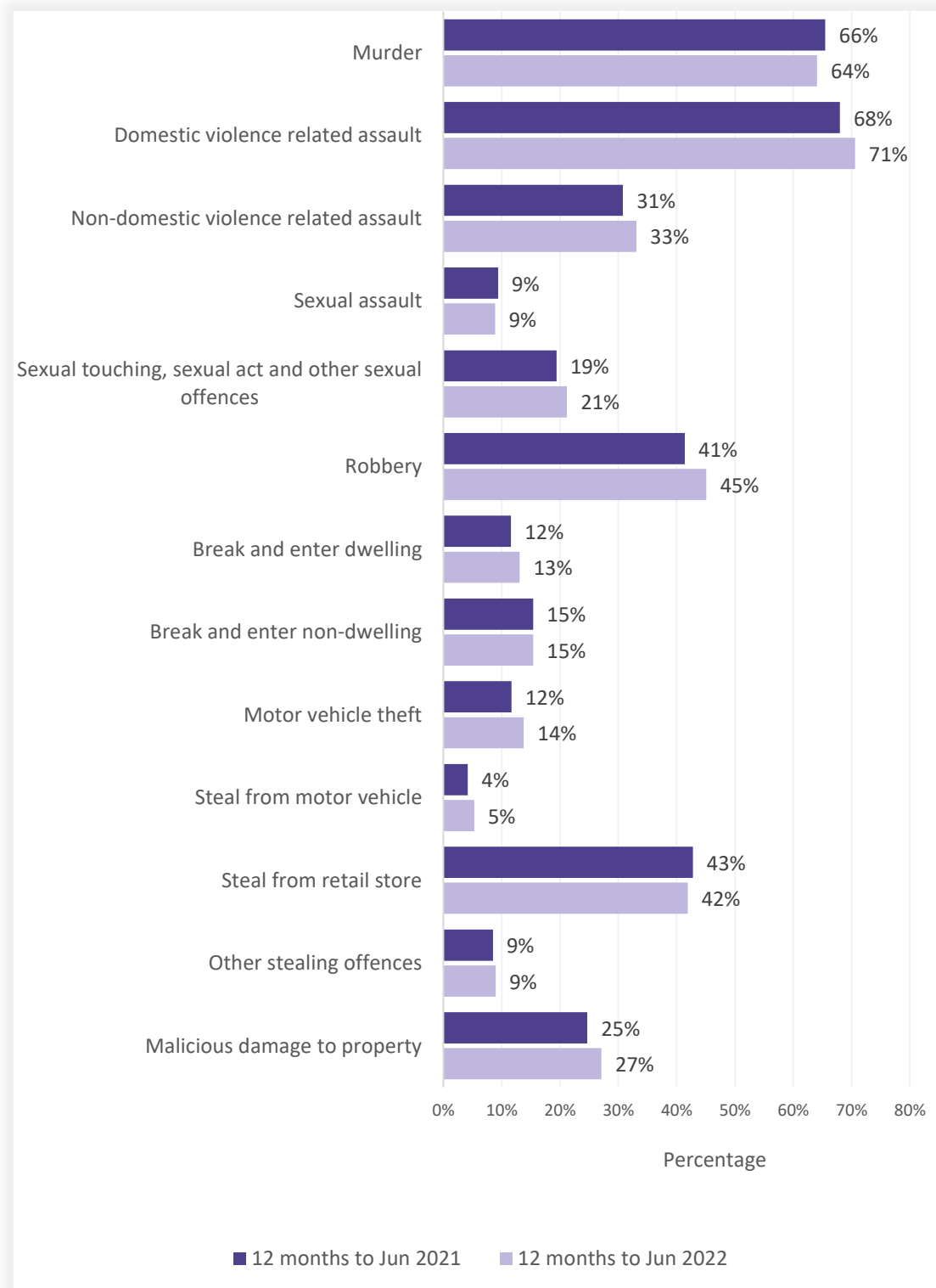
## NSW Recorded Crime Statistics, September Quarter 2022

**Table 3.7: Incidents of all 62 criminal offence types by whether legal proceedings commenced within 90 days of reporting**  
Over the two years to June 2022

Offence category		Recorded criminal incidents over the 12 months to June 2021			Recorded criminal incidents over the 12 months to June 2022		
		Proceedings commenced within 90 days	Total number recorded	% proceedings commenced within 90 days	Proceedings commenced within 90 days	Total number recorded	% proceedings commenced within 90 days
Homicide	Murder	38	58	65.5%	41	64	64.1%
	Attempted murder	15	28	53.6%	12	14	85.7%
	Murder accessory, conspiracy	0	0	0.0%	0	1	0.0%
	Manslaughter	1	2	50.0%	2	3	66.7%
Assault	Domestic violence related assault	22,399	32,926	68.0%	22,504	31,853	70.6%
	Non-domestic violence related assault	9,537	30,997	30.8%	9,183	27,779	33.1%
	Assault Police	2,171	2,441	88.9%	2,391	2,674	89.4%
Sexual offences	Sexual assault	745	7,967	9.4%	627	7,038	8.9%
	Sexual touching, sexual act and other sexual offences	1,599	8,239	19.4%	1,488	7,032	21.2%
Abduction and kidnapping		128	233	54.9%	112	181	61.9%
Robbery	Robbery without a weapon	440	1,149	38.3%	335	795	42.1%
	Robbery with a firearm	46	110	41.8%	44	79	55.7%
	Robbery with a weapon not a firearm	393	865	45.4%	312	658	47.4%
Blackmail and extortion		15	121	12.4%	12	164	7.3%
Intimidation, stalking and harassment		18,085	41,548	43.5%	18,941	40,994	46.2%
Other offences against the person		417	1,427	29.2%	525	1,762	29.8%
Theft	Break and enter dwelling	2,227	19,257	11.6%	2,262	17,325	13.1%
	Break and enter non-dwelling	1,095	7,099	15.4%	1,083	7,011	15.4%
	Receiving or handling stolen goods	5,780	7,504	77.0%	5,723	7,379	77.6%
	Motor vehicle theft	1,353	11,546	11.7%	1,484	10,716	13.8%
	Steal from motor vehicle	1,198	28,735	4.2%	1,394	26,358	5.3%
	Steal from retail store	8,787	20,531	42.8%	7,219	17,249	41.9%
	Steal from dwelling	897	16,453	5.5%	1,050	15,540	6.8%
	Steal from person	367	2,095	17.5%	305	1,657	18.4%
	Stock theft	9	348	2.6%	9	277	3.2%
	Fraud	3,840	46,026	8.3%	3,243	44,147	7.3%
	Other theft	1,936	18,891	10.2%	1,696	16,478	10.3%
Arson		214	3,975	5.4%	184	3,455	5.3%
Malicious damage to property		13,187	53,437	24.7%	12,898	47,555	27.1%
Drug offences	Possession and/or use of cocaine	1,790	2,430	73.7%	1,685	2,292	73.5%
	Possession and/or use of narcotics	728	1,138	64.0%	771	1,262	61.1%
	Possession and/or use of cannabis	12,616	16,444	76.7%	11,856	15,673	75.6%
	Possession and/or use of amphetamines	5,245	7,059	74.3%	4,870	6,666	73.1%
	Possession and/or use of ecstasy	401	597	67.2%	472	616	76.6%
	Possession and/or use of other drugs	3,218	6,552	49.1%	2,926	6,136	47.7%
	Dealing, trafficking in cocaine	1,119	1,551	72.1%	840	1,080	77.8%
	Dealing, trafficking in narcotics	183	272	67.3%	401	454	88.3%
	Dealing, trafficking in cannabis	696	882	78.9%	600	753	79.7%
	Dealing, trafficking in amphetamines	2,359	2,800	84.3%	2,274	2,828	80.4%
	Dealing, trafficking in ecstasy	199	280	71.1%	127	153	83.0%
	Dealing, trafficking in other drugs	390	577	67.6%	321	474	67.7%
	Cultivating cannabis	745	1,138	65.5%	655	964	67.9%
	Manufacture drug	40	67	59.7%	34	54	63.0%
	Importing drugs	78	238	32.8%	66	168	39.3%
Other drug offences	1,147	6,027	19.0%	1,041	5,373	19.4%	
Prohibited and regulated weapons offences		6,086	15,004	40.6%	5,827	13,561	43.0%
Disorderly conduct	Trespass	3,651	9,590	38.1%	3,695	9,328	39.6%
	Offensive conduct	2,641	3,943	67.0%	2,392	3,586	66.7%
	Offensive language	1,552	1,965	79.0%	1,379	1,764	78.2%
	Criminal intent	1,830	2,360	77.5%	1,938	2,411	80.4%
Betting and gaming offences		21	84	25.0%	16	121	13.2%
Liquor offences		3,111	9,260	33.6%	2,950	9,059	32.6%
Pornography offences		277	947	29.3%	251	921	27.3%
Prostitution offences		0	15	0.0%	1	16	6.3%
Against justice procedures	Escape custody	161	179	89.9%	132	159	83.0%
	Breach Apprehended Violence Order	16,691	20,574	81.1%	17,975	21,819	82.4%
	Breach bail conditions	16,367	50,949	32.1%	18,280	52,042	35.1%
	Fail to appear	5	790	0.6%	14	908	1.5%
	Resist or hinder officer	4,575	5,503	83.1%	4,800	5,700	84.2%
	Other offences against justice procedures	1,196	1,895	63.1%	1,239	2,053	60.4%
Transport regulatory offences		63,673	74,575	85.4%	55,566	64,952	85.5%
Other offences		7,921	29,279	27.1%	24,041	89,701	26.8%

**Figure 3.8: Percentage of recorded criminal incidents for major offences by whether legal proceedings commenced within 90 days of reporting**

Over the two years to June 2022



# SECTION 4: POLICING ACTIVITY

**Table 4.1: Selected policing activities**  
Over the five years to September 2022

	Number of selected policing activities					2 Year Trend		5 Year Trend	
	12 months to September 2018	12 months to September 2019	12 months to September 2020	12 months to September 2021	12 months to September 2022	Number change	Annual percentage change	Number change	Annual average percentage change
Bail compliance checks	108,977	96,009	113,315	119,264	142,824	23,560	19.8%	33,847	7.0%
ADVO compliance checks	22,590	49,080	71,379	89,395	144,253	54,858	61.4%	121,663	59.0%
Move-on directions	105,509	107,895	109,660	100,390	90,407	-9,983	-9.9%	-15,102	-3.8%
Searches	285,119	287,484	281,196	245,931	224,287	-21,644	-8.8%	-60,832	-5.8%
Vehicle searches	46,806	44,560	47,258	44,244	39,222	-5,022	-11.4%	-7,584	-4.3%
Person searches	232,528	238,228	230,268	199,381	183,021	-16,360	-8.2%	-49,507	-5.8%
Strip searches	5,785	4,696	3,670	2,306	2,044	-262	-11.4%	-3,741	-22.9%
Convey/detain person to mental health facility	14,326	16,124	17,392	18,898	20,265	1,367	Stable	5,939	9.1%



## NSW Recorded Crime Statistics, September Quarter 2022

**Table 4.2: Non-criminal domestic violence episodes by Statistical Area (SA4)**  
Over the five years to September 2022

Statistical Area	Number of activities					Trend and average annual percentage change	
	12 months to September 2018	12 months to September 2019	12 months to September 2020	12 months to September 2021	12 months to September 2022	2 Year Trend	5 Year Trend
						Percentage change	Annual average percentage change
<b>Greater Sydney</b>	44,986	46,613	49,856	46,141	43,186	-6.4%	Stable
Baulkham Hills and Hawkesbury	979	1,134	1,203	1,163	1,077	-7.4%	Stable
Blacktown	5,468	5,195	5,482	5,364	5,077	-5.4%	-1.8%
Central Coast	4,352	4,505	5,095	4,637	4,470	-3.6%	Stable
City and Inner South	3,176	3,484	3,600	3,472	3,394	-2.2%	Stable
Eastern Suburbs	1,675	1,856	2,037	1,973	1,935	-1.9%	Stable
Inner South West	5,369	5,129	5,470	4,948	4,539	-8.3%	-4.1%
Inner West	2,018	2,020	2,207	1,922	1,851	-3.7%	-2.1%
North Sydney and Hornsby	1,556	1,590	1,880	1,816	1,693	Stable	Stable
Northern Beaches	1,510	1,625	1,709	1,447	1,309	-9.5%	-3.5%
Outer South West	3,473	3,537	3,734	3,452	3,132	-9.3%	-2.6%
Outer West and Blue Mountains	4,460	4,744	4,984	4,582	4,109	-10.3%	-2.0%
Parramatta	4,147	4,124	4,659	4,059	4,157	Stable	Stable
Ryde	909	1,098	1,194	1,161	1,034	Stable	Stable
South West	4,338	4,776	4,717	4,399	3,992	-9.3%	-2.1%
Sutherland	1,556	1,796	1,885	1,746	1,417	-18.8%	Stable
<b>Regional NSW</b>	35,535	37,265	39,771	39,748	37,417	-5.9%	Stable
Capital Region	2,138	2,460	2,785	2,893	2,679	-7.4%	5.8%
Central West	2,998	3,023	3,340	3,254	3,165	Stable	Stable
Coffs Harbour - Grafton	2,024	1,919	1,979	1,936	2,014	Stable	Stable
Far West and Orana	3,518	3,620	3,725	3,833	3,651	-4.7%	Stable
Hunter Valley excluding Newcastle	2,833	2,790	2,983	3,219	3,099	Stable	Stable
Illawarra	3,410	3,616	3,768	3,676	3,600	Stable	Stable
Mid North Coast	3,009	3,222	3,420	3,294	2,874	-12.8%	Stable
Murray	1,626	1,863	2,020	2,056	1,850	-10.0%	Stable
New England and North West	3,691	3,780	3,856	3,767	3,742	-0.7%	Stable
Newcastle and Lake Macquarie	3,605	3,612	4,296	4,359	3,920	-10.1%	2.1%
Richmond - Tweed	2,593	2,728	2,846	2,895	2,791	Stable	Stable
Riverina	2,512	2,805	2,887	2,735	2,310	-15.5%	-2.1%
Southern Highlands and Shoalhaven	1,578	1,827	1,866	1,831	1,722	-6.0%	Stable
<b>NSW</b>	<b>80,541</b>	<b>83,890</b>	<b>89,639</b>	<b>85,897</b>	<b>80,619</b>	<b>-6.1%</b>	<b>Stable</b>

**Table 4.3: Ratio to NSW rate of non-criminal domestic violence episodes per 100,000 population by Statistical Area (SA4)**

Over the five years to September 2022

Statistical Area	12 months to September 2018	12 months to September 2019	12 months to September 2020	12 months to September 2021	12 months to September 2022
<b>Greater Sydney</b>	0.9	0.8	0.8	0.8	0.8
Baulkham Hills and Hawkesbury	0.4	0.4	0.4	0.4	0.4
Blacktown	1.5	1.3	1.3	1.3	1.3
Central Coast	1.3	1.3	1.3	1.3	1.3
City and Inner South	0.9	0.9	0.9	0.9	0.9
Eastern Suburbs	0.6	0.6	0.6	0.6	0.7
Inner South West	0.9	0.8	0.8	0.7	0.7
Inner West	0.6	0.6	0.6	0.6	0.6
North Sydney and Hornsby	0.4	0.3	0.4	0.4	0.4
Northern Beaches	0.6	0.6	0.6	0.5	0.5
Outer South West	1.2	1.2	1.2	1.1	1.1
Outer West and Blue Mountains	1.4	1.4	1.4	1.3	1.3
Parramatta	0.8	0.8	0.8	0.8	0.8
Ryde	0.5	0.5	0.5	0.5	0.5
South West	1.0	1.0	0.9	0.9	0.9
Sutherland	0.7	0.8	0.7	0.7	0.6
<b>Regional NSW</b>	1.3	1.3	1.3	1.3	1.4
Capital Region	0.9	1.0	1.1	1.2	1.2
Central West	1.4	1.4	1.4	1.4	1.5
Coffs Harbour - Grafton	1.4	1.3	1.3	1.3	1.4
Far West and Orana	3.0	3.0	2.9	3.1	3.2
Hunter Valley excluding Newcastle	1.0	1.0	1.0	1.1	1.1
Illawarra	1.1	1.1	1.1	1.1	1.1
Mid North Coast	1.4	1.4	1.4	1.4	1.3
Murray	1.3	1.5	1.5	1.6	1.5
New England and North West	2.0	1.9	1.9	1.9	2.0
Newcastle and Lake Macquarie	1.0	0.9	1.0	1.1	1.0
Richmond - Tweed	1.0	1.0	1.0	1.1	1.1
Riverina	1.5	1.7	1.6	1.6	1.4
Southern Highlands and Shoalhaven	1.0	1.1	1.1	1.1	1.1
<b>NSW</b>	<b>1.0</b>	<b>1.0</b>	<b>1.0</b>	<b>1.0</b>	<b>1.0</b>

# APPENDIX 1

# REGIONAL

# COMPARISONS

## Local Government Areas

## NSW Recorded Crime Statistics, September Quarter 2022

Appendix  
Table 1.1: Trends in recorded criminal incidents for major offences, NSW LGAs

Over the two years to September 2022

NSW LGA	Murder	Domestic violence related assault	Non-domestic violence related assault	Sexual assault	Sexual touching, sexual act and other sexual offences	Robbery	Break and enter dwelling	Break and enter non-dwelling	Motor vehicle theft	Steal from motor vehicle	Steal from retail store	Other stealing offences	Malicious damage to property
Albury	ns	ns	ns	ns	ns	ns	ns	ns	ns	ns	ns	ns	ns
Armidale Regional	ns	ns	ns	ns	ns	ns	ns	ns	ns	ns	ns	ns	ns
Ballina	ns	ns	ns	ns	ns	ns	ns	ns	ns	ns	ns	ns	ns
Balranald	ns	ns	ns	ns	ns	ns	ns	ns	ns	ns	ns	ns	ns
Bathurst Regional	ns	-16.3	-13.0	ns	ns	ns	ns	ns	ns	ns	-17.2	-14.5	ns
Bayside	ns	ns	ns	ns	ns	ns	ns	ns	ns	ns	ns	ns	ns
Bega Valley	ns	ns	ns	ns	ns	ns	-67.2	ns	ns	130.4	-23.7	ns	ns
Bellingen	-38.5	ns	ns	ns	ns	ns	ns	ns	63.6	ns	ns	ns	ns
Berrigan	ns	ns	ns	ns	ns	ns	ns	ns	ns	ns	ns	ns	ns
Blacktown	-9.0	-9.4	ns	ns	-28.2	ns	ns	ns	ns	18.5	ns	-7.9	ns
Bland	ns	ns	ns	ns	ns	ns	ns	ns	ns	ns	ns	ns	ns
Blayney	-38.9	ns	ns	ns	ns	ns	ns	ns	ns	ns	ns	ns	-43.5
Blue Mountains	ns	ns	ns	ns	ns	ns	ns	ns	ns	ns	ns	ns	ns
Bogan	ns	ns	ns	ns	ns	ns	ns	ns	ns	ns	ns	ns	ns
Bourke	ns	ns	ns	ns	ns	ns	ns	ns	ns	ns	ns	ns	ns
Brewarrina	ns	ns	ns	ns	ns	ns	ns	ns	ns	ns	ns	ns	ns
Broken Hill	ns	ns	ns	ns	ns	ns	ns	ns	ns	ns	ns	ns	ns
Burwood	ns	ns	ns	ns	ns	ns	ns	54.2	ns	-28.5	ns	ns	ns
Byron	ns	ns	ns	ns	ns	ns	ns	ns	ns	ns	-22.6	ns	ns
Cabonne	ns	ns	ns	ns	ns	ns	ns	ns	ns	ns	ns	ns	ns
Camden	ns	ns	ns	ns	ns	ns	ns	-31.8	ns	ns	ns	ns	-11.9
Campbelltown	ns	ns	ns	ns	ns	-16.0	-38.1	ns	ns	ns	ns	ns	-12.8
Canada Bay	ns	ns	ns	ns	ns	ns	ns	27.5	ns	ns	ns	ns	ns
Canterbury-Bankstown	ns	ns	ns	ns	ns	ns	ns	ns	ns	ns	-5.8	-5.2	ns
Carrathool	ns	ns	ns	ns	ns	ns	ns	ns	ns	ns	ns	ns	ns
Central Coast	ns	ns	ns	ns	ns	-17.7	ns	ns	ns	ns	-15.7	-12.6	ns
Central Darling	ns	ns	ns	ns	ns	ns	ns	ns	ns	ns	ns	ns	-50.0
Cessnock	ns	ns	ns	-24.1	ns	ns	ns	ns	ns	ns	ns	ns	ns
Clarence Valley	ns	ns	ns	ns	ns	ns	69.4	140.4	128.2	25.0	ns	ns	ns
Cobar	ns	ns	ns	ns	ns	ns	ns	ns	ns	ns	ns	ns	ns
Coffs Harbour	ns	ns	-25.0	ns	ns	ns	ns	34.1	ns	ns	ns	ns	ns
Coolamon	ns	ns	ns	ns	ns	ns	ns	ns	ns	ns	ns	ns	ns
Coonamble	-36.3	ns	ns	ns	ns	ns	ns	ns	ns	ns	ns	ns	ns
Cootamundra-Gundagai	ns	ns	ns	ns	ns	ns	ns	ns	ns	ns	ns	ns	ns
Cowra	ns	ns	ns	ns	ns	ns	ns	ns	ns	ns	ns	ns	ns
Cumberland	ns	ns	ns	ns	ns	ns	ns	ns	ns	ns	ns	ns	ns
Dubbo Regional	ns	ns	ns	ns	ns	ns	ns	52.2	ns	46.2	ns	ns	ns
Dungog	ns	ns	ns	ns	ns	ns	ns	ns	ns	ns	ns	ns	ns
Edward River	ns	ns	ns	ns	ns	ns	ns	ns	ns	ns	ns	ns	ns
Eurobodalla	ns	ns	ns	ns	ns	ns	ns	ns	ns	ns	ns	ns	ns
Fairfield	ns	ns	ns	ns	ns	ns	ns	ns	ns	ns	ns	ns	ns
Federation	ns	ns	ns	ns	ns	ns	ns	ns	ns	ns	ns	ns	ns
Forbes	ns	-37.9	ns	ns	ns	ns	ns	ns	-45.7	ns	ns	ns	ns
Georges River	ns	ns	ns	ns	ns	ns	ns	-11.5	ns	ns	ns	ns	ns
Gilgandra	ns	ns	ns	ns	ns	ns	ns	ns	ns	ns	ns	ns	ns
Glen Innes Severn	ns	ns	ns	ns	ns	ns	ns	ns	ns	ns	ns	ns	ns
Goulburn Mulwaree	ns	ns	-36.0	ns	ns	ns	ns	ns	ns	ns	ns	ns	ns

## NSW Recorded Crime Statistics, September Quarter 2022

NSW LGA	Murder	Domestic violence related assault	Non-domestic violence related assault	Sexual assault	Sexual touching, sexual act and other sexual offences	Robbery	Break and enter dwelling	Break and enter non-dwelling	Motor vehicle theft	Steal from motor vehicle	Steal from retail store	Other stealing offences	Malicious damage to property
Greater Hume Shire		ns								ns		ns	ns
Griffith		ns	ns	ns	ns		ns	56.9	ns	52.9	ns	ns	ns
Gunnedah		ns	-31.3				ns	ns	ns	-44.1	ns	ns	-21.4
Gwydir												ns	
Hawkesbury		ns	ns	ns	ns		ns	-45.2	ns	ns	ns	ns	ns
Hay												ns	ns
Hilltops		ns	ns				ns		ns	109.1		ns	ns
Hornsby		ns	ns	ns	ns		-47.5	ns	ns	ns	ns	ns	-16.4
Hunters Hill			ns				ns			ns		ns	-38.2
Inner West		ns	ns	ns	ns	ns	ns	ns	ns	-21.9	ns	ns	ns
Inverell		ns	78.8	ns	ns		ns	ns	ns	ns	ns	ns	ns
Junee			ns									ns	-42.6
Kempsey		ns	ns	ns	ns		ns	ns	ns	-22.5	72.9	ns	-17.1
Kiama		ns	ns							ns		ns	-28.6
Ku-ring-gai		ns	ns	ns	-52.8		ns	ns	ns	ns	-65.5	ns	-24.1
Kyogle		ns	ns									ns	ns
Lachlan		ns	ns				100.0	ns	77.8	ns		ns	ns
Lake Macquarie		ns	-9.9	ns	ns	ns	ns	-31.5	ns	ns	-17.3	-11.9	-8.8
Lane Cove		48.7	ns				ns		ns	ns	ns	ns	ns
Leeton		ns	ns	ns	ns		-34.9					ns	ns
Lismore		-18.1	ns	ns	ns		ns	ns	ns	ns	-39.5	ns	ns
Lithgow		ns	ns	ns	ns		ns	ns	ns	ns	ns	ns	ns
Liverpool		ns	ns	ns	ns	ns	ns	ns	ns	ns	ns	ns	ns
Liverpool Plains		ns	ns									ns	ns
Lockhart													
Lord Howe Island													
Maitland		26.0	ns	ns	ns	ns	ns	ns	ns	62.8	ns	-8.0	ns
Mid-Coast		-2.2	ns	ns	ns		ns	ns	ns	ns	18.1	-17.6	ns
Mid-Western Regional		ns	ns	ns	ns		-32.8			ns	ns	-33.6	ns
Moree Plains		ns	ns	ns	ns		ns	ns	ns	ns	ns	ns	ns
Mosman		ns	ns				ns			-57.1	ns	ns	ns
Murray River		ns	ns					ns	-3.7	ns		ns	ns
Murrumbidgee													ns
Muswellbrook		ns	ns	ns	ns		ns	ns	ns	ns	ns	ns	ns
Nambucca Valley		ns	ns		ns		ns	ns	ns	ns	ns	-26.5	ns
Narrabri		ns	ns				ns		ns	ns		ns	ns
Narrandera		ns	ns				ns			ns		-47.7	ns
Narromine		ns	ns				ns	ns		ns		ns	ns
Newcastle		ns	-5.7	ns	ns	ns	ns	39.3	ns	ns	ns	-2.4	-8.2
North Sydney		ns	ns	ns	ns		ns	ns	ns	ns	ns	-24.2	-31.3
Northern Beaches		-20.8	-7.8	ns	ns	ns	ns	-52.0	ns	-33.6	ns	-27.3	-23.4
Oberon												ns	ns
Orange		17.7	ns	ns	ns		ns	ns	ns	63.6	46.7	ns	ns
Parkes		ns	ns		ns		ns		ns	ns	53.8	ns	-20.9
Parramatta		ns	ns	ns	ns	ns	ns	ns	ns	ns	ns	13.5	ns
Penrith		ns	ns	ns	ns	ns	ns	ns	ns	ns	ns	-15.2	ns
Port Macquarie-Hastings		ns	ns	ns	ns		ns	-31.6	ns	ns	ns	ns	ns
Port Stephens		ns	ns	ns	ns		-35.7	ns	ns	ns	20.8	-17.5	ns
Queanbeyan-Palerang Regional		ns	ns	ns	ns		-25.8	ns	ns	ns	ns	-18.1	ns

NSW Recorded Crime Statistics, September Quarter 2022

NSW LGA	Murder	Domestic violence related assault	Non-domestic violence related assault	Sexual assault	Sexual touching, sexual act and other sexual offences	Robbery	Break and enter dwelling	Break and enter non-dwelling	Motor vehicle theft	Steal from motor vehicle	Steal from retail store	Other stealing offences	Malicious damage to property
Randwick		-5.7	ns	ns	ns		ns	ns	ns	ns	ns	ns	-6.0
Richmond Valley		ns	ns	ns	ns		62.6	ns	ns	ns	ns	ns	ns
Ryde		-24.5	ns	ns	ns		ns	ns	ns	ns	ns	ns	ns
Shellharbour		ns	ns	ns	ns		ns	ns	ns	ns	ns	ns	ns
Shoalhaven		ns	ns	ns	ns	ns	ns	ns	ns	ns	ns	-26.1	-3.4
Singleton		ns	ns	ns			ns	-49.6	ns	ns	ns	-27.7	ns
Snowy Monaro Regional		ns	ns	36.4			ns			ns		ns	-29.9
Snowy Valleys		ns	ns	ns						ns		ns	ns
Strathfield		ns	ns		ns		ns		ns	ns	ns	19.6	ns
Sutherland Shire		ns	ns	ns	ns	ns	-23.1	ns	-34.2	ns	ns	-20.1	ns
Sydney		ns	ns	ns	38.2	ns	ns	ns	ns	ns	ns	13.8	ns
Tamworth Regional		ns	ns	ns	ns		ns	ns	ns	-37.1	ns	ns	ns
Temora							ns					ns	ns
Tenterfield		ns	ns				ns					ns	ns
The Hills Shire		ns	ns	ns	ns		ns	ns	ns	ns	ns	ns	ns
Tweed		ns	ns	-31.8	ns		ns	-31.1	ns	ns	ns	ns	-8.4
Unincorporated Far West													
Upper Hunter Shire		ns	ns	ns			ns			ns		ns	ns
Upper Lachlan Shire												ns	ns
Uralla													ns
Wagga Wagga		ns	ns	ns	ns		ns	ns	91.2	68.6	ns	ns	-16.2
Walcha													ns
Walgett		ns	ns				ns			ns		ns	ns
Warren		ns										ns	ns
Warrumbungle Shire		ns	ns				ns			64.0		ns	ns
Waverley		ns	ns	ns	ns		ns		ns	ns	ns	-22.1	ns
Weddin													
Wentworth		ns	ns					ns		ns		ns	ns
Willoughby		37.2	ns	ns	ns		83.3	ns	ns	ns	ns	ns	ns
Wingecarribee		ns	ns	36.5	ns		ns		ns	ns	-47.8	ns	ns
Wollondilly		ns	ns	ns	ns		ns		ns	ns		ns	ns
Wollongong		ns	ns	ns	ns	ns	ns	ns	ns	ns	ns	-15.0	-6.1
Woollahra		ns	ns	ns	ns		ns		ns	ns	ns	ns	ns
Yass Valley		ns	ns									ns	ns
NSW	ns	ns	ns	ns	ns	ns	-2.5	ns	ns	ns	ns	-5.7	-3.7

# NSW Recorded Crime Statistics, September Quarter 2022

Appendix  
Table 1.2: Ratio to NSW rate of recorded criminal incidents per 100,000 population for major offences, NSW LGAs

12 months to September 2022

NSW LGA	Murder	Domestic violence related assault	Non-domestic violence related assault	Sexual assault	Sexual touching, sexual act and other sexual offences	Robbery	Break and enter dwelling	Break and enter non-dwelling	Motor vehicle theft	Steal from motor vehicle	Steal from retail store	Other stealing offences	Malicious damage to property
Albury		1.9	2.0	1.3	1.8	1.3	1.9	2.1	2.2	3.9	1.6	1.6	2.3
Armidale Regional		1.7	1.7	1.9	2.1	2.1	3.0	2.7	1.3	2.2	1.9	1.5	2.1
Ballina	3.3	0.8	0.9	0.9	0.8	1.3	0.8	0.9	1.0	1.1	0.6	1.1	1.0
Balranald													
Bathurst Regional	3.4	1.7	1.5	1.5	1.6	1.6	1.7	1.4	1.3	1.2	1.3	1.2	1.7
Bayside		0.9	0.6	0.5	0.5	0.8	0.5	0.4	0.6	0.6	1.0	0.9	0.7
Bega Valley		0.8	0.8	0.8	0.9		0.5	0.7	0.4	0.5	0.6	0.7	0.9
Bellingen		0.6	1.0	2.3	1.9		0.8	2.2	1.3	0.8	0.3	1.0	1.1
Berrigan		1.2	0.9	1.4	1.5	0.6	0.9	4.4	0.9	0.6	0.4	1.2	1.9
Blacktown	1.6	1.3	1.1	0.9	1.0	1.8	1.0	0.7	1.1	1.2	1.3	1.0	1.2
Bland		1.0	0.8	0.5	1.5		0.7	2.5	2.1	1.3	0.1	0.9	1.0
Blayney		0.7	0.6	1.3	0.7	1.3	1.1	2.8	0.6	0.5	0.2	1.0	0.8
Blue Mountains	1.9	0.8	0.7	1.1	0.8	0.4	0.5	0.6	0.4	0.5	0.5	0.6	1.1
Bogan													
Bourke													
Brewarrina													
Broken Hill		3.5	2.3	0.8	2.3	1.1	3.6	2.6	1.9	1.4	1.4	1.8	2.9
Burwood		0.6	0.8	0.7	0.8	1.7	1.1	1.1	0.6	0.7	2.5	1.3	0.6
Byron		0.8	1.7	1.3	1.0	0.1	0.6	1.6	1.4	1.0	0.5	1.2	1.3
Cabonne		0.8	0.5	0.9	0.7		0.9	1.2	1.3	0.5	0.1	0.7	0.8
Camden		0.8	0.4	0.5	0.7	0.5	0.3	0.3	0.5	0.6	0.5	0.4	0.5
Campbelltown	1.7	1.5	1.1	1.2	1.3	1.3	0.8	0.6	1.0	1.1	1.4	0.9	1.1
Canada Bay	1.6	0.4	0.3	0.3	0.4	0.4	0.6	0.5	0.6	0.6	0.5	0.7	0.4
Canterbury-Bankstown	2.8	0.9	0.7	0.6	0.7	1.0	0.6	0.5	0.9	0.8	0.5	0.6	0.6
Carrathool													
Central Coast	2.6	1.2	1.2	1.3	1.1	1.1	0.7	0.8	0.9	1.0	1.0	0.7	1.1
Central Darling													
Cessnock		1.3	1.4	1.8	1.5	1.0	1.3	1.6	2.8	1.8	1.0	1.8	1.6
Clarence Valley		1.1	1.2	0.9	1.3	0.8	1.7	2.3	1.9	1.5	0.8	1.8	1.3
Cobar		1.3	1.5	1.5	2.0		0.8	5.6	2.5	1.2	1.0	2.5	2.6
Coffs Harbour		1.8	1.7	1.6	1.5	1.5	1.5	2.0	2.0	1.8	1.1	1.4	1.7
Coolamon		0.6	0.3	1.5	0.5		0.6	0.8	1.0	0.1		0.8	0.8
Coonamble		3.7	3.2	1.9	2.5	2.5	8.6	5.5	2.5	2.1	1.0	3.3	4.9
Cootamundra-Gundagai		1.2	1.1	1.0	1.2	0.4	0.8	1.2	1.0	0.5	0.2	1.0	0.8
Cowra		2.0	1.6	0.8	2.3	2.3	3.9	3.4	2.4	1.0	0.9	1.6	1.9
Cumberland	3.1	0.9	0.8	0.6	0.6	1.1	1.0	0.7	1.2	1.0	0.6	0.8	0.7
Dubbo Regional		3.1	2.1	1.8	2.2	2.2	4.7	4.7	3.7	3.1	2.3	2.0	2.5
Dungog		0.9	0.7	1.2	1.0		0.4	0.5	1.2	0.7	0.1	1.2	0.9
Edward River	16.7	2.2	1.4	0.5	1.1	0.5	1.4	1.2	0.9	0.5	0.4	1.2	1.9
Eurobodalla		1.4	1.1	1.1	1.3	1.4	1.0	2.4	1.0	0.9	1.6	1.0	1.5
Fairfield	0.7	1.1	0.6	0.5	0.7	1.0	0.6	0.4	0.8	0.7	0.7	0.6	0.7
Federation	12.0	0.6	0.8	0.6	0.6		0.6	1.1	0.7	0.7	0.7	1.3	0.8
Forbes		1.3	1.6	1.2	1.4	1.0	3.2	1.9	2.4	1.3	0.8	1.8	2.6
Georges River		0.7	0.5	0.3	0.5	0.6	0.6	0.4	0.5	0.6	0.6	0.5	0.5
Gilgandra		2.2	1.5	3.6	1.6	3.5	2.2	4.8	1.2	0.8	0.7	1.3	2.3
Glen Innes Severn		1.5	1.3	2.6	2.2	0.5	3.0	3.8	1.8	1.2	1.9	2.3	2.5
Goulburn Mulwaree		1.0	1.1	1.1	1.6	0.6	1.1	1.4	0.8	0.6	1.3	1.7	1.2

NSW Recorded Crime Statistics, September Quarter 2022

NSW LGA	Murder	Domestic violence related assault	Non-domestic violence related assault	Sexual assault	Sexual touching, sexual act and other sexual offences	Robbery	Break and enter dwelling	Break and enter non-dwelling	Motor vehicle theft	Steal from motor vehicle	Steal from retail store	Other stealing offences	Malicious damage to property
Greater Hume Shire		0.8	0.5	1.8	1.2		0.7	1.2	1.3	0.6	0.2	0.9	0.6
Griffith		1.6	1.4	1.6	1.6	1.6	2.0	3.3	2.2	1.7	1.5	1.4	1.6
Gunnedah		2.3	1.4	1.7	1.4	0.4	4.1	2.6	3.5	1.5	0.8	1.5	2.0
Gwydir		0.6	0.9	0.8	1.5		0.7	1.1	0.9	0.7	0.1	0.9	0.5
Hawkesbury		1.0	0.8	1.0	1.2	0.6	0.6	0.4	0.9	0.5	0.7	0.6	0.8
Hay													
Hilltops		1.8	1.3	1.0	0.7	0.8	0.8	1.2	1.3	0.7	0.6	0.9	1.5
Hornsby	1.0	0.4	0.3	0.5	0.4	0.4	0.2	0.3	0.2	0.3	0.7	0.4	0.4
Hunters Hill		0.2	0.4	0.7	0.7		1.0	0.5	0.6	0.5	0.0	0.7	0.4
Inner West	3.0	0.6	0.7	0.7	0.8	1.0	0.7	0.7	0.7	0.7	0.9	1.0	0.8
Inverell		2.8	2.3	2.0	1.7	0.8	2.6	3.0	1.8	1.6	1.6	1.5	2.5
Junee		0.6	0.8	1.6	1.2	0.7	0.4	0.3	0.4	0.1	0.1	1.0	0.7
Kempsey	5.1	2.1	1.6	1.7	1.7	1.3	3.8	2.2	2.8	1.6	1.4	2.8	2.1
Kiama		0.3	0.3	0.8	0.6	0.4	0.3	0.9	0.6	1.0	0.1	0.5	0.5
Ku-ring-gai		0.3	0.1	0.3	0.2	0.2	0.5	0.3	0.3	0.4	0.1	0.3	0.3
Kyogle	17.2	0.9	0.9	1.1	0.3		1.2	2.3	1.4	0.4	0.4	0.7	0.8
Lachlan		2.2	2.2	0.9	2.0	3.2	5.3	13.0	5.5	1.8	0.5	2.2	2.9
Lake Macquarie		1.0	0.9	1.2	1.1	0.6	0.9	1.1	1.3	1.1	0.9	0.9	1.1
Lane Cove		0.4	0.2	0.4	0.3	0.2	0.7	0.4	0.5	0.4	0.3	0.7	0.4
Leeton		2.0	2.1	3.6	1.9	0.4	1.6	1.6	1.4	0.4	0.4	1.3	1.9
Lismore		1.3	1.7	1.7	1.6	1.2	1.5	2.8	2.2	1.5	0.5	1.3	1.5
Lithgow		1.6	1.5	1.9	1.5	1.1	0.9	1.2	0.7	0.9	0.9	1.9	1.5
Liverpool		1.2	0.9	0.8	0.9	1.1	0.9	0.6	0.9	1.0	1.0	0.9	0.9
Liverpool Plains		1.6	1.5	1.7	1.0	3.7	1.7	3.6	1.0	0.6	0.2	1.0	1.4
Lockhart		0.5	0.4	0.7	1.7	1.5	0.8		1.1	0.4		0.8	1.0
Lord Howe Island													
Maitland		1.6	1.2	1.7	1.4	1.2	1.1	1.3	1.3	1.8	1.3	1.5	1.4
Mid-Coast		1.4	1.2	1.4	1.6	0.8	2.2	3.0	1.4	1.1	0.9	1.9	1.5
Mid-Western Regional		1.6	1.3	2.0	1.5	0.4	0.7	0.8	0.7	0.3	0.6	0.8	1.5
Moree Plains	11.6	5.3	3.7	2.6	1.6	2.6	7.4	4.5	4.5	3.5	3.4	3.4	5.5
Mosman		0.2	0.3	0.6	0.8		0.5	0.2	0.4	0.5	0.3	0.7	0.4
Murray River		0.7	0.5	1.1	1.1		0.7	2.7	1.5	0.6	0.2	1.4	1.1
Murrumbidgee		1.1	0.6	0.6	0.3	2.5	1.7	2.0	1.6	0.2		0.8	1.6
Muswellbrook		1.9	2.1	2.1	2.0	0.6	2.3	2.1	1.8	1.8	1.1	2.9	2.1
Nambucca Valley		2.6	1.7	0.9	1.8	2.0	1.6	1.9	1.2	1.5	0.9	1.3	2.2
Narrabri		2.4	1.4	1.4	1.1	0.4	3.1	1.8	2.2	1.6	0.4	1.7	1.5
Narrandera		1.7	1.2	2.0	1.7	2.5	2.7	4.6	0.7	1.0	1.3	0.9	2.0
Narromine		2.5	2.0	1.7	3.2	2.3	2.4	4.7	2.4	1.4	0.2	2.0	1.8
Newcastle	2.7	1.1	1.7	1.4	1.1	2.6	2.3	2.2	2.4	2.9	1.9	1.8	1.8
North Sydney		0.3	0.5	0.4	0.5	0.2	0.5	0.5	0.3	0.5	0.6	0.7	0.4
Northern Beaches		0.2	0.5	0.5	0.6	0.5	0.4	0.3	0.4	0.5	0.8	0.5	0.5
Oberon		0.6	0.3	1.2	2.0		0.6	1.7	0.6	0.5		1.0	0.8
Orange		2.1	2.0	2.2	1.7	2.1	2.8	2.5	2.4	2.7	1.9	1.5	2.4
Parkes		1.9	1.7	1.3	2.0	0.7	1.2	1.5	1.6	1.7	1.1	2.0	2.0
Parramatta	1.2	0.8	0.8	0.7	0.9	1.1	1.2	0.8	0.8	1.1	1.1	1.2	0.7
Penrith		1.3	1.3	1.2	1.3	1.7	1.2	0.9	1.2	1.4	1.5	1.0	1.3
Port Macquarie-Hastings		1.1	1.1	1.1	1.4	0.5	0.8	1.0	1.0	0.8	0.6	1.2	1.1
Port Stephens		1.2	1.1	1.5	1.3	0.8	0.6	1.6	1.0	0.9	0.7	1.0	1.4
Queanbeyan-Palerang Regional		0.8	0.8	0.7	0.8	0.6	0.8	1.3	1.4	1.5	0.6	0.9	0.9



NSW Recorded Crime Statistics, September Quarter 2022

NSW LGA	Murder	Domestic violence related assault	Non-domestic violence related assault	Sexual assault	Sexual touching, sexual act and other sexual offences	Robbery	Break and enter dwelling	Break and enter non-dwelling	Motor vehicle theft	Steal from motor vehicle	Steal from retail store	Other stealing offences	Malicious damage to property
Randwick		0.6	0.8	0.6	0.7	0.5	0.6	0.2	0.5	0.8	0.5	0.8	0.6
Richmond Valley	12.9	1.8	1.4	1.8	1.7	0.8	3.3	3.4	2.7	1.7	0.5	1.5	2.2
Ryde		0.4	0.4	0.4	0.4	0.5	0.6	0.7	0.4	0.5	0.7	0.7	0.5
Shellharbour	2.0	0.8	0.7	0.8	1.0	0.5	0.7	0.5	1.0	1.1	1.3	0.7	1.0
Shoalhaven	2.8	1.0	1.1	1.3	1.2	1.0	1.0	1.2	0.9	0.8	0.9	0.8	1.2
Singleton		1.2	0.9	1.7	1.6	0.4	1.3	2.8	1.8	1.3	0.6	1.3	1.8
Snowy Monaro Regional		0.7	0.8	1.5	0.8		0.4	1.2	0.3	0.4	0.1	0.9	0.9
Snowy Valleys		1.3	1.4	2.1	1.0	1.0	0.6	1.3	0.9	0.5	0.5	1.1	1.4
Strathfield		0.7	0.6	0.7	0.5	0.8	1.2	0.6	0.6	1.0	0.9	1.0	0.5
Sutherland Shire		0.7	0.5	0.6	0.6	0.5	0.4	0.3	0.3	0.4	0.5	0.5	0.6
Sydney	1.2	1.2	2.7	1.3	1.8	2.5	0.9	1.5	0.7	0.9	3.4	3.2	1.3
Tamworth Regional		1.7	1.8	1.5	1.3	1.9	3.9	1.8	2.6	1.9	1.3	1.2	2.2
Temora		0.4	0.9	1.9	0.5		1.4	2.2	1.6	0.6	0.6	1.1	1.1
Tenterfield		1.6	1.3	2.3	1.7		1.9	1.7	1.4	0.4	0.3	1.3	1.6
The Hills Shire		0.4	0.4	0.6	0.6	0.5	0.5	0.5	0.4	0.4	0.6	0.6	0.5
Tweed	1.5	1.0	0.9	0.7	0.8	1.1	0.9	0.8	1.3	1.0	0.5	1.0	0.9
Unincorporated Far West													
Upper Hunter Shire		1.2	1.0	2.3	1.5	0.3	1.1	1.3	0.7	0.7	0.2	1.0	1.1
Upper Lachlan Shire		0.3	0.4	0.5	0.5	0.6	0.8	0.7	0.7	0.3		0.6	0.6
Uralla		1.1	0.5	0.4	0.9		0.6	1.9	1.1	0.3	0.1	0.6	0.7
Wagga Wagga	2.3	1.7	1.7	1.3	1.2	1.0	2.9	1.2	2.3	2.7	1.9	1.5	1.9
Walcha		1.4	1.2	2.4	0.7		1.0	3.6		0.3	0.5	0.6	1.5
Walgett		5.8	3.4	2.2	3.2	2.5	3.3	6.2	3.1	2.3	1.3	2.2	3.7
Warren													
Warrumbungle Shire		1.9	1.2	2.1	2.0		1.8	2.2	1.4	1.3	1.1	1.9	1.1
Waverley		0.6	1.0	0.7	1.1	0.8	0.5	0.3	0.8	0.4	3.3	0.9	0.7
Weddin		0.6	0.4	0.3	0.3		0.6		0.4	0.2	0.1	0.9	1.1
Wentworth		2.7	1.5	0.9	0.9		1.2	5.4	1.6	0.9	0.2	1.5	2.3
Willoughby		0.4	0.4	0.5	0.7	0.7	0.7	0.5	0.3	0.5	1.9	0.7	0.5
Wingecarribee		0.5	0.5	1.5	1.6	0.2	0.3	0.2	0.3	0.3	0.2	0.4	0.8
Wollondilly		0.8	0.4	0.5	0.8	0.2	0.3	0.2	0.5	0.3	0.1	0.5	0.5
Wollongong		0.7	1.0	1.0	0.9	1.1	1.0	0.9	1.2	1.4	1.5	0.9	1.0
Woollahra		0.5	0.6	0.7	0.7	0.2	0.8	0.3	0.9	0.5	0.4	0.8	0.5
Yass Valley		0.6	0.4	0.6	0.9	0.3	0.1	0.9	1.0	0.4	0.1	0.5	0.7
<b>NSW</b>	<b>1.0</b>	<b>1.0</b>	<b>1.0</b>	<b>1.0</b>	<b>1.0</b>	<b>1.0</b>	<b>1.0</b>	<b>1.0</b>	<b>1.0</b>	<b>1.0</b>	<b>1.0</b>	<b>1.0</b>	<b>1.0</b>

## NSW Recorded Crime Statistics, September Quarter 2022

Appendix  
Table 1.3: Number of recorded criminal incidents for major offences, NSW LGAs

12 months to September 2022

NSW LGA	Murder	Domestic violence related assault	Non-domestic violence related assault	Sexual assault	Sexual touching, sexual act and other sexual offences	Robbery	Break and enter dwelling	Break and enter non-dwelling	Motor vehicle theft	Steal from motor vehicle	Steal from retail store	Other stealing offences	Malicious damage to property
Albury	0	423	404	64	90	15	239	104	174	710	211	369	744
Armidale Regional	0	202	182	51	57	13	196	71	54	222	134	193	379
Ballina	1	146	153	38	31	12	80	37	66	159	64	202	257
Balranald	0	8	9	0	1	0	11	2	8	9	0	8	18
Bathurst Regional	1	298	237	60	63	14	169	56	83	183	139	226	442
Bayside	0	670	412	78	83	29	209	68	154	380	430	709	722
Bega Valley	0	112	96	26	29	0	36	22	22	58	53	100	178
Bellingen	0	32	47	28	23	0	23	26	24	36	10	55	87
Berrigan	0	41	29	11	12	1	18	34	11	18	8	43	97
Blacktown	4	2,000	1,524	330	363	145	880	231	589	1,549	1,212	1,695	2,655
Bland	0	23	18	3	8	0	9	13	18	26	1	22	34
Blayney	0	22	16	9	5	2	18	18	6	12	4	30	35
Blue Mountains	1	251	189	81	60	6	86	43	45	138	96	215	504
Bogan	0	32	12	2	2	2	16	32	11	22	7	26	59
Bourke	0	111	65	23	8	3	61	75	29	99	16	66	166
Brewarrina	0	65	36	7	2	1	24	12	7	8	2	13	56
Broken Hill	0	246	146	13	36	4	138	40	47	81	58	135	303
Burwood	0	94	122	26	31	14	98	39	37	94	248	232	151
Byron	0	122	219	43	34	1	44	51	69	121	44	188	280
Cabonne	0	46	24	11	9	0	27	15	26	24	3	38	67
Camden	0	329	176	49	66	11	79	30	73	204	135	202	325
Campbelltown	2	1,034	671	201	201	48	326	91	242	669	600	660	1,185
Canada Bay	1	146	119	31	39	8	136	43	88	209	108	286	255
Canterbury-Bankstown	7	1,344	908	205	225	75	505	184	495	1,055	458	926	1,399
Carrathool	0	18	9	6	1	0	7	24	14	5	2	14	34
Central Coast	6	1,651	1,500	411	359	75	544	241	424	1,178	827	1,061	2,251
Central Darling	0	88	26	5	6	2	11	23	5	6	0	19	35
Cessnock	0	311	311	102	82	13	182	86	248	367	153	457	585
Clarence Valley	0	240	222	45	59	8	191	105	137	267	100	398	414
Cobar	0	24	24	6	8	0	8	22	16	18	11	46	69
Coffs Harbour	0	572	488	117	106	24	257	136	224	465	213	474	779
Coolamon	0	11	4	6	2	0	6	3	6	1	0	14	21
Coonamble	0	58	45	7	9	2	75	19	14	27	9	55	114
Cootamundra-Gundagai	0	56	47	10	12	1	21	12	16	20	6	47	55
Cowra	0	102	76	9	27	6	111	38	43	42	29	85	147
Cumberland	5	923	718	134	133	57	531	147	413	830	335	786	966
Dubbo Regional	0	674	418	90	106	24	569	227	283	568	304	454	791
Dungog	0	37	23	11	9	0	8	4	16	22	2	51	54
Edward River	1	81	47	4	9	1	29	10	11	16	9	47	102
Eurobodalla	0	216	155	39	46	11	86	84	54	113	154	165	360
Fairfield	1	906	498	105	139	42	273	70	232	519	354	568	908
Federation	1	33	36	7	7	0	16	12	13	31	21	69	59
Forbes	0	52	59	11	13	2	70	17	34	44	19	77	153
Georges River	0	438	294	51	80	21	197	59	116	309	226	348	463
Gilgandra	0	38	23	14	6	3	21	18	7	11	7	24	57
Glen Innes Severn	0	54	41	21	18	1	60	30	23	37	41	87	135

NSW Recorded Crime Statistics, September Quarter 2022

NSW LGA	Murder	Domestic violence related assault	Non-domestic violence related assault	Sexual assault	Sexual touching, sexual act and other sexual offences	Robbery	Break and enter dwelling	Break and enter non-dwelling	Motor vehicle theft	Steal from motor vehicle	Steal from retail store	Other stealing offences	Malicious damage to property
Goulburn Mulwaree	0	131	129	32	46	4	78	40	35	68	101	223	232
Greater Hume Shire	0	33	21	18	12	0	17	12	20	23	6	42	39
Griffith	0	181	135	41	39	9	124	80	87	156	101	156	267
Gunnedah	0	116	66	20	16	1	117	29	63	62	26	82	154
Gwydir	0	12	17	4	7	0	8	5	7	12	1	20	15
Hawkesbury	0	287	193	60	71	8	85	23	85	108	110	177	334
Hay	0	26	19	8	2	0	18	12	5	7	2	22	38
Hilltops	0	139	89	18	11	3	32	19	35	46	28	74	164
Hornsby	1	220	161	69	61	14	74	47	41	158	264	237	367
Hunters Hill	0	14	20	9	10	0	33	6	13	24	1	44	34
Inner West	4	470	545	135	150	41	293	131	190	481	434	839	914
Inverell	0	198	152	33	28	3	102	47	46	96	67	114	266
Junee	0	15	20	10	7	1	6	2	4	2	2	28	27
Kempsey	1	257	178	46	46	8	251	57	118	165	102	356	377
Kiama	0	30	25	17	13	2	17	18	19	79	5	52	70
Ku-ring-gai	0	135	66	39	25	6	152	35	54	154	29	147	205
Kyogle	1	32	30	9	2	0	24	18	17	12	9	27	40
Lachlan	0	54	48	5	11	4	72	70	48	37	8	58	106
Lake Macquarie	0	822	663	236	204	26	398	200	382	752	474	758	1,302
Lane Cove	0	58	35	14	12	2	67	15	26	60	31	125	87
Leeton	0	90	85	38	20	1	41	16	22	16	10	64	127
Lismore	0	222	267	70	65	11	150	109	137	215	49	238	396
Lithgow	0	139	116	37	29	5	44	22	21	67	47	174	196
Liverpool	0	1,081	744	163	192	53	476	117	307	779	541	857	1,197
Liverpool Plains	0	52	42	12	7	6	29	25	11	17	3	32	64
Lockhart	0	6	5	2	5	1	6	0	5	4	0	11	19
Lord Howe Island	0	0	1	0	0	0	1	0	0	0	0	3	5
Maitland	0	558	385	135	113	21	219	99	166	516	285	552	723
Mid-Coast	0	529	430	121	141	16	474	249	182	338	209	749	871
Mid-Western Regional	0	162	119	46	34	2	39	17	24	27	36	91	220
Moree Plains	1	283	178	31	19	7	215	52	84	152	109	190	430
Mosman	0	24	39	16	22	0	31	5	17	48	23	86	81
Murray River	0	34	24	13	12	0	18	29	26	26	5	75	79
Murrumbidgee	0	17	9	2	1	2	15	7	9	2	0	13	37
Muswellbrook	0	128	124	32	29	2	84	30	43	101	43	200	203
Nambucca Valley	0	207	127	16	32	8	70	34	34	98	43	111	265
Narrabri	0	126	65	17	13	1	91	21	41	70	14	95	113
Narrandera	0	41	26	11	9	3	35	24	6	20	19	23	69
Narromine	0	66	48	10	19	3	35	27	22	31	3	54	71
Newcastle	3	779	1,047	212	161	89	854	333	563	1,627	753	1,281	1,758
North Sydney	0	77	128	29	36	3	80	32	30	115	102	219	189
Northern Beaches	0	252	476	131	145	29	224	61	165	455	505	559	784
Oberon	0	13	6	6	10	0	7	8	5	9	0	22	27
Orange	0	365	315	87	65	18	263	94	147	386	198	278	604
Parkes	0	116	90	18	27	2	40	19	33	85	40	122	178
Parramatta	2	839	759	176	223	61	715	181	306	926	702	1,358	1,036
Penrith	0	1,131	1,019	247	259	76	594	177	377	977	759	896	1,665
Port Macquarie-Hastings	0	371	336	90	106	9	153	78	123	220	135	424	583
Port Stephens	0	370	304	103	91	12	108	105	103	231	128	315	605

## NSW Recorded Crime Statistics, September Quarter 2022

NSW LGA	Murder	Domestic violence related assault	Non-domestic violence related assault	Sexual assault	Sexual touching, sexual act and other sexual offences	Robbery	Break and enter dwelling	Break and enter non-dwelling	Motor vehicle theft	Steal from motor vehicle	Steal from retail store	Other stealing offences	Malicious damage to property
Queanbeyan-Palerang Regional	0	194	187	43	48	8	112	72	122	319	96	249	341
Randwick	0	361	474	86	93	17	203	34	105	404	192	524	564
Richmond Valley	2	171	124	40	37	4	174	71	90	136	30	149	315
Ryde	0	222	209	54	48	13	191	82	70	206	220	375	376
Shellharbour	1	240	195	53	70	7	113	30	102	265	230	224	456
Shoalhaven	2	449	434	124	118	21	246	116	131	287	225	386	788
Singleton	0	111	79	37	33	2	67	57	61	104	34	128	251
Snowy Monaro Regional	0	61	61	30	16	0	21	22	9	30	5	83	110
Snowy Valleys	0	75	72	28	13	3	19	17	18	23	18	70	118
Strathfield	0	127	99	29	20	8	128	25	42	158	108	201	144
Sutherland Shire	0	667	438	124	117	25	193	58	106	345	291	446	853
Sydney	2	1,172	2,495	295	416	125	474	322	239	754	2,066	3,370	2,002
Tamworth Regional	0	440	401	87	76	25	544	100	230	397	192	327	809
Temora	0	11	20	11	3	0	20	12	14	13	9	29	40
Tenterfield	0	43	31	14	10	0	27	10	13	8	5	37	60
The Hills Shire	0	328	247	94	96	19	214	77	99	238	261	431	537
Tweed	1	413	319	60	69	23	197	73	182	333	112	403	555
Unincorporated Far West	0	1	7	7	6	0	7	2	2	8	2	8	4
Upper Hunter Shire	0	67	50	30	19	1	36	16	15	32	6	63	90
Upper Lachlan Shire	0	11	11	4	4	1	14	5	8	7	0	21	30
Uralla	0	27	11	2	5	0	8	10	9	6	2	16	26
Wagga Wagga	1	464	405	82	74	13	425	67	216	585	310	426	746
Walcha	0	17	14	7	2	0	7	10	0	3	4	8	27
Walgett	0	138	72	12	17	3	43	32	26	45	18	55	130
Warren	0	36	21	3	4	1	25	10	21	37	5	38	41
Warrumbungle Shire	0	72	42	18	17	0	38	18	19	41	24	74	61
Waverley	0	167	280	50	75	12	88	23	86	104	591	296	315
Weddin	0	9	5	1	1	0	5	0	2	3	1	14	24
Wentworth	0	78	39	6	6	0	19	34	16	22	3	44	97
Willoughby	0	118	110	39	50	12	132	36	36	144	380	234	229
Wingecarribee	0	110	95	71	73	2	31	10	21	54	24	96	239
Wollondilly	0	177	77	26	41	2	38	9	35	48	12	104	175
Wollongong	0	640	776	197	184	51	490	184	363	1,008	777	862	1,274
Woollahra	0	111	132	38	39	2	101	16	73	92	64	194	175
Yass Valley	0	42	25	10	14	1	5	14	24	24	3	36	72
In Custody	1	3	994	443	127	4	0	0	0	1	0	6	83
<b>NSW</b>	<b>54</b>	<b>33,061</b>	<b>29,855</b>	<b>7,550</b>	<b>7,414</b>	<b>1,675</b>	<b>18,235</b>	<b>7,235</b>	<b>11,636</b>	<b>27,326</b>	<b>19,745</b>	<b>34,685</b>	<b>48,740</b>

# NSW Recorded Crime Statistics, September Quarter 2022

Appendix  
Table 1.4: Number of recorded criminal incidents for major offences, NSW LGAs

12 months to September 2021

NSW LGA	Murder	Domestic violence related assault	Non-domestic violence related assault	Sexual assault	Sexual touching, sexual act and other sexual offences	Robbery	Break and enter dwelling	Break and enter non-dwelling	Motor vehicle theft	Steal from motor vehicle	Steal from retail store	Other stealing offences	Malicious damage to property
Albury	1	355	361	68	71	23	279	89	125	531	263	406	733
Armidale Regional	0	215	192	68	43	6	222	70	52	192	97	226	345
Ballina	0	163	130	56	41	10	75	29	59	195	98	265	265
Balranald	0	8	6	0	1	0	9	3	0	5	0	17	12
Bathurst Regional	0	327	283	69	82	15	148	50	46	241	117	273	517
Bayside	0	616	403	83	91	23	219	61	171	347	308	662	758
Bega Valley	0	126	105	29	44	2	47	67	31	69	23	131	193
Bellingen	0	52	49	14	20	2	21	15	20	22	6	48	143
Berrigan	0	19	38	14	8	0	17	16	9	20	7	26	60
Blacktown	4	2,199	1,682	380	402	202	808	241	605	1,720	1,023	1,731	2,882
Bland	0	42	30	8	5	0	11	11	9	14	4	25	28
Blayney	0	36	28	8	8	0	26	11	12	13	9	31	62
Blue Mountains	1	199	164	80	83	7	87	49	37	164	73	191	528
Bogan	0	17	8	5	7	1	9	11	10	14	3	32	42
Bourke	1	132	77	14	11	3	67	60	26	34	31	79	192
Brewarrina	0	63	24	7	4	0	18	11	2	14	0	23	63
Broken Hill	0	236	158	24	22	7	169	33	28	102	43	160	318
Burwood	0	88	103	12	26	11	54	26	24	89	347	187	160
Byron	0	125	205	45	41	6	62	61	91	130	56	243	302
Cabonne	0	27	28	16	14	0	24	25	11	17	7	43	54
Camden	1	325	154	60	83	10	84	38	107	248	125	244	369
Campbelltown	1	942	640	195	214	63	388	147	283	774	520	713	1,359
Canada Bay	0	111	121	41	38	10	124	33	69	184	131	298	253
Canterbury-Bankstown	2	1,386	843	185	234	94	535	147	485	1,211	491	983	1,475
Carrathool	1	22	17	4	2	0	6	10	3	7	1	21	20
Central Coast	2	1,427	1,407	396	406	55	661	233	459	1,254	858	1,258	2,576
Central Darling	0	109	16	6	4	0	28	23	12	10	0	20	70
Cessnock	0	311	240	84	108	9	179	107	282	292	111	476	530
Clarence Valley	0	238	219	48	53	10	123	62	57	117	80	364	398
Cobar	0	22	23	3	4	0	15	11	7	12	7	28	61
Coffs Harbour	0	533	518	156	142	38	232	215	167	365	187	447	707
Coolamon	0	13	4	6	2	0	2	8	1	1	0	14	14
Coonamble	0	91	61	11	9	2	64	21	18	31	6	59	120
Cootamundra-Gundagai	0	46	29	8	31	0	19	16	15	17	13	61	77
Cowra	0	82	65	19	22	4	133	26	49	56	32	87	129
Cumberland	3	968	666	141	161	77	534	101	332	804	325	775	1,007
Dubbo Regional	2	603	416	113	77	23	424	174	186	474	208	488	788
Dungog	0	29	18	6	12	1	10	7	5	16	5	43	48
Edward River	0	64	51	9	9	1	19	7	5	20	11	64	115
Eurobodalla	0	218	186	36	48	14	117	59	45	106	112	213	367
Fairfield	2	793	532	93	157	61	277	93	229	638	333	662	878
Federation	0	34	41	11	12	0	24	21	20	29	20	72	73
Forbes	1	81	95	17	11	2	73	33	31	81	25	92	146
Georges River	1	441	312	64	98	22	204	50	131	305	221	360	482
Gilgandra	0	55	20	5	9	1	25	8	9	21	3	32	37
Glen Innes Severn	0	75	58	11	21	0	53	21	7	24	21	75	103
Goulburn Mulwaree	0	138	134	50	35	4	66	23	41	92	72	187	232
Greater Hume Shire	0	33	13	9	12	0	20	18	11	20	4	31	50

## NSW Recorded Crime Statistics, September Quarter 2022

NSW LGA	Murder	Domestic violence related assault	Non-domestic violence related assault	Sexual assault	Sexual touching, sexual act and other sexual offences	Robbery	Break and enter dwelling	Break and enter non-dwelling	Motor vehicle theft	Steal from motor vehicle	Steal from retail store	Other stealing offences	Malicious damage to property
Griffith	0	198	103	36	29	11	114	51	56	102	87	175	263
Gunnedah	0	93	96	19	22	2	106	27	40	111	26	100	196
Gwydir	0	15	15	8	6	1	8	4	7	8	1	26	19
Hawkesbury	0	244	206	48	71	9	105	42	81	114	116	165	336
Hay	0	19	21	2	7	0	12	3	4	2	1	21	26
Hilltops	0	113	68	28	23	1	35	15	28	22	16	67	178
Hornsby	0	247	201	52	85	14	141	34	58	188	326	245	439
Hunters Hill	0	17	21	9	13	0	26	5	8	40	8	35	55
Inner West	1	441	529	130	139	52	271	88	172	616	542	814	925
Inverell	1	177	85	34	33	2	74	36	33	93	76	126	203
Junee	0	39	24	12	9	2	14	10	6	2	7	27	47
Kempsey	1	294	204	57	49	18	379	59	156	213	59	369	455
Kiama	0	33	36	16	19	0	33	31	14	53	14	55	98
Ku-ring-gai	0	157	70	42	53	11	158	36	35	133	84	203	270
Kyogle	0	32	28	8	11	0	18	12	16	20	2	33	51
Lachlan	0	34	36	11	11	0	36	51	27	42	9	72	107
Lake Macquarie	2	802	736	253	225	54	468	292	398	794	573	860	1,428
Lane Cove	0	39	37	18	12	0	62	8	35	92	35	111	93
Leeton	0	99	55	20	30	3	63	11	16	26	7	53	99
Lismore	0	271	309	74	64	24	142	66	96	201	81	224	486
Lithgow	0	146	116	34	40	2	49	20	26	98	51	185	204
Liverpool	1	1,057	707	153	203	75	497	132	369	913	411	917	1,226
Liverpool Plains	0	48	40	14	7	1	11	6	9	13	8	48	64
Lockhart	0	10	11	5	1	0	2	8	5	3	0	12	13
Lord Howe Island	0	18	0	0	0	0	0	1	1	1	0	1	9
Maitland	1	443	343	136	108	25	245	116	151	317	309	600	781
Mid-Coast	1	541	383	135	147	19	427	311	185	337	177	909	842
Mid-Western Regional	0	149	116	52	56	3	58	27	19	39	42	137	183
Moree Plains	0	260	200	22	29	15	231	63	81	190	92	163	430
Mosman	0	24	30	14	12	1	51	8	20	112	22	81	81
Murray River	0	30	31	21	9	0	12	28	27	32	10	78	69
Murrumbidgee	0	11	10	9	8	0	13	7	3	4	4	20	28
Muswellbrook	0	124	110	23	23	2	86	62	42	129	39	187	207
Nambucca Valley	0	179	114	36	33	3	112	45	50	104	26	151	248
Narrabri	0	111	69	21	10	3	86	15	35	65	11	73	130
Narrandera	0	51	36	10	12	0	35	16	8	29	16	44	68
Narromine	0	73	65	14	11	2	52	28	9	45	14	52	63
Newcastle	6	691	1,110	240	201	89	827	239	481	1,355	762	1,313	1,915
North Sydney	0	91	104	34	27	6	89	28	44	161	117	289	275
Northern Beaches	1	318	516	162	142	31	260	127	180	685	444	769	1,024
Oberon	2	21	16	12	7	0	6	3	3	2	0	34	35
Orange	0	310	302	84	90	25	291	95	102	236	135	291	523
Parkes	0	115	96	33	39	1	58	29	42	132	26	115	225
Parramatta	3	864	720	175	169	79	623	174	271	933	612	1,196	1,075
Penrith	0	1,176	982	231	230	79	613	208	379	1,137	733	1,056	1,664
Port Macquarie-Hastings	0	387	315	123	87	6	174	114	134	236	150	449	602
Port Stephens	1	374	280	102	96	3	168	80	96	227	106	382	510
Queanbeyan-Palerang Regional	0	180	172	53	45	6	151	59	99	293	136	304	311
Randwick	1	383	495	84	79	30	193	31	117	294	200	549	600
Richmond Valley	0	154	124	50	35	2	107	55	85	137	28	166	273
Ryde	0	294	189	51	81	14	150	41	60	240	319	396	362

NSW Recorded Crime Statistics, September Quarter 2022

NSW LGA	Murder	Domestic violence related assault	Non-domestic violence related assault	Sexual assault	Sexual touching, sexual act and other sexual offences	Robbery	Break and enter dwelling	Break and enter non-dwelling	Motor vehicle theft	Steal from motor vehicle	Steal from retail store	Other stealing offences	Malicious damage to property
Shellharbour	1	233	176	77	60	13	124	44	104	252	262	272	432
Shoalhaven	3	451	448	147	145	28	264	99	147	284	292	522	816
Singleton	0	101	92	30	19	5	84	113	53	136	60	177	180
Snowy Monaro Regional	1	59	62	22	17	1	29	14	19	31	10	88	157
Snowy Valleys	0	58	42	25	20	2	37	39	23	35	10	97	124
Strathfield	0	113	131	13	26	8	111	16	51	148	118	168	123
Sutherland Shire	1	706	475	100	114	21	251	67	161	452	295	558	882
Sydney	4	1,056	1,998	282	301	146	446	255	221	630	1,728	2,961	1,856
Tamworth Regional	0	428	351	98	96	15	647	62	170	631	152	388	816
Temora	0	21	14	15	4	0	21	7	5	11	17	27	50
Tenterfield	0	66	32	8	12	0	28	4	14	8	3	37	73
The Hills Shire	0	330	249	91	81	24	230	61	111	283	286	415	488
Tweed	1	362	307	88	87	12	194	106	173	350	125	438	606
Unincorporated Far West	0	1	3	12	18	0	1	1	2	5	4	13	6
Upper Hunter Shire	0	66	28	26	24	1	41	22	12	35	7	88	87
Upper Lachlan Shire	0	16	8	5	4	0	8	6	4	6	0	30	37
Uralla	0	19	18	6	3	0	13	2	4	8	2	16	33
Wagga Wagga	0	448	376	117	109	25	422	95	113	347	313	435	890
Walcha	0	17	7	2	4	0	5	9	2	6	1	14	38
Walgett	0	149	66	16	14	0	44	15	16	46	7	37	133
Warren	0	33	15	4	2	0	10	16	10	13	3	25	45
Warrumbungle Shire	1	37	49	14	5	1	35	19	7	25	11	60	99
Waverley	0	184	250	58	61	10	74	18	82	146	510	380	301
Weddin	0	17	7	10	1	0	6	6	3	5	2	8	18
Wentworth	0	65	38	7	9	1	19	21	24	21	4	43	95
Willoughby	0	86	140	27	52	9	72	31	45	149	506	264	245
Wingecarribee	0	116	105	52	47	2	32	28	34	63	46	118	217
Wollondilly	0	149	72	31	40	1	36	24	43	77	15	112	181
Wollongong	0	655	709	180	189	47	563	264	329	1,110	782	1,014	1,357
Woollahra	0	99	87	49	32	3	82	6	62	135	60	192	188
Yass Valley	1	38	37	8	4	1	11	6	13	16	7	49	39
In Custody	0	7	873	133	57	4	0	1	0	2	0	5	57
<b>NSW</b>	<b>58</b>	<b>32,418</b>	<b>28,920</b>	<b>7,550</b>	<b>7,643</b>	<b>1,925</b>	<b>18,693</b>	<b>7,185</b>	<b>10,910</b>	<b>27,979</b>	<b>19,145</b>	<b>36,765</b>	<b>50,624</b>

# APPENDIX 2

# EXPLANATORY NOTES



## Appendix 2.1: Explanatory Notes

### What are crime statistics?

BOCSAR's crime statistics consist of criminal incidents reported to, or detected by, police and recorded on the NSW Police Force's Computerised Operational Policing System (COPS). While this system is used for record-keeping for all police operations, not just for criminal matters, BOCSAR only reports on criminal incidents and selected policing activities. BOCSAR's crime statistics therefore do not capture crimes that are not recorded on COPS. The Australian Bureau of Statistics conducts regular crime and victim surveys which attempt to capture a snapshot of both reported and unreported crimes.

### How to interpret crime statistics

Recorded crime statistics for some offence categories do not accurately reflect the actual level of crime in the community. This is because the number of incidents recorded may be affected by extraneous factors which are not easily measured. In particular:

- > Public willingness to report crime - Many crimes which occur are not reported to police and will therefore not be recorded - for example, a large number of assaults, sexual assaults and robberies are not reported to police.
- > Shifts in policing policy - Recording of those offences which are detected by, rather than reported to police, are strongly affected by policing practices - examples of these are drug offences, drink driving offences, offensive behaviour and receiving stolen goods. Recorded rates for such offences do not accurately reflect actual rates.
- > High visitor populations compared to residential populations - Sydney Local Government Area has relatively high recorded crime rates because, compared with other regions, the resident population is small relative to the number of people in the area. In other words, the area has a high user population which is not reflected in the denominator of the rate calculation.
- > Areas with small residential populations - Recorded crime rates in Local Government Areas with small population sizes are not always a good indicator of offending. Crime rates in areas with populations under 3,000 may be unreliable and should be interpreted with

### What offences are included?

BOCSAR's standard quarterly publications report on 13 major offence categories, which include serious personal violence and property offences. In addition to these offences, we also release data for 62 specific offence categories.

From the September Quarter 2021 report, the offence category previously labelled 'indecent sexual assault, act of indecency and other sexual offences' is labelled 'sexual touching, sexual act and other sexual offences'.

Commencing March 2020, the NSW Government issued public health orders under the NSW Public Health Act 2010 (NSW) to limit the spread of COVID-19. Police can issue a fine or court attendance notice for failure to comply with the orders. Breaches of these orders are counted as "other offences" in this report.

### **What is being counted?**

> Incidents - When a crime is reported to, or detected by, the NSW Police they record it as a criminal event on COPS. The event date is the date that the crime was reported. Unless otherwise stated, the date BOCSAR attaches to a crime is the event date. One criminal event can contain multiple criminal incidents. BOCSAR's default counting unit for crime data is criminal incidents with the exception of murder and manslaughter. Criminal incidents are activities detected by or reported to police which involve the same offender(s) and victim(s); occur at the one location during one uninterrupted period of time; fall into one offence category and one incident type.

For murder and manslaughter only, the counting units used are victims.

> Alleged offenders - BOCSAR also reports on alleged offenders or 'Persons of Interest' (POIs) who have had a legal proceeding commenced against them by the NSW Police Force. Within the police recorded crime data POIs may not have been convicted in court, however they have been proceeded against in some way or another by the police. There could be quite some time between an event being recorded by police, an investigation being completed and an alleged offender (i.e. a POI) being charged. Consequently, POIs are counted in the time period they were proceeded against, rather than the time period the event /incident was reported to or recorded by police.

> Legal proceedings against alleged offenders presented in Tables 3.1 and 3.2 include persons proceeded against to court and persons diverted from court (by way of criminal infringement notice, cannabis or other drug caution and diversions under the Young Offenders Act 1997, including Youth Justice Conference, Caution and Warning). Young people proceeded against by way of a Warning for Transport and regulatory offences have been excluded from table 3.2 as Warnings are not a diversion for these offences.

> Young people proceeded against by way of a Warning under the Young Offenders Act 1997 for Transport and regulatory offences have been excluded from table 3.2 as Warnings are not a diversion for these offences.

> Proceeded against to court (breach of bail) in Tables 3.1 and 3.2 includes persons with breach of bail as the only matter on the criminal event recorded by the NSW Police Force. Breaching bail is not a criminal offence by it can lead to being brought to court by police for the court to reconsider bail.

> Infringement Notices (fines) are not included in this report but have been included in past reports as they are not a form of court diversion.

### **What are crime trends and how are they calculated?**

In general, BOCSAR relies upon the Kendall Rank Order Correlation statistical test (or Kendall's tau-b) to determine whether a series is trending upwards, downwards or is stable ( $p < .05$ ). In some tables a stable trend is represented by 'ns' (not significant). The statistical test is applied to the monthly data over the specified period. Where a significant trend is found, the average annual percentage change over the time period is reported. If any of the 12-monthly totals in the series have a value of less than 20, a trend test is not conducted. When this occurs, the relevant cell will be left blank or contain 'n.c.' (not calculated). For murder and manslaughter incidents, the trend test is applied to the monthly number of recorded victims rather than criminal incidents.

### **How is the ratio to NSW calculated?**

The ratio to NSW rate statistics are a comparison of a NSW regional rate per 100,000 population to the NSW rate per 100,000 population. A ratio of one indicates parity with the NSW rate. Ratios indicating double the NSW rate (or more) before rounding are highlighted in red, whilst ratios indicating half the NSW rate (or less) before rounding are highlighted in green. Ratios are not calculated for regions with a population of less than 3,000.

### **How are 'young people' and 'adults' defined?**

The term 'young people' refers to persons aged 10-17 years at the time of the offence; 'adults' refers to persons aged 18 years and older at the time of the offence.

### **Regional Statistics**

Statistics are provided on the number of criminal incidents (victims for murder) recorded for each of the Statistical Areas Level 4 (SA4s) of NSW as defined by the Australian Bureau of Statistics (ABS). Recorded criminal incidents which occurred in correctional, detention or remand centres, however, are not counted in the SA in which the incident occurred. Note that LGA boundaries change from time to time. A criminal incident is counted within a particular region when the location of the offence falls within that region.

### **What is included in 'selected policing activities'?**

- > Bail compliance checks - checks conducted by police to assess if bail conditions are being complied with.
- > ADVO compliance checks - checks conducted by police to assess if ADVO conditions are being complied. These checks can also include checking on the person in need of protection and taking the necessary action if a breach is detected.
- > Move on directions - a 'move on direction' is a direction given to a person by a police officer, under section 198 of the Law Enforcement (Powers and Responsibilities) Act 2002 (NSW), to leave a public place and not return for a specified period.
- > Searches - If the police have reasonable grounds they may, without a warrant, stop and search a person and anything in their possession or under their control, including a vehicle.
- > Detain/convey person to mental health facility - The police detain a person at risk of harm to themselves or others and transport them to a mental health facility for assessment under section 22 of the Mental Health Act 2007 (NSW).

### **What are non-criminal domestic violence episodes?**

Incidents attended by police where a domestic dispute is recorded as having taken place but no criminal incident has been recorded. The vast majority of these episodes are verbal altercations.

### **Where can I find more detail and explanatory notes?**

Detailed definitions and explanatory notes are available at

[https://www.bocsar.nsw.gov.au/Pages/bocsar\\_crime\\_stats/bocsar\\_glossary.aspx](https://www.bocsar.nsw.gov.au/Pages/bocsar_crime_stats/bocsar_glossary.aspx)

# APPENDIX 3

# LGAs IN STATISTICAL AREAS

**Appendix**  
**Table 3.1: Local Government Areas in Greater Sydney Statistical Areas**

<b>Baulkham Hills and Hawkesbury</b>	<b>Blacktown</b>	<b>Central Coast</b>
The Hills Shire*	Blacktown	Central Coast
	Cumberland	
<b>City and Inner South</b>	<b>Eastern Suburbs</b>	<b>Inner South West</b>
Sydney*	Randwick*	Bayside*
	Waverley	Canterbury-Bankstown*
	Woollahra	Georges River
<b>Inner West</b>	<b>North Sydney and Hornsby</b>	<b>Northern Beaches</b>
Burwood	Hornsby*	Northern Beaches
Canada Bay	Ku-ring-gai	
Strathfield*	Lane Cove	
Inner West*	Mosman	
	North Sydney	
	Willoughby	
<b>Outer South West</b>	<b>Outer West and Blue Mountains</b>	<b>Parramatta</b>
Camden*	Blue Mountains*	Cumberland*
Campbelltown	Penrith*	Parramatta*
Wollondilly*	Hawkesbury*	
<b>Ryde</b>	<b>South West</b>	<b>Sutherland</b>
Hunters Hill	Fairfield*	Sutherland Shire*
Ryde*	Liverpool*	

\* These LGAs span across two or more Statistical Areas.

These LGAs are listed under the Greater Sydney Statistical Areas which contain the largest area of each LGA.

**Appendix**  
**Table 3.2: Local Government Areas in Regional Statistical Areas**

<b>Capital Region</b>	<b>Central West</b>	<b>Coffs Harbour - Grafton</b>	<b>Far West and Orana</b>
Bega Valley	Bathurst Regional	Bellingen*	Bogan
Eurobodalla	Bland*	Clarence Valley	Bourke
Goulburn Mulwaree	Blayney	Coffs Harbour	Brewarrina
Hilltops	Cabonne*		Broken Hill
Queanbeyan-Palerang Regional	Cowra		Central Darling
Snowy Monaro Regional*	Forbes		Cobar
Upper Lachlan Shire	Lachlan*		Coonamble
Yass Valley	Lithgow		Dubbo Regional*
	Mid-Western Regional		Gilgandra
	Oberon*		Narromine
	Orange		Unincorporated Far West
	Parkes		Walgett
	Weddin		Warren
			Warrumbungle Shire*
<b>Hunter Valley excluding Newcastle</b>	<b>Illawarra</b>	<b>Mid North Coast</b>	<b>Murray</b>
Cessnock	Kiama*	Kempsey	Albury
Dungog	Shellharbour	Lord Howe Island	Balranald
Maitland*	Wollongong	Mid-Coast*	Berrigan
Muswellbrook		Nambucca	Edward River
Port Stephens*		Port Macquarie-Hastings	Federation*
Singleton*			Greater Hume Shire*
Upper Hunter Shire*			Hay
			Murray River
			Wentworth
<b>New England and North West</b>	<b>Newcastle and Lake Macquarie</b>	<b>Richmond - Tweed</b>	<b>Riverina</b>
Armidale Regional*	Lake Macquarie*	Ballina	Carrathool*
Glen Innes Severn	Newcastle	Byron	Coolamon
Gunnedah		Kyogle	Cootamundra-Gundagai
Gwydir		Lismore	Griffith
Inverell		Richmond Valley*	Junee
Liverpool Plains		Tweed	Leeton
Moree Plains			Lockhart*
Narrabri			Murrumbidgee*
Tamworth Regional			Narrandera
Tenterfield			Snowy Valleys*
Uralla			Temora
Walcha			Wagga Wagga
<b>Southern Highlands and Shoalhaven</b>			
Shoalhaven*			
Wingecarribee*			

\* These LGAs span across two or more Statistical Areas.

These LGAs are listed under the NSW Regional Statistical Areas which contain the largest area of each LGA.

Appendix Table 3.3: Greater Sydney Statistical Area Map



Appendix Table 3.4: Regional NSW Statistical Areas Map





# APPENDIX 4

# OFFENCE

# CATEGORIES

**Appendix BOCSAR offences mapped to NSW Police Force incident categories**

**4.1:**

<b>BOCSAR offence</b>	<b>NSW Police Force incident categories</b>
<b>Homicide</b>	
Murder	Murder
Attempted murder	Murder – attempted Shoot with intent to murder
Murder accessory, conspiracy	Murder – conspiracy Murder – solicit
Manslaughter – not driving	Manslaughter
<hr/>	
<b>Assault</b>	<i>Includes any of the following offences disaggregated by whether or not police have flagged the incident as domestic violence related:</i>
Domestic violence related	Actual bodily harm Assault common Grievous bodily harm (including malicious wounding) Shoot with intent other than to murder Spike drink/food
Non-domestic violence related	Actual bodily harm Assault common Grievous bodily harm (including malicious wounding) Shoot with intent other than to murder Spike drink/food
Assault Police	Assault Police officer
<hr/>	
<b>Sexual offences</b>	
Sexual assault	Sexual assault – adult victim (16 years old and over) Sexual assault – child victim, reported when child Sexual assault – child victim, reported when adult
Sexual touching, sexual act and other sexual offences	Sexual act – adult victim (16 years old and over) Sexual act – child victim, reported when child Sexual act – child victim, reported when adult Sexual touching – adult victim (16 years old and over) Sexual touching – child victim, reported when child Sexual touching – child victim, reported when adult Act of indecency Aggravated act of indecency Bestiality Carnal knowledge Grooming/procuring Incest Indecent communication Peep or pry

<b>BOCSAR offence</b>	<b>NSW Police Force incident categories</b>
Sexual touching, sexual act and other sexual offences ( <i>continued</i> )	Wilful and obscene exposure Other sexual offence Voyeurism/Film person
<b>Abduction and kidnapping</b>	Kidnapping/Abduction People trafficking
<b>Robbery</b>	
Robbery without a weapon	<i>Includes any of the following offences in which no weapon was recorded:</i> Demand money with menaces Robbery Robbery with aggravation Robbery with wounding Other robbery
Robbery with a firearm	<i>Includes any of the following offences in which a firearm was recorded as a weapon:</i> Armed robbery Demand money with menaces Robbery Robbery with aggravation Robbery with wounding Other robbery
Robbery with a weapon not a firearm	<i>Includes any of the following offences in which a non firearm weapon was recorded:</i> Armed robbery Demand money with menaces Robbery Robbery with aggravation Robbery with wounding Other robbery
<b>Blackmail and extortion</b>	Extortion/Blackmail
<b>Intimidation, stalking and harassment</b>	Bullying/harassment or intimidation Stalking (since 2017) Child approach (since 2017) Riot and affray Telecommunications offence (includes nuisance phone calls) Indecent Communication Threats against Police Violent disorder Unlawful assembly

<b>BOCSAR offence</b>	<b>NSW Police Force incident categories</b>
<b>Other offences against the person</b>	Labour exploitation (includes sexual servitude) Malicious damage with intent to injure/endorse Negligent act cause grievous bodily harm Other offence against the person
<b>Theft</b>	
Break and enter – dwelling	<i>Dwelling includes premises where people reside such as house, home unit, caravan, tent as well as any attachment such as garage, shed, yard and garden.</i> Break/Enter and steal Break/Enter and commit other felony Break/Enter intent to steal Break/Enter intent to commit other felony
Break and enter – non-dwelling	<i>Non-dwelling includes commercial and government premises.</i> Break/Enter and steal Break/Enter and commit other felony Break/Enter intent to steal Break/Enter intent to commit other felony
Receiving or handling stolen goods	Receiving Goods in custody Possess property stolen outside NSW Deal with proceeds of crime Money Laundering
Motor vehicle theft	Theft of motor cars, motor cycles, and other vehicles / vessels Rebirthing vehicles / vessels Vehicle/Vessel Unique Identifier
Steal from motor vehicle	Steal from motor vehicle
Steal from retail store	Steal from retail store
Steal from dwelling	Steal from dwelling <i>Other stealing occurring in a residential dwelling</i>
Steal from person	Steal from person
Stock theft	Steal stock (Non-domestic animal)
Fraud	Company/corporate offence Computer crime Copyright/Intellectual property/Trademark Corrupt commission/practices Corrupt payment (receive or pay) Counterfeit currency Deception offence Embezzlement Fail to pay

<b>BOCSAR offence</b>	<b>NSW Police Force incident categories</b>
Fraud ( <i>continued</i> )	Forgery (since 2017) Fraudulent misappropriation Larceny clerk/servant/bailee Make/use false instrument Misappropriate cheques/funds Possess false instrument Publish false misleading statement Receiving (fraud related) Scams - obtain funds (since 2017) Scams - selling (since 2017) Unauthorised access of funds (since 2017) Deal/supply false identity documents (since 2017) Deal/supply false information (since 2017) Equipment to make false identity documents (since 2017) Make false identity documents (since 2017) Possess false identity documents (since 2017) Possess identity information (since 2017) Use false identity documents (since 2017) Other fraud
Other theft	Steal from dwelling <i>occurring somewhere other than a residential or non-residential dwelling</i> (e.g. from hostels, motels, boarding houses etc) Steal domestic animal or bird Steal from marine vessel Steal vessel Other stealing <i>occurring somewhere other than a dwelling</i> (e.g. in outdoor/public places)
<b>Arson</b>	<i>Fire incident where classified as deliberate:</i> Bushfire Structure Vehicle (e.g. aircraft/motor vehicle/train/vessel) Other commodity
<b>Malicious damage to property</b>	Graffiti Malicious damage to property Public place – damage fountain/wall etc. Public place – damage shrine/monument
<b>Drug offences</b>	
Possession and/or use of cocaine	Possess drug where drug type is cocaine Use or administer drug where drug type is cocaine Item/object found where drug type is cocaine
Possession and/or use of narcotics	Possess drug <i>where drug type is narcotics</i> Use or administer drug <i>where drug type is narcotics</i> Item/object found <i>where drug type is narcotics</i>

<b>BOCSAR offence</b>	<b>NSW Police Force incident categories</b>
Possession and/or use of cannabis	Possess drug / plant <i>where drug type is cannabis</i> Use or administer drug <i>where drug type is cannabis</i> Item/object found <i>where drug type is cannabis</i>
Possession and/or use of amphetamines	Possess drug <i>where drug type is amphetamines</i> Use or administer drug <i>where drug type is amphetamines</i> Item/object found <i>where drug type is amphetamines</i>
Possession and/or use of ecstasy	Possess drug <i>where drug type is ecstasy</i> Use or administer drug <i>where drug type is ecstasy</i> Item/object found <i>where drug type is ecstasy</i>
Possession and/or use of other drugs	Possess drug <i>where drug type is not cocaine, narcotics, cannabis, amphetamines or ecstasy</i> Use or administer drug <i>where drug type is not cocaine, narcotics, cannabis, amphetamines or ecstasy</i> Item/object found <i>where drug type is not cocaine, narcotics, cannabis, amphetamines or ecstasy</i>
Dealing, trafficking in cocaine	Supply drug <i>where drug type is cocaine</i>
Dealing, trafficking in narcotics	Supply drug <i>where drug type is narcotics</i>
Dealing, trafficking in cannabis	Supply drug/plant <i>where drug/plant type is cannabis</i>
Dealing, trafficking in amphetamines	Supply drug <i>where drug type is amphetamines</i>
Dealing, trafficking in ecstasy	Supply drug <i>where drug type is ecstasy</i>
Dealing, trafficking in other drugs	Supply drug/plant <i>where drug/plant type is not cocaine, narcotics, cannabis, amphetamines or ecstasy</i>
Cultivating cannabis	Cultivation
Manufacture drug	Manufacture drug
Importing drugs	Import drug/plant
Other drug offences	Forge and/or utter prescription Possess drug utensil Other drug detection/seizure offence
<b>Prohibited and regulated weapons offences</b>	Bomb hoax or threat Discharge firearm into premises Licence offence Firearms dealer offence Firearms not ensure safekeeping Improper storage of explosives Person search - Item/object found <i>where item/object is a weapon</i> Possess explosive/dangerous article Possess prohibited weapon/article Possess shortened firearm Possess whilst unlicensed Sell prohibited weapon/article Shorten firearm

<b>BOCSAR offence</b>	<b>NSW Police Force incident categories</b>
<b>Prohibited and regulated weapons offences (continued)</b>	Trespass with firearm Unlawful handling/access/supply of explosives Unlawfully discharge firearm Use firearm under influence Use prohibited weapon/article Other explosives offence Other firearm licencing offence Other firearm offence Other prohibited weapon/article offence
<b>Disorderly conduct</b>	
Trespass	Trespass Remain inclosed lands
Offensive conduct	Offensive behaviour
Offensive language	Offensive language
Criminal intent	Armed with intent Charge with intent Disguised with intent Enter land with intent Intent to repeat indictable offence Instruments of crime Possess implements
<b>Betting and gaming offences</b>	Conduct/play illegal betting Conduct/play illegal game Own/manage premises – betting Own/manage premises – gaming Other gaming offence
<b>Liquor offences</b>	Consume alcohol in alcohol-free zone Consume/possess alcohol in public by minor Licensing legislation offence: – Offence by licensee/employee/secretary – Offence by minor – Offence by customer (not minor) – Supply liquor to juvenile – Offence against registered clubs legislation
<b>Pornography offences</b>	Possess/disseminate child pornography Possess/publish indecent material
<b>Prostitution offences</b>	Soliciting/prostitution in public Procure Prostitute (Including child prostitute) Prostitution – premises Prostitution – live off earnings Child prostitution

<b>BOCSAR offence</b>	<b>NSW Police Force incident categories</b>
Prostitution offences ( <i>continued</i> )	Other vice offence
<b>Against justice procedures</b>	
Escape Custody	Escapee – Corrective Services custody Escapee – Department of Community Services custody Escapee – Police custody Escapee – Other custody
Breach Apprehended Violence Order	Breach Apprehended Violence Order – domestic Breach Apprehended Violence Order – personal
Breach bail conditions	Breach bail conditions Breach control order
Fail to appear	Fail to appear
Resist or hinder officer	Refuse direction Refuse direction continue intoxication and disorder Refuse direction intoxicated person Refuse to be searched Refuse to produce object Resist/hinder officer
Other offences against justice procedures	Other judicial offence Fail to comply Contravene Child Protection Prohibition Order (CPPO)
<b>Transport regulatory offences</b>	<i>Transport offence (includes offences on the rail network such as travelling without a valid ticket, smoking, drinking or using offensive language on a train or railway land)</i> Buffer riding
<b>Other offences</b>	Animals - Dog offences Cyber Breach/Attack False 000 call Family law offence Immigration/customs offence Obstruction Offence against transport service  Breach COVID 19 direction Other street offences (carry cutting weapon, offensive implement) Public mischief Terrorism offences (e.g. associating with terrorist organisations, financing terrorism etc.) Other miscellaneous offences  Offences under various acts:



**BOCSAR offence**

**NSW Police Force incident categories**

**Other offences (*continued*)**

*Animals - Prevention Of Cruelty Acts*

*Bush Fire Act*

*Child Protection Act*

*Local Government Act*

*Marine/Waterway Act*

*Pawnbrokers Act*

*Postal Services Act*

*Public Health Act*

*Security Industry Act*

*Sydney Harbour Bridge Act*

*Tattoo Parlours Act*