



NEW SOUTH WALES

# RECORDED CRIME STATISTICS

Supplementary Report:

Crime trends in the three years to March 2022

Many major crimes fell significantly from March 2020, corresponding with the first COVID-19 lockdown in NSW<sup>1</sup>. Crime generally remained low in 2021. The regular quarterly report, Recorded Crime Statistics: March 2022, shows two-year crime trends. The two-year period to March 2022 fails to capture the large crime falls in early 2020 and so gives an incomplete view of trends in crime.

This Supplementary Report shows trends in recorded crime over the three years to March 2022, allowing a comparison of crime from the year before the pandemic across the two years since.

**Supplementary Quarterly Update**  
**March Quarter 2022**

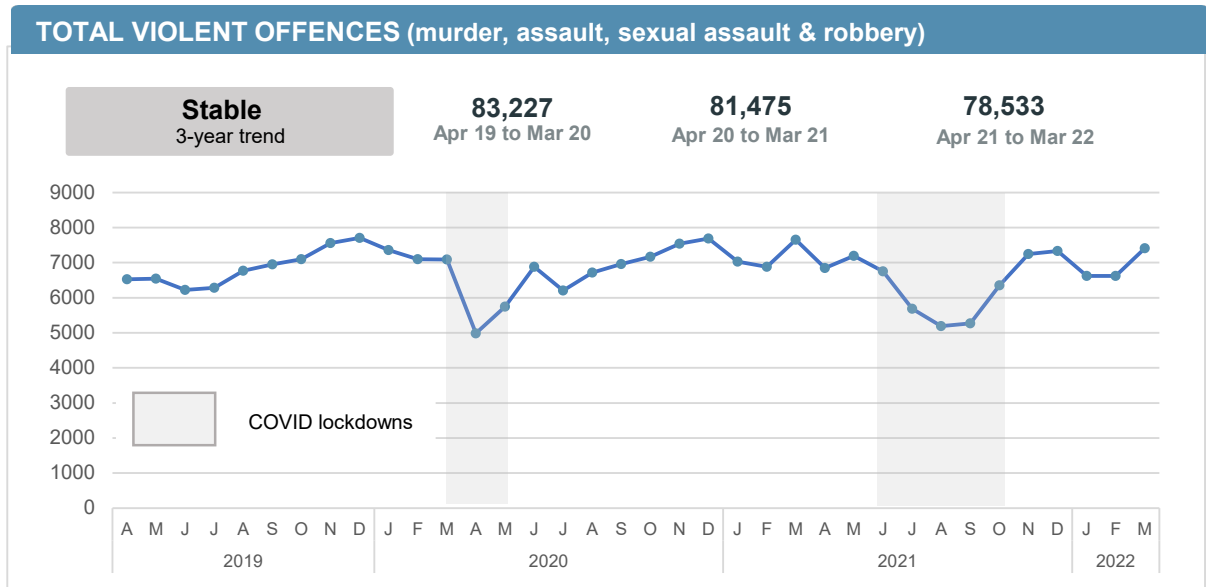
<sup>1</sup> Kim, M. T. & Leung, F. 2020, COVID-19 Pandemic and crime trends in NSW, NSW Bureau of Crime Statistics and Research, [https://www.bocsar.nsw.gov.au/Pages/bocsar\\_publication/Pub\\_Summary/BB/Summary-COVID-19-pandemic-and-crime-trends-in-NSW-BB147.aspx](https://www.bocsar.nsw.gov.au/Pages/bocsar_publication/Pub_Summary/BB/Summary-COVID-19-pandemic-and-crime-trends-in-NSW-BB147.aspx)

**Table 1.3: Violent and property offences by Statistical Area (SA4)**

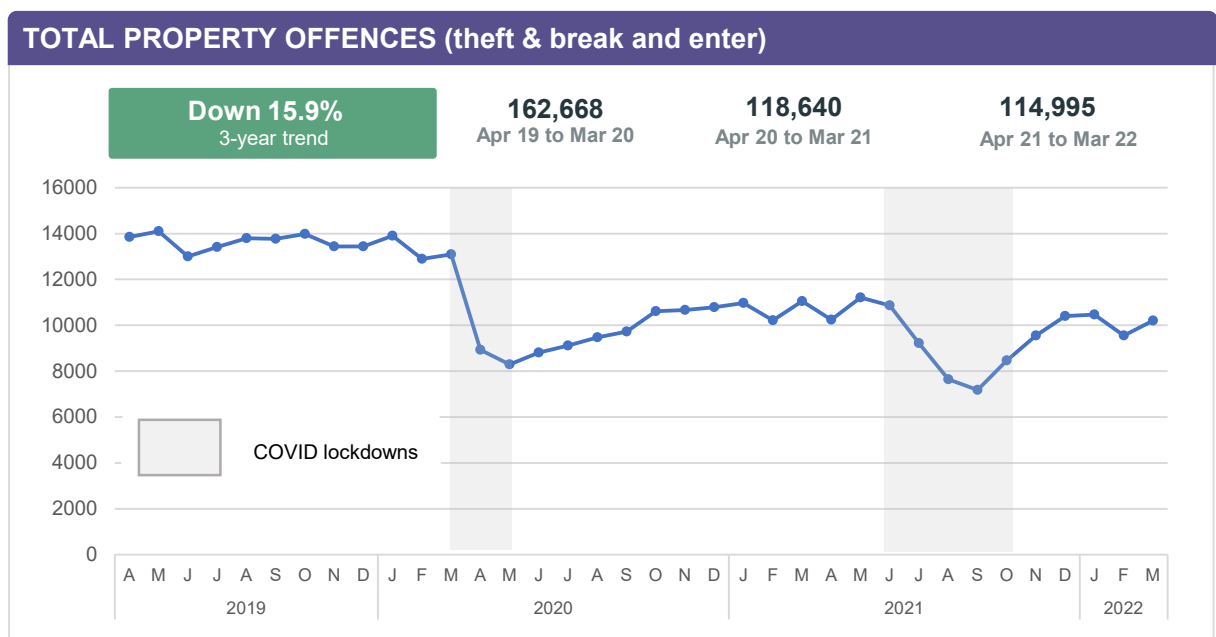
Over the three years to March 2022

Statistical Area	3 Year Trend (annual ave. % change)	
	Violent offences	Property offences
<b>Greater Sydney</b>	Stable	-19.3%
Central Coast	Stable	-21.1%
Sydney - Baulkham Hills And Hawkesbury	Stable	-28.4%
Sydney - Blacktown	Stable	-16.7%
Sydney - City And Inner South	-12.3%	-22.3%
Sydney - Eastern Suburbs	Stable	-19.3%
Sydney - Inner South West	Stable	-18.0%
Sydney - Inner West	Stable	-15.0%
Sydney - North Sydney And Hornsby	Stable	-22.4%
Sydney - Northern Beaches	-11.2%	-18.2%
Sydney - Outer South West	Stable	-17.5%
Sydney - Outer West And Blue Mountains	Stable	-18.1%
Sydney - Parramatta	Stable	-15.5%
Sydney - Ryde	-7.9%	-23.2%
Sydney - South West	Stable	-21.7%
Sydney - Sutherland	Stable	-16.6%
<b>Regional NSW</b>	1.9%	-11.8%
Capital Region	Stable	-13.7%
Central West	3.7%	-10.0%
Coffs Harbour - Grafton	3.3%	-9.8%
Far West And Orana	Stable	-11.7%
Hunter Valley Exc Newcastle	2.7%	-15.0%
Illawarra	Stable	-12.4%
Mid North Coast	6.8%	Stable
Murray	3.2%	-16.7%
New England And North West	4.9%	Stable
Newcastle And Lake Macquarie	Stable	-14.1%
Richmond - Tweed	3.8%	Stable
Riverina	Stable	-22.1%
Southern Highlands And Shoalhaven	6.0%	-18.1%
<b>NSW</b>	Stable	-15.9%

## NSW 3-year trend and annual average percentage increase in violent offences



## NSW 3-year trend and annual average percentage increase in property offences



Violent offences include: murder, attempted murder, manslaughter, assault - domestic violence related, assault - non-domestic violence related, assault police, robbery without a weapon, robbery with a firearm, robbery with a weapon not a firearm, sexual assault and sexual touching, sexual act and other sexual offences.

Property offences include: break and enter dwelling, break and enter non-dwelling, motor vehicle theft, steal from motor vehicle, steal from retail store, steal from dwelling, steal from person, stock theft and other theft.

**Table 1.4: Recorded criminal incidents for major offences**  
Over the three years to March 2022

Offence category	Number of recorded criminal incidents			3 Year Trend	
	12 months to March 2020	12 months to March 2021	12 months to March 2022	Trend test result	Annual average percentage change
Murder *	69	67	60	Stable	
Domestic violence related assault	31,612	32,152	32,188	Up	Up 0.9%
Non-domestic violence related assault	32,014	29,329	27,854	Stable	
Sexual assault	6,492	7,394	7,019	Stable	
Sexual touching, sexual act and other sexual offences	8,023	8,051	7,046	Stable	
Robbery	2,469	1,972	1,704	Down	Down 16.9%
Break and enter dwelling	25,296	18,462	17,378	Down	Down 17.1%
Break and enter non-dwelling	9,953	6,739	7,226	Down	Down 14.8%
Motor vehicle theft	13,381	11,216	10,551	Down	Down 11.2%
Steal from motor vehicle	37,684	26,732	27,446	Down	Down 14.7%
Steal from retail store	26,580	18,972	17,524	Down	Down 18.8%
Other stealing offences	49,774	36,519	34,870	Down	Down 16.3%
Malicious damage to property	56,177	52,708	48,253	Down	Down 7.3%

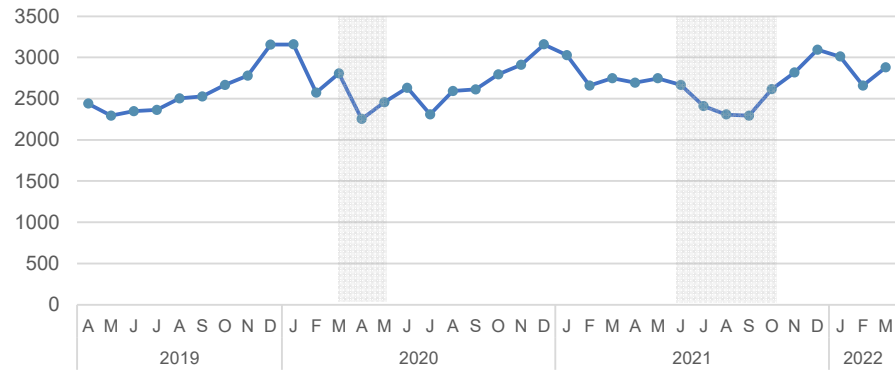
## NSW 3-year trend and annual average percentage increase in selected violent and property offences

 COVID lockdowns

### Domestic assault

**Up 0.9%**  
3-year trend

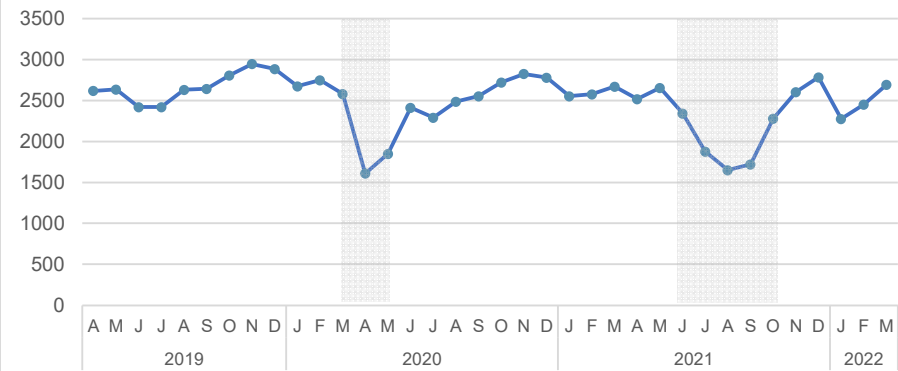
**31,612** Apr 19 to Mar 20  
**32,152** Apr 20 to Mar 21  
**32,188** Apr 21 to Mar 22



### Non-domestic assault

**Stable**  
3-year trend

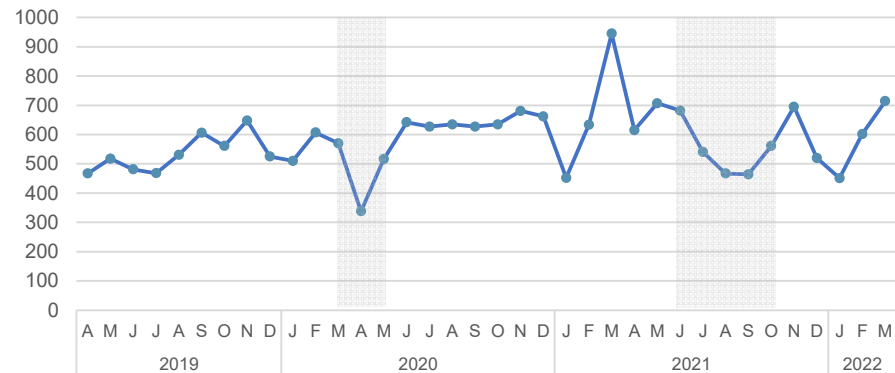
**32,014** Apr 19 to Mar 20  
**29,329** Apr 20 to Mar 21  
**27,854** Apr 21 to Mar 22



### Sexual assault

**Stable**  
3-year trend

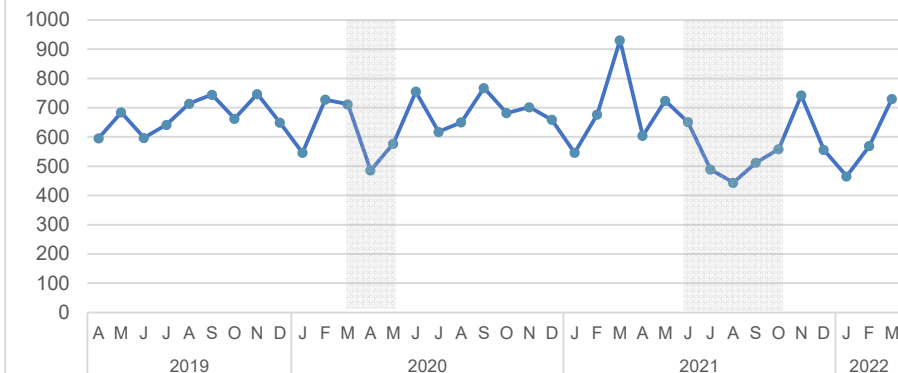
**6,492** Apr 19 to Mar 20  
**7,394** Apr 20 to Mar 21  
**7,019** Apr 21 to Mar 22



### Sexual touching, sexual act and other sexual offences

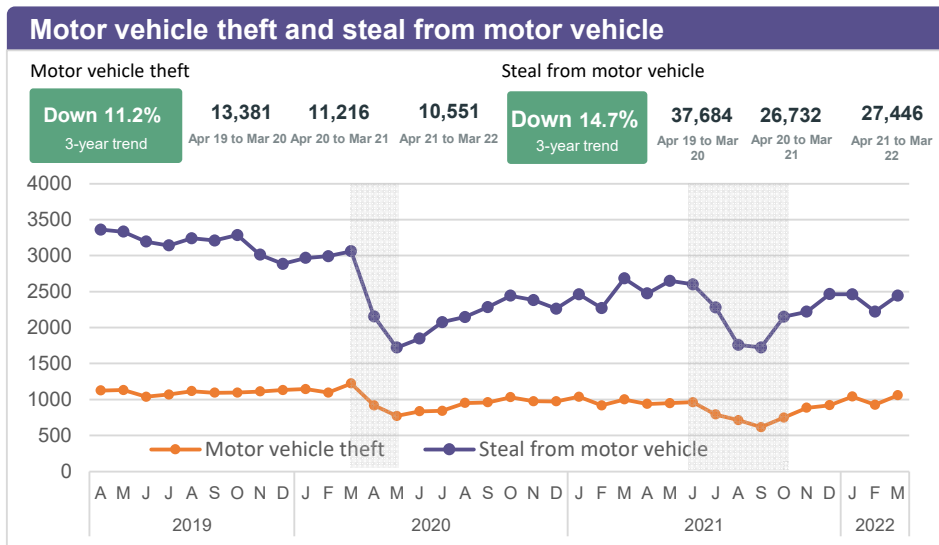
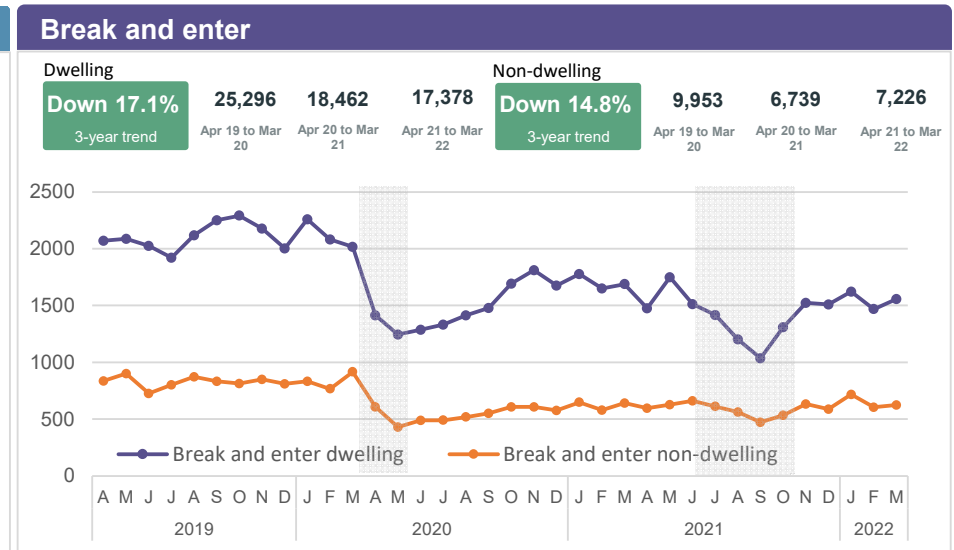
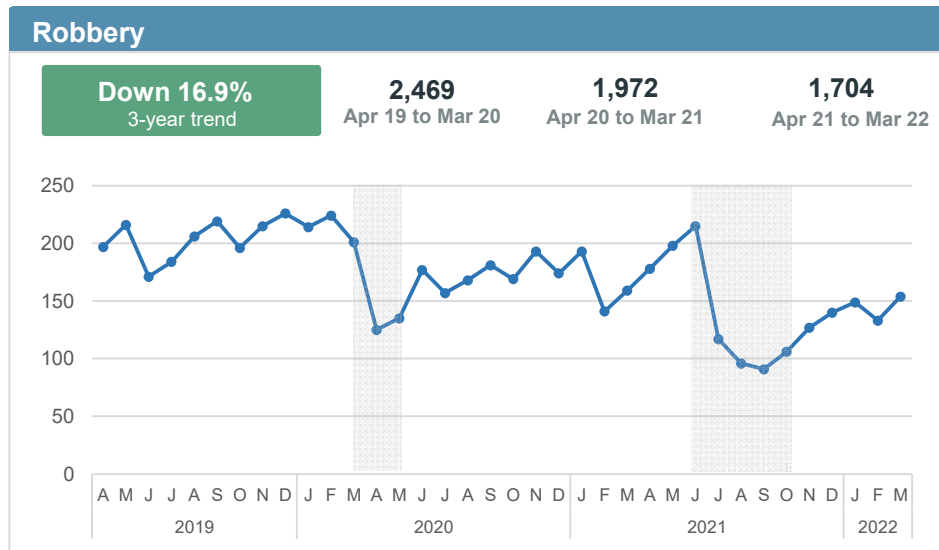
**Stable**  
3-year trend

**8,023** Apr 19 to Mar 20  
**8,051** Apr 20 to Mar 21  
**7,046** Apr 21 to Mar 22



# NSW 3-year trend and annual average percentage increase in selected violent and property offences

COVID lockdowns



**Table 1.6: Recorded criminal incidents for 62 offences**  
Over the three years to March 2022

Offence category	Number of recorded criminal incidents			3 Year Trend			
	12 months to March 2020	12 months to March 2021	12 months to March 2022	Trend test result	Annual average percentage change		
Homicide	Murder *	69	67	60	Stable		
	Attempted murder	29	28	17	n.c.		
	Murder accessory, conspiracy	1	0	1	n.c.		
	Manslaughter *	9	2	1	n.c.		
Assault	Domestic violence related assault	31,612	32,152	32,188	Up	0.9%	
	Non-domestic violence related assault	32,014	29,329	27,854	Stable		
	Assault Police	2,510	2,480	2,644	Stable		
Sexual offences	Sexual assault	6,492	7,394	7,019	Stable		
	Sexual touching, sexual act and other sexual offences	8,023	8,051	7,046	Stable		
Abduction and kidnapping		199	220	196	Stable		
Robbery	Robbery without a weapon	1,379	1,082	888	Down	-19.8%	
	Robbery with a firearm	145	94	91	Down	-20.8%	
	Robbery with a weapon not a firearm	945	796	725	Down	-12.4%	
Blackmail and extortion		83	107	125	Up	22.7%	
Intimidation, stalking and harassment		36,512	40,143	40,988	Up	6.0%	
Other offences against the person		1,217	1,460	1,803	Up	21.7%	
Theft	Break and enter dwelling	25,296	18,462	17,378	Down	-17.1%	
	Break and enter non-dwelling	9,953	6,739	7,226	Down	-14.8%	
	Receiving or handling stolen goods	9,168	7,815	7,333	Down	-10.6%	
	Motor vehicle theft	13,381	11,216	10,551	Down	-11.2%	
	Steal from motor vehicle	37,684	26,732	27,446	Down	-14.7%	
	Steal from retail store	26,580	18,972	17,524	Down	-18.8%	
	Steal from dwelling	18,871	16,259	16,074	Down	-7.7%	
	Steal from person	3,529	1,929	1,700	Down	-30.6%	
	Stock theft	387	400	298	Down	-12.2%	
	Fraud	52,900	44,056	44,378	Down	-8.4%	
	Other theft	26,987	17,931	16,798	Down	-21.1%	
	Arson		4,974	3,951	3,606	Down	-14.9%
	Malicious damage to property		56,177	52,708	48,253	Down	-7.3%
Drug offences	Possession and/or use of cocaine	2,512	2,245	2,272	Stable		
	Possession and/or use of narcotics	1,296	1,265	1,231	Stable		
	Possession and/or use of cannabis	17,601	17,925	15,998	Down	-4.7%	
	Possession and/or use of amphetamines	8,273	7,905	6,970	Down	-8.2%	
	Possession and/or use of ecstasy	2,473	694	610	Down	-50.3%	
	Possession and/or use of other drugs	5,876	6,868	6,239	Stable		
	Dealing, trafficking in cocaine	1,202	1,491	994	Stable		
	Dealing, trafficking in narcotics	651	335	488	Stable		
	Dealing, trafficking in cannabis	1,038	1,109	771	Stable		
	Dealing, trafficking in amphetamines	2,093	3,073	2,989	Stable		
	Dealing, trafficking in ecstasy	629	337	156	Down	-50.2%	
	Dealing, trafficking in other drugs	580	657	481	Down	-8.9%	
	Cultivating cannabis	1,127	1,176	1,023	Stable		
	Manufacture drug	64	73	48	Stable		
	Importing drugs	236	227	187	Stable		
	Other drug offences	6,609	6,113	5,614	Down	-7.8%	
	Prohibited and regulated weapons offences		16,644	15,154	13,982	Down	-8.3%
Disorderly conduct	Trespass	11,029	9,852	9,205	Down	-8.6%	
	Offensive conduct	4,352	3,818	3,592	Down	-9.2%	
	Offensive language	2,288	2,053	1,783	Down	-11.7%	
	Criminal intent	2,575	2,305	2,415	Stable		
Betting and gaming offences		88	76	70	Stable		
Liquor offences		11,252	8,042	8,980	Stable		
Pornography offences		711	954	873	Stable		
Prostitution offences		24	16	19	n.c.		
Against justice procedures	Escape custody	189	181	158	Stable		
	Breach Apprehended Violence Order	18,486	20,215	21,602	Up	8.1%	
	Breach bail conditions	49,253	51,866	51,090	Stable		
	Fail to appear	674	744	892	Up	15.0%	
	Resist or hinder officer	6,005	5,518	5,662	Stable		
	Other offences against justice procedures	1,744	1,869	1,989	Stable		
Transport regulatory offences		110,123	70,125	70,059	Down	-20.2%	
Other offences		14,731	34,117	90,877	Up	148.4%	

**Table 2.1: Three year trends and annual ave. percent change in recorded criminal incidents for major offences by Statistical Areas (SA4)**  
Over the three years to March 2022

Statistical Area	Murder*	Domestic violence related assault	Non-domestic violence related assault	Sexual assault	Sexual touching, sexual act and other sexual offences	Robbery	Break and enter dwelling	Break and enter non-dwelling	Motor vehicle theft	Steal from motor vehicle	Steal from retail store	Other stealing offences	Malicious damage to property
Greater Sydney	ns	ns	-10.8	ns	ns	-22.3	-21.5	-21.6	-17.4	-19.3	-19.3	-18.4	-11.4
Central Coast		ns	ns	9.7	ns	-16.3	-21.4	-14.6	-26.0	-23.6	-16.5	-20.7	ns
Sydney - Baulkham Hills And Hawkesbury		ns	ns	ns	ns		-34.1	-32.5	-25.8	-32.6	-22.7	-24.0	ns
Sydney - Blacktown		ns	ns	ns	ns	-15.0	-23.8	-21.2	ns	-20.7	ns	-15.8	-9.8
Sydney - City And Inner South		ns	-17.9	ns	-16.9	-25.2	-25.1	-24.0	-16.8	-24.4	-20.7	-22.4	-12.4
Sydney - Eastern Suburbs		ns	ns	ns	ns	-22.8	-23.6	ns	ns	-15.8	ns	-22.0	-12.6
Sydney - Inner South West		ns	-13.1	ns	ns	-28.4	-19.5	-20.0	-23.2	-17.2	-16.3	-16.3	-14.3
Sydney - Inner West		ns	ns	15.5	ns	-17.5	-17.0	ns	-16.6	ns	-16.9	-14.3	ns
Sydney - North Sydney And Hornsby		ns	-15.0	ns	ns	ns	-28.8	-31.1	ns	-16.7	-27.2	-18.9	-18.8
Sydney - Northern Beaches		-15.7	-14.1	ns	ns	ns	ns	-26.8	ns	-23.8	ns	-18.8	-17.8
Sydney - Outer South West		ns	ns	ns	ns	ns	-23.3	-17.5	ns	-15.0	-24.6	-12.6	ns
Sydney - Outer West And Blue Mountains		-7.5	ns	ns	ns	-18.9	-15.4	-17.1	-15.9	-17.4	-19.4	-20.3	-14.3
Sydney - Parramatta		ns	-9.8	12.7	ns	-23.7	-15.5	-20.4	-15.5	-15.6	-16.3	-14.2	-10.2
Sydney - Ryde		-6.4	-15.0	ns	ns		-29.9	ns	-26.9	-30.0	-25.3	-12.9	-16.5
Sydney - South West		7.8	-10.0	ns	ns	-26.6	-23.1	-25.0	-24.1	-20.9	-22.1	-20.2	ns
Sydney - Sutherland		ns	-16.4	ns	-17.8	ns	ns	-26.9	-20.0	-13.9	-27.0	ns	-17.3
Regional NSW	ns	4.0	ns	ns	ns	ns	-13.0	ns	ns	-8.5	-18.0	-13.5	ns
Capital Region		8.6	ns	ns	ns	ns	-23.9	ns	ns	ns	-19.3	-12.5	ns
Central West		6.3	ns	ns	ns	0.0	-14.6	ns	ns	ns	-14.5	-13.8	ns
Coffs Harbour - Grafton		6.2	ns	10.4	ns	ns	ns	ns	ns	ns	-25.9	-13.9	ns
Far West And Orana		ns	ns	ns	ns	ns	ns	ns	ns	-16.7	ns	-12.4	-9.6
Hunter Valley Exc Newcastle		ns	2.4	ns	ns	ns	-21.7	-25.3	-15.3	ns	-19.1	-11.8	ns
Illawarra		ns	ns	ns	ns	ns	-12.9	ns	-10.5	ns	-16.8	-15.6	-8.4
Mid North Coast		10.1	ns	ns	ns	ns	ns	ns	ns	ns	-13.3	ns	ns
Murray		6.9	ns	ns	-9.5		-26.8	ns	ns	-12.9	-16.4	-15.8	ns
New England And North West		8.5	ns	ns	ns	ns	ns	ns	15.7	ns	ns	-10.6	ns
Newcastle And Lake Macquarie		ns	ns	ns	-13.7	ns	-16.7	ns	ns	-12.1	-14.3	-16.3	ns
Richmond - Tweed		13.7	ns	ns	-13.1	ns	ns	ns	ns	ns	-25.5	-14.0	5.4
Riverina		ns	ns	ns	ns	ns	-24.0	-20.0	ns	-25.0	-29.5	-20.3	-7.2
Southern Highlands And Shoalhaven		ns	6.2	ns	ns	ns	-17.5	-24.7	-16.7	-18.4	-22.0	-14.6	ns
NSW	ns	0.9	ns	ns	ns	-16.9	-17.1	-14.8	-11.2	-14.7	-18.8	-16.3	-7.3



**Table 2.3: Number of major offences by Statistical Areas (SA4)**  
Over the 12 months to March 2022

Statistical Area	Murder*	Domestic violence related assault	Non-domestic violence related assault	Sexual assault	Sexual touching, sexual act and other sexual offences	Robbery	Break and enter dwelling	Break and enter non-dwelling	Motor vehicle theft	Steal from motor vehicle	Steal from retail store	Other stealing offences	Malicious damage to property
<b>Greater Sydney</b>	34	17,306	14,471	3,369	3,675	1,065	7,691	2,583	4,912	14,263	10,858	18,968	23,443
Central Coast	4	1,516	1,362	386	342	63	572	242	391	1,144	785	1,075	2,343
Sydney - Baulkham Hills And Hawkesbury	1	467	322	126	107	14	236	72	113	287	227	438	592
Sydney - Blacktown	5	2,025	1,491	316	354	172	788	212	579	1,537	1,080	1,687	2,677
Sydney - City And Inner South	9	1,431	2,415	347	393	146	554	341	325	955	2,168	3,691	2,473
Sydney - Eastern Suburbs	0	673	868	170	169	31	336	65	244	596	605	1,075	1,070
Sydney - Inner South West	2	2,097	1,232	276	305	105	734	229	541	1,502	680	1,524	2,036
Sydney - Inner West	2	634	605	152	167	49	455	171	229	821	612	1,149	1,088
Sydney - North Sydney And Hornsby	0	562	480	167	193	31	455	139	197	680	803	967	1,083
Sydney - Northern Beaches	1	317	471	135	150	28	218	89	164	552	455	670	805
Sydney - Outer South West	3	1,313	790	243	302	65	392	155	325	929	598	924	1,622
Sydney - Outer West And Blue Mountains	0	1,477	1,251	331	368	79	689	252	405	1,183	837	1,189	2,173
Sydney - Parramatta	6	1,775	1,395	314	314	141	1,138	269	680	1,920	857	2,080	2,104
Sydney - Ryde	0	353	264	73	88	15	228	100	78	308	250	507	497
Sydney - South West	1	1,980	1,099	233	323	104	673	186	520	1,396	634	1,461	2,028
Sydney - Sutherland	0	686	426	100	100	22	223	61	121	453	267	531	852
<b>Regional NSW</b>	25	14,876	12,560	3,569	3,322	638	9,687	4,642	5,639	13,181	6,666	15,896	24,733
Capital Region	1	885	719	223	212	38	422	246	291	633	357	977	1,506
Central West	3	1,413	1,149	331	340	51	918	394	437	1,041	483	1,276	2,239
Coffs Harbour - Grafton	0	798	760	206	186	38	445	311	331	627	282	883	1,252
Far West And Orana	2	1,610	949	215	224	44	1,025	507	409	890	396	1,101	1,984
Hunter Valley Exc Newcastle	1	1,434	1,117	419	371	40	693	433	571	1,222	604	1,851	2,340
Illawarra	1	883	916	232	239	62	671	296	448	1,496	929	1,222	1,800
Mid North Coast	2	1,355	1,003	312	319	37	1,019	496	457	850	475	1,760	2,143
Murray	2	700	577	148	141	25	372	214	276	769	299	751	1,236
New England And North West	1	1,560	1,156	320	281	46	1,421	413	535	1,310	564	1,210	2,467
Newcastle And Lake Macquarie	7	1,608	1,775	457	350	133	1,141	594	878	2,210	1,300	2,104	3,199
Richmond - Tweed	1	1,080	1,128	271	249	57	664	345	549	1,135	352	1,320	1,993
Riverina	0	982	767	235	218	32	613	275	312	651	355	902	1,600
Southern Highlands And Shoalhaven	4	568	544	200	192	35	283	118	145	347	270	539	974
<b>NSW</b>	60	32,188	27,854	7,019	7,046	1,704	17,378	7,226	10,551	27,446	17,524	34,870	48,253

**Table 2.4: Number of major offences by Statistical Areas (SA4)**  
Over the 12 months to March 2020

Statistical Area	Murder*	Domestic violence related assault	Non-domestic violence related assault	Sexual assault	Sexual touching, sexual act and other sexual offences	Robbery	Break and enter dwelling	Break and enter non-dwelling	Motor vehicle theft	Steal from motor vehicle	Steal from retail store	Other stealing offences	Malicious damage to property
<b>Greater Sydney</b>	37	17,864	18,203	3,230	4,310	1,762	12,487	4,207	7,204	21,924	16,677	28,514	29,866
Central Coast	3	1,589	1,469	321	365	90	927	332	714	1,959	1,125	1,710	2,639
Sydney - Baulkham Hills And Hawkesbury	0	488	357	84	114	30	543	158	205	631	380	758	678
Sydney - Blacktown	3	2,253	1,792	348	404	238	1,356	341	673	2,444	1,288	2,377	3,292
Sydney - City And Inner South	6	1,500	3,581	368	569	261	987	591	469	1,673	3,450	6,135	3,223
Sydney - Eastern Suburbs	2	727	988	187	223	52	575	114	275	841	918	1,765	1,400
Sydney - Inner South West	1	2,051	1,631	286	382	205	1,134	358	918	2,193	970	2,176	2,769
Sydney - Inner West	3	571	676	114	192	72	661	246	329	1,070	887	1,563	1,316
Sydney - North Sydney And Hornsby	2	507	664	159	224	53	898	293	222	979	1,514	1,472	1,643
Sydney - Northern Beaches	0	446	639	120	148	43	292	166	198	951	587	1,015	1,191
Sydney - Outer South West	2	1,326	891	240	367	92	666	228	439	1,286	1,051	1,210	1,875
Sydney - Outer West And Blue Mountains	1	1,728	1,468	334	355	120	962	367	572	1,734	1,290	1,871	2,959
Sydney - Parramatta	5	1,879	1,715	247	348	242	1,593	425	952	2,695	1,224	2,825	2,612
Sydney - Ryde	0	403	365	43	98	29	464	143	146	628	448	668	713
Sydney - South West	6	1,705	1,357	275	373	193	1,137	331	903	2,229	1,044	2,296	2,311
Sydney - Sutherland	3	691	610	104	148	42	292	114	189	611	501	673	1,245
<b>Regional NSW</b>	29	13,741	12,438	3,215	3,690	702	12,809	5,744	6,177	15,760	9,903	21,246	26,228
Capital Region	5	751	780	197	241	25	728	290	293	794	548	1,277	1,560
Central West	2	1,250	1,104	308	317	66	1,258	503	476	1,004	661	1,716	2,338
Coffs Harbour - Grafton	0	707	735	169	182	47	574	282	321	657	513	1,190	1,296
Far West And Orana	2	1,706	978	226	243	38	1,279	539	421	1,282	589	1,436	2,430
Hunter Valley Exc Newcastle	2	1,347	1,065	372	378	47	1,130	777	795	1,428	924	2,379	2,445
Illawarra	3	953	978	245	312	73	884	369	559	1,722	1,343	1,715	2,143
Mid North Coast	1	1,118	949	235	299	48	880	418	461	1,069	632	2,008	2,125
Murray	1	613	564	126	172	36	694	309	359	1,014	428	1,060	1,304
New England And North West	3	1,324	1,066	319	293	55	1,481	478	400	1,247	700	1,515	2,380
Newcastle And Lake Macquarie	5	1,511	1,817	424	470	138	1,646	800	1,068	2,863	1,771	3,006	3,573
Richmond - Tweed	5	835	1,112	249	330	65	779	341	474	1,001	635	1,784	1,795
Riverina	0	1,130	808	190	242	36	1,060	430	341	1,158	715	1,421	1,859
Southern Highlands And Shoalhaven	0	496	482	155	211	28	416	208	209	521	444	739	980
<b>NSW</b>	69	31,612	32,014	6,492	8,023	2,469	25,296	9,953	13,381	37,684	26,580	49,774	56,177