

NSW CUSTODY STATISTICS

June 2022



YOUTH DETENTION POPULATION

201

in June 2021

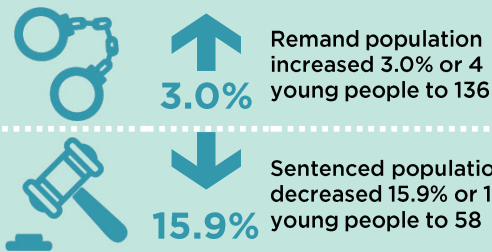
194

in June 2022



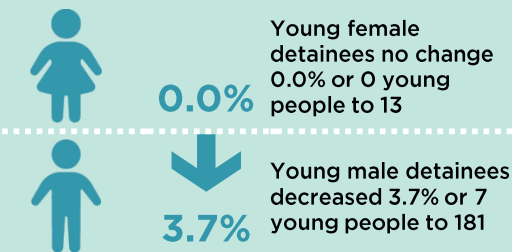
CUSTODY STATUS

Between June 2021 and June 2022



GENDER

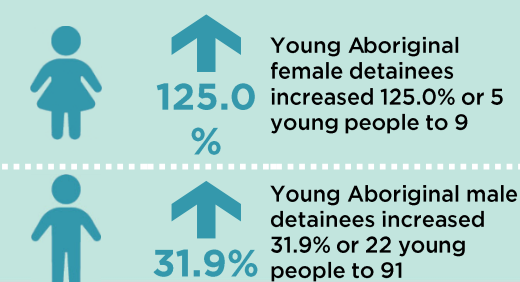
Between June 2021 and June 2022



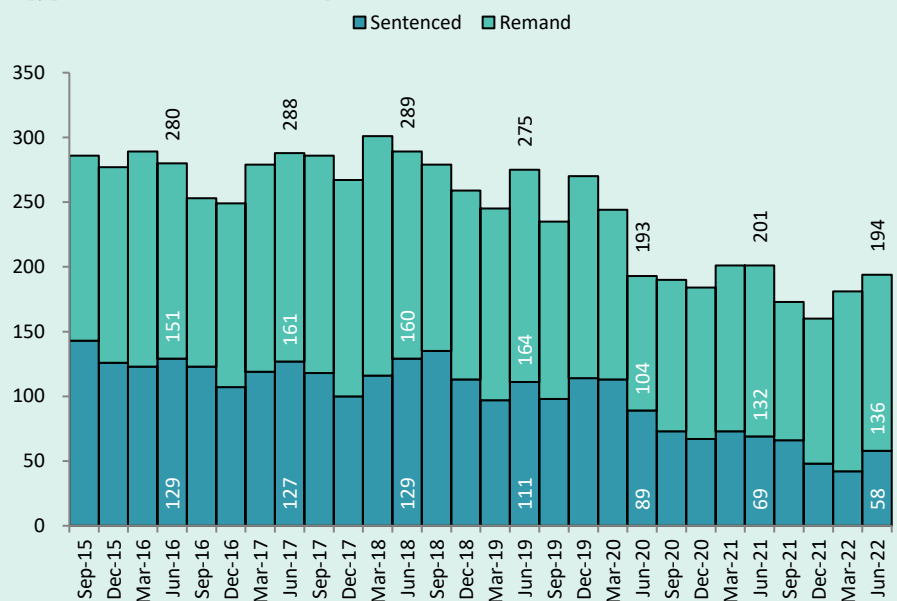
ABORIGINAL OVER-REPRESENTATION



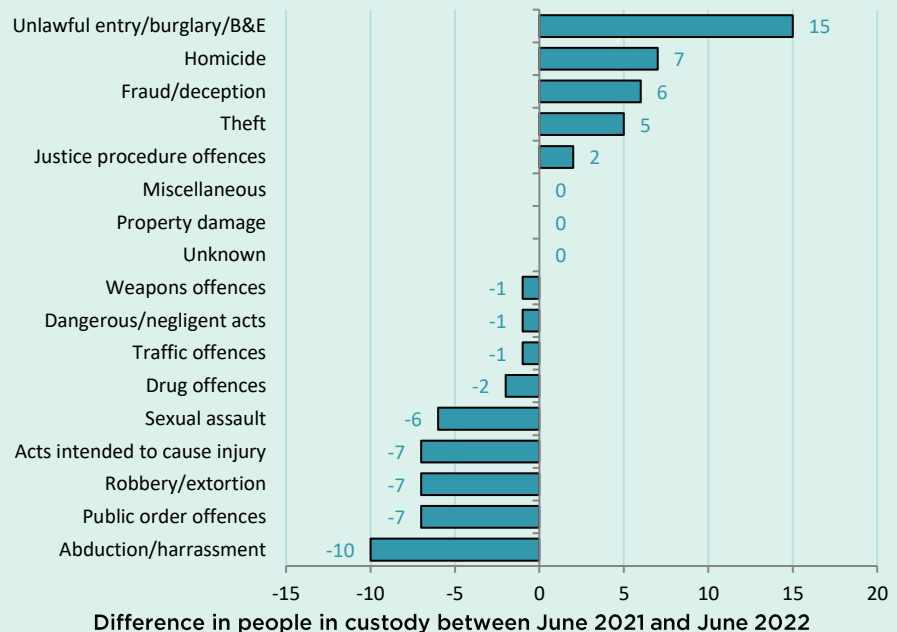
Between June 2021 and June 2022



QUARTERLY TRENDS



CHANGE IN YOUTH CUSTODY BY OFFENCE



NSW CUSTODY STATISTICS

June 2022

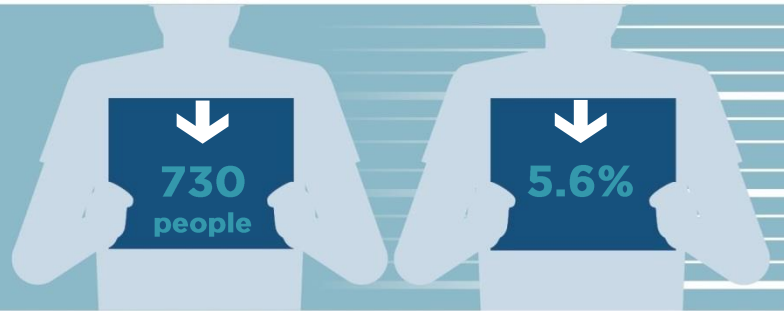
PRISON POPULATION

13,066

in June 2021

12,336

in June 2022



LEGAL STATUS

Between June 2021 and June 2022



1.5%

Remand population increased 1.5% or 70 people to 4,648



9.4%

Sentenced population decreased 9.4% or 800 people to 7,688

GENDER

Between June 2021 and June 2022



6.4%

Female custody population decreased 6.4% or 55 people to 806



5.5%

Male custody population decreased 5.5% or 675 people to 11,530

ABORIGINAL OVER-REPRESENTATION*

In Jun 2021

27.7%

of prisoners were Aboriginal

In Jun 2022

29.0%

of prisoners were Aboriginal

Between June 2021 and June 2022



4.2%

Aboriginal female custody population increased 4.2% or 13 people to 323

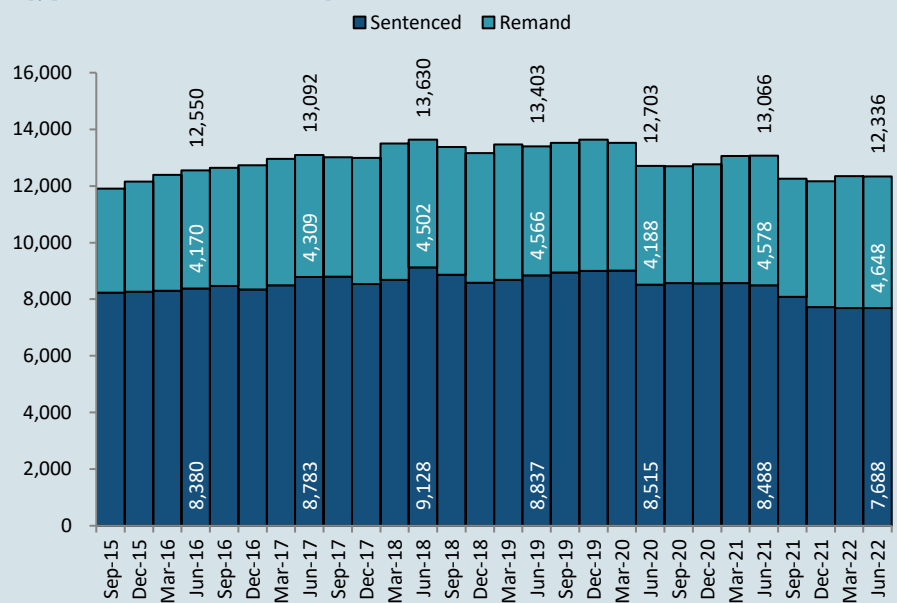


1.6%

Aboriginal male custody population decreased 1.6% or 54 people to 3,258

*Due to delays in identification of Aboriginal status the number of Aboriginal persons in adult custody is potentially undercounted by up to 2% in more recent months.

QUARTERLY TRENDS



CHANGE IN PRISON NUMBERS BY OFFENCE

