

# NSW CUSTODY STATISTICS

December 2019



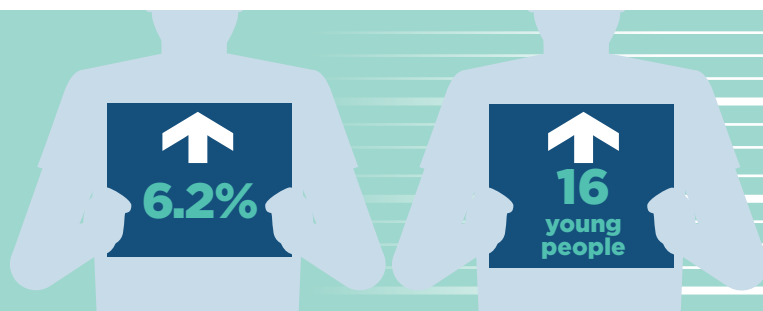
## YOUTH DETENTION POPULATION

**259**

in December 2018

**275**

in December 2019



### CUSTODY STATUS

Between December 2018 and December 2019



**8.2%**

Remand up 8.2% or 12 young people to 158



**3.5%**

Sentenced up 3.5% or 4 young people to 117

### GENDER

Between December 2018 and December 2019



**9.1%**

Girls increased by 9.1% or 2 young people to 24



**5.9%**

Boys increased by 5.9% or 14 young people to 251

### ABORIGINAL OVER-REPRESENTATION

In Dec 2018  
**53.7%**  
of young people in custody were Aboriginal

In Dec 2019  
**44.0%**  
of young people in custody were Aboriginal

Between December 2018 and December 2019



**8.3%**

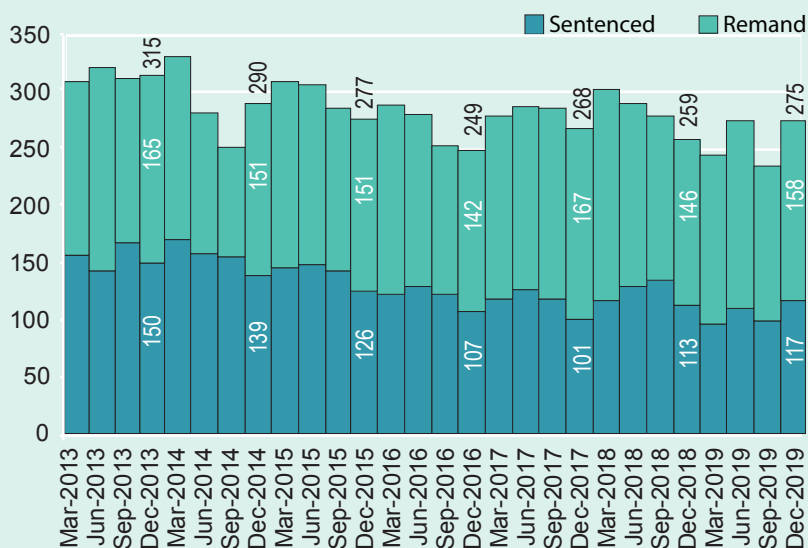
Young Aboriginal female prisoners fell by 8.3% or 1 young person to 11



**13.4%**

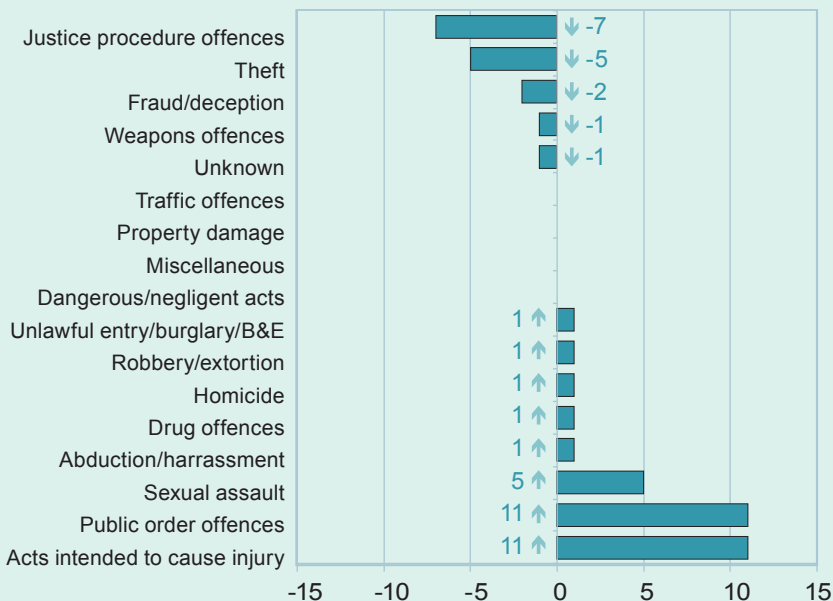
Young Aboriginal male prisoners fell by 13.4% or 17 young people to 110

### MONTHLY TRENDS



### CHANGE IN YOUTH CUSTODY BY OFFENCE

December 18 to December 19



# NSW CUSTODY STATISTICS

December 2019

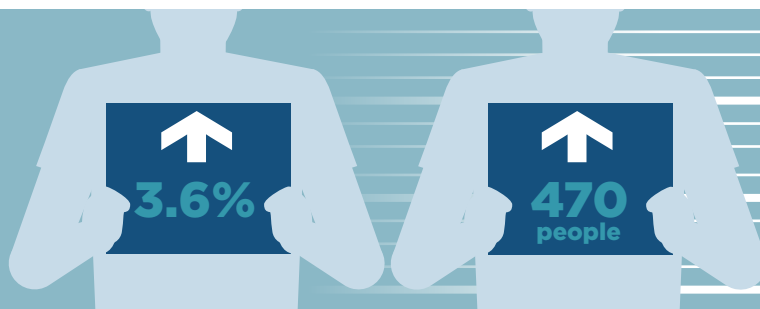


## PRISON POPULATION

**13,165**      **13,635**

in December 2018

in December 2019



### PRISONER TYPE

Between December 2018 and December 2019



**↑**  
1.2%

Remand up 1.2% or 53 people to 4,639



**↑**  
4.9%

Sentenced up 4.9% or 417 people to 8,996

### PRISONER GENDER

Between December 2018 and December 2019



**↑**  
2.7%

Female prisoners increased 2.7% or 26 people to 981



**↑**  
3.6%

Male prisoners increased 3.6% or 444 people to 12,654

### ABORIGINAL OVER-REPRESENTATION

In Dec 2018

**24.9%**

of prisoners were Aboriginal

In Dec 2019

**25.0%**

of prisoners were Aboriginal

Between December 2018 and December 2019



**↓**  
3.2%

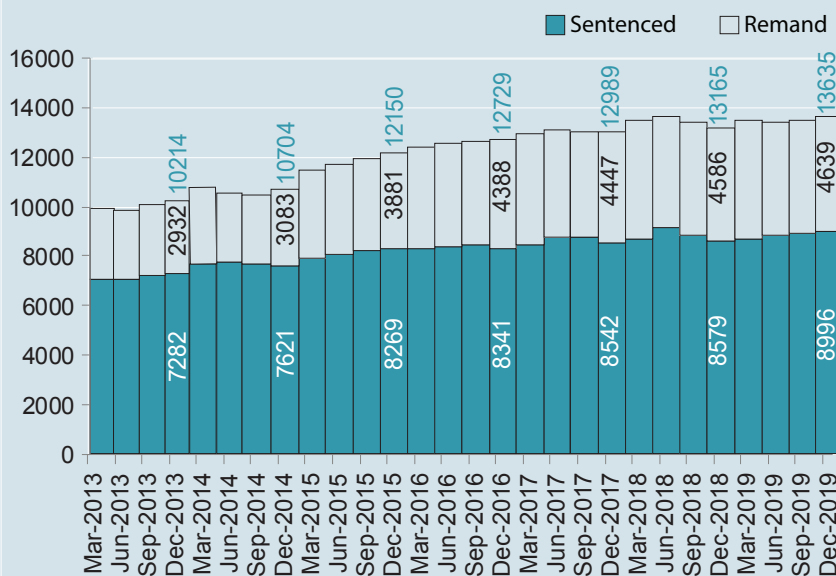
Aboriginal female prisoners fell 3.2% or 10 people to 306



**↑**  
5.1%

Aboriginal male prisoners increased 5.1% or 150 people to 3,109

### MONTHLY TRENDS



### CHANGE IN PRISON NUMBERS BY OFFENCE

December 18 to December 19

