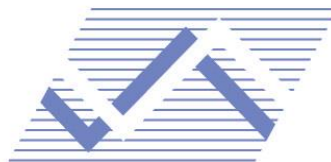


---

# **NEW SOUTH WALES CUSTODY STATISTICS**

QUARTERLY UPDATE  
DECEMBER 2015

---



NSW Bureau of Crime  
Statistics and Research

## **CONTENTS**

This report presents 24 months of reception, discharge and custody population data and comparisons between the current and previous quarter for age, gender, indigenous status, most serious offence and the average length of stay.

Separate figures are presented for juveniles and adults.

The counting unit is a custodial episode. An individual will be counted multiple times in a period if they have multiple custodial episodes in that period.

## **SCOPE**

The data in this report are extracted from the Corrective Services NSW (CSNSW) Offender Integrated Management System (OIMS) and the Juvenile Justice NSW (JJNSW) Client Information Management System (CIMS).

The adult custody population figures include only those persons held in gazetted correctional centres managed by CSNSW. This includes: persons managed as forensic patients, persons held after expiry of their sentence awaiting deportation and persons awaiting extradition to another jurisdiction. Persons in the Special Purpose Centre at Long Bay Correctional Centre are not included.

In addition to gazetted correctional centres, CSNSW manages a number of police/court cell complexes. This report excludes persons received into and then discharged from a CSNSW-managed 24 hour police/court cell complex without entering a gazetted correctional centre. Adults refused police bail but not held in a gazetted correctional centre are not included.

Custody population figures are counted as at midnight on the last day of the month or quarter as appropriate. Reception and discharge figures are those during each month or quarter as appropriate.

Refer to the Glossary at the back of the report for detailed descriptions of the terms used in the report.

## **ACKNOWLEDGEMENTS**

Juvenile custody data are provided by the Research and Information Section of JJNSW. Adult custody data are provided by the Corrections Research, Evaluation and Statistics (CRES) section of CSNSW. BOCSAR is grateful for the support provided by both areas in supplying the data for this report and advising on its interpretation.

## **NOTE**

The adult custody data presented in this report will differ from data reported by CSNSW due to data extract timing differences.

# Contents

## **PART 1 JUVENILES** **3**

<b>SECTION 1.1</b>	<b>JUVENILE CUSTODY POPULATION</b>	<b>4</b>
1.1.1	By Month .....	4
1.1.2	By Legal Status .....	4
1.1.3	By Indigenous Status.....	5
1.1.4	By Legal Status (Indigenous Only).....	5
1.1.5	Profile .....	6
1.1.6	Legal Status Changed from Remand to Sentenced .....	6
1.1.7	Remand Population by Most Serious Offence .....	7
1.1.8	Sentenced Population by Most Serious Offence .....	8
<b>SECTION 1.2</b>	<b>JUVENILE CUSTODY RECEPTIONS</b>	<b>9</b>
1.2.1	By Month .....	9
1.2.2	By Legal Status .....	9
<b>SECTION 1.3</b>	<b>JUVENILE CUSTODY DISCHARGES</b>	<b>10</b>
1.3.1	By Month .....	10
1.3.2	Length of Stay .....	10
1.3.3	By Discharge Type .....	11
1.3.4	By Discharge Type (Excluding Bail).....	11
1.3.5	Ratio Of Receptions To Discharges.....	12

## **PART 2 ADULTS** **13**

<b>SECTION 2.1</b>	<b>ADULT CUSTODY POPULATION</b>	<b>14</b>
2.1.1	By Month .....	14
2.1.2	By Indigenous Status.....	14
2.1.3	Remand Population .....	15
2.1.4	Sentenced Population.....	15
2.1.5	Indigenous Remand Population .....	16
2.1.6	Indigenous Sentenced Population .....	16
2.1.7	Profile .....	17
2.1.8	Legal Status Changed from Remand to Sentenced .....	17
2.1.9	Remand Population by Most Serious Offence .....	18
2.1.10	Sentenced Population by Most Serious Offence .....	19
<b>SECTION 2.2</b>	<b>ADULT CUSTODY RECEPTIONS</b>	<b>20</b>
2.2.1	By Month .....	20
2.2.2	Remand Receptions .....	21
2.2.3	Sentenced Receptions.....	21
<b>SECTION 2.3</b>	<b>ADULT CUSTODY DISCHARGES</b>	<b>22</b>
2.3.1	By Month .....	22
2.3.2	Length of Stay .....	22
2.3.3	By Discharge Type .....	23
2.3.4	Ratio Of Receptions To Discharges.....	23

## **PART 3 DATA TABLES** **24**

## **PART 4 GLOSSARY** **29**

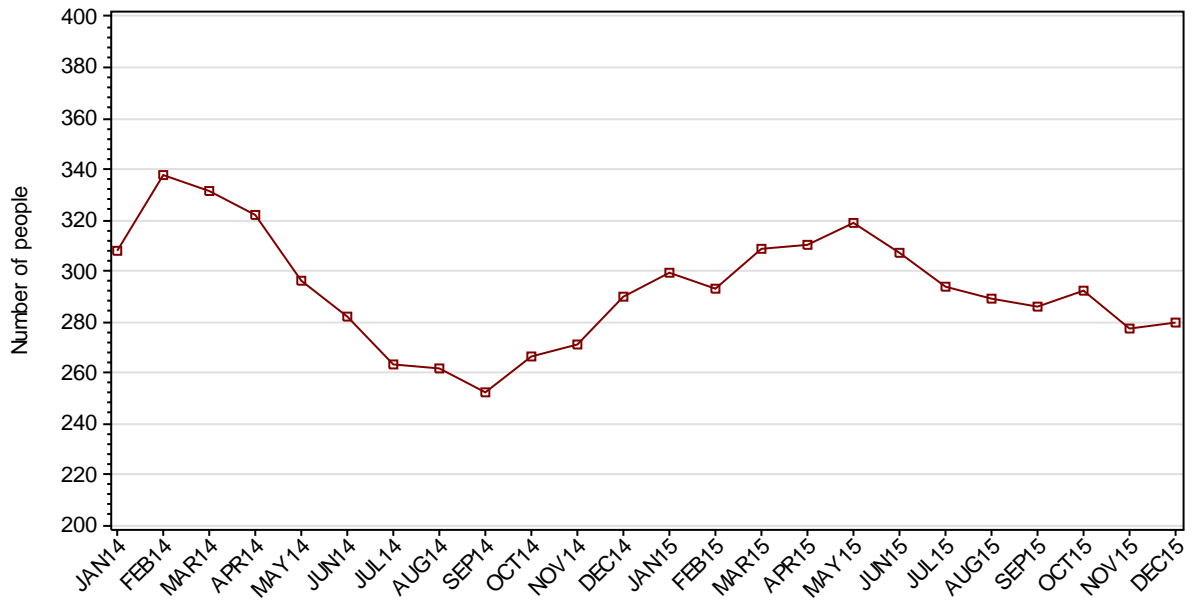
---

## **Part 1 JUVENILES**

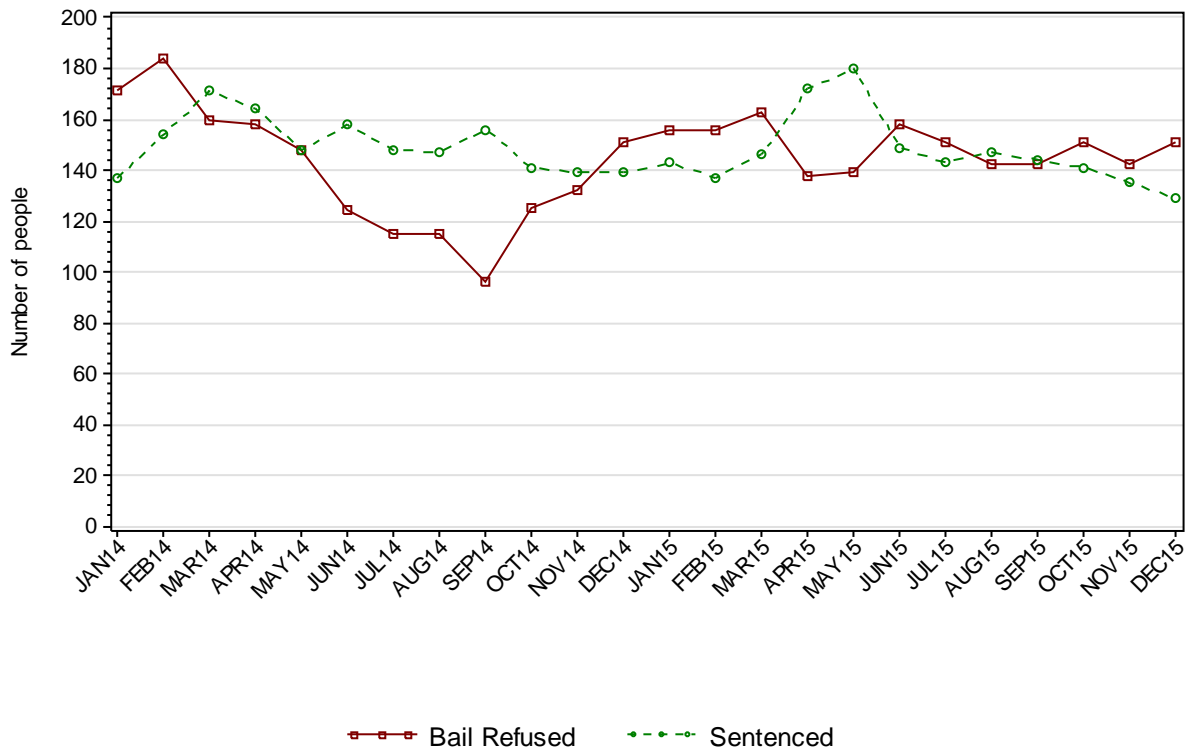
---

## SECTION 1.1 JUVENILE CUSTODY POPULATION

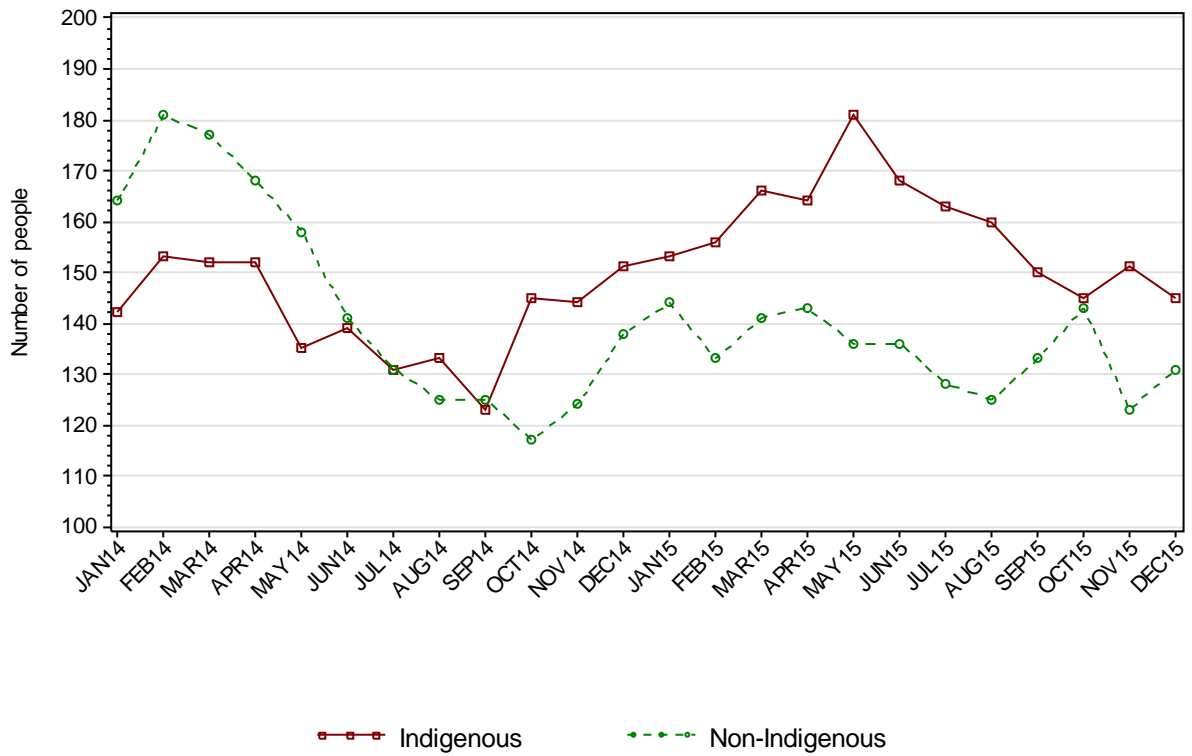
### 1.1.1 JUVENILE CUSTODY POPULATION AT END OF MONTH



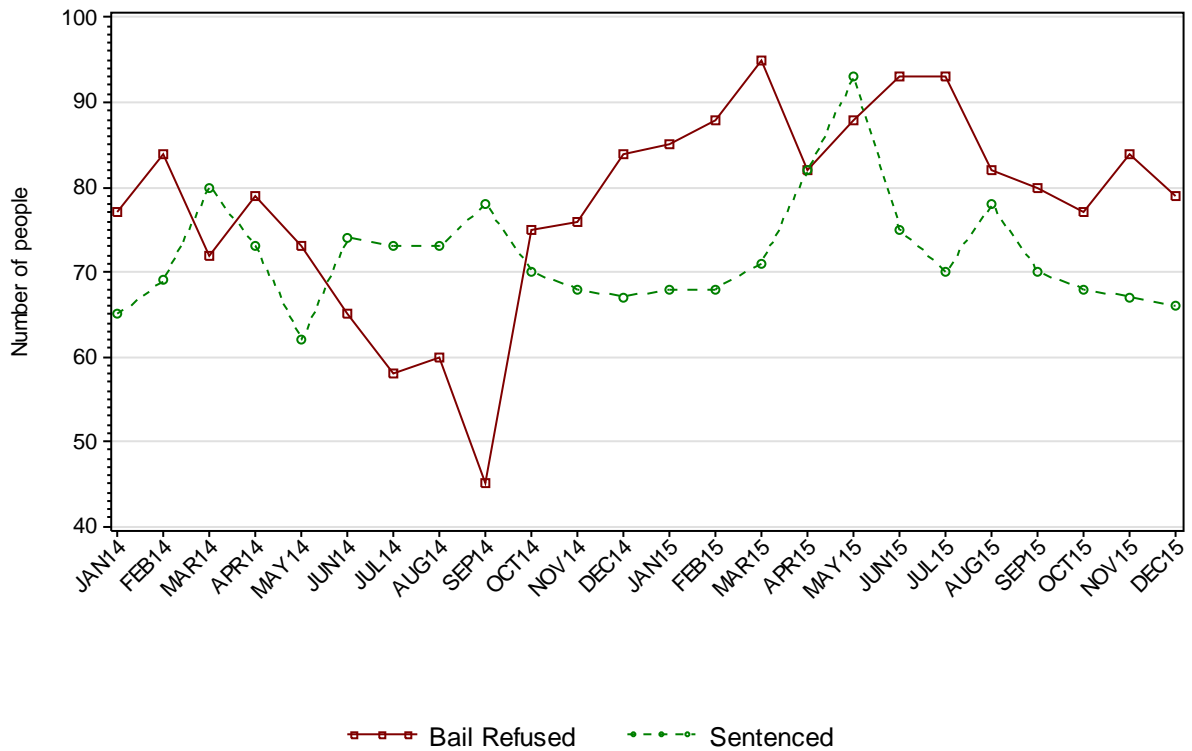
### 1.1.2 JUVENILE CUSTODY POPULATION BY LEGAL STATUS



### 1.1.3 JUVENILE CUSTODY POPULATION BY INDIGENOUS STATUS



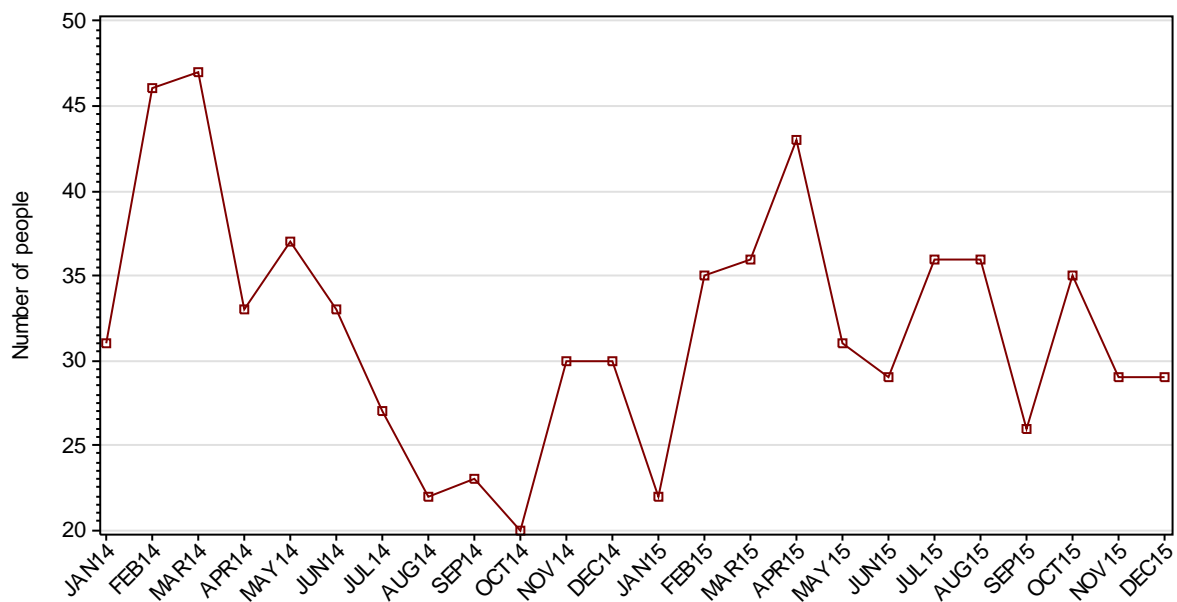
### 1.1.4 INDIGENOUS JUVENILE CUSTODY POPULATION BY LEGAL STATUS



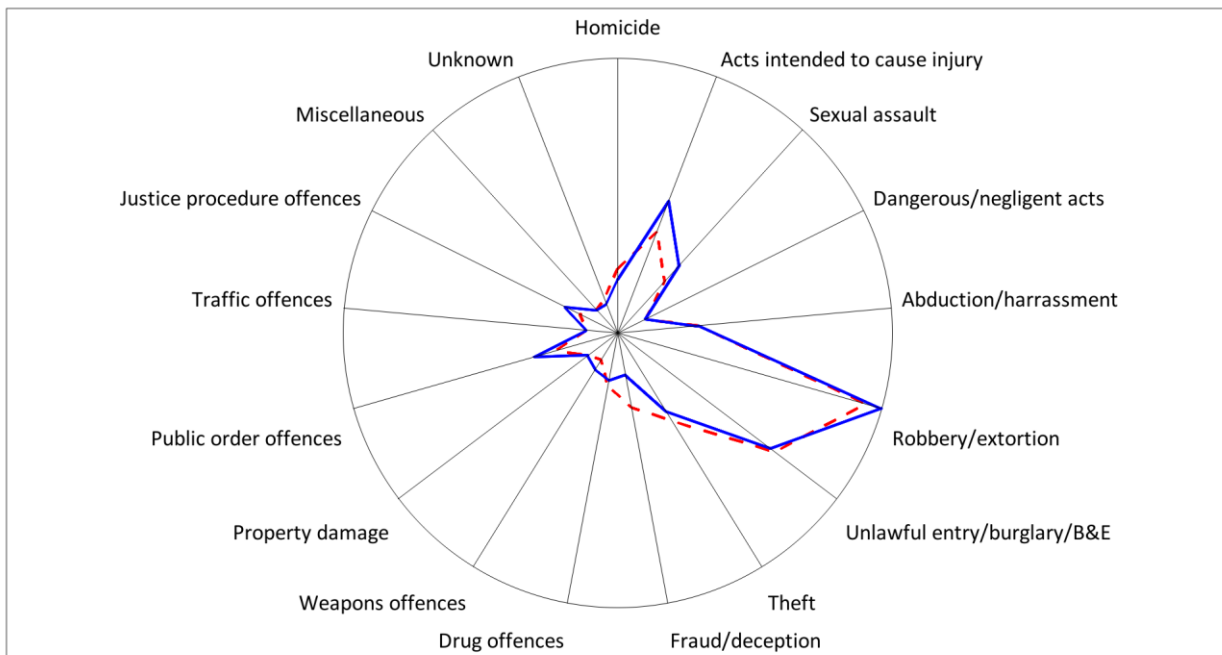
### 1.1.5 JUVENILE CUSTODY PROFILE AT END OF QUARTER

		Police Bail Refused		Court Bail Refused		Sentenced		Total	
		SEP15	DEC15	SEP15	DEC15	SEP15	DEC15	SEP15	DEC15
Total Male	Count	4	6	125	135	140	123	269	264
	Avg Age	15.0	15.3	16.2	16.2	16.8	16.9	16.5	16.5
Total Female	Count	1	1	12	9	4	6	17	16
	Avg Age	15.0	17.0	15.6	14.3	17.0	16.8	15.9	15.4
Indigenous Male	Count	2	2	68	72	67	65	137	139
	Avg Age	15.5	14.5	16.1	16.2	16.4	16.4	16.2	16.3
Indigenous Female	Count	0	0	10	5	3	1	13	6
	Avg Age	0	0	15.6	15.0	17.0	15.0	15.9	15.0
Total	Count	5	7	137	144	144	129	286	280
	Avg Age	15.0	15.6	16.2	16.1	16.8	16.9	16.5	16.4

### 1.1.6 JUVENILES IN CUSTODY: NUMBER WHOSE LEGAL STATUS CHANGED DURING MONTH FROM REMAND TO SENTENCED



### 1.1.7 JUVENILE REMAND POPULATION BY MOST SERIOUS OFFENCE



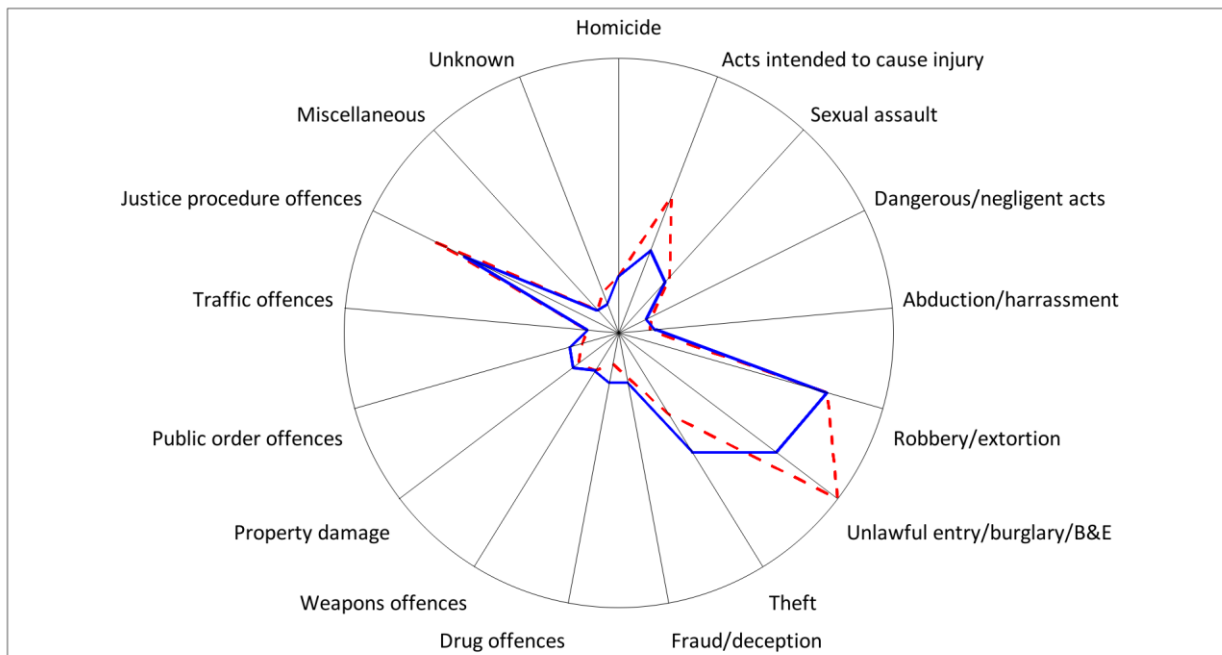
As At: - -30SEP15

— 31DEC15

	30SEP15		31DEC15	
	Number	% of Total	Number	% of Total
Homicide	6	4.2	4	2.6
Acts intended to cause injury	14	9.9	20	13.2
Sexual assault	7	4.9	11	7.3
Dangerous/negligent acts	0	0	0	0
Abduction/harrassment	9	6.3	9	6.0
Robbery/extortion	41	28.9	44	29.1
Unlawful entry/burglary/B&E	30	21.1	29	19.2
Theft	13	9.2	11	7.3
Fraud/deception	8	5.6	2	1.3
Drug offences	4	2.8	3	2.0
Weapons offences	0	0	2	1.3
Property damage	1	0.7	1	0.7
Public order offences	6	4.2	10	6.6
Traffic offences	0	0	0	0
Justice procedure offences	2	1.4	5	3.3
Miscellaneous	0	0	0	0
Unknown	1	0.7	0	0
<b>Total</b>	<b>142</b>	<b>100.0</b>	<b>151</b>	<b>100.0</b>



### 1.1.8 JUVENILE SENTENCED POPULATION BY MOST SERIOUS OFFENCE



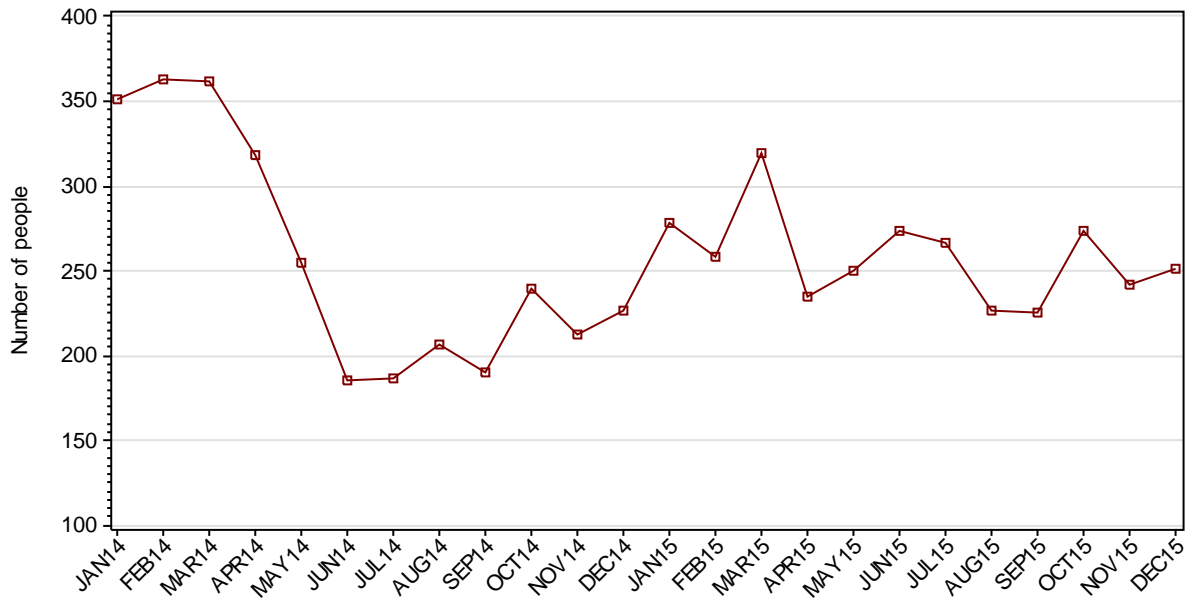
As At: - -30SEP15

—31DEC15

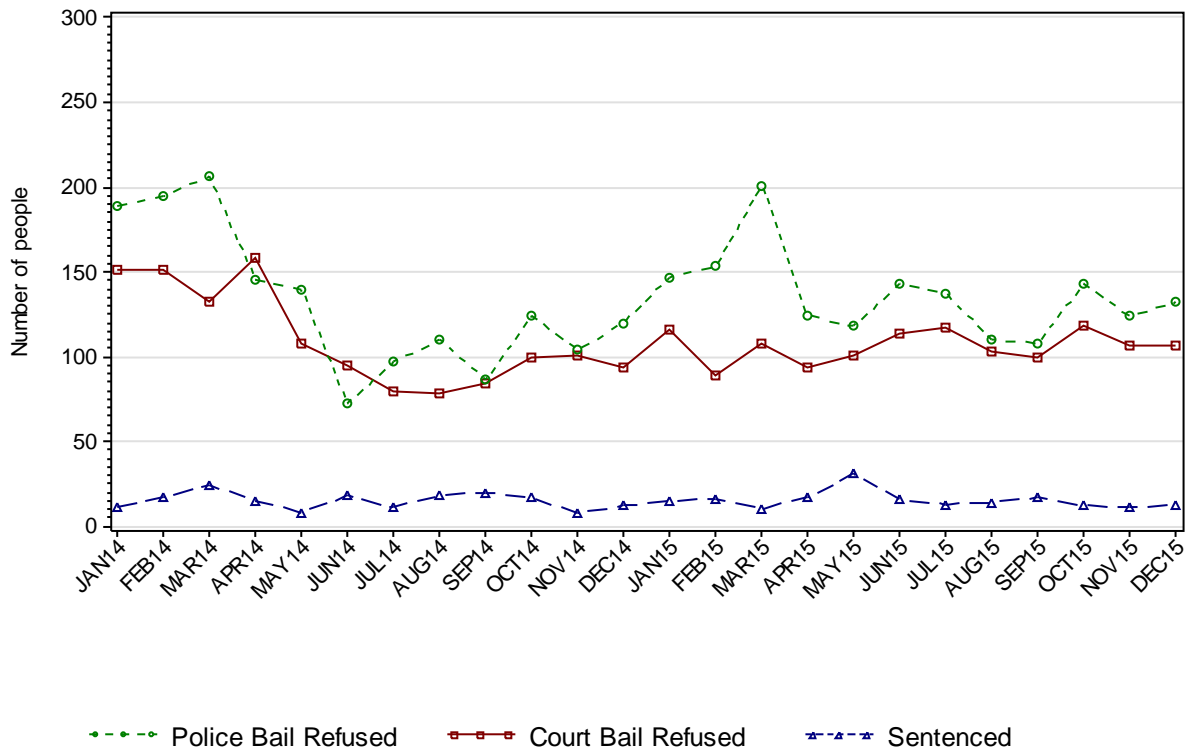
	30SEP15		31DEC15	
	Number	% of Total	Number	% of Total
Homicide	4	2.8	4	3.1
Acts intended to cause injury	18	12.5	9	7.0
Sexual assault	7	4.9	6	4.7
Dangerous/negligent acts	1	0.7	0	0
Abduction/harrassment	0	0	1	0.8
Robbery/extortion	29	20.1	29	22.5
Unlawful entry/burglary/B&E	38	26.4	26	20.2
Theft	10	6.9	17	13.2
Fraud/deception	2	1.4	3	2.3
Drug offences	0	0	3	2.3
Weapons offences	2	1.4	2	1.6
Property damage	3	2.1	4	3.1
Public order offences	1	0.7	3	2.3
Traffic offences	0	0	0	0
Justice procedure offences	27	18.8	22	17.1
Miscellaneous	0	0	0	0
Unknown	2	1.4	0	0
Total	144	100.0	129	100.0

## SECTION 1.2 JUVENILE CUSTODY RECEPTIONS

### 1.2.1 JUVENILES RECEIVED INTO CUSTODY DURING MONTH

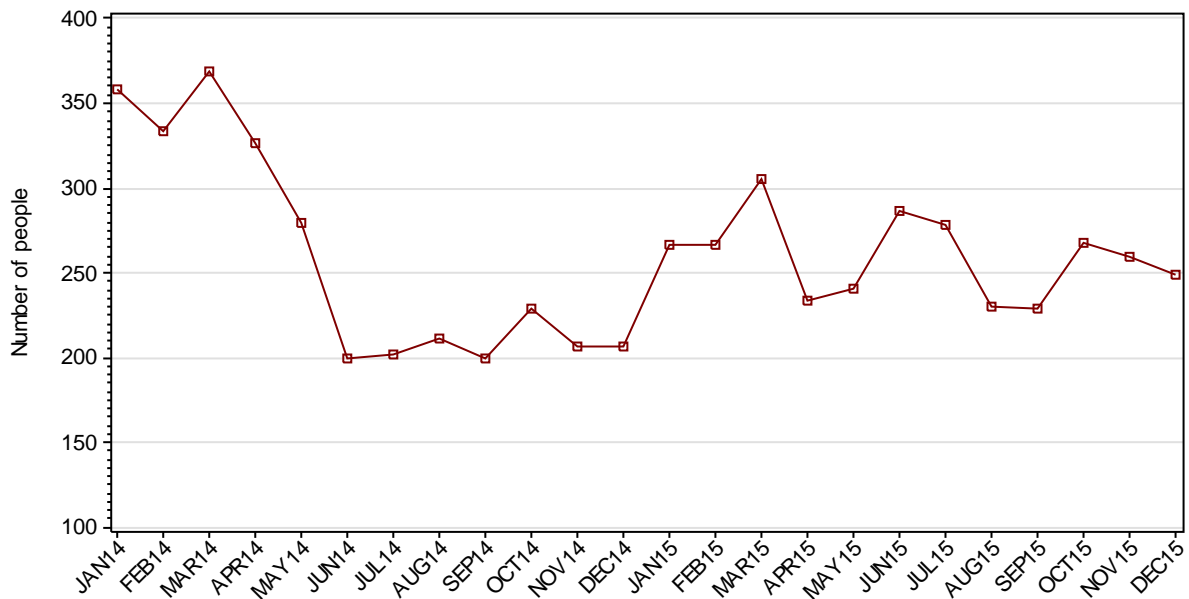


### 1.2.2 JUVENILES RECEIVED INTO CUSTODY BY LEGAL STATUS



## SECTION 1.3 JUVENILE CUSTODY DISCHARGES

### 1.3.1 JUVENILES DISCHARGED FROM CUSTODY DURING MONTH

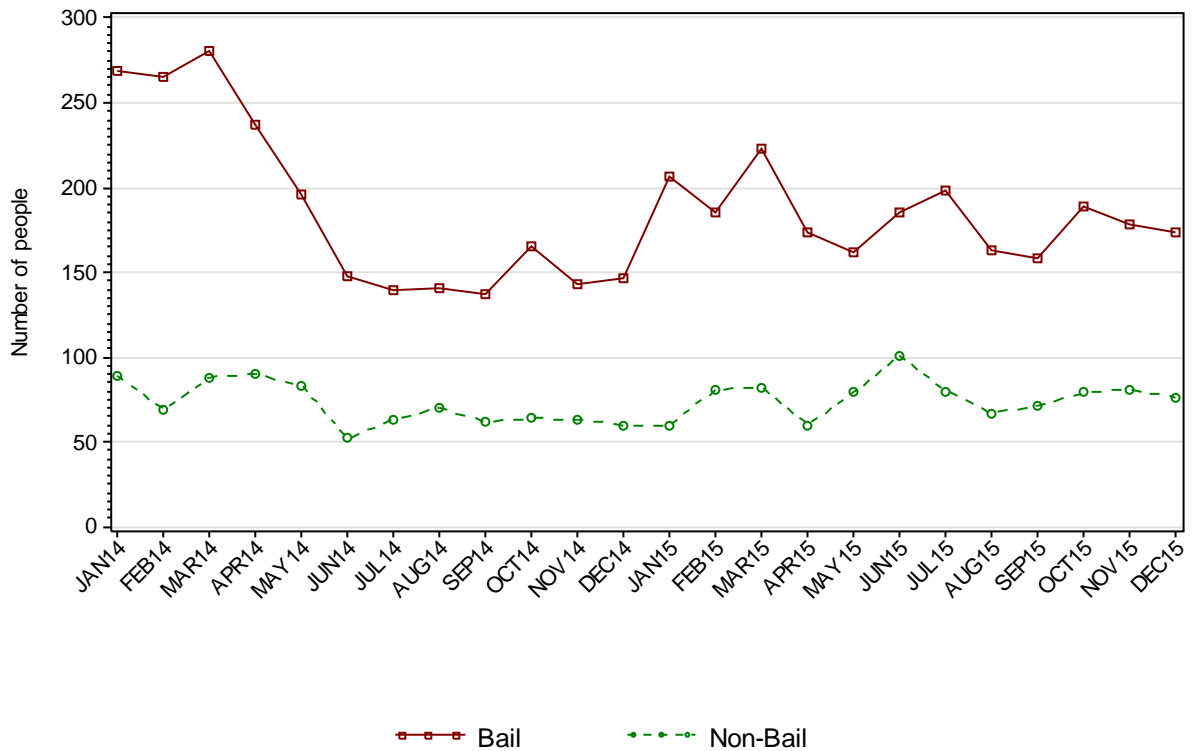


### 1.3.2 AVERAGE LENGTH OF STAY FOR JUVENILES DISCHARGED FROM CUSTODY EACH QUARTER

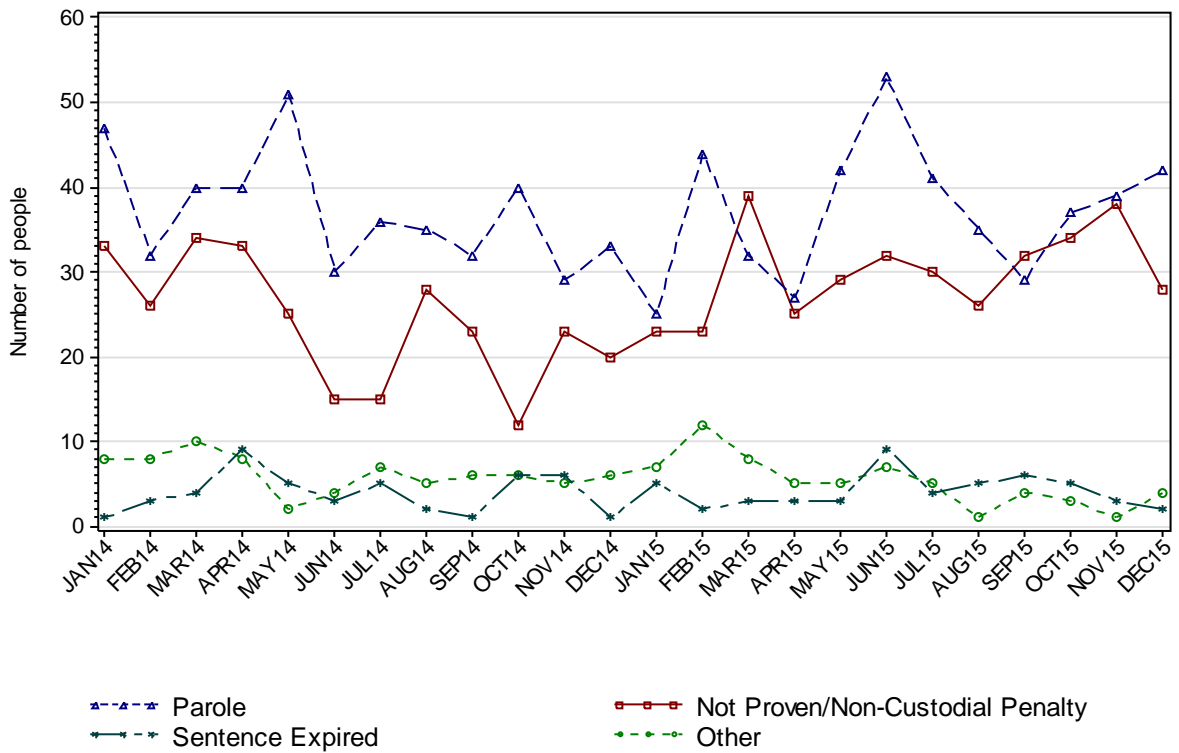
		Remand Custody Only		Sentenced Custody Only		Remand to Sentenced Custody	
		SEP15	DEC15	SEP15	DEC15	SEP15	DEC15
Total Male	Avg Days	12.8	8.7	103.8	136.2	203.0	188.3
	Number	444	488	48	47	79	93
Total Female	Avg Days	4.5	7.7	23.6	40.5	115.8	107.5
	Number	149	140	5	4	12	4
Indigenous Male	Avg Days	15.9	11.0	131.2	97.2	190.3	171.7
	Number	185	215	27	26	47	39
Indigenous Female	Avg Days	6.6	11.5	23.6	46.7	103.9	137.0
	Number	77	67	5	3	8	3
Total	Avg Days	10.7	8.4	96.2	128.7	191.5	184.9
	Number	593	628	53	51	91	97

*Note: Length of Stay for Remand to Sentenced Custody is from the date of reception on remand to date of discharge after serving sentence.*

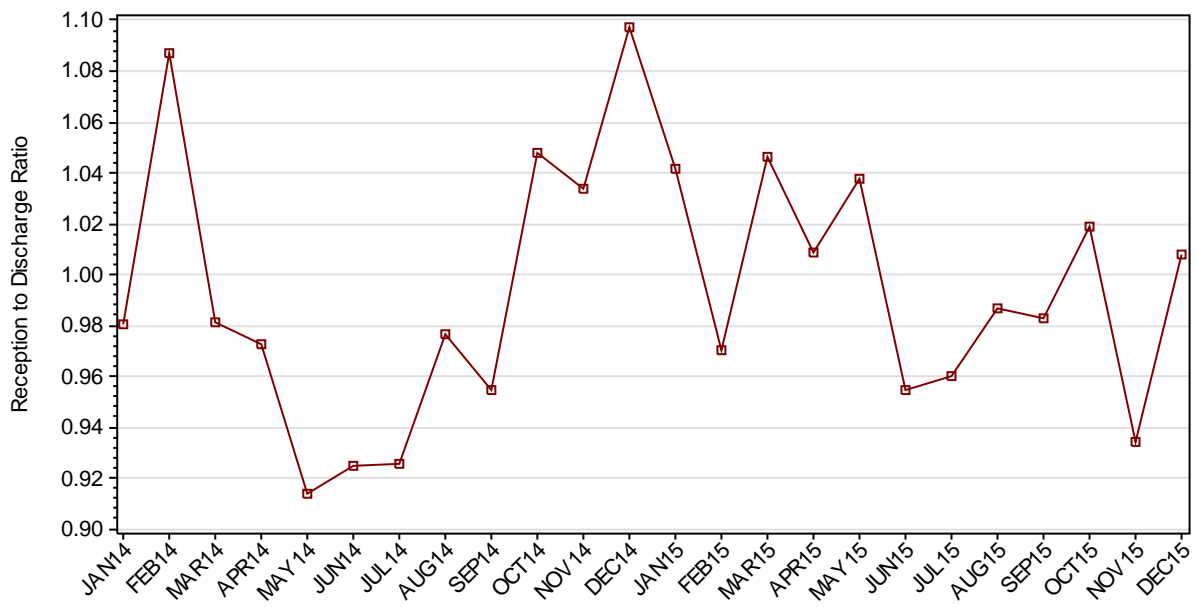
### 1.3.3 JUVENILES BY DISCHARGE TYPE



### 1.3.4 JUVENILES BY DISCHARGE TYPE (EXCLUDING BAIL)



### 1.3.5 RATIO OF JUVENILE RECEPTIONS TO DISCHARGES



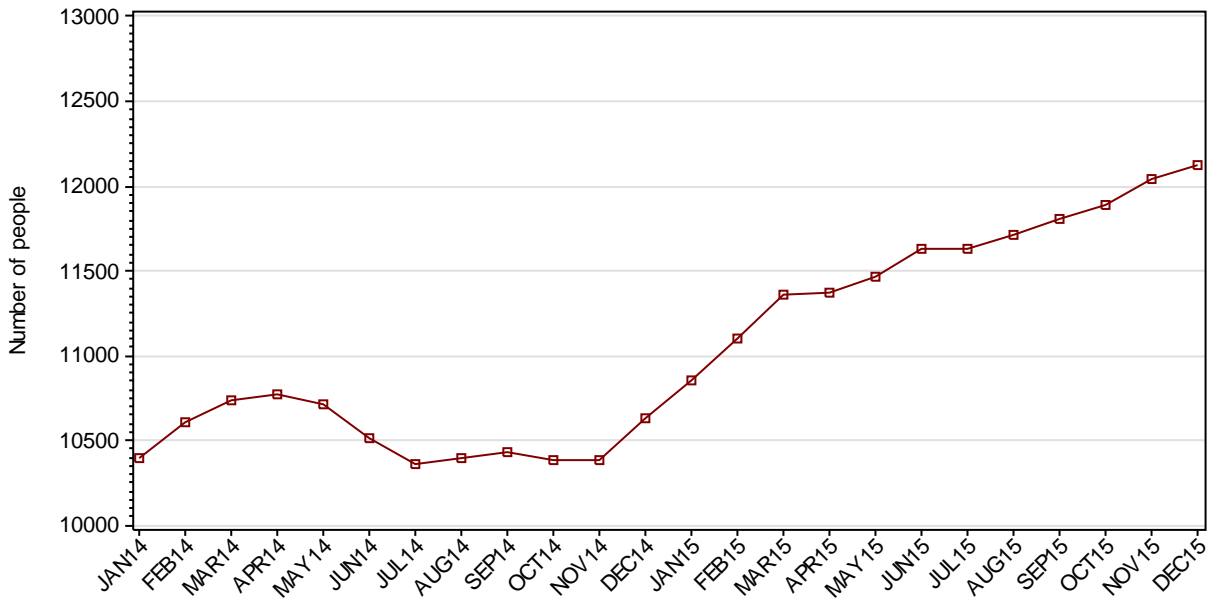
---

## **Part 2 ADULTS**

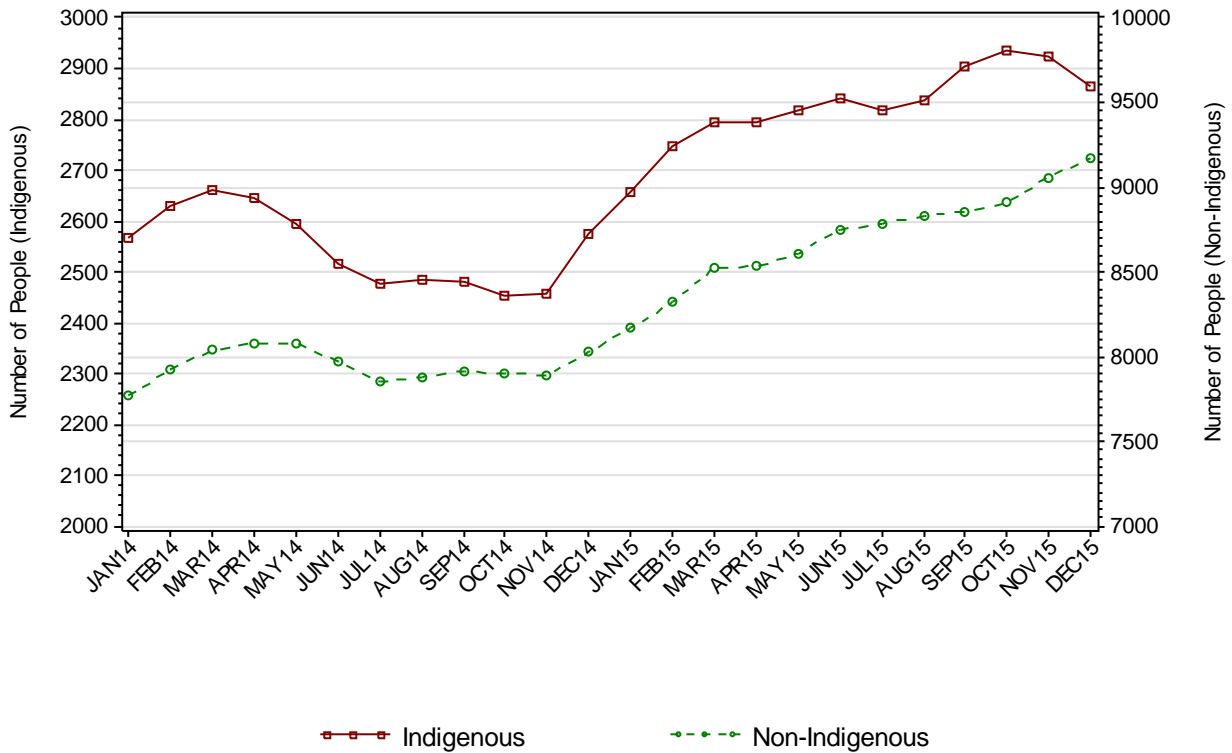
---

## SECTION 2.1 ADULT CUSTODY POPULATION

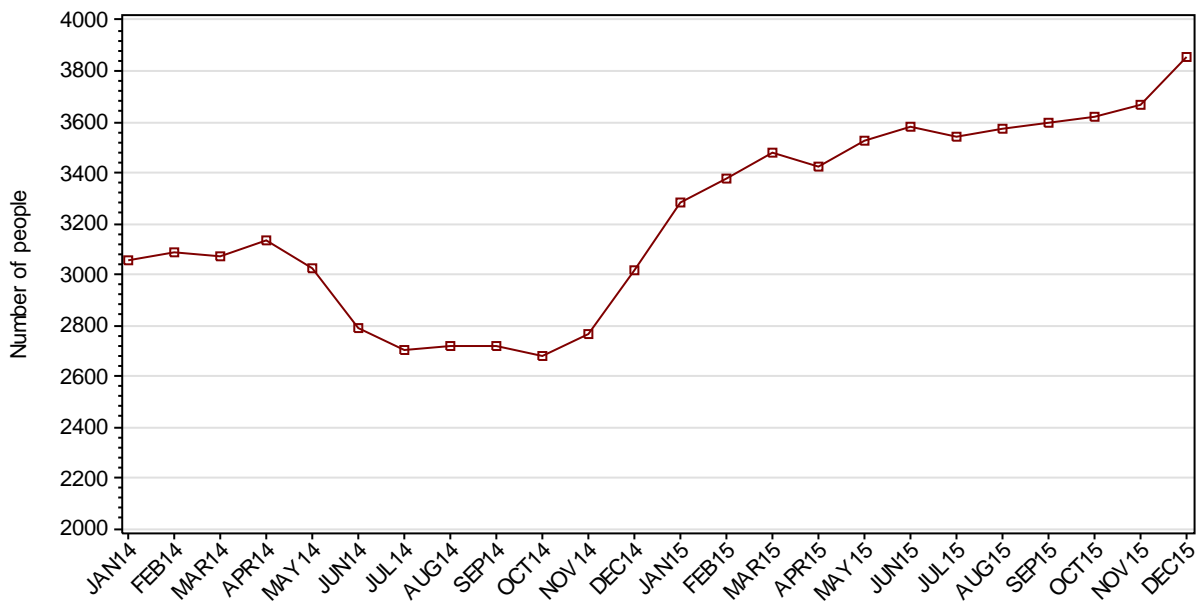
### 2.1.1 ADULT CUSTODY POPULATION AT END OF MONTH



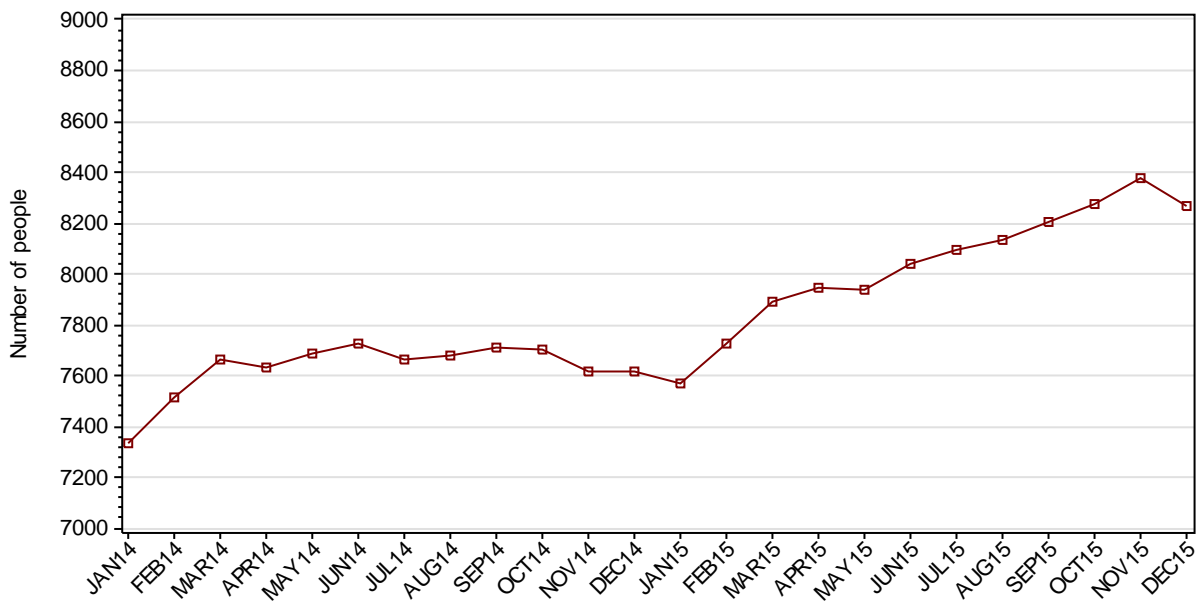
### 2.1.2 ADULT CUSTODY POPULATION BY INDIGENOUS STATUS



### 2.1.3 ADULT REMAND POPULATION

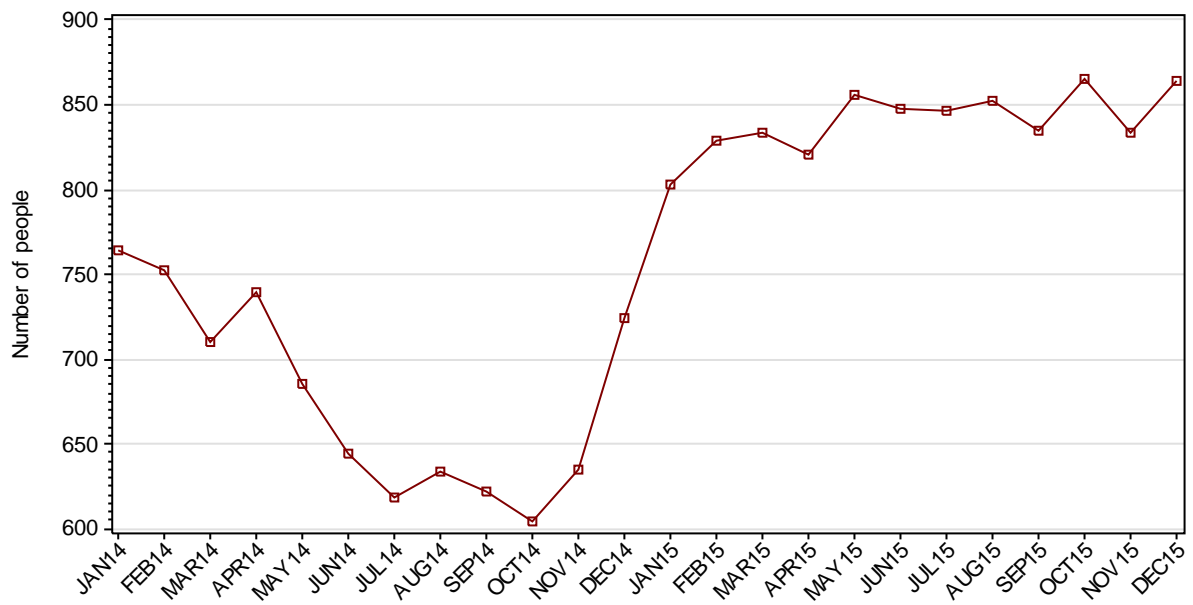


### 2.1.4 ADULT SENTENCED POPULATION

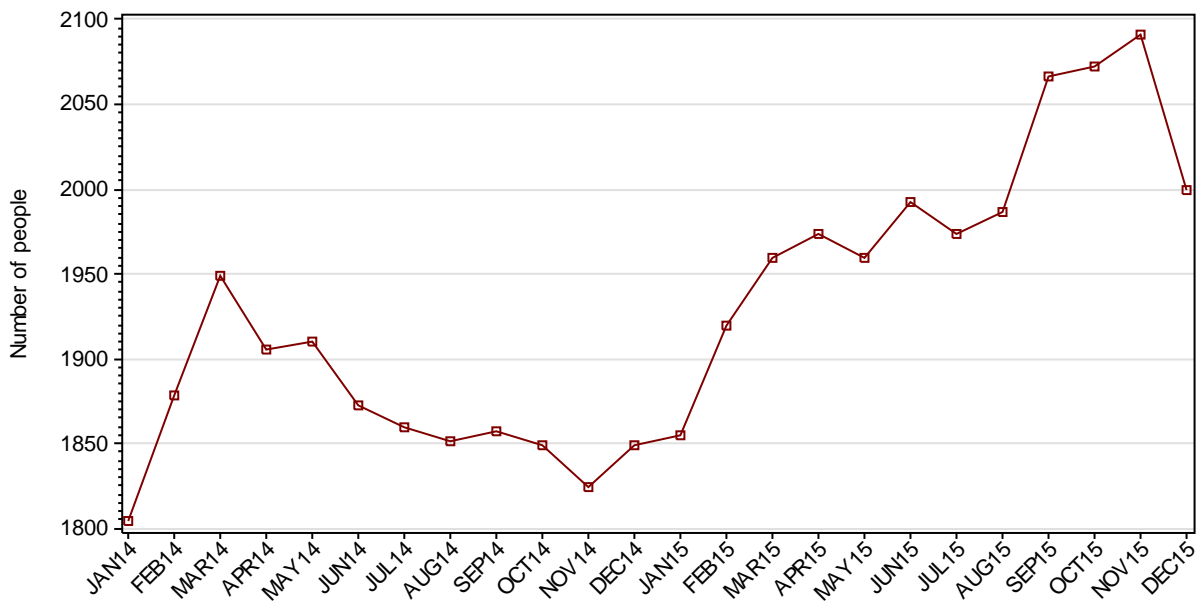




### 2.1.5 INDIGENOUS ADULT REMAND POPULATION



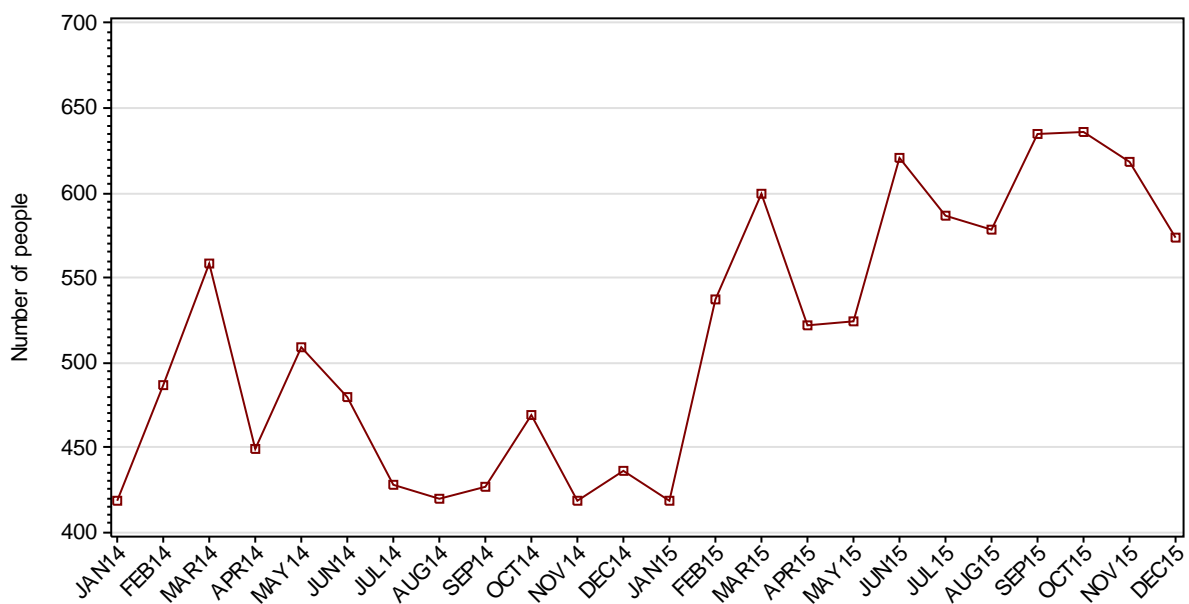
### 2.1.6 INDIGENOUS ADULT SENTENCED POPULATION



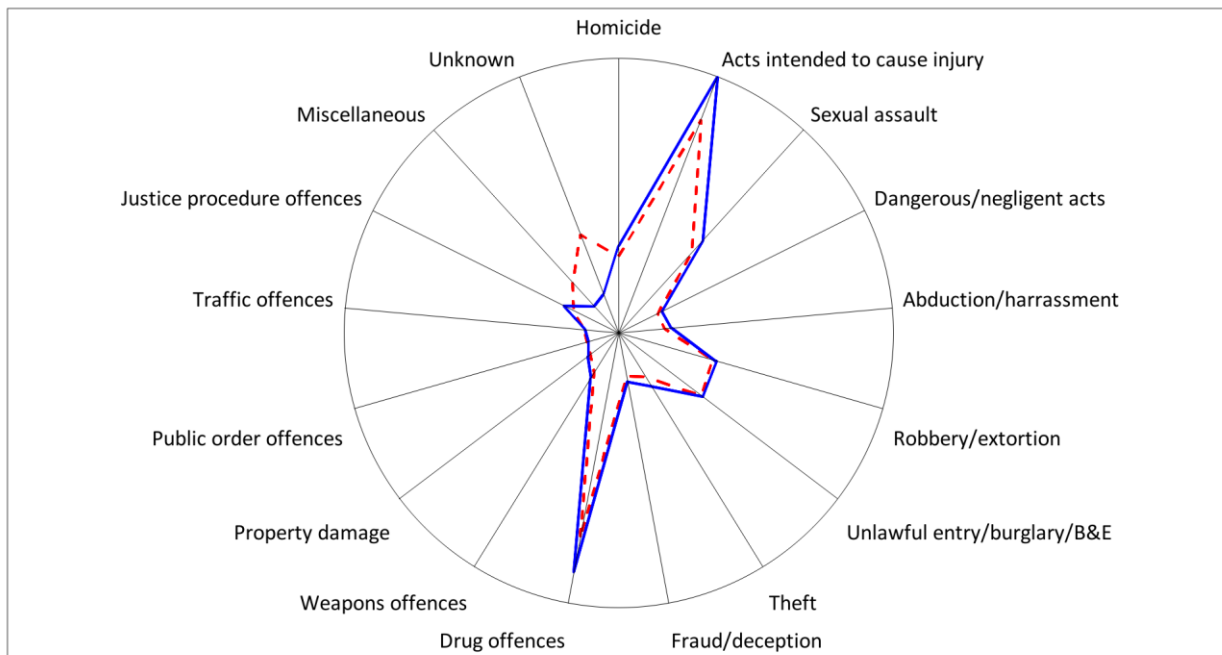
## 2.1.7 ADULT CUSTODY PROFILE AT END OF QUARTER

		Remand		Sentenced		Total	
		SEP15	DEC15	SEP15	DEC15	SEP15	DEC15
Total Male	Count	3329	3545	7628	7707	10957	11252
	Avg Age	34.3	34.3	36.7	36.8	36.0	36.1
Total Female	Count	268	307	576	562	844	869
	Avg Age	33.4	34.0	36.9	36.4	35.8	35.6
Indigenous Male	Count	753	765	1862	1825	2615	2590
	Avg Age	31.4	31.2	32.6	32.9	32.3	32.4
Indigenous Female	Count	82	99	205	174	287	273
	Avg Age	31.6	32.8	33.5	33.0	33.0	32.9
Total	Count	3597	3852	8204	8269	11801	12121
	Avg Age	34.3	34.3	36.7	36.8	36.0	36.0

## 2.1.8 ADULTS IN CUSTODY: NUMBER WHOSE LEGAL STATUS CHANGED DURING MONTH FROM REMAND TO SENTENCED



## 2.1.9 ADULT REMAND POPULATION BY MOST SERIOUS OFFENCE

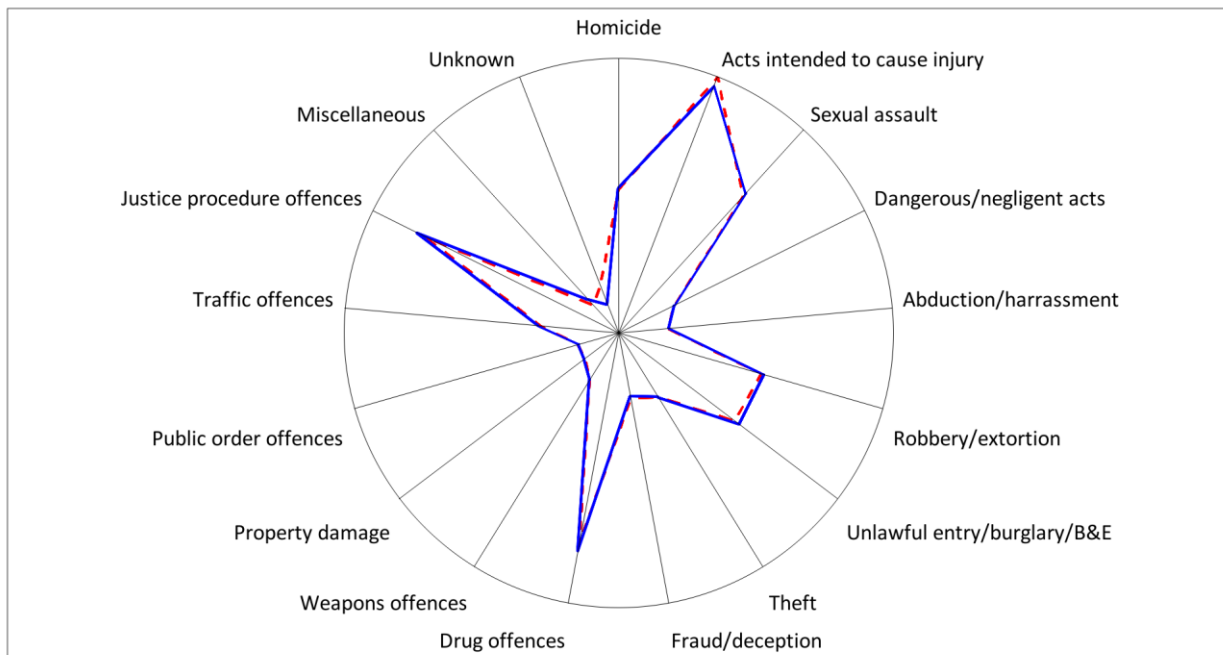


As At: - -30SEP15

—31DEC15

	30SEP15		31DEC15	
	Number	% of Total	Number	% of Total
Homicide	194	5.4	234	6.1
Acts intended to cause injury	794	22.1	974	25.3
Sexual assault	318	8.8	387	10.0
Dangerous/negligent acts	64	1.8	83	2.2
Abduction/harrassment	74	2.1	103	2.7
Robbery/extortion	277	7.7	294	7.6
Unlawful entry/burglary/B&E	300	8.3	308	8.0
Theft	95	2.6	139	3.6
Fraud/deception	63	1.8	85	2.2
Drug offences	714	19.8	850	22.1
Weapons offences	74	2.1	97	2.5
Property damage	29	0.8	41	1.1
Public order offences	19	0.5	14	0.4
Traffic offences	26	0.7	22	0.6
Justice procedure offences	89	2.5	132	3.4
Miscellaneous	160	4.4	34	0.9
Unknown	307	8.5	55	1.4
Total	3597	100.0	3852	100.0

## 2.1.10 ADULT SENTENCED POPULATION BY MOST SERIOUS OFFENCE



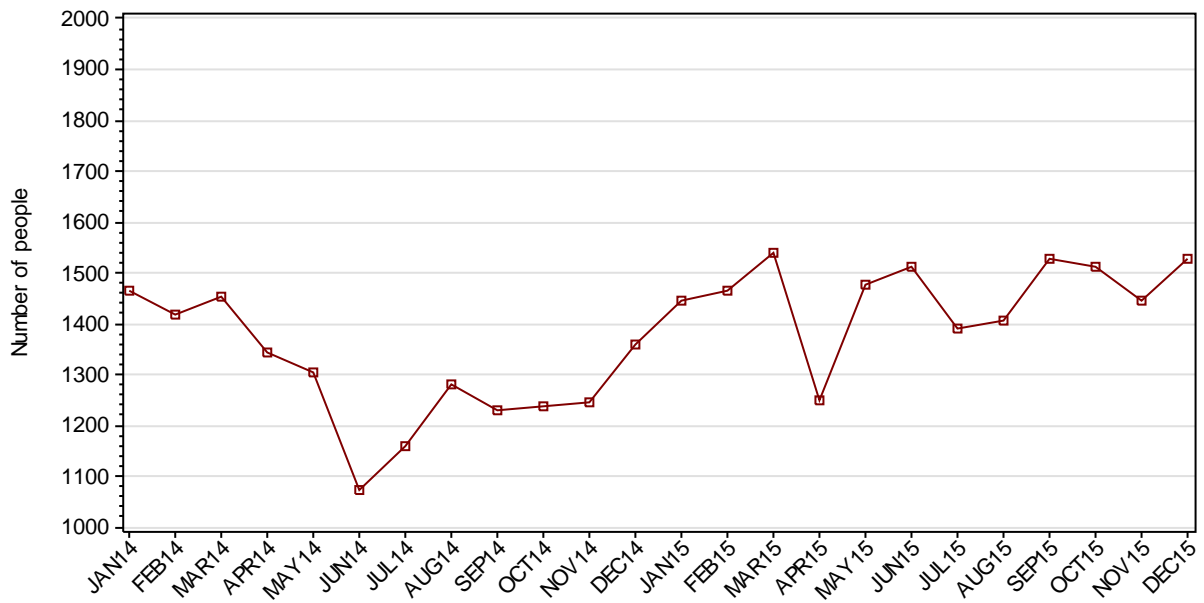
As At: - -30SEP15

— 31DEC15

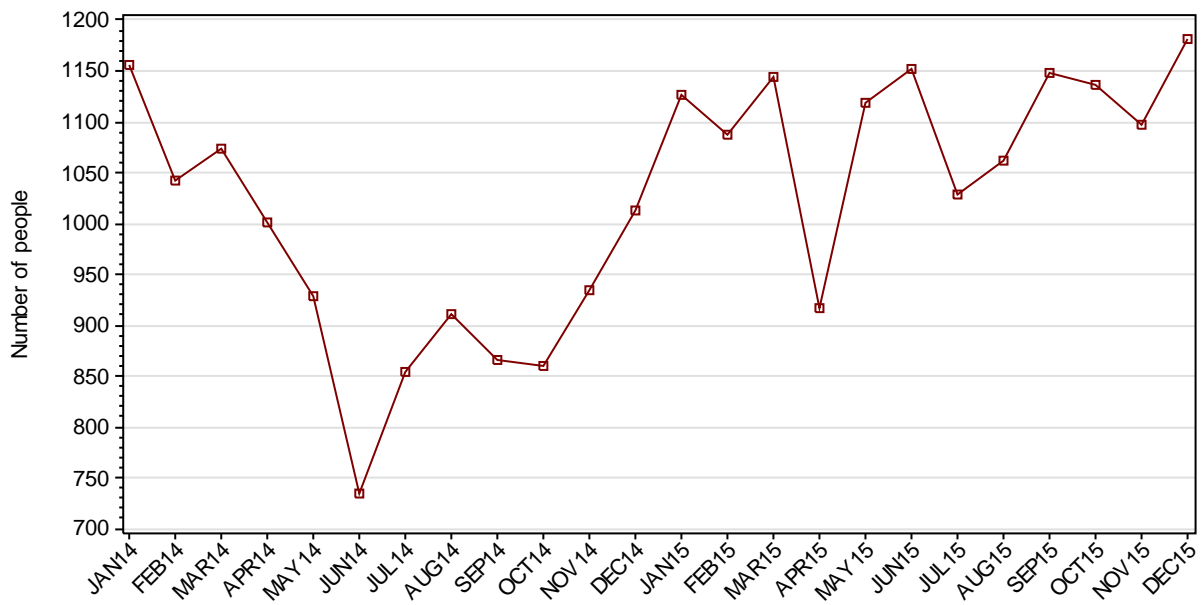
	30SEP15		31DEC15	
	Number	% of Total	Number	% of Total
Homicide	678	8.3	689	8.3
Acts intended to cause injury	1464	17.8	1406	17.0
Sexual assault	926	11.3	953	11.5
Dangerous/negligent acts	192	2.3	192	2.3
Abduction/harrassment	113	1.4	120	1.5
Robbery/extortion	707	8.6	723	8.7
Unlawful entry/burglary/B&E	691	8.4	722	8.7
Theft	268	3.3	266	3.2
Fraud/deception	216	2.6	200	2.4
Drug offences	1103	13.4	1146	13.9
Weapons offences	145	1.8	146	1.8
Property damage	70	0.9	75	0.9
Public order offences	69	0.8	65	0.8
Traffic offences	284	3.5	301	3.6
Justice procedure offences	1114	13.6	1169	14.1
Miscellaneous	45	0.5	92	1.1
Unknown	119	1.5	4	0.0
Total	8204	100.0	8269	100.0

## SECTION 2.2 ADULT CUSTODY RECEPTIONS

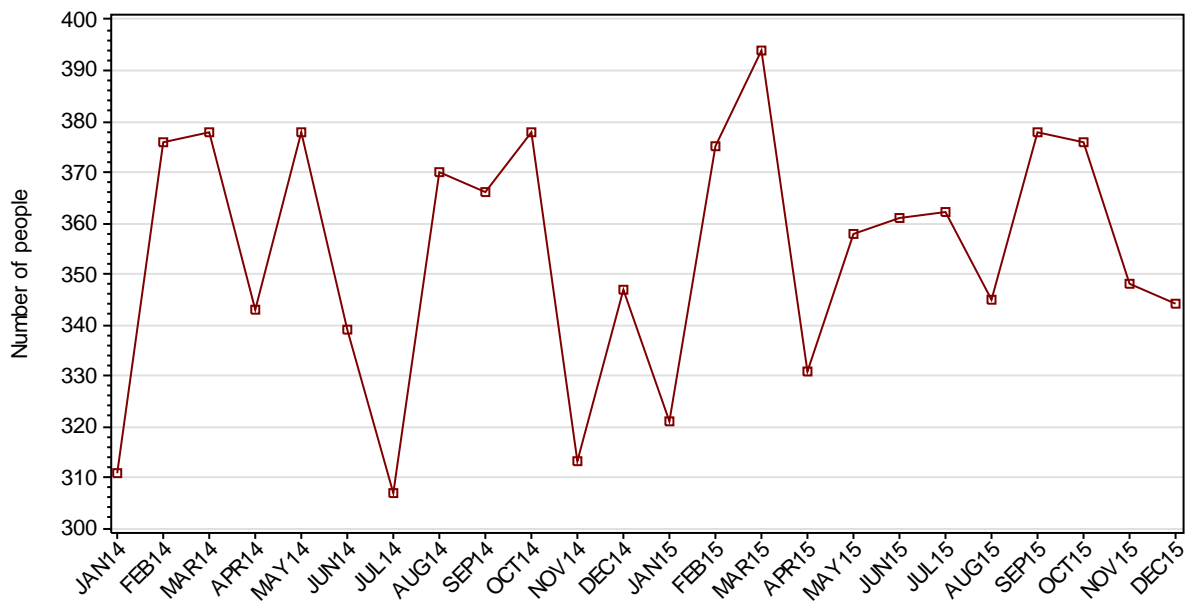
### 2.2.1 ADULTS RECEIVED INTO CUSTODY DURING MONTH



## 2.2.2 ADULT REMAND RECEPTIONS

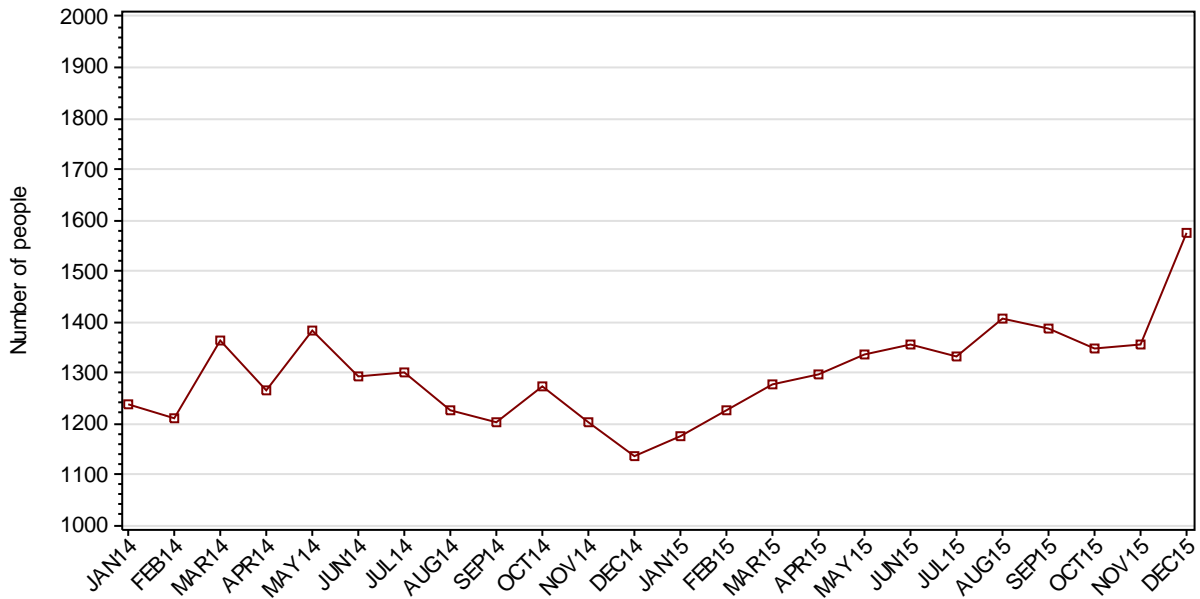


## 2.2.3 ADULT SENTENCED RECEPTIONS



## SECTION 2.3 ADULT CUSTODY DISCHARGES

### 2.3.1 ADULTS DISCHARGED FROM CUSTODY DURING MONTH

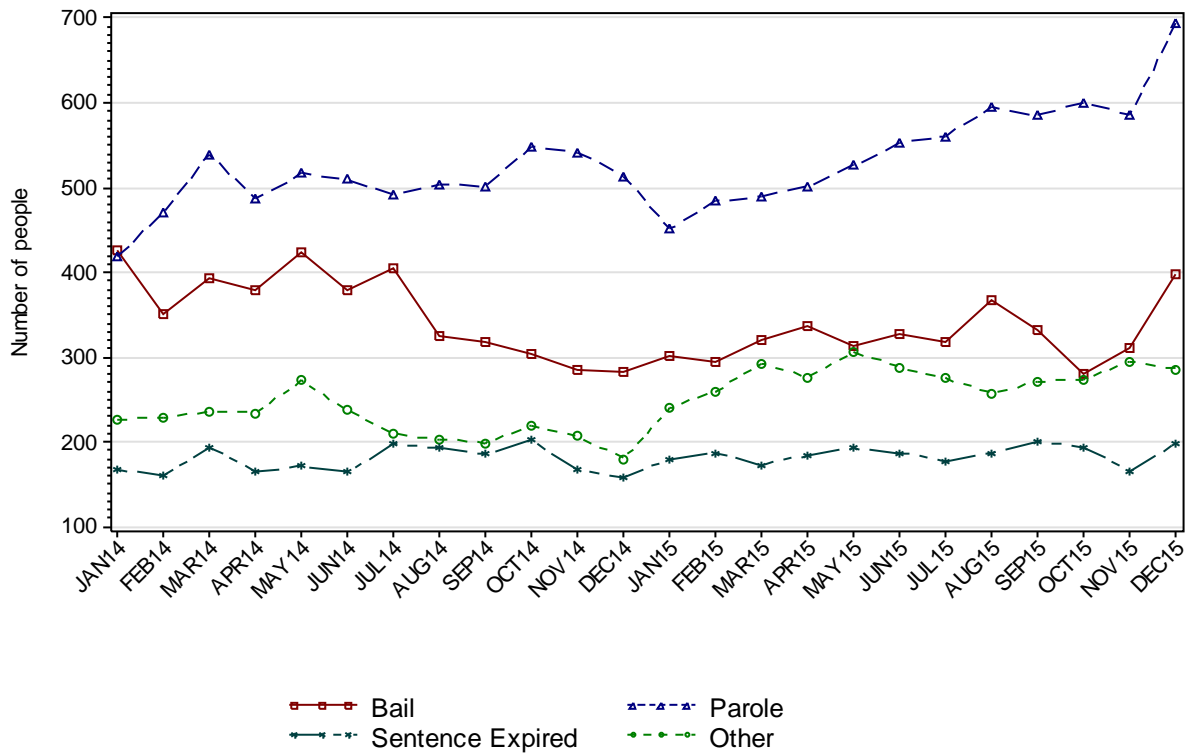


### 2.3.2 AVERAGE LENGTH OF STAY FOR ADULTS DISCHARGED FROM CUSTODY EACH QUARTER

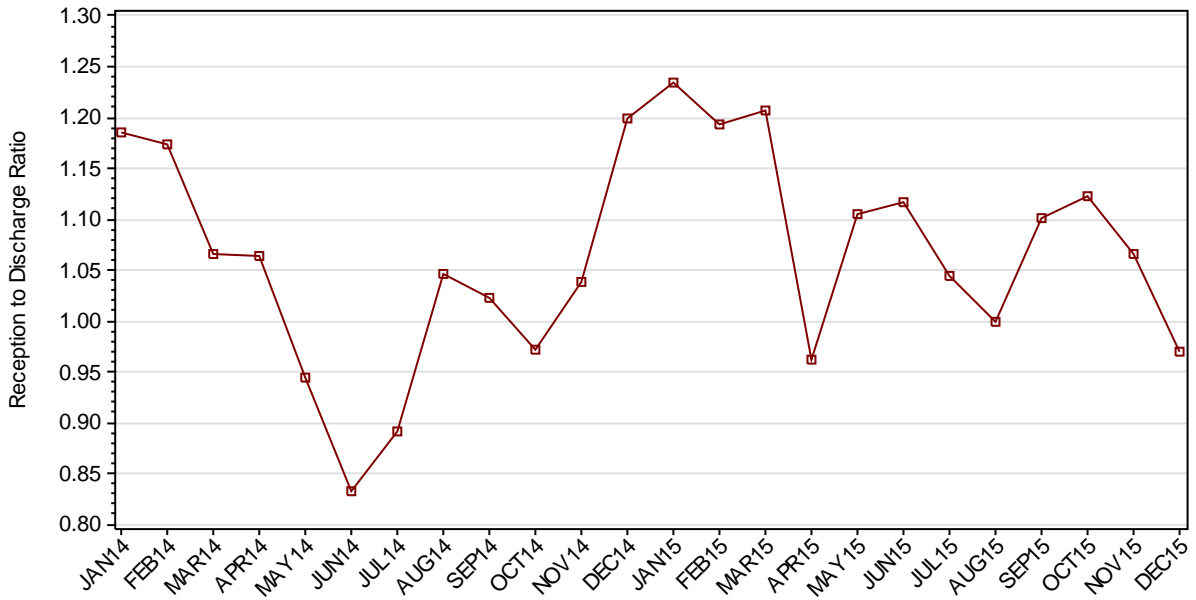
		Remand Custody Only		Sentenced Custody Only		Remand to Sentenced Custody	
		SEP15	DEC15	SEP15	DEC15	SEP15	DEC15
Total Male	Avg Days	55.4	58.0	214.8	221.8	395.8	454.3
	Number	1214	1168	965	1003	1415	1546
Total Female	Avg Days	40.3	30.4	133.4	142.0	255.5	244.0
	Number	230	233	137	137	165	192
Indigenous Male	Avg Days	52.6	51.1	230.5	193.7	317.0	351.1
	Number	302	299	265	272	397	488
Indigenous Female	Avg Days	47.7	27.3	103.2	115.0	189.9	193.1
	Number	86	88	44	55	67	86
Total	Avg Days	53.0	53.4	204.7	212.3	381.2	431.1
	Number	1444	1401	1102	1140	1580	1738

*Note: length of Stay for Remand to Sentenced Custody is from the date of reception on remand to date of discharge after serving sentence.*

### 2.3.3 ADULTS BY DISCHARGE TYPE



### 2.3.4 RATIO OF ADULT RECEPTIONS TO DISCHARGES





---

## **Part 3 DATA TABLES**

---

Juvenile	1.In Custody										Remand to Sent
	Total	Legal Status			Indigenous			Indigenous Legal Status			
		Court Bail Ref.	Police Bail Ref.	Sent	Yes	No	Unk	Court Bail Ref.	Police Bail Ref.	Sent	
JAN14	308	166	5	137	142	164	2	73	4	65	31
FEB14	338	179	5	154	153	181	4	82	2	69	46
MAR14	331	154	6	171	152	177	2	66	6	80	47
APR14	322	155	3	164	152	168	2	78	1	73	33
MAY14	296	144	4	148	135	158	3	72	1	62	37
JUN14	282	124	0	158	139	141	2	65	0	74	33
JUL14	263	115	0	148	131	131	1	58	0	73	27
AUG14	262	111	4	147	133	125	4	58	2	73	22
SEP14	252	94	2	156	123	125	4	44	1	78	23
OCT14	266	124	1	141	145	117	4	74	1	70	20
NOV14	271	131	1	139	144	124	3	76	0	68	30
DEC14	290	145	6	139	151	138	1	78	6	67	30
JAN15	299	153	3	143	153	144	2	84	1	68	22
FEB15	293	152	4	137	156	133	4	86	2	68	35
MAR15	309	160	3	146	166	141	2	93	2	71	36
APR15	310	137	1	172	164	143	3	81	1	82	43
MAY15	319	136	3	180	181	136	2	87	1	93	31
JUN15	307	156	2	149	168	136	3	93	0	75	29
JUL15	294	147	4	143	163	128	3	92	1	70	36
AUG15	289	137	5	147	160	125	4	78	4	78	36
SEP15	286	137	5	144	150	133	3	78	2	70	26
OCT15	292	150	1	141	145	143	4	77	0	68	35
NOV15	277	137	5	135	151	123	3	79	5	67	29
DEC15	280	144	7	129	145	131	4	77	2	66	29

Juvenile	2.Receptions							3.Discharges									Ratio Rec/ Dis
	Tot	Legal Status			Indigenous			Tot	Legal Status					Indigenous			
		Court Bail Ref.	Police Bail Ref.	Sent	Yes	No	Unk		Bail	Not Proven Non- Cust.	Other	Parole	Sent Exp	Yes	No	Unk	
JAN14	351	151	189	11	158	184	9	358	269	33	8	47	1	158	189	11	0.98
FEB14	363	151	195	17	180	178	5	334	265	26	8	32	3	169	162	3	1.09
MAR14	362	132	206	24	156	195	11	369	281	34	10	40	4	157	199	13	0.98
APR14	318	158	145	15	155	159	4	327	237	33	8	40	9	155	168	4	0.97
MAY14	255	108	139	8	120	129	6	279	196	25	2	51	5	136	138	5	0.91
JUN14	185	95	72	18	97	84	4	200	148	15	4	30	3	94	101	5	0.93
JUL14	187	79	97	11	100	83	4	202	139	15	7	36	5	107	91	4	0.93
AUG14	206	78	110	18	114	87	5	211	141	28	5	35	2	114	94	3	0.98
SEP14	190	84	86	20	98	88	4	199	137	23	6	32	1	108	87	4	0.95
OCT14	240	99	124	17	136	101	3	229	165	12	6	40	6	114	112	3	1.05
NOV14	213	101	104	8	111	98	4	206	143	23	5	29	6	112	89	5	1.03
DEC14	226	94	120	12	112	109	5	206	146	20	6	33	1	104	95	7	1.10
JAN15	278	116	147	15	130	143	5	267	207	23	7	25	5	126	137	4	1.04
FEB15	258	89	153	16	125	125	8	266	185	23	12	44	2	123	137	6	0.97
MAR15	319	108	201	10	145	164	10	305	223	39	8	32	3	137	156	12	1.05
APR15	235	94	124	17	107	125	3	233	173	25	5	27	3	108	123	2	1.01
MAY15	250	101	118	31	123	118	9	241	162	29	5	42	3	107	124	10	1.04
JUN15	273	114	143	16	116	147	10	286	185	32	7	53	9	129	148	9	0.95
JUL15	267	117	137	13	127	136	4	278	198	30	5	41	4	129	145	4	0.96
AUG15	227	103	110	14	107	110	10	230	163	26	1	35	5	108	113	9	0.99
SEP15	225	100	108	17	99	120	6	229	158	32	4	29	6	112	110	7	0.98
OCT15	273	118	143	12	119	148	6	268	189	34	3	37	5	124	139	5	1.02
NOV15	242	107	124	11	125	110	7	259	178	38	1	39	3	120	131	8	0.93
DEC15	251	106	132	13	102	140	9	249	173	28	4	42	2	109	132	8	1.01

Adult	1.In Custody								Remand to Sent
	Total	Legal Status		Indigenous			Indigenous Legal Status		
		Remand	Sent	Yes	No	Unk	Remand	Sent	
JAN14	10390	3058	7332	2568	7770	52	764	1804	418
FEB14	10604	3090	7514	2630	7925	49	752	1878	486
MAR14	10738	3074	7664	2659	8037	42	710	1949	558
APR14	10766	3135	7631	2644	8081	41	739	1905	449
MAY14	10715	3027	7688	2595	8080	40	685	1910	509
JUN14	10515	2789	7726	2516	7969	30	644	1872	480
JUL14	10363	2699	7664	2478	7853	32	618	1860	428
AUG14	10393	2717	7676	2485	7881	27	634	1851	420
SEP14	10426	2719	7707	2479	7912	35	622	1857	426
OCT14	10382	2681	7701	2453	7899	30	604	1849	469
NOV14	10380	2767	7613	2459	7892	29	635	1824	418
DEC14	10630	3014	7616	2573	8028	29	724	1849	436
JAN15	10857	3284	7573	2658	8168	31	803	1855	418
FEB15	11101	3377	7724	2748	8319	34	829	1919	537
MAR15	11363	3476	7887	2794	8527	42	834	1960	600
APR15	11366	3424	7942	2794	8531	41	821	1973	522
MAY15	11463	3524	7939	2816	8608	39	856	1960	524
JUN15	11624	3582	8042	2840	8750	34	848	1992	621
JUL15	11635	3542	8093	2819	8784	32	846	1973	587
AUG15	11707	3573	8134	2839	8830	38	852	1987	578
SEP15	11801	3597	8204	2902	8858	41	835	2067	635
OCT15	11893	3619	8274	2937	8908	48	865	2072	636
NOV15	12039	3663	8376	2925	9059	55	834	2091	618
DEC15	12121	3852	8269	2863	9174	84	864	1999	573

Adult	2.Receptions						3.Discharges								Ratio Rec/ Dis
	Tot	Legal Status		Indigenous			Tot	Legal Status				Indigenous			
		Remand	Sent	Yes	No	Unk		Bail	Other	Parole	Sent Exp	Yes	No	Unk	
JAN14	1466	1155	311	425	980	61	1237	425	227	418	167	344	842	51	1.19
FEB14	1418	1042	376	422	948	48	1209	350	228	471	160	356	805	48	1.17
MAR14	1452	1074	378	403	997	52	1362	393	236	539	194	403	894	65	1.07
APR14	1345	1002	343	368	943	34	1264	379	234	487	164	363	872	29	1.06
MAY14	1306	928	378	327	941	38	1384	423	272	517	172	384	958	42	0.94
JUN14	1074	735	339	284	766	24	1291	380	237	510	164	363	892	36	0.83
JUL14	1161	854	307	331	804	26	1302	404	209	491	198	367	912	23	0.89
AUG14	1281	911	370	379	870	32	1225	326	203	504	192	368	820	37	1.05
SEP14	1231	865	366	343	858	30	1204	318	199	502	185	348	836	20	1.02
OCT14	1238	860	378	340	867	31	1274	304	219	549	202	360	875	39	0.97
NOV14	1247	934	313	354	861	32	1201	286	207	541	167	345	827	29	1.04
DEC14	1359	1012	347	398	938	23	1134	283	180	514	157	286	822	26	1.20
JAN15	1447	1126	321	431	980	36	1173	302	240	451	180	332	808	33	1.23
FEB15	1463	1088	375	417	1011	35	1226	295	260	484	187	335	862	29	1.19
MAR15	1539	1145	394	421	1075	43	1275	319	293	490	173	365	872	38	1.21
APR15	1248	917	331	376	838	34	1297	336	276	501	184	387	877	33	0.96
MAY15	1477	1119	358	434	1010	33	1337	313	306	526	192	401	903	33	1.10
JUN15	1512	1151	361	438	1042	32	1355	328	288	552	187	419	893	43	1.12
JUL15	1391	1029	362	387	965	39	1331	318	275	561	177	398	898	35	1.05
AUG15	1407	1062	345	399	983	25	1407	368	257	595	187	397	987	23	1.00
SEP15	1527	1149	378	452	1048	27	1388	331	271	585	201	366	996	26	1.10
OCT15	1512	1136	376	421	1059	32	1348	279	274	601	194	385	938	25	1.12
NOV15	1445	1097	348	385	1030	30	1357	311	295	585	166	411	926	20	1.06
DEC15	1526*	1182	344	408	1056	62	1574	397	286	693	198	492	1046	36	0.97*

\*This figure will be subject to revision in the next report

---

## **Part 4 GLOSSARY**

---

## Adult

A person held in custody in a gazetted correctional centre managed by Corrective Services NSW (CSNSW). Persons may have been remanded in custody after being refused bail or sentenced to a custodial order for a proven offence.

The adult figures in this report include the small number of 16 and 17 year old males held in the Kariiong Juvenile Correctional Centre.

## ANZSOC

The Australian Bureau of Statistics Australian and New Zealand Standard Offence Classification (ANZSOC) groups criminal offences into 16 broad divisions:

1. Homicide and related offences
2. Acts intended to cause injury
3. Sexual assault and related offences
4. Dangerous or negligent acts endangering persons
5. Abduction, harassment and other offences against the person
6. Robbery, extortion and related offences
7. Unlawful entry with intent/burglary, break and enter
8. Theft and related offences
9. Fraud, deception and related offences
10. Illicit drug offences
11. Prohibited and regulated weapons and explosives offences
12. Property damage and environmental pollution
13. Public order offences
14. Traffic and vehicle regulatory offences
15. Offences against justice procedures, government security and government operations
16. Miscellaneous offences

For further information see:

<http://www.abs.gov.au/AUSSTATS/abs@.nsf/DetailsPage/1234.02011>

Note that shortened titles are used in this report.

## Average length of stay

The length of stay is the duration of the custodial episode, from the date of reception to the date of discharge.

The average length of stay (in days) is presented for three types of custodial episodes:

Remand custody only - the person entered custody after being refused bail and was then discharged from custody without having been sentenced. Most commonly discharged after being granted bail, other reasons include criminal charges not proven, receiving a non-custodial penalty for a proven offence or being transferred interstate or from a juvenile to an adult prison or vice versa.

Sentenced custody only - persons who entered custody only after being sentenced to a custodial penalty by a court. These persons had either been granted bail, or bail had been dispensed with, pending finalisation of their charges.

Remand to sentenced custody - persons who had been remanded in custody prior to having a custodial sentence imposed by a court. The length of stay for these people is the entire time from reception on remand to discharge after serving the custodial sentence.

Note: Persons initially remanded in custody but then granted bail prior to having a custodial penalty imposed by a court are counted as two custodial episodes: one of remand custody only and one of sentenced custody only.

## **Bail**

Under the provisions of the *Bail Act 1978*, police and courts may grant or refuse to grant bail to alleged offenders. The grant of bail takes into consideration the alleged offence and offender. Bail is granted at the offence level and so a person may be granted bail for one offence and refused bail for another offence.

Persons refused bail (and small numbers granted bail but unable to meet the bail conditions set by a court) are remanded into custody pending further court action.

Juvenile custody population data in this report disaggregates persons remanded into custody into those refused police bail and refused court bail. This is because all juveniles refused police bail are held in Juvenile Justice centres whereas not all adults refused police bail are held in gazetted correctional centres or 24 hour police cell complexes.

## **Control order**

See Custodial sentence

## **Corrective Services NSW**

Corrective Services NSW (CSNSW) is part of the NSW Department of Attorney General and Justice with responsibilities including the supervision of people remanded in custody pending the finalisation of criminal charges and offenders sentenced to a custodial order.

See <http://www.correctiveservices.nsw.gov.au/> for further information.

The Corrections Research, Evaluation and Statistics (CRES) section of CSNSW have provided the adult custody data for this report and advised on its interpretation.

## **Court bail refused**

See Bail

## **Custodial episode**

A custodial episode is the time between the reception into and discharge from custody. An individual may have multiple custodial episodes within the reporting period. A change in legal status between the reception and discharge date, for example changing from being bail refused to being sentenced to a custodial order, does not count as a new custodial episode.

## **Custodial sentence**

Courts may impose a custodial sentence for a proven offence. For adults this is a term of imprisonment under the *Crimes (Sentencing Procedure) Act 1999*. For young people this is a control order of up to two years duration or a term of imprisonment to be served partly or wholly as a juvenile under the *Children (Criminal Proceedings) Act 1987*. A person may be given custodial sentences for multiple proven offences.



While the majority of persons held under sentence in a correctional centre are sentenced under the *Crimes (Sentencing Procedure) Act 1999*, offenders whose parole has been revoked by the State Parole Authority, persons sentenced under the *Commonwealth Crimes Act 1914*, those sentenced under the *Mental Health (Forensic Provision) Act 1990*, small numbers of persons held under immigration orders awaiting deportation following expiry of their sentence and persons sentenced under legislation in other states or territories are also managed by CSNSW.

## **Custody population**

Persons held in custody in a JJNSW juvenile justice centre or a CSNSW gazetted correctional centre, whether remanded or sentenced. Custody population figures are counted as at midnight on the last day of the month or quarter as appropriate.

## **Discharge type**

The type of reason why persons were discharged from custody:

Bail - courts granted the person bail pending the finalisation of their criminal charge(s).

Parole - the person was released to parole after serving the non-parole period of custodial sentence(s).

Sentence expired - the person was released after serving the entire period of all custodial sentence(s) imposed. This includes some persons who served both the non-parole and parole components of their sentence(s) in custody.

Not proven / non-custodial penalty - juvenile data only - the person was released after criminal charges were not proven or after the court imposed a non-custodial penalty for a proven offence, e.g. good behaviour bond.

Other - includes persons transferred to the NSW Drug Court, interstate or from a juvenile to an adult prison or vice versa and deceased persons. Includes adults released after criminal charges were not proven, after the court imposed a non-custodial penalty for a proven offence and where the specific nature of the court's final non-custodial disposal is unknown.

## **Discharges**

Persons legally discharged from JJNSW or CSNSW custody in accordance with a court order (including any State Parole Authority order). For example - to parole, on expiry of a sentence or having been granted bail. Note that persons whose legal status changed from remand to sentenced or the reverse are not counted as discharges as they have not been discharged from custody.

## **Imprisonment**

See Custodial sentence.

## **Indigenous status**

Indigenous status as self-reported on reception into custody. Persons may identify as being Aboriginal or Torres Strait Islander, neither Aboriginal nor Torres Strait Islander or may not provide this information. An inmate is recorded as indigenous if they have identified as such in the current or any previous custodial episode. Indigenous status is unknown for a small proportion of people.

## Juvenile

A person held in custody in a juvenile justice centre. These centres are managed by Juvenile Justice NSW (JJNSW). A young person in juvenile custody may have been refused bail by police, refused bail by the court or sentenced to a custodial sentence.

All young persons refused bail by police must be taken to a juvenile justice centre to be held in custody pending their court appearance. Young persons refused police bail cannot be held in a police or court cell.

Note: a small number of 16 and 17 year old males are held in Kariiong Juvenile Correctional Centre which is managed by CSNSW. As Kariiong is a gazetted correctional centre, these young persons are counted in the adult figures in this report.

## Juvenile Justice NSW

Juvenile Justice NSW (JJNSW) is part of the NSW Department of Attorney General and Justice with responsibilities including the supervision of young people remanded in custody pending the finalisation of criminal charges and young offenders sentenced to a control order/imprisonment.

See <http://www.djj.nsw.gov.au/> for further information.

The Research and Information Section of JJNSW have provided the juvenile data for this report and advised on its interpretation.

## Legal status

The legal status of persons received into or held in custody:

Remand (Juvenile) - Juveniles refused bail (and small numbers granted bail but unable to meet conditions) are remanded into custody pending future court action.

Juvenile remand figures are disaggregated into:

- Police bail refused - Police have refused to grant bail to a juvenile. All juveniles refused bail by police are held in custody in a juvenile justice centre pending future court action.
- Court bail refused - the courts have refused to grant bail to a juvenile pending future court action.

Remand (Adult) - adults refused bail (and small numbers granted bail but unable to meet conditions) are remanded in custody pending future court action. Includes a small number of persons refused police bail and remanded in custody in a gazetted correctional centre. Includes persons on remand who are being managed as correctional patients under the *Mental Health (Forensic Provisions) Act 1990*.

Sentenced - the courts have imposed custodial sentence(s) for proven offence(s). This category includes persons returned to custody after breaching parole. Includes forensic patients as per the *Mental Health (Forensic Provisions) Act 1990* (ie persons found unfit to be tried and persons found not guilty due to mental illness). Persons on remand for one or more offences and sentenced for one or more offences have a legal status of sentenced.

Unknown - adults whose legal status was not recorded at the time of admission.

## **Legal status changed from remand to sentenced**

Persons whose legal status changed from remand to sentenced upon the imposition of a custodial sentence by a court. This report shows the numbers of persons during each month who changed from being on remand to being sentenced.

## **Most serious offence**

The most serious offence type for which each person is in custody. The offence type categories in this report are the sixteen ANZSOC Divisions, with shortened titles (See ANZSOC).

Most serious offence data is presented in a radar chart and a data table. The radar chart consists of a circle with a series of 'spokes' running from the centre of the circle to the perimeter. Each spoke represents a different offence type. The radar chart is constructed by placing a point on each spoke marking the proportion of prisoners with that offence type as their most serious offence. The higher the proportion, the closer the point to the perimeter. The points are then connected and the resulting figure inside the circle gives a picture of the distribution of most serious offence type across prisoners. A different type/colour of line is used for each quarter, making changes from quarter to quarter apparent. Note that offence types with no observations are plotted a short distance from the zero radius so that the numbers for every offence type can be observed.

The data table displays the number and proportion of persons in custody for each of the most serious offence types. The data is presented separately for sentenced persons and persons on remand:

### *Most Serious Offence – Adults:*

The most serious offence for adults is as provided by CSNSW.

A person's most serious offence may change over the course of their custodial episode depending on offences for which they are in custody at any one time. The Most Serious Offence data presented in this report are stock data and are sourced from data extracts run two to three weeks after the end of the quarter.

The data for the previous quarter is as at the previous quarter's custody report.

Extracting the data after the same time lag each quarter reduces variability due to extract timing and so is indicative of a change in the broad offence profile of persons in custody between the end of the current and previous quarters.

Due to the way that MSO is recorded and the data extracted, it is not available for receptions or discharge data.

### *Most Serious Offence – Juveniles:*

Most serious offence for juveniles is compiled by matching custody order records from JJNSW with sentencing and bail refused orders sourced from the JusticeLink system used by the NSW criminal courts. Data is matched using JusticeLink Proceeding Number, a unique offence identifier which is available in the JJNSW data from January 2011.

- The most serious offence for juveniles remanded in custody is the offence with the highest Median Sentence Ranking (MSR). The MSR is a ranking of ANZSOC codes and was developed by BOCSAR using data on sentences imposed in the NSW criminal courts. The MSR can be used to select the most serious offence when sentencing data is not available and to select most serious offence when multiple

offences have the same custodial order duration. For further information see the BOCSAR's Crime and Justice Bulletin No.142 "Measuring Offence Seriousness": [www.bocsar.nsw.gov.au/lawlink/bocsar/ll\\_bocsar.nsf/vwFiles/CJB142.pdf/\\$file/CJB142.pdf](http://www.bocsar.nsw.gov.au/lawlink/bocsar/ll_bocsar.nsf/vwFiles/CJB142.pdf/$file/CJB142.pdf)

- The most serious offence for sentenced juveniles is the offence with the longest custodial order. For juveniles with more than one offence type with the same custodial order duration, the offence with the highest Median Sentence Ranking is selected as the most serious offence.
- Juveniles sentenced to a custodial order after breaching a non-custodial penalty (eg a suspended sentence, Community Service Order or good behaviour bond) have a most serious offence type of *Justice procedure offence* rather than the type of offence for which the non-custodial penalty was originally imposed (eg robbery/extortion, drug offences).

Note: this differs from the definition of most serious offence used in the Australian Bureau of Statistics Prisoners in Australia publication series (*ABS cat.no.4517.0*)

### **Police bail refused**

See Bail.

### **Receptions**

Persons received into Juvenile Justice custody or a gazetted correctional centre. Gazetted correctional centres are managed by CSNSW. Persons received into CSNSW custody and managed only in CSNSW 24-hour police/court cell complexes are excluded.

### **Ratio of receptions to discharges**

The ratio of receptions to discharges. A ratio greater than 1 means there were more receptions than discharges during the month; a ratio less than 1 means there were more discharges than receptions during the month.

### **Remand**

See Legal status.

### **Sentenced**

See Legal status.

### **24 hour police/court cell complexes**

In addition to gazetted correctional centres, CSNSW manage a number of police/court cell complexes. This report excludes persons received and then discharged from a CSNSW-managed 24 hour police/court cell complex without entering a gazetted correctional centre.