

---

# **NEW SOUTH WALES CUSTODY STATISTICS**

QUARTERLY UPDATE  
DECEMBER 2014

---



NSW Bureau of Crime  
Statistics and Research

## **CONTENTS**

This report presents 24 months of reception, discharge and custody population data and comparisons between the current and previous quarter for age, gender, indigenous status, most serious offence and the average length of stay.

Separate figures are presented for juveniles and adults.

The counting unit is a custodial episode. An individual will be counted multiple times in a period if they have multiple custodial episodes in that period.

## **SCOPE**

The data in this report are extracted from the Corrective Services NSW (CSNSW) Offender Information Management System (OIMS) and the Juvenile Justice NSW (JJNSW) Client Information Management System (CIMS).

The adult custody population figures include only those persons held in gazetted correctional centres managed by CSNSW. This includes: persons managed as forensic patients, persons held after expiry of their sentence awaiting deportation and persons awaiting extradition to another jurisdiction. Persons in the Special Purpose Centre at Long Bay Correctional Centre are not included.

In addition to gazetted correctional centres, CSNSW manages a number of police/court cell complexes. This report excludes persons received into and then discharged from a CSNSW-managed 24 hour police/court cell complex without entering a gazetted correctional centre. Adults refused police bail but not held in a gazetted correctional centre are not included.

Custody population figures are counted as at midnight on the last day of the month or quarter as appropriate. Reception and discharge figures are those during each month or quarter as appropriate.

Refer to the Glossary at the back of the report for detailed descriptions of the terms used in the report.

## **ACKNOWLEDGEMENTS**

Juvenile custody data are provided by the Research and Information Section of JJNSW. Adult custody data are provided by the Corporate Research, Evaluation and Statistics (CRES) section of CSNSW. The Bureau is grateful for the support provided by both areas in supplying the data for this report and advising on its interpretation.

## **NOTE**

The adult custody data presented in this report will differ from data reported by CSNSW due to data extract timing differences.

# Contents

## **PART 1 JUVENILES** **3**

<b>SECTION 1.1</b>	<b>JUVENILE CUSTODY POPULATION</b>	<b>4</b>
1.1.1	By Month .....	4
1.1.2	By Legal Status .....	4
1.1.3	By Indigenous Status.....	5
1.1.4	By Legal Status (Indigenous Only).....	5
1.1.5	Profile .....	6
1.1.6	Legal Status Changed from Remand to Sentenced .....	6
1.1.7	Remand Population by Most Serious Offence .....	7
1.1.8	Sentenced Population by Most Serious Offence .....	8
<b>SECTION 1.2</b>	<b>JUVENILE CUSTODY RECEPTIONS</b>	<b>9</b>
1.2.1	By Month .....	9
1.2.2	By Legal Status .....	9
<b>SECTION 1.3</b>	<b>JUVENILE CUSTODY DISCHARGES</b>	<b>10</b>
1.3.1	By Month .....	10
1.3.2	Length of Stay .....	10
1.3.3	By Discharge Type .....	11
1.3.4	By Discharge Type (Excluding Bail).....	11
1.3.5	Ratio Of Reception To Discharges.....	12

## **PART 2 ADULTS** **13**

<b>SECTION 2.1</b>	<b>ADULT CUSTODY POPULATION</b>	<b>14</b>
2.1.1	By Month .....	14
2.1.2	By Indigenous Status.....	14
2.1.3	Remand Population .....	15
2.1.4	Sentenced Population.....	15
2.1.5	Indigenous Remand Population .....	16
2.1.6	Indigenous Sentenced Population .....	16
2.1.7	Profile .....	17
2.1.8	Legal Status Changed from Remand to Sentenced .....	17
2.1.9	Remand Population by Most Serious Offence .....	18
2.1.10	Sentenced Population by Most Serious Offence .....	19
<b>SECTION 2.2</b>	<b>ADULT CUSTODY RECEPTIONS</b>	<b>20</b>
2.2.1	By Month .....	20
2.2.2	Remand Reception .....	21
2.2.3	Sentenced Reception.....	21
<b>SECTION 2.3</b>	<b>ADULT CUSTODY DISCHARGES</b>	<b>22</b>
2.3.1	By Month .....	22
2.3.2	Length of Stay .....	22
2.3.3	By Discharge Type .....	23
2.3.4	Ratio Of Reception To Discharges.....	23

## **PART 3 DATA TABLES** **24**

## **PART 4 GLOSSARY** **29**

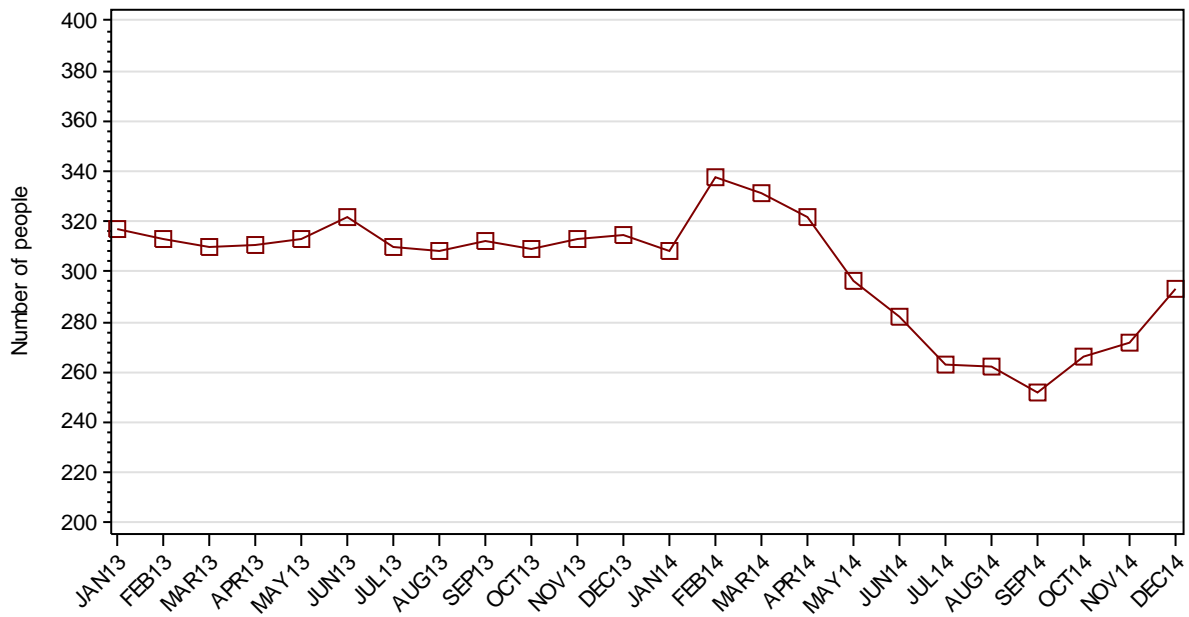
---

## **Part 1 JUVENILES**

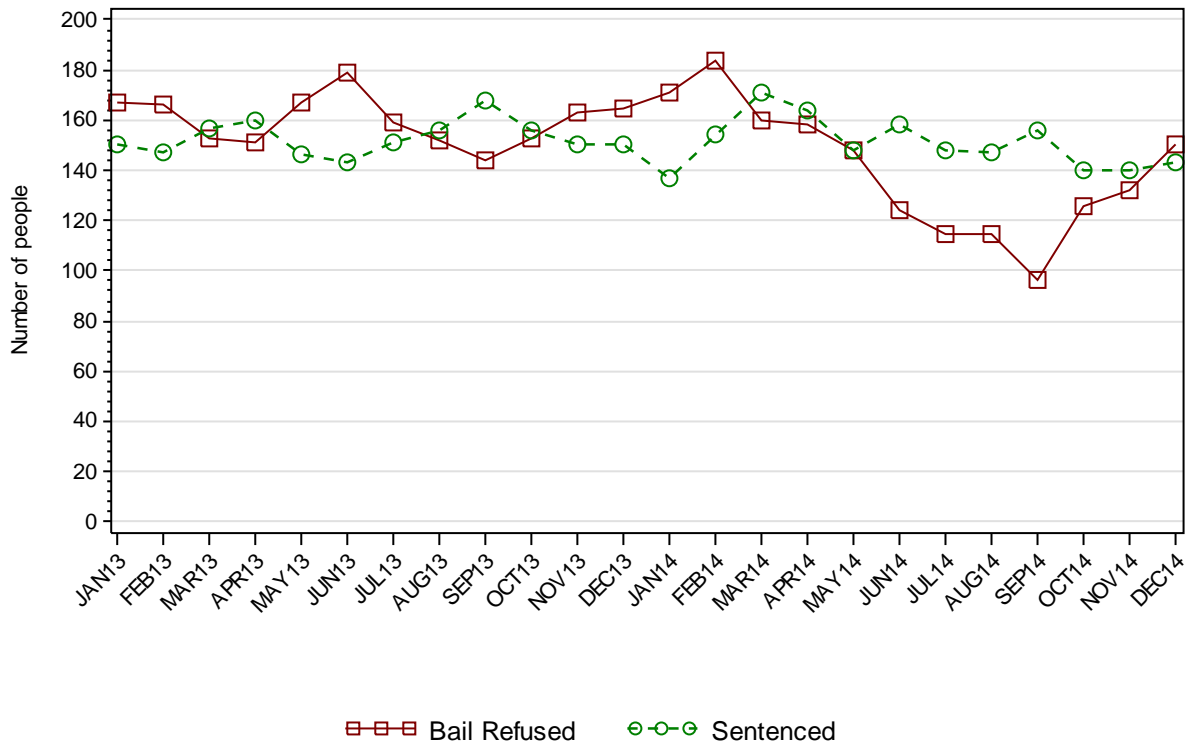
---

## SECTION 1.1 JUVENILE CUSTODY POPULATION

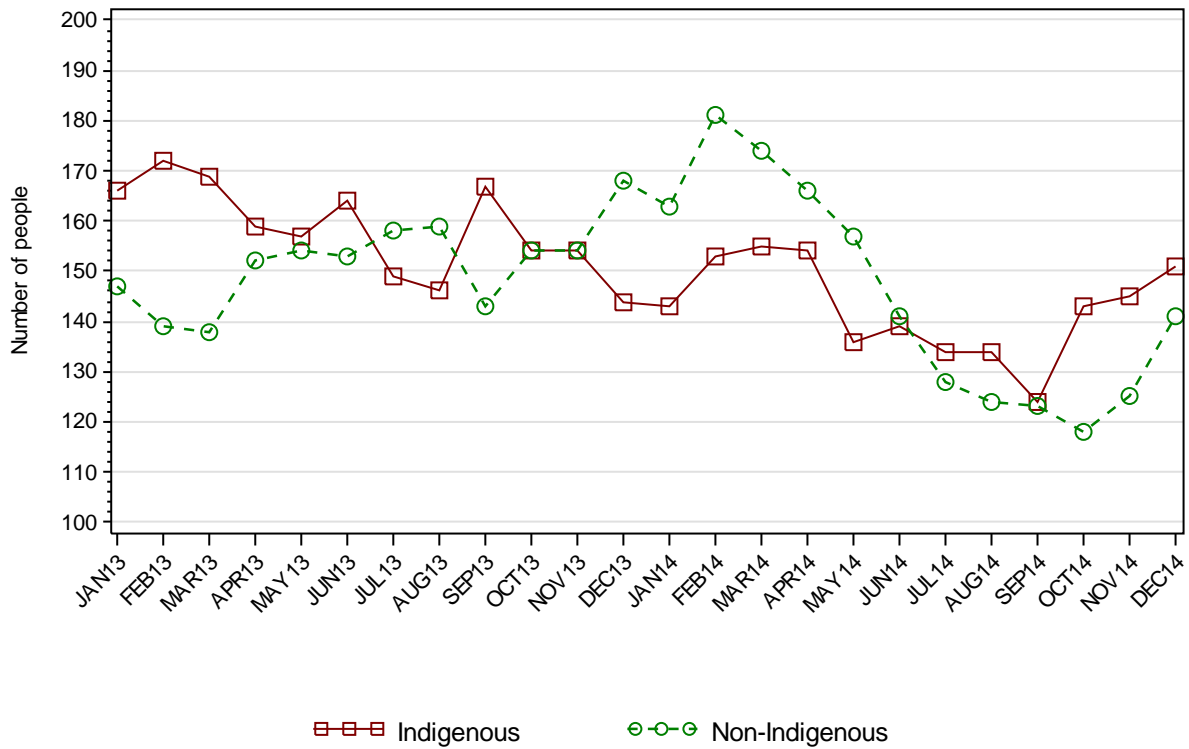
### 1.1.1 JUVENILE CUSTODY POPULATION AT END OF MONTH



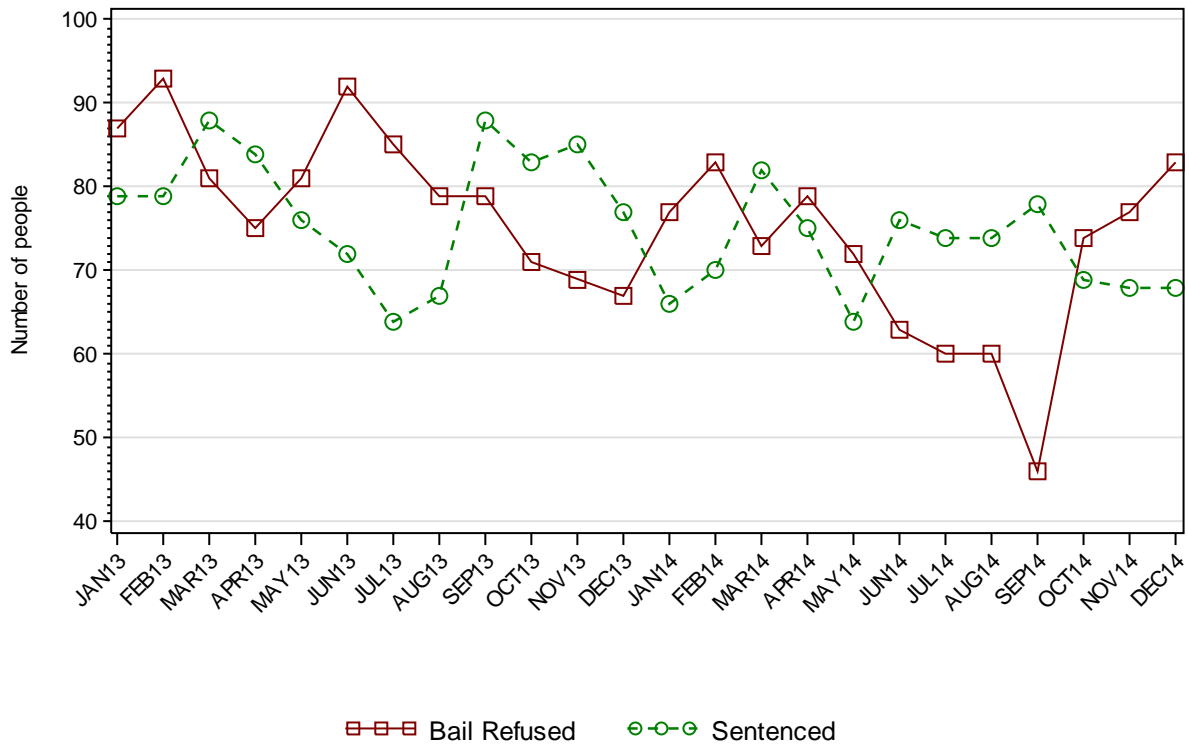
### 1.1.2 JUVENILE CUSTODY POPULATION BY LEGAL STATUS



### 1.1.3 JUVENILE CUSTODY POPULATION BY INDIGENOUS STATUS



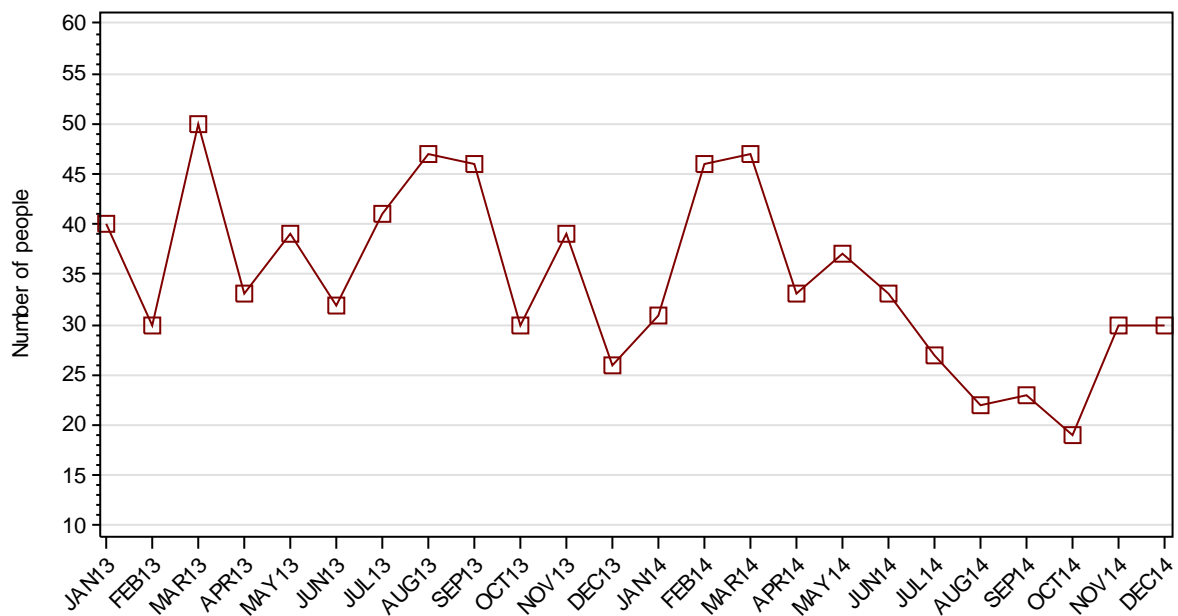
### 1.1.4 INDIGENOUS JUVENILE CUSTODY POPULATION BY LEGAL STATUS



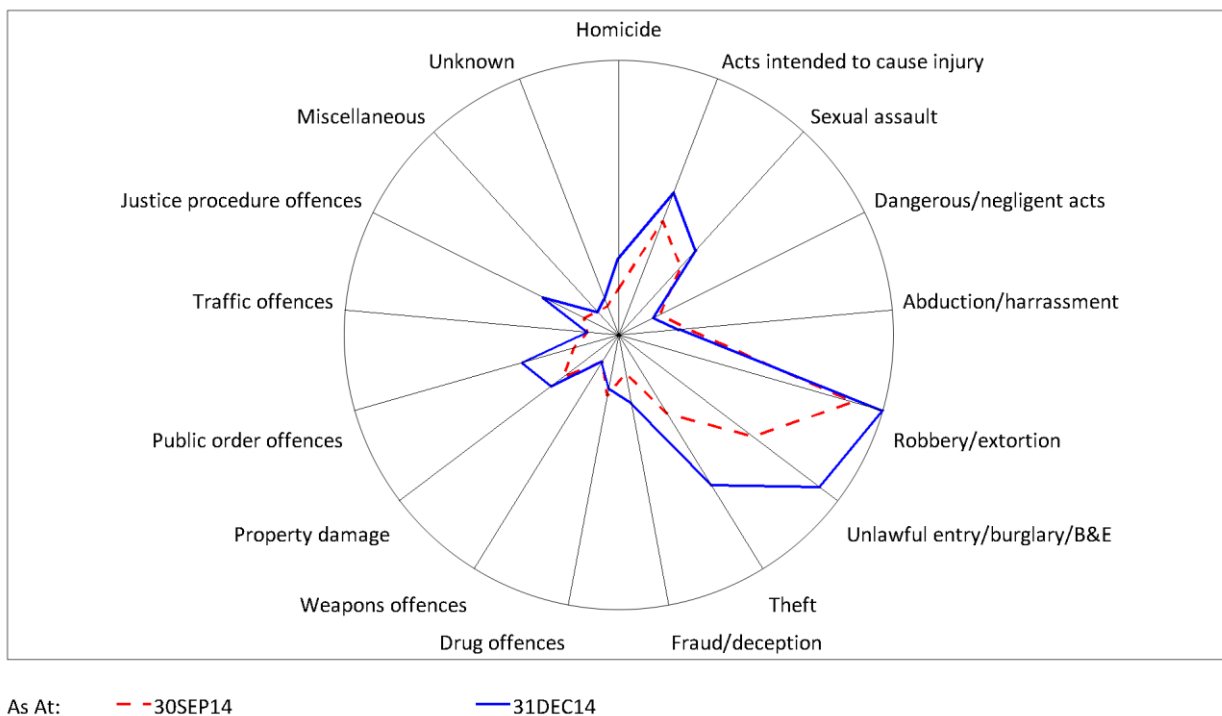
## 1.1.5 JUVENILE CUSTODY PROFILE AT END OF QUARTER

		Police Bail Refused		Court Bail Refused		Sentenced		Total	
		SEP14	DEC14	SEP14	DEC14	SEP14	DEC14	SEP14	DEC14
Total Male	Count	2	5	85	129	145	141	232	275
	Avg Age	15.0	15.6	16.3	16.0	16.7	17.0	16.5	16.5
Total Female	Count	0	2	9	14	11	2	20	18
	Avg Age	0	15.0	15.9	15.8	16.4	17.5	16.2	15.9
Indigenous Male	Count	1	4	44	69	72	67	117	140
	Avg Age	14.0	15.5	16.1	15.7	16.4	16.5	16.2	16.1
Indigenous Female	Count	0	2	1	8	6	1	7	11
	Avg Age	0	15.0	16.0	15.8	16.5	18.0	16.4	15.8
Total	Count	2	7	94	143	156	143	252	293
	Avg Age	15.0	15.4	16.2	16.0	16.7	17.0	16.5	16.5

## 1.1.6 JUVENILES IN CUSTODY: NUMBER WHOSE LEGAL STATUS CHANGED DURING MONTH FROM REMAND TO SENTENCED



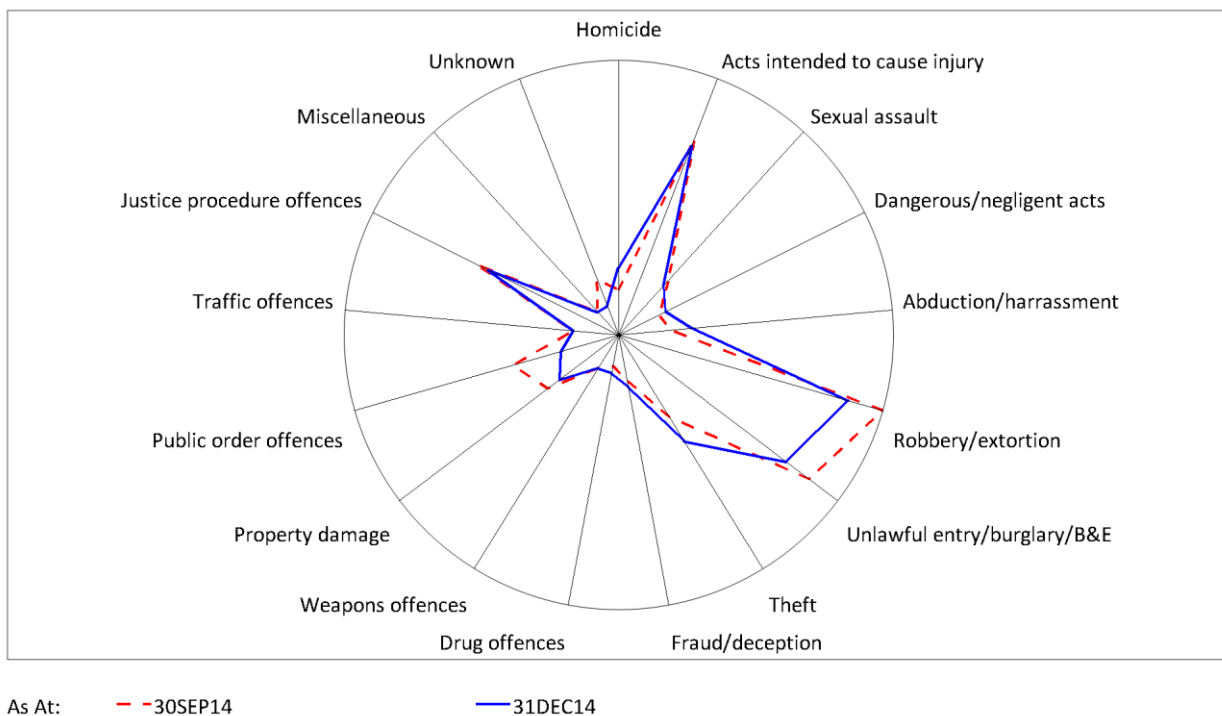
## 1.1.7 JUVENILE REMAND POPULATION BY MOST SERIOUS OFFENCE



	30SEP14		31DEC14	
	Number	% of Total	Number	% of Total
Homicide	2	2.1	6	4.0
Acts intended to cause injury	12	12.5	16	10.7
Sexual assault	8	8.3	11	7.3
Dangerous/negligent acts	2	2.1	1	0.7
Abduction/harrassment	5	5.2	4	2.7
Robbery/extortion	28	29.2	32	21.3
Unlawful entry/burglary/B&E	18	18.8	29	19.3
Theft	8	8.3	19	12.7
Fraud/deception	1	1.0	5	3.3
Drug offences	4	4.2	3	2.0
Weapons offences	0	0	0	0
Property damage	5	5.2	7	4.7
Public order offences	2	2.1	9	6.0
Traffic offences	0	0	0	0
Justice procedure offences	1	1.0	7	4.7
Miscellaneous	0	0	0	0
Unknown	0	0	1	0.7
<b>Total</b>	<b>96</b>	<b>100.0</b>	<b>150</b>	<b>100.0</b>



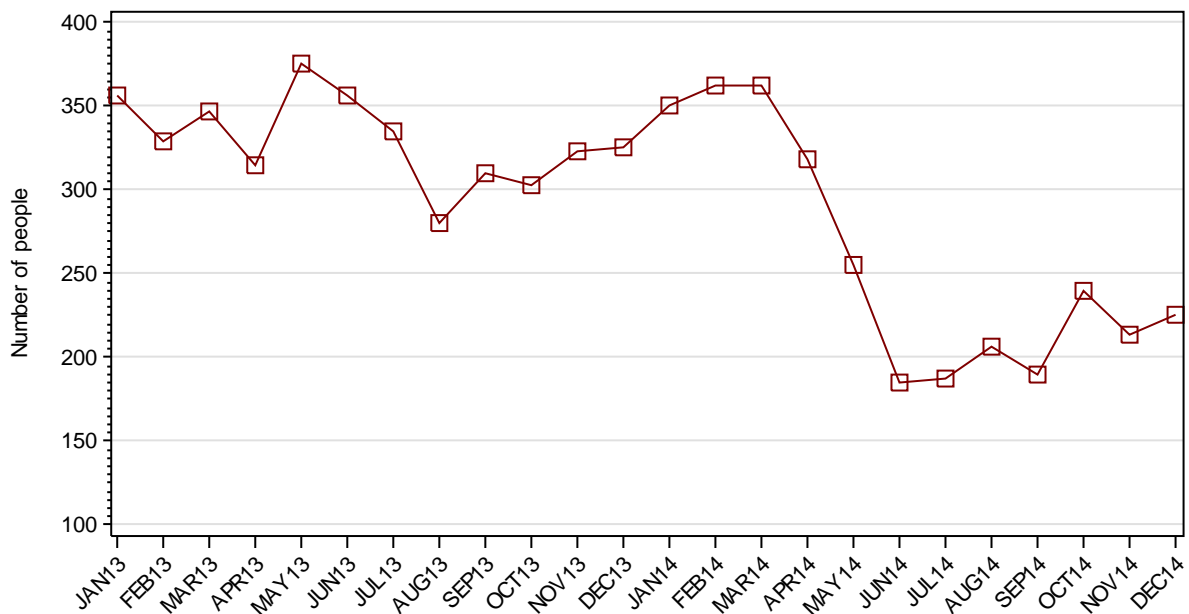
## 1.1.8 JUVENILE SENTENCED POPULATION BY MOST SERIOUS OFFENCE



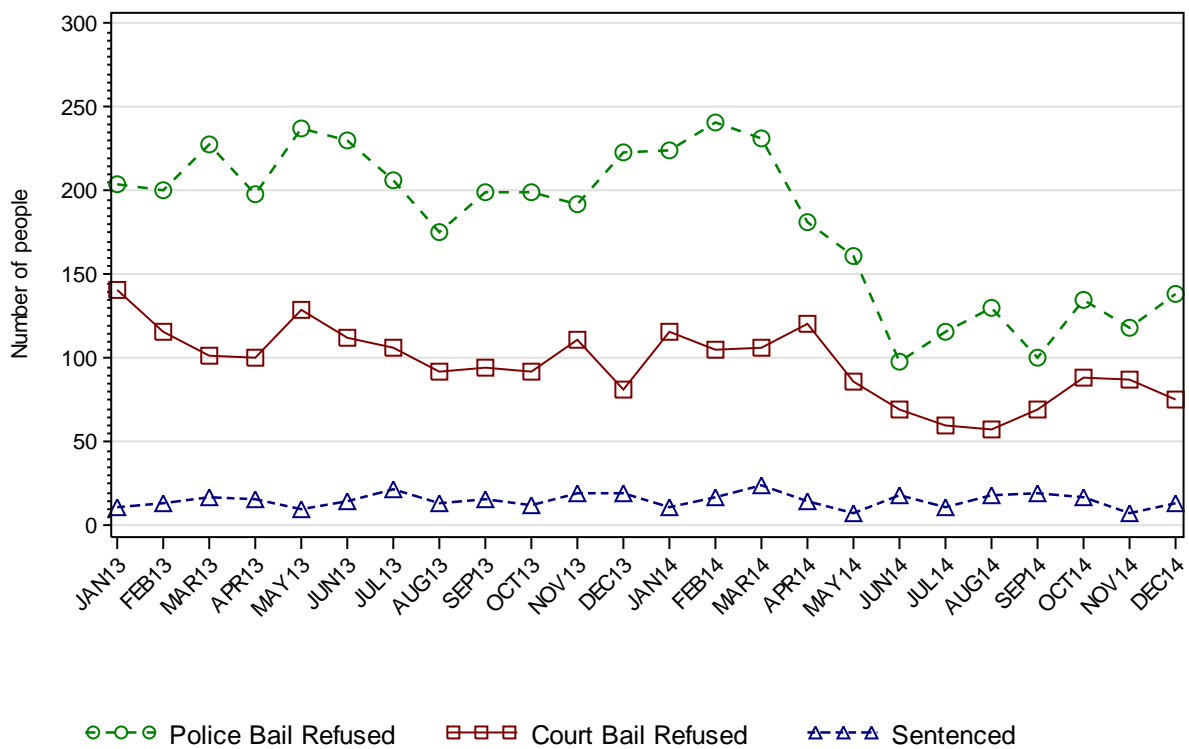
	30SEP14		31DEC14	
	Number	% of Total	Number	% of Total
Homicide	2	1.3	5	3.5
Acts intended to cause injury	25	16.0	24	16.8
Sexual assault	6	3.8	5	3.5
Dangerous/negligent acts	2	1.3	3	2.1
Abduction/harrassment	3	1.9	6	4.2
Robbery/extortion	34	21.8	29	20.3
Unlawful entry/burglary/B&E	29	18.6	25	17.5
Theft	9	5.8	13	9.1
Fraud/deception	2	1.3	3	2.1
Drug offences	0	0	1	0.7
Weapons offences	1	0.6	1	0.7
Property damage	8	5.1	6	4.2
Public order offences	11	7.1	4	2.8
Traffic offences	2	1.3	2	1.4
Justice procedure offences	18	11.5	16	11.2
Miscellaneous	0	0	0	0
Unknown	4	2.6	0	0
<b>Total</b>	<b>156</b>	<b>100.0</b>	<b>143</b>	<b>100.0</b>

## SECTION 1.2 JUVENILE CUSTODY RECEPTIONS

### 1.2.1 JUVENILES RECEIVED INTO CUSTODY DURING MONTH

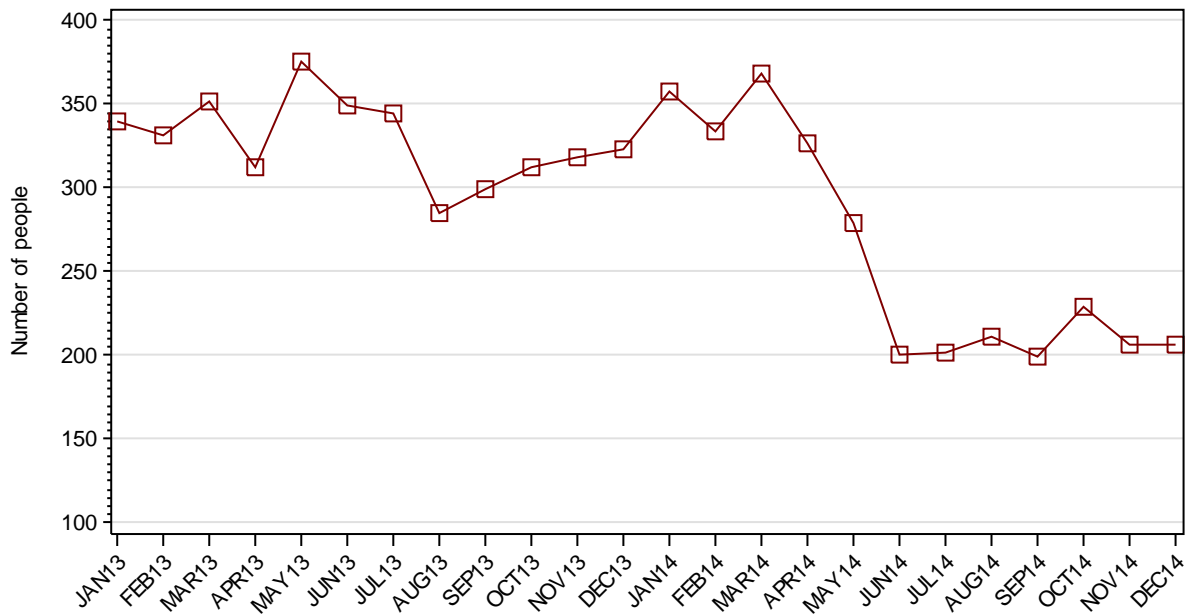


### 1.2.2 JUVENILES RECEIVED INTO CUSTODY BY LEGAL STATUS



## SECTION 1.3 JUVENILE CUSTODY DISCHARGES

### 1.3.1 JUVENILES DISCHARGED FROM CUSTODY DURING MONTH

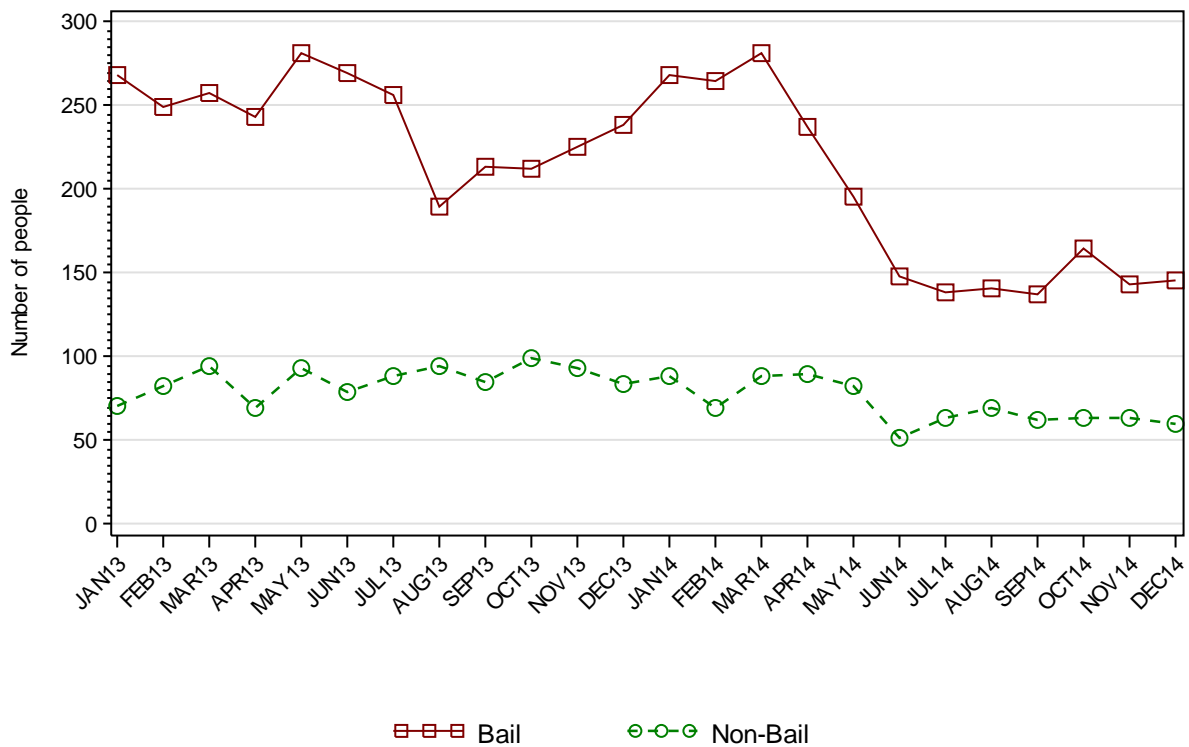


### 1.3.2 AVERAGE LENGTH OF STAY FOR JUVENILES DISCHARGED FROM CUSTODY EACH QUARTER

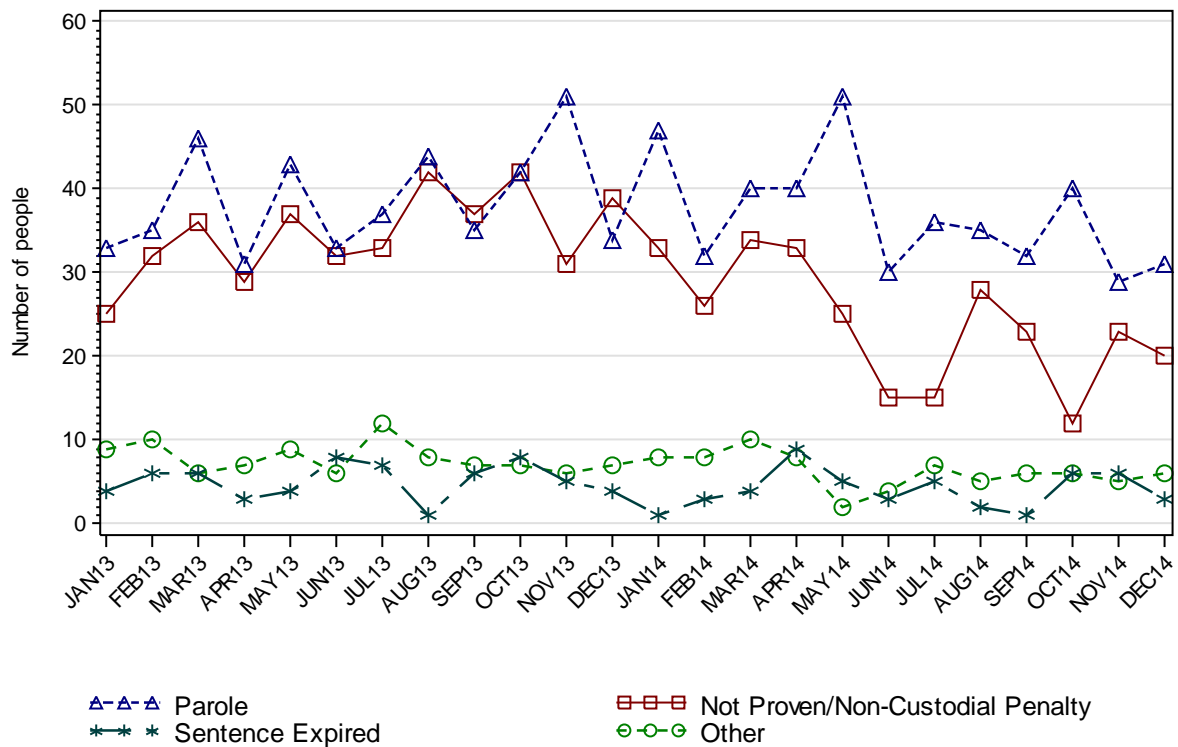
		Remand Custody Only		Sentenced Custody Only		Remand to Sentenced Custody	
		SEP14	DEC14	SEP14	DEC14	SEP14	DEC14
Total Male	Avg Days	12.7	8.0	83.3	85.7	195.5	159.7
	Number	381	404	32	41	85	70
Total Female	Avg Days	8.7	8.2	31.4	44.8	100.2	91.1
	Number	104	105	5	10	5	11
Indigenous Male	Avg Days	12.6	9.2	87.8	93.3	170.7	153.0
	Number	208	193	18	27	44	36
Indigenous Female	Avg Days	12.5	4.0	25.7	57.8	0	97.8
	Number	52	52	3	5	0	4
Total	Avg Days	11.9	8.0	76.3	77.6	190.2	150.4
	Number	485	509	37	51	90	81

*Note: Length of Stay for Remand to Sentenced Custody is from the date of reception on remand to date of discharge after serving sentence.*

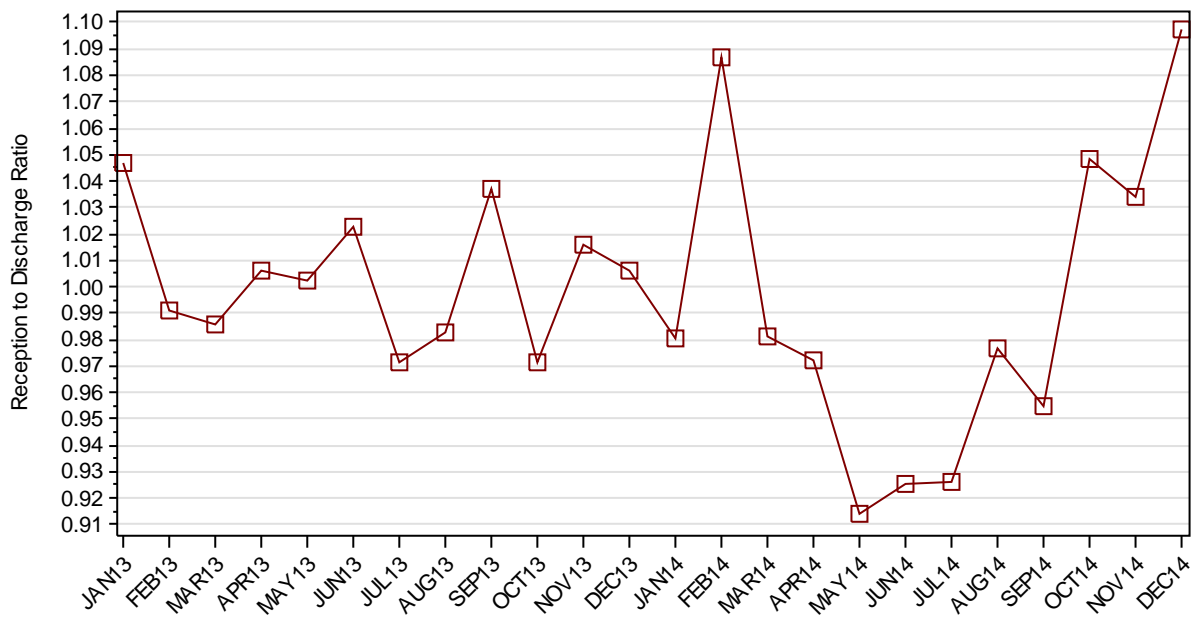
### 1.3.3 JUVENILES BY DISCHARGE TYPE



### 1.3.4 JUVENILES BY DISCHARGE TYPE (EXCLUDING BAIL)



### 1.3.5 RATIO OF JUVENILE RECEPTIONS TO DISCHARGES



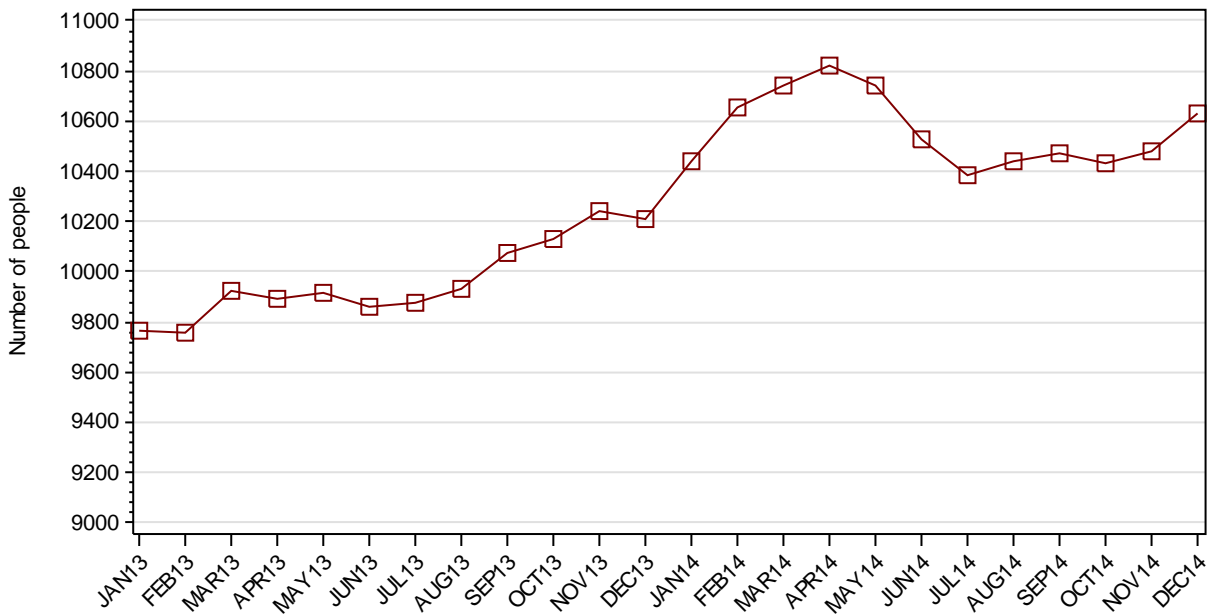
---

## **Part 2 ADULTS**

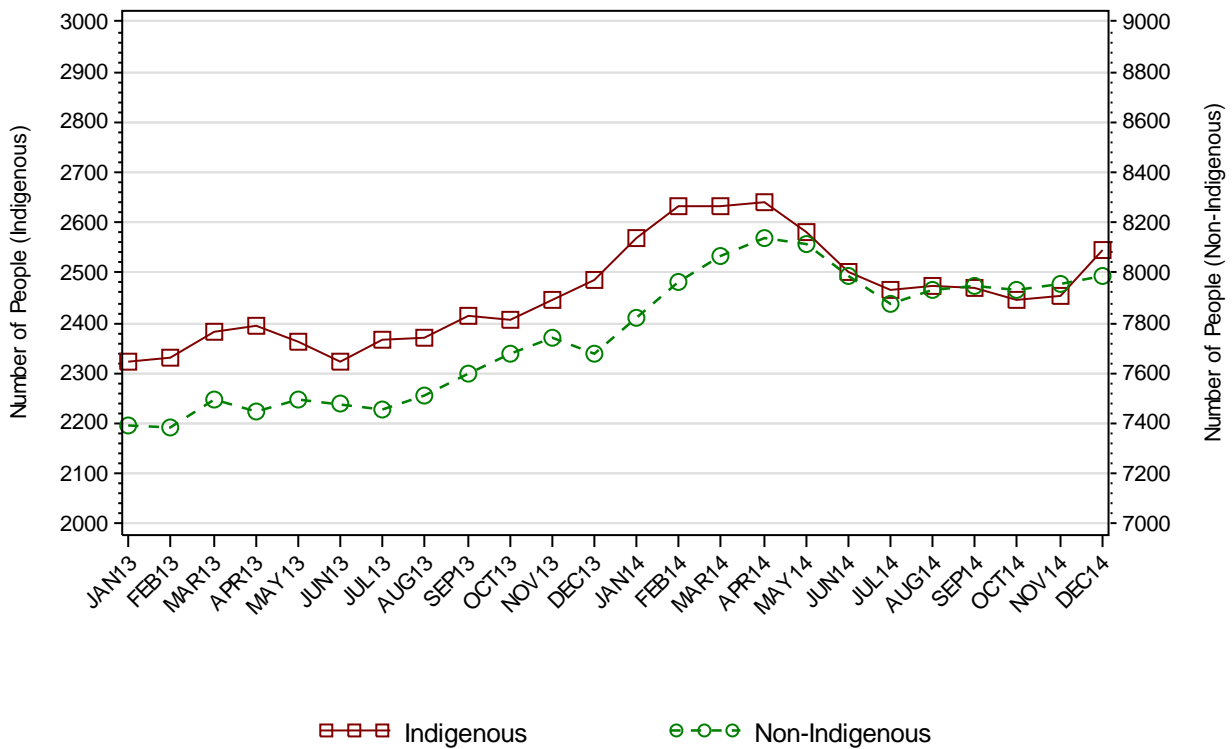
---

## SECTION 2.1 ADULT CUSTODY POPULATION

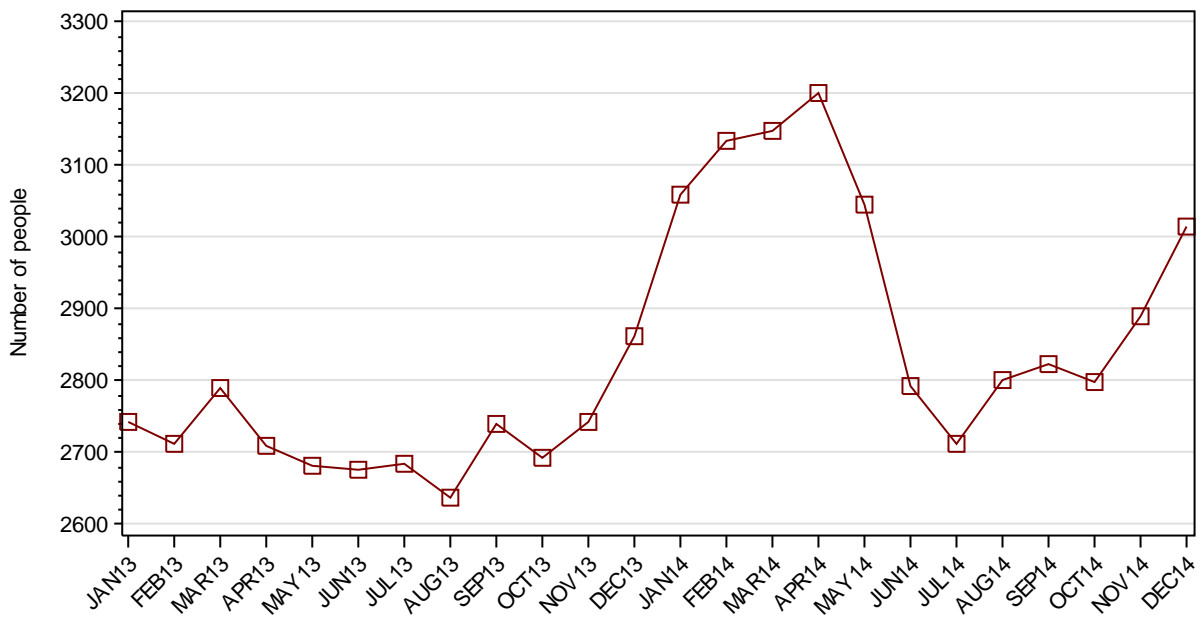
### 2.1.1 ADULT CUSTODY POPULATION AT END OF MONTH



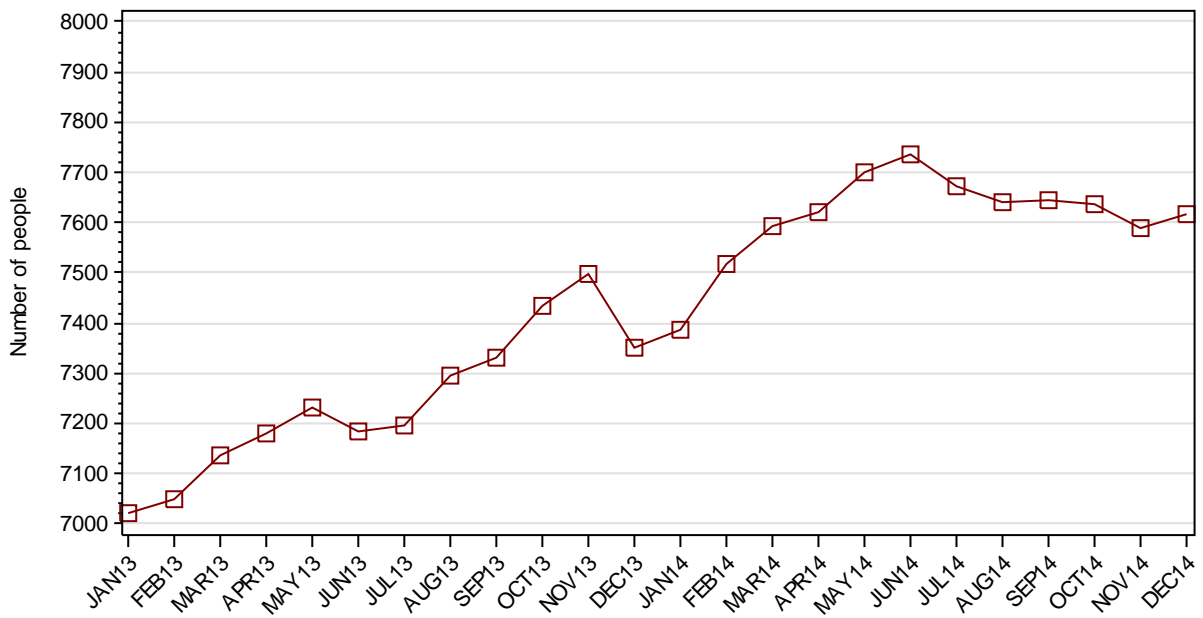
### 2.1.2 ADULT CUSTODY POPULATION BY INDIGENOUS STATUS



### 2.1.3 ADULT REMAND POPULATION

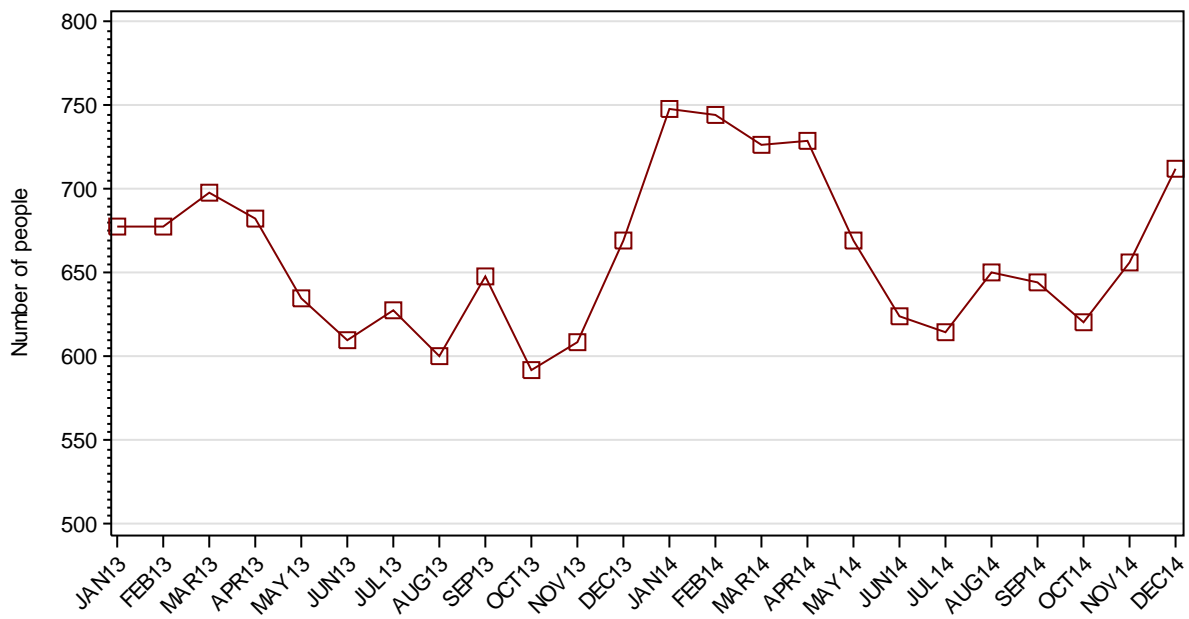


### 2.1.4 ADULT SENTENCED POPULATION

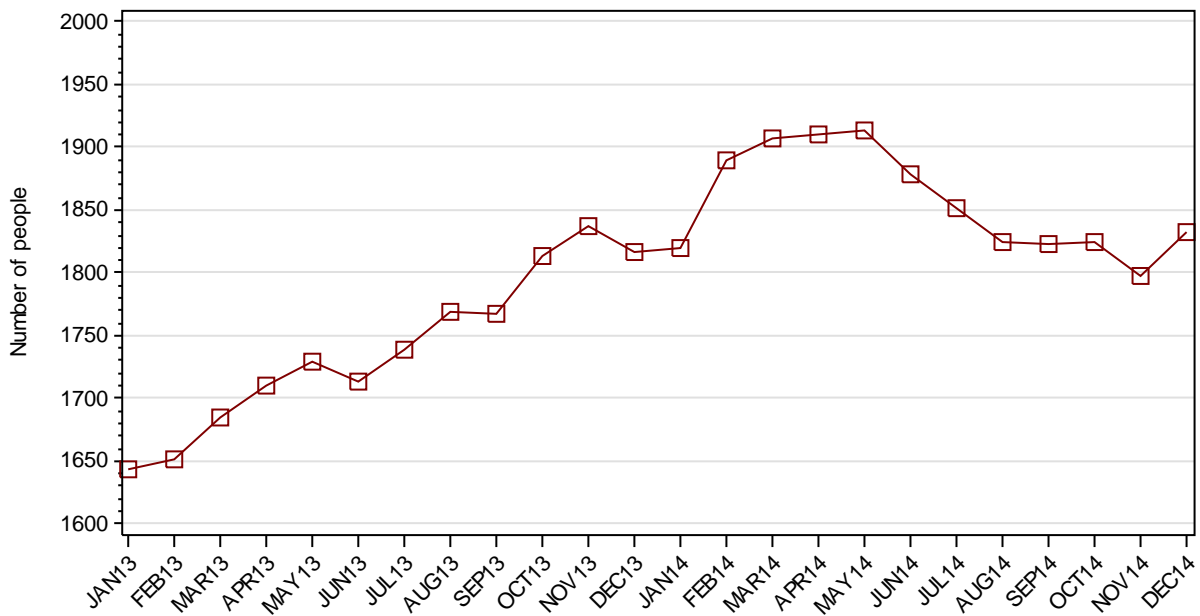




### 2.1.5 INDIGENOUS ADULT REMAND POPULATION



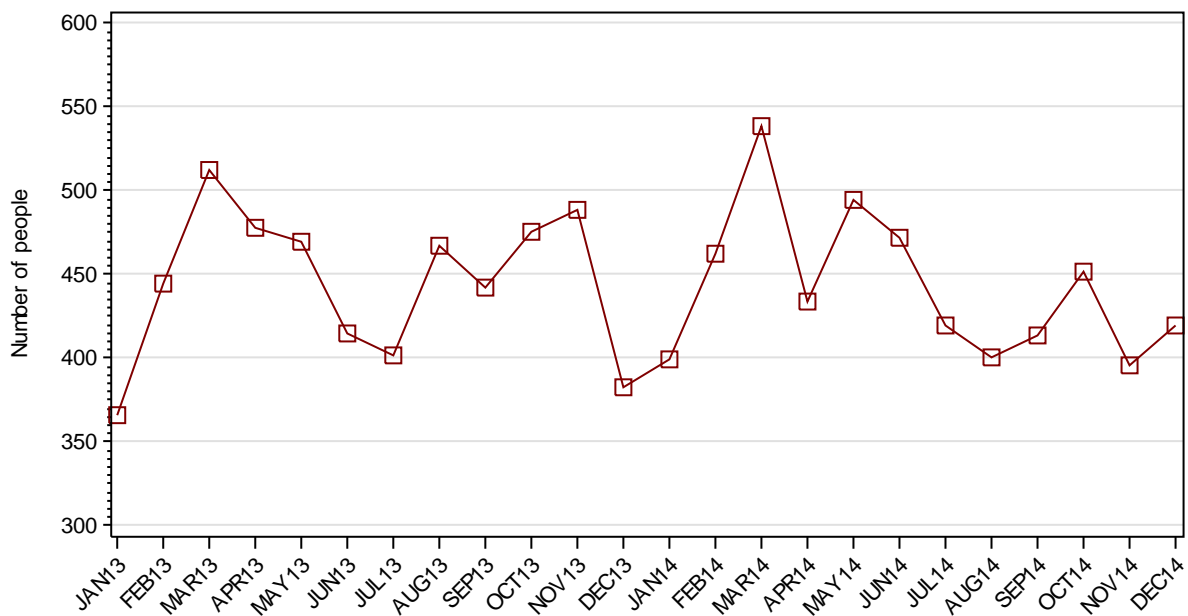
### 2.1.6 INDIGENOUS ADULT SENTENCED POPULATION



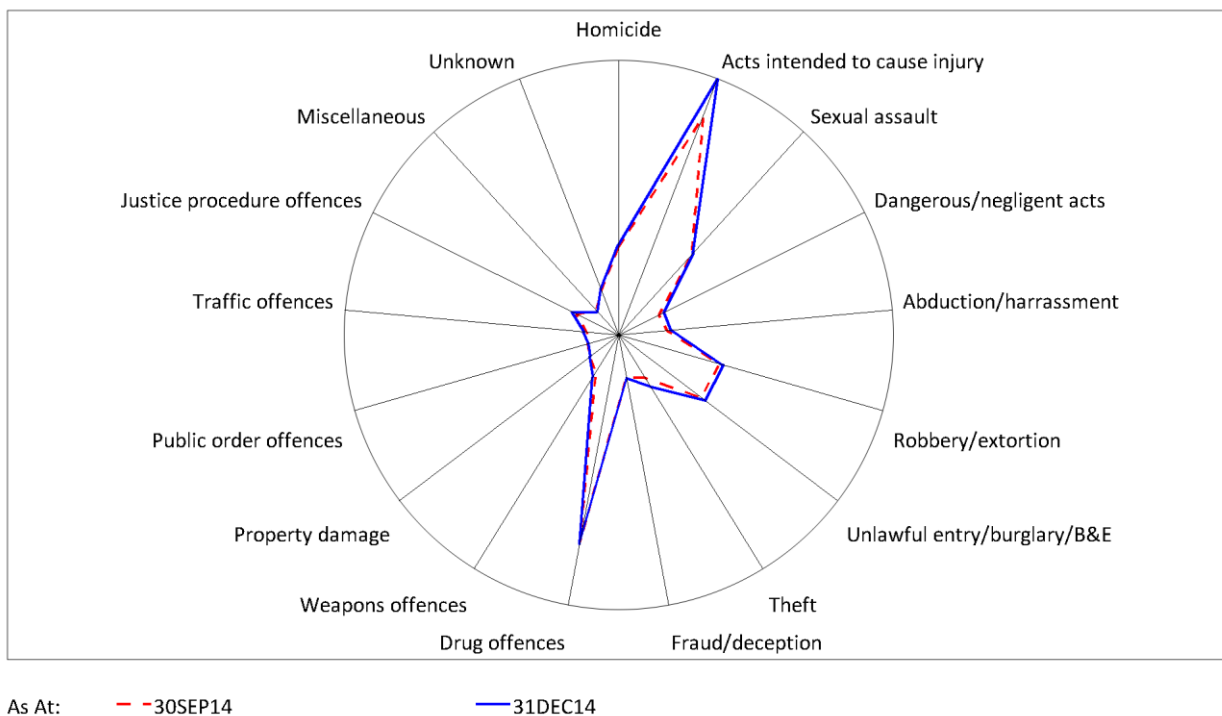
## 2.1.7 ADULT CUSTODY PROFILE AT END OF QUARTER

		Remand		Sentenced		Total	
		SEP14	DEC14	SEP14	DEC14	SEP14	DEC14
Total Male	Count	2591	2753	7165	7129	9756	9882
	Avg Age	34.0	33.9	36.5	36.7	35.8	35.9
Total Female	Count	231	262	481	486	712	748
	Avg Age	34.5	34.1	37.1	37.5	36.3	36.3
Indigenous Male	Count	565	622	1654	1683	2219	2305
	Avg Age	30.9	30.9	32.2	32.3	31.9	31.9
Indigenous Female	Count	80	90	169	150	249	240
	Avg Age	32.8	32.3	33.2	33.5	33.1	33.0
Total	Count	2822	3015	7646	7615	10468	10630
	Avg Age	34.1	34.0	36.5	36.7	35.9	35.9

## 2.1.8 ADULTS IN CUSTODY: NUMBER WHOSE LEGAL STATUS CHANGED DURING MONTH FROM REMAND TO SENTENCED

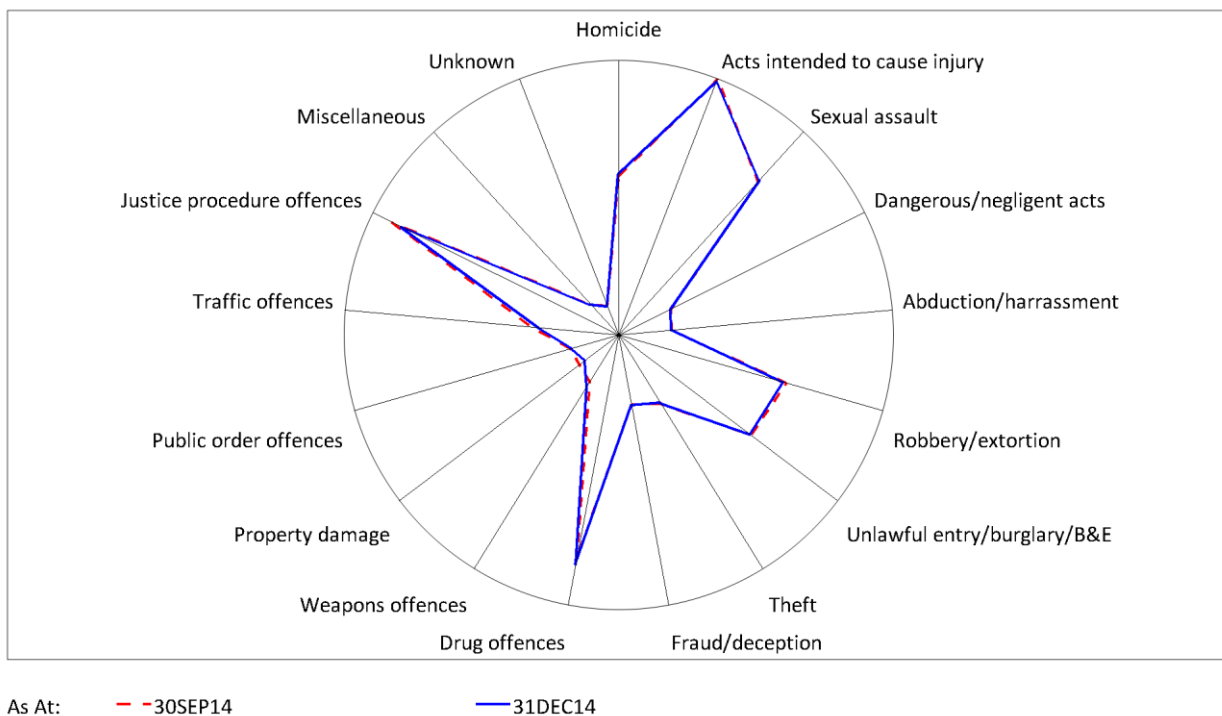


## 2.1.9 ADULT REMAND POPULATION BY MOST SERIOUS OFFENCE



	30SEP14		31DEC14	
	Number	% of Total	Number	% of Total
Homicide	197	7.2	205	6.8
Acts intended to cause injury	677	24.9	809	26.8
Sexual assault	264	9.7	272	9.0
Dangerous/negligent acts	55	2.0	74	2.5
Abduction/harrassment	68	2.5	81	2.7
Robbery/extortion	252	9.3	266	8.8
Unlawful entry/burglary/B&E	247	9.1	265	8.8
Theft	72	2.6	106	3.5
Fraud/deception	48	1.8	51	1.7
Drug offences	597	22.0	604	20.0
Weapons offences	49	1.8	68	2.3
Property damage	26	1.0	24	0.8
Public order offences	13	0.5	10	0.3
Traffic offences	12	0.4	22	0.7
Justice procedure offences	62	2.3	78	2.6
Miscellaneous	16	0.6	11	0.4
Unknown	64	2.4	69	2.3
<b>Total</b>	<b>2719</b>	<b>100.0</b>	<b>3015</b>	<b>100.0</b>

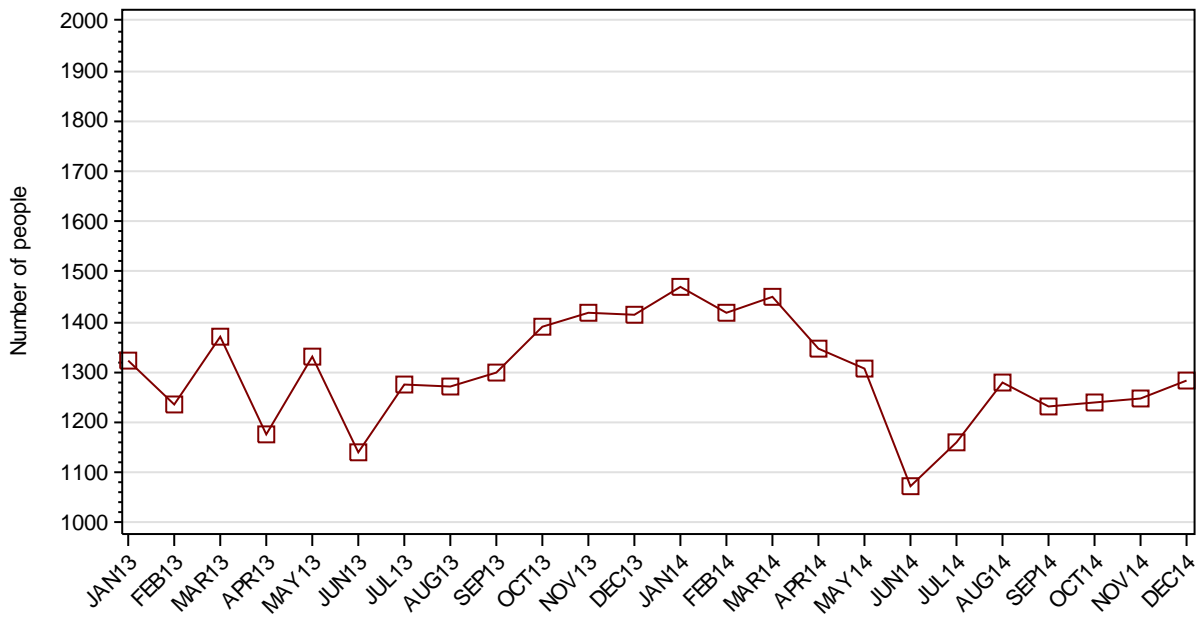
## 2.1.10 ADULT SENTENCED POPULATION BY MOST SERIOUS OFFENCE



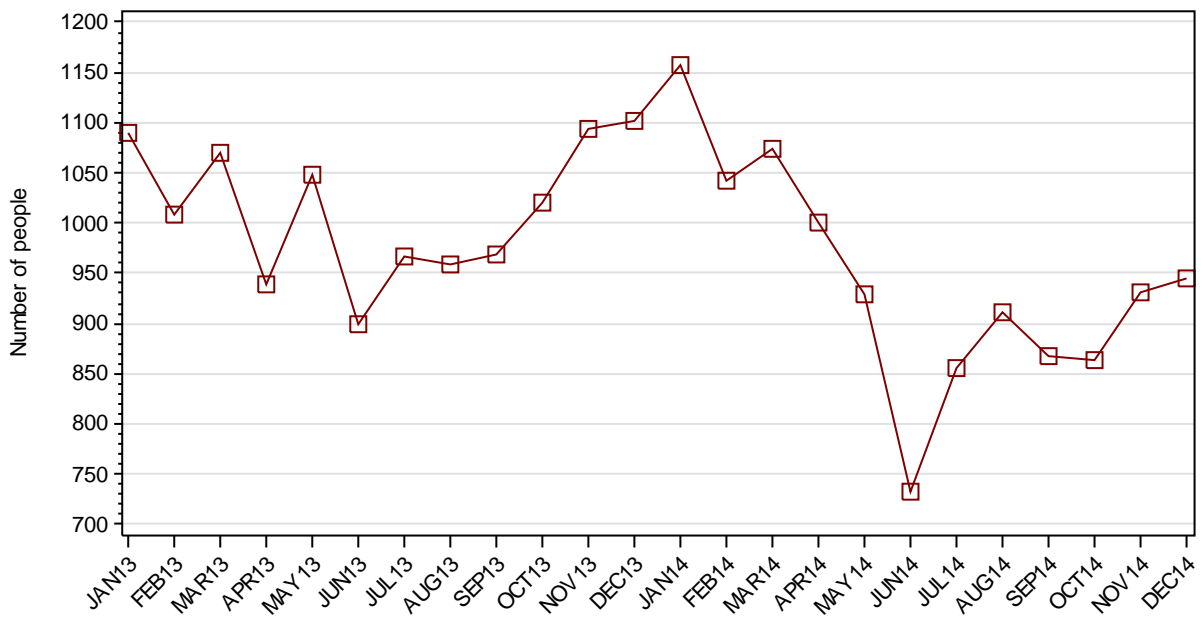
	30SEP14		31DEC14	
	Number	% of Total	Number	% of Total
Homicide	654	8.5	665	8.7
Acts intended to cause injury	1244	16.1	1230	16.2
Sexual assault	900	11.7	909	11.9
Dangerous/negligent acts	140	1.8	137	1.8
Abduction/harrassment	113	1.5	113	1.5
Robbery/extortion	733	9.5	714	9.4
Unlawful entry/burglary/B&E	690	9.0	682	9.0
Theft	253	3.3	245	3.2
Fraud/deception	200	2.6	202	2.7
Drug offences	1001	13.0	1033	13.6
Weapons offences	121	1.6	150	2.0
Property damage	91	1.2	56	0.7
Public order offences	96	1.2	90	1.2
Traffic offences	287	3.7	252	3.3
Justice procedure offences	1135	14.7	1083	14.2
Miscellaneous	49	0.6	54	0.7
Unknown	0	0	0	0
Total	7707	100.0	7615	100.0

## SECTION 2.2 ADULT CUSTODY RECEPTIONS

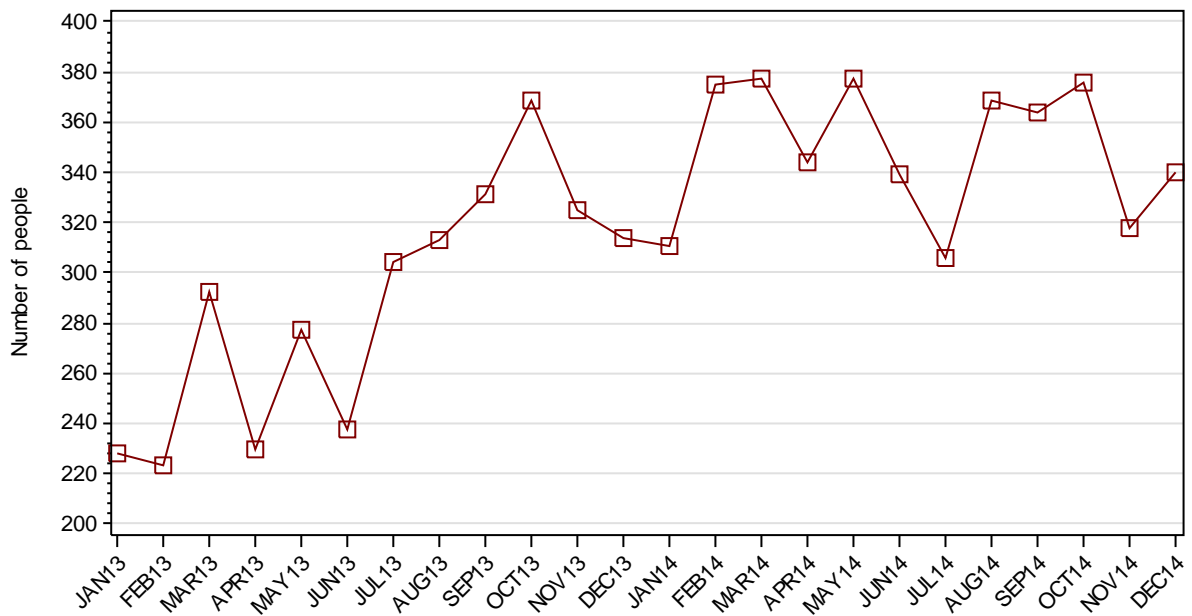
### 2.2.1 ADULTS RECEIVED INTO CUSTODY DURING MONTH



## 2.2.2 ADULT REMAND RECEPTIONS

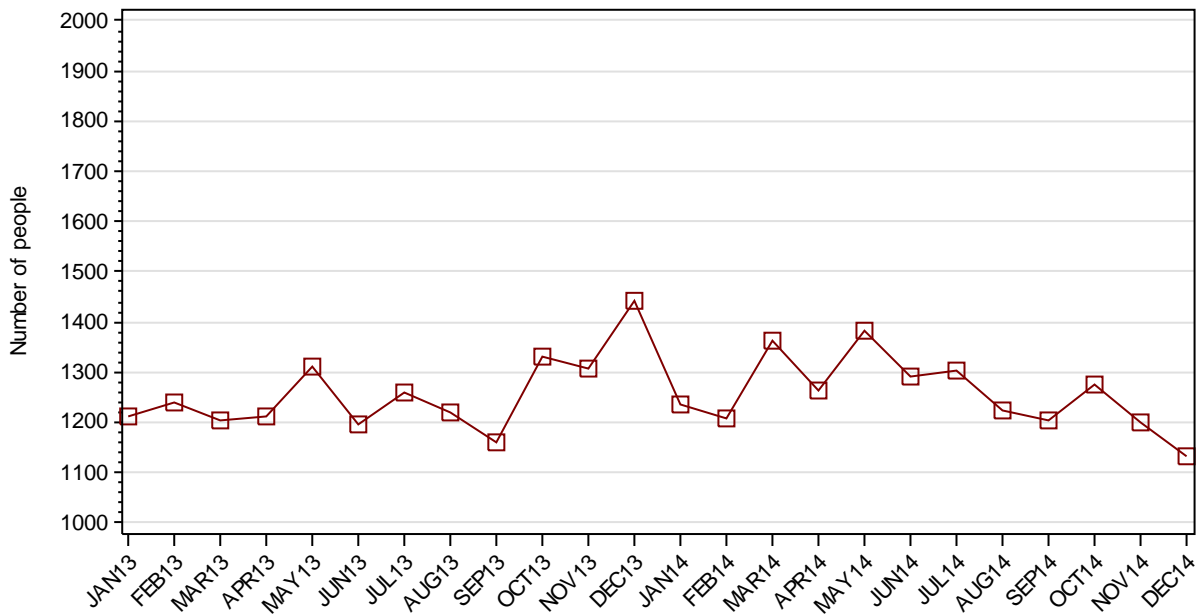


## 2.2.3 ADULT SENTENCED RECEPTIONS



## SECTION 2.3 ADULT CUSTODY DISCHARGES

### 2.3.1 ADULTS DISCHARGED FROM CUSTODY DURING MONTH

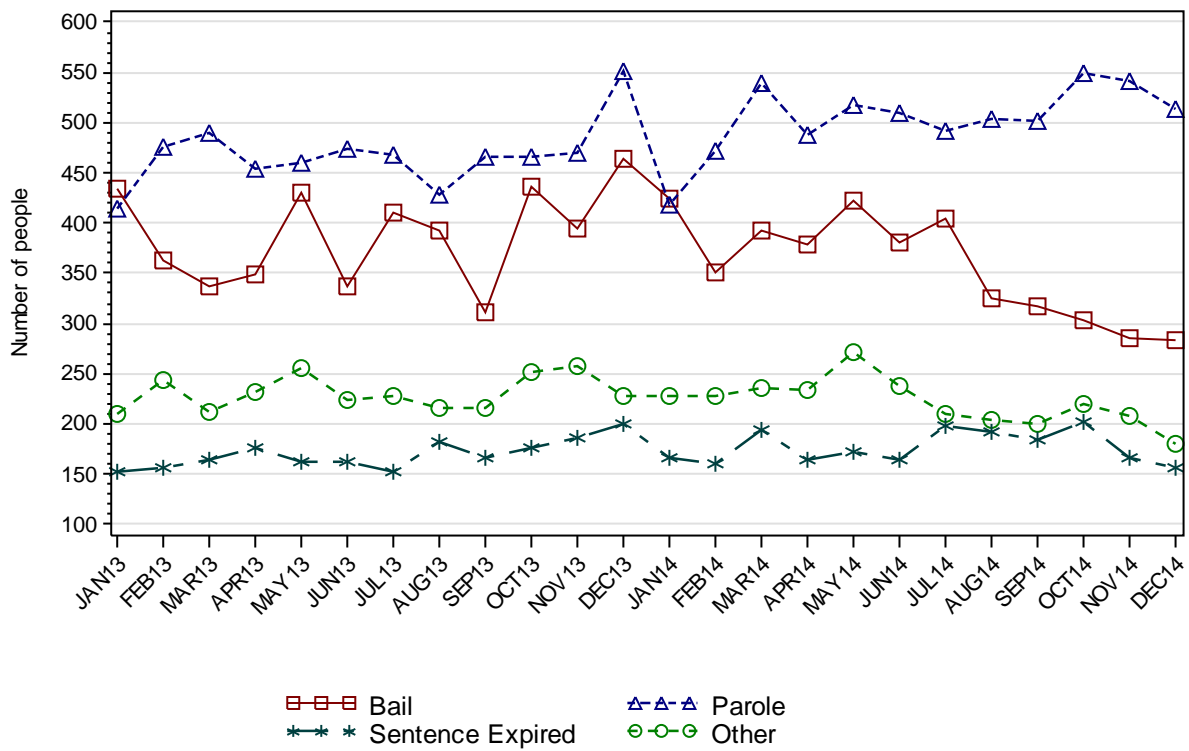


### 2.3.2 AVERAGE LENGTH OF STAY FOR ADULTS DISCHARGED FROM CUSTODY EACH QUARTER

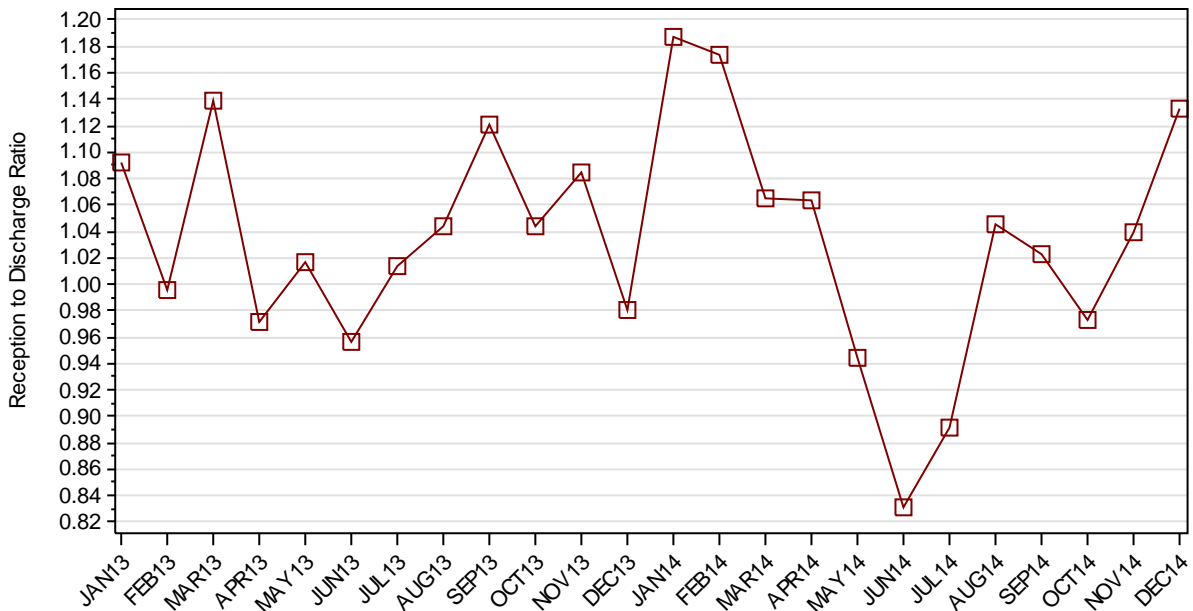
		Remand Custody Only		Sentenced Custody Only		Remand to Sentenced Custody	
		SEP14	DEC14	SEP14	DEC14	SEP14	DEC14
Total Male	Avg Days	53.0	52.0	208.3	219.8	450.8	506.2
	Number	1136	1023	915	957	1225	1182
Total Female	Avg Days	33.4	34.2	170.4	141.1	252.6	300.1
	Number	198	192	118	124	139	131
Indigenous Male	Avg Days	48.1	50.1	190.3	188.8	344.7	430.5
	Number	276	232	271	250	375	331
Indigenous Female	Avg Days	33.0	36.0	166.3	140.3	190.9	230.2
	Number	65	68	48	52	48	58
Total	Avg Days	50.1	49.2	204.0	210.8	430.6	485.6
	Number	1334	1215	1033	1081	1364	1313

*Note: length of Stay for Remand to Sentenced Custody is from the date of reception on remand to date of discharge after serving sentence.*

### 2.3.3 ADULTS BY DISCHARGE TYPE



### 2.3.4 RATIO OF ADULT RECEPTIONS TO DISCHARGES





---

## **Part 3 DATA TABLES**

---

Juvenile	1.In Custody										Remand to Sent
	Total	Legal Status			Indigenous			Indigenous Legal Status			
		Court Bail Ref.	Police Bail Ref.	Sent	Yes	No	Unk	Court Bail Ref.	Police Bail Ref.	Sent	
JAN13	317	162	5	150	166	147	4	84	3	79	40
FEB13	313	155	11	147	172	139	2	89	4	79	30
MAR13	310	145	8	157	169	138	3	77	4	88	50
APR13	311	146	5	160	159	152	0	73	2	84	33
MAY13	313	159	8	146	157	154	2	77	4	76	39
JUN13	322	174	5	143	164	153	5	89	3	72	32
JUL13	310	149	10	151	149	158	3	80	5	64	41
AUG13	308	144	8	156	146	159	3	78	1	67	47
SEP13	312	142	2	168	167	143	2	79	0	88	46
OCT13	309	145	8	156	154	154	1	69	2	83	30
NOV13	313	159	4	150	154	154	5	68	1	85	39
DEC13	315	155	10	150	144	168	3	65	2	77	26
JAN14	308	167	4	137	143	163	2	74	3	66	31
FEB14	338	179	5	154	153	181	4	81	2	70	46
MAR14	331	154	6	171	155	174	2	67	6	82	47
APR14	322	154	4	164	154	166	2	78	1	75	33
MAY14	296	143	5	148	136	157	3	71	1	64	37
JUN14	282	124	0	158	139	141	2	63	0	76	33
JUL14	263	115	0	148	134	128	1	60	0	74	27
AUG14	262	109	6	147	134	124	4	57	3	74	22
SEP14	252	94	2	156	124	123	5	45	1	78	23
OCT14	266	125	1	140	143	118	5	73	1	69	19
NOV14	272	130	2	140	145	125	2	76	1	68	30
DEC14	293	143	7	143	151	141	1	77	6	68	30

Juvenile	2.Receptions							3.Discharges									Ratio Rec/ Dis
	Tot	Legal Status			Indigenous			Tot	Legal Status					Indigenous			
		Court Bail Ref.	Police Bail Ref.	Sent	Yes	No	Unk		Bail	Not Proven Non- Cust.	Other	Parole	Sent Exp	Yes	No	Unk	
JAN13	356	141	204	11	152	195	9	340	269	25	9	33	4	141	191	8	1.05
FEB13	329	116	200	13	160	165	4	332	249	32	10	35	6	154	172	6	0.99
MAR13	347	102	228	17	149	190	8	352	258	36	6	46	6	153	192	7	0.99
APR13	315	101	198	16	130	180	5	313	243	29	7	31	3	140	165	8	1.01
MAY13	376	129	237	10	142	227	7	375	282	37	9	43	4	145	225	5	1.00
JUN13	357	112	230	15	155	193	9	349	270	32	6	33	8	148	195	6	1.02
JUL13	335	106	207	22	144	186	5	345	256	33	12	37	7	158	180	7	0.97
AUG13	280	92	175	13	131	146	3	285	190	42	8	44	1	135	147	3	0.98
SEP13	310	95	199	16	136	171	3	299	214	37	7	35	6	110	185	4	1.04
OCT13	303	92	199	12	112	186	5	312	213	42	7	42	8	129	177	6	0.97
NOV13	323	111	192	20	136	175	12	318	225	31	6	51	5	136	174	8	1.02
DEC13	325	82	223	20	139	179	7	323	239	39	7	34	4	149	166	8	1.01
JAN14	351	116	224	11	155	187	9	358	269	33	8	47	1	156	191	11	0.98
FEB14	363	105	241	17	177	178	8	334	265	26	8	32	3	167	161	6	1.09
MAR14	362	107	231	24	154	195	13	369	281	34	10	40	4	152	202	15	0.98
APR14	318	121	182	15	152	162	4	327	237	33	8	40	9	153	170	4	0.97
MAY14	255	86	161	8	114	133	8	279	196	25	2	51	5	131	141	7	0.91
JUN14	185	69	98	18	93	85	7	200	148	15	4	30	3	90	102	8	0.93
JUL14	187	60	116	11	102	81	4	202	139	15	7	36	5	106	92	4	0.93
AUG14	206	58	130	18	114	81	11	211	141	28	5	35	2	116	86	9	0.98
SEP14	190	70	100	20	93	88	9	199	137	23	6	32	1	103	88	8	0.95
OCT14	240	88	135	17	126	107	7	229	165	12	6	40	6	108	114	7	1.05
NOV14	213	87	118	8	110	97	6	206	143	23	5	29	6	108	89	9	1.03
DEC14	226	75	138	13	107	110	9	206	146	20	6	31	3	101	95	10	1.10

Adult	1.In Custody										Remand to Sent
	Total	Legal Status			Indigenous			Indigenous Legal Status			
		Remand	Sent	Unk	Yes	No	Unk	Remand	Sent	Unk	
JAN13	9765	2744	7021	0	2322	7393	50	678	1644	0	366
FEB13	9760	2712	7048	0	2329	7384	47	678	1651	0	445
MAR13	9927	2791	7135	1	2384	7497	46	698	1685	1	512
APR13	9892	2708	7181	3	2395	7448	49	683	1710	2	478
MAY13	9914	2681	7233	0	2364	7495	55	635	1729	0	469
JUN13	9861	2675	7186	0	2324	7477	60	610	1714	0	415
JUL13	9878	2684	7194	0	2366	7458	54	628	1738	0	402
AUG13	9932	2637	7295	0	2369	7513	50	600	1769	0	467
SEP13	10072	2741	7331	0	2415	7601	56	648	1767	0	442
OCT13	10130	2694	7436	0	2405	7678	47	592	1813	0	476
NOV13	10241	2742	7499	0	2446	7743	52	609	1837	0	489
DEC13	10213	2861	7352	0	2487	7681	45	670	1817	0	383
JAN14	10444	3059	7385	0	2568	7821	55	748	1820	0	399
FEB14	10653	3134	7519	0	2634	7962	57	745	1889	0	463
MAR14	10742	3148	7594	0	2634	8064	44	727	1907	0	539
APR14	10823	3201	7622	0	2639	8135	49	729	1910	0	434
MAY14	10745	3046	7699	0	2582	8118	45	669	1913	0	495
JUN14	10526	2792	7734	0	2503	7988	35	624	1879	0	472
JUL14	10385	2711	7674	0	2467	7876	42	615	1852	0	419
AUG14	10441	2800	7641	0	2475	7928	38	650	1825	0	401
SEP14	10468	2822	7646	0	2468	7945	55	645	1823	0	414
OCT14	10433	2798	7635	0	2445	7935	53	621	1824	0	452
NOV14	10480	2891	7589	0	2454	7957	69	656	1798	0	396
DEC14	10630	3015	7615	0	2545	7988	97	712	1833	0	420

Adult	2.Receptions							3.Discharges								Ratio Rec/ Dis
	Tot	Legal Status			Indigenous			Tot	Legal Status				Indigenous			
		Remand	Sent	Unk	Yes	No	Unk		Bail	Other	Parole	Sent Exp	Yes	No	Unk	
JAN13	1322	1090	228	4	392	893	37	1211	435	209	415	152	360	805	46	1.09
FEB13	1234	1008	223	3	370	836	28	1239	362	244	476	157	363	845	31	1.00
MAR13	1370	1070	292	8	405	933	32	1203	337	211	490	165	350	820	33	1.14
APR13	1176	938	230	8	356	786	34	1211	348	232	455	176	345	835	31	0.97
MAY13	1332	1048	277	7	384	908	40	1310	430	256	461	163	415	861	34	1.02
JUN13	1142	899	238	5	304	797	41	1195	336	223	473	163	344	815	36	0.96
JUL13	1276	967	304	5	397	832	47	1259	411	228	468	152	355	851	53	1.01
AUG13	1272	958	313	1	364	866	42	1218	392	215	429	182	361	811	46	1.04
SEP13	1300	969	331	0	392	876	32	1160	312	215	466	167	346	788	26	1.12
OCT13	1390	1021	369	0	395	950	45	1332	437	252	466	177	405	873	54	1.04
NOV13	1419	1094	325	0	412	945	62	1308	394	257	470	187	371	880	57	1.08
DEC13	1415	1101	314	0	434	921	60	1443	463	228	552	200	393	983	67	0.98
JAN14	1468	1157	311	0	425	982	61	1237	425	227	418	167	344	842	51	1.19
FEB14	1418	1043	375	0	422	946	50	1209	350	228	471	160	356	805	48	1.17
MAR14	1451	1074	377	0	403	996	52	1362	393	236	539	194	403	894	65	1.07
APR14	1345	1001	344	0	368	943	34	1264	379	234	487	164	363	872	29	1.06
MAY14	1306	929	377	0	327	941	38	1384	423	272	517	172	384	958	42	0.94
JUN14	1072	733	339	0	284	762	26	1291	380	237	510	164	363	892	36	0.83
JUL14	1161	855	306	0	331	800	30	1302	404	209	491	198	367	912	23	0.89
AUG14	1281	912	369	0	376	872	33	1225	326	203	504	192	368	820	37	1.05
SEP14	1231	867	364	0	341	853	37	1204	318	199	502	185	348	836	20	1.02
OCT14	1239	863	376	0	337	865	37	1274	304	219	549	202	360	875	39	0.97
NOV14	1248	930	318	0	354	849	45	1201	286	207	541	167	345	827	29	1.04
DEC14	1284	944	340	0	377	853	54	1134	283	180	514	157	286	822	26	1.13

---

## **Part 4 GLOSSARY**

---

## Adult

A person held in custody in a gazetted correctional centre managed by Corrective Services NSW (CSNSW). Persons may have been remanded in custody after being refused bail or sentenced to a custodial order for a proven offence.

The adult figures in this report include the small number of 16 and 17 year old males held in the Kariiong Juvenile Correctional Centre.

## ANZSOC

The Australian Bureau of Statistics Australian and New Zealand Standard Offence Classification (ANZSOC) groups criminal offences into 16 broad divisions:

1. Homicide and related offences
2. Acts intended to cause injury
3. Sexual assault and related offences
4. Dangerous or negligent acts endangering persons
5. Abduction, harassment and other offences against the person
6. Robbery, extortion and related offences
7. Unlawful entry with intent/burglary, break and enter
8. Theft and related offences
9. Fraud, deception and related offences
10. Illicit drug offences
11. Prohibited and regulated weapons and explosives offences
12. Property damage and environmental pollution
13. Public order offences
14. Traffic and vehicle regulatory offences
15. Offences against justice procedures, government security and government operations
16. Miscellaneous offences

For further information see:

<http://www.abs.gov.au/AUSSTATS/abs@.nsf/DetailsPage/1234.02011>

Note that shortened titles are used in this report.

## Average length of stay

The length of stay is the duration of the custodial episode, from the date of reception to the date of discharge.

The average length of stay (in days) is presented for three types of custodial episodes:

Remand custody only - the person entered custody after being refused bail and was then discharged from custody without having been sentenced. Most commonly discharged after being granted bail, other reasons include criminal charges not proven, receiving a non-custodial penalty for a proven offence or being transferred interstate or from a juvenile to an adult prison or vice versa.

Sentenced custody only - persons who entered custody only after being sentenced to a custodial penalty by a court. These persons had either been granted bail, or bail had been dispensed with, pending finalisation of their charges.

Remand to sentenced custody - persons who had been remanded in custody prior to having a custodial sentence imposed by a court. The length of stay for these people is the entire time from reception on remand to discharge after serving the custodial sentence.

Note: Persons initially remanded in custody but then granted bail prior to having a custodial penalty imposed by a court are counted as two custodial episodes: one of remand custody only and one of sentenced custody only.

## **Bail**

Under the provisions of the *Bail Act 1978*, police and courts may grant or refuse to grant bail to alleged offenders. The grant of bail takes into consideration the alleged offence and offender. Bail is granted at the offence level and so a person may be granted bail for one offence and refused bail for another offence.

Persons refused bail (and small numbers granted bail but unable to meet the bail conditions set by a court) are remanded into custody pending further court action.

Juvenile custody population data in this report disaggregates persons remanded into custody into those refused police bail and refused court bail. This is because all juveniles refused police bail are held in Juvenile Justice centres whereas not all adults refused police bail are held in gazetted correctional centres or 24 hour police cell complexes.

## **Control order**

See Custodial sentence

## **Corrective Services NSW**

Corrective Services NSW (CSNSW) is part of the NSW Department of Attorney General and Justice with responsibilities including the supervision of people remanded in custody pending the finalisation of criminal charges and offenders sentenced to a custodial order.

See <http://www.correctiveservices.nsw.gov.au/> for further information.

The Corporate Research, Evaluation and Statistics (CRES) section of CSNSW have provided the adult custody data for this report and advised on its interpretation.

## **Court bail refused**

See Bail

## **Custodial episode**

A custodial episode is the time between the reception into and discharge from custody. An individual may have multiple custodial episodes within the reporting period. A change in legal status between the reception and discharge date, for example changing from being bail refused to being sentenced to a custodial order, does not count as a new custodial episode.

## **Custodial sentence**

Courts may impose a custodial sentence for a proven offence. For adults this is a term of imprisonment under the *Crimes (Sentencing Procedure) Act 1999*. For young people this is a control order of up to two years duration or a term of imprisonment to be served partly or wholly as a juvenile under the *Children (Criminal Proceedings) Act 1987*. A person may be given custodial sentences for multiple proven offences.



While the majority of persons held under sentence in a correctional centre are sentenced under the *Crimes (Sentencing Procedure) Act 1999*, offenders whose parole has been revoked by the State Parole Authority, persons sentenced under the *Commonwealth Crimes Act 1914*, those sentenced under the *Mental Health (Forensic Provision) Act 1990*, small numbers of persons held under immigration orders awaiting deportation following expiry of their sentence and persons sentenced under legislation in other states or territories are also managed by CSNSW.

## **Custody population**

Persons held in custody in a JJNSW juvenile justice centre or a CSNSW gazetted correctional centre, whether remanded or sentenced. Custody population figures are counted as at midnight on the last day of the month or quarter as appropriate.

## **Discharge type**

The type of reason why persons were discharged from custody:

Bail - courts granted the person bail pending the finalisation of their criminal charge(s).

Parole - the person was released to parole after serving the non-parole period of custodial sentence(s).

Sentence expired - the person was released after serving the entire period of all custodial sentence(s) imposed. This includes some persons who served both the non-parole and parole components of their sentence(s) in custody.

Not proven / non-custodial penalty - juvenile data only - the person was released after criminal charges were not proven or after the court imposed a non-custodial penalty for a proven offence, e.g. good behaviour bond.

Other - includes persons transferred to the NSW Drug Court, interstate or from a juvenile to an adult prison or vice versa and deceased persons. Includes adults released after criminal charges were not proven, after the court imposed a non-custodial penalty for a proven offence and where the specific nature of the court's final non-custodial disposal is unknown.

## **Discharges**

Persons legally discharged from JJNSW or CSNSW custody in accordance with a court order (including any State Parole Authority order). For example - to parole, on expiry of a sentence or having been granted bail. Note that persons whose legal status changed from remand to sentenced or the reverse are not counted as discharges as they have not been discharged from custody.

## **Imprisonment**

See Custodial sentence.

## **Indigenous status**

Indigenous status as self-reported on reception into custody. Persons may identify as being Aboriginal or Torres Strait Islander, neither Aboriginal nor Torres Strait Islander or may not provide this information. An inmate is recorded as indigenous if they have identified as such in the current or any previous custodial episode. Indigenous status is unknown for a small proportion of people.

## Juvenile

A person held in custody in a juvenile justice centre. These centres are managed by Juvenile Justice NSW (JJNSW). A young person in juvenile custody may have been refused bail by police, refused bail by the court or sentenced to a custodial sentence.

All young persons refused bail by police must be taken to a juvenile justice centre to be held in custody pending their court appearance. Young persons refused police bail cannot be held in a police or court cell.

Note: a small number of 16 and 17 year old males are held in Kariiong Juvenile Correctional Centre which is managed by CSNSW. As Kariiong is a gazetted correctional centre, these young persons are counted in the adult figures in this report.

## Juvenile Justice NSW

Juvenile Justice NSW (JJNSW) is part of the NSW Department of Attorney General and Justice with responsibilities including the supervision of young people remanded in custody pending the finalisation of criminal charges and young offenders sentenced to a control order/imprisonment.

See <http://www.djj.nsw.gov.au/> for further information.

The Research and Information Section of JJNSW have provided the juvenile data for this report and advised on its interpretation.

## Legal status

The legal status of persons received into or held in custody:

Remand (Juvenile) - Juveniles refused bail (and small numbers granted bail but unable to meet conditions) are remanded into custody pending future court action.

Juvenile remand figures are disaggregated into:

- Police bail refused - Police have refused to grant bail to a juvenile. All juveniles refused bail by police are held in custody in a juvenile justice centre pending future court action.
- Court bail refused - the courts have refused to grant bail to a juvenile pending future court action.

Remand (Adult) - adults refused bail (and small numbers granted bail but unable to meet conditions) are remanded in custody pending future court action. Includes a small number of persons refused police bail and remanded in custody in a gazetted correctional centre. Includes persons on remand who are being managed as correctional patients under the *Mental Health (Forensic Provisions) Act 1990*.

Sentenced - the courts have imposed custodial sentence(s) for proven offence(s). This category includes persons returned to custody after breaching parole. Includes forensic patients as per the *Mental Health (Forensic Provisions) Act 1990* (ie persons found unfit to be tried and persons found not guilty due to mental illness). Persons on remand for one or more offences and sentenced for one or more offences have a legal status of sentenced.

Unknown - adults whose legal status was not recorded at the time of admission.

## Legal status changed from remand to sentenced

Persons whose legal status changed from remand to sentenced upon the imposition of a custodial sentence by a court. This report shows the numbers of persons during each month who changed from being on remand to being sentenced.

## Most serious offence

The most serious offence type for which each person is in custody. The offence type categories in this report are the sixteen ANZSOC Divisions, with shortened titles (See ANZSOC).

Most serious offence data is presented in a radar chart and a data table. The radar chart consists of a circle with a series of 'spokes' running from the centre of the circle to the perimeter. Each spoke represents a different offence type. The radar chart is constructed by placing a point on each spoke marking the proportion of prisoners with that offence type as their most serious offence. The higher the proportion, the closer the point to the perimeter. The points are then connected and the resulting figure inside the circle gives a picture of the distribution of most serious offence type across prisoners. A different type/colour of line is used for each quarter, making changes from quarter to quarter apparent. Note that offence types with no observations are plotted a short distance from the zero radius so that the numbers for every offence type can be observed.

The data table displays the number and proportion of persons in custody for each of the most serious offence types. The data is presented separately for sentenced persons and persons on remand:

### Most Serious Offence – Adults:

The most serious offence for adults is as provided by CSNSW.

A person's most serious offence may change over the course of their custodial episode depending on offences for which they are in custody at any one time. The Most Serious Offence data presented in this report are stock data and are sourced from data extracts run two to three weeks after the end of the quarter.

The data for the previous quarter is as at the previous quarter's custody report.

Extracting the data after the same time lag each quarter reduces variability due to extract timing and so is indicative of a change in the broad offence profile of persons in custody between the end of the current and previous quarters.

Due to the way that MSO is recorded and the data extracted, it is not available for receptions or discharge data.

### Most Serious Offence – Juveniles:

Most serious offence for juveniles is compiled by matching custody order records from JJNSW with sentencing and bail refused orders sourced from the JusticeLink system used by the NSW criminal courts. Data is matched using JusticeLink Proceeding Number, a unique offence identifier which is available in the JJNSW data from January 2011.

- The most serious offence for juveniles remanded in custody is the offence with the highest Median Sentence Ranking (MSR). The MSR is a ranking of ANZSOC codes and was developed by the Bureau of Crime Statistics and Research using data on sentences imposed in the NSW criminal courts. The MSR can be used to select the most serious offence when sentencing data is not available and to select most serious offence when multiple offences have the same custodial order duration. For

further information see the Bureau's Crime and Justice Bulletin No.142 "Measuring Offence Seriousness":

[www.bocsar.nsw.gov.au/lawlink/bocsar/ll\\_bocsar.nsf/vwFiles/CJB142.pdf/\\$file/CJB142.pdf](http://www.bocsar.nsw.gov.au/lawlink/bocsar/ll_bocsar.nsf/vwFiles/CJB142.pdf/$file/CJB142.pdf)

- The most serious offence for sentenced juveniles is the offence with the longest custodial order. For juveniles with more than one offence type with the same custodial order duration, the offence with the highest Median Sentence Ranking is selected as the most serious offence.
- Juveniles sentenced to a custodial order after breaching a non-custodial penalty (eg a suspended sentence, Community Service Order or good behaviour bond) have a most serious offence type of *Justice procedure offence* rather than the type of offence for which the non-custodial penalty was originally imposed (eg robbery/extortion, drug offences).

Note: this differs from the definition of most serious offence used in the Australian Bureau of Statistics Prisoners in Australia publication series (*ABS cat.no.4517.0*)

### **Police bail refused**

See Bail.

### **Receptions**

Persons received into Juvenile Justice custody or a gazetted correctional centre. Gazetted correctional centres are managed by CSNSW. Persons received into CSNSW custody and managed only in CSNSW 24-hour police/court cell complexes are excluded.

### **Ratio of receptions to discharges**

The ratio of receptions to discharges. A ratio greater than 1 means there were more receptions than discharges during the month; a ratio less than 1 means there were more discharges than receptions during the month.

### **Remand**

See Legal status.

### **Sentenced**

See Legal status.

### **24 hour police/court cell complexes**

In addition to gazetted correctional centres, CSNSW manage a number of police/court cell complexes. This report excludes persons received and then discharged from a CSNSW-managed 24 hour police/court cell complex without entering a gazetted correctional centre.