

---

# **NEW SOUTH WALES CUSTODY STATISTICS**

QUARTERLY UPDATE  
JUNE 2015

---



NSW Bureau of Crime  
Statistics and Research

## **CONTENTS**

This report presents 24 months of reception, discharge and custody population data and comparisons between the current and previous quarter for age, gender, indigenous status, most serious offence and the average length of stay.

Separate figures are presented for juveniles and adults.

The counting unit is a custodial episode. An individual will be counted multiple times in a period if they have multiple custodial episodes in that period.

## **SCOPE**

The data in this report are extracted from the Corrective Services NSW (CSNSW) Offender Integrated Management System (OIMS) and the Juvenile Justice NSW (JJNSW) Client Information Management System (CIMS).

The adult custody population figures include only those persons held in gazetted correctional centres managed by CSNSW. This includes: persons managed as forensic patients, persons held after expiry of their sentence awaiting deportation and persons awaiting extradition to another jurisdiction. Persons in the Special Purpose Centre at Long Bay Correctional Centre are not included.

In addition to gazetted correctional centres, CSNSW manages a number of police/court cell complexes. This report excludes persons received into and then discharged from a CSNSW-managed 24 hour police/court cell complex without entering a gazetted correctional centre. Adults refused police bail but not held in a gazetted correctional centre are not included.

Custody population figures are counted as at midnight on the last day of the month or quarter as appropriate. Reception and discharge figures are those during each month or quarter as appropriate.

Refer to the Glossary at the back of the report for detailed descriptions of the terms used in the report.

## **ACKNOWLEDGEMENTS**

Juvenile custody data are provided by the Research and Information Section of JJNSW. Adult custody data are provided by the Corrections Research, Evaluation and Statistics (CRES) section of CSNSW. The Bureau is grateful for the support provided by both areas in supplying the data for this report and advising on its interpretation.

## **NOTE**

The adult custody data presented in this report will differ from data reported by CSNSW due to data extract timing differences.

# Contents

## **PART 1 JUVENILES** **3**

<b>SECTION 1.1</b>	<b>JUVENILE CUSTODY POPULATION</b>	<b>4</b>
1.1.1	By Month .....	4
1.1.2	By Legal Status .....	4
1.1.3	By Indigenous Status.....	5
1.1.4	By Legal Status (Indigenous Only).....	5
1.1.5	Profile .....	6
1.1.6	Legal Status Changed from Remand to Sentenced .....	6
1.1.7	Remand Population by Most Serious Offence .....	7
1.1.8	Sentenced Population by Most Serious Offence .....	8
<b>SECTION 1.2</b>	<b>JUVENILE CUSTODY RECEPTIONS</b>	<b>9</b>
1.2.1	By Month .....	9
1.2.2	By Legal Status .....	9
<b>SECTION 1.3</b>	<b>JUVENILE CUSTODY DISCHARGES</b>	<b>10</b>
1.3.1	By Month .....	10
1.3.2	Length of Stay .....	10
1.3.3	By Discharge Type .....	11
1.3.4	By Discharge Type (Excluding Bail).....	11
1.3.5	Ratio Of Receptions To Discharges.....	12

## **PART 2 ADULTS** **13**

<b>SECTION 2.1</b>	<b>ADULT CUSTODY POPULATION</b>	<b>14</b>
2.1.1	By Month .....	14
2.1.2	By Indigenous Status.....	14
2.1.3	Remand Population .....	15
2.1.4	Sentenced Population.....	15
2.1.5	Indigenous Remand Population .....	16
2.1.6	Indigenous Sentenced Population .....	16
2.1.7	Profile .....	17
2.1.8	Legal Status Changed from Remand to Sentenced .....	17
2.1.9	Remand Population by Most Serious Offence .....	18
2.1.10	Sentenced Population by Most Serious Offence .....	19
<b>SECTION 2.2</b>	<b>ADULT CUSTODY RECEPTIONS</b>	<b>20</b>
2.2.1	By Month .....	20
2.2.2	Remand Receptions .....	21
2.2.3	Sentenced Receptions.....	21
<b>SECTION 2.3</b>	<b>ADULT CUSTODY DISCHARGES</b>	<b>22</b>
2.3.1	By Month .....	22
2.3.2	Length of Stay .....	22
2.3.3	By Discharge Type .....	23
2.3.4	Ratio Of Receptions To Discharges.....	23

## **PART 3 DATA TABLES** **24**

## **PART 4 GLOSSARY** **29**

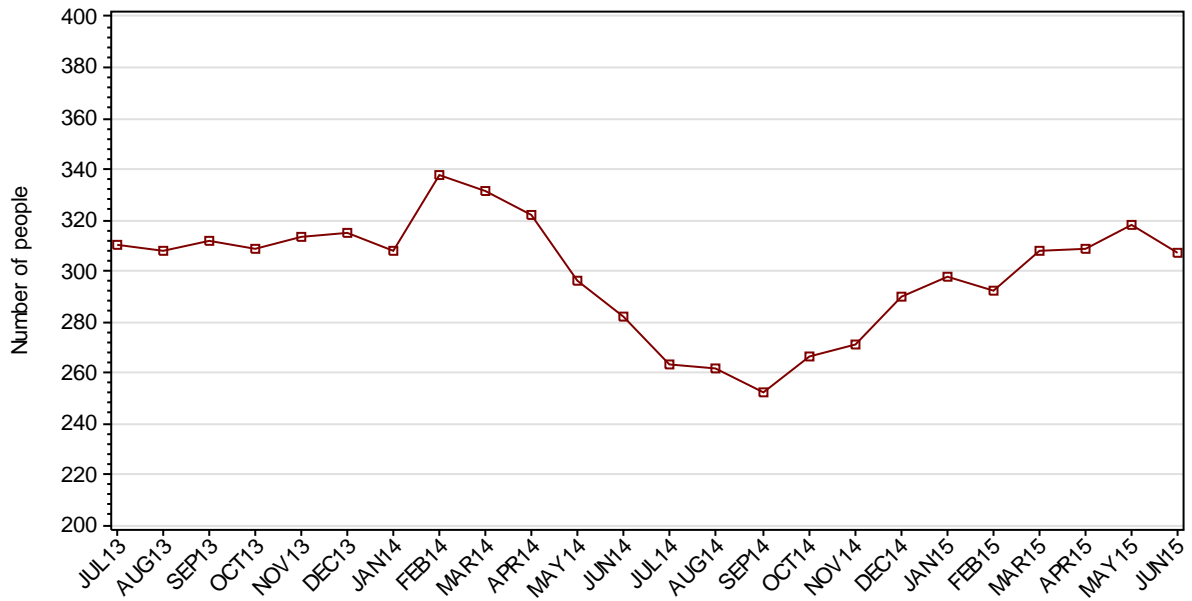
---

## **Part 1 JUVENILES**

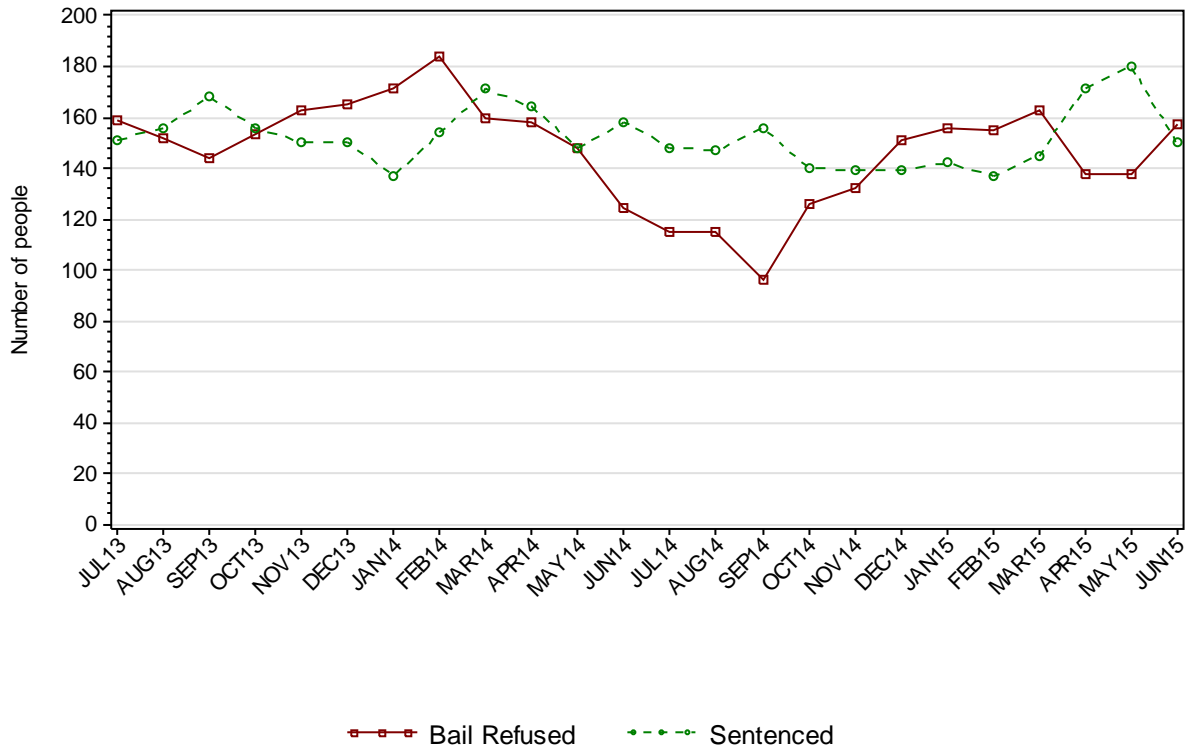
---

## SECTION 1.1 JUVENILE CUSTODY POPULATION

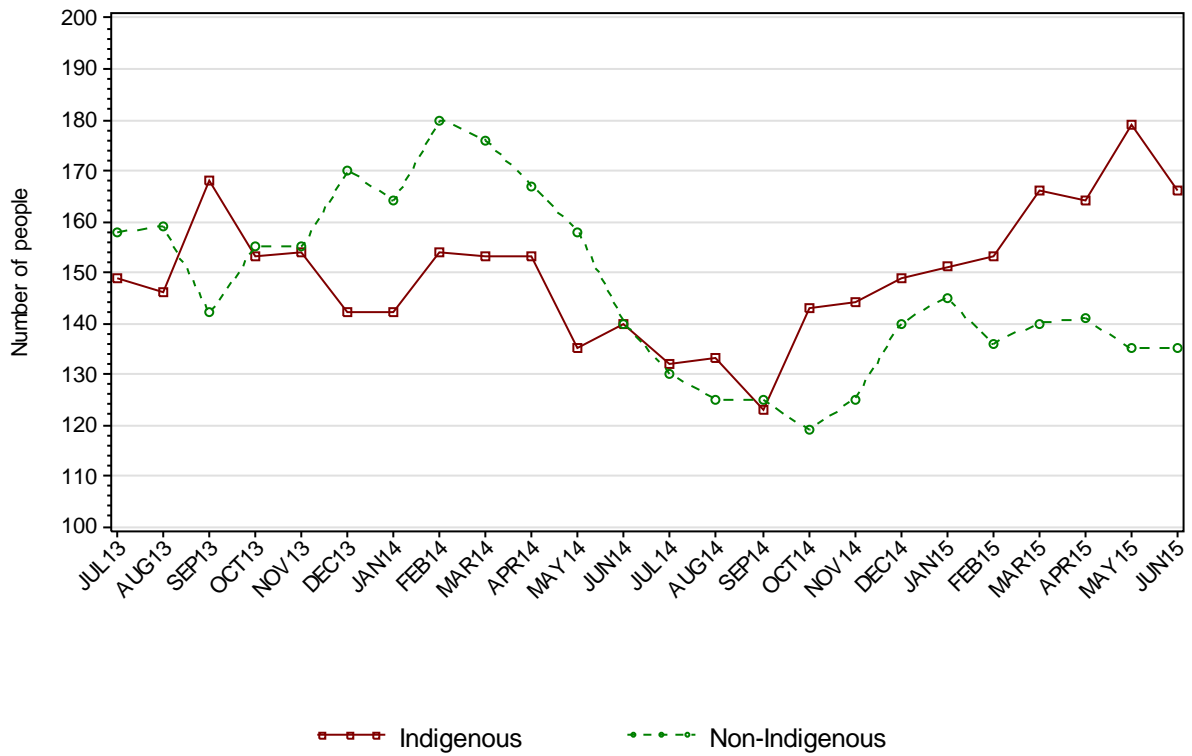
### 1.1.1 JUVENILE CUSTODY POPULATION AT END OF MONTH



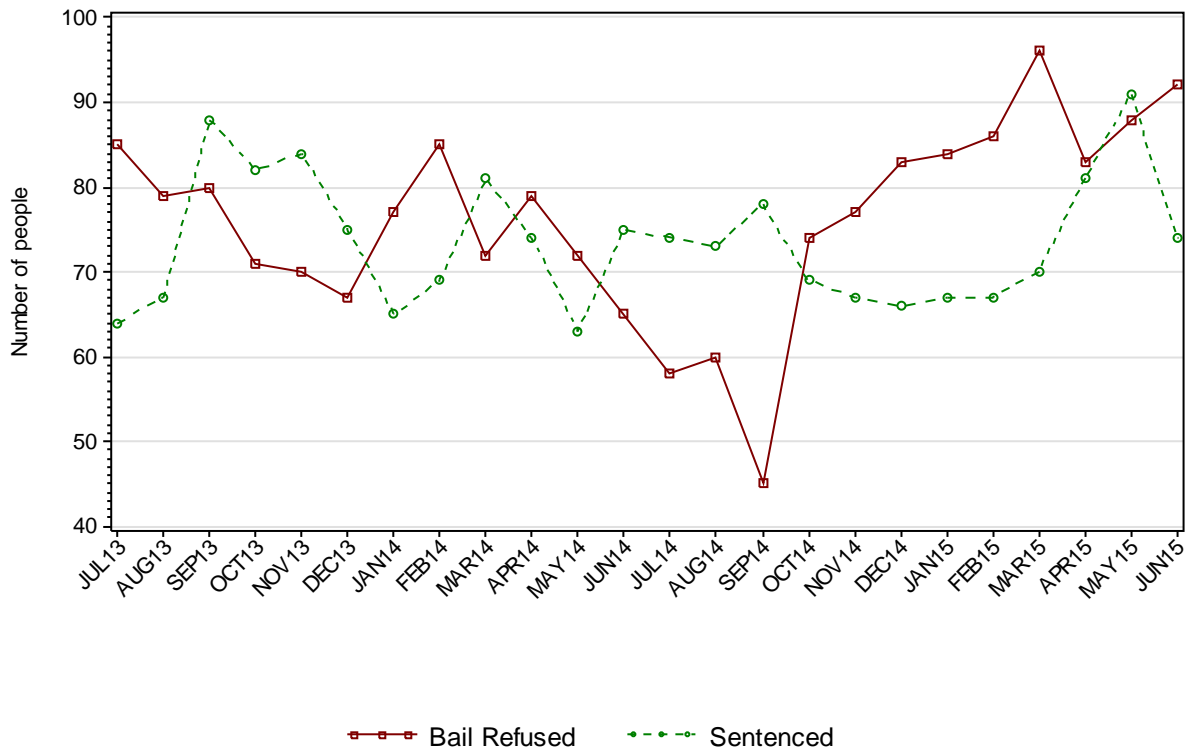
### 1.1.2 JUVENILE CUSTODY POPULATION BY LEGAL STATUS



### 1.1.3 JUVENILE CUSTODY POPULATION BY INDIGENOUS STATUS



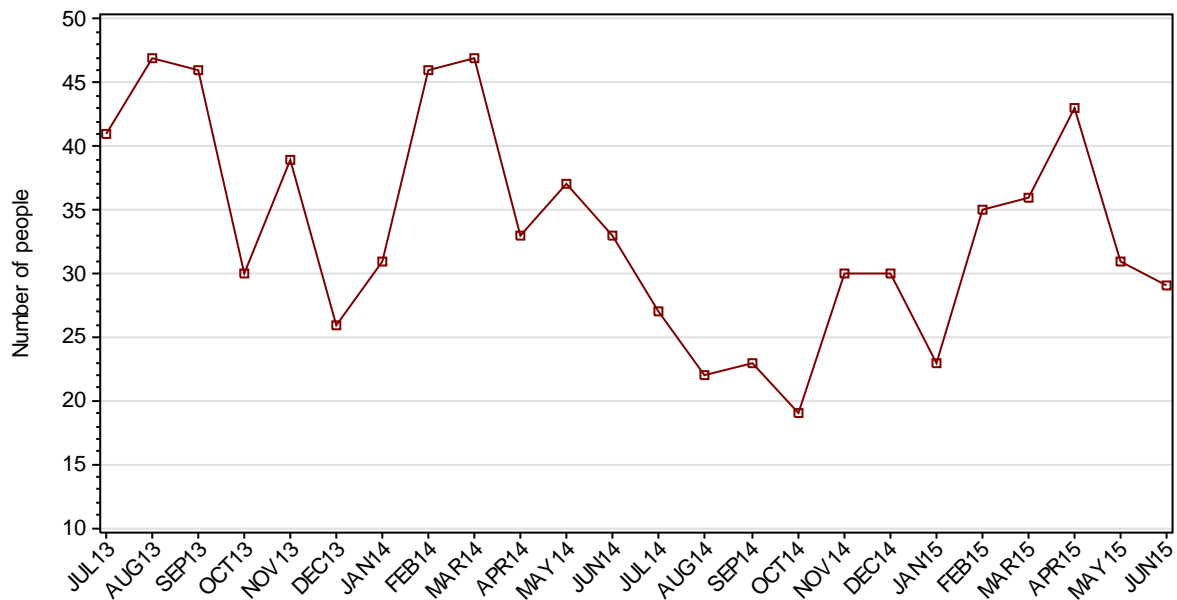
### 1.1.4 INDIGENOUS JUVENILE CUSTODY POPULATION BY LEGAL STATUS



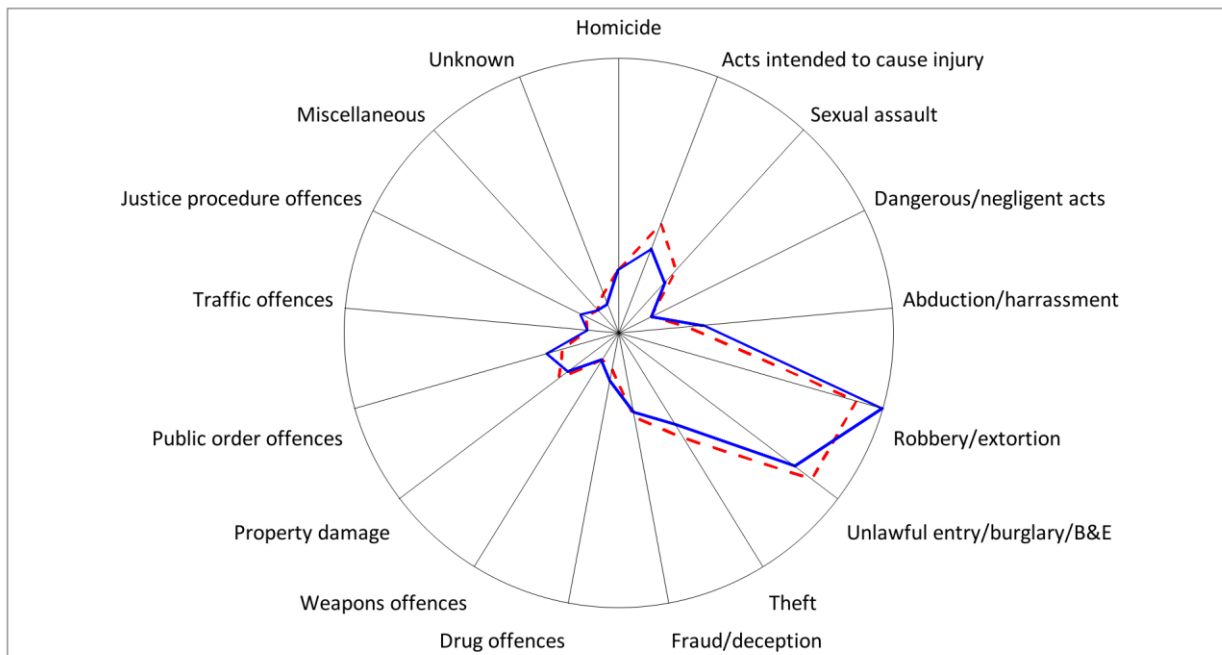
### 1.1.5 JUVENILE CUSTODY PROFILE AT END OF QUARTER

		Police Bail Refused		Court Bail Refused		Sentenced		Total	
		MAR15	JUN15	MAR15	JUN15	MAR15	JUN15	MAR15	JUN15
Total Male	Count	3	2	142	144	138	143	283	289
	Avg Age	15.3	14.0	16.0	16.1	16.8	17.0	16.4	16.6
Total Female	Count	0	1	18	10	7	7	25	18
	Avg Age	0	13.0	15.7	15.9	16.6	15.9	15.9	15.7
Indigenous Male	Count	1	2	83	83	68	68	152	153
	Avg Age	17.0	14.0	15.8	15.9	16.3	16.6	16.0	16.2
Indigenous Female	Count	0	0	12	7	2	6	14	13
	Avg Age	0	0	15.7	15.7	15.5	15.7	15.6	15.7
Total	Count	3	3	160	154	145	150	308	307
	Avg Age	15.3	13.7	16.0	16.1	16.8	17.0	16.4	16.5

### 1.1.6 JUVENILES IN CUSTODY: NUMBER WHOSE LEGAL STATUS CHANGED DURING MONTH FROM REMAND TO SENTENCED



## 1.1.7 JUVENILE REMAND POPULATION BY MOST SERIOUS OFFENCE



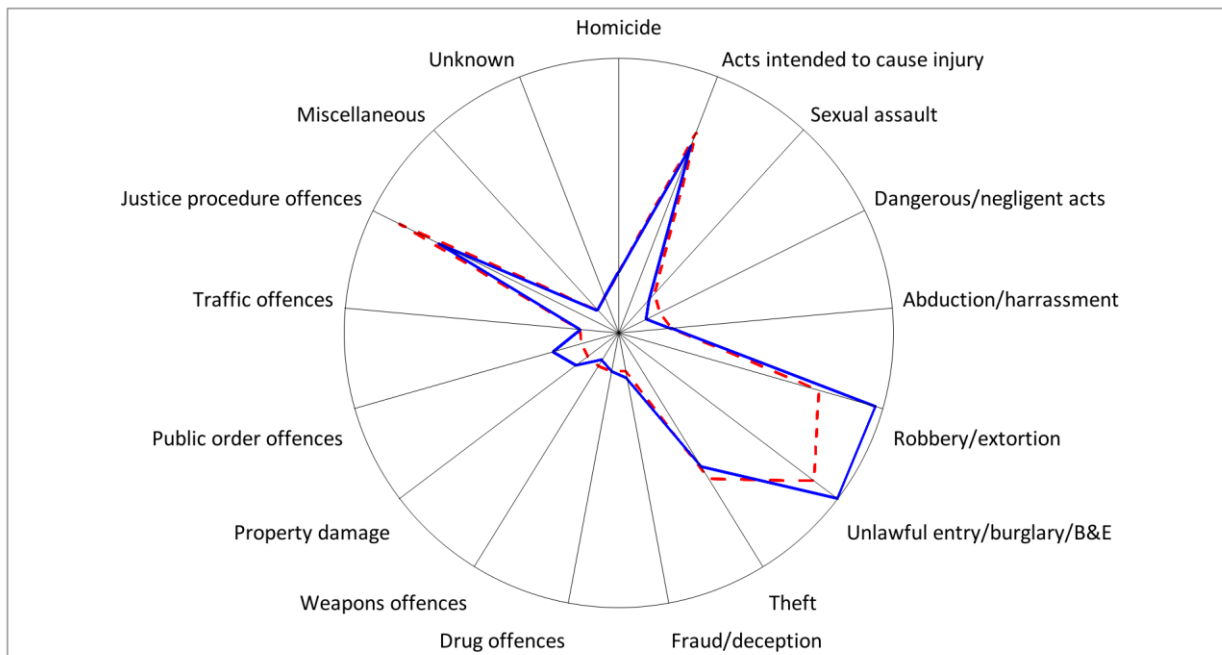
As At: - 31MAR15

— 30JUN15

	31MAR15		30JUN15	
	Number	% of Total	Number	% of Total
Homicide	6	3.7	6	3.8
Acts intended to cause injury	16	9.8	11	7.0
Sexual assault	10	6.1	7	4.5
Dangerous/negligent acts	1	0.6	1	0.6
Abduction/harrassment	7	4.3	10	6.4
Robbery/extortion	40	24.5	45	28.7
Unlawful entry/burglary/B&E	39	23.9	35	22.3
Theft	17	10.4	14	8.9
Fraud/deception	10	6.1	9	5.7
Drug offences	1	0.6	3	1.9
Weapons offences	0	0	0	0
Property damage	8	4.9	6	3.8
Public order offences	5	3.1	8	5.1
Traffic offences	0	0	0	0
Justice procedure offences	1	0.6	2	1.3
Miscellaneous	0	0	0	0
Unknown	2	1.2	0	0
<b>Total</b>	<b>163</b>	<b>100.0</b>	<b>157</b>	<b>100.0</b>



## 1.1.8 JUVENILE SENTENCED POPULATION BY MOST SERIOUS OFFENCE



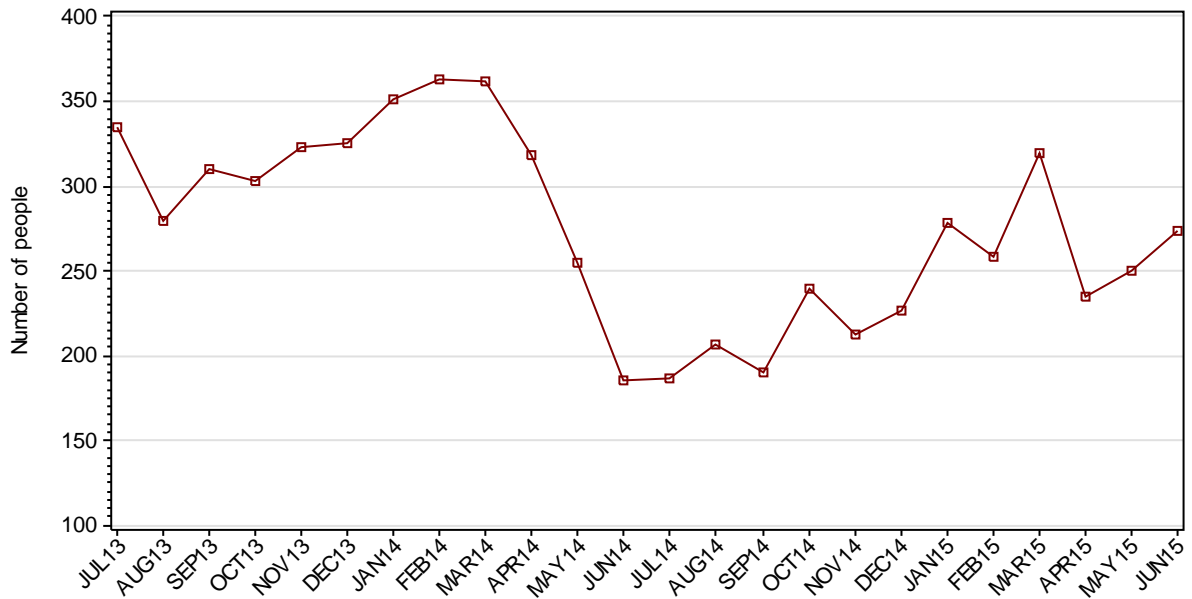
As At: -31MAR15

—30JUN15

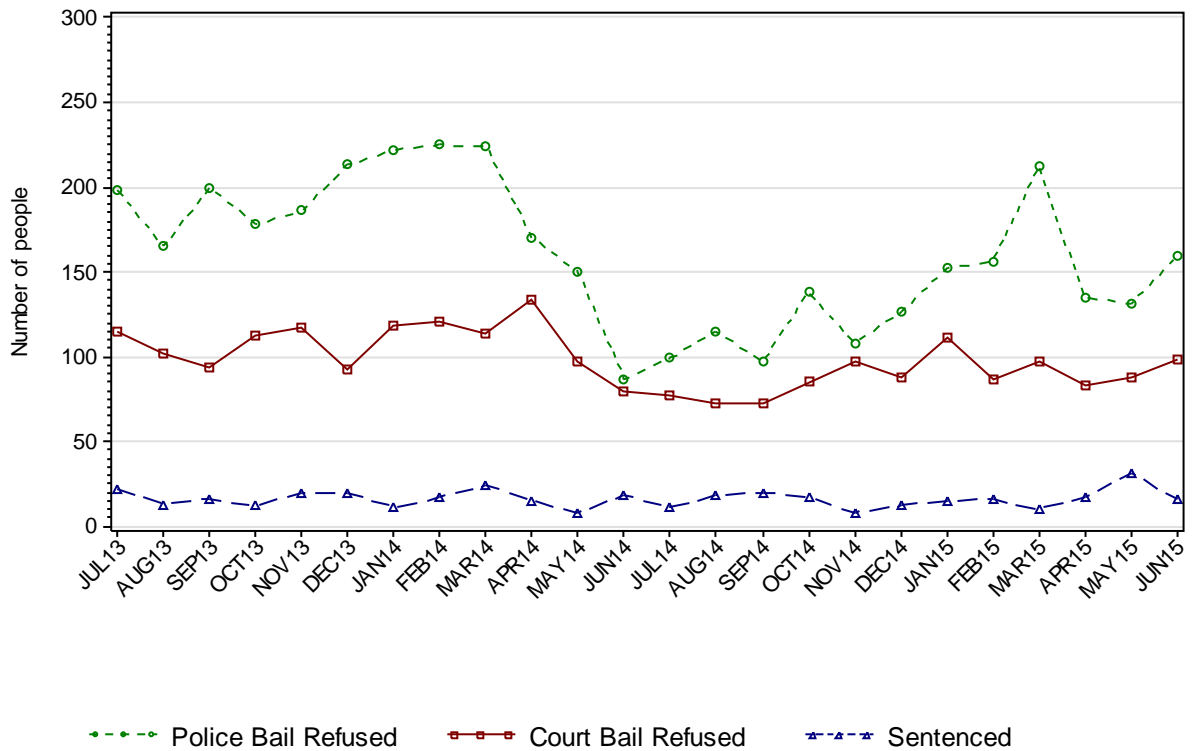
	31MAR15		30JUN15	
	Number	% of Total	Number	% of Total
Homicide	4	2.8	4	2.7
Acts intended to cause injury	25	17.2	23	15.3
Sexual assault	3	2.1	2	1.3
Dangerous/negligent acts	2	1.4	0	0
Abduction/harrassment	3	2.1	3	2.0
Robbery/extortion	24	16.6	32	21.3
Unlawful entry/burglary/B&E	29	20.0	33	22.0
Theft	19	13.1	17	11.3
Fraud/deception	1	0.7	2	1.3
Drug offences	1	0.7	1	0.7
Weapons offences	1	0.7	0	0
Property damage	1	0.7	3	2.0
Public order offences	1	0.7	5	3.3
Traffic offences	1	0.7	1	0.7
Justice procedure offences	29	20.0	23	15.3
Miscellaneous	0	0	0	0
Unknown	1	0.7	1	0.7
<b>Total</b>	<b>145</b>	<b>100.0</b>	<b>150</b>	<b>100.0</b>

## SECTION 1.2 JUVENILE CUSTODY RECEPTIONS

### 1.2.1 JUVENILES RECEIVED INTO CUSTODY DURING MONTH

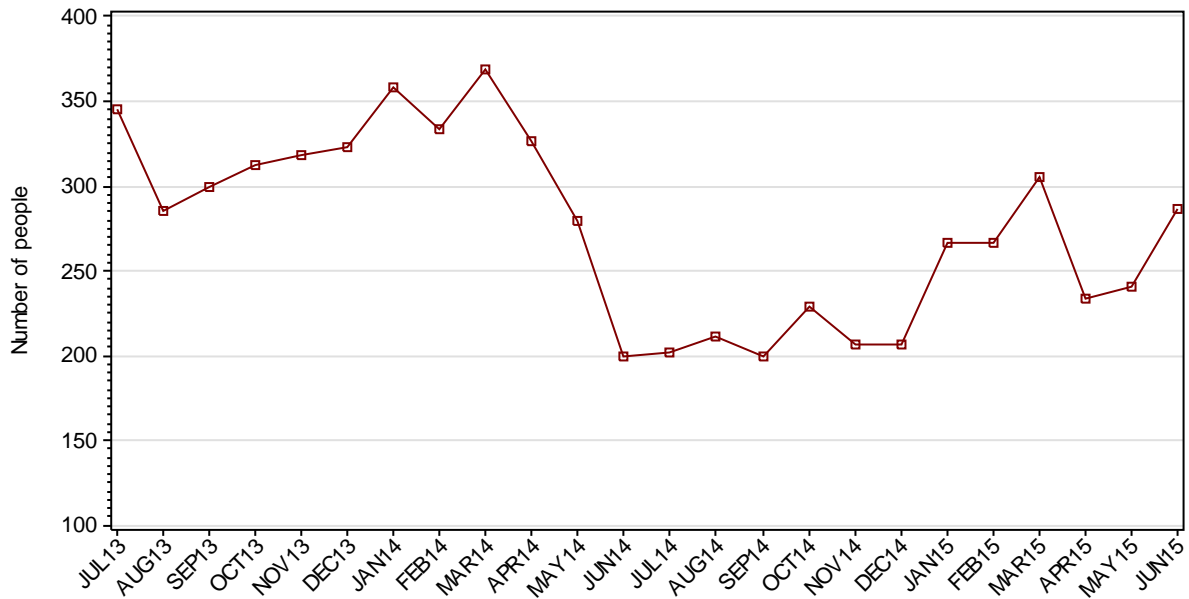


### 1.2.2 JUVENILES RECEIVED INTO CUSTODY BY LEGAL STATUS



## SECTION 1.3 JUVENILE CUSTODY DISCHARGES

### 1.3.1 JUVENILES DISCHARGED FROM CUSTODY DURING MONTH

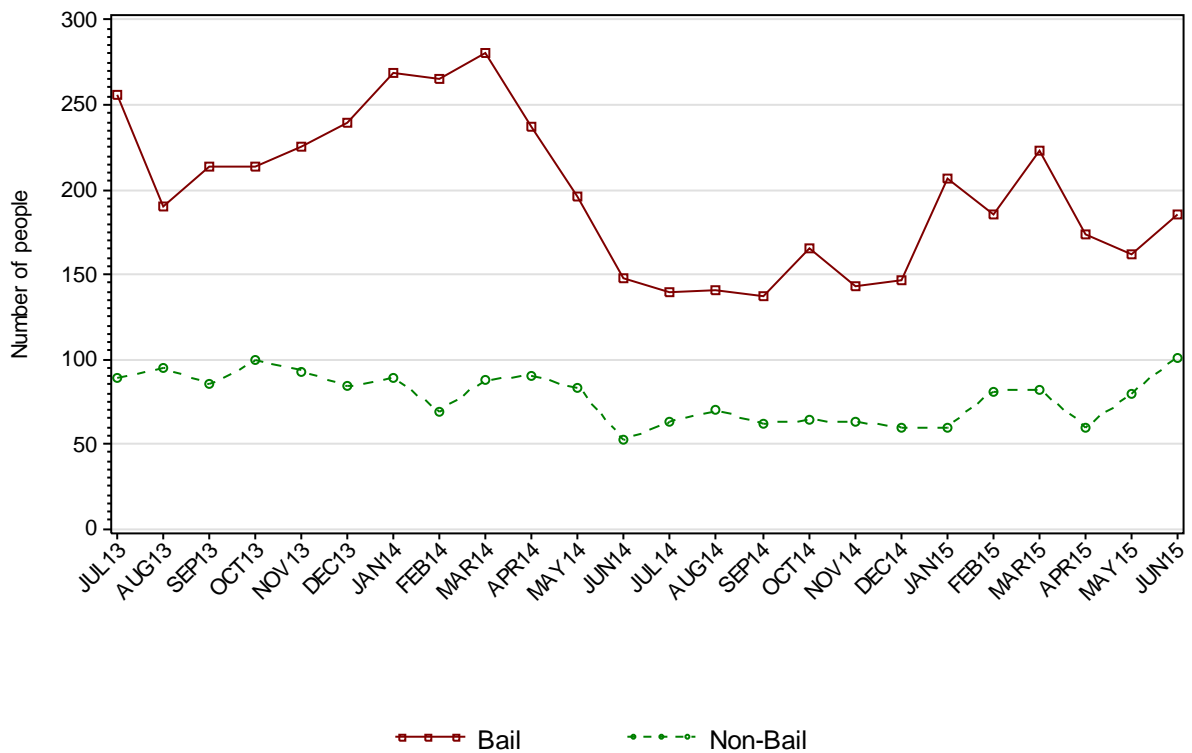


### 1.3.2 AVERAGE LENGTH OF STAY FOR JUVENILES DISCHARGED FROM CUSTODY EACH QUARTER

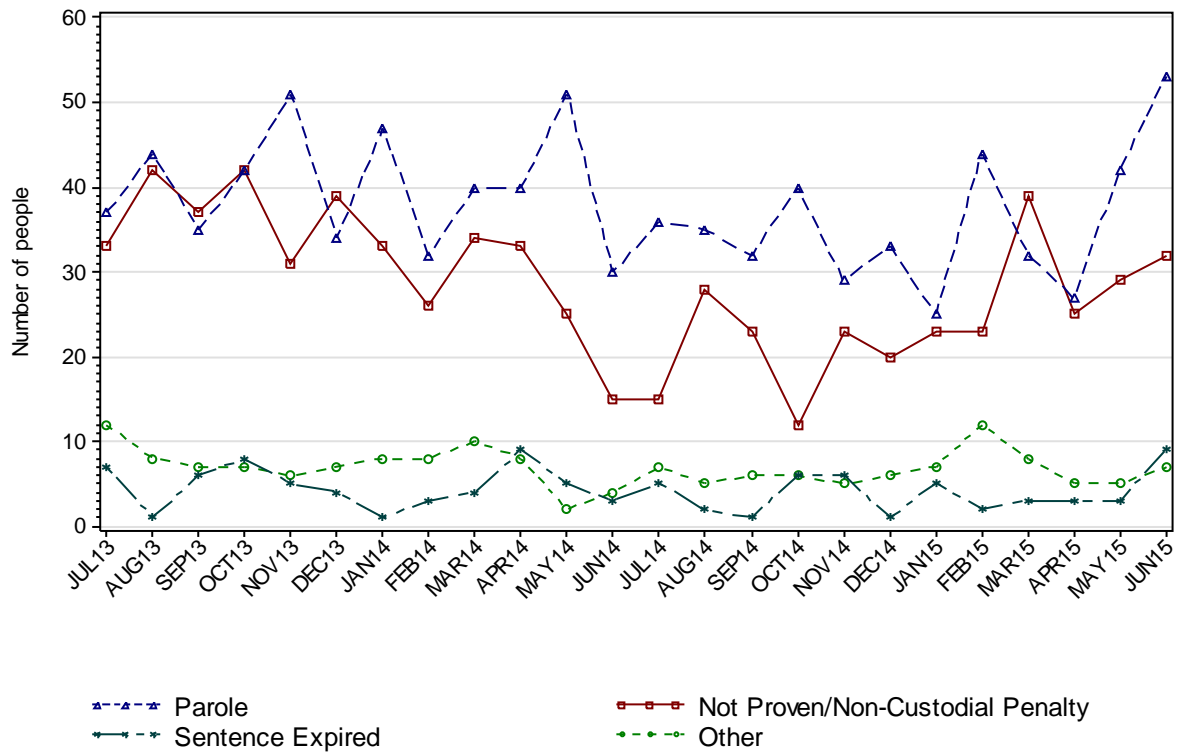
		Remand Custody Only		Sentenced Custody Only		Remand to Sentenced Custody	
		MAR15	JUN15	MAR15	JUN15	MAR15	JUN15
Total Male	Avg Days	9.7	9.9	112.2	65.7	200.7	156.1
	Number	562	462	44	39	75	115
Total Female	Avg Days	5.9	6.4	101.5	35.0	42.3	94.5
	Number	148	132	2	1	7	11
Indigenous Male	Avg Days	12.7	14.8	119.0	64.9	179.5	148.6
	Number	248	185	20	22	31	63
Indigenous Female	Avg Days	8.4	8.1	183.0	35.0	39.3	78.9
	Number	71	59	1	1	3	7
Total	Avg Days	8.9	9.2	111.7	64.9	187.2	150.8
	Number	710	594	46	40	82	126

*Note: Length of Stay for Remand to Sentenced Custody is from the date of reception on remand to date of discharge after serving sentence.*

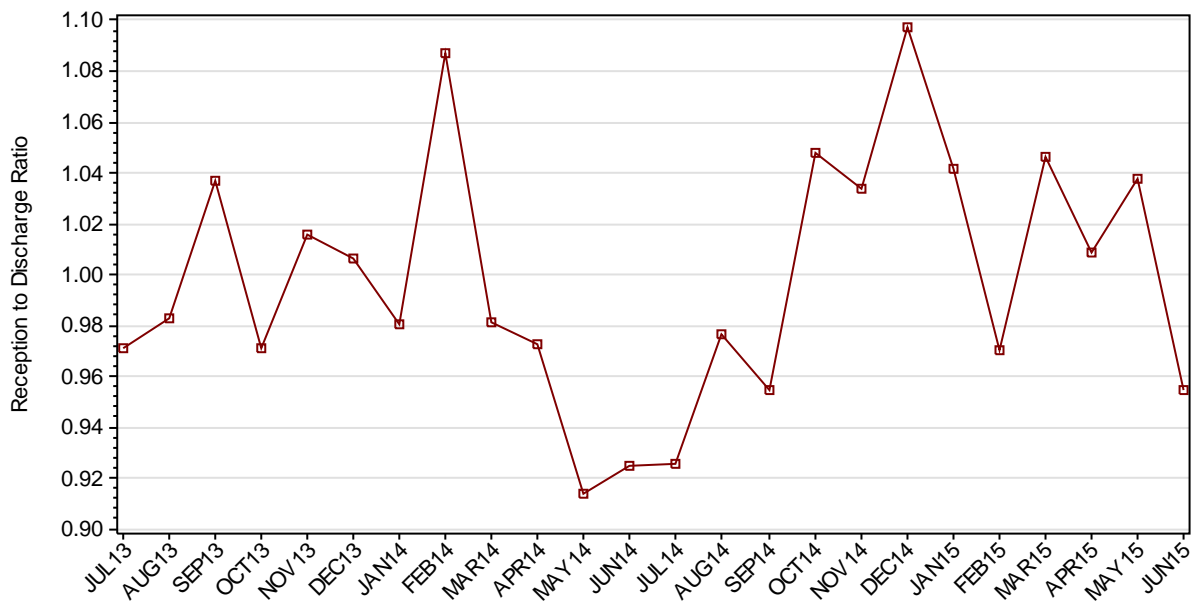
### 1.3.3 JUVENILES BY DISCHARGE TYPE



### 1.3.4 JUVENILES BY DISCHARGE TYPE (EXCLUDING BAIL)



### 1.3.5 RATIO OF JUVENILE RECEPTIONS TO DISCHARGES



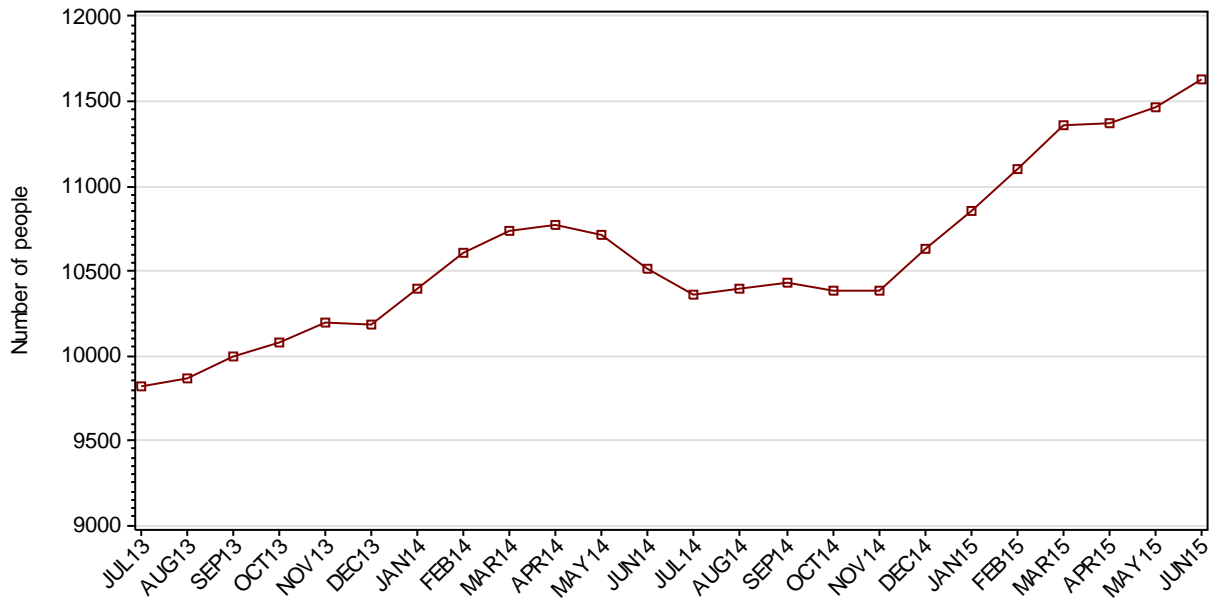
---

## **Part 2 ADULTS**

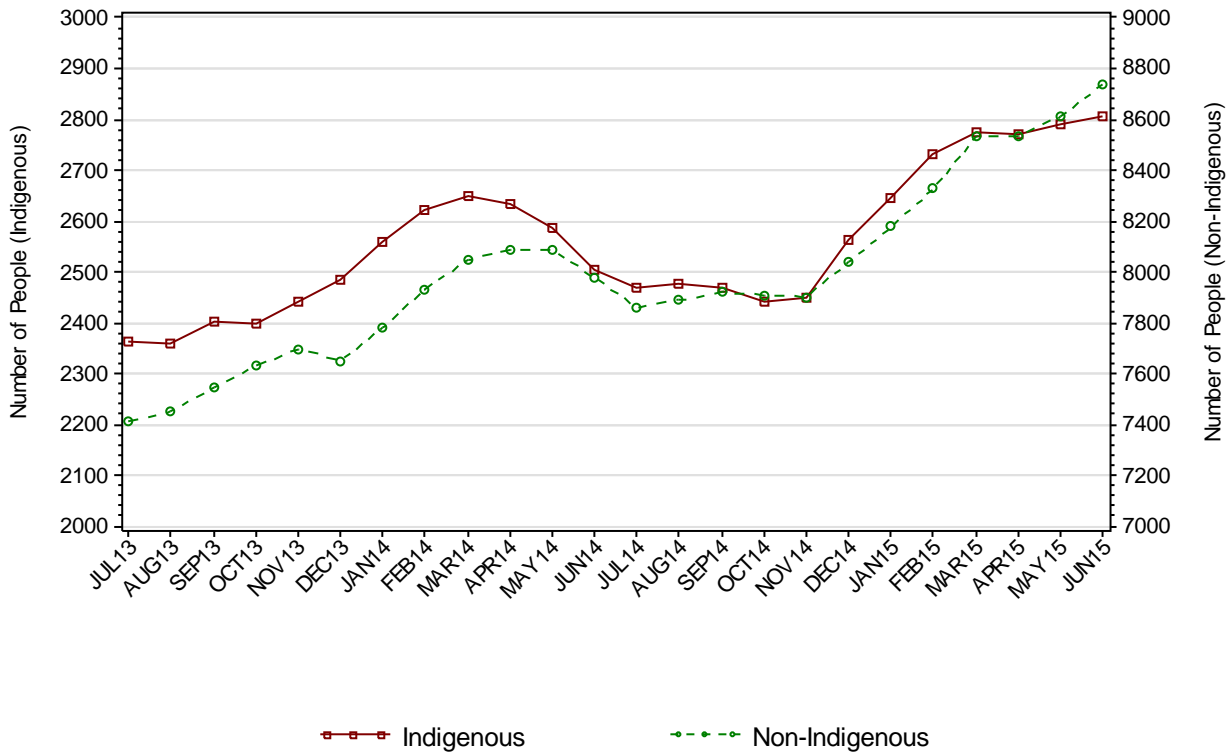
---

## SECTION 2.1 ADULT CUSTODY POPULATION

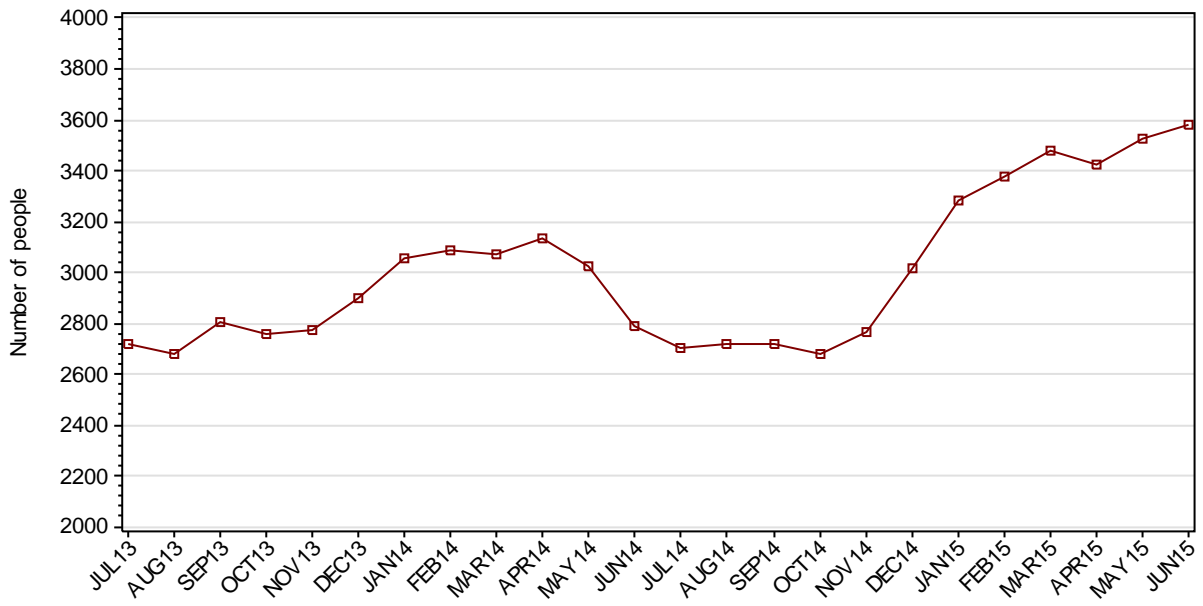
### 2.1.1 ADULT CUSTODY POPULATION AT END OF MONTH



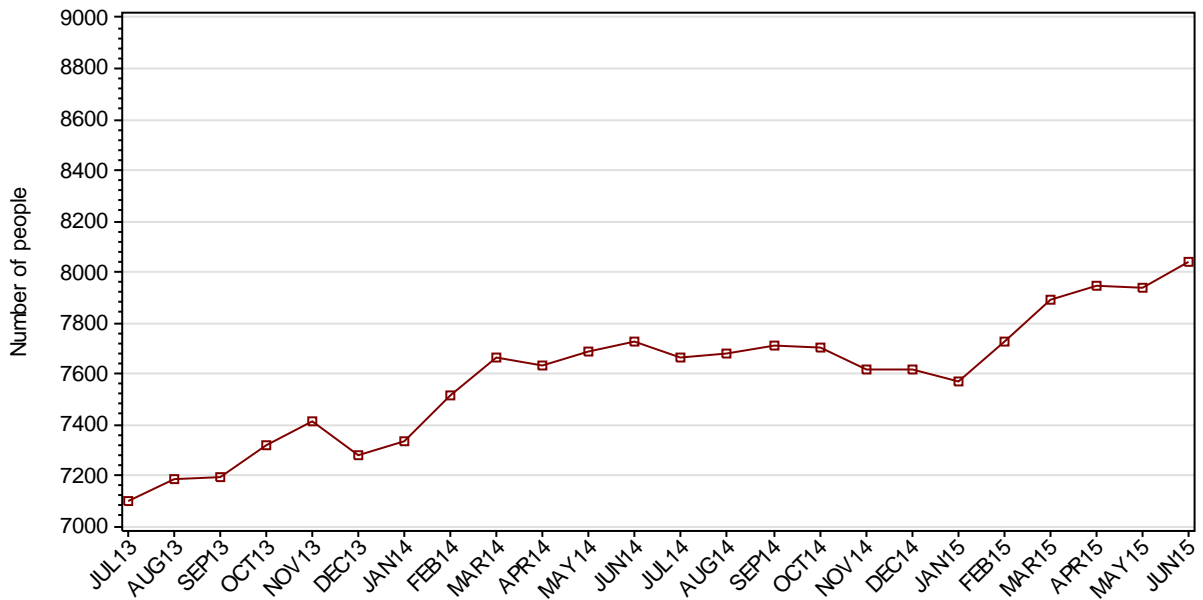
### 2.1.2 ADULT CUSTODY POPULATION BY INDIGENOUS STATUS



### 2.1.3 ADULT REMAND POPULATION

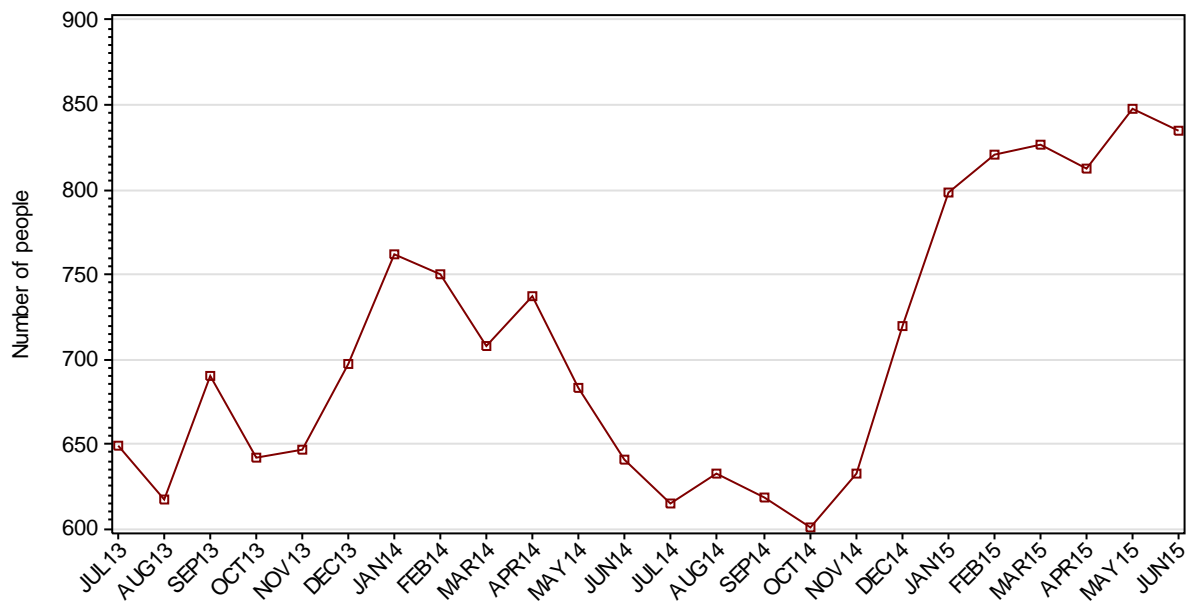


### 2.1.4 ADULT SENTENCED POPULATION

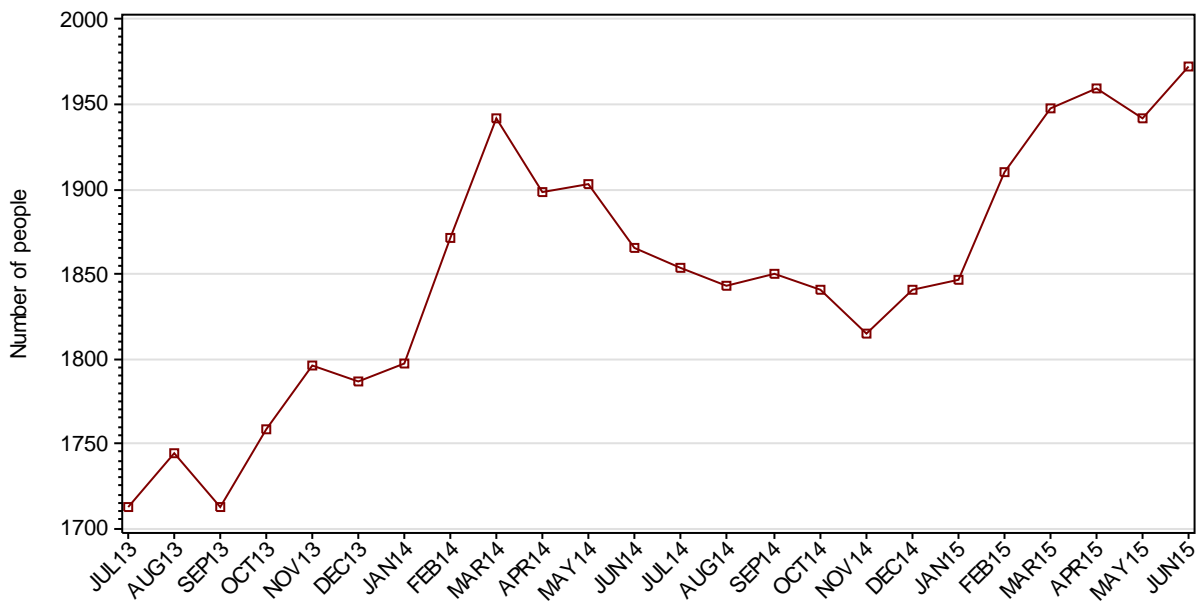




### 2.1.5 INDIGENOUS ADULT REMAND POPULATION



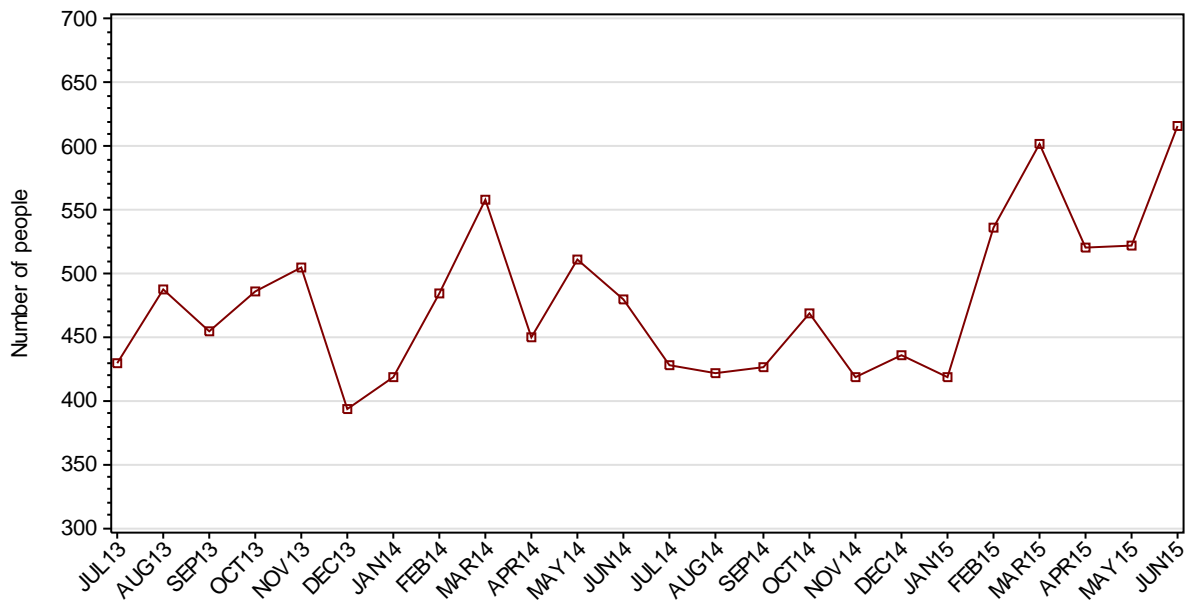
### 2.1.6 INDIGENOUS ADULT SENTENCED POPULATION



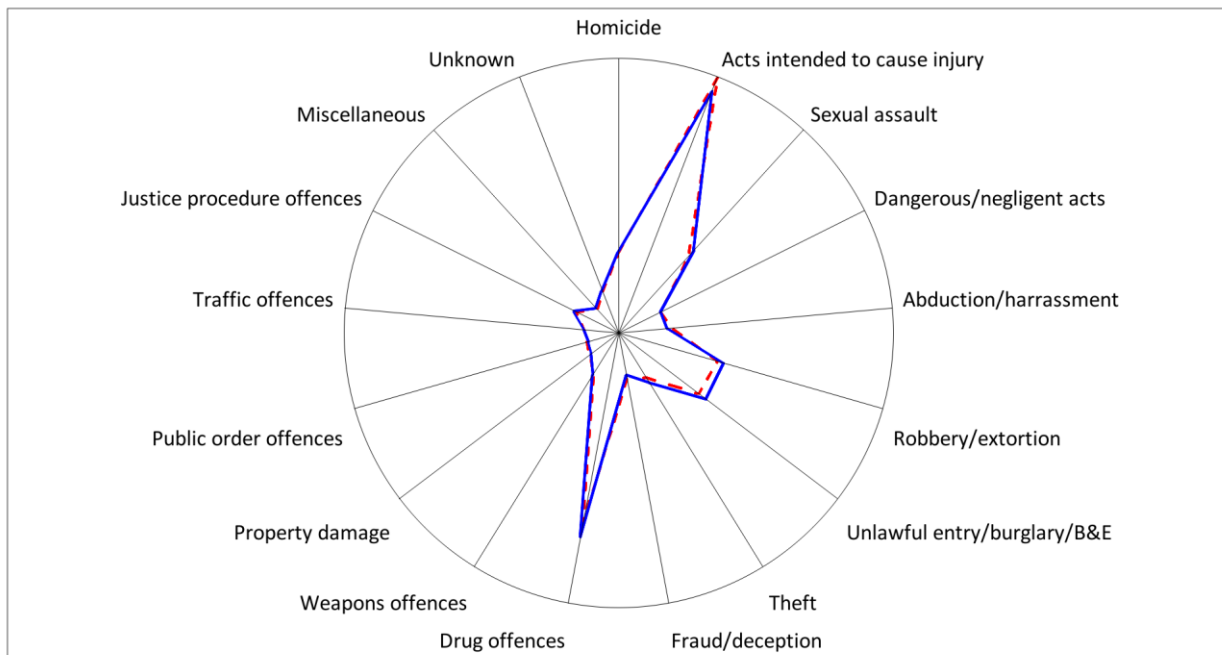
### 2.1.7 ADULT CUSTODY PROFILE AT END OF QUARTER

		Remand		Sentenced		Total	
		MAR15	JUN15	MAR15	JUN15	MAR15	JUN15
Total Male	Count	3191	3297	7359	7480	10550	10777
	Avg Age	33.8	34.0	36.5	36.6	35.7	35.8
Total Female	Count	285	285	528	562	813	847
	Avg Age	33.5	32.2	37.2	37.3	35.9	35.6
Indigenous Male	Count	727	735	1775	1786	2502	2521
	Avg Age	30.4	31.0	32.3	32.4	31.7	32.0
Indigenous Female	Count	99	100	173	186	272	286
	Avg Age	32.8	31.2	32.9	33.3	32.9	32.5
Total	Count	3476	3582	7887	8042	11363	11624
	Avg Age	33.8	33.8	36.5	36.6	35.7	35.8

### 2.1.8 ADULTS IN CUSTODY: NUMBER WHOSE LEGAL STATUS CHANGED DURING MONTH FROM REMAND TO SENTENCED



## 2.1.9 ADULT REMAND POPULATION BY MOST SERIOUS OFFENCE

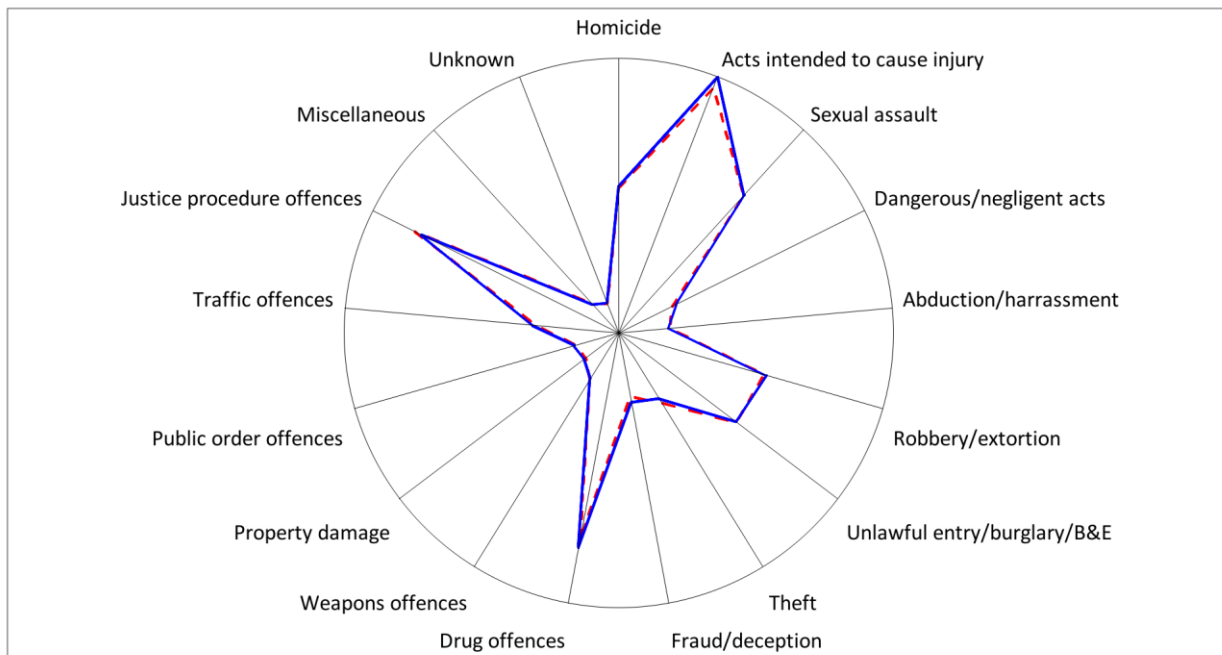


As At: - -31MAR15

— 30JUN15

	31MAR15		30JUN15	
	Number	% of Total	Number	% of Total
Homicide	216	6.2	219	6.1
Acts intended to cause injury	1022	29.4	958	26.7
Sexual assault	312	9.0	346	9.7
Dangerous/negligent acts	74	2.1	75	2.1
Abduction/harrassment	103	3.0	84	2.3
Robbery/extortion	307	8.8	334	9.3
Unlawful entry/burglary/B&E	298	8.6	337	9.4
Theft	97	2.8	122	3.4
Fraud/deception	74	2.1	55	1.5
Drug offences	679	19.5	742	20.7
Weapons offences	75	2.2	82	2.3
Property damage	29	0.8	21	0.6
Public order offences	16	0.5	9	0.3
Traffic offences	22	0.6	22	0.6
Justice procedure offences	78	2.2	86	2.4
Miscellaneous	10	0.3	20	0.6
Unknown	64	1.8	70	2.0
Total	3476	100.0	3582	100.0

## 2.1.10 ADULT SENTENCED POPULATION BY MOST SERIOUS OFFENCE



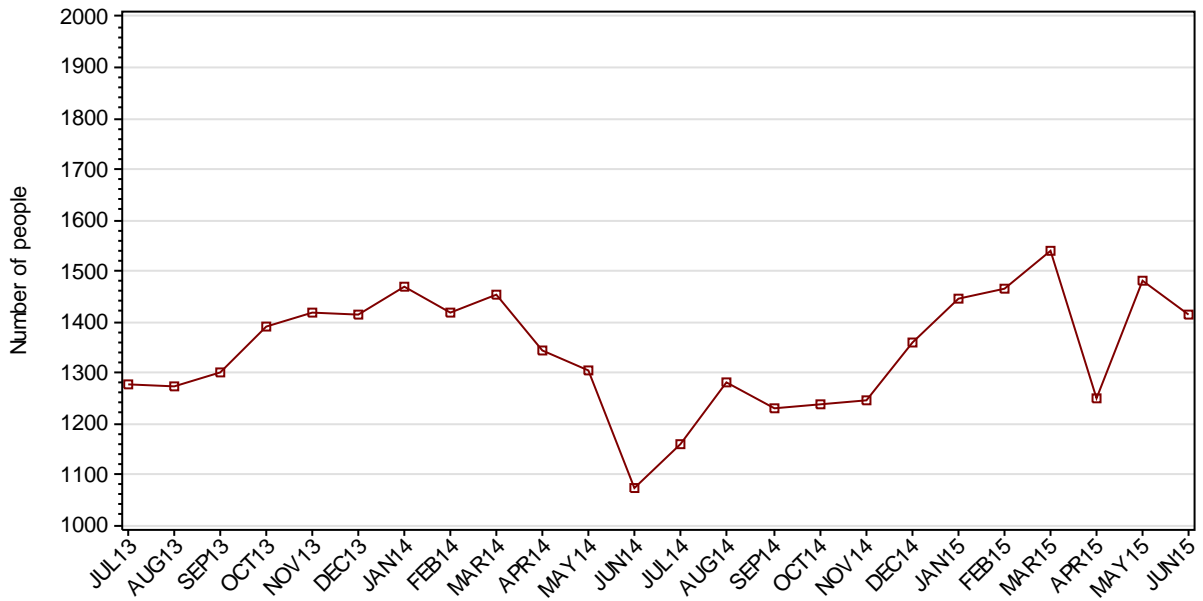
As At: -31MAR15

—30JUN15

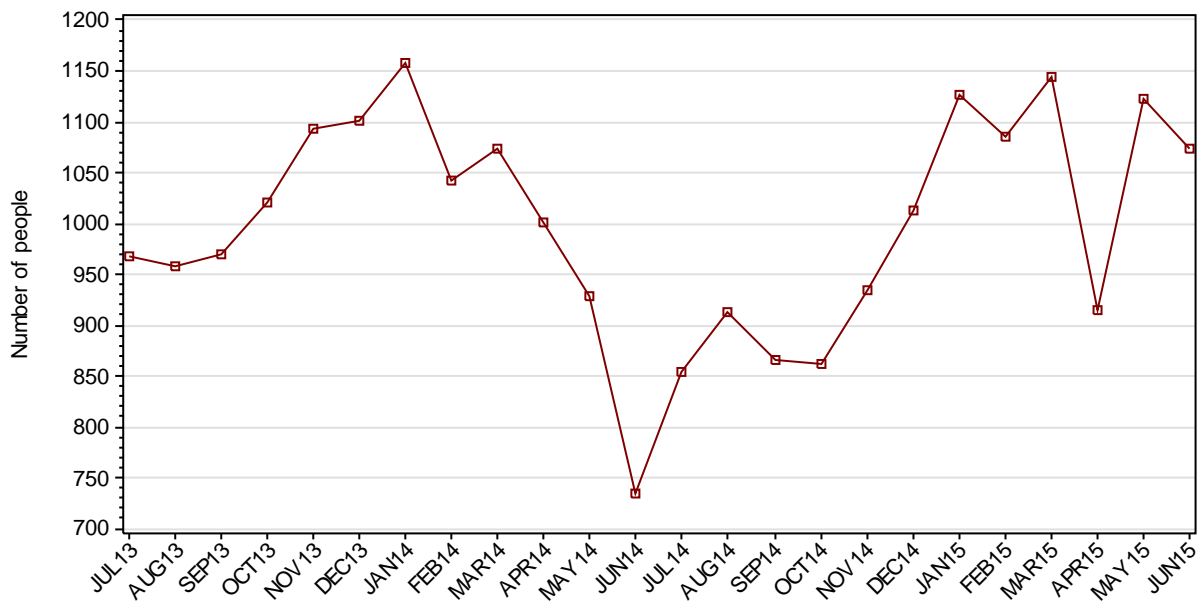
	31MAR15		30JUN15	
	Number	% of Total	Number	% of Total
Homicide	664	8.4	673	8.4
Acts intended to cause injury	1350	17.1	1417	17.6
Sexual assault	902	11.4	907	11.3
Dangerous/negligent acts	168	2.1	196	2.4
Abduction/harrassment	120	1.5	111	1.4
Robbery/extortion	699	8.9	715	8.9
Unlawful entry/burglary/B&E	680	8.6	675	8.4
Theft	299	3.8	266	3.3
Fraud/deception	194	2.5	227	2.8
Drug offences	1039	13.2	1089	13.5
Weapons offences	136	1.7	133	1.7
Property damage	59	0.7	69	0.9
Public order offences	78	1.0	85	1.1
Traffic offences	298	3.8	321	4.0
Justice procedure offences	1146	14.5	1102	13.7
Miscellaneous	54	0.7	47	0.6
Unknown	1	0.0	9	0.1
Total	7887	100.0	8042	100.0

## SECTION 2.2 ADULT CUSTODY RECEPTIONS

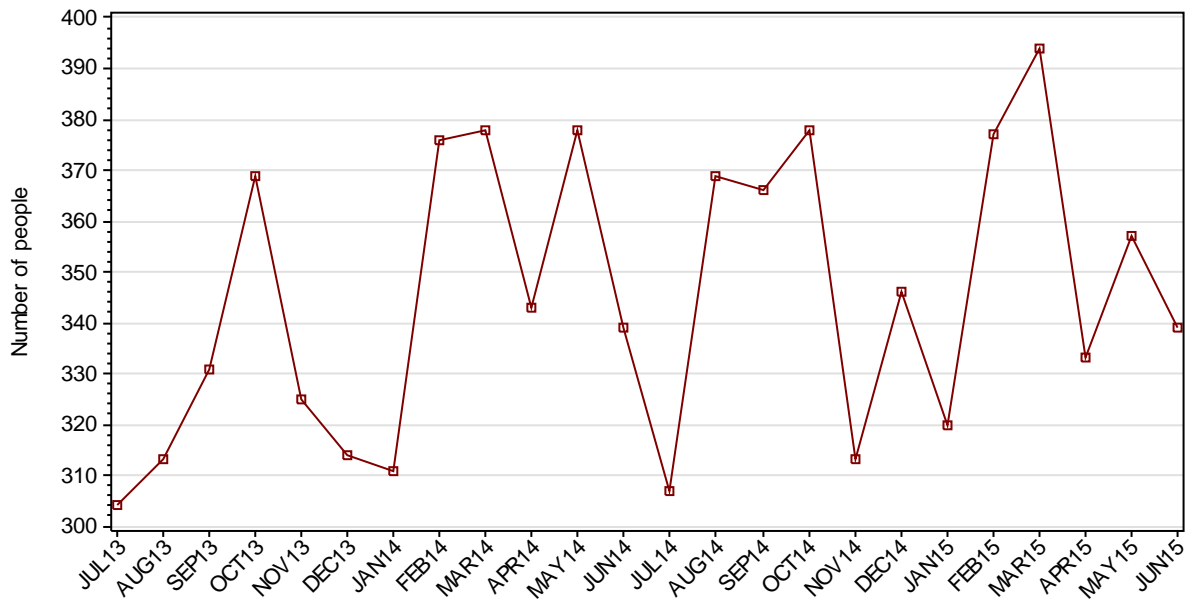
### 2.2.1 ADULTS RECEIVED INTO CUSTODY DURING MONTH



## 2.2.2 ADULT REMAND RECEPTIONS

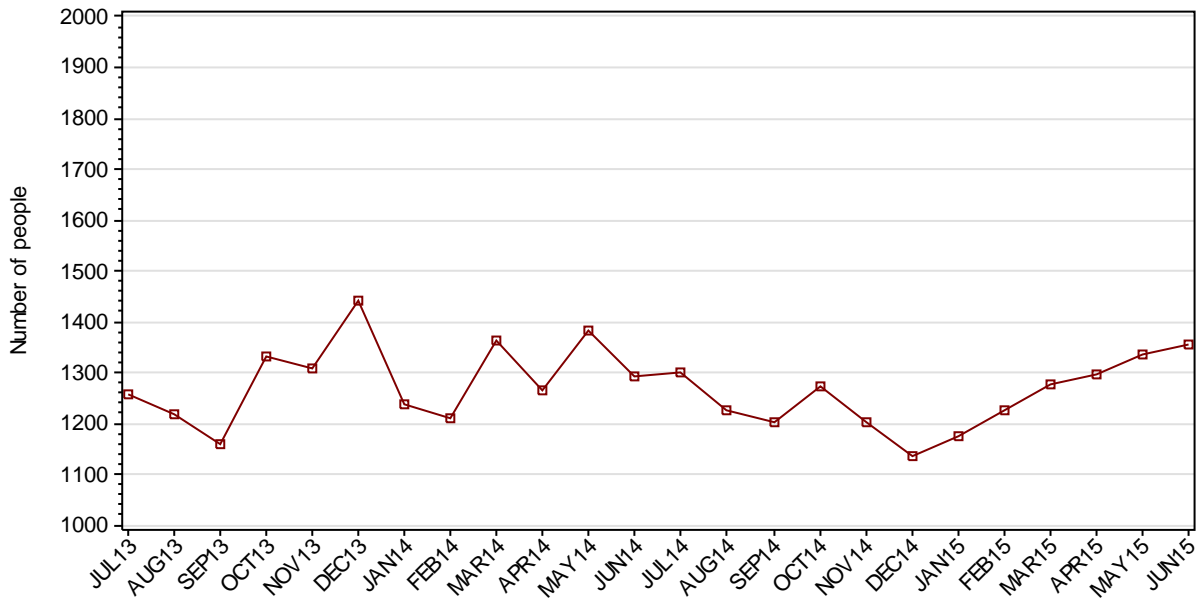


## 2.2.3 ADULT SENTENCED RECEPTIONS



## SECTION 2.3 ADULT CUSTODY DISCHARGES

### 2.3.1 ADULTS DISCHARGED FROM CUSTODY DURING MONTH

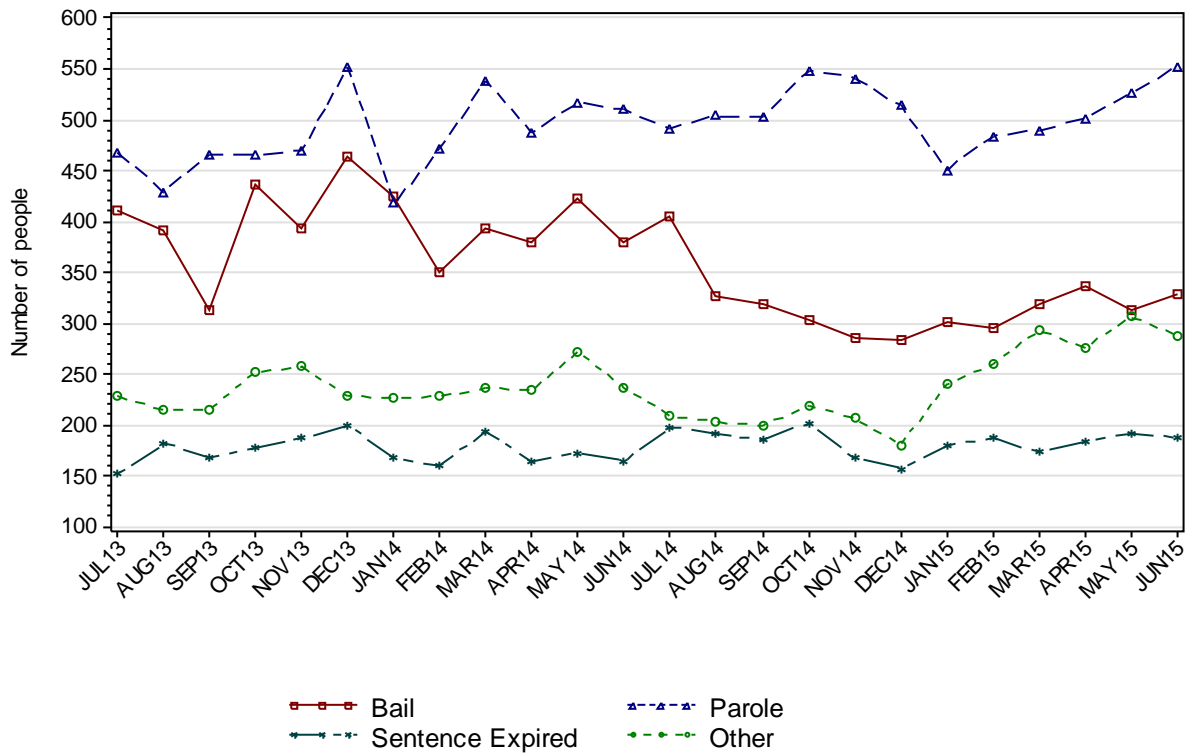


### 2.3.2 AVERAGE LENGTH OF STAY FOR ADULTS DISCHARGED FROM CUSTODY EACH QUARTER

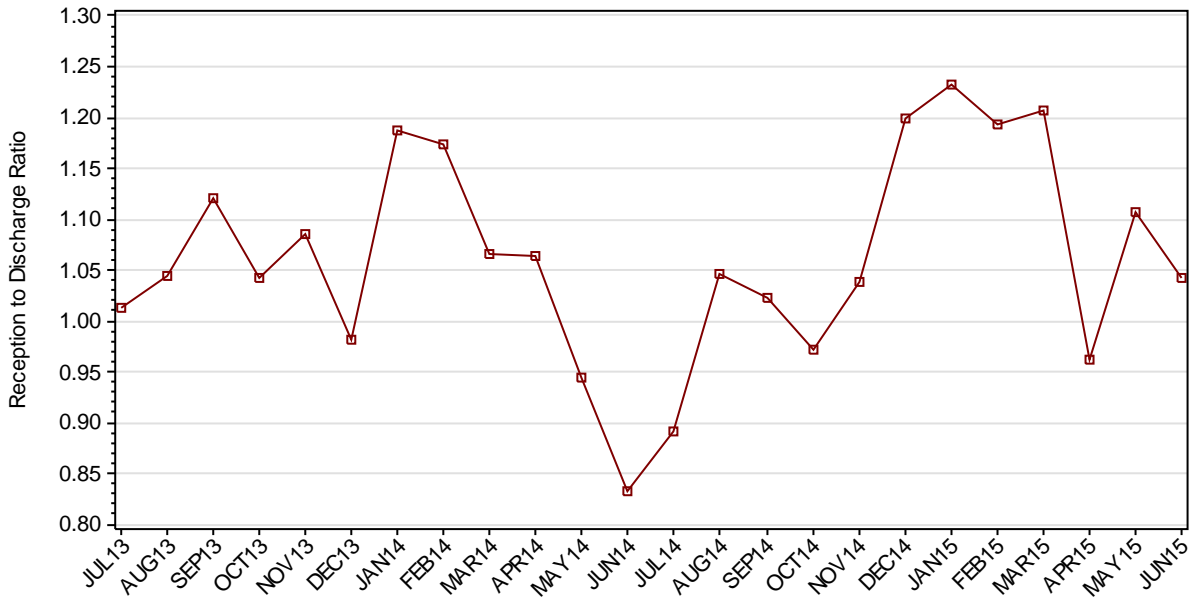
		Remand Custody Only		Sentenced Custody Only		Remand to Sentenced Custody	
		MAR15	JUN15	MAR15	JUN15	MAR15	JUN15
Total Male	Avg Days	42.5	50.0	219.9	248.7	484.5	433.4
	Number	1145	1257	880	932	1169	1318
Total Female	Avg Days	29.4	36.1	132.5	144.3	272.5	260.9
	Number	232	215	106	112	142	155
Indigenous Male	Avg Days	45.2	40.4	227.0	256.4	394.8	355.5
	Number	306	355	238	283	325	376
Indigenous Female	Avg Days	31.1	33.3	152.3	145.5	194.1	235.1
	Number	70	76	35	38	58	79
Total	Avg Days	40.3	47.9	210.5	237.5	461.6	415.3
	Number	1377	1472	986	1044	1311	1473

*Note: length of Stay for Remand to Sentenced Custody is from the date of reception on remand to date of discharge after serving sentence.*

### 2.3.3 ADULTS BY DISCHARGE TYPE



### 2.3.4 RATIO OF ADULT RECEPTIONS TO DISCHARGES





---

## **Part 3 DATA TABLES**

---

Juvenile	1.In Custody										Remand to Sent
	Total	Legal Status			Indigenous			Indigenous Legal Status			
		Court Bail Ref.	Police Bail Ref.	Sent	Yes	No	Unk	Court Bail Ref.	Police Bail Ref.	Sent	
JUL13	310	152	7	151	149	158	3	82	3	64	41
AUG13	308	145	7	156	146	159	3	79	0	67	47
SEP13	312	143	1	168	168	142	2	80	0	88	46
OCT13	309	147	6	156	153	155	1	69	2	82	30
NOV13	313	159	4	150	154	155	4	69	1	84	39
DEC13	315	158	7	150	142	170	3	66	1	75	26
JAN14	308	167	4	137	142	164	2	74	3	65	31
FEB14	338	179	5	154	154	180	4	83	2	69	46
MAR14	331	153	7	171	153	176	2	65	7	81	47
APR14	322	155	3	164	153	167	2	78	1	74	33
MAY14	296	145	3	148	135	158	3	71	1	63	37
JUN14	282	124	0	158	140	140	2	65	0	75	33
JUL14	263	114	1	148	132	130	1	58	0	74	27
AUG14	262	110	5	147	133	125	4	57	3	73	22
SEP14	252	94	2	156	123	125	4	44	1	78	23
OCT14	266	124	2	140	143	119	4	72	2	69	19
NOV14	271	131	1	139	144	125	2	77	0	67	30
DEC14	290	144	7	139	149	140	1	77	6	66	30
JAN15	298	153	3	142	151	145	2	82	2	67	23
FEB15	292	150	5	137	153	136	3	85	1	67	35
MAR15	308	160	3	145	166	140	2	95	1	70	36
APR15	309	137	1	171	164	141	4	82	1	81	43
MAY15	318	134	4	180	179	135	4	86	2	91	31
JUN15	307	154	3	150	166	135	6	90	2	74	29

Juvenile	2.Receptions							3.Discharges									Ratio Rec/ Dis
	Tot	Legal Status			Indigenous			Tot	Legal Status					Indigenous			
		Court Bail Ref.	Police Bail Ref.	Sent	Yes	No	Unk		Bail	Not Proven Non- Cust.	Other	Parole	Sent Exp	Yes	No	Unk	
JUL13	335	115	198	22	142	188	5	345	256	33	12	37	7	155	184	6	0.97
AUG13	280	102	165	13	132	145	3	285	190	42	8	44	1	136	146	3	0.98
SEP13	310	94	200	16	137	170	3	299	214	37	7	35	6	110	185	4	1.04
OCT13	303	113	178	12	111	188	4	312	213	42	7	42	8	130	177	5	0.97
NOV13	323	117	186	20	137	175	11	318	225	31	6	51	5	136	174	8	1.02
DEC13	325	92	213	20	140	178	7	323	239	39	7	34	4	152	164	7	1.01
JAN14	351	118	222	11	157	185	9	358	269	33	8	47	1	157	190	11	0.98
FEB14	363	121	225	17	180	176	7	334	265	26	8	32	3	168	161	5	1.09
MAR14	362	114	224	24	153	198	11	369	281	34	10	40	4	154	202	13	0.98
APR14	318	133	170	15	153	161	4	327	237	33	8	40	9	153	170	4	0.97
MAY14	255	97	150	8	118	131	6	279	196	25	2	51	5	135	139	5	0.91
JUN14	185	80	87	18	97	83	5	200	148	15	4	30	3	93	101	6	0.93
JUL14	187	77	99	11	99	84	4	202	139	15	7	36	5	106	92	4	0.93
AUG14	206	73	115	18	115	85	6	211	141	28	5	35	2	116	91	4	0.98
SEP14	190	73	97	20	96	89	5	199	137	23	6	32	1	106	88	5	0.95
OCT14	240	85	138	17	131	106	3	229	165	12	6	40	6	111	115	3	1.05
NOV14	213	97	108	8	112	98	3	206	143	23	5	29	6	111	90	5	1.03
DEC14	226	88	126	12	109	112	5	206	146	20	6	33	1	103	97	6	1.10
JAN15	278	111	152	15	129	144	5	267	207	23	7	25	5	125	138	4	1.04
FEB15	258	86	156	16	123	127	8	266	185	23	12	44	2	122	137	7	0.97
MAR15	319	97	212	10	138	168	13	305	223	39	8	32	3	127	164	14	1.05
APR15	235	83	135	17	105	125	5	233	173	25	5	27	3	106	124	3	1.01
MAY15	250	88	131	31	119	119	12	241	162	29	5	42	3	105	125	11	1.04
JUN15	273	98	159	16	113	148	12	286	185	32	7	53	9	126	149	11	0.95

Adult	1.In Custody								Remand to Sent
	Total	Legal Status		Indigenous			Indigenous Legal Status		
		Remand	Sent	Yes	No	Unk	Remand	Sent	
JUL13	9822	2722	7100	2362	7409	51	649	1713	429
AUG13	9860	2677	7183	2361	7450	49	617	1744	488
SEP13	10000	2804	7196	2403	7544	53	690	1713	455
OCT13	10076	2757	7319	2400	7629	47	642	1758	486
NOV13	10191	2775	7416	2443	7695	53	647	1796	504
DEC13	10178	2897	7281	2483	7651	44	697	1786	393
JAN14	10390	3058	7332	2559	7778	53	762	1797	418
FEB14	10604	3090	7514	2621	7933	50	750	1871	485
MAR14	10738	3074	7664	2650	8045	43	708	1942	558
APR14	10766	3135	7631	2635	8089	42	737	1898	450
MAY14	10715	3027	7688	2586	8088	41	683	1903	511
JUN14	10515	2789	7726	2506	7977	32	641	1865	480
JUL14	10363	2699	7664	2468	7861	34	615	1853	428
AUG14	10393	2717	7676	2475	7889	29	632	1843	421
SEP14	10426	2719	7707	2468	7921	37	618	1850	426
OCT14	10382	2681	7701	2442	7908	32	601	1841	469
NOV14	10380	2767	7613	2448	7901	31	633	1815	418
DEC14	10630	3014	7616	2561	8038	31	720	1841	436
JAN15	10857	3284	7573	2645	8177	35	798	1847	418
FEB15	11101	3377	7724	2731	8326	44	821	1910	536
MAR15	11363	3476	7887	2774	8530	59	826	1948	602
APR15	11366	3424	7942	2771	8533	62	812	1959	521
MAY15	11463	3524	7939	2790	8609	64	848	1942	522
JUN15	11624	3582	8042	2807	8741	76	835	1972	616

Adult	2.Receptions							3.Discharges								Ratio Rec/ Dis
	Tot	Legal Status			Indigenous			Tot	Legal Status				Indigenous			
		Remand	Sent	Unk	Yes	No	Unk		Bail	Other	Parole	Sent Exp	Yes	No	Unk	
JUL13	1276	967	304	5	397	832	47	1259	411	228	468	152	355	851	53	1.01
AUG13	1272	958	313	1	364	866	42	1218	392	215	429	182	361	811	46	1.04
SEP13	1300	969	331	0	392	876	32	1160	312	215	466	167	346	788	26	1.12
OCT13	1389	1020	369	0	396	948	45	1332	437	252	466	177	405	873	54	1.04
NOV13	1419	1094	325	0	412	945	62	1308	394	257	470	187	371	880	57	1.08
DEC13	1415	1101	314	0	434	921	60	1443	463	228	552	200	393	983	67	0.98
JAN14	1468	1157	311	0	425	982	61	1237	425	227	418	167	344	842	51	1.19
FEB14	1418	1042	376	0	422	948	48	1209	350	228	471	160	356	805	48	1.17
MAR14	1452	1074	378	0	403	997	52	1362	393	236	539	194	403	894	65	1.07
APR14	1345	1002	343	0	368	943	34	1264	379	234	487	164	363	872	29	1.06
MAY14	1306	928	378	0	326	942	38	1384	423	272	517	172	384	958	42	0.94
JUN14	1074	735	339	0	284	765	25	1291	380	237	510	164	363	892	36	0.83
JUL14	1161	854	307	0	331	804	26	1302	404	209	491	198	367	912	23	0.89
AUG14	1281	912	369	0	379	870	32	1225	326	203	504	192	368	820	37	1.05
SEP14	1231	865	366	0	342	859	30	1204	318	199	502	185	348	836	20	1.02
OCT14	1239	861	378	0	340	867	32	1274	304	219	549	202	360	875	39	0.97
NOV14	1247	934	313	0	354	861	32	1201	286	207	541	167	345	827	29	1.04
DEC14	1359	1013	346	0	397	939	23	1134	283	180	514	157	286	822	26	1.20
JAN15	1446	1126	320	0	430	977	39	1173	302	240	451	180	332	808	33	1.23
FEB15	1463	1086	377	0	413	1010	40	1226	295	260	484	187	335	862	29	1.19
MAR15	1539	1145	394	0	418	1071	50	1275	319	293	490	173	365	872	38	1.21
APR15	1248	915	333	0	371	840	37	1297	336	276	501	184	387	877	33	0.96
MAY15	1479	1122	357	0	433	1009	37	1337	313	306	526	192	401	903	33	1.11
JUN15	1413	1074	339	0	413	951	49	1355	328	288	552	187	419	893	43	1.04

---

## **Part 4 GLOSSARY**

---

## Adult

A person held in custody in a gazetted correctional centre managed by Corrective Services NSW (CSNSW). Persons may have been remanded in custody after being refused bail or sentenced to a custodial order for a proven offence.

The adult figures in this report include the small number of 16 and 17 year old males held in the Kariiong Juvenile Correctional Centre.

## ANZSOC

The Australian Bureau of Statistics Australian and New Zealand Standard Offence Classification (ANZSOC) groups criminal offences into 16 broad divisions:

1. Homicide and related offences
2. Acts intended to cause injury
3. Sexual assault and related offences
4. Dangerous or negligent acts endangering persons
5. Abduction, harassment and other offences against the person
6. Robbery, extortion and related offences
7. Unlawful entry with intent/burglary, break and enter
8. Theft and related offences
9. Fraud, deception and related offences
10. Illicit drug offences
11. Prohibited and regulated weapons and explosives offences
12. Property damage and environmental pollution
13. Public order offences
14. Traffic and vehicle regulatory offences
15. Offences against justice procedures, government security and government operations
16. Miscellaneous offences

For further information see:

<http://www.abs.gov.au/AUSSTATS/abs@.nsf/DetailsPage/1234.02011>

Note that shortened titles are used in this report.

## Average length of stay

The length of stay is the duration of the custodial episode, from the date of reception to the date of discharge.

The average length of stay (in days) is presented for three types of custodial episodes:

Remand custody only - the person entered custody after being refused bail and was then discharged from custody without having been sentenced. Most commonly discharged after being granted bail, other reasons include criminal charges not proven, receiving a non-custodial penalty for a proven offence or being transferred interstate or from a juvenile to an adult prison or vice versa.

Sentenced custody only - persons who entered custody only after being sentenced to a custodial penalty by a court. These persons had either been granted bail, or bail had been dispensed with, pending finalisation of their charges.

Remand to sentenced custody - persons who had been remanded in custody prior to having a custodial sentence imposed by a court. The length of stay for these people is the entire time from reception on remand to discharge after serving the custodial sentence.

Note: Persons initially remanded in custody but then granted bail prior to having a custodial penalty imposed by a court are counted as two custodial episodes: one of remand custody only and one of sentenced custody only.

## **Bail**

Under the provisions of the *Bail Act 1978*, police and courts may grant or refuse to grant bail to alleged offenders. The grant of bail takes into consideration the alleged offence and offender. Bail is granted at the offence level and so a person may be granted bail for one offence and refused bail for another offence.

Persons refused bail (and small numbers granted bail but unable to meet the bail conditions set by a court) are remanded into custody pending further court action.

Juvenile custody population data in this report disaggregates persons remanded into custody into those refused police bail and refused court bail. This is because all juveniles refused police bail are held in Juvenile Justice centres whereas not all adults refused police bail are held in gazetted correctional centres or 24 hour police cell complexes.

## **Control order**

See Custodial sentence

## **Corrective Services NSW**

Corrective Services NSW (CSNSW) is part of the NSW Department of Attorney General and Justice with responsibilities including the supervision of people remanded in custody pending the finalisation of criminal charges and offenders sentenced to a custodial order.

See <http://www.correctiveservices.nsw.gov.au/> for further information.

The Corrections Research, Evaluation and Statistics (CRES) section of CSNSW have provided the adult custody data for this report and advised on its interpretation.

## **Court bail refused**

See Bail

## **Custodial episode**

A custodial episode is the time between the reception into and discharge from custody. An individual may have multiple custodial episodes within the reporting period. A change in legal status between the reception and discharge date, for example changing from being bail refused to being sentenced to a custodial order, does not count as a new custodial episode.

## **Custodial sentence**

Courts may impose a custodial sentence for a proven offence. For adults this is a term of imprisonment under the *Crimes (Sentencing Procedure) Act 1999*. For young people this is a control order of up to two years duration or a term of imprisonment to be served partly or wholly as a juvenile under the *Children (Criminal Proceedings) Act 1987*. A person may be given custodial sentences for multiple proven offences.



While the majority of persons held under sentence in a correctional centre are sentenced under the *Crimes (Sentencing Procedure) Act 1999*, offenders whose parole has been revoked by the State Parole Authority, persons sentenced under the *Commonwealth Crimes Act 1914*, those sentenced under the *Mental Health (Forensic Provision) Act 1990*, small numbers of persons held under immigration orders awaiting deportation following expiry of their sentence and persons sentenced under legislation in other states or territories are also managed by CSNSW.

## **Custody population**

Persons held in custody in a JJNSW juvenile justice centre or a CSNSW gazetted correctional centre, whether remanded or sentenced. Custody population figures are counted as at midnight on the last day of the month or quarter as appropriate.

## **Discharge type**

The type of reason why persons were discharged from custody:

Bail - courts granted the person bail pending the finalisation of their criminal charge(s).

Parole - the person was released to parole after serving the non-parole period of custodial sentence(s).

Sentence expired - the person was released after serving the entire period of all custodial sentence(s) imposed. This includes some persons who served both the non-parole and parole components of their sentence(s) in custody.

Not proven / non-custodial penalty - juvenile data only - the person was released after criminal charges were not proven or after the court imposed a non-custodial penalty for a proven offence, e.g. good behaviour bond.

Other - includes persons transferred to the NSW Drug Court, interstate or from a juvenile to an adult prison or vice versa and deceased persons. Includes adults released after criminal charges were not proven, after the court imposed a non-custodial penalty for a proven offence and where the specific nature of the court's final non-custodial disposal is unknown.

## **Discharges**

Persons legally discharged from JJNSW or CSNSW custody in accordance with a court order (including any State Parole Authority order). For example - to parole, on expiry of a sentence or having been granted bail. Note that persons whose legal status changed from remand to sentenced or the reverse are not counted as discharges as they have not been discharged from custody.

## **Imprisonment**

See Custodial sentence.

## **Indigenous status**

Indigenous status as self-reported on reception into custody. Persons may identify as being Aboriginal or Torres Strait Islander, neither Aboriginal nor Torres Strait Islander or may not provide this information. An inmate is recorded as indigenous if they have identified as such in the current or any previous custodial episode. Indigenous status is unknown for a small proportion of people.

## Juvenile

A person held in custody in a juvenile justice centre. These centres are managed by Juvenile Justice NSW (JJNSW). A young person in juvenile custody may have been refused bail by police, refused bail by the court or sentenced to a custodial sentence.

All young persons refused bail by police must be taken to a juvenile justice centre to be held in custody pending their court appearance. Young persons refused police bail cannot be held in a police or court cell.

Note: a small number of 16 and 17 year old males are held in Kariiong Juvenile Correctional Centre which is managed by CSNSW. As Kariiong is a gazetted correctional centre, these young persons are counted in the adult figures in this report.

## Juvenile Justice NSW

Juvenile Justice NSW (JJNSW) is part of the NSW Department of Attorney General and Justice with responsibilities including the supervision of young people remanded in custody pending the finalisation of criminal charges and young offenders sentenced to a control order/imprisonment.

See <http://www.djj.nsw.gov.au/> for further information.

The Research and Information Section of JJNSW have provided the juvenile data for this report and advised on its interpretation.

## Legal status

The legal status of persons received into or held in custody:

Remand (Juvenile) - Juveniles refused bail (and small numbers granted bail but unable to meet conditions) are remanded into custody pending future court action.

Juvenile remand figures are disaggregated into:

- Police bail refused - Police have refused to grant bail to a juvenile. All juveniles refused bail by police are held in custody in a juvenile justice centre pending future court action.
- Court bail refused - the courts have refused to grant bail to a juvenile pending future court action.

Remand (Adult) - adults refused bail (and small numbers granted bail but unable to meet conditions) are remanded in custody pending future court action. Includes a small number of persons refused police bail and remanded in custody in a gazetted correctional centre. Includes persons on remand who are being managed as correctional patients under the *Mental Health (Forensic Provisions) Act 1990*.

Sentenced - the courts have imposed custodial sentence(s) for proven offence(s). This category includes persons returned to custody after breaching parole. Includes forensic patients as per the *Mental Health (Forensic Provisions) Act 1990* (ie persons found unfit to be tried and persons found not guilty due to mental illness). Persons on remand for one or more offences and sentenced for one or more offences have a legal status of sentenced.

Unknown - adults whose legal status was not recorded at the time of admission.

## **Legal status changed from remand to sentenced**

Persons whose legal status changed from remand to sentenced upon the imposition of a custodial sentence by a court. This report shows the numbers of persons during each month who changed from being on remand to being sentenced.

## **Most serious offence**

The most serious offence type for which each person is in custody. The offence type categories in this report are the sixteen ANZSOC Divisions, with shortened titles (See ANZSOC).

Most serious offence data is presented in a radar chart and a data table. The radar chart consists of a circle with a series of 'spokes' running from the centre of the circle to the perimeter. Each spoke represents a different offence type. The radar chart is constructed by placing a point on each spoke marking the proportion of prisoners with that offence type as their most serious offence. The higher the proportion, the closer the point to the perimeter. The points are then connected and the resulting figure inside the circle gives a picture of the distribution of most serious offence type across prisoners. A different type/colour of line is used for each quarter, making changes from quarter to quarter apparent. Note that offence types with no observations are plotted a short distance from the zero radius so that the numbers for every offence type can be observed.

The data table displays the number and proportion of persons in custody for each of the most serious offence types. The data is presented separately for sentenced persons and persons on remand:

### *Most Serious Offence – Adults:*

The most serious offence for adults is as provided by CSNSW.

A person's most serious offence may change over the course of their custodial episode depending on offences for which they are in custody at any one time. The Most Serious Offence data presented in this report are stock data and are sourced from data extracts run two to three weeks after the end of the quarter.

The data for the previous quarter is as at the previous quarter's custody report.

Extracting the data after the same time lag each quarter reduces variability due to extract timing and so is indicative of a change in the broad offence profile of persons in custody between the end of the current and previous quarters.

Due to the way that MSO is recorded and the data extracted, it is not available for receptions or discharge data.

### *Most Serious Offence – Juveniles:*

Most serious offence for juveniles is compiled by matching custody order records from JJNSW with sentencing and bail refused orders sourced from the JusticeLink system used by the NSW criminal courts. Data is matched using JusticeLink Proceeding Number, a unique offence identifier which is available in the JJNSW data from January 2011.

- The most serious offence for juveniles remanded in custody is the offence with the highest Median Sentence Ranking (MSR). The MSR is a ranking of ANZSOC codes and was developed by the Bureau of Crime Statistics and Research using data on sentences imposed in the NSW criminal courts. The MSR can be used to select the most serious offence when sentencing data is not available and to select most serious offence when multiple offences have the same custodial order duration. For

further information see the Bureau's Crime and Justice Bulletin No.142 "Measuring Offence Seriousness":

[www.bocsar.nsw.gov.au/lawlink/bocsar/ll\\_bocsar.nsf/vwFiles/CJB142.pdf/\\$file/CJB142.pdf](http://www.bocsar.nsw.gov.au/lawlink/bocsar/ll_bocsar.nsf/vwFiles/CJB142.pdf/$file/CJB142.pdf)

- The most serious offence for sentenced juveniles is the offence with the longest custodial order. For juveniles with more than one offence type with the same custodial order duration, the offence with the highest Median Sentence Ranking is selected as the most serious offence.
- Juveniles sentenced to a custodial order after breaching a non-custodial penalty (eg a suspended sentence, Community Service Order or good behaviour bond) have a most serious offence type of *Justice procedure offence* rather than the type of offence for which the non-custodial penalty was originally imposed (eg robbery/extortion, drug offences).

Note: this differs from the definition of most serious offence used in the Australian Bureau of Statistics Prisoners in Australia publication series (*ABS cat.no.4517.0*)

### **Police bail refused**

See Bail.

### **Receptions**

Persons received into Juvenile Justice custody or a gazetted correctional centre. Gazetted correctional centres are managed by CSNSW. Persons received into CSNSW custody and managed only in CSNSW 24-hour police/court cell complexes are excluded.

### **Ratio of receptions to discharges**

The ratio of receptions to discharges. A ratio greater than 1 means there were more receptions than discharges during the month; a ratio less than 1 means there were more discharges than receptions during the month.

### **Remand**

See Legal status.

### **Sentenced**

See Legal status.

### **24 hour police/court cell complexes**

In addition to gazetted correctional centres, CSNSW manage a number of police/court cell complexes. This report excludes persons received and then discharged from a CSNSW-managed 24 hour police/court cell complex without entering a gazetted correctional centre.