

---

# **NEW SOUTH WALES RECORDED CRIME STATISTICS 2003**

---

**Steve Moffatt, Derek Goh and Jacqueline Fitzgerald**

**NSW BUREAU OF CRIME STATISTICS AND RESEARCH**

## ACKNOWLEDGEMENTS

The production of this report was greatly assisted by officers within the NSW Police Service. Special thanks are due to officers in Information Technology and in Corporate Information, Executive Support Group. The following officers of the Bureau of Crime Statistics and Research contributed significantly to the production of this report. Thanks to Jonathan Nichol who carried out the desktop publishing of the report. Thanks also to Tracy Painting and Mark Ramsay of the Data Quality Unit for collecting, validating and advising on the data contained in the report.

2004

Published by the NSW Bureau of Crime Statistics and Research  
Attorney General's Department  
Level 8  
St James Centre  
111 Elizabeth Street  
Sydney

Phone: (02) 9231 9190  
Fax: (02) 9231 9187  
Email: [bcsr@agd.nsw.gov.au](mailto:bcsr@agd.nsw.gov.au)  
Website: [www.lawlink.nsw.gov.au/bocsar](http://www.lawlink.nsw.gov.au/bocsar)  
ISSN 1035-9044

# INTRODUCTION

This report presents data on crimes reported to or detected by NSW Police from January 2001 to December 2003. The data were extracted from the Computerised Operational Policing System (COPS) of the NSW Police Service in January 2004.

The report includes an overview of trends in the most recent two-year period for a selection of serious offence categories. The overview in this year's report indicates that of none of the sixteen major offence categories are trending upwards. In the two years to December 2003 the incidence of eight offence categories showed significant downward trends. These offence categories were *robbery without a weapon*, *robbery with a weapon not a firearm*, *break and enter – dwelling*, *break and enter – non-dwelling*, *motor vehicle theft*, *steal from motor vehicle*, *steal from person* and *fraud*.

Note that this publication does not include data on the incidence of driving offences in New South Wales. Unfortunately, this data was unavailable at the time of printing due to a recent change in the classification of traffic incidents by NSW Police. In July 2003 the police stopped recording the incidence of specific driving offences directly in COPS. This change has affected our ability to report the offences *manslaughter – driving*, *culpable driving*, *PCA*, *drive while disqualified*, *drive manner/speed dangerous* and *other driving offences*.

It is hoped that this problem will be rectified by the time next year's Recorded Crime Statistics report is published. Data on the incidence of driving offences for the period January 2001 to December 2003 will be posted on the Bureau of Crime Statistics and Research's website as soon as it becomes available.

Dr Don Weatherburn  
**Director**

March 2004

# CONTENTS

<b>DEFINITIONS AND EXPLANATORY NOTES</b>	vi
<b>OVERVIEW OF MAJOR TRENDS, 2002 AND 2003, NEW SOUTH WALES</b>	1
Figure 1 Murder	5
Figure 2 Assault	6
Figure 3 Sexual assault and indecent assault, act of indecency, other sexual offences	7
Figure 4 Robbery with and without a weapon	8
Figure 5 Break and enter – dwelling and non-dwelling	9
Figure 6 Motor vehicle theft and steal from motor vehicle	10
Figure 7 Steal from retail store, from dwelling and from person	11
Figure 8 Fraud	12
Figure 9 Malicious damage to property	13
Figure 10 Charge	14
Figure 11 Court Attendance Notice	15
Figure 12 Summons	15
Figure 13 Field Court Attendance Notice	16
<b>MONTHLY TRENDS IN RECORDED CRIMINAL INCIDENTS, 2001, 2002 AND 2003, NEW SOUTH WALES</b>	17
Table 1.1 Monthly trends in recorded criminal incidents, 2001 New South Wales: Type of offence	18
Table 1.2 Monthly trends in recorded criminal incidents, 2002 New South Wales: Type of offence	22
Table 1.3 Monthly trends in recorded criminal incidents, 2003 New South Wales: Type of offence	26
<b>MONTHLY TRENDS IN METHODS OF PROCEEDING AGAINST ALLEGED OFFENDERS, 2001, 2002 AND 2003, NEW SOUTH WALES</b>	31
Table 2.1 Monthly trends in methods of proceeding against alleged offenders, 2001 New South Wales: Type of process	32
Table 2.2 Monthly trends in methods of proceeding against alleged offenders, 2002 New South Wales: Type of process	33
Table 2.3 Monthly trends in methods of proceeding against alleged offenders, 2003 New South Wales: Type of process	34
<b>CLEARED CRIMINAL INCIDENTS FOR SELECTED OFFENCES, JANUARY 2001 TO SEPTEMBER 2003, NEW SOUTH WALES</b>	35
Table 3.1 Cleared criminal incidents, selected offences, January 2001 to December 2001, New South Wales: Type of offence	36
Table 3.2 Cleared criminal incidents, selected offences, January 2002 to December 2002, New South Wales: Type of offence	37
Table 3.3 Cleared criminal incidents, selected offences, January 2003 to September 2003, New South Wales: Type of offence	38

## CONTENTS continued

### RECORDED CRIME STATISTICS IN NEW SOUTH WALES REGIONS FOR SELECTED OFFENCES, 2001, 2002 AND 2003

	39
Table 4.1 Murder	41
Table 4.2 Assault	42
Table 4.2a Assault – domestic	43
Table 4.3 Sexual assault	44
Table 4.4 Indecent assault, act of indecency, other sexual offences	45
Table 4.5 Robbery without a weapon	46
Table 4.6 Robbery with a firearm	47
Table 4.7 Robbery with a weapon not a firearm	48
Table 4.8 Break and enter – dwelling	49
Table 4.9 Break and enter – non-dwelling	50
Table 4.10 Receiving, goods in custody	51
Table 4.11 Motor vehicle theft	52
Table 4.12 Steal from motor vehicle	53
Table 4.13 Steal from retail store	54
Table 4.14 Steal from dwelling	55
Table 4.15 Steal from person	56
Table 4.16 Fraud	57
Table 4.17 Malicious damage to property	58
Table 4.18 Possession and/or use of cocaine	59
Table 4.19 Possession and/or use of narcotics	60
Table 4.20 Possession and/or use of cannabis	61
Table 4.21 Dealing, trafficking in cocaine	62
Table 4.22 Dealing, trafficking in narcotics	63
Table 4.23 Dealing, trafficking in cannabis	64
Table 4.24 Cultivating cannabis	65
Table 4.25 Offensive conduct	66
Table 4.26 Offensive language	67
Table 4.27 Breach Apprehended Violence Order	68

APPENDICES	69
Appendix 1 Offences included in classifications	70
Appendix 2 Maps	75
Appendix 3 Local Government Areas in Statistical Divisions	77

## DEFINITIONS AND EXPLANATORY NOTES

The data in this report are extracted from the NSW Police Service's Computerised Operational Policing System (COPS). This system is used for record-keeping for all police operations, not just for criminal matters.

In this report:

- the counting units are recorded *criminal incidents* (except for murder and manslaughter where the counting units are victims) rather than recorded *offences*; and
- the data are categorised by date of *reporting* to police (or date of detection by police) rather than by date of *occurrence* of the offence.

### RECORDED CRIMINAL INCIDENTS

A *criminal incident* is defined as an activity detected by or reported to police which:

- involved the same offender(s);
- involved the same victim(s);
- occurred at the one location;
- occurred during one uninterrupted period of time;
- falls into one offence category;
- falls into one incident type (for example, 'actual', 'attempted', 'conspiracy').

One incident may involve two offenders assaulting the same victim. This would be recorded as one assault incident. Alternatively, suppose a man reports to police that his neighbour demanded money from him, then assaulted him when he did not comply. For such an event, two criminal incidents are recorded because two distinct offence types are involved (demand money with menaces and assault) even though the same parties were involved at the same time and in the same place.

### RECORDED VICTIMS

For murder and manslaughter only, the counting units used are victims. Under the definition of a criminal incident (same parties, same time, same place, same offence and same incident type) one murder or manslaughter incident could involve two or more persons being killed. Because of the seriousness of these offences and their relatively small numbers, it was considered to be more appropriate to count the number of victims, rather than the number of criminal incidents. Hence, where *one* murder incident involves a person killing six people, *six* murder victims are counted.

### OFFENCE CATEGORIES

The classification of offences in this report is based on the Australian National Classification of Offences (ANCO) issued by the Australian Bureau of Statistics (ABS, 1985, Cat. No. 1234.0).

For all *type of offence* classifications used in the report, Appendix 1 lists the offence categories included in the classification. The offence categories are those used by the NSW Police Service and do not necessarily correspond exactly with offences defined in legislation.

This data was unavailable at the time of printing due to a change in the classification of traffic incidents by NSW Police in July 2003. The police now classify traffic incidents on the basis of police action (e.g. *traffic stop* or *mobile RBT*) rather than the type of criminal incident (e.g. *PCA* or *drive while disqualified*). This change means that the incidence of specific driving offences cannot be determined from the incident categories recorded on COPS. In this publication, the changes affect the offences of *manslaughter – driving, culpable driving, PCA, drive while disqualified, drive manner/speed dangerous* and *other driving offences*.

## COUNTING PERIOD

Criminal incidents are included in the counting period in which they were reported to or detected by police.

In most cases criminal incidents are recorded on COPS on the day of reporting. It is possible for some updating of data to occur. That is, data extracted for a specified period of time (incidents reported in 2002, for example), may differ according to the date of extraction of the data.

## PROCEEDINGS AGAINST ALLEGED OFFENDERS

Police may proceed against offenders and alleged offenders through a variety of legal or other processes. Most alleged offenders are referred to the NSW criminal courts. The more serious offences are dealt with by way of a charge. The alleged offender is arrested, taken to a police station, fingerprinted and the details of the person and charge recorded. A Court Attendance Notice (CAN) may be issued at a police station or a Field Court Attendance Notice (FCAN) may be issued by police at other locations. Either type of Court Attendance Notice specifies the particulars of the alleged offence, the date and place of the court hearing and the consequences of failure to attend. A summons may be used for less serious offences. The court issues a summons at the request of an informant. The summons specifies the alleged offence and the date and place of the court hearing.

Following legislative changes to Local Court procedures, since July 2003 the police have commenced all criminal proceedings by Court Attendance Notice. Charges and Summonses have been replaced by specific types of Court Attendance Notice. Charges have been replaced by Bail Court Attendance Notices and Summonses have been replaced by Future Court Attendance Notices. Field Court Attendance Notices remain unchanged, while Court Attendance Notices are now called No-Bail Court Attendance Notices. In this publication, proceedings from July to December 2003 have been reclassified under the original categories.

Some alleged offenders are proceeded against but diverted from the criminal court system. For many minor offences police can issue Infringement Notices. By paying the prescribed penalty the offender avoids having to go to court. Police also have the discretion to issue warnings to offenders. More recently, the *Young Offenders Act 1997* (NSW) introduced the Youth Justice Conferencing scheme. A Youth Justice Conference (YJC) is a face to face meeting between offenders, victims and their support persons. A convenor acts as a facilitator for the meeting. The parties discuss the offending behaviour and the impact on the victim. They also negotiate some form of restitution to the victim. The *Young Offenders Act 1997* (NSW) also provides for cautions to be issued to juvenile offenders.

Some alleged offenders are not proceeded against. The alleged offender may be deceased, be under the age of ten years, have diplomatic immunity or be mentally incapable of forming criminal intent. The victim or the Director of Public Prosecutions may refuse to prosecute. A small number of alleged offenders are temporarily not proceeded against while police await further advice, for example whether a juvenile should be referred to a YJC.

## CLEARED CRIMINAL INCIDENTS

A cleared criminal incident is one which, in the view of police, has been satisfactorily cleared by the commencement of legal proceedings or otherwise.

An incident is cleared by the commencement of legal proceedings when police have laid a charge or an information against at least one person. The information may have been laid with a view to the issuing of a warrant, summons or other process for the purpose of bringing an offender before the court.

A criminal incident is cleared other than by commencement of legal proceedings when, under normal circumstances, a charge or information would have been laid against at least one person, but, for a variety of reasons, police have been unable to make an arrest, despite knowing the identity of the offender and having sufficient evidence to support a charge. Examples of situations in which an offence may be cleared other than by charge include the following:

- the offender is a juvenile and is cautioned;
- the offender has died before a charge is made or information laid;
- the offender has been committed to a psychiatric institution and is unlikely to be released;
- there is an obstacle to charging, such as diplomatic immunity;
- the complainant or essential witness is dead and proceedings would be aborted;
- the offender is serving a sentence and police consider that no useful purpose would be served by prosecution.

## REGIONAL STATISTICS

Statistics are provided on the number of criminal incidents (victims for murder) recorded for each of the Statistical Divisions of NSW as defined by the Australian Bureau of Statistics (ABS). Within the Sydney Statistical Division, statistics are provided for Statistical Subdivisions. Recorded criminal incidents which occurred in correctional, detention or remand centres, however, are not counted in the Statistical Division in which the incident occurred. Numbers of such incidents are noted at the foot of each table. Appendix 2 provides maps indicating the location of each Statistical Division and Sydney Statistical Subdivision. Appendix 3 lists the Local Government Areas within each of the Statistical Divisions and Statistical Subdivisions. A criminal incident is counted within a particular region when the location of the offence falls within that region.

For the rate calculations, population data were obtained from the Australian Bureau of Statistics publication: *Regional Population Growth, Australia and New Zealand, 2001-02*, Cat. No. 3218.0 (for 2001 and 2002 population estimates). As no population estimates were available for 2003 when this report was published, rates for 2003 were calculated using 2002 population estimates.

## ORGANISATION OF THE REPORT

The report is organised into five main sections as follows. The first section is an overview of major trends in recorded criminal incidents (recorded victims for murder) over the two-year period from January 2002 to December 2003. Figures showing trends in selected offences are presented, as well as summary points indicating which trends are statistically significant and the highest and lowest offending rates in Statistical Divisions of rural NSW and Statistical Subdivisions of Sydney. This section also includes figures showing trends in methods of proceeding against offenders and alleged offenders which lead to attendance at court.

The second section presents, for all categories of offence, the monthly numbers of recorded criminal incidents (recorded victims for murder and manslaughter). There are three tables in this section, one each for 2001, 2002 and 2003. Each table provides a total for the year and the annual rate per 100,000 population. The data used for the trend analysis in the first section of the report are included in these tables. Note, however, that the trend analysis uses only the most recent two years of data.

The third section provides monthly numbers of alleged offenders proceeded against, by the type of process pursued, for those criminal incidents recorded by NSW Police in the reference year. There are three tables in this section, one each for 2001, 2002 and 2003. Each offender or alleged offender appears only once in the table for each event (there can be more than one criminal incident associated with a single event). The processes are arranged in a hierarchy with the offender or alleged offender appearing in the most serious category where multiple incidents are involved. For example if an event involves two incidents and the alleged offender is charged for one incident but receives a warning for the second incident, the alleged offender appears only in the 'Charged' category. Note that in these tables the year refers to the year in which the criminal incident or incidents were reported to police. For example, if an incident was reported to police in 2002 but the alleged offender was not apprehended and charged until 2003, the charge is recorded for 2002.



The fourth section provides the numbers and percentages of cleared criminal incidents, for selected types of offence, for 2001, 2002 and 2003. The offence types included in these tables are those where the crime is likely to have been reported to police, rather than discovered or detected by police. Offence types where the numbers of recorded criminal incidents are influenced by police law enforcement activity (drug offences, for example) are excluded. For such offence types the clear-up percentages are very high because clearing the offence generally occurs simultaneously with its detection (that is, an arrest is made when the crime is discovered).

The tables for 2001 and 2002 show the number of recorded criminal incidents and, of these, the number and percentage which had been cleared 30 days, 90 days and 180 days after the incident was reported to police. The table for 2003 is similar to those for 2001 and 2002 except that there are only two follow-up periods, 30 days and 90 days. Because the data for this report were extracted in January 2004, the clear-up status after 90 days could not be determined for any offences reported in the last three months of 2003. Hence, the clear-up data for 2003 are for the first nine months of the year only.

In the fifth section of the report there are 28 tables, one for each major offence category. Each table gives the numbers and rates (per 100,000 population) of recorded criminal incidents (for murder, recorded victims) for the periods January to December 2001, 2002 and 2003, for each of the NSW Statistical Divisions and for each Statistical Subdivision in Sydney. Recorded criminal incidents which occurred in custodial institutions are counted separately; they are not included in the data for the Statistical Division where the custodial institution is located. Note that both the numbers and rates of recorded criminal incidents in 2002 have been updated since the previous edition.

In previous publications this section has included tables on PCA Driving Offences, Drive While Disqualified and Drive in a Manner/Speed Dangerous. These tables are omitted from this publication because the data was unavailable at the time of printing due to a change in the classification of traffic incidents by NSW Police in July 2003. As discussed above, the police now classify traffic incidents on the basis of police action (e.g. *traffic stop* or *mobile RBT*) rather than the type of criminal incident (e.g. *PCA* or *drive while disqualified*). This change means that the incidence of specific driving offences cannot be determined from the incident categories recorded on COPS. In this publication, the changes affect the offences of *manslaughter – driving, culpable driving, PCA, drive while disqualified, drive manner/speed dangerous* and *other driving offences*.



---

**OVERVIEW OF MAJOR TRENDS,  
2002 AND 2003  
NEW SOUTH WALES**

---



# OVERVIEW OF MAJOR TRENDS

## TRENDS IN RECORDED CRIME

However trends in recorded crime are presented, their interpretation is a difficult task. The recorded criminal incident data presented in this report are based on information derived from the NSW Police Service Computerised Operational Policing System, so only those incidents which are reported to, or detected by, police are included. The trends in recorded crime shown in this report will, therefore, reflect movements in the underlying factors which influence the detection, reporting and recording of crime, as well as changes in the true level of crime in the community.

An alternative measure of the level of crime in NSW is available from crime victim surveys, for example the *Crime and Safety Survey* which is conducted annually by the Australian Bureau of Statistics (ABS).<sup>1</sup> As well as providing an estimate of the victimisation rate in the community for a selected set of offences, this survey measures the proportion of crimes which are not reported to police, and are therefore not recorded in the official statistics. In particular, personal crimes, such as assault and robbery, are less likely to be reported than crimes which involve households. For example, *Crime and Safety, New South Wales, 2003* shows that, in the twelve-month period to April 2003, while 94 per cent of motor vehicle thefts and 72 per cent of break and enter offences (crimes against 'households') were reported to police, only 39 per cent of all alleged assault offences were reported during that period. Given that some offences have low reporting rates, it is possible that changes in recorded crime rates over time for these offences largely reflect changes in reporting rates.

Public willingness to report crime, however, is just one of the extraneous factors which can affect trends in recorded crime. Shifts in policing policy can also have a marked effect on the number of recorded drug offences, drink driving offences, cases of offensive behaviour or of receiving stolen goods. For these offences, therefore, recorded rates probably do not accurately reflect actual rates. For this reason, the more detailed comparisons of crime rates and examination of trends in this document are restricted to categories of offence which are reported to, rather than detected by, police.

The interpretation of trends in official reports of crime can be considerably more difficult than the interpretation of trends in unemployment or inflation statistics. The ease with which recorded crime statistics can be misunderstood creates a temptation to offer an authoritative explanation for each major crime trend. Indeed, in many instances it is simply impossible to state with any assurance why a particular trend has appeared. This report, therefore, confines itself to identifying and describing trends in recorded crime, rather than explaining them.

The trends examined in this overview cover a twenty-four month period, from January 2002 to December 2003. For comparative purposes, statistics for 2001 have been included in the detailed tables in the sections which follow. For some offence categories, separate trends have been presented for various offence subcategories; in particular, sexual offences, robbery, break and enter, and stealing offences have been further disaggregated.

For each offence category or subcategory except murder, a statistical test for trend was applied to the monthly numbers of recorded criminal incidents over the twenty-four month period from January 2002 to December 2003.<sup>2</sup> In the case of murder, the statistical test for trend was applied to the monthly numbers of victims over the same period. For those offences where a statistically significant trend was found, the extent of the trend is indicated by the percentage change between the total recorded number of incidents for the twelve months of January to December 2002 and the total recorded number of incidents for the same period in 2003.

## SUMMARY OF TRENDS

In the following summary the bracketed figures denote the percentage change in the total number of recorded criminal incidents between the consecutive twelve-month periods January to December 2002 and January to December 2003. The percentage change is shown only for those offences where a statistically significant upward or downward trend was detected.

### Significant downward trends

There was a statistically significant downward trend in the monthly numbers of recorded criminal incidents for the following offences:

- robbery without a weapon (down by 4.6%, see Figure 4)
- robbery with a weapon not a firearm (down by 19.3%, see Figure 4)
- break and enter – dwelling (down by 11.4%, see Figure 5)
- break and enter – non-dwelling (down by 12.8%, see Figure 5)
- motor vehicle theft (down by 17.3%, see Figure 6)
- steal from motor vehicle (down by 14.7%, see Figure 6)
- steal from person (down by 6.8%, see Figure 7)
- fraud (down by 15.2%, see Figure 8)

### Offences where there was no upward or downward trend

There was no statistically significant generally upward or downward trend in the monthly numbers of recorded criminal incidents<sup>3</sup> for any of the following offences:

- murder (see Figure 1)
- assault (see Figure 2)
- domestic assault (see Figure 2)
- sexual assault (see Figure 3)
- indecent assault, act of indecency, other sexual offences (see Figure 3)
- robbery with a firearm (see Figure 4)
- steal from dwelling (see Figure 7)
- steal from retail store (see Figure 7)
- malicious damage to property (see Figure 9).

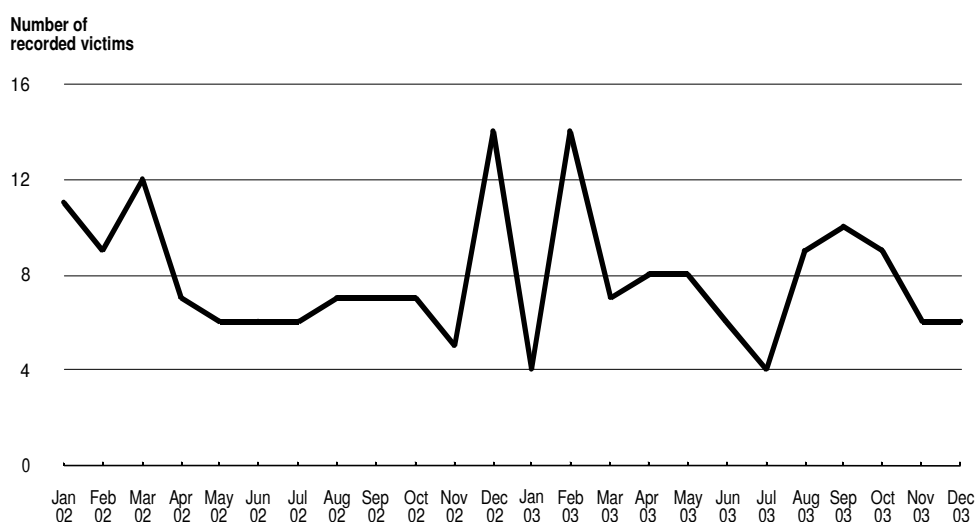
### Significant upward trends

There were no offences for which there was a statistically significant upward trend in the monthly number of recorded criminal incidents.

## DESCRIPTION OF TRENDS

Graphs in this section show monthly trends for a selected set of offences in NSW, between January 2002 and December 2003. For each offence category, information is given on the statistical significance of any trend shown in the graphs, and the annual rate of offences per 100,000 resident population. In addition, geographical areas with the three highest rates, and the three lowest rates of recorded criminal incidents in NSW are listed. Within the Sydney Statistical Division, recorded crime rates are detailed by Statistical Subdivision (SSD). Outside the Sydney Statistical Division, recorded crime rates are detailed by Statistical Division (SD). The rate calculations are based on resident population data and are calculated as recorded offences per 100,000 population in each Statistical Division or Subdivision.<sup>4</sup> It should be noted that the Inner Sydney Statistical Subdivision has high recorded crime rates because, compared with other regions, the resident population is small relative to the 'transient' or non-resident population which uses the area for business, entertainment, shopping, etc. That is, the high transient population is not reflected in the rate calculation.

**Figure 1: Murder**

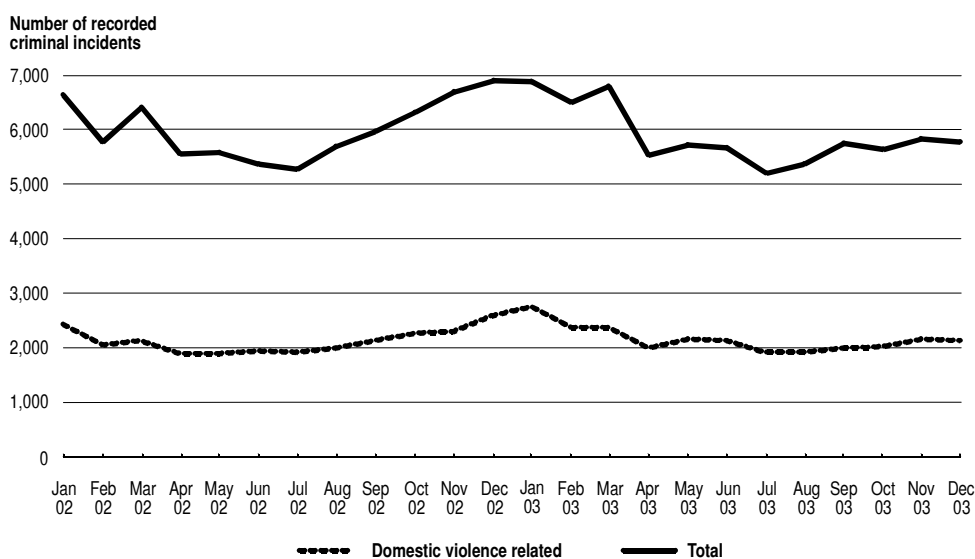


## Murder

With such small numbers of murder victims, the month to month variation is extremely marked. For this reason it is difficult to detect trends over such a short period. Because of the small numbers of murder victims, it is not sensible to make regional comparisons.

**Trend (Jan 2002 - Dec 2003):** No statistically significant upward or downward trend.

**NSW annual rate (2003):** 1.4 per 100,000 population

**Figure 2: Assault**

## Assault

### *Total assaults*

**Trend (Jan 2002 - Dec 2003):** No statistically significant upward or downward trend.

**NSW annual rate (2003):** 1,066.0 per 100,000 population

**Highest rates:** Far West SD - 3,602.4 per 100,000 population  
 North Western SD - 2,552.2 per 100,000 population  
 Inner Sydney SSD - 2,250.9 per 100,000 population

**Lowest rates:** Central Northern Sydney SSD - 287.7 per 100,000 population  
 Lower Northern Sydney SSD - 466.6 per 100,000 population  
 St George–Sutherland SSD - 568.6 per 100,000 population

### *Domestic assault*

**Trend (Jan 2002 - Dec 2003):** No statistically significant upward or downward trend.

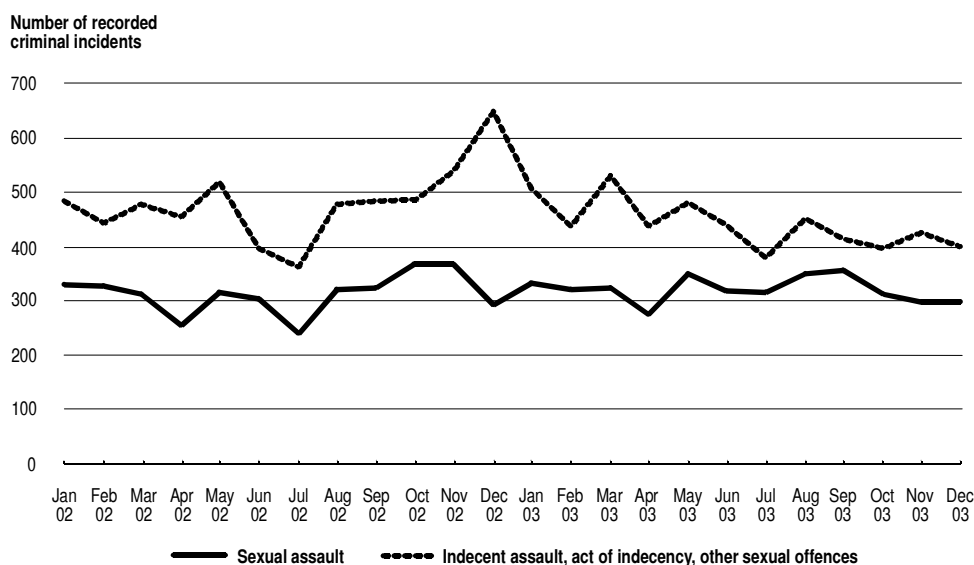
**NSW annual rate (2003):** 391.9 per 100,000 population

**Highest rates:** Far West SD - 1,968.7 per 100,000 population  
 North Western SD - 1,089.2 per 100,000 population  
 Blacktown SSD - 679.4 per 100,000 population

**Lowest rates:** Central Northern Sydney SSD - 101.8 per 100,000 population  
 Lower Northern Sydney SSD - 136.8 per 100,000 population  
 Inner Western Sydney SSD - 185.1 per 100,000 population



**Figure 3: Sexual assault and indecent assault, act of indecency, other sexual offences**



## Sexual offences

### *Sexual assault*

**Trend (Jan 2002 - Dec 2003):** No statistically significant upward or downward trend.

**NSW annual rate (2003):** 58.1 per 100,000 population

**Highest rates:** Far West SD - 119.9 per 100,000 population  
 North Western SD - 109.5 per 100,000 population  
 Northern SD - 100.3 per 100,000 population

**Lowest rates:** Central Northern Sydney SSD - 18.1 per 100,000 population  
 Lower Northern Sydney SSD - 23.4 per 100,000 population  
 Northern Beaches SSD - 24.9 per 100,000 population

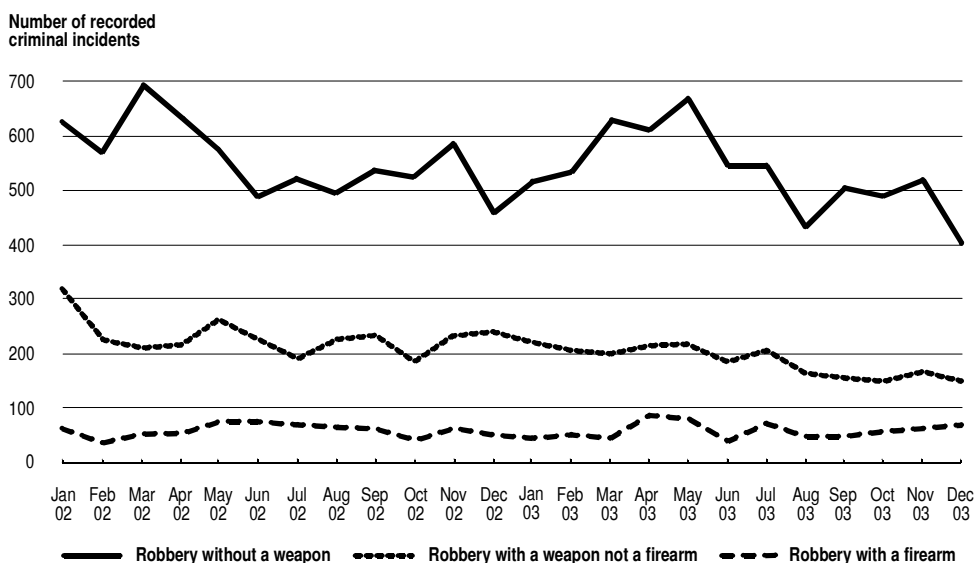
### *Indecent assault, act of indecency, other sexual offences*

**Trend (Jan 2002 - Dec 2003):** No statistically significant upward or downward trend.

**NSW annual rate (2003):** 79.8 per 100,000 population

**Highest rates:** North Western SD - 173.9 per 100,000 population  
 Far West SD - 132.4 per 100,000 population  
 Northern SD - 125.8 per 100,000 population

**Lowest rates:** Central Northern Sydney SSD - 32.4 per 100,000 population  
 Lower Northern Sydney SSD - 40.6 per 100,000 population  
 Northern Beaches SSD - 44.7 per 100,000 population

**Figure 4: Robbery with and without a weapon**

## Robbery

### *Robbery without a weapon*

**Trend (Jan 2002 - Dec 2003):** A statistically significant downward trend (down by 4.6%).

**NSW annual rate (2003):** 96.2 per 100,000 population

**Highest rates:** Inner Sydney SSD - 570.2 per 100,000 population  
 Inner Western Sydney SSD - 225.9 per 100,000 population  
 Central Western Sydney SSD - 205.4 per 100,000 population

**Lowest rates:** South Eastern SD - 14.3 per 100,000 population  
 Murray SD - 15.8 per 100,000 population  
 Mid-North Coast SD - 24.6 per 100,000 population

### *Robbery with a firearm*

**Trend (Jan 2002 - Dec 2003):** No statistically significant upward or downward trend.

**NSW annual rate (2003):** 10.6 per 100,000 population

**Highest rates:** Inner Sydney SSD - 47.4 per 100,000 population  
 Inner Western Sydney SSD - 35.9 per 100,000 population  
 Central Western Sydney SSD - 27.8 per 100,000 population

**Lowest rates:** No robberies with firearms were recorded in the following SDs:  
 Richmond-Tweed, Murray, Far West.

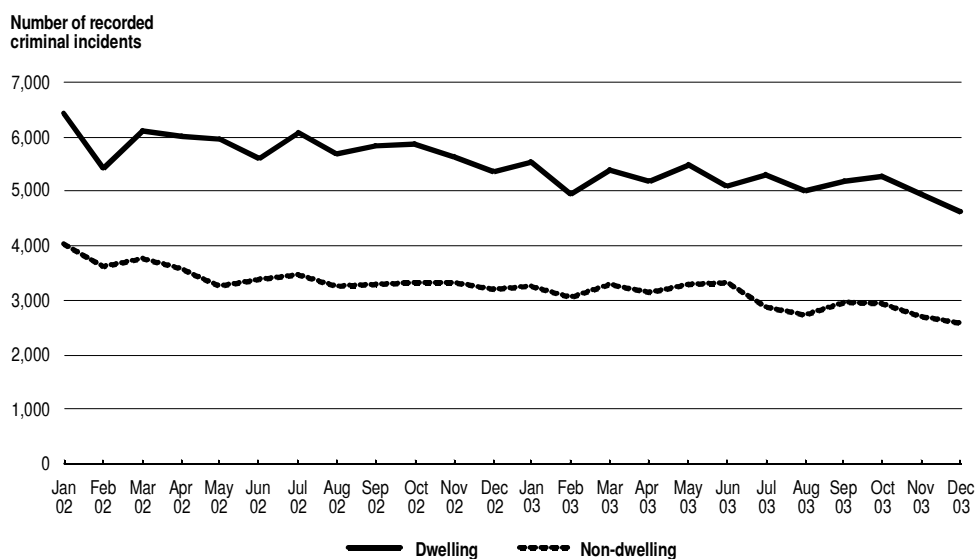
### *Robbery with a weapon not a firearm*

**Trend (Jan 2002 - Dec 2003):** A statistically significant downward trend (down by 19.3%).

**NSW annual rate (2003):** 33.6 per 100,000 population

**Highest rates:** Inner Sydney SSD - 168.0 per 100,000 population  
 Inner Western Sydney SSD - 83.4 per 100,000 population  
 Central Western Sydney SSD - 76.4 per 100,000 population

**Lowest rates:** Murrumbidgee SD - 2.0 per 100,000 population  
 Northern SD - 3.3 per 100,000 population  
 Far West SD - 4.1 per 100,000 population

**Figure 5: Break and enter – dwelling and non-dwelling**

## Break and enter

### *Break and enter – dwelling*

**Trend (Jan 2002 - Dec 2003):** A statistically significant downward trend (down by 11.4%).

**NSW annual rate (2003):** 934.6 per 100,000 population

**Highest rates:** North Western SD - 1,662.7 per 100,000 population  
 Inner Sydney SSD - 1,623.3 per 100,000 population  
 Eastern Suburbs SSD - 1,417.6 per 100,000 population

**Lowest rates:** Central Northern Sydney SSD - 544.0 per 100,000 population  
 Northern Beaches SSD - 628.5 per 100,000 population  
 Murray SD - 659.3 per 100,000 population

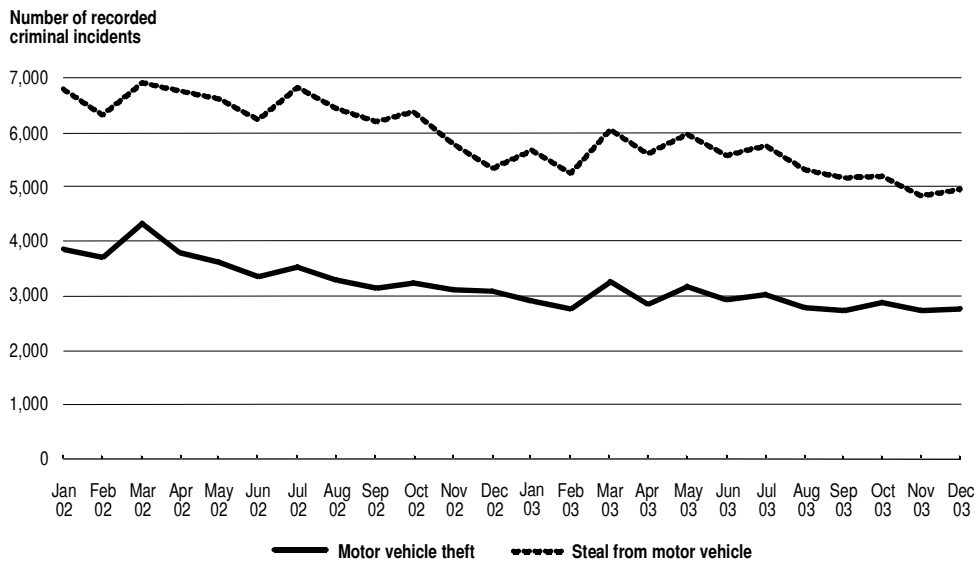
### *Break and enter – non-dwelling*

**Trend (Jan 2002 - Dec 2003):** A statistically significant downward trend (down by 12.8%).

**NSW annual rate (2003):** 545.4 per 100,000 population

**Highest rates:** North Western SD - 1,340.9 per 100,000 population  
 Inner Sydney SSD - 1,107.9 per 100,000 population  
 Far West SD - 992.6 per 100,000 population

**Lowest rates:** Central Northern Sydney SSD - 250.0 per 100,000 population  
 St George–Sutherland SSD - 302.1 per 100,000 population  
 Inner Western Sydney SSD - 320.3 per 100,000 population

**Figure 6: Motor vehicle theft and steal from motor vehicle**

## Motor vehicle theft and steal from motor vehicle

### *Motor vehicle theft*

**Trend (Jan 2002 - Dec 2003):** A statistically significant downward trend (down by 17.3%).

**NSW annual rate (2003):** 524.0 per 100,000 population

**Highest rates:** Inner Sydney SSD - 1,103.2 per 100,000 population  
 Canterbury–Bankstown SSD - 875.0 per 100,000 population  
 Central Western Sydney SSD - 824.8 per 100,000 population

**Lowest rates:** Central Northern Sydney SSD - 199.5 per 100,000 population  
 Northern SD - 202.3 per 100,000 population  
 Northern Beaches SSD - 243.7 per 100,000 population

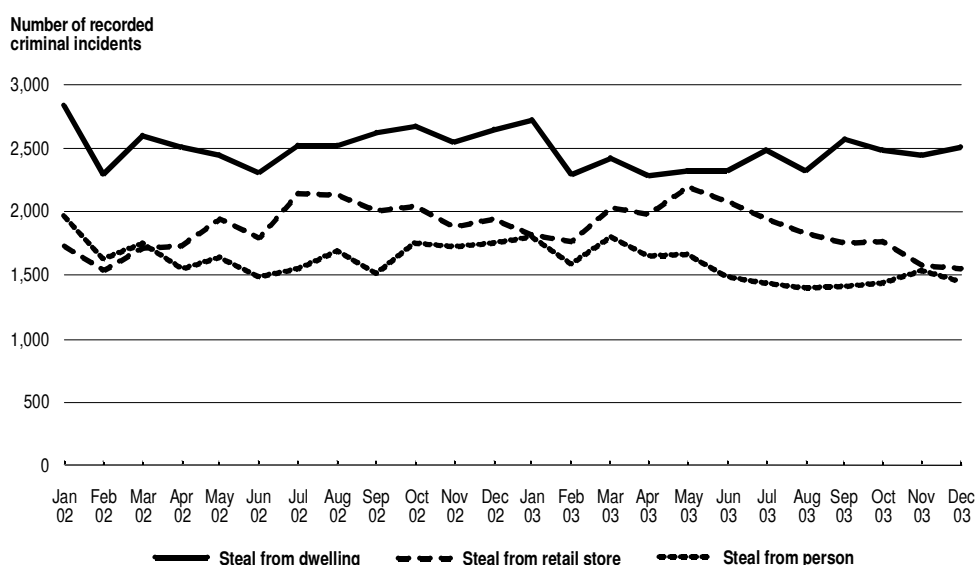
### *Steal from motor vehicle*

**Trend (Jan 2002 - Dec 2003):** A statistically significant downward trend (down by 14.7%).

**NSW annual rate (2003):** 983.2 per 100,000 population

**Highest rates:** Inner Sydney SSD - 3,756.9 per 100,000 population  
 North Western SD - 1,242.2 per 100,000 population  
 Eastern Suburbs SSD - 1,145.2 per 100,000 population

**Lowest rates:** Central Northern Sydney SSD - 505.6 per 100,000 population  
 South Eastern SD - 654.4 per 100,000 population  
 St George–Sutherland SSD - 667.0 per 100,000 population

**Figure 7: Steal from retail store, from dwelling and from person**

## Stealing

### *Steal from retail store*

**Trend (Jan 2002 - Dec 2003):** No statistically significant upward or downward

**NSW annual rate (2003):** 335.5 per 100,000 population

**Highest rates:** Inner Sydney SSD - 735.5 per 100,000 population  
 Blacktown SSD - 472.4 per 100,000 population  
 North Western SD - 460.6 per 100,000 population

**Lowest rates:** Central Northern Sydney SSD - 149.7 per 100,000 population  
 Northern Beaches SSD - 194.3 per 100,000 population  
 St George–Sutherland SSD - 239.2 per 100,000 population

### *Steal from dwelling*

**Trend (Jan 2002 - Dec 2003):** No statistically significant upward or downward trend.

**NSW annual rate (2003):** 439.1 per 100,000 population

**Highest rates:** Far West SD - 1,050.5 per 100,000 population  
 North Western SD - 712.2 per 100,000 population  
 Murrumbidgee SD - 692.0 per 100,000 population

**Lowest rates:** Canterbury–Bankstown SSD - 185.4 per 100,000 population  
 Central Northern Sydney SSD - 214.5 per 100,000 population  
 Fairfield–Liverpool SSD - 236.7 per 100,000 population

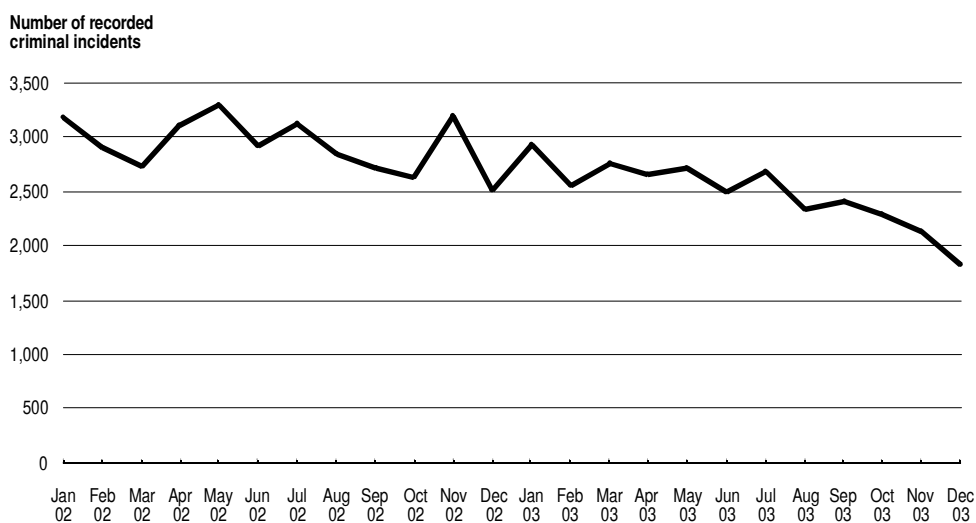
### *Steal from person*

**Trend (Jan 2002 - Dec 2003):** A statistically significant downward trend (down by 6.8%).

**NSW annual rate (2003):** 280.9 per 100,000 population

**Highest rates:** Inner Sydney SSD - 2,457.0 per 100,000 population  
 Inner Western Sydney SSD - 446.9 per 100,000 population  
 Eastern Suburbs SSD - 423.1 per 100,000 population

**Lowest rates:** South Eastern SD - 55.1 per 100,000 population  
 Murray SD - 64.0 per 100,000 population  
 Murrumbidgee SD - 67.3 per 100,000 population

**Figure 8: Fraud**

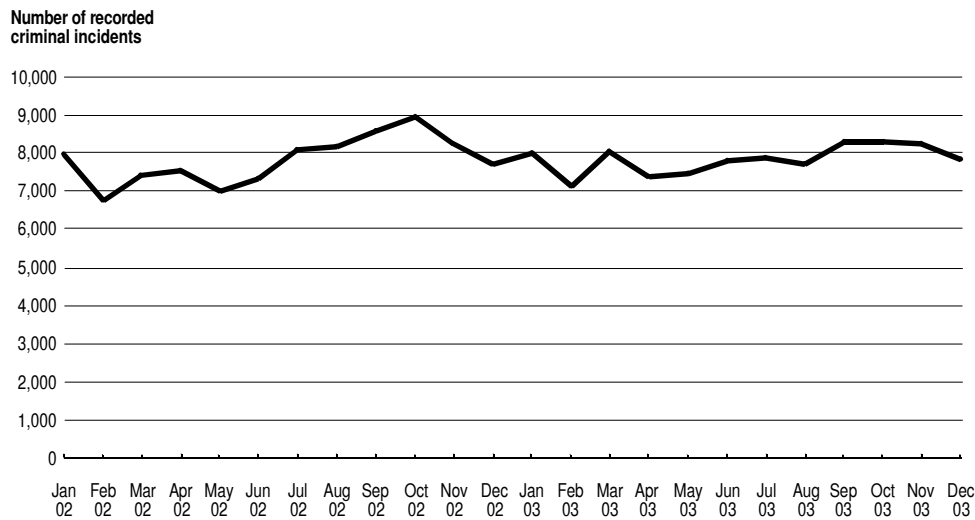
## Fraud

**Trend (Jan 2002 - Dec 2003):** A statistically significant downward trend (down by 15.2%).

**NSW annual rate (2003):** 448.6 per 100,000 population

**Highest rates:** Inner Sydney SSD - 1,616.3 per 100,000 population  
 Central Western Sydney SSD - 739.7 per 100,000 population  
 Blacktown SSD - 587.9 per 100,000 population

**Lowest rates:** Far West SD - 223.3 per 100,000 population  
 Central Northern Sydney SSD - 231.9 per 100,000 population  
 Murray SD - 258.6 per 100,000 population

**Figure 9: Malicious damage to property**

## Malicious damage to property

**Trend (Jan 2002 - Dec 2003):** No statistically significant upward or downward trend.

**NSW annual rate (2003):** 1,417.6 per 100,000 population

**Highest rates:** Far West SD - 2,804.2 per 100,000 population  
 North Western SD - 2,737.7 per 100,000 population  
 Murrumbidgee SD - 2,101.3 per 100,000 population

**Lowest rates:** Central Northern Sydney SSD - 698.5 per 100,000 population  
 Inner Western Sydney SSD - 839.6 per 100,000 population  
 Lower Northern Sydney SSD - 867.2 per 100,000 population

## TRENDS IN METHODS OF PROCEEDING AGAINST ALLEGED OFFENDERS

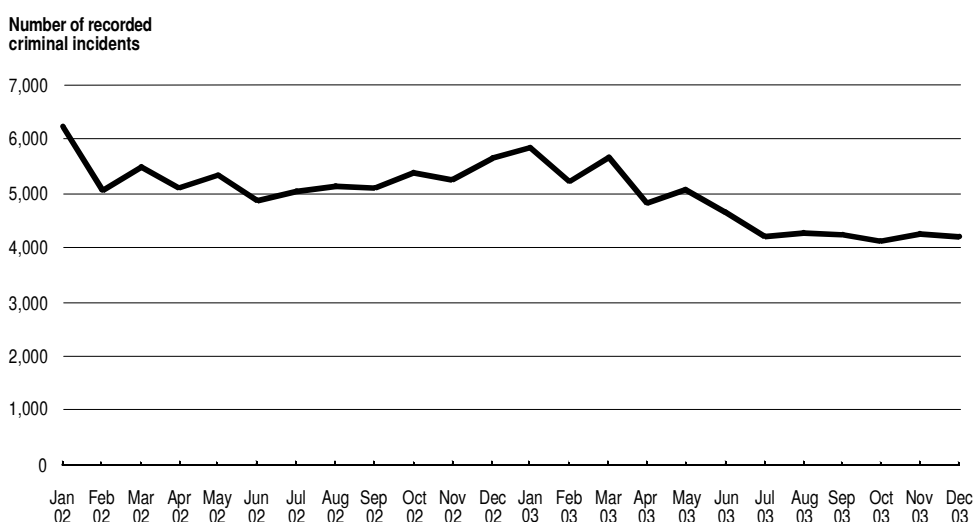
The information which follows highlights trends in the number of persons proceeded against to court by NSW Police. These proceedings relate to criminal incidents recorded between January 2002 and December 2003.

Following legislative changes to Local Court procedures, since July 2003 the police have commenced all criminal proceedings by Court Attendance Notice. Charges and Summonses have been replaced by specific types of Court Attendance Notice. Charges have been replaced by Bail Court Attendance Notices and Summonses have been replaced by Future Court Attendance Notices. Field Court Attendance Notices remain unchanged, while Court Attendance Notices are now called No-Bail Court Attendance Notices. In this publication, proceedings from July to December 2003 have been reclassified under the original categories.

### Charge

**Trend (Jan 2002 - Dec 2003):** A statistically significant downward trend (down by 11.0%).

**Figure 10: Persons charged\***



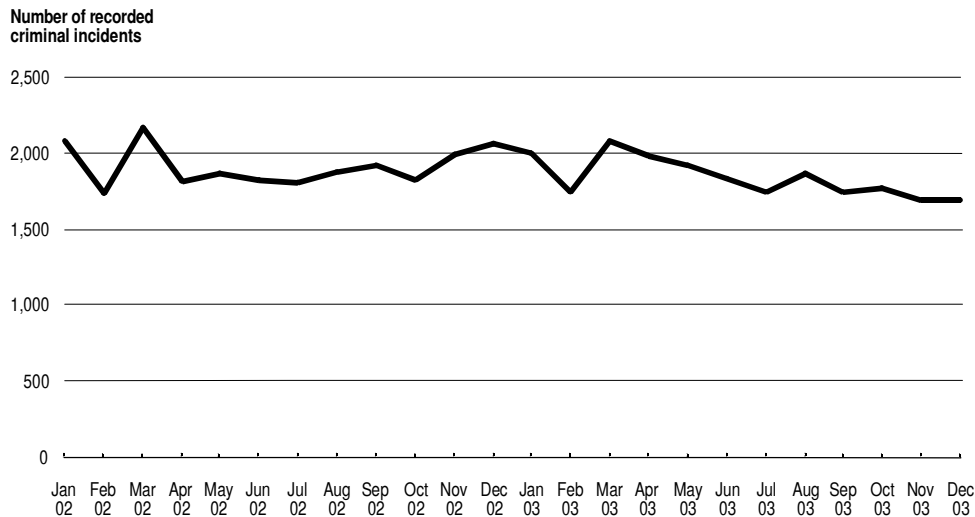
\* In July 2003, Bail Court Attendance Notices replaced charges.



## Court Attendance Notice

**Trend (Jan 2002 - Dec 2003):** No statistically significant upward or downward trend.

**Figure 11: Persons issued with a Court Attendance Notice\***

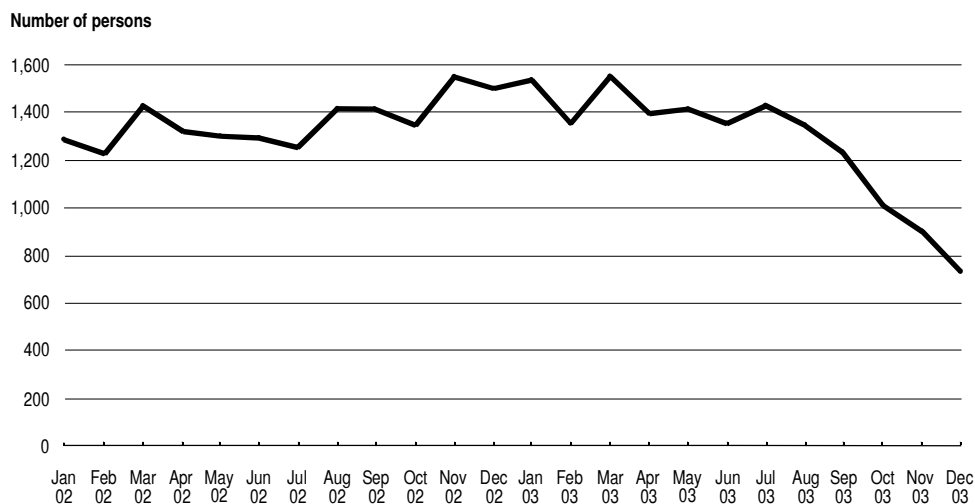


\* In July 2003, No-Bail Court Attendance Notices replaced Court Attendance Notices

## Summons

**Trend (Jan 2002 - Dec 2003):** No statistically significant upward or downward trend.

**Figure 12: Persons issued with summons\*#**



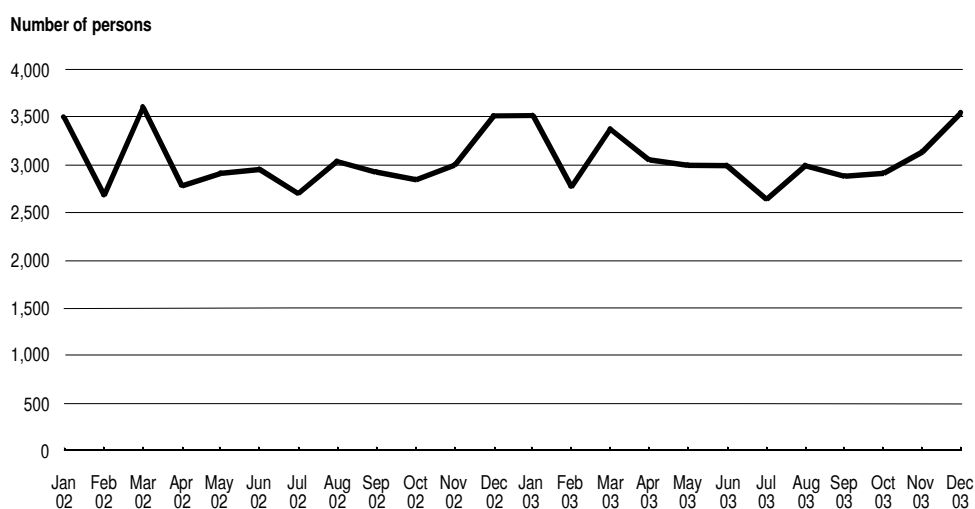
\* In July 2003, Future Service Court Attendance Notices replaced summons.

# These data show the number of summons issued for criminal incidents recorded in 2002 and 2003. The number of summons issued for offences in the final months of 2003 are low due to a time lag between the incident being recorded and a summons being issued.

## Field Court Attendance Notice

**Trend (Jan 2002 - Dec 2003):** No statistically significant upward or downward trend.

**Figure 13: Persons issued with a Field Court Attendance Notice**



## NOTES

1. Australian Bureau of Statistics 2003, *Crime and Safety, New South Wales, April 2003*, Cat. No.4509.1, ABS, Sydney.
2. The trend test used was Kendall's rank-order correlation test (see for example, Conover, W.J., 1980, *Practical Non-Parametric Statistics*, 2<sup>nd</sup> edn, John Wiley and Sons, pp 256-260). A two tailed test was used to determine whether there had been an increasing or decreasing trend in the recorded numbers of criminal incidents over the most recent twenty-four month period covered in the report. Some month to month variations in the numbers could be due in part to seasonal factors. The test for trend is not sensitive to seasonal variations; it is sensitive only to a generally increasing or decreasing trend over the time period examined.
3. In the case of murder, there was no statistically significant trend in the monthly numbers of recorded victims.
4. For the rate calculations, population data were obtained from the Australian Bureau of Statistics publication: *Regional Population Growth, Australia and New Zealand, 2001-02*, Cat. No. 3218.0 (for 2001 and 2002 population estimates). As no population estimates were available for 2003 when this report was published, rates for 2003 were calculated using 2002 population estimates.

---

**MONTHLY TRENDS IN  
RECORDED CRIMINAL INCIDENTS,  
2001, 2002 AND 2003  
NEW SOUTH WALES**

---

**TABLE 1.1** MONTHLY TRENDS IN RECORDED CRIMINAL INCIDENTS, 2001, NEW SOUTH WALES:  
TYPE OF OFFENCE

Type of offence	Recorded criminal incidents												Total 2001
	Jan	Feb	Mar	Apr	May	Jun	Jul	Aug	Sep	Oct	Nov	Dec	No. population
<b>Homicide:</b>													Rate per 100,000
Murder*	9	13	6	7	10	9	5	10	9	8	10	8	104
Attempted murder	15	19	10	19	15	10	10	13	11	11	7	21	161
Murder accessory, conspiracy	0	0	1	0	1	0	2	0	0	1	1	0	6
Manslaughter – not driving*	0	1	0	4	0	0	0	1	1	2	0	3	12
Manslaughter – driving*	10	9	4	7	11	9	13	17	4	11	9	9	113
<b>Assault</b>	6,311	5,917	6,026	5,258	5,080	5,415	5,059	5,386	5,800	6,178	6,050	6,685	69,165
<b>Sexual offences:</b>													1,051.9
Sexual assault	341	365	350	278	318	311	289	279	285	364	326	265	3,771
Indecent assault, act of indecency	318	347	374	276	284	310	265	292	304	298	278	289	3,635
Other sexual offences	150	154	141	127	105	122	113	120	119	163	140	128	1,582
<b>Abduction and kidnapping</b>	42	40	37	30	39	34	39	42	35	62	33	34	467
<b>Robbery:</b>													7.1
Robbery without a weapon	725	827	854	697	681	635	638	634	609	619	563	603	8,085
Robbery with a firearm	67	51	68	92	63	81	74	115	86	60	59	70	886
Robbery with a weapon not a firearm	393	508	496	389	366	308	371	310	275	346	308	256	4,326
<b>Other offences against the person</b>	355	418	425	366	416	373	385	452	453	474	498	445	5,060
													77.0

\* For murder and manslaughter only, the data are counts of recorded victims, not criminal incidents. See Explanatory Notes.

**Theft:**

Break and enter – dwelling	8,056	6,713	6,485	6,383	7,081	6,828	6,721	6,563	6,174	6,559	6,232	6,326	80,121	1,218.5
Break and enter – non-dwelling	4,684	4,202	4,654	4,413	4,327	4,236	4,700	4,451	4,181	4,346	4,094	4,040	52,328	795.8
Possess implements	174	185	157	160	175	200	195	195	139	160	145	164	2,049	31.2
Receiving	292	224	192	194	153	168	141	136	148	140	140	92	2,020	30.7
Goods in custody	1,027	919	837	767	815	786	801	808	733	779	771	753	9,796	149.0
Motor vehicle theft	4,627	4,470	5,059	4,389	4,843	4,360	4,867	4,671	4,026	4,117	4,450	4,046	53,925	820.1
Steal from motor vehicle	7,552	6,403	7,371	6,929	7,901	7,648	8,636	8,447	7,653	8,019	7,376	6,751	90,686	1,379.2
Steal from retail store	1,923	1,664	1,672	1,604	1,934	1,760	1,765	1,813	1,626	1,707	1,597	1,763	20,828	316.8
Steal from dwelling	3,131	2,588	2,575	2,322	2,411	2,632	2,571	2,595	2,517	2,869	2,564	2,848	31,623	480.9
Steal from person	1,407	1,148	1,188	1,199	1,191	1,042	1,016	1,613	1,695	1,602	1,668	1,887	16,656	253.3
Stock theft	72	71	73	77	110	71	62	106	88	79	62	73	944	14.4
Fraud	2,814	2,364	2,600	2,490	2,951	2,670	2,815	3,005	2,899	3,074	2,998	2,648	33,328	506.9
Other theft	6,967	6,080	6,428	6,228	6,314	5,969	5,931	5,595	5,034	5,520	5,336	5,119	70,521	1,072.5
<b>Demand money with menaces</b>	82	75	120	71	97	93	83	78	87	66	68	59	979	14.9
<b>Extortion, blackmail</b>	5	4	2	5	3	3	8	11	1	7	5	3	57	0.9
<b>Arson</b>	598	450	534	528	591	666	738	682	623	778	617	594	7,399	112.5
<b>Malicious damage to property</b>	7,936	7,285	7,650	7,525	7,586	8,250	8,695	8,262	8,568	8,967	8,196	7,861	96,781	1,471.9

Table continues on next page

**TABLE 1.1** MONTHLY TRENDS IN RECORDED CRIMINAL INCIDENTS, 2001, NEW SOUTH WALES:  
TYPE OF OFFENCE - continued

Recorded criminal incidents														
Type of offence	Jan	Feb	Mar	Apr	May	Jun	Jul	Aug	Sep	Oct	Nov	Dec	No. population	Rate per 100,000
														Total 2001
Drug offences:														
Possession and/or use of cocaine	26	36	64	46	34	39	36	45	34	52	24	33	469	7.1
Possession and/or use of narcotics	191	131	89	95	113	91	80	75	38	69	66	64	1,102	16.8
Possession and/or use of cannabis	921	1,122	1,289	1,078	1,583	1,449	1,142	1,340	1,326	1,228	974	1,034	14,486	220.3
Possession and/or use of other drugs	268	248	298	225	300	305	244	278	271	214	232	232	3,115	47.4
Dealing, trafficking in cocaine	4	12	30	19	28	25	21	22	28	42	13	11	255	3.9
Dealing, trafficking in narcotics	38	60	42	31	64	31	24	42	36	40	30	29	467	7.1
Dealing, trafficking in cannabis	82	82	113	76	114	79	81	104	66	84	77	73	1,031	15.7
Dealing, trafficking in other drugs	57	73	70	74	83	160	120	118	100	73	76	92	1,096	16.7
Cultivating cannabis	229	231	188	104	103	57	62	87	83	98	142	199	1,583	24.1
Importing drugs	1	3	3	2	3	0	3	3	1	2	1	2	24	0.4
Other drug offences	220	259	286	210	264	259	242	308	277	332	273	234	3,164	48.1
Offensive behaviour:														
Offensive conduct	371	368	363	368	291	344	315	356	357	374	350	417	4,274	65.0
Offensive language	558	537	526	461	397	473	440	494	561	496	500	563	6,006	91.3
Prostitution offences	17	101	152	107	54	123	43	86	52	45	50	49	879	13.4
Betting and gaming offences	1	1	1	0	0	0	1	1	5	4	7	3	24	0.4
Weapons offences	848	900	893	839	857	932	833	935	989	968	892	780	10,666	162.2

**Against justice procedures:**

Escapee – Corrective Services custody	8	10	10	10	5	6	4	10	8	6	12	8	11	98	1.5
Escapee – Police custody	20	27	21	23	20	10	13	18	18	26	27	30	253	3.8	
Escapee – juvenile detention	1	0	0	0	0	0	0	0	0	0	1	0	0	2	0.0
Escapee – other custody	3	3	6	8	3	3	3	3	8	5	4	3	1	50	0.8
Breach Apprehended Violence Order	1,099	1,022	1,038	957	994	873	910	928	953	1,114	1,019	1,123	12,030	183.0	
Breach bail conditions	591	513	534	563	555	585	640	647	601	634	594	657	7,114	108.2	
Breach of recognizance	42	24	36	37	27	30	22	30	30	30	36	30	374	5.7	
Fail to appear	170	147	183	170	177	231	209	214	186	190	138	158	2,173	33.0	
Other offences against justice procedures	652	572	605	521	525	528	448	680	711	653	597	712	7,204	109.6	

**Driving offences:**

Culpable driving	20	14	13	20	17	21	22	25	13	8	19	16	208	3.2
PCA	2,088	1,740	2,408	2,010	1,735	1,998	1,687	1,887	2,149	1,803	2,156	2,272	23,933	364.0
Drive while disqualified	1,727	1,452	1,718	1,602	1,549	1,514	1,416	1,613	1,589	1,512	1,625	1,759	19,076	290.1
Drive manner/speed dangerous	268	250	296	219	235	248	196	279	274	265	264	302	3,096	47.1
Other driving offences	51,210	32,057	38,843	46,495	37,868	40,157	36,547	43,643	48,777	43,077	39,818	53,120	511,612	7,780.9

**Other offences**

	4,551	4,048	4,435	4,203	4,117	4,341	4,284	4,607	4,603	4,872	4,915	5,151	54,127	823.2
--	-------	-------	-------	-------	-------	-------	-------	-------	-------	-------	-------	-------	--------	-------

**TABLE 1.2 MONTHLY TRENDS IN RECORDED CRIMINAL INCIDENTS, 2002, NEW SOUTH WALES: TYPE OF OFFENCE**

Recorded criminal incidents													
Type of offence	Jan	Feb	Mar	Apr	May	Jun	Jul	Aug	Sep	Oct	Nov	Dec	Total 2002
													Rate per 100,000 population
Homicide:													
Murder*	11	9	12	7	6	6	6	7	7	7	5	14	97 1.5
Attempted murder	8	10	9	9	9	14	7	7	4	8	8	9	102 1.5
Murder accessory, conspiracy	0	1	0	0	0	3	0	0	1	1	0	0	6 0.1
Manslaughter – not driving*	1	1	0	0	1	1	0	1	1	3	0	2	11 0.2
Manslaughter – driving*	13	8	10	9	13	9	6	15	8	6	5	7	109 1.6
Assault	6,649	5,797	6,400	5,566	5,596	5,379	5,295	5,691	5,965	6,316	6,694	6,931	72,279 1,088.5
Sexual offences:													
Sexual assault	330	328	311	255	316	305	240	322	325	367	368	291	3,758 56.6
Indecent assault, act of indecency	322	294	326	301	358	279	248	328	351	349	395	518	4,069 61.3
Other sexual offences	161	148	152	152	160	117	113	150	133	136	143	129	1,694 25.5
Abduction and kidnapping	33	36	31	32	34	25	29	27	33	24	34	41	379 5.7
Robbery:													
Robbery without a weapon	627	572	690	631	575	490	520	495	536	523	583	458	6,700 100.9
Robbery with a firearm	64	37	55	55	74	74	70	65	63	43	64	52	716 10.8
Robbery with a weapon not a firearm	319	225	212	213	263	226	192	227	231	184	233	239	2,764 41.6
Other offences against the person	435	409	495	425	434	467	463	539	529	592	601	550	5,939 89.4

\* For murder and manslaughter only, the data are counts of recorded victims, not criminal incidents. See Explanatory Notes.



**Theft:**

Break and enter – dwelling	6,430	5,423	6,113	6,035	5,949	5,612	6,084	5,683	5,836	5,876	5,626	5,375	70,042	1,054.8
Break and enter – non-dwelling	4,042	3,609	3,763	3,592	3,267	3,392	3,462	3,260	3,278	3,321	3,325	3,212	41,523	625.3
Possess implements	136	140	148	142	137	117	144	139	119	129	87	112	1,550	23.3
Receiving	143	142	135	155	167	108	123	158	136	146	114	98	1,625	24.5
Goods in custody	905	698	715	813	805	732	804	752	626	908	654	684	9,096	137.0
Motor vehicle theft	3,851	3,716	4,321	3,806	3,628	3,345	3,521	3,289	3,156	3,234	3,117	3,091	42,075	633.6
Steal from motor vehicle	6,800	6,305	6,925	6,756	6,621	6,229	6,834	6,427	6,186	6,371	5,786	5,338	76,578	1,153.2
Steal from retail store	1,732	1,542	1,710	1,725	1,935	1,791	2,142	2,135	2,008	2,040	1,884	1,937	22,581	340.1
Steal from dwelling	2,836	2,300	2,597	2,508	2,442	2,309	2,515	2,522	2,616	2,677	2,549	2,648	30,519	459.6
Steal from person	1,967	1,620	1,756	1,552	1,637	1,486	1,555	1,685	1,509	1,748	1,731	1,757	20,003	301.2
Stock theft	85	67	85	67	58	68	57	70	77	82	70	68	854	12.9
Fraud	3,173	2,906	2,723	3,110	3,290	2,912	3,128	2,851	2,716	2,618	3,187	2,504	35,118	528.9
Other theft	5,934	5,073	5,548	5,272	5,073	4,690	4,801	4,806	4,756	4,884	4,879	4,465	60,181	906.3
<b>Demand money with menaces</b>	65	45	69	77	57	60	60	55	69	54	54	60	725	10.9
<b>Extortion, blackmail</b>	5	7	3	6	6	4	7	6	4	4	3	0	55	0.8
<b>Arson</b>	666	431	519	514	504	490	647	612	642	697	595	499	6,816	102.6
<b>Malicious damage to property</b>	7,950	6,746	7,439	7,537	7,002	7,332	8,085	8,165	8,588	8,950	8,261	7,703	93,758	1,411.9

Table continues on next page

**TABLE 1.2** MONTHLY TRENDS IN RECORDED CRIMINAL INCIDENTS, 2002, NEW SOUTH WALES:  
TYPE OF OFFENCE - continued

Recorded criminal incidents														
Type of offence	Jan	Feb	Mar	Apr	May	Jun	Jul	Aug	Sep	Oct	Nov	Dec	No. population	Rate per 100,000
														Total 2002
Drug offences:														
Possession and/or use of cocaine	43	33	20	21	22	7	12	11	6	11	4	21	211	3.2
Possession and/or use of narcotics	70	73	65	72	76	71	84	88	86	105	64	94	948	14.3
Possession and/or use of cannabis	1,095	855	975	904	1,213	967	834	1,087	937	871	893	934	11,565	174.2
Possession and/or use of other drugs	254	187	203	170	245	212	205	248	181	217	213	234	2,569	38.7
Dealing, trafficking in cocaine	29	7	6	12	27	3	2	14	1	6	1	7	115	1.7
Dealing, trafficking in narcotics	31	37	44	36	51	49	74	44	19	71	22	46	524	7.9
Dealing, trafficking in cannabis	70	40	92	52	80	66	62	57	38	69	62	46	734	11.1
Dealing, trafficking in other drugs	60	94	93	82	96	98	88	104	65	74	56	104	1,014	15.3
Cultivating cannabis	186	195	227	145	76	53	56	78	99	114	132	160	1,521	22.9
Importing drugs	1	2	4	6	3	1	1	4	6	1	4	5	38	0.6
Other drug offences	285	251	228	247	353	240	236	273	286	261	231	257	3,148	47.4
Offensive behaviour:														
Offensive conduct	419	409	416	394	356	367	332	416	407	424	457	505	4,902	73.8
Offensive language	621	486	547	421	425	401	409	454	460	469	486	605	5,784	87.1
Prostitution offences														
	62	47	53	55	65	49	41	42	48	69	32	58	621	9.4
Betting and gaming offences														
	0	3	2	12	2	1	4	7	3	6	21	14	75	1.1
Weapons offences														
	836	736	784	849	852	813	754	919	940	931	907	940	10,261	154.5

**Against justice procedures:**

Escapée – Corrective Services custody	7	6	5	7	9	1	2	5	8	6	6	4	66	1.0
Escapée – Police custody	26	18	10	13	15	9	12	14	7	20	25	19	188	2.8
Escapée – juvenile detention	0	0	0	0	0	0	0	0	0	0	0	0	0	0.0
Escapée – other custody	8	4	5	3	5	4	3	3	2	2	8	10	57	0.9
Breach Apprehended Violence Order	1,152	985	1,020	1,003	985	950	865	984	1,043	1,093	1,138	1,212	12,430	187.2
Breach bail conditions	789	637	661	614	650	575	599	613	668	716	689	753	7,964	119.9
Breach of recognizance	33	20	33	30	33	30	24	25	18	30	26	14	316	4.8
Fail to appear	197	177	173	190	195	157	167	175	172	155	147	183	2,088	31.4
Other offences against justice procedures	753	583	642	605	575	637	552	582	556	611	592	681	7,369	111.0

**Driving offences:**

Culpable driving	15	6	18	16	20	15	16	11	16	23	16	12	184	2.8
PCA	2,084	1,590	2,679	1,858	1,973	2,080	1,884	2,189	2,246	1,994	2,397	2,440	25,414	382.7
Drive while disqualified	1,875	1,351	1,731	1,469	1,542	1,437	1,467	1,473	1,482	1,574	1,548	1,780	18,729	282.0
Drive manner/speed dangerous	310	186	286	185	245	252	231	237	200	246	268	293	2,939	44.3
Other driving offences	53,595	34,037	48,505	42,856	39,912	46,959	46,654	46,616	46,096	48,924	40,655	58,232	553,041	8,328.5

**Other offences**

	5,848	5,539	6,306	5,999	6,116	5,798	6,126	6,402	6,631	7,263	6,690	7,835	76,553	1,152.8
--	-------	-------	-------	-------	-------	-------	-------	-------	-------	-------	-------	-------	--------	---------

TABLE 1.3	MONTHLY TRENDS IN RECORDED CRIMINAL INCIDENTS, 2003, NEW SOUTH WALES: TYPE OF OFFENCE
1	...
2	...
3	...
4	...
5	...
6	...
7	...
8	...
9	...
10	...
11	...
12	...
13	...
14	...
15	...
16	...
17	...
18	...
19	...
20	...
21	...
22	...
23	...
24	...
25	...
26	...
27	...
28	...
29	...
30	...
31	...
32	...
33	...
34	...
35	...
36	...
37	...
38	...
39	...
40	...
41	...
42	...
43	...
44	...
45	...
46	...
47	...
48	...
49	...
50	...
51	...
52	...
53	...
54	...
55	...
56	...
57	...
58	...
59	...
60	...
61	...
62	...
63	...
64	...
65	...
66	...
67	...
68	...
69	...
70	...
71	...
72	...
73	...
74	...
75	...
76	...
77	...
78	...
79	...
80	...
81	...
82	...
83	...
84	...
85	...
86	...
87	...
88	...
89	...
90	...
91	...
92	...
93	...
94	...
95	...
96	...
97	...
98	...
99	...
100	...

Recorded criminal incidents														Total 2003
Type of offence	Jan	Feb	Mar	Apr	May	Jun	Jul	Aug	Sep	Oct	Nov	Dec	No.	Rate per 100,000 population
Homicide:														
Murder*	4	14	7	8	8	6	4	9	10	9	6	6	91	1.4
Attempted murder	13	6	6	11	7	7	8	10	5	10	7	3	93	1.4
Murder accessory, conspiracy	0	0	1	0	0	1	2	0	0	1	0	2	7	0.1
Manslaughter – not driving*	1	1	1	0	0	2	0	1	1	0	0	1	8	0.1
Manslaughter – driving*	4	9	10	7	11	1	n.a.	n.a.	n.a.	n.a.	n.a.	n.a.	n.a.	n.a.
Assault	6,883	6,509	6,823	5,552	5,723	5,671	5,211	5,380	5,748	5,658	5,844	5,785	70,787	1,066.0
Sexual offences:														
Sexual assault	333	322	324	274	351	317	316	351	357	313	298	299	3,855	58.1
Indecent assault, act of indecency	348	302	382	319	370	326	253	308	281	267	289	275	3,720	56.0
Other sexual offences	158	134	146	117	111	115	127	143	134	130	137	124	1,576	23.7
Abduction and kidnapping	31	21	26	31	32	31	25	35	25	37	34	22	350	5.3
Robbery:														
Robbery without a weapon	515	532	629	612	666	545	546	431	504	489	519	402	6,390	96.2
Robbery with a firearm	46	51	45	86	80	38	72	48	47	58	62	68	701	10.6
Robbery with a weapon not a firearm	221	206	200	213	216	185	205	163	154	149	168	150	2,230	33.6
Other offences against the person	650	608	578	483	574	570	520	530	559	498	542	571	6,683	100.6

\* For murder and manslaughter only, the data are counts of recorded victims, not criminal incidents. See Explanatory Notes.

**Theft:**

Break and enter – dwelling	5,541	4,952	5,407	5,189	5,495	5,103	5,316	5,007	5,195	5,275	4,952	4,627	62,059	934.6
Break and enter – non-dwelling	3,261	3,052	3,301	3,141	3,291	3,341	2,881	2,741	2,954	2,951	2,711	2,594	36,219	545.4
Possess implements	122	79	114	108	120	114	118	112	85	97	78	78	1,225	18.4
Receiving	110	81	128	114	152	107	81	132	106	91	58	39	1,199	18.1
Goods in custody	757	710	715	720	682	682	640	624	654	609	575	439	7,807	117.6
Motor vehicle theft	2,908	2,770	3,261	2,844	3,172	2,941	3,034	2,798	2,724	2,874	2,718	2,750	34,794	524.0
Steal from motor vehicle	5,659	5,257	6,040	5,599	5,948	5,588	5,754	5,305	5,155	5,181	4,832	4,967	65,285	983.2
Steal from retail store	1,812	1,765	2,034	1,977	2,198	2,085	1,939	1,829	1,748	1,763	1,580	1,548	22,278	335.5
Steal from dwelling	2,722	2,295	2,414	2,284	2,317	2,314	2,480	2,323	2,574	2,479	2,450	2,509	29,161	439.1
Steal from person	1,801	1,582	1,808	1,649	1,666	1,486	1,438	1,399	1,409	1,431	1,532	1,450	18,651	280.9
Stock theft	70	74	95	73	96	97	75	68	77	70	75	68	938	14.1
Fraud	2,936	2,551	2,758	2,656	2,712	2,494	2,686	2,338	2,407	2,295	2,126	1,827	29,786	448.6
Other theft	4,817	4,494	5,162	4,492	4,425	4,467	4,541	4,484	4,564	4,353	4,264	4,231	54,294	817.6
<b>Demand money with menaces</b>	59	51	63	70	58	56	50	40	38	48	33	29	595	9.0
<b>Extortion, blackmail</b>	3	6	3	5	10	8	4	3	2	3	4	6	57	0.9
<b>Arson</b>	513	390	444	396	430	438	504	421	544	463	488	368	5,399	81.3
<b>Malicious damage to property</b>	7,991	7,153	8,035	7,383	7,455	7,784	7,904	7,700	8,297	8,303	8,269	7,860	94,134	1,417.6

*n.a. This data was unavailable at the time of printing due to a change in the classification of traffic incidents by NSW Police in July 2003. The police now classify traffic incidents on the basis of police action rather than the type of criminal incident. This change means that the incidence of specific driving offences (e.g. PCA, drive while disqualified) cannot be determined from the incident categories used in COPS.*

*Table continues on next page*

**TABLE 1.3** MONTHLY TRENDS IN RECORDED CRIMINAL INCIDENTS, 2003, NEW SOUTH WALES:  
TYPE OF OFFENCE - continued

Type of offence	Recorded criminal incidents												Total 2003		
	Jan	Feb	Mar	Apr	May	Jun	Jul	Aug	Sep	Oct	Nov	Dec		Rate per 100,000 population	
														No.	population
Drug offences:															
Possession and/or use of cocaine	12	6	15	11	11	12	6	3	9	12	8	11	116	1.7	
Possession and/or use of narcotics	91	75	60	59	74	73	53	83	75	85	82	80	890	13.4	
Possession and/or use of cannabis	1,061	821	988	945	1,000	967	1,008	968	891	892	814	859	11,214	168.9	
Possession and/or use of other drugs	299	194	232	221	232	235	254	255	274	212	239	253	2,900	43.7	
Dealing, trafficking in cocaine	4	3	3	5	6	3	0	4	4	3	3	2	40	0.6	
Dealing, trafficking in narcotics	61	59	34	23	51	33	62	56	44	24	35	21	503	7.6	
Dealing, trafficking in cannabis	53	61	65	56	65	48	62	47	63	41	43	44	648	9.8	
Dealing, trafficking in other drugs	51	63	69	108	65	72	148	68	74	63	70	55	906	13.6	
Cultivating cannabis	254	224	221	144	89	61	75	58	56	87	126	136	1,531	23.1	
Importing drugs	4	3	3	4	10	2	3	2	4	3	2	6	46	0.7	
Other drug offences	324	234	271	254	275	272	289	245	249	198	234	246	3,091	46.5	
Offensive behaviour:															
Offensive conduct	523	438	502	371	406	395	359	396	393	379	407	435	5,004	75.4	
Offensive language	598	526	546	403	427	420	386	422	420	443	412	458	5,461	82.2	
Prostitution offences	108	42	26	27	26	44	37	22	12	24	17	28	413	6.2	
Betting and gaming offences	3	6	40	22	31	5	6	14	8	8	11	12	166	2.5	
Weapons offences	980	904	956	852	883	861	794	797	807	1,028	877	810	10,549	158.9	

**Against justice procedures:**

Escapee – Corrective Services custody	5	4	3	4	3	2	9	1	2	3	3	2	41	0.6
Escapee – Police custody	34	15	24	11	23	14	15	9	20	17	9	16	207	3.1
Escapee – juvenile detention	0	0	0	0	0	0	0	0	0	0	0	0	0	0.0
Escapee – other custody	5	2	2	2	3	3	4	7	6	2	4	3	43	0.6
Breach Apprehended Violence Order	1,179	1,164	1,182	942	1,058	1,072	952	979	966	1,017	983	927	12,421	187.1
Breach bail conditions	952	754	784	815	794	733	662	698	655	673	728	772	9,020	135.8
Breach of recognizance	14	19	15	17	12	12	11	7	5	12	5	8	137	2.1
Fail to appear	130	162	160	157	137	153	143	53	65	65	45	49	1,319	19.9
Other offences against justice procedures	701	552	643	528	561	497	414	405	424	426	412	442	6,005	90.4

**Driving offences:**

Culpable driving	12	12	12	16	11	5	n.a.	n.a.	n.a.	n.a.	n.a.	n.a.	n.a.	n.a.
PCA	2,388	1,920	2,622	2,424	2,216	2,256	n.a.	n.a.	n.a.	n.a.	n.a.	n.a.	n.a.	n.a.
Drive while disqualified	1,765	1,335	1,496	1,488	1,404	1,342	n.a.	n.a.	n.a.	n.a.	n.a.	n.a.	n.a.	n.a.
Drive manner/speed dangerous	277	244	256	252	243	236	n.a.	n.a.	n.a.	n.a.	n.a.	n.a.	n.a.	n.a.
Other driving offences	59,339	42,636	51,221	57,952	49,284	49,760	n.a.	n.a.	n.a.	n.a.	n.a.	n.a.	n.a.	n.a.

**Other offences**

	8,135	8,429	9,371	8,844	9,368	8,097	7,855	7,298	7,675	7,764	7,292	7,722	97,850	1,473.6
--	-------	-------	-------	-------	-------	-------	-------	-------	-------	-------	-------	-------	--------	---------

n.a. This data was unavailable at the time of printing due to a change in the classification of traffic incidents by NSW Police in July 2003. The police now classify traffic incidents on the basis of police action rather than the type of criminal incident. This change means that the incidence of specific driving offences (e.g. PCA, drive while disqualified) cannot be determined from the incident categories used in COPS.





---

**MONTHLY TRENDS IN  
METHODS OF PROCEEDING  
AGAINST ALLEGED OFFENDERS,  
2001, 2002 AND 2003  
NEW SOUTH WALES**

---

**TABLE 2.1** MONTHLY TRENDS IN METHODS OF PROCEEDING AGAINST ALLEGED OFFENDERS, 2001,  
NEW SOUTH WALES: TYPE OF PROCESS

Type of process	Number of alleged offenders												2001 Total
	Jan	Feb	Mar	Apr	May	Jun	Jul	Aug	Sep	Oct	Nov	Dec	
Proceeded against to court:													
Charged	5,979	5,824	5,678	5,197	5,345	5,245	5,194	5,383	5,396	5,491	5,308	5,782	65,822
Court Attendance Notice	2,317	2,077	2,462	2,190	2,146	2,227	2,002	2,140	2,217	2,093	1,873	2,011	25,755
Summons	1,265	1,208	1,456	1,183	1,165	1,145	1,182	1,227	1,193	1,230	1,284	1,364	14,902
Field Court Attendance Notice	3,851	3,085	3,607	3,321	2,972	3,218	2,718	3,117	3,243	2,907	3,281	3,630	38,950
All proceedings to court	13,412	12,194	13,203	11,891	11,628	11,835	11,096	11,867	12,049	11,721	11,746	12,787	145,429
Proceeded against other than to court:													
Youth Conference	80	90	121	118	125	88	119	108	81	63	87	91	1,171
Caution Young Offenders Act	771	669	854	881	804	849	878	925	861	899	770	843	10,004
Cannabis/other drug caution	221	299	269	244	469	512	336	437	472	348	253	305	4,165
Infringement Notice/ Public Safety Infringement Notice	42,334	25,948	32,071	39,586	31,738	33,594	30,332	35,975	40,059	34,650	31,116	41,448	418,851
Warning	1,477	1,234	1,620	1,616	1,378	1,626	1,718	1,795	1,955	1,981	2,114	2,150	20,664
All proceedings other than to court	44,883	28,240	34,935	42,445	34,514	36,669	33,383	39,240	43,428	37,941	34,340	44,837	454,855
All proceedings	58,295	40,434	48,138	54,336	46,142	48,504	44,479	51,107	55,477	49,662	46,086	57,624	600,284
Not proceeded against*	4,312	3,782	4,082	3,817	3,741	4,085	3,956	3,976	4,403	4,463	4,382	4,538	49,537

\* Includes person deceased, under 10 years of age, diplomatic immunity, mentally incapable of forming criminal intent, DPP or victim refuses to prosecute and proceeding delayed pending further advice.

**TABLE 2.2** MONTHLY TRENDS IN METHODS OF PROCEEDING AGAINST ALLEGED OFFENDERS, 2002,  
NEW SOUTH WALES: TYPE OF PROCESS

Type of process	Number of alleged offenders												
	Jan	Feb	Mar	Apr	May	Jun	Jul	Aug	Sep	Oct	Nov	Dec	2002 Total
Proceeded against to court:													
Charged	6,229	5,062	5,498	5,103	5,350	4,860	5,051	5,142	5,095	5,359	5,242	5,626	63,617
Court Attendance Notice	2,080	1,731	2,168	1,813	1,865	1,825	1,803	1,875	1,916	1,824	1,990	2,056	22,946
Summons	1,286	1,228	1,430	1,331	1,300	1,297	1,253	1,417	1,419	1,351	1,550	1,505	16,367
Field Court Attendance Notice	3,494	2,678	3,600	2,780	2,914	2,954	2,695	3,033	2,917	2,858	3,008	3,499	36,430
All proceedings to court	13,089	10,699	12,696	11,027	11,429	10,936	10,802	11,467	11,347	11,392	11,790	12,686	139,360
Proceeded against other than to court:													
Youth Conference	91	75	122	79	82	98	84	122	99	110	73	112	1,147
Caution Young Offenders Act	750	705	835	750	853	779	870	970	913	841	853	678	9,797
Cannabis/other drug caution	306	222	189	179	285	213	171	270	225	206	222	252	2,740
Infringement Notice/ Public Safety Infringement Notice	43,704	27,598	40,127	36,068	33,361	40,200	40,076	40,220	39,304	41,920	33,600	48,690	464,868
Warning	2,345	2,167	2,572	2,512	2,648	2,620	2,777	2,850	3,139	3,388	3,390	3,968	34,376
All proceedings other than to court	47,196	30,767	43,845	39,588	37,229	43,910	43,978	44,432	43,680	46,465	38,138	53,700	512,928
All proceedings	60,285	41,466	56,541	50,615	48,658	54,846	54,780	55,899	55,027	57,857	49,928	66,386	652,288
Not proceeded against*	4,829	4,177	4,666	4,555	4,612	4,325	4,576	4,817	5,110	5,458	5,571	5,434	58,130

\* Includes person deceased, under 10 years of age, diplomatic immunity, mentally incapable of forming criminal intent, DPP or victim refuses to prosecute and proceeding delayed pending further advice.

**TABLE 2.3** MONTHLY TRENDS IN METHODS OF PROCEEDING AGAINST ALLEGED OFFENDERS, 2003, NEW SOUTH WALES: TYPE OF PROCESS

Type of process	Number of alleged offenders											
	Jan	Feb	Mar	Apr	May	Jun	Jul	Aug	Sep	Oct	Nov	2003 Total
<b>Proceeded against to court:*</b>												
Charged	5,858	5,228	5,665	4,826	5,065	4,649	4,214	4,261	4,228	4,127	4,266	56,610
Court Attendance Notice	1,995	1,744	2,079	1,982	1,916	1,827	1,747	1,870	1,746	1,766	1,692	22,054
Summons <sup>#</sup>	1,539	1,359	1,550	1,396	1,414	1,355	1,432	1,351	1,231	1,007	903	15,266
Field Court Attendance Notice	3,523	2,760	3,379	3,049	2,991	2,987	2,641	2,998	2,882	2,912	3,136	36,799
<b>All proceedings to court</b>	<b>12,915</b>	<b>11,091</b>	<b>12,673</b>	<b>11,253</b>	<b>11,386</b>	<b>10,818</b>	<b>10,034</b>	<b>10,480</b>	<b>10,087</b>	<b>9,812</b>	<b>9,997</b>	<b>130,729</b>
<b>Proceeded against other than to court:</b>												
Youth Conference	74	82	70	80	81	106	102	78	88	72	79	969
Cautions Young Offenders Act	712	644	914	801	818	853	749	789	784	750	663	8,981
Cannabis/other drug caution	254	188	213	206	212	286	272	286	217	246	214	2,833
Infringement Notice/ Public Safety Infringement Notice	50,830	36,750	44,126	50,306	43,140	45,686	46,703	47,342	46,737	45,144	40,346	544,306
Warning	4,316	3,809	4,177	4,206	4,090	3,658	3,718	3,520	3,772	3,766	3,666	46,591
<b>All proceedings other than to court</b>	<b>56,186</b>	<b>41,473</b>	<b>49,500</b>	<b>55,599</b>	<b>48,341</b>	<b>50,589</b>	<b>51,544</b>	<b>52,015</b>	<b>51,598</b>	<b>49,978</b>	<b>44,968</b>	<b>603,680</b>
<b>All proceedings</b>	<b>69,101</b>	<b>52,564</b>	<b>62,173</b>	<b>66,852</b>	<b>59,727</b>	<b>61,407</b>	<b>61,578</b>	<b>62,495</b>	<b>61,685</b>	<b>59,790</b>	<b>54,965</b>	<b>734,409</b>
<b>Not proceeded against<sup>^</sup></b>	5,923	5,403	5,743	5,010	5,114	5,076	5,193	4,973	5,240	4,993	5,006	62,359

\* Following legislative changes to Local Court procedures, since July 2003 the police have commenced all criminal proceedings by Court Attendance Notice. Charges and Summonses have been replaced by specific types of Court Attendance Notice. Charges have been replaced by Bail Court Attendance Notices and Summonses have been replaced by Future Court Attendance Notices. Field Court Attendance Notices remain unchanged, while Court Attendance Notices are now called No-Bail Court Attendance Notices. In this publication, proceedings from July to December 2003 have been reclassified under the original categories.

<sup>#</sup> These data show the number of summons issued for criminal incidents recorded in 2003. The number of summons issued for offences in the final months of the year are low due to a time lag between the incident being recorded and a summons being issued.

<sup>^</sup> Includes person deceased, under 10 years of age, diplomatic immunity, mentally incapable of forming criminal intent, DPP or victim refuses to prosecute and proceeding delayed pending further advice.

---

**CLEARED CRIMINAL INCIDENTS  
FOR SELECTED OFFENCES,  
JANUARY 2001 TO SEPTEMBER 2003,  
NEW SOUTH WALES**

---

**TABLE 3.1** CLEARED CRIMINAL INCIDENTS, SELECTED OFFENCES, JANUARY 2001 TO DECEMBER 2001, NEW SOUTH WALES: TYPE OF OFFENCE

Type of offence	Recorded criminal incidents						
	Cleared within 30 days of reporting		Cleared within 90 days of reporting		Cleared within 180 days of reporting		
	Total number recorded	Total number cleared	% cleared	Total number cleared	% cleared	Total number cleared	% cleared
Murder*	104	62	59.6	67	64.4	73	70.2
Assault	69,165	39,764	57.5	43,014	62.2	44,614	64.5
Sexual assault	3,771	729	19.3	1,085	28.8	1,254	33.3
Indecent assault, act of indecency	3,635	900	24.8	1,269	34.9	1,409	38.8
Other sexual offences	1,582	405	25.6	461	29.1	501	31.7
Abduction and kidnapping	467	140	30.0	169	36.2	183	39.2
Robbery without a weapon	8,085	900	11.1	1,079	13.3	1,165	14.4
Robbery with a firearm	886	98	11.1	123	13.9	136	15.3
Robbery with a weapon not a firearm	4,326	663	15.3	814	18.8	909	21.0
Break and enter - dwelling	80,121	3,162	3.9	4,209	5.3	4,677	5.8
Break and enter - non-dwelling	52,328	2,209	4.2	2,668	5.1	3,026	5.8
Motor vehicle theft	53,925	2,936	5.4	3,459	6.4	3,723	6.9
Steal from motor vehicle	90,686	2,299	2.5	2,554	2.8	2,704	3.0
Steal from retail store	20,828	12,389	59.5	12,762	61.3	12,906	62.0
Steal from dwelling	31,623	2,190	6.9	2,568	8.1	2,776	8.8
Steal from person	16,656	755	4.5	880	5.3	942	5.7
Stock theft	944	38	4.0	47	5.0	48	5.1
Fraud	33,328	5,713	17.1	7,492	22.5	8,610	25.8
Demand money with menaces	979	207	21.1	244	24.9	269	27.5
Arson	7,399	365	4.9	424	5.7	462	6.2
Malicious damage to property	96,781	14,160	14.6	15,421	15.9	16,048	16.6

\* Victims for whom incident was cleared.

**TABLE 3.2** CLEARED CRIMINAL INCIDENTS, SELECTED OFFENCES, JANUARY 2002 TO DECEMBER 2002, NEW SOUTH WALES: TYPE OF OFFENCE

Type of offence	Recorded criminal incidents						
	Cleared within 30 days of reporting		Cleared within 90 days of reporting		Cleared within 180 days of reporting		
	Total number recorded	Total number cleared	% cleared	Total number cleared	% cleared	Total number cleared	% cleared
Murder*	97	56	57.7	65	67.0	70	72.2
Assault	72,279	42,206	58.4	45,603	63.1	47,272	65.4
Sexual assault	3,758	748	19.9	969	25.8	1,095	29.1
Indecent assault, act of indecency	4,069	1,058	26.0	1,383	34.0	1,606	39.5
Other sexual offences	1,694	465	27.4	534	31.5	590	34.8
Abduction and kidnapping	379	107	28.2	125	33.0	145	38.3
Robbery without a weapon	6,700	722	10.8	866	12.9	938	14.0
Robbery with a firearm	716	80	11.2	100	14.0	110	15.4
Robbery with a weapon not a firearm	2,764	400	14.5	479	17.3	525	19.0
Break and enter - dwelling	70,042	2,816	4.0	3,796	5.4	4,323	6.2
Break and enter - non-dwelling	41,523	1,876	4.5	2,321	5.6	2,587	6.2
Motor vehicle theft	42,075	2,214	5.3	2,643	6.3	2,914	6.9
Steal from motor vehicle	76,578	1,870	2.4	2,190	2.9	2,349	3.1
Steal from retail store	22,581	13,126	58.1	13,568	60.1	13,754	60.9
Steal from dwelling	30,519	2,079	6.8	2,417	7.9	2,626	8.6
Steal from person	20,003	711	3.6	800	4.0	868	4.3
Stock theft	854	48	5.6	57	6.7	65	7.6
Fraud	35,118	5,373	15.3	7,049	20.1	8,433	24.0
Demand money with menaces	725	146	20.1	162	22.3	176	24.3
Arson	6,816	435	6.4	509	7.5	541	7.9
Malicious damage to property	93,758	15,318	16.3	16,524	17.6	17,120	18.3

\* Victims for whom incident was cleared.

**TABLE 3.3** CLEARED CRIMINAL INCIDENTS, SELECTED OFFENCES, JANUARY 2003 TO SEPTEMBER 2003, NEW SOUTH WALES: TYPE OF OFFENCE

Type of offence	Recorded criminal incidents				
	Cleared within 30 days of reporting		Cleared within 90 days of reporting		
	Total number recorded	Total number cleared	% cleared	Total number cleared	% cleared
Murder*	70	37	52.9	40	57.1
Assault	53,500	31,188	58.3	33,606	62.8
Sexual assault	2,945	543	18.4	714	24.2
Indecent assault, act of indecency	2,889	710	24.6	993	34.4
Other sexual offences	1,185	343	28.9	384	32.4
Abduction and kidnapping	257	75	29.2	81	31.5
Robbery without a weapon	4,980	492	9.9	586	11.8
Robbery with a firearm	513	39	7.6	59	11.5
Robbery with a weapon not a firearm	1,763	203	11.5	238	13.5
Break and enter - dwelling	47,205	1,716	3.6	2,288	4.8
Break and enter - non-dwelling	27,963	1,137	4.1	1,427	5.1
Motor vehicle theft	26,452	1,228	4.6	1,481	5.6
Steal from motor vehicle	50,305	1,249	2.5	1,477	2.9
Steal from retail store	17,387	9,768	56.2	10,066	57.9
Steal from dwelling	21,723	1,534	7.1	1,802	8.3
Steal from person	14,238	559	3.9	639	4.5
Stock theft	725	38	5.2	52	7.2
Fraud	23,538	3,551	15.1	4,649	19.8
Demand money with menaces	485	95	19.6	114	23.5
Arson	4,080	224	5.5	256	6.3
Malicious damage to property	69,702	11,142	16.0	12,097	17.4

\* Victims for whom incident was cleared.



---

**RECORDED CRIME STATISTICS  
IN NEW SOUTH WALES REGIONS  
FOR SELECTED OFFENCES,  
2001, 2002 AND 2003**

---



**TABLE 4.1** RECORDED CRIMINAL VICTIMS, 2001 TO 2003: STATISTICAL DIVISION**MURDER**

<i>Statistical Division where offence occurred</i>	<i>Recorded victims</i>					
	<i>2001</i>		<i>2002</i>		<i>2003</i>	
	<i>Number</i>	<i>Rate per 100,000 population</i>	<i>Number</i>	<i>Rate per 100,000 population</i>	<i>Number</i>	<i>Rate per 100,000 population</i>
Sydney	77	1.9	58	1.4	60	1.4
Inner Sydney	16	5.4	4	1.3	12	4.0
Eastern Suburbs	4	1.7	5	2.1	2	0.8
St George – Sutherland	7	1.6	7	1.6	8	1.8
Canterbury – Bankstown	8	2.6	2	0.6	11	3.5
Fairfield – Liverpool	15	4.3	10	2.8	4	1.1
Outer South Western Sydney	3	1.3	3	1.3	5	2.1
Inner Western Sydney	4	2.5	4	2.4	1	0.6
Central Western Sydney	4	1.4	2	0.7	2	0.7
Outer Western Sydney	4	1.3	4	1.3	4	1.3
Blacktown	0	0.0	5	1.9	5	1.9
Lower Northern Sydney	1	0.3	6	2.0	3	1.0
Central Northern Sydney	2	0.5	0	0.0	0	0.0
Northern Beaches	1	0.4	2	0.9	1	0.4
Gosford – Wyong	8	2.7	4	1.3	2	0.7
Hunter	9	1.5	3	0.5	6	1.0
Illawarra	2	0.5	7	1.7	2	0.5
Richmond – Tweed	1	0.5	3	1.4	1	0.5
Mid-North Coast	8	2.9	3	1.1	4	1.4
Northern	0	0.0	1	0.6	2	1.1
North Western	0	0.0	3	2.5	1	0.8
Central West	2	1.1	4	2.2	5	2.8
South Eastern	2	1.0	4	2.0	5	2.6
Murrumbidgee	0	0.0	2	1.3	3	2.0
Murray	2	1.8	6	5.3	0	0.0
Far West	1	4.1	0	0.0	1	4.1
New South Wales*	104	1.6	97	1.5	91	1.4

\* The total for New South Wales includes 3 recorded victims in 2002 and 1 recorded victim in 2003 where the offence occurred in a custodial institution.

**TABLE 4.2 RECORDED CRIMINAL INCIDENTS, 2001 TO 2003: STATISTICAL DIVISION****ASSAULT**

<i>Statistical Division where offence occurred</i>	<i>Recorded criminal incidents</i>					
	<i>2001</i>		<i>2002</i>		<i>2003</i>	
	<i>Number</i>	<i>Rate per 100,000 population</i>	<i>Number</i>	<i>Rate per 100,000 population</i>	<i>Number</i>	<i>Rate per 100,000 population</i>
Sydney	37,395	905.8	38,857	931.6	38,390	920.4
Inner Sydney	6,798	2,311.6	7,082	2,365.5	6,739	2,250.9
Eastern Suburbs	1,957	810.5	2,163	894.6	2,089	864.0
St George – Sutherland	2,487	574.3	2,668	612.0	2,479	568.6
Canterbury – Bankstown	2,250	727.0	2,186	704.8	2,107	679.3
Fairfield – Liverpool	3,181	913.9	3,481	987.9	3,452	979.7
Outer South Western Sydney	2,971	1,269.5	2,964	1,248.1	2,992	1,259.9
Inner Western Sydney	1,018	625.1	1,031	627.7	1,036	630.8
Central Western Sydney	2,847	962.5	2,860	958.5	3,047	1,021.2
Outer Western Sydney	3,132	987.2	3,003	941.0	3,238	1,014.6
Blacktown	3,923	1,481.5	4,129	1,528.6	3,914	1,449.0
Lower Northern Sydney	1,312	447.8	1,457	493.4	1,378	466.6
Central Northern Sydney	1,234	303.3	1,219	294.7	1,190	287.7
Northern Beaches	1,151	497.8	1,347	579.1	1,494	642.2
Gosford – Wyong	3,134	1,057.9	3,267	1,087.6	3,235	1,076.9
Hunter	6,050	1,027.2	6,766	1,137.1	6,829	1,147.7
Illawarra	4,504	1,126.0	4,453	1,099.5	4,298	1,061.2
Richmond – Tweed	2,487	1,149.6	2,584	1,179.7	2,524	1,152.3
Mid-North Coast	3,554	1,266.6	3,830	1,346.2	3,488	1,226.0
Northern	2,266	1,255.9	2,556	1,416.5	2,534	1,404.3
North Western	2,698	2,255.2	2,997	2,505.4	3,053	2,552.2
Central West	2,194	1,234.9	2,301	1,288.5	2,297	1,286.2
South Eastern	2,303	1,192.9	2,101	1,072.5	2,073	1,058.2
Murrumbidgee	2,550	1,672.5	2,382	1,556.4	2,129	1,391.1
Murray	1,353	1,193.2	1,342	1,176.5	1,282	1,123.9
Far West	682	2,794.7	805	3,329.5	871	3,602.4
New South Wales*	69,165	1,051.9	72,279	1,088.5	70,787	1,066.0

\* The total for New South Wales includes 1,129 recorded incidents in 2001, 1,305 recorded incidents in 2002 and 1,019 recorded incidents in 2003 where the offence occurred in a custodial institution.

**TABLE 4.2a RECORDED CRIMINAL INCIDENTS, 2001 TO 2003: STATISTICAL DIVISION****ASSAULT - DOMESTIC**

<i>Statistical Division where offence occurred</i>	<i>Recorded criminal incidents</i>					
	<i>2001</i>		<i>2002</i>		<i>2003</i>	
	<i>Number</i>	<i>Rate per 100,000 population</i>	<i>Number</i>	<i>Rate per 100,000 population</i>	<i>Number</i>	<i>Rate per 100,000 population</i>
Sydney	12,109	293.3	13,489	323.4	13,562	325.2
Inner Sydney	1,122	381.5	1,251	417.8	1,300	434.2
Eastern Suburbs	498	206.2	607	251.1	553	228.7
St George – Sutherland	903	208.5	967	221.8	884	202.8
Canterbury – Bankstown	879	284.0	840	270.8	841	271.1
Fairfield – Liverpool	1,186	340.7	1,610	456.9	1,473	418.0
Outer South Western Sydney	1,108	473.4	1,198	504.5	1,266	533.1
Inner Western Sydney	280	171.9	299	182.0	304	185.1
Central Western Sydney	1,025	346.5	1,082	362.6	1,158	388.1
Outer Western Sydney	1,144	360.6	1,081	338.7	1,217	381.3
Blacktown	1,643	620.5	1,906	705.6	1,835	679.4
Lower Northern Sydney	335	114.3	490	165.9	404	136.8
Central Northern Sydney	435	106.9	431	104.2	421	101.8
Northern Beaches	372	160.9	484	208.1	552	237.3
Gosford – Wyong	1,179	398.0	1,243	413.8	1,354	450.7
Hunter	2,319	393.7	2,451	411.9	2,662	447.4
Illawarra	1,694	423.5	1,724	425.7	1,787	441.2
Richmond – Tweed	815	376.7	933	426.0	900	410.9
Mid-North Coast	1,272	453.3	1,421	499.4	1,380	485.0
Northern	790	437.9	872	483.2	927	513.7
North Western	1,055	881.8	1,223	1,022.4	1,303	1,089.2
Central West	751	422.7	862	482.7	901	504.5
South Eastern	795	411.8	729	372.1	758	386.9
Murrumbidgee	949	622.4	947	618.8	850	555.4
Murray	498	439.2	518	454.1	500	438.4
Far West	307	1,258.0	417	1,724.7	476	1,968.7
New South Wales*	23,372	355.5	25,596	385.5	26,025	391.9

\* The total for New South Wales includes 18 recorded incidents in 2001, 10 recorded incidents in 2002 and 19 recorded incidents in 2003 where the offence occurred in a custodial institution.

**TABLE 4.3 RECORDED CRIMINAL INCIDENTS, 2001 TO 2003: STATISTICAL DIVISION****SEXUAL ASSAULT**

<i>Statistical Division where offence occurred</i>	<i>Recorded criminal incidents</i>					
	<i>2001</i>		<i>2002</i>		<i>2003</i>	
	<i>Number</i>	<i>Rate per 100,000 population</i>	<i>Number</i>	<i>Rate per 100,000 population</i>	<i>Number</i>	<i>Rate per 100,000 population</i>
Sydney	1,967	47.6	1,872	44.9	1,959	47.0
Inner Sydney	259	88.1	288	96.2	257	85.8
Eastern Suburbs	69	28.6	79	32.7	89	36.8
St George – Sutherland	121	27.9	141	32.3	126	28.9
Canterbury – Bankstown	118	38.1	105	33.9	120	38.7
Fairfield – Liverpool	173	49.7	162	46.0	212	60.2
Outer South Western Sydney	217	92.7	189	79.6	192	80.9
Inner Western Sydney	53	32.5	59	35.9	62	37.7
Central Western Sydney	150	50.7	147	49.3	142	47.6
Outer Western Sydney	239	75.3	178	55.8	176	55.1
Blacktown	187	70.6	192	71.1	177	65.5
Lower Northern Sydney	77	26.3	62	21.0	69	23.4
Central Northern Sydney	83	20.4	52	12.6	75	18.1
Northern Beaches	71	30.7	68	29.2	58	24.9
Gosford – Wyong	150	50.6	150	49.9	204	67.9
Hunter	339	57.6	455	76.5	445	74.8
Illawarra	244	61.0	255	63.0	266	65.7
Richmond – Tweed	127	58.7	158	72.1	153	69.9
Mid-North Coast	210	74.8	204	71.7	191	67.1
Northern	158	87.6	156	86.5	181	100.3
North Western	130	108.7	123	102.8	131	109.5
Central West	151	85.0	144	80.6	120	67.2
South Eastern	152	78.7	129	65.9	150	76.6
Murrumbidgee	128	84.0	145	94.7	133	86.9
Murray	122	107.6	69	60.5	74	64.9
Far West	26	106.5	27	111.7	29	119.9
New South Wales*	3,771	57.4	3,758	56.6	3,855	58.1

\* The total for New South Wales includes 17 recorded incidents in 2001, 21 recorded incidents in 2002 and 23 recorded incidents in 2002 where the offence occurred in a custodial institution.

**TABLE 4.4** RECORDED CRIMINAL INCIDENTS, 2001 TO 2003: STATISTICAL DIVISION**INDECENT ASSAULT, ACT OF INDECENCY, OTHER SEXUAL OFFENCES**

<i>Statistical Division where offence occurred</i>	<i>Recorded criminal incidents</i>					
	<i>2001</i>		<i>2002</i>		<i>2003</i>	
	<i>Number</i>	<i>Rate per 100,000 population</i>	<i>Number</i>	<i>Rate per 100,000 population</i>	<i>Number</i>	<i>Rate per 100,000 population</i>
Sydney	2,869	69.5	2,979	71.4	2,910	69.8
Inner Sydney	325	110.5	332	110.9	330	110.2
Eastern Suburbs	106	43.9	131	54.2	144	59.6
St George – Sutherland	228	52.6	309	70.9	270	61.9
Canterbury – Bankstown	148	47.8	263	84.8	222	71.6
Fairfield – Liverpool	186	53.4	284	80.6	250	71.0
Outer South Western Sydney	260	111.1	247	104.0	223	93.9
Inner Western Sydney	105	64.5	93	56.6	96	58.5
Central Western Sydney	223	75.4	193	64.7	197	66.0
Outer Western Sydney	299	94.2	270	84.6	284	89.0
Blacktown	285	107.6	230	85.2	269	99.6
Lower Northern Sydney	176	60.1	145	49.1	120	40.6
Central Northern Sydney	141	34.7	134	32.4	134	32.4
Northern Beaches	149	64.4	102	43.8	104	44.7
Gosford – Wyong	238	80.3	246	81.9	267	88.9
Hunter	485	82.3	685	115.1	519	87.2
Illawarra	293	73.3	277	68.4	273	67.4
Richmond – Tweed	174	80.4	312	142.4	223	101.8
Mid-North Coast	307	109.4	388	136.4	298	104.7
Northern	233	129.1	198	109.7	227	125.8
North Western	149	124.5	181	151.3	208	173.9
Central West	183	103.0	195	109.2	173	96.9
South Eastern	165	85.5	183	93.4	136	69.4
Murrumbidgee	186	122.0	180	117.6	144	94.1
Murray	128	112.9	127	111.3	131	114.8
Far West	33	135.2	38	157.2	32	132.4
New South Wales*	5,217	79.3	5,763	86.8	5,296	79.8

\* The total for New South Wales includes 12 recorded incidents in 2001, 20 recorded incidents in 2002 and 22 recorded incidents in 2003 where the offence occurred in a custodial institution.

**TABLE 4.5** RECORDED CRIMINAL INCIDENTS, 2001 TO 2003: STATISTICAL DIVISION**ROBBERY WITHOUT A WEAPON**

<i>Statistical Division where offence occurred</i>	<i>Recorded criminal incidents</i>					
	<i>2001</i>		<i>2002</i>		<i>2003</i>	
	<i>Number</i>	<i>Rate per 100,000 population</i>	<i>Number</i>	<i>Rate per 100,000 population</i>	<i>Number</i>	<i>Rate per 100,000 population</i>
Sydney	7,072	171.3	5,800	139.1	5,547	133.0
Inner Sydney	2,325	790.6	1,758	587.2	1,707	570.2
Eastern Suburbs	380	157.4	342	141.4	349	144.3
St George – Sutherland	436	100.7	391	89.7	385	88.3
Canterbury – Bankstown	542	175.1	421	135.7	458	147.7
Fairfield – Liverpool	678	194.8	451	128.0	434	123.2
Outer South Western Sydney	381	162.8	273	115.0	202	85.1
Inner Western Sydney	407	249.9	410	249.6	371	225.9
Central Western Sydney	606	204.9	589	197.4	613	205.4
Outer Western Sydney	262	82.6	257	80.5	208	65.2
Blacktown	363	137.1	325	120.3	323	119.6
Lower Northern Sydney	290	99.0	244	82.6	200	67.7
Central Northern Sydney	177	43.5	150	36.3	103	24.9
Northern Beaches	117	50.6	89	38.3	92	39.5
Gosford – Wyong	108	36.5	100	33.3	102	34.0
Hunter	295	50.1	288	48.4	291	48.9
Illawarra	261	65.3	225	55.6	145	35.8
Richmond – Tweed	71	32.8	60	27.4	54	24.7
Mid-North Coast	97	34.6	92	32.3	70	24.6
Northern	49	27.2	55	30.5	71	39.3
North Western	88	73.6	54	45.1	63	52.7
Central West	49	27.6	35	19.6	46	25.8
South Eastern	31	16.1	35	17.9	28	14.3
Murrumbidgee	39	25.6	32	20.9	50	32.7
Murray	19	16.8	13	11.4	18	15.8
Far West	12	49.2	9	37.2	7	29.0
New South Wales*	8,085	123.0	6,700	100.9	6,390	96.2

\* The total for New South Wales includes 2 recorded incidents in 2001 and 2 recorded incidents in 2002 where the offence occurred in a custodial institution.



**TABLE 4.6** RECORDED CRIMINAL INCIDENTS, 2001 TO 2003: STATISTICAL DIVISION**ROBBERY WITH A FIREARM**

<i>Statistical Division where offence occurred</i>	<i>Recorded criminal incidents</i>					
	<i>2001</i>		<i>2002</i>		<i>2003</i>	
	<i>Number</i>	<i>Rate per 100,000 population</i>	<i>Number</i>	<i>Rate per 100,000 population</i>	<i>Number</i>	<i>Rate per 100,000 population</i>
Sydney	807	19.5	662	15.9	657	15.8
Inner Sydney	129	43.9	103	34.4	142	47.4
Eastern Suburbs	37	15.3	35	14.5	28	11.6
St George – Sutherland	85	19.6	48	11.0	48	11.0
Canterbury – Bankstown	127	41.0	82	26.4	80	25.8
Fairfield – Liverpool	114	32.8	76	21.6	68	19.3
Outer South Western Sydney	27	11.5	26	10.9	19	8.0
Inner Western Sydney	56	34.4	41	25.0	59	35.9
Central Western Sydney	108	36.5	102	34.2	83	27.8
Outer Western Sydney	22	6.9	23	7.2	13	4.1
Blacktown	31	11.7	44	16.3	25	9.3
Lower Northern Sydney	31	10.6	32	10.8	39	13.2
Central Northern Sydney	25	6.1	17	4.1	23	5.6
Northern Beaches	5	2.2	20	8.6	19	8.2
Gosford – Wyong	10	3.4	13	4.3	11	3.7
Hunter	40	6.8	28	4.7	23	3.9
Illawarra	21	5.3	13	3.2	9	2.2
Richmond – Tweed	6	2.8	1	0.5	0	0.0
Mid-North Coast	5	1.8	1	0.4	3	1.1
Northern	0	0.0	1	0.6	3	1.7
North Western	1	0.8	0	0.0	3	2.5
Central West	0	0.0	3	1.7	1	0.6
South Eastern	6	3.1	2	1.0	1	0.5
Murrumbidgee	0	0.0	4	2.6	1	0.7
Murray	0	0.0	1	0.9	0	0.0
Far West	0	0.0	0	0.0	0	0.0
New South Wales	886	13.5	716	10.8	701	10.6

**TABLE 4.7** RECORDED CRIMINAL INCIDENTS, 2001 TO 2003: STATISTICAL DIVISION**ROBBERY WITH A WEAPON NOT A FIREARM**

<i>Statistical Division where offence occurred</i>	<i>Recorded criminal incidents</i>					
	<i>2001</i>		<i>2002</i>		<i>2003</i>	
	<i>Number</i>	<i>Rate per 100,000 population</i>	<i>Number</i>	<i>Rate per 100,000 population</i>	<i>Number</i>	<i>Rate per 100,000 population</i>
Sydney	3,917	94.9	2,457	58.9	1,984	47.6
Inner Sydney	1,149	390.7	599	200.1	503	168.0
Eastern Suburbs	203	84.1	142	58.7	100	41.4
St George – Sutherland	279	64.4	213	48.9	131	30.0
Canterbury – Bankstown	405	130.9	279	90.0	233	75.1
Fairfield – Liverpool	488	140.2	233	66.1	221	62.7
Outer South Western Sydney	144	61.5	111	46.7	48	20.2
Inner Western Sydney	234	143.7	196	119.3	137	83.4
Central Western Sydney	395	133.5	258	86.5	228	76.4
Outer Western Sydney	81	25.5	72	22.6	62	19.4
Blacktown	166	62.7	129	47.8	100	37.0
Lower Northern Sydney	141	48.1	94	31.8	64	21.7
Central Northern Sydney	102	25.1	65	15.7	73	17.7
Northern Beaches	58	25.1	24	10.3	35	15.0
Gosford – Wyong	72	24.3	42	14.0	49	16.3
Hunter	166	28.2	141	23.7	98	16.5
Illawarra	84	21.0	66	16.3	67	16.5
Richmond – Tweed	16	7.4	9	4.1	14	6.4
Mid-North Coast	28	10.0	24	8.4	23	8.1
Northern	19	10.5	13	7.2	6	3.3
North Western	25	20.9	6	5.0	9	7.5
Central West	14	7.9	15	8.4	10	5.6
South Eastern	32	16.6	8	4.1	10	5.1
Murrumbidgee	14	9.2	15	9.8	3	2.0
Murray	10	8.8	9	7.9	5	4.4
Far West	1	4.1	1	4.1	1	4.1
New South Wales	4,326	65.8	2,764	41.6	2,230	33.6

**TABLE 4.8** RECORDED CRIMINAL INCIDENTS, 2001 TO 2003: STATISTICAL DIVISION**BREAK AND ENTER – DWELLING**

<i>Statistical Division where offence occurred</i>	<i>Recorded criminal incidents</i>					
	<i>2001</i>		<i>2002</i>		<i>2003</i>	
	<i>Number</i>	<i>Rate per 100,000 population</i>	<i>Number</i>	<i>Rate per 100,000 population</i>	<i>Number</i>	<i>Rate per 100,000 population</i>
Sydney	53,794	1,303.1	44,342	1,063.1	38,952	933.9
Inner Sydney	6,414	2,181.0	5,357	1,789.3	4,860	1,623.3
Eastern Suburbs	4,349	1,801.1	4,015	1,660.6	3,558	1,471.6
St George – Sutherland	5,309	1,225.9	3,548	813.8	3,964	909.2
Canterbury – Bankstown	4,052	1,309.3	2,947	950.1	2,529	815.4
Fairfield – Liverpool	4,821	1,385.0	3,949	1,120.8	3,054	866.7
Outer South Western Sydney	2,778	1,187.0	2,307	971.5	2,386	1,004.7
Inner Western Sydney	2,629	1,614.3	2,161	1,315.7	1,932	1,176.3
Central Western Sydney	4,414	1,492.2	3,509	1,176.0	3,105	1,040.6
Outer Western Sydney	3,020	951.9	2,460	770.8	2,333	731.0
Blacktown	3,247	1,226.2	2,844	1,052.9	2,315	857.1
Lower Northern Sydney	3,709	1,266.0	3,642	1,233.3	2,810	951.6
Central Northern Sydney	3,079	756.7	2,815	680.6	2,250	544.0
Northern Beaches	1,929	834.2	1,668	717.0	1,462	628.5
Gosford – Wyong	4,044	1,365.0	3,120	1,038.6	2,394	796.9
Hunter	6,538	1,110.1	7,875	1,323.5	6,073	1,020.6
Illawarra	6,129	1,532.3	5,006	1,236.0	4,461	1,101.5
Richmond – Tweed	1,668	771.0	1,815	828.6	1,643	750.1
Mid-North Coast	2,408	858.2	2,201	773.6	2,121	745.5
Northern	1,691	937.2	1,861	1,031.3	1,849	1,024.7
North Western	2,156	1,802.1	1,862	1,556.5	1,989	1,662.7
Central West	1,636	920.9	1,466	820.9	1,485	831.5
South Eastern	1,461	756.8	1,282	654.4	1,316	671.8
Murrumbidgee	1,293	848.1	1,081	706.3	1,130	738.3
Murray	1,026	904.8	910	797.8	752	659.3
Far West	321	1,315.4	341	1,410.4	288	1,191.2
New South Wales	80,121	1,218.5	70,042	1,054.8	62,059	934.6

**TABLE 4.9** RECORDED CRIMINAL INCIDENTS, 2001 TO 2003: STATISTICAL DIVISION**BREAK AND ENTER – NON-DWELLING**

<i>Statistical Division where offence occurred</i>	<i>Recorded criminal incidents</i>					
	<i>2001</i>		<i>2002</i>		<i>2003</i>	
	<i>Number</i>	<i>Rate per 100,000 population</i>	<i>Number</i>	<i>Rate per 100,000 population</i>	<i>Number</i>	<i>Rate per 100,000 population</i>
Sydney	29,592	716.8	22,629	542.5	19,009	455.8
Inner Sydney	5,310	1,805.6	4,121	1,376.5	3,317	1,107.9
Eastern Suburbs	1,291	534.7	1,185	490.1	845	349.5
St George – Sutherland	1,911	441.3	1,692	388.1	1,317	302.1
Canterbury – Bankstown	1,723	556.7	1,443	465.2	1,112	358.5
Fairfield – Liverpool	2,734	785.5	1,677	475.9	1,538	436.5
Outer South Western Sydney	1,928	823.8	1,066	448.9	1,007	424.0
Inner Western Sydney	854	524.4	764	465.2	526	320.3
Central Western Sydney	2,587	874.6	2,011	674.0	1,737	582.2
Outer Western Sydney	2,144	675.8	1,682	527.0	1,526	478.2
Blacktown	1,564	590.6	1,382	511.6	1,240	459.1
Lower Northern Sydney	2,488	849.2	1,727	584.8	1,497	506.9
Central Northern Sydney	1,736	426.6	1,304	315.3	1,034	250.0
Northern Beaches	1,015	439.0	886	380.9	758	325.9
Gosford – Wyong	2,307	778.7	1,689	562.3	1,555	517.6
Hunter	5,975	1,014.5	4,695	789.0	4,409	741.0
Illawarra	4,119	1,029.8	3,090	762.9	2,448	604.4
Richmond – Tweed	1,639	757.6	1,723	786.6	1,503	686.2
Mid-North Coast	2,334	831.8	2,042	717.7	1,827	642.1
Northern	1,587	879.6	1,635	906.1	1,338	741.5
North Western	1,464	1,223.7	1,323	1,106.0	1,604	1,340.9
Central West	1,611	906.8	1,048	586.8	1,011	566.1
South Eastern	1,380	714.8	1,078	550.3	1,096	559.5
Murrumbidgee	1,394	914.3	1,039	678.9	924	603.7
Murray	984	867.7	969	849.5	806	706.6
Far West	241	987.6	245	1,013.3	240	992.6
New South Wales*	52,328	795.8	41,523	625.3	36,219	545.4

\* The total for New South Wales includes 8 recorded incidents in 2001, 7 recorded incidents in 2002 and 4 recorded incidents in 2003 where the offence occurred in a custodial institution.

**TABLE 4.10 RECORDED CRIMINAL INCIDENTS, 2001 TO 2003: STATISTICAL DIVISION****RECEIVING, GOODS IN CUSTODY**

<i>Statistical Division where offence occurred</i>	<i>Recorded criminal incidents</i>					
	<i>2001</i>		<i>2002</i>		<i>2003</i>	
	<i>Number</i>	<i>Rate per 100,000 population</i>	<i>Number</i>	<i>Rate per 100,000 population</i>	<i>Number</i>	<i>Rate per 100,000 population</i>
Sydney	8,138	197.1	7,175	172.0	5,957	142.8
Inner Sydney	2,230	758.3	1,900	634.6	1,673	558.8
Eastern Suburbs	374	154.9	313	129.5	251	103.8
St George – Sutherland	619	142.9	482	110.6	368	84.4
Canterbury – Bankstown	581	187.7	445	143.5	282	90.9
Fairfield – Liverpool	827	237.6	703	199.5	517	146.7
Outer South Western Sydney	356	152.1	347	146.1	257	108.2
Inner Western Sydney	270	165.8	223	135.8	173	105.3
Central Western Sydney	676	228.5	643	215.5	552	185.0
Outer Western Sydney	573	180.6	526	164.8	360	112.8
Blacktown	552	208.5	610	225.8	562	208.1
Lower Northern Sydney	284	96.9	257	87.0	245	83.0
Central Northern Sydney	192	47.2	204	49.3	165	39.9
Northern Beaches	181	78.3	180	77.4	130	55.9
Gosford – Wyong	423	142.8	342	113.8	422	140.5
Hunter	824	139.9	854	143.5	711	119.5
Illawarra	646	161.5	609	150.4	448	110.6
Richmond – Tweed	414	191.4	393	179.4	301	137.4
Mid-North Coast	321	114.4	343	120.6	299	105.1
Northern	169	93.7	215	119.1	202	111.9
North Western	255	213.1	256	214.0	218	182.2
Central West	290	163.2	251	140.5	240	134.4
South Eastern	294	152.3	207	105.7	241	123.0
Murrumbidgee	250	164.0	169	110.4	166	108.5
Murray	174	153.4	177	155.2	157	137.6
Far West	23	94.3	55	227.5	51	210.9
New South Wales*	11,816	179.7	10,721	161.5	9,006	135.6

\* The total for New South Wales includes 18 recorded incidents in 2001, 17 recorded incidents in 2002 and 15 recorded incidents in 2003 where the offence occurred in a custodial institution.

**TABLE 4.11 RECORDED CRIMINAL INCIDENTS, 2001 TO 2003: STATISTICAL DIVISION****MOTOR VEHICLE THEFT**

<i>Statistical Division where offence occurred</i>	<i>Recorded criminal incidents</i>					
	<i>2001</i>		<i>2002</i>		<i>2003</i>	
	<i>Number</i>	<i>Rate per 100,000 population</i>	<i>Number</i>	<i>Rate per 100,000 population</i>	<i>Number</i>	<i>Rate per 100,000 population</i>
Sydney	39,206	949.7	31,136	746.5	24,499	587.4
Inner Sydney	5,171	1,758.3	4,106	1,371.4	3,303	1,103.2
Eastern Suburbs	2,449	1,014.2	2,146	887.6	1,492	617.1
St George – Sutherland	3,380	780.5	2,632	603.7	1,881	431.5
Canterbury – Bankstown	4,003	1,293.4	3,217	1,037.2	2,714	875.0
Fairfield – Liverpool	3,938	1,131.3	2,938	833.8	2,280	647.1
Outer South Western Sydney	2,678	1,144.3	2,159	909.1	1,725	726.4
Inner Western Sydney	1,726	1,059.8	1,337	814.0	1,223	744.6
Central Western Sydney	4,001	1,352.6	3,220	1,079.2	2,461	824.8
Outer Western Sydney	2,605	821.1	2,257	707.2	1,732	542.7
Blacktown	2,750	1,038.5	2,339	865.9	1,802	667.1
Lower Northern Sydney	1,678	572.7	1,406	476.1	1,046	354.2
Central Northern Sydney	1,371	336.9	1,049	253.6	825	199.5
Northern Beaches	1,107	478.7	803	345.2	567	243.7
Gosford – Wyong	2,349	792.9	1,527	508.3	1,448	482.0
Hunter	4,645	788.7	3,537	594.4	3,161	531.2
Illawarra	4,937	1,234.3	2,854	704.7	2,523	623.0
Richmond – Tweed	821	379.5	767	350.2	815	372.1
Mid-North Coast	1,055	376.0	824	289.6	968	340.2
Northern	410	227.2	407	225.5	365	202.3
North Western	763	637.8	696	581.8	564	471.5
Central West	481	270.7	521	291.7	445	249.2
South Eastern	526	272.5	481	245.5	602	307.3
Murrumbidgee	534	350.2	389	254.2	431	281.6
Murray	417	367.7	371	325.3	360	315.6
Far West	126	516.3	87	359.8	60	248.2
New South Wales*	53,925	820.1	42,075	633.6	34,794	524.0

\* The total for New South Wales includes 4 recorded incidents in 2001, 5 recorded incidents in 2002 and 1 recorded incident in 2003 where the offence occurred in a custodial institution.

**TABLE 4.12 RECORDED CRIMINAL INCIDENTS, 2001 TO 2003: STATISTICAL DIVISION****STEAL FROM MOTOR VEHICLE**

<i>Statistical Division where offence occurred</i>	<i>Recorded criminal incidents</i>					
	<i>2001</i>		<i>2002</i>		<i>2003</i>	
	<i>Number</i>	<i>Rate per 100,000 population</i>	<i>Number</i>	<i>Rate per 100,000 population</i>	<i>Number</i>	<i>Rate per 100,000 population</i>
Sydney	64,502	1,562.4	52,778	1,265.4	43,521	1,043.4
Inner Sydney	15,476	5,262.4	12,539	4,188.2	11,248	3,756.9
Eastern Suburbs	4,509	1,867.3	3,417	1,413.3	2,769	1,145.2
St George – Sutherland	4,903	1,132.2	4,194	962.0	2,908	667.0
Canterbury – Bankstown	3,661	1,182.9	3,106	1,001.4	2,607	840.5
Fairfield – Liverpool	4,192	1,204.3	3,482	988.2	2,897	822.2
Outer South Western Sydney	3,178	1,357.9	2,396	1,008.9	2,029	854.4
Inner Western Sydney	2,446	1,501.9	1,884	1,147.1	1,679	1,022.3
Central Western Sydney	4,448	1,503.7	4,005	1,342.3	3,128	1,048.4
Outer Western Sydney	4,139	1,304.7	3,667	1,149.0	3,247	1,017.4
Blacktown	3,147	1,188.4	2,695	997.7	2,306	853.7
Lower Northern Sydney	4,833	1,649.6	3,456	1,170.3	2,621	887.6
Central Northern Sydney	3,207	788.2	2,839	686.4	2,091	505.6
Northern Beaches	2,812	1,216.1	2,408	1,035.2	1,587	682.2
Gosford – Wyong	3,551	1,198.6	2,690	895.5	2,404	800.3
Hunter	6,844	1,162.0	6,882	1,156.6	6,026	1,012.7
Illawarra	5,929	1,482.3	4,119	1,017.0	3,919	967.6
Richmond – Tweed	1,973	912.0	2,353	1,074.3	1,828	834.6
Mid-North Coast	2,155	768.0	2,167	761.7	2,136	750.8
Northern	1,588	880.1	1,602	887.8	1,434	794.7
North Western	2,104	1,758.7	1,673	1,398.5	1,486	1,242.2
Central West	1,571	884.3	1,479	828.2	1,340	750.3
South Eastern	1,370	709.6	1,139	581.4	1,282	654.4
Murrumbidgee	1,320	865.8	1,104	721.4	1,223	799.1
Murray	1,044	920.7	1,018	892.5	923	809.2
Far West	282	1,155.6	259	1,071.2	167	690.7
New South Wales*	90,686	1,379.2	76,578	1,153.2	65,285	983.2

\* The total for New South Wales includes 4 recorded incidents in 2001 and 5 recorded incidents in 2002 where the offence occurred in a custodial institution.

**TABLE 4.13 RECORDED CRIMINAL INCIDENTS, 2001 TO 2003: STATISTICAL DIVISION****STEAL FROM RETAIL STORE**

<i>Statistical Division where offence occurred</i>	<i>Recorded criminal incidents</i>					
	<i>2001</i>		<i>2002</i>		<i>2003</i>	
	<i>Number</i>	<i>Rate per 100,000 population</i>	<i>Number</i>	<i>Rate per 100,000 population</i>	<i>Number</i>	<i>Rate per 100,000 population</i>
Sydney	13,332	322.9	14,212	340.7	14,010	335.9
Inner Sydney	2,375	807.6	2,343	782.6	2,202	735.5
Eastern Suburbs	866	358.6	822	340.0	824	340.8
St George – Sutherland	1,141	263.5	1,083	248.4	1,043	239.2
Canterbury – Bankstown	846	273.4	911	293.7	846	272.8
Fairfield – Liverpool	945	271.5	1,091	309.6	1,220	346.2
Outer South Western Sydney	648	276.9	833	350.8	887	373.5
Inner Western Sydney	447	274.5	473	288.0	559	340.4
Central Western Sydney	1,339	452.7	1,347	451.4	1,247	417.9
Outer Western Sydney	957	301.7	1,018	319.0	1,140	357.2
Blacktown	976	368.6	1,230	455.4	1,276	472.4
Lower Northern Sydney	796	271.7	757	256.3	767	259.7
Central Northern Sydney	529	130.0	631	152.6	619	149.7
Northern Beaches	413	178.6	514	221.0	452	194.3
Gosford – Wyong	1,054	355.8	1,159	385.8	928	308.9
Hunter	1,849	313.9	1,989	334.3	1,817	305.4
Illawarra	1,254	313.5	1,533	378.5	1,366	337.3
Richmond – Tweed	759	350.8	826	377.1	910	415.5
Mid-North Coast	876	312.2	1,006	353.6	1,006	353.6
Northern	512	283.8	660	365.8	675	374.1
North Western	406	339.4	477	398.7	551	460.6
Central West	521	293.3	572	320.3	598	334.9
South Eastern	479	248.1	540	275.7	518	264.4
Murrumbidgee	449	294.5	405	264.6	478	312.3
Murray	310	273.4	258	226.2	277	242.8
Far West	81	331.9	103	426.0	72	297.8
New South Wales	20,828	316.8	22,581	340.1	22,278	335.5



**TABLE 4.14** RECORDED CRIMINAL INCIDENTS, 2001 TO 2003: STATISTICAL DIVISION**STEAL FROM DWELLING**

<i>Statistical Division where offence occurred</i>	<i>Recorded criminal incidents</i>					
	<i>2001</i>		<i>2002</i>		<i>2003</i>	
	<i>Number</i>	<i>Rate per 100,000 population</i>	<i>Number</i>	<i>Rate per 100,000 population</i>	<i>Number</i>	<i>Rate per 100,000 population</i>
Sydney	16,623	402.7	15,298	366.8	14,069	337.3
Inner Sydney	2,358	801.8	2,030	678.0	1,947	650.3
Eastern Suburbs	1,495	619.1	1,360	562.5	1,217	503.3
St George – Sutherland	1,257	290.3	1,215	278.7	1,165	267.2
Canterbury – Bankstown	784	253.3	646	208.3	575	185.4
Fairfield – Liverpool	982	282.1	968	274.7	834	236.7
Outer South Western Sydney	1,084	463.2	1,005	423.2	1,086	457.3
Inner Western Sydney	554	340.2	478	291.0	420	255.7
Central Western Sydney	956	323.2	826	276.8	797	267.1
Outer Western Sydney	1,263	398.1	1,179	369.4	1,146	359.1
Blacktown	1,205	455.1	1,163	430.6	1,113	412.1
Lower Northern Sydney	1,092	372.7	1,141	386.4	829	280.7
Central Northern Sydney	1,181	290.2	1,045	252.7	887	214.5
Northern Beaches	960	415.2	790	339.6	728	313.0
Gosford – Wyong	1,452	490.1	1,452	483.4	1,325	441.1
Hunter	3,548	602.4	3,639	611.6	3,427	575.9
Illawarra	2,200	550.0	2,372	585.7	2,410	595.1
Richmond – Tweed	1,448	669.3	1,415	646.0	1,287	587.6
Mid-North Coast	1,539	548.5	1,632	573.6	1,791	629.5
Northern	1,049	581.4	1,147	635.6	1,119	620.1
North Western	904	755.6	776	648.7	852	712.2
Central West	1,219	686.1	1,165	652.3	1,158	648.4
South Eastern	1,075	556.8	1,049	535.5	1,077	549.8
Murrumbidgee	1,032	676.9	1,070	699.1	1,059	692.0
Murray	735	648.2	671	588.3	658	576.9
Far West	251	1,028.6	285	1,178.8	254	1,050.5
New South Wales	31,623	480.9	30,519	459.6	29,161	439.1

**TABLE 4.15 RECORDED CRIMINAL INCIDENTS, 2001 TO 2003: STATISTICAL DIVISION****STEAL FROM PERSON**

<i>Statistical Division where offence occurred</i>	<i>Recorded criminal incidents</i>					
	<i>2001</i>		<i>2002</i>		<i>2003</i>	
	<i>Number</i>	<i>Rate per 100,000 population</i>	<i>Number</i>	<i>Rate per 100,000 population</i>	<i>Number</i>	<i>Rate per 100,000 population</i>
Sydney	14,431	349.6	17,289	414.5	16,011	383.9
Inner Sydney	6,650	2,261.2	7,982	2,666.1	7,356	2,457.0
Eastern Suburbs	898	371.9	1,112	459.9	1,023	423.1
St George – Sutherland	781	180.3	861	197.5	839	192.4
Canterbury – Bankstown	733	236.8	796	256.6	726	234.1
Fairfield – Liverpool	825	237.0	976	277.0	776	220.2
Outer South Western Sydney	342	146.1	356	149.9	312	131.4
Inner Western Sydney	644	395.4	820	499.3	734	446.9
Central Western Sydney	957	323.5	1,145	383.7	1,070	358.6
Outer Western Sydney	412	129.9	497	155.7	467	146.3
Blacktown	532	200.9	629	232.9	638	236.2
Lower Northern Sydney	692	236.2	814	275.6	804	272.3
Central Northern Sydney	294	72.3	383	92.6	363	87.8
Northern Beaches	415	179.5	500	214.9	489	210.2
Gosford – Wyong	256	86.4	418	139.1	414	137.8
Hunter	536	91.0	784	131.8	737	123.9
Illawarra	663	165.8	673	166.2	589	145.4
Richmond – Tweed	202	93.4	308	140.6	312	142.4
Mid-North Coast	191	68.1	216	75.9	229	80.5
Northern	119	66.0	120	66.5	146	80.9
North Western	139	116.2	147	122.9	152	127.1
Central West	90	50.7	134	75.0	157	87.9
South Eastern	115	59.6	132	67.4	108	55.1
Murrumbidgee	85	55.8	92	60.1	103	67.3
Murray	55	48.5	81	71.0	73	64.0
Far West	27	110.6	24	99.3	33	136.5
New South Wales*	16,656	253.3	20,003	301.2	18,651	280.9

\* The total for New South Wales includes 3 recorded incidents in 2001, 3 recorded incidents in 2002 and 1 recorded incident in 2003 where the offence occurred in a custodial institution.

**TABLE 4.16 RECORDED CRIMINAL INCIDENTS, 2001 TO 2003: STATISTICAL DIVISION****FRAUD**

<i>Statistical Division where offence occurred</i>	<i>Recorded criminal incidents</i>					
	<i>2001</i>		<i>2002</i>		<i>2003</i>	
	<i>Number</i>	<i>Rate per 100,000 population</i>	<i>Number</i>	<i>Rate per 100,000 population</i>	<i>Number</i>	<i>Rate per 100,000 population</i>
Sydney	24,920	603.6	26,246	629.3	22,035	528.3
Inner Sydney	4,658	1,583.9	5,355	1,788.6	4,839	1,616.3
Eastern Suburbs	1,272	526.8	1,512	625.4	1,334	551.7
St George – Sutherland	1,931	445.9	2,003	459.4	1,534	351.9
Canterbury – Bankstown	2,358	761.9	2,087	672.9	1,502	484.2
Fairfield – Liverpool	2,289	657.6	2,450	695.3	1,961	556.5
Outer South Western Sydney	1,022	436.7	801	337.3	758	319.2
Inner Western Sydney	1,128	692.6	1,045	636.3	729	443.9
Central Western Sydney	2,426	820.2	2,521	844.9	2,207	739.7
Outer Western Sydney	1,478	465.9	1,446	453.1	1,222	382.9
Blacktown	1,913	722.4	1,705	631.2	1,588	587.9
Lower Northern Sydney	1,670	570.0	1,935	655.3	1,466	496.4
Central Northern Sydney	878	215.8	1,124	271.8	959	231.9
Northern Beaches	898	388.4	824	354.2	682	293.2
Gosford – Wyong	999	337.2	1,438	478.7	1,254	417.4
Hunter	1,926	327.0	2,311	388.4	2,030	341.2
Illawarra	1,303	325.8	1,303	321.7	1,258	310.6
Richmond – Tweed	749	346.2	933	426.0	702	320.5
Mid-North Coast	925	329.7	1,100	386.6	898	315.6
Northern	427	236.7	530	293.7	485	268.8
North Western	395	330.2	428	357.8	337	281.7
Central West	614	345.6	538	301.3	517	289.5
South Eastern	720	372.9	684	349.2	645	329.3
Murrumbidgee	940	616.5	593	387.5	525	343.0
Murray	351	309.5	381	334.0	295	258.6
Far West	50	204.9	65	268.8	54	223.3
New South Wales*	33,328	506.9	35,118	528.9	29,786	448.6

\* The total for New South Wales includes 8 recorded incidents in 2001, 6 recorded incidents in 2002 and 5 recorded incidents in 2003 where the offence occurred in a custodial institution.

**TABLE 4.17 RECORDED CRIMINAL INCIDENTS, 2001 TO 2003: STATISTICAL DIVISION****MALICIOUS DAMAGE TO PROPERTY**

<i>Statistical Division where offence occurred</i>	<i>Recorded criminal incidents</i>					
	<i>2001</i>		<i>2002</i>		<i>2003</i>	
	<i>Number</i>	<i>Rate per 100,000 population</i>	<i>Number</i>	<i>Rate per 100,000 population</i>	<i>Number</i>	<i>Rate per 100,000 population</i>
Sydney	54,631	1,323.3	51,699	1,239.5	50,896	1,220.3
Inner Sydney	6,306	2,144.3	6,220	2,077.5	5,970	1,994.0
Eastern Suburbs	3,203	1,326.5	3,229	1,335.5	2,767	1,144.4
St George – Sutherland	4,911	1,134.0	4,810	1,103.3	4,653	1,067.3
Canterbury – Bankstown	3,299	1,066.0	3,084	994.3	3,011	970.8
Fairfield – Liverpool	4,163	1,196.0	3,670	1,041.6	3,806	1,080.2
Outer South Western Sydney	4,845	2,070.2	4,035	1,699.1	3,978	1,675.1
Inner Western Sydney	1,405	862.7	1,494	909.6	1,379	839.6
Central Western Sydney	3,489	1,179.5	3,475	1,164.6	3,353	1,123.8
Outer Western Sydney	4,963	1,564.4	4,418	1,384.3	4,707	1,474.9
Blacktown	4,297	1,622.7	4,290	1,588.2	4,273	1,582.0
Lower Northern Sydney	2,813	960.1	2,614	885.2	2,561	867.2
Central Northern Sydney	3,363	826.5	2,923	706.7	2,889	698.5
Northern Beaches	2,837	1,226.9	2,214	951.8	2,219	953.9
Gosford – Wyong	4,737	1,598.9	5,223	1,738.7	5,330	1,774.3
Hunter	9,865	1,674.9	9,585	1,610.8	9,722	1,633.9
Illawarra	6,998	1,749.6	6,431	1,587.9	6,343	1,566.1
Richmond – Tweed	2,729	1,261.5	2,900	1,324.0	2,875	1,312.6
Mid-North Coast	4,168	1,485.4	4,526	1,590.8	4,650	1,634.4
Northern	3,352	1,857.8	3,547	1,965.7	3,765	2,086.5
North Western	3,155	2,637.2	3,174	2,653.3	3,275	2,737.7
Central West	3,306	1,860.9	3,197	1,790.2	3,381	1,893.2
South Eastern	3,193	1,653.9	2,959	1,510.5	3,241	1,654.4
Murrumbidgee	2,851	1,869.9	2,895	1,891.6	3,216	2,101.3
Murray	1,835	1,618.2	2,113	1,852.5	1,974	1,730.6
Far West	605	2,479.2	612	2,531.2	678	2,804.2
New South Wales*	96,781	1,471.9	93,758	1,411.9	94,134	1,417.6

\* The total for New South Wales includes 93 recorded incidents in 2001, 120 recorded incidents in 2002 and 118 recorded incidents in 2003 where the offence occurred in a custodial institution.

**TABLE 4.18** RECORDED CRIMINAL INCIDENTS, 2001 TO 2003: STATISTICAL DIVISION**POSSESSION AND/OR USE OF COCAINE**

<i>Statistical Division where offence occurred</i>	<i>Recorded criminal incidents</i>					
	<i>2001</i>		<i>2002</i>		<i>2003</i>	
	<i>Number</i>	<i>Rate per 100,000 population</i>	<i>Number</i>	<i>Rate per 100,000 population</i>	<i>Number</i>	<i>Rate per 100,000 population</i>
Sydney	440	10.7	190	4.6	102	2.4
Inner Sydney	209	71.1	96	32.1	46	15.4
Eastern Suburbs	11	4.6	11	4.5	16	6.6
St George – Sutherland	9	2.1	7	1.6	2	0.5
Canterbury – Bankstown	26	8.4	7	2.3	6	1.9
Fairfield – Liverpool	113	32.5	45	12.8	11	3.1
Outer South Western Sydney	6	2.6	0	0.0	0	0.0
Inner Western Sydney	7	4.3	3	1.8	2	1.2
Central Western Sydney	22	7.4	6	2.0	7	2.3
Outer Western Sydney	3	0.9	5	1.6	1	0.3
Blacktown	5	1.9	3	1.1	1	0.4
Lower Northern Sydney	6	2.0	2	0.7	4	1.4
Central Northern Sydney	8	2.0	0	0.0	2	0.5
Northern Beaches	9	3.9	2	0.9	3	1.3
Gosford – Wyong	6	2.0	3	1.0	1	0.3
Hunter	3	0.5	5	0.8	2	0.3
Illawarra	5	1.3	1	0.2	2	0.5
Richmond – Tweed	8	3.7	5	2.3	3	1.4
Mid-North Coast	4	1.4	2	0.7	1	0.4
Northern	2	1.1	0	0.0	0	0.0
North Western	0	0.0	2	1.7	0	0.0
Central West	0	0.0	0	0.0	0	0.0
South Eastern	2	1.0	2	1.0	1	0.5
Murrumbidgee	1	0.7	0	0.0	1	0.7
Murray	0	0.0	2	1.8	0	0.0
Far West	0	0.0	0	0.0	0	0.0
New South Wales*	469	7.1	211	3.2	116	1.7

\* The total for New South Wales includes 4 recorded incidents in 2001, 2 recorded incidents in 2002 and 4 recorded incidents in 2003 where the offence occurred in a custodial institution.

**TABLE 4.19** RECORDED CRIMINAL INCIDENTS, 2001 TO 2003: STATISTICAL DIVISION**POSSESSION AND/OR USE OF NARCOTICS**

<i>Statistical Division where offence occurred</i>	<i>Recorded criminal incidents</i>					
	<i>2001</i>		<i>2002</i>		<i>2003</i>	
	<i>Number</i>	<i>Rate per 100,000 population</i>	<i>Number</i>	<i>Rate per 100,000 population</i>	<i>Number</i>	<i>Rate per 100,000 population</i>
Sydney	813	19.7	772	18.5	729	17.5
Inner Sydney	243	82.6	185	61.8	191	63.8
Eastern Suburbs	10	4.1	7	2.9	11	4.5
St George – Sutherland	37	8.5	19	4.4	31	7.1
Canterbury – Bankstown	51	16.5	52	16.8	62	20.0
Fairfield – Liverpool	306	87.9	340	96.5	304	86.3
Outer South Western Sydney	6	2.6	8	3.4	8	3.4
Inner Western Sydney	17	10.4	20	12.2	12	7.3
Central Western Sydney	36	12.2	41	13.7	37	12.4
Outer Western Sydney	9	2.8	18	5.6	11	3.4
Blacktown	45	17.0	35	13.0	16	5.9
Lower Northern Sydney	4	1.4	9	3.0	9	3.0
Central Northern Sydney	8	2.0	3	0.7	8	1.9
Northern Beaches	11	4.8	10	4.3	8	3.4
Gosford – Wyong	30	10.1	25	8.3	21	7.0
Hunter	57	9.7	81	13.6	42	7.1
Illawarra	37	9.3	18	4.4	20	4.9
Richmond – Tweed	88	40.7	17	7.8	28	12.8
Mid-North Coast	32	11.4	16	5.6	19	6.7
Northern	3	1.7	1	0.6	3	1.7
North Western	6	5.0	4	3.3	7	5.9
Central West	14	7.9	4	2.2	5	2.8
South Eastern	19	9.8	4	2.0	8	4.1
Murrumbidgee	3	2.0	2	1.3	3	2.0
Murray	5	4.4	4	3.5	2	1.8
Far West	1	4.1	0	0.0	0	0.0
New South Wales*	1,102	16.8	948	14.3	890	13.4

\* The total for New South Wales includes 24 recorded incidents in 2001, 25 recorded incidents in 2002 and 24 recorded incidents in 2003 where the offence occurred in a custodial institution.

**TABLE 4.20** RECORDED CRIMINAL INCIDENTS, 2001 TO 2003: STATISTICAL DIVISION**POSSESSION AND/OR USE OF CANNABIS**

<i>Statistical Division where offence occurred</i>	<i>Recorded criminal incidents</i>					
	<i>2001</i>		<i>2002</i>		<i>2003</i>	
	<i>Number</i>	<i>Rate per 100,000 population</i>	<i>Number</i>	<i>Rate per 100,000 population</i>	<i>Number</i>	<i>Rate per 100,000 population</i>
Sydney	7,799	188.9	5,727	137.3	5,770	138.3
Inner Sydney	2,314	786.8	1,416	473.0	1,249	417.2
Eastern Suburbs	304	125.9	241	99.7	262	108.4
St George – Sutherland	518	119.6	382	87.6	371	85.1
Canterbury – Bankstown	301	97.3	272	87.7	294	94.8
Fairfield – Liverpool	438	125.8	323	91.7	370	105.0
Outer South Western Sydney	432	184.6	347	146.1	317	133.5
Inner Western Sydney	213	130.8	229	139.4	246	149.8
Central Western Sydney	582	196.8	451	151.2	536	179.6
Outer Western Sydney	566	178.4	396	124.1	444	139.1
Blacktown	681	257.2	522	193.3	481	178.1
Lower Northern Sydney	302	103.1	199	67.4	187	63.3
Central Northern Sydney	448	110.1	394	95.3	397	96.0
Northern Beaches	214	92.5	166	71.4	180	77.4
Gosford – Wyong	486	164.0	389	129.5	436	145.1
Hunter	1,084	184.0	1,062	178.5	941	158.1
Illawarra	653	163.3	515	127.2	464	114.6
Richmond – Tweed	1,136	525.1	881	402.2	903	412.3
Mid-North Coast	824	293.7	845	297.0	781	274.5
Northern	487	269.9	424	235.0	368	203.9
North Western	303	253.3	212	177.2	201	168.0
Central West	406	228.5	328	183.7	316	176.9
South Eastern	561	290.6	404	206.2	417	212.9
Murrumbidgee	507	332.5	346	226.1	324	211.7
Murray	309	272.5	271	237.6	295	258.6
Far West	63	258.2	57	235.8	44	182.0
New South Wales*	14,486	220.3	11,565	174.2	11,214	168.9

\* The total for New South Wales includes 354 recorded incidents in 2001, 493 recorded incidents in 2002 and 390 recorded incidents in 2003 where the offence occurred in a custodial institution.

**TABLE 4.21 RECORDED CRIMINAL INCIDENTS, 2001 TO 2003: STATISTICAL DIVISION****DEALING, TRAFFICKING IN COCAINE**

<i>Statistical Division where offence occurred</i>	<i>Recorded criminal incidents</i>					
	<i>2001</i>		<i>2002</i>		<i>2003</i>	
	<i>Number</i>	<i>Rate per 100,000 population</i>	<i>Number</i>	<i>Rate per 100,000 population</i>	<i>Number</i>	<i>Rate per 100,000 population</i>
Sydney	241	5.8	111	2.7	37	0.9
Inner Sydney	115	39.1	61	20.4	11	3.7
Eastern Suburbs	2	0.8	8	3.3	8	3.3
St George – Sutherland	5	1.2	1	0.2	1	0.2
Canterbury – Bankstown	16	5.2	21	6.8	0	0.0
Fairfield – Liverpool	73	21.0	12	3.4	9	2.6
Outer South Western Sydney	0	0.0	0	0.0	0	0.0
Inner Western Sydney	1	0.6	1	0.6	1	0.6
Central Western Sydney	16	5.4	2	0.7	0	0.0
Outer Western Sydney	0	0.0	0	0.0	0	0.0
Blacktown	0	0.0	0	0.0	0	0.0
Lower Northern Sydney	2	0.7	0	0.0	4	1.4
Central Northern Sydney	4	1.0	0	0.0	1	0.2
Northern Beaches	6	2.6	5	2.1	2	0.9
Gosford – Wyong	1	0.3	0	0.0	0	0.0
Hunter	1	0.2	2	0.3	1	0.2
Illawarra	8	2.0	1	0.2	0	0.0
Richmond – Tweed	4	1.8	0	0.0	1	0.5
Mid-North Coast	0	0.0	0	0.0	0	0.0
Northern	0	0.0	0	0.0	0	0.0
North Western	0	0.0	1	0.8	0	0.0
Central West	0	0.0	0	0.0	0	0.0
South Eastern	0	0.0	0	0.0	0	0.0
Murrumbidgee	0	0.0	0	0.0	0	0.0
Murray	1	0.9	0	0.0	0	0.0
Far West	0	0.0	0	0.0	0	0.0
New South Wales*	255	3.9	115	1.7	40	0.6

\* The total for New South Wales includes 1 recorded incident in 2003 where the offence occurred in a custodial institution.



**TABLE 4.22 RECORDED CRIMINAL INCIDENTS, 2001 TO 2003: STATISTICAL DIVISION****DEALING, TRAFFICKING IN NARCOTICS**

<i>Statistical Division where offence occurred</i>	<i>Recorded criminal incidents</i>					
	<i>2001</i>		<i>2002</i>		<i>2003</i>	
	<i>Number</i>	<i>Rate per 100,000 population</i>	<i>Number</i>	<i>Rate per 100,000 population</i>	<i>Number</i>	<i>Rate per 100,000 population</i>
Sydney	347	8.4	426	10.2	426	10.2
Inner Sydney	97	33.0	92	30.7	106	35.4
Eastern Suburbs	1	0.4	3	1.2	7	2.9
St George – Sutherland	7	1.6	23	5.3	22	5.0
Canterbury – Bankstown	22	7.1	30	9.7	33	10.6
Fairfield – Liverpool	183	52.6	222	63.0	224	63.6
Outer South Western Sydney	2	0.9	1	0.4	4	1.7
Inner Western Sydney	15	9.2	7	4.3	6	3.7
Central Western Sydney	5	1.7	6	2.0	10	3.4
Outer Western Sydney	2	0.6	5	1.6	3	0.9
Blacktown	1	0.4	24	8.9	0	0.0
Lower Northern Sydney	2	0.7	0	0.0	0	0.0
Central Northern Sydney	2	0.5	0	0.0	0	0.0
Northern Beaches	2	0.9	5	2.1	0	0.0
Gosford – Wyong	6	2.0	8	2.7	11	3.7
Hunter	15	2.5	31	5.2	27	4.5
Illawarra	21	5.3	35	8.6	14	3.5
Richmond – Tweed	64	29.6	2	0.9	16	7.3
Mid-North Coast	9	3.2	3	1.1	10	3.5
Northern	0	0.0	1	0.6	0	0.0
North Western	1	0.8	0	0.0	1	0.8
Central West	6	3.4	14	7.8	1	0.6
South Eastern	2	1.0	2	1.0	4	2.0
Murrumbidgee	2	1.3	0	0.0	0	0.0
Murray	0	0.0	10	8.8	1	0.9
Far West	0	0.0	0	0.0	0	0.0
New South Wales*	467	7.1	524	7.9	503	7.6

\* The total for New South Wales includes 3 recorded incidents in 2003 where the offence occurred in a custodial institution.

**TABLE 4.23** RECORDED CRIMINAL INCIDENTS, 2001 TO 2003: STATISTICAL DIVISION**DEALING, TRAFFICKING IN CANNABIS**

<i>Statistical Division where offence occurred</i>	<i>Recorded criminal incidents</i>					
	<i>2001</i>		<i>2002</i>		<i>2003</i>	
	<i>Number</i>	<i>Rate per 100,000 population</i>	<i>Number</i>	<i>Rate per 100,000 population</i>	<i>Number</i>	<i>Rate per 100,000 population</i>
Sydney	512	12.4	358	8.6	320	7.7
Inner Sydney	170	57.8	122	40.7	96	32.1
Eastern Suburbs	14	5.8	10	4.1	19	7.9
St George – Sutherland	20	4.6	22	5.0	29	6.7
Canterbury – Bankstown	40	12.9	26	8.4	18	5.8
Fairfield – Liverpool	65	18.7	22	6.2	18	5.1
Outer South Western Sydney	24	10.3	27	11.4	17	7.2
Inner Western Sydney	14	8.6	12	7.3	8	4.9
Central Western Sydney	30	10.1	26	8.7	15	5.0
Outer Western Sydney	42	13.2	16	5.0	19	6.0
Blacktown	30	11.3	25	9.3	26	9.6
Lower Northern Sydney	19	6.5	16	5.4	8	2.7
Central Northern Sydney	21	5.2	8	1.9	10	2.4
Northern Beaches	9	3.9	11	4.7	9	3.9
Gosford – Wyong	14	4.7	15	5.0	28	9.3
Hunter	65	11.0	54	9.1	38	6.4
Illawarra	39	9.8	29	7.2	26	6.4
Richmond – Tweed	62	28.7	38	17.3	43	19.6
Mid-North Coast	46	16.4	62	21.8	47	16.5
Northern	45	24.9	27	15.0	15	8.3
North Western	29	24.2	13	10.9	16	13.4
Central West	32	18.0	37	20.7	28	15.7
South Eastern	60	31.1	24	12.3	30	15.3
Murrumbidgee	78	51.2	56	36.6	42	27.4
Murray	46	40.6	19	16.7	20	17.5
Far West	5	20.5	9	37.2	3	12.4
New South Wales*	1,031	15.7	734	11.1	648	9.8

\* The total for New South Wales includes 12 recorded incidents in 2001, 8 recorded incidents in 2002 and 20 recorded incidents in 2003 where the offence occurred in a custodial institution.

**TABLE 4.24** RECORDED CRIMINAL INCIDENTS, 2001 TO 2003: STATISTICAL DIVISION**CULTIVATING CANNABIS**

<i>Statistical Division where offence occurred</i>	<i>Recorded criminal incidents</i>					
	<i>2001</i>		<i>2002</i>		<i>2003</i>	
	<i>Number</i>	<i>Rate per 100,000 population</i>	<i>Number</i>	<i>Rate per 100,000 population</i>	<i>Number</i>	<i>Rate per 100,000 population</i>
Sydney	340	8.2	362	8.7	447	10.7
Inner Sydney	16	5.4	17	5.7	28	9.4
Eastern Suburbs	8	3.3	14	5.8	11	4.5
St George – Sutherland	35	8.1	22	5.0	33	7.6
Canterbury – Bankstown	20	6.5	25	8.1	30	9.7
Fairfield – Liverpool	19	5.5	22	6.2	37	10.5
Outer South Western Sydney	47	20.1	40	16.8	36	15.2
Inner Western Sydney	3	1.8	4	2.4	5	3.0
Central Western Sydney	31	10.5	19	6.4	27	9.0
Outer Western Sydney	40	12.6	52	16.3	59	18.5
Blacktown	37	14.0	38	14.1	54	20.0
Lower Northern Sydney	8	2.7	6	2.0	8	2.7
Central Northern Sydney	17	4.2	26	6.3	16	3.9
Northern Beaches	16	6.9	7	3.0	13	5.6
Gosford – Wyong	43	14.5	70	23.3	90	30.0
Hunter	198	33.6	151	25.4	179	30.1
Illawarra	92	23.0	87	21.5	99	24.4
Richmond – Tweed	289	133.6	217	99.1	175	79.9
Mid-North Coast	231	82.3	254	89.3	232	81.5
Northern	83	46.0	122	67.6	124	68.7
North Western	38	31.8	38	31.8	34	28.4
Central West	68	38.3	58	32.5	56	31.4
South Eastern	121	62.7	88	44.9	95	48.5
Murrumbidgee	74	48.5	60	39.2	51	33.3
Murray	33	29.1	66	57.9	35	30.7
Far West	11	45.1	15	62.0	3	12.4
New South Wales*	1,583	24.1	1,521	22.9	1,531	23.1

\* The total for New South Wales includes 5 recorded incidents in 2001, 3 recorded incidents in 2002 and 1 recorded incident in 2003 where the offence occurred in a custodial institution.

**TABLE 4.25 RECORDED CRIMINAL INCIDENTS, 2001 TO 2003: STATISTICAL DIVISION****OFFENSIVE CONDUCT**

<i>Statistical Division where offence occurred</i>	<i>Recorded criminal incidents</i>					
	<i>2001</i>		<i>2002</i>		<i>2003</i>	
	<i>Number</i>	<i>Rate per 100,000 population</i>	<i>Number</i>	<i>Rate per 100,000 population</i>	<i>Number</i>	<i>Rate per 100,000 population</i>
Sydney	1,346	32.6	1,610	38.6	1,589	38.1
Inner Sydney	316	107.5	387	129.3	398	132.9
Eastern Suburbs	57	23.6	92	38.1	76	31.4
St George – Sutherland	97	22.4	132	30.3	138	31.7
Canterbury – Bankstown	30	9.7	29	9.3	33	10.6
Fairfield – Liverpool	56	16.1	88	25.0	78	22.1
Outer South Western Sydney	65	27.8	70	29.5	93	39.2
Inner Western Sydney	23	14.1	45	27.4	34	20.7
Central Western Sydney	84	28.4	86	28.8	93	31.2
Outer Western Sydney	135	42.6	174	54.5	145	45.4
Blacktown	140	52.9	202	74.8	131	48.5
Lower Northern Sydney	67	22.9	61	20.7	57	19.3
Central Northern Sydney	69	17.0	41	9.9	32	7.7
Northern Beaches	83	35.9	92	39.5	133	57.2
Gosford – Wyong	124	41.9	111	37.0	148	49.3
Hunter	420	71.3	472	79.3	435	73.1
Illawarra	143	35.8	196	48.4	190	46.9
Richmond – Tweed	390	180.3	468	213.7	464	211.8
Mid-North Coast	363	129.4	433	152.2	408	143.4
Northern	289	160.2	265	146.9	363	201.2
North Western	283	236.6	328	274.2	308	257.5
Central West	257	144.7	269	150.6	244	136.6
South Eastern	226	117.1	271	138.3	292	149.1
Murrumbidgee	361	236.8	347	226.7	340	222.2
Murray	136	119.9	184	161.3	290	254.2
Far West	59	241.8	59	244.0	79	326.7
New South Wales*	4,274	65.0	4,902	73.8	5,004	75.4

\* The total for New South Wales includes 1 recorded incident in 2001 and 2 recorded incidents in 2003 where the offence occurred in a custodial institution.

**TABLE 4.26 RECORDED CRIMINAL INCIDENTS, 2001 TO 2003: STATISTICAL DIVISION****OFFENSIVE LANGUAGE**

<i>Statistical Division where offence occurred</i>	<i>Recorded criminal incidents</i>					
	<i>2001</i>		<i>2002</i>		<i>2003</i>	
	<i>Number</i>	<i>Rate per 100,000 population</i>	<i>Number</i>	<i>Rate per 100,000 population</i>	<i>Number</i>	<i>Rate per 100,000 population</i>
Sydney	2,272	55.0	2,210	53.0	2,229	53.4
Inner Sydney	358	121.7	400	133.6	364	121.6
Eastern Suburbs	63	26.1	75	31.0	103	42.6
St George – Sutherland	154	35.6	159	36.5	152	34.9
Canterbury – Bankstown	80	25.8	73	23.5	80	25.8
Fairfield – Liverpool	218	62.6	188	53.4	155	44.0
Outer South Western Sydney	151	64.5	180	75.8	121	51.0
Inner Western Sydney	45	27.6	64	39.0	49	29.8
Central Western Sydney	177	59.8	140	46.9	168	56.3
Outer Western Sydney	312	98.3	244	76.5	294	92.1
Blacktown	272	102.7	238	88.1	248	91.8
Lower Northern Sydney	48	16.4	40	13.5	52	17.6
Central Northern Sydney	110	27.0	85	20.6	85	20.6
Northern Beaches	72	31.1	81	34.8	105	45.1
Gosford – Wyong	212	71.6	243	80.9	253	84.2
Hunter	436	74.0	431	72.4	353	59.3
Illawarra	213	53.3	244	60.2	253	62.5
Richmond – Tweed	326	150.7	330	150.7	286	130.6
Mid-North Coast	456	162.5	498	175.0	450	158.2
Northern	409	226.7	317	175.7	352	195.1
North Western	362	302.6	342	285.9	290	242.4
Central West	383	215.6	371	207.7	289	161.8
South Eastern	365	189.1	316	161.3	284	145.0
Murrumbidgee	427	280.1	334	218.2	299	195.4
Murray	241	212.5	272	238.5	311	272.7
Far West	113	463.1	115	475.6	61	252.3
New South Wales*	6,006	91.3	5,784	87.1	5,461	82.2

\* The total for New South Wales includes 3 recorded incidents in 2001, 4 recorded incidents in 2002 and 4 recorded incidents in 2003 where the offence occurred in a custodial institution.

**TABLE 4.27 RECORDED CRIMINAL INCIDENTS, 2001 TO 2003: STATISTICAL DIVISION****BREACH APPREHENDED VIOLENCE ORDER**

<i>Statistical Division where offence occurred</i>	<i>Recorded criminal incidents</i>					
	<i>2001</i>		<i>2002</i>		<i>2003</i>	
	<i>Number</i>	<i>Rate per 100,000 population</i>	<i>Number</i>	<i>Rate per 100,000 population</i>	<i>Number</i>	<i>Rate per 100,000 population</i>
Sydney	5,546	134.3	5,705	136.8	5,558	133.3
Inner Sydney	552	187.7	612	204.4	550	183.7
Eastern Suburbs	276	114.3	255	105.5	307	127.0
St George – Sutherland	574	132.5	585	134.2	455	104.4
Canterbury – Bankstown	361	116.6	376	121.2	286	92.2
Fairfield – Liverpool	444	127.6	490	139.1	531	150.7
Outer South Western Sydney	526	224.8	544	229.1	623	262.3
Inner Western Sydney	173	106.2	170	103.5	148	90.1
Central Western Sydney	432	146.0	395	132.4	417	139.8
Outer Western Sydney	523	164.9	505	158.2	504	157.9
Blacktown	510	192.6	571	211.4	536	198.4
Lower Northern Sydney	201	68.6	167	56.6	181	61.3
Central Northern Sydney	186	45.7	185	44.7	197	47.6
Northern Beaches	196	84.8	221	95.0	197	84.7
Gosford – Wyong	592	199.8	629	209.4	626	208.4
Hunter	1,419	240.9	1,559	262.0	1,638	275.3
Illawarra	1,134	283.5	1,006	248.4	1,093	269.9
Richmond – Tweed	496	229.3	511	233.3	485	221.4
Mid-North Coast	850	302.9	797	280.1	676	237.6
Northern	414	229.5	497	275.4	527	292.0
North Western	413	345.2	482	402.9	556	464.8
Central West	401	225.7	485	271.6	448	250.9
South Eastern	416	215.5	402	205.2	476	243.0
Murrumbidgee	454	297.8	511	333.9	505	330.0
Murray	312	275.1	298	261.3	258	226.2
Far West	166	680.2	176	727.9	194	802.4
New South Wales*	12,030	183.0	12,430	187.2	12,421	187.1

\* The total for New South Wales includes 9 recorded incidents in 2001, 1 recorded incident in 2002 and 7 recorded incidents in 2003 where the offence occurred in a custodial institution.

---

# APPENDICES

---

## APPENDIX 1

<b>Classification</b>	<b>Offences included</b>
<b>Homicide:</b>	
Murder	Murder – actual
Attempted murder	Murder – attempted Shoot with intent to murder
Murder accessory, conspiracy	Murder accessory Murder conspiracy
Manslaughter – not driving	Manslaughter
Manslaughter – driving	Culpable driving cause death
<b>Assault</b>	Actual bodily harm Grievous bodily harm (including malicious wounding) Assault officer Common assault Shoot with intent other than to murder
<b>Sexual offences:</b>	
Sexual assault	Sexual assault Aggravated sexual assault Assault with intent to have sexual intercourse
Indecent assault, act of indecency	Indecent assault Aggravated indecent assault Act of indecency Aggravated act of indecency
Other sexual offences	Incest Carnal knowledge Wilful and obscene exposure Indecent communication Peep or pry Other sexual offence
<b>Abduction and kidnapping</b>	Abduction and kidnapping
<b>Robbery:</b>	
Robbery without a weapon	Robbery Robbery with striking Robbery with wounding Other robbery
Robbery with a firearm	Armed robbery where weapon is firearm
Robbery with a weapon not a firearm	Armed robbery where weapon is not firearm



## APPENDIX 1 continued

<i>Classification</i>	<i>Offences included</i>
<b>Other offences against the person</b>	Intimidation Malicious damage intent injure / endanger Negligent act cause grievous bodily harm Offence against transport service Other offence against the person
<b>Theft:</b>	
Break and enter – dwelling	Break, enter and steal Break, enter intent to steal Break, enter and commit other felony Break, enter and intent to commit other felony <i>Note: dwelling includes all living premises, including nursing home, tent, balcony, garden, garage (attached or detached), shed etc.</i>
Break and enter – non-dwelling	Break, enter and steal Break, enter intent to steal Break, enter and commit other felony Break, enter and intent to commit other felony
Possess implements	Possess implements
Receiving	Receiving
Goods in custody	Goods in custody Possess property stolen outside NSW
Motor vehicle theft	Theft of motor cars, motor cycles, and other modes of transport (excluding marine vessels and aircraft)
Steal from motor vehicle	Steal from motor vehicle
Steal from retail store	Steal from retail store
Steal from dwelling	Steal from dwelling
Steal from person	Steal from person
Stock theft	Stock theft
Fraud	Larceny clerk / servant / bailee Make / use false instrument Embezzlement Fraudulent appropriation Company / corporate offence Deception offence Possess false instrument Publish false misleading statement Corrupt commission / practices Counterfeit currency offence under Crimes Act 1914 (Cth)
Other theft	Other stealing

## APPENDIX 1 continued

<b>Classification</b>	<b>Offences included</b>
<b>Demand money with menace</b>	Demand money with menaces
<b>Extortion, blackmail</b>	Extortion, blackmail
<b>Arson</b>	Malicious damage by fire Destroy by fire – financial gain Destroy by fire – intent injure
<b>Malicious damage to property</b>	Malicious damage to property Graffiti Public place – damage fountain / wall Public place – damage shrine / monument
<b>Drug offences:</b>	
Possession and / or use of cocaine	Possess drug unlawfully, where drug type is cocaine Use or administer drug, where drug type is cocaine
Possession and / or use of narcotics	Possess drug unlawfully, where drug type is narcotics Use or administer drug, where drug type is narcotics
Possession and / or use of cannabis	Possess drug / plant unlawfully, where drug type is cannabis Use or administer drug, where drug type is cannabis
Possession and / or use of other drugs	Possess drug unlawfully, where drug type is not cocaine, narcotics or cannabis Use or administer drug, where drug type is not cocaine, narcotics or cannabis
Dealing, trafficking in cocaine	Supply drug where drug type is cocaine
Dealing, trafficking in narcotics	Supply drug where drug type is narcotics
Dealing, trafficking in cannabis	Supply drug where drug type is cannabis
Dealing, trafficking in other drugs	Supply drug where drug type is not cocaine, narcotics or cannabis
Cultivating cannabis	Cultivate cannabis plant
Cultivating cannabis	Hydroponics / cultivate
Cultivating cannabis	Plantation
Importing drugs	Import drugs / plant
Other drug offences	Manufacture drug Forge and / or utter prescription Possess drug utensil Other drug offence
<b>Offensive behaviour:</b>	
Offensive conduct	Offensive conduct
Offensive language	Offensive language
<b>Prostitution offences</b>	Soliciting / prostitution in public Prostitution – premises Consorting Child prostitution Child pornography Other vice offence
<b>Betting and gaming offences</b>	Conduct / play illegal game Own / manage premises – gaming Other gaming offence

## APPENDIX 1 continued

<i>Classification</i>	<i>Offences included</i>
<b>Weapons offences</b>	Possess whilst unlicensed Possess shortened firearm Possess prohibited weapon / article Shorten firearm Firearms, dealer offence Unlawfully discharge firearm Trespass with firearm Use firearm under influence Discharge firearm into premises Firearms, not ensure safekeeping Use prohibited weapon / article Sell prohibited weapon / article Other prohibited weapon / article offence Bomb hoax or threat Possess explosive / dangerous article Carry cutting weapon Search knife / implement found Person search / weapon found Other firearm offence Other firearm licensing offence
<b>Against justice procedures:</b>	
Escapee – Corrective Services custody	Escapee – Corrective Services custody
Escapee – Police custody	Escapee – Police custody
Escapee – juvenile detention	Escapee – juvenile detention
Escapee – other custody	Escapee – other custody
Breach Apprehended Violence Order	Breach Apprehended Violence Order – domestic Breach Apprehended Violence Order – personal
Breach bail conditions	Breach bail conditions
Breach of recognizance	Breach of recognizance
Fail to appear	Fail to appear
Other offences against justice procedures	Resist / hinder officers Other judicial offence
<b>Driving offences:</b>	
Culpable driving	Culpable driving cause grievous bodily harm Culpable navigation cause grievous bodily harm
PCA	Prescribed concentration alcohol
Drive while disqualified	Drive while disqualified / licence cancelled etc.
Drive manner / speed dangerous	Drive manner / speed dangerous
Other driving offences	Negligent driving Drive under influence drug / alcohol Furious / wanton / menacing driving Registration / insurance offence Breath / drug test offence Speed class A (vehicle under 4.5 tonne) Speed class B & C (vehicle 4.5 tonne and over) Heavy vehicle (non-speeding) offence Motorcycle (non-speeding) offence

## APPENDIX 1 continued

<b>Classification</b>	<b>Offences included</b>
Other driving offences, <i>continued</i>	Public passenger vehicle offence Other driving offence Other traffic offence Other driving licence offence Miscellaneous offence Administrative offence Pedestrian offence Tow truck offence Bicycle offence Safety offence
<b>Other offences</b>	Accessory after the fact Consume alcohol in alcohol free zone Consume alcohol in public by minor Custody of offensive implement Immigration / customs offence Intention offences (e.g. armed with intent) Offences under the: Australian Postal Corporation Act 1989 (Cth) Children and Young Persons (Care and Protection) Act 1998 (NSW) Children (Care and Protection) Act 1987 (NSW) Companion Animals Act 1998 (NSW) Family Law Act 1975 (Cth) Inclosed Lands Protection Act 1901 (NSW) Liquor Act 1982 (NSW) Local Government Act 1993 (NSW) Pawnbrokers and Second-hand Dealers Act 1997 (NSW) Prevention of Cruelty to Animals Act 1979 (NSW) Registered Clubs Act 1976 (NSW) Rural Fires Act 1997 (NSW) Security Industry Act 1997 (NSW) Telecommunications Act 1997 (Cth) various acts administered by the Waterways Authority of NSW Person search - refuse to be searched or produce object Possess / publish indecent material Public mischief Refuse direction to move on Street offences Transport offences Trespass Other offences

## APPENDIX 2

**Map 1: New South Wales Statistical Division boundaries**



## APPENDIX 2 continued

**Map 2: Sydney Statistical Subdivision boundaries**



## APPENDIX 3

### LOCAL GOVERNMENT AREAS IN STATISTICAL DIVISIONS

#### *Sydney Statistical Subdivisions*

##### *Inner Sydney*

Botany Bay  
Leichhardt  
Marrickville  
South Sydney  
Sydney

##### *Outer South Western Sydney*

Camden  
Campbelltown  
Wollondilly

##### *Lower Northern Sydney*

Hunters Hill  
Lane Cove  
Mosman  
North Sydney  
Ryde  
Willoughby

##### *Eastern Suburbs*

Randwick  
Waverley  
Woollahra

##### *Inner Western Sydney*

Ashfield  
Burwood  
Canada Bay  
Strathfield

##### *Central Northern Sydney\**

Baulkham Hills  
Hornsby  
Ku-ring-gai

##### *St George – Sutherland*

Hurstville  
Kogarah  
Rockdale  
Sutherland

##### *Central Western Sydney*

Auburn  
Holroyd  
Parramatta

##### *Northern Beaches*

Manly  
Pittwater  
Warringah

##### *Canterbury – Bankstown*

Bankstown  
Canterbury

##### *Outer Western Sydney*

Blue Mountains  
Hawkesbury  
Penrith

##### *Gosford – Wyong*

Gosford  
Wyong

##### *Fairfield – Liverpool*

Fairfield  
Liverpool

##### *Blacktown\**

Blacktown

\* In reports prior to 2001, the Statistical Subdivision and Local Government Area boundaries, as defined by the ABS, were as follows:

- Blacktown – Baulkham Hills SSD included Blacktown LGA and Baulkham Hills LGA,
- Hornsby – Ku-ring-gai SSD included Hornsby LGA and Ku-ring-gai LGA.

## APPENDIX 3 continued

### NSW Statistical Divisions

<i>Hunter</i>	<i>Illawarra</i>	<i>Richmond – Tweed</i>	<i>Mid-North Coast</i>
Cessnock	Kiama	Ballina	Bellingen
Dungog	Shellharbour	Byron	Coffs Harbour
Gloucester	Shoalhaven	Kyogle	Copmanhurst
Great Lakes	Wingecarribee	Lismore	Grafton
Lake Macquarie	Wollongong	Richmond Valley	Greater Taree
Maitland		Tweed	Hastings
Merriwa			Kempsey
Murrurundi			Lord Howe Island
Muswellbrook			Maclean
Newcastle			Nambucca
Port Stephens			Pristine Waters
Scone			
Singleton			
<i>Northern</i>	<i>North Western</i>	<i>Central West</i>	<i>South Eastern</i>
Armidale Dumaresq	Bogan	Bathurst	Bega Valley
Barraba	Bourke	Bland	Bombala
Bingara	Brewarrina	Blayney	Boorowa
Glen Innes	Cobar	Cabonne	Cooma-Monaro
Gunnedah	Coolah	Cowra	Crookwell
Guyra	Coonabarabran	Evans	Eurobodalla
Inverell	Coonamble	Forbes	Goulburn
Manilla	Dubbo	Greater Lithgow	Gunning
Moree Plains	Gilgandra	Lachlan	Harden
Narrabri	Mudgee	Oberon	Mulwaree
Nundle	Narromine	Orange	Queanbeyan
Parry	Walgett	Parkes	Snowy River
Quirindi	Warren	Rylstone	Tallaganda
Severn	Wellington	Weddin	Yarrowlumla
Tamworth			Yass
Tenterfield			Young
Uralla			
Walcha			
Yallaro			
<i>Murrumbidgee</i>	<i>Murray</i>	<i>Far West</i>	
Carrathool	Albury	Broken Hill	
Coolamon	Balranald	Central Darling	
Cootamundra	Berrigan	Unincorporated Far West	
Griffith	Conargo		
Gundagai	Corowa		
Hay	Culcairn		
Junee	Deniliquin		
Leeton	Holbrook		
Lockhart	Hume		
Murrumbidgee	Jerilderie		
Narrandera	Murray		
Temora	Tumbarumba		
Tumut	Urana		
Wagga Wagga	Wakool		
	Wentworth		
	Windouran		