



NSW Bureau of Crime
Statistics and Research

NEW SOUTH WALES RECORDED CRIME STATISTICS

Quarterly Update
June Quarter 2024

This report presents data on crime reported to, or detected by, police and recorded on the NSW Police Force's Computerised Operational Policing System (COPS). Information is provided on 13 major offence categories, which include the most serious personal violence and property offences, plus a more detailed list of 62 specific offence types.

Published by the NSW Bureau of Crime Statistics and Research
September 2024

Phone: + 61 (2) 8688 9800

Email: bcsr@dcj.nsw.gov.au

Website: www.bocsar.nsw.gov.au

ISSN: 1035-9044

This report is available in pdf format on our website and may be provided in alternative formats. Please contact us at bcsr@justice.nsw.gov.au.

© State of New South Wales through the NSW Department of Communities and Justice 2024. You may copy, distribute, display, download and otherwise freely deal with this work for any purpose, provided that you attribute the Department of Justice NSW as the owner. However, you must obtain permission if you wish to (a) charge others for access to the work (other than at cost), (b) include the work in advertising or a product for sale, or (c) modify the work.

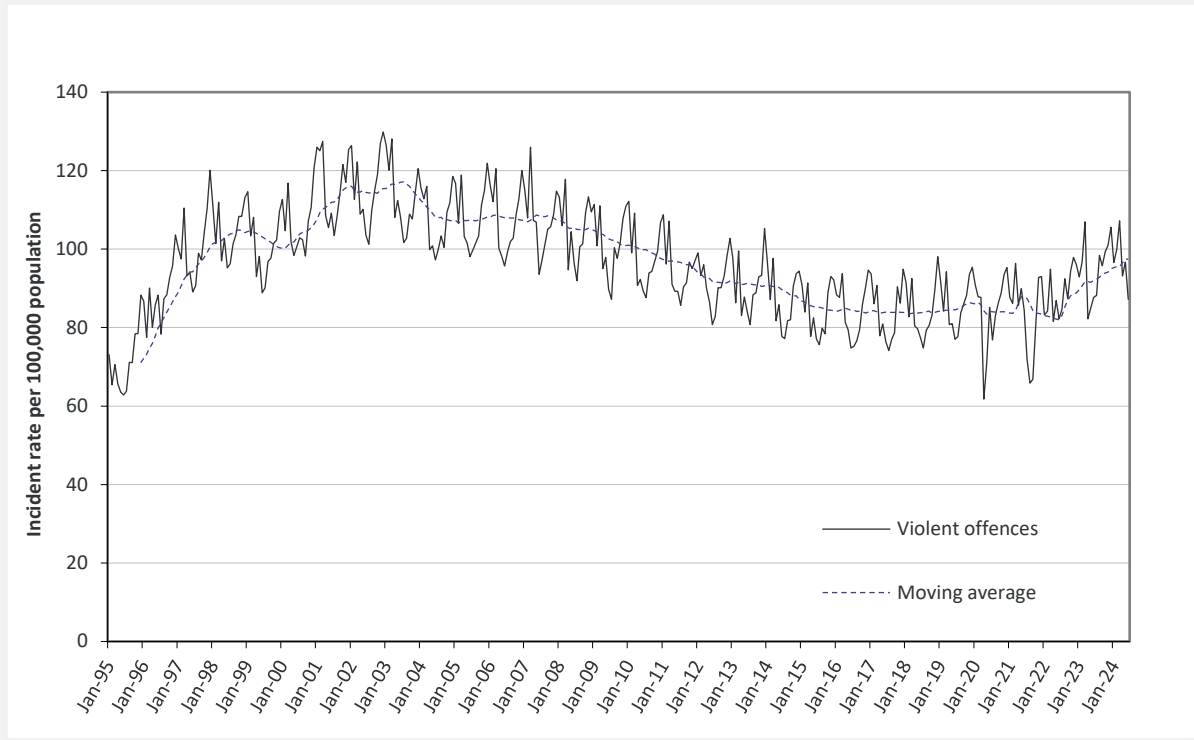
CONTENTS

SECTION 1:	OVERVIEW OF TRENDS IN RECORDED CRIME	5
Figure 1.1	NSW long-term trend in violent offences	6
Figure 1.2	NSW long-term trend in property offences	6
Table 1.3	Violent and property offences by Statistical Area (SA4) over the ten years to June 2024	7
Table 1.4	Recorded criminal incidents for major offences over the ten years to June 2024	8
Table 1.5	Recorded criminal incidents for 62 offences over the two years to June 2024	9
Table 1.6	Recorded criminal incidents for 62 offences over the ten years to June 2024	10
SECTION 2:	REGIONAL COMPARISONS Statistical Areas	11
Table 2.1	Two year trends and percent change in recorded criminal incidents for major offences by Statistical Area (SA4) over the two years to June 2024	12
Table 2.2	Ratio to NSW rate of recorded criminal incidents per 100,000 population for major offences by Statistical Area (SA4) over the 12 months to June 2024	13
Table 2.3	Number of major offences by Statistical Area (SA4) over the 12 months to June 2024	14
Table 2.4	Number of major offences by Statistical Area (SA4) over the 12 months to June 2023	15
Table 2.5	Rate per 100,000 population of major offences by Statistical Area (SA4) over the 12 months to June 2024	16
Table 2.6	Ten year trends and annual average percent change in recorded criminal incidents for major offences by Statistical Area (SA4) over the 12 months to June 2023	17
Table 2.7	Number of major offences by Statistical Area (SA4) over the 12 months to June 2015	18
SECTION 3:	LEGAL PROCEEDINGS	19
Table 3.1	Adults proceeded against by the NSW Police Force by method of legal proceeding over the ten years to June 2024	20
Table 3.2	Young people proceeded against by the NSW Police Force by method of legal proceeding over the ten years to June 2024	20
Table 3.3	Adults proceeded against to court by the NSW Police Force for all 62 criminal offences types over the two years to June 2024	21
Table 3.4	Young people proceeded against to court by the NSW Police Force for all 62 criminal offences over the two years to June 2024	22
Figure 3.5	Offences with the largest change in the number of adults proceeded against to court by the NSW Police Force between the 12 months to June 2023 and the 12 months to June 2024	23
Figure 3.6	Offences with the largest change in the number of young people proceeded against to court by the NSW Police Force between the 12 months to June 2023 and the 12 months to June 2024	23
Table 3.7	Incidents of all 62 criminal offence types by whether legal proceedings commenced within 90 days of reporting over the two years to March 2024	24

Figure 3.8	Percentage of recorded criminal incidents for major offences by whether legal proceedings commenced within 90 days of reporting over the two years to March 2024	25
SECTION 4: POLICING ACTIVITY		26
Table 4.1	Selected policing activities over the ten years to June 2024	27
Table 4.2	Non-criminal domestic episodes by Statistical Area (SA4) over the ten years to June 2024	28
Table 4.3	Ratio to NSW rate of non-criminal domestic episodes per 100,000 population by Statistical Area (SA4) over the ten years to June 2024	29
APPENDIX 1: REGIONAL COMPARISONS Local Government Areas		30
Appendix Table 1.1	Trends in recorded criminal incidents for major offences, NSW LGAs Over the two years to June 2024	31
Appendix Table 1.2	Ratio to NSW rate of recorded criminal incidents per 100,000 population for major offences, NSW LGAs	34
Appendix Table 1.3	Number of recorded criminal incidents for major offences, NSW LGAs 12 months to June 2024	37
Appendix Table 1.4	Number of recorded criminal incidents for major offences, NSW LGAs 12 months to June 2023	40
APPENDIX 2: EXPLANATORY NOTES		43
Appendix 2.1	Explanatory Notes	44
APPENDIX 3: LGAs IN STATISTICAL AREAS		47
Appendix Table 3.1	Local Government Areas in Greater Sydney Statistical Areas	48
Appendix Table 3.2	Local Government Areas in Regional Statistical Areas	49
Appendix Table 3.3	Greater Sydney Statistical Area Map	50
Appendix Table 3.4	Regional NSW Statistical Areas Map	51
APPENDIX 4: OFFENCE CATEGORIES		52
Appendix 4.1	BOCSAR offences mapped to NSW Police Force incident categories	53

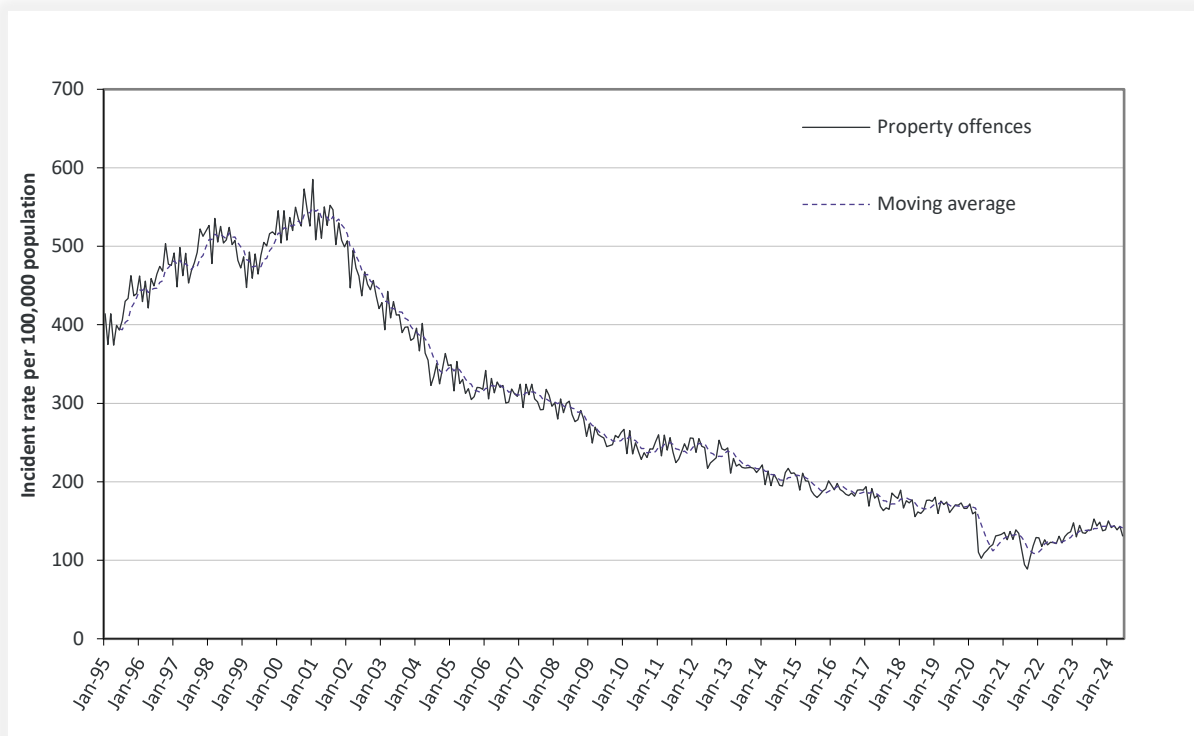
SECTION 1: OVERVIEW OF TRENDS IN RECORDED CRIME

Figure 1.1: NSW long-term trend in violent offences



3
3
9

Figure 1.2: NSW long-term trend in property offences



Violent offences include: murder, attempted murder, manslaughter, assault - domestic violence related, assault - non-domestic violence related, assault police, robbery without a weapon, robbery with a firearm, robbery with a weapon not a firearm, sexual assault and sexual touching, sexual act and other sexual offences.

Property offences include: break and enter dwelling, break and enter non-dwelling, motor vehicle theft, steal from motor vehicle, steal from retail store, steal from dwelling, steal from person, stock theft and other theft.

Table 1.3: Violent and property offences by Statistical Area (SA4)

Over the ten years to June 2024

Trend and average annual percentage change

Statistical Area	Violent Offences		Property Offences	
	2 Year Trend	10 Year Trend	2 Year Trend	10 Year Trend
Greater Sydney	6.7%	1.9%	Stable	-4.0%
Baulkham Hills and Hawkesbury	Stable	2.8%	Stable	-4.5%
Blacktown	Stable	1.6%	Stable	-3.5%
Central Coast	Stable	2.0%	10.5%	-3.9%
City and Inner South	Stable	Stable	6.6%	-4.2%
Eastern Suburbs	Stable	2.1%	Stable	-4.5%
Inner South West	Stable	1.7%	3.4%	-5.3%
Inner West	10.5%	2.9%	Stable	-3.7%
North Sydney and Hornsby	12.5%	3.1%	Stable	-5.9%
Northern Beaches	Stable	Stable	10.4%	-4.4%
Outer South West	17.0%	2.3%	Stable	-5.1%
Outer West and Blue Mountains	7.8%	1.5%	Stable	-3.0%
Parramatta	Stable	1.7%	11.3%	-1.6%
Ryde	Stable	3.4%	Stable	-3.1%
South West	11.3%	3.6%	Stable	-3.7%
Sutherland	Stable	1.4%	Stable	-6.6%
Regional NSW	Stable	2.8%	8.0%	-1.9%
Capital Region	Stable	3.2%	Stable	-2.0%
Central West	Stable	2.1%	Stable	-4.3%
Coffs Harbour - Grafton	Stable	4.0%	Stable	Stable
Far West and Orana	Stable	2.6%	Stable	-2.5%
Hunter Valley excluding Newcastle	Stable	5.3%	Stable	-2.1%
Illawarra	Stable	Stable	Stable	-3.5%
Mid North Coast	Stable	3.7%	Stable	-1.3%
Murray	Stable	3.5%	15.0%	Stable
New England and North West	Stable	2.9%	Stable	-1.6%
Newcastle and Lake Macquarie	Stable	2.2%	15.8%	Stable
Richmond - Tweed	Stable	1.9%	17.8%	Stable
Riverina	Stable	2.4%	Stable	-3.4%
Southern Highlands and Shoalhaven	Stable	1.7%	23.0%	-4.4%
NSW	5.9%	2.4%	6.4%	-3.1%

Table 1.4: Recorded criminal incidents for major offences
Over the ten years to June 2024

Offence category	12 months	12 months	12 months	12 months	12 months	12 months	12 months	12 months	12 months	12 months	Trend and average annual percentage change	
	to June 2015	to June 2016	to June 2017	to June 2018	to June 2019	to June 2020	to June 2021	to June 2022	to June 2023	to June 2024	2 Year Trend	10 Year Trend
Murder	93	60	71	54	79	72	58	64	54	69	Stable	Down 3.3%
Domestic violence related assault	29,094	29,305	28,753	28,720	30,566	31,888	32,948	31,969	35,059	37,332	Up 6.5%	Up 2.8%
Non-domestic violence related assault	31,155	31,432	32,075	32,171	31,804	30,228	31,029	27,956	32,913	34,940	Stable	Stable
Sexual assault	4,844	5,225	5,684	6,119	5,900	6,569	8,265	8,169	9,479	10,036	Stable	Up 8.4%
Sexual touching, sexual act and other sexual offences	6,445	6,945	7,268	7,759	8,070	7,980	8,408	7,612	7,965	8,474	Stable	Up 3.1%
Robbery	3,190	2,374	2,372	2,486	2,552	2,323	2,124	1,537	1,956	2,004	Stable	Down 5.0%
Break and enter dwelling	32,794	30,477	29,020	27,188	25,553	23,059	19,259	17,344	19,127	20,340	Stable	Down 5.2%
Break and enter non-dwelling	12,921	11,408	11,063	10,389	10,029	9,014	7,101	7,022	8,080	8,372	Stable	Down 4.7%
Motor vehicle theft	15,085	13,201	13,412	12,963	13,284	12,615	11,550	10,724	13,238	14,891	Up 12.5%	Stable
Steal from motor vehicle	42,274	39,838	40,086	38,335	38,119	33,518	28,740	26,365	28,185	28,493	Stable	Down 4.3%
Steal from retail store	21,382	22,825	24,136	24,441	26,131	23,707	20,535	17,275	25,601	27,953	Up 9.2%	Up 3.0%
Other stealing offences	59,900	56,636	54,063	51,434	50,330	45,856	37,801	34,010	36,847	39,455	Up 7.1%	Down 4.5%
Malicious damage to property	65,507	63,541	62,389	59,618	57,680	54,649	53,451	47,618	48,752	49,940	Stable	Down 3.0%

NSW Recorded Crime Statistics, June Quarter 2024

Table 1.5: Recorded criminal incidents for 62 offences
Over the two years to June 2024

Offence category		Number of recorded criminal incidents		2 Year Trend	
		12 months to June 2023	12 months to June 2024	Trend test result	Annual average percentage change
Homicide	Murder	54	69	Stable	
	Attempted murder	8	13	n.c.	
	Murder accessory, conspiracy	1	4	n.c.	
	Manslaughter	11	13	n.c.	
Assault	Domestic violence related assault	35,059	37,332	Up	6.5%
	Non-domestic violence related assault	32,913	34,940	Stable	
	Assault Police	2,727	2,569	Stable	
Sexual offences	Sexual assault	9,479	10,036	Stable	
	Sexual touching, sexual act and other sexual offences	7,965	8,474	Stable	
Abduction and kidnapping		237	233	Stable	
Robbery	Robbery without a weapon	1,082	1,140	Stable	
	Robbery with a firearm	110	95	Stable	
	Robbery with a weapon not a firearm	764	769	Stable	
Blackmail and extortion		1,713	1,525	Stable	
Intimidation, stalking and harassment		45,192	47,554	Up	5.2%
Other offences against the person		1,572	1,603	Stable	
Theft	Break and enter dwelling	19,127	20,340	Stable	
	Break and enter non-dwelling	8,080	8,372	Stable	
	Receiving or handling stolen goods	8,054	7,832	Stable	
	Motor vehicle theft	13,238	14,891	Up	12.5%
	Steal from motor vehicle	28,185	28,493	Stable	
	Steal from retail store	25,601	27,953	Up	9.2%
	Steal from dwelling	15,359	16,313	Stable	
	Steal from person	2,075	2,129	Stable	
	Stock theft	269	209	Stable	
	Fraud	47,880	45,933	Down	-4.1%
Other theft	19,144	20,804	Up	8.7%	
Arson		3,794	4,582	Stable	
Malicious damage to property		48,752	49,940	Stable	
Drug offences	Possession and/or use of cocaine	2,538	2,123	Down	-16.4%
	Possession and/or use of narcotics	1,172	1,218	Stable	
	Possession and/or use of cannabis	15,447	13,603	Down	-11.9%
	Possession and/or use of amphetamines	6,397	6,815	Stable	
	Possession and/or use of ecstasy	1,139	977	Stable	
	Possession and/or use of other drugs	6,299	5,311	Down	-15.7%
	Dealing, trafficking in cocaine	1,299	928	Down	-28.6%
	Dealing, trafficking in narcotics	289	263	Stable	
	Dealing, trafficking in cannabis	532	491	Stable	
	Dealing, trafficking in amphetamines	1,922	1,566	Stable	
	Dealing, trafficking in ecstasy	208	238	Stable	
	Dealing, trafficking in other drugs	444	457	Stable	
	Cultivating cannabis	687	639	Stable	
	Manufacture drug	59	65	Stable	
	Importing drugs	162	76	Down	-53.1%
	Other drug offences	5,715	5,182	Down	-9.3%
Prohibited and regulated weapons offences		13,469	15,016	Up	11.5%
Disorderly conduct	Trespass	11,687	12,441	Up	6.5%
	Offensive conduct	3,481	2,954	Down	-15.1%
	Offensive language	1,417	1,021	Down	-27.9%
	Criminal intent	2,757	2,855	Stable	
Betting and gaming offences		114	29	Down	-74.6%
Liquor offences		9,105	6,164	Down	-32.3%
Pornography offences		1,134	1,202	Stable	
Prostitution offences		32	29	Stable	
Against justice procedures	Escape custody	138	158	Stable	
	Breach Apprehended Violence Order	23,367	25,473	Up	9.0%
	Breach bail conditions	53,444	55,544	Up	3.9%
	Fail to appear	866	710	Stable	
	Resist or hinder officer	5,542	5,262	Stable	
	Other offences against justice procedures	2,634	2,190	Down	-16.9%
Transport regulatory offences		71,894	65,952	Stable	
Other offences		14,613	12,261	Down	-16.1%

Note: The NSW Police Force made changes to the classification of 'arson' incidents from March 2023 and 'blackmail and extortion' incidents from June 2022. As such, the series for these offence categories are not comparable pre and post the changes being made. See Appendix 4.1 for more details.

NSW Recorded Crime Statistics, June Quarter 2024

Table 1.6: Recorded criminal incidents for 62 offences
Over the ten years to June 2024

Offence category		Number of recorded criminal incidents		10 Year Trend	
		12 months to June 2015	12 months to June 2024	Trend test result	Annual average percentage change
Homicide	Murder	93	69	Down	-3.3%
	Attempted murder	30	13	n.c.	
	Murder accessory, conspiracy	4	4	n.c.	
	Manslaughter	6	13	n.c.	
Assault	Domestic violence related assault	29,094	37,332	Up	2.8%
	Non-domestic violence related assault	31,155	34,940	Stable	
	Assault Police	2,501	2,569	Stable	
Sexual offences	Sexual assault	4,844	10,036	Up	8.4%
	Sexual touching, sexual act and other sexual offences	6,445	8,474	Up	3.1%
Abduction and kidnapping		264	233	Stable	
Robbery	Robbery without a weapon	1,841	1,140	Down	-5.2%
	Robbery with a firearm	266	95	Down	-10.8%
	Robbery with a weapon not a firearm	1,083	769	Down	-3.7%
Blackmail and extortion		104	1,525	Up	34.8%
Intimidation, stalking and harassment		30,063	47,554	Up	5.2%
Other offences against the person		1,282	1,603	Up	2.5%
Theft	Break and enter dwelling	32,794	20,340	Down	-5.2%
	Break and enter non-dwelling	12,921	8,372	Down	-4.7%
	Receiving or handling stolen goods	7,888	7,832	Stable	
	Motor vehicle theft	15,085	14,891	Stable	
	Steal from motor vehicle	42,274	28,493	Down	-4.3%
	Steal from retail store	21,382	27,953	Up	3.0%
	Steal from dwelling	22,376	16,313	Down	-3.5%
	Steal from person	5,933	2,129	Down	-10.8%
	Stock theft	503	209	Down	-9.3%
	Fraud	50,472	45,933	Down	-1.0%
	Other theft	31,088	20,804	Down	-4.4%
Arson		5,280	4,582	Down	-1.6%
Malicious damage to property		65,507	49,940	Down	-3.0%
Drug offences	Possession and/or use of cocaine	1,115	2,123	Up	7.4%
	Possession and/or use of narcotics	841	1,218	Up	4.2%
	Possession and/or use of cannabis	18,287	13,603	Down	-3.2%
	Possession and/or use of amphetamines	6,248	6,815	Stable	
	Possession and/or use of ecstasy	2,086	977	Down	-8.1%
	Possession and/or use of other drugs	3,485	5,311	Up	4.8%
	Dealing, trafficking in cocaine	293	928	Up	13.7%
	Dealing, trafficking in narcotics	324	263	Stable	
	Dealing, trafficking in cannabis	842	491	Down	-5.8%
	Dealing, trafficking in amphetamines	2,380	1,566	Down	-4.5%
	Dealing, trafficking in ecstasy	604	238	Down	-9.8%
	Dealing, trafficking in other drugs	282	457	Up	5.5%
	Cultivating cannabis	1,348	639	Down	-8.0%
	Manufacture drug	105	65	Down	-5.2%
	Importing drugs	37	76	Up	8.3%
	Other drug offences	5,054	5,182	Stable	
Prohibited and regulated weapons offences		11,681	15,016	Up	2.8%
Disorderly conduct	Trespass	9,135	12,441	Up	3.5%
	Offensive conduct	6,066	2,954	Down	-7.7%
	Offensive language	4,218	1,021	Down	-14.6%
	Criminal intent	2,153	2,855	Up	3.2%
Betting and gaming offences		92	29	Stable	
Liquor offences		12,098	6,164	Down	-7.2%
Pornography offences		498	1,202	Up	10.3%
Prostitution offences		205	29	n.c.	
Against justice procedures	Escape custody	139	158	Stable	
	Breach Apprehended Violence Order	13,728	25,473	Up	7.1%
	Breach bail conditions	35,049	55,544	Up	5.2%
	Fail to appear	753	710	Stable	
	Resist or hinder officer	6,402	5,262	Down	-2.2%
	Other offences against justice procedures	505	2,190	Up	17.7%
Transport regulatory offences		106,146	65,952	Down	-5.2%
Other offences		15,222	12,261	Stable	

Note: The NSW Police Force made changes to the classification of 'arson' incidents from March 2023 and 'blackmail and extortion' incidents from June 2022. As such, the series for these offence categories are not comparable pre and post the changes being made. See Appendix 4.1 for more details.

SECTION 2:

REGIONAL

COMPARISONS

Statistical Areas

NSW Recorded Crime Statistics, June Quarter 2024

Table 2.1: Two year trends and percent change in recorded criminal incidents for major offences by Statistical Area (SA4)

Over the two years to June 2024

Statistical Area	Murder	Domestic violence related assault	Non-domestic violence related assault	Sexual assault	Sexual touching, sexual act and other sexual offences	Robbery	Break and enter dwelling	Break and enter non-dwelling	Motor vehicle theft	Steal from motor vehicle	Steal from retail store	Other stealing offences	Malicious damage to property
Greater Sydney	ns	6.9	ns	ns	ns	ns	ns	ns	14.3	ns	ns	8.9	ns
Baulkham Hills and Hawkesbury	ns	ns	ns	ns	ns	ns	ns	ns	ns	ns	ns	ns	-9.3
Blacktown	ns	16.0	ns	ns	ns	ns	ns	ns	ns	ns	ns	ns	ns
Central Coast	ns	ns	ns	ns	ns	ns	ns	ns	31.6	ns	ns	ns	6.3
City and Inner South	ns	ns	ns	ns	ns	20.1	ns	ns	ns	ns	ns	13.0	ns
Eastern Suburbs	ns	ns	ns	ns	ns	ns	ns	ns	ns	ns	-14.5	ns	ns
Inner South West	ns	ns	ns	ns	ns	ns	ns	ns	ns	ns	ns	15.0	ns
Inner West	ns	13.6	ns	ns	ns	28.0	ns	ns	34.7	ns	ns	ns	ns
North Sydney and Hornsby	15.3	ns	ns	ns	ns	ns	ns	ns	ns	-24.8	ns	ns	ns
Northern Beaches	26.4	18.2	ns	ns	ns	ns	ns	43.3	ns	ns	16.2	ns	ns
Outer South West	26.0	15.4	ns	ns	ns	ns	ns	ns	ns	ns	ns	ns	ns
Outer West and Blue Mountains	10.6	ns	ns	ns	ns	ns	ns	44.7	ns	ns	ns	ns	ns
Parramatta	ns	17.9	ns	ns	ns	18.5	ns	ns	ns	13.5	ns	17.9	ns
Ryde	ns	ns	ns	ns	ns	ns	ns	ns	ns	ns	ns	ns	ns
South West	12.8	15.2	ns	ns	ns	ns	ns	ns	14.6	ns	ns	ns	13.6
Sutherland	ns	ns	ns	ns	ns	ns	ns	ns	ns	ns	38.2	ns	ns
Regional NSW	ns	ns	ns	ns	ns	ns	ns	ns	10.9	ns	26.9	ns	ns
Capital Region	ns	ns	27.8	ns	ns	ns	ns	ns	ns	ns	48.0	ns	ns
Central West	ns	9.5	ns	ns	ns	ns	ns	ns	ns	-10.1	22.4	ns	ns
Coffs Harbour - Grafton	ns	ns	ns	ns	ns	ns	ns	ns	30.8	ns	ns	ns	ns
Far West and Orana	12.6	ns	ns	ns	ns	ns	ns	ns	ns	-15.4	30.0	ns	ns
Hunter Valley excluding Newcastle	ns	ns	ns	35.4	ns	ns	ns	ns	18.0	ns	ns	ns	ns
Illawarra	ns	ns	ns	ns	ns	ns	ns	ns	ns	ns	ns	ns	ns
Mid North Coast	ns	ns	ns	ns	ns	ns	ns	ns	ns	ns	ns	ns	ns
Murray	ns	ns	ns	ns	ns	ns	ns	ns	ns	ns	32.7	5.6	ns
New England and North West	15.8	ns	ns	ns	ns	ns	ns	23.0	ns	-20.4	24.8	5.4	ns
Newcastle and Lake Macquarie	ns	ns	ns	ns	ns	ns	ns	ns	ns	ns	49.9	9.9	ns
Richmond - Tweed	ns	7.9	ns	ns	ns	45.4	ns	22.8	ns	49.9	ns	ns	ns
Riverina	ns	ns	ns	ns	75.0	ns	ns	ns	ns	ns	ns	ns	ns
Southern Highlands and Shoalhaven	ns	ns	ns	ns	ns	ns	ns	37.2	ns	43.1	ns	ns	ns
NSW	ns	6.5	ns	ns	ns	ns	ns	ns	12.5	ns	9.2	7.1	ns

NSW Recorded Crime Statistics, June Quarter 2024

Table 2.2: Ratio to NSW rate of recorded criminal incidents per 100,000 population for major offences by Statistical Area (SA4)
Over the 12 months to June 2024

Statistical Area	Murder	Domestic violence related assault	Non-domestic violence related assault	Sexual assault	Sexual touching, sexual act and other sexual offences	Robbery	Break and enter dwelling	Break and enter non-dwelling	Motor vehicle theft	Steal from motor vehicle	Steal from retail store	Other stealing offences	Malicious damage to property
Greater Sydney	0.9	0.8	0.8	0.7	0.8	1.0	0.7	0.6	0.7	0.8	0.9	0.9	0.8
Baulkham Hills and Hawkesbury	0.4	0.3	0.3	0.5	0.5	0.8	0.4	0.5	0.4	0.3	0.5	0.4	0.4
Blacktown	1.4	1.2	1.1	0.9	0.9	1.6	0.9	0.6	1.0	1.0	1.1	0.8	1.0
Central Coast	0.3	1.1	1.0	1.3	1.2	0.9	0.8	0.8	1.0	1.0	1.0	0.7	1.2
City and Inner South	1.0	1.1	2.3	1.2	1.5	2.9	0.9	1.1	0.8	1.0	2.9	3.2	1.4
Eastern Suburbs	4.0	0.6	0.8	0.8	1.0	0.7	0.7	0.4	0.7	0.7	1.1	1.1	0.7
Inner South West	1.0	0.9	0.6	0.6	0.6	0.8	0.5	0.4	0.7	0.8	0.5	0.6	0.6
Inner West	1.5	0.6	0.7	0.6	0.6	0.9	0.8	0.7	0.8	0.8	0.7	1.0	0.6
North Sydney and Hornsby	0.3	0.4	0.4	0.5	0.7	0.3	0.5	0.4	0.3	0.4	0.6	0.5	0.4
Northern Beaches	0.4	0.3	0.5	0.5	0.6	0.4	0.3	0.5	0.4	0.4	0.8	0.6	0.5
Outer South West		1.2	0.9	0.9	1.0	0.9	0.5	0.5	0.8	0.7	0.8	0.6	0.9
Outer West and Blue Mountains	0.4	1.1	1.1	1.1	1.1	1.0	0.9	1.2	1.0	1.1	1.0	0.9	1.2
Parramatta	0.9	0.9	1.0	0.7	0.7	1.6	1.1	0.8	1.1	1.3	0.9	1.2	0.8
Ryde	0.6	0.4	0.3	0.4	0.6	0.3	0.5	0.5	0.4	0.5	0.6	0.6	0.4
South West	0.7	1.1	0.8	0.7	0.8	1.1	0.6	0.5	0.9	1.0	0.7	0.7	0.8
Sutherland		0.5	0.4	0.5	0.6	0.5	0.4	0.2	0.3	0.4	0.6	0.5	0.6
Regional NSW	1.2	1.3	1.2	1.4	1.3	1.0	1.6	1.7	1.5	1.4	1.2	1.2	1.4
Capital Region	1.0	0.9	0.9	1.2	1.0	0.4	0.8	1.1	0.8	0.7	0.8	0.9	1.0
Central West	1.1	1.4	1.4	1.6	1.5	1.0	1.7	2.0	1.5	1.3	1.0	1.2	1.6
Coffs Harbour - Grafton	3.2	1.8	1.3	1.8	1.4	1.6	1.4	1.9	1.9	1.4	1.0	1.2	1.5
Far West and Orana	2.0	3.7	2.3	1.8	2.0	1.2	4.1	4.8	2.5	2.1	1.9	1.9	3.2
Hunter Valley excluding Newcastle	1.2	1.5	1.1	1.5	1.6	1.0	1.1	1.6	1.6	1.3	0.9	1.2	1.3
Illawarra	1.1	0.7	0.8	1.0	1.0	0.7	0.9	0.8	0.9	1.2	1.4	0.9	0.9
Mid North Coast	1.0	1.5	1.2	1.4	1.4	0.8	1.8	1.7	1.5	1.1	0.9	1.3	1.4
Murray		1.4	1.3	1.3	1.3	0.9	1.5	2.5	1.7	2.2	1.0	1.4	1.6
New England and North West	0.6	2.1	1.6	2.0	1.6	1.5	3.5	2.7	1.9	1.4	1.4	1.4	2.1
Newcastle and Lake Macquarie	0.6	1.0	1.2	1.4	1.1	1.2	1.5	1.5	1.6	2.0	1.7	1.2	1.3
Richmond - Tweed	3.7	0.9	1.1	1.2	1.3	0.8	1.6	1.3	1.7	1.1	1.0	1.1	1.1
Riverina		1.5	1.2	1.4	1.2	1.2	1.9	1.8	1.4	1.3	1.1	1.3	1.5
Southern Highlands and Shoalhaven		0.8	0.9	1.0	1.2	0.5	0.8	1.2	0.9	0.7	1.0	0.7	1.1
NSW	1.0	1.0	1.0	1.0	1.0	1.0	1.0	1.0	1.0	1.0	1.0	1.0	1.0

NSW Recorded Crime Statistics, June Quarter 2024

Table 2.3: Number of major offences by Statistical Area (SA4)

Over the 12 months to June 2024

Statistical Area	Murder	Domestic violence related assault	Non-domestic violence related assault	Sexual assault	Sexual touching, sexual act and other sexual offences	Robbery	Break and enter dwelling	Break and enter non-dwelling	Motor vehicle theft	Steal from motor vehicle	Steal from retail store	Other stealing offences	Malicious damage to property
Greater Sydney	39	19,886	19,064	4,843	4,515	1,323	8,954	3,309	7,151	14,939	16,484	23,305	25,118
Baulkham Hills and Hawkesbury	1	434	379	164	143	52	275	129	190	305	455	572	645
Blacktown	5	2,225	1,889	442	392	159	913	246	768	1,453	1,519	1,669	2,580
Central Coast	1	1,750	1,495	544	423	80	708	287	637	1,262	1,165	1,186	2,468
City and Inner South	3	1,647	3,390	497	534	239	723	397	501	1,138	3,327	5,327	2,828
Eastern Suburbs	9	720	924	256	264	46	434	99	335	641	1,006	1,439	1,174
Inner South West	5	2,441	1,644	424	379	113	775	232	769	1,594	1,139	1,791	2,289
Inner West	4	819	900	242	200	64	608	224	439	848	751	1,448	1,145
North Sydney and Hornsby	1	687	646	244	289	32	530	162	254	527	845	1,091	1,121
Northern Beaches	1	321	578	158	151	25	205	139	185	407	710	822	875
Outer South West	0	1,638	1,140	330	330	65	399	158	422	794	851	855	1,644
Outer West and Blue Mountains	1	1,723	1,548	472	390	81	726	408	615	1,318	1,147	1,449	2,366
Parramatta	4	2,123	2,044	403	369	192	1,381	425	961	2,315	1,542	2,771	2,302
Ryde	1	375	297	106	121	16	280	99	159	337	414	629	509
South West	3	2,428	1,748	411	382	130	786	252	807	1,710	1,099	1,747	2,337
Sutherland	0	555	442	150	148	29	211	52	109	290	514	509	835
Regional NSW	29	17,434	14,544	4,973	3,864	677	11,386	5,063	7,740	13,552	11,469	16,139	24,754
Capital Region	2	1,023	924	354	252	24	469	260	353	593	681	1,023	1,521
Central West	2	1,415	1,291	434	342	52	895	441	584	952	744	1,226	2,137
Coffs Harbour - Grafton	4	1,185	844	333	215	59	518	293	510	708	497	886	1,385
Far West and Orana	2	2,000	1,149	266	240	35	1,193	571	544	876	745	1,094	2,300
Hunter Valley excluding Newcastle	3	2,086	1,371	569	482	72	852	505	900	1,312	967	1,710	2,453
Illawarra	3	998	1,085	404	331	55	673	268	538	1,334	1,506	1,340	1,829
Mid North Coast	2	1,585	1,148	412	338	46	1,034	406	622	891	702	1,461	2,023
Murray	0	823	696	195	167	26	473	321	388	965	422	814	1,233
New England and North West	1	1,835	1,306	463	312	71	1,639	513	645	916	926	1,315	2,413
Newcastle and Lake Macquarie	2	1,722	1,989	673	440	119	1,503	625	1,180	2,812	2,266	2,265	3,073
Richmond - Tweed	8	1,074	1,251	387	342	48	1,018	358	792	1,017	850	1,397	1,791
Riverina	0	1,104	856	274	204	49	790	308	415	756	605	1,027	1,553
Southern Highlands and Shoalhaven	0	584	634	209	199	21	329	194	269	420	558	581	1,043
NSW	69	37,332	34,940	10,036	8,474	2,004	20,340	8,372	14,891	28,493	27,953	39,455	49,940

NSW Recorded Crime Statistics, June Quarter 2024

Table 2.4: Number of major offences by Statistical Area (SA4)

Over the 12 months to June 2023

Statistical Area	Murder	Domestic violence related assault	Non-domestic violence related assault	Sexual assault	Sexual touching, sexual act and other sexual offences	Robbery	Break and enter dwelling	Break and enter non-dwelling	Motor vehicle theft	Steal from motor vehicle	Steal from retail store	Other stealing offences	Malicious damage to property
Greater Sydney	29	18,599	17,675	4,501	4,289	1,209	8,566	3,110	6,259	14,641	16,566	21,405	23,988
Baulkham Hills and Hawkesbury	1	501	346	136	128	25	250	129	172	331	362	586	711
Blacktown	1	2,144	1,628	407	393	171	912	227	695	1,638	1,549	1,789	2,542
Central Coast	4	1,737	1,525	513	404	71	578	250	484	1,137	1,026	1,272	2,321
City and Inner South	2	1,634	3,236	504	526	199	682	434	456	1,081	3,339	4,715	2,792
Eastern Suburbs	2	737	1,053	231	236	33	416	100	314	627	1,177	1,289	1,108
Inner South West	6	2,351	1,554	373	369	102	821	255	721	1,484	1,254	1,558	2,312
Inner West	0	764	792	228	198	50	557	218	326	858	749	1,315	1,154
North Sydney and Hornsby	1	596	601	197	234	41	486	190	208	701	977	976	999
Northern Beaches	0	254	489	162	130	33	237	97	174	401	611	716	785
Outer South West	2	1,300	988	336	277	60	400	145	365	754	991	826	1,528
Outer West and Blue Mountains	3	1,558	1,471	422	371	81	758	282	504	1,323	1,170	1,331	2,308
Parramatta	4	1,945	1,733	390	396	162	1,218	404	862	2,040	1,565	2,351	2,078
Ryde	0	296	291	94	91	23	297	77	146	388	331	545	461
South West	3	2,152	1,518	357	396	131	752	249	704	1,573	1,093	1,669	2,057
Sutherland	0	630	450	151	140	27	202	53	128	305	372	467	832
Regional NSW	25	16,457	14,076	4,557	3,525	740	10,561	4,969	6,978	13,542	9,035	15,435	24,710
Capital Region	0	1,019	935	277	271	26	414	265	308	540	460	980	1,491
Central West	3	1,476	1,179	365	320	59	1,026	348	534	1,059	608	1,216	2,132
Coffs Harbour - Grafton	1	1,066	859	269	219	59	495	254	390	662	473	895	1,308
Far West and Orana	1	1,776	1,108	253	244	47	1,128	704	605	1,036	573	1,191	2,136
Hunter Valley excluding Newcastle	2	1,760	1,421	495	356	67	783	544	763	1,267	851	1,711	2,569
Illawarra	4	944	1,083	393	290	69	648	272	459	1,508	1,322	1,263	1,867
Mid North Coast	3	1,555	1,139	334	309	56	987	390	600	821	679	1,459	2,037
Murray	2	763	661	189	145	22	411	317	302	824	318	771	1,180
New England and North West	2	1,584	1,321	402	281	77	1,526	417	727	1,151	742	1,248	2,500
Newcastle and Lake Macquarie	2	1,701	1,776	639	404	141	1,425	528	1,125	2,546	1,512	2,061	2,957
Richmond - Tweed	2	1,039	1,159	393	291	70	700	436	645	1,012	567	1,253	1,709
Riverina	1	1,168	858	327	223	28	730	313	324	781	540	865	1,620
Southern Highlands and Shoalhaven	2	606	577	221	172	19	288	181	196	335	390	522	1,204
NSW	54	35,059	32,913	9,479	7,965	1,956	19,127	8,080	13,238	28,185	25,601	36,847	48,752

NSW Recorded Crime Statistics, June Quarter 2024

Table 2.5: Rate per 100,000 population of major offences by Statistical Area (SA4)

Over the 12 months to June 2024

Statistical Area	Murder	Domestic violence related assault	Non-domestic violence related assault	Sexual assault	Sexual touching, sexual act and other sexual offences	Robbery	Break and enter dwelling	Break and enter non-dwelling	Motor vehicle theft	Steal from motor vehicle	Steal from retail store	Other stealing offences	Malicious damage to property
Greater Sydney	0.7	375.0	359.5	91.3	85.1	24.9	168.9	62.4	134.9	281.7	310.9	439.5	473.7
Baulkham Hills and Hawkesbury	0.4	159.9	139.6	60.4	52.7	19.2	101.3	47.5	70.0	112.3	167.6	210.7	237.6
Blacktown	1.2	536.0	455.0	106.5	94.4	38.3	219.9	59.3	185.0	350.0	365.9	402.0	621.5
Central Coast	0.3	501.2	428.2	155.8	121.1	22.9	202.8	82.2	182.4	361.4	333.6	339.7	706.8
City and Inner South	0.9	484.3	996.7	146.1	157.0	70.3	212.6	116.7	147.3	334.6	978.2	1,566.2	831.5
Eastern Suburbs	3.4	273.2	350.6	97.1	100.2	17.5	164.7	37.6	127.1	243.2	381.7	546.0	445.4
Inner South West	0.8	401.8	270.6	69.8	62.4	18.6	127.6	38.2	126.6	262.3	187.5	294.8	376.7
Inner West	1.3	267.6	294.1	79.1	65.3	20.9	198.7	73.2	143.4	277.1	245.4	473.1	374.1
North Sydney and Hornsby	0.2	161.5	151.9	57.4	68.0	7.5	124.6	38.1	59.7	123.9	198.7	256.5	263.6
Northern Beaches	0.4	121.9	219.5	60.0	57.3	9.5	77.9	52.8	70.3	154.6	269.7	312.2	332.3
Outer South West		538.5	374.8	108.5	108.5	21.4	131.2	51.9	138.7	261.1	279.8	281.1	540.5
Outer West and Blue Mountains	0.3	512.6	460.5	140.4	116.0	24.1	216.0	121.4	183.0	392.1	341.2	431.1	703.9
Parramatta	0.8	425.8	409.9	80.8	74.0	38.5	276.9	85.2	192.7	464.3	309.2	555.7	461.6
Ryde	0.5	183.0	144.9	51.7	59.0	7.8	136.6	48.3	77.6	164.4	202.0	306.9	248.4
South West	0.6	499.7	359.7	84.6	78.6	26.8	161.8	51.9	166.1	351.9	226.2	359.5	481.0
Sutherland		240.0	191.1	64.9	64.0	12.5	91.2	22.5	47.1	125.4	222.2	220.1	361.0
Regional NSW	1.0	608.9	508.0	173.7	135.0	23.6	397.7	176.8	270.3	473.4	400.6	563.7	864.6
Capital Region	0.8	425.1	384.0	147.1	104.7	10.0	194.9	108.0	146.7	246.4	283.0	425.1	632.1
Central West	0.9	660.8	602.9	202.7	159.7	24.3	418.0	205.9	272.7	444.6	347.4	572.5	998.0
Coffs Harbour - Grafton	2.7	802.6	571.6	225.5	145.6	40.0	350.8	198.4	345.4	479.5	336.6	600.1	938.0
Far West and Orana	1.7	1,707.6	981.0	227.1	204.9	29.9	1,018.6	487.5	464.5	747.9	636.1	934.1	1,963.8
Hunter Valley excluding Newcastle	1.0	696.3	457.6	189.9	160.9	24.0	284.4	168.6	300.4	438.0	322.8	570.8	818.8
Illawarra	0.9	314.2	341.6	127.2	104.2	17.3	211.9	84.4	169.4	419.9	474.1	421.8	575.8
Mid North Coast	0.9	683.5	495.0	177.7	145.8	19.8	445.9	175.1	268.2	384.2	302.7	630.0	872.4
Murray		660.7	558.8	156.5	134.1	20.9	379.7	257.7	311.5	774.7	338.8	653.5	989.9
New England and North West	0.5	976.5	695.0	246.4	166.0	37.8	872.2	273.0	343.2	487.4	492.8	699.8	1,284.0
Newcastle and Lake Macquarie	0.5	434.5	501.9	169.8	111.0	30.0	379.2	157.7	297.7	709.5	571.8	571.5	775.4
Richmond - Tweed	3.1	415.1	483.5	149.6	132.2	18.6	393.4	138.4	306.1	393.0	328.5	539.9	692.1
Riverina		670.8	520.1	166.5	124.0	29.8	480.0	187.1	252.2	459.3	367.6	624.0	943.6
Southern Highlands and Shoalhaven		360.1	391.0	128.9	122.7	12.9	202.9	119.6	165.9	259.0	344.1	358.3	643.2
NSW	0.8	457.2	427.9	122.9	103.8	24.5	249.1	102.5	182.4	348.9	342.3	483.2	611.6

NSW Recorded Crime Statistics, June Quarter 2024

Table 2.6: Ten year trends and annual average percent change in recorded criminal incidents for major offences by Statistical Area (SA4)
Over the ten years to June 2024

Statistical Area	Murder	Domestic violence related assault	Non-domestic violence related assault	Sexual assault	Sexual touching, sexual act and other sexual offences	Robbery	Break and enter dwelling	Break and enter non-dwelling	Motor vehicle theft	Steal from motor vehicle	Steal from retail store	Other stealing offences	Malicious damage to property
Greater Sydney	-2.5	2.5	ns	7.8	2.9	-6.4	-7.2	-5.7	-2.8	-5.6	2.2	-4.6	-3.6
Baulkham Hills and Hawkesbury		2.6	ns	7.9	3.2		-9.3	-6.5	ns	-9.4	5.0	-3.1	-3.7
Blacktown		1.4	1.9	7.5	1.5	-8.1	-6.2	-6.0	-1.5	-6.3	4.0	-4.1	-3.2
Central Coast		2.7	ns	8.8	4.4	-3.9	-7.0	-5.4	-1.8	-4.1	ns	-6.3	-2.6
City and Inner South		2.6	ns	9.8	ns	-6.2	-5.4	-5.3	-3.0	-9.3	ns	-5.4	-3.1
Eastern Suburbs		1.6	ns	12.2	6.4	-5.0	-7.3	-6.2	-2.5	-7.7	ns	-5.8	-4.1
Inner South West		2.2	ns	8.3	2.4	-9.9	-9.0	-8.4	-7.3	-5.3	ns	-4.9	-3.7
Inner West		3.4	ns	10.4	ns	-6.8	-6.1	-3.8	-2.8	-5.3	2.9	-4.4	-4.4
North Sydney and Hornsby		4.6	ns	8.1	4.4	ns	-8.3	-8.7	ns	-8.0	ns	-7.0	-5.8
Northern Beaches		ns	-1.5	7.4	ns	ns	-9.6	-5.7	-1.4	-8.0	ns	-5.6	-5.3
Outer South West		2.6	ns	5.5	ns	-5.4	-10.5	-8.4	-2.2	-5.7	ns	-5.8	-3.9
Outer West and Blue Mountains		1.6	1.1	6.2	2.6	-9.2	-6.7	ns	-2.3	-4.3	3.0	-3.8	-3.8
Parramatta		2.0	ns	6.5	ns	-5.9	-5.1	-3.9	ns	-1.5	ns	-1.6	-2.9
Ryde		6.7	ns	8.0	ns		-6.0	-6.6	ns	-3.8	ns	-3.6	-4.2
South West		3.8	3.9	6.5	5.2	-6.8	-8.6	-6.3	-3.5	-4.2	ns	-2.3	-1.1
Sutherland		2.8	-1.1	7.2	ns		-8.3	-12.7	-8.5	-11.1	1.7	-6.7	-6.4
Regional NSW	ns	3.2	1.3	8.7	3.1	ns	-3.1	-4.0	3.1	-2.7	4.3	-4.4	-2.3
Capital Region		4.7	ns	9.7	ns		-5.1	-5.1	4.1	-3.7	ns	-3.0	-3.4
Central West		1.6	ns	7.6	4.0	ns	-6.0	-5.1	2.5	-5.4	ns	-5.8	-3.3
Coffs Harbour - Grafton		5.7	1.2	8.6	2.8	5.3	-1.7	-3.7	7.2	ns	ns	-4.0	-1.2
Far West and Orana		3.6	1.4	4.5	ns	ns	-2.2	-4.4	2.6	-5.8	ns	-4.0	-1.6
Hunter Valley excluding Newcastle		5.0	4.0	11.7	6.2	ns	-4.4	-3.2	ns	-3.8	ns	-3.4	-1.9
Illawarra		ns	ns	8.9	4.1	-9.0	-8.1	-7.7	-1.9	-3.4	5.3	-6.2	-3.9
Mid North Coast		5.1	1.8	8.4	3.0	ns	-1.6	-3.7	4.2	ns	ns	-4.6	-1.2
Murray		4.8	1.7	10.1	ns	ns	-3.2	ns	5.1	ns	ns	-1.6	ns
New England and North West		3.9	ns	10.9	ns	ns	ns	-3.6	5.9	-4.2	ns	-4.5	-2.0
Newcastle and Lake Macquarie		1.7	1.2	9.5	ns	ns	ns	-2.6	ns	ns	7.6	-4.2	-2.4
Richmond - Tweed		1.0	ns	7.5	4.6	ns	1.1	-4.6	7.0	-1.9	ns	-4.6	-2.4
Riverina		3.3	ns	7.3	1.6	ns	-4.6	-3.9	ns	-4.9	ns	-4.2	-2.5
Southern Highlands and Shoalhaven		1.3	ns	5.3	ns		-9.3	-4.7	ns	-5.8	ns	-6.5	-2.8
NSW	-3.3	2.8	ns	8.4	3.1	-5.0	-5.2	-4.7	ns	-4.3	3.0	-4.5	-3.0

NSW Recorded Crime Statistics, June Quarter 2024

Table 2.7: Number of major offences by Statistical Area (SA4)

Over the 12 months to June 2015

Statistical Area	Murder	Domestic violence related assault	Non-domestic violence related assault	Sexual assault	Sexual touching, sexual act and other sexual offences	Robbery	Break and enter dwelling	Break and enter non-dwelling	Motor vehicle theft	Steal from motor vehicle	Steal from retail store	Other stealing offences	Malicious damage to property
Greater Sydney	49	15,984	17,436	2,455	3,479	2,410	17,610	5,607	9,214	25,011	13,521	35,665	34,788
Baulkham Hills and Hawkesbury	1	343	351	83	108	21	664	237	208	743	293	761	905
Blacktown	3	1,959	1,597	230	342	340	1,632	430	876	2,618	1,071	2,422	3,462
Central Coast	7	1,378	1,491	254	288	114	1,355	472	748	1,840	940	2,130	3,128
City and Inner South	4	1,312	3,566	215	439	424	1,192	649	662	2,734	2,754	8,743	3,750
Eastern Suburbs	0	624	906	91	151	73	857	176	422	1,318	747	2,453	1,705
Inner South West	6	2,009	1,480	207	306	288	1,807	513	1,526	2,610	1,018	2,825	3,200
Inner West	5	604	724	99	165	121	1,076	317	565	1,383	582	2,167	1,723
North Sydney and Hornsby	1	457	606	121	196	55	1,160	368	222	1,116	905	2,100	1,912
Northern Beaches	0	350	660	83	146	41	506	236	210	862	496	1,379	1,433
Outer South West	0	1,298	959	203	247	107	1,086	347	515	1,349	817	1,458	2,357
Outer West and Blue Mountains	5	1,495	1,406	274	309	194	1,357	443	757	1,966	882	2,045	3,368
Parramatta	9	1,779	1,678	228	336	333	2,211	609	1,023	2,641	1,205	3,209	2,996
Ryde	0	209	289	53	104	20	488	183	126	476	404	871	751
South West	8	1,733	1,235	234	242	245	1,759	451	1,111	2,523	965	2,149	2,577
Sutherland	0	434	488	80	100	34	460	176	243	832	442	953	1,521
Regional NSW	44	13,105	12,994	2,352	2,945	777	15,184	7,312	5,871	17,262	7,861	24,223	30,557
Capital Region	2	677	871	154	203	16	749	416	245	830	456	1,344	2,068
Central West	0	1,232	1,168	224	241	51	1,566	704	469	1,568	746	2,107	2,896
Coffs Harbour - Grafton	1	718	756	158	168	37	603	413	273	773	340	1,279	1,539
Far West and Orana	11	1,449	1,018	179	231	56	1,457	859	431	1,503	443	1,587	2,671
Hunter Valley excluding Newcastle	2	1,344	965	210	281	75	1,279	675	740	1,861	695	2,332	2,908
Illawarra	5	1,026	1,136	188	230	128	1,436	551	640	1,815	947	2,375	2,605
Mid North Coast	3	1,016	978	199	259	59	1,197	569	429	847	507	2,232	2,250
Murray	3	538	598	82	140	27	633	331	249	669	324	945	1,363
New England and North West	4	1,306	1,235	183	268	56	1,756	713	384	1,352	668	1,981	2,907
Newcastle and Lake Macquarie	4	1,474	1,784	297	359	143	1,579	794	975	2,932	1,174	3,332	3,809
Richmond - Tweed	2	979	1,158	202	229	57	924	548	430	1,206	561	2,137	2,235
Riverina	7	825	795	145	177	30	1,210	441	376	1,188	591	1,507	1,958
Southern Highlands and Shoalhaven	0	521	532	131	159	42	795	298	230	718	409	1,065	1,348
NSW	93	29,094	31,155	4,844	6,445	3,190	32,794	12,921	15,085	42,274	21,382	59,900	65,507

SECTION 3: LEGAL PROCEEDINGS

NSW Recorded Crime Statistics, June Quarter 2024

Table 3.1: Adults proceeded against by the NSW Police Force by method of legal proceeding

Over the ten years to June 2024

Method of legal proceeding	Adults proceeded against										Trend and average annual percentage change	
	12 months to June 2015	12 months to June 2016	12 months to June 2017	12 months to June 2018	12 months to June 2019	12 months to June 2020	12 months to June 2021	12 months to June 2022	12 months to June 2023	12 months to June 2024	2 Year Trend	10 Year Trend
Proceeded against to court (offence)	130,076	144,882	144,134	144,617	149,622	148,630	141,971	147,264	158,574	156,990	Stable	2.1%
Proceeded against to court (breach of bail)	3,814	4,718	5,454	5,498	6,425	7,864	7,195	7,888	7,779	7,998	Stable	8.6%
Court diversion	15,729	15,712	14,778	14,509	13,434	12,053	9,410	8,294	9,627	8,332	-13.5%	-6.8%
Criminal Infringement Notice	9,739	9,763	9,421	9,254	8,767	7,733	6,186	5,482	6,772	6,018	Stable	-5.2%
Cannabis or other drug caution	5,990	5,949	5,357	5,255	4,667	4,320	3,224	2,812	2,855	2,314	-18.9%	-10.0%

Table 3.2: Young people proceeded against by the NSW Police Force by method of legal proceeding

Over the ten years to June 2024

Method of legal proceeding	Young people proceeded against										Trend and average annual percentage change	
	12 months to June 2015	12 months to June 2016	12 months to June 2017	12 months to June 2018	12 months to June 2019	12 months to June 2020	12 months to June 2021	12 months to June 2022	12 months to June 2023	12 months to June 2024	2 Year Trend	10 Year Trend
Proceeded against to court (offence)	10,461	10,586	10,125	10,527	9,864	10,101	9,496	9,461	10,604	11,664	10.0%	Stable
Proceeded against to court (breach of bail)	1,379	1,358	1,380	1,575	1,685	1,605	1,443	1,353	1,617	1,667	Stable	2.1%
Court diversion	9,837	10,017	9,962	10,789	10,130	10,505	10,789	11,409	11,204	10,284	-8.2%	Stable
Youth Justice Conference	755	568	517	718	689	862	800	648	839	909	8.3%	2.1%
Caution Young Offenders Act	6,921	7,130	6,896	7,371	6,881	7,037	6,862	6,374	7,296	6,531	-10.5%	Stable
Warning Young Offenders Act	2,161	2,319	2,549	2,700	2,560	2,606	3,127	4,387	3,069	2,844	Stable	3.1%

NSW Recorded Crime Statistics, June Quarter 2024

Table 3.3: Adults proceeded against to court by the NSW Police Force for all 62 criminal offences types
Over the two years to June 2024

		12 months to June 2023		12 months to June 2024		2 Year Trend	
Offence category		No. proceeded to court	% proceeded to court	No. proceeded to court	% proceeded to court	Trend test result	Percentage change
Homicide	Murder	96	100.0%	97	100.0%	Stable	
	Attempted murder	7	100.0%	15	100.0%	n.c.	
	Murder accessory, conspiracy	1	100.0%	9	100.0%	n.c.	
	Manslaughter	9	100.0%	9	100.0%	n.c.	
Assault	Domestic violence related assault	14,651	99.9%	14,866	99.9%	Stable	
	Non-domestic violence related assault	7,291	96.5%	7,216	96.6%	Stable	
	Assault Police	1,469	99.8%	1,340	100.0%	Down	-8.8%
Sexual offences	Sexual assault	848	100.0%	734	100.0%	Stable	
	Sexual touching, sexual act and other sexual offences	1,437	97.7%	1,440	98.4%	Stable	
Abduction and kidnapping		200	100.0%	166	100.0%	Stable	
Robbery	Robbery without a weapon	361	100.0%	401	99.8%	Stable	
	Robbery with a firearm	84	100.0%	62	100.0%	Stable	
	Robbery with a weapon not a firearm	303	100.0%	284	100.0%	Stable	
Blackmail and extortion		21	100.0%	30	100.0%	Stable	
Intimidation, stalking and harassment		15,007	99.1%	15,153	99.1%	Stable	
Other offences against the person		298	96.1%	338	96.3%	Up	13.4%
Theft	Break and enter dwelling	2,509	99.8%	2,564	99.6%	Stable	
	Break and enter non-dwelling	1,426	99.5%	1,467	99.6%	Stable	
	Receiving or handling stolen goods	4,236	97.9%	4,391	97.8%	Stable	
	Motor vehicle theft	1,490	99.9%	1,582	99.7%	Stable	
	Steal from motor vehicle	1,038	99.0%	1,076	98.6%	Stable	
	Steal from retail store	7,049	70.5%	7,794	76.1%	Up	10.6%
	Steal from dwelling	809	94.7%	797	95.4%	Stable	
	Steal from person	236	97.5%	226	97.4%	Stable	
	Stock theft	6	100.0%	8	100.0%	n.c.	
	Other theft	1,645	90.1%	1,829	92.1%	Stable	
Arson		149	87.1%	218	86.2%	Up	46.3%
Malicious damage to property		4,422	99.4%	4,344	99.4%	Stable	
Drug offences	Possession and/or use of cocaine	1,481	94.7%	978	84.6%	Down	-34.0%
	Possession and/or use of narcotics	555	99.5%	542	98.0%	Stable	
	Possession and/or use of cannabis	4,580	61.7%	3,875	62.4%	Down	-15.4%
	Possession and/or use of amphetamines	2,701	99.1%	2,857	96.8%	Stable	
	Possession and/or use of ecstasy	413	53.0%	324	54.0%	Stable	
	Possession and/or use of other drugs	1,553	93.3%	1,328	93.7%	Down	-14.5%
	Dealing, trafficking in cocaine	857	100.0%	709	100.0%	Stable	
	Dealing, trafficking in narcotics	139	100.0%	139	100.0%	Stable	
	Dealing, trafficking in cannabis	370	99.7%	318	100.0%	Stable	
	Dealing, trafficking in amphetamines	653	100.0%	708	100.0%	Stable	
	Dealing, trafficking in ecstasy	93	100.0%	120	100.0%	Stable	
	Dealing, trafficking in other drugs	223	100.0%	231	100.0%	Stable	
	Cultivating cannabis	443	100.0%	396	100.0%	Stable	
	Manufacture drug	39	100.0%	52	100.0%	Stable	
	Importing drugs	103	100.0%	59	100.0%	Down	-42.7%
Other drug offences	629	96.6%	613	96.5%	Stable		
Prohibited and regulated weapons offences		2,849	87.6%	3,019	87.7%	Stable	
Disorderly conduct	Trespass	1,477	70.0%	1,578	71.5%	Up	6.8%
	Offensive conduct	288	15.3%	299	19.0%	Stable	
	Offensive language	95	14.0%	66	13.5%	Down	-30.5%
	Criminal intent	1,638	99.7%	1,614	100.0%	Stable	
Betting and gaming offences		16	76.2%	9	90.0%	n.c.	
Liquor offences		160	6.4%	124	7.3%	Stable	
Pornography offences		256	100.0%	278	100.0%	Stable	
Prostitution offences		1	100.0%	3	100.0%	n.c.	
Against justice procedures	Escape custody	65	100.0%	84	100.0%	Up	29.2%
	Breach Apprehended Violence Order	12,497	100.0%	13,559	100.0%	Up	8.5%
	Breach bail conditions	7,779	100.0%	7,998	100.0%	Stable	
	Fail to appear	11	100.0%	19	100.0%	n.c.	
	Resist or hinder officer	1,502	83.9%	1,476	85.2%	Stable	
	Other offences against justice procedures	1,184	100.0%	1,315	100.0%	Stable	
Transport regulatory offences		319	0.9%	400	1.7%	Up	25.4%
Other offences		2,008	34.0%	2,024	41.5%	Stable	

NSW Recorded Crime Statistics, June Quarter 2024

Table 3.4: Young people proceeded against to court by the NSW Police Force for all 62 criminal offences
Over the two years to June 2024

Offence category		12 months to June 2023		12 months to June 2024		2 Year Trend	
		No. proceeded to court	% proceeded to court	No. proceeded to court	% proceeded to court	Trend test result	Percentage change
Homicide	Murder	10	100.0%	11	100.0%	n.c.	
	Attempted murder	0		1	100.0%	n.c.	
	Murder accessory, conspiracy	0		0		n.c.	
	Manslaughter	0		0		n.c.	
Assault	Domestic violence related assault	458	39.3%	443	36.6%	Stable	
	Non-domestic violence related assault	799	30.4%	881	33.8%	Up	10.3%
	Assault Police	139	76.0%	145	81.5%	Stable	
Sexual offences	Sexual assault	104	98.1%	126	99.2%	Stable	
	Sexual touching, sexual act and other sexual offences	79	76.7%	69	66.3%	Stable	
Abduction and kidnapping		4	100.0%	9	100.0%	n.c.	
Robbery	Robbery without a weapon	296	92.8%	357	91.1%	Stable	
	Robbery with a firearm	26	92.9%	14	100.0%	n.c.	
	Robbery with a weapon not a firearm	183	97.3%	223	97.4%	Stable	
Blackmail and extortion		1	100.0%	9	81.8%	n.c.	
Intimidation, stalking and harassment		1,382	73.2%	1,312	71.1%	Stable	
Other offences against the person		30	56.6%	18	50.0%	n.c.	
Theft	Break and enter dwelling	938	84.0%	1,095	87.3%	Stable	
	Break and enter non-dwelling	422	51.3%	575	66.9%	Up	36.3%
	Receiving or handling stolen goods	205	52.2%	210	51.7%	Stable	
	Motor vehicle theft	833	74.5%	918	76.4%	Stable	
	Steal from motor vehicle	272	75.1%	289	74.7%	Stable	
	Steal from retail store	546	30.6%	896	44.6%	Up	64.1%
	Steal from dwelling	58	39.2%	45	41.3%	Stable	
	Steal from person	47	58.0%	72	67.9%	Up	53.2%
	Stock theft	0		0		n.c.	
	Fraud	294	67.3%	306	72.3%	Stable	
Other theft	110	31.2%	118	36.2%	Stable		
Arson		30	36.6%	29	21.2%	Stable	
Malicious damage to property		537	34.1%	519	34.4%	Stable	
Drug offences	Possession and/or use of cocaine	8	72.7%	2	18.2%	n.c.	
	Possession and/or use of narcotics	2	100.0%	0		n.c.	
	Possession and/or use of cannabis	159	16.0%	160	18.7%	Stable	
	Possession and/or use of amphetamines	7	46.7%	10	41.7%	n.c.	
	Possession and/or use of ecstasy	2	28.6%	5	35.7%	n.c.	
	Possession and/or use of other drugs	10	21.7%	10	40.0%	n.c.	
	Dealing, trafficking in cocaine	17	100.0%	20	100.0%	n.c.	
	Dealing, trafficking in narcotics	1	100.0%	0		n.c.	
	Dealing, trafficking in cannabis	34	85.0%	18	90.0%	n.c.	
	Dealing, trafficking in amphetamines	4	100.0%	3	100.0%	n.c.	
	Dealing, trafficking in ecstasy	3	100.0%	6	85.7%	n.c.	
	Dealing, trafficking in other drugs	0		1	50.0%	n.c.	
	Cultivating cannabis	4	66.7%	1	100.0%	n.c.	
	Manufacture drug	0		0		n.c.	
	Importing drugs	0		0		n.c.	
Other drug offences	5	6.8%	8	18.6%	n.c.		
Prohibited and regulated weapons offences		134	24.6%	145	28.2%	Stable	
Disorderly conduct	Trespass	296	19.4%	253	18.6%	Stable	
	Offensive conduct	24	9.2%	12	5.9%	n.c.	
	Offensive language	7	9.6%	3	9.4%	n.c.	
	Criminal intent	241	84.9%	263	81.4%	Stable	
Betting and gaming offences		0		0		n.c.	
Liquor offences		1	0.8%	2	2.0%	n.c.	
Pornography offences		9	12.7%	22	26.5%	n.c.	
Prostitution offences		0		1	100.0%	n.c.	
Against justice procedures	Escape custody	10	100.0%	4	80.0%	n.c.	
	Breach Apprehended Violence Order	505	100.0%	531	99.8%	Stable	
	Breach bail conditions	1,617	98.5%	1,667	98.8%	Stable	
	Fail to appear	1	100.0%	0		n.c.	
	Resist or hinder officer	95	43.2%	70	46.7%	Stable	
	Other offences against justice procedures	13	100.0%	6	100.0%	n.c.	
Transport regulatory offences		40	0.3%	42	0.7%	Stable	
Other offences		133	17.2%	126	19.5%	Stable	

Figure 3.5: Offences with the largest change in the number of adults proceeded against to court by the NSW Police Force

Between the 12 months to June 2023 and the 12 months to June 2024

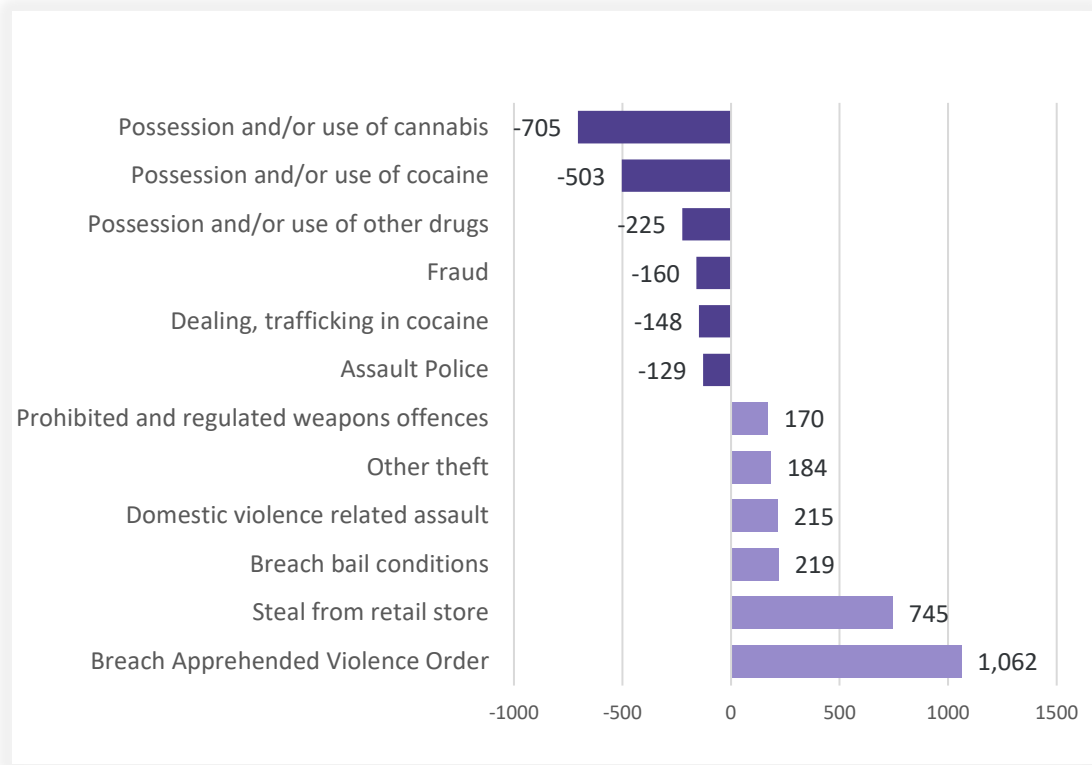
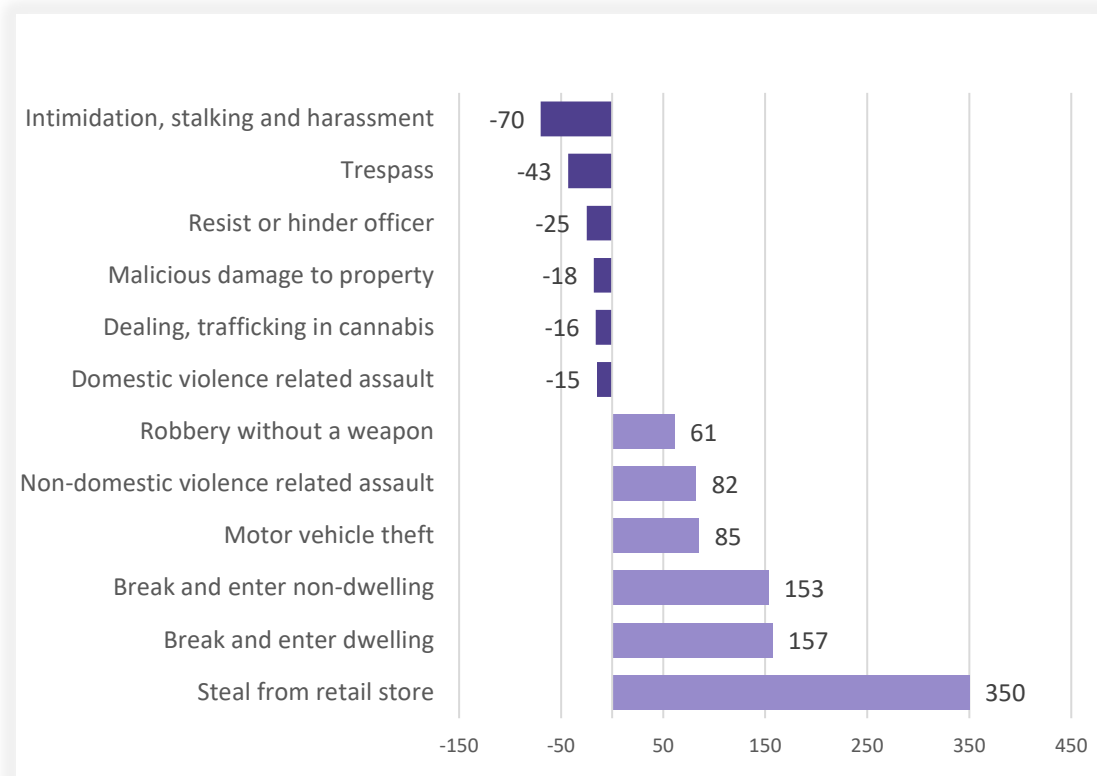


Figure 3.6: Offences with the largest change in the number of young people proceeded against to court by the NSW Police Force

Between the 12 months to June 2023 and the 12 months to June 2024



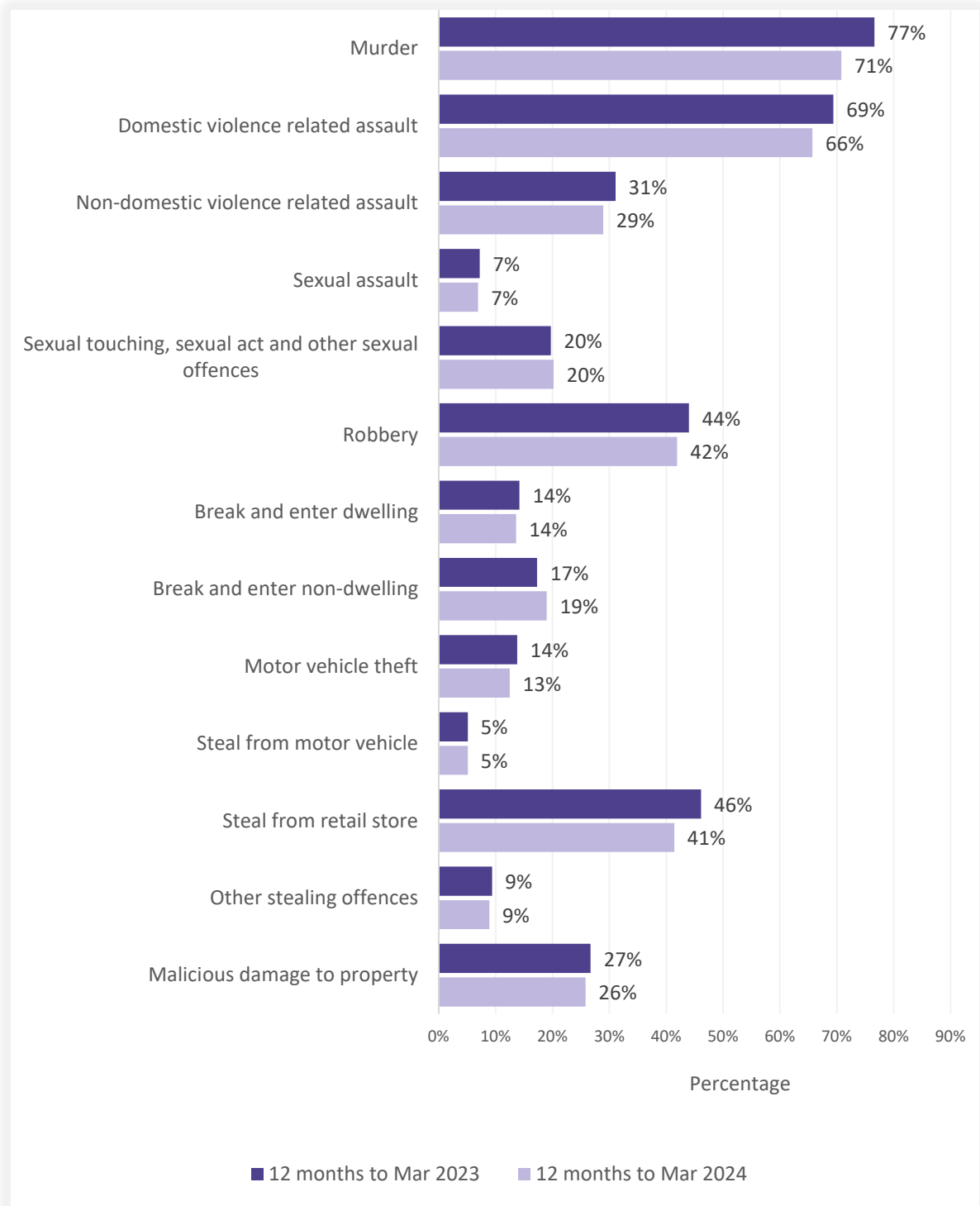
NSW Recorded Crime Statistics, June Quarter 2024

Table 3.7: Incidents of all 62 criminal offence types by whether legal proceedings commenced within 90 days of reporting
Over the two years to March 2024

Offence category		Recorded criminal incidents over the 12 months to March 2023			Trend test result		
		Proceedings commenced within 90 days	Total number recorded	% proceedings commenced within 90 days	Proceedings commenced within 90 days	Total number recorded	% proceedings commenced within 90 days
Homicide	Murder	36	47	76.6%	46	65	70.8%
	Attempted murder	4	7	57.1%	5	14	35.7%
	Murder accessory, conspiracy	1	1	100.0%	2	4	50.0%
	Manslaughter	6	12	50.0%	5	12	41.7%
Assault	Domestic violence related assault	24,009	34,609	69.4%	24,087	36,663	65.7%
	Non-domestic violence related assault	10,061	32,402	31.1%	10,044	34,713	28.9%
	Assault Police	2,449	2,737	89.5%	2,230	2,562	87.0%
Sexual offences	Sexual assault	695	9,676	7.2%	666	9,671	6.9%
	Sexual touching, sexual act and other sexual offences	1,664	8,442	19.7%	1,612	7,991	20.2%
Abduction and kidnapping		120	207	58.0%	112	259	43.2%
Robbery	Robbery without a weapon	447	1,033	43.3%	463	1,125	41.2%
	Robbery with a firearm	52	109	47.7%	50	101	49.5%
	Robbery with a weapon not a firearm	336	755	44.5%	304	725	41.9%
Blackmail and extortion		16	1,311	1.2%	25	1,674	1.5%
Intimidation, stalking and harassment		20,658	44,412	46.5%	20,618	46,572	44.3%
Other offences against the person		453	1,474	30.7%	514	1,592	32.3%
Theft	Break and enter dwelling	2,692	19,016	14.2%	2,776	20,396	13.6%
	Break and enter non-dwelling	1,310	7,564	17.3%	1,640	8,652	19.0%
	Receiving or handling stolen goods	6,324	8,080	78.3%	6,401	7,956	80.5%
	Motor vehicle theft	1,771	12,860	13.8%	1,825	14,563	12.5%
	Steal from motor vehicle	1,389	27,432	5.1%	1,452	28,693	5.1%
	Steal from retail store	11,225	24,355	46.1%	11,399	27,542	41.4%
	Steal from dwelling	1,058	15,291	6.9%	1,022	16,100	6.3%
	Steal from person	378	2,049	18.4%	396	2,138	18.5%
	Stock theft	2	266	0.8%	4	228	1.8%
	Fraud	3,395	48,160	7.0%	3,287	46,304	7.1%
Other theft		1,987	18,733	10.6%	2,062	20,771	9.9%
Arson		204	3,634	5.6%	300	4,608	6.5%
Malicious damage to property		13,128	49,086	26.7%	12,789	49,546	25.8%
Drug offences	Possession and/or use of cocaine	1,966	2,646	74.3%	1,583	2,232	70.9%
	Possession and/or use of narcotics	752	1,173	64.1%	831	1,218	68.2%
	Possession and/or use of cannabis	11,460	15,615	73.4%	10,136	14,257	71.1%
	Possession and/or use of amphetamines	4,685	6,440	72.7%	4,926	6,718	73.3%
	Possession and/or use of ecstasy	869	1,093	79.5%	726	1,011	71.8%
	Possession and/or use of other drugs	2,895	6,284	46.1%	2,650	5,688	46.6%
	Dealing, trafficking in cocaine	1,107	1,349	82.1%	854	1,001	85.3%
	Dealing, trafficking in narcotics	245	291	84.2%	160	250	64.0%
	Dealing, trafficking in cannabis	441	552	79.9%	439	517	84.9%
	Dealing, trafficking in amphetamines	1,488	1,908	78.0%	1,304	1,630	80.0%
	Dealing, trafficking in ecstasy	145	195	74.4%	200	245	81.6%
	Dealing, trafficking in other drugs	254	410	62.0%	313	478	65.5%
	Cultivating cannabis	507	735	69.0%	442	664	66.6%
	Manufacture drug	30	63	47.6%	29	62	46.8%
Importing drugs	64	153	41.8%	53	111	47.7%	
Other drug offences	1,097	5,657	19.4%	1,028	5,412	19.0%	
Prohibited and regulated weapons offences		5,860	13,615	43.0%	5,939	14,490	41.0%
Disorderly conduct	Trespass	4,586	11,108	41.3%	5,045	12,388	40.7%
	Offensive conduct	2,368	3,570	66.3%	1,922	3,111	61.8%
	Offensive language	1,194	1,530	78.0%	750	1,070	70.1%
	Criminal intent	2,155	2,701	79.8%	2,228	2,812	79.2%
Betting and gaming offences		25	118	21.2%	11	44	25.0%
Liquor offences		3,740	9,836	38.0%	2,665	6,925	38.5%
Pornography offences		250	1,095	22.8%	314	1,212	25.9%
Prostitution offences		5	32	15.6%	2	21	9.5%
Against justice procedures	Escape custody	131	156	84.0%	121	142	85.2%
	Breach Apprehended Violence Order	18,783	23,127	81.2%	19,471	24,864	78.3%
	Breach bail conditions	18,581	53,450	34.8%	19,603	54,140	36.2%
	Fail to appear	12	867	1.4%	20	860	2.3%
	Resist or hinder officer	4,655	5,568	83.6%	4,410	5,260	83.8%
	Other offences against justice procedures	1,454	2,558	56.8%	1,584	2,319	68.3%
Transport regulatory offences		51,568	68,257	75.5%	34,844	69,857	49.9%
Other offences		7,781	16,173	48.1%	6,487	12,652	51.3%

Figure 3.8: Percentage of recorded criminal incidents for major offences by whether legal proceedings commenced within 90 days of reporting

Over the two years to March 2024



SECTION 4: POLICING ACTIVITY

Table 4.1: Selected policing activities
Over the ten years to June 2024

	Number of selected policing activities										Trend and average annual percentage change	
	12 months to June 2015	12 months to June 2016	12 months to June 2017	12 months to June 2018	12 months to June 2019	12 months to June 2020	12 months to June 2021	12 months to June 2022	12 months to June 2023	12 months to June 2024	2 Year Trend	10 Year Trend
Bail compliance checks	92,394	96,635	110,222	110,053	100,984	106,335	117,950	138,690	131,904	105,943	-19.70%	1.50%
ADVO compliance checks events	n.a.	n.a.	n.a.	n.a.	40,206	52,712	63,370	113,534	109,964	97,690	Stable	n.c.
Move-on directions	103,739	107,159	106,581	105,620	105,944	114,569	99,146	92,595	82,780	56,766	-31.40%	-6.50%
Searches	316,305	313,751	291,336	287,616	284,877	294,321	249,078	226,892	199,607	142,076	-28.80%	-8.50%
Vehicle searches	54,266	55,482	50,054	47,705	44,981	47,692	44,262	41,227	31,072	23,023	-25.90%	-9.10%
Person searches	258,310	253,192	236,834	234,420	234,483	242,878	202,334	183,569	166,099	116,835	-29.70%	-8.40%
Strip searches	3,729	5,077	4,448	5,491	5,413	3,751	2,482	2,096	2,436	2,218	Stable	-5.60%
Taser use	876	792	715	720	917	982	943	947	1,216	1,832	50.70%	8.50%
Taser Draw/Cover	658	590	511	506	690	717	676	707	931	1,463	57.10%	9.30%
Taser Warning Arc	n.a.	n.a.	n.a.	n.a.	n.a.	n.a.	n.a.	n.a.	n.a.	79	n.c.	n.c.
Taser Probes Discharged	199	186	181	190	201	236	244	212	257	272	Stable	3.50%
Taser Drive Stun	19	16	23	24	26	29	23	28	27	18	n.c.	n.c.
Convey/detain person to mental health facility	12,180	12,835	13,494	13,950	15,677	17,158	18,743	19,747	20,723	19,831	Stable	5.60%

AVO compliance check numbers are only available from January 2018 and Taser Warning/Arc numbers are only available from September 2023. See Appendix 2 for more details.

n.a. - Not available.

n.c. - Not calculated.

NSW Recorded Crime Statistics, June Quarter 2024

Table 4.2: Non-criminal domestic episodes by Statistical Area (SA4)
Over the ten years to June 2024

Statistical Area	Number of activities										Trend and average annual percentage change	
	12 months to June 2015	12 months to June 2016	12 months to June 2017	12 months to June 2018	12 months to June 2019	12 months to June 2020	12 months to June 2021	12 months to June 2022	12 months to June 2023	12 months to June 2024	2 Year Trend	10 Year Trend
Greater Sydney	42,059	43,396	44,973	44,420	46,212	49,234	46,989	44,288	42,445	46,202	8.9%	Stable
Baulkham Hills and Hawkesbury	962	997	1,102	944	1,102	1,195	1,175	1,128	1,082	1,365	26.2%	4.0%
Blacktown	4,936	5,061	5,465	5,460	5,212	5,467	5,304	5,223	5,009	5,024	Stable	Stable
Central Coast	3,786	4,138	4,365	4,316	4,478	4,906	4,849	4,513	4,326	4,628	Stable	2.3%
City and Inner South	3,170	3,292	3,329	3,151	3,471	3,488	3,565	3,390	3,275	3,651	11.5%	1.6%
Eastern Suburbs	1,729	1,778	1,786	1,656	1,802	2,042	1,955	2,005	1,725	1,982	14.9%	1.5%
Inner South West	4,920	5,284	5,380	5,214	5,211	5,422	4,979	4,700	4,448	4,615	Stable	Stable
Inner West	1,902	1,950	2,145	1,992	2,002	2,173	1,966	1,888	1,883	2,179	15.7%	Stable
North Sydney and Hornsby	1,506	1,483	1,600	1,560	1,565	1,805	1,800	1,771	1,683	1,829	Stable	2.2%
Northern Beaches	1,497	1,478	1,418	1,506	1,578	1,709	1,481	1,348	1,311	1,642	25.2%	Stable
Outer South West	3,369	3,414	3,307	3,391	3,529	3,708	3,536	3,217	3,119	3,376	Stable	Stable
Outer West and Blue Mountains	4,128	4,102	4,310	4,369	4,701	4,868	4,809	4,118	4,303	4,423	Stable	Stable
Parramatta	3,892	3,814	3,898	3,975	4,166	4,582	4,188	4,206	3,956	4,336	9.6%	1.2%
Ryde	878	901	964	937	1,056	1,209	1,113	1,091	1,033	1,254	21.4%	4.0%
South West	3,945	4,230	4,398	4,365	4,597	4,790	4,496	4,156	3,878	4,299	10.9%	Stable
Sutherland	1,439	1,474	1,506	1,584	1,742	1,870	1,773	1,534	1,414	1,599	13.1%	1.2%
Regional NSW	35,856	35,449	35,457	35,255	36,634	39,475	39,935	38,104	38,620	42,651	10.4%	1.9%
Capital Region	2,112	2,106	2,224	2,089	2,371	2,666	2,934	2,695	2,665	2,886	Stable	3.5%
Central West	3,227	3,100	3,027	2,850	3,044	3,316	3,290	3,157	3,214	3,142	Stable	Stable
Coffs Harbour - Grafton	1,716	1,926	1,976	1,971	1,928	1,969	1,985	1,942	2,198	2,492	13.4%	4.2%
Far West and Orana	3,646	3,327	3,126	3,469	3,648	3,597	3,902	3,766	3,753	4,329	15.3%	1.9%
Hunter Valley excluding Newcastle	2,789	2,930	2,904	2,907	2,758	2,933	3,191	3,112	3,354	3,525	Stable	2.6%
Illawarra	3,966	3,921	3,780	3,427	3,582	3,800	3,642	3,607	3,637	3,763	Stable	Stable
Mid North Coast	2,630	2,851	2,956	2,978	3,130	3,362	3,350	3,014	2,884	3,422	18.7%	3.0%
Murray	1,605	1,463	1,604	1,616	1,772	2,030	2,058	1,878	1,978	2,066	Stable	2.8%
New England and North West	3,564	3,484	3,694	3,749	3,753	3,900	3,756	3,846	3,542	4,068	14.9%	1.5%
Newcastle and Lake Macquarie	3,677	3,729	3,691	3,584	3,471	4,192	4,343	4,150	4,150	4,702	13.3%	2.8%
Richmond - Tweed	3,010	2,678	2,511	2,598	2,730	2,854	2,910	2,750	2,903	3,417	17.7%	1.4%
Riverina	2,242	2,414	2,418	2,429	2,714	2,960	2,801	2,387	2,413	2,708	12.2%	2.1%
Southern Highlands and Shoalhaven	1,672	1,520	1,546	1,588	1,733	1,896	1,773	1,800	1,929	2,131	Stable	2.7%
NSW	77,920	78,851	80,437	79,690	82,864	88,719	86,931	82,408	81,085	88,870	9.6%	1.5%

Table 4.3: Ratio to NSW rate of non-criminal domestic episodes per 100,000 population by Statistical Area (SA4)

Over the ten years to June 2024

Statistical Area	12 months to June 2015	12 months to June 2016	12 months to June 2017	12 months to June 2018	12 months to June 2019	12 months to June 2020	12 months to June 2021	12 months to June 2022	12 months to June 2023	12 months to June 2024
Greater Sydney	0.8	0.8	0.9	0.9	0.8	0.8	0.8	0.8	0.8	0.8
Baulkham Hills and Hawkesbury	0.4	0.4	0.4	0.4	0.4	0.4	0.4	0.4	0.4	0.5
Blacktown	1.4	1.4	1.5	1.5	1.3	1.3	1.2	1.2	1.2	1.1
Central Coast	1.1	1.2	1.3	1.3	1.3	1.3	1.3	1.3	1.2	1.2
City and Inner South	1.0	1.0	0.9	0.9	0.9	0.9	1.0	1.0	1.0	1.0
Eastern Suburbs	0.6	0.6	0.6	0.6	0.6	0.7	0.7	0.8	0.7	0.7
Inner South West	0.8	0.9	0.9	0.8	0.8	0.8	0.8	0.8	0.7	0.7
Inner West	0.6	0.6	0.7	0.6	0.6	0.6	0.6	0.6	0.6	0.7
North Sydney and Hornsby	0.4	0.3	0.4	0.4	0.3	0.4	0.4	0.4	0.4	0.4
Northern Beaches	0.6	0.5	0.5	0.6	0.6	0.6	0.5	0.5	0.5	0.6
Outer South West	1.3	1.2	1.2	1.2	1.2	1.1	1.1	1.0	1.0	1.0
Outer West and Blue Mountains	1.3	1.3	1.3	1.4	1.4	1.3	1.3	1.2	1.3	1.2
Parramatta	0.8	0.8	0.8	0.8	0.8	0.8	0.8	0.8	0.8	0.8
Ryde	0.5	0.5	0.5	0.5	0.5	0.5	0.5	0.5	0.5	0.6
South West	0.9	1.0	1.0	1.0	1.0	0.9	0.9	0.8	0.8	0.8
Sutherland	0.6	0.6	0.6	0.7	0.7	0.7	0.7	0.7	0.6	0.6
Regional NSW	1.3	1.3	1.3	1.3	1.3	1.3	1.3	1.3	1.4	1.4
Capital Region	0.9	0.9	1.0	0.9	1.0	1.0	1.1	1.1	1.1	1.1
Central West	1.5	1.4	1.4	1.3	1.4	1.4	1.4	1.5	1.5	1.3
Coffs Harbour - Grafton	1.2	1.4	1.4	1.4	1.3	1.2	1.3	1.3	1.5	1.6
Far West and Orana	3.0	2.8	2.6	3.0	3.0	2.8	3.1	3.2	3.2	3.4
Hunter Valley excluding Newcastle	1.0	1.1	1.0	1.1	1.0	0.9	1.0	1.0	1.1	1.1
Illawarra	1.3	1.3	1.2	1.1	1.1	1.1	1.1	1.1	1.2	1.1
Mid North Coast	1.2	1.3	1.3	1.4	1.4	1.4	1.4	1.3	1.3	1.4
Murray	1.3	1.2	1.3	1.3	1.4	1.5	1.6	1.5	1.6	1.5
New England and North West	1.9	1.8	1.9	2.0	2.0	1.9	1.9	2.0	1.9	2.0
Newcastle and Lake Macquarie	1.0	1.0	1.0	1.0	0.9	1.0	1.0	1.0	1.1	1.1
Richmond - Tweed	1.2	1.1	1.0	1.0	1.1	1.0	1.1	1.1	1.1	1.2
Riverina	1.4	1.5	1.5	1.5	1.6	1.7	1.6	1.4	1.5	1.5
Southern Highlands and Shoalhaven	1.1	1.0	1.0	1.0	1.1	1.1	1.0	1.1	1.2	1.2
NSW	1.0	1.0	1.0	1.0	1.0	1.0	1.0	1.0	1.0	1.0

APPENDIX 1

REGIONAL

COMPARISONS

Local Government Areas

NSW Recorded Crime Statistics, June Quarter 2024

Appendix Table 1.1: Trends in recorded criminal incidents for major offences, NSW LGAs

Over the two years to June 2024

NSW LGA	Murder	Domestic violence related assault	Non-domestic violence related assault	Sexual assault	Sexual touching, sexual act and other sexual offences	Robbery	Break and enter dwelling	Break and enter non-dwelling	Motor vehicle theft	Steal from motor vehicle	Steal from retail store	Other stealing offences	Malicious damage to property
Albury	ns	ns	ns	ns	ns	ns	ns	ns	ns	ns	33.8	ns	ns
Armidale Regional	ns	ns	ns	ns	ns	ns	ns	132.8	ns	ns	ns	ns	ns
Ballina	ns	25.0	ns	ns	ns	ns	75.0	ns	ns	ns	ns	ns	ns
Balranald	ns	ns	ns	ns	ns	ns	ns	ns	ns	ns	ns	ns	ns
Bathurst Regional	ns	-20.2	17.9	ns	ns	ns	ns	ns	ns	ns	ns	ns	ns
Bayside	ns	-14.9	ns	ns	ns	ns	ns	ns	ns	ns	ns	-8.0	ns
Bega Valley	ns	ns	ns	110.3	ns	ns	ns	ns	ns	ns	ns	ns	ns
Bellingen	ns	ns	ns	ns	ns	ns	ns	ns	ns	ns	ns	ns	9.7
Berrigan	ns	ns	ns	ns	ns	ns	ns	ns	ns	ns	ns	180.0	ns
Blacktown	ns	ns	15.8	ns	ns	ns	ns	ns	ns	ns	ns	ns	ns
Bland	ns	ns	ns	ns	ns	ns	ns	ns	ns	ns	ns	ns	ns
Blayney	ns	ns	ns	ns	ns	ns	ns	ns	ns	ns	ns	ns	ns
Blue Mountains	ns	ns	ns	ns	ns	ns	-35.0	ns	-20.0	-3.1	ns	ns	-23.9
Bogan	ns	ns	ns	ns	ns	ns	ns	ns	ns	-54.5	ns	ns	ns
Bourke	ns	ns	-21.7	ns	ns	ns	ns	ns	ns	ns	ns	ns	ns
Brewarrina	ns	ns	ns	ns	ns	ns	ns	ns	ns	ns	ns	ns	ns
Broken Hill	ns	ns	ns	ns	ns	ns	ns	ns	ns	ns	ns	ns	ns
Burwood	ns	ns	ns	ns	ns	ns	ns	ns	ns	ns	-29.9	ns	ns
Byron	ns	ns	ns	ns	ns	ns	69.4	ns	31.0	ns	97.7	ns	ns
Cabonne	ns	ns	ns	ns	ns	ns	ns	ns	ns	ns	ns	ns	ns
Camden	ns	39.9	ns	ns	ns	ns	ns	ns	64.6	ns	ns	ns	ns
Campbelltown	ns	ns	20.8	ns	ns	ns	ns	ns	ns	ns	ns	ns	ns
Canada Bay	ns	ns	31.2	ns	ns	ns	ns	ns	48.1	ns	ns	ns	ns
Canterbury-Bankstown	ns	17.6	ns	ns	ns	ns	ns	ns	ns	ns	-24.3	17.0	ns
Carrathool	ns	ns	ns	ns	ns	ns	ns	ns	ns	ns	ns	ns	ns
Central Coast	ns	ns	ns	ns	ns	ns	ns	ns	31.6	ns	ns	ns	6.3
Central Darling	ns	41.5	ns	ns	ns	ns	ns	ns	ns	ns	ns	ns	ns
Cessnock	ns	24.8	ns	ns	ns	ns	ns	ns	7.8	ns	ns	ns	ns
Clarence Valley	ns	ns	ns	ns	ns	ns	ns	ns	ns	ns	ns	ns	ns
Cobar	ns	ns	ns	ns	ns	ns	ns	ns	ns	ns	ns	-42.9	ns
Coffs Harbour	ns	ns	ns	ns	ns	ns	ns	ns	ns	ns	ns	ns	ns
Coolamon	ns	ns	ns	ns	ns	ns	ns	ns	ns	ns	ns	ns	ns
Coonamble	ns	ns	ns	ns	ns	ns	ns	ns	ns	ns	ns	ns	ns
Cootamundra-Gundagai	ns	ns	ns	ns	ns	ns	ns	ns	ns	ns	ns	ns	ns
Cowra	ns	ns	ns	ns	ns	ns	ns	ns	ns	ns	ns	ns	ns
Cumberland	ns	17.4	ns	ns	ns	ns	ns	-21.5	ns	15.4	-20.9	18.0	ns
Dubbo Regional	ns	ns	ns	ns	ns	ns	ns	ns	-17.3	ns	30.5	ns	15.2
Dungog	ns	ns	ns	ns	ns	ns	ns	ns	ns	ns	ns	ns	ns
Edward River	ns	ns	ns	ns	ns	ns	ns	ns	ns	ns	ns	ns	ns
Eurobodalla	ns	ns	ns	ns	ns	ns	ns	ns	ns	ns	ns	17.6	ns
Fairfield	ns	ns	27.8	ns	ns	ns	ns	ns	ns	ns	-17.4	ns	20.6
Federation	ns	ns	ns	ns	ns	ns	ns	ns	ns	ns	ns	ns	36.1
Forbes	ns	ns	ns	ns	ns	ns	ns	ns	ns	ns	ns	ns	ns

NSW Recorded Crime Statistics, June Quarter 2024

NSW LGA	Murder	Domestic violence related assault	Non-domestic violence related assault	Sexual assault	Sexual touching, sexual act and other sexual offences	Robbery	Break and enter dwelling	Break and enter non-dwelling	Motor vehicle theft	Steal from motor vehicle	Steal from retail store	Other stealing offences	Malicious damage to property
Georges River	ns	ns	ns	ns	ns	ns	ns	ns	ns	ns	ns	ns	ns
Gilgandra	ns	ns	ns	ns	ns	ns	ns	ns	ns	ns	ns	ns	ns
Glen Innes Severn	ns	ns	ns	ns	ns	ns	ns	ns	ns	ns	ns	ns	ns
Goulburn Mulwaree	ns	ns	ns	ns	ns	ns	ns	ns	ns	44.0	ns	ns	ns
Greater Hume Shire	ns	ns	ns	ns	ns	ns	ns	ns	ns	ns	ns	ns	ns
Griffith	ns	ns	-49.0	ns	ns	ns	ns	ns	ns	ns	ns	ns	ns
Gunnedah	ns	ns	ns	ns	ns	ns	ns	ns	ns	63.0	9.1	ns	ns
Gwydir	ns	ns	ns	ns	ns	ns	ns	ns	ns	ns	ns	ns	ns
Hawkesbury	ns	ns	ns	ns	ns	ns	ns	ns	ns	ns	ns	ns	ns
Hay	ns	ns	ns	ns	ns	ns	ns	ns	ns	ns	ns	ns	ns
Hilltops	ns	ns	ns	ns	ns	ns	ns	ns	ns	-22.5	ns	ns	ns
Hornsby	ns	ns	ns	ns	ns	ns	ns	32.8	ns	ns	ns	ns	ns
Hunters Hill	ns	ns	ns	ns	ns	ns	ns	ns	ns	ns	ns	ns	ns
Inner West	ns	ns	ns	ns	ns	ns	ns	ns	ns	ns	ns	ns	ns
Inverell	ns	ns	ns	ns	ns	ns	ns	-41.8	ns	209.1	ns	ns	ns
Junee	ns	ns	ns	ns	ns	ns	ns	ns	ns	ns	ns	ns	ns
Kempsey	ns	ns	ns	ns	ns	ns	ns	ns	ns	ns	ns	ns	12.7
Kiama	ns	ns	ns	ns	ns	ns	ns	ns	ns	ns	ns	ns	ns
Ku-ring-gai	ns	ns	ns	ns	ns	ns	ns	ns	ns	ns	ns	ns	29.9
Kyogle	ns	ns	ns	ns	ns	ns	ns	ns	ns	ns	ns	ns	ns
Lachlan	ns	ns	ns	ns	ns	ns	-36.7	ns	ns	ns	ns	ns	ns
Lake Macquarie	10.5	ns	ns	ns	ns	ns	15.2	31.8	11.2	ns	48.8	ns	10.9
Lane Cove	ns	ns	ns	ns	ns	ns	ns	ns	ns	ns	ns	ns	ns
Leeton	13.8	ns	ns	ns	ns	ns	-45.7	ns	ns	ns	ns	ns	ns
Lismore	ns	22.3	ns	47.6	ns	ns	136.6	ns	28.0	ns	56.8	ns	25.5
Lithgow	ns	ns	ns	ns	ns	ns	ns	ns	ns	ns	ns	-20.3	ns
Liverpool	14.1	ns	ns	ns	ns	ns	ns	ns	16.5	ns	ns	ns	ns
Liverpool Plains	ns	ns	ns	ns	ns	ns	ns	ns	ns	ns	ns	ns	ns
Lockhart	ns	ns	ns	ns	ns	ns	ns	ns	ns	ns	ns	ns	ns
Lord Howe Island	ns	ns	ns	ns	ns	ns	ns	ns	ns	ns	ns	ns	ns
Maitland	ns	ns	ns	ns	ns	ns	ns	ns	17.2	18.6	ns	ns	ns
Mid-Coast	ns	ns	ns	ns	ns	ns	ns	ns	ns	ns	ns	-22.7	ns
Mid-Western Regional	ns	ns	ns	ns	ns	ns	ns	ns	ns	ns	ns	ns	ns
Moree Plains	ns	ns	ns	ns	ns	ns	ns	ns	ns	-17.9	ns	ns	ns
Mosman	ns	ns	ns	ns	ns	ns	ns	ns	ns	ns	ns	ns	ns
Murray River	ns	ns	ns	ns	ns	ns	ns	ns	ns	144.4	ns	ns	ns
Murrumbidgee	ns	ns	ns	ns	ns	ns	ns	ns	ns	ns	ns	ns	ns
Muswellbrook	ns	ns	ns	ns	ns	ns	ns	ns	ns	ns	ns	ns	ns
Nambucca Valley	-24.9	ns	ns	ns	ns	ns	ns	ns	ns	ns	ns	ns	-20.5
Narrabri	ns	ns	ns	ns	ns	ns	ns	ns	ns	ns	ns	ns	ns
Narrandera	ns	ns	ns	ns	ns	ns	ns	ns	ns	ns	ns	ns	ns
Narromine	ns	ns	ns	ns	ns	ns	ns	ns	ns	ns	ns	ns	ns
Newcastle	ns	ns	ns	ns	ns	ns	ns	ns	ns	ns	50.6	15.8	ns
North Sydney	ns	ns	ns	ns	ns	ns	ns	ns	ns	-35.0	ns	ns	ns
Northern Beaches	26.4	18.2	ns	ns	ns	ns	ns	43.3	ns	ns	16.2	ns	ns

NSW Recorded Crime Statistics, June Quarter 2024

NSW LGA	Murder	Domestic violence related assault	Non-domestic violence related assault	Sexual assault	Sexual touching, sexual act and other sexual offences	Robbery	Break and enter dwelling	Break and enter non-dwelling	Motor vehicle theft	Steal from motor vehicle	Steal from retail store	Other stealing offences	Malicious damage to property
Oberon													ns
Orange		ns	ns	ns	ns	ns	ns	ns	ns	-44.7	ns	25.1	ns
Parkes		ns	ns	ns	ns		ns	ns	50.0	ns	93.8	ns	ns
Parramatta		ns	ns	ns	ns	34.6	ns	ns	ns	7.3	ns	16.9	ns
Penrith		16.8	ns	ns	ns	ns	ns	55.7	ns	ns	ns	ns	ns
Port Macquarie-Hastings		ns	ns	ns	ns		ns	85.4	ns	47.4	ns	ns	ns
Port Stephens		ns	ns	ns	ns		ns	ns	ns	ns	ns	ns	-19.1
Queanbeyan-Palerang Region		ns	ns	ns	ns		ns	ns	ns	ns	120.0	ns	ns
Randwick		ns	ns	ns	ns	ns	ns	ns	ns	ns	ns	ns	ns
Richmond Valley		ns	ns	ns	ns		ns	ns	ns	ns	ns	ns	ns
Ryde		38.9	ns	ns	ns		ns	ns	ns	ns	ns	16.0	ns
Shellharbour		ns	ns	ns	ns		ns	ns	ns	ns	ns	ns	-13.3
Shoalhaven		ns	ns	ns	ns		ns	ns	ns	ns	41.9	13.8	ns
Singleton		ns	ns	ns	ns		ns	ns	38.0	ns	74.4	ns	ns
Snowy Monaro Regional		ns	-38.8	ns			ns			ns		ns	ns
Snowy Valleys		ns	ns	ns			ns	ns		ns		ns	ns
Strathfield		ns	ns	ns	ns		ns	ns	66.2	ns	ns	ns	ns
Sutherland Shire		ns	ns	ns	ns	ns	ns	ns	ns	ns	38.2	ns	ns
Sydney		ns	ns	ns	ns	25.5	ns	ns	ns	ns	ns	13.3	ns
Tamworth Regional		44.7	ns	ns	ns		ns	ns	ns	ns	ns	15.4	ns
Temora													ns
Tenterfield		ns	ns				ns					ns	ns
The Hills Shire		ns	ns	ns	ns	ns	ns	ns	ns	ns	ns	ns	ns
Tweed		ns	ns	ns	ns		ns	ns	ns	ns	54.0	ns	ns
Unincorporated Far West													
Upper Hunter Shire		ns	ns				ns	ns		ns		32.8	ns
Upper Lachlan Shire		ns										ns	ns
Uralla		ns										ns	ns
Wagga Wagga		ns	ns	ns	ns		ns	ns	ns	ns	ns	ns	ns
Walcha		ns											
Walgett		ns	ns				116.7	ns	ns	ns		ns	ns
Warren		ns										ns	ns
Warrumbungle Shire		ns	ns				ns	ns		ns	ns	ns	53.9
Waverley		ns	-15.5	ns	ns		ns	ns	ns	ns	-26.6	ns	ns
Weddin													
Wentworth		ns	ns				ns		ns	ns		ns	-27.3
Willoughby		ns	ns	ns	ns		ns	ns	ns	ns	-26.5	ns	ns
Wingecarribee		ns	ns	ns	ns		ns	ns	ns	ns	ns	ns	ns
Wollondilly		39.2	ns	ns	ns		ns		ns	ns	ns	ns	ns
Wollongong		ns	ns	ns	ns	ns	ns	ns	ns	ns	ns	ns	ns
Woollahra		ns	ns	ns	27.9		ns		ns	46.9	ns	ns	ns
Yass Valley		ns	ns					ns	ns			ns	ns
NSW	ns	6.5	ns	ns	ns	ns	ns	ns	12.5	ns	9.2	7.1	ns

NSW Recorded Crime Statistics, June Quarter 2024

Appendix Table 1.2: Ratio to NSW rate of recorded criminal incidents per 100,000 population for major offences, NSW LGAs
12 months to June 2024

NSW LGA	Murder	Domestic violence related assault	Non-domestic violence related assault	Sexual assault	Sexual touching, sexual act and other sexual	Robbery	Break and enter dwelling	Break and enter non-dwelling	Motor vehicle theft	Steal from motor vehicle	Steal from retail store	Other stealing offences	Malicious damage to property
Albury		1.8	1.9	1.6	1.4	1.6	1.8	2.6	2.5	3.5	1.9	1.5	2.1
Armidale Regional		1.6	1.6	1.6	2.0	2.5	4.0	4.7	1.6	1.5	1.6	1.5	2.1
Ballina	2.5	0.7	0.8	1.0	1.1	0.4	1.5	1.5	1.4	1.1	0.7	1.1	0.9
Balranald													
Bathurst Regional		1.3	1.5	1.8	1.9	0.9	1.2	1.3	1.0	1.3	1.3	1.0	1.4
Bayside	0.7	0.7	0.6	0.5	0.5	0.5	0.5	0.3	0.6	0.6	0.9	0.8	0.7
Bega Valley		0.6	0.6	1.4	1.0		0.5	1.1	0.5	0.4	0.5	0.6	1.0
Bellingen		0.9	0.9	2.1	1.2	0.3	1.0	1.3	1.2	0.6	0.2	1.0	1.5
Berrigan		1.1	0.8	0.9	0.4	0.5	0.9	1.6	1.0	1.1	0.2	1.3	1.2
Blacktown	1.4	1.2	1.1	0.9	0.9	1.6	0.9	0.6	1.0	1.0	1.1	0.8	1.0
Bland		1.5	1.1	0.9	1.6		2.1	3.0	2.6	1.8	0.3	1.4	1.7
Blayney		1.0	0.7	1.1	1.3		1.0	2.7	0.9	1.0	0.2	0.6	0.6
Blue Mountains		0.6	0.6	1.0	0.9	0.5	0.3	0.6	0.3	0.5	0.6	0.5	0.8
Bogan													
Bourke													
Brewarrina													
Broken Hill		4.1	1.7	1.0	1.6	1.6	3.5	1.3	2.3	1.8	1.6	1.7	2.5
Burwood		0.7	0.8	0.5	0.5	2.1	0.9	0.8	0.6	0.7	1.6	1.4	0.6
Byron		0.7	1.5	1.2	1.5	0.6	1.2	1.1	1.7	1.1	0.7	1.5	1.1
Cabonne		0.8	0.3	0.9	0.6		0.7	1.6	0.8	0.3	0.1	0.7	0.7
Camden		0.7	0.4	0.5	0.7	0.2	0.3	0.4	0.6	0.6	0.4	0.3	0.5
Campbelltown		1.5	1.2	1.1	1.2	1.3	0.7	0.6	0.9	1.0	1.1	0.8	1.1
Canada Bay	2.7	0.4	0.5	0.4	0.5	0.4	0.7	0.8	0.7	0.5	0.5	0.7	0.5
Canterbury-Bankstown	1.0	1.1	0.7	0.7	0.7	1.0	0.5	0.4	0.9	0.9	0.4	0.7	0.7
Carrathool													
Central Coast	0.3	1.1	1.0	1.3	1.2	0.9	0.8	0.8	1.0	1.0	1.0	0.7	1.2
Central Darling													
Cessnock	1.8	1.6	1.0	1.7	1.6	1.3	1.2	1.9	2.5	1.5	1.0	1.7	1.5
Clarence Valley		1.5	1.1	1.6	1.3	1.0	1.5	2.8	2.2	1.5	0.9	1.5	1.4
Cobar		1.7	1.0	1.0	1.4		2.1	2.4	1.4	1.1	0.6	1.2	1.9
Coffs Harbour	5.9	2.0	1.6	2.0	1.5	2.2	1.4	1.5	1.8	1.4	1.2	1.1	1.6
Coolamon		0.7	0.4	1.5	0.4			2.0	0.6	0.1	0.1	0.6	0.5
Coonamble		4.2	3.2	1.7	1.5		7.0	10.7	4.0	1.1	1.7	2.2	3.4
Cootamundra-Gundagai		1.3	0.8	1.2	1.0	0.4	0.6	1.5	0.6	0.8	0.4	0.9	1.2
Cowra		1.2	1.2	1.0	1.4	1.3	2.9	3.6	2.1	1.1	1.4	0.8	1.9
Cumberland	1.0	1.0	0.9	0.6	0.6	1.3	1.1	0.6	1.1	1.3	0.4	0.9	0.7
Dubbo Regional	2.1	2.8	2.5	1.6	1.7	1.2	3.4	4.0	2.5	2.3	2.4	1.6	3.3
Dungog		0.7	0.7	2.4	1.4		0.6	1.3	0.7	0.3	0.0	1.1	0.7
Edward River		1.9	1.5	1.3	1.5	0.5	1.5	3.8	0.8	1.7	0.5	1.8	2.3
Eurobodalla		1.3	1.4	1.6	1.2	0.3	1.3	1.1	1.2	1.1	1.1	1.1	1.4
Fairfield	0.6	1.0	0.8	0.6	0.7	0.8	0.5	0.4	0.7	0.8	0.6	0.6	0.8
Federation		0.9	0.7	0.9	1.7		0.6	1.5	0.5	0.6	0.2	0.8	1.1
Forbes	12.7	1.4	1.9	1.4	1.9	2.2	2.3	2.3	2.7	4.4	0.6	1.5	2.2
Georges River	0.8	0.5	0.5	0.5	0.4	0.5	0.5	0.4	0.4	0.5	1.0	0.5	0.5
Gilgandra		1.8	0.8	1.9	1.3	0.9	3.3	5.9	1.9	1.4	0.4	1.2	1.9
Glen Innes Severn		1.7	1.9	1.4	2.0		2.6	2.1	1.3	1.4	0.9	1.7	2.0

NSW Recorded Crime Statistics, June Quarter 2024

NSW LGA	Murder	Domestic violence related assault	Non-domestic violence related assault	Sexual assault	Sexual touching, sexual act and other sexual	Robbery	Break and enter dwelling	Break and enter non-dwelling	Motor vehicle theft	Steal from motor vehicle	Steal from retail store	Other stealing offences	Malicious damage to property
Goulburn Mulwaree	3.6	1.3	1.1	1.3	1.3	0.3	0.9	1.8	0.7	0.9	1.5	1.6	1.3
Greater Hume Shire		0.6	0.4	1.2	1.4		0.8	1.0	0.9	0.8	0.0	0.7	0.6
Griffith		1.7	1.2	0.8	1.1	2.7	1.5	1.6	1.4	1.5	1.7	1.4	1.6
Gunnedah		2.0	1.3	2.1	1.4	1.6	3.8	3.2	3.2	1.7	1.0	1.3	2.3
Gwydir		1.6	0.6	1.8	0.8		1.8	0.8	1.4	0.3	0.1	1.1	0.7
Hawkesbury		1.0	0.8	1.3	1.2	0.1	0.4	0.7	0.8	0.6	0.8	0.7	1.0
Hay													
Hilltops	6.2	1.5	1.1	1.2	1.4		0.7	0.8	0.7	0.5	0.8	0.8	1.0
Hornsby	0.8	0.3	0.3	0.4	0.7	0.3	0.4	0.4	0.3	0.3	0.6	0.4	0.4
Hunters Hill		0.2	0.2	0.7	0.6		0.5	0.5	0.9	0.5	0.0	0.5	0.4
Inner West	0.6	0.6	0.9	0.9	0.8	1.0	0.7	0.7	0.8	0.9	0.8	1.1	0.8
Inverell		2.5	1.9	2.1	1.9	1.4	3.2	2.3	1.4	0.9	2.2	1.3	2.2
Junee		1.0	0.7	1.4	1.0	0.6	0.9	1.4	0.9	0.4	0.2	0.9	0.9
Kempsey		2.5	1.5	1.5	1.6	1.0	4.4	2.1	3.1	1.8	1.2	2.4	2.4
Kiama		0.3	0.4	0.5	0.9	0.5	0.7	0.5	0.9	1.2	0.2	0.4	0.5
Ku-ring-gai		0.3	0.2	0.3	0.5	0.1	0.5	0.2	0.3	0.3	0.1	0.2	0.3
Kyogle		0.9	0.7	0.7	0.3	0.4	1.0	0.9	1.3	0.4	0.1	0.4	0.8
Lachlan		3.0	1.5	2.9	2.2		3.3	7.6	3.4	2.4	0.8	2.7	3.4
Lake Macquarie	1.1	0.9	0.8	1.3	0.9	0.6	1.0	1.1	1.3	1.1	1.4	0.7	1.0
Lane Cove		0.4	0.3	0.4	0.6	0.3	0.8	0.4	0.4	0.5	0.2	0.6	0.3
Leeton		2.0	1.3	1.9	1.8	1.8	1.3	2.6	1.9	0.6	0.6	1.4	1.5
Lismore	8.0	1.2	1.6	2.0	2.0	1.3	2.9	1.6	1.9	1.2	1.5	1.0	1.6
Lithgow		2.0	1.8	1.5	1.2	1.0	1.6	0.9	0.9	1.3	0.8	1.8	2.0
Liverpool	1.0	1.3	1.0	0.8	0.8	1.5	0.9	0.7	1.1	1.3	0.8	0.9	0.9
Liverpool Plains		1.2	1.2	1.6	0.9	0.5	0.6	0.6	0.9	0.3	0.2	0.8	1.2
Lockhart		1.0	0.3	1.2	0.9		1.0	1.7	0.7	0.3		1.0	0.9
Lord Howe Island													
Maitland		1.7	1.1	1.5	1.5	1.0	1.2	1.3	1.5	1.7	1.3	1.0	1.3
Mid-Coast		1.4	1.1	1.3	1.5	0.8	1.7	1.7	1.5	1.0	1.0	1.1	1.4
Mid-Western Regional	4.6	1.1	1.2	2.1	1.4	0.5	0.9	1.4	1.1	0.4	0.5	0.9	1.2
Moree Plains		4.8	3.1	4.6	1.6	6.3	8.7	7.4	4.9	2.9	3.9	2.8	4.5
Mosman		0.3	0.2	0.5	0.9	0.3	0.5	0.1	0.4	0.4	0.4	0.6	0.4
Murray River		0.7	0.4	0.8	0.7	0.3	2.2	4.5	1.8	1.9	0.2	1.7	0.8
Murrumbidgee		1.5	0.5	1.8	0.8		1.8	1.6	0.5	0.7	0.2	0.8	1.7
Muswellbrook	7.2	2.7	1.8	2.9	2.1	0.7	1.8	1.5	1.7	1.0	1.3	1.9	2.1
Nambucca Valley		1.4	1.0	2.1	1.6	0.8	1.7	1.4	1.5	1.3	0.9	1.5	1.4
Narrabri	9.3	1.9	1.5	2.0	0.8	1.6	2.7	1.8	1.7	1.7	0.6	1.3	1.6
Narrandera		1.8	2.0	0.9	1.7	1.4	3.3	5.8	3.4	3.1	0.6	2.0	2.2
Narromine	18.4	2.8	1.7	2.7	1.6		3.6	6.7	2.6	2.3	1.4	2.1	2.4
Newcastle		1.0	1.6	1.5	1.3	2.0	2.3	2.2	2.0	3.3	2.1	1.8	1.6
North Sydney		0.4	0.5	0.4	0.7	0.3	0.4	0.5	0.2	0.4	0.5	0.8	0.5
Northern Beaches	0.4	0.3	0.5	0.5	0.6	0.4	0.3	0.5	0.4	0.4	0.8	0.6	0.5
Oberon		0.9	0.3	1.2	0.9		0.5	1.4	1.0	0.4	0.3	0.8	0.8
Orange		1.5	1.8	1.6	1.4	1.9	2.5	2.0	2.0	1.3	1.4	1.2	1.9
Parkes		2.1	1.9	2.2	1.9	1.1	1.7	2.7	2.1	1.7	1.9	1.8	1.9
Parramatta	1.4	0.7	0.9	0.6	0.7	1.6	1.1	0.9	0.9	1.2	1.3	1.3	0.7
Penrith	0.5	1.3	1.2	1.1	1.1	1.3	1.1	1.5	1.3	1.4	1.1	1.1	1.2
Port Macquarie-Hastings	2.7	1.2	1.0	1.3	1.1	0.8	1.0	1.7	0.9	0.9	0.6	1.1	1.1

NSW Recorded Crime Statistics, June Quarter 2024

NSW LGA	Murder	Domestic violence related assault	Non-domestic violence related assault	Sexual assault	Sexual touching, sexual act and other sexual	Robbery	Break and enter dwelling	Break and enter non-dwelling	Motor vehicle theft	Steal from motor vehicle	Steal from retail store	Other stealing offences	Malicious damage to property
Port Stephens	1.5	1.5	1.0	1.3	1.4	1.0	0.9	1.3	1.2	0.9	0.6	0.8	1.2
Queanbeyan-Palerang Region		0.7	0.8	0.9	0.7	1.1	0.7	1.0	0.9	0.9	1.1	0.8	0.9
Randwick	0.9	0.6	0.9	0.8	0.9	0.7	0.6	0.4	0.6	0.7	0.6	1.1	0.8
Richmond Valley	10.0	1.8	1.5	2.0	1.7	1.2	3.0	1.9	2.4	1.1	0.6	1.1	1.8
Ryde		0.5	0.4	0.5	0.5	0.4	0.6	0.5	0.4	0.6	0.8	0.8	0.4
Shellharbour		0.7	0.6	1.1	1.1	0.5	0.7	0.8	0.9	1.0	1.2	0.7	0.8
Shoalhaven		1.0	1.1	1.2	1.3	0.7	1.1	1.3	1.1	0.9	1.3	0.9	1.2
Singleton		1.0	1.0	1.4	1.4	0.2	1.3	2.6	1.5	0.8	0.9	1.0	1.5
Snowy Monaro Regional		0.7	0.6	1.3	1.0	0.4	0.7	0.8	0.5	0.3	0.1	0.8	1.0
Snowy Valleys		1.1	0.9	1.9	0.9	1.4	1.0	2.5	1.1	0.8	0.4	0.7	1.2
Strathfield	2.6	0.7	0.8	0.5	1.0	1.5	1.3	0.8	1.3	1.2	0.9	1.3	0.6
Sutherland Shire		0.5	0.4	0.5	0.6	0.5	0.4	0.2	0.3	0.4	0.6	0.5	0.6
Sydney	1.6	1.2	3.1	1.4	1.9	3.9	1.0	1.4	0.8	1.0	3.6	4.3	1.6
Tamworth Regional		2.2	1.6	1.9	1.6	1.0	3.4	1.3	1.7	1.5	1.5	1.4	2.0
Temora		0.4	0.7	0.4	1.0		1.7	2.1	0.5	0.5	0.5	0.7	1.2
Tenterfield		1.8	1.4	1.8	2.2		2.9	1.8	1.8	0.8	0.4	1.5	2.7
The Hills Shire	0.6	0.3	0.4	0.4	0.4	1.0	0.5	0.5	0.4	0.3	0.6	0.5	0.4
Tweed	2.4	0.7	0.9	0.8	0.9	0.7	0.9	1.2	1.6	1.2	1.1	1.1	0.9
Unincorporated Far West													
Upper Hunter Shire		1.1	0.9	1.1	2.2	0.9	0.7	1.6	1.2	0.7	0.4	1.1	1.0
Upper Lachlan Shire		0.5	0.4	0.8	0.7		0.8	0.8	0.7	0.2	0.0	0.7	1.0
Uralla		0.7	0.7	1.0	1.4		1.1	2.8	0.5	0.5	0.2	0.7	0.7
Wagga Wagga		1.6	1.5	1.5	1.3	1.0	2.8	1.2	1.5	1.8	1.5	1.5	1.8
Walcha		1.7	1.0	3.2	0.3		0.8	6.2		0.4	0.4	1.0	1.1
Walgett		8.0	4.2	3.1	2.1		4.7	6.0	3.1	1.9	1.0	2.4	4.7
Warren													
Warrumbungle Shire		1.5	1.4	2.1	4.3	0.9	2.2	4.0	1.0	1.2	0.9	2.1	2.4
Waverley	10.2	0.7	0.8	0.8	1.0	1.2	0.6	0.4	0.8	0.7	2.6	1.5	0.8
Weddin		1.4	0.6	2.5	3.2		0.8	1.3	0.6	0.4	1.1	1.2	1.7
Wentworth		2.3	1.4	1.3	0.9	0.5	1.8	2.3	1.9	1.2	0.5	1.6	1.9
Willoughby		0.4	0.5	0.7	0.8	0.5	0.6	0.8	0.4	0.4	1.3	0.8	0.5
Wingecarribee		0.3	0.6	0.7	0.9	0.2	0.3	0.9	0.5	0.3	0.3	0.4	0.7
Wollondilly		0.8	0.4	0.7	0.9	0.4	0.3	0.3	0.6	0.3	0.2	0.4	0.6
Wollongong	1.6	0.7	0.9	1.1	1.0	0.8	0.9	0.9	0.9	1.3	1.6	1.0	1.0
Woollahra	4.4	0.4	0.5	0.8	1.0	0.1	0.8	0.3	0.8	0.8	0.6	0.8	0.5
Yass Valley		0.6	0.5	1.0	1.1		0.5	0.6	0.8	0.4	0.1	0.4	0.7
NSW	1.0	1.0	1.0	1.0	1.0	1.0	1.0	1.0	1.0	1.0	1.0	1.0	1.0

NSW Recorded Crime Statistics, June Quarter 2024

Appendix Table 1.3: Number of recorded criminal incidents for major offences, NSW LGAs

12 months to June 2024

NSW LGA	Murder	Domestic violence related assault	Non-domestic violence related assault	Sexual assault	Sexual touching, sexual act and other sexual offences	Robbery	Break and enter dwelling	Break and enter non-dwelling	Motor vehicle theft	Steal from motor vehicle	Steal from retail store	Other stealing offences	Malicious damage to property
Albury	0	456	456	110	85	22	254	152	254	690	360	411	721
Armidale Regional	0	221	207	56	60	18	296	142	86	156	158	211	380
Ballina	1	155	162	57	54	5	175	70	121	183	118	256	248
Balranald	0	16	10	4	3	0	4	3	3	3	1	3	11
Bathurst Regional	0	265	290	97	89	10	134	58	77	200	201	203	390
Bayside	1	609	485	104	100	21	209	60	204	390	565	675	759
Bega Valley	0	96	99	61	37	0	43	39	30	51	57	104	212
Bellingen	0	55	49	34	16	1	33	17	28	27	10	63	124
Berrigan	0	45	30	10	4	1	19	14	16	34	7	56	63
Blacktown	5	2,208	1,874	440	391	158	891	239	758	1,429	1,488	1,640	2,561
Bland	0	38	25	6	9	0	29	17	26	34	5	37	56
Blayney	0	36	24	10	10	0	18	21	13	27	4	23	30
Blue Mountains	0	215	193	98	70	10	67	48	40	123	166	189	399
Bogan	0	24	11	4	4	0	14	37	15	20	8	47	30
Bourke	0	174	54	14	7	7	171	49	36	77	51	71	136
Brewarrina	0	63	20	9	7	1	36	20	12	11	4	32	61
Broken Hill	0	330	125	21	30	7	154	24	74	112	94	144	268
Burwood	0	129	142	27	23	21	93	35	48	94	218	276	147
Byron	0	116	232	55	57	5	105	40	110	137	85	257	256
Cabonne	0	51	19	16	8	0	23	22	19	15	7	46	62
Camden	0	431	230	79	92	5	97	58	135	249	172	209	416
Campbelltown	0	1,239	918	239	227	58	325	107	303	635	704	659	1,263
Canada Bay	2	177	206	49	43	8	147	72	117	171	144	313	276
Canterbury-Bankstown	3	1,807	1,158	306	285	94	491	156	593	1,201	456	1,184	1,522
Carrathool	0	18	11	6	8	0	11	15	17	7	4	20	25
Central Coast	1	1,750	1,495	544	423	80	708	287	637	1,262	1,165	1,185	2,468
Central Darling	0	133	28	11	7	1	31	15	8	18	1	24	64
Cessnock	1	488	286	140	107	21	192	126	304	352	228	535	599
Clarence Valley	0	385	266	106	76	14	204	155	221	279	166	387	474
Cobar	0	31	18	5	6	0	21	10	10	16	8	24	47
Coffs Harbour	4	745	529	193	123	44	281	121	261	402	321	436	787
Coolamon	0	15	7	8	2	0	0	9	5	1	1	12	15
Coonamble	0	73	53	8	6	0	67	42	28	15	22	40	80
Cootamundra-Gundagai	0	66	39	17	12	1	18	17	13	33	16	52	84
Cowra	0	70	63	15	18	4	93	47	48	49	62	51	146
Cumberland	2	1,113	887	167	140	76	632	157	477	1,069	345	1,064	1,070
Dubbo Regional	1	711	603	112	98	16	476	228	259	440	454	439	1,120
Dungog	0	32	29	29	14	0	15	13	12	10	1	50	41
Edward River	0	73	56	13	13	1	32	33	13	49	14	74	117
Eurobodalla	0	243	251	79	51	3	137	47	92	163	156	214	343
Fairfield	1	919	695	157	160	39	240	81	274	604	451	590	960
Federation	0	53	38	14	23	0	19	20	12	26	10	50	83
Forbes	1	59	75	16	18	5	54	22	46	142	19	67	123
Georges River	1	370	325	86	69	20	188	58	101	279	513	400	481

NSW Recorded Crime Statistics, June Quarter 2024

NSW LGA	Murder	Domestic violence related assault	Non-domestic violence related assault	Sexual assault	Sexual touching, sexual act and other sexual offences	Robbery	Break and enter dwelling	Break and enter non-dwelling	Motor vehicle theft	Steal from motor vehicle	Steal from retail store	Other stealing offences	Malicious damage to property
Gilgandra	0	36	14	10	6	1	35	26	15	21	6	24	49
Glen Innes Severn	0	71	72	15	19	0	59	19	22	45	27	72	107
Goulburn Mulwaree	1	200	157	52	45	2	71	60	43	99	167	244	254
Greater Hume Shire	0	31	20	17	16	0	23	12	18	31	1	40	44
Griffith	0	206	136	25	30	18	101	45	69	140	154	178	259
Gunnedah	0	119	75	34	19	5	124	43	76	76	44	84	187
Gwydir	0	36	12	11	4	0	22	4	13	6	1	27	21
Hawkesbury	0	316	241	108	87	2	72	51	94	140	182	224	406
Hay	0	19	17	0	6	0	10	7	3	8	5	14	28
Hilltops	1	132	87	29	27	0	35	15	23	31	50	73	121
Hornsby	1	241	200	82	112	10	141	56	85	168	308	266	404
Hunters Hill	0	14	14	12	9	0	19	7	24	24	2	36	32
Inner West	1	539	676	211	160	43	304	129	258	569	514	1,006	950
Inverell	0	205	148	47	35	6	144	43	46	55	136	115	243
Junee	0	29	18	11	7	1	15	9	11	8	4	27	37
Kempsey	0	363	206	59	51	8	339	68	177	191	123	363	451
Kiama	0	28	44	15	22	3	40	12	39	95	14	49	77
Ku-ring-gai	0	146	105	52	60	3	162	30	69	112	56	149	243
Kyogle	0	39	28	8	3	1	23	9	22	13	4	20	44
Lachlan	0	84	39	22	14	0	50	48	38	52	17	79	129
Lake Macquarie	2	903	786	340	207	34	514	236	526	813	1,015	781	1,379
Lane Cove	0	78	55	18	26	3	78	15	32	65	31	107	78
Leeton	0	107	64	27	21	5	38	31	40	25	24	76	108
Lismore	3	248	296	107	93	14	317	73	151	187	232	207	428
Lithgow	0	192	162	38	25	5	85	19	36	96	56	177	258
Liverpool	2	1,411	1,004	244	203	91	509	164	488	1,048	629	1,085	1,297
Liverpool Plains	0	43	38	15	7	1	12	5	13	8	5	28	58
Lockhart	0	15	4	5	3	0	8	6	4	4	0	17	19
Lord Howe Island	0	7	1	3	1	0	1	0	0	0	0	1	2
Maitland	0	711	440	168	147	24	280	127	259	556	407	455	718
Mid-Coast	0	628	478	151	153	19	407	174	270	345	327	501	828
Mid-Western Regional	1	131	127	67	38	3	58	37	51	40	43	109	185
Moree Plains	0	281	172	72	22	20	278	97	115	128	174	175	354
Mosman	0	33	23	16	26	2	34	2	22	43	40	80	77
Murray River	0	39	23	12	9	1	70	60	42	88	10	107	67
Murrumbidgee	0	25	8	8	3	0	16	6	3	9	3	14	38
Muswellbrook	1	205	124	58	36	3	74	26	51	59	71	150	208
Nambucca Valley	0	136	87	53	34	4	89	30	55	90	66	150	178
Narrabri	1	113	83	31	10	5	84	24	40	74	26	78	125
Narrandera	0	47	50	6	10	2	47	34	35	62	12	55	76
Narromine	1	81	47	21	11	0	57	44	30	51	31	64	95
Newcastle	0	757	1,175	321	224	85	970	388	634	1,981	1,250	1,476	1,647
North Sydney	0	131	155	34	53	5	71	33	31	89	108	262	228
Northern Beaches	1	321	578	158	151	25	205	139	185	407	710	822	875
Oberon	0	23	6	8	5	0	7	8	10	7	5	22	28

NSW Recorded Crime Statistics, June Quarter 2024

NSW LGA	Murder	Domestic violence related assault	Non-domestic violence related assault	Sexual assault	Sexual touching, sexual act and other sexual offences	Robbery	Break and enter dwelling	Break and enter non-dwelling	Motor vehicle theft	Steal from motor vehicle	Steal from retail store	Other stealing offences	Malicious damage to property
Orange	0	310	333	89	66	21	273	91	162	193	218	254	523
Parkes	0	139	116	39	29	4	59	40	54	87	93	124	165
Parramatta	3	847	1,030	208	202	105	726	248	437	1,106	1,185	1,671	1,076
Penrith	1	1,277	1,173	306	261	69	612	330	522	1,097	835	1,135	1,648
Port Macquarie-Hastings	2	470	393	146	105	17	226	152	145	283	189	480	592
Port Stephens	1	512	336	121	112	18	176	105	169	230	162	293	580
Queanbeyan-Palerang Regional	0	213	222	69	44	17	106	64	108	192	231	237	334
Randwick	1	383	530	129	131	24	215	59	154	317	264	700	649
Richmond Valley	2	195	151	59	42	7	178	47	105	90	49	129	255
Ryde	0	289	234	76	66	12	198	63	98	254	360	479	345
Shellharbour	0	248	217	104	93	9	134	61	125	277	313	264	399
Shoalhaven	0	501	505	164	147	19	292	146	225	359	498	469	834
Singleton	0	112	109	43	37	1	80	68	69	68	75	125	237
Snowy Monaro Regional	0	71	52	34	22	2	36	17	19	24	11	89	128
Snowy Valleys	0	77	59	34	14	5	38	39	30	40	21	53	108
Strathfield	1	150	162	30	46	17	155	38	113	192	145	289	171
Sutherland Shire	0	556	442	150	148	29	211	52	110	291	514	511	843
Sydney	3	1,240	2,901	370	421	207	565	317	316	797	2,707	4,532	2,100
Tamworth Regional	0	647	428	150	110	16	549	87	205	335	338	441	780
Temora	0	12	19	3	6	0	26	13	5	10	11	19	44
Tenterfield	0	56	42	15	16	0	49	13	23	19	9	49	112
The Hills Shire	1	289	299	105	93	50	230	99	136	242	423	450	479
Tweed	2	321	382	101	93	16	220	119	283	407	362	528	560
Unincorporated Far West	0	4	10	6	2	0	1	2	3	18	13	15	5
Upper Hunter Shire	0	69	57	20	32	3	26	23	31	37	21	77	88
Upper Lachlan Shire	0	20	16	8	6	0	18	7	11	6	1	28	50
Uralla	0	20	17	7	9	0	16	17	6	10	4	21	26
Wagga Wagga	0	498	443	127	89	17	479	86	183	422	357	506	751
Walcha	0	23	13	12	1	0	6	19	0	4	4	14	21
Walgett	0	203	98	21	12	0	65	34	31	36	19	65	160
Warren	0	67	15	0	4	0	19	8	6	8	6	25	54
Warrumbungle Shire	0	64	56	24	41	2	51	38	17	38	29	93	137
Waverley	6	222	251	71	70	20	108	25	98	161	607	497	330
Weddin	0	23	9	11	12	0	7	5	4	5	13	21	37
Wentworth	0	80	44	12	7	1	35	18	27	31	12	57	88
Willoughby	0	125	161	65	61	10	106	59	54	102	341	303	218
Wingecarribee	0	84	131	44	51	2	37	48	47	61	60	113	213
Wollondilly	0	206	103	49	51	5	45	18	58	67	32	117	191
Wollongong	3	719	823	286	217	43	500	195	373	960	1,177	1,028	1,351
Woollahra	2	108	119	53	55	1	100	17	81	144	106	199	155
Yass Valley	0	47	39	22	20	0	22	11	24	27	8	32	77
In Custody	1	12	1,332	220	95	4	0	0	0	2	0	11	68
NSW	69	37,332	34,940	10,036	8,474	2,004	20,340	8,372	14,891	28,493	27,953	39,455	49,940

NSW Recorded Crime Statistics, June Quarter 2024

Appendix Table 1.4: Number of recorded criminal incidents for major offences, NSW LGAs

12 months to June 2023

NSW LGA	Murder	Domestic violence related assault	Non-domestic violence related assault	Sexual assault	Sexual touching, sexual act and other sexual offences	Robbery	Break and enter dwelling	Break and enter non-dwelling	Motor vehicle theft	Steal from motor vehicle	Steal from retail store	Other stealing offences	Malicious damage to property
Albury	2	403	413	124	69	18	240	147	161	634	269	432	700
Armidale Regional	0	202	242	72	63	10	271	61	101	254	128	243	412
Ballina	1	124	155	59	34	16	100	53	90	184	77	194	240
Balranald	0	10	8	3	2	1	4	1	9	4	0	4	8
Bathurst Regional	0	332	246	75	73	13	175	53	86	162	138	214	394
Bayside	1	716	469	90	97	24	192	61	181	411	529	734	794
Bega Valley	0	94	97	29	57	4	21	29	23	37	46	137	189
Bellingen	0	65	59	25	14	1	36	27	18	40	7	70	113
Berrigan	0	55	29	9	10	1	19	15	16	19	2	20	64
Blacktown	1	2,128	1,618	406	392	169	892	224	683	1,617	1,527	1,766	2,524
Bland	0	39	28	7	5	1	15	19	11	15	1	25	51
Blayney	0	28	16	7	7	0	15	15	14	17	6	29	61
Blue Mountains	0	254	228	97	82	4	103	55	50	127	135	207	524
Bogan	1	35	14	5	0	2	24	49	27	44	4	52	35
Bourke	0	148	69	15	11	3	77	61	31	40	41	80	139
Brewarrina	0	47	27	8	3	1	24	16	10	18	0	16	50
Broken Hill	0	325	166	31	41	2	140	54	59	92	93	148	321
Burwood	0	112	143	27	30	13	76	36	35	116	311	253	173
Byron	0	124	229	58	52	2	62	58	84	132	43	226	235
Cabonne	1	29	25	17	9	0	24	29	19	19	10	38	42
Camden	0	308	236	69	81	9	86	46	82	253	167	245	367
Campbelltown	2	1,002	760	252	195	45	319	112	274	533	829	638	1,109
Canada Bay	0	174	157	48	35	5	149	51	79	177	126	301	282
Canterbury-Bankstown	6	1,536	1,077	285	246	80	565	204	537	1,101	602	1,012	1,477
Carrathool	0	15	11	6	2	0	9	13	5	9	3	15	35
Central Coast	4	1,737	1,525	513	404	71	578	250	484	1,137	1,026	1,272	2,321
Central Darling	0	94	26	11	4	2	25	23	3	11	1	23	59
Cessnock	2	391	330	124	79	19	227	160	282	340	168	484	643
Clarence Valley	1	313	270	82	56	19	158	109	153	232	123	364	447
Cobar	0	29	26	7	8	0	21	18	26	24	5	42	68
Coffs Harbour	0	688	530	162	149	39	301	118	219	390	343	461	748
Coolamon	0	7	5	6	4	0	5	4	1	1	1	3	19
Coonamble	0	66	40	10	14	0	80	43	33	37	6	48	102
Cootamundra-Gundagai	0	75	51	20	18	1	22	12	15	21	5	44	65
Cowra	0	87	81	28	24	1	116	12	30	44	46	64	139
Cumberland	3	948	770	167	150	80	556	200	392	926	436	902	967
Dubbo Regional	0	606	513	107	97	34	575	316	313	593	348	509	972
Dungog	0	35	21	13	8	0	10	5	13	13	5	46	41
Edward River	0	71	59	14	16	0	32	14	10	33	14	60	108
Eurobodalla	0	248	213	58	47	3	123	64	80	140	162	182	334
Fairfield	0	917	544	142	163	61	241	90	283	593	546	569	796
Federation	0	44	41	10	13	1	15	17	14	35	9	67	61
Forbes	0	72	63	8	14	1	68	25	27	169	26	76	124
Georges River	1	470	304	82	78	18	175	50	123	232	504	332	517

NSW Recorded Crime Statistics, June Quarter 2024

NSW LGA	Murder	Domestic violence related assault	Non-domestic violence related assault	Sexual assault	Sexual touching, sexual act and other sexual offences	Robbery	Break and enter dwelling	Break and enter non-dwelling	Motor vehicle theft	Steal from motor vehicle	Steal from retail store	Other stealing offences	Malicious damage to property
Gilgandra	0	42	20	8	13	2	22	18	5	15	5	37	39
Glen Innes Severn	0	75	69	20	16	3	45	32	25	19	35	72	165
Goulburn Mulwaree	0	179	174	40	45	9	66	48	44	84	116	214	267
Greater Hume Shire	0	38	19	12	9	0	9	15	19	29	5	37	33
Griffith	0	230	127	49	44	10	116	59	57	146	131	138	307
Gunnedah	0	112	85	27	21	1	116	19	76	81	27	77	157
Gwydir	0	12	15	2	4	0	20	13	15	15	2	26	18
Hawkesbury	0	312	211	89	70	4	85	27	64	144	140	176	336
Hay	0	21	20	4	5	0	19	12	6	5	3	16	22
Hilltops	0	123	102	31	29	2	41	13	19	40	20	71	135
Hornsby	2	227	196	65	68	13	103	58	64	221	297	237	350
Hunters Hill	0	16	10	9	8	2	32	12	13	36	4	34	35
Inner West	0	526	605	186	167	43	302	151	217	514	504	801	940
Inverell	0	213	151	31	25	7	114	37	79	88	44	91	264
Junee	0	15	24	12	11	2	13	2	6	5	1	24	21
Kempsey	1	347	216	41	40	20	344	88	197	200	158	290	400
Kiama	0	30	32	15	22	4	18	15	24	70	10	39	49
Ku-ring-gai	0	135	82	59	42	6	106	48	39	143	32	147	187
Kyogle	0	32	26	16	11	0	32	22	24	32	9	21	45
Lachlan	0	54	33	12	14	2	79	43	46	50	6	65	78
Lake Macquarie	0	817	691	285	202	42	446	179	473	781	682	763	1,244
Lane Cove	0	65	42	14	16	3	82	20	29	68	34	112	81
Leeton	0	94	67	37	23	2	70	23	31	38	19	75	146
Lismore	0	221	242	102	63	19	134	119	118	192	148	226	341
Lithgow	0	160	152	33	33	8	85	27	44	100	53	222	218
Liverpool	3	1,237	908	208	223	77	500	145	419	959	567	1,005	1,206
Liverpool Plains	0	65	31	20	12	3	20	15	16	23	3	26	67
Lockhart	0	7	9	1	2	0	11	7	8	7	0	10	28
Lord Howe Island	0	3	1	2	1	0	1	0	0	0	0	1	5
Maitland	0	641	419	172	122	29	260	136	221	469	355	501	728
Mid-Coast	2	585	477	167	162	20	417	177	253	342	291	648	816
Mid-Western Regional	0	155	99	41	33	3	44	19	44	41	57	104	235
Moree Plains	1	261	197	36	18	20	252	79	155	156	182	180	370
Mosman	0	33	34	8	21	3	30	3	18	52	35	79	63
Murray River	0	38	25	10	12	1	39	48	38	36	6	95	55
Murrumbidgee	0	21	15	7	5	1	12	3	13	5	2	21	21
Muswellbrook	0	167	134	40	32	4	82	39	49	88	75	195	221
Nambucca Valley	0	181	131	32	34	2	77	46	67	99	63	115	224
Narrabri	0	102	72	21	14	3	129	19	47	96	35	86	126
Narrandera	0	63	33	16	9	0	31	27	7	17	19	38	88
Narromine	0	68	46	11	15	0	36	34	33	47	10	55	83
Newcastle	2	829	1,067	332	194	97	957	343	632	1,748	830	1,275	1,651
North Sydney	0	91	138	35	42	9	100	35	45	137	131	212	217
Northern Beaches	0	254	489	162	130	33	237	97	174	401	611	716	785
Oberon	1	14	10	6	11	0	11	1	7	3	8	22	17

NSW Recorded Crime Statistics, June Quarter 2024

NSW LGA	Murder	Domestic violence related assault	Non-domestic violence related assault	Sexual assault	Sexual touching, sexual act and other sexual offences	Robbery	Break and enter dwelling	Break and enter non-dwelling	Motor vehicle theft	Steal from motor vehicle	Steal from retail store	Other stealing offences	Malicious damage to property
Orange	0	362	299	95	64	24	328	66	167	349	204	203	577
Parkes	1	131	119	32	26	6	64	29	36	79	48	135	180
Parramatta	0	787	888	187	235	78	640	174	430	1,031	1,082	1,429	993
Penrith	3	1,093	1,099	273	240	74	590	212	422	1,095	913	1,008	1,559
Port Macquarie-Hastings	0	456	334	98	77	14	161	82	104	192	167	426	624
Port Stephens	0	399	370	112	81	16	140	123	130	247	191	315	717
Queanbeyan-Palerang Regional	0	237	211	63	58	7	121	64	97	179	105	222	359
Randwick	0	396	564	126	106	23	241	51	154	403	274	683	600
Richmond Valley	0	157	142	69	46	8	146	65	97	125	55	155	260
Ryde	0	208	243	69	57	15	218	51	104	271	299	413	343
Shellharbour	2	270	221	93	96	10	108	39	92	251	296	240	460
Shoalhaven	2	471	470	157	119	17	248	147	155	283	351	412	975
Singleton	0	105	98	32	20	0	50	63	50	82	43	111	188
Snowy Monaro Regional	0	63	85	25	16	1	22	28	7	26	7	85	124
Snowy Valleys	0	74	77	48	13	1	25	35	11	27	14	66	101
Strathfield	0	149	119	30	35	8	117	33	68	199	145	253	143
Sutherland Shire	0	633	450	151	140	27	202	53	128	306	372	468	833
Sydney	1	1,211	2,809	393	428	165	526	353	293	747	2,657	4,000	2,073
Tamworth Regional	1	447	377	133	88	28	522	121	196	390	272	382	796
Temora	0	31	22	9	4	2	19	16	5	14	13	33	39
Tenterfield	0	48	36	19	9	1	21	9	7	17	12	38	80
The Hills Shire	0	341	263	87	89	24	217	105	132	278	345	500	531
Tweed	1	381	365	89	85	25	226	119	232	347	235	431	588
Unincorporated Far West	0	3	3	5	7	0	0	4	0	4	7	14	4
Upper Hunter Shire	0	59	46	17	17	1	23	20	17	32	14	58	60
Upper Lachlan Shire	0	22	16	15	5	0	9	4	8	10	0	31	30
Uralla	0	26	20	10	2	1	10	8	9	9	1	20	27
Wagga Wagga	1	541	423	116	88	9	404	112	169	493	333	403	758
Walcha	0	22	27	12	9	0	6	5	1	4	1	10	19
Walgett	0	199	79	19	15	1	30	26	29	51	19	53	126
Warren	0	32	17	5	8	0	26	17	25	26	6	39	55
Warrumbungle Shire	0	92	63	12	10	0	48	32	13	40	28	86	89
Waverley	2	189	297	59	73	6	88	28	102	106	827	381	293
Weddin	0	3	7	3	5	0	2	3	1	5	5	8	10
Wentworth	0	78	41	3	9	0	27	48	25	27	9	36	121
Willoughby	0	118	148	37	68	8	93	48	41	134	464	243	203
Wingecarribee	0	135	109	64	54	2	40	34	40	53	39	113	230
Wollondilly	0	148	96	42	36	6	45	11	50	80	29	94	199
Wollongong	2	643	826	284	171	55	522	218	341	1,182	1,015	981	1,356
Woollahra	0	129	155	35	43	3	80	16	53	98	67	186	169
Yass Valley	0	53	37	16	13	0	11	15	30	23	4	34	52
In Custody	0	3	1,162	421	151	7	0	1	1	2	0	7	54
NSW	54	35,059	32,913	9,479	7,965	1,956	19,127	8,080	13,238	28,185	25,601	36,847	48,752

APPENDIX 2

EXPLANATORY NOTES

Appendix 2.1: Explanatory Notes

What are crime statistics?

BOCSAR's crime statistics consist of criminal incidents reported to, or detected by, police and recorded on the NSW Police Force's Computerised Operational Policing System (COPS). While this system is used for record-keeping for all police operations, not just for criminal matters, BOCSAR only reports on criminal incidents and selected policing activities. BOCSAR's crime statistics therefore do not capture crimes that are not recorded on COPS. The Australian Bureau of Statistics conducts regular crime and victim surveys which attempt to capture a snapshot of both reported and unreported crimes.

How to interpret crime statistics

Recorded crime statistics for some offence categories do not accurately reflect the actual level of crime in the community. This is because the number of incidents recorded may be affected by extraneous factors which are not easily measured. In particular:

- > Public willingness to report crime - Many crimes which occur are not reported to police and will therefore not be recorded - for example, a large number of assaults, sexual assaults and robberies are not reported to police.
- > Shifts in policing policy - Recording of those offences which are detected by, rather than reported to police, are strongly affected by policing practices - examples of these are drug offences, drink driving offences, offensive behaviour and receiving stolen goods. Recorded rates for such offences do not accurately reflect actual rates.
- > High visitor populations compared to residential populations - Sydney Local Government Area has relatively high recorded crime rates because, compared with other regions, the resident population is small relative to the number of people in the area. In other words, the area has a high user population which is not reflected in the denominator of the rate calculation.
- > Areas with small residential populations - Recorded crime rates in Local Government Areas with small population sizes are not always a good indicator of offending. Crime rates in areas with populations under 3,000 may be unreliable and should be interpreted with caution.

What offences are included?

BOCSAR's standard quarterly publications report on 13 major offence categories, which include serious personal violence and property offences. In addition to these offences, we also release data for 62 specific offence categories.

From the September Quarter 2021 report, the offence category previously labelled 'indecent sexual assault, act of indecency and other sexual offences' is labelled 'sexual touching, sexual act and other sexual offences'.

Commencing March 2020, the NSW Government issued public health orders under the NSW Public Health Act 2010 (NSW) to limit the spread of COVID-19. Police can issue a fine or court attendance notice for failure to comply with the orders. Breaches of these orders are counted as "other offences" in this report.

What is being counted?

- > Incidents - When a crime is reported to, or detected by, the NSW Police they record it as a criminal event on COPS. The event date is the date that the crime was reported. Unless otherwise stated, the date BOCSAR attaches to a crime is the event date. One criminal event can contain multiple criminal incidents. BOCSAR's default counting unit for crime data is criminal incidents with the exception of murder and manslaughter. Criminal incidents are activities detected by or reported to police which involve the same offender(s) and victim(s); occur at the one location during one uninterrupted period of time; fall into one offence category and one incident type.

For murder and manslaughter only, the counting units used are victims.

- > People proceeded against - BOCSAR reports on people identified as 'Persons of Interest' (POIs) by the NSW Police Force who have had a legal proceeding commenced against them by the NSW Police Force. POIs counted in this report have been proceeded against to court or by way of diversion from court, and may not end up with a proven offence. There could be quite some time between an event being recorded by police, an investigation being completed and an alleged offender (i.e. a POI) being charged or otherwise legally proceeded against. Consequently, POIs are counted in the time period they were proceeded against, rather than the time period the event /incident was reported to or recorded by police.

- > Legal proceedings against persons presented in Tables 3.1 and 3.2 include persons proceeded against to court and persons diverted from court (by way of criminal infringement notice, cannabis or other drug caution and diversions under the *Young Offenders Act 1997*, including Youth Justice Conference, Caution and Warning). Young people proceeded against by way of a Warning for Transport and regulatory offences have been excluded from table 3.2 as Warnings are not a diversion for these offences.

- > Young people proceeded against by way of a Warning under the *Young Offenders Act 1997* for Transport and regulatory offences have been excluded from table 3.2 as Warnings are not a diversion for these offences.

- > Proceeded against to court (breach of bail) in Tables 3.1 and 3.2 includes persons with breach of bail as the only incident on the criminal event recorded by the NSW Police Force. Breaching bail is not a criminal offence but it can lead to being brought to court by police for the court to reconsider bail.

- > Infringement Notices (fines) are not included in this report as they are not a form of court diversion.

What are crime trends and how are they calculated?

In general, BOCSAR relies upon the Kendall Rank Order Correlation statistical test (or Kendall's tau-b) to determine whether a series is trending upwards, downwards or is stable ($p < .05$). In some tables a stable trend is represented by 'ns' (not significant). The statistical test is applied to the monthly data over the specified period. Where a significant trend is found, the average annual percentage change over the time period is reported. If any of the 12-monthly totals in the series have a value of less than 20, a trend test is not conducted. When this occurs, the relevant cell will be left blank or contain 'n.c.' (not calculated). For murder and manslaughter incidents, the trend test is applied to the monthly number of recorded victims rather than criminal incidents.

With the June Quarter 2024 update, the report has transitioned from reporting five-year to reporting ten-year trends. The COVID-19 pandemic is associated with reductions in crime rates arising from government-imposed policies and restrictions introduced to minimise the impact of the pandemic. BOCSAR's regular crime reporting is suited to detecting sustained changes in crime rather than sharp fluctuations of the kind we saw in March 2020 and June 2021. By reporting ten-year trends, we aim to provide a more accurate view of longer term trends in crime, reducing the impact of the COVID-19 pandemic on the trend analysis.

How is the ratio to NSW calculated?

The ratio to NSW rate statistics are a comparison of a NSW regional rate per 100,000 population to the NSW rate per 100,000 population. A ratio of one indicates parity with the NSW rate. Ratios indicating double the NSW rate (or more) before rounding are highlighted in red, whilst ratios indicating half the NSW rate (or less) before rounding are highlighted in green. Ratios are not calculated for regions with a population of less than 3,000.

How are 'young people' and 'adults' defined?

The term 'young people' refers to persons aged 10-17 years at the time of the offence; 'adults' refers to persons aged 18 years and older at the time of the offence.

Regional Statistics

Statistics are provided on the number of criminal incidents (victims for murder) recorded for each of the Statistical Areas Level 4 (SA4s) of NSW as defined by the Australian Bureau of Statistics (ABS). Recorded criminal incidents which occurred in correctional, detention or remand centres, however, are not counted in the SA in which the incident occurred. Note that LGA boundaries change from time to time. A criminal incident is counted within a particular region when the location of the offence falls within that region.

What is included in 'selected policing activities'?

- > Bail compliance checks - checks conducted by police to assess if bail conditions are being complied with.
- > ADVO compliance checks - checks conducted by police to assess defendants' compliance with Apprehended Domestic Violence Order (ADVO) conditions. Police are required to speak with all interested parties (ie the protected persons and the defendant) for the compliance check event to be completed. The reported count is the total number of ADVO compliance check events conducted, regardless of whether all interested parties were able to be contacted. If a breach of ADVO is detected, Police may charge the defendant with breaching their ADVO.
- > Move on directions - a 'move on direction' is a direction given to a person by a police officer, under section 198 of the Law Enforcement (Powers and Responsibilities) Act 2002 (NSW), to leave a public place and not return for a specified period.
- > Searches - If the police have reasonable grounds they may, without a warrant, stop and search a person and anything in their possession or under their control, including a vehicle.
- > Taser use - A Taser is a hand-held electrical device used by the NSW Police Force to temporarily incapacitate a person and/or cause pain through the application of electrical current. It can be used in probe or stun mode.
 - Taser draw/cover: Drawing of the Taser from the holster so as to cover a subject.
 - Taser warning arc: The user demonstrates their Taser is armed by showing the visible flow of electricity (arc) to the subject.
 - Taser probes discharged: The Taser trigger is pulled resulting in the cartridge firing and discharging the two probes. This mode renders the subject temporarily incapacitated.
 - Taser drive stun: The Taser is activated and placed directly against an individual's body. Drive stun mode may cause pain but will not cause paralysis.
- > Detain/convey person to mental health facility - The police detain a person at risk of harm to themselves or others and transport them to a mental health facility for assessment under section 22 of the Mental Health Act 2007 (NSW).

What are non-criminal domestic episodes?

Incidents attended by police where a domestic dispute is recorded as having taken place but no criminal incident has been recorded. The vast majority of these episodes are verbal altercations.

Where can I find more detail and explanatory notes?

Detailed definitions and explanatory notes are available at

https://www.bocsar.nsw.gov.au/Pages/bocsar_crime_stats/bocsar_glossary.aspx

APPENDIX 3

LGAs IN STATISTICAL AREAS

Appendix Table 3.1: Local Government Areas in Greater Sydney Statistical Areas

Baulkham Hills and Hawkesbury	Blacktown	Central Coast
Hawkesbury*	Blacktown	Central Coast
The Hills Shire*		
City and Inner South	Eastern Suburbs	Inner South West
Sydney*	Randwick*	Bayside*
	Waverley	Canterbury-Bankstown*
	Woollahra	Georges River
Inner West	North Sydney and Hornsby	Northern Beaches
Burwood	Hornsby*	Northern Beaches
Canada Bay	Ku-ring-gai	
Strathfield*	Lane Cove	
Inner West*	Mosman	
	North Sydney	
	Willoughby	
Outer South West	Outer West and Blue Mountains	Parramatta
Camden*	Blue Mountains*	Cumberland*
Campbelltown*	Penrith*	Parramatta*
Wollondilly*		
Ryde	South West	Sutherland
Hunters Hill	Fairfield*	Sutherland Shire*
Ryde*	Liverpool*	

* These LGAs span across two or more Statistical Areas.

These LGAs are listed under the Greater Sydney Statistical Areas which contain the largest area of each LGA.

Appendix Table 3.2: Local Government Areas in Regional Statistical Areas

Capital Region	Central West	Coffs Harbour - Grafton	Far West and Orana
Bega Valley	Bathurst Regional	Bellingen*	Bogan
Eurobodalla	Bland*	Clarence Valley*	Bourke
Goulburn Mulwaree	Blayney	Coffs Harbour	Brewarrina
Hilltops	Cabonne*		Broken Hill
Queanbeyan-Palerang Regional	Cowra		Central Darling
Snowy Monaro Regional*	Forbes		Cobar
Upper Lachlan Shire	Lachlan*		Coonamble
Yass Valley*	Lithgow		Dubbo Regional*
	Mid-Western Regional*		Gilgandra
	Oberon*		Narromine
	Orange		Unincorporated Far West
	Parkes		Walgett
	Weddin		Warren
			Warrumbungle Shire*
Hunter Valley excluding Newcastle	Illawarra	Mid North Coast	Murray
Cessnock	Kiama*	Kempsey	Albury
Dungog	Shellharbour	Lord Howe Island	Balranald
Maitland*	Wollongong	Mid-Coast*	Berrigan
Muswellbrook		Nambucca*	Edward River
Port Stephens*		Port Macquarie-Hastings	Federation*
Singleton*			Greater Hume Shire*
Upper Hunter Shire*			Hay
			Murray River
			Wentworth
New England and North West	Newcastle and Lake Macquarie	Richmond - Tweed	Riverina
Armidale Regional*	Lake Macquarie*	Ballina	Carrathool*
Glen Innes Severn	Newcastle	Byron	Coolamon
Gunnedah		Kyogle	Cootamundra-Gundagai
Gwydir		Lismore	Griffith
Inverell		Richmond Valley*	Junee
Liverpool Plains*		Tweed	Leeton
Moree Plains			Lockhart*
Narrabri			Murrumbidgee*
Tamworth Regional			Narrandera
Tenterfield			Snowy Valleys*
Uralla			Temora
Walcha			Wagga Wagga
Southern Highlands and Shoalhaven			
Shoalhaven*			
Wingecarribee*			

* These LGAs span across two or more Statistical Areas.

These LGAs are listed under the NSW Regional Statistical Areas which contain the largest area of each LGA.

Appendix Table 3.3: Greater Sydney Statistical Area Map



Appendix Table 3.4: Regional NSW Statistical Areas Map



APPENDIX 4

OFFENCE

CATEGORIES

Appendix 4.1: BOCSAR offences mapped to NSW Police Force incident categories

BOCSAR offence	NSW Police Force incident categories
Homicide	
Murder	Murder
Attempted murder	Murder – attempted Shoot with intent to murder
Murder accessory, conspiracy	Murder – conspiracy Murder – solicit
Manslaughter – not driving	Assault causing death (s25A) Manslaughter
Assault	
	<i>Includes any of the following offences disaggregated by whether or not police have flagged the incident as domestic violence related:</i>
Domestic violence related	Actual bodily harm Assault common Grievous bodily harm (including malicious wounding) Shoot with intent other than to murder Spike drink/food
Non-domestic violence related	Actual bodily harm Assault common Grievous bodily harm (including malicious wounding) Shoot with intent other than to murder Spike drink/food
Assault Police	Assault Police officer
Sexual offences	
Sexual assault	Sexual assault – adult victim (16 years old and over) Sexual assault – child victim, reported when child Sexual assault – child victim, reported when adult
Sexual touching, sexual act and other sexual offences	Sexual act – adult victim (16 years old and over) Sexual act – child victim, reported when child Sexual act – child victim, reported when adult Sexual touching – adult victim (16 years old and over) Sexual touching – child victim, reported when child Sexual touching – child victim, reported when adult Act of indecency Aggravated act of indecency Bestiality Carnal knowledge Grooming/procuring Incest Indecent communication Peep or pry Wilful and obscene exposure Other sexual offence Voyeurism/Film person
Abduction and kidnapping	
	Kidnapping/Abduction People trafficking
Robbery	
Robbery without a weapon	Includes any of the following offences in which no weapon was recorded: Demand money with menaces Robbery Robbery with aggravation Robbery with wounding Other robbery

BOCSAR offence	NSW Police Force incident categories
Robbery with a firearm	<i>Includes any of the following offences in which a firearm was recorded as a weapon:</i> Armed robbery Demand money with menaces Robbery Robbery with aggravation Robbery with wounding Other robbery
Robbery with a weapon not a firearm	<i>Includes any of the following offences in which a non firearm weapon was recorded:</i> Armed robbery Demand money with menaces Robbery Robbery with aggravation Robbery with wounding Other robbery
Blackmail and extortion	<i>From mid-2022 'sextortion' incidents have been recorded as extortion. Prior to this they were classified as fraud. As such, the series prior to mid-2022 is not comparable to the series after this time for this offence.</i> Extortion/Blackmail
Intimidation, stalking and harassment	Bullying/harassment or intimidation Stalking (since 2017) Child approach (since 2017) Riot and affray Telecommunications offence (includes nuisance phone calls) Indecent Communication Threats against Police Violent disorder Unlawful assembly
Other offences against the person	Labour exploitation (includes sexual servitude) Malicious damage with intent to injure/endorse Negligent act cause grievous bodily harm Other offence against the person
Theft	
Break and enter – dwelling	<i>Dwelling includes premises where people reside such as house, home unit, caravan, tent as well as any attachment such as garage, shed, yard and garden.</i> Break/Enter and steal Break/Enter and commit other felony Break/Enter intent to steal Break/Enter intent to commit other felony
Break and enter – non-dwelling	<i>Non-dwelling includes commercial and government premises.</i> Break/Enter and steal Break/Enter and commit other felony Break/Enter intent to steal Break/Enter intent to commit other felony
Receiving or handling stolen goods	Receiving Goods in custody Possess property stolen outside NSW Deal with proceeds of crime Money Laundering
Motor vehicle theft	Theft of motor cars, motor cycles, and other vehicles / vessels (<i>includes being carried in conveyance taken without consent</i>) Rebirthing vehicles / vessels Vehicle/Vessel Unique Identifier
Steal from motor vehicle	Steal from motor vehicle
Steal from retail store	Steal from retail store

BOCSAR offence	NSW Police Force incident categories
Steal from dwelling	Steal from dwelling Other stealing <i>occurring in a residential dwelling</i>
Steal from person	Steal from person
Stock theft	Steal stock (Non-domestic animal)
Fraud	Company/corporate offence Computer crime Copyright/Intellectual property/Trademark Corrupt commission/practices Corrupt payment (receive or pay) Counterfeit currency Deception offence Embezzlement Fail to pay Forgery (since 2017) Fraudulent misappropriation Larceny clerk/servant/bailee Make/use false instrument Misappropriate cheques/funds Possess false instrument Publish false misleading statement Receiving (fraud related) Scams - obtain funds (since 2017) Scams - selling (since 2017) Unauthorised access of funds (since 2017) Deal/supply false identity documents (since 2017) Deal/supply false information (since 2017) Equipment to make false identity documents (since 2017) Make false identity documents (since 2017) Possess false identity documents (since 2017) Possess identity information (since 2017) Use false identity documents (since 2017) Other fraud
Other theft	Steal from dwelling occurring somewhere other than a residential or non-residential dwelling (e.g. from hostels, motels, boarding houses etc) Steal from marine vessel Steal vessel Other stealing <i>occurring somewhere other than a dwelling (e.g. in outdoor/public places)</i>
Arson	<i>Fire incidents were classified as deliberate (to March 2023) or as suspicious - arson or suspicious - reckless (from March 2023). As such, the series prior to March 2023 is not comparable to the series after this time for this offence.:</i> Bushfire related Structure (not bushfire related) Vehicle/Transport/Aircraft Other commodity
Malicious damage to property	Graffiti Malicious damage to property Public place – damage fountain/wall etc. Public place – damage shrine/monument
Drug offences	
Possession and/or use of cocaine	Possess drug where drug type is cocaine Use or administer drug where drug type is cocaine Item/object found where drug type is cocaine
Possession and/or use of narcotics	Possess drug <i>where drug type is narcotics</i> Use or administer drug <i>where drug type is narcotics</i> Item/object found where drug type is narcotics
Possession and/or use of cannabis	Possess drug / plant where drug type is cannabis Use or administer drug where drug type is cannabis Item/object found where drug type is cannabis

BOCSAR offence	NSW Police Force incident categories
Possession and/or use of amphetamines	Possess drug where drug type is amphetamines Use or administer drug where drug type is amphetamines Item/object found where drug type is amphetamines
Possession and/or use of ecstasy Possession and/or use of ecstasy (continued)	Possess drug where drug type is ecstasy Use or administer drug where drug type is ecstasy Item/object found where drug type is ecstasy
Possession and/or use of other drugs	Possess drug where drug type is not cocaine, narcotics, cannabis, amphetamines or ecstasy Use or administer drug where drug type is not cocaine, narcotics, cannabis, amphetamines or ecstasy Item/object found where drug type is not cocaine, narcotics, cannabis, amphetamines or ecstasy
Dealing, trafficking in cocaine	Supply drug where drug type is cocaine
Dealing, trafficking in narcotics	Supply drug where drug type is narcotics
Dealing, trafficking in cannabis	Supply drug/plant where drug/plant type is cannabis
Dealing, trafficking in amphetamines	Supply drug where drug type is amphetamines
Dealing, trafficking in ecstasy	Supply drug where drug type is ecstasy
Dealing, trafficking in other drugs	Supply drug/plant where drug/plant type is not cocaine, narcotics, cannabis, amphetamines or ecstasy
Cultivating cannabis	Cultivation
Manufacture drug	Manufacture drug
Importing drugs	Import drug/plant
Other drug offences	Forge and/or utter prescription Possess drug utensil Other drug detection/seizure offence
Prohibited and regulated weapons offences	
	Bomb hoax or threat Discharge firearm into premises Licence offence Firearms dealer offence Firearms not ensure safekeeping Improper storage of explosives Person search - Item/object found where item/object is a weapon Possess explosive/dangerous article Possess prohibited weapon/article Possess shortened firearm Possess whilst unlicensed Sell prohibited weapon/article Shorten firearm Trespass with firearm Unlawful handling/access/supply of explosives Unlawfully discharge firearm Use firearm under influence Use prohibited weapon/article Other explosives offence Other firearm licencing offence Other firearm offence Other prohibited weapon/article offence
Disorderly conduct	
Trespass	Trespass
Offensive conduct	Remain inclosed lands Offensive behaviour
Offensive language	Offensive language
Criminal intent	Armed with intent Charge with intent Disguised with intent Enter land with intent Intent to repeat indictable offence Instruments of crime Possess implements

BOCSAR offence	NSW Police Force incident categories	
Betting and gaming offences	Conduct/play illegal betting Conduct/play illegal game Own/manage premises – betting Own/manage premises – gaming Other gaming offence	
Liquor offences	Consume alcohol in alcohol-free zone Consume/possess alcohol in public by minor Licensing legislation offence: – Offence by licensee/employee/secretary – Offence by minor – Offence by customer (not minor) – Supply liquor to juvenile – Offence against registered clubs legislation	
Pornography offences	Possess/disseminate child pornography Possess/publish indecent material	
Prostitution offences	Soliciting/prostitution in public Procure Prostitute (Including child prostitute) Prostitution – premises Prostitution – live off earnings Child prostitution Other vice offence	
Against justice procedures	Escape Custody Breach Apprehended Violence Order Breach bail conditions Fail to appear Resist or hinder officer Other offences against justice procedures Transport regulatory offences	Escapee – Corrective Services custody Escapee – Department of Community Services custody Escapee – Police custody Escapee – Other custody Breach Apprehended Violence Order – domestic Breach Apprehended Violence Order – personal Breach bail conditions Breach control order Fail to appear Refuse direction Refuse direction continue intoxication and disorder Refuse direction intoxicated person Refuse to be searched Refuse to produce object Resist/hinder officer Other judicial offence Fail to comply Contravene Child Protection Prohibition Order (CPPO) Transport offence (includes offences on the rail network such as travelling without a valid ticket, smoking, drinking or using offensive language on a train Buffer riding
Other offences	Animals - Dog offences Cyber Breach/Attack False 000 call Family law offence Immigration/customs offence Obstruction Offence against transport service	

BOCSAR offence

NSW Police Force incident categories

Other offences (*continued*)

Breach COVID 19 direction
 Other street offences (carry cutting weapon, offensive implement)
 Public mischief
 Terrorism offences (e.g. associating with terrorist organisations, financing terrorism etc.)
 Other miscellaneous offences
 Offences under various acts:
 Animals - Prevention Of Cruelty Acts
 Bush Fire Act
 Child Protection Act
 Local Government Act
 Marine/Waterway Act
 Pawnbrokers Act
 Postal Services Act
 Public Health Act
 Security Industry Act
 Sydney Harbour Bridge Act
 Tattoo Parlours Act
 Voluntary Assisted Dying Act
 Voluntary Assisted Dying (*Crimes Act*)