



NSW Bureau of Crime
Statistics and Research



NEW SOUTH WALES RECORDED CRIME STATISTICS

Quarterly Update

December Quarter 2025

This report presents data on crime reported to, or detected by, police and recorded on the NSW Police Force's Computerised Operational Policing System (COPS). Information is provided on 13 major offence categories, which include the most serious personal violence and property offences, plus a more detailed list of 62 specific offence types.

Published by the NSW Bureau of Crime Statistics and Research
March 2026

Phone: + 61 (2) 8688 9800

Email: bcsr@dcj.nsw.gov.au

Website: www.bocsar.nsw.gov.au

ISSN: 1035-9044

This report is available in pdf format on our website and may be provided in alternative formats. Please contact us at bcsr@justice.nsw.gov.au.

© State of New South Wales through the NSW Department of Communities and Justice 2025. You may copy, distribute, display, download and otherwise freely deal with this work for any purpose, provided that you attribute the Department of Justice NSW as the owner. However, you must obtain permission if you wish to (a) charge others for access to the work (other than at cost), (b) include the work in advertising or a product for sale, or (c) modify the work.

CONTENTS

SECTION 1:	OVERVIEW OF TRENDS IN RECORDED CRIME	5
Figure 1.1	NSW long-term trend in violent offences	6
Figure 1.2	NSW long-term trend in property offences	6
Table 1.3	Violent and property offences by Statistical Area (SA4) over the ten years to December 2025	7
Table 1.4	Recorded criminal incidents for major offences over the ten years to December 2025	8
Table 1.5	Recorded criminal incidents for 62 offences over the two years to December 2025	9
Table 1.6	Recorded criminal incidents for 62 offences over the ten years to December 2025	10
SECTION 2:	REGIONAL COMPARISONS Statistical Areas	11
Table 2.1	Two year trends and percent change in recorded criminal incidents for major offences by Statistical Area (SA4) over the two years to December 2025	12
Table 2.2	Ratio to NSW rate of recorded criminal incidents per 100,000 population for major offences by Statistical Area (SA4) over the 12 months to December 2025	13
Table 2.3	Number of major offences by Statistical Area (SA4) over the 12 months to December 2025	14
Table 2.4	Number of major offences by Statistical Area (SA4) over the 12 months to December 2024	15
Table 2.5	Rate per 100,000 population of major offences by Statistical Area (SA4) over the 12 months to December 2025	16
Table 2.6	Ten year trends and annual average percent change in recorded criminal incidents for major offences by Statistical Area (SA4) over the 12 months to December 2024	17
Table 2.7	Number of major offences by Statistical Area (SA4) over the 12 months to December 2016	18
SECTION 3:	LEGAL PROCEEDINGS	19
Table 3.1	Adults proceeded against by the NSW Police Force by method of legal proceeding over the ten years to December 2025	20
Table 3.2	Young people proceeded against by the NSW Police Force by method of legal proceeding over the ten years to December 2025	20
Table 3.3	Adults proceeded against to court by the NSW Police Force for all 62 criminal offences types over the two years to December 2025	21
Table 3.4	Young people proceeded against to court by the NSW Police Force for all 62 criminal offences over the two years to December 2025	22
Figure 3.5	Offences with the largest change in the number of adults proceeded against to court by the NSW Police Force between the 12 months to December 2024 and the 12 months to December 2025	23
Figure 3.6	Offences with the largest change in the number of young people proceeded against to court by the NSW Police Force between the 12 months to December 2024 and the 12 months to December 2025	23
Table 3.7	Incidents of all 62 criminal offence types by whether legal proceedings commenced within 90 days of reporting over the two years to September 2025	24

Figure 3.8	Percentage of recorded criminal incidents for major offences by whether legal proceedings commenced within 90 days of reporting over the two years to September 2025	25
SECTION 4: POLICING ACTIVITY		26
Table 4.1	Selected policing activities over the ten years to December 2025	27
Table 4.2	Non-criminal domestic episodes by Statistical Area (SA4) over the ten years to December 2025	28
Table 4.3	Ratio to NSW rate of non-criminal domestic episodes per 100,000 population by Statistical Area (SA4) over the ten years to December 2025	29
APPENDIX 1: REGIONAL COMPARISONS Local Government Areas		30
Appendix Table 1.1	Trends in recorded criminal incidents for major offences, NSW LGAs Over the two years to December 2025	31
Appendix Table 1.2	Ratio to NSW rate of recorded criminal incidents per 100,000 population for major offences, NSW LGAs	34
Appendix Table 1.3	Number of recorded criminal incidents for major offences, NSW LGAs 12 months to December 2025	37
Appendix Table 1.4	Number of recorded criminal incidents for major offences, NSW LGAs 12 months to December 2024	40
APPENDIX 2: EXPLANATORY NOTES		43
Appendix 2.1	Explanatory Notes	44
APPENDIX 3: LGAs IN STATISTICAL AREAS		47
Appendix Table 3.1	Local Government Areas in Greater Sydney Statistical Areas	48
Appendix Table 3.2	Local Government Areas in Regional Statistical Areas	49
Appendix Table 3.3	Greater Sydney Statistical Area Map	50
Appendix Table 3.4	Regional NSW Statistical Areas Map	51
APPENDIX 4: OFFENCE CATEGORIES		52
Appendix 4.1	BOCSAR offences mapped to NSW Police Force incident categories	53

SECTION 1: OVERVIEW OF TRENDS IN RECORDED CRIME

Figure 1.1: NSW long-term trend in violent offences

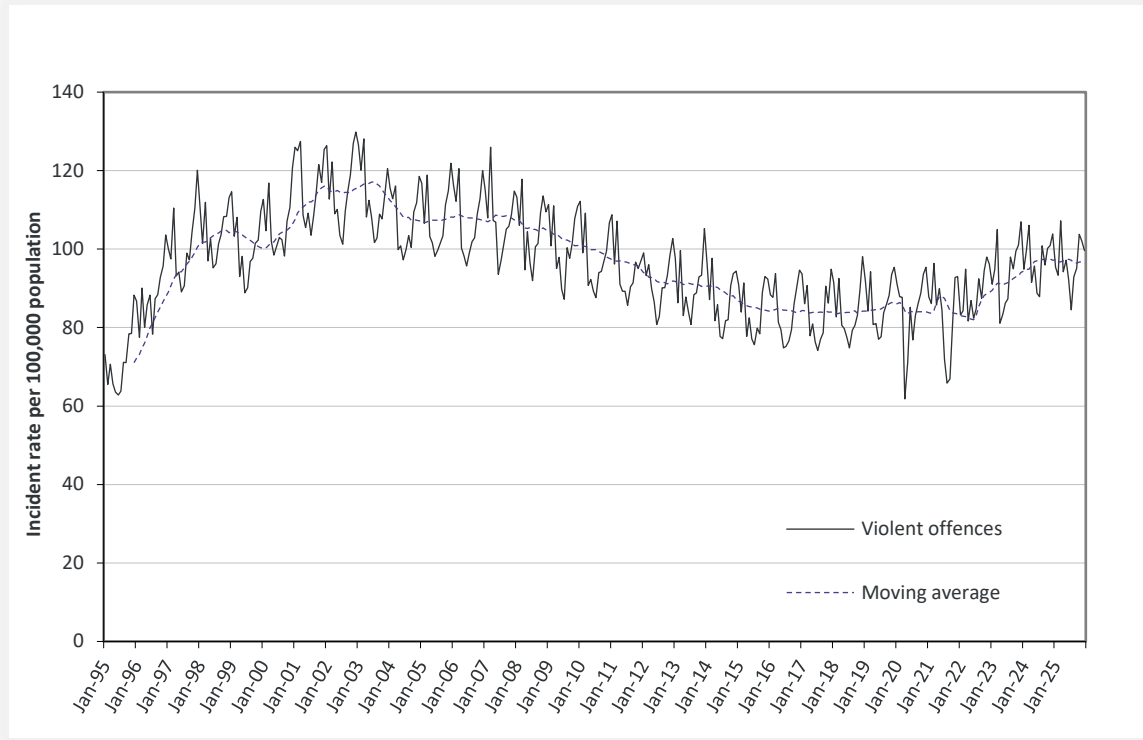


Figure 1.2: NSW long-term trend in property offences



Violent offences include: murder, attempted murder, manslaughter, assault - domestic violence related, assault - non-domestic violence related, assault police, robbery without a weapon, robbery with a firearm, robbery with a weapon not a firearm, sexual assault and sexual touching, sexual act and other sexual offences.

Property offences include: break and enter dwelling, break and enter non-dwelling, motor vehicle theft, steal from motor vehicle, steal from retail store, steal from dwelling, steal from person, stock theft and other theft.

Table 1.3: Violent and property offences by Statistical Area (SA4)

Over the ten years to December 2025

Trend and average annual percentage change

Statistical Area	Violent Offences		Property Offences	
	2 Year Trend	10 Year Trend	2 Year Trend	10 Year Trend
Greater Sydney	Stable	2.0%	3.2%	-2.7%
Baulkham Hills and Hawkesbury	Stable	3.6%	Stable	-3.2%
Blacktown	3.1%	2.4%	Stable	-3.7%
Central Coast	Stable	2.0%	Stable	-3.9%
City and Inner South	Stable	Stable	8.2%	-1.7%
Eastern Suburbs	Stable	Stable	Stable	-3.6%
Inner South West	Stable	1.4%	Stable	-2.3%
Inner West	Stable	3.0%	Stable	-2.5%
North Sydney and Hornsby	Stable	2.9%	Stable	-3.6%
Northern Beaches	Stable	Stable	-21.9%	-6.5%
Outer South West	Stable	2.0%	Stable	-4.3%
Outer West and Blue Mountains	Stable	1.5%	Stable	-2.5%
Parramatta	Stable	2.7%	Stable	Stable
Ryde	Stable	4.3%	13.4%	Stable
South West	-6.6%	2.8%	Stable	-3.0%
Sutherland	10.4%	2.1%	Stable	-4.2%
Regional NSW	Stable	3.0%	-5.8%	-2.9%
Capital Region	Stable	2.5%	-12.8%	-4.2%
Central West	Stable	2.0%	Stable	-5.2%
Coffs Harbour - Grafton	Stable	3.6%	Stable	Stable
Far West and Orana	Stable	2.9%	-14.3%	-6.1%
Hunter Valley excluding Newcastle	Stable	4.3%	Stable	-4.4%
Illawarra	Stable	1.7%	Stable	-2.7%
Mid North Coast	Stable	3.6%	-13.0%	-2.3%
Murray	Stable	4.9%	Stable	-1.4%
New England and North West	Stable	3.4%	Stable	-2.2%
Newcastle and Lake Macquarie	Stable	3.1%	Stable	Stable
Richmond - Tweed	Stable	3.0%	Stable	Stable
Riverina	Stable	1.2%	Stable	-4.9%
Southern Highlands and Shoalhaven	8.9%	3.2%	Stable	-4.4%
NSW	Stable	2.6%	Stable	-2.8%

Table 1.4: Recorded criminal incidents for major offences
Over the ten years to December 2025

Offence category	12 months to	12 months to	12 months to	12 months to	12 months to	12 months to	12 months to	12 months to	12 months to	12 months to	Trend and average annual percentage change	
	December 2016	December 2017	December 2018	December 2019	December 2020	December 2021	December 2022	December 2023	December 2024	December 2025	2 Year Trend	10 Year Trend
Murder	67	52	75	73	69	52	61	59	90	82	Stable	Stable
Domestic violence related assault	29,143	28,487	29,717	31,339	32,284	32,140	33,819	36,289	38,325	37,828	Stable	Up 2.9%
Non-domestic violence related assault	31,753	32,220	31,898	32,405	29,557	28,365	31,194	34,537	35,108	34,068	Stable	Stable
Sexual assault	5,265	6,042	5,955	6,441	7,128	8,200	9,172	10,560	11,981	12,925	Up 7.9%	Up 10.5%
Sexual touching, sexual act and other sexual offences	6,948	7,649	7,947	8,260	7,920	7,922	8,237	8,209	8,717	8,765	Stable	Up 2.6%
Robbery	2,357	2,432	2,493	2,555	2,117	1,768	1,844	1,929	1,976	1,799	Down 9.0%	Down 3.0%
Break and enter dwelling	29,721	27,835	26,550	25,509	19,698	17,875	18,781	20,028	19,416	18,136	Stable	Down 5.3%
Break and enter non-dwelling	11,704	10,573	10,226	9,923	7,387	7,163	7,419	8,638	8,320	7,634	Down 8.2%	Down 4.6%
Motor vehicle theft	13,110	13,213	13,096	13,432	11,732	10,495	12,304	14,325	14,934	14,845	Stable	Up 1.4%
Steal from motor vehicle	40,473	39,077	38,114	38,193	28,339	27,738	27,180	29,076	26,771	25,192	Down 5.9%	Down 5.1%
Steal from retail store	23,543	24,555	24,855	27,061	19,984	17,983	22,369	27,395	28,272	30,900	Up 9.3%	Up 3.1%
Other stealing offences	56,432	52,013	50,792	50,369	39,160	35,870	35,463	38,602	38,976	38,599	Stable	Down 4.1%
Malicious damage to property	62,810	61,190	58,587	57,170	53,329	49,297	48,568	49,450	49,167	46,811	Stable	Down 3.2%

NSW Recorded Crime Statistics, December Quarter 2025

Table 1.5: Recorded criminal incidents for 62 offences
Over the two years to December 2025

Offence category		Number of recorded criminal incidents		2 Year Trend	
		12 months to December 2024	12 months to December 2025	Trend test result	Annual average percentage change
Homicide	Murder	90	82	Stable	
	Attempted murder	15	13	n.c.	
	Murder accessory, conspiracy	3	3	n.c.	
	Manslaughter	12	9	n.c.	
Assault	Domestic violence related assault	38,325	37,828	Stable	
	Non-domestic violence related assault	35,108	34,068	Stable	
	Assault Police	2,670	2,643	Stable	
Sexual offences	Sexual assault	11,981	12,925	Up	7.9%
	Sexual touching, sexual act and other sexual offences	8,717	8,765	Stable	
Abduction and kidnapping		222	218	Stable	
Robbery	Robbery without a weapon	1,065	993	Down	-6.8%
	Robbery with a firearm	94	93	Stable	
	Robbery with a weapon not a firearm	817	713	Stable	
Blackmail and extortion		1,207	1,257	Stable	
Coercive Control		147*	326	n.c.*	
Intimidation, stalking and harassment		48,762	49,923	Stable	
Other offences against the person		1,567	1,586	Stable	
Theft	Break and enter dwelling	19,416	18,136	Stable	
	Break and enter non-dwelling	8,320	7,634	Down	-8.2%
	Receiving or handling stolen goods	7,814	7,607	Stable	
	Motor vehicle theft	14,934	14,845	Stable	
	Steal from motor vehicle	26,771	25,192	Down	-5.9%
	Steal from retail store	28,272	30,900	Up	9.3%
	Steal from dwelling	16,234	16,178	Stable	
	Steal from person	2,012	1,828	Down	-9.1%
	Stock theft	217	231	Stable	
	Fraud	43,522	38,197	Down	-12.2%
	Other theft	20,513	20,362	Stable	
Arson		4,341	4,614	Stable	
Malicious damage to property		49,167	46,811	Stable	
Drug offences	Possession and/or use of cocaine	2,052	2,004	Stable	
	Possession and/or use of narcotics	1,372	1,502	Up	9.5%
	Possession and/or use of cannabis	12,664	12,856	Stable	
	Possession and/or use of amphetamines	7,439	8,534	Up	14.7%
	Possession and/or use of ecstasy	878	801	Stable	
	Possession and/or use of other drugs	4,972	4,801	Stable	
	Dealing, trafficking in cocaine	1,030	987	Stable	
	Dealing, trafficking in narcotics	294	198	Stable	
	Dealing, trafficking in cannabis	489	524	Stable	
	Dealing, trafficking in amphetamines	1,808	1,493	Stable	
	Dealing, trafficking in ecstasy	259	245	Stable	
	Dealing, trafficking in other drugs	443	337	Down	-23.9%
	Cultivating cannabis	644	415	Stable	
	Manufacture drug	66	35	Stable	
	Importing drugs	65	53	Stable	
Other drug offences	4,847	5,163	Stable		
Prohibited and regulated weapons offences		15,836	14,427	Stable	
Disorderly conduct	Trespass	12,737	13,387	Up	5.1%
	Offensive conduct	2,862	2,807	Stable	
	Offensive language	954	778	Down	-18.4%
	Criminal intent	3,008	2,909	Stable	
Betting and gaming offences		22	22	Stable	
Liquor offences		5,435	5,510	Stable	
Pornography offences		1,202	1,155	Stable	
Against justice procedures	Escape custody	152	146	Stable	
	Breach Apprehended Violence Order	26,318	27,491	Up	4.5%
	Breach bail conditions	57,725	57,276	Stable	
	Fail to appear	397	101	Down	-74.6%
	Resist or hinder officer	5,570	5,977	Up	7.3%
	Other offences against justice procedures	2,203	1,969	Down	-10.6%
Transport regulatory offences		64,376	52,970	Down	-17.7%
Other offences		12,140	11,938	Stable	

Note: * The new coercive control offence commenced on 1 July 2024. Without 24 months of data, it is not possible to calculate a 2 Year Trend. Prostitution offences are included as 'other offences' from the September 2024 report. See Appendix 4.1.

NSW Recorded Crime Statistics, December Quarter 2025

Table 1.6: Recorded criminal incidents for 62 offences
Over the ten years to December 2025

Offence category		Number of recorded criminal incidents		10 Year Trend	
		12 months to December 2016	12 months to December 2025	Trend test result	Annual average percentage change
Homicide	Murder	67	82	Stable	
	Attempted murder	28	13	n.c.	
	Murder accessory, conspiracy	3	3	n.c.	
	Manslaughter	8	9	n.c.	
Assault	Domestic violence related assault	29,143	37,828	Up	2.9%
	Non-domestic violence related assault	31,753	34,068	Stable	
	Assault Police	2,325	2,643	Up	1.4%
Sexual offences	Sexual assault	5,265	12,925	Up	10.5%
	Sexual touching, sexual act and other sexual offences	6,948	8,765	Up	2.6%
Abduction and kidnapping		238	218	Stable	
Robbery	Robbery without a weapon	1,362	993	Down	-3.4%
	Robbery with a firearm	167	93	Down	-6.3%
	Robbery with a weapon not a firearm	828	713	Down	-1.6%
Blackmail and extortion		111	1,257	Up	31.0%
Coercive Control		n.a.*	326	n.c.*	
Intimidation, stalking and harassment		30,726	49,923	Up	5.5%
Other offences against the person		1,263	1,586	Up	2.6%
Theft	Break and enter dwelling	29,721	18,136	Down	-5.3%
	Break and enter non-dwelling	11,704	7,634	Down	-4.6%
	Receiving or handling stolen goods	8,494	7,607	Down	-1.2%
	Motor vehicle theft	13,110	14,845	Up	1.4%
	Steal from motor vehicle	40,473	25,192	Down	-5.1%
	Steal from retail store	23,543	30,900	Up	3.1%
	Steal from dwelling	21,346	16,178	Down	-3.0%
	Steal from person	4,960	1,828	Down	-10.5%
	Stock theft	518	231	Down	-8.6%
	Fraud	50,905	38,197	Down	-3.1%
Other theft		29,608	20,362	Down	-4.1%
Arson		5,599	4,614	Down	-2.1%
Malicious damage to property		62,810	46,811	Down	-3.2%
Drug offences	Possession and/or use of cocaine	1,325	2,004	Up	4.7%
	Possession and/or use of narcotics	921	1,502	Up	5.6%
	Possession and/or use of cannabis	18,842	12,856	Down	-4.2%
	Possession and/or use of amphetamines	7,476	8,534	Stable	
	Possession and/or use of ecstasy	2,605	801	Down	-12.3%
	Possession and/or use of other drugs	4,218	4,801	Up	1.4%
	Dealing, trafficking in cocaine	456	987	Up	9.0%
	Dealing, trafficking in narcotics	449	198	Stable	
	Dealing, trafficking in cannabis	897	524	Down	-5.8%
	Dealing, trafficking in amphetamines	2,344	1,493	Down	-4.9%
	Dealing, trafficking in ecstasy	663	245	Down	-10.5%
	Dealing, trafficking in other drugs	287	337	Stable	
	Cultivating cannabis	1,195	415	Down	-11.1%
	Manufacture drug	59	35	Stable	
Importing drugs	64	53	Stable		
Other drug offences		5,368	5,163	Stable	
Prohibited and regulated weapons offences		12,779	14,427	Up	1.4%
Disorderly conduct	Trespass	10,261	13,387	Up	3.0%
	Offensive conduct	5,513	2,807	Down	-7.2%
	Offensive language	3,742	778	Down	-16.0%
	Criminal intent	2,301	2,909	Up	2.6%
Betting and gaming offences		188	22	Down	-21.2%
Liquor offences		10,997	5,510	Down	-7.4%
Pornography offences		583	1,155	Up	7.9%
Against justice procedures	Escape custody	200	146	Down	-3.4%
	Breach Apprehended Violence Order	15,526	27,491	Up	6.6%
	Breach bail conditions	42,341	57,276	Up	3.4%
	Fail to appear	742	101	Stable	
	Resist or hinder officer	6,433	5,977	Stable	
Other offences against justice procedures		591	1,969	Up	14.3%
Transport regulatory offences		120,063	52,970	Down	-8.7%
Other offences		15,215	11,938	Down	-2.7%

Note: * The new coercive control offence commenced on 1 July 2024. Without 60 months of data, it is not possible to calculate a 10 Year Trend.

The NSW Police Force made changes to the classification of 'arson' incidents from March 2023 and 'blackmail and extortion' incidents from June 2022. As such, the series for these offence categories are not comparable pre and post the changes being made. Prostitution offences are included as 'other offences' from the September 2024 report. See Appendix 4.1.

SECTION 2:

REGIONAL

COMPARISONS

Statistical Areas

NSW Recorded Crime Statistics, December Quarter 2025

Table 2.1: Two year trends and percent change in recorded criminal incidents for major offences by Statistical Area (SA4)
Over the two years to December 2025

Statistical Area	Murder	Domestic violence related assault	Non-domestic violence related assault	Sexual assault	Sexual touching, sexual act and other sexual offences	Robbery	Break and enter dwelling	Break and enter non-dwelling	Motor vehicle theft	Steal from motor vehicle	Steal from retail store	Other stealing offences	Malicious damage to property
Greater Sydney	ns	ns	ns	ns	ns	ns	ns	ns	ns	-4.6	13.5	ns	ns
Baulkham Hills and Hawkesbury		ns	ns	ns	ns	ns	ns	-31.0	ns	ns	ns	ns	ns
Blacktown		6.3	ns	ns	ns	ns	ns	ns	ns	ns	20.8	ns	ns
Central Coast		ns	ns	ns	ns	ns	ns	ns	ns	ns	ns	15.0	ns
City and Inner South		ns	ns	ns	ns	ns	13.3	36.1	28.7	ns	ns	ns	ns
Eastern Suburbs		ns	ns	ns	-14.4	ns	9.8	ns	ns	ns	ns	ns	ns
Inner South West		ns	ns	ns	ns	ns	ns	ns	ns	ns	ns	ns	ns
Inner West		ns	ns	ns	ns	ns	ns	ns	ns	ns	19.5	ns	ns
North Sydney and Hornsby		ns	ns	ns	ns	ns	ns	ns	ns	ns	23.1	ns	-13.2
Northern Beaches		ns	ns	ns	ns	ns	ns	ns	ns	-23.8	-20.1	-18.0	ns
Outer South West		ns	ns	ns	ns	ns	ns	ns	ns	ns	ns	ns	ns
Outer West and Blue Mountains		ns	ns	ns	ns	ns	ns	ns	ns	ns	32.7	ns	ns
Parramatta		ns	ns	ns	ns	ns	ns	ns	ns	ns	21.0	ns	ns
Ryde		ns	28.2	ns	ns	ns	ns	ns	ns	ns	27.1	ns	ns
South West		-9.3	-8.2	ns	ns	ns	ns	ns	ns	-7.5	ns	ns	ns
Sutherland		ns	16.2	ns	ns	ns	ns	33.9	ns	ns	ns	ns	ns
Regional NSW	ns	ns	ns	ns	ns	-12.9	-10.9	-14.1	ns	-7.4	ns	ns	ns
Capital Region		ns	ns	ns	ns	ns	ns	-22.6	-11.7	ns	ns	-13.7	ns
Central West		ns	-11.5	ns	ns	ns	ns	ns	-13.5	ns	ns	ns	ns
Coffs Harbour - Grafton		ns	ns	ns	ns	ns	ns	ns	-18.9	-18.7	ns	ns	ns
Far West and Orana		ns	ns	28.6	ns	ns	-22.1	-27.4	ns	-26.6	ns	ns	-12.7
Hunter Valley excluding Newcastle		ns	ns	ns	ns	ns	ns	ns	ns	-13.8	ns	-16.6	ns
Illawarra		12.1	ns	ns	ns	ns	ns	ns	ns	ns	ns	ns	ns
Mid North Coast		ns	ns	ns	ns	ns	-22.0	ns	ns	-24.2	ns	ns	ns
Murray		ns	ns	ns	ns	ns	ns	ns	ns	-28.5	ns	ns	ns
New England and North West		ns	ns	ns	ns	ns	ns	-28.6	ns	16.6	ns	ns	ns
Newcastle and Lake Macquarie		ns	ns	ns	12.9	ns	ns	ns	ns	ns	-14.4	ns	ns
Richmond - Tweed		ns	ns	ns	ns	ns	-32.9	ns	-23.9	ns	58.8	ns	ns
Riverina		-10.0	ns	ns	ns	ns	ns	ns	ns	ns	ns	ns	ns
Southern Highlands and Shoalhaven		ns	ns	16.3	ns	ns	ns	ns	-20.6	ns	ns	ns	ns
NSW	ns	ns	ns	7.9	ns	-9.0	ns	-8.2	ns	-5.9	9.3	ns	ns

NSW Recorded Crime Statistics, December Quarter 2025

Table 2.2: Ratio to NSW rate of recorded criminal incidents per 100,000 population for major offences by Statistical Area (SA4)
Over the 12 months to December 2025

Statistical Area	Murder	Domestic violence related assault	Non-domestic violence related assault	Sexual assault	Sexual touching, sexual act and other sexual offences	Robbery	Break and enter dwelling	Break and enter non-dwelling	Motor vehicle theft	Steal from motor vehicle	Steal from retail store	Other stealing offences	Malicious damage to property
Greater Sydney	0.8	0.8	0.8	0.7	0.8	1.0	0.7	0.6	0.8	0.8	0.9	0.9	0.8
Baulkham Hills and Hawkesbury	0.7	0.4	0.3	0.4	0.5	0.5	0.4	0.3	0.3	0.3	0.5	0.4	0.4
Blacktown	1.4	1.3	1.0	0.8	1.0	2.0	0.8	0.6	0.9	0.9	1.2	0.8	1.0
Central Coast	0.6	1.2	1.1	1.4	1.3	1.2	1.0	0.8	1.0	1.1	1.0	0.8	1.2
City and Inner South	0.9	1.0	2.3	1.1	1.6	2.8	1.1	1.5	1.3	1.2	2.8	3.4	1.4
Eastern Suburbs	6.0	0.5	0.8	0.6	0.7	0.6	0.7	0.5	0.8	0.6	1.0	1.2	0.7
Inner South West	0.3	0.8	0.7	0.5	0.6	0.7	0.6	0.5	0.8	0.8	0.6	0.7	0.6
Inner West	1.0	0.6	0.7	0.5	0.6	0.7	1.0	0.7	0.8	0.9	0.8	1.0	0.6
North Sydney and Hornsby	0.0	0.3	0.4	0.4	0.5	0.4	0.5	0.6	0.2	0.4	0.7	0.5	0.4
Northern Beaches	0.4	0.4	0.5	0.5	0.6	0.4	0.3	0.4	0.3	0.4	0.5	0.6	0.5
Outer South West	0.3	1.0	0.9	0.9	1.0	0.9	0.6	0.6	0.9	0.8	0.7	0.6	0.9
Outer West and Blue Mountains	0.9	1.0	1.0	1.1	1.1	1.2	0.8	1.0	0.9	1.0	1.3	0.9	1.1
Parramatta	0.8	0.9	1.0	0.6	0.7	1.2	1.1	0.7	1.0	1.4	1.0	1.1	0.7
Ryde	0.5	0.4	0.5	0.4	0.5	0.4	0.7	0.6	0.4	0.6	0.7	0.7	0.5
South West	0.2	1.0	0.8	0.6	0.8	1.1	0.6	0.4	1.0	1.0	0.6	0.8	0.7
Sutherland	0.0	0.6	0.6	0.5	0.6	0.4	0.4	0.4	0.3	0.3	0.7	0.5	0.6
Regional NSW	1.3	1.4	1.2	1.2	1.3	0.9	1.5	1.7	1.4	1.3	1.1	1.1	1.4
Capital Region	0.8	0.9	0.9	0.9	1.0	0.2	0.7	1.0	0.7	0.6	0.6	0.8	1.1
Central West	0.5	1.5	1.2	1.3	1.4	0.8	1.5	1.7	1.2	1.1	1.0	1.1	1.5
Coffs Harbour - Grafton	2.7	1.6	1.4	1.5	1.4	1.6	2.0	1.9	1.8	1.3	1.2	1.4	1.5
Far West and Orana	4.4	3.4	2.0	2.2	2.3	1.4	3.2	3.8	2.0	1.7	1.9	1.7	2.8
Hunter Valley excluding Newcastle	0.7	1.6	1.1	1.3	1.4	0.8	1.3	1.6	1.8	1.2	0.9	0.9	1.3
Illawarra	1.0	0.8	0.8	1.1	1.0	0.9	1.0	1.0	1.1	1.2	1.2	1.0	1.0
Mid North Coast	0.9	1.6	1.3	1.2	1.3	0.7	1.5	2.1	1.4	0.8	0.8	1.3	1.4
Murray	0.8	1.6	1.3	1.0	1.4	1.3	1.3	2.8	1.7	1.8	1.0	1.3	1.6
New England and North West	2.2	2.4	1.7	1.5	1.6	1.2	3.1	2.5	1.9	1.6	1.5	1.5	2.3
Newcastle and Lake Macquarie	1.5	1.1	1.3	1.2	1.2	1.2	1.7	1.6	1.8	2.2	1.4	1.3	1.3
Richmond - Tweed	1.2	0.9	1.3	1.2	1.2	1.1	1.4	1.5	1.4	1.2	1.4	1.1	1.2
Riverina		1.4	1.3	1.2	1.6	0.8	1.8	1.5	1.3	1.3	0.9	1.2	1.6
Southern Highlands and Shoalhaven	0.6	0.9	1.0	1.1	1.2	0.4	0.8	0.7	0.8	0.7	0.9	0.6	1.1
NSW	1.0	1.0	1.0	1.0	1.0	1.0	1.0	1.0	1.0	1.0	1.0	1.0	1.0

NSW Recorded Crime Statistics, December Quarter 2025

Table 2.3: Number of major offences by Statistical Area (SA4)

Over the 12 months to December 2025

Statistical Area	Murder	Domestic violence related assault	Non-domestic violence related assault	Sexual assault	Sexual touching, sexual act and other sexual offences	Robbery	Break and enter dwelling	Break and enter non-dwelling	Motor vehicle theft	Steal from motor vehicle	Steal from retail store	Other stealing offences	Malicious damage to property
Greater Sydney	45	19,764	18,740	5,879	4,658	1,222	8,562	3,219	7,506	13,807	18,952	23,498	23,846
Baulkham Hills and Hawkesbury	2	455	352	195	142	29	257	87	171	279	497	504	608
Blacktown	6	2,557	1,760	563	447	188	717	224	733	1,211	1,863	1,534	2,479
Central Coast	2	1,910	1,527	754	482	90	738	245	608	1,192	1,334	1,287	2,349
City and Inner South	3	1,575	3,333	604	619	218	817	490	803	1,259	3,647	5,595	2,873
Eastern Suburbs	16	638	878	244	214	38	437	130	406	524	1,057	1,516	1,109
Inner South West	2	2,259	1,679	472	377	91	824	270	867	1,494	1,356	1,880	2,262
Inner West	3	849	879	263	206	49	665	192	449	819	987	1,434	1,095
North Sydney and Hornsby	0	662	714	248	232	39	485	240	192	547	1,123	1,078	979
Northern Beaches	1	443	554	216	162	24	168	105	150	353	525	681	676
Outer South West	1	1,471	1,093	438	325	61	423	178	497	785	784	864	1,651
Outer West and Blue Mountains	3	1,599	1,373	582	393	91	592	321	520	1,040	1,594	1,397	2,126
Parramatta	4	2,010	2,041	503	390	139	1,212	349	951	2,180	1,850	2,750	2,132
Ryde	1	418	395	140	114	20	337	109	162	397	535	657	556
South West	1	2,256	1,581	489	409	126	693	200	878	1,485	1,196	1,788	2,133
Sutherland	0	662	581	168	146	19	197	79	119	242	604	533	818
Regional NSW	37	18,060	14,037	5,546	3,960	572	9,574	4,412	7,339	11,383	11,948	15,091	22,898
Capital Region	2	952	851	335	244	11	370	219	303	460	561	888	1,443
Central West	1	1,484	1,079	417	312	37	688	322	442	723	784	1,062	1,821
Coffs Harbour - Grafton	4	1,055	826	348	218	52	635	261	464	594	649	961	1,255
Far West and Orana	5	1,774	950	396	277	35	797	406	422	598	804	932	1,845
Hunter Valley excluding Newcastle	2	2,158	1,311	629	443	51	837	444	995	1,114	962	1,313	2,279
Illawarra	3	1,182	1,014	548	352	60	669	306	608	1,140	1,454	1,494	1,719
Mid North Coast	2	1,665	1,196	421	328	34	774	437	573	584	712	1,371	1,839
Murray	1	883	654	192	186	34	362	319	384	680	479	733	1,153
New England and North West	4	2,042	1,265	425	308	50	1,271	436	629	929	1,051	1,301	2,383
Newcastle and Lake Macquarie	6	2,057	2,061	773	508	103	1,474	570	1,254	2,624	2,034	2,336	2,895
Richmond - Tweed	3	1,112	1,338	470	313	62	760	362	665	961	1,374	1,358	1,764
Riverina	3	1,026	843	314	269	29	645	225	377	659	531	886	1,486
Southern Highlands and Shoalhaven	1	670	649	278	202	14	292	105	223	317	553	456	1,016
NSW	82	37,828	34,068	12,925	8,765	1,799	18,136	7,634	14,845	25,192	30,900	38,599	46,811

NSW Recorded Crime Statistics, December Quarter 2025

Table 2.4: Number of major offences by Statistical Area (SA4)

Over the 12 months to December 2024

Statistical Area	Murder	Domestic violence related assault	Non-domestic violence related assault	Sexual assault	Sexual touching, sexual act and other sexual offences	Robbery	Break and enter dwelling	Break and enter non-dwelling	Motor vehicle theft	Steal from motor vehicle	Steal from retail store	Other stealing offences	Malicious damage to property
Greater Sydney	53	20,420	19,031	5,609	4,587	1,314	8,666	3,185	7,269	14,480	16,699	22,919	24,709
Baulkham Hills and Hawkesbury	2	483	319	168	137	38	276	126	193	262	445	541	614
Blacktown	6	2,405	1,841	496	453	152	766	248	693	1,227	1,542	1,565	2,479
Central Coast	0	1,856	1,618	722	413	78	624	278	588	1,173	1,265	1,119	2,506
City and Inner South	4	1,645	3,312	570	593	260	721	360	624	1,200	3,410	5,345	2,834
Eastern Suburbs	9	686	898	256	250	49	398	86	325	583	896	1,374	1,239
Inner South West	4	2,556	1,724	464	395	125	832	273	885	1,613	1,118	1,762	2,343
Inner West	4	813	912	265	200	60	639	197	466	931	826	1,505	1,137
North Sydney and Hornsby	0	683	688	280	253	46	559	168	254	606	912	1,145	1,128
Northern Beaches	1	337	585	175	170	23	242	141	206	463	657	830	766
Outer South West	2	1,704	1,117	411	298	68	440	186	420	833	771	861	1,680
Outer West and Blue Mountains	6	1,618	1,530	550	397	73	567	339	530	1,140	1,201	1,419	2,173
Parramatta	7	2,150	1,956	519	355	176	1,314	420	959	2,179	1,529	2,668	2,164
Ryde	1	402	308	121	113	23	338	84	143	354	421	598	484
South West	7	2,486	1,723	433	417	127	756	220	847	1,605	1,124	1,677	2,280
Sutherland	0	596	500	179	143	16	194	59	136	311	582	510	882
Regional NSW	35	17,900	14,551	5,300	3,983	657	10,750	5,134	7,664	12,291	11,573	16,043	24,383
Capital Region	2	986	889	376	280	17	420	283	343	483	654	1,029	1,498
Central West	2	1,509	1,219	455	361	61	708	381	511	673	699	1,158	2,062
Coffs Harbour - Grafton	7	1,125	799	319	232	61	632	274	572	731	489	964	1,356
Far West and Orana	2	1,903	1,146	308	267	35	1,023	559	483	815	715	1,027	2,113
Hunter Valley excluding Newcastle	3	2,050	1,381	639	516	63	825	472	896	1,292	858	1,574	2,290
Illawarra	2	1,054	1,068	479	348	49	679	287	574	1,148	1,502	1,406	1,822
Mid North Coast	1	1,631	1,160	418	336	40	992	478	580	770	791	1,508	1,938
Murray	1	877	691	207	169	31	459	368	392	951	398	806	1,196
New England and North West	1	2,005	1,312	454	291	71	1,527	611	613	797	1,032	1,320	2,473
Newcastle and Lake Macquarie	3	1,853	2,051	678	450	124	1,426	632	1,182	2,629	2,375	2,435	3,145
Richmond - Tweed	11	1,160	1,313	434	327	54	1,133	328	874	940	865	1,355	1,884
Riverina	0	1,140	899	294	232	39	609	294	363	740	612	928	1,596
Southern Highlands and Shoalhaven	0	607	623	239	174	12	317	167	281	322	583	533	1,010
NSW	90	38,325	35,108	11,981	8,717	1,976	19,416	8,320	14,934	26,771	28,272	38,976	49,167

NSW Recorded Crime Statistics, December Quarter 2025

Table 2.5: Rate per 100,000 population of major offences by Statistical Area (SA4)

Over the 12 months to December 2025

Statistical Area	Murder	Domestic violence related assault	Non-domestic violence related assault	Sexual assault	Sexual touching, sexual act and other sexual offences	Robbery	Break and enter dwelling	Break and enter non-dwelling	Motor vehicle theft	Steal from motor vehicle	Steal from retail store	Other stealing offences	Malicious damage to property
Greater Sydney	0.8	355.6	337.2	105.8	83.8	22.0	154.1	57.9	135.1	248.5	341.0	422.8	429.1
Baulkham Hills and Hawkesbury	0.7	158.0	122.2	67.7	49.3	10.1	89.3	30.2	59.4	96.9	172.6	175.0	211.2
Blacktown	1.4	577.9	397.8	127.2	101.0	42.5	162.1	50.6	165.7	273.7	421.1	346.7	560.3
Central Coast	0.6	538.3	430.4	212.5	135.8	25.4	208.0	69.1	171.4	336.0	376.0	362.7	662.1
City and Inner South	0.8	433.3	916.9	166.2	170.3	60.0	224.8	134.8	220.9	346.4	1,003.3	1,539.2	790.4
Eastern Suburbs	5.8	229.6	315.9	87.8	77.0	13.7	157.2	46.8	146.1	188.5	380.3	545.5	399.0
Inner South West	0.3	356.2	264.8	74.4	59.5	14.4	129.9	42.6	136.7	235.6	213.8	296.5	356.7
Inner West	0.9	264.9	274.3	82.1	64.3	15.3	207.5	59.9	140.1	255.6	308.0	447.5	341.7
North Sydney and Hornsby	0.0	149.1	160.8	55.9	52.2	8.8	109.2	54.1	43.2	123.2	252.9	242.8	220.5
Northern Beaches	0.4	163.6	204.6	79.8	59.8	8.9	62.0	38.8	55.4	130.4	193.9	251.5	249.7
Outer South West	0.3	462.3	343.5	137.7	102.1	19.2	132.9	55.9	156.2	246.7	246.4	271.6	518.9
Outer West and Blue Mountains	0.9	461.7	396.4	168.1	113.5	26.3	170.9	92.7	150.1	300.3	460.3	403.4	613.9
Parramatta	0.8	381.2	387.1	95.4	74.0	26.4	229.9	66.2	180.4	413.5	350.9	521.6	404.4
Ryde	0.5	193.9	183.2	64.9	52.9	9.3	156.3	50.6	75.1	184.2	248.2	304.8	257.9
South West	0.2	436.7	306.0	94.7	79.2	24.4	134.1	38.7	169.9	287.4	231.5	346.1	412.9
Sutherland	0.0	278.9	244.8	70.8	61.5	8.0	83.0	33.3	50.1	102.0	254.5	224.6	344.6
Regional NSW	1.3	618.1	480.4	189.8	135.5	19.6	327.6	151.0	251.2	389.6	408.9	516.4	783.6
Capital Region	0.8	386.9	345.8	136.1	99.2	4.5	150.4	89.0	123.1	186.9	228.0	360.8	586.4
Central West	0.5	687.0	499.5	193.1	144.4	17.1	318.5	149.1	204.6	334.7	363.0	491.7	843.1
Coffs Harbour - Grafton	2.7	700.7	548.6	231.1	144.8	34.5	421.8	173.3	308.2	394.5	431.0	638.3	833.5
Far West and Orana	4.2	1,502.4	804.5	335.4	234.6	29.6	675.0	343.8	357.4	506.4	680.9	789.3	1,562.5
Hunter Valley excluding Newcastle	0.6	695.2	422.3	202.6	142.7	16.4	269.6	143.0	320.5	358.9	309.9	423.0	734.2
Illawarra	0.9	362.2	310.7	167.9	107.9	18.4	205.0	93.8	186.3	349.3	445.5	457.8	526.7
Mid North Coast	0.8	703.2	505.2	177.8	138.5	14.4	326.9	184.6	242.0	246.7	300.7	579.1	776.7
Murray	0.8	692.7	513.1	150.6	145.9	26.7	284.0	250.3	301.3	533.5	375.8	575.1	904.6
New England and North West	2.1	1,073.1	664.8	223.3	161.9	26.3	667.9	229.1	330.5	488.2	552.3	683.7	1,252.3
Newcastle and Lake Macquarie	1.5	505.0	505.9	189.8	124.7	25.3	361.8	139.9	307.8	644.2	499.3	573.5	710.7
Richmond - Tweed	1.1	423.1	509.1	178.8	119.1	23.6	289.2	137.7	253.0	365.7	522.8	516.7	671.2
Riverina	1.8	618.6	508.3	189.3	162.2	17.5	388.9	135.7	227.3	397.3	320.2	534.2	896.0
Southern Highlands and Shoalhaven	0.6	408.4	395.6	169.5	123.1	8.5	178.0	64.0	135.9	193.2	337.1	278.0	619.3
NSW	1.0	446.1	401.8	152.4	103.4	21.2	213.9	90.0	175.1	297.1	364.4	455.2	552.1

NSW Recorded Crime Statistics, December Quarter 2025

Table 2.6: Ten year trends and annual average percent change in recorded criminal incidents for major offences by Statistical Area (SA4)
Over the ten years to December 2025

Statistical Area	Murder	Domestic violence related assault	Non-domestic violence related assault	Sexual assault	Sexual touching, sexual act and other sexual offences	Robbery	Break and enter dwelling	Break and enter non-dwelling	Motor vehicle theft	Steal from motor vehicle	Steal from retail store	Other stealing offences	Malicious damage to property
Greater Sydney	ns	2.2	ns	9.5	2.5	-3.5	-6.0	-4.8	ns	-5.2	2.9	-3.6	-3.6
Baulkham Hills and Hawkesbury		4.2	ns	12.6	1.7		-7.4	-7.5	ns	-7.1	6.0	-3.5	-1.8
Blacktown		2.4	ns	9.6	3.6	-3.4	-8.3	-5.5	ns	-7.6	6.3	-5.5	-3.5
Central Coast		ns	ns	10.7	ns	ns	-6.9	-7.2	-2.5	-6.3	3.9	-4.8	-4.3
City and Inner South		2.5	-1.0	9.4	3.8	-3.9	-2.7	-3.7	ns	-5.7	ns	-3.0	-2.6
Eastern Suburbs		ns	-1.8	8.1	1.3	-5.8	-5.8	-2.5	ns	-7.2	ns	-4.9	-3.8
Inner South West		1.1	ns	10.8	3.4	-8.0	-4.3	-4.1	ns	-4.4	3.6	-3.1	-4.2
Inner West		4.6	1.3	11.0	ns	-4.0	-4.5	-2.8	2.1	-5.7	3.6	-3.6	-4.0
North Sydney and Hornsby		4.2	ns	7.3	2.3	ns	-6.9	-5.4	ns	-5.9	1.3	-4.8	-5.5
Northern Beaches		ns	ns	9.1	4.0	ns	-10.9	-9.0	-1.5	-9.1	ns	-6.9	-5.9
Outer South West		1.5	1.4	8.4	ns	-3.5	-8.9	-6.1	ns	-5.0	-1.1	-5.1	-3.7
Outer West and Blue Mountains		ns	ns	8.5	1.9	-4.0	-6.2	-3.4	-2.7	-4.1	4.8	-4.7	-3.4
Parramatta		2.3	2.8	8.4	ns	-3.9	-4.4	-3.4	2.4	-1.4	5.7	-1.0	-3.0
Ryde		5.2	ns	13.4	ns		-3.0	ns	4.8	-3.3	ns	ns	-2.3
South West		3.2	2.0	8.9	2.3	-3.6	-6.9	-7.3	ns	-4.6	ns	-2.7	-1.8
Sutherland		3.5	ns	10.9	ns		-6.2	-5.1	-5.2	-9.8	ns	-4.5	-5.0
Regional NSW		3.9	1.0	8.7	2.5	-1.8	-4.8	-4.5	2.5	-5.0	3.3	-4.8	-2.8
Capital Region		3.6	ns	8.3	ns		-6.2	-4.4	ns	-8.3	ns	-4.1	-2.6
Central West		3.7	ns	6.8	ns	ns	-7.9	-7.8	ns	-6.8	1.2	-6.0	-3.9
Coffs Harbour - Grafton		3.6	1.7	9.2	3.1	4.5	ns	-4.1	6.6	ns	5.3	-2.3	ns
Far West and Orana		4.6	ns	7.4	ns	ns	-8.6	ns	ns	-10.5	2.3	-6.6	-3.0
Hunter Valley excluding Newcastle		4.8	1.9	10.7	5.2	ns	-6.6	-5.2	2.2	-6.7	ns	-7.1	-2.1
Illawarra		1.3	ns	11.4	5.6	-3.8	-5.2	-7.6	ns	-5.8	3.6	-3.0	-3.7
Mid North Coast		5.6	2.0	6.2	ns	-1.5	-3.3	-3.4	4.4	-4.2	3.2	-4.4	-1.6
Murray		5.9	3.2	7.5	4.8	ns	-5.7	ns	7.8	ns	ns	-3.6	ns
New England and North West		5.2	ns	7.7	ns	ns	ns	-4.5	5.9	-5.1	3.6	-4.7	-2.8
Newcastle and Lake Macquarie		3.4	1.3	10.1	ns	ns	-1.6	-1.1	2.5	-2.1	4.1	-3.7	-3.8
Richmond - Tweed		3.2	2.2	8.1	ns	ns	ns	ns	4.7	-3.4	9.3	-5.1	-2.3
Riverina		ns	ns	8.4	4.0	ns	-7.1	-5.8	ns	-6.0	ns	-5.7	-3.5
Southern Highlands and Shoalhaven		2.9	2.3	9.8	ns		-7.0	-8.7	1.3	-6.7	4.3	-7.9	-2.5
NSW	ns	2.9	ns	10.5	2.6	-3.0	-5.3	-4.6	1.4	-5.1	3.1	-4.1	-3.2

NSW Recorded Crime Statistics, December Quarter 2025

Table 2.7: Number of major offences by Statistical Area (SA4)

Over the 12 months to December 2016

Statistical Area	Murder	Domestic violence related assault	Non-domestic violence related assault	Sexual assault	Sexual touching, sexual act and other sexual offences	Robbery	Break and enter dwelling	Break and enter non-dwelling	Motor vehicle theft	Steal from motor vehicle	Steal from retail store	Other stealing offences	Malicious damage to property
Greater Sydney	47	16,284	17,835	2,600	3,746	1,683	14,873	5,013	7,251	22,375	14,640	32,835	33,097
Baulkham Hills and Hawkesbury	1	314	331	67	122	26	514	176	189	539	295	695	715
Blacktown	3	2,070	1,597	247	326	257	1,571	374	787	2,465	1,073	2,564	3,430
Central Coast	3	1,758	1,480	303	401	72	1,405	478	764	2,140	945	2,013	3,504
City and Inner South	4	1,262	3,665	269	443	312	1,045	690	534	2,141	2,993	7,357	3,639
Eastern Suburbs	1	641	1,032	121	191	65	747	164	356	1,030	980	2,374	1,577
Inner South West	10	2,054	1,595	187	280	193	1,229	395	896	2,248	984	2,492	3,336
Inner West	1	568	781	103	189	71	1,002	249	373	1,387	718	1,994	1,576
North Sydney and Hornsby	1	459	650	132	189	36	926	394	177	946	1,000	1,671	1,623
Northern Beaches	4	301	587	99	114	27	473	245	172	837	599	1,300	1,170
Outer South West	2	1,284	962	212	293	84	981	313	452	1,249	869	1,386	2,314
Outer West and Blue Mountains	4	1,490	1,300	279	333	131	1,049	438	664	1,509	1,043	2,164	2,909
Parramatta	2	1,641	1,586	243	331	199	1,822	478	768	2,478	1,119	3,012	2,808
Ryde	1	264	338	45	71	16	442	98	106	536	368	715	683
South West	8	1,694	1,328	227	332	176	1,317	394	821	2,260	1,138	2,289	2,513
Sutherland	2	484	603	66	131	18	350	127	192	610	516	809	1,300
Regional NSW	20	12,854	12,827	2,615	3,183	672	14,848	6,688	5,858	18,096	8,903	23,586	29,544
Capital Region	0	694	807	164	216	16	661	328	295	1,006	554	1,295	1,836
Central West	3	1,072	1,123	231	287	56	1,447	667	481	1,361	707	1,854	2,607
Coffs Harbour - Grafton	0	769	709	157	165	35	638	379	261	702	409	1,183	1,467
Far West and Orana	3	1,184	974	208	238	41	1,786	629	542	1,629	653	1,715	2,434
Hunter Valley excluding Newcastle	1	1,412	1,105	252	280	64	1,548	716	820	2,075	810	2,547	2,763
Illawarra	2	1,053	1,123	208	215	85	1,080	626	561	1,959	1,058	1,968	2,423
Mid North Coast	1	1,019	998	245	304	39	1,050	596	388	858	535	2,063	2,135
Murray	2	525	491	100	122	25	614	365	196	798	369	1,020	1,223
New England and North West	1	1,291	1,162	218	299	50	1,605	657	375	1,482	764	2,008	3,068
Newcastle and Lake Macquarie	2	1,521	1,827	326	411	147	1,707	628	1,002	3,168	1,415	3,292	4,090
Richmond - Tweed	3	838	1,099	234	290	44	903	475	439	1,312	617	2,172	2,168
Riverina	2	959	878	152	189	48	1,248	384	300	1,154	633	1,508	2,051
Southern Highlands and Shoalhaven	0	517	531	120	167	22	561	238	198	592	379	961	1,279
NSW	67	29,143	31,753	5,265	6,948	2,357	29,721	11,704	13,110	40,473	23,543	56,432	62,810

SECTION 3: LEGAL PROCEEDINGS

NSW Recorded Crime Statistics, December Quarter 2025

Table 3.1: Adults proceeded against by the NSW Police Force by method of legal proceeding

Over the ten years to December 2025

Method of legal proceeding	Adults proceeded against										Trend and average annual percentage change	
	12 months to December 2016	12 months to December 2017	12 months to December 2018	12 months to December 2019	12 months to December 2020	12 months to December 2021	12 months to December 2022	12 months to December 2023	12 months to December 2024	12 months to December 2025	2 Year Trend	10 Year Trend
Proceeded against to court (offence)	144,938	143,907	147,753	148,758	144,611	145,302	155,054	156,807	159,803	172,466	7.9%	2.0%
Proceeded against to court (breach of bail)	5,300	5,364	5,828	7,012	7,933	7,491	7,880	7,870	8,002	7,713	Stable	4.3%
Court diversion	15,232	14,942	13,546	13,292	10,277	8,637	9,344	8,813	8,177	7,553	-7.6%	-7.5%
Criminal Infringement Notice	9,688	9,534	8,779	8,681	6,509	5,667	6,477	6,221	6,064	5,427	-10.5%	-6.2%
Cannabis or other drug caution	5,544	5,408	4,767	4,611	3,768	2,970	2,867	2,592	2,113	2,126	Stable	-10.1%

Table 3.2: Young people proceeded against by the NSW Police Force by method of legal proceeding

Over the ten years to December 2025

Method of legal proceeding	Young people proceeded against										Trend and average annual percentage change	
	12 months to December 2016	12 months to December 2017	12 months to December 2018	12 months to December 2019	12 months to December 2020	12 months to December 2021	12 months to December 2022	12 months to December 2023	12 months to December 2024	12 months to December 2025	2 Year Trend	10 Year Trend
Proceeded against to court (offence)	9,971	10,667	10,139	9,848	9,691	9,331	10,338	11,045	11,447	10,944	Stable	1.0%
Proceeded against to court (breach of bail)	1,300	1,510	1,596	1,667	1,478	1,418	1,498	1,683	1,565	1,602	Stable	2.3%
Court diversion	9,724	10,669	10,221	10,666	10,019	12,683	11,122	11,037	10,014	10,139	Stable	Stable
Youth Justice Conference	519	614	731	791	754	754	630	933	885	896	Stable	6.3%
Caution Young Offenders Act	6,783	7,328	6,985	7,133	6,700	6,771	6,912	7,055	6,351	6,353	Stable	Stable
Warning Young Offenders Act	2,422	2,727	2,505	2,742	2,565	5,158	3,580	3,049	2,778	2,890	Stable	2.0%

NSW Recorded Crime Statistics, December Quarter 2025

Table 3.3: Adults proceeded against to court by the NSW Police Force for all 62 criminal offences types

Over the two years to December 2025

Offence category		12 months to December 2024		12 months to December 2025		2 Year Trend	
		No. proceeded to court	% proceeded to court	No. proceeded to court	% proceeded to court	Trend test result	Percentage change
Homicide	Murder	93	100.0%	84	100.0%	Stable	
	Attempted murder	21	100.0%	18	100.0%	n.c.	
	Murder accessory, conspiracy	10	100.0%	4	100.0%	n.c.	
	Manslaughter	11	100.0%	9	100.0%	n.c.	
Assault	Domestic violence related assault	14,441	99.9%	15,808	99.8%	Up	9.5%
	Non-domestic violence related assault	7,131	96.6%	7,332	97.2%	Stable	
	Assault Police	1,428	100.0%	1,539	99.9%	Up	7.8%
Sexual offences	Sexual assault	788	100.0%	845	100.0%	Up	7.2%
	Sexual touching, sexual act and other sexual offences	1,500	98.4%	1,537	97.6%	Stable	
Abduction and kidnapping		167	100.0%	184	100.0%	Stable	
Robbery	Robbery without a weapon	319	100.0%	293	100.0%	Stable	
	Robbery with a firearm	63	100.0%	63	100.0%	Stable	
	Robbery with a weapon not a firearm	291	100.0%	260	100.0%	Stable	
Blackmail and extortion		31	100.0%	32	100.0%	Stable	
Coercive Control		2	100.0%	6	100.0%	n.c.*	
Intimidation, stalking and harassment		15,708	99.2%	17,283	99.2%	Up	10.0%
Other offences against the person		379	97.2%	348	97.2%	Stable	
Theft	Break and enter dwelling	2,441	99.4%	2,233	99.2%	Stable	
	Break and enter non-dwelling	1,555	99.6%	1,412	99.4%	Stable	
	Receiving or handling stolen goods	4,565	97.8%	4,727	97.9%	Stable	
	Motor vehicle theft	1,474	99.7%	1,330	99.7%	Down	-9.8%
	Steal from motor vehicle	918	98.2%	690	97.3%	Down	-24.8%
	Steal from retail store	7,774	78.1%	8,720	82.6%	Up	12.2%
	Steal from dwelling	896	96.4%	873	96.1%	Stable	
	Steal from person	205	96.7%	190	96.4%	Stable	
	Stock theft	10	100.0%	9	81.8%	n.c.	
	Fraud	3,755	99.3%	3,199	99.1%	Down	-14.8%
Other theft	1,816	92.2%	1,834	92.2%	Stable		
Arson		233	94.3%	271	92.5%	Stable	
Malicious damage to property		5,135	99.6%	5,326	99.5%	Stable	
Drug offences	Possession and/or use of cocaine	777	70.2%	706	68.9%	Stable	
	Possession and/or use of narcotics	628	97.7%	699	97.2%	Up	11.3%
	Possession and/or use of cannabis	3,368	61.2%	3,597	62.8%	Stable	
	Possession and/or use of amphetamines	3,074	94.7%	3,527	95.1%	Up	14.7%
	Possession and/or use of ecstasy	242	46.1%	227	53.5%	Stable	
	Possession and/or use of other drugs	1,226	91.6%	1,182	91.3%	Stable	
	Dealing, trafficking in cocaine	695	100.0%	664	100.0%	Stable	
	Dealing, trafficking in narcotics	166	100.0%	158	100.0%	Stable	
	Dealing, trafficking in cannabis	277	100.0%	300	100.0%	Stable	
	Dealing, trafficking in amphetamines	723	100.0%	713	100.0%	Stable	
	Dealing, trafficking in ecstasy	116	100.0%	111	100.0%	Stable	
	Dealing, trafficking in other drugs	214	100.0%	163	100.0%	Stable	
	Cultivating cannabis	350	100.0%	256	100.0%	Down	-26.9%
	Manufacture drug	79	100.0%	42	100.0%	Stable	
	Importing drugs	52	100.0%	43	100.0%	Stable	
Other drug offences	498	94.7%	583	91.5%	Stable		
Prohibited and regulated weapons offences		3,114	89.4%	3,361	92.7%	Up	7.9%
Disorderly conduct	Trespass	1,619	71.7%	1,796	71.8%	Up	10.9%
	Offensive conduct	287	18.6%	259	17.9%	Stable	
	Offensive language	69	14.5%	79	19.4%	Stable	
	Criminal intent	1,329	99.9%	1,367	99.4%	Stable	
Betting and gaming offences		4	80.0%	3	100.0%	n.c.	
Liquor offences		132	9.1%	106	7.4%	Stable	
Pornography offences		256	100.0%	286	100.0%	Stable	
Against justice procedures	Escape custody	86	100.0%	84	100.0%	Stable	
	Breach Apprehended Violence Order	13,895	100.0%	15,115	100.0%	Up	8.8%
	Breach bail conditions	8,002	98.9%	7,713	94.4%	Stable	
	Fail to appear	11	100.0%	7	77.8%	n.c.	
	Resist or hinder officer	1,707	87.9%	1,863	89.4%	Up	9.1%
	Other offences against justice procedures	1,324	100.0%	1,176	99.7%	Stable	
Transport regulatory offences		354	0.8%	315	0.9%	Stable	
Other offences		2,180	44.2%	2,299	48.7%	Up	5.5%

* Note: The new coercive control offence commenced on 1 July 2024. Without 24 months of data, it is not possible to calculate a 2 Year Trend.

NSW Recorded Crime Statistics, December Quarter 2025

Table 3.4: Young people proceeded against to court by the NSW Police Force for all 62 criminal offences

Over the two years to December 2025

Offence category		12 months to December 2024		12 months to December 2025		2 Year Trend	
		No. proceeded to court	% proceeded to court	No. proceeded to court	% proceeded to court	Trend test result	Percentage change
Homicide	Murder	7	100.0%	13	100.0%	n.c.	
	Attempted murder	0		0		n.c.	
	Murder accessory, conspiracy	0		2	100.0%	n.c.	
	Manslaughter	0		0		n.c.	
Assault	Domestic violence related assault	416	36.3%	435	35.0%	Stable	
	Non-domestic violence related assault	917	36.2%	1,086	38.7%	Up	18.4%
	Assault Police	143	85.6%	158	84.5%	Stable	
Sexual offences	Sexual assault	122	99.2%	118	100.0%	Stable	
	Sexual touching, sexual act and other sexual offences	76	72.4%	58	68.2%	Stable	
Abduction and kidnapping		14	100.0%	8	100.0%	n.c.	
Robbery	Robbery without a weapon	308	88.8%	335	91.3%	Stable	
	Robbery with a firearm	5	100.0%	6	100.0%	n.c.	
	Robbery with a weapon not a firearm	202	96.7%	219	92.4%	Stable	
Blackmail and extortion		8	72.7%	4	66.7%	n.c.	
Coercive Control		0		0		n.c.*	
Intimidation, stalking and harassment		1,364	71.6%	1,403	72.4%	Stable	
Other offences against the person		22	53.7%	14	41.2%	n.c.	
Theft	Break and enter dwelling	1,008	82.7%	979	87.4%	Stable	
	Break and enter non-dwelling	469	61.3%	339	54.1%	Down	-27.7%
	Receiving or handling stolen goods	256	57.1%	237	54.4%	Stable	
	Motor vehicle theft	878	75.6%	714	75.5%	Down	-18.7%
	Steal from motor vehicle	240	66.9%	123	63.1%	Down	-48.8%
	Steal from retail store	911	45.7%	902	41.8%	Stable	
	Steal from dwelling	58	51.3%	35	46.1%	Stable	
	Steal from person	64	63.4%	50	58.1%	Stable	
	Stock theft	0		0		n.c.	
	Fraud	274	69.0%	190	62.5%	Down	-30.7%
Other theft	110	34.5%	119	36.6%	Stable		
Arson		28	29.8%	58	51.3%	Stable	
Malicious damage to property		567	35.4%	451	33.1%	Down	-20.5%
Drug offences	Possession and/or use of cocaine	1	9.1%	7	36.8%	n.c.	
	Possession and/or use of narcotics	0		2	100.0%	n.c.	
	Possession and/or use of cannabis	141	18.6%	128	18.0%	Stable	
	Possession and/or use of amphetamines	14	66.7%	11	50.0%	n.c.	
	Possession and/or use of ecstasy	5	35.7%	5	33.3%	n.c.	
	Possession and/or use of other drugs	14	43.8%	8	36.4%	n.c.	
	Dealing, trafficking in cocaine	16	100.0%	12	92.3%	n.c.	
	Dealing, trafficking in narcotics	0		2	100.0%	n.c.	
	Dealing, trafficking in cannabis	12	80.0%	23	88.5%	n.c.	
	Dealing, trafficking in amphetamines	3	100.0%	2	100.0%	n.c.	
	Dealing, trafficking in ecstasy	9	100.0%	5	83.3%	n.c.	
	Dealing, trafficking in other drugs	2	100.0%	1	50.0%	n.c.	
	Cultivating cannabis	1	100.0%	0		n.c.	
	Manufacture drug	0		0		n.c.	
	Importing drugs	0		0		n.c.	
Other drug offences	5	15.6%	5	10.0%	n.c.		
Prohibited and regulated weapons offences		181	32.7%	190	36.3%	Stable	
Disorderly conduct	Trespass	254	20.1%	278	21.5%	Stable	
	Offensive conduct	9	5.1%	19	9.1%	n.c.	
	Offensive language	2	7.7%	3	15.8%	n.c.	
	Criminal intent	233	81.5%	227	79.9%	Stable	
Betting and gaming offences		0		0			
Liquor offences		1	0.7%	4	2.4%	n.c.	
Pornography offences		14	24.6%	7	10.0%	n.c.	
Against justice procedures	Escape custody	1	50.0%	4	100.0%	n.c.	
	Breach Apprehended Violence Order	521	99.4%	478	99.8%	Stable	
	Breach bail conditions	1,565	97.8%	1,602	95.5%	Stable	
	Fail to appear	0		0		n.c.	
	Resist or hinder officer	81	51.3%	102	55.7%	Stable	
Other offences against justice procedures	6	100.0%	2	100.0%	n.c.		
Transport regulatory offences		48	0.3%	40	0.3%	Stable	
Other offences		175	23.7%	166	24.2%	Stable	

* Note: The new coercive control offence commenced on 1 July 2024. Without 24 months of data, it is not possible to calculate a 2 Year Trend.

Figure 3.5: Offences with the largest change in the number of adults proceeded against to court by the NSW Police Force

Between the 12 months to December 2024 and the 12 months to December 2025

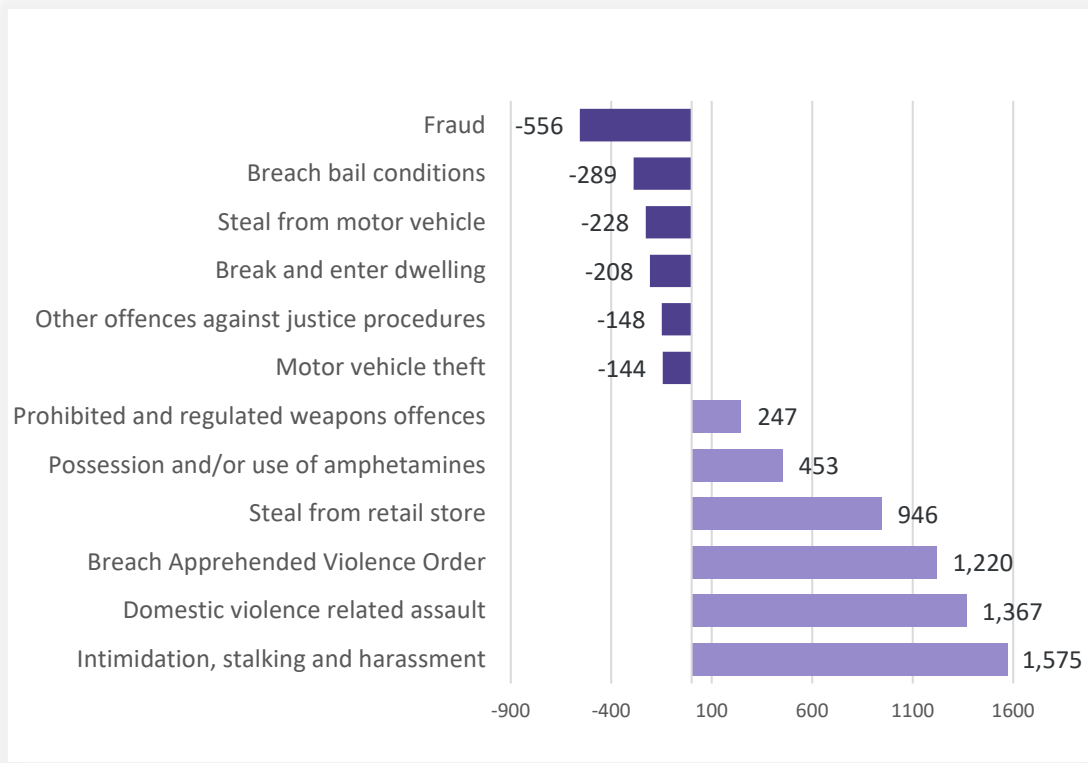
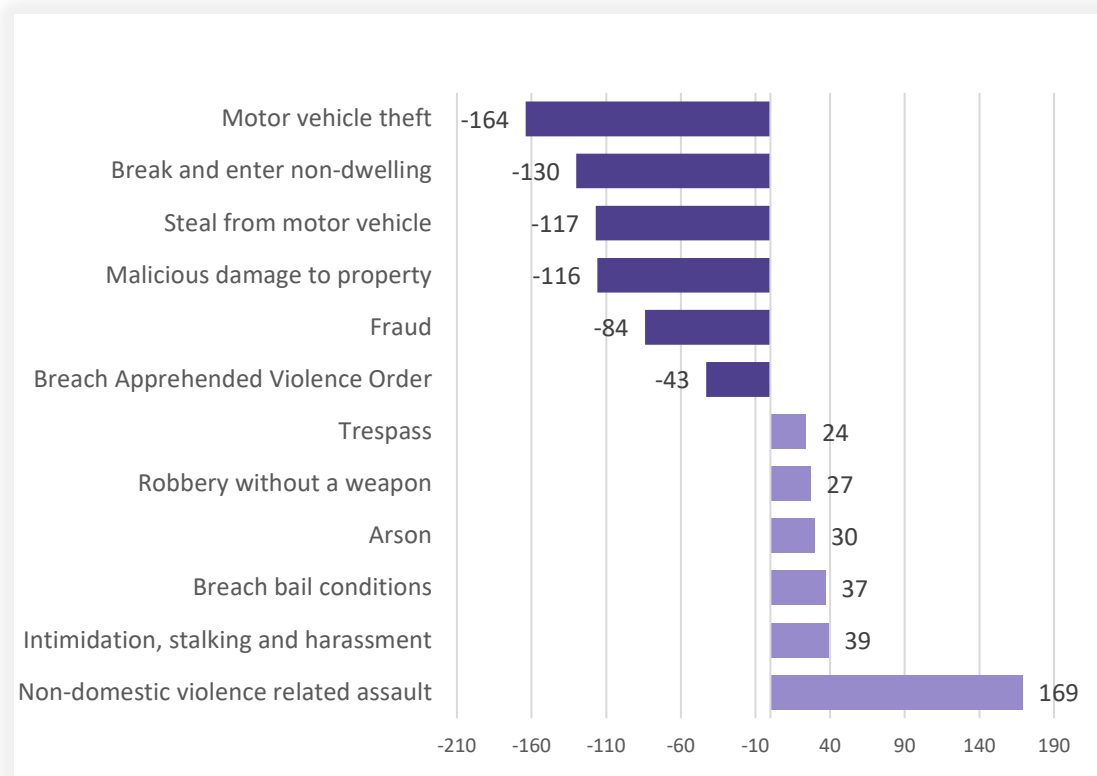


Figure 3.6: Offences with the largest change in the number of young people proceeded against to court by the NSW Police Force

Between the 12 months to December 2024 and the 12 months to December 2025



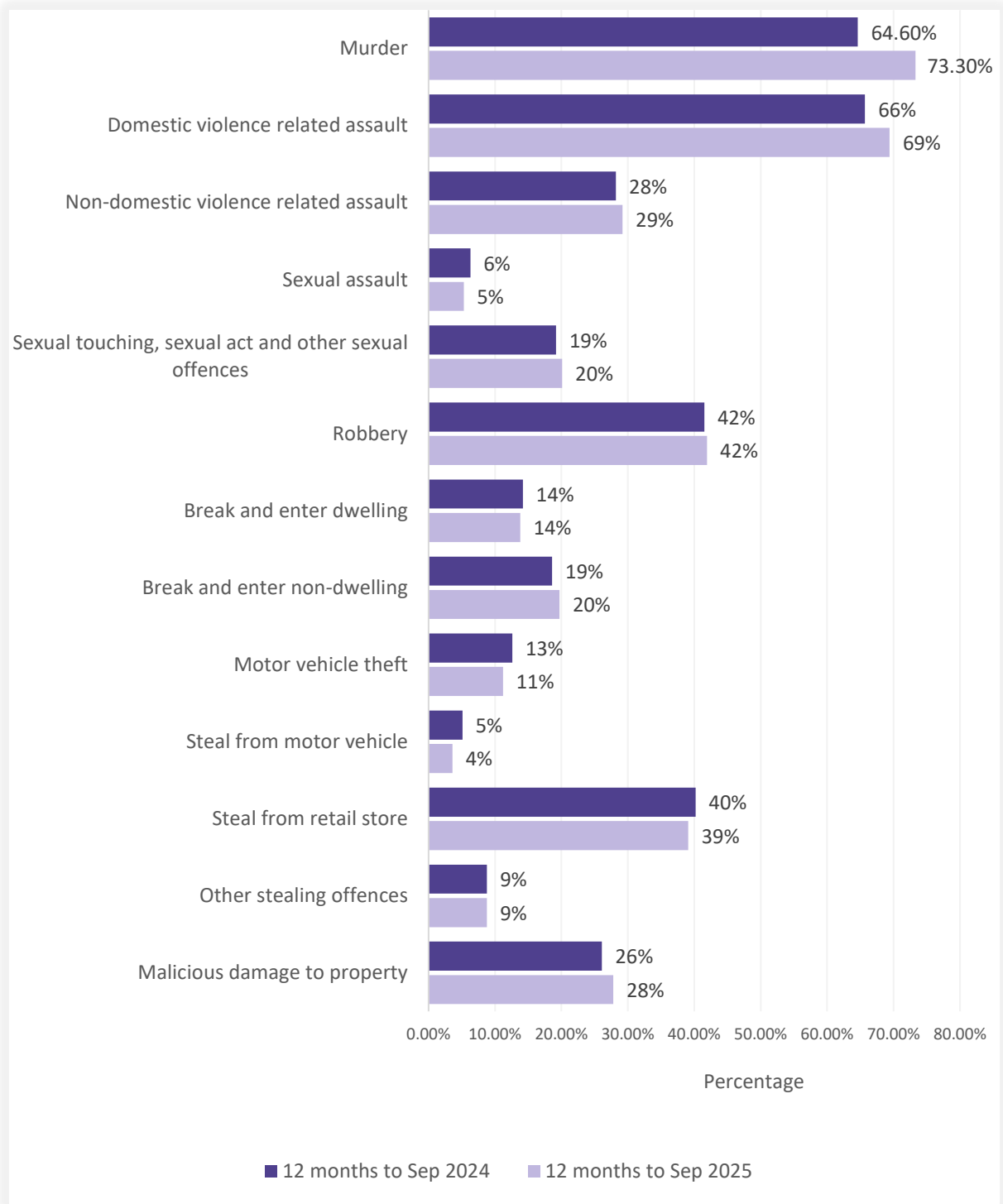
NSW Recorded Crime Statistics, December Quarter 2025

Table 3.7: Incidents of all 62 criminal offence types by whether legal proceedings commenced within 90 days of reporting
Over the two years to September 2025

Offence category		Recorded criminal incidents over the 12 months to September 2024			Recorded criminal incidents over the 12 months to September 2025		
		Proceedings commenced within 90 days	Total number recorded	% proceedings commenced within 90 days	Proceedings commenced within 90 days	Total number recorded	% proceedings commenced within 90 days
Homicide	Murder	51	79	64.6%	55	75	73.3%
	Attempted murder	7	14	50.0%	6	12	50.0%
	Murder accessory, conspiracy	2	4	50.0%	0	1	0.0%
	Manslaughter	5	12	41.7%	2	12	16.7%
Assault	Domestic violence related assault	24,938	37,945	65.7%	26,268	37,876	69.4%
	Non-domestic violence related assault	9,950	35,333	28.2%	9,932	34,051	29.2%
	Assault Police	2,273	2,622	86.7%	2,358	2,662	88.6%
Sexual offences	Sexual assault	745	11,863	6.3%	684	12,838	5.3%
	Sexual touching, sexual act and other sexual offences	1,703	8,856	19.2%	1,768	8,787	20.1%
Abduction and kidnapping		111	224	49.6%	114	231	49.4%
Robbery	Robbery without a weapon	443	1,086	40.8%	395	994	39.7%
	Robbery with a firearm	51	100	51.0%	35	86	40.7%
	Robbery with a weapon not a firearm	318	769	41.4%	316	700	45.1%
Blackmail and extortion		35	1,293	2.7%	28	1,153	2.4%
Coercive Control		2	72	2.8%	3	307	1.0%
Intimidation, stalking and harassment		21,740	48,235	45.1%	23,164	49,238	47.0%
Other offences against the person		559	1,619	34.5%	533	1,535	34.7%
Theft	Break and enter dwelling	2,790	19,586	14.2%	2,532	18,320	13.8%
	Break and enter non-dwelling	1,547	8,333	18.6%	1,570	7,984	19.7%
	Receiving or handling stolen goods	6,345	7,903	80.3%	6,239	7,566	82.5%
	Motor vehicle theft	1,844	14,638	12.6%	1,663	14,898	11.2%
	Steal from motor vehicle	1,385	27,394	5.1%	921	25,499	3.6%
	Steal from retail store	11,222	27,899	40.2%	11,787	30,169	39.1%
	Steal from dwelling	1,073	16,268	6.6%	1,011	15,860	6.4%
	Steal from person	394	2,076	19.0%	376	1,827	20.6%
	Stock theft	5	187	2.7%	7	242	2.9%
	Fraud	3,112	44,870	6.9%	2,457	38,948	6.3%
Other theft	1,986	20,606	9.6%	1,977	20,244	9.8%	
Arson		280	4,312	6.5%	267	4,327	6.2%
Malicious damage to property		12,980	49,668	26.1%	12,938	46,525	27.8%
Drug offences	Possession and/or use of cocaine	1,348	2,058	65.5%	1,248	1,941	64.3%
	Possession and/or use of narcotics	915	1,295	70.7%	1,058	1,452	72.9%
	Possession and/or use of cannabis	9,081	12,944	70.2%	8,899	12,659	70.3%
	Possession and/or use of amphetamines	5,271	7,178	73.4%	6,208	8,181	75.9%
	Possession and/or use of ecstasy	596	877	68.0%	528	837	63.1%
	Possession and/or use of other drugs	2,461	5,113	48.1%	2,316	4,753	48.7%
	Dealing, trafficking in cocaine	819	926	88.4%	818	1,012	80.8%
	Dealing, trafficking in narcotics	185	274	67.5%	172	208	82.7%
	Dealing, trafficking in cannabis	362	459	78.9%	433	562	77.0%
	Dealing, trafficking in amphetamines	1,407	1,748	80.5%	1,302	1,541	84.5%
	Dealing, trafficking in ecstasy	181	221	81.9%	214	263	81.4%
	Dealing, trafficking in other drugs	318	465	68.4%	235	333	70.6%
	Cultivating cannabis	420	693	60.6%	326	471	69.2%
Manufacture drug	29	62	46.8%	22	51	43.1%	
Importing drugs	39	73	53.4%	33	57	57.9%	
Other drug offences	967	4,968	19.5%	1,089	4,946	22.0%	
Prohibited and regulated weapons offences		6,202	15,455	40.1%	6,258	14,603	42.9%
Disorderly conduct	Trespass	5,225	12,606	41.4%	5,623	13,078	43.0%
	Offensive conduct	1,727	2,912	59.3%	1,586	2,842	55.8%
	Offensive language	618	971	63.6%	498	802	62.1%
	Criminal intent	2,333	2,956	78.9%	2,306	2,913	79.2%
Betting and gaming offences		8	26	30.8%	7	25	28.0%
Liquor offences		2,314	5,930	39.0%	2,284	5,652	40.4%
Pornography offences		300	1,237	24.3%	294	1,189	24.7%
Against justice procedures	Escape custody	133	160	83.1%	130	154	84.4%
	Breach Apprehended Violence Order	20,253	25,904	78.2%	21,445	26,901	79.7%
	Breach bail conditions	19,975	57,083	35.0%	19,858	56,834	34.9%
	Fail to appear	16	589	2.7%	6	114	5.3%
	Resist or hinder officer	4,465	5,435	82.2%	4,976	5,884	84.6%
	Other offences against justice procedures	1,604	2,250	71.3%	1,540	2,047	75.2%
Transport regulatory offences		62,618	65,003	96.3%	52,757	54,764	96.3%
Other offences		6,333	12,320	51.4%	6,306	11,586	54.4%

Figure 3.8: Percentage of recorded criminal incidents for major offences by whether legal proceedings commenced within 90 days of reporting

Over the two years to September 2025



SECTION 4:

POLICING ACTIVITY

Table 4.1: Selected policing activities
Over the ten years to December 2025

	Number of selected policing activities										Trend and average annual percentage change	
	12 months to December 2016	12 months to December 2017	12 months to December 2018	12 months to December 2019	12 months to December 2020	12 months to December 2021	12 months to December 2022	12 months to December 2023	12 months to December 2024	12 months to December 2025	2 Year Trend	10 Year Trend
Bail compliance checks	104,984	113,761	106,617	93,941	117,633	127,483	139,937	118,546	93,358	94,470	Stable	Stable
ADVO compliance checks events	n.a.	n.a.	30,353	42,358	63,350	85,177	117,805	100,554	96,922	110,672	Stable	n.c.
Move-on directions	107,781	105,704	104,040	112,091	103,892	101,770	86,520	70,300	47,778	42,908	-10.2%	-9.7%
Searches	302,645	289,361	279,955	292,030	268,931	245,845	216,116	171,021	123,243	117,733	Stable	-10.0%
Vehicle searches	53,144	48,783	45,693	44,282	47,333	44,463	36,329	26,536	20,253	20,230	Stable	-10.2%
Person searches	244,825	235,776	228,716	243,281	218,282	199,047	177,579	142,122	100,948	95,737	Stable	-9.9%
Strip searches	4,676	4,802	5,546	4,467	3,316	2,335	2,208	2,363	2,042	1,766	Stable	-10.3%
Taser use	683	598	704	858	852	835	840	1,411	1,766	2,040	15.5%	12.9%
Taser Discharged	169	170	187	207	216	226	200	253	323	410	26.9%	10.3%
Taser Warning Arc	n.a.	n.a.	n.a.	n.a.	n.a.	n.a.	n.a.	30	105	76	Stable	n.c.
Taser Draw/Cover	514	428	517	651	636	609	640	1,128	1,338	1,554	16.1%	13.1%
Convey/detain person to mental health facility	12,986	13,736	14,844	16,469	17,728	19,012	20,754	20,306	18,956	18,153	Stable	3.8%

AVO compliance check numbers are only available from January 2018 and Taser Warning Arc numbers are only available from September 2023. See Appendix 2 for more details.

n.a. - Not available.
n.c. - Not calculated.

NSW Recorded Crime Statistics, December Quarter 2025

Table 4.2: Non-criminal domestic episodes by Statistical Area (SA4)
Over the ten years to December 2025

Statistical Area	Number of activities										Trend and average annual percentage change	
	12 months to December 2016	12 months to December 2017	12 months to December 2018	12 months to December 2019	12 months to December 2020	12 months to December 2021	12 months to December 2022	12 months to December 2023	12 months to December 2024	12 months to December 2025	2 Year Trend	10 Year Trend
Greater Sydney	44,889	44,445	44,993	47,104	49,692	45,498	42,542	44,309	47,084	45,951	Stable	Stable
Baulkham Hills and Hawkesbury	1,099	1,017	1,008	1,123	1,211	1,158	1,062	1,212	1,527	1,562	Stable	4.0%
Blacktown	5,492	5,419	5,301	5,258	5,430	5,362	5,012	5,053	5,006	4,665	Stable	-1.8%
Central Coast	4,364	4,297	4,304	4,623	5,112	4,567	4,449	4,420	4,911	4,824	Stable	1.1%
City and Inner South	3,317	3,231	3,298	3,425	3,657	3,439	3,301	3,443	3,802	3,724	Stable	1.3%
Eastern Suburbs	1,847	1,706	1,721	1,873	2,031	2,029	1,806	1,824	2,057	1,954	Stable	Stable
Inner South West	5,453	5,167	5,291	5,212	5,376	4,845	4,429	4,595	4,814	4,701	Stable	-1.6%
Inner West	2,101	2,023	2,002	2,049	2,196	1,870	1,888	1,993	2,191	2,000	Stable	Stable
North Sydney and Hornsby	1,537	1,603	1,531	1,617	1,889	1,826	1,685	1,781	1,849	2,067	Stable	3.3%
Northern Beaches	1,405	1,434	1,557	1,631	1,640	1,419	1,306	1,456	1,592	1,562	Stable	Stable
Outer South West	3,416	3,351	3,450	3,560	3,687	3,418	3,094	3,196	3,384	3,071	-9.2%	-1.2%
Outer West and Blue Mountains	4,327	4,268	4,508	4,732	5,073	4,371	4,125	4,427	4,370	4,545	Stable	Stable
Parramatta	3,805	3,948	4,094	4,246	4,636	4,077	4,050	4,104	4,439	4,476	Stable	1.8%
Ryde	919	967	953	1,110	1,213	1,099	1,042	1,135	1,326	1,250	-5.7%	3.5%
South West	4,304	4,438	4,397	4,787	4,686	4,318	3,915	4,114	4,231	4,012	Stable	Stable
Sutherland	1,503	1,576	1,578	1,858	1,855	1,700	1,378	1,556	1,585	1,538	Stable	Stable
Regional NSW	36,162	35,137	35,446	38,120	40,138	39,312	37,277	41,242	42,584	43,189	Stable	2.0%
Capital Region	2,294	2,066	2,190	2,526	2,864	2,895	2,612	2,728	2,890	2,840	Stable	2.4%
Central West	3,134	2,927	2,962	3,125	3,374	3,194	3,157	3,222	3,210	3,146	Stable	Stable
Coffs Harbour - Grafton	1,962	1,977	2,000	1,881	2,023	1,916	2,097	2,331	2,484	2,349	Stable	2.0%
Far West and Orana	3,188	3,348	3,600	3,549	3,813	3,877	3,537	4,209	4,144	3,885	-6.3%	2.2%
Hunter Valley excluding Newcastle	2,970	2,925	2,769	2,815	3,132	3,136	3,180	3,523	3,536	3,606	Stable	2.2%
Illawarra	3,995	3,526	3,381	3,737	3,717	3,680	3,546	3,830	3,699	3,847	Stable	Stable
Mid North Coast	2,992	2,899	2,990	3,311	3,441	3,238	2,766	3,151	3,488	3,876	11.1%	2.9%
Murray	1,570	1,568	1,682	1,954	2,035	1,993	1,874	2,010	2,048	2,009	Stable	2.8%
New England and North West	3,647	3,706	3,669	3,886	3,817	3,844	3,586	3,895	4,009	3,955	Stable	Stable
Newcastle and Lake Macquarie	3,682	3,703	3,448	3,788	4,351	4,295	3,995	4,540	4,868	5,104	Stable	3.7%
Richmond - Tweed	2,703	2,533	2,577	2,824	2,856	2,830	2,794	3,188	3,391	3,689	Stable	3.5%
Riverina	2,478	2,424	2,583	2,831	2,892	2,577	2,347	2,540	2,740	2,671	Stable	Stable
Southern Highlands and Shoalhaven	1,547	1,535	1,595	1,893	1,823	1,837	1,786	2,075	2,077	2,212	Stable	4.1%
NSW	81,054	79,593	80,458	85,235	89,841	84,822	79,835	85,567	89,690	89,155	Stable	1.1%

Table 4.3: Ratio to NSW rate of non-criminal domestic episodes per 100,000 population by Statistical Area (SA4)

Over the ten years to December 2025

Statistical Area	12 months to December 2016	12 months to December 2017	12 months to December 2018	12 months to December 2019	12 months to December 2020	12 months to December 2021	12 months to December 2022	12 months to December 2023	12 months to December 2024	12 months to December 2025
Greater Sydney	0.9	0.9	0.9	0.8	0.8	0.8	0.8	0.8	0.8	0.8
Baulkham Hills and Hawkesbury	0.4	0.4	0.4	0.4	0.4	0.4	0.4	0.4	0.5	0.5
Blacktown	1.5	1.5	1.4	1.3	1.2	1.3	1.2	1.1	1.1	1.0
Central Coast	1.2	1.3	1.2	1.3	1.3	1.3	1.3	1.2	1.3	1.3
City and Inner South	0.9	0.9	0.9	0.9	0.9	1.0	1.0	0.9	1.0	1.0
Eastern Suburbs	0.6	0.6	0.6	0.6	0.7	0.7	0.7	0.7	0.7	0.7
Inner South West	0.9	0.8	0.8	0.8	0.8	0.8	0.7	0.7	0.7	0.7
Inner West	0.7	0.6	0.6	0.6	0.6	0.6	0.6	0.6	0.6	0.6
North Sydney and Hornsby	0.3	0.4	0.3	0.3	0.4	0.4	0.4	0.4	0.4	0.4
Northern Beaches	0.5	0.5	0.6	0.6	0.6	0.5	0.5	0.5	0.6	0.5
Outer South West	1.2	1.2	1.2	1.2	1.1	1.1	1.0	1.0	1.0	0.9
Outer West and Blue Mountains	1.3	1.3	1.4	1.4	1.4	1.2	1.3	1.3	1.2	1.2
Parramatta	0.8	0.8	0.8	0.8	0.8	0.8	0.8	0.8	0.8	0.8
Ryde	0.5	0.5	0.5	0.5	0.5	0.5	0.5	0.5	0.6	0.6
South West	1.0	1.0	1.0	1.0	0.9	0.9	0.8	0.8	0.8	0.7
Sutherland	0.6	0.7	0.7	0.8	0.7	0.7	0.6	0.6	0.6	0.6
Regional NSW	1.3	1.3	1.3	1.3	1.3	1.3	1.3	1.4	1.4	1.4
Capital Region	1.0	0.9	1.0	1.0	1.1	1.2	1.1	1.1	1.1	1.1
Central West	1.4	1.4	1.4	1.4	1.4	1.4	1.5	1.5	1.4	1.4
Coffs Harbour - Grafton	1.3	1.4	1.4	1.3	1.3	1.3	1.5	1.5	1.6	1.5
Far West and Orana	2.6	2.8	3.0	2.9	2.9	3.2	3.1	3.5	3.3	3.1
Hunter Valley excluding Newcastle	1.1	1.1	1.0	1.0	1.0	1.0	1.1	1.1	1.1	1.1
Illawarra	1.3	1.1	1.1	1.1	1.1	1.1	1.1	1.2	1.1	1.1
Mid North Coast	1.3	1.3	1.3	1.4	1.4	1.3	1.2	1.3	1.4	1.6
Murray	1.3	1.3	1.4	1.5	1.5	1.5	1.5	1.6	1.5	1.5
New England and North West	1.9	2.0	1.9	2.0	1.8	2.0	2.0	2.0	2.0	2.0
Newcastle and Lake Macquarie	1.0	1.0	0.9	0.9	1.0	1.0	1.0	1.1	1.1	1.2
Richmond - Tweed	1.0	1.0	1.0	1.1	1.0	1.1	1.1	1.2	1.2	1.3
Riverina	1.5	1.5	1.6	1.7	1.6	1.5	1.5	1.5	1.6	1.5
Southern Highlands and Shoalhaven	1.0	1.0	1.0	1.1	1.0	1.1	1.1	1.2	1.2	1.3
NSW	1.0	1.0	1.0	1.0	1.0	1.0	1.0	1.0	1.0	1.0

APPENDIX 1

REGIONAL

COMPARISONS

Local Government Areas

NSW Recorded Crime Statistics, December Quarter 2025

Appendix Table 1.1: Trends in recorded criminal incidents for major offences, NSW LGAs

Over the two years to December 2025

NSW LGA	Murder	Domestic violence related assault	Non-domestic violence related assault	Sexual assault	Sexual touching, sexual act and other sexual offences	Robbery	Break and enter dwelling	Break and enter non-dwelling	Motor vehicle theft	Steal from motor vehicle	Steal from retail store	Other stealing offences	Malicious damage to property
Albury	ns	ns	ns	ns	ns	ns	ns	ns	ns	ns	ns	ns	ns
Armidale	ns	ns	ns	ns	ns	ns	ns	-70.1	ns	ns	ns	-15.1	ns
Ballina	ns	ns	ns	ns	ns	ns	ns	124.3	ns	ns	183.0	ns	24.5
Balranald	ns	ns	ns	ns	ns	ns	ns	ns	ns	ns	ns	ns	ns
Bathurst	ns	-20.6	-24.2	ns	ns	ns	ns	ns	-31.5	ns	ns	ns	ns
Bayside	ns	ns	ns	ns	ns	ns	ns	ns	15.6	ns	ns	ns	ns
Bega Valley	ns	ns	ns	ns	ns	ns	ns	-51.0	ns	ns	ns	ns	ns
Bellingen	ns	ns	ns	ns	ns	ns	ns	ns	ns	ns	ns	ns	ns
Berrigan	ns	ns	ns	ns	ns	ns	ns	ns	ns	ns	ns	-47.3	ns
Blacktown	6.7	ns	ns	ns	ns	ns	ns	ns	ns	ns	21.5	ns	ns
Bland	ns	ns	ns	ns	ns	ns	ns	ns	ns	ns	ns	ns	ns
Blayney	ns	ns	ns	ns	ns	ns	ns	ns	ns	ns	ns	ns	ns
Blue Mountains	ns	ns	ns	ns	ns	ns	ns	ns	ns	ns	ns	ns	ns
Bogan	ns	ns	ns	ns	ns	ns	ns	ns	ns	ns	ns	ns	ns
Bourke	ns	ns	ns	ns	ns	ns	ns	ns	-63.6	ns	ns	ns	ns
Brewarrina	ns	ns	ns	ns	ns	ns	-42.9	ns	ns	ns	ns	ns	ns
Broken Hill	ns	ns	ns	ns	ns	ns	ns	83.9	ns	ns	ns	ns	47.8
Burwood	ns	18.1	ns	ns	ns	ns	-27.6	ns	ns	ns	33.8	ns	ns
Byron	ns	ns	ns	ns	ns	ns	ns	ns	ns	ns	ns	ns	ns
Cabonne	ns	ns	ns	ns	ns	ns	ns	ns	ns	ns	ns	-36.6	ns
Camden	ns	31.8	ns	ns	ns	ns	ns	ns	ns	ns	ns	ns	ns
Campbelltown	ns	ns	ns	ns	ns	ns	ns	ns	ns	ns	ns	ns	ns
Canada Bay	ns	ns	ns	ns	ns	ns	ns	ns	ns	ns	56.1	ns	ns
Canterbury-Bankstown	-14.7	ns	ns	ns	ns	ns	ns	ns	ns	ns	29.5	ns	ns
Carrathool	ns	ns	ns	ns	ns	ns	ns	ns	ns	ns	ns	ns	ns
Central Coast	ns	ns	ns	ns	ns	ns	ns	ns	ns	ns	ns	15.0	ns
Central Darling	-36.8	ns	ns	ns	ns	ns	ns	ns	ns	ns	ns	ns	ns
Cessnock	ns	ns	ns	ns	ns	ns	ns	ns	ns	ns	ns	-38.7	ns
Clarence Valley	ns	ns	ns	ns	ns	ns	ns	ns	ns	-17.1	ns	ns	ns
Cobar	ns	ns	ns	ns	ns	ns	ns	ns	ns	ns	ns	ns	ns
Coffs Harbour	ns	ns	ns	ns	ns	ns	ns	ns	ns	-20.4	ns	ns	ns
Coolamon	ns	ns	ns	ns	ns	ns	ns	ns	ns	ns	ns	ns	ns
Coonamble	ns	ns	ns	ns	ns	ns	-58.9	ns	ns	ns	ns	ns	ns
Cootamundra-Gundagai	ns	ns	ns	ns	ns	ns	ns	ns	ns	ns	ns	ns	ns
Cowra	ns	ns	ns	ns	ns	ns	ns	ns	-36.4	ns	ns	ns	ns
Cumberland	-11.9	ns	ns	ns	ns	ns	ns	ns	ns	ns	ns	ns	ns
Dubbo	ns	-23.2	19.7	ns	ns	ns	-32.0	-53.3	-20.8	-41.1	ns	ns	-25.3
Dungog	ns	ns	ns	ns	ns	ns	ns	ns	ns	ns	ns	ns	ns
Edward River	ns	ns	ns	ns	ns	ns	ns	ns	ns	ns	ns	ns	ns
Eurobodalla	ns	-20.2	ns	-37.1	ns	ns	ns	ns	ns	ns	ns	ns	-19.1
Fairfield	-21.1	-9.0	ns	ns	ns	ns	-13.4	ns	ns	ns	ns	ns	-15.6
Federation	ns	ns	ns	ns	ns	ns	ns	36.4	ns	ns	ns	ns	ns
Forbes	38.9	ns	ns	ns	ns	ns	ns	ns	ns	ns	ns	ns	ns

NSW Recorded Crime Statistics, December Quarter 2025

NSW LGA	Murder	Domestic violence related assault	Non-domestic violence related assault	Sexual assault	Sexual touching, sexual act and other sexual offences	Robbery	Break and enter dwelling	Break and enter non-dwelling	Motor vehicle theft	Steal from motor vehicle	Steal from retail store	Other stealing offences	Malicious damage to property
Georges River		ns	ns	ns	ns		ns	ns	ns	ns	ns	18.3	ns
Gilgandra		ns										ns	ns
Glen Innes Severn		ns	ns				ns		ns	ns	ns	ns	-45.5
Goulburn Mulwaree		ns	ns	ns	ns		ns	-33.8	ns	ns	-48.4	-28.3	ns
Greater Hume		ns										ns	ns
Griffith		ns	ns	125.9	ns		ns	ns	ns	ns	ns	-27.1	ns
Gunnedah		ns	ns	ns			ns	ns	ns	ns	ns	ns	ns
Gwydir		ns										ns	ns
Hawkesbury		ns	ns	ns	ns		59.4	ns	ns	ns	ns	ns	-18.0
Hay													
Hilltops		ns	ns	ns	3.0		ns		ns		ns	ns	ns
Hornsby		ns	ns	ns	ns		ns	ns	ns	ns	ns	ns	ns
Hunters Hill			60.0				110.0			ns			ns
Inner West		ns	ns	ns	ns	ns	ns	ns	ns	ns	ns	ns	ns
Inverell		ns	ns	ns	-23.7		ns	ns	ns	ns	-39.0	-39.5	-23.2
Junee		ns										ns	ns
Kempsey		ns	ns	ns	ns		-26.6	ns	ns	ns	ns	ns	ns
Kiama		ns	ns				-50.0		ns	-48.3	ns	ns	ns
Ku-ring-gai		ns	ns	ns	ns		-29.7	ns	-59.8	ns	ns	ns	ns
Kyogle		ns	ns									ns	ns
Lachlan		ns	ns				ns		ns	ns		ns	ns
Lake Macquarie		ns	ns	ns	ns	ns	ns	ns	ns	ns	-20.2	ns	-10.8
Lane Cove		ns	ns	ns	ns		ns		ns	ns	37.8	ns	ns
Leeton		ns	ns	ns	ns		85.7	ns	ns	ns		ns	ns
Lismore		ns	ns	ns	ns		-43.5	ns	ns	ns	ns	ns	ns
Lithgow		ns	ns	ns	ns		ns	ns	ns	ns	ns	ns	ns
Liverpool		ns	ns	ns	ns	ns	ns	ns	ns	-9.6	ns	ns	ns
Liverpool Plains		67.5	ns									ns	ns
Lockhart													
Lord Howe Island													
Maitland		ns	ns	ns	ns	ns	ns	ns	ns	-15.6	ns	ns	ns
Mid-Coast		ns	ns	ns	ns		ns	ns	ns	ns	-35.9	ns	ns
Mid-Western		ns	ns	ns	ns		ns	ns	-60.8	ns	ns	ns	ns
Moree Plains		ns	ns	ns	ns		ns	-43.6	ns	ns	ns	ns	ns
Mosman		ns	ns				ns			ns	ns	ns	ns
Murray River		ns	ns				ns	-45.9	71.4	-57.0		ns	ns
Murrumbidgee													
Muswellbrook		ns	ns	ns	ns		ns	ns	ns	ns	ns	ns	ns
Nambucca Valley		ns	ns	ns	ns		-41.1	ns	ns	ns	-60.0	-36.8	ns
Narrabri		ns	ns	ns			ns	ns	ns	ns	103.8	ns	21.4
Narrandera		-37.5	ns				ns		ns	ns		ns	ns
Narromine		ns	ns				ns	ns	ns	ns		ns	ns
Newcastle		ns	ns	ns	ns	ns	ns	ns	ns	ns	ns	ns	ns
North Sydney		ns	ns	ns	ns		ns	ns	ns	ns	85.8	ns	ns
Northern Beaches		ns	ns	ns	ns	ns	ns	ns	ns	-23.8	-20.1	-18.0	ns

NSW Recorded Crime Statistics, December Quarter 2025

NSW LGA	Murder	Domestic violence related assault	Non-domestic violence related assault	Sexual assault	Sexual touching, sexual act and other sexual offences	Robbery	Break and enter dwelling	Break and enter non-dwelling	Motor vehicle theft	Steal from motor vehicle	Steal from retail store	Other stealing offences	Malicious damage to property
Oberon		ns											ns
Orange		ns	ns	ns	ns		ns	ns	-30.8	ns	ns	ns	ns
Parkes		ns	ns	ns	ns		ns	ns	ns	ns	ns	ns	ns
Parramatta		ns	ns	ns	ns	ns	ns	ns	ns	ns	24.3	ns	ns
Penrith		ns	ns	ns	ns	ns	ns	ns	ns	ns	51.0	ns	ns
Port Macquarie-Hastings		ns	ns	ns	ns		ns	-45.2	ns	ns	ns	ns	ns
Port Stephens		ns	-22.3	ns	-35.5		-30.1	-26.3	ns	ns	-25.8	ns	ns
Queanbeyan-Palerang		ns	ns	ns	ns		ns	ns	-10.5	-4.6	ns	ns	ns
Randwick		ns	ns	ns	-26.8	ns	19.8	45.2	47.1	ns	50.0	19.6	ns
Richmond Valley		ns	ns	ns	ns		ns	ns	ns	ns	ns	ns	-26.6
Ryde		ns	ns	ns	ns		ns	ns	ns	ns	24.9	ns	ns
Shellharbour		ns	ns	ns	ns		ns	ns	ns	ns	ns	ns	ns
Shoalhaven		ns	ns	39.4	24.4		ns	ns	ns	ns	ns	ns	ns
Singleton		ns	ns	ns	ns		ns	ns	ns	ns	ns	ns	-21.6
Snowy Monaro		ns	ns	ns	ns		ns		-16.7			ns	ns
Snowy Valleys		ns	ns	ns			ns	ns	ns	ns		ns	ns
Strathfield		ns	ns	ns	ns		ns	ns	ns	ns	ns	ns	ns
Sutherland		ns	16.2	ns	ns		ns	33.9	ns	ns	ns	ns	ns
Sydney		ns	ns	ns	ns	ns	14.4	37.4	37.8	ns	ns	ns	ns
Tamworth		ns	ns	ns	ns		ns	65.1	ns	48.9	ns	ns	ns
Temora												ns	-56.0
Tenterfield		ns	ns				ns	20.0	ns			ns	ns
The Hills		ns	ns	ns	ns	ns	ns	-37.4	ns	ns	14.0	ns	ns
Tweed		ns	ns	ns	ns		ns	ns	-30.1	ns	73.7	-20.6	ns
Unincorporated Far West													
Upper Hunter		ns	ns	ns			ns	ns	ns	ns	ns	ns	ns
Upper Lachlan												ns	ns
Uralla		ns											ns
Wagga Wagga		ns	ns	ns	ns		ns	ns	ns	ns	ns	ns	ns
Walcha													
Walgett		ns	ns				ns	ns	ns	ns		ns	ns
Warren		ns					ns					ns	ns
Warrumbungle		ns	ns				ns	ns			ns	ns	-36.3
Waverley		ns	ns	ns	ns		ns	ns	ns	ns	ns	ns	ns
Weddin													
Wentworth		ns	ns				ns	ns	ns	ns		ns	ns
Willoughby		ns	ns	ns	ns		ns	ns	ns	ns	ns	ns	ns
Wingecarribee		ns	ns	ns	ns		ns		ns	ns	ns	ns	ns
Wollondilly		ns	ns	ns	ns		ns		ns	ns	ns	ns	ns
Wollongong		17.3	ns	ns	ns	ns	ns	ns	ns	ns	ns	ns	ns
Woollahra		ns	ns	ns	ns		ns		ns	ns	ns	ns	ns
Yass Valley		ns	ns									ns	ns
NSW	ns	ns	ns	7.9	ns	-9.0	ns	-8.2	ns	-5.9	9.3	ns	ns

NSW Recorded Crime Statistics, December Quarter 2025

Appendix Table 1.2: Ratio to NSW rate of recorded criminal incidents per 100,000 population for major offences, NSW LGAs

12 months to December 2025

NSW LGA	Murder	Domestic violence related assault	Non-domestic violence related assault	Sexual assault	Sexual touching, sexual act and other sexual	Robbery	Break and enter dwelling	Break and enter non-dwelling	Motor vehicle theft	Steal from motor vehicle	Steal from retail store	Other stealing offences	Malicious damage to property
Albury	0.0	1.9	1.8	1.3	1.5	2.2	1.5	3.2	2.1	2.8	1.7	1.4	2.1
Armidale	3.5	2.0	1.7	1.6	1.9	1.4	3.9	1.9	1.9	1.5	1.7	1.4	1.9
Ballina	0.0	0.8	0.9	1.3	1.0	1.2	1.7	1.9	1.4	1.3	1.8	1.4	1.2
Balranald	0.0	0.0	0.0	0.0	0.0	0.0	0.0	0.0	0.0	0.0	0.0	0.0	0.0
Bathurst	0.0	1.5	1.4	1.0	1.3	1.3	1.2	1.1	1.1	0.8	1.3	0.9	1.4
Bayside	0.6	0.6	0.6	0.4	0.6	0.5	0.7	0.4	0.8	0.8	0.9	0.9	0.7
Bega Valley	2.8	0.6	0.8	0.7	0.8	0.1	0.5	0.7	0.5	0.5	0.6	0.6	1.1
Bellingen	0.0	1.1	1.2	1.4	1.1	1.1	1.3	1.0	1.3	1.0	0.4	1.0	1.5
Berrigan	0.0	0.7	0.8	0.8	1.1	0.0	0.8	1.3	1.1	0.3	0.6	0.7	1.1
Blacktown	1.4	1.3	1.0	0.8	1.0	2.0	0.7	0.6	0.9	0.9	1.1	0.8	1.0
Bland	0.0	1.0	0.8	1.2	1.1	0.0	0.9	2.4	0.8	0.8	0.2	0.6	1.1
Blayney	0.0	1.2	0.6	0.8	1.1	0.6	0.6	0.6	0.8	0.4	0.1	0.3	0.7
Blue Mountains	0.0	0.6	0.5	1.0	0.7	0.5	0.4	0.6	0.3	0.4	0.5	0.4	0.8
Bogan	0.0	0.0	0.0	0.0	0.0	0.0	0.0	0.0	0.0	0.0	0.0	0.0	0.0
Bourke	0.0	0.0	0.0	0.0	0.0	0.0	0.0	0.0	0.0	0.0	0.0	0.0	0.0
Brewarrina	0.0	0.0	0.0	0.0	0.0	0.0	0.0	0.0	0.0	0.0	0.0	0.0	0.0
Broken Hill	5.9	3.8	1.7	1.5	2.0	0.8	3.3	3.6	1.0	2.1	1.5	1.7	3.4
Burwood	4.8	0.7	1.0	0.4	0.8	1.7	0.8	0.9	0.8	0.8	2.0	1.5	0.6
Byron	2.7	0.7	1.7	1.0	1.3	0.6	1.1	1.5	1.7	1.6	0.7	1.7	1.2
Cabonne	0.0	1.1	0.3	0.7	0.6	0.0	0.4	1.6	0.9	0.2	0.0	0.4	0.8
Camden	0.0	0.6	0.6	0.4	0.7	0.3	0.3	0.3	0.7	0.5	0.5	0.4	0.6
Campbelltown	0.5	1.3	1.0	1.1	1.1	1.4	0.8	0.9	1.0	1.1	0.9	0.8	1.2
Canada Bay	0.0	0.5	0.5	0.3	0.6	0.5	1.1	0.5	0.7	0.7	0.6	0.8	0.5
Canterbury-Bankstown	0.5	0.9	0.8	0.6	0.6	0.9	0.6	0.5	1.0	1.0	0.4	0.7	0.7
Carrathool	0.0	0.0	0.0	0.0	0.0	0.0	0.0	0.0	0.0	0.0	0.0	0.0	0.0
Central Coast	0.6	1.2	1.1	1.4	1.3	1.2	1.0	0.8	1.0	1.1	1.0	0.8	1.2
Central Darling	0.0	0.0	0.0	0.0	0.0	0.0	0.0	0.0	0.0	0.0	0.0	0.0	0.0
Cessnock	1.5	1.7	1.2	1.6	1.4	0.5	1.6	2.0	3.2	1.3	0.8	1.0	1.6
Clarence Valley	3.7	1.5	1.3	1.4	1.2	1.3	2.2	2.0	1.9	1.3	1.2	1.8	1.5
Cobar	0.0	3.0	1.9	3.8	2.9	2.3	1.7	4.7	4.1	1.3	0.8	1.7	2.4
Coffs Harbour	2.5	1.7	1.5	1.6	1.6	2.0	2.0	2.1	1.7	1.4	1.3	1.2	1.5
Coolamon	0.0	0.8	0.6	1.0	0.8	0.0	1.0	1.0	0.9	0.3	0.1	0.6	0.4
Coonamble	0.0	3.9	3.3	3.4	3.2	0.0	2.8	5.2	3.2	1.6	0.4	1.5	3.5
Cootamundra-Gundagai	0.0	1.0	0.8	0.8	1.3	0.0	0.9	1.0	0.6	0.5	0.1	0.8	1.1
Cowra	0.0	1.7	0.9	1.4	1.3	0.0	2.0	3.8	1.3	1.1	1.2	1.1	1.9
Cumberland	0.4	0.9	0.9	0.7	0.7	1.5	0.9	0.6	1.1	1.4	0.6	1.0	0.7
Dubbo	1.8	2.6	1.9	2.0	2.1	2.2	2.3	2.2	1.7	1.5	2.7	1.4	2.4
Dungog	0.0	1.1	0.4	0.5	1.1	0.0	0.4	1.2	0.7	0.4	0.3	0.9	0.7
Edward River	0.0	2.2	1.6	0.9	2.3	0.0	1.7	4.0	1.0	2.0	0.8	2.0	1.8
Eurobodalla	0.0	1.1	1.1	1.1	1.0	0.2	1.1	1.2	0.8	0.8	0.9	0.9	1.1
Fairfield	0.5	0.8	0.7	0.6	0.6	1.2	0.5	0.3	0.9	1.0	0.5	0.6	0.7
Federation	0.0	0.6	0.7	0.6	1.0	0.7	0.9	2.5	1.0	1.0	0.4	0.7	0.8
Forbes	0.0	1.8	1.7	1.6	1.0	1.0	2.7	3.9	2.3	3.5	0.9	2.2	2.5
Georges River	0.0	0.6	0.6	0.4	0.4	0.4	0.6	0.6	0.5	0.5	1.0	0.6	0.6
Gilgandra	0.0	3.2	0.9	2.9	1.3	0.0	1.7	2.3	2.3	1.4	0.1	1.5	2.1
Glen Innes Severn	0.0	1.3	1.9	0.7	1.1	1.0	2.2	1.7	1.8	0.8	1.1	1.7	1.5

NSW Recorded Crime Statistics, December Quarter 2025

NSW LGA	Murder	Domestic violence related assault	Non-domestic violence related assault	Sexual assault	Sexual touching, sexual act and other sexual	Robbery	Break and enter dwelling	Break and enter non-dwelling	Motor vehicle theft	Steal from motor vehicle	Steal from retail store	Other stealing offences	Malicious damage to property
Goulburn Mulwaree	3.1	1.1	1.4	1.0	1.4	0.4	0.8	1.6	0.9	0.9	0.7	1.3	1.3
Greater Hume	0.0	1.1	0.3	0.8	1.6	0.0	0.6	2.0	0.9	0.4	0.1	0.8	0.8
Griffith	0.0	1.8	1.1	1.5	1.2	1.0	1.6	1.3	1.2	1.2	0.9	1.0	1.8
Gunnedah	7.7	1.9	1.4	1.7	1.4	0.4	2.9	4.5	2.8	4.0	0.7	1.7	2.2
Gwydir	0.0	2.1	1.1	0.8	1.4	0.0	1.8	0.9	1.3	0.6	0.1	1.1	0.8
Hawkesbury	0.0	0.8	0.8	1.2	1.1	0.2	0.7	0.7	0.9	0.6	0.9	0.7	0.8
Hay	0.0	0.0	0.0	0.0	0.0	0.0	0.0	0.0	0.0	0.0	0.0	0.0	0.0
Hilltops	0.0	1.3	1.0	1.2	1.7	0.0	0.7	0.8	0.7	0.6	0.3	0.9	1.2
Hornsby	0.0	0.4	0.3	0.4	0.5	0.5	0.3	0.5	0.2	0.3	0.4	0.3	0.4
Hunters Hill	0.0	0.4	0.6	0.6	1.0	1.0	1.4	0.5	0.7	0.6	0.0	0.3	0.5
Inner West	0.0	0.6	0.8	0.7	0.9	0.6	0.8	0.8	0.8	1.0	0.8	1.2	0.9
Inverell	0.0	2.5	1.5	1.6	1.6	1.3	2.2	2.0	0.9	1.1	1.3	0.8	1.9
Junee	16.0	1.0	0.4	1.7	1.2	0.7	0.5	0.9	0.9	0.3	0.3	0.9	1.1
Kempsey	3.3	2.6	1.7	1.5	1.7	1.2	3.7	3.5	3.1	1.2	1.4	2.4	2.4
Kiama	0.0	0.3	0.4	0.5	0.8	0.2	0.5	0.7	0.8	0.7	0.5	0.5	0.5
Ku-ring-gai	0.0	0.3	0.2	0.3	0.4	0.3	0.4	0.3	0.1	0.4	0.2	0.3	0.3
Kyogle	0.0	0.9	0.6	1.2	0.7	0.0	0.7	1.9	0.9	0.8	0.1	0.6	0.8
Lachlan	0.0	2.7	1.5	1.1	1.4	0.8	2.0	1.5	2.7	2.6	0.5	1.7	2.5
Lake Macquarie	1.4	1.1	0.9	1.1	1.1	0.4	1.0	1.2	1.3	1.4	1.1	0.7	1.0
Lane Cove	0.0	0.3	0.3	0.4	0.6	0.0	0.8	0.5	0.3	0.4	0.4	0.6	0.3
Leeton	0.0	1.8	1.2	1.4	2.3	0.0	2.1	2.7	2.3	1.1	0.4	1.2	1.6
Lismore	2.4	1.4	1.8	1.5	1.7	2.8	1.9	1.9	1.7	1.2	1.7	1.0	1.5
Lithgow	0.0	2.0	1.4	1.4	1.4	0.7	1.4	1.4	1.0	0.7	0.9	1.8	1.8
Liverpool	0.0	1.3	0.9	0.7	0.9	1.3	0.8	0.5	1.1	1.2	0.8	0.9	0.9
Liverpool Plains	0.0	2.0	1.2	0.9	1.3	0.0	1.7	1.0	1.6	0.6	0.0	1.3	1.4
Lockhart	0.0	0.5	0.6	0.2	0.8	0.0	1.2	0.6	1.8	0.8	0.7	0.9	1.4
Lord Howe Island	0.0	0.0	0.0	0.0	0.0	0.0	0.0	0.0	0.0	0.0	0.0	0.0	0.0
Maitland	1.1	1.6	1.1	1.4	1.5	1.0	1.4	1.5	1.7	1.6	1.2	0.8	1.3
Mid-Coast	0.0	1.6	1.1	1.0	1.5	0.5	1.3	2.0	1.2	0.7	0.6	1.1	1.3
Mid-Western	3.9	1.3	1.0	1.6	1.8	0.5	0.7	1.3	0.4	0.5	0.4	1.0	1.3
Moree Plains	0.0	5.2	3.1	1.8	1.6	3.3	8.6	5.7	3.4	2.2	3.4	2.8	6.1
Mosman	0.0	0.3	0.5	0.4	0.5	0.2	0.6	0.4	0.4	0.4	0.4	0.6	0.4
Murray River	0.0	0.9	0.6	0.5	1.0	0.7	1.4	2.7	2.0	0.8	0.5	1.5	1.1
Murrumbidgee	28.3	0.7	1.6	1.6	1.1	0.0	1.9	2.1	1.9	1.3	0.1	1.3	0.7
Muswellbrook	0.0	2.2	1.5	2.1	2.2	1.7	2.3	2.7	1.5	1.2	1.4	2.3	2.0
Nambucca Valley	0.0	1.5	1.3	1.6	1.5	0.7	1.2	2.2	1.8	1.7	0.4	0.9	1.5
Narrabri	0.0	2.5	1.5	1.2	1.3	0.4	1.9	2.2	1.5	1.9	1.1	1.4	2.3
Narrandera	0.0	1.4	2.5	2.1	1.7	0.0	2.7	3.9	2.6	1.4	0.6	1.2	3.5
Narromine	0.0	2.8	1.0	2.5	1.7	0.0	1.4	3.6	2.7	1.4	0.6	1.3	2.4
Newcastle	1.2	1.2	1.7	1.4	1.3	2.2	2.6	2.1	2.4	3.2	1.8	2.0	1.7
North Sydney	0.0	0.3	0.4	0.4	0.5	0.3	0.5	1.0	0.3	0.5	0.8	0.8	0.5
Northern Beaches	0.4	0.4	0.5	0.5	0.6	0.4	0.3	0.4	0.3	0.4	0.5	0.6	0.5
Oberon	0.0	1.0	0.6	1.5	0.9	0.8	0.3	0.6	0.4	0.1	0.0	0.5	0.6
Orange	0.0	1.5	1.5	1.4	1.6	1.3	2.3	1.3	1.2	1.8	1.7	1.0	1.8
Parkes	0.0	2.2	2.0	1.3	1.6	0.3	2.3	2.3	2.5	1.6	1.6	1.6	1.8
Parramatta	1.1	0.7	0.9	0.5	0.7	1.0	1.2	0.9	0.8	1.2	1.4	1.3	0.7
Penrith	1.4	1.2	1.1	1.1	1.2	1.6	1.0	1.3	1.1	1.3	1.5	1.1	1.2
Port Macquarie-Hastings	1.1	1.2	1.2	1.1	0.9	0.7	1.0	1.5	0.9	0.7	1.0	1.1	1.2

NSW Recorded Crime Statistics, December Quarter 2025

NSW LGA	Murder	Domestic violence related assault	Non-domestic violence related assault	Sexual assault	Sexual touching, sexual act and other sexual	Robbery	Break and enter dwelling	Break and enter non-dwelling	Motor vehicle theft	Steal from motor vehicle	Steal from retail store	Other stealing offences	Malicious damage to property
Port Stephens	1.3	1.5	0.9	1.2	1.1	0.7	0.8	1.0	1.1	0.8	0.5	0.7	1.1
Queanbeyan-Palerang	0.0	0.8	0.7	0.7	0.8	0.2	0.7	0.8	0.7	0.7	0.9	0.7	1.1
Randwick	0.7	0.5	0.8	0.5	0.6	0.9	0.8	0.5	0.9	0.8	0.8	1.2	0.8
Richmond Valley	0.0	1.6	1.6	2.2	2.0	1.4	2.3	1.6	2.3	1.0	0.6	1.0	1.5
Ryde	0.7	0.5	0.5	0.5	0.5	0.3	0.7	0.6	0.4	0.7	0.9	0.8	0.5
Shellharbour	1.3	0.8	0.7	1.1	1.2	0.7	0.9	0.7	1.0	1.1	1.0	0.8	0.8
Shoalhaven	0.9	1.2	1.1	1.4	1.3	0.6	1.0	0.9	1.0	0.8	1.2	0.7	1.4
Singleton	0.0	1.4	1.0	1.0	1.5	0.9	1.2	1.7	1.6	0.9	0.5	0.7	1.1
Snowy Monaro	0.0	0.6	0.7	0.9	1.0	0.4	0.6	0.6	0.5	0.4	0.2	0.8	0.9
Snowy Valleys	0.0	1.2	0.9	0.9	1.3	0.0	0.9	1.6	1.0	1.2	0.3	1.0	1.2
Strathfield	2.1	0.8	0.7	0.6	0.6	1.0	1.3	0.7	1.2	1.2	1.1	1.0	0.6
Sutherland	0.0	0.6	0.6	0.5	0.6	0.4	0.4	0.4	0.3	0.3	0.7	0.5	0.6
Sydney	0.9	1.1	3.0	1.3	2.0	3.9	1.2	1.9	1.4	1.2	3.4	4.4	1.6
Tamworth	3.1	2.6	1.8	1.5	1.7	1.6	3.0	2.4	1.9	1.8	2.0	1.7	2.3
Temora	17.2	0.4	0.6	1.4	0.8	0.8	0.7	1.8	0.5	0.8	0.5	1.1	0.7
Tenterfield	0.0	2.1	0.9	1.3	1.4	0.0	2.4	3.8	2.5	0.6	0.2	1.4	2.4
The Hills	1.0	0.3	0.3	0.4	0.4	0.6	0.4	0.3	0.3	0.3	0.6	0.4	0.4
Tweed	1.0	0.8	1.0	0.8	0.8	0.6	0.9	1.1	1.2	1.2	1.7	0.9	1.1
Unincorporated Far West	0.0	0.0	0.0	0.0	0.0	0.0	0.0	0.0	0.0	0.0	0.0	0.0	0.0
Upper Hunter	0.0	1.5	0.7	0.9	1.0	0.3	1.0	1.5	0.9	0.9	0.4	1.3	1.2
Upper Lachlan	0.0	0.5	0.6	0.9	0.4	0.0	0.5	0.8	0.6	0.5	0.1	0.6	0.4
Uralla	0.0	0.7	0.5	1.2	1.1	0.8	1.1	2.6	0.8	0.8	0.0	0.4	1.2
Wagga Wagga	1.5	1.5	1.6	1.2	1.9	1.4	2.5	1.3	1.4	1.9	1.4	1.4	1.9
Walcha	0.0	0.0	0.0	0.0	0.0	0.0	0.0	0.0	0.0	0.0	0.0	0.0	0.0
Walgett	0.0	6.1	3.5	3.3	4.2	0.9	7.8	4.8	3.1	2.6	1.0	2.6	4.4
Warren	0.0	0.0	0.0	0.0	0.0	0.0	0.0	0.0	0.0	0.0	0.0	0.0	0.0
Warrumbungle	22.4	2.1	1.7	0.9	1.7	0.5	2.3	3.6	1.2	0.7	0.8	2.1	1.7
Waverley	21.3	0.6	0.8	0.6	1.0	0.6	0.6	0.7	0.9	0.4	2.0	1.4	0.7
Weddin	0.0	1.2	0.6	1.3	1.9	0.0	0.3	1.5	0.8	0.5	0.2	0.4	0.7
Wentworth	0.0	3.1	0.9	1.1	1.2	1.2	2.0	3.1	2.3	1.3	0.6	1.6	2.4
Willoughby	0.0	0.3	0.6	0.3	0.7	0.6	0.6	0.9	0.2	0.5	1.7	0.8	0.4
Wingecarribee	0.0	0.4	0.6	0.6	0.9	0.1	0.4	0.4	0.3	0.3	0.3	0.3	0.6
Wollondilly	0.0	0.7	0.5	0.6	0.6	0.1	0.4	0.2	0.7	0.4	0.1	0.4	0.6
Wollongong	0.9	0.9	0.9	1.2	1.0	1.0	1.0	1.2	1.1	1.2	1.4	1.1	1.0
Woollahra	0.0	0.4	0.6	0.6	0.6	0.1	0.7	0.5	0.6	0.5	0.6	0.8	0.6
Yass Valley	0.0	0.7	0.4	0.9	0.6	0.0	0.3	1.1	0.6	0.2	0.2	0.4	0.7
NSW	1.0	1.0	1.0	1.0	1.0	1.0	1.0	1.0	1.0	1.0	1.0	1.0	1.0

NSW Recorded Crime Statistics, December Quarter 2025

Appendix Table 1.3: Number of recorded criminal incidents for major offences, NSW LGAs

12 months to December 2025

NSW LGA	Murder	Domestic violence related assault	Non-domestic violence related assault	Sexual assault	Sexual touching, sexual act and other sexual offences	Robbery	Break and enter dwelling	Break and enter non-dwelling	Motor vehicle theft	Steal from motor vehicle	Steal from retail store	Other stealing offences	Malicious damage to property
Albury	0	497	431	116	92	27	190	169	212	491	371	369	683
Armidale	1	266	203	71	57	9	250	52	100	133	185	185	306
Ballina	0	163	177	97	48	12	176	83	114	183	317	300	305
Balranald	0	13	13	2	2	1	3	2	8	5	0	9	18
Bathurst	0	306	247	69	60	12	113	46	83	113	206	175	344
Bayside	1	537	424	119	123	20	259	72	257	422	576	771	723
Bega Valley	1	101	114	41	29	1	39	24	31	50	86	103	219
Bellingen	0	66	62	28	15	3	36	12	30	38	17	58	112
Berrigan	0	27	28	11	10	0	15	10	17	8	18	29	53
Blacktown	6	2,549	1,743	561	442	184	697	221	721	1,185	1,821	1,507	2,458
Bland	0	24	18	10	6	0	10	12	8	13	4	15	33
Blayney	0	40	18	10	9	1	10	4	11	10	3	12	31
Blue Mountains	0	197	173	116	59	9	69	42	37	101	132	151	357
Bogan	0	28	14	11	11	0	21	27	22	32	3	36	39
Bourke	0	118	48	24	8	2	91	24	11	24	28	45	90
Brewarrina	1	45	20	5	3	0	24	29	9	11	8	18	60
Broken Hill	1	299	117	39	37	3	124	57	32	109	95	137	334
Burwood	2	143	170	28	36	16	76	35	57	104	309	292	138
Byron	1	113	258	60	51	5	91	52	111	176	92	300	261
Cabonne	0	66	17	15	8	0	13	20	22	8	2	26	61
Camden	0	393	336	96	109	9	93	40	163	206	239	247	476
Campbelltown	1	1,100	786	320	212	56	332	147	337	609	607	679	1,202
Canada Bay	0	199	196	48	54	9	225	41	107	197	192	333	261
Canterbury-Bankstown	2	1,563	1,199	348	253	73	502	158	647	1,114	624	1,148	1,418
Carrathool	0	15	2	4	6	0	4	9	4	3	4	20	16
Central Coast	2	1,910	1,527	754	482	90	738	245	608	1,192	1,334	1,287	2,349
Central Darling	0	84	23	7	5	0	22	22	13	11	14	21	49
Cessnock	1	534	329	174	100	7	239	125	388	262	212	310	624
Clarence Valley	2	369	282	123	70	15	258	99	187	209	236	471	470
Cobar	0	53	30	23	12	2	15	17	29	15	12	31	54
Coffs Harbour	2	620	482	197	133	34	341	150	247	348	396	432	673
Coolamon	0	17	12	7	4	0	10	4	7	4	2	12	10
Coonamble	0	67	52	20	13	0	23	18	22	18	5	27	75
Cootamundra-Gundagai	0	51	38	14	15	0	23	10	13	18	6	40	69
Cowra	0	98	48	27	17	0	54	43	28	40	57	66	130
Cumberland	1	972	929	261	173	80	503	129	503	1,053	525	1,097	990
Dubbo	1	672	446	170	122	27	280	112	171	248	571	369	753
Dungog	0	49	15	8	11	0	8	11	12	13	12	41	40
Edward River	0	81	55	11	20	0	31	30	15	49	25	76	82
Eurobodalla	0	211	174	66	44	2	94	46	60	93	130	176	246
Fairfield	1	716	617	188	140	56	207	66	335	626	390	610	772
Federation	0	36	37	11	13	2	24	30	22	37	19	40	60
Forbes	0	75	63	23	10	2	53	33	38	97	29	94	126
Georges River	0	466	366	98	74	14	204	90	138	245	607	473	554

NSW Recorded Crime Statistics, December Quarter 2025

NSW LGA	Murder	Domestic violence related assault	Non-domestic violence related assault	Sexual assault	Sexual touching, sexual act and other sexual offences	Robbery	Break and enter dwelling	Break and enter non-dwelling	Motor vehicle theft	Steal from motor vehicle	Steal from retail store	Other stealing offences	Malicious damage to property
Gilgandra	0	61	15	19	6	0	16	9	17	18	1	30	51
Glen Innes Severn	0	52	68	10	10	2	43	14	29	21	35	68	72
Goulburn Mulwaree	1	163	183	51	47	3	55	47	55	86	81	190	244
Greater Hume	0	56	15	14	19	0	14	21	19	14	3	40	48
Griffith	0	216	124	61	34	6	91	31	57	97	93	124	271
Gunnedah	1	111	74	34	19	1	82	54	66	160	32	102	164
Gwydir	0	45	21	6	7	0	19	4	11	8	1	25	21
Hawkesbury	0	260	232	124	77	3	102	46	109	123	219	227	306
Hay	0	12	13	2	5	0	4	1	7	10	0	22	19
Hilltops	0	113	80	36	34	0	30	14	25	34	24	75	125
Hornsby	0	256	209	98	77	18	112	72	67	157	243	241	344
Hunters Hill	0	25	32	13	14	3	42	6	18	26	1	18	42
Inner West	0	547	637	215	171	24	312	138	281	556	578	1,004	967
Inverell	0	200	112	44	29	5	85	32	30	58	86	69	185
Junee	1	30	11	17	8	1	7	5	10	5	7	26	39
Kempsey	1	365	218	74	57	8	248	100	171	112	165	347	416
Kiama	0	30	35	19	20	1	24	14	33	45	45	58	63
Ku-ring-gai	0	169	124	59	48	7	123	33	33	136	91	149	209
Kyogle	0	37	23	18	7	0	15	16	15	22	2	24	42
Lachlan	0	74	36	10	9	1	26	8	29	48	12	48	86
Lake Macquarie	3	1,054	835	382	255	20	481	234	509	908	860	757	1,236
Lane Cove	0	59	43	23	25	0	71	19	22	55	62	107	77
Leeton	0	91	57	25	27	0	52	28	46	36	16	61	99
Lismore	1	279	313	100	77	26	178	76	128	152	277	203	361
Lithgow	0	182	117	43	31	3	64	26	37	44	68	170	204
Liverpool	0	1,426	899	288	249	70	455	117	508	885	733	1,076	1,249
Liverpool Plains	0	67	36	11	10	0	28	7	22	13	1	44	61
Lockhart	0	7	8	1	3	0	9	2	11	8	9	15	27
Lord Howe Island	0	0	1	0	0	0	0	0	0	0	0	0	0
Maitland	1	683	453	209	156	21	286	133	297	480	446	346	709
Mid-Coast	0	694	439	151	155	10	282	181	212	194	205	487	690
Mid-Western	1	148	106	65	49	3	40	30	20	38	40	119	189
Moree Plains	0	299	159	36	21	9	237	66	76	82	160	161	429
Mosman	0	39	56	16	16	1	35	11	22	38	39	84	69
Murray River	0	52	30	10	14	2	41	33	48	34	26	91	81
Murrumbidgee	1	11	24	9	4	0	15	7	12	14	1	21	15
Muswellbrook	0	166	102	54	39	6	81	41	45	60	85	178	186
Nambucca Valley	0	136	113	50	33	3	56	41	66	103	28	86	169
Narrabri	0	140	75	24	17	1	52	25	34	71	53	79	159
Narrandera	0	35	56	18	10	0	33	20	26	23	12	32	110
Narromine	0	79	27	25	11	0	19	21	30	27	13	39	85
Newcastle	2	944	1,199	367	241	83	978	335	732	1,701	1,174	1,570	1,628
North Sydney	0	107	131	44	39	5	85	65	41	99	210	251	185
Northern Beaches	1	443	554	216	162	24	168	105	150	353	525	681	676
Oberon	0	25	13	13	5	1	4	3	4	2	0	14	20

NSW Recorded Crime Statistics, December Quarter 2025

NSW LGA	Murder	Domestic violence related assault	Non-domestic violence related assault	Sexual assault	Sexual touching, sexual act and other sexual offences	Robbery	Break and enter dwelling	Break and enter non-dwelling	Motor vehicle theft	Steal from motor vehicle	Steal from retail store	Other stealing offences	Malicious damage to property
Orange	0	290	268	95	75	12	223	54	92	232	278	207	437
Parkes	0	138	116	29	24	1	70	30	62	69	81	103	141
Parramatta	3	911	1,012	216	206	61	734	217	378	984	1,372	1,628	1,038
Penrith	3	1,215	1,040	388	283	79	468	260	446	855	1,267	1,129	1,563
Port Macquarie-Hastings	1	488	443	151	89	13	200	121	140	189	315	471	593
Port Stephens	1	514	279	142	89	11	130	70	156	197	138	256	468
Queanbeyan-Palerang	0	229	187	72	52	3	103	50	85	144	209	210	406
Randwick	1	310	470	111	93	27	254	61	231	351	396	811	611
Richmond Valley	0	169	151	80	49	7	118	35	95	69	52	111	196
Ryde	1	303	286	103	77	10	222	70	106	305	452	515	383
Shellharbour	1	287	218	134	99	12	164	50	149	270	286	284	380
Shoalhaven	1	583	511	230	153	13	248	89	194	272	499	373	833
Singleton	0	155	100	39	39	5	66	39	72	65	48	84	160
Snowy Monaro	0	62	64	32	22	2	28	13	20	28	16	83	111
Snowy Valleys	0	79	55	20	20	0	30	21	26	52	15	71	101
Strathfield	1	168	144	41	32	10	134	32	104	166	203	222	163
Sutherland	0	666	581	168	146	19	197	79	119	243	604	533	819
Sydney	2	1,188	2,889	478	490	196	634	397	576	861	2,945	4,784	2,140
Tamworth	2	762	470	152	118	22	424	142	219	353	489	504	839
Temora	1	11	14	13	5	1	9	10	5	15	10	30	22
Tenterfield	0	65	26	14	10	0	36	24	31	13	6	46	94
The Hills	2	321	257	122	100	28	190	62	108	224	479	382	460
Tweed	1	351	416	115	81	12	182	100	202	359	634	420	599
Unincorporated Far West	0	3	3	3	2	0	3	7	1	7	1	8	4
Upper Hunter	0	96	42	20	15	1	30	20	22	37	20	86	94
Upper Lachlan	0	19	20	12	4	0	9	6	10	12	4	23	22
Uralla	0	20	13	11	7	1	14	14	9	15	1	12	41
Wagga Wagga	1	464	445	127	134	21	368	79	165	386	357	434	712
Walcha	0	17	8	14	3	0	1	2	2	2	2	7	12
Walgett	0	149	78	28	24	1	92	24	30	42	21	65	133
Warren	0	30	17	10	9	0	27	17	19	21	5	25	37
Warrumbungle	2	85	64	13	16	1	46	30	19	19	28	88	86
Waverley	15	210	240	70	72	9	89	43	113	84	518	454	294
Weddin	0	19	8	7	7	0	2	5	5	5	3	6	14
Wentworth	0	108	28	13	10	2	34	22	31	30	16	56	104
Willoughby	0	109	199	40	56	10	98	63	31	108	507	299	197
Wingecarribee	0	88	138	48	51	1	45	17	29	45	54	82	183
Wollondilly	0	189	117	58	36	1	50	13	77	66	28	102	190
Wollongong	2	862	760	393	232	47	481	241	422	824	1,123	1,149	1,272
Woollahra	0	100	124	53	32	1	82	25	60	79	124	210	171
Yass Valley	0	54	29	25	11	0	11	18	17	13	11	29	69
In Custody	0	4	1,291	1,500	147	5	0	3	0	2	0	10	67
NSW	82	37,828	34,068	12,925	8,765	1,799	18,136	7,634	14,845	25,192	30,900	38,599	46,811

NSW Recorded Crime Statistics, December Quarter 2025

Appendix Table 1.4: Number of recorded criminal incidents for major offences, NSW LGAs

12 months to December 2024

NSW LGA	Murder	Domestic violence related assault	Non-domestic violence related assault	Sexual assault	Sexual touching, sexual act and other sexual offences	Robbery	Break and enter dwelling	Break and enter non-dwelling	Motor vehicle theft	Steal from motor vehicle	Steal from retail store	Other stealing offences	Malicious damage to property
Albury	1	476	419	113	87	28	251	167	244	658	325	402	704
Armidale	0	236	190	59	51	8	264	174	87	176	167	218	364
Ballina	4	194	177	74	46	7	218	37	151	165	112	225	245
Balranald	0	19	9	4	4	0	5	4	5	3	1	4	17
Bathurst	0	298	311	91	87	13	119	48	66	165	214	206	391
Bayside	2	632	472	118	103	27	204	74	224	365	502	763	737
Bega Valley	0	112	109	74	42	1	51	49	39	55	62	125	229
Bellingen	1	55	52	28	13	1	38	38	39	42	10	77	118
Berrigan	0	25	33	10	12	1	20	16	23	25	10	55	61
Blacktown	6	2,388	1,831	492	450	150	754	245	682	1,209	1,499	1,541	2,466
Bland	0	36	24	9	8	0	19	19	28	22	4	29	42
Blayney	0	38	19	8	6	2	14	15	15	19	3	22	30
Blue Mountains	2	238	186	105	87	8	66	40	34	74	173	183	340
Bogan	0	34	11	5	4	0	23	39	20	14	7	43	40
Bourke	1	156	47	26	11	5	132	45	30	66	45	59	114
Brewarrina	0	63	28	10	4	1	42	20	19	9	7	24	49
Broken Hill	0	273	127	29	54	7	124	31	56	106	89	145	226
Burwood	1	120	144	26	31	20	105	29	58	111	231	301	154
Byron	0	130	245	45	51	5	181	44	133	141	137	246	291
Cabonne	0	53	26	16	12	0	23	23	19	15	7	41	58
Camden	0	504	255	103	109	9	113	64	126	233	160	198	459
Campbelltown	0	1,267	882	292	195	59	353	132	311	681	637	683	1,247
Canada Bay	2	178	208	54	39	13	174	49	117	179	123	343	275
Canterbury-Bankstown	3	1,832	1,220	314	272	109	528	188	688	1,252	482	1,162	1,526
Carrathool	0	14	9	0	5	0	8	8	15	5	2	19	24
Central Coast	0	1,856	1,618	722	413	78	624	278	588	1,173	1,265	1,119	2,506
Central Darling	0	133	24	10	8	0	31	18	8	25	2	18	60
Cessnock	2	476	306	143	110	18	198	161	330	340	186	506	600
Clarence Valley	1	361	254	104	85	19	251	99	218	252	183	444	428
Cobar	0	36	28	6	8	0	13	9	9	12	14	21	47
Coffs Harbour	5	709	493	187	134	41	343	137	315	437	296	443	810
Coolamon	0	24	7	13	5	0	3	7	6	10	2	7	15
Coonamble	0	67	58	8	6	0	56	16	21	16	17	36	83
Cootamundra-Gundagai	0	49	48	19	10	1	18	14	15	35	15	38	83
Cowra	0	78	51	16	16	5	63	39	44	37	46	59	117
Cumberland	4	1,103	854	255	138	88	554	162	444	992	422	1,040	977
Dubbo	0	683	581	142	83	18	412	240	216	421	441	428	1,008
Dungog	0	36	32	26	20	0	10	8	14	15	0	42	34
Edward River	0	88	55	13	13	1	36	46	19	63	15	72	107
Eurobodalla	0	229	218	70	70	3	114	56	74	109	152	217	304
Fairfield	5	907	678	167	145	42	239	72	295	593	421	593	915
Federation	0	63	46	15	15	0	23	22	16	48	17	59	77
Forbes	1	54	55	21	20	6	40	22	38	63	15	81	104
Georges River	1	456	344	97	82	13	210	61	121	267	506	400	506

NSW Recorded Crime Statistics, December Quarter 2025

NSW LGA	Murder	Domestic violence related assault	Non-domestic violence related assault	Sexual assault	Sexual touching, sexual act and other sexual offences	Robbery	Break and enter dwelling	Break and enter non-dwelling	Motor vehicle theft	Steal from motor vehicle	Steal from retail store	Other stealing offences	Malicious damage to property
Gilgandra	0	49	14	14	6	0	25	20	16	18	5	25	47
Glen Innes Severn	0	68	85	20	24	1	53	35	22	45	34	60	132
Goulburn Mulwaree	1	159	166	53	45	2	70	71	56	102	157	265	254
Greater Hume	0	31	18	15	13	0	21	15	21	22	1	34	37
Griffith	0	216	157	27	31	10	109	38	63	129	111	170	248
Gunnedah	1	117	102	43	17	4	101	51	66	73	39	101	194
Gwydir	0	28	18	13	8	0	28	12	7	4	3	23	24
Hawkesbury	1	310	268	113	80	5	64	65	105	135	223	204	373
Hay	0	19	17	2	5	0	10	4	3	6	6	14	33
Hilltops	1	111	97	34	33	0	32	12	23	17	51	64	121
Hornsby	0	285	202	107	90	19	170	54	75	157	268	295	419
Hunters Hill	0	14	20	10	13	0	20	3	22	34	0	24	38
Inner West	2	499	660	223	172	26	322	118	283	634	529	975	939
Inverell	0	219	152	60	38	6	144	46	35	60	141	114	241
Junee	0	39	26	10	9	2	7	4	4	8	5	33	40
Kempsey	1	342	203	63	47	3	338	86	180	165	161	404	429
Kiama	0	25	40	30	18	3	48	16	47	87	31	57	69
Ku-ring-gai	0	153	128	72	60	4	175	32	82	128	69	168	270
Kyogle	0	41	27	31	10	1	14	11	19	10	2	21	41
Lachlan	0	78	35	21	13	0	31	27	24	36	9	47	108
Lake Macquarie	2	997	815	361	221	33	500	248	524	876	1,078	804	1,385
Lane Cove	0	73	43	24	22	2	71	14	31	68	45	131	73
Leeton	0	92	58	36	28	3	28	33	45	22	33	64	107
Lismore	2	280	297	113	101	13	315	79	177	157	207	213	379
Lithgow	0	173	130	62	26	4	68	42	31	69	58	154	232
Liverpool	2	1,456	989	259	235	85	485	130	521	979	684	1,018	1,271
Liverpool Plains	0	40	41	19	7	1	8	12	10	13	5	37	46
Lockhart	0	8	8	3	3	0	7	4	4	5	0	14	17
Lord Howe Island	0	0	2	0	1	0	0	0	0	0	0	0	2
Maitland	0	685	434	206	149	27	263	90	262	569	328	395	669
Mid-Coast	0	687	496	180	157	17	326	152	202	250	320	521	747
Mid-Western	0	143	123	54	42	3	53	51	51	49	54	107	208
Moree Plains	0	315	145	50	23	34	255	117	108	99	212	184	379
Mosman	0	26	36	13	14	1	21	5	19	44	37	67	60
Murray River	0	38	33	18	9	1	44	61	28	79	15	101	75
Murrumbidgee	0	29	18	12	8	0	15	6	3	10	1	13	41
Muswellbrook	0	178	119	65	35	4	62	34	48	60	68	162	217
Nambucca Valley	0	160	79	49	28	7	95	29	59	84	70	136	173
Narrabri	0	110	63	28	11	4	52	24	34	42	26	73	131
Narrandera	0	56	78	11	10	1	46	17	28	37	11	52	91
Narromine	1	79	44	19	22	0	28	42	20	36	20	40	87
Newcastle	1	805	1,204	307	219	91	912	380	640	1,730	1,295	1,615	1,711
North Sydney	0	110	142	48	39	8	66	42	32	104	113	246	202
Northern Beaches	1	337	585	175	170	23	242	141	206	463	657	830	766
Oberon	0	24	12	23	11	0	6	4	12	6	7	28	27

NSW Recorded Crime Statistics, December Quarter 2025

NSW LGA	Murder	Domestic violence related assault	Non-domestic violence related assault	Sexual assault	Sexual touching, sexual act and other sexual offences	Robbery	Break and enter dwelling	Break and enter non-dwelling	Motor vehicle theft	Steal from motor vehicle	Steal from retail store	Other stealing offences	Malicious damage to property
Orange	0	357	309	96	82	25	207	55	133	139	189	240	546
Parkes	1	142	112	27	34	3	57	30	46	46	81	105	158
Parramatta	4	872	968	235	212	83	755	242	444	1,047	1,104	1,551	1,051
Penrith	4	1,172	1,150	367	256	59	464	254	436	965	839	1,120	1,537
Port Macquarie-Hastings	0	463	391	131	107	15	247	221	159	284	243	485	604
Port Stephens	1	511	359	131	138	10	186	95	153	222	186	261	503
Queanbeyan-Palerang	0	240	189	84	52	9	92	60	95	151	211	216	365
Randwick	1	354	484	116	127	29	212	42	157	300	264	678	640
Richmond Valley	2	188	181	60	41	5	183	51	105	82	42	121	267
Ryde	0	305	240	87	75	18	239	46	96	251	362	477	335
Shellharbour	0	291	244	124	110	8	171	50	153	246	313	239	403
Shoalhaven	0	518	518	165	123	10	286	134	236	270	532	434	800
Singleton	0	126	101	50	42	2	80	47	65	61	61	106	204
Snowy Monaro	0	72	61	38	25	2	28	13	24	19	14	85	121
Snowy Valleys	0	84	53	22	16	6	42	60	30	43	14	60	127
Strathfield	0	170	154	34	32	18	144	40	121	224	209	281	188
Sutherland	1	597	500	179	144	16	194	59	137	313	582	512	888
Sydney	1	1,249	2,883	456	485	227	554	289	418	816	2,825	4,518	2,139
Tamworth	0	758	453	134	92	11	556	86	206	237	385	419	790
Temora	0	19	17	7	8	0	14	15	8	13	11	21	50
Tenterfield	0	54	37	19	16	2	51	20	25	31	15	62	122
The Hills	1	325	230	107	91	37	214	99	132	205	420	434	462
Tweed	3	327	386	111	78	23	222	106	289	385	365	529	661
Unincorporated Far West	0	4	6	4	6	0	2	3	3	7	10	16	6
Upper Hunter	0	67	51	22	28	0	26	31	22	35	28	80	92
Upper Lachlan	0	22	15	8	5	0	12	7	7	9	0	22	35
Uralla	0	34	16	5	3	0	12	22	11	13	2	19	31
Wagga Wagga	0	522	424	138	101	16	316	90	143	427	408	438	764
Walcha	0	27	10	5	1	0	3	12	2	4	3	10	22
Walgett	0	196	99	15	11	1	69	35	39	48	18	48	173
Warren	0	49	23	0	8	0	25	13	9	8	6	31	50
Warrumbungle	0	88	57	21	37	3	44	31	18	33	35	109	135
Waverley	6	206	246	80	62	19	95	25	107	151	498	466	344
Weddin	0	28	11	11	3	0	5	3	3	3	11	23	30
Wentworth	0	106	57	13	9	0	45	31	32	43	7	64	74
Willoughby	0	121	182	50	55	13	122	52	44	154	415	307	221
Wingecarribee	0	90	107	72	49	2	31	33	48	53	51	101	212
Wollondilly	1	193	101	54	40	4	34	22	57	60	26	111	190
Wollongong	2	735	783	326	222	38	461	221	372	812	1,157	1,103	1,347
Woollahra	2	115	129	55	49	2	79	17	58	122	110	187	198
Yass Valley	0	40	32	15	8	0	20	15	22	20	7	33	66
In Custody	2	5	1,526	1,072	147	5	0	1	1	0	0	14	75
NSW	90	38,325	35,108	11,981	8,717	1,976	19,416	8,320	14,934	26,771	28,272	38,976	49,167

APPENDIX 2

EXPLANATORY NOTES

Appendix 2.1: Explanatory Notes

What are crime statistics?

BOCSAR's crime statistics consist of criminal incidents reported to, or detected by, police and recorded on the NSW Police Force's Computerised Operational Policing System (COPS). While this system is used for record-keeping for all police operations, not just for criminal matters, BOCSAR only reports on criminal incidents and selected policing activities. BOCSAR's crime statistics therefore do not capture crimes that are not recorded on COPS. The Australian Bureau of Statistics conducts regular crime and victim surveys which attempt to capture a snapshot of both reported and unreported crimes.

How to interpret crime statistics

Recorded crime statistics for some offence categories do not accurately reflect the actual level of crime in the community. This is because the number of incidents recorded may be affected by extraneous factors which are not easily measured. In particular:

- > Public willingness to report crime - Many crimes which occur are not reported to police and will therefore not be recorded - for example, a large number of assaults, sexual assaults and robberies are not reported to police.
- > Shifts in policing policy - Recording of those offences which are detected by, rather than reported to police, are strongly affected by policing practices - examples of these are drug offences, drink driving offences, offensive behaviour and receiving stolen goods. Recorded rates for such offences do not accurately reflect
- > High visitor populations compared to residential populations - Sydney Local Government Area has relatively high recorded crime rates because, compared with other regions, the resident population is small relative to the number of people in the area. In other words, the area has a high user population which is not reflected in the denominator of the rate calculation.
- > Areas with small residential populations - Recorded crime rates in Local Government Areas with small population sizes are not always a good indicator of offending. Crime rates in areas with populations under 3,000 may be unreliable and should be interpreted with caution.

What offences are included?

BOCSAR's standard quarterly publications report on 13 major offence categories, which include serious personal violence and property offences. In addition to these offences, we also release data for 62 specific offence categories.

The offence of coercive control is included from the September Quarter 2024. This offence relates to the use of abusive behaviours directed towards a current or former intimate partner with the intention to coerce or control them. The criminal offence captures repeated patterns of physical or non-physical abuse used to hurt, scare, intimidate, threaten or control someone. The law applies to abusive behaviour from 1 July 2024.

From the September Quarter 2021 report, the offence category previously labelled 'indecent sexual assault, act of indecency and other sexual offences' is labelled 'sexual touching, sexual act and other sexual offences'.

Commencing March 2020, the NSW Government issued public health orders under the NSW Public Health Act 2010 (NSW) to limit the spread of COVID-19. Police can issue a fine or court attendance notice for failure to comply with the orders. Breaches of these orders are counted as "other offences" in this report.

What is being counted?

- > Incidents - When a crime is reported to, or detected by, the NSW Police they record it as a criminal event on COPS. The event date is the date that the crime was reported. Unless otherwise stated, the date BOCSAR attaches to a crime is the event date. One criminal event can contain multiple criminal incidents. BOCSAR's default counting unit for crime data is criminal incidents with the exception of murder and manslaughter. For murder and manslaughter only, the counting units used are victims. Criminal incidents are activities detected by or reported to police which involve the same offender(s) and victim(s); occur at the one location during one uninterrupted period of time; fall into one offence category and one incident type.

> People proceeded against - BOCSAR reports on people identified as 'Persons of Interest' (POIs) by the NSW Police Force who have had a legal proceeding commenced against them by the NSW Police Force. POIs counted in this report have been proceeded against to court or by way of diversion from court, and may not end up with a proven offence. There could be quite some time between an event being recorded by police, an investigation being completed and an alleged offender (i.e. a POI) being charged or otherwise legally proceeded against. Consequently, POIs are counted in the time period they were proceeded against, rather than the time period the event /incident was reported to or recorded by police.

> Legal proceedings against persons presented in Tables 3.1 and 3.2 include persons proceeded against to court and persons diverted from court (by way of criminal infringement notice, cannabis or other drug caution and diversions under the *Young Offenders Act 1997*, including Youth Justice Conference, Caution and Warning). Young people proceeded against by way of a Warning for Transport and regulatory offences have been excluded from Table 3.2 as Warnings are not a diversion for these offences.

> Proceeded against to court (breach of bail) in Tables 3.1 and 3.2 includes persons with breach of bail as the only incident on the criminal event recorded by the NSW Police Force. Breaching bail is not a criminal offence but it can lead to being brought to court by police for the court to reconsider bail.

> Infringement Notices (fines) are not included in this report as they are not a form of court diversion.

> Persons proceeded against to court by offence type (Table 3.3 and Table 3.4) selects one offence type per criminal event. The offence type is selected based on the most serious offence for which the person was proceeded against using the Median Sentence Ranking (MSR) of the offence. For example, a person legally proceeded against to court for a criminal event involving a serious domestic assault charge and a coercive control charge will be counted under the domestic assault offence category as it has the higher MSR ranking than coercive control. For further information see the BOCSAR's Crime and Justice Bulletin No.142 Measuring Offence Seriousness.

What are crime trends and how are they calculated?

In general, BOCSAR relies upon the Kendall Rank Order Correlation statistical test (or Kendall's tau-b) to determine whether a series is trending upwards, downwards or is stable ($p < .05$). In some tables a stable trend is represented by 'ns' (not significant). The statistical test is applied to the monthly data over the specified period. Where a significant trend is found, the average annual percentage change over the time period is reported. If any of the 12-monthly totals in the series have a value of less than 20, a trend test is not conducted. When this occurs, the relevant cell will be left blank or contain 'n.c.' (not calculated).

For murder and manslaughter incidents, the trend test is applied to the monthly number of recorded victims rather than criminal incidents.

With the June Quarter 2024 update, the report has transitioned from reporting five-year to reporting ten-year trends. The COVID-19 pandemic is associated with reductions in crime rates arising from government-imposed policies and restrictions introduced to minimise the impact of the pandemic. BOCSAR's regular crime reporting is suited to detecting sustained changes in crime rather than sharp fluctuations of the kind we saw in March 2020 and June 2021. By reporting ten-year trends, we aim to provide a more accurate view of longer term trends in crime, reducing the impact of the COVID-19 pandemic on the trend analysis.

How is the ratio to NSW calculated?

The ratio to NSW rate statistics are a comparison of a NSW regional rate per 100,000 population to the NSW rate per 100,000 population. A ratio of one indicates parity with the NSW rate. Ratios indicating double the NSW rate (or more) before rounding are highlighted in red, whilst ratios indicating half the NSW rate (or less) before rounding are highlighted in green. Ratios are not calculated for regions with a population of less than 3,000.

How are 'young people' and 'adults' defined?

The term 'young people' refers to persons aged 10-17 years at the time of the offence; 'adults' refers to persons aged 18 years and older at the time of the offence.

Regional Statistics

Statistics are provided on the number of criminal incidents (victims for murder) recorded for each of the Statistical Areas Level 4 (SA4s) of NSW as defined by the Australian Bureau of Statistics (ABS). Recorded criminal incidents which occurred in correctional, detention or remand centres, however, are not counted in the SA in which the incident occurred. Note that LGA boundaries change from time to time. A criminal incident is counted within a particular region when the location of the offence falls within that region.

What is included in 'selected policing activities'?

- > Bail compliance checks - checks conducted by police to assess if bail conditions are being complied with.
- > ADVO compliance checks - checks conducted by police to assess defendants' compliance with Apprehended Domestic Violence Order (ADVO) conditions. Police are required to speak with all interested parties (ie the protected persons and the defendant) for the compliance check event to be completed. The reported count is the total number of ADVO compliance check events conducted, regardless of whether all interested parties were able to be contacted. If a breach of ADVO is detected, Police may charge the defendant with breaching their ADVO.
- > Move on directions - a 'move on direction' is a direction given to a person by a police officer, under section 198 of the Law Enforcement (Powers and Responsibilities) Act 2002 (NSW), to leave a public place and not return for a specified period.
- > Searches - If the police have reasonable grounds they may, without a warrant, stop and search a person and anything in their possession or under their control, including a vehicle.
- > Taser use - A Taser is a hand-held electrical device used by the NSW Police Force to temporarily incapacitate a person and/or cause pain through the application of electrical current. It can be used in probe or stun mode.
 - Taser draw/cover: Drawing of the Taser from the holster so as to cover a subject.
 - Taser warning arc: The user demonstrates their Taser is armed by showing the visible flow of electricity (arc) to the subject.
 - Taser discharged: The Taser trigger is pulled resulting in the cartridge firing and discharging the two probes (Taser probes discharged), or the Taser is activated and placed directly against an individual's body (Taser drive stun). These modes may cause pain and render the subject temporarily incapacitated.

From the March Quarter 2025 report, the categories 'Taser probes discharged' and 'Taser drive stun' were combined into a single category: 'Taser discharge'. The counting of taser use also changed from counting each incident of taser use, to the most serious type of taser used in a single event. For example, if during a single event the Taser was drawn from the holster, a warning arc was demonstrated and the Taser was discharged with the probes firing at a person, only the 'Taser discharge' will be counted for the event.

- > Detain/convey person to mental health facility - The police detain a person at risk of harm to themselves or others and transport them to a mental health facility for assessment under section 22 of the Mental Health Act 2007 (NSW).

What are non-criminal domestic episodes?

Incidents attended by police where a domestic dispute is recorded as having taken place but no criminal incident has been recorded. The vast majority of these episodes are verbal arguments.

Where can I find more detail and explanatory notes?

Detailed definitions and explanatory notes are available at

https://www.bocsar.nsw.gov.au/Pages/bocsar_crime_stats/bocsar_glossary.aspx

APPENDIX 3

LGAs IN STATISTICAL AREAS

Appendix Table 3.1: Local Government Areas in Greater Sydney Statistical Areas

Baulkham Hills and Hawkesbury	Blacktown	Central Coast
Hawkesbury*	Blacktown	Central Coast
The Hills Shire*		
City and Inner South	Eastern Suburbs	Inner South West
Sydney*	Randwick*	Bayside*
	Waverley	Canterbury-Bankstown*
	Woollahra	Georges River
Inner West	North Sydney and Hornsby	Northern Beaches
Burwood	Hornsby*	Northern Beaches
Canada Bay	Ku-ring-gai	
Strathfield*	Lane Cove	
Inner West*	Mosman	
	North Sydney	
	Willoughby	
Outer South West	Outer West and Blue Mountains	Parramatta
Camden*	Blue Mountains*	Cumberland*
Campbelltown*	Penrith*	Parramatta*
Wollondilly*		
Ryde	South West	Sutherland
Hunters Hill	Fairfield*	Sutherland Shire*
Ryde*	Liverpool*	

* These LGAs span across two or more Statistical Areas.

These LGAs are listed under the Greater Sydney Statistical Areas which contain the largest area of each LGA.

Appendix Table 3.2: Local Government Areas in Regional Statistical Areas

Capital Region	Central West	Coffs Harbour - Grafton	Far West and Orana
Bega Valley	Bathurst Regional	Bellingen*	Bogan
Eurobodalla	Bland*	Clarence Valley*	Bourke
Goulburn Mulwaree	Blayney	Coffs Harbour	Brewarrina
Hilltops	Cabonne*		Broken Hill
Queanbeyan-Palerang Regional	Cowra		Central Darling
Snowy Monaro Regional*	Forbes		Cobar
Upper Lachlan Shire	Lachlan*		Coonamble
Yass Valley*	Lithgow		Dubbo Regional*
	Mid-Western Regional*		Gilgandra
	Oberon*		Narromine
	Orange		Unincorporated Far West
	Parkes		Walgett
	Weddin		Warren
			Warrumbungle Shire*
Hunter Valley excluding Newcastle	Illawarra	Mid North Coast	Murray
Cessnock	Kiama*	Kempsey	Albury
Dungog	Shellharbour	Lord Howe Island	Balranald
Maitland*	Wollongong	Mid-Coast*	Berrigan
Muswellbrook		Nambucca*	Edward River
Port Stephens*		Port Macquarie-Hastings	Federation*
Singleton*			Greater Hume Shire*
Upper Hunter Shire*			Hay
			Murray River
			Wentworth
New England and North West	Newcastle and Lake Macquarie	Richmond - Tweed	Riverina
Armidale Regional*	Lake Macquarie*	Ballina	Carrathool*
Glen Innes Severn	Newcastle	Byron	Coolamon
Gunnedah		Kyogle	Cootamundra-Gundagai
Gwydir		Lismore	Griffith
Inverell		Richmond Valley*	Junee
Liverpool Plains*		Tweed	Leeton
Moree Plains			Lockhart*
Narrabri			Murrumbidgee*
Tamworth Regional			Narrandera
Tenterfield			Snowy Valleys*
Uralla			Temora
Walcha			Wagga Wagga
Southern Highlands and Shoalhaven			
Shoalhaven*			
Wingecarribee*			

* These LGAs span across two or more Statistical Areas.

These LGAs are listed under the NSW Regional Statistical Areas which contain the largest area of each LGA.

Appendix Table 3.3: Greater Sydney Statistical Area Map



Appendix Table 3.4: Regional NSW Statistical Areas Map



APPENDIX 4

OFFENCE

CATEGORIES

Appendix 4.1: BOCSAR offences mapped to NSW Police Force incident categories

BOCSAR offence	NSW Police Force incident categories
Homicide	
Murder	Murder
Attempted murder	Murder – attempted Shoot with intent to murder
Murder accessory, conspiracy	Murder – conspiracy Murder – solicit
Manslaughter – not driving	Assault causing death (s25A) Manslaughter
Assault	
	<i>Includes any of the following offences disaggregated by whether or not police have flagged the incident as domestic violence related:</i>
Domestic violence related	Actual bodily harm Assault common Grievous bodily harm (including malicious wounding) Shoot with intent other than to murder Spike drink/food
Non-domestic violence related	Actual bodily harm Assault common Grievous bodily harm (including malicious wounding) Shoot with intent other than to murder Spike drink/food
Assault Police	Assault Police officer
Sexual offences	
Sexual assault	Sexual assault – adult victim (16 years old and over) Sexual assault – child victim, reported when child Sexual assault – child victim, reported when adult
Sexual touching, sexual act and other sexual offences	Sexual act – adult victim (16 years old and over) Sexual act – child victim, reported when child Sexual act – child victim, reported when adult Sexual touching – adult victim (16 years old and over) Sexual touching – child victim, reported when child Sexual touching – child victim, reported when adult Act of indecency Aggravated act of indecency Bestiality Carnal knowledge Grooming/procuring Incest Indecent communication Peep or pry Wilful and obscene exposure Other sexual offence Voyeurism/Film person
Abduction and kidnapping	
	Kidnapping/Abduction People trafficking
Robbery	
Robbery without a weapon	<i>Includes any of the following offences in which no weapon was recorded:</i> Demand money with menaces Robbery Robbery with aggravation Robbery with wounding Other robbery

BOCSAR offence	NSW Police Force incident categories
Robbery with a firearm	<p><i>Includes any of the following offences in which a firearm was recorded as a weapon:</i></p> <ul style="list-style-type: none"> Armed robbery Demand money with menaces Robbery Robbery with aggravation Robbery with wounding Other robbery
Robbery with a weapon not a firearm	<p><i>Includes any of the following offences in which a non firearm weapon was recorded:</i></p> <ul style="list-style-type: none"> Armed robbery Demand money with menaces Robbery Robbery with aggravation Robbery with wounding Other robbery
Blackmail and extortion	<hr/> <p><i>From mid-2022 ‘sextortion’ incidents have been recorded as extortion. Prior to this they were classified as fraud. As such, the series prior to mid-2022 is not comparable to the series after this time for this offence.</i></p> <p>Extortion/Blackmail</p>
Coercive control	<hr/> <p>Coercive control</p>
Intimidation, stalking and harassment	<hr/> <ul style="list-style-type: none"> Bullying/harassment or intimidation Stalking (since 2017) Child approach (since 2017) Riot and affray Telecommunications offence (includes nuisance phone calls) Indecent Communication Threats against Police Violent disorder Unlawful assembly
Other offences against the person	<hr/> <ul style="list-style-type: none"> Labour exploitation (includes sexual servitude) Malicious damage with intent to injure/endorse Negligent act cause grievous bodily harm Other offence against the person
Theft	<hr/> <p><i>Dwelling includes premises where people reside such as house, home unit, caravan, tent as well as any attachment such as garage, shed, yard and garden.</i></p> <ul style="list-style-type: none"> Break/Enter and steal Break/Enter and commit other felony Break/Enter intent to steal Break/Enter intent to commit other felony <p><i>Non-dwelling includes commercial and government premises.</i></p> <ul style="list-style-type: none"> Break/Enter and steal Break/Enter and commit other felony Break/Enter intent to steal Break/Enter intent to commit other felony <ul style="list-style-type: none"> Receiving Goods in custody Possess property stolen outside NSW Deal with proceeds of crime

BOCSAR offence	NSW Police Force incident categories
Motor vehicle theft	Money Laundering Theft of motor cars, motor cycles, and other vehicles / vessels <i>(includes being carried in conveyance taken without consent)</i>
Steal from motor vehicle Steal from retail store Steal from dwelling	Rebirthing vehicles / vessels Vehicle/Vessel Unique Identifier Steal from motor vehicle Steal from retail store Steal from dwelling Other stealing <i>occurring in a residential dwelling</i>
Steal from person Stock theft Fraud	Steal from person Steal stock (Non-domestic animal) Company/corporate offence Computer crime Copyright/Intellectual property/Trademark Corrupt commission/practices Corrupt payment (receive or pay) Counterfeit currency Deception offence Embezzlement Fail to pay Forgery (since 2017) Fraudulent misappropriation Larceny clerk/servant/bailee Make/use false instrument Misappropriate cheques/funds Possess false instrument Publish false misleading statement Receiving (fraud related) Scams - obtain funds (since 2017) Scams - selling (since 2017) Unauthorised access of funds (since 2017) Deal/supply false identity documents (since 2017) Deal/supply false information (since 2017) Equipment to make false identity documents (since 2017) Make false identity documents (since 2017) Possess false identity documents (since 2017) Possess identity information (since 2017) Use false identity documents (since 2017) Other fraud
Other theft	Steal from dwelling occurring somewhere other than a residential or non-residential dwelling (e.g. from hostels, motels, boarding houses etc) Steal from marine vessel Steal vessel Other stealing <i>occurring somewhere other than a dwelling (e.g. in outdoor/public places)</i>
Arson	<hr/> Fire incidents were classified as deliberate (to March 2023) or as suspicious - arson or suspicious - reckless (from March 2023). As such, the series prior to March 2023 is not comparable to the series after this time for this offence.: Bushfire related Structure (not bushfire related) Vehicle/Transport/Aircraft Other commodity
Malicious damage to property	<hr/> Graffiti Malicious damage to property Public place – damage fountain/wall etc. Public place – damage shrine/monument
Drug offences	<hr/> Possession and/or use of cocaine Possess drug where drug type is cocaine Use or administer drug where drug type is cocaine

BOCSAR offence	NSW Police Force incident categories
Possession and/or use of narcotics	Item/object found where drug type is cocaine Possess drug <i>where drug type is narcotics</i> Use or administer drug <i>where drug type is narcotics</i>
Possession and/or use of cannabis	Item/object found where drug type is narcotics Possess drug / plant where drug type is cannabis Use or administer drug where drug type is cannabis
Possession and/or use of amphetamines	Item/object found where drug type is cannabis Possess drug where drug type is amphetamines Use or administer drug where drug type is amphetamines
Possession and/or use of ecstasy	Item/object found where drug type is amphetamines Possess drug where drug type is ecstasy
Possession and/or use of ecstasy (continued)	Use or administer drug where drug type is ecstasy Item/object found where drug type is ecstasy
Possession and/or use of other drugs	Possess drug where drug type is not cocaine, narcotics, cannabis, amphetamines or ecstasy Use or administer drug where drug type is not cocaine, narcotics, cannabis, amphetamines or ecstasy Item/object found where drug type is not cocaine, narcotics, cannabis, amphetamines or ecstasy
Dealing, trafficking in cocaine	Supply drug where drug type is cocaine
Dealing, trafficking in narcotics	Supply drug where drug type is narcotics
Dealing, trafficking in cannabis	Supply drug/plant where drug/plant type is cannabis
Dealing, trafficking in amphetamines	Supply drug where drug type is amphetamines
Dealing, trafficking in ecstasy	Supply drug where drug type is ecstasy
Dealing, trafficking in other drugs	Supply drug/plant where drug/plant type is not cocaine, narcotics, cannabis, amphetamines or ecstasy
Cultivating cannabis	Cultivation
Manufacture drug	Manufacture drug
Importing drugs	Import drug/plant
Other drug offences	Forge and/or utter prescription Possess drug utensil Other drug detection/seizure offence
Prohibited and regulated weapons offences	
	Bomb hoax or threat Discharge firearm into premises Licence offence Firearms dealer offence Firearms not ensure safekeeping Improper storage of explosives Person search - Item/object found where item/object is a weapon Possess explosive/dangerous article Possess prohibited weapon/article Possess shortened firearm Possess whilst unlicensed Sell prohibited weapon/article Shorten firearm Trespass with firearm Unlawful handling/access/supply of explosives Unlawfully discharge firearm Use firearm under influence Use prohibited weapon/article Other explosives offence Other firearm licencing offence Other firearm offence Other prohibited weapon/article offence
Disorderly conduct	
Trespass	Trespass
Offensive conduct	Remain inclosed lands Offensive behaviour
Offensive language	Offensive language

BOCSAR offence	NSW Police Force incident categories
Criminal intent	Armed with intent Charge with intent Disguised with intent Enter land with intent Intent to repeat indictable offence Instruments of crime Possess implements
Betting and gaming offences	Conduct/play illegal betting Conduct/play illegal game Own/manage premises – betting Own/manage premises – gaming Other gaming offence
Liquor offences	Consume alcohol in alcohol-free zone Consume/possess alcohol in public by minor Licensing legislation offence: – Offence by licensee/employee/secretary – Offence by minor – Offence by customer (not minor) – Supply liquor to juvenile – Offence against registered clubs legislation
Pornography offences	Possess/disseminate child pornography Possess/publish indecent material
Against justice procedures	
Escape Custody	Escapee – Corrective Services custody Escapee – Department of Community Services custody Escapee – Police custody Escapee – Other custody
Breach Apprehended Violence Order	Breach Apprehended Violence Order – domestic Breach Apprehended Violence Order – personal
Breach bail conditions	Breach bail conditions
Fail to appear	Breach control order Fail to appear
Resist or hinder officer	Refuse direction Refuse direction continue intoxication and disorder Refuse direction intoxicated person Refuse to be searched Refuse to produce object Resist/hinder officer
Other offences against justice procedures	Other judicial offence Fail to comply Contravene Child Protection Prohibition Order (CPPO)
Transport regulatory offences	Transport offence (includes offences on the rail network such as travelling without a valid ticket, smoking, drinking or using offensive language on a train Buffer riding
Other offences	
	<i>From the September 2024 report offences previously classified under 'prostitution offences' are classified as 'other offences'.</i>
	Animals - Dog offences Breach COVID 19 direction Cyber Breach/Attack False 000 call Family law offence Immigration/customs offence

BOCSAR offence

NSW Police Force incident categories

Obstruction
 Offence against transport service
 Other street offences (carry cutting weapon, offensive implement)
 Public mischief
 Other miscellaneous offences
 Offences under various acts:
 Animals - Prevention Of Cruelty Acts
 Bush Fire Act
 Child Protection Act
 Local Government Act
 Marine/Waterway Act
 Pawnbrokers Act
 Postal Services Act
 Public Health Act
 Security Industry Act
 Sydney Harbour Bridge Act
 Tattoo Parlours Act
 Voluntary Assisted Dying Act
 Voluntary Assisted Dying (*Crimes Act*)
 Procure Prostitute (Including child prostitute)
 Prostitution – premises
 Prostitution – live off earnings
 Child prostitution
 Other vice offence