



NSW Bureau of Crime
Statistics and Research

NEW SOUTH WALES RECORDED CRIME STATISTICS

Quarterly Update
March Quarter 2025

This report presents data on crime reported to, or detected by, police and recorded on the NSW Police Force's Computerised Operational Policing System (COPS). Information is provided on 13 major offence categories, which include the most serious personal violence and property offences, plus a more detailed list of 62 specific offence types.

Published by the NSW Bureau of Crime Statistics and Research
June 2025

Phone: + 61 (2) 8688 9800

Email: bcsr@dcj.nsw.gov.au

Website: www.bocsar.nsw.gov.au

ISSN: 1035-9044

This report is available in pdf format on our website and may be provided in alternative formats. Please contact us at bcsr@justice.nsw.gov.au.

© State of New South Wales through the NSW Department of Communities and Justice 2025. You may copy, distribute, display, download and otherwise freely deal with this work for any purpose, provided that you attribute the Department of Justice NSW as the owner. However, you must obtain permission if you wish to (a) charge others for access to the work (other than at cost), (b) include the work in advertising or a product for sale, or (c) modify the work.

CONTENTS

SECTION 1:	OVERVIEW OF TRENDS IN RECORDED CRIME	5
Figure 1.1	NSW long-term trend in violent offences	6
Figure 1.2	NSW long-term trend in property offences	6
Table 1.3	Violent and property offences by Statistical Area (SA4) over the ten years to March 2025	7
Table 1.4	Recorded criminal incidents for major offences over the ten years to March 2025	8
Table 1.5	Recorded criminal incidents for 62 offences over the two years to March 2025	9
Table 1.6	Recorded criminal incidents for 62 offences over the ten years to March 2025	10
SECTION 2:	REGIONAL COMPARISONS Statistical Areas	11
Table 2.1	Two year trends and percent change in recorded criminal incidents for major offences by Statistical Area (SA4) over the two years to March 2025	12
Table 2.2	Ratio to NSW rate of recorded criminal incidents per 100,000 population for major offences by Statistical Area (SA4) over the 12 months to March 2025	13
Table 2.3	Number of major offences by Statistical Area (SA4) over the 12 months to March 2025	14
Table 2.4	Number of major offences by Statistical Area (SA4) over the 12 months to March 2024	15
Table 2.5	Rate per 100,000 population of major offences by Statistical Area (SA4) over the 12 months to March 2025	16
Table 2.6	Ten year trends and annual average percent change in recorded criminal incidents for major offences by Statistical Area (SA4) over the 12 months to March 2024	17
Table 2.7	Number of major offences by Statistical Area (SA4) over the 12 months to March 2016	18
SECTION 3:	LEGAL PROCEEDINGS	19
Table 3.1	Adults proceeded against by the NSW Police Force by method of legal proceeding over the ten years to March 2025	20
Table 3.2	Young people proceeded against by the NSW Police Force by method of legal proceeding over the ten years to March 2025	20
Table 3.3	Adults proceeded against to court by the NSW Police Force for all 62 criminal offences types over the two years to March 2025	21
Table 3.4	Young people proceeded against to court by the NSW Police Force for all 62 criminal offences over the two years to March 2025	22
Figure 3.5	Offences with the largest change in the number of adults proceeded against to court by the NSW Police Force between the 12 months to March 2024 and the 12 months to March 2025	23
Figure 3.6	Offences with the largest change in the number of young people proceeded against to court by the NSW Police Force between the 12 months to March 2024 and the 12 months to March 2025	23
Table 3.7	Incidents of all 62 criminal offence types by whether legal proceedings commenced within 90 days of reporting over the two years to December 2024	24

Figure 3.8	Percentage of recorded criminal incidents for major offences by whether legal proceedings commenced within 90 days of reporting over the two years to December 2024	25
SECTION 4: POLICING ACTIVITY		26
Table 4.1	Selected policing activities over the ten years to March 2025	27
Table 4.2	Non-criminal domestic episodes by Statistical Area (SA4) over the ten years to March 2025	28
Table 4.3	Ratio to NSW rate of non-criminal domestic episodes per 100,000 population by Statistical Area (SA4) over the ten years to March 2025	29
APPENDIX 1: REGIONAL COMPARISONS Local Government Areas		30
Appendix Table 1.1	Trends in recorded criminal incidents for major offences, NSW LGAs Over the two years to March 2025	31
Appendix Table 1.2	Ratio to NSW rate of recorded criminal incidents per 100,000 population for major offences, NSW LGAs	34
Appendix Table 1.3	Number of recorded criminal incidents for major offences, NSW LGAs 12 months to March 2025	37
Appendix Table 1.4	Number of recorded criminal incidents for major offences, NSW LGAs 12 months to March 2024	40
APPENDIX 2: EXPLANATORY NOTES		43
Appendix 2.1	Explanatory Notes	44
APPENDIX 3: LGAs IN STATISTICAL AREAS		47
Appendix Table 3.1	Local Government Areas in Greater Sydney Statistical Areas	48
Appendix Table 3.2	Local Government Areas in Regional Statistical Areas	49
Appendix Table 3.3	Greater Sydney Statistical Area Map	50
Appendix Table 3.4	Regional NSW Statistical Areas Map	51
APPENDIX 4: OFFENCE CATEGORIES		52
Appendix 4.1	BOCSAR offences mapped to NSW Police Force incident categories	53

SECTION 1:

OVERVIEW OF

TRENDS IN

RECORDED CRIME

Figure 1.1: NSW long-term trend in violent offences

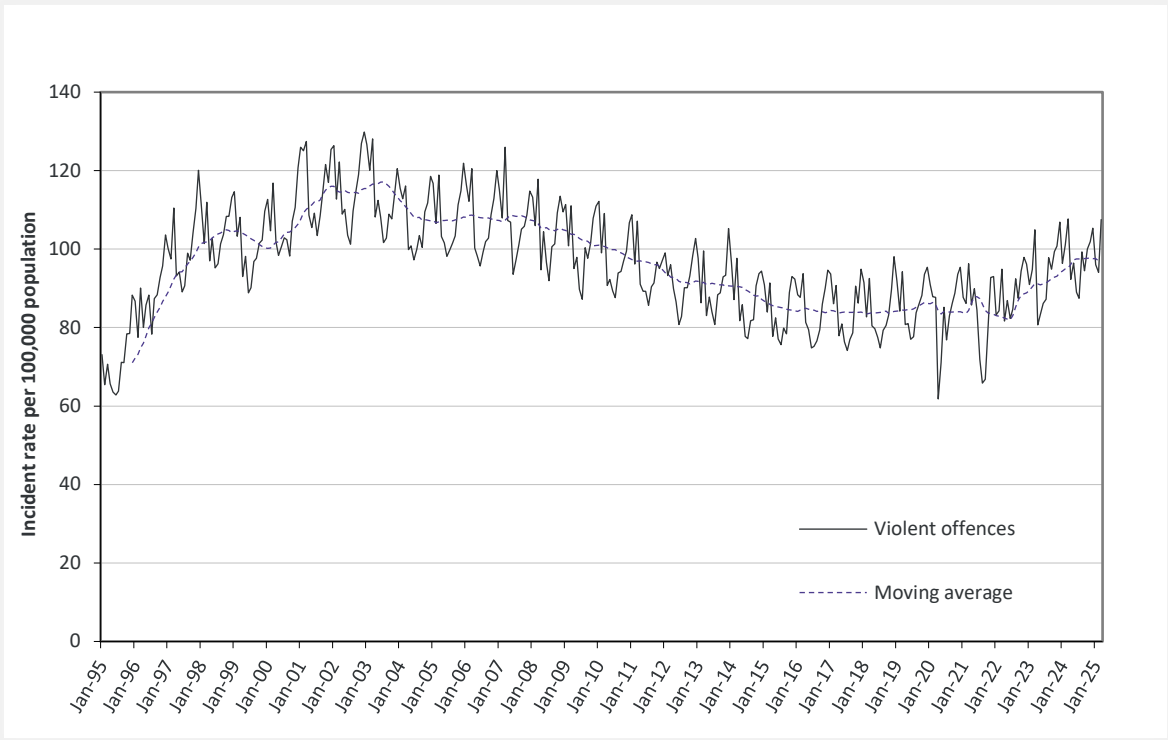
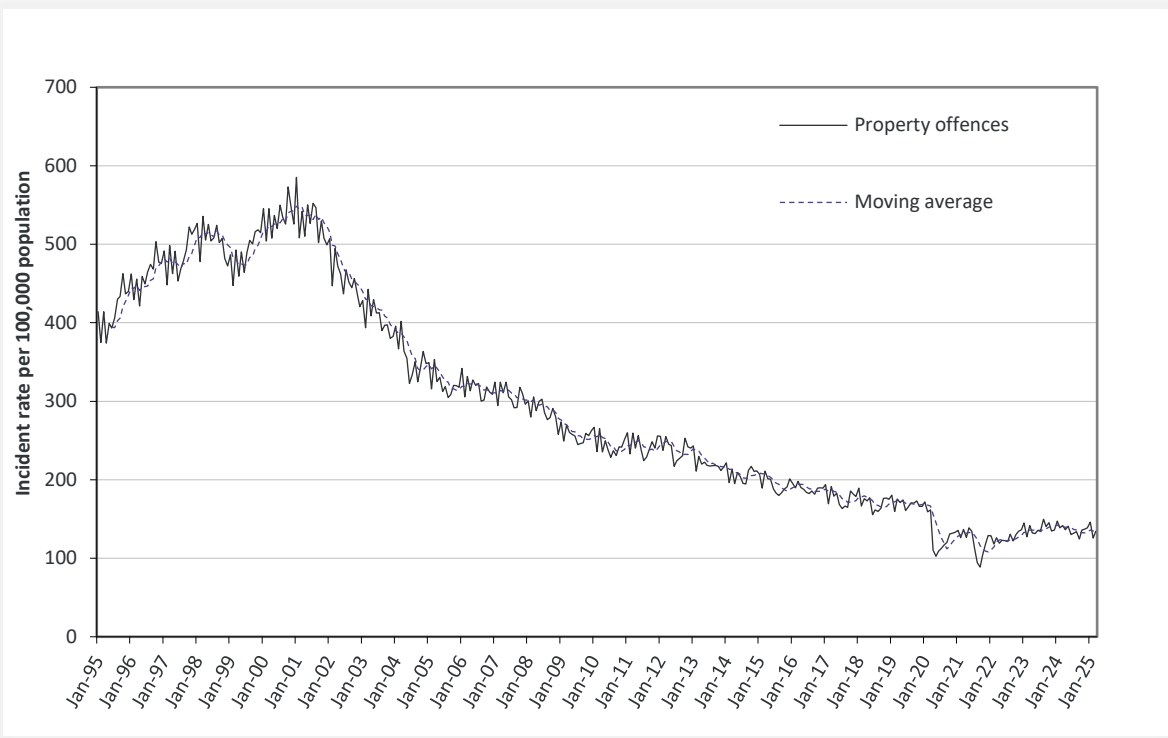


Figure 1.2: NSW long-term trend in property offences



Violent offences include: murder, attempted murder, manslaughter, assault - domestic violence related, assault - non-domestic violence related, assault police, robbery without a weapon, robbery with a firearm, robbery with a weapon not a firearm, sexual assault and sexual touching, sexual act and other sexual offences.

Property offences include: break and enter dwelling, break and enter non-dwelling, motor vehicle theft, steal from motor vehicle, steal from retail store, steal from dwelling, steal from person, stock theft and other theft.

Table 1.3: Violent and property offences by Statistical Area (SA4)

Over the ten years to March 2025

Statistical Area	Trend and average annual percentage change			
	Violent Offences		Property Offences	
	2 Year Trend	10 Year Trend	2 Year Trend	10 Year Trend
Greater Sydney	2.2%	2.0%	Stable	-3.3%
Baulkham Hills and Hawkesbury	Stable	2.3%	Stable	-3.0%
Blacktown	10.0%	2.0%	-11.6%	-4.1%
Central Coast	6.7%	2.7%	Stable	-4.2%
City and Inner South	Stable	Stable	3.8%	-2.5%
Eastern Suburbs	Stable	Stable	Stable	-5.1%
Inner South West	Stable	1.7%	7.8%	-3.2%
Inner West	Stable	2.4%	10.8%	-2.8%
North Sydney and Hornsby	Stable	3.4%	Stable	-3.9%
Northern Beaches	Stable	Stable	Stable	-4.7%
Outer South West	5.6%	2.4%	Stable	-4.3%
Outer West and Blue Mountains	Stable	1.8%	-17.0%	-3.5%
Parramatta	Stable	2.0%	Stable	-1.3%
Ryde	Stable	3.3%	Stable	-2.0%
South West	4.5%	4.3%	Stable	-3.4%
Sutherland	9.6%	2.1%	Stable	-5.1%
Regional NSW	1.4%	2.9%	Stable	-2.4%
Capital Region	Stable	2.7%	Stable	-3.3%
Central West	Stable	2.5%	-19.7%	-5.7%
Coffs Harbour - Grafton	Stable	4.0%	11.6%	Stable
Far West and Orana	Stable	3.0%	-21.2%	-4.0%
Hunter Valley excluding Newcastle	Stable	4.4%	-9.4%	-3.5%
Illawarra	Stable	Stable	Stable	-2.9%
Mid North Coast	Stable	3.1%	Stable	-2.3%
Murray	6.0%	4.4%	Stable	Stable
New England and North West	3.2%	3.3%	Stable	-1.3%
Newcastle and Lake Macquarie	6.1%	3.0%	Stable	Stable
Richmond - Tweed	6.3%	2.5%	Stable	Stable
Riverina	Stable	1.4%	Stable	-5.5%
Southern Highlands and Shoalhaven	Stable	1.5%	Stable	-4.0%
NSW	1.9%	2.5%	Stable	-2.9%

Table 1.4: Recorded criminal incidents for major offences
Over the ten years to March 2025

Offence category	12 months to March 2016	12 months to March 2017	12 months to March 2018	12 months to March 2019	12 months to March 2020	12 months to March 2021	12 months to March 2022	12 months to March 2023	12 months to March 2024	12 months to March 2025	Trend and average annual percentage change	
											2 Year Trend	10 Year Trend
Murder	68	68	52	80	69	67	61	48	70	78	Stable	Stable
Domestic violence related assault	29,319	29,052	28,368	30,237	31,626	32,179	32,351	34,618	36,779	38,108	Up 3.6%	Up 3.0%
Non-domestic violence related assault	31,062	31,864	32,372	31,619	32,027	29,378	28,129	32,413	34,981	34,285	Stable	Up 1.1%
Sexual assault	5,180	5,447	5,979	6,021	6,534	7,621	8,048	9,699	10,736	11,421	Up 6.4%	Up 9.2%
Sexual touching, sexual act and other sexual offences	6,962	7,181	7,582	8,157	8,038	8,184	7,622	8,473	8,164	8,628	Stable	Up 2.4%
Robbery	2,532	2,377	2,500	2,540	2,470	1,972	1,715	1,897	1,953	1,902	Stable	Down 3.1%
Break and enter dwelling	31,044	29,276	27,383	26,080	25,294	18,463	17,445	19,023	20,425	18,787	Stable	Down 5.4%
Break and enter non-dwelling	11,887	11,477	10,352	10,103	9,953	6,740	7,258	7,565	8,661	8,176	Stable	Down 4.1%
Motor vehicle theft	13,772	13,148	13,014	13,275	13,382	11,221	10,598	12,860	14,590	15,002	Stable	Stable
Steal from motor vehicle	40,061	40,369	39,086	37,681	37,685	26,736	27,470	27,431	28,704	26,086	Down 9.1%	Down 4.7%
Steal from retail store	22,499	23,791	24,628	25,401	26,581	18,974	17,588	24,356	27,595	28,781	Up 4.3%	Up 2.8%
Other stealing offences	56,636	55,436	51,660	50,334	49,786	36,537	34,955	36,348	39,266	37,950	Stable	Down 4.4%
Malicious damage to property	64,038	62,307	60,470	58,149	56,176	52,728	48,403	49,093	49,611	48,114	Stable	Down 3.1%

NSW Recorded Crime Statistics, March Quarter 2025

Table 1.5: Recorded criminal incidents for 62 offences
Over the two years to March 2025

		Number of recorded criminal incidents		2 Year Trend	
		12 months to March 2024	12 months to March 2025	Trend test result	Annual average percentage change
Offence category					
Homicide	Murder	70	78	Stable	
	Attempted murder	15	15	n.c.	
	Murder accessory, conspiracy	4	0	n.c.	
	Manslaughter	14	7	n.c.	
Assault	Domestic violence related assault	36,779	38,108	Up	3.6%
	Non-domestic violence related assault	34,981	34,285	Stable	
	Assault Police	2,564	2,632	Stable	
Sexual offences	Sexual assault	10,736	11,421	Up	6.4%
	Sexual touching, sexual act and other sexual offences	8,164	8,628	Stable	
Abduction and kidnapping		263	225	Stable	
Robbery	Robbery without a weapon	1,127	1,036	Down	-8.1%
	Robbery with a firearm	101	93	Stable	
	Robbery with a weapon not a firearm	725	773	Stable	
Blackmail and extortion		1,676	1,179	Down	-29.7%
Coercive Control		n.a.	224	n.c.	
Intimidation, stalking and harassment		46,663	48,912	Up	4.8%
Other offences against the person		1,597	1,565	Stable	
Theft	Break and enter dwelling	20,425	18,787	Stable	
	Break and enter non-dwelling	8,661	8,176	Stable	
	Receiving or handling stolen goods	8,001	7,580	Stable	
	Motor vehicle theft	14,590	15,002	Stable	
	Steal from motor vehicle	28,704	26,086	Down	-9.1%
	Steal from retail store	27,595	28,781	Up	4.3%
	Steal from dwelling	16,104	15,768	Stable	
	Steal from person	2,143	1,986	Stable	
	Stock theft	228	222	Stable	
	Fraud	46,438	41,884	Down	-9.8%
	Other theft	20,791	19,974	Stable	
Arson		4,608	4,358	Stable	
Malicious damage to property		49,611	48,114	Stable	
Drug offences	Possession and/or use of cocaine	2,236	1,920	Stable	
	Possession and/or use of narcotics	1,222	1,374	Stable	
	Possession and/or use of cannabis	14,275	12,311	Down	-13.8%
	Possession and/or use of amphetamines	6,736	7,573	Up	12.4%
	Possession and/or use of ecstasy	1,016	870	Stable	
	Possession and/or use of other drugs	5,708	4,813	Down	-15.7%
	Dealing, trafficking in cocaine	1,007	967	Stable	
	Dealing, trafficking in narcotics	253	301	Stable	
	Dealing, trafficking in cannabis	520	531	Stable	
	Dealing, trafficking in amphetamines	1,643	1,687	Stable	
	Dealing, trafficking in ecstasy	246	260	Stable	
	Dealing, trafficking in other drugs	483	375	Down	-22.4%
	Cultivating cannabis	728	479	Stable	
	Manufacture drug	66	57	Stable	
	Importing drugs	112	63	Down	-43.8%
	Other drug offences	5,420	4,625	Down	-14.7%
Prohibited and regulated weapons offences		14,569	15,179	Stable	
Disorderly conduct	Trespass	12,411	12,817	Up	3.3%
	Offensive conduct	3,116	2,861	Stable	
	Offensive language	1,072	886	Down	-17.4%
	Criminal intent	2,818	3,020	Stable	
Betting and gaming offences		44	19	n.c.	
Liquor offences		6,954	5,038	Down	-27.6%
Pornography offences		1,232	1,222	Stable	
Against justice procedures	Escape custody	142	150	Stable	
	Breach Apprehended Violence Order	24,874	26,446	Up	6.3%
	Breach bail conditions	54,158	57,793	Up	6.7%
	Fail to appear	860	198	Down	-77.0%
	Resist or hinder officer	5,275	5,687	Up	7.8%
	Other offences against justice procedures	2,336	2,123	Down	-9.1%
Transport regulatory offences		69,857	61,125	Down	-12.5%
Other offences		12,734	11,726	Stable	

Note: The new coercive control offence commenced on 1 July 2024. The NSW Police Force made changes to the classification of ‘arson’ incidents from March 2023 and ‘blackmail and extortion’ incidents from June 2022. As such, the series for these offence categories are not comparable pre and post the changes being made. Prostitution offences are included as ‘other offences’ from the September 2024 report. See Appendix 4.1.

NSW Recorded Crime Statistics, March Quarter 2025

Table 1.6: Recorded criminal incidents for 62 offences
Over the ten years to March 2025

		Number of recorded criminal incidents		10 Year Trend	
Offence category		12 months to March 2016	12 months to March 2025	Trend test result	Annual average percentage change
Homicide	Murder	68	78	Stable	
	Attempted murder	26	15	n.c.	
	Murder accessory, conspiracy	5	0	n.c.	
	Manslaughter	9	7	n.c.	
Assault	Domestic violence related assault	29,319	38,108	Up	3.0%
	Non-domestic violence related assault	31,062	34,285	Up	1.1%
	Assault Police	2,473	2,632	Stable	
Sexual offences	Sexual assault	5,180	11,421	Up	9.2%
	Sexual touching, sexual act and other sexual offences	6,962	8,628	Up	2.4%
Abduction and kidnapping		244	225	Stable	
Robbery	Robbery without a weapon	1,458	1,036	Down	-3.7%
	Robbery with a firearm	169	93	Down	-6.4%
	Robbery with a weapon not a firearm	905	773	Down	-1.7%
Blackmail and extortion		145	1,179	Up	26.2%
Coercive Control		n.a.	224	n.c.	
Intimidation, stalking and harassment		30,635	48,912	Up	5.3%
Other offences against the person		1,364	1,565	Up	1.5%
Theft	Break and enter dwelling	31,044	18,787	Down	-5.4%
	Break and enter non-dwelling	11,887	8,176	Down	-4.1%
	Receiving or handling stolen goods	8,337	7,580	Down	-1.1%
	Motor vehicle theft	13,772	15,002	Stable	
	Steal from motor vehicle	40,061	26,086	Down	-4.7%
	Steal from retail store	22,499	28,781	Up	2.8%
	Steal from dwelling	20,983	15,768	Down	-3.1%
	Steal from person	5,537	1,986	Down	-10.8%
	Stock theft	518	222	Down	-9.0%
	Fraud	51,307	41,884	Down	-2.2%
	Other theft	29,598	19,974	Down	-4.3%
Arson		5,101	4,358	Down	-1.7%
Malicious damage to property		64,038	48,114	Down	-3.1%
Drug offences	Possession and/or use of cocaine	1,238	1,920	Up	5.0%
	Possession and/or use of narcotics	852	1,374	Up	5.5%
	Possession and/or use of cannabis	19,739	12,311	Down	-5.1%
	Possession and/or use of amphetamines	7,161	7,573	Stable	
	Possession and/or use of ecstasy	2,262	870	Down	-10.1%
	Possession and/or use of other drugs	3,864	4,813	Up	2.5%
	Dealing, trafficking in cocaine	412	967	Up	9.9%
	Dealing, trafficking in narcotics	483	301	Stable	
	Dealing, trafficking in cannabis	769	531	Down	-4.0%
	Dealing, trafficking in amphetamines	2,260	1,687	Down	-3.2%
	Dealing, trafficking in ecstasy	631	260	Down	-9.4%
	Dealing, trafficking in other drugs	327	375	Up	1.5%
	Cultivating cannabis	1,198	479	Down	-9.7%
	Manufacture drug	106	57	Down	-6.7%
	Importing drugs	38	63	Up	5.8%
	Other drug offences	5,459	4,625	Stable	
Prohibited and regulated weapons offences		12,426	15,179	Up	2.2%
Disorderly conduct	Trespass	9,786	12,817	Up	3.0%
	Offensive conduct	5,836	2,861	Down	-7.6%
	Offensive language	4,025	886	Down	-15.5%
	Criminal intent	2,248	3,020	Up	3.3%
Betting and gaming offences		163	19	n.c.	
Liquor offences		11,061	5,038	Down	-8.4%
Pornography offences		587	1,222	Up	8.5%
Against justice procedures	Escape custody	206	150	Down	-3.5%
	Breach Apprehended Violence Order	14,561	26,446	Up	6.9%
	Breach bail conditions	38,213	57,793	Up	4.7%
	Fail to appear	770	198	Stable	
	Resist or hinder officer	6,551	5,687	Down	-1.6%
	Other offences against justice procedures	559	2,123	Up	16.0%
Transport regulatory offences		117,350	61,125	Down	-7.0%
Other offences		15,627	11,726	Stable	

Note: The new coercive control offence commenced on 1 July 2024. The NSW Police Force made changes to the classification of ‘arson’ incidents from March 2023 and ‘blackmail and extortion’ incidents from June 2022. As such, the series for these offence categories are not comparable pre and post the changes being made. Prostitution offences are included as 'other offences' from the September 2024 report. See Appendix 4.1.

SECTION 2:

REGIONAL

COMPARISONS

Statistical Areas

Table 2.1: Two year trends and percent change in recorded criminal incidents for major offences by Statistical Area (SA4)
Over the two years to March 2025

Statistical Area	Murder	Domestic violence related assault	Non-domestic violence related assault	Sexual assault	Sexual touching, sexual act and other sexual offences	Robbery	Break and enter dwelling	Break and enter non-dwelling	Motor vehicle theft	Steal from motor vehicle	Steal from retail store	Other stealing offences	Malicious damage to property
Greater Sydney	ns	3.2	ns	9.8	5.2	ns	ns	ns	4.5	-6.8	5.1	ns	ns
Baulkham Hills and Hawkesbury		ns	ns	ns	ns	-28.9	ns	ns	ns	ns	ns	ns	ns
Blacktown		10.6	ns	ns	39.0	ns	-26.0	ns	ns	-26.7	ns	-10.7	ns
Central Coast		4.5	3.0	16.1	ns	ns	ns	ns	ns	ns	ns	ns	ns
City and Inner South		ns	ns	ns	13.0	ns	ns	ns	37.5	ns	ns	ns	ns
Eastern Suburbs		ns	ns	ns	ns	ns	ns	ns	ns	-31.4	ns	ns	ns
Inner South West		ns	ns	ns	ns	ns	ns	ns	22.3	ns	ns	ns	5.2
Inner West		ns	ns	-15.9	ns	ns	ns	ns	ns	ns	24.3	8.7	ns
North Sydney and Hornsby		ns	ns	29.7	ns	ns	ns	ns	ns	ns	14.0	ns	ns
Northern Beaches		ns	ns	ns	ns	ns	ns	ns	ns	ns	ns	ns	ns
Outer South West		ns	ns	18.1	ns	ns	ns	ns	ns	ns	ns	ns	ns
Outer West and Blue Mountains		ns	ns	10.8	ns	ns	-30.8	ns	-20.7	-32.3	ns	ns	ns
Parramatta		ns	ns	ns	ns	-23.2	ns	ns	ns	ns	ns	ns	ns
Ryde		ns	20.9	19.8	ns		ns	ns	ns	ns	ns	ns	ns
South West		7.8	ns	ns	ns	ns	ns	ns	10.3	ns	ns	ns	ns
Sutherland		ns	ns	ns	ns		ns	ns	ns	ns	27.9	ns	14.8
Regional NSW	ns	4.1	ns	ns	ns	-8.5	ns	ns	ns	-11.7	ns	ns	ns
Capital Region		ns	ns	ns	ns		-19.4	ns	ns	ns	ns	ns	ns
Central West		13.6	ns	ns	ns	ns	-26.9	-27.2	-16.4	-37.3	ns	ns	ns
Coffs Harbour - Grafton		ns	ns	ns	ns	ns	48.2	ns	13.5	ns	ns	ns	ns
Far West and Orana		ns	ns	ns	ns	ns	-29.4	ns	-20.1	-21.0	ns	-23.4	-14.4
Hunter Valley excluding Newcastle		ns	ns	ns	ns	ns	ns	-19.8	ns	ns	ns	-14.5	ns
Illawarra		7.1	ns	24.3	ns	ns	9.5	ns	22.0	-14.4	ns	ns	ns
Mid North Coast		5.0	ns	ns	ns	ns	ns	7.7	ns	-24.4	ns	ns	ns
Murray		12.4	1.2	ns	ns	ns	ns	ns	ns	ns	ns	ns	ns
New England and North West		14.8	ns	ns	ns	ns	-14.1	ns	ns	-25.3	24.4	ns	ns
Newcastle and Lake Macquarie		12.9	3.8	ns	ns	ns	ns	ns	ns	ns	ns	10.5	ns
Richmond - Tweed		12.7	ns	ns	ns	ns	ns	ns	ns	ns	ns	ns	ns
Riverina		ns	ns	ns	ns	ns	ns	ns	ns	ns	ns	ns	ns
Southern Highlands and Shoalhaven		9.3	ns	ns	ns		ns	-24.6	ns	ns	ns	ns	ns
NSW	ns	3.6	ns	6.4	ns	ns	ns	ns	ns	-9.1	4.3	ns	ns

Table 2.2: Ratio to NSW rate of recorded criminal incidents per 100,000 population for major offences by Statistical Area (SA4)
Over the 12 months to March 2025

Statistical Area	Murder	Domestic violence related assault	Non-domestic violence related assault	Sexual assault	Sexual touching, sexual act and other sexual offences	Robbery	Break and enter dwelling	Break and enter non-dwelling	Motor vehicle theft	Steal from motor vehicle	Steal from retail store	Other stealing offences	Malicious damage to property
Greater Sydney	0.9	0.8	0.8	0.7	0.8	1.0	0.7	0.6	0.8	0.8	0.9	0.9	0.8
Baulkham Hills and Hawkesbury	0.8	0.4	0.3	0.5	0.5	0.5	0.5	0.4	0.4	0.3	0.5	0.4	0.4
Blacktown	1.2	1.2	1.0	0.9	1.1	1.6	0.7	0.6	0.9	0.9	1.1	0.8	1.0
Central Coast	0.3	1.2	1.1	1.4	1.2	1.0	0.8	0.8	0.9	1.1	1.0	0.7	1.2
City and Inner South	1.2	1.0	2.3	1.1	1.6	3.1	0.9	1.1	1.1	1.1	2.9	3.2	1.4
Eastern Suburbs	2.7	0.5	0.8	0.6	0.8	0.9	0.6	0.4	0.7	0.6	1.0	1.1	0.8
Inner South West	0.5	0.9	0.7	0.5	0.6	0.8	0.6	0.5	0.8	0.8	0.6	0.6	0.7
Inner West	1.4	0.6	0.7	0.5	0.6	0.9	0.9	0.6	0.8	0.9	0.8	1.0	0.6
North Sydney and Hornsby		0.3	0.4	0.5	0.5	0.5	0.6	0.4	0.3	0.4	0.6	0.6	0.4
Northern Beaches		0.3	0.5	0.5	0.6	0.4	0.4	0.5	0.4	0.5	0.7	0.7	0.5
Outer South West	0.7	1.1	0.9	1.0	0.9	1.0	0.7	0.7	0.8	0.8	0.8	0.6	0.9
Outer West and Blue Mountains	2.5	1.0	1.0	1.2	1.1	1.0	0.7	1.0	0.8	1.0	1.1	0.9	1.1
Parramatta	1.0	0.9	0.9	0.6	0.7	1.3	1.1	0.8	1.0	1.4	1.0	1.1	0.7
Ryde	1.0	0.4	0.4	0.4	0.4	0.5	0.7	0.4	0.4	0.5	0.6	0.6	0.4
South West	1.1	1.1	0.8	0.7	0.8	1.1	0.7	0.5	1.0	1.0	0.7	0.7	0.8
Sutherland		0.6	0.5	0.6	0.6	0.3	0.3	0.3	0.3	0.4	0.8	0.5	0.7
Regional NSW	1.1	1.4	1.2	1.3	1.3	0.9	1.6	1.7	1.5	1.3	1.1	1.2	1.4
Capital Region		0.9	0.9	1.1	1.1	0.2	0.7	1.2	0.8	0.6	0.8	0.9	1.1
Central West	1.0	1.6	1.3	1.5	1.6	1.2	1.4	1.6	1.3	1.0	0.9	1.2	1.6
Coffs Harbour - Grafton	4.3	1.7	1.3	1.5	1.6	1.7	2.1	1.7	2.1	1.5	1.0	1.4	1.5
Far West and Orana	1.8	3.4	2.2	2.0	2.3	1.2	3.3	4.4	2.2	2.0	1.6	1.7	2.9
Hunter Valley excluding Newcastle	1.1	1.5	1.1	1.5	1.5	0.7	1.2	1.5	1.7	1.3	0.8	1.1	1.3
Illawarra	0.7	0.7	0.8	1.1	1.0	0.7	1.0	0.9	1.1	1.2	1.3	1.0	1.0
Mid North Coast	0.5	1.5	1.2	1.3	1.3	0.7	1.7	2.0	1.4	0.9	0.9	1.4	1.3
Murray	0.8	1.5	1.3	1.2	1.3	1.0	1.4	2.6	1.7	2.2	0.9	1.4	1.6
New England and North West	2.3	2.3	1.7	1.7	1.5	1.5	3.3	3.0	1.8	1.3	1.6	1.5	2.2
Newcastle and Lake Macquarie	0.8	1.0	1.2	1.2	1.1	1.4	1.5	1.6	1.7	2.2	1.6	1.3	1.3
Richmond - Tweed	2.1	1.0	1.2	1.1	1.2	0.9	1.7	1.3	1.8	1.1	1.1	1.1	1.2
Riverina		1.5	1.3	1.3	1.5	0.9	1.6	1.7	1.2	1.3	1.1	1.2	1.7
Southern Highlands and Shoalhaven		0.8	0.9	1.1	1.0	0.3	0.9	1.0	0.9	0.6	1.1	0.7	1.0
NSW	1.0	1.0	1.0	1.0	1.0	1.0	1.0	1.0	1.0	1.0	1.0	1.0	1.0

NSW Recorded Crime Statistics, March Quarter 2025

Table 2.3: Number of major offences by Statistical Area (SA4)
Over the 12 months to March 2025

Statistical Area	Murder	Domestic violence related assault	Non-domestic violence related assault	Sexual assault	Sexual touching, sexual act and other sexual offences	Robbery	Break and enter dwelling	Break and enter non-dwelling	Motor vehicle theft	Steal from motor vehicle	Steal from retail store	Other stealing offences	Malicious damage to property
Greater Sydney	48	20,169	18,653	5,504	4,580	1,279	8,660	3,321	7,383	14,131	17,419	22,431	24,377
Baulkham Hills and Hawkesbury	2	470	306	184	135	32	300	117	199	278	457	523	603
Blacktown	5	2,416	1,812	526	485	156	725	267	719	1,170	1,593	1,522	2,452
Central Coast	1	1,875	1,590	693	437	84	625	275	596	1,172	1,255	1,125	2,426
City and Inner South	4	1,610	3,301	554	591	251	735	383	712	1,231	3,515	5,209	2,792
Eastern Suburbs	7	651	881	235	239	53	376	99	336	490	928	1,355	1,184
Inner South West	3	2,546	1,669	455	398	110	860	328	893	1,648	1,231	1,707	2,402
Inner West	4	806	884	227	204	62	661	195	453	911	875	1,494	1,109
North Sydney and Hornsby	0	662	681	288	239	46	543	183	231	580	960	1,104	1,085
Northern Beaches	0	327	564	181	168	23	218	121	173	436	635	799	752
Outer South West	2	1,627	1,099	417	302	68	472	216	433	770	817	836	1,678
Outer West and Blue Mountains	8	1,557	1,453	552	383	75	554	342	507	1,017	1,250	1,340	2,125
Parramatta	5	2,090	1,934	444	352	152	1,316	411	967	2,203	1,721	2,609	2,120
Ryde	2	390	336	121	97	22	342	86	147	349	445	602	510
South West	5	2,512	1,637	447	398	128	751	222	886	1,590	1,128	1,688	2,254
Sutherland	0	630	506	180	152	17	182	76	131	286	609	518	885
Regional NSW	29	17,936	14,207	5,215	3,925	617	10,127	4,854	7,619	11,955	11,362	15,502	23,661
Capital Region	0	989	857	366	276	13	386	280	330	482	637	994	1,511
Central West	2	1,577	1,174	448	356	57	699	337	494	640	689	1,142	1,998
Coffs Harbour - Grafton	6	1,127	805	309	240	59	701	251	563	691	528	925	1,321
Far West and Orana	2	1,809	1,076	319	275	32	880	512	456	724	657	930	2,000
Hunter Valley excluding Newcastle	3	2,035	1,376	608	481	51	792	455	914	1,233	845	1,480	2,235
Illawarra	2	1,059	1,005	497	347	52	705	285	620	1,202	1,433	1,403	1,784
Mid North Coast	1	1,626	1,158	401	309	36	891	450	598	668	730	1,444	1,820
Murray	1	888	690	209	172	30	405	319	380	880	376	817	1,188
New England and North West	4	2,027	1,294	438	289	63	1,402	558	611	775	1,035	1,287	2,412
Newcastle and Lake Macquarie	3	1,921	2,013	685	441	125	1,397	643	1,205	2,795	2,261	2,404	3,051
Richmond - Tweed	5	1,141	1,265	403	310	53	970	338	820	861	944	1,284	1,793
Riverina	0	1,105	874	293	256	34	582	273	351	674	604	879	1,579
Southern Highlands and Shoalhaven	0	632	620	239	173	12	317	153	277	330	623	513	969
NSW	78	38,108	34,285	11,421	8,628	1,902	18,787	8,176	15,002	26,086	28,781	37,950	48,114

NSW Recorded Crime Statistics, March Quarter 2025

Table 2.4: Number of major offences by Statistical Area (SA4)
Over the 12 months to March 2024

Statistical Area	Murder	Domestic violence related assault	Non-domestic violence related assault	Sexual assault	Sexual touching, sexual act and other sexual offences	Robbery	Break and enter dwelling	Break and enter non-dwelling	Motor vehicle theft	Steal from motor vehicle	Steal from retail store	Other stealing offences	Malicious damage to property
Greater Sydney	39	19,544	19,008	5,014	4,355	1,272	9,062	3,464	7,067	15,165	16,568	23,247	24,726
Baulkham Hills and Hawkesbury	1	438	382	152	136	45	281	129	183	319	457	577	636
Blacktown	4	2,184	1,792	418	349	162	980	236	771	1,596	1,494	1,705	2,518
Central Coast	2	1,794	1,544	597	409	66	703	277	617	1,261	1,087	1,249	2,405
City and Inner South	3	1,587	3,404	498	523	219	713	445	518	1,137	3,314	5,232	2,819
Eastern Suburbs	3	753	978	264	256	47	496	110	350	714	1,037	1,452	1,203
Inner South West	8	2,381	1,646	448	356	108	757	245	730	1,486	1,217	1,750	2,283
Inner West	3	814	925	270	223	59	561	232	411	857	704	1,375	1,171
North Sydney and Hornsby	1	701	660	222	262	35	507	192	231	551	842	1,080	1,068
Northern Beaches	1	315	547	166	145	34	212	131	189	414	733	838	876
Outer South West	1	1,491	1,137	353	321	55	409	165	422	817	878	881	1,613
Outer West and Blue Mountains	2	1,737	1,568	498	392	85	800	431	639	1,503	1,177	1,487	2,408
Parramatta	5	2,063	2,011	429	367	198	1,363	427	925	2,246	1,609	2,733	2,241
Ryde	0	378	278	101	119	15	266	107	165	345	404	606	494
South West	5	2,330	1,675	440	362	116	784	276	803	1,603	1,139	1,757	2,220
Sutherland	0	578	461	158	135	28	230	61	113	316	476	525	771
Regional NSW	30	17,223	14,648	5,030	3,693	674	11,363	5,196	7,523	13,537	11,027	16,012	24,821
Capital Region	2	1,054	925	331	228	25	479	237	353	598	603	1,032	1,540
Central West	2	1,388	1,270	427	298	49	956	463	591	1,021	722	1,228	2,119
Coffs Harbour - Grafton	3	1,205	879	304	216	57	473	303	496	681	485	840	1,383
Far West and Orana	1	2,006	1,166	276	244	37	1,247	611	571	917	717	1,214	2,336
Hunter Valley excluding Newcastle	2	2,092	1,420	540	433	67	890	567	862	1,289	970	1,731	2,531
Illawarra	3	989	1,119	400	320	59	644	269	508	1,404	1,511	1,349	1,768
Mid North Coast	3	1,548	1,170	406	327	51	1,029	418	640	884	684	1,413	2,018
Murray	1	790	682	200	181	21	472	324	369	890	419	788	1,197
New England and North West	2	1,766	1,331	482	319	79	1,633	491	673	1,037	832	1,305	2,445
Newcastle and Lake Macquarie	1	1,702	1,939	681	435	127	1,505	636	1,119	2,661	2,136	2,176	3,059
Richmond - Tweed	9	1,012	1,233	412	310	44	929	376	712	1,003	863	1,375	1,757
Riverina	0	1,093	866	323	196	38	765	298	363	715	539	1,014	1,557
Southern Highlands and Shoalhaven	1	578	648	248	186	20	341	203	266	437	546	547	1,111
NSW	70	36,779	34,981	10,736	8,164	1,953	20,425	8,661	14,590	28,704	27,595	39,266	49,611

NSW Recorded Crime Statistics, March Quarter 2025

Table 2.5: Rate per 100,000 population of major offences by Statistical Area (SA4)
Over the 12 months to March 2025

Statistical Area	Murder	Domestic violence related assault	Non-domestic violence related assault	Sexual assault	Sexual touching, sexual act and other sexual offences	Robbery	Break and enter dwelling	Break and enter non-dwelling	Motor vehicle theft	Steal from motor vehicle	Steal from retail store	Other stealing offences	Malicious damage to property
Greater Sydney	0.9	370.0	342.2	101.0	84.0	23.5	158.9	60.9	135.5	259.3	319.6	411.5	447.2
Baulkham Hills and Hawkesbury	0.7	167.8	109.3	65.7	48.2	11.4	107.1	41.8	71.0	99.3	163.2	186.7	215.3
Blacktown	1.2	561.2	420.9	122.2	112.6	36.2	168.4	62.0	167.0	271.8	370.0	353.5	569.5
Central Coast	0.3	532.8	451.8	196.9	124.2	23.9	177.6	78.1	169.3	333.0	356.6	319.7	689.3
City and Inner South	1.1	452.0	926.8	155.5	165.9	70.5	206.4	107.5	199.9	345.6	986.8	1,462.4	783.9
Eastern Suburbs	2.6	238.3	322.5	86.0	87.5	19.4	137.7	36.2	123.0	179.4	339.8	496.1	433.5
Inner South West	0.5	408.4	267.7	73.0	63.8	17.6	137.9	52.6	143.2	264.3	197.4	273.8	385.3
Inner West	1.3	256.1	280.8	72.1	64.8	19.7	210.0	61.9	143.9	289.4	278.0	474.6	352.3
North Sydney and Hornsby		151.4	155.7	65.8	54.6	10.5	124.2	41.8	52.8	132.6	219.5	252.4	248.1
Northern Beaches		122.1	210.5	67.6	62.7	8.6	81.4	45.2	64.6	162.7	237.0	298.2	280.7
Outer South West	0.6	522.6	353.0	133.9	97.0	21.8	151.6	69.4	139.1	247.3	262.4	268.5	538.9
Outer West and Blue Mountains	2.3	456.4	425.9	161.8	112.3	22.0	162.4	100.2	148.6	298.1	366.4	392.8	622.8
Parramatta	1.0	405.9	375.6	86.2	68.4	29.5	255.6	79.8	187.8	427.8	334.2	506.7	411.7
Ryde	0.9	184.8	159.2	57.3	46.0	10.4	162.0	40.7	69.6	165.4	210.8	285.2	241.6
South West	1.0	500.3	326.0	89.0	79.3	25.5	149.6	44.2	176.5	316.7	224.7	336.2	448.9
Sutherland		268.7	215.8	76.8	64.8	7.3	77.6	32.4	55.9	122.0	259.7	220.9	377.5
Regional NSW	1.0	620.2	491.3	180.3	135.7	21.3	350.2	167.9	263.5	413.4	392.9	536.1	818.2
Capital Region		406.8	352.5	150.6	113.5	5.3	158.8	115.2	135.7	198.3	262.0	408.9	621.6
Central West	0.9	734.0	546.4	208.5	165.7	26.5	325.3	156.9	229.9	297.9	320.7	531.5	929.9
Coffs Harbour - Grafton	4.0	756.2	540.1	207.3	161.0	39.6	470.3	168.4	377.7	463.6	354.3	620.6	886.3
Far West and Orana	1.7	1,534.4	912.6	270.6	233.3	27.1	746.4	434.3	386.8	614.1	557.3	788.8	1,696.4
Hunter Valley excluding Newcastle	1.0	667.0	451.0	199.3	157.6	16.7	259.6	149.1	299.6	404.1	276.9	485.1	732.5
Illawarra	0.6	329.1	312.3	154.4	107.8	16.2	219.1	88.6	192.7	373.5	445.3	436.0	554.4
Mid North Coast	0.4	694.0	494.3	171.2	131.9	15.4	380.3	192.1	255.2	285.1	311.6	616.3	776.8
Murray	0.8	704.7	547.6	165.9	136.5	23.8	321.4	253.1	301.6	698.3	298.4	648.3	942.7
New England and North West	2.1	1,070.6	683.5	231.3	152.6	33.3	740.5	294.7	322.7	409.3	546.7	679.8	1,274.0
Newcastle and Lake Macquarie	0.7	478.0	500.9	170.4	109.7	31.1	347.6	160.0	299.8	695.5	562.6	598.2	759.2
Richmond - Tweed	1.9	438.1	485.7	154.7	119.0	20.3	372.4	129.8	314.8	330.6	362.4	493.0	688.4
Riverina		668.8	529.0	177.3	154.9	20.6	352.2	165.2	212.4	407.9	365.5	532.0	955.6
Southern Highlands and Shoalhaven		388.3	380.9	146.8	106.3	7.4	194.8	94.0	170.2	202.7	382.8	315.2	595.3
NSW	0.9	456.8	411.0	136.9	103.4	22.8	225.2	98.0	179.8	312.7	345.0	454.9	576.7

Table 2.6: Ten year trends and annual average percent change in recorded criminal incidents for major offences by Statistical Area (SA4)
Over the ten years to March 2025

Statistical Area	Murder	Domestic violence related assault	Non-domestic violence related assault	Sexual assault	Sexual touching, sexual act and other sexual offences	Robbery	Break and enter dwelling	Break and enter non-dwelling	Motor vehicle theft	Steal from motor vehicle	Steal from retail store	Other stealing offences	Malicious damage to property
Greater Sydney	ns	2.5	ns	8.8	2.8	-4.1	-6.6	-4.6	-1.0	-5.2	2.4	-4.3	-3.6
Baulkham Hills and Hawkesbury		2.6	ns	8.3	2.9		-6.4	-4.1	ns	-8.0	4.8	-2.7	-2.3
Blacktown		2.0	1.6	7.7	3.4	-6.8	-8.3	-3.9	-1.5	-7.7	3.1	-4.8	-3.7
Central Coast		2.1	1.3	11.7	ns	ns	-7.5	-5.4	-2.0	-4.8	1.1	-6.3	-3.6
City and Inner South		2.7	-1.1	8.7	3.5	-3.7	-4.5	-4.8	2.1	-6.6	ns	-4.2	-3.0
Eastern Suburbs		ns	ns	8.8	3.7	-2.1	-8.3	-4.7	ns	-8.3	ns	-6.2	-3.6
Inner South West		2.2	ns	9.2	3.7	-8.2	-6.6	-4.1	-2.8	-3.4	3.5	-4.6	-3.4
Inner West		2.7	2.1	8.9	ns	-4.4	-4.8	-3.5	ns	-5.2	3.6	-3.3	-3.9
North Sydney and Hornsby		3.7	ns	10.6	3.7	ns	-6.4	-7.1	ns	-5.7	ns	-4.7	-4.5
Northern Beaches		ns	ns	9.8	2.7	ns	-6.6	-8.6	-2.4	-7.8	ns	-5.3	-6.4
Outer South West		2.6	1.8	6.9	ns	-1.4	-8.7	-2.5	ns	-5.6	ns	-5.3	-3.1
Outer West and Blue Mountains		ns	1.0	8.9	2.2	-5.6	-8.9	-1.9	-2.4	-4.5	2.5	-4.7	-4.4
Parramatta		2.6	1.8	6.4	ns	-4.6	-4.0	-3.4	1.2	-2.5	5.0	-2.1	-3.2
Ryde		4.9	ns	11.6	ns		-4.0	-6.3	ns	-3.1	ns	-2.1	-3.6
South West		4.5	3.7	8.1	4.7	-2.9	-7.5	-6.3	ns	-4.4	ns	-3.3	-2.2
Sutherland		3.7	-1.0	10.5	ns		-9.2	-7.3	-5.5	-9.2	ns	-5.7	-5.6
Regional NSW	ns	3.5	1.3	8.2	1.7	ns	-4.3	-3.7	3.3	-4.0	3.4	-4.5	-2.6
Capital Region		2.9	1.3	8.8	ns		-7.0	-3.3	2.3	-7.4	ns	-3.0	-3.2
Central West		3.3	ns	7.3	3.4	ns	-8.2	-8.2	1.0	-8.1	ns	-5.9	-3.5
Coffs Harbour - Grafton		5.2	1.2	8.1	3.2	5.3	-1.1	-3.7	9.8	ns	ns	-4.0	ns
Far West and Orana		3.9	ns	7.0	ns	ns	-5.7	ns	1.2	-6.3	ns	-6.1	-2.7
Hunter Valley excluding Newcastle		4.1	3.4	10.6	4.6	ns	-6.3	-4.3	ns	-5.4	ns	-4.3	-2.3
Illawarra		ns	ns	9.2	4.7	-6.5	-5.9	-7.6	ns	-4.6	4.5	-4.7	-3.9
Mid North Coast		5.1	2.1	6.5	ns	ns	ns	-2.2	3.2	-3.5	ns	-4.0	-2.0
Murray		6.1	2.5	8.9	1.7		-3.8	ns	7.9	ns	ns	-3.0	ns
New England and North West		5.0	1.3	8.6	ns	ns	ns	-2.0	5.3	-5.3	ns	-3.8	-2.2
Newcastle and Lake Macquarie		3.3	2.0	9.0	ns	ns	-1.6	ns	3.2	ns	7.2	-2.9	-2.4
Richmond - Tweed		3.3	ns	7.4	ns	ns	ns	-4.2	7.6	-3.4	ns	-5.4	-1.6
Riverina		1.6	ns	7.0	ns	ns	-8.6	-5.5	ns	-6.6	ns	-5.9	-2.8
Southern Highlands and Shoalhaven		1.8	1.7	6.0	ns		-8.2	-6.7	3.1	-5.2	ns	-7.6	-3.5
NSW	ns	3.0	1.1	9.2	2.4	-3.1	-5.4	-4.1	ns	-4.7	2.8	-4.4	-3.1

NSW Recorded Crime Statistics, March Quarter 2025

Table 2.7: Number of major offences by Statistical Area (SA4)
Over the 12 months to March 2016

Statistical Area	Murder	Domestic violence related assault	Non-domestic violence related assault	Sexual assault	Sexual touching, sexual act and other sexual offences	Robbery	Break and enter dwelling	Break and enter non-dwelling	Motor vehicle theft	Steal from motor vehicle	Steal from retail store	Other stealing offences	Malicious damage to property
Greater Sydney	40	16,205	17,424	2,572	3,586	1,866	16,023	5,068	8,084	22,863	14,097	33,217	33,944
Baulkham Hills and Hawkesbury	0	373	327	90	104	29	545	170	201	588	299	669	745
Blacktown	7	2,024	1,571	270	360	294	1,581	381	824	2,399	1,209	2,378	3,448
Central Coast	4	1,554	1,415	255	343	91	1,256	453	715	1,822	1,139	2,022	3,359
City and Inner South	4	1,264	3,651	262	434	353	1,115	596	592	2,268	2,610	7,648	3,664
Eastern Suburbs	1	671	977	110	173	64	822	152	406	1,069	909	2,406	1,644
Inner South West	6	2,094	1,610	206	286	238	1,586	477	1,148	2,250	903	2,604	3,289
Inner West	0	632	734	105	178	93	1,025	269	482	1,477	639	2,025	1,581
North Sydney and Hornsby	3	478	605	116	173	33	984	354	209	982	931	1,697	1,643
Northern Beaches	1	328	583	78	132	29	404	273	216	902	576	1,302	1,365
Outer South West	3	1,289	938	228	308	77	1,075	272	490	1,289	789	1,367	2,234
Outer West and Blue Mountains	3	1,431	1,323	257	315	126	1,280	405	631	1,533	1,002	2,063	3,192
Parramatta	3	1,666	1,647	255	317	233	1,909	562	871	2,758	1,114	3,145	2,833
Ryde	1	253	309	45	89	16	496	154	99	464	422	726	710
South West	4	1,694	1,178	222	264	167	1,510	399	981	2,383	1,021	2,290	2,749
Sutherland	0	454	556	73	110	23	435	151	219	679	534	875	1,488
Regional NSW	28	13,104	12,659	2,569	3,361	663	15,021	6,817	5,687	17,196	8,402	23,403	29,864
Capital Region	4	767	760	172	254	12	741	380	268	965	524	1,309	2,016
Central West	4	1,173	1,126	238	263	46	1,513	725	450	1,371	723	1,971	2,755
Coffs Harbour - Grafton	0	715	721	153	180	37	774	353	243	853	398	1,333	1,514
Far West and Orana	5	1,286	984	174	212	33	1,497	616	411	1,296	528	1,639	2,552
Hunter Valley excluding Newcastle	1	1,421	1,017	245	321	79	1,425	673	744	2,032	790	2,196	2,763
Illawarra	3	1,083	1,123	226	229	95	1,216	580	585	1,838	961	2,160	2,558
Mid North Coast	1	1,042	961	227	340	55	1,297	552	451	924	572	2,089	2,190
Murray	0	522	553	97	148	16	575	336	192	640	309	1,070	1,329
New England and North West	3	1,304	1,154	209	316	54	1,482	669	383	1,266	760	1,816	2,943
Newcastle and Lake Macquarie	4	1,439	1,684	315	403	119	1,609	692	907	3,047	1,212	3,133	3,798
Richmond - Tweed	1	854	1,166	212	268	56	902	499	424	1,180	577	2,124	2,077
Riverina	2	958	875	160	216	32	1,304	456	418	1,252	620	1,523	2,038
Southern Highlands and Shoalhaven	0	540	535	141	211	29	686	286	211	532	428	1,040	1,331
NSW	68	29,319	31,062	5,180	6,962	2,532	31,044	11,887	13,772	40,061	22,499	56,636	64,038

SECTION 3:

LEGAL

PROCEEDINGS

Table 3.1: Adults proceeded against by the NSW Police Force by method of legal proceeding
Over the ten years to March 2025

Method of legal proceeding	Adults proceeded against										Trend and average annual percentage change	
	12 months to March 2016	12 months to March 2017	12 months to March 2018	12 months to March 2019	12 months to March 2020	12 months to March 2021	12 months to March 2022	12 months to March 2023	12 months to March 2024	12 months to March 2025	2 Year Trend	10 Year Trend
Proceeded against to court (offence)	142,682	143,690	144,268	148,926	147,272	144,197	144,919	158,085	156,806	161,757	3.2%	1.4%
Proceeded against to court (breach of bail)	4,522	5,357	5,470	6,072	7,265	7,853	7,604	7,910	7,874	7,990	Stable	6.5%
Court diversion	15,986	14,704	14,989	13,420	13,031	9,442	8,436	9,796	8,388	8,015	Stable	-7.4%
Criminal Infringement Notice	9,754	9,442	9,488	8,750	8,593	5,913	5,556	6,850	5,956	5,944	Stable	-5.4%
Cannabis or other drug caution	6,232	5,262	5,501	4,670	4,438	3,529	2,880	2,946	2,432	2,071	-14.8%	-11.5%

Table 3.2: Young people proceeded against by the NSW Police Force by method of legal proceeding
Over the ten years to March 2025

Method of legal proceeding	Young people proceeded against										Trend and average annual percentage change	
	12 months to March 2016	12 months to March 2017	12 months to March 2018	12 months to March 2019	12 months to March 2020	12 months to March 2021	12 months to March 2022	12 months to March 2023	12 months to March 2024	12 months to March 2025	2 Year Trend	10 Year Trend
Proceeded against to court (offence)	10,838	9,868	10,742	9,976	9,964	9,561	9,327	10,571	11,208	11,261	Stable	Stable
Proceeded against to court (breach of bail)	1,429	1,349	1,523	1,626	1,624	1,471	1,388	1,528	1,718	1,458	-15.1%	Stable
Court diversion	10,033	9,886	10,851	9,899	10,867	10,731	12,128	11,160	10,665	10,042	Stable	Stable
Youth Justice Conference	613	501	681	696	824	785	686	753	883	966	Stable	5.2%
Caution Young Offenders Act	7,143	6,811	7,451	6,733	7,299	6,748	6,412	7,201	6,833	6,326	Stable	-1.3%
Warning Young Offenders Act	2,277	2,574	2,719	2,470	2,744	3,198	5,030	3,206	2,949	2,750	-6.7%	2.1%

Table 3.3: Adults proceeded against to court by the NSW Police Force for all 62 criminal offences types
Over the two years to March 2025

		12 months to March 2024		12 months to March 2025		2 Year Trend	
		No. proceeded to court	% proceeded to court	No. proceeded to court	% proceeded to court	Trend test result	Percentage change
Offence category							
Homicide	Murder	115	100.0%	85	100.0%	Stable	
	Attempted murder	13	100.0%	20	100.0%	n.c.	
	Murder accessory, conspiracy	7	100.0%	6	100.0%	n.c.	
	Manslaughter	7	100.0%	8	100.0%	n.c.	
Assault	Domestic violence related assault	13,863	99.9%	14,618	99.9%	Up	5.4%
	Non-domestic violence related assault	7,044	96.3%	7,194	96.8%	Up	2.1%
	Assault Police	1,385	100.0%	1,464	99.9%	Stable	
Sexual offences	Sexual assault	799	100.0%	814	100.0%	Stable	
	Sexual touching, sexual act and other sexual offences	1,389	98.5%	1,537	98.5%	Up	10.7%
Abduction and kidnapping		173	100.0%	176	100.0%	Stable	
Robbery	Robbery without a weapon	340	99.7%	307	100.0%	Stable	
	Robbery with a firearm	69	100.0%	65	100.0%	Stable	
	Robbery with a weapon not a firearm	246	100.0%	258	100.0%	Stable	
Blackmail and extortion		29	100.0%	36	100.0%	Stable	
Coercive Control		n.a.		3	100.0%	n.c.	
Intimidation, stalking and harassment		14,715	98.9%	16,037	99.2%	Up	9.0%
Other offences against the person		360	96.8%	382	97.0%	Stable	
Theft	Break and enter dwelling	2,419	99.6%	2,291	99.1%	Stable	
	Break and enter non-dwelling	1,477	99.9%	1,541	99.4%	Stable	
	Receiving or handling stolen goods	4,707	97.9%	4,512	97.9%	Stable	
	Motor vehicle theft	1,416	99.7%	1,471	99.7%	Stable	
	Steal from motor vehicle	1,118	98.5%	839	97.7%	Down	-25.0%
	Steal from retail store	7,802	75.5%	7,857	79.0%	Stable	
	Steal from dwelling	809	94.7%	880	97.2%	Stable	
	Steal from person	214	96.8%	216	97.3%	Stable	
	Stock theft	10	100.0%	6	85.7%	n.c.	
	Fraud	4,046	98.9%	3,600	99.2%	Down	-11.0%
	Other theft	1,825	91.6%	1,743	91.8%	Stable	
Arson		210	85.4%	227	93.8%	Stable	
Malicious damage to property		5,153	99.4%	5,155	99.6%	Stable	
Drug offences	Possession and/or use of cocaine	1,130	90.2%	689	66.8%	Down	-39.0%
	Possession and/or use of narcotics	549	99.6%	630	97.4%	Up	14.8%
	Possession and/or use of cannabis	4,141	63.0%	3,280	61.0%	Down	-20.8%
	Possession and/or use of amphetamines	2,912	98.8%	3,165	93.9%	Up	8.7%
	Possession and/or use of ecstasy	350	55.8%	240	46.2%	Stable	
	Possession and/or use of other drugs	1,451	94.2%	1,198	91.7%	Down	-17.4%
	Dealing, trafficking in cocaine	748	100.0%	622	100.0%	Stable	
	Dealing, trafficking in narcotics	135	100.0%	174	100.0%	Stable	
	Dealing, trafficking in cannabis	326	99.7%	287	100.0%	Stable	
	Dealing, trafficking in amphetamines	654	100.0%	733	100.0%	Up	12.1%
	Dealing, trafficking in ecstasy	109	100.0%	119	100.0%	Stable	
	Dealing, trafficking in other drugs	224	100.0%	203	100.0%	Stable	
	Cultivating cannabis	421	100.0%	291	100.0%	Stable	
	Manufacture drug	55	100.0%	69	100.0%	Stable	
	Importing drugs	70	100.0%	47	100.0%	Stable	
	Other drug offences	521	96.3%	484	92.5%	Stable	
Prohibited and regulated weapons offences		2,937	87.5%	3,087	90.2%	Stable	
Disorderly conduct	Trespass	1,600	72.4%	1,693	72.4%	Stable	
	Offensive conduct	298	18.7%	290	18.8%	Stable	
	Offensive language	91	17.6%	75	16.5%	Stable	
	Criminal intent	1,262	99.9%	1,361	99.9%	Stable	
Betting and gaming offences		10	83.3%	6	100.0%	n.c.	
Liquor offences		128	6.9%	117	8.5%	Stable	
Pornography offences		280	100.0%	251	100.0%	Stable	
Against justice procedures	Escape custody	80	100.0%	89	100.0%	Stable	
	Breach Apprehended Violence Order	12,992	100.0%	14,140	100.0%	Up	8.8%
	Breach bail conditions	7,874	100.0%	7,990	97.9%	Stable	
	Fail to appear	21	100.0%	5	71.4%	n.c.	
	Resist or hinder officer	1,624	86.2%	1,724	87.5%	Up	6.2%
	Other offences against justice procedures	1,323	100.0%	1,273	99.8%	Stable	
Transport regulatory offences		366	0.8%	330	0.8%	Stable	
Other offences		2,063	41.1%	2,158	45.7%	Stable	

NSW Recorded Crime Statistics, March Quarter 2025

Table 3.4: Young people proceeded against to court by the NSW Police Force for all 62 criminal offences
Over the two years to March 2025

		12 months to March 2024		12 months to March 2025		2 Year Trend	
Offence category		No. proceeded to court	% proceeded to court	No. proceeded to court	% proceeded to court	Trend test result	Percentage change
Homicide	Murder	7	100.0%	9	100.0%	n.c.	
	Attempted murder	1	100.0%	0		n.c.	
	Murder accessory, conspiracy	0		0		n.c.	
	Manslaughter	0		0		n.c.	
Assault	Domestic violence related assault	435	38.8%	400	34.9%	Stable	
	Non-domestic violence related assault	873	32.6%	932	36.8%	Up	6.8%
	Assault Police	149	83.2%	139	81.3%	Stable	
Sexual offences	Sexual assault	112	98.2%	126	99.2%	Stable	
	Sexual touching, sexual act and other sexual offences	63	63.0%	75	76.5%	Stable	
Abduction and kidnapping		10	100.0%	18	100.0%	n.c.	
Robbery	Robbery without a weapon	311	91.2%	302	89.1%	Stable	
	Robbery with a firearm	16	100.0%	4	100.0%	n.c.	
	Robbery with a weapon not a firearm	205	97.2%	207	95.8%	Stable	
Blackmail and extortion		8	100.0%	2	33.3%	n.c.	
Coercive Control		n.a.		0		n.c.	
Intimidation, stalking and harassment		1,280	70.1%	1,410	72.8%	Stable	
Other offences against the person		17	45.9%	22	56.4%	n.c.	
Theft	Break and enter dwelling	941	85.4%	967	84.2%	Stable	
	Break and enter non-dwelling	623	67.2%	445	58.5%	Stable	
	Receiving or handling stolen goods	282	57.7%	256	57.1%	Stable	
	Motor vehicle theft	860	73.5%	849	75.1%	Stable	
	Steal from motor vehicle	267	76.1%	194	61.2%	Stable	
	Steal from retail store	754	39.9%	939	44.7%	Stable	
	Steal from dwelling	63	44.7%	57	53.3%	Stable	
	Steal from person	64	71.1%	56	61.5%	Stable	
	Stock theft	0		0		n.c.	
	Fraud	310	68.4%	259	69.6%	Down	-16.5%
	Other theft	138	37.1%	106	34.8%	Stable	
Arson		43	28.7%	31	30.7%	Stable	
Malicious damage to property		520	33.8%	576	36.0%	Stable	
Drug offences	Possession and/or use of cocaine	5	38.5%	3	25.0%	n.c.	
	Possession and/or use of narcotics	0		0		n.c.	
	Possession and/or use of cannabis	161	17.5%	146	20.4%	Down	-9.3%
	Possession and/or use of amphetamines	7	38.9%	14	58.3%	n.c.	
	Possession and/or use of ecstasy	5	45.5%	4	30.8%	n.c.	
	Possession and/or use of other drugs	9	39.1%	15	41.7%	n.c.	
	Dealing, trafficking in cocaine	21	100.0%	10	90.9%	n.c.	
	Dealing, trafficking in narcotics	1	100.0%	0		n.c.	
	Dealing, trafficking in cannabis	20	87.0%	15	78.9%	n.c.	
	Dealing, trafficking in amphetamines	2	100.0%	1	100.0%	n.c.	
	Dealing, trafficking in ecstasy	5	83.3%	9	100.0%	n.c.	
	Dealing, trafficking in other drugs	0		2	100.0%	n.c.	
	Cultivating cannabis	2	66.7%	0		n.c.	
	Manufacture drug	0		0		n.c.	
	Importing drugs	0		0		n.c.	
	Other drug offences	7	14.6%	5	16.7%	n.c.	
Prohibited and regulated weapons offences		142	26.9%	170	31.4%	Stable	
Disorderly conduct	Trespass	260	18.6%	252	20.4%	Stable	
	Offensive conduct	16	6.5%	16	7.8%	n.c.	
	Offensive language	6	14.6%	2	7.7%	n.c.	
	Criminal intent	247	82.3%	222	80.4%	Stable	
Betting and gaming offences		.					
Liquor offences		2	1.6%	0		n.c.	
Pornography offences		25	32.5%	9	16.1%	n.c.	
Against justice procedures	Escape custody	5	100.0%	0		n.c.	
	Breach Apprehended Violence Order	497	99.8%	494	99.6%	Stable	
	Breach bail conditions	1,718	98.5%	1,458	96.9%	Down	-15.1%
	Fail to appear	1	100.0%	0		n.c.	
	Resist or hinder officer	80	47.9%	85	50.9%	Stable	
	Other offences against justice procedures	8	100.0%	4	100.0%	n.c.	
Transport regulatory offences		40	0.2%	51	0.3%	Stable	
Other offences		116	17.4%	180	24.2%	Stable	

Figure 3.5: Offences with the largest change in the number of adults proceeded against to court by the NSW Police Force

Between the 12 months to March 2024 and the 12 months to March 2025

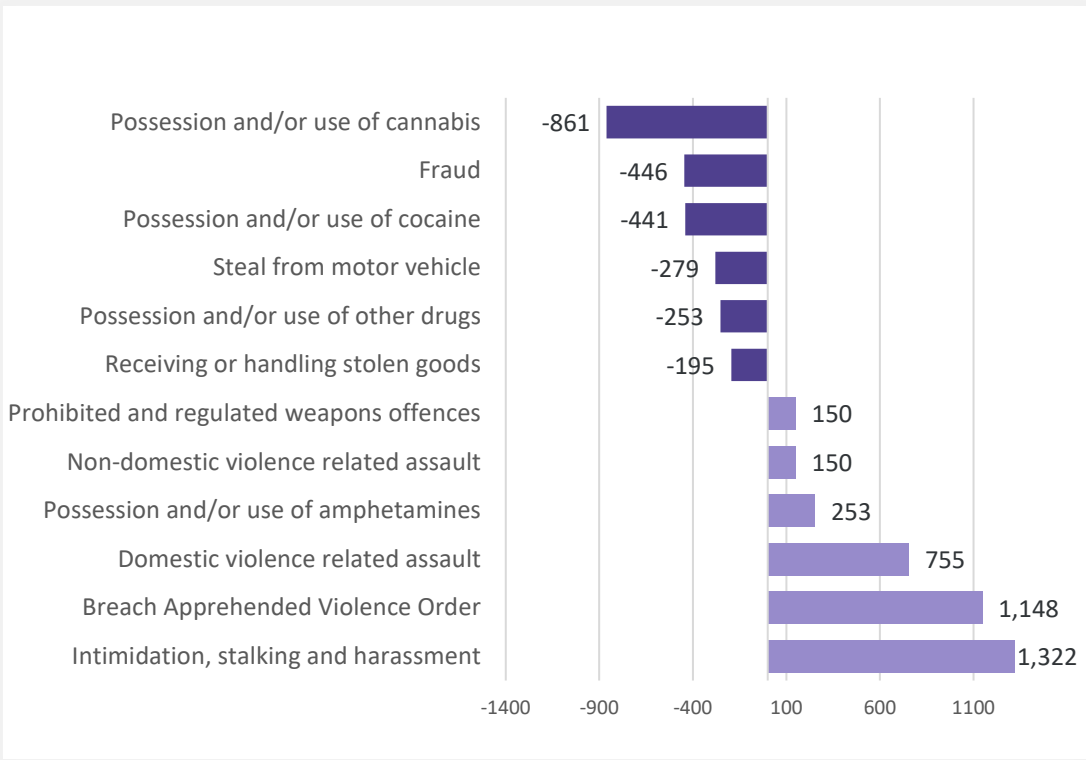
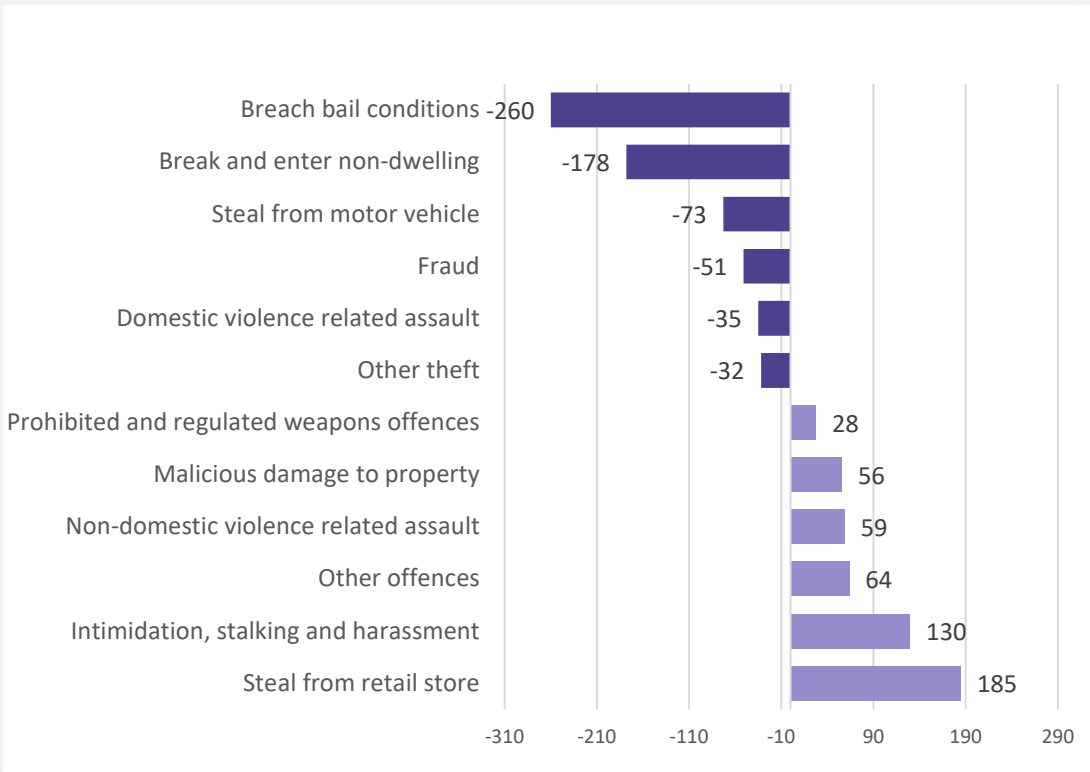


Figure 3.6: Offences with the largest change in the number of young people proceeded against to court by the NSW Police Force

Between the 12 months to March 2024 and the 12 months to March 2025



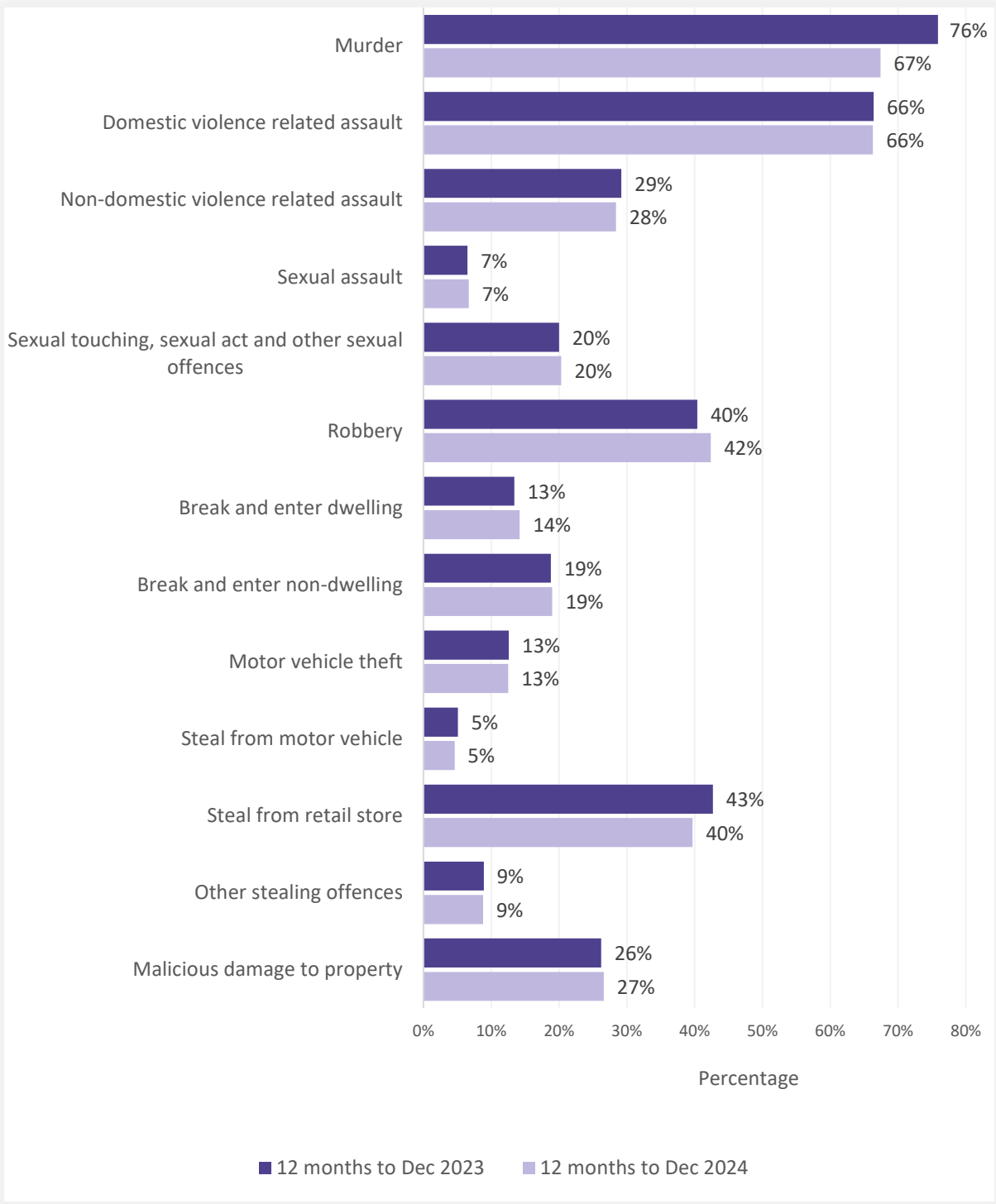
NSW Recorded Crime Statistics, March Quarter 2025

Table 3.7: Incidents of all 62 criminal offence types by whether legal proceedings commenced within 90 days of reporting
Over the two years to December 2024

		Recorded criminal incidents over the 12 months to December 2023			Recorded criminal incidents over the 12 months to December 2024		
Offence category		Proceedings commenced within 90 days	Total number recorded	% proceedings commenced within 90 days	Proceedings commenced within 90 days	Total number recorded	% proceedings commenced within 90 days
Homicide	Murder	44	58	75.9%	60	89	67.4%
	Attempted murder	5	14	35.7%	6	15	40.0%
	Murder accessory, conspiracy	1	1	100.0%	1	3	33.3%
	Manslaughter	4	13	30.8%	3	7	42.9%
Assault	Domestic violence related assault	24,085	36,261	66.4%	25,396	38,294	66.3%
	Non-domestic violence related assault	10,089	34,524	29.2%	9,912	34,895	28.4%
	Assault Police	2,241	2,557	87.6%	2,330	2,668	87.3%
Sexual offences	Sexual assault	681	10,527	6.5%	743	11,171	6.7%
	Sexual touching, sexual act and other sexual offences	1,639	8,192	20.0%	1,746	8,591	20.3%
Abduction and kidnapping		125	273	45.8%	115	222	51.8%
Robbery	Robbery without a weapon	451	1,118	40.3%	444	1,063	41.8%
	Robbery with a firearm	47	107	43.9%	41	93	44.1%
	Robbery with a weapon not a firearm	281	704	39.9%	351	818	42.9%
Blackmail and extortion		17	1,855	0.9%	37	1,207	3.1%
Coercive Control		n.a.	n.a.	n.a.	4	146	2.7%
Intimidation, stalking and harassment		20,895	46,630	44.8%	22,286	48,680	45.8%
Other offences against the person		536	1,646	32.6%	550	1,559	35.3%
Theft	Break and enter dwelling	2,691	20,028	13.4%	2,758	19,413	14.2%
	Break and enter non-dwelling	1,626	8,638	18.8%	1,581	8,305	19.0%
	Receiving or handling stolen goods	6,410	7,994	80.2%	6,309	7,766	81.2%
	Motor vehicle theft	1,810	14,324	12.6%	1,869	14,913	12.5%
	Steal from motor vehicle	1,486	29,071	5.1%	1,220	26,772	4.6%
	Steal from retail store	11,683	27,392	42.7%	11,198	28,233	39.7%
	Steal from dwelling	1,039	15,911	6.5%	1,067	16,216	6.6%
	Steal from person	387	2,142	18.1%	383	2,027	18.9%
	Stock theft	3	253	1.2%	8	218	3.7%
	Fraud	3,338	47,187	7.1%	2,918	43,433	6.7%
	Other theft	2,018	20,295	9.9%	1,960	20,478	9.6%
Arson		285	4,591	6.2%	255	4,330	5.9%
Malicious damage to property		12,975	49,449	26.2%	13,066	49,134	26.6%
Drug offences	Possession and/or use of cocaine	1,659	2,279	72.8%	1,303	2,048	63.6%
	Possession and/or use of narcotics	780	1,163	67.1%	970	1,369	70.9%
	Possession and/or use of cannabis	10,527	14,743	71.4%	8,817	12,637	69.8%
	Possession and/or use of amphetamines	4,814	6,549	73.5%	5,479	7,422	73.8%
	Possession and/or use of ecstasy	880	1,168	75.3%	558	878	63.6%
	Possession and/or use of other drugs	2,729	5,899	46.3%	2,435	4,959	49.1%
	Dealing, trafficking in cocaine	876	1,035	84.6%	924	1,018	90.8%
	Dealing, trafficking in narcotics	160	247	64.8%	199	291	68.4%
	Dealing, trafficking in cannabis	430	519	82.9%	386	485	79.6%
	Dealing, trafficking in amphetamines	1,274	1,653	77.1%	1,484	1,787	83.0%
	Dealing, trafficking in ecstasy	173	225	76.9%	219	258	84.9%
	Dealing, trafficking in other drugs	281	438	64.2%	312	440	70.9%
	Cultivating cannabis	426	652	65.3%	394	639	61.7%
	Manufacture drug	28	66	42.4%	24	61	39.3%
	Importing drugs	60	129	46.5%	34	65	52.3%
	Other drug offences	1,046	5,522	18.9%	939	4,842	19.4%
Prohibited and regulated weapons offences		5,876	14,192	41.4%	6,235	15,753	39.6%
Disorderly conduct	Trespass	5,017	12,289	40.8%	5,357	12,728	42.1%
	Offensive conduct	2,027	3,217	63.0%	1,663	2,855	58.2%
	Offensive language	834	1,143	73.0%	593	953	62.2%
	Criminal intent	2,227	2,813	79.2%	2,383	3,000	79.4%
Betting and gaming offences		15	72	20.8%	8	22	36.4%
Liquor offences		2,867	7,335	39.1%	2,168	5,382	40.3%
Pornography offences		318	1,234	25.8%	294	1,190	24.7%
Against justice procedures	Escape custody	128	151	84.8%	127	152	83.6%
	Breach Apprehended Violence Order	19,187	24,437	78.5%	20,661	26,315	78.5%
	Breach bail conditions	19,254	53,197	36.2%	20,233	57,714	35.1%
	Fail to appear	19	830	2.3%	8	398	2.0%
	Resist or hinder officer	4,467	5,326	83.9%	4,596	5,553	82.8%
	Other offences against justice procedures	1,594	2,423	65.8%	1,586	2,187	72.5%
Transport regulatory offences		70,197	73,341	95.7%	62,132	64,375	96.5%
Other offences		6,742	13,453	50.1%	6,382	12,091	52.8%

Figure 3.8: Percentage of recorded criminal incidents for major offences by whether legal proceedings commenced within 90 days of reporting

Over the two years to December 2024



SECTION 4:

POLICING ACTIVITY

Table 4.1: Selected policing activities
Over the ten years to March 2025

	Number of selected policing activities										Trend and average annual percentage change	
	12 months to March 2016	12 months to March 2017	12 months to March 2018	12 months to March 2019	12 months to March 2020	12 months to March 2021	12 months to March 2022	12 months to March 2023	12 months to March 2024	12 months to March 2025	2 Year Trend	10 Year Trend
Bail compliance checks	93,944	106,009	113,119	103,680	94,585	123,533	133,548	135,534	113,622	89,645	-21.1%	Stable
ADVO compliance checks events	0	0	5,322	36,030	44,002	66,340	99,791	113,509	99,910	96,520	Stable	n.c.
Move-on directions	108,016	107,480	105,057	104,800	113,255	101,765	97,675	84,415	64,194	44,807	-30.2%	-9.3%
Searches	320,135	295,839	291,052	279,992	288,404	264,559	236,230	208,355	158,877	117,128	-26.3%	-10.6%
Vehicle searches	56,755	51,199	48,961	45,043	43,620	48,165	43,110	33,484	25,334	19,367	-23.6%	-11.3%
Person searches	258,247	240,032	236,905	229,259	240,864	213,591	190,952	172,434	131,279	95,821	-27.0%	-10.4%
Strip searches	5,133	4,608	5,186	5,690	3,920	2,803	2,168	2,437	2,264	1,940	Stable	-10.2%
Taser use	731	665	624	724	870	851	824	920	1,559	1,794	15.1%	10.5%
Taser Discharged	192	169	185	182	211	224	207	211	275	339	23.3%	6.5%
Taser Warning Arc	n.a.	n.a.	n.a.	n.a.	n.a.	n.a.	n.a.	n.a.	57	102	78.9%	n.c.
Taser Draw/Cover	539	496	439	542	659	627	617	709	1,227	1,353	10.3%	10.8%
Convey/detain person to mental health facility	12,626	13,273	13,955	15,113	16,995	18,091	19,208	21,087	20,010	18,373	Stable	4.3%

AVO compliance check numbers are only available from January 2018 and Taser Warning Arc numbers are only available from September 2023. See Appendix 2 for more details.

n.a. - Not available.
n.c. - Not calculated.

NSW Recorded Crime Statistics, March Quarter 2025

Table 4.2: Non-criminal domestic episodes by Statistical Area (SA4)
Over the ten years to March 2025

Statistical Area	Number of activities										Trend and average annual percentage change	
	12 months to March 2016	12 months to March 2017	12 months to March 2018	12 months to March 2019	12 months to March 2020	12 months to March 2021	12 months to March 2022	12 months to March 2023	12 months to March 2024	12 months to March 2025	2 Year Trend	10 Year Trend
Greater Sydney	42,675	44,987	44,622	45,436	47,807	48,374	45,102	42,536	45,150	46,847	3.8%	1.0%
Baulkham Hills and Hawkesbury	983	1,130	957	1,028	1,166	1,173	1,160	1,079	1,259	1,581	25.6%	5.4%
Blacktown	4,915	5,452	5,507	5,242	5,338	5,336	5,325	5,034	5,016	4,901	Stable	Stable
Central Coast	4,063	4,369	4,354	4,355	4,713	4,989	4,595	4,405	4,442	4,899	10.3%	2.1%
City and Inner South	3,202	3,354	3,233	3,375	3,457	3,574	3,438	3,280	3,560	3,859	8.4%	2.1%
Eastern Suburbs	1,756	1,809	1,708	1,731	1,950	1,999	2,058	1,722	1,912	1,993	4.2%	1.4%
Inner South West	5,177	5,453	5,204	5,174	5,328	5,101	4,872	4,413	4,584	4,884	6.5%	Stable
Inner West	1,890	2,134	2,004	1,987	2,080	2,134	1,870	1,870	2,095	2,064	Stable	Stable
North Sydney and Hornsby	1,469	1,572	1,583	1,549	1,706	1,844	1,783	1,705	1,827	1,869	2.3%	2.7%
Northern Beaches	1,527	1,401	1,479	1,547	1,671	1,566	1,359	1,334	1,523	1,594	Stable	Stable
Outer South West	3,395	3,319	3,396	3,495	3,584	3,650	3,268	3,214	3,239	3,286	Stable	Stable
Outer West and Blue Mountains	4,073	4,270	4,372	4,584	4,802	4,981	4,181	4,177	4,461	4,437	Stable	Stable
Parramatta	3,836	3,865	3,947	4,127	4,349	4,412	4,193	4,007	4,224	4,439	5.1%	1.6%
Ryde	876	955	937	1,020	1,141	1,155	1,104	1,041	1,221	1,314	7.6%	4.6%
South West	4,110	4,365	4,389	4,519	4,695	4,622	4,302	3,861	4,180	4,157	Stable	Stable
Sutherland	1,403	1,539	1,552	1,703	1,827	1,838	1,594	1,394	1,607	1,570	Stable	Stable
Regional NSW	35,349	35,914	35,107	35,970	38,635	40,058	38,602	38,149	41,944	42,565	1.5%	2.1%
Capital Region	2,049	2,230	2,108	2,262	2,575	2,888	2,815	2,674	2,759	2,900	5.1%	3.9%
Central West	3,107	3,063	2,901	3,005	3,201	3,338	3,161	3,166	3,205	3,172	Stable	Stable
Coffs Harbour - Grafton	1,856	2,010	1,933	1,939	1,907	2,036	1,923	2,141	2,389	2,454	Stable	3.2%
Far West and Orana	3,344	3,136	3,424	3,624	3,621	3,842	3,760	3,672	4,290	4,063	Stable	2.2%
Hunter Valley excluding Newcastle	2,899	2,948	2,927	2,747	2,860	3,201	3,080	3,284	3,551	3,550	Stable	2.3%
Illawarra	3,907	3,857	3,464	3,502	3,756	3,668	3,609	3,611	3,809	3,788	Stable	Stable
Mid North Coast	2,785	3,008	2,943	3,064	3,284	3,405	3,158	2,794	3,319	3,462	4.3%	2.4%
Murray	1,467	1,615	1,568	1,734	1,964	2,041	1,951	1,937	2,061	1,979	Stable	3.4%
New England and North West	3,515	3,731	3,697	3,665	3,897	3,746	3,868	3,600	3,968	3,996	Stable	1.4%
Newcastle and Lake Macquarie	3,738	3,699	3,617	3,495	3,939	4,412	4,185	4,121	4,566	5,029	10.1%	3.4%
Richmond - Tweed	2,750	2,571	2,581	2,681	2,789	2,868	2,763	2,913	3,292	3,374	2.5%	2.3%
Riverina	2,365	2,463	2,396	2,601	2,963	2,822	2,509	2,347	2,626	2,716	3.4%	1.5%
Southern Highlands and Shoalhaven	1,567	1,583	1,548	1,651	1,879	1,791	1,820	1,889	2,109	2,082	Stable	3.2%
NSW	78,032	80,906	79,740	81,426	86,453	88,441	83,716	80,704	87,111	89,431	2.7%	1.5%

Table 4.3: Ratio to NSW rate of non-criminal domestic episodes per 100,000 population by Statistical Area (SA4)
Over the ten years to March 2025

Statistical Area	12 months to March 2016	12 months to March 2017	12 months to March 2018	12 months to March 2019	12 months to March 2020	12 months to March 2021	12 months to March 2022	12 months to March 2023	12 months to March 2024	12 months to March 2025
Greater Sydney	0.8	0.9	0.9	0.8	0.8	0.8	0.8	0.8	0.8	0.8
Baulkham Hills and Hawkesbury	0.4	0.5	0.4	0.4	0.4	0.4	0.4	0.4	0.4	0.5
Blacktown	1.4	1.5	1.5	1.4	1.3	1.2	1.3	1.2	1.1	1.1
Central Coast	1.2	1.3	1.3	1.3	1.3	1.3	1.3	1.3	1.2	1.3
City and Inner South	0.9	0.9	0.9	0.9	0.9	1.0	1.0	1.0	1.0	1.0
Eastern Suburbs	0.6	0.6	0.6	0.6	0.7	0.7	0.8	0.7	0.7	0.7
Inner South West	0.9	0.9	0.8	0.8	0.8	0.8	0.8	0.7	0.7	0.7
Inner West	0.6	0.7	0.6	0.6	0.6	0.6	0.6	0.6	0.6	0.6
North Sydney and Hornsby	0.3	0.4	0.4	0.3	0.4	0.4	0.4	0.4	0.4	0.4
Northern Beaches	0.6	0.5	0.5	0.6	0.6	0.5	0.5	0.5	0.5	0.6
Outer South West	1.2	1.2	1.2	1.2	1.1	1.1	1.0	1.1	1.0	1.0
Outer West and Blue Mountains	1.3	1.3	1.4	1.4	1.4	1.4	1.2	1.3	1.3	1.2
Parramatta	0.8	0.8	0.8	0.8	0.8	0.8	0.8	0.8	0.8	0.8
Ryde	0.5	0.5	0.5	0.5	0.5	0.5	0.5	0.5	0.6	0.6
South West	1.0	1.0	1.0	1.0	0.9	0.9	0.9	0.8	0.8	0.8
Sutherland	0.6	0.7	0.7	0.7	0.7	0.7	0.7	0.6	0.7	0.6
Regional NSW	1.3	1.3	1.3	1.3	1.3	1.3	1.3	1.4	1.4	1.4
Capital Region	0.9	1.0	0.9	1.0	1.0	1.1	1.1	1.1	1.1	1.1
Central West	1.5	1.4	1.4	1.4	1.4	1.4	1.4	1.5	1.4	1.4
Coffs Harbour - Grafton	1.3	1.4	1.4	1.4	1.2	1.3	1.3	1.5	1.5	1.5
Far West and Orana	2.8	2.6	2.9	3.1	2.9	3.0	3.1	3.2	3.5	3.2
Hunter Valley excluding Newcastle	1.1	1.1	1.1	1.0	0.9	1.0	1.0	1.1	1.1	1.1
Illawarra	1.3	1.2	1.1	1.1	1.1	1.1	1.1	1.2	1.1	1.1
Mid North Coast	1.3	1.3	1.3	1.4	1.4	1.4	1.3	1.2	1.4	1.4
Murray	1.2	1.3	1.3	1.4	1.5	1.5	1.5	1.6	1.6	1.5
New England and North West	1.9	1.9	2.0	1.9	1.9	1.8	2.0	2.0	2.0	2.0
Newcastle and Lake Macquarie	1.0	1.0	1.0	0.9	1.0	1.0	1.0	1.1	1.1	1.2
Richmond - Tweed	1.1	1.0	1.0	1.1	1.0	1.0	1.0	1.2	1.2	1.2
Riverina	1.5	1.5	1.5	1.6	1.7	1.6	1.5	1.5	1.5	1.5
Southern Highlands and Shoalhaven	1.0	1.0	1.0	1.0	1.1	1.0	1.1	1.2	1.2	1.2
NSW	1.0	1.0	1.0	1.0	1.0	1.0	1.0	1.0	1.0	1.0

APPENDIX 1

REGIONAL

COMPARISONS

Local Government Areas

Appendix Table 1.1: Trends in recorded criminal incidents for major offences, NSW LGAs
Over the two years to March 2025

NSW LGA	Murder	Domestic violence related assault	Non-domestic violence related assault	Sexual assault	Sexual touching, sexual act and other sexual offences	Robbery	Break and enter dwelling	Break and enter non-dwelling	Motor vehicle theft	Steal from motor vehicle	Steal from retail store	Other stealing offences	Malicious damage to property
Albury	ns	ns	ns	ns			ns	ns	ns	ns	ns	ns	ns
Armidale Regional	ns	ns	ns	ns			ns	ns	ns	ns	35.5	ns	ns
Ballina	ns	ns	ns	ns			30.5	ns	ns	ns	ns	ns	ns
Balranald													
Bathurst Regional	ns	ns	ns	ns			-34.0	ns	-26.1	ns	ns	ns	ns
Bayside	ns	ns	ns	ns	ns		ns	ns	21.5	ns	ns	12.2	ns
Bega Valley	ns	ns	ns	ns			ns	ns	ns	ns	ns	ns	19.7
Bellingen	ns	ns	ns				ns		ns	ns		ns	ns
Berrigan		-56.0	ns							ns		ns	ns
Blacktown		11.0	ns	ns	37.9	ns	-25.8	ns	ns	-26.6	ns	-10.3	ns
Bland	ns	ns								ns		ns	-40.0
Blayney	ns											ns	ns
Blue Mountains	ns	ns	ns	ns			ns	-42.6	-19.5	ns	ns	ns	-20.9
Bogan	ns							ns				ns	ns
Bourke	ns	ns					ns	ns	-47.6	ns	-48.1	-24.4	ns
Brewarrina	ns	ns					ns						ns
Broken Hill	ns	ns	ns	ns			ns	ns	ns	ns	ns	ns	ns
Burwood	ns	ns	ns	ns			ns	ns	ns	ns	ns	16.3	ns
Byron	ns	ns	ns	ns			83.9	ns	42.3	ns	ns	ns	19.2
Cabonne	ns	ns										ns	ns
Camden		32.6	21.4	ns	33.7		ns	ns	ns	ns	ns	-21.7	14.2
Campbelltown		6.0	ns	ns	ns	ns	ns	ns	ns	ns	ns	ns	ns
Canada Bay	ns	ns	ns	ns			41.1	ns	ns	ns	ns	21.4	ns
Canterbury-Bankstown	ns	ns	ns	ns	ns	ns	ns	ns	23.0	ns	ns	ns	ns
Carrathool													ns
Central Coast		4.5	3.0	16.1	ns	ns	ns	ns	ns	ns	ns	ns	ns
Central Darling	ns	ns					ns	ns					ns
Cessnock	ns	ns	ns	ns			ns	ns	ns	ns	ns	-16.6	ns
Clarence Valley	ns	ns	ns	ns			47.1	-49.7	ns	ns	34.2	ns	ns
Cobar	ns	ns										ns	ns
Coffs Harbour	ns	ns	ns	ns	ns	ns	51.9	ns	35.2	ns	ns	ns	ns
Coolamon													
Coonamble	ns	ns					ns		ns			ns	ns
Cootamundra-Gundagai	ns	ns								ns		ns	ns
Cowra	ns		-40.5				ns	ns	ns	ns	ns	ns	-20.0
Cumberland	ns	ns		21.6	ns	ns	ns	ns	ns	ns	ns	ns	ns
Dubbo Regional	ns	ns		37.3	ns		-36.6	ns	-28.9	ns	ns	-23.5	ns
Dungog	ns	ns										ns	ns
Edward River	ns	ns					ns	ns		ns		ns	ns
Eurobodalla	ns	ns	ns		69.2		ns	ns	ns	ns	ns	ns	-12.0
Fairfield	ns	ns	ns	ns	ns	ns	ns	ns	ns	ns	-26.1	ns	ns
Federation		124.1	ns							91.7		ns	ns
Forbes	ns	ns					-42.4		ns	-72.4		ns	ns

NSW LGA	Murder	Domestic violence related assault	Non-domestic violence related assault	Sexual assault	Sexual touching, sexual act and other sexual offences	Robbery	Break and enter dwelling	Break and enter non-dwelling	Motor vehicle theft	Steal from motor vehicle	Steal from retail store	Other stealing offences	Malicious damage to property
Georges River		ns	ns	ns	ns		ns	ns	ns	ns	ns	ns	ns
Gilgandra		ns					ns					ns	ns
Glen Innes Severn		-23.1	ns				ns			ns		ns	ns
Goulburn Mulwaree		ns	ns	ns	ns		ns	ns	ns	ns	ns	ns	ns
Greater Hume Shire		ns										ns	ns
Griffith		ns	18.7	ns	ns		ns	ns	ns	-37.1	-53.0	ns	ns
Gunnedah		ns	ns	ns			ns	ns	ns	ns	ns	ns	ns
Gwydir		ns										ns	
Hawkesbury		ns	ns	ns	ns		ns	35.4	35.8	-31.6	58.8	ns	ns
Hay													ns
Hilltops		ns	ns	ns	ns		ns		ns	ns	ns	ns	ns
Hornsby		ns	ns	53.4	ns		ns	ns	ns	ns	ns	ns	ns
Hunters Hill							ns		ns				ns
Inner West		ns	ns	ns	ns	ns	ns	ns	ns	ns	ns	ns	ns
Inverell		ns	ns	ns	ns		ns	ns	-45.3	ns	ns	ns	ns
Junee		ns										31.8	29.4
Kempsey		ns	ns	ns	ns		ns	ns	ns	ns	ns	22.2	ns
Kiama		ns	ns				ns		ns	ns		ns	ns
Ku-ring-gai		ns	32.0	ns	ns		ns	-58.8	ns	ns	67.3	ns	ns
Kyogle		ns	ns										ns
Lachlan		ns	ns				-61.1		ns	ns		-62.6	ns
Lake Macquarie		18.5	ns	ns	ns	ns	ns	ns	ns	20.8	ns	ns	ns
Lane Cove		ns	ns				ns		ns	ns	200.0	ns	ns
Leeton		ns	ns	ns	ns		ns	ns	ns	ns	ns	-27.7	ns
Lismore		34.1	ns	ns	ns		ns	ns	ns	-27.0	ns	ns	ns
Lithgow		ns	ns	109.4	ns		ns		ns	ns	ns	ns	ns
Liverpool		14.3	ns	ns	ns	ns	ns	-22.3	ns	ns	ns	ns	ns
Liverpool Plains		ns	ns									ns	ns
Lockhart													
Lord Howe Island													
Maitland		ns	ns	31.3	ns	ns	ns	-31.0	ns	ns	ns	-21.1	ns
Mid-Coast		11.9	ns	ns	ns		ns	ns	ns	-42.2	ns	ns	ns
Mid-Western Regional		21.9	ns	ns	ns		ns	ns	ns	ns	ns	ns	ns
Moree Plains		ns	ns	ns	ns	ns	-15.5	ns	ns	-33.6	26.8	ns	9.7
Mosman		ns	ns				ns			ns	ns	ns	ns
Murray River		ns	ns				ns	ns	ns	ns		ns	ns
Murrumbidgee													ns
Muswellbrook		ns	ns	ns	ns		ns	ns	ns	-32.1	ns	ns	ns
Nambucca Valley		ns	ns	ns	ns		ns	ns	ns	ns	ns	ns	ns
Narrabri		ns	ns	ns			-37.1		ns	-51.1	ns	ns	ns
Narrandera		ns	ns				ns		ns	ns		ns	43.5
Narromine		ns	ns					ns		ns		-65.8	ns
Newcastle		ns	ns	ns	ns	ns	ns	ns	ns	ns	ns	16.9	ns
North Sydney		ns	ns	96.8	ns		ns	74.2	ns	ns	ns	ns	ns
Northern Beaches		ns	ns	ns	ns	ns	ns	ns	ns	ns	ns	ns	ns

NSW LGA	Murder	Domestic violence related assault	Non-domestic violence related assault	Sexual assault	Sexual touching, sexual act and other sexual offences	Robbery	Break and enter dwelling	Break and enter non-dwelling	Motor vehicle theft	Steal from motor vehicle	Steal from retail store	Other stealing offences	Malicious damage to property
Oberon		ns										ns	ns
Orange		ns	ns	ns	34.5	ns	ns	ns	ns	ns	ns	ns	ns
Parkes		ns	ns	ns	ns		ns	ns	ns	ns	ns	ns	ns
Parramatta		ns	ns	ns	ns	-38.5	ns	ns	ns	ns	ns	ns	ns
Penrith		ns	ns	23.5	ns	ns	-33.3	ns	-24.0	-32.0	ns	ns	ns
Port Macquarie-Hastings		ns	6.0	ns	ns		ns	ns	ns	ns	ns	ns	ns
Port Stephens		ns	ns	ns	52.4		ns	ns	ns	ns	ns	ns	-18.2
Queanbeyan-Palerang Region		ns	ns	ns	ns		ns	ns	ns	ns	ns	ns	ns
Randwick		ns	ns	-18.3	ns	ns	ns	-24.2	ns	ns	ns	ns	ns
Richmond Valley		ns	ns	ns	ns		ns	ns	ns	ns	ns	ns	ns
Ryde		ns	ns	12.7	ns		ns	ns	ns	ns	ns	ns	ns
Shellharbour		ns	ns	40.7	ns		ns	ns	30.0	ns	ns	ns	ns
Shoalhaven		11.4	ns	ns	ns		ns	ns	ns	ns	ns	ns	ns
Singleton		ns	ns	ns	ns		ns	-61.0	ns	ns	ns	ns	ns
Snowy Monaro Regional		ns	ns	ns	ns		ns					ns	ns
Snowy Valleys		46.6	ns				ns	ns	ns	ns		ns	ns
Strathfield		ns	ns	ns	-50.9		ns	ns	ns	ns	102.5	ns	ns
Sutherland Shire		ns	ns	ns	ns		ns	ns	ns	ns	27.9	ns	14.5
Sydney		ns	ns	ns	19.2	ns	ns	ns	51.9	ns	ns	ns	ns
Tamworth Regional		39.0	19.8	ns	ns		ns	ns	ns	-41.9	24.1	ns	ns
Temora													ns
Tenterfield		ns	ns				ns					ns	ns
The Hills Shire		ns	-27.5	ns	ns	-23.8	ns	ns	ns	ns	ns	ns	ns
Tweed		ns	ns	ns	ns		ns	ns	ns	ns	ns	ns	ns
Unincorporated Far West													
Upper Hunter Shire		ns	ns		ns		ns			ns	ns	ns	ns
Upper Lachlan Shire												ns	ns
Uralla													ns
Wagga Wagga		ns	ns	ns	ns		ns	ns	ns	ns	44.2	-14.9	7.0
Walcha		ns											
Walgett		ns	ns				ns	ns	ns	ns		ns	ns
Warren		ns					ns					ns	ns
Warrumbungle Shire		ns	ns				ns	ns		ns	ns	ns	ns
Waverley		ns	ns	ns	ns		ns	ns	ns	ns	-29.2	ns	ns
Weddin													ns
Wentworth		43.1	ns				ns	ns	ns	ns		ns	ns
Willoughby		ns	ns	ns	ns		ns	ns	ns	ns	ns	ns	ns
Wingecarribee		ns	ns	ns	ns		ns	ns	ns	ns	ns	ns	ns
Wollondilly		ns	ns	ns	ns		ns		ns	ns	ns	ns	ns
Wollongong		ns	ns	14.0	ns	ns	ns	ns	ns	-16.3	ns	ns	ns
Woollahra		ns	ns	ns	ns		ns		ns	-48.1	ns	ns	ns
Yass Valley		ns	ns	ns					ns	ns		ns	ns
NSW	ns	3.6	ns	6.4	ns	ns	ns	ns	ns	-9.1	4.3	ns	ns

Appendix Table 1.2: Ratio to NSW rate of recorded criminal incidents per 100,000 population for major offences, NSW LGAs
12 months to March 2025

NSW LGA	Murder	Domestic violence related assault	Non-domestic violence related assault	Sexual assault	Sexual touching, sexual act and other sexual	Robbery	Break and enter dwelling	Break and enter non-dwelling	Motor vehicle theft	Steal from motor vehicle	Steal from retail store	Other stealing offences	Malicious damage to property
Albury	1.9	1.8	1.9	1.5	1.4	2.1	1.5	2.4	2.1	3.4	1.4	1.5	2.1
Armidale Regional		1.8	1.6	1.6	1.5	0.9	4.2	4.9	2.0	2.1	1.8	1.6	2.0
Ballina		0.8	0.9	0.8	0.8	0.8	2.0	0.9	1.6	1.1	0.8	1.1	0.9
Balranald													
Bathurst Regional		1.6	1.6	1.4	1.6	1.2	1.1	1.0	0.8	1.0	1.4	1.0	1.5
Bayside	1.8	0.8	0.6	0.4	0.5	0.6	0.5	0.4	0.7	0.6	0.8	0.9	0.7
Bega Valley		0.7	0.6	1.3	0.9	0.2	0.6	1.3	0.6	0.5	0.6	0.7	1.2
Bellingen	8.1	0.9	1.0	1.4	1.0	0.7	1.2	2.2	1.7	1.2	0.3	1.1	1.6
Berrigan		0.6	1.1	0.8	1.5	0.5	1.2	1.8	1.7	0.9	0.5	1.3	1.2
Blacktown	1.3	1.2	1.0	0.9	1.1	1.6	0.7	0.6	0.9	0.9	1.0	0.8	1.0
Bland		1.3	0.9	1.2	1.6		1.5	3.0	2.1	1.2	0.2	1.0	1.0
Blayney		1.4	0.6	0.9	1.3	1.1	0.8	1.6	1.1	0.6	0.1	0.6	0.8
Blue Mountains	2.7	0.7	0.5	0.9	0.9	0.4	0.4	0.4	0.2	0.3	0.6	0.4	0.7
Bogan													
Bourke													
Brewarrina													
Broken Hill		3.3	1.7	1.2	3.3	1.5	2.9	2.2	1.7	2.1	1.2	1.7	2.3
Burwood	2.5	0.6	0.8	0.4	0.7	1.8	1.0	0.7	0.7	0.9	1.7	1.6	0.6
Byron		0.7	1.6	1.0	1.3	0.4	1.9	1.2	2.1	1.0	1.0	1.5	1.3
Cabonne		0.9	0.4	0.7	0.9		0.5	1.3	0.7	0.3	0.0	0.5	0.7
Camden		0.8	0.5	0.6	0.8	0.4	0.4	0.5	0.5	0.5	0.4	0.3	0.6
Campbelltown		1.4	1.1	1.2	1.0	1.4	0.9	0.9	1.0	1.1	1.1	0.8	1.2
Canada Bay	2.3	0.4	0.5	0.3	0.5	0.7	1.0	0.4	0.7	0.6	0.4	0.9	0.5
Canterbury-Bankstown	0.6	1.0	0.8	0.6	0.7	1.1	0.6	0.6	1.0	1.1	0.4	0.7	0.7
Carrathool													
Central Coast	0.3	1.2	1.1	1.4	1.2	1.0	0.8	0.8	0.9	1.1	1.0	0.7	1.2
Central Darling													
Cessnock	3.2	1.5	1.2	1.6	1.3	0.6	1.4	2.3	3.0	1.6	0.7	1.4	1.6
Clarence Valley	1.9	1.5	1.1	1.3	1.5	1.6	2.1	1.5	1.9	1.2	1.0	1.7	1.4
Cobar		2.6	1.7	1.6	2.1		1.6	3.3	2.7	0.7	1.2	1.6	2.1
Coffs Harbour	5.3	1.9	1.5	1.7	1.7	2.0	2.3	1.8	2.3	1.7	1.1	1.2	1.6
Coolamon		1.1	0.3	2.2	0.9		0.6	1.1	0.9	0.8	0.2	0.3	0.4
Coonamble		3.5	3.3	2.5	1.5		6.3	4.8	3.5	1.1	1.1	2.0	3.1
Cootamundra-Gundagai		1.0	1.0	1.5	0.6		0.8	0.9	0.5	0.8	0.3	0.7	1.2
Cowra		1.5	0.8	1.2	1.1	1.7	2.2	2.4	1.8	0.8	1.2	1.1	1.6
Cumberland	1.3	0.9	0.9	0.6	0.6	1.5	1.0	0.6	1.0	1.3	0.6	0.9	0.7
Dubbo Regional		2.5	2.3	2.0	1.7	1.3	2.7	3.8	1.9	2.0	2.1	1.5	2.8
Dungog		1.0	0.6	0.6	1.7		0.4	1.0	0.8	0.5	0.2	1.0	0.6
Edward River		2.6	1.2	1.1	1.5	0.5	2.1	5.6	1.5	2.5	0.6	2.1	2.0
Eurobodalla		1.2	1.2	1.1	1.6	0.2	1.2	1.5	0.9	0.7	1.0	1.1	1.3
Fairfield	2.0	0.9	0.8	0.5	0.6	0.9	0.5	0.3	0.9	1.0	0.5	0.6	0.7
Federation		1.1	0.8	0.8	1.0		1.0	1.7	0.9	1.1	0.4	1.0	1.0
Forbes	11.5	1.2	1.4	1.4	1.9	2.4	1.6	2.1	1.9	1.7	0.4	2.3	2.0
Georges River	0.7	0.6	0.5	0.4	0.5	0.3	0.6	0.5	0.4	0.6	1.0	0.5	0.6
Gilgandra		2.4	1.0	1.9	1.3		2.4	3.6	1.7	1.4	0.2	1.5	2.2
Glen Innes Severn		1.5	2.6	1.7	2.2	0.5	1.9	4.0	1.3	1.4	1.4	1.4	2.2

NSW Recorded Crime Statistics, March Quarter 2025

NSW LGA	Murder	Domestic violence related assault	Non-domestic violence related assault	Sexual assault	Sexual touching, sexual act and other sexual	Robbery	Break and enter dwelling	Break and enter non-dwelling	Motor vehicle theft	Steal from motor vehicle	Steal from retail store	Other stealing offences	Malicious damage to property
Goulburn Mulwaree		1.1	1.2	1.3	1.5	0.5	0.7	2.3	0.9	0.8	1.2	1.7	1.3
Greater Hume Shire		0.8	0.3	1.0	0.8		0.7	1.7	0.8	0.4	0.1	0.7	0.7
Griffith		1.8	1.5	1.0	1.3	1.5	1.7	1.3	1.2	1.2	0.8	1.3	1.6
Gunnedah	16.1	2.0	2.0	2.0	1.3	1.3	3.4	2.8	2.5	1.6	0.8	1.7	2.2
Gwydir		1.1	0.6	1.6	2.0		2.2	2.7	1.2	0.3	0.2	1.1	0.9
Hawkesbury	1.6	1.0	0.9	1.2	1.2	0.4	0.5	1.0	0.9	0.6	1.0	0.6	0.9
Hay													
Hilltops		1.2	1.2	1.2	1.8		0.6	0.5	0.7	0.5	0.6	0.8	1.0
Hornsby		0.4	0.3	0.5	0.5	0.5	0.5	0.4	0.3	0.3	0.4	0.4	0.5
Hunters Hill		0.3	0.4	0.5	0.8	0.3	0.8	0.4	1.0	0.9		0.3	0.5
Inner West	0.6	0.6	0.9	0.8	0.9	0.7	0.7	0.7	0.8	1.0	0.8	1.1	0.9
Inverell		2.6	1.7	2.4	2.1	1.0	2.4	2.5	0.9	0.8	1.8	1.1	2.2
Junee		1.2	1.0	1.5	1.0	0.7	0.7	0.3	0.5	0.3	0.2	1.0	1.2
Kempsey	3.4	2.3	1.6	1.5	1.4	0.8	4.2	3.2	3.4	1.6	1.5	2.7	2.2
Kiama		0.3	0.4	1.1	0.7	0.6	0.8	0.9	1.0	1.1	0.5	0.5	0.5
Ku-ring-gai		0.3	0.3	0.4	0.4	0.1	0.6	0.2	0.3	0.3	0.2	0.3	0.3
Kyogle		0.9	0.6	2.3	1.1	0.5	0.7	1.3	1.2	0.3	0.0	0.5	0.7
Lachlan		3.0	1.5	1.4	2.0		1.5	2.5	1.9	1.4	0.2	1.2	2.6
Lake Macquarie	1.0	1.0	0.9	1.1	0.9	0.6	1.0	1.3	1.3	1.4	1.4	0.8	1.0
Lane Cove		0.3	0.2	0.5	0.6	0.1	0.7	0.4	0.4	0.5	0.4	0.7	0.3
Leeton		1.5	1.2	2.0	2.6	1.2	1.5	3.0	2.3	0.6	0.9	1.2	1.5
Lismore	4.9	1.5	1.6	1.8	2.2	1.4	2.3	2.1	2.0	1.0	1.4	1.0	1.3
Lithgow		2.2	1.3	2.4	1.5	0.8	1.3	2.3	1.0	0.9	0.8	1.8	1.8
Liverpool	0.4	1.4	0.9	0.8	0.9	1.5	0.9	0.5	1.2	1.2	0.8	0.9	0.9
Liverpool Plains		1.6	1.3	1.7	1.1	0.6	0.9	2.1	1.0	0.6	0.2	1.0	1.0
Lockhart		0.7	0.6	0.2	1.1		0.5	0.3	1.0	0.7	0.7	0.8	1.0
Lord Howe Island													
Maitland		1.5	1.1	1.6	1.6	1.1	1.2	1.0	1.5	1.7	1.1	0.9	1.2
Mid-Coast		1.6	1.1	1.2	1.5	0.4	1.4	1.4	1.2	0.6	0.8	1.1	1.2
Mid-Western Regional		1.3	1.1	1.5	1.6	0.7	0.9	2.1	0.9	0.6	0.6	1.0	1.4
Moree Plains		5.0	2.6	2.0	1.8	10.6	8.5	9.0	4.4	2.2	4.8	3.2	5.2
Mosman		0.2	0.3	0.4	0.6	0.2	0.3	0.4	0.3	0.3	0.4	0.5	0.4
Murray River		0.7	0.6	1.1	1.2		1.3	4.1	1.2	1.7	0.5	1.7	1.0
Murrumbidgee		1.0	1.2	2.2	2.1		2.1	2.0	0.6	1.1	0.2	0.8	1.7
Muswellbrook		2.2	1.7	2.9	1.4	1.8	1.5	2.0	1.4	1.1	1.3	2.2	2.2
Nambucca Valley		1.6	1.0	1.7	1.2	1.5	1.7	1.6	1.6	1.4	0.9	1.1	1.4
Narrabri		2.0	1.1	1.9	1.1	0.7	1.9	2.2	1.6	1.1	0.7	1.3	2.0
Narrandera		2.1	1.7	1.5	2.4	0.8	3.7	2.2	2.3	1.5	0.7	1.7	3.0
Narromine	16.6	2.3	1.4	1.9	3.8		1.3	3.8	1.6	1.1	0.7	0.9	2.0
Newcastle	0.6	1.1	1.7	1.4	1.2	2.4	2.3	2.1	2.1	3.4	2.0	2.0	1.7
North Sydney		0.3	0.5	0.6	0.5	0.5	0.4	0.8	0.2	0.5	0.5	0.7	0.5
Northern Beaches		0.3	0.5	0.5	0.6	0.4	0.4	0.5	0.4	0.5	0.7	0.7	0.5
Oberon		0.8	0.7	3.8	1.9	0.8	0.3	0.4	1.0	0.3	0.2	0.9	0.7
Orange		1.7	1.7	1.6	1.7	2.1	2.4	1.4	1.6	1.3	1.3	1.2	2.1
Parkes	7.5	2.1	2.0	1.6	2.2	0.9	1.8	1.5	2.3	1.2	1.6	1.6	1.8
Parramatta	1.2	0.7	0.8	0.6	0.7	1.1	1.3	1.0	0.9	1.2	1.3	1.2	0.7
Penrith	2.9	1.1	1.2	1.2	1.1	1.2	0.9	1.2	1.0	1.2	1.1	1.1	1.2
Port Macquarie-Hastings		1.1	1.1	1.1	1.0	0.7	1.1	2.1	1.0	0.8	0.8	1.2	1.2

NSW LGA	Murder	Domestic violence related assault	Non-domestic violence related assault	Sexual assault	Sexual touching, sexual act and other sexual	Robbery	Break and enter dwelling	Break and enter non-dwelling	Motor vehicle theft	Steal from motor vehicle	Steal from retail store	Other stealing offences	Malicious damage to property
Port Stephens	1.4	1.4	1.1	1.2	1.6	0.4	1.0	1.3	1.0	0.8	0.7	0.7	1.1
Queanbeyan-Palerang Region		0.9	0.7	1.0	0.8	0.3	0.7	0.8	0.7	0.8	0.9	0.7	1.0
Randwick	0.8	0.5	0.8	0.5	0.8	1.0	0.6	0.3	0.7	0.7	0.6	1.0	0.7
Richmond Valley	4.5	1.8	1.7	1.9	1.6	0.9	2.7	2.1	2.2	1.0	0.6	1.0	1.7
Ryde	0.8	0.4	0.5	0.5	0.5	0.5	0.8	0.4	0.4	0.6	0.8	0.8	0.5
Shellharbour	1.3	0.8	0.7	1.2	1.2	0.4	1.0	0.5	1.1	1.0	1.2	0.6	0.9
Shoalhaven		1.1	1.1	1.2	1.1	0.4	1.1	1.1	1.2	0.8	1.5	0.8	1.2
Singleton		1.2	1.0	1.2	1.6	0.5	1.3	1.2	1.6	0.7	0.5	0.8	1.2
Snowy Monaro Regional		0.6	0.7	1.1	1.1	0.2	0.6	0.7	0.6	0.3	0.2	0.9	1.0
Snowy Valleys		1.2	0.9	0.9	1.2	1.2	1.2	4.0	1.0	0.9	0.3	1.0	1.4
Strathfield		0.8	0.7	0.5	0.5	1.7	1.4	0.9	1.3	1.4	1.5	1.2	0.6
Sutherland Shire	0.5	0.6	0.5	0.6	0.6	0.3	0.3	0.3	0.3	0.4	0.8	0.5	0.7
Sydney	0.5	1.1	3.0	1.4	2.1	4.2	1.1	1.4	1.2	1.2	3.7	4.2	1.5
Tamworth Regional	3.3	2.7	1.8	1.4	1.3	0.8	3.3	1.4	1.6	1.1	1.7	1.4	2.1
Temora		0.6	0.7	0.8	1.0		0.6	2.2	0.7	0.8	0.5	0.6	1.2
Tenterfield		2.0	1.2	2.0	1.9	1.3	3.1	3.7	2.1	1.4	0.6	2.1	2.9
The Hills Shire	0.5	0.3	0.3	0.4	0.4	0.7	0.5	0.4	0.4	0.3	0.6	0.4	0.4
Tweed	2.2	0.7	0.9	0.7	0.7	0.9	0.9	1.0	1.5	1.2	1.2	1.1	1.1
Unincorporated Far West													
Upper Hunter Shire		1.0	0.8	0.7	1.8		0.7	2.5	0.6	0.8	0.5	1.2	0.9
Upper Lachlan Shire		0.6	0.6	0.8	0.3		0.5	0.7	0.6	0.4		0.6	0.6
Uralla		1.0	0.5	1.1	0.5		0.9	3.0	1.0	0.7	0.0	0.7	0.7
Wagga Wagga		1.6	1.5	1.4	1.7	1.0	1.9	1.3	1.1	1.9	1.8	1.4	1.9
Walcha													
Walgett		7.2	4.3	2.5	1.4	0.8	5.1	5.2	3.1	3.0	1.2	1.9	5.5
Warren													
Warrumbungle Shire		1.9	1.5	1.3	2.0	1.0	2.0	2.8	1.0	1.1	0.9	2.1	2.3
Waverley	9.0	0.6	0.8	0.7	0.9	1.1	0.5	0.4	0.8	0.5	1.9	1.4	0.8
Weddin		1.3	0.7	1.4	1.3		0.5	0.3	0.3	0.2	0.4	0.9	1.0
Wentworth		2.9	1.7	1.0	1.3	0.6	2.1	3.2	2.2	1.6	0.4	1.7	1.7
Willoughby		0.3	0.5	0.4	0.7	0.8	0.6	0.7	0.3	0.6	1.6	0.9	0.5
Wingecarribee		0.4	0.5	0.8	0.8	0.2	0.3	0.6	0.4	0.3	0.3	0.4	0.6
Wollondilly	1.9	0.7	0.5	0.7	0.6	0.1	0.3	0.4	0.6	0.3	0.1	0.4	0.6
Wollongong	0.5	0.7	0.8	1.1	1.0	0.8	1.0	1.0	1.1	1.3	1.4	1.1	1.0
Woollahra		0.4	0.5	0.7	0.8	0.2	0.6	0.3	0.5	0.5	0.7	0.8	0.6
Yass Valley		0.6	0.4	0.8	0.3		0.3	0.7	0.8	0.4	0.1	0.4	0.6
NSW	1.0	1.0	1.0	1.0	1.0	1.0	1.0	1.0	1.0	1.0	1.0	1.0	1.0

NSW Recorded Crime Statistics, March Quarter 2025

Appendix Table 1.3: Number of recorded criminal incidents for major offences, NSW LGAs
12 months to March 2025

NSW LGA	Murder	Domestic violence related assault	Non-domestic violence related assault	Sexual assault	Sexual touching, sexual act and other sexual offences	Robbery	Break and enter dwelling	Break and enter non-dwelling	Motor vehicle theft	Steal from motor vehicle	Steal from retail store	Other stealing offences	Malicious damage to property
Albury	1	477	440	115	85	27	199	134	221	609	285	400	703
Armidale Regional	0	237	192	66	47	6	277	141	106	193	187	213	347
Ballina	0	163	173	54	41	9	214	43	137	157	128	232	242
Balranald	0	14	6	4	5	0	7	3	7	6	1	5	17
Bathurst Regional	0	330	299	83	74	12	107	43	65	139	215	196	396
Bayside	3	633	444	111	101	24	213	79	232	361	486	766	776
Bega Valley	0	108	96	66	34	2	47	46	38	57	78	122	249
Bellingen	1	56	57	25	13	2	35	29	40	49	15	67	121
Berrigan	0	22	39	9	13	1	23	15	26	25	14	52	62
Blacktown	5	2,403	1,800	521	480	152	711	264	707	1,152	1,539	1,504	2,441
Bland	0	33	21	9	9	0	18	16	21	20	4	25	33
Blayney	0	50	19	9	10	2	13	12	15	14	2	21	36
Blue Mountains	2	241	176	101	76	7	65	31	33	85	159	155	330
Bogan	0	32	9	6	11	0	19	27	25	16	8	35	38
Bourke	1	138	41	25	12	5	90	48	22	45	28	59	105
Brewarrina	0	65	25	8	2	1	38	21	12	8	9	19	51
Broken Hill	0	269	126	30	60	6	114	38	53	118	75	135	235
Burwood	1	126	146	24	32	17	92	29	56	116	250	306	156
Byron	0	122	251	49	49	3	160	44	138	117	125	253	285
Cabonne	0	56	20	13	13	0	16	18	18	11	2	31	56
Camden	0	488	289	104	115	11	119	64	129	204	166	188	475
Campbelltown	0	1,200	838	296	197	60	371	159	317	625	676	669	1,231
Canada Bay	2	169	201	36	46	14	213	39	116	176	122	357	257
Canterbury-Bankstown	2	1,815	1,181	315	265	97	545	224	690	1,284	529	1,130	1,517
Carrathool	0	14	8	0	2	0	5	11	12	4	2	16	25
Central Coast	1	1,875	1,590	693	437	84	625	275	596	1,172	1,255	1,125	2,426
Central Darling	0	116	20	8	8	0	32	21	12	23	8	15	59
Cessnock	2	473	320	145	93	10	211	153	362	347	167	442	609
Clarence Valley	1	377	255	102	87	20	256	80	193	211	196	435	446
Cobar	0	48	29	9	9	0	15	13	20	9	17	30	50
Coffs Harbour	4	694	493	182	140	37	410	142	330	431	317	423	754
Coolamon	0	22	6	14	4	0	6	5	7	11	3	7	10
Coonamble	0	62	53	13	6	0	55	18	24	13	14	36	68
Cootamundra-Gundagai	0	52	45	23	7	0	20	10	11	29	13	35	77
Cowra	0	84	44	21	14	5	62	30	42	33	52	64	116
Cumberland	3	1,044	878	214	145	84	554	145	452	1,004	523	1,007	949
Dubbo Regional	0	650	538	151	97	17	338	213	194	353	412	378	923
Dungog	0	43	25	8	17	0	8	10	14	14	6	43	31
Edward River	0	102	43	13	13	1	39	46	23	65	17	79	98
Eurobodalla	0	229	194	59	66	2	108	62	66	94	147	200	302
Fairfield	4	862	656	154	141	42	241	69	330	648	394	610	887
Federation	0	65	40	15	14	0	30	21	21	46	19	58	74
Forbes	1	51	52	18	18	5	34	19	32	50	14	98	107
Georges River	1	454	354	90	88	12	211	76	124	282	571	390	546

NSW Recorded Crime Statistics, March Quarter 2025

NSW LGA	Murder	Domestic violence related assault	Non-domestic violence related assault	Sexual assault	Sexual touching, sexual act and other sexual offences	Robbery	Break and enter dwelling	Break and enter non-dwelling	Motor vehicle theft	Steal from motor vehicle	Steal from retail store	Other stealing offences	Malicious damage to property
Gilgandra	0	48	18	11	6	0	23	15	13	19	3	29	55
Glen Innes Severn	0	60	95	21	20	1	39	35	21	38	42	59	115
Goulburn Mulwaree	0	160	167	58	51	4	55	75	52	80	134	255	243
Greater Hume Shire	0	43	15	15	10	0	19	19	17	13	2	36	43
Griffith	0	217	165	36	37	9	103	34	60	100	78	155	257
Gunnedah	2	122	110	36	18	4	101	37	60	67	36	101	167
Gwydir	0	25	12	11	10	0	25	13	11	4	3	24	25
Hawkesbury	1	305	257	115	82	6	82	65	110	119	235	198	341
Hay	0	14	18	3	4	0	7	4	5	3	4	21	28
Hilltops	0	107	94	32	36	0	24	10	25	32	41	68	114
Hornsby	0	279	201	112	72	16	159	60	71	154	233	282	401
Hunters Hill	0	17	24	10	11	1	25	5	25	38	0	19	44
Inner West	1	516	663	205	171	28	318	128	272	618	529	936	950
Inverell	0	216	123	60	39	4	99	45	29	48	115	93	229
Junee	0	37	26	13	7	1	11	2	6	7	4	29	44
Kempsey	1	337	212	63	47	6	300	100	192	155	166	385	403
Kiama	0	31	35	34	17	3	43	20	43	76	41	56	64
Ku-ring-gai	0	150	132	64	59	4	180	21	69	136	82	154	242
Kyogle	0	40	24	30	11	1	14	12	20	8	1	23	38
Lachlan	0	83	38	12	13	0	21	15	21	27	4	34	92
Lake Macquarie	2	1,030	793	338	214	30	476	272	525	951	1,039	768	1,318
Lane Cove	0	62	32	27	25	1	62	16	27	59	60	126	78
Leeton	0	79	58	31	31	3	38	34	47	22	35	60	98
Lismore	2	295	290	111	101	14	228	90	155	135	216	190	341
Lithgow	0	208	111	67	33	4	62	47	37	59	60	165	217
Liverpool	1	1,530	919	281	224	85	479	129	532	948	715	1,018	1,277
Liverpool Plains	0	55	40	18	9	1	16	16	14	14	4	35	45
Lockhart	0	11	9	1	4	0	4	1	6	7	8	12	19
Lord Howe Island	0	0	2	0	0	0	0	0	0	0	0	0	1
Maitland	0	678	453	210	156	23	249	98	267	523	348	374	656
Mid-Coast	0	695	461	158	147	10	298	136	208	199	270	499	671
Mid-Western Regional	0	156	116	52	44	4	53	54	44	48	53	113	207
Moree Plains	0	292	135	35	24	31	246	113	101	87	213	190	384
Mosman	0	30	39	14	19	1	22	10	18	28	41	67	65
Murray River	0	43	32	20	16	0	38	53	28	69	21	106	78
Murrumbidgee	0	16	18	11	8	0	17	7	4	12	2	13	35
Muswellbrook	0	165	114	67	25	7	55	33	42	57	74	169	217
Nambucca Valley	0	154	82	49	25	7	78	32	58	89	64	107	166
Narrabri	0	114	57	34	15	2	56	27	37	44	32	74	144
Narrandera	0	54	39	12	14	1	47	12	24	27	14	44	99
Narromine	1	68	38	17	25	0	19	24	18	22	16	26	76
Newcastle	1	840	1,191	336	218	95	907	367	667	1,831	1,220	1,621	1,686
North Sydney	0	110	142	61	37	9	68	54	30	102	136	231	201
Northern Beaches	0	327	564	181	168	23	218	121	173	436	635	799	752
Oberon	0	20	16	29	11	1	4	2	10	5	3	22	24

NSW Recorded Crime Statistics, March Quarter 2025

NSW LGA	Murder	Domestic violence related assault	Non-domestic violence related assault	Sexual assault	Sexual touching, sexual act and other sexual offences	Robbery	Break and enter dwelling	Break and enter non-dwelling	Motor vehicle theft	Steal from motor vehicle	Steal from retail store	Other stealing offences	Malicious damage to property
Orange	0	347	310	96	78	21	244	60	125	177	195	237	539
Parkes	1	136	119	31	32	3	57	21	60	52	79	105	144
Parramatta	3	879	938	207	201	67	772	254	439	1,036	1,238	1,529	1,039
Penrith	6	1,121	1,090	378	254	62	450	274	419	845	888	1,081	1,542
Port Macquarie-Hastings	0	454	409	134	93	14	222	185	155	238	233	485	599
Port Stephens	1	504	341	130	128	7	179	97	136	202	179	262	495
Queanbeyan-Palerang Regional	0	254	193	87	54	4	101	54	88	166	213	205	386
Randwick	1	334	483	103	113	32	203	47	181	294	291	677	611
Richmond Valley	1	193	167	61	38	5	144	48	95	73	50	105	239
Ryde	1	277	258	89	67	16	235	49	95	250	364	473	354
Shellharbour	1	289	225	128	100	8	174	40	156	257	317	231	400
Shoalhaven	0	539	514	179	128	10	277	121	238	283	576	423	772
Singleton	0	141	99	41	42	3	74	30	75	54	45	96	175
Snowy Monaro Regional	0	61	61	34	26	1	28	15	25	19	19	86	124
Snowy Valleys	0	85	55	18	18	4	41	59	27	40	16	70	120
Strathfield	0	174	129	36	26	19	150	42	113	207	241	257	177
Sutherland Shire	1	631	506	180	153	17	182	76	131	288	609	520	890
Sydney	1	1,203	2,866	439	491	220	560	310	509	847	2,958	4,392	2,065
Tamworth Regional	2	795	478	125	89	12	481	87	193	233	386	405	799
Temora	0	16	17	7	6	0	8	13	8	16	10	17	42
Tenterfield	0	63	34	19	14	2	48	25	26	30	14	68	117
The Hills Shire	1	313	219	111	86	32	222	86	137	224	427	416	443
Tweed	2	328	360	98	70	21	210	101	275	371	424	481	648
Unincorporated Far West	0	5	7	4	6	0	5	3	4	8	9	15	6
Upper Hunter Shire	0	65	45	14	26	0	23	35	16	36	25	77	77
Upper Lachlan Shire	0	22	22	10	3	0	10	6	10	12	0	23	31
Uralla	0	27	12	9	3	0	12	18	11	14	1	18	26
Wagga Wagga	0	507	429	131	120	16	288	85	140	405	421	422	764
Walcha	0	24	6	5	1	0	2	1	2	3	2	7	16
Walgett	0	182	97	19	8	1	64	28	31	51	23	48	175
Warren	0	49	18	3	8	0	30	17	13	11	6	32	48
Warrumbungle Shire	0	78	56	17	19	2	42	25	17	31	30	89	121
Waverley	6	196	233	73	65	18	88	29	100	110	478	450	332
Weddin	0	22	10	7	5	0	4	1	2	2	5	15	21
Wentworth	0	103	55	11	10	1	37	24	31	38	11	59	74
Willoughby	0	115	176	46	53	15	112	53	42	146	441	304	208
Wingecarribee	0	93	107	59	44	2	40	32	41	48	47	91	197
Wollondilly	1	184	108	59	36	1	36	20	59	57	22	114	184
Wollongong	1	736	744	334	231	41	488	225	417	865	1,074	1,107	1,315
Woollahra	0	109	122	55	44	2	77	18	53	84	127	190	197
Yass Valley	0	48	30	20	6	0	13	12	24	21	5	34	60
In Custody	1	3	1,425	702	123	6	0	1	0	0	0	17	76
NSW	78	38,108	34,285	11,421	8,628	1,902	18,787	8,176	15,002	26,086	28,781	37,950	48,114

NSW Recorded Crime Statistics, March Quarter 2025

Appendix Table 1.4: Number of recorded criminal incidents for major offences, NSW LGAs
12 months to March 2024

NSW LGA	Murder	Domestic violence related assault	Non-domestic violence related assault	Sexual assault	Sexual touching, sexual act and other sexual offences	Robbery	Break and enter dwelling	Break and enter non-dwelling	Motor vehicle theft	Steal from motor vehicle	Steal from retail store	Other stealing offences	Malicious damage to property
Albury	1	446	442	115	93	16	253	162	237	648	372	414	720
Armidale Regional	0	225	233	57	72	17	304	129	97	200	138	236	398
Ballina	5	144	159	56	44	5	164	75	109	189	124	260	244
Balranald	0	11	9	4	2	0	4	1	2	4	0	2	9
Bathurst Regional	0	290	278	97	81	11	162	64	88	194	189	216	389
Bayside	2	599	479	108	98	22	211	66	191	410	577	683	768
Bega Valley	0	107	105	44	38	0	40	42	28	39	60	115	208
Bellingen	0	58	61	30	15	1	29	16	24	32	8	58	120
Berrigan	0	50	26	7	4	0	18	12	15	20	5	43	62
Blacktown	4	2,165	1,778	416	348	161	958	231	760	1,569	1,474	1,676	2,499
Bland	0	45	28	6	6	1	27	14	19	30	5	37	55
Blayney	0	31	26	11	10	0	21	20	16	32	5	27	43
Blue Mountains	0	220	204	100	70	7	70	54	41	134	162	210	417
Bogan	0	23	13	4	4	0	14	36	17	27	6	46	31
Bourke	0	194	60	16	9	4	163	49	42	75	54	78	124
Brewarrina	0	68	21	9	8	0	31	18	14	15	2	29	56
Broken Hill	0	343	129	23	28	5	166	39	82	113	99	160	296
Burwood	0	123	150	31	27	16	86	36	47	104	231	263	155
Byron	0	114	250	55	48	5	87	42	97	137	81	250	239
Cabonne	1	50	24	19	6	0	23	25	20	13	6	38	44
Camden	0	368	238	84	86	5	91	62	135	252	169	240	416
Campbelltown	1	1,132	898	261	223	46	334	117	299	629	733	688	1,232
Canada Bay	1	179	209	51	43	8	151	73	110	183	148	294	272
Canterbury-Bankstown	5	1,715	1,178	320	265	90	493	170	561	1,140	509	1,169	1,533
Carrathool	0	14	12	7	7	0	11	15	12	6	3	22	24
Central Coast	2	1,794	1,544	597	409	66	703	277	617	1,261	1,087	1,248	2,405
Central Darling	0	133	26	11	4	1	25	22	6	15	1	27	68
Cessnock	1	487	313	141	103	18	219	154	290	323	217	530	633
Clarence Valley	1	388	267	98	79	13	174	159	228	254	146	354	487
Cobar	0	34	21	7	5	0	21	7	9	15	4	30	61
Coffs Harbour	2	759	551	176	122	43	270	128	244	395	331	428	776
Coolamon	0	10	5	6	3	0	0	8	4	1	1	9	13
Coonamble	0	66	41	10	8	0	61	43	26	25	14	41	83
Cootamundra-Gundagai	0	71	33	18	11	1	16	14	10	27	11	55	80
Cowra	0	73	74	19	18	4	92	43	42	41	60	53	145
Cumberland	3	1,062	877	176	144	79	621	168	469	1,020	371	1,060	1,070
Dubbo Regional	1	695	623	110	102	26	533	247	273	461	441	494	1,118
Dungog	0	32	32	29	13	0	16	13	8	4	5	53	37
Edward River	0	74	63	15	14	1	34	29	9	38	11	78	113
Eurobodalla	0	258	239	72	39	2	142	39	87	176	155	211	343
Fairfield	1	934	655	179	151	43	233	91	288	569	533	589	891
Federation	0	29	39	12	27	1	18	17	14	24	7	53	75
Forbes	0	61	81	12	13	3	59	25	47	181	24	66	123
Georges River	2	389	303	97	71	17	169	63	106	224	534	372	459

NSW Recorded Crime Statistics, March Quarter 2025

NSW LGA	Murder	Domestic violence related assault	Non-domestic violence related assault	Sexual assault	Sexual touching, sexual act and other sexual offences	Robbery	Break and enter dwelling	Break and enter non-dwelling	Motor vehicle theft	Steal from motor vehicle	Steal from retail store	Other stealing offences	Malicious damage to property
Gilgandra	0	40	16	10	11	1	32	26	9	17	8	29	46
Glen Innes Severn	0	78	73	17	16	1	55	17	18	26	17	59	104
Goulburn Mulwaree	1	190	161	48	39	3	66	48	46	99	137	226	277
Greater Hume Shire	0	38	23	18	17	0	20	9	19	39	1	44	35
Griffith	0	211	139	34	31	16	103	44	59	159	166	169	303
Gunnedah	0	120	74	30	24	4	104	32	69	80	42	81	206
Gwydir	0	29	13	9	5	0	15	5	13	7	1	25	19
Hawkesbury	0	317	242	130	82	3	76	48	81	174	148	209	404
Hay	0	20	14	0	6	0	8	7	1	8	3	16	29
Hilltops	1	138	86	22	20	0	41	16	27	36	43	79	122
Hornsby	1	248	204	73	103	10	129	64	84	187	287	256	401
Hunters Hill	0	14	11	7	12	1	23	13	20	16	3	34	27
Inner West	1	558	670	229	169	44	292	147	264	539	483	982	968
Inverell	0	206	141	50	31	5	142	37	53	66	104	107	229
Junee	0	26	17	10	7	1	15	9	10	7	3	22	34
Kempsey	0	358	226	61	52	12	374	68	205	198	119	315	462
Kiama	0	29	40	17	24	1	33	11	32	83	13	49	75
Ku-ring-gai	0	143	100	48	56	4	130	51	52	112	49	147	200
Kyogle	0	31	21	13	7	0	29	12	18	29	6	18	47
Lachlan	0	80	42	21	13	0	54	51	41	60	18	91	124
Lake Macquarie	1	869	766	334	211	33	480	234	486	787	929	774	1,346
Lane Cove	0	75	53	18	18	3	74	20	25	57	20	102	76
Leeton	0	103	64	31	20	2	47	24	32	35	20	83	118
Lismore	2	220	275	118	70	13	273	92	135	185	252	231	407
Lithgow	0	187	151	32	24	4	86	17	46	92	48	194	248
Liverpool	4	1,338	968	251	198	76	524	166	473	981	606	1,081	1,241
Liverpool Plains	0	47	36	15	9	1	12	6	12	13	4	28	65
Lockhart	0	15	5	5	3	0	11	12	5	7	0	18	30
Lord Howe Island	0	7	0	3	1	0	1	0	0	0	0	1	3
Maitland	0	716	442	160	136	24	291	142	230	566	411	474	754
Mid-Coast	1	621	495	163	146	22	414	182	278	344	323	519	825
Mid-Western Regional	1	128	113	68	26	1	47	31	36	44	56	109	197
Moree Plains	0	283	189	75	22	23	291	109	139	131	168	173	350
Mosman	0	41	27	14	22	5	31	2	22	48	35	90	83
Murray River	0	39	25	15	11	2	68	60	44	65	8	93	56
Murrumbidgee	0	22	5	9	4	0	14	4	3	6	2	15	32
Muswellbrook	1	206	133	53	35	3	81	30	52	84	85	157	207
Nambucca Valley	0	125	84	45	35	3	70	30	52	90	56	136	181
Narrabri	1	112	86	34	10	6	89	19	32	90	27	76	137
Narrandera	0	54	47	8	8	1	33	38	30	56	9	48	69
Narromine	0	75	48	18	10	0	59	51	33	52	29	76	100
Newcastle	0	776	1,150	335	212	92	1,004	402	615	1,853	1,207	1,387	1,664
North Sydney	0	129	151	31	51	8	90	31	33	98	119	251	224
Northern Beaches	1	315	547	166	145	34	212	131	189	414	733	838	876
Oberon	0	21	3	7	4	0	11	7	11	6	10	27	27

NSW Recorded Crime Statistics, March Quarter 2025

NSW LGA	Murder	Domestic violence related assault	Non-domestic violence related assault	Sexual assault	Sexual touching, sexual act and other sexual offences	Robbery	Break and enter dwelling	Break and enter non-dwelling	Motor vehicle theft	Steal from motor vehicle	Steal from retail store	Other stealing offences	Malicious damage to property
Orange	0	273	327	91	58	21	299	110	170	231	226	241	515
Parkes	0	139	111	35	27	4	64	40	50	88	65	107	175
Parramatta	2	849	1,018	223	202	109	710	239	424	1,105	1,194	1,642	1,036
Penrith	2	1,284	1,182	306	267	75	675	352	551	1,243	894	1,151	1,684
Port Macquarie-Hastings	2	456	386	135	99	15	198	155	134	266	188	473	576
Port Stephens	0	499	330	113	84	20	179	123	169	214	164	306	605
Queanbeyan-Palerang Regional	0	234	218	67	43	17	108	55	114	186	190	243	339
Randwick	0	405	548	126	124	28	266	62	157	362	251	732	661
Richmond Valley	1	184	145	60	39	7	157	37	90	96	52	124	237
Ryde	0	285	223	79	62	8	190	65	100	266	361	468	343
Shellharbour	0	251	223	91	89	10	122	64	120	284	305	252	400
Shoalhaven	1	484	518	187	136	17	299	154	219	371	493	443	888
Singleton	0	115	116	32	39	0	71	77	70	70	66	122	233
Snowy Monaro Regional	0	66	58	32	20	3	39	22	17	27	9	93	135
Snowy Valleys	0	58	67	63	17	2	32	34	20	37	23	53	102
Strathfield	1	150	172	35	53	14	116	33	84	185	119	279	159
Sutherland Shire	0	578	461	158	135	28	230	61	114	317	476	526	777
Sydney	2	1,177	2,926	369	412	190	561	353	335	798	2,680	4,408	2,103
Tamworth Regional	1	572	399	158	107	21	566	94	219	401	311	438	787
Temora	0	14	23	3	7	0	20	14	1	11	10	23	44
Tenterfield	0	57	48	18	12	1	36	12	15	10	11	52	108
The Hills Shire	1	292	302	97	91	42	240	99	134	256	436	461	463
Tweed	1	319	383	110	102	14	219	118	263	367	348	492	583
Unincorporated Far West	0	4	8	7	3	0	1	3	3	18	9	16	4
Upper Hunter Shire	0	75	55	21	29	3	26	11	32	35	20	74	80
Upper Lachlan Shire	0	19	17	16	8	0	17	7	8	6	1	32	50
Uralla	0	17	23	10	7	0	13	13	6	9	5	19	26
Wagga Wagga	0	506	451	131	79	15	472	84	177	366	292	496	714
Walcha	0	20	17	11	4	0	6	18	0	4	4	11	18
Walgett	0	199	91	25	10	0	69	33	32	45	12	66	150
Warren	0	58	16	2	2	0	21	9	9	7	6	30	67
Warrumbungle Shire	0	69	56	24	40	0	55	38	17	37	32	100	139
Waverley	1	213	279	82	73	17	118	29	112	165	675	482	331
Weddin	0	15	9	9	12	0	7	6	4	4	10	14	28
Wentworth	0	72	39	12	6	1	40	25	28	41	11	46	92
Willoughby	0	132	176	57	56	7	109	54	56	107	363	308	209
Wingecarribee	0	95	132	60	49	3	42	49	50	66	53	105	228
Wollondilly	0	194	106	44	42	6	46	17	58	81	29	108	177
Wollongong	3	709	854	293	208	48	490	194	354	1,034	1,191	1,047	1,291
Woollahra	2	127	130	51	47	0	100	19	77	162	81	200	165
Yass Valley	0	41	40	30	21	0	25	8	23	29	8	32	63
In Custody	1	12	1,325	692	116	7	0	1	0	2	0	7	64
NSW	70	36,779	34,981	10,736	8,164	1,953	20,425	8,661	14,590	28,704	27,595	39,266	49,611

APPENDIX 2

EXPLANATORY NOTES

Appendix 2.1: Explanatory Notes

What are crime statistics?

BOCSAR's crime statistics consist of criminal incidents reported to, or detected by, police and recorded on the NSW Police Force's Computerised Operational Policing System (COPS). While this system is used for record-keeping for all police operations, not just for criminal matters, BOCSAR only reports on criminal incidents and selected policing activities. BOCSAR's crime statistics therefore do not capture crimes that are not recorded on COPS. The Australian Bureau of Statistics conducts regular crime and victim surveys which attempt to capture a snapshot of both reported and unreported crimes.

How to interpret crime statistics

Recorded crime statistics for some offence categories do not accurately reflect the actual level of crime in the community. This is because the number of incidents recorded may be affected by extraneous factors which are not easily measured. In particular:

- > Public willingness to report crime - Many crimes which occur are not reported to police and will therefore not be recorded - for example, a large number of assaults, sexual assaults and robberies are not reported to police.
- > Shifts in policing policy - Recording of those offences which are detected by, rather than reported to police, are strongly affected by policing practices - examples of these are drug offences, drink driving offences, offensive behaviour and receiving stolen goods. Recorded rates for such offences do not accurately reflect
- > High visitor populations compared to residential populations - Sydney Local Government Area has relatively high recorded crime rates because, compared with other regions, the resident population is small relative to the number of people in the area. In other words, the area has a high user population which is not reflected in the denominator of the rate calculation.
- > Areas with small residential populations - Recorded crime rates in Local Government Areas with small population sizes are not always a good indicator of offending. Crime rates in areas with populations under 3,000 may be unreliable and should be interpreted with caution.

What offences are included?

BOCSAR's standard quarterly publications report on 13 major offence categories, which include serious personal violence and property offences. In addition to these offences, we also release data for 62 specific offence categories.

The offence of coercive control is included from the September Quarter 2024. This offence relates to the use of abusive behaviours directed towards a current or former intimate partner with the intention to coerce or control them. The criminal offence captures repeated patterns of physical or non-physical abuse used to hurt, scare, intimidate, threaten or control someone. The law applies to abusive behaviour from 1 July 2024.

From the September Quarter 2021 report, the offence category previously labelled 'indecent sexual assault, act of indecency and other sexual offences' is labelled 'sexual touching, sexual act and other sexual offences'.

Commencing March 2020, the NSW Government issued public health orders under the NSW Public Health Act 2010 (NSW) to limit the spread of COVID-19. Police can issue a fine or court attendance notice for failure to comply with the orders. Breaches of these orders are counted as "other offences" in this report.

What is being counted?

- > Incidents - When a crime is reported to, or detected by, the NSW Police they record it as a criminal event on COPS. The event date is the date that the crime was reported. Unless otherwise stated, the date BOCSAR attaches to a crime is the event date. One criminal event can contain multiple criminal incidents. BOCSAR's default counting unit for crime data is criminal incidents with the exception of murder and manslaughter. For murder and manslaughter only, the counting units used are victims. Criminal incidents are activities detected by or reported to police which involve the same offender(s) and victim(s); occur at the one location during one uninterrupted period of time; fall into one offence category and one incident type.

> People proceeded against - BOCSAR reports on people identified as 'Persons of Interest' (POIs) by the NSW Police Force who have had a legal proceeding commenced against them by the NSW Police Force. POIs counted in this report have been proceeded against to court or by way of diversion from court, and may not end up with a proven offence. There could be quite some time between an event being recorded by police, an investigation being completed and an alleged offender (i.e. a POI) being charged or otherwise legally proceeded against. Consequently, POIs are counted in the time period they were proceeded against, rather than the time period the event /incident was reported to or recorded by police.

> Legal proceedings against persons presented in Tables 3.1 and 3.2 include persons proceeded against to court and persons diverted from court (by way of criminal infringement notice, cannabis or other drug caution and diversions under the *Young Offenders Act 1997*, including Youth Justice Conference, Caution and Warning). Young people proceeded against by way of a Warning for Transport and regulatory offences have been excluded from Table 3.2 as Warnings are not a diversion for these offences.

> Proceeded against to court (breach of bail) in Tables 3.1 and 3.2 includes persons with breach of bail as the only incident on the criminal event recorded by the NSW Police Force. Breaching bail is not a criminal offence but it can lead to being brought to court by police for the court to reconsider bail.

> Infringement Notices (fines) are not included in this report as they are not a form of court diversion.

> Persons proceeded against to court by offence type (Table 3.3 and Table 3.4) selects one offence type per criminal event. The offence type is selected based on the most serious offence for which the person was proceeded against using the Median Sentence Ranking (MSR) of the offence. For example, a person legally proceeded against to court for a criminal event involving a serious domestic assault charge and a coercive control charge will be counted under the domestic assault offence category as it has the higher MSR ranking than coercive control. For further information see the BOCSAR's Crime and Justice Bulletin No.142 Measuring Offence Seriousness.

What are crime trends and how are they calculated?

In general, BOCSAR relies upon the Kendall Rank Order Correlation statistical test (or Kendall's tau-b) to determine whether a series is trending upwards, downwards or is stable ($p < .05$). In some tables a stable trend is represented by 'ns' (not significant). The statistical test is applied to the monthly data over the specified period. Where a significant trend is found, the average annual percentage change over the time period is reported. If any of the 12-monthly totals in the series have a value of less than 20, a trend test is not conducted. When this occurs, the relevant cell will be left blank or contain 'n.c.' (not calculated).

For murder and manslaughter incidents, the trend test is applied to the monthly number of recorded victims rather than criminal incidents.

With the June Quarter 2024 update, the report has transitioned from reporting five-year to reporting ten-year trends. The COVID-19 pandemic is associated with reductions in crime rates arising from government-imposed policies and restrictions introduced to minimise the impact of the pandemic. BOCSAR's regular crime reporting is suited to detecting sustained changes in crime rather than sharp fluctuations of the kind we saw in March 2020 and June 2021. By reporting ten-year trends, we aim to provide a more accurate view of longer term trends in crime, reducing the impact of the COVID-19 pandemic on the trend analysis.

How is the ratio to NSW calculated?

The ratio to NSW rate statistics are a comparison of a NSW regional rate per 100,000 population to the NSW rate per 100,000 population. A ratio of one indicates parity with the NSW rate. Ratios indicating double the NSW rate (or more) before rounding are highlighted in red, whilst ratios indicating half the NSW rate (or less) before rounding are highlighted in green. Ratios are not calculated for regions with a population of less than 3,000.

How are 'young people' and 'adults' defined?

The term 'young people' refers to persons aged 10-17 years at the time of the offence; 'adults' refers to persons aged 18 years and older at the time of the offence.

Regional Statistics

Statistics are provided on the number of criminal incidents (victims for murder) recorded for each of the Statistical Areas Level 4 (SA4s) of NSW as defined by the Australian Bureau of Statistics (ABS). Recorded criminal incidents which occurred in correctional, detention or remand centres, however, are not counted in the SA in which the incident occurred. Note that LGA boundaries change from time to time. A criminal incident is counted within a particular region when the location of the offence falls within that region.

What is included in 'selected policing activities'?

- > Bail compliance checks - checks conducted by police to assess if bail conditions are being complied with.
- > ADVO compliance checks - checks conducted by police to assess defendants' compliance with Apprehended Domestic Violence Order (ADVO) conditions. Police are required to speak with all interested parties (ie the protected persons and the defendant) for the compliance check event to be completed. The reported count is the total number of ADVO compliance check events conducted, regardless of whether all interested parties were able to be contacted. If a breach of ADVO is detected, Police may charge the defendant with breaching their ADVO.
- > Move on directions - a 'move on direction' is a direction given to a person by a police officer, under section 198 of the Law Enforcement (Powers and Responsibilities) Act 2002 (NSW), to leave a public place and not return for a specified period.
- > Searches - If the police have reasonable grounds they may, without a warrant, stop and search a person and anything in their possession or under their control, including a vehicle.
- >Taser use - A Taser is a hand-held electrical device used by the NSW Police Force to temporarily incapacitate a person and/or cause pain through the application of electrical current. It can be used in probe or stun mode.
 - Taser draw/cover: Drawing of the Taser from the holster so as to cover a subject.
 - Taser warning arc: The user demonstrates their Taser is armed by showing the visible flow of electricity (arc) to the subject.
 - Taser discharged: The Taser trigger is pulled resulting in the cartridge firing and discharging the two probes (Taser probes discharged), or the Taser is activated and placed directly against an individual's body (Taser drive stun). These modes may cause pain and render the subject temporarily incapacitated.

From the March Quarter 2025 report, the categories 'Taser probes discharged' and 'Taser drive stun' were combined into a single category: 'Taser discharge'. The counting of taser use also changed from counting each incident of taser use, to the most serious type of taser used in a single event. For example, if during a single event the Taser was drawn from the holster, a warning arc was demonstrated and the Taser was discharged with the probes firing at a person, only the 'Taser discharge' will be counted for the event.

- > Detain/convey person to mental health facility - The police detain a person at risk of harm to themselves or others and transport them to a mental health facility for assessment under section 22 of the Mental Health Act 2007 (NSW).

What are non-criminal domestic episodes?

Incidents attended by police where a domestic dispute is recorded as having taken place but no criminal incident has been recorded. The vast majority of these episodes are verbal arguments.

Where can I find more detail and explanatory notes?

Detailed definitions and explanatory notes are available at

https://www.bocsar.nsw.gov.au/Pages/bocsar_crime_stats/bocsar_glossary.aspx

APPENDIX 3

LGAs IN STATISTICAL AREAS

Appendix Table 3.1: Local Government Areas in Greater Sydney Statistical Areas

Baulkham Hills and Hawkesbury	Blacktown	Central Coast
Hawkesbury*	Blacktown	Central Coast
The Hills Shire*		
City and Inner South	Eastern Suburbs	Inner South West
Sydney*	Randwick*	Bayside*
	Waverley	Canterbury-Bankstown*
	Woollahra	Georges River
Inner West	North Sydney and Hornsby	Northern Beaches
Burwood	Hornsby*	Northern Beaches
Canada Bay	Ku-ring-gai	
Strathfield*	Lane Cove	
Inner West*	Mosman	
	North Sydney	
	Willoughby	
Outer South West	Outer West and Blue Mountains	Parramatta
Camden*	Blue Mountains*	Cumberland*
Campbelltown*	Penrith*	Parramatta*
Wollondilly*		
Ryde	South West	Sutherland
Hunters Hill	Fairfield*	Sutherland Shire*
Ryde*	Liverpool*	

* These LGAs span across two or more Statistical Areas.

These LGAs are listed under the Greater Sydney Statistical Areas which contain the largest area of each LGA.

Appendix Table 3.2: Local Government Areas in Regional Statistical Areas

Capital Region	Central West	Coffs Harbour - Grafton	Far West and Orana
Bega Valley	Bathurst Regional	Bellingen*	Bogan
Eurobodalla	Bland*	Clarence Valley*	Bourke
Goulburn Mulwaree	Blayney	Coffs Harbour	Brewarrina
Hilltops	Cabonne*		Broken Hill
Queanbeyan-Palerang Regional	Cowra		Central Darling
Snowy Monaro Regional*	Forbes		Cobar
Upper Lachlan Shire	Lachlan*		Coonamble
Yass Valley*	Lithgow		Dubbo Regional*
	Mid-Western Regional*		Gilgandra
	Oberon*		Narromine
	Orange		Unincorporated Far West
	Parkes		Walgett
	Weddin		Warren
			Warrumbungle Shire*
Hunter Valley excluding Newcastle	Illawarra	Mid North Coast	Murray
Cessnock	Kiama*	Kempsey	Albury
Dungog	Shellharbour	Lord Howe Island	Balranald
Maitland*	Wollongong	Mid-Coast*	Berrigan
Muswellbrook		Nambucca*	Edward River
Port Stephens*		Port Macquarie-Hastings	Federation*
Singleton*			Greater Hume Shire*
Upper Hunter Shire*			Hay
			Murray River
			Wentworth
New England and North West	Newcastle and Lake Macquarie	Richmond - Tweed	Riverina
Armidale Regional*	Lake Macquarie*	Ballina	Carrathool*
Glen Innes Severn	Newcastle	Byron	Coolamon
Gunnedah		Kyogle	Cootamundra-Gundagai
Gwydir		Lismore	Griffith
Inverell		Richmond Valley*	Junee
Liverpool Plains*		Tweed	Leeton
Moree Plains			Lockhart*
Narrabri			Murrumbidgee*
Tamworth Regional			Narrandera
Tenterfield			Snowy Valleys*
Uralla			Temora
Walcha			Wagga Wagga
Southern Highlands and Shoalhaven			
Shoalhaven*			
Wingecarribee*			

* These LGAs span across two or more Statistical Areas.

These LGAs are listed under the NSW Regional Statistical Areas which contain the largest area of each LGA.

Appendix Table 3.3: Greater Sydney Statistical Area Map



Appendix Table 3.4: Regional NSW Statistical Areas Map



APPENDIX 4

OFFENCE CATEGORIES

Appendix 4.1: BOCSAR offences mapped to NSW Police Force incident categories

BOCSAR offence	NSW Police Force incident categories
Homicide	
Murder	Murder
Attempted murder	Murder – attempted Shoot with intent to murder
Murder accessory, conspiracy	Murder – conspiracy Murder – solicit
Manslaughter – not driving	Assault causing death (s25A) Manslaughter
Assault	
	<i>Includes any of the following offences disaggregated by whether or not police have flagged the incident as domestic violence related:</i>
Domestic violence related	Actual bodily harm Assault common Grievous bodily harm (including malicious wounding) Shoot with intent other than to murder Spike drink/food
Non-domestic violence related	Actual bodily harm Assault common Grievous bodily harm (including malicious wounding) Shoot with intent other than to murder Spike drink/food
Assault Police	Assault Police officer
Sexual offences	
Sexual assault	Sexual assault – adult victim (16 years old and over) Sexual assault – child victim, reported when child Sexual assault – child victim, reported when adult
Sexual touching, sexual act and other sexual offences	Sexual act – adult victim (16 years old and over) Sexual act – child victim, reported when child Sexual act – child victim, reported when adult Sexual touching – adult victim (16 years old and over) Sexual touching – child victim, reported when child Sexual touching – child victim, reported when adult Act of indecency Aggravated act of indecency Bestiality Carnal knowledge Grooming/procuring Incest Indecent communication Peep or pry Wilful and obscene exposure Other sexual offence Voyeurism/Film person
Abduction and kidnapping	
	Kidnapping/Abduction People trafficking
Robbery	
Robbery without a weapon	<i>Includes any of the following offences in which no weapon was recorded:</i> Demand money with menaces Robbery Robbery with aggravation Robbery with wounding Other robbery

BOCSAR offence	NSW Police Force incident categories
Robbery with a firearm	<p><i>Includes any of the following offences in which a firearm was recorded as a weapon:</i></p> <p>Armed robbery Demand money with menaces Robbery Robbery with aggravation Robbery with wounding Other robbery</p>
Robbery with a weapon not a firearm	<p><i>Includes any of the following offences in which a non firearm weapon was recorded:</i></p> <p>Armed robbery Demand money with menaces Robbery Robbery with aggravation Robbery with wounding Other robbery</p>
Blackmail and extortion	<p><i>From mid-2022 'sextortion' incidents have been recorded as extortion. Prior to this they were classified as fraud. As such, the series prior to mid-2022 is not comparable to the series after this time for this offence.</i></p> <p>Extortion/Blackmail</p>
Coercive control	Coercive control
Intimidation, stalking and harassment	<p>Bullying/harassment or intimidation Stalking (since 2017) Child approach (since 2017) Riot and affray Telecommunications offence (includes nuisance phone calls) Indecent Communication Threats against Police Violent disorder Unlawful assembly</p>
Other offences against the person	<p>Labour exploitation (includes sexual servitude) Malicious damage with intent to injure/endorse Negligent act cause grievous bodily harm Other offence against the person</p>
Theft	
Break and enter – dwelling	<p><i>Dwelling includes premises where people reside such as house, home unit, caravan, tent as well as any attachment such as garage, shed, yard and garden.</i></p> <p>Break/Enter and steal Break/Enter and commit other felony Break/Enter intent to steal Break/Enter intent to commit other felony</p>
Break and enter – non-dwelling	<p><i>Non-dwelling includes commercial and government premises.</i></p> <p>Break/Enter and steal Break/Enter and commit other felony Break/Enter intent to steal Break/Enter intent to commit other felony</p>
Receiving or handling stolen goods	<p>Receiving Goods in custody Possess property stolen outside NSW Deal with proceeds of crime</p>

BOCSAR offence	NSW Police Force incident categories
	Money Laundering
Motor vehicle theft	Theft of motor cars, motor cycles, and other vehicles / vessels <i>(includes being carried in conveyance taken without consent)</i>
	Rebirthing vehicles / vessels
	Vehicle/Vessel Unique Identifier
Steal from motor vehicle	Steal from motor vehicle
Steal from retail store	Steal from retail store
Steal from dwelling	Steal from dwelling
	Other stealing <i>occurring in a residential dwelling</i>
Steal from person	Steal from person
Stock theft	Steal stock (Non-domestic animal)
Fraud	Company/corporate offence
	Computer crime
	Copyright/Intellectual property/Trademark
	Corrupt commission/practices
	Corrupt payment (receive or pay)
	Counterfeit currency
	Deception offence
	Embezzlement
	Fail to pay
	Forgery (since 2017)
	Fraudulent misappropriation
	Larceny clerk/servant/bailee
	Make/use false instrument
	Misappropriate cheques/funds
	Possess false instrument
	Publish false misleading statement
	Receiving (fraud related)
	Scams - obtain funds (since 2017)
	Scams - selling (since 2017)
	Unauthorised access of funds (since 2017)
	Deal/supply false identity documents (since 2017)
	Deal/supply false information (since 2017)
	Equipment to make false identity documents (since 2017)
	Make false identity documents (since 2017)
	Possess false identity documents (since 2017)
	Possess identity information (since 2017)
	Use false identity documents (since 2017)
	Other fraud
Other theft	Steal from dwelling occurring somewhere other than a residential or non-residential dwelling (e.g. from hostels, motels, boarding houses etc)
	Steal from marine vessel
	Steal vessel
	Other stealing <i>occurring somewhere other than a dwelling (e.g. in outdoor/public places)</i>
Arson	
	<i>Fire incidents were classified as deliberate (to March 2023) or as suspicious - arson or suspicious - reckless (from March 2023). As such, the series prior to March 2023 is not comparable to the series after this time for this offence.:</i>
	Bushfire related
	Structure (not bushfire related)
	Vehicle/Transport/Aircraft
	Other commodity
Malicious damage to property	
	Graffiti
	Malicious damage to property
	Public place – damage fountain/wall etc.
	Public place – damage shrine/monument
Drug offences	
Possession and/or use of cocaine	Possess drug where drug type is cocaine
	Use or administer drug where drug type is cocaine

BOCSAR offence	NSW Police Force incident categories
Possession and/or use of narcotics	Item/object found where drug type is cocaine Possess drug <i>where drug type is narcotics</i> Use or administer drug <i>where drug type is narcotics</i>
Possession and/or use of cannabis	Item/object found where drug type is narcotics Possess drug / plant where drug type is cannabis Use or administer drug where drug type is cannabis Item/object found where drug type is cannabis
Possession and/or use of amphetamines	Possess drug where drug type is amphetamines Use or administer drug where drug type is amphetamines Item/object found where drug type is amphetamines
Possession and/or use of ecstasy	Possess drug where drug type is ecstasy
Possession and/or use of ecstasy (continued)	Use or administer drug where drug type is ecstasy Item/object found where drug type is ecstasy
Possession and/or use of other drugs	Possess drug where drug type is not cocaine, narcotics, cannabis, amphetamines or ecstasy Use or administer drug where drug type is not cocaine, narcotics, cannabis, amphetamines or ecstasy Item/object found where drug type is not cocaine, narcotics, cannabis, amphetamines or ecstasy
Dealing, trafficking in cocaine	Supply drug where drug type is cocaine
Dealing, trafficking in narcotics	Supply drug where drug type is narcotics
Dealing, trafficking in cannabis	Supply drug/plant where drug/plant type is cannabis
Dealing, trafficking in amphetamines	Supply drug where drug type is amphetamines
Dealing, trafficking in ecstasy	Supply drug where drug type is ecstasy
Dealing, trafficking in other drugs	Supply drug/plant where drug/plant type is not cocaine, narcotics, cannabis, amphetamines or ecstasy
Cultivating cannabis	Cultivation
Manufacture drug	Manufacture drug
Importing drugs	Import drug/plant
Other drug offences	Forge and/or utter prescription Possess drug utensil Other drug detection/seizure offence
Prohibited and regulated weapons offences	
	Bomb hoax or threat Discharge firearm into premises Licence offence Firearms dealer offence Firearms not ensure safekeeping Improper storage of explosives Person search - Item/object found where item/object is a weapon Possess explosive/dangerous article Possess prohibited weapon/article Possess shortened firearm Possess whilst unlicensed Sell prohibited weapon/article Shorten firearm Trespass with firearm Unlawful handling/access/supply of explosives Unlawfully discharge firearm Use firearm under influence Use prohibited weapon/article Other explosives offence Other firearm licencing offence Other firearm offence Other prohibited weapon/article offence
Disorderly conduct	
Trespass	Trespass Remain inclosed lands
Offensive conduct	Offensive behaviour
Offensive language	Offensive language

BOCSAR offence	NSW Police Force incident categories
Criminal intent	Armed with intent Charge with intent Disguised with intent Enter land with intent Intent to repeat indictable offence Instruments of crime Possess implements
Betting and gaming offences	
	Conduct/play illegal betting Conduct/play illegal game Own/manage premises – betting Own/manage premises – gaming Other gaming offence
Liquor offences	
	Consume alcohol in alcohol-free zone Consume/possess alcohol in public by minor Licensing legislation offence: – Offence by licensee/employee/secretary – Offence by minor – Offence by customer (not minor) – Supply liquor to juvenile – Offence against registered clubs legislation
Pornography offences	
	Possess/disseminate child pornography Possess/publish indecent material
Against justice procedures	
Escape Custody	Escapee – Corrective Services custody Escapee – Department of Community Services custody Escapee – Police custody Escapee – Other custody
Breach Apprehended Violence Order	Breach Apprehended Violence Order – domestic Breach Apprehended Violence Order – personal
Breach bail conditions	Breach bail conditions Breach control order
Fail to appear	Fail to appear
Resist or hinder officer	Refuse direction Refuse direction continue intoxication and disorder Refuse direction intoxicated person Refuse to be searched Refuse to produce object Resist/hinder officer
Other offences against justice procedures	Other judicial offence Fail to comply Contravene Child Protection Prohibition Order (CPPO)
Transport regulatory offences	Transport offence (includes offences on the rail network such as travelling without a valid ticket, smoking, drinking or using offensive language on a train Buffer riding
Other offences	
	<i>From the September 2024 report offences previously classified under 'prostitution offences' are classified as 'other offences'.</i>
	Animals - Dog offences Breach COVID 19 direction Cyber Breach/Attack False 000 call Family law offence Immigration/customs offence

BOCSAR offence	NSW Police Force incident categories
	Obstruction
	Offence against transport service
	Other street offences (carry cutting weapon, offensive implement)
	Public mischief
	Other miscellaneous offences
	Offences under various acts:
	Animals - Prevention Of Cruelty Acts
	Bush Fire Act
	Child Protection Act
	Local Government Act
	Marine/Waterway Act
	Pawnbrokers Act
	Postal Services Act
	Public Health Act
	Security Industry Act
	Sydney Harbour Bridge Act
	Tattoo Parlours Act
	Voluntary Assisted Dying Act
	Voluntary Assisted Dying (<i>Crimes Act</i>)
	Procure Prostitute (Including child prostitute)
	Prostitution – premises
	Prostitution – live off earnings
	Child prostitution
	Other vice offence