

# DOMESTIC VIOLENCE RELATED MURDER IN NSW

## Trends to December 2024



### Long-term trends in domestic violence related murder

**39 victims**

12 months to Dec 2024



**16**  
Adult female victims

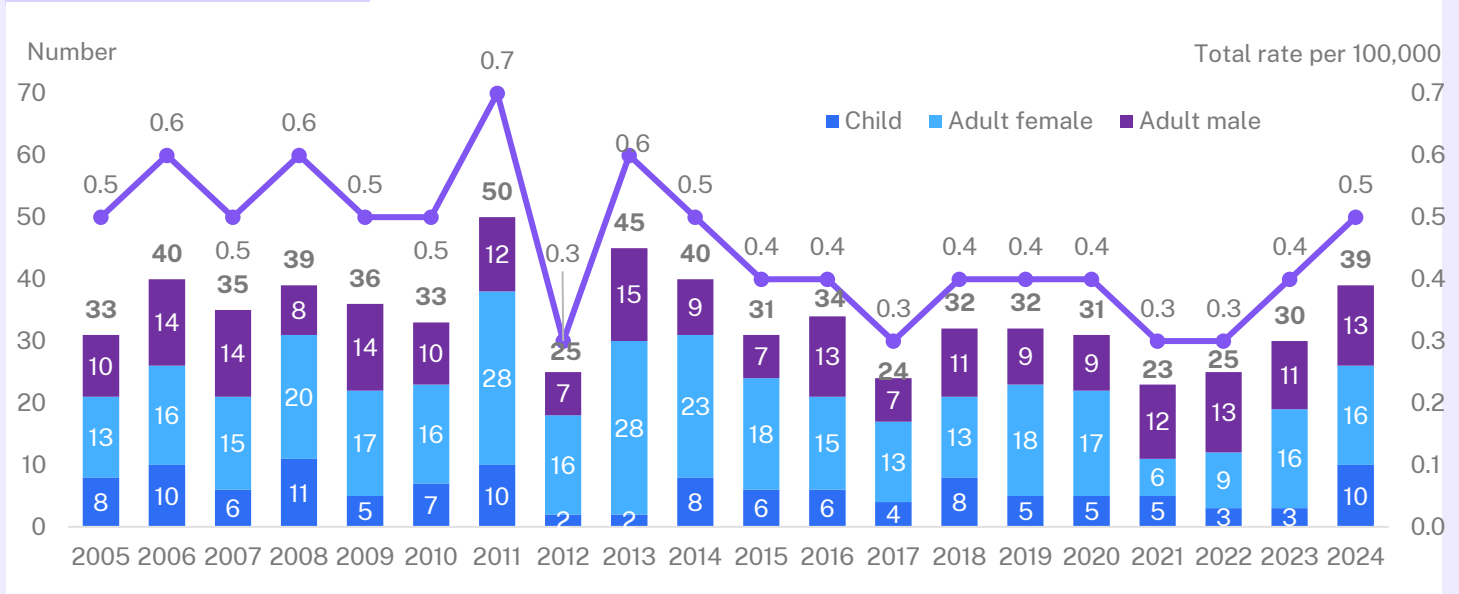


**10**  
Child victims



**13**  
Adult male victims

**Down**  
20-year trend

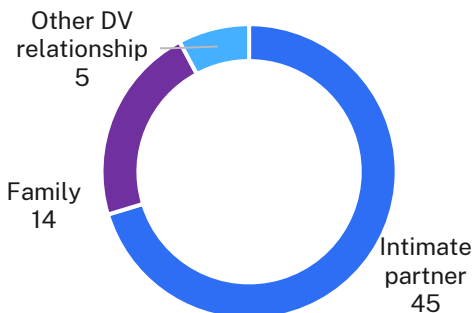


### Relationship between victim of DV murder and perpetrator

#### Adult female victims

**70%** of adult female victims were murdered by an intimate partner

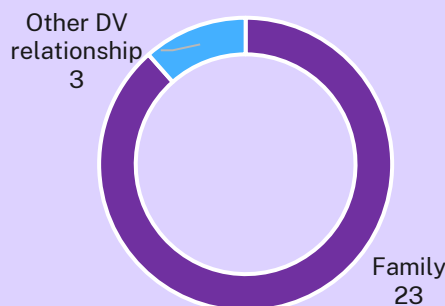
Relationship type adult female victims, 5 years to Dec 24 (n=64)



#### Child victims

**88%** of child victims were murdered by a family member

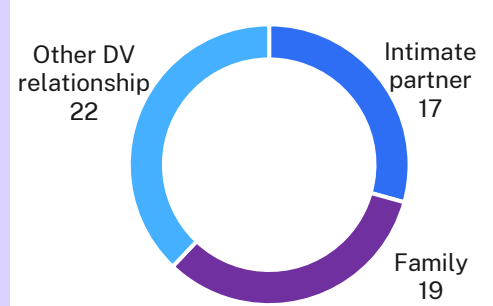
Relationship type child victims, 5 years to Dec 24 (n=26)



#### Adult male victims

**38%** of adult male victims were murdered by someone other than a partner or family member, e.g. a flatmate

Relationship type adult male victims, 5 years to Dec 24 (n=58)



# DOMESTIC VIOLENCE RELATED MURDER IN NSW

Trends to December 2024



## Long-term trends in intimate partner murder

**15 victims**

12 months to Dec 2024



**9**

Adult female victims



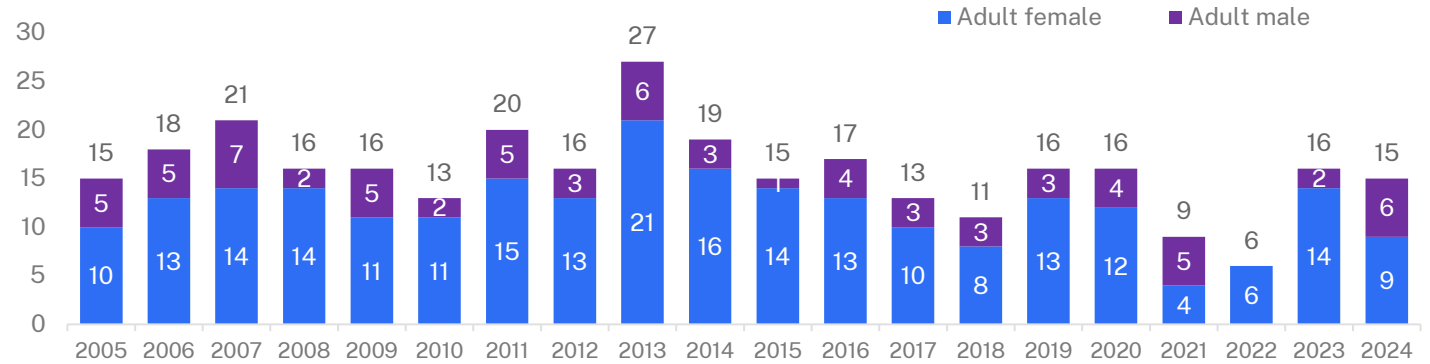
**6**

Adult male victims

**Down**

20-year trend

Number

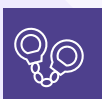
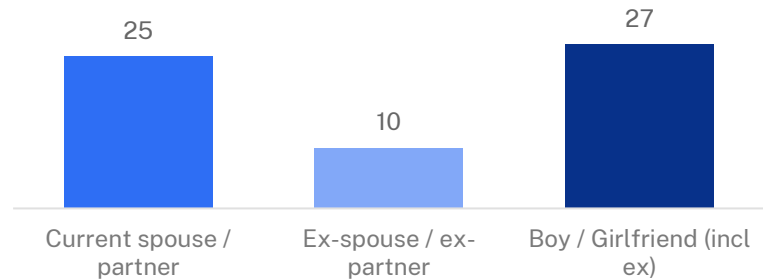


## Nature of the intimate partner relationship

**40%** or 25 victims were murdered by a current spouse or partner  
18 women and 7 men

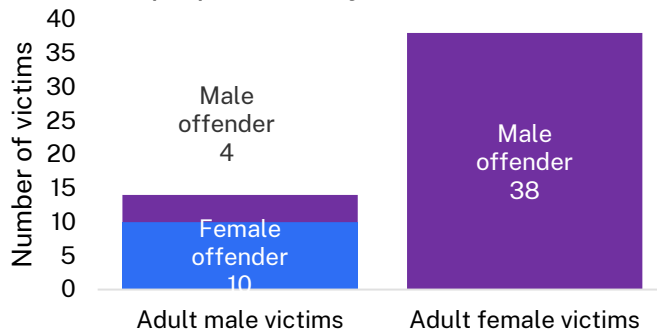
**44%** or 27 victims were murdered by a current or ex-boyfriend/girlfriend  
19 women and 8 men

Relationship type, 5 years to Dec 24 (n=62)



## Perpetrators of intimate partner murder

Gender of perpetrator, 5 years to Dec 24 (n=52)



**100%** of adult female victims were murdered by a male intimate partner

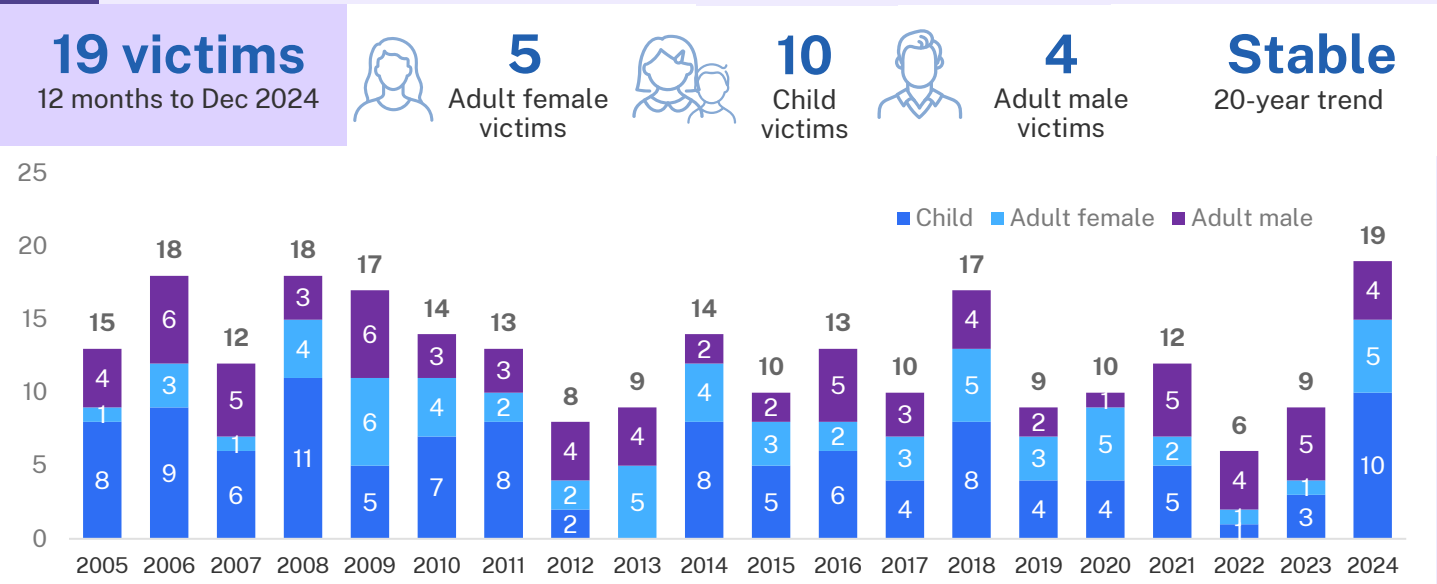


**71%** of adult male victims were murdered by a female intimate partner

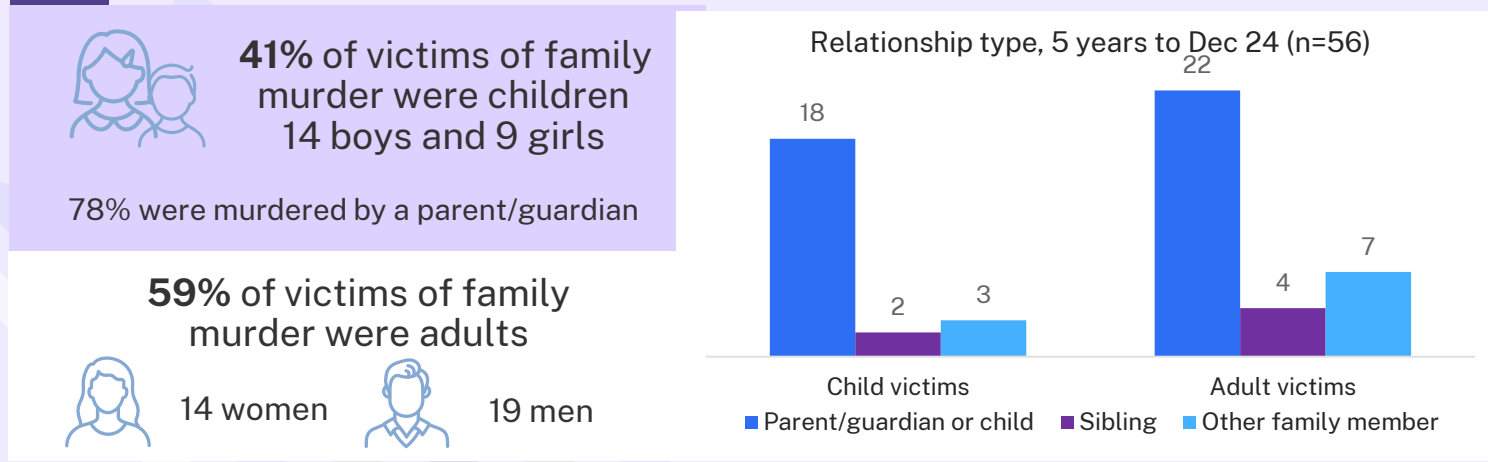
# DOMESTIC VIOLENCE RELATED MURDER IN NSW

Trends to December 2024

## Long-term trends in family murder



## Nature of the family relationship



## Perpetrators of family murder

